

1973

# Industrial Resources: Scott County - Georgetown

Kentucky Library Research Collections  
Western Kentucky University, [spcol@wku.edu](mailto:spcol@wku.edu)

Follow this and additional works at: [https://digitalcommons.wku.edu/scott\\_cty](https://digitalcommons.wku.edu/scott_cty)



Part of the [Business Administration, Management, and Operations Commons](#), [Growth and Development Commons](#), and the [Infrastructure Commons](#)

---

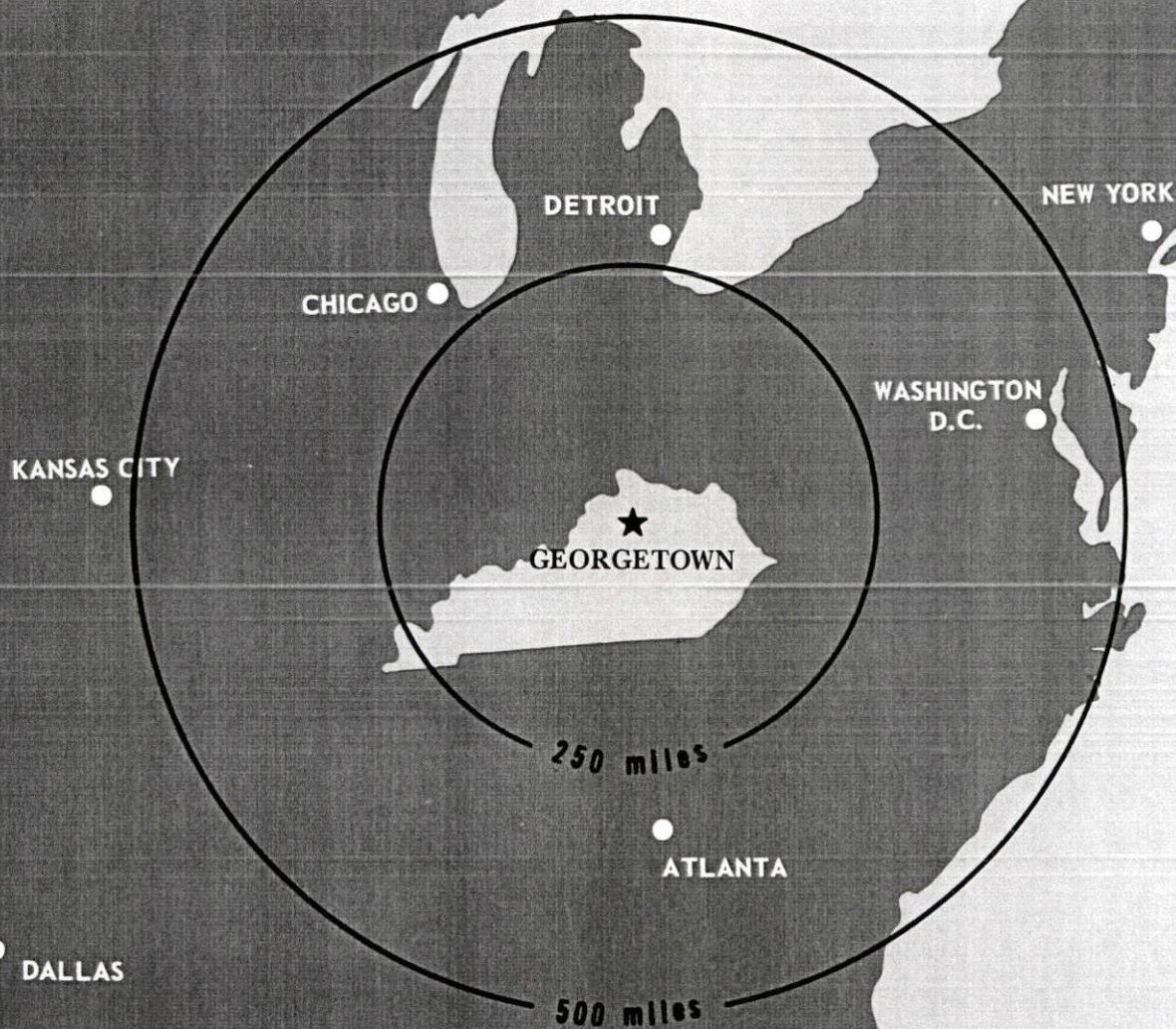
## Recommended Citation

Kentucky Library Research Collections, "Industrial Resources: Scott County - Georgetown" (1973). *Scott County*. Paper 22.  
[https://digitalcommons.wku.edu/scott\\_cty/22](https://digitalcommons.wku.edu/scott_cty/22)

This Report is brought to you for free and open access by TopSCHOLAR®. It has been accepted for inclusion in Scott County by an authorized administrator of TopSCHOLAR®. For more information, please contact [topscholar@wku.edu](mailto:topscholar@wku.edu).

# INDUSTRIAL RESOURCES

## ***GEORGETOWN KENTUCKY***



SCOTT COUNTY, KENTUCKY

GEORGETOWN INDUSTRIAL SITES

1973

# GEORGETOWN INDUSTRIAL SITES

1973

For more information about the following sites, contact Joe E. Johnson, 143 East Main Street, Georgetown, Kentucky 40324; or the Kentucky Department of Commerce, Capital Plaza Office Tower, Frankfort, Kentucky 40601.

**SITE #3:** ACREAGE: 12 acres  
LOCATION: Approximately one-fourth mile northeast of city limits  
ZONING: Agricultural  
HIGHWAY ACCESS: Degaris Mill Road  
RAILROADS: Not rail served  
WATER: West Scott County Water District  
SIZE LINE: 6-inch line approximately 400 feet east of site  
GAS: Columbia Gas of Kentucky  
SIZE MAIN: 6-inch main approximately 400 feet east of site  
ELECTRICITY: Kentucky Utilities Company  
SEWERAGE: Georgetown Municipal Water and Sewer Commission  
SIZE LINE: 8-inch line on site  
OPTIONED BY: Georgetown Improvement Company

**SITE #4:** ACREAGE: 28 acres  
LOCATION: Three-fourth mile northeast of city limits  
ZONING: Commercial  
HIGHWAY ACCESS: Adjacent to U. S. 62; I-75 interchanges approximately 400 feet north and 2,000 feet south of site  
RAILROADS: Not rail served  
WATER: West Scott County Water District  
SIZE LINE: 6-inch line adjacent to site across U. S. 62  
GAS: Columbia Gas of Kentucky  
SIZE MAIN: 6-inch main approximately 160 feet west of site, across U. S. 62  
ELECTRICITY: Kentucky Utilities Company  
SEWERAGE: Georgetown Municipal Water and Sewer Commission  
SIZE LINE: 8-inch line on site  
OPTIONED BY: Georgetown Improvement Company

**SITE #5:** ACREAGE: 3 acres  
LOCATION: Within city limits  
ZONING: Industrial  
HIGHWAY ACCESS: Paved access road leads to U. S. 460  
RAILROADS: Not rail served  
WATER: Georgetown Municipal Water and Sewer Commission  
SIZE LINE: 10-inch line on site  
GAS: Columbia Gas of Kentucky  
SIZE MAIN: 4-inch main adjacent to west side of site across Chambers Street  
ELECTRICITY: Kentucky Utilities Company  
SEWERAGE: Georgetown Municipal Water and Sewer Commission  
SIZE LINE: 10-inch line on site  
OPTIONED BY: Georgetown Improvement Company

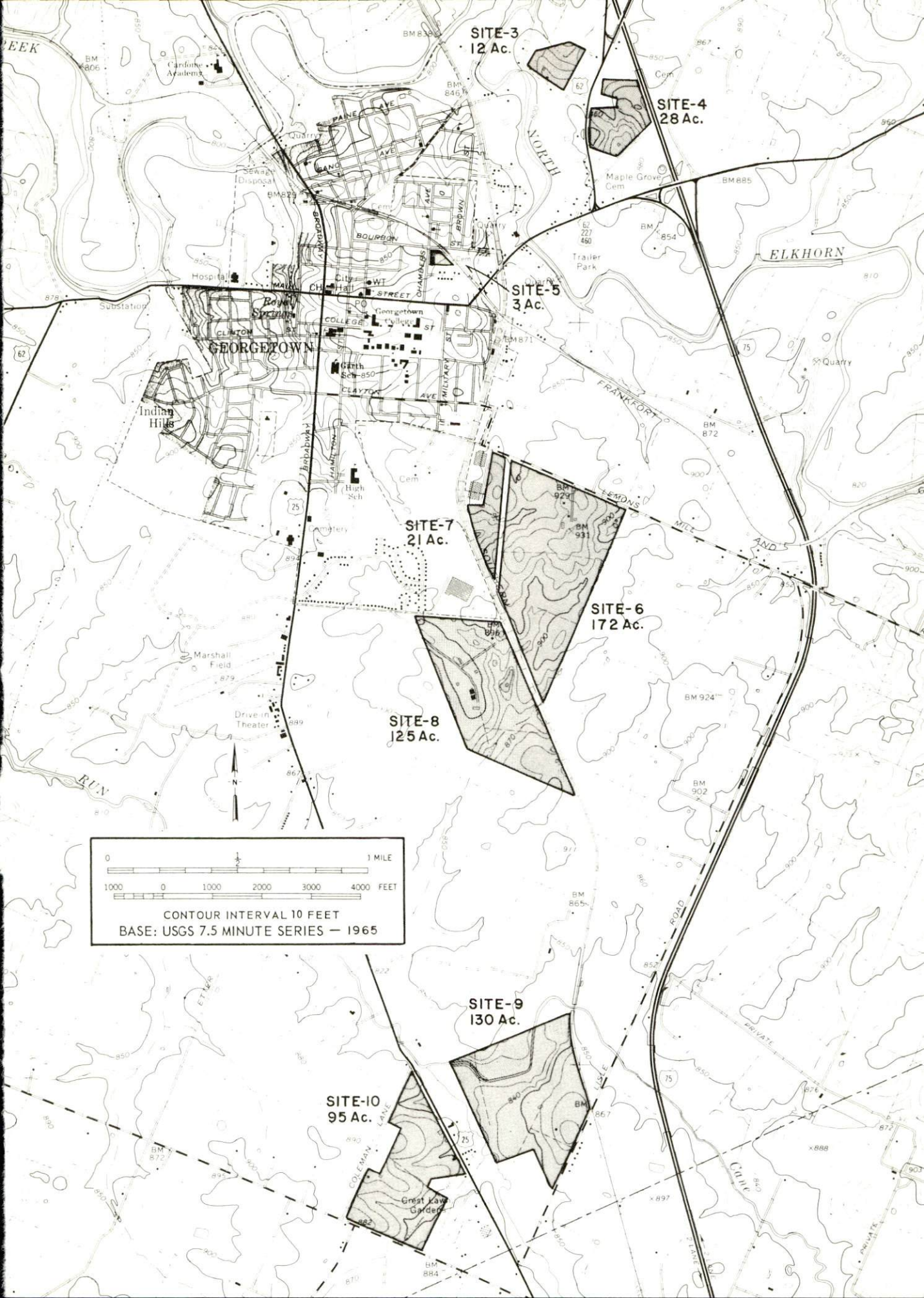
**SITE #6:** ACREAGE: 172 acres  
LOCATION: Outside southeast city limits  
ZONING: Industrial  
HIGHWAY ACCESS: Lemons Mill Road  
RAILROADS: Southern Railway borders south-western edge of site  
WATER: Georgetown Municipal Water and Sewer Commission  
SIZE LINE: 10-inch line adjacent to north side of Lemons Mill Road  
GAS: Columbia Gas of Kentucky  
SIZE MAIN: 4-inch main adjacent to north side of Lemons Mill Road  
ELECTRICITY: Kentucky Utilities Company  
SEWERAGE: Georgetown Municipal Water and Sewer Commission  
SIZE LINE: 8-inch line adjacent to north side of Lemons Mill Road  
OPTIONED BY: Georgetown Improvement Company

**SITE #7:** ACREAGE: 21 acres  
LOCATION: Adjacent to southeast city limits  
ZONING: Industrial  
HIGHWAY ACCESS: Lemons Mill Road  
RAILROADS: Southern Railway borders south-west boundary of site  
WATER: Georgetown Municipal Water and Sewer Commission  
SIZE LINE: 10-inch line adjacent to north side of Lemons Mill Road  
GAS: Columbia Gas of Kentucky  
SIZE MAIN: 4-inch main adjacent to north side of Lemons Mill Road  
ELECTRICITY: Kentucky Utilities Company  
SEWERAGE: Georgetown Municipal Water and Sewer Commission  
SIZE LINE: 8-inch line adjacent to north side of Lemons Mill Road  
OPTIONED BY: Georgetown Improvement Company

**SITE #8:** ACREAGE: 125 acres  
LOCATION: Adjacent to southern city limits  
ZONING: Industrial  
HIGHWAY ACCESS: Paved access road leads to U. S. 25  
RAILROADS: Southern Railway extends along eastern boundary of site  
WATER: Georgetown Municipal Water and Sewer Commission  
SIZE LINE: 8-inch line on site at northwest corner  
GAS: Columbia Gas of Kentucky  
SIZE MAIN: 6-inch main approximately 100 feet north of site  
ELECTRICITY: Kentucky Utilities Company  
SEWERAGE: Georgetown Municipal Water and Sewer Commission  
SIZE LINE: 8-inch line approximately 400 feet west of site  
OPTIONED BY: Georgetown Improvement Company

**SITE #9:** ACREAGE: 130 acres  
LOCATION: 2 1/2 miles south of Georgetown  
ZONING: Agricultural  
HIGHWAY ACCESS: Paved access road to U. S. 25  
RAILROADS: Southern Railway borders east boundary of site  
WATER: West Scott County Water District  
SIZE LINE: 6-inch line on site  
GAS: Columbia Gas of Kentucky  
SIZE MAIN: 6-inch main on site  
ELECTRICITY: Kentucky Utilities Company  
SEWERAGE: Georgetown Municipal Water and Sewer Commission  
SIZE LINE: 8-inch line approximately 2 miles north of site  
OPTIONED BY: Georgetown Improvement Company

**SITE #10:** ACREAGE: 95 acres  
LOCATION: 2 1/2 miles south of city limits  
ZONING: Agricultural  
HIGHWAY ACCESS: Paved access road to U. S. 25  
RAILROADS: Not rail served  
WATER: West Scott County Water District  
SIZE LINE: 6-inch line approximately 660 feet north of site  
GAS: Columbia Gas of Kentucky  
SIZE MAIN: 6-inch main approximately 100 feet east of site across U. S. 25  
ELECTRICITY: Kentucky Utilities Company  
SEWERAGE: Georgetown Municipal Water and Sewer Commission  
SIZE LINE: 8-inch line approximately 2 miles north of site  
OPTIONED BY: Georgetown Improvement Company

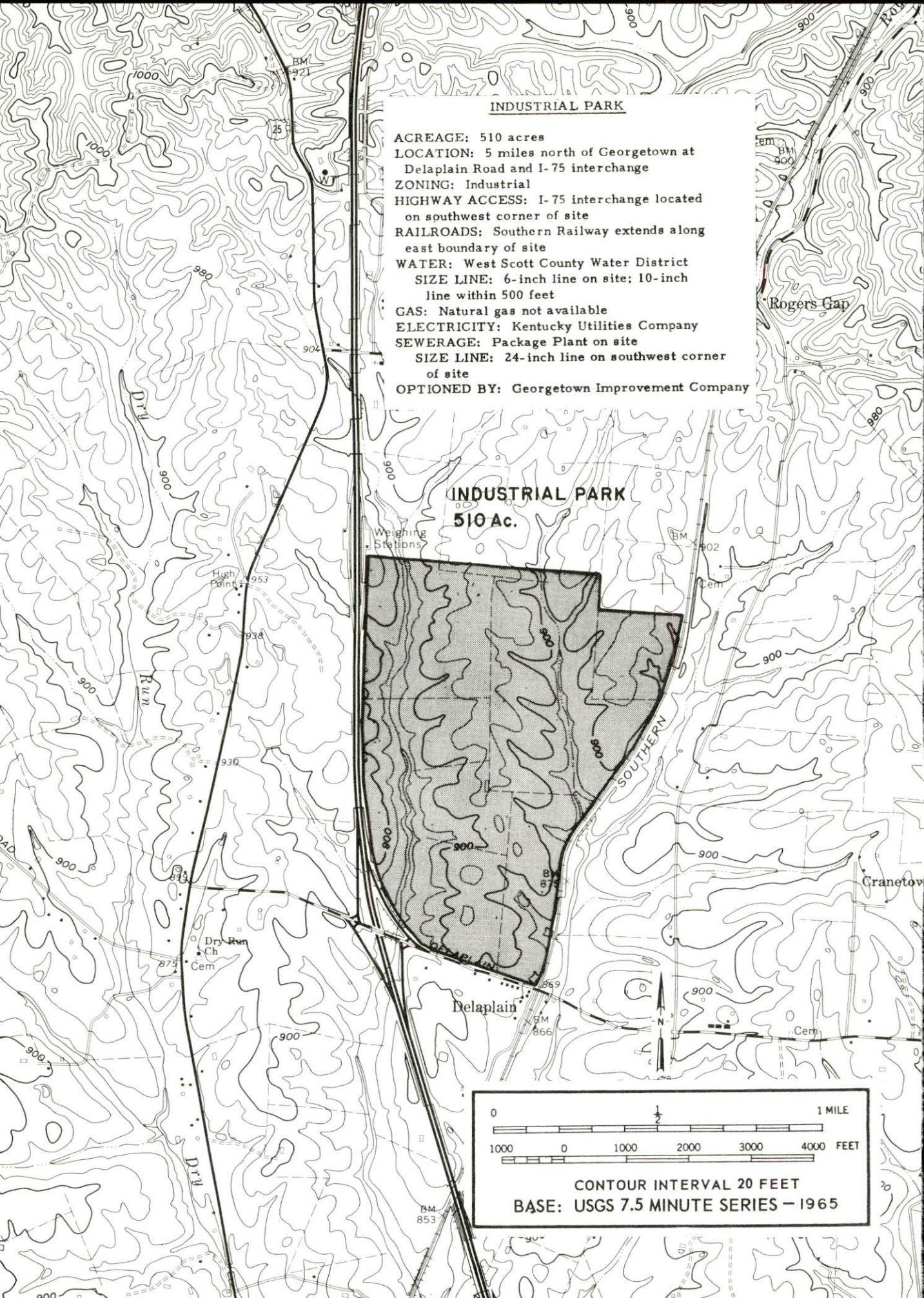


0 1 1 MILE  
1000 0 1000 2000 3000 4000 FEET  
CONTOUR INTERVAL 10 FEET  
BASE: USGS 7.5 MINUTE SERIES — 1965

### INDUSTRIAL PARK

ACREAGE: 510 acres  
LOCATION: 5 miles north of Georgetown at  
Delaplain Road and I-75 interchange  
ZONING: Industrial  
HIGHWAY ACCESS: I-75 interchange located  
on southwest corner of site  
RAILROADS: Southern Railway extends along  
east boundary of site  
WATER: West Scott County Water District  
SIZE LINE: 6-inch line on site; 10-inch  
line within 500 feet  
GAS: Natural gas not available  
ELECTRICITY: Kentucky Utilities Company  
SEWERAGE: Package Plant on site  
SIZE LINE: 24-inch line on southwest corner  
of site  
OPTIONED BY: Georgetown Improvement Company

### INDUSTRIAL PARK 510 Ac.



CONTOUR INTERVAL 20 FEET  
BASE: USGS 7.5 MINUTE SERIES - 1965

INDUSTRIAL RESOURCES  
GEORGETOWN, KENTUCKY

Prepared by  
The Kentucky Department of Commerce  
in cooperation with  
The Georgetown-Scott County Chamber of Commerce

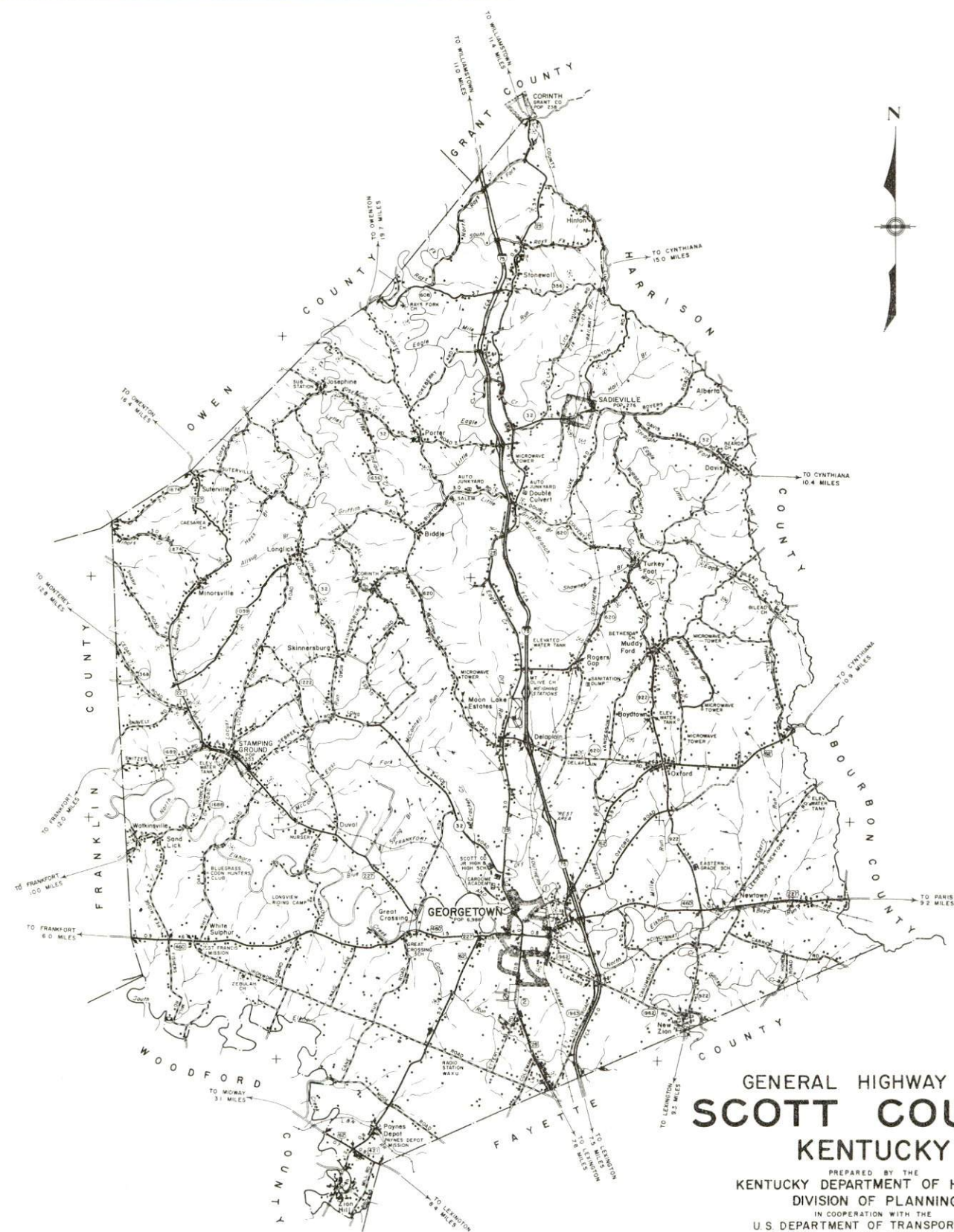
1973

This copy has been prepared by the Kentucky Department of Commerce, Division of Research and Planning, and the cost of printing paid from state funds.

# TABLE OF CONTENTS

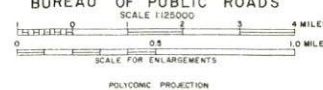
<u>Chapter</u>	<u>Page</u>
INDUSTRIAL SITES . . . . .	i
GEORGETOWN, KENTUCKY - A RESOURCE PROFILE . . . . .	1
THE LABOR MARKET. . . . .	4
Population Trends . . . . .	4
General Employment Characteristics, 1971 . . . . .	4
Manufacturing Employment Trends by Industry. . . . .	4
Major Georgetown Manufacturing Firms, Their Products and Employment . . . . .	7
Wages. . . . .	7
Labor Organizations . . . . .	7
Current and Future Labor Supply. . . . .	8
Total Personal Income . . . . .	8
Per Capita Personal Income. . . . .	8
EDUCATION . . . . .	9
Public Schools . . . . .	9
Vocational Schools . . . . .	9
Colleges and Universities . . . . .	10
TRANSPORTATION . . . . .	13
Rail. . . . .	13
Truck Service . . . . .	13
Air . . . . .	14
Bus . . . . .	14
Taxi . . . . .	14
Rental Services. . . . .	14
POWER AND FUEL . . . . .	15
Electricity. . . . .	15
Natural Gas . . . . .	15
Other Fuels . . . . .	15
WATER AND SEWERAGE . . . . .	16
Water. . . . .	16
Sewerage . . . . .	17

<u>Chapter</u>	<u>Page</u>
LOCAL GOVERNMENT . . . . .	18
City . . . . .	18
County . . . . .	18
Assessed Value of Property - 1972. . . . .	18
Local General Property Tax Rates Per \$100 of	
Assessed Valuation - 1972. . . . .	18
Utilities Gross Receipts Tax for Schools . . . . .	18
Planning and Zoning . . . . .	19
Safety . . . . .	19
Police. . . . .	19
Fire . . . . .	19
Sanitation. . . . .	19
HEALTH . . . . .	20
Hospitals . . . . .	20
Nursing Homes . . . . .	20
Public Health . . . . .	20
OTHER LOCAL FACILITIES. . . . .	21
Communications . . . . .	21
Library Services . . . . .	21
Religious Institutions. . . . .	22
Financial Institutions. . . . .	22
Hotels and Motels . . . . .	22
Clubs and Organizations . . . . .	22
RECREATION . . . . .	23
Local. . . . .	23
Area . . . . .	23
AGRICULTURE - NATURAL RESOURCES - CLIMATE . . . . .	24
Agriculture . . . . .	24
Natural Resources . . . . .	24
Climate. . . . .	24
HISTORY . . . . .	25



# GENERAL HIGHWAY MAP **SCOTT COUNTY** KENTUCKY

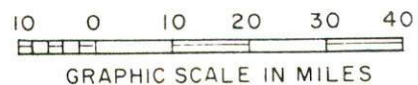
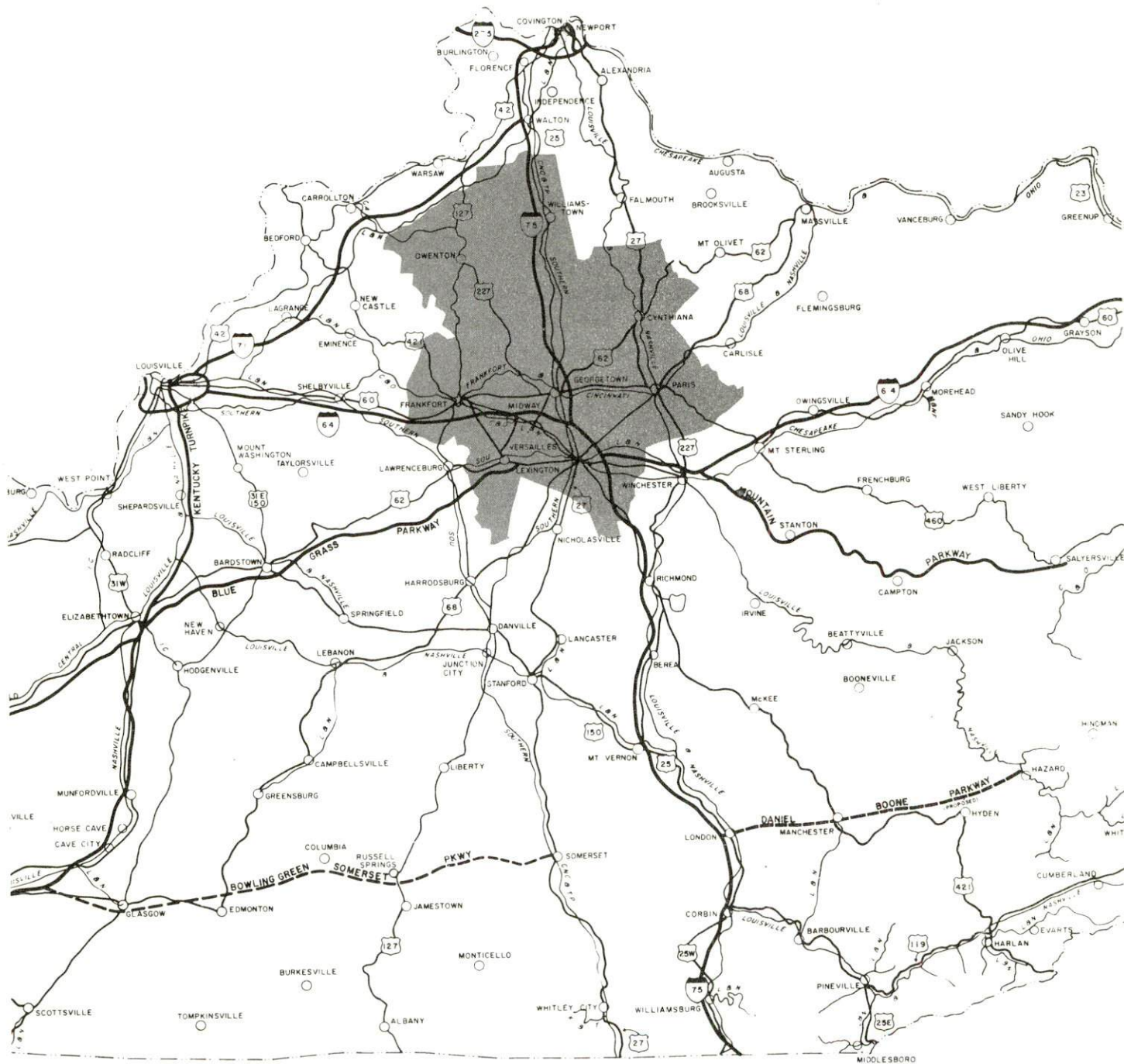
PREPARED BY THE  
 KENTUCKY DEPARTMENT OF HIGHWAYS  
 DIVISION OF PLANNING  
 IN COOPERATION WITH THE  
 U.S. DEPARTMENT OF TRANSPORTATION  
 FEDERAL HIGHWAY ADMINISTRATION  
 BUREAU OF PUBLIC ROADS



ORIGINAL DATA	1965
REVISIONS	
DATE BY DATE BY	
1965	
1966	
1967	
1968	
1969	
1970	
1971	
1972	
1973	
1974	
1975	
1976	
1977	
1978	
1979	
1980	
1981	
1982	
1983	
1984	
1985	
1986	
1987	
1988	
1989	
1990	
1991	
1992	
1993	
1994	
1995	
1996	
1997	
1998	
1999	
2000	
2001	
2002	
2003	
2004	
2005	
2006	
2007	
2008	
2009	
2010	
2011	
2012	
2013	
2014	
2015	
2016	
2017	
2018	
2019	
2020	
2021	
2022	
2023	
2024	
2025	

# GEORGETOWN LABOR MARKET AREA

\*Shaded area denotes labor market area



## GEORGETOWN, KENTUCKY - A RESOURCE PROFILE

### Location

Georgetown, the county seat of Scott County, is located in the famed Bluegrass Region of Kentucky. An attractive college town, Georgetown is located 10 miles north of Lexington, 57 miles east of Louisville, and 70 miles south of Cincinnati, Ohio. Georgetown had a 1970 population of 8,629.

Scott County, encompassing an area of 284 square miles, had a 1970 population of 17,948.

### The Economic Framework

Total employment in Scott County averaged 5,340 in 1971 with agriculture providing 1,120 jobs, manufacturing 1,450, government 610, and trade and services 1,350. Since 1961 manufacturing has increased by 64 percent or 600 new jobs. Major industrial products are electrical wire, environmental control systems, auto seat springs and frames, furniture springs and metal frames for box springs.

Per capita income in the county in 1970 was \$2,627. From 1960 to 1970 per capita personal income increased 71 percent.

The Georgetown labor market area includes Scott, Bourbon, Fayette, Franklin, Grant, Harrison, Owen and Woodford Counties. Area employment in 1971 averaged 142,200 with agriculture providing 9,290 jobs, manufacturing 25,720, government 38,230, and trade and services 38,695. Industrial employment in this area has increased by 63 percent since 1961 with sharpest gains in the machinery, metal products and printing and publishing industries.

Despite important industrial gains in recent years, the area still has a deficit of 770 manufacturing jobs when measured against the national industrial employment-population ratio. This indicates an area where the potential for additional manufacturing production is good.

### Resources for Growth

1. There is a current estimated labor supply of 19,870 men and 19,055 women available for industrial jobs in the labor market area. In addition 13,705 young men and 13,225 young women will become 18 years of age by 1978 and potentially available for work.

2. Georgetown is served by U. S. Highways 460, 25 and 227. An interchange to Interstate 75 is located approximately 1 1/2 miles east of the city limits. Rail service is provided by the Southern Railway System. Georgetown is served by seven truck lines. Air transportation facilities for small aircraft are provided at Marshall Field in Georgetown, with commercial service available at Blue Grass Field in Lexington, 10 miles away.

3. Electricity is furnished to Georgetown and Scott County by the Kentucky Utilities Company, the Harrison County RECC and the Owen County RECC. Natural gas is provided by Columbia Gas of Kentucky, Inc. There are four distributors of distillate fuel oil in Scott County and two distributors of propane and butane in Georgetown.

4. Georgetown has 8 industrial sites and a 510-acre industrial park available.

5. Education - Two school systems operate within Scott County: the Scott County School System and the Georgetown Independent School District.

Georgetown is the home of Georgetown College, a four-year church related coeducational institution. The college confers the degrees of Bachelor of Arts, Bachelor of Science, Bachelor of Science in Medical Technology, Bachelor of Music Education, and Master of Arts in Education.

Other institutions of higher learning located within 50 miles of Georgetown include four universities, three senior colleges, and two junior colleges.

Excellent vocational training is provided at Central Kentucky State Vocational Technical School and Fayette County Area Vocational Education Center, both located at Lexington, 10 miles from Georgetown.

#### Community Programs for Improvement

Recent community improvements include: A new parking lot has been completed by the Chamber of Commerce.

The Scott County School System has completed a new addition to the senior high school at a cost of \$650,000, completed a greenhouse at the senior high school, installed new heating systems in four elementary schools and repainted four schools.

Planned community improvements include: The Georgetown Municipal Water and Sewer Commission is planning to increase the sewage treatment plant capacity to 3,000,000 gallons per day by 1974. There are also plans being made to expand the water treatment plant capacity to 4,000,000 gallons daily and to add a 500,000-gallon storage tank.

### Recreation, Entertainment and Livability

Georgetown, located in the famous Bluegrass Region of Kentucky, offers a wide variety of entertainment. At Lexington, 10 miles away, the Central Kentucky Concert and Lecture Series presents world famous groups and individuals in the arts and sciences. There are also many other educational and cultural events at Georgetown College and in Lexington at Transylvania University and the University of Kentucky.

Lexington also provides thoroughbred racing at the Keeneland Racetrack and harness racing at the Red Mile Trotting Track. A complete selection of sporting entertainment is available at the University of Kentucky, Transylvania University and in Georgetown at Georgetown College.

The scenic landscape of the Bluegrass is the home of many champion thoroughbred horses with a number of farms open to the public. There are also many historic homes and museums in the area. Frankfort, 17 miles away, is the site of the Kentucky State Capitol and several places of interest which reflect the history and tradition of the Bluegrass area of Kentucky.

# THE LABOR MARKET

## POPULATION TRENDS <sup>1/</sup>

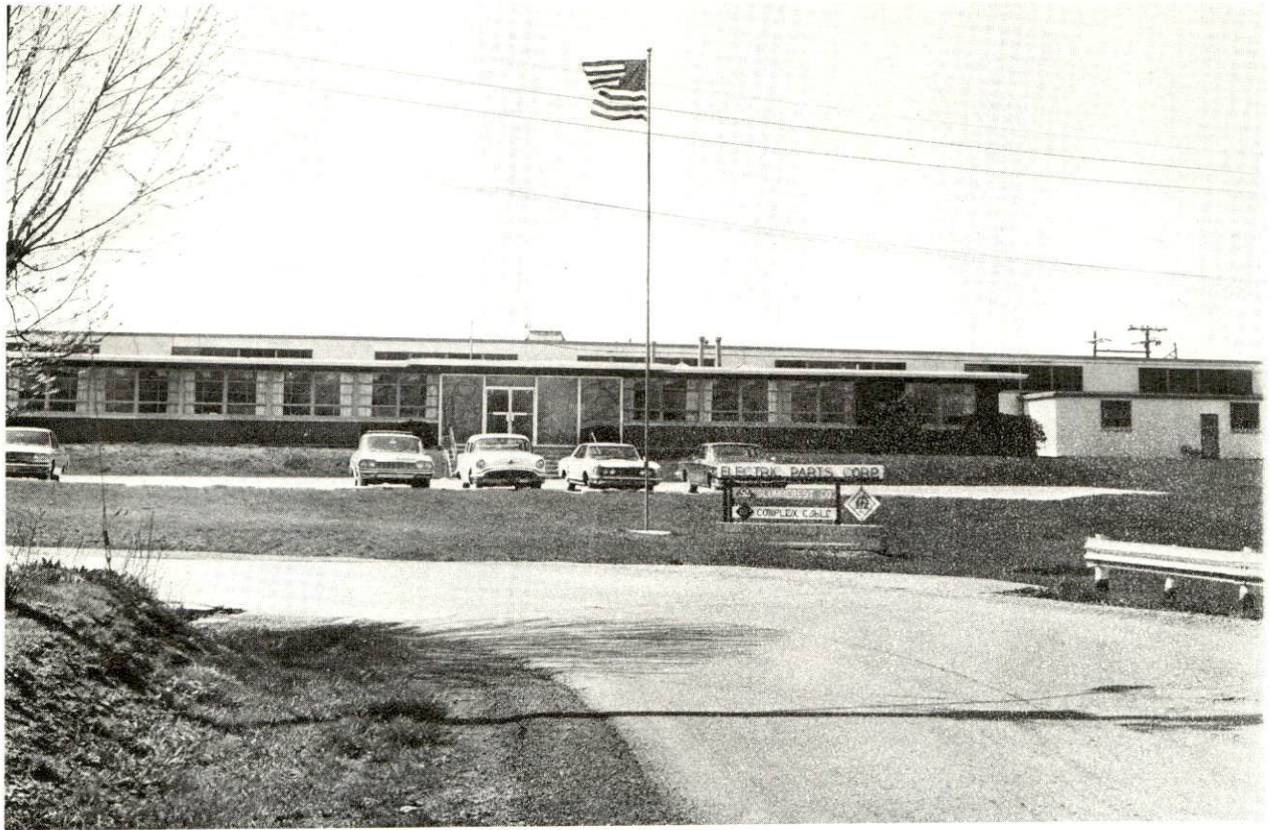
Area	Population			Percent Change	
	1970	1960	1950	1960-70	1950-60
Georgetown	8,629	6,986	5,516	+23.0	+26.0
Labor Market Area	291,089	238,224	204,084	+22.0	+16.0
Scott County	17,948	15,376	15,141	+16.7	+ 1.6
Bourbon County	18,476	18,178	17,752	+ 1.6	+ 2.4
Fayette County	174,123	131,906	100,746	+32.2	+30.9
Franklin County	34,481	29,421	25,933	+17.2	+13.5
Grant County	9,999	9,489	9,809	+ 5.4	- 3.3
Harrison County	14,158	13,704	13,736	+ 3.3	- 0.2
Owen County	7,470	8,237	9,755	- 9.3	-15.6
Woodford County	14,434	11,913	11,212	+21.2	+ 6.3

## GENERAL EMPLOYMENT CHARACTERISTICS, 1971 <sup>2/</sup>

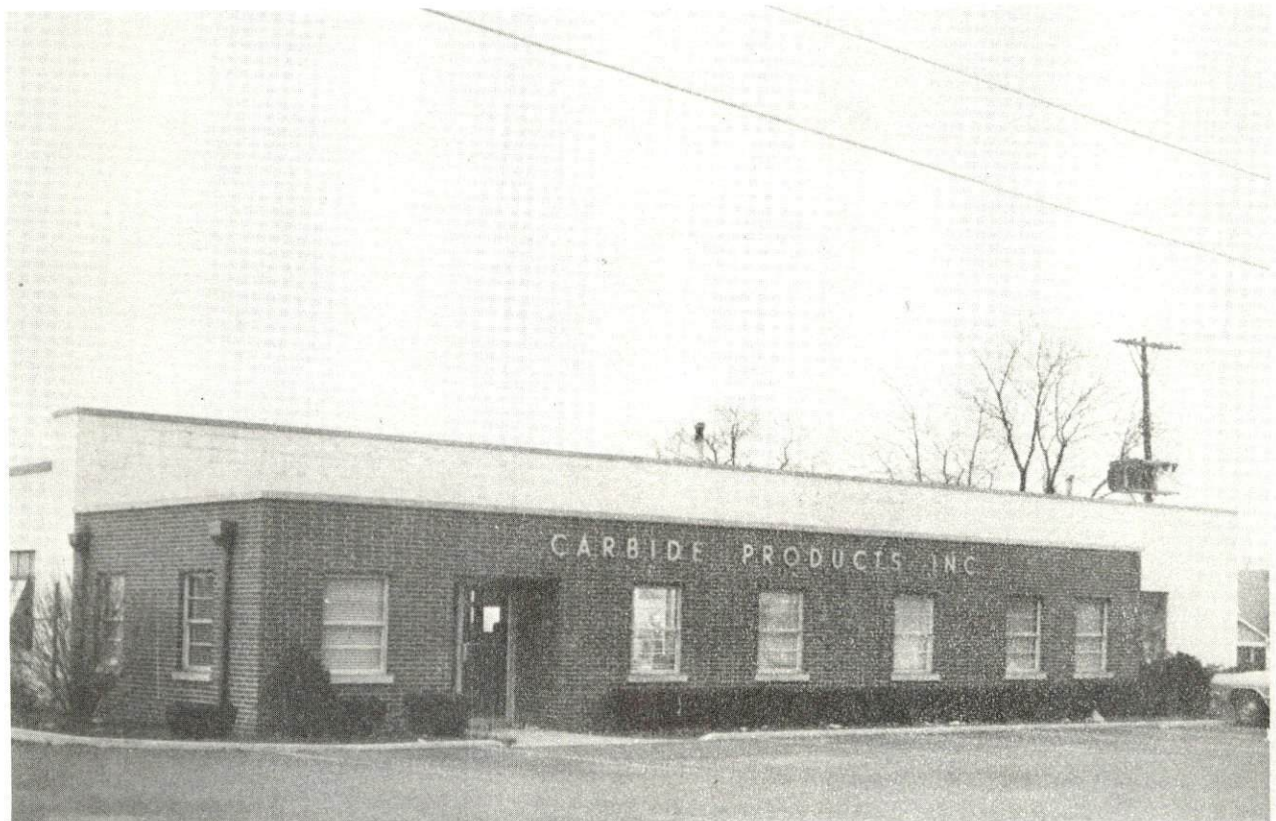
Major Employment Group	Employment	
	Scott County	Labor Market Area
TOTAL	5,340	142,200
Agricultural	1,120	9,290
Nonagricultural	4,220	132,910
Manufacturing	1,450	25,720
Government	610	38,230
Trade and Services	1,350	38,694

## MANUFACTURING EMPLOYMENT TRENDS BY INDUSTRY SEPTEMBER 1971 AND 1961 <sup>3/</sup>

Industry	Scott County			Labor Market Area		
	1971	1961	%Change	1971	1961	%Change
TOTAL	1,537	937	+ 64.0	25,794	15,819	+ 63.0
Food & Kindred Products	23	36	- 36.0	2,621	2,791	- 6.1
Tobacco	1	2	--	1,009	1,465	- 31.1
Apparel, Textiles, Leather	0	0	0	2,886	1,772	+ 62.9
Lumber, Furniture	4	5	- 20.0	186	201	- 7.5
Printing & Publishing, Paper	13	8	+ 62.5	2,489	1,013	+145.7
Chemicals, Petroleum & Coal, Rubber	43	27	+ 59.3	1,059	346	+206.1
Stone, Clay & Glass	0	0	0	498	456	+ 9.2
Primary Metals	104	68	+ 52.9	349	68	+413.2
Machinery, Metal Products Equipment	862	595	+ 44.9	12,440	7,407	+ 67.9
Other	487	196	+148.5	2,257	300	+652.3



ELECTRIC PARTS CORP.



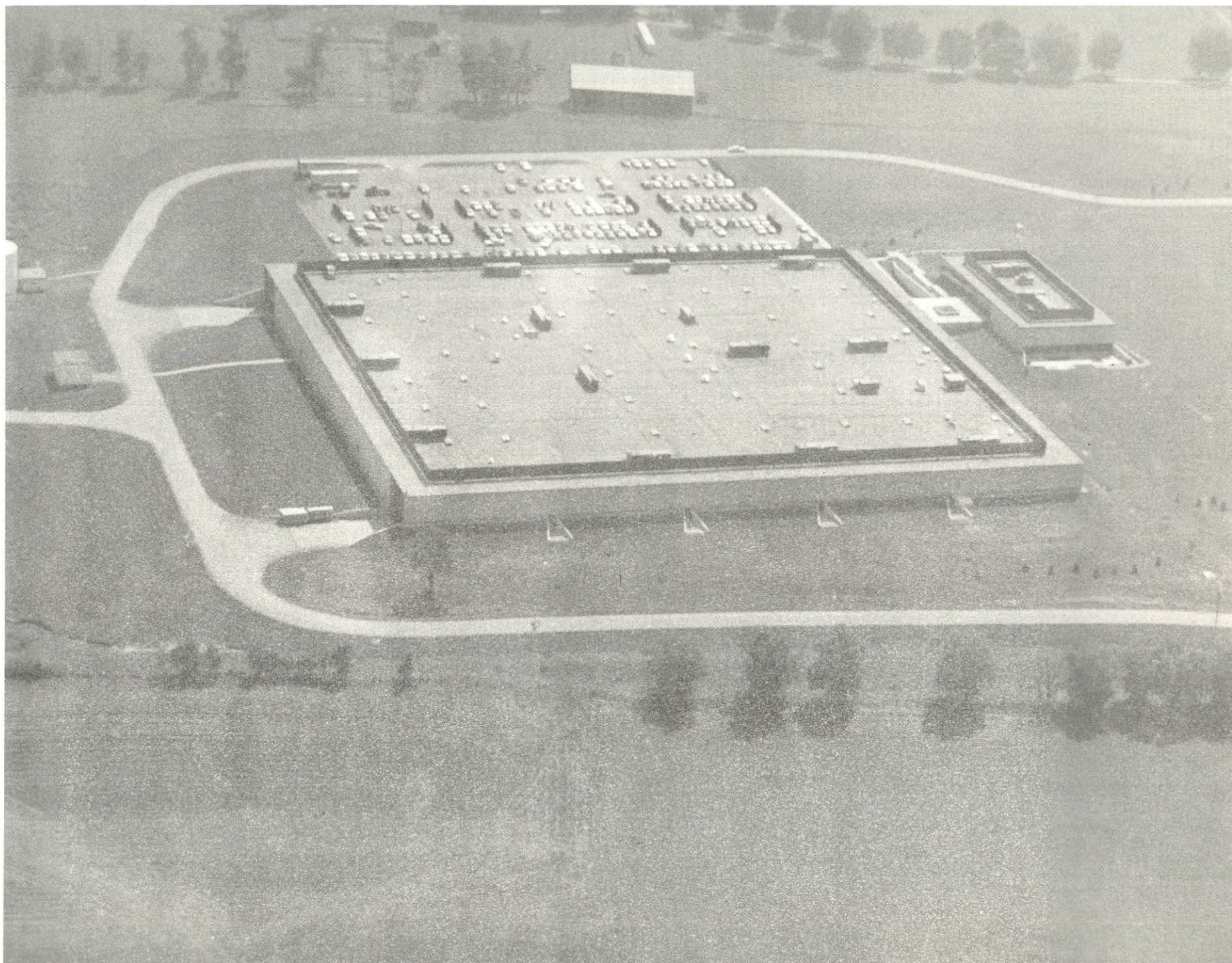
CARBIDE PRODUCTS, INC.



KENTUCKY DIE CASTING CORP.



MALLARD PEN & PENCIL COMPANY, INC.



JOHNSON SERVICE COMPANY



UNIVERSAL WIRE SPRING DIVISION  
HOOVER BALL & BEARING CO.

MAJOR GEORGETOWN MANUFACTURING FIRMS,  
THEIR PRODUCTS AND EMPLOYMENT <sup>4/</sup>

<u>Firm</u>	<u>Product</u>	<u>Employment</u>		
		<u>Total</u>	<u>Male</u>	<u>Female</u>
Blue Ribbon Pen & Pencil Co., Inc.	Imprinted pens, pencils	120	20	100
Carbide Products, Inc.	Carbide tools, accessories	72	51	21
Electric Parts Corp.	Power cords, cord sets, electrical wire, wiring harness	470	150	320
Georgetown American Swiss Products, Inc.	Screw machine products, motor shafts, metal stamping	36	9	27
Georgetown Cable Products	Electronic wiring, components	40	5	35
Georgetown Metal Stamping Company	Metal stampings, wire forms	51	15	36
Hydro Plastic Company	Typewriter parts, plastic parts	65	20	45
Johnson Service Company	Environmental control systems	299	154	145
Preferred Stampings, Inc.	Metal stampings, induction welding	70	28	42
Stiohn Products Corp.	Machine shop, tools, fixtures, special machines	55	16	39
Teledyne Kentucky Die Casting	Aluminum die castings	65	64	1
Universal Wire Spring	Bed spring components, auto seat springs, frames, furniture springs, metal frames for box springs	401	378	23

WAGES

Wage information will be provided upon request by the Kentucky Department of Commerce, Division of Research and Planning.

LABOR ORGANIZATIONS

<u>Union</u>	<u>Representing Manufacturing workers at:</u>
Sheet Metal Workers International (Local 390)	Johnson Service Company
International Brotherhood of Electrical Workers	Electric Parts Corporation

Labor Organizations (continued)

International Association of  
Machinists and Aerospace Workers  
(Local 1892)

Teledyne Kentucky Die Casting

CURRENT AND FUTURE LABOR SUPPLY,  
GEORGETOWN LABOR MARKET AREA

Area	Current Labor Supply, 1972 <sup>5/</sup>			Future Labor Supply by 1978 <sup>6/</sup> (Becoming 18 Years of Age)		
	Total	Male	Female	Total	Male	Female
Labor Market Area	38,925	19,869	19,056	26,926	13,703	13,223
Scott	2,846	1,415	1,431	1,664	820	844
Bourbon	1,973	891	1,082	1,819	944	875
Fayette	24,135	12,678	11,457	15,698	7,973	7,725
Franklin	4,123	2,168	1,955	3,191	1,608	1,583
Grant	1,369	612	757	996	521	475
Harrison	1,778	827	951	1,378	686	692
Owen	1,442	776	666	711	383	328
Woodford	1,259	502	757	1,469	768	701

TOTAL PERSONAL INCOME <sup>7/</sup>

Area	1970	1960	% Change
Scott County	\$ 43,557,000	\$ 23,596,000	+ 84.6
Labor Market Area	1,048,461,000	442,968,596	+136.0
Kentucky	9,719,647,000	4,779,695,000	+103.4

PER CAPITA PERSONAL INCOME <sup>8/</sup>

Area	1970*	1960	% Change
Scott County	\$ 2,627	\$ 1,535	+ 71.1
Labor Market Area	2,263 - 3,962	1,144 - 2,167	N.A.
Kentucky	3,019	1,573	+ 91.9

\*Unadjusted for commuting.

## EDUCATION

### Public Schools

	<u>Georgetown Independent</u>	<u>Scott County</u>
Total Enrollment	950	3,015
Elementary	520	1,705
Junior High		750
High School	430	560
Student-Teacher Ratio	21-1	27-1
Elementary	22-1	25-1
Junior High		28-1
High School	20-1	24-1
Accreditation	Southern Association of Colleges and Schools	
Percent High School Graduates to College	43.3	34.6
Current Expenditures Per Pupil	\$557.70	\$547.52
Bonded Indebtedness, June 30, 1972	\$443,000	\$1,827,000

### Vocational Schools

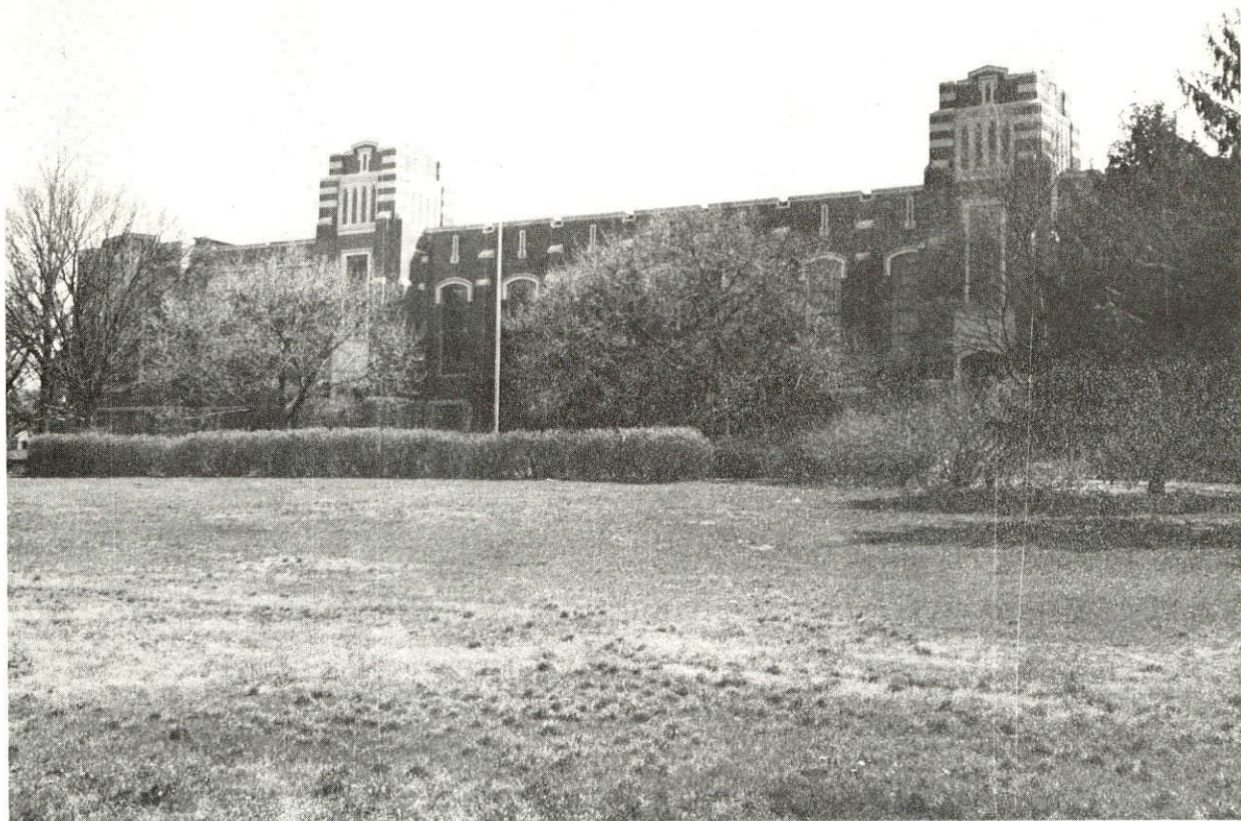
	<u>Nearest State School</u>	<u>Nearest Area Education Center</u>
Location	Central Kentucky State Vo- cational-Technical School Lexington	Fayette County Area Voca- tional Education Center Lexington
Miles Distant	10 miles	10 miles
Curriculum	Accounting Jr. Management Clerical, Secretarial Marketing and Distributive Education Practical Nursing Learning Lab Electronics (Communications) Technical Drafting Auto Body Repair Auto Mechanics	Accounting Jr. Management Health Careers Air Conditioning and Refrig- eration Auto Body Repair Auto Mechanics, Carpentry Electricity Machine Shop Radio and TV Repair Welding

Vocational Schools (continued)

Commercial Foods  
Cosmetology  
Drafting  
Electricity  
Machine Shop  
Office Machine Repair  
Printing  
Sheet Metal  
Welding

Colleges and Universities

<u>Name</u>	<u>Area - Within 50 Miles</u>		<u>Highest Degree Conferred</u>
	<u>Location</u>	<u>Enrollment</u>	
Georgetown College	Georgetown	1,243	Masters
Kentucky State University	Frankfort	1,961	Masters
University of Kentucky	Lexington	20,598	Ph.D., M.D., D.M.D., J.D.
Transylvania University	Lexington	726	Baccalaureate
Eastern Kentucky University	Richmond	10,505	Masters
Asbury College	Wilmore	1,115	Baccalaureate
Centre College	Danville	758	Baccalaureate
Berea College	Berea	1,356	Baccalaureate
Midway Junior College	Midway	253	Associate
Southeastern Christian College	Winchester	130	Associate



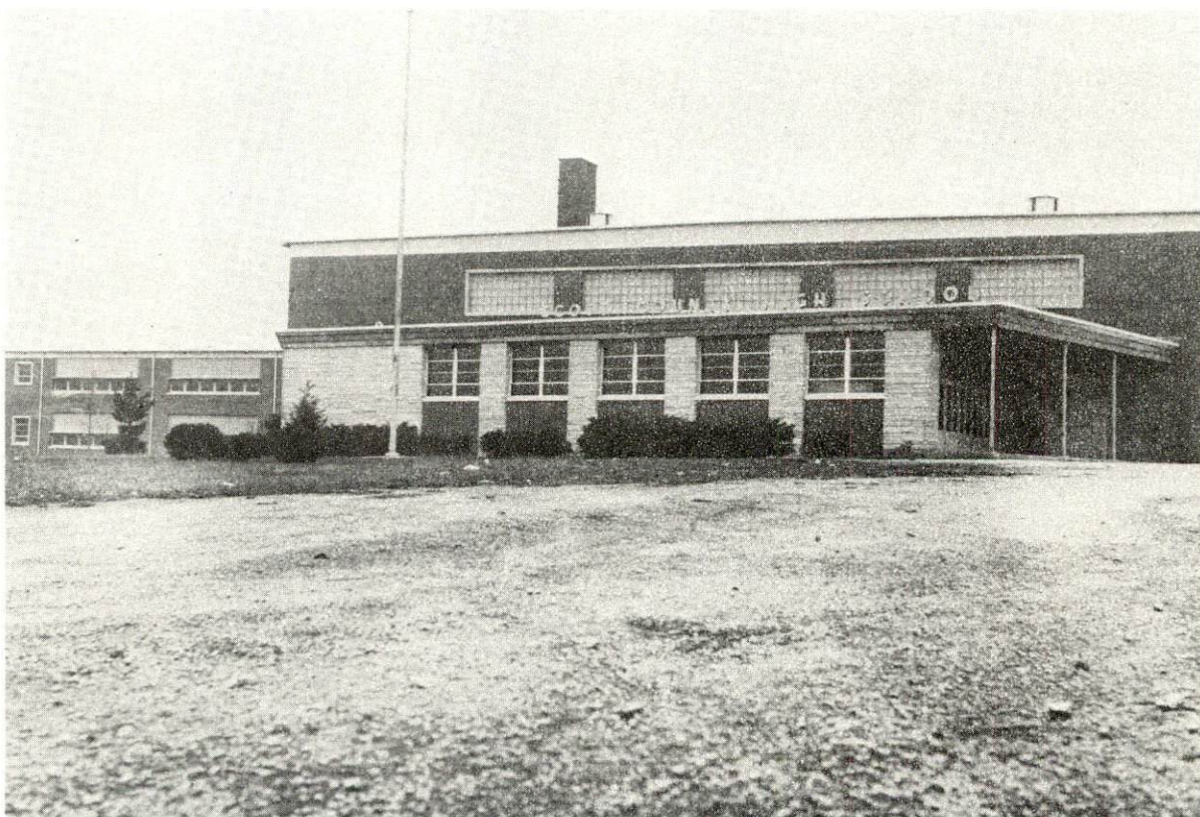
GARTH ELEMENTARY SCHOOL



GEORGETOWN HIGH SCHOOL



EASTERN ELEMENTARY SCHOOL



SCOTT COUNTY HIGH SCHOOL

# TRANSPORTATION

## Rail

Line serving Georgetown - Southern Railway System

Services - Freight, siding, switching; nearest piggyback service  
at Lexington, 10 miles distant

### RAILWAY TRANSIT TIME FROM GEORGETOWN, KENTUCKY, TO: 2/

City	No. of Days		City	No. of Days	
	CL			CL	
Atlanta, Ga.	2		Los Angeles, Calif.	6	
Birmingham, Ala.	2		Louisville, Ky.	2	
Chicago, Ill.	3		Nashville, Tenn.	3	
Cincinnati, Ohio	1		New Orleans, La.	3	
Cleveland, Ohio	3		New York, N. Y.	5	
Detroit, Mich.	3		Pittsburgh, Pa.	4	
Knoxville, Tenn.	2		St. Louis, Mo.	3	

## Truck Service

### Company

### Home Office

Consolidated Freightways	Menlo Park, California
Dixie Ohio Express, Inc.	Akron, Ohio
Ecklar-Moore Express, Inc.	Lexington, Kentucky
McLean Trucking Company	Winston-Salem, North Carolina
Motor Freight Corporation	Terre Haute, Indiana
Wilson Freight Company	Cincinnati, Ohio
United Parcel Service	St. Charles, Illinois

### HIGHWAY MILES AND TRUCK TRANSIT TIME IN DAYS FROM GEORGETOWN, KENTUCKY, TO SELECTED MARKET CENTERS

City	Highway Miles	Delivery		City	Highway Miles	Delivery	
		Time 10/	TL			Time	TL
Atlanta, Ga.	376	2		Los Angeles, Calif.	2,164	5	
Birmingham, Ala.	423	2		Louisville, Ky.	57	overnight	
Chicago, Ill.	358	1		Nashville, Tenn.	237	1	
Cincinnati, Ohio	70	overnight		New Orleans, La.	767	2	
Cleveland, Ohio	314	1		New York, N. Y.	826	2	
Detroit, Mich.	432	1		Pittsburgh, Pa.	454	1	
Knoxville, Tenn.	182	1		St. Louis, Mo.	321	1	

## Air

	<u>Local</u>	<u>Nearest Commercial</u>
Location:	Marshall Field Georgetown	Blue Grass Field Lexington, 10 miles away
Runways:	1 turf	3 paved
Length:	1,800 feet	6,500 feet, 3,500 feet, 3,500 feet
Traffic Control:	Wind sock	Tower, guards, approach control, ground control, ILS system
Lighting:		Approach lighting system, beacon, runways and obstructions lighted
Services:	80-100 octane, A and E repairs, tie down, taxi, charter, flight instructions	80, 100 and 145 octane, jet fuel, major A and E repairs, storage, restaurant, Weather Bureau and flight instruction, charter service, taxi, U-Drive-It service; Eastern, Delta Piedmont and Allegheny Airlines

## Bus

Southern Greyhound Bus Lines

## Taxi

Jones Taxi - operating from 5:30 a.m. to midnight

## Rental Services

Car rentals

## POWER AND FUEL

### Electricity

Company serving Georgetown - Kentucky Utilities Company

Source of power - Kentucky Utilities Company

Total generating capacity - 1,215,000 KW

Industrial rates furnished by - Kentucky Utilities Company,  
Georgetown office

Company serving Scott County - Harrison County RECC; Owen County RECC

Source of power - East Kentucky Power Cooperative

Total generating capacity - 548,000 KW

Industrial rates furnished by - Harrison County RECC, Cynthiana,  
Kentucky; Owen County RECC, Owenton, Kentucky

### Natural Gas

Company serving Georgetown - Columbia Gas of Kentucky, Inc.

Source of supply - Columbia Gas Transmission Company

Size of transmission mains - 6-inch (supplier); 6-inch (distributor)

Distribution mains - 2 to 6 inches

Distribution pressure - 5 oz. to 40 psi

Btu content - 1,020 per cubic feet

Specific gravity - .60

Rates - Industrial rates will be furnished upon request by Columbia  
Gas of Kentucky, Inc., Georgetown, Kentucky

### Other Fuels

Propane and butane - John B. Penn Company - Georgetown; Southern  
States - Georgetown

### Fuel Oils -

Distillate fuel oil distributors - Hamilton Oil Company (Shell Oil Company),  
Georgetown; R. C. Offutt (Gulf Oil Company) Stamping Ground; C. L.  
Mitchell (Gulf Oil Company) Stamping Ground; Tom Lee (Standard Oil  
Company) Georgetown

Residual fuel oil - arrangements must be made with the refinery

\* Low sulphur content coal - available in Kentucky

## WATER AND SEWERAGE

### Water

Company serving Georgetown - Georgetown Municipal Water and Sewer Commission

Source - Royal Spring and Elkhorn Creek

Treatment plant capacity - 1,500,000 gpd\*

Average daily consumption - 1,300,000 gallons

Peak daily consumption - 1,500,000 gallons

Type treatment - Chlorine, rapid mix flocculation, sedimentation, rapid sand filtration

Storage capacity - 300,000 gallons

Size mains - 4, 6, 8 and 10 inches

Average pressure - 75 psi

Average temperature - 65 degrees F.

### MONTHLY WATER RATES FOR WHOLESALE AND INDUSTRIAL CONSUMERS

---

First	600 cubic feet	50¢ per 100 cubic feet
Next	1,100 cubic feet	40¢ per 100 cubic feet
Over	1,700 cubic feet	20¢ per 100 cubic feet

Name of water district - West Scott County Water District

Area served - Eastern half of Scott County

Date when water district began operating - 1965

Source of raw water - Eagle Creek

Capacity of treatment plant - 250,000 gallons per day

Type of treatment - Filter and chlorine

Storage capacity - 650,000 gallons

Average pressure - 98 psi

Size mains - 6-inch

Rates -

#### Commercial

First	7,000 gallons	\$10.50 (Flat rate)
Next	3,000 gallons	1.50 per M gallons
Over	10,000 gallons	1.00 per M gallons

---

\*Plans are underway to expand the water treatment capacity to 4,000,000 gpd and to add a 500,000 gallon storage tank.

Surface water sources - North Elkhorn Creek of Kentucky River  
Average discharge - North Elkhorn Creek near Georgetown 151 cfs  
(21 years, USGS)  
Expected ground water yield - 50 to 200 gpm in small portions of central  
and southwestern border of county; 5 to 50 gpm in southern half of  
county; 5 gpm or less in northern half of county

### Sewerage

Company serving Georgetown - Georgetown Municipal Water and Sewer  
Commission  
Design capacity - 1,250,000 gallons per day\*  
Average daily flow - 1,000,000 gallons  
Treatment - Primary and secondary  
Type treatment - Clarifiers, trickling filter with digesters, and drying beds  
Treated effluent discharged into - Elkhorn Creek  
Size of sanitary mains - 16 and 18 inches  
Size of storm mains - 24-inch  
Rates - 75 percent of monthly water bill

---

\*Plans are underway to increase the sewage treatment plant capacity to  
3,000,000 gallons per day by 1974.

## LOCAL GOVERNMENT

### City

Structure - Mayor - 4-year term; 8 councilmen - 2-year terms  
Budget 1971-72 - General Fund \$349,009.31; Water and Sewer Fund  
\$25,246.13  
Annual fees and licenses - Occupational license - \$5 to \$500; vehicle  
tax sticker - \$10

### County

Structure - County Judge - 4-year term; 3 commissioners - 4-year terms  
Budget 1971-72 - General Fund \$267,342; Road Fund \$89,169

### Assessed Value of Property - 1972

<u>Classes of Property*</u>	<u>Georgetown</u>	<u>Scott County</u>
Real Estate and Tangibles	\$36,333,880	
Real Estate		\$100,428,645
Tangibles		12,932,455
Public Service	5,378,554	13,755,277

### Local General Property Tax Rates Per \$100 of Assessed Valuation, 1972 <sup>11</sup>/

<u>Taxing Unit**</u>	<u>Georgetown</u>	<u>Scott County</u>
State	\$ .015	\$ .015
County	.267	.267
School	.713	.544
City	.199	
Total	\$1.194	\$ .826

### Utilities Gross Receipts Tax for Schools

Scott County levies a 3 percent tax on utilities receipts for schools. This tax is paid by all consumers of utilities. Exempted are receipts from utilities services that are resold and the receipts from the sale of energy or energy producing fuels that exceed 3 percent of the cost of production in manufacturing, processing, mining or refining.

\*Property assessed at 100 percent of fair value.

\*\*Manufacturing machinery, raw materials inventories and goods in process inventories are not subject to local tax. State rate is only \$.15 per \$100.

## Planning and Zoning

Joint agency - Georgetown-Scott County Planning Commission

Zoning enforced - all areas

Subdivision regulations enforced - all areas

Local codes enforced - Building, housing

Mandatory state codes enforced - Plumbing, National Fire Protection

Association Code, National Building Code (for major buildings and

residential construction containing more than 12 bedrooms per building)

Other programs - Public housing

## Safety

<u>Police</u>	<u>Georgetown</u>	<u>Scott County</u>
Total staff	13 regular 6 auxiliary	5 full-time 5 part-time
Radio-patrol cars	3	3 private
Other equipment	Standard	Standard

## Fire

American Insurance

Association Fire Rating

7

Volunteers

30

21

Equipment:

1,000 gpm pumper

1

750 gpm pumper

1

600 gpm pumper

1

3

500 gpm pumper

1

1,200 gpm pumpers

3

Utility truck

1

Rescue Ambulance

1

## Sanitation

	<u>Georgetown</u>
Type service	Municipal
Fee charged:	
residential	\$3 per month
business	Ranges from \$10 to \$150 per month depending on the volume of collection
Collection frequency:	
residential	Weekly
business	3 times weekly
Disposal method	Sanitary landfill

## HEALTH

### Hospitals

<u>General Hospital</u>	<u>Location</u>	<u>Beds</u>
John Graves Ford Memorial Hospital	Georgetown	48

General hospital facilities - 2 laboratories, EKG, nursery, emergency room, operating rooms, obstetrical section, diagnostic X-ray, inhalation therapy, intensive coronary care and physical therapy departments

Medical staff - 6 doctors, 15 registered nurses, 11 licensed practical nurses

### Nursing Homes

	<u>Number</u>	<u>Beds</u>
Extended care home	1	50
Personal care homes	2	45

### Public Health

Facility - Scott County Health Department

Staff - 3 registered nurses, 2 sanitarians, clerk (part-time), health officer (part-time)

Budget 1972-73 - \$71,244

## OTHER LOCAL FACILITIES

### Communications

Telephone - South Central Bell Telephone Company  
Services - Standard

Telegraph - Western Union  
Services - Monday through Friday, 8 a.m. to 5 p.m.

Postal - U. S. Post Office  
Class - First  
Mail received - Twice daily  
Mail dispatched - Twice daily

Newspapers - Georgetown News - Georgetown Times - The Graphic  
Weekly and  
Circulation            3,980                            2,860                            2,000  
Other papers received from - Lexington and Louisville, Kentucky

Radio - WAXU, Georgetown College FM Station  
Stations received from - Lexington, Louisville, Paris, Cynthiana,  
Nicholasville, Winchester, Richmond, Frankfort and Versailles, Kentucky

Television -  
Reception from - Lexington and Louisville, Kentucky; and Cincinnati, Ohio  
Kentucky Educational Television - Lexington transmitter - Channel 46,  
Owenton transmitter - Channel 52

### Library Services

Public library - Scott County Public Library  
Size collection - 38,483 volumes  
Circulation, 1971 - 147,594  
Services - Children's hour, films, records, pictures, magazines,  
bookmobile, pamphlets, telephone reference, inter-library loans,  
Xerox and copying service, projectors and screens loaned

Private library - Cooke Memorial Library, Georgetown College  
Size collection - 106,949 volumes  
Special collections - Rare bibles  
Services - Theological library, 1,056 periodicals, New York Times on  
microfilm from 1953 to present, microfilm reader-printers, selected  
recordings, newspapers, Xerox machine, films, pictures, tapes,  
Courier Journal on microfilm since 1970

### Religious Institutions

Number of churches - 13

Denominations - Baptist, Catholic, Christian, Church of Christ, Church of God, Episcopal, Nazarene, Methodist, Presbyterian

Nearest synagogues - Lexington: Adath Israel (reform), Ohavey Zion (traditional)

### Financial Institutions

<u>Bank</u>	<u>Statement as of June 30, 1972</u>	
	<u>Assets</u>	<u>Deposits</u>
First National Bank and Trust Company	\$20,869,429	\$18,869,429
Farmers Bank and Trust Company	14,517,009	13,146,438

### Hotels and Motels

Total number - 7

Units - 58

### Clubs and Organizations

Business and Civic - Georgetown-Scott County Chamber of Commerce, Scott County Junior Chamber of Commerce, Kiwanis, Georgetown Citizens Advisory Committee, Rotary, Optimist, Sadieville Lions Club, Ruritan, Scott County Bar Association, Georgetown Improvement Company, Scott County Development Association, Farm Bureau

Fraternal - American Legion, Veterans of Foreign Wars, IOOF, Masons

Women's - American Legion Auxiliary, Women's Christian Temperance Union, Town and Country Garden Club, Stamping Ground Woman's Club, Georgetown Junior Woman's Club, Scott County Woman's Club, Daughters of American Revolution, Scott County Homemakers, Scott County Business and Professional Women's Club, VFW Auxiliary, Eastern Star, Little Garden Club

Youth - Boy Scouts of America, Girl Scouts of America, Future Farmers of America, Future Homemakers of America, Little League baseball, Little League football, Little League basketball

Other - Scott County Bowhunters Club, Saddle Blanket Riding Club, Scott County Historical Society.

## RECREATION

### Local

#### Public Recreation Facilities

Supervised program - yes  
Parks - 2  
Playgrounds - 2  
Swimming pool - 1  
Tennis courts - 2  
Baseball diamonds - 3  
Football fields - 3

#### Private Recreation Facilities

Golf course - 1  
Swimming pool - 1  
Movie theaters - 1 (outdoor)  
Bowling lanes - 1  
Other - Miniature golf

#### Cultural Events

Georgetown College offers a variety of dramatic and musical presentations each year. The college planetarium is available for groups to tour by special arrangement.

### Area (Within 25 miles)

Central Kentucky Concert and Lecture Series at Lexington  
Transylvania University  
University of Kentucky  
Keeneland Race Course  
Big Red Mile Trotting Track  
Thoroughbred Horse Farms  
The State Capitol at Frankfort

# AGRICULTURE - NATURAL RESOURCES - CLIMATE

## Agriculture 12/

	<u>Scott County</u>	<u>Labor Market Area</u>
Total land area (acres)	181,824	1,392,832
Percent of area in farm land	95.2	89.5
Number of farms	1,154	8,841
Average size of farms (acres)	149.9	146.9
1964 value of all farm products	\$4,607,650	\$ 92,237,793
Value per farm	9,959	
Total crop sales	6,843,371	47,001,062
Total livestock & livestock products	4,607,650	45,063,792
1970 agricultural production included:		
Burley tobacco (lbs.)	9,301,000	65,388,000
Corn (bu.)	290,000	2,160,000
Cattle and calves (number)	37,700	291,700
Hogs and pigs (number)	19,200	108,600
Milk production, 1969 (lbs.)	5,120,000	104,940,000

## Natural Resources

Principal mineral resources	Limestone
Other mineral resources	Possibly some vein minerals
Acres of commercial forest land	25,400
Most abundant tree species	White oak, red oak, hickory, ash, hard and soft maple, yellow poplar

## Climate 13/

	<u>Scott County</u>
Temperature	
Annual mean (30-year record)	55.6 degrees
Average annual 1971	55.6 degrees
Record highest, July, 1966* (8-year record)	98.0 degrees
Record lowest, January 1966*(8-year record)	-10.0 degrees
Seasonal heating degree days (30-year record)	4,683
Precipitation	
Mean annual total (30-year record)	44.73 inches
Mean annual snow and sleet (27-year record)	16.50 inches
Total precipitation 1971	44.67 inches
Mean number days precipitation, (.01 inch or more) (27-year record)	128
Average number days thunderstorms (27-year record)	47
Prevailing winds (17-year record)	South

\*Also on earlier days, months or years.

## SCOTT COUNTY HISTORY

Scott County is located in northcentral Kentucky in the state's beautiful Bluegrass Region. South Elkhorn Creek flows along its southwestern boundary, and North Elkhorn and Eagle Creeks and their tributaries drain its western and northern portions, respectively. The land surface is gently rolling in the south and hilly and broken in the north. The soil is fertile, especially in the southern half, and is based on limestone. Most of the county's 284 square mile area is used agriculturally.

The first visitors in Scott County were Colonel John Floyd and James Douglas, who made British military surveys of the area in 1774. The first settlement was made at Georgetown in 1775 by Alexander, John and William McClelland, Andrew and Francis McConnell, David Perry, and Charles Lecompte, all of whom came down the Ohio River from Pittsburgh, up the Kentucky River, and then up the Elkhorn Creek. Known as McClelland's Station, this was the first fortified station north of the Kentucky River. The famous Indian Chief, "Pluggy", lost his life in an attack on the fort in 1776. A few more scattered settlements were made before 1798, after which settlers came in great numbers.

The early settlers raised flax and manufactured clothing from it, built gristmills and paper mills, and discovered by accident the process for making bourbon whiskey. In 1798 at the Craig-Parker Mill in Georgetown, a fire caught onto some white oak staves being seasoned to make whiskey barrels and charred them deeply. Since the supply of staves was limited, the charred ones were used, and it was noticed that they mellowed the taste and changed the color of the whiskey. This discovery formed the basis for production of Kentucky's world-famous Bourbon Whiskey.

Scott County became Kentucky's eleventh county in 1792, and was named in honor of General Charles Scott, a Revolutionary War hero from Virginia who settled in present-day Woodford County, Kentucky. Scott was elected Governor of Kentucky in 1808.

Georgetown, the county seat, was originally named McClelland's Station, then Lebanon, then Georgetown in 1792 to honor George Washington. Georgetown College, a Baptist institution, was founded here in 1829. A modern liberal arts institution offering a master's degree, the college had an enrollment of over 1,200 in 1972.

Scott County had a population of 8,007 in 1800. This had reached 15,141 in 1950, 15,376 in 1960, and 17,948 in 1970. The city of Georgetown had a 1970 population of 8,629.

Agriculture accounted for 1,120 of the county's 5,340 employed in 1971 with burley tobacco, corn, cattle and hogs the principal products. Manufacturing employment had grown to 1,450, with the greatest production in machinery and metal products. Largest of the county's firms are Universal Wire Spring, Division of Hoover Ball and Bearing Company, which makes auto seat springs, Electric Parts Corp., making power cords, and Johnson Service Company, makers of environmental control systems.

Interstate Highway 75 bisects the county from north to south, providing excellent access to Lexington to the south and Cincinnati to the north.

Among noted Scott countians was Richard M. Johnson, a hero of the War of 1812 who became the ninth U. S. Vice President in an election decided by the Senate. James Robinson was elected Governor of Kentucky in 1862.