

1969

# Industrial Resources: Shelby County - Shelbyville

Kentucky Library Research Collections  
Western Kentucky University, [spcol@wku.edu](mailto:spcol@wku.edu)

Follow this and additional works at: [https://digitalcommons.wku.edu/shelby\\_cty](https://digitalcommons.wku.edu/shelby_cty)

 Part of the [Business Administration, Management, and Operations Commons](#), [Growth and Development Commons](#), and the [Infrastructure Commons](#)

---

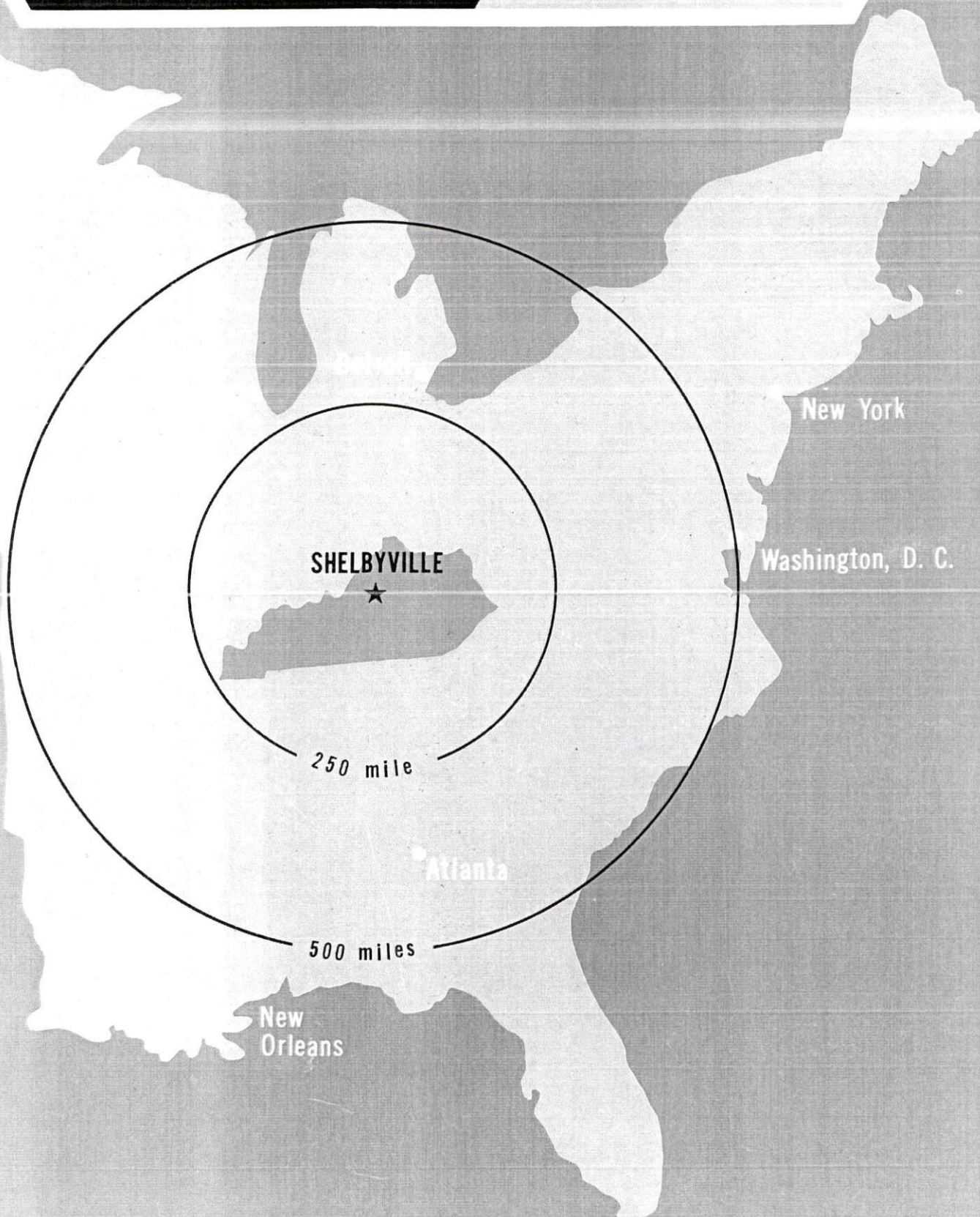
## Recommended Citation

Kentucky Library Research Collections, "Industrial Resources: Shelby County - Shelbyville" (1969). *Shelby County*. Paper 16.  
[https://digitalcommons.wku.edu/shelby\\_cty/16](https://digitalcommons.wku.edu/shelby_cty/16)

This Report is brought to you for free and open access by TopSCHOLAR®. It has been accepted for inclusion in Shelby County by an authorized administrator of TopSCHOLAR®. For more information, please contact [topscholar@wku.edu](mailto:topscholar@wku.edu).

# **INDUSTRIAL RESOURCES**

**SHELBYVILLE  
KENTUCKY**



SHELBYVILLE INDUSTRIAL SITE

1969

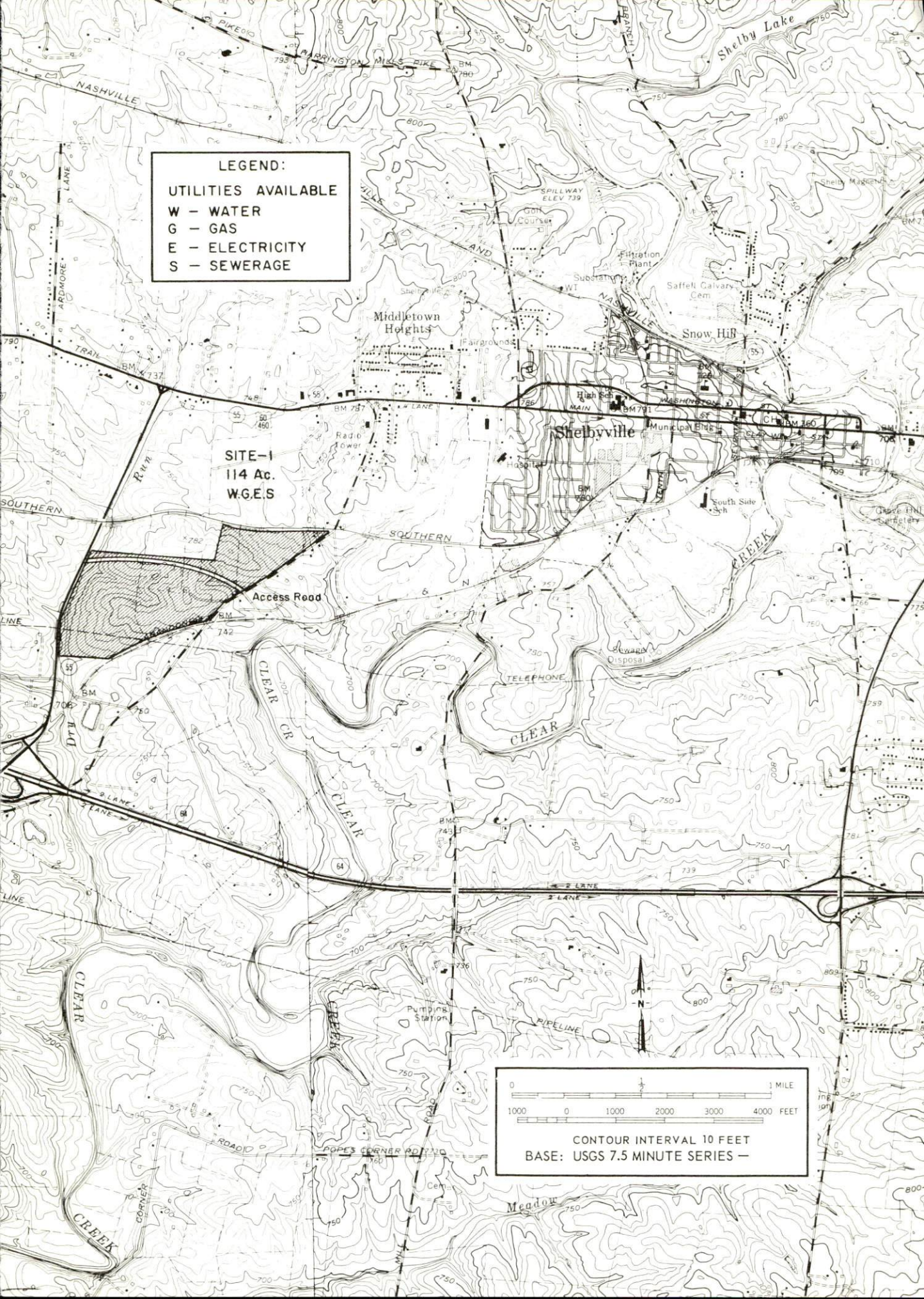
## SHELBYVILLE INDUSTRIAL SITE

Additional information concerning the following sites will be furnished upon request by the Shelby County Industrial Development Foundation, Shelbyville, Kentucky, or the Kentucky Department of Commerce, Frankfort, Kentucky.

SITE # 1: ACREAGE AND TOPOGRAPHY: 114 acres, level to rolling  
LOCATION: West city limits on Kentucky Route 55  
ZONING: Industrial  
HIGHWAY ACCESS: Highway frontage on Kentucky Route 55, and  
Industrial Park Road  
RAILROADS: Southern Railway is adjacent to property  
WATER: Available at site by the Shelbyville Municipal Water and  
Sewer Commission  
GAS: Available at site by the Western Kentucky Gas Company  
ELECTRICITY: Available at site  
SEWERAGE: Available at site by the Shelbyville Municipal Water  
and Sewer Commission  
OPTIONED BY: Shelby County Industrial Development Foundation



**LEGEND:**  
UTILITIES AVAILABLE  
W - WATER  
G - GAS  
E - ELECTRICITY  
S - SEWERAGE



SITE-1  
114 Ac.  
W.G.E.S

Access Road

Shelbyville

Snow Hill

Middletown Heights

Shelby Lake

CLEAR CR

CLEAR

CLEAR CREEK

Meadow

0 1 MILE  
1000 0 1000 2000 3000 4000 FEET  
CONTOUR INTERVAL 10 FEET  
BASE: USGS 7.5 MINUTE SERIES —



INDUSTRIAL RESOURCES  
SHELBYVILLE, KENTUCKY

Prepared by  
The Kentucky Department of Commerce  
in cooperation with  
The Shelby County Chamber of Commerce

1969

## TABLE OF CONTENTS

<u>Chapter</u>	<u>Page</u>
INDUSTRIAL SITES . . . . .	i
SHELBYVILLE, KENTUCKY, A PROFILE. . . . .	1
THE LABOR MARKET. . . . .	3
Population. . . . .	3
General Employment Characteristics . . . . .	3
Manufacturing Characteristics . . . . .	4
Labor Organizations . . . . .	6
Wage Levels. . . . .	6
Labor Supply. . . . .	7
Income . . . . .	8
EDUCATION . . . . .	11
Elementary and High Schools . . . . .	11
Vocational Schools . . . . .	12
Colleges and Universities . . . . .	12
TRANSPORTATION . . . . .	15
Rail. . . . .	15
Highways . . . . .	15
Truck Service . . . . .	15
Air . . . . .	16
Other Transportation Services . . . . .	17
POWER AND FUEL . . . . .	18
Electricity. . . . .	18
Natural Gas . . . . .	18
Coal . . . . .	19
Fuel Oil. . . . .	19
WATER AND SEWERAGE . . . . .	20
Water. . . . .	20
Sewerage . . . . .	20

<u>Chapter</u>	<u>Page</u>
AGRICULTURE - NATURAL RESOURCES - CLIMATE . . . .	.21
Agriculture . . . . .	.21
Mineral Resources. . . . .	.21
Water Resources . . . . .	.21
Forests. . . . .	.21
Climate. . . . .	.22
LOCAL GOVERNMENT . . . . .	.23
Structure . . . . .	.23
Finance. . . . .	.23
Taxes . . . . .	.23
Planning and Zoning . . . . .	.24
Safety . . . . .	.24
Fire . . . . .	.24
Police . . . . .	.25
Sanitation. . . . .	.25
HEALTH . . . . .	.27
Hospitals . . . . .	.27
Nursing Homes . . . . .	.27
Public Health . . . . .	.27
OTHER LOCAL FACILITIES. . . . .	.29
Housing . . . . .	.29
Communication . . . . .	.29
Telephone . . . . .	.29
Telegraph . . . . .	.29
Postal . . . . .	.29
Newspapers . . . . .	.29
Radio . . . . .	.29
Television . . . . .	.30
Libraries. . . . .	.30
Churches . . . . .	.30
Financial Institutions. . . . .	.30
Hotels and Motels . . . . .	.31
Clubs and Organizations . . . . .	.31
Recreation . . . . .	.31
Recent Community Improvements . . . . .	.32
HISTORY . . . . .	.33



## SHELBYVILLE, KENTUCKY, A PROFILE

### Location

Shelbyville, the county seat and largest town in Shelby County, is located in the famous Bluegrass Region of Central Kentucky. Shelbyville is 31 miles east of Louisville, 49 miles west of Lexington, and 105 miles southwest of Cincinnati. The 1960 population of the town was 4,525, a 2.8 percent increase over 1950.

### The Economy

Total 1968 employment in Shelby County was 7,367. Employment consists of 2,100 persons engaged in agriculture, 1,960 engaged in trade and services, 1,130 employed in manufacturing, and 470 government employees. Per capita income has increased from \$1,417 in 1959 to \$2,660 in 1968. Total personal income during this same period increased from \$26,073,000 to \$50,314,000.

Shelby and the six adjoining counties combine to provide over 362,000 jobs. Jefferson County, with 320,880 of these jobs, is the primary economic center of this area. There are approximately 99,650 manufacturing jobs in the seven counties. Other important economic activities within the Shelby County labor market area are trade and services (97,840), government (45,820), and agriculture (8,730).

The economic outlook of Shelbyville as well as the entire area is extremely favorable. Strong local leadership, good community attitudes, a productive and growing labor supply, moderate wage rates, and available industrial sites are indicators of continuing economic growth. Interstate 64, with two interchanges at Shelbyville, affords easy commuting and allows valuable transportation benefits to industry. Shelbyville's proximity to Frankfort, the state capital, and Louisville, Kentucky's largest city, offers residents great opportunities in governmental and industrial jobs.

### Labor Supply

There is a current labor supply of 5,900 men and 4,350 women within reasonable commuting distance of Shelbyville. This supply will be augmented by 40,000 young men and 39,300 young women who will become 18 years of age during the next five years.

### Industrial Sites and Services

The Shelby County Industrial Development Foundation has under option a 114-acre site located on Kentucky Route 55. All utilities are available at the site, and the property is adjacent to rail. An interchange of Interstate 64 is located one-half mile south of this site.

Shelbyville is well located to reach major markets in the Midwest.

- Rail service is provided by Southern Railway, the Louisville & Nashville Railroad, and the Chesapeake & Ohio Railway Co.
- Interstate 64 is located 2 miles south of the town.
- Ten trucking firms, one of which maintains a terminal in Shelbyville, serve the city.
- Air service is only 31 miles away at Louisville's Standiford Field.

### Education

The environment for higher education is a major resource for growth in the Shelbyville area. Louisville, only 31 miles from Shelbyville, is the home of several excellent institutions of higher learning - University of Louisville, Bellarmine-Ursuline, Catherine Spalding, and Jefferson Community College. Lexington, home of the University of Kentucky, is only 49 miles distant.

The new Shelby County Vocational Extension Center is providing courses for business, trade and industrial training.

### Recreation

Recreational activities are plentiful within the Shelbyville area. The city itself maintains several recreational facilities, and it is in close proximity to a number of state and national recreational facilities.

Major college sports are at Louisville, Cincinnati, and Lexington.

The major league sports of baseball, basketball, and football may be viewed at Cincinnati, while professional baseball and basketball are found at Louisville.

General Butler State Park - a resort facility - is at Carrollton, only 36 miles away.

My Old Kentucky Home State Park, Bardstown, is located 41 miles from Shelbyville.

Mammoth Cave National Park is some 100 miles away.

Major cultural activities are found in Louisville, Lexington, and Cincinnati.

## THE LABOR MARKET

### Population

Since 1900 Shelbyville has experienced a steady increase in population. In 1960, the population of Shelbyville was 4,525, a 2.8 percent increase since 1950.

The population of Shelby County in the 1900-1950 period experienced a 2.3 percent decrease. In the 1950-1960 period, however, Shelby County increased its population 3.2 percent. During the 1960-1969 period, Shelby County experienced another 3.2 percent increase in population, due in part to increased industrialization in the area.

TABLE 1

### POPULATION TREND-SHELBYVILLE AND SHELBY COUNTY, KENTUCKY <sup>1/</sup>

Year	Shelbyville		Shelby County	
	Population	% Change	Population	% Change
1900	3,016		18,340	
1950	4,403	46.0	17,912	-2.3
1960	4,525	2.8	18,493	3.2
1969	NA		19,100 <sup>2/</sup>	3.2

### General Employment Characteristics

During 1968 total employment in Shelby County averaged 7,367. Unemployment was equivalent to only 1.5 percent of the total labor force. Major segments of employment are agriculture (2,100), manufacturing (1,130), trade and services (1,960) and government (470). In addition to job opportunities located in the county, many Shelby County residents commute to government jobs in Frankfort and industrial jobs in Louisville, both within easy driving distance.

Shelby County is centered in a seven-county labor market area which includes Anderson, Franklin, Henry, Jefferson, Oldham, and Spencer Counties. Total 1968 area employment averaged 362,113. Major segments of employment include manufacturing (99,650), trades and services (97,840), government (45,820), and agriculture (8,730).



## Manufacturing Characteristics

A 170 percent increase in manufacturing employment has taken place in Shelby County during the 1960's. Total employment in manufacturing was 1,126 in September, 1968; 560 were employed in the machinery and metal products industry. Approximately 38 percent of industrial employment is female.

Twenty-six Shelby County manufacturing firms are engaged in the production of some 30 different products. The greatest concentration is in the production of metal products, although the product mix as shown by Table 2 is diversified.

Five manufacturing firms employ 100 or more workers.

Ten of the county's manufacturing firms began production during the sixties. Shelbyville Finishing Company and Lear-Siegler, Inc., are among the firms employing over 100 people.

Since 1960 several expansions of existing firms have taken place, with an added investment in excess of \$2,110,000.

TABLE 2

### SHELBY COUNTY MANUFACTURING FIRMS, THEIR PRODUCTS, AND EMPLOYMENT <sup>3/</sup>

Firm	Product	Employment		
		Total	Male	Female
<u>Shelbyville</u>				
Bohn's Ice Cream Plant	Ice cream	3	0	3
Briel Industries, Inc.	Extrusion billets, foundry ingots	63	60	3
Climax Mills, Inc.	Flour, corn meal, feed	7	7	0
Coca-Cola Bottling Co.	Soft drinks	34	29	5
Dotson Concrete, Inc.	Ready mixed concrete	9	9	0
Food Foils, Inc.	Foil containers	50	13	37
Goodman Bros., Inc.	Feed	14	13	1
Greater Kentucky Publishers, Inc.	Printing, newspaper	7	6	1
Gro Green Chemical Co.	Fertilizer	11	10	1
Lee-McClain Co., Inc.	Men's suits, sport coats, men's slacks	100	25	75
Long Block & Supply Co.	Concrete block, joists, septic tanks	29	28	1

(cont'd)



Firm	Product	Employment		
		Total	Male	Female
Long Silo Co.	Concrete staves	76	75	1
E. J. O'Brien Long Co.	Tobacco redrying	73	51	22
Official Printers	Job printing	1	1	0
R & B Tool & Engineering Co.	Tools, dies, jigs, fixtures, special machines	13	12	1
Robinson Industries	Plastic molds	10	7	3
Roll Forming Corp.	Customer rolled formed products, copper rollings, drawing aluminum rolling, drawing	182	137	45
The Shelby News	Newspaper, job printing	9	4	5
Shelby Sentinel	Newspaper	10	2	8
Shelbyville Finishing Co.	Greeting card finishing	150	8	142
Southwestern Tobacco Co., Inc.	Tobacco redrying	20	17	3
Suma, Inc.	Air filter products	35	30	5
Western District Redrying and Storing	Tobacco redrying	185	125	60
<u>Bagdad</u>				
Bagdad Roller Mills, Inc.	Corn meal, feed	27	24	3
<u>Simpsonville</u>				
Lear-Siegler, Inc.	Furniture hardware, metal stampings	436	257	179
F. B. Purnell Sausage Co.	Sausage products	35	27	8

In the seven-county Shelbyville labor market area, there were 99,649 persons employed in manufacturing in September, 1968, a 24.7 percent gain over September, 1960. Growth in employment since 1959 has been sharpest in the machinery, metal products and equipment industry (13,990 new jobs); tobacco industry (2,290); printing, publishing, and paper industry (2,130); and the chemicals, petroleum, coal and rubber industry (1,960).

TABLE 3

MANUFACTURING EMPLOYMENT, SHELBYVILLE LABOR MARKET AREA  
SEPTEMBER, 1968 <sup>4/</sup>

Industry	Employment
TOTAL	99,649
Food and beverages	13,847
Tobacco	10,723
Metal products and machinery	44,453
Printing, publishing and paper	8,839
Others	21,787

Labor Organizations

Unions represented in Shelbyville are the Aluminum Workers at Briel Industries, Inc.; the United Auto Workers at Suma, Inc.; and Production Service Sales Employees at the Shelbyville Finishing Company.

Wage Levels

The 1968 average weekly wage for all industries covered by unemployment insurance in Shelby County was \$91.59. The average weekly wage in manufacturing was \$98.51. Both wages were below the Kentucky averages of \$112.16 for all industries and \$123.97 for manufacturing, leading to a tentative conclusion that workers for production jobs can be recruited in Shelby County at or near the minimum wage.

Some examples of occupational wage rates in Shelbyville are: <sup>5/</sup>

<u>Production Employees</u>	<u>Wages Per Hour</u>		
	<u>Starting</u>	<u>Maximum</u>	<u>Prevailing</u>
Assembler	\$1.60	\$1.90	\$1.60
Drill Press Operator	1.80	2.10	1.80
Grinder, Machine	1.80	2.10	1.80
Inspector	1.80	2.10	1.80
Lathe Operator	1.85	2.25	1.85
Machinist, Set Up	2.25	3.00	2.25
Polisher & Buffer	1.85	2.15	1.85
Production Laborer	1.60	2.00	1.60
Punch Press Operator	1.75	2.25	1.75
Sprayer or Painter	1.80	2.25	1.80
Welder, Arc or Acetylene	2.00	2.50	2.00
Welder, Resistance or Spot	2.25	3.00	2.25

(cont'd)

<u>Service Employees</u>	<u>Wages Per Hour</u>		
	<u>Starting</u>	<u>Maximum</u>	<u>Prevailing</u>
Carpenter	\$2.25	\$3.00	\$2.25
Crane Operator	3.00	4.00	3.00
Electrician	2.50	3.00	2.50
Janitor	1.60	1.90	1.60
Laborer	1.60	2.00	1.60
Machinist	1.90	2.15	1.90
Mechanic, Maintenance	2.25	3.25	2.25
Shipping Clerk	1.66	1.95	
Truck Driver	2.00	2.75	2.00
Tool, Die or Gauge Maker	2.75	3.25	2.75
Welder, Acetylene, Carbon, & Arc	2.50	3.15	2.50

Office Employees

Bookkeeper or Accounting Clerk	\$2.03	\$2.65	\$2.03
Chief Clerk	1.78	2.34	1.78
Draftsman	2.00	3.00	2.00
File Clerk	1.60	1.87	1.60
Key Punch Operator	1.87	2.12	1.87
Receptionist	1.75	1.96	1.75
Secretary	2.03	2.68	2.03
Stenographer	1.87	2.40	1.87
Tabulating Machine Operator	2.03	2.34	2.03
Telephone Operator	1.70	2.28	1.70
Typist	1.60	1.87	1.60

Labor Supply

The current estimated labor supply of the Shelbyville labor market area is 5,900 men and 4,350 women. During the next five years 40,000 boys and 39,300 girls in the area will become 18 years of age and will augment this labor supply.

The highway network is conducive to commuting; however, the number of workers who would be available for jobs at Shelbyville would depend on a number of factors including wage scales and working conditions.

TABLE 4

CURRENT AND FUTURE LABOR SUPPLY - SHELBYVILLE  
LABOR MARKET AREA

County	Current Labor Supply <sup>6/</sup> 1969			Future Labor Supply by 1975 <sup>7/</sup> (Becoming 18 Years of Age)		
	Total	Male	Female	Total	Male	Female
Labor Market Area	10,254	5,898	4,356	79,378	40,077	39,301
Shelby	370	198	172	1,843	910	933
Anderson	466	228	238	844	419	425
Franklin	836	543	293	2,786	1,431	1,355
Henry	368	186	182	976	505	471
Jefferson	7,699	4,468	3,231	70,972	35,798	35,174
Oldham	196	82	114	1,312	680	632
Spencer	319	193	126	645	334	311

Income

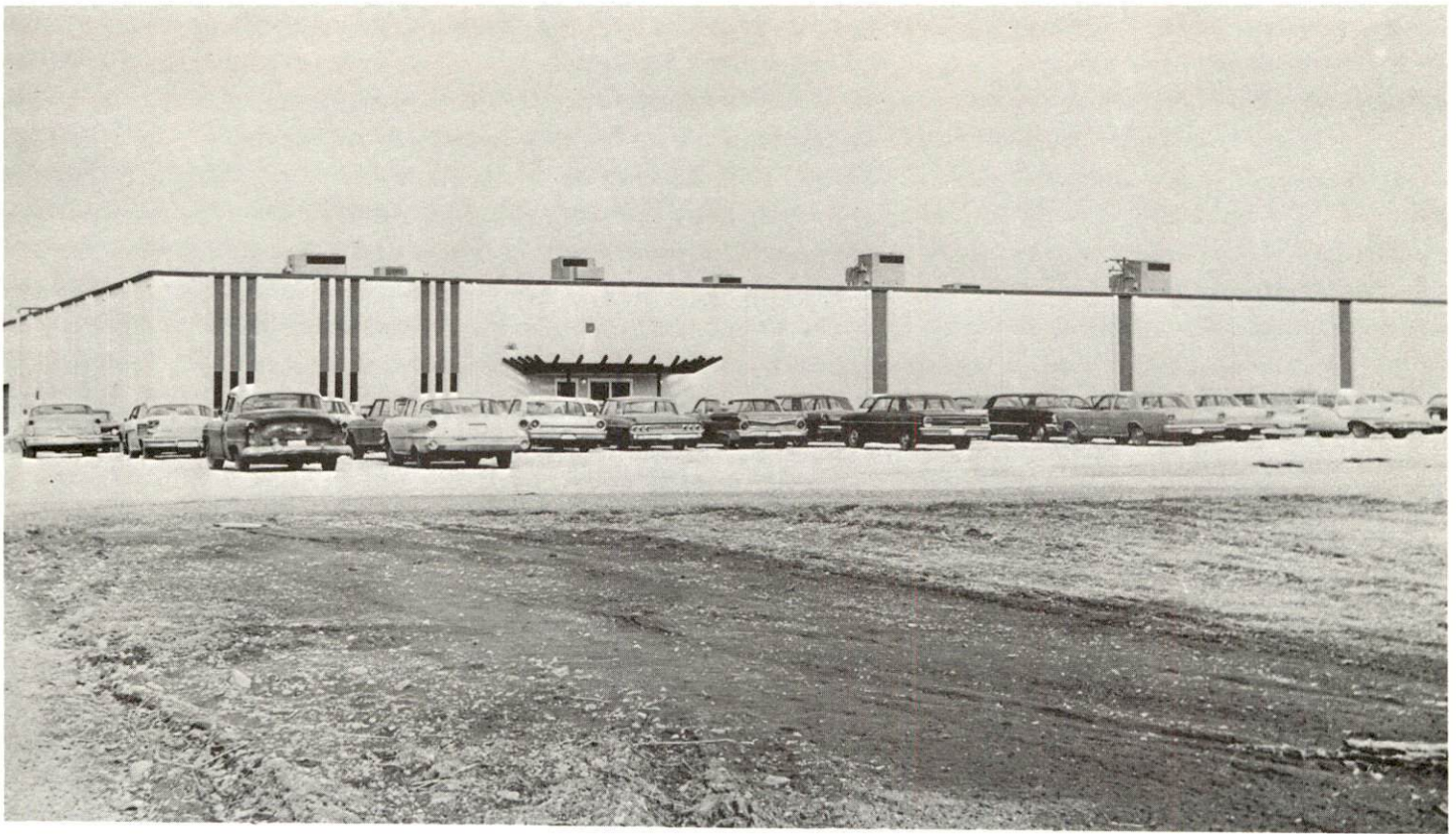
The total personal income in Shelby County in 1968 was \$50,814,000. Per capita income was \$2,660 for a gain of \$1,243 during the previous nine years. <sup>8/</sup> —





ROLL FORMING CORP.





SHELBYVILLE FINISHING CO.  
(AMERICAN GREETINGS CORP.)



GREATER KENTUCKY PUBLISHERS, INC.



## EDUCATION

The educational system within the Shelbyville labor market area has the facilities to produce an effective labor force for future industrial growth.

### Elementary and High Schools

The Shelbyville Independent School District has two elementary schools, one junior high school, and one high school with a rating of standard. The system employs 80 professional and 12 nonprofessional employees. Specialized personnel consists of a special education teacher, guidance counselor, and a remedial reading teacher. Programs offered at Shelbyville High School include vocational business, vocational home economics, and industrial arts. The 1968-69 budget was \$776,870.

A recent improvement is the new six-room addition to the Southside Elementary School. Plans for a new high school are now being made, with construction to begin in 1970.

The Shelby County School System has seven elementary schools, one junior high, and one high school with a comprehensive rating. The system employs 139 professional and 86 nonprofessional employees. Seven of the professionals serve as guidance counselors or remedial reading teachers. The system offers programs in vocational agriculture, vocational home economics, and industrial arts. The 1968-69 budget was \$1,157,452.

The new junior high school was opened in September, 1968.

TABLE 5

SCHOOLS, ENROLLMENT, NUMBER OF TEACHERS, STUDENT-  
TEACHER RATIO IN SHELBYVILLE AND SHELBY COUNTY, 1968-69 <sup>2/</sup>

School	Grades	Enrollment	No. of Teachers	Student-Teacher Ratio
Shelby County Elementaries	1- 6	1,539	57	27-1
Shelby County Junior High	7- 8	510	20	25-1
Shelby County High	9-12	825	37	22-1
Shelbyville Ind. Elementaries	1- 6	979	38	26-1
Shelbyville Ind. Junior High	7- 8	275	9	31-1
Shelbyville Ind. High	9-12	458	23	20-1

### Vocational Schools

The new Shelby County Extension Center of the Jefferson County Area Vocational School opened in September, 1969, and is offering the following courses: general clerical, secretarial-steno, auto mechanics, carpentry, electricity, machine shop, and welding. The school is presently serving the high school students in the area; however, adult education in these fields is planned for the coming year.



NEW VOCATIONAL SCHOOL

### Colleges and Universities

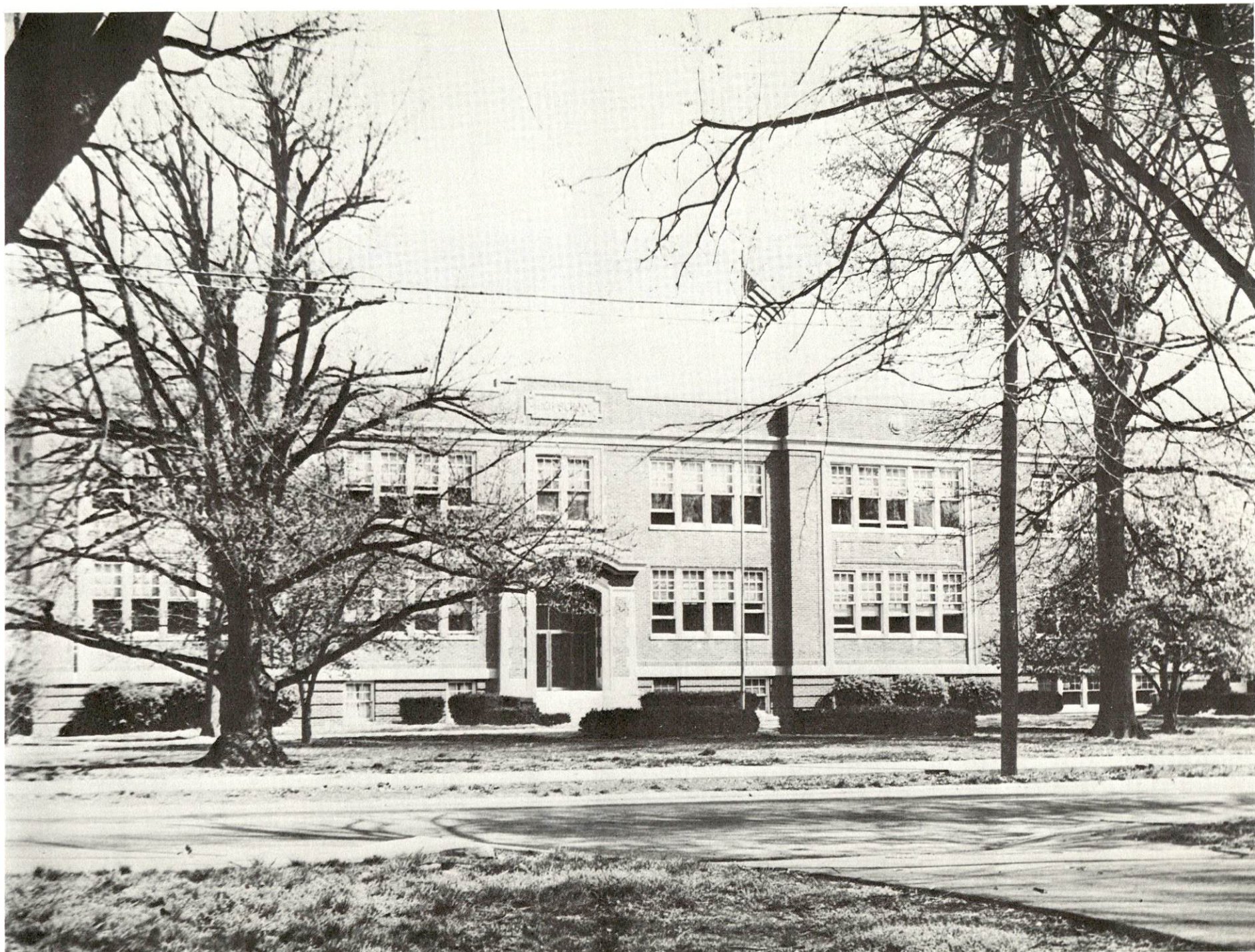
Shelbyville is located near a number of fine colleges and universities. The University of Louisville is approximately 31 miles distant.

Other colleges and universities in the Louisville area are: Bellarmine-Ursuline; Catherine Spalding; Southern Baptist Theological Seminary; Presbyterian Theological Seminary; Jefferson Community College; and the Southeastern Extension of Indiana University in Jeffersonville, Indiana.

Other institutions of higher learning in the Shelbyville area include:

<u>College or University</u>	<u>Location</u>	<u>Distance</u>
Kentucky State College	Frankfort, Kentucky	21 miles
Georgetown College	Georgetown, Kentucky	40 miles
Transylvania College	Lexington, Kentucky	49 miles
University of Kentucky	Lexington, Kentucky	49 miles
Centre College	Danville, Kentucky	52 miles





SHELBYVILLE HIGH SCHOOL





SHELBY COUNTY HIGH SCHOOL



## TRANSPORTATION

### Rail

The Louisville & Nashville Railroad serves Shelbyville with four daily freights. The Chesapeake & Ohio Railway has two freight and two passenger trains serving Shelbyville daily. Switching service is provided, and siding space is available for approximately 10 cars. Inbound carloads per month average 50 to 65, while outbound carloads are seasonal and range from 15 to 18 in winter and 400 to 450 during the tobacco season.

The Southern Railway System serves Shelbyville with nine daily freights. Switching service is available, and siding space will accommodate 22 cars. Inbound carloads per month average 50 to 65, while outbound carloads average 15 per month.

REA Express delivery service is also available.

TABLE 6

#### RAILWAY TRANSIT TIME FROM SHELBYVILLE, KENTUCKY, TO: <sup>10/</sup>

City	No. of Days CL	City	No. of Days CL
Atlanta, Ga.	3	Los Angeles, Calif.	6
Birmingham, Ala.	3	Louisville, Ky.	1
Chicago, Ill.	4	Nashville, Tenn.	2
Cincinnati, Ohio	2	New Orleans, La.	4
Cleveland, Ohio	4	New York, N. Y.	5
Detroit, Mich.	5	Pittsburgh, Pa.	5
Knoxville, Tenn.	3	St. Louis, Mo.	3

### Highways

Shelbyville is served by Interstate 64, which connects the town to all interstates and parkways in the Midwest. Two interchanges, one located 2 miles south of the town and the other 4 miles southwest, connect Shelbyville to the Interstate. Shelbyville is also served by U. S. Routes 60 and 460 and Kentucky Routes 43, 53, and 55.

Truck Service: The following truck lines serve Shelbyville:



<u>Company</u>	<u>Home Office</u>
Claxon Truck Line, Inc.	Frankfort, Kentucky
Cooper-Jarrett, Inc.	Orange, New Jersey
Ecklar-Moore Express, Inc.	Lexington, Kentucky
McDuffee Motor Freight, Inc.	Lebanon, Kentucky
Motor Freight Corporation	Terre Haute, Indiana
O. K. Trucking Co.	Cincinnati, Ohio
Smith's Transfer Corporation of Virginia	Staunton, Virginia
Turner Expediting Service	Louisville, Kentucky
Webb Transfer Line, Inc.	Shelbyville, Kentucky
Wilson Freight Co.	Cincinnati, Ohio

Webb Transfer Line, Inc., maintains a terminal in Shelbyville.

TABLE 7

HIGHWAY MILES AND TRUCK TRANSIT TIME FROM SHELBYVILLE,  
KENTUCKY, TO SELECTED MARKET CENTERS

City	Delivery		City	Delivery	
	Highway Miles	Time (Days) TL		Highway Miles	Time <sup>11/</sup> TL
Atlanta, Ga.	470	2	Los Angeles, Calif.	2,140	6
Birmingham, Ala.	436	3	Louisville, Ky.	31	1
Chicago, Ill.	325	2	Nashville, Tenn.	187	3
Cincinnati, Ohio	105	2	New Orleans, La.	810	4
Cleveland, Ohio	349	3	New York, N. Y.	745	4
Detroit, Mich.	348	3	Pittsburgh, Pa.	380	3
Knoxville, Tenn.	242	2	St. Louis, Mo.	292	2

Air

Shelbyville is served by Standiford Field and Bowman Field, both located in Louisville, Kentucky, 31 miles from Shelbyville.

Standiford Field has three paved runways - 7,800 by 150 feet, 5,000 by 150 feet, and 7,250 by 150 feet. Services available include TWA, American, Eastern, Delta, Piedmont, Ozark, and Allegheny Airlines; car rental and city bus and taxi services; restaurant; 80, 91, 100, 135, and 155 octane; major A&E repairs; and weather bureau.

Bowman Field has three paved runways - 4,350 by 100 feet, 3,600 by 100 feet, and 3,700 by 100 feet. Services available include 80 and 100 octane, jet fuel, storage, major A&E repairs, radio service, charter service, city bus and taxi service, and weather bureau.

#### Other Transportation Services

Shelbyville is served by Southern Greyhound Bus Lines, operating seven eastbound and eight westbound buses daily. Bell Bus Lines operates between Carrollton, Shelbyville, and Louisville with one round trip daily.

Taxi service is provided twenty-four hours daily.

There are numerous car and truck rental agencies available in Louisville, 31 miles from Shelbyville.

## POWER AND FUEL

### Electricity

Electricity is supplied to Shelbyville by the Kentucky Utilities Company, which serves 4,725 customers in Shelbyville and the immediate vicinity. The Kentucky Utilities Company, which provides electric service in 78 Kentucky counties, has a generating capacity of approximately 740,000 KW in its six generating stations that are located in the southeastern, central, and western portions of the state. Additional generating capacity of 427,000 KW is under construction with completion scheduled for May 1971. The Company also has interconnections with other major generating sources, providing a means for interchanging blocks of electricity when desired. Rates for industry will be furnished by the Company's Industrial Development Department in Lexington, Kentucky, or the Kentucky Department of Commerce, Frankfort, Kentucky.

The Shelby Rural Electric Cooperative provides electric service to 2,016 consumers in Shelby County, while the Fox Creek Rural Electric Cooperative provides electric service to 28 Shelby County customers. Both the Shelby RECC and the Fox Creek RECC purchase power from the East Kentucky Rural Electric Cooperative.

The East Kentucky RECC is a generation and transmission cooperative which transmits low-cost, wholesale power to its 18 member rural electrics. Rates may be obtained from the East Kentucky RECC, Winchester, Kentucky, or the Kentucky Department of Commerce, Frankfort, Kentucky.

### Natural Gas

Natural gas is supplied to 2,576 customers in Shelbyville by the Western Kentucky Gas Company, whose source of supply is the Texas Gas Transmission Corporation. The 30-inch transmission line from which gas is tapped is located 15 miles from town.

Distribution lines of 2, 3, 4, 6, and 8 inches have a pressure range of 4 ounces to 50 pounds. The average BTU content is 1,000 per cubic foot and specific gravity is .60.

Small pipeline extensions are soon to be placed in the subdivisions to meet the community's needs.



### General Service Rate 1:

First	1,000 cu. ft. or less per month	\$1.50
Next	2,000 cu. ft. per month	.0895 per 100 cu. ft.
Next	7,000 cu. ft. per month	.0715 per 100 cu. ft.
Next	40,000 cu. ft. per month	.0655 per 100 cu. ft.
All additional	cu. ft. per month	.0585 per 100 cu. ft.

### Rate 3-A:

Gas service under this rate is available only to customers who require and contract for not less than 100,000 cubic feet per day, or 24,000,000 cubic feet per year. Service may be 100 percent interruptible, or 100 percent firm, or a combination of the two. The cost shall be:

### Interruptible Service:

First	2,000,000 cu. ft. per month	\$950.00
Next	2,000,000 cu. ft. per month	44.5¢ per M cu. ft.
Next	2,000,000 cu. ft. per month	42.5¢ per M cu. ft.
All additional	cu. ft. per month	36.5¢ per M cu. ft.

Minimum Charge: \$950.00 per meter per month.

If additional information is needed, contact the Industrial Development Department, Western Kentucky Gas Company, Owensboro, Kentucky.

### Coal

Shelbyville is served by both the Eastern and Western Kentucky Coal Fields. A representative delivery cost can be determined for each district shown below.

<u>Point of Origin</u>	<u>Freight Delivery Cost (Net Ton) <sup>12/</sup></u>
Jellico-Middlesboro	\$3.44
Harlan	3.44
Hazard	3.32
West Kentucky Group	3.29

### Fuel Oil

Kentucky has three fuel oil refineries located in Catlettsburg, Louisville, and Somerset. Kentucky's fuel supply is supplemented by border state operations.

Delivery prices of the various grades may be obtained from the Kentucky Department of Commerce, Frankfort, Kentucky.

## WATER AND SEWERAGE

### Water

Water is supplied to 2,480 customers in Shelbyville by the Shelbyville Municipal Water and Sewer Commission. The sources of raw water are impoundments of Guist Creek Lake and Lake Shelby.

The treatment plant has a design capacity of 1,000,000 gpd. Average daily use is 800,000 gallons and the maximum daily use has been 1,000,000 gallons. An average pumping time of 20 hours is required to meet daily needs.

Distribution lines vary from 4 to 16 inches, and water pressure is maintained at 70 psi. The average temperature of treated water is 65° F.

Storage facilities include a 200,000-gallon elevated tank, a 300,000-gallon elevated tank, and a 200,000-gallon clear well.

Several improvements now in process include: expansion of the water plant which will increase capacity from 1,000,000 to 3,000,000 gpd; erection of a 500,000-gallon elevated storage tank and a 340,000-gallon clear well; addition of 6 miles of 12-, 14-, and 16-inch water mains.

Current water rates are as follows:

First	1,000 gallons	\$2.65 (Minimum)
Next	9,000 gallons	1.02 per M gallons
Next	15,000 gallons	.85 per M gallons
Next	25,000 gallons	.70 per M gallons
Next	50,000 gallons	.55 per M gallons
All over	100,000 gallons	.40 per M gallons

### Sewerage

Sewerage service is provided to 1,320 customers or 88 percent of the city by the Shelbyville Municipal Water and Sewer Commission. Both primary and secondary treatments are used, and treatment processes include trickling filter, digester, clarifier, and drying beds. Treated sewage is discharged into Clear Creek. The design flow of the treatment plant is 1,320,000 gpd and the design population is 8,300 persons.

Sizes of sanitary sewers are 6, 8, 10, 12, and 15 inches. The city maintains separate storm sewers which range from 12 to 60 inches.

The current sewerage rate is 42.6 percent of the water bill.

## AGRICULTURE - NATURAL RESOURCES - CLIMATE

### Agriculture

The approximate total land area of Shelby County is 245,120 acres, with 93 percent of the area devoted to farm land. In 1964, there were 1,735 farms in the county, with an average size of 132 acres.

Farm income in the county is largely from burley tobacco, dairying, and beef cattle. The 1964 value of sales of all farm products totaled \$13,339,793, averaging \$7,689 per farm. Crop sales totaled \$6,320,887; livestock and livestock products totaled \$7,017,115.

In 1967, agricultural production in Shelby County included 11.4 million pounds of burley tobacco, 1.2 million bushels of corn, and 33,000 tons of alfalfa hay. Livestock on farms on January 1, 1968, included 59,000 cattle and calves, 16,800 hogs and pigs, and 3,700 sheep and lambs. Milk cows on farms during 1966 averaged 14,100 head, with milk production for the year totaling 125 million pounds.

### Mineral Resources

No mineral production for Shelby County has been reported. The limestone and residual clays are the principal raw materials of the county, but no commercial development of these minerals has occurred. Natural gas has been encountered and occasionally utilized as a domestic fuel.

### Water Resources

Floyds Fork and Clear Creek have been impounded to provide Shelbyville with a public and industrial water supply. Guist Creek Lake, 325 acres completed in 1961, is a multipurpose lake. Other supplies could be obtained with additional impoundments.

The expected yield of the entirety of Shelby County is 5 gpm or less. Exceptions may be found in restricted areas.

### Forests

There are 31,000 acres of commercial forest land in Shelby County, covering 12.7 percent of the total land area. The most abundant species are white oaks, red oaks, hickories, yellow poplar, ash, and hard maple.



In Kentucky, within a 50-mile radius of Shelbyville, there are more than 900 thousand acres of commercial forest land. In 1962, 30 million board feet of timber were harvested from this area. While some of the timber harvest is used locally, most of it is shipped out of the area for further processing.

Forests of the entire area receive organized protection from fire from the State Department of Natural Resources.

### Climate

Shelbyville has an average yearly precipitation of 43.12 inches. Rainfall is heaviest in Shelbyville during the months of January and March. Snowfall is heaviest during the months of January, February, and March.

In an average year there are 161 cloudy days, 105 partly cloudy days, and 99 clear days. An average of 18 days of fog occurs yearly.

Over the year the average temperature ranges from 33.7° to 76.2° F. The normal monthly minimum temperature ranges from 25.7° to 66.4° F. Maximum monthly temperature ranges from 41.6° to 86° F. The prevailing wind is from the south.

## LOCAL GOVERNMENT

### Structure

Shelbyville, a fourth-class city, is governed by a mayor elected for a four-year term and six councilmen elected for two-year terms.

Shelby County is governed by a fiscal court composed of a county judge and seven magistrates.

### Finance

Shelbyville had an income of \$218,008.81 for the year ending December 31, 1968, while expenditures totaled \$214,450.60.

Shelby County's 1968-69 estimated budget was \$290,000. Bonded indebtedness outstanding of the county as of June 1, 1969, was \$41,000.

The bonded indebtedness of the Shelbyville Independent School District as of June 30, 1969, was \$423,000.

The bonded indebtedness of the Shelby County School System was \$2,459,000 as of June 30, 1968.

### Taxes

Property taxes are the major source of income for Shelbyville and Shelby County. Property must be assessed at 100 percent of fair cash value under provisions of the Kentucky Constitution. Net assessed value of property in these jurisdictions was as follows:

<u>Classes of Property</u>	<u>Shelbyville (1968)</u>	<u>Shelby County (1968)</u>
Real Estate	\$17,679,135	\$115,380,000
Tangibles	4,267,870	13,594,028
Public Service	2,822,366	16,240,306

Property tax rates for Shelbyville and Shelby County are shown on the following page.



TABLE 8

PROPERTY TAX RATES PER \$100 OF ASSESSED VALUE FOR  
SHELBYVILLE AND SHELBY COUNTY, 1968 <sup>13/</sup>

Taxing Unit	Shelbyville	Shelby County
State	\$ .015	\$ .015
County	.165	.165
School	.674	.574
City	<u>.300</u>	<u>          </u>
Total	\$1.154	\$ .754

The City of Shelbyville requires a business license fee which varies with the type of business and ranges from \$15 to more than \$200 annually.

As provided by state law, Shelbyville may allow a five-year exemption from municipal taxation for new industry.

#### Planning and Zoning

The Shelbyville-Shelby County Planning Commission was organized during the early 1960's. Since then, the county has completed a comprehensive plan and the city has completed base studies.

The city has adopted all major codes and ordinances. One hundred units of low-cost public housing have just been completed in Shelbyville.

#### Safety

Fire: Shelbyville has a Class-6 American Insurance Association fire rating.

The Shelbyville Fire Department is staffed with a chief, assistant chief, 4 full-time firemen, and 20 volunteers. Motorized equipment consists of a 1968 GMC, 1,000-gpm pumper; a 1952 Ford, 750-gpm pumper; and a 1947 American-La France 750-gpm pumper.

The Shelby County Volunteer Fire Department, staffed by 20 volunteers, operates within a 3-mile radius of 7th and Washington Streets in Shelbyville. Equipment includes two pumper type trucks and one rescue truck which is shared with the city.

Police: The Shelbyville Police Department employs a chief, a captain, and five patrolmen. Motorized equipment consists of two police cruisers, each equipped with a two-way radio.

The Shelby County Sheriff's Department is staffed by a sheriff and three deputies. Motorized equipment consists of four privately-owned cars.

#### Sanitation

Garbage is collected weekly or semiweekly by private contractors in the business district and in the residential areas. The monthly residential collection fee is \$3, while the business collection fee varies. Garbage is disposed of in a city-owned and operated sanitary land fill. In addition, the City of Shelbyville conducts annual cleanup drives.





SHELBYVILLE MUNICIPAL BUILDING

## HEALTH

### Hospitals

The King's Daughters' Hospital, with 65 beds and 20 bassinets, is located in Shelbyville. The facilities include a laboratory, X-ray equipment, two major operating rooms, cystoscopic room, fracture room, two delivery rooms, emergency room, and waiting room. Nine physicians and 98 other employees comprise the active hospital staff. The hospital is accredited by the Joint Commission on Accreditation of Hospitals.

### Nursing Homes

There are three licensed nursing and convalescent homes in Shelbyville containing a total of 173 beds.

### Public Health

The Shelby County Health Department, located in Shelbyville, is staffed with a nurse, sanitarian, clerk, and health officer. Programs include immunization and tests, venereal disease and tuberculosis control programs, school health services, sanitation services, health education, communicable disease control, vital statistics, and an environmental sanitation program.





CHURCH AND EDUCATIONAL BUILDING



HOSPITAL AND NEW NURSING HOME

## OTHER LOCAL FACILITIES

### Housing

There are few apartment or house rentals in Shelbyville. However, two apartment buildings have recently been constructed, and there are plans for more apartment construction. Monthly rental rates for apartments and houses range from \$80 to \$125.

There are several houses for sale in Shelbyville, and there is an abundance of building lots. The construction cost of a 3-bedroom brick veneer with 1 1/2 baths and a concrete block basement would range from \$21,500 to \$25,500. This same type of house without a basement would range from \$20,000 to \$24,000.

There are 15 real estate dealers in Shelbyville.

### Communication

Telephone: South Central Bell Telephone Company serves 3,243 customers in Shelbyville and 7,900 customers in Shelby County. South Central Bell, which maintains a cross-bar office in Shelbyville, provides the city's residents with dial service, direct distance dialing, and the additional service of touch-tone. In an effort to give better service to the Shelbyville area, South Central Bell is now in the process of laying additional cable in Shelby and Henry Counties.

Telegraph: Western Union, located in Shelbyville, provides telegraph service to the Shelbyville area.

Postal: Shelbyville has a first-class post office with twenty-three employees. Mail is received and dispatched four times daily via star routes. There are five rural and four city routes. The postal receipts for 1968 were approximately \$150,000.

Newspapers: Shelbyville has two weekly newspapers - the Shelby Sentinel with a circulation of 4,375, and The Shelby News with a circulation of 4,600. Both papers are published each Thursday.

Other papers are received daily from Louisville and Lexington, Kentucky.

Radio: Radio Station WCND, an independent station located in downtown Shelbyville, transmits on 940 kilocycles with a power of 250 watts. WCND is a daytime station.



Other radio reception is from Frankfort, Lexington, and Louisville stations.

Television: Good to excellent television reception is received from Lexington and Louisville, Kentucky, and Cincinnati, Ohio. All major networks are represented. Programs are received by the use of outside antennae.

### Libraries

The Shelby County Library, located in Shelbyville, is staffed with a librarian, assistant librarian, and bookmobile librarian, and contains approximately 29,000 volumes. The 1967-68 library circulation totaled 18,012 volumes, while the bookmobile's circulation totaled 62,013 volumes.

In addition to books, the library circulates magazines, records, film strips, and athletic equipment. Services provided by the library include a weekly story hour through the winter months and meeting space for civic groups. Library hours are 12:30 to 5:30 p.m., Monday through Thursday, and 10:00 to 11:30 a.m. on Friday.

The bookmobile operates five days a week, serving the rural schools and communities.

### Churches

The following religious denominations are represented in Shelbyville: Baptist, Christian, Church of Christ, Episcopal, Methodist, Latter Day Saints, Church of God, Pentecostal, Presbyterian, and Roman Catholic.

### Financial Institutions

<u>Bank</u>	<u>Statement as of December 31, 1968</u>	
	<u>Assets</u>	<u>Deposits</u>
Bank of Shelbyville	\$4,900,571.76	\$4,233,602.31
Citizens Bank	4,579,600.00	4,117,800.00
Farmers & Traders Bank	5,086,421.65	4,106,066.20
Shelby County Trust & Banking Co.	6,530,183.80	5,903,425.79
Deposit Bank of Pleasureville	8,353,763.74	7,653,601.79
Bank of Simpsonville	2,412,971.15	2,205,680.28
Peoples Bank of Bagdad	1,689,900.00	1,563,100.00
<u>Savings &amp; Loan Associations</u>	<u>Assets</u>	<u>Shared Accounts</u>
Shelby County Building & Loan Association	\$1,708,359.01	\$1,548,507.17

## Hotels and Motels

<u>Name</u>	<u>Rooms or Units</u>
Blue Gables Motel	40
Lee's Motel	20
Shelby Motel	22

## Clubs and Organizations

Business and Civic: Chamber of Commerce, Jaycees, Kiwanis, Lions, Rotary, Ruritan, Optomist, Shelby County Historical Society, PTA

Fraternal: American Legion, Masons, Odd Fellows, VFW, Moose

Women's: Business and Professional Women, Shelby County Garden Club, Chautauqua Club, Eastern Star, Shelby County Homemakers Club, Hospital Auxiliary, Jennie Bennedict Circle, Women of the Moose

Youth: Boy Scouts, 4-H, FFA

## Recreation

Local: Recreational facilities in Shelbyville include: four ball parks, four playgrounds, bowling alleys, municipal swimming pool, 18-hole golf course, tennis courts, and three fishing lakes with picnic grounds.

Area: Located within the Shelbyville area are several fine recreational facilities, among which are General Butler State Park, My Old Kentucky Home State Park, and Pioneer Memorial State Park.

Racing: Churchill Downs, home of the Kentucky Derby, is in Louisville, only 31 miles away. Two thoroughbred racing meets and the world-famous Kentucky Derby are held annually. Additional thoroughbred racing is held at Miles Park. Harness racing is offered at the beautiful new Louisville Downs.

Four race meets are held each year in Lexington, 49 miles from Shelbyville. Meets are held in the spring and fall for thoroughbreds at Keeneland Race Course, and two meets for harness horses are held at Lexington's Big Red Mile Trotting Track.

College Sports: Intercollegiate athletic programs in football, basketball, and baseball at the University of Kentucky and University of Louisville can be enjoyed by the sports fan.



Professional Sports: Major league sports may be found in Cincinnati, home of the Cincinnati Reds Baseball team, the Cincinnati Royals Basketball team, and the Bengals football organization.

Louisville is home to the Louisville Colonels baseball team and the Louisville Colonels basketball team.

Fine Arts: The Cincinnati Symphony Orchestra presents biweekly concerts throughout the fall and winter seasons. Cincinnati is also the home of the unique Zoo Summer Opera where professional casts, with Metropolitan artists, offer the world's great operas each summer in the Cincinnati Zoological Gardens.

The Louisville Orchestra, located in Louisville, performs eight pairs of subscription concerts annually. The Louisville Opera Association, with professional stars, presents four operas each season at the Brown Theater.

The Central Kentucky Concert and Lecture Series, Lexington, presents eight concerts and four lectures annually. The Central Kentucky Philharmonic Orchestra, featuring artists of national prominence, presents five local concerts a year.

Lexington has six little theater groups of local talent which produce more than 20 plays each year. Centennial Theater, a summer stock company, is also located in Lexington.

Cincinnati and Louisville offer regular road show performances of Broadway productions. Actors Theater, a Louisville repertory company, offers a well-rounded dramatic fare.

#### Recent Community Improvements

Public: A \$1,250,000 bond issue for the renovation of the Shelbyville Municipal Water and Sewer System - a \$41,000 bond issue for two downtown parking lots - completion of Shelbyville Municipal Housing Project - \$3,500 appropriation by the city for recreation - development of a new playground park - 500,000-gallon water elevated storage tank is being erected at the industrial site - completion of Shelby County Junior High - completion of Shelby County Vocational School.

Business and Industrial: South Central Bell is improving service by laying additional cable.

## HISTORY

Shelby County, the 12th county formed in Kentucky, was created in 1792 from part of Jefferson County and was named for Governor Isaac Shelby, the first governor of the Commonwealth of Kentucky. Shelby County, located in Central Kentucky, is drained by the Kentucky and Salt Rivers. The surface of Shelby County's 384 square miles is rolling to hilly, and the fertile soil is based on limestone with a red clay foundation.

Painted Stone, established in 1779 by Squire Boone, brother of the famous explorer of Kentucky, Daniel Boone, was the first settlement in Shelby County. At the close of the 18th century a Dutch group attempted a communal type settlement at Pleasureville which ended in failure.

Shelbyville, the county seat, was established in 1792 by the first session of court, held at the home of Brackett Owen. A courthouse was built four years later, meeting the town's needs until 1912 when the present structure was erected.

Shelby County experienced much activity in the 19th century. In 1804, the county's first church was built. Old Stone Inn near Simpsonville, built in the early 1800's, is still in operation. A county newspaper began publication in 1814. Although there were some objections to the railroad, it prospered and was completed between Louisville and Lexington in the 1850's.

One of the most famous educational institutions in Kentucky, Science Hill, was located in Shelby County. Founded in 1825 by the Reverend and Mrs. John Trevis, the school was designed for the education of frontier girls. From this school, which achieved nation-wide recognition, girls were sent to the colleges of the east - Vassar, Smith, Barnard, and others - to finish their education.

Names worthy of remembrance are:

William Logan, served as Speaker of the State House of Representatives, Justice of the Court of Appeals, and United States Senator.

John Adair, served as Governor of Kentucky, 1820-1824.

A. O. Stanley, born in Shelby County, served as Governor from 1915 to 1919.

Wingfield Bullock, James C. Sprigg, and Ralph Gilbert, served in the United States House of Representatives.



Throughout its history, Shelby County's economy has been centered in agriculture. Industry, however, is fast becoming an important part of Shelby County's economic life. It was in Shelbyville, the county seat and largest town, that industry began and grows today. Between 1960 and 1968, over 700 new manufacturing jobs were to be had in Shelby County and this figure continues to grow.

The citizens of Shelby County have continued in their efforts to improve their community. A home for Masons, a hospital, a municipal swimming pool, new school buildings, new water and sewerage facilities, and the Shelby County Industrial Development Foundation all attest to the progressive steps taken by the area's residents.

## SOURCES OF INFORMATION

- 1/ U. S. Bureau of the Census, U. S. Census of Population, Kentucky.
- 2/ Department of Sociology, University of Kentucky, Kentucky County Provisional Population Estimates, 1969, Lexington, Kentucky.
- 3/ Kentucky Department of Commerce, 1969 Kentucky Directory of Manufacturers.
- 4/ Kentucky Department of Economic Security, Division of Research and Statistics.
- 5/ Kentucky Department of Economic Security, Employment Service Office.
- 6/ Kentucky Department of Economic Security, Division of Research and Statistics.
- 7/ Kentucky Department of Commerce, Kentucky's Labor Supply Estimates, 1968.
- 8/ Office of Development Services and Business Research, University of Kentucky, Lexington, Kentucky.
- 9/ Kentucky Department of Education, Kentucky School Directory, 1968-69.
- 10/ Louisville & Nashville Railroad Company, Louisville, Kentucky.
- 11/ McDuffee Motor Freight, Inc., Lebanon, Kentucky.
- 12/ Louisville & Nashville Railroad Company, Louisville, Kentucky.
- 13/ Kentucky Department of Revenue, Kentucky Property Tax Rates, 1968.