

1974

Industrial Resources: Simpson County - Franklin County

Kentucky Library Research Collections
Western Kentucky University, spcol@wku.edu

Follow this and additional works at: https://digitalcommons.wku.edu/simpson_cty

 Part of the [Business Administration, Management, and Operations Commons](#), [Growth and Development Commons](#), and the [Infrastructure Commons](#)

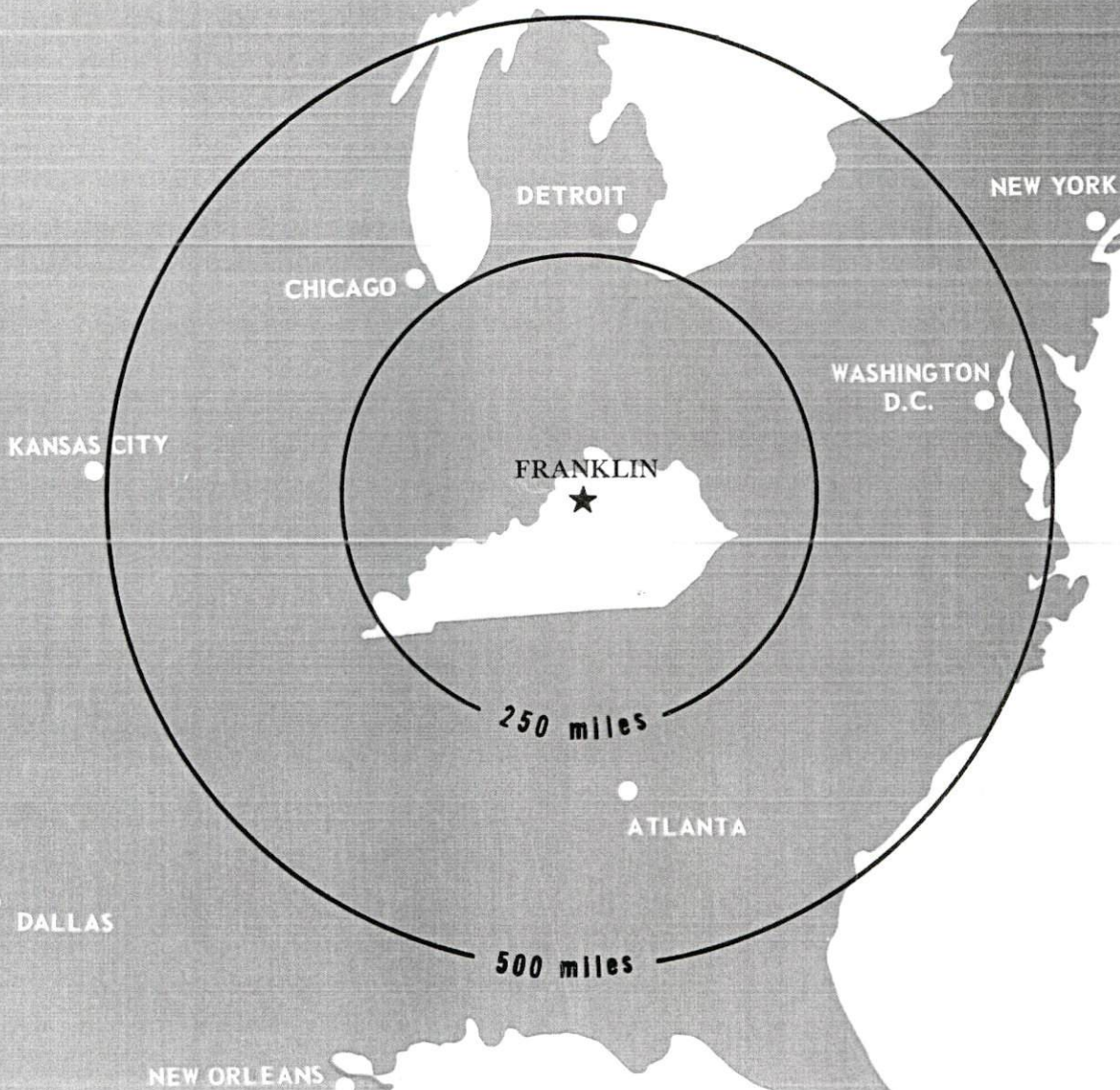
Recommended Citation

Kentucky Library Research Collections, "Industrial Resources: Simpson County - Franklin County" (1974). *Simpson County*. Paper 10.
https://digitalcommons.wku.edu/simpson_cty/10

This Report is brought to you for free and open access by TopSCHOLAR®. It has been accepted for inclusion in Simpson County by an authorized administrator of TopSCHOLAR®. For more information, please contact topscholar@wku.edu.

INDUSTRIAL RESOURCES

FRANKLIN KENTUCKY



SIMPSON COUNTY, KENTUCKY

FRANKLIN INDUSTRIAL SITES

1974

For more information about the following sites, contact Mr. John T. Butts, Franklin Electric Plant Board, Franklin, Kentucky; or the Kentucky Department of Commerce, Capital Plaza Office Tower, Frankfort, Kentucky.

SITE #1: ACREAGE: 43 acres
LOCATION: In county, approximately
2 1/2 miles north of U. S. 31W
ZONING: Industrial
HIGHWAY ACCESS: Site fronts on U. S.
31W
RAILROAD: Louisville & Nashville
Railroad adjacent to east boundary
WATER: Simpson County Water
District
SIZE LINE: 10-inch line along west
border of site
GAS: Western Kentucky Gas Company
SIZE MAIN: 4-inch main adjacent to
west boundary across U. S. 31W
ELECTRICITY: Warren RECC
SEWERAGE: City of Franklin Water
Works Commission
SIZE LINE: 24-inch line approximately
1 3/4 miles south of site
OPTIONED BY: Franklin-Simpson County
Industrial Development Association

SITE #2: ACREAGE: 97 acres
LOCATION: In county, approximately 1,450
feet north of city
ZONING: Industrial
HIGHWAY ACCESS: Site fronts on
Kentucky 1171
RAILROAD: Louisville & Nashville
Railroad adjacent to west boundary
WATER: City of Franklin Water Works
Commission
SIZE LINE: 8-inch line extends through
center of site
GAS: Western Kentucky Gas Company
SIZE MAIN: 2-inch main approximately
800 feet south of site
ELECTRICITY: Warren RECC and/or
Franklin Electric Plant Board
SEWERAGE: City of Franklin Water
Works Commission
SIZE LINE: 21-inch line along east
portion of site
OPTIONED BY: Franklin-Simpson County
Industrial Development Association

SITE #3: ACREAGE: 40 acres
LOCATION: Partially within northern
city limits
ZONING: Industrial
HIGHWAY ACCESS: Kentucky 1171 approxi-
mately one-half mile east of site
RAILROAD: Louisville & Nashville
Railroad adjacent to western boundary
WATER: City of Franklin Water Works
Commission
SIZE LINE: 8-inch line approximately
2,800 feet east of site
GAS: Western Kentucky Gas Company
SIZE MAIN: 2-inch main extends
through center of site
ELECTRICITY: Warren RECC and/or
Franklin Electric Plant Board
SEWERAGE: City of Franklin Water
Works Commission
SIZE LINE: 21-inch line approximately
1,200 feet east of site
OPTIONED BY: Franklin-Simpson County
Industrial Development Association

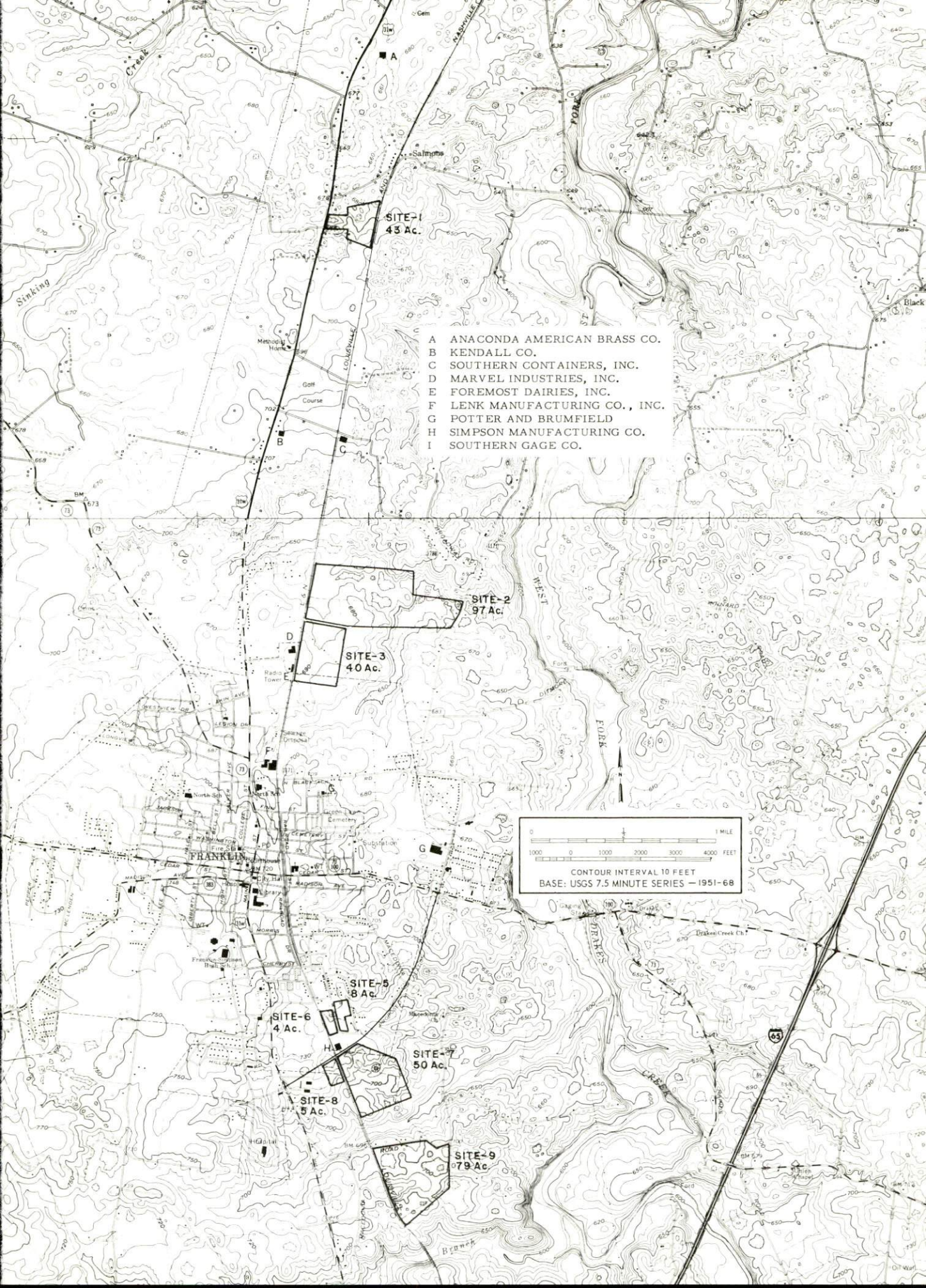
SITE #5: ACREAGE: 8 acres
LOCATION: Within southeast city limits
ZONING: Industrial
HIGHWAY ACCESS: Site fronts on paved
city street which leads to U. S. 31W
RAILROAD: Not rail served
WATER: City of Franklin Water Works
Commission
SIZE LINE: 8-inch line along western,
northern and southern boundaries
GAS: Western Kentucky Gas Company
SIZE MAIN: Along western boundary
of site
ELECTRICITY: Franklin Electric Plant
Board
SEWERAGE: City of Franklin Water Works
Commission
SIZE LINE: 8-inch line adjacent to
east boundary across paved city street
OPTIONED BY: Franklin-Simpson County
Industrial Development Association

SITE #6: ACREAGE: 4 acres
LOCATION: Within southeast city limits
ZONING: Industrial
HIGHWAY ACCESS: Paved city street adjacent to east boundary
RAILROAD: Louisville & Nashville Railroad adjacent to west boundary
WATER: City of Franklin Water Works Commission
SIZE LINE: 8-inch line adjacent to east border of site across paved city street
GAS: Western Kentucky Gas Company
SIZE MAIN: 2-inch main adjacent to east border of site across paved city street
ELECTRICITY: Franklin Electric Plant Board
SEWERAGE: City of Franklin Water Works Commission
SIZE LINE: 8-inch line adjacent to southern boundary of site
OPTIONED BY: Franklin-Simpson County Industrial Development Association

SITE #7: ACREAGE: 50 acres
LOCATION: Partially within southeast city limits
ZONING: Industrial
HIGHWAY ACCESS: Site fronts on Franklin by-pass
RAILROAD: Louisville & Nashville Railroad adjacent to western boundary of site
WATER: City of Franklin Water Works Commission and/or Simpson County Water District
SIZE LINE: City of Franklin Water Works Commission - 8-inch line approximately 500 feet north of site across paved city street; Simpson County Water District - 8-inch line approximately 1,700 feet west of site across Louisville & Nashville Railroad
GAS: Western Kentucky Gas Company
SIZE MAIN: 2-inch main adjacent to north boundary across Franklin by-pass
ELECTRICITY: Franklin Electric Plant Board
SEWERAGE: City of Franklin Water Works Commission
SIZE LINE: 8-inch line approximately 900 feet south of site
OPTIONED BY: Franklin-Simpson County Industrial Development Association

SITE #8: ACREAGE: 5 acres
LOCATION: Partially within southeast city limits
ZONING: Industrial
HIGHWAY ACCESS: Site fronts on Franklin by-pass
RAILROAD: Louisville & Nashville Railroad adjacent to east boundary of site
WATER: City of Franklin Water Works Commission or Simpson County Water District
SIZE LINE: City of Franklin Water Works Commission - 8-inch line approximately 800 feet northeast of site across paved city street; Simpson County Water District - 8-inch line approximately 1,100 feet west of site
GAS: Western Kentucky Gas Company
SIZE MAIN: 2-inch main approximately 3,200 feet northeast of site across Franklin by-pass
ELECTRICITY: Franklin Electric Plant Board
SEWERAGE: City of Franklin Water Works Commission
SIZE LINE: 15-inch line approximately 2,000 feet south of property
OPTIONED BY: Franklin-Simpson County Industrial Development Association

SITE #9: ACREAGE: 79 acres
LOCATION: In county, approximately one-half mile south of Macedonia Road
ZONING: Industrial
HIGHWAY ACCESS: Site fronts on paved county road
RAILROAD: Louisville & Nashville Railroad adjacent to west boundary
WATER: Simpson County Water District
SIZE LINE: 8-inch line approximately 1,650 feet west of site
GAS: Western Kentucky Gas Company
SIZE MAIN: 4-inch main approximately 2,900 feet northwest of site
ELECTRICITY: Warren RECC
SEWERAGE: City of Franklin Water Works Commission
SIZE LINE: 15-inch line adjacent to northern boundary of site across Macedonia Road
OPTIONED BY: Franklin-Simpson County Industrial Development Association



- A ANACONDA AMERICAN BRASS CO.
B KENDALL CO.
C SOUTHERN CONTAINERS, INC.
D MARVEL INDUSTRIES, INC.
E FOREMOST DAIRIES, INC.
F LENK MANUFACTURING CO., INC.
G POTTER AND BRUMFIELD
H SIMPSON MANUFACTURING CO.
I SOUTHERN GAGE CO.

0 1000 2000 3000 4000 FEET
1 MILE
CONTOUR INTERVAL 10 FEET
BASE: USGS 7.5 MINUTE SERIES - 1951-68

INDUSTRIAL RESOURCES

FRANKLIN, KENTUCKY

Prepared by

The Kentucky Department of Commerce

in cooperation with

Franklin-Simpson County Chamber of Commerce

1974

Dept. of Commerce

4-1-74

TABLE OF CONTENTS

TABLE OF CONTENTS

<u>Chapter</u>	<u>Page</u>
INDUSTRIAL SITES	i
FRANKLIN, KENTUCKY - A RESOURCE PROFILE.	1
THE LABOR MARKET.	4
Population Trends	4
General Employment Characteristics, 1972.	4
Manufacturing Employment Trends by Industry	5
Major Franklin Manufacturing Firms, Their Products and Employment	5
Wages.	7
Labor Organizations	8
Estimated Male Labor Supply	8
Estimated Female Labor Supply	8
Per Capita Personal Income.	9
TRANSPORTATION	10
Rail.	10
Truck Service	10
Air	11
Bus	11
Taxi	11
POWER AND FUEL	12
Electricity.	12
Natural Gas	12
Other Fuels	14
WATER AND SEWERAGE	15
Water.	15
Sewerage	16
LOCAL GOVERNMENT	17
City.	17
County	17

<u>Chapter</u>	<u>Page</u>
Assessed Value of Property, 1973	17
Property Taxes	17
Local Property Tax Rate Per \$100 of	
Assessed Valuation, 1973	18
Utilities Gross Receipts Tax for Schools	18
Planning and Zoning	18
Safety.	18
Police.	18
Fire.	18
Rescue Service.	19
Sanitation	19
EDUCATION	20
Public Schools	20
Nonpublic Schools	20
Vocational Schools	21
Colleges and Universities	22
HEALTH	23
Hospitals	23
Nursing Homes.	23
Public Health	23
OTHER LOCAL FACILITIES	25
Communications	25
Library Services.	25
Religious Institutions	27
Financial Institutions	27
Hotels and Motels	27
Clubs and Organizations.	27
RECREATION.	29
Local.	29
Area	29
AGRICULTURE - NATURAL RESOURCES - CLIMATE	30
Agriculture	30
Natural Resources	30
Climate.	31
HISTORY.	32

GENERAL HIGHWAY MAP
SIMPSON COUNTY
KENTUCKY

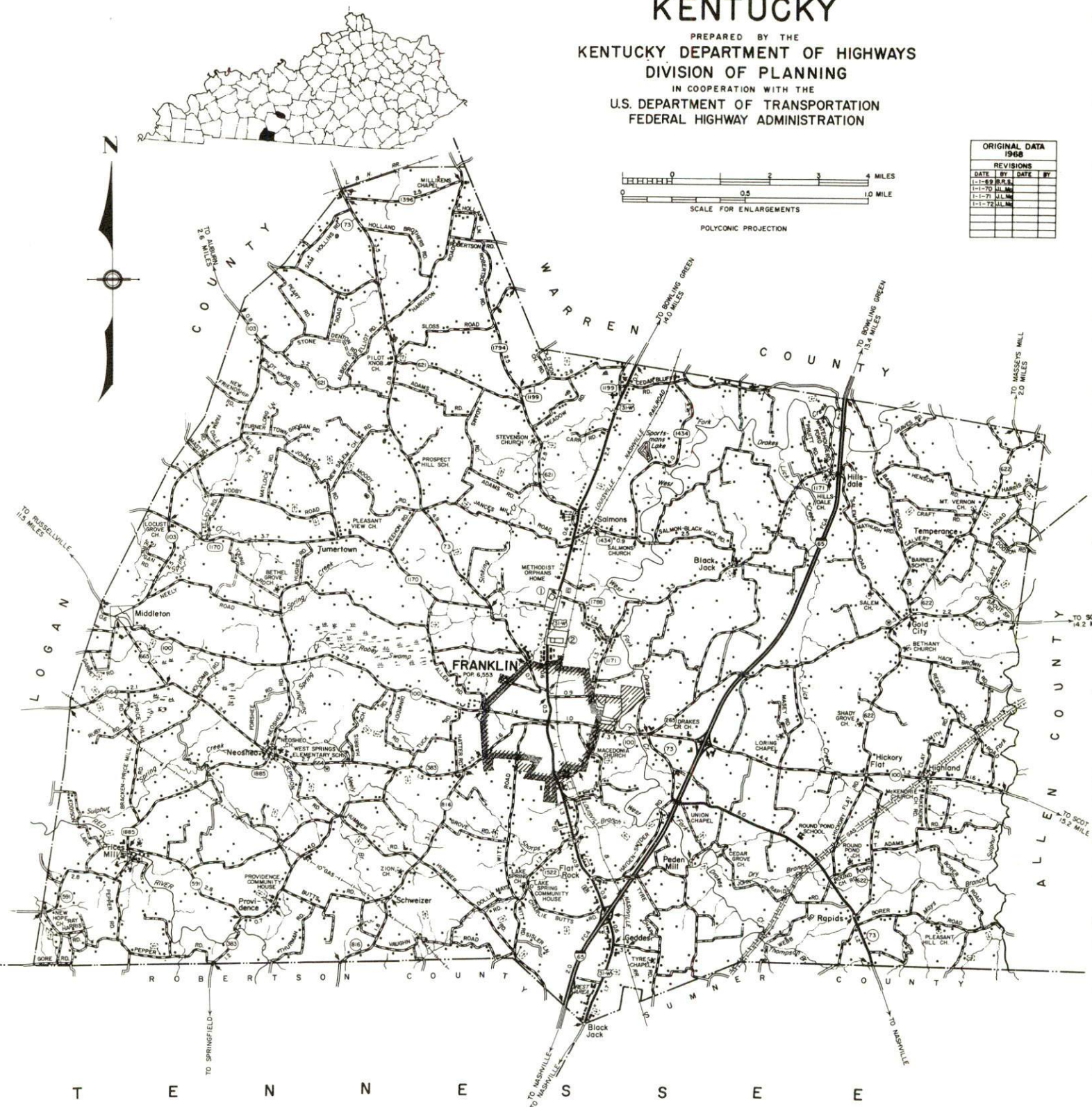
PREPARED BY THE
KENTUCKY DEPARTMENT OF HIGHWAYS
DIVISION OF PLANNING

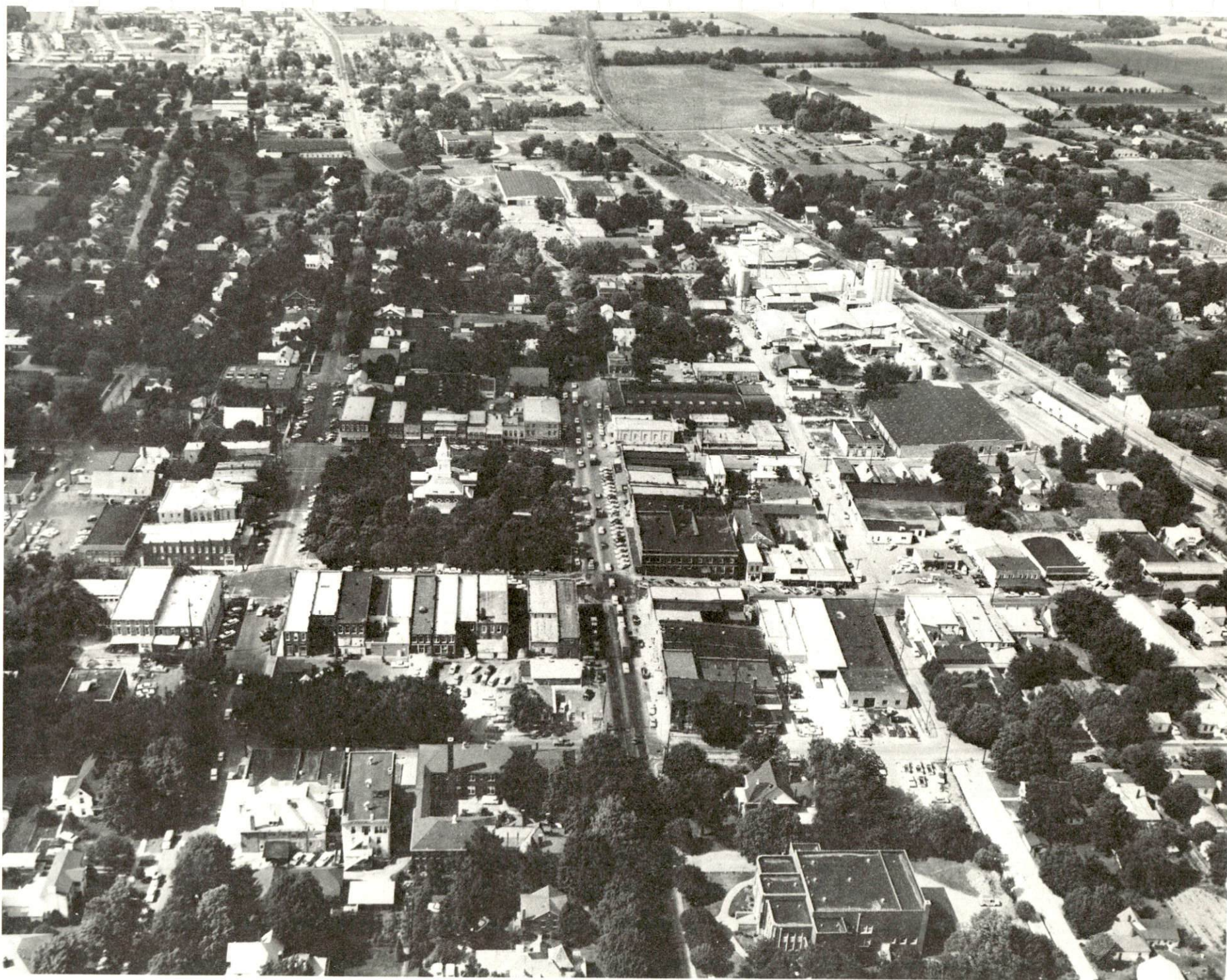
IN COOPERATION WITH THE
U.S. DEPARTMENT OF TRANSPORTATION
FEDERAL HIGHWAY ADMINISTRATION



POLYCONIC PROJECTION

ORIGINAL DATA 1968			
REVISIONS			
DATE	BY	DATE	BY
1-1-69	B.R.S.		
1-1-70	J.L.M.		
1-1-71	J.L.M.		
1-1-72	J.L.M.		



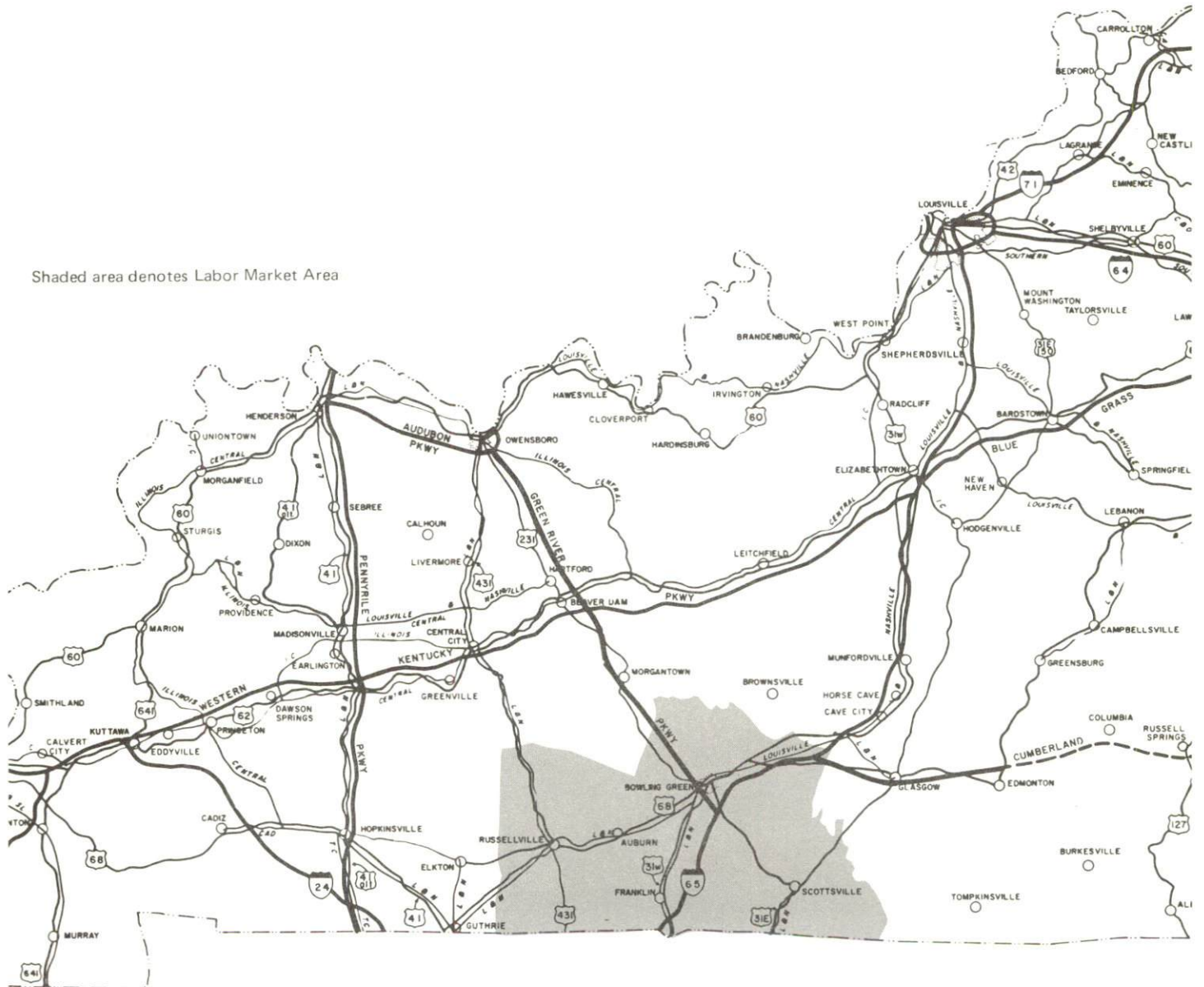


AERIAL VIEW OF FRANKLIN, KENTUCKY

FRANKLIN LABOR MARKET AREA



Shaded area denotes Labor Market Area



FRANKLIN, KENTUCKY - A RESOURCE PROFILE

Franklin, the county seat and largest community in Simpson County, is located in Kentucky's Western Pennyrile area in the southwestern part of the state. Franklin, with a population of 6,553, is situated only 6 miles north of the Tennessee state line and is approximately 52 miles north of Nashville, Tennessee, and 125 miles southwest of Louisville, Kentucky.

Simpson County, with a population of 13,054, covers an area of 239 square miles. The county is bounded on the east by Allen County, on the north by Warren County, on the west by Logan County, and on the south by the Tennessee state line. Drakes Creek is the major stream in Simpson County.

The Economic Framework

Total employment in Simpson County averaged 7,070 in 1972. Manufacturing provides 2,900 jobs. Major industrial products are adhesive tape products, clothing, soldering irons, blowtorches, and electrical relays.

Per capita personal income in the county in 1971 was \$3,420, an increase of 117 percent since 1961.

Franklin is the center of a labor market area that includes Simpson County and its three surrounding Kentucky counties. Area employment in 1972 totaled 48,600 jobs, including 5,590 in agriculture. Manufacturing provides 13,750 jobs. Area industrial employment has increased by 109 percent since 1963 with the greatest gains in the apparel, textile, chemical, machinery, and metal products industries.

Resources for Growth

1. There is a current estimated labor supply of 9,770 men and 7,540 women available for industrial jobs in the Kentucky portion of the labor market area. Additional workers could come from the two adjoining Tennessee counties, Sumner and Robertson. In addition, 4,990 young men and 4,760 young women will become 18 years of age by 1979 and be potentially available for work.

2. Franklin is served by U. S. Highway 31-W and Kentucky Highways 383 and 100 with an Interstate 65 interchange 3 miles east of Franklin. Eight truck lines serve Franklin. The nearest United Parcel Service shipping center is located in Bowling Green, 21 miles away. Rail service

is provided by the Louisville & Nashville Railroad with piggyback facilities in Franklin. Local air service is provided by WHAK Field, 3 miles from Franklin. Commercial air service is provided by the Nashville Metropolitan Airport, 52 miles away.

3. Electricity for Franklin is provided by the Franklin Electric Plant Board. Electricity for Simpson County is provided by Pennyrite RECC and Warren RECC. Natural gas service for Franklin is provided by the Western Kentucky Gas Company. Franklin is served by two distributors of propane and three distributors of distillate fuel oil.

4. Franklin is served by the Simpson County School System. There are four universities, one senior college and one medical college within a 55-mile radius of Franklin. The nearest state vocational-technical school is located at Bowling Green, 21 miles away. The nearest area education center is located at Scottsville, 21 miles away.

Community Programs for Improvement

Recent:

Two new parks are now open.

Sealed Power Corporation has begun production.

A new shopping center has been completed.

New library and science facilities for the high school and a new gym for the middle school have been completed.

Planned:

Expansion of Franklin-Simpson Memorial Hospital is planned.

The Franklin Municipal Housing Project is to be completed in 1973.

Construction of a new subdivision is to begin in January 1974.

A new branch of the Simpson County Bank is planned.

The City of Franklin Water Works Commission plans to expand the capacity of its water treatment plant to five million gallons per day, increase water storage capacity to 1,000,000 gallons and to replace some old water and sewer lines as well as extend service area.

Recreation, Entertainment and Livability

Franklin is located approximately 50 miles from Mammoth Cave National Park. Features at this park include guided tours of the cave, a scenic boat cruise, lodge, cottages, dining room, coffee shop, service station, tennis, shuffleboard, wildlife preserve and nature trails. Other caves in the area include Diamond Caverns, Mammoth Onyx Cave, Jesse James Cave, Crystal Onyx Cave and Hundred Dome Cave.

Barren River State Resort Park is located approximately 35 miles away, near Lucas. Facilities at this park include a lodge, coffee shop, cottages, camping, swimming, boating, picnic area, playground, fishing, restaurant, pool, riding stables, nature trails, and golf course.

Lake Malone State Park is located approximately 50 miles away near Dunmor. Facilities at the park include camping, picnic area, playground, hiking, fishing and boat rentals.

THE LABOR MARKET

POPULATION TRENDS

Area	Population				Percent Change	
	1972*	1970	1960	1950	1960-70	1950-60
Franklin	N. A.	6,553	5,319	4,343	+23.2	+22.5
Labor Market Area	109,200	104,877	90,204	90,558	+16.3	- 0.4
Simpson County	13,500	13,054	11,548	11,678	+13.0	- 1.1
Allen County	12,800	12,598	12,269	13,787	+ 2.7	-11.0
Logan County	21,700	21,793	20,896	22,335	+ 4.3	- 6.4
Warren County	61,200	57,432	45,491	42,758	+26.2	+ 6.4

*Provisional Estimates.

Sources: U. S. Department of Commerce, Bureau of the Census, Census of Population, 1970, 1960, 1950. U. S. Bureau of the Census, Current Population Reports, Series P-26, June 1973.

GENERAL EMPLOYMENT CHARACTERISTICS, 1972

Major Employment Group	Employment	
	Simpson County	Labor Market Area
TOTAL	7,070	48,600
Agricultural	1,030	5,590
Nonagricultural	6,040	43,010
Manufacturing	2,890	13,750
Government	440	6,910
Trade and Services	1,117	10,747
Other	1,593	11,603

Source: Kentucky Department of Economic Security, Division of Research and Statistics.

MANUFACTURING EMPLOYMENT TRENDS BY INDUSTRY
MARCH 1973 AND 1963

Industry	Simpson County			Labor Market Area		
	1973	1963	% Change	1973	1963	% Change
TOTAL	2, 934	1, 556	+ 88. 6	15, 124	7, 221	+109. 4
Food & Kindred						
Products	15	36	- 58. 3	771	829	- 7. 0
Tobacco	9	46	- 80. 4	125	175	- 28. 6
Apparel, Textiles,						
Leather	250	113	+121. 2	3, 699	1, 879	+ 96. 9
Lumber, Furniture	26	0	0	1, 252	742	+ 68. 7
Printing & Publishing,						
Paper	65	15	+333. 3	271	79	+243. 0
Chemicals, Petroleum						
& Coal, Rubber	1, 137	597	+ 90. 5	1, 505	701	+114. 7
Stone, Clay & Glass	11	7	+ 57. 1	58	40	+ 45. 0
Primary Metals	41	0	0	522	226	+131. 0
Machinery, Metal						
Products, Equip.	1, 324	742	+ 78. 4	6, 693	2, 549	+162. 6
Other	56	0	0	228	1	+227. 0

Source: Kentucky Department of Economic Security, Number of Workers in Manufacturing Industries Covered by Kentucky Unemployment Insurance Law Classified by Industry and County, March 1973, March 1963.

MAJOR FRANKLIN MANUFACTURING FIRMS,
THEIR PRODUCTS AND EMPLOYMENT

Firm	Product	Employment		
		Total	Male	Female
Alliance Rubber Co., Inc.	Rubber bands	35	15	20
Anaconda American Brass Company	Welded copper air conditioning tube	38	37	1
Kendall Company, Adhesive Plant	Industrial adhesive tape products, consumers adhesive products	747	359	388
Kendall Company, Polyken Plant	Industrial adhesive tapes, pipeline coating	240	200	40
Lenk Manufacturing Co., Inc.	Contract aerosol fillers, soldering irons, blowtorches	300	120	180

(cont.)

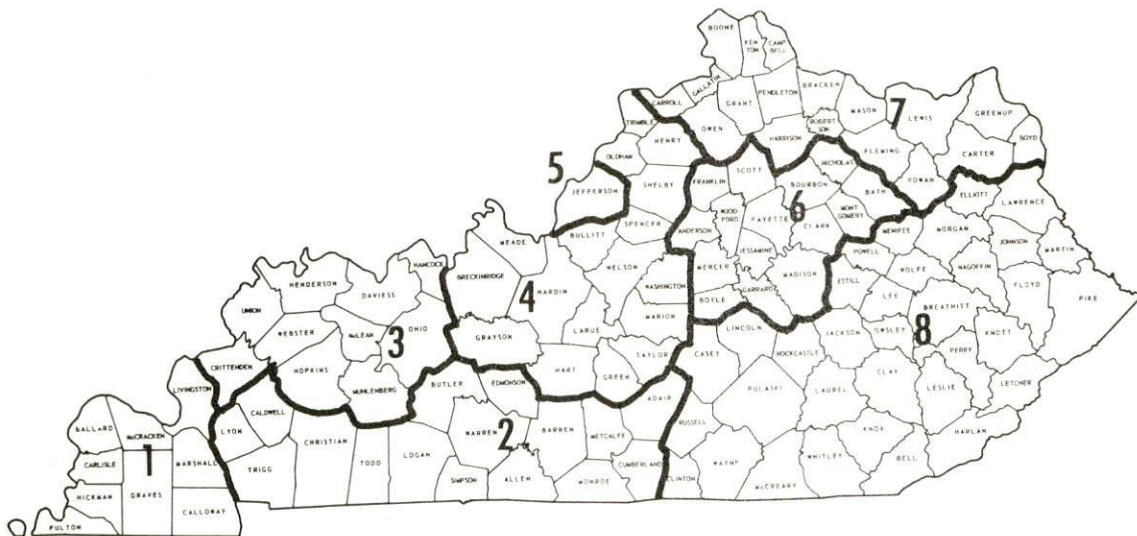
<u>Firm</u>	<u>Product</u>	<u>Employment</u>		
		<u>Total</u>	<u>Male</u>	<u>Female</u>
Marvel Industries, Inc.	Screw hoists, metal stampings, trailer couplers	150	147	3
Potter & Brumfield	Electrical relays	695	254	441
E. S. Robey & Co., Inc.	Tobacco redrying	89	66	23
Simpson County Lumber Company	Rough lumber	33	30	3
Simpson Manufacturing Company	Fatigue pants, jackets, dungarees	252	17	235
Southern Containers, Inc.	Corrugated shipping containers	37	36	1
Southern Gage Co.	Plain and thread plug and ring gages	36	31	5

Source: Kentucky Department of Commerce.

WAGES

Occupational wage rates for specific industries are usually not available to most government agencies, and wage data furnished to state employment agencies by industrial employers is protected from disclosure by federal law. The most reliable up-to-date wage information can be obtained by direct contact with local employers.

Associated Industries of Kentucky, a voluntary organization of Kentucky businesses, regularly collects occupational wage rates and fringe benefits data from participating member firms. Data is compiled for over 130 clearly defined office, production, and service occupations. Tabulations are published for eight regions of Kentucky, as shown on the map below. It should be noted that the data may be weighted by the preponderance of firms in the larger cities and may be somewhat higher than the rates paid in the smaller communities. Data from these tabulations are available, upon request, from the Kentucky Department of Commerce, Frankfort, Kentucky 40601.



Associated Industries of Kentucky Area Wage Surveys

LABOR ORGANIZATIONS

Union

Representing manufacturing workers at:

International Brotherhood of
Electrical Workers
International Association of
Machinists

Neon Fluorescent Engineering Company
Southern Gage Company

ESTIMATED MALE LABOR SUPPLY FRANKLIN LABOR MARKET AREA

<u>Area</u>	<u>Current</u>			<u>Future</u>	
	<u>Total</u>	<u>Not in Labor Force</u>	<u>Unemployed</u>	<u>Under- employed</u>	<u>Reaching 18 Yrs. of Age by 1979</u>
Labor Market					
Area	9,771	3,002	1,509	5,260	4,989
Simpson	723	206	144	373	615
Allen	890	367	157	366	587
Logan	1,468	432	379	657	1,134
Warren	6,690	1,997	829	3,864	2,653

Sources: Kentucky Department of Economic Security, Kentucky Labor Supply Estimates by County, 1972. Kentucky Department of Commerce, Future Labor Supply by 1979.

ESTIMATED FEMALE LABOR SUPPLY FRANKLIN LABOR MARKET AREA

<u>Area</u>	<u>Current</u>			<u>Future</u>	
	<u>Total</u>	<u>Not in Labor Force</u>	<u>Unemployed</u>	<u>Under- employed</u>	<u>Reaching 18 Yrs. of Age by 1979</u>
Labor Market					
Area	7,538	773	881	5,884	4,761
Simpson	635	34	86	515	664
Allen	777	152	93	532	560
Logan	1,345	390	221	734	1,035
Warren	4,781	197	481	4,103	2,502

Sources: Kentucky Department of Economic Security, Kentucky Labor Supply Estimates by County, 1972. Kentucky Department of Commerce, Future Labor Supply by 1979.

PER CAPITA PERSONAL INCOME

<u>Area</u>	<u>1971</u>	<u>1961</u>	<u>% Change</u>
Simpson County	\$3,420	\$1,576	+117.0
Labor Market Area Range	\$2,370 to 3,420	\$1,020 to 1,576	N. A.
Kentucky	3,310	1,677	+ 97.3
U. S.	4,164	2,265	+ 83.8

Sources: University of Kentucky, Office of Development Services and Business Research, Per Capita Income in Kentucky. U. S. Department of Commerce, Bureau of Economic Analysis, Survey of Current Business, August 1972.

TRANSPORTATION

Rail

Line serving Franklin - Louisville & Nashville Railroad

Services - Freight, piggyback facilities, team tracks, switching

For details on routing, schedules, rates, and services, contact:

Manager of Industrial Development
Louisville & Nashville Railroad
908 West Broadway
Louisville, Kentucky 40203

Truck Service

<u>Company</u>	<u>Home Office</u>
Associated Transport, Inc.	New York, New York
Bowling Green Express, Inc.	Bowling Green, Kentucky
Great Lakes Express, Inc.	Saginaw, Michigan
Franklin Express*	Franklin, Kentucky
McLean Trucking Company	Winston-Salem, North Carolina
Renner's Express, Inc.	Indianapolis, Indiana
Southern Forwarding Company	Memphis, Tennessee
Wilson Freight Company	Cincinnati, Ohio

<u>Other Freight Services</u>	<u>Nearest Shipping Center</u>
-------------------------------	--------------------------------

United Parcel Service	Bowling Green, Kentucky, 21 miles away
-----------------------	--

*Local terminal.

HIGHWAY MILES AND TRUCK TRANSIT TIME IN DAYS FROM FRANKLIN, KENTUCKY, TO SELECTED MARKET CENTERS

City	Delivery		City	Delivery	
	Highway Miles	Time TL		Highway Miles	Time TL
Atlanta, Ga.	304	2	Los Angeles, Calif.	2,110	5-6
Birmingham, Ala.	239	2	Louisville, Ky.	125	overnight
Chicago, Ill.	423	2	Nashville, Tenn.	52	overnight
Cincinnati, Ohio	238	2	New Orleans, La.	590	3
Cleveland, Ohio	486	2	New York, N. Y.	916	3-4
Detroit, Mich.	507	2-3	Pittsburgh, Pa.	538	3
Knoxville, Tenn.	237	2	St. Louis, Mo.	301	2

Source: Delivery Time Only - Renner's Express, Inc., P. O. Box 613,
Indianapolis, Indiana 46206.

Air

	<u>Local</u>	<u>Nearest Commercial</u>
	WHAK Field	Metropolitan Nashville Airport
Location:	3 miles west-southwest of Franklin	Nashville, 52 miles south
Runways:	1 turf	3 paved
Length:	2,400 feet	8,500 feet, 7,700 feet, 4,025 feet
Traffic		
Control:	Wind sock	FAA control; Control tower, approach and ground control, departure control, guards
Lighting:	Hours of darkness	High intensity for instrument runway, medium intensity for other runways; obstructions, beacon and approach lights
Services:	100-80 fuel on request, hangars and overnight tie downs	80, 91, 100 and 115 octane, jet fuel, major A & E repairs, storage, taxi and rental car service, city bus service, restaurant, hotel, FAA Flight Service Station; American, Ozark, Braniff, Eastern, Piedmont, Allegheny, Delta, TWA and Southern Airlines
Air Freight		
Service:		Air freight terminal

Bus

Southern Greyhound Bus Line

Taxi

One taxicab company

POWER AND FUEL

Electricity

Company serving Franklin - Franklin Electric Plant Board
Source of power - Tennessee Valley Authority
Total generating capacity - 19,400,000 KW
For industrial rates contact:

Electric Plant Board
Franklin, Kentucky 42134

Company serving Simpson County - Warren RECC
Source of power - Tennessee Valley Authority
Total generating capacity - 19,400,000 KW
For industrial rates contact:

Warren RECC
P. O. Box 1118
951 Fairview Avenue
Bowling Green, Kentucky 42101

Company serving Simpson County - Pennyrile RECC
Source of power - Tennessee Valley Authority
Total generating capacity - 19,400,000 KW
For industrial rates contact:

Pennyrile RECC
2000 Harrison Street
Hopkinsville, Kentucky 42240

Natural Gas

Company serving Franklin - Western Kentucky Gas Company
Source of supply - Texas Gas Transmission Corporation
Size of transmission mains - 6 inches (supplier)
Distribution mains - 6, 4, 3, and 2 inches
Btu content - 1,030 per cubic foot
Specific gravity - .60
For rates and supplies contact:

Western Kentucky Gas Company
Franklin, Kentucky 42134



MUNICIPAL BUILDING



ELECTRIC PLANT BOARD

Other Fuels

Propane and butane - Pargas, Inc. (Bulk plant) - Franklin
Southern States - Franklin

Fuel oils -

Distillate fuel oil - Balance Oil Company (Bulk plant) - Russellville
Southern States (Bulk plant) - Franklin
Standard Oil Company - Franklin

Residual fuel oil - arrangements must be made with the refinery

Low sulphur content coal - available in Kentucky.

WATER AND SEWERAGE

Water

Company serving Franklin - City of Franklin Water Works Commission*

Source - Drakes Creek

Treatment plant capacity - 2,500,000 gallons per day

Average daily consumption - 1,500,000 gallons

Peak daily consumption - 1,750,000 gallons

Type treatment - rapid sand filter

Storage capacity - 1,200,000 gallons

Size mains - 12, 10, 8, 6, 4, 2, 1 and 3/4 inches

Average pressure - 40 psi

Average temperature - 60 degrees F.

MONTHLY WATER RATES FOR WHOLESALE AND INDUSTRIAL CONSUMERS

(Inside corporate city limits)

1,000 gallons	\$ 2.20
5,000 gallons	4.84
10,000 gallons	8.69
15,000 gallons	11.74
20,000 gallons	14.79
25,000 gallons	17.29
30,000 gallons	19.79
50,000 gallons	27.59

Name of water district - Simpson County Water District

Area served - Simpson County

Date when water district began operating - October 1968

If water district purchases treated water:

Source of supply of treated water - City of Franklin Water Works
Commission

Average amount of water used in a 24-hour period - 164,438 gallons

Peak amount of water used in a 24-hour period - 225,000 gallons

Storage capacity - 300,000 gallons

Average pressure - 55 psi

Average temperature - 60 degrees F.

Size lines 2, 3, 4, 6, 8 and 10 inches

*Plans are underway to expand the capacity of the water treatment plant to 5 million gallons per day, increase the storage capacity to 1,000,000 gallons, and replace some of the old water lines.

Rates -

First	2,000 gallons	\$5.00 per month (minimum bill)
Next	2,000 gallons	1.50 per M gallons
Next	2,000 gallons	1.10 per M gallons
Next	4,000 gallons	.90 per M gallons
Next	20,000 gallons	.80 per M gallons
Next	50,000 gallons	.70 per M gallons
Next	60,000 gallons	.50 per M gallons
All over		.40 per M gallons

Surface water sources - Drakes Creek and Red River

Expected ground water yield - 50 to 200 gpm along major streams,
5 to 50 gpm over remainder of county

Sewerage

Company serving Franklin - City of Franklin Water Works Commission

Design capacity - 1,000,000 gallons per day

Average daily flow - 750,000 gallons

Treatment - Primary and secondary

Type treatment - Primary clarifier, trickling filter, drying beds, lagoon

Treated effluent discharged into - Drakes Creek

Size of sanitary mains - 8, 10, 12, 15, 21, 24, 27 and 36 inches*

Size of storm mains - 4 x 8 feet

Rates 85 percent of current monthly water bill

*The City of Franklin Water Works Commission is presently expanding its sewer lines and its areas of service.

LOCAL GOVERNMENT

City

Structure - Mayor - 4-year term; 6 councilmen - 2-year terms

Budget 1973 - General Fund \$324,045.88

Water and Sewer Fund 494,500.00

Fees and licenses - Business license required

County

Structure - County Judge - 4-year term; 4 magistrates - 4-year terms

Budget 1972-73 - General Fund \$154,995; Road Fund \$52,500

Assessed Value of Property, 1973

<u>Classes of Property</u>	<u>Franklin</u>	<u>Simpson County</u>
Real Estate	\$30,240,090	\$87,002,040
Tangibles	8,186,760	16,902,790
Public Service	38,426,850	10,539,660

Property Taxes

Land and buildings are taxed by the state and may be taxed by local jurisdictions. The state rate is \$0.015 per \$100 of assessed valuation.

Tangible personal property owned by manufacturers (automobiles, trucks, finished goods, office furniture, office equipment) is taxed by the state at \$0.15 per \$100 and may be taxed by local jurisdictions.

Manufacturing machinery, raw materials inventories, and goods in process inventories are not subject to local taxation. The state rate is \$0.15 per \$100.

Property stored in public warehouses is not subject to local taxation. The state rate is only \$0.015 per \$100.

All property is assessed at 100 percent of fair cash value.

Local Property Tax Rate Per \$100 of Assessed Valuation, 1973*

<u>Taxing Jurisdiction</u>	<u>Franklin</u>	<u>Simpson County</u>
County	\$.194	\$.194
School	.479	.479
City	.253	

Utilities Gross Receipts Tax for Schools

Simpson County levies a 3 percent tax on utilities receipts for schools. This tax is paid by all consumers of utilities. Exempted are receipts from utilities services that are resold and the receipts from the sale of energy or energy producing fuels that exceed 3 percent of the cost of production in manufacturing, processing, mining or refining.

Planning and Zoning

Joint agency - Franklin - Simpson County Planning and Zoning Commission
Zoning enforced - All areas
Subdivision regulations enforced - City and 5 miles beyond city limits
Mandatory state codes enforced - Plumbing, National Fire Protection Association Code, National Building Code (for major buildings and residential construction containing more than 12 bedrooms per building)
Other programs - Public housing

Safety

<u>Police</u>	<u>Franklin</u>	<u>Simpson County</u>
Total staff	17	4
Radio-patrol cars	3	4
Other equipment	Radar	

Fire

American Insurance Association Fire Rating	8
Full-time staff	1
Volunteers	24
Equipment:	
1,000 gpm pumpers	2
750 gpm pumper	1
500 gpm pumpers	2
Other	Auxiliary tank truck

*Kentucky Department of Revenue.

Rescue Service

Franklin-Simpson County Rescue Squad:

Number of volunteers - 25

Equipment - Rescue van, resuscitator, geiger counter, two stretchers, search light, scuba diving equipment, jeep, utility truck

Personnel training - 3 scuba divers

Sanitation

Franklin

Type service

Municipal

Fee charged:

residential

Negotiated

business

Negotiated

Collection frequency:

residential

Weekly

business

Weekly

Trash pickup

Weekly

Disposal method

Sanitary landfill

EDUCATION

Public Schools

	<u>Simpson County*</u>
Total Enrollment (Fall 1972)	3,016
Elementary	1,683
Junior High	515
High School	818
Student-Teacher Ratio	20-1
Elementary	21-1
Junior High	24-1
High School	17-1
Accreditation	The Southern Association of Colleges and Schools
Percent High School Graduates to College	50.7
Expenditures Per Pupil (1971-72)	\$512.02
Bonded Indebtedness, June 30, 1972	\$1,159,000

Nonpublic Schools

Total Enrollment	24
Elementary	24
Student-Teacher Ratio	14-1
Elementary	14-1

*Recent improvements in the Simpson County School System include new library and science facilities for the high school and a new gym for the middle school.

Vocational Schools

	<u>Nearest State School</u>	<u>Nearest Area Education Center</u>
Location	Bowling Green State Vocational- Technical School	Allen County Area Voca- tional Educational Center
Miles Distant	Bowling Green	Scottsville
Curriculum	21	21
	Distributive Education	Accounting Jr.
	Dental Assistant	Management
	Dental Technician	Clerical
	Health Careers	Secretarial
	Nurses Aide	Auto Mechanics
	Practical Nursing	Carpentry
	Surgical Technician	Drafting
	Ward Clerk	Electricity
	Electronics (Technology)	
	Highway Technology	
	Technical Drafting	
	Air Conditioning and Refrigeration	
	Auto Body Repair	
	Auto Mechanics	
	Carpentry	
	Commercial Foods	
	Drafting	
	Electricity	
	Machine Shop	
	Printing	
	Radio and TV Repair	
	Tool and Die making	
	Welding	

Arrangements can be made to provide training in the specific production skills required by an industrial plant. Instruction may be conducted either in the vocational school or in the industrial plant, depending upon the desired arrangement and the availability of special equipment.

Colleges and Universities

<u>Name</u>	<u>Area - Within 55 Miles</u>		<u>Highest Degree Conferred</u>
	<u>Location</u>	<u>Enrollment (Fall 1972)</u>	
Western Kentucky University	Bowling Green	11, 488	Masters, Ph. D.*
Fisk University	Nashville, Tenn.	1, 558	Masters
Mcharry Medical College	Nashville, Tenn.	622	M. A., M. D., D. D. S.
Peabody College	Nashville, Tenn.	1, 959	Ph. D.
Tennessee State University	Nashville, Tenn.	4, 640	Masters
Vanderbilt University	Nashville, Tenn.	6, 895	Ph. D.

*Cooperative program with the University of Kentucky, Lexington, for a Ph. D. in Education only.

HEALTH

Hospitals

<u>General Hospital</u>	<u>Location</u>	<u>Beds</u>
Franklin-Simpson Memorial Hospital	Franklin	50

General hospital facilities - Laboratory and X-ray equipment, emergency room, nursery, operating room, delivery room, cardiac monitoring, radiology service

Medical staff - 8 general practitioners, 8 consulting doctors, 10 registered nurses, 11 licensed practical nurses, 28 aides and orderlies

Nursing Homes

	<u>Number</u>	<u>Beds</u>
Personal care homes	3	103

Public Health

Facility - Simpson County Health Department

Staff - Medical clinician, nurse, sanitarian, clerk

Budget 1973-74 - \$32,763



FRANKLIN - SIMPSON MEMORIAL HOSPITAL



SIMCO PERSONAL CARE HOME

OTHER LOCAL FACILITIES

Communications

Telephone - South Central Bell Telephone Company
Services - Standard

Telegraph - Western Union Telegraph Company
Services - Standard

Postal - U. S. Post Office
Class - First
Mail received - Twice daily
Mail dispatched - Twice daily

Newspapers - Franklin Favorite
Weekly and circulation - 4,250
Other papers received from - Bowling Green and Louisville, Kentucky;
Nashville, Tennessee

Radio - WFKN - AM
Stations received from - Russellville, Scottsville, Bowling Green,
Lexington, Louisville, Hopkinsville and Glasgow, Kentucky; Nash-
ville, Clarksville, Gallatin and Springfield, Tennessee

Television -
Reception from - Bowling Green, Kentucky; Nashville, Tennessee

Kentucky Educational Television - Channel 53; Bowling Green transmitter

Library Services

Public library - Goodnight Memorial Library
Size collection - 18,429 volumes
Circulation, 1971-72 - 64,363
Services - Story hour, loan records, framed reproductions, magazines,
films, drama productions, culture and enrichment program, art
exhibits, civic club meeting room, head start program



FIRST BAPTIST CHURCH



ST. MARY CATHOLIC CHURCH



CHURCH OF CHRIST



PRESBYTERIAN CHURCH



FIRST METHODIST CHURCH

Religious Institutions

Number of churches - 11

Denominations - Baptist
 Catholic
 Church of Christ
 Episcopal
 Lutheran
 Methodist
 Presbyterian

Nearest Synagogues - Nashville, 52 miles south
Congregations - Sherith Israel (orthodox)
 Ohabai Shalom (reform)
 West End Synagogue (conservative)

Financial Institutions

<u>Banks</u>	<u>Statement as of June 30, 1973</u>	
	<u>Assets</u>	<u>Deposits</u>
Franklin Bank and Trust Co.	\$11,140,699.09	\$10,168,831.60
Simpson County Bank	27,696,878.03	25,200,287.53

<u>Savings and Loan Associations</u>	<u>Assets</u>	<u>Shared Accounts</u>
First Federal Savings and Loan Association	\$55,825,797.41	\$50,118,756.30

Hotels and Motels

Total number - 7
Units - 109

Clubs and Organizations

Business and Civic - Chamber of Commerce, Jaycees, Lions,
Rotary, Optimist

Fraternal - Masonic Lodge, American Legion, VFW, WOW, Moose,
Shriners

Women's - Garden Club, Homemakers, Eastern Star, Business and
Professional Women's Association, VFW Auxiliary, DAR

Youth - Junior Music Club, 4-H, Boy Scouts, Girl Scouts, FHA,
FFA, Cub Scouts, Brownies

Other - Ministerial Association, Sportsmen's Club



SUBDIVISION DEVELOPMENT



FRANKLIN COUNTRY CLUB

RECREATION

Local

Public Recreation Facilities

Supervised program - Little league baseball and football

Parks - 2

Playgrounds - 4

Swimming pool - 1

Tennis courts - 4

Baseball diamonds - 4

Football field - 1

Private Recreation Facilities

Country club - 1

Golf course - 1

Swimming pool - 1

Movie theaters - 1 (drive-in)

Other - Tennis courts (country club)

Area (Within 50 miles)

Mammoth Cave National Park

Diamond Caverns

Mammoth Onyx Cave

Jesse James Cave

Crystal Onyx Cave

Hundred Dome Cave

Barren River State Resort Park

Lake Malone State Park

AGRICULTURE - NATURAL RESOURCES - CLIMATE

Agriculture*

	<u>Simpson County</u>	<u>Labor Market Area</u>
Total land area (acres)	152,896	1,087,104
Percent of area in farm land	88.4	83.1
Number of farms	995	7,106
Average size of farms (acres)	135.8	127.2
1969 value of all farm products	\$ 9,848,786	\$ 46,539,146
Value per farm	9,898	6,549
Total crop sales	3,553,609	16,232,477
Total livestock & livestock products	6,260,673	30,078,001
1970 agricultural production included:		
Burley tobacco (lbs.)	1,771,000	13,393,000
Corn (bu.)	1,320,000	3,145,600
Cattle and calves (number)	28,700	181,700
Hogs and pigs (number)	39,900	154,900
Milk production, 1969 (lbs.)	35,000,000	195,460,000

Natural Resources

Principal mineral resources	Limestone and petroleum
Acres of commercial forest land	23,200
Most abundant tree species	Red oak, white oak, hickory, sweetgum, ash, yellow poplar, hard maple

*U. S. Department of Commerce, Bureau of the Census, Census of Agriculture, 1969. U. S. Department of Agriculture and Kentucky Department of Agriculture, Kentucky Agricultural Statistics, 1971.

Climate*

Simpson County

Temperature

Annual mean (30-year record)	60.0 degrees
Average annual 1972	59.6 degrees
Record highest, July, 1966 (7-year record)	103.0 degrees
Record lowest, January, 1966 (7-year record)	- 6.0 degrees
Normal heating degree days (30-year record)	3,578
(Heating degree day totals are the sums of negative departures of average daily tem- peratures from 65 degrees F.)	

Precipitation

Mean annual total (30-year record)	45.14 inches
Mean annual snow and sleet (31-year record)	11.70 inches
Total precipitation 1972	54.41 inches
Mean number days precipitation (.01 inch or more) (31-year record)	118
Average number days thunderstorms (31-year record)	56

Prevailing winds (22-year record)	South
-----------------------------------	-------

*U. S. Department of Commerce, Environmental Science Services
Administration, Climatological Data, 1972. Station of record: Nash-
ville, Tennessee.

HISTORY

Simpson County was formed in 1819, and became the sixty-third county in Kentucky. Its territory was taken from Allen, Logan, and Warren Counties. The eastern boundary line was to have been a north-south survey, 12 1/2 miles west of Scottsville, the county seat of Allen County, but another act changed the line, making Drakes Creek the boundary. This caused Simpson County to lose several miles of original territory. In 1867, the legislature compensated Simpson by taking a strip of land 3 miles wide from Logan, adding some 50 square miles to Simpson County.

The surface of Simpson County is generally level to slightly undulating. The soil is based on limestone with a red clay formation, and is very fertile. It is drained by Drakes Creek.

Simpson County was named for Captain John Simpson, an Indian fighter and state legislator. In 1812 he was elected to a term in the U. S. Congress. But in 1813, before he could serve, he was killed while leading his men into battle against the British. Franklin, the county seat, was named for Benjamin Franklin in 1820.

Names worthy of remembrance are:

J. R. Collins - was editor of the Franklin Favorite before the turn of the Twentieth Century.

John Welsh - founded a woolen mill in the early 1900's.

William Hudspeth - owned the land which was chosen as the site for Franklin.

Simpson County's population increased 13 percent from 11,548 in 1960 to 13,054 in 1970. Franklin had a 1970 population of 6,553, a 23 percent increase over the 1960 population of 5,319.

Manufacturing employment increased by 88 percent from 1,155 in 1963 to 2,935 ten years later. Major products are adhesive products, contract aerosol fillers, soldering irons, blow torches, electrical relays, fatigue pants, jackets and dungarees, screw hoists, metal stampings, and trailer couplers. Major Franklin manufacturing firms are: The Kendall Company, Lenk Manufacturing Company, Inc., Marvel Industries, Inc., Potter and Brumfield and Simpson Manufacturing Company.