

1975

Industrial Resources: Trigg County - Cadiz

Kentucky Library Research Collections
Western Kentucky University, spcol@wku.edu

Follow this and additional works at: https://digitalcommons.wku.edu/trigg_cty

 Part of the [Business Administration, Management, and Operations Commons](#), [Growth and Development Commons](#), and the [Infrastructure Commons](#)

Recommended Citation

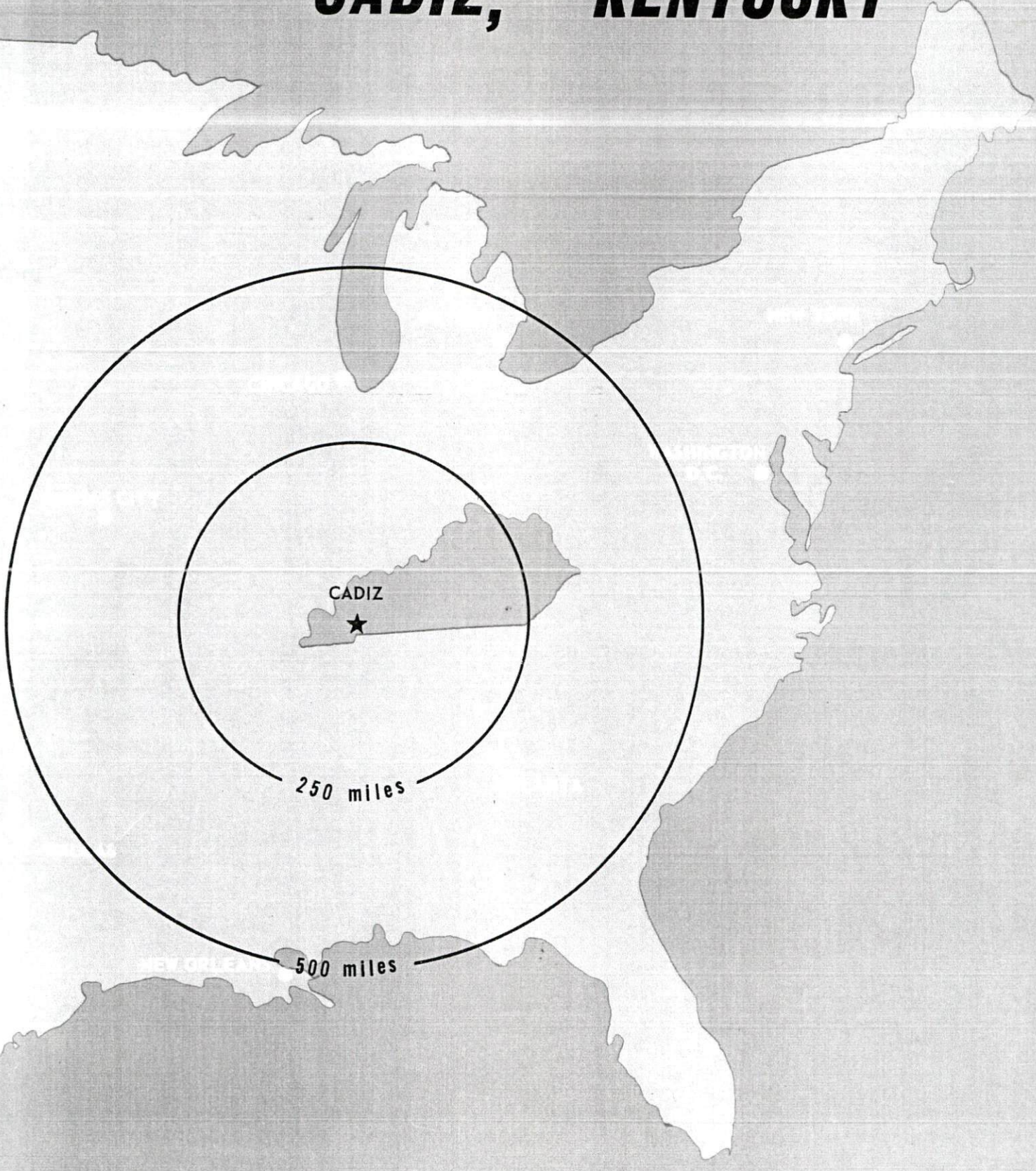
Kentucky Library Research Collections, "Industrial Resources: Trigg County - Cadiz" (1975). *Trigg County*. Paper 14.
https://digitalcommons.wku.edu/trigg_cty/14

This Report is brought to you for free and open access by TopSCHOLAR®. It has been accepted for inclusion in Trigg County by an authorized administrator of TopSCHOLAR®. For more information, please contact topscholar@wku.edu.

INDUSTRIAL RESOURCES

Trigg

CADIZ, KENTUCKY



CADIZ, KENTUCKY --- Index to Industrial Sites -- 1975

For detailed data on individual sites, contact Brent D. Thompson, Chairman, Industrial Committee, Trigg County Farmers Bank, Cadiz, Kentucky 42211, or the Site Development Division, Kentucky Department of Commerce, Capital Plaza Tower, Frankfort, Kentucky 40601.

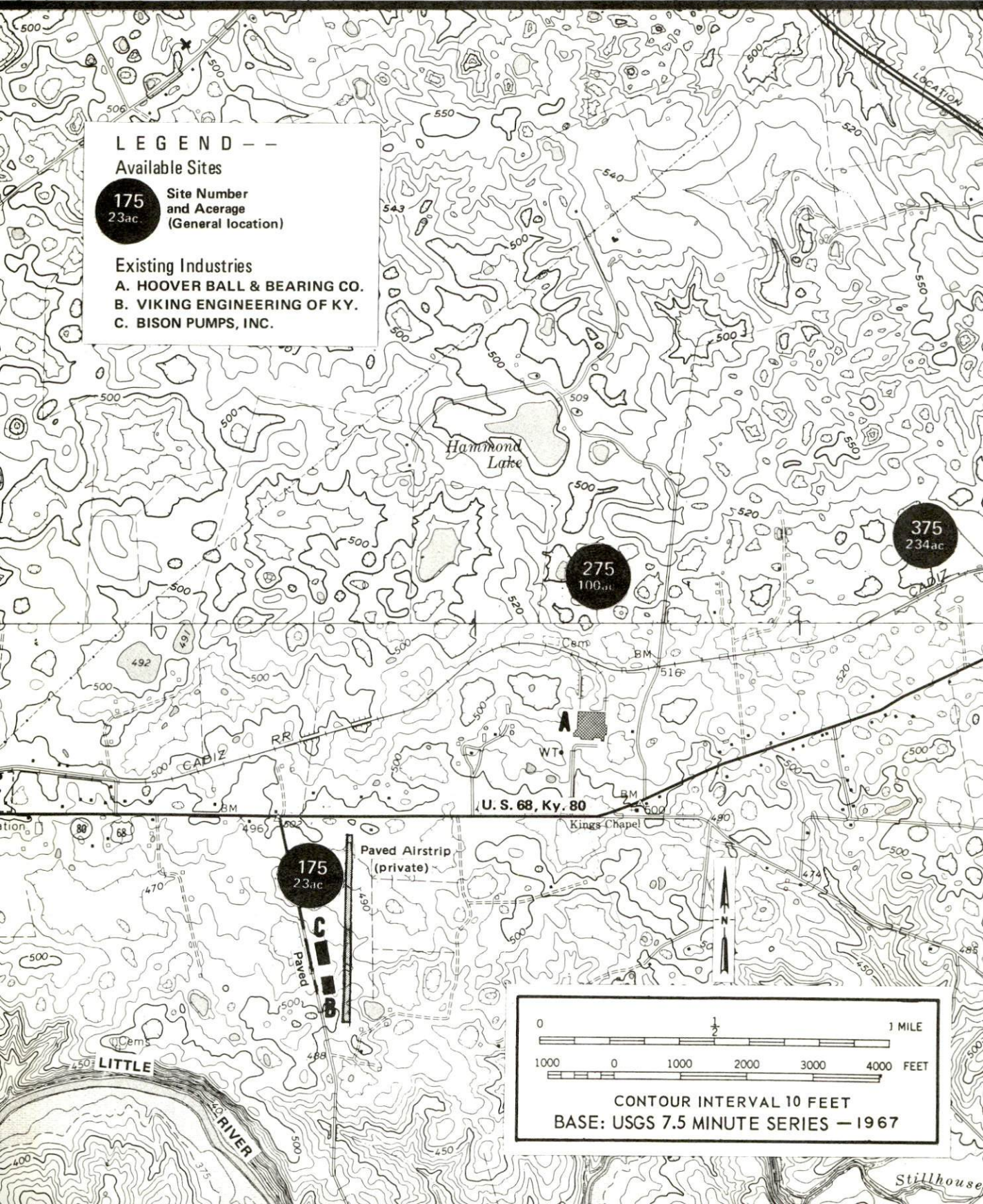
LEGEND --

Available Sites

175
23ac
Site Number and Acreage (General location)

Existing Industries

- A. HOOVER BALL & BEARING CO.
- B. VIKING ENGINEERING OF KY.
- C. BISON PUMPS, INC.



Hammond Lake

LOCATION

375
234ac

275
106ac

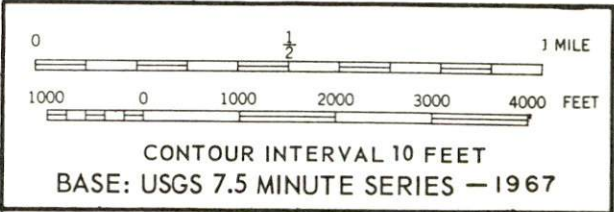
175
23ac

Paved Airstrip (private)

U. S. 68, Ky. 80

Kings Chapel

LITTLE RIVER



Stillhouse

INDUSTRIAL RESOURCES

CADIZ, KENTUCKY

Prepared by

The Kentucky Department of Commerce

in cooperation with

The Cadiz-Trigg County Chamber of Commerce

1975

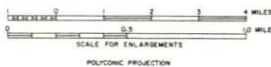
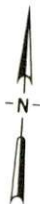
TABLE OF CONTENTS

<u>Chapter</u>	<u>Page</u>
INDUSTRIAL SITES	i
CADIZ, KENTUCKY - A RESOURCE PROFILE.	1
THE LABOR MARKET.	6
Population Trends	6
General Employment Characteristics, 1973	6
Manufacturing Employment Trends by Industry	7
Cadiz Manufacturing Firms, Their Products and Employment	7
Wages.	10
Labor Organizations	11
Estimated Male Labor Supply	11
Estimated Female Labor Supply	11
Per Capita Personal Income	12
TRANSPORTATION	13
Rail.	13
Truck Service	13
Air	14
Bus	15
Rental Services	15
POWER AND FUEL	16
Electricity.	16
Natural Gas	16
Other Fuels	17
WATER AND SEWERAGE	18
Water.	18
Sewerage	20
LOCAL GOVERNMENT	21
City.	21
County.	21
Assessed Value of Property, 1974	21

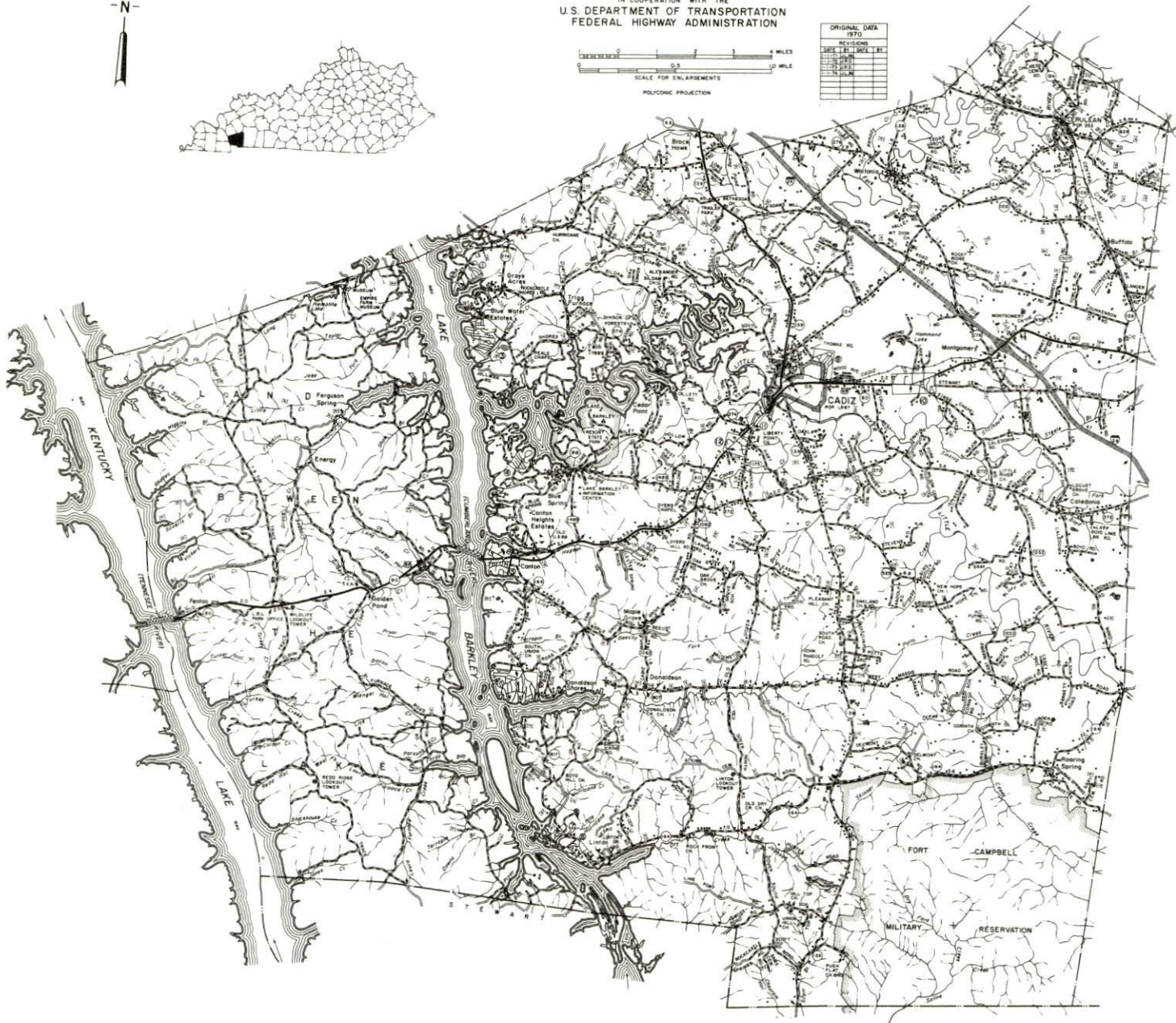
<u>Chapter</u>	<u>Page</u>
Property Taxes	21
Local Property Tax Rate Per \$100 of Assessed Valuation, 1974.	22
Planning and Zoning	22
Safety	22
Police	22
Fire	22
Rescue Service	23
Sanitation.	23
 EDUCATION.	 24
Public Schools	24
Vocational Schools.	24
Colleges and Universities	25
 HEALTH	 26
Hospitals	26
Ambulance Service.	26
Nursing Homes	26
Public Health	26
 OTHER LOCAL FACILITIES	 27
Communications.	27
Library Services	27
Religious Institutions.	27
Financial Institutions	28
Hotels and Motels	28
Clubs and Organizations	28
 RECREATION	 30
Local	30
Area	30
 AGRICULTURE-NATURAL RESOURCES-CLIMATE	 32
Agriculture.	32
Natural Resources.	32
Climate.	33
 HISTORY	 34

GENERAL HIGHWAY MAP TRIGG COUNTY KENTUCKY

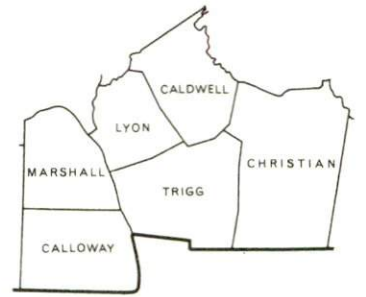
PREPARED BY THE
KENTUCKY DEPARTMENT OF TRANSPORTATION
BUREAU OF HIGHWAYS
DIVISION OF PLANNING
IN COOPERATION WITH THE
U.S. DEPARTMENT OF TRANSPORTATION
FEDERAL HIGHWAY ADMINISTRATION



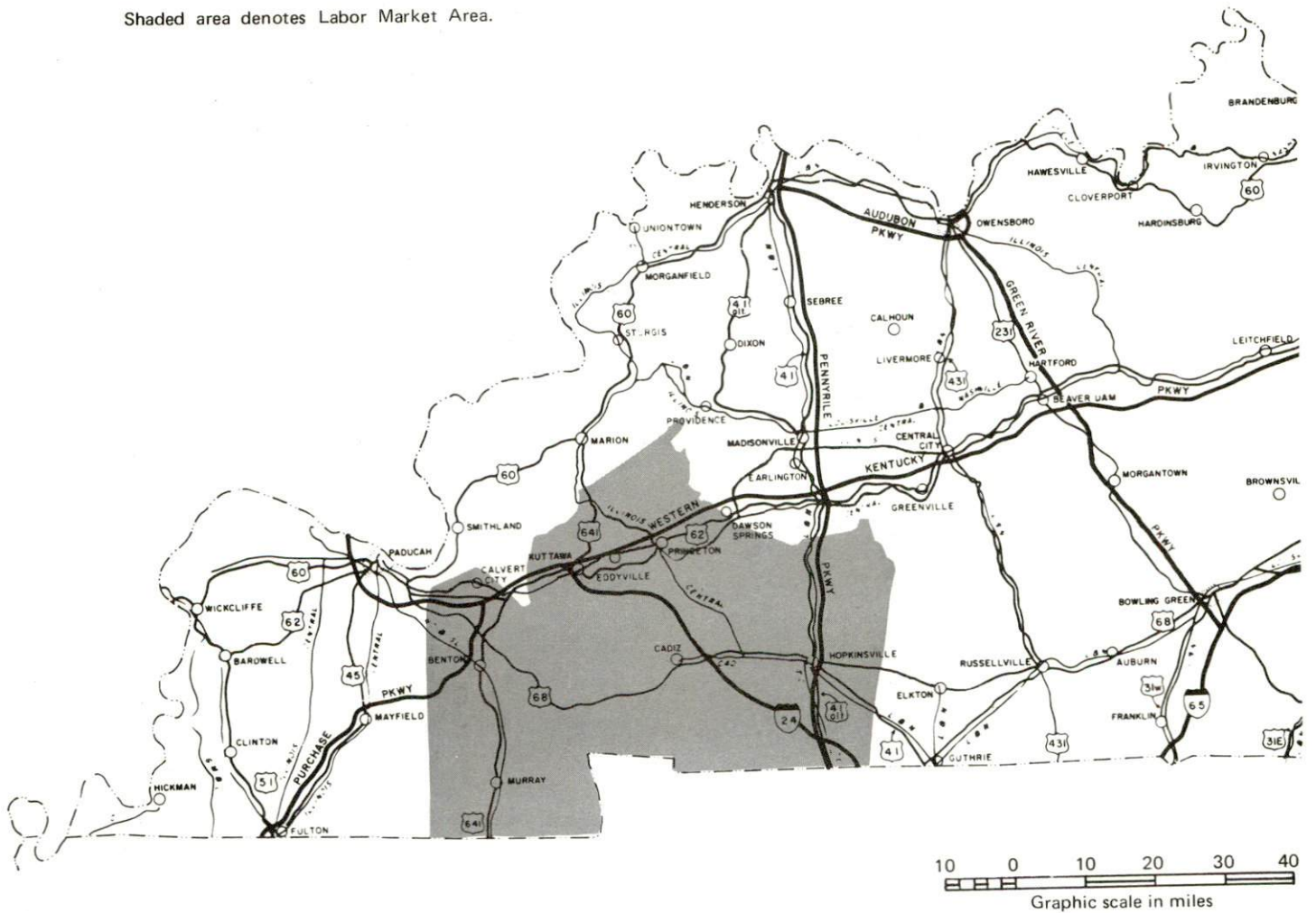
ORIGINAL DATA		REVISIONS	
DATE	BY	DATE	BY
1970			



CADIZ LABOR MARKET AREA



Shaded area denotes Labor Market Area.



CADIZ, KENTUCKY - A RESOURCE PROFILE

Cadiz, the county seat of Trigg County and a 1974 "All Kentucky City," is located in the Pennyrile Region of southwest Kentucky approximately 7 miles east of Lake Barkley. Cadiz is 192 miles southwest of Louisville, Kentucky, and 91 miles northwest of Nashville, Tennessee. The 1970 population of Cadiz was 1,987.

Trigg County had a 1970 population of 8,620 and a 1973 estimated population of 8,700 and covers a land area of 408 square miles. The county borders on the Tennessee state line. Parts of Land Between the Lakes National Recreation Area, Lake Barkley, and the Fort Campbell Military Reservation are located within the boundaries of Trigg County. Over forty percent of the total land area is owned by the federal government and its various agencies.

The Economic Framework

Total employment in Trigg County in 1973 averaged 3,440 with agriculture providing 720 jobs, manufacturing 610, trade and services 580, and government 570. Between 1964 and 1974, industrial employment in the county increased 214 percent. Major industrial products are automotive and truck seat springs and dungarees.

Per capita income in the county in 1972 was \$3,175. Between 1962 and 1972, per capita personal income in the county increased approximately 159 percent.

The Cadiz labor market area includes Trigg County, the five adjoining Kentucky counties, and Stewart County, Tennessee. Total employment in the Kentucky portion of the labor market area in 1973 averaged 50,810 with agriculture providing 4,560 jobs, manufacturing 11,345, trade and services 13,405, and government 9,080. In the Kentucky area, industrial employment has increased approximately 43 percent or 3,242 new jobs since 1964 with strong growth in the electrical machinery, fabricated metal products, chemicals and allied products, primary metals and miscellaneous industries.

Resources for Growth

1. There is a current estimated labor supply of 8,520 men and 10,830 women available for industrial jobs in the Kentucky portion of the labor market area. The current labor supply would be supplemented by the number of men and women in the adjoining Tennessee county who are available for industrial jobs. In addition, 5,860 young men and 5,600 young women in the Kentucky area will become 18 years of age before 1981, and will be potentially available for work.

2. The local transportation capability is good. Rail service is provided by the Cadiz Railroad, which extends from Cadiz to Gracey, Kentucky, where it connects with the Illinois Central Gulf Railroad. Cadiz is served by U. S. Highway 68 which connects with the North-South Pennyriple Parkway 23 miles to the east. Twenty-four miles north along the Pennyriple Parkway is an interchange for the east-west Western Kentucky Parkway. In addition, Interstate 24 is under construction. An interchange will be located approximately 5 miles from Cadiz and completion from this point southeast to the Tennessee state line is tentatively scheduled for December 1975. Four truck lines serve Cadiz. Barge transportation is available on Lake Barkley via the Cumberland and Tennessee Rivers. Two local private airports near Cadiz are capable of accommodating light aircraft. Commercial air service is available at Outlaw Field in Clarksville, Tennessee, 43 miles southeast of Cadiz and at Barkley Field in Paducah, 60 miles northwest of Cadiz.

3. Pennyriple RECC provides electric power to Cadiz and Trigg County. Natural gas service is provided by the Western Kentucky Gas Company, whose source of supply is the Texas Gas Transmission Corporation. There are five distributors of propane and seven distributors of distillate fuel oil that provide service to Cadiz.

4. Education is an important growth asset for Cadiz. One school system operates within the county and educational television is available.

One university and three community colleges are located within 60 miles of Cadiz.

Vocational training is available at the Christian County Area Vocational Education Center, 20 miles east of Cadiz, which offers nine course areas, and at the Madisonville State Vocational-Technical School, 50 miles northeast of Cadiz, which offers seventeen course areas.

Community Programs for Improvement

Industrial and Commercial

Bison Pumps, Inc., has begun operations. Viking Engineering of Kentucky completed an expansion of its facilities doubling the size of its plant and adding 20 new employees. Averitt Lumber Company has a \$1.5 million automated sawmill under construction with plans to be in operation by the summer of 1975.

Several new commercial businesses have begun operations and several firms have opened new professional offices. The Hopkinsville Federal Savings and Loan Association opened a branch office.

Water and Sewerage

The City of Cadiz Water and Sewerage Department has extended water service to a large residential area near town. Grants and loans totaling \$250,000 have been approved and bids have been received for the extension of sewer lines 2 miles east of town which will include service to the Woodruff Industrial Park.

Education

The Trigg County School System has a new athletic complex consisting of a football field, track facilities, bleachers, three lighted tennis courts, a playground, and a parking area. A new \$10,000 greenhouse has been constructed to supplement the vocational agriculture program. A pre-school program consisting of two kindergarten classes and three HeadStart units is now being offered.

Public Safety

The Cadiz Police Department purchased a new police cruiser, new office equipment, and files. A joint city-county project has provided two new communication systems for the Cadiz Police Department and the Trigg County Sheriff's office. One system completes a network whereby the city, county, and State Police can communicate with each other. The second system links all police and sheriff's departments in the nine-county region.

The Cadiz Fire Department has ordered a 750 gpm pumper. The Trigg County Fire Department division at Cerulean has a new fire station and the East Golden Pond division plans to build a fire station.

The Cadiz-Trigg County Emergency Preparedness Team has been established and is equipped with three rescue units for land rescue and eighteen boats and motors for water rescue.

Recreation

The new Trigg County Recreational Complex, a joint city-county project, has been located on a 129-acre site 3 miles north of Cadiz. Facilities already completed include four baseball diamonds, a horseshow arena, fairgrounds, a scramble track, campgrounds, a minibike trail, and a motorcycle course. Further development will involve expansion of the horseshow arena, and the addition of two baseball diamonds, bleachers, and a Boy Scout Camp. A municipal swimming pool, now under construction, is to open by the summer of 1975.

Other

During 1973-74, 83 off-street parking spaces were added to serve the downtown business district. The new \$100,000 John L. Street Library and youth center has opened to serve the citizens of Cadiz and Trigg County. South Central Bell completed a \$170,000 project installing underground cables. Various businesses and civic organizations have been involved in beautification projects throughout the community.

Recreation, Entertainment and Livability

Cadiz and the surrounding area offer unlimited recreational opportunities. A supervised summer recreation program is provided for all ages in Cadiz and various civic organizations sponsor additional recreational programs and events throughout the year. The Cadiz Municipal Park, the 129-acre Trigg County Recreational Complex, and the eighteen U. S. Army Corps of Engineers Recreation Areas located throughout the county, offer a wide variety of recreational facilities for public use.

Cadiz is fortunate to be located near two of the largest inland lakes in America, Lake Barkley which flows through the western part of Trigg County and Kentucky Lake which follows the western boundary of the county. A portion of Land Between the Lakes National Recreation Area also lies within Trigg County.

Lake Barkley State Resort Park, one of Kentucky's finest state parks, is located just 7 miles west of Cadiz on the shores of Lake Barkley. This 3,600-acre park offers lodge and cottage accommodations and camping sites. The recreational facilities available include a heated pool, a beach and bathhouse, an 18-hole golf course, riding stables, hiking trails, a playground, picnic areas, and a trap shooting range. A marina with 152 slips has rental and storage facilities for houseboats, fishing boats, and pleasure boats.

Land Between the Lakes National Recreation Area is a 170,000-acre woodland formed into a peninsula by Lake Barkley and Kentucky Lake and developed into a major area for outdoor recreation, conservation, and environmental learning. Several large campgrounds provide over a thousand sites for family and organized group camping in addition to the numerous areas available for informal tent and trailer camping. The 5,000-acre Conservation Education Center has quarters for school study groups in outdoor living plus an educational farm and a Center Station with films and displays. Hunting is a prime attraction in the fall and winter, and fishing and boating is a year-round sport along the 3,300 miles of lake shoreline.

Kentucky Dam Village State Resort Park, located on Kentucky Lake is a 1,200-acre park with a village inn, cottages, and camping facilities. Other park features include a pool, beach, miniature golf course, playground and picnic area, horseback riding, fishing and boating, and an airport with a 4,000-foot lighted airstrip.

Kenlake State Resort Park, also located on Kentucky Lake, is an 1,800-acre park with hotel and cottage accommodations and sites for tent and trailer camping. The park features include a 9-hole golf course, tennis, pool and lake swimming, horseback riding, hiking trails, fishing, and boating.

Another area park is the Pennyryle Forest State Resort Park, located 32 miles northeast of Cadiz. The park features include a resort lodge, camping facilities, a 55-acre lake, a beach, a swimming pool, and picnic and playground areas. Facilities are available for boating, fishing, golfing, horseback riding, and hiking.

The Jefferson Davis Monument State Shrine, located 32 miles east of Cadiz, is the site of the birthplace - farm of Confederate President Jefferson Davis. The 351-foot obelisk, which has a museum and an elevator to the top, is the fourth highest monument in the United States.

THE LABOR MARKET

POPULATION TRENDS

<u>Area</u>	<u>Population</u>				<u>Percent Change</u>	
	<u>1973*</u>	<u>1970</u>	<u>1960</u>	<u>1950</u>	<u>1960-70</u>	<u>1950-60</u>
Cadiz	N. A.	1,987	1,980	1,280	+ 0.4	+54.7
Labor Market						
Area	143,700	131,658	122,479	105,628	+ 7.5	+16.0
Trigg County	8,700	8,620	8,870	9,683	- 2.8	- 8.4
Caldwell County	12,900	13,179	13,073	13,199	+ 0.8	- 1.0
Calloway County	27,700	27,692	20,972	20,147	+32.0	+ 4.1
Christian County	66,400	56,224	56,904	42,359	- 1.2	+34.3
Lyon County	6,000	5,562	5,924	6,853	- 6.1	-13.6
Marshall County	22,000	20,381	16,736	13,387	+21.8	+25.0

*Provisional estimates.

Sources: U. S. Department of Commerce, Bureau of the Census, Census of Population, 1970, 1960, 1950. U. S. Bureau of the Census, Current Population Reports, Series P-26, June 1973.

GENERAL EMPLOYMENT CHARACTERISTICS, 1973

<u>Major Employment Group</u>	<u>Employment</u>	
	<u>Trigg County</u>	<u>Labor Market Area</u>
TOTAL	3,440	50,810
Agricultural	720	4,560
Nonagricultural	2,720	46,250
Manufacturing	610	11,345
Government	570	9,080
Trade and Services	579	13,405

Source: Kentucky Department for Human Resources, Bureau for Administration and Operations.

MANUFACTURING EMPLOYMENT TRENDS BY INDUSTRY
SEPTEMBER 1974 AND 1964

Industry	Trigg County			Labor Market Area		
	1974	1964	% Change	1974	1964	% Change
TOTAL	556	177	+214.1	10,839	7,597	+ 42.7
Food & Kindred						
Products	10	7	+ 42.9	392	336	+ 16.7
Tobacco	0	0	0	15	15	0
Apparel, Textiles,						
Leather	214	67	+219.4	1,875	1,782	+ 5.2
Lumber, Furniture	25	101	- 75.2	345	490	- 29.6
Printing & Publishing,						
Paper	7	2	+250.0	155	109	+ 42.2
Chemicals, Petroleum						
& Coal, Rubber	0	0	0	2,519	1,838	+ 37.1
Stone, Clay & Glass	0	0	0	99	128	- 22.6
Primary Metals	6	0	--	1,257	610	+106.1
Machinery, Metal						
Products, Equipment	294	0	--	3,484	2,289	+ 52.2
Other	0	0	0	698	0	--

Source: Kentucky Department for Human Resources, Number of Workers in Manufacturing Industries Covered by Kentucky Unemployment Insurance Law Classified by Industry and County, September, 1974, September, 1964.

CADIZ MANUFACTURING FIRMS,
THEIR PRODUCTS AND EMPLOYMENT

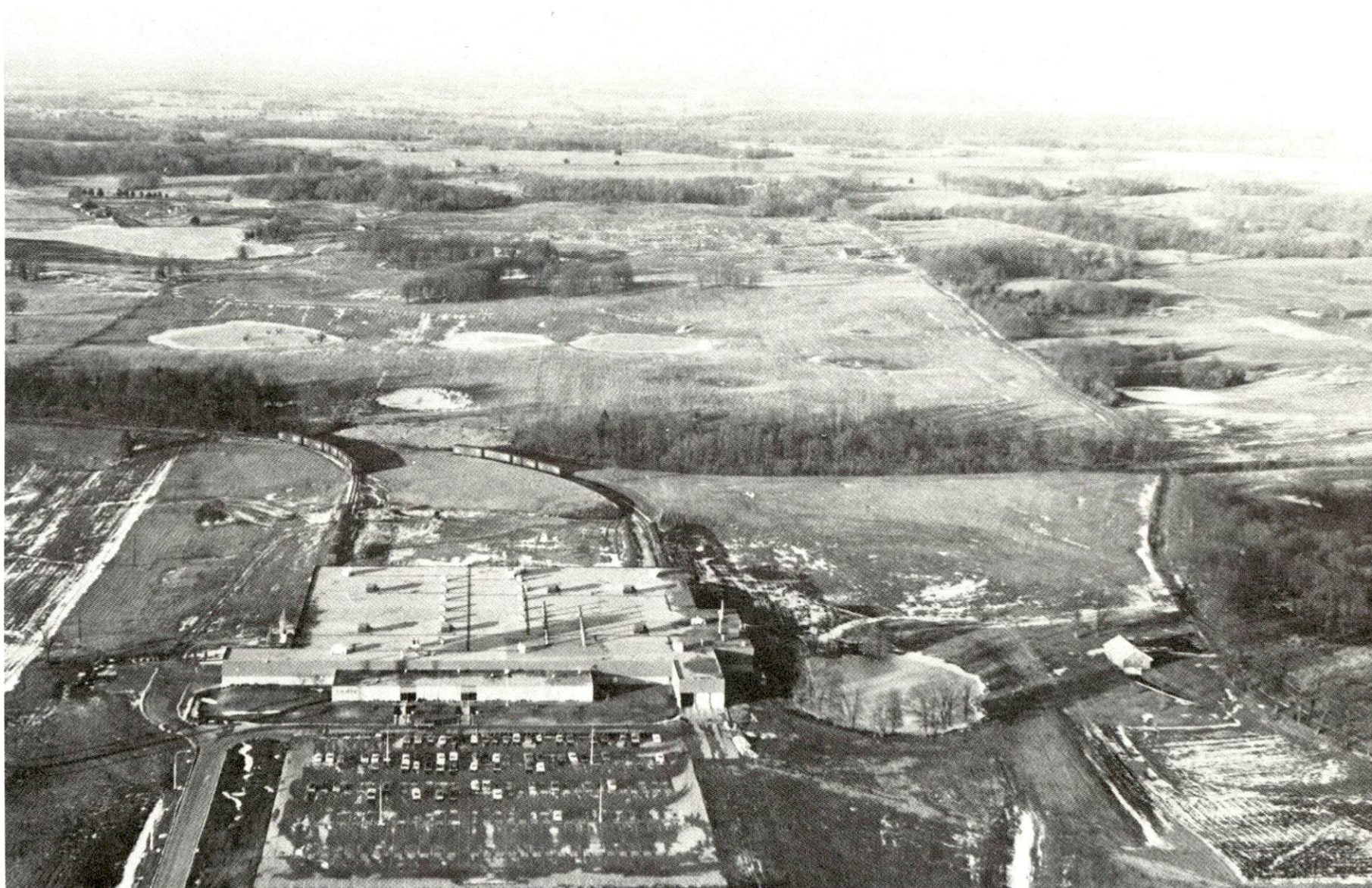
Firm (Establishment date)	Product	Employment			
		Total	Male	Female	Organized
Averitt Lumber Company (under construction)	Lumber	31 (est.)	29	2	
Bailey Lumber Company (1960)	Sawmill, lumber	17	17	0	
Bison Pumps, Inc. (1973)	Pumps	50			
Broadbent Country Hams (1966)	Country hams, bacon, sausage	1	1	0	
Cadiz Machine and Tool Company, Inc.	Tools, dies, jigs metal fabricating	22	21	1	
Cadiz Milling Company, Inc. (1875)	Feed	13	12	1	
The Cadiz Record (1876)	Newspaper, job printing	4	2	2	
Cadiz Spring Products Division (1965)	Automotive, truck seat springs	400			*

(Cont'd.)

<u>Firm (Establishment date)</u>	<u>Product</u>	<u>Employment</u>			<u>Organized</u>
		<u>Total</u>	<u>Male</u>	<u>Female</u>	
Elk Brand Manufacturing Company (1967)	Dungarees	128	12	116	
Futrell Sawmill (1951)	Barrel staves, hardwood flooring	9	8	1	
Kerr-McGee Oil Company (1967)	Fertilizer, chemicals	3	3	0	
Noel Concrete & Excavating Company, Inc. (1967)	Ready mixed concrete	22	20	2	
Trigg-Knit Hosiery Mill (1952)	Women's hosiery	51	18	33	
Viking Engineering of Kentucky (1972)	Machine shop	35	33	2	

*See Labor Organizations, page 11.

Source: Kentucky Department of Commerce, 1975 Kentucky Directory of
Manufacturers.



HOOVER BALL AND BEARING COMPANY
CADIZ SPRING PRODUCTS DIVISION

LABOR ORGANIZATIONS

Union Representing manufacturing workers at:

United Steelworkers of
America

Cadiz Spring Products Division,
Hoover Ball and Bearing Company

ESTIMATED MALE LABOR SUPPLY
CADIZ LABOR MARKET AREA

<u>Area</u>	<u>Current</u>			<u>Future</u>	
	<u>Total</u>	<u>Not in Labor Force</u>	<u>Unemployed</u>	<u>Under- employed</u>	<u>Reaching 18 yrs. of age before 1981</u>
Labor Market					
Area	8,520	3,460	1,780	3,280	5,860
Trigg	290	0	140	150	446
Caldwell	900	390	340	170	562
Calloway	1,830	600	210	1,020	1,002
Christian	3,350	1,320	490	1,540	2,655
Lyon	430	250	110	70	209
Marshall	1,720	900	490	330	986

Sources: Kentucky Department for Human Resources, Kentucky Labor Supply Estimates by County, 1974. Kentucky Department of Commerce, Future Labor Supply before 1981.

ESTIMATED FEMALE LABOR SUPPLY
CADIZ LABOR MARKET AREA

<u>Area</u>	<u>Current</u>			<u>Future</u>	
	<u>Total</u>	<u>Not in Labor Force</u>	<u>Unemployed</u>	<u>Under- employed</u>	<u>Reaching 18 yrs. of age before 1981</u>
Labor Market					
Area	10,830	6,680	1,260	2,890	5,599
Trigg	300	20	110	170	391
Caldwell	1,010	470	260	280	592
Calloway	1,550	430	200	920	965
Christian	5,800	4,430	370	1,000	2,526
Lyon	260	100	90	70	173
Marshall	1,910	1,230	230	450	952

Sources: Kentucky Department for Human Resources, Kentucky Labor Supply Estimates by County, 1974. Kentucky Department of Commerce, Future Labor Supply before 1981.

PER CAPITA PERSONAL INCOME

<u>Area</u>	<u>1972</u>	<u>1962</u>	<u>% Change</u>
Trigg County	\$3,175	\$1,228	+158.6
Labor Market Area			
Range	\$2,919 - 3,952	\$1,096 - 2,336	N.A.
Kentucky	3,634	1,769	+105.4
U. S.	4,549	2,381	+ 91.1

Sources: Office of Development Services and Business Research, College of Economics, University of Kentucky, Kentucky Personal Income 1929/68. U. S. Department of Commerce, Office of Business Economics, Survey of Current Business, May, 1974, August, 1974.

TRANSPOR TATION

Rail

Line serving Cadiz - Cadiz Railroad Company; joins the Illinois Central Gulf Railroad at Gracey, Kentucky, 10 miles east of Cadiz.

Services - Freight, carload only; one local freight from Cadiz to Gracey and return Monday through Friday (Saturday if needed); switching facilities; two team tracks at Cadiz accommodating twenty cars; piggyback facilities. One team track at Montgomery, 5 miles distant, for eight cars, switching to Illinois Central Gulf daily at Gracey

For details on routing, schedules, rates, and services, contact:

Cadiz Railroad Company
Line Street
Cadiz, Kentucky 42211

Truck Service

Company

Home Office

Harper Truck Service, Inc.

1266 North 8th Street
Paducah, Kentucky 42002

McLean Trucking Company

617 Waughtown Street
Winston-Salem, North Carolina 27107

Skaggs Transfer, Inc.

2400 Ralph Avenue
Louisville, Kentucky 40216

United Trucking of Kentucky

332 Hood Avenue
Lebanon, Kentucky 40033

Other Freight Services

Shipping Center

REA Express

Local pickup and delivery service

United Parcel Service

Hopkinsville, Kentucky, 20 miles
distant

HIGHWAY MILES AND TRUCK TRANSIT TIME IN DAYS FROM
CADIZ, KENTUCKY, TO SELECTED MARKET CENTERS

City	Delivery		City	Delivery	
	Highway Miles	Time TL		Highway Miles	Time TL
Atlanta, Ga.	333	3	Los Angeles, Calif.	2,089	4
Birmingham, Ala.	287	3	Louisville, Ky.	192	1
Chicago, Ill.	465	2	Nashville, Tenn.	91	1
Cincinnati, Ohio	293	2	New Orleans, La.	608	3
Cleveland, Ohio	537	2	New York, N. Y.	940	3
Detroit, Mich.	552	2	Pittsburgh, Pa.	580	3
Knoxville, Tenn.	268	3	St. Louis, Mo.	244	1

Source: Delivery Time only - Harper Truck Service, Inc., 1266 North
8th Street, Paducah, Kentucky 42002.

Air

Local

Allen (private)
Location: 1 mile west of Cadiz
Runways: 1 turf
Length: 2,300 feet
Traffic
Control: None
Lighting: None
Services: None

Woodruff Airport (private)
3 miles east of Cadiz
1 paved
3,500 feet

Wind sock
Runway, obstructions
100 octane in emergency,
tie down, phone

Nearest Commercials

	Barkley Field*	Outlaw Field
Location:	Paducah, Kentucky, 60 miles from Cadiz	Clarksville, Tennessee, 43 miles from Cadiz
Runways:	2 paved	2 paved
Length:	6,500 feet, 4,000 feet	4,100 feet, 5,000 feet
Traffic		
Control:	Wind tee, ILS System, Control tower	Approved instrument approach
Lighting:	Beacon, boundary obstruction, runway lights and runway end identification lights, approach lightying system	Beacon, runway (hours of darkness)
Services:	Delta and Ozark Airlines, 80 and 100 octane, JA-1 fuel, taxi, limousine, U-Drive-It, storage, major A & E repairs, restaurant	Ozark and Aerie Airlines, fuel - 80/87, 100/130, and jet fuel, major repairs, hangars, tiedowns, charter, flight instruction, weather information, car rentals, snack bar, vending machine, restrooms
Air Freight		
Service:	Air freight accepted on a space-available basis	Air freight accepted on a space-available basis

Bus - Western Kentucky Stages

Rental Services - Car, truck, and trailer rentals

*Proposed - A runway in the southwestern portion of the air field is to be extended by 2,600 feet. The runway will require edge lighting and additions of transformers.

POWER AND FUEL

Electricity

Company serving Cadiz and Trigg County - Pennyrile RECC
Source of power - Tennessee Valley Authority
Total generating capacity - 23,200,000 KW
For industrial rates contact:

Pennyrile RECC
2000 Harrison Street
Hopkinsville, Kentucky 42240

Natural Gas

Company serving Cadiz - Western Kentucky Gas Company
Source of supply - Texas Gas Transmission Corporation
Size of transmission mains - 25 inches (supplier);
6 and 4 inches (distributor)
Distribution mains - 4 and 2 inches
Distribution pressure - 20 psi
Btu content - 1008 per cubic foot; Specific gravity - .60
For rates and supplies contact:

Western Kentucky Gas Company
311 West Seventh Street
Owensboro, Kentucky 42301

Other Fuels

Propane and butane

Speedway Butane Gas
Company
294 East Main Street
Cadiz, Kentucky

Southern State Hopkinsville
Cooperative
520 Wooldridge Road
Hopkinsville, Kentucky

J. Petty Company
Route 1
Gracey, Kentucky

Fortner L. P. Gas Company
Cadiz Street
Princeton, Kentucky

Pargas of Hopkinsville
Fort Campbell Boulevard
Hopkinsville, Kentucky

Fuel oils

Distillate fuel oil -

Cunningham and Lester
(Gulf Oil)
Cadiz, Kentucky

R. C. McKinney
East 14th Street
Hopkinsville, Kentucky

Standard Oil Company,
J. "Tappy" Edwards,
Distributor
Cadiz, Kentucky

Hopkinsville Oil Company
(Phillips 66 Products)
708 North Main Street
Hopkinsville, Kentucky

Ashland Petroleum Company
(bulk plant)
2316 Fort Campbell Boulevard
Hopkinsville, Kentucky

Monarch Oil Company
South Virginia
Hopkinsville, Kentucky

Southern States Hopkinsville
Petroleum Co-op
520 Wooldridge Road
Hopkinsville, Kentucky

Residual fuel oil - Arrangements must be made with the refinery.

Low sulphur content coal - Available in Eastern Kentucky.

WATER AND SEWERAGE

Water

Company serving Cadiz - City of Cadiz Water and Sewerage Department*

Source - Spring

Treatment plant capacity - 576,000 gallons**

Average daily consumption - 270,000 gallons

Peak daily consumption - 350,000 gallons

Type treatment - Coagulation, settling, filtration, chlorination,
fluoridation

Storage capacity - 725,000 gallons

Size lines - 8, 6, and 4 inches

Average pressure - 50 psi

Average temperature - 58 degrees F.

MONTHLY WATER RATES FOR WHOLESALE AND INDUSTRIAL CONSUMERS

Minimum monthly water rates for the first 2,000 gallons
or less of water per month for water connections of all sizes

<u>Size of Connection</u>	<u>Minimum Rates</u>
3/4-inch or less	\$ 4.00
over 3/4-inch to 1-inch	8.00
over 1-inch to 1 1/4-inch	11.25
over 1 1/4-inch to 1 1/2-inch	14.75
over 1 1/2-inch to 2-inch	21.25
over 2-inch to 3-inch	41.50
over 3-inch to 4-inch	68.00

Water Rates, City

First	2,000 gallons	\$ 4.00 (Minimum)***
Next	3,000 gallons	1.35 per M gallons
Next	5,000 gallons	1.10 per M gallons
Next	10,000 gallons	.80 per M gallons
Next	30,000 gallons	.70 per M gallons
Next	50,000 gallons	.55 per M gallons
All over	100,000 gallons	.45 per M gallons

*Water service has recently been extended to a large residential area
east of town.

**Based on 24,000 gallons per hour, 24 hours per day.

***Minimum rate for 3/4-inch or less.

(Cont'd.)

Water Rates, Rural

First	2,000 gallons	\$4.75 (Minimum)
Next	3,000 gallons	1.60 per M gallons
Next	5,000 gallons	1.35 per M gallons
Next	10,000 gallons	1.10 per M gallons
Next	30,000 gallons	.95 per M gallons
Next	50,000 gallons	.70 per M gallons
All over	100,000 gallons	.45 per M gallons

Tap-on charges:

<u>Size of Meter</u>	<u>Inside City</u>	<u>Outside City</u>
3/4-inch	\$125	\$150
1-inch	300	325
2-inch	425	450

Name of water district - Barkley Lake Water District

Area served - All of Trigg County not served by the City of Cadiz Water Department

Date when water district began operating - April, 1969

Source of raw water - Lake Barkley

Capacity of treatment plant - 1,000,000 gpd

Type of treatment - Sand filter, chlorination, fluoridation, lime, alum, activated charcoal

Average amount of water used in a 24-hour period - 300,000 gallons

Peak amount of water used in a 24-hour period - 423,000 gallons

Storage capacity - 750,000 gallons

Average pressure - 50 to 60 psi

Average temperature - 60 degrees F.

Size lines - 10, 8, 6, 4, 3, and 2 inches

Rates -

Minimum charges per month for 5/8-inch or 3/4-inch service - \$4.00

First	2,000 gallons	\$2.00 per M gallons
Next	3,000 gallons	1.20 per M gallons
Next	5,000 gallons	1.00 per M gallons
Next	10,000 gallons	.80 per M gallons
Next	30,000 gallons	.70 per M gallons
Next	50,000 gallons	.50 per M gallons
All over	100,000 gallons	.35 per M gallons

(Cont'd.)

<u>Meter Size</u>	<u>Minimum Rates</u>
5/8-inch	\$ 4.00
3/4-inch	4.00
1 -inch	7.60
1 1/2-inch	12.60
2 -inch	20.60
3 -inch	40.00
4 -inch	65.00

Tap-on charges:

5/8-inch service	\$200
3/4-inch service	250
1 -inch service	350
1 1/2-inch service	450
2 -inch service	500

Surface water sources - Lake Barkley and Little River
Average discharge - Little River near Cadiz 337 cfs (34-years, USGS)
Expected ground water yield - 5 to 200 gpm throughout the county

Sewerage

Company serving Cadiz - City of Cadiz Water and Sewerage Department*
Design capacity - 300,000 gpd**
Average daily flow - 70,000 to 80,000 gallons
Treatment - Primary and secondary
Type treatment - Extended aeration, drying beds
Treated effluent discharged into - Little River
Size of sanitary mains - 14, 12, 10, and 8 inches
Rates -

Monthly sewer rates based on water usage:

First	2,000 gallons	\$3.15 (Minimum)
Next	3,000 gallons	1.10 per M gallons
Next	5,000 gallons	.90 per M gallons
Next	10,000 gallons	.70 per M gallons
Next	30,000 gallons	.65 per M gallons
Next	50,000 gallons	.55 per M gallons
All over	100,000 gallons	.50 per M gallons

Tap-on charge: \$100 for all connections

*Bids have been received for the extension of sewer lines 2 miles east of town which will include service to the Woodruff Industrial Park.
**Department for Natural Resources and Environmental Protection.

LOCAL GOVERNMENT

City

Structure - Mayor - 4-year term; 6 councilmen - 2-year terms

Budget 1975 - General Fund \$160,000

Water and Sewer Fund 160,000

Fees and licenses - Business privileges license based on one percent of gross receipts with minimum fees ranging from \$15 to \$300 per year; one percent payroll tax on gross salaries; unloading licenses \$25 per year

County

Structure - County Judge - 4-year term; 7 magistrates - 4-year terms

Budget 1974-75 - General Fund \$139,175; Road Fund \$40,100

Assessed Value of Property, 1974

<u>Classes of Property</u>	<u>Cadiz</u>	<u>Trigg County</u>
Real Estate	\$7,659,305	\$61,335,952
Tangibles	5,144,215	10,914,060
Public Service	963,736	6,624,628

Property Taxes

Land and buildings are taxed by the state and may be taxed by local jurisdictions. The state rate is \$0.015 per \$100 of assessed valuation.

Tangible personal property owned by manufacturers (automobiles, trucks, finished goods, office furniture, office equipment) is taxed by the state at \$0.15 per \$100 and may be taxed by local jurisdictions.

Manufacturing machinery, raw materials inventories, pollution control equipment, and goods in process inventories are not subject to local taxation. The state rate is \$0.15 per \$100.

Property stored in public warehouses is not subject to local taxation. The state rate is only \$0.015 per \$100.

All property is assessed at 100 percent of fair cash value.

Local Property Tax Rate Per \$100 of Assessed Valuation, 1974*

<u>Taxing Jurisdiction</u>	<u>Cadiz</u>	<u>Trigg County</u>
County	\$.107	\$.107
School	.472	.472
City	.278	

Planning and Zoning

Joint agency - Cadiz-Trigg County Planning Commission
 Zoning enforced - In city of Cadiz only
 Local codes enforced - Building, housing
 Mandatory state codes enforced - Plumbing, National Fire Protection Association Code, National Building Code (for major buildings and residential construction containing more than 12 bedrooms per building)

Safety

<u>Police</u>	<u>Cadiz</u>	<u>Trigg County</u>
Total staff	5	4
Radio-patrol cars	2	2
Other equipment	Radar unit, 2 walkie talkies	

Fire

American Insurance Association Fire Rating	7	
Volunteers	18	30 (2 divisions)
Equipment:		
750 gpm pumpers	1**	
500 gpm pumper		1**
350 gpm pumper		1**
275 gpm pumper	1**	
550 gpm pumper		1**
Other	150-gpm portable pump, 3,000-watt portable power generator	Pickup truck, rescue truck, 1,200-gallon tank truck, 1,000 gallon tank truck, 500-gpm portable pump, pumper used for fighting grass fires

*Kentucky Department of Revenue, Kentucky Property Tax Rates, 1974.
 **All pumpers also have water tanks of various capacities.

Rescue Service

Cadiz-Trigg County Emergency Preparedness Team:

Number of volunteers - 45 plus the city and county volunteer firemen
Equipment - 3 rescue units, 1 trailer, rescue gear emergency medical supplies, 18 boats and motors, dragging equipment, generators, emergency radio equipment

Sanitation

Cadiz

Type service	Municipal
Fee charged:	
residential	\$2.50 per month
business	Depends upon pickup frequency - minimum \$2.50 per month
Collection frequency:	
residential	Weekly
business	As needed
Trash pickup	Weekly
Disposal method	Sanitary landfill

The industries in Cadiz are served by the municipal sanitation service.

EDUCATION

Public Schools

	<u>Trigg County</u>
Total Enrollment (1974)	2,020
Elementary	870
Middle School	510
High School	640
Student-Teacher Ratio	16 to 1
Elementary	23 to 1
Middle School	15 to 1
High School	12 to 1
Accreditation	Southern Association of Colleges and Schools
Percent High School Graduates to College	24.4
Expenditures Per Pupil (1973-74)	\$643.09
Bonded Indebtedness, June 30, 1974	\$2,295,000

Vocational Schools

Arrangements can be made to provide training in the specific production skills required by an industrial plant. Instruction may be conducted either in the vocational school or in the industrial plant, depending upon the desired arrangement and the availability of special equipment.

Nearest State School

Location	Madisonville State Vocational-Technical School Madisonville
Miles Distant	50
Curriculum	Certified Lab Assistant, Health Careers, Inhalation Respiratory Therapy, Medical Secretary, Practical Nursing, Radiologic Technology, Surgical Tech- nician, Learning Lab, Electronics (Communications), Auto Body Repair, Auto Mechanics, Carpentry- Building Trades, Drafting, Electricity, Machine Shop, Mine Maintenance, Welding

(Cont'd.)

The Madisonville State Vocational-Technical School participates in a federally funded Comprehensive Educational Training program offering mine electrician training to individuals chosen by the employment service office. The Christian County Vocational Education Center offers environmental aide training under this same program.

Nearest Area Education Center

Location	Christian County Area Vocational Education Center Hopkinsville
Miles Distant	20
Curriculum	Appliance Repair Auto Mechanics Auto Body Repair Carpentry-Building Trades Drafting Electricity Machine Shop Masonry Welding

Colleges and Universities

<u>Name</u>	<u>Area - Within 60 miles</u>		<u>Highest Degree Conferred</u>
	<u>Location</u>	<u>Enrollment (Fall, 1974)</u>	
Hopkinsville Community College	Hopkinsville	950	Associate
Murray State University	Murray	7,106	Masters, Ph.D.*
Madisonville Community College	Madisonville	476	Associate
Paducah Community College	Paducah	1,001	Associate

*Cooperative program with the University of Kentucky, Lexington, for a ph. D. in education only.

HEALTH

Hospitals

<u>General Hospital</u>	<u>Location</u>	<u>Beds</u>
Trigg County Hospital, Inc.	Cadiz	40

General hospital facilities - Laboratory, emergency room, nursery, obstetrics, gynecology, X-ray, EKG, cardiac care unit, part of Western Kentucky Hospital Services, Inc.*

Medical Staff - 3 doctors, 7 registered nurses, 6 licensed practical nurses

Other - Trigg County Mental Health Clinic

Ambulance Service

Ambulance service is available on a countywide basis, 24 hours a day, seven days a week.

Nursing Homes

	<u>Number</u>	<u>Beds</u>
Extended care home	1	50
Personal care home	1	68

Public Health

Facility - Trigg County Health Department

Staff-Health environmentalist - administrator, community health nurse, environmental health technician, clerk-typist (all full time); medical clinician, dentist, community health nurse, community worker (all part time)

Services - Family planning, immunizations, preschool health clinic, communicable disease control, screening tests, environmental health services

*Participants in: Mid South Regional Medical Program, Pennyroyal Mental Retardation Program, Comprehensive Health Planning, Red Cross Whole Blood Program.

OTHER LOCAL FACILITIES

Communications

Telephone - South Central Bell Telephone Company
Services - Standard

Telegraph - Western Union
Services - Telephone to Hopkinsville

Postal - U. S. Post Office
Class - First
Mail received - Twice daily
Mail dispatched - Twice daily

Newspaper - The Cadiz Record
Weekly and circulation - 2,700
Other papers received from - Hopkinsville, Louisville, and Paducah,
Kentucky; Evansville, Indiana

Radio - WKDZ - AM-FM
Stations received from - Hopkinsville, Louisville, Paducah, and
Princeton, Kentucky; Nashville, Tennessee

Television -
Reception from - Paducah and Bowling Green, Kentucky; Nashville,
Tennessee
Kentucky Educational Television - Madisonville transmitter-Channel 35
Murray transmitter-Channel 21

Library Services

Public library - John L. Street Library
Size collection - 8,500 volumes
Circulation, 1973-74 - 7,600 volumes
Services - Magazines, newspapers, information file material, records,
art, film strips, film strip projector, story hour

Religious Institutions

Number of churches - 18
Denominations - Baptist, Catholic, Christian, Church of Christ, Church
of God, Methodist, Presbyterian

Nearest Synagogue - Hopkinsville, 20 miles away
Congregation - Adath Israel (reform)

Financial Institutions

<u>Banks</u>	<u>Assets</u>	<u>Deposits</u>	<u>Statement Date</u>
Bank of Cadiz	\$ 6,738,519.19	\$ 5,726,400.22	12/31/74
Trigg County Farmers Bank	26,687,656.86	24,226,011.59	12/31/74

Savings and Loan
Associations

Hopkinsville Federal Savings & Loan Association (branch office in Cadiz)	\$42,424,427.30	\$38,578,063.78	12/31/74
---	-----------------	-----------------	----------

Hotels and Motels

Total number - 4
Total units - 45

Excellent accommodations are also available at Lake Barkley State
Resort Park, only 7 miles west of Cadiz.

Clubs and Organizations

Business and Civic - Cadiz - Trigg County Chamber of Commerce, Civitan
Club, Jaycees, Lions Club, Optimist, Rotary

Fraternal - American Legion, Fraternal Order of Eagles, Masonic
Lodge

Women's - Business and Professional Women's Club, DAR, Eastern Star,
Garden Club, Hospital Auxiliary, Homemaker's, Iota Tau Sorority,
Jaycettes, National Secretaries Association, Rotarians, Women's Club,
Women's Missionary Union, Woodmen of the World Society

Youth - Boy Scouts, Cub Scouts, Girl Scouts, Brownies, Explorers,
FFA, 4-H, Little League, Teen Club

Other - Cadiz Bass Club, Cadiz Powerboat Club, C-B Radio Club,
Foxhunters Association, Sportsman Club, West Kentucky Trail Bike
Riders Association



TRIGG COUNTY FARMERS BANK
MAIN OFFICE



TRIGG COUNTY FARMERS BANK
EAST CADIZ BRANCH

RECREATION

Local

Public Recreation Facilities

Supervised program - Summer Recreation Program

Park - Cadiz Municipal Park

Playground - 1

Swimming pool - 1 (under construction)

Tennis courts - 3

Baseball diamonds - 5

Football field - 1

Other - Basketball court, horse show arena, scramble track, minibike trail, motorcycle course, fairgrounds, public marina at Port Prizer, 18 Army Corps of Engineers Recreation Areas in the county (include launching ramps, picnic areas and camping facilities)

Lake Barkley State Resort Park, located 7 miles west of Cadiz on Lake Barkley, offers a swimming pool, recreation room, beach, bathhouse, riding stables, hiking trails, picnic areas, a playground, tennis courts, 18-hole golf course, and a marina with 152 slips.

Land Between the Lakes National Recreation Area, also located in Trigg County, is a major outdoor recreation area with over 3,300 miles of lake shoreline, facilities for fishing, boating, swimming, and hiking, and several large campgrounds.

Area (Within 50 miles)

Kenlake State Resort Park

Kentucky Dam Village State Resort Park

Pennyrile Forest State Forest Park

Jefferson Davis Monument State Shrine



LAKE BARKLEY STATE RESORT PARK

AGRICULTURE - NATURAL RESOURCES - CLIMATE

Agriculture*

	<u>Trigg County</u>	<u>Labor Market Area</u>
Total land area (acres)	261,120	1,531,456
Percent of area in farm land	56.4	63.2
Number of farms	718	6,373
Average size of farms (acres)	204.9	151.9
1969 value of all farm products	\$6,411,211	\$45,543,541
Value per farm	8,929	7,146
Total crop sales	2,656,987	19,410,001
Total livestock & livestock products	3,662,522	65,811,407
1973 agricultural production included:		
Burley tobacco (lbs.) (est.)	1,140,000	6,776,000
Corn for grain (bu.) (est.)	871,500	6,784,300
Cattle and calves (number)	25,700	170,600
Hogs and pigs (number) (preliminary)	23,000	123,300
Milk production, 1972 (lbs.)	2,800,000	68,620,000

Natural Resources

Principal mineral resources	Limestone
Acres of commercial forest land	148,300
Most abundant tree species	Red oak, white oak, hickory, sweet gum, cottonwood, soft maple, ash

*U. S. Department of Commerce, Bureau of the Census, Census of Agriculture, 1969. U. S. Department of Agriculture and Kentucky Department of Agriculture, Kentucky Agricultural Statistics, 1973.

Climate*

Trigg County

Temperature

Annual mean (30-year record)	59.4 degrees
Average annual 1974	59.8 degrees
Record highest, July, 1966 (9-year record)	103.0 degrees
Record lowest, January, 1966 (9-year record)	- 6.0 degrees
Normal heating degree days (30-year record)	3,696
(Heating degree day totals are the sums of negative departures of average daily temperature from 65 degrees F.)	

Precipitation

Mean annual total (30-year record)	46.0 inches
Mean annual snowfall (33-year record)	11.0 inches
Total precipitation 1974	60.7 inches
Mean number days precipitation (.01 inch or more) (33-year record)	119
Average number days thunderstorms (33-year record)	56

Prevailing winds (35-year record) South

*U. S. Department of Commerce, Environmental Science Services Administration, Climatological Data, 1974. Station of record: Nashville, Tennessee.

HISTORY

Trigg County, the sixty-sixth county formed in the state, dates from 1820. Its territory was taken from Caldwell and Christian Counties. It lies east of the Tennessee River and borders on the Tennessee state line. The Cumberland River flows in a northerly direction across it. Little River flows partly across Trigg County to its confluence with the Cumberland. The Cumberland and Little Rivers divide the county into three parts almost equal in size. The surface between the Tennessee and Cumberland Rivers is broken and hilly, while the eastern portion of the county is generally level to gently rolling. Its soil is based on limestone, with a red clay foundation. Nearly one-half of the county is forested.

Dr. Thomas Walker and Daniel Smith surveyed the boundary line between Virginia and North Carolina in the 1780's which included the Kentucky-Tennessee line of today as far west as the Tennessee River. In 1783 Robert Goodwin and his sons, Samuel and Jesse, of North Carolina, settled near Cerulean Springs in the northern corner of Trigg County. Soon Joel Wilson, Adam Thompson, Seth Pool, James David and Samuel Campbell joined them. By 1800 other settlements had been established on Donaldson Creek at Roaring Springs. Boyd's Landing, later known as Canton, founded by Abraham Boyd, became the best known shipping point on the Cumberland River. Enough settlers migrated into the area to form a separate governmental division by 1820.

Trigg County was named for Colonel Stephen Trigg, a native of Virginia who came to Kentucky as a member of the Court of Land Commissioners, and after the surveys were completed he settled on Cane Run Creek in Mercer County. He lost his life on August 19, 1782, in the Battle of Blue Licks.

Trigg County had a population of 10,129 in 1850, reaching a peak of 14,539 in 1910. The population of the county fluctuated until 1950, when it began a steady decline to a population of 8,620 in 1970. Since then it has remained stable. Trigg County covers a land area of 408 square miles. Parts of the Land Between the Lakes National Recreation Area, Lake Barkley, and the Fort Campbell Military Reservation are located within the county. Over forty percent of the total land area is owned by the federal government and its various agencies.

Cadiz, the county seat, was incorporated on December 6, 1822. The 1970 population of Cadiz was 1,987.

Agriculture accounted for 720 of the county's 3,440 employed in 1973 with burley tobacco, corn, cattle, hogs, and milk the principal products. Manufacturing employed 610. Largest of the county's firms are Cadiz Spring Products Division of Hoover Ball and Bearing Company which makes automotive and truck seat springs and Elk Brand Manufacturing Company which produces dungarees.