

1978

Industrial Resources: Adair County, Kentucky

Kentucky Library Research Collections
Western Kentucky University, spcol@wku.edu

Follow this and additional works at: https://digitalcommons.wku.edu/adair_cty

 Part of the [Business Administration, Management, and Operations Commons](#), [Growth and Development Commons](#), and the [Infrastructure Commons](#)

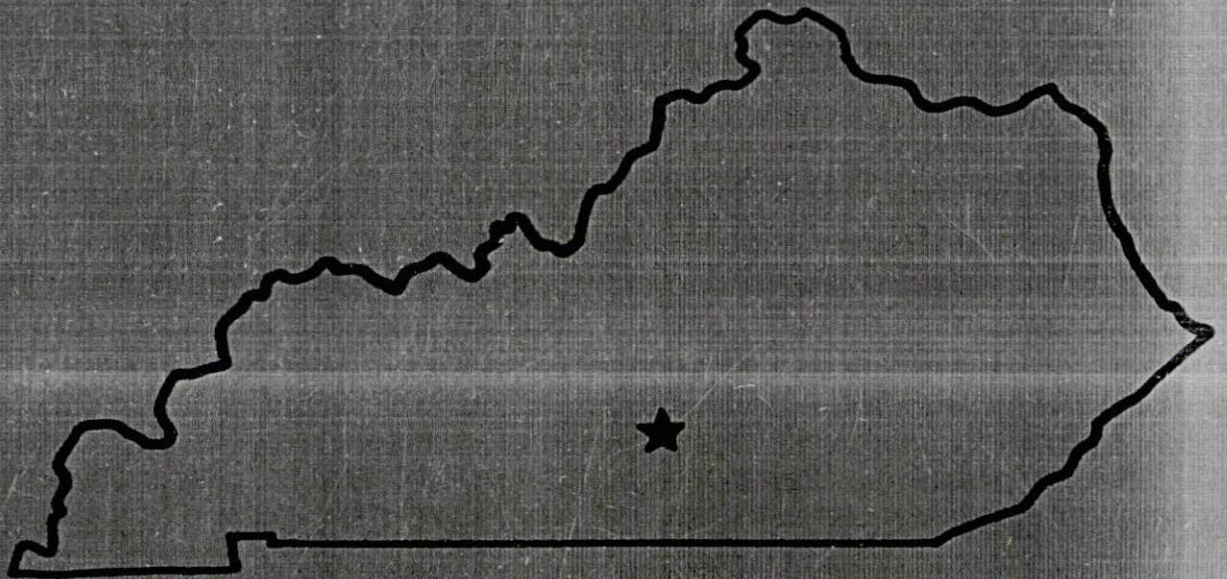
Recommended Citation

Kentucky Library Research Collections, "Industrial Resources: Adair County, Kentucky" (1978). *Adair County*. Paper 4.
https://digitalcommons.wku.edu/adair_cty/4

This Report is brought to you for free and open access by TopSCHOLAR®. It has been accepted for inclusion in Adair County by an authorized administrator of TopSCHOLAR®. For more information, please contact topscholar@wku.edu.

RESOURCES FOR ECONOMIC DEVELOPMENT

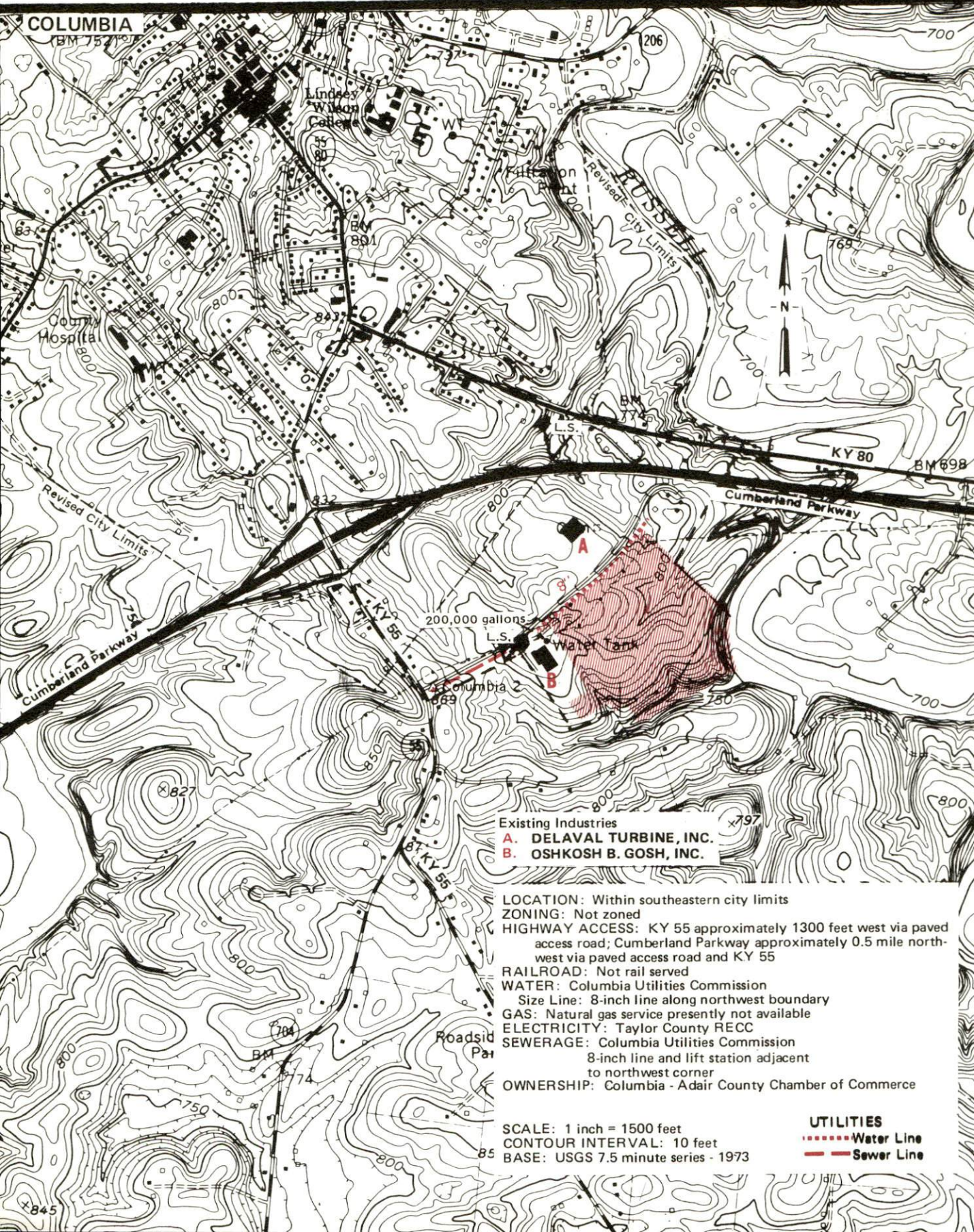
Columbia



KENTUCKY
The business environment is right.

COLUMBIA, KENTUCKY --- Site No. 178 -- 67 Acres

For more information contact Dr. J. W. Holladay, 209 Burkesville Street, Columbia, Kentucky 42728 or the Kentucky Department of Commerce, Industrial Development Division, Capital Plaza Tower, Frankfort, Kentucky 40601.



INDUSTRIAL RESOURCES

COLUMBIA, KENTUCKY

Prepared by
The Kentucky Department of Commerce
Division of Research and Planning
in cooperation with
The Columbia-Adair County Chamber of Commerce

1978

Program manager: Patsy Wallace; production supervisor: Pam Riley;
research: Darlene Craycroft; clerical: Linda Fint; graphics: Frank
Ferrante, Tony Cecconi and Richard Spencer; Cartography: Industrial
Development Division. Cost of printing paid from state funds.

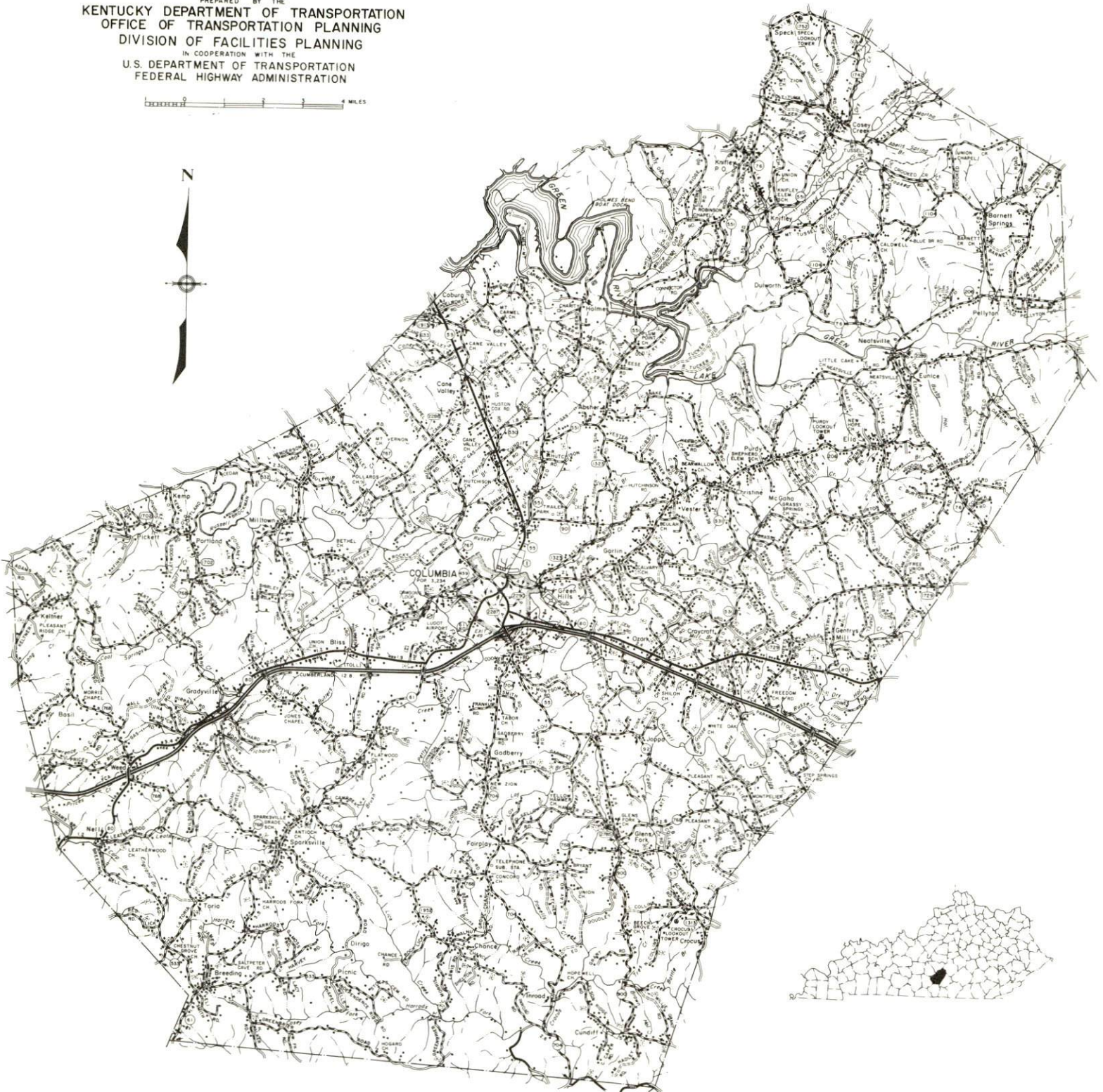
TABLE OF CONTENTS

<u>Chapter</u>	<u>Page</u>
INDUSTRIAL SITES	i
SUMMARY OF INDUSTRIAL RESOURCES - COLUMBIA, KENTUCKY	1
THE LABOR MARKET AREA.	6
Population.	6
Labor Force Characteristics of Residents, 1977.	6
Columbia Manufacturing Firms, Their Products and Employment	7
Labor Organizations	8
Industrial Services	8
Estimated Male Labor Supply	9
Estimated Female Labor Supply	9
Average Weekly Wages by Industry, by Place of Work, 1977.	10
Per Capita Personal Income.	12
TRANSPORTATION	13
Rail.	13
Highways.	13
Truck Service	13
Air	15
Bus	15
Taxi.	15
Rental Services	15
POWER AND FUEL	16
Electricity	16
Natural Gas	16
Other Fuels	17
WATER AND SEWERAGE	18
Water	18
Sewerage.	21
CLIMATE.	22

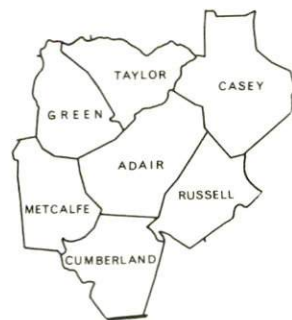
<u>Chapter</u>	<u>Page</u>
LOCAL GOVERNMENT	23
City.	23
County.	23
Assessed Value of Property, 1977.	23
Property Taxes.	23
Combined State and Local Rates Per \$100 Valuation, 1977.	24
Planning and Zoning	24
Safety.	24
Police	24
Fire	24
Rescue Service	25
Refuse Collection and Disposal.	25
EDUCATION.	26
Public Schools.	26
Nonpublic Schools	26
Area Colleges and Universities.	27
Vocational Schools.	27
HEALTH	29
Local Medical Personnel	29
Hospitals	29
Other Medical Facilities.	29
Ambulance Service	29
Public Health	29
OTHER LOCAL FACILITIES	30
Communications.	30
Library Services.	30
Religious Institutions.	31
Financial Institutions.	31
Hotels and Motels	31
Clubs and Organizations	32
RECREATION	33
COMMUNITY IMPROVEMENTS	35

1978 EDITION
GENERAL HIGHWAY MAP
ADAIR COUNTY
KENTUCKY

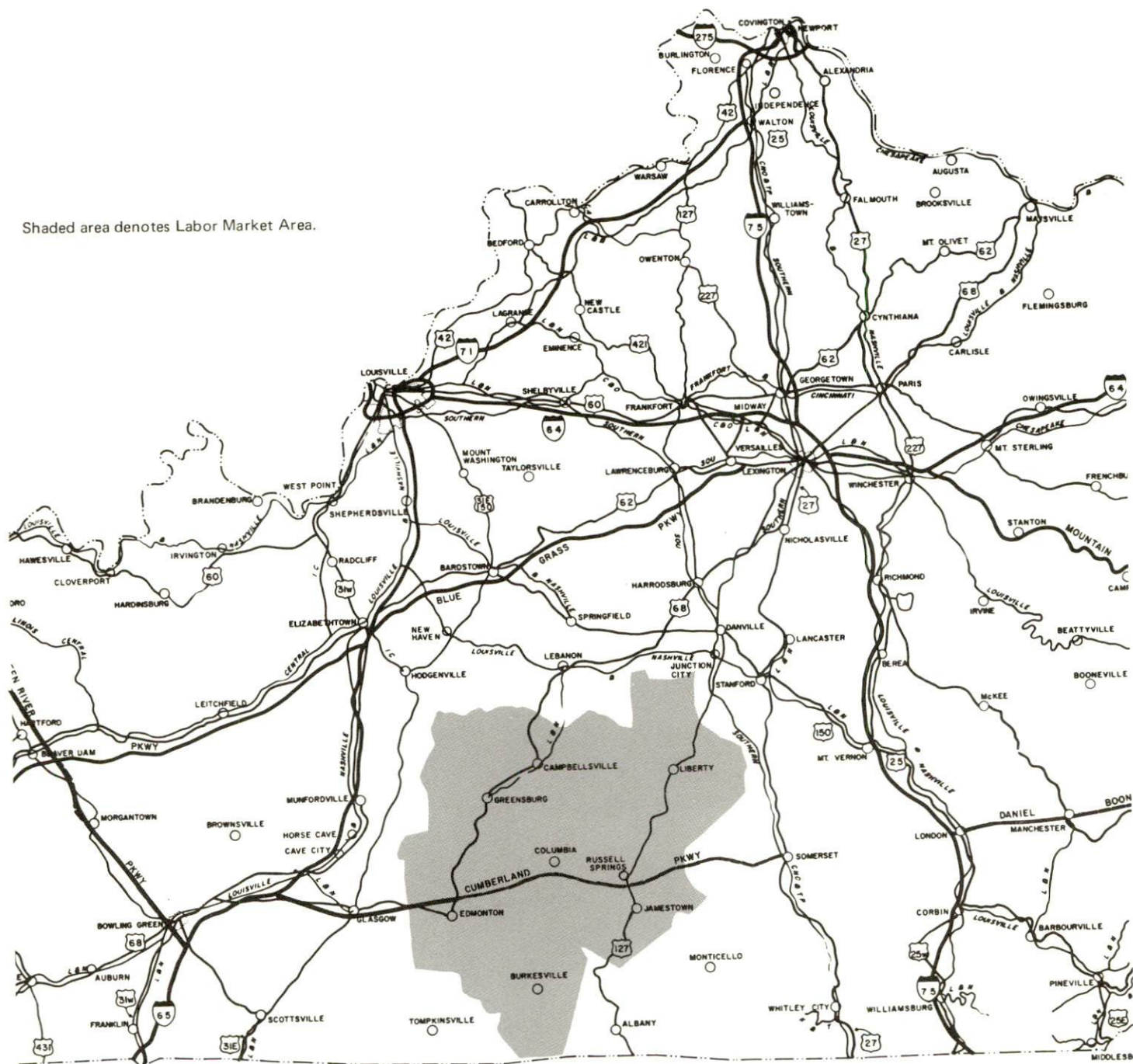
PREPARED BY THE
KENTUCKY DEPARTMENT OF TRANSPORTATION
OFFICE OF TRANSPORTATION PLANNING
DIVISION OF FACILITIES PLANNING
IN COOPERATION WITH THE
U.S. DEPARTMENT OF TRANSPORTATION
FEDERAL HIGHWAY ADMINISTRATION



COLUMBIA LABOR MARKET AREA

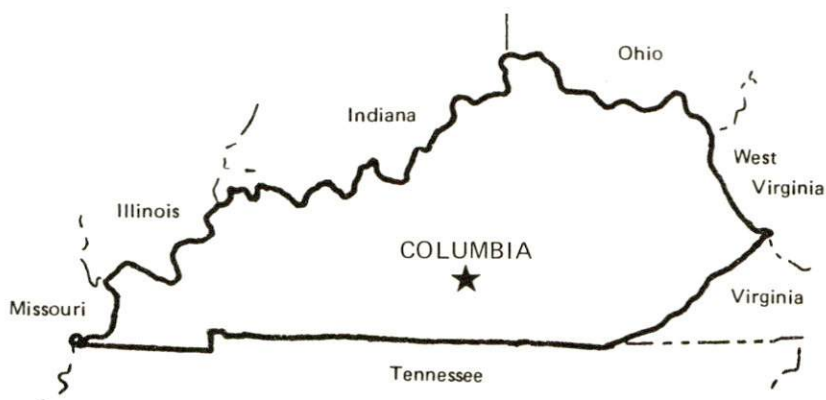


Shaded area denotes Labor Market Area.



SUMMARY OF INDUSTRIAL RESOURCES
COLUMBIA, KENTUCKY

LOCATION



Road Distance in Miles:

Atlanta	364	Baltimore	646
Chicago	424	Detroit	442
New York	<u>808</u>	St. Louis	<u>350</u>

POPULATION

City of Columbia, 1975	3,673
Adair County, 1976	<u>14,400</u>
Labor Market Area, 1976	<u>84,200</u>
% Nonwhite, Adair County, 1970	<u>4.6</u>

LABOR ANALYSIS

Labor Market Area - Adair, Casey, Cumberland, Green, Metcalfe, Russell and Taylor Counties

Estimated available workers from labor market area:

Male	<u>4,590</u>	Female	<u>3,990</u>
Unemployment rate, 1977		Labor Market Area	<u>4.7%</u>
Adair County	4.9%	Metcalfe County	5.1%
Casey County	<u>4.3%</u>	Russell County	<u>8.3%</u>
Cumberland County	4.5%	Taylor County	<u>3.8%</u>
Green County	<u>3.6%</u>		
Total employment, Adair County, 1977			<u>6,090</u>
Manufacturing employment in labor market area, 1977			<u>8,260</u>

Major local manufacturing plants:

<u>Name</u>	<u>Employment</u>
<u>Oshkosh B'Gosh, Inc.</u>	<u>275</u>
<u>The Daily Statesman, Waggener-Walker Newspapers</u>	<u>70</u>
<u>Lakeland Apparel</u>	<u>60</u>
<u>De Laval Turbine, Inc.</u>	<u>52</u>

Labor unions in local manufacturing plants:

United Garment Workers

TRANSPORTATION

Highways:

Interstate - I-65, 50 miles west of Columbia
Parkway - Cumberland Parkway

Rail:

Nearest railroad - Louisville and Nashville Railroad at Campbellsville,
19 miles distant; Distance to nearest piggyback - 37 miles

Truck:

Number of interstate motor carriers - 3; Terminals - None

Water:

Nearest public riverport - Louisville; Distance - 132 miles

Air:

Nearest commercial service - London-Corbin Airport
Distance - 80 miles; Airlines serving - Piedmont

Nearest local airport - Lu Dot Airport; Distance - 1.5 miles
Runway length - 2,100 feet

UTILITIES AND SERVICES

Electricity:

Local distributor - Kentucky Utilities Company
Source of power - Kentucky Utilities Company

Natural Gas:

Local distributor - Columbia Utilities Commission
Source of supply - Texas Eastern Transmission Corporation
Available for new industry - No

Other Fuels:

Number of propane distributors - 2
Number of distillate fuel oil distributors - 5

Water, treated:

Local supplier - Municipal: Excess municipal system capacity - 500,000 gpd; Expansions planned - No

Water, raw:

Source for industrial use - Russell Creek

Sewer:

Excess treatment capacity - 115,000 gpd; Planned expansions - Yes

Industrial Services:

	<u>Location</u>	<u>Miles Distant</u>
Tool & Die, Machine & Pattern Shops	<u>Horse Cave</u>	<u>53</u>
Metal Service Centers	<u>Bowling Green</u>	<u>71</u>
Heat Treating	<u>Richmond</u>	<u>99</u>
Metal Finishers	<u>Elizabethtown</u>	<u>90</u>
Electric Motor Repair	<u>Lebanon</u>	<u>39</u>
	<u>Somerset</u>	<u>42</u>

CLIMATE

Temperature, Normal - 59.7 degrees F.
Precipitation, Normal - 46.18 inches
Snowfall, Mean Annual - 12.2 inches
Prevailing winds - Northeast
Relative humidity (%) - 7 a.m. - 84; 7 p.m. - 62

GOVERNMENT

Type - Mayor-City Council
Police personnel - full-time - 8
Fire department personnel - volunteer - 18
Fire insurance rating (A.I.A.), class - Inside city - 7
Outside city - 10

TAXES

Property taxes:

Combined state and local rates per \$100 valuation, 1977
(100% assessment)

	<u>Inside City of Columbia</u>	<u>Outside City</u>
1. Land and buildings	\$1.057	\$0.707
2. Mfg. machinery, raw materials, goods in process, pollution control equipment	0.150	0.150
3. Finished goods, office equipment, vehicles, other tangibles	1.192	0.842
4. Intangibles (accounts rec., notes, bonds, etc.)	0.250	0.250
5. Leaseholds in I. R. bond financed plants	0.015	0.015

EDUCATION

Nearest state vocational-technical school - Somerset, 42 miles distant
Nearest area vocational educational center - Russell Springs, 13 miles distant
College or university - Lindsey Wilson Junior College

Public Schools:

High school enrollment - 784; Student/teacher ratio - 19-1
Elementary school enrollment - 2,083; Student/teacher ratio - 20-1

Nonpublic Schools:

Enrollment - 29; Student/teacher ratio - 29-1

FINANCIAL INSTITUTIONS

Banks - 2; Total assets - \$25,039,579.10
Savings & loan associations - 1; Total assets - \$62,228,178.52

COMMUNICATIONS

Local newspapers - 2; Daily - The Daily Reed Statesman
Weekly - Adair County News
Local radio station - WAIN. - AM-FM
Television reception - Cable service is available

MEDICAL

Number of physicians locally - 7 M.D.'s, 2 surgeons
Number of dentists locally - 4
Hospital - Adair Memorial Hospital
Number of beds - 36 (not including OB and nursery)

RELIGIOUS FACILITIES

Churches - 12; Nearest synagogues - Lexington, 105 miles distant

PUBLIC LODGING

Total number hotels and motels - 3; Total rooms - 45

RECREATION FACILITIES

Parks; Tennis courts; Swimming pools; Country club; Golf course

Nearest state park - Green River Lake State Park, 10 miles distant
Camping; Swimming; Fishing; Water skiing; Boating; Open year round

THE LABOR MARKET AREA

POPULATION			
Area	1976*	1970	Percent Nonwhite
			1970
Columbia	3,673**	3,234	9.9
Labor Market Area	84,200	79,024	N/A
Adair County	14,400	13,037	4.6
Casey County	14,000	12,930	0.3
Cumberland County	6,900	6,850	6.5
Green County	10,600	10,350	4.4
Metcalfe County	8,400	8,177	3.9
Russell County	11,900	10,542	0.8
Taylor County	18,000	17,138	6.3

*Provisional Estimates.

**1975 Population Estimates.

Sources: U. S. Department of Commerce, Bureau of the Census, Census of Population, 1970. U. S. Department of Commerce, Bureau of the Census, Current Population Reports, Series P-25, No. 665, May 1977; Series P-26, No. 76-17, July 1977.

LABOR FORCE CHARACTERISTICS OF RESIDENTS, 1977		
	Adair County	Labor Market Area
Civilian Labor Force	6,405	39,501
Employment	6,094	37,630
Agricultural	1,539	7,676
Nonagricultural	4,555	29,954
Unemployment	311	1,871
Rate of Unemployment (%)	4.9	4.7

Source: Kentucky Department for Human Resources, Kentucky Labor Force Estimates, Annual Averages, 1977.

COLUMBIA MANUFACTURING FIRMS,
THEIR PRODUCTS AND EMPLOYMENT

Firm (Establishment date)	Product	Employment			Organized
		Total	Male	Female	
Adair Cheese Company (1959)	Fluid milk	4	4	0	
Barnes Milling Company (1965)	Feed	7	5	2	
City Supply Company (1948)	Ready mixed concrete, concrete stock tanks	19	16	3	
The Daily Statesman, Waggener-Walker Newspapers (1968)	Offset printing, newspaper pub- lishing, job printing	70	18	52	
Day & Day Feed Mill (1960)	Feed	5	5	0	
DeLaval Turbine, Inc. (1973)	Hydraulic pumps	52	50	2	
R. E. Gaddie, Inc. (1938)	Plant mix asphalt	22	20	2	
Kentucky Tie and Lumber Company (1958)	Hardwood lumber, dimension material, pallet material	16	14	2	
Lakeland Apparel (1978)	Men's T-shirts, women's dresses	60	5	55	
M & W Milling Company, Inc. (1946)	Feed	5	4	1	
Morrison Lumber Company (1958)	Rough lumber, crossties, charcoal wood	26	25	1	
Oshkosh B'Gosh, Inc. (1964)	Work clothing, casual clothing	275	44	231	*
Roach Manufacturing Company (1940)	Tobacco spears and knives, truck body hardware	3	3	0	

(Contd.)

<u>Firm (Establishment date)</u>	<u>Product</u>	<u>Employment</u>			<u>Organized</u>
		<u>Total</u>	<u>Male</u>	<u>Female</u>	
W. H. Sandusky and Son, Inc. (1940)	Lumber	19	18	1	
Warner Fertilizer Company, Inc. (N/A)	Fertilizer	6	5	1	
Whitney & Whitney (1952)	Hardwood lumber, crossties, pallet lumber	17	17	0	

*See Labor Organizations below.

Source: Kentucky Department of Commerce, Division of Research and Planning.

LABOR ORGANIZATIONS

<u>Union</u>	<u>Representing manufacturing workers at:</u>
United Garment Workers of America, AFL-CIO	Oshkosh B'Gosh, Inc.

INDUSTRIAL SERVICES

	<u>Location</u>	<u>Miles Distant</u>
Tool & Die, Machine & Pattern Shops	Horse Cave	53
Metal Service Centers	Bowling Green	71
Heat Treating	Richmond	99
Metal Finishers	Elizabethtown	90
Electric Motor Repair	Lebanon	39
	Somerset	42

Source: Kentucky Directory of Selected Industrial Services, 1977.

ESTIMATED MALE LABOR SUPPLY
COLUMBIA LABOR MARKET AREA

Area	Current			Under- employed	Future
	Total	Not in Labor Force	Unemployed		Reaching 18 years of age before 1984
Labor Market Area	4,590	900	2,110	1,580	3,682
Adair	580	0	320	260	562
Casey	610	0	320	290	637
Cumberland	310	0	140	170	319
Green	430	0	290	140	481
Metcalfe	330	0	210	120	399
Russell	1,500	900	380	220	463
Taylor	830	0	450	380	821

Sources: Kentucky Department for Human Resources, Kentucky Labor Supply Estimates by County, 1976. Kentucky Department of Commerce, Future Labor Supply Before 1984.

ESTIMATED FEMALE LABOR SUPPLY
COLUMBIA LABOR MARKET AREA

Area	Current			Under- employed	Future
	Total	Not in Labor Force	Unemployed		Reaching 18 years of age before 1984
Labor Market Area	3,990	1,970	750	1,270	3,607
Adair	360	100	90	170	567
Casey	830	490	100	240	573
Cumberland	150	0	40	110	308
Green	410	160	90	160	431
Metcalfe	460	200	180	80	387
Russell	1,270	960	110	200	504
Taylor	510	60	140	310	837

Sources: Kentucky Department for Human Resources, Kentucky Labor Supply Estimates by County, 1976. Kentucky Department of Commerce, Future Labor Supply Before 1984.

AVERAGE WEEKLY WAGES BY INDUSTRY,
BY PLACE OF WORK, 1977

	<u>Adair County</u>	<u>Casey County</u>	<u>Cumberland County</u>	<u>Green County</u>
All Industries	\$120.04	\$109.75	\$106.88	\$142.90
Mining & Quarrying	175.68	0	*	*
Contract Construction	99.59	166.61	177.37	120.16
Manufacturing	115.77	98.02	102.44	165.86
Transportation, Communications & Public Utilities	144.86	198.50	117.03	262.61
Wholesale & Retail Trade	103.47	105.91	105.81	99.98
Finance, Insurance & Real Estate	180.03	146.55	129.71	153.71
Services	132.82	105.33	108.11	90.57
Other	*	0	*	100.73

	<u>Metcalfe County</u>	<u>Russell County</u>	<u>Taylor County</u>
All Industries	\$114.21	\$141.51	\$153.21
Mining & Quarrying	*	*	*
Contract Construction	109.62	*	157.44
Manufacturing	113.79	113.83	*
Transportation, Communications & Public Utilities	166.68	189.10	240.96
Wholesale & Retail Trade	101.37	95.15	109.20
Finance, Insurance & Real Estate	125.21	140.03	189.07
Services	138.30	101.52	118.73
Other	*	*	103.95

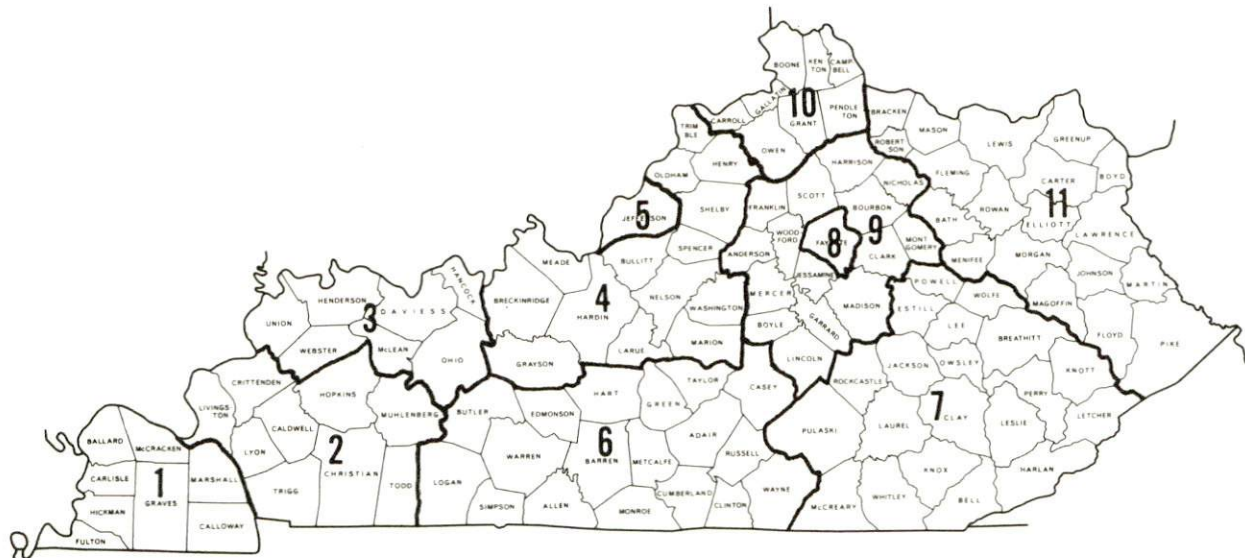
*Not disclosed.

Note: Excludes domestic workers, railway workers; certain nonprofit corporations; majority of federal, state, and local government workers; and self-employed workers.

Source: Kentucky Department for Human Resources, Average Weekly Wages of Workers Covered By Kentucky Unemployment Insurance Law, 1977.

Occupational wage rates for specific industries are usually not available to most government agencies, and wage data furnished to state employment agencies by individual industrial employers is protected from disclosure by federal law. The most reliable up-to-date wage information can be obtained by direct contact with local employers.

Associated Industries of Kentucky, a voluntary organization of Kentucky businesses, regularly collects occupational wage rates and fringe benefits data from participating member firms. Data is compiled for over 127 clearly defined office, production, and service occupations. Tabulations are published for eleven regions of Kentucky, as shown on the map below. It should be noted that the data may be weighted by the preponderance of firms in the larger cities and may be somewhat higher than the rates paid in the smaller communities. Data from these tabulations are available, upon request, from the Kentucky Department of Commerce, Frankfort, Kentucky 40601.



Associated Industries of Kentucky Area Wage Surveys

PER CAPITA PERSONAL INCOME

<u>Area</u>	<u>1976</u>	<u>1972</u>	<u>Percent Change</u>
Adair County	\$3,516	\$2,412	45.8
Labor Market Area Range	\$2,979 - 4,852	\$2,104 - 3,372	N/A
Kentucky	5,384	3,613	49.0
U. S.	6,396	4,493	42.4

Source: U. S. Department of Commerce, Bureau of Economic Analysis,
July 1978.

TRANSPORTATION

Rail

The nearest rail service is provided by the Louisville and Nashville Railroad and is located at Campbellsville, 19 miles north of Columbia.

Services - Local turnaround service Monday thru Friday; switching facilities; team track space available for 2 cars; L & N piggyback facilities are available at Glasgow, 37 miles west of Columbia, and at Louisville, 132 miles northwest of Columbia

For details on routing, schedules, rates, and services, contact:

Director of Industrial Development
Louisville and Nashville Railroad
908 West Broadway
Louisville, Kentucky 40201
(502) 587-5000

Highways

The Cumberland Parkway serves Columbia with an interchange just one mile south of the city. The Cumberland Parkway connects with Interstate 65 approximately 50 miles to the west. Other highways serving Columbia include Kentucky 80 and 55 which are "AAA" rated trucking highways and Kentucky 61 which is a "AA" rated trucking highway.

Truck Service

<u>Company</u>	<u>Home Office</u>
Central Motor Express, Inc.*	P. O. Drawer C Campbellsville, Kentucky 42718
Manning Motor Express, Inc.**	P. O. Box 685 Glasgow, Kentucky 42141
Sanders & Leigh Transfer Company***	P. O. Box 69 Liberty, Kentucky 42539
Smith's Transfer Corporation**	P. O. Box 1000 Staunton, Virginia 24401

(Contd.)

- *Interstate and Intrastate.
**Interstate only.
***Intrastate only.

Other Freight ServicesNearest Shipping Center or Home Office

United Parcel Service* Campbellsville, Kentucky
 Purolator Courier Corporation* Bowling Green, Kentucky
 KATO Express
 (air cargo service)** Elizabethtown, Kentucky

HIGHWAY MILES AND TRUCK TRANSIT TIME IN DAYS FROM
 COLUMBIA, KENTUCKY, TO SELECTED MARKET CENTERS

City	Highway Miles	Delivery		City	Highway Miles	Delivery	
		Time TL				Time TL	
Atlanta, Ga.	364	1		Los Angeles, Ca.	2,159	5	
Baltimore, Md.	646	3		Louisville, Ky.	132	1	
Birmingham, Ala.	330	1		Nashville, Tenn.	134	1	
Chicago, Ill.	424	1		New Orleans, La.	651	2	
Cincinnati, Ohio	183	1		New York, N. Y.	808	3	
Cleveland, Ohio	422	1		Pittsburgh, Pa.	448	2	
Detroit, Mich.	442	2		St. Louis, Mo.	350	1	
Knoxville, Tenn.	171	1					

Source: Delivery Time Only - Central Motor Express, Inc.,
 P. O. Drawer C, Campbellsville, Kentucky 42718.

*For regular scheduled pickups or for occasional pickups, arrangements must be made with the Louisville office of U.P.S. or Purolator Courier Corporation.

**Daily pickup and delivery service is available to and from Standiford Field in Louisville. Arrangements for service should be made through the home office in Elizabethtown.

Air

Local*

Location: Lu Dot Airport
1.5 miles southwest of Columbia
Runways: 1 turf
Length: 2,100 feet
Traffic
Control: Wind sock, tetrahedron
Lighting: Lights on request
Services: 80 octane, taxi and air charters
Air Freight
Service: Chartered air freight service must
be arranged

Nearest Commercial

Location: London-Corbin Airport (Magee Field)
3 miles south of London, Kentucky;
80 miles east of Columbia
Runways: 1 paved
Length: 6,000 feet
Traffic
Control: Wind sock and FSS advisory service
Lighting: Beacon, runway and obstruction lights
Services: Piedmont Airlines, 100 octane,
JP-A-50, taxi, car rental, weather,
flight training, charter and ambulance
service, vending machines
Air Freight
Service: Air freight accepted on a space
available basis

Bus - Southern Greyhound Bus Lines

Taxi - One taxi company, 24-hour service, 4 radio-equipped cabs

Rental Services - Bus rental service available. Car, truck, and
trailer rental services are available at
Campbellsville, 19 miles north of Columbia.

*A new Columbia-Adair County municipal airport with a 2,900-foot turf
runway is under construction and scheduled to be completed by
October 1, 1978.

POWER AND FUEL

Electricity

Company serving Columbia and parts of Adair County - Kentucky
Utilities Company
Source of power - Kentucky Utilities Company
Total generating capacity - 2,238,400 KW
For industrial rates contact:

Director of Industrial Development
Kentucky Utilities Company
120 South Limestone Street
Lexington, Kentucky 40507
(606) 255-1461

Company serving the major portion of Adair County - Taylor County
Rural Electric Cooperative Corporation
Source of power - East Kentucky Power Cooperative
Total generating capacity - 867,000 KW
For industrial rates contact:

Industrial Development Division
East Kentucky Power Cooperative
P. O. Box 707
Winchester, Kentucky 40391
(606) 744-4812

and/or

Taylor County RECC
West Main Street
P. O. Box 100
Campbellsville, Kentucky 42718
(502) 465-4101

Natural Gas

Company serving Columbia - Columbia Utilities Commission
Source of supply - Texas Eastern Transmission Corporation
Size of transmission mains - 36 inches (supplier)
3 inches (distributor)
Distribution mains - 1 through 4 inches
Distribution pressure - 7 to 19 psi
Btu content - 1,000 per cubic foot
Specific gravity - .60
For rates and supplies contact:

Columbia Utilities Commission
Municipal Building
Columbia, Kentucky 42728
(502) 384-2006

Other Fuels

Propane

Banks Gas Service
700 Russell Road
Columbia, Kentucky 42728

Williams Energy Company
Russell Road
Columbia, Kentucky 42728

Fuel oils

Distillate fuel oil -

Ashland Petroleum Company
East Highway 80
Columbia, Kentucky 42728

Chevron USA
706 Burkesville Road
Columbia, Kentucky 42728

B & G Oil Company
800 East Highway 80
Columbia, Kentucky 42728

Hill Oil Company
802 East Highway 80
Columbia, Kentucky 42728

Sexton Sun Oil Products
Sandusky Street
Columbia, Kentucky 42728

Residual fuel oil - Arrangements must be made with the refinery.

Low sulphur content coal - Available in Kentucky.

WATER AND SEWERAGE

Water

Company serving Columbia - Columbia Utilities Commission*
Municipal Building
Columbia, Kentucky 42728
(502) 384-2006

Source - Russell Creek

Treatment plant capacity - 1,000,000 gallons per day

Average daily consumption - 360,000 gallons

Peak daily consumption - 500,000 gallons

Type treatment - Sedimentation and filtration

Storage capacity - 1,049,000 gallons (including clearwell)

Size lines - 8, 6 and 4 inches

Average pressure - 45 psi

Average temperature - 45 degrees F.

MONTHLY WATER RATES FOR WHOLESALE AND INDUSTRIAL CONSUMERS

First	3,000 gallons	\$4.00 (Minimum Bill)
Next	7,000 gallons	.95 per M gallons
Next	10,000 gallons	.85 per M gallons
Next	10,000 gallons	.75 per M gallons
Next	10,000 gallons	.70 per M gallons
Next	10,000 gallons	.55 per M gallons
All over	50,000 gallons	.45 per M gallons

Tap-on charge:

5/8 x 3/4-inch meter	\$150
1-inch meter	200
1 1/2-inch meter	300
2-inch meter	400

*Construction of a 300,000-gallon tank was completed in 1977 and approximately 8,000 feet of 6-inch line has been laid in the last two years in several subdivisions.

Name of water district - Adair County Water District*
Adair County Courthouse
Columbia, Kentucky 42728
(502) 384-4096

Area served - Adair County

Date when water district began operating - June 1975

Source of supply of treated water - Columbia Utilities Commission

Average amount of water used in a 24-hour period - 9,437 gallons

Peak amount of water used in a 24-hour period - 13,320 gallons

Storage capacity - 165,000 gallons

Average pressure - 60 to 65 psi

Average temperature - 58 degrees F.

Size lines - 8, 6 and 4 inches

Rates - See following page

*Approximately 54 miles of water mains are under construction. Four new standpipes at 65,000 gallons each and four new pumping stations are being constructed.

MONTHLY RATES

5/8-inch x 3/4-inch Meter

First	2,000 gallons	\$ 7.50 Minimum Bill
Next	3,000 gallons	2.60 per M gallons
Next	5,000 gallons	2.30 per M gallons
Next	15,000 gallons	2.00 per M gallons
Over	25,000 gallons	1.30 per M gallons

3/4-inch Meter

First	3,000 gallons	\$10.10 Minimum Bill
Next	2,000 gallons	2.60 per M gallons
Next	5,000 gallons	2.30 per M gallons
Next	15,000 gallons	2.00 per M gallons
Over	25,000 gallons	1.30 per M gallons

1-inch Meter

First	5,000 gallons	\$15.30 Minimum Bill
Next	5,000 gallons	2.30 per M gallons
Next	15,000 gallons	2.00 per M gallons
Over	25,000 gallons	1.30 per M gallons

1 1/2-inch Meter

First	10,000 gallons	\$26.80 Minimum Bill
Next	15,000 gallons	2.00 per M gallons
Over	25,000 gallons	1.30 per M gallons

2-inch Meter

First	16,000 gallons	\$38.80 Minimum Bill
Next	9,000 gallons	2.00 per M gallons
Over	25,000 gallons	1.30 per M gallons

Tap-on charges:

5/8-inch x 3/4-inch Meter	\$250
3/4-inch Meter	250
1-inch Meter	300
1 1/2-inch Meter	450
2-inch Meter	700

Surface water sources - Russell Creek

Average discharge - Russell Creek near Columbia, 285 cfs, (37 years, USGS)

Expected ground water yield - 5 to 50 gpm in the larger portion of central Adair County (east to west), 5 gpm or less through remainder of county.

Sewerage

Company serving Columbia - Columbia Utilities Commission*
Municipal Building
Columbia, Kentucky 42728
(502) 384-2006

Design capacity - 395,000 gallons per day

Average daily flow - 280,000 gallons

Treatment - Secondary

Type treatment - Extended aeration

Treated effluent discharged into - Russell Creek

Size of sanitary mains - 10, 8 and 6 inches

Rates - 75 percent of monthly water bill

Tap-on charge: \$100

*Columbia Utilities Commission has recently completed 4,500 feet of 8-inch sewer mains, and 30,000 feet of 8- and 10-inch sewer mains are near completion. Plans are underway to construct a new 600,000-gallon per day sewage treatment plant.

CLIMATE

Adair County

Temperature

Normal (30-year record)	59.7 degrees
Average annual 1977	59.6 degrees
Record highest, September, 1954 (36-year record)	103 degrees
Record lowest, January, 1966 (36-year record)	-9 degrees
Normal heating degree days (30-year record) (Heating degree day totals are the sums of negative departures of average daily temperatures from 65 degrees F.)	3,478

Precipitation

Normal (30-year record)	46.18 inches
Mean annual snowfall (34-year record)	12.20 inches
Total precipitation 1977	50.93 inches
Mean number days precipitation (.01 inch or more) (35-year record)	128
Mean number days thunderstorms (35-year record)	48

Prevailing Winds (14-year record)

Northeast

Relative Humidity (17-year record)

1 a.m.	79 percent
7 a.m.	84 percent
1 p.m.	59 percent
7 p.m.	62 percent

Source: U.S. Department of Commerce, Environmental Science Services
Administration, Climatological Data, 1977. Station of record:
Knoxville, Tennessee.

LOCAL GOVERNMENT

City

Structure - Mayor - 4-year term; 6 councilmen - 2-year terms
Budget 1977 - General Fund \$201,559.49
 Water, Gas, and Sewer Fund 446,009.00
Fees and licenses - Occupational license fees range from \$10 to \$40,
depending on the type of business

County

Structure - County Judge/Executive - 4-year term;
7 magistrates - 4-year terms
Budget 1977-78 - General Fund \$219,341; Road Fund \$87,230

Assessed Value of Property, 1977

<u>Classes of Property</u>	<u>Columbia</u>	<u>Adair County</u>
Real Estate	\$20,687,815	\$88,006,385
Tangibles	6,369,589	18,175,607

Property Taxes

All property in Kentucky is assessed at 100 percent of fair cash value.

Land and buildings are taxed by the state and may be taxed by local jurisdictions. The state rate is \$0.315 per \$100 of assessed valuation.

Manufacturing machinery, raw materials inventories, pollution control equipment, and goods in the process of manufacture are not subject to local taxation. The state rate is \$0.15 per \$100.

Other tangible personal property owned by manufacturers (automobiles, trucks, finished goods, office furniture, office equipment) is taxed by the state at \$0.45 per \$100 and may be taxed by local jurisdictions.

Property stored in public warehouses in a transit status is not subject to local taxation. The state rate is only \$0.015 per \$100.

Intangible personal property located in Kentucky (money in hand, shares of stock, notes, bonds, accounts receivable, and other credits) is taxed by the state at \$0.25 per \$100, and is not subject to local taxation.

Private leaseholds in industrial facilities owned by cities or counties and financed by industrial revenue bonds are subject to a state tax of \$0.015 per \$100 of value (essentially the lessee's equity, adjusted for appreciation or depreciation). Local taxation is not permitted.

Combined State and Local Rates Per \$100 Valuation, 1977*
(100% assessment)

	<u>Inside City of Columbia</u>	<u>Outside City</u>
1. Land and buildings	\$1.057	\$0.707
2. Mfg. machinery, raw materials, goods in process, pollution control equipment	0.150	0.150
3. Finished goods, office equipment, vehicles, other tangibles	1.192	0.842
4. Intangibles (accounts rec., notes, bonds, etc.)	0.250	0.250
5. Leaseholds in I. R. bond financed plants	0.015	0.015

Planning and Zoning

A joint city/county planning commission was formed in 1972 and a comprehensive plan was adopted in 1973; however, the planning commission is inactive at the present time.

Mandatory state codes enforced - Plumbing, National Fire Protection Association Code, National Building Code (for major buildings and residential construction containing more than 12 bedrooms per building)

Safety

<u>Police</u>	<u>Columbia</u>	<u>Adair County</u>
Total staff	8	3
Radio-patrol cars	2	3

Fire

American Insurance Association Fire Rating	7	10
Volunteers	18	18

*Kentucky Department of Commerce.

Rescue Service

Adair County Unit of Disaster and Emergency Services, Kentucky

Association of Rescue Squads:

Number of volunteers - 80

Equipment - 1 panel truck, 1 ambulance-personnel carrier, 1 heavy duty truck, 2 pickup trucks, portable kitchen, 3 boats, air pumps, scuba equipment for 7 people, two-way radio system, emergency equipment including porta-power, cutting equipment for wood and metal, first aid supplies, resuscitators, winches, dragging equipment, rope, axes, shovels, tools, stretchers, blankets, emergency lighting equipment, severe weather shelter, and other necessary rescue equipment

Personnel training - Disaster and emergency training, first aid, Red Cross scuba diving certification class, hazardous materials training

Refuse Collection and Disposal

Columbia

Type service	Municipal
Fee charged:	
residential	\$2 per month
business	Varies according to volume
industrial	Varies according to volume
Collection frequency:	
residential	Weekly
business	On request
industrial	On request
Trash pickup	As required
Disposal method	City sanitary landfill

EDUCATION

Public Schools

Adair County

Total Enrollment (May, 1978)	2,867
Elementary	2,083
High School	784
Student-Teacher Ratio	20-1
Elementary	20-1
High School	19-1
Percent High School Graduates to College	43.6
Expenditures Per Pupil (1976-77)	\$741
Bonded Indebtedness, June 30, 1977	\$1,376,000

Nonpublic Schools

Lindsey Wilson Training School

Total Enrollment	29
Elementary	29
Student-Teacher Ratio	29-1
Elementary	29-1

Area Colleges and Universities

<u>Name</u>	<u>Location (Miles distant)</u>	<u>Enrollment (Fall, 1977)</u>	<u>Highest Degree Conferred</u>
Lindsey Wilson Junior College	Columbia	371	Associate
Campbellsville College	Campbellsville (19)	691	Baccalaureate
Somerset Community College	Somerset (42)	775	Associate
St. Catherine College	St. Catherine (50)	161	Associate
Centre College	Danville (57)	782	Baccalaureate
Elizabethtown Community College	Elizabethtown (61)	1,548	Associate
Western Kentucky University	Bowling Green (71)	13,490	Masters, Ph.D.*

Vocational Schools

	<u>Nearest State School</u>
Location	Somerset State Vocational-Technical School
Miles Distant	Somerset 42
Curriculum	Business and Office Accounting-Jr. Management Clerical Data Processing Secretarial Health and Personal Service Occupations Health Careers Industrial Education Aircraft Maintenance Technician Appliance Repair Auto Body Repair Auto Mechanics Diesel Mechanics Drafting Electronics Graphic Arts (Printing) Machinist Welding Public Service Programs Fire Service Training Learning Resource Center

*Cooperative program with the University of Kentucky, Lexington, for a Ph.D. in education only.

Nearest Area Education Center

Location	Russell County Area Vocational Education Center
Miles Distant	Russell Springs
Curriculum	13
	Health and Personal Service Occupations
	Health Careers
	Industrial Education
	Auto Mechanics
	Carpentry
	Industrial Electricity
	Welding

Arrangements can be made to provide training in the specific production skills required by an industrial plant. Instruction may be conducted either in the vocational school or in the industrial plant, depending upon the desired arrangement and the availability of special equipment.

HEALTH

Local Medical Personnel

Physicians - 7 medical doctors, 2 surgeons
Dentists - 4

Hospitals

<u>General Hospital</u>	<u>Location</u>	<u>Beds</u>
Adair Memorial Hospital	Columbia	36 (not including OB and nursery)

General hospital facilities - Operating room, delivery room, two emergency rooms, nursery, OB, X-ray and laboratory

Medical staff - 11 doctors (active staff), including a radiologist and 2 surgeons; 4 dentists; 7 doctors (courtesy staff); 17 registered nurses; 10 licensed practical nurses; 4 X-ray technologists; 6 laboratory technicians; and 1 laboratory aide

Other Medical Facilities

Lake Cumberland Comprehensive Care Center

Ambulance Service

Name - Adair County Ambulance Service, Division of Lake Cumberland Emergency Medical Services System, Inc.

Staff - 12

Service - 24-hour service, county wide (ten-county area also served when needed)

Equipment - 4 fully equipped ambulances with 3 radio equipped

Public Health

Facility - Adair County Health Department

Staff - 1 health environmentalist, 1 registered nurse (full time), 1 registered nurse (part time), 2 clerks

OTHER LOCAL FACILITIES

Communications

Telephone - General Telephone Company
Services - Standard

Postal - U. S. Post Office
Class - First
Mail received - Once daily
Mail dispatched - Once daily

Newspapers -
Daily and circulation - The Daily Reed Statesman - 3,055
Weekly and circulation - Adair County News - 2,420
Other papers
received from - Louisville, Lexington, Campbellsville and
Russell Springs, Kentucky

Radio - WAIN AM-FM
Stations received from - Louisville and Lexington, Kentucky;
Nashville, Tennessee

Television -
Cable service
Reception from - Louisville, Lexington and Bowling Green, Kentucky;
Nashville, Tennessee
Kentucky Educational
Television - Elizabethtown transmitter, Channel 9

Library Services

Public library - Adair County Public Library
Size collection - 34,603 volumes
Circulation, 1976-77 - 104,367
Services - Story hours; telephone reference services; services to
shut-ins, blind and handicapped; general reading lists (special
subjects upon request); bookmobile; reading guidance and reference
assistance; research center; audiovisual equipment, films, records,
filmstrips; community, state, and national interagency referral;
special program (summer reading and other programs); games; framed
prints; special programs presented for organizations upon request;
tours for groups; program planning based on community resources;
service to local hospitals and convalescent homes; copying service
(minimum fee)

College library - Katie Murrell Library, Lindsey Wilson Junior College
Size collection - 18,897 volumes
Services - Periodicals, books and other publications such as catalogs;
audiovisual equipment; phonographic records; telephone reference
services; reading guidance and reference assistance; general
reading list; reference work

Religious Institutions

Number of Churches - 12
Denominations - Assembly of God
Baptist
Catholic
Christian
Church of Christ
Church of God
Nazarene
Methodist
Presbyterian
Seventh Day Adventist

Nearest Synagogues - Lexington, 105 miles distant
Congregations - Adath Israel (reform)
Ohavey Zion (traditional)

Financial Institutions

<u>Banks</u>	<u>Assets</u>	<u>Deposits</u>	<u>Statement Date</u>
Bank of Columbia	\$15,054,579.10	\$13,258,434.25	12/31/77
First National Bank	9,985,000.00	8,705,000.00	3/31/78
<u>Savings and Loan Associations</u>	<u>Assets</u>	<u>Savings Accounts</u>	<u>Statement Date</u>
First Federal Savings and Loan Association*	\$62,228,178.52	\$54,518,573.92	12/31/77

Hotels and Motels

Total number - 3
Total units - 45

*Branch of First Federal Savings and Loan Association located in Campbellsville.

Clubs and Organizations

Business and Civic - Columbia-Adair County Chamber of Commerce, Retail Merchants Association, Adair County Jaycees, Kiwanis, Lions, Rotary, Medical Society, Dental Society, Ministerial Association, Business and Professional Women's Club, Adair County Heritage Association, Adair County Historical Society, Adair County Development Committee

Fraternal - American Legion, Masonic Lodge, Veterans of Foreign Wars

Women's - Woman's Club, Daughters of the American Revolution, Eastern Star, Homemakers

Youth - Boy Scouts, Girl Scouts, Cub Scouts, FFA, FHA, 4-H, FTA, Beta Club, Key Club, Little League, Pony League

Other - NAACP, Sportsman Club, Farm Bureau

RECREATION

Local

Columbia offers a variety of recreational activities. Public facilities available include a park, softball diamond, tennis courts, and a playground. A swimming pool, basketball courts, tennis courts, softball diamond and a playground are located at the fairgrounds. Improvement of the facilities at the fairgrounds is underway at this time. A football field and track are available at Adair County High School. A private country club provides a golf course and swimming pool to residents of Columbia. One indoor and one outdoor movie theater are located in or near Columbia.

Area (Within 50 miles)

Green River Lake State Park, 10 miles distant, is 1,300 acres on lake shore. Park recreational activities include camping, boating, fishing, swimming and a picnic area.

Lake Cumberland State Resort Park is located 22 miles southeast of Columbia. Lake Cumberland covers 50,250 acres in south central Kentucky and has 1,200 miles of shoreline. The park features a lodge, dining room, cottages, Olympic and resort pools, tennis, horseback riding, 9-hole par 3 golf, miniature golf, fishing, picnic area, playground, and multi-purpose convention center.

Forty miles south of Columbia, Dale Hollow Lake State Park, Kentucky's largest state park, is situated on 3,497 lakeside acres and offers a swimming pool, marina, camping, and picnic areas. The 27,700-acre lake is prime scenic and fishing waters shared by southern Kentucky and northern Tennessee.

Barren River Lake State Resort Park is located near Glasgow, 44 miles southwest of Columbia. The park is situated on the 10,000-acre lake, and features a lodge, dining room, cottages, camping, swimming pool, riding stables, fishing, tennis, and 9-hole par 3 golf course.

The Old Mulkey Meeting House, near Tompkinsville, 47 miles to the south, is Kentucky's oldest log church. A 63-acre park provides a playground and picnic area.

(Contd.)

Abraham Lincoln Birthplace National Historic Site is located south of Hodgenville, 49 miles from Columbia. The site includes the original Lincoln farm, visitors center with exhibits on the Lincoln family, an audio-visual program, a limestone spring, a 300-year old Boundary Oak, hiking trails and picnic area.

General Burnside State Park is located 50 miles east of Columbia on Chandler Island in Lake Cumberland. This 400-acre park offers camping, fishing, picnicking, a playground, and an 18-hole golf course.

COMMUNITY IMPROVEMENTS

Recent:

Several new businesses have come into Columbia in the last two years while many existing firms have remodeled.

One of the most prominent improvements is the Adair County Courthouse which was completed in July 1977. Two additional offices, another courtroom, and an elevator have been added and the existing offices have all been remodeled. A central heating and air conditioning system was also installed.

A new rescue squad building has been constructed at an approximate cost of \$10,000 and a great amount of donated labor. The building is being used for meetings and to store equipment. It is also an emergency shelter.

Construction of a 300,000-gallon water tank was completed in 1977, and approximately 8,000 feet of 6-inch water line has been laid in the past two years.

The Adair County School System has completed construction of a new Raymond Lacy Music Building which will be ready for use in the fall of 1978.

Underway:

Adair County Water District has approximately 54 miles of water mains under construction. Four new standpipes at 65,000 gallons each and four new pumping stations are also being constructed.

A new Columbia-Adair County municipal airport with a 2,900-foot turf runway is under construction and is scheduled to be completed by October 1, 1978. The approximate cost is to be \$165,000.

Planned:

Columbia Utilities Commission is planning to construct a new 600,000 gallon per day sewage treatment plant.

Plans are underway to build a new 65-bed hospital (West Lake Cumberland Hospital) on 25 acres of land purchased from Lindsey Wilson Junior College. The approximate cost of the facility is \$5.5 million. Bids are to be let in the summer of 1978.