

1976

Industrial Resources: Allen County, Kentucky

Kentucky Library Research Collections
Western Kentucky University, spcol@wku.edu

Follow this and additional works at: https://digitalcommons.wku.edu/allen_cty

 Part of the [Business Administration, Management, and Operations Commons](#), [Growth and Development Commons](#), and the [Infrastructure Commons](#)

Recommended Citation

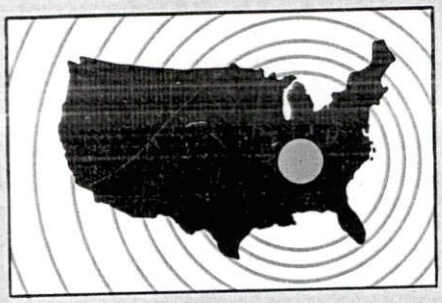
Kentucky Library Research Collections, "Industrial Resources: Allen County, Kentucky" (1976). *Allen County*. Paper 10.
https://digitalcommons.wku.edu/allen_cty/10

This Report is brought to you for free and open access by TopSCHOLAR®. It has been accepted for inclusion in Allen County by an authorized administrator of TopSCHOLAR®. For more information, please contact topscholar@wku.edu.

INDUSTRIAL RESOURCES

Scottsville

**Kentucky
first**

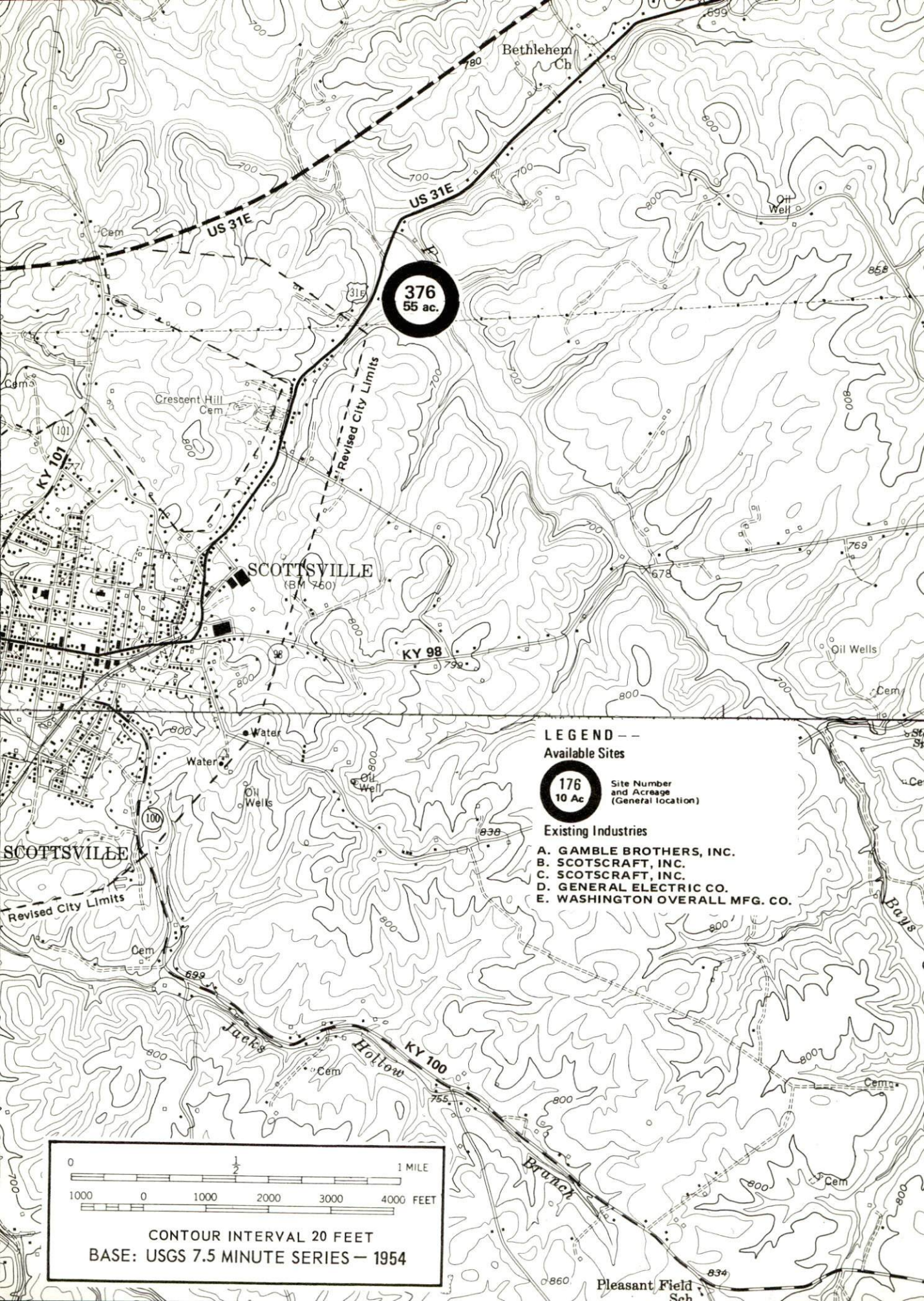


DEPARTMENT OF COMMERCE

SCOTTSVILLE, KENTUCKY --- Index to Industrial Sites --- 1976

For detailed data on individual sites, contact Mr. T. W. Crowe, President, Scottsville-Allen County Industrial Foundation, 201 N. Court Street, Scottsville, Kentucky 42164, or the Industrial Development Division, Kentucky Department of Commerce, Capital Plaza Tower, Frankfort, Kentucky 40601.





376
55 ac.

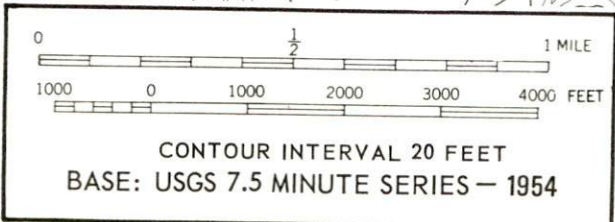
LEGEND --
Available Sites

176
10 Ac

Site Number
and Acreage
(General location)

Existing Industries

- A. GAMBLE BROTHERS, INC.
- B. SCOTSCRAFT, INC.
- C. SCOTSCRAFT, INC.
- D. GENERAL ELECTRIC CO.
- E. WASHINGTON OVERALL MFG. CO.



INDUSTRIAL RESOURCES
SCOTTSVILLE, KENTUCKY

Prepared by
The Kentucky Department of Commerce
Division of Research and Planning
in cooperation with
The Scottsville-Allen County Chamber of Commerce

1976

TABLE OF CONTENTS

<u>Chapter</u>	<u>Page</u>
INDUSTRIAL SITES	i
SCOTTSVILLE, KENTUCKY - A RESOURCE PROFILE	1
THE LABOR MARKET AREA	3
Population	3
General Employment Characteristics, 1974	3
Manufacturing Employment by Industry	4
Allen County Manufacturing Firms, Their Products and Employment	4
Labor Organizations.	5
Estimated Male Labor Supply.	7
Estimated Female Labor Supply	7
Wages	8
Per Capita Personal Income	9
TRANSPORTATION	10
Rail	10
Highways	10
Truck Service	10
Air	12
Bus	12
Taxi.	12
Rental Services.	12
POWER AND FUEL	13
Electricity	13
Natural Gas	13
Other Fuels	14
WATER AND SEWERAGE	16
Water	16
Sewerage	17
CLIMATE	18

<u>Chapter</u>	<u>Page</u>
LOCAL GOVERNMENT19
City19
County19
Assessed Value of Property19
Property Taxes19
Local Property Tax Rate Per \$100 of	
Assessed Valuation, 197520
Planning and Zoning20
Safety20
Police20
Fire20
Rescue Service20
Solid Waste21
EDUCATION23
Public Schools23
Area Colleges and Universities24
Vocational Schools25
HEALTH26
Hospitals26
Ambulance Service26
Nursing Homes26
Public Health26
OTHER LOCAL FACILITIES27
Communications27
Library Services27
Religious Institutions27
Financial Institutions28
Hotels and Motels28
Clubs and Organizations28
RECREATION30
COMMUNITY IMPROVEMENTS31
HISTORY33

Dept. of Com.

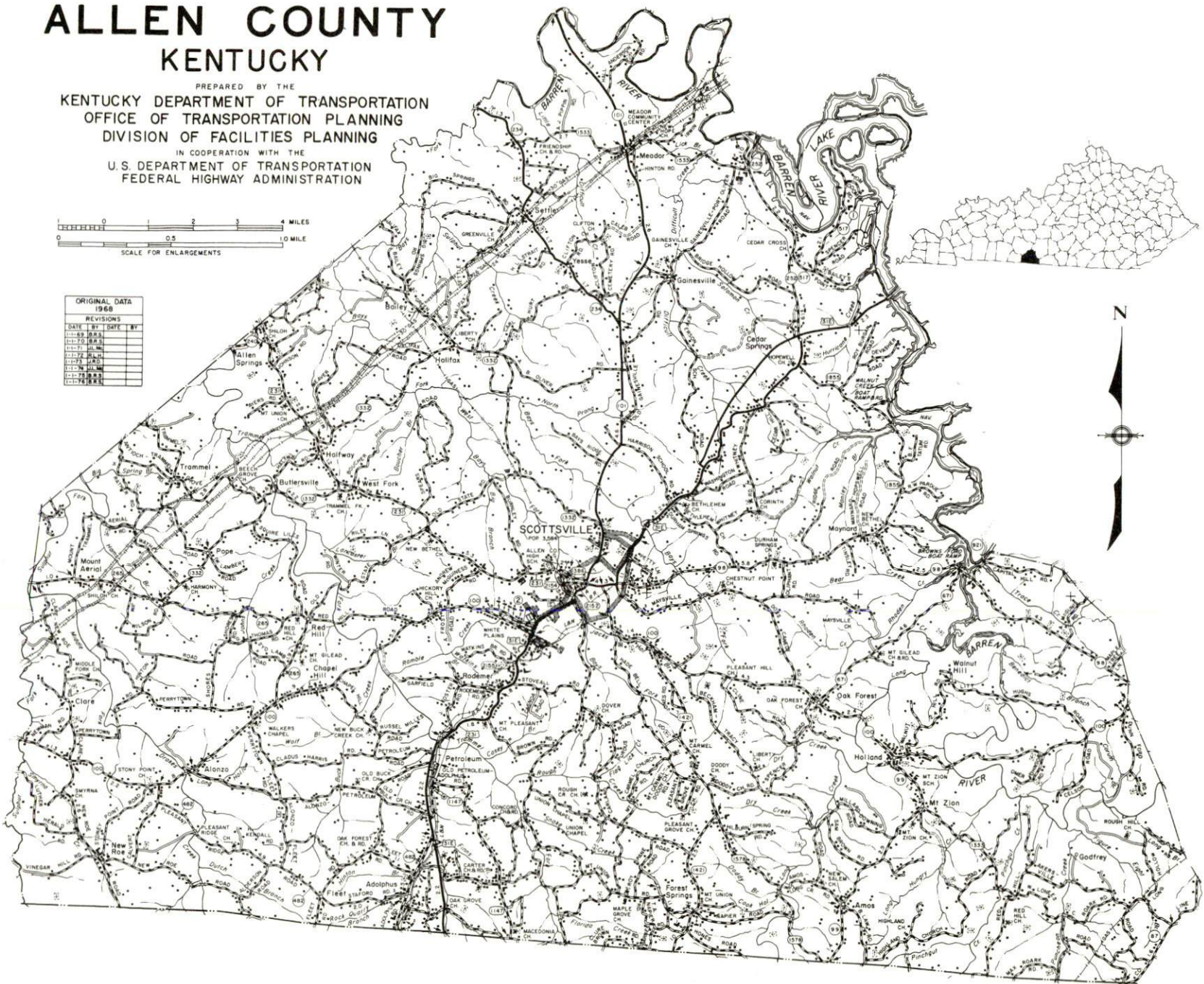
1-25-77

GENERAL HIGHWAY MAP ALLEN COUNTY KENTUCKY

PREPARED BY THE
 KENTUCKY DEPARTMENT OF TRANSPORTATION
 OFFICE OF TRANSPORTATION PLANNING
 DIVISION OF FACILITIES PLANNING
 IN COOPERATION WITH THE
 U.S. DEPARTMENT OF TRANSPORTATION
 FEDERAL HIGHWAY ADMINISTRATION



ORIGINAL DATA	
1968	
REVISIONS	
DATE	BY
11-1-68	JKS
11-1-68	JKS
11-1-68	JKS
11-1-68	JKS
11-1-68	JKS
11-1-68	JKS
11-1-68	JKS
11-1-68	JKS
11-1-68	JKS
11-1-68	JKS



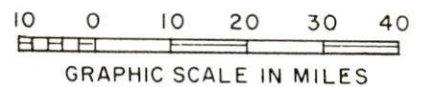
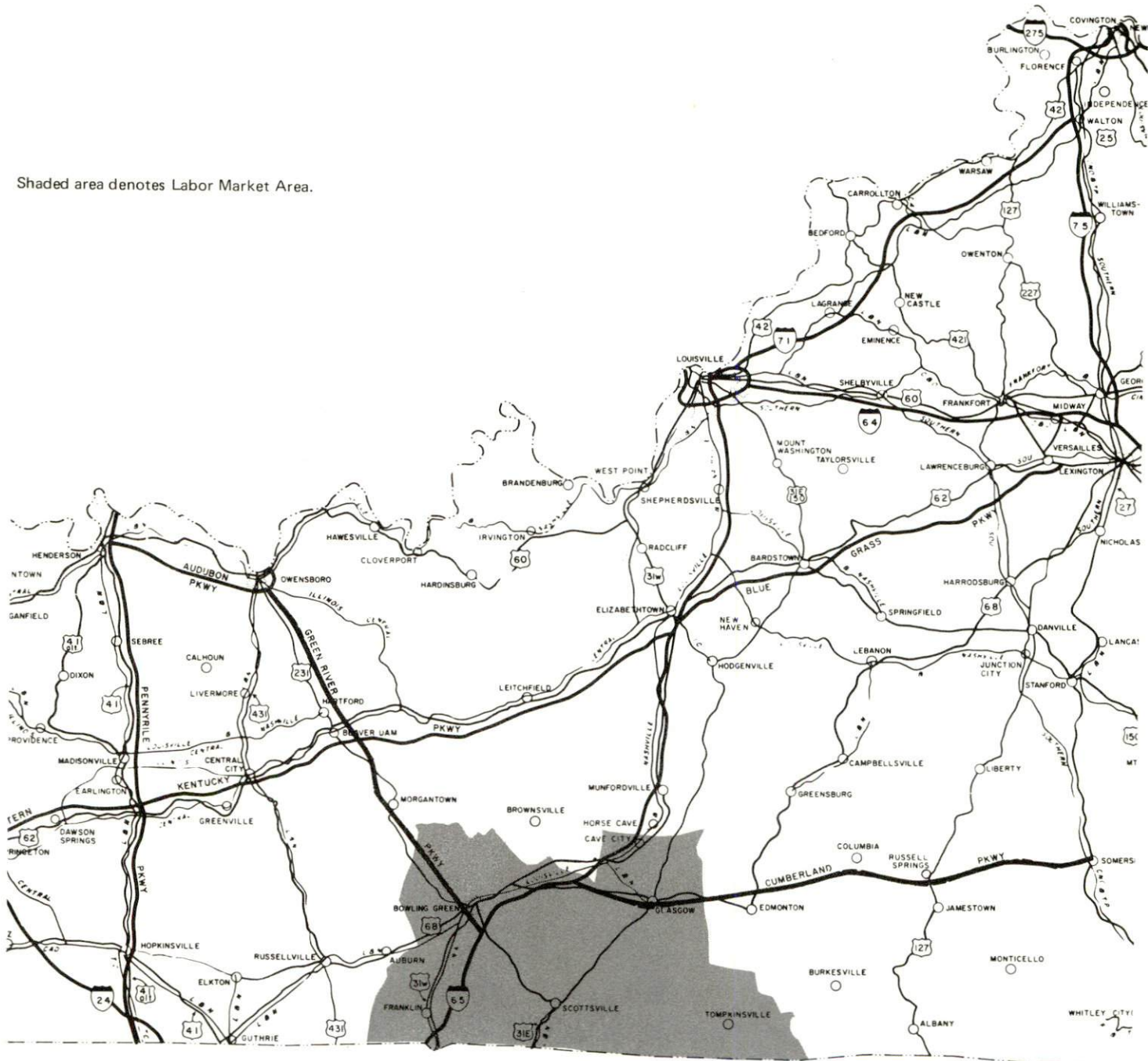


AERIAL VIEW OF SCOTTSVILLE, KENTUCKY

SCOTTSVILLE LABOR MARKET AREA



Shaded area denotes Labor Market Area.



SCOTTSVILLE, KENTUCKY - A RESOURCE PROFILE

Scottsville, the county seat of Allen County, is situated in south central Kentucky and lies only 10 miles from the Kentucky-Tennessee border. Scottsville is 137 miles from Louisville, Kentucky; 52 miles from Nashville, Tennessee; and 238 miles from Cincinnati, Ohio. In 1973, Scottsville had an estimated population of 3,492.

Allen County, with a land area of 351 square miles, is bound on the south by the Kentucky-Tennessee state line, on the west by Simpson County, on the north by Warren and Barren Counties, and on the east by Monroe County. In 1975, Allen County had an estimated population of 13,600.

The Economic Framework

The total number of Allen County residents employed in 1974 averaged 6,185, including 1,020 in agriculture and 570 in government. Manufacturing employers in the county reported 1,140 workers; trade and services firms employed 1,025. Major industrial products are: hermetic motor parts, drapery hardware and accessories, men's and boys' trousers, ladies' and girls' blouses, knit shirts, lumber, pallet stock, and furniture dimension. Dollar General Stores, with headquarters in Scottsville, provides approximately 225 jobs in Allen County.

Total unemployment in Allen County averaged 5.1 percent of the labor force in 1974.

Per capita personal income in the county in 1974 was \$3,278, an increase of 48 percent since 1970.

The Scottsville labor market area includes Allen, the four adjoining Kentucky counties, and Sumner and Macon Counties in Tennessee. The total number of residents in the Kentucky portion of the labor market area employed in 1974 averaged 63,395, including 7,140 in agriculture and 7,975 in government. Manufacturing employers in the Kentucky portion of the labor market area reported 17,420 workers; trade and services firms employed 16,070.

Resources for Growth

1. Labor Supply - There is a current estimated labor supply of 5,650 men and 5,070 women available for industrial jobs in the Kentucky portion of the labor market area. In addition, 6,010 young men and 5,640

young women in this area will become 18 years of age by 1982 and potentially available for work. The current labor supply would be supplemented by the number of men and women in the adjoining Tennessee counties who are available for industrial jobs.

2. Transportation - Scottsville is served by the Louisville and Nashville Railroad Company. Highway access to the city is by U. S. 231, U. S. 31-E and Kentucky Highways 101, 98, and 100. Interstate 65 is 21 miles from Scottsville via U. S. 231. A Cumberland Parkway interchange is located 23 miles north of Scottsville. The city is served by six truck lines. The nearest commercial airport is located at Nashville, Tennessee, 52 miles away. A commuter air carrier serves the Bowling Green-Warren County Airport, 23 miles away.

3. Utilities and Fuel - Scottsville is served electric power by the Tri-County Electric Membership Corporation, whose source of supply is the Tennessee Valley Authority. Natural gas service is provided to Scottsville by the Scottsville Gas Department, whose source of supply is Texas Gas Transmission Corporation. There are seven propane distributors and nine distillate fuel oil distributors serving the area.

4. Education - One public school system, the Allen County School System, serves the residents of Allen County. The Allen County Area Vocational Education Center is located in Scottsville and offers training in five vocational areas. The nearest state vocational-technical school, located at Bowling Green, 23 miles away, offers training in twenty-one vocational areas. Ten institutions of higher learning are located within 65 miles of Scottsville, including Western Kentucky University at Bowling Green, 23 miles away.

THE LABOR MARKET AREA

POPULATION

<u>Area</u>	<u>POPULATION</u>		<u>Percent Nonwhite</u>
	<u>1975*</u>	<u>1970</u>	<u>1970</u>
Scottsville	3,492**	3,584	5.7
Labor Market Area	132,900	123,855	
Allen County	13,600	12,598	2.1
Barren County	30,700	28,677	6.3
Monroe County	12,100	11,642	3.5
Simpson County	14,100	13,054	12.4
Warren County	62,400	57,884	8.6

*Provisional Estimates.

**1973 Population Estimates.

Sources: U. S. Department of Commerce, Bureau of the Census, Census of Population, 1970. U. S. Department of Commerce, Bureau of the Census, Current Population Reports, Series P-25, No. 562, June 1975; Series P-26, No. 75-17, May 1976.

GENERAL EMPLOYMENT CHARACTERISTICS, 1974

<u>Major Employment Group</u>	<u>Employment by Place of Residence of Workers</u>	
	<u>Allen County</u>	<u>Labor Market Area</u>
	Total Employment	6,185
Agriculture	1,022	7,140
Government	574	7,975
	<u>Employment by Location of Jobs</u>	
	<u>Allen County</u>	<u>Labor Market Area</u>
Manufacturing	1,140	17,422
Trade and Services	1,025	16,066

Source: Kentucky Department for Human Resources, Bureau for Administration and Operations.

MANUFACTURING EMPLOYMENT BY INDUSTRY
SEPTEMBER 1975

<u>Industry</u>	<u>Allen County</u>	<u>Labor Market Area</u>
TOTAL	1,048	15,358
Food & Kindred Products	18	808
Tobacco	0	143
Apparel, Textiles, Leather	352	3,925
Lumber, Furniture	358	963
Printing & Publishing, Paper	16	778
Chemicals, Petroleum & Coal, Rubber	3	491
Stone, Clay & Glass	0	106
Primary Metals	0	108
Machinery, Metal Products, Equipment	301	7,107
Other	0	929

Source: Kentucky Department for Human Resources, Number of Workers in Manufacturing Industries Covered by Kentucky Unemployment Insurance Law Classified by Industry and County, September, 1975.

ALLEN COUNTY MANUFACTURING FIRMS,
THEIR PRODUCTS AND EMPLOYMENT

<u>Firm (Establishment date)</u>	<u>Product</u>	<u>Employment</u>			
		<u>Total</u>	<u>Male</u>	<u>Female</u>	<u>Organized</u>
<u>Adolphus</u>					
Petroleum Industries, Inc. (1972)	Ladies' and girls' blouses	85	5	80	
<u>Holland</u>					
Holland Industries (1971)	Knit shirts	175	20	155	
<u>Scottsville</u>					
Bryant Lumber Company (1933)	Lumber	46	45	1	
Cannon Publishing Company (1935)	Newspaper	5	2	3	
Citizen Times (1890)	Newspaper, job printing	6	3	3	
Orvill Clark Lumber Company (1945)	Lumber	9	8	1	

(Contd.)

<u>Firm (Establishment date)</u>	<u>Product</u>	<u>Employment</u>			<u>Organized</u>
		<u>Total</u>	<u>Male</u>	<u>Female</u>	
Farmers Feed & Fertilizer (N. A.)	Fertilizer, feed	9	8	1	
General Electric Company (1973)	Hermetic motor parts	300			
Gerald Printing Service (1935)	Job printing	12	9	3	
Keen Tool & Die Company, Inc. (1974)	Precision tools and dies, gauges, special machinery	7	6	1	
Olde Kentucky Foods, Inc. (1972)	Country hams and bacon	12	8	4	
Scotscraft, Inc. (1961)	Drapery hardware and accessories	350			*
Washington Overall Manufacturing Company (1928)	Men's and boys' trousers	170	19	151	
Marvin Wood Lumber Company (1950)	Lumber, pallet stock and furniture dimension	52	50	2	

*See Labor Organizations below.

Sources: Kentucky Department of Commerce, Division of Research and Planning; Kentucky Department of Labor, 1976 Directory of Labor Organizations; Scottsville-Allen County Chamber of Commerce.

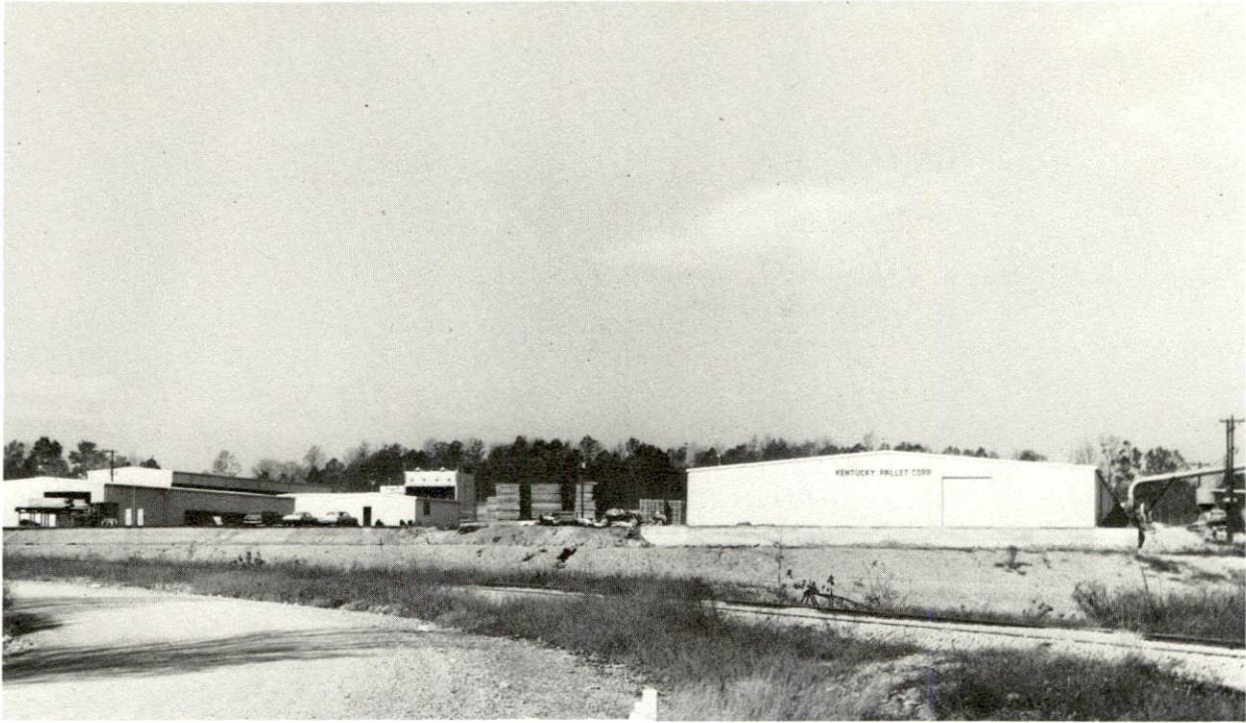
LABOR ORGANIZATIONS

Union

Representing manufacturing workers at:

International Association of Machinists and Aerospace Workers

Scotscraft, Inc.



AVAILABLE BUILDING



SCOTSCRAFT, INC. - PLANT #2

ESTIMATED MALE LABOR SUPPLY
SCOTTSVILLE LABOR MARKET AREA

Area	Current			Under- employed	Future
	Total	Not in Labor Force	Unemployed		Reaching 18 yrs. of age before 1982
Labor Market					
Area	5,650	910	1,630	3,110	6,012
Allen	370	0	190	180	542
Barren	970	0	440	530	1,458
Monroe	840	400	200	240	636
Simpson	870	510	170	190	714
Warren	2,600	0	630	1,970	2,662

Sources: Kentucky Department for Human Resources, Kentucky Labor Supply Estimates by County, 1975. Kentucky Department of Commerce, Future Labor Supply before 1982.

ESTIMATED FEMALE LABOR SUPPLY
SCOTTSVILLE LABOR MARKET AREA

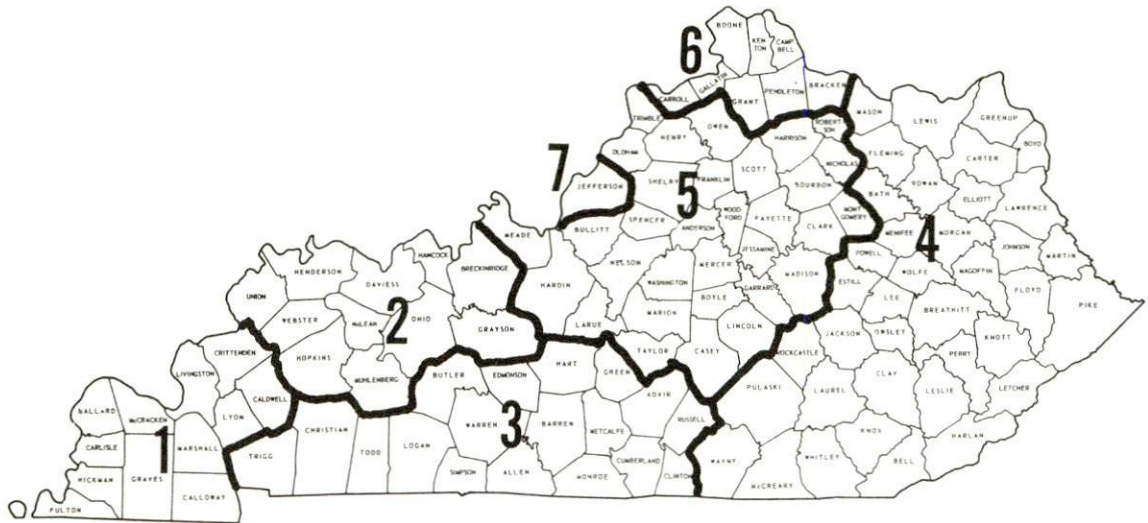
Area	Current			Under- employed	Future
	Total	Not in Labor Force	Unemployed		Reaching 18 yrs. of age before 1982
Labor Market					
Area	5,070	810	1,170	3,090	5,643
Allen	390	0	140	250	578
Barren	790	0	300	490	1,318
Monroe	710	380	130	200	556
Simpson	800	430	130	240	651
Warren	2,380	0	470	1,910	2,540

Sources: Kentucky Department for Human Resources, Kentucky Labor Supply Estimates by County, 1975. Kentucky Department of Commerce, Future Labor Supply before 1982.

WAGES

Occupational wage rates for specific industries are usually not available to most government agencies, and wage data furnished to state employment agencies by individual industrial employers is protected from disclosure by federal law. The most reliable up-to-date wage information can be obtained by direct contact with local employers.

Associated Industries of Kentucky, a voluntary organization of Kentucky businesses, regularly collects occupational wage rates and fringe benefits data from participating member firms. Data is compiled for over 127 clearly defined office, production, and service occupations. Tabulations are published for seven regions of Kentucky, as shown on the map below. It should be noted that the data may be weighted by the preponderance of firms in the larger cities and may be somewhat higher than the rates paid in the smaller communities. Data from these tabulations are available, upon request, from the Kentucky Department of Commerce, Frankfort, Kentucky 40601.



Associated Industries of Kentucky Area Wage Surveys

Up-to-date occupational wage rates of the existing industries are maintained by South Kentucky Industrial Development Association, Post Office Box 726, Hopkinsville, Kentucky 42240.

PER CAPITA PERSONAL INCOME

<u>Area</u>	<u>1974</u>	<u>1970</u>	<u>Percent Change</u>
Allen County	\$3,278	\$2,215	48.0
Labor Market Area Range	\$2,784 - 4,634	\$1,925 - 3,110	N.A.
Kentucky	4,442	3,112	42.7
U. S.	5,448	3,966	37.4

Sources: U. S. Department of Commerce, Bureau of Economic Analysis, Survey of Current Business, August 1975. U. S. Department of Commerce, Bureau of Economic Analysis, March 1976.

TRANSPORTATION

Rail

Line serving Scottsville - Louisville & Nashville Railroad Company Services - Freight service once or twice each week (end of line), team track space for twelve cars, switching. Piggyback facilities are located at Glasgow, 25 miles distant, and at Bowling Green, 23 miles distant.

For details on routing, schedules, rates, and services, contact:

Manager of Industrial Development
Louisville & Nashville Railroad Company
908 West Broadway
Louisville, Kentucky 40203
(502) 587-5000

Highways

Scottsville is served by U. S. 31-E and 231, and Kentucky Highways 101, 98, and 100. Scottsville is located 21 miles from Interstate 65 and 23 miles from the Cumberland Parkway.

U. S. 31-E has been improved from the Barren River Reservoir south to the Jefferson School Road. Plans, now in the design stage, are to improve U. S. 31-E from this point south to within 2.2 miles of the Kentucky-Tennessee state line. These plans include a bypass west of Scottsville.

Truck Service

<u>Company</u>	<u>Home Office</u>
Great Lakes Express	1150 North Niagara Street Saginaw, Michigan 48602
Manning Motor Express, Inc.	P. O. Box 685 Glasgow, Kentucky 42141
McLean Trucking Company	P. O. Box 213 Winston-Salem, North Carolina 27102
Renner's Express, Inc.	P. O. Box 613 Indianapolis, Indiana 46206
Theatres Service Company	830 Willoughby Way, N. E. Atlanta, Georgia 30301
TSC Express	1224 Antioch Pike Nashville, Tennessee 37211

Other Freight Services

Nearest Shipping Center

United Parcel Service*

Bowling Green, 23 miles distant

HIGHWAY MILES AND TRUCK TRANSIT TIME IN DAYS FROM
SCOTTSVILLE, KENTUCKY, TO SELECTED MARKET CENTERS

City	Highway Miles	Delivery		City	Highway Miles	Delivery	
		Time TL				Time TL	
Atlanta, Ga.	289	2		Los Angeles, Calif.	2,072	4	
Birmingham, Ala.	243	2		Louisville, Ky.	137	1	
Chicago, Ill.	429	2		Nashville, Tenn.	52	1	
Cincinnati, Ohio	238	1-2		New Orleans, La.	585	2	
Cleveland, Ohio	482	2		New York, N. Y.	885	3	
Detroit, Mich.	497	2		Pittsburgh, Pa.	525	3	
Knoxville, Tenn.	224	2		St. Louis, Mo.	346	2	

Source: Delivery Time Only - Manning Motor Express, Inc., Box 685,
Glasgow, Kentucky 42141.

*For regular scheduled pickups or for occasional pickups, arrangements must be made with the Louisville office of U. P. S.

Air

	<u>Nearest Local</u>	<u>Nearest Commercial</u>
	Bowling Green-Warren County Airport	Nashville Metropolitan Airport
Location:	23 miles northwest of Scottsville at Bowling Green	Nashville, Tennessee, 52 miles southwest of Scottsville
Runways:	2 paved	3 paved
Length:	6,500 feet; 4,000 feet	8,000 feet; 7,700 feet; 4,025 feet
Traffic Control:	Wind tee, Airport Advisory Service	FAA control tower; full instrument landing system (ILS); radar approach and departure control; Stage 3 radar service for VFR aircraft
Lighting:	Runways, obstructions, taxiways, beacon, wind tee	High intensity for instrument runway, medium intensity for other runways; VASI; obstructions, beacon, and approach lights
Services:	Air Kentucky Airlines (commuter air carrier),* 100 octane, jet A-50, storage, minor A & E repairs, FAA Flight Service Station, taxi and rental car service, snack bar	Allegheny, American, Braniff, Delta, Eastern, Ozark, Piedmont and Southern Airlines; Aerie Airlines (air taxi); 80 to 145 octane, jet fuel; major repairs, tie downs and hangars; charter service; flight instruction; limousine, bus, taxi, and car rentals; weather information; restaurant, hotel
Air Freight Service:	Air freight services must be arranged	Air Freight Terminal

Bus - Southern Greyhound Bus Lines
Continental Trailway

Taxi - 24-hour service daily

Rental Services - U-Haul

*Daily connecting service to Louisville, Cincinnati, Frankfort and Owensboro.

POWER AND FUEL

Electricity

Company serving Scottsville and Allen County - Tri-County Electric
Membership Corporation

Source of power - Tennessee Valley Authority

Total generating capacity - 26,723,430 KW

For industrial rates contact:

South Kentucky Industrial Development Association, Inc.
Post Office Box 726
Hopkinsville, Kentucky 42240
(502) 885-5392

and/or

Tri-County Electric Membership Corporation
East Main Street
Scottsville, Kentucky 42164
(502) 237-3546

Natural Gas

Company serving Scottsville - Scottsville Gas Department

Source of supply - Texas Gas Transmission Corporation

Size of transmission main - 26-inch

Distribution mains - 1 through 6 inches

Distribution pressure - 5 oz.

Btu content - 1,000 per cubic foot

For rates and supplies contact:

Scottsville Gas Department
City-County Building
Scottsville, Kentucky 42164
(502) 237-3831

Other Fuels

Propane and butane (Within 25 miles)

Pargas, Inc.
Gallatin Road, Scottsville, Kentucky 42164
Signal LP Gas
South 31-E, Scottsville, Kentucky 42164
Williams Energy Company
West Main Street, Glasgow, Kentucky 42141
McClard Doxol Gas Company
801 Victoria Street, Bowling Green, Kentucky 42101
Miller's Bottled Gas, Inc.
110 East Campbell Lane, Bowling Green, Kentucky 42101
Ramsey Oil Company
31-W Bypass, Bowling Green, Kentucky 42101
Southern States Bowling Green Petroleum Cooperative
Emmett Drive, Bowling Green, Kentucky 42101

Fuel oils

Distillate fuel oil - (Within 25 miles)

Sun Oil Company
Gainesville Road, Scottsville, Kentucky 42164
Virgil Taylor - Distributor (Gulf)
700 West Main Street, Glasgow, Kentucky 42141
Tri County Oil Company, Inc. (Shell)
715 West Main Street, Glasgow, Kentucky 42141
Standard Oil Company
210 Leslie Avenue, Glasgow, Kentucky 42141
Ashland Petroleum Company
West Main and U. S. 31 Bypass, Glasgow, Kentucky 42141
Ward Oil Company (Atlantic Richfield)
201 Leslie Avenue, Glasgow, Kentucky 42141
Paul Bridges Oil Company (Exxon)
Industrial Drive, Glasgow, Kentucky 42141
Amoco Oil Company
Louisville Road, Bowling Green, Kentucky 42101
Exxon Company USA
3170 Industrial Boulevard, Bowling Green, Kentucky 42101
Gulf Oil Distributors
800 Power Street, Bowling Green, Kentucky 42101
Phillips 66 Petroleum Company, Ramsey Oil Company -
distributor, 31-W Bypass, Bowling Green, Kentucky 42101
(Contd.)

Shell Heating Oils, Browning Oil Company - distributor
Louisville Road, Bowling Green, Kentucky 42101
Southern States Bowling Green Petroleum Cooperative
Emmett Drive, Bowling Green, Kentucky 42101
Standard Oil Company
Plant 316 Portage, Bowling Green, Kentucky 42101
Texaco Heating Oil, R. C. McKinney - distributor
110 West 16th Street, Bowling Green, Kentucky 42101

Residual fuel oil - Arrangements must be made with the refinery.

Low sulphur content coal - Available from eastern Kentucky.

WATER AND SEWERAGE

Water

Company serving Scottsville - Scottsville Water Department
City-County Building
Scottsville, Kentucky 42164
(502) 237-4402

Source - Spring*
Treatment plant capacity - 648,000 gpd**
Average daily consumption - 558,000 gallons
Peak daily consumption - 580,000 gallons
Type treatment - Fluoride, chlorine
Storage capacity - 825,000 gallons
Size lines - 1 to 12 inches
Average temperature - 60° F.

MONTHLY WATER RATES FOR WHOLESALE AND INDUSTRIAL CONSUMERS

First	2,000 gallons	\$5.25 Minimum (5/8-or 3/4-inch meter)
Next	2,000 gallons	1.75 per M gallons
Next	4,000 gallons	1.40 per M gallons
Next	12,000 gallons	1.23 per M gallons
All over	20,000 gallons	.79 per M gallons

MINIMUM MONTHLY WATER SERVICES CHARGES

5/8- or 3/4-inch meters	\$ 5.25
1-inch meters	7.50
1 1/4-inch meters	11.25
1 1/2-inch meters	15.00
2-inch meters	25.00

Tap-on charge: \$125

*New source of treated water now available; new supply from Glasgow Water Works.

**Two 450-gpm pumps are rotated; pumping is continuous 24 hours per day.

Name of water district - Allen County Water District*
Route #4
Scottsville, Kentucky
(502) 622-5821 or 237-3135

Area served - North Allen County

Date when water district began operating - April 1976 along U. S. 31-E

Source of supply of treated water - Glasgow Water Works through the
City of Scottsville

Number of customers - Approximately 30

Size line - 12-inch

Rates (proposed) -

First	2,000 gallons	\$7.00 Minimum
Next	3,000 gallons	2.50 per M gallons
Next	5,000 gallons	2.00 per M gallons
Over	10,000 gallons	1.80 per M gallons

Tap-on charge: \$250 during sign-up period;
\$400 after sign-up period

Surface water sources - Barren River

Average discharge - Barren River near Finney, Kentucky - 1,466 cfs
(24-year record, USGS) unadjusted

Expected ground water yield - 50 to 200 gpm along the extreme northern
and western borders of the county; 5 to 50 gpm in a band extending
from the northern to the central portion; and 5 gpm or less over the
remainder of the county

Sewerage

Company serving Scottsville - Scottsville Sewer Plant**
c/o City-County Building
Scottsville, Kentucky 42164
(502) 237-3831

Design capacity - 400,000 gpd

Average daily flow - 319,000 gallons

Treatment - Primary and secondary

Type treatment - Filter, chlorine, drying beds

Treated effluent discharged into - Bays Fork Creek

Size of sanitary mains - Up to 12 inches

Rates - 80 percent of monthly water bill

Tap-on charge: \$100

*Plans are underway to extend lines to serve the Bailey's Point Area.

**A 201 Facilities Plan is being prepared which will provide the data
necessary for recommendations to be made concerning any needed
expansion or improvement to the sewerage system.

CLIMATE

Allen County

Temperature

Annual mean (30-year record)	59.4 degrees
Average annual 1974	59.8 degrees
Record highest, July, 1966 (9-year record)	103.0 degrees
Record lowest, January, 1966 (9-year record)	- 6.0 degrees
Normal heating degree days (30-year record)	3,696
(Heating degree day totals are the sums of negative departures of average daily temperatures from 65 degrees F.)	

Precipitation

Mean annual total (30-year record)	46.00 inches
Mean annual snowfall (33-year record)	11.00 inches
Total precipitation 1974	60.70 inches
Mean number days precipitation (.01 inch or more) (33-year record)	119
Average number days thunderstorms (33-year record)	56

Prevailing Winds (22-year record)

South

Relative Humidity (9-year record)

12 midnight	80 percent
6 a.m.	84 percent
12 noon	58 percent
6 p.m.	62 percent

Source: U. S. Department of Commerce, Environmental Science Services Administration, Climatological Data, 1974. Station of record: Nashville, Tennessee.

LOCAL GOVERNMENT

City

Structure - Mayor - 4-year term; 6 councilmen - 2-year terms
Estimated Operating Budget 1976 - General Fund \$235,580
Water and Sewer Fund 426,965
City Gas System 339,409
Fees and licenses - Business license fees range from \$10 to \$50 annually

County

Structure - County Judge - 4-year terms; 5 magistrates - 4 year terms
Budget 1975-76 - General Fund \$172,463; Road Fund \$69,296

Assessed Value of Property

<u>Classes of Property</u>	<u>Scottsville (1976)</u>	<u>Allen County (1975)</u>
Real Estate	\$17,822,085	\$73,567,360
Tangibles	15,600,249	21,974,930

Property Taxes

Land and buildings are taxed by the state and may be taxed by local jurisdictions. The state rate is \$0.015 per \$100 of assessed valuation.

Tangible personal property owned by manufacturers (automobiles, trucks, finished goods, office furniture, office equipment) is taxed by the state at \$0.15 per \$100 and may be taxed by local jurisdictions.

Manufacturing machinery, raw materials inventories, pollution control equipment, and goods in process inventories, are not subject to local taxation. The state rate is \$0.15 per \$100.

Property stored in public warehouses in a transit status is not subject to local taxation. The state rate is only \$0.015 per \$100.

All property is assessed at 100 percent of fair cash value.

Local Property Tax Rate Per \$100 of Assessed Valuation, 1975*

<u>Taxing Jurisdiction</u>	<u>Scottsville</u>	<u>Allen County</u>
County	\$.223	\$.223
School	.643	.643
City	.250	

Planning and Zoning

Mandatory state codes enforced - Plumbing, National Fire Protection Association Code, National Building Code (for major buildings and residential construction containing more than 12 bedrooms per building)

Safety

<u>Police</u>	<u>Scottsville</u>	<u>Allen County</u>
Total staff	17	3
Radio-patrol cars	2	2

Fire

American Insurance Association Fire Rating	7	
Volunteers	19	Some of the volunteers from the city fire department also answers calls from the county. County-owned equipment is used.

Rescue Service

Scottsville-Allen County Civil Defense and Rescue Squad:

Number of volunteers - 36

Equipment - Radio-equipped one ton truck, converted school bus, 2 jeeps, 1 boat (14-foot) and motor, dragging equipment, 5 portable generators, 2 trucks (2½ ton), 1 communication van, citizens band and business band radios, 5 walkie-talkies, van equipped for transporting volunteers, ambulance

Personnel training -First aid, Civil Defense school training, radiological monitoring, emergency medical technician training, fire school

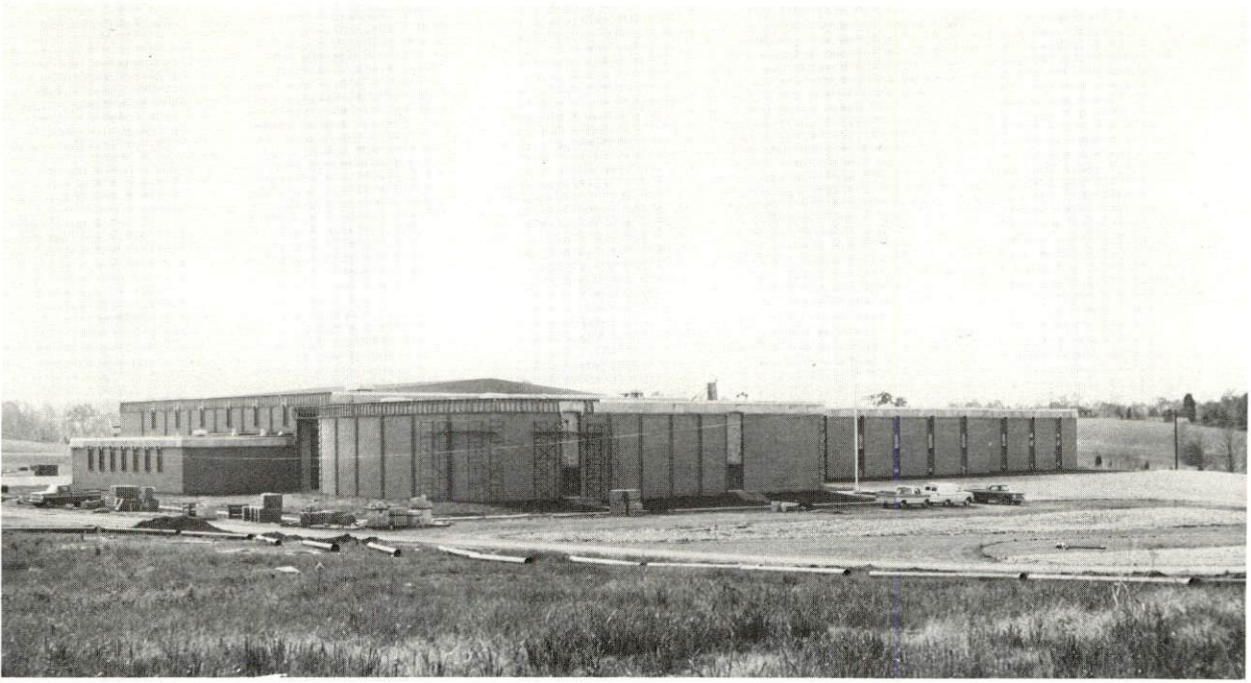
*Kentucky Department of Revenue, Kentucky Property Tax Rates, 1975.

Solid Waste

Scottsville

Type service	Municipal
Fee charged:	
residential	\$2.00 per month
business	Varies according to service required
Collection frequency:	
residential	Twice weekly
business	Daily
Disposal method	City-county landfill

Manufacturers pay a fee of \$5.00 for use of the sanitary landfill for solid waste disposal.



ALLEN COUNTY-SCOTTSVILLE HIGH SCHOOL



ALLEN COUNTY VOCATIONAL SCHOOL

EDUCATION

Public Schools

	<u>Allen County</u>
Total Enrollment (June 1976)	2,559
Elementary	1,283
Middle School	527
High School	749
Student-Teacher Ratio	20 - 1
Elementary	19 - 1
Middle School	25 - 1
High School	21 - 1
Percent High School Graduates to College	42.9
Expenditures Per Pupil (1974-75)	\$646.01
Bonded Indebtedness, June 30, 1975	\$2,307,000

Area Colleges and Universities

<u>Name</u>	<u>Location (Miles distant)</u>	<u>Enrollment (Fall, 1975)</u>	<u>Highest Degree Conferred</u>
Western Kentucky University	Bowling Green (23)	13,040	Masters, Ph. D. *
Belmont College	Nashville, Tennessee (52)	1,114	A. B., B. S., A. A.
David Lipscomb	Nashville, Tennessee (52)	2,086	A. B., B. S.
Fisk University	Nashville, Tennessee (52)	1,428	B. A., B. S., M. A., B. M.
George Peabody College for Teachers	Nashville, Tennessee (52)	1,865	Academic and Professional
Meharry Medical College	Nashville, Tennessee (52)	790	M. S., M. D., D. D. S., Certificate
Trevecca Nazarene	Nashville, Tennessee (52)	856	A. B., B. S.
Tennessee State University	Nashville, Tennessee (52)	5,686	A. A., B. S., B. A., M. A., M. S.
Vanderbilt University	Nashville, Tennessee (52)	7,034	Academic and Professional
Lindsey Wilson Junior College	Columbia (62)	354	Associate

*Cooperative program with the University of Kentucky, Lexington, for a Ph. D. in education only.

Vocational Schools

	<u>Nearest State School</u>	<u>Nearest Area Education Center</u>
Location	Bowling Green State Vocational-Technical School	Allen County Area Vocational Education Center
Miles Distant	Bowling Green 23	Scottsville
Curriculum	Commercial Foods Distributive Education Dental Assisting Health Careers Nursing Assistant Surgical Technician Industrial Education Air Conditioning and Heating Auto Body Repair Auto Mechanics Carpentry Civil Highway Technician Drafting Electronics (Technology) Graphic Arts (Printing) Industrial Electricity Machine Shop Masonry Radio and TV Repair Small Engine Repair Tool and Die Making Welding	Business and Office Industrial Education Auto Mechanics Building Trades Drafting Electricity

Arrangements can be made to provide training in the specific production skills required by an industrial plant. Instruction may be conducted either in the vocational school or in the industrial plant, depending upon the desired arrangement and the availability of special equipment.

HEALTH

Hospitals

<u>General Hospital</u>	<u>Location</u>	<u>Beds</u>
Allen County War Memorial Hospital	Scottsville	53

General hospital facilities - Operating rooms, X-ray, laboratory, maternity ward, recovery room, emergency room, critical care unit

Medical staff - 5 doctors, 14 registered nurses, 23 licensed practical nurses, 41 nurse aides, 6 laboratory and X-ray technicians, 3 respiratory technicians, orderlies

Ambulance Service

Name - T. W. Crow & Son Funeral Home
Staff - 6 Emergency Medical Technicians
Service - County-wide, 24-hour service
Equipment - 3 ambulances

Name - Allen County Funeral Home
Staff - 4 Emergency Medical Technicians
Service - County-wide, 24-hour service
Equipment - 2 ambulances

Nursing Homes

	<u>Number</u>	<u>Beds</u>
Personal care homes	5	168

Public Health

Facility - Allen County Health Department
Staff - Sanitarian, nurse, clerk

OTHER LOCAL FACILITIES

Communications

Telephone - General Telephone Company
Services - Standard

Telegraph - Western Union Telegraph service at Bowling Green,
23 miles distant, and Glasgow, 25 miles distant

Postal - U. S. Post Office
Class - First
Mail received - Once daily
Mail dispatched - Once daily

Newspapers - Citizens Times Allen County News
Weekly and circulation - 3,972 3,000
Other papers received from - Louisville, Bowling Green, and Glasgow,
Kentucky; Nashville, Tennessee

Radio - WLCK-AM & FM
Stations received from - Louisville, Glasgow, Bowling Green, Franklin,
and Russellville, Kentucky; LaFayette and Nashville, Tennessee

Television -
Reception from - Bowling Green, Kentucky; Nashville, Tennessee
Educational Television - Nashville, Tennessee - Channel 2

Library Services

Public library - Allen County Library
Size collection - 21,000 volumes
Circulation, 1974-75 - 40,000
Services - Magazines, records, story hour, pictures, projector, book
stations, bookmobile, games for Junior Department, magazines and
books supplied to nursing homes

Religious Institutions

Number of churches - 6
Denominations - Baptist, Catholic, Church of Christ, Church of God,
Methodist, Nazarene

Nearest synagogues - Nashville, Tennessee, 52 miles distant
Congregations - Sherith Israel (orthodox); Ohabai Shalom (reform);
West End Synagogue (conservative)

Financial Institutions

<u>Banks</u>	<u>Assets</u>	<u>Deposits</u>	<u>Statement Date</u>
The Farmers National Bank	\$24,198,829.92	\$22,093,153.91	12/31/75
Kentucky State Bank	16,694,436.51	14,725,196.51	12/30/75
<u>Savings and Loan Association</u>	<u>Assets</u>	<u>Shared Accounts</u>	<u>Statement Date</u>
Fidelity Federal Savings & Loan Association	\$17,344,180.98	\$15,856,978.40	12/31/75

Hotels and Motels

Total number - 4
Total units - 67

Clubs and Organizations

Business and Civic - Rotary, Lions, Jaycees, Chamber of Commerce, Business and Professional Women

Fraternal - Masons, VFW, American Legion

Women's - Homemakers, Garden Club, Mother's Club, Eastern Star, DAR

Youth - Boy Scouts, Girl Scouts, Cub Scouts, FFA, FHA, 4-H, Little League, Rainbow Girls

Other - Port Oliver Yacht Club



FARMERS NATIONAL BANK



KENTUCKY STATE BANK

RECREATION

Local

Public recreation facilities available to the residents of Scottsville include two neighborhood parks and playground areas, one baseball field, one football field, two tennis courts, picnic grounds, and Youth Center. Private recreation facilities include a country club, golf course, swimming pool, and one movie theater. The Fred Hale Park, a large community park, located approximately 2.5 miles from the central business district, provides facilities for Little League baseball and adult softball. The U. S. Corps of Engineers camping sites at Barren River Lake offer primitive camping sites, swimming, and fishing.

Area

Scottsville is within easy driving distance of several excellent park and recreation facilities.

Barren River Lake State Resort Park is located 12 miles north of Scottsville. The park, covering 1,799 acres, is open all year. Accommodations include a 51-room lodge with coffee shop, and cottages. 326 sites are available for park camping. Park features include a lodge pool, riding stables, 9-hole par-3 golf course, nature trails, open and covered boat slips, and fishing.

Mammoth Cave National Park is located approximately 55 miles north of Scottsville. The park offers guided tours through Mammoth Cave, hotel accommodations, cottages, park camping, nature trails, visitor center, wildlife, tennis, shuffleboard, naturalist programs, dining room, coffee shop, and gift and craft shops.

Western Kentucky University at Bowling Green, 23 miles from Scottsville, offers an array of cultural and athletic activities, including a fine arts series, a university lecture series, various musical performances, and productions by the Western players. The Hardin Planetarium and the Kentucky Building, housing a collection of art and artifacts devoted to local and state history, are open to the public.

Nashville, Tennessee, only 52 miles south of Scottsville, offers a wide variety of entertainment and cultural events.

COMMUNITY IMPROVEMENTS

Recent:

1. In 1975 two manufacturing companies, Scotscraft, Inc., and Keen Tool & Die Company, Inc., announced plans to expand facilities.
2. The Scottsville Water Department is now purchasing treated water from the Glasgow Water Works.
3. The Fidelity Federal Savings & Loan Association is now occupying new quarters.
4. Three new businesses - a realty company, a parts and farm center, and a restaurant - have been opened.
5. The corporate limits have recently been extended.
6. A new city-county landfill is now in use.
7. The building formerly used as the Scottsville High School is now being used as a sixth grade center.

Underway:

1. A 201 Facilities Plan is being prepared which will provide the data necessary for recommendations to be made concerning any needed expansion or improvements to the sewerage system.
2. A 16-acre subdivision is being developed.
3. U. S. 31-E has been improved from the Barren River Reservoir south to the Jefferson School Road. Plans, now in the design stage, are to improve U. S. 31-E from this point south to within 2.2 miles of the Kentucky-Tennessee state line. These plans include a bypass west of Scottsville.

Planned:

1. The Allen County Water District is planning to extend lines to serve the Bailey's Point area.
2. A new building is to be constructed to house the library. A site has been selected on Public Square.
3. The Allen County Farm Service has selected a site and is planning to construct a new building.
4. A 35-acre, 30-lot subdivision, North Wood Estates, is planned for development.
5. The Allen County School System is planning to add a second kindergarten unit in September, 1976. Also at that time classes will begin for the trainable mentally retarded.

HISTORY

Allen County is situated in south central Kentucky and has an area of 351 square miles. Its surface is predominantly hilly, its soil fairly fertile, and timber grows throughout its area. The Barren River forms about one-half of its eastern and all of its northern border, and several creeks flowing into the Barren furnish a good drainage system for the county.

The county was first settled in 1797 in the vicinity of Scottsville by Joseph Ficklin, Toliver Craig, Henry Collins, Daniel Moore, and Abram Wood. Daniel Boone had passed through the area earlier as evidenced by his initials found carved on a tree with the date 1777. In 1815, Allen County became the fifty-seventh county established in Kentucky, taking its name from Colonel John Allen, who migrated from Virginia to Kentucky in 1776 and settled near Danville. A military leader of considerable courage, Allen's practice of law put him among the first men of his profession.

Scottsville, the county seat, is named for General Charles Scott, who served on a military advisory board in Kentucky for President George Washington during the troubled period of the 1790's and was elected Kentucky's fourth governor in 1808. The city is scenically located on a central hill surrounded by other hills, and a red brick courthouse stands in the middle of its town square.

Allen County's population increased from the first recorded figure of 5,327 in 1820 to a high of 13,787 in 1950. There was a decline to 12,269 in 1960, but due to industrial growth, the population grew to 12,598 in 1970. In 1975, population of Allen County was estimated at 13,600. In 1973, population of Scottsville was estimated at 3,492.

Until the mid-1800's the entire population of Allen County made its livelihood on farms, and livestock was an important factor in the county's economy. By 1850 there were several flour mills, boot and shoemakers, a few furniture makers, wool carders, and leather workers among the manufacturing groups of the county. Oil wells had been drilled by 1870, making petroleum one of the county's principal natural resources.

The total number of Allen County residents employed in 1974 averaged 6,185, including 1,020 in agriculture and 570 in government. Manufacturing employers in the county reported 1,140 workers; trade

and services firms employed 1,025. Largest among Allen County's industrial plants are: Holland Industries, Washington Overall Manufacturing Company, Scotscraft, Inc., and General Electric Company. Dollar General Stores, with headquarters in Scottsville, provides approximately 225 jobs in Allen County.

The area is serviced by U. S. 31-E and U. S. 231 and offers easy access to Interstate 65 and the Cumberland Parkway.

Among the distinguished citizens of Allen County is J. William Bryant, who was elected president of the Reserve Mining Company of Minnesota and became head of the Armco Steel Corporation.

Production supervisor: Patsy Wallace; clerical: Dorothy Tierney; graphics: N. C. Montague, Frank Ferrante, Tony Cecconi; cartography: Site Development Section. Cost of printing paid from state funds.