

1976

## Industrial Resources: Bourbon County - Paris

Kentucky Library Research Collections  
Western Kentucky University, [spcol@wku.edu](mailto:spcol@wku.edu)

Follow this and additional works at: [https://digitalcommons.wku.edu/bourbon\\_cty](https://digitalcommons.wku.edu/bourbon_cty)

 Part of the [Business Administration, Management, and Operations Commons](#), [Growth and Development Commons](#), and the [Infrastructure Commons](#)

---

### Recommended Citation

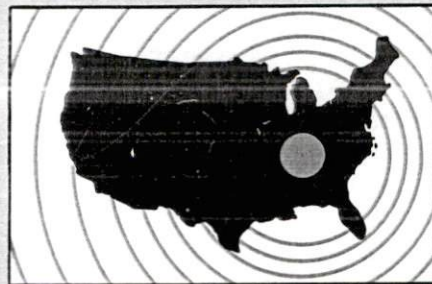
Kentucky Library Research Collections, "Industrial Resources: Bourbon County - Paris" (1976). *Bourbon County*. Paper 10.  
[https://digitalcommons.wku.edu/bourbon\\_cty/10](https://digitalcommons.wku.edu/bourbon_cty/10)

This Report is brought to you for free and open access by TopSCHOLAR®. It has been accepted for inclusion in Bourbon County by an authorized administrator of TopSCHOLAR®. For more information, please contact [topscholar@wku.edu](mailto:topscholar@wku.edu).

# *INDUSTRIAL RESOURCES*

**Paris, Kentucky**

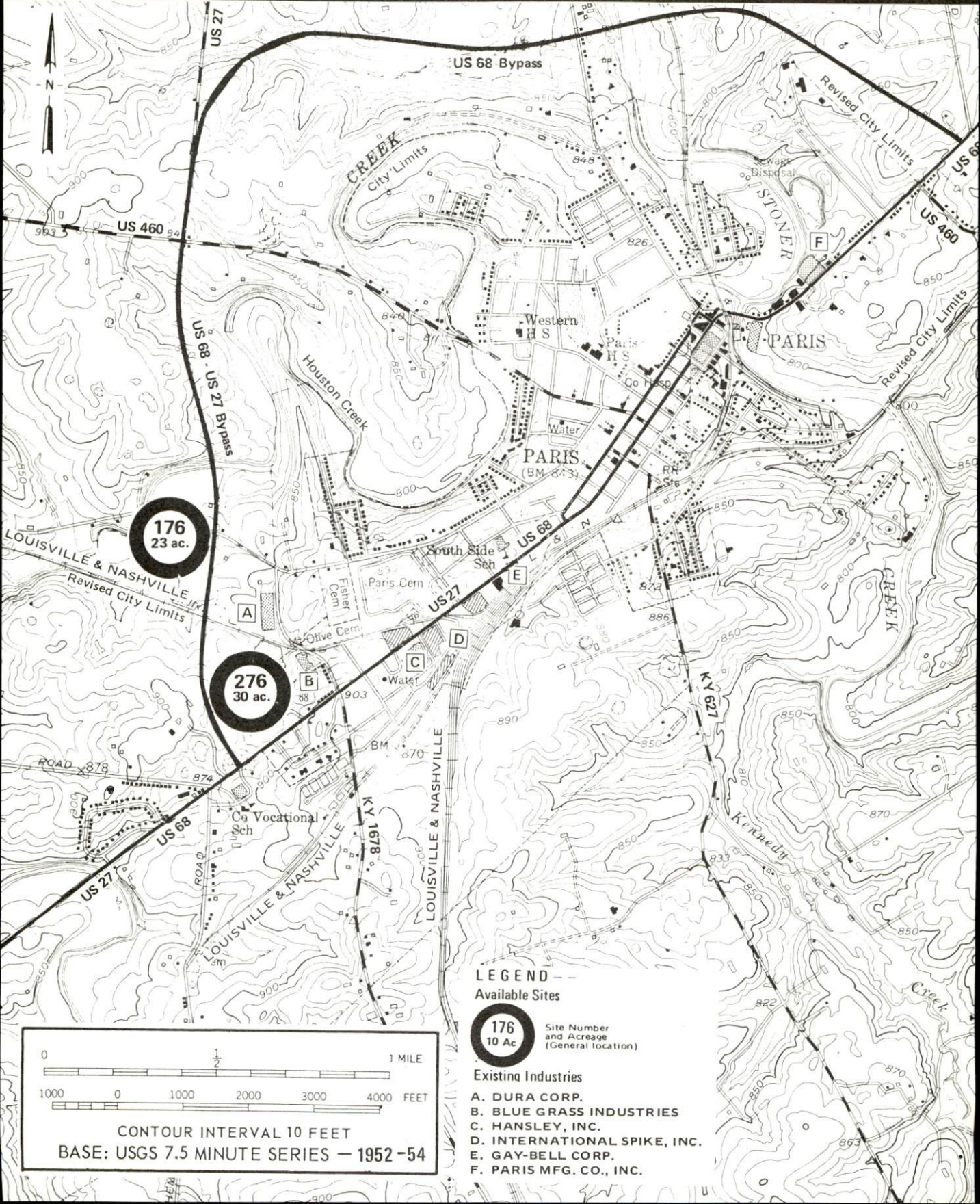
*Kentucky  
first*



**DEPARTMENT OF COMMERCE**

# PARIS, KENTUCKY --- Index to Industrial Sites --- 1976

For detailed data on individual sites, contact Mr. Cecil Murray, Paris-Bourbon County Chamber of Commerce, 318 Main Street, Paris, Kentucky 40361, or the Industrial Development Division, Kentucky Department of Commerce, Capital Plaza Tower, Frankfort, Kentucky 40601.



**176**  
23 ac.

**276**  
30 ac.

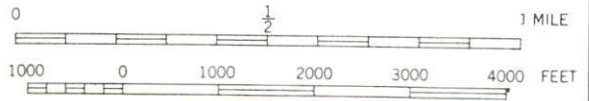
### LEGEND

Available Sites

**176**  
10 Ac. Site Number and Acreage (General location)

Existing Industries

- A. DURA CORP.
- B. BLUE GRASS INDUSTRIES
- C. HANSLEY, INC.
- D. INTERNATIONAL SPIKE, INC.
- E. GAY-BELL CORP.
- F. PARIS MFG. CO., INC.



CONTOUR INTERVAL 10 FEET  
BASE: USGS 7.5 MINUTE SERIES — 1952-54

INDUSTRIAL RESOURCES

PARIS, KENTUCKY

Prepared by

The Kentucky Department of Commerce

in cooperation with

The Paris-Bourbon County Chamber of Commerce, Inc.

1976

## TABLE OF CONTENTS

<u>Chapter</u>	<u>Page</u>
INDUSTRIAL SITES . . . . .	i
PARIS, KENTUCKY - A RESOURCE PROFILE . . . . .	1
THE LABOR MARKET AREA . . . . .	3
Population . . . . .	3
General Employment Characteristics, 1974 . . . . .	3
Manufacturing Employment by Industry. . . . .	4
Major Bourbon County Manufacturing Firms, Their Products and Employment. . . . .	5
Labor Organizations. . . . .	7
Estimated Male Labor Supply. . . . .	7
Estimated Female Labor Supply. . . . .	7
Wages . . . . .	8
Per Capita Personal Income . . . . .	9
TRANSPORTATION . . . . .	11
Rail . . . . .	11
Highways. . . . .	11
Truck Service. . . . .	12
Air . . . . .	13
Bus . . . . .	14
Taxi . . . . .	14
Rental Services . . . . .	14
POWER AND FUEL . . . . .	15
Electricity . . . . .	15
Natural Gas. . . . .	16
Other Fuels. . . . .	16
WATER AND SEWERAGE. . . . .	17
Water . . . . .	17
Sewerage. . . . .	18
CLIMATE. . . . .	19

<u>Chapter</u>	<u>Page</u>
LOCAL GOVERNMENT . . . . .	20
City. . . . .	20
County . . . . .	20
Assessed Value of Property, 1975 . . . . .	20
Property Taxes . . . . .	20
Local Property Tax Rate Per \$100 of Assessed Valuation, 1975 . . . . .	21
Utilities Gross Receipts Tax for Schools . . . . .	21
Planning and Zoning . . . . .	21
Safety. . . . .	21
Police . . . . .	21
Fire . . . . .	21
Solid Waste . . . . .	22
EDUCATION . . . . .	23
Public Schools . . . . .	23
Nonpublic Schools . . . . .	23
Area Colleges and Univerisites . . . . .	25
Vocational Schools . . . . .	26
HEALTH. . . . .	27
Local Medical Personnel . . . . .	27
Hospitals . . . . .	27
Other Medical Facilities . . . . .	27
Ambulance Service . . . . .	27
Nursing Homes. . . . .	27
Public Health . . . . .	27
OTHER LOCAL FACILITIES . . . . .	29
Communications . . . . .	29
Library Services . . . . .	29
Religious Institutions . . . . .	30
Financial Institutions . . . . .	30
Hotels and Motels . . . . .	30
Clubs and Organizations. . . . .	30
RECREATION . . . . .	33
COMMUNITY IMPROVEMENTS. . . . .	35
HISTORY. . . . .	38





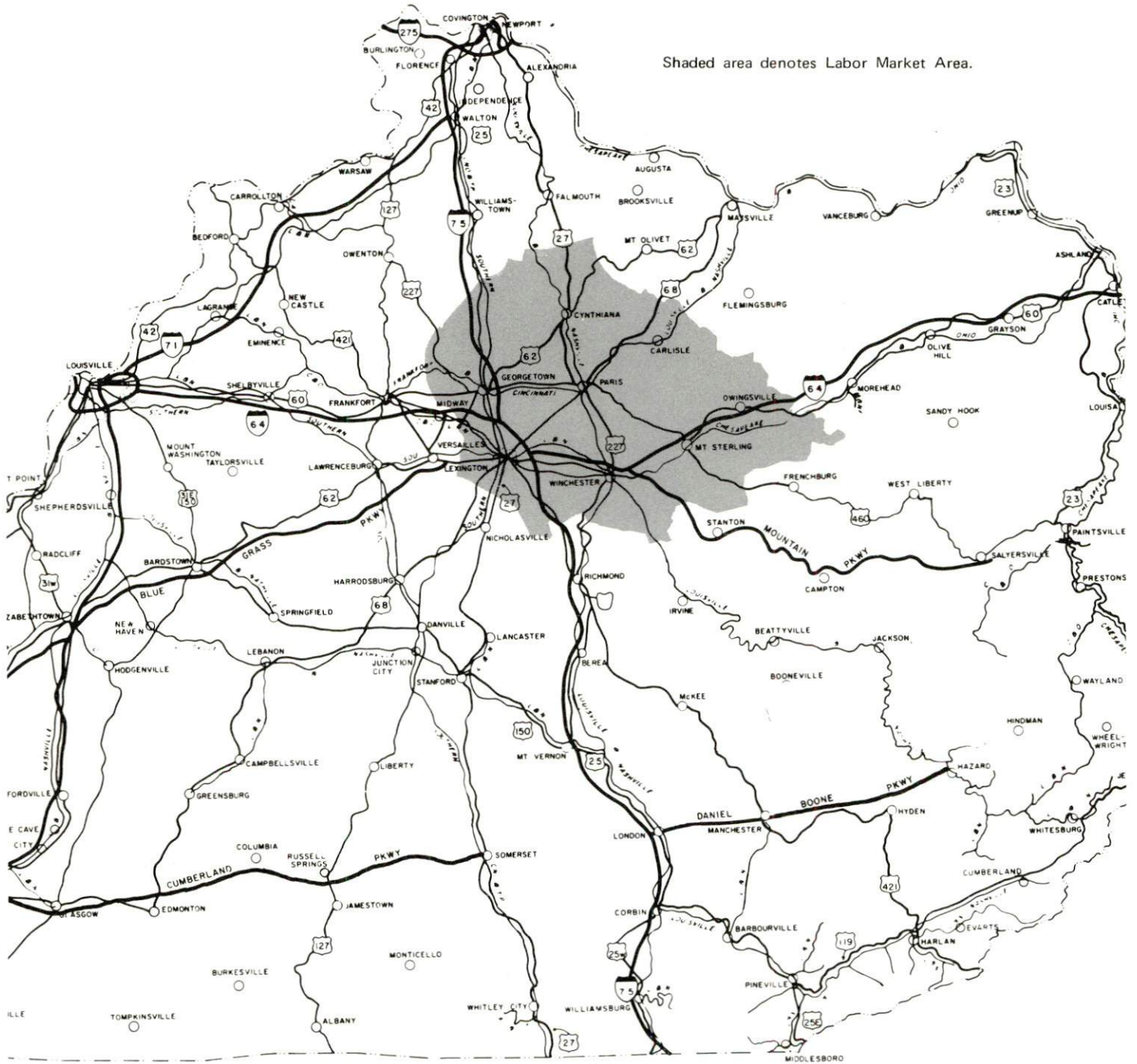
AERIAL VIEW OF PARIS, KENTUCKY



# PARIS LABOR MARKET AREA



Shaded area denotes Labor Market Area.



GRAPHIC SCALE IN MILES

## PARIS, KENTUCKY - A RESOURCE PROFILE

Paris, the county seat of Bourbon County, is a member of the All Kentucky City Hall of Fame, an honor received for continued outstanding achievement in community development. Paris is located 19 miles north-east of Lexington, Kentucky; 91 miles east of Louisville, Kentucky; and 84 miles south of Cincinnati, Ohio. Paris had an estimated population of 7,639 in 1973.

Bourbon County, with a land area of 300 square miles, is located in central Kentucky in the heart of the Bluegrass Region. The county is rich in history and tradition, and is noted for its beautiful horse farms. Bourbon County had an estimated population of 18,700 in 1974.

### The Economic Framework

The total number of Bourbon County residents employed in 1974 averaged 9,290, including 1,750 in agriculture and 1,280 in government. Manufacturing employers in the county reported 1,400 workers; trade and services firms employed 1,250. Major industrial products are apparel and motor vehicle parts.

Total unemployment in Bourbon County averaged 2.6 percent of the labor force in 1974.

Per capita personal income in the county in 1973 was \$4,314, an increase of 36.3 percent since 1969.

The Paris labor market area includes Bourbon County and the seven adjoining counties. The total number of residents of the labor market area employed in 1974 averaged 141,870, including 10,680 in agriculture and 30,920 in government. Manufacturing employers in the labor market area reported 32,235 workers; trade and services firms employed 51,505.

### Resources for Growth

1. Labor Supply - There is a current labor supply of 9,180 men and 9,450 women available for industrial jobs in the labor market area. In addition, 13,640 young men and 12,880 young women in the area will become 18 years of age by 1982 and potentially available for work.

2. Transportation - The Louisville & Nashville Railroad serves Paris with a variety of services. The city is only 16 miles east of Interstate 75 via U. S. 460, and 15 miles north of Winchester where Interstate 64 and the Mountain Parkway converge. Seven truck lines serve Paris. The nearest commercial air service is at Lexington, 19 miles distant.

3. Energy and Fuel - Electric power is supplied to Paris by the City of Paris Light and Power System and the Kentucky Utilities Company. Electric power is supplied to Bourbon County by the Harrison RECC and the Clark RECC. Natural gas service is provided to Paris by Columbia Gas of Kentucky, Inc. Two distributors of propane and three distributors of distillate fuel oil are located in Paris.

4. Education - Bourbon County's two public school systems - The Bourbon County School System and the Paris Independent School District - offer an excellent accredited curriculum. Within 40 miles of Paris, there are four universities, two senior colleges, two junior colleges, and one technical institute. Located at Lexington, 19 miles distant, is the Central Kentucky State Vocational-Technical School where seventeen different course areas are offered, providing an excellent vocational training program. The Harrison County Area Vocational Education Center at Cynthiana, 15 miles from Paris, offers training in seven vocational areas.

THE LABOR MARKET AREA

POPULATION

<u>Area</u>	<u>1974*</u>	<u>1970</u>	<u>Percent Nonwhite</u>
			<u>1970</u>
Paris	7,639**	7,823	20.5
Labor Market			
Area	297,300	280,102	
Bourbon County	18,700	18,476	12.4
Bath County	9,500	9,235	4.4
Clark County	25,600	24,090	7.7
Fayette County	186,900	174,323	12.7
Harrison County	14,700	14,158	3.7
Montgomery County	17,100	15,364	7.4
Nicholas County	6,400	6,508	2.2
Scott County	18,400	17,948	9.4

\*Provisional Estimates.

\*\*1973 Population Estimates.

Sources: U. S. Department of Commerce, Bureau of the Census, Census of Population, 1970. U. S. Bureau of the Census, Current Population Reports, Series P-25, No. 562, June 1975; Series P-26, No. 120, June 1975.

GENERAL EMPLOYMENT CHARACTERISTICS, 1974

<u>Major Employment Group</u>	<u>Employment by Place of Residence of Workers</u>	
	<u>Bourbon County</u>	<u>Labor Market Area</u>
	Total Employment	9,288
Agriculture	1,750	10,676
Government	1,276	30,919
	<u>Employment by Location of Jobs</u>	
	<u>Bourbon County</u>	<u>Labor Market Area</u>
Manufacturing	1,397	32,235
Trade and Services	1,246	51,505

Source: Kentucky Department for Human Resources, Bureau for Administration and Operations.

MANUFACTURING EMPLOYMENT BY INDUSTRY  
MARCH 1975

<u>Industry</u>	<u>Bourbon County</u>	<u>Labor Market Area</u>
TOTAL	1, 240	28, 406
Food & Kindred Products	19	1, 255
Tobacco	0	1, 576
Apparel, Textiles, Leather	556	3, 212
Lumber, Furniture	11	548
Printing & Publishing, Paper	26	1, 513
Chemicals, Petroleum & Coal, Rubber	17	725
Stone, Clay & Glass	0	443
Primary Metals	0	860
Machinery, Metal Products, Equipment	611	17, 103
Other	0	1, 171

Source: Kentucky Department for Human Resources, Number of Workers in Manufacturing Industries Covered by Kentucky Unemployment Insurance Law Classified by Industry and County, March, 1975.

MAJOR BOURBON COUNTY MANUFACTURING FIRMS,  
THEIR PRODUCTS AND EMPLOYMENT

<u>Firm</u> (Establishment date)	<u>Products</u>	<u>Employment</u>			<u>Organized</u>
		<u>Total</u>	<u>Male</u>	<u>Female</u>	
<u>Paris</u>					
Blue Grass Industries (1966)	Swimwear, knit garments	345	38	307	
Gay-Bell Corporation (1946)	Prefabricated containers, tobacco hogsheads	19	18	1	
The Grapette Bottling Company (1947)	Carbonated beverages	16	15	1	
Hansley, Inc. (1942)	Men's slacks, men's and boys' swimwear	275	25	250	*
Industrial Products Division, Dura Corpo- ration, Walter Kidde & Company, Inc. (1952)	Tandem and single axle suspensions, motor vehicle parts, hydraulic equipment for vehicle service	422	369	53	*
International Spike, Inc. (1972)	Tree fertilizer spikes	17	6	11	
The Paris Daily Enterprise (1942)	Newspaper, job printing	21	10	11	
Paris Manufacturing Company, Inc. (1972)	Machine shop, steering arms, shock brackets	19	18	1	
Woodford Spears and Sons (1923)	Feed	31	30	1	
<u>Millersburg</u>					
The W. R. Stamler Corporation (1953)	Conveyor belt feeder breakers, hydraulic mine and railroad car movers	88	82	6	

\*See Labor Organizations below.

Source: Kentucky Department of Commerce, 1976 Kentucky Directory  
of Manufacturers.



DURA CORPORATION



BLUE GRASS INDUSTRIES

## LABOR ORGANIZATIONS

<u>Union</u>	<u>Representing manufacturing workers at:</u>
Allied Industrial Workers of America	Dura Corporation
Amalgamated Clothing Workers of America	Hansley, Incorporated

### ESTIMATED MALE LABOR SUPPLY PARIS LABOR MARKET AREA

<u>Area</u>	<u>Current</u>			<u>Future</u>	
	<u>Total</u>	<u>Not in Labor Force</u>	<u>Unemployed</u>	<u>Under- employed</u>	<u>Reaching 18 yrs. of age before 1982</u>
Labor Market Area	9,180	330	2,840	6,010	13,644
Bourbon	440	0	170	270	930
Bath	400	0	220	180	453
Clark	570	0	190	380	1,268
Fayette	5,760	0	1,640	4,120	8,258
Harrison	310	0	120	190	695
Montgomery	990	330	270	390	799
Nicholas	150	0	70	80	326
Scott	560	0	160	400	915

Sources: Kentucky Department for Human Resources, Kentucky Labor Supply Estimates by County, 1975. Kentucky Department of Commerce, Future Labor Supply before 1982.

### ESTIMATED FEMALE LABOR SUPPLY PARIS LABOR MARKET AREA

<u>Area</u>	<u>Current</u>			<u>Future</u>	
	<u>Total</u>	<u>Not in Labor Force</u>	<u>Unemployed</u>	<u>Under- employed</u>	<u>Reaching 18 yrs. of age before 1982</u>
Labor Market Area	9,450	970	1,240	7,240	12,879
Bourbon	470	0	80	390	858
Bath	510	270	60	180	448
Clark	1,110	340	130	640	1,142
Fayette	5,550	0	710	4,840	7,939
Harrison	340	0	50	290	645
Montgomery	740	360	70	310	716
Nicholas	120	0	30	90	300
Scott	610	0	110	500	831

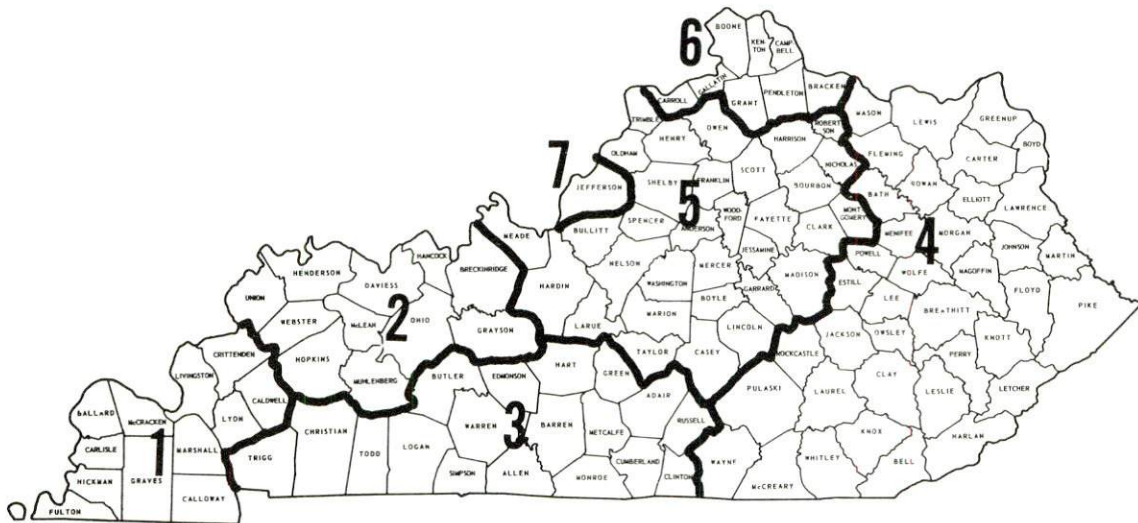
Sources: Kentucky Department for Human Resources, Kentucky Labor Supply Estimates by County, 1975. Kentucky Department of Commerce, Future Labor Supply before 1982.



## WAGES

Occupational wage rates for specific industries are usually not available to most government agencies, and wage data furnished to state employment agencies by individual industrial employers is protected from disclosure by federal law. The most reliable up-to-date wage information can be obtained by direct contact with local employers.

Associated Industries of Kentucky, a voluntary organization of Kentucky businesses, regularly collects occupational wage rates and fringe benefits data from participating member firms. Data is compiled for over 127 clearly defined office, production, and service occupations. Tabulations are published for seven regions of Kentucky, as shown on the map below. It should be noted that the data may be weighted by the preponderance of firms in the larger cities and may be somewhat higher than the rates paid in the smaller communities. Data from these tabulations are available, upon request, from the Kentucky Department of Commerce, Frankfort, Kentucky 40601.



Associated Industries of Kentucky Area Wage Surveys

PER CAPITA PERSONAL INCOME

<u>Area</u>	<u>1973</u>	<u>1969</u>	<u>Percent Change</u>
Bourbon County	\$4,314	\$3,166	36.3
Labor Market Area			
Range	\$3,094 - 4,930	\$2,003 - 3,740	N. A.
Kentucky	4,050	2,894	39.9
U.S.	5,041	3,733	35.1

Sources: U. S. Department of Commerce, Office of Business Economics, Survey of Current Business, August, 1974. U. S. Department of Commerce, Bureau of Economic Analysis, April 1975.



HINKLE CONTRACTING CORP.

## TRANSPORTATION

### Rail

Line serving Paris - Louisville and Nashville Railroad

Services - 2 daily freight stops - 1 northbound and 1 southbound;  
6 northbound and 6 southbound through freights daily; switching  
facilities; team track space for 4 cars; siding space for 50 cars;  
nearest piggyback facilities are located in Lexington, Kentucky

For details on routing, schedules, rates, and services, contact:

Manager of Industrial Development  
Louisville and Nashville Railroad Company  
908 West Broadway  
Louisville, Kentucky 40203  
(502) 587-5000

### Highways

U. S. highways 27, 68, 460 and state highways 627, 1940 and 1678 serve Paris and the surrounding area. Interstate 75 is 16 miles to the west while Interstate 64 and the Mountain Parkway are accessible 15 miles to the south at Winchester.

The Paris bypass will extend from U. S. 68 southwest of the city, encircle Paris on the west and north and reconnect with U. S. 68 just northeast of the city. That portion of the bypass from U. S. 68 southwest to U. S. 460 west of the city is completed. Construction on the remaining portion of the bypass is underway with completion expected by late summer 1976.

Truck Service

Company

Home Office

Cooper-Jarrett, Inc.

23 South Essex Avenue  
Orange, New Jersey 07050

Great Lakes Express

1150 N. Niagara  
Saginaw, Michigan 48602

McDaniel Motor Express, Inc.

1115 Winchester Road  
Lexington, Kentucky 40505

McLean Trucking Company

P. O. Box 213  
Winston-Salem, North Carolina 27102

Motor Freight Corporation  
(Branch Motor Express  
Company)

114 Fifth Avenue  
New York, New York 10011

O. K. Trucking Company

Lexington office - 147 S. Forbes Road  
Lexington, Kentucky 40505

Turner Expediting Service

Box 21333, Standiford Field  
Louisville, Kentucky 40221

Other Freight Services

United Parcel Service\*

Nearest office - Lexington, 19  
miles distant

---

\*For regular scheduled pickups or for occasional pickups, arrangements must be made with the Louisville office of U. P. S.

HIGHWAY MILES AND TRUCK TRANSIT TIME IN DAYS FROM  
PARIS, KENTUCKY, TO SELECTED MARKET CENTERS

City	Delivery		City	Delivery	
	Highway Miles	Time TL		Highway Miles	Time TL
Atlanta, Ga.	387	2	Los Angeles, Calif.	2,199	5
Birmingham, Ala.	425	2	Louisville, Ky.	91	overnight
Chicago, Ill.	383	1	Nashville, Tenn.	229	1
Cincinnati, Ohio	84	overnight	New Orleans, La.	767	2
Cleveland, Ohio	328	1	New York, N. Y.	704	2
Detroit, Mich.	343	1	Pittsburgh, Pa.	340	1
Knoxville, Tenn.	194	1	St. Louis, Mo.	354	1

Source: Delivery Time Only - O. K. Trucking Company, 147 S. Forbes Road, Lexington, Kentucky 40505.

Air

<u>Nearest Local</u>	<u>Nearest Commercial</u>
Cynthiana-Harrison County Airport	Blue Grass Field
Location: Cynthiana, 13 miles north of Paris	Lexington, 19 miles from Paris
Runways: 1 paved	2 paved
Length: 3,200 feet	6,500 feet, 3,500 feet
Traffic	
Control: Wind sock and lighted wind tee	Tower, guards, radar arrival/ departure services, ground control, automatic terminal information service
Lighting: Runway lights - sundown to sunrise	Approach lighting system, beacon, runways and obstructions lighted
Services: 80-100 octane, hangar and tie down, taxi, U-Drive- It, A & E repairs, flight instruction, A & I service	Airlines: Delta, Eastern, Piedmont and Allegheny; Repair service: Major A & E repairs, Certified Avionics repair station; Fuel: 24-hour service, 80, 100, 145 and jet fuel; National Weather Service, restaurant, flight instructions, charter service, storage, taxi, limousine, and car rentals
Air Freight	
Service: Chartered air freight services must be arranged	All commercial air carriers accept air freight on a space- available basis

Bus - Southeastern Greyhound Bus Line

Taxi - Two taxi companies, 24-hour service  
(one radio-dispatch service)

Rental Services - U-Haul-It service, trucks and trailers

POWER AND FUEL

Electricity

Company serving Paris - City of Paris Light and Power System

Source of power - (1) City of Paris Light and Power System;

(2) Kentucky Utilities Company

Total generating capacity - (1) 11,675 KW; (2) 1,615,500 KW

For industrial rates contact:

Manager

City of Paris Light and Power System

800 Pleasant Street

Paris, Kentucky 40361

(606) 987-2630

Company serving Paris - Kentucky Utilities Company

Source of power - Kentucky Utilities Company

Total generating capacity - 1,615,500 KW

For industrial rates contact:

Industrial Development Department

Kentucky Utilities Company

120 South Limestone Street

Lexington, Kentucky 40507

(606) 255-1461

Company serving Bourbon County - Harrison Rural Electric Co-  
operative Corporation and Clark Rural Electric Cooperative  
Corporation

Source of power - East Kentucky Power Cooperative

Total generating capacity - 496,000 KW

For industrial rates contact:

Industrial Development Division

East Kentucky Power Cooperative

P. O. Box 707

Winchester, Kentucky 40391

(606) 744-4812

and/or



Harrison Rural Electric Cooperative Corporation  
P. O. Box 312  
Cynthiana, Kentucky 41031  
(606) 234-3131

and/or

Clark Rural Electric Cooperative Corporation  
P. O. Box 748, Route 15  
Winchester, Kentucky  
(606) 774-4251

### Natural Gas

Company serving Paris - Columbia Gas of Kentucky, Inc.  
Source of supply - Columbia Gas Transmission Company  
Size of transmission mains - 8-inch (supplier); 8-inch (distributor)  
Distribution mains - 8, 6, 4, 3, 2½, and 2 inches  
Distribution pressure - 49 psi - 15 psi  
Btu content - Approximately 1,020 per cubic foot  
Specific gravity - 0.6  
For rates and supplies contact:

Columbia Gas of Kentucky, Inc.  
429 Main Street  
Paris, Kentucky 40361  
(606) 987-4450

### Other Fuels

#### Propane and butane

Williams Energy Company (Doxol), Cynthiana Road, Paris  
TH & T Oil Co., 136 East Main, Paris (Doxol)

#### Fuel oils

Distillate fuel oil -

Ashland Petroleum Company, 136 Main Street, Paris  
Coe Oil Service, Cynthiana Road, Paris (Shell)  
West's Oil Co., Inc., South Main, Paris (Texaco)

Residual fuel oil - Arrangements must be made with the refinery.

Low sulphur content coal - Available in eastern Kentucky.

## WATER AND SEWERAGE

### Water

Company serving Paris - City of Paris Water and Sewer Department  
 800 Pleasant Street, P. O. Box 370  
 Paris, Kentucky 40361  
 (606) 987-2630

Source - Stone Creek and Strodes Creek  
 Treatment plant capacity - 3,000,000 gallons per day  
 Average daily consumption - 1,250,000 gallons  
 Peak daily consumption - Over 2,000,000 gallons  
 Type treatment - Coagulated, settled, filtered, chlorinated,  
 fluoridated  
 Storage capacity - 2,058,700 gallons  
 Size lines - 6, 8 and 10 inches  
 Average pressure - 98 psi  
 Average temperature - 58 degrees F.

#### MONTHLY WATER RATES FOR WHOLESALE AND INDUSTRIAL CONSUMERS

---

First	2,000 gallons	\$3.40 (Minimum) 5/8 or 3/4 inch meter
Next	8,000 gallons	.90 per M gallons
Next	20,000 gallons	.85 per M gallons
Next	20,000 gallons	.75 per M gallons
Next	50,000 gallons	.65 per M gallons
Next	50,000 gallons	.60 per M gallons
All over	150,000 gallons	.50 per M gallons

#### MINIMUM MONTHLY SERVICE CHARGE FOR METER CONNECTIONS BY SIZE (includes up to 2,000 gallons of water per month)

---

5/8 or 3/4 inch	\$3.40
1 inch	5.25
1½ inch	7.50
2 inch	10.50
3 inch	15.00
4 inch	30.00
6 inch	60.00

In the event a special water rate shall be fixed for a peculiar or unusual situation, no such water rate shall be less than fifty cents (50¢) per 1,000 gallons of water used. Municipal fire hydrant rental - \$5.00 per hydrant per month.

## PRIVATE FIRE PROTECTION RATES

Private fire hydrant (standard) - \$7.50 per hydrant per month.

Sprinkler system with 4-inch connection - \$15.00 per connection per month.

Sprinkler system with 6-inch connection - \$25.00 per connection per month.

Sprinkler system with 8-inch connection - \$40.00 per connection per month.

Tap-on charge: There is no tap-on fee for water service within the city limits. Tap-on fee for county residents is \$100 for up to 1-inch tap.

Surface water sources - StonerCreek, South Fork of Licking River  
Average discharge - Stoner Creek at Paris, Kentucky, 283 cfs,  
22-year record (USGS)

Expected ground water yield - 50 to 200 gpm in the north central portion of the county grading out to 5 gpm or less.

## Sewerage

Company serving Paris - City of Paris Water and Sewer Department  
800 Pleasant Street, P. O. Box 370  
Paris, Kentucky 40361  
(606) 987-2630

Design capacity - 3,168,000 gallons per day

Average daily flow - 500,000 gallons

Treatment - Primary and secondary

Type treatment - Trickling filters, clarifier, drying beds

Treated effluent discharged into - Stoner Creek

Size of sanitary mains - 6, 8, and 10 inches

Size of storm mains - 10, 12, and 24 inches

Rates - For city residents the sewerage rate is 70 percent of the monthly water bill; for county residents the minimum monthly sewerage rate is \$3.40.

Tap-on charge: \$100

## CLIMATE

### Bourbon County

#### Temperature

Annual mean (30-year record)	55.2 degrees
Average annual 1974	55.1 degrees
Record highest, July, 1966 (11-year record)	98.0 degrees
Record lowest, January, 1972 (11-year record)	-11.0 degrees
Normal heating degree days (30-year record)	4,729
(Heating degree day totals are the sums of negative departures of average daily temperatures from 65 degrees F.)	

#### Precipitation

Mean annual total (30-year record)	44.49 inches
Mean annual snowfall (30-year record)	15.70 inches
Total precipitation 1974	60.09 inches
Mean number days precipitation (.01 inch or more) (30-year record)	130
Average number days thunderstorms (30-year record)	47

#### Prevailing Winds (17-year record)

South

#### Relative Humidity (11-year record)

1 a. m.	76 percent
7 a. m.	81 percent
1 p. m.	59 percent
7 p. m.	64 percent

Source: U. S. Department of Commerce, Environmental Science Services Administration, Climatological Data, 1974. Station of record: Lexington, Kentucky.

LOCAL GOVERNMENT

City

Paris

Structure - Mayor - 4-year term; 4 commissioners - 4-year terms;  
City manager

Budget 1975 - General Fund \$777,920  
Water and Sewer Fund 450,955\*  
Light and Power Fund 582,507\*

Fees and licenses - Auto stickers \$25; occupational license tax -  
1½ percent on wages and net profits

County

Structure - County Judge - 4-year term; 8 magistrates - 4-year terms  
Budget 1975-76 - General Fund \$404,925; Road Fund \$204,900

Assessed Value of Property, 1975

<u>Classes of Property</u>	<u>Paris</u>	<u>Bourbon County</u>
Real Estate and Tangibles	\$45,556,572	
Real Estate		\$174,567,822
Tangibles		21,278,832

Property Taxes

Land and buildings are taxed by the state and may be taxed by local jurisdictions. The state rate is \$0.015 per \$100 of assessed valuation.

Tangible personal property owned by manufacturers (automobiles, trucks, finished goods, office furniture, office equipment) is taxed by the state at \$0.15 per \$100 and may be taxed by local jurisdictions.

Manufacturing machinery, raw materials inventories, pollution control equipment, and goods in process inventories are not subject to local taxation. The state rate is \$0.15 per \$100.

Property stored in public warehouses is not subject to local taxation. The state rate is only \$0.015 per \$100.

All property is assessed at 100 percent of fair cash value.

\*1974 figures.

Local Property Tax Rate Per \$100 of Assessed Valuation, 1975\*

<u>Taxing Jurisdiction</u>	<u>Paris</u>	<u>Bourbon County</u>
County	\$ .196	\$ .196
School	.820	.488
City	.280	

Utilities Gross Receipts Tax for Schools

Bourbon County levies a 3 percent tax on utilities receipts for schools. This tax is paid by all consumers of utilities as an add-on to the utilities bills. Exempted are receipts from utilities services that are resold and the receipts from the sale of energy or energy producing fuels that exceed 3 percent of the cost of production in manufacturing, processing, mining or refining.

Planning and Zoning

Joint agency - Paris-Bourbon County Joint Planning Commission  
Zoning enforced - All areas  
Subdivision regulations enforced - All areas  
Local codes enforced - Housing, building  
Mandatory state codes enforced - Plumbing, National Fire Protection Association Code, National Building Code (for major buildings and residential construction containing more than 12 bedrooms per building)

Safety

<u>Police</u>	<u>Paris</u>	<u>Bourbon County</u>
Total staff	37	4
Radio-patrol cars	4	2

<u>Fire</u>		
American Insurance Association Fire Rating	6	
Full-time staff	23	11
Volunteers	8	6

\*Kentucky Department of Revenue, Kentucky Property Tax Rates, 1975.

Solid Waste

	<u>Paris</u>	<u>Bourbon County</u>
Type service	Municipal	Private
Fee charged:		
residential	\$3.50 per month	\$3.75 to \$4.25 per month
business	\$8 to \$100 per month	Contract
industrial	Up to \$100 per month for general pickup	Contract
Collection frequency:		
residential	Weekly	Weekly
business	Weekly to 5 times weekly	Weekly to 3 times weekly
industrial	When desired	When desired
Trash pickup	Weekly	Weekly
Disposal method	Incinerator*	Landfill

---

\*In the process of receiving bids for a sanitary landfill.

## EDUCATION

### Public Schools

	<u>Paris</u>	<u>Bourbon County</u>
Total Enrollment (Fall, 1975)	1,355	2,683
Elementary	608	1,238
Middle School	345	566
High School	402	879
Student-Teacher Ratio	18-1	21-1
Elementary	18-1	20-1
Middle School	19-1	25-1
High School	16-1	21-1
Accreditation	Southern Association of Colleges and Schools	Southern Association of Colleges and Schools
Percent High School Graduates to College	33.8	32.3
Expenditures Per Pupil (1974-75)	\$716.14	\$751.02
Bonded Indebtedness, June 30, 1975	\$1,442,000	\$1,691,000

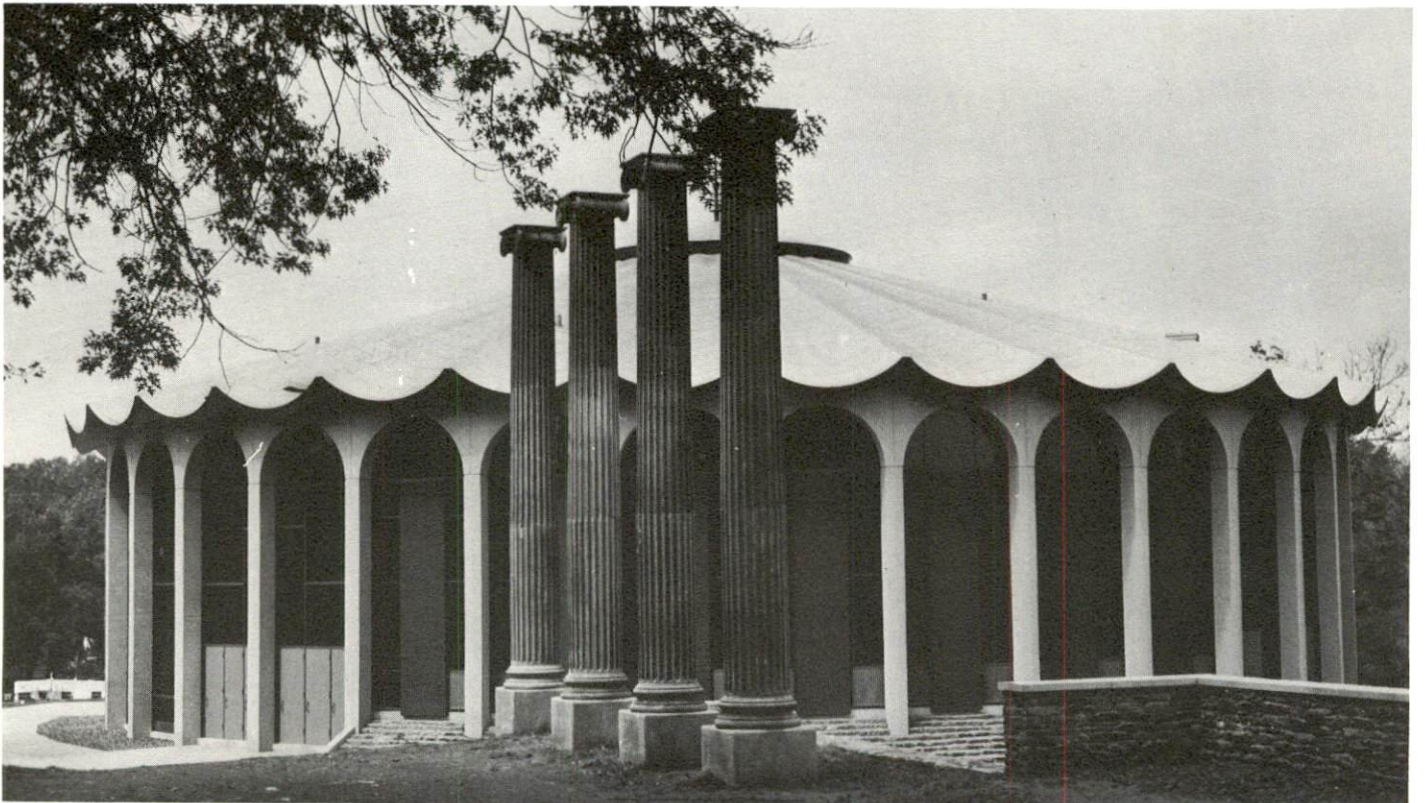
### Nonpublic Schools

	<u>Private</u>	<u>Parochial</u>
Total Enrollment	100	87
Elementary		87
Middle School	20	
High School	80	
Student-Teacher Ratio	8-1	29-1
Elementary		29-1
Middle School	7-1	
High School	8-1	





PARIS CITY SCHOOL



FINE ARTS CENTER - PARIS HIGH SCHOOL

Area Colleges and Universities

<u>Name</u>	<u>Location (Miles Distant)</u>	<u>Enrollment (Fall, 1975)</u>	<u>Highest Degree Conferred</u>
Southeastern Christian Junior College	Winchester (17)	91	Associate
Georgetown College	Georgetown (18)	1,062	Masters
University of Kentucky	Lexington (19)	22,526	Ph. D. , M. D. , D. M. D. , J. D.
Transylvania University Lexington Technical Institute	Lexington (19)	722	Masters*
Midway Junior College	Lexington (19)	1,654	Associate
Kentucky State University	Midway (30)	350	Associate
Asbury College	Frankfort (36)	2,246	Masters
Eastern Kentucky University	Wilmore (36)	1,225	Baccalaureate
	Richmond (39)	13,430	Masters, Ph. D. **

---

\*Courses in the Master's Degree program are taught on the Transylvania campus by the Xavier University of Cincinnati faculty members. The degree is awarded by Xavier University.

\*\*Cooperative program with the University of Kentucky, Lexington, for a Ph. D. in education only.

## Vocational Schools

	<u>Nearest State School</u>	<u>Nearest Area Education Center</u>
	Central Kentucky State Vocational-Technical School	Harrison County Area Voca- tional Education Center
Location	Lexington	Cynthiana
Miles Distant	19 miles from Paris	15 miles from Paris
Curriculum	Clerical Secretarial-Stenographical Commercial Foods Cosmetology Equine Education Practical Nursing Industrial Education Auto Body Repair Auto Mechanics Drafting Electronics Graphic Arts (Printing) Industrial Electricity Machine Shop Office Machine Repair Sheet Metal Welding	Business and Office Health and Personal Services Industrial Education Auto Mechanics Carpentry Drafting Machine Shop Welding

Arrangements can be made to provide training in the specific production skills required by an industrial plant. Instruction may be conducted either in the vocational school or in the industrial plant, depending upon the desired arrangement and the availability of special equipment.

## HEALTH

### Local Medical Personnel

Physicians - 9  
Dentists - 6

### Hospitals

<u>General Hospital</u>	<u>Location</u>	<u>Beds</u>
Bourbon County Hospital	Paris	76
General hospital facilities - 2 operating rooms, recovery room, X-ray, nursery, pharmacy, laboratory, physical therapy, inhalation therapy department, obstetrical section, emergency room		
Medical staff - 10 doctors, 11 registered nurses (full time), 3 registered nurses (part time), 4 graduate licensed practical nurses (full time), 4 graduate licensed practical nurses (part time)		

### Other Medical Facilities

State Respiratory Diseases Hospital

### Ambulance Service

Ambulance service for Paris and Bourbon County is provided by three Paris funeral homes using five ambulances.

### Nursing Homes

	<u>Number</u>	<u>Beds</u>
Nursing home with extended care and personal care	1	81
Personal care homes	2	37

### Public Health

Facility - The Bourbon County Health Center  
Staff - Health officer, 2 nurses, 3 clerks, 2 sanitarians, nutritionist, 2 dentists, Bluegrass Family Planning agent, outreach worker



BOURBON HEIGHTS NURSING HOME

## OTHER LOCAL FACILITIES

### Communications

Telephone - South Central Bell Telephone Company  
Services - Standard (touchtone)

Telegraph - Western Union  
Services - Phone

Postal - U. S. Post Office  
Class - First  
Mail received - 2 times daily  
Mail dispatched - 3 times daily

Newspapers -  
Daily and circulation - Paris Daily Enterprise - 5,130  
Weekly and circulation - The Citizen Advertiser - 6,200  
Other papers received from - Louisville and Lexington, Kentucky;  
Cincinnati, Ohio

Radio - WBGR AM and FM  
Stations received from - Lexington, Louisville, Cynthiana and  
Winchester, Kentucky; Cincinnati,  
Ohio

Television -  
Cable service  
Reception from - Lexington and Louisville, Kentucky; Cincinnati,  
Ohio  
Kentucky Educational Television - Lexington-Richmond transmitter,  
Channel 46

### Library Services

Public library - Paris-Bourbon County Public Library  
Size collection - 27,019 volumes  
Circulation, 1975 - 193,000  
Services - Services for the blind, summer reading program, film  
series, audiovisual services and equipment, bridge lessons,  
craft lessons, service to shut-ins, meeting rooms available,  
Bookmobile service, creativity programs

Religious Institutions

Number of churches - 27

Denominations - Baptist, Catholic, Christian, Church of God, Church of Christ, Episcopal, Latter Day Saints, Methodist, Nazarene, Presbyterian, Primitive Baptist

Nearest synagogues - Lexington, 19 miles distant

Congregations - Adath Israel (reform), Ohavey Zion (traditional)

Financial Institutions

<u>Banks</u>	<u>Assets</u>	<u>Deposits</u>	<u>Statement Date</u>
Bourbon-Agricultural Bank and Trust Company	\$25,546,922.00	\$22,868,893.00	12/31/75
The National Bank and Trust Company	13,114,977.52	11,674,256.06	12/31/75
Peoples Deposit Bank and Trust Company	18,654,027.81	16,979,221.53	12/31/75

<u>Savings and Loan Associations</u>	<u>Assets</u>	<u>Shared Accounts</u>	<u>Statement Date</u>
Blue Grass Federal Savings and Loan Association	\$12,452,300.73	\$11,223,820.55	12/31/75

Hotels and Motels

Total number - 4

Total units - 57

Clubs and Organizations

Business and Civic - Paris-Bourbon County Chamber of Commerce, Jaycees, Kiwanis, Lions, Rotary, P. T. A., Civitan, YMCA, Bourbon County REACT, Business and Professional Women's Club

Fraternal - Odd Fellows, Masons, American Legion, VFW

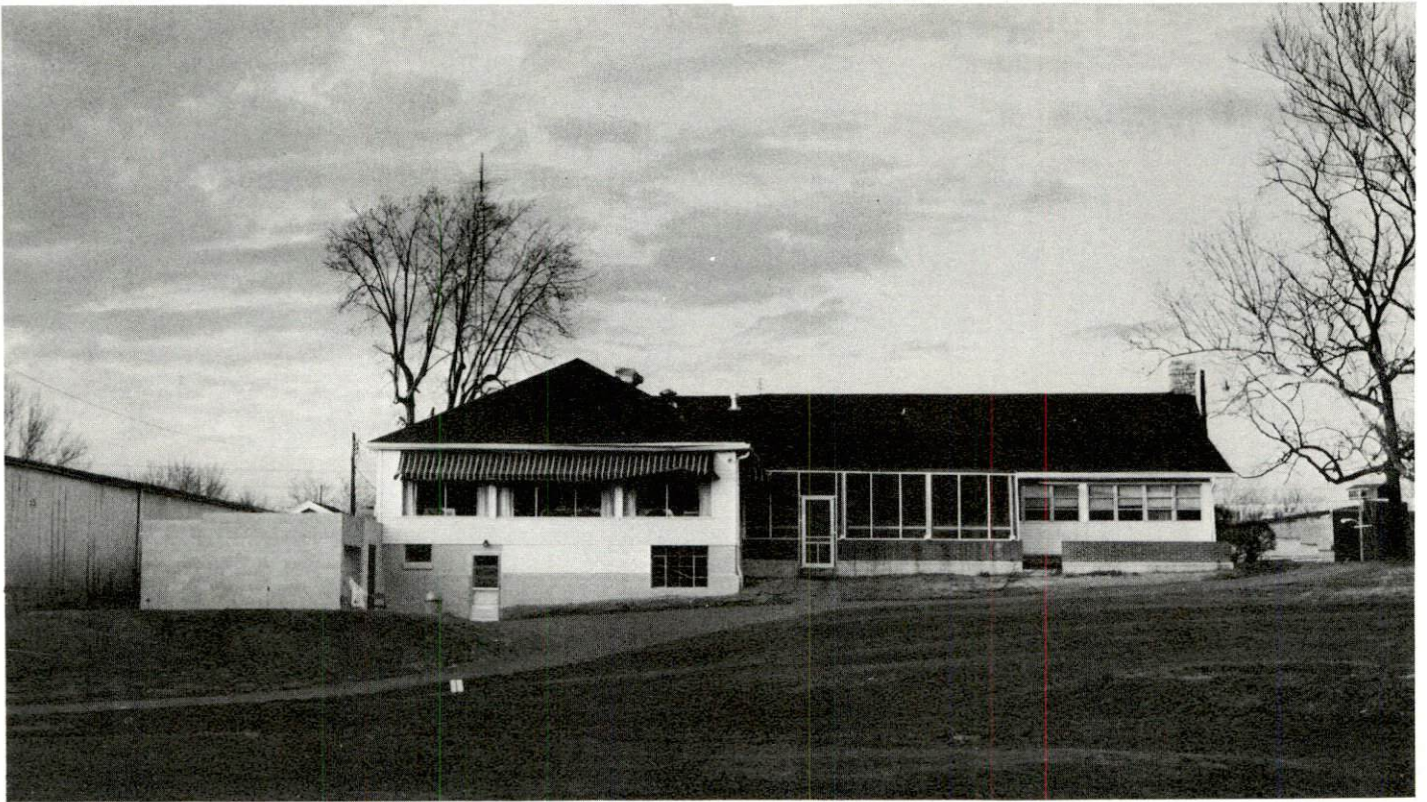
Women's - DAR, American Legion Auxiliary, Bourbon County Homemakers, Younger Woman's Club, VFW Auxiliary, Lioness, Civinettes, Garden Club, Hospital Auxiliary of Bourbon County, League of Women Voters

Youth - Boy Scouts, Girl Scouts, Cub Scouts, Brownies, 4-H, FFA, FHA, FBLA, Teen Square, Little League, Small Fry Football



GARRARD PARK





CLUBHOUSE - STONER CREEK COUNTRY CLUB



GOLF COURSE

## RECREATION

### Local

The city and the Paris YMCA offer a variety of recreation facilities and programs. The city supports a summer supervised program, two parks, one playground, a pool, lighted tennis courts, two baseball diamonds, and two football fields. The city has recently added lights to the baseball diamonds for summer night softball.

Private recreation facilities in Paris are as extensive as the public. The country club offers a nine-hole golf course and swimming pool. A bowling facility, health club, and two movie theaters - one indoor and one drive-in are available to the public.

Tourist attractions in and around Paris include Duncan Tavern, Cane Ridge Shrine, the Lions Club Dixieland Show and numerous tobacco auctions. A gas and steam engine show is held annually in July, along with numerous horse shows. Many horse farms, which are a part of the Kentucky heritage, are located around Paris. One farm is the permanent home of the 1973 Triple Crown winner, Secretariat.

### Area

Located within 55 miles of Paris are three state parks and five state shrines.

Blue Licks Battlefield State Park, 33 miles from Paris, offers 100 acres of facilities and attractions. The park is located on the site of the last battle of the Revolution and last Indian-pioneer struggle in Kentucky. This park features free camping, an Olympic swimming pool, hiking trails and other facilities.

Fort Boonesborough State Park, approximately 30 miles from Paris, offers camping, swimming, beach facilities, a bathhouse with sundeck, first aid and life guard station, boat docks for campers, fishing and other recreational facilities. Fort Boonesborough is the site of the Daniel Boone settlement.

Kincaid Lake State Park, 37 miles from Paris, has 150 primitive camp sites. This park offers a 220-acre lake, plus 228 acres of various facilities and attractions.

There are five state shrines located within 55 miles of Paris. These state shrines offer numerous forms of recreation and entertainment. The five state shrines in the area are: Constitution Square State Shrine, Isaac Shelby State Shrine, Perryville Battlefield State Shrine, Waveland State Shrine and the White Hall State Shrine.

## COMMUNITY IMPROVEMENTS

### Recent:

New commercial buildings and face liftings have taken place in Paris during the past year. Paris is an old city, beginning in the 1780's, and most of the downtown buildings were built prior to the turn of the century. A desire to provide modern facilities led the city to preserve those buildings with historical value and provide the best downtown services for local consumers.

1. Some fourteen Paris businesses either remodeled or opened in new quarters during the past year.
2. A 30-unit housing complex has been completed.
3. A new physical education building for the Paris elementary school has been completed.
4. The first portion of the Paris by-pass has been completed.
5. The 50,000 square foot Normandy Place shopping center is now open.
6. The city fire department purchased a 100-foot ladder truck and additional fire equipment.
7. The Bourbon County Hospital spent \$42,000 painting and remodeling.
8. The Peoples Bank remodeled and added drive-through window service.
9. The city completed the extended sign renovation project.
10. Construction on a new city parking lot has been completed.
11. The Paris Independent School District has added a kindergarten.
12. Schools in the Paris Independent School District have either been remodeled or renovated recently, including structural remodeling, new heating, new lights, etc.

13. The Recreation Department has added lights to two baseball diamonds.
14. Two computers have been purchased for accounting functions for the city, as well as payroll.
15. Four counties have merged, including Bourbon, and have formed the Blue Grass District Health Department.
16. South Central Bell spent \$285,000 to upgrade the cable service throughout the city.
17. A new substation was added to serve the south area of the city of Paris.

Planned:

1. The Paris Independent School District is now in the planning stage of renovating the athletic field.
2. The city is planning to build a new fire station building which will house the new ladder truck.
3. Redevelopment of an area adjacent to the city of Paris is planned.
4. Development of two new smaller neighborhood parks is planned.
5. Paris is planning a multi-purpose juvenile center which will be for rehabilitation, probation and emergencies.
6. The Paris Water and Sewer Department has plans to construct reservoirs and to extend water and sewer lines into newly developed and newly annexed areas.
7. Two apartment complexes are planned for the coming year; one will house eight commercial businesses.
8. Sewers are to be extended into planned subdivisions at developer's cost.

Underway:

1. Additional off street parking improvements are underway.
2. "Operation Bootstrap," to preserve the downtown area and meet the needs of a modern downtown business district, is underway.
3. Home Health Program for discharged patients is now available.
4. The National Bank and Trust Company is constructing a new building.
5. Paul Miller Ford is building a new facility on the by-pass.
6. The city beautification program is underway with the hiring of a landscape architect and program administrator.
7. The Columbia Gas Company is in the process of upgrading all existing facilities.
8. A five-year city recreation plan is now in effect for improvements to city parks.
9. Extension of sewer force main into the county on the south end of Paris, total project cost - \$100,000, is underway.
10. The second portion of the Paris by-pass is under construction.
11. The city is in the process of receiving bids for a sanitary landfill.

## HISTORY

Bourbon County was established by the Virginia Legislature in 1785. Its territory was taken from Fayette County, and later it gave lands to four other counties. It was named in honor of the Bourbon family, the ruling family of France which aided the American effort for independence from Great Britain. The first court in the county was held in 1786 at the house of James Garrard, Kentucky's second governor, and the only man to be elected two successive terms. John Edwards, who was later elected to the United States Senate, was also a member of the court.

Bourbon County is located in central Kentucky in the heart of the Bluegrass region. The county's name is French but its country roads and country estates look English. Paris, the county seat, was established as Hopewell in 1789 (because stagecoach drivers "hoped" they would reach it by nightfall), then called Bourbontown, and finally Paris in 1790, named for the Capital of France. The county offers 300 square miles of gently rolling fertile soil.

The county has the distinction of having four great pioneer figures as one-time residents: Daniel Boone, James Smith, Simon Kenton and Michael Stoner. There are scores of names inscribed on a D. A. R. tablet on the Bourbon County courthouse, erected in memory of soldier-citizens of the county who fought in the American Revolution. Cassius M. Clay, Jr., who was president of the convention which wrote Kentucky's present constitution and John Fox, Jr., the Kentucky novelist who wrote The Little Shepherd of Kingdom Come, were Bourbon County natives.

A pioneer product, corn whiskey, Kentucky's famous Bourbon whiskey was first produced in this county. By 1823, there were 40 distilleries operating in the county, but today there are none.

The first land surveys of the area were made by James Douglass and Colonel John Floyd in 1774 and 1775, with settlements following soon afterward. Hinkston Creek flows along Bourbon County's eastern border and Stoner Creek rises in the southwest and unites with the South Fork of the Licking River in the northern area.

Bourbon County played an important role in the religious history of the state. Following the Great Western Revival which began in Logan County, a movement called "The New Lights" was headed in Bourbon County by Barton W. Stone. Stone led his people into a merger with Alexander Campbell's Disciples of Christ, forming the Christian Church in 1832. The birthplace of the Christian Church is preserved in Bourbon County.

Paris had a population of 7,823 in 1970 and 7,639 in 1973. Bourbon County already had a population of 7,837 in 1790. Since 1810 the population has remained rather stable, with 17,752 in 1950; 18,178 in 1960; 18,476 in 1970; and 18,700 in 1974.

The total number of Bourbon County residents employed in 1974 averaged 9,290, including 1,750 in agriculture and 1,280 in government. Manufacturing employers in the county reported 1,400 workers; trade and services firms employed 1,250. The largest firms in the county are International Products Division of Dura Corporation, producing motor vehicle parts; Blue Grass Industries, making knit garments; and Hansley, Inc., which makes men's slacks and swimwear.



Production Supervisor  
Patsy Wallace

Research  
Craig Turner

Clerical  
Mildred Keefer

Graphics  
N. C. Montague  
Frank Ferrante  
Tony Cecconi

Cartography  
Site Development Section

This copy has been prepared by the Kentucky Department of Commerce, Division of Research and Planning, and the cost of printing paid from state funds.