

1968

Industrial Resources: Boyd County - Ashland

Kentucky Library Research Collections
Western Kentucky University, spcol@wku.edu

Follow this and additional works at: https://digitalcommons.wku.edu/boyd_cty

 Part of the [Business Administration, Management, and Operations Commons](#), [Growth and Development Commons](#), and the [Infrastructure Commons](#)

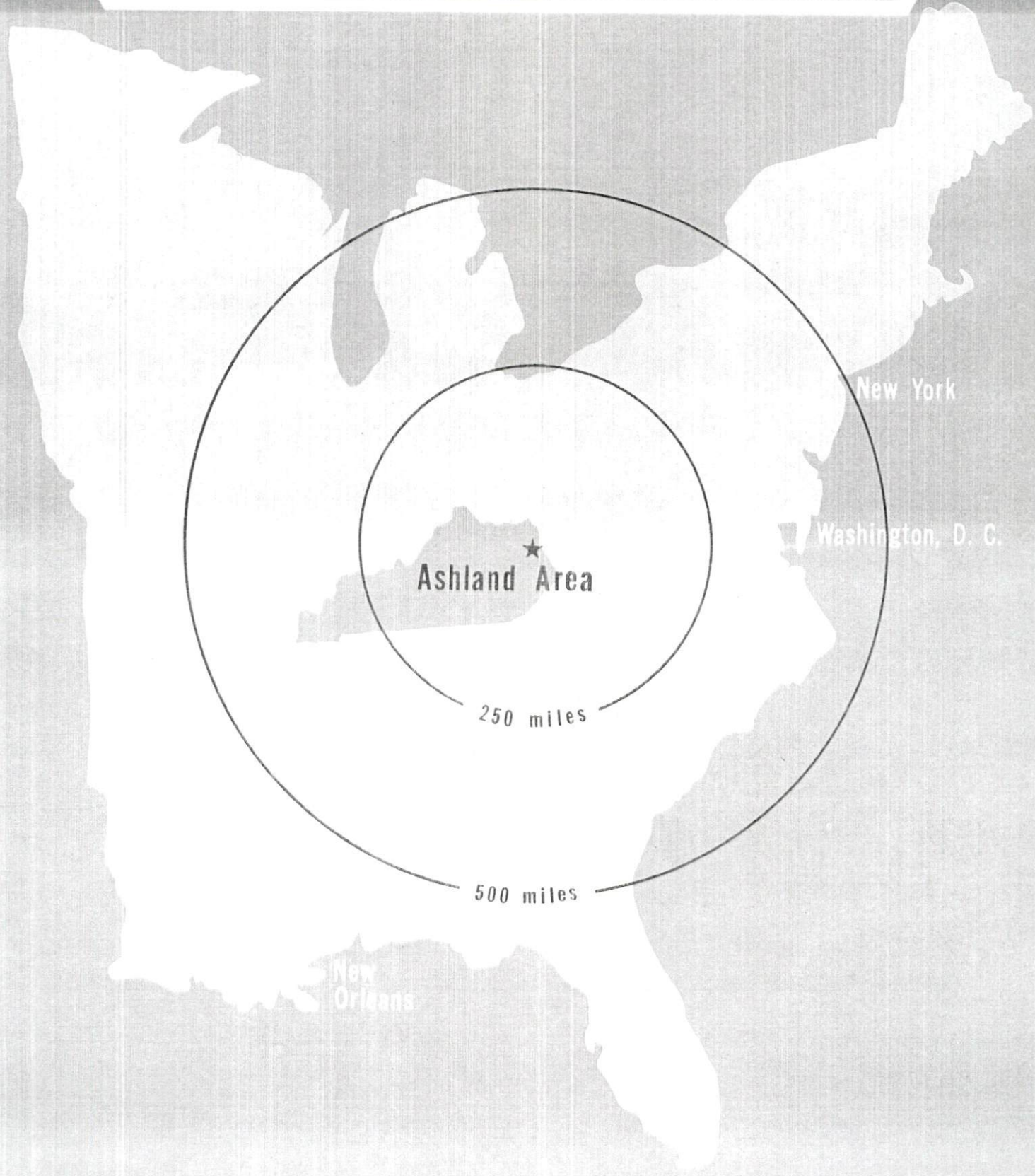
Recommended Citation

Kentucky Library Research Collections, "Industrial Resources: Boyd County - Ashland" (1968). *Boyd County*. Paper 4.
https://digitalcommons.wku.edu/boyd_cty/4

This Report is brought to you for free and open access by TopSCHOLAR®. It has been accepted for inclusion in Boyd County by an authorized administrator of TopSCHOLAR®. For more information, please contact topscholar@wku.edu.

**INDUSTRIAL
RESOURCES**

**ASHLAND AREA
KENTUCKY**



New York

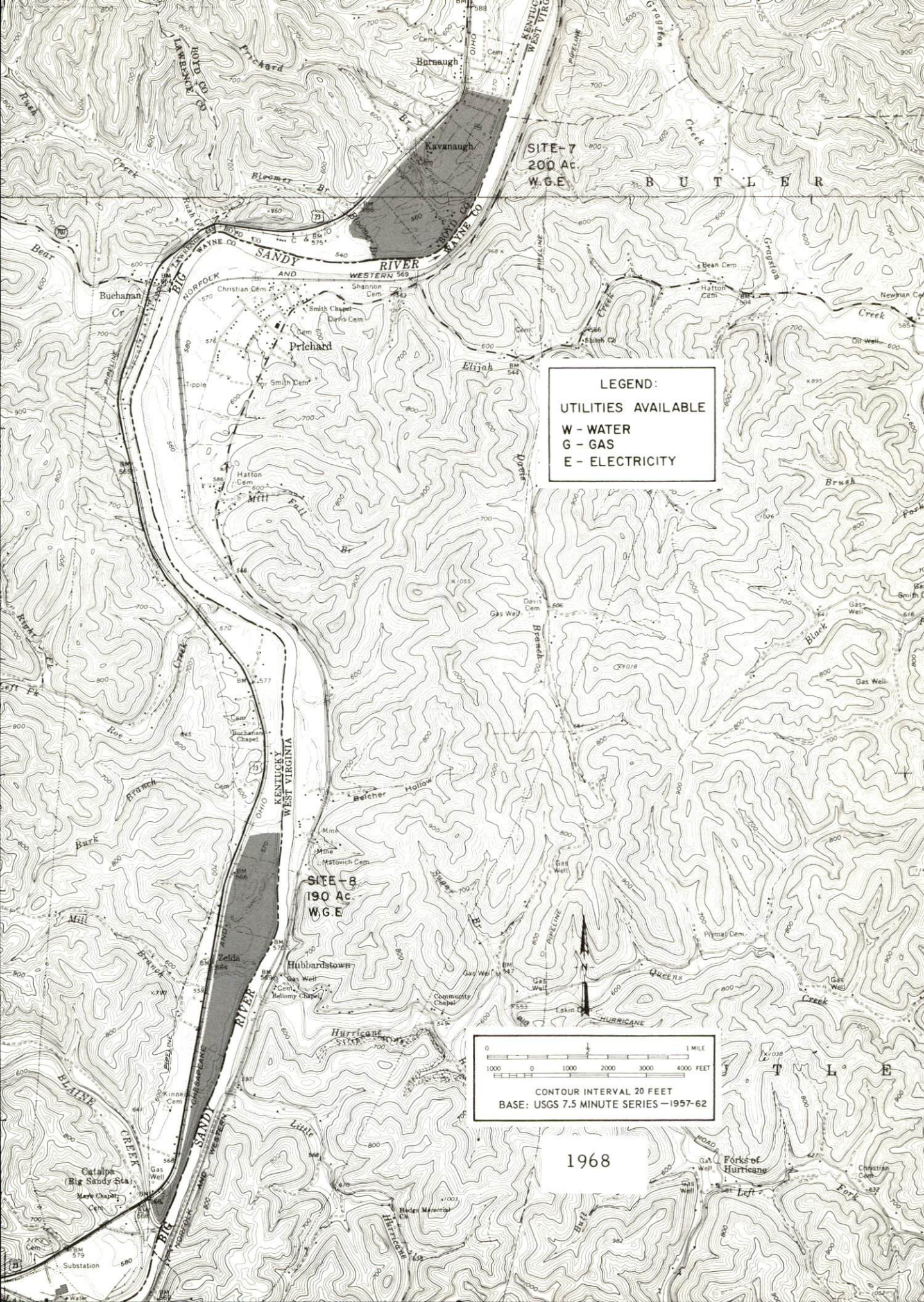
Washington, D. C.

Ashland Area

250 miles

500 miles

New Orleans



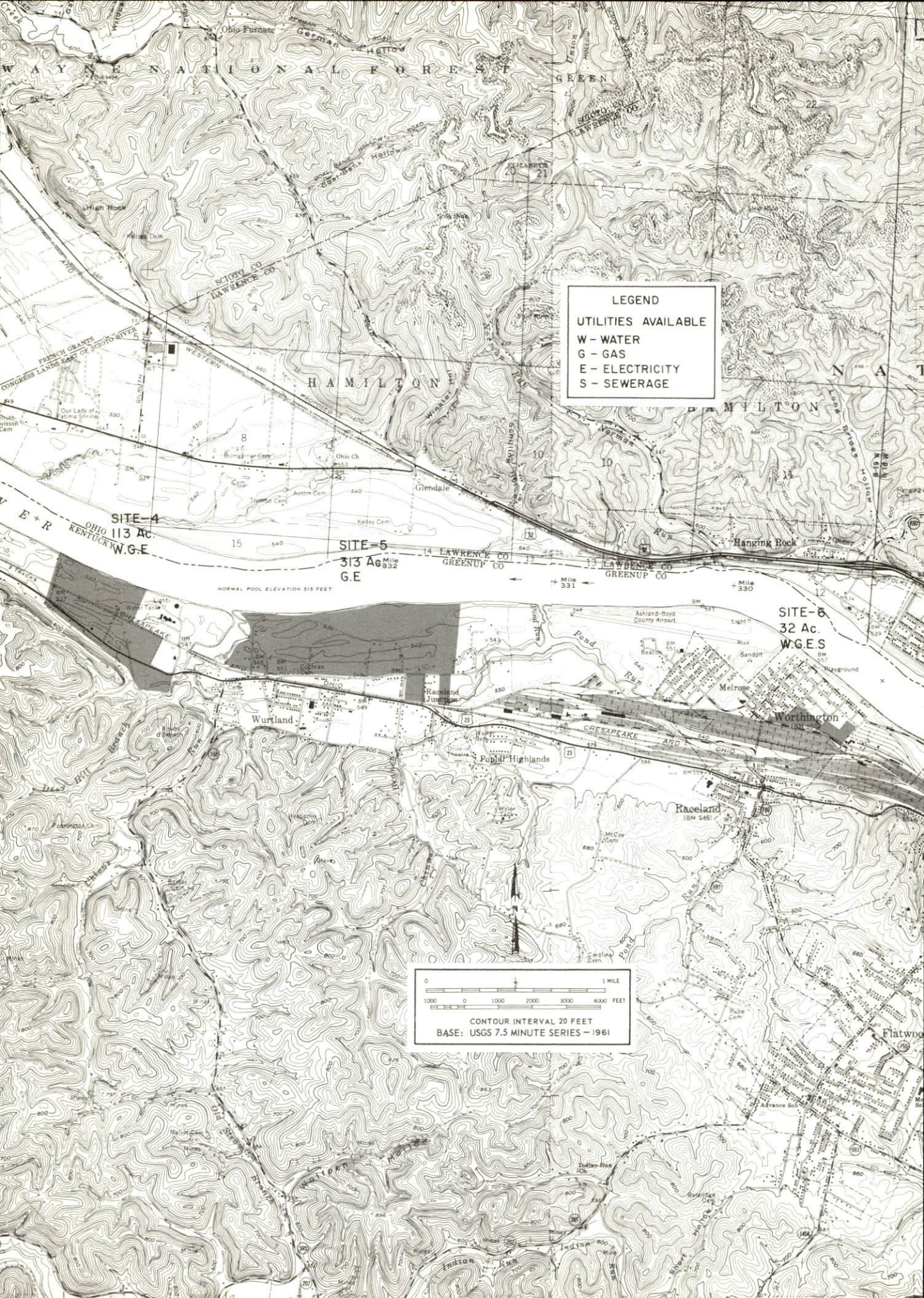
SITE-7
200 Ac.
W.G.E.

SITE-8
190 Ac.
W.G.E.

LEGEND:
W - WATER
G - GAS
E - ELECTRICITY

0 1000 2000 3000 4000 FEET
1 MILE
CONTOUR INTERVAL 20 FEET
BASE: USGS 7.5 MINUTE SERIES—1957-62

1968



LEGEND
UTILITIES AVAILABLE
W - WATER
G - GAS
E - ELECTRICITY
S - SEWERAGE

SITE-4
113 Ac.
W.G.E.

SITE-5
313 Ac.
G.E.

SITE-6
32 Ac.
W.G.E.S.

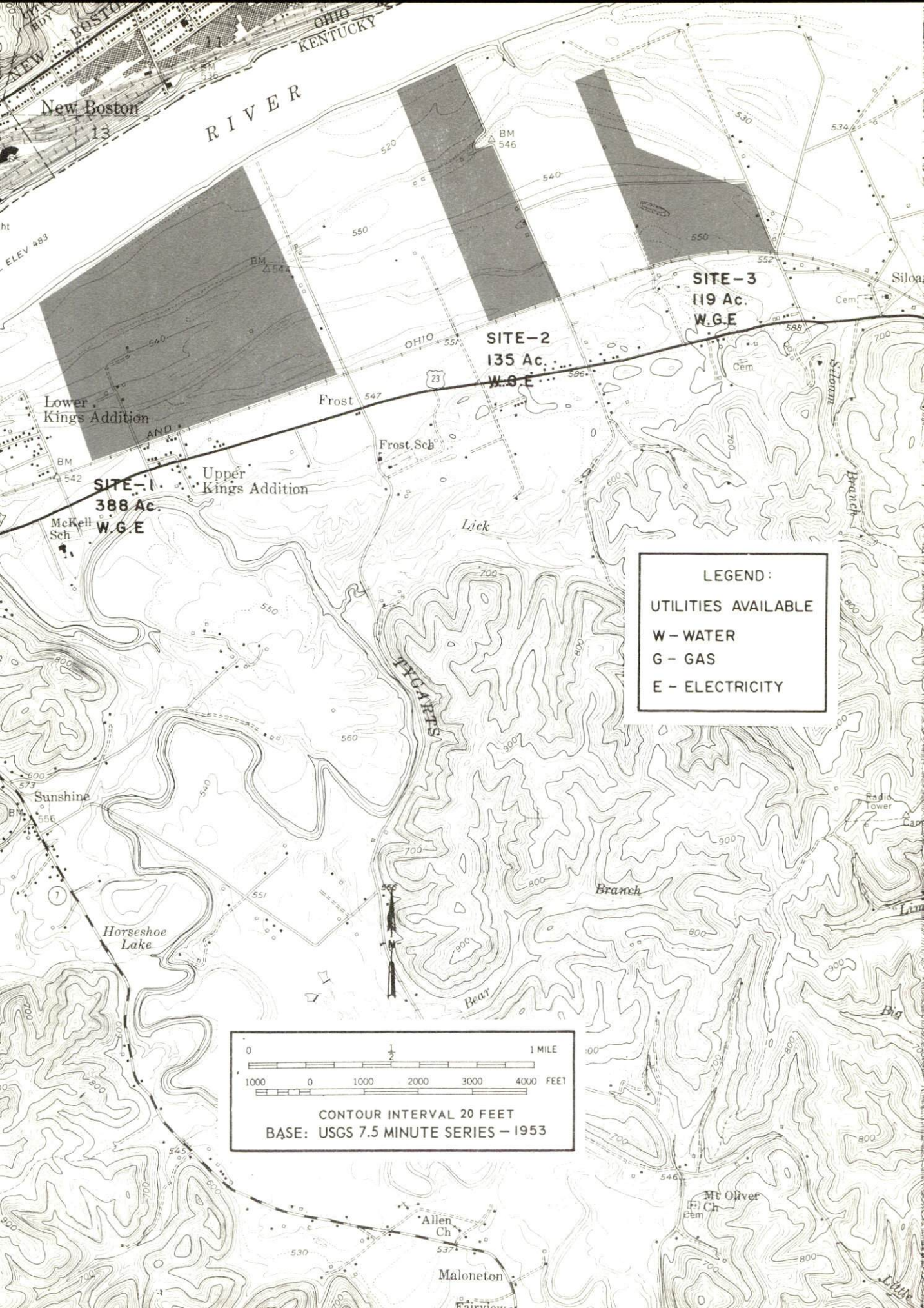
0 1 MILE
1000 0 1000 2000 3000 4000 FEET
CONTOUR INTERVAL 20 FEET
BASE: USGS 7.5 MINUTE SERIES - 1961

ASHLAND AREA INDUSTRIAL SITES

There are numerous large tracts of land available as industrial sites in the Ashland Area. The sites range from 32 to 400 acres accommodating any size of industry. Cost per acre will be furnished upon request by the Agent, Mr. Roger Thompson, Kentucky Power Company, Ashland, Kentucky, or the Kentucky Department of Commerce.

The Ashland Industrial Corporation is able to make available moneys for local participation for the purpose of purchasing industrial sites not shown in this brochure.

- SITE #1: ACREAGE AND TOPOGRAPHY: 388 acres, level land
 LOCATION: Approximately 29 miles northwest of Ashland
 HIGHWAY ACCESS: Two county roads leading to U. S. Route 23 approximately 500 feet south
 RAILROADS: This site is bound by the Chesapeake & Ohio Railway.
 WATER: Surface water from the Ohio River
 GAS: Columbia Gas of Kentucky, Inc.
 ELECTRICITY: Kentucky Power Company
 OWNER: Chesapeake & Ohio Railway Company
- SITE #2: ACREAGE AND TOPOGRAPHY: 135 acres, level land
 LOCATION: 28 miles northwest of Ashland and between the Chesapeake & Ohio Railway and the Ohio River
 HIGHWAY ACCESS: A county road leads to U. S. Route 23, one-fourth mile south.
 RAILROADS: Bordered by the Chesapeake & Ohio Railway on the south
 WATER: Surface water from Ohio River
 GAS: Columbia Gas of Kentucky, Inc.
 ELECTRICITY: Kentucky Power Company
 OWNER: Chesapeake & Ohio Railway Company
- SITE #3: ACREAGE AND TOPOGRAPHY: 119 acres, level land
 LOCATION: 27 miles northwest of Ashland and on the Chesapeake & Ohio Railway
 HIGHWAY ACCESS: Two county roads lead to U. S. Route 23 approximately 1500 feet south
 RAILROADS: The Chesapeake & Ohio Railway borders the site on the south.
 WATER: Surface water from Ohio River
 GAS: Columbia Gas of Kentucky, Inc.
 ELECTRICITY: Kentucky Power Company
 OWNER: Chesapeake & Ohio Railway Company
- SITE #4: ACREAGE AND TOPOGRAPHY: 113 acres, level to slightly rolling
 LOCATION: 7 miles west of Ashland
 RAILROADS: Chesapeake & Ohio Railway
 WATER: Wurtland Water District
 GAS: Columbia Gas of Kentucky, Inc.
 ELECTRICITY: Kentucky Power Company
 OWNER: Kentucky Power Company
- SITE #5: ACREAGE AND TOPOGRAPHY: 313 acres, level to gently rolling land
 LOCATION: 8 miles northwest of Ashland on the Ohio River and just off U. S. Route 23
 HIGHWAY ACCESS: No portion of this site is more than 2,000 feet from U. S. Route 23 and access is obtained by using six county roads.
 RAILROADS: The southwestern portion of this site borders the Raceland-Russel Yards of the Chesapeake & Ohio Railway Company.
 WATER: Surface water from Ohio River
 GAS: Columbia Gas of Kentucky, Inc.
 ELECTRICITY: Kentucky Power Company
 OWNER: Kentucky Power Company
- SITE #6: ACREAGE AND TOPOGRAPHY: 32 acres, level land
 LOCATION: Approximately 6 miles west of Ashland on Kentucky Route 244
 HIGHWAY ACCESS: Bound by Kentucky Route 244 on the south
 RAILROADS: A spur extending from the Raceland-Russell Yards of the Chesapeake & Ohio Railway Company enters the southeastern portion of this site.
 WATER: Raceland Water Works
 ELECTRICITY: Kentucky Power Company
 GAS: Columbia Gas of Kentucky, Inc.
 SEWERAGE: Worthington Sewer System
 OWNER: Chesapeake & Ohio Railway Company
- SITE #7: ACREAGE AND TOPOGRAPHY: 200 acres, level land
 LOCATION: 16 miles south of Ashland adjacent to U. S. Route 23
 HIGHWAY ACCESS: U. S. Route 23 is adjacent to this site.
 RAILROADS: The Chesapeake & Ohio Railway bounds this property.
 RIVER TRANSPORTATION: A 6-foot channel extends from the Ohio River.
 WATER: Surface water from Big Sandy River
 ELECTRICITY: Kentucky Power Company
 GAS: Columbia Gas of Kentucky, Inc.
 OWNER: Jointly owned by the Kentucky Power Company and the Chesapeake & Ohio Railway Company
- SITE #8: ACREAGE AND TOPOGRAPHY: 190 acres, level to gently rolling land
 LOCATION: Approximately 20 miles south of Ashland
 HIGHWAY ACCESS: U. S. Route 23 bounds the property.
 RAILROADS: Bound by the Chesapeake & Ohio Railway
 WATER: Surface water from Big Sandy River
 ELECTRICITY: Kentucky Power Company
 GAS: Columbia Gas of Kentucky, Inc.



OHIO
KENTUCKY

RIVER

New Boston

13

ELEV 483

BM
546

SITE-3
119 Ac.
W.G.E

SITE-2
135 Ac.
W.G.E

SITE-1
388 Ac.
W.G.E

Lower Kings Addition

Upper Kings Addition

Frost Sch

Frost

Lick

HIGGINS

Bear

Branch

Sunshine

Horseshoe Lake

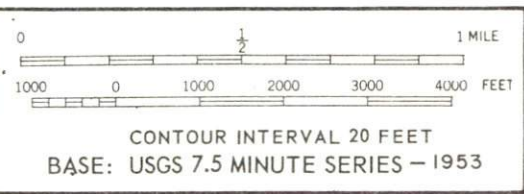
LEGEND:

UTILITIES AVAILABLE

W - WATER

G - GAS

E - ELECTRICITY



Allen Ch

Maloneton

Mc Oliver
Ch

INDUSTRIAL RESOURCES
ASHLAND AREA, KENTUCKY

Prepared by
The Kentucky Department of Commerce
in cooperation with
The Ashland Area Chamber of Commerce
and
The Catlettsburg Chamber of Commerce
1968

Kentucky Library WKU

This copy has been prepared by the Kentucky Department of Commerce, Division of Research and Planning, and the cost of printing paid from state funds.

TABLE OF CONTENTS

<u>Chapter</u>	<u>Page</u>
INDUSTRIAL SITES	i
ASHLAND AREA, KENTUCKY, A PROFILE	1
THE LABOR MARKET	3
Population	3
Employment Characteristics	3
Wage Levels	5
Labor Organizations	6
Labor Supply	6
Income and Sales	7
EDUCATION	8
Elementary and High School	8
Vocational Schools	9
Colleges	10
TRANSPORTATION	11
Rail	11
Highways	12
Truck Service	12
Air	13
Water	13
Other Transportation Services	13
POWER AND FUEL	14
Electricity	14
Natural Gas	14
Fuel Oil	15
Coal	15
WATER AND SEWERAGE	16
Water	16
Sewerage	17

<u>Chapter</u>	<u>Page</u>
AGRICULTURE - NATURAL RESOURCES - CLIMATE	18
Agriculture	18
Mineral Resources	18
Water Resources	18
Forests	19
Climate	19
LOCAL GOVERNMENT	20
Structure	20
Finance	20
Taxes	20
Planning and Zoning	21
Safety	21
Fire	21
Police	22
Sanitation	22
HEALTH	23
Hospitals	23
Nursing Homes	23
Public Health	23
OTHER LOCAL FACILITIES	24
Housing	24
Hotels and Motels	24
Communication	24
Libraries	25
Churches and Synagogues	25
Financial Institutions	25
Clubs and Organizations	25
Recreation	26
Community Improvements - Ashland	27
Recent	27
Under Construction	27
Planned	27
Community Improvements - Catlettsburg	27
Recent	27
Planned	27
HISTORY	28

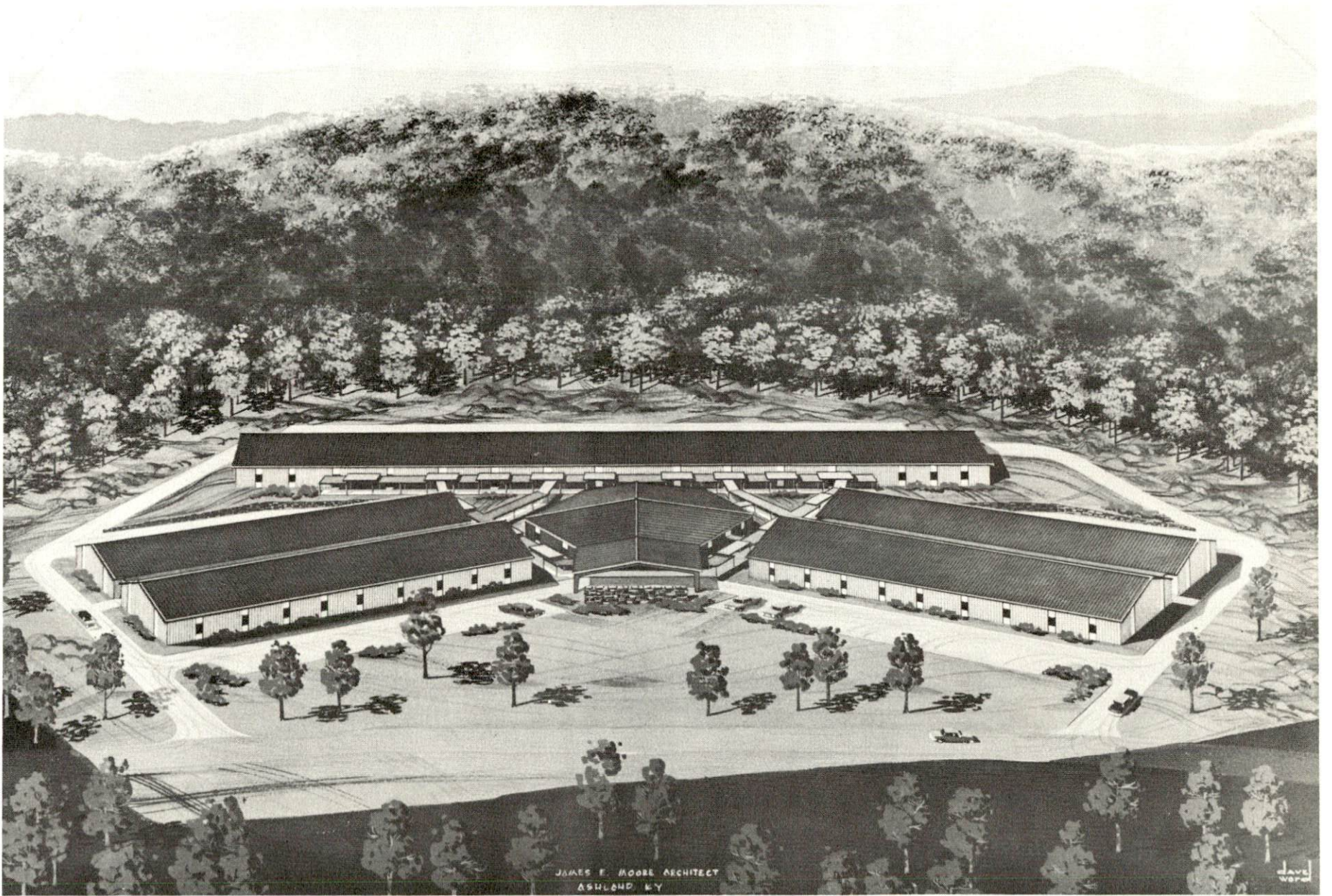
this is...

ASHLAND

and the
industrial pace-setting
area of

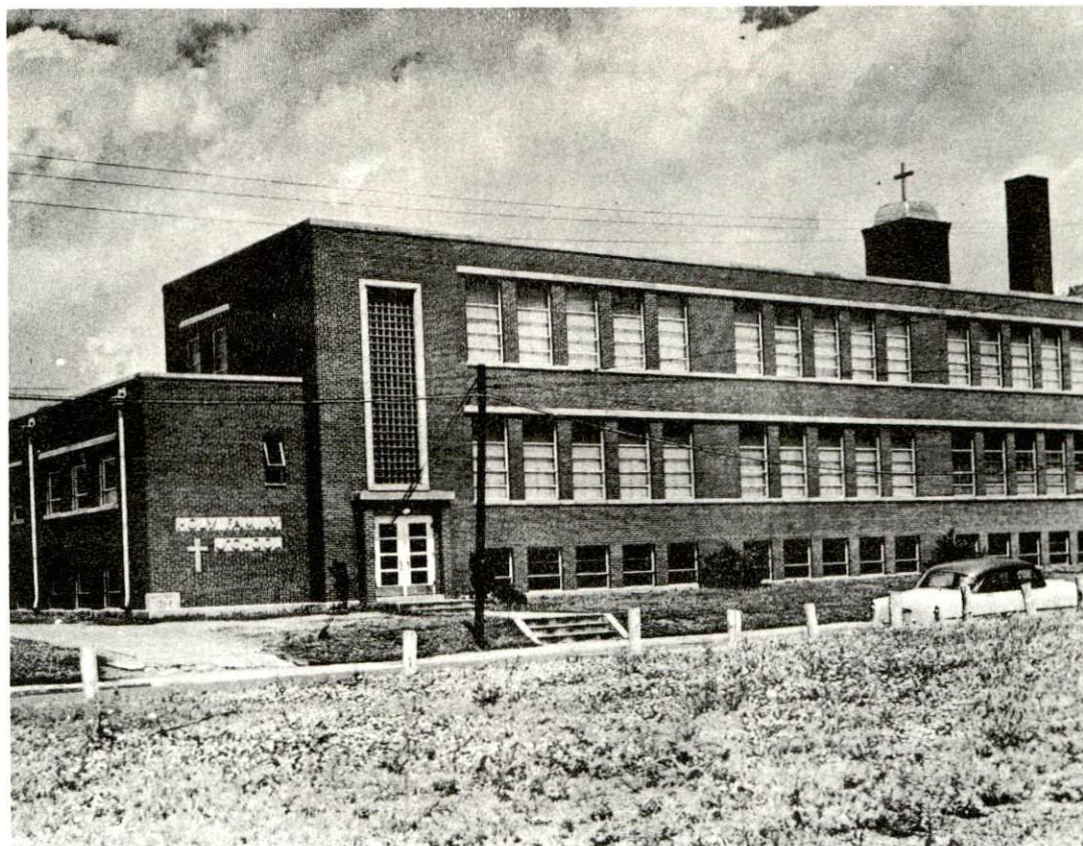
KENTUCKY



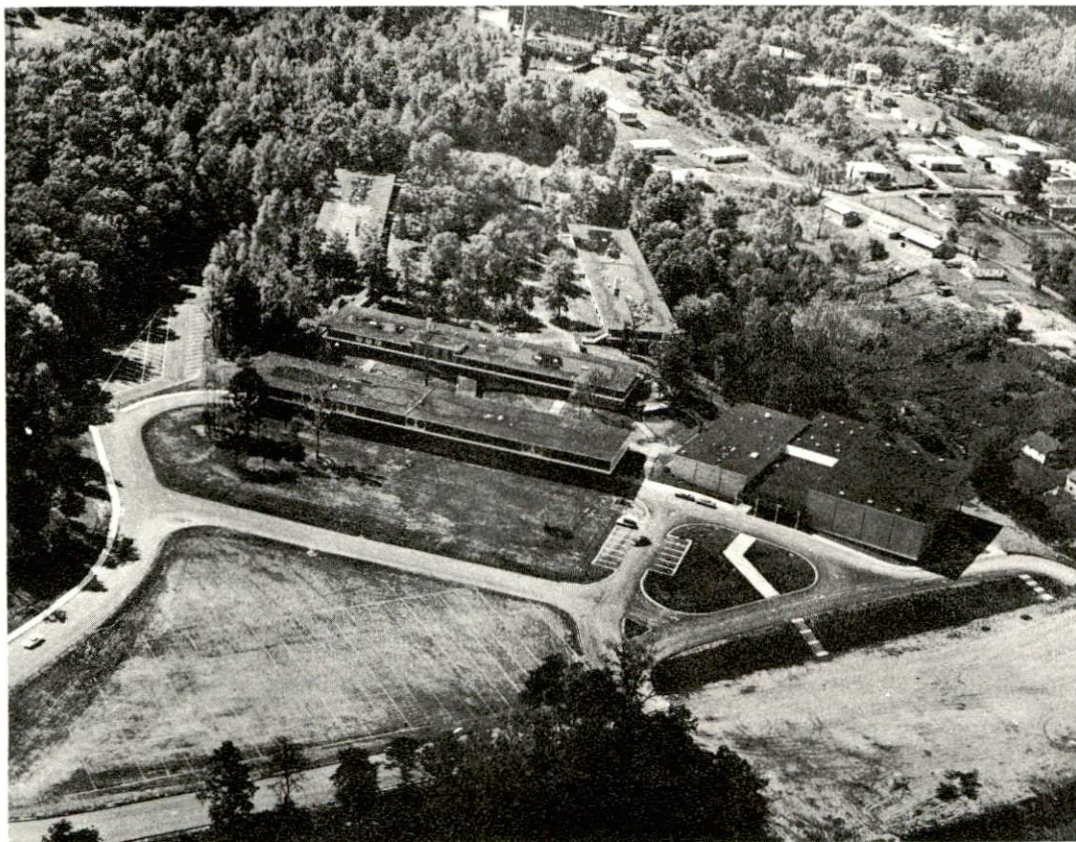


Ashland Area Vocational-Technical School

Ashland
and
Boyd
County
have
put
millions
into
their
excellent
grade
and
high
schools,
new
on all
sides

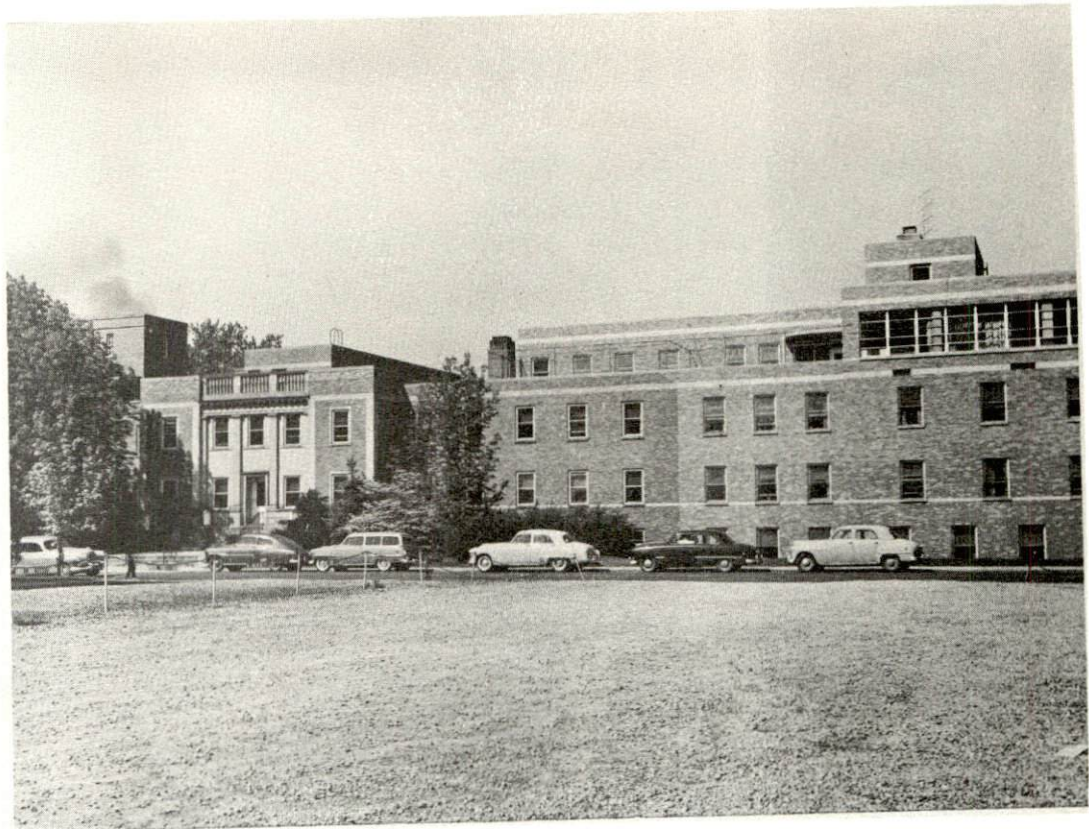


PAROCHIAL AND PUBLIC

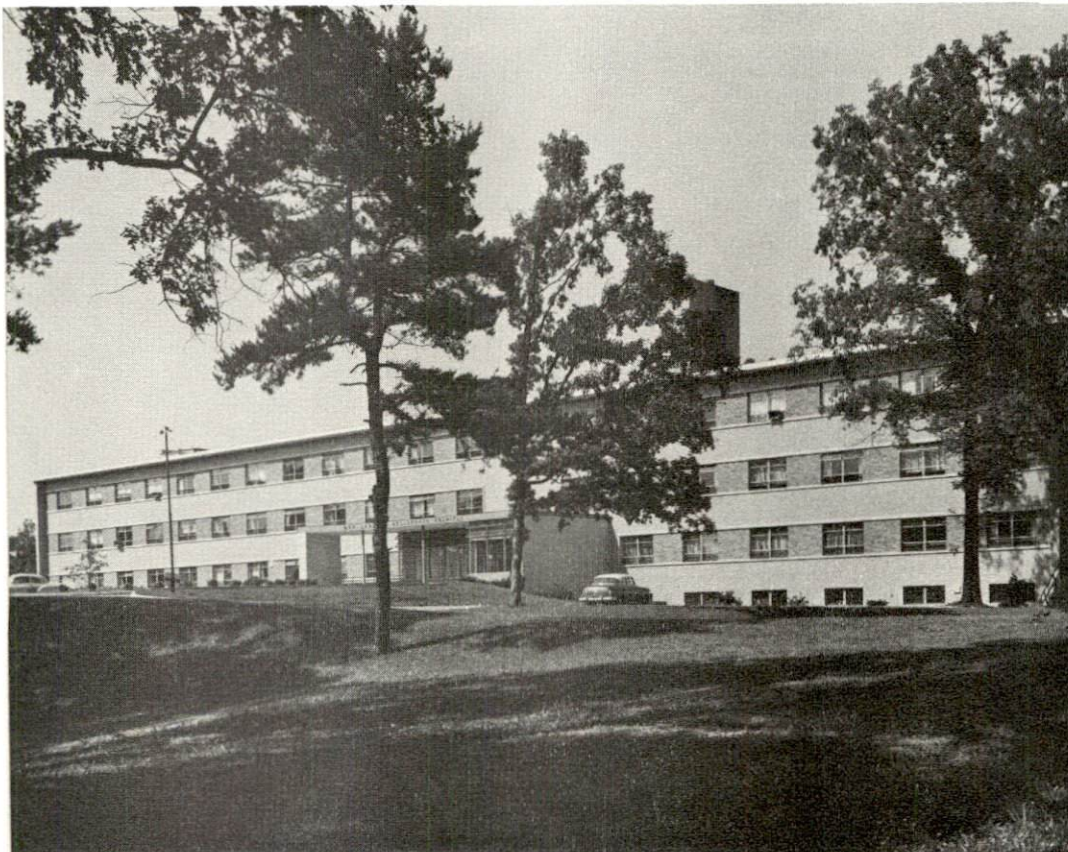


this
is the
magnificent
new
campus-
type
Paul
G.
Blazer
Senior
High
School
in
Ashland

King's
Daughters'
Hospital
provides
the
Ashland
Area
with
excellent
hospital
facilities

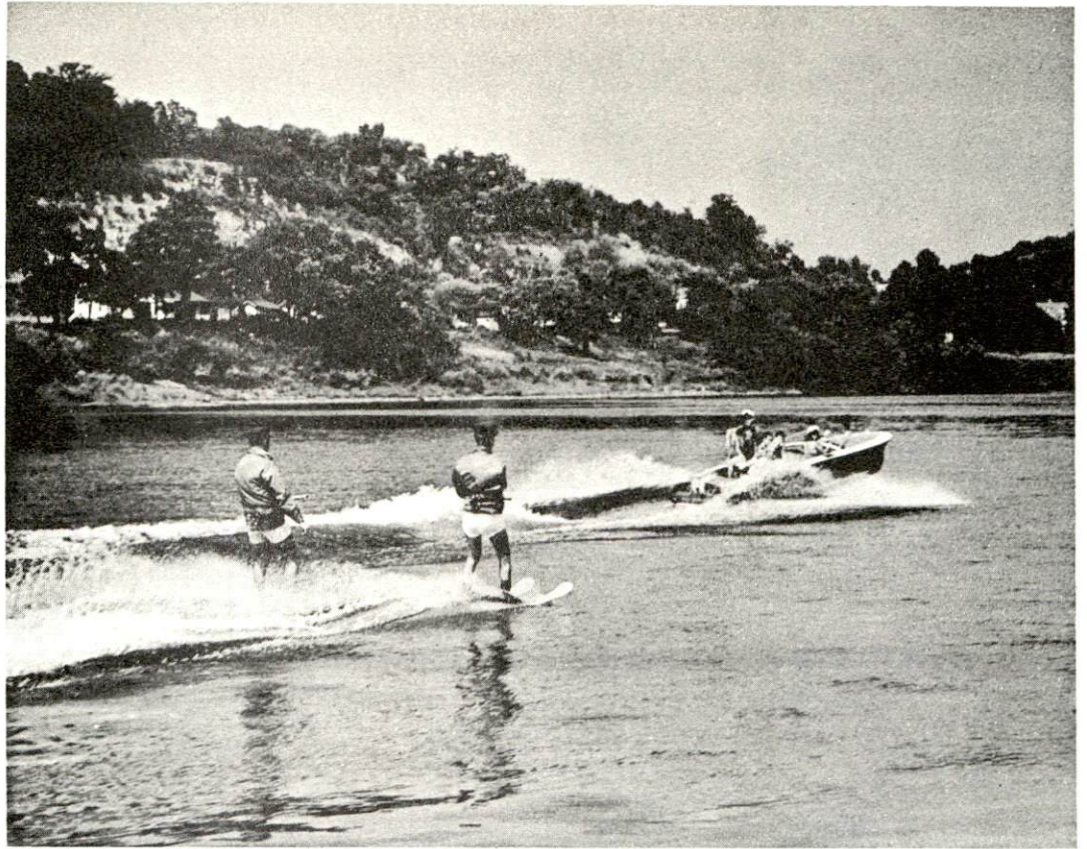


EXCELLENT MEDICAL SERVICES



Our
Lady
of
Bellefonte
Hospital
is
suburban,
adjacent
to the
beautiful
Bellefonte
Country
Club
and the
charming
City of
Bellefonte

from
water
sports
to
mountain
glens,
the
Ashland
Area
is
replete
with
all
types
of
recreation
facilities



AND FUN FOR THE ENTIRE FAMILY

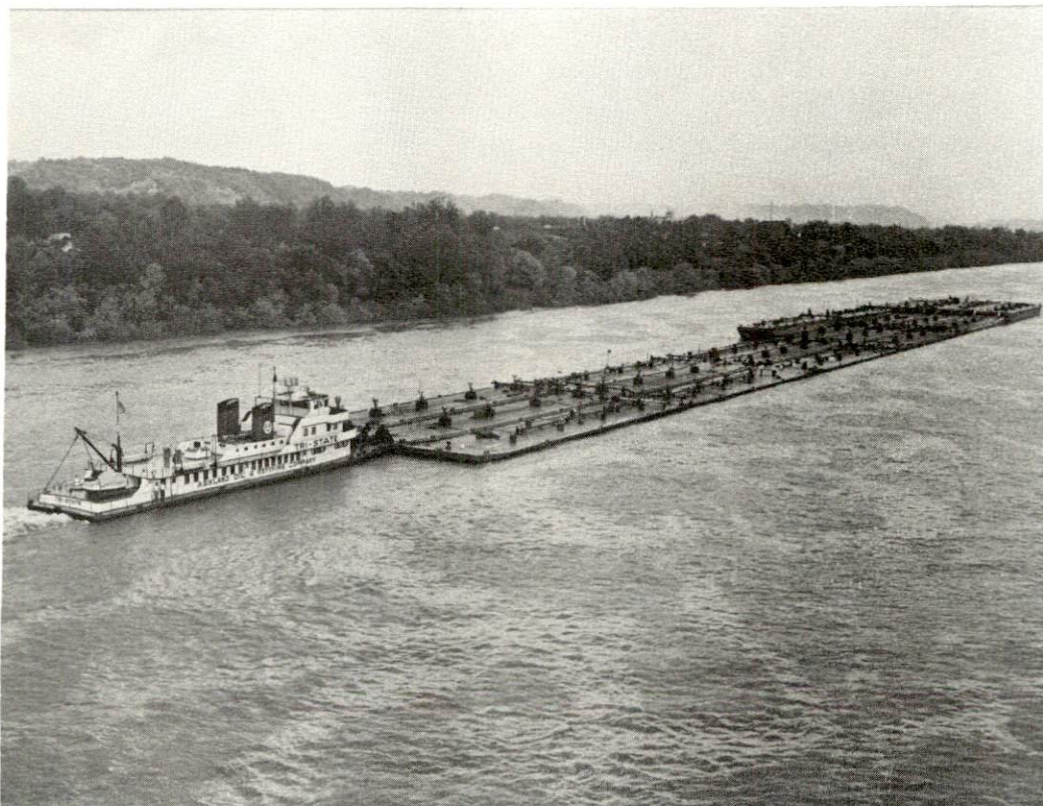


waterways,
lake
and river,
stretch
for
miles;
hills
climb
to the
cool
heights
in
this
pleasurable
land
that is
Ashland's

Ashland-Huntington Tri-State Airport is served by Eastern, Piedmont, and Allegheny Airlines and Ashland-Boyd County have an industrial Airport with 5,000-foot lighted runway



AIR SERVICE AND WATERWAYS

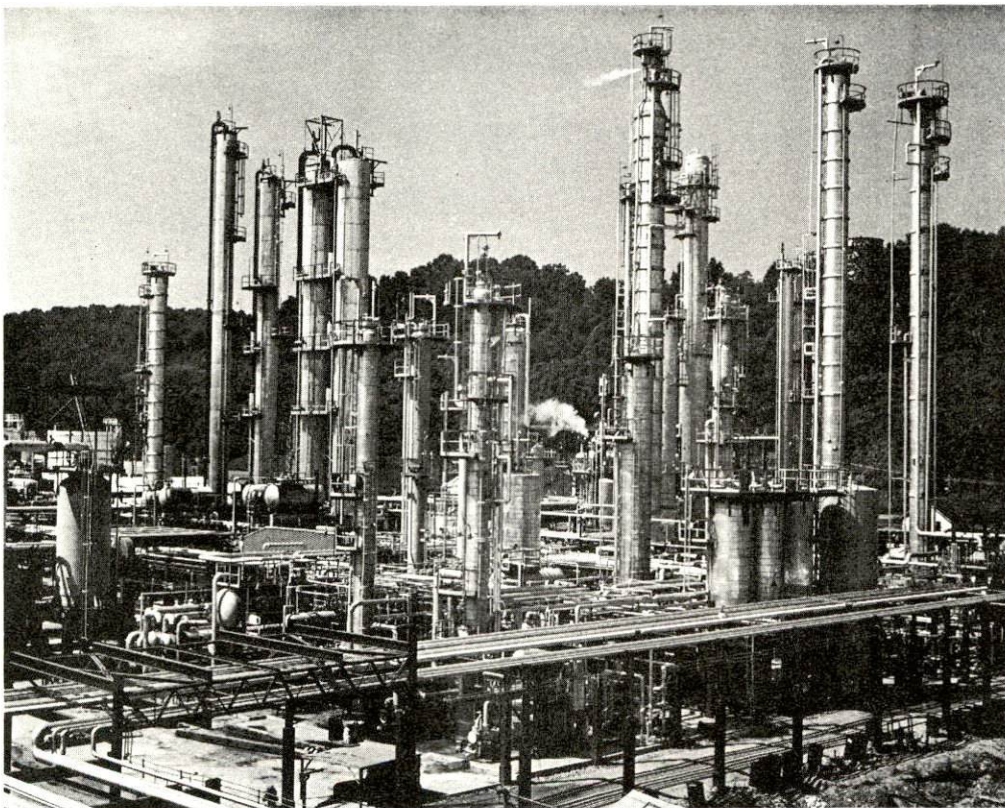


the broad Ohio and the Big Sandy Rivers furnish economical transportior for barge sites of 100 to 400 acres served by the C & O Railway and U.S. 23

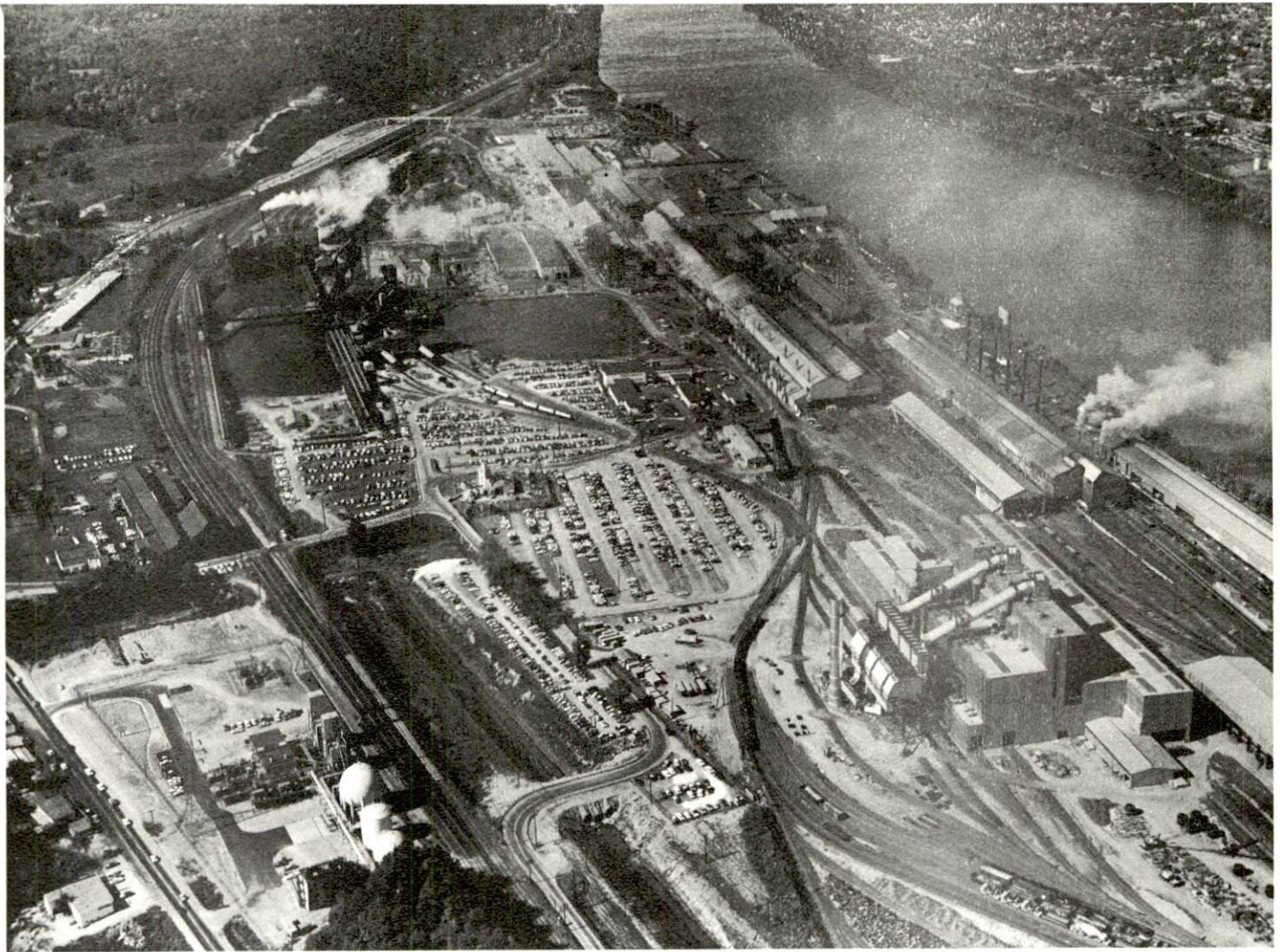
Corporate headquarters operations of Ashland Oil are centered in this building, located in downtown Ashland



ASHLAND IS THE HOME OF ONE OF THE NATION'S LEADING CORPORATIONS, ASHLAND OIL & REFINING COMPANY, WHOSE PETROLEUM AND CHEMICAL OPERATIONS ARE WORLD WIDE.



Ashland Oil's largest refinery is located south of Ashland on U.S. 23, near Catlettsburg. Over 180,000 barrels of refined products are produced at this plant each day. Research to provide new and better products is carried on at a highly modern laboratory adjacent to the refinery.



Capacity doubled in 1963. Armco Steel Corporation now operates the world's largest blast furnace, itself a monument to the fine men and women responsible for top production.

A bit southern to northerners, a bit northern to southerners, ASHLAND, as pretty as its name, beckons to new industry, new business and newcomers alike.

See its magnificent old homes to understand its heritage; visit the "years ahead" new schools, such as Paul G. Blazer Senior High School, to appreciate its progressiveness.

You'll like locating in, building in, living in the ASHLAND AREA!

ASHLAND AREA, KENTUCKY, A PROFILE

Location

The Ashland Area is comprised of Ashland, Catlettsburg, and the surrounding industrial and residential sections of Boyd County, Kentucky. The area is bordered by gently rolling terrain and lies adjacent to the Ohio River at its junction with the Big Sandy River in northeastern Kentucky. Catlettsburg is the county seat of Boyd County. The Ashland Area is located about 15 miles west of Huntington, West Virginia, and 128 miles east of Lexington, Kentucky.

The Economy

Boyd County has a strong economy based on employment in manufacturing, government, and trades and services. Total county employment during 1967 averaged 22,100 and included over 7,200 manufacturing workers.

Employment in the four-county area of which the Ashland Area is the economic center is characterized by balance. In this area manufacturing provides 9,000 jobs, trades and services almost 7,400, government 2,800, and agriculture 2,300. Manufacturing employment in the four-county area has increased by 28 percent during the past eight years.

The outlook for continuing economic growth in the Ashland Area is very favorable. Strong local leadership, good community attitudes, a large and growing labor supply, industrial sites, and the availability of barge shipping facilities will enhance further growth. The community college and area vocational-technical school add depth to the educational system.

Labor Supply

There is an estimated current labor supply of 3,500 men and 4,900 women in the four-county labor market area. This labor supply will be augmented by 6,300 young men and 6,500 young women who will become 18 years of age within the next five years.

Industrial Sites and Services

Industrial sites totaling 1,490 acres are now being shown in the Ashland Area. These sites vary in size from 32 to 388 acres.

The Ashland Area's location and excellent transportation facilities provide easy access to the major market areas of the Midwest.

- . . . Rail service is provided by the Chesapeake & Ohio Railway Company.
- . . . Thirteen trucking firms serve the area.
- . . . Nine barge lines provide water transportation.
- . . . The Ashland Area is located just off Interstate 64. The area is also served by U.S. Highways 23, 52, and 60.
- . . . Commercial air service is available at the Tri-State Airport in Kenova, West Virginia, and facilities for private aircraft are available at the Ashland-Boyd County Airport.

Power and fuels are available in adequate volume. Natural gas is provided by Columbia Gas of Kentucky, Inc., the Inland Gas Company, the Kentucky-Ohio Gas Company, and the Kentucky-West Virginia Gas Company. Electric power is supplied by the Kentucky Utilities Company.

Recreation

There are numerous recreational facilities in the Ashland Area including parks, playgrounds, golf courses, and a country club.

Regionally, residents of the area are within a short drive of several Kentucky state parks.

Professional sports and horse racing are available at Cincinnati.

THE LABOR MARKET

Population

The Ashland Area has had an upward trend in population throughout most of this century. The largest gain was an increase of 80 percent during the 1920's. Boyd County has experienced a net increase in population during each decade of this century. The 1968 county population is estimated at 54,400, an increase of 4.3 percent since 1960.

TABLE 1

POPULATION TREND - ASHLAND, CATLETTSBURG, AND
BOYD COUNTY, KENTUCKY ^{1/}

Year	Ashland		Catlettsburg		Boyd County	
	Population	% Change	Population	% Change	Population	% Change
1900	6,800		3,081		18,834	
1950	31,131	357.8	4,750	54.2	49,949	165.2
1960	31,283	.5	3,874	-18.4	52,163	4.4
1968	34,800 ^{2/}		NA		54,400 ^{3/}	4.3

Employment Characteristics

In 1967 total employment in Boyd County averaged 22,100. Major segments of employment are manufacturing (7,200), government (1,400), agriculture (400), and trades and services (5,700).

Industrial activity in Boyd County has experienced steady growth during the last twenty years and now provides about 7,200 jobs. Primary metals is the leading product with approximately 5,400 employed. Other leading products are chemicals, petroleum, and apparel with a total of over 1,100 workers. The largest single employer among Boyd County's industries is Armco Steel Corporation, employing approximately 5,000 workers.

Four industries have located new plants in the county during the 1960's. These new plants represented several millions of dollars in capital investments and created new jobs initially for over 600 workers. An additional 13 firms expanded facilities to create more than 2,300 new jobs. Total new investment approximated \$300,000,000 during the past nine years.

TABLE 2

MAJOR ASHLAND AREA MANUFACTURERS, PRODUCTS,
AND EMPLOYMENT ^{4/}

Firm	Product	Employment		
		T	M	F
Armco Steel Corp.	Iron, steel sheets, coils	5,000	4,900	100
Ashland Asphalt Paving Co.	Asphaltic concrete	37	35	2
Ashland Crafts, Inc.	Children's clothing	265	15	250
Ashland Oil & Refining Co.	Petroleum products	2,514	2,007	507
Betsy Ross Bakeries, Inc.	Bread	80	75	5
Big Run Coal and Clay Co.	Brick	62	61	1
Castle Showcase Co.	Display showcases and fixtures, hardware	43	40	3
C & O Railroad and Car Shops	Railroad cars	3,500		
Emory Gillum Wholesale Meats	Sausage	35	31	4
Foremost Dairies, Inc.	Milk	51	48	3
Huntington Alloy Products Div., The International Nickel Co.	New product development	61	58	3
Johnsons Dairy, Inc.	Milk products	67	56	11
Kentucky Electric Steel Co.	Steel rounds, angles, channels	264	260	4
A. C. Lawrence Leather Co.	Sole leather	127	125	2
Mansback Metal	Scrap metal	82	80	2
Metal Products Co.	Culvert pipe	26	25	1
National Mine Service Co.	Mining equipment	339	313	26
Pennco, Inc.	Aluminum doors and windows	31	30	1
Pittsburgh Activated Carbon Co.	Activated carbon	77	67	10
Semet Solvay Division, Allied Chemical Co.	Coke, crude tar, ammonia	500	500	
Standard Slag Co.	Crushed slag	25	25	
Valley Poultry Farms, Inc.	Turkey production	50	40	10
Barney Williams Co.	Rebuilt auto engines	27	24	3

The Ashland Area labor market area includes Boyd County and the adjoining counties of Carter, Greenup, and Lawrence. Total manufacturing employment in the labor market area during September, 1967, was 9,000 workers, an increase of 28 percent since 1960. Major groupings of manufacturing employment in the labor market area are shown in Table 3. Employment in primary metals is concentrated in Boyd County; chemicals, petroleum, and coal are concentrated in Boyd and Greenup Counties; while apparel and stone, clay and glass are scattered throughout the four counties.

TABLE 3

MANUFACTURING EMPLOYMENT, ASHLAND AREA LABOR MARKET
AREA, SEPTEMBER, 1967 ^{5/}

Industry	Employment
TOTAL	9,030
Primary metals	5,414
Apparel	987
Chemicals, petroleum, rubber	956
Stone, clay, and glass	877
Others	796

Wage Levels

The average weekly wage in all industries in Boyd County in 1967 was \$130.49. The average weekly wage in manufacturing was \$152.23. Comparable averages for Kentucky were \$104.50 for all industries and \$115.08 for manufacturing. Some examples of specific occupational wage rates are: ^{6/}

<u>Production Employees</u>	<u>Wages Per Hour</u>		
	<u>Starting</u>	<u>Maximum</u>	<u>Prevailing</u>
Drill Press Operator	\$2.60	\$2.90	\$2.60
Grinder, Machine	2.40	3.05	2.70
Inspector	2.70	3.50	3.00
Lathe Operator	2.60	2.90	2.60
Machinist, Set Up	2.70	3.75	3.00
Polisher & Buffer	2.40	3.05	2.70
Production Laborer	1.75	2.65	2.40
Punch Press Operator	2.40	3.05	2.70
Sprayer or Painter	1.90	3.40	2.50
Welder, Arc or Acetylene	2.75	3.40	2.80
 <u>Service Employees</u>			
Carpenter	2.40	3.20	3.00
Crane Operator	2.40	3.75	3.00
Electrician	2.60	3.80	3.00
Janitor	1.60	3.00	2.00
Laborer	1.60	3.00	2.00
Machinist	2.80	4.50	3.40
Mechanic, Maintenance	2.80	4.50	3.40
Pattern Maker	2.80	4.50	3.40
Shipping Clerk	1.75	3.00	2.30
Truck Driver	1.60	3.50	2.25
Tool, Die or Gauge Maker	2.80	4.50	3.40
Welder, Acetylene, Carbon, and Arc	2.00	3.25	2.50

<u>Office Employees</u>	<u>Wages Per Hour</u>		
	<u>Starting</u>	<u>Maximum</u>	<u>Prevailing</u>
Bookkeeper or Accounting Clerk	\$2.00	\$5.00	\$3.00
Chief Clerk	2.75	6.00	3.30
Draftsman	2.00	4.00	3.00
File Clerk	1.60	2.10	1.70
Key Punch Operator	1.75	2.40	2.00
Receptionist	1.60	2.00	1.70
Secretary	1.60	2.25	1.75
Stenographer	1.75	2.50	1.90
Tabulating Machine Operator	1.60	1.90	1.70
Telephone Operator	1.90	2.50	2.00
Typist	1.60	1.90	1.70

Labor Organizations

The following labor organizations are represented in the Ashland Area: The Ashland Building and Construction Trade Council, Carpenter's Local Union 472, International Ladies' Garment Worker's Union, Laborer and Hod Carrier Local Union 1445, Leather Workers International Union of America, Oil Workers International Union, Painters and Decorators Local 1072, Plumbers and Steam Fitters Local Union 278, United Brick and Clay Workers of America, United Coke and Chemical Workers, United Steel Workers Local Union 1865.

Labor Supply

There is an estimated current labor supply in the Ashland Area labor market area of 3,500 men and 4,900 women. The current labor supply includes estimates of unemployed, underemployed, and persons who would enter the labor force if jobs become available. By 1974, 6,300 boys and 6,500 girls will become 18 years of age and will augment the labor supply.

TABLE 4

CURRENT AND FUTURE LABOR SUPPLY - ASHLAND AREA LABOR MARKET AREA ^{7/}

County	Estimated Labor Supply July, 1968			Future Labor Supply by 1974 (Becoming 18 Years of Age)		
	Total	Male	Female	Total	Male	Female
Labor Market Area	8,500	3,550	4,950	12,854	6,332	6,522
Boyd	2,200	650	1,550	5,354	2,722	2,632
Carter	2,400	1,300	1,100	2,694	1,201	1,493
Greenup	2,200	800	1,400	3,522	1,748	1,774
Lawrence	1,700	800	900	1,284	661	623

Income and Sales

The effective buying income in Boyd County in 1967 was \$117,970,000. Income per household was \$7,611, with 61 percent of all households in the \$5,000 or above income class. Retail sales in the county totaled \$89,034,000 in 1967. Estimates for Ashland during the same period were: effective buying income, \$81,365,000; average per household, \$8,137; retail sales, \$79,317,000. 8/

In 1963 there were 528 retail trade establishments in Boyd County, of which 413 were in Ashland and 55 in Catlettsburg. 9/

EDUCATION

The educational system in the Ashland Area labor market area has the facilities to produce an effective labor force for future industrial growth.

Elementary and High School

The Ashland Independent School District consists of a high school, two junior high schools, and nine elementary schools. The high school has both a comprehensive and merit rating by the Kentucky Department of Education. Such a rating is the highest which can be given to any school by this department. The junior high schools have a standard rating.

Special personnel and facilities in the system include language laboratory, fully-equipped science laboratories, guidance counselors, a Dean of Boys, and a Dean of Girls.

The school budget for the 1968-69 school year is \$3,610,937. Bonded indebtedness of the Ashland Independent School District as of June 30, 1968, was \$2,749,000.

The Catlettsburg Independent School District is composed of one high school and three elementary schools. The Catlettsburg High School has a provisional rating from the Kentucky Department of Education. Special personnel and facilities include fully-equipped science laboratory, librarians, dietitians, self-help instructors, and teachers aides. The district is now in the process of installing educational television.

The Catlettsburg Independent School District's budget for the 1968-1969 school year is \$500,000. Bonded indebtedness of the district as of June 30, 1967, was \$322,000.

The Boyd County School System consists of one high school and seven grade schools. The Boyd County High School has a standard rating from the Kentucky Department of Education.

Special personnel and facilities in the county school system include the following: remedial reading, homebound teaching, adult education, program for the retarded, educational television, library program, vocational training, agricultural training, home economics, music programs, and counselors in both the grade schools and high school. Planned improvements include the building of two new junior high schools, extending the educational television facilities, increasing the number of mobile classrooms from one to three, and adding a mobile library.

Bonded indebtedness of the Boyd County School System as of July 1, 1968, was \$1,321,000.

The Ashland Area is also served by several private schools in the Fairview Independent School District.

TABLE 5

SCHOOLS, ENROLLMENT, NUMBER OF TEACHERS, STUDENT-TEACHER RATIO IN ASHLAND AREA AND BOYD COUNTY 1967-68 ¹⁰

School	Grades	Enrollment	No. of Teachers	Student-Teacher Ratio
Paul G. Blazer High School	10-12	1,368	59	23-1
Coles Junior High School	7-9	875	31	28-1
Putnam Junior High School	7-9	761	28	27-1
Ashland Elementary (9)	1-6	3,218	117	27-1
Boyd County High School	9-12	1,066	42	25-1
Boyd County Elementary (7)	1-8	2,717	102	27-1
Holy Family High School	9-12	137	14	9-1
Holy Family Elementary	1-8	310	10	31-1
St. Paul Lutheran	OK-6	60	10	6-1
Seventh Day Adventist	1-8	7	1	7-1
Catlettsburg High School	9-12	255	13	19-1
Catlettsburg Elementary (3)	1-8	574	21	27-1
Fairview High School	9-12	405	16	25-1
Fairview Junior High School	7-8	255	9	28-1
Fairview Elementary (3)	1-6	662	25	26-1

Vocational Schools

The Ashland Area labor market is presently served by the Ashland Area Vocational-Technical School and the Greenup County Extension Center. The Carter County Extension Center is scheduled to open in 1969. The Ashland Area Vocational-Technical School offers courses in auto body repair, auto mechanics, business and office education, commercial foods, cosmetology, drafting, electronics technician, health occupations, highway technology, home economics occupations, industrial electricity, industrial electronics, instrumentation, machine shop, radio and television repair, refrigeration and air-conditioning, welding, and woodworking. The Greenup County Extension offers courses in agriculture-business, appliance repair, auto mechanics, drafting, building trades, welding, and industrial electricity. The Carter County Extension Center will offer courses in appliance repair, auto mechanics, building trades, business and office education, drafting, electricity, and welding.

Colleges

The Ashland Area is served by the Ashland Community College. The college presently offers the first two years (67 credit hours) of all major and professional programs available on the Lexington campus of the University of Kentucky, except for majors of Art and Music and the second year of study for a professional degree in Architecture. The college also offers two-year technical or semi-professional programs leading to associate degrees. In addition, there are continuing education programs.

The college has a program of intramural sports as well as physical education classes in fitness and sports. Other student activities include the participation in student government, college newspaper, yearbook and literary magazines, debating and orchestra, band and glee club, as well as joint faculty-student activities such as drama production and literary discussion. The college also sponsors a week-long Spring Fine Arts Festival in addition to concert and lecture programs.

At the present, the college has 33 full-time faculty members, 16 staff members, and 20 part-time employees. Enrollment during the 1968-69 school year is expected to exceed 1,100 students.

Other institutions of higher learning in the Ashland Area include:

<u>College or University</u>	<u>Location</u>	<u>Distance</u>
Marshall University	Huntington, West Virginia	17 miles
Morehead State University	Morehead, Kentucky	60 miles
University of Kentucky	Lexington, Kentucky	128 miles
Transylvania College	Lexington, Kentucky	128 miles
Eastern Kentucky University	Richmond, Kentucky	148 miles

TRANSPORTATION

Rail

The Ashland Area is provided with both freight and passenger service by the Chesapeake & Ohio Railway Company.

The Ashland Area is the junction point of four major divisions of the Chesapeake & Ohio. The main line of the Chesapeake & Ohio operates between Chicago, Illinois; Cincinnati, Ohio; Washington, D. C.; Richmond, Virginia; Newport News, Virginia; and Norfolk, Virginia. In addition to the main line, other divisions extend west to Louisville, Kentucky, via Lexington, Kentucky, south to Elkhorn City, Kentucky, where connections are made to other points south, and north to Detroit, Michigan.

The Ashland Yards have 40 tracks which will accommodate approximately 1,500 cars per day. Switching service is provided 24 hours per day, seven days a week. At the present, approximately 36 freights pass through the Ashland Area each day. Inbound carloads average 7,000 per month and outbound carloads average 2,700 per month.

Each day there are several passenger trains which pass through Ashland. Connections can be made to all points east, north, and west.

The Russell Yard at Russell, Kentucky, approximately 4 miles from Ashland, is one of the largest classification yards in the world owned by a single company. Here, thousands of cars are prepared daily for shipment to all parts of the United States. These yards can accommodate approximately 14,500 freight cars.

TABLE 6

RAILWAY TRANSIT TIME FROM ASHLAND, KENTUCKY, TO: 11/

Town	No. of Days CL	Town	No. of Days CL
Atlanta, Ga.	4	Louisville, Ky.	1
Birmingham, Ala.	4	Los Angeles, Calif.	7
Chicago, Ill.	1	Nashville, Tenn.	3
Cincinnati, Ohio	1	New Orleans, La.	4
Cleveland, Ohio	2 1/2	New York, N. Y.	3 1/2
Detroit, Mich.	1	Pittsburgh, Pa.	3
Knoxville, Tenn.	3	St. Louis, Mo.	2

Highways

Interstate 64 passes just south of the Ashland Area. With the exception of one 9-mile section, I-64 is scheduled to be complete from the West Virginia state line through Lexington, Kentucky, to Louisville, Kentucky, in 1969. Thus, the Ashland Area will have high-speed access to the rest of Kentucky's interstate and parkway systems to the west and to Huntington and Charleston, West Virginia, to the east.

The Ashland Area is also served by US Highways 23, 52, and 60 and Kentucky Highways 3 and 5.

Truck Service: The following trucking firms serve the Ashland Area:

<u>Company</u>	<u>Home Office</u>
Point Express, Inc.	Charleston, West Virginia
Reinhardt Transfer Company	Portsmouth, Ohio
Associated Transport, Inc.	New York, New York
Bell Lines, Inc.	Charleston, West Virginia
Commercial Motor Freight, Inc.	Columbus, Ohio
Parson Motor Lines, Inc.	Ashland, Kentucky
Hogan Storage and Transfer Co.	Williamson, West Virginia
McLean Trucking Company	Winston-Salem, North Carolina
Miami Transportation Company	Cincinnati, Ohio
O. K. Trucking Company	Cincinnati, Ohio
Smith's Transfer Corporation	Staunton, Virginia
Suburban Motor Freight, Inc.	Columbus, Ohio
Wilson Freight Company	Cincinnati, Ohio

TABLE 7

HIGHWAY MILES AND TRUCK TRANSIT TIME IN DAYS FROM ASHLAND, KENTUCKY, TO SELECTED MARKET CENTERS ^{12/}

Town	Highway Miles	Delivery Time		Town	Highway Miles	Delivery Time	
		LTL	TL			LTL	TL
Atlanta, Ga.	510	3	2	Louisville, Ky.	205	3	2
Birmingham, Ala.	530	3	2	Los Angeles, Calif.	2,311	7	7
Chicago, Ill.	429	3	2	Nashville, Tenn.	310	3	2
Cincinnati, Ohio	135	2	1	New Orleans, La.	843	4	3
Cleveland, Ohio	250	3	2	New York, N. Y.	669	3	2
Detroit, Mich.	332	3	2	Pittsburgh, Pa.	265	3	2
Knoxville, Tenn.	336	3	2	St. Louis, Mo.	469	3	2

Air

The nearest major airport is the Tri-State Airport at Kenova, West Virginia, 5 miles east of Catlettsburg. Each day, Eastern, Piedmont, and Allegheny Airlines provide over 30 regularly scheduled flights.

The Ashland-Boyd County Airport, located 6 miles northwest of Ashland in Greenup County, provides local facilities for private aircraft. The airport has a paved, lighted 5,000- by 100-foot runway. Plans are now being made to expand the runway to 5,600 feet.

Water

The Ashland Area is ideally located to take full advantage of the low transportation rates afforded by river carriers. A nine-foot channel stage is maintained throughout the length of the Ohio River, thus affording barge transportation service for commodities to and from the Ashland Area. The Ohio-Mississippi River system, along with its many tributaries, serves to connect the area directly with Pittsburgh, Wheeling, Cincinnati, Louisville, St. Louis, Memphis, and New Orleans.

The Port of Ashland is one of the few barge-to-rail public docks along the Ohio River and is available to industry at a very low cost. Barge lines serving Ashland include the American Commercial Barge Line, Mississippi Valley Barge Line, Ohio River Company, Union Barge Line Corporation, and Point Towing Company. Four other lines which have interstate commerce authority to serve the area are Southern Barge Line Corporation, Gulf Coast Towing, Central Barge Company, and Midwest Towing Company.

Other Transportation Services

The Ashland City Transit Company provides bus service in and around the City of Ashland.

The Ohio Valley Bus Company operates six buses daily each way between Ashland and Huntington, West Virginia, and Ashland and Ironton, Ohio.

The Southern Greyhound Bus Lines has a daily schedule of four buses between Ashland and Louisville, Kentucky, eight buses each way between Ashland and Charleston, West Virginia, and three buses each way between Ashland and Pikeville, Kentucky.

Four taxicab companies provide 24-hour taxi service for the Ashland Area. Car and truck rental services are also available.

POWER AND FUEL

Electricity

The Kentucky Power Company provides 34,571 Ashland Area customers with electric power. The Kentucky Power Company is an integrated part of the American Electric Power Company's interconnected system which has a generating capacity of over 9 million kilowatts. This capacity will be increased to over 13 million kilowatts by 1971.

The area served by the Kentucky Power Company is substantially covered with transmission and distribution lines. Company officials foresee no difficulty in supplying the Ashland Area's future industrial power requirements.

In 1963, a 265,000 kilowatt plant was built on the Big Sandy River near Louisa. Construction has begun to quadruple the size of the plant at a cost of 100 million dollars. The new unit is scheduled for commercial operation in 1969 - the plant's new generating capacity will be 1,065,000 kilowatts. Rates are available from the Kentucky Power Company office in Ashland and the Kentucky Department of Commerce.

Natural Gas

Natural gas is distributed in the Ashland Area by Columbia Gas of Kentucky, Inc., whose source of supply is the United Fuel Gas Company. Transmission lines bringing gas into the Ashland Area are 20, 12, and 10 inches with pressure maintained at 250 psi. Distribution lines vary from 2 to 16 inches with pressure maintained at .5 to 50 psi. The specific gravity of the gas is .60 and the BTU content is 1,042.

Rates for large industrial users are subject to negotiation. Listed below are commercial and residential rates:

First	1,000 cu. ft.	\$2.2831
Next	29,000 cu. ft.	.7931 per M cu. ft.
Next	570,000 cu. ft.	.6631 per M cu. ft.
Over	600,000 cu. ft.	.5231 per M cu. ft.
Minimum bill		2.25

Also serving some industrial users in the Ashland Area are the Inland Gas Company, Inc., the Kentucky-Ohio Gas Company, and the Kentucky-West Virginia Gas Company.

Fuel Oil

Kentucky has three fuel oil refineries located in Catlettsburg, Louisville and Somerset. Kentucky's fuel supply is supplemented by border state operations.

Delivered prices of the various grades may be obtained from the Kentucky Department of Commerce.

Coal

The Ashland Area is served by the Eastern Kentucky Coal Field. A representative delivery cost can be determined for each district shown below. 13/

<u>Point of Origin</u>	<u>Type of Coal</u>	<u>Freight Delivery Cost (Net Ton)</u>
Catlettsburg, Ky.	Industrial & Domestic	\$1. 66
Gulfco, Ky.	Industrial & Domestic	1. 16
Meads, Ky.	Industrial & Domestic	1. 58
Big Sandy District	Industrial & Domestic	1. 66

WATER AND SEWERAGE

Water

Water is supplied to Ashland by the municipally owned water works, whose source of raw water is the Ohio River. Treatment includes flocculation, sedimentation, filtration, chlorination, and fluoridation.

The treatment plant has a designed capacity of 8,310,000 gpd. Average daily use is 3,522,989 gallons and the maximum daily use has been 6,000,000 gallons. An average pumping time of 12 to 14 hours is required to meet daily needs.

Distribution lines vary from 2 to 24 inches, and water pressure is maintained at 100 psi.

Storage facilities include a 6,000,000-gallon underground reservoir and two 2,000,000-gallon steel ground storage tanks.

Current water rates for Ashland are as follows:

First	2,000 gallons	\$.75 per M	\$ 1.50 Minimum
Next	8,000 gallons	.50 per M	4.00
Next	90,000 gallons	.40 per M	36.00
Next	200,000 gallons	.35 per M	70.00
Next	400,000 gallons	.30 per M	120.00
Next	300,000 gallons	.25 per M	75.00

Water is supplied to Catlettsburg by privately owned Catlettsburg, Kenova, and Ceredo Water Company, Inc., whose source of raw water is the Big Sandy River. Treatment includes flocculation, sedimentation, filtration, and chlorination.

The treatment plant has a designed capacity of 2,420,000 gpd. Average daily use is 1,000,000 gallons, and the maximum daily use has been 1,300,000 gallons. An average pumping time of 16 hours is required to meet daily needs.

Distribution lines vary from 4 to 20 inches, and water pressure is maintained at 120 psi. The average water temperature is 80° F in the summer and 35° F in the winter.

Water is stored in a 1,000,000-gallon elevated tank.

Current water rates for Catlettsburg are as follows:

First	10,000 gallons	\$.80 per M gallons
Next	40,000 gallons	.70 per M gallons
Next	50,000 gallons	.60 per M gallons
Next	50,000 gallons	.50 per M gallons
Next	100,000 gallons	.40 per M gallons
Next	100,000 gallons	.35 per M gallons
All over	350,000 gallons	.25 per M gallons

Monthly minimum charge: \$1.65

Sewerage

Sewage treatment for Ashland is provided by a municipally owned sewage treatment plant which was built in 1961. Sewage receives primary treatment and is then discharged into the Ohio River. The designed flow of the treatment plant is 5,610,000 gpd for normal sewerage and 13,000,000 gpd for storm sewerage. The designed population is 39,000 persons per day.

The system consists of 20- to 60-inch interceptors, 8- and 12-inch trunks, and 4-inch laterals. The city maintains separate storm sewers.

The current sewerage rate is 80 percent of the water bill.

Catlettsburg's municipally owned sewerage system serves Catlettsburg with both storm and sanitary sewers. The treatment plant, with a designed flow of 500,000 gpd and a designed population of 5,000 per day, began operation in 1964. Treatment is by contact stabilization - primary and secondary. Treated sewage is discharged into the Ohio River.

The sewerage rate is 130 percent of the water bill.

AGRICULTURE - NATURAL RESOURCES - CLIMATE

Agriculture

The approximate land area of Boyd County is 102,400 acres, with 39.3 percent of this area devoted to farming. In 1964, there were 277 farms in the county with an average size of 145 acres, valued at \$144 per acre including buildings.

Farm income in the county is primarily from the production of poultry, cattle, and hogs, supplemented by horticultural crops. The 1964 value of sales of all farm products totaled \$1,505,647, averaging \$5,436 per farm. Crop sales totaled \$159,740, while livestock and livestock products totaled \$1,345,907.

In 1966, agricultural production in Boyd County included 54,000 pounds of burley tobacco and 82,000 bushels of corn. Livestock on farms on January 1, 1967, included 5,900 cattle and calves and 900 hogs and pigs. Milk cows on farms during 1965 averaged 1,300 head, with milk production for the year totaling 8.6 million pounds.

Mineral Resources

The principal mineral resources of Boyd County are coal, clay, and some minor amounts of petroleum.

Coal is the most important mineral resource in the county. Coals in the county are high volatile bituminous rank, usually low in ash and moisture. Alluvial and residual clay deposits, fire clays, and clay-shale formations have relatively widespread occurrence throughout the county.

Present oil and gas yields are of secondary importance although gas production in large quantities has been secured in the past. Crude petroleum is of small, but commercial value; however, it ranks low in mineral income.

Water Resources

A large supply of surface water is available from the Ohio and Big Sandy Rivers. Other sources may be secured from impounded small streams.

Recent reports by the USGS indicate that ground water in Boyd County is available from alluvium along the Ohio and Big Sandy Rivers and their tributaries, as well as from the Breathitt Formation. Most dug and drilled wells yield adequate amounts of water for a minimum domestic supply (more than 100 gpd). Some wells will yield amounts adequate for a modern domestic supply (more than 500 gpd). The median yield of large capacity

wells in the Ohio River alluvium is 150 gpm with the maximum reported yield being 360 gpm. Compound horizontal wells could be constructed in this area that would yield more than these amounts. Almost all springs yield less than 5 gpm. Water from most wells is moderately hard to hard and contains variable amounts of iron.

Forests

There are 57,100 acres of commercial forest land in Boyd County, covering 56.1 percent of the total land area. The most abundant species are red oaks, white oaks, yellow pines, hickories, yellow poplar, beech, and soft maple.

Within a 50-mile radius of Ashland, there are 1,446,000 acres of commercial forest land. In 1962, 61 million board feet of timber were harvested from this area. Forestry authorities agree that the desirable annual cut could be much larger. The adjacent parts of Ohio and West Virginia are also well forested. While some of the timber harvest is used locally, much of it is shipped out of the area for further processing.

Forests of the entire area receive organized protection from fire from the State Department of Natural Resources.

Climate

The Ashland Area has an attractive year-round climate which is characterized by the lack of extremes and severe changes.

Winter is short - snowfall averages about 18 inches each year and occurs mostly during December and January. The snow rarely lasts longer than a few days.

Rainfall is sufficient to meet the needs of each season. The wettest month is March with an average rainfall of 4.15 inches, and the driest month is October with an average rainfall of 1.70 inches. The average yearly precipitation is 39.80 inches.

The average yearly temperature is 56.9° F. The warmest month of the year is July with an average temperature of 77° F, and the coolest month of the year is January with an average temperature of 37.1° F. The temperature in the Ashland Area rarely falls below freezing from April to October.

Each year there is an average of 109 clear days, 103 partly cloudy days, and 153 cloudy days. There is an average of 80 days with precipitation of 0.01 inch or over and an average of 12 days with heavy fog.

The prevailing wind is from the southwest.

LOCAL GOVERNMENT

Structure

Ashland is a second-class city governed by a mayor and four commissioners. The mayor is elected for a term of four years and the commissioners are elected by district, for terms of two years. The Commission employs a city manager who runs the city in an executive capacity.

Catlettsburg is a fourth-class city and is governed by a council consisting of a mayor and eight councilmen. The mayor is elected for a four-year term and the councilmen are elected, by district, for two-year terms.

Boyd County is governed by a fiscal court consisting of the county judge and three magistrates. All are elected for terms of four years.

Finance

Ashland's general income for the period ending May 31, 1968, was \$1,965,970 while expenditures totaled \$1,778,830. As of May 31, 1968, the city had a bonded indebtedness of \$9,669,000 in water and sewer bonds.

Catlettsburg's income for the period ending December 31, 1967, was approximately \$130,000 while expenditures totaled approximately \$128,000. Bonded indebtedness of the city as of June 30, 1968, was as follows: sewer expansion - \$150,000; floodwall protection - \$450,000. Catlettsburg has a revenue bond issue which has been approved but not yet sold.

The Boyd County budget for the fiscal year ending July 30, 1969, is \$500,900. The county has no bonded indebtedness.

Taxes

Taxes are the major source of income for the Ashland Area and Boyd County. Property must be assessed at 100 percent of value under the provisions of Kentucky's Constitution. Net assessed value of property in these jurisdictions in 1968 is as follows:

<u>Classes of Property</u>	<u>Ashland</u>	<u>Catlettsburg</u>	<u>Boyd County</u>
Real Estate	\$141,815,450	\$10,500,000	\$228,385,261
Tangibles	26,819,180	170,000	41,040,628
Public Service	18,408,200*	3,607,587*	42,421,918*

*1968 Estimate.

TABLE 8

PROPERTY TAX RATES PER \$100 OF ASSESSED VALUE
FOR THE ASHLAND AREA AND BOYD COUNTY, 1968 ^{14/}

Taxing Unit	Ashland	Catlettsburg	Boyd County
State	\$.015	\$.015	\$.015
County	.136	.136	.136
School	.760	.668	.596
City	<u>.472*</u>	<u>.840</u>	<u> </u>
Total	<u>\$1.383</u>	<u>\$1.659</u>	<u>\$.747</u>

*An additional .04¢ flood protection levy inside flood protection area.

The City of Ashland requires a business license which has a minimum fee of \$20 per year or 1 percent of net profit - whichever is greater.

The City of Catlettsburg requires a business license which ranges from a minimum of \$10 to a maximum of \$200 per year. Catlettsburg also levies an occupational license tax of 1 percent of net wages or net profit.

Planning and Zoning

The Ashland Planning Commission has completed a comprehensive plan, subdivision regulations and a major revision of the zoning ordinance. The city has adopted and enforces codes and its Workable Program for Community Improvements has been recertified through March 1969. One hundred and thirty-eight units of housing for the elderly have been completed and 140 units are in the planning stage. One hundred and fifty-six units of low-cost public housing are also in the planning stage. The Ashland Urban Renewal Agency has completed one project and another is in the planning stages.

The Catlettsburg Planning Commission has completed a comprehensive plan, zoning ordinance and subdivision regulations. The city has adopted and enforces codes and the Municipal Housing Authority has completed 50 units of low-cost public housing.

Safety

Fire: Ashland has a Class-4 American Insurance Association fire rating. The city receives fire protection from its municipally owned fire department. The department is staffed by a chief and 59 full-time firemen. Motorized equipment includes four 750-gpm pumpers, a 65-foot aerial truck, a 100-foot aerial truck, a 1,000-gpm pumper, 2 ambulances, and 2 emergency automobiles.

Catlettsburg has a Class-7 American Insurance Association fire rating. The fire department is staffed by a full-time chief and 16 volunteer firemen. Motorized equipment includes a 750-gpm pumper, a combination generator and phone truck, and a 1,200-gpm pumper.

Police: The Ashland Police Department is staffed by a chief, an assistant chief, a records and identification sergeant, two detectives, three captains, three sergeants, two metermen, and twenty-nine patrolmen. Motorized equipment includes four radio-equipped, marked cruisers; two radio-equipped, unmarked cruisers; and two motorcycles. The department is also equipped with chemical Mace.

The Catlettsburg Police Department is staffed by a chief, a lieutenant, three patrolmen, and eight auxiliary policemen. Motorized equipment consists of two radio-equipped, marked cruisers. The department is also equipped with chemical Mace.

The Boyd County Sheriff's Office is staffed by a sheriff and two deputies. Motorized equipment includes three radio-equipped, marked cruisers. The sheriff's office is also equipped with chemical Mace.

There are two FBI agents stationed in Ashland. The Kentucky State Police maintain post headquarters near Ashland. A detective is assigned to the Ashland Area and four troopers patrol the roads in Boyd County.

Sanitation

Municipal garbage collection is provided by both Ashland and Catlettsburg. In residential areas, the garbage is picked up one time each week and in business areas it is picked up as required. In Ashland, garbage collection fees are \$2 per month in residential areas and 60 cents per can in business areas. In Catlettsburg, the fees are \$1.25 per month for residential areas and \$1.25 to \$6 per month for business areas, depending upon the amount of garbage collected.

HEALTH

Hospitals

The Ashland Area is served by King's Daughters' Hospital located in Ashland and Our Lady of Bellefonte Hospital located in Bellefonte in Greenup County.

King's Daughters' Hospital contains 324 beds, 34 bassinets, 7 operating rooms, and 3 delivery rooms. There is a staff of 54 doctors, 80 registered nurses, 30 licensed practical nurses, 24 ward clerks and orderlies, 95 nurse assistants, 10 operating room technicians, plus 225 other miscellaneous employees. Hospital facilities include dental surgery room, post-operative recovery room, diagnostic X-ray, and lab sources. Currently, facilities for intensive and cardiac care are being added.

Our Lady of Bellefonte Hospital contains 123 beds, 20 bassinets, 2 delivery rooms, 3 operating rooms, a recovery room, and X-ray and laboratory facilities. There is a staff of 75 doctors, 33 registered nurses, 10 licensed practical nurses, 6 ward clerks and orderlies, 43 nurse assistants, 2 surgical room technicians, 5 X-ray technicians, 10 laboratory technicians, plus 175 other miscellaneous employees. The hospital is air conditioned and has just recently completed a very modern pediatric ward containing 22 beds.

Nursing Homes

There is a licensed nursing home in Boyd County, located in Ashland, which contains 89 beds.

Public Health

The Boyd County Health Department is located in Ashland. The department is staffed by four nurses, three sanitarians, five clerks, a lab technician, and a lab helper. A dentist also works for the department on a part-time basis.

Services provided by the department include chronic disease control, communicable disease control, tuberculosis control, dental health, mental health, maternal and child care, sanitation, vital statistics, general services, and preschool, school age, and crippled children's programs.

OTHER LOCAL FACILITIES

Housing

There is an adequate supply of saleable and rentable housing in the Ashland Area. The cost of building a two- or three-bedroom brick house is \$14 per square foot plus lot. The cost of renting a two-bedroom house varies from \$75 to \$100 per month.

Hotels and Motels

There is 1 hotel in the Ashland Area containing 100 rooms and 13 motels containing approximately 350 rooms.

Communication

Telephone: The Ashland Area is served by the General Telephone Company of Kentucky. General Telephone has approximately 20,000 subscribers in the Ashland Area. Complete telephone service is available.

Telegraph: Western Union Telegraph provides 24-hour service in the Ashland Area.

Postal: Ashland has a first-class post office. Mail is received and dispatched 20 times each day. Mail is delivered twice daily in the business district.

Catlettsburg has a first-class post office. Mail is received three times and dispatched four times each day. There is one daily delivery in the business district.

Newspapers: The Ashland Daily Independent is published seven days a week. Currently, the newspaper has a circulation of approximately 22,000. Other newspapers are received from Huntington, West Virginia, and Louisville, Kentucky.

Radio: There are four radio stations located in the Ashland Area. WCMI-AM broadcasts on 1340 kilocycles at a power of 1,000 watts from 5 A. M. to 1 A. M. WCMI-FM broadcasts on 93.7 megacycles at a power of 50,000 watts from 6 A. M. to 1 A. M. WTCR-AM broadcasts on 1420 kilocycles at a power of 5,000 watts from dawn to dusk. WIRO-AM broadcasts on 1230 kilocycles at a power of 1,000 watts from 6 A. M. to 12 midnight.

Other stations are received from neighboring Ohio and West Virginia.

Television: Television is received by antenna from Charleston, West Virginia (1 station), and Huntington, West Virginia (2 stations). All three networks are represented.

Libraries

Library facilities are provided by the Ashland Public Library. The library contains 66,874 volumes and has an annual circulation of 123,184 volumes. In addition, the library contains prints of famous paintings, records, periodicals, and a children's library. Library hours are 9 A. M. to 9 P. M., Monday through Saturday.

Churches and Synagogues

The following denominations are represented in the Ashland Area: Christian, Baptist, Church of Christ, Church of God, Episcopal, Holiness, Latter Day Saints, Lutheran, Methodist, Nazarene, Presbyterian, Salvation Army, Congregation Agudathachim Temple.

Financial Institutions

<u>Bank</u>	<u>Statement as of June 30, 1968</u>	
	<u>Assets</u>	<u>Deposits</u>
Bank of Ashland	\$ 5,329,297.92	\$ 4,544,181.60
Second National Bank	45,617,833.90	39,902,943.58
Third National Bank	29,198,317.02	25,552,653.75
Kentucky Farmers Bank	14,344,756.90	12,474,132.64
<u>Savings and Loan Associations</u>	<u>Assets</u>	<u>Shared Accounts</u>
Ashland Federal Savings & Loan	\$ 9,626,253.70	\$ 8,709,208.00
First Federal Savings & Loan	12,400,689.82	10,288,203.93
Home Federal Savings & Loan	14,287,894.52	12,626,728.31
Russell Federal Savings & Loan	6,019,109.00	5,380,441.00
Catlettsburg Federal Savings & Loan	12,087,507.84	11,060,843.93

Clubs and Organizations

Business and Civic: Chamber of Commerce, Jaycees, Kiwanis, Lions, Rotary, Optimist, Toastmaster, Medical Society, Dental Society, Ministerial Association, Salvation Army, Red Cross, Welcome Wagon, Ashland Civic League, Life Underwriters, Newcomers Club, South Ashland Business Association, Welcome Hostesses.

Fraternal: American Legion, Eagles, FOP, IOOF, Masonic Lodge, Moose Lodge, Knights of Templar, Shrine, VFW, YMCA, Elks, Knights of Columbus, Art Clubs (3).

Women's: YWCA, Woman's Club, B and PW Club, DAR, Eastern Star, Homemakers, Garden Club, Rebekah, Lioness, Opti-Mrs., Jaycettes, Altrusa, American Legion Auxiliary, American Business Women's Association, American Association of University Women, League of Women Voters, Daughters of America, Sorority Council, Y-Wives.

Youth: Boy Scouts, Girl Scouts, Cub Scouts, Brownies, FFA, FHA, 4-H, FTA, Beta Club, FBLA, Little League, Babe Ruth League.

Other: Catlettsburg Boat Club, Ashland Community Concert Association, Ashland Boat Club.

Recreation

Local: Numerous local recreation facilities are available in the Ashland Area. There are three parks totaling more than 100 acres, four playgrounds, two bowling alleys, two indoor theaters, one outdoor theater, two 18-hole golf courses, three 9-hole golf courses, one skating rink and two swimming pools.

There are organized little leagues, Babe Ruth leagues, Senior Babe Ruth leagues, Junior league football and girls softball.

Also available to the residents of the Area is the Bellefonte Country Club which has full clubhouse facilities. Nearby Greenbo Lake State Park offers boating, fishing, and camping. There is also the Ashland Boat Club on the Ohio River.

Regional: The Ashland Area is within easy driving distance of Carter Caves State Park and Jenny Wiley State Park. These facilities offer swimming, camping, golf, riding, hiking, fishing, boating, and camping.

Professional Sports: Professional football, baseball, and basketball are available in Cincinnati, Ohio.

College Sports: A full schedule of collegiate athletics is available at Marshall University in Huntington, West Virginia, and Morehead State University in Morehead, Kentucky.

Horse Racing: Thoroughbred racing is available at River Downs in Cincinnati.

Fine Arts: Fine art programs are brought to the area by the Ashland Civic Music Club, the Ashland Ambassador's Club, and the Ashland Community College.

Community Improvements - Ashland

Recent: A one hundred and thirty-eight unit elderly housing apartment, a 6-mile street resurfacing program, the exterior and interior of the post office have been renovated and air conditioning installed, an addition has been made to the Central Fire Station, a new fire truck with a 100-foot aerial ladder has been purchased, a collector sewer line extension has been added to the sewer system, an additional disposal plant has been added to the sewer system, a water storage tank and extension mains have been added to the water system, a major transportation plan and a central business district study have been completed, a new central business district white-way lighting system has been completed, a new vocational school, new telephone switchboard and terminal facilities.

Under Construction: A new community college building, all the city incandescent street lights are being replaced with corrected mercury fixtures, a thirty-two-bed addition to King's Daughters' Hospital, a citizen's group intense study for improving recreational facilities.

Planned: One hundred and forty units of housing for the elderly, one hundred and fifty-six units of low-cost public housing, a civic center, four-laning US-23 through Ashland, four-laning US-60 from I-64 through Ashland, completion of golf, swimming, and lodge facilities at Greenbo Lake State Park.

Community Improvements - Catlettsburg

Recent: A park on the Big Sandy

Planned: A high-rise public housing facility for the elderly, a new bank.

HISTORY

Boyd County, Kentucky's 107th county, was organized in 1860 from parts of Greenup, Carter, and Lawrence Counties. Boyd County was named after the Honorable Linn Boyd, who was for many years a member of Congress from the First Kentucky District and Speaker of the House of Representatives.

Early visitors to Boyd County included George Rogers Clark, Simon Kenton, Michael Tyger and the Reverend David Jones, who came from New Jersey in 1772. The next year Kenton and Tyger surveyed lands near the Mouth of the Big Sandy. That winter William Grills, Jacob Greathouse, Samuel Cartwright, and Joseph Lock joined them and engaged in hunting and trapping. Because of the restlessness of the Indians along the Ohio River, these hunters left the area early in 1774 but returned during the next winter after the Indian menace had been removed from the area.

Catlettsburg is located at the junction of the Big Sandy and Ohio Rivers. It was named for Sawney Catlett who established a trading post there in 1808 and served traders and trappers for half a century. Catlettsburg remained a trading post until about 1857 when the cutting of big timber along the Big Sandy River inaugurated an era of low but steady growth. It became the county seat when Boyd County was organized, and has continued as such despite the center of industrial growth in Ashland only five miles distance. The business district is dominated by the courthouse, courthouse square, the waterfront, and the quiet streets which extend back from the river.

In 1815, three settlers, George and Robert Poage and Robert's son, Robert Jr., secured a title to lands along the Ohio River below Catlett's Station which became known as "Poage's Landing." Later, in 1854, the name of Poage's Landing was changed to Ashland in honor of Henry Clay's home in Lexington. By 1847, a post office had been established at Poage's Landing, and a few years later a plant which made brick from the abundant native clays was constructed. In 1856, Ashland was incorporated by Kentucky's Legislature; a newspaper, The Ashland Kentuckian, began publication; and a bank, The Ashland National, was organized. The area's first railroad, the Northern Division of the Lexington and Big Sandy was also built that year.

The Ashland Area was not drastically affected by the Civil War. Most of its citizens remained loyal to the Union, although many families were split on the issues and tension ran high. Union soldiers camped in Central Park in Ashland and rallies were held there for the northern enlistments.

After the Civil War, the Area's slumping industry began to show life again. The wealth of northeastern Kentucky's coal fields caused the Ashland Coal and Iron Company Railroad to channel through Ashland. The Ashland Iron Furnace was started in 1869, with a capacity of 45 tons a day. In 1872, the Norton Iron Works built a blast furnace, rolling mill, and nail and key factory. The furniture factory of H. Hermann came in 1883, the Ashland Hub and Spoke Factory in 1887, and the Ashland Foundry and Machine Shops in 1889.

During World War I, the open hearth steel plant of the Ashland Iron and Mining Company, successor of the Ashland Coal and Iron Company, was built. Following the War, the greatest single event in Ashland's history occurred. The American Rolling Mill Company selected Ashland as the site for its new steel processing plant. In 1920, construction was begun on the Armco plant, where steel sheets were to be produced by the new continuous rolling method - the first operation of its kind in the country.

The Roaring '20's were indeed roaring for the Area. New suburbs and new schools quickly sprang up. In 1924, the Area's second largest employer - the Ashland Oil and Refining Company - was formed.

With the outbreak of the Second World War, the Ashland Area took on an added significance because of its steel plant. The Area rendered both men and steel for our nation's cause. During the War, in 1942, Armco's Bellefonte Furnace was completed and soon operated at a maximum production rate of 1,000 tons of steel a day - one of the world's largest yields. Clayton-Lambert opened in Ashland to help in the War cause by making steel cartridge cases. Ashland Oil and Refining Company soon expanded its refineries, and there followed a "war-time" boom.

In 1943, an Ashland attorney, Simeon S. Willis, a Republican, was elected as Governor of Kentucky, and served from 1944 to 1948.

Being strategically located upon an important river, it is natural that the Ashland Area should continue in its prominence as a river port. But it should not be assumed that the Area was built for only one industry. Steelmaking was, and still is, the big industry with Armco, the world's largest blast furnace. However, there are many other important industries which round out the Area's personality. For more than a century, the Ashland Area has had good leather, lumber, and chemical products. Coal, another of the region's resources, also plays an important role.

SOURCES OF INFORMATION

- 1/ U. S. Bureau of the Census, U. S. Census of Population, Kentucky.
- 2/ Ashland Area Chamber of Commerce, Ashland, Kentucky.
- 3/ Department of Sociology, University of Kentucky, Kentucky County Provisional Population Estimate, 1968, Lexington, Kentucky.
- 4/ Kentucky Department of Commerce, 1968 Kentucky Directory of Manufacturers.
- 5/ Kentucky Department of Economic Security, Division of Research and Statistics.
- 6/ Kentucky Department of Economic Security, Employment Service Office.
- 7/ Kentucky Department of Commerce, Kentucky's Labor Supply Estimates, 1968.
- 8/ Sales Management Magazine, Survey of Buying Power, June 10, 1968.
- 9/ U. S. Department of Commerce, 1963 U. S. Census of Business.
- 10/ Kentucky Department of Education, Kentucky School Directory, 1967-68.
- 11/ Ashland Area Chamber of Commerce, Ashland, Kentucky.
- 12/ Point Express, Inc., Charleston, West Virginia.
- 13/ Chesapeake & Ohio Railway Company, Huntington, West Virginia.
- 14/ Ashland Tax Assessor, Catlettsburg City Clerk, Boyd County Sheriff's Office.