

1974

Industrial Resources: Boyle County - Danville

Kentucky Library Research Collections
Western Kentucky University, spcol@wku.edu

Follow this and additional works at: https://digitalcommons.wku.edu/boyle_cty

 Part of the [Business Administration, Management, and Operations Commons](#), [Growth and Development Commons](#), and the [Infrastructure Commons](#)

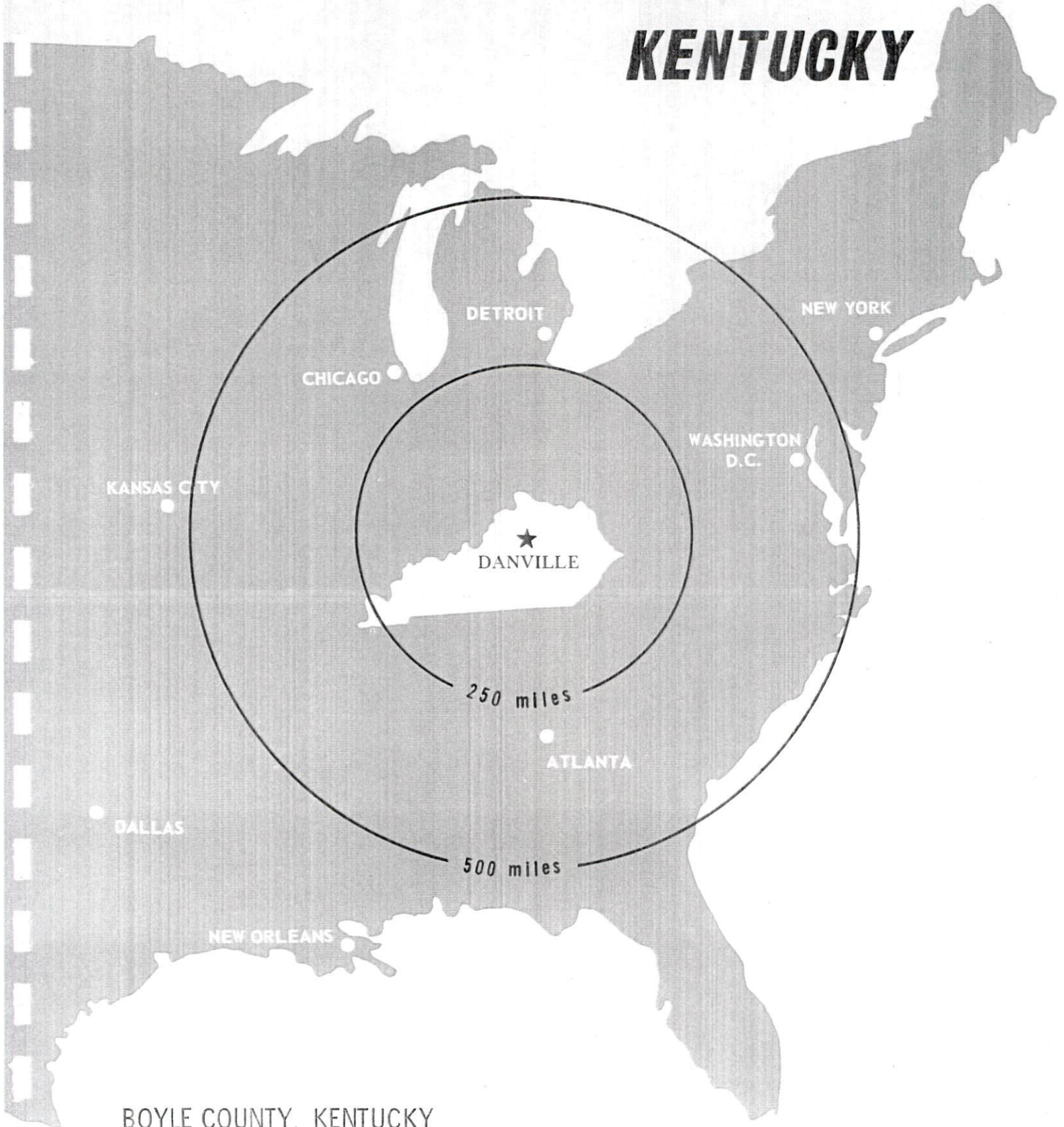
Recommended Citation

Kentucky Library Research Collections, "Industrial Resources: Boyle County - Danville" (1974). *Boyle County*. Paper 5.
https://digitalcommons.wku.edu/boyle_cty/5

This Report is brought to you for free and open access by TopSCHOLAR®. It has been accepted for inclusion in Boyle County by an authorized administrator of TopSCHOLAR®. For more information, please contact topscholar@wku.edu.

INDUSTRIAL RESOURCES

DANVILLE KENTUCKY



BOYLE COUNTY, KENTUCKY

DANVILLE INDUSTRIAL SITES

1974

DANVILLE INDUSTRIAL SITES

For more information about the following sites, contact John Hill Bailey, Kentucky Utilities Company, Danville, Kentucky; or the Kentucky Department of Commerce, Capital Plaza Office Tower, Frankfort, Kentucky.

SITE #1: ACREAGE: 10 acres
 LOCATION: Approximately 1 1/2 miles southwest of city limits
 ZONING: Industrial
 HIGHWAY ACCESS: Kentucky 34 along north boundary of site
 RAILROAD: Not rail served
 WATER: City of Danville Water Department
 SIZE LINE: 10-inch line at northeast corner of site
 GAS: Western Kentucky Gas Company
 SIZE MAIN: 4-inch main approximately 1,300 feet east of site
 ELECTRICITY: Kentucky Utilities Company
 SEWERAGE: City of Danville Sewerage Department
 SIZE LINE: 10-inch line approximately 1,600 feet southeast of site
 OWNERSHIP: Danville Development Corporation

SITE #5: ACREAGE: 100 acres
 LOCATION: Approximately three-fourths mile southwest of city limits
 ZONING: Industrial
 HIGHWAY ACCESS: Kentucky 34 adjacent to northwest boundary of site
 RAILROAD: Southern Railway System approximately 500 feet south of site
 WATER: City of Danville Water Department
 SIZE LINE: 12-inch line along northwest boundary
 GAS: Western Kentucky Gas Company
 SIZE MAIN: 4-inch main along northern and western boundaries of site
 ELECTRICITY: Kentucky Utilities Company
 SEWERAGE: City of Danville Sewerage Department
 SIZE LINE: 15-inch line along southeast boundary of site
 OWNERSHIP: Danville Development Corporation

SITE #2: ACREAGE: 12 acres
 LOCATION: Approximately 1 1/2 miles southwest of city limits
 ZONING: Industrial
 HIGHWAY ACCESS: Kentucky 34 and U.S. 127 bypass
 RAILROAD: Not rail served
 WATER: City of Danville Water Department
 SIZE LINE: 12-inch line along eastern boundary of site
 GAS: Western Kentucky Gas Company
 SIZE MAIN: 4-inch main approximately 150 feet east of site
 ELECTRICITY: Kentucky Utilities Company
 SEWERAGE: City of Danville Sewerage Department
 SIZE LINE: 10-inch line approximately 750 feet south of site
 OWNERSHIP: Danville Development Corporation

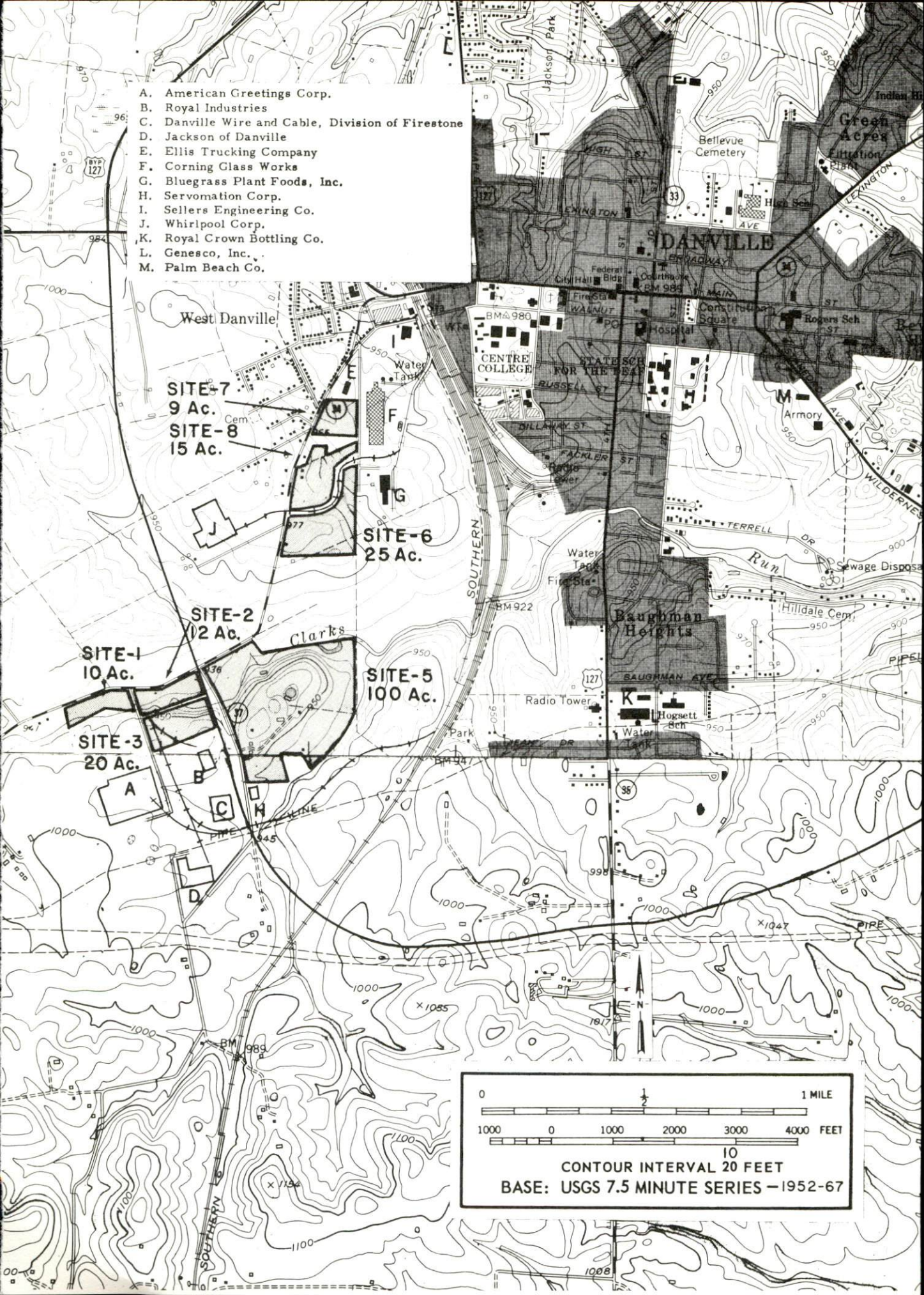
SITE #6: ACREAGE: 25 acres
 LOCATION: Approximately 1,000 feet south of city limits
 ZONING: Industrial
 HIGHWAY ACCESS: Kentucky 34 adjacent to western boundary of site
 RAILROAD: Southern Railway System along northern boundary of site
 WATER: City of Danville Water Department
 SIZE LINE: 12-inch line along western boundary of site
 GAS: Western Kentucky Gas Company
 SIZE MAIN: 4-inch main along western boundary of site
 ELECTRICITY: Kentucky Utilities Company
 SEWERAGE: City of Danville Sewerage Department
 SIZE LINE: 10-inch line along western boundary of site
 OWNERSHIP: Danville Development Corporation

SITE #3: ACREAGE: 20 acres
 LOCATION: Approximately 1 1/2 miles southwest of city limits
 ZONING: Industrial
 HIGHWAY ACCESS: U.S. 127 bypass adjacent to eastern boundary of site
 RAILROAD: Not rail served
 WATER: City of Danville Water Department
 SIZE LINE: 12-inch line along eastern boundary of site
 GAS: Western Kentucky Gas Company
 SIZE MAIN: 4-inch main approximately 250 feet east of site
 ELECTRICITY: Kentucky Utilities Company
 SEWERAGE: City of Danville Sewerage Department
 SIZE LINE: 10-inch line approximately 125 feet south of site
 OWNERSHIP: Danville Development Corporation

SITE #7: ACREAGE: 9 acres
 LOCATION: Adjacent to western city limits
 ZONING: Industrial
 HIGHWAY ACCESS: Site fronts on Kentucky 34
 RAILROAD: Southern Railway System approximately 350 feet south of site
 WATER: City of Danville Water Department
 SIZE LINE: 12-inch line along western boundary of site
 GAS: Western Kentucky Gas Company
 SIZE MAIN: 2-inch main adjacent to western boundary across Kentucky 34
 ELECTRICITY: Kentucky Utilities Company
 SEWERAGE: City of Danville Sewerage Department
 SIZE LINE: 10-inch line approximately 1,400 feet south of site
 OWNERSHIP: Danville Development Corporation

SITE #8: ACREAGE: 15 acres
 LOCATION: Approximately 600 feet from western city limits
 ZONING: Industrial
 HIGHWAY ACCESS: Site fronts on Kentucky 34
 RAILROAD: Southern Railway System along southern boundary of site
 WATER: City of Danville Water Department
 SIZE LINE: 12-inch line along western boundary of site
 GAS: Western Kentucky Gas Company
 SIZE MAIN: 4-inch main along western boundary of site
 ELECTRICITY: Kentucky Utilities Company
 SEWERAGE: City of Danville Sewerage Department
 SIZE LINE: 10-inch line approximately 150 feet south of site across Southern Railway System
 OWNERSHIP: Danville Development Corporation

- A. American Greetings Corp.
- B. Royal Industries
- C. Danville Wire and Cable, Division of Firestone
- D. Jackson of Danville
- E. Ellis Trucking Company
- F. Corning Glass Works
- G. Bluegrass Plant Foods, Inc.
- H. Servomation Corp.
- I. Sellers Engineering Co.
- J. Whirlpool Corp.
- K. Royal Crown Bottling Co.
- L. Genesco, Inc.
- M. Palm Beach Co.



SITE-7
9 Ac.

SITE-8
15 Ac.

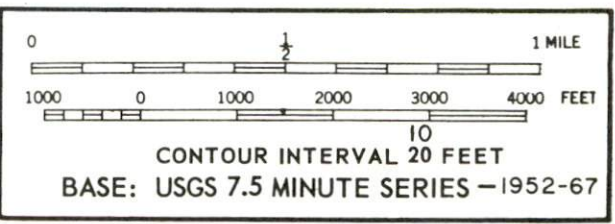
SITE-6
25 Ac.

SITE-2
12 Ac.

SITE-1
10 Ac.

SITE-5
100 Ac.

SITE-3
20 Ac.



INDUSTRIAL RESOURCES

DANVILLE, KENTUCKY

Prepared by

The Kentucky Department of Commerce

in cooperation with

The Danville-Boyle County Chamber of Commerce

1974

TABLE OF CONTENTS

<u>Chapter</u>	<u>Page</u>
INDUSTRIAL SITES	i
DANVILLE, KENTUCKY - A RESOURCE PROFILE.	1
THE LABOR MARKET.	6
Population Trends	6
General Employment Characteristics, 1972	6
Manufacturing Employment Trends by Industry.	7
Danville Manufacturing Firms, Their Products and Employment	7
Labor Organizations	12
Estimated Male Labor Supply	12
Estimated Female Labor Supply	12
Per Capita Personal Income	13
TRANSPORTATION	14
Rail.	14
Truck Service	14
Air	15
POWER AND FUEL	17
Electricity.	17
Natural Gas	17
Other Fuels	17
WATER AND SEWERAGE	18
Water	18
Sewerage	19
LOCAL GOVERNMENT	20
City.	20
County.	20
Assessed Value of Property, 1973	20
Property Taxes	20

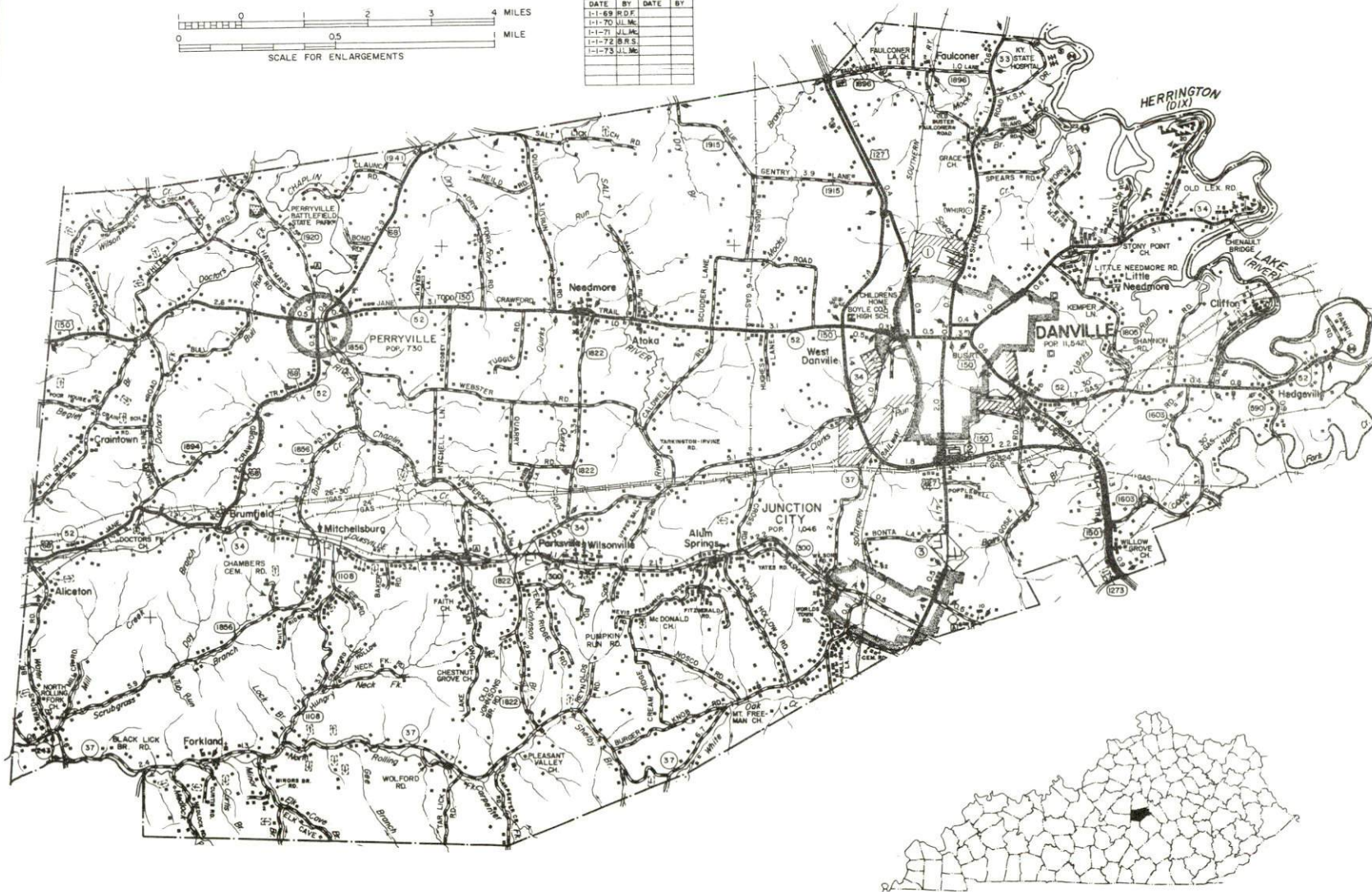
<u>Chapter</u>	<u>Page</u>
Local Property Tax Rate Per \$100 of Assessed Valuation, 197321
Planning and Zoning21
Safety21
Police21
Fire21
Rescue Service22
Sanitation22
 EDUCATION23
Public Schools23
Nonpublic Schools23
Vocational Schools27
Colleges and Universities28
 HEALTH29
Hospitals29
Nursing Homes29
Public Health29
 OTHER LOCAL FACILITIES30
Communications30
Library Services30
Religious Institutions31
Financial Institutions31
Hotels and Motels31
Clubs and Organizations31
 RECREATION33
Local33
Area33
 AGRICULTURE - NATURAL RESOURCES - CLIMATE34
Agriculture34
Natural Resources34
Climate35
 HISTORY36

GENERAL HIGHWAY MAP BOYLE COUNTY KENTUCKY

PREPARED BY THE
KENTUCKY DEPARTMENT OF HIGHWAYS
DIVISION OF PLANNING
IN COOPERATION WITH THE
U.S. DEPARTMENT OF TRANSPORTATION
FEDERAL HIGHWAY ADMINISTRATION



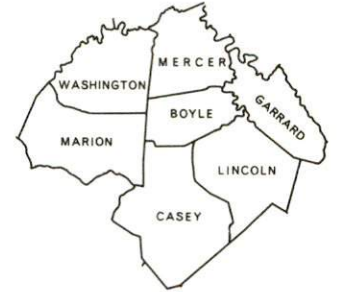
ORIGINAL DATA 1968			
REVISIONS			
DATE	BY	DATE	BY
1-1-69	R.D.F.		
1-1-70	J.L.M.		
1-1-71	J.L.M.		
1-1-72	B.R.S.		
1-1-73	J.L.M.		



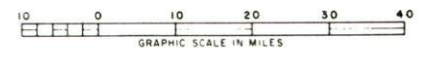
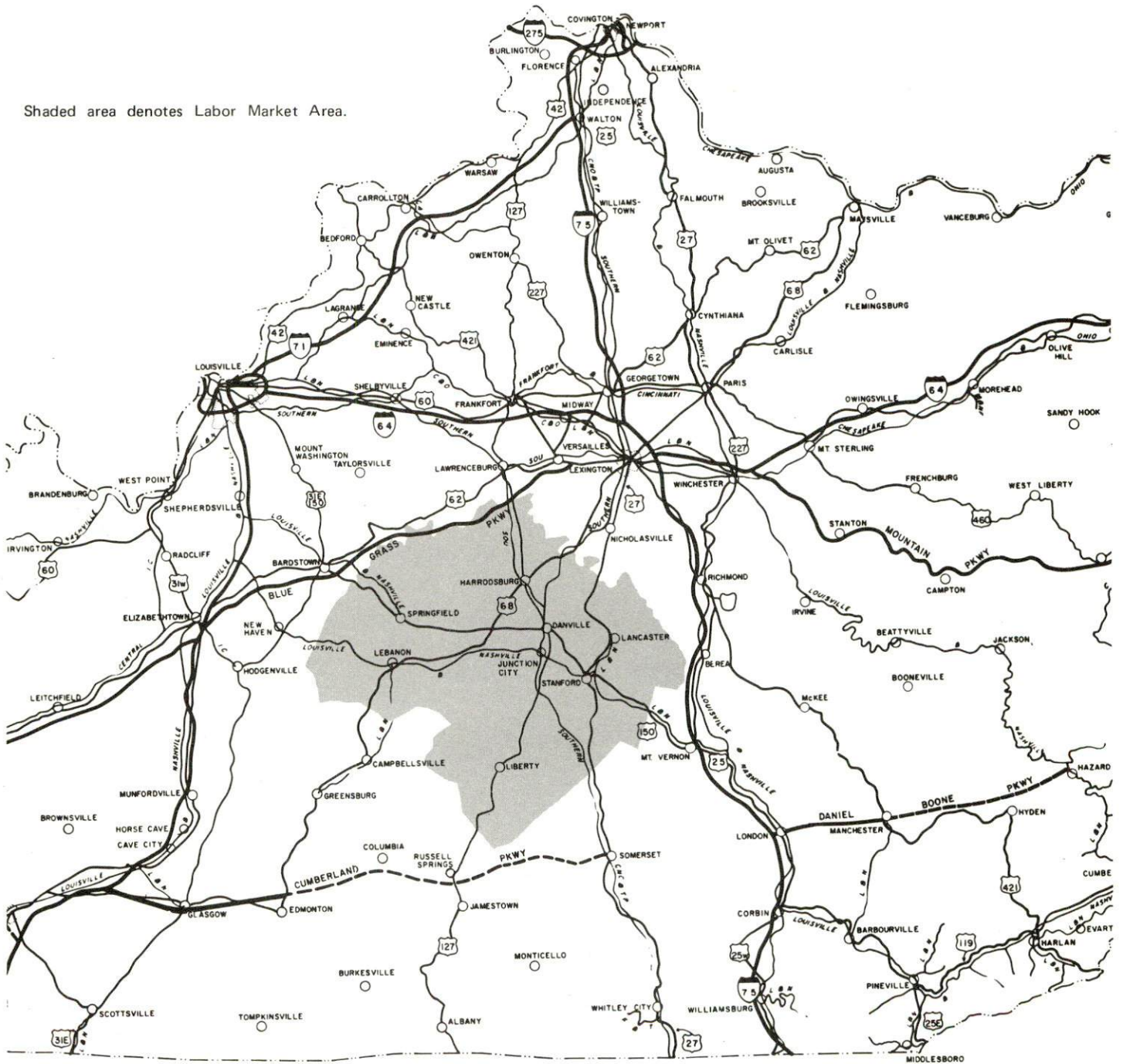


AERIAL VIEW - DANVILLE, KENTUCKY

DANVILLE LABOR MARKET AREA



Shaded area denotes Labor Market Area.



DANVILLE, KENTUCKY - A RESOURCE PROFILE

Danville, county seat of Boyle County, is in the central portion of Kentucky. The county is a part of the Bluegrass Region, and its southwestern corner extends into the Knobs. Its eastern border follows Herrington Lake on Dix River. Its 183 square miles of territory range from gently rolling to hilly terrain.

Danville is no typical small town. It was designated "All American City" in 1968 and "All Kentucky City" in 1967, 1968, and 1971. Today, with a population of 11,542, Danville is progressing rapidly, but also maintaining a beautiful image of the past.

Danville is 32 miles from Lexington, 80 miles from Louisville, and 109 miles from Cincinnati, Ohio. Its central location and accessibility to Kentucky's new modern highway system has made Danville an attractive prospect as a distribution center and manufacturing site for industry.

The Economic Framework

Total employment in Boyle County averaged 11,200 in 1972 with manufacturing providing 2,400 of these jobs. Manufacturing employment has increased 36.3 percent or 664 jobs since 1962. The American Greeting Card Company's Danville plant is utilized as a distribution center and provides more than 600 jobs. The major industrial products are glass bulbs and tubing, ladies' shoes, upholstered furniture, men's suits and household trash compactors.

Per capita income in the county in 1971 was \$3,257, an increase of 146 percent since 1961.

Danville is the hub of a labor market area that includes Boyle and the six surrounding counties. Area employment in 1972 totaled 38,420 jobs. Since 1962, area manufacturing employment has had its sharpest gains in the apparel, machinery, metal products, and lumber industries.

Despite important industrial gains in recent years, the area has a deficit of 1,436 manufacturing jobs when measured against the national manufacturing employment-population ratio. This indicates an area with a potential for additional manufacturing production.

Resources for Growth

1. There is a current labor supply of 8,310 men and 7,540 women available for industrial jobs in the labor market area. In addition, 5,490 young men and 5,240 young women will become 18 years of age by 1979 and potentially available for work.

2. The local transportation capability is good. The Southern Railway System serves Danville with a variety of services including piggyback. There is easy access to Interstate 75 and Interstate 64, which are major highway arteries to the industrial south, midwest, and east. The Blue Grass Parkway, only a short distance to the north, is an important link to the west. Ten separate trucking companies serving Danville make delivery time competitive with most shipping points within the general market area. The local airport provides charter service, and commercial air service is available in Lexington, 32 miles north of Danville.

3. Electric service is provided by the Kentucky Utilities Company. Natural gas service is provided by the Western Kentucky Gas Company, and fuel oil is available from the Somerset Oil Refinery, Somerset, Kentucky.

4. Industrial sites - Danville has 7 sites available for industrial use. The sites range in size from 9 to 100 acres.

5. Education is an important growth asset for Danville. The city and county school systems are rated among the most outstanding in Kentucky.

Four universities, four senior colleges, two junior colleges, and one technical institute are within 50 miles of Danville, with the University of Kentucky only 32 miles away. At Danville is Centre College, chartered in 1819. During the 1960's Centre College's capital resources were doubled, eleven new buildings were added, and the enrollment enlarged from 450 to 750. In 1970 Centre became one of the smallest of the 199 institutions now sheltering local chapters of Phi Beta Kappa.

Since 1904 Centre College has been a member of the Southern Association of Colleges and Schools and also holds membership in the Association of American Colleges. Governed by a self perpetuating board of trustees, Centre is affiliated with the United Presbyterian Church in the United States of America and the Presbyterian Church in the United States.

Financial support for Centre's operating costs is partially covered by the income from endowment funds accumulating over a period of years. Value in 1970 was in excess of \$7,000,000. The income from this fund creates numerous scholarships that are annually awarded to Centre students. Gifts to the Development Fund totaled \$1,399,821 for the 1969-70 fiscal year.

Vocational education is available at the Harrodsburg Vocational Education Center, just 9 miles north of Danville. The Central Kentucky State Vocational-Technical School is located at Lexington and offers 20 course areas.

Community Programs for Improvements

Cooperation, planning, and action have resulted in successful community programs and industrial expansion for Danville.

The Danville Independent School District has under consideration approximately 20 new programs. These include a new facility addition at Mary Hogsett Elementary School and the development of many new academic programs.

The Boyle County School System has added four classrooms to the new elementary school and a new garage for bus maintenance.

The city of Danville has made improvements in its city services and plans are being made for further improvements. The city rebuilt streets within several new subdivisions. Plans are underway to four-lane south 4th street to the U. S. 127 bypass. The rescue squad is now providing three ambulances to serve the Danville area. The Police Department is in the process of improving its radio communication system. Water and sewerage facilities have been extended approximately eight-tenths mile out Perryville Road to the Danville Manor Shopping Center, and south to the U. S. 127 bypass.

The city of Danville's urban renewal program is restoring the section in and around the McDowell Home and completely renovating Constitution Square. A six story, mid-rise building is also to be constructed as part of the urban renewal program.

Danville's recreational and cultural future has also been taken into consideration. A new golf course and swimming pool have just been completed by private interests adjacent to the eastern city limits.

Other improvements underway include: a new hangar at the airport, resurfacing both runways; the country club is adding 9 new holes; a new shopping center is under construction; a 90-bed nursing home has just been completed; a \$3,000,000 expansion program has been approved for the Ephraim McDowell Memorial Hospital; Pioneer Opportunity Workshop has just purchased a 5-acre site and plans to relocate their operation; Rexnord Corporation has just purchased a site and will begin construction in the near future; and Centre College has just completed a new \$5,500,000 Fine Arts Building.

Recreation, Entertainment and Livability

Danville's location in the heart of Kentucky places it in the center of numerous recreation facilities.

Danville offers much in entertainment both in public and private facilities. Offerings in sports include golf, swimming, tennis, football and baseball. Several public parks and playgrounds are available. A supervised recreation program is provided for all age groups.

Tourist attractions near Danville include: State and National Shrines; two State Parks, Kentucky's Official State Theatre plus Pioneer Playhouse, Old Fort Harrod Amphitheatre and Shakertown Village.

Constitution Square State Shrine is an authentic reproduction of Kentucky's first courthouse square. Included is the original 1792 post office and replicas of the jail, courthouse and meeting house.

Jacobs Hall, a National Shrine, on the campus of the Kentucky School for the Deaf, was built over a 100 years ago to house girls and members of the staff. The Kentucky School for the Deaf was the first school for the deaf west of the Alleghenies and first established at public expense in the United States.

Perryville Battlefield State Park is located 13 miles west of Perryville. On October 8, 1862, this was the site of Kentucky's bloodiest Civil War battle leaving 4,241 Union forces and 1,822 Confederates dead or wounded. Many of the dead, both Union and Confederate, rest side by side in the land over which they fought that day. A small museum contains relics and stories of the battle.

Old Fort Harrod State Park, just 9 miles north of Danville, was Kentucky's first town. On display here are the first school, pioneer cemetery and marriage temple, a brick building which shelters the cabin where Lincoln's parents were married. The mansion museum is also full of fascinating mementos of the difficult pioneer struggles. The Legend of Daniel Boone is presented in the Old Fort Harrod Amphitheatre, adjacent to Old Fort Harrod Park. This exciting and acclaimed outdoor drama tells a "living history" story of Kentucky's heroes, Daniel Boone, James Harrod, and George Rogers Clark and their wilderness struggles. "The Legend of Daniel Boone" is performed in a natural setting of trees and mountains.

Pioneer Playhouse, Kentucky's Official State Theatre, brings summer stock to Danville during June, July and August.

Just 16 miles northeast of Danville, Shakertown, once a prosperous religious community, is located. The 19th century village of original buildings has been carefully restored. Visitors will be interested in walking through the quiet village and viewing the exhibits.

Herrington Lake, 4 miles from Danville, is 36 miles long and offers excellent fishing, boating and swimming. Lexington, 32 miles north, offers sophisticated entertainment, as well as cultural and sporting events. Louisville, 70 miles northwest from Danville, offers the same sophisticated entertainment, adding more emphasis on sporting events. It could be said that both cities have the world's most classic thoroughbred racing events.

THE LABOR MARKET

POPULATION TRENDS

Area	Population				Percent Change	
	1972*	1970	1960	1950	1960-70	1950-60
Danville	N. A.	11,542	9,010	8,686	+28.1	+ 3.7
Labor Market Area						
Area	105,700	103,542	104,485	112,307	- 0.9	- 7.0
Boyle Co.	22,300	21,090	21,257	20,532	- 0.8	+ 3.5
Casey Co.	13,100	12,930	14,327	17,446	- 9.8	-17.9
Garrard Co.	9,300	9,457	9,747	11,029	- 3.0	-11.6
Lincoln Co.	17,100	16,663	16,503	18,668	+ 1.0	-11.6
Marion Co.	16,900	16,714	16,887	17,212	- 1.0	- 1.8
Mercer Co.	16,600	15,960	14,596	14,643	+ 9.3	- 0.3
Washington Co.	10,400	10,728	11,168	12,777	- 3.9	-12.6

*Provisional estimates.

Sources: U. S. Department of Commerce, Bureau of the Census, Census of Population, 1970, 1960, 1950. U. S. Bureau of the Census, Current Population Reports, Series P-26, June 1973.

GENERAL EMPLOYMENT CHARACTERISTICS, 1972

Major Employment Group	Employment	
	Boyle County	Labor Market Area
TOTAL	11,200	38,420
Agricultural	800	8,060
Nonagricultural	10,400	30,360
Manufacturing	2,400	8,400
Government	1,850	4,710
Trade and Services	3,059	6,811
Other	3,091	10,439

Source: Kentucky Department of Economic Security, Division of Research and Statistics.

MANUFACTURING EMPLOYMENT TRENDS BY INDUSTRY
SEPTEMBER 1972 AND 1962

Industry	Boyle County			Labor Market Area		
	1972	1962	%Change	1972	1962	%Change
TOTAL	2,517	1,853	+ 36.8	8,450	5,504	+ 53.5
Food & Kindred						
Products	79	150	- 47.3	358	236	- 33.2
Tobacco	4	17	- 75.0	145	241	- 39.8
Apparel, Textiles,						
Leather	1,093	844	+ 29.5	3,361	3,007	+ 11.8
Lumber, Furniture	233	89	+162.8	773	353	+119.0
Printing & Publishing,						
Paper	39	125	- 68.8	78	166	- 53.0
Chemicals, Petroleum						
& Coal, Rubber	7	5	+ 40.0	149	5	+288.0
Stone, Clay & Glass	614	442	+ 38.9	919	466	+ 97.2
Machinery, Metal						
Products, Equipment	448	177	+153.1	1,737	376	+362.0
Other	0	4	-100.0	930	354	+162.7

Source: Kentucky Department of Economic Security, Number of Workers in Manufacturing Industries Covered by Kentucky Unemployment Insurance Law Classified by Industry and County, September 1972, September 1962.

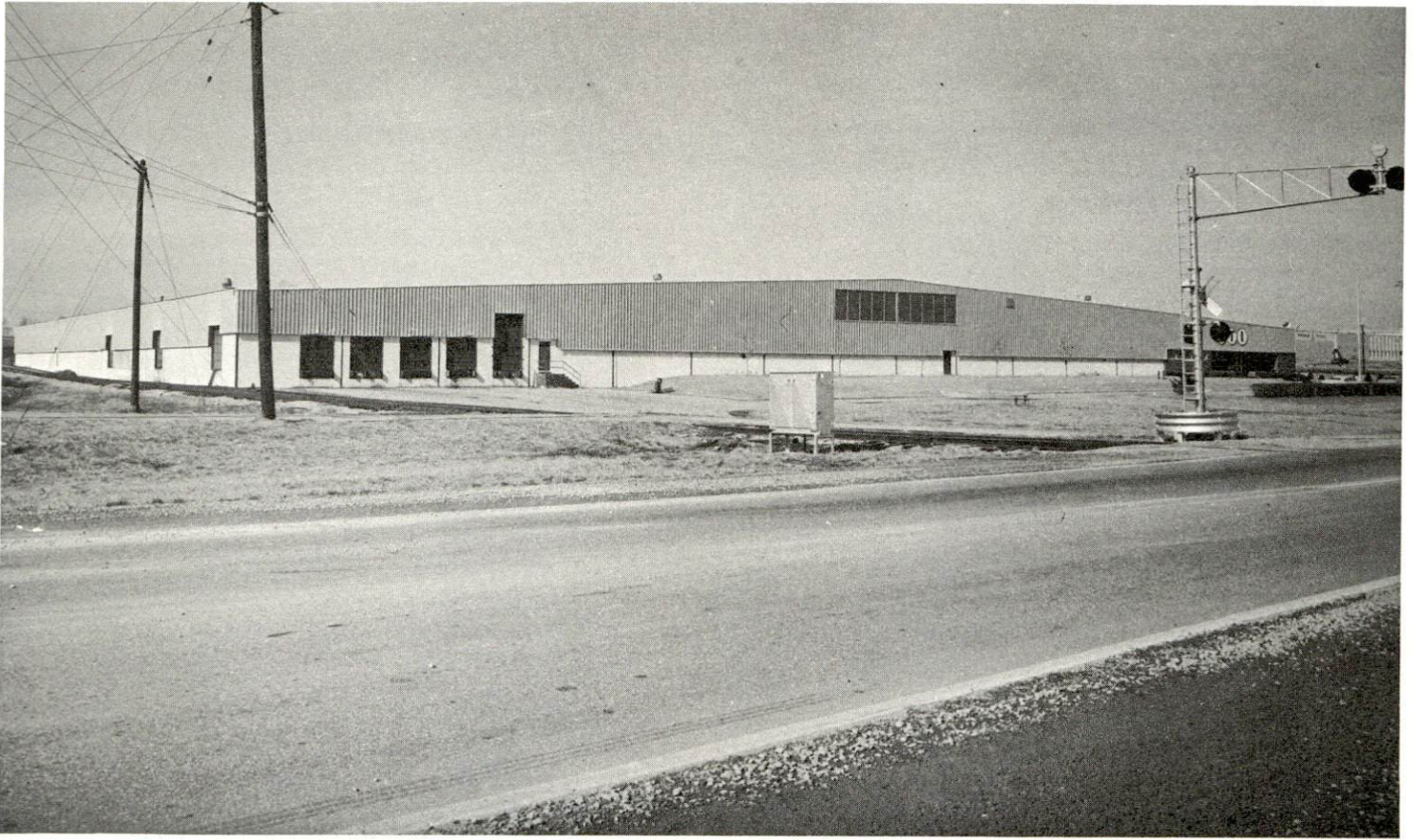
DANVILLE MANUFACTURING FIRMS,
THEIR PRODUCTS AND EMPLOYMENT

Firm (Establishment date)	Product	Employment		
		Total	Male	Female
Bluegrass Printing Co. (1958)	Lithographic printing, letterpress printing, phototypesetting	6	6	
Boyle Block Co. (1943)	Concrete block	18	16	2
Fred Cain Farm Equipment Co. (1959)	Tractor accessories, field tillers	32	30	2
Caldwell Stone Co., Inc. (1928)	Agricultural lime	23	23	
Concrete materials Corp. (1948)	Ready mixed concrete	7		
Corning Glass Works (1952)	Glass bulbs, tubing	500	300	200
Corps Line, Inc. (1972)	Leather goods, parade products	50		
Danville Advocate-Messenger Co. (1865)	Newspaper, offset and letterpress printing	41	26	15
Danville Screw Machine Products Co.	Screw machine products	20		
Danville Wire and Cable Co. (1971)	Steel wire and cable	N. A.		

(contd.)

<u>Firm</u> (Establishment date)	<u>Product</u>	<u>Employment</u>		
		<u>Total</u>	<u>Male</u>	<u>Female</u>
Genesco, Inc. (1946)	Ladies shoes	500	130	370
Jackson of Danville (1946)	Upholstered chairs, sofas	223	165	58
Kentucky Kandies (1948)	Candy, barbecue sauce, pancake syrup	6	1	5
Palm Beach Co. (1937)	Men's suits	587	34	553
Pioneer Opportunity Workshop, Inc. (1969)	Wood boxes, wood pallets	40	25	15
Rexnard, Inc. (Under construction)	Conveyors	400 (Estimated)		
Royal Crown Bottling Co. (1938)	Soft drinks	41	38	3
Royal Industries (1969)	Friction brake lining, disc pads	60	43	17
Sellers Engineering Co. (1947)	Commercial gas fired water heaters	N. A.		
Stevens Concrete Co., Inc. (1965)	Ready mixed concrete	10	9	1
Teater Brothers and Elliott (1953)	Fertilizer	12	10	2
Whirlpool Corp. (1969)	Trash compactors	39	280	319

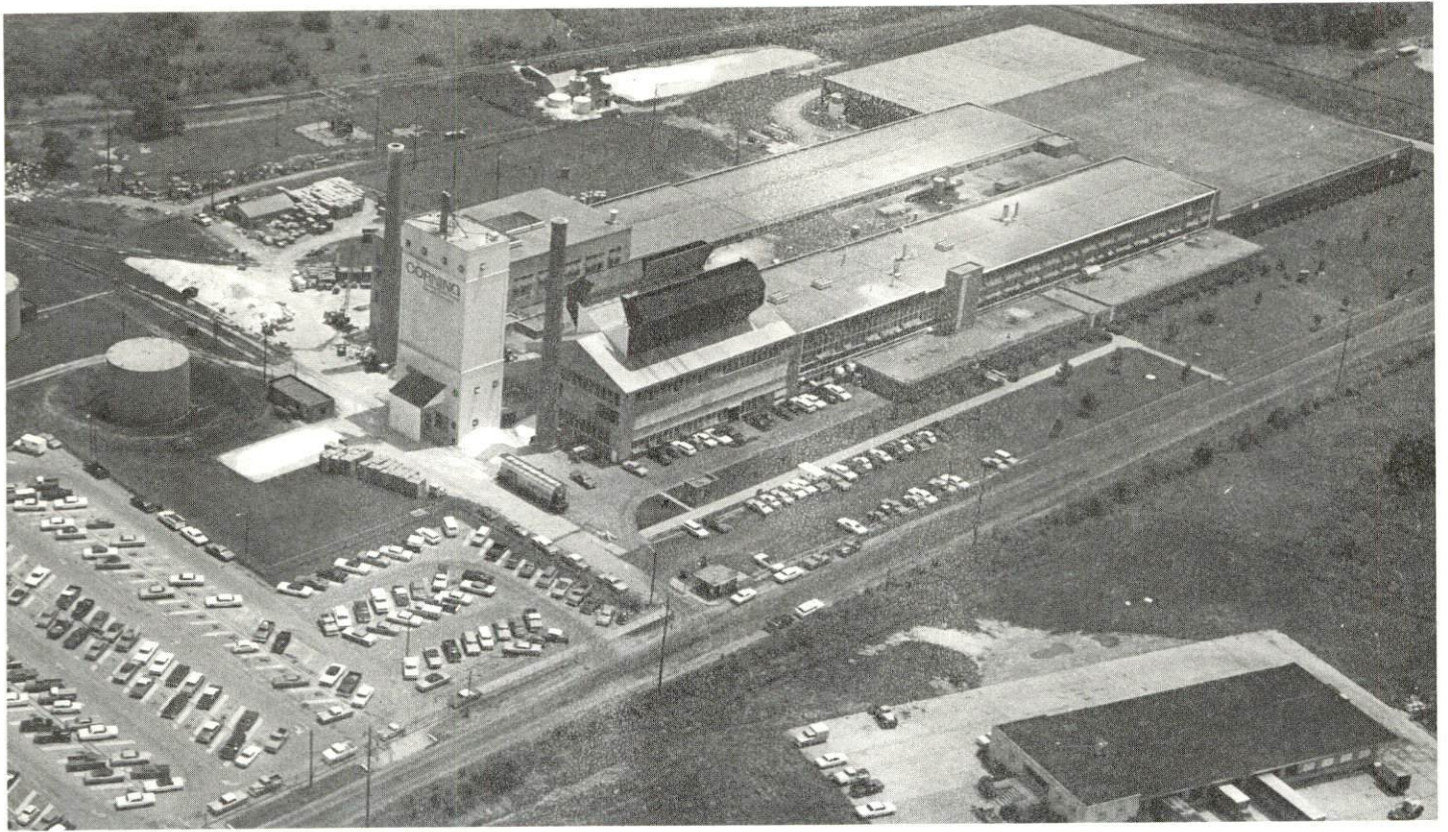
Source: Kentucky Department of Commerce, Division of Research and Planning.



DANVILLE WIRE & CABLE COMPANY



WHIRLPOOL CORPORATION



CORNING GLASS WORKS

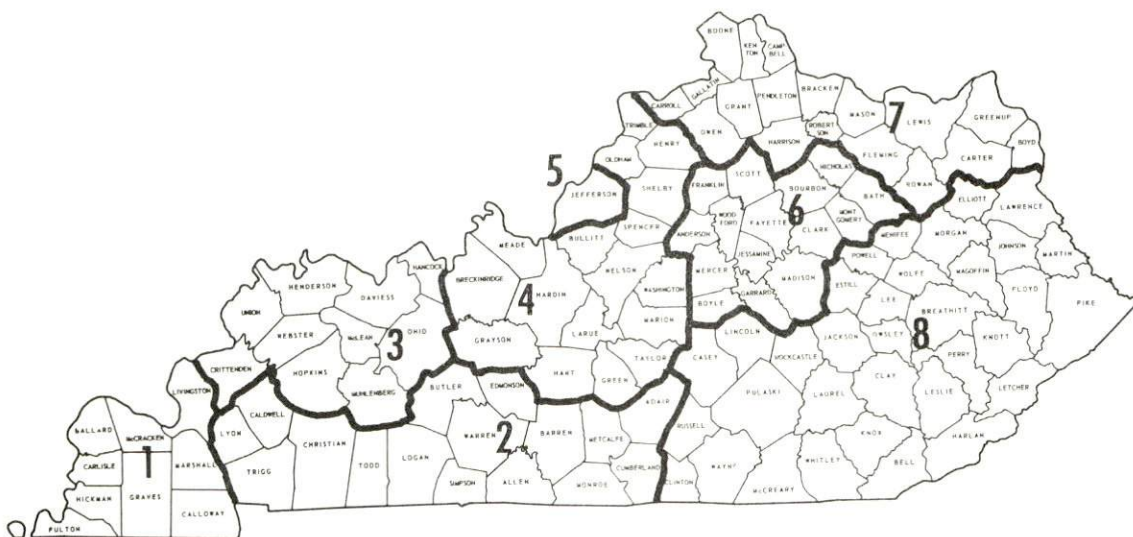


PALM BEACH COMPANY

WAGES

Occupational wage rates for specific industries are usually not available to most government agencies, and wage data furnished to state employment agencies by industrial employers is protected from disclosure by federal law. The most reliable up-to-date wage information can be obtained by direct contact with local employers.

Associated Industries of Kentucky, a voluntary organization of Kentucky businesses, regularly collects occupational wage rates and fringe benefits data from participating member firms. Data is compiled for over 130 clearly defined office, production, and service occupations. Tabulations are published for eight regions of Kentucky, as shown on the map below. It should be noted that the data may be weighted by the preponderance of firms in the larger cities and may be somewhat higher than the rates paid in the smaller communities. Data from these tabulations are available, upon request, from the Kentucky Department of Commerce, Frankfort, Kentucky 40601.



Associated Industries of Kentucky Area Wage Surveys

LABOR ORGANIZATIONS

<u>Union</u>	<u>Representing manufacturing workers at:</u>
American Flint Glass Workers Union of North America	Corning Glass Works
Upholsterers International of North America	Jackson of Danville
United Steel Workers of America	Royal Industries
Amalgamated Clothing Workers of America	Palm Beach Company

ESTIMATED MALE LABOR SUPPLY DANVILLE LABOR MARKET AREA

<u>Area</u>	<u>Current</u>			<u>Future</u>	
	<u>Total</u>	<u>Not in Labor Force</u>	<u>Unemployed</u>	<u>Reaching 18 yrs. of age by 1979</u>	
Labor Market					
Area	8,312	2,504	1,785	4,023	5,493
Boyle	1,595	267	329	999	1,036
Casey	1,471	744	159	568	697
Garrard	793	304	147	342	486
Lincoln	1,617	545	407	665	865
Marion	1,334	385	354	595	1,023
Mercer	1,000	190	207	603	795
Washington	502	69	182	251	591

Sources: Kentucky Department of Economic Security, Kentucky Labor Supply Estimates by County, 1972. Kentucky Department of Commerce, Future Labor Supply by 1979.

ESTIMATED FEMALE LABOR SUPPLY DANVILLE LABOR MARKET AREA

<u>Area</u>	<u>Current</u>			<u>Future</u>	
	<u>Total</u>	<u>Not in Labor Force</u>	<u>Unemployed</u>	<u>Reaching 18 yrs. of age by 1979</u>	
Labor Market					
Area	7,541	2,472	1,045	3,997	5,236
Boyle	1,238	0	201	1,037	978
Casey	1,277	688	91	498	691
Garrard	685	212	83	390	432
Lincoln	1,462	660	233	569	846
Marion	1,265	500	206	559	1,010
Mercer	775	0	123	652	706
Washington	839	412	108	319	573

Sources: Kentucky Department of Economic Security, Kentucky Labor Supply Estimates by County, 1972. Kentucky Department of Commerce, Future Labor Supply by 1979.

PER CAPITA PERSONAL INCOME

<u>Area</u>	<u>1971</u>	<u>1961</u>	<u>% Change</u>
Boyle County	\$3,257	\$1,323	+146.2
Labor Market Area			
Range	\$1,917 - 3,257	\$ 798 - 1,573	N. A.
Kentucky	3,306	1,683	+ 96.4
U. S.	4,156	2,265	+ 83.5

Sources: University of Kentucky, Office of Development Services and Business Research, Per Capita Income in Kentucky. U. S. Department of Commerce, Bureau of Economic Analysis, Survey of Current Business, August 1972.

TRANSPORTATION

Rail

Line serving Danville - Southern Railway System

Services - 23 to 25 freights stopping daily, 10 to 12 through freights daily, switching facilities, siding space for approximately 40 cars, crew switching station, piggyback facilities

For details on routing, schedules, rates, and services, contact:

District Sales Manager
Southern Railway System
1402 South 15th Street
Louisville, Kentucky 40210

Truck Service

<u>Company</u>	<u>Home Office</u>
Best Way Express, Inc.	710 Poplar Avenue Nashville, Tennessee 37210
Cooper-Jarrett, Inc.	23 South Essex Avenue Orange, New Jersey 07050
Davenport's Transfer	125 East Broadway Harrodsburg, Kentucky 40330
Distillery Transfer Service, Inc. (Distillery products and supplies only)	Depot Bardstown, Kentucky 40004
Lawrenceburg Transfer Co.*	Court Street Lawrenceburg, Kentucky 40342
McDuffee Motor Freight, Inc.* (United Trucking)	332 High School Avenue Lebanon, Kentucky 40033
McLean Trucking Company*	P. O. Box 213; 617 Waughtown Street Winston-Salem, North Carolina 27107
O. K. Trucking Company	1810 South Street Cincinnati, Ohio 45204
Smith's Transfer Corporation of Virginia	P. O. Box 1000 Staunton, Virginia 24401
Turner Expediting Service	Box 21333, Standiford Field Louisville, Kentucky 40221

*Local terminal.

Truck Service (contd.)

Other Freight Services

United Parcel Service* Danville, Kentucky (nearest shipping center)
 REA Express** Lexington, Kentucky, 38 miles from Danville

*For regular scheduled pickups or for occasional pickups, arrangements must be made with the Louisville office of UPS.

**Daily service to Danville.

HIGHWAY MILES AND TRUCK TRANSIT TIME IN DAYS FROM DANVILLE, KENTUCKY, TO SELECTED MARKET CENTERS

City	Delivery		City	Delivery	
	Highway Miles	Time TL		Highway Miles	Time TL
Atlanta, Ga.	355	1	Los Angeles, Calif.	2,184	4
Birmingham, Ala.	357	1	Louisville, Ky.	77	1
Chicago, Ill.	381	1	Nashville, Tenn.	193	1
Cincinnati, Ohio	112	1	New Orleans, La.	715	2
Cleveland, Ohio	356	1	New York, N. Y.	771	2
Detroit, Mich.	377	1	Pittsburgh, Pa.	412	1
Knoxville, Tenn.	169	1	St. Louis, Mo.	341	1

Source: Delivery time only - Smith's Transfer Corporation, Staunton, Virginia 24401.

Air

Local

Location: Goodall Field
 4.2 miles south of Danville
 Runways: 2 paved
 Length: 2,400 feet, 3,400 feet
 Traffic Control: Wind sock
 Lighting: Sundown to sunrise
 Services: 80-100 octane, charter, hangar, tie down, flight instruction, aero crop spraying

Air Freight

Service: Chartered air freight services must be arranged

Nearest Commercial

Location: Blue Grass Field
Lexington, 32 miles from Danville

Runways: 3 paved

Length: 6,500 feet, 3,500 feet, 3,500 feet

Traffic Control: Tower, guard, approach control,
ground control, ILS System

Lighting: Approach lighting system, beacon, runways,
and obstructions lighted

Services: 80, 100 and 145 octane, jet fuel, major
A & E repairs, storage, restaurant, Weather
Bureau and flight instructions, charter
service, taxi, U-Drive-It Service; Eastern,
Delta, Piedmont, and Allegheny Airlines

Air Freight
Service: Air freight provided on space available
basis

Bus - Southern Greyhound, Trailways Bus Lines

Taxi - Three cab companies - 24-hour, radio-dispatched
service

Rental Services - Car, trailer, and truck rentals

POWER AND FUEL

Electricity

Company serving Danville - Kentucky Utilities Company
Source of power - Kentucky Utilities Company
Total generating capacity - 1,215,000 KW
For industrial rates contact:

Kentucky Utilities Company
198 West Broadway
Danville, Kentucky 40422

Company serving Boyle County - Inter-county RECC
Source of power - East Kentucky Power Cooperative
Total generating capacity - 548,000 KW
For industrial rates contact:

Inter-County RECC
P. O. Box 87
Danville, Kentucky 40422

Natural Gas

Company serving Danville - Western Kentucky Gas Company
Source of supply - Tennessee Gas Pipeline Company
Size of transmission mains - 24-inch (supplier); 6-inch (distributor)
Distribution mains - 8, 6, 4, and 2 inches
Distribution pressure - 4 ounces to 25 psi
Btu content - 1,025 per cubic foot
Specific gravity - .60
For rates and supplies contact:

Western Kentucky Gas Company
424 West Main Street
Danville, Kentucky 40422

Other Fuels

Fuel Oils -

Distillate or residual fuel oil - Somerset Oil Refinery, 45 miles
from Danville

Low sulphur content coal - Available from eastern Kentucky

WATER AND SEWERAGE

Water

Company serving Danville - Danville Water Department

Source - Herrington Lake

Treatment plant capacity - 5,000,000 gallons per day

Average daily consumption - 2,800,000 gallons

Peak daily consumption - 3,100,000 gallons

Type treatment - Aeration, flocculation, settling, filtered, chlorination, fluorides

Storage capacity - 2,000,000 gallons

Size mains - 12, 8, and 6 inches

Average pressure - 80 psi

Average temperature - 50 degrees F.

MONTHLY WATER RATES FOR WHOLESALE AND INDUSTRIAL CONSUMERS

First	20,000 cu. ft.	\$60.00 (Minimum monthly bill)
Next	80,000 cu. ft.	.20 per 100 cu. ft.
Next	100,000 cu. ft.	.18 per 100 cu. ft.
Next	300,000 cu. ft.	.16 per 100 cu. ft.
Next	500,000 cu. ft.	.14 per 100 cu. ft.
All over	1,000,000 cu. ft.	.12 per 100 cu. ft.

Name of water district - Lake Village Water Association, Inc.

Area served - 112 customers in Boyle County and 508 customers in east Mercer County

Date when water district began operating - January 1971

Source of supply of treated water - Danville Water Department

Average amount of water used in a 24-hour period 102,000 gallons

Peak amount of water used in a 24-hour period - 140,000 gallons

Storage capacity - 47,000 gallons

Average pressure - 68 psi

Average temperature - 52 degrees F.

Size line - 6 inch

Rates -

<u>Gallons</u>	<u>Net Bill</u>
1,000	\$ 6.00
2,000	8.25
3,000	10.50
5,000	13.75
8,000	17.00
10,000	19.00
13,000	22.00

Surface water sources - Dix and Salt Rivers and Herrington Lake
Average discharge - Dix River near Danville, 424 cfs (29-year record)
Salt River near Harrodsburg, 48.1 cfs (19-year record)
Expected ground water yield - 5 to 50 gpm in central and extreme
eastern portion of county; 5 gpm or less over remainder of county

Sewerage

Company serving - Danville Sewerage Department
Design capacity - 2,200,000 gallons per day
Average daily flow - 1,600,000 gallons
Treatment - Primary and secondary
Type treatment - Lime when needed, degreaser when needed, and
chlorine when discharged into stream
Treated effluent discharged into - Clarks Run
Size of sanitary mains - 24-inch
Rates - 40 percent of monthly water bill

LOCAL GOVERNMENT

City

Structure - Mayor - 4-year term; 4 councilmen - 2-year terms;
City manager
Budget 1972-73 - General Fund \$686,328
Water and Sewer Fund 499,743
Fees and licenses - Payroll tax - 1 percent of gross wages -
minimum fee, \$25

County

Structure - County Judge - 4-year term; 6 magistrates - 4-year terms
Budget 1973-74 - General Fund \$178,722; Road Fund \$153,500

Assessed Value of Property, 1973

<u>Classes of Property</u>	<u>Danville</u>	<u>Boyle County</u>
Real Estate	\$51,299,437	\$119,679,375
Tangibles	10,810,257	30,401,219
Public Service		26,555,353

Property Taxes

Land and buildings are taxed by the state and may be taxed by local jurisdictions. The state rate is \$0.015 per \$100 of assessed valuation.

Tangible personal property owned by manufacturers (automobiles, trucks, finished goods, office furniture, office equipment) is taxed by the state at \$0.15 per \$100 and may be taxed by local jurisdictions.

Manufacturing machinery, raw materials inventories, and goods in process inventories are not subject to local taxation. The state rate is \$0.15 per \$100.

Property stored in public warehouses is not subject to local taxation. The state rate is only \$0.015 per \$100.

All property is assessed at 100 percent of fair cash value.

Local Property Tax Rate Per \$100 of Assessed Valuation, 1973*

<u>Taxing Jurisdiction</u>	<u>Danville</u>	<u>Boyle County</u>
County	\$.176	\$.176
School	.900	.645
City	.380	

Planning and Zoning

Joint agency - Danville and Boyle County Planning and Zoning Commission

Zoning enforced - All areas

Subdivision regulations enforced - All areas

Local codes enforced - Building and Housing - City of Danville

Mandatory state codes enforced - Plumbing, National Fire Protection Association Code, National Building Code (for major buildings and residential construction containing more than 12 bedrooms per building)

Other programs - Urban renewal, public housing and neighborhood development program

Safety

<u>Police</u>	<u>Danville</u>	<u>Boyle County</u>
Total staff	27	6
Radio-patrol cars	4	5
Other equipment	Radar unit, mobile laboratory	Standard

Fire

American Insurance Association Fire Rating	6	
Full-time staff	20	
Volunteers	20	90
Equipment:		
1,000 gpm pumpers	3	
750 gpm pumpers	1	5
1,600 gal. tanker		1
1,260 gal. tankers		2
Ladder truck	1	
Utility truck	1	
Other	Mutual aid service from surrounding area	

*Kentucky Department of Revenue.

Rescue Service

Danville-Boyle County Rescue Squad:

Number of volunteers - 30

Equipment - 3 radio-dispatched trucks, 3 ambulances

Personnel training - Standard and advanced First Aid

Sanitation

	<u>Danville</u>	<u>Boyle County</u>
Type service	Municipal	Private
Fee charged:		
residential	None	\$4 per month
business	None	By contract
Collection frequency:		
residential	Twice weekly	Twice weekly
business	Daily	By contract
Trash pickup	Once a month	
Disposal method	Landfill	

EDUCATION

Public Schools

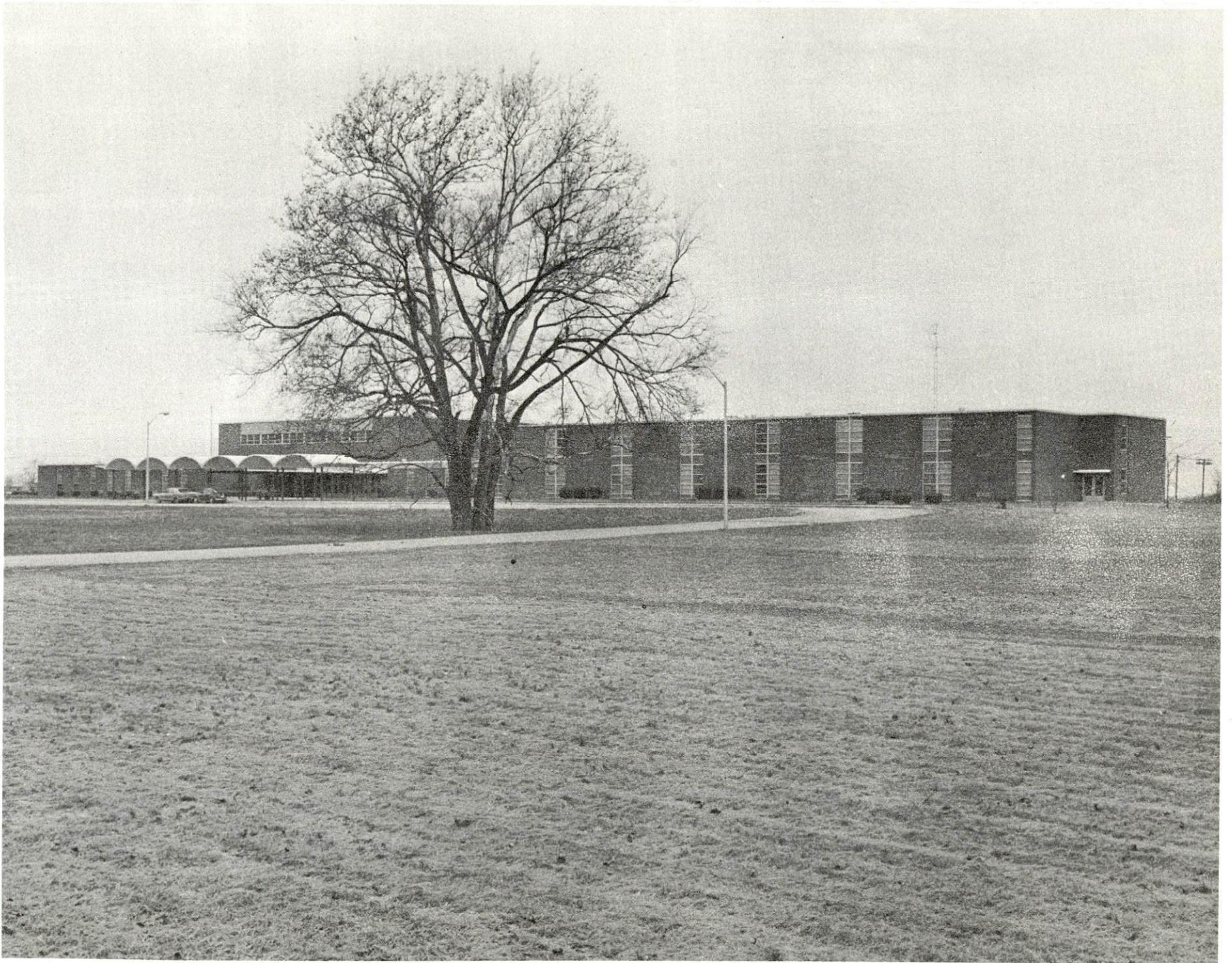
	<u>Danville Independent</u>	<u>Boyle County</u>
Total Enrollment (Sept., 1973)	2,507	2,315
Elementary	1,259	1,360
Junior High	448	
Middle School		269
High School	800	686
Student-Teacher Ratio	22-1	23-1
Elementary	21-1	23-1
Junior High	25-1	
Middle School		30-1
High School	21-1	20-1
Accreditation	Southern Association of Colleges and Schools	
Percent High School Graduates to College	64.6	29.4
Expenditures Per Pupil (1971-72)	\$552.08	\$449.54
Bonded Indebtedness, June 30, 1972	\$1,769,000	\$2,347,000

Nonpublic Schools

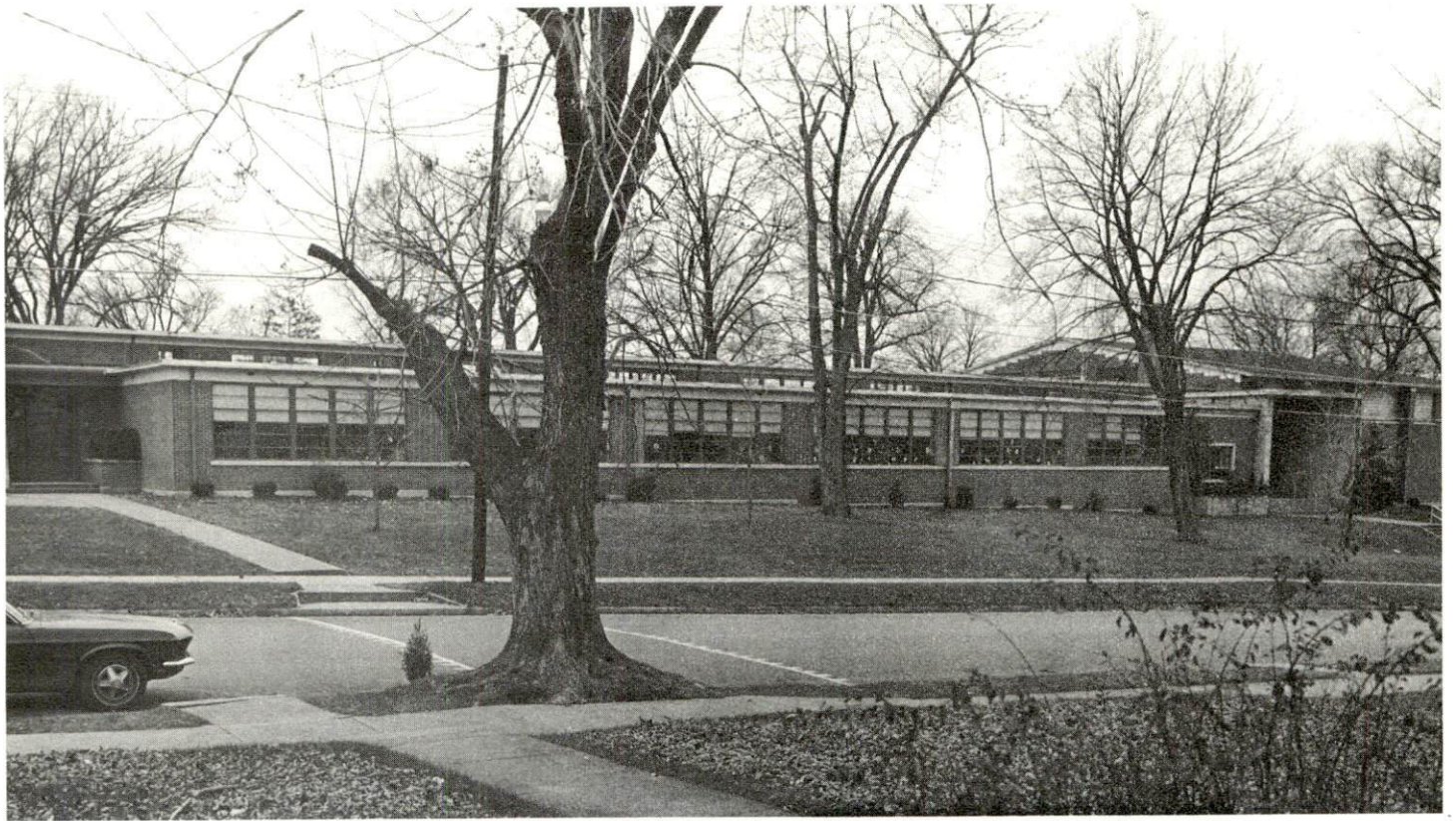
	<u>Kentucky School for the Deaf</u>
Total Enrollment	373
Elementary	317
High School	56
Student-Teacher Ratio	7-1
Elementary	8-1
High School	4-1



DANVILLE HIGH SCHOOL



BOYLE COUNTY HIGH SCHOOL



JENNIE ROGERS SCHOOL



CENTRE COLLEGE DINING COMMONS

Vocational Schools

	<u>Nearest State School</u>	<u>Nearest Area Education Center</u>
	Central Kentucky State Vocational-Technical School	Harrodsburg Extension Center
Location	Lexington	Harrodsburg
Miles Distant	32 miles	9 miles
Curriculum	General Clerical Accounting Jr. Management Secretarial-Steno Distributive Education Practical Nursing Electronics (Communication) Technical Drafting Auto Body Repair Auto Mechanics Commercial Foods Cosmetology Drafting Electricity Machine Shop Office Machine Repair Printing Radio and TV Repair Sheet Metal Tool and Die Making Welding	General Clerical Secretarial-Steno Auto Mechanics Carpentry Electricity Welding

Arrangements can be made to provide training in the specific production skills required by an industrial plant. Instruction may be conducted either in the vocational school or in the industrial plant, depending upon the desired arrangement and the availability of special equipment.

Colleges and Universities

<u>Name</u>	<u>Area - Within 50 miles</u>		<u>Highest Degree Conferred</u>
	<u>Location</u>	<u>Enrollment (Fall, 1972)</u>	
Centre College	Danville	758	Baccalaureate
Berea College	Berea	1,356	Baccalaureate
Eastern Kentucky University	Richmond	10,580	Masters
University of Kentucky	Lexington	19,538	Ph. D. , D. M. D. , M. D. , J. D.
Asbury College	Wilmore	1,115	Baccalaureate
Campbellsville College	Campbellsville	743	Baccalaureate
Transylvania University	Lexington	726	Masters
Southeastern Christian College	Winchester	130	Associate
Saint Catharine Academy	St. Catharine	131	Associate
Kentucky State University	Frankfort	1,961	Baccalaureate
Lexington Technical Institute	Lexington	*	Associate

*Included in University of Kentucky (Lexington) enrollment.

HEALTH

Hospitals

<u>General Hospital</u>	<u>Location</u>	<u>Beds</u>
Ephraim McDowell Memorial Hospital	Danville	100

General hospital facilities - 3 operating rooms, recovery room, obstetrical service, X-ray, laboratories, 4-bed extensive care unit, drug dispensary unit, emergency service, and respiratory therapy

Medical staff - 13 general practitioners, including general surgeons, 11 specialists, 34 registered nurses, 64 licensed practical nurses and graduate licensed practical nurses, 28 nurses aides and 1 pharmacist (part-time)

Other

Kentucky State Hospital, Southern Blue Grass Comprehensive Care Center (Region C)

Nursing Homes

	<u>Number</u>	<u>Beds</u>
Extended care homes	1	50
Personal care homes	2	150

Public Health

Facility - Boyle County Health Center

Staff - 1 dentist (part-time), 3 nurses, 1 TB project nurse (part-time), sanitarian, state plumbing inspector (part-time), 2 clerks and 1 outreach family and planning worker

Budget 1973-74 - \$39,975

OTHER LOCAL FACILITIES

Communications

Telephone - South Central Bell Telephone Company
Services - All standard services, touch tone

Telegraph - Western Union
Services - Telephone

Postal - U. S. Post Office
Class - First
Mail received - 4 times daily
Mail dispatched - 2 times daily

Newspapers -
Daily and circulation - Danville Advocate Messenger - 7,900
Weekly and circulation - Kentucky Advocate (Sunday) - 7,950
Other papers received from - Major cities

Radio - WHTR - AM; WMGE - FM
Stations received from - Louisville and Lexington, Kentucky;
Cincinnati, Ohio

Television -
Cable service
Reception from - Louisville and Lexington, Kentucky; Cincinnati,
Ohio

Kentucky Educational Television - Lexington transmitter, Channel 8

Library Services

Public library - Danville Public Library
Size collection - 23,250 volumes
Circulation, 1972-73 - Volumes, 62,592
Services - Bookmobile, a part of the regional system of libraries
furnishes all library services

Private library - Grace Doherty Library, Centre College
Size collection - Over 85,000 volumes
Special collections - A wide variety of periodicals, government documents,
pamphlets, recordings, music scores, microfilm, microcards and other
audio-visual material
Services - More than 500 periodicals and more than a dozen newspapers
regularly; music listening facilities and photo duplication services
provided to students

Religious Institutions

Number of churches - 30

Denominations - Apostolic, Baptist, Christian, Pentecostal
Church of God, Church of God, Church of Jesus Christ of
Latter Day Saints, Church of Christ, Episcopal, Jehovah's
Witnesses, Lutheran, Nazarene, Presbyterian, Roman Catholic,
Salvation Army, United Methodist

Nearest Synagogues - Lexington, 38 miles away

Congregations - Adath Israel (Reform); Ohavey Zion (Traditional)

Financial Institutions

<u>Banks</u>	<u>Statement as of June 30, 1973</u>	
	<u>Assets</u>	<u>Deposits</u>
Bank of Danville	\$13,609,344.96	\$12,370,212.17
The Farmers National Bank	21,832,312.64	19,613,505.66
Citizens National Bank	16,327,100.75	14,535,105.76
<u>Savings and Loan Associations</u>	<u>Assets</u>	<u>Shared Accounts</u>
Central Kentucky Federal Savings and Loan Association	\$12,077,837.67	\$10,980,169.13
Commonwealth First Federal Savings and Loan Association	14,095,726.14	12,866,345.60

Hotels and Motels

Total number - 3

Units - 101

Clubs and Organizations

Business and Civic - Chamber of Commerce, Rotary, Lions, Kiwanis,
Jaycees, Optimist, Historical Society, Newcomers, Danville Ministerial
Association, Jolly Believers, Bar Association, Medical Association

Fraternal - Demolay, American Legion, Shrine, Knights of Columbus,
Masons, Knights of Pythias, IOOF

Women's - Garden Clubs, Business and Professional Women's Club,
Junior Women's Club, DAR, AAUW, Kentucky Club, Ladies Domestic
Economy Club, Sunshine Club, Eastern Star, Rebekah

Youth - Boy Scouts, Girl Scouts, FFA, FHA, 4-H, Little League baseball
and football

Other - Fish and Game Club, Wilderness Trail Riding Club



DANVILLE COUNTRY CLUB

RECREATION

Local

Public Recreation Facilities

Supervised program - Danville-Boyle County Recreation Department

Parks - 2

Playgrounds - 8

Swimming pools - 3

Tennis courts - 2

Baseball diamonds - 4

Football fields - 4

Private Recreation Facilities

Country clubs - 2

Golf courses - 2

Swimming pools - 5

Movie theaters - 2

Bowling facility - 1

Tourist Attractions

Constitution Square State Shrine

Jacobs Hall National Shrine

McDowell Home and Apothecary Shop

Centre College

Area (Within 25 miles)

Old Fort Harrod State Park

Perryville Battlefield State Shrine

Shakertown

Herrington Lake

Kentucky River

AGRICULTURE - NATURAL RESOURCES - CLIMATE

Agriculture *

	<u>Boyle County</u>	<u>Labor Market Area</u>
Total land area (acres)	117,312	1,344,064
Percent of area in farm land	97.9	89.1
Number of farms	882	9,870
Average size of farms (acres)	130.2	121.3
1969 value of all farm products	\$ 6,973,855	\$ 66,384,582
Value per farm	7,906	6,725
Total crop sales	3,016,736	28,518,983
Total livestock & livestock products	3,927,675	37,582,192
1970 agricultural production included:		
Burley tobacco (lbs.)	4,484,000	40,965,000
Corn (bu.)	39,000	2,473,000
Cattle and calves (number)	26,700	275,700
Hogs and pigs (number)	6,600	88,000
Milk production, 1969 (lbs.)	15,620,000	257,290,000

Natural Resources

Principal mineral resources	Stone
Acres of commercial forest land	20,100
Most abundant tree species	White oak, hickory, red oak, ash, maple, red cedar, black walnut

*U. S. Department of Commerce, Bureau of the Census, Census of Agriculture, 1969. U. S. Department of Agriculture and Kentucky Department of Agriculture, Kentucky Agricultural Statistics, 1971.

Climate*

Boyle County

Temperature

Annual mean (30-year record)	55.6 degrees
Average annual 1972	54.2 degrees
Record highest, July 1966** (9-year record)	98.0 degrees
Record lowest, January, 1972 (9-year record)	-11.0 degrees
Normal heating degree days (30-year record)	4,683
(Heating degree day totals are the sums of negative departures of average daily temperatures from 65 degrees F.)	

Precipitation

Mean annual total (30-year record)	44.73 inches
Mean annual snow and sleet (28-year record)	16.30 inches
Total precipitation 1972	57.61 inches
Mean number days precipitation (.01 inch or more) (28-year record)	129
Average number days thunderstorms (28-year record)	47

Prevailing winds (17-year record) South

*U. S. Department of Commerce, Environmental Science Services Administration, Climatological Data, 1972. Station of record: Lexington.

**Also on earlier dates, months or years.

HISTORY

Boyle County lies in the central portion of Kentucky, partly in the Bluegrass Physiographic Region and partly in the Knobs. Its eastern border follows Herrington Lake on Dix River, and Chaplin and Salt Rivers flow through the county. Its 183 square miles of territory range from gently rolling to hilly terrain with rich soil.

The Boyle County area was one of the earliest colonized in Kentucky. James Harrod, the founder of Harrodsburg, in adjoining Mercer County, built a cabin in present-day Danville around 1774. The first settlement was made in 1775, and within a decade enough progress had been made for Danville to become the center for efforts to make Kentucky a state. Beginning in 1784, ten conventions met over a period of eight years in a building on present-day Constitution Square in efforts to lay a basis for statehood. Under the leadership of Samuel McDowell, these conventions led to Kentucky's admission to the Union on June 1, 1792.

Danville served as the seat of Virginian government west of the Allegheny Mountains from 1785 to 1792, and upon Kentucky's admission to the Union, Danville became the first state capitol for a brief time. The first post office west of the Alleghenies was established here in 1792 and the restored structure now sits at Constitution Square near a replica of the Convention Building. An important advance in surgery was made in Danville in 1809, when Doctor Ephraim McDowell performed the first abdominal surgery. A shrine has been made of the McDowell residence where the operation was performed.

Two of the state's most prominent educational institutions, Transylvania and Centre Colleges, were founded at Danville. Transylvania was chartered by the Virginia Assembly in 1780, established in 1783, and moved to Lexington in 1788 to merge with Lexington Seminary. Centre was chartered in 1819 and has since produced a host of distinguished alumni, including two United States Vice Presidents, Richard M. Johnson and John C. Breckinridge, Supreme Court Chief Justice Fred Vinson and thirteen United States Senators. One of the country's most respected independent liberal arts colleges, Centre had an enrollment of 750 in 1972. The Kentucky School for the Deaf, established at Danville in 1823, was the first school of its kind to be operated at government expense.

Boyle County was not formed until 1842, after some thirty years of agitation for county status. The state's ninety-fourth county, Boyle was named for John Boyle, a Virginia native who moved to Kentucky, where he was elected to three terms in the United States Congress and served as Kentucky's Chief Justice for 16 years. Danville is the county seat of Boyle

County. The Civil War Battle of Perryville in 1862 was the bloodiest to take place in Kentucky, and a memorial park is maintained at the battle site in Perryville, west of Danville.

In 1850, Boyle County had 9,116 inhabitants. By 1950, the figure had reached 20,532, and by 1960, 21,257. There followed a slight decline to 21,090 in 1970. Danville's population was 11,542 in 1970, and Junction City had 1,046 residents.

There were 11,200 people employed in Boyle County in 1972. Agriculture accounted for 800 of these jobs, with burley tobacco, corn, cattle and milk the principal products. Manufacturing employment reached 2,400 in 1972. The greatest production is in apparel, paper and glass products. Largest of the county's firms are: American Greetings Corporation, a distribution center for stationery and gift wrap; Palm Beach Company, making men's suits; Corning Glass Works, producing glass bulbs and tubing; and Genesco, Incorporated, which makes women's shoes.

Among noted figures in Boyle County history was James G. Birney, a well-known abolitionist prior to the Civil War who was a presidential candidate of the Liberty Party in 1844.

This copy has been prepared by the Kentucky Department of Commerce,
Division of Research and Planning, and the cost of printing paid from
state funds.