

1975

Industrial Resources: Caldwell County - Princeton

Kentucky Library Research Collections
Western Kentucky University, spcol@wku.edu

Follow this and additional works at: https://digitalcommons.wku.edu/caldwell_cty

 Part of the [Business Administration, Management, and Operations Commons](#), [Growth and Development Commons](#), and the [Infrastructure Commons](#)

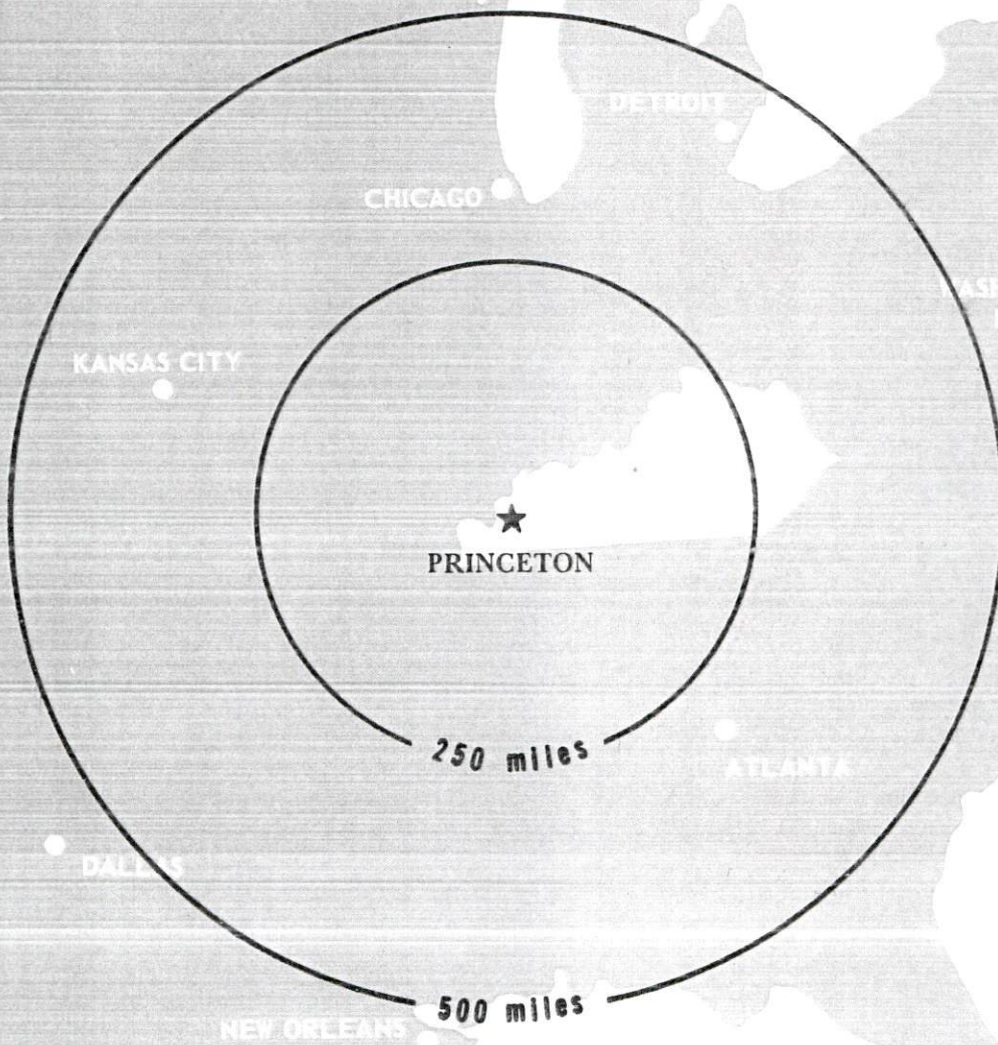
Recommended Citation

Kentucky Library Research Collections, "Industrial Resources: Caldwell County - Princeton" (1975). *Caldwell County*. Paper 9.
https://digitalcommons.wku.edu/caldwell_cty/9

This Report is brought to you for free and open access by TopSCHOLAR®. It has been accepted for inclusion in Caldwell County by an authorized administrator of TopSCHOLAR®. For more information, please contact topscholar@wku.edu.

INDUSTRIAL RESOURCES

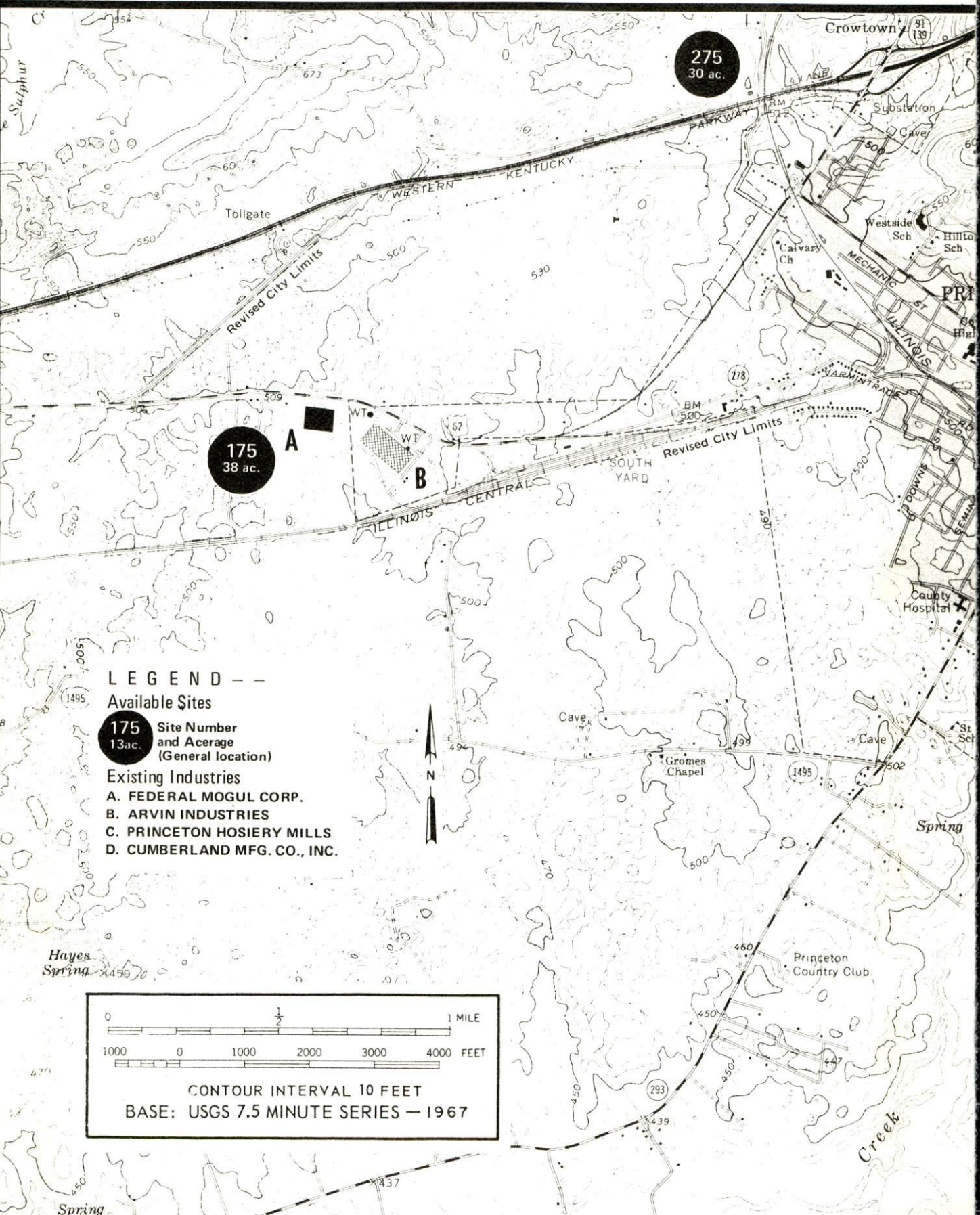
PRINCETON KENTUCKY



CALDWELL COUNTY, KENTUCKY

PRINCETON, KENTUCKY --- Index to Industrial Sites --- 1975

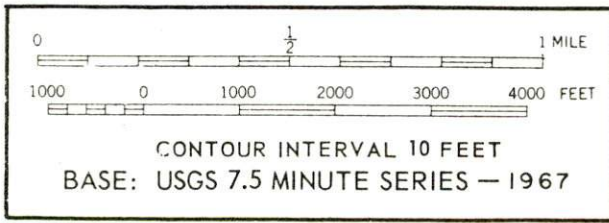
For detailed data on individual sites, contact Edward H. Johnstone, Secretary, Princeton Industrial Foundation, Box 644, Princeton, Kentucky 42445, or the Industrial Development Division, Kentucky Department of Commerce, Capital Plaza Tower, Frankfort, Kentucky 40601.

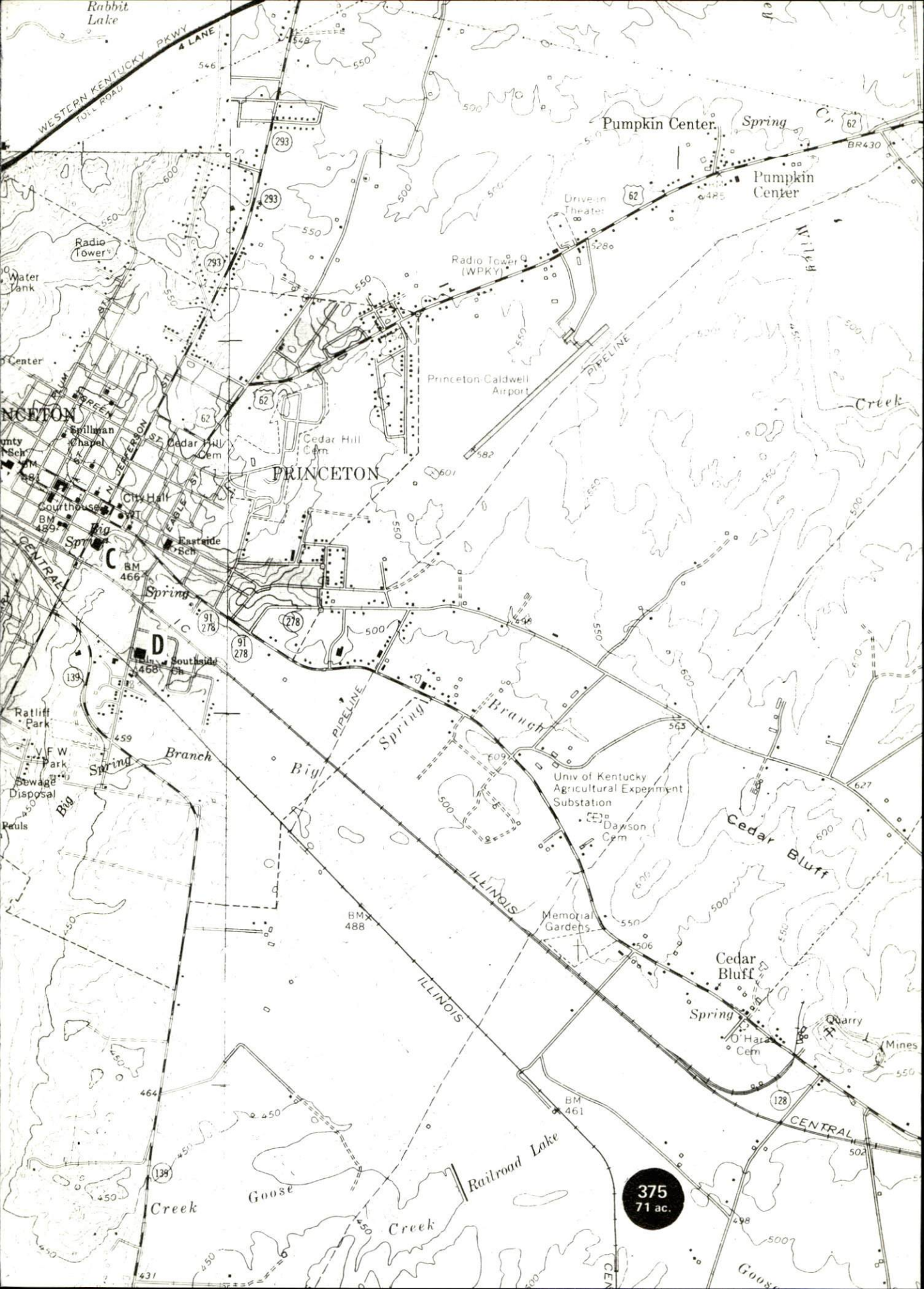


LEGEND --

Available Sites
175 Site Number and Acreage
 13ac. (General location)

- Existing Industries
- A. FEDERAL MOGUL CORP.
 - B. ARVIN INDUSTRIES
 - C. PRINCETON HOSIERY MILLS
 - D. CUMBERLAND MFG. CO., INC.





Rabbit Lake
WESTERN KENTUCKY PKWY
4 LANE
FULL ROAD

Pumpkin Center
Spring
Pumpkin Center
Drive-in Theater

PRINCETON
City Hall
Courthouse
Eastside Sch
Cedar Hill Cem
Cedar Hill Cem
Cedar Hill Cem

Radio Tower (WPKY)
Princeton-Caldwell Airport
PIPELINE

Southside Sch
Ratliff Park
VFW Park
Sewage Disposal
Pauls

Univ of Kentucky
Agricultural Experiment
Substation
Dawson Cem

Cedar Bluff
Cedar Bluff

Cedar Bluff
Spring
O'Hara Cem

Creek
Goose

Railroad Lake
Creek
Goose

375
71 ac.

CENTRAL
128

INDUSTRIAL RESOURCES
PRINCETON, KENTUCKY

Prepared by
The Kentucky Department of Commerce
in cooperation with
The Princeton Chamber of Commerce

1975

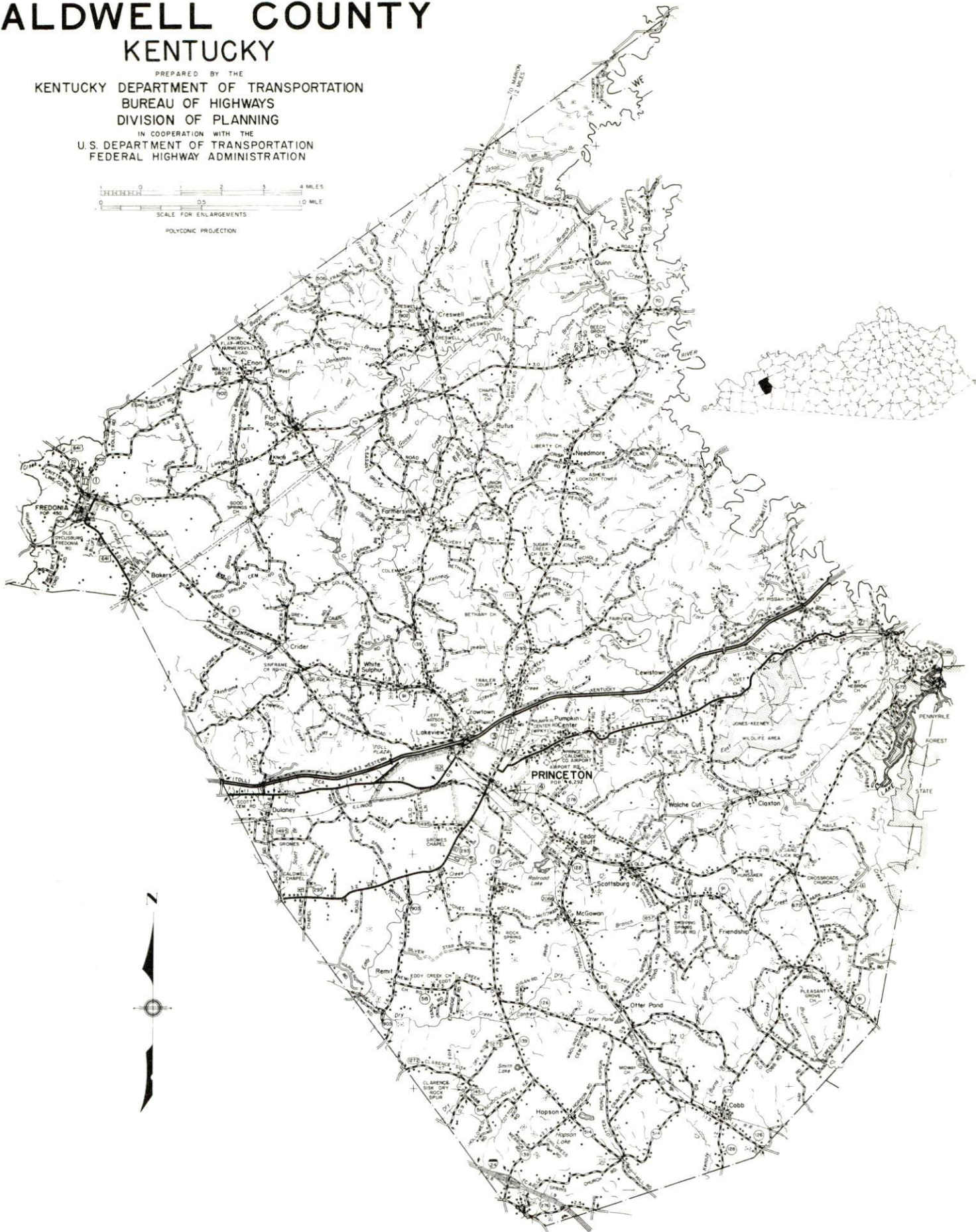
TABLE OF CONTENTS

<u>Chapter</u>	<u>Page</u>
INDUSTRIAL SITES	i
PRINCETON, KENTUCKY - A RESOURCE PROFILE	1
THE LABOR MARKET	5
Population Trends	5
General Employment Characteristics, 1973	5
Manufacturing Employment Trends by Industry	6
Princeton Manufacturing Firms, Their Products and Employment	7
Wages	11
Labor Organizations	12
Estimated Male Labor Supply	12
Estimated Female Labor Supply	13
Per Capita Personal Income.	13
TRANSPORTATION	14
Rail	14
Truck Service	14
Air	15
Bus	16
Taxi	16
Rental Services	16
POWER AND FUEL	17
Electricity	17
Natural Gas	18
Other Fuels	18
WATER AND SEWERAGE	19
Water.	19
Sewerage	20
LOCAL GOVERNMENT	21
City	21
County	21

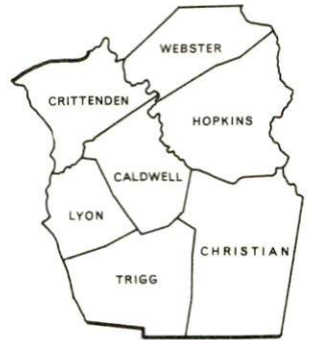
<u>Chapter</u>	<u>Page</u>
Assessed Value of Property, 1974	21
Property Taxes	21
Local Property Tax Rate Per \$100 of Assessed Valuation, 1974	22
Utilities Gross Receipts Tax for Schools	22
Planning and Zoning	22
Safety	22
Police	22
Fire	22
Rescue Service	23
Sanitation	23
 EDUCATION	 24
Public Schools	24
Nonpublic Schools	24
Vocational Schools	27
Colleges and Universities	28
 HEALTH	 29
Hospitals	29
Ambulance Service	29
Nursing Homes	29
Public Health	30
 OTHER LOCAL FACILITIES	 31
Communications	31
Library Services	31
Religious Institutions	33
Financial Institutions	33
Hotels and Motels	33
Clubs and Organizations	36
 RECREATION	 37
Local	37
Area	37
 AGRICULTURE - NATURAL RESOURCES - CLIMATE	 38
Agriculture	38
Natural Resources	38
Climate	39
 HISTORY	 40

GENERAL HIGHWAY MAP CALDWELL COUNTY KENTUCKY

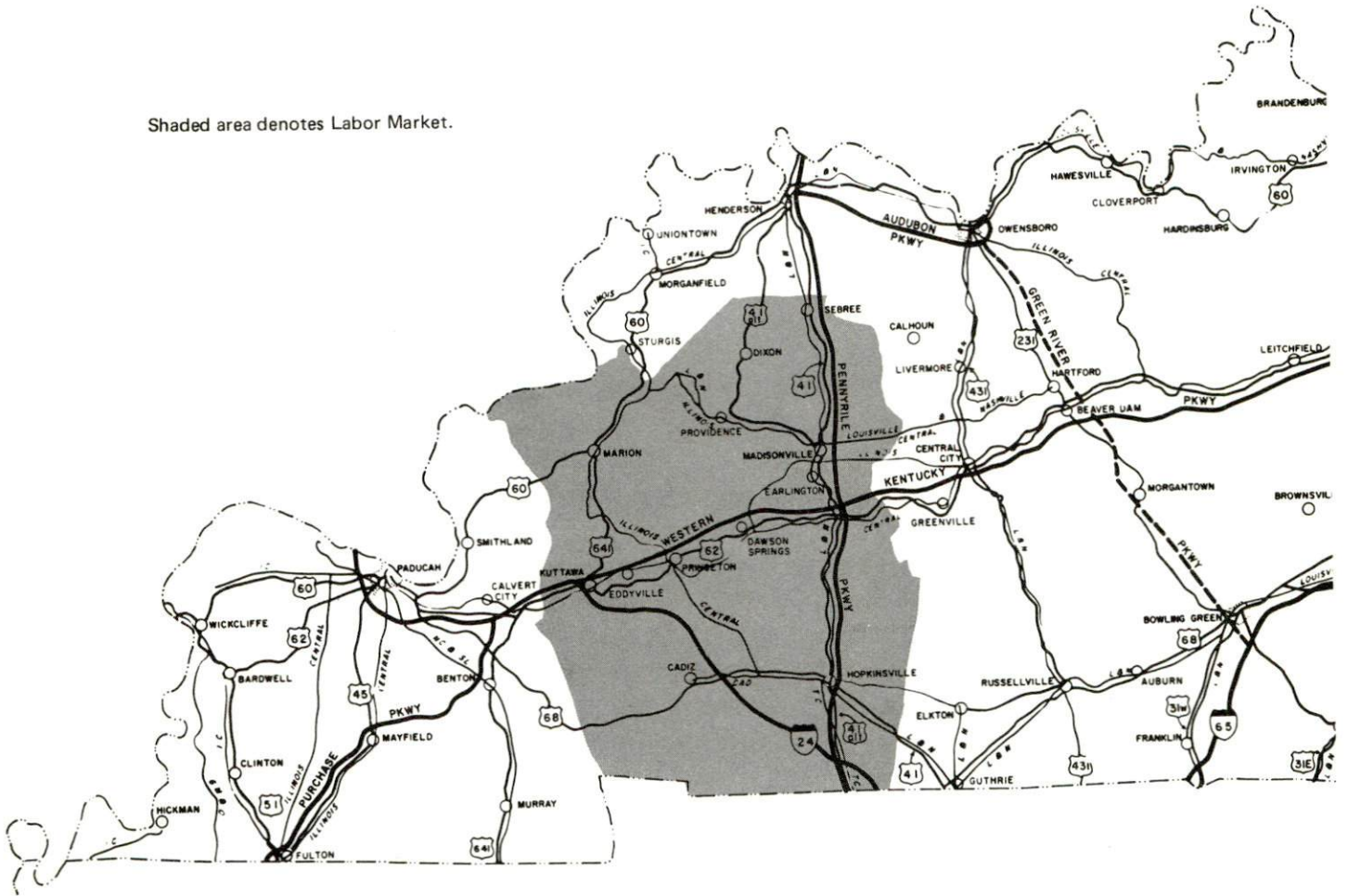
PREPARED BY THE
KENTUCKY DEPARTMENT OF TRANSPORTATION
BUREAU OF HIGHWAYS
DIVISION OF PLANNING
IN COOPERATION WITH THE
U.S. DEPARTMENT OF TRANSPORTATION
FEDERAL HIGHWAY ADMINISTRATION



PRINCETON LABOR MARKET AREA



Shaded area denotes Labor Market.



PRINCETON, KENTUCKY - A RESOURCE PROFILE

Princeton, the county seat of Caldwell County, is located in the Pennyryle section of western Kentucky just east of Lake Barkley. It is situated on the Western Kentucky Parkway and is 102 miles northwest of Nashville, Tennessee; 168 miles southwest of Louisville, Kentucky; and 233 miles southeast of St. Louis, Missouri. In 1970, Princeton had a population of 6,292.

Caldwell County, which covers a land area of 357 square miles, had a 1970 population of 13,179.

The Economic Framework

Total employment in Caldwell County averaged 5,950 in 1973, with agriculture providing 630 jobs, government 750, trade and services 1,190, and manufacturing 1,550. Manufacturing employment has increased approximately 64 percent, or 690 new jobs since 1964. Major products are phonographs, stereo components, steel welding fittings, forged steel flanges, children's hosiery, and apparel.

Per capita personal income in Caldwell County in 1973 was \$3,999, slightly below the Kentucky average of \$4,050. Between 1969 and 1973, per capita personal income in the county increased by 45.7 percent.

In the Princeton labor market area, which includes Caldwell and its six surrounding counties, total employment in 1973 averaged 56,110. Manufacturing provided 10,255 of these jobs, agriculture 5,160, government 8,010, and trade and services 14,625. Area manufacturing employment has increased 102 percent since 1964 with the sharpest employment gain in the electrical machinery industry. Significant employment growth has also occurred in the nonelectrical machinery, metal products, apparel, and rubber and plastics products industries.

Resources for Growth

1. Labor supply - There is a current estimated labor supply of 7,340 men and 10,450 women in the labor market area. In addition, 6,830 young men and 6,430 young women will become 18 years of age before 1981 and potentially available for work.

2. Transportation - Princeton is located on the Western Kentucky Parkway, a major east-west highway artery. Princeton is 30 miles east of the Purchase Parkway, 28 miles west of the Pennyryle Parkway, and 67 miles west of the Green River Parkway. Rail service is provided by the Illinois Central Gulf Railroad. Commercial air service is available at Paducah, 46 miles from Princeton. The Princeton-Caldwell County airport can accommodate light aircraft.

3. Power and fuel - Electric power is supplied to Princeton by the Princeton Electric Plant Board, whose source of supply is the Tennessee Valley Authority. The Kentucky Utilities Company, Henderson-Union RECC, and Pennyriple RECC serve Caldwell County. Natural gas is supplied to Princeton by the Western Kentucky Gas Company, whose source of supply is Texas Gas Transmission Corporation. Propane and butane are available from two local distributors, and distillate fuel oil is available from five distributors. The raw water supply is more than adequate for continued growth.

4. Education - Two universities, two senior colleges, and four community colleges are located within 90 miles of Princeton. The nearest state vocational-technical school is located at Madisonville, 30 miles distant, and offers training in 17 different courses. An area vocational education center is to be constructed at Princeton; and when opened, in September, 1976, will offer training in seven course areas.

Community Programs for Improvement

The Princeton Electric Plant Board has plans for capital improvements to the system to be completed in two-, five-, and ten-year phases that will more than double the capacity of the system.

The Caldwell County Water District Commission has been formed and presently a preliminary engineering study is underway to determine the feasibility of providing service to specific areas of the county.

Plans are underway to extend the runway at the Princeton-Caldwell County Airport to 4,200 feet, add landing lights and an instrument landing system, enlarge the tie down area, and construct an administration building.

A \$1.2 million expansion project is now under way at the Princeton plant of ITT Grinnell Corporation.

Nine new businesses have recently been opened in Princeton, and four businesses have recently remodeled their facilities.

A new shopping center is nearing completion and two businesses have located in the center.

A new shopping center is to be built with construction expected to start in July 1975.

Construction of a new 62-unit motel was recently completed.

The courtroom at the courthouse has been remodeled and the entire building is being air conditioned.

Three new paved parking lots are now in use.

An 88-unit, 10-building apartment complex was recently constructed. Additional construction is planned.

A new beauty college recently opened, accommodating twenty full-time students.

WPKY has expanded to include FM.

Plans are under way to acquire a 47-acre site to be developed as a city park.

The George Coon Public Library has received a grant to establish a local history and genealogical book collection.

An ambulance service is to be established which will serve both city and county residents. An addition to an existing building is to be constructed to house two ambulances.

A new area vocational education center is to be constructed at Princeton, with construction expected to be completed and the school in operation by September, 1976.

The Caldwell County School System recently added an area of instruction for the visibly handicapped students, including totally blind students. The program is now being provided to elementary grade students.

A landscaping plan is now being implemented at the new county high school. Also, improvements are under way on the football stadium, and lighting and limited seating facilities are being installed.

Recreation, Entertainment and Livability

Princeton is located in an area that offers excellent recreational opportunities. The city is within 45 miles of four of Kentucky's resort parks, a national recreation area, a state shrine, and Kentucky and Barkley Lakes.

Kentucky Dam Village State Resort Park, located on Kentucky Lake, is a 1,200-acre park with a village inn, cottages, and camping facilities. Other park features include a pool, beach, 18-hole miniature golf course, playground and picnic area, horseback riding, fishing and boating, and an airport with a 4,000-foot lighted airstrip.

Kenlake State Resort Park, also located on Kentucky Lake, is an 1,800-acre park with hotel and cottage accommodations and camping facilities. The park facilities include an amphitheater, a 9-hole golf course, tennis, pool and lake swimming, horseback riding, hiking trails, fishing and boating.

Lake Barkley State Resort Park is a 3,600-acre park which provides lodge and cottage accommodations and camping sites. Features of this park include an 18-hole golf course, pool and beach facilities, riding stables, hiking trails, picnic and playground areas, and boating and fishing facilities.

Land Between the Lakes National Recreation Area, a 170,000-acre woodland formed into a peninsula by Kentucky Lake and Lake Barkley, is a major area for outdoor recreation, conservation, and environmental learning. There are facilities for fishing, boating, hiking, swimming, hunting, and camping.

Pennyrile Forest State Resort Park is comprised of 435 acres with a resort lodge and camping facilities. The park features include a 55-acre lake, swimming, boating, fishing, golfing, horseback riding, hiking, and picnic and playground areas.

Jefferson Davis Monument State Shrine, site of the birthplace of Jefferson Davis, features a 351-foot obelisk, museum, and picnic and playground facilities.

THE LABOR MARKET

POPULATION TRENDS

Area	Population				Percent Change	
	1973*	1970	1960	1950	1960-70	1950-60
Princeton	N. A.	6,292	5,618	5,388	+12.0	+ 4.3
Labor Market Area	158,000	143,527	146,121	137,282	- 1.8	+ 6.4
Caldwell County	12,900	13,179	13,073	13,199	+ 0.8	- 1.0
Christian County	66,400	56,224	56,904	42,359	- 1.2	+34.3
Crittenden County	9,200	8,493	8,648	10,818	- 1.8	-20.1
Hopkins County	40,800	38,167	38,458	38,815	- 0.8	- 0.9
Lyons County	6,000	5,562	5,924	6,853	- 6.1	-13.6
Trigg County	8,700	8,620	8,870	9,683	- 2.8	- 8.4
Webster County	14,000	13,282	14,244	15,555	- 6.8	- 8.4

*Provisional Estimates.

Sources: U. S. Department of Commerce, Bureau of the Census, Census of Population, 1970, 1960, 1950. U. S. Bureau of the Census, Current Population Reports, Series P-26, June 1973.

GENERAL EMPLOYMENT CHARACTERISTICS, 1973

Major Employment Group	Employment	
	Caldwell County	Labor Market Area
TOTAL	5,950	56,110
Agricultural	630	5,160
Nonagricultural	5,320	50,950
Manufacturing	1,550	10,255
Government	750	8,010
Trade and Services	1,190	14,624

Source: Kentucky Department for Human Resources, Bureau for Administration and Operations.

MANUFACTURING EMPLOYMENT TRENDS BY INDUSTRY
SEPTEMBER 1974 AND 1964

Industry	Caldwell County			Labor Market Area		
	1974	1964	% Change	1974	1964	% Change
TOTAL	1,756	1,069	+ 64.3	10,979	5,432	+ 102.1
Food & Kindred Products	12	13	- 7.7	545	495	+ 10.1
Tobacco	0	0	0	15	15	0
Apparel, Textiles, Leather	484	466	+ 3.9	2,702	1,834	+ 47.3
Lumber, Furniture	53	35	+ 51.4	411	593	- 30.7
Printing & Publishing, Paper	14	15	- 6.7	366	468	- 21.8
Chemicals, Petroleum & Coal, Rubber	0	21	--	934	335	+ 178.8
Stone, Clay & Glass	0	16	--	91	145	- 37.2
Primary Metals	41	0	--	492	32	+1437.5
Machinery, Metal Products, Equip.	1,152	503	+129.0	5,169	1,505	+ 243.5
Other	0	0	0	254	10	+2440.0

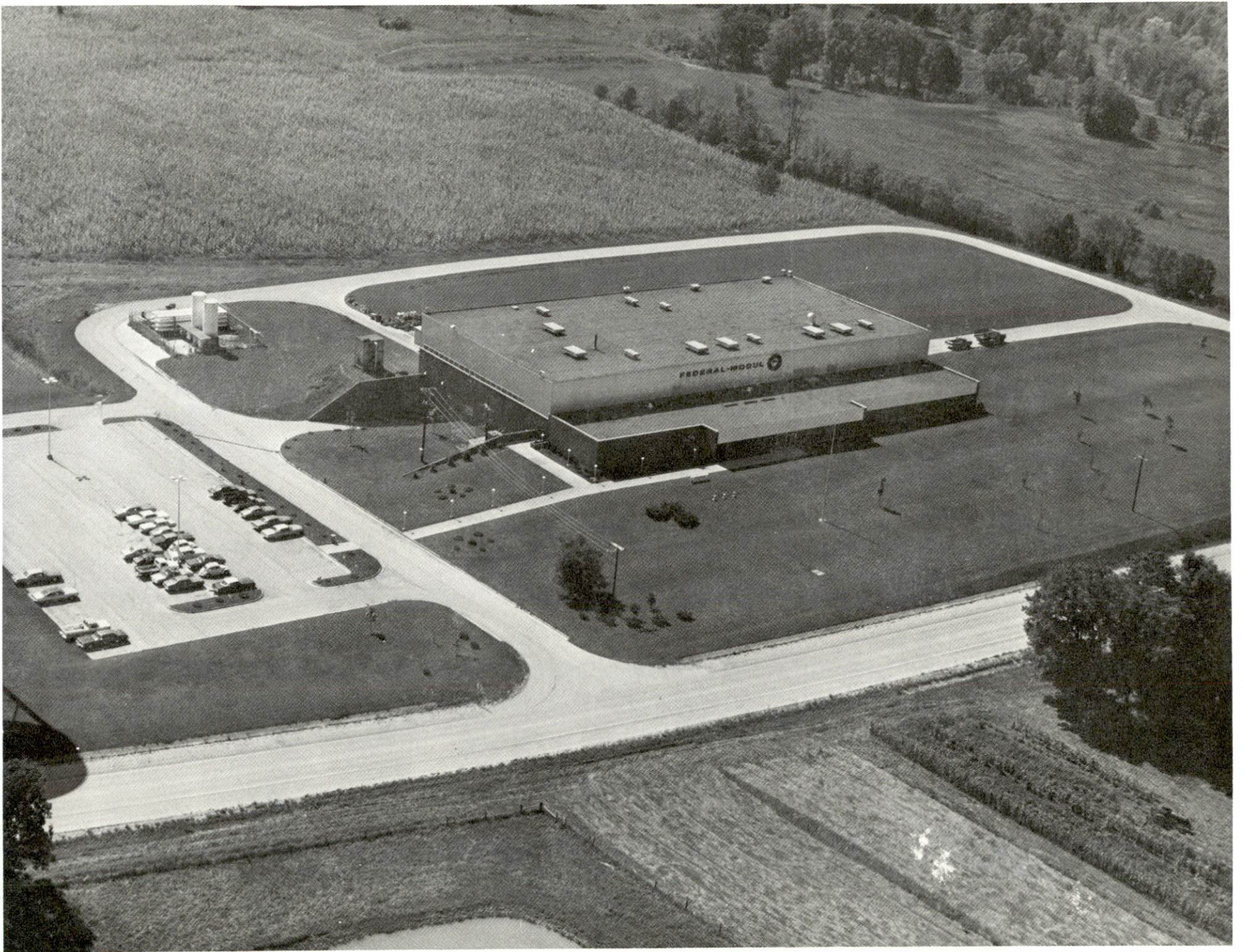
Source: Kentucky Department for Human Resources, Number of Workers in Manufacturing Industries Covered by Kentucky Unemployment Insurance Law Classified by Industry and County, September, 1974, September, 1964.

PRINCETON MANUFACTURING FIRMS,
THEIR PRODUCTS AND EMPLOYMENT

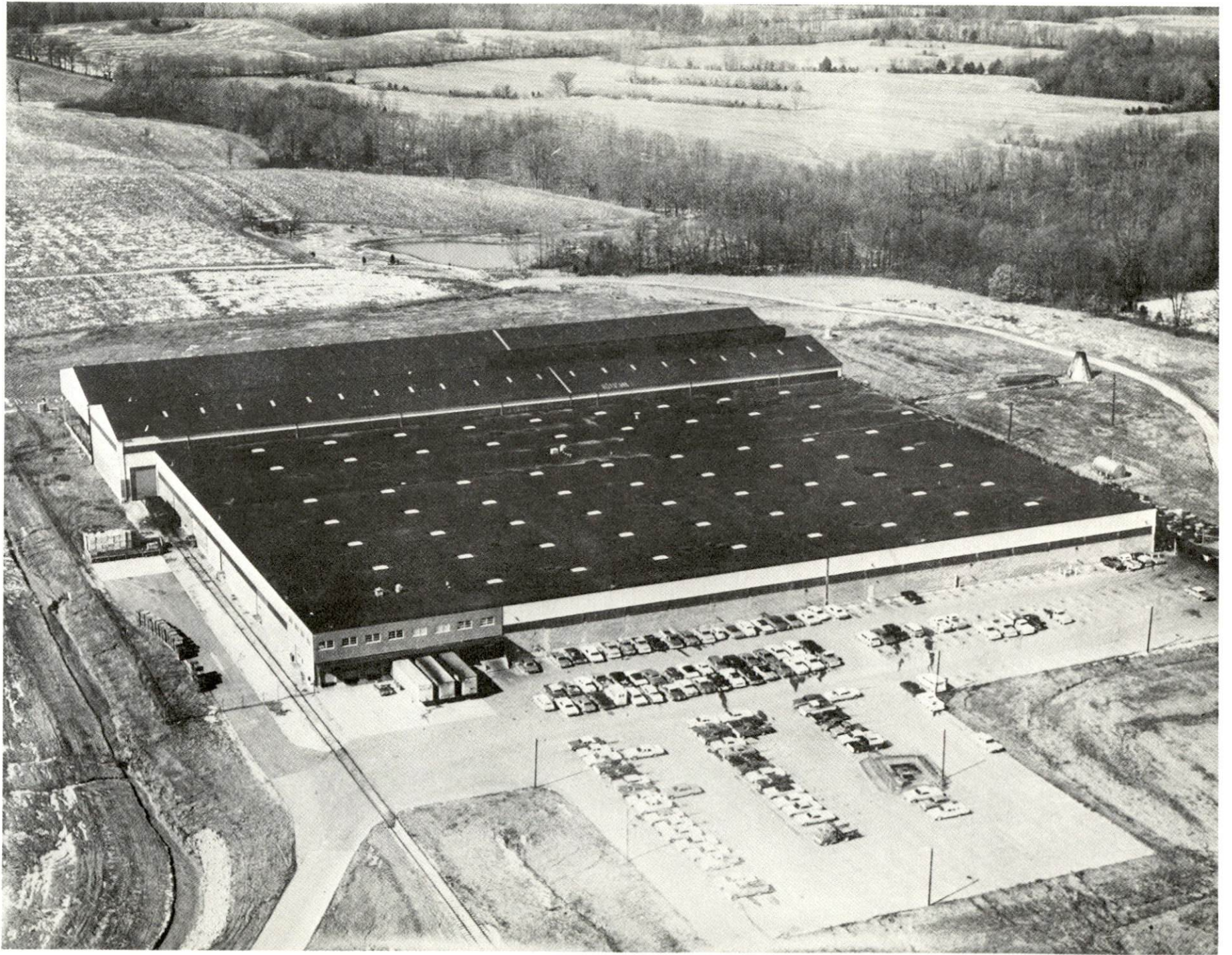
Firm (Establishment date)	Product	Employment			Organized
		Total	Male	Female	
O. Ames Company (1967)	Parts for garden tools	17	16	1	
Arvin Industries (1963)	Phonograph, stereo components	400	100	300	*
Beshear Lumber Company	Rough lumber	12			
Caldwell County Times, Inc. (1925)	Newspaper, commercial job printing	11	6	5	
John Call Lumber Co.	Rough lumber	4			
Cedar Bluff Stone Company (1953)	Agricultural lime, asphalt products	42	40	2	
Cumberland Manufacturing Co., Inc. (1939)	Misses' blouses, dungarees, misses' and ladies' shorts and slacks	85	13	72	*
Federal-Mogul Corp. (1969)	Powdered metals and consolidations	50	45	5	*
Guess Trucking and Construction Company, Inc. (1962)	Ready mixed concrete	35	34	1	
ITT Grinnell Corp. (1962)	Steel welding fittings, forged steel flanges	262	238	24	*
O. P. Link Handle Company, Inc. (1956)	Hickory blanks	8	8	0	
Long Silo Company (1962)	Concrete silo staves, feeding equipment	30	30	0	
Princeton Hosiery Mills (1918)	Children's hosiery, infant's terry cloth garments	450	120	330	
The Princeton Leader (1872)	Newspaper	2	0	2	
Princeton Lumber Company	Radio cabinets	22			
Southern States Cooperative (1970)	Fertilizer, feed	7	6	1	
Tri-State Stave Company (1965)	Barrel staves and headings	6	6	0	

*See Labor Organizations, page 12.

Source: Kentucky Department of Commerce, Division of Research and Planning.



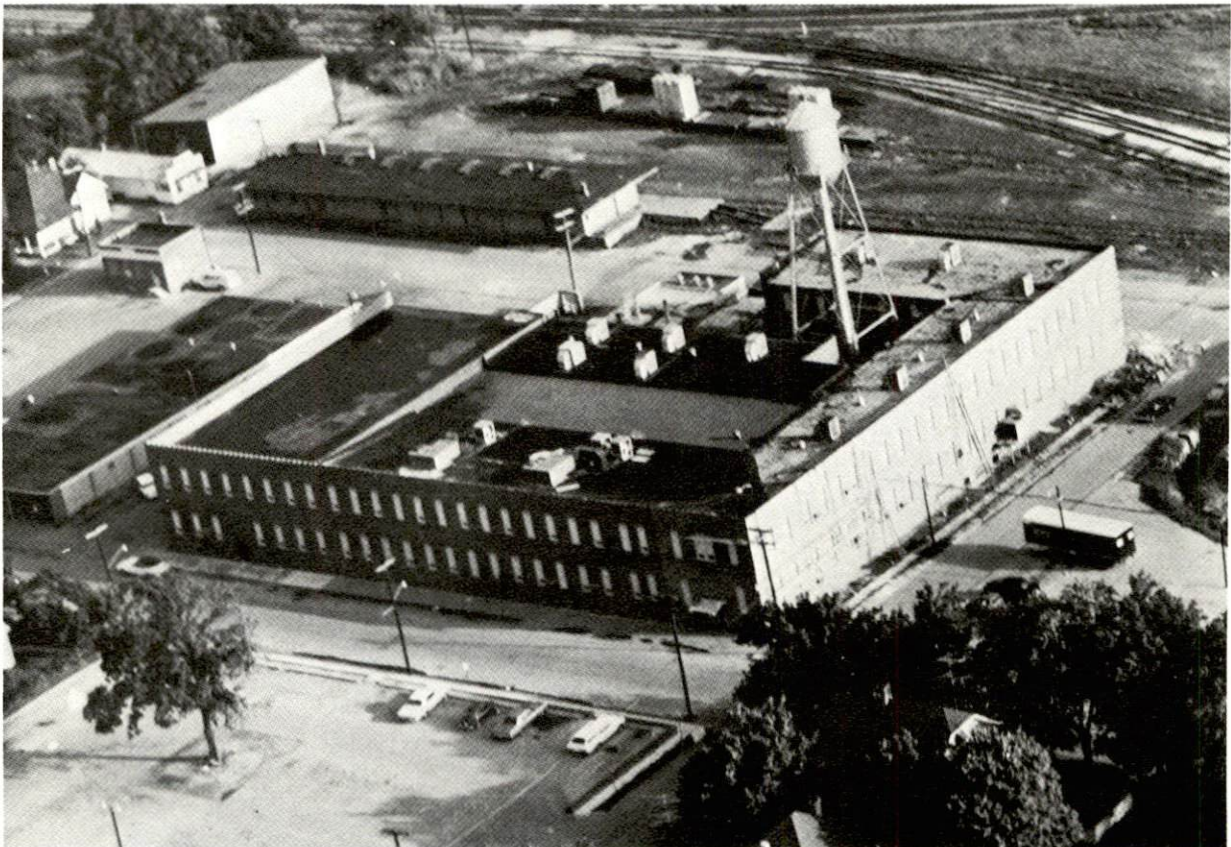
FEDERAL-MOGUL CORPORATION



ITT GRINNELL CORPORATION



ARVIN INDUSTRIES

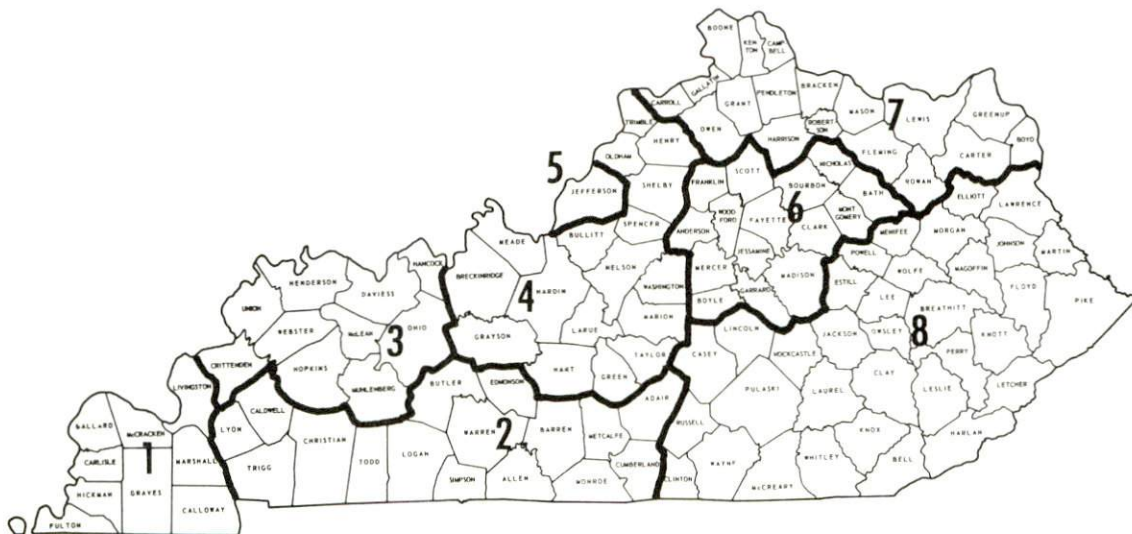


PRINCETON HOSIERY MILLS

WAGES

Occupational wage rates for specific industries are usually not available to most government agencies, and wage data furnished to state employment agencies by industrial employers is protected from disclosure by federal law. The most reliable up-to-date wage information can be obtained by direct contact with local employers.

Associated Industries of Kentucky, a voluntary organization of Kentucky businesses, regularly collects occupational wage rates and fringe benefits data from participating member firms. Data is compiled for over 130 clearly defined office, production, and service occupations. Tabulations are published for eight regions of Kentucky, as shown on the map below. It should be noted that the data may be weighted by the preponderance of firms in the larger cities and may be somewhat higher than the rates paid in the smaller communities. Data from these tabulations are available, upon request, from the Kentucky Department of Commerce, Frankfort, Kentucky 40601.



Associated Industries of Kentucky Area Wage Surveys

LABOR ORGANIZATIONS

<u>Union</u>	<u>Representing manufacturing workers at:</u>
International Association of Machinists and Aerospace Workers	Arvin Industries
United Steelworkers of America	ITT Grinnell Corporation
Amalgamated Clothing Workers	Cumberland Manufacturing Company, Inc.
International Association of Machinists and Aerospace Workers	Federal-Mogul Corporation

ESTIMATED MALE LABOR SUPPLY
PRINCETON LABOR MARKET AREA

<u>Area</u>	<u>Current</u>			<u>Future</u>	
	<u>Total</u>	<u>Not in Labor Force</u>	<u>Unemployed</u>	<u>Under- employed</u>	<u>Reaching 18 yrs. of age before 1981</u>
Labor Market Area	7,340	2,520	2,070	2,750	6,826
Caldwell	900	390	340	170	562
Christian	3,350	1,320	490	1,540	2,655
Crittenden	380	0	240	140	393
Hopkins	920	0	460	460	1,930
Lyon	430	250	110	70	209
Trigg	290	0	140	150	446
Webster	1,070	560	290	220	631

Sources: Kentucky Department for Human Resources, Kentucky Labor Supply Estimates by County, 1974. Kentucky Department of Commerce Future Labor Supply before 1981.

ESTIMATED FEMALE LABOR SUPPLY
PRINCETON LABOR MARKET AREA

Area	Current			Future	
	Total	Not in Labor Force	Unemployed	Under- employed	Reaching 18 yrs. of age before 1981
Labor Market					
Area	10,450	6,700	1,200	2,550	6,426
Caldwell	1,010	470	260	280	592
Christian	5,800	4,430	370	1,000	2,526
Crittenden	460	230	80	150	378
Hopkins	1,500	660	180	660	1,723
Lyon	260	100	90	70	173
Trigg	300	20	110	170	391
Webster	1,120	790	110	220	643

Sources: Kentucky Department for Human Resources, Kentucky Labor Supply Estimates by County, 1974. Kentucky Department of Commerce, Future Labor Supply before 1981.

PER CAPITA PERSONAL INCOME

Area	1973	1969	% Change
Caldwell County	\$3,999	\$2,745	+45.7
Labor Market Area Range	\$3,441 to 4,622	\$2,265 to 2,984	N. A.
Kentucky	4,050	2,894	+39.9
U. S.	5,041	3,733	+35.1

Sources: U. S. Department of Commerce, Office of Business Economics, Survey of Current Business, August, 1974. U. S. Department of Commerce, Bureau of Economic Analysis, April, 1975.

TRANSPORTATION

Rail

Line serving Princeton - Illinois Central Gulf Railroad Company

Services - Siding space; switching facilities; piggyback facilities; freight service - local between Princeton and Evansville daily except Sunday; freight from Princeton to Nashville on Sunday, Tuesday, and Thursday; freight to Princeton from Nashville on Monday, Wednesday, and Friday; two freights from Louisville to Memphis daily - one with scheduled stop at Princeton; two freights from Memphis to Louisville daily - one with scheduled stop at Princeton

For details on routing, schedules, rates, and services, contact:

Assistant Vice President
Industrial Development
Illinois Central Gulf Railroad Company
Illinois Center II
233 North Michigan Avenue
Chicago, Illinois 60605

Truck Service

<u>Company</u>	<u>Home Office</u>
Harper Truck Service, Inc.	1266 North 8th Street Paducah, Kentucky 42002
United Trucking of Kentucky*	7950 Dix Road Detroit, Michigan 48209
McLean Trucking Company	617 Waughtown Street Winston-Salem, North Carolina 27107
Schroder's Express, Inc.	1550 Perin Street Cincinnati, Ohio 45204
Renner's Express, Inc.	1350 South West Street Indianapolis, Indiana 46206
Tennessee Cartage Company, Inc.	1240 Antioch Pike Nashville, Tennessee 37211

Other Freight Services

Shipping Center

United Parcel Service	Hopkinsville, Kentucky, 26 miles from Princeton
-----------------------	--

*Local terminal.

HIGHWAY MILES AND TRUCK TRANSIT TIME IN DAYS FROM
PRINCETON, KENTUCKY, TO SELECTED MARKET CENTERS

City	Highway Miles	Delivery		City	Highway Miles	Delivery	
		Time TL				Time TL	
Atlanta, Ga.	351	2		Los Angeles, Calif.	2,081	4	
Birmingham, Ala.	289	2		Louisville, Ky.	168	1	
Chicago, Ill.	401	1		Nashville, Tenn.	102	1	
Cincinnati, Ohio	267	1		New Orleans, La.	644	3	
Cleveland, Ohio	519	2		New York, N. Y.	926	3	
Detroit, Mich.	533	2		Pittsburgh, Pa.	551	3	
Knoxville, Tenn.	287	2		St. Louis, Mo.	233	1	

Source: Delivery time only - Harper Truck Service, Inc., 1266 North 8th Street, Paducah, Kentucky 42002

Air

	<u>Local</u>	<u>Commercial</u>
	Princeton-Caldwell County Airport*	Barkley Field
Location:	1 mile northeast of Princeton	Paducah, Kentucky, 46 miles from Princeton
Runways:	1 paved	2 paved**
Length:	3,000 feet	6,500 feet, 4,000 feet
Traffic		
Control:	Wind tee	Wind tee, ILS system, control tower
Lighting:		Beacon, boundary obstruction, runway lights and runway end identification lights, approach lightingsystem
Services:		Delta and Ozark Airlines, 80 and 100 octane, JA-1 fuel, taxi, limousine, U-Drive-It, storage, major A & E repairs, restaurant
Air Freight		
Service:		Air freight accepted on a space available basis

*Plans are underway to extend the runway to 4,200 feet and widen it to 100 feet, add landing lights and an instrument landing system, enlarge the tie down area, and construct an administration building.

**Proposed - A runway in the southwestern portion of the air field is to be extended by 2,600 feet. The runway will require edge lighting and additions to transformers.

Bus -

Continental Trailways

Taxi -

Two companies, 24-hour service

Rental Services -

Car, truck and trailer rentals

POWER AND FUEL

Electricity

Company serving Princeton - Princeton Electric Plant Board*

Source of power - Tennessee Valley Authority

Total generating capacity - 23,200,000 KW

For industrial rates contact:

Princeton Electric Plant Board
Legion Drive
Princeton, Kentucky 42445

Company serving Caldwell County - Henderson-Union RECC

Source of power - Big Rivers Electric Corporation

Total generating capacity - 540,000 KW

For industrial rates contact:

Henderson-Union RECC
P. O. Box 18
Henderson, Kentucky 42420

Company serving Caldwell County - Pennyrile RECC

Source of power - Tennessee Valley Authority

Total generating capacity - 23,200,000 KW

For industrial rates contact:

Pennyrile RECC
2000 Harrison Street
Hopkinsville, Kentucky 42240

Company serving Caldwell County - Kentucky Utilities Company

Source of power - Kentucky Utilities Company

Total generating capacity - 1,735,000 KW

For industrial rates contact:

Kentucky Utilities Company
220 North Morgan Street
Morganfield, Kentucky 42437

*The Princeton Electric Plant Board also serves an area outside the corporate limits which extends approximately 4 miles south-southwest along Kentucky Highway 293, and an area extending approximately 2 miles west along U. S. Highway 62.

Natural Gas

Company serving Princeton - Western Kentucky Gas Company
Source of supply - Texas Gas Transmission Corporation
Size of transmission mains - 26 inches (supplier);
10, 6, and 4 inches (distributor)
Distribution mains - 4, 3, and 2 inches
Distribution pressure - 25 psi
Btu content - 1,000 per cubic foot; Specific gravity - .60
For rates and supplies contact:

Western Kentucky Gas Company
311 West Seventh Street
Owensboro, Kentucky 42301

Other Fuels

Propane and butane

Fortner LP Gas Company, Cadiz Road, Princeton
Larry Osting, Distributor, Garrett Street, Princeton

Fuel oils

Distillate fuel oil -

Larry Osting Gulf Distributor, Garrett Street, Princeton
Herring, Inc., Cadiz Road, Princeton
Ashland Petroleum Company, Fredonia
Standard Oil Company, Railroad Street, Princeton
Sun Oil Company, Cadiz Road, Princeton

Residual fuel oil - arrangements must be made with the refinery.

Low sulphur content coal - available in Kentucky.

WATER AND SEWERAGE

Water

Company serving Princeton - City of Princeton Water and Sewer Works

Source - Lake Barkley

Treatment plant capacity - 2,000,000 gpd

Average daily consumption - 792,000 gallons

Peak daily consumption - 1,135,000 gallons

Type treatment - Chlorination, sedimentation, filtration, coagulation
with alum and lime

Storage capacity - 900,000 gallons

Size lines - 16, 10, 8, and 6 inches*

Average pressure - 58 psi

Average temperature - 49° F.

MONTHLY WATER RATES FOR WHOLESALE AND INDUSTRIAL CONSUMERS

First	150 cubic feet	\$2.25 (Minimum)
Next	450 cubic feet	.65 per 100 cubic feet
Next	500 cubic feet	.55 per 100 cubic feet
Next	2,000 cubic feet	.45 per 100 cubic feet
Next	6,900 cubic feet	.40 per 100 cubic feet
Over	10,000 cubic feet	.35 per 100 cubic feet

Tap-on charge: \$150 (Minimum)
\$300 (Maximum)

Surface water sources - Tradewater River

Average discharge - Tradewater River at Olney, 324 cfs (34-year record,
USGS)

Expected ground water yield - From 500 gpm in center of county grading
outward to 5 to 50 gpm

*1,800 feet of 6- and 8-inch lines are being extended along U. S. 62 west
and in Etheridge subdivision.

Sewerage

Company serving Princeton - City of Princeton Water and Sewer Works

Design capacity - 1,000,000 gpd

Average daily flow - 534,000 gallons

Treatment - Primary and secondary

Type treatment - Trickling filter, aeration, drying beds, chlorine

Treated effluent discharged into - Eddy Creek and then into Lake Barkley

Size of sanitary mains - 15, 10, 8, and 6 inches*

Size of storm mains - 10 through 30 inches

Rates - 50 percent of monthly water bill

Tap-on charge: \$200 (Minimum)
\$600 (Maximum)

*1,100 feet of 10-inch main is being extended along Railroad Road off
Mechanic Street; 1,800 feet of 8-inch main is being extended into the
northwestern section of town.

LOCAL GOVERNMENT

City

Structure - Mayor - 4-year term; 6 councilmen - 2-year terms

Budget 1975 - General Fund	\$370,600
Water and Sewer Fund	308,600

Fees and licenses - One percent occupational license fee on wages and net profits; regulatory license fees for specific occupations

County

Structure - County Judge - 4-year term; 6 magistrates - 4-year terms

Budget 1974-75 - General Fund	\$152,180
Road Fund	40,500

Assessed Value of Property, 1974

<u>Classes of Property</u>	<u>Princeton</u>	<u>Caldwell County</u>
Real Estate	\$23,842,191	\$62,117,776
Tangibles	12,364,154	21,350,356
Public Service	2,365,378	14,987,644

Property Taxes

Land and buildings are taxed by the state and may be taxed by local jurisdictions. The state rate is \$0.015 per \$100 of assessed valuation.

Tangible personal property owned by manufacturers (automobiles, trucks, finished goods, office furniture, office equipment) is taxed by the state at \$0.15 per \$100 and may be taxed by local jurisdictions.

Manufacturing machinery, raw materials inventories, pollution control equipment, and goods in process inventories are not subject to local taxation. The state rate is \$0.15 per \$100.

Property stored in public warehouses is not subject to local taxation. The state rate is only \$0.015 per \$100.

All property is assessed at 100 percent of fair cash value.

Local Property Tax Rate Per \$100 of Assessed Valuation, 1974*

<u>Taxing Jurisdiction</u>	<u>Princeton</u>	<u>Caldwell County</u>
County	\$.193	\$.193
School	.467	.467
City	.150	

Special (not county wide): \$.11 - Donaldson Creek Watershed

Utilities Gross Receipts Tax for Schools

Caldwell County levies a 3 percent tax on utilities receipts for schools. This tax is paid by all consumers of utilities. Exempted are receipts from utilities services that are resold and the receipts from the sale of energy or energy producing fuels that exceed 3 percent of the cost of production in manufacturing, processing, mining or refining.

Planning and Zoning

Agency - Joint City-County Planning Commission (Princeton, Fredonia, and Caldwell County)

Zoning enforced - City of Princeton

Local codes enforced - Housing and building codes, City of Princeton

Mandatory state codes enforced - Plumbing, National Fire Protection

Association Code, National Building Code (for major buildings and residential construction containing more than 12 bedrooms per building)

Safety

<u>Police</u>	<u>Princeton</u>	<u>Caldwell County</u>
Total staff	13	7
Radio-patrol cars	3	4

Fire

American Insurance

Association Fire Rating 7

Volunteers 25

Equipment:

750 gpm pumpers 2

500 gpm pumpers 2

Ladder truck 1

Utility trucks 2

1,200-gallon tanker 1

*Kentucky Department of Revenue, Kentucky Property Tax Rates, 1974.

Rescue Service

Caldwell County Radio-Rescue Squad:

Number of volunteers - 24

Equipment - Station wagon; Ford truck equipped with power unit; generator; short-wave radio; emergency van; boat and four power units

Personnel training - First aid, radiological monitoring, fireman training

Sanitation

Princeton

Type service	Municipal	Private
Fee charged:		
residential	\$1.25 per month	
business		Varies according to volume collected
Collection frequency:		
residential	Weekly	
business		Daily
Trash pickup	Heavy trash quarterly	
Disposal method	Landfill	Landfill

The landfill is available to manufacturing plants providing their own sanitation service. Fee for use of the landfill is based on volume.

EDUCATION

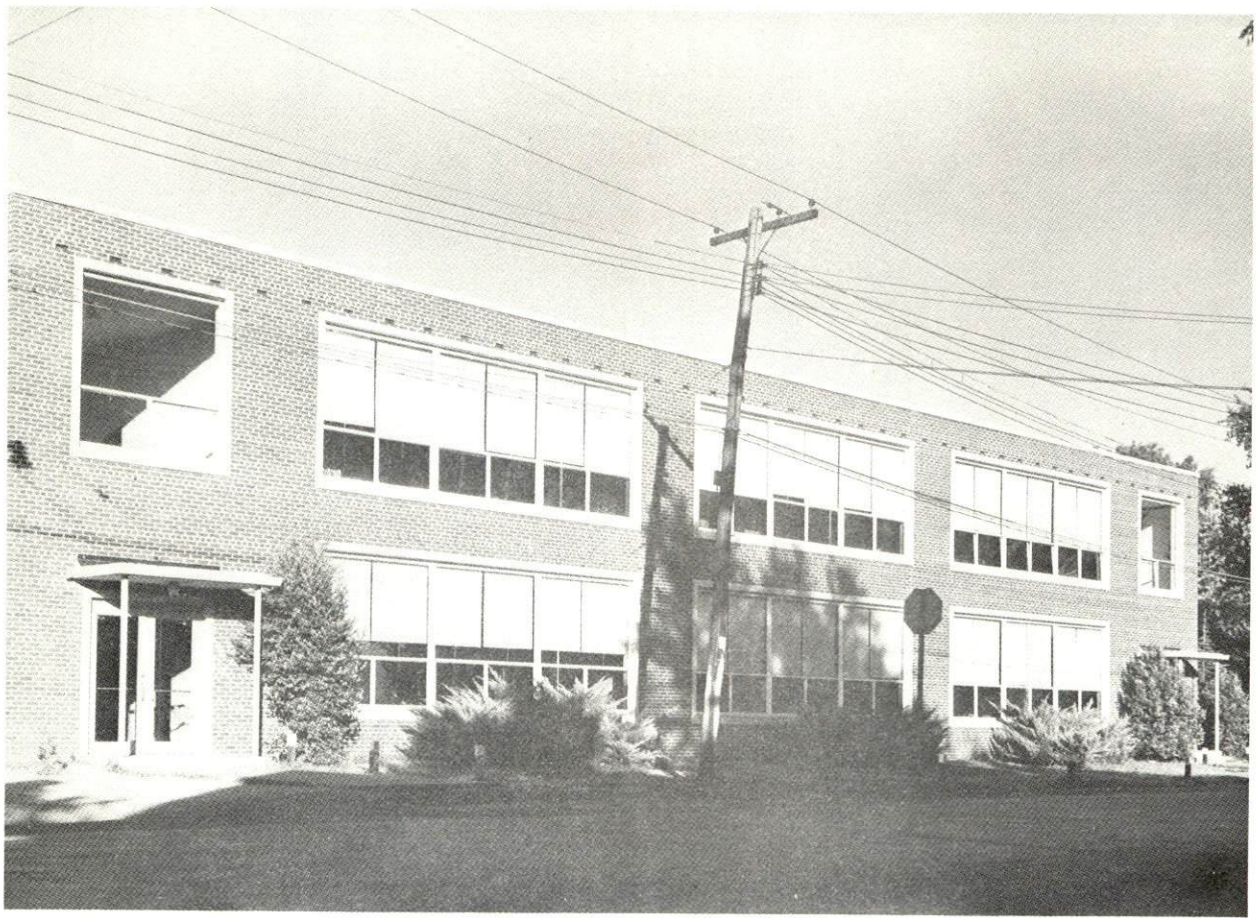
Public Schools

Caldwell County

Total Enrollment (Fall 1974)	2,463
Elementary	1,229
Junior High	698
High School	536
Student-Teacher Ratio	22 - 1
Elementary	24 - 1
Junior High	23 - 1
High School	17 - 1
Percent High School Graduates to College	42.4
Expenditures Per Pupil (1973-1974)	\$617.78
Bonded Indebtedness, June 30, 1974	\$1,809,000

Nonpublic Schools

Total Enrollment	72
Elementary (KG - grade 6)	72
Student-Teacher Ratio	18 - 1
Elementary	18 - 1



CALDWELL COUNTY JUNIOR HIGH SCHOOL



WEST SIDE ELEMENTARY SCHOOL



CALDWELL COUNTY HIGH SCHOOL

Vocational Schools

Arrangements can be made to provide training in the specific production skills required by an industrial plant. Instruction may be conducted either in the vocational school or in the industrial plant, depending upon the desired arrangement and the availability of special equipment.

Nearest State School

Location	Madisonville State Vocational-Technical School Madisonville
Miles Distant	30
Curriculum	Technical: Electronics (Communications) Trade and Industrial: Auto Body Repair Auto Mechanics Carpentry - Building Trades Drafting Electricity Machine Shop Mine Maintenance Welding Learning Lab Health Occupations: Certified Lab Assistant Health Careers Inhalation Respiratory Therapy Medical Secretary Practical Nursing Radiologic Technology Surgical Technician

An area vocational education center is to be constructed at Princeton. The anticipated opening date is September, 1976. Areas of study to be offered are carpentry, welding, electricity, heating and air conditioning, auto mechanics, health careers, and food service with emphasis on commercial services.

Colleges and Universities

<u>Name</u>	<u>Area - Within 90 Miles</u>		<u>Highest Degree Conferred</u>
	<u>Location (miles)</u>	<u>Enrollment (Fall, 1974)</u>	
Hopkinsville Community College	Hopkinsville (26)	950	Associate
Madisonville Community College	Madisonville (30)	476	Associate
Paducah Community College	Paducah (48)	1,001	Associate
Murray State University	Murray (55)	7,106	Masters, Ph. D.*
Henderson Community College	Henderson (59)	639	Associate
Brescia College	Owensboro (69)	845	Baccalaureate
Kentucky Wesleyan College	Owensboro (69)	688	Baccalaureate
Western Kentucky University	Bowling Green (90)	12,266	Masters, Ph. D.*

*Cooperative program with the University of Kentucky, Lexington, for a Ph. D. in education only.

HEALTH

Hospitals

<u>General Hospital</u>	<u>Location</u>	<u>Beds</u>
Caldwell County War Memorial Hospital	Princeton	85

General hospital facilities and services - two operating rooms, diagnostic X-ray, clinical laboratory including basal metabolism and electrocardiograph, emergency and outpatient services, complete obstetrical facilities, pharmacy, dietary and skilled nursing facilities

Medical staff - 6 doctors, 12 registered nurses, 20 graduate licensed practical nurses, radiologist, pathologist, and cardiologist

Other - Caldwell County Mental Health Clinic*

Full-time staff - Counselor, Social Worker, Medical Records Clerk and Receptionist, Progress Center Teacher and Assistant Progress Center Teacher (full-time during school year)

Part-time staff - Psychiatrist, Psychologist, Vocational Rehabilitation Counselor, three Mental Health Workers, Assistant Medical Records Clerk, Speech Pathologist, Learning Disabilities Teacher

Ambulance Service

Presently, the Morgan Funeral Home is providing ambulance service. However, an ambulance service is to be established which will serve both city and county residents. An addition to an existing building is to be constructed which will house two ambulances.

Nursing Homes

	<u>Number</u>	<u>Beds</u>
Intermediate and personal care home	1	112
Personal care homes	2	99

*Program of the Pennyroyal Regional Mental Health Mental Retardation Board, Inc.

Public Health

Facility - Caldwell County Health Department

Staff - Administrative Assistant-Sanitarian, Registered Nurse, Clerk

Programs - Communicable disease, cancer, hearing and vision screening, KMNAP screening (up to 21 years of age), family planning, hypertension screening, free supply of medications for rheumatic fever cases, anemias, diabetes testing, PKU testing, bacteriuria, sickle cell testing, dental program

OTHER LOCAL FACILITIES

Communications

Telephone - South Central Bell Telephone Company
Services - Standard

Telegraph - Western Union Telegraph Company
Services - Messenger and telephone

Postal - U. S. Post Office
Class - First
Mail received - Once daily
Mail dispatched - Once daily

Newspapers - Princeton Leader Caldwell County Times
Weekly and circulation - 2,750 4,900
Other papers received from - Louisville, Paducah, and Hopkinsville,
Kentucky; Evansville, Indiana

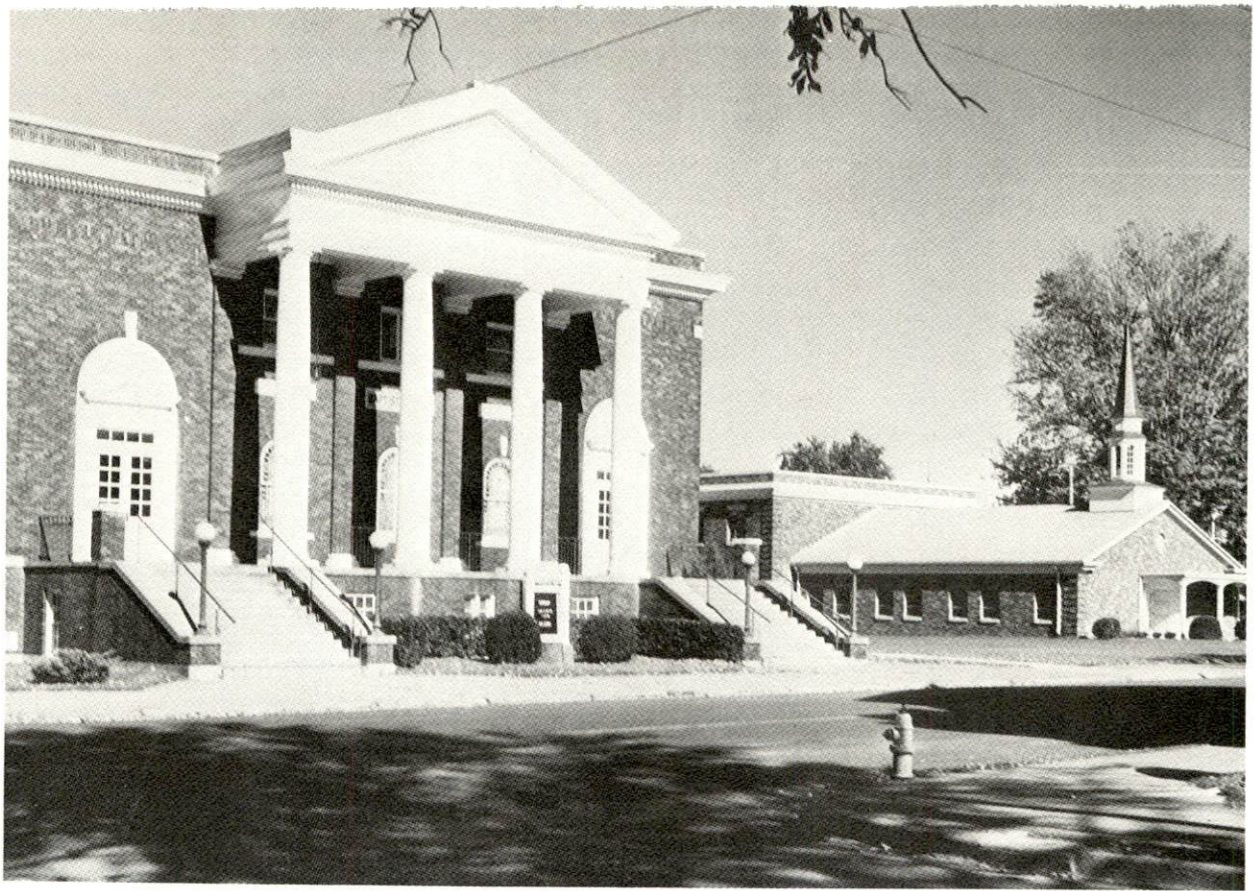
Radio - WPKY, AM-FM
Stations received from - Paducah, Hopkinsville, Henderson, Central
City, and Cadiz, Kentucky; Nashville and Clarksville, Tennessee

Television -
Cable service
Reception from - Paducah and Bowling Green, Kentucky; Nashville,
Tennessee; Cape Girardeau, Missouri; Evansville, Indiana; and
Harrisburg, Illinois
Kentucky Educational Television - Madisonville transmitter, Channel 35

Library Services

Public library - George Coon Public Library*
Size collection - 38,000 volumes
Circulation, 1973-74 - 115,000
Services - Story hours, films, film strips, newspapers, magazines,
microfilm reader, microfilm, audio-visual equipment, phonograph
records, conference room, art exhibits, reading club, inter-library
loan service, bookmobile, off-campus college extension, genealogical
collection

*Headquarters for Pennyryle District Development Library.



FIRST BAPTIST CHURCH



CALDWELL COUNTY TIMES

Religious Institutions

Number of churches - 19

Denominations - Baptist, Catholic, Christian, Church of Christ,
Cumberland Presbyterian, Presbyterian U.S. A., Gospel Temple,
Holiness, Methodist

Nearest synagogues - Hopkinsville, 26 miles away

Congregations - Adath Israel (reform)

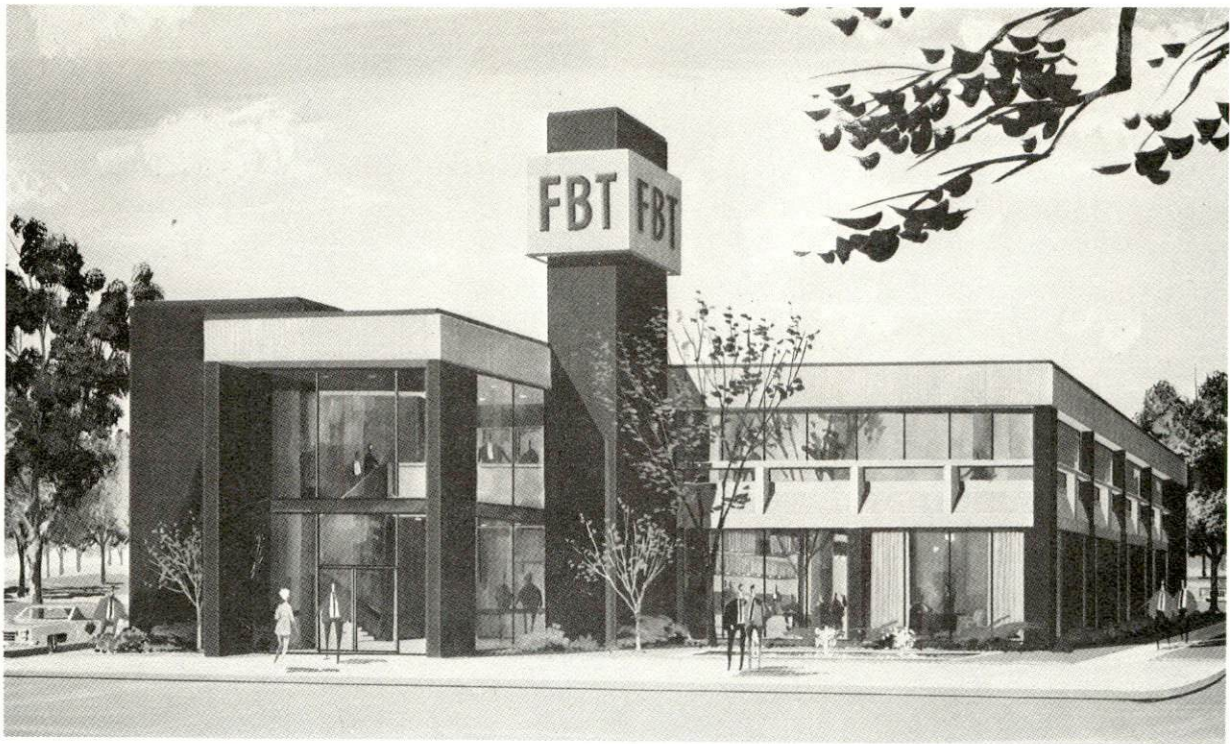
Financial Institutions

<u>Banks</u>	<u>Assets</u>	<u>Deposits</u>	<u>Statement Date</u>
The First Bank & Trust Company	\$28,858,041.56	\$26,176,267.67	12/31/74
Farmers Bank and Trust Company	23,628,469.27	20,707,441.05	12/31/74
<u>Savings and Loan Association</u>	<u>Assets</u>	<u>Shared Accounts</u>	<u>Statement Date</u>
Princeton Federal Savings and Loan Association	\$ 5,059,481.73	\$ 4,648,335.90	12/31/74

Hotels and Motels

Total number - 2

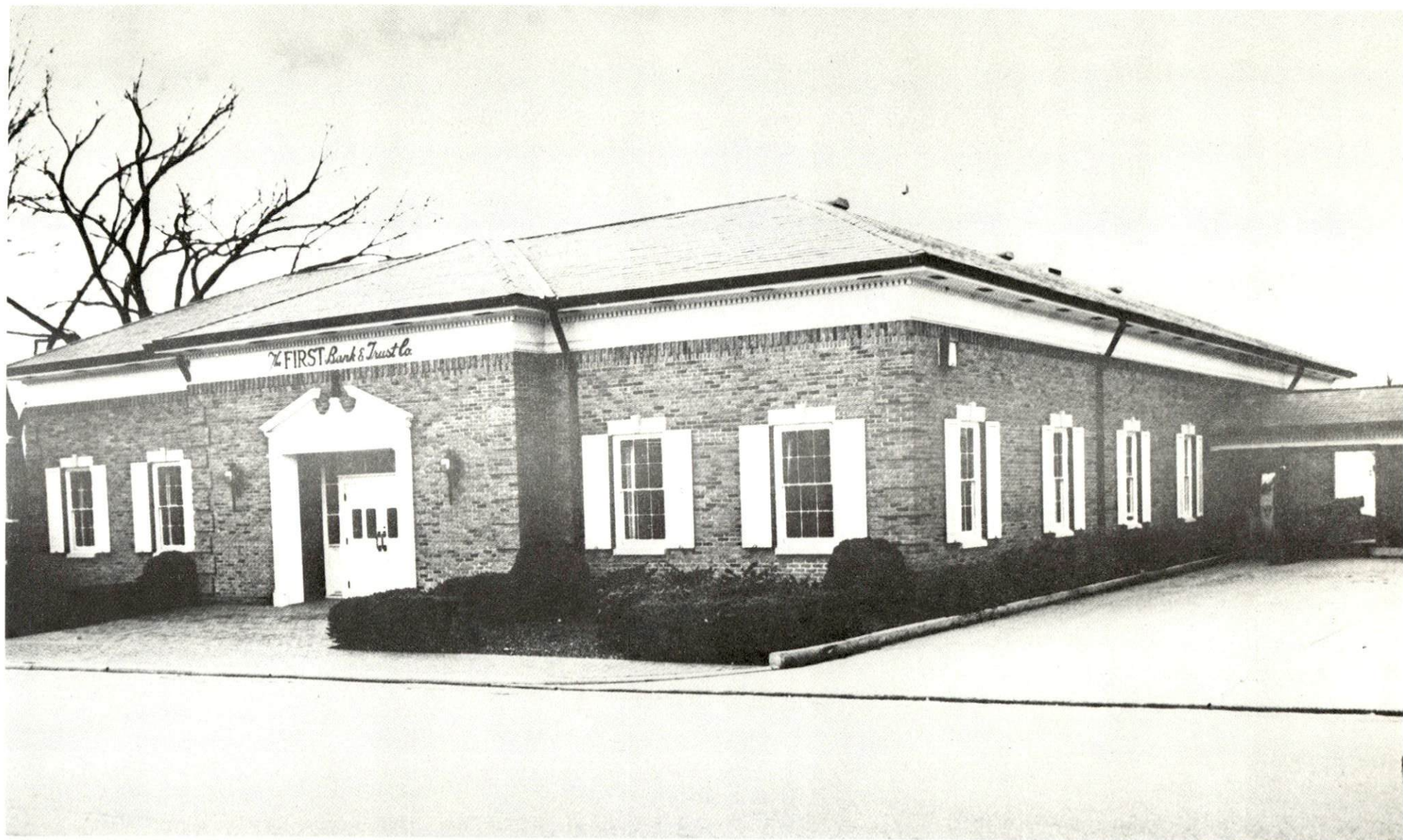
Total units - 72



FARMERS BANK & TRUST COMPANY



PRINCETON FEDERAL SAVINGS AND LOAN ASSOCIATION



THE FIRST BANK & TRUST COMPANY

Clubs and Organizations

Business and Civic - Chamber of Commerce, Jaycees, Kiwanis, Lions, Rotary, Civitan, Ministerial Association, Red Cross, Farm Bureau, United Givers Fund, Optimist

Fraternal - American Legion, Eagles, IOOF, Masons, VFW, Elks, Shrine

Women's - Business and Professional Women's Club, Eastern Star, Garden Club, Rebekah Lodge, American Legion Auxiliary, Daughters of the Confederacy, League of Women Voters, United Church Women, National Secretaries Association

Youth - Boy Scouts, Girl Scouts, Cub Scouts, Brownies, FFA, FHA, 4-H, Beta Club, FBLA, Junior Achievement, Teen Club, National Honor Society, Youth, Inc., Teens Who Care

Other - Band Boosters, Book Lovers, Caldwell Flying Club, Riding Club, Sportsmans Club, Senior Citizens, U. S. Army Reserve, Auxiliary Police Force, Dieters Club, Karate Club

RECREATION

Local

Public Recreation Facilities

Supervised program - Youth, Inc.
Parks - 2
Playgrounds - 2
Tennis courts - 6
Baseball diamonds - 8
Football fields - 2
Other - basketball court

Private Recreation Facilities

Country club - 1
Golf course - 1
Swimming pool - 1
Movie theaters - 1 indoor, 1 drive-in

Tourist Attractions

Big Spring Park
Old Elkhorn Tavern
George Coon Public Library

Cultural Events

Community Concert Series

Area (Within 45 miles)

Kentucky Dam Village State Resort Park
Kenlake State Resort Park (Summer Theater)
Pennyrile Forest State Resort Park
Lake Barkley State Resort Park
Land Between the Lakes National Recreation Area
Lake Barkley
Kentucky Lake
Jefferson Davis Monument State Shrine

AGRICULTURE - NATURAL RESOURCES - CLIMATE

Agriculture*

	<u>Caldwell County</u>	<u>Labor Market Area</u>
Total land area (acres)	228,416	1,895,744
Percent of area in farm land	67.4	63.2
Number of farms	953	6,444
Average size of farms (acres)	161.4	186.0
1969 value of all farm products	\$6,300,577	\$51,132,484
Value per farm	6,611	7,935
Total crop sales	1,585,635	21,368,774
Total livestock & livestock products	4,649,707	29,343,331
1973 agricultural production included:		
Burley tobacco (lbs.)(est.)	711,000	32,267,000
Corn for grain (bu.)(est.)	1,080,000	10,676,700
Cattle for calves (number)	29,200	198,100
Hogs and pigs (number) (Preliminary)	20,000	168,900
Milk production, 1972 (lbs.)	15,410,000	49,090,000

Natural Resources

Principal mineral resources	Limestone, coal
Other mineral resources	Fluorspar and other vein minerals
Acres of commercial forest land	78,900
Most abundant tree species	Red oak, white oak, hickory, yellow poplar, beech, hard maple, ash

*U. S. Department of Commerce, Bureau of the Census, Census of Agriculture, 1969. U. S. Department of Agriculture and Kentucky Department of Agriculture, Kentucky Agricultural Statistics, 1973.

Climate*

Caldwell County

Temperature

Annual mean (30-year record)	59.4 degrees
Average annual 1973	60.5 degrees
Record highest, July, 1966 (8-year record)	103.0 degrees
Record lowest, January, 1966 (8-year record)	- 6.0 degrees
Normal heating degree days (30-year record)	3,696
(Heating degree day totals are the sums of negative departures of average daily temperatures from 65° F.)	

Precipitation

Mean annual total (30-year record)	46.00 inches
Mean annual snow and sleet (32-year record)	11.30 inches
Total precipitation 1973	59.78 inches
Mean number days precipitation (.01 inch or more) (32-year record)	119
Average number days thunderstorms (32-year record)	56

Prevailing winds (34-year record) Northwest

*U. S. Department of Commerce, Environmental Science Services
Administration, Climatological Data, 1973. Station of record:
Nashville, Tennessee.

HISTORY

Caldwell County is located in the Pennyrile Region of western Kentucky, covering 357 square miles of territory. The Tradewater River flows along its northeastern boundary and Lake Beshear and Pennyrile Forest border its southeastern side. An outlet of Lake Barkley extends into its western half. The land surface is rolling to hilly and the soil is fairly productive. About one-third of the county's area is forested, and there are large deposits of fluorspar. A major transportation artery, the Western Kentucky Parkway, bisects the county from east to west.

The first settlers in the area were William Prince and Thomas Frazier, who held land granted by Virginia. Prince gave land and founded Princeton, and Frazier established a settlement at nearby Big Springs. Both are now incorporated into Princeton.

Caldwell became Kentucky's fifty-first county in 1809, its territory taken from Livingston County. It was named for General John Caldwell, a Virginia native who came to Kentucky, where he became prominent in the state's early politics, and became Lieutenant Governor.

In 1810, a year after its formation, Caldwell County had 4,268 inhabitants. The population had reached 13,199 by 1950, since which time it has remained stable, with 13,073 in 1960 and 13,179 in 1970. Princeton had a population of 6,292 in 1970.

Caldwell County has had a history of interest in education. Caldonia Academy and Princeton Seminary opened the way for founding of Cumberland College in 1826, which operated for 34 years. Princeton College was founded in 1860, and served the area until the founding of the state colleges.

Agriculture accounted for 630 of the county's 5,950 employed in 1973, with tobacco, corn, cattle, milk and hogs the principal products. Manufacturing employment increased 64 percent between 1964 and 1974. Largest of the county's firms are Arvin Industries, which makes phonographs and stereo components, and Princeton Hosiery Mills, producing infants terry cloth garments and children's hosiery, and ITT Grinnell Corporation, manufacturer of steel welding fittings and forged steel flanges.

This copy has been prepared by the Kentucky Department of Commerce,
Division of Research and Planning, and the cost of printing paid from
state funds.