

1968

Industrial Resources: Calloway County - Murray

Kentucky Library Research Collections
Western Kentucky University, spcol@wku.edu

Follow this and additional works at: https://digitalcommons.wku.edu/calloway_cty

 Part of the [Business Administration, Management, and Operations Commons](#), [Growth and Development Commons](#), and the [Infrastructure Commons](#)

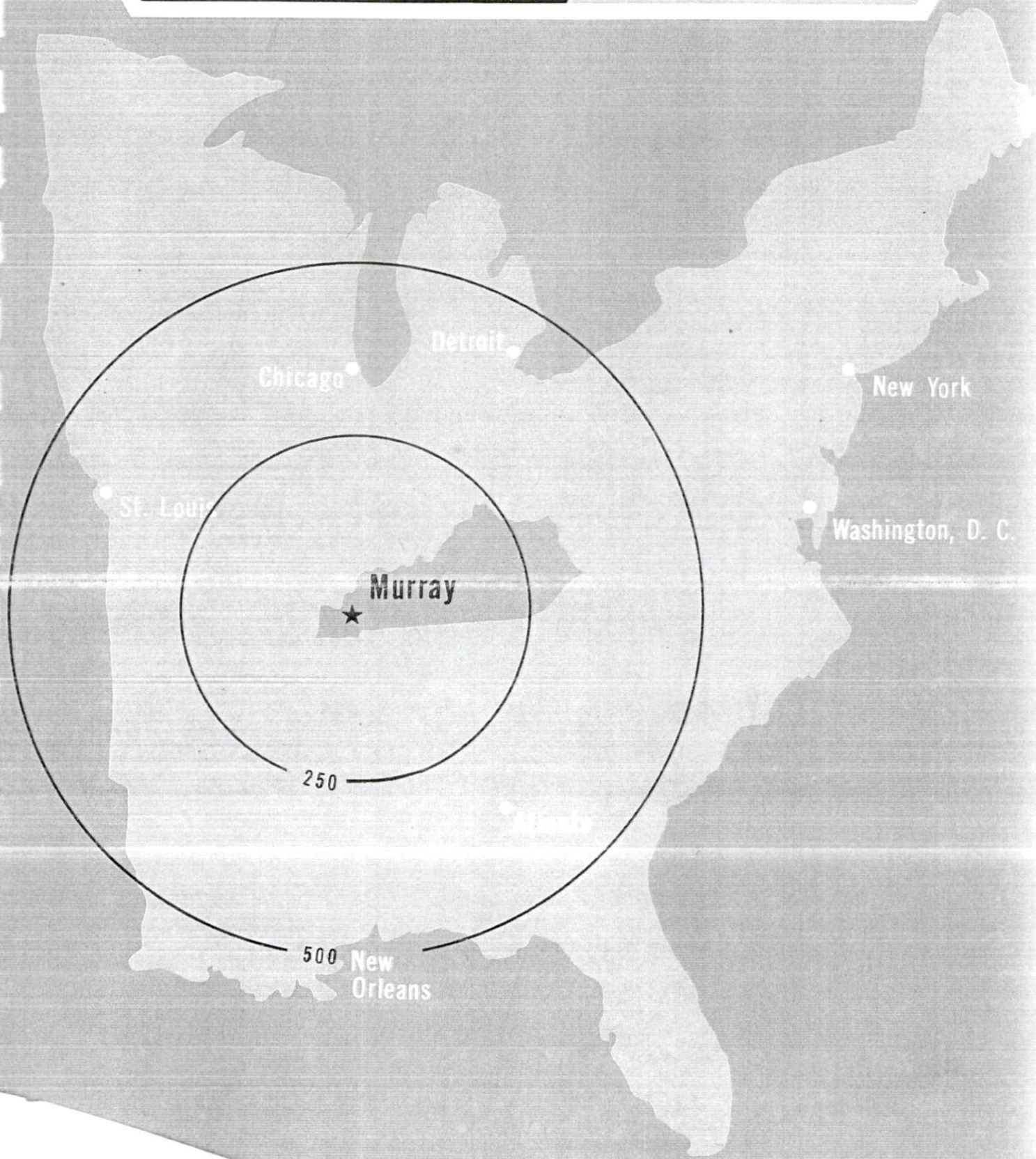
Recommended Citation

Kentucky Library Research Collections, "Industrial Resources: Calloway County - Murray" (1968). *Calloway County*. Paper 12.
https://digitalcommons.wku.edu/calloway_cty/12

This Report is brought to you for free and open access by TopSCHOLAR®. It has been accepted for inclusion in Calloway County by an authorized administrator of TopSCHOLAR®. For more information, please contact topscholar@wku.edu.

INDUSTRIAL RESOURCES

MURRAY KENTUCKY



MURRAY INDUSTRIAL SITES

INDUSTRIAL SITES

Cost per acre of the following sites will be furnished upon request by James L. Johnson, Woodmen Building, Murray, Kentucky, Phone 753-5171 Robert Moyer, Tappan Company, Murray, Kentucky, Phone 753-1250; or the Kentucky Department of Commerce, Washington and Wapping Streets, Frankfort, Kentucky.

SITE # 1: ACREAGE AND TOPOGRAPHY: 105 acres, flat slope
LOCATION: 2.7 miles north of Murray on U. S. 641
ZONING: None
HIGHWAY ACCESS: U. S. 641, being 4-laned
RAILROADS: Louisville & Nashville Railroad
WATER: To be installed in 1969 by city SIZE LINE: 10-inch
GAS: Murray Natural Gas System SIZE LINE: 6-inch
ELECTRICITY: West Kentucky RECC
SEWERAGE: None
OWNED BY: Murray-Calloway County Industrial Foundation

SITE # 3: ACREAGE AND TOPOGRAPHY: 23.7 acres, rolling to flat
LOCATION: On U. S. 641 north
ZONING: Industrial
HIGHWAY ACCESS: U. S. 641
RAILROADS: Louisville & Nashville Railroad
WATER: Murray Water & Sewerage System SIZE LINE: 8-inch
GAS: Murray Natural Gas System SIZE LINE: 4-inch
ELECTRICITY: West Kentucky RECC
SEWERAGE: Murray Water & Sewerage System
OWNED BY: Murray Chamber of Commerce

SITE # 5: ACREAGE AND TOPOGRAPHY: 30.5 acres, level to rolling
LOCATION: In city - southside
ZONING: Industrial
HIGHWAY ACCESS: U. S. 641 - Kentucky 121
RAILROADS: Louisville & Nashville Railroad
WATER: Murray Water & Sewerage System SIZE LINE: 12-inch
GAS: Murray Natural Gas System SIZE LINE: 4-inch HP
ELECTRICITY: Murray Electric System
SEWERAGE: Murray Water & Sewerage System
OWNED BY: Murray-Calloway County Industrial Foundation

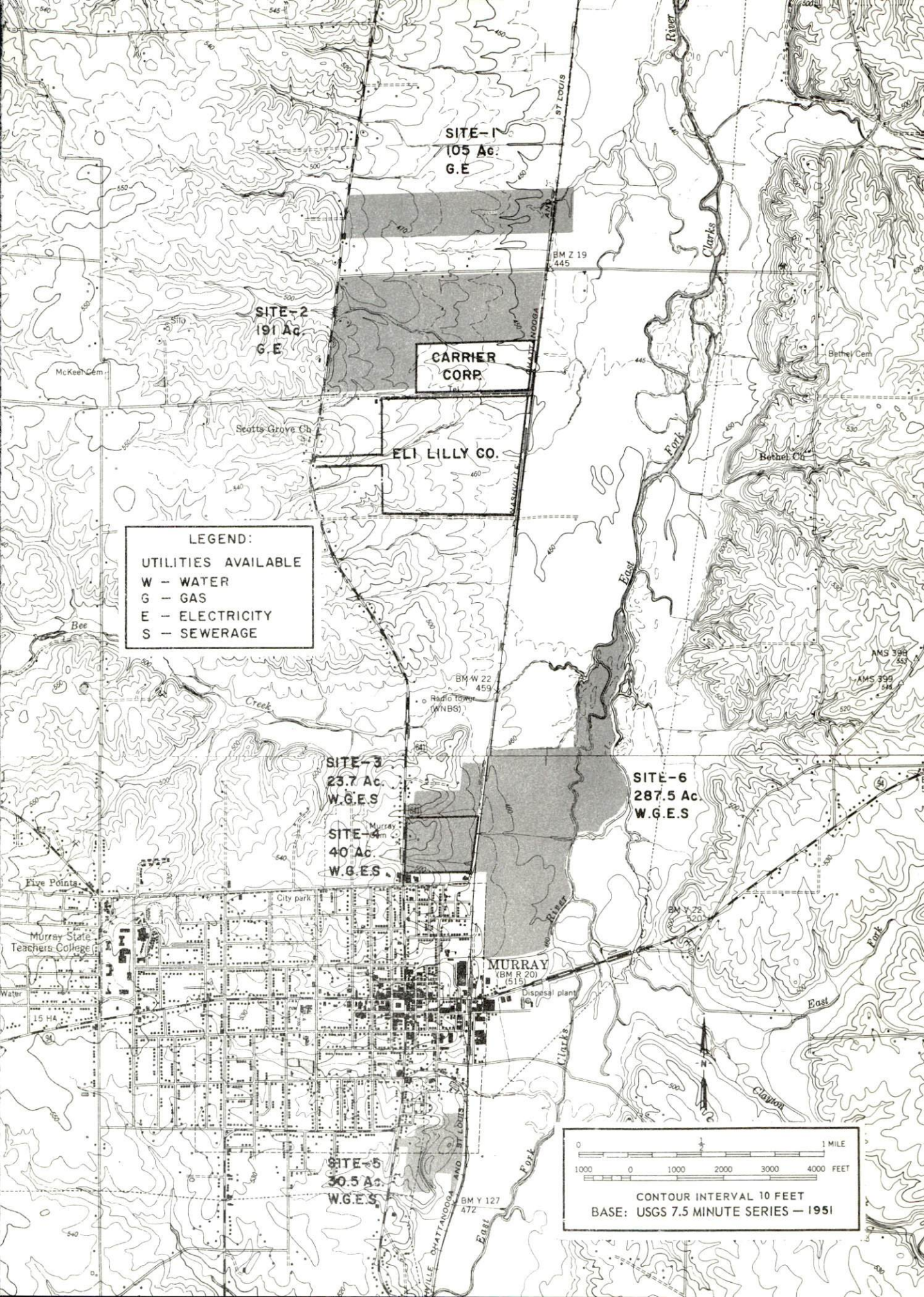
SITE # 2: ACREAGE AND TOPOGRAPHY: 191 acres, flat slope
LOCATION: 2.6 miles north of Murray on U. S. 641
ZONING: None
HIGHWAY ACCESS: U. S. 641
RAILROADS: Louisville & Nashville Railroad
WATER: To be extended in 1968 SIZE LINE: 10-inch
GAS: Murray Natural Gas Company SIZE LINE: 6-inch
ELECTRICITY: West Kentucky RECC
SEWERAGE: None
OPTIONED BY: Oral option to Murray Chamber of Commerce

SITE # 4: ACREAGE AND TOPOGRAPHY: 40 acres, gentle slope
LOCATION: In city - north of Chestnut Street
ZONING: Industrial
HIGHWAY ACCESS: U. S. 641
RAILROADS: Louisville & Nashville Railroad
WATER: Murray Water & Sewerage System
SIZE LINE: 8-inch
GAS: Murray Natural Gas System SIZE LINE: 2-inch
ELECTRICITY: Murray Electric System
SEWERAGE: Murray Water & Sewerage System
OWNED BY: Huron Redden - oral option to Murray Chamber of Commerce

SITE # 6: ACREAGE AND TOPOGRAPHY: 287.5 acres, almost flat
LOCATION: Industrial Road
ZONING: Industrial
HIGHWAY ACCESS: U. S. 641 by-pass
RAILROADS: Louisville & Nashville Railroad
WATER: Murray Water & Sewerage System
SIZE LINE: 8-inch
GAS: Murray Natural Gas System SIZE LINE: 4-inch
ELECTRICITY: Murray Electric System
SEWERAGE: Murray Water & Sewerage System
OPTIONED BY: Murray Chamber of Commerce has oral option

Available Industrial Building

DESCRIPTION: 48,000 sq. ft. brick building; 3 floors; elevator; 5 loading docks
fully sprinkled and air cooled
TRANSPORTATION: One block from railroad
EQUIPMENT: Complete machinery for sewing industry
LEASE PRICE: \$10,000 per year
SALE PRICE: \$135,000
OWNER: Mr. Harry Coldreck, 100 Sherman Avenue, Elizabeth, New Jersey
AGENT: Mr. James L. Johnson



SITE-1
105 Ac.
G.E

SITE-2
191 Ac.
G.E

CARRIER CORP.

ELI LILLY CO.

LEGEND:
UTILITIES AVAILABLE
W - WATER
G - GAS
E - ELECTRICITY
S - SEWERAGE

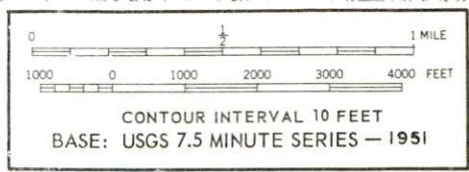
SITE-3
23.7 Ac.
W.G.E.S

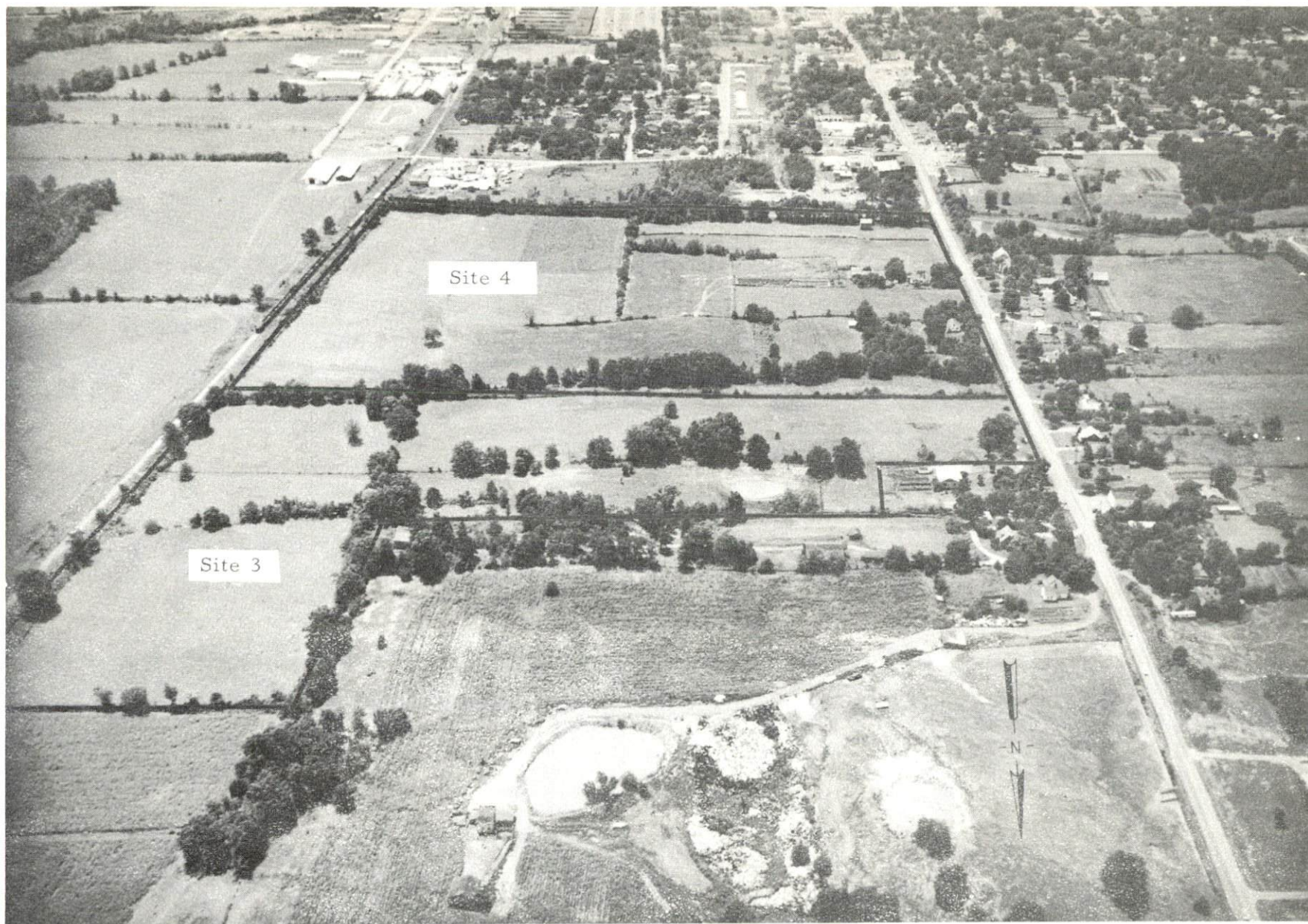
SITE-4
40 Ac.
W.G.E.S

SITE-6
287.5 Ac.
W.G.E.S

SITE-5
30.5 Ac.
W.G.E.S

MURRAY
(BM R 20)
(515)





AERIAL VIEW OF INDUSTRIAL SITES

INDUSTRIAL RESOURCES

MURRAY, KENTUCKY

Prepared by

The Murray Chamber of Commerce

and

The Kentucky Department of Commerce

Frankfort, Kentucky

1968

This copy has been prepared by the Kentucky Department of Commerce,
Division of Research and Planning, and the cost of printing paid from
state funds.

TABLE OF CONTENTS

<u>Chapter</u>	<u>Page</u>
INDUSTRIAL SITES	i
MURRAY, KENTUCKY, A PROFILE	1
THE LABOR MARKET	3
Location and Population	3
Employment Characteristics	3
Wage Levels	5
Labor Supply	6
Income and Sales	7
TRANSPORTATION	8
Rail	8
Highways	8
Truck Service	8
Air	9
Water	10
Other Transportation Services	10
POWER AND FUEL	11
Electricity	11
Natural Gas	12
Coal	12
Liquid Gas	12
WATER AND SEWERAGE	13
Water	13
Sewerage	13
AGRICULTURE -NATURAL RESOURCES-CLIMATE	14
Agriculture	14
Mineral Resources	14
Water Resources	15
Forests	15
Climate	15

<u>Chapter</u>	<u>Page</u>
LOCAL GOVERNMENT	16
Structure	16
Finance	16
Taxes	17
Planning and Zoning	17
Safety	18
Police	18
Sanitation	19
EDUCATION	20
Elementary and High School	20
Vocational Schools	21
Colleges	21
HEALTH	23
Hospitals	23
Nursing Homes	23
Public Health	23
OTHER LOCAL FACILITIES	24
Housing	24
Communication	24
Telephone	24
Telegraph	24
Postal	24
Newspapers	24
Radio	24
Television	25
Libraries	25
Churches	25
Financial Institutions	25
Clubs and Organizations	25
Recreation	26
Recent Community Improvements	27
HISTORY	29

MURRAY, KENTUCKY, A PROFILE

Location

Murray, county seat and largest city in Calloway County, is located in the flatlands of the Jackson Purchase Region of western Kentucky. Nashville, Tennessee, is 119 miles southeast; Paducah is 42 miles northwest; and the Blood River inlet of Kentucky Lake is just 8 miles east.

The Economy

Calloway County has a well-diversified economy, distributed almost equally among agriculture, trade, manufacturing and government. Economic stimulants have been the growth of Murray State University, manufacturing plant locations and annually increasing tourism.

Labor Supply

There is a current labor supply of 3,700 men and 2,475 women in the Murray labor market area, not including the additional persons that would commute from the adjoining Tennessee counties. The present labor supply will be increased by 3,485 boys and 3,374 girls who will become 18 years old by 1974.

Industrial Sites and Services

Murray has six available industrial sites totaling 677.7 acres owned or optioned by the Murray Chamber of Commerce and the Murray-Calloway County Industrial Foundation.

Murray's location places it in a favorable freight zone for major mid-western, western and southern market centers.

Rail service is provided by the Louisville & Nashville Railroad.

Interstate 24, the Purchase Parkway and Western Kentucky Parkway interchanges are all within 35 miles of Murray and trucking services are available from six firms, two of which maintain a local terminal. Daily air freight pickup and delivery service is available.

Recreation

Murray's location in the heart of Kentucky's Land of Lakes gives it an unlimited livability index. In addition to being a water recreation and camping center, two Kentucky and one Tennessee state parks are within minutes of town and offer a wide variety of activities including a summer theatre program.

The Thoroughbreds of Murray State are perennial challengers for major honors in the seven intercollegiate sports in the Ohio Valley Conference. Soccer is an intercollegiate non-conference sports activity.

Nashville and Memphis are within three hours drive and offer a variety of cultural activities and entertainment media.

THE LABOR MARKET

Location and Population

Murray is the higher education center of the Jackson Purchase Region and a gateway to both the Land Between the Lakes National Recreation Area on the east and Tennessee on the south.

Population of Murray was 9,303 in 1960, a sharp gain of 54 percent from 1950. Population increase has been even more substantial since 1960 - over 60 percent in the past 8 years. Population of Calloway County has increased numerically as rapidly during the past 8 years as it did during the first half of the century.

TABLE 1

POPULATION TREND - MURRAY AND CALLOWAY COUNTY, KENTUCKY ^{1/}

Year	Murray		Calloway County	
	Population	% Change	Population	% Change
1900	1,822		17,633	
1950	6,035	+231.2	20,147	+14.3
1960	9,303	+ 54.2	20,972	+ 4.1
1968 (Est.)	15,500	+ 66.6	23,900	+14.0

Employment Characteristics

During 1967, total employment in Calloway County averaged 7,000. 1,300 were employed in agriculture and the balance almost equally divided among manufacturing, trade and government. The latter sectors are increasing while agriculture is decreasing.

The government employment sector is almost totally composed of the faculty and staff of Murray State University. Students make up a noticeable portion of employment in the trade and service categories, with a smaller portion working in local manufacturing.

During the past decade, manufacturing has assumed increasing importance in the Calloway County economy, presently employing approximately 1,150 persons with the majority of these in the metal products industry.

Major Murray manufacturing firms are:

<u>Firm</u>	<u>Product</u>	<u>Employment</u> ^{2/}		
		<u>T</u>	<u>M</u>	<u>F</u>
Tappan Co., Murray Div.	Gas & electric ranges	961	931	30
Sager Glove Co.	Fireproof clothing	100		
Ryan Milk Co.	Dairy products	50	40	10

Recent significant locations have been:

Carrier Corp.	Air filtering equipment	26
Eli Lilly & Co.	Biochemicals	250 (projected)
General Carbon & Graphite Co.	Graphite electrodes	250 (projected)

In the 4-county (Calloway, Graves, Marshall, Trigg) Murray labor market area, there were approximately 7,631 employed in manufacturing in September, 1967. Major products were chemicals, apparel and metal products; growth in recent years has been strongest in the chemical and metal products industries.



INDUSTRY

TABLE 2

MANUFACTURING EMPLOYMENT, MURRAY LABOR MARKET AREA
SEPTEMBER, 1967 ^{3/}

Industry	Employment
TOTAL	7,631
Chemicals	2,676
Apparel	2,152
Metal products & machinery	1,040
Other	1,763

There are approximately 1,500 persons employed in trades and services in Calloway County, a reflection of the growth in the other sectors of the economy.

Wage Levels

The average weekly wage in industries covered by unemployment insurance in Calloway County was \$89.14 during 1967. The weekly average in manufacturing was \$113.92. Comparable figures for Kentucky were: \$104.50 all industries; \$115.08 in manufacturing. ^{4/}

<u>Production Employees</u>	<u>Wages per Hour ^{5/}</u>		
	<u>Starting</u>	<u>Maximum</u>	<u>Prevailing</u>
Assembler	\$1.70	\$3.00	\$2.75
Drill Press Operator	1.60	3.25	2.75
Grinder, Machine	1.60	3.00	2.75
Inspector	1.60	3.00	2.60
Lathe Operator	1.90	3.50	2.90
Machinist, Set Up	2.10	3.75	3.00
Polisher & Buffer	1.60	2.90	2.60
Production Laborer	1.60	2.75	2.40
Punch Press Operator	1.60	3.25	2.75
Sprayer or Painter	1.60	3.10	2.60
Welder, Arc or Acetylene	1.60	3.75	2.90
Welder, Resistance or Spot	1.60	3.75	2.90

<u>Service Employees</u>	<u>Wages per Hour</u>		
	<u>Starting</u>	<u>Maximum</u>	<u>Prevailing</u>
Carpenter	\$1.60	\$4.25	\$3.00
Crane Operator	1.60	4.25	3.00
Electrician	1.60	4.25	3.00
Janitor	1.25	2.50	1.80
Laborer	1.60	3.13	2.50
Machinist	1.60	4.00	3.00
Mechanic, Maintenance	2.70	3.50	2.75
Pattern Maker	1.60	4.00	3.00
Shipping Clerk	1.60	3.00	2.00
Truck Driver	1.60	3.10	2.00
Tool, Die or Gauge Maker	1.60	4.00	3.00
Welder, Acetylene, Carbon & Arc	1.60	3.75	2.90
 <u>Office Employees</u>			
Bookkeeper or Accounting Clerk	1.60	2.50	2.00
Chief Clerk	1.60	2.75	2.75
Draftsman	1.60	3.25	2.75
File Clerk	1.60	2.00	1.80
Key Punch Operator	1.60	2.50	2.00
Receptionist	1.60	2.25	1.90
Secretary	1.60	2.50	2.00
Stenographer	1.60	2.50	2.00
Tabulating Machine Operator	1.60	2.50	2.00
Telephone Operator	1.60	2.00	1.80
Typist	1.60	2.00	1.80

Labor Supply

There is an estimated current labor supply of 3,700 men and 2,475 women available for industrial jobs in the Murray area. In addition, approximately 300 women, trained in the apparel industry, are available for immediate employment. During the next 5 years, 3,485 boys and 3,374 girls will augment this labor supply as they become 18 years of age. Immigration from beyond the labor market area is becoming a noticeable increase factor in the area's current and future labor supply potential.

TABLE 3

CURRENT AND FUTURE LABOR SUPPLY
MURRAY LABOR MARKET AREA

County	Current Labor Supply ^{6/}			Future Labor Supply by 1974 (Becoming 18 Years of Age) ^{7/}		
	Total	Male	Female	Total	Male	Female
Labor market						
Area	6,175	3,700	2,475	6,859	3,485	3,374
Calloway	1,875	1,100	775	1,562	785	777
Graves	2,150	1,050	1,100	2,659	1,361	1,298
Marshall	1,100	800	300	1,770	889	881
Trigg	1,050	750	300	868	450	418

Labor Organizations

United Auto Workers -
 AFL - CIO
United Packinghouse Workers
Communications Workers of
 America

Bargaining Unit for:

Tappan Co. , Murray Div.
Ryan Milk Co.
South Central Bell Telephone &
 Telegraph Co.

Income and Sales

Effective buying income was estimated at \$46,136,000 in Calloway County in 1966. Income per household was approximately \$6,320 with 43.6 percent of households in the \$5,000 or above income class. Total retail sales were estimated at \$35,266,000 in 1966. ^{8/} The 1963 Census of Business (latest available data) reported 200 retail establishments in Murray and 87 in Calloway County.

TRANSPORTATION

Rail

The Louisville & Nashville Railroad, operating between Paducah and Memphis, provides Murray with daily freight service, but there is no passenger service. There are 6 switchings a day with 4 tracks for 110 cars plus a 200-car reserve spur.

The REA Express provides daily pickup and delivery service from a bulk parcel terminal.

TABLE 4

RAILWAY TRANSIT TIME FROM MURRAY, KENTUCKY, TO: 9/

Town	No. of Days		Town	No. of Days	
	CL			CL	
Atlanta, Ga.	3		Kansas City, Mo.	3	
Birmingham, Ala.	3		Los Angeles, Calif.	6	
Chicago, Ill.	4		Louisville, Ky.	2	
Cincinnati, Ohio	3		Memphis, Tenn.	2	
Cleveland, Ohio	4		Nashville, Tenn.	1	
Dallas, Texas	4		New Orleans, La.	3	
Denver, Colo.	5		New York, N. Y.	4	
Detroit, Mich.	4		St. Louis, Mo.	2	

Highways

Murray is served by U. S. Route 641 and Kentucky Routes 121 and 94. These provide access to Purchase Parkway interchanges at Benton (14 miles), Mayfield (21 miles) and Fulton (37 miles). The I-24 interchange at Kentucky Dam and the Western Kentucky Parkway connection are both within 35 miles of Murray via U. S. 641.

Truck Service: Murray is served by six common carrier truck lines, two of which maintain a local terminal.*

Company

Paschall Truck Lines*
Ellis Truck Lines*

Home Office

Murray, Kentucky
Indianapolis, Indiana

<u>Company</u>	<u>Home Office</u>
T. I. M. E.	Lubbock, Texas
Harper Truck Service	Paducah, Kentucky
McLean Trucking Co.	Indianapolis, Indiana
Dixie Highway Express, Inc.	Meridian, Mississippi

TABLE 5

HIGHWAY MILES AND TRUCK TRANSIT TIME IN DAYS FROM
MURRAY, KENTUCKY, TO SELECTED MARKET CENTERS 10/

Town	Highway Miles	Delivery		Town	Highway Miles	Delivery	
		LTL	TL			LTL	TL
Atlanta, Ga.	375	2	2	Kansas City, Mo.	492	2	1
Birmingham, Ala.	324	2	2	Los Angeles, Calif.	1,991	5	4
Chicago, Ill.	435	1	1	Louisville, Ky.	241	overnight	
Cincinnati, Ohio	341	1	1	Memphis, Tenn.	160	overnight	
Cleveland, Ohio	585	2	1	Nashville, Tenn.	119	overnight	
Dallas, Texas	624	3	2	New Orleans, La.	561	3	2
Denver, Colo.	1,096	3	2	New York, N. Y.	1,000	3	2
Detroit, Mich.	606	2	1	St. Louis, Mo.	240	overnight	

Air

Murray is served by Kyle Field, 5 miles northwest, and there is a paved runway at each of the nearby state parks. Barkley Field at Paducah is the closest major airport where Delta and Ozark Airlines operate nine daily flights and daily air freight service is available.

Kyle Field has an 800-foot approach and a 3,900-foot paved runway which can be extended 6,300 feet. Offerings include charter freight and passenger service, hangar and tie down facilities, radio communications and flight instruction.

Kentucky Dam Village State Park, 30 miles north, has a 4,000-foot paved runway and 2,900-foot graded runway. Kentucky Lake State Park, 15 miles east, has a 2,300-foot paved runway.

Water

The nearest commercial ports are located at Paducah, Kentucky, and Cairo, Illinois, and trucking service is available. Badgett Terminal, a private facility, is located 27 miles northeast at Kentucky Dam. Three commercial terminal sites are also available in Calloway County on Kentucky Lake.

Other Transportation Services

West Kentucky Stages operates 18 buses daily, offering connections to Paducah and Hopkinsville, Kentucky, and Clarksville, Paris, and Nashville, Tennessee. Southern Greyhound operates 2 daily buses to Nashville, Tennessee, and St. Louis, Missouri.

Radio Cab Company operates an 18-hour daily taxi service at Murray.

Car and truck rental service is available.

POWER AND FUEL

Electricity

The Murray Electric System, a municipal company, supplies Murray with electric power which it purchases from TVA. As of June, 1968, it was serving 4,675 customers with annual average growth of 200 customers.

Calloway County is supplied electric power by the West Kentucky RECC which also purchases power from TVA. Presently, 5,635 customers are served and annual average growth has been 200 customers. Enormous blocks of power are available for industries.

Rates of Murray Electric System

- A. If the customer's demand is not more than 5,000 kilowatts per month:

First	200 kilowatt-hrs. per mo. at 2.20 cent per kwh
Next	300 kilowatt-hrs. per mo. at 1.50 cent per kwh
Next	1,000 kilowatt-hrs. per mo. at 1.09 cent per kwh
Next	1,500 kilowatt-hrs. per mo. at .76 cent per kwh

- B. If the customer's demand is greater than 5,000 kilowatts per month:

Demand Charge:

First 75,000 kilowatts of demand per month, at \$1.10 per kilowatt

Excess over 75,000 kilowatts of demand per month, at \$1.05 per kilowatt

Additional charge for any demand in excess of customer's contract demand, at \$1.10 per month per kilowatt

Energy Charge:

First 50,000,000 kilowatt-hours per month at 2.80 mills per kwh

Additional energy.....2.75 mills per kwh

Natural Gas

The Murray Natural Gas System, a municipal company, supplies Murray with natural gas which it purchases from Texas Gas Transmission Corporation. 1,920 customers are presently served. Expansion into six new subdivisions will add 150 new customers by April 30, 1969. The system has a 6-inch transmission line, 4-and 2-inch distribution lines and 1-inch service lines. Pressure is maintained at 35 psi (capacity is 400 psi); specific gravity is 0.6; BTU content is 1,015. Industrial rates are negotiated.

Coal

Murray is served by the Western Kentucky Coal Field. Representative freight rates from the field for numbers 9, 11, and 12 industrial and domestic coal range from \$3.14 to \$3.52 per net ton. 11/

Liquid Gas

Kengas Corporation of Murray supplies propane and butane gas to 1,310 customers in Calloway County.

WATER AND SEWERAGE

Water

Water is supplied to Murray by the Murray Water and Sewerage System, a municipal company. Raw water is drawn from 5 wells and treated in a plant that has a capacity of 5.0 million gpd. Average daily water use is 1.8 million gpd, although maximum daily use has been 2.5 million gpd. The system has distribution lines ranging from 6 to 12 inches and 3/4 inch service lines. Treated water is stored in a 1,250,000-gallon standpipe and a 1,200,000-gallon underground reservoir. Pressure is maintained at 60 psi and average temperature of treated water is 58 degrees. Average pumping time to meet daily requirements is 8 to 10 hours.

Monthly Water Rates

		<u>Per M Gallons</u>
First	2,000 gallons	\$.75
Next	2,000 gallons	.66
Next	2,000 gallons	.57
Next	4,000 gallons	.42
Next	25,000 gallons	.33

An additional \$.15 per thousand-gallon unit price is charged for service areas outside the city limits.

Sewerage

Sanitary sewerage service is provided by the Murray Water and Sewerage System through 6-inch local connectors, 8, 10, and 12-inch laterals and 24-inch interceptors. A separate 48-inch storm sewer system is also maintained. The treatment plant has a design population of 21,200 and design flow of 2.5 million gpd. Average daily treatment load is 1.6 million gpd and maximum daily load has been 2.0 million gpd. Primary treatment of raw sewage is by Imhoff tanks; secondary treatment consists of trickling filters, a digester and drying beds. Treated sewage is discharged into East Fork of Clarks River. There are presently 3,516 hook-ups and an annual average increase of 165 during the past 8 years. Sewer rates are 1/3 of the water bill inside the city limits. An additional 20 percent of the total sewer billing is charged customers outside the city limits.

AGRICULTURE - NATURAL RESOURCES - CLIMATE

Agriculture

Farm income in Calloway County is mainly from the production of field crops, primarily tobacco and popcorn, substantially supported by the growing livestock and dairy products sector. The total land area of the county is approximately 245,760 acres with 1,707 farms comprising 69.2 percent of this area.

In 1964, average farm size was 99.7 acres, valued at \$189.24 per acre (including buildings). Total value of all farm products sold was \$6,084,246, (\$3,323,676 all crops sold and \$2,757,759 livestock and livestock products), averaging \$3,564 per farm. ^{12/}

Mineral Resources

The principal minerals of importance in Calloway County consist of Glass type sand, sand and gravel, clays, and limestone. Minerals of lesser importance are chert and silicious products that are associated. No annual figure of value is given in order to avoid disclosure of company profits.

Glass sand that also is suitable for foundry work is sold by a local producer and is of sufficient quality to offer potential to a possible user.



SILICA SANDS

Clays of various chemical compositions and amounts are present and extractable locally. These include ball, sagger, and wad clays; however, these are largely undeveloped but produced in the area. Fuller's Earth, which is a bleaching clay, has potential for development.

Water Resources

Large supplies of surface water suitable to industrial uses are available from Kentucky Lake. The impoundment of small streams offers a source of such water.

Ground water at shallow depths is available in unconsolidated sediments in almost unlimited quantities. By proper design and location, wells up to 1,400 gallons per minute are reported; thus the ground water sources for industrial and domestic uses are among the best in the state.

Forests

There are approximately 77,100 acres of commercial forest land in Calloway County, covering 31.6 percent of the total land area. The most abundant species are red oak, white oak, hickory, sweetgum, ash, cottonwood, and blackgum.

With the coming of the new pulp and paper mill at Wickliffe, Kentucky, and a new hardboard mill at Paris, Tennessee, there are growing markets for pulpwood in the area. These new markets bring opportunities for the practice of better forestry by woodland owners, and for utilization of waste wood by sawmill operators.

Climate

Murray has a pleasant year around climate. Great extremes of heat or cold rarely occur, yet weather changes are sufficiently frequent to give variety.

Winter is short and mild with an average annual snowfall of 10 inches, lasting only a few days at a time.

Total precipitation averages 45 inches annually, occurring mainly in the winter and spring.

During an average year, 105 days are clear, 107 partly cloudy and 153 cloudy. Normal monthly minimum temperatures range from 30° to 69° F; maximum range is from 47° to 88° F; average annual temperatures range from 39° to 79° F.

Prevailing wind is from the Southwest. 13/

LOCAL GOVERNMENT

Structure

Murray, a third-class city, is governed by a mayor, elected for a 4-year term, and 12 councilmen, elected for 2-year terms.

Calloway County is governed by a fiscal court composed of a county judge, elected for a 4-year term, and 6 magistrates, elected by district for 4-year terms.



COURTHOUSE



CITY HALL

Finance

The City of Murray had an income of \$475,666 for the 12 months ending December 31, 1967; expenditures totaled \$477,594. As of June 30, 1968, bonded indebtedness outstanding was \$242,000 in voted bonds. School district bonds outstanding were \$23,000 in voted bonds and \$172,000 in revenue bonds.

Calloway County's budget was \$201,000 for 1967. Bonded indebtedness as of June 30, 1968, was \$360,000 in voted bonds. School district bonds outstanding totaled \$598,000 in revenue bonds.

Taxes

Property taxes are the major source of income for Murray and Calloway County. Property must be assessed at 100 percent of value under provisions of the Kentucky Constitution. 1968 net assessed value of property in these jurisdictions was:

Class of Property	<u>Murray</u>	<u>Calloway County</u>
Total	\$ 60,353,848	\$128,856,615
Real Estate	46,919,346	98,759,351
Tangibles	11,110,186	22,704,584
Public Service	2,324,316	7,392,680

Property tax rates for 1968 are shown below.

TABLE 6

PROPERTY TAX RATES PER \$100 OF ASSESSED VALUE FOR CITY OF MURRAY AND CALLOWAY COUNTY, 1968

<u>Taxing Unit</u>	<u>Murray</u>	<u>Calloway County</u>
State	\$.015	\$.015
County*	.212	.212
School	.563	.373
City	<u>.400</u>	<u> </u>
Total	\$1 .190	\$.600

*Includes General, Health, Hospital, and Library.

The City of Murray requires an annual business license which ranges from a minimum of \$25 to a maximum of \$200.

Murray is empowered by state law to allow a five-year exemption from municipal taxation for new industry.

Planning and Zoning

The Murray Planning Commission, organized in 1957, has completed a comprehensive plan, subdivision regulations, and zoning ordinance. Building, housing, electrical and plumbing codes are enforced and the city's Workable Program for Community Improvement has been recertified through 1969.

Forty-five regular and 97 elderly low-rent housing units have been completed and occupied.

The Planning Commission is presently completing a major revision of the zoning ordinance due to unprecedented growth of subdivisions and the University complex.

Safety

Murray has a Class-6 NBFU insurance rating. The Murray Fire Department is staffed by a chief, 17 firemen and an average of 10 volunteers operating out of a main station in city hall and a substation. Major equipment for both stations includes: a 1951 Central Quad - 750 gpm; a 1961 Howe pumper - 750 gpm; a 1967 Howe pumper - 1,000 gpm; a 1947 General pumper - 500 gpm; a radio-equipped chiefs car; 2 resuscitators, 2 generators and all other equipment necessary for full fire and rescue service. Fire protection is supplied to industries beyond the city limits upon request and free of charge.



FIRE DEPARTMENT

Police

The Murray Police Department is staffed by a chief, 6 patrolmen, 4 dispatchers and one meter man. The Department operates 2 radio-equipped patrol cars, several fully-equipped unmarked cars (as needed) and has full radar and riot-control equipment. Within the city limits, this force is augmented by 8 full-time campus police, at Murray State University, who operate 2 radio-equipped patrol cars.

The Calloway County Sheriff's office is staffed by a sheriff and 3 full-time deputies who operate 3 radio-equipped patrol cars. In addition, 2 state policemen are stationed in Murray and operate 2 radio-equipped cars and a water patrol boat on Kentucky Lake. All police forces are connected by radio and operate on a fully cooperative basis.

Sanitation

Garbage collection is provided by the City of Murray with weekly collection in residential areas and twice-weekly to daily collection in business areas depending upon service needs. Garbage is disposed of in a state-approved sanitary land fill. Collection charges are \$1.50 per month in residential areas and from \$5 to \$50 per month in business areas. Trash collection is provided free of charge during the summer months.

EDUCATION

Elementary and High School

The Murray Independent School System operates three elementary schools and one high school. Total system enrollment was 1,628 and the budget was \$744,000 for the 1967-68 school year. School facilities include libraries, band room and science laboratory. In addition to regular personnel, there is a guidance counselor, lunchroom supervisor and speech therapist.

The Calloway County School System operates six elementary schools and one high school. The budget for the 1967-68 school year was \$859,503 and total enrollment was 2,282. Special facilities include science, language, agriculture, home economics and drafting labs. Special personnel include 3 remedial reading teachers, 3 librarians and a guidance counselor. The high school offers students the choice of a vocational or college preparatory program.

Murray State University operates an elementary and secondary laboratory school which is open to the public on a "first come, first serve" basis. The faculty assists in training student teachers in classroom methods. The University plans to close the high school but enlarge the elementary school in a new building by 1971.

The three high schools presently are rated standard by the State Department of Education.

TABLE 7

SCHOOL SYSTEMS, ENROLLMENT, NUMBER OF TEACHERS,
STUDENT-TEACHER RATIO, 1967-68

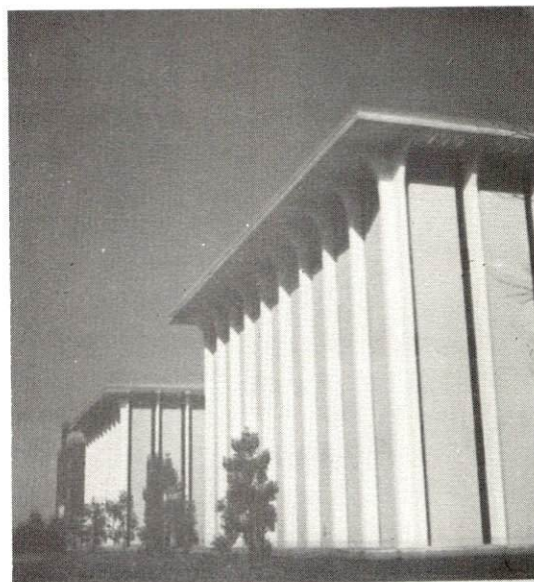
School	Grades	Enrollment	No. of Teachers	Student-Teacher Ratio
Calloway County High	9-12	625	34	18-1
Calloway County Elementary	1- 8	1,657	66	25-1
Murray High	7-12	751	42	17-1
Murray Elementary	1- 6	877	38	27-1
University Lab. High	7-12	174	17	10-1
University Lab. Elementary	K- 6	225	11	20-1

Vocational Schools

Murray and Calloway County are served by the Tilghman Area Vocational-Technical School and the West Kentucky State Vocational-Technical School, both located at Paducah. A Calloway County Extension Center at Murray has been approved and funded but is not yet in operation. In addition to regular preparatory classes, upgrading courses are offered in evening extension classes for employed persons. Special courses are also available for eligible people under the Manpower Development and Training Act. Course offerings include appliance repair, auto body repair, auto mechanics, barbering, business and office education, carpentry, commercial foods, cosmetology, drafting, electricity, electronics technician, highway technology, industrial electricity, machine shop, masonry, refrigeration and air conditioning, small gasoline engine repair, tailoring and welding.

Colleges

Murray State is a multipurpose, co-educational university of some 7,500 students. The university is organized into five schools - the School of Arts and Sciences, the School of Applied Science and Technology, the School of Business, the School of Education, and the Graduate School. There are 28 major departments. Pre-professional courses are also provided in medicine, veterinary medicine, dentistry, law, theology, pharmacy, engineering, forestry, and medical technology. Eleven baccalaureate degrees are offered and the masters degree is awarded in seventeen subject areas.



Some of the distinctive features of the more than 40 buildings on the campus are the largest college auditorium in Kentucky; modern spacious dormitories; and a host of new classroom buildings that are second to none in equipment, function and beauty. A variety of cultural activities contribute to the refinement and the all-around development of the students at Murray State University.

Other institutions of higher learning in the Murray area include:

Brescia College, Owensboro, Kentucky, 125 miles

Kentucky Wesleyan College, Owensboro, Kentucky, 125 miles

Vanderbilt University, Nashville, Tennessee, 119 miles

University of Kentucky Community College, Paducah, Kentucky,
42 miles

University of Kentucky Community College, Hopkinsville, Kentucky,
55 miles

University of Kentucky Community College, Madisonville, Kentucky
97 miles

HEALTH

Hospitals

The Murray-Calloway County Hospital is a new full-service facility of 118 beds and 49 convalescent beds, 15 bassinets, premature nursery with 4 isolettes, and 2 operating rooms. The staff of 214 includes 15 doctors, 40 registered nurses, and 30 licensed practical nurses. Within the next year, a 4-bed Intensive Coronary Care Unit, monitored by Vanderbilt University Hospital, will be installed.



Nursing Homes

The Westview Nursing Home is a privately-owned 40-bed facility with a registered nursing staff and a doctor on 24-hour call.

Public Health

The Calloway County Health Department, located at Murray, is staffed with an administrator, 2 sanitarians, 3 public health nurses, 1 part-time nutritionist and 2 clerks. Services are: immunization and tests, communicable and venereal disease and tuberculosis control programs, free Papanicolaou tests, school health, sanitation, health education, maternal and child health, vital statistics and environmental sanitation. The budget for the fiscal year ending June 30, 1968 was \$61,041.

OTHER LOCAL FACILITIES

Housing

Home building in the Murray area is experiencing a sharp increase. During the past year, more subdivision plats were submitted for approval than in the previous five years. The price of an average 3-bedroom, 1 1/2-bath brick home ranges from \$13,500 to \$18,500 depending upon lot price and location. Rental range for the same home is from \$75 to \$125 plus utilities. The 2-bedroom unfurnished apartment rental range is from \$60 to \$99.50 including utilities. Students and single persons renting sleeping rooms pay an average of \$30.

Communication

Telephone: Murray and Calloway County are served by South Central Bell Telephone Company. 11,228 stations are served which includes the 2,500-station Centrex System at Murray State University. This Centrex System, installed in 1962, connects every campus office, dormitory room, and service facility in a single exchange.

Telegraph: Telegraph service is provided by a local Western Union office.

Postal: Murray has a first-class post office. Mail is received and dispatched four times daily and six rural routes are served. There are daily deliveries in both business and residential areas. Postal receipts for 1967 totaled \$296,040.

Newspapers: Two afternoon dailies, the Murray Democrat (not published on Saturday) and the Ledger & Times (not published on Sunday) serve Murray. Each has a circulation of approximately 4,500.

Other papers are received daily from New York, Memphis, Louisville, Nashville, and Paducah.

Radio: WNBS-AM and WAAW-FM serve Murray, the FM station being one of thirteen maximum power stations in the country. Broadcasts are also received from all other regional and area stations.

Television: Television reception is excellent via cable (Murray Cable-vision Company) or outside antenna. Programs are from 3 channels at Nashville, Tennessee, and one channel each from Paducah, Harrisburg, Illinois, Cape Girardeau, Missouri, and Jackson, Tennessee. In addition, channel 2, Nashville, Tennessee and channel 23, Murray State University offer educational television.

Libraries

The Murray-Calloway County Library, one of the fastest growing in the state, has a 35,000-volume collection and an annual circulation of 102,000. The Bookmobile, operating 4 days a week, has an annual circulation of 84,000. The library budget for 1968 is \$40,000. Magazines, over 1,000 records, films and projectors are also provided. Other services are a weekly story-hour and radio program, art shows, and a Great Books Discussion Group. The University Library, with a collection of over 80,000 volumes and 825 periodicals, is open to the public.

Churches

There are 89 churches in Murray and Calloway County supported by 11 denominations. These are Church of Christ, Lutheran, Methodist, Nazarene, Episcopal, Christian, Catholic, Baptist, Presbyterian, Pentecostal and Seventh Day Adventist.

Financial Institutions

<u>Bank</u>	<u>Statement as of December 31, 1967</u>	
	<u>Assets</u>	<u>Deposits</u>
Bank of Murray	\$31,402,691	\$29,152,223
Peoples Bank of Murray	21,565,000	19,400,000
Dees Bank of Hazel	3,900,000	2,950,000
Peoples Farm Credit Corporation	627,250	

Clubs and Organizations

Business and Civic: Murray Chamber of Commerce, Jaycees, Kiwanis, Lions, Rotary, Optimist, Civitan, Murray Hospital Association, Murray Dental Society, Murray Ministerial Association, Salvation Army, Red Cross, Agricultural Council, Welcome Wagon, Calloway County Medical Association, Calloway County Conservation Club, Young Business Men's Club.

Fraternal: American Legion, Disabled Veterans, Masonic Lodge 105, VFW, Thoroughbred Club, Eagles, FOP, IOOF, Moose Lodge, Knights Templar, Shrine, Elks, Woodsmen of the World, Alcoholics Anonymous

Women's: AAUW, Associated Women of Farm Bureau, B & PW Club, Homemakers, Nature Palette, DAR, Magazine Club, Murray Women's Club, Eastern Star, Garden Club, Jaycettes, Moose Auxiliary, American Legion Auxiliary, VFW Auxiliary, American Business Women's Association, Daughters of the Confederacy

Youth: Boy Scouts, Girl Scouts, Cub Scouts, Brownies, 4-H, Junior Rose Club, Murray Baseball Association, FFA, FHA, FTA, FAA, Beta Club, FBLA, Little League

Recreation

Local: Murray's 18-acre city park offers a variety of facilities: 2 lighted baseball fields, 4 tennis courts, picnic shelters and grills, a variety of playground equipment and recreational baseball. University facilities open to the public include: a lighted baseball field, 8 tennis courts and an indoor swimming pool. Murray State University is the center of cultural and sports activity, offering: major collegiate football and basketball, a concert program in cooperation with local organizations featuring famous performers, and regular drama and music programs.

In addition, Murray has a large bowling facility and a large, new movie theater. The Murray Country Club and the Oaks Country Club have golf courses as do each of the nearby state parks.

Other: (Racing, College Sports, Professional Sports, Drama and Music) Murray's location in the heart of the Lakes Area provides residents a boundless variety of recreational activities. Kentucky Lake State Park, 15 miles east, offers a complete range of vacation facilities and activities, including outstanding summer theater productions by the drama department of Murray State University. Kentucky Dam Village State Park, 33 miles northeast, also has complete recreational facilities including a fully accredited airport and flying service.

Between the Lakes National Recreation Area is a vast wilderness offering campers and naturalists recreation, relaxation, developed campsites and the other amenities of outdoor living.

There are also 54 commercial resorts in the Calloway County area that offer excellent recreational facilities.

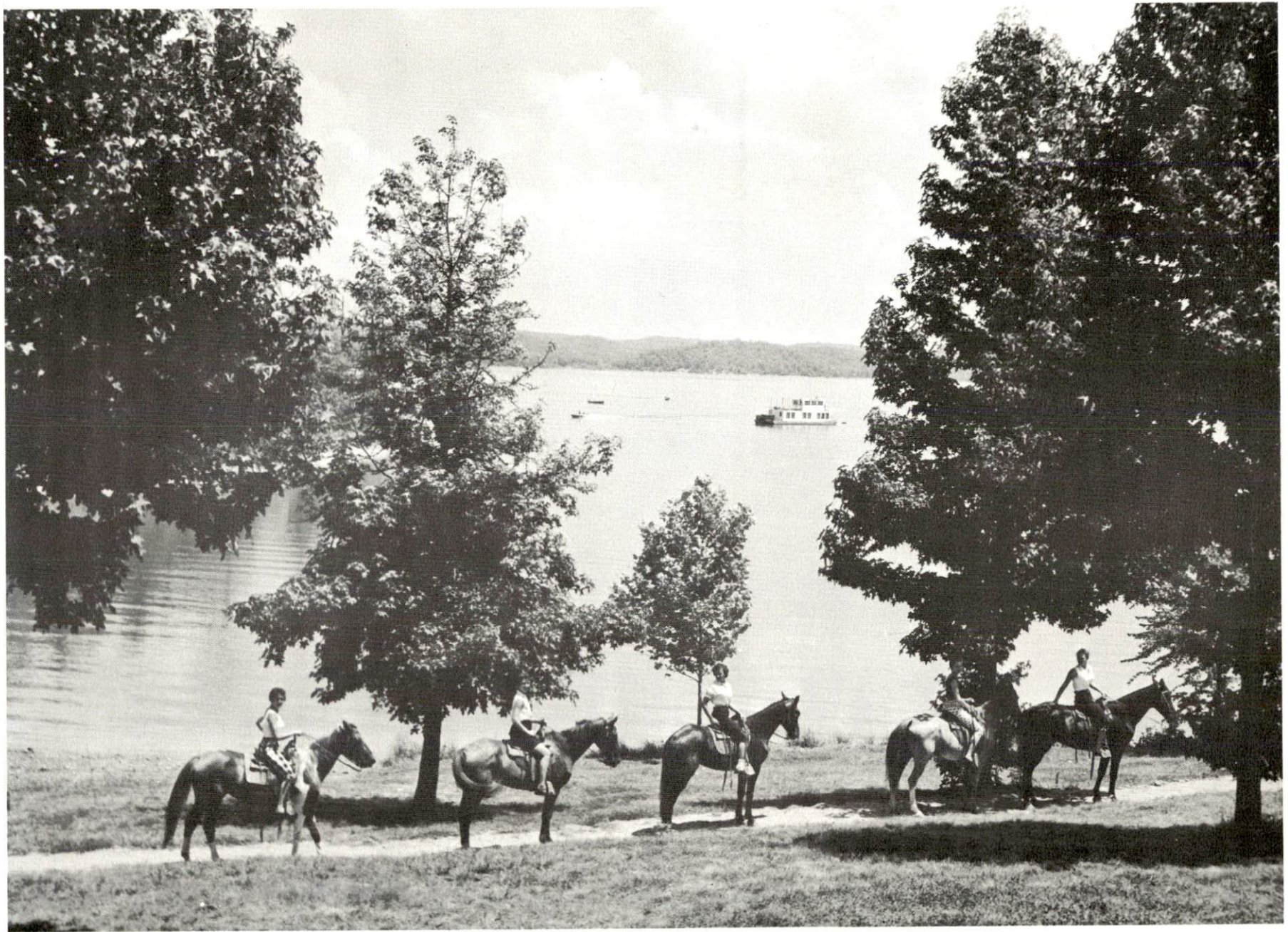
The Lakes Area attracts more than 5 million tourists a year and the National Recreation Area is expected to attract a total of approximately 20,000,000 within the next ten years.

Recent Community Improvements

Public: Expansion of the sewerage and water systems, hospital expansion, U. S. 641 By-Pass, 4-laning of 12th Street, new fire substation, \$12,000 building at city park for equipment storage and rest rooms.

Business and Industrial: New TV Drive-Inn Bank, the \$2,740,000 Bel Air Shopping Center, Tappan Plant expansion, new Carrier Corporation plant, 2 large downtown stores and the new Capri movie theater, reputed to be the finest in the state.

Other: The cooperative and pleasant attitude of citizens and service establishment personnel and the neat appearance of the city have resulted from self-improvement programs and a new awareness of growth and progress.



EXCELLENT RECREATIONAL FACILITIES

HISTORY

Calloway County, named for Colonel Richard Callaway of Virginia, who migrated to Kentucky in 1776 to survey the site of Boonesborough was the 72nd county formed in the state and dates from 1822. A greater percentage of its land is level than any other county in the state. It was unforested land even before the white man came because the Indians kept it free of trees in order to hunt the buffalo which ranged eastward from the Great Plains. The soil is fertile and well drained by both forks of Clarks River, its tributary creeks, Kentucky Lake (formed by the Tennessee River) and its tributaries.

Murray, the county seat since 1844, is located on the west bank of Clarks River at the approximate geographic center of the county and named for the Honorable John L. Murray, a state legislator and congressman. During the Civil War residents were pro-southern and a large majority of those who fought in the war served in the Confederate Army.

Historical events of note include: The first transmission of the human voice via wireless radio by Nathan B. Stubblefield in 1902. Stubblefield did not patent his discovery until 1908, but by that time Marconi, whose experiments with the telegraph were already famous, received full credit for voice transmission also.

-The founding of Murray State University in 1922 as Murray State Teachers College.

-Names of note are: Daniel Matthewson - state legislator in 1861 and member of the Sovereignty Convention which attempted to establish a Confederate government in Kentucky.

Dr. John W. Carr, Dr. Rainey Wells, Dr. James H. Richmond, and Dr. Ralph H. Woods, presidents of Murray State University.

Historically, agriculture was the economic base of Calloway County and Murray, a major national processor of popcorn grown in the area. Since the founding of the University in 1922 and the gradual development of tourism and industry, the economy has become well diversified with recent sharp rises in commercial and service enterprises. The agricultural sector of field crop production is gradually being overtaken by the livestock sector.

The economic future of Murray and Calloway County will probably continue to develop upon a broad base of industry, commerce, agriculture and educational services.

SOURCES OF INFORMATION

1. U. S. Department of Commerce, Bureau of the Census, Census of Population, 1900, 1950, 1960. Department of Rural Sociology, University of Kentucky, Kentucky County Provisional Population Estimates: January 1, 1968.
2. Kentucky Department of Commerce, 1968 Kentucky Directory of Manufacturers.
3. Kentucky Department of Economic Security, Number of Workers in Manufacturing Industries Covered by Kentucky Unemployment Insurance Law Classified by Industry and County, September, 1967.
4. Kentucky Department of Economic Security, Division of Research and Statistics.
5. Kentucky Department of Economic Security, Employment Service Office, Mayfield, Kentucky.
6. Fantus Area Research, Inc., Kentucky's Recrutable Labor Supply for Manufacturing, November, 1966.
7. U. S. Department of Commerce, Bureau of the Census, Census of Population, 1960.
8. Sales Management Magazine, Survey of Buying Power, June, 1967.
9. Louisville & Nashville Railroad, Freight Agent, Murray, Kentucky.
10. McLean Trucking Company, Division Traffic Manager, Indianapolis, Indiana.
11. Louisville & Nashville Railroad. Item 1874 IC Coal Tariff 3010-0, ICC-E-1898, Item 4400, SFIB FT 847-B, ICC S-198.
12. U. S. Department of Commerce, Bureau of the Census, Census of Agriculture, 1964.
13. U. S. Department of Commerce, Environmental Science Services Administration, Climatological Data, 1967.