

1972

Industrial Resources: Christian County - Hopkinsville

Kentucky Library Research Collections
Western Kentucky University, spcol@wku.edu

Follow this and additional works at: https://digitalcommons.wku.edu/christian_cty

 Part of the [Business Administration, Management, and Operations Commons](#), [Growth and Development Commons](#), and the [Infrastructure Commons](#)

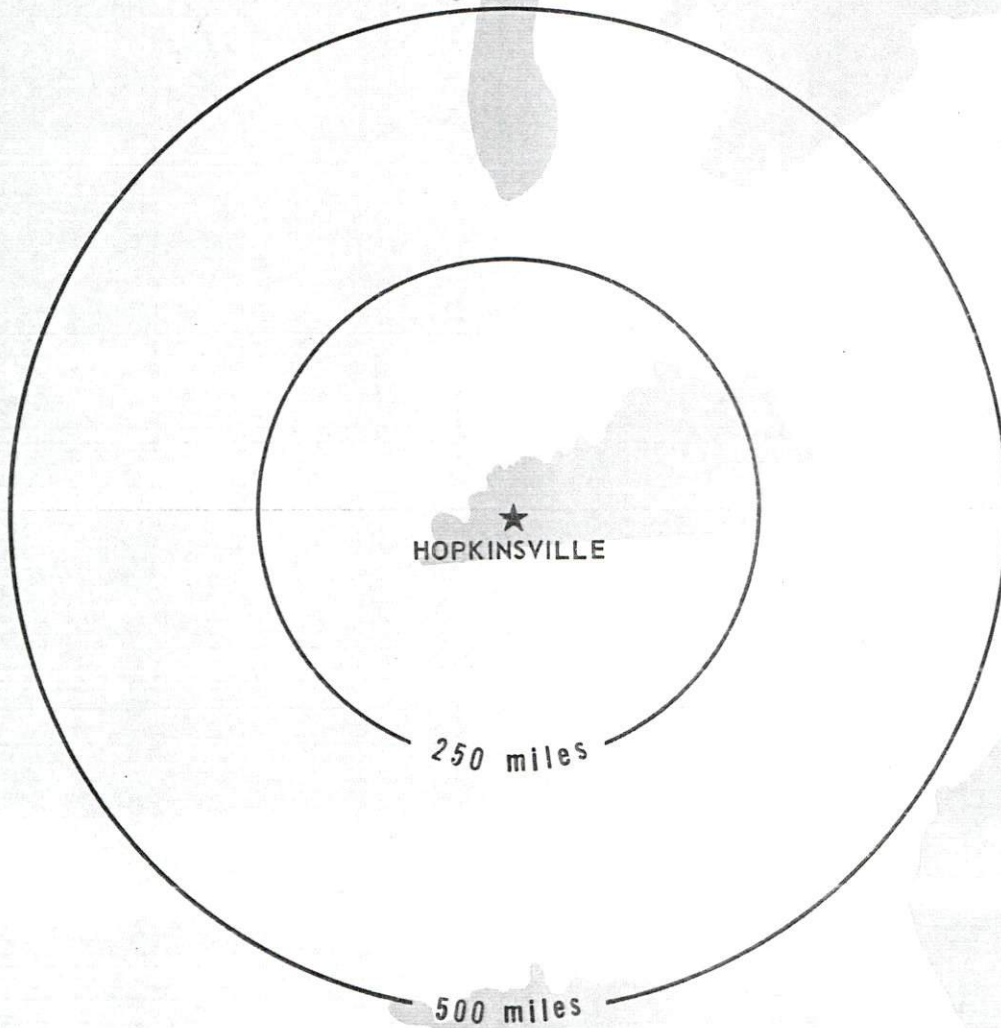
Recommended Citation

Kentucky Library Research Collections, "Industrial Resources: Christian County - Hopkinsville" (1972). *Christian County*. Paper 12.
https://digitalcommons.wku.edu/christian_cty/12

This Report is brought to you for free and open access by TopSCHOLAR®. It has been accepted for inclusion in Christian County by an authorized administrator of TopSCHOLAR®. For more information, please contact topscholar@wku.edu.

**INDUSTRIAL
RESOURCES**

**HOPKINSVILLE
KENTUCKY**



HOPKINSVILLE INDUSTRIAL SITES

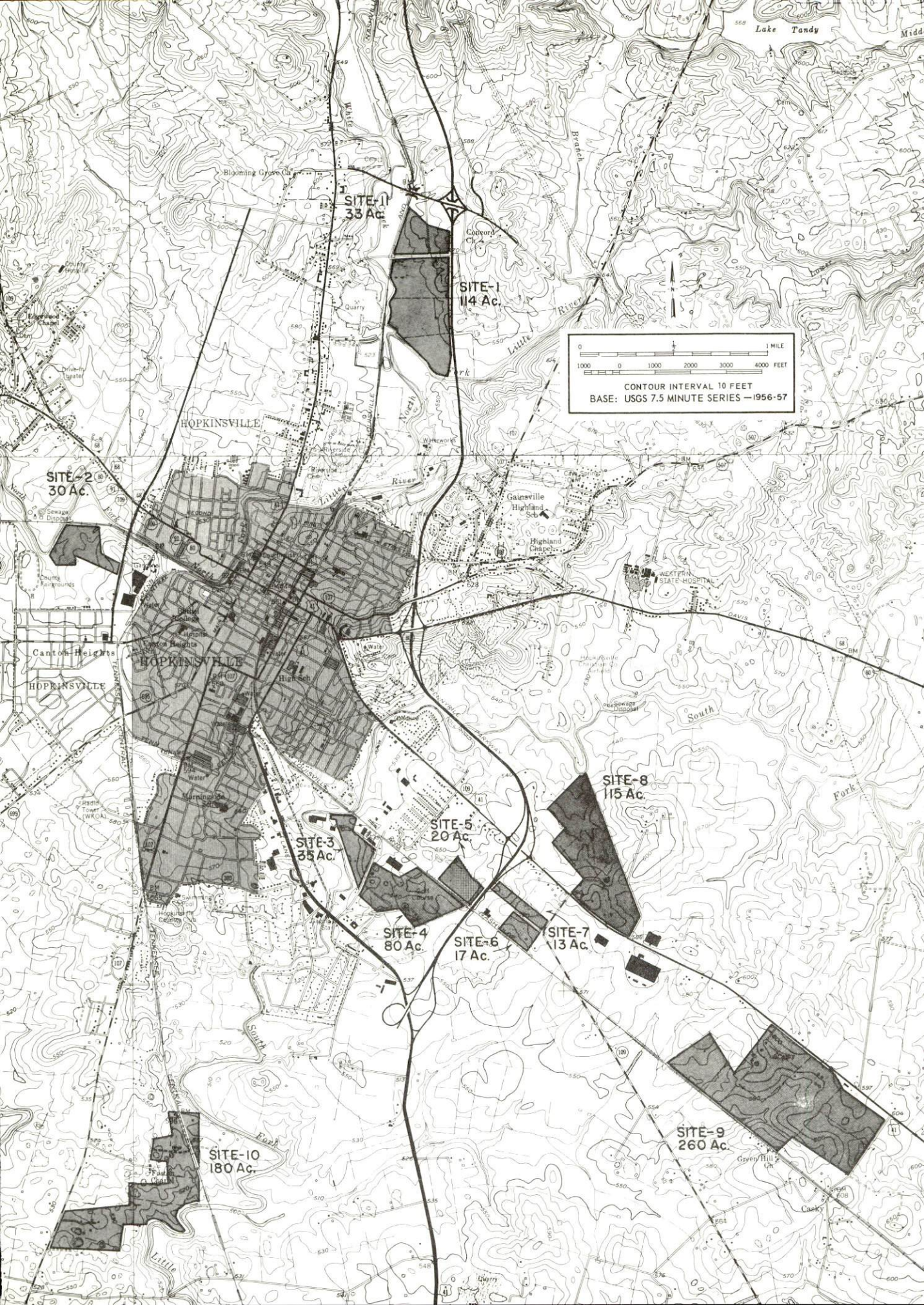
1972

HOPKINSVILLE INDUSTRIAL SITES

1972

For additional site information contact Mr. W. W. Bryan, Executive Director,
Hopkinsville Chamber of Commerce, Inc., Hopkinsville, Kentucky; or the Kentucky Department
of Commerce, Frankfort, Kentucky.

- SITE #1:** ACREAGE: 114 acres
LOCATION: One-half mile north-northeast of Hopkinsville
ZONING: Industrial
HIGHWAY ACCESS: Paved road to U.S. 41, near Pennyriple Parkway
RAILROADS: Louisville & Nashville Railroad along west border
with 525 feet of track
WATER: Hopkinsville Sewerage & Water Works Commission
SIZE LINE: 12-inch line 2,000 feet west of site
GAS: Western Kentucky Gas Company
SIZE MAIN: 4-inch main 2,000 feet west of site
ELECTRICITY: Pennyriple RECC
SEWERAGE: Hopkinsville Sewerage & Water Works Commission
SIZE LINE: 8-inch line 2,000 feet west of site
OWNERSHIP: Private
- SITE #2:** ACREAGE: 30 acres
LOCATION: West side of Hopkinsville within city limits
ZONING: Industrial
HIGHWAY ACCESS: Kentucky 380 along east border;
U.S. 68 1,500 feet north of site
RAILROADS: Illinois Central Railroad along north border
with 830 feet of track
WATER: Hopkinsville Sewerage & Water Works Commission
SIZE LINE: 12-inch line along east boundary
GAS: Western Kentucky Gas Company
SIZE MAIN: 6-inch main along east boundary
ELECTRICITY: Pennyriple RECC
SEWERAGE: Hopkinsville Sewerage & Water Works Commission
SIZE LINE: 10-inch line along west boundary
OWNERSHIP: Private
CONTACT: Trust Officer, First City Bank, Hopkinsville
- SITE #3:** ACREAGE: 35 acres
LOCATION: In south Hopkinsville, within city limits
ZONING: Industrial
HIGHWAY ACCESS: On Kentucky 380 between U.S. 41 and
U.S. 41-A near the Pennyriple Parkway
RAILROADS: Louisville & Nashville Railroad bounds
northeast side of site with 200 feet of track.
WATER: Hopkinsville Sewerage & Water Works Commission
SIZE LINE: 12-inch line on site
GAS: Western Kentucky Gas Company
SIZE MAIN: 6-inch main along southeast border
ELECTRICITY: Hopkinsville Electric Plant Board
SEWERAGE: Hopkinsville Sewerage & Water Works Commission
SIZE LINE: 10-inch line on site
OWNERSHIP: Private
- SITE #4:** ACREAGE: 80 acres
LOCATION: Southeast of Hopkinsville adjacent to city limits
ZONING: Industrial
HIGHWAY ACCESS: On Kentucky 380
RAILROADS: Louisville & Nashville Railroad along northeast
border with 1,700 feet of track
WATER: Hopkinsville Sewerage & Water Works Commission
SIZE LINE: 12-inch line on site
GAS: Western Kentucky Gas Company
SIZE MAIN: 6-inch main on site
ELECTRICITY: Hopkinsville Electric Plant Board
SEWERAGE: Hopkinsville Sewerage & Water Works Commission
SIZE LINE: 10-inch line on site
OWNERSHIP: Private
- SITE #5:** ACREAGE: 20 acres
LOCATION: One-half mile southeast of Hopkinsville
ZONING: Industrial
HIGHWAY ACCESS: Just off Pennyriple Parkway
RAILROADS: Louisville & Nashville Railroad along west
border with 975 feet of track
WATER: Hopkinsville Sewerage & Water Works Commission
SIZE LINE: 12-inch line on site
GAS: Western Kentucky Gas Company
SIZE MAIN: 8-inch main on site
ELECTRICITY: Hopkinsville Electric Plant Board
SEWERAGE: Hopkinsville Sewerage & Water Works Commission
SIZE LINE: 10-inch line on site
OWNERSHIP: Private
- SITE #6:** ACREAGE: 17 acres
LOCATION: 1 mile southeast of Hopkinsville
ZONING: Industrial
HIGHWAY ACCESS: On Calvin Drive between U.S. 41 and
U.S. 41-A, just off Pennyriple Parkway
RAILROADS: Louisville & Nashville Railroad along southwest
boundary, 1,050 feet of track
WATER: Hopkinsville Sewerage & Water Works Commission
SIZE LINE: 8-inch line on site
GAS: Western Kentucky Gas Company
SIZE MAIN: 8-inch main on site
ELECTRICITY: Hopkinsville Electric Plant Board
SEWERAGE: Hopkinsville Sewerage & Water Works Commission
SIZE LINE: 10-inch line on site
OWNERSHIP: Private
- SITE #7:** ACREAGE: 13 acres
LOCATION: 1 mile southeast of Hopkinsville
ZONING: Industrial
HIGHWAY ACCESS: On Calvin Drive, between U.S. 41 and
U.S. 41-A, just off Pennyriple Parkway
RAILROADS: Louisville & Nashville Railroad 750 feet
southwest of site
WATER: Hopkinsville Sewerage & Water Works Commission
SIZE LINE: 12-inch line on site
GAS: Western Kentucky Gas Company
SIZE MAIN: 8-inch main on site
ELECTRICITY: Hopkinsville Electric Plant Board
SEWERAGE: Hopkinsville Sewerage & Water Works Commission
SIZE LINE: 10-inch line on site
OWNERSHIP: Private
- SITE #8:** ACREAGE: 115 acres
LOCATION: 1 mile southeast of Hopkinsville
ZONING: Industrial
HIGHWAY ACCESS: On U.S. 41, just off the Pennyriple Parkway
RAILROADS: Not rail served
WATER: Hopkinsville Sewerage & Water Works Commission
SIZE LINE: Two 12-inch lines on site
GAS: Western Kentucky Gas Company
SIZE MAIN: 8-inch main on site
ELECTRICITY: Hopkinsville Electric Plant Board
SEWERAGE: Hopkinsville Sewerage & Water Works Commission
SIZE LINE: 8-inch line on site
OWNERSHIP: Private
- SITE #9:** ACREAGE: 260 acres
LOCATION: 1.1 miles southeast of Hopkinsville
ZONING: Industrial and agricultural
HIGHWAY ACCESS: Fronts on U.S. 41
RAILROADS: Louisville & Nashville Railroad along west
boundary, 4,100 feet of track
WATER: Hopkinsville Sewerage & Water Works Commission
SIZE LINE: Two 12-inch lines 3,000 feet from site
GAS: Western Kentucky Gas Company
SIZE MAIN: 8-inch main 3,000 feet from site
ELECTRICITY: Pennyriple RECC
SEWERAGE: Hopkinsville Sewerage & Water Works Commission
SIZE LINE: 10-inch line 3,000 feet from site
OWNERSHIP: Hopkinsville Industrial Foundation
- SITE #10:** ACREAGE: 180 acres
LOCATION: One-fourth mile south of Hopkinsville
ZONING: Industrial
HIGHWAY ACCESS: Kentucky 107 on west side of site
RAILROADS: Illinois Central Railroad divides eastern section
with 1,900 feet of track.
WATER: Hopkinsville Sewerage & Water Works Commission
SIZE LINE: 6-inch line 1,500 feet from site
GAS: Western Kentucky Gas Company
SIZE MAIN: 4-inch main 1,500 feet from site
ELECTRICITY: Pennyriple RECC
SEWERAGE: Hopkinsville Sewerage & Water Works Commission
SIZE LINE: 8-inch line 1,500 feet from site
OWNERSHIP: Private
- SITE #11:** ACREAGE: 33 acres
LOCATION: One-half mile north of Hopkinsville
ZONING: Industrial
HIGHWAY ACCESS: Paved road to U.S. 41, near Pennyriple Parkway
RAILROADS: Louisville & Nashville Railroad along west boundary
WATER: Hopkinsville Sewerage & Water Works Commission
SIZE LINE: 12-inch line 2,000 feet west of site
GAS: Western Kentucky Gas Company
SIZE MAIN: 4-inch main 2,000 feet west of site
ELECTRICITY: Pennyriple RECC
SEWERAGE: Hopkinsville Sewerage & Water Works Commission
SIZE LINE: 8-inch line 2,000 feet west of site
OWNERSHIP: Private



INDUSTRIAL RESOURCES
HOPKINSVILLE, KENTUCKY

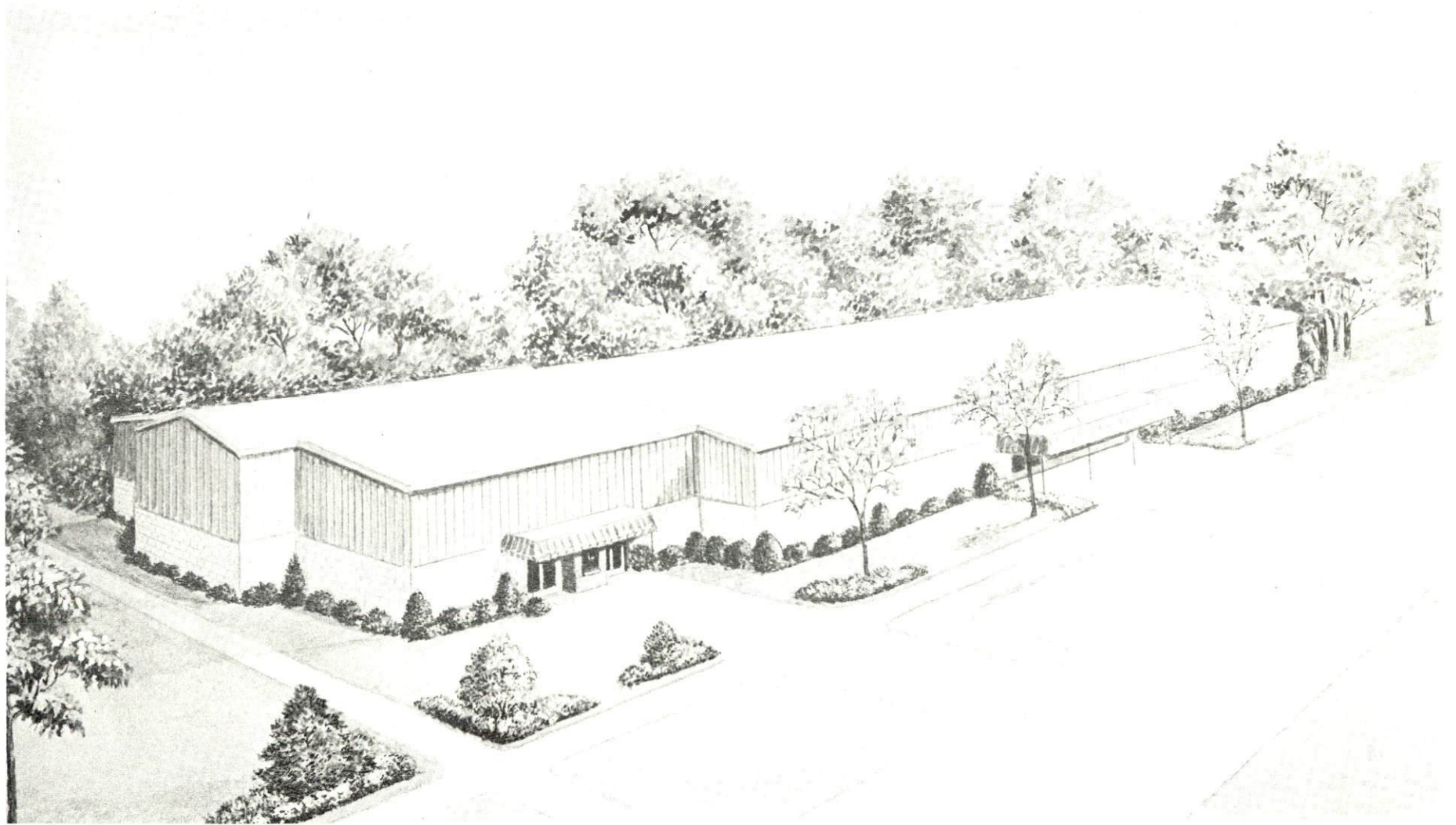
Prepared by
The Kentucky Department of Commerce
in cooperation with
The Hopkinsville Chamber of Commerce

1972

TABLE OF CONTENTS

<u>Chapter</u>	<u>Page</u>
INDUSTRIAL SITES	i
HOPKINSVILLE, KENTUCKY - A RESOURCE PROFILE	1
THE LABOR MARKET	4
Population Trends	4
General Employment Characteristics, 1970.	4
Manufacturing Employment Trends by Industry	4
Major Hopkinsville Manufacturing firms, Their Products and Employment	5
Wage Rates for Selected Occupations	5
Labor Organizations	6
Current and Future Labor Supply	6
Total Personal Income	7
Per Capita Personal Income.	7
EDUCATION	8
Public Schools	8
Vocational Schools	8
Colleges and Universities	9
TRANSPORTATION	10
Rail	10
Truck Service	10
Air	11
Bus	11
Taxi	11
Rental Services	11
POWER AND FUEL	12
Electricity	12
Natural Gas	12
WATER AND SEWERAGE	13
Water	13
Sewerage	13

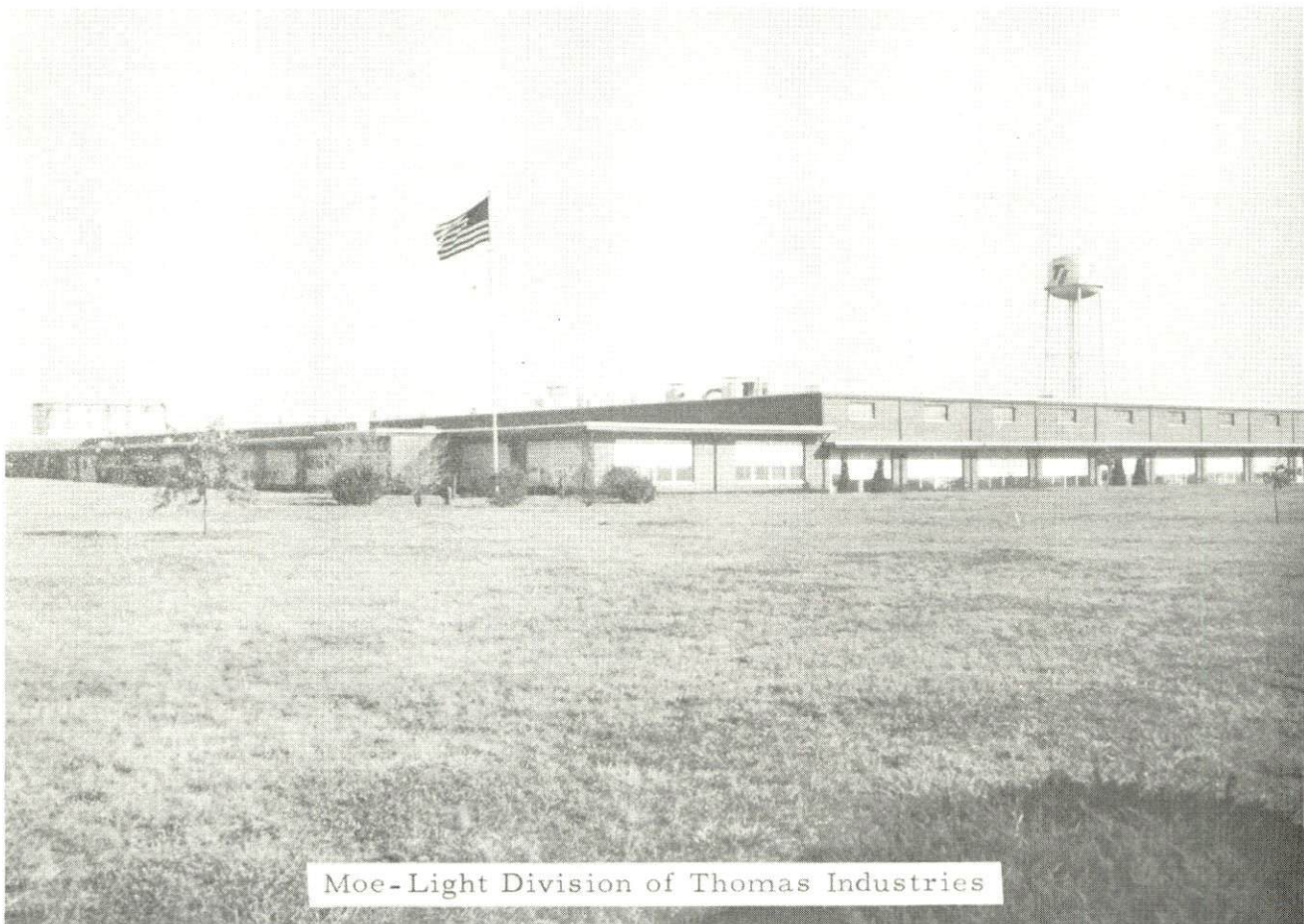
<u>Chapter</u>	<u>Page</u>
LOCAL GOVERNMENT14
City14
County14
Assessed Value of Property, 197114
Local General Property Tax Rates Per \$100 of Assessed Valuation, 197114
Utilities Gross Receipts Tax for Schools14
Planning and Zoning15
Safety15
Police15
Fire15
Rescue Service15
Sanitation16
HEALTH.17
Hospitals17
Nursing Homes17
Public Health17
OTHER LOCAL FACILITIES.18
Communications18
Library Services18
Religious Institutions18
Financial Institutions19
Hotels and Motels19
Clubs and Organizations19
RECREATION20
Local20
Area20
AGRICULTURE - NATURAL RESOURCES - CLIMATE21
Agriculture21
Natural Resources21
Climate22
HISTORY.23



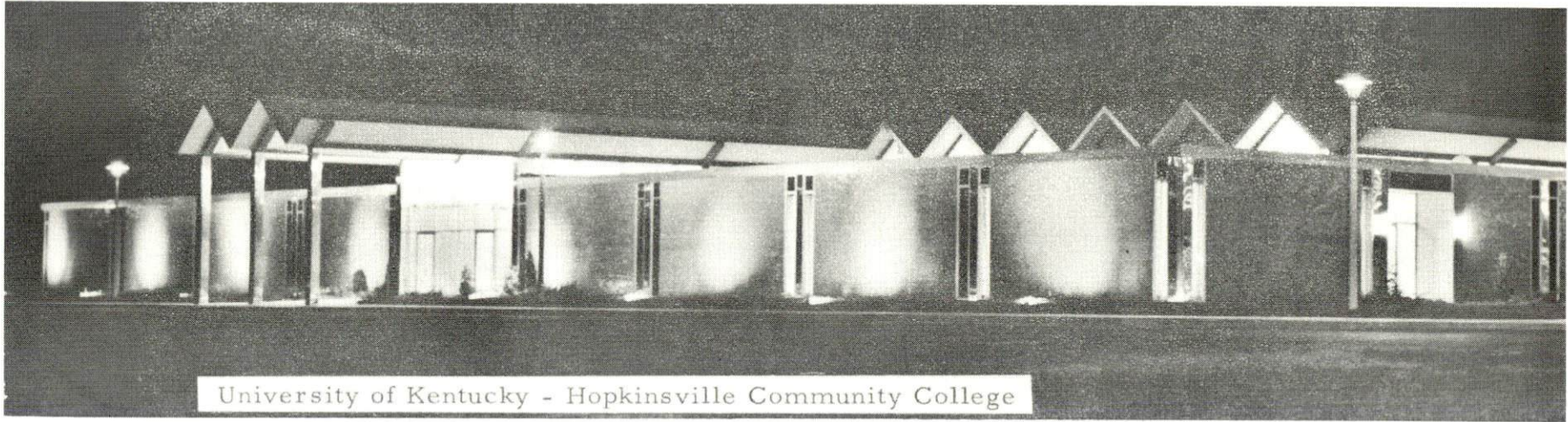
Convention Center and Exhibition Hall
80,000 square foot building



Hopkinsville Clothing Company



Moe-Light Division of Thomas Industries



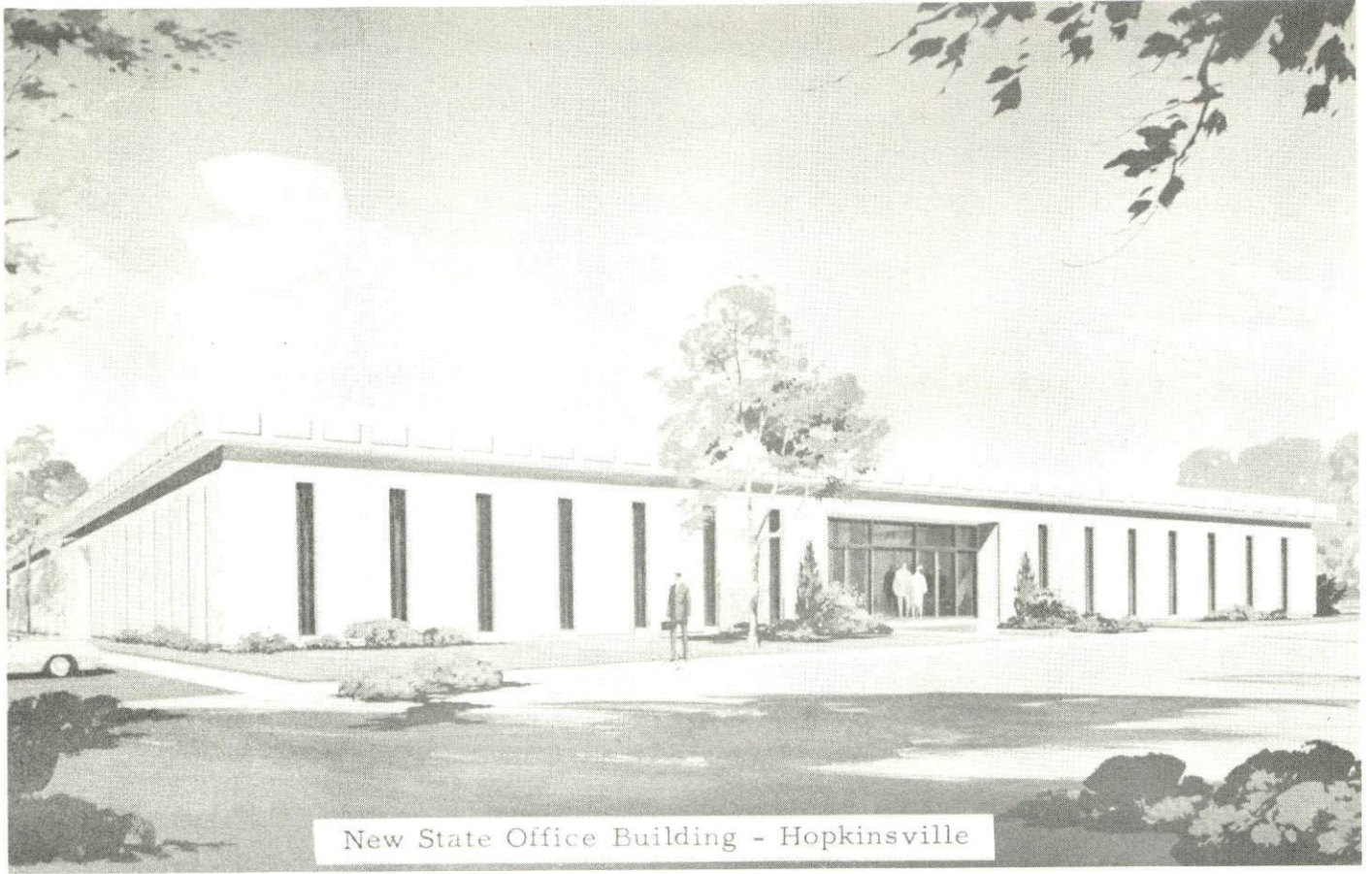
University of Kentucky - Hopkinsville Community College



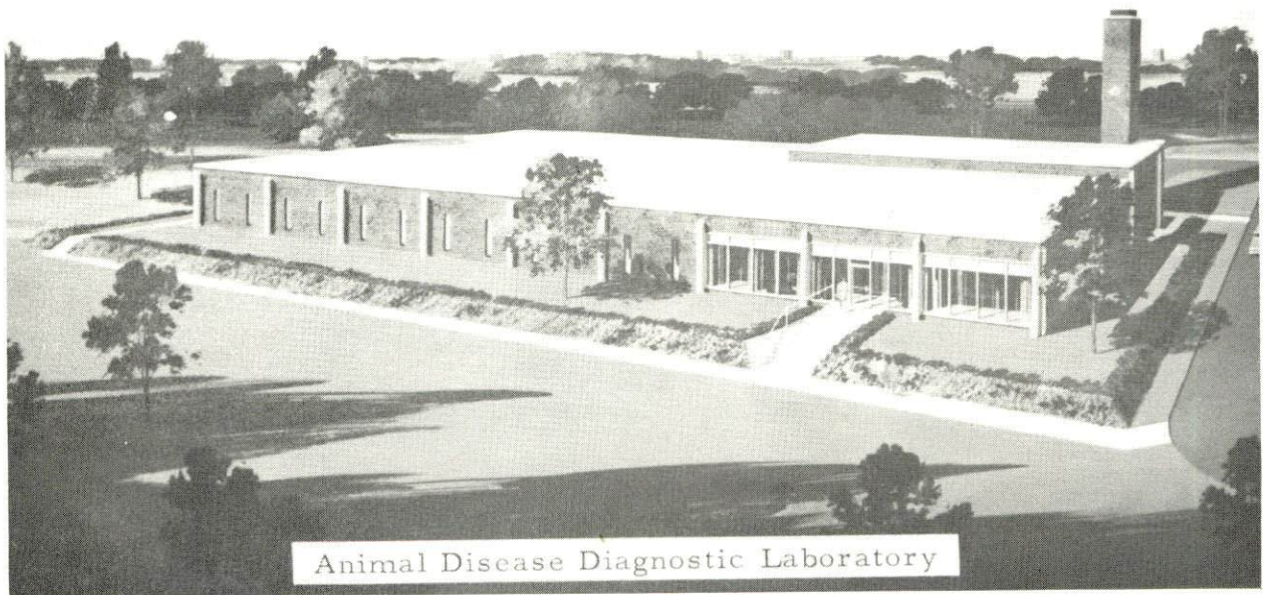
Christian County High School



Hopkinsville High School



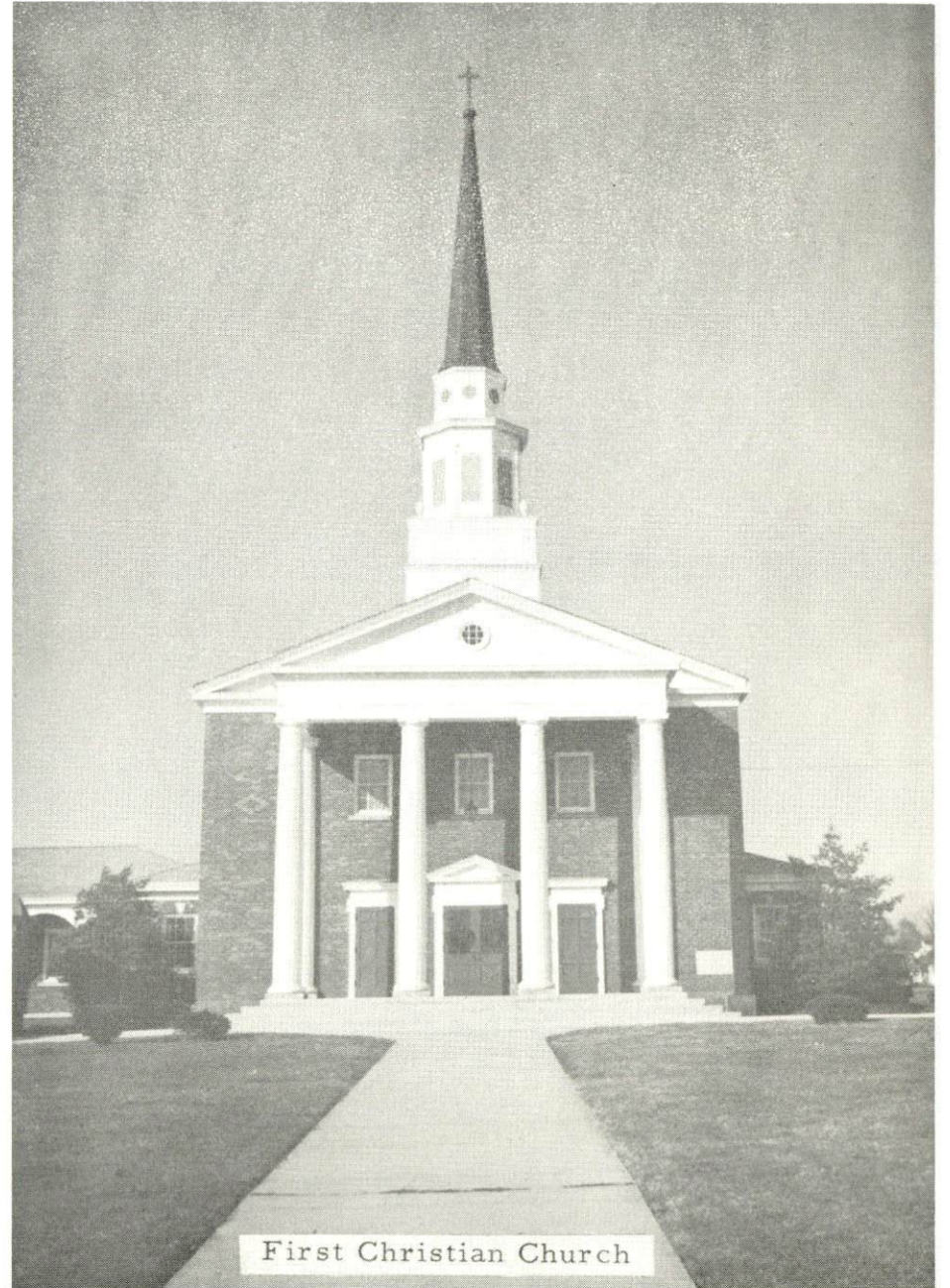
New State Office Building - Hopkinsville



Animal Disease Diagnostic Laboratory



Church of Christ



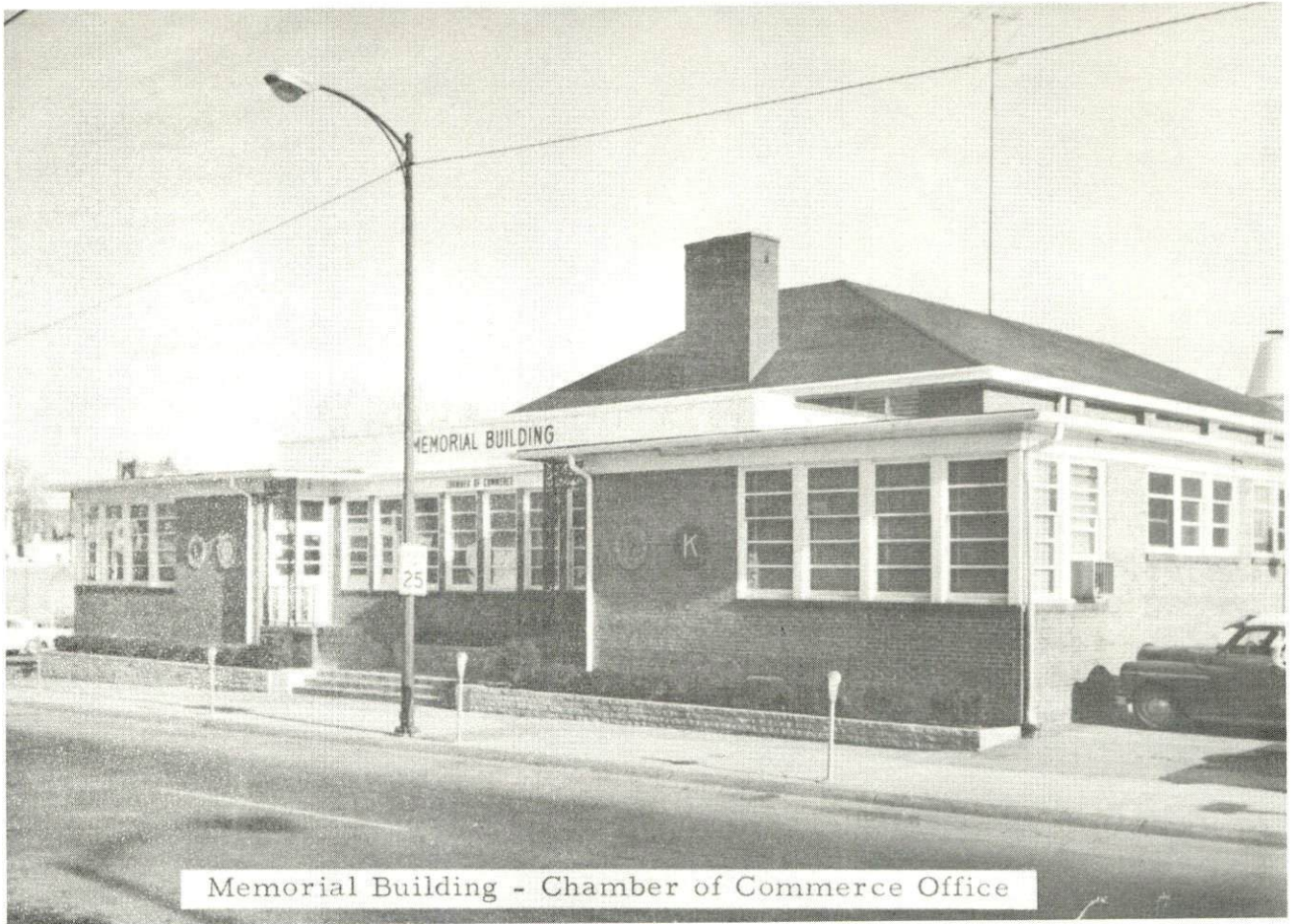
First Christian Church



First Baptist Church



First Methodist Church



Memorial Building - Chamber of Commerce Office



Hopkinsville-Christian County Vocational School

GENERAL HIGHWAY MAP CHRISTIAN COUNTY KENTUCKY

PREPARED BY THE
KENTUCKY DEPARTMENT OF HIGHWAYS
DIVISION OF PLANNING
IN COOPERATION WITH THE
U.S. DEPARTMENT OF TRANSPORTATION
FEDERAL HIGHWAY ADMINISTRATION
BUREAU OF PUBLIC ROADS

SCALE 1:125,000
METERS 0 1 2 3 4 5 6 7 8 9 10
MILES 0 1 2 3 4 5 6 7 8 9 10

SCALE FOR ENLARGEMENTS
POLYCONIC PROJECTION



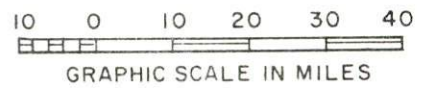
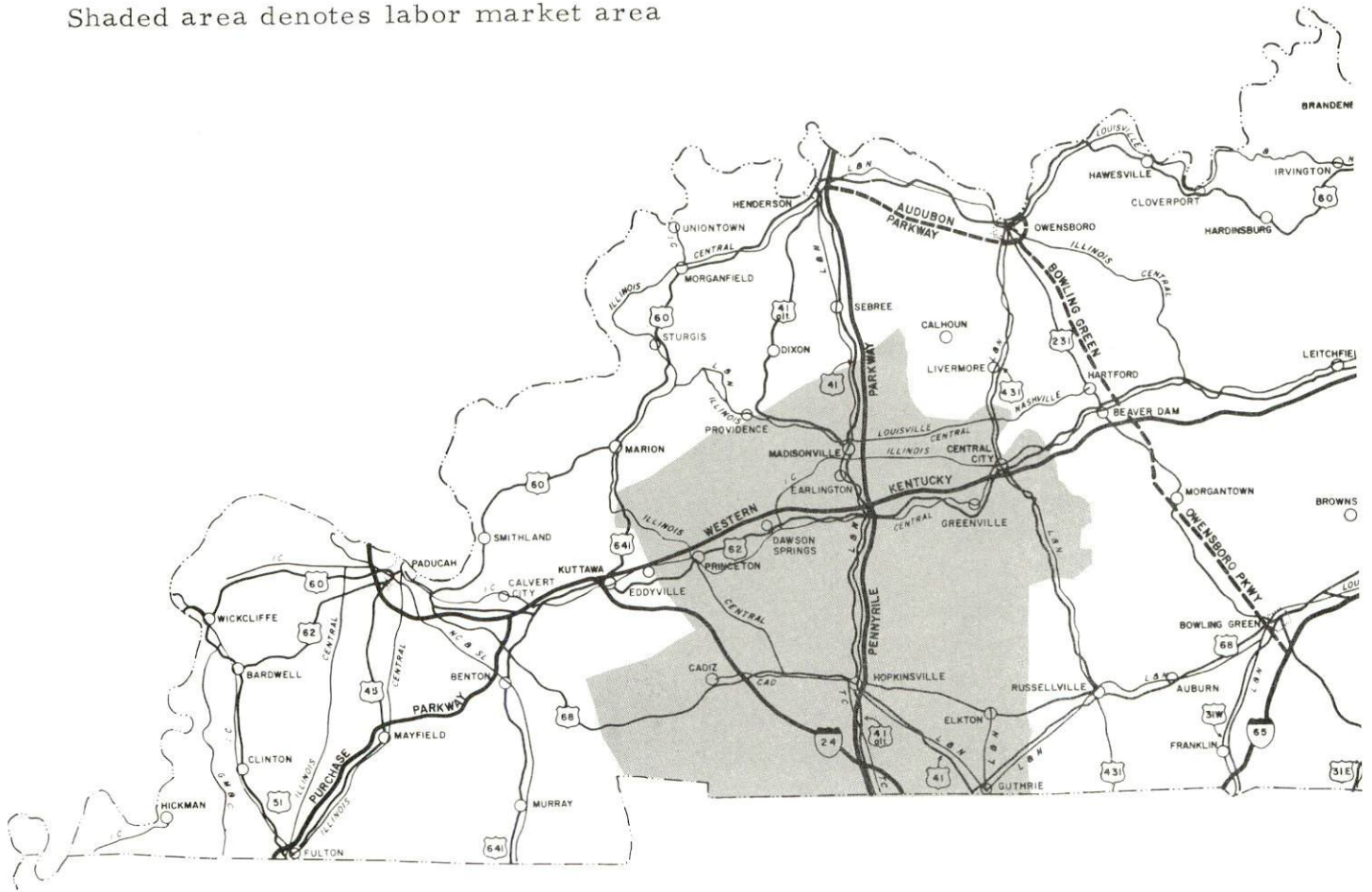
ORIGINAL DATA 1957

REVISION	DATE	BY	REASON

T
E
N
N
E
S
S
E
E

HOPKINSVILLE LABOR MARKET AREA

Shaded area denotes labor market area



HOPKINSVILLE, KENTUCKY - A RESOURCE PROFILE

Location

Hopkinsville, the county seat of Christian County, is a friendly, progressive community located in the southwestern section of Kentucky. Christian County is the second largest county in Kentucky and is bordered on the south by Tennessee. Hopkinsville is centrally located between the commercial centers of the south and the midwest. Louisville is 161 miles northeast; Nashville is 70 miles south; St. Louis is 240 miles northwest; Chicago is 375 miles north; and Cincinnati is 280 miles northeast.

The population of Hopkinsville in 1970 was 21,250, while the population of Christian County was 56,224.

The Economic Framework

Total employment in Christian County averaged 18,500 in 1970, with manufacturing providing 3,400 of these jobs. Trade and services, and government provided 4,150 and 4,200 jobs, respectively. The county's major industrial products include lighting fixtures, apparel, shoes, magnet wire, metal products, and plastic bowling balls.

Per capita personal income in the county in 1969 was \$4,610 and ranked first among the state's 120 counties. This indicates a relatively prosperous economy, with adequate room for future economic growth.

The Hopkinsville labor market area includes Christian County, the five adjoining Kentucky counties, and Montgomery and Stewart Counties in Tennessee. Total employment in the Kentucky portion of the labor market area in 1970 averaged 53,400. Manufacturing provided 9,100 of these jobs while trade and services provided 11,725. Industrial employment in the area has more than doubled since 1960 with sharpest gains in apparel, leather, machine and metal products industries.

Despite important industrial gains in recent years, the area still has a deficit of 4,750 manufacturing jobs when measured against the national industrial employment-population ratio. This indicates an area where the potential for additional manufacturing production is excellent.

Resources for Growth

1. There is a current estimated labor supply of 3,795 men and 4,660 women available for industrial jobs in Christian and the surrounding Kentucky counties. In addition, 9,260 young men and 8,515 young women will have become 18 years of age by 1977 and potentially available for work. Also, the current labor supply would be increased by the number of men and women in the adjoining Tennessee counties who are available for industrial jobs.

2. The local transportation capability is very good and will be enhanced by the completion of Interstate 24. The Pennyriple Parkway together with U. S. 41-A and U. S. 41 are considered major highway arteries into the industrial south and midwest. The Western Kentucky Parkway, 23 miles distant, is an important link to the east and west. The Hopkinsville-Christian County Airport has a 5,000-foot paved runway capable of accommodating small jets. Commercial air service is available at Outlaw Field, 20 miles away at Fort Campbell, Kentucky. The Louisville & Nashville Railroad and the Illinois Central Railroad provide Hopkinsville with a variety of services.

3. Energy - Electricity is furnished by the Hopkinsville Electric Plant Board and the Pennyriple RECC. Natural gas is supplied by the Western Kentucky Gas Company, whose source of supply is the Texas Gas Transmission Corporation. The local water supply is more than adequate for future growth.

4. Hopkinsville has eleven available industrial sites.

5. Education in Hopkinsville and Christian County is progressive. The city and county school systems were consolidated in July of 1971 in order to strengthen the educational system. Hopkinsville is the home of Hopkinsville Community College, an extension of the University of Kentucky. There are four universities, four senior colleges, and four community colleges within 75 miles of Hopkinsville.

Community Programs for Improvement

Recent community improvements include: completion of a new regional Mental Health Center, a new 40-store Pennyriple Mall, a \$140,000 city recreation center, new student center for the Community College, 80 units of low-rent housing for the elderly, several new apartment buildings, a new \$2,000,000 high school, a new elementary school, and a \$1,000,000 addition to Hopkinsville High School.

Recreation, Entertainment, and Livability

Hopkinsville offers a recreation program for children supervised by a full-time director and staff. There are five playgrounds, tennis courts, football field, park, swimming pools, skating rink, five baseball diamonds, recreation building, three indoor and two outdoor theaters, two country clubs, three golf courses, and riding stables.

Hopkinsville is only minutes away from some of Kentucky's largest and most beautiful state resort parks and lakes:

1. Kentucky Lake and Kentucky Dam, with 2,380 miles of shoreline, is the longest of any man-made lake in the world. Water activities include fine fishing, swimming, boating, and water skiing. The huge dam is TVA's largest and controls the waters of the Tennessee River near its junction with the Ohio River at Paducah. The dam is 206 feet high, 8,422 feet long, and cost \$115 million.

2. Lake Barkley and Barkley Dam has 1,004 miles of shoreline. It impounds a reservoir of more than 93,000 acres. The shoreline and islands are open for fishing, boating, camping, swimming, hunting, and picnicking. The dam near Grand Rivers is 157 feet high and 10,180 feet long.

3. Land Between the Lakes consists of 170,000 acres of wooded ridge formed into a peninsula by Kentucky and Barkley Lakes. Recreation activities include: fishing, water sports, hunting, and camping.

4. Kentucky Dam Village State Resort Park includes 1,200 acres. Facilities include Village Inn, Lake Lodge, cottages, and camping accommodations. The park has a pool, 18-hole golf course, horseback riding trail, playground, tennis court, airstrip, and a lake for boating and fishing.

5. Kenlake State Resort Park is an 1,800-acre resort park with hotel, cottages, and camping facilities. Activities include: fishing, boating, pool and lake swimming, horseback riding, golfing, tennis, and shuffleboard.

6. Pennyrile Forest State Resort Park is a 436-acre resort park with lodge, cottages, and camping accommodations. The park facilities and activities include: lake, pool for swimming, fishing, golfing, horseback riding, hiking, and picnicking.

7. Lake Barkley State Resort Park is a 3,000-acre resort park. Recreation includes: fishing, boating, swimming, and golfing. A new \$7,000,000 lodge has just been completed.

THE LABOR MARKET

POPULATION TRENDS ^{1/}

Area	Population			Percent Change	
	1970	1960	1950	1960-70	1950-60
Hopkinsville	21,250	19,465	12,526	+9.2	+55.4
Labor Market Area	154,550	156,460	149,447	-3.1	+ 4.7
Christian County	56,224	56,904	42,359	-1.2	+34.3
Caldwell County	13,179	13,073	13,199	+0.8	- 1.0
Hopkins County	38,167	38,458	38,815	-0.8	- 0.9
Muhlenberg County	27,537	27,791	32,501	-0.9	-14.5
Todd County	10,823	11,364	12,890	-4.8	- 7.6
Trigg County	8,620	8,870	9,683	-2.8	- 8.4

GENERAL EMPLOYMENT CHARACTERISTICS, 1970 ^{2/}

Major Employment Group	Employment	
	Christian County	Labor Market Area
TOTAL	18,500	53,400
Agricultural	1,900	5,900
Nonagricultural	16,600	47,500
Manufacturing	3,400	9,100
Trade and Services	4,150	11,725
Government	4,200	9,200

MANUFACTURING EMPLOYMENT TRENDS BY INDUSTRY
SEPTEMBER 1970 AND 1960 ^{3/}

Industry	Christian County			Labor Market Area		
	1970	1960	%Change	1970	1960	%Change
TOTAL	3,414	2,145	+ 59.2	9,932	4,320	+ 129.9
Food & Kindred Products	147	303	- 51.5	522	506	+ 3.2
Tobacco	11	4	+175.0	34	35	- 2.9
Apparel, Textiles, Leather	1,170	839	+ 39.5	3,269	1,933	+ 69.1
Lumber & Furniture	94	182	- 48.4	952	874	+ 8.9
Printing, Publishing, Paper	57	42	+ 35.7	129	121	+ 6.6
Chemicals, Petroleum, Coal, Rubber	133	39	+241.0	596	49	+1116.3
Stone, Clay & Glass	65	54	+ 20.4	73	75	- 2.7
Primary Metals	499	0	+100.0	616	21	+2833.3
Machinery & Metal Products	1,089	682	+ 59.7	3,585	703	+ 410.0
Other	149	0	+100.0	156	3	+5100.0

MAJOR HOPKINSVILLE MANUFACTURING FIRMS,
THEIR PRODUCTS AND EMPLOYMENT ^{4/}

Firm	Product	Employment		
		Total	Male	Female
Central Tool & Die, Inc.	Dies, tools	73	68	5
Ebonite Co.	Bowling balls	162	150	12
Elk Brand Mfg. Co., Inc.	Men's & boys' clothing	150	25	125
Faultless Caster Co.	Decorative furniture, hardware	100	50	50
Hopkinsville Clothing Mfg. Co.	Men's & boys' jeans	452	98	354
Hopkinsville Milling Co.	Wheat flour, corn meal	61	59	2
International Shoe Co.	Women's shoes	412	101	311
K-Y Clothing Mfg., Inc.	Men's work coveralls, coats, jackets	91	10	81
Mid Continent Spring Co. of Ky.	Compression, torsion springs	171	87	84
R. C. Owen Co.	Hardwood flooring and lumber pallets	98	96	2
Phelps Dodge Magnet Wire Corp.	Magnet wire	450 (est.)		
Phillips Products Co., Inc.	Plastic products	104	60	44
Southwestern Tobacco Co., Inc.	Tobacco redrying	175	115	60
Thomas Industries, Inc.	Lighting fixtures	800	425	375
USM Corporation	Fasteners	65	58	7

WAGE RATES FOR SELECTED OCCUPATIONS
HOPKINSVILLE, KENTUCKY ^{5/}

Classification	Wages Per Hour		
	Starting	Maximum	Prevailing
<u>Production Employees</u>			
Assembler	\$1.95	\$2.13	\$2.13
Inspector	1.85	2.74	2.74
Production Laborer	1.85	2.13	2.13
Welder, Arc or Acetylene (Class-A)	3.25	3.85	3.50
<u>Service Employees</u>			
Electrician (Class-A)	\$3.00	\$7.10	\$7.10
Laborer	2.00	3.67	2.00
Machinist	3.45	4.00	3.85
Mechanic, Maintenance	3.10	3.50	3.30
Truck Driver, Industrial (Class-A)	2.00	4.76	3.00

(Cont'd.)

<u>Classification</u>	<u>Wages per Hour</u>		
	<u>Starting</u>	<u>Maximum</u>	<u>Prevailing</u>
<u>Office Employees</u>			
Bookkeeper	\$2.00	\$2.75	\$2.25
File Clerk	1.70	2.35	2.00
Receptionist	1.70	2.35	2.00
Secretary	2.00	2.75	2.50
Typist	1.60	2.45	1.80

LABOR ORGANIZATIONS

<u>Union</u>	<u>Representing Workers at:</u>
Teamsters & International Brotherhood of Electrical Workers	Thomas Industries, Inc.
United Mine Workers of America	International Shoe Co.
International Leather, Plastic and Novelty Workers	Ebonite Company
International Association of Machinists	USM Corporation
Retail, Wholesale & Department Store Workers	Hopkinsville Milling Co.

CURRENT AND FUTURE LABOR SUPPLY -
HOPKINSVILLE LABOR MARKET AREA

<u>County</u>	<u>Current Labor Supply 1971 ^{6/}</u>			<u>Future Labor Supply by 1977 ^{7/}</u> <u>(Becoming 18 Years of Age)</u>		
	<u>Total</u>	<u>Male</u>	<u>Female</u>	<u>Total</u>	<u>Male</u>	<u>Female</u>
Labor Market Area	8,457	3,795	4,662	17,776	9,260	8,516
Christian	1,820	864	956	6,320	3,356	2,964
Caldwell	950	518	432	1,422	707	715
Hopkins	2,018	771	1,247	4,440	2,347	2,093
Muhlenberg	2,164	815	1,349	3,313	1,687	1,626
Todd	770	460	310	1,263	642	621
Trigg	735	367	368	1,018	521	497

TOTAL PERSONAL INCOME 8/

<u>Area</u>	<u>1969*</u>	<u>1959</u>	<u>%Change</u>
Christian County	\$ 276,073,000	\$ 93,351,000	+195.7
Labor Market Area	524,680,000	224,225,000	+134.0
Kentucky	9,202,000,000	4,655,000,000	+ 97.6

PER CAPITA PERSONAL INCOME 9/

<u>Area</u>	<u>1969*</u>	<u>1959</u>	<u>%Change</u>
Christian County	\$4,610	\$1,600	+188.1
Labor Market Area	\$2,070 to 4,610	\$941 to 1,619	NA
Kentucky	2,847	1,552	+ 83.4

*Preliminary figures.

EDUCATION

Public Schools

Christian County

Total Enrollment	14,156
Elementary	7,857
Junior High	3,323
High School	2,976
Student-Teacher Ratio	25-1
Elementary	25-1
Junior High	29-1
High School	22-1
State Rating of High School	Comprehensive
Other Accreditations	Southern Association of Colleges and Schools
Percent High School Graduates to College	55.4
Bonded Indebtedness, June 30, 1971	\$7,306,000

Vocational Schools

	<u>Nearest Area School</u>	<u>Nearest Extension Center</u>
Location	Madisonville Area Vocational School	Christian County Extension Center
Miles Distant	Madisonville 35	Hopkinsville
Curriculum	Practical Nursing Electronics (Communications) Auto Mechanics Auto Body Repair Carpentry Drafting Electricity Machine Shop	Appliance Repair Auto Mechanics Carpentry Drafting Electricity Welding

Colleges and Universities

<u>Name</u>	<u>Area - Within 80 Miles</u>		<u>Highest Degree Conferred</u>
	<u>Location</u>	<u>Enrollment</u>	
Hopkinsville Community College	Hopkinsville	540	Associate
Western Kentucky University	Bowling Green	11,400	Masters
Murray State University	Murray	7,063	Masters
Kentucky Wesleyan	Owensboro	839	Baccalaureate
Brescia College	Owensboro	957	Baccalaureate
Madisonville Community College	Madisonville	359	Associate
Henderson Community College	Henderson	593	Associate
Paducah Community College	Paducah	1,228	Associate
Austin Peay St. College	Clarksville, Tenn.	3,500	Masters
Vanderbilt University	Nashville, Tenn.	6,000	Ph. D.
George Peabody College	Nashville, Tenn.	2,100	Ph. D.
Tennessee University	Nashville, Tenn.	4,800	Masters

TRANSPORTATION

Rail

Lines serving Hopkinsville - Louisville & Nashville Railroad, Illinois
Central Railroad

Services - Freight, switching, siding, piggyback facilities, REA pickup
and delivery

RAILWAY TRANSIT TIME FROM HOPKINSVILLE, KENTUCKY, TO: 10/

City	No. of Days		City	No. of Days	
	CL			CL	
Atlanta, Ga.	3		Los Angeles, Calif.	5	
Birmingham, Ala.	3		Louisville, Ky.	2	
Chicago, Ill.	2		Nashville, Tenn.	2	
Cincinnati, Ohio	2		New Orleans, La.	3	
Cleveland, Ohio	4		New York, N. Y.	5	
Detroit, Mich.	5		Pittsburgh, Pa.	4	
Knoxville, Tenn.	3		St. Louis, Mo.	2	

Truck Service

Company

Harper Truck Service, Inc.
Marvin Hayes Lines, Inc.*
A. Ligon Truck Line, Inc.
(United Trucking)
McLean Trucking Co.*
Renner's Express, Inc.*
T. I. M. E. -DC, Inc.
Wilson Freight Co.
United Parcel Service*
Pulaski Highway Express, Inc.*
REA*

Home Office

Paducah, Kentucky
Clarksville, Tennessee

Lebanon, Kentucky
Winston-Salem, North Carolina
Louisville, Kentucky
Lubbock, Texas
Cincinnati, Ohio
Louisville, Kentucky
Nashville, Tennessee
Chicago, Illinois

*Terminal - Hopkinsville.

HIGHWAY MILES AND TRUCK TRANSIT TIME IN DAYS FROM
HOPKINSVILLE, KENTUCKY, TO SELECTED MARKET CENTERS

City	Highway Miles	Delivery Time ^{11/}		City	Highway Miles	Delivery Time	
		LTL	TL			LTL	TL
Atlanta, Ga.	323	2-3	1	Los Angeles, Calif.	1,985	7-9	4-5
Birmingham, Ala.	292	3-4	1-2	Louisville, Ky.	161	1-2	1
Chicago, Ill.	375	2-3	1	Nashville, Tenn.	70	1	1
Cincinnati, Ohio	280	2	1	New Orleans, La.	602	3-4	2
Cleveland, Ohio	526	3	2	New York, N. Y.	920	4-5	2-3
Detroit, Mich.	545	3	1-2	Pittsburgh, Pa.	580	3	2
Knoxville, Tenn.	254	2	1	St. Louis, Mo.	240	2	1

Air

	<u>Local</u>	<u>Nearest Commercial</u>
	Hopkinsville-Christian County Airport	Outlaw Field, Fort Campbell
Location:	Hopkinsville	20 miles from Hopkinsville
Runways:	1 paved	2 paved
Length:	5,000 ft.	4,100 ft.; 5,000 ft.
Traffic Control:	Wind sock	Unicom and ADF instrument approach system
Lighting:	Sundown to sunrise	Lighted beacon, and runway
Services:	80-100 octane, charter flight training, tie down, taxi, car rental, minor repairs	80-87-100-130 octane, car rental, taxi, A & E major repairs, restaurant, teletype, radio, hangars (storage), tie down, loading ramp, charters, Ozark Airlines

Bus

Southern Greyhound Bus Lines
Bowling Green-Hopkinsville Bus Line
West Kentucky Stages

Taxi

24-hour radio-dispatched service by three cab companies

Rental Services

Car and truck rentals

POWER AND FUEL

Electricity

Company serving Hopkinsville - Hopkinsville Electric Plant Board
Source of power - Tennessee Valley Authority
Total generating capacity - 19,400,000 KW; voltage 7,200/12,470
Industrial rates furnished by - Hopkinsville Electric Plant Board,
Hopkinsville, Kentucky

Company serving Christian County - Pennyrile RECC
Source of power - Tennessee Valley Authority
Total generating capacity - 19,400,000 KW; voltage 7,200/14,400
Industrial rates furnished by - Pennyrile RECC, Hopkinsville, Kentucky

Natural Gas

Company serving Hopkinsville - Western Kentucky Gas Company
Source of supply - Texas Gas Transmission Corporation
Size of transmission lines - 6 and 8 inches
Distribution lines - 2 through 8 inches
BTU content - 1,000
Specific gravity - .6
Distribution pressure - 10 to 50 psi
Rates - Rates will be furnished upon request by the Western Kentucky
Gas Company, Hopkinsville, Kentucky.

WATER AND SEWERAGE

Water

Company serving - Hopkinsville Sewerage and Water Works Commission
Source - 4 impoundments and Little River
Treatment plant capacity - 5,000,000 gpd
Average daily consumption - 3,250,000 gallons
Peak daily consumption - 4,140,000 gallons
Type treatment - Flash mixer, flocculation, clarification, filtration,
alum, lime, chlorine and carbon
Storage capacity - 1,750,000 gallons
Size mains - 4, 6, 8, 10, and 12 inches
Average pressure - 80 psi
Average temperature - winter 45 degrees - summer 75 degrees

MONTHLY WATER RATES FOR WHOLESALE AND INDUSTRIAL CONSUMERS

First	3,000 cu. ft.	\$.50	per 100 cu. ft.
Next	3,000 cu. ft.	.40	per 100 cu. ft.
Next	3,000 cu. ft.	.30	per 100 cu. ft.
Next	3,000 cu. ft.	.25	per 100 cu. ft.
Next	3,000 cu. ft.	.20	per 100 cu. ft.
All over	15,000 cu. ft.	.16 2/3	per 100 cu. ft.

Surface water sources - Little River
Average discharge - South Fork Little River at Hopkinsville 65.1 cfs
(20-year record, USGS)
Expected ground water yield - varies widely from a high of 200 gpm to
5 gpm or less

Sewerage

Company serving - Hopkinsville Sewerage and Water Works Commission
Design capacity - 3,000,000 gpd
Average daily flow - 2,210,000 gallons; Treatment - primary and secondary
Type treatment - grit removal, comminutor, primary settling and sludge
removal, sludge thickener, two trickling filters, secondary settling and
sludge removal
Treated effluent discharged into - North Fork of Little River
Size of sanitary mains - 8, 10, 12, 15, and 21 inches
Size of storm mains - 12 and 24 inches
Rates - 80 percent of monthly water bill

LOCAL GOVERNMENT

City

Structure - Mayor - 4-year term; 12 councilmen - 2-year terms
 Budget 1971-72 - General Fund \$1,300,000
 Fees and licenses - Licenses range from \$10 to \$350 annually; payroll tax is one percent of gross wages.

County

Structure - County Judge - 4-year term; 8 magistrates - 4-year terms
 Budget 1971-72 - General Fund \$433,700; Road Fund \$150,000

Assessed Value of Property, 1971

<u>Classes of Property*</u>	<u>Hopkinsville</u>	<u>Christian County</u>
Real Estate	\$92,480,760	\$199,864,951
Tangibles	24,108,215	58,608,834
Public Service		18,696,556

Local General Property Tax Rates Per \$100 of Assessed Valuation, 1971 ^{12/}

<u>Taxing Unit**</u>	<u>Hopkinsville</u>	<u>Christian County</u>
State	\$.015	\$.015
County	.135	.135
School	.547	.404
City	.305	
Total	\$1.002	\$.554

Utilities Gross Receipts Tax for Schools

Christian County levies a 3 percent tax on utilities receipts for schools. This tax is paid by all consumers of utilities. Exempted are receipts from utilities services that are resold and the receipts from the sale of energy or energy producing fuels that exceed 3 percent of the cost of production in manufacturing, processing, mining or refining.

*Property assessed at 100 percent of fair value.

**Manufacturing machinery, raw materials inventories and goods in process inventories are not subject to local tax. State rate is only \$0.15 per \$100.

Planning and Zoning

Agency - Hopkinsville-Christian County Planning Commission
Plans completed - Comprehensive Plan, Subdivision Regulations,
Zoning Ordinance, Housing Study, Fringe Area Study, Public Improve-
ments Program, Capital Improvements Budget
Codes adopted - Building Code, Housing Code, Plumbing Code, Electric
Code, Fire Code, Gas Code

Safety

<u>Police</u>	<u>Hopkinsville</u>	<u>Christian County</u>
Total staff	48	6
Radio-patrol cars	6	5

Fire

American Insurance Association Fire Rating	5
Full-time staff	43
Equipment:	
1,000 gpm pumpers	3
750 gpm pumpers	2
1,250 gpm pumper	1
ladder truck	1 (85 feet)
utility truck	1
hose wagon	1

Rescue Service

Christian County Rescue Squad
Number of volunteers - 45
Equipment - 2 generators, lake dragging equipment, skin diving equip-
ment, 8 privately owned boats for use, 27 radio-equipped cars
(citizen band), and a station wagon
Personnel training - 3 professional scuba divers, 3 assistant divers,
18 men skilled in lake dragging, most personnel trained in standard
first aid and some with advanced Red Cross training

Sanitation

	<u>Hopkinsville</u>	<u>Christian County</u>
Type service	municipal	private
Cost:		
residential	\$2.30 per month	contract
business	contract	contract
Collection frequency:		
residential	weekly	when desired
business	daily	when desired
Trash pickup	contract	when desired
Disposal method	sanitary land fill	sanitary land fill

HEALTH

Hospitals

<u>General Hospital</u>	<u>Location</u>	<u>Beds</u>
Jennie Stuart Memorial Hospital	Hopkinsville, Kentucky	227

General hospital facilities - 4 operating rooms, coronary care unit, pediatrics, X-ray, OB section, radioisotope, laboratory, pathology, physical therapy, blood bank, intensive care units, pharmacy, renal dialysis unit, stroke unit and emergency room affiliated with licensed practical nurses school and an AA nursing program with Hopkinsville Community College

Other - The Pennyroyal Mental Health Clinic and the Western State Hospital, a mental treatment facility, are located in Hopkinsville.

Nursing Homes

	<u>Number</u>	<u>Beds</u>
Extended care homes	3	113
Personal care homes	5	303

Public Health

Facility - Christian County Health Department

Staff - 1 doctor, 5 registered nurses, 1 administrative assistant, 3 sanitarians, and 3 clerks

Budget 1971-72 - \$127,280

OTHER LOCAL FACILITIES

Communications

Telephone - South Central Bell Telephone Company
Services - standard

Telegraph - Western Union
Services - standard

Postal - U. S. Post Office
Class - First
Mail received - 7 times daily
Mail dispatched - 7 times daily

Newspapers - The Kentucky New Era
Daily and circulation - 13,600
Other papers received from - Evansville, Indiana; Louisville, Kentucky;
Nashville, Tennessee

Radio - WHOP-WKOA
Stations received from Fort Campbell, Cadiz, Russellville, and
Bowling Green, Kentucky; Nashville, Tennessee

Television -
Reception from - 3 stations from Nashville, Tennessee, received without
cable service; Louisville, Paducah, Bowling Green, Kentucky;
Evansville, Indiana, and Cape Girardeau, Missouri, received with
cable service
Kentucky Educational Television - Madisonville transmitter, Channel 35;
Nashville transmitter

Library Services

Public Libraries - Hopkinsville Public Library
Size collection - 22,040 volumes
Circulation, 1970-71 - 59,214
Services - bookmobile, microfilm, microfilm-reader, pictures, records,
film strips, slides, maps and athletic equipment

Religious Institutions

Number of churches - 35
Denominations - Baptist, Church of Christ, Christian, Methodist, Catholic,
Presbyterian, Episcopal, Pentecostal, Christian Science, Assembly of
God, Latter Day Saints, Seventh-Day Adventists, Lutheran, Church of
God, Church of the Nazarene, Jehovah's Witnesses, Universalist,
Adath Israel, Salvation Army

Financial Institutions

<u>Bank</u>	<u>Statement as of June 30, 1971</u>	
	<u>Assets</u>	<u>Deposits</u>
First City Bank & Trust Co.	\$39,127,618.41	\$34,608,864.01
Planters Bank & Trust Co.	55,606,766.54	50,748,016.83
<u>Savings and Loan Associations</u>	<u>Assets</u>	<u>Shared Accounts</u>
Hopkinsville Federal Savings and Loan Association	\$28,399,447.83	\$23,909,119.86
First Federal Savings and Loan Association	14,774,152.54	11,927,696.46

Hotels and Motels

Number - 18
Units - 512

Clubs and Organizations

Business and Civic - Chamber of Commerce, Jaycees, Rotary, Kiwanis, Lions, Optimist, Elks, VFW, Farm Bureau, Pioneers, Inc., Civitan, Western Kentucky State Fair, Pennyriple Area Development Association

Fraternal - Shriners, Masons, Moose, Epsilon Sigma Alpha, IOOF, Ye Ole Timers Club, DAV, Woodsmen of the World

Women's - National Secretaries Association, Altrusa Club, Eastern Star, Rebekahs, Business and Professional Women's Club, Junior Auxiliary, DAR, Homemakers, Garden Club, AAUW, LWV, Daughters of the Confederacy, Jaycettes; Lions, Civitan, Elks, Moose, American Legion and VFW Auxiliaries

Youth - Junior Achievement, Boy Scouts, Girl Scouts, YMCA, Brownies, FFA, FHA, 4-H, FTA, Beta Club, Girl Guards and Sunbeams

RECREATION

Local

Public Recreation Facilities

Supervised program - full-time director and staff

Park - 1

Playgrounds - 5

Swimming pool - 1

Tennis courts - 5 locations

Baseball diamonds - 5

Football field - 1

Other - indoor basketball and other recreation facilities are contained in the city recreation building; skating rink

Private Recreation Facilities

Country clubs - 2

Golf courses - 3

Swimming pools - 4

Movie theaters - 3 indoor; 2 outdoor

Bowling lanes - 1

Other - riding stables, trap shooting

Tourist Attractions

2 dude ranches for children, The Jefferson Davis Monument State Park, Western Kentucky State Fair

Cultural Events

Community Concert Association, Art Guild exhibits and community theater group

Area (Within 50 miles)

Pennyrile Festival of Arts - art exhibits, two concerts, drama, flower show

Pennyrile Forest and State Resort Park

Lake Barkley State Park with a new \$7 million lodge considered one of the finest in the nation

Land Between the Lakes National Recreation Area

Lake Barkley

Kentucky Lake

Kenlake State Resort Park

AGRICULTURE - NATURAL RESOURCES - CLIMATE

Agriculture 13/

	<u>Christian County</u>	<u>Labor Market Area</u>
Total land area (acres)	464,000	1,888,640
Percent of area in farm land	73.2	61.8
Number of farms	1,653	6,340
Average size of farms (acres)	205.4	184.1
1964 value of all farm products	\$13,629,902	\$37,769,049
Value per farm	8,246	5,957
Total crop sales	7,736,478	20,394,252
Total livestock & livestock products	5,886,168	17,365,045
1968 agricultural production included:		
Burley tobacco (lbs.)	5,551,000	11,390,000
Corn (bu.)	3,477,000	9,587,000
Cattle and calves (number)	54,300	192,500
Hogs and pigs (number)	44,500	141,400
Milk production (1967) (lbs.)	11,990,000	72,100,000

Natural Resources

Principal Mineral resources	Limestone, petroleum, and miscellaneous clay
Other mineral resources	Coal; dimension stone and sandstone has been quarried in the past.
Acres of commercial forest land	129,600
Most abundant tree species	Red oaks, white oaks, hickories, sweet gum, ash, yellow poplar, and hard maple

U. S. DEPARTMENT OF COMMERCE, WEATHER BUREAU
 IN COOPERATION WITH KENTUCKY AGRICULTURAL EXPERIMENT STATION
 CLIMATOGRAPHY OF THE UNITED STATES NO. 20 - 15

LATITUDE 36° 51'
 LONGITUDE 87° 30'
 ELEV. (GROUND) 540 Ft.

CLIMATOLOGICAL SUMMARY

STATION HOPKINSVILLE,
 KENTUCKY

MEANS AND EXTREMES FOR PERIOD 1931-1960

Month	Temperature (°F)							** Mean degree days	Precipitation Totals (Inches)						Mean number of days						Month		
	Means			Extremes					Mean	Greatest daily	Year	Snow, Sleet			Precip. .10 inch or more	Temperatures							
	Daily maximum	Daily minimum	Monthly	Record highest	Year	Record lowest	Year					Mean	Maximum monthly	Year		Greatest daily	Year	90° and above	Max.			Min.	
																			32° and below	32° and below		0° and below	0° and below
(a)	30	30	#	30		30		#	#	30		16	ç		ç		30	30	30	30	30		
Jan.	47.1	27.4	37.3	78	1943	-17	1942+	859	5.35	4.47	1951	2.1	10.0	1948	7.0	1931	8	0	4	21	1	Jan.	
Feb.	50.2	29.2	39.7	80	1932	-22	1951	708	4.01	4.75	1949	1.9	7.0	1951+	7.0	1951	7	0	2	18	*	Feb.	
Mar.	58.3	35.5	46.9	84	1945+	-3	1960	570	5.08	3.80	1935	2.4	25.7	1960	12.0	1960	8	0	1	13	*	Mar.	
Apr.	69.7	46.0	57.8	89	1960+	22	1950	228	4.08	3.37	1942	T	T	1936	T	1936	8	0	*	3	0	Apr.	
May	78.6	54.8	66.7	97	1937	31	1954	65	4.21	3.86	1953	0	0				7	2	0	*	0	May	
June	87.2	63.4	75.3	105	1954+	40	1956	0	4.11	4.22	1960	0	0				6	12	0	0	0	June	
July	90.4	66.6	78.5	110	1936	45	1947	0	3.93	4.13	1933	0	0				6	19	0	0	0	July	
Aug.	89.9	65.5	77.7	108	1954	41	1946	0	3.43	2.93	1949	0	0				6	17	0	0	0	Aug.	
Sept.	84.2	58.1	71.2	104	1954+	34	1942	39	3.00	2.85	1954	0	0				5	9	0	0	0	Sept.	
Oct.	73.5	46.5	60.0	98	1953	21	1952	198	2.42	2.55	1947	0	0				5	1	*	2	0	Oct.	
Nov.	58.6	35.1	46.9	85	1950	-4	1950	543	3.90	4.07	1948	.6	3.0	1950	3.0	1950	6	0	*	14	*	Nov.	
Dec.	48.7	28.9	38.8	78	1951	-5	1960+	812	4.00	3.32	1931	.5	5.3	1935	4.0	1945	6	0	2	20	*	Dec.	
Year	69.7	46.4	58.1	110	July 1936	-22	Feb. 1951	4022	47.52	4.75	Feb. 1949	7.5	25.7	Mar. 1960	12.0	Mar. 1960	78	60	9	91	1	Year	

(a) Average length of record, years.

T Trace, an amount too small to measure.

** Base 65°F Climatology of the United States No. 83-13, Kentucky.

+ Also on earlier dates, months, or years.

* Less than one half.

ç Data from 16 complete years and 13 years with values one or more months missing.

Official Normals, based on 1931-60 data.

HISTORY

Christian County lies in the southwestern part of Kentucky, its southern boundary formed by the Tennessee state line. Covering 726 square miles, Christian is the state's second largest county. It is well drained, since the headwaters of the Pond, Tradewater, Little and West Fork of the Red Rivers are near its center. The land surface is level to gently rolling in the southern region and broken and hilly in the north with many sinkholes and caves throughout. The limestone-and-clay-based soil is fertile, especially in the south. There are some forested areas, principally in the northern area, where an unusual natural bridge is located.

The first settlement in Christian County was made by John Montgomery and James Davis of Virginia in 1785. They built a block house on the West Fork of Red River near a large cave in which they hid from the Indians. Other settlers soon came, and within eleven years enough people had arrived to ask the Legislature for a new county organization. Christian became Kentucky's twenty-first county in 1796, taking its name from Colonel William Christian, a Virginia legislator and Revolutionary War figure who moved to Kentucky, where he lost his life in an Indian conflict.

Hopkinsville, the county seat, was built on land given by Bartholomew Wood in 1797, when it was called Elizabethtown. In 1804, when the city was incorporated, the name was changed to Hopkinsville in honor of General Samuel Hopkins. The town grew rapidly, and its large old homes and wide lawns give evidence of a long prosperity. In 1851, Bethel College for Women was chartered here by the Baptist Church. A progressive trade and industrial city with a population of 21,250 in 1970, Hopkinsville is one of the leading dark-fired tobacco markets in the country.

Christian County had a population of 2,318 in 1800, and by 1950 had reached 42,359. The next decade saw rapid growth, with the 1960 population totalling 56,904. Subsequently, there has been a slight decline to 56,224 in 1970.

Agricultural employment accounted for 1,900 of the county's 18,500 employed in 1970. Principal products were burley tobacco, corn, cattle, and hogs. Manufacturing employment was up over 50 percent from 1959 to 3,400 in 1970, with the heaviest concentration in the production of apparel and metal products. Hopkinsville's largest firms are Thomas Industries, Inc., making lighting fixtures; Phelps Dodge Magnet Wire Corporation; Hopkinsville Clothing Manufacturing Company, which makes men's jeans; and International Shoe Company, which makes women's shoes.

Christian County is served by the Pennyrile Parkway, which connects Hopkinsville with the Western Kentucky Parkway, and points north. Pennyrile Forest State Resort Park, in the northern part of the county, has complete tourist and recreational facilities in a scenic forest setting.

Christian County was the birthplace of Jefferson Davis, the President of the Confederacy (though that part of the county is now included in Todd County). At Fairview, on the Christian-Todd line, is a 351-foot monument honoring Davis. Adlai E. Stevenson, U. S. Vice President under Grover Cleveland and grandfather of Adlai E. Stevenson who was twice the Democratic nominee for President, was a native of Christian County. Edward T. Breathitt, elected Governor of Kentucky in 1963, is from Hopkinsville. An interesting account of the county's history can be found in A History of Christian County, Kentucky, from Oxcart to Airplane, by Charles M. Meacham.

SOURCES OF INFORMATION

- 1/ U. S. Department of Commerce, Bureau of the Census, Census of Population, 1950, 1960, 1970.
- 2/ Kentucky Department of Economic Security, Division of Research and Statistics.
- 3/ Kentucky Department of Economic Security, Number of Workers in Manufacturing Industries Covered by Kentucky Unemployment Insurance Law Classified by Industry and County, September 1970, September 1960.
- 4/ Kentucky Department of Commerce, 1971 Kentucky Directory of Manufacturers. Hopkinsville Chamber of Commerce.
- 5/ Kentucky Department of Economic Security, Division of Employment Services, Hopkinsville Office.
- 6/ Kentucky Department of Economic Security, Kentucky Labor Supply Estimates by County, January 1971.
- 7/ Kentucky Department of Commerce, Future Labor Supply by 1977.
- 8/ University of Kentucky, Office of Development Services and Business Research, Total Personal Income for Kentucky.
- 9/ University of Kentucky, Office of Development Services and Business Research, Per Capita Income in Kentucky.
- 10/ Louisville & Nashville Railroad, Louisville, Kentucky.
- 11/ McLean Trucking Company, Winston-Salem, North Carolina.
- 12/ Kentucky Department of Revenue, Kentucky Property Tax Rates, 1970.
- 13/ U. S. Department of Commerce, Bureau of the Census, Census of Agriculture, 1964. U. S. Department of Agriculture and Kentucky Department of Agriculture, Kentucky Agricultural Statistics, 1969.

All other information was obtained from governmental offices, local businesses and organizations.

This copy has been prepared by the Kentucky Department of Commerce,
Division of Research and Planning, and the cost of printing paid from
state funds.