

1976

Industrial Resources: Crittenden County - Marion

Kentucky Library Research Collections
Western Kentucky University, spcol@wku.edu

Follow this and additional works at: https://digitalcommons.wku.edu/crittenden_cty

 Part of the [Business Administration, Management, and Operations Commons](#), [Growth and Development Commons](#), and the [Infrastructure Commons](#)

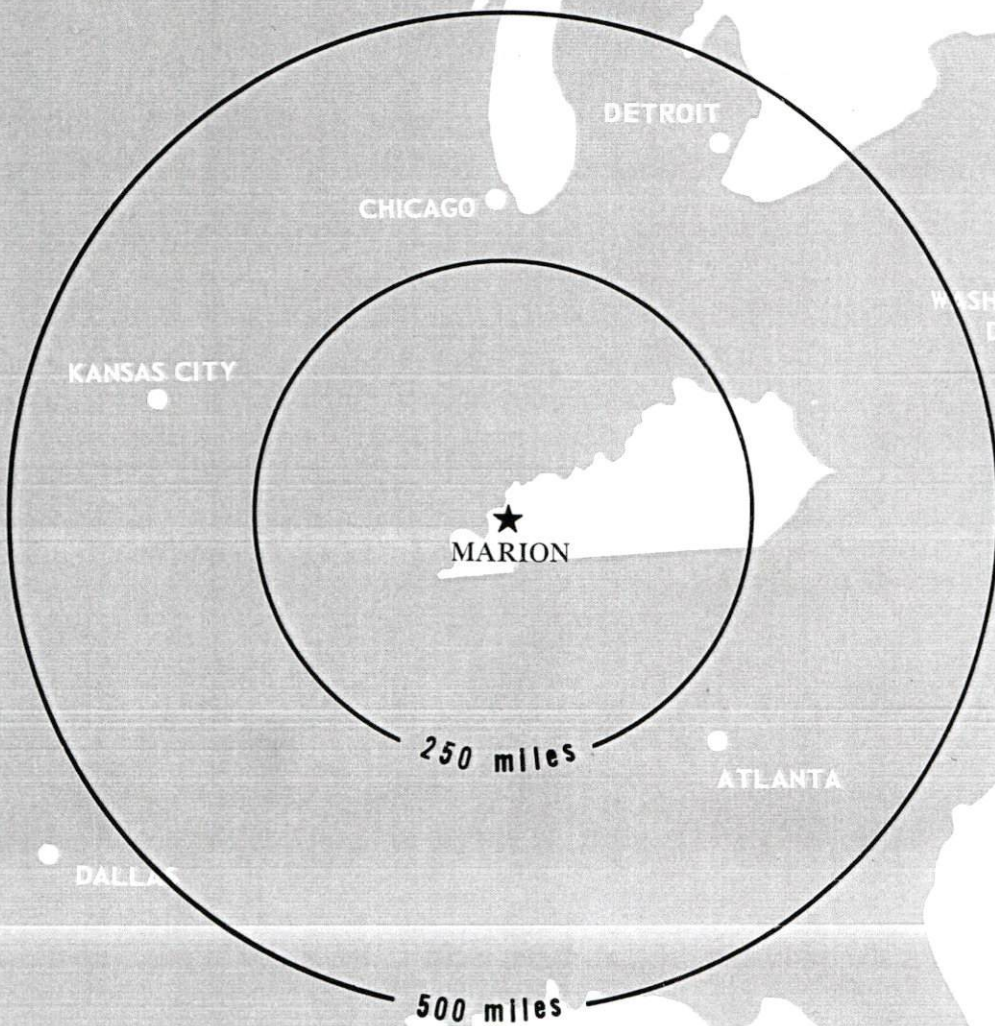
Recommended Citation

Kentucky Library Research Collections, "Industrial Resources: Crittenden County - Marion" (1976). *Crittenden County*. Paper 9.
https://digitalcommons.wku.edu/crittenden_cty/9

This Report is brought to you for free and open access by TopSCHOLAR®. It has been accepted for inclusion in Crittenden County by an authorized administrator of TopSCHOLAR®. For more information, please contact topscholar@wku.edu.

INDUSTRIAL RESOURCES

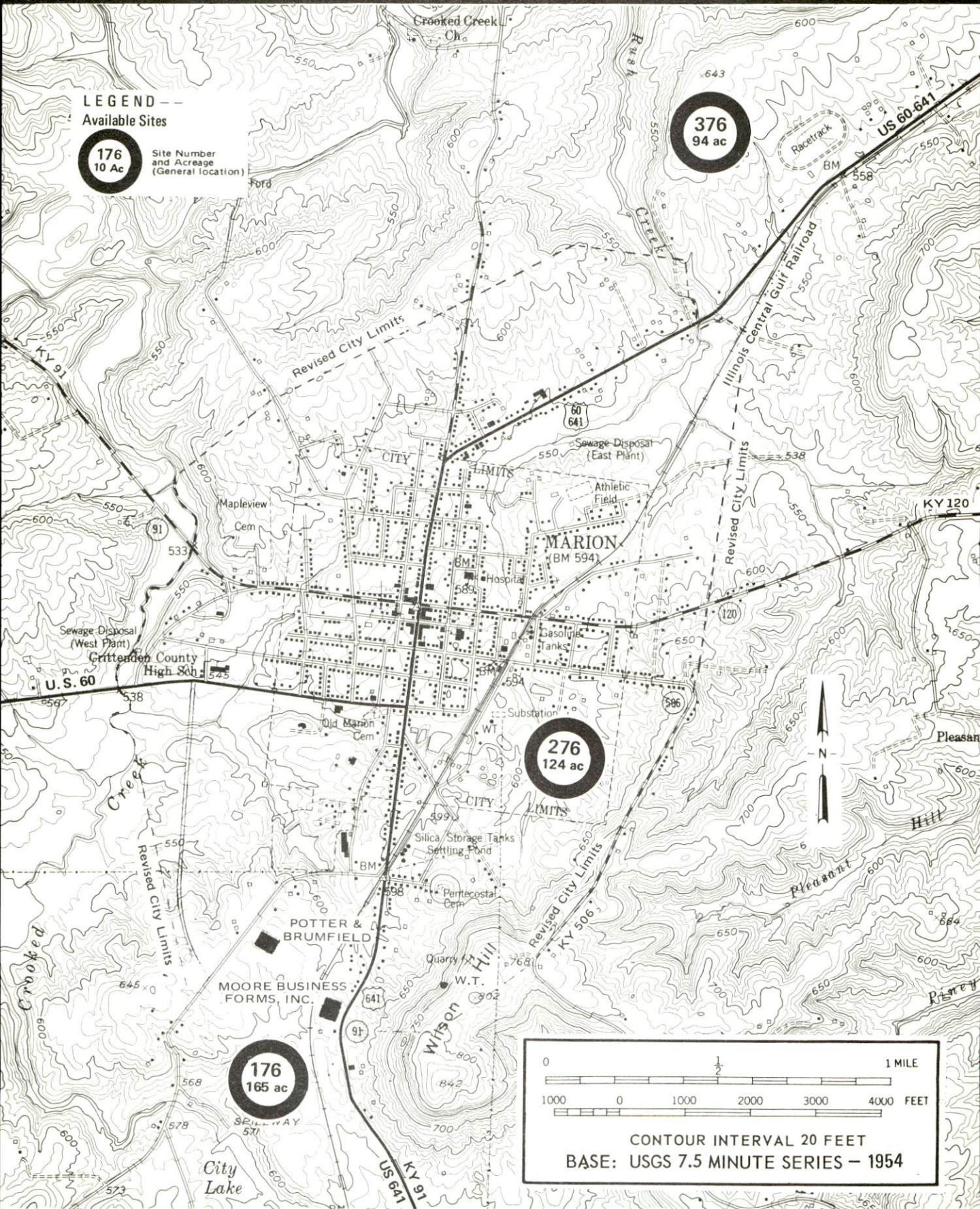
MARION KENTUCKY



CRITTENDEN COUNTY, KENTUCKY

MARION, KENTUCKY --- Index to Industrial Sites --- 1976

For detailed data on individual sites, contact John Ramsey, Kentucky Utilities Company, Marion, Kentucky 42064, or the Industrial Development Division, Kentucky Department of Commerce, Capital Plaza Tower, Frankfort, Kentucky 40601.



INDUSTRIAL RESOURCES

MARION, KENTUCKY

Prepared by

The Kentucky Department of Commerce

in cooperation with

The Crittenden County Chamber of Commerce

1976

Production Supervisor
Patsy Wallace

Research
Terry Patterson

Clerical
Barbara Blair

Graphics
N. C. Montague
Frank Ferrante
Tony Cecconi

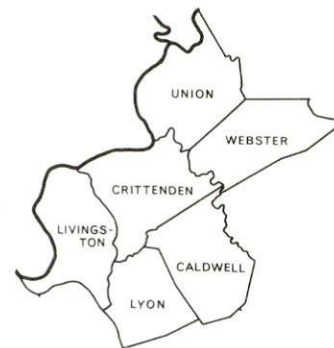
Cartography
Site Development Section

TABLE OF CONTENTS

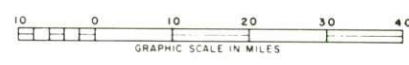
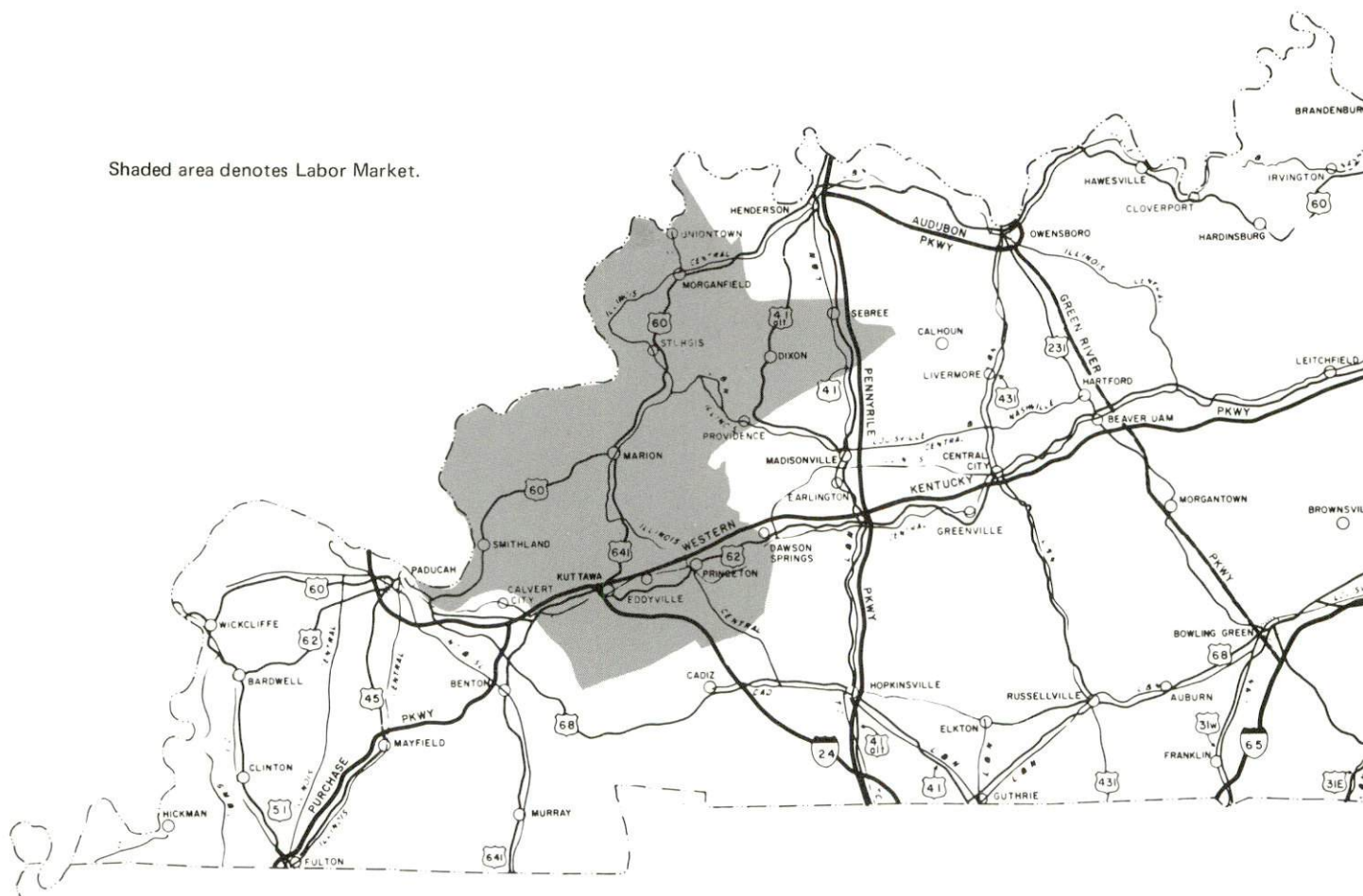
<u>Chapter</u>	<u>Page</u>
INDUSTRIAL SITES	i
MARION, KENTUCKY - A RESOURCE PROFILE.	1
THE LABOR MARKET AREA	3
Population	3
General Employment Characteristics, 1974	3
Manufacturing Employment by Industry	4
Marion Manufacturing Firms, Their	
Products and Employment	5
Labor Organizations.	5
Estimated Male Labor Supply.	6
Estimated Female Labor Supply.	6
Wages	7
Per Capita Personal Income	8
TRANSPORTATION	9
Rail	9
Highways.	9
Truck Service	9
Air	10
Bus	10
Taxi.	10
Rental Services.	10
POWER AND FUEL	11
Electricity	11
Natural Gas	11
Other Fuels	12
WATER AND SEWERAGE	13
Water	13
Sewerage.	14
CLIMATE	15

<u>Chapter</u>	<u>Page</u>
LOCAL GOVERNMENT	16
City	16
County	16
Assessed Value of Property, 1975-76	16
Property Taxes	16
Local Property Tax Rate Per \$100 of Assessed Valuation, 1975	17
Utilities Gross Receipts Tax for Schools	17
Planning and Zoning	17
Safety	17
Police	17
Fire	17
Rescue Service and County Fire Service.	18
Solid Waste	18
EDUCATION	19
Public Schools	19
Area Colleges and Universities	19
Vocational Schools.	20
HEALTH	21
Local Medical Personnel.	21
Hospitals	21
Other Medical Facilities	21
Ambulance Service	21
Nursing Homes	21
Public Health	21
OTHER LOCAL FACILITIES	23
Communications.	23
Library Services	23
Religious Institutions	24
Financial Institutions	24
Hotels and Motels	24
Clubs and Organizations	24
RECREATION.	25
COMMUNITY IMPROVEMENTS	26
HISTORY	28

MARION LABOR MARKET AREA



Shaded area denotes Labor Market.



MARION, KENTUCKY - A RESOURCE PROFILE

Marion, the county seat of Crittenden County, is situated in the southwestern part of Kentucky in the state's Pennyriple Region. The city is 190 miles southwest of Louisville, Kentucky, 150 miles northwest of Nashville, Tennessee, and 209 miles southeast of St. Louis, Missouri. The 1973 population of Marion was 2,976.

Crittenden County, which covers a land area of 365 square miles, had a 1974 estimated population of 9,400. The county's northwestern border is formed by the Ohio River, and the Tradewater River flows along the northeastern boundary.

The Economic Framework

The total number of Crittenden County residents employed in 1974 averaged 4,130, including 440 in agriculture and 470 in government. Manufacturing employers in the county reported 770 workers; trade and services firms employed 560. Major industrial products are electromagnetic relays and specialized business forms.

Total unemployment in Crittenden County averaged 4.9 percent of the labor force in 1974.

Per capita personal income in the county in 1973 was \$3,582, an increase of 52.5 percent since 1969.

The Marion labor market area includes Crittenden and the five adjoining counties. The total number of residents of the labor market area employed in 1974 averaged 29,990, including 2,670 in agriculture and 3,760 in government. Manufacturing employers in the labor market area reported 3,610 workers; trade and services firms employed 4,740; mining reported 2,250.

Resources for Growth

1. There is a current labor supply of 3,800 men and 3,850 women available for industrial jobs in the labor market area. In addition, 2,870 young men and 2,830 young women in the area will become 18 years of age before 1981 and potentially available for work.

2. The Illinois Central Gulf Railroad provides rail service to Marion. Piggyback facilities are available at Princeton, 22 miles to the south. U.S. Highways 60 and 641 serve the city and the Western Kentucky Parkway is only 25 miles away via U.S. 641. Five truck lines serve Marion. The Sturgis Airport, 20 miles north of Marion, is capable of accommodating small aircraft. Commercial air service is available at Barkley Field near Paducah, 45 miles away.

3. The Kentucky Utilities Company provides electric power to Marion and parts of Crittenden County. The remainder of Crittenden County is served by Henderson-Union RECC. The Western Kentucky Gas Company supplies Marion and portions of Crittenden County with natural gas. There are six distributors of propane and butane and four distributors of distillate fuel oil in the Marion area.

4. The Crittenden County School System provides modern educational facilities for over 1,700 students.

There are three universities and four community colleges within a 70-mile radius of Marion. The nearest state vocational-technical school is located at Madisonville, 39 miles from Marion, and offers seventeen courses.

THE LABOR MARKET AREA

POPULATION

Area	1974*	1970	Percent Nonwhite
			1970
Marion	2,976**	3,008	3.2
Labor Market Area	66,900	63,994	8.3
Crittenden County	9,400	8,493	1.2
Caldwell County	13,000	13,179	7.1
Livingston County	8,400	7,596	0.7
Lyon County	5,900	5,562	7.5
Union County	16,200	15,882	18.0
Webster County	14,000	13,282	7.1

*Provisional Estimates.

**1973 Population Estimates.

Sources: U.S. Department of Commerce, Bureau of the Census, Census of Population, 1970. U.S. Bureau of the Census, Current Population Reports, Series P-25, No. 562, June 1975; Series P-26, No. 120, June 1975.

GENERAL EMPLOYMENT CHARACTERISTICS, 1974

Major Employment Group	Employment by Place of Residence of Workers	
	Crittenden County	Labor Market Area
Total Employment	4,133	29,992
Agriculture	436	2,669
Government	474	3,760
	Employment by Location of Jobs	
	Crittenden County	Labor Market Area
Manufacturing	773	3,613
Trade and Services	559	4,742
Mining	-	2,246*

*Almost ninety percent of these workers are employed in Union County.

Sources: Kentucky Department for Human Resources, Bureau for Administration and Operations; Kentucky Department of Mines and Minerals, Annual Report.

MANUFACTURING EMPLOYMENT BY INDUSTRY
SEPTEMBER 1974

<u>Industry</u>	<u>Crittenden County</u>	<u>Labor Market Area</u>
TOTAL	786	4,068
Food & Kindred Products	3	52
Apparel, Textiles, Leather	0	1,093
Lumber, Furniture	23	214
Printing & Publishing, Paper	168	219
Chemicals, Petroleum & Coal, Rubber	0	281
Stone, Clay & Glass	0	18
Primary Metals	0	41
Machinery, Metal Products, Equipment	592	2,150

Source: Kentucky Department for Human Resources, Number of Workers in Manufacturing Industries Covered by Kentucky Unemployment Insurance Law Classified by Industry and County, September 1974.

MARION MANUFACTURING FIRMS,
THEIR PRODUCTS AND EMPLOYMENT

<u>Firm</u> (Establishment date)	<u>Product</u>	<u>Employment</u>		
		<u>Total</u>	<u>Male</u>	<u>Female</u>
Circle-O Farm Center (1973)	Liquid fertilizer	8	6	2
Conyer Hardwood Lumber Co. (1950)	Lumber	2	2	0
Crittenden Press	Newspaper, letter-press printing, offset printing	6	4	2
C. Damron Lumber Co. (1974)	Crossties, lumber, pallets	N/A		
Kentucky Stone Co. (1946)	Agricultural lime	35		
Marion Machine Works (1936)	Machine shop	10	9	1
Moore Business Forms, Inc. (1950)	Specialized business forms	140	72	68
Ohio River Concrete Corp. (1973)	Ready-mixed concrete	7	6	1
Potter & Brumfield (1959)	Electromagnetic relays	648	128	520
Turner & Conyer Lumber Company, Inc. (1958)	Lumber, clay pipe spacers, pallets, boxes	42	40	2

Source: Kentucky Department of Commerce, Division of Research and Planning.

LABOR ORGANIZATIONS

At present, no unions represent manufacturing workers in Marion.

ESTIMATED MALE LABOR SUPPLY
MARION LABOR MARKET AREA

Area	Current			Future	
	Total	Not in Labor Force	Unemployed	Under-employed	Reaching 18 yrs. of age before 1981
Labor Market Area	3,800	1,200	1,480	1,120	2,871
Crittenden	380	0	240	140	393
Caldwell	900	390	340	170	562
Livingston	330	0	160	170	325
Lyon	430	250	110	70	209
Union	690	0	340	350	751
Webster	1,070	560	290	220	631

Sources: Kentucky Department for Human Resources, Kentucky Labor Supply Estimates by County, 1974. Kentucky Department of Commerce, Future Labor Supply before 1981.

ESTIMATED FEMALE LABOR SUPPLY
MARION LABOR MARKET AREA

Area	Current			Future	
	Total	Not in Labor Force	Unemployed	Under-employed	Reaching 18 yrs. of age before 1981
Labor Market Area	3,850	1,930	720	1,200	2,834
Crittenden	460	230	80	150	378
Caldwell	1,010	470	260	280	592
Livingston	540	340	70	130	304
Lyon	260	100	90	70	173
Union	460	0	110	350	744
Webster	1,120	790	110	220	643

Sources: Kentucky Department for Human Resources, Kentucky Labor Supply Estimates by County, 1974. Kentucky Department of Commerce, Future Labor Supply before 1981.

PER CAPITA PERSONAL INCOME

<u>Area</u>	<u>1973</u>	<u>1969</u>	<u>%Change</u>
Crittenden County	\$3,582	\$2,349	52.5
Labor Market Area			
Range	\$3,441 - 4,622	\$2,265 - 3,027	N. A.
Kentucky	4,050	2,894	39.9
U.S.	5,041	3,733	35.1

Sources: U.S. Department of Commerce, Office of Business Economics, Survey of Current Business, August, 1974. U.S. Department of Commerce, Bureau of Economic Analysis, April, 1975.

TRANSPORTATION

Rail

Line serving Marion - Illinois Central Gulf Railroad

Services - One northbound and one southbound through freight daily (stops, as demanded); switching facilities; team track for 8 cars; siding space for 15 cars; nearest piggyback facilities at Princeton, 22 miles distant

For details on routing, schedules, rates, and services, contact:

Industrial Development
Illinois Central Gulf Railroad
Illinois Center II
233 North Michigan Avenue
Chicago, Illinois 60605
(312) 565-1600

Highways

U.S. Highways 60 and 641, both "AAA" trucking routes, and Kentucky Highways 91 and 120 serve Marion. In addition, an interchange of the Western Kentucky Parkway is located 21 miles to the southeast at Princeton via U.S. 641 and Kentucky 91, and 25 miles south via U.S. 641.

Truck Service

<u>Company</u>	<u>Home Office</u>
A & H Truck Lines, Inc.	1111 East Louisiana Street, Evansville, Indiana 47717
Harper Truck Service, Inc.	1266 North Eighth Street, Paducah, Kentucky 42002
McLean Trucking Company	617 Waughtown Street, Winston-Salem, North Carolina 27107
Tennessee Cartage Co., Inc.	809 Ewing Avenue Nashville, Tennessee 37202
<u>Other Freight Services</u>	<u>Nearest Shipping Center</u>
United Parcel Service	Madisonville, 39 miles distant

HIGHWAY MILES AND TRUCK TRANSIT TIME IN DAYS FROM
MARION, KENTUCKY, TO SELECTED MARKET CENTERS

City	Delivery		City	Delivery	
	Highway Miles	Time TL		Highway Miles	Time TL
Atlanta, Ga.	392	2	Los Angeles, Calif.	2,054	3
Birmingham, Ala.	346	2	Louisville, Ky.	190	1
Chicago, Ill.	482	2	Nashville, Tenn.	150	1
Cincinnati, Ohio	291	2	New Orleans, La.	688	2
Cleveland, Ohio	538	2	New York, N. Y.	950	3
Detroit, Mich.	550	2	Pittsburgh, Pa.	581	2
Knoxville, Tenn.	327	2	St. Louis, Mo.	209	1

Source: Delivery Time Only - Harper Truck Service, Inc., 1266 North Eighth Street, Paducah, Kentucky 42002.

Air

	<u>Local</u>	<u>Nearest Commercial</u>
	Sturgis Airport	Barkley Field
Location:	Sturgis, 20 miles distant	Paducah, 45 miles distant
Runways:	3 paved	2 paved
Length:	All 5,000 feet	6,500 and 4,000 feet
Traffic		
Control:	Wind tee	Tower, ground control
Lighting:	None	Beacon, boundary, obstruction, runway lights and runway end identification lights, medium intensity approach lighting system
Services:	80 and 100 octane, taxi	Delta and Ozark Airlines, 80 and 100 octane, jet fuel, taxi and limousine, U-Drive-It, storage, major A & E repairs
Air Freight Service:		Accepted on a space available basis

Bus - Southern Greyhound Bus Lines

Taxi - Three companies, 24-hour service

Rental Services - U-Haul trailers

POWER AND FUEL

Electricity

Company serving Marion and parts of Crittenden County - Kentucky
Utilities Company
Source of power - Kentucky Utilities Company
Total generating capacity - 1,615,500 KW

For industrial rates contact:

Kentucky Utilities Company
106 East Bellville Street
Marion, Kentucky 42064
(502) 965-3161

Company serving Crittenden County - Henderson-Union RECC
Source of power - Big Rivers Electric Corporation
Total generating capacity - 590,000 KW

For industrial rates contact:

Henderson-Union RECC
P.O. Box 18
Henderson, Kentucky 42420
(502) 826-3991

Natural Gas

Company serving Marion and parts of Crittenden County - Western
Kentucky Gas Company
Source of supply - Texas Gas Transmission Corporation
Size of transmission mains - 28 inches (supplier); 4 inches (distributor)
Distribution mains - 4 and 2 inches
Distribution pressure - 18 psi
Btu content - 1,000 per cubic foot; Specific gravity - .6

For rates and supplies contact:

Western Kentucky Gas Company
311 West Seventh Street
Owensboro, Kentucky 42301
(502) 684-8811

Other Fuels

Propane and butane (within 35 miles)

Fortner LP Gas Co.
Cadiz Road
Princeton, Kentucky 42445
Harris Distributing Co.
Salem, Kentucky 42078
Larry Osting, Distributor
Garrett Avenue
Princeton, Kentucky 42445
Southern States LP Gas
Main Street
Clay, Kentucky 42404
Texgas Corporation
105 East Bellville
Marion, Kentucky 42064
Union Propane Gas Co.
U.S. 60 W.
Morganfield, Kentucky 42437

Fuel oils (within 25 miles)

Distillate fuel oil -

Ashland Petroleum Co.
Fredonia, Kentucky 42411
Gulf Heating Oil,
East Depot
Marion, Kentucky 42064
Herring, Inc.
Cadiz Road
Princeton, Kentucky 42445
Standard Oil Co.
420 East Depot
Marion, Kentucky 42064

Residual fuel oil - Arrangements must be made with the refinery.

Low sulphur content coal - Available in Kentucky

WATER AND SEWERAGE

Water

Company serving Marion - City of Marion Water and Sewer Department
108 East Bellville Street
Marion, Kentucky 42064
(502) 965-2266

Source - Two lakes

Treatment plant capacity - 1,000,000 gpd

Average daily consumption - 350,000 gallons

Peak daily consumption - 400,000 gallons

Type treatment - Coagulation, sedimentation, filtration, activated carbon, fluoridation, chlorination

Storage capacity - 800,000 gallons

Size lines - 12, 8, 6, and 2 inches

Average pressure - 62 psi

Average temperature - 60 degrees F.

MONTHLY WATER RATES FOR WHOLESALE AND INDUSTRIAL CONSUMERS

First	2,000 gallons	\$3.90 Minimum
Next	3,000 gallons	1.30 per 1,000 gallons
Next	10,000 gallons	1.04 per 1,000 gallons
Next	10,000 gallons	.85 per 1,000 gallons
Next	25,000 gallons	.65 per 1,000 gallons
Next	50,000 gallons	.52 per 1,000 gallons
All over	100,000 gallons	.36 per 1,000 gallons

Tap-on charge: \$200 inside city limits
\$300 outside city limits

Surface water sources - Ohio and Tradewater Rivers

Average discharge - Ohio River unlimited; Tradewater River at Olney
324 cfs (34 years, USGS)

Expected ground water yield - 500 to 1,000 gpm along Ohio River; 50
to 200 gpm in west central and south central portions and along north-
eastern boundary; 5 to 50 gpm in central portion; 5 gpm or less along
southeastern boundary

Sewerage

Company serving Marion - City of Marion Water and Sewer Department
108 East Bellville Street
Marion, Kentucky 42064
(502) 965-2266

Design capacity - 500,000 gpd

Average daily flow - 290,000 gallons; Treatment - Primary and secondary

Type treatment - Aeration, clarifier, digester, drying beds, chlorine

Treated effluent discharged into - Crooked Creek

Size of sanitary mains - 15 inches; Size of storm mains - 12 to 48 inches

Rates - 90 percent of monthly water bill

Tap-on charge: \$100.00

CLIMATE

Temperature

Crittenden County

Annual mean (30-year record)	56.0 degrees
Average annual 1974	56.6 degrees
Record highest, July, 1966 (14-year record)	104.0 degrees
Record lowest, January, 1963 (14-year record)	- 18.0 degrees
Normal heating degree days (30-year record)	4,629
(Heating degree day totals are the sums of negative departures of average daily temperatures from 65 degrees F.)	

Precipitation

Mean annual total (30-year record)	41.88 inches
Mean annual snowfall (34-year record)	13.00 inches
Total precipitation 1974	43.27 inches
Mean number days precipitation (.01 inch or more)	
(34-year record)	115
Average number days thunderstorms (34-year record)	46

Prevailing Winds (14-year record)

South-Southwest

Relative Humidity (30-year record)

1 A.M.	79%
7 A.M.	81%
1 P.M.	59%
7 P.M.	63%

Source: U.S. Department of Commerce, Environmental Science Services Administration, Climatological Data, 1974. Station of record: Evansville, Indiana.

LOCAL GOVERNMENT

City

Structure - Mayor - 4-year term; 6 councilmen - 2-year terms
Income 1974 - General Fund \$ 87,770
Water and Sewer Fund 157,875 (year ending October 31)
Fees and licenses - Business licenses range from \$12.50 to \$100 annually

County

Structure - County Judge - 4-year term; 6 magistrates - 4-year terms
Budget 1974-75 - General Fund \$118,249; Road Fund \$87,501

Assessed Value of Property, 1975-76

<u>Classes of Property</u>	<u>Marion</u>	<u>Crittenden County</u>
Real Estate and Tangibles	\$19,800,809	
Real Estate		\$52,236,160
Tangibles		12,993,080

Property Taxes

Land and buildings are taxed by the state and may be taxed by local jurisdictions. The state rate is \$0.015 per \$100 of assessed valuation.

Tangible personal property owned by manufacturers (automobiles, trucks, finished goods, office furniture, office equipment) is taxed by the state at \$0.15 per \$100 and may be taxed by local jurisdictions.

Manufacturing machinery, raw materials inventories, pollution control equipment, and goods in process inventories are not subject to local taxation. The state rate is \$0.15 per \$100.

Property stored in public warehouses is not subject to local taxation. The state rate is only \$0.015 per \$100.

All property is assessed at 100 percent of fair cash value.

Local Property Tax Rate Per \$100 of Assessed Valuation, 1975*

<u>Taxing Jurisdiction</u>	<u>Marion</u>	<u>Crittenden County</u>
County	\$.370	\$.370
School	.430	.430
City	.344	

Special \$.002 (fire protection)

Utilities Gross Receipts Tax for Schools

Crittenden County levies a 3 percent tax on utilities receipts for schools. This tax is paid by all consumers of utilities as an add-on to the utilities bills. Exempted are receipts from utilities services that are resold and the receipts from the sale of energy or energy producing fuels that exceed 3 percent of the cost of production in manufacturing, processing, mining or refining.

Planning and Zoning

Joint agency - Marion-Crittenden County Planning Commission
Zoning enforced - City only
Subdivision regulations enforced - City and 5 miles beyond city limits
Local codes enforced - Building
Mandatory state codes enforced - Plumbing, National Fire Protection Association Code, National Building Code (for major buildings and residential construction containing more than 12 bedrooms per building)

Safety

<u>Police</u>	<u>Marion</u>	<u>Crittenden County</u>
Total staff	4 (part-time)	2
Radio-patrol cars	1	1

Fire

American Insurance
Association Fire Rating 7
Volunteers 20

*Kentucky Department of Revenue.

Rescue Service and County Fire Service

Crittenden County Civil Defense Rescue Squad:

Number of volunteers - 45

Equipment - Ambulance, 750 gpm pumper, 1,100 gallon tanker, 2 utility trucks, jeep, 3 boats and motors, portable generator, master fallout detector, citizens band and short wave radio

Solid Waste

Although there is no garbage collection service in Marion or Crittenden County, residents and businesses are permitted to use the sanitary landfill owned by the city.

EDUCATION

<u>Public Schools</u>	<u>Crittenden County</u>
Total Enrollment (1975)	1,770
Elementary	842
Middle School	327
High School	601
Student-Teacher Ratio	22-1
Elementary	20-1
Middle School	25-1
High School	23-1
Percent High School Graduates to College	25.5
Expenditures Per Pupil, (1974-75)	\$650.16
Bonded Indebtedness, June 30, 1975	\$1,204,000

Area Colleges and Universities

<u>Name</u>	<u>Location</u>	<u>Distance (Miles)</u>	<u>Enrollment (Fall, 1974)</u>	<u>Highest Degree Conferred</u>
Henderson Commu- nity College	Henderson	54	639	Associate
Hopkinsville Commu- nity College	Hopkinsville	48	950	Associate
Indiana State Univer- sity, Evansville Campus	Evansville, Indiana	61	2,680*	Academic and Professional
Madisonville Commu- nity College	Madisonville	39	476	Associate
Murray State Univer- sity	Murray	69	7,106	Masters, Ph.D. **
Paducah Community College	Paducah	45	1,001	Associate
University of Evans- ville	Evansville, Indiana	61	5,538*	Academic and Professional

*Fall 1973 enrollment.

**Cooperative program with the University of Kentucky for Ph.D. in education only.

Vocational Schools

Nearest State School

Location	Madisonville State Vocational-Technical School
Miles Distant	Madisonville
Curriculum	39
	Certified Lab Assistant
	Health Careers
	Inhalation Respiratory Therapy
	Medical Secretary
	Practical Nursing
	Radiologic Technology
	Surgical Technician
	Learning Lab
	Electronics (Communication)
	Auto Body Repair
	Auto Mechanics
	Carpentry-Building Trades
	Drafting
	Electricity
	Machine Shop
	Mine Maintenance
	Welding

Arrangements can be made to provide training in the specific production skills required by an industrial plant. Instruction may be conducted either in the vocational school or in the industrial plant, depending upon the desired arrangement and the availability of special equipment.

HEALTH

Local Medical Personnel

Physicians - 3
Dentists - 2

Hospitals

<u>General Hospital</u>	<u>Location</u>	<u>Beds</u>
Crittenden County Hospital	Marion	37

General hospital facilities - Laboratory, X-ray, emergency room, delivery room, nursery, operation suite, inhalation therapy
Medical staff - 4 medical doctors, 8 registered nurses, 7 licensed practical nurses, graduate licensed practical nurse, dietician, radiologist (part time), pathologist (part time)

Other Medical Facilities

Crittenden County Mental Health Clinic

Ambulance Service

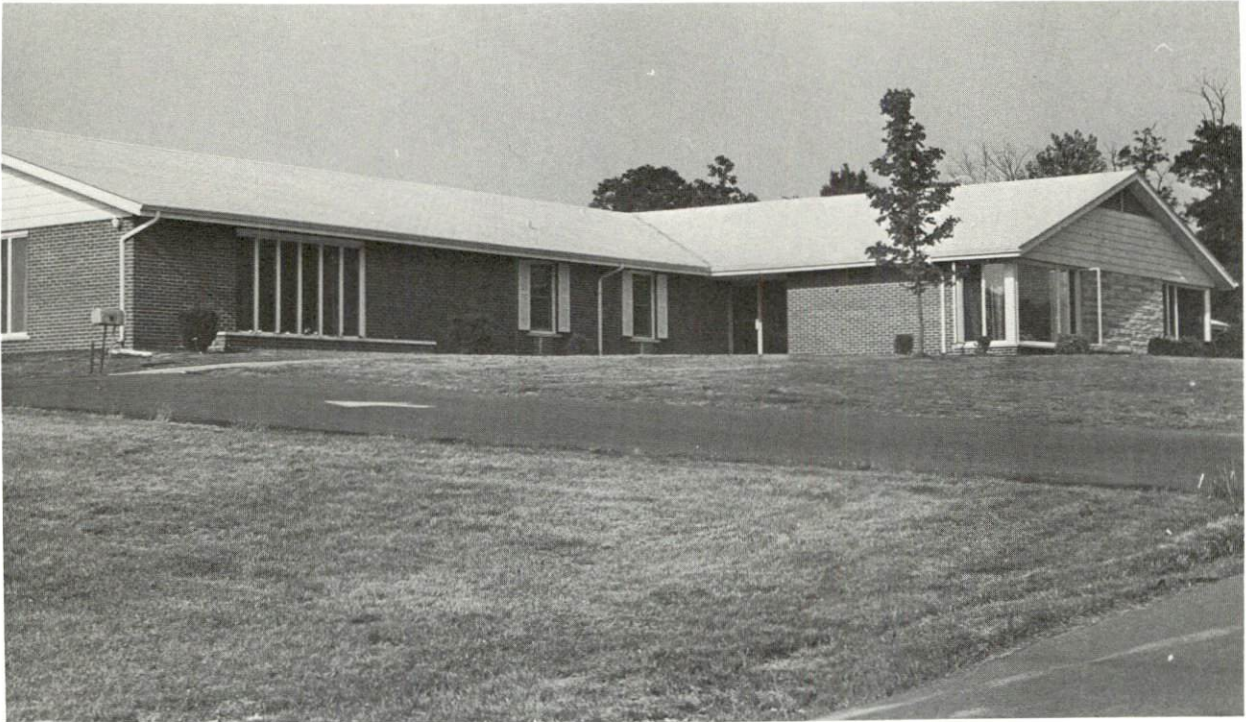
Name - Crittenden County Ambulance Service
Staff - 2 emergency medical technicians, 1 driver
Service - 24-hour service
Equipment - 4-bed ambulance

Nursing Homes

One nursing home with 25 personal care beds and 30 intermediate care beds is located in Marion.

Public Health

Facility - Crittenden County Health Department
Staff - Registered nurse, clerk sanitarian (part time), administrator



NURSING HOME



CRITTENDEN COUNTY HEALTH CENTER

OTHER LOCAL FACILITIES

Communications

Telephone - South Central Bell Telephone Company
Services - Standard

Telegraph - Western Union
Services - Telephone

Postal - U.S. Post Office
Class - First
Mail received - Twice daily
Mail dispatched - Once daily

Newspapers - Crittenden Press
Weekly and circulation - 4,500
Other papers
received from - Louisville and Paducah, Kentucky

Radio - WMJL
Stations received from - Henderson, Paducah, Princeton, Morganfield, and Louisville, Kentucky; Clarksville and Nashville, Tennessee; St. Louis and Cape Girardeau, Missouri; Harrisburg, Illinois; Evansville, Indiana

Television -
Reception from - Paducah, Kentucky; Nashville, Tennessee; Harrisburg, Illinois; St. Louis, Missouri; Evansville, Indiana

Kentucky Educational Television - Madisonville transmitter, Channel 35; Mayfield transmitter, Channel 21

Library Services

Public library - Crittenden County Public Library
Size collection - 20,000 volumes
Circulation, 1974-75 - 48,571
Services - Records, movie projector, bookmobile, slide and film strip projector, record player, copy machine, microfilm reader

Religious Institutions

Number of churches - 13

Denominations - Baptist, Presbyterian, Methodist, Church of Christ,
Christian, Church of God, Pentecostal, Catholic

Nearest Synagogue - Paducah, 45 miles distant

Congregation - Temple Israel (reform)

Financial Institutions

<u>Banks</u>	<u>Assets</u>	<u>Deposits</u>	<u>Statement Date</u>
Farmers Bank & Trust Company	\$13,493,811.75	\$11,860,221.84	6-30-75
The Peoples Bank	10,124,586.23	9,100,670.86	6-30-75

Hotels and Motels

Total number - 5

Total units - 64

Clubs and Organizations

Business and Civic - Crittenden County Chamber of Commerce, Rotary,
Lions Club, Ministerial Association

Fraternal - Masonic Lodge, American Legion, Woodmen of the World,
Oddfellows, Eagles

Women's - Federation of Women's Club, Eastern Star, American Legion
Auxiliary, Homemakers

Youth - 4-H, FFA, FBLA, Boy Scouts, Girl Scouts, Little League
baseball, Peewee League, Pony League, Little League football, FHA

Other - Town and Country Riding Club, Gun Club, Crittenden County
Historic Society

RECREATION

Local

Marion has adequate recreational facilities which are presently being enlarged and improved. Public facilities include 2 parks, 2 playgrounds, 4 tennis courts, 2 baseball diamonds, 2 football fields, and a riding ring. The Marion Country Club, which has a golf course and swimming pool, has recently remodeled the clubhouse.

A one hundred acre area, on the Ohio River at Dam 50, will be returned to Crittenden County, once operations at the dam are terminated. Officials plan to convert this property into a county recreation area. Construction of a 5-mile access road to the site is already underway.

Area (Within 65 miles)

Marion is very fortunate to be located near Kentucky's water wonderland - the Kentucky Lake and Lake Barkley area. These large recreational complexes offer a variety of activities for all ages. Kentucky Dam Village State Resort Park, Lake Barkley State Resort Park, Kenlake State Resort Park, Pennyriple State Forest Resort Park, and the Land Between the Lakes, a national area for outdoor recreation and conservation education, are all within a short distance of Marion.

John James Audubon State Park is located at Henderson, 54 miles distant. Thoroughbred and harness racing meets are held near Henderson.

COMMUNITY IMPROVEMENTS

Recent:

The Crittenden County School System recently completed a new high school. In addition, all seventh and eighth grades were moved to the renovated old high school building. Construction of a school bus garage is scheduled to begin soon.

The city water department has installed pipeline that will connect the two lakes that serve as the city water sources. A pump also has been installed to transfer water from the lower to the upper lake.

Potter & Brumfield, manufacturers of electromagnetic relays, have doubled the size of their facilities.

A new library and a new jail have been completed.

Two shopping centers have recently been constructed.

Eight new businesses have opened in Marion.

A 16-unit motel has been constructed.

The old hospital building has been converted into an 11-unit apartment building.

An old place of residence has been remodeled and converted into a senior citizens home.

A large animal center has been constructed.

The Marion Country Club has remodeled its clubhouse.

Planned and Underway:

Moore Business Forms, Inc., plans to enlarge their manufacturing plant.

A 30-unit apartment complex is to be constructed.

A new subdivision is being developed.

An office complex and retail outlet is under construction.
A recreation center will be built adjacent to this complex.

One hundred acres of property bordering the Ohio River at Dam 50 will be returned to the county when operations at the dam are ceased. A 5-mile access road is already being constructed to this planned recreation area.

HISTORY

Crittenden County is located in the southwestern part of Kentucky in the state's Pennyrile Region. The county's northwestern border is formed by the Ohio River and Illinois state line, while the Tradewater River flows along its northeastern edge. Cumberland River touches the southwestern corner. The land surface is rolling, and over 35 percent of its 365 square mile area is forested.

Crittenden became Kentucky's ninety-first county in 1842, its territory taken from Livingston County. It was named in honor of John J. Crittenden, a Kentucky Governor, U.S. Senator and U.S. Attorney General.

Marion, the county seat, was incorporated in 1844 and is located near the county's geographical center. It was named for General Francis Marion, the famous "Swamp Fox" of the Revolutionary War. Marion was the home of two U.S. Senators around the turn of the century--William J. Deboe, a Republican, and Ollie M. James, a Democrat.

In 1850 Crittenden County had 6,351 inhabitants. Population reached 15,191 by 1900, followed by a significant decline to 11,931 in 1930. By 1940 the population had increased to 12,115. At that time the population again began to decline, falling to 8,493 by 1970. In 1974, the population was estimated at 9,400. In 1973, Marion had a population of 2,976.

The total number of Crittenden County residents employed in 1974 averaged 4,130, including 440 in agriculture and 470 in government. Manufacturing employers in the county reported 770 workers; trade and services firms employed 560. Largest of the county's manufacturing firms are Potter & Brumfield, producers of electromagnetic relays, and Moore Business Forms, Inc., makers of specialized business forms.

This copy has been prepared by the Kentucky Department of Commerce,
Division of Research and Planning, and the cost of printing paid from
state funds.

**Kentucky Department of Commerce
Capital Plaza Tower
Frankfort, Kentucky 40601**

**Industrial Development Division
(502) 564-7140**

**Community Services Division
(502) 564-4300**

**Business Development Division
(502) 564-4300**

**Research and Planning Division
(502) 564-4886**

**Office of Minority Business Enterprises
(502) 564-4270**

**Map Sales Office
133 Holmes Street
(502) 564-4715**

**Industrial Development Finance Authority
(502) 564-4554**