

1972

Industrial Resources - Daviess County

Kentucky Library Research Collections
Western Kentucky University, spcol@wku.edu

Follow this and additional works at: https://digitalcommons.wku.edu/daviess_cty

 Part of the [Business Administration, Management, and Operations Commons](#), [Growth and Development Commons](#), and the [Infrastructure Commons](#)

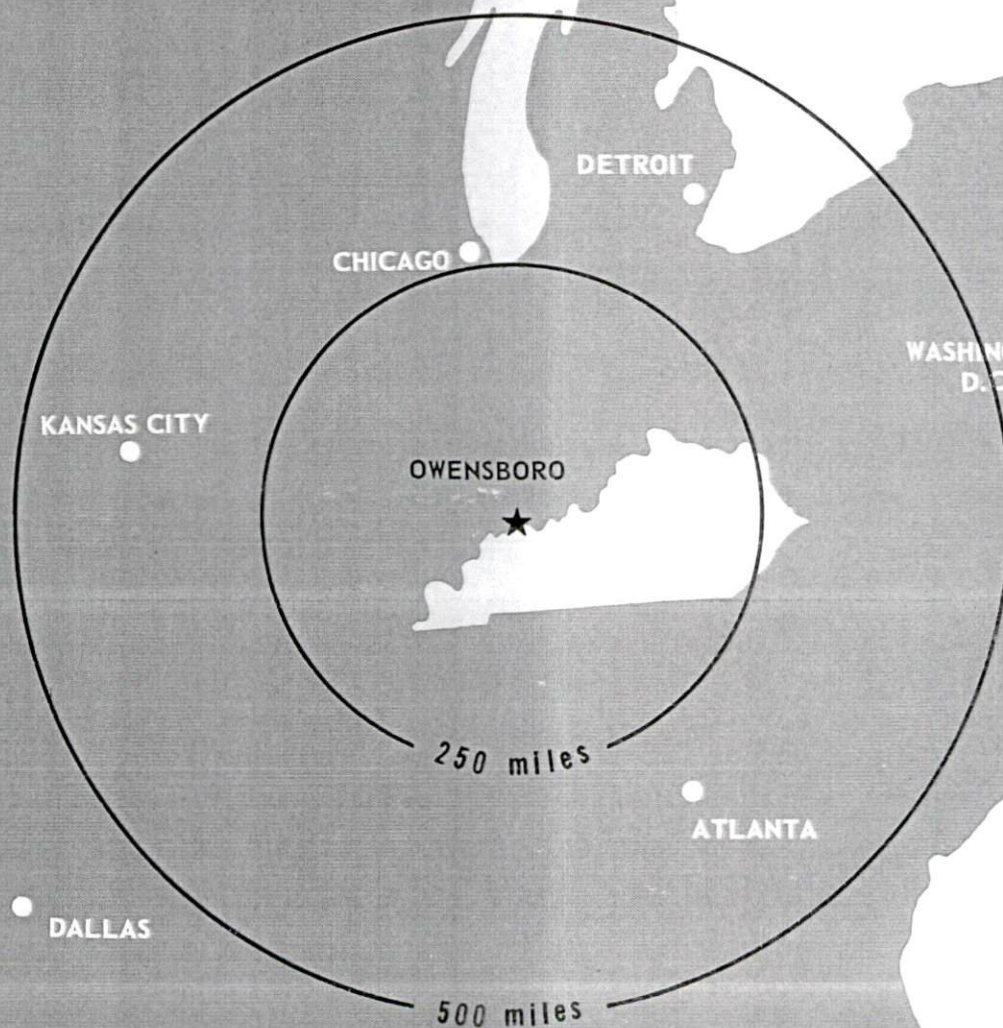
Recommended Citation

Kentucky Library Research Collections, "Industrial Resources - Daviess County" (1972). *Daviess County*. Paper 11.
https://digitalcommons.wku.edu/daviess_cty/11

This Report is brought to you for free and open access by TopSCHOLAR®. It has been accepted for inclusion in Daviess County by an authorized administrator of TopSCHOLAR®. For more information, please contact topscholar@wku.edu.

INDUSTRIAL RESOURCES

OWENSBORO, KENTUCKY



OWENSBORO INDUSTRIAL SITES

1972

For more information about the following sites, contact General Manager, Owensboro-Daviess County Industrial Foundation, Inc., Owensboro, Kentucky; or the Kentucky Department of Commerce, Frankfort, Kentucky.

SITE # 1: INDUSTRIAL PARK

ACREAGE: 90 acres
 LOCATION: Northwest of city and adjoining city limits
 ZONING: Industrial
 HIGHWAY ACCESS: 24-foot paved industrial access road to U. S. Highway 60
 RAILROADS: Louisville & Nashville Railroad lead track on property
 WATER: Owensboro Municipal Utilities Commission
 SIZE LINE: 12-inch line on site
 GAS: Western Kentucky Gas Company
 SIZE MAIN: 6-inch and 8-inch mains on site
 ELECTRICITY: Owensboro Municipal Utilities
 SEWERAGE: Owensboro Sewer Commission
 SIZE LINE: 8-inch line and 6-inch force line on site
 OWNERSHIP: Owensboro-Daviess County Industrial Foundation, Inc.

SITE # 3: ACREAGE: 95 acres

LOCATION: Approximately one-half mile southeast of city
 ZONING: Industrial
 HIGHWAY ACCESS: Owensboro Bypass on east and south, Kentucky Highway 54 to the south, and Grimes Avenue to the north
 RAILROADS: Louisville & Nashville Railroad, a 40-foot easement is owned from tracks to the property
 WATER: Owensboro Municipal Utilities Commission, Southeast Daviess County Water District
 SIZE LINE: 12-inch line approximately 400 feet to the north along the railroad, 12-inch line on south section
 GAS: Western Kentucky Gas Company
 SIZE MAIN: 8-inch main along bypass on property and 4-inch main approximately 1,400 feet to the north
 ELECTRICITY: Owensboro Municipal Utilities
 SEWERAGE: Owensboro Sewer Commission
 OWNERSHIP: Private

SITE # 4: ACREAGE: 159 acres

LOCATION: 2.8 miles east of city limits
 ZONING: Industrial
 HIGHWAY ACCESS: U. S. Highway 60 separates property, Kentucky 144 bounds south boundary of southern section.
 RAILROADS: Louisville & Nashville Railroad separates property.
 WATER: Owensboro Municipal Utilities Commission
 SIZE LINE: 12-inch line, 3,200 feet to the west along U. S. 60 beyond Kentucky 144
 GAS: Western Kentucky Gas Company
 SIZE MAIN: 4-inch main on property along U.S. 60
 ELECTRICITY: Owensboro Municipal Utilities
 SEWERAGE: Not served by city
 OWNERSHIP: Private

SITE # 5: ACREAGE: 110 acres

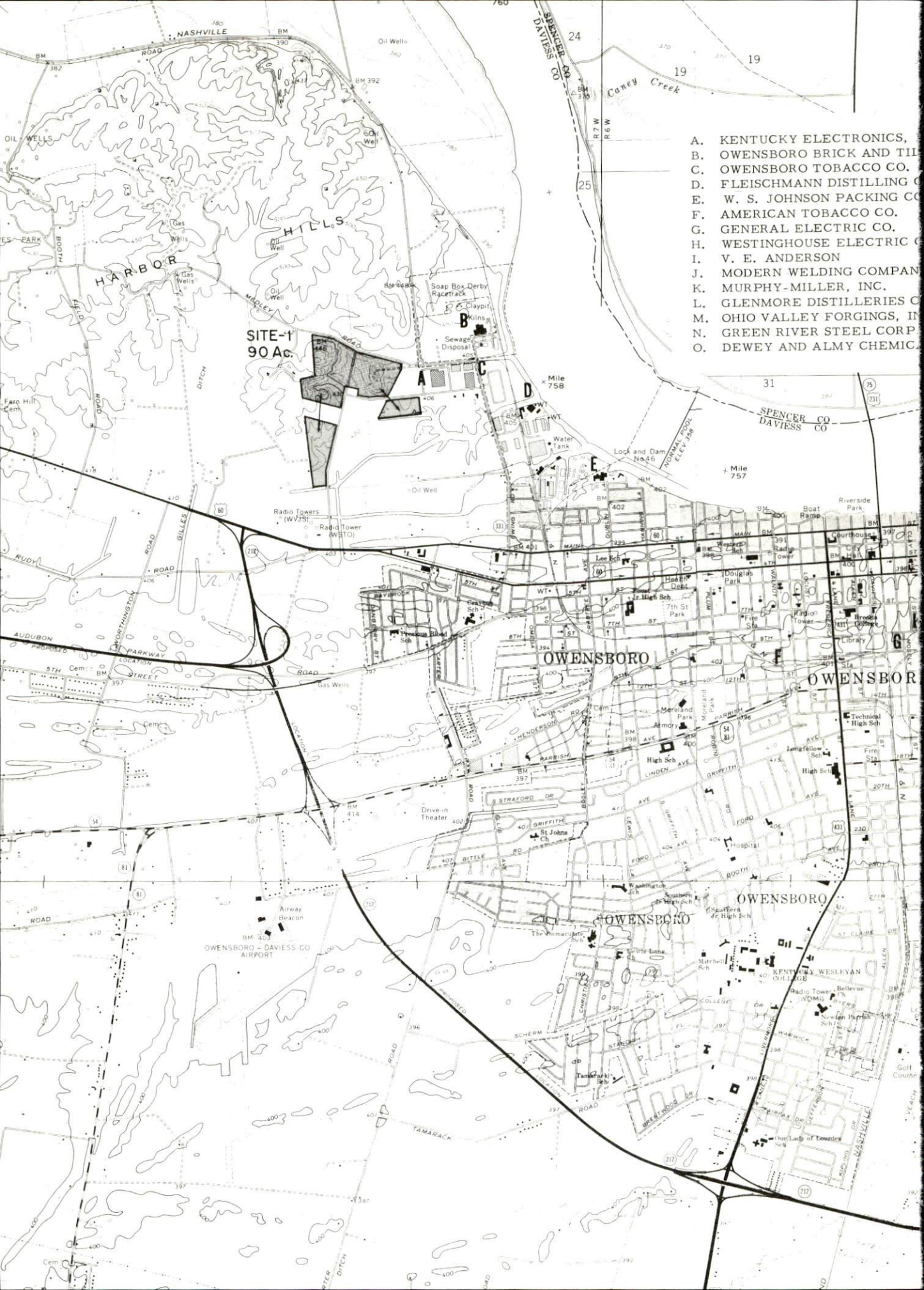
LOCATION: Adjacent to south city limits
 ZONING: Industrial
 HIGHWAY ACCESS: Owensboro Bypass adjacent to southeast boundary
 RAILROADS: Illinois Central Railroad bounds site on northeast.
 WATER: Owensboro Municipal Utilities Commission
 SIZE LINE: 8-inch line on property, 12-inch line nearby to the north
 GAS: Western Kentucky Gas Company
 SIZE MAIN: 6-inch and 8-inch mains on property
 ELECTRICITY: Owensboro Municipal Utilities
 SEWERAGE: Owensboro Sewer Commission
 SIZE LINE: 12-inch line on site along Old Hartford Road
 OWNERSHIP: Private

SITE # 6: ACREAGE: 8 acres

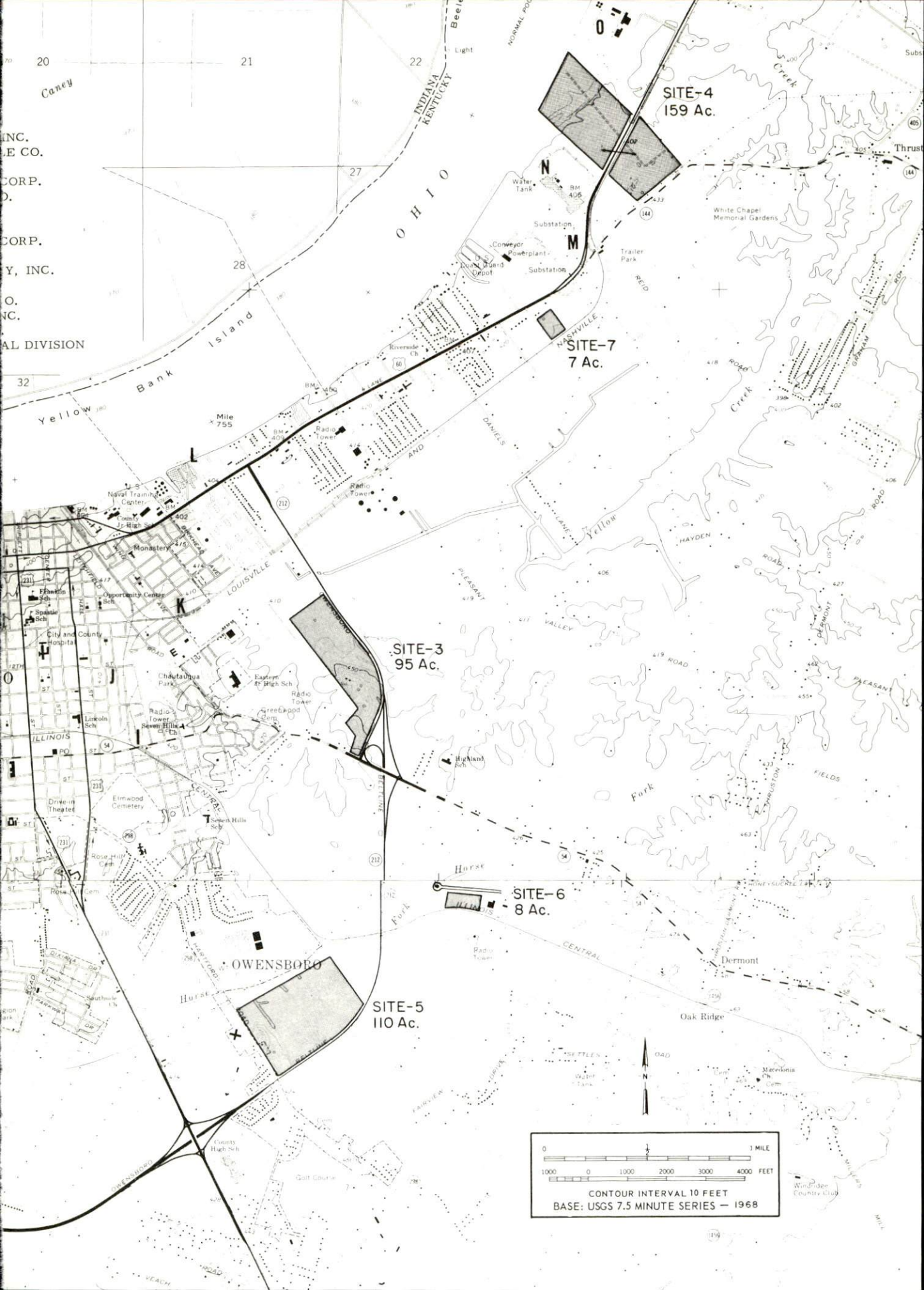
LOCATION: 1.5 miles southeast of city limits
 ZONING: Industrial
 HIGHWAY ACCESS: County road to Kentucky Highway 54, which leads to the Owensboro Bypass
 RAILROADS: Illinois Central Railroad bounds property on the south
 WATER: Southeast Daviess County Water District
 SIZE LINE: 6-inch line 300 feet away across county road
 GAS: Western Kentucky Gas Company
 SIZE MAIN: 2-inch main 300 feet away across county road
 ELECTRICITY: Owensboro Municipal Utilities
 SEWERAGE: Not served by city
 OWNERSHIP: Green River RECC

SITE # 7: ACREAGE: 7 acres

LOCATION: 2.2 miles east of city limits
 ZONING: Industrial
 HIGHWAY ACCESS: Approximately 400 feet to U. S. Highway 60 by county road
 RAILROADS: Louisville & Nashville Railroad bounds site on the south
 WATER: Owensboro Municipal Utilities Commission
 SIZE LINE: 12-inch line crosses south boundary.
 GAS: Western Kentucky Gas Company
 SIZE MAIN: 8-inch main crosses south boundary.
 ELECTRICITY: Owensboro Municipal Utilities
 SEWERAGE: Not served by city
 OWNERSHIP: Owensboro Municipal Utilities



- A. KENTUCKY ELECTRONICS,
- B. OWENSBORO BRICK AND TILE
- C. OWENSBORO TOBACCO CO.
- D. FLEISCHMANN DISTILLING CO.
- E. W. S. JOHNSON PACKING CO.
- F. AMERICAN TOBACCO CO.
- G. GENERAL ELECTRIC CO.
- H. WESTINGHOUSE ELECTRIC CO.
- I. V. E. ANDERSON
- J. MODERN WELDING COMPANY
- K. MURPHY-MILLER, INC.
- L. GLENMORE DISTILLERIES CO.
- M. OHIO VALLEY FORGINGS, INC.
- N. GREEN RIVER STEEL CORP.
- O. DEWEY AND ALMY CHEMICAL



INC.
E CO.
CORP.
D.
CORP.
Y, INC.
O.
NC.
AL DIVISION

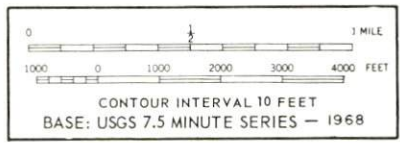
SITE-4
159 Ac.

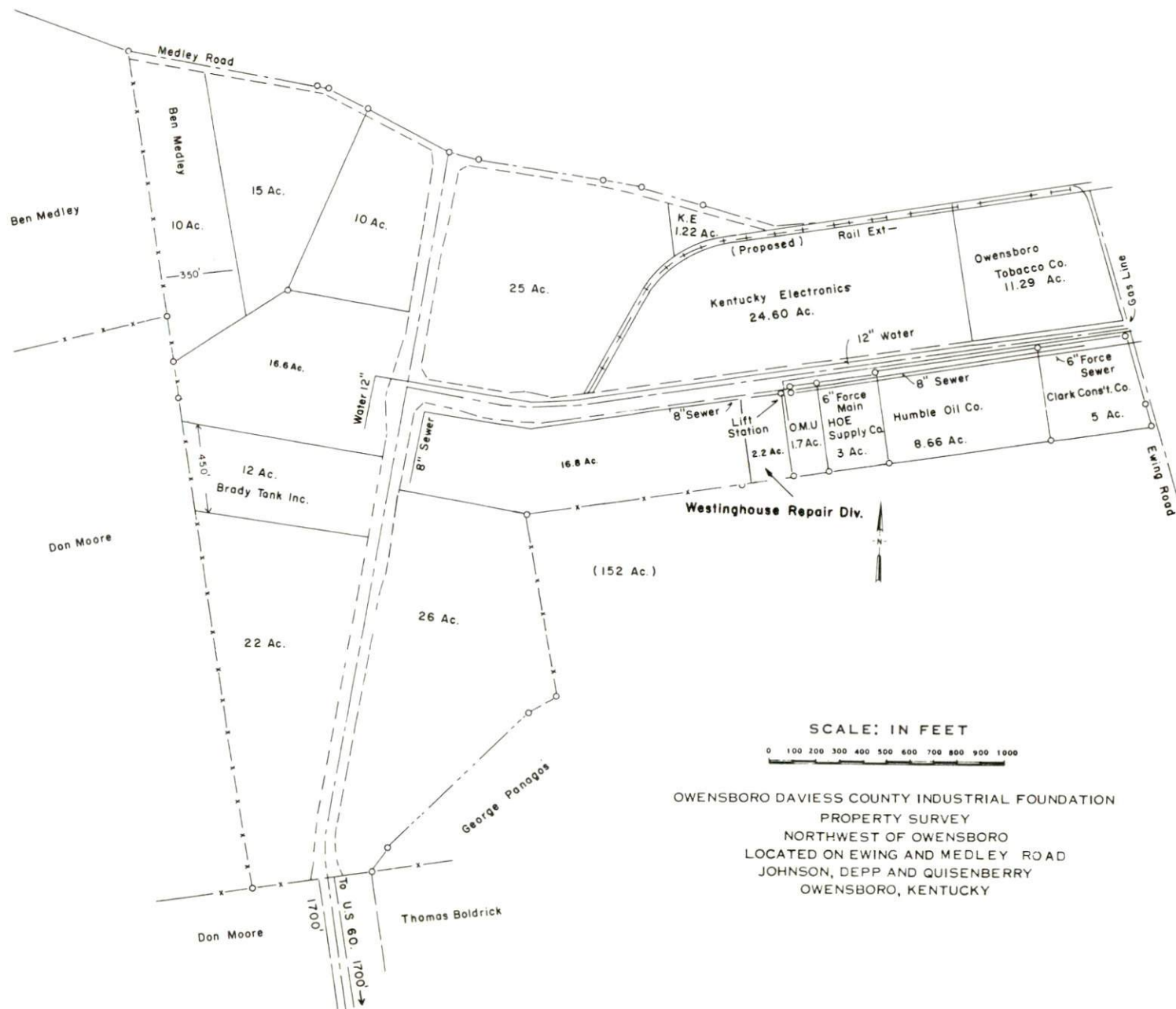
SITE-7
7 Ac.

SITE-3
95 Ac.

SITE-6
8 Ac.

SITE-5
110 Ac.





INDUSTRIAL RESOURCES
OWENSBORO, KENTUCKY

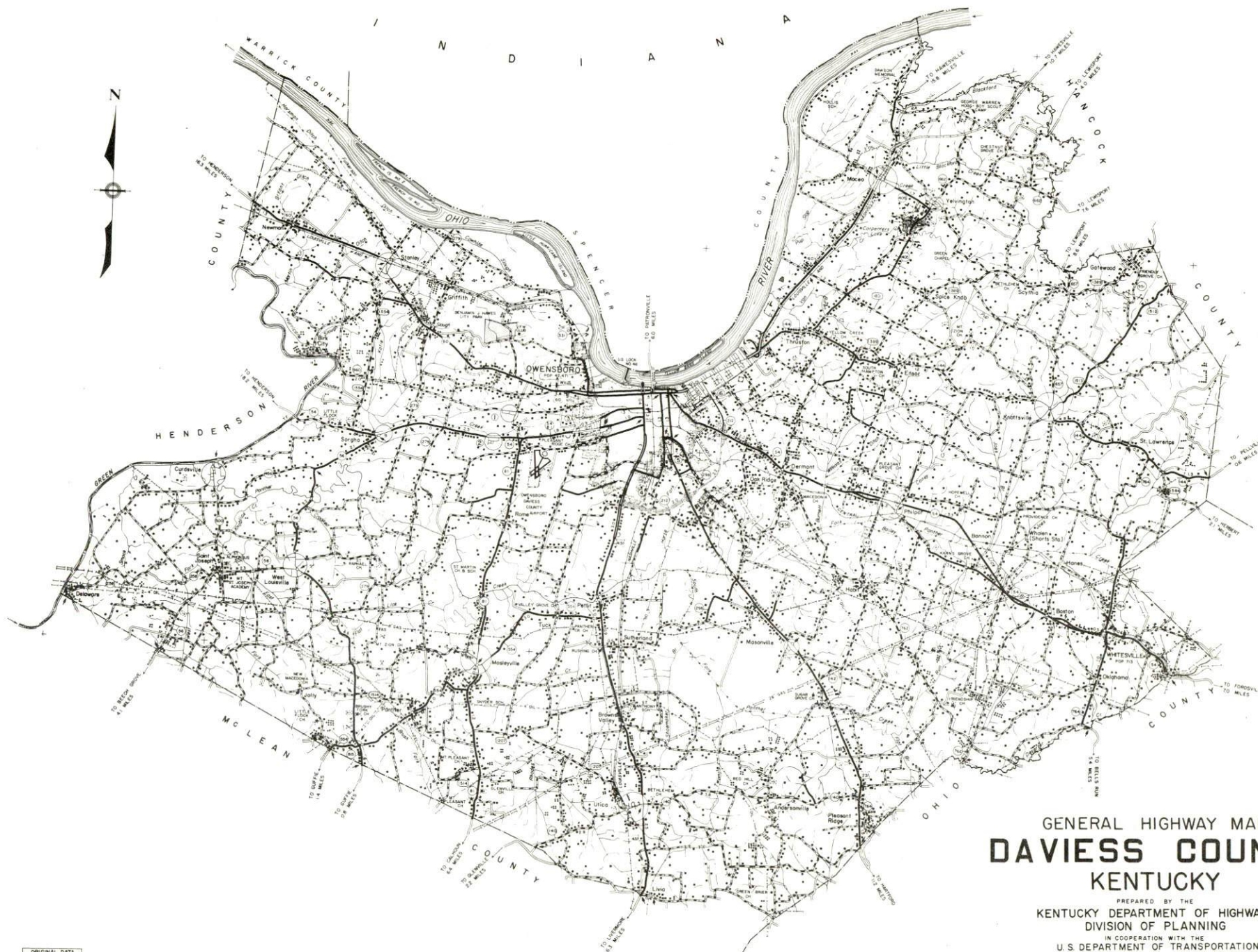
Prepared by
The Kentucky Department of Commerce
in cooperation with
The Owensboro-Daviess County Industrial Foundation, Inc.
and
The Owensboro-Daviess County Chamber of Commerce

1972

TABLE OF CONTENTS

<u>Chapter</u>	<u>Page</u>
INDUSTRIAL SITES	i
OWENSBORO, KENTUCKY - A RESOURCE PROFILE	1
THE LABOR MARKET	7
Population Trends	7
General Employment Characteristics, 1970.	7
Manufacturing Employment Trends by Industry	7
Major Owensboro Manufacturing Firms, Their Products and Employment	8
Wage Rates for Selected Occupations	9
Labor Organizations	9
Current and Future Labor Supply	10
Total Personal Income	10
Per Capita Personal Income	10
EDUCATION	11
Public Schools	11
Parochial Schools	11
Vocational Schools	12
Colleges and Universities	12
TRANSPORTATION	15
Rail	15
Truck Service	15
Air	16
Bus	16
Taxi	16
Rental Services	16
POWER AND FUEL	17
Electricity	17
Natural Gas	17

<u>Chapter</u>	<u>Page</u>
WATER AND SEWERAGE	20
Water	20
Sewerage	22
LOCAL GOVERNMENT	23
City	23
County	23
Assessed Value of Property, 1970	23
Local General Property Tax Rates Per \$100 of Assessed Valuation, 1971	23
Planning and Zoning	25
Safety	25
Police	25
Fire	25
Sanitation	25
HEALTH	26
Hospitals	26
Nursing Homes	26
Public Health	26
OTHER LOCAL FACILITIES	29
Communications	29
Library Services	29
Religious Institutions	29
Financial Institutions	30
Hotels and Motels	30
Clubs and Organizations	30
RECREATION	31
Local	31
Area	31
AGRICULTURE - NATURAL RESOURCES - CLIMATE	32
Agriculture	33
Natural Resources	33
Climate	33
HISTORY	34



ORIGINAL DATA	1957
REVISIONS	
DATE BY DATE BY	
11/1/57	

GENERAL HIGHWAY MAP **DAVIESS COUNTY** KENTUCKY

PREPARED BY THE
 KENTUCKY DEPARTMENT OF HIGHWAYS
 DIVISION OF PLANNING
 IN COOPERATION WITH THE
 U.S. DEPARTMENT OF TRANSPORTATION
 FEDERAL HIGHWAY ADMINISTRATION
 BUREAU OF PUBLIC ROADS

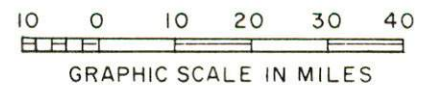
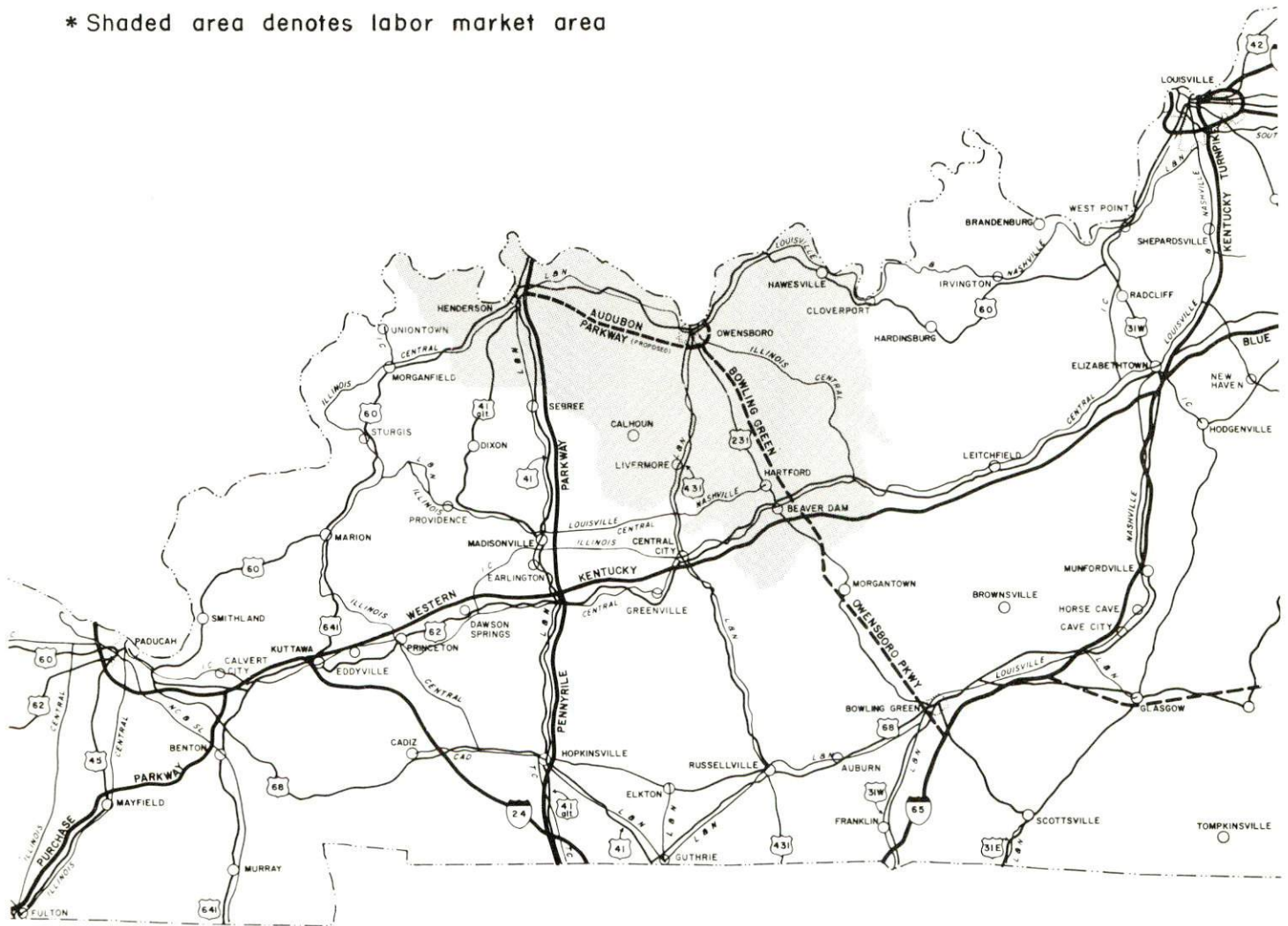




Aerial View of Owensboro, Kentucky

OWENSBORO LABOR MARKET AREA

* Shaded area denotes labor market area



OWENSBORO, KENTUCKY - A RESOURCE PROFILE

Location

Owensboro, the county seat of Daviess County, is located on the southern bank of the Ohio River in Kentucky's Western Coal Field Region. Owensboro was one of the few cities on the Ohio River during the 1937 flood which was not also "in" the river. This was due to the high, yellow river banks from which Owensboro was given its first name, Yellow Bank.

Geographically, Owensboro is 30 miles southeast of Evansville, Indiana, 136 miles southwest of Louisville, Kentucky, and 135 miles northwest of Nashville, Tennessee. Owensboro had a 1970 population of 50,329, while Daviess County had a population of 79,486.

The Economic Framework

Total employment in Daviess County averaged 29,400 in 1970, with manufacturing providing 8,600 jobs and trade and services providing 9,165 jobs. Manufacturing employment in Owensboro and Daviess County has remained stable since 1960. Major industrial products are electronic components, steel, cigars, and whisky.

Per capita income in the county in 1969 was \$3,080, or an increase of 54 percent since 1959. Total personal income for the county has increased by over 66 percent since 1959.

Owensboro is the hub of a labor market area that includes Daviess County and the four surrounding Kentucky counties. Area employment totaled 52,400 in 1970, including 14,600 jobs in manufacturing, 13,810 jobs in trade and services, and 5,200 jobs in agriculture. Area manufacturing has increased 29 percent, or 3,350 jobs, since 1960.

Resources for Growth

1. There is a current estimated labor supply of 4,525 men and 3,500 women available for industrial jobs in the labor market area. In addition, 9,600 young men and 9,430 young women will become 18 years of age by 1977 and potentially available for work.

2. The local transportation capability is excellent. Owensboro is served by the Audubon Parkway, which provides Owensboro with direct access to the Pennyriple Parkway. Construction is now underway on the Owensboro-Bowling Green Parkway, which will provide direct access to the Western Kentucky Parkway. The Owensboro-Bowling Green Parkway is expected to be open to traffic December 1, 1972. Commercial air service is provided by the Owensboro-Daviess County Airport located 3 1/2 miles west-southwest of Owensboro.

3. Energy - Electricity is provided by the Owensboro Municipal Utilities Commission. Natural gas is supplied by the Western Kentucky Gas Company. Water is provided to Owensboro by the Owensboro Municipal Utilities Commission.

4. Industrial sites - Owensboro has six available industrial sites, including a 90-acre industrial park.

5. Education is an important growth asset for Owensboro. The city and county school systems are rated among the most outstanding in Kentucky.

Three universities and two community colleges are located within 70 miles of Owensboro. Owensboro is the home of Brescia and Kentucky Wesleyan Colleges.

Kentucky Wesleyan College is a coeducational college under the auspices of the United Methodist Church. The college was formally opened on October 9, 1951. The citizens of the Owensboro area raised \$1,000,000 to move the college from Winchester, Kentucky, where it had been located since 1890. Wesleyan is a member of the Southern Association of Colleges and Schools.

Brescia, under the direction of the Ursuline Nuns of Mount St. Joseph, moved to Owensboro in 1950. In 1951, through affiliation with the Catholic Universities of America, upper division courses leading to the baccalaureate degree were added. It was admitted to membership in the Southern Association of Colleges and Schools as a senior college the same year.

Community Programs for Improvement

Cooperation, planning, and action have resulted in successful community programs for Owensboro. Public and private entities are continuously striving for improvements to all phases of the community's interest.

The utility companies of Owensboro are constantly upgrading and adding new facilities to meet the needs of a growing city. The Owensboro Municipal Utilities Commission began a project in April of 1971 to erect an additional 265,000 KW facility to the Elmer Smith Station at a cost of \$52,000,000. The project is expected to be completed in December of 1973. The new addition will more than double the output of the present facility. The surplus power supply will be sold to the Kentucky Utilities Company. The Green River RECC has constructed a new modern office in Owensboro.

Three miles of water lines have been constructed and service extended to 330 new customers by the municipal water service. Two new supply wells have been added this year and two more are to be drilled by 1975. The water treatment plant capacity is to be expanded to twenty million gallons per day. Also, new 12-inch distribution lines are to be installed to improve flow.

The Owensboro Sewer Commission plans for an expansion of the sewage treatment plant and the addition of secondary treatment. Completion of this project is expected in 1974.

The Western Kentucky Gas Company has added 22,500 feet of gas main and extended service to 225 new customers. The gas company is in the process of building a new measurement and storage warehouse with 5,900 square feet of space at a cost of \$52,500.

There has been a growth rate of approximately 325 students per year for the past several years in Daviess County. As a result both the city and county school systems are undertaking programs to maintain their outstanding educational ratings.

The city school system has completed a TV studio for the school system and has wired the schools to receive transmission from this studio as well as to receive transmission from Kentucky ETV and commercial channels. Additional classrooms and resource rooms have been constructed and new programs for education implemented. Currently underway is comprehensive long-range planning for program development, development and initiation of a Teen-age Parent Program, initiation of a vocational rehabilitation program, and a study of internal and external communications. The system plans to change to a middle school concept and plans to make a study of a 12-month school program.

The county school system has made additions to the county junior high, Tamarak, Highland and Masonville as well as \$600,000 addition to the Apollo High School. The system is presently changing to a middle school concept. Currently under construction is a new middle school which is scheduled to be ready for the 1972-73 school year. The school will accommodate 800 to 900 students and total cost is expected to be \$1,600,000. Plans have been made for a new elementary school to be located on the site of the middle school. It will accommodate approximately 600 students and cost approximately \$700,000.

Public and private entities are striving to furnish Owensboro with more than adequate housing for all varieties of needs. Within the past two years 76 units of housing for the elderly, 200 units of public housing, 304 units of rent supplement housing, and 325 units of interest supplement housing have been completed.

Within the next two years 500 units of interest supplement housing, 32 units of housing for the elderly, and a 200-unit apartment for the handicapped will be completed or underway.

Residents of Owensboro are being provided with better recreational facilities. Four mini parks have been completed within the past year. One of Owensboro's city parks is adding a new swimming pool to its facilities at a cost of \$360,000. It will be a 50-meter pool and will have bathhouses, rest rooms, and parking area. The Family-Y opened in the Fall of 1970. It is a sports center that provides recreation for the entire family.

Other community improvements include: The Hermitage Manor Nursing Home plans to add a 50-bed expansion to its facilities, the Davco Rest Home has initiated a rehabilitation program for the elderly.

Mercury vapor lighting was installed in Owensboro. This has led to the designation of Owensboro as one of the best lighted cities in the United States. It has also helped reduce the crime rate by 29 percent in Owensboro.

The city has improved 110 miles of city streets, and the bypass should be completed by mid-October of 1971. A new tower has been constructed at the Owensboro-Daviess County Airport, along with the extension of one runway to 6,500 feet.

The new Lincoln Mall is under construction in the south city limits. The mall will include a large retail department store and 18 retail and service establishments. A Williamsburg mini mall will be located within the larger Lincoln Mall.

The Wesleyan Park Plaza Shopping Center was increased in size by 200,000 square feet this year and plans call for this much additional increase in 1972.

Facilities for tourists and visitors to Owensboro will be increased as plans have been made for the location of a new Holiday Inn on U. S. 431 south near the beltline.

Recreation, Entertainment and Livability

The Owensboro Recreational Commission maintains municipal parks, golf courses, and the Sportscenter complex which includes swimming, ice rink, auditorium and arena. The commission is also responsible for the operation of a year-round recreational program.

Brescia and Kentucky Wesleyan Colleges both operate student theaters. Brescia's "le petit theater" during the summer months shifts its emphasis to the production of plays especially written for children. Kentucky Wesleyan's "Little Theater" opened in 1967 and is well equipped and versatile. The Little Theater, seating 300 people, adapts to a variety of staging techniques.

The Owensboro Art Guild was founded as a means of promoting the visual arts among interested patrons and artists as well as the general public. The Guild sponsors an annual juried show which attracts more than 200 paintings, sculptures, and other works of art.

The Owensboro Symphony Orchestra, a 70-member symphony orchestra, performs from October through May in the Daviess County High School. Guest soloists and groups join the orchestra in presenting outstanding music each season.

Owensboro's Sportscenter is the home court of Kentucky Wesleyan College. Kentucky Wesleyan has been the NCAA small college basketball champion several times within the past few years.

The Owensboro Regatta, the annual Kentucky Governor's Cup Race for unlimited hydroplanes on the Ohio River, opens with a parade of boats, bands, and beauty queens, featuring Miss Regatta. Other activities include a huge fireworks extravaganza on the river, square dancing, folk festival, teen dance, stock car races, aerobatics performance, sky divers and boat qualifications races.

Two other very interesting attractions of the Owensboro area are Glenmore's Little Museum, which contains local maps, prints, early advertisements and a collection of miniature bottles from all over the world, and Uncle Tom's Daviess County Cabin.

Thoroughbred racing is held at James C. Ellis Park and Race Track located between Henderson, Kentucky, and Evansville, Indiana. Harness racing can also be found at the Audubon Raceway, Henderson, Kentucky.

Other scenic and interesting recreational facilities within easy driving distance are: John James Audubon State Park, Rough River Dam State Resort Park, Pennyriple Forest State Resort Park, Jefferson Davis Monument State Shrine, Lake Malone State Park, and Windy Hollow Recreational Area.

THE LABOR MARKET

POPULATION TRENDS^{1/}

Area	Population			Percent Change	
	1970	1960	1950	1960-70	1950-60
Owensboro	50,329	42,471	33,651	+18.5	+26.2
Labor Market Area	150,449	136,517	124,826	+10.2	+ 9.4
Daviess County	79,486	70,588	57,241	+12.6	+23.3
Hancock County	7,080	5,330	6,009	+32.8	-11.3
Henderson County	36,031	33,519	30,715	+ 7.5	+ 9.1
McLean County	9,062	9,355	10,021	- 3.1	- 6.6
Ohio County	18,790	17,725	20,840	+ 6.0	-14.9

GENERAL EMPLOYMENT CHARACTERISTICS, 1970^{2/}

Major Employment Group	Employment	
	Daviess County	Labor Market Area
TOTAL	29,400	52,400
Agricultural	1,600	5,200
Nonagricultural	27,800	47,200
Manufacturing	8,600	14,600
Trade and Services	9,165	13,809
Government	2,500	4,900
Other	7,535	13,891

MANUFACTURING EMPLOYMENT TRENDS BY INDUSTRY SEPTEMBER 1970 AND 1960^{3/}

Industry	Daviess County			Labor Market Area		
	1970	1960	%Change	1970	1960	%Change
TOTAL	8,586	8,553	+ 0.4	15,038	11,683	+ 28.7
Food & Kindred Products	1,564	1,706	- 8.3	1,811	1,912	- 5.3
Tobacco	646	495	+ 30.5	646	495	+ 30.5
Apparel, Textiles, Leather	7	3	+133.3	715	738	- 3.1
Lumber & Furniture	509	658	- 22.6	1,586	1,720	- 7.8
Printing, Publishing, Paper	167	140	+ 19.3	679	205	+231.2
Chemicals, Petroleum, Coal, Rubber	283	146	+ 93.8	1,109	738	+ 50.3
Stone, Clay & Glass	261	296	- 11.8	596	350	+ 70.3
Primary Metals	578	496	+ 16.5	2,494	613	+306.9
Machinery & Metal Products	4,564	4,604	- 0.9	5,330	4,837	+ 10.2
Other	7	9	- 22.2	72	75	- 4.0

MAJOR OWENSBORO MANUFACTURING FIRMS,
THEIR PRODUCTS AND EMPLOYMENT^{4/}

Firm	Product	Employment		
		Total	Male	Female
The American Tobacco Co.	Cigars	653	166	487
Can-Tex Industries,	Sewer pipe, tile,			
Division of Harsco Corp.	flue lining	100	97	3
Colonial Baking Co.	Bread and rolls	86	80	6
Dewey & Almy Chemical	Battery separators,			
Division	latex, cellulosic			
	fibers	229	220	9
The Fleischmann Distilling	Whisky, feed,			
Corp.	cooperage	129	125	4
General Electric Co.	Radio, television			
	tubes, components,			
	industrial controls	3,800	1,200	2,600
Glenmore Distilleries Co.	Whisky, gin, vodka,			
	cocktails	259	206	53
Green River Steel Corp.	Bars, billets,			
	blooms, stainless			
	steel, carbon, &			
	alloy steel	744	721	23
Hodge Tobacco Co.	Tobacco processing	165	143	22
Ideal Pure Milk Co.	Fluid milk, ice cream	99	88	11
Kentucky Electronics, Inc.	Wire drawing,			
	cathode ray tube			
	parts, cathode ray			
	tubes and guns	145	80	65
Medley Distilling Co.	Whisky, animal			
	feed supplement	183	141	42
Modern Welding Co., Inc.	Tanks, pressure			
	vessels, fabricated			
	structural steel	184	180	4
Murphy-Miller, Inc.	Office desk, chairs	500	450	50
Ohio Valley Forgings, Inc.	Steel drop forgings	51	48	3
Owensboro Brick & Tile Co.	Face brick	85	80	5
Owensboro Grain Co.	Soybean oil, meal	60	60	0
Owensboro Ice Cream &	Fluid milk,			
Dairy Products	ice cream	74	70	4
Owensboro Publishing Co.	Newspaper	125	85	40
Owensboro Tobacco Co.	Tobacco redrying	350	100	250
Premium Allied Tool, Inc.	Metal stampings,			
	wire forms,			
	weldments	70	40	30
Westinghouse Electric Corp.	Incandescent lamps	103	36	67
V. E. Anderson	Aluminum storm			
	windows, doors,			
	wood windows,			
	insulating glass	225	200	25

WAGE RATES FOR SELECTED OCCUPATIONS
OWENSBORO, KENTUCKY ^{5/}

<u>Classification</u>	<u>Starting</u>	<u>Wages Per Hour</u>	
		<u>Maximum</u>	<u>Prevailing</u>
<u>Production Employees</u>			
Assembler	\$1.60	\$2.10	\$1.70
Inspector	1.73	2.10	1.75
Production Laborer	1.73	2.25	2.00
Welder, Arc or Acetylene (Class-A)	2.00	3.10	2.25
<u>Service Employees</u>			
Electrician (Class-A)	\$2.50	\$3.10	\$2.50
Laborer	1.60	2.00	1.75
Machinist	2.50	3.50	2.50
Mechanic, Maintenance	2.00	3.00	2.00
Truck Driver, Industrial (Class-A)	1.70	2.00	1.75
<u>Office Employees</u>			
Bookkeeper	\$1.75	\$2.10	\$2.00
File Clerk	1.60	1.85	1.70
Receptionist	1.60	1.85	1.70
Secretary	\$75 per wk.	\$110 per wk.	\$75 per wk.
Typist	1.70	2.10	1.75

LABOR ORGANIZATIONS

<u>Union</u>	<u>Representing workers at:</u>
Bakery and Confectionery Workers International	Colonial Baking Company
Allied Industrial Workers	Westinghouse Electric Corp. General Electric Company
Carpenters	V. E. Anderson Manufacturing Company
Distillery and Wine Workers	Glenmore and Fleischman Distilleries
Boilermakers	Dewey & Almy Chemical Division Ohio Valley Forgings, Inc.
Steel Workers	Green River Steel Corp. Faith Tool & Die Company, Inc. Kentucky Electronics, Inc.
Tobacco Workers	American Tobacco Company
Upholstery Workers	Murphy-Miller, Inc.

CURRENT AND FUTURE LABOR SUPPLY -
OWENSBORO LABOR MARKET AREA

Area	Current Labor Supply, 1971 ^{6/}			Future Labor Supply by 1977 (Becoming 18 Years of Age) ^{7/}		
	Total	Male	Female	Total	Male	Female
Labor Market Area	8,020	4,526	3,494	19,042	9,612	9,430
Daviess County	3,201	1,906	1,295	10,474	5,318	5,156
Hancock County	674	371	303	866	428	438
Henderson County	1,026	609	417	4,407	2,195	2,212
McLean County	997	443	554	1,022	518	504
Ohio County	2,122	1,197	925	2,273	1,153	1,120

TOTAL PERSONAL INCOME^{8/}

Area	1969*	1959	% Change
Daviess County	\$ 236,331,000	\$ 142,132,000	+66.3
Labor Market Area	409,460,000	220,308,000	+85.9
Kentucky	9,202,000,000	4,655,000,000	+97.6

PER CAPITA PERSONAL INCOME^{9/}

Area	1969*	1959	% Change
Daviess County	\$ 3,080	\$ 1,998	+54.1
Labor Market Area	\$1,740 to 3,910	\$884 to 1,998	N. A.
Kentucky	2,847	1,552	+83.4

*Preliminary figures.

EDUCATION

Public Schools

	<u>Owensboro</u>	<u>Daviess County</u>
Total Enrollment	7,660	10,356
Elementary	4,004	5,908
Junior High	2,006	2,218
High School	1,650	2,230
Student-Teacher Ratio	26-1	26-1
Elementary	25-1	27-1
Junior High	28-1	26-1
High School	27-1	25-1
State Rating of High School	Standard Comprehensive	Standard Comprehensive
Other Accreditations	The Southern Association of Colleges and Schools	The Southern Association of Colleges and Schools
Percent High School Graduates to College	49.6	43.1
Current Expenditures Per Pupil	\$523.43	\$513.63
Bonded Indebtedness, June 30, 1971	\$3,840,000	\$3,249,000

Parochial Schools

Total Enrollment	3,145
Elementary	2,105
High School	1,040
Student-Teacher Ratio	25-1
Elementary	26-1
High School	23-1

Vocational Schools

	<u>Nearest Area School</u>
Location	Daviess County Area Vocational School Owensboro
Curriculum	Practical Nursing Distributive Education Electronics (Communications) Electronics (Industrial) ETV Technician Auto Body Repair Auto Mechanics Cosmetology Drafting Machine Cabinet Making Machine Shop Office Machines Repair Printing Welding

Colleges and Universities

<u>Name</u>	<u>Area - Within 70 Miles</u>		<u>Highest Degree Conferred</u>
	<u>Location</u>	<u>Enrollment</u>	
Brescia College	Owensboro	1,017	Baccalaureate
Kentucky Wesleyan College	Owensboro	1,042	Baccalaureate
Western Kentucky University	Bowling Green	10,737	Masters
University of Evansville	Evansville, Ind.	5,373	Masters
Henderson Community College	Henderson	590	Associate
Madisonville Community College	Madisonville	307	Associate
Indiana State University	Evansville, Ind.	2,600*	Baccalaureate

*Projected.



Apollo Junior High School



Daviess County High School



Owensboro Senior High School



Science Building - Brescia College

TRANSPORTATION

Rail

Lines serving Owensboro - Louisville & Nashville Railroad, Illinois
Central Railroad

Services - Carload freight, switching, piggyback service, team tracks.
REA Express pickup and delivery service is available.

RAILWAY TRANSIT TIME FROM OWENSBORO, KENTUCKY, TO: ¹⁰/

No. of Days		No. of Days	
City	CL	City	CL
Atlanta, Ga.	3	Los Angeles, Calif.	5
Birmingham, Ala.	3	Louisville, Ky.	1
Chicago, Ill.	2	Nashville, Tenn.	2
Cincinnati, Ohio	2	New Orleans, La.	4
Cleveland, Ohio	3	New York, N. Y.	5
Detroit, Mich.	4	Pittsburgh, Pa.	4
Knoxville, Tenn.	2	St. Louis, Mo.	2

Truck Service

Company

A & H Truck Line, Inc.
Able Express, Inc.
Brada Miller Freight System
Interstate Motor Freight
System
McLean Trucking Co.
Motor Freight Cooperation
Owensboro Express, Inc.
Roadway Express, Inc.
T.I.M.E.-DC, Inc.
Transport Motor Express,
Inc.

Home Office

Evansville, Indiana
Louisville, Kentucky
Kokomo, Indiana

Grand Rapids, Michigan
Winston-Salem, North Carolina
Terre Haute, Indiana
Owensboro, Kentucky
Akron, Ohio
Lubbock, Texas

Ft. Wayne, Indiana

HIGHWAY MILES AND TRUCK TRANSIT TIME IN DAYS FROM
OWENSBORO, KENTUCKY, TO SELECTED MARKET CENTERS

City	Highway Miles	Delivery Time ¹¹ / _{TL}		City	Highway Miles	Delivery Time	
		LTL	TL			LTL	TL
Atlanta, Ga.	440	3	2	Los Angeles, Calif.	2,053	7-9	4-5
Birmingham, Ala.	360	3	2	Louisville, Ky.	136	1-2	1
Chicago, Ill.	348	2-3	1	Nashville, Tenn.	135	1-2	1
Cincinnati, Ohio	249	2	1	New Orleans, La.	711	3	2
Cleveland, Ohio	497	3	1-2	New York, N. Y.	927	4-6	2-3
Detroit, Mich.	518	3	2	Pittsburgh, Pa.	549	3	2
Knoxville, Tenn.	303	3	1-2	St. Louis, Mo.	214	2	1

Air

Local

Location: Owensboro-Daviess County Airport
 Runways: 3 1/2 miles west-southwest of Owensboro
 Length: 2 paved
 Traffic: 6,500 feet; 3,700 feet
 Control: Control tower
 Lighting: Beacon, runways, wind tee, obstruction
 lights and taxi lights
 Services: Ozark Airlines; 80, 91, and 100 octane;
 Jet-A fuel; storage; major A & E
 repairs; general flying service; and taxi

Bus

Southern Greyhound Bus Line, Fuqua Bus Line,
 Evansville and Ohio Valley Bus Lines

Taxi

24-hour, radio-dispatched service

Rental Services

Car, trailer and truck rentals

POWER AND FUEL

Electricity

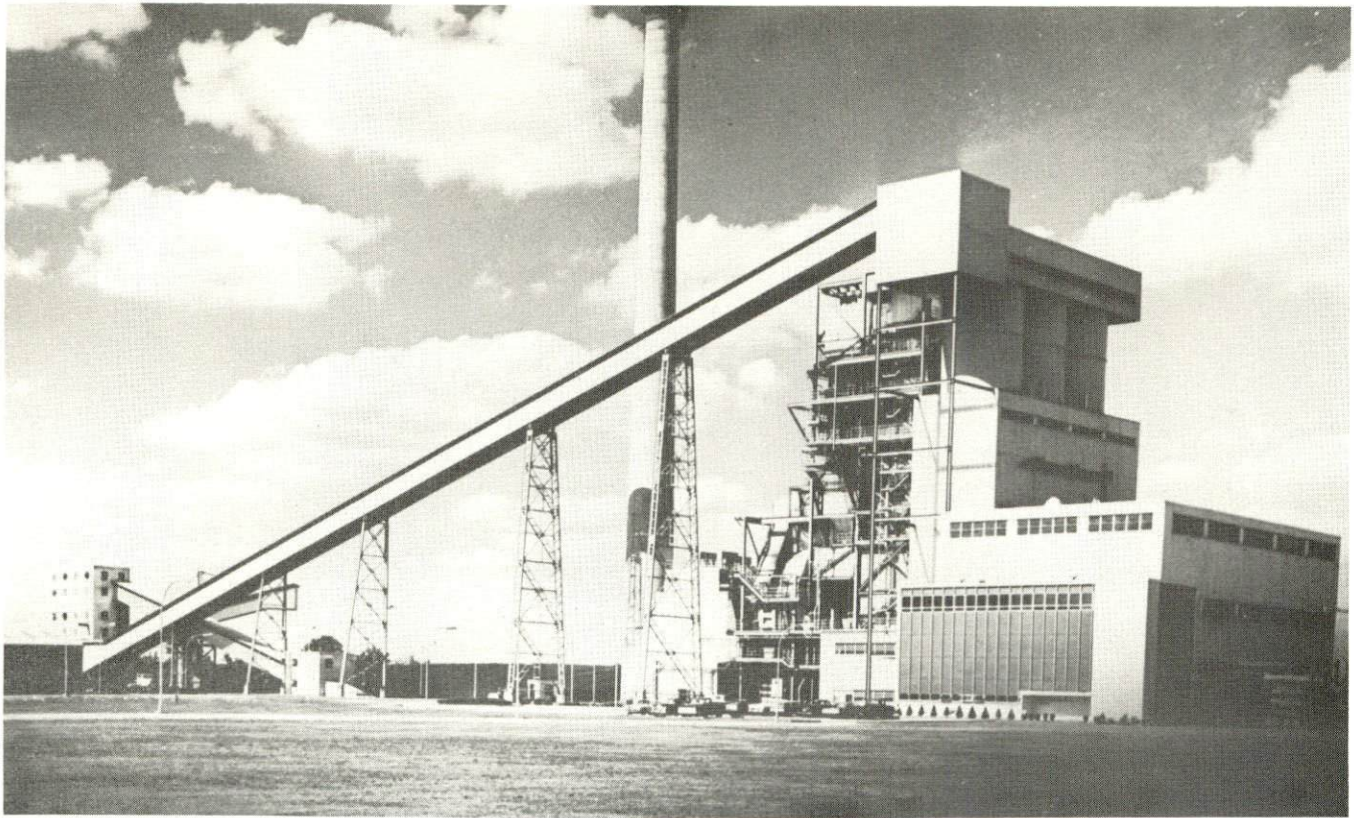
Company serving Owensboro - Owensboro Municipal Utilities Commission
Source of power - Owensboro Municipal Utilities Commission
Total generating capacity - 202,000 KW
Industrial rates furnished by - General Manager, Owensboro Municipal
Utilities Commission, Owensboro, Kentucky

Company serving Daviess County - Kentucky Utilities Company
Source of power - Kentucky Utilities Company
Total generating capacity - 1,215,000 KW
Industrial rates furnished by - Kentucky Utilities Company,
Lexington, Kentucky

Company serving Daviess County - Green River Rural Electric
Cooperative Corporation
Source of power - Big Rivers Rural Electric Cooperative Corporation
Total generating capacity - 400,000 KW
Industrial rates furnished by - Green River Rural Electric Cooperative
Corporation, P. O. Box 1389, Owensboro, Kentucky

Natural Gas

Company serving Owensboro - Western Kentucky Gas Company
Source of supply - Texas Gas Transmission Corporation
Size of transmission lines - 24-inch
Distribution lines - 2 to 10 inches
Btu content - 1,000
Specific gravity - .60
Distribution pressure - 4 ounces to 35 psi
Rates - Industrial rates furnished by Western Kentucky Gas Company,
Owensboro, Kentucky.



Owensboro Municipal Utilities Electric Generating Station



Green River RECC, Owensboro



Western Kentucky Gas Company Building - General Office



Texas Gas Transmission Corporation, Owensboro

WATER AND SEWERAGE

Water

Company serving Owensboro - Owensboro Municipal Utilities Commission

Source - 24 wells

Treatment plant capacity - 14,000,000 gpd

Average daily consumption - 8,000,000 gallons

Peak daily consumption - 11,000,000 gallons

Type treatment - lime, chlorine, phosphate

Storage capacity - 7,000,000 gallons

Size mains - 20, 12, and 6 inches

Average pressure - 60 psi

Average temperature - 56°F

MONTHLY WATER RATES FOR WHOLESALE AND INDUSTRIAL CONSUMERS

<u>Cubic Feet Delivered in Any One Month</u>		<u>Inside City</u> Per 100 Cu. Ft.	<u>Outside City</u> Per 100 Cu. Ft.
First	1,500 cu. ft.	\$.381	\$.572
Next	8,500 cu. ft.	.292	.438
Next	190,000 cu. ft.	.210	.315
All over	200,000 cu. ft.	.173	.260

<u>Minimum Charge for Metered Service</u>	<u>Inside City</u>	<u>Outside City</u>
5/8 or 3/4-inch meter	\$ 1.36	\$ 2.04
1-inch meter	3.74	5.61
1 1/4-inch meter	6.12	9.18
1 1/2-inch meter	8.16	12.24
2-inch meter	13.60	20.40
3-inch meter	24.30	36.45
4-inch meter	36.90	55.35
6-inch meter	68.00	102.00
8-inch meter	136.00	204.00

<u>Fire Protection Service</u>	<u>Inside City</u>	<u>Outside City</u>
2-inch service connection	\$ 4.50 per mo.	\$ 6.75 per mo.
4-inch service connection	9.00 per mo.	13.50 per mo.
6-inch service connection	13.00 per mo.	19.50 per mo.
8-inch service connection	17.00 per mo.	25.50 per mo.

Name of water district - Southeast Daviess County Water District

Date when water district began operating - 1966

Source of supply of treated water - Owensboro Municipal Utilities
Commission

Amount of water which can be purchased in a 24-hour period - Unlimited

Average amount of water used - 9,000,000 gallons per month

Peak amount of water used - Due to increasing amount of water being
used, a peak amount has not been determined.

Water district storage facilities and capacities:

<u>Facility</u>	<u>Capacity</u>
2 storage tanks	300,000 gallons each
1 storage tank	150,000 gallons

Size mains - 12, 10, 8, and 6 inches

Rates:

First	2,000 gallons	\$4.00 (Minimum bill)
Next	8,000 gallons	1.00 per M gallons
Next	10,000 gallons	.90 per M gallons
Next	20,000 gallons	.80 per M gallons
Next	20,000 gallons	.70 per M gallons
Next	240,000 gallons	.60 per M gallons
Next	100,000 gallons	.50 per M gallons
All over	400,000 gallons	.40 per M gallons

Surface water sources - Ohio and Green Rivers

Average discharge - Ohio River at Evansville, Indiana; 129,000 cfs (29-years, USGS); Green River at Calhoun 10,580 cfs (unadjusted, 39-years, USGS)

Expected ground water yield - 500 to 1,000 gpm along the Ohio River on the northern boundary; 5 to 50 gpm or less over the remainder of the county.

Sewerage

Company serving Owensboro - Owensboro Sewer Commission

Design capacity - 11,000,000 gpd

Average daily flow - 8,500,000 gallons

Treatment - Primary

Type treatment - Primary settling tanks, Anaerobic digester, sludge drying beds, chlorination

Treated effluent discharged into - Ohio River

Size of mains - 6 to 96 inches

Rates - 100 percent of the monthly water bill.

LOCAL GOVERNMENT

City

Structure - Mayor - 4-year term; 4 commissioners-2-year terms;
city manager

Budget 1971-72 - General Fund \$5,183,907; Water and Sewer Fund
\$848,500

Fees and licenses - Occupational license - one percent of wages and
net profits.

County

Structure - County Judge - 4-year term; 3 commissioners-4-year terms

Budget 1970-71 - General Fund \$772,000; Road Fund \$619,486

Assessed Value of Property, 1970

<u>Classes of Property*</u>	<u>Owensboro</u>	<u>Daviess County</u>
Real Estate	\$257,128,815	\$433,311,105
Tangibles	51,144,859	107,085,019
Public Service	17,000,000	51,363,191 (1969)

Local General Property Tax Rates Per \$100 of Assessed Valuation, 1971 ^{12/}

<u>Taxing Unit**</u>	<u>Owensboro</u>	<u>Daviess County</u>
State	\$.015	\$.015
County	.161	.161
School	.842	.558
City	.448	
Total	\$ 1.466	\$.734

*Property assessed at 100 percent of fair value.

**Manufacturing machinery, raw materials inventories and goods in
process inventories are not subject to local tax. State rate is only
\$0.15 per \$100.



Owensboro Public Library



Daviess County Courthouse

Planning and Zoning

Agency - Owensboro Planning and Zoning Commission
Plans completed - Land Use Plan, Zoning Ordinance, Neighborhood
Analysis, Commercial Area Study, Public Improvements Program,
Capital Improvements Budget, Planning Advisory Service
Codes adopted - All major codes and ordinances

Safety

<u>Police</u>	<u>Owensboro</u>	<u>Daviess County</u>
Total staff	116	15
Radio-patrol cars	27	7
Other equipment	Radar	Standard

Fire

American Insurance Association Fire Rating	4
Full-time staff	91
Equipment:	
1,000-gpm pumpers	4
ladder trucks	2
utility truck	1
Other	Rescue truck 2 auxiliary trucks

Sanitation

	<u>Owensboro</u>	<u>Daviess County</u>
Type service	municipal	private contract
Cost:		
residential	\$3 per mo.	
business	\$6 to \$45 per mo. plus \$.50 per 20-gallon container in excess of 75 containers	
Collection frequency:		
residential	weekly	by contract
business	as needed	by contract
Trash pickup	on request	by contract
Disposal method	sanitary land fill	sanitary land fill

Steel dumpster is \$5 per pickup not to exceed \$100 per month.

HEALTH

Hospitals

<u>General Hospital</u>	<u>Location</u>	<u>Beds</u>
Owensboro-Daviess County Hospital	Owensboro	132

General hospital facilities - Pharmacy, laboratory, operating room, recovery room, emergency room, X-ray department, pediatric department, X-ray school for technicians, central supply, dietary department, coronary care, intensive care, inhalation therapy, physical therapy, and nursery department

Medical staff - 125 registered nurses, 100 licensed practical nurses, 190 nurse aides, 30 orderlies, 9 regular laboratory technicians, 1 dietician, 2 physical therapists, 2 pharmacists

Our Lady of Mercy Hospital	Owensboro	458
----------------------------	-----------	-----

General hospital facilities - Operating room, recovery room, laboratory, emergency room, diagnostic X-ray, intensive care, 5 nursing units - 2 medical, 1 surgical, 1 pediatric, 1 psychiatric

Medical staff - 43 registered nurses, 28 licensed practical nurses, 53 nurse aides, 9 orderlies

Other - Approximately 70 local doctors are available for both hospitals.

Nursing Homes

	<u>Number</u>	<u>Beds</u>
Extended care homes	3	208
Personal care homes	10	555

Public Health

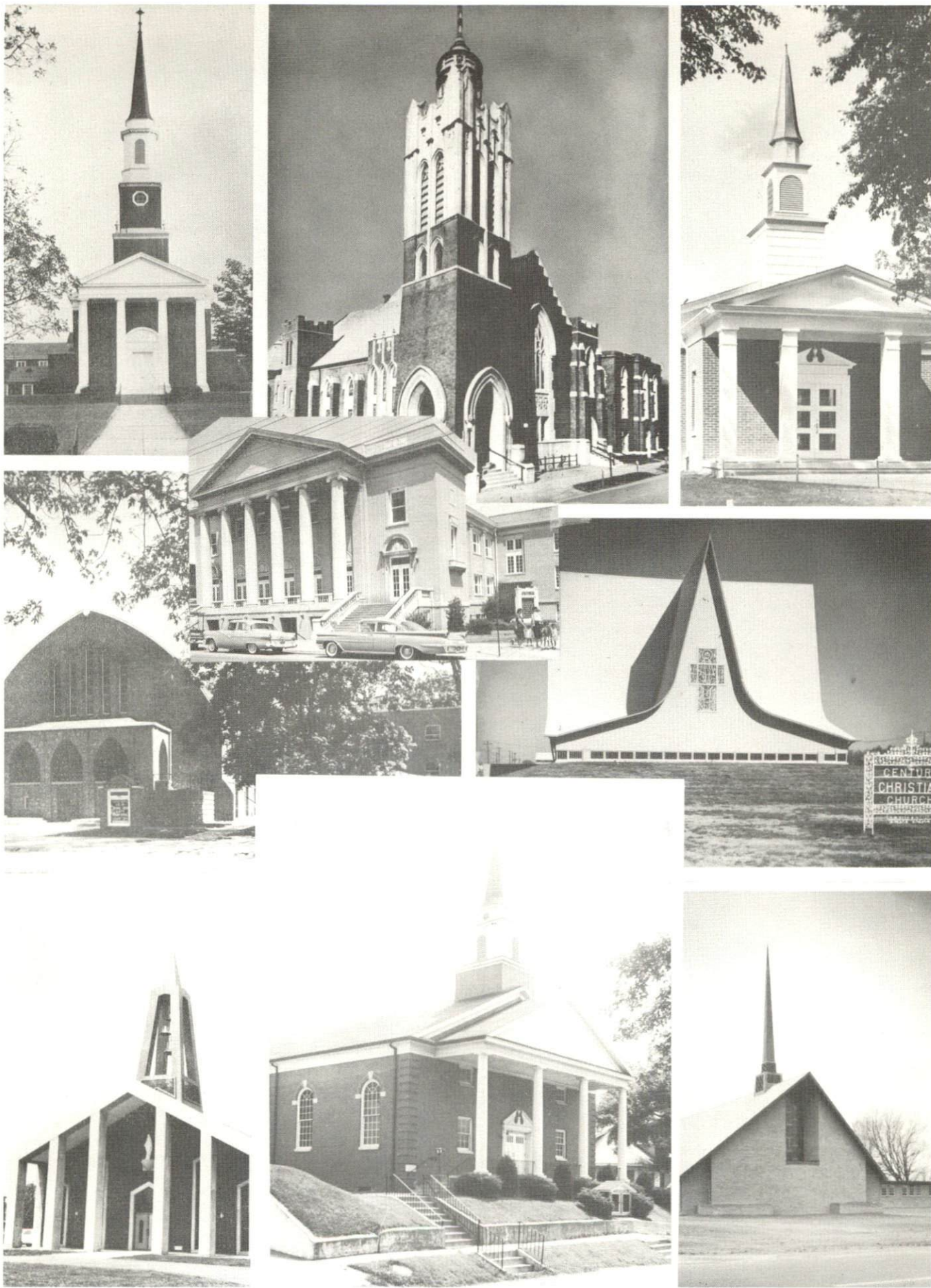
Facility - Owensboro-Daviess County Health Department
Staff - Health director, 5 clerk typists, 9 nurses, 6 sanitarians, 3 clinicians, 1 dental clinician, 1 plumbing inspector
Budget 1970-71 - \$213,032



Owensboro-Daviess County Hospital



Our Lady of Mercy Hospital



Some of Owensboro's 70 churches

OTHER LOCAL FACILITIES

Communications

Telephone - South Central Bell Telephone Company
Services - All standard services

Telegraph - Western Union

Postal - U. S. Post Office
Class - 1
Mail received - 10 times daily
Mail dispatched - 10 times daily

Newspapers - Messenger and Inquirer
Daily and circulation - 27,400

Radio - WVJS-AM; WSTO-FM; WOMI-AM-FM
Hours of operation - 5 A.M. to 12 P.M.

Television -
Reception from - Henderson, Kentucky; Evansville, Indiana
Kentucky Educational Television - Channel 35, Madisonville transmitter

Library Services

Public Libraries - Owensboro-Daviess County Public Library
Size collection - 65,000 volumes
Circulation, 1970-71 - 300,319
Services - Books, framed paintings, microfilm, movie films, film strips, bookmobile, children's story hour, children's programs, participates in Head Start, headquarters for Commonwealth's program for recording for the blind, headquarters for Audubon Regional Library

Private Libraries - Kentucky Wesleyan College and Brescia College

Religious Institutions

Number of churches - 70
Denominations - All major denominations are represented in Owensboro.

Financial Institutions

<u>Banks</u>	<u>Statement as of June 30, 1971</u>	
	<u>Assets</u>	<u>Deposits</u>
The Owensboro National Bank	\$73,586,015.06	\$65,639,982.30
Central Bank & Trust Co.	42,239,889.74	37,099,280.71
Citizens State Bank	45,010,060.47	39,088,506.69
<u>Savings and Loan Associations</u>	<u>Assets</u>	<u>Shared Accounts</u>
Owensboro Federal	\$49,663,790.25	\$44,949,658.82
Lincoln Federal	7,190,995.83	6,015,822.70
First Home Federal	25,648,810.02	23,245,987.11

Hotels and Motels

<u>Number</u>	<u>Units</u>
14	698

Clubs and Organizations

Business and Civic - Chamber of Commerce, Jaycees, Kiwanis, Lions, Rotary, Optimist, Civitan, Medical Society, Dental Society, Ministerial Association, Salvation Army, Red Cross, Welcome Wagon

Fraternal - American Legion, Eagles, IOOF, Masonic Lodge, Moose Lodge, VFW, Elks, Spastic Guild

Women's - YWCA, Women's Club, Business and Professional Women's Club, DAR, Homemakers, Garden Club, Rebekah, Cotillion, Jaycettes, Civitana, Moose Auxiliary, American Legion Auxiliary, VFW Auxiliary, American Business Women's Association, American Association of University Women, League of Women Voters, Junior Service League

Youth - Boy Scouts, Girl Scouts, Cub Scouts, Brownies, FFA, FHA, 4-H, Beta Club, Junior Achievement, Boy's Club, Little League

RECREATION

Local

Public Recreation Facilities

Supervised program - Owensboro Recreational Commission
Parks - 11
Playgrounds - 18
Swimming pools - 3
Golf courses - 3
Tennis courts - in 4 locations
Baseball diamonds - 5
Football fields - 3
Basketball courts - 3
Croquet courts - 3
Ice rink - 1
Sports center - 1

Private Recreation Facilities

Country clubs - 2
Golf courses - 2
Swimming pools - 6
Movie theaters - 4, 3 drive-ins
Bowling lanes - 2
Other - Tennis courts, YWCA, Family-Y

Tourist Attractions

Glenmore's Little Museum
Uncle Tom's Daviess County Cabin

Cultural Events

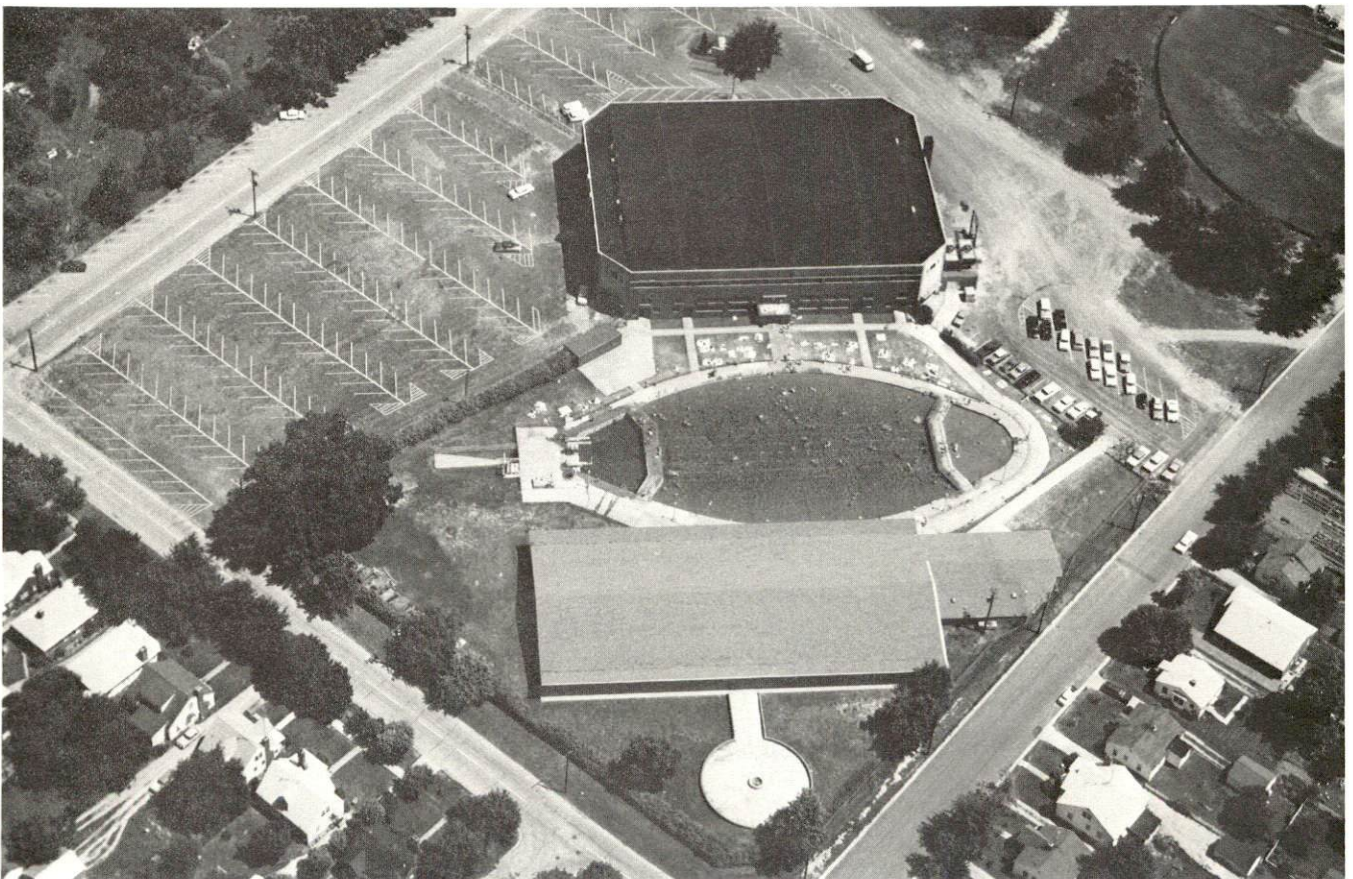
Brescia College's "Les Deux Images," Dramatic Arts Club
The Little Theatre
Owensboro Festival of Arts
Owensboro Symphony Orchestra

Area (Within 75 miles)

Windy Hollow Recreational Area
John James Audubon State Park
Lake Malone State Park
Rough River Dam State Resort Park
Pennyrile Forest State Resort Park
Jefferson Davis Monument State Shrine
Henderson Kentucky - Harness racing at the Audubon Raceway and
James C. Ellis Park and Race Track.



Family-Y, Owensboro



Owensboro Sportscenter

AGRICULTURE - NATURAL RESOURCES - CLIMATE

Agriculture 13/

	<u>Daviess County</u>	<u>Labor Market Area</u>
Total land area (acres)	295,680	1,238,400
Percent of area in farm land	82.9	71.6
Number of farms	1,952	6,229
Average size of farms (acres)	125.5	142.4
1964 value of all farm products	\$15,482,495	\$38,075,139
Value per farm	8,246	6,113
Total crop sales	9,449,124	23,160,757
Total livestock & livestock products	6,029,371	14,904,300
1968 agricultural production included:		
Burley tobacco (lbs.)	6,446,000	12,709,000
Corn (bu.)	3,219,000	9,936,000
Cattle and calves (number)	52,400	138,300
Hogs and pigs (number)	38,000	138,400
Milk production (1967) (lbs.)	22,650,000	36,140,000

Natural Resources

Principal mineral resources	Petroleum, coal, sand and gravel, and miscellaneous clay
Acres of commercial forest land	70,000
Most abundant tree species	Red oaks, white oaks, hickories, sweetgum, soft and hard maples, yellow poplar and ash

Climate 14/

	<u>Daviess County</u>
Temperature	
Annual mean (30-year record)	57.0 degrees
Average annual 1969	55.0 degrees
Record highest July, 1966 (10-year record)	104.0 degrees
Record lowest January, 1963 (10-year record)	- 18.0 degrees
Seasonal heating degree-days (30-year record)	4,435
Precipitation	
Mean annual total (30-year record)	41.45 inches
Mean annual snow and sleet (30-year record)	13.0 inches
Total precipitation 1969	45.93 inches
Mean number days precipitation (30-year record) (.01 inches or more)	114
Average No. days thunderstorms (30-year record)	47
Prevailing winds (14-year record)	south-southwest

HISTORY

Daviess County, 466 square miles in size, is located in western Kentucky and is bounded on the north by the Ohio River. Green River forms most of its western border, and Panther Creek bisects the county from east to west, where it empties into the Green. The land surface is level to hilly and the soil consists of rich loams and clays well-adapted to agriculture. Lying in the Western Coal Field Region, the county has vast deposits of coal.

The first settlement in the area was made at Owensboro in 1798 by William Smithers, who was impressed by the numerous canebrakes along the Ohio and the plentiful game there. Other settlers soon joined Smithers, and Owensboro became a regular stopping place for river boats on the Ohio. Originally known as Yellow Bank, the town was later called Rossborough, then Owensboro when the town was chartered in 1866 for Colonel Abraham Owen, who lost his life at Tippecanoe while serving under General Harrison. An important river port, Owensboro was the site of numerous skirmishes in the Civil War.

Daviess became Kentucky's fifty-eighth county in 1815, its territory taken from Ohio County. It was named for Colonel Joseph Hamilton Daveiss (by some oversight the county's name is spelled differently), who moved to Kentucky from Virginia and lived, among other places, at Owensboro. Daveiss was the first western lawyer to argue a case before the Supreme Court and served as U. S. District Attorney for Kentucky.

Industry came to Daviess County soon after its establishment. A distillery which began operation in 1820 was an improvement on the first attempt made by Robert McFarland a few years before. This second plant, established by Robert Triplett, became one of the fastest growing concerns in the state. By 1887 there were 75 distilleries in Daviess County, producing some 350 barrels of whisky a day. Today the industry serves as a vital part of the county's economy.

Owensboro, the county seat, is a progressive city with a population of over 50,000 in 1970. A former All American City, Owensboro is the home of Kentucky Wesleyan and Brescia Colleges, both four-year institutions with enrollments of over 1,000.

In 1820 Daviess County had a population of 3,876. This grew steadily to 57,241 in 1950, 70,588 in 1960, and 79,486 in 1970.

Agriculture accounted for 1,600 of the county's 29,400 employed in 1970 with burley tobacco, corn, cattle, milk and hogs the principal products. Manufacturing employment totaled 8,600, with the greatest production in machinery and metal products and food products. Largest of the county's firms are General Electric Company, which employs some 3,800 people and produces radio and television components, The American Tobacco Company, making cigars, Green River Steel Corporation, and Murphy-Miller, Incorporated, which makes furniture. The county also produces large quantities of coal and petroleum.

A wide variety of recreational activities are available in the Owensboro area.

Daviess County has produced seven U. S. Representatives and two U. S. Senators, George M. Bibb and Thomas C. McCreery. Bibb became Secretary of the Treasury under President Tyler.

SOURCES OF INFORMATION

- 1/ U. S. Department of Commerce, Bureau of the Census, Census of Population, 1950, 1960, 1970.
- 2/ Kentucky Department of Economic Security, Division of Research and Statistics.
- 3/ Kentucky Department of Economic Security, Number of Workers in Manufacturing Industries Covered by Kentucky Unemployment Insurance Law Classified by Industry and County, September, 1960 and September, 1970.
- 4/ Kentucky Department of Commerce, Division of Planning and Research.
- 5/ Kentucky Department of Economic Security, Division of Employment Services, Owensboro Office.
- 6/ Kentucky Department of Economic Security, Kentucky Labor Supply Estimates by County, January 1971.
- 7/ Kentucky Department of Commerce, Future Labor Supply by 1977.
- 8/ University of Kentucky, Office of Development Services and Business Research, Total Personal Income for Kentucky.
- 9/ University of Kentucky, Office of Development Services and Business Research, Per Capita Income in Kentucky.
- 10/ Louisville & Nashville Railroad Company; Louisville, Kentucky.
- 11/ McLean Trucking Company; Winston-Salem, North Carolina.
- 12/ Kentucky Department of Revenue.
- 13/ U. S. Department of Commerce, Bureau of the Census, Census of Agriculture, 1964. U. S. Department of Agriculture and Kentucky Department of Agriculture, Kentucky Agricultural Statistics, 1969.
- 14/ U. S. Department of Commerce, Environmental Science Services Administration, Climatological Data, 1970.

All other information was obtained from governmental offices, local businesses and organizations.

This copy has been prepared by the Kentucky Department of Commerce,
Division of Research and Planning, and the cost of printing paid from
state funds.