

1973

# Industrial Resources - Franklin County - Frankfort

Kentucky Library Research Collections  
Western Kentucky University, [spcol@wku.edu](mailto:spcol@wku.edu)

Follow this and additional works at: [https://digitalcommons.wku.edu/franklin\\_cty](https://digitalcommons.wku.edu/franklin_cty)



Part of the [Business Administration, Management, and Operations Commons](#), [Growth and Development Commons](#), and the [Infrastructure Commons](#)

---

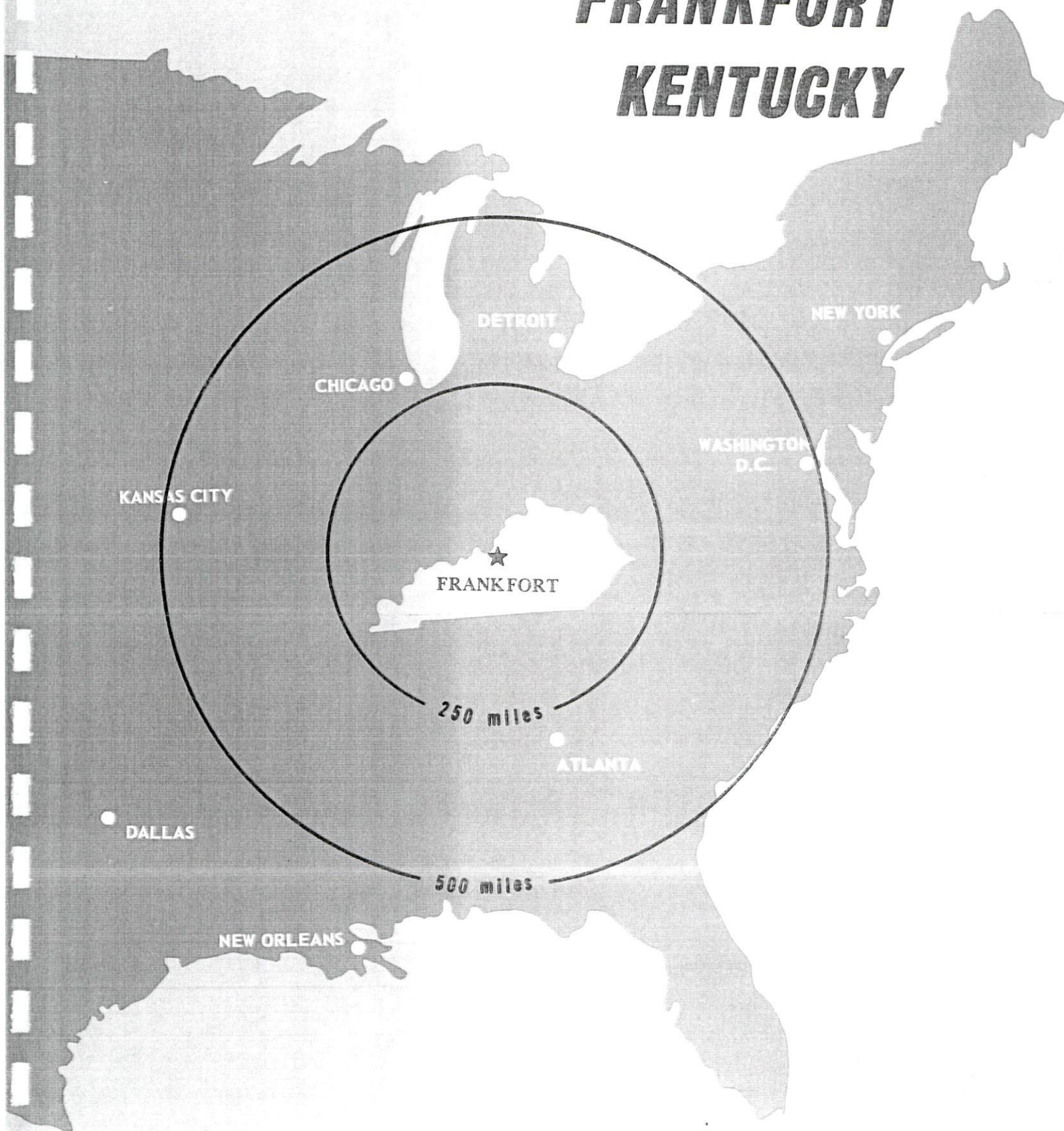
## Recommended Citation

Kentucky Library Research Collections, "Industrial Resources - Franklin County - Frankfort" (1973). *Franklin County*. Paper 11.  
[https://digitalcommons.wku.edu/franklin\\_cty/11](https://digitalcommons.wku.edu/franklin_cty/11)

This Report is brought to you for free and open access by TopSCHOLAR®. It has been accepted for inclusion in Franklin County by an authorized administrator of TopSCHOLAR®. For more information, please contact [topscholar@wku.edu](mailto:topscholar@wku.edu).

# INDUSTRIAL RESOURCES

## ***FRANKFORT*** ***KENTUCKY***



FRANKFORT INDUSTRIAL SITES

1973

# FRANKFORT INDUSTRIAL SITES

1973

For more information about the following sites, contact Paul Chenault, President, Franklin County Development Corporation, 326 St. Clair Street, Frankfort, Kentucky; or the Kentucky Department of Commerce, Capital Plaza Office Tower, Frankfort, Kentucky.

SITE #1: ACREAGE: 25 acres  
 LOCATION: On U.S. 460 at east city limits  
 ZONING: Industrial  
 HIGHWAY ACCESS: Fronts on U.S. 460 with Steadmantown Lane on western boundary  
 RAILROADS: Louisville & Nashville Railroad  
 WATER: Frankfort Electric and Water Plant Board  
 SIZE LINE: 8-inch line adjacent to southern boundary  
 GAS: Columbia Gas of Kentucky  
 SIZE MAIN: 6-inch main on site  
 ELECTRICITY: Kentucky Utilities Company  
 SEWERAGE: Frankfort Municipal Sewer Board  
 SIZE LINE: 8-inch line on site  
 OWNERSHIP: Private

SITE #3: ACREAGE: 30 acres  
 LOCATION: 0.8 miles southeast of Frankfort city limits, between U.S. 60 and U.S. 421  
 ZONING: Industrial  
 HIGHWAY ACCESS: Paved access road to site from U.S. 421  
 RAILROADS: Louisville & Nashville Railroad bounds site on the southwest  
 WATER: Frankfort Electric and Water Plant Board  
 SIZE LINE: 16-inch line on site  
 GAS: Columbia Gas of Kentucky  
 SIZE MAIN: 6-inch and 10-inch mains at northeast corner of site  
 ELECTRICITY: Frankfort Electric and Water Plant Board  
 SEWERAGE: Frankfort Municipal Sewer Board  
 SIZE LINE: 8-inch line 500 feet from northeast corner of site  
 OWNERSHIP: Louisville & Nashville Railroad

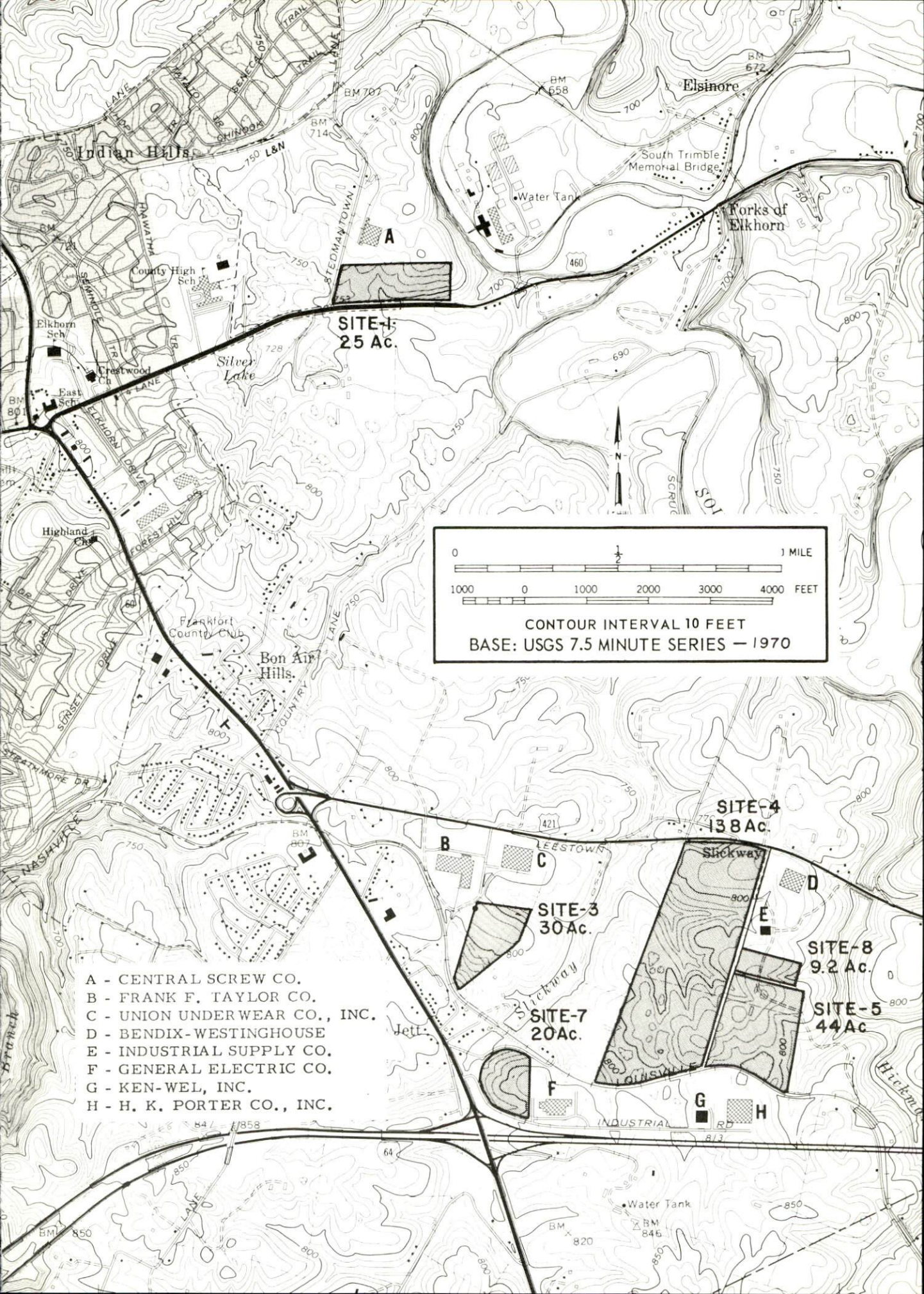
SITE #4: ACREAGE: 138 acres  
 LOCATION: 1.2 miles east of Frankfort on U.S. 421  
 ZONING: Industrial  
 HIGHWAY ACCESS: Fronts on U.S. 421 with paved access road along entire eastern boundary  
 RAILROADS: Louisville & Nashville Railroad along southern boundary  
 WATER: Frankfort Electric and Water Plant Board  
 SIZE LINE: 12-inch line on site  
 GAS: Columbia Gas of Kentucky  
 SIZE MAIN: 10-inch and 6-inch mains on site  
 ELECTRICITY: Frankfort Electric and Water Plant Board  
 SEWERAGE: Frankfort Municipal Sewer Board  
 SIZE LINE: 8-inch line on site  
 OWNERSHIP: Louisville & Nashville Railroad

SITE #5: ACREAGE: 44 acres  
 LOCATION: 1.4 miles east of Frankfort between U.S. 421 and I-64  
 ZONING: Industrial  
 HIGHWAY ACCESS: U.S. 421 via paved access road on western boundary  
 RAILROADS: Louisville & Nashville Railroad borders site on south  
 WATER: Frankfort Electric and Water Plant Board  
 SIZE LINE: 12-inch line at northwest corner of site by summer of 1973  
 GAS: Columbia Gas of Kentucky  
 SIZE MAIN: 10-inch and 6-inch mains 400 feet north of site  
 ELECTRICITY: Frankfort Electric and Water Plant Board  
 SEWERAGE: Frankfort Municipal Sewer Board  
 SIZE LINE: 8-inch line 1,200 feet north of site  
 OWNERSHIP: Private

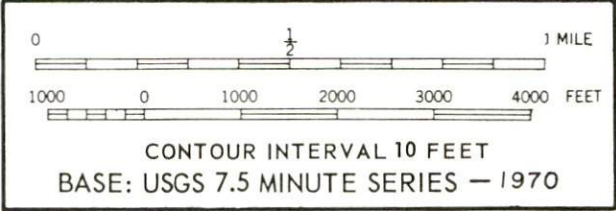
SITE #7: ACREAGE: 20 acres  
 LOCATION: 1.5 miles southeast of city limits  
 ZONING: Industrial  
 HIGHWAY ACCESS: Fronts on Industrial Park Road  
 RAILROADS: Louisville & Nashville Railroad 75 feet from north boundary  
 WATER: Frankfort Electric and Water Plant Board  
 SIZE LINE: 16-inch line 500 feet northeast of site  
 GAS: Columbia Gas of Kentucky  
 SIZE MAIN: 6-inch main on site  
 ELECTRICITY: Frankfort Electric and Water Plant Board  
 SEWERAGE: Frankfort Municipal Sewer Board  
 SIZE LINE: 8-inch line 350 feet east of site  
 OWNERSHIP: Franklin County Development Corporation

SITE #8: ACREAGE: 9.2 acres  
 LOCATION: 1.4 miles east of Frankfort between U.S. 421 and I-64  
 ZONING: Industrial  
 HIGHWAY ACCESS: Via U.S. 421 with paved access road to site  
 RAILROADS: Louisville & Nashville Railroad 1,500 feet south of site  
 WATER: Frankfort Electric and Water Plant Board  
 SIZE LINE: 12-inch line on western boundary to be complete by summer of 1973  
 GAS: Columbia Gas of Kentucky  
 SIZE MAIN: 6-inch and 10-inch mains on site  
 ELECTRICITY: Frankfort Electric and Water Plant Board  
 SEWERAGE: Frankfort Municipal Sewer Board  
 SIZE LINE: 8-inch line 800 feet north of site  
 OWNERSHIP: Private





**SITE-1**  
25 Ac.



- A - CENTRAL SCREW CO.
- B - FRANK F. TAYLOR CO.
- C - UNION UNDERWEAR CO., INC.
- D - BENDIX-WESTINGHOUSE
- E - INDUSTRIAL SUPPLY CO.
- F - GENERAL ELECTRIC CO.
- G - KEN-WEL, INC.
- H - H. K. PORTER CO., INC.

**SITE-4**  
138 Ac.

**SITE-3**  
30 Ac.

**SITE-7**  
20 Ac.

**SITE-8**  
9.2 Ac.

**SITE-5**  
44 Ac.

INDUSTRIAL RESOURCES

FRANKFORT, KENTUCKY

Prepared by

The Kentucky Department of Commerce

in cooperation with

The Frankfort-Franklin County Chamber of Commerce

1973

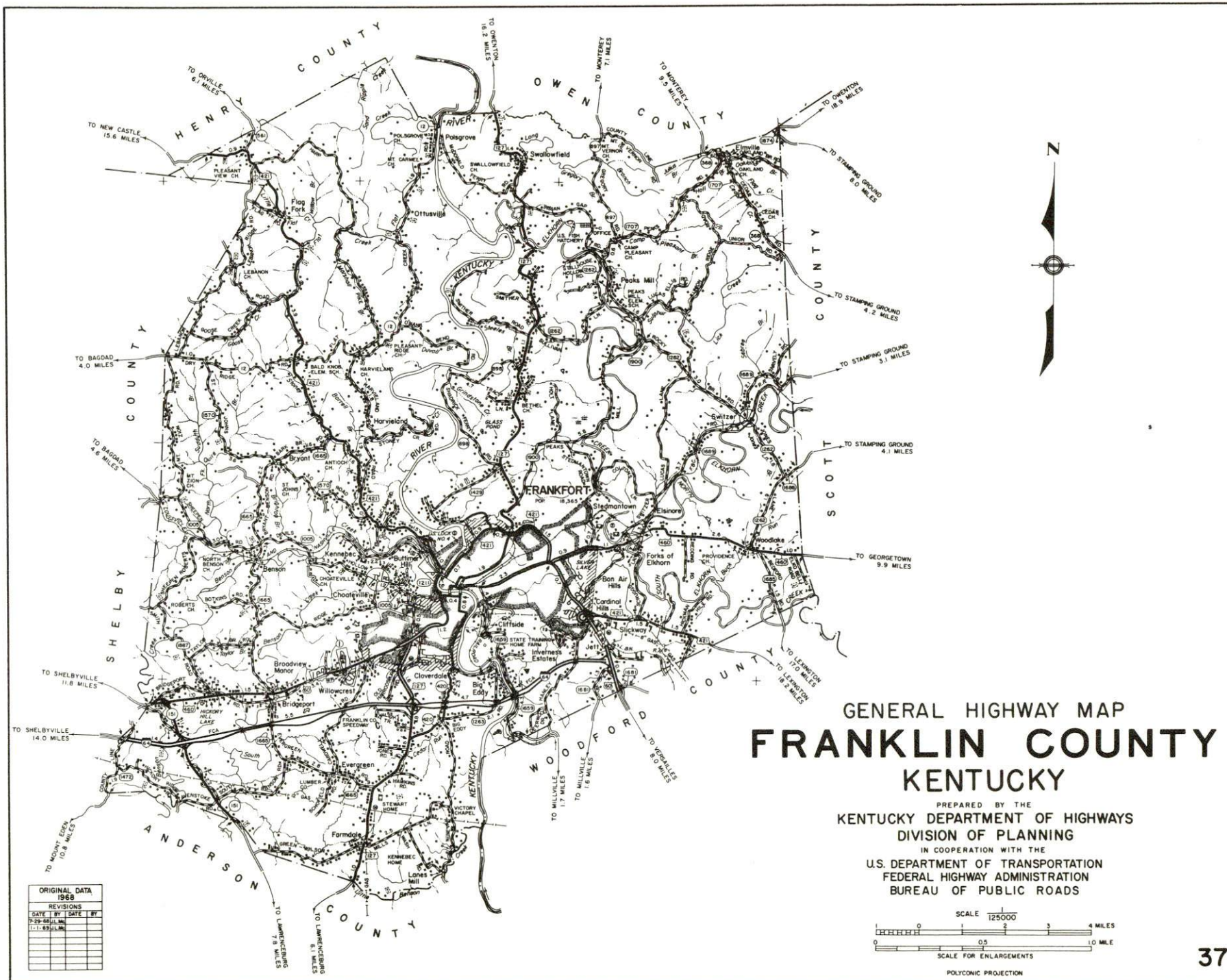


# TABLE OF CONTENTS

<u>Chapter</u>	<u>Page</u>
INDUSTRIAL SITES . . . . .	i
FRANKFORT, KENTUCKY - A RESOURCE PROFILE . . . . .	1
THE LABOR MARKET . . . . .	5
Population Trends . . . . .	5
General Employment Characteristics, 1971 . . . . .	5
Manufacturing Employment Trends by Industry. . . . .	5
Frankfort Manufacturing Firms, Their Products and Employment . . . . .	6
Wages . . . . .	7
Labor Organizations . . . . .	7
Current and Future Labor Supply . . . . .	9
Total Personal Income . . . . .	9
Per Capita Personal Income . . . . .	9
EDUCATION . . . . .	10
Public Schools . . . . .	10
Parochial and Private Schools . . . . .	10
Vocational Schools . . . . .	12
Colleges and Universities . . . . .	12
TRANSPORTATION . . . . .	14
Rail . . . . .	14
Truck Service . . . . .	14
Air . . . . .	15
Water . . . . .	15
Bus . . . . .	15
Taxi. . . . .	15
Rental Services. . . . .	15
POWER AND FUEL . . . . .	16
Electricity . . . . .	16
Natural Gas . . . . .	16
Other Fuels . . . . .	16

<u>Chapter</u>	<u>Page</u>
WATER AND SEWERAGE . . . . .	17
Water . . . . .	17
Sewerage . . . . .	18
LOCAL GOVERNMENT . . . . .	19
City . . . . .	19
County . . . . .	19
Assessed Value of Property, 1971 . . . . .	19
Local General Property Tax Rates Per \$100 of	
Assessed Valuation, 1971. . . . .	19
Utilities Gross Receipts Tax for Schools . . . . .	19
Planning and Zoning . . . . .	21
Safety . . . . .	21
Police . . . . .	21
Fire . . . . .	21
Rescue Service . . . . .	21
Sanitation . . . . .	22
HEALTH. . . . .	23
Hospitals . . . . .	23
Nursing Homes . . . . .	23
Public Health . . . . .	23
OTHER LOCAL FACILITIES . . . . .	24
Communications . . . . .	24
Library Services . . . . .	24
Religious Institutions . . . . .	25
Financial Institutions . . . . .	25
Hotels and Motels . . . . .	25
Clubs and Organizations. . . . .	25
RECREATION . . . . .	27
Local . . . . .	27
Area . . . . .	27
AGRICULTURE - NATURAL RESOURCES - CLIMATE . . . . .	29
Agriculture . . . . .	29
Natural Resources . . . . .	29
Climate . . . . .	29
HISTORY. . . . .	30







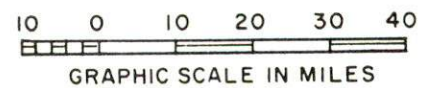
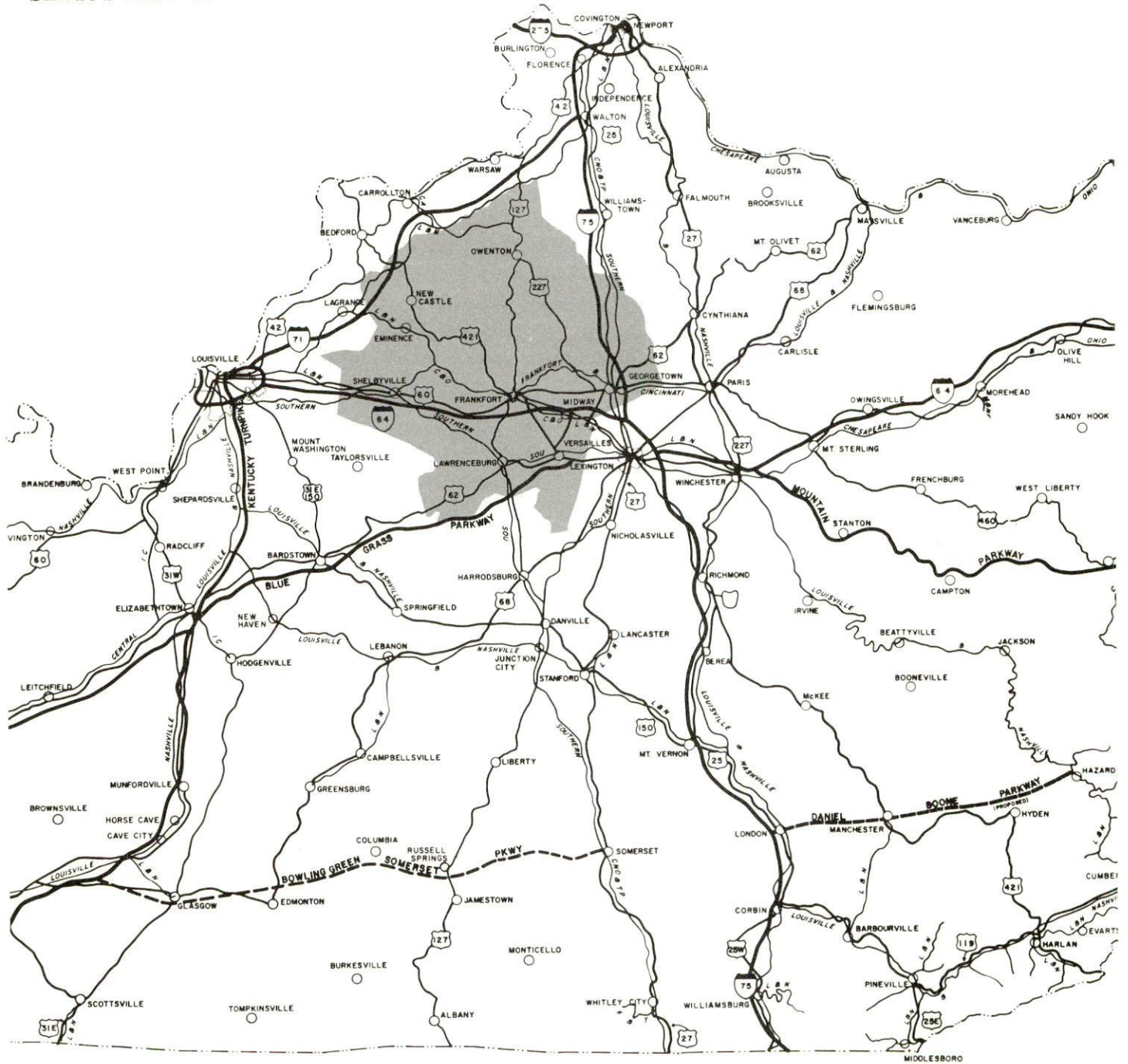


KENTUCKY STATE CAPITOL



# FRANKFORT LABOR MARKET AREA

\*Shaded area denotes labor market area



## FRANKFORT, KENTUCKY - A RESOURCE PROFILE

Frankfort, site of Kentucky's capitol and county seat of Franklin County, is located at the heart of the Blue Grass Region in central Kentucky. The Kentucky River bisects this beautiful and historic capital city. Many of the old homes and buildings, constructed in the early 1800's, have been preserved and are a delight not only to local inhabitants, but to thousands of tourists each year. Frankfort is 52 miles east of Louisville, 23 miles west of Lexington and 87 miles south of Cincinnati, Ohio, and had a 1970 population of 21,902. Franklin County covers a land area of 211 square miles and had a 1970 population of 34,481.

### The Economic Framework

Total employment in Franklin County averaged 22,790 in 1971 with manufacturing providing 3,110 of these jobs. Government provided 11,620 jobs, while trade and services provided 3,595. The county's major products are distilled beverages, apparel, and metal products.

Per capita personal income in the county in 1970 was \$3,270.

In the Frankfort labor market area, which includes Franklin and its six surrounding counties, total employment in 1971 averaged 49,280. Manufacturing provided 9,575 jobs while government provided 14,310 and trade and services 8,665. Area manufacturing employment has increased approximately 66 percent since 1962 with greatest increases noted in the machinery and metal products; printing and publishing; and stone, clay and glass industries.

Despite important industrial gains in recent years, the area still has a deficit of 753 manufacturing jobs when measured against the national industrial employment-population ratio.

### Resources for Growth

1. There is a current estimated labor supply of 7,010 men and 7,250 women available for industrial jobs in the labor market area. In addition, 5,500 young men and 5,330 young women will have become 18 years of age by 1978 and potentially available for work.

2. The local transportation capability is excellent. Frankfort is served by U. S. Highways 460, 60, 127 and 421. Interstate 64 passes 1 mile south of Frankfort, Interstate 75 is 20 miles east while the Blue Grass Parkway is 16 miles to the south. The Louisville & Nashville Railroad provides the city with a variety of services, including piggyback facilities. Commercial



air service is 20 minutes away at Lexington and Capital City Airport is capable of accommodating small aircraft in Frankfort. Unloading facilities for sand and gravel are available on the Kentucky River where a 6-foot navigation channel is maintained.

3. Electricity is furnished to Frankfort by the Frankfort Electric and Water Plant Board. Kentucky Utilities Company and Fox Creek RECC supply Franklin County. Natural gas is furnished by Columbia Gas of Kentucky, Inc. The raw water supply from the Kentucky River is more than adequate for future growth.

There are six distributors of distillate fuel oil in Frankfort and two distributors for propane and butane.

4. Industrial sites - Frankfort has six available industrial sites with all utilities.

5. Industrial services - a tool and die shop is located in Frankfort. Located within a 30-mile radius are 17 tool and die shops, 2 metal finishers, 1 heating facility and 1 electric motor repair facility.

6. There are five universities, five senior colleges, two junior colleges and two community colleges within a 50-mile radius of the city. Located in Frankfort itself is Kentucky State University, an institution recently elevated to university status and now offering a Masters' degree. The university's 220-acre campus overlooks Frankfort and is comprised of 26 buildings, many of which are new, modern, air conditioned structures. A vocational education center is located in Frankfort where two school systems operate. In addition, a state vocational-technical school is located in Lexington, 25 miles away.

#### Community Programs for Improvement

Since 1970, the construction of apartments in Frankfort has increased more than 30 percent. During 1972, 453 private rental units, 100 units of "236" rent subsidy and 147 private single family dwellings were under construction or completed. During the next 18 months, more than 500 new apartments are planned for the Frankfort metro area.

Additional recent improvements include:

1. 32 new units of low-cost public housing
2. One junior high school and one elementary school under construction
3. Extension of sewers to two subdivisions

4. One junior high school in planning stages
5. One new shopping center
6. Opening of Fort Hill State Park
7. One new branch bank
8. Completion of Capital Plaza Complex including a 28-story office building and a Federal office building nearing completion
9. Completion of a new YMCA and Civic Center with a seating capacity of 8,000
10. Leasing of commercial space in the Capital Plaza completed
11. Old State House undergoing complete historical renovation
12. Neighborhood Development Program to revitalize the downtown area in progress
13. Completion of a new multistory bank building in downtown Frankfort
14. Completion of the Franklin County Courthouse Annex
15. Filtration plant for water works under construction
16. Secondary sewage treatment plant in planning stages
17. Field house and athletic field recently completed at Kentucky State University
18. Three new restaurants including one which is unique due to its location in a cave
19. New multi-million dollar hospital under construction which will include 150 beds and greatly expanded medical services for the Franklin County area. Completion projected for mid-1974.
20. Value of residential and commercial construction more than \$5 million in 1972

#### Recreation, Entertainment and Livability

The Frankfort Recreation Department has a full-time director and offers a well-rounded program of supervised activities. Frankfort also has a "Golden Age" program for the elderly.

Frankfort, with its location on the Kentucky River, offers extensive entertainment in water sports including boating, water skiing, fishing and swimming.

The city itself also boasts several historical points of interest including the State Capitol, Old State House Museum, the Governor's Mansion, the Floral Clock, site of Daniel Boone's grave, the Orlando Brown House, Liberty Hall and the Old Governor's Mansion. Other attractions include the U. S. Fish Hatchery, the Kentucky Fish and Wildlife Game Farm, several distilleries and The Cave, a unique restaurant built partially underground in an old brewery.

The new Capital Plaza Convention Center features sports events, concerts, exhibits and has lighting suitable for color television.

The Frankfort Arts Foundation sponsors a concert series while Kentucky State University offers lectures, concerts and art exhibits.

Lexington, 23 miles east, and Louisville, Kentucky, 52 miles west, offer a full spectrum of sophisticated entertainment through cultural and sporting events.

Also within a 55-mile radius are Harrodsburg and Bardstown. The former is the site of Old Fort Harrod State Park while Bardstown houses My Old Kentucky Home.



# THE LABOR MARKET

## POPULATION TRENDS <sup>1/</sup>

Area	Population			Percent Change	
	1970	1960	1950	1960-70	1950-60
Frankfort	21,902	18,365	11,916	+19.3	+54.1
Labor Market Area	113,600	103,495	100,332	+ 9.8	+ 3.2
Franklin County	34,481	29,421	25,933	+17.2	+13.5
Anderson County	9,358	8,618	8,984	+ 8.6	- 4.2
Henry County	10,910	10,987	11,395	- 0.7	- 3.6
Owen County	7,470	8,237	9,755	- 9.3	-15.6
Scott County	17,948	15,376	15,141	+16.7	+ 1.6
Shelby County	18,999	18,493	17,912	+ 2.7	+ 3.2
Woodford County	14,434	11,913	11,212	+21.2	+ 6.3

## GENERAL EMPLOYMENT CHARACTERISTICS, 1971 <sup>2/</sup>

Major Employment Group	Employment	
	Franklin County	Labor Market Area
TOTAL	22,790	49,280
Agricultural	610	7,340
Nonagricultural	22,180	41,940
Manufacturing	3,110	9,575
Government	11,620	14,310
Trade and Services	3,594	8,664
Other	3,856	9,391

## MANUFACTURING EMPLOYMENT TRENDS BY INDUSTRY MARCH 1972 AND 1962 <sup>3/</sup>

Industry	Franklin County			Labor Market Area		
	1972	1962	% Change	1972	1962	% Change
TOTAL	2,858	2,269	+ 25.9	9,924	5,972	+ 66.1
Food & Kindred Products	675	778	- 13.2	1,773	1,798	- 1.4
Tobacco	2	1	+100.0	4	32	- 87.5
Apparel, Textiles, Leather	1,024	740	+ 38.4	1,254	1,276	- 1.7
Lumber, Furniture	11	28	- 60.7	14	37	- 62.2
Printing & Publishing,						
Paper	80	57	+ 40.4	1,133	157	+621.7
Chemicals, Petroleum &						
Coal, Rubber	7	0	--	156	58	+168.9
Stone, Clay & Glass	44	29	+ 51.7	624	70	+791.4
Primary Metals	0	0	0	227	215	+ 5.6
Machinery, Metal						
Products, Equipment	870	636	+ 36.8	2,973	1,677	+ 77.3
Other	145	0	--	1,766	652	+170.9



FRANKFORT MANUFACTURING FIRMS,  
THEIR PRODUCTS AND EMPLOYMENT <sup>4/</sup>

Firm	Product	Employment		
		Total	Male	Female
Bacon's Machine Shop	Machine shop, weldments	5	4	1
Bendix-Westinghouse Air Brake Division	Air brake components	200		
Blue Grass Press, Inc.	Job printing	12		
Cash Rubber Stamps	Rubber stamps, marking equipment	2		
Central Screw Co.	Screws, nuts, bolts	210	173	37
Frankfort Lumber & Manufacturing Co., Inc.	Millwork	19	16	3
Frankfort Materials Co.	Asphalt	5	5	0
Frankfort Publishing Co.	Newspaper, commercial printing	60	45	15
Frankfort Tool & Die Co.	Tools and dies, weld- ments and fixtures, punch and press stamping	3	2	1
George W. Gayle & Sons	Scraper rings, electric typewriter parts, para- chute and helicopter hardware	16	9	7
General Electric Co.	Plastic parts	50		
Genesco, Inc.	Ladies' dress shoes	280	90	190
Harrod-Carter, Inc.	Ready mixed concrete	16	14	2
Harrod-Carter, Inc.	Crushed stone, agricul- tural lime	15	15	0
Horn & Goin, Inc.	Ready mixed concrete	23	22	1
Hyman Pet Casket Div.	Caskets for animals, concrete headstones for animals	4	3	1
Ken-Wel, Inc.	Ignition transformers, hydraulic pumps, valves	106	26	80
Lyons Lumber Co.	Millwork	10	9	1
National Distillers Products Co.	Whisky, feed	763	532	231
H. K. Porter Co., Inc.	Automotive, appliance trim, metal stamping	372	198	174
Rebecca Ruth Candy, Inc.	Candy	16	3	13
Roberts Printing Co.	Letterpress printing, offset printing	12	7	5

(cont.)

<u>Firm</u>	<u>Product</u>	<u>Employment</u>		
		<u>Total</u>	<u>Male</u>	<u>Female</u>
Schenley Distillers, Inc.	Whisky, distillers dried grain	350	250	100
Frank F. Taylor Company	Strollers, playpens, highchairs	204	133	71
Trigometer, Inc.	Thermal temperature control devices, emmissions control components, electric range components	70	15	55
21 Brands, Division of Foremost McKesson, Inc.	Whisky	153	100	53
Union Underwear Co., Inc.	Men's knit underwear, shorts	847	78	769

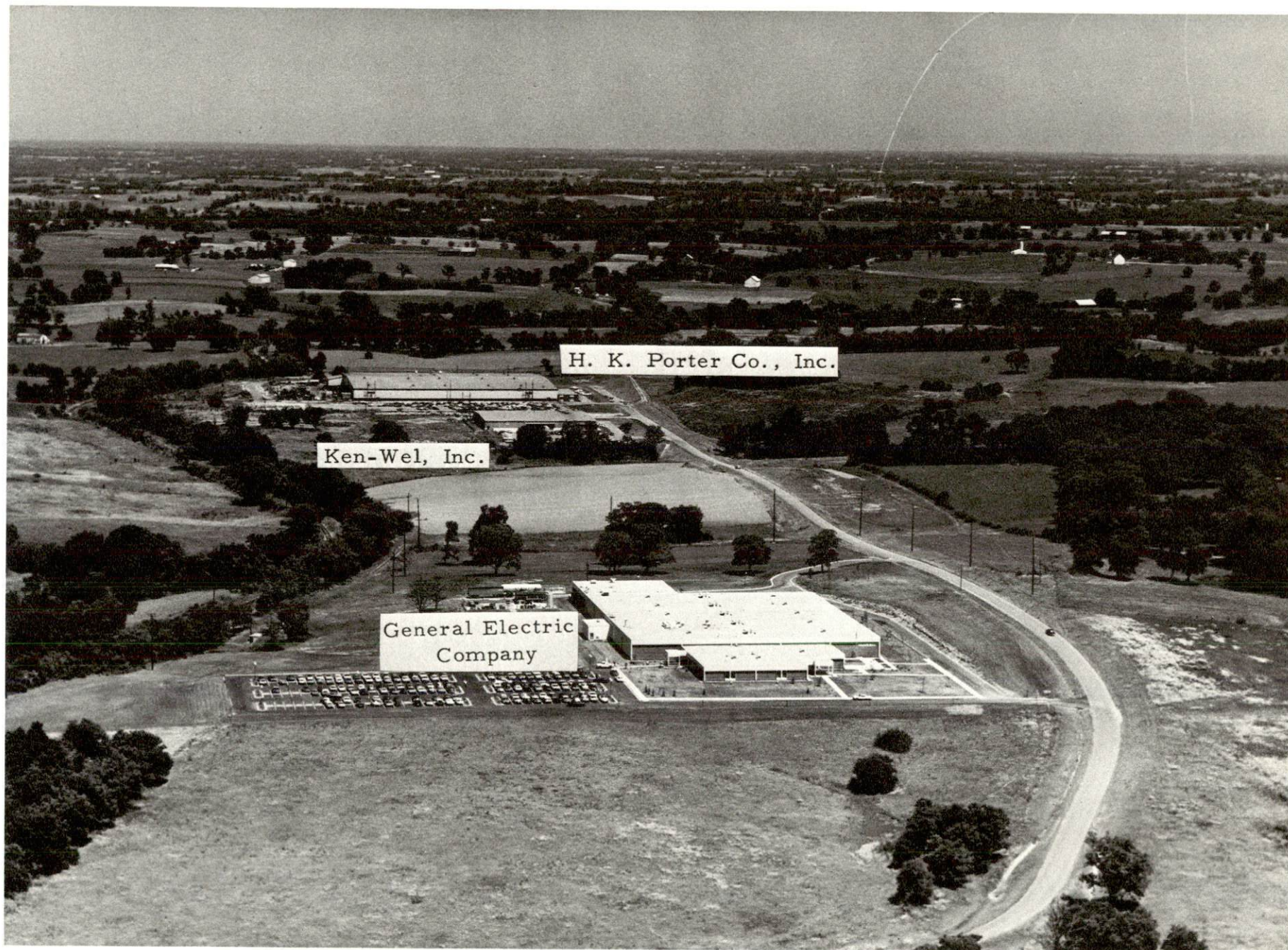
#### WAGES

For wage information, contact the Kentucky Department of Commerce, Division of Research and Planning.

#### LABOR ORGANIZATIONS

<u>Union</u>	<u>Representing Manufacturing Workers at:</u>
Allied Industrial Workers	Ken-Wel, Inc. H. K. Porter Co., Inc. Bendix-Westinghouse Air Brake Division
International Association of Machinists	Frank F. Taylor Co. Central Screw Co.
Distillery, Rectifying, Wine and Allied Workers International Union of America	All distilleries
Typographical	Frankfort Publishing Company





AERIAL VIEW OF INDUSTRIAL PARK



CURRENT AND FUTURE LABOR SUPPLY -  
FRANKFORT LABOR MARKET AREA

<u>Area</u>	<u>Current Labor Supply, 1972</u> <sup>5/</sup>			<u>Future Labor Supply by 1978</u> <sup>6/</sup> (Becoming 18 Years of Age)		
	<u>Total</u>	<u>Male</u>	<u>Female</u>	<u>Total</u>	<u>Male</u>	<u>Female</u>
Labor Market Area	14,258	7,009	7,249	10,825	5,497	5,328
Franklin County	4,123	2,168	1,955	3,191	1,608	1,583
Anderson County	779	315	464	881	457	424
Henry County	1,534	729	805	1,007	527	480
Owen County	1,442	776	666	711	383	328
Scott County	2,846	1,415	1,431	1,664	820	844
Shelby County	2,275	1,104	1,171	1,902	934	968
Woodford County	1,259	502	757	1,469	768	701

TOTAL PERSONAL INCOME <sup>7/</sup>

<u>Area</u>	<u>1970</u>	<u>1960</u>	<u>% Change</u>
Franklin County	\$ 117,910,000	\$ 58,285,000	+102.3
Labor Market Area	340,434,000	172,123,000	+ 97.8
Kentucky	9,719,647,000	4,779,695,000	+103.4

PER CAPITA PERSONAL INCOME <sup>8/</sup>

<u>Area</u>	<u>1970*</u>	<u>1960</u>	<u>% Change</u>
Franklin County	\$3,270	\$1,981	+ 65.1
Labor Market Area Range	\$2,507 to 3,719	\$1,149 to 1,989	N.A.
Kentucky	3,019	1,573	+ 91.9

\*Unadjusted for commuting.



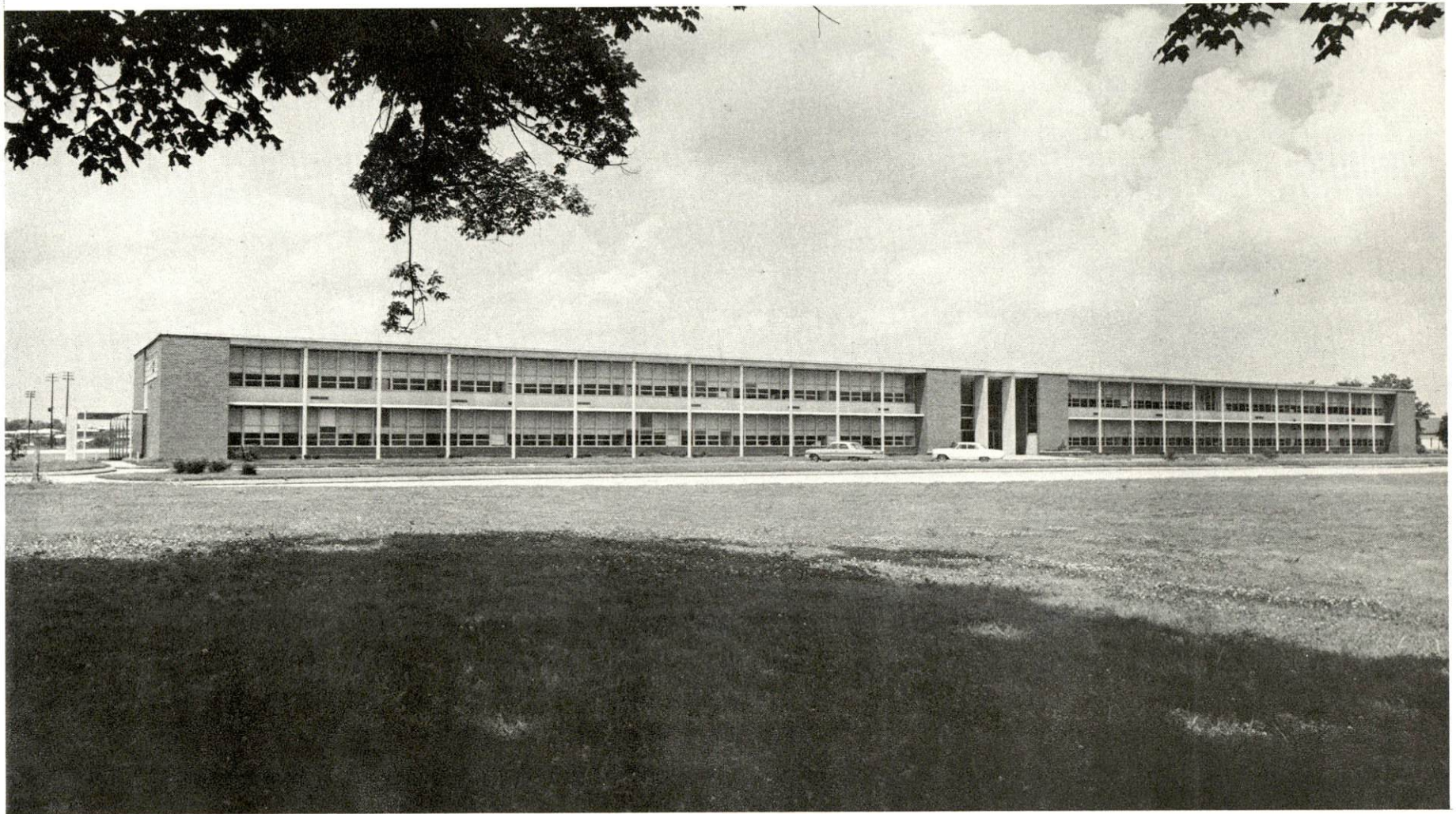
# EDUCATION

## Public Schools

	<u>Frankfort Independent</u>	<u>Franklin County</u>
Total Enrollment	1,024	6,096
Elementary	669	4,354
High School	355	1,742
Student-Teacher Ratio	17-1	28-1
Elementary	19-1	29-1
High School	15-1	25-1
Other Accreditations	Southern Association of Colleges and Schools	Southern Association of Colleges and Schools
Percent High School Graduates to College	61.7	40.7
Current Expenditures Per Pupil	\$564.99	\$491.77
Bonded Indebtedness, June 30, 1972	\$119,000	\$7,749,000

## Parochial and Private Schools

	<u>Parochial</u>	<u>Private</u>
Total Enrollment	220	148
Elementary	220	148
Student-Teacher Ratio	22-1	11-1
Elementary	22-1	11-1



FRANKLIN COUNTY HIGH SCHOOL

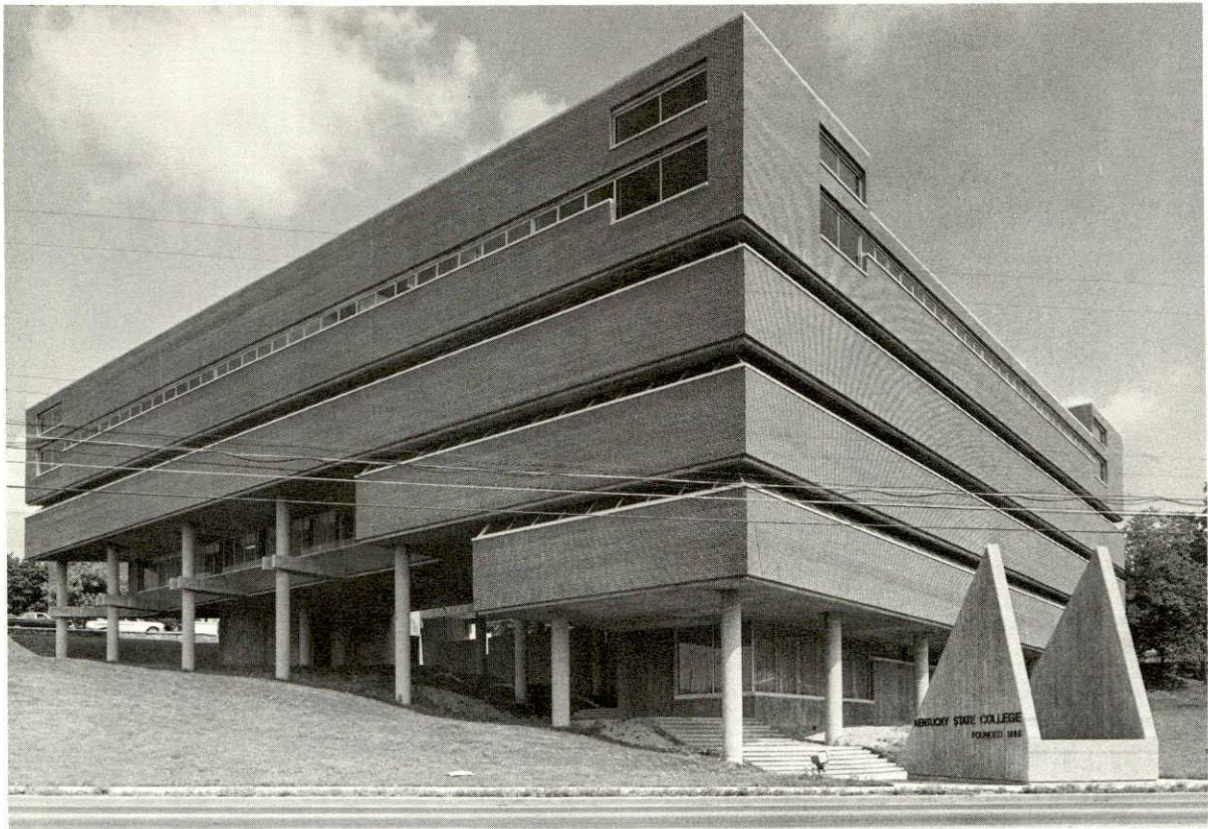


## Vocational Schools

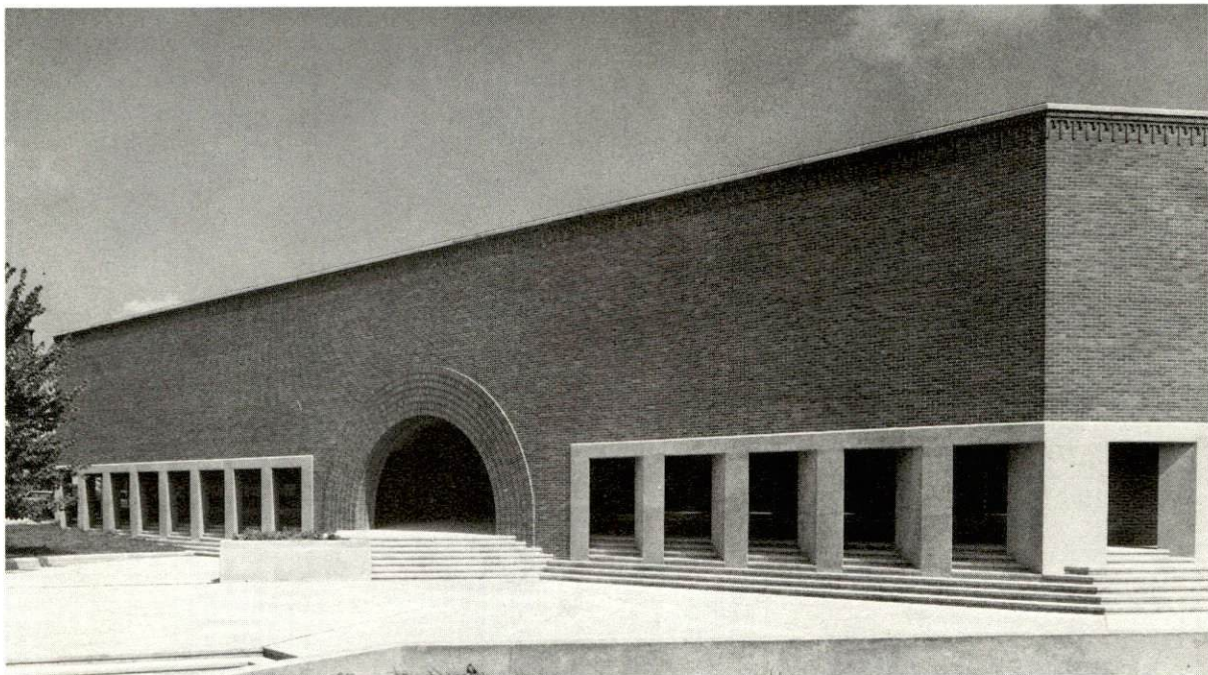
	<u>Nearest State School</u>	<u>Nearest Education Center</u>
Location	Central Kentucky Vocational- Technical School Lexington, Kentucky	Franklin County Area Vocational Education Center Frankfort, Kentucky
Miles Distant	24	
Curriculum	Accounting Jr. Management Clerical Secretarial Marketing and Distributive Education Practical Nursing Learning Lab Electronics (Communications) Technical Drafting Auto Body Repair Auto Mechanics Commercial Foods Cosmetology Drafting Electricity Machine Shop Office Machines Repair Printing Sheet Metal Welding	Marketing and Distributive Education Auto Body Repair Auto Mechanics Drafting Electricity Machine Shop Welding

## Colleges and Universities

<u>Name</u>	<u>Area - Within 50 Miles</u>		<u>Highest Degree Conferred</u>
	<u>Location</u>	<u>Enrollment</u>	
Asbury College	Wilmore	1,115	Baccalaureate
Bellarmino College	Louisville	1,530	Baccalaureate
Centre College	Danville	758	Baccalaureate
Eastern Kentucky University	Richmond	10,505	Masters
Georgetown College	Georgetown	1,243	Masters
Jefferson Community College	Louisville	4,238	Associate
Southwest Campus	Louisville	242	Associate
Kentucky State University	Frankfort	1,961	Masters
Midway Junior College	Midway	253	Associate
Spalding College	Louisville	1,048	Masters
Southeastern Christian College	Winchester	130	Associate
Transylvania University	Lexington	726	Masters
University of Kentucky	Lexington	20,598	Ph. D., M. D., D. M. D., J. D.
University of Louisville	Louisville	10,882	Ph. D., M. D., D. M. D., J. D.



KENTUCKY STATE COLLEGE  
NEW CLASSROOM BUILDING



BLAZER LIBRARY BUILDING



## TRANSPORTATION

### Rail

Line serving Frankfort - Louisville & Nashville Railroad

Services - Freight, switching, siding, piggyback facilities, REA Express

### RAILWAY TRANSIT TIME FROM FRANKFORT, KENTUCKY, TO: 9/

No. of Days		No. of Days	
City	CL	City	CL
Atlanta, Ga.	2	Knoxville, Tenn.	2
Birmingham, Ala.	2	Los Angeles, Calif.	5
Chicago, Ill.	2	Louisville, Ky.	1
Cincinnati, Ohio	1	Nashville, Tenn.	1
Cleveland, Ohio	2	New Orleans, La.	3
Detroit, Mich.	3	New York, N. Y.	4
East St. Louis, Ill.	2	Pittsburgh, Pa.	3

### Truck Service

<u>Company</u>	<u>Home Office</u>
Best Way Express, Inc.	Nashville, Tennessee
*Claxon Truck Line, Inc.	Frankfort, Kentucky
Consolidated Freightways	Menlo Park, California
Cooper-Jarrett, Inc.	Orange, New Jersey
Dixie Ohio Express, Inc.	Akron, Ohio
*Ecklar-Moore Express, Inc.	Lexington, Kentucky
Kentucky Truck Lines, Inc.	Frankfort, Kentucky
McDuffee Motor Freight, Inc.	Lebanon, Kentucky
(United Trucking)	
McLean Trucking Company	Winston-Salem, North Carolina
Motor Freight Corporation	Terre Haute, Indiana
O. K. Trucking Company	Cincinnati, Ohio
*Smith's Transfer Corporation	
of Virginia	Staunton, Virginia
Turner Expediting Service	Louisville, Kentucky
Wilson Freight Company	Cincinnati, Ohio
United Parcel Service	St. Charles, Illinois

\*Terminals in Frankfort, Kentucky.

HIGHWAY MILES AND TRUCK TRANSIT TIME IN DAYS FROM  
FRANKFORT, KENTUCKY, TO SELECTED MARKET CENTERS

City	Highway Miles	Delivery Time <u>10</u> / TL		City	Highway Miles	Delivery Time TL	
Atlanta, Ga.	389		2	Knoxville, Tenn.	195		1
Birmingham, Ala.	411		2	Los Angeles, Calif.	2,267		4
Chicago, Ill.	356		1	Louisville, Ky.	52	overnight	
Cincinnati, Ohio	87	overnight		Nashville, Tenn.	224		1
Cleveland, Ohio	339		1	New Orleans, La.	766		2
Detroit, Mich.	353		1	New York, N. Y.	712		2
East St. Louis, Ill.	321		1	Pittsburgh, Pa.	372		1

Air

	<u>Local</u>	<u>Nearest Commercial</u>
Location:	Capital City Airport Frankfort, Kentucky	Blue Grass Field Lexington, Kentucky, 23 miles from Frankfort
Runways:	1 paved	3 paved
Length:	5,000 ft.	6,500 ft., 3,500 ft., 3,500 ft.
Traffic		
Control:	Wind tee	Tower, guards, approach control, ground control, ILS system
Lighting:	Beacon, runway lights sundown to sunrise	Approach lighting system, beacon, runways and obstructions lighted
Services:	80-100 octane, jet fuel, hangar, storage, auto rental, taxi	80, 100 and 145 octane; jet fuel; major A & E repairs; storage; restaurant; Weather Bureau; flight instruction; charter service; taxi; U-Drive-It service; Eastern, Delta, Piedmont, Allegheny Airlines

Water - Unloading facilities for sand and gravel are available at Frankfort on the Kentucky River where a 6-foot navigation channel is maintained.

Bus - Southern Greyhound Bus Lines, Trailways Bus Lines, Frankfort Bus Line(intra-city service)

Taxi - Radio-dispatched service - 4 a.m. to 1 a.m. daily

Rental Services - Car and truck rentals



## POWER AND FUEL

### Electricity

Company serving Frankfort - Frankfort Electric and Water Plant Board

Source of power - Kentucky Utilities Company

Total generating capacity - 1,215,000 KW

Industrial rates furnished by - Frankfort Electric and Water Plant Board,  
315 West Second Street, Frankfort, Kentucky

Company serving Franklin County - Kentucky Utilities Company

Source of power - Kentucky Utilities Company

Total generating capacity - 1,215,000 KW

Industrial rates furnished by - Kentucky Utilities Company, Lexington,  
Kentucky

Company serving Franklin County - Fox Creek RECC

Source of power - East Kentucky Power Cooperative

Total generating capacity - 548,000 KW

Industrial rates furnished by - Fox Creek RECC, Lawrenceburg, Kentucky

### Natural Gas

Company serving Frankfort - Columbia Gas of Kentucky, Inc.

Source of supply - Columbia Gas Transmission Company

Size of transmission mains - 12, 20 and 30 inches (supplier); 6, 8, 10  
and 12 inches (distributor)

Distribution mains - 2 to 12 inches; Distribution pressure - 4 oz.

Btu content - 1,000 per cubic foot; Specific gravity - .6

Rates - Industrial rates will be furnished upon request by Columbia Gas  
of Kentucky, Inc., 115 West Main Street, Frankfort, Kentucky

### Other Fuels

Propane and butane - Burley Oil Co., Frankfort

Southern States Cooperative, Frankfort

Fuel oils -

Distillate fuel oil distributors - Ashland Fuel Oil\*, Gulf Heating Oil\*,  
Marathon Heating Oil\*, Phillips 66\*, Robinson's Oil Co., Schiller's  
American Oil\* (all located in Frankfort)

\*Bulk plant.

Residual fuel oil - arrangements must be made with the refinery.

Low sulphur content coal - Available in Kentucky

## WATER AND SEWERAGE

### Water

Company serving Frankfort - Frankfort Electric and Water Plant Board

Source - Kentucky River

Treatment plant capacity - 6,000,000 gpd\*

Average daily consumption - 4,500,000 gallons

Peak daily consumption - 6,000,000 gallons

Type treatment - Flocculation, sedimentation, filtration

Storage capacity - 11,700,000 gallons

Size mains - 4 to 24 inches

Average pressure - 85 psi

Average temperature - 60° F.

### MONTHLY WATER RATES FOR WHOLESALE AND INDUSTRIAL CONSUMERS

		<u>City</u>	<u>Rural (Outside City Limits)</u>
First	5,000 gallons	\$ .30 per M gal.	\$ .40 per M gal.
Next	20,000 gallons	.20 per M gal.	.20 per M gal.
Next	175,000 gallons	.15 per M gal.	.15 per M gal.
Next	800,000 gallons	.12 per M gal.	.12 per M gal.
Excess		.10 per M gal.	.10 per M gal.

### Minimum Bill:

5/8 and 3/4-inch meters	\$ 1.00 per mo.	\$ 1.25 per mo.
1-inch meters	1.50 per mo.	1.50 per mo.
1 1/2-inch meters	2.50 per mo.	2.50 per mo.
2-inch meters	5.00 per mo.	5.00 per mo.
3-inch meters	10.00 per mo.	10.00 per mo.
4-inch meters	20.00 per mo.	20.00 per mo.
6-inch meters	30.00 per mo.	30.00 per mo.
8-inch meters	50.00 per mo.	50.00 per mo.

Booster Pumping (outside city)- plus - 20 percent and in no case shall it be less than 3 1/4 cents per thousand gallons.

Fire Hydrants - Per Hydrant - \$10.00 per year

\*Filtration plant for water works under construction.



### Sprinkler Service and Private Fire Hydrants:

Size of Service - 2-inch	\$ 12.00 per year
Size of Service - 4-inch	30.00 per year
Size of Service - 6-inch	60.00 per year
Size of Service - 8-inch	100.00 per year
Size of Service - 10-inch	150.00 per year

Surface water sources - Kentucky River and Elkhorn Creek

Average discharge - Kentucky River at Lock 4 at Frankfort 6,816 cfs  
(45-years, USGS, unadjusted); Elkhorn Creek near Frankfort 585 cfs  
(33-years, USGS)

Expected ground water yield - 50 to 200 gpm along Kentucky River in  
north central portion of county; 5 gpm or less in remainder of county

### Sewerage

Company serving Frankfort - Frankfort Municipal Sewer Board

Design capacity - 4,000,000 gpd\*

Average daily flow - 3,800,000 gallons

Treatment - Primary

Type treatment - Clarifiers, thickener, aerated grit chamber, anaerobic  
digesters, drying beds

Treated effluent discharged into - Kentucky River

Size of sanitary mains - 8 to 27 inches

Size of storm mains - 12 to 62 inches

Rates - 150 percent of monthly bill

---

\*Secondary sewage treatment plant in planning stages.

## LOCAL GOVERNMENT

### City

Structure - Mayor - 4-year term; 4 commissioners - 2-year terms;  
city manager

Budget 1971-72 - General Fund \$1,695,836

Fees and licenses - One percent occupational license tax on wages and  
net profits; business license fees range from \$10 to \$1,500 annually

### County

Structure - County Judge - 4-year term; 5 magistrates - 4-year terms

Budget 1972-73 - General Fund \$425,411 (Estimated); Road Fund \$277,600

### Assessed Value of Property, 1971

<u>Classes of Property*</u>	<u>Frankfort</u>	<u>Franklin County</u>
Real Estate	\$107,532,543	\$176,773,279
Tangibles	22,933,058	37,477,436
Public Service	8,511,205	16,736,220

### Local General Property Tax Rates Per \$100 of Assessed Valuation, 1971 <sup>11/</sup>

<u>Taxing Unit**</u>	<u>Frankfort</u>	<u>Franklin County</u>
State	\$ .015	\$ .015
County	.190	.190
School	.658	.527
City	.345	
Total	\$1.208	\$ .732

### Utilities Gross Receipts Tax for Schools

Franklin County levies a 3 percent tax on utilities receipts for schools. This tax is paid by all consumers of utilities. Exempted are receipts from utilities services that are resold and the receipts from the sale of energy or energy producing fuels that exceed 3 percent of the cost of production in manufacturing, processing, mining or refining.

\*Property assessed at 100 percent of fair value.

\*\*Manufacturing machinery, raw materials inventories and goods in process inventories are not subject to local tax. State rate is only \$0.15 per \$100.





MUNICIPAL BUILDING - CITY OF FRANKFORT



## Planning and Zoning

Joint agency - Frankfort-Franklin County Planning Commission  
Zoning enforced - City presently, county in process of adoption  
Subdivision regulations enforced - City and county  
Local codes enforced - Building and Housing  
Mandatory state codes enforced - Plumbing, National Fire Protection Association Code, National Building Code (for major buildings and residential construction containing more than 12 bedrooms per building)  
Other programs - Public Housing, Neighborhood Development Program

## Safety

<u>Police</u>	<u>Frankfort</u>	<u>Franklin County</u>
Total staff	51	7
Radio-patrol cars	20	4
Other equipment	2 cycles 1 Cushman	

## Fire

American Insurance		
Association Fire Rating	6	
Full-time staff	45	5
Stations	3	1
Equipment:		
1,000 gpm pumper	1	
750 gpm pumper	1	
500 gpm pumper	1	
1,500 gpm pumper	1	
1,200 gpm pumper		1
Ladder truck	1 with 1,000 gpm pumper	
Utility truck	1	
Other	Chief's station wagon	

## Rescue Service

Frankfort-Franklin County Rescue Squad:  
Number on staff - 6  
Equipment - two ambulances with four places each; Chief's station wagon acts as auxiliary ambulance; drag hooks; access to Civil Defense boat; oxygen and resuscitation  
Personnel training - First Aid training



Sanitation

	<u>Frankfort</u>	<u>Franklin County</u>
Type service	Municipal	Private
Fee charged:		
residential	None	Contract
business	Contract	Contract
Collection frequency:		
residential	Twice weekly	Once or twice weekly
business	When desired	When desired
Trash pickup	Weekly	When desired
Disposal method	Incinerator, dry dump	Sanitary landfill

## HEALTH

### Hospitals

<u>General Hospital</u>	<u>Location</u>	<u>Beds</u>
King's Daughters' Hospital	Frankfort	112

General hospital facilities - 4 operating rooms, recovery room, laboratory, X-ray, intensive care, emergency room, coronary care unit, pharmacy, OB section with nursery, outpatient clinic

Medical staff - 29 medical doctors, 6 dentists, 25 graduate licensed practical nurses, 15 licensed practical nurses, 30 regular and 25 part-time registered nurses, 10 orderlies, 99 nurses aides

### Nursing Homes

	<u>Number</u>	<u>Beds</u>
Extended care homes	1	100
Personal care homes	1	24

### Public Health

Facility - Franklin County Health Department

Staff - 3 nurses, 2 health inspectors, 1 medical consultant, 1 secretary

Budget 1972-73 - \$55,796



## OTHER LOCAL FACILITIES

### Communications

Telephone - South Central Bell Telephone Company  
Services - Standard

Telegraph - Western Union  
Services - Standard

Postal - U. S. Post Office  
Class - First  
Mail received - 10 times daily  
Mail dispatched - 10 times daily

Newspapers - The State Journal  
Daily and circulation - 9,000  
Other papers received from - Louisville and Lexington, Kentucky;  
Cincinnati, Ohio

Radio - WFKY - AM-FM  
Stations received from - Louisville and Lexington, Kentucky; Cincinnati,  
Ohio

Television -  
Cable service  
Reception from - Louisville and Lexington, Kentucky; Cincinnati, Ohio  
Kentucky Educational Television - Owenton transmitter, Channel 52

### Library Services

Public library - Paul Sawyer Public Library  
Size collection - 40,000 volumes  
Circulation, 1971-72 - 150,232  
Services - Reference service, story hour, art exhibits, annual Pet Day,  
records, magazines, paper backs, films, copying machine, art classes  
for children. Library is open seven days a week plus three evenings  
each week.

Other libraries - Kentucky Department of Libraries  
Size collection - 77,342 volumes  
Circulation, 1971-72 - 27,605

### Religious Institutions

Number of churches - 38

Denominations - Apostolic, Assembly of God, Baptist, Catholic, Christian, Christian Science, Church of Christ, Church of God, Episcopal, Latter Day Saints, Lutheran, Methodist, Nazarene, Pentecostal, Presbyterian, Salvation Army, Seventh Day Adventist

Nearest synagogue - Lexington, Kentucky, with two congregations:

Ohavey Zion (traditional); Adath Israel (reform)

### Financial Institutions

<u>Bank</u>	<u>Statement as of June 30, 1972</u>	
	<u>Assets</u>	<u>Deposits</u>
Farmers Bank & Capital Trust Company	\$179,274,716	\$171,921,340
The State National Bank	16,438,655	14,964,638
<u>Savings and Loan Associations</u>		<u>Assets</u> <u>Shared Accounts</u>
Capital Building & Loan Association	\$ 15,431,124	\$ 13,908,792
First Federal Savings & Loan Association	24,825,923	22,215,639

### Hotels and Motels

Total Number - 11

Units - 453

### Clubs and Organizations

Business and Civic - Chamber of Commerce, Civitan, Lions, Jaycees, Kiwanis, Optimist, Rotary, Ruritan

Fraternal - American Legion, Bluegrass Toastmasters, Shriners, Elks, Hiram Lodge, IOOF, Knights of Columbus, Moose, Masons, VFW, Kentucky State University Alumni, FOP

Women's - Altrusa, Alpha Delta Kappa, AAUW, American Business Women's Association, American Legion Auxiliary, Beta Sigma Phi, BPOE Auxiliary, Capitoline, American War Mothers, Garden Clubs, Colonial Dames, DAR, Delta Theta Chi, Eastern Star, B & PW Club, Frankfort Woman's Club, Hadassah, Heritage Women's Club, Jay-C-Ettes, Mizpah Lodge, Phi Beta Psi, 3-Link Rebekah Lodge, U.D.C, VFW, Younger Woman's Club



Youth - Cub Scouts, Boy Scouts, Girl Scouts, Big Brothers, Junior Optimist Band, 4-H, FFA, FTA, Junior Achievement, YMCA

Other - American Red Cross, American Cancer Society, Alcoholics Anonymous, Weight Watchers, TOPS, Franklin County Council on Aging, Human Relations Forum, La Leche League, Senior Citizens, American Contract Bridge League, Radio Club, Audubon Society, Bluegrass Orchid Society, Capital City Philatelic Association, Chinese Style Karate Club, Community Chorus, Frankfort Boat Club, Frankfort Dulcimer Players, Little Theater, Humane Society, Great Books, Kentucky Historical Society, Paul Sawyer Art Club, United Nations Association

## RECREATION

### Local

#### Public Recreation Facilities

Supervised program - Frankfort Recreation Department

Parks - 2

Playgrounds - 12

Swimming pools - 2

Golf courses - 2

Tennis courts - 12

Baseball diamonds - 8

Football fields - 3

#### Private Recreation Facilities

Country club - 1

Golf course - 1

Swimming pool - 1

Movie theaters - 1 indoor, 1 drive-in

Bowling alley - 1

Other - tennis courts

#### Tourist Attractions

State Capitol, Old State House (museum), Floral Clock, Governor's Mansion, Daniel Boone's grave, Orlando Brown House, Liberty Hall, Old Governor's Mansion, Fish and Wildlife Game Farm, U. S. Fish Hatchery, The Cave Restaurant and several distilleries

#### Cultural Events

Concert series, art exhibits, outdoor arts and crafts festival, Lyceum concerts at Kentucky State University, art club, community chorus and Little Theater group

### Area (Within 55 miles)

Lexington, 23 miles southeast, has several little theater groups, the Central Kentucky Concert and Lecture Series, Keeneland Race Track, Big Red Mile Trotting Track, Blue Grass tours, Junior League Horse Show, collegiate athletic events at the University of Kentucky.

Louisville, 52 miles west has an Actors Theater, a symphony orchestra, one flat and harness racing track each, as well as a variety of collegiate and professional sporting events.

Harrodsburg, 32 miles away, was the site of the first permanent settlement west of the Allegheny Mountains.

Bardstown, site of My Old Kentucky Home, is just 53 miles from Frankfort.





JUNIPER HILL MUNICIPAL PARK  
18-HOLE GOLF COURSE

# AGRICULTURE - NATURAL RESOURCES - CLIMATE

## Agriculture 12/

	<u>Franklin County</u>	<u>Labor Market Area</u>
Total land area (acres)	135,040	1,227,008
Percent of area in farm land	81.7	88.0
Number of farms	905	7,798
Average size of farms (acres)	121.8	138.5
1969 value of all farm products	\$4,992,137	\$69,020,928
Value per farm	9,827	8,851
Total crop sales	3,072,277	33,725,310
Total livestock & livestock products	1,913,715	35,198,692
1970 agricultural production included:		
Burley tobacco (lbs.)	5,018,000	53,187,000
Corn (bu.)	95,000	1,861,000
Cattle and calves (number)	23,500	238,400
Hogs and pigs (number)	3,100	76,100
Milk production, 1969 (lbs.)	5,600,000	256,270,000

## Natural Resources

Principal mineral resources	Limestone
Other mineral resources	Clays, shales, sand and gravel, as well as certain vein minerals
Acres of commercial forest land	44,300
Most abundant tree species	White oaks, red oaks, hickories, ash, red cedar, hard maple, yellow poplar

## Climate 13/

	<u>Franklin County</u>
Temperature	
Annual mean (30-year record)	55.6 degrees
Average annual 1971	55.6 degrees
Record highest, July, 1966* (8-year record)	98.0 degrees
Record lowest, January, 1966* (8-year record)	-10.0 degrees
Seasonal heating degree days (30-year record)	4,683
Precipitation	
Mean annual total (30-year record)	44.73 inches
Mean annual snow and sleet (27-year record)	16.50 inches
Total precipitation 1971	44.67 inches
Mean number days precipitation, (.01 inch or more) (27-year record)	128
Average number days thunderstorms (27-year record)	47
Prevailing winds (17-year record)	South

\*Also on earlier dates, months and years.



## HISTORY

Franklin County, the eighteenth county formed in Kentucky, dates from 1794. It was taken from Woodford, Mercer, and Shelby Counties. It contains 211 square miles, and is bisected by the Kentucky River which flows in a northwesterly direction. Upland on both sides of the river, the topography of the land is gently rolling and hilly with fertile soils which produce abundant harvests. The county is well drained by many small streams which empty into the Kentucky River. The county was named for Benjamin Franklin.

In 1751, Christopher Gist while employed by the Ohio Land Company, was the first explorer passing through Franklin County. John Findley crossed the area the next year, while Daniel Boone roamed over it several times in the following two decades. In 1773, the present site of Frankfort was surveyed. The first settlement in Franklin County was at Leestown in 1775. The site is a part of Frankfort today and is the oldest continually inhabited location along the Kentucky River.

Frankfort, the center of Kentucky's government as well as the county seat of Franklin County, was laid out by General James Wilkinson and established by Virginia in 1786. It was incorporated in 1835. It was named in honor of Stephen Frank who was killed by the Indians while on the way to Mann's Salt Lick in Jefferson County.

Kentucky's first capitol building was completed on November 3, 1794, two years, five months and one day after she became the fifteenth state in the Union. It was located near the present site of the Old Capitol Building. It was destroyed by fire on November 25, 1813. The second State Capitol was completed in 1816, and was also destroyed by fire in 1824. A third building was completed in 1829. It was designed by Gideon Shyrock and is regarded as an architectural marvel whose circular self-supporting stairway is beautiful, yet challenging. It is an historical landmark and is the home of the Kentucky Historical Society. It houses a magnificent collection of Kentuckiana. A spirited contest occurred during the writing of Kentucky's fourth Constitution regarding an official capital site. Louisville and Lexington, as well as a dozen other towns, wanted it. When the Legislature in 1893 saw no reason to move the capital, Frankfort became the official site. The new building was constructed of Bedford limestone and Vermont granite. Charles Henry Neihaus of New York was its designer, and Frank M. Andrews was the architect. It resembles the national capitol at Washington. The Executive Mansion was built in 1912.





DANIEL BOONE'S GRAVE



The Frankfort Cemetery lies along the edge of the bluff that overlooks the town from the east. Near its entrance is the William Goebel Monument which marks the grave of the man who served as Governor for three days, and was assassinated on the Old Capitol grounds in 1900. Near the edge of the bluff is the Boone Memorial, which marks the place where the remains of Daniel Boone and his wife Rebecca were interred in 1845 when they were brought to Kentucky from Missouri, their last home.

Frankfort has been the scene of many important firsts including the first water works in the State, the first Female Sabbath School, and the cultivation of the first Bibb lettuce in the west. Here history is made constantly, and over 3,200,000 people look to her for guidance.

The 1850 population of Franklin County was 12,462, a figure which increased to 21,267 in 1890. The City of Frankfort had a 1900 population of 9,487. By 1970, this figure had reached 21,356.

Manufacturing employment in Franklin County increased approximately 66 percent between 1962 and 1972, with largest gains in the machinery and metal products and apparel industries. The county's chief industrial products are whiskey, men's underwear, and screws, nuts and bolts.

## SOURCES OF INFORMATION

- 1/ U. S. Department of Commerce, Bureau of the Census, Census of Population, 1950, 1960, 1970.
- 2/ Kentucky Department of Economic Security, Division of Research and Statistics.
- 3/ Kentucky Department of Economic Security, Number of Workers in Manufacturing Industries Covered by Kentucky Unemployment Insurance Law Classified by Industry and County, March 1972, March 1962.
- 4/ Kentucky Department of Commerce, Division of Research and Planning.
- 5/ Kentucky Department of Economic Security, Kentucky Labor Supply Estimates by County, January 1972.
- 6/ Kentucky Department of Commerce, Future Labor Supply by 1978.
- 7/ University of Kentucky, Office of Development Services and Business Research, Total Personal Income for Kentucky.
- 8/ University of Kentucky, Office of Development Services and Business Research, Per Capita Income in Kentucky.
- 9/ Louisville & Nashville Railroad, 908 West Broadway, Louisville, Kentucky. .
- 10/ Ecklar-Moore Express, Inc., Lexington, Kentucky.
- 11/ Kentucky Department of Revenue, Program and Research Staff.
- 12/ U. S. Department of Commerce, Bureau of the Census, Census of Agriculture, 1969. U. S. Department of Agriculture and Kentucky Department of Agriculture, Kentucky Agricultural Statistics, 1971.
- 13/ U. S. Department of Commerce, Environmental Science Services Administration, Climatological Data, 1971.

All other information was obtained from governmental offices, local businesses and organizations.



This copy has been prepared by the Kentucky Department of Commerce,  
Division of Research and Planning, and the cost of printing paid from  
state funds.