

1967

Industrial Resources - Fulton County - Fulton

Kentucky Library Research Collections
Western Kentucky University, spcol@wku.edu

Follow this and additional works at: https://digitalcommons.wku.edu/fulton_cty



Part of the [Business Administration, Management, and Operations Commons](#), [Growth and Development Commons](#), and the [Infrastructure Commons](#)

Recommended Citation

Kentucky Library Research Collections, "Industrial Resources - Fulton County - Fulton" (1967). *Fulton County*. Paper 20.
https://digitalcommons.wku.edu/fulton_cty/20

This Report is brought to you for free and open access by TopSCHOLAR®. It has been accepted for inclusion in Fulton County by an authorized administrator of TopSCHOLAR®. For more information, please contact topscholar@wku.edu.

12-4-67



YOUR GUIDE TO A

KENTUCKY INDUSTRIAL SITE

**FULTON
HAS THE
LOCATION**



FULTON-SOUTH FULTON CHAMBER OF COMMERCE
and
FULTON INDUSTRIAL CORPORATION

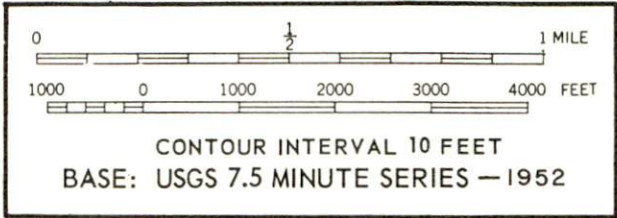
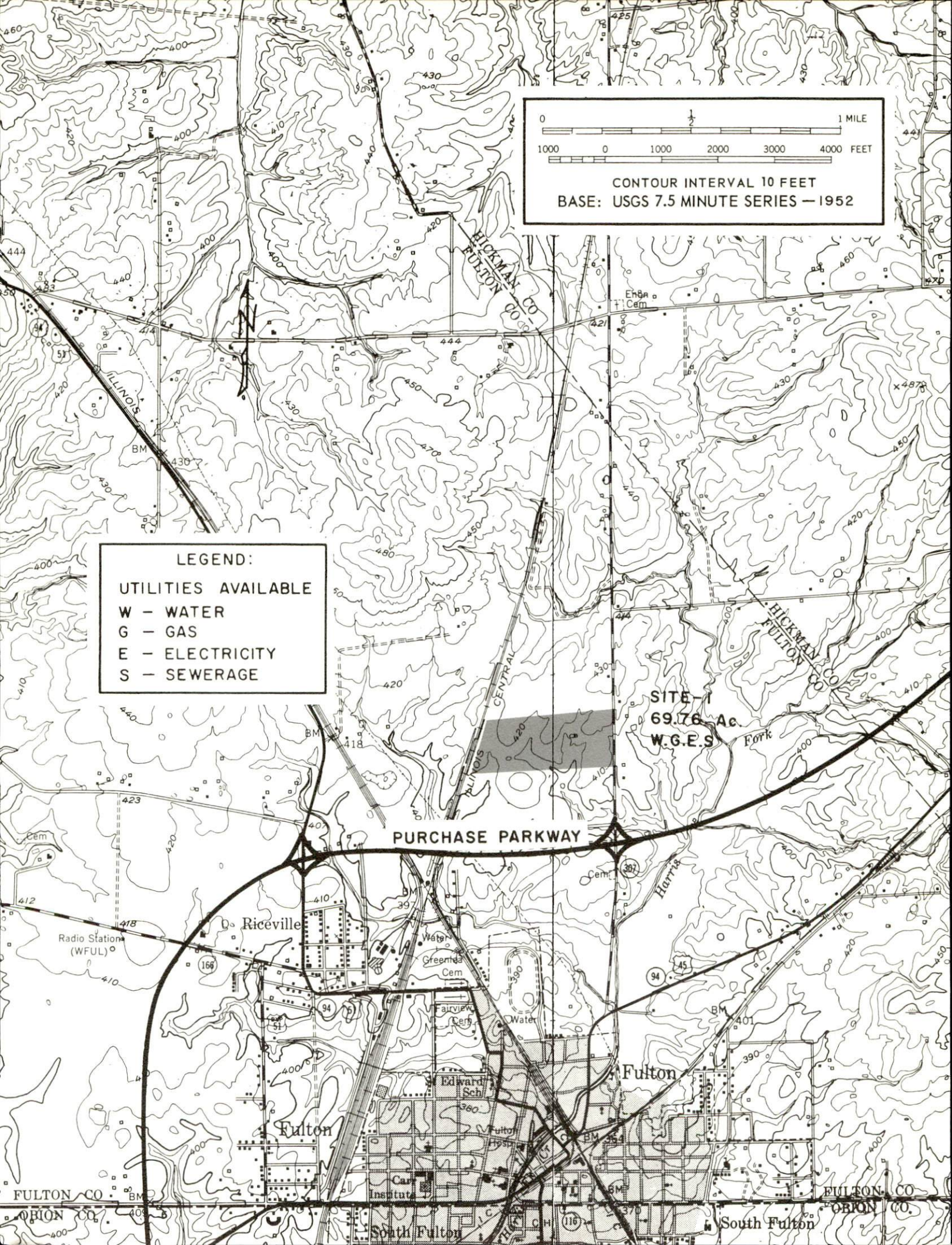
In view of the need for additional industry in the community, the Fulton Industrial Corporation, which is a nonprofit agency that acts as a Department of the Fulton-South Fulton Chamber of Commerce, has purchased 69.76 acres of land one-half mile north of Fulton.

The property is bound on the east by Kentucky Highway 307 and the Illinois Central Railroad is at the rear of the property. The Jackson Purchase Turnpike, when completed, will pass within 1,500 feet of the site. The entire acreage lies from elevation 410 to 420.

At the present time, electricity and sewerage facilities are the only utilities on the property. However, the Mayor and Commission of Fulton have set aside funds to build adequate water and gas lines to the site at no expense to the user.

The price is set at \$1,000 per acre, subject to negotiation with the prospective owner and according to planned use.

Site No. 2 on the adjacent map is under option to the Fulton Industrial Corporation and would be a very attractive site for a non-rail user. All utilities would be provided at this site also.



LEGEND:
UTILITIES AVAILABLE
W - WATER
G - GAS
E - ELECTRICITY
S - SEWERAGE

SITE 1
69.76 Ac.
W.G.E.S.

PURCHASE PARKWAY

Riceville

Water

Greenfield Cem

Fairview Cem

Water

Edward Sch

Fulton

Car Institute

South Fulton

Fulton

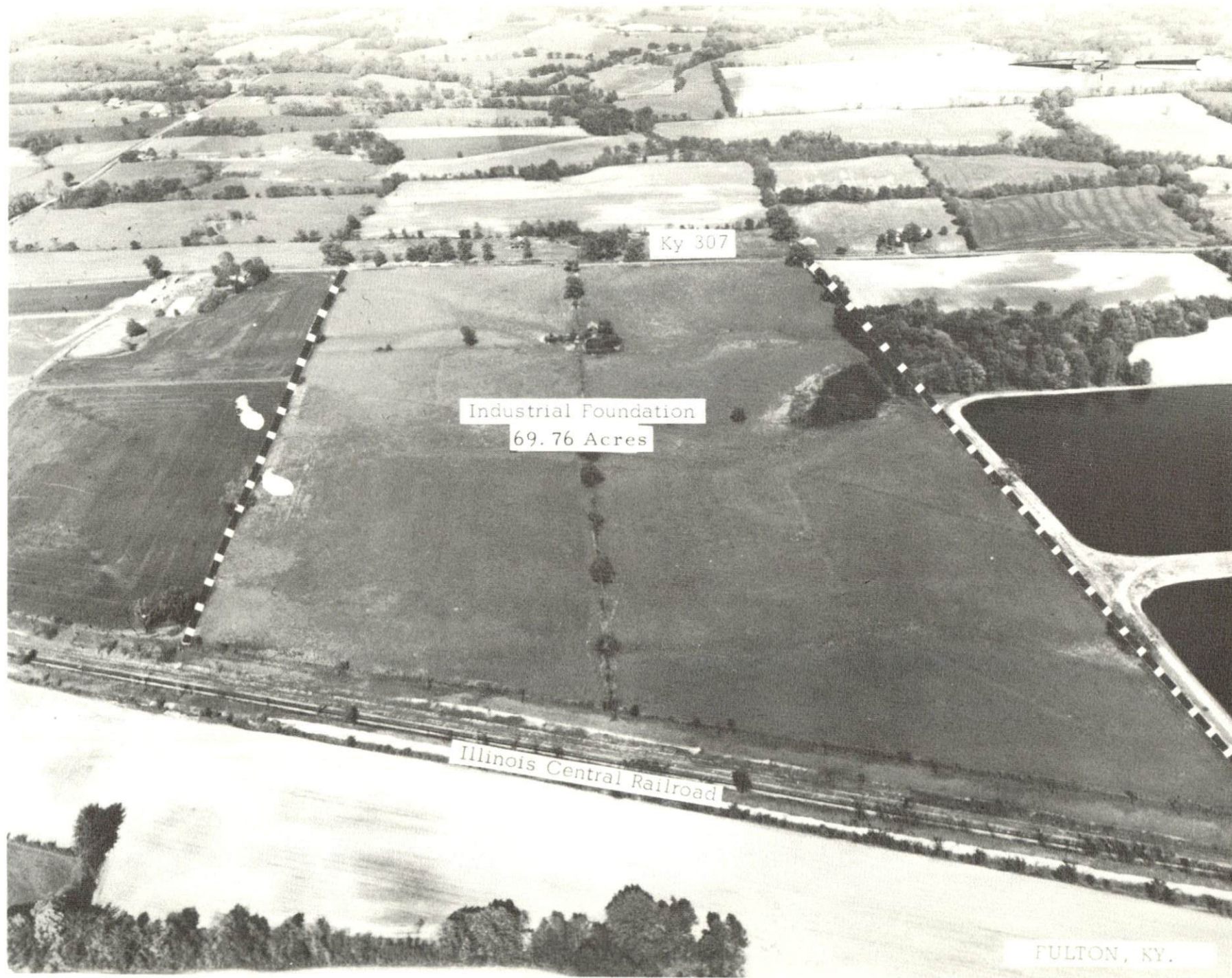
South Fulton

FULTON CO.

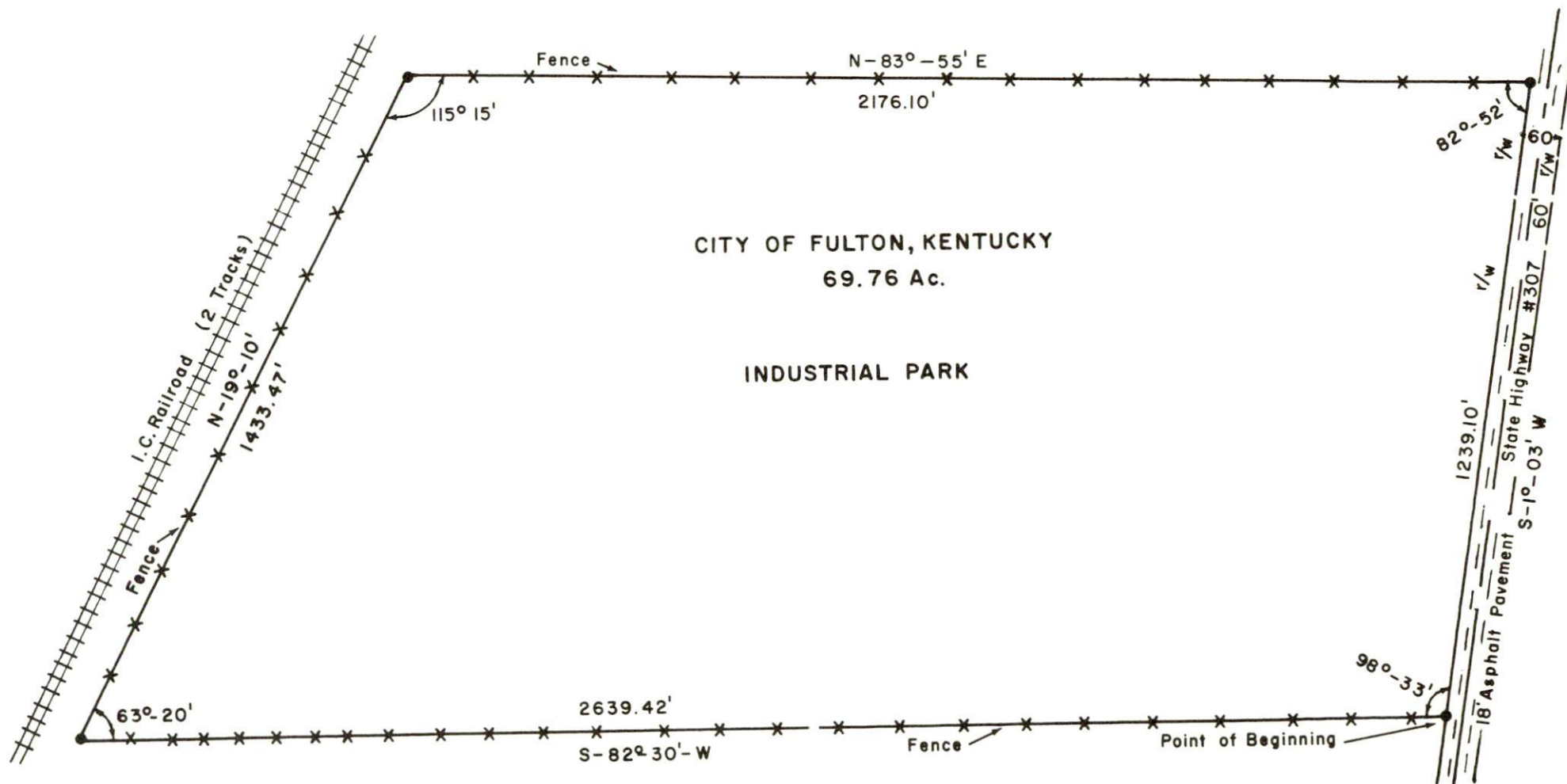
ORION CO.

FULTON CO.

ORION CO.



FULTON, KY.



FULTON, KENTUCKY

POPULATION:

1960: Fulton - 3,265

Fulton County - 11,256

FULTON LABOR SUPPLY AREA:

Includes Fulton and all adjoining counties. Estimated number of workers available for industrial jobs in the labor supply area from Kentucky counties: 1,500 to 1,800 men and 1,375 to 1,675 women. Number of workers available from Fulton County: 350 to 450 men and 175 to 275 women. Adjoining Tennessee counties, Obion and Weakley, have an estimated 1,224 men and 1,008 women available for industrial jobs.

The future labor supply will include 4,502 boys and 4,241 girls who will become 18 years of age by 1973.

TRANSPORTATION:

Railroads: Fulton is the junction point at which all north-south-east rails of the Illinois Central Railroad converge. The main line of the Illinois Central from Chicago to New Orleans passes through Fulton. Approximately 130,000 cars pass through the Fulton yards each month. At present, there are 25 freight and 12 passenger trains daily. Switching service is provided 24 hours, 7 days a week, on 21 tracks which will handle 1,200 cars.

Air: The nearest major airport, Barkley Field at Paducah, 50 miles from Fulton, is served by Delta and Ozark Airlines. The Fulton Municipal Airport has a 2,600 by 60-foot paved runway. This field will accommodate light aircraft and charter service is available for private planes.

Trucks: There are nine common carrier truck lines serving Fulton with both interstate and intrastate service.

Bus Lines: Fulton is provided excellent bus service by Southern Greyhound Bus Lines, with 13 inbound and outbound buses daily; Continental Trailways System with 4 inbound and outbound buses daily; and Brooks Bus Lines with 1 inbound and outbound bus daily.

HIGHWAY DISTANCES FROM FULTON, KENTUCKY, TO:

| Town | Miles | Town | Miles |
|------------------|-------|------------------|-------|
| Atlanta, Ga. | 405 | Louisville, Ky. | 261 |
| Birmingham, Ala. | 362 | Memphis, Tenn. | 133 |
| Chicago, Ill. | 428 | Nashville, Tenn. | 149 |
| Cincinnati, Ohio | 382 | New York, N. Y. | 1,030 |
| Detroit, Mich. | 645 | Pittsburgh, Pa. | 665 |
| Lexington, Ky. | 310 | St. Louis, Mo. | 197 |

UTILITIES:

Electricity: Fulton is served by the Fulton Electric System, a municipal company whose source of supply is TVA.

Abundant low-cost TVA electric power is available to industry in a number of counties of southern and southwest Kentucky. The power is distributed from TVA's 161/500-kv transmission network supplied by 47 hydro and 11 steam generation stations having a combined capacity of some 18,000,000 kilowatts. The system is also fully interconnected with neighboring utilities.

Gas: Fulton is served by a municipally owned gas system, whose source of supply is Texas Gas Transmission Corporation, with two 20-inch mains and one 30-inch main within 3 miles of the city limits. Distribution mains average 2 and 6 inches. The average heat content is 1026 BTU per cubic foot, with a specific gravity of .60.

Water: Fulton is served by the municipally owned Fulton Water Works. The source of supply is 3 deep wells with capacities of 1,255 gpm, 1,250 gpm, and 750 gpm, giving a pumping capacity of 2,500,000 gallons per day. Storage facilities include a 150,000-gallon and a 200,000-gallon overhead tank and a 300,000-gallon ground reservoir with two high service pumps. The 1,255 gpm well drilled in 1936 and the 1,250 gpm well was drilled in 1965. The 750 gpm well, drilled in 1929, is on standby only.

The average daily use is 350,000 gallons and peak daily use has been 500,000 gallons. Pressure is maintained at 50 to 75 psi and distribution mains vary from 4 to 10 inches, with a temperature of 56°.

Sewerage: Fulton has 90 percent storm sewer coverage and 98 percent sanitary sewer coverage. The system, with a capacity of 1,000,000 gpd and mains from 8 to 24 inches, was constructed to serve a population of 8,000, and is now serving 3,500. Treatment is by means of a 48-acre lagoon. The sewer rate is one-third of the water bill and in special cases will be negotiated.

EXISTING INDUSTRY:

FULTON MANUFACTURING FIRMS WITH PRODUCTS
AND EMPLOYMENT, 1967

| Firm | Product | Employment | | |
|-------------------------------------|------------------------------------|------------|--------|-------|
| | | Male | Female | Total |
| Ashby Veneer & Lumber Co. | Lumber | 25 | 0 | 25 |
| Browder Milling Co., Inc. | Feed | 9 | 1 | 10 |
| Brundage Sausage Co. | Pork sausage | 4 | 0 | 4 |
| Columbus Asphalt Co. | Asphalt | 8 | 0 | 8 |
| Ferry-Morse Seed Co.* | Garden seed packaging | 42 | 104 | 146 |
| Fulton Coca-Cola Bottling Co., Inc. | Soft drinks | 10 | 0 | 10 |
| Fulton County News | Newspaper, letterpress printing | 4 | 1 | 5 |
| Fulton Ice Co., Inc. | Ice | 8 | 1 | 9 |
| Fulton Publishing Co., Inc. | Newspaper, commercial printing | 10 | 3 | 13 |
| Jiffy Steamer Co.* | Steam presses | 10 | 1 | 11 |
| Jones Coal & Concrete Co. | Concrete | 5 | 1 | 6 |
| Pepsi-Cola Bottling Co. | Carbonated beverages | 12 | 5 | 17 |
| B. J. Pritchard Ornamental Iron Co. | Ornamental iron work | 1 | 0 | 1 |
| Pure Milk Co. | Milk, ice cream | 41 | 4 | 45 |
| Henry I. Siegel Co., Inc.** | Men's, boys' clothing | 179 | 563 | 742 |
| Swift & Company* | Ice cream & cheese | 35 | 3 | 38 |
| Way Matic Welding Fab Co. | Concession trailers, display racks | 18 | 1 | 19 |

*Companies located in Tennessee.

**Henry I. Siegel Company has two plants - one in Kentucky and one in Tennessee. Employment shown is combined total of both plants.

PREVAILING WAGE RATES:

| | <u>Male</u> | <u>Female</u> |
|-------------|--------------------------|--------------------------|
| Unskilled | \$1.40 to \$1.90 per hr. | \$1.40 to \$1.80 per hr. |
| Semiskilled | 1.50 to 2.05 per hr. | 1.50 to 1.85 per hr. |
| Skilled | 1.90 to 2.90 per hr. | 1.80 to 2.20 per hr. |

UNIONS:

| <u>Name of Union</u> | <u>Name of Company</u> |
|---|--------------------------------|
| Amalgamated Clothing Workers of America, AFL-CIO | Henry I. Siegel Co., Inc. |
| American Federation of Grain Millers, AFL-CIO | Ferry-Morse Seed Co. |
| Communication Workers of America, AFL-CIO | Southern Bell Telephone Co. |

TAXES:

PROPERTY TAX RATES PER \$100 OF ASSESSED VALUE
FOR FULTON AND FULTON COUNTY, 1966

| <u>Taxing Unit</u> | <u>Fulton</u> | <u>Fulton County</u> |
|--------------------|---------------|----------------------|
| City | \$.275 | \$ |
| County | .115 | .115 |
| State | .015 | .015 |
| School | .632 | .440 |
| Health | .024 | .024 |
| Total | \$1.061 | \$.594 |

Source: Kentucky Department of Commerce.

Net Assessed Value of Property (1966)

| | |
|---------------|--------------------------------------|
| Fulton | \$14,467,442 Real Estate & Tangibles |
| | 2,000,000 Franchise |
| | <u>\$16,467,442 Total</u> |
| Fulton County | \$39,469,767 Real Estate |
| | 7,767,364 Tangibles |
| | 5,223,504 Franchise |
| | <u>\$52,460,635 Total</u> |

EDUCATION:

Graded Schools: The city school system of Fulton, Kentucky, a fully integrated system, consists of two elementary schools and one high school. This system led the state for two consecutive years in the number of high school graduates attending college and 87 1/2 percent of last year's graduates attended college.

During the 1966-67 school year, the Fulton city and county school system had a combined total enrollment of 1,824 in their elementary schools and 572 in their high schools.

Vocational Schools: Fulton is served by the Tilghman Trade School and West Kentucky Vocational School, both located in Paducah. Courses offered at Tilghman include: auto mechanics, drafting, electronics technician, welding, machine shop, and woodworking and carpentry. Courses offered at West Kentucky include: auto mechanics, auto body mechanics, cabinet making, mining mechanics, radio and television, barbering, brick masonry, commercial cooking, cosmetology, general industrial electricity, office practices, tailoring, and woodworking and carpentry.

Colleges: Institutions of higher learning in the Fulton area include:

Austin Peay State College, Clarksville, Tennessee, 101 miles
Freed-Hardeman College, Henderson, Tennessee, 83 miles
Lambuth College, Jackson, Tennessee, 65 miles
Memphis State University, Memphis, Tennessee, 127 miles
Murray State University, Murray, Kentucky, 38 miles
Paducah Junior College, Paducah, Kentucky, 50 miles
Southwestern University, Memphis, Tennessee, 127 miles
Union University, Jackson, Tennessee, 65 miles
University of Tennessee-Martin Branch, Martin, Tennessee, 11 miles
Vanderbilt University, Nashville, Tennessee, 150 miles
Western Kentucky University, Bowling Green, Kentucky, 65 miles

HEALTH:

Hospitals: Fulton is served by two modern and fully-equipped hospitals, located in Fulton, that provide excellent medical care to the community.

The Fulton Hospital, a general short term hospital, has 46 beds, operating room, medical laboratory, X-ray department, EKG facilities, and 24-hour emergency care. The hospital is staffed by four medical doctors, one administrator, one laboratory technician, one X-ray technician, 5 registered nurses, seven licensed practical nurses, and eight nurses aides.

Hillview Hospital, Inc., a general short term hospital, has 30 beds and 5 bassinets, operating room, medical laboratory, X-ray department, 24-hour emergency care, and EKG facilities. The hospital is staffed by a full-time director, three medical doctors, one registered nurse, one laboratory technician, one X-ray technician, and seven licensed practical nurses.

Public Health: Fulton is served by the Fulton County Health Center, which is located in Fulton and staffed by two full-time registered nurses, two full-time clerks, and one sanitarian.

RECREATION:

Local: A 15-acre municipal park was built in 1958 which offers facilities for baseball, softball, basketball, tennis, picnicking and general playground activities, all lighted. Adjacent to this park is a newly constructed swimming pool complete with lights and bathhouses.

Fulton has a private country club with a nine-hole golf course, swimming pool, and modern clubhouse.

In addition to these two facilities, Fulton has a baseball diamond and grandstand with a seating capacity of 3,500. It was formerly used by Fulton teams participating in Kitty League baseball.

Fulton has one downtown theater, one drive-in theater, and one bowling alley.

Area: The following is a list of parks in the area and the distance from Fulton:

| | |
|--|----------|
| Columbus-Belmont State Park | 21 miles |
| Reelfoot Lake State Park | 37 miles |
| Land Between the Lakes National Recreational Area | 52 miles |
| Kenlake State Park | 53 miles |
| Kentucky Dam Village State Park | 51 miles |
| Lake Barkley State Park | 60 miles |

For detailed information concerning Fulton,
please request publication
"Industrial Resources, Fulton, Kentucky."

This copy has been prepared by the Kentucky Department of Commerce,
Division of Research, and the cost of printing paid from state funds.

MAJOR HIGHWAY NETWORK IN KENTUCKY

Compiled By
KENTUCKY DEPARTMENT
OF
COMMERCE

Frankfort, Kentucky
SEPT. 1966

LEGEND

INTERSTATE and PARKWAYS

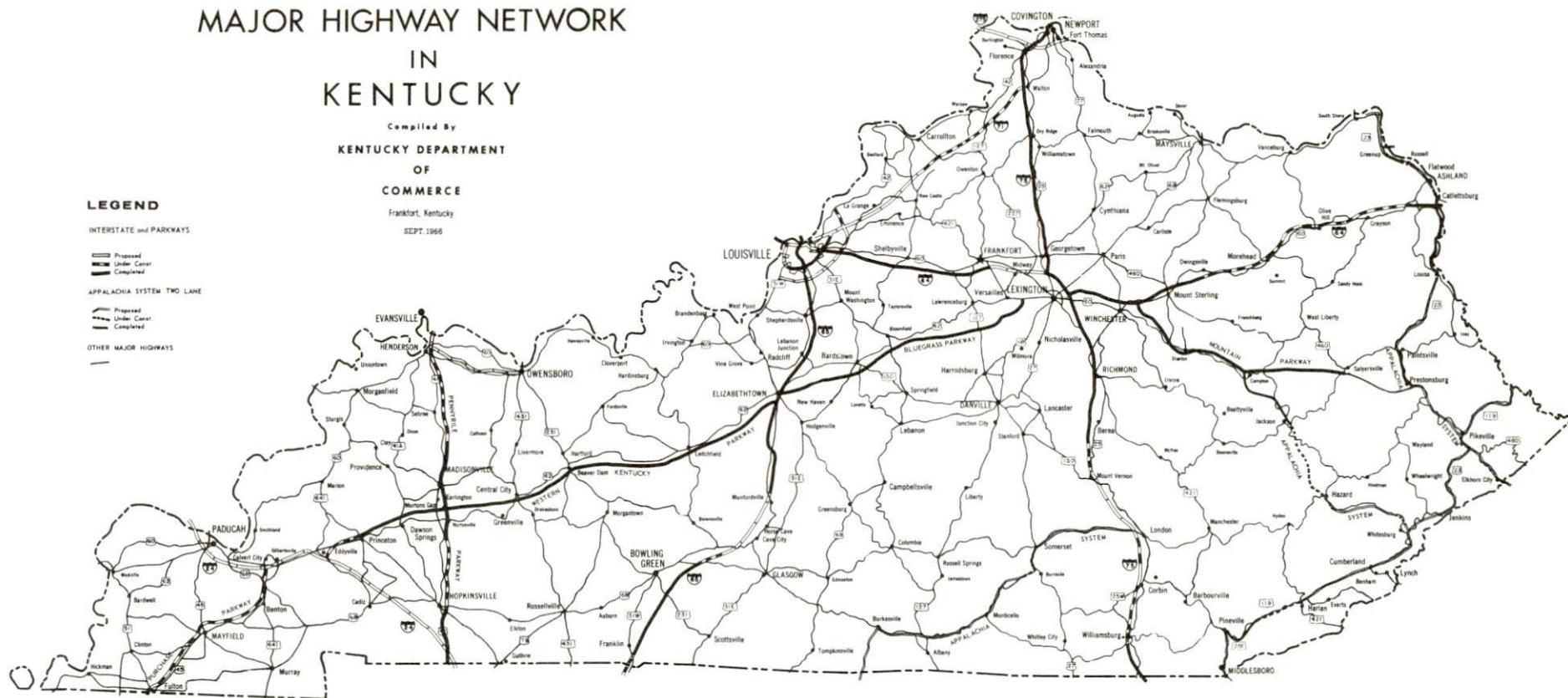
Proposed
Under Const.
Completed

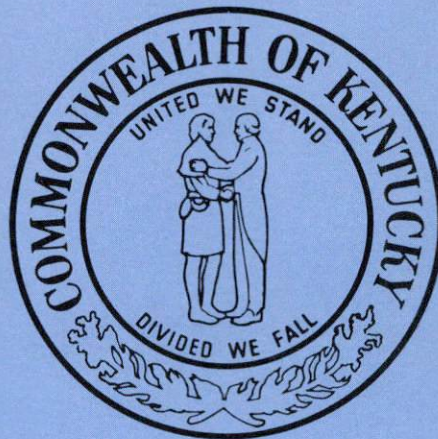
APPALACHIA SYSTEM TWO LANE

Proposed
Under Const.
Completed

OTHER MAJOR HIGHWAYS

MAJOR HIGHWAY NETWORK





PREPARED BY
KENTUCKY DEPARTMENT OF COMMERCE
FRANKFORT, KENTUCKY

AND

FULTON INDUSTRIAL CORPORATION

1967