

1979

Industrial Resources - Garrard County - Lancaster

Kentucky Library Research Collections
Western Kentucky University, spcol@wku.edu

Follow this and additional works at: https://digitalcommons.wku.edu/garrard_cty

 Part of the [Business Administration, Management, and Operations Commons](#), [Growth and Development Commons](#), and the [Infrastructure Commons](#)

Recommended Citation

Kentucky Library Research Collections, "Industrial Resources - Garrard County - Lancaster" (1979). *Garrard County*. Paper 8.
https://digitalcommons.wku.edu/garrard_cty/8

This Report is brought to you for free and open access by TopSCHOLAR®. It has been accepted for inclusion in Garrard County by an authorized administrator of TopSCHOLAR®. For more information, please contact topscholar@wku.edu.

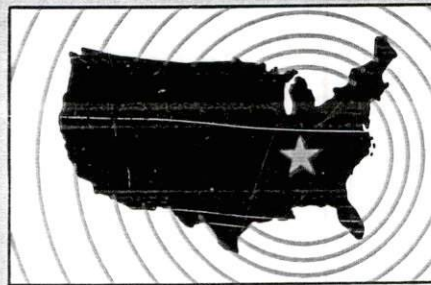
IK
185

Garrard County.

INDUSTRIAL RESOURCES

LANCASTER

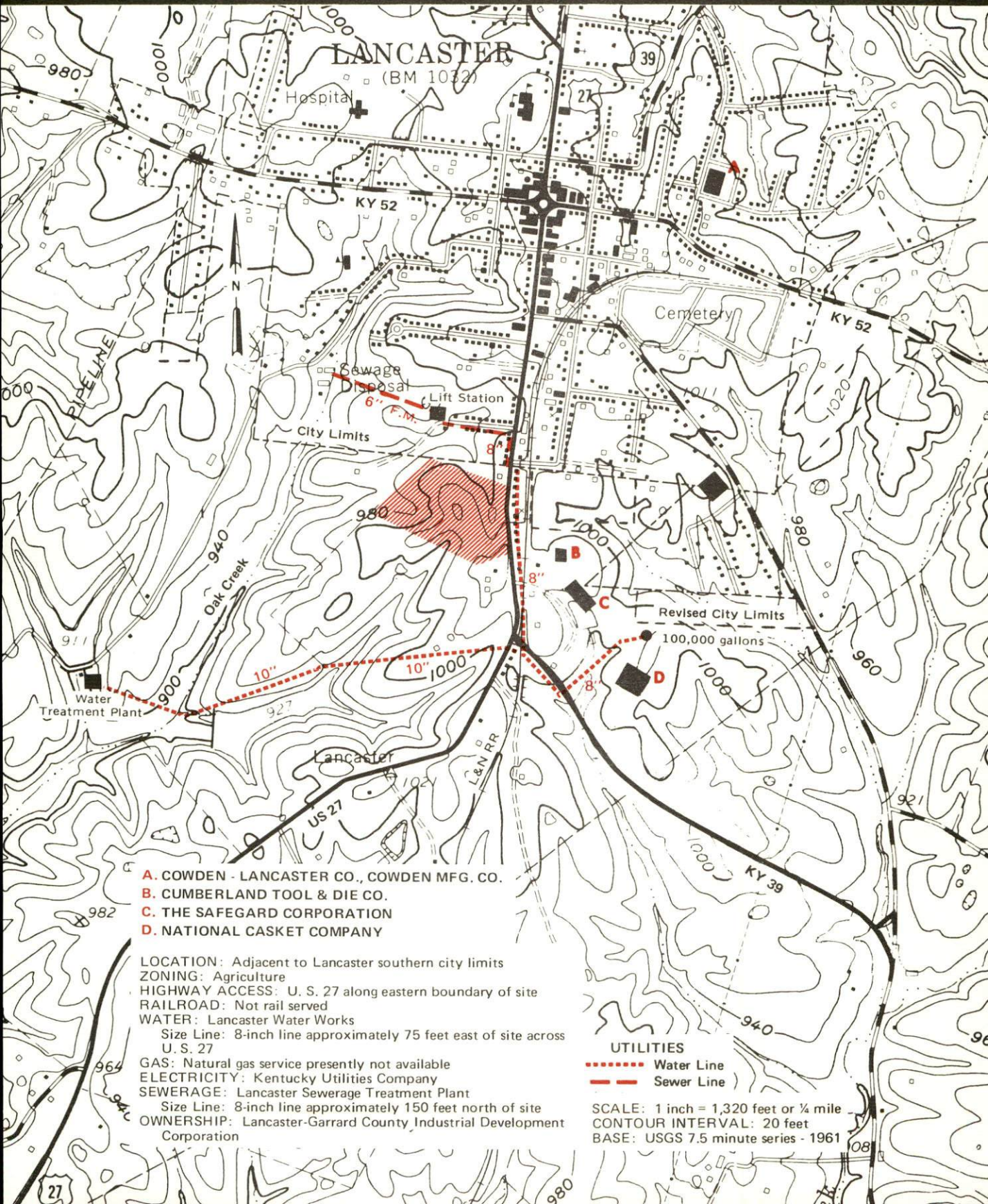
**Kentucky
first**



DEPARTMENT OF COMMERCE

LANCASTER, KENTUCKY --- Site No. 179 -- 18 Acres

For more information contact Cliff Ledford, Board Member, Garrard County Industrial Development Corporation, 107 Lexington Street, Lancaster, Kentucky 40444, (606 792-2521), or the Industrial Development Division, Kentucky Department of Commerce, Capital Plaza Tower, Frankfort, Kentucky 40601.



- A. COWDEN - LANCASTER CO., COWDEN MFG. CO.**
- B. CUMBERLAND TOOL & DIE CO.**
- C. THE SAFEGARD CORPORATION**
- D. NATIONAL CASKET COMPANY**

LOCATION: Adjacent to Lancaster southern city limits
ZONING: Agriculture
HIGHWAY ACCESS: U. S. 27 along eastern boundary of site
RAILROAD: Not rail served
WATER: Lancaster Water Works
 Size Line: 8-inch line approximately 75 feet east of site across U. S. 27
GAS: Natural gas service presently not available
ELECTRICITY: Kentucky Utilities Company
SEWERAGE: Lancaster Sewerage Treatment Plant
 Size Line: 8-inch line approximately 150 feet north of site
OWNERSHIP: Lancaster-Garrard County Industrial Development Corporation

UTILITIES
 - - - - - Water Line
 ——— Sewer Line

SCALE: 1 inch = 1,320 feet or ¼ mile
CONTOUR INTERVAL: 20 feet
BASE: USGS 7.5 minute series - 1961

INDUSTRIAL RESOURCES

LANCASTER, KENTUCKY

Prepared by
The Kentucky Department of Commerce
Division of Research and Planning
in cooperation with
The Garrard County Chamber of Commerce

1979

Program supervisor - Pamela Riley; research - Brenda Roberts;
clerical - Linda Fint; graphics - Frank Ferrante, Tony Cecconi,
Richard Spencer; cartography - Industrial Development Division.
Cost of printing paid from state funds.

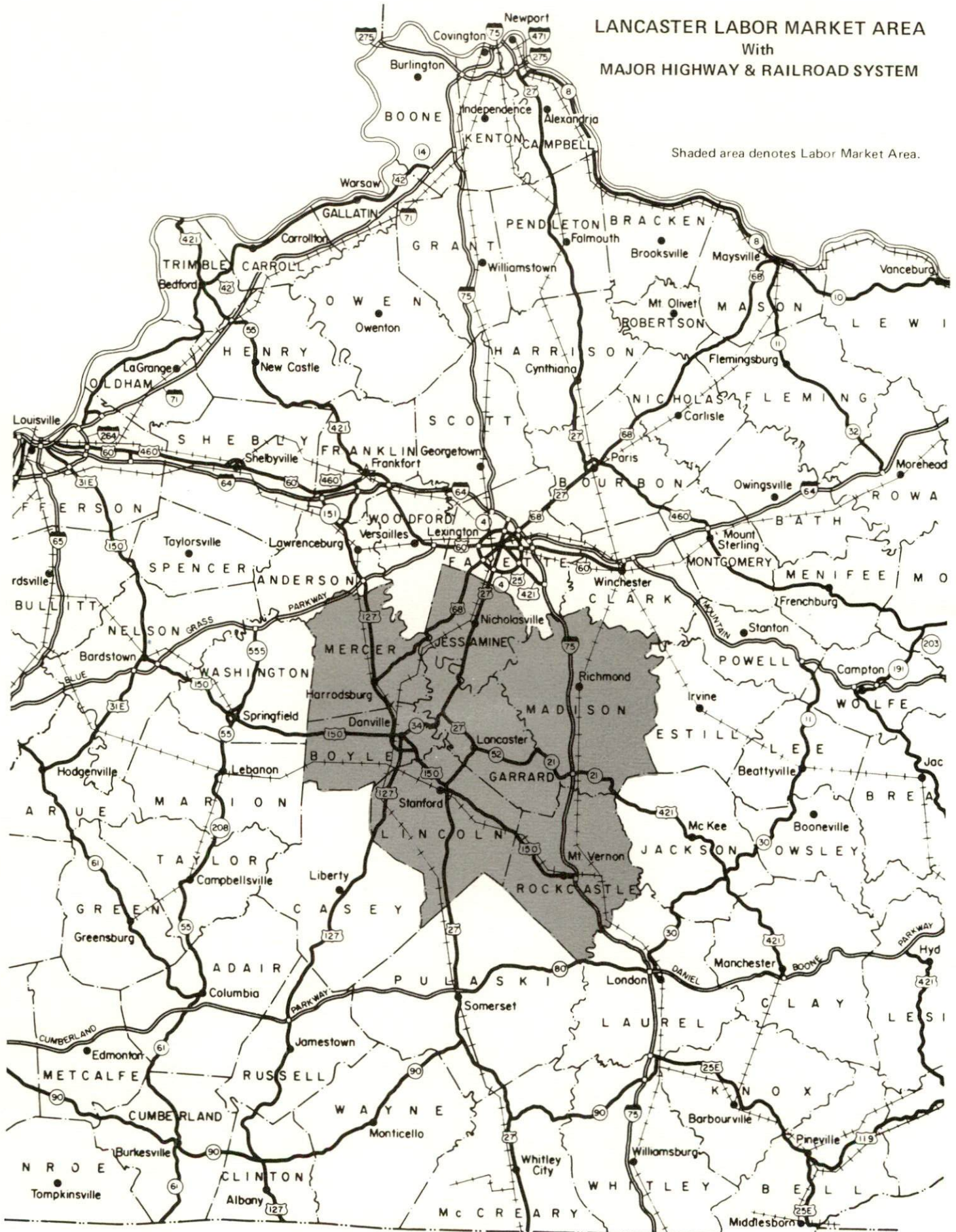
TABLE OF CONTENTS

<u>Chapter</u>	<u>Page</u>
INDUSTRIAL SITES	i
SUMMARY OF INDUSTRIAL RESOURCES - LANCASTER, KENTUCKY	1
THE LABOR MARKET AREA	6
Population	6
Labor Force Characteristics of Residents, 1978	6
Lancaster Manufacturing Firms, Their Products and Employment	7
Labor Organizations	7
Industrial Services	8
Estimated Male Labor Supply	9
Estimated Female Labor Supply	9
Average Weekly Wages by Industry, by Place of Work, 1978	10
Per Capita Personal Income	12
TRANSPORTATION	13
Rail	13
Highways	13
Truck Service	14
Air	15
Bus	16
Rental Services	16
Water	16
POWER AND FUEL	17
Electricity	17
Natural Gas	18
Other Fuels	18
WATER AND SEWERAGE	19
Water	19
Sewerage	20
CLIMATE	21

<u>Chapter</u>	<u>Page</u>
LOCAL GOVERNMENT	22
City	22
County	22
Assessed Value of Property, 1978-79	22
Property Taxes	22
Combined State and Local Rates Per \$100 Valuation, 1979	23
Planning and Zoning	23
Safety	23
Police	23
Fire	23
Rescue Service	24
Refuse Collection and Disposal	24
EDUCATION	25
Public Schools	25
Area Colleges and Universities	25
Vocational Schools	26
HEALTH	28
Local Medical Personnel	28
Hospitals	28
Ambulance Service	28
Public Health	28
OTHER LOCAL FACILITIES	29
Communications	29
Library Services	29
Religious Institutions	30
Financial Institutions	30
Hotels and Motels	30
Clubs and Organizations	30
RECREATION	31
COMMUNITY IMPROVEMENTS	33

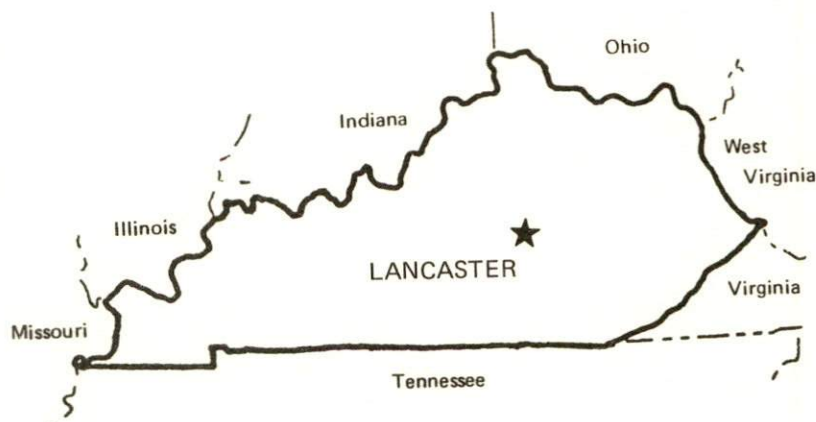
LANCASTER LABOR MARKET AREA With MAJOR HIGHWAY & RAILROAD SYSTEM

Shaded area denotes Labor Market Area.



SUMMARY OF INDUSTRIAL RESOURCES
LANCASTER, KENTUCKY

LOCATION



Road Distance in Miles:

Atlanta	<u>344</u>	Baltimore	<u>575</u>
Chicago	<u>386</u>	Detroit	<u>371</u>
New York	<u>737</u>	St. Louis	<u>369</u>

POPULATION

City of Lancaster, 1976	<u>3,119</u>
Garrard County, 1978	<u>10,100</u>
Labor Market Area, 1978	<u>157,000</u>
% Nonwhite, Garrard County, 1977	<u>7.7</u>

LABOR ANALYSIS

Labor Market Area - Garrard, Boyle, Jessamine, Lincoln, Madison, Mercer, and Rockcastle Counties

Estimated available workers from labor market area, 1978:

Male	<u>6,874</u>	Female	<u>6,375</u>
Unemployment rate, 1978		Labor Market Area	<u>4.8%</u>
Garrard County	<u>6.5%</u>	Madison County	<u>3.8%</u>
Boyle County	<u>5.0%</u>	Mercer County	<u>4.0%</u>
Jessamine County	<u>3.7%</u>	Rockcastle County	<u>6.8%</u>
Lincoln County	<u>9.8%</u>		

Total employment, Garrard County, 1978 - 4,146
Manufacturing employment in labor market area, 1978 - 11,622

Major local manufacturing plants:

<u>Name</u>	<u>Employment</u>
<u>Cowden-Lancaster Company</u>	<u>333</u>
<u>Feldman Lumber Company, Inc.</u>	<u>79</u>
<u>National Casket Company</u>	<u>243</u>

Labor unions in local manufacturing plants:

Teamsters; Upholsterers

INDUSTRIAL SERVICES

	<u>Location</u>	<u>Miles Distant</u>
Tool & Die, Machine & Pattern Shops	<u>Lancaster</u>	<u>--</u>
Metal Service Centers	<u>Lexington</u>	<u>34</u>
Heat Treating	<u>Richmond</u>	<u>24</u>
Metal Finishers	<u>Richmond</u>	<u>24</u>
Electric Motor Repair	<u>Lexington</u>	<u>34</u>

TRANSPORTATION

Rail:

Nearest rail service - Louisville & Nashville Railroad at Stanford, 8 miles distant, and Southern Railway System at Danville, 12 miles distant; Piggyback service - Available at Danville on Southern Railway System

Highways:

Nearest interstates - I-75, 21 miles to the east; I-64, 38 miles to the north
Nearest parkway - Cumberland Parkway, 42 miles to the south
U.S. Highway - U.S. 27

Truck:

Number of interstate motor carriers - 6; Local terminals - 0

Air:

Nearest scheduled airline service - Blue Grass Field at Lexington
Distance - 34 miles; Airlines serving - Delta, Eastern, Piedmont, and USAir (Frontier beginning in February 1980)

Nearest local airport - Goodall Field
Distance - 16 miles; Runway length - 4,000 feet

Water:

Nearest navigable river - Kentucky River
Nearest public riverport - Louisville, Kentucky
Distance - 106 miles

UTILITIES AND SERVICES

Electricity:

Local distributor - Kentucky Utilities Company
Source of power - Kentucky Utilities Company

Natural Gas:

Local distributor - Western Kentucky Gas Company
Source of supply - Tennessee Gas Pipeline Company
Available for new industry - No

Other Fuels:

Number of area propane distributors - 4
Number of area distillate fuel oil distributors - 3

Water, treated:

Local supplier - Municipal
Excess municipal system capacity - 500,000 gpd
Storage capacity - 1,000,000 gallons
Expansions planned - No

Water, raw:

Sources - Dix River, Herrington Lake, Kentucky River and Paint Lick Creek

Sewer:

Excess treatment capacity - 92,000 gpd
Planned expansions - Yes

CLIMATE

Temperature, Normal - 55.2 degrees F.
Precipitation, Normal - 44.49 inches
Snowfall, Mean Annual - 16.7 inches
Prevailing winds - South
Relative humidity (%) - 7 a.m. 81; 7 p.m. 64

GOVERNMENT

Type - Mayor-City Council

Police personnel - full-time - 7

Fire department personnel - full-time - 1, volunteer - 21

Fire insurance rating (A.I.A.), class - Inside city - 6
Outside city - 10

TAXES

Property taxes:

Combined state and local rates per \$100 valuation, 1979
(100% assessment)

	<u>Inside City of Lancaster</u>	<u>Outside City</u>
1. Land and buildings	\$0.986	\$0.751
2. Mfg. machinery, raw materials, goods in process, pollution control equipment	0.150	0.150
3. Finished goods, office equipment, vehicles, other tangibles	1.157	0.922
4. Intangibles (accounts receivable, notes, bonds, etc.)	0.250	0.250
5. Leaseholds in I. R. bond financed plants	0.015	0.015

EDUCATION

Nearest state vocational-technical school - Central Kentucky State Vocational-Technical School at Lexington, 34 miles distant

Area vocational education center - Garrard County Area Vocational Education Center at Lancaster

Nearest college or university - Centre College at Danville, 12 miles distant

Public Schools:

High school enrollment - 560; Student/teacher ratio - 20-1

Elementary school enrollment - 1,339; Student/teacher ratio - 17-1

MEDICAL

Number of physicians locally - 3; Number of dentists locally - 4
Hospital - Garrard County Memorial Hospital

Number of beds - 50 acute, 34 extended care, 46 personal care

COMMUNICATIONS

Local newspapers - The Central Record, The Garrard County News, weeklies
Local radio station - WIXI - AM
Television reception - Cable service

RELIGIOUS FACILITIES

Churches - 13; Nearest synagogues - Lexington, 34 miles distant

FINANCIAL INSTITUTIONS

Banks - 2; Total assets - \$32,845,254.86
Savings & loan associations - 1; Total assets - \$14,092,007.09

PUBLIC LODGING

Total number hotels and motels - 2; Total rooms - 54

RECREATION FACILITIES

Ball park; Playground; Tennis courts; Boat docks; Country club with
golf course, swimming pool and tennis courts

Nearest state park - Old Fort Harrod State Park, 21 miles away
Reconstructed replica of an early fort; Museum; Playground;
Picnic area; "Legend of Daniel Boone", outdoor drama during
summer; Open year round

THE LABOR MARKET AREA

Area	POPULATION		Percent Nonwhite**
	1978*	1970	
Lancaster	3,119**	3,230	14.9
Labor Market Area	157,000	136,406	N/A
Garrard County	10,100	9,457	7.7
Boyle County	23,300	21,861	11.8
Jessamine County	24,300	17,430	5.5
Lincoln County	18,300	16,663	5.2
Madison County	49,500	42,730	6.6
Mercer County	18,100	15,960	4.9
Rockcastle County	13,400	12,305	0.1

*Provisional Estimates.

**1976 Population Estimates; 1970 Percent Nonwhite for city; 1977 Percent Nonwhite for counties.

Sources: U.S. Department of Commerce, Bureau of the Census, Census of Population, 1970. U.S. Department of Commerce, Bureau of the Census, Current Population Reports, Series P-25, No. 756, January 1979; Series P-26, No. 78-17, August 1979. University of Louisville, Urban Studies Center, Population Research Unit, Kentucky's Population Disaggregations of 1977 Estimates, December 1978.

LABOR FORCE CHARACTERISTICS OF RESIDENTS, 1978

	Garrard County	Labor Market Area
Civilian Labor Force	4,434	79,986
Employment	4,146	76,120
Agricultural	709	6,262
Nonagricultural	3,437	69,858
Unemployment	288	3,866
Rate of Unemployment (%)	6.5	4.8

Source: Kentucky Department for Human Resources, Kentucky Labor Force Estimates, Annual Averages, 1978.

LANCASTER MANUFACTURING FIRMS,
THEIR PRODUCTS AND EMPLOYMENT

Firm (Establishment date)	Product	Employment			Organized
		Total	Male	Female	
Camp Nelson Stone Company, Inc. (1977)	Crushed stone, agricultural lime, concrete blocks	20	19	1	
The Central Record (1889)	Newspaper, job printing	9	6	3	
Cowden-Lancaster Company (1946)	Men's and boys' work clothing	333	32	301	*
Cumberland Tool and Die Company (1974)	Tools, dies, jigs, fixtures	10	9	1	
Feldman Lumber Company, Inc. (1938)	Lumber	79	77	2	
Garrard Mills (1921)	Feed	5	4	1	
National Casket Company, Division of Walco National Corporation (1965)	Steel caskets	243	179	64	*
The Safeguard Corporation (1965)	Pillows, cushions	5	3	2	

*See Labor Organizations below.

Source: Kentucky Department of Commerce, Division of Research and Planning.

LABOR ORGANIZATIONS

<u>Union</u>	<u>Representing manufacturing workers at:</u>
International Brotherhood of Teamsters, Chauffeurs, Warehousemen and Helpers of America	Cowden-Lancaster Company
Upholsterers' International Union of North America, AFL-CIO	National Casket Company

INDUSTRIAL SERVICES

	<u>Location</u>	<u>Miles Distant</u>
Tool & Die, Machine & Pattern Shops	Lancaster	--
Metal Service Centers	Lexington	34
Heat Treating	Richmond	24
Metal Finishers	Richmond	24
Electric Motor Repair	Lexington	34

Source: Kentucky Directory of Selected Industrial Services, 1979.

ESTIMATED MALE LABOR SUPPLY
LANCASTER LABOR MARKET AREA

Area	Current			Under- employed	Future
	Total	Not in Labor Force	Unemployed		Reaching 18 years of age before 1985
Labor Market					
Area	6,874	1,011	1,863	4,000	6,211
Garrard	382	72	140	170	408
Boyle	966	160	296	510	975
Jessamine	935	155	230	550	815
Lincoln	780	130	310	340	838
Madison	2,683	276	507	1,900	1,792
Mercer	641	128	193	320	707
Rockcastle	487	90	187	210	676

Sources: Kentucky Department for Human Resources, Kentucky Labor Supply Estimates by County, 1978. Kentucky Department of Commerce, Future Labor Supply Before 1985.

ESTIMATED FEMALE LABOR SUPPLY
LANCASTER LABOR MARKET AREA

Area	Current			Under- employed	Future
	Total	Not in Labor Force	Unemployed		Reaching 18 years of age before 1985
Labor Market					
Area	6,375	432	2,003	3,940	6,042
Garrard	358	30	148	180	435
Boyle	904	77	337	490	931
Jessamine	958	58	230	670	831
Lincoln	647	55	332	260	792
Madison	2,508	119	549	1,840	1,722
Mercer	575	56	209	310	730
Rockcastle	425	37	198	190	601

Sources: Kentucky Department for Human Resources, Kentucky Labor Supply Estimates by County, 1978. Kentucky Department of Commerce, Future Labor Supply Before 1985.

AVERAGE WEEKLY WAGES BY INDUSTRY,
BY PLACE OF WORK, 1978

	<u>Garrard County</u>	<u>Boyle County</u>	<u>Jessamine County</u>	<u>Lincoln County</u>
All Industries	\$142.93	\$189.10	\$172.53	\$153.36
Mining & Quarrying	*	*	*	*
Contract Construction	189.68	200.46	195.11	194.57
Manufacturing	166.00	221.91	219.84	132.84
Transportation, Communications & Public Utilities	212.57	262.31	210.36	*
Wholesale & Retail Trade	95.85	147.45	140.72	130.03
Finance, Insurance & Real Estate	169.85	190.56	174.15	165.51
Services	114.53	153.55	141.66	137.79
Other	0	*	*	*

	<u>Madison County</u>	<u>Mercer County</u>	<u>Rockcastle County</u>
All Industries	\$170.94	\$178.27	\$126.88
Mining & Quarrying	*	*	*
Contract Construction	178.38	185.50	120.47
Manufacturing	208.32	225.07	144.23
Transportation, Communications & Public Utilities	200.51	*	172.39
Wholesale & Retail Trade	124.87	118.58	111.16
Finance, Insurance & Real Estate	170.09	176.83	*
Services	177.77	104.52	112.73
Other	*	126.69	*

*Not disclosed.

Note: Excludes domestic workers, railway workers; certain nonprofit corporations; majority of federal, state, and local government workers; and self-employed workers.

Source: Kentucky Department for Human Resources, Average Weekly Wages of Workers Covered by Kentucky Unemployment Insurance Law, 1978.

PER CAPITA PERSONAL INCOME

<u>Area</u>	<u>1977</u>	<u>1973</u>	<u>Percent Change</u>
Garrard County	\$5,924	\$4,025	47.2
Labor Market Area			
Range	\$3,304 - 6,254	\$2,224 - 4,104	N/A
Kentucky	5,989	4,021	48.9
U.S.	7,026	4,980	41.1

Source: U.S. Department of Commerce, Bureau of Economic Analysis,
April 1979.

TRANSPORTATION

Rail

The nearest lines serving Lancaster are the Louisville & Nashville Railroad at Stanford, 8 miles distant, and the Southern Railway System at Danville, 12 miles distant.

Louisville & Nashville Railroad -

Services - Northbound and southbound freight stops once per week, northbound and southbound through freights daily, switching facilities, and team track space. Piggyback service is available with Louisville & Nashville Railroad at Lexington, 34 miles from Lancaster.

Southern Railway System -

Services - Main line, freights traveling westbound, northbound and southbound making daily stops, switching facilities, team track space, siding space, and piggyback facilities.

For details on routing, schedules, rates, and services, contact:

Manager of Industrial Development
Louisville & Nashville Railroad
908 West Broadway
Louisville, Kentucky 40201
(502) 587-5723

and/or

District Sales Manager
Southern Railway System
701 South Broadway
Lexington, Kentucky 40508
(606) 252-2242

Highways

Lancaster is served by U.S. 27, a class "AAA" trucking route, and Kentucky Highways 52 and 39, both "AA" routes. Access to I-75, a north-south transcontinental route, is provided by an interchange 21 miles to the east of Lancaster via Kentucky Highways 52 and 21. Other interchanges to I-75 are located 24 miles northeast via Kentucky Highway 52, and 35 miles southeast via U.S. 27 and 150. U.S. 27 provides direct access to I-64, 38 miles to the north, and to the Cumberland Parkway, 42 miles south of Lancaster. I-64 is an east-west transcontinental route, while the Cumberland Parkway is a major route to the southwestern portion of the state.

Truck Service

<u>Company</u>	<u>Home Office</u>
Cooper-Jarrett, Inc.*	Hanover Plaza Morristown, New Jersey 07960
Eldridge Truck Line**	North Highway 27 P. O. Box 659 Somerset, Kentucky 42501
Interstate Motor Freight System*	134 Grandville Avenue, S.W. Grand Rapids, Michigan 49503
Lawrenceburg Transfer Company, Inc.**	Route 4 P. O. Box 220 Lawrenceburg, Kentucky 40342
McLean Trucking Company*	P. O. Box 213 Winston-Salem, North Carolina 27102
United Trucking Service, Inc.**	8505 West Warren Dearborn, Michigan 48126
<u>Other Freight Services</u>	<u>Nearest Shipping Center</u>
Purolator Courier Corporation***	Lexington, 34 miles distant
United Parcel Service***	Danville, 12 miles distant

HIGHWAY MILES AND TRUCK TRANSIT TIME IN DAYS FROM LANCASTER, KENTUCKY, TO SELECTED MARKET CENTERS

City	Delivery		City	Delivery	
	Highway Miles	Time TL		Highway Miles	Time TL
Atlanta, Ga.	344	Next a.m.	Los Angeles, Ca.	2,214	5th a.m.
Baltimore, Md.	575	2nd a.m.	Louisville, Ky.	106	Next a.m.
Birmingham, Ala.	405	Next a.m.	Nashville, Tenn.	215	Next a.m.
Chicago, Ill.	386	Next a.m.	New Orleans, La.	732	3rd a.m.
Cincinnati, Ohio	112	Next a.m.	New York, N. Y.	737	3rd a.m.
Cleveland, Ohio	351	2nd a.m.	Pittsburgh, Pa.	377	2nd a.m.
Detroit, Mich.	371	2nd a.m.	St. Louis, Mo.	369	2nd a.m.
Knoxville, Tenn.	151	Next a.m.			

Source: Delivery Time Only - Lawrenceburg Transfer Company, Inc.,
P. O. Box 220, Lawrenceburg, Kentucky 40342.

*Interstate service only.

**Interstate and intrastate service.

***For regular scheduled pickups or for occasional pickups, arrangements must be made with the Louisville office of Purolator Courier Corporation or United Parcel Service.

Air

Nearest local

Location: Goodall Field
4 miles south of Danville, Kentucky;
16 miles from Lancaster

Runways: 1 paved
Length: 4,000 feet

Traffic Control: Wind sock

Lighting: Rotating beacon, sundown to sunrise

Services: 100 octane, charter, hangar, tie down,
flight instruction, aircraft rental

Air Freight Service: Chartered air freight services must
be arranged

Nearest Scheduled Airline Service

Location: Blue Grass Field
Lexington, Kentucky, 34 miles
from Lancaster

Runways: 2 paved
Length: 6,500 feet and 3,500 feet

Traffic Control: Tower; radar services: arrival/
departure control, Stage II contact
approach control, ground control;
Automatic Terminal Information
Service

Lighting: Approach lighting system, beacon,
runways and obstructions lighted

Services: Delta, Eastern, Piedmont, and USAir
Airlines, Frontier Airlines
beginning in February 1980; fuel:
24-hour service, 80, 100 and jet
fuel; major A & E repairs, Certified
Avionics repair station; National
Weather Service; restaurant; flight
instructions; charter service;
storage; taxi, limousine and car
rentals

Air Freight Service: Air freight terminal regularly
serviced by freight carrying
airlines

Bus - Southern Greyhound Bus Lines

Rental Services - Nearest car, truck and trailer rentals are in
Danville, 12 miles distant.

Water

The nearest navigable river is the Kentucky River. Lancaster is located approximately 12 miles south of a point on the Kentucky River near Camp Nelson where a 6-foot navigation channel is maintained.

POWER AND FUEL

Electricity

Company serving Lancaster and portions of Garrard County - Kentucky
Utilities Company
Source of power - Kentucky Utilities Company
Total generating capacity - 2,238,400 KW
For industrial rates contact:

Industrial Development Department
Kentucky Utilities Company
One Quality Street
Lexington, Kentucky 40507
(606) 255-1461

and/or

Kentucky Utilities Company
208 Lexington Street
Lancaster, Kentucky 40444
(606) 792-2021

Company serving portions of Garrard County - Inter-County Rural
Electric Cooperative Corporation
Source of power - East Kentucky Power Cooperative
Total generating capacity - 867,000 KW
For industrial rates contact:

Industrial Development Division
East Kentucky Power Cooperative
P. O. Box 707
Winchester, Kentucky 40391
(606) 744-4812

and/or

Inter-County RECC
P. O. Box 87
Danville, Kentucky 40422
(606) 236-4561

Natural Gas

Company serving Lancaster - Western Kentucky Gas Company
Source of supply - Tennessee Gas Pipeline Company
Size of transmission mains - 24 inches (supplier);
4 inches (distributor)
Distribution mains - 2, 4, and 6 inches
Distribution pressure - As required in accordance to load
(maximum 35 psi)
Btu content - 1,000 per cubic foot
Specific gravity - 0.65
For rates and supplies contact:

Industrial Development Department
Western Kentucky Gas Company
311 West Seventh Street
Owensboro, Kentucky 42301
(502) 684-8811

Other Fuels

Propane (Within 22 miles)

Bright's Bottle Gas Company 100 West Brook Burgin, Kentucky 40310	Suburban Propane 121 North 4th Street Nicholasville, Kentucky 40356
Jack Campbell Bottled Gas Bowen Road Junction City, Kentucky 40440	William's Energy Company Box 280, U.S. Highway 127 Hustonville, Kentucky 40437

Fuel oils

Distillate fuel oil - (Within 12 miles)

Ashland Petroleum Company Route 3 Danville, Kentucky 40422	Jack and Doug Little Distributors, Inc. Gulf Oil Products P. O. Box 202 Danville, Kentucky 40422
--	--

Standard Oil Company
David Avenue
Danville, Kentucky 40422

Residual fuel oil - Arrangements must be made with the refinery.

Low sulphur content coal - Available in eastern Kentucky.

WATER AND SEWERAGE

Water

Company serving Lancaster - Lancaster Water Works
101 Stanford Street
Lancaster, Kentucky 40444
(606) 792-2241

Source - 2 city impoundments and Kentucky River
Treatment plant capacity - 1,400,000 gallons per day
Average daily consumption - 600,000 gallons
Peak daily consumption - Approximately 900,000 gallons
Type treatment - Flocculation, sedimentation and rapid sand filter
Storage capacity - 1,000,000 gallons
Size lines - 4, 6, 8, 10, and 12 inches
Average pressure - 75 psi
Average temperature - 60 degrees F.

MONTHLY WATER RATES FOR WHOLESALE AND INDUSTRIAL CONSUMERS

First	2,000 gallons	\$3.90 (Minimum bill)
Next	3,000 gallons	1.20 per M gallons
Next	10,000 gallons	1.10 per M gallons
Next	10,000 gallons	1.00 per M gallons
All over	25,000 gallons	.90 per M gallons

Tap-on charge:

5/8-inch to 3/4-inch meter	- \$150
1-inch meter	- 250
1 1/2-inch meter	- 350
2-inch meter	- 500
Commercial	- Cost plus materials

Surface water sources - Dix River, Herrington Lake, Kentucky River,
and Paint Lick Creek

Average discharge - At Dix River near Danville - 446 cfs
(36 years, USGS)

Expected ground water yield - 200 to 500 gpm in small northern
portion of county; 50 to 200 gpm in eastern tip of county;
5 to 50 gpm in northwestern fourth of county; and 5 gpm or
less over remainder of county

Sewerage

Company serving Lancaster - Lancaster Sewage Treatment Plant*
101 Stanford Street
Lancaster, Kentucky 40444
(606) 792-2241

Design capacity - 400,000 gallons per day

Average daily flow - 308,000 gallons

Treatment - Primary and secondary

Type treatment - Primary, dosing chamber, trickling filter,
secondary clarifier, chlorine contact tank, anaerobic digester,
sludge drying beds

Treated effluent discharged into - White Oak Creek

Size of sanitary mains - 6, 8, and 10 inches

Size of storm mains - 15, 18, 24, and 36 inches

Rates - 100 percent of monthly water bill; minimum sewer bill - \$3.90

Tap-on charge: Residential - \$150

Commercial - Cost plus materials

*The city of Lancaster is in the final stages of Step I of the 201 Facilities Plan study of its sewerage system. The city is currently scheduled to begin Step II in September 1980.

CLIMATE

Garrard County

Temperature

Normal (30-year record)	55.2 degrees
Average annual 1978	53.0 degrees
Record highest, September, 1954 (34-year record)	103.0 degrees
Record lowest, January, 1963 (34-year record)	-21.0 degrees
Normal heating degree days (30-year record)	4,729
(Heating degree day totals are the sums of negative departures of average daily temperatures from 65 degrees F.)	

Precipitation

Normal (30-year record)	44.49 inches
Mean annual snowfall (34-year record)	16.70 inches
Total precipitation 1978	57.73 inches
Mean number days precipitation (.01 inch or more) (34-year record)	131
Mean number days thunderstorms (34-year record)	47

Prevailing Winds (17-year record) South

Relative Humidity

1 a.m.	77 percent (14-year record)
7 a.m.	81 percent (15-year record)
1 p.m.	60 percent (15-year record)
7 p.m.	64 percent (15-year record)

Source: U.S. Department of Commerce, Environmental Science Services Administration, Climatological Data, 1978.
Station of record: Lexington, Kentucky.

LOCAL GOVERNMENT

City

Structure - Mayor - 4-year term; 6 councilmen - 2-year terms
Estimated receipts - 1979-80 - General Fund \$174,150
Water and Sewer Fund 310,100

Fees and licenses - Car sticker - \$10 annually; occupational license fees vary in cost according to the type of business and range from \$5 to \$200 annually; occupational license fee for manufacturing or industry with less than 25 employees - \$50 per year, manufacturing or industry with more than 25 employees - \$100 per year (exempt first five years of their operation)

County

Structure - County Judge/Executive - 4-year term;
4 magistrates - 4-year terms
Budget 1979-80 - General Fund \$217,180; Road Fund \$74,300

Assessed Value of Property, 1978-79

<u>Classes of Property</u>	<u>Lancaster</u>	<u>Garrard County</u>
Real Estate	\$27,145,850	\$101,650,730
Tangibles	4,568,440	14,654,805

Property Taxes

All property in Kentucky is assessed at 100 percent of fair cash value.

Land and buildings are taxed by the state and may be taxed by local jurisdictions. The state rate is \$0.279 per \$100 of assessed valuation.

Manufacturing machinery, raw materials inventories, pollution control equipment, and goods in the process of manufacture are not subject to local taxation. The state rate is \$0.15 per \$100.

Other tangible personal property owned by manufacturers (automobiles, trucks, finished goods, office furniture, office equipment) is taxed by the state at \$0.45 per \$100 and may be taxed by local jurisdictions.

Property stored in public warehouses in a transit status is not subject to local taxation. The state rate is only \$0.015 per \$100.

Intangible personal property located in Kentucky (money in hand, shares of stock, notes, bonds, accounts receivable, and other credits) is taxed by the state at \$0.25 per \$100, and is not subject to local taxation.

Private leaseholds in industrial facilities owned by cities or counties and financed by industrial revenue bonds are subject to a state tax of \$0.015 per \$100 of value (essentially the lessee's equity, adjusted for appreciation or depreciation). Local taxation is not permitted.

Combined State and Local Rates Per \$100 Valuation, 1979*
(100% assessment)

	<u>Inside City of Lancaster</u>	<u>Outside City</u>
1. Land and buildings	\$0.986	\$0.751
2. Mfg. machinery, raw materials, goods in process, pollution control equipment	0.150	0.150
3. Finished goods, office equipment, vehicles, other tangibles	1.157	0.922
4. Intangibles (accounts receivable, notes, bonds, etc.)	0.250	0.250
5. Leaseholds in I. R. bond financed plants	0.015	0.015

Planning and Zoning

City agency - Lancaster Planning and Zoning Commission
 Zoning enforced - City only
 Subdivision regulations enforced - City and 2 miles beyond city limits
 Local codes enforced - Building
 Mandatory state codes enforced - Plumbing, National Fire Protection Association Code, National Building Code (for major buildings and residential construction containing more than 12 bedrooms per building)

Safety

<u>Police</u>	<u>Lancaster</u>	<u>Garrard County</u>
Total staff	7 full-time 1 part-time	4
Radio-patrol cars	2	4
 <u>Fire</u>		
American Insurance Association Fire Rating	6	10
Full-time staff	1	
Active volunteers	21	69

*Kentucky Department of Commerce.

Rescue Service

Garrard County Civil Defense

Number of volunteers - 15

Equipment - Siren system for emergency and storm warnings, individual pager system to alert manpower, 1 mobile operation center which includes 1 large trailer equipped with a kitchen and sleeping facilities for several people, 1 heavy-duty rescue truck, boat and underwater recovery equipment, communications section, ambulance and jeep

Personnel training - First aid and emergency health courses

Refuse Collection and Disposal

Lancaster

Type service	Municipal
Fee charged:	
residential	\$5.00 monthly
business	Varies according to type of business
industrial	Varies according to type of industry
Collection frequency:	
residential	Weekly
business	Daily
industrial	Daily
Disposal method	Landfill

The city landfill is available for use by county residents on a fee basis. Manufacturers outside the city may purchase permits from the city to use the landfill until October 1980 when the city's contract expires. City officials are currently studying other landfill possibilities.

EDUCATION

Public Schools

Garrard County

Total Enrollment (June 1, 1979)	1,899
Elementary	1,339
High School	560
Student-Teacher Ratio	18-1
Elementary	17-1
High School	20-1
Percent High School Graduates to College	27.5
Expenditures Per Pupil (1977-78)	\$969.57
Bonded Indebtedness, June 30, 1978	\$1,093,000

Area Colleges and Universities

<u>Name</u>	<u>Location (Miles distant)</u>	<u>Enrollment (Fall, 1978)</u>	<u>Highest Degree Conferred</u>
Centre College	Danville (12)	754	Baccalaureate
Berea College	Berea (22)	1,432	Baccalaureate
Eastern Kentucky University	Richmond (24)	13,815	Masters, Specialist*
Asbury College	Wilmore (28)	1,271	Baccalaureate
University of Kentucky	Lexington (34)	22,463	Doctorate, M.D., D.M.D., J.D.
Transylvania University	Lexington (34)	789	Masters**
Lexington Technical Institute	Lexington (34)	1,867	Associate

*Joint doctoral degree programs are offered in cooperation with the University of Kentucky, Lexington, and cooperative doctoral degree programs are offered with Michigan State University and the University of Maryland.

**Courses in the masters degree program are taught on the Transylvania campus by faculty members of Xavier University of Cincinnati. The degree is issued by Xavier University.

Vocational Schools

Nearest State School

Location
Miles Distant
Curriculum

Central Kentucky State
Vocational-Technical School
Lexington
34
Agriculture
Equine Education
Business and Office
Clerical
Secretarial
Consumer and Home Economics
Commercial Foods
Consumer Education
Health and Personal Services Occupations
Cosmetology
Dental Assistant
Operating Room Technician
Orderly/Nurse Assistant
Practical Nursing
Marketing and Distributive Education
Industrial Education
Auto Body Repair
Auto Mechanics
Carpentry
Drafting
Electronics
Graphic Arts (Printing)
Industrial Electricity
Masonry
Machine Shop
Office Machine Repair
Sheet Metal
(includes Heating & Air Conditioning)
Welding
Learning Resource Center

Nearest Area Education Center

Location	Garrard County Area Vocational Education Center
Curriculum	Lancaster Health and Personal Services Occupations Health Careers Industrial Education Auto Mechanics Carpentry Drafting Electricity Welding

Arrangements can be made to provide training in the specific production skills required by an industrial plant. Instruction may be conducted either in the vocational school or in the industrial plant, depending upon the desired arrangement and the availability of special equipment.

HEALTH

Local Medical Personnel

Physicians - 3
Dentists - 4

Hospitals

<u>General Hospital</u>	<u>Location</u>	<u>Beds</u>
Garrard County Memorial Hospital	Lancaster	50 acute care 34 extended care 46 personal care

General hospital facilities - X-ray, laboratory, physical therapy, emergency room, OB, operating room, psychiatric observation, coronary care unit, respiratory therapy, special care unit

Medical staff - Active staff - 3 doctors, 12 registered nurses (full time), 3 registered nurses (part time), 9 graduate licensed practical nurses; Courtesy staff - 3 surgeons, 1 associate pathologist, 2 radiologists, 2 dentists; Consulting staff - 18 doctors, 1 ophthalmologist, 1 orthopedist

Ambulance Service

Name - Garrard County Ambulance Service
Staff - 3 emergency medical technicians (full time), 1 trainee (full time), and 1 emergency medical technician (part time)
Service - 24 hours daily
Equipment - 3 ambulances

Public Health

Facility - Garrard County Health Department
Staff - Full time - Health environmentalist, nurse, 2 clerks;
Part time - Nurse, social worker, 2 health service aides working with family planning, nutritionist in office once weekly and doctor in office 2 half days per month

OTHER LOCAL FACILITIES

Communications

Telephone - General Telephone Company
Services - Standard

Telegraph - Western Union
Services - Toll-free telephone number

Postal - U.S. Post Office
Class - First
Mail received - Twice daily
Mail dispatched - Once daily

Newspapers - The Central Record; The Garrard County News
Weekly and
circulation - 2,550 2,400
Other papers
received from - Louisville, Lexington and Danville, Kentucky

Radio - WIXI-AM
Stations received from - Harrodsburg, Danville, Richmond,
Lexington, and Louisville, Kentucky;
Cincinnati, Ohio

Television -
Cable service
Reception from - Louisville and Lexington, Kentucky;
Cincinnati, Ohio
Kentucky Educational
Television - Lexington-Richmond transmitter, Channel 46

Library Services

Public library - Garrard County Public Library
Size collection - 32,604 volumes
Circulation, 1978-79 - 70,195
Services - Films, pictures, records, audiovisual equipment,
magazines, newspapers, bookmobile, programs for children,
meeting room facilities, oral history program, microfilm
and genealogical research section

Religious Institutions

Number of churches - 13

Denominations - Baptist, Catholic, Christian, Church of Christ,
Church of God, Methodist, Nazarene, Pilgrim's
Holiness, Presbyterian

Nearest synagogues - Lexington, 34 miles distant

Congregations - Adath Israel (reform)
Ohavey Zion (traditional)

Financial Institutions

<u>Banks</u>	<u>Assets</u>	<u>Deposits</u>	<u>Statement Date</u>
The Garrard Bank and Trust Company	\$13,182,325.31	\$11,892,537.01	12/29/78
The National Bank of Lancaster	19,662,929.55	17,692,757.87	12/31/78
<u>Savings and Loan Associations</u>	<u>Assets</u>	<u>Savings Accounts</u>	<u>Statement Date</u>
First Lancaster Federal Savings and Loan Association, Inc.	\$14,092,007.09	\$13,153,970.90	12/31/78

Hotels and Motels

Total number - 2
Total units - 54

Clubs and Organizations

American Legion	Garrard County Industrial Corporation
American Legion Auxiliary	Girl Scouts
Boy Scouts	Homemakers
Brownies	Hospital Auxiliary
Cub Scouts	International Order of Odd Fellows
Daughters of the American Revolution	Junior Chamber of Commerce
4-H	Kiwanis
Future Farmers of America	Little League
Garrard County Beef Club	Masons
Garrard County Chamber of Commerce	Rotary
	Woman's Club

RECREATION

Local

Lancaster has a ball park, a playground, tennis courts and a supervised Little League program. A state fox hunt is held in Garrard County each fall and two horse shows are presented annually.

Private recreational facilities nearby include boat dock; and a country club with an 18-hole golf course, tennis courts, swimming pool and dining facilities.

Lake Lorraine, a 160-acre recreational area, offers picnicking, camping, swimming and fishing.

Herrington Lake with 325 miles of shoreline is located seven miles from Lancaster. Here the family can enjoy a variety of water sports. Lodging, dining and camping facilities are available. The annual white bass run in April brings fishermen from far and near.

Area (Within 35 miles)

Lancaster is located in the heartland of historic Kentucky. Constitution Square State Shrine, located in Danville, 12 miles from Lancaster, is an authentic reproduction of Kentucky's first courthouse square where Kentucky's first constitution was written. The square contains the original 1792 post office and replicas of the jail, courthouse and meeting house. Danville is also the home of a recreated Kentucky town of the 1800's and Pioneer Playhouse, which presents a summer drama.

The William Whitley House State Shrine, located 13 miles from Lancaster, is the site of the first brick house built west of the Allegheny Mountains. The first Kentucky race track was laid out here by Whitley who is also responsible for starting counter-clockwise racing in the United States. The shrine includes a 10-acre park, picnic and playground area.

The Isaac Shelby State Shrine, located approximately 20 miles from Lancaster, is the burial site of Kentucky's first and fifth governor.

Old Fort Harrod State Park, 21 miles away, and Fort Boonesborough State Park, 37 miles away, are two of Kentucky's earliest settlements. Both are reconstructed replicas of early forts that opened the way to the west. Fort Harrod offers the "Legend of Daniel Boone" during the summer, an outdoor drama recalling the struggles of the early pioneers. A playground and picnic area are also located in the park. Fort Boonesborough offers camping, picnicking, swimming, boating, a playground, a supervised recreation and/or naturalist program and fishing.

The Indian Fort Theatre in Berea presents "Wilderness Road," an outdoor drama renowned for its stirring recreation of Civil War life in Kentucky. Only 21 miles southeast of Lancaster, Berea offers a number of gift shops featuring quilts, wood products and traditional crafts made by Berea College students. Churchill Weavers, the largest handweaving business in the United States, is also located in Berea. Self-guided tours of the loomhouse are available.

White Hall State Shrine, located approximately 24 miles northeast of Lancaster near Richmond, is the site of the home of Cassius M. Clay (1810-1903), early anti-slavery leader and politician. The annual North-South Skirmish Labor Day Shoot is held August 31-September 3.

Perryville Battlefield State Park, the site of the bloodiest Civil War battle in Kentucky, is located 25 miles west of Lancaster. A small museum contains relics and stories of the battle. The park also contains a playground and picnic shelter.

Outdoor recreational opportunities are bountiful in the area. In addition to the opportunities afforded by Herrington Lake and the Kentucky River, Daniel Boone National Forest is only 30 miles away. This vast timberland stretches through much of Kentucky's Eastern Region. Nature trails, picnicking, camping, and water activities are a few of the attractions of the forest's scenic 650,000 acres.

Bybee Pottery, located east of Richmond about 33 miles from Lancaster, is open for tours by appointment. The handmade Kentucky pottery has been created for one and one-third centuries.

Waveland State Shrine near Lexington is a complete plantation village, including a blacksmith shop, a general store and a Greek Revival mansion built in 1847. The Kentucky Life Museum houses hundreds of pioneer and Civil War relics.

At Pleasant Hill, approximately 35 miles away, is a restored Shaker Village which was once a prosperous religious community. This 19th century village has been carefully restored to display unique Shaker skills in furniture making, crafts, and architecture.

Lancaster is within easy driving distance to a variety of sporting events and cultural activities. Centre College, only 12 miles away at Danville, offers art exhibits, concerts, plays, lectures and collegiate sports. Lexington, 34 miles distant, has some of the finest thoroughbred and harness racing in the world. Many talented professional and amateur groups in Lexington provide the area with quality entertainment, including theatrical and music performances, ballet, art exhibits, and lecture series. The University of Kentucky and Transylvania University in Lexington and Eastern Kentucky University in Richmond provide additional cultural and sporting events for area residents.

COMMUNITY IMPROVEMENTS

1. Approximately 20 miles of new water lines have been completed in Garrard County according to officials at the Garrard County Water Association.
2. The city of Lancaster is in the final stages of Step I of the 201 Facilities Plan study of the sewerage system. The city is currently scheduled to begin Step II in September 1980.
3. The Garrard County Rural Development Committee, composed of heads of organizations in Lancaster and Garrard County, has been organized to study problems of the area.
4. A bi-county resolution has been signed between Garrard and Lincoln County officials with assistance from the Blue Grass Area Development District to promote industry. Officials have applied for a \$2 million grant from Title IX funds of the Economic Development Administration. If received, the funds will be used to upgrade existing businesses and to improve city services to promote industrial growth.
5. Another bi-county resolution has been signed to seek assistance from the state and federal governments to maintain the existing L & N Railroad line east of Stanford to Lancaster.
6. The Pleasant Retreat Shopping Center has gained a television sales and service store, a drug store, a jewelry store and a real estate office.
7. New commercial stores in the downtown area include a ladies apparel store and a discount variety store.
8. The Garrard County Bank and Trust Company has opened a full service branch bank on Danville Street and the Bank of Lancaster is currently remodeling its main office.
9. The Christian Appalachian Project, which is headquartered in Lancaster, recently moved into facilities on the Crab Orchard Road.
10. At least 200 acres of land in the Lancaster area are being subdivided. Approximately 50 acres are being developed into rental property to accommodate the growing needs for the area.
11. Approximately 26 acres of residential land on the west side of Lancaster have been annexed into the city.
12. Lancaster municipal offices have been moved into the newly remodeled Wade Building. Other plans call for another portion of the building to be remodeled into a meeting room.

13. The Garrard County Courthouse has undergone a major renovation program which included installation of an elevator and a new air conditioning and heating system and rebuilding the clock tower.

14. A consulting firm for the Garrard County Memorial Hospital has entered into a three-year feasibility study. The study is being conducted through the Kentucky Hospital Research and Education Foundation, Inc.

15. In the spring of 1979, the Lancaster Volunteer Fire Department moved into new facilities on North Campbell Street which cost over \$100,000.

16. The Garrard County Board of Education moved into a new \$148,000 structure in early 1978. With the beginning of the 1978-79 school year, the board added an optional kindergarten program with a first year enrollment of 100 students at a cost of \$40,000.

17. A \$50,000 classroom building has been added at the Paint Lick Elementary School in Garrard County. Services for students with learning disabilities, workshops for gifted and talented students, and speech therapy have been added to the curriculum of the Garrard County Schools. An application has been submitted for funding to provide more services for gifted and talented students. A school bus maintenance garage is planned within the next two years.

**Kentucky Department of Commerce
Capital Plaza Tower
Frankfort, Kentucky 40601**

**Office of the Commissioner
(502) 564-4270**

**Industrial Development Division
(502) 564-7140**

**Existing Industries Division
(502) 564-4300**

**Office of Minority Business Enterprise
(502) 564-2064**

**Agribusiness Division
(502) 564-6784**

**International Trade and Investment
Promotion Division
(502) 564-2170**

**Research and Planning Division
(502) 564-4886
Map Sales Office
133 Holmes Street
(502) 564-4715**

**Kentucky Development Finance Authority (KDFA)
(502) 564-4554**

**Kentucky Film Commission
(502) 564-2240**