

1975

Industrial Resources: Graves County - Mayfield

Kentucky Library Research Collections
Western Kentucky University, spcol@wku.edu

Follow this and additional works at: https://digitalcommons.wku.edu/graves_cty

 Part of the [Business Administration, Management, and Operations Commons](#), [Growth and Development Commons](#), and the [Infrastructure Commons](#)

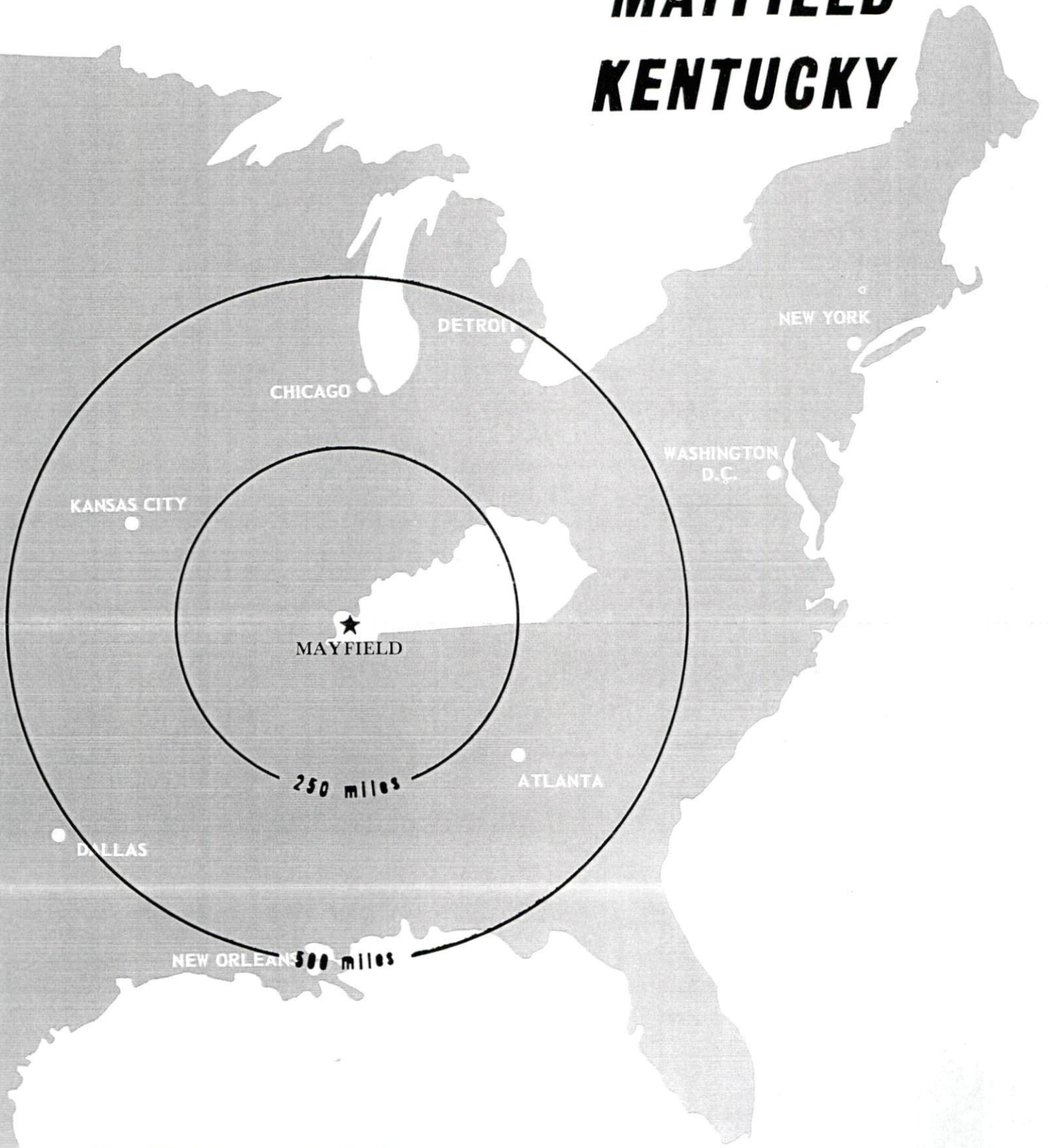
Recommended Citation

Kentucky Library Research Collections, "Industrial Resources: Graves County - Mayfield" (1975). *Graves County*. Paper 10.
https://digitalcommons.wku.edu/graves_cty/10

This Report is brought to you for free and open access by TopSCHOLAR®. It has been accepted for inclusion in Graves County by an authorized administrator of TopSCHOLAR®. For more information, please contact topscholar@wku.edu.

INDUSTRIAL RESOURCES

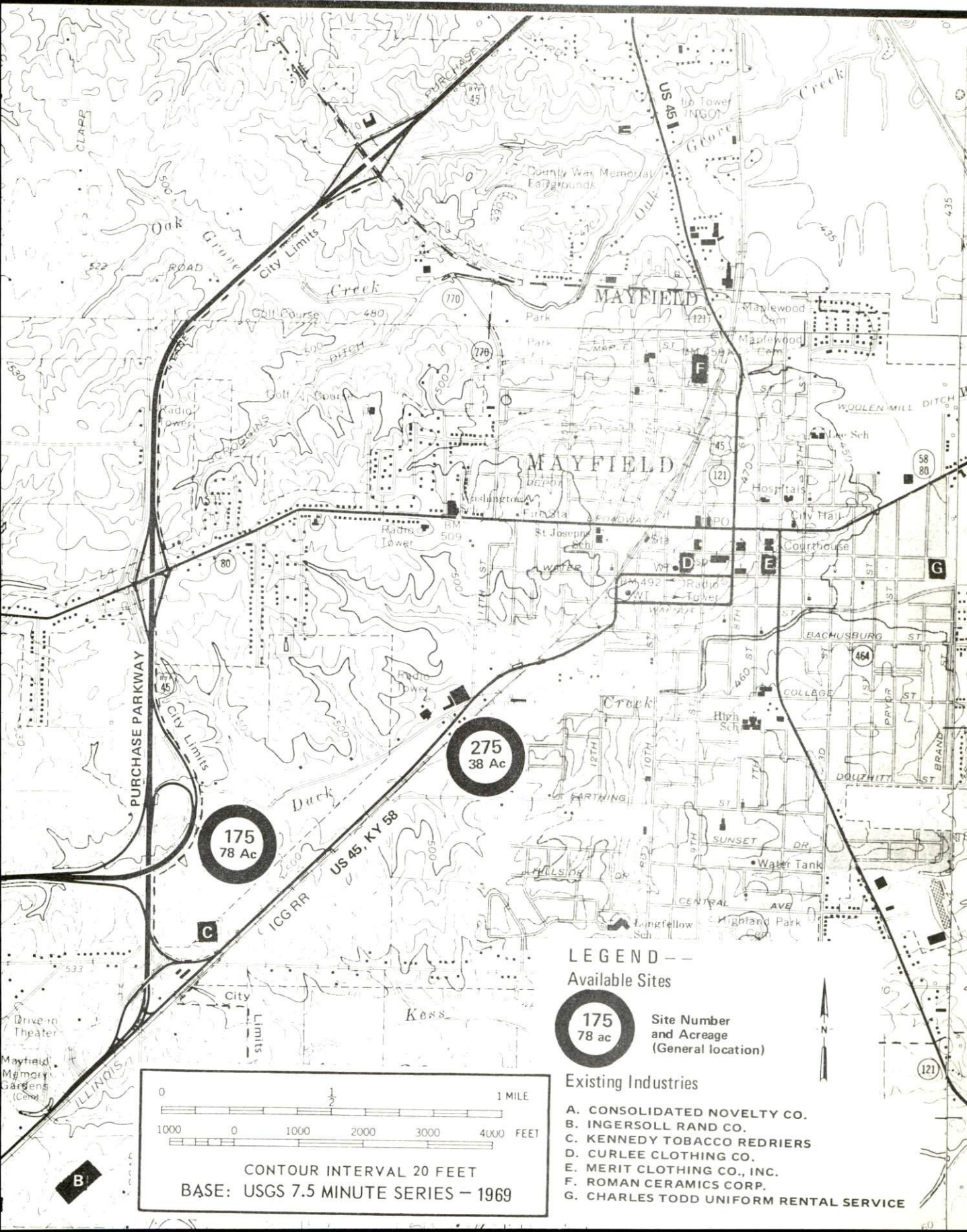
MAYFIELD KENTUCKY



GRAVES COUNTY, KENTUCKY

MAYFIELD, KENTUCKY --- Index to Industrial Sites --- 1975

For detailed data on individual sites, contact Mr. Larry Winders, Mayfield-Graves County Chamber of Commerce, Mayfield, Kentucky 42066, or the Kentucky Department of Commerce, Capital Plaza Tower, Frankfort, Kentucky 40601.



INDUSTRIAL RESOURCES

MAYFIELD, KENTUCKY

Prepared by

The Kentucky Department of Commerce

in cooperation with

The Mayfield-Graves County Chamber of Commerce

1975

TABLE OF CONTENTS

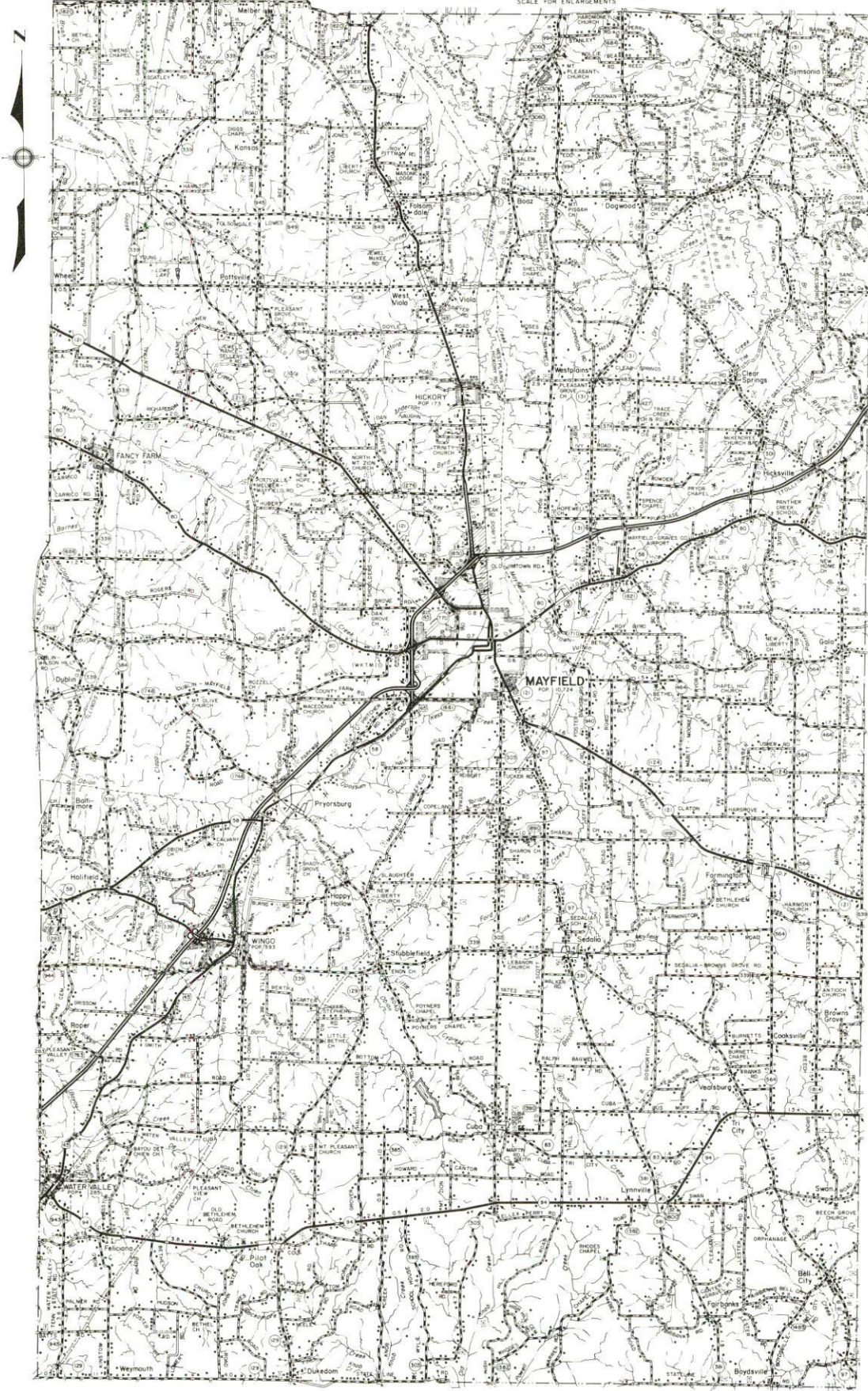
<u>Chapter</u>	<u>Page</u>
INDUSTRIAL SITES.	i
MAYFIELD, KENTUCKY - A RESOURCE PROFILE	1
THE LABOR MARKET	5
Population Trends	5
General Employment Characteristics, 1973.	5
Manufacturing Employment Trends by Industry	6
Major Mayfield Manufacturing Firms, Their Products and Employment.	7
Labor Organizations	7
Estimated Male Labor Supply	12
Estimated Female Labor Supply.	12
Wages	13
Per Capita Personal Income	14
TRANSPORTATION.	15
Rail	15
Truck Service.	15
Air.	16
Bus	17
Taxi	17
Rental Services	17
POWER AND FUEL.	18
Electricity	18
Natural Gas.	19
Other Fuels.	19
WATER AND SEWERAGE	20
Water	20
Sewerage	27
LOCAL GOVERNMENT	28
City	28
County	28

<u>Chapter</u>	<u>Page</u>
Assessed Value of Property, 1975	28
Property Taxes	29
Local Property Tax Rate Per \$100 of	
Assessed Valuation, 1974	29
Planning and Zoning	29
Safety.	30
Police	30
Fire	30
Rescue Service	30
Sanitation	31
 EDUCATION	 32
Public Schools	32
Nonpublic Schools	32
Vocational Schools	35
Colleges and Universities	35
 HEALTH.	 36
Hospitals	36
Other Medical Facilities	36
Nursing Homes.	37
Public Health	37
 OTHER LOCAL FACILITIES.	 38
Communications	38
Library Services.	38
Religious Institutions.	40
Financial Institutions.	40
Hotels and Motels	40
Clubs and Organizations.	41
 RECREATION	 42
Local.	42
Area	42
 AGRICULTURE - NATURAL RESOURCES - CLIMATE	 43
Agriculture	43
Natural Resources	43
Climate.	44
 HISTORY	 45

GENERAL HIGHWAY MAP GRAVES COUNTY KENTUCKY

PREPARED BY THE
KENTUCKY DEPARTMENT OF TRANSPORTATION
BUREAU OF HIGHWAYS
DIVISION OF PLANNING

IN COOPERATION WITH THE
U.S. DEPARTMENT OF TRANSPORTATION
FEDERAL HIGHWAY ADMINISTRATION



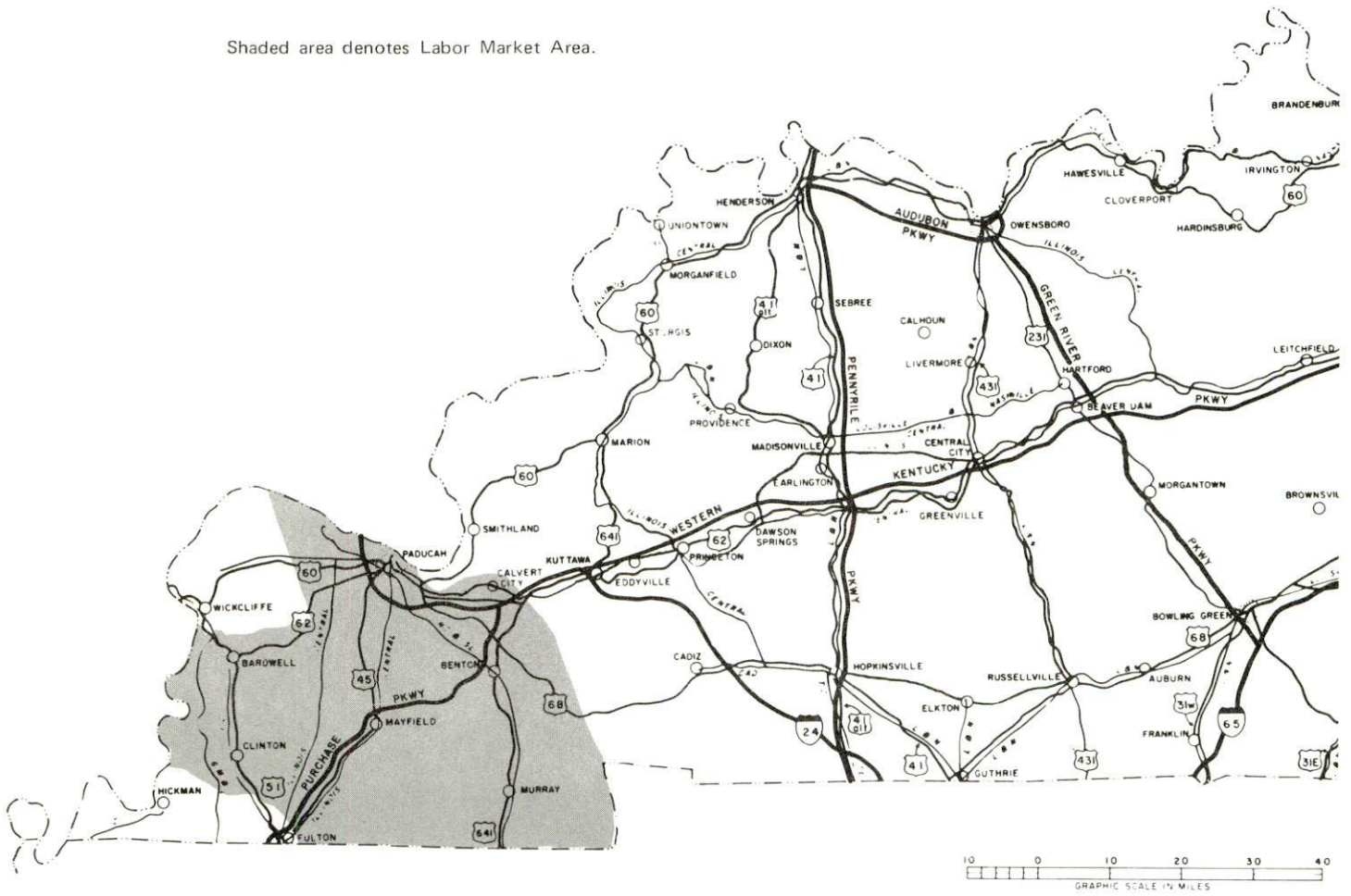


AERIAL VIEW OF MAYFIELD

MAYFIELD LABOR MARKET AREA



Shaded area denotes Labor Market Area.



MAYFIELD, KENTUCKY - A RESOURCE PROFILE

Mayfield, the county seat of Graves County, is the geographic center of the eight-county Jackson Purchase Region in the western tip of Kentucky. It is located 25 miles from Paducah, Kentucky, 147 miles from Nashville, Tennessee, 181 miles from St. Louis, Missouri, and 217 miles from Louisville, Kentucky. The 1973 population of Mayfield was 10,123.

Graves County is a 560 square mile rectangular-shaped territory bordered on the south by Tennessee. The 1974 population of Graves County was 31,800.

The Economic Framework

Total employment in Graves County averaged 12,500 in 1973 with manufacturing providing 3,940 of these jobs; trade and services 2,480; agriculture 1,140; and government 1,270. Major industrial products are men's clothing, tires, ceramic containers and lamp bases, artificial trees and wreaths, and centrifugal air compressors. The average weekly wage in manufacturing in Graves County in 1974 was \$168.75.

Per capita personal income in 1973 was \$4,075, an increase of 41.1 percent since 1969.

Mayfield is the center of a labor market area that includes Graves and the five adjoining Kentucky counties. Area employment averaged 63,060 including 3,510 in agriculture; 10,060 in government; 17,600 in trade and services; and 15,290 in manufacturing.

Resources for Growth

1. There is a current estimated labor supply of 7,200 men and 7,810 women available for industrial jobs in the labor market area. Before 1981, 6,780 young men and 6,550 young women will become 18 years of age and will be potentially available for industrial jobs in the labor market area. An additional labor supply is available from the adjoining Tennessee counties, Weakley and Henry.

2. The Illinois Central Gulf Railroad serves Mayfield with a variety of services. The city is easily accessible via the Kentucky Parkway System; interchanges to the Purchase Parkway are located 2 miles north and west of Mayfield. Seven state highways and U. S. Highway 45, which traverse the Purchase area in all directions, connect at Mayfield. Seven trucking companies serve the area. In addition to the local airport, facilities for small aircraft are available at nearby Kentucky Dam Village State Park.

Commercial service is available at Paducah, 25 miles away. Mayfield is within 40 miles of three main inland waterways: the Mississippi, Ohio, and Tennessee Rivers, all navigable for barge traffic.

3. Electricity, generated by the Tennessee Valley Authority, is provided by the Mayfield Electric and Water System. Natural gas service is provided by the Western Kentucky Gas Company. Four distributors of distillate fuel oils and three distributors of propane and butane are located in Mayfield and Murray, 21 miles away. There is an excess capacity of 2,000,000 gallons of treated water available daily.

4. Two school systems serve Graves County: The Mayfield Independent School District and the Graves County School System. Murray State University, located only 21 miles from Mayfield, is a comprehensive co-educational institution offering three associate degrees, ten baccalaureate degrees, seven master's degrees, and two specialists degrees. A community college of the University of Kentucky is located in Paducah. A new area vocational school at Mayfield offers training in 10 skill areas; the Western Kentucky State Vocational School at Paducah offers training in 14 areas.

Community Programs for Improvement

Industrial and Commercial

A multi-million dollar expansion program at General Tire and Rubber Company has been completed. Eleven retail businesses have recently opened and another shopping center is planned. The First Federal Savings and Loan Association has remodeled and expanded its facilities and the Liberty Savings Bank has opened a branch bank.

Public Safety

A new building adjacent to city hall houses the fire department and the ambulance service.

The Mayfield Police Department is being modernized. New systems for budgeting, internal accounting and uniform reporting are being established. Plans are underway to install a records communication system. New communications and investigations equipment has been purchased. An investigations unit has been set up and provisions have been made for an investigator and an assistant chief of police. Two specially equipped patrol cars will be added to the fleet.

Health

A \$1.5 million extension to the Mayfield Community Hospital has been completed. The X-ray, physical therapy, and inhalation departments have been expanded and operating rooms renovated. The addition of a third floor to the hospital is now being planned.

The Graves County Health Department is in the process of establishing a home health care program. A registered nurse and a nurse's aide will be added to the regular staff and a speech therapist, a physical therapist, occupational therapist, and a male orderly will be available to the department.

Education

Mayfield has a modern new high school and gymnasium which houses grades nine through twelve as well as an area vocational school. The vocational school offers an adult extension program in addition to its regular program.

Construction has begun on an addition to an elementary school. The expansion will provide space for five classrooms and a library. Final completion is scheduled for February 1976.

Water and Sewerage

A study is being conducted to determine long-range needs for the sewerage system in Mayfield. Three water districts in the area have recently installed, or will install in the near future, new treatment equipment.

Government Facilities

The Graves County Courthouse is being remodeled and the sidewalks around the building are being replaced. A new City Hall houses the mayor's office, city offices, the police department, and a jail.

Other

The Mayfield-Graves County Library has recently purchased a microfilm reader-printer. The South Central Bell Telephone Company has added an equipment room. A swim and racquet club has opened.

The city of Mayfield has annexed four new areas and is in the process of acquiring a sanitary landfill. An urban area transportation study will be conducted on the traffic patterns in the downtown area. A 32-unit housing project for the elderly is now under construction.

Recreation, Entertainment and Livability

Mayfield is located in the center of a region of lakes, rivers, streams, forests and parklands. Land Between the Lakes, a unique national recreation area, is a wooded peninsula between Kentucky Lake and Lake Barkley. The 170,000-acre area has an excellent combination of land and water recreational facilities such as picnic and swimming areas, boat launching ramps, primitive and developed campgrounds, and nature trails.

Two state parks, Kenlake and Kentucky Dam Village, are located on the shores of Kentucky Lake. Both parks offer facilities for swimming, golfing, tennis, fishing, picnicking, horseback riding, and camping.

The Columbus-Belmont Battlefield State Park, 30 miles west of Mayfield, overlooks the Mississippi. The park features a Civil War museum and camping grounds.

Murray State University, 21 miles southeast of Mayfield, offers collegiate sports events and cultural entertainment. Paducah, 25 miles north, offers additional cultural activities and entertainment.

POPULATION TRENDS

Area	Population				Percent Change	
	1974*	1970	1960	1950	1960-70	1950-60
Mayfield	10,123**	10,724	10,762	8,990	- 0.4	+19.7
Labor Market						
Area	153,500	148,911	137,390	128,019	+ 8.4	+ 7.3
Graves County	31,800	30,939	30,021	31,364	+ 3.1	- 4.3
Calloway County	28,600	27,692	20,972	20,147	+32.0	+ 4.1
Carlisle County	5,400	5,354	5,608	6,206	- 4.5	- 9.6
Hickman County	6,800	6,264	6,747	7,778	- 7.2	-13.3
Marshall County	21,900	20,381	16,736	13,387	+21.8	+25.0
McCracken County	59,000	58,281	57,306	49,137	+ 1.7	+16.6

*Provisional Estimates.

**1973 Population Estimates.

Sources: U. S. Department of Commerce, Bureau of the Census, Census of Population, 1970, 1960, 1950. U. S. Bureau of the Census, Current Population Reports, Series P-25, No. 562, June 1975; Series P-26, No. 120, June 1975.

GENERAL EMPLOYMENT CHARACTERISTICS, 1973

Major Employment Group	Employment	
	Graves County	Labor Market Area
TOTAL	12,500	63,060
Agricultural	1,140	3,510
Nonagricultural	11,360	59,550
Manufacturing	3,940	15,290
Government	1,270	10,060
Trade and Services	2,483	17,601

Source: Kentucky Department for Human Resources, Bureau for Administration and Operations.

MANUFACTURING EMPLOYMENT TRENDS BY INDUSTRY
SEPTEMBER 1974 AND 1964

Industry	Graves County			Labor Market Area		
	1974	1964	% Change	1974	1964	% Change
TOTAL	4,452	3,333	+ 33.6	15,867	12,568	+ 26.2
Food & Kindred Products	69	211	- 205.8	772	908	- 15.0
Tobacco	0	23	- 100.0	6	28	- 78.6
Apparel, Textiles, Leather	1,568	2,131	- 26.4	3,180	3,990	- 20.3
Lumber, Furniture	46	48	- 04.7	317	259	+ 22.4
Printing & Publishing, Paper	58	51	+ 13.7	289	282	+ 2.5
Chemicals, Petroleum & Coal, Rubber	1,720	595	+ 189.1	5,573	3,504	+ 59.0
Stone, Clay & Glass	444	252	+ 76.2	580	400	+ 45.0
Primary Metals	0	0	0	949	610	+ 55.6
Machinery, Metal Products, Equipment	379	14	+2607.2	3,562	2,553	+ 39.5
Other	168	8	+2000.0	639	34	+1779.4

Source: Kentucky Department for Human Resources, Number of Workers in Manufacturing Industries Covered by Kentucky Unemployment Insurance Law Classified by Industry and County, September, 1974, September, 1964.

MAJOR MAYFIELD MANUFACTURING FIRMS,
THEIR PRODUCTS AND EMPLOYMENT

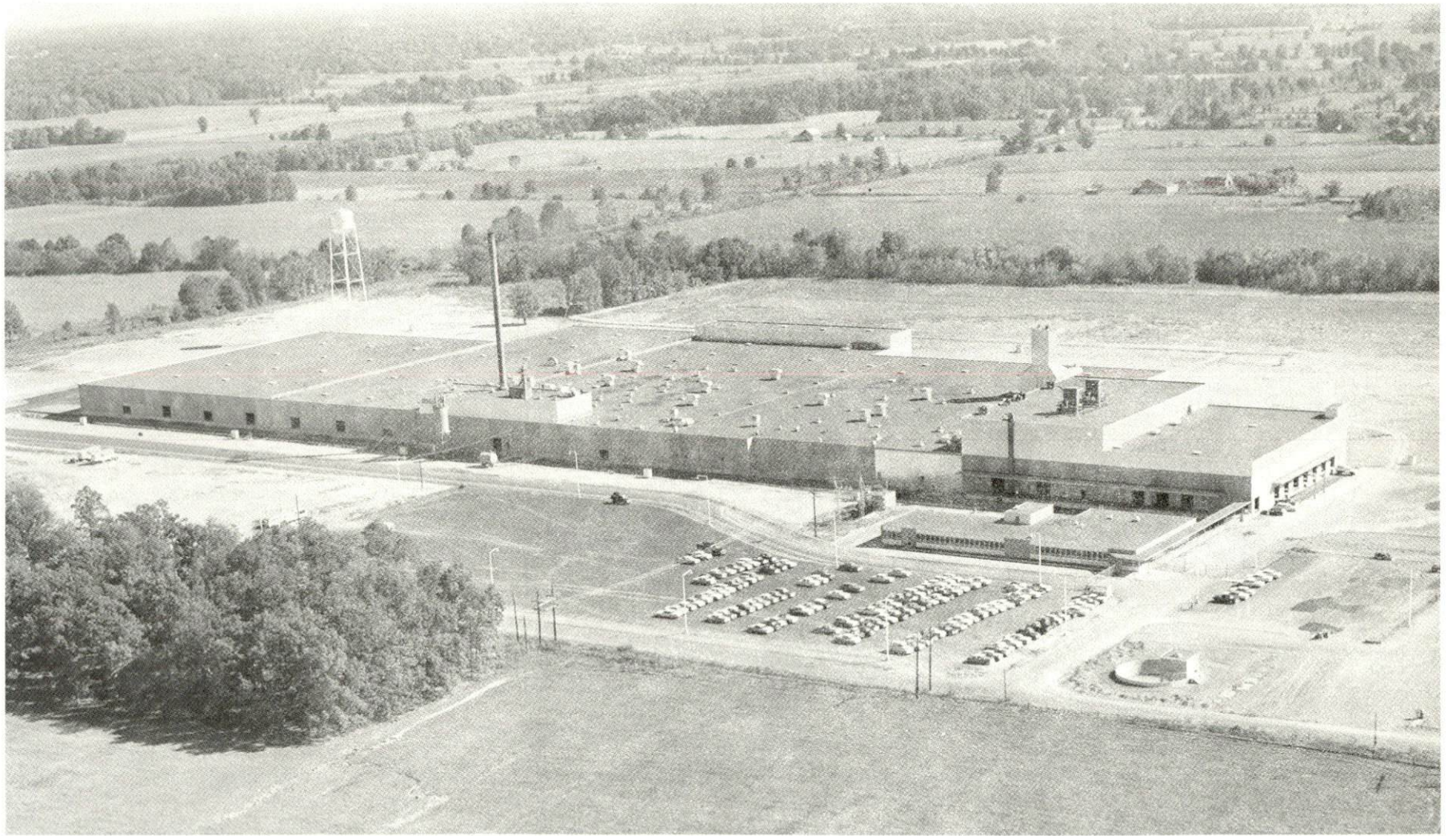
<u>Firm</u> (Establishment date)	<u>Product</u>	<u>Employment</u>			<u>Organized</u>
		<u>Total</u>	<u>Male</u>	<u>Female</u>	
Centac Division, Ingersoll-Rand Company (1970)	Centrifugal air compressors	338	306	32	*
Consolidated Novelty Company (1969)	Artificial trees, wreaths	150	30	120	*
Curlee Clothing Company (1929)	Men's suits, coats, slacks	640	90	550	
General Tire and Rubber Company (1960)	Tires	1,650			*
Merit Clothing Company, Inc. (1899)	Men's suits, sport coats, men's slacks	1,460	310	1,150	*
Roman Ceramic Corporation (1961)	Ceramic con- tainers, lamp bases	450	175	275	*

*See Labor Organizations below.

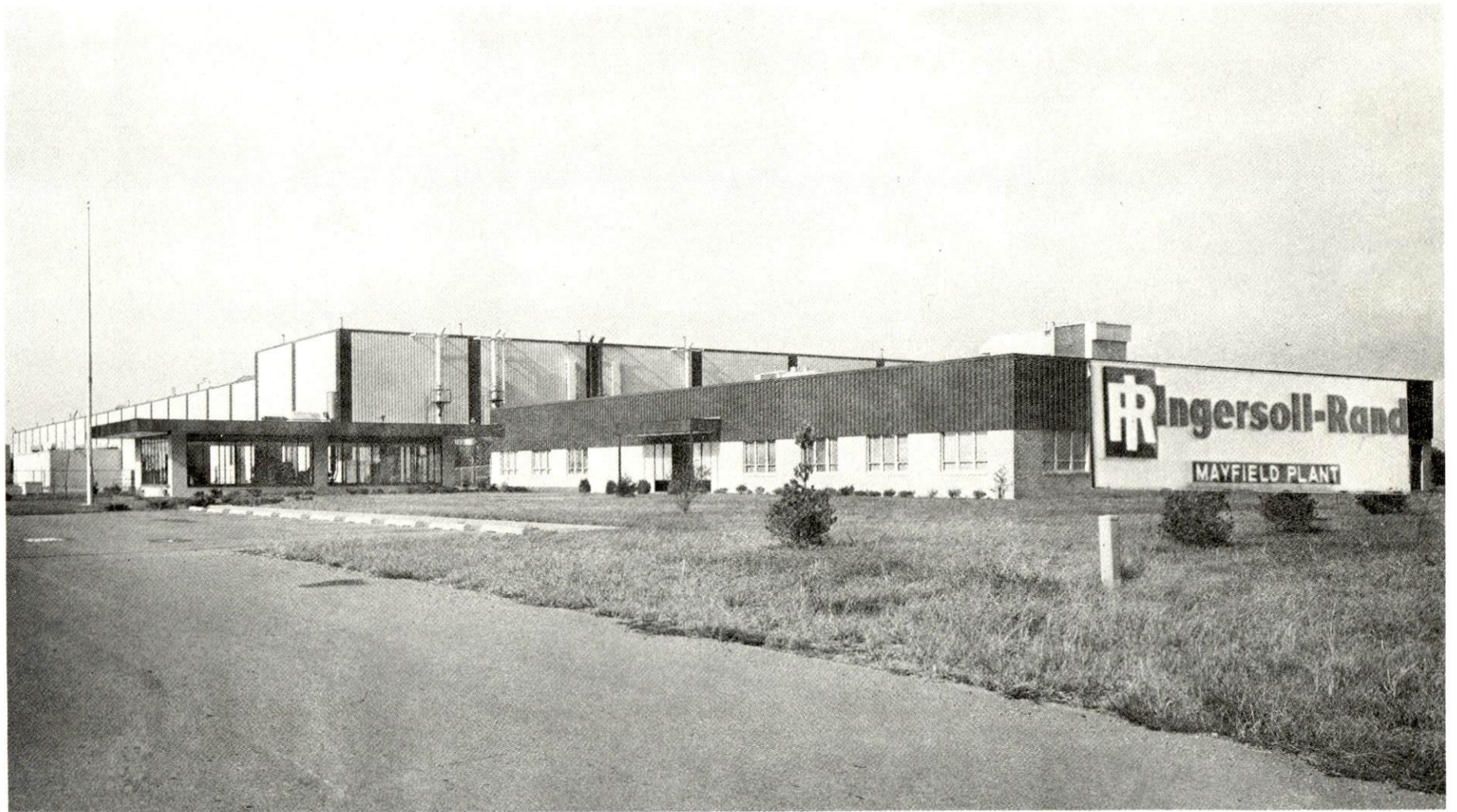
Source: Kentucky Department of Commerce, Division of Research and Planning.

LABOR ORGANIZATIONS

<u>Union</u>	<u>Representing manufacturing workers at:</u>
International Association of Machinists and Aerospace Workers	Centac Division of Ingersoll-Rand Company
International Brotherhood of Pottery and Allied Workers	Consolidated Novelty Company
United Rubber, Cork, Linoleum and Plastics Workers of America	General Tire and Rubber Company
International Brotherhood of Electrical Workers	Greer Neon Company
International Brotherhood of Pottery and Allied Workers	Mayfield Printing Company
Amalgamated Clothing Workers of America	Merit Clothing Company, Inc.
International Brotherhood of Pottery and Allied Workers	Roman Ceramics Corporation



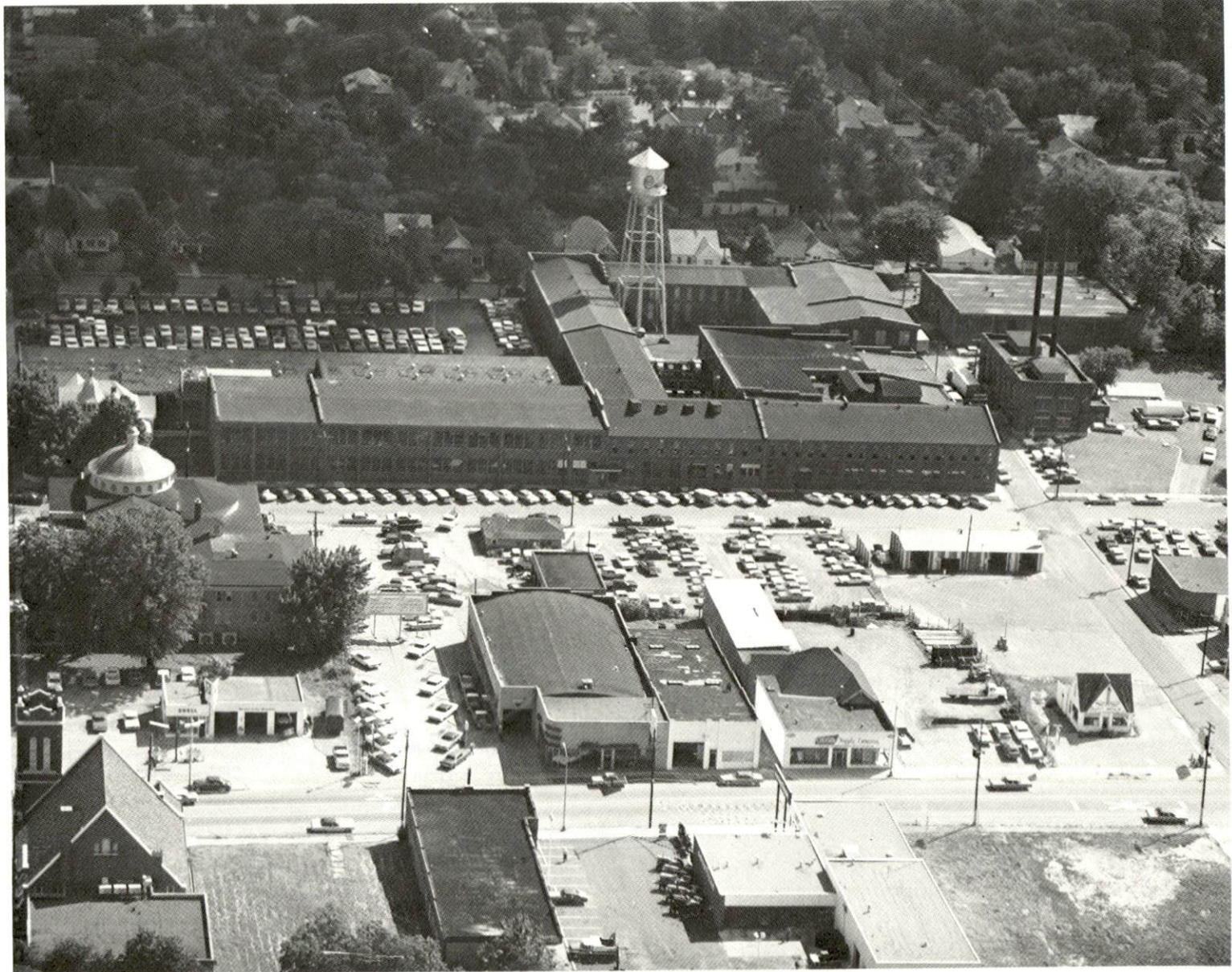
GENERAL TIRE AND RUBBER COMPANY



INGERSOLL-RAND COMPANY



MERIT CLOTHING COMPANY, INC.



CURLEE CLOTHING COMPANY

ESTIMATED MALE LABOR SUPPLY
MAYFIELD LABOR MARKET AREA

Area	Current			Under- employed	Future
	Total	Not in Labor Force	Unemployed		Reaching 18 yrs. of age before 1981
Labor Market					
Area	7,200	2,210	2,080	2,910	6,781
Graves	1,610	650	470	490	1,453
Calloway	1,830	600	210	1,020	1,002
Carlisle	310	60	120	130	240
Hickman	170	0	70	100	292
Marshall	1,720	900	490	330	986
McCracken	1,560	0	720	840	2,808

Sources: Kentucky Department for Human Resources, Kentucky Labor Supply Estimates by County, 1974. Kentucky Department of Commerce, Future Labor Supply before 1981.

ESTIMATED FEMALE LABOR SUPPLY
MAYFIELD LABOR MARKET AREA

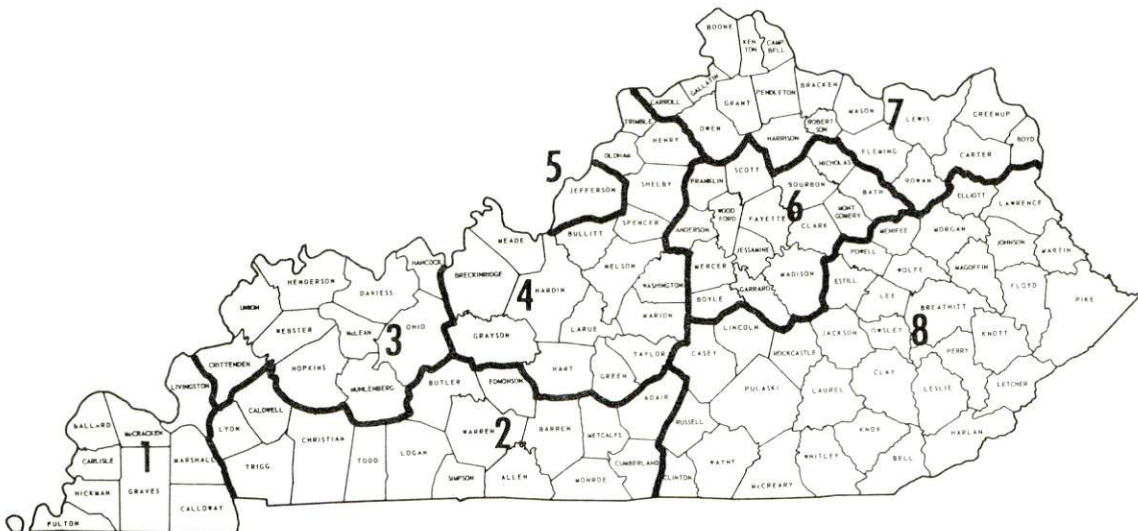
Area	Current			Under- employed	Future
	Total	Not in Labor Force	Unemployed		Reaching 18 yrs. of age before 1981
Labor Market					
Area	7,810	3,120	1,330	3,360	6,554
Graves	1,200	140	440	620	1,350
Calloway	1,550	430	200	920	965
Carlisle	410	240	60	110	246
Hickman	180	0	70	110	274
Marshall	1,910	1,230	230	450	952
McCracken	2,560	1,080	330	1,150	2,767

Sources: Kentucky Department for Human Resources, Kentucky Labor Supply Estimates by County, 1974. Kentucky Department of Commerce, Future Labor Supply before 1981.

WAGES

Occupational wage rates for specific industries are usually not available to most government agencies, and wage data furnished to state employment agencies by industrial employers is protected from disclosure by federal law. The most reliable up-to-date wage information can be obtained by direct contact with local employers.

Associated Industries of Kentucky, a voluntary organization of Kentucky businesses, regularly collects occupational wage rates and fringe benefits data from participating member firms. Data is compiled for over 130 clearly defined office, production, and service occupations. Tabulations are published for eight regions of Kentucky, as shown on the map below. It should be noted that the data may be weighted by the preponderance of firms in the larger cities and may be somewhat higher than the rates paid in the smaller communities. Data from these tabulations are available, upon request, from the Kentucky Department of Commerce, Frankfort, Kentucky 40601.



Associated Industries of Kentucky Area Wage Surveys

Up-to-date occupational wage rates of the existing industries are maintained by South Kentucky Industrial Development Association, Post Office Box 726, Hopkinsville, Kentucky 42240.

PER CAPITA PERSONAL INCOME

<u>Area</u>	<u>1973</u>	<u>1969</u>	<u>% Change</u>
Graves County	\$4,075	\$2,877	+41.1
Labor Market Area			
Range	\$3,234 - 4,405	\$2,402 - 3,149	N. A.
Kentucky	4,050	2,894	+39.9
U. S.	5,041	3,733	+35.1

Sources: U. S. Department of Commerce, Office of Business Economics, Survey of Current Business, August, 1974. U. S. Department of Commerce, Bureau of Economic Analysis, April, 1975.

TRANSPORTATION

Rail

Line serving Mayfield - Illinois Central Gulf Railroad

Services - Freight, 2 southbound, 2 northbound and 1 local daily; switching facilities; siding space for seventy cars; nearest piggy-back facilities in Fulton, 20 miles distant, and Paducah, 25 miles distant

For details on routing, schedules, rates, and services, contact:

Assistant Vice President
Industrial Development
Illinois Central Gulf Railroad
Company
Illinois Center II
233 North Michigan Avenue
Chicago, Illinois 60605

Truck Service

Company

Home Office

A & H Truck Line, Inc

1111 East Louisiana Street
Evansville, Indiana 47717

Henry Edwards Trucking
Company

Clinton, Kentucky 42031

Harper Truck Service, Inc.

1266 North Eighth Street
Paducah, Kentucky 42002

McLean Trucking Company

617 Waughtown Street
Winston-Salem, North Carolina 27107

Paschall Truck Line, Inc.

Route 4
Murray, Kentucky 42071

Spector Freight Systems, Inc.

205 West Wacker Drive
Chicago, Illinois 60606

T.I.M.E. - DC, Inc.

P. O. Box 2550
Lubbock, Texas 79408

Other Freight Services

Nearest Shipping Center

REA Express

Local pickup and delivery

United Parcel Service

Paducah, 25 miles away

HIGHWAY MILES AND TRUCK TRANSIT TIME IN DAYS FROM
MAYFIELD, KENTUCKY, TO SELECTED MARKET CENTERS

City	Delivery		City	Delivery	
	Highway Miles	Time TL		Highway Miles	Time TL
Atlanta, Ga.	389	3*	Los Angeles, Calif.	2,001	5*
Birmingham, Ala.	298	3*	Louisville, Ky.	217	1
Chicago, Ill.	402	3*	Nashville, Tenn.	147	1
Cincinnati, Ohio	319	3*	New Orleans, La.	518	3*
Cleveland, Ohio	632	3*	New York, N. Y.	1,020	3*
Detroit, Mich.	644	3*	Pittsburgh, Pa.	645	3*
Knoxville, Tenn.	324	3*	St. Louis, Mo.	181	3*

*Estimates, dependent upon connecting line.

Source: Delivery Time Only - Paschall Truck Lines, Inc., Murray, Kentucky.

Air

<u>Local</u>	<u>Nearest Commercial</u>
Mayfield-Graves County*	Barkley Field**
Location: 3½ miles east, northeast of Mayfield	Paducah, 25 miles away
Runways: 1 paved	2 paved
Length: 3,300 feet	6,500 feet, 4,000 feet
Traffic Control: Wind sock	Wind tee, ILS System, control tower
Lighting: Sunset to sunrise, medium intensity	Beacon, boundary, obstruction, runway lights and runway end identification lights, approach lighting system
Services: 80 and 100 octane; taxi; telephone; charter service; agricultural spraying; air ambulance; pilot training, FAA approved	Delta and Ozark Airlines, 80 and 100 octane, JA-1 fuel, taxi, limousine, U-Drive-It, storage, major A & E repairs, restaurant
Air Freight Service:	Air freight accepted on a space available basis

*Planned-extension of runway to 4,000 feet, final extension to 4,650 feet proposed.

**Planned-extension of a runway in the southwestern portion of the airfield by 2,600 feet. The runway will require edge lighting and additions of transformers.

Bus -

Southern Greyhound Bus Lines
Brooks Bus Line
Western Kentucky Stages

Taxi -

24-hour service, 3 radio dispatched cars

Rental Services -

Car, truck and trailer rentals

POWER AND FUEL

Electricity

Company serving Mayfield - Mayfield Electric and Water System
Source of power - Tennessee Valley Authority
Total generating capacity - 23,200,000 KW
For industrial rates contact:

Mayfield Electric and Water System
301 East Broadway
Mayfield, Kentucky 42066

and/or

South Kentucky Industrial Development
Association, Inc.
Post Office Box 726
Hopkinsville, Kentucky 42240

South Kentucky Industrial Development Association is the industrial promotion arm of the Municipal Electric Plant Boards and the Rural Electric Cooperatives who distribute TVA electric power in Kentucky. This area includes 26 counties in southwestern Kentucky.

Companies serving Graves County - (1) Hickman-Fulton RECC; (2) Jackson Purchase Electric Cooperative Corporation; (3) West Kentucky RECC
Source of power - (1) Tennessee Valley Authority; (2) Kentucky Utilities Company; (3) Tennessee Valley Authority
Total generating capacity - Tennessee Valley Authority - 23,200,000 KW,
Kentucky Utilities Company - 1,735,000 KW
For industrial rates contact:

(1) Hickman-Fulton RECC
Post Office Box 190
Hickman, Kentucky 42050

(2) Jackson Purchase Electric
Cooperative Corporation
2900 Irvin Cobb Drive
Paducah, Kentucky 42001

(3) West Kentucky RECC
1218 West Broadway
Mayfield, Kentucky 42066

Natural Gas

Company serving Mayfield - Western Kentucky Gas Company

Source of supply - Texas Gas Transmission Corporation

Size of transmission mains - 3 - 26-inch (supplier);

6 inches (distributor)

Distribution mains - 2, 3, 4 and 6 inches

Distribution pressure - 20 - 30 psi

Btu content - 1,006 per cubic; Specific gravity - .60

For rates and supplies contact:

Western Kentucky Gas Company

212 East Broadway

Mayfield, Kentucky 42066

Other Fuels

Propane and butane

Ohio Valley Gas Company, 832 West Broadway, Mayfield, Kentucky

Signat LP-Gas, Inc., Highway 45 North, Mayfield, Kentucky

Texgas Corporation, Railroad Avenue, Murray, Kentucky

Fuel oils

Distillate fuel oil -

Ashland Petroleum Company, Inc., 1000 Paducah Road, Mayfield,
Kentucky

Kentucky Lake Oil Company, South 12th Street, Mayfield, Kentucky

Standard Oil Company, 413 North 9th Street, Mayfield, Kentucky

Fristoe W. H., Texaco Agent, 945 South 9th Street, Mayfield,
Kentucky

Other distributors located in Paducah, 25 miles distant

Residual fuel oil - Arrangements must be made with the refinery.

Low sulphur content coal - Available in Kentucky

WATER AND SEWERAGE

Water

Company serving Mayfield - Mayfield Electric and Water System
Source - 4 deep wells
Treatment plant capacity - 3,100,000 gpd
Average daily consumption - 1,100,000 gallons
Peak daily consumption - 1,300,000 gallons
Type treatment - Aeration, lime, chlorine and fluorides
Storage capacity - 1,240,000 gallons
Size lines - 2 through 12 inches
Average pressure - 60 psi
Average temperature - 66 degrees F.

MONTHLY WATER RATES FOR WHOLESALE AND INDUSTRIAL CONSUMERS

Within the city (all meter sizes)

First	2,000 gallons	\$2.10 (Minimum)
Next	3,000 gallons	.98 per M gallons
Next	5,000 gallons	.83 per M gallons
Next	15,000 gallons	.64 per M gallons
Next	25,000 gallons	.45 per M gallons
Next	50,000 gallons	.30 per M gallons
Next	100,000 gallons	.27 per M gallons
Next	100,000 gallons	.24 per M gallons
Next	200,000 gallons	.21 per M gallons
Next	500,000 gallons	.18 per M gallons
Next	1,000,000 gallons	.15 per M gallons

Outside the city (all meter sizes)

Consumers and users served outside the corporate limits of the city of Mayfield shall pay a rate 50 percent above the rates charged within the corporate limits.

(continued)

MINIMUM CHARGES: (Based upon the size of meter used)

	<u>Within the Corporate Limits:</u>	<u>Outside the Corporate Limits:</u>
Under 1-inch meter	\$ 2.10	\$ 3.15
1-inch to 1 3/4-inch	4.50	6.75
2-inch meter	15.00	22.50
3-inch meter	30.00	45.00
4-inch meter	45.00	67.50
6-inch meter	105.00	157.50

FIRE HYDRANT RATES:

\$3.00 per month per hydrant

SPRINKLER SYSTEM RATES:

4-inch connection - Under 600 heads	\$ 72.00 per year
2 cents per head per year for additional heads over 600	
6-inch connection - Under 600 heads	\$ 90.00 per year
2 cents per head per year for additional heads over 600	
8-inch connection - Under 600 heads	\$144.00 per year
2 cents per head per year for additional heads over 600	

TAP-ON CHARGE:

5/8 - 3/4 -inch meter- Urban (inside city limits)	\$ 60.00
Rural (outside city limits)	90.00
1-inch meter- Urban (inside city limits)	80.00
Rural (outside city limits)	120.00
2-inch meter- Urban (inside city limits)	120.00
Rural (outside city limits)	180.00

3-inch and 4-inch or larger meter - Actual cost of installation
If larger meter service is requested on property now being
served the fee for the larger meter less the fee for the smaller
meter shall be charged for the new installation.

(continued)

Charge \$350 for connection to serve fire protection sprinkler system on 6-inch water main.

Charge \$475 for connection to serve fire protection sprinkler system on 8-inch water main.

Charge \$600 for connection to serve fire protection sprinkler system on 10-inch water main.

Charge \$750 for connection to serve fire protection sprinkler system on 12-inch water main.

Name of water district - Consumer Water District*

Area served - Portion of Graves County southeast of Mayfield

Date when water district began operating - 1969

Source of raw water - Two wells

Capacity of treatment plant - 240,000 gpd**

Type of treatment - Chloride

Average amount of water used in a 24-hour period - 235,000 gallons**

Peak amount of water used in a 24-hour period - 240,000 gallons**

Storage capacity - 125,000 gallons

Average pressure - 70 psi

Size lines - 1 and 2 inches

Rates -

First	2,000 gallons	\$5.20
Next	3,500 gallons	2.30 per M gallons
Next	5,000 gallons	1.60 per M gallons
Next	10,000 gallons	1.30 per M gallons
Next	30,000 gallons	1.00 per M gallons
Next	50,000 gallons	.70 per M gallons
Next	100,000 gallons	.50 per M gallons

Tap-on charge: \$250

*Plans are underway to install fluoride treatment equipment.

**Department for Natural Resources and Environmental Protection.

Name of water district - Fancy Farm Water District
 Area served - Fancy Farms Community, in Graves County, and portions
 of Carlisle County
 Date when water district began operating - 1965
 Source of raw water - Three wells
 Capacity of treatment plant - 100,000 gpd
 Type of treatment - Chlorine and soda ash*
 Average amount of water used in a 24-hour period - 60,000 gallons
 Peak amount of water used in a 24-hour period - 80,000 gallons
 Storage capacity - 100,000 gallons
 Average pressure - 45 psi
 Size lines - 4 and 6 inches

MONTHLY WATER RATES FOR RESIDENTIAL CONSUMERS

First	2,000 gallons	\$4.00
Next	3,000 gallons	1.00 per M gallons
Next	5,000 gallons	.90 per M gallons
Next	10,000 gallons	.80 per M gallons
Next	10,000 gallons	.70 per M gallons
Next	20,000 gallons	.60 per M gallons
	50,000-100,000 gallons	.50 per M gallons

Tap-on charge: \$300

*Fluoride treatment equipment has been purchased by the Fancy Farm Water District.

Name of water district - Hardeman Water District*
 Area served - Hardeman Community, one mile east of Mayfield
 Source of raw water - Two wells
 Capacity of treatment plant - 120,000 gpd**
 Type of treatment - Fluoride, chlorine, phosphate
 Average amount of water used in a 24-hour period - 34,000 gallons
 Peak amount of water used in a 24-hour period - 40,000 gallons
 Storage capacity - 50,000 gallons
 Average pressure - 50 psi
 Average temperature - 55 degree F.
 Size lines - 4, 6, 8 and 10 inches
 Rates -

First	2,000 gallons	\$5.50 (Minimum)
Next	1,000 gallons	.90 per M gallons
Next	1,000 gallons	.80 per M gallons
Next	2,000 gallons	.75 per M gallons
Next	2,000 gallons	.70 per M gallons
Next	2,000 gallons	.65 per M gallons
All over	10,000 gallons	.60 per M gallons

Tap-on charge: \$250

*New equipment was installed July, 1975.

**Department for Natural Resources and Environmental Protection.

Name of water district - Hickory Water District
 Area served - Portion of Graves County north of Mayfield
 Date when water district began operating - 1967
 Source of raw water - Two wells
 Capacity of treatment plant - 365,000 gpd
 Type of treatment - Chlorine and soda ash
 Average amount of water used in a 24-hour period - 129,970 gallons
 Peak amount of water used in a 24-hour period - 135,000 gallons*
 Storage capacity - 225,000 gallons
 Average pressure - 60 psi
 Size lines - 4, 6, and 8 inches
 Rates -

First	2,000 gallons	\$4.00 (Minimum)
Next	3,000 gallons	1.75 per M gallons
Next	5,000 gallons	1.25 per M gallons
Next	10,000 gallons	1.00 per M gallons
Next	30,000 gallons	.75 per M gallons
Next	50,000 gallons	.50 per M gallons
All over	100,000 gallons	.40 per M gallons

Tap-on charge: 1½ -inch meter \$500
 2 -inch meter \$600

*Department for Human Resources and Environmental Protection.

Name of water district - South Graves County Water District
 Area served - Portion of Graves County south of Mayfield
 Date when water district began operating - 1971
 Source of raw water - 2 wells
 Capacity of treatment plant - 180,000 gpd
 Type of treatment - Chlorine and caustic soda flakes
 Average amount of water used in a 24-hour period - 65,000 to 70,000 gallons
 Peak amount of water used in a 24-hour period - 75,000 gallons
 Storage capacity - 180,000 gallons
 Average pressure - 60 psi
 Size lines - 2, 3, 4, 6, and 8 inches
 Rates -

First	2,000 gallons	\$5.50 (Minimum)
Next	3,000 gallons	1.75 per M gallons
Next	5,000 gallons	1.25 per M gallons
Next	10,000 gallons	1.00 per M gallons
Next	30,000 gallons	.75 per M gallons
Next	50,000 gallons	.50 per M gallons

Tap-on charge: \$250

Surface water sources - Obion and Mayfield Creeks and West Fork of
 Clarks River
 Annual maximum - Obion Creek at Pryorsburg 5,160 cfs (23 years, USGS);
 Mayfield Creek at Lovelaceville (neighboring Carlisle County) 10,700 cfs
 (36-years,USGS)
 Expected ground water yield 500 to 1,000 gpm over entire county

Sewerage

Company serving Mayfield - Mayfield Electric and Water System*
Design capacity - 2,300,000 gpd
Average daily flow - 965,000 gallons
Treatment-Primary and secondary
Type treatment - Anaerobic digestion supplemental with zimpro sludge
heat treatment, drying beds, activated sludge
Treated effluent discharged into - Red Duck Creek, tributary of Mayfield
Creek
Size of sanitary mains - 6 through 24 inches
Size of storm mains - 18 through 42 inches
Rates -

WITHIN THE CITY:

65 percent of the monthly water bill based on water rates, or a minimum charge of \$1.50 per month, whichever is the greater.

Tap-on charge inside city limits - \$225.00

OUTSIDE THE CITY:

65 percent of the monthly water bill based on water rates, or a minimum charge of \$2.25 per month, whichever is the greater.

Tap-on charge outside city limits - \$337.50.

*A study of long-range needs of the sewerage system in Mayfield is now underway.

LOCAL GOVERNMENT

City

Structure - Mayor - 4-year term; 12 councilmen - 2-year terms

Budget 1974-75 - General Fund \$1,125,566

Operating Revenues 1973-74 - Water and Sewer Fund 479,201
Electric Fund 1,679,123

Fees and licenses - Occupational license tax one percent; vehicle tax \$10 to \$25; regulatory business license, ordinance #232, Sub-section 83 - Manufacturers: where the number of employees does not exceed 200, a fixed fee of \$250; where the number of employees exceeds 200, but does not exceed 500, \$500; where the number of employees exceeds 500, but does not exceed 1,000, a fixed fee of \$750; where the number of employees exceeds 1,000 a fixed fee of \$1,000.*

County

Structure - County Judge - 4-year term; 3 commissioners - 4-year terms

Budget 1974-75 - General Fund \$329,420; Road Fund \$163,000

Assessed Value of Property, 1975

<u>Classes of Property</u>	<u>Mayfield</u>	<u>Graves County</u>
Real Estate	\$58,309,240	\$182,230,439
Tangibles	16,781,075	79,719,430
Public Service	4,146,578	25,427,135

*This applies to manufacturers not otherwise classified in ordinance #232.

Property Taxes

Land and buildings are taxed by the state and may be taxed by local jurisdictions. The state rate is \$0.015 per \$100 of assessed valuation.

Tangible personal property owned by manufacturers (automobiles, trucks, finished goods, office furniture, office equipment) is taxed by the state at \$0.15 per \$100 and may be taxed by local jurisdictions.

Manufacturing machinery, raw materials inventories, pollution control equipment, and goods in process inventories are not subject to local taxation. The state rate is \$0.15 per \$100.

Property stored in public warehouses is not subject to local taxation. The state rate is only \$0.015 per \$100.

All property is assessed at 100 percent of fair cash value.

Local Property Tax Rate Per \$100 of Assessed Valuation, 1974*

<u>Taxing Jurisdiction</u>	<u>Mayfield</u>	<u>Graves County</u>
County	\$.163	\$.163
School	.964	.347
City	.360	

Special (not county wide): West Mayfield Watershed \$.110

Planning and Zoning

City agency - Mayfield Planning and Zoning Commission

Zoning enforced - City only

Subdivision regulations enforced - City and 3 miles beyond city limits

Local codes enforced - Building

Mandatory state codes enforced - Plumbing, National Fire Protection

Association Code, National Building Code (for major buildings and

residential construction containing more than 12 bedrooms per building)

*Kentucky Department of Revenue, Kentucky Property Tax Rates, 1974.

Safety

<u>Police</u>	<u>Mayfield</u>	<u>Graves County</u>
Total staff	29	6
Radio-patrol cars	3	4
Other equipment	Communications equipment, inves- tigative equipment	6 walkie-talkies

Fire

American Insurance Association Fire Rating	6
Full-time staff	38
Volunteers	20 (rescue squad)
Equipment:	
1,000 gpm pumpers and ladder trucks	2
750 gpm pumpers	3
500 gpm pumper	1
Jeep with 100 gpm pumper	1
Ambulances	3
Safety net	1
Portable generators	2
Emergency unit	1

Note: Mayfield Fire Department serves manufacturing firms in the county and provides ambulance service for the entire county.

Rescue Service

Mayfield-Graves County Rescue Squad:

Number of volunteers - 20

Equipment - 2 fire trucks with 1,200 gallon capacity, weapon car truck which pulls a generator, 2 boats and dragging equipment

Personnel training - Fire fighting

Sanitation

Mayfield

Type service	Private
Fee charged:	
residential	\$3 monthly
business	Negotiated by contract
Collection frequency:	
residential	Twice weekly
business	Varies, some businesses are served daily
Trash pickup	Twice weekly
Disposal method	Landfill

Private service is also available in the area immediately surrounding Mayfield.

EDUCATION

Public Schools

	<u>Mayfield</u>	<u>Graves County</u>
Total Enrollment		
(1974-75)	2,110	4,260
Elementary	1,028	2,772
Junior High	382	
High School	700	1,488
Student-Teacher Ratio	21 - 1	25 - 1
Elementary	21 - 1	29 - 1
Junior High	20 - 1	
High School	20 - 1	20 - 1
Accreditation	Southern Association of Colleges and Schools	
Percent High School Graduates to College	54.4	30.4
Expenditures Per Pupil (1973-74)	\$619.03	\$512.47
Bonded Indebtedness, June 30, 1974	\$3,321,000	\$389,000

Nonpublic Schools

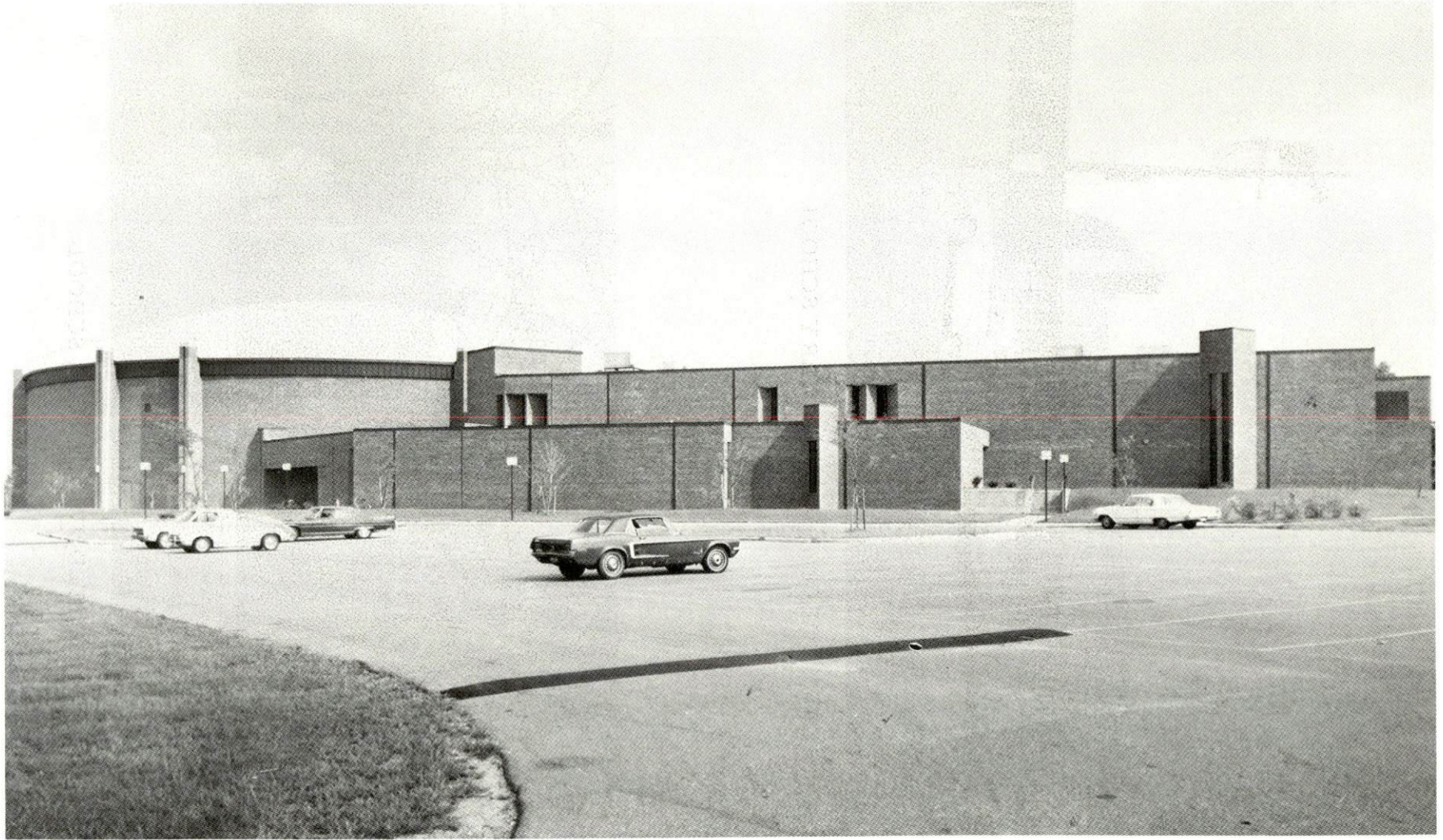
Total Enrollment	85
Elementary	85
Student-Teacher Ratio	21 - 1
Elementary	21 - 1



EAST COLLEGE ELEMENTARY SCHOOL



MAYFIELD JUNIOR HIGH SCHOOL



MAYFIELD HIGH SCHOOL

Vocational Schools

	<u>Nearest State School</u>	<u>Nearest Area Education Center</u>
	Western Kentucky State Vocational-Technical School	Mayfield Area Vocational Education Center
Location	Paducah	Mayfield
Miles Distant	25 miles	
Curriculum	Business and Office Clerical Secretarial Technical Electronics (Communi- cations) Trade and Industrial Auto Body Repair Auto Mechanics Barbering Carpentry-Building Trades Commercial Foods Cosmetology Drafting Electricity Masonry Tailoring Welding	Business and Office Model Office Secretarial Health Occupations Health Careers Trade and Industrial Auto Body Repair Auto Mechanics Carpentry-Building Trades Electricity Machine Shop Welding Industrial Sewing

Arrangements can be made to provide training in the specific production skills required by an industrial plant. Instruction may be conducted either in the vocational school or in the industrial plant, depending upon the desired arrangement and the availability of special equipment.

Colleges and Universities

<u>Name</u>	<u>Area - Within 25 miles</u>		
	<u>Location</u>	<u>Enrollment (Fall, 1974)</u>	<u>Highest Degree Conferred</u>
Murray State University	Murray	7,106	Masters, Ph. D*
Paducah Community College	Paducah	1,001	Associate

*Cooperative program with the University of Kentucky, Lexington, for a Ph. D. in education only.

HEALTH

Hospitals

<u>General Hospital</u>	<u>Location</u>	<u>Beds</u>
Community Hospital	Mayfield	116

General hospital facilities - 2 operating rooms, delivery room, emergency room, coronary care unit, bassinets, physical therapy department, intensive care unit, X-ray department, respiratory therapy department, laboratory

Medical staff - 20 doctors, 36 registered nurses, 36 licensed practical nurses, 1 pathologist, 1 physical therapist, 1 inhalation therapist, 1 ADA dietitian, 1 radiologist

Other Medical Facilities

Fuller-Gilliam Clinic

Facilities - X-ray, laboratory, emergency room
Medical staff - 3 doctors

J. V. Kevil Mental Health and Mental Retardation Center

Mental Health Division

Services - Preventive, inpatient, direct, after-care, 24-hour emergency service

Staff - 1 psychiatrist (part time), 2 psychologists, 1 psychiatric social worker, 1 mental health registered nurse, 1 drug and alcohol consultant, 1 speech and hearing therapist, 1 special education worker. The center also has access to personnel in other hospitals and centers in the area.

Mental Retardation Division

Services - Day-care classes, trainable classes, opportunity workshop classes for adults and children

Staff - Director, social worker, 5 teachers' aides, 3 teachers (County Board of Education), 2 teachers, workshop manager, 3 floor supervisors, basic education teacher, work activities supervisor, work activities aide, evaluator

Mayfield Hospital and Clinic, Inc.

Facilities - X-ray, laboratory, emergency room
Medical staff - 3 doctors, 2 graduate licensed practical nurses

Morgan-Haugh Clinic

Facilities - X-ray, physical therapy department, non-equipped
emergency room, laboratory
Medical staff - 9 doctors, 1 registered nurse, 6 licensed practical
nurses

Nursing Homes

	<u>Number</u>	<u>Beds</u>
Nursing homes	5	323 personal care

Public Health

Facility - Graves County Health Department
Staff - 3 registered nurses, 1 licensed practical nurse, 1 aide, 2 clerks,
1 administrator, 1 administrative assistant, 1 dental clinician (part
time), 1 medical clinician (part time), 1 environmentalist, 1 plumbing
inspector (part time), 1 milk inspector

OTHER LOCAL FACILITIES

Communications

Telephone - Mayfield - South Central Bell Telephone Company
Graves County - West Kentucky Telephone Cooperative
Corporation
Services - Standard

Telegraph - Western Union Telegraph Company
Services - Office, telephone, messenger

Postal - U. S. Post Office
Class - First
Mail received - 4 times daily
Mail dispatched - 3 times daily

Newspapers - Mayfield Messenger
Daily and circulation - Daily except Sunday - 7,250
Other papers received from - Louisville, Kentucky; Nashville and
Memphis, Tennessee; Chicago, Illinois; St. Louis, Missouri;
Western Edition of the Wall Street Journal

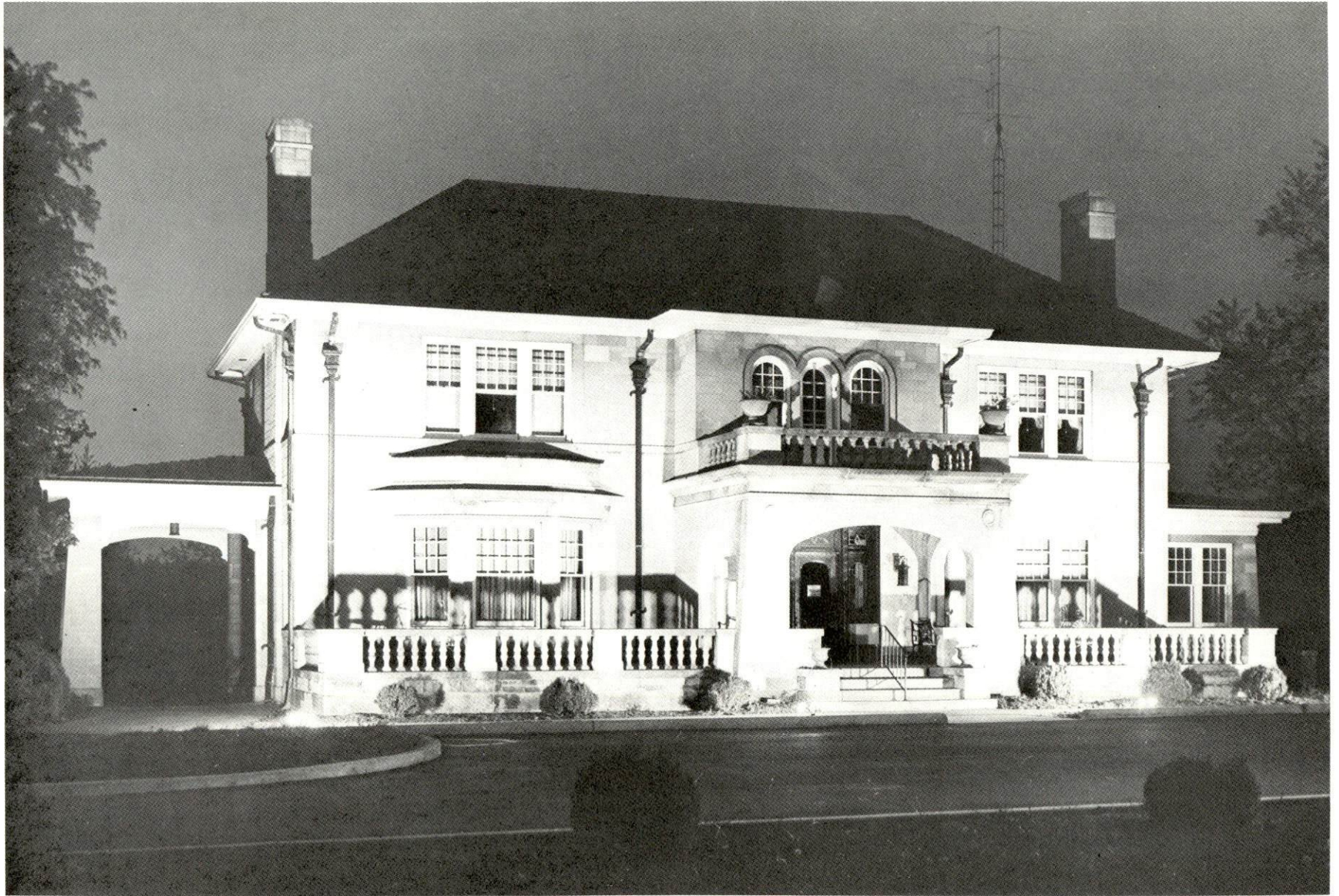
Radio - WNGO - AM and FM
Stations received from - 15 stations located within a 100-mile radius

Television -
Cable service
Reception from - Paducah, Kentucky; Nashville and Memphis,
Tennessee; Cape Girardeau, Missouri; Harrisburg, Illinois

Kentucky Educational Television - Murray transmitter, Channel 21

Library Services

Public library - Mayfield - Graves County Library
Size collection - 45,000 volumes
Circulation, 1974 - 100,000
Services - Bookmobile, periodicals, films, pictures, records,
story hour, scheduled visits for schools, children's films, art
classes, summer reading program, visits to rest homes, micro-
film reader-printer



MAYFIELD - GRAVES COUNTY LIBRARY

Religious Institutions

Number of churches - 39

Denominations - Assembly of God, Baptist, Christian, Christian Scientist, Church of Christ, Church of God, Church of the Nazarene, Episcopal, Gospel Mission, Holiness Church, Holiness to God, Jehovah's Witnesses, Methodist, Pentecostal Holiness, Presbyterian, Roman Catholic, Seventh Day Adventist

Nearest Synagogue - Paducah
Congregation - Temple Israel (reform)

Financial Institutions

<u>Banks</u>	<u>Assets</u>	<u>Deposits</u>	<u>Statement Date</u>
Liberty Savings Bank	\$35,000,841	\$30,351,285	6/30/75
First National Bank	24,123,409	19,933,034	6/30/75
Exchange Bank	11,861,634	10,174,500	6/30/75

<u>Savings and Loan Associations</u>	<u>Assets</u>	<u>Shared Accounts</u>	<u>Statement Date</u>
First Federal Savings and Loan Association	\$36,390,112	\$34,378,182	12/31/74
Security Federal Savings and Loan Association	7,878,093	7,687,012	12/31/74

Hotels and Motels

Total number - 4

Total units - 135

Clubs and Organizations

Business and Civic - Mayfield - Graves County Chamber of Commerce, Retail Merchants Association, Kiwanis, Lions, Rotary, Key Club, Optimist Club, Business and Professional Women's Club

Fraternal - American Legion, VFW, Moose, Masonic, Odd Fellows, Disabled American Veterans, Woodsmen of the World, Fraternal Order of Eagles

Women's - Mayfield Woman's Club, Community Woman's Club, Laurel Oaks Garden Club, Hospital Auxiliary, Emblem Club, Mayfield Council of Club Women, Junior Welfare League, American Legion Auxiliary

Youth - Boy Scouts, Girl Scouts, FFA, FHA

Other - Cardinal Club (Booster), Mayfield Music Club, Newcomers Club, Senior Citizens Club, Welcome Wagon

RECREATION

Local

Public Recreation Facilities

Supervised program - Summer and winter - Mayfield Playground
and Recreation Board

Parks - 4, 1 mini-park

Playgrounds - 5

Tennis courts - 4

Baseball diamonds - 5

Football fields - 2

Other - Adult softball field, stadium, fairgrounds

Private Recreation Facilities

Country clubs - 2

Golf courses - 1 (18-hole), 1 (9-hole)

Swimming pools - 2

Movie theater - 1

Bowling lanes - 2

Other - Skating rink, miniature golf course, swim and racquet club

Tourist Attraction

Wooldridge Monuments

Area (Within 40 miles)

Parks and Waterways

Kenlake State Resort Park

Kentucky Dam Village State Resort Park

Land Between the Lakes National Recreation Area

Columbus-Belmont Battlefield State Park

Tennessee, Ohio, and Mississippi Rivers

Special Attractions

Ancient Buried City at Wickliffe

Market House at Paducah containing Clark Market Museum, Paducah

Art Gallery and Market House Theatre

Alben W. Barkley Monument and Museum at Paducah

AGRICULTURE - NATURAL RESOURCES - CLIMATE

Agriculture*

	<u>Graves County</u>	<u>Labor Market Area</u>
Total land area (acres)	358,336	1,240,064
Percent of area in farm land	72.0	66.0
Number of farms	2,280	6,896
Average size of farms (acres)	113.1	118.7
1969 value of all farm products	\$13,275,484	\$ 41,099,217
Value per farm	5,822	5,960
Total crop sales	5,681,521	17,261,476
Total livestock & livestock products	7,559,579	23,676,515
1973 agricultural production included:		
Burley tobacco (lbs.) (est.)	435,000	2,008,000
Corn for grain (bu.) (est.)	1,653,000	4,638,000
Cattle and calves (number)	34,000	132,000
Hogs and pigs (number) (preliminary)	48,400	106,800
Milk production, 1972 (lbs.)	35,280,000	109,600,000

Natural Resources

Principal mineral resources	Ball clay
Other mineral resources	Absorbent clay
Acres of commercial forest land	80,200
Most abundant tree species	Red oaks, white oaks, hickory, sweetgum, cottonwood, ash, hard maple

*U. S. Department of Commerce, Bureau of the Census, Census of Agriculture, 1969. U. S. Department of Agriculture and Kentucky Department of Agriculture, Kentucky Agricultural Statistics, 1973.

Climate*

Graves County

Temperature

Annual mean (30-year record)	59.4 degrees
Average annual 1974	58.8 degrees
Record highest, July, 1954 (32-year record)	104.0 degrees
Record lowest, January, 1963 (32-year record)	- 5.0 degrees
Normal heating degree days (30-year record)	3,833
(Heating degree day totals are the sums of negative departures of average daily temperatures from 65 degrees F.)	

Precipitation

Mean annual total (30-year record)	47.12 inches
Mean annual snowfall (32-year record)	9.50 inches
Total precipitation 1974	37.91 inches
Mean number day precipitation (.01 inch or more) (32-year record)	115
Average number days thunderstorms (22-year record)	53

Prevailing winds (22-year record)

Southwest

*U. S. Department of Commerce, Environmental Science Services Administration, Climatological Data, 1974. Station of record: Cairo, Illinois.

HISTORY

Graves County is located west of the Tennessee River in an area known as the Jackson Purchase. The territory is the former tribal lands of the Chickasaw Indians which the government purchased in 1818.

The first settler in the area, John Anderson, built a log house at present-day Mayfield in 1819. Other settlers soon joined him, and within four years enough people had come for a new county to be formed. Graves became Kentucky's seventy-fifth county in 1823, its territory taken from Hickman County. It was named for Major Benjamin Graves, a Virginia native who came to Kentucky, was elected to the State Legislature, and died in the War of 1812.

In 1830, Graves County had 2,054 inhabitants. The population had reached 31,364 by 1950 and 31,800 by 1974.

Agriculture provided 1,140 of the county's 12,500 jobs in 1973. Manufacturing employment was 4,450 in 1974, an increase of 33.6 percent since 1964. Locally mined potters clay is used in manufacturing lamps and novelties. Mayfield produces primarily non-durable goods such as clothing and automobile tires. Largest of Mayfield's 21 firms are General Tire and Rubber Company, which employs 1,650 persons and Merit Clothing Company, which employs 1,460 persons.

Mayfield is a loose leaf tobacco market of major importance. Graves County is bisected by the Purchase Parkway, which connects with an excellent multi-medium transport system to other states.

This copy has been prepared by the Kentucky Department of Commerce,
Division of Research and Planning, and the cost of printing paid from
state funds.

**Kentucky Department of Commerce
Capital Plaza Tower
Frankfort, Kentucky 40601**

**Industrial Development Division
(502) 564-7140**

**Community Services Division
(502) 564-4300**

**Business Development Division
(502) 564-4300**

**Research and Planning Division
(502) 564-4886**

**Office of Minority Business Enterprises
(502) 564-4270**

**Map Sales Office
133 Holmes Street
(502) 564-4715**

**Industrial Development Finance Authority
(502) 564-4554**