

1976

Industrial Resources: Grayson County - Leitchfield

Kentucky Library Research Collections
Western Kentucky University, spcol@wku.edu

Follow this and additional works at: https://digitalcommons.wku.edu/grayson_cty

 Part of the [Business Administration, Management, and Operations Commons](#), [Growth and Development Commons](#), and the [Infrastructure Commons](#)

Recommended Citation

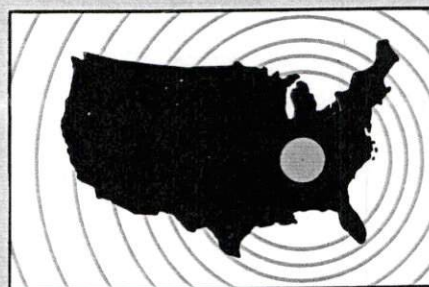
Kentucky Library Research Collections, "Industrial Resources: Grayson County - Leitchfield" (1976). *Grayson County*. Paper 10.
https://digitalcommons.wku.edu/grayson_cty/10

This Report is brought to you for free and open access by TopSCHOLAR®. It has been accepted for inclusion in Grayson County by an authorized administrator of TopSCHOLAR®. For more information, please contact topscholar@wku.edu.

INDUSTRIAL RESOURCES

Leitchfield, Kentucky

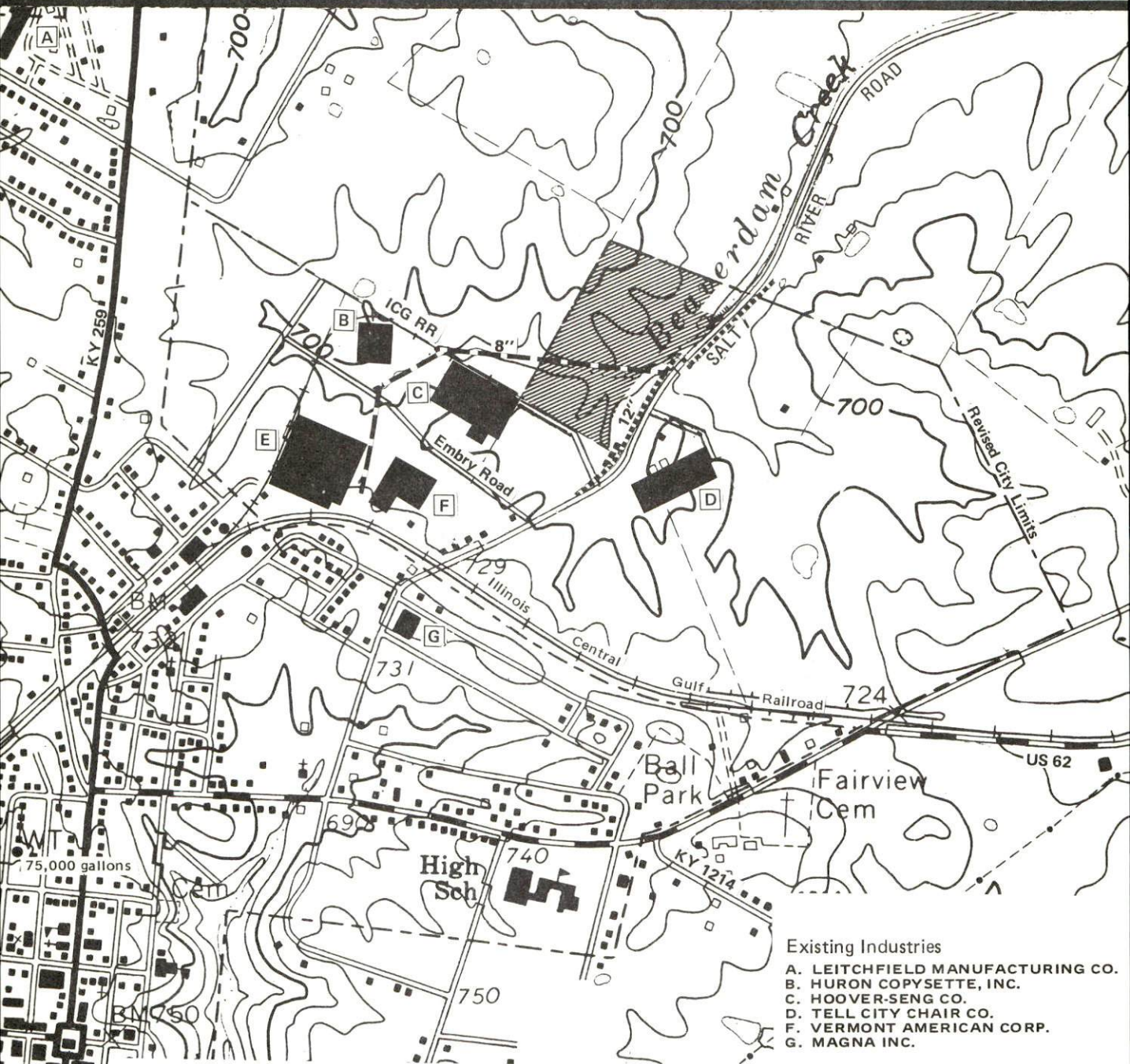
**Kentucky
first**



DEPARTMENT OF COMMERCE

LEITCHFIELD, KENTUCKY --- Site No. 176 -- 18 Acres

For more information contact Mr. Kenneth Goff, Circuit Court Judge, Grayson County Court House, Leitchfield, Kentucky 42754, or the Industrial Development Division, Kentucky Department of Commerce, Capital Plaza Tower, Frankfort, Kentucky 40601.



LOCATION: Within northeast city limits
ZONING: Not zoned
HIGHWAY ACCESS: Salt River Road adjacent to eastern boundary of site; US 62 approximately 0.7 mile south of site; Western Kentucky Parkway approximately 2.2 miles south of site
RAILROAD: Illinois Central Gulf Railroad spur at southwest corner of site
WATER: Leitchfield Utilities
 Size Line: 12-inch line on eastern boundary of site
GAS: Natural gas service presently not available
ELECTRICITY: Warren RECC
SEWERAGE: Leitchfield Utilities
 Size Line: 8-inch line through site
OWNERSHIP: Leitchfield-Grayson County Industrial and Development Foundation

Existing Industries

- A. LEITCHFIELD MANUFACTURING CO.
- B. HURON COPYSETTE, INC.
- C. HOOVER-SENG CO.
- D. TELL CITY CHAIR CO.
- F. VERMONT AMERICAN CORP.
- G. MAGNA INC.

Available Building

- E. FORMERLY PAPER NOVELTY CO.
230,904 square feet

UTILITIES

- Water Line
- Sewer Line

SCALE: 1 inch = 1,000 feet

CONTOUR INTERVAL: 20 feet

BASE: USGS 7.5 minute series - 1967

INDUSTRIAL RESOURCES
LEITCHFIELD, KENTUCKY

Prepared by
The Kentucky Department of Commerce
in cooperation with
The Leitchfield-Grayson County Chamber of Commerce

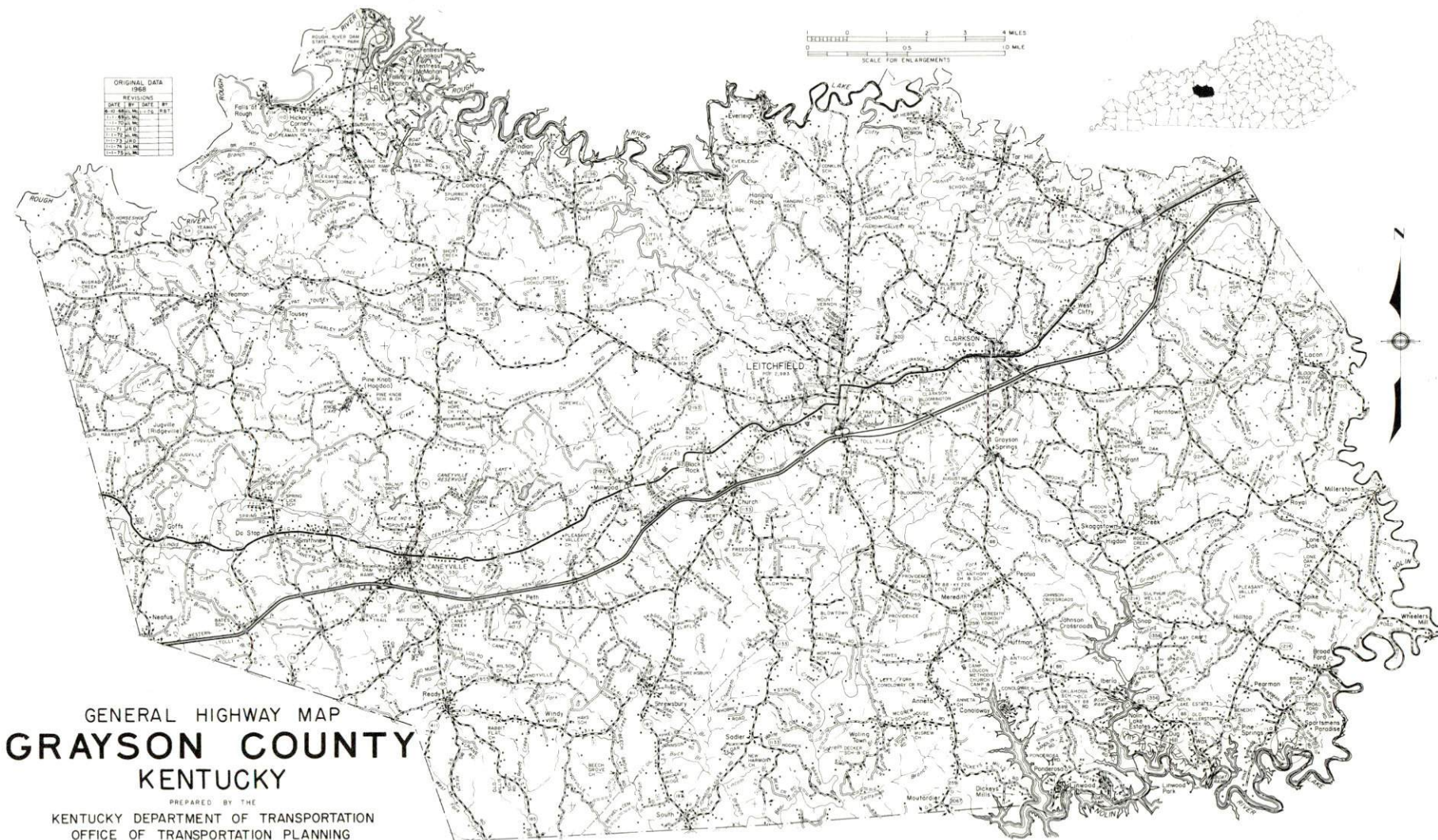
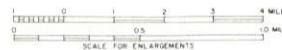
1976

TABLE OF CONTENTS

<u>Chapter</u>	<u>Page</u>
INDUSTRIAL SITES	i
LEITCHFIELD, KENTUCKY - A RESOURCE PROFILE	1
THE LABOR MARKET AREA	3
Population	3
General Employment Characteristics, 1974	3
Manufacturing Employment by Industry	4
Leitchfield Manufacturing Firms, Their	
Products and Employment	4
Labor Organizations	5
Estimated Male Labor Supply	9
Estimated Female Labor Supply	9
Wages	10
Per Capita Personal Income	11
TRANSPORTATION	12
Rail	12
Highways	12
Truck Service	12
Air	13
Bus	14
Rental Services	14
POWER AND FUEL	15
Electricity	15
Natural Gas	16
Other Fuels	16
WATER AND SEWERAGE	17
Water	17
Sewerage	19
CLIMATE	20

<u>Chapter</u>	<u>Page</u>
LOCAL GOVERNMENT	21
City	21
County	21
Assessed Value of Property, 1975	21
Property Taxes	21
Local Property Tax Rate Per \$100 of Assessed	
Valuation, 1975	22
Utilities Gross Receipts Tax for Schools	22
Planning and Zoning	22
Safety	22
Police	22
Fire	22
Rescue Service	23
Solid Waste	23
EDUCATION	24
Public Schools	24
Nonpublic Schools	24
Area Colleges and Universities	25
Vocational Schools	26
HEALTH	27
Local Medical Personnel	27
Hospitals	27
Ambulance Service	27
Nursing Homes	27
Public Health	27
OTHER LOCAL FACILITIES	28
Communications.	28
Religious Institutions	28
Financial Institutions	29
Hotels and Motels	29
Clubs and Organizations	29
RECREATION	30
COMMUNITY IMPROVEMENTS	31
HISTORY	34

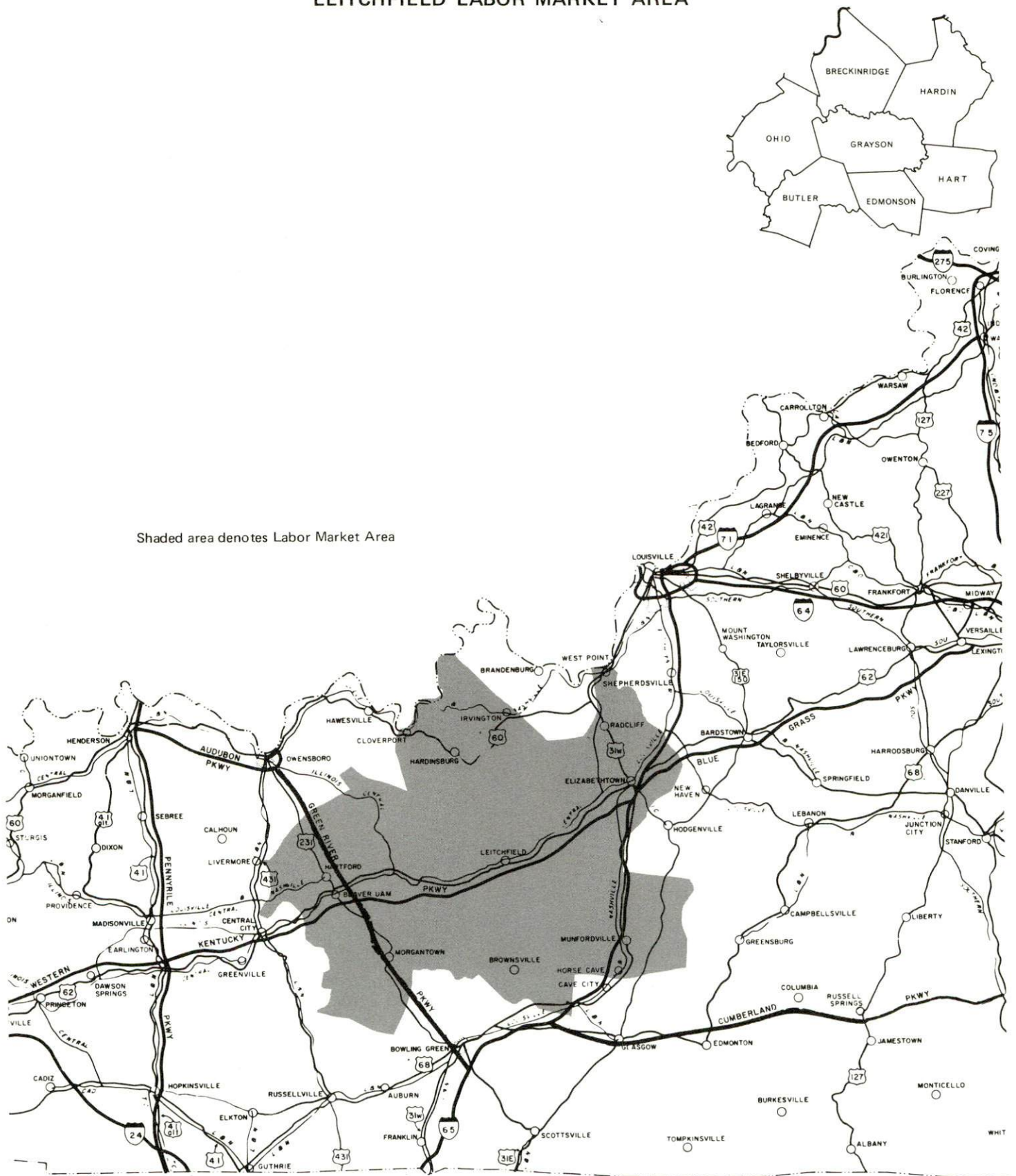
ORIGINAL DATA 1960		
REVISIONS		
DATE	BY	SHEET #
11-15-60	W.L.	1
11-15-60	W.L.	2
11-15-60	W.L.	3
11-15-60	W.L.	4
11-15-60	W.L.	5
11-15-60	W.L.	6
11-15-60	W.L.	7
11-15-60	W.L.	8
11-15-60	W.L.	9
11-15-60	W.L.	10



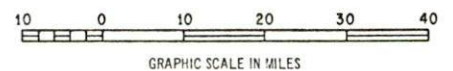
GENERAL HIGHWAY MAP **GRAYSON COUNTY** KENTUCKY

PREPARED BY THE
KENTUCKY DEPARTMENT OF TRANSPORTATION
OFFICE OF TRANSPORTATION PLANNING
DIVISION OF FACILITIES PLANNING
IN COOPERATION WITH THE
U.S. DEPARTMENT OF TRANSPORTATION
FEDERAL HIGHWAY ADMINISTRATION

LEITCHFIELD LABOR MARKET AREA



Shaded area denotes Labor Market Area



LEITCHFIELD, KENTUCKY - A RESOURCE PROFILE

Leitchfield, located in west central Kentucky, serves as the county seat of Grayson County and has a population of 3,682. Leitchfield, only one mile north of the Western Kentucky Parkway, is 72 miles southwest of Louisville, Kentucky, and 157 miles northeast of Nashville, Tennessee.

Grayson County, which had a 1975 estimated population of 18,200, encompasses an area of 496 square miles in the west central part of Kentucky. The southern and western portions of the county lie within the Western Kentucky Coal Field Region. The northern and eastern portions of the county lie within the Mississippian Plateau physiographic region.

The Economic Framework

The total number of Grayson County residents employed in 1974 averaged 7,625, including 1,000 in agriculture and 870 in government. Manufacturing employers in the county reported 1,190 workers; trade and services firms employed 1,030. Major industrial products are: cheese, furniture parts, sportswear, carbide tipped circular saws and masonry tools, hand tools, and manifold carbon paper sets.

Total unemployment in Grayson County averaged 5.8 percent of the labor force in 1974.

Per capita personal income in the county in 1974 was \$3,219, an increase of 45.9 percent since 1970.

The Leitchfield labor market area includes Grayson and the six adjoining counties. The total number of residents of the labor market area employed in 1974 averaged 55,675, including 6,450 in agriculture and 9,590 in government. Manufacturing employers in the labor market area reported 7,470 workers; trade and services firms employed 9,740; mining reported 2,010.

Resources for Growth

1. Labor Supply - There is a current labor supply of 6,630 men and 9,720 women available for industrial jobs in the labor market area. In addition, 7,650 young men and 7,250 young women in the area will become 18 years of age before 1982 and potentially available for work.

2. Transportation - The local transportation capability is excellent. The Illinois Central Gulf Railroad provides a variety of services. Adequate trucking service is available. The Western Kentucky Parkway passes 1 mile south of Leitchfield, and U.S. Highway 62 passes through the city. Commercial air service is available in Owensboro, 52 miles away. A 2,500-foot turf runway is located 5 nautical miles southeast of Leitchfield and tie down services are available.

3. Utilities and Fuel - Leitchfield and Grayson County are provided electric power by the Kentucky Utilities Company and Warren RECC. Natural gas is supplied to Leitchfield by Leitchfield Utilities, whose source of supply is the Texas Gas Transmission Corporation. Three distributors of propane and two distributors of distillate fuel oil, located in Leitchfield, provide service to industry.

4. Education - One public school system - The Grayson County School System - operates within the county. One university, two senior colleges, a community college, and an extension campus of the University of Kentucky are located within 55 miles of Leitchfield. Vocational training is available at the Elizabethtown State Vocational-Technical School, 33 miles from Leitchfield. A vocational education center is located at Harned, 26 miles from Leitchfield. Construction of the Grayson County Vocational Education Center is scheduled to begin during the summer of 1976 with completion expected by the fall of 1977.

THE LABOR MARKET AREA

POPULATION

Area	1975*	1970	Percent Nonwhite
			1970
Leitchfield	3,682**	2,983	3.8
Labor Market Area	159,600	160,899	-
Grayson County	18,200	16,445	0.8
Breckinridge County	15,100	14,789	4.6
Butler County	10,100	9,723	0.7
Edmonson County	9,500	8,751	2.7
Hardin County	72,000	78,421	9.0
Hart County	14,700	13,980	9.9
Ohio County	20,000	18,790	1.4

*Provisional Estimates.

**1973 Population Estimates.

Sources: U.S. Department of Commerce, Bureau of the Census, Census of Population, 1970. U.S. Bureau of the Census, Current Population Reports, Series P-25, No. 562, June 1975; Series P-26, No. 75-17, May 1976.

GENERAL EMPLOYMENT CHARACTERISTICS, 1974

Major Employment Group	Employment by Place of Residence of Workers	
	Grayson County	Labor Market Area
Total Employment	7,625	55,675
Agriculture	1,004	6,448
Government	870	9,586

	Employment by Location of Jobs	
	Grayson County	Labor Market Area
Manufacturing	1,191	7,473
Trade and Services	1,029	9,738
Mining	-	2,012*

*Mining employment - Butler, Edmonson, and Ohio Counties.

Sources: Kentucky Department for Human Resources, Bureau for Administration and Operations; Kentucky Department of Mines and Minerals, Annual Report.

MANUFACTURING EMPLOYMENT BY INDUSTRY
SEPTEMBER 1975

<u>Industry</u>	<u>Grayson County</u>	<u>Labor Market Area</u>
TOTAL	1,291	7,463
Food & Kindred Products	100	449
Apparel, Textiles, Leather	483	2,672
Lumber, Furniture	30	610
Printing & Publishing, Paper	15	410
Chemicals, Petroleum & Coal,		
Rubber	31	927
Stone, Clay & Glass	27	315
Primary Metals	0	83
Machinery, Metal Products,		
Equipment	464	1,848
Other	141	148

Source: Kentucky Department for Human Resources, Number of Workers in Manufacturing Industries Covered by Kentucky Unemployment Insurance Law Classified by Industry and County, September, 1975.

LEITCHFIELD MANUFACTURING FIRMS,
THEIR PRODUCTS AND EMPLOYMENT

<u>Firm</u> (Establishment date)	<u>Product</u>	<u>Employment</u>			<u>Organized</u>
		<u>Total</u>	<u>Male</u>	<u>Female</u>	
Albany Cheese, Inc. (1958)	Cheese	113	59	54	
Future Designs, Inc. (1970)	Wedge and standard concrete block	9	8	1	
Grayson County News (1940)	Newspaper	5	1	4	
Hoover-Seng Company, Kentucky Division (1969)	Furniture parts	255	225	30	*
Huron Copysette, Inc. (1972)	Manifold carbon paper sets	74	36	38	
Leitchfield Gazette (1881)	Newspaper	6	2	4	
Leitchfield Manufacturing Company (1925)	Men's, women's and children's sportswear	495	40	455	

(Contd.)

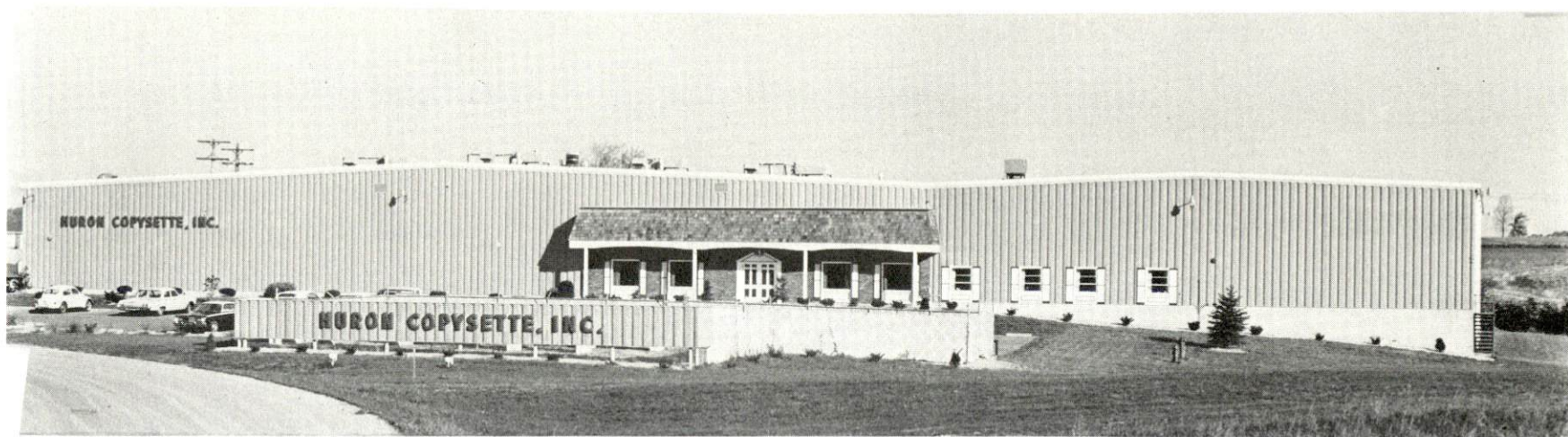
<u>Firm</u> (Establishment date)	<u>Product</u>	<u>Employment</u>			
		<u>Total</u>	<u>Male</u>	<u>Female</u>	<u>Organized</u>
Lowes Concrete, Inc. (1946)	Concrete blocks, ready mixed concrete, precast concrete products	18	16	2	
Magna, Inc. (1971)	Pharmaceuti- cals, cosmet- ics, dietary supplements	28	8	20	
Middle Ground, Inc.	Golfing equipment	17			
Ragland Quarry (N.A.)	Agricultural lime, crushed limestone	16	15	1	
Tell City Chair Company (1974)	Furniture components	63	50	13	
Vermont American Corp., Leitchfield Division (1967)	Carbide tipped circular saws, carbide tipped mas- onry tools, misc. hand tools	179	103	76	*

*See Labor Organizations below.

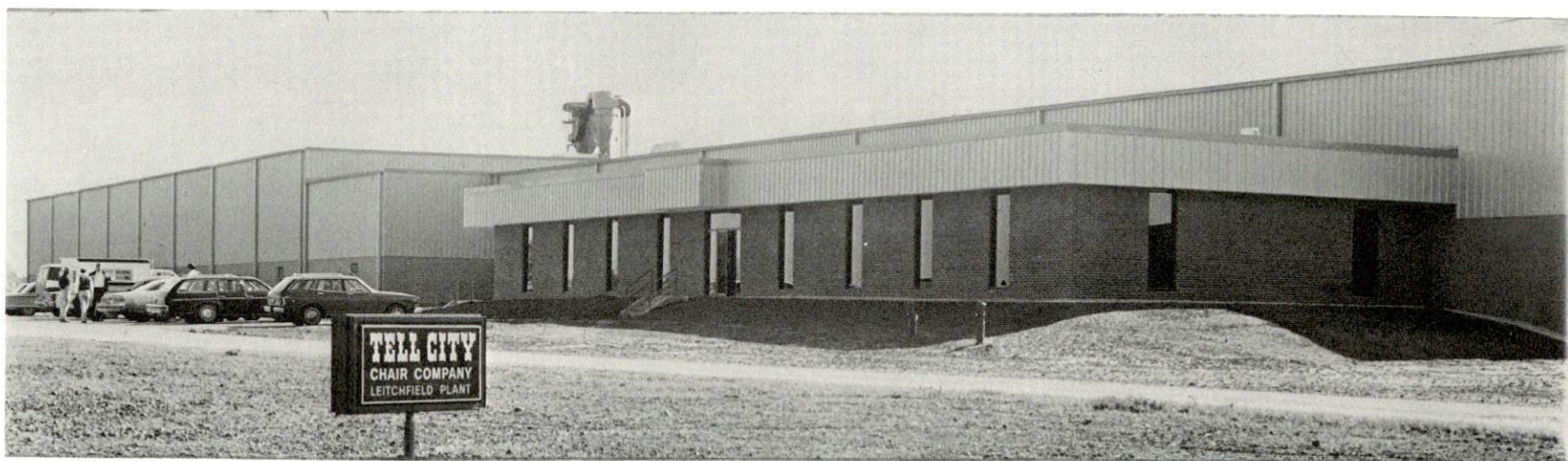
Source: Kentucky Department of Commerce, Division of Research and Planning.

LABOR ORGANIZATIONS

<u>Union</u>	<u>Representing manufacturing workers at:</u>
International Union of Electrical, Radio and Machine Workers	Hoover-Seng Company, Kentucky Division
Aluminum Workers International, Affiliate of AFL-CIO	Vermont American Corporation, Leitch- field Division



HURON COPYSETTE, INC.



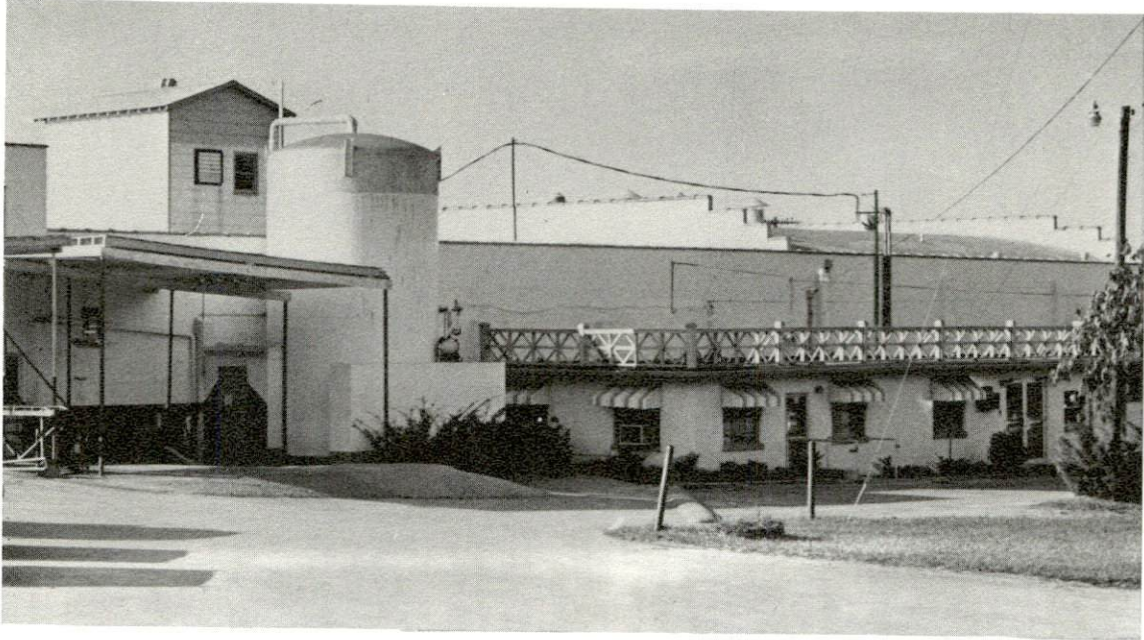
TELL CITY CHAIR COMPANY



MAGNA, INC.



VERMONT AMERICAN CORPORATION



ALBANY CHEESE, INC.



HOOVER-SENG COMPANY

ESTIMATED MALE LABOR SUPPLY
LEITCHFIELD LABOR MARKET AREA

Area	Current				Future
	Total	Not in Labor Force	Unemployed	Under- employed	Reaching 18 yrs. of age before 1982
Labor Market					
Area	6,630	510	2,120	4,000	7,652
Grayson	680	0	360	320	860
Breckinridge	470	0	230	240	766
Butler	890	510	170	210	473
Edmonson	240	0	130	110	443
Hardin	3,390	0	770	2,620	3,417
Hart	360	0	160	200	747
Ohio	600	0	300	300	946

Sources: Kentucky Department for Human Resources, Kentucky Labor Supply Estimates by County, 1975. Kentucky Department of Commerce, Future Labor Supply before 1982.

ESTIMATED FEMALE LABOR SUPPLY
LEITCHFIELD LABOR MARKET AREA

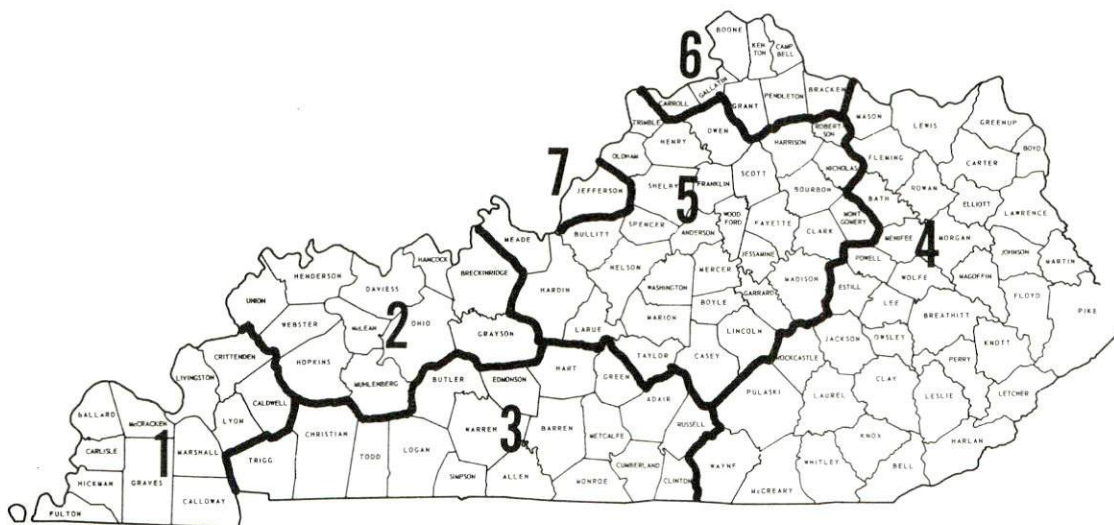
Area	Current				Future
	Total	Not in Labor Force	Unemployed	Under- employed	Reaching 18 yrs. of age before 1982
Labor Market					
Area	9,720	6,240	860	2,620	7,254
Grayson	470	90	110	270	780
Breckinridge	290	0	70	220	761
Butler	790	460	130	200	486
Edmonson	590	350	100	140	441
Hardin	6,460	5,080	230	1,150	3,246
Hart	660	260	110	290	709
Ohio	460	0	110	350	831

Sources: Kentucky Department for Human Resources, Kentucky Labor Supply Estimates by County, 1975. Kentucky Department of Commerce, Future Labor Supply before 1982.

WAGES

Occupational wage rates for specific industries are usually not available to most government agencies, and wage data furnished to state employment agencies by individual industrial employers is protected from disclosure by federal law. The most reliable up-to-date wage information can be obtained by direct contact with local employers.

Associated Industries of Kentucky, a voluntary organization of Kentucky businesses, regularly collects occupational wage rates and fringe benefits data from participating member firms. Data is compiled for over 127 clearly defined office, production, and service occupations. Tabulations are published for seven regions of Kentucky, as shown on the map below. It should be noted that the data may be weighted by the preponderance of firms in the larger cities and may be somewhat higher than the rates paid in the smaller communities. Data from these tabulations are available, upon request, from the Kentucky Department of Commerce, Frankfort, Kentucky 40601.



Associated Industries of Kentucky Area Wage Surveys

Up-to-date occupational wage rates of the existing industries are maintained by South Kentucky Industrial Development Association, Post Office Box 726, Hopkinsville, Kentucky 42240.

PER CAPITA PERSONAL INCOME

<u>Area</u>	<u>1974</u>	<u>1970</u>	<u>% Change</u>
Grayson County	\$3,219	\$2,207	45.9
Labor Market Area			
Range	\$2,505 - 5,380	\$1,753 - 4,105	N. A.
Kentucky	4,442	3,112	42.7
U. S.	5,448	3,966	37.4

Sources: U. S. Department of Commerce, Bureau of Economic Analysis, Survey of Current Business, August 1975. U. S. Department of Commerce, Bureau of Economic Analysis, March 1976.

TRANSPORTATION

Rail

Line serving Leitchfield - Illinois Central Gulf Railroad

Services - Freight, siding and switching. Local freight Tuesday, Thursday, and Saturday, supplemented by night freights as needed by customers. Two scheduled northbound and two scheduled southbound through freights daily. Average of two unscheduled northbound or southbound through freights per day. Siding space: Leitchfield-78 cars, Caneyville-105 cars, Big Clifty-95 cars. Piggyback service is available in Louisville, Kentucky, 72 miles.

For details on routing, schedules, rates, and services, contact:

Manager of Industrial Development
Illinois Central Gulf Railroad Company
112 North 4th Street
St. Louis, Missouri 63102
(314) 241-9400

Highways

Highway access to Leitchfield is by Kentucky Highways 54, 259, and U.S. 62. Leitchfield is located approximately one mile north of an interchange to the Western Kentucky Parkway, which connects with the Blue Grass Parkway, Interstate 65, the Green River Parkway and the Pennyryle Parkway.

Truck Service

<u>Company</u>	<u>Home Office</u>
Leitchfield Transfer Company*	U.S. 62, P.O. Box 366 Leitchfield, Kentucky 42754
Majors Transit, Inc.	P.O. Box 7 Caneyville, Kentucky 42721
McLean Trucking Company	P.O. Box 213 Winston-Salem, North Carolina 27102
O'Nan Transportation Company*	614 Mill Street Leitchfield, Kentucky 42754
T.I.M.E. -DC, Inc.	P.O. Box 2550 Lubbock, Texas 79408
United Trucking of Kentucky	7950 Dix Road Detroit, Michigan 48209

*Local terminal.

Other Freight Services

United Parcel Service*

Nearest Shipping Centers

Owensboro, Kentucky, 52 miles
Bowling Green, Kentucky, 52 miles

HIGHWAY MILES AND TRUCK TRANSIT TIME IN DAYS FROM
LEITCHFIELD, KENTUCKY, TO SELECTED MARKET CENTERS

City	Highway Miles	Delivery		City	Highway Miles	Delivery	
		Time TL				Time TL	
Atlanta, Ga.	399	1-2		Los Angeles, Calif.	2,182	4-5	
Birmingham, Ala.	353	1-2		Louisville, Ky.	72	1	
Chicago, Ill.	364	1-2		Nashville, Tenn.	157	1	
Cincinnati, Ohio	173	1-2		New Orleans, La.	674	2-3	
Cleveland, Ohio	417	2-3		New York, N. Y.	820	2-3	
Detroit, Mich.	432	2-3		Pittsburgh, Pa.	460	3-4	
Knoxville, Tenn.	334	1-2		St. Louis, Mo.	299	1-2	

Source: Delivery Time Only - T.I.M.E. -DC, Inc., P.O. Box 2550,
Lubbock, Texas 79408.

Air

	<u>Local</u>	<u>Nearest Commercial</u>
Location:	Grayson County Airport 5 nautical miles south- east of Leitchfield	Owensboro-Daviess County Airport Owensboro, 52 miles northwest of Leitchfield
Runways:	1 turf	2 paved
Length:	2,500 feet	6,500 feet; 3,700 feet
Traffic		
Control:	Wind sock	Control tower, ground control, ILS system and guards
Lighting:	None	Beacon, runways, wind tee, obstruc- tion and taxi lights, MALS/RAIL on runway 35
Services:	Tie down	Ozark Airlines, Air Kentucky, 100 octane, Jet A fuel, storage, major A & E repairs, general flying service, taxi, rental cars
Air Freight		
Service:		Accepted on a space available basis

*For regular scheduled pickups or for occasional pickups, arrangements
must be made with the Louisville office of U. P. S.

Bus - Tri-State Bus Lines, Trailways

Rental Services - Nearest rental services - Elizabethtown, 33 miles
distant

POWER AND FUEL

Electricity

Company serving Leitchfield and part of Grayson County - Kentucky
Utilities Company

Source of power - Kentucky Utilities Company

Total generating capacity - 1,615,500 KW

For industrial rates contact:

Industrial Development Department
Kentucky Utilities Company
120 South Limestone Street
Lexington, Kentucky 40507
(606) 255-1461

Company serving Grayson County and portions of Leitchfield - Warren
RECC

Source of power - Tennessee Valley Authority

Total generating capacity - 26,723,430 KW

For industrial rates contact:

South Kentucky Industrial Development
Association, Inc.
Post Office Box 726
Hopkinsville, Kentucky 42240
(502) 885-5392

and/or

Warren RECC
P.O. Box 1118
Bowling Green, Kentucky 42101
(502) 842-6541

Natural Gas

Company serving Leitchfield - Leitchfield Utilities
Source of supply - Texas Gas Transmission Corporation
Size of transmission mains - 24-inch (supplier); 6-inch (distributor)
Distribution mains - 6, 4, and 2 inches
Distribution pressure - 18 psi
Btu content - 1,000 per cubic foot; Specific gravity - .585
For rates and supplies contact:

Leitchfield Utilities
314 West White Oak Street
Leitchfield, Kentucky 42754
(502) 259-4034

Other Fuels

Propane

John E. Foster & Son (CITGO)
207 North Main Street
Leitchfield, Kentucky

Foster's Gas, Inc. (Gulfgas)
126 West Market
Leitchfield, Kentucky

Lorenzo Holland
313 Floyd Street
Leitchfield, Kentucky

Fuel oils

Distillate fuel oil -

B. W. Lyons Oil Company
308 South Main Street
Leitchfield, Kentucky

Residual fuel oil - Arrangements must be made with the refinery.

Low sulphur content coal - Available in eastern Kentucky

WATER AND SEWERAGE

Water

Company serving Leitchfield - Leitchfield Utilities
314 West White Oak Street
Leitchfield, Kentucky 42754
(502) 259-4034

Source - Rough River Reservoir
Treatment plant capacity - 1,000,000 gpd
Average daily consumption - 300,000 gallons
Peak daily consumption - 500,000 gallons
Type treatment - Coagulated, rapid sand filter, chlorine
Storage capacity - 775,000 gallons*
Size lines - 3/4 through 12 inches
Average pressure - 65 psi
Average temperature - 52° F

MONTHLY WATER RATES FOR WHOLESALE AND INDUSTRIAL CONSUMERS

First	2,000 gallons	\$4.80 (Minimum Bill)
Next	3,000 gallons	2.38 per M gallons
Next	5,000 gallons	1.82 per M gallons
Next	10,000 gallons	1.45 per M gallons
Next	10,000 gallons	1.35 per M gallons
Next	20,000 gallons	1.01 per M gallons
Next	50,000 gallons	.85 per M gallons
All over	100,000 gallons	.69 per M gallons

Tap-on charge - Residential: 3/4-inch - \$125
Commercial and industrial: 1-inch and up
cost plus installation

*Includes new 500,000 gallon elevated tank.

Name of water district - Grayson County Water District
Warren RECC Building
P.O. Box 345
Leitchfield, Kentucky 42754

Area served - From Leitchfield east along U.S. 62 to within 1 mile of
the Grayson County line. West of Leitchfield approximately 3 miles
along U.S. 62; along Kentucky 187 South approximately 1 1/2 miles

Date when water district began operating - November 1974

Source of supply of treated water - Leitchfield Utilities

Amount of water which can be purchased in one month - 8,000,000 gallons

Peak amount of water used in a 24-hour period - 400 customers
(estimated)

Size lines - 6 and 8 inches

Monthly Rates -

First	1,500 gallons	\$6.50 (Minimum bill)
Next	3,500 gallons	3.50 per M gallons
Next	5,000 gallons	3.00 per M gallons
Next	15,000 gallons	2.00 per M gallons
All over	25,000 gallons	1.00 per M gallons

Contribution in aid of construction -

5/8-inch meter (Res.)	\$ 250
3/4-inch meter	300
1-inch meter	350
1 1/2-inch meter	500
2-inch meter	675
3-inch meter	950
4-inch meter	1,350
6-inch, or larger, meter	Actual cost

Surface water sources - Rough River

Average discharge - Rough River at Falls of Rough, 741 cfs (27 years USGS, unadjusted)

Expected ground water yield - 50 to 200 gpm along the western and southwestern border of the county and small portions throughout the county; 5 to 50 gpm in northeastern and northwestern tips of county; 5 gpm or less over the remainder of the county

Sewerage

Company serving Leitchfield - Leitchfield Utilities*

314 West White Oak Street

Leitchfield, Kentucky 42754

(502) 259-4034

Design capacity - 360,000 gpd**

Average daily flow - 188,000 gallons;** Treatment - Primary and secondary

Type treatment - Trickling filter, digester, drying beds, final settling tank, primary settling tank

Treated effluent discharged into - Taylor Fork of Bear Creek

Size of sanitary mains - 6 and 8 inches; Size of storm mains - 15 and 24 inches

Rates - 60 percent of monthly water bill

Tap-on charge: \$200

*A 201 Facilities Plan has been completed which recommends the construction of a 1.3 million gallon per day sewage treatment plant to serve the communities of Leitchfield and Clarkson.

**Data obtained from Department for Natural Resources and Environmental Protection. Parts of the system can handle up to 720,000 gpd, but the total capacity of the system is limited to 360,000 gpd based on the capacity of drying beds and settling system.

CLIMATE

Grayson County

Temperature

Annual mean (30-year record)	55.2 degrees
Average annual 1974	55.1 degrees
Record highest, July, 1966 (11-year record)	98.0 degrees
Record lowest, January, 1972 (11-year record)	-11.0 degrees
Normal heating degree days (30-year record)	4,729
(Heating degree day totals are the sums of negative departures of average daily temperatures from 65 degrees F.)	

Precipitation

Mean annual total (30-year record)	44.49 inches
Mean annual snowfall (30-year record)	15.70 inches
Total precipitation 1974	60.09 inches
Mean number days precipitation (.01 inch or more) (30-year record)	130
Average number days thunderstorms (30-year record)	47

Prevailing Winds (17-year record)

South

Relative Humidity (11-year record)

1 a.m.	76 percent
7 a.m.	81 percent
1 p.m.	59 percent
7 p.m.	64 percent

Source: U.S. Department of Commerce, Environmental Science Services Administration, Climatological Data, 1974. Station of record: Lexington, Kentucky.

LOCAL GOVERNMENT

City

Structure - Mayor - 4-year term; 6 councilmen - 2-year terms
Estimated operating budget 1976 - General Fund \$439,760
Water and Sewer Fund 308,000
City Gas System 330,000
Fees and licenses - 1 percent occupational license tax on wages and net profits; unloading license \$10 to \$50 annually

County

Structure - County Judge - 4-year term; 6 magistrates - 4-year terms
Budget 1975-76 - General Fund \$158,860; Road Fund \$52,200

Assessed Value of Property, 1975

<u>Classes of Property</u>	<u>Leitchfield</u>	<u>Grayson County</u>
Real Estate	\$23,722,860	\$105,855,082
Tangibles	6,787,084	15,336,241

Property Taxes

Land and buildings are taxed by the state and may be taxed by local jurisdictions. The state rate is \$0.015 per \$100 of assessed valuation.

Tangible personal property owned by manufacturers (automobiles, trucks, finished goods, office furniture, office equipment) is taxed by the state at \$0.15 per \$100 and may be taxed by local jurisdictions.

Manufacturing machinery, raw materials inventories, pollution control equipment and goods in process inventories are not subject to local taxation. The state rate is \$0.15 per \$100.

Property stored in public warehouses is not subject to local taxation. The state rate is only \$0.015 per \$100.

All property is assessed at 100 percent of fair cash value.

Local Property Tax Rate Per \$100 of Assessed Valuation, 1975*

<u>Taxing Jurisdiction</u>	<u>Leitchfield</u>	<u>Grayson County</u>
County	\$.233	\$.233
School	.366	.366
City	.150	

Special (not county wide): Fire protection - .020 (per acre)
Caney Creek - .100
Big Reedy Watershed - .060

Utilities Gross Receipts Tax for Schools

Grayson County levies a 3 percent tax on utilities receipts for schools. This tax is paid by all consumers of utilities as an add-on to the utilities bills. Exempted are receipts from utilities services that are resold and the receipts from the sale of energy or energy producing fuels that exceed 3 percent of the cost of production in manufacturing, processing, mining or refining.

Planning and Zoning

Presently there is no planning and zoning agency in Leitchfield or Grayson County.

Mandatory state codes enforced - Plumbing, National Fire Protection Association Code, National Building Code (for major buildings and residential construction containing more than 12 bedrooms per building).

Safety

<u>Police</u>	<u>Leitchfield</u>	<u>Grayson County</u>
Total staff	12	5
Radio-patrol cars	3	4
<u>Fire</u>		
American Insurance Association Fire Rating	7	
Volunteers	38	

*Property Evaluation Administrator, Grayson County.

Rescue Service

Leitchfield Rescue Squad:

Number of volunteers - 38

Equipment - 5 complete sets of scuba diving dquipment, 1 boat (14 feet),
2 resuscitators

Personnel training - Annual refresher training conducted for volunteer
firemen

Solid Waste

Leitchfield

Type service	Municipal
Fee charged:	
residential	\$2.50 per month
business	\$5 to \$35 per month
Collection frequency:	
residential	Weekly
business	Weekly or as needed
Trash pickup	As needed
Disposal method	Sanitary landfill

Manufacturers may obtain a permit from the city to use the
sanitary landfill for solid waste disposal.

EDUCATION

<u>Public Schools</u>	<u>Grayson County</u>
Total Enrollment (May, 1976)	3,761
Elementary	1,985
Middle School	742
High School	1,034
Student-Teacher Ratio	22 to 1
Elementary	21 to 1
Middle School	26 to 1
High School	22 to 1
Accreditation	*
Percent High School Graduates to College	20.7
Expenditures Per Pupil (1974-75)	\$623.88
Bonded Indebtedness, June 30, 1975	\$3,406,000
<u>Nonpublic Schools</u>	
Total Enrollment	120
Elementary	120
Student-Teacher Ratio	24 to 1
Elementary	24 to 1

*All Grayson County Schools have been evaluated by the Southern Association of Colleges and Schools and indications are that they will receive accreditation under this agency in December of 1976.

Area Colleges and Universities

<u>Name</u>	<u>Location (Miles distant)</u>	<u>Enrollment (Fall, 1975)</u>	<u>Highest Degree Conferred</u>
Elizabethtown Community College	Elizabethtown (33)	1,345	Associate
Fort Knox Extension Campus, University of Kentucky	Fort Knox (50)	*	Baccalaureate
Brescia College	Owensboro (52)	928	Baccalaureate
Kentucky Wesleyan College	Owensboro (52)	708	Baccalaureate
Western Kentucky University	Bowling Green (52)	13,040	Masters, Ph.D. **

*Enrollment is included in total enrollment of the University of Kentucky, which in 1975 was 22,526.

**Cooperative program with the University of Kentucky, Lexington, for a Ph.D. in education only.

Vocational Schools

	<u>Nearest State School</u>	<u>Nearest Area Education Center</u>
	Elizabethtown State Vocational-Technical School	Breckinridge County Area Vocational Education Center
Location	Elizabethtown	Harned
Miles Distant	33	26
Curriculum	Commercial Foods Health and Personal Service Industrial Education Air Conditioning and Refrigeration Appliance Repair Auto Mechanics Carpentry Drafting Industrial Electricity Industrial Machine Repair Machine Shop Radio and TV Repair Welding	Business and Office Industrial Education Auto Mechanics Carpentry Machine Shop Welding

Arrangements can be made to provide training in the specific production skills required by an industrial plant. Instruction may be conducted either in the vocational school or in the industrial plant, depending upon the desired arrangement and the availability of special equipment.

Plans are for construction to begin on the Grayson County Vocational Education Center during the summer of 1976 with completion slated for the fall of 1977. This facility, to be located adjacent to the Grayson County High School, will offer programs in: Carpentry, Welding, Health Careers, Automotive Mechanics, basic electronics to include Radio and TV Repair, and Industrial Electricity.

HEALTH

Local Medical Personnel

Physicians - 4

Dentists - 1

Hospitals

<u>General Hospital</u>	<u>Location</u>	<u>Beds</u>
Grayson County War Memorial Hospital	Leitchfield	40

General hospital facilities - Operating room, X-ray equipment, recovery room, maternity ward, emergency room, respiratory therapy

Medical staff - 5 doctors, 15 registered nurses, 2 licensed practical nurses; in-house physicians - holidays, weekends, and 5 p.m. to 5 a.m. week nights

Ambulance Service

Name - Grayson County Ambulance Service

Staff - 8 employees, 7 of which are certified Emergency Medical Technicians

Service - 24-hour, county wide

Equipment - 3 ambulances

Nursing Homes

<u>Number</u>	<u>Beds</u>
2	52 personal care; 116 intermediate care

Public Health

Facility - Grayson County Health Department

Staff - One environmentalist, two nurses, two clerks

Family planning - One health service aide, one nurse (part time), one clinician (part time);

Home health agency - 1 nurse, 1 community nurses' aide, one clerk

OTHER LOCAL FACILITIES

Communications

Telephone - General Telephone Company of Kentucky
Services - Standard

Telegraph - Western Union
Services - Telephone

Postal - U.S. Post Office
Class - First
Mail received - Once daily
Mail dispatched - Once daily

Newspapers -	Leitchfield Gazette	Grayson County News
Weekly and circulation -	4,400	5,600
Other papers		
received from -	Louisville, Kentucky; New York, New York	

Radio - WMTL - AM/FM
Stations received from - Louisville, Bowling Green and Owensboro,
Kentucky; Evansville, Indiana

Television -
Cable service
Reception from - Bowling Green and Louisville, Kentucky; Evansville,
Indiana; Nashville, Tennessee
Educational Television - Bowling Green and Elizabethtown, Kentucky;
Evansville, Indiana

Religious Institutions

Number of churches - 12
Denominations - Baptist, Catholic, Christian, Church of Christ, Church
of God, Methodist, Nazarene, Pilgrim Holiness, Presbyterian, Seventh
Day Adventist

Nearest Synagogue - Owensboro, 52 miles distant
Congregation - Adath Israel (reform)

Financial Institutions

<u>Banks</u>	<u>Assets</u>	<u>Deposits</u>	<u>Statement Date</u>
Leitchfield Deposit Bank and Trust Company	\$14,675,355.59	\$12,692,395.59	12/31/75
The Citizens Bank and Trust Company	17,470,695.80	15,784,333.29	12/31/75

<u>Savings and Loan Association</u>	<u>Assets</u>	<u>Shared Accounts</u>	<u>Statement Date</u>
First Federal Savings and Loan Association	\$18,608,464.83	\$17,740,643.82	12/31/75

Hotels and Motels

Total number - 4
Total units - 62

Clubs and Organizations

Business and Civic - Chamber of Commerce, Leitchfield Development Council, Rotary Club, Lions Club, Jaycees, Business and Professional Womens Club, Retail Merchants Association

Fraternal - Masonic, VFW, American Legion, Shriners Club, Scottish Rites

Women's - Woman's Club, Homemakers Club, Eastern Star, Zeta Chi

Youth - 4-H Club, Little League, FFA, Boy Scouts, Girl Scouts

Other - Sportsman's Club

RECREATION

Local

Leitchfield provides a supervised summer recreation program which includes tennis and arts and crafts classes. As a part of the program, the Grayson County Middle School gymnasium is opened to adults in the community for organized play in volleyball, badminton, floor tennis, and table tennis. Two parks, two playgrounds, and two baseball diamonds are also provided for recreational activities. A new 9-hole golf course will soon be completed and available to the public.

Private recreation facilities include a movie theater, a drive-in theater, a skating rink, a lake and pay fishing area.

Area

Leitchfield is approximately 20 miles from the Rough River Dam State Resort Park, one of Kentucky's full facility recreation parks. Accommodations include a 40-room lodge, with dining room, and cottages. Five general camping areas with 50 sites are available. Park features include 4,860-acre Rough River Lake, lodge pool, beach, bathhouse, boat and motor rentals, paddle boats, dock, mini-golf, 9-hole par-3 golf, tennis, hiking, shuffleboard, picnicking, playground and supervised recreation.

Leitchfield is also within an hour's driving time of the Abraham Lincoln Birthplace National Historic Site, Nolin River Lake, and Mammoth Cave National Park.

With close proximity to the metropolitan areas of Bowling Green, Louisville, and Owensboro, Leitchfield residents have access to a multitude of entertainment facilities, ranging from cultural arts programs to college and professional sports.

COMMUNITY IMPROVEMENTS

Recent:

Tell City Chair Company, manufacturer of furniture components, is in operation and employs 63. Middle Round, Inc., manufacturing golfing equipment, is now in operation and employs 17. Hoover-Seng Company recently announced industrial expansion plans which will create approximately 50 new jobs.

A Little League ball park, with bleachers, has been completed, and a new blacktop road provides access to the park.

A 2,500-foot turf runway, located just southeast of Leitchfield, has been completed. Tie down services are available.

The Citizens Bank and Trust Company has constructed a new building and is now occupying the new facility.

Twenty-four hour, county wide ambulance service is now being provided.

A new 500,000 gallon elevated storage tank has been erected, increasing the city's water storage capacity to 775,000 gallons.

A chapel with a seating capacity of approximately 100 has been constructed at the Grayson Manor Nursing Home.

A telephone business office has been opened in Leitchfield for the convenience of General Telephone customers.

The Grayson County School System reorganized in the fall of 1974 with opening of the new Grayson County High School. The school system now consists of three elementary schools grades 1-6, the Grayson County Middle School grades 7-8, the Grayson County Occupational Training Center for handicapped students, and the Grayson County High School grades 9-12. The Grayson County High School, which has recently received the comprehensive rating by the State Board of Education along with the other schools in the county, will be accredited for the next three years under the Cooperative Accreditation Program through the State Department of Education. All Grayson County schools have recently

been evaluated by the Southern Association of Colleges and Schools and indications are that they will receive accreditation under this agency in December of 1976. Programs for exceptional children have been expanded recently to include: TMH, EMH and Speech Therapy.

Underway:

The Southgate Mall shopping area is now being developed and construction of a building which will house a restaurant is underway.

The Leitchfield Deposit Bank is constructing a branch banking facility.

A combined beautification and townlift program is underway. A Beautification Board has been formed, consisting of two representatives from each of eight civic organizations. A clean-up month was promoted and a survey of the town will be conducted with follow-up letters to residents and businesses requesting their cooperation in the community improvement project. Proceeds from an antique show, sponsored by the Leitchfield Woman's Club, and funds donated by the city will be used for the beautification of Public Square.

Planned:

A 201 Facilities Study has been completed which recommends the construction of a 1.3 million gallon per day sewage treatment plant to serve the communities of Leitchfield and Clarkson.

Construction of a 35-bed expansion of the Grayson County War Memorial Hospital is expected to be underway by late summer 1976. Plans also include remodeling of the main structure.

The Grayson County Water District is planning an 18-mile extension of service which will add approximately 180 new customers to the system.

Construction of a new jail complex is planned. The new proposed four-story facility will house a jail, a juvenile court center and all the facilities of the circuit court.

Plans are underway to construct a public library.

A swimming pool is planned for construction.

Plans for a 9-hole golf course have been completed and construction is expected to start in the near future.

The Grayson County School System plans to initiate a deaf and hard-of-hearing program in the fall of 1976.

Plans are for construction to begin on the Grayson County Vocational Education Center during the summer of 1976 with completion slated for the fall of 1977. This facility, to be located adjacent to the Grayson County High School, will offer programs in: Carpentry, Welding, Health Careers, Automotive Mechanics, basic electronics to include Radio and TV Repair, and Industrial Electricity.

HISTORY

Grayson County, the fifty-fourth county established in the state, dates from 1810. Rough River flows along its northern boundary. Containing 496 square miles of land area, the county's surface is level to gently rolling, and the soil is fairly fertile. Some tracts of virgin timber remain in the county, and deposits of limestone and iron ore dot the area.

Grayson County was named for Colonel William Grayson, a native and resident of Virginia. He was first elected as a delegate to the Articles of Confederation Congress. He was a member of the Virginia Convention that ratified the Federal Constitution in 1788, which he opposed.

Leitchfield, the county seat, 635 feet above sea level, was incorporated on February 5, 1866. It was named for Major David Leitch who owned the land on which the town was built. Leitch lived in Campbell County, Kentucky, at Leitch's Station, and some of his holdings in Grayson County were adjacent to Washington's claims. It has been said that there is no other town in the world with the exact name of Leitchfield.

George Washington once owned a section of 5,000 acres of land in the extreme northwestern part of the county. He acquired this land in 1788 from Harry Lee, generally known as "Lighthouse Harry."

Jack Thomas was the most popular person in the early history of Grayson County. He was born in a house built by Thomas Lincoln, father of the President. He was the first County and Circuit Court Clerk, and held both offices continuously from the formation of the county until 1851.

Grayson Seminary, incorporated in January 1, 1816, was an outstanding educational institution for a frontier area and continued in operation until the Civil War.

Grayson County has had bad luck with her courthouses. The first was burned by Confederate soldiers in 1864. The next building was destroyed in 1896. A third burned in April, 1936.

Grayson County had a population of 2,301 in 1810. By 1850, population had increased to 6,837, and by 1910 the county had 19,958 inhabitants. Population had decreased to 15,834 by 1960. Between 1960 and 1970 population increased, reaching 16,445 in 1970. This growth trend continued during the early 1970's with population being estimated at 18,200 in 1975.

The total number of Grayson County residents employed in 1974 averaged 7,625, including 1,000 in agriculture and 870 in government. Manufacturing employers in the county reported 1,190 workers, and trade and services firms employed 1,030. Largest of the county's manufacturing firms are: Albany Cheese, Inc., Kentucky Division of Hoover-Seng Company, Tell City Chair Company, and Leitchfield Division of Vermont American Corporation.

Research
Patsy Wallace

Clerical
Barbara Blair

Graphics
N. C. Montague
Frank Ferrante
Tony Cecconi

Cartography
Site Development Section

This copy has been prepared by the Kentucky Department of
Commerce, Division of Research and Planning, and the cost
of printing paid from state funds.

**Kentucky Department of Commerce
Capital Plaza Tower
Frankfort, Kentucky 40601**

**Industrial Development Division
(502) 564-7140**

**Community Services Division
(502) 564-4300**

**Business Development Division
(502) 564-4300**

**Research and Planning Division
(502) 564-4886**

**Office of Minority Business Enterprises
(502) 564-4270**

**Map Sales Office
133 Holmes Street
(502) 564-4715**

**Industrial Development Finance Authority
(502) 564-4554**