

1979

Industrial Resources: Hancock County

Kentucky Library Research Collections
Western Kentucky University, spcol@wku.edu

Follow this and additional works at: https://digitalcommons.wku.edu/hancock_cty

 Part of the [Business Administration, Management, and Operations Commons](#), [Growth and Development Commons](#), and the [Infrastructure Commons](#)

Recommended Citation

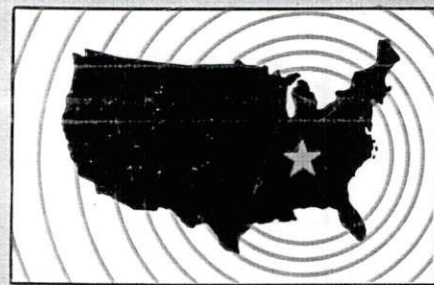
Kentucky Library Research Collections, "Industrial Resources: Hancock County" (1979). *Hancock County*. Paper 8.
https://digitalcommons.wku.edu/hancock_cty/8

This Report is brought to you for free and open access by TopSCHOLAR®. It has been accepted for inclusion in Hancock County by an authorized administrator of TopSCHOLAR®. For more information, please contact topscholar@wku.edu.

INDUSTRIAL RESOURCES

HANCOCK COUNTY

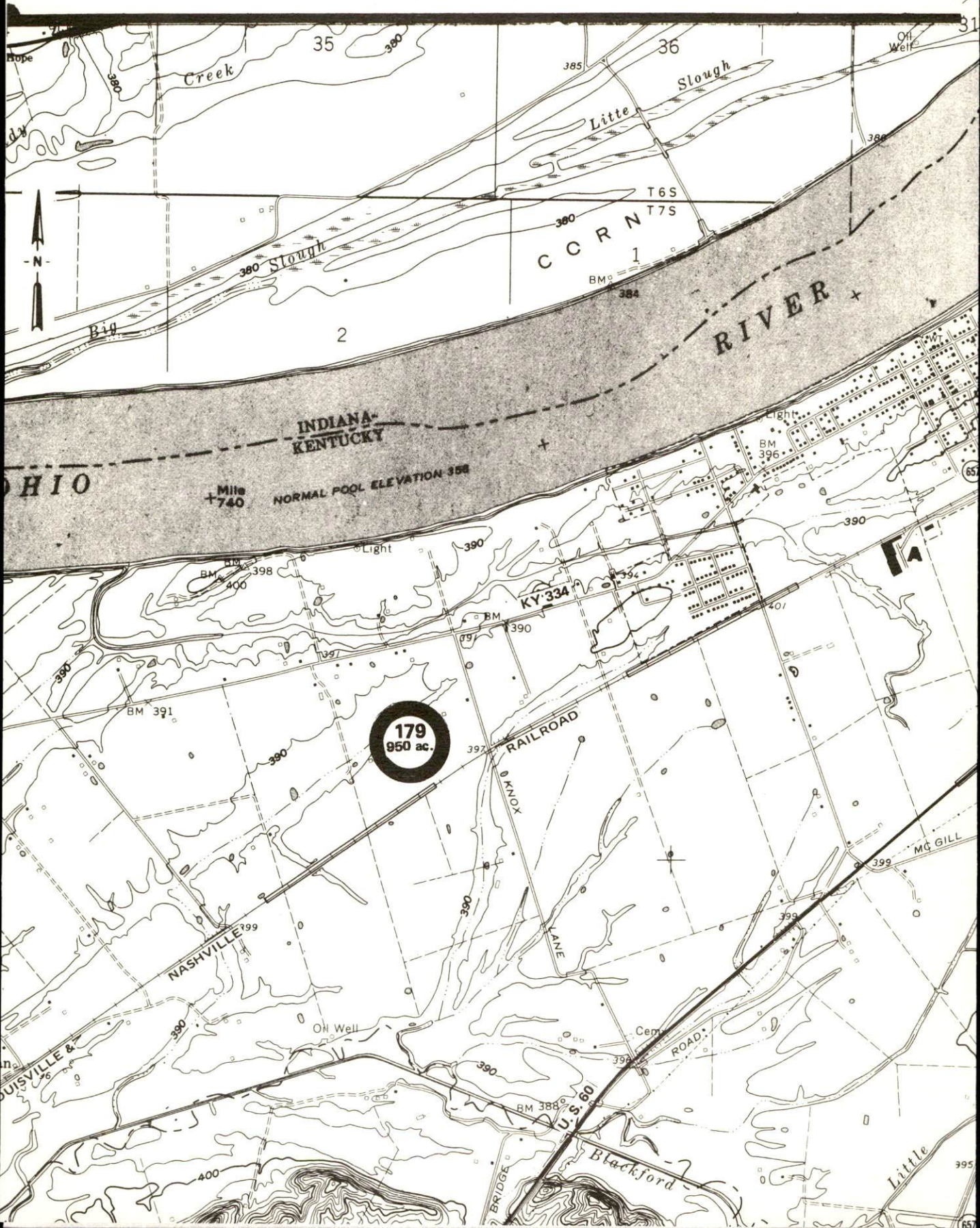
*Kentucky
first*

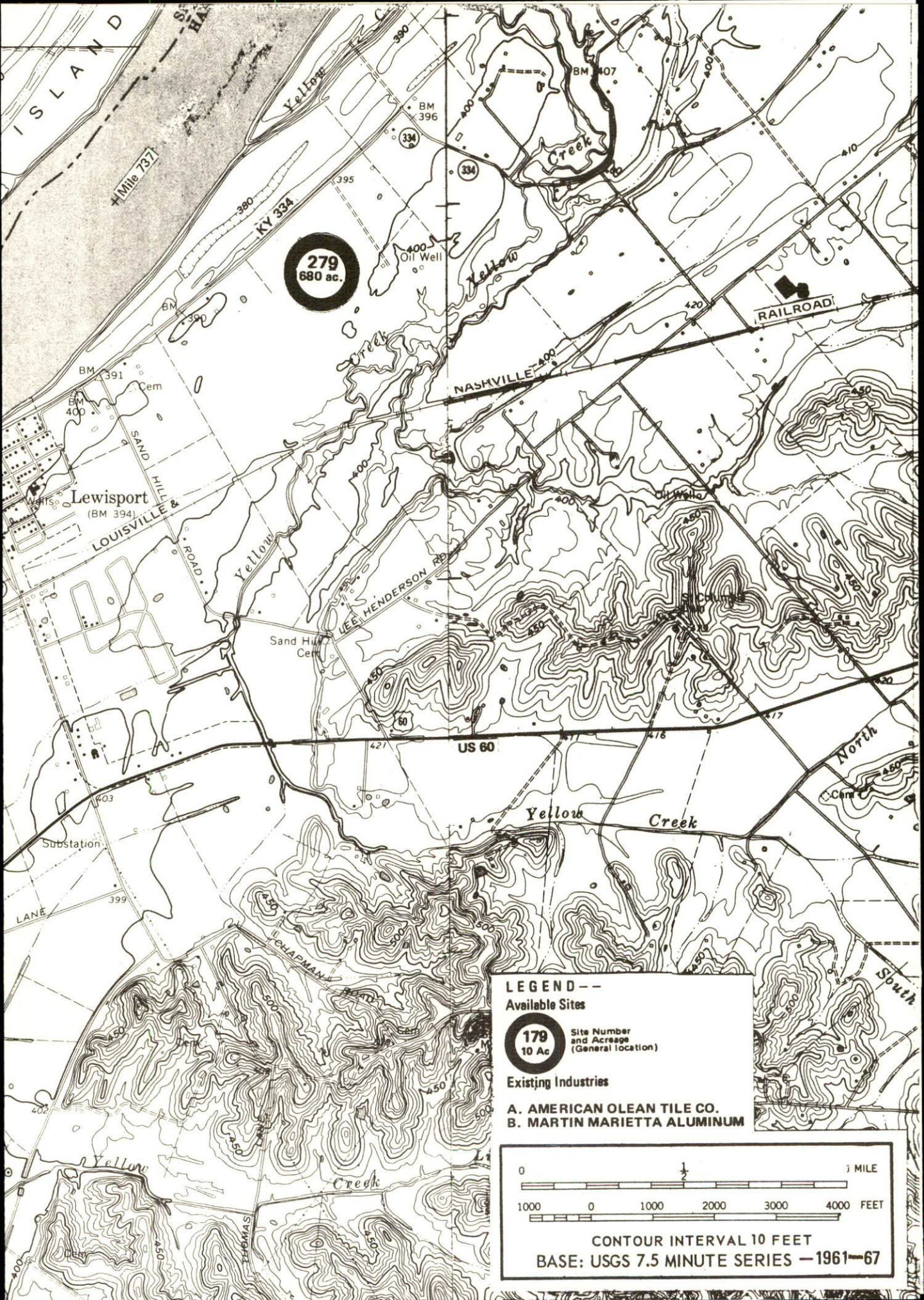


DEPARTMENT OF COMMERCE

LEWISPORT, KENTUCKY --- Index to Industrial Sites -- 1979

For detailed data on individual sites, contact Mr. John S. Hancock, P. O. Box 22, Lewisport, Kentucky 42351 or the Industrial Development Division, Kentucky Department of Commerce, Capital Plaza Tower, Frankfort, Kentucky 40601.





279
680 ac.

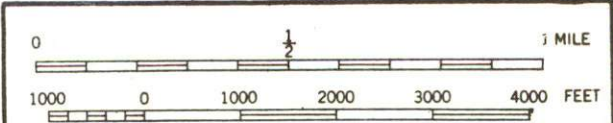
LEGEND --
Available Sites

179
10 Ac

Site Number and Acreage (General location)

Existing Industries

- A. AMERICAN OLEAN TILE CO.
- B. MARTIN MARIETTA ALUMINUM



CONTOUR INTERVAL 10 FEET
BASE: USGS 7.5 MINUTE SERIES — 1961—67

INDUSTRIAL RESOURCES
HANCOCK COUNTY, KENTUCKY

Prepared by
The Kentucky Department of Commerce
Division of Research and Planning
in cooperation with
The Hancock County Chamber of Commerce

1979

Program supervisor - Pamela Riley; research - Rich Stringer; clerical - Sharon Mills; graphics - Frank Ferrante, Tony Cecconi, Richard Spencer; cartography - Industrial Development Division. Cost of printing paid from state funds.

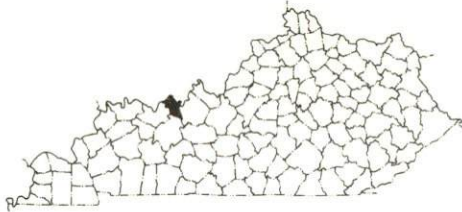
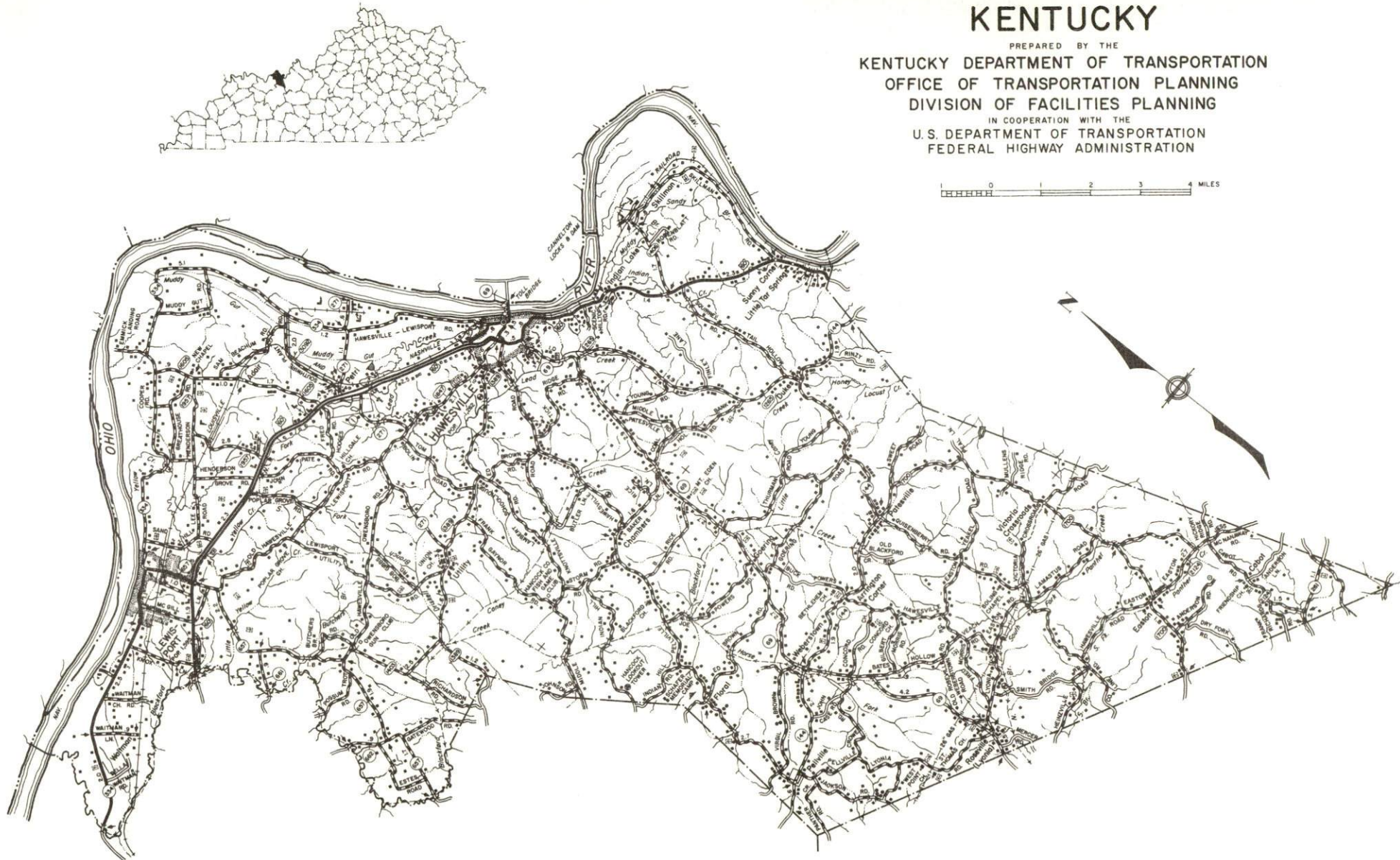
TABLE OF CONTENTS

<u>Chapter</u>	<u>Page</u>
INDUSTRIAL SITES	i
SUMMARY OF INDUSTRIAL RESOURCES - HANCOCK COUNTY, KENTUCKY	1
THE LABOR MARKET AREA	8
Population	8
Labor Force Characteristics of Residents, 1978	8
Hancock County Manufacturing Firms, Their Products and Employment	9
Labor Organizations	10
Industrial Services	10
Estimated Male Labor Supply	11
Estimated Female Labor Supply	11
Average Weekly Wages by Industry, by Place of Work, 1978	12
Per Capita Personal Income	14
TRANSPORTATION	15
Rail	15
Highways	15
Truck Service	16
Air	17
Bus	18
Rental Services	18
Water	18
POWER AND FUEL	19
Electricity	19
Natural Gas	19
Other Fuels	20
WATER AND SEWERAGE	21
Water	21
Sewerage	23
CLIMATE	24

<u>Chapter</u>	<u>Page</u>
LOCAL GOVERNMENT	25
City	25
County	25
Assessed Value of Property, 1978	25
Property Taxes	26
Combined State and Local Rates Per \$100 Valuation, 1978	26
Utilities Gross Receipts Tax for Schools	27
Planning and Zoning	27
Safety	28
Police	28
Fire	28
Rescue Service	28
Refuse Collection and Disposal	28
EDUCATION	29
Public Schools	29
Nonpublic Schools	29
Area Colleges and Universities	30
Vocational Schools	31
HEALTH	33
Local Medical Personnel	33
Hospitals	33
Other Medical Facilities	34
Ambulance Service	34
Public Health	34
OTHER LOCAL FACILITIES	35
Communications	35
Library Services	36
Religious Institutions	36
Financial Institutions	36
Hotels and Motels	37
Clubs and Organizations	37
RECREATION	38
COMMUNITY IMPROVEMENTS	40

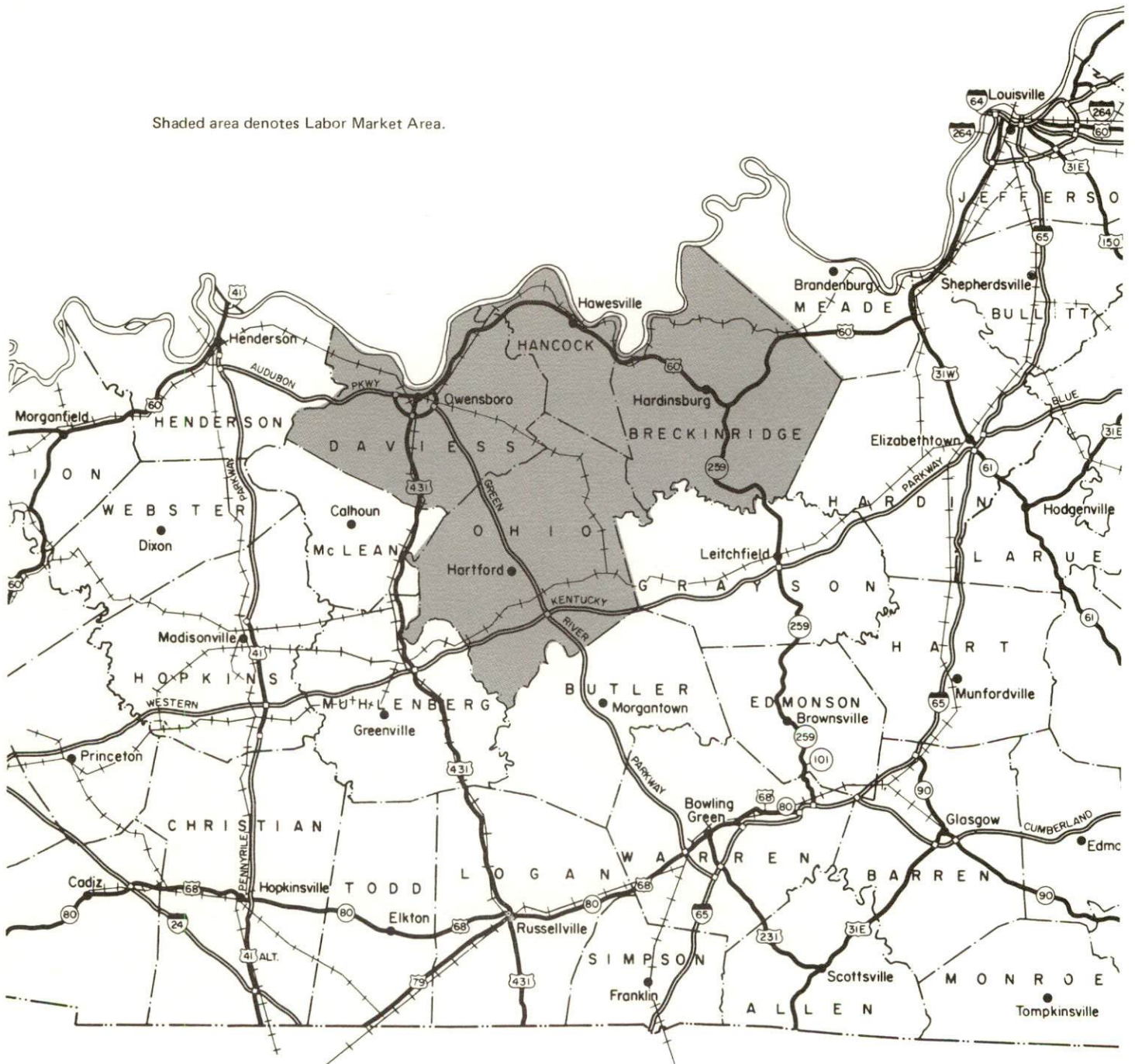
1979 EDITION
GENERAL HIGHWAY MAP
HANCOCK COUNTY
KENTUCKY

PREPARED BY THE
KENTUCKY DEPARTMENT OF TRANSPORTATION
OFFICE OF TRANSPORTATION PLANNING
DIVISION OF FACILITIES PLANNING
IN COOPERATION WITH THE
U.S. DEPARTMENT OF TRANSPORTATION
FEDERAL HIGHWAY ADMINISTRATION



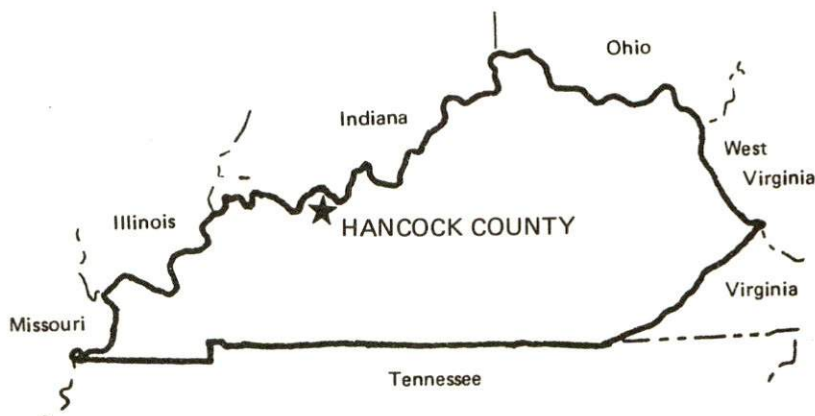
HANCOCK COUNTY LABOR MARKET AREA
With
MAJOR HIGHWAYS & RAILROAD SYSTEM

Shaded area denotes Labor Market Area.



SUMMARY OF INDUSTRIAL RESOURCES
HANCOCK COUNTY, KENTUCKY

LOCATION



Road Distance in Miles from Hawesville:

Atlanta	397	Baltimore	688
Chicago	357	Detroit	450
New York	838	St. Louis	235

POPULATION

City of Hawesville, 1976	1,161
City of Lewisport, 1976	1,670
Hancock County, 1978	7,400
Labor Market Area, 1978	126,400
%Nonwhite, Hancock County, 1977	1.9

LABOR ANALYSIS

Labor Market Area - Hancock, Breckinridge, Daviess and Ohio Counties

Estimated available workers from labor market area, 1978:

Male	3,962*	Female	4,217*
Unemployment rate, 1978		Labor Market Area	4.9%
Hancock County	5.3%	Daviess County	5.1%
Breckinridge County	4.9%	Ohio County	4.1%

*In addition, the labor supply will be supplemented by the number of men and women in the adjoining Ohio counties of Perry and Spencer who are available for industrial jobs.

Total employment, Hancock County, 1978 - 3,181
 Manufacturing employment in labor market area, 1978 - 11,037
 Major local manufacturing plants:

<u>Name</u>	<u>Employment</u>
<u>Hawesville</u>	
<u>National Aluminum Division of National Steel Corporation</u>	<u>290</u>
<u>National-Southwire Aluminum Company</u>	<u>1,070</u>
<u>Southwire Company, Kentucky Division</u>	<u>220</u>
<u>Wescor Division</u>	<u>163</u>
<u>Western Kraft Paper Group</u>	<u>162</u>
<u>Lewisport</u>	
<u>American Olean Tile Company</u>	<u>187</u>
<u>Martin Marietta Aluminum</u>	<u>880</u>

Labor unions in local manufacturing plants:

Aluminum Workers; Clothing and Textile Workers; Paperworkers; Steelworkers

INDUSTRIAL SERVICES

	<u>Location</u>	<u>Miles Distant</u>
Tool & Die, Machine & Pattern Shops	<u>Owensboro, Kentucky</u>	<u>25</u>
Metal Service Centers	<u>Owensboro, Kentucky</u>	<u>25</u>
Heat Treating	<u>Evansville, Indiana</u>	<u>65</u>
Metal Finishers	<u>Hartford, Kentucky</u>	<u>49</u>
Electric Motor Repair	<u>Owensboro, Kentucky</u>	<u>25</u>

TRANSPORTATION

Rail:

Railroad - Louisville and Nashville Railroad
 Distance to nearest piggyback - 25 miles from Hawesville

Highways:

Interstate - I-64, 60 miles northeast of Hawesville
 Parkways - Green River and Audubon Parkways, 23 miles southwest of Hawesville
 U.S. Highway - 60

Truck:

Number of interstate motor carriers - 4; Local terminals - 0

Air:

Nearest scheduled airline service - Owensboro-Daviess County Airport

Distance - 28 miles; Airlines serving - Air Kentucky (Commuter)

Nearest local airport - Hancock Field

Distance - 3 miles north of Hawesville; Runway length - 5,000 feet

Water:

Nearest navigable river - Ohio River

Nearest public riverport - Owensboro; Distance - 25 miles

UTILITIES AND SERVICES

Electricity:

Hawesville, Lewisport and Hancock County

Local distributor - Green River Electric Corporation

Source of power - Big Rivers Electric Corporation

Natural Gas:

Hawesville

Local distributor - Western Kentucky Gas Company

Source of supply - Texas Gas Transmission Corporation

Available for new industry - No

Lewisport

Local distributor - Lewisport Municipal Natural Gas System

Source of supply - Texas Gas Transmission Corporation

Available for new industry - No

Other Fuels:

Number of area propane distributors - 10

Number of area distillate fuel oil distributors - 9

Water, treated:

Hawesville

Local supplier - Municipal
Excess municipal system capacity - 138,000 gpd
Storage capacity - 175,000 gallons
Expansions planned - No

Lewisport

Local supplier - Municipal
Excess municipal system capacity - 133,000 gpd
Storage capacity - 110,000 gallons
Expansions planned - Yes

Water, raw:

Source for industrial use - Ohio River

Sewer:

Hawesville

Excess treatment capacity - 150,000 gpd
Planned expansions - No

Lewisport

Excess treatment capacity - 150,000 gpd
Planned expansions - Yes

CLIMATE

Temperature, Normal - 56.0 degrees F.
Precipitation, Normal - 41.88 inches
Snowfall, Mean Annual - 13.9 inches
Prevailing winds - South-southwest
Relative humidity (%) - 6 a.m. 81; 6 p.m. 62

GOVERNMENT

Hawesville

Type - Mayor/City Council

Police personnel - full-time - 1

Fire department personnel - volunteer - 25

Fire insurance rating (A.I.A.), class - Inside city - 7
Outside city - 10

Lewisport

Type - Mayor/City Council

Police personnel - full-time - 2

Fire department personnel - volunteer - 25

Fire insurance rating (A.I.A.), class - Inside city - 7
Outside city - 10

TAXES

Property taxes:

Combined state and local rates per \$100 valuation, 1978
(100% assessment)

	<u>Inside City of Hawesville</u>	<u>Inside City of Lewisport</u>	<u>Outside City</u>
1. Land and buildings	\$1.161	\$1.006	\$0.764
2. Mfg. machinery, raw materials, goods in process, pollution control equipment	0.150	0.150	0.150
3. Finished goods, office equipment, vehicles, other tangibles	1.296	1.141	0.899
4. Intangibles (accounts receivable, notes, bonds, etc.)	0.250	0.250	0.250
5. Leaseholds in I. R. bond financed plants	0.015	0.015	0.015

Special local taxes:

Net profits tax - One percent in Hancock County

Utilities tax - 3% of electric, gas, water, sewer, telephone services

EDUCATION

Nearest state vocational-technical school - Daviess County State Vocational-Technical School, Owensboro, 25 miles from Hawesville
Nearest area vocational education center - Owensboro Vocational Technical School, Owensboro, 25 miles from Hawesville
Nearest colleges - Brescia College and Kentucky Wesleyan College, Owensboro, 25 miles from Hawesville

Public Schools:

High school enrollment - 530; Student/teacher ratio - 17-1
Middle school enrollment - 434; Student/teacher ratio - 18-1
Elementary school enrollment - 717; Student/teacher ratio - 17-1

Nonpublic Schools:

Enrollment - 108; Student/teacher ratio - 27-1

MEDICAL

Number of physicians locally - 2; Number of dentists locally - 2
Nearest hospitals - Owensboro-Daviess County Hospital and Our Lady of Mercy Hospital in Owensboro; Perry County Memorial Hospital in Tell City, Indiana; Total number of beds - 666

COMMUNICATIONS

Local newspaper - Hancock Clarion - Weekly (Hawesville)
Local radio station - WKCM-AM (Hawesville)
Television reception - Bowling Green and Louisville, Kentucky; Evansville, Indiana

RELIGIOUS FACILITIES

Churches - 12; Nearest Synagogue - Owensboro, 25 miles from Hawesville

FINANCIAL INSTITUTIONS

Hancock County

Banks - 1; Total assets - \$28,315,050.39
Savings & loan association - 1; Total assets - \$126,635,414.17

PUBLIC LODGING

Total number hotels and motels - 1; Total rooms - 10

RECREATION FACILITIES

Hancock County

Parks; Tennis courts; Baseball diamonds; Basketball courts; Picnic areas; Playgrounds; Boat ramps on the Ohio River; 20-acre lake with beach and bathhouse; Country club with clubhouse, swimming pool, golf course and tennis courts

Nearest Kentucky state resort park - Rough River Dam State Resort Park
Camping; Swimming; Fishing; Water skiing; Boating; Lodgings; Dining facility; Open year round; Airstrip

THE LABOR MARKET AREA

Area	POPULATION		
	1978 *	1970	Percent Nonwhite**
Hawesville	1,161**	1,262	2.7
Lewisport	1,670**	1,595	6.8
Labor Market Area	126,400	120,145	N/A
Hancock County	7,400	7,080	1.9
Breckinridge County	16,000	14,789	4.8
Daviess County	81,100	79,486	4.8
Ohio County	21,900	18,790	1.3

*Provisional Estimates.

**1976 Population Estimates; 1970 Percent Nonwhite for cities; 1977 Percent Nonwhite for counties.

Sources: U.S. Department of Commerce, Bureau of the Census, Census of Population, 1970. U.S. Department of Commerce, Bureau of the Census, Current Population Reports, Series P-25, No. 756, January 1979; Series P-26, No. 78-17, August 1979. University of Louisville, Urban Studies Center, Population Research Unit, Kentucky's Population Disaggregations of 1977 Estimates, December 1978.

LABOR FORCE CHARACTERISTICS OF RESIDENTS, 1978

	Hancock County	Labor Market Area
Civilian Labor Force	3,359	60,487
Employment	3,181	57,549
Agricultural	167	3,293
Nonagricultural	3,014	54,256
Unemployment	178	2,938
Rate of Unemployment (%)	5.3	4.9

Source: Kentucky Department for Human Resources, Kentucky Labor Force Estimates, Annual Averages, 1978.

HANCOCK COUNTY MANUFACTURING FIRMS,
THEIR PRODUCTS AND EMPLOYMENT

Firm (Establishment date)	Product	Employment			
		Total	Male	Female	Organized
<u>Hawesville</u>					
Bruner Printing Company (1910)	Job printing, business forms, newsletters	5	1	4	
Clarion Publishing Company (1893)	Newspaper, job printing	6	2	4	
Hancock County Ready Mixed Concrete (1964)	Ready mixed concrete	10	10	0	
National Aluminum Division of National Steel Corporation (1969)	Aluminum sheet coil form, aluminum sheet ingot and extrusion billet, aluminum for steel deoxidizing	290	275	15	*
National-Southwire Aluminum Company (1967)	Primary aluminum products	1,070	1,020	50	
Southwire Company, Kentucky Division (1967)	Aluminum wire strand, aluminum rod wire	220	200	20	
Western Kraft Paper Group, Kentucky Mills Division (1968)	Bleached kraft hardwood pulp, pulp mill, paper corrugating medium	330	311	19	*
<u>Lewisport</u>					
American Olean Tile Company (1959)	Quarry tile	187			*
Martin Marietta Aluminum (1966)	Aluminum sheet plate	880	789	91	*

*See Labor Organizations below.

Source: Kentucky Department of Commerce, Division of Research and Planning.

LABOR ORGANIZATIONS

<u>Union</u>	<u>Representing manufacturing workers at:</u>
<u>Hawesville</u>	
Aluminum Workers International Union, AFL-CIO	National Aluminum Division of National Steel Corporation
United Paperworkers International Union, AFL-CIO	Western Kraft Paper Group, Kentucky Mills Division
<u>Lewisport</u>	
Amalgamated Clothing and Textile Workers Union, AFL-CIO	American Olean Tile Company
United Steelworkers of America, AFL-CIO	Martin Marietta Aluminum

INDUSTRIAL SERVICES

	<u>Location</u>	<u>Mileage from Hawesville</u>
Tool & Die, Machine & Pattern Shops	Owensboro, Kentucky	25
Metal Service Centers	Owensboro, Kentucky	25
Heat Treating	Evansville, Indiana	65
Metal Finishers	Hartford, Kentucky	49
Electric Motor Repair	Owensboro, Kentucky	25
Source: <u>Kentucky Directory of Selected Industrial Services, 1979.</u>		

ESTIMATED MALE LABOR SUPPLY
HANCOCK COUNTY LABOR MARKET AREA*

Area	Current			Under- employed	Future
	Total	Not in Labor Force	Unemployed		Reaching 18 years of age before 1985
Labor Market					
Area	3,962	853	1,389	1,720	6,205
Hancock	248	51	87	110	407
Breckinridge	515	116	169	230	729
Daviess	2,498	531	887	1,080	4,205
Ohio	701	155	246	300	864

*In addition, the labor supply will be supplemented by the number of men in the adjoining Indiana counties of Perry and Spencer who are available for industrial jobs.

Sources: Kentucky Department for Human Resources, Kentucky Labor Supply Estimates by County, 1978. Kentucky Department of Commerce, Future Labor Supply Before 1985.

ESTIMATED FEMALE LABOR SUPPLY
HANCOCK COUNTY LABOR MARKET AREA*

Area	Current			Under- employed	Future
	Total	Not in Labor Force	Unemployed		Reaching 18 years of age before 1985
Labor Market					
Area	4,217	388	1,549	2,280	6,030
Hancock	252	21	91	140	358
Breckinridge	442	47	175	220	748
Daviess	2,850	256	1,024	1,570	4,092
Ohio	673	64	259	350	832

*In addition, the labor supply will be supplemented by the number of women in the adjoining Indiana counties of Perry and Spencer who are available for industrial jobs.

Sources: Kentucky Department for Human Resources, Kentucky Labor Supply Estimates by County, 1978. Kentucky Department of Commerce, Future Labor Supply Before 1985.

AVERAGE WEEKLY WAGES BY INDUSTRY,
BY PLACE OF WORK, 1978

	<u>Hancock County</u>	<u>Breckinridge County</u>	<u>Daviess County</u>	<u>Ohio County</u>
All Industries	\$348.14	\$152.78	\$210.53	\$267.51
Mining & Quarrying	*	*	302.30	*
Contract Construction	257.44	142.59	236.59	222.63
Manufacturing	*	163.21	264.17	168.35
Transportation, Communications & Public Utilities	*	285.46	306.70	218.53
Wholesale & Retail Trade	111.47	126.96	150.83	133.56
Finance, Insurance & Real Estate	143.38	195.77	203.48	179.15
Services	112.03	125.80	156.30	132.86
Other	*	*	167.48	*

*Not disclosed.

Note: Excludes domestic workers, railway workers; certain nonprofit corporations; majority of federal, state, and local government workers; and self-employed workers.

Source: Kentucky Department for Human Resources, Average Weekly Wages of Workers Covered by Kentucky Unemployment Insurance Law, 1978.

PER CAPITA PERSONAL INCOME

<u>Area</u>	<u>1977</u>	<u>1973</u>	<u>Percent Change</u>
Hancock County	\$5,563	\$3,686	50.9
Labor Market Area			
Range	\$4,505 - 6,926	\$3,225 - 4,392	N/A
Kentucky	5,989	4,021	48.9
U.S.	7,026	4,980	41.1

Source: U.S. Department of Commerce, Bureau of Economic Analysis,
April 1979.

TRANSPORTATION

Rail

Hawesville and Lewisport are on the main line of the Louisville and Nashville Railroad between Louisville, Kentucky, and Evansville, Indiana. Service to existing industry is provided from Skillman Yard at Hawesville Bottoms which is located approximately 3 miles south of Hawesville. A switcher is stationed at Skillman Yard. Freight services include one northbound and one southbound freight stopping daily, one northbound and one southbound local freight stopping three times a week, and one northbound and one southbound through freight daily. Team track space is available at both Hawesville and Lewisport. Piggy-back facilities are available at Owensboro, 25 miles southwest of Hawesville.

For details on routing, schedules, rates, and services, contact:

Manager of Industrial Development
Louisville and Nashville Railroad
908 West Broadway
Louisville, Kentucky 40201
(502) 587-5723

Highways

Hancock County is served by U.S. 60 and Kentucky Highways 69, 144, 657, 661 and 1389. Both Hawesville and Lewisport are located along U.S. 60, which is presently being widened to four lanes between the two towns. Construction is expected to be completed in the fall of 1979.

Access to the Green River Parkway and the Audubon Parkway is 23 miles southwest of Hawesville via U.S. 60. The Green River Parkway connects with the Western Kentucky Parkway, a major east-west toll road, and with Interstate 65 near Bowling Green, Kentucky. Interstate 64 is located 60 miles northwest of Hawesville via U.S. 60 and U.S. 231.

Truck Service

<u>Company</u>	<u>Home Office</u>
A & H Truck Line, Inc.*	1111 East Louisiana Street Evansville, Indiana 47711
McLean Trucking Company*	P.O. Box 213 Winston-Salem, North Carolina 27102
Overnite Transportation Company*	1000 Semmes Avenue P.O. Box 1216 Richmond, Virginia 23209
Robbins Truck Line, Inc.**	Route 1 Hardinsburg, Kentucky 40143

<u>Other Freight Services</u>	<u>Nearest Shipping Center or Home Office</u>
Purolator Courier Corporation***	Owensboro, Kentucky
United Parcel Service***	Owensboro, Kentucky
KATO Express (air cargo service)****	Elizabethtown, Kentucky

HIGHWAY MILES AND TRUCK TRANSIT TIME IN DAYS FROM
HAWESVILLE, KENTUCKY, TO SELECTED MARKET CENTERS

City	Highway Miles	Delivery		City	Highway Miles	Delivery Time TL
		Time TL				
Atlanta, Ga.	397	2nd a.m.		Los Angeles, Ca.	2,080	4th a.m.
Baltimore, Md.	688	3rd a.m.		Louisville, Ky.	90	overnight
Birmingham, Ala.	351	2nd a.m.		Nashville, Tenn.	155	2nd a.m.
Chicago, Ill.	357	2nd a.m.*		New Orleans, La.	672	3rd a.m.
Cincinnati, Ohio	191	2nd a.m.*		New York, N. Y.	838	3rd a.m.
Cleveland, Ohio	435	2nd a.m.		Pittsburgh, Pa.	478	2nd a.m.
Detroit, Mich.	450	2nd a.m.		St. Louis, Mo.	235	2nd a.m.*
Knoxville, Tenn.	332	2nd a.m.*				

*These points are being served on volume overnight with special handling.
Source: Delivery Time Only - Robbins Truck Line, Inc., Route 1,
Hardinsburg, Kentucky 40143.

*Interstate only.

**Interstate and intrastate.

***For regular scheduled pickups or for occasional pickups, arrangements must be made with the Louisville office of Purolator Courier Corporation or United Parcel Service.

****Daily pickup and delivery service is available to and from Standiford Field in Louisville. Arrangements for service should be made through the home office in Elizabethtown.

Air

Local

Location: Hancock Field
3 miles north of Hawesville and 7 miles
east of Lewisport, adjacent to an
industrial complex

Runways: 1 paved
Length: 5,000 feet

Traffic
Control: Wind sock, right hand traffic pattern
for runway

Lighting: Runway lights sundown to sunrise

Services: 100 octane, charter, rental, flight
instruction, maintenance

Air Freight
Service: Chartered air freight service must be
arranged

Nearest Scheduled Airline Service

Location: Owensboro-Daviess County Airport
3½ miles west-southwest of Owensboro; 28
miles southwest of Hawesville

Runways: 2 paved
Length: 6,500 feet; 3,700 feet (300-foot displaced
threshold)

Traffic
Control: Control tower, ground control, ILS
system

Lighting: Beacon, runways, lighted wind sock, ob-
struction lights and taxi light;
MALSR/RAIL, VASI, REIL, HIRL

Services: Air Kentucky (commuter) Airline, 100
octane, jet A fuel, storage, major
A & E repairs, general flying service,
taxi, rental cars

Air Freight
Service: Accepted on a space available basis

(Contd.)

Location:	Evansville Dress Regional Airport 4 miles north of Evansville, Indiana; 69 miles northwest of Hawesville
Runways:	3 paved
Length:	8,021 feet; 5,088 feet; 2,968 feet
Traffic Control:	Tower, ground control, arrival and departure control, clearance, radar, Automatic Terminal Information Service
Lighting:	Beacon and runway lights
Services:	Allegheny, Delta and Eastern Airlines, LL100 and jet A fuel, major repairs, major Avionics repairs, hangars and tiedowns, flight service station, APU, charter, flight instruction, plane rental, car rental, courtesy car, taxi, restaurant
Air Freight Service:	Air freight terminal regularly serviced by freight carrying airlines

Bus - Southern Greyhound Bus Lines serve Hawesville and Lewisport.

Rental Services - Nearest car and truck rentals in Owensboro, 25 miles southwest of Hawesville.

Water

The northern boundary of Hancock County is formed by the Ohio River, where a nine-foot navigation channel is maintained. Hawesville and Lewisport are both located along the Ohio River.

A public river terminal, the Owensboro Riverport, is located at Owensboro, 25 miles southwest of Hawesville. This facility has a 30,000-square-foot transfer warehouse, 9,300 square yards of paved outside storage, two 1.2-million gallon liquid storage tanks, and two 110-ton cranes (one located on a spud barge) for the transfer of commodities. The facility has 8 mooring dolphins and space for approximately 30 to 40 barges. Tug and fleeting service is available 24 hours a day. The riverport is located on a main line of the Louisville and Nashville Railroad.

POWER AND FUEL

Electricity

Company serving Hawesville, Lewisport and Hancock County - Green River Electric Corporation
Source of power - Big Rivers Electric Corporation
Total generating capacity - 678,300 KW
For industrial rates contact:

Green River Electric Corporation
3111 Fairview Drive
P.O. Box 1389
Owensboro, Kentucky 42301
(502) 926-4141

Natural Gas

Company serving Hawesville - Western Kentucky Gas Company
Source of supply - Texas Gas Transmission Corporation
Size of transmission mains - 8 inches (supplier);
6 and 8 inches (distributor)
Distribution mains - 2 and 4 inches
Distribution pressure - 35 psi
Btu content - 1,000 per cubic foot; Specific gravity - 0.60
For rates and supplies contact:

Western Kentucky Gas Company
311 West Seventh Street
Owensboro, Kentucky 42301
(502) 684-8811

Company serving Lewisport - Lewisport Municipal Natural Gas System
Source of supply - Texas Gas Transmission Corporation
Size of transmission mains - 8 inches (supplier);
4 inches (distributor)
Distribution mains - 2 and 4 inches
Distribution pressure - 12 psi
Btu content - 1,000 per cubic foot; Specific gravity - 0.60
For rates and supplies contact:

Lewisport Municipal Natural Gas System
City Hall
Lewisport, Kentucky 42351
(502) 295-3324

Other Fuels

Propane

Empiregas, Inc., of Owensboro 2108 Calhoun Road Owensboro, Kentucky 42301	Pargas of Owensboro 308 East 25th Street Owensboro, Kentucky 42301
Industrial Petroleum Supply 3520 New Hartford Pike Owensboro, Kentucky 42301	Suburban Gas and Heating Company Pyrofax Gas Service 2124 Calhoun Road Owensboro, Kentucky 42301
Jay's LP Gas, Inc. Texaco LP Gas Products Pleasant Valley Road Owensboro, Kentucky 42301	Sure Gas, Inc. 1301 Daviess Street Owensboro, Kentucky 42301
Lyons Skelgas Company Hardinsburg, Kentucky 40143	Thermogas Company Highway 60 West Hardinsburg, Kentucky 40143
Miles LP Gas, Inc. Keller Road Owensboro, Kentucky 42301	Truflame LP Gas Products Fischer's Furniture Company, Inc. Tell City, Indiana

Fuel Oils

Distillate fuel oil -

Ashland Petroleum Company 1021 East 2nd Street Owensboro, Kentucky 42301	Industrial Petroleum Supply 3520 New Hartford Pike Owensboro, Kentucky 42301
Ashland Oil Company Hardinsburg, Kentucky 40143	Marathon Oil Company Pleasant Valley Road Owensboro, Kentucky 42301
T. J. Bartlett Company Gulf Heating Oil 1309 West 9th Street Owensboro, Kentucky 42301	Quality Oil Company, Inc. Distributor of Amoco Oil Products Pleasant Valley Road Owensboro, Kentucky 42301
D. R. Hayden Oil Company Sunoco Products 1414 East 15th Street Owensboro, Kentucky 42301	Standard Oil Company Hardinsburg, Kentucky 40143

Sunmark Industries, Division of
Sun Oil Company of Pennsylvania
D.S. Sims Oil Company
P.O. Box 175
Hawesville, Kentucky 42348

Residual fuel oil - Arrangements must be made with the refinery.

Low sulphur content coal - Available in eastern Kentucky.

WATER AND SEWERAGE

Water

Company serving Hawesville - Hawesville Water Works*
P.O. Box 157
Hawesville, Kentucky 42348
(502) 927-6870

Source - Two private wells
Treatment plant capacity - 288,000 gallons per day
Average daily consumption - 120,000 gallons
Peak daily consumption - 150,000 gallons
Type treatment - Filtration, chlorination, sedimentation, coagulation, aeration, fluoridation
Storage capacity - 175,000 gallons
Size lines - 2, 4 and 6 inches
Average pressure - 90 psi

MONTHLY WATER RATES FOR WHOLESALE AND INDUSTRIAL CONSUMERS

First	2,000 gallons	\$5.00 (Minimum)
Next	5,000 gallons	1.50 per M gallons
Next	8,000 gallons	1.30 per M gallons
Next	10,000 gallons	1.10 per M gallons
Next	25,000 gallons	.90 per M gallons
Tap-on charge:	3/4-inch meter	\$250
	1-inch meter	350
	1 1/2-inch meter	400
	2-inch meter	450

*Service to Vastwood Park has recently been upgraded.

Company serving Lewisport - City of Lewisport Municipal Water Works
P.O. Box 22
Lewisport, Kentucky 42351
(502) 295-3324

Source - 2 deep wells
Treatment plant capacity - 288,000 gallons per day
Average daily consumption - 125,000 gallons
Peak daily consumption - 155,000 gallons
Type treatment - Filtration, coagulation, softening, sedimentation,
fluoridation
Storage capacity - 110,000 gallons*
Size lines - 4, 6 and 8 inches
Average pressure - 62 psi

MONTHLY WATER RATES FOR WHOLESAL
AND INDUSTRIAL CONSUMERS

First	2,000 gallons	\$3.50 (Minimum)
Next	3,000 gallons	1.25 per M gallons
Next	5,000 gallons	1.10 per M gallons
Next	15,000 gallons	.95 per M gallons
Next	25,000 gallons	.75 per M gallons
All over	50,000 gallons	.50 per M gallons

Tap-on charge: up to 1-inch meter \$100
over 1-inch meter Negotiable

Surface water sources - Ohio River
Average discharge - Ohio River at Cannelton Dam - Period of record:
October 1975 to 1978; maximum daily discharge - 561,000 cfs;
minimum daily discharge - 10,100 cfs
Expected ground water yield - 500 to 1,000 gpm along Ohio River; 50
to 200 gpm in mid-eastern portion of county; 5 to 50 gpm in small
section of south central portion of county; 5 gpm or less in western
and extreme eastern portion of county

*There are plans to construct one new 200,000-gallon storage tank in the
winter of 1979.

Sewerage

Company serving Hawesville - Hawesville Sewer Department
P.O. Box 157
Hawesville, Kentucky 42348
(502) 927-8707

Design capacity - 250,000 gallons per day
Average daily flow - 100,000 gallons
Treatment - Primary and secondary
Type treatment - Aeration, clarification, chlorination
Treated effluent discharged into - Lead Creek
Size of sanitary mains - 6, 8 and 10 inches
Size of storm mains - Up to six feet
Rates - 100 percent of monthly water bill
Tap-on charge: \$250

Company serving Lewisport - City of Lewisport Municipal Sewer System*
P.O. Box 22
Lewisport, Kentucky 42351
(502) 295-6665

Design capacity - 250,000 gallons per day
Average daily flow - 100,000 gallons
Treatment - Primary and secondary
Type treatment - Contact stabilization and final chlorination
Treated effluent discharged into - Ohio River
Size of sanitary mains - 8 and 12 inches
Rates - 80 percent of monthly water bill
Tap-on charge: \$100

*There are plans to build three new sludge drying beds in the summer of 1980.

CLIMATE

Hancock County

Temperature

Normal (30-year record)	56.0 degrees
Average annual 1978	54.0 degrees
Record highest, July, 1954 (38-year record)	105.0 degrees
Record lowest, February, 1951 (38-year record)	-23.0 degrees
Normal heating degree days (30-year record) (Heating degree day totals are the sums of negative departures of average daily temperatures from 65 degrees F.)	4,629

Precipitation

Normal (30-year record)	41.88 inches
Mean annual snowfall (38-year record)	13.90 inches
Total precipitation 1978	42.96 inches
Mean number days precipitation (.01 inch or more) (38-year record)	115
Mean number days thunderstorms (38-year record)	45

Prevailing Winds (14-year record)

South-southwest

Relative Humidity (17-year record)

Midnight	78 percent
6 a.m.	81 percent
Noon	59 percent
6 p.m.	62 percent

Source: U.S. Department of Commerce, Environmental Science
Services Administration, Climatological Data, 1978.
Station of record: Evansville, Indiana.

LOCAL GOVERNMENT

City

Hawesville

Structure - Mayor - 4-year term; 6 Councilmen - 2-year terms
 Budget 1978 - General Fund \$ 66,251.00
 Water and Sewer Fund \$103,341.91
 Fees and licenses - Occupational license - \$15 annually; vehicle
 license - \$5 annually

Lewisport

Structure - Mayor - 4-year term; 6 Councilmen - 2-year terms
 Budget 1978 - General Fund \$ 52,883.27
 Water and Sewer Fund 98,349.32
 City Gas System 504,712.55
 Fees and licenses - Occupational license - \$5 and \$10 annually, depen-
 dent on type of business

County

Structure - County Judge/Executive - 4-year term; 4 magistrates -
 4-year terms
 Budget 1978-1979 - General Fund \$836,920*; Road Fund \$546,775**
 Fees and licenses - Occupational license tax - one percent on wages
 and net profits

Assessed Value of Property, 1978

<u>Classes of Property</u>	<u>Hawesville</u>	<u>Lewisport</u>	<u>Hancock County</u>
Real Estate and Tangibles	\$6,283,446		
Real Estate Tangibles		\$6,298,256 4,161,427	\$62,801,522 (78-79) 28,201,854 (78-79)

*Includes \$200,000 occupational license tax.

**Includes \$433,000 occupational license tax.

Property Taxes

All property in Kentucky is assessed at 100 percent of fair cash value.

Land and buildings are taxed by the state and may be taxed by local jurisdictions. The state rate is \$0.315 per \$100 of assessed valuation.

Manufacturing machinery, raw materials inventories, pollution control equipment, and goods in the process of manufacture are not subject to local taxation. The state rate is \$0.15 per \$100.

Other tangible personal property owned by manufacturers (automobiles, trucks, finished goods, office furniture, office equipment) is taxed by the state at \$0.45 per \$100 and may be taxed by local jurisdictions.

Property stored in public warehouses in a transit status is not subject to local taxation. The state rate is only \$0.015 per \$100.

Intangible personal property located in Kentucky (money in hand, shares of stock, notes, bonds, accounts receivable, and other credits) is taxed by the state at \$0.25 per \$100, and is not subject to local taxation.

Private leaseholds in industrial facilities owned by cities or counties and financed by industrial revenue bonds are subject to a state tax of \$0.015 per \$100 of value (essentially the lessee's equity, adjusted for appreciation or depreciation). Local taxation is not permitted.

Combined State and Local Rates Per \$100 Valuation, 1978* (100% assessment)

	<u>Inside City of Hawesville</u>	<u>Inside City of Lewisport</u>	<u>Outside City</u>
1. Land and buildings	\$1.161	\$1.006	\$0.764
2. Mfg. machinery, raw materials, goods in process, pollution control equipment	0.150	0.150	0.150
3. Finished goods, office equipment, vehicles, other tangibles	1.296	1.141	0.899
4. Intangibles (accounts rec., notes, bonds, etc.)	0.250	0.250	0.250
5. Leaseholds in I.R. bond financed plants	0.015	0.015	0.015

*Kentucky Department of Commerce.

Utilities Gross Receipts Tax for Schools

A 3 percent tax is levied on utilities receipts for schools in Hancock County. Tax is paid by all consumers of utilities as an add-on to the utilities bills. Exempted are receipts from utilities services that are resold and the receipts from the sale of energy or energy producing fuels that exceed 3 percent of the cost of production in manufacturing, processing, mining or refining.

Planning and Zoning

Joint agency - Hancock County Planning Commission

Zoning enforced - Hawesville, Lewisport and the first two magisterial districts covering the northern half of Hancock County*

Subdivision regulations enforced - Hawesville, Lewisport and the first two magisterial districts covering the northern half of Hancock County*

Mandatory state codes enforced - Plumbing, National Fire Protection Association Code, National Building Code (for major buildings and residential construction containing more than 12 bedrooms per building)

*The planning and zoning regulations have been revised and will be presented to the governing bodies of the three participating units early in 1980. If approved, the following changes will be made: zoning will be enforced in the area from one mile south of U.S. Highway 60 north to the Ohio River and subdivision regulations will be enforced county-wide.

Safety

<u>Police</u>	<u>Hawesville</u>	<u>Lewisport</u>	<u>Hancock County</u>
Total staff	1	2	3
Radio-patrol cars	1	1	5

Fire

American Insurance Association Fire Rating	7	7	10
Volunteers	25	25	37

Rescue Service

Hancock County Civil Defense Rescue Squad:

Number of volunteers - 60

Equipment - 2 boats, trailers, motors, dragging equipment, life jackets, first aid equipment, stretchers, rope, block and tackle, 10 four-wheel vehicles, 50 CB mobile radios, 1 shortwave with 2 mobiles, assorted brush and grass fire fighting equipment

Personnel training - 45 members trained in Red Cross advanced first aid, 5 emergency medical technicians, 4 radio dispatchers, 3 radiation instructors, 10 weather spotters, cardiopulmonary resuscitation training

Refuse Collection and Disposal

	<u>Hawesville</u>	<u>Lewisport</u>	<u>Hancock County</u>
Type service	Private	Private	Private
Fee charged:			
residential	\$4.50 monthly	\$4.50 monthly	\$4.50 monthly
business	Contract	Contract	Contract
industrial	Contract	Contract	Contract
Collection frequency:			
residential	Twice weekly	Twice weekly	Twice weekly
business	Twice weekly	Twice weekly	Twice weekly
industrial	Contract	Contract	Contract
Trash pickup	Twice weekly	Twice weekly	Twice weekly
Disposal method	Landfill	Landfill	Landfill

EDUCATION

Public Schools

	<u>Hancock County</u>
Total Enrollment (March 1979)	1,681
Elementary	717
Middle School	434
High School	530
Student-Teacher Ratio	17-1
Elementary	17-1
Middle School	18-1
High School	17-1
Accreditation	Southern Association of Colleges and Schools
Percent High School Graduates to College	36.5
Expenditures Per Pupil (1977-78)	\$1,134.02
Bonded Indebtedness, June 30, 1978	\$2,356,000

Nonpublic Schools

	<u>Immaculate Conception</u>
Total Enrollment	108
Elementary	108
Student-Teacher Ratio	27-1
Elementary	27-1

Area Colleges and Universities

<u>Name</u>	<u>Location (Miles distant)*</u>	<u>Enrollment (Fall, 1978)</u>	<u>Highest Degree Conferred</u>
Brescia College	Owensboro (25)	832	Baccalaureate
Kentucky Wesleyan College	Owensboro (25)	854	Baccalaureate
St. Meinrad College (Men)	St. Meinrad, Indiana (30)	203	Baccalaureate
Henderson Community College	Henderson (55)	762	Associate
Fort Knox Extension Campus of the University of Kentucky	Fort Knox (61)	**	Baccalaureate
Indiana State University Evansville Campus	Evansville, Indiana (65)	2,868	Academic and Professional
University of Evansville	Evansville, Indiana (65)	6,554	Academic and Professional

*Mileage from Hawesville.

**Enrollment is included in total enrollment of the University of Kentucky, Lexington, which in 1978 was 22,463.

Vocational Schools

<u>Location</u>	<u>Nearest State School</u>
Mileage from Hawesville	Daviess County State Vocational- Technical School Owensboro
Curriculum	25 Business and Office Clerical Secretarial Consumer and Home Economics Food Services Marketing and Distributive Education Health and Personal Services Occupations Cosmetology Industrial Education Auto Body Repair Auto Mechanics Diesel Mechanics Drafting Graphic Arts (Printing) Small Engine Repair Welding Public Service Programs Fire Service Training (Regional Service) Learning Resource Center

(Contd.)

Nearest Area Education Center

Location	Owensboro Vocational-Technical School
Mileage from Hawesville	Owensboro
Curriculum	25 Health and Personal Services Occupations Health Careers Licensed Practical Nursing Nurses Assistant Industrial Education Air Conditioning and Heating Appliance Repair Carpentry-Building Trades Electronics (Communications) Electronics (Home Entertainment) Electronics (Industrial) Industrial Electricity Machine Shop Maintenance Mechanics Masonry Office Machines Repair Plumbing Sheet Metal Welding

Arrangements can be made to provide training in the specific production skills required by an industrial plant. Instruction may be conducted either in the vocational school or in the industrial plant, depending upon the desired arrangement and the availability of special equipment.

HEALTH

Local Medical Personnel

Physicians - 2
Dentists - 2

Hospitals

<u>Nearest General Hospitals</u>	<u>Location</u>	<u>Beds</u>
Owensboro-Daviess County Hospital	Owensboro, Kentucky	458
Our Lady of Mercy Hospital	Owensboro, Kentucky	133
Perry County Memorial Hospital	Tell City, Indiana	75

Owensboro-Daviess County Hospital

General hospital facilities - 10 operating rooms, 2 recovery rooms, OB section, X-ray, pharmacy, physical therapy, clinical pathology laboratories, emergency room, intensive care unit, coronary care unit, inhalation therapy department, renal dialysis unit, nursery, cafeteria, gift shop

Medical staff - 100 doctors and dentists, 227 registered nurses, 78 licensed practical nurses

Our Lady of Mercy Hospital

General hospital facilities - 4 operating rooms, 1 recovery room, X-ray, emergency room, pharmacy, intensive care-coronary care unit, respiratory therapy

Medical staff - 100 doctors and dentists, 60 registered nurses, 35 licensed practical nurses

Perry County Memorial Hospital

General hospital facilities - 2 operating rooms, intensive care and recovery room, OB and nursery section, X-ray and radiology, laboratories, pharmacy, physical therapy, labs, emergency room, coronary-intensive care unit, social services, gift shop

Medical Staff - 9 active doctors, 12 consultant doctors, 28 registered nurses, 11 licensed practical nurses

Other Medical Facilities

Southern Hills Mental Health Center, in Tell City, Indiana, provides comprehensive outpatient psychiatric service.

Audubon Area Community Services, Inc., is an outreach and information service for the disadvantaged and for senior citizens.

Ambulance Service

Name - Hancock County Ambulance Service
Staff - 6 certified emergency medical technicians
Service - County-wide, 24 hours a day
Equipment - Two fully-equipped ambulances

Public Health

Facility - Hancock County Health Department
Staff - Nurse, health environmentalist, clerk-typist

OTHER LOCAL FACILITIES

Communications

Hawesville and Lewisport

Telephone - South Central Bell Telephone Company (most of county)
Services - Standard

Telephone - Lewisport Telephone Company
Services - Standard

Telegraph - Western Union office in Owensboro
Services - Telephone

Postal - U. S. Post Offices in Hawesville and Lewisport
Class - Second
Mail received - Once daily
Mail dispatched - Once daily

Newspaper - Hancock Clarion (Hawesville)
Weekly and circulation - 3,900
Other papers
received from - Louisville and Owensboro, Kentucky; Evansville,
Indiana; exchanges with ten other counties in Kentucky

Radio - WKCM-AM in Hawesville
Stations received from - Owensboro, Louisville, Bowling Green,
Henderson and Hardinsburg, Kentucky; Evansville and Tell City,
Indiana

Television -
Cable Service - Yes*
Reception from - Bowling Green and Louisville, Kentucky; Evansville,
Indiana

Educational Television - Channel 35, Madisonville transmitter
Channel 53, Bowling Green transmitter
Channel 9, Indiana ETV

*Cable service franchises have been let for both Hawesville and Lewisport and service is expected to begin in 1979. Negotiations for service for Hancock County are under way.

Library Services

Public library - Hancock County Public Library (Hawesville)

Size collection - Approximately 20,000 volumes

Circulation, 1977-1978 - 55,000

Services - Story hour, films, projector, magazines, pictures, records, record players, bookmobile, extension course from Western Kentucky University, radio programs, slides, telephone, 8mm films, microfilm, genealogy, information file, art exhibits and community center

Public library - Lewisport Regional Branch Library

Size collection - Approximately 8,000 volumes

Religious Institutions

	<u>Hawesville</u>	<u>Lewisport</u>
Number of churches -	4	8
Denominations -	Baptist Catholic Nondenominational United Methodist	Baptist Catholic Christian Holy Pentecostal Nondenominational Pilgrim Holiness United Methodist
Nearest Synagogue -	Owensboro, 25 miles	
Congregation -	from Hawesville Adath Israel (reform)	

Financial Institutions

<u>Banks</u>	<u>Assets</u>	<u>Deposits</u>	<u>Statement Date</u>
Hancock County Bank and Trust Company (branches in Lewisport and Pellville)	\$28,315,050.39	\$24,516,986.68	12/31/78
<u>Savings and Loan Association</u>	<u>Assets</u>	<u>Savings Accounts</u>	<u>Statement Date</u>
Owensboro Federal Savings and Loan Association (Hawesville)	\$126,635,414.17*	\$116,363,807.91*	12/31/78

*Includes the total assets and savings accounts of the Owensboro Federal Savings and Loan Association which has its main office in Owensboro, Kentucky.

Hotels and Motels

Hawesville

Total number -	1
Total units -	10

Clubs and Organizations

Hancock County

Beta Club
Boy Scouts
Brownies
Cub Scouts
Downtown Improvement Committee
Eastern Star
4-H
Future Farmers of America
Future Homemakers of America
Future Teachers of America
Girl Scouts
Hancock County Chamber of Commerce
Hancock County Community Players
Hancock County Enrichment Society
Hancock County Historical Society
Hancock County Jaycees
Hancock County Senior Citizens Club
Homemakers Club
Junior Achievement
Lewisport Senior Citizens, Inc.
Lions Club
Masons
Women's Club

RECREATION

Local

A wide variety of recreational activities are available to the residents of Hancock County. Three baseball diamonds, two playgrounds, one skating rink and four county parks are available in the county. Vastwood Park, completed in March of 1978, is a 340-acre park about 3 miles outside Hawesville. Facilities available include two baseball diamonds, four tennis courts, two basketball courts, an archery range, volleyball area and a 20-acre lake with beach, bathhouse, picnic area and playground. Planned improvements to the park include a third baseball diamond, both primitive and recreational vehicle camping facilities, and development of the Hancock County Fair headquarters. South Hancock Park contains a baseball diamond, tennis court, croquet yard, basketball court, picnic area and playground equipment. Lewisport offers a picnic area and boat ramp on the Ohio River, two mini-parks with tennis and basketball courts and playground equipment, and plans to build a new tennis court and a new basketball court. Hawesville is building a \$250,000 boat ramp and parking area about 500 feet downstream from the bridge which connects Hawesville with Cannelton, Indiana, and is studying the possibility of building an amphitheatre adjacent to the parking area.

The Windward Heights Country Club, located between Hawesville and Lewisport, provides a clubhouse, swimming pool, 9-hole golf course, and tennis courts.

Area (Within 35 miles)

Owensboro, Kentucky, 25 miles southwest of Hawesville, offers additional cultural and entertainment facilities. A few of these include the Owensboro Museum of Fine Arts, the Owensboro Area Museum of Natural Science, the Theatre Workshop, the Owensboro Festival of Arts, Owensboro Symphony Orchestra and the Owensboro Youth Orchestra.

Ben Hawes State Park, located northwest of Owensboro, has a public 18-hole golf course and a par-3 course as well as picnic areas, hiking trails, playground facilities and tennis courts.

Rough River Dam State Resort Park, one of the best known and most beautiful in the state, is 41 miles southeast of Hawesville. It offers boating, boat rentals, fishing, swimming, camping, cottages and a beautiful lodge with a dining room and gift shop. In addition, there is miniature golf, a 9-hole, par-3 golf course, tennis, shuffleboard, boat cruises on Rough River Lake, hiking, a picnic shelter, supervised recreation and a playground. Also located inside the 377-acre park is a 2,500-foot paved and lighted airstrip.

Hoosier National Forest, approximately 10 miles north of Hawesville, covers 172,000 acres of beautiful woodland in southern Indiana. The forest provides for many scenic drives, particularly in the spring and autumn.

Ferdinand State Park and Forest in Indiana is a 7,581-acre park offering camping, picnicking, hiking trails, boating, boat rentals, fishing and swimming.

Lincoln Boyhood National Memorial in Indiana contains 1,864 acres and offers camping, picnicking, hiking, boating, fishing and swimming.

Santa Claus Land in Santa Claus, Indiana, is a large amusement park and playground center.

COMMUNITY IMPROVEMENTS

Industrial

Bruner Printing Company, a commercial printing operation, purchased two new presses and a larger cutter in 1978 for an added investment of \$16,000.

Western Kraft Paper Group, Kentucky Mills Division, made a \$1.2 million capital investment in 1979 to upgrade equipment at its pulp mill.

A \$45 million expansion project is under way at Martin Marietta Aluminum which will double the casting operations and make possible the complete finishing of aluminum. Expected to be completed in December of 1980, the project includes a third cold rolling mill, a fourth leveler, a fourth coil slitter, and a second paint line. There are also plans for a \$33 million expansion of the plant's casting facilities with better furnaces and greater recycling to aluminum which is scheduled for completion in the fall of 1980.

South East Coal Company and Kentucky River Coal Corporation have acquired a 500-acre site for the construction of a coal blending plant and coal loading facility within the next two years.

Utilities

The East Daviess County Water Association has extended service to 150 homes in southern Hancock County within the last two years.

The City of Lewisport Municipal Water Works plans to construct one 200,000-gallon water storage tank in the winter of 1979 and the City of Lewisport Municipal Sewer System plans to construct three new sludge drying beds in the summer of 1980.

Kentucky Utilities Company has announced plans to construct an electric generating plant on a 2,000-acre site at Skillman Bottoms in Hancock County.

The Lewisport Telephone Company has upgraded all service from party lines to private lines, transferred to a direct dial long distance call system, installed touch-tone equipment, and added 3,000 square feet to its facilities.

(Contd.)

Transportation

U.S. Highway 60 is being widened to four lanes between Hawesville and Lewisport. Construction is expected to be completed in the fall of 1979.

Hancock County, in conjunction with "GRITS" in Owensboro, has initiated a rural transit system for senior citizens. Two mini-buses operate between Hawesville and Lewisport and make trips to Owensboro, Kentucky, and Tell City, Indiana.

Local Government

A new Hancock County Administration Building, which houses all of the county's administrative offices and the jail, was completed in the fall of 1977 at a cost of \$800,000.

A \$500,000 renovation of the Hancock County Courthouse, which included the futuristic courtroom in the round, was completed in the summer of 1978.

A \$150,000 project is under way to construct a curb and gutter system in the city of Lewisport.

The Hancock County Civil Defense Rescue Squad is discussing plans to raise money to purchase a "Jaws of Life" and is planning to conduct tornado watch training and ham radio operation classes.

Plans to build a new building for the Hancock County Health Department are being discussed.

Education

The new \$950,000 South Hancock Elementary School was occupied in October of 1978. Located on a 20-acre site 9 miles south of Hawesville, the school contains eight classrooms, a media center/library, and a multipurpose room used as a lunchroom/gymnasium.

An additional special education unit and one and a half kindergarten units were added by the Hancock County School System.

Hancock County High School is planning to start an FM educational radio station.

Efforts are under way to organize basketball teams for 4th and 5th grade students.

(Contd.)

Recreation

Major construction at the 340-acre Vastwood Park near Hawesville was completed in March of 1978. Additional facilities planned for the park include another baseball diamond, both primitive and recreational vehicle camping facilities, and development of the Hancock County Fair headquarters at the park.

A \$250,000 boat ramp is being constructed on the Ohio River at Hawesville.

The Parks and Recreation Board added lights to the ball field at the Lewisport Elementary School and plans to add a concession stand and restrooms.

The City of Lewisport plans to build an additional tennis court and basketball court.

Other

Franchises have been let to provide cable television service for Hawesville and Lewisport by the end of 1979. Hancock County has advertised for a county-wide system.

Kentucky Department of Commerce
Capital Plaza Tower
Frankfort, Kentucky 40601

Office of the Commissioner
(502) 564-4270

Industrial Development Division
(502) 564-7140

Existing Industries Division
(502) 564-4300

Office of Minority Business Enterprise
(502) 564-2064

Agribusiness Division
(502) 564-6784

International Trade and Investment
Promotion Division
(502) 564-2170

Research and Planning Division
(502) 564-4886
Map Sales Office
133 Holmes Street
(502) 564-4715

Kentucky Development Finance Authority (KDFA)
(502) 564-4554

Kentucky Film Commission
(502) 564-2240