

1977

Industrial Resources: Harrison County - Cynthiana

Kentucky Library Research Collection
Western Kentucky University, spcol@wku.edu

Follow this and additional works at: https://digitalcommons.wku.edu/harrison_cty



Part of the [Business Administration, Management, and Operations Commons](#), [Growth and Development Commons](#), and the [Infrastructure Commons](#)

Recommended Citation

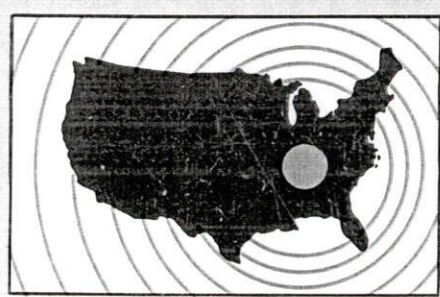
Kentucky Library Research Collection, "Industrial Resources: Harrison County - Cynthiana" (1977). *Harrison County*. Paper 11.
https://digitalcommons.wku.edu/harrison_cty/11

This Report is brought to you for free and open access by TopSCHOLAR®. It has been accepted for inclusion in Harrison County by an authorized administrator of TopSCHOLAR®. For more information, please contact topscholar@wku.edu.

INDUSTRIAL RESOURCES

CYNTHIANA

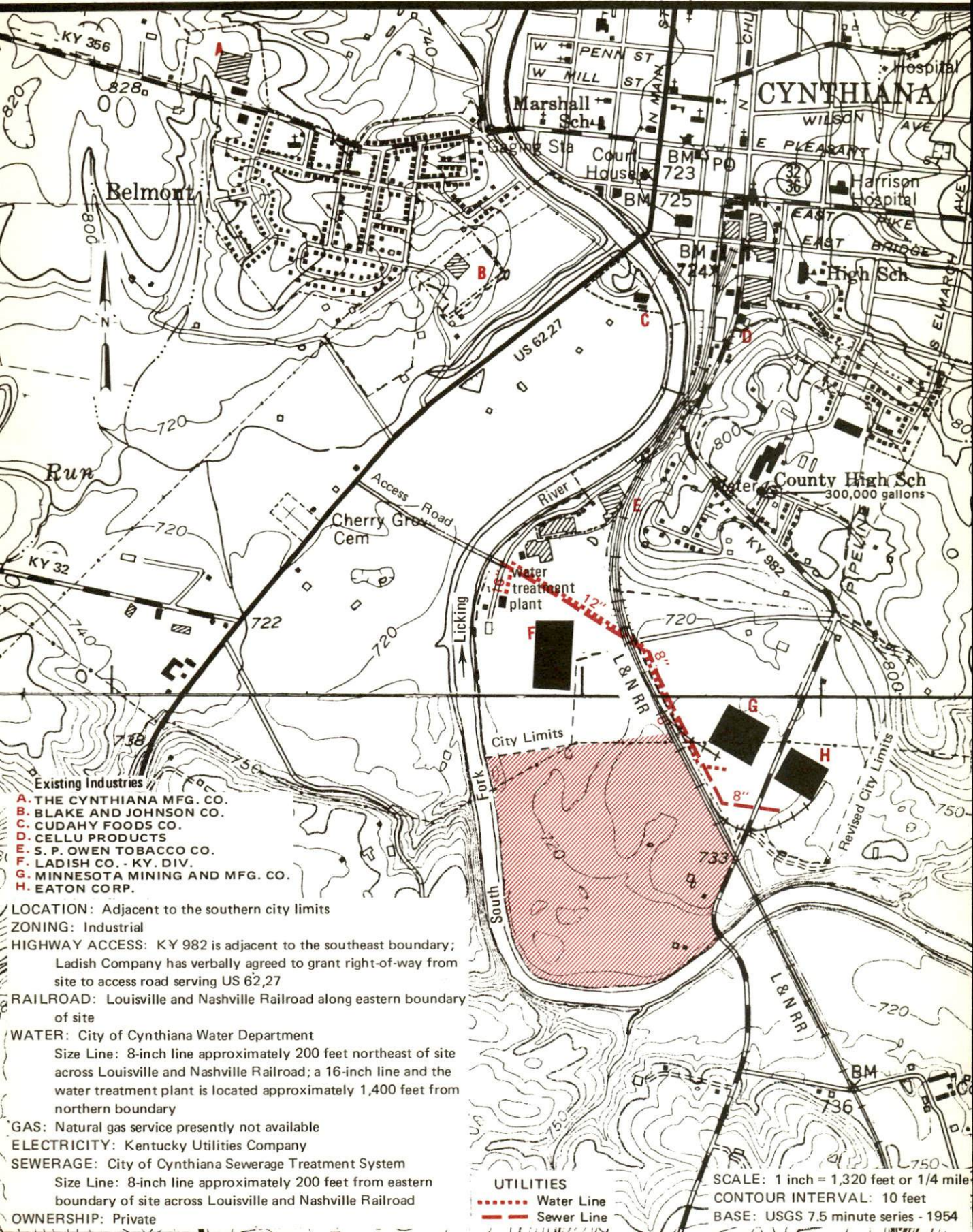
**Kentucky
first**



DEPARTMENT OF COMMERCE

CYNTHIANA, KENTUCKY --- Site No. 177 -- 114 Acres

For more information contact William Rogers, Kentucky Utilities Company, Cynthiana, Kentucky 41031, or the Industrial Development Division, Kentucky Department of Commerce, Capital Plaza Tower, Frankfort, Kentucky 40601.



INDUSTRIAL RESOURCES

CYNTHIANA, KENTUCKY

Prepared by
The Kentucky Department of Commerce
Division of Research and Planning
in cooperation with
The Cynthiana-Harrison County Chamber of Commerce

1977

Production supervisor: Patsy Wallace; research: David Wellman; clerical: Linda Fint; graphics: N. C. Montague, Frank Ferrante, Tony Cecconi, Richard Spencer; cartography: Industrial Development Division. Cost of printing paid from state funds.

TABLE OF CONTENTS

<u>Chapter</u>	<u>Page</u>
INDUSTRIAL SITES.	i
CYNTHIANA, KENTUCKY - A RESOURCE PROFILE.	1
THE LABOR MARKET AREA	3
Population.	3
Labor Force Characteristics of Residents, 1975.	3
Nonagricultural Employment by Industry, by Place of Work, 1975.	4
Major Cynthiana Manufacturing Firms, Their Products and Employment	5
Labor Organizations	5
Estimated Male Labor Supply	6
Estimated Female Labor Supply	6
Average Weekly Wages by Industry, by Place of Work, 1975.	7
Per Capita Personal Income.	9
TRANSPORTATION.	10
Rail.	10
Highways.	10
Truck Service	11
Air	12
Bus	13
Taxi.	13
Rental Services	13
POWER AND FUEL.	14
Electricity	14
Natural Gas	15
Other Fuels	15
WATER AND SEWERAGE.	16
Water	16
Sewerage.	18
CLIMATE	19

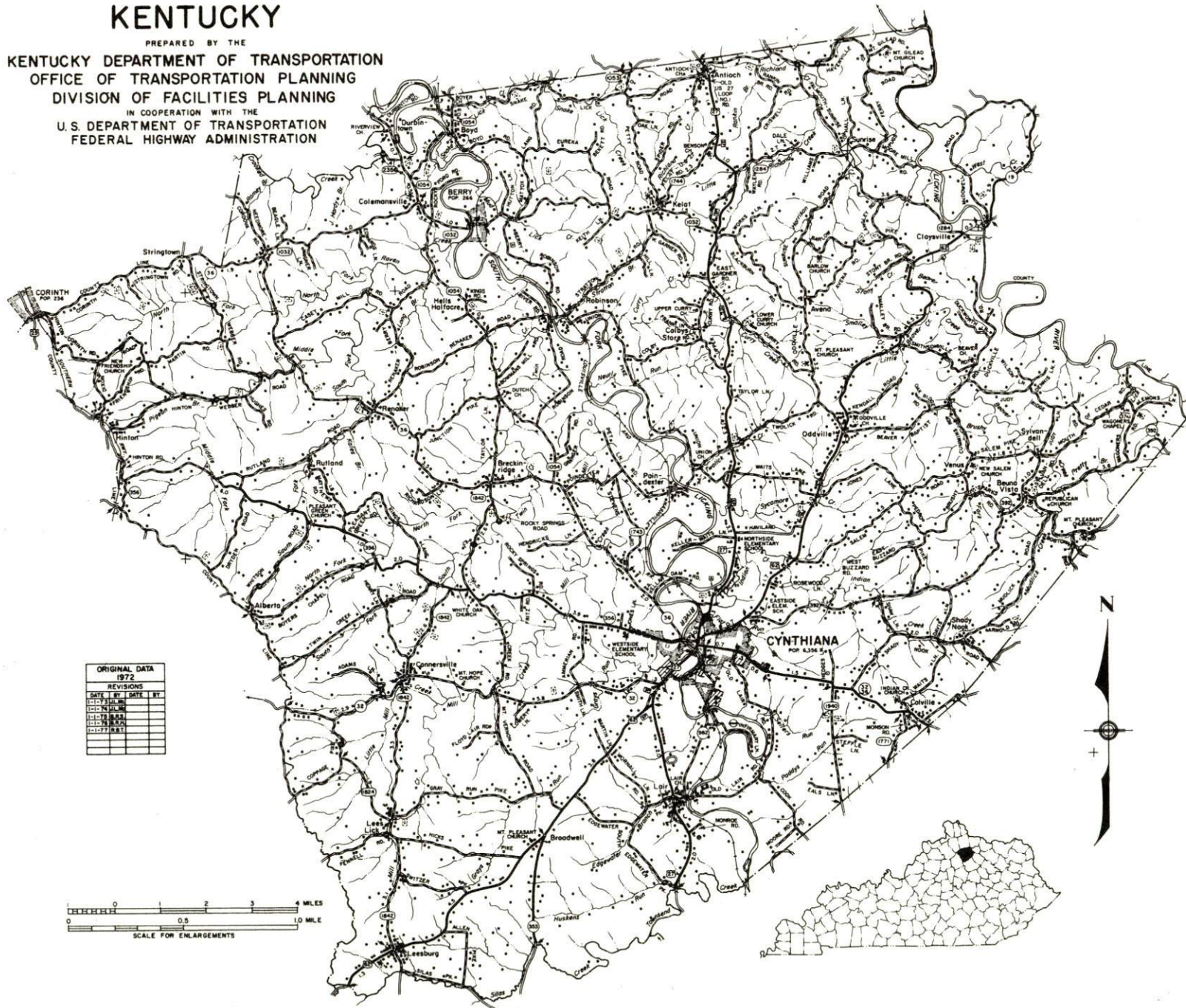
Dept. of Commerce

11-20-77

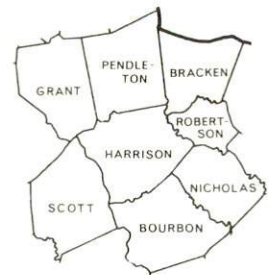
<u>Chapter</u>	<u>Page</u>
LOCAL GOVERNMENT.	20
City.	20
County.	20
Assessed Value of Property, 1976-77	20
Property Taxes.	20
Local Property Tax Rate Per \$100 of Assessed Valuation, 1976	21
Planning and Zoning	21
Safety.	21
Police.	21
Fire.	21
Rescue Service.	22
Solid Waste	22
EDUCATION	23
Public Schools.	23
Nonpublic Schools	23
Area Colleges and Universities.	28
Vocational Schools.	29
HEALTH.	31
Local Medical Personnel	31
Hospitals	31
Other Medical Facilities.	31
Ambulance Service	31
Public Health	31
OTHER LOCAL FACILITIES.	32
Communications.	32
Library Services.	33
Religious Institutions.	33
Financial Institutions.	33
Hotels and Motels	34
Clubs and Organizations	34
RECREATION.	35
COMMUNITY IMPROVEMENTS.	38

GENERAL HIGHWAY MAP
HARRISON COUNTY
KENTUCKY

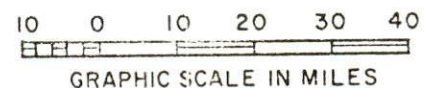
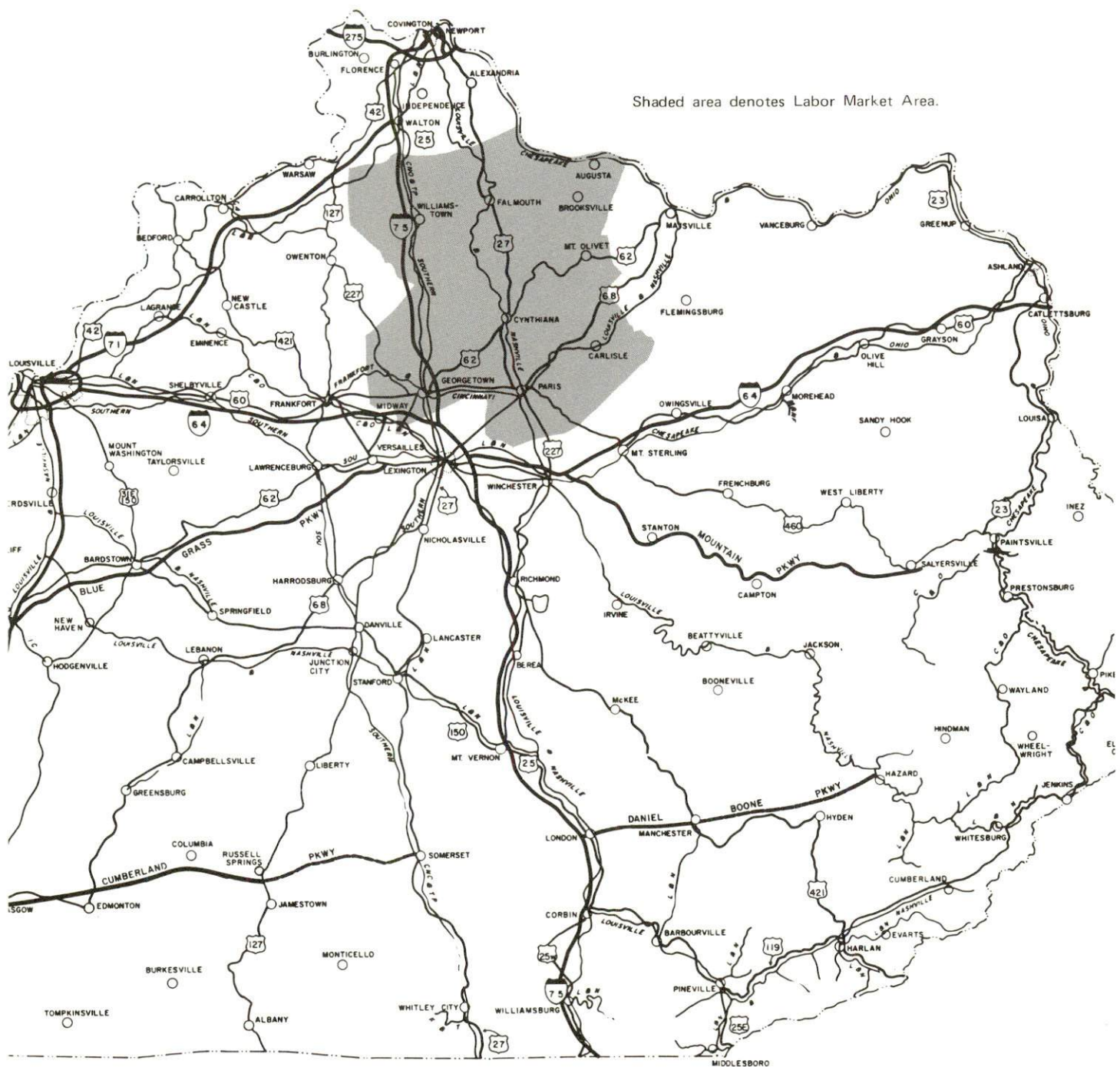
PREPARED BY THE
KENTUCKY DEPARTMENT OF TRANSPORTATION
OFFICE OF TRANSPORTATION PLANNING
DIVISION OF FACILITIES PLANNING
IN COOPERATION WITH THE
U.S. DEPARTMENT OF TRANSPORTATION
FEDERAL HIGHWAY ADMINISTRATION



CYNTHIANA LABOR MARKET AREA



Shaded area denotes Labor Market Area.



CYNTHIANA, KENTUCKY - A RESOURCE PROFILE

Cynthiana, the county seat of Harrison County, is located in the southeastern portion of the county on the South Fork Licking River. It is 87 miles south of Cincinnati, Ohio; 99 miles east of Louisville, Kentucky; and 34 miles northeast of Lexington, Kentucky. In 1973, Cynthiana had an estimated population of 6,191.

Harrison County, covering a land area of 308 square miles, lies in the northeast corner of central Kentucky's Bluegrass Region. In 1975, Harrison County had an estimated population of 14,600.

The Economic Framework

The total number of Harrison County residents employed in 1975 averaged 7,130, with nonagricultural jobs accounting for 6,080 workers. Manufacturing employers in the county reported 1,860 workers; construction firms 150; transportation, communications, and public utilities 110; wholesale and retail trade 795; finance, insurance, and real estate 140; and employees in the service industries 520. Major industrial products are stainless steel valves and fittings, industrial saw blades, forged steel fittings, copiers, overhead projectors, steel tubing, and gray iron castings.

Total unemployment in Harrison County averaged 4.7 percent of the labor force in 1975.

Per capita personal income in the county in 1975 was \$5,132, an increase of 59.7 percent since 1971.

The Cynthiana labor market area includes Harrison and the seven adjoining counties. The total number of residents of the labor market area employed in 1975 averaged 38,830, with nonagricultural jobs accounting for 31,870 workers. Manufacturing employers in the area reported 6,830 workers; construction firms 790; transportation, communications, and public utilities 545; wholesale and retail trade 3,535; finance, insurance, and real estate 630; and employees in the service industries 2,210.

Resources for Growth

1. Labor Supply - There is a current labor supply of 2,760 men and 3,260 women available for industrial jobs in the labor market area. In addition, 4,350 young men and 4,030 young women in the area will become 18 years of age before 1983 and potentially available for work.

2. Transportation - The Louisville and Nashville Railroad provides daily freight service to Cynthiana. U. S. Highways 27 and 62 and Kentucky 36 pass through the city. An entrance onto Interstate 75 is located 19 miles from Cynthiana and the junction of the Mountain Parkway and Interstate 64 is 31 miles away. Eight trucking companies serve the city and a United Parcel Service shipping center is located in Lexington, 34 miles to the south. The Cynthiana-Harrison County Airport provides facilities for light aircraft. Commercial air service is available at Blue Grass Field in Lexington.

3. Utilities and Fuel - Kentucky Utilities Company provides electric power to Cynthiana. Harrison County is served by the Kentucky Utilities Company and Harrison County RECC. Natural gas is furnished in Cynthiana by Columbia Gas of Kentucky, Inc., whose source of supply is the Columbia Gas Transmission Corporation. Six propane distributors and four distillate fuel oil distributors are located within a 15-mile radius of Cynthiana.

4. Education - The Harrison County School System, which is accredited by the Southern Association of Colleges and Schools, provides primary and secondary education in Cynthiana. A private elementary school also provides primary education in the city. Cynthiana is within 40 miles of three universities, one senior college, two junior colleges and a technical institute. The Harrison County Area Vocational Education Center, located in Cynthiana, offers eight courses. The Central Kentucky State Vocational-Technical School, located 34 miles to the south in Lexington, offers 19 courses.

THE LABOR MARKET AREA

POPULATION			Percent Nonwhite
Area	1975*	1970	1970
Cynthiana	6,191**	6,356	7.0
Labor Market Area	91,000	86,428	N.A.
Harrison County	14,600	14,158	3.7
Bourbon County	18,900	18,476	12.4
Bracken County	7,400	7,227	1.0
Grant County	11,700	9,999	0.7
Nicholas County	6,800	6,508	2.2
Pendleton County	10,400	9,949	0.7
Robertson County	2,300	2,163	0.6
Scott County	18,900	17,948	9.4

*Provisional Estimates.

**1973 Population Estimates.

Sources: U. S. Department of Commerce, Bureau of the Census, Census of Population, 1970. U. S. Department of Commerce, Bureau of the Census, Current Population Reports, Series P-25, No. 562, June 1975; Series P-26, No. 75-17, May 1976.

LABOR FORCE CHARACTERISTICS OF RESIDENTS, 1975		
	Harrison County	Labor Market Area
Civilian Labor Force	7,479	40,752
Employment	7,129	38,834
Agricultural	1,050	6,965
Nonagricultural	6,079	31,869
Unemployment	350	1,918
Rate of Unemployment (%)	4.7	4.7

Source: Kentucky Department for Human Resources, Kentucky Labor Force Estimates, Annual Averages, 1975.

NONAGRICULTURAL EMPLOYMENT
BY INDUSTRY, BY PLACE OF WORK, 1975

	<u>Harrison County</u>	<u>Labor Market Area</u>
All Industries	3,625	14,779
Mining & Quarrying	*	*
Contract Construction	151	787
Manufacturing	1,862	6,827
Food & Kindred Products	144	320
Apparel, Textiles, Leather	151	1,810
Lumber, Furniture	0	427
Printing & Publishing, Paper	30	103
Chemicals, Petroleum & Coal,		
Rubber	17	415
Stone, Clay & Glass	6	139
Primary Metals	428	452
Machinery, Metal Products,		
Equipment	1,035	2,674
Other Manufacturing	50	487
Transportation, Communications		
& Public Utilities	111	545
Wholesale & Retail Trade	795	3,535
Finance, Insurance & Real Estate	138	631
Services	520	2,207
Other	30	61

*Not disclosed.

Note: Excludes domestic workers, railway workers; certain nonprofit corporations; majority of federal, state, and local government workers; and self-employed workers. Labor market area totals for some employment categories exclude employment that was not disclosed for individual counties. Manufacturing detail may not add to totals because of rounding of base data.

Source: Kentucky Department for Human Resources, Average Monthly Workers Covered by Kentucky Unemployment Insurance Law, 1975.

MAJOR CYNTHIANA MANUFACTURING FIRMS,
THEIR PRODUCTS AND EMPLOYMENT

Firm (Establishment date)	Product	Employment			Organized
		Total	Male	Female	
Blake and Johnson Company (1957)	Screws	81	80	1	
Blue Grass Industries (1968)	Men's knit underwear	169	13	156	
Bundy Tubing (1965)	Steel tubing, automotive, refrigeration coils	222	210	12	*
The Cynthiana Manufacturing Company (1972)	Wire, tool blanks	59	47	12	
Eaton Corporation (1970)	Gray iron castings	210	176	34	
Ladish Company, Kentucky Division (1961)	Stainless steel valves and fittings, industrial saw blades, forged steel fittings	434	386	48	*
Minnesota Mining and Manufacturing Company (1969)	Copiers, overhead projectors	342	122	220	
Safety Specialties Manufacturing Division of E. D. Bullard Company (1972)	Safety head-gear and equipment	61	6	55	
Webber Farms, Inc. (1947)	Sausage	145	134	11	

*See Labor Organizations below.

Source: Kentucky Department of Commerce, Division of Research and Planning.

LABOR ORGANIZATIONS

<u>Union</u>	<u>Representing manufacturing workers at:</u>
Distillery, Rectifying, Wine and Allied Workers; International Brotherhood of Firemen and Oilers	Joseph E. Seagram & Sons, Inc.
United Auto Workers	Bundy Tubing
United Steelworkers of America, 8054; United Steelworkers of America, 7513	Ladish Company, Kentucky Division

ESTIMATED MALE LABOR SUPPLY
CYNTHIANA LABOR MARKET AREA

Area	Current			Future	
	Total	Not in Labor Force	Unemployed	Under-employed	Reaching 18 yrs. of age before 1983
Labor Market					
Area	2,760	0	1,350	1,410	4,352
Harrison	430	0	250	180	719
Bourbon	500	0	230	270	935
Bracken	210	0	110	100	350
Grant	330	0	160	170	470
Nicholas	200	0	110	90	316
Pendleton	330	0	170	160	572
Robertson	90	0	60	30	79
Scott	670	0	260	410	911

Sources: Kentucky Department for Human Resources, Kentucky Labor Supply Estimates by County, 1976. Kentucky Department of Commerce, Future Labor Supply before 1983.

ESTIMATED FEMALE LABOR SUPPLY
CYNTHIANA LABOR MARKET AREA

Area	Current			Future	
	Total	Not in Labor Force	Unemployed	Under-employed	Reaching 18 yrs. of age before 1983
Labor Market					
Area	3,260	870	570	1,820	4,031
Harrison	390	0	100	290	643
Bourbon	480	0	90	390	827
Bracken	700	520	50	130	353
Grant	250	10	50	190	476
Nicholas	140	0	50	90	293
Pendleton	400	180	60	160	495
Robertson	240	160	20	60	89
Scott	660	0	150	510	855

Sources: Kentucky Department for Human Resources, Kentucky Labor Supply Estimates by County, 1976. Kentucky Department of Commerce, Future Labor Supply before 1983.

AVERAGE WEEKLY WAGES BY INDUSTRY,
BY PLACE OF WORK 1975

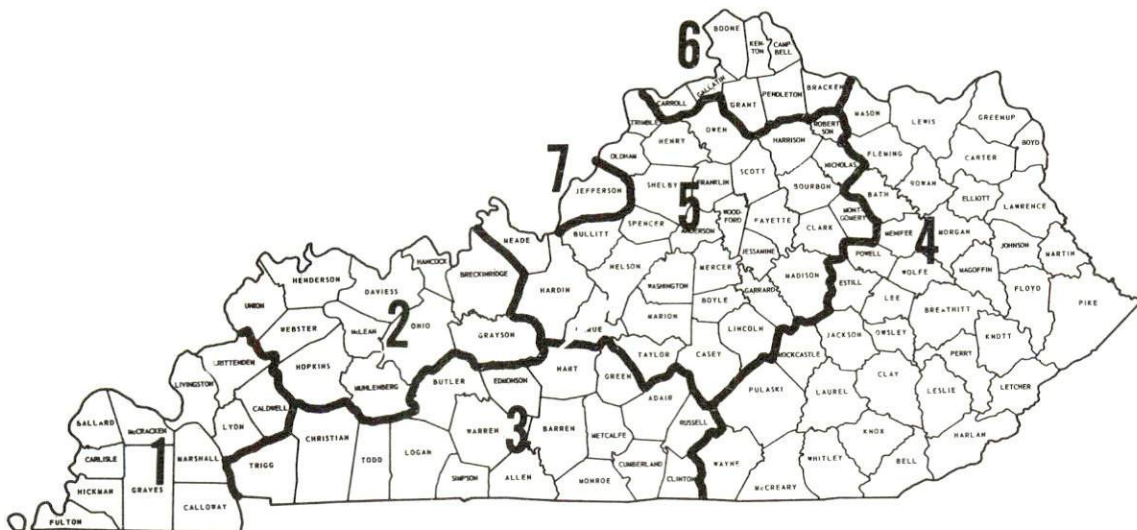
	<u>Harrison County</u>	<u>Bourbon County</u>	<u>Bracken County</u>	<u>Grant County</u>
All Industries	\$145.43	\$132.04	\$144.61	\$124.49
Mining & Quarrying	*	*	0	0
Contract Construction	140.16	184.98	*	123.56
Manufacturing	173.98	136.82	178.59	160.42
Transportation, Com- munications & Public Utilities	177.17	170.61	191.57	263.77
Wholesale & Retail Trade	106.37	108.60	94.73	105.12
Finance, Insurance & Real Estate	122.21	161.95	135.97	131.53
Services	102.99	105.76	66.29	78.92
Other	151.57	114.34	0	*
	<u>Nicholas County</u>	<u>Pendleton County</u>	<u>Robertson County</u>	<u>Scott County</u>
All Industries	\$109.52	\$134.80	\$139.28	\$142.60
Mining & Quarrying	0	*	0	*
Contract Construction	158.93	230.68	94.61	147.80
Manufacturing	*	145.60	0	167.39
Transportation, Com- munications & Public Utilities	191.22	143.46	*	169.50
Wholesale & Retail Trade	95.95	95.49	63.95	108.84
Finance, Insurance & Real Estate	120.62	114.39	*	125.76
Services	86.84	79.09	150.60	107.79
Other	*	*	0	0

*Not disclosed.

Note: Excludes domestic workers, railway workers; certain nonprofit corporations; majority of federal, state, and local government workers; and self-employed workers.

Source: Kentucky Department for Human Resources, Average Weekly Wages of Workers Covered By Unemployment Insurance, 1975.

Associated Industries of Kentucky, a voluntary organization of Kentucky businesses, regularly collects occupational wage rates and fringe benefits data from participating member firms. Data is compiled for over 127 clearly defined office, production, and service occupations. Tabulations are published for seven regions of Kentucky, as shown on the map below. It should be noted that the data may be weighted by the preponderance of firms in the larger cities and may be somewhat higher than the rates paid in the smaller communities. Data from these tabulations are available, upon request, from the Kentucky Department of Commerce, Frankfort, Kentucky 40601.



Associated Industries of Kentucky Area Wage Surveys

PER CAPITA PERSONAL INCOME

<u>Area</u>	<u>1975</u>	<u>1971</u>	<u>Percent Change</u>
Harrison County	\$5,132	\$3,214	59.7
Labor Market Area			
Range	\$4,085 - 5,151	\$2,596 - 3,741	N.A.
Kentucky	4,886	3,314	47.4
U. S.	5,903	4,195	40.7

Sources: U. S. Department of Commerce, Bureau of Economic Analysis,
Survey of Current Business, April 1977. U. S. Department
of Commerce, Bureau of Economic Analysis, March 1976.

TRANSPORTATION

Rail

Line serving Cynthiana - Louisville and Nashville Railroad Company

Services - 1 northbound and 1 southbound freight stop daily; 10 northbound and 10 southbound through freights daily; switching facilities; team track space for 6 cars; nearest piggyback facilities at Lexington, 34 miles away

For details on routing, schedules, rates, and services, contact:

Manager of Industrial Development
Louisville and Nashville Railroad Company
908 West Broadway
Louisville, Kentucky 40203
(502) 587-5000

Highways

Major highways through Cynthiana include U.S. Routes 27 and 62 and Kentucky Route 36. U.S. 62 connects the city with Interstate 75, 19 miles to the southwest, near Georgetown. Kentucky 36 connects the city with Interstate 75 approximately 33 miles away near Williams-town. U. S. 27 joins Cynthiana with Cincinnati to the north and with Lexington to the south. The junction of the Mountain Parkway and Interstate 64 is located 31 miles to the south, near Winchester.

U. S. 62 is being improved between Cynthiana and the I-75 interchange. Approximately 5 miles of the highway have already been repaved, and engineering plans are now being formulated for the reconstruction of an additional 4.5 miles. Long range plans call for the reconstruction of the remainder of the highway.

Truck Service

Company

Home Office

Branch Motor Express Company	114 Fifth Avenue New York, New York 10011
Cooper-Jarrett, Inc.	23 South Essex Avenue Orange, New Jersey 07051
Interstate Motor Freight System	134 Grandville Avenue, S.W. Grand Rapids, Michigan 49502
McLean Trucking Company	P. O. Box 213 Winston-Salem, North Carolina 27102
O. K. Trucking Company	3000 East Crescentville Cincinnati, Ohio 45241
Smith's Transfer Corporation	P. O. Box 1000 Staunton, Virginia 24401
Turner Expediting Service	Box 21333 Louisville, Kentucky 40221

Other Freight Services

Nearest Shipping Center

United Parcel Service

Lexington, 34 miles away

HIGHWAY MILES AND TRUCK TRANSIT TIME IN DAYS FROM CYNTHIANA, KENTUCKY, TO SELECTED MARKET CENTERS

City	Highway Miles	Delivery		City	Highway Miles	Delivery	
		Time	TL			Time	TL
Atlanta, Ga.	396	2		Los Angeles, Calif.	2,207	4	
Birmingham, Ala.	432	2		Louisville, Ky.	99	1	
Chicago, Ill.	374	2		Nashville, Tenn.	244	1	
Cincinnati, Ohio	87	1		New Orleans, La.	761	2	
Cleveland, Ohio	331	2		New York, N. Y.	734	3	
Detroit, Mich.	346	2		Pittsburgh, Pa.	374	2	
Knoxville, Tenn.	209	1		St. Louis, Mo.	362	2	

Source: Delivery Time Only - O. K. Trucking Company, (Lexington office)
147 South Forbes Road, Lexington, Kentucky 40505.

Air

	<u>Local</u>	<u>Nearest Commercial</u>
	Cynthiana-Harrison County Airport*	Blue Grass Field
Location:	1.5 miles south of Cynthiana	Lexington, 34 miles southwest of Cynthiana
Runways:	1 paved	2 paved
Length:	3,200 feet	6,500 feet and 3,500 feet
Traffic Control:	Wind sock and lighted wind tee	Tower; guards; radar services - arrival/departure control, Stage II contact approach control, ground control; Automatic Terminal Information Service
Lighting:	Runway lights - sundown to sunrise	Approach lighting system, beacon, runways and obstructions lighted
Services:	80-100 octane, hangar & tie down, taxi, U-Drive-It, A & E repairs, flight instructions, A & I service	Delta, Eastern, Piedmont, Air Kentucky, and Allegheny Airlines; 24-hour fuel service, 100,145, and jet fuel; Major A & E repairs, certified avionics repair station; National Weather Service; restau- rant; flight instructions; charter service; storage; taxi, limousine, and car rentals
Air Freight Service:		Air carriers accept air freight on a space available basis

*A Master Plan has been completed for the expansion of the Cynthiana-Harrison County Airport. The expansion is to proceed in the following phases:

Phase I: Total estimated cost - \$395,000

Completed - A Medium Intensity Runway Lighting System (including approach lights, runway lights, lighted wind tee, rotating beacon, VASI), a 7,000-gallon 100-octane fuel tank, and a 7,000-gallon 80-octane fuel tank.

Underway - A jet fuel tank.

Planned - A 1,000-foot runway extension.

Phase II (Intermediate Range): Total estimated cost - \$231,000

Planned - Purchase of an additional 40 acres of land and construction of a parallel taxi area, new terminal building, new hangar, and parking lot.

Phase III (Long Range): Total estimated cost - \$220,000

Planned - Construction of a storage hangar, additional parking area and additional taxi area.

Bus - Greyhound Bus Lines

Taxi - One company, radio-dispatched service from 6 a.m. to 11 p.m.

Rental Services - U-Haul truck and trailer rentals available locally,
auto rentals available in Lexington, 34 miles away

POWER AND FUEL

Electricity

Company serving Cynthiana and parts of Harrison County - Kentucky

Utilities Company

Source of power - Kentucky Utilities Company

Total generating capacity - 1,839,000 KW

For industrial rates contact:

Industrial Development Department
Kentucky Utilities Company
120 South Limestone Street
Lexington, Kentucky 40507
(606) 255-1461

Company serving Harrison County - Harrison RECC

Source of power - East Kentucky Power Cooperative

Total generating capacity - 868,000 KW

For industrial rates contact:

Industrial Development Division
East Kentucky Power Cooperative
P. O. Box 707
Winchester, Kentucky 40391
(606) 744-4812

and/or

Harrison RECC
P. O. Box 130
Cynthiana, Kentucky 41031
(606) 234-3131

Natural Gas

Company serving Cynthiana - Columbia Gas of Kentucky, Inc.
Source of supply - Columbia Gas Transmission Corporation
Size of transmission mains - 8 inches (supplier),
8 and 6 inches (distributor)
Distribution mains - 2 to 6 inches
Distribution pressure - 6 ounces to 50 psi
Btu content - 1,020 per cubic foot
Specific gravity - .59
For rates and supplies contact:

Utilization Manager
Columbia Gas of Kentucky, Inc.
P. O. Box 241
Lexington, Kentucky 40501
(606) 255-3612

Other Fuels

Propane (within 15 miles)

Connersville Grocery
(Doxol Propane)
Connersville Pike
Cynthiana, Kentucky 41031

Southern States Cynthiana
Cooperative*
Railroad Avenue
Cynthiana, Kentucky 41031

Williams Energy Company*
Cynthiana Road
Paris, Kentucky 40361

Stan Harvey Gas Company*
111 East Pike
Cynthiana, Kentucky 41031

Bourbon Hardware Company
420 Main
Paris, Kentucky 40361

T H & T Oil Company
136 East Main
Paris, Kentucky 40361

Fuel Oils

Distillate fuel oil - (within 15 miles)

Ashland Oil Distributorship
Division of Harrison Motor
Company
Connersville Pike
Cynthiana, Kentucky 41031

T H & T Oil Company
136 East Main
Paris, Kentucky 40361

Coe Oil Service, Inc.
Shell Jobber
U. S. Highway 27 South
Cynthiana, Kentucky 41031

West's Oil Company, Inc.
South Main
Paris, Kentucky 40361

Residual fuel oil - Arrangements must be made with the refinery.

Low sulphur content coal - Available in Kentucky.

*Bulk plant.

WATER AND SEWERAGE

Water

Company serving Cynthiana - City of Cynthiana Water Department*
P. O. Box 67
Cynthiana, Kentucky 41031
(606) 234-1242

Source - South Fork Licking River

Treatment plant capacity - 3,000,000 gallons per day

Average daily consumption - 1,500,000 gallons

Peak daily consumption - 1,800,000 gallons

Type treatment - Alum, lime, fluoride, chlorine and post chlorine,
quick mix, flocculation, sedimentation, fast flow filtration,
carbon when needed

Storage capacity - 1,100,000 gallons

Size lines - 4, 6, 8, 10, 16, and 20 inches

Average pressure - 75 psi

Average temperature - 50 degrees F.

MONTHLY WATER RATES FOR WHOLESAL AND INDUSTRIAL CONSUMERS

First	2,000 gallons (or part thereof)	\$2.50
Next	6,000 gallons	.90 per M gallons
Next	12,000 gallons	.60 per M gallons
Next	30,000 gallons	.45 per M gallons
Next	50,000 gallons	.35 per M gallons
Next	900,000 gallons	.25 per M gallons
All over	1,000,000 gallons	.18 per M gallons

There is an additional charge of 33 1/3 percent of the above schedule of rates charged to consumers for water which is delivered outside the corporate city limits.

Tap-on charge: No charge within the city limits
Outside city limits - \$100 residential,
\$200 commercial

*The City is making tentative plans to install a new raw water line from the Licking River to its water treatment plant.

Name of water district - Harrison County Water Association*
P. O. Box 215
Cynthiana, Kentucky 41031
(606) 234-4284

Area served - Rural areas of Harrison County

Date when water district began operating - 1970

Source of supply of treated water - City of Cynthiana Water
Department

Average amount of water used in a 24-hour period - 170,000 gallons

Storage capacity - 190,000 gallons

Average pressure - 45 psi

Average temperature - 55 to 60 degrees F.

Size lines - 2, 3, 4, 6, 8, 10, and 12 inches

Rates -

5/8-inch x 3/4-inch Meter

First	2,000 gallons	\$6.00 (Minimum)
Next	1,000 gallons	1.25 per M gallons
Next	2,000 gallons	1.00 per M gallons
Next	45,000 gallons	.80 per M gallons
All over	50,000 gallons	.60 per M gallons

Tap-on charge: \$250

3/4-inch Meter

First	3,000 gallons	\$7.50 (Minimum)
Next	2,000 gallons	1.00 per M gallons
Next	45,000 gallons	.80 per M gallons
All over	50,000 gallons	.60 per M gallons

Tap-on charge: \$300

1-inch Meter

First	8,000 gallons	\$11.65 (Minimum)
Next	42,000 gallons	.80 per M gallons
All over	50,000 gallons	.60 per M gallons

Tap-on charge: \$350

*A 33-mile extension of the Harrison County Water Association's line is nearing completion. The Association is planning an additional 41-mile extension of line.

Surface water sources - South Fork Licking River

Average discharge - South Fork Licking River at Cynthiana - 762 cfs
(38 years, USGS)

Expected ground water yield - 5 to 50 gpm along the South Fork Licking River above Cynthiana and southwestern portion of county; 50 to 200 gpm along South Fork Licking River below Cynthiana and along northeast border of Harrison county; 5 gpm or less over remainder of county

Sewerage

Company serving Cynthiana - City of Cynthiana*

P. O. Box 67

Cynthiana, Kentucky 41031

(606) 234-2437

Design capacity - 900,000 gallons per day

Average daily flow - 864,000 gallons

Treatment - Primary and secondary

Type treatment - Clarifier, high rated filtered, digester, drying beds, comminutor and grit collector

Treated effluent discharged into - South Fork Licking River

Size of sanitary mains - 6, 8, 10, 12, 15, 18, and 24 inches

Size of storm mains - 8, 10, 12, 15, 18, and 30 inches

Rates - 50 percent of monthly water charge

Tap-on charge - None

*A 201 Facilities Plan for the Cynthiana sewerage system has been completed and is now being reviewed by the Environmental Protection Agency. The plan calls for the remodeling of the pump house to increase capacity from between 1.8 to 2 million gallons per day. Other features of the plan are the replacement of the present treatment system with a "biosurf" system and the addition of two new final clarifiers, a press, and an incinerator. The plan also calls for the separation of sanitary mains and storm mains. This will require the installation of several thousand feet of storm main throughout the city.

CLIMATE

Harrison County

Temperature

Normal (30-year record)	55.2 degrees
Average annual 1976	52.9 degrees
Record highest, September, 1954 (32-year record)	103.0 degrees
Record lowest, January, 1963 (32-year record)	-21.0 degrees
Normal heating degree days (30-year record)	4,729
(Heating degree day totals are the sums of negative departures of average daily temperatures from 65 degrees F.)	

Precipitation

Normal (30-year record)	44.49 inches
Mean annual snowfall (32-year record)	15.70 inches
Total precipitation 1976	37.48 inches
Mean number days precipitation (.01 inch or more) (32-year record)	130
Mean number days thunderstorms (32-year record)	47

<u>Prevailing Winds</u> (17-year record)	South
--	-------

Relative Humidity

1 a.m.	76 percent	12-year record
7 a.m.	81 percent	13-year record
1 p.m.	59 percent	13-year record
7 p.m.	63 percent	13-year record

Source: U. S. Department of Commerce, Environmental Science Services Administration, Climatological Data, 1976. Station of record: Lexington, Kentucky.

LOCAL GOVERNMENT

City

Structure - Mayor - 4-year term; 4 commissioners - 4-year terms

Budget 1976-77 - General Fund \$734,575

Water and Sewer Fund 343,820

Fees and licenses - Occupational license tax of 1 ½ percent of all salaries, wages, commissions and other compensation, and net profits of all businesses; \$5 license fee for trucks

County

Structure - County Judge - 4-year term; 8 magistrates - 4-year terms

Budget 1976-77 - General Fund \$238,607; Road Fund \$140,393

Assessed Value of Property, 1976-77

<u>Classes of Property</u>	<u>Cynthiana</u>	<u>Harrison County</u>
Real Estate	\$47,412,040	\$128,829,735
Tangibles	17,323,014	26,567,809

Property Taxes

All property in Kentucky is assessed at 100 percent of fair cash value.

Land and buildings are taxed by the state and may be taxed by local jurisdictions. The state rate is \$0.315 per \$100 of assessed valuation. Beginning January 1, 1977, local school tax rates were reduced by \$0.30 per \$100 valuation and the state rate was increased by \$.30 per \$100 (from \$0.015), resulting in no net change in the combined state and local rates.

Manufacturing machinery, raw materials inventories, pollution control equipment, and goods in the process of manufacture are not subject to local taxation. The state rate is \$0.15 per \$100.

Other tangible personal property owned by manufacturers (automobiles, trucks, finished goods, office furniture, office equipment) is taxed by the state at \$0.45 per \$100 and may be taxed by local jurisdictions. Beginning January 1, 1977, local school rates were reduced by \$0.30 per \$100 valuation and the state rate was raised by \$0.30 per \$100 (from \$0.15).

Property stored in public warehouses in a transit status is not subject to local taxation. The state rate is only \$0.015 per \$100.

Intangible personal property located in Kentucky (money in hand, shares of stock, notes, bonds, accounts, and other credits) is taxed by the state at \$0.25 per \$100, and is not subject to local taxation.

(Contd.)

Intangible personal property owned by corporations in Kentucky as a result of business transactions performed out-of-state, but having a tax situs in Kentucky (accounts receivable, notes, bonds, credits, non-domestic bank deposits, licensing or royalty agreements, shares of stock of any affiliated company, etc.) is taxed by the state at \$0.015 and is not subject to local taxation.

Local Property Tax Rate Per \$100 of Assessed Valuation, 1976*

<u>Taxing Jurisdiction</u>	<u>Cynthiana</u>	<u>Harrison County</u>
County	\$.192	\$.192
School	.599	.599
City	.230	

Planning and Zoning

Joint agency - Cynthiana-Harrison County Joint Planning Commission
 Zoning enforced - All areas
 Subdivision regulations enforced - All areas
 Local codes enforced - Building and housing
 Mandatory state codes enforced - Plumbing, National Fire Protection Association Code, National Building Code (for major buildings and residential construction containing more than 12 bedrooms per building).

Safety

<u>Police</u>	<u>Cynthiana</u>	<u>Harrison County</u>
Total staff	16	4
Radio-patrol cars	4	2

Fire

American Insurance Association Fire Rating	6	
Full-time staff	19	
Volunteers	27	70

*Kentucky Department of Revenue, Kentucky Property Tax Rates, 1976.

Rescue Service

Cynthiana Fire Department Rescue Squad:

Number of volunteers - 20

Equipment - Resuscitator, 14-foot boat, ropes, pompier safety belts, life jackets, dragging equipment, porta-power, portable generator and lights

Personnel training - All firemen have multi-media first aid; 2 men are Emergency Medical Technicians and cardio-pulmonary resuscitation instructors

Harrison County Volunteer Fire Department Rescue Squad:

Number of volunteers - 10

Equipment - Dragging equipment, boats and motors, 3 generators, lights, small foam pump, truck equipped with 250-gallon water tank, 3 air packs, metal saw, first aid equipment, blower for fighting grass fires

Personnel training - State fire training course

Solid Waste

Cynthiana

Type service	Municipal*	Private
Fee charged:		
residential	\$2 monthly	\$2.50 monthly
business	Varies with volume	From \$6 monthly; varies with volume
industrial	Varies with volume	From \$6 monthly; varies with volume
Collection frequency:		
residential	Weekly	Weekly
business	Varies with volume	Varies with volume
industrial	Varies with volume	Varies with volume
Trash pickup	On request	On request
Disposal method	Sanitary landfill	Sanitary landfill

County - The county has stationed approximately 40 dumpsters throughout the county. These are regularly served by three county trucks.

*Municipal or private sanitation services are available to industry. However, if the industry chooses to provide its own sanitation services, the municipal-county landfill is available for the following rates: Pickup truck load, \$1.50; 1 ton, \$3.00; over 1 ton, \$4.50.

EDUCATION

Public Schools

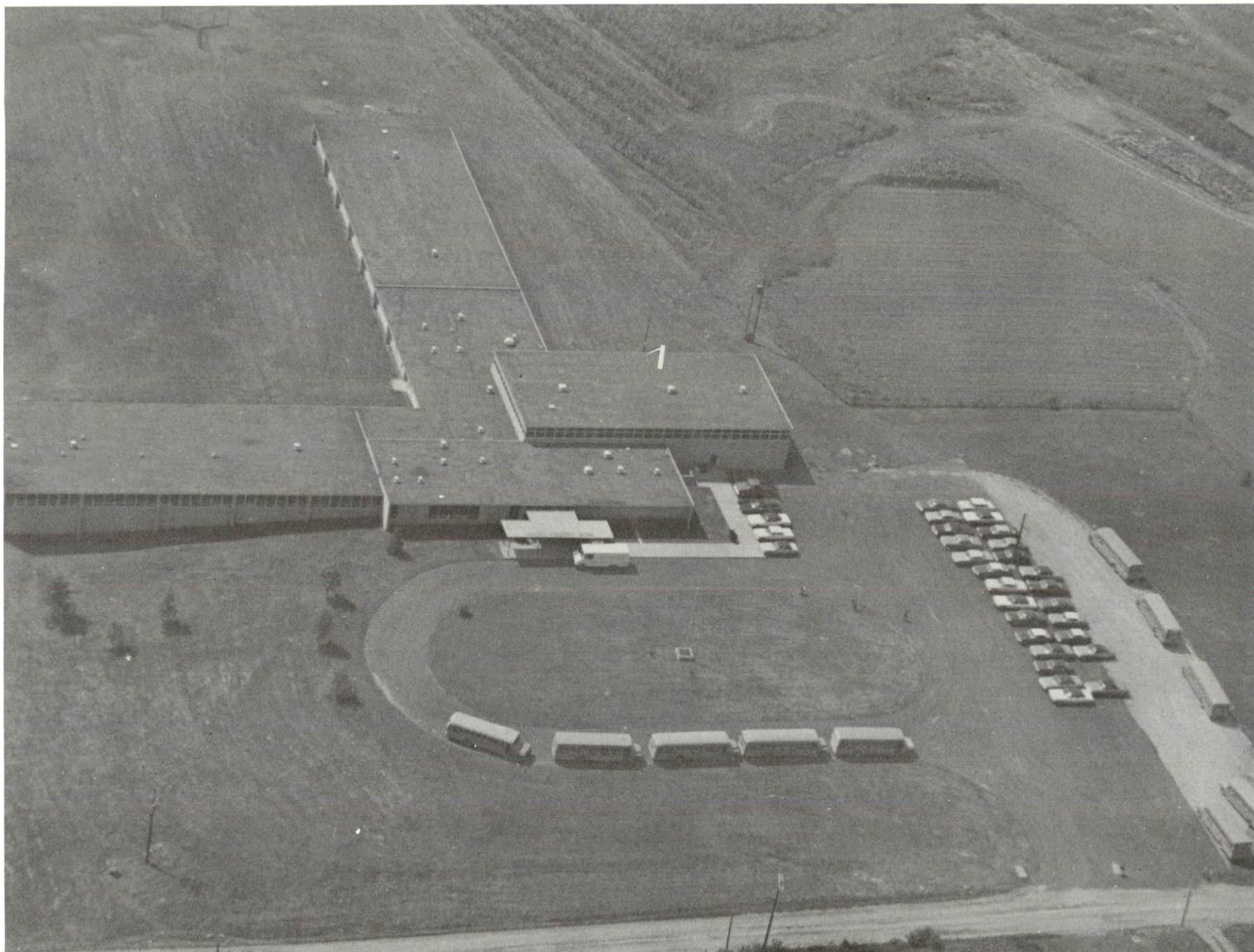
Harrison County

Total Enrollment (March, 1977)	3,009
Elementary	1,507
Junior High	544
High School	958
Student-Teacher Ratio	17-1
Elementary	16-1
Junior High	18-1
High School	17-1
Accreditation	Southern Association of Colleges and Schools
Percent High School Graduates to College	25.2
Expenditures Per Pupil (1975-76)	\$797.81
Bonded Indebtedness, June 30, 1976	\$4,820,000

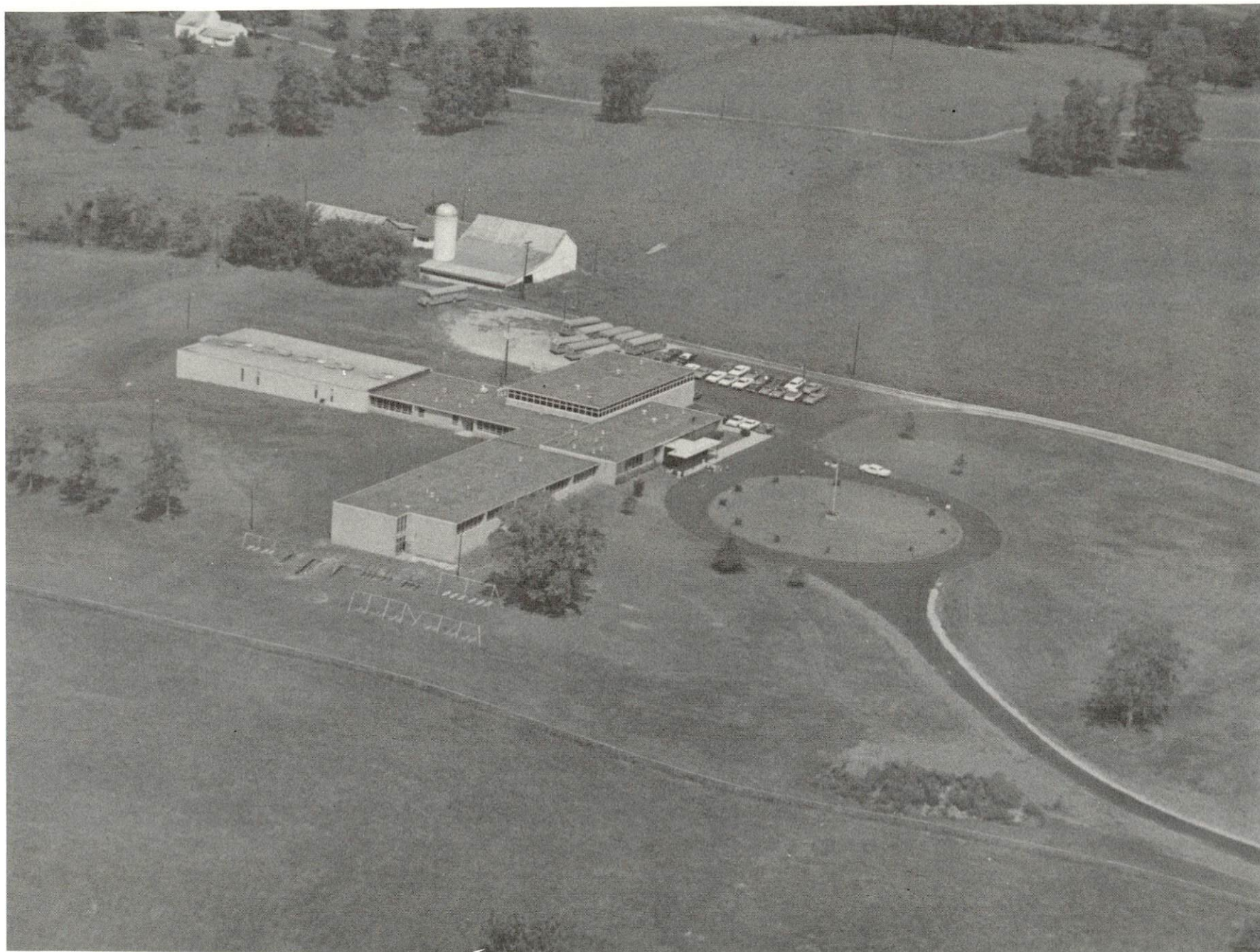
Nonpublic Schools

St. Edward

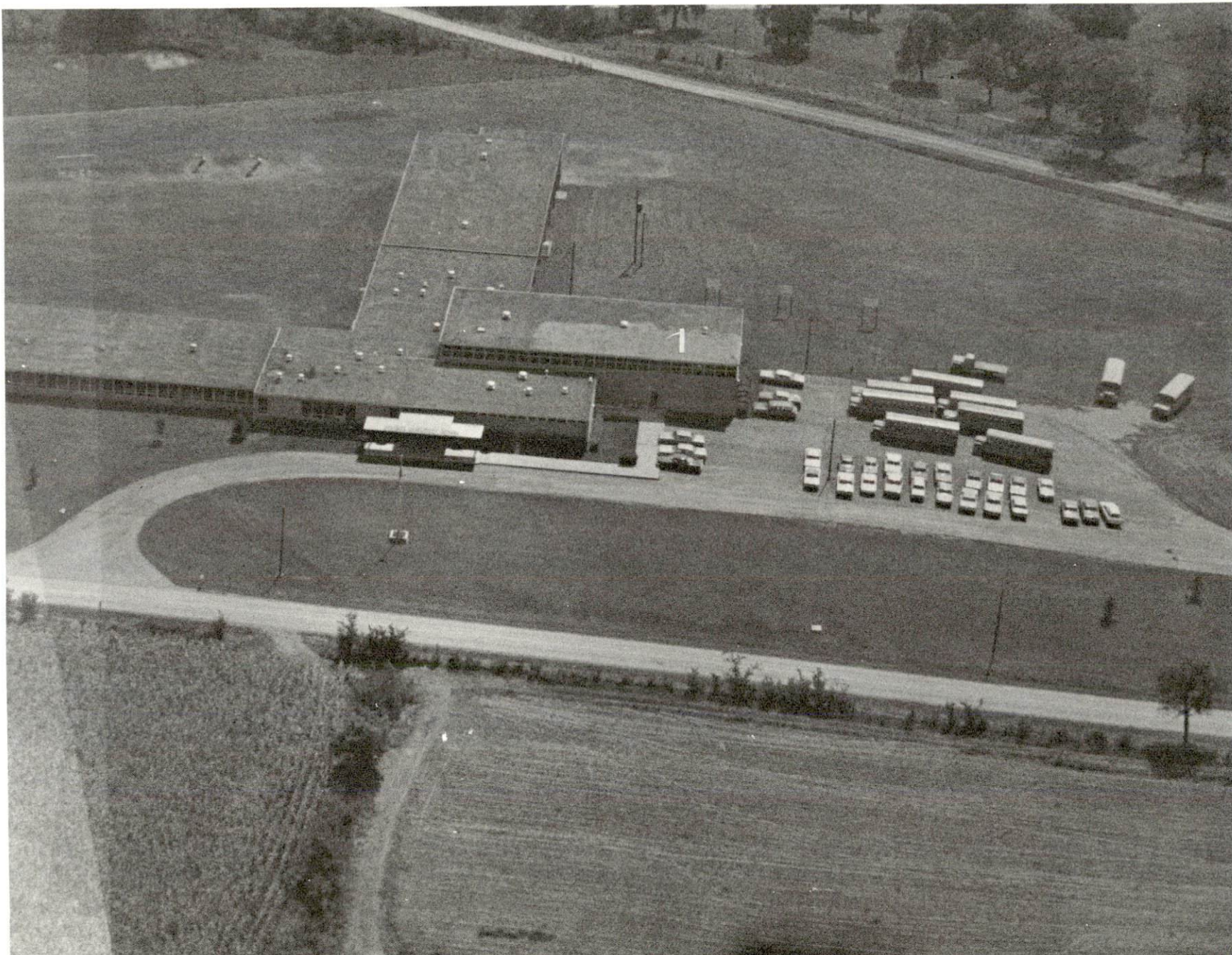
Total Enrollment	87
Elementary	87
Student-Teacher Ratio	22-1
Elementary	22-1



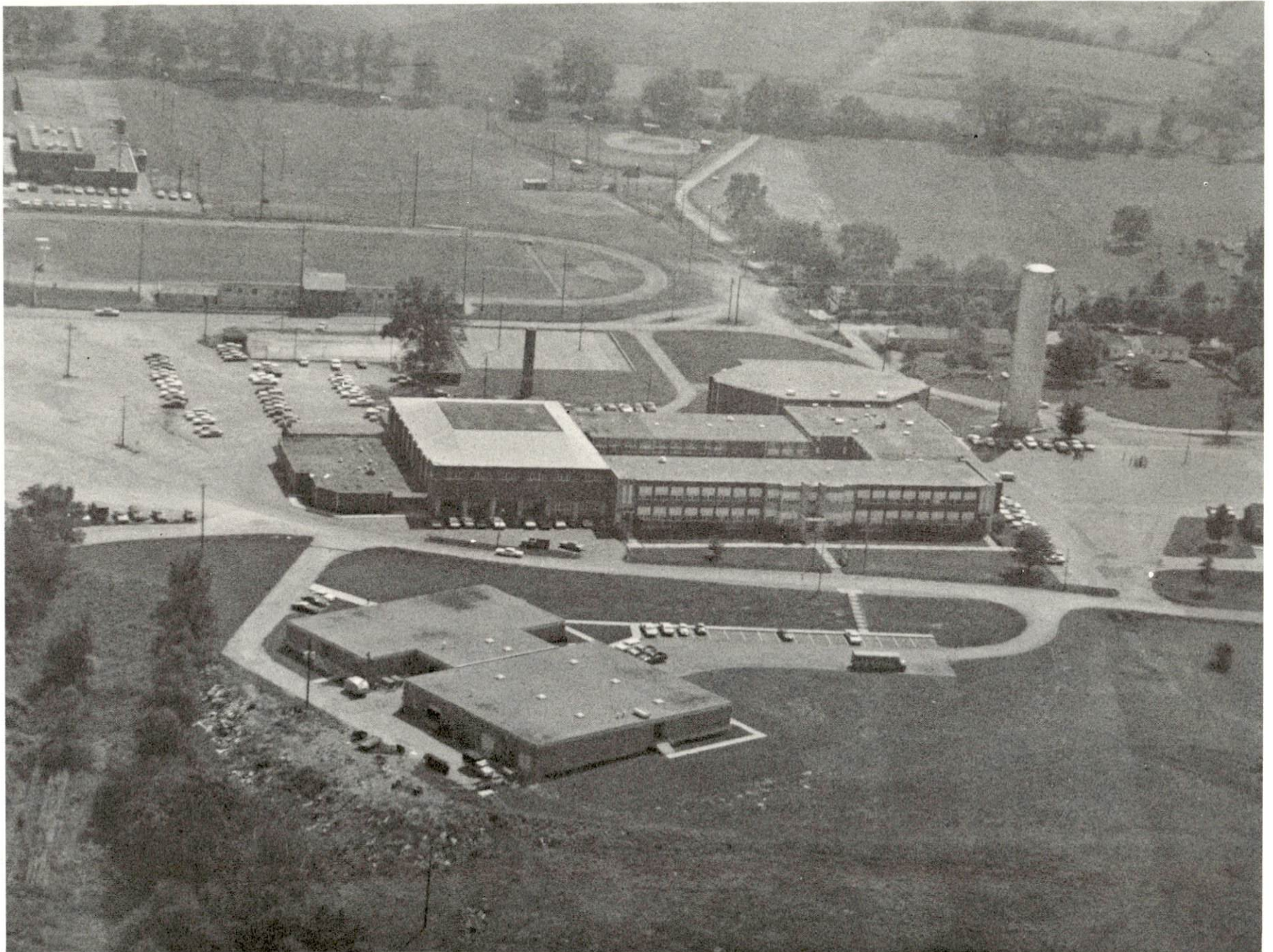
WESTSIDE ELEMENTARY SCHOOL



NORTHSIDE ELEMENTARY SCHOOL



EASTSIDE ELEMENTARY SCHOOL



VOCATIONAL SCHOOL HIGH SCHOOL JUNIOR HIGH SCHOOL

Area Colleges and Universities

<u>Name</u>	<u>Location (Miles distant)</u>	<u>Enrollment (Fall, 1976)</u>	<u>Highest Degree Conferred</u>
Georgetown College	Georgetown (21)	1,020	Masters
Midway Junior College	Midway (31)	333	Associate
Southeastern Christian Junior College	Winchester (32)	99	Associate
Lexington Technical Institute	Lexington (34)	1,765	Associate
Transylvania Univer- sity	Lexington (34)	752	Masters*
University of Kentucky	Lexington (34)	22,525	Ph.D., M.D. D.M.D., J.D.
Kentucky State University	Frankfort (39)	2,389	Masters

*Courses in the Masters degree program are taught on the Transylvania campus by Xavier University of Cincinnati faculty members. The degree is issued by Xavier University.

Vocational Schools

Nearest State School

Location	Central Kentucky State Vocational- Technical School
Miles Distant	Lexington 34
Curriculum	Agriculture Equine Education Business and Office Clerical Secretarial Consumer and Home Economics Commercial Foods Consumer Education Health and Personal Service Occupations Cosmetology Orderly/Nurse Assistant Practical Nursing Marketing and Distributive Education Industrial Education Auto Body Repair Auto Mechanics Drafting Electronics Graphic Arts (Printing) Industrial Electricity Machine Shop Office Machine Repair Sheet Metal Welding Learning Resource Center

Nearest Area Education Center

Location	Harrison County Area Vocational Education Center
Curriculum	Cynthiana
	Business and Office
	Clerical
	Secretarial
	Health and Personal Service Occupations
	Health Careers
	Industrial Education
	Auto Mechanics
	Carpentry-Building Trades
	Drafting
	Machine Shop
	Welding

Arrangements can be made to provide training in the specific production skills required by an industrial plant. Instruction may be conducted either in the vocational school or in the industrial plant, depending upon the desired arrangement and the availability of special equipment.

HEALTH

Local Medical Personnel

Physicians - 13
Dentists - 5

Hospitals

<u>General Hospital</u>	<u>Location</u>	<u>Beds</u>
Harrison Memorial Hospital	Cynthiana	83 acute; 10 extended care

General hospital facilities - 2 operating rooms, laboratory, X-ray, EKG, physical therapy, inhalation therapy, delivery room and nursery

Medical staff - 7 physicians, 25 registered nurses, 3 licensed practical nurses, 13 graduate licensed practical nurses, 35 nurses' aides, 3 registered lab technicians, physical and inhalation therapist, 2 registered pharmacists, 2 registered X-ray technicians, anesthetist, anesthesiologist, radiologist, pathologist, and ADA dietician on consulting basis

Other Medical Facilities

Harrison County Comprehensive Care Center

Services - Mental health - mental retardation prevention and treatment services including inpatient services, outpatient services, partial hospitalization, consultation and education services, emergency services

Staff - Full time: Psychiatric nurse, mental health worker, partial hospitalization aide, intake receptionist

Part time: Psychiatrist, psychologist, social worker, speech pathologist, liaison education counselor, family counselor, alcohol and drug counselor, children's counselor, mental retardation worker

Ambulance Service

Name - Brown Ambulance Service, Inc.

Staff - Total staff of 6, including 5 emergency medical technicians
Service - 24-hour service

Equipment - 3 ambulances - air conditioned and oxygen-equipped

Public Health

Facility - WEACO District, Harrison County Health Center

Staff - Full time: 2 registered sanitarians, 3 registered nurses, 2 community health workers, 2 clerks; Part time: nutritionist, dentist

OTHER LOCAL FACILITIES

Communications

Telephone - South Central Bell Telephone Company
Services - All standard services, direct distance dialing, WATS service, FX lines, data-phone service, touch tone service

Telegraph - Western Union Telegraph Company
Services - By phone

Postal-U. S. Post Office
Class - First
Mail received - Twice daily
Mail dispatched - Twice daily

Newspapers - Cynthiana Democrat
Weekly and circulation - 5,700
Other papers received
from - Louisville and Lexington, Kentucky; Cincinnati, Ohio

Radio - WCYN - AM-FM
Stations received from - Louisville and Lexington, Kentucky;
Cincinnati, Ohio

Television -
Cable service
Reception from - Louisville and Lexington, Kentucky;
Cincinnati, Ohio

Kentucky Educational
Television - Lexington transmitter, Channel 46
Owenton transmitter, Channel 52

Library Services

Public library - Cynthiana Public Library

Size collection - 43,234 volumes

Circulation, 1975-76 - 141,670

Services - A new bookmobile, pamphlets, films and filmstrips, audio-visual equipment, periodicals, recordings, framed paintings, sports equipment, talking books for the blind, delivery to the handicapped, story hour, Library Club, color TV for Kentucky ETV classes, photocopying and duplicating, telephone reference, sponsor of physical fitness and bridge classes, community room for meetings, sponsor of series of forums, branch library at Berry

Religious Institutions

Number of churches - 24

Denominations - Assembly of God

Baptist

Catholic

Christian

Church of God

Episcopal

Jehovah's Witnesses

Methodist

Nazarene

Presbyterian

Seventh Day Adventist

Nearest Synagogues - Lexington, 34 miles distant

Congregations - Adath Israel (reform)

Ohavey Zion (traditional)

Financial Institutions

<u>Banks</u>	<u>Assets</u>	<u>Deposits</u>	<u>Statement Date</u>
Farmers National Bank	\$21,266,342.88	\$19,132,851.43	12/30/76
Harrison Deposit Bank and Trust Company	11,862,291.00	10,786,805.00	12/31/76
The National Bank of Cynthiana	31,638,390.65	29,374,427.60	12/31/76
<u>Savings and Loan Associations</u>	<u>Assets</u>	<u>Savings Accounts</u>	<u>Statement Date</u>
First Federal Savings and Loan Association of Cynthiana	\$19,350,558.77	\$18,302,665.97	12/31/76

Hotels and Motels

Total number 2
Total units 30

Clubs and Organizations

Business and Civic - Chamber of Commerce, Jaycees, Kiwanis, Rotary, Optimist Club, Business and Professional Women's Club, Ministerial Association, Red Cross, Welcome Wagon, National Farmers Organization, Farm Bureau

Fraternal - American Legion, Masonic Lodge, Disabled American Veterans, VFW, Elks, Odd Fellows

Women's - Harrison County Woman's Club, DAR, Eastern Star, Homemakers, Garden Club, Elks Auxiliary, American Legion Auxiliary, VFW Auxiliary, United Daughters of the Confederacy, Junior Woman's Club, Hospital Auxiliary, Democratic Women's Club, Republican Women's Club, Trails and Trowels Club

Youth - Candy Strippers, Children of the American Revolution, Boy Scouts, Cub Scouts, Girl Scouts, Brownies, FFA, FHA, 4-H, Leo's Club

Other - Harrison County Coon Hunters Club, Rod and Gun Club, Thoroughbred Club, Inquisitors' Club, Harrison County Commission on Aging

RECREATION

Local

The Cynthiana-Harrison County Recreation Department provides public recreational facilities and activities through its county-wide recreational program. The Department leases all recreational facilities at the high school for public use; these facilities include a swimming pool, 4 tennis courts, 3 baseball diamonds, 4 basketball half-courts and 2 full courts. In addition, the Department has two developed mini-parks (containing playground equipment and basketball courts), one undeveloped mini-park, and a gymnasium donated by the City of Cynthiana.

The Department oversees summer Little League activities at the high school ball fields. It also schedules various activities in the gymnasium, including square dancing, volleyball, and a winter basketball program. The Department hopes to convert the gym into indoor tennis courts for use in winter.

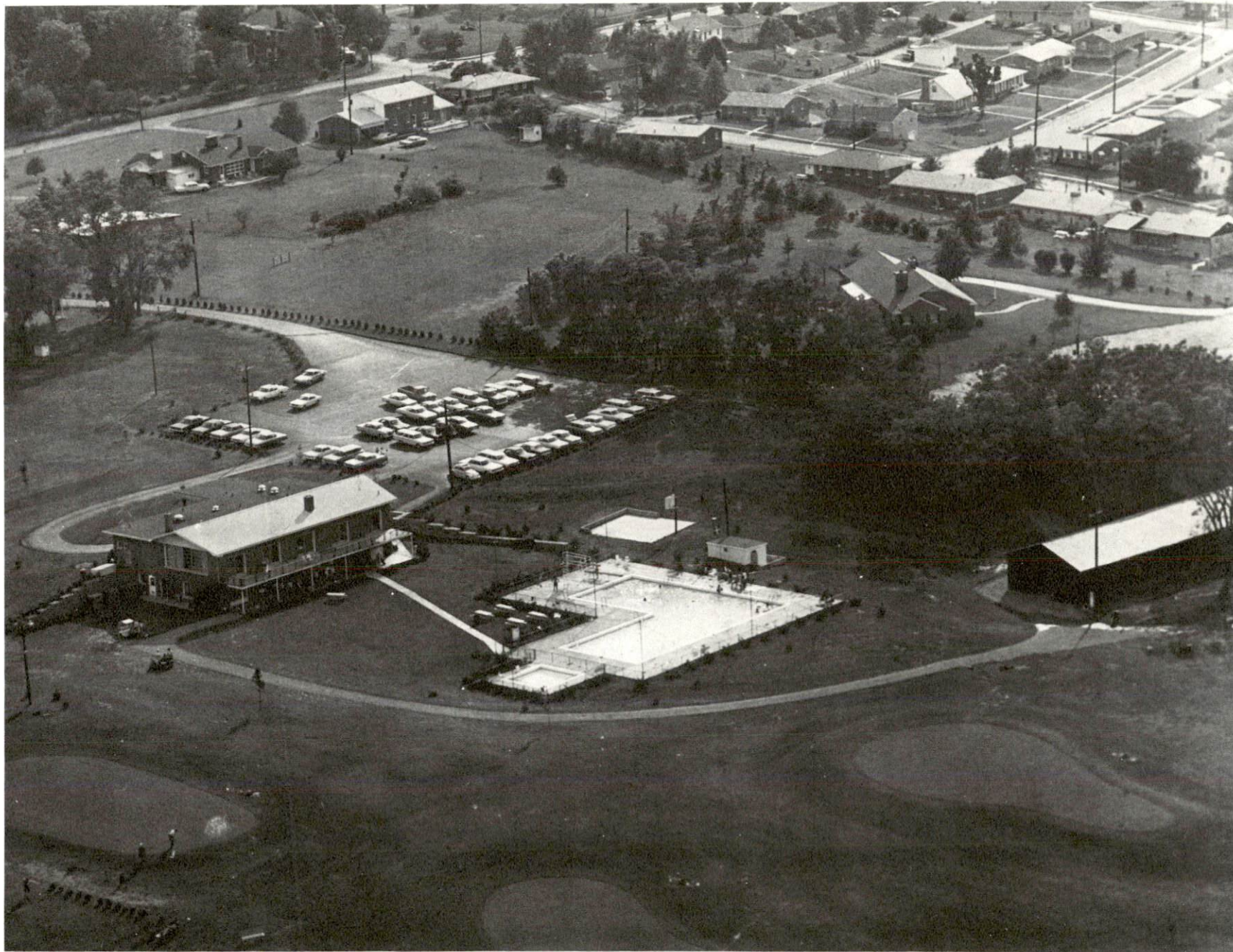
A \$160,000, 15-acre River Road Park will be developed on the South Fork Licking River. The park will contain 1 baseball diamond, 2 softball diamonds, 2 large picnic shelters, picnic area, 2 tennis courts, concession stand, restrooms, and croquet, badminton, and shuffleboard courts.

The Department also hopes to develop a 145-acre county farm into a public park. The City has agreed to provide water and sewerage service and fire protection to such a park. Facilities planned for the park include a golf course, fishing lake and paddle boats, trails, and picnic area.

The Cynthiana-Harrison County Airport plans to develop an Airport Park on an unused portion of its grounds. A concrete boat ramp into the South Fork Licking River is presently being built, and plans include a boat dock, shelter house, picnic area and tables, camping area, and playground.

Private recreational facilities available in Cynthiana include an indoor movie theater, drive-in theater, bowling lanes, and a country club with 9-hole golf course and swimming pool.

Special annual events in Cynthiana include the Harrison County Fair, a charity horseshow, and an Iris Festival.



CYNTHIANA COUNTRY CLUB

Area (Within 40 miles)

Kincaid Lake State Park near Falmouth, 22 miles to the north, offers camping, boating, swimming, and fishing at 175-acre Kincaid Lake. Other park facilities include hiking trails, boat motors and docks, picnic shelter, playground, miniature golf, tennis and paddle tennis courts, and organized recreational programs in the summer.

Blue Licks Battlefield State Park, 24 miles away, occupies the site of the "Last Battle of the Revolution." A monument honors 60 pioneers who died here in an Indian ambush. Park facilities include a museum, olympic pool, bathhouse, hiking trail, picnic shelter, and playground.

The Kentucky State Horse Park, 27 miles south, is now being developed on a 1,032-acre site approximately 7 miles north of Lexington. Planned attractions include a visitors center, museum, gift shop, walking tour, events area, horseback and pony rides, horse-drawn rides, vehicle demonstration area, restaurant, picnic area and campground. The park will also serve as the site of various equestrian events.

Lexington is located 34 miles south of Cynthiana in the center of the Bluegrass and horse farm region. Some of the world's foremost thoroughbred, standardbred, and saddlebred horses are bred and trained at the several hundred private horse farms concentrated within a 35-mile radius of the city. Lexington itself offers a wide variety of historic buildings and homes, museums, libraries, galleries, schools, and cultural and sporting events.

Waveland State Shrine, 39 miles south of Cynthiana near Lexington, is a 10-acre plantation village featuring an 1847 Greek Revival mansion, blacksmith shop, general store, other shops, museum, displays, and gardens.

Frankfort, 39 miles away, includes the State's Capitol as well as historical buildings, museums, and the grave of Daniel Boone.

COMMUNITY IMPROVEMENTS

Recent:

1. The Minnesota Mining and Manufacturing Company has completed a 30,000-square-foot addition to its Cynthiana factory.
2. The city and the county have cooperated in forming the Cynthiana-Harrison County Joint Planning Commission.
3. The city and the county have formed the Cynthiana-Harrison County Recreation Department which has initiated a county-wide recreation program and hired a full-time recreation director.
4. As part of Phase I of the Cynthiana-Harrison County Airport Master Plan, a Medium Intensity Runway Lighting System (including approach lights, runway lights, lighted wind tee, rotating beacon, VASI), a 7,000-gallon 100-octane fuel tank, and a 7,000-gallon 80-octane fuel tank have been installed at the airport.
5. Approximately 5 miles of U.S. 62 - from Cynthiana to Kentucky 353 - has been reconstructed.
6. Construction has been completed on the new Cynthiana Armory. This two-level building, containing 14,300 square feet of floor space, is used to train the Kentucky National Guard and to house community activities.
7. Approximately \$100,000 of work to the Harrison County Courthouse has been completed, including renovation of the entrance hall and addition of air conditioning in the courtroom. The county has also purchased a building near the Courthouse and moved in some of its offices.
8. Harrison County has implemented a county-wide sanitation system. Approximately 40 dumpsters are located in various locations throughout the county and are regularly served by 3 county trucks. The county and city have also gone into partnership in operating the sanitary landfill, which has recently been expanded.
9. The South Central Bell Telephone Company has added automatic number identification for direct-dialing of long distance calls.
10. The Housing Authority of Cynthiana has constructed 20 units of low-income federally subsidized housing and 45 units of federally subsidized housing for the elderly.
11. The Harrison County School System offers a complete program for the handicapped.

Underway:

1. Safety Specialties Manufacturing Division of E. D. Bullard Company is moving its principal manufacturing operation to Cynthiana. This requires the expansion of its Cynthiana plant, which is currently underway.
2. A 33-mile extension of the Harrison County Water Association's line is nearing completion.
3. The Cynthiana-Harrison County Airport is adding a jet fuel tank as part of Phase I of its Master Plan. The Airport is also building a concrete boat ramp into the South Fork Licking River as a beginning in developing its proposed Airport Park.
4. A new shopping center is being developed south of Cynthiana. Several businesses have already opened and an office complex is now under construction.
5. The South Central Bell Telephone Company is constructing a \$600,000, 40-foot addition to its building. This addition will house equipment which will enable the company to double its local switching capacity and number of lines handled. The company is also continually replacing old rural wire with new cable, adding miles of buried cable, and adding more touch tone and long distance capacity.
6. The Harrison County School System is constructing a new junior high school, which is expected to be opened in 1977.

Planned:

1. A 201 Facilities Plan for the Cynthiana sewerage system has been completed and is now being reviewed by the Environmental Protection Agency. The plan calls for the remodeling of the pump house to increase capacity from between 1.8 to 2 million gallons per day. Other features of the plan are the replacement of the present treatment system with a "biosurf" system and the addition of two new final clarifiers, a press, and an incinerator. The plan also calls for the separation of sanitary mains and storm mains. This will require the installation of several thousand feet of storm main throughout the city.
2. The city is making tentative plans to install a new raw water line from the Licking River to its water treatment plant.
3. The Harrison County Water Association is planning a 41-mile extension of line.

4. The Kentucky Bureau of Highways is preparing preliminary engineering plans for the reconstruction of U. S. 62 from Kentucky 353 to Leesburg, in southwestern Harrison County (a distance of 4.5 miles). Long range plans call for the reconstruction of U.S. 62 from Leesburg to Interstate 75.
5. The Master Plan for the expansion of the Cynthiana-Harrison County Airport includes: Phase I: A 1,000-foot runway extension (part of Phase I has been completed). Phase II (Intermediate Range): Purchase of an additional 40 acres of land and construction of a parallel taxi area, new terminal building, new hangar, and parking lot. Phase III (Long Range): Construction of a storage hangar, additional parking area, and additional taxi area.
6. The city has requested a \$420,000 grant from the Department of Housing and Urban Development to implement a planned, 30-year Community Development Program. The Program, which focuses on an area inhabited largely by minorities, will involve purchase of certain sites by the city and razing of homes, installation of new water and sewer lines, installation of new sidewalks and curbs, arrangement with local lending institutions and/or the FHA for low-interest home improvement loans to area residents, and possibly construction of government-financed housing.
7. A downtown revitalization program is being planned by the City with the assistance of the Bluegrass Area Development District. This program will improve the appearance of the downtown area by standardizing building fronts and placing utility lines underground.
8. The city plans to establish another municipal parking lot.
9. A contract will be let shortly for a 3,500- to 4,000-square foot addition to the Cynthiana Public Library.
10. Plans for the Airport Park include a boat dock, shelter house, picnic area and tables, camping area, and playground.
11. The Cynthiana-Harrison County Recreation Department has several improvements planned, including the conversion of its gymnasium into an indoor tennis court and the development of two new parks. The \$160,000, 15-acre River Road Park will be developed on the South Fork Licking River and will contain 1 baseball diamond, 2 softball diamonds, 2 large picnic shelters, picnic area, 2 tennis courts, concession stand, restrooms, and croquet, badminton, and shuffleboard courts. A 145-acre county farm will be developed into a public park containing a golf course, fishing lake and paddle boats, trails, and picnic area.

12. The Harrison County School System will initiate a complete, system-wide kindergarten program.

Kentucky Department of Commerce
Capital Plaza Tower
Frankfort, Kentucky 40601

Industrial Development Division
(502) 564-7140

Community Services Division
(502) 564-4300

Business Development Division
(502) 564-3862

Research and Planning Division
(502) 564-4886

Office of Minority Business Enterprise
(502) 564-4270

Map Sales Office
133 Holmes Street
(502) 564-4715

International Trade & Investment
Promotion Division
(502) 564-2170

Agri-Business Division
(502) 564-6784

Industrial Development Finance Authority
(502) 564-4554