

1973

Industrial Resources: Henderson County - Henderson

Kentucky Library Research Collection
Western Kentucky University, spcol@wku.edu

Follow this and additional works at: https://digitalcommons.wku.edu/henderson_cty



Part of the [Business Administration, Management, and Operations Commons](#), [Growth and Development Commons](#), and the [Infrastructure Commons](#)

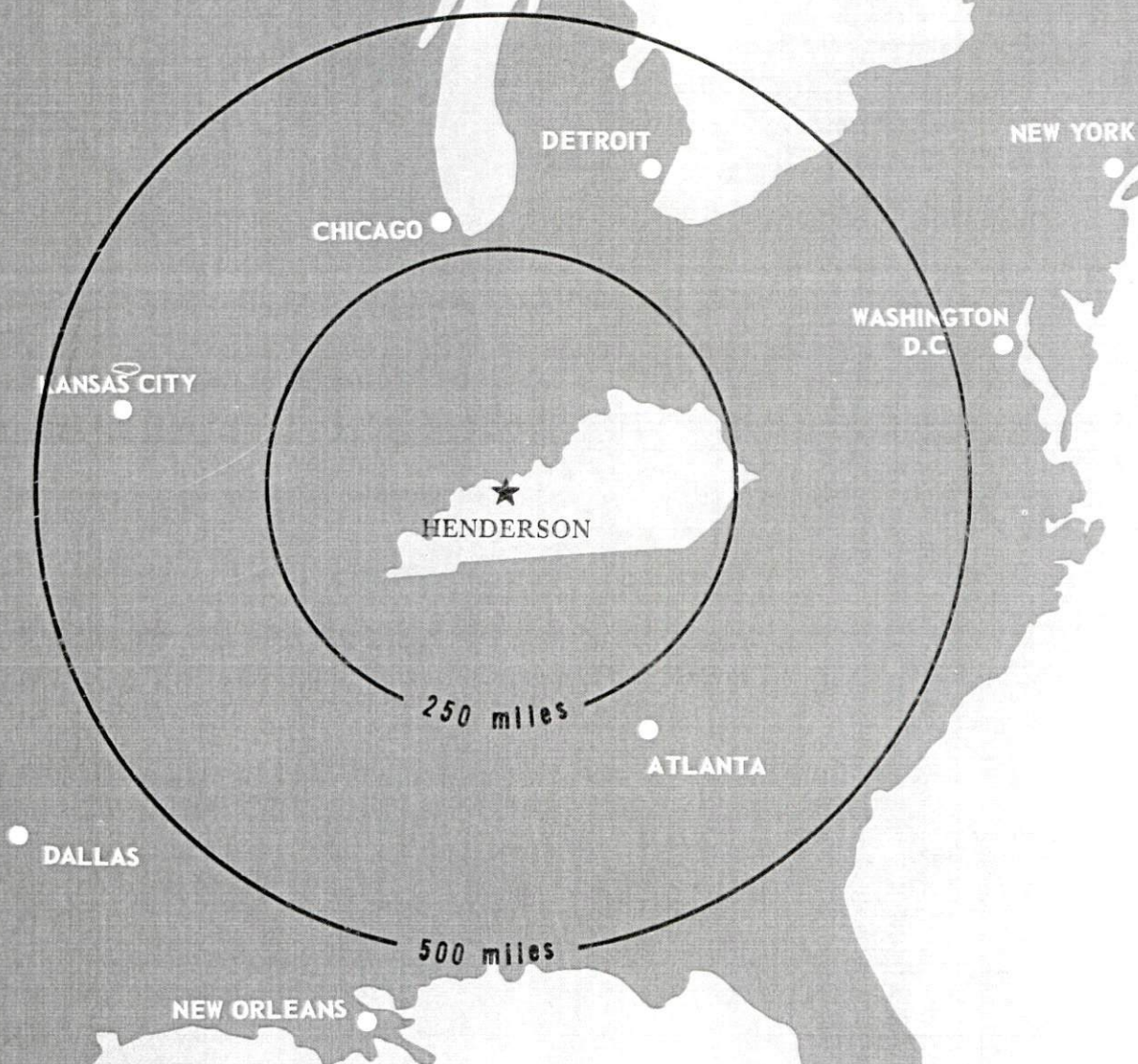
Recommended Citation

Kentucky Library Research Collection, "Industrial Resources: Henderson County - Henderson" (1973). *Henderson County*. Paper 12.
https://digitalcommons.wku.edu/henderson_cty/12

This Report is brought to you for free and open access by TopSCHOLAR®. It has been accepted for inclusion in Henderson County by an authorized administrator of TopSCHOLAR®. For more information, please contact topscholar@wku.edu.

INDUSTRIAL RESOURCES

HENDERSON KENTUCKY



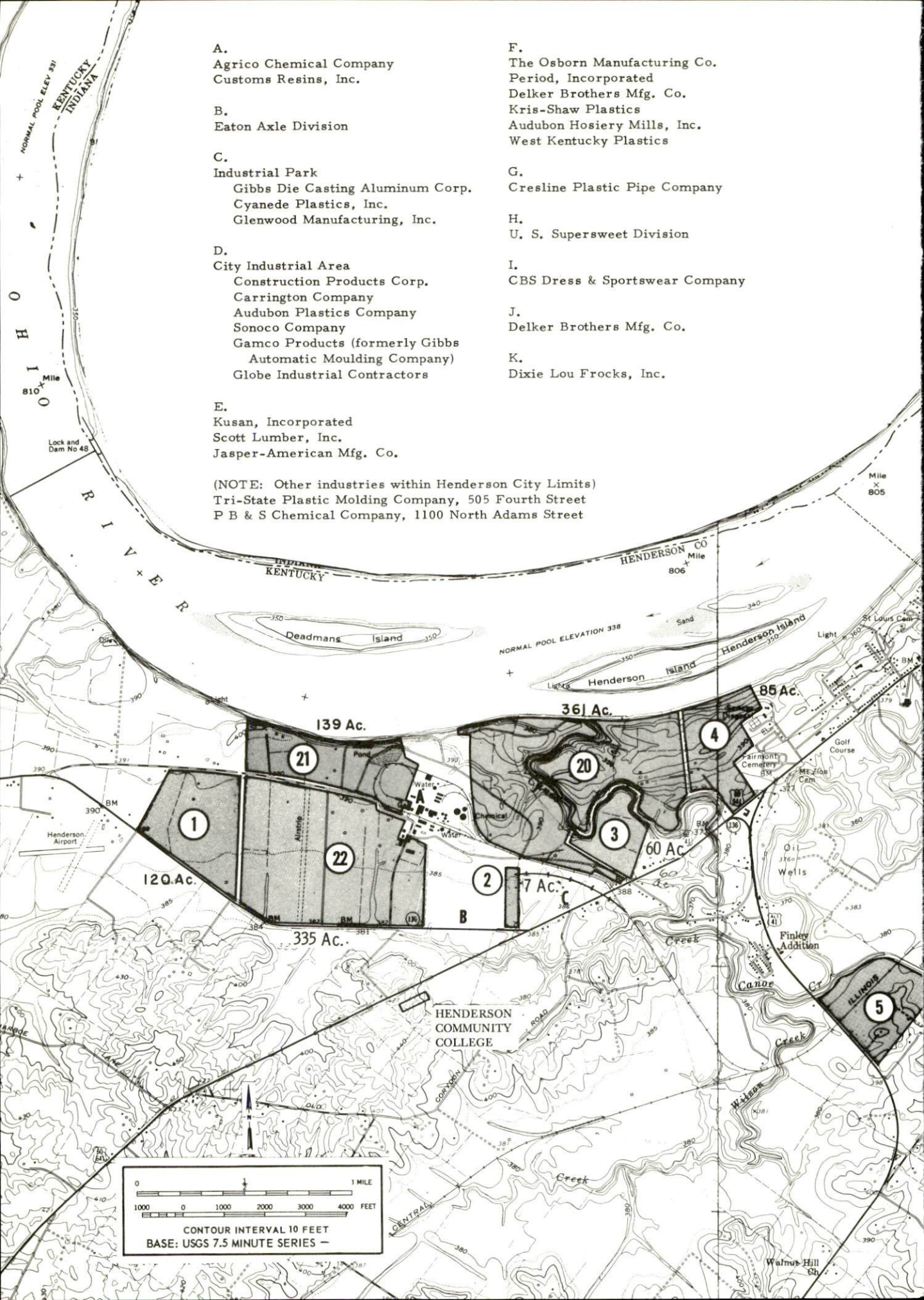
HENDERSON COUNTY, KENTUCKY

HENDERSON INDUSTRIAL SITES

1973

For more information about the following sites, contact Bob Reilly, Henderson-Audubon Area Chamber of Commerce, Henderson, Kentucky; or the Kentucky Department of Commerce, Capital Plaza Office Tower, Frankfort, Kentucky.

- SITE #1:** ACREAGE: 120 acres
LOCATION: In county, approximately 1 mile west of city limits
ZONING: Industrial
HIGHWAY ACCESS: Kentucky 136 along southern boundary of site
RAILROAD: Illinois Central Gulf Railroad approximately 3,200 feet east from northeast corner of site
WATER: Henderson Municipal Water and Sewer Department
SIZE LINE: 10-inch line along southern border of site
GAS: Henderson Municipal Gas Department
SIZE MAIN: 4-inch main approximately 3,720 feet southeast of site
ELECTRICITY: Henderson-Union RECC
SEWERAGE: Henderson Municipal Water and Sewer Department
SIZE LINE: 8-inch line approximately 1 1/4 miles east from southeast corner
OWNERSHIP: Private
- SITE #2:** ACREAGE: 7 acres
LOCATION: In western city limits
ZONING: Industrial
HIGHWAY ACCESS: Kentucky 136 along southern border of site
RAILROAD: Illinois Central Gulf Railroad extends onto northeast corner of site
WATER: Henderson Municipal Water and Sewer Department
SIZE LINE: 12-inch line along southern border of site
GAS: Henderson Municipal Gas Department
SIZE MAIN: 6-inch main approximately 360 feet west from southwest boundary of site
ELECTRICITY: Henderson Municipal Power and Light Department
SEWERAGE: Henderson Municipal Water and Sewer Department
SIZE LINE: 8-inch line adjacent to southeast corner of site; lift station also adjacent to site
OWNERSHIP: Henderson-Henderson County Industrial Foundation, Inc.
- SITE #3:** ACREAGE: 60 acres
LOCATION: In county, adjacent to western city limits
ZONING: Industrial
HIGHWAY ACCESS: U. S. 60 along southeast corner of site
RAILROAD: Illinois Central Gulf Railroad approximately 400 feet from southern border of site
WATER: Henderson Municipal Water and Sewer Department
SIZE LINE: 12-inch line crosses southeast corner of site
GAS: Henderson Municipal Gas Department
SIZE MAIN: 6-inch main adjacent to southeast corner of site across U. S. 60
ELECTRICITY: Henderson Municipal Power and Light Department
SEWERAGE: Henderson Municipal Water and Sewer Department
SIZE LINE: 8-inch line extends across southeast corner of property
OPTIONED BY: Henderson-Henderson County Industrial Foundation, Inc.
- SITE #4:** ACREAGE: 85 acres
LOCATION: Partially within western city limits
ZONING: Industrial
HIGHWAY ACCESS: U. S. 60 along southern border of site
RAILROAD: Illinois Central Gulf Railroad approximately 3,080 feet west of site
WATER: Henderson Municipal Water and Sewer Department
SIZE LINE: 12-inch line along southern border of site
GAS: Henderson Municipal Gas Department
SIZE MAIN: 4-inch main along southern boundary of site
ELECTRICITY: Henderson Municipal Power and Light Department
SEWERAGE: Henderson Municipal Water and Sewer Department
SIZE LINE: 8-inch line along southern border of site
OWNERSHIP: Private
- SITE #5:** ACREAGE: 96 acres
LOCATION: In county, approximately 4,800 feet south from southwest city limits
ZONING: Industrial
HIGHWAY ACCESS: U. S. 41-A along western border of site
RAILROAD: Illinois Central Gulf Railroad bisects site
WATER: Henderson Municipal Water and Sewer Department
SIZE LINE: 10-inch line along western boundary of site
GAS: Henderson Municipal Gas Department
SIZE MAIN: 6-inch main approximately 4,800 feet north of site
ELECTRICITY: Kentucky Utilities Company
SEWERAGE: Henderson Municipal Water and Sewer Department
SIZE LINE: 8-inch line approximately 5,000 feet north of site across U. S. 60
OWNERSHIP: Private
- SITE #6:** ACREAGE: 600 acres
LOCATION: Partially within southwestern city limits
ZONING: Industrial and agricultural
HIGHWAY ACCESS: Kentucky 285 along eastern boundary and Kentucky 136 along northern boundary
RAILROAD: Illinois Central Gulf Railroad crosses southern portion of site
WATER: Henderson Municipal Water and Sewer Department
SIZE LINE: 8-inch line along eastern border and adjacent to northern border across Kentucky 136
GAS: Henderson Municipal Gas Department
SIZE MAIN: 6-inch main bisects site
ELECTRICITY: Kentucky Utilities Company and Henderson Municipal Power and Light Department
SEWERAGE: Henderson Municipal Water and Sewer Department
SIZE LINE: 8-inch line adjacent to northeast border across Kentucky 136
OWNERSHIP: Private
- SITE #7:** ACREAGE: 469 acres
LOCATION: In county, approximately 1,200 feet east of city limits
ZONING: Agricultural
HIGHWAY ACCESS: Pennyridge Parkway passes through southern part of site and access road on site leads to Pennyridge Parkway
RAILROAD: Louisville & Nashville Railroad passes through eastern section of site
WATER: Henderson Municipal Water and Sewer Department
SIZE LINE: 8-inch line approximately 800 feet southwest of site
GAS: Henderson Municipal Gas Department
SIZE MAIN: 6-inch main passes through center and along western border of site
ELECTRICITY: Kentucky Utilities Company, Henderson-Union RECC or Henderson Municipal Power and Light Department
SEWERAGE: Henderson Municipal Water and Sewer Department
SIZE LINE: 8-inch line approximately 1,400 feet southwest of site
OWNERSHIP: Private
- SITE #8:** ACREAGE: 48 acres
LOCATION: Within southern city limits
ZONING: Industrial
HIGHWAY ACCESS: Kentucky 812 along northern boundary of site
RAILROAD: Louisville & Nashville Railroad along western boundary of site
WATER: Henderson Municipal Water and Sewer Department
SIZE LINE: 12-inch line along northern boundary of site
GAS: Henderson Municipal Gas Department
SIZE MAIN: 4-inch main approximately 880 feet east of site
ELECTRICITY: Kentucky Utilities Company or Henderson Municipal Power and Light Department
SEWERAGE: Henderson Municipal Water and Sewer Department
SIZE LINE: 8-inch line along northern boundary of site
OWNERSHIP: Private



A.
Agrico Chemical Company
Customs Resins, Inc.

B.
Eaton Axle Division

C.
Industrial Park
Gibbs Die Casting Aluminum Corp.
Cyanede Plastics, Inc.
Glenwood Manufacturing, Inc.

D.
City Industrial Area
Construction Products Corp.
Carrington Company
Audubon Plastics Company
Sonoco Company
Gamco Products (formerly Gibbs
Automatic Moulding Company)
Globe Industrial Contractors

E.
Kusan, Incorporated
Scott Lumber, Inc.
Jasper-American Mfg. Co.

(NOTE: Other industries within Henderson City Limits)
Tri-State Plastic Molding Company, 505 Fourth Street
P B & S Chemical Company, 1100 North Adams Street

F.
The Osborn Manufacturing Co.
Period, Incorporated
Delker Brothers Mfg. Co.
Kris-Shaw Plastics
Audubon Hosiery Mills, Inc.
West Kentucky Plastics

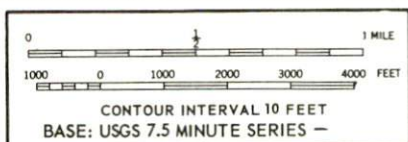
G.
Cresline Plastic Pipe Company

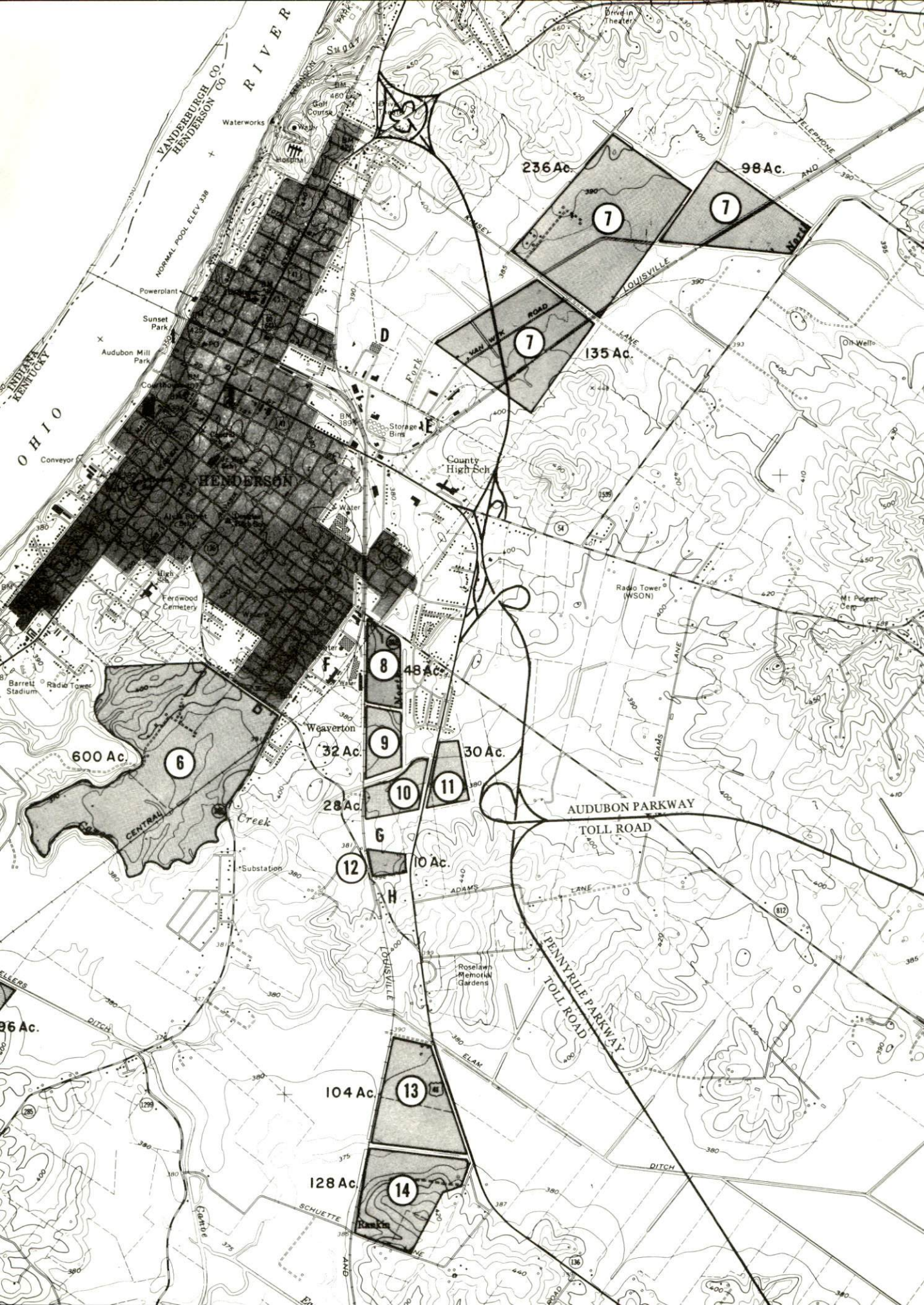
H.
U. S. Supersweet Division

I.
CBS Dress & Sportswear Company

J.
Delker Brothers Mfg. Co.

K.
Dixie Lou Frocks, Inc.





SITE #9: ACREAGE: 32 acres
LOCATION: Within southern city limits
ZONING: Industrial
HIGHWAY ACCESS: Paved city street to U. S. 41
RAILROAD: Louisville & Nashville Railroad along western boundary of site
WATER: Henderson Municipal Water and Sewer Department
SIZE LINE: 12-inch line approximately 640 feet east of site
GAS: Henderson Municipal Gas Department
SIZE MAIN: 4-inch main approximately 640 feet east of site
ELECTRICITY: Kentucky Utilities Company
SEWERAGE: Henderson Municipal Water and Sewer Department
SIZE LINE: 8-inch line approximately 740 feet east of site
OWNERSHIP: Private

SITE #10: ACREAGE: 28 acres
LOCATION: Within southern city limits
ZONING: Industrial
HIGHWAY ACCESS: U. S. 41 along eastern boundary of site
RAILROAD: Louisville & Nashville Railroad along western boundary of site
WATER: Henderson Municipal Water and Sewer Department
SIZE LINE: 12-inch line along eastern boundary of site
GAS: Henderson Municipal Gas Department
SIZE MAIN: 4-inch main passes through eastern portion of site
ELECTRICITY: Kentucky Utilities Company
SEWERAGE: Henderson Municipal Water and Sewer Department
SIZE LINE: 8-inch line to northeast corner of site
OWNERSHIP: Henderson-Henderson County Industrial Foundation, Inc.

SITE #11: ACREAGE: 30 acres
LOCATION: Within southern city limits
ZONING: Industrial
HIGHWAY ACCESS: U. S. 41 along western boundary of site
RAILROAD: Not rail served
WATER: Henderson Municipal Water and Sewer Department
SIZE LINE: 12-inch line adjacent to western boundary of site across U. S. 41
GAS: Henderson Municipal Gas Department
SIZE MAIN: 4-inch main approximately 240 feet west of site across U. S. 41
ELECTRICITY: Kentucky Utilities Company
SEWERAGE: Henderson Municipal Water and Sewer Department
SIZE LINE: 8-inch line approximately 320 feet northwest of site across U. S. 41
OWNERSHIP: Private

SITE #12: ACREAGE: 10 acres
LOCATION: Within southern city limits
ZONING: Industrial
HIGHWAY ACCESS: U. S. 41 along eastern boundary of site
RAILROAD: Louisville & Nashville Railroad along western boundary of site
WATER: Henderson Municipal Water and Sewer Department
SIZE LINE: 12-inch line passes through eastern section of site
GAS: Henderson Municipal Gas Department
SIZE MAIN: 6-inch main passes through eastern portion of site
ELECTRICITY: Henderson-Union RECC
SEWERAGE: Henderson Municipal Water and Sewer Department
SIZE LINE: Existing 8-inch line approximately 2,300 feet north of site; proposed lift station to be constructed 1,000 feet north of site
OWNERSHIP: Henderson-Henderson County Industrial Foundation, Inc.

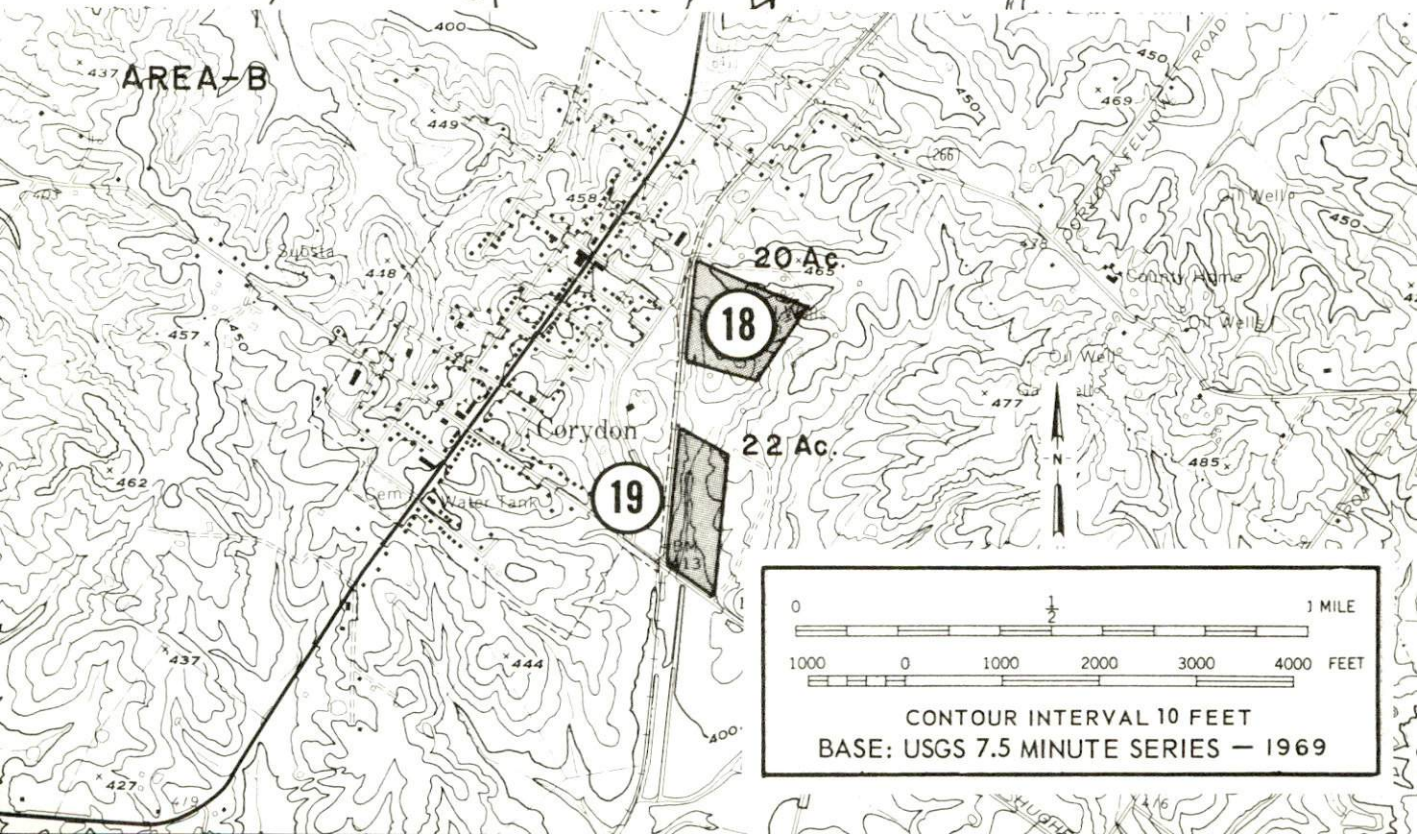
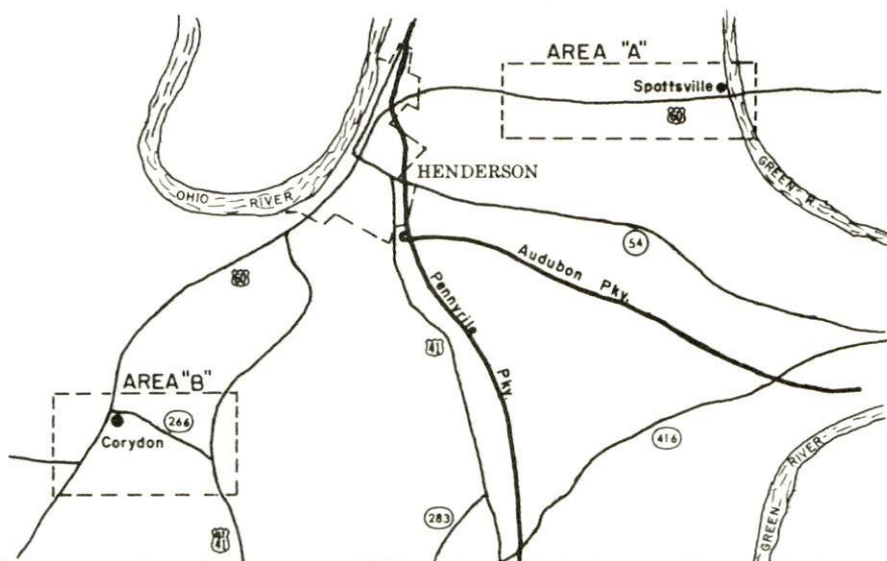
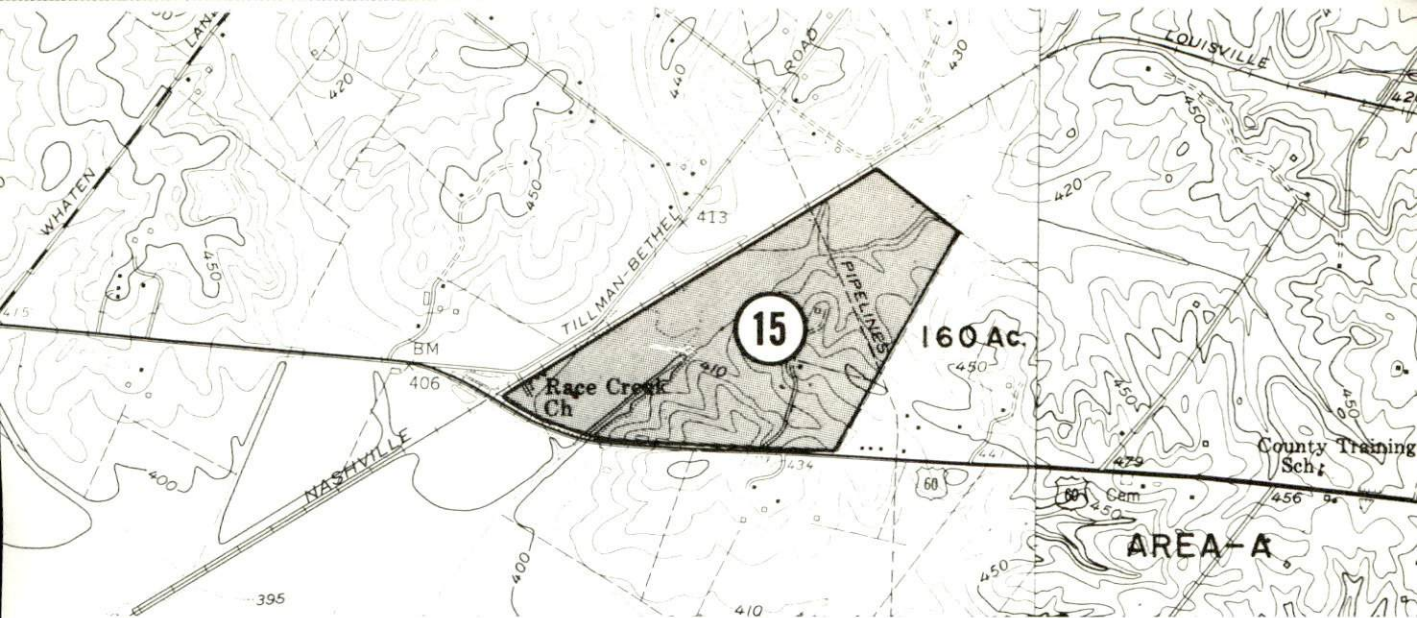
SITE #13: ACREAGE: 104 acres
LOCATION: In county, approximately 3,920 feet south of city limits
ZONING: Industrial
HIGHWAY ACCESS: U. S. 41 along eastern boundary of site
RAILROAD: Louisville & Nashville Railroad along western boundary of site
WATER: Henderson Municipal Water and Sewer Department
SIZE LINE: 12-inch line approximately 1,400 feet north of site
GAS: Henderson Municipal Gas Department
SIZE MAIN: 4-inch main passes through eastern section of site
ELECTRICITY: Henderson-Union RECC
SEWERAGE: Henderson Municipal Water and Sewer Department
SIZE LINE: 8-inch line approximately 1 1/2 miles north of site
OWNERSHIP: Private

SITE #14: ACREAGE: 128 acres
LOCATION: In county, approximately 1 1/4 miles south of city limits
ZONING: Industrial
HIGHWAY ACCESS: U. S. 41 at northeast corner of site
RAILROAD: Louisville & Nashville Railroad along western border of site
WATER: Henderson Municipal Water and Sewer Department
SIZE LINE: 12-inch line approximately 4,120 feet north of site
GAS: Henderson Municipal Gas Department
SIZE MAIN: 3-inch main passes through northeast corner of site; 2-inch main along southern border of site
ELECTRICITY: Henderson-Union RECC
SEWERAGE: Henderson Municipal Water and Sewer Department
SIZE LINE: 8-inch line approximately 2 miles north of site
OWNERSHIP: Private

SITE #20: ACREAGE: 361 acres
LOCATION: In county, adjacent to western city limits
ZONING: Industrial
HIGHWAY ACCESS: U. S. 60 along southern tip of site
RAILROAD: Illinois Central Gulf Railroad along southern border of site
WATER: Henderson Municipal Water and Sewer Department
SIZE LINE: 12-inch line passes through southern tip of site
GAS: Henderson Municipal Gas Department
SIZE MAIN: 6-inch main adjacent to southern tip of site across U. S. 60
ELECTRICITY: Henderson Municipal Power and Light Department
SEWERAGE: Henderson Municipal Water and Sewer Department
SIZE LINE: 8-inch line approximately 440 feet southeast of site
OWNERSHIP: Private

SITE #21: ACREAGE: 139 acres
LOCATION: In county, approximately 2,800 feet northwest of southwestern city limits
ZONING: Industrial
HIGHWAY ACCESS: Paved county road to Kentucky 136
RAILROAD: Illinois Central Gulf Railroad located in southern section of site
WATER: Henderson Municipal Water and Sewer Department
SIZE LINE: 10-inch line approximately 2,720 feet south of site
GAS: Henderson Municipal Gas Department
SIZE MAIN: 6-inch main approximately 2,600 feet southeast of site
ELECTRICITY: Kentucky Utilities Company
SEWERAGE: Henderson Municipal Water and Sewer Department
SIZE LINE: 8-inch line approximately 3,720 feet southeast of site
OWNERSHIP: Private

SITE #22: ACREAGE: 335 acres
LOCATION: In county, approximately 2,400 feet west of southwest city limits
ZONING: Industrial
HIGHWAY ACCESS: Kentucky 136 along southern boundary of site
RAILROAD: Illinois Central Gulf Railroad adjacent to northeast corner of site across paved county road
WATER: Henderson Municipal Water and Sewer Department
SIZE LINE: 10-inch line along southern border of site
GAS: Henderson Municipal Gas Department
SIZE MAIN: 6-inch main at southeast corner of site
ELECTRICITY: Kentucky Utilities Company
SEWERAGE: Henderson Municipal Water and Sewer Department
SIZE LINE: 8-inch line approximately 2,500 feet east of site
OWNERSHIP: Private



SITE #15: ACREAGE: 160 acres
LOCATION: In county, site fronts on U. S. 60 approximately
2 miles east of city limits
ZONING: Agricultural
HIGHWAY ACCESS: U. S. 60 along southern border of site
RAILROAD: Louisville & Nashville Railroad along western
boundary of site
WATER: Henderson County Water District
SIZE LINE: 8-inch line along northern boundary of site
GAS: Western Kentucky Gas Company
SIZE MAIN: 2-inch main approximately 680 feet southeast
of site across U. S. 60
ELECTRICITY: Henderson-Union RECC
SEWERAGE: Package plant necessary
OWNERSHIP: Private

SITE #18: ACREAGE: 20 acres
LOCATION: In county, adjacent to eastern city limits of Corydon
ZONING: Industrial
HIGHWAY ACCESS: Kentucky 266 at northwest corner of site
RAILROAD: Illinois Central Gulf Railroad along western
boundary of site
WATER: Henderson County Water District
SIZE LINE: 8-inch line on property
GAS: Henderson Municipal Gas Department
SIZE MAIN: 4-inch main approximately 1,400 feet northwest
of site
ELECTRICITY: Kentucky Utilities Company
SEWERAGE: Package plant necessary
OWNERSHIP: Private

SITE #19: ACREAGE: 22 acres
LOCATION: In county, adjacent to eastern city limits of Corydon
ZONING: Industrial
HIGHWAY ACCESS: Kentucky 145 along southern border of site
RAILROAD: Illinois Central Gulf Railroad along western
boundary of site
WATER: Henderson County Water District
SIZE LINE: 8-inch line on site
GAS: Henderson Municipal Gas Department
SIZE MAIN: 4-inch main approximately 3,000 feet north of site
ELECTRICITY: Kentucky Utilities Company
SEWERAGE: Package plant necessary
OPTIONED BY: Henderson-Henderson County Industrial
Foundation, Inc.

INDUSTRIAL RESOURCES
HENDERSON, KENTUCKY

Prepared by
The Kentucky Department of Commerce
in cooperation with
The Henderson-Audubon Area Chamber of Commerce

1973

This copy has been prepared by the Kentucky Department of Commerce,
Division of Research and Planning, and the cost of printing paid from
state funds.

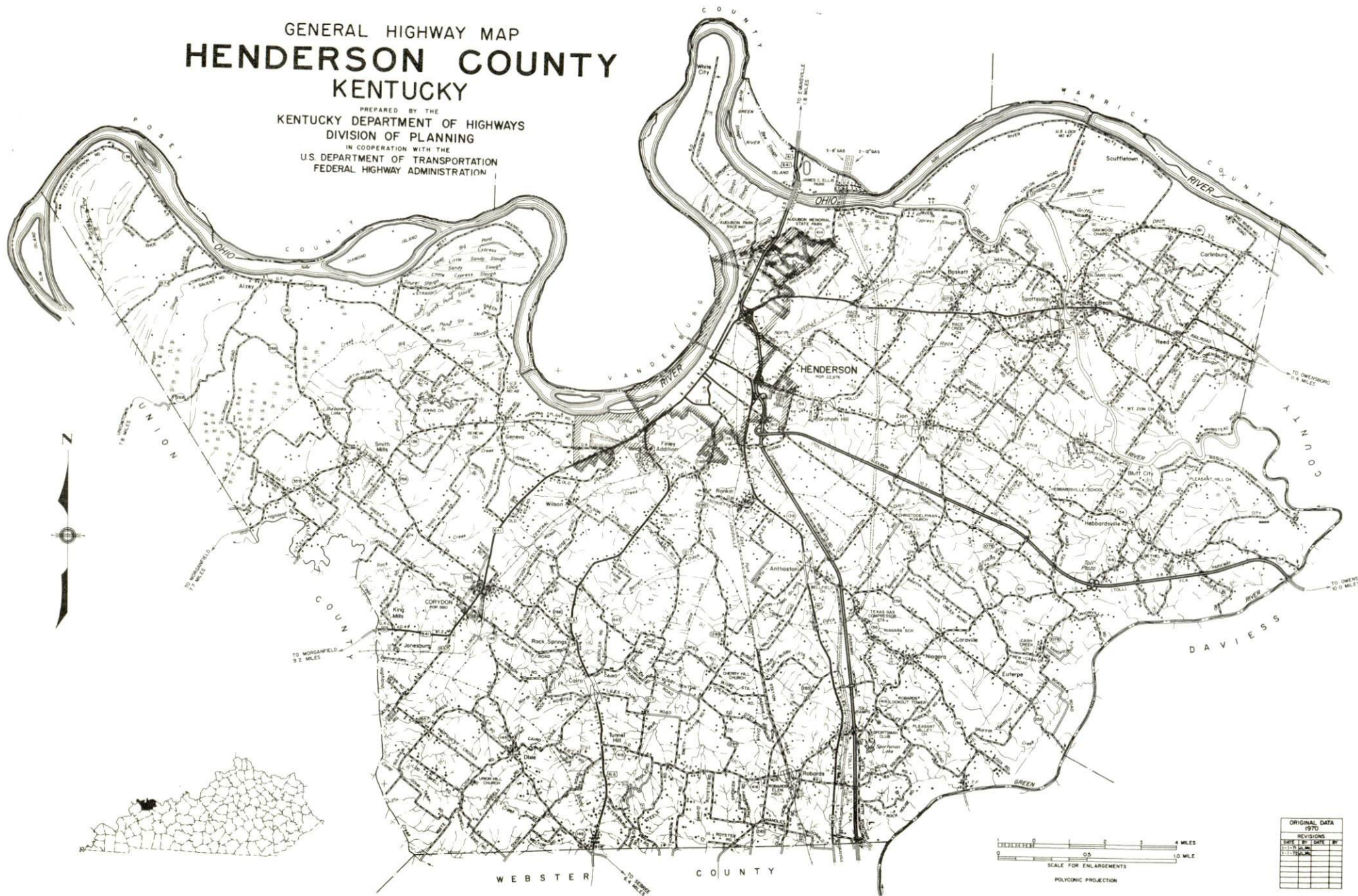
TABLE OF CONTENTS

<u>Chapter</u>	<u>Page</u>
INDUSTRIAL SITES	i
HENDERSON, KENTUCKY - A RESOURCE PROFILE	1
THE LABOR MARKET.	4
Population Trends	4
General Employment Characteristics, 1971	4
Manufacturing Employment Trends by Industry.	5
Major Henderson Manufacturing Firms, Their Products and Employment	5
Area Occupational Wage Rates	7
Labor Organizations	10
Estimated Male Labor Supply	10
Estimated Female Labor Supply	10
Per Capita Personal Income	11
TRANSPORTATION	12
Rail.	12
Truck Service	12
Air	13
Water	14
Bus	14
Taxi	14
Rental Services	14
POWER AND FUEL	15
Electricity.	15
Natural Gas	15
Other Fuels	16
WATER AND SEWERAGE	17
Water.	17
Sewerage	18
LOCAL GOVERNMENT	19
City.	19
County	19

<u>Chapter</u>	<u>Page</u>
Assessed Value of Property, 1972	19
Property Taxes	19
Local Property Tax Rate Per \$100 of	
Assessed Valuation, 1972	20
Utilities Gross Receipts Tax for Schools	20
Planning and Zoning	20
Safety.	20
Police.	20
Fire.	20
Rescue Service.	23
Sanitation	23
EDUCATION	24
Public Schools	24
Nonpublic Schools	24
Vocational Schools	24
Colleges and Universities	25
HEALTH.	27
Hospitals	27
Nursing Homes.	27
Public Health	27
OTHER LOCAL FACILITIES.	29
Communications	29
Library Services.	29
Religious Institutions	29
Financial Institutions	31
Hotels and Motels	31
Clubs and Organizations.	31
RECREATION	32
Local	32
Area	32
AGRICULTURE - NATURAL RESOURCES - CLIMATE	34
Agriculture	34
Natural Resources	34
Climate	35
HISTORY.	36

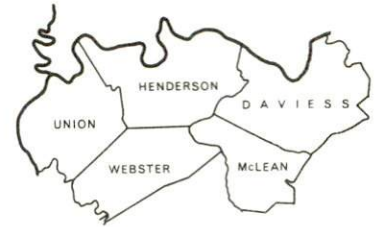
GENERAL HIGHWAY MAP HENDERSON COUNTY KENTUCKY

PREPARED BY THE
KENTUCKY DEPARTMENT OF HIGHWAYS
DIVISION OF PLANNING
IN COOPERATION WITH THE
U.S. DEPARTMENT OF TRANSPORTATION
FEDERAL HIGHWAY ADMINISTRATION

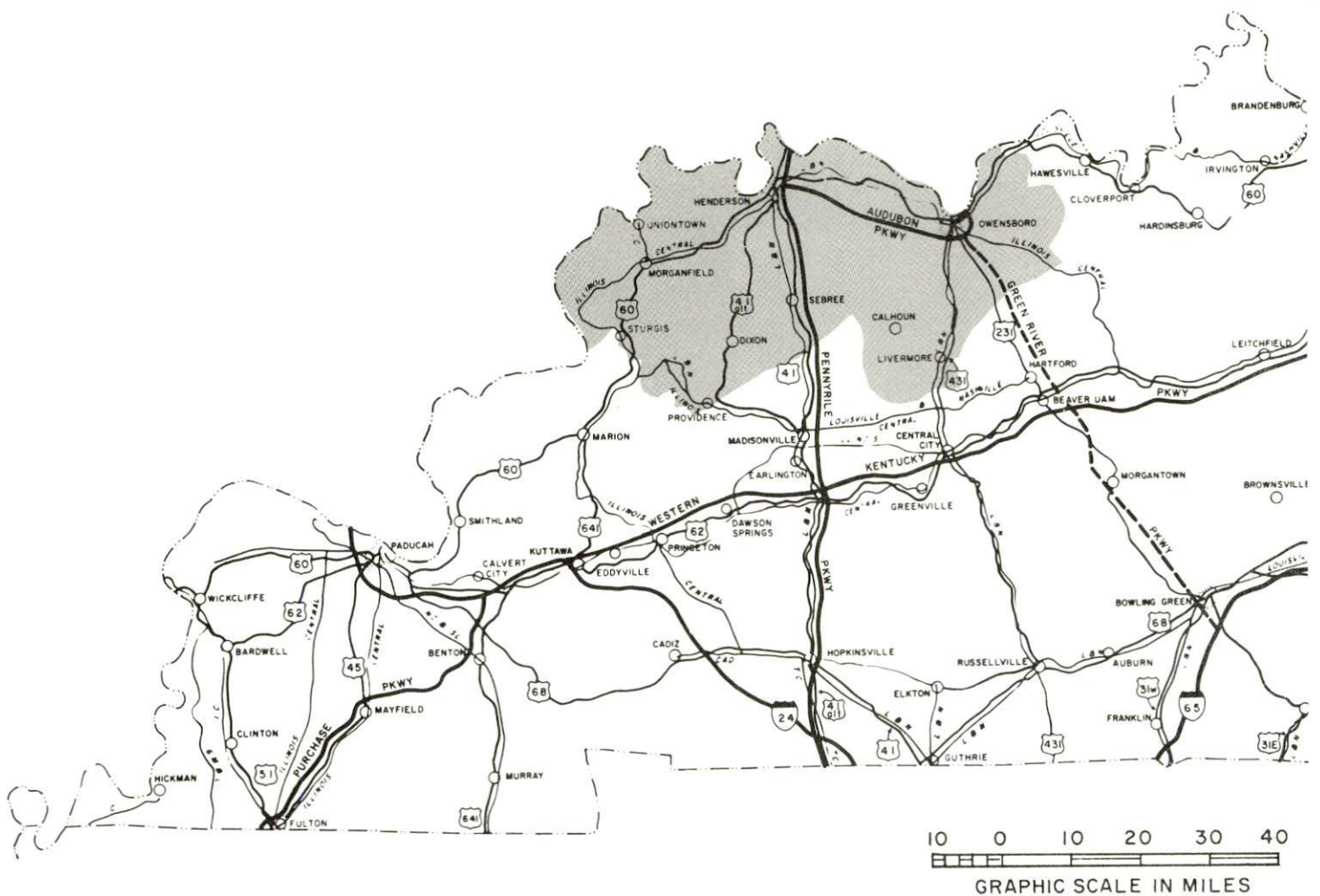


ORIGINAL DATA	
1970	
REVISIONS	
DATE	BY
10/1/70	1
11/1/70	2
12/1/70	3
1/1/71	4
2/1/71	5
3/1/71	6
4/1/71	7
5/1/71	8
6/1/71	9
7/1/71	10
8/1/71	11
9/1/71	12

HENDERSON LABOR MARKET AREA



Shaded Area Denotes Labor Market.



HENDERSON, KENTUCKY - A RESOURCE PROFILE

Henderson is located in western Kentucky on the bank of the Ohio River. It is the county seat of Henderson County and is 138 miles southwest of Louisville, 198 miles west of Lexington, 142 miles north of Nashville, Tennessee, 182 miles east of St. Louis, Missouri, and 10 miles south of Evansville, Indiana.

The 1970 population of Henderson was 22,976. The 1970 population of Henderson County, which is composed of 433 square miles, was 36,031.

The Economic Framework

Total employment in Henderson County averaged 12,800 in 1971, with manufacturing providing 3,140 jobs, government 1,240, and trade and services 3,485. Since 1962, manufacturing employment has increased by approximately 34 percent or 826 jobs. Major industrial products are aluminum reduction, furniture, axle assembly, zinc die castings, custom moldings, wood tables and aluminum die castings.

Per capita personal income in the county in 1970 was \$2,966. Since 1960, per capita personal income in the county has increased nearly 85 percent.

The Henderson labor market area includes Henderson County, the four adjoining Kentucky counties and the three adjoining southern Indiana counties. Total employment in the Kentucky portion of the labor market area averaged 52,750 in 1971. Manufacturing provided 12,610 of these jobs while trade and services provided 14,795, government 5,070, and agriculture 4,450. Area manufacturing employment is heaviest in the electrical machinery, fabricated metal products, furniture and fixtures, and rubber and plastic products industries.

Despite important industrial gains in recent years, the area still shows a deficit of 1,380 manufacturing jobs when measured against the national industrial employment-population ratio. This indicates an area where the potential for additional manufacturing growth is excellent.

Resources for Growth

1. There is a current estimated labor supply of 9,465 men and 10,960 women available for jobs in the labor market area. In addition 8,310 young men and 8,030 young women will become 18 years of age by 1979 and potentially available for work. The current labor supply would also be enhanced by the number of men and women in the adjoining Indiana counties who are available for industrial jobs.

2. Rail transportation is provided by the Louisville and Nashville Railroad and the Illinois Central Gulf Railroad. The nearest piggyback service is at Evansville, 10 miles away. Highway transportation is provided by U. S. Highways 60 and 41 and by the Audubon and Pennyrile Parkways. Henderson is served by 16 truck lines. Commercial air service is available at Evansville, Indiana. Henderson is located on the Ohio River affording the town with excellent water transportation capabilities.

3. Henderson is served by the Henderson Municipal Power and Light Department and by the Kentucky Utilities Company. Henderson County is served by the Henderson-Union RECC and by the Kentucky Utilities Company. The Henderson Municipal Gas Department serves the city of Henderson and portions of Henderson County. The Western Kentucky Gas Company also serves Henderson County. There are five distributors of propane and six distributors of distillate fuel oil in Henderson.

4. Henderson has 20 sites available for industrial use.

5. Two school systems serve the county: the Henderson Independent School District and the Henderson County School System. Two universities, two senior colleges and two community colleges are within a 50-mile radius of Henderson, including Henderson Community College at Henderson.

The Henderson County Area Vocational Education Center is located in Henderson and offers classes in eight course areas. Additional vocational training is easily accessible at the Daviess County State Vocational Technical School at Owensboro, only 29 miles away.

Community Programs for Improvement

Recent:

Henderson has 36 new businesses, and 14 businesses have expanded.

Three new industries have located in Henderson.

The Audubon Parkway connecting Henderson and Owensboro is now open for travel.

The Community Methodist Hospital has expanded at a cost of 1.5 million dollars.

A new shopping center is now open.

Henderson has a new 120-bed geriatric center.

Planned:

A new YMCA is scheduled to open in the spring of 1973.

The city plans to build a new secondary sewage treatment plant with construction to begin in June 1973.

A new municipal power plant will be ready for use by August, 1973.

Henderson is planning the construction of a new marina.

The Henderson County School System will have completed construction of a new elementary school by the fall of 1973.

The Henderson Independent School District is planning to construct two new elementary schools.

Recreation, Entertainment and Livability

The John James Audubon State Park is located on U. S. 41 near Henderson. The museum contains Kentucky's greatest exhibit of original Audubon prints. Other facilities include cottages, camping, picnic area, playground, supervised recreation, hiking trails, beach, fishing, boat rentals, golf and a gift shop.

Ellis Park provides thoroughbred racing, and Audubon Raceway provides harness racing.

THE LABOR MARKET

POPULATION TRENDS

Area	Population			Percent Change	
	1970	1960	1950	1960-70	1950-60
Henderson	22,976	16,892	16,837	+36.0	+ 0.3
Labor Market Area	153,743	142,243	128,425	+ 8.1	+10.8
Henderson County	36,031	33,519	30,715	+ 7.5	+ 9.1
Daviness County	79,486	70,588	57,241	+12.6	+23.3
McLean County	9,062	9,355	10,021	- 3.1	- 6.6
Union County	15,882	14,537	14,893	+ 9.3	- 2.4
Webster County	13,282	14,244	15,555	- 6.8	- 8.4

Source: U. S. Department of Commerce, Bureau of the Census, Census of Population, 1970, 1960, 1950.

GENERAL EMPLOYMENT CHARACTERISTICS, 1971

Major Employment Group	Employment	
	Henderson County	Labor Market Area
TOTAL	12,800	52,750
Agricultural	950	4,450
Nonagricultural	11,850	48,300
Manufacturing	3,140	12,610
Government	1,240	5,070
Trade and Services	3,483	14,795
Other	3,987	15,825

Source: Kentucky Department of Economic Security, Division of Research and Statistics.

MANUFACTURING EMPLOYMENT TRENDS BY INDUSTRY
MARCH 1972 AND 1962

Industry	Henderson County			Labor Market Area		
	1972	1962	%Change	1972	1962	%Change
TOTAL	3,225	2,399	+ 34.4	12,886	11,758	+ 9.6
Food & Kindred						
Products	124	125	- 0.8	1,592	1,683	- 5.4
Tobacco	0	0	0	568	520	+ 9.2
Apparel, Textiles,						
Leather	351	605	- 41.9	634	763	-16.9
Lumber, Furniture	707	621	+ 13.8	1,470	1,710	-14.0
Printing & Publishing,						
Paper	200	39	+412.8	552	392	+40.8
Chemicals, Petroleum						
& Coal, Rubber	1,096	581	+ 88.6	1,406	854	+64.6
Stone, Clay & Glass	65	77	- 15.6	337	330	+ 2.1
Primary Metals	170	106	+ 60.4	925	734	+26.0
Machinery, Metal						
Products, Equip.	447	191	+134.0	5,328	4,707	+13.2
Other	65	54	+ 20.4	74	65	+13.8

Source: Kentucky Department of Economic Security, Number of Workers in Manufacturing Industries Covered by Kentucky Unemployment Insurance Law Classified by Industry and County, March 1972, March 1962.

MAJOR HENDERSON MANUFACTURING FIRMS,
THEIR PRODUCTS AND EMPLOYMENT

Firm	Product	Employment		
		Total	Male	Female
Agrico Chemical Co.	Fertilizer	60	50	10
Agrico Chemical Co.	Nitric Acid, Nitrogen			
	fertilizer solutions	64	58	6
Anaconda Aluminum Co.	Aluminum reduction plant	600		
Audubon Hosiery Mills, Inc.	Men's and boys' socks	142	41	101
CBS Dress and Sportswear Co.	Junior, misses, and			
	womens dresses; junior			
	and misses suits	150	25	125
Construction Products Corp.	Prestressed concrete			
	products; ready mixed			
	concrete	70		
Cresline Plastic Pipe Co.	Plastic pipe and fittings	170	150	20
Cyanede Plastics, Inc.	Thermoplastics	67	38	29
Delker Bros. Mfg. Co.	Furniture	200	175	25
Dixie Lou Frocks, Inc.	Ladies' Dresses	80	10	70

(contd.)



CRESLINE PLASTIC PIPE CO.

<u>Firm</u>	<u>Product</u>	<u>Employment</u>		
		<u>Total</u>	<u>Male</u>	<u>Female</u>
Eaton Axle Div., Eaton Corporation	Axle assembly	300	270	30
Gibbs Automatic Moulding Company	Zinc die castings, custom moldings	278	172	106
Gibbs Die Casting Aluminum Corporation	Aluminum die castings	180	125	55
Glenwood Mfg., Inc.	Wood tables	200	150	50
Kusan, Inc.	Games, toys; plastic refrigerator and auto parts	185	54	131
The Osborn Mfg. Company	Industrial maintenance brushes	61	38	23
P B & S Chemical Company	Chlorine; muriatic, nitric acids; solvents	102	82	20
Period, Inc.	Furniture for hotels and motels	80	50	30
Scott Lumber, Inc.	Hardwood, lumber, skids	85	80	5
Tri State Plastic Molding Company	Plastic injection moulding, zinc die casting, aluminum die casting	276	130	146
U. S. Supersweet Div., International Multifood Corporation	Livestock feed	50		

Source: Kentucky Department of Commerce, 1973 Kentucky Directory of Manufacturers.

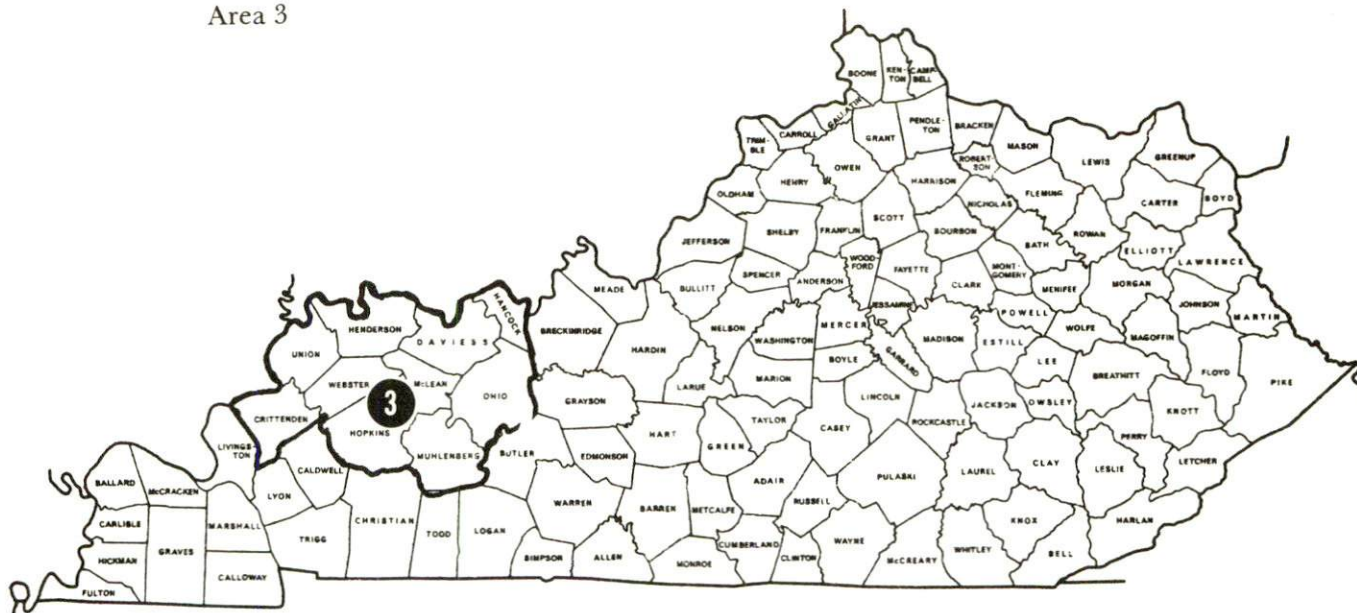
AREA OCCUPATIONAL WAGE RATES

Reliable wage data for specific communities are not available for publication. The best source for manufacturing wages in Henderson are the major firms listed in this survey. The Department of Commerce will assist in obtaining data by specific occupation for a specific community.

Associated Industries of Kentucky publishes an excellent annual Survey of Wages and Related Practices. This survey shows wages for eight regions of the state but not for specific communities. It does give a good indication of competing rates in the area.

Henderson is in Area 3 which includes the counties shown on the inset map.

Area 3



A sample of wages by occupation in this area are shown below.

Job	PRODUCTION EMPLOYEES -- HOURLY				Weighted
Classification	Firms and Employees	R A T E S R E P O R T E D			Averages
Assembler (D)	6/1959	69¢--\$2.00-\$2.49	350--\$2.50-\$2.99	913--\$3.00-\$3.49	\$2.80
Inspector (C)	7/124	32--\$2.00-\$2.49	52--\$2.50-\$2.99	40--\$3.00-\$3.49	\$2.72
Machinist (D)	4/13	2--\$2.50-\$2.99	2--\$3.00-\$3.49	9--\$3.50-\$3.99	\$3.49
Production Laborer	16/753	4--To--\$1.99 134--\$2.00-\$2.49	169--\$2.50-\$2.99 320--\$3.00-\$3.49	122--\$3.50-\$3.99 4--\$4.00-\$4.49	\$2.96
Punch Press Operator (C)	2/38	8--\$2.00-\$2.49	30--\$2.50-\$2.99		\$2.71
Sewing Machine Operator (A)	1/173	91--To--\$1.99 70--\$2.00-\$2.49	8--\$2.50-\$2.99 4--\$3.00-\$3.49		\$2.01
Welder (Resistance or Spot) (B)	3/118	34--\$2.00-\$2.49 71--\$2.50-\$2.99	12--\$3.00-\$3.49 1--\$3.50-\$3.99		\$2.64
Fork Lift Operator	15/86	16--\$2.00-\$2.49 17--\$2.50-\$2.99	15--\$3.00-\$3.49 8--\$3.50-\$3.99	30--\$4.00-\$4.49	\$3.32
First Line Foreman or Supervisor	23/81	1--To--\$1.99 2--\$2.00-\$2.49 3--\$2.50-\$2.99	2--\$3.00-\$3.49 7--\$3.50-\$3.99 20--\$4.00-\$4.49	3--\$4.50-\$4.99 12--\$5.00-\$5.49 31--\$5.50-Up	\$5.37

Area Three

Job	SERVICE EMPLOYEES -- HOURLY				Weighted Averages
Classification	Firms and Employees	R A T E S R E P O R T E D			
Crane Operator Overhead (A)	5/36	6--\$3.00-\$3.49 4--\$3.50-\$3.99	24--\$4.00-\$4.49 2--\$4.50-\$4.99		\$3.99
Electrician (B)	8/10	2--\$3.00-\$3.49	6--\$3.50-\$3.99	2--\$4.50-\$4.99	\$3.80
Laborer	18/150	5--To--\$1.99 16--\$2.00-\$2.49	76--\$2.50-\$2.99 16--\$3.00-\$3.49	17--\$3.50-\$3.99 20--\$5.50-Up	\$3.11
Mechanic Maintenance (All Around)	21/259	7--\$2.50-\$2.99 10--\$3.00-\$3.49 34--\$3.50-\$3.99	40--\$4.00-\$4.49 66--\$4.50-\$4.99 88--\$5.00-\$5.49	14--\$5.50-Up	\$4.76
Tool, Die or Gauge Maker (B)	3/52	2--\$3.50-\$3.99	4--\$4.00-\$4.49	46--\$4.50-\$4.99	\$4.71
Welder	6/27	1--\$3.00-\$3.49 1--\$3.50-\$3.99	1--\$4.00-\$4.49 5--\$4.50-\$4.99	3--\$5.00-\$5.49 16--\$5.50-Up	\$5.66

Job Classification	OFFICE EMPLOYEES -- MONTHLY				Weighted Averages
	Firms and Employees	RATES REPORTED			
Draftsman	11/28	1--\$450-\$499 3--\$500-\$549 2--\$550-\$599	1--\$600-\$649 2--\$650-\$699 13--\$700-\$799	6--\$800-Up	\$723
File Clerk	3/11	4--To--\$349 2--\$350-\$399	2--\$400-\$449 1--\$450-\$499	2--\$650-\$699	\$433
Secretary-- Junior	16/61	2--To--\$349 4--\$350-\$399 10--\$400-\$449	8--\$450-\$499 19--\$500-\$549 11--\$550-\$599	7--\$600-\$649	\$506
Stenographer-- Junior	5/55	10--\$350-\$399 8--\$400-\$449	10--\$450-\$499 27--\$500-\$549		\$468
Telephone Operator- Receptionist	12/13	2--To--\$349 2--\$350-\$399	1--\$400-\$449 3--\$450-\$499	4--\$500-\$549 1--\$550-\$599	\$456
Typist	4/10	3--\$400-\$449	7--\$450-\$499		\$455

By permission of Associated Industries of Kentucky, 200 West Chestnut Street, Louisville,
Kentucky 40202

LABOR ORGANIZATIONS

<u>Union</u>	<u>Representing manufacturing workers at:</u>
Textiles Workers of America	Audubon Hosiery Mills, Inc.
Industrial Workers of America	Hercules Manufacturing Company
United Furniture Workers of America	The Osborn Manufacturing Company
Laborers International Union of North America	Construction Products Corp.
International Chemical Workers Union	Agrico Chemical Co.
International Cork and Rubber Workers Union	Tri State Plastic Molding Company

ESTIMATED MALE LABOR SUPPLY HENDERSON LABOR MARKET AREA

<u>Area</u>	<u>Current</u>			<u>Future</u>	
	<u>Total</u>	<u>Not in Labor Force</u>	<u>Unemployed</u>	<u>Under-employed</u>	<u>Reaching 18 yrs. of age by 1979</u>
Labor Market					
Area	9,463	3,083	1,827	4,553	8,307
Henderson	1,408	162	318	928	1,864
Daviess	3,549	246	1,075	2,228	4,583
McLean	658	236	196	226	424
Union	2,489	1,674	77	738	789
Webster	1,359	765	161	433	647

Sources: Kentucky Department of Economic Security, Kentucky Labor Supply Estimates by County, 1972. Kentucky Department of Commerce, Future Labor Supply by 1979.

ESTIMATED FEMALE LABOR SUPPLY HENDERSON LABOR MARKET AREA

<u>Area</u>	<u>Current</u>			<u>Future</u>	
	<u>Total</u>	<u>Not in Labor Force</u>	<u>Unemployed</u>	<u>Under-employed</u>	<u>Reaching 18 yrs. of age by 1979</u>
Labor Market					
Area	10,957	3,085	1,103	6,769	8,032
Henderson	2,497	668	192	1,637	1,885
Daviess	4,272	57	665	3,550	4,332
McLean	1,577	1,162	114	301	431
Union	1,261	422	33	806	732
Webster	1,350	776	99	475	652

Sources: Kentucky Department of Economic Security, Kentucky Labor Supply Estimates by County, 1972. Kentucky Department of Commerce, Future Labor Supply by 1979.

PER CAPITA PERSONAL INCOME

<u>Area</u>	<u>1970</u>	<u>1960</u>	<u>% Change</u>
Henderson County	\$2,966*	\$1,606	+84.7
Labor Market Area			
Range	\$1,820 - 3,113*	\$1,292 - 1,846	N.A.
Kentucky	3,099	1,581	+96.0
U. S.	3,933	2,216	+77.5

*Unadjusted for commuting.

Sources: University of Kentucky, Office of Development Services and Business Research, Per Capita Income in Kentucky. U. S. Department of Commerce, Bureau of Economic Analysis, Survey of Current Business, August 1972.

TRANSPORTATION

Rail

Lines serving Henderson - Illinois Central Gulf Railroad, Louisville and Nashville Railroad

Services - Freight, siding, switching

For details on routing, schedules, rates, and services, contact:

Director of Industrial Development
Illinois Central Gulf Railroad Company
135 East 11th Place
Chicago, Illinois 60605

Manager of Industrial Development
Louisville and Nashville Railroad
908 West Broadway
Louisville, Kentucky 40203

Truck Service

Company

A and H Truck Lines, Inc.
Bonifield Brothers Truck Lines, Inc.
Chandley Cartage Co.*
Clairmont Transfer Co.
Gateway Transportation Co., Inc.
Hancock Trucking, Inc. (Hennis)
Harper Truck Service, Inc.
Interstate Motor Freight System
A. Ligon Truck Line, Inc.*
(United Trucking)
McLean Trucking Company
Motor Freight Corporation
Owensboro Express, Inc.
Roadway Express, Inc.
T.I.M.E. - DC, Inc.
Wilson Freight Company

Home Office

Evansville, Indiana
West Frankfort, Illinois
Henderson, Kentucky
Escanaba, Michigan
LaCrosse, Wisconsin
Evansville, Indiana
Paducah, Kentucky
Grand Rapids, Michigan

Lebanon, Kentucky
Winston-Salem, North Carolina
Terre Haute, Indiana
Owensboro, Kentucky
Akron, Ohio
Lubbock, Texas
Cincinnati, Ohio

Other Freight Services

United Parcel Service

Nearest Shipping Center

Owensboro, Kentucky

*Local Terminal.

HIGHWAY MILES AND TRUCK TRANSIT TIME IN DAYS FROM
HENDERSON, KENTUCKY, TO SELECTED MARKET CENTERS

City	Highway Miles	Delivery Time		City	Highway Miles	Delivery Time	
		TL				TL	
Atlanta, Ga.	564	1-2		Los Angeles, Calif.	2,245	4-6	
Birmingham, Ala.	594	1-2		Louisville, Ky.	138	1	
Chicago, Ill.	439	1		Nashville, Tenn.	142	1	
Cincinnati, Ohio	251	1		New Orleans, La.	672	2	
Cleveland, Ohio	492	1-2		New York, N. Y.	907	2-3	
Detroit, Mich.	513	1-2		Pittsburgh, Pa.	532	1-2	
Knoxville, Tenn.	370	1		St. Louis, Mo.	182	1	

Source: Delivery time only - McLean Trucking Service, Winston-Salem, North Carolina.

Air

	<u>Local</u>	<u>Nearest Commercial</u>
Location:	Henderson Airport 5 miles southwest of Henderson	Dress Regional Airport Evansville, Indiana
Runway:	1 paved, 1 turf	3 paved
Length:	3,800 ft., 1,900 ft.	8,023 ft., 5,084 ft., 3,502 ft.
Traffic Control:	Wind sock, wind tee	
Lighting:	Runway lights, rotating beacon	Runway lights
Services:	80 and 100 octane, jet A-50, flight training, tie down and taxi, hangar	80-87, 91-96, 100-130 jet fuel; taxi, courtesy car, car rentals; major repairs, restaurant, hangars, tie downs, baggage carts, charter, rest rooms; Eastern, Delta and Allegheny Airlines
Air Freight Service:		Space - available basis

Water

Henderson is strategically located on the banks of the Ohio River near the junction of the Green and Ohio Rivers. The Green River has a nine-foot channel providing navigation for a distance of 103 miles. The Ohio River has a nine-foot depth navigation for its entire length and a minimum channel width of 300 feet.

Mead Johnson Terminal, Evansville, provides complete and unexcelled facilities - a modern, fully-integrated, river-rail-truck terminal and public warehouse, bulk terminals and open-yard storage - providing efficient and economical distribution of commodities of every description. The terminal is served by the Louisville & Nashville Railroad with reciprocal switching with other rail lines.

Common carrier barge lines utilizing facilities of the terminal include American Commercial Barge Line Company, Valley Barge Line Company, Ohio Barge Line, Inc., The Ohio River Company, and Union Barge Line Corporation. More than 2,000 feet of river frontage provides ample properties for terminating of dry bulk cargoes.

Bus - Southern Greyhound Bus Line
Evansville and Ohio Valley Bus Line

Taxi - 2 companies, 24-hour service

Rental Services - Car rentals

POWER AND FUEL

Electricity

Company serving Henderson - Henderson Municipal Power and Light Department

Source of power - Henderson Municipal Power and Light Department

Total generating capacity - 50,000 KW*

For industrial rates contact:

Henderson Municipal Power and Light Department
Henderson, Kentucky 42420

Company serving Henderson and Henderson County - Kentucky Utilities Company

Source of power - Kentucky Utilities Company

Total generating capacity - 1,215,000 KW

For industrial rates contact:

Kentucky Utilities Company
Industrial Development Division
120 South Lime
Lexington, Kentucky 40507

Company serving Henderson County - Henderson-Union RECC

Source of power - Big Rivers RECC

Total generating capacity - 400,000 KW

For industrial rates contact:

Henderson-Union RECC
P. O. Box 18
Henderson, Kentucky 42420

Natural Gas

Company serving Henderson - Henderson Municipal Gas Department

Source of supply - Texas Gas Transmission Corporation

Size of transmission mains - 8 inches (supplier); 6 inches (distributor)

Distribution mains - 1 1/4 to 10 inches

Distribution pressure - 8 oz. to 60 psi

Btu content - 1,000 per cubic foot; Specific gravity - .06

For rates and supplies contact:

Mr. Oliver VanMeter
Henderson Municipal Gas Department
City Hall
Henderson, Kentucky 42420

*An additional 350,000 KW plant is now under construction. 175,000 KW is scheduled to be commercial by April 1973 and 175,000 KW scheduled to be commercial by the end of 1973.

Company serving Henderson County - Western Kentucky Gas Company
Source of supply - Texas Gas Transmission Corporation
Size of transmission mains - 4, 6, and 8 inches (supplier);
2 inches (distributor)
Distribution mains - 2 inches
Distribution pressure - 30 to 40 psi
Btu content - 1,000 per cubic foot; Specific gravity - .06
For rates and supplies contact:

Western Kentucky Gas Company
Industrial Development Division
608 Frederica Street
Owensboro, Kentucky 42301

Other Fuels

Propane and butane - Herrons Bottle Gas, LIN Gas Inc., Southern States, Texgas Corporation, Universal Butane Company

Fuel Oils -

Distillate fuel oil - Hayes Oil Company (ARCO); Ashland Oil Company (bulk plant); Eargood and Son; Henderson Oil Company; Palmer Oil Company; Sun Oil Company (bulk plant)
Residual fuel oil - arrangements must be made with the refinery

Low sulphur content coal - Available in eastern Kentucky

WATER AND SEWERAGE

Water

Company serving Henderson - Henderson Municipal Water and
Sewer Department

Source - Ohio River

Treatment plant capacity - 6,000,000 gallons per day

Average daily consumption - 4,000,000 gallons

Peak daily consumption - 5,000,000 gallons

Type treatment - Sedimentation, chlorination, fluoridation, filtration

Storage capacity - 5,500,000 gallons

Size mains - 1 1/2 to 24 inches

Average pressure - 50 psi

Average temperature - 80 degrees F.

MONTHLY WATER RATES FOR WHOLESALE AND INDUSTRIAL CONSUMERS

First	400 cu. ft.	\$0.65 per 100 cu. ft.
Next	600 cu. ft.	.55 per 100 cu. ft.
Next	1,500 cu. ft.	.50 per 100 cu. ft.
Next	2,500 cu. ft.	.45 per 100 cu. ft.
Next	5,000 cu. ft.	.40 per 100 cu. ft.
Next	20,000 cu. ft.	.20 per 100 cu. ft.
Next	100,000 cu. ft.	.15 per 100 cu. ft.
All over	130,000 cu. ft.	.12 per 100 cu. ft.

Name of water district - Henderson County Water District

Area served - Henderson County and Poole, Kentucky, in Webster County

Date when water district began operating - 1967

Average amount of water used in a 24-hour period - 267,000 gallons

Storage capacity - 740,000 gallons

Average pressure - 40 psi

Size lines - 2, 3, 4, 6, 8 and 10 inches

Rates -

First	2,000 gallons	\$6.25 (Minimum rate)
Next	8,000 gallons	2.00 per M gallons
Next	5,000 gallons	1.75 per M gallons
Next	5,000 gallons	1.50 per M gallons
Next	10,000 gallons	1.25 per M gallons
Next	20,000 gallons	1.00 per M gallons
All over	50,000 gallons	.65 per M gallons

Surface water sources - Ohio and Green Rivers
Average discharge - Unlimited industrial supplies
Expected ground water yield - 5 to 1,000 gpm along Ohio River alluvium;
5 to 50 gpm in area trending northwest-southeast direction and 5 gpm or
less over remainder of county

Sewerage

Company serving Henderson - Henderson Municipal Water and Sewer
Department
Design capacity - 7,200,000 gallons per day
Average daily flow - 3,000,000 gallons; Treatment - Primary *
Type treatment - Aeration, settling, aerobic digestion, drying beds
Treated effluent discharged into - Ohio River
Size of sanitary mains - 6 inches to 5 feet
Size of storm mains - 18 inches to 5 feet
Rates - 100 percent of monthly water bill

*Construction will begin in the spring, 1973, to convert treatment
facilities from primary to secondary.

LOCAL GOVERNMENT

City

Structure - Mayor - 4-year term; 4 councilmen - 2-year terms;

City manager

Budget 1972-73 - General Fund \$2,207,600

Water and Sewer Fund \$1,188,110

City Gas System \$1,836,098

Fees and licenses - Occupational license varies from \$2 to
\$1,000 annually

County

Structure - County Judge - 4-year term; 5 magistrates - 4-year terms

Budget 1972-73 - General Fund \$273,600; Road Fund \$231,200

Assessed Value of Property, 1972

<u>Classes of Property</u>	<u>Henderson</u>	<u>Henderson County</u>
Real Estate	\$ 92,674,685	\$206,814,200
Tangibles	26,391,940	40,702,240
Public Service	7,229,181	24,714,512 (1971)

Property Taxes

Land and buildings are taxed by the state and may be taxed by local jurisdictions. The state rate is \$0.015 per \$100 of assessed valuation.

Tangible personal property owned by manufacturers (automobiles, trucks, finished goods, office furniture, office equipment) is taxed by the state at \$0.15 per \$100 and may be taxed by local jurisdictions.

Manufacturing machinery, raw materials inventories, and goods in process inventories are not subject to local taxation. The state rate is \$0.15 per \$100.

Property stored in public warehouses is not subject to local taxation. The state rate is only \$0.015 per \$100.

All property is assessed at 100 percent of fair cash value.

Local Property Tax Rate Per \$100 of Assessed Valuation, 1972*

<u>Taxing Jurisdiction</u>	<u>Henderson</u>	<u>Henderson County</u>
County	\$.145	\$.145
School	.966	.598
City	.577	

Special (not county wide): Grassy Pond Watershed - \$.04
Pond Creek Watershed - .10

Utilities Gross Receipts Tax for Schools

Henderson County levies a 3 percent tax on utilities receipts for schools. This tax is paid by all consumers of utilities. Exempted are receipts from utilities services that are resold and the receipts from the sale of energy or energy producing fuels that exceed 3 percent of the cost of production in manufacturing, processing, mining or refining.

Planning and Zoning

Joint agency - Henderson City-County Planning Commission
Zoning enforced - all areas (county presently being rezoned)
Subdivision regulations enforced - all areas
Mandatory state codes enforced - Plumbing, National Fire Protection Association Code, National Building Code (for major buildings and residential construction containing more than 12 bedrooms per building)

Safety

<u>Police</u>	<u>Henderson</u>	<u>Henderson County</u>
Total staff	50	9
Radio-patrol cars	11	5

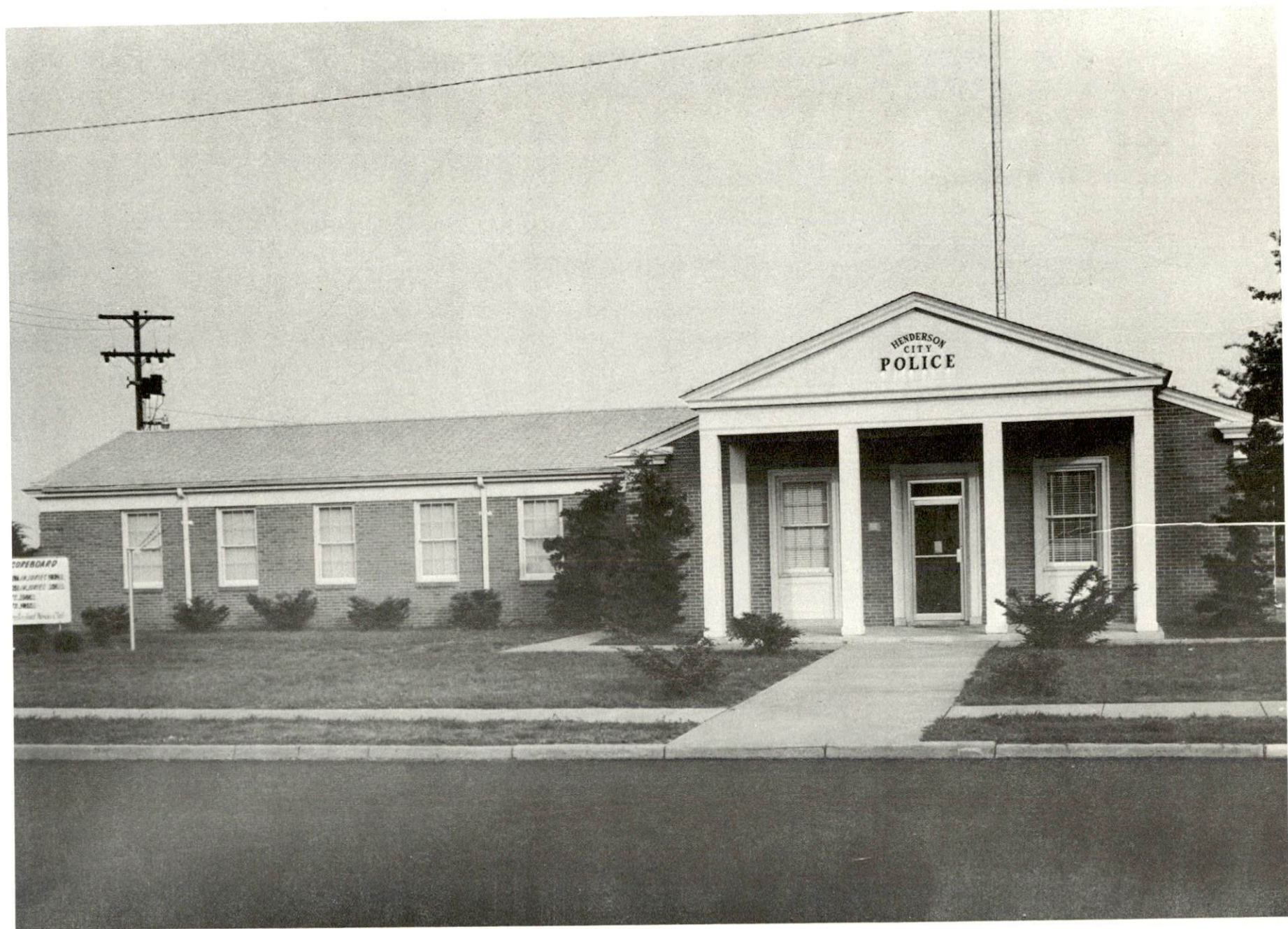
Fire

American Insurance Association Fire Rating	6
Full-time staff	52
Equipment:	
1,500 gpm pumper	1
1,000 gpm pumpers	3
500 gpm pumper	1
Ladder truck	1
Utility truck	1

*Kentucky Department of Revenue, Kentucky Property Tax Rates, 1972.



HENDERSON COUNTY COURTHOUSE



HENDERSON CITY POLICE

Rescue Service

Henderson County Civil Defense Unit

Number of volunteers - 260

Equipment - 14 pumper trucks, 6 tank trucks, 3 Army ducks,
30 generators

Personnel training - First aid training, Civil Defense training,
Red Cross training

Sanitation

Henderson

Type service	Municipal
Fee charged:	
residential	\$2.50 per month
business	7.50 per month
Collection frequency:	
residential	Once weekly
business	Once weekly
Trash pickup	Once weekly
Disposal method	Landfill

EDUCATION

Public Schools

	<u>Henderson</u>	<u>Henderson County</u>
Total Enrollment (1972-73)	3,100	5,670
Elementary	1,650	2,920
Junior High	500	950
High School	950	1,800
Student-Teacher Ratio	24-1	28-1
Elementary	28-1	31-1
Junior High	22-1	25-1
High School	21-1	26-1
Accreditation	The Southern Association of Colleges and Schools	
Percent High School Graduates to College	48.3	27.4
Expenditures Per Pupil (1971-72)	\$484.11	\$464.26
Bonded Indebtedness, June 30, 1972	\$1,081,000	\$4,409,000

Nonpublic Schools

Total Enrollment	380
Elementary	380
Student-Teacher Ratio	25-1
Elementary	25-1

Vocational Schools

	<u>Nearest State School</u>	<u>Nearest Area Education Center</u>
Location	Daviness County State Vocational-Technical School Owensboro	Henderson County Area Vocational Education Center Henderson
Miles Distant	29	
Curriculum	Accounting Jr. Management Clerical Secretarial	Accounting Jr. Management Clerical Secretarial

(contd.)

Vocational Schools (contd.)

	<u>Nearest State School</u>	<u>Nearest Area Education Center</u>
Curriculum	Marketing and Distributive Education Child Care Food Service Home and Community Service Learning Lab Electronics Instrumentation Air Conditioning and Refrigeration Auto Body Repair Auto Mechanics Cosmetology Diesel Mechanics Masonry Printing Welding	Auto Mechanics Carpentry Drafting Electricity Machine Shop

Arrangements can be made to provide training in the specific production skills required by an industrial plant. Instruction may be conducted either in the vocational school or in the industrial plant, depending upon the desired arrangement and the availability of special equipment.

Colleges and Universities

<u>Name</u>	<u>Location</u>	<u>Area - Within 50 miles</u>	
		<u>Enrollment</u> <u>(Fall 1972)</u>	<u>Highest Degree</u> <u>Conferred</u>
Brescia College	Owensboro	931	Baccalaureate
Indiana State University (Evansville Campus)	Evansville, Indiana	2,648	Baccalaureate
Kentucky Wesleyan	Owensboro	772	Baccalaureate
Henderson Community College	Henderson	608	Associate
Madisonville Community College	Madisonville	356	Associate
University of Evansville	Evansville, Indiana	5,468	Masters



HENDERSON COMMUNITY COLLEGE



HENDERSON COUNTY HIGH SCHOOL

HEALTH

Hospitals

<u>General Hospital</u>	<u>Location</u>	<u>Beds</u>
Community Methodist Hospital	Henderson	191

General hospital facilities - 16 bassinets, 5 X-ray and diagnostic treatment rooms, laboratory facilities, nursery, emergency room, 4 operating rooms, cardiac care unit, intensive care unit, physical therapy, rehabilitation, respiratory therapy unit

Medical staff - 28 doctors, 36 consultant doctors, 63 registered nurses, 38 graduate licensed practical nurses

Nursing Homes

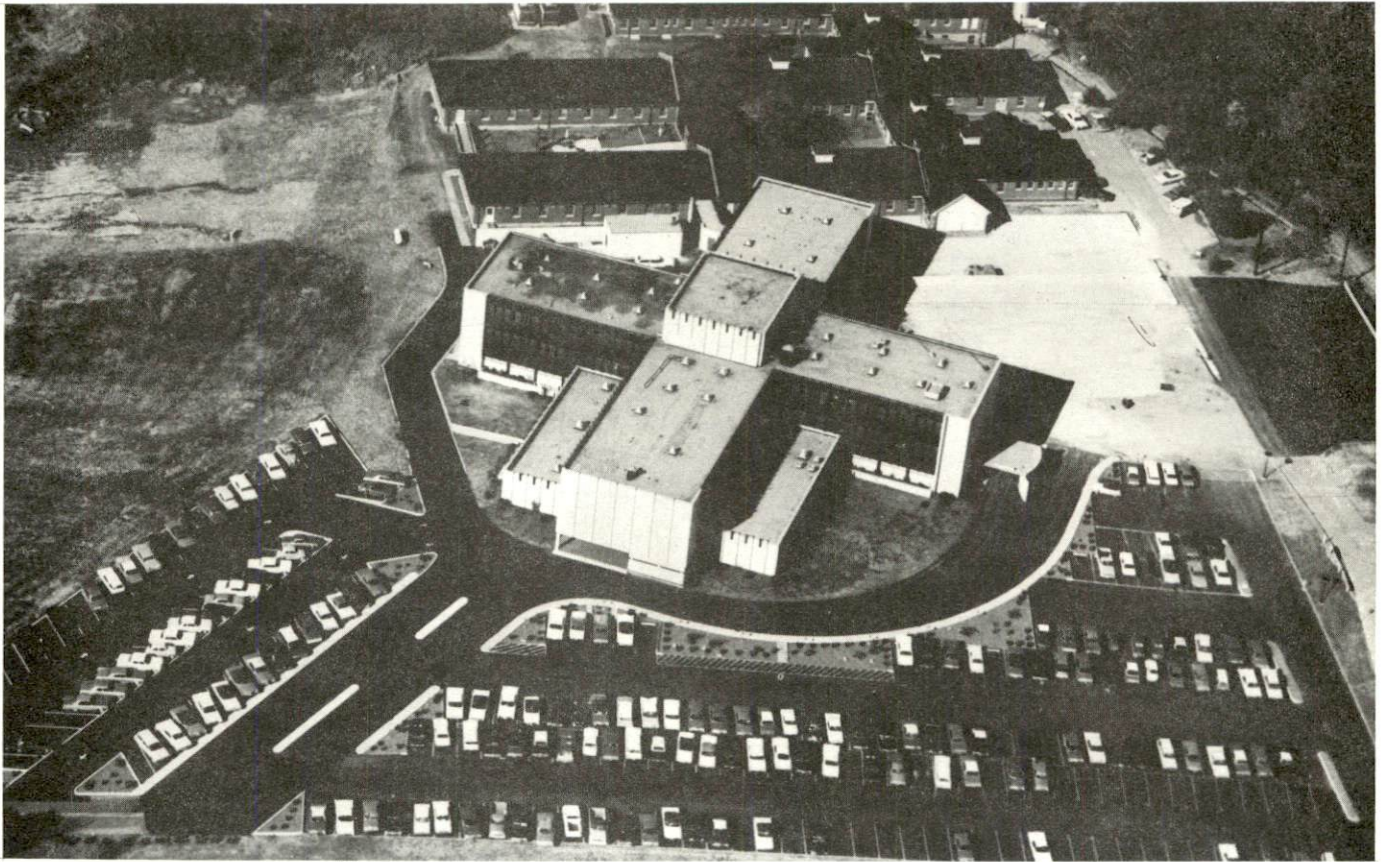
	<u>Number</u>	<u>Beds</u>
Extended care homes	1	98
Personal care homes	2	91

Public Health

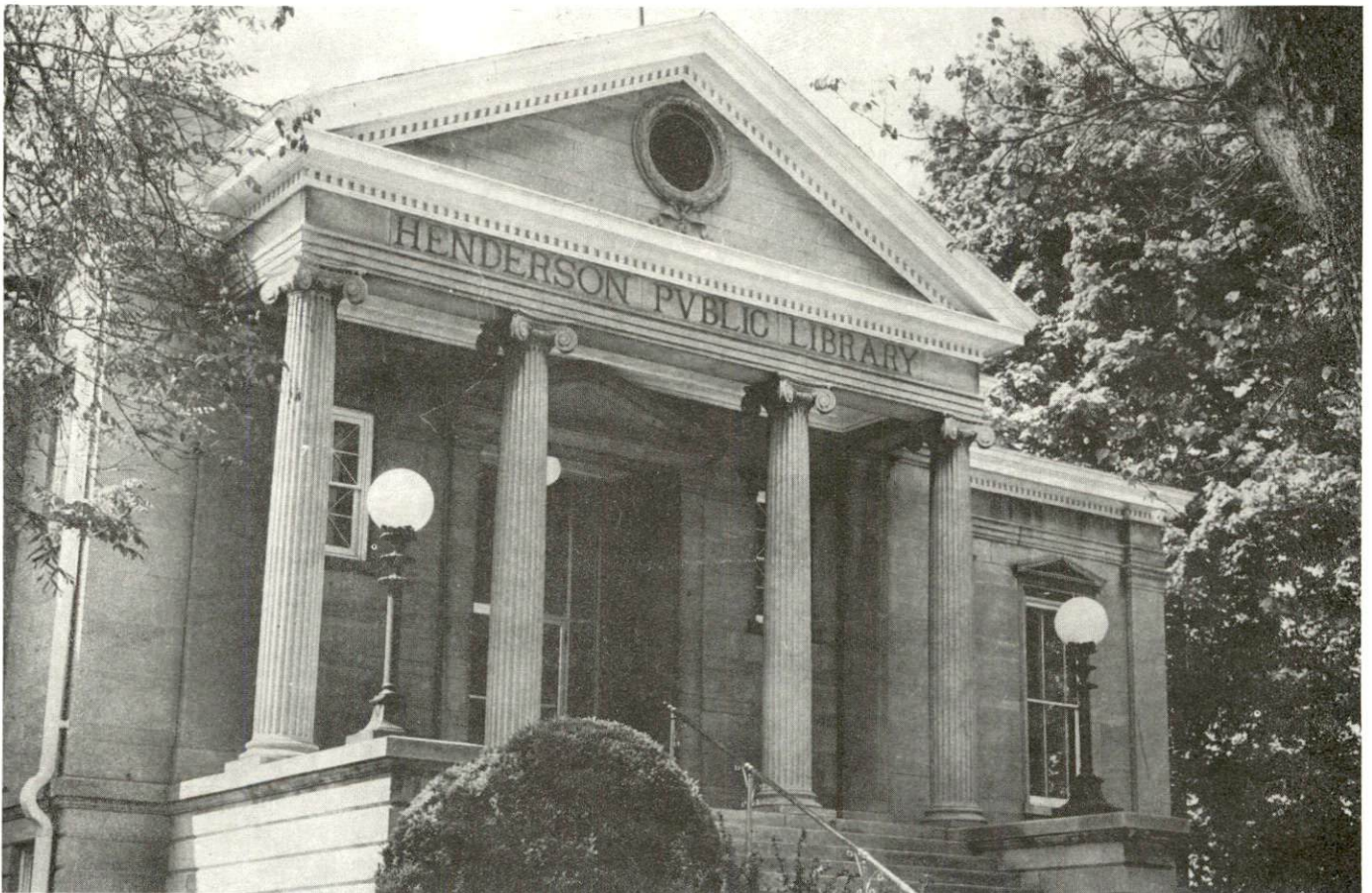
Facility - Henderson County Health Department

Staff - Health officer, administrative assistant, 2 sanitarians, 5 nurses, 4 clerks

Budget 1972-73 - \$124,827



COMMUNITY METHODIST HOSPITAL



HENDERSON PUBLIC LIBRARY

OTHER LOCAL FACILITIES

Communications

Telephone - South Central Bell Telephone Company
Services - Standard

Telegraph - Western Union
Services - Standard

Postal - U. S. Post Office
Class - First
Mail received - 5 times daily
Mail dispatched - 5 times daily

Newspapers - Henderson-Gleaner Journal
Daily and circulation - 10,980
Other papers received from - Louisville, Kentucky; Evansville, Indiana

Radio - WSON-AM; WUAZ-FM; WKDQ-FM
Stations received from - Louisville, Lexington, Owensboro, and Paducah, Kentucky; Evansville, Indiana

Television -
Cable service
Reception from - Evansville, Indiana

Kentucky Educational Television - Channel 35-Madisonville transmitter;
Channel 9-Evansville transmitter

Library Services

Public library - Henderson Public Library
Size collection - 63,003 volumes
Circulation, 1971-72 - 194,351
Services - Bookmobile, records, framed paintings, audio visuals, photocopier

Religious Institutions

Number of churches - 72
Denominations - Baptist, Catholic, Christian, Church of Christ, Church of God, Church of Jesus Christ of Latter Day Saints, East End Tabernacle, Episcopal, First Assembly of God, Lutheran, Nazarene, Pentecostal, Presbyterian, Seventh Day Adventist, Union Holiness



U. S. POST OFFICE
HENDERSON

Religious Institutions (contd.)

Nearest Synagogues - Henderson
Congregations - Adath Israel (Reform)

Financial Institutions

<u>Bank</u>	<u>Statement as of December 30, 1972</u>	
	<u>Assets</u>	<u>Deposits</u>
Farmers Bank & Trust Company	\$20,103,910.23	\$18,354,145.49
First National Bank	23,651,770.60	21,831,324.83
Ohio Valley National Bank	24,580,059.47	22,044,525.30
Henderson County State Bank	4,944,327.27	4,456,748.56
<u>Savings and Loan Associations</u>	<u>Assets</u>	<u>Shared Accounts</u>
Henderson Federal Savings and Loan Association	\$ 11,176,244.45	\$ 9,803,464.61
Union Federal Savings and Loan Association	100,844,104.85	88,965,199.04

Hotels and Motels

Total number - 14
Units - 442

Clubs and Organizations

There are 95 clubs and organizations in Henderson which include most major civic, business, professional, fraternal, charitable, sports, farm and youth organizations.

RECREATION

Local

Public Recreation Facilities

Supervised program - Henderson City Recreation Program

Parks - 7

Playgrounds - 7

Swimming pools - 3

Golf courses - 3

Tennis courts - 15

Baseball diamonds - 9

Football fields - 4

Other - 2 community centers

Private Recreation Facilities

Country club - 1

Golf course - 1

Swimming pool - 1

Movie theaters - 2 indoor, 1 drive-in

Bowling facilities - 3

Other - 2

Tourist Attractions

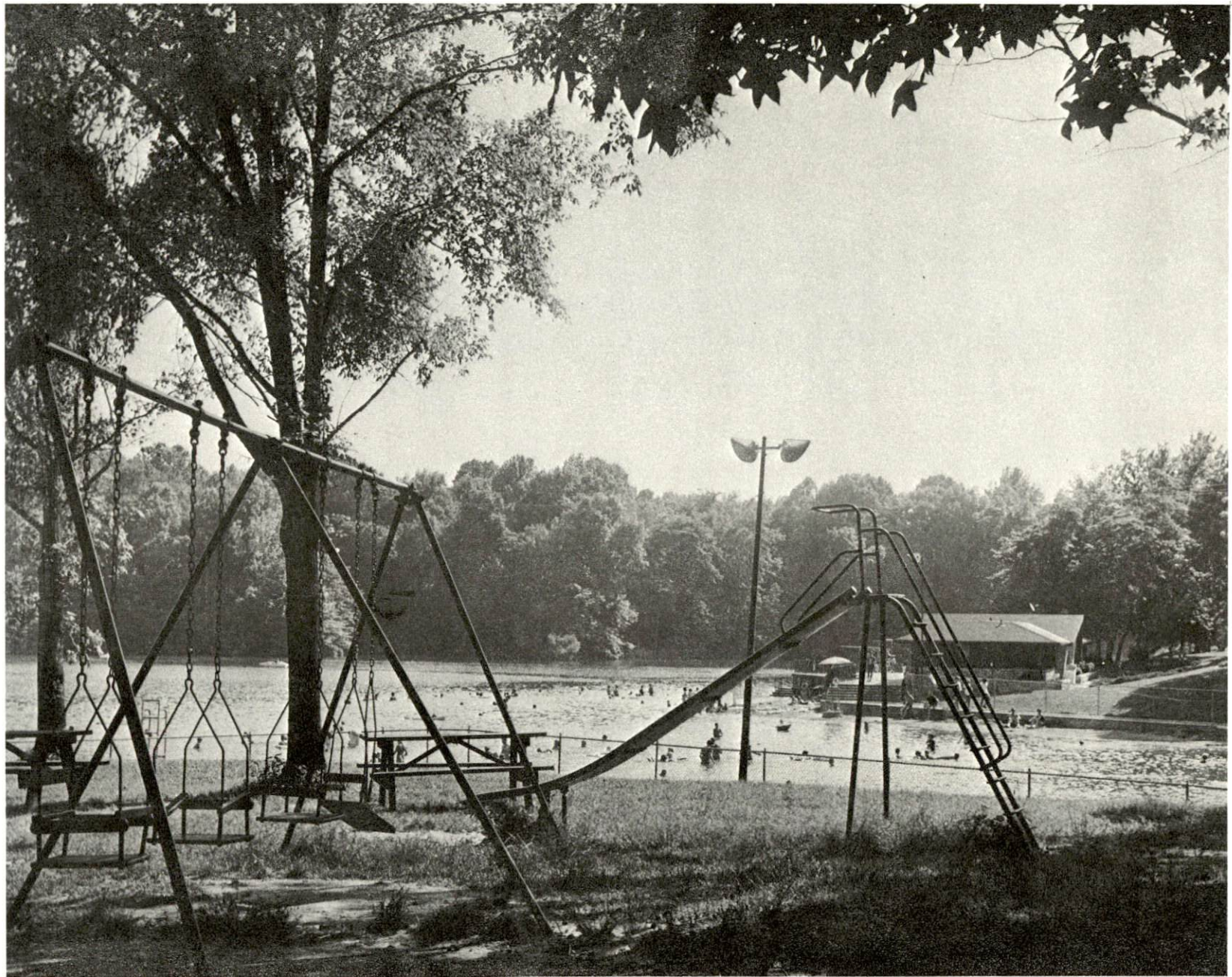
Audubon Museum

Area (Within 25 miles)

John James Audubon State Park

Ellis Park

Audubon Raceway



AUDUBON STATE PARK

AGRICULTURE - NATURAL RESOURCES - CLIMATE

Agriculture*

	<u>Henderson County</u>	<u>Labor Market Area</u>
Total land area (acres)	277,184	1,171,904
Percent of area in farm land	86.3	83.2
Number of farms	1,073	5,384
Average size of farms (acres)	223	181
1969 value of all farm products	\$14,246,175	\$60,694,066
Value per farm	13,276	11,273
Total crop sales	7,591,581	29,400,279
Total livestock & livestock products	6,591,525	31,076,684
1970 agricultural production included:		
Burley tobacco (lbs.)	497,000	8,113,000
Corn (bu.)	2,700,000	8,774,000
Cattle and calves (number)	33,600	168,000
Hogs and pigs (number)	80,100	308,400
Milk production, 1969 (lbs.)	1,680,000	32,180,000

Natural Resources

Principal mineral resources	Petroleum, sand and gravel, and coal
Acres of commercial forest land	60,800
Most abundant tree species	Red oak, white oak, hickory, sweetgum, hard maple, ash and soft maple

*U. S. Department of Commerce, Bureau of the Census, Census of Agriculture, 1969. U. S. Department of Agriculture and Kentucky Department of Agriculture, Kentucky Agricultural Statistics, 1971.

Climate*

Henderson County

Temperature

Annual mean (30-year record)	57.0 degrees
Average annual 1971	56.9 degrees
Record highest, July, 1966 (11-year record)	104.0 degrees
Record lowest, January, 1963 (11-year record)	-18.0 degrees
Normal heating degree days (30-year record)	4,435

(Heating degree day totals are the sums of negative departures of average daily temperatures from 65 degrees F.)

Precipitation

Mean annual total (30-year record)	41.35 inches
Mean annual snow and sleet (31-year record)	13.30 inches
Total precipitation 1971	40.25 inches
Mean number days precipitation (.01 inch or more) (31-year record)	114
Average number days thunderstorms (31-year record)	14
Prevailing winds (14-year record)	South-southwest

*U. S. Department of Commerce, Environmental Science Services Administration, Climatological Data, 1971. Station of record: Evansville.

HISTORY

Henderson County, the thirty-eighth county formed in Kentucky, dates from 1798. Its territory was taken from Christian County. Later it gave lands to establish Hopkins and Union Counties and part of Webster.

One of the first settlers in Henderson County was John Dunn who was appointed constable of the territory in 1792. Five years later, General Samuel Hopkins, an agent for the Transylvania Company, and Thomas Allen arrived at present-day Henderson and laid out the town.

Henderson County was named for Richard Henderson a native of Hanover County, Virginia. He made a treaty with the Cherokee Indians at Sycamore Shoals on the Watauga River which gave him the lands in Kentucky between the Cumberland, Ohio, and Kentucky Rivers. The state of Virginia contested the validity of such a treaty of purchase and made good her claims.

The Transylvania Company lost its claims in Kentucky in 1776 when Kentucky County was created out of Fincastle County by the Virginia Legislature. The Virginia Assembly recognized that the Transylvania Company had incurred considerable expense in its efforts to secure a title to the area and to settle it. Since Kentucky was a frontier region and settlers were needed to develop it, Richard Henderson was allocated some 200,000 acres of land in its western part, the greater portion of which lay in present-day Henderson County.

The population of Henderson County was 12,171 in 1850. Growing steadily, the population reached 32,907 in 1900. A gradual decline occurred until 1930 when the population was 26,295. A steady increase can be noticed since then with the 1970 population reaching 36,031. The 1970 population of Henderson was 22,976.

Total employment in Henderson averaged 12,800 in 1971 with agriculture providing 950 jobs, manufacturing 3,140, government 1,240 and trade and services 3,485. Major industrial products are aluminum reduction, furniture, axle assembly, zinc die castings, custom moldings, wood tables and aluminum die castings.

Among Henderson County's distinguished citizens are John Young Brown and Augustus Owsley Stanley, both governors of the state. Albert Benjamin Chandler, a native son, served two terms as Governor of Kentucky, from 1935 to 1939 and from 1955 to 1959.