

1984

# Industrial Resources: Jefferson County - Louisville

Kentucky Library Research Collections  
Western Kentucky University, [spcol@wku.edu](mailto:spcol@wku.edu)

Follow this and additional works at: [https://digitalcommons.wku.edu/jefferson\\_cty](https://digitalcommons.wku.edu/jefferson_cty)



Part of the [Business Administration, Management, and Operations Commons](#), [Growth and Development Commons](#), and the [Infrastructure Commons](#)

---

## Recommended Citation

Kentucky Library Research Collections, "Industrial Resources: Jefferson County - Louisville" (1984). *Jefferson County*. Paper 6.  
[https://digitalcommons.wku.edu/jefferson\\_cty/6](https://digitalcommons.wku.edu/jefferson_cty/6)

This Report is brought to you for free and open access by TopSCHOLAR®. It has been accepted for inclusion in Jefferson County by an authorized administrator of TopSCHOLAR®. For more information, please contact [topscholar@wku.edu](mailto:topscholar@wku.edu).

**RESOURCES  
FOR  
ECONOMIC  
DEVELOPMENT**

**LOUISVILLE**



**KENTUCKY**  
The Business Environment is Right

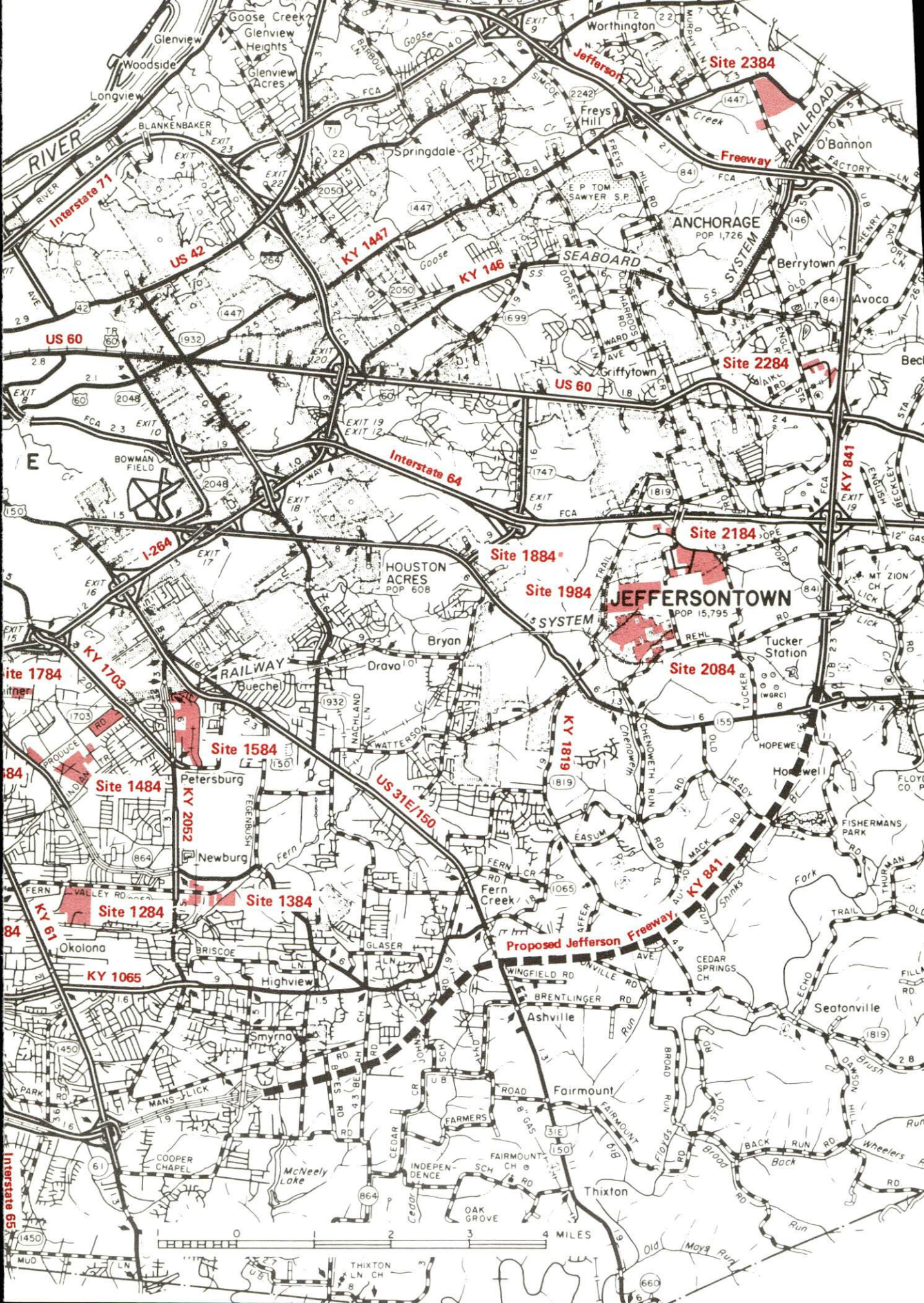


# LOUISVILLE, KENTUCKY --- Index to Industrial Sites --- 1984

For detailed data on individual sites contact the Kentucky Department of Economic Development, Industrial Development & Marketing Division, Capital Plaza Tower, Frankfort, Kentucky 40601 (502-564-7140).









RESOURCES FOR ECONOMIC DEVELOPMENT  
LOUISVILLE, KENTUCKY

Prepared by  
The Kentucky Department of Economic Development  
Division of Research and Planning  
in cooperation with  
The Louisville Chamber of Commerce

1984



Program manager - Pamela Riley; research - Andrew Dennis; clerical - Bobbi Graves; graphics - Frank Ferrante, Tony Cecconi, Robert Owens; cartography - Site Evaluation Branch, Division of Industrial Development and Marketing. Cost of printing paid from state funds.



## TABLE OF CONTENTS

<u>Chapter</u>	<u>Page</u>
INDUSTRIAL SITES .....	i
LOUISVILLE, KENTUCKY - A RESOURCE PROFILE .....	1
THE LABOR MARKET AREA .....	3
Population .....	3
Labor Force Characteristics of Residents, 1983 .....	4
Selected Components of Nonagricultural Employment, by Place of Work, 1983 .....	4
Major Louisville Manufacturing Firms, Their Products and Employment .....	5
Labor Organizations in Manufacturing Firms .....	11
Industrial Services .....	12
Estimated Male Labor Supply .....	13
Estimated Female Labor Supply .....	13
Average Weekly Wages By Industry, by Place of Work, 1983 .....	14
Hourly Wages - Selected Occupations .....	15
Per Capita Personal Income .....	16
Total Personal Income .....	16
TRANSPORTATION .....	17
Rail .....	17
Highways .....	17
Truck Service .....	18
Air .....	19
Bus .....	19
Taxi .....	19
Rental Services .....	19
Water .....	20
POWER AND FUEL .....	22
Electricity .....	22
Natural Gas .....	22
Other Fuels .....	22
WATER AND SEWERAGE .....	23
Public Water Supply .....	23
Raw Water .....	25
Sewerage .....	26
CLIMATE .....	29

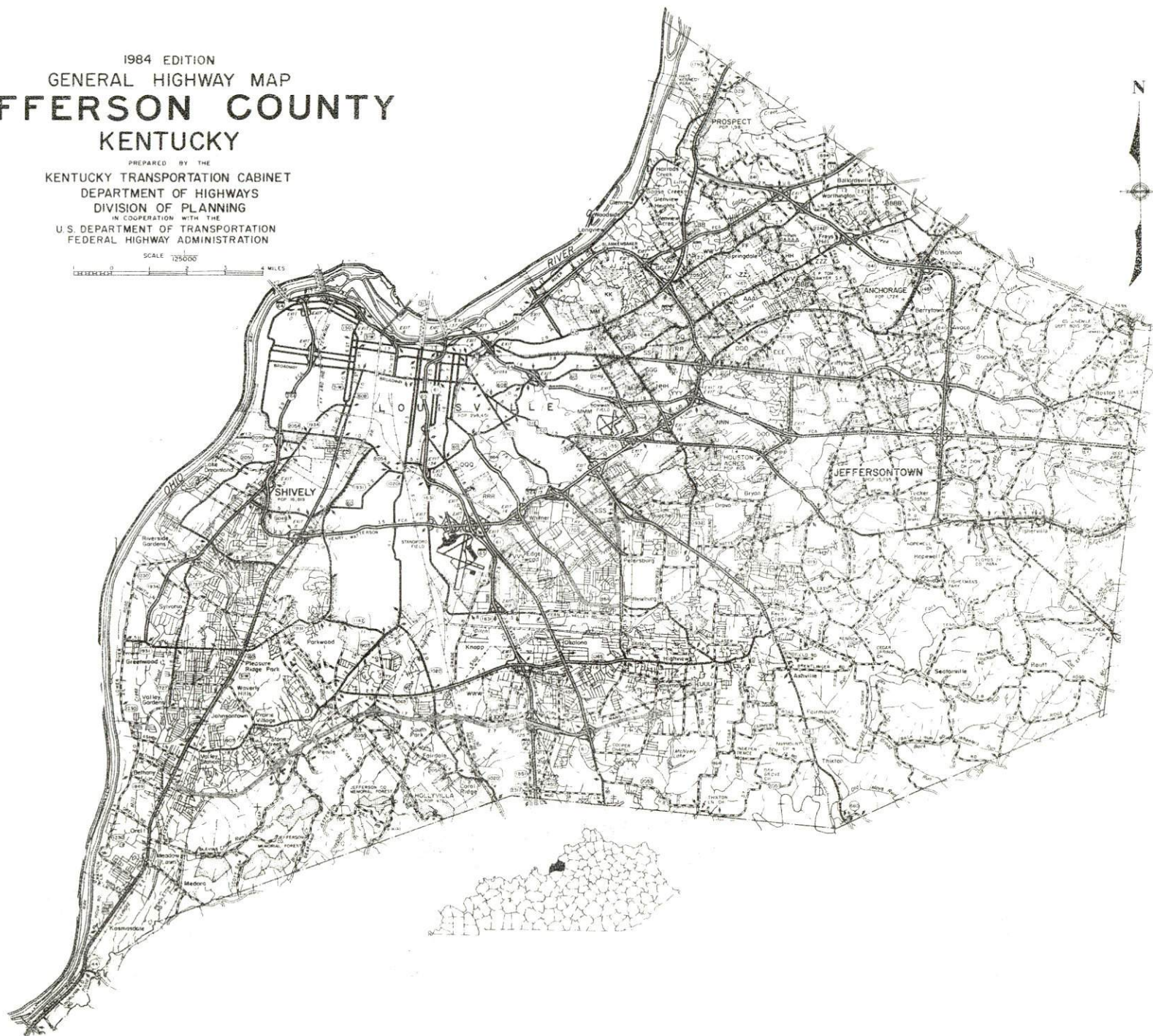


<u>Chapter</u>	<u>Page</u>
LOCAL GOVERNMENT .....	30
City .....	30
County .....	30
Assessed Value of Property, 1983 .....	30
Property Taxes .....	31
Local Property Tax Rates, 1984 .....	31
Planning and Zoning .....	33
Safety .....	33
Police .....	33
Fire .....	33
Rescue Service .....	34
Refuse Collection and Disposal .....	34
EDUCATION .....	35
Public Schools .....	35
Nonpublic Schools .....	35
Area Colleges and Universities .....	36
Vocational Training .....	37
HEALTH .....	39
Local Medical Personnel .....	39
Hospitals .....	39
Ambulance Service .....	39
Public Health .....	40
OTHER LOCAL FACILITIES .....	41
Communications .....	41
Library Services .....	42
Religious Institutions .....	42
Financial Institutions .....	42
Hotels and Motels .....	43
Convention Facilities .....	43
Clubs and Organizations .....	43
RECREATION AND CULTURAL ARTS .....	44
COMMUNITY IMPROVEMENTS .....	47

1984 EDITION  
GENERAL HIGHWAY MAP  
**JEFFERSON COUNTY**  
**KENTUCKY**

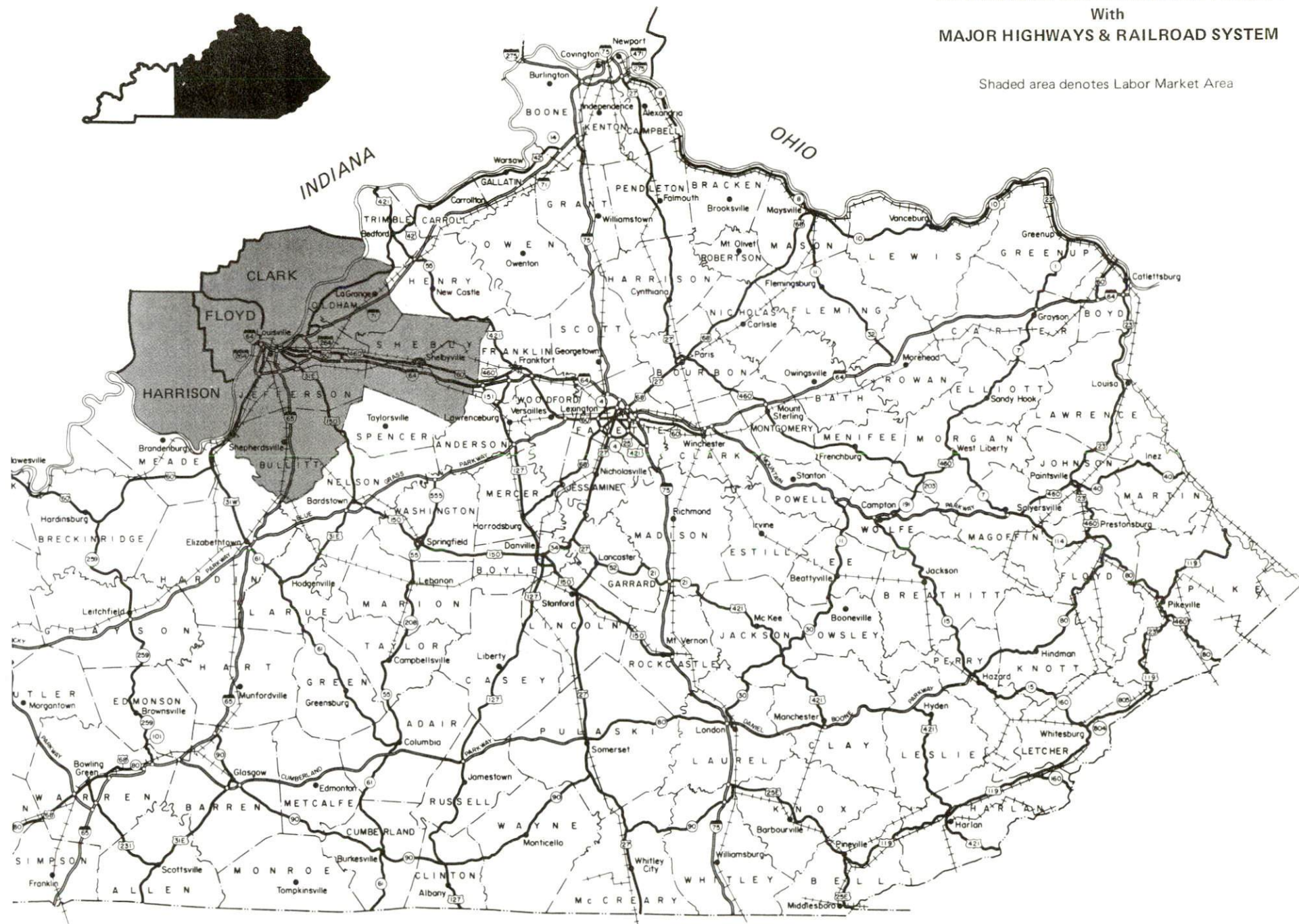
PREPARED BY THE  
KENTUCKY TRANSPORTATION CABINET  
DEPARTMENT OF HIGHWAYS  
DIVISION OF PLANNING  
IN COOPERATION WITH THE  
U.S. DEPARTMENT OF TRANSPORTATION  
FEDERAL HIGHWAY ADMINISTRATION

SCALE 1:250,000  
0 1 2 3 4 MILES





INDIANA





## LOUISVILLE, KENTUCKY - A RESOURCE PROFILE

Louisville, Kentucky's largest city, was founded in 1780 and has since developed into one of the southeast's foremost industrial centers. Louisville, situated on the south bank of the Ohio River, is strategically located in the center part of the nation, served by excellent transportation facilities, and supported by a widely diversified industrial base. Louisville's location places the city just 101 miles southwest of Cincinnati, Ohio; 168 miles northeast of Nashville, Tennessee; and 263 miles east of St. Louis, Missouri.

Louisville is the county seat of Jefferson County, which covers a land area of 386 square miles.

The Louisville, KY-IN Metropolitan Statistical Area (MSA) is made up of Jefferson County plus three adjoining counties in Kentucky and three counties in southern Indiana. The 1982 estimated population of the Louisville, KY-IN MSA was 958,300.

### The Economic Framework

Louisville has a diversified manufacturing industry with tobacco products, home appliances, motor vehicles, food products and liquor manufacturing being of the greatest importance. In 1983, manufacturing provided more than 69,430 jobs.

The total number of Jefferson County residents employed in 1983 averaged 289,850. Wholesale and retail trade accounted for 75,290 jobs; service firms 64,550; state and local government 29,040; and 11,920 were employed by construction firms.

Per capita personal income in Jefferson County was \$11,312 in 1982, or \$212 above the national average. Between 1978 and 1982, per capita personal income increased by 38.6 percent.

In 1983, the average weekly wage for all industries in Jefferson County was \$339.40, ranging from \$478.16 in manufacturing to \$246.87 in wholesale and retail trade.

### Resources for Growth

1. Labor Supply - The Kentucky portion of the Louisville, KY-IN MSA has a current estimated labor supply of 37,900 men and 38,910 women available for industrial jobs. In addition, from 1985 through 1989, 31,740 young men and 30,400 young women will become 18 years of age and potentially available for industrial jobs. The labor supply would be increased by the number of available workers in other nearby Kentucky counties and southern Indiana counties.

2. Transportation - Local transportation facilities are excellent. Louisville is served directly by six railroad companies which provide freight services to the principal markets and industrial centers of the United States. Two major north-south highways, Interstates 65 and 71, serve the city as does Interstate 64, a major east-west route. Interstate 264 (Watterson Expressway) serves as a limited access bypass around the city.



Standiford Field, five miles southeast of downtown Louisville, is served by ten passenger airline companies. Bowman Field, also in Louisville, maintains three paved runways for use by private planes.

Two riverports serve the city, the Port of Louisville, a privately owned facility, and the Louisville and Jefferson County Riverport, which includes a foreign trade zone. Louisville is also a U.S. Customs Port of Entry.

3. Power and Fuel - Electric power and natural gas services are provided by Louisville Gas and Electric Company. The source of supply for natural gas is Texas Gas Resources Corporation. In addition, numerous propane and fuel oil dealers are located in Jefferson County.

4. Education - The Jefferson County Public School System, which is accredited by the Southern Association of Colleges and Schools, had a Spring 1984 enrollment of 92,652. The Anchorage Independent School System enrolls students in grades kindergarten through ninth and had a Fall 1984 enrollment of 270. The Catholic School System in Jefferson County includes 55 elementary schools and 10 high schools and had a Spring 1984 enrollment of 24,317 students. Eighty-eight other parochial and private schools are located throughout Jefferson County.

Three universities, one senior college and one community college are located in the greater Louisville area. The University of Louisville is a state supported institution which enrolled 19,794 students in the fall of 1984. Spalding University and Bellarmine College are coeducational colleges of arts and sciences with Fall 1984 enrollments of 1,126 and 2,710 respectively. Jefferson Community College is the largest of the 13 statewide community colleges in the University of Kentucky system. In the fall of 1984, enrollment at Jefferson Community College was 6,767. Indiana University Southwest, in New Albany, Indiana, is one of eight campuses within the Indiana University system. Enrollment for the fall of 1984 totaled 4,399. In addition, 14 other specialized institutions of higher education are located in greater Louisville.

Vocational training in Jefferson County is provided at a state vocational-technical school, six area vocational education centers, two rehabilitation centers and several independent technical schools. The Jefferson State Vocational-Technical School and Manpower Skill Center offers occupational training in 28 courses.

## THE LABOR MARKET AREA

The Louisville Labor Market Area is made up of the Louisville, Kentucky-Indiana Metropolitan Statistical Area which includes Jefferson, Bullitt, Oldham and Shelby Counties in Kentucky, plus Clark, Floyd and Harrison Counties in Indiana.

### POPULATION

Area	1982	1980	1970	Percent Nonwhite
				1980
Louisville, KY-IN MSA*	958,300	956,476	906,752	N/A
Jefferson County, KY	681,800	684,688	695,055	16.9
Bullitt County, KY	43,900	43,346	26,090	0.8
Oldham County, KY	28,600	27,795	14,687	5.5
Shelby County, KY	23,700	23,328	18,999	11.4
Clark County, IN	89,300	88,838	75,876	5.6
Floyd County, IN	62,400	61,205	55,622	4.0
Harrison County, IN	28,600	27,276	20,423	0.8

\* Shelby County, Kentucky, and Harrison County, Indiana, were added to the Louisville, KY-IN MSA in 1983.

Note: The 1982 county population counts are estimates.

Sources: U.S. Department of Commerce, Bureau of the Census, 1980 Census of Population and Housing, March 1981; 1980 Census of Population, Number of Inhabitants; Local Population Estimates, Series P-26, No. 82-17-C, June 1984; Local Population Estimates, Series P-26, No. 82-14-C, May 1984.

### POPULATION TRENDS - CITIES IN JEFFERSON COUNTY\*

City	Population		
	1982	1980	1970
Louisville	293,531	298,694	361,706
Anchorage	1,700	1,726	1,477
Douglass Hills	4,380	4,384	**
Jeffersontown	15,626	15,795	9,701
Lyndon	2,360	1,553	460
Middletown	397	414	**
Prospect	2,085	1,981	**
St. Matthews	14,231	3,519	13,152
St. Regis Park	1,678	1,735	1,527
Shively	15,931	16,645	19,139

\* Includes First through Fourth class cities.

\*\* Incorporated since 1970.

Sources: U.S. Department of Commerce, Bureau of the Census, 1980 Census of Population and Housing; Local Population Estimates, Series P-26, No. 82-17-SC, September 1984.



LABOR FORCE CHARACTERISTICS OF RESIDENTS, 1983

<u>Area</u>	<u>Civilian Labor Force</u>	<u>Employment</u>	<u>Unemploy- ment</u>	<u>Rate of Unemploy- ment(%)</u>
Louisville, KY-IN MSA	453,419	404,210	49,209	10.9
Jefferson County, KY	327,831	291,402	36,429	11.1
Bullitt County, KY	20,770	18,446	2,324	11.2
Oldham County, KY	11,967	11,037	930	7.8
Shelby County, KY	11,751	10,900	851	7.2
Clark County, IN	41,200	36,800	4,400	10.7
Floyd County, IN	28,300	25,350	2,950	10.4
Harrison County, IN	11,600	10,275	1,325	11.4

Source: Kentucky Cabinet for Human Resources, Kentucky Labor Force Estimates, Annual Averages, 1983. Indiana Employment Security Division, Department of Labor Market Information and Statistical Services.

SELECTED COMPONENTS OF NONAGRICULTURAL EMPLOYMENT,  
BY PLACE OF WORK, 1983

	<u>Jefferson County</u>	<u>Kentucky Portion of Louisville, KY-IN MSA</u>
All Industries (total)	289,850	305,026
Manufacturing	69,434	73,052
Wholesale & Retail Trade	75,288	78,683
Services	64,547	66,908
State/Local Government	29,037	32,521
Contract Construction	11,924	12,874

Note: Excludes domestic workers, railway workers, certain nonprofit corporations, majority of federal government workers, and self-employed workers.

Source: Kentucky Cabinet for Human Resources, Average Monthly Workers Covered by Kentucky Unemployment Insurance Law, 1983.

MAJOR LOUISVILLE MANUFACTURING FIRMS,  
THEIR PRODUCTS AND EMPLOYMENT\*

Firm (Establishment date)	Product	Employment			Labor Unions
		Total	Male	Female	
Airco Carbide, Division of Airco, Inc. (1942)	Calcium carbide, acetylene, carbide lime	280	250	30	Firemen & Oilers; Electrical Workers (IBEW)
American Air Filter Company (1924)	Air cleaning products and systems, heat cooling and ventilating products, noise pollution control product systems	600	N/A	N/A	Auto Workers
American Printing House for the Blind (1858)	Books in braille or large type, books on record cassettes, educational aids for the blind	439	126	313	Teamsters
American Standard, Inc. (1859)	Enameled iron plumbing fixtures	740	700	40	Carpenters; Electrical Workers (IBEW); Firemen & Oilers; Machinists; Metal Polishers; Molders, Pattern Makers; Plumbers; Guards
American Synthetic Rubber Corporation (1955)	Synthetic rubber, liquid polymers, reprocessed rubber	295	277	18	Rubber Workers; Plumbers; Machinists; Electrical Workers (IBEW)
Arco Metals Company, Arco Aluminum-Mill Products (1941)	Aluminum sheet and foil	272	241	31	Aluminum, Brick & Glass Workers

(Cont'd)



<u>Firm (Establishment date)</u>	<u>Product</u>	<u>Employment</u>			<u>Labor Unions</u>
		<u>Total</u>	<u>Male</u>	<u>Female</u>	
Arco Metals Company, Packaging Products (1952)	Aluminum foil, laminated products	340	N/A	N/A	Aluminum, Brick & Glass Workers; Electrical Workers (IBEW); Machinists
Armour Processed Meats Company (1875)	Pork, smoked meats and sausage, grease tallow, beef products	700	600	100	Firemen & Oilers; Food & Commercial Workers Electronic Workers (IUE)
Audio Systems, Inc. (1978)	Automobile radios	250	N/A	N/A	Electronic Workers (IUE)
Beatrice Bakery Products, Inc. (1947)	Cookies	350	155	195	Teamsters
Blue Grass Cooperage Company (1945)	White oak whiskey barrels	250	N/A	N/A	Firemen & Oilers; Guards
Bremner Biscuit Company (1961)	Crackers, cookies, marshmallow pies	467	293	174	Bakery, Confectionery & Tobacco Workers; Teamsters
Brown-Forman Distillers Corporation (1870)	Distilled spirits, cooperage, distillers dried grain	1,348	915	433	Electrical Workers (IBEW); Firemen & Oilers; Teamsters; Guards
Celanese Specialty Resins (1919)	Synthetic resins, packaging coatings	305	265	45	Teamsters
Cissell Manufacturing Company (1931)	Laundry and dry cleaning equip- ment, conveyors	353	281	72	Machinists
Coca-Cola Bottling Company of Louisville (1901)	Carbonated beverages	406	351	55	

(Cont'd)

Firm (Establishment date)	Product	Employment			Labor Unions
		Total	Male	Female	
Courier Journal and Louisville Times (1868)	Newspaper	1,396	981	415	Electrical Workers (IBEW); Machinists; Graphic Communi- cations; Louisville Mailers; Typograph- ical; Teamsters
Dover Corporation, Cook Division (1888)	Metallic packing, piston rings, sealing devices	380	310	70	Machinists; Molders
E.I. Dupont De Nemours and Company (1942)	Synthetic elastomer, fluorinated hydrocarbons	1,160	N/A	N/A	Chemical Protection Employees; Neo- prene Craftsmen
The Enro Shirt Company, Inc. (1960)	Men's shirts, pajamas, and sports shirts	580	88	492	Clothing & Textile Workers
Fischer Packing Company, Inc. (1909)	Sausages, bacon, pork processing	760	645	115	Food & Commercial Workers; Teamsters
Ford Motor Company, Assembly Plant (1955)	Motor vehicles	3,683	3,385	298	Auto Workers; Plant Guard Workers
Ford Motor Company, Kentucky Truck Plant (1968)	Truck assembly	2,100	N/A	N/A	Auto Workers
Frito-Lay, Inc. (1960)	Potato chips, corn products	396	228	168	Teamsters
General Electric Company, Major Appliance Business Group (1952)	Major household appliances, refrigerators, freezers, laundry washers and dryers	16,900	N/A	N/A	Electronic Workers (IUE); Firemen & Oilers; Machinists; Plant Guard Workers
Globe Union, Inc. (1956)	Storage batteries, lead oxide	421	368	53	Auto Workers

(Cont'd)



<u>Firm</u> (Establishment date)	<u>Product</u>	<u>Employment</u>			<u>Labor Unions</u>
		<u>Total</u>	<u>Male</u>	<u>Female</u>	
B. F. Goodrich, Chemical Group (1942)	PVC resins, latex and compounds, synthetic rubber	714	685	29	Distillery Workers; Electrical Workers (IBEW); Machinists; Plumbers
Kentucky Manufacturing Company (1939)	Truck trailers, truck bodies	359	350	9	
Logan Company (1876)	Conveyors	380	300	80	Steelworkers
Lorillard, A Division of Loews Theatres, Inc. (1945)	Cigarettes, chewing tobacco, cigars	1,200	600	600	Bakery, Confectionery & Tobacco Workers; Machinists; Firemen & Oilers
Louisville Bedding Company (1889)	Mattress pads, dust ruffles, linens	1,050	230	820	
Louisville Ladder (1951)	Fiberglass ladders, aluminum steel ladders, wood ladders	350	250	100	Aluminum, Brick & Glass Workers
Louisville Manufacturing Company, Inc. (1947)	Men's and boy's caps, men's jackets	297	59	238	
The Marley Cooling Tower Company (1949)	Steel water cooling towers	265	250	15	Ironworkers
Naval Ordnance Station (1946)	Gun and missile launchers, missile components, gun fire control systems	2,724	2,283	441	Machinists

(Cont'd)

<u>Firm (Establishment date)</u>	<u>Product</u>	<u>Employment</u>			<u>Labor Unions</u>
		<u>Total</u>	<u>Male</u>	<u>Female</u>	
Paramount Foods, Inc. (1886)	Pickles, mustard, dressings, spreads, canned meat products, tomato products	350	225	125	Teamsters
Pepsi-Cola, Louisville Bottlers (1942)	Soft drinks	360	319	41	Teamsters; Distillery Workers
Philip Morris USA, Louisville Plant Operations (1944)	Cigarettes	4,367	2,948	1,419	Bakery, Confectionery & Tobacco Workers; Electrical Workers (IBEW); Firemen & Oilers; Machinists; Plumbers
Porter Paint Company (1921)	Architectural paints and high performance coatings	830	590	240	
Rainbo Baking Company of Louisville (1903)	Bakery products	250	210	40	Bakery, Confectionery & Tobacco Workers
Reynolds Metals Company, Plant No. 1 (1919)	Aluminum foil, rigid aluminum containers, laminated foil products	826	684	142	Aluminum, Brick & Glass Workers; Electrical Workers (IBEW); Firemen & Oilers; Machinists; Painters; Plumbers; Guards
Rohm and Haas Kentucky, Inc. (1960)	Acrylic emulsions, PVC modifiers, plexiglas acrylic plastic sheet	547	489	58	Oil, Chemical & Atomic Workers; Firemen & Oilers

(Cont'd)



<u>Firm</u> (Establishment date)	<u>Product</u>	<u>Employment</u>			<u>Labor Unions</u>
		<u>Total</u>	<u>Male</u>	<u>Female</u>	
H. J. Scheirich Company (1932)	Cabinets	319	270	49	Carpenters
Standard Gravure Corporation (1924)	Rotogravure printing	650	548	102	Typographical; Louisville Mailers; Graphic Communi- cations; Teamsters;
Tube Turns, Inc. (1927)	Welding fittings, engineering products, commercial forgings	340	309	31	Steelworkers; Die Sinkers; Electrical Workers (IBEW); Plant Guard Workers
United Catalysts, Inc., Grinder and CCI Catalyst Manufacturing (1957)	Catalysts, chemicals and clay products	660	541	119	
Henry Vogt Machine Company (1880)	Valves and fittings, boilers and heat exchangers, heat recovery equipment, ice making machines	1,360	1,250	110	Die Sinkers; Steelworkers
Vulcan-Hart Corporation (1917)	Commercial food service equipment	254	230	24	Molders

\* Firms with 250 or more employees.

Source: Kentucky Department of Economic Development, 1985 Kentucky Directory of Manufacturers; Division of Research and Planning.

UNIONS REPRESENTING WORKERS IN MANUFACTURING  
FIRMS IN LOUISVILLE-JEFFERSON COUNTY

Aluminum, Brick and Glass Workers International Union, AFL-CIO (Aluminum, Brick and Glass Workers)  
International Association of Heat and Frost Insulators and Asbestos Workers, AFL-CIO (Asbestos Workers)  
International Union, United Automobile, Aerospace and Agricultural Implement Workers of America (Auto Workers)  
Bakery, Confectionery and Tobacco Workers' International Union, AFL-CIO, CLC (Bakery, Confectionery and Tobacco Workers)  
International Brotherhood of Boilermakers, Iron Ship Builders, Blacksmiths, Forgers and Helpers, AFL-CIO (Boilermakers)  
United Brotherhood of Carpenters and Joiners of America, AFL-CIO (Carpenters)  
United Cement, Lime, Gypsum and Allied Workers International Union, AFL-CIO (Cement Workers)  
Chemical Protection Employees Independent Union (Chemical Protection Employees)  
International Chemical Workers Union, AFL-CIO (Chemical Workers)  
Amalgamated Clothing and Textile Workers Union, AFL-CIO (Clothing and Textile Workers Union)  
Coopers' International Union of North America, AFL-CIO (Coopers)  
International Die Sinkers' Conference (Die Sinkers)  
Distillery, Wine and Allied Workers' International Union, AFL-CIO, CLC (Distillery Workers)  
International Brotherhood of Electrical Workers, AFL-CIO (Electrical Workers, IBEW)  
International Union of Electronic, Technical, Salaried and Machine Workers, AFL-CIO (Electronic Workers, IUE)  
International Union of Elevator Constructors, AFL-CIO (Elevator Constructors)  
International Brotherhood of Firemen and Oilers, AFL-CIO (Firemen and Oilers)  
United Food and Commercial Workers International Union, AFL-CIO (Food and Commercial Workers)  
United Furniture Workers of America, AFL-CIO (Furniture Workers)  
Graphic Communications International Union, AFL-CIO (Graphic Communications)  
International Guards Union of America (Guards)  
International Union, Allied Industrial Workers of America, AFL-CIO (Industrial Workers)  
International Association of Bridge and Structural Ironworkers, AFL-CIO (Ironworkers)  
Laborer's International Union of North America, AFL-CIO (Laborers)  
International Ladies' Garment Workers Union, AFL-CIO (Ladies' Garment Workers)  
International Association of Machinists and Aerospace Workers, AFL-CIO (Machinists)  
Tile, Marble, Terrazzo, Finishers, Shopworkers and Granite Cutters International Union, AFL-CIO (Marble Polishers)  
Metal Polishers, Buffers, Platers and Allied Workers International Union, AFL-CIO (Metal Polishers)  
International Molders and Allied Workers' Union, AFL-CIO (Molders)  
Neoprene Craftsmen Union (Neoprene Craftsmen)  
Oil, Chemical and Atomic Workers International Union, AFL-CIO (Oil, Chemical and Atomic Workers)  
International Union of Operating Engineers, AFL-CIO (Operating Engineers)

(Cont'd)



International Brotherhood of Painters and Allied Trades of the United States and Canada, AFL-CIO (Painters)  
United Paperworkers International Union, AFL-CIO (Paperworkers)  
Pattern Makers' League of North America, AFL-CIO (Pattern Makers)  
United Plant Guard Workers of America International Union (Plant Guard Workers)  
United Association of Journeymen and Apprentices of the Plumbing and Pipe Fitting Industry of the United States and Canada, AFL-CIO (Plumbers)  
United Rubber, Cork, Linoleum and Plastic Workers of America, AFL-CIO (Rubber Workers)  
Sheet Metal Workers' International Association (Sheet Metal Workers)  
United Steelworkers of America, AFL-CIO (Steelworkers)  
Stove, Furnace and Allied Appliance Workers' International Union of North America, AFL-CIO (Stove Workers)  
International Brotherhood of Teamsters, Chauffeurs, Warehousemen and Helpers of America (Teamsters)  
International Typographical Union AFL-CIO (Typographical Union)

### INDUSTRIAL SERVICES

A wide variety of services is available to industry in Louisville. Included in these services are: custom plastics producers; electric motor repair; grinding, precision and tool; heat treating facilities; industrial equipment and supplies; industrial gases; industrial waste removal; machine shops, tool and die; metal finishers; metal service centers; and millwrights.

ESTIMATED MALE LABOR SUPPLY  
LOUISVILLE LABOR MARKET AREA

Area	Current				Future
	Total Male	Unemployed	Under-employed	Not in Labor Force	Becoming 18 years of age 1985 thru 1989
Kentucky					
Portion of Louisville					
KY-IN					
MSA*	37,895	23,723	12,333	1,839	31,741
Jefferson	33,067	21,357	10,581	1,129	26,681
Bullitt	1,995	1,403	592	0	2,659
Oldham	1,942	467	765	710	1,466
Shelby	891	496	395	0	935

ESTIMATED FEMALE LABOR SUPPLY  
LOUISVILLE LABOR MARKET AREA

Area	Current				Future
	Total Female	Unemployed	Under-employed	Not in Labor Force	Becoming 18 years of age 1985 thru 1989
Kentucky					
Portion of Louisville					
KY-IN					
MSA*	38,913	16,811	17,734	4,368	30,404
Jefferson	32,645	15,072	15,717	1,856	25,558
Bullitt	3,572	921	987	1,664	2,434
Oldham	1,710	463	538	709	1,450
Shelby	986	355	492	139	962

\* Additional workers may be drawn from other nearby counties including Clark, Floyd and Harrison Counties in Indiana.

Note: Unemployed - persons unemployed and actively seeking work;  
Underemployed - persons employed but working only 14 to 26 weeks per year;  
Not in Labor Force - represents the number of persons who would enter the labor force if suitable employment were available (based on the assumption that persons in Kentucky would like to participate in the labor force in the same proportion that they do nationally).

Sources: Kentucky Cabinet for Human Resources, Kentucky Labor Supply Estimates by County, 1983. Kentucky Department of Economic Development, Future Labor Supply Becoming 18 Years of Age, 1985 thru 1989.



AVERAGE WEEKLY WAGES BY INDUSTRY,  
BY PLACE OF WORK, 1983

	<u>Jefferson County</u>	<u>Bullitt County</u>	<u>Oldham County</u>	<u>Shelby County</u>
All Industries	\$339.40	\$259.80	\$265.03	\$247.09
Mining & Quarrying	404.35	*	233.11	.00
Contract Construction	376.35	229.98	276.80	187.61
Manufacturing	478.16	359.40	353.22	285.99
Transportation, Communications & Public Utilities	442.02	292.55	261.81	366.87
Wholesale & Retail Trade	246.87	160.87	204.58	186.11
Finance, Insurance & Real Estate	352.56	239.83	253.84	265.51
Services	265.82	192.06	192.31	199.90
State/Local Government	334.46	264.09	325.81	322.21
Other	192.67	132.39	175.49	209.68

\* Not disclosed.

Note: Excludes domestic workers, railway workers, certain nonprofit corporations, majority of federal government workers, and self-employed workers.

Source: Kentucky Cabinet for Human Resources, Average Weekly Wages of Workers Covered by Kentucky Unemployment Insurance Law, 1983.

WAGES  
HOURLY WAGE RATES - SELECTED OCCUPATIONS  
1984 LOUISVILLE AREA SURVEY\*

<u>Occupation</u>	<u>Combined Weighted Average Paid**</u>
General Clerk - Senior	\$ 7.55
Secretary - Senior	8.37
Typist	5.53
Stenographer - Senior	8.28
Computer Programmer - Business	10.74
Key Punch Operator	5.46
Accountant - Intermediate	11.12
Bookkeeper - Senior	8.24
Stock Clerk - Accumulator	7.84
Shipping Clerk	7.91
Janitor/Porter	6.97
Laborer - Maintenance	7.17
Machinist - Simple	8.94
Machinist - Complex	10.83
Punch Press Operator - Intermediate	9.89
Assembler - Simple	9.48
Assembler - Complex	10.07
Drill Press Operator	7.99
Welder - Machine Arc	8.66
Sprayer/Painter - Average	7.61
Process Operator - Skilled	11.41
Mixer Operator	9.59
Sheet Metal Layout Worker	10.47
Sewing Machine Operator - Average	4.35
Inspector - Average	9.81
Counter/Packer/Wrapper	8.24
Production Laborer	9.47
First Line Foreman/Supervisor	11.97

\* The Louisville Area Survey includes Jefferson County, Kentucky, plus a few firms across the Ohio River that are in the metropolitan statistical area.

\*\* The weighted averages are a combination of large manufacturers and other smaller Louisville employers.

Source: Associated Industries of Kentucky, Survey of Wages and Related Practices, 1984.

Associated Industries of Kentucky, a voluntary organization of Kentucky businesses, regularly collects occupational wage rates and fringe benefits data from participating member firms. Data are compiled for over 127 clearly defined office, production, and service occupations. Data from these tabulations for the Louisville area are available, upon request, from the Kentucky Department of Economic Development, Frankfort, Kentucky 40601.



PER CAPITA PERSONAL INCOME

<u>Area</u>	<u>1978</u>	<u>1982</u>	<u>Percent Change</u>
Jefferson County	\$ 8,161	\$ 11,312	38.6
Labor Market Area Range	\$5,406 - 8,161	\$7,046 - 11,312	N/A
Kentucky	6,389	8,893	39.2
U. S.	7,776	11,100	42.7

Sources: Kentucky Economic Information System, July 1984. U.S. Department of Commerce, Bureau of Economic Analysis, Survey of Current Business, April 1980, April 1984.

TOTAL PERSONAL INCOME

	<u>Millions of Dollars</u>		
	<u>1978</u>	<u>1982</u>	<u>Percent Change</u>
Labor Market Area	7,368.1	10,112.3	37.2
Jefferson County, KY	5,677.1	7,680.8	35.3
Bullitt County, KY	222.7	312.7	40.4
Oldham County, KY	148.3	236.3	59.3
Shelby County, KY	144.0	210.5	46.2
Clark County, IN	597.0	855.0	43.2
Floyd County, IN	422.0	593.0	40.5
Harrison County, IN	157.0	224.0	42.7

Sources: Kentucky Economic Information System, July 1984. U.S. Department of Commerce, Bureau of Economic Analysis, Survey of Current Business, April 1980, April 1984.

## TRANSPORTATION

### Rail

Louisville is served by the following railroad companies: Seaboard System Railroad, Consolidated Rail Corporation (Conrail), Southern Railway System, Chessie System Railroads, Illinois Central Gulf Railroad, and the Milwaukee Railroad. These railroad companies provide all types of freight services between Louisville and the principle markets and industrial centers in the United States. Piggyback facilities are available in Louisville.

In addition, the Missouri Pacific Railroad Company and Southern Pacific Lines maintain sales offices in Louisville.

The Kentucky and Indiana Terminal Railroad operates eight miles of track in and around Louisville which is used to switch cars of various railroads between Kentucky and Indiana.

### Highways

Major highways which serve Louisville are Interstate Highways 64, 65 and 71.

Interstate 64 is a major east-west route which connects Louisville with St. Louis, Missouri, to the west and Charleston, West Virginia, to the east. Interstate 65 is a major north-south route which connects Louisville with Indianapolis, Indiana, to the north and Nashville, Tennessee, to the south. Interstate 71 stretches out northeast of Louisville to Cincinnati, Ohio.

Interstate 264 (Watterson Expressway) is a multilane, limited-access bypass around Louisville. A 13.5 mile section of Watterson Expressway is scheduled to be widened between 1985 and 1988. The section of highway from U.S. 60 East (Shelbyville Road) to Interstate 65 will be expanded to eight lanes. The section of highway from U.S. 60 West (Dixie Highway) to Interstate 65 will be expanded to six lanes.

Kentucky Highway 841 (Jefferson Freeway) is another multilane bypass around Louisville. Some sections of the highway have been completed and are in use. Other sections are under construction or in the design stage. Upon completion, scheduled for late 1987, the freeway will stretch from U.S. 42, northeast of downtown Louisville, to U.S. 60 (Dixie Highway), southwest of the downtown area.

Access to Interstate 75 north is provided via Interstate 71 -- the two highways merge 78 miles from Louisville at a point south of Cincinnati. Interstate 75 south is accessible at Lexington, Kentucky, 72 miles to the east via Interstate 64.

Interstate 65 south provides direct access to the following intrastate multilane toll roads: the Blue Grass Parkway, the Western Kentucky Parkway, the Cumberland Parkway, and the Green River Parkway.



## Truck Service

The major commercial and industrial sections of the Louisville area are in the Louisville Commercial Zone, which includes Louisville and the area within ten miles of the corporate limits of Louisville, therefore encompassing portions of the state of Indiana.

Motor carrier service is available to all parts of the United States through approximately 83 common carriers which serve Louisville, with interstate and/or intrastate service available.

### Other Freight Services

### Nearest Office or Shipping Center

Airborne Express	Louisville
Emery	Louisville
Federal Express	Louisville
Purolator Courier	Louisville
United Parcel Service*	Louisville

### HIGHWAY MILES AND TRUCK TRANSIT TIME IN DAYS FROM LOUISVILLE, KENTUCKY, TO SELECTED MARKET CENTERS

City	Highway Miles	Delivery Time TL	City	Highway Miles	Delivery Time TL
Atlanta, Ga.	382	1	Knoxville, Tenn.	241	1
Baltimore, Md.	598	2	Los Angeles, Ca.	2,108	6
Birmingham, Ala.	364	1	Nashville, Tenn.	168	1
Chicago, Ill.	292	1	New Orleans, La.	685	2
Cincinnati, Ohio	101	1	New York, N. Y.	748	2
Cleveland, Ohio	345	1	Pittsburgh, Pa.	388	2
Detroit, Mich.	360	1	St. Louis, Mo.	263	1

Note: Mileage computations are via the best interstate or primary highways, not necessarily the most direct route of travel.

Sources: Rand McNally Road Atlas, 1979. Official Kentucky Mileage Map, 1980.  
Delivery time - Lawrenceburg Transfer, Inc., P.O. Box 36005, Louisville, Kentucky 40233.

\* United Parcel Service has chosen Louisville to become the national air distribution center for its next-day delivery service. The \$20 million expansion of the UPS package handling facility, adjacent to Standiford Field, will result in the creation of 500 new jobs. In addition, UPS will construct concrete parking pads and ramps for its fleet of airplanes stationed in Louisville.

## Air

### Local

Location: Bowman Field  
5 miles east of downtown Louisville  
Runways: 3 paved  
Length: 4,350 feet; 3,677 feet; 3,539 feet  
Traffic  
Control: Control tower  
Lighting: Runways, obstructions, beacon, and wind tee  
lighted; VASI  
Services: 100 octane and jet fuel, major A & P repairs,  
storage, radio service, FAA Flight Standards  
District Office, FAA Flight Service Station,  
charter service, taxi, city bus, restaurant  
Air Freight  
Service: Chartered air freight services must be arranged

### Scheduled Commercial Airline Service

Location: Standiford Field  
5 miles southeast of center of Louisville, Kentucky  
Runways: 2 paved  
Length: 10,000 feet; 7,250 feet  
Traffic  
Control: Control tower  
Lighting: Runways, obstructions, beacon and approach; touch-  
down lights and center line on one runway  
Services: Delta, Eastern, Ozark, Piedmont, TWA, United, USAir,  
Allegheny Commuter, Comair, Florida Express;  
fuel - 100 and jet-A; major A & P repairs;  
major Avionics repairs; APU, charter, oxygen, U. S.  
Customs; taxi, car rentals, limousine, courtesy car,  
public transit; Weather Bureau; restaurant, snack bar  
Air Freight  
Service: Air freight terminal

**Bus** - Greyhound Bus Lines, Trailways Bus System, and TARC (intracity)

**Taxi** - Approximately 10 taxicab companies serve Louisville

**Rental Services** - All types of rental services are available

\* A new terminal is under construction at Standiford Field. The new building will be used for passenger services such as airline ticket counters, baggage claim, rental cars and a restaurant. Completion of the new terminal is scheduled for mid-1985. Construction of a second building will begin in mid-1985. The second building will be used for boarding positions and gates. A tentative completion date of August 1986 is scheduled for the second building. The airport's existing terminal will be torn down when the new facilities are complete.



## **Water**

Louisville's location on the Ohio River provides it with excellent water transportation via inland waterways of the United States. Inland waterway routes connect Louisville to midwestern and Gulf points by means of commercial barge lines.

Many different types of freight move along the Ohio River in the Louisville area including coal, sand, gravel and petroleum products.

Louisville is also a U.S. Customs Port of Entry which allows for customs inspection upon arrival in Louisville.

## **Riverports**

### Louisville and Jefferson County Riverport Authority

The Louisville and Jefferson County Riverport Authority is developing a riverport complex which is planned to provide port facilities for efficient handling and storage for breakbulk, dry and liquid bulk cargoes, transfer to and from barge, truck and rail service, and barge fleetings.

The first phase (800 acres) of the 1,600-acre industrial/port complex is served by the Greenbelt Highway, a partially controlled access, four-lane highway which connects the complex to the interstate system less than five miles away. Access to six rail lines and inter- and intra-state motor carrier service are part of the superior intermodal transportation network serving the complex. Standiford Field, a major commercial airport, is only eight miles from the Riverport via I-264.

The northern 800 acres, "Phase I" of the development, has been fully improved for immediate occupancy by industry. Internal roads have been constructed; the lead rail track served directly by Illinois Central Gulf and Norfolk Southern and through switching arrangements with all other railroads serving Louisville has been constructed and is in operation; industrial-sized water and sewer lines are in place, served by the Louisville Water Company and the Louisville and Jefferson County Metropolitan Sewer District; and electric and gas service is provided by the Louisville Gas and Electric Company. The planned public port facilities will be located in the extreme northwest section of the Phase I development area and the remainder is zoned "River Terminal", "Heavy" and "Medium-Light" industry and distribution.

Foreign Trade Zone No. 29, a 12-acre zone, is located within the 800-acre Phase I area of the 1,600-acre complex. Facilities include 22,500 square feet of covered space with 22-foot ceiling height, heated and sprinklered; six truck docks and paved parking and turn around areas. Facilities also include 15,000 square feet of concrete surfaced outside storage and consolidation area with rail and truck docks. The general purpose zone is operated by Bary Transportation, Inc., 6310 Cane Run Road, Louisville, Kentucky 40258, (502) 937-0442.

The Riverport has maintained an on-site air quality monitoring station, operated by the Air Pollution Control District of Jefferson County. The availability of this historic air quality data provides for a quick air quality review, facilitating the permitting process. Also, an air emissions bank is available within the Jefferson County area.

For more information contact:

President  
Louisville and Jefferson County Riverport  
P.O. Box 58010  
Louisville, Kentucky 40258  
(502) 935-6024

#### Port of Louisville Terminal

The Port of Louisville Terminal offers a variety of services which include direct cargo transfer between barge and rail car or truck and covered or open storage.

The terminal offers a complete range of cargo handling equipment including a crawler crane with 135-ton capacity, a covered overhead crane with 5- to 15-ton hoists, and a 10-ton capacity monorail crane. Additional equipment includes 15 forklift trucks, the largest with a capacity of 25,000 pounds.

The terminal offers 180,000 square feet of inside storage plus 12,000 square feet of open storage space. Commodities which can be handled in bulk include grain, coal, fertilizer, sheet steel, structural steel, pipe, newsprint and printing paper.

For more information contact:

General Manager  
Port of Louisville Terminal  
P.O. Box 32300  
Louisville, Kentucky 40232  
(502) 583-7723



## POWER AND FUEL

### Electricity

Company serving **Louisville and Jefferson County** - Louisville Gas and Electric Company  
Source of power - Louisville Gas and Electric Company  
Total generating capacity - 2,925,850 KW\*  
For industrial rates contact:

Louisville Gas and Electric Company  
P.O. Box 32010  
Louisville, Kentucky 40232  
(502) 566-4246

### Natural Gas

Company serving **Louisville** - Louisville Gas and Electric Company  
Source of supply - Texas Gas Resources Corporation  
Size of transmission mains - 26-inch (supplier); 16- and 20-inch (distributor)  
Distribution mains - 2- to 16- inch  
Distribution pressure - 6 ounces to 35 psi  
Btu content - 1,025 per cubic foot  
Specific gravity - 0.597  
For rates and supplies contact:

Louisville Gas and Electric Company  
Gas Market Services  
P.O. Box 32010  
Louisville, Kentucky 40232  
(502) 566-4488

### Other Fuels

Propane and distillate fuel oil - Numerous dealers are located in Jefferson County.

Residual fuel oil - Arrangements must be made with the refinery.

Low sulphur content coal - Available in Kentucky.

\* A 543,600 KW coal-fired generation plant is under construction in Trimble County and scheduled for completion in June 1987.

## WATER AND SEWERAGE

### Public Water Supply

Company serving **Louisville** - Louisville Water Company  
 435 South Third Street  
 Louisville, Kentucky 40202  
 (502) 582-2431

Source - Ohio River

Treatment plant capacity - Plant #1 - 240,000,000 gallons per day  
 Plant #2 - 30,000,000 gallons per day  
 Total - 270,000,000 gallons per day

Average daily consumption - 119,300,000 gallons

Peak daily consumption - 176,500,000 gallons

Type treatment - Sedimentation, coagulation, softening, filtration and chlorination

Storage capacity - 87,385,000 gallons (treated water)

Size lines - 1 to 60 inches

Pressure - 40 psi minimum

### BI-MONTHLY CHARGES INSIDE JEFFERSON COUNTY AND LEASED FACILITIES OUTSIDE JEFFERSON COUNTY

#### DEMAND CHARGE

5/8 - 3/4-inch Meter	\$ 5.30	6-inch Meter	\$ 632.44
1-inch Meter	18.56	8-inch Meter	1,125.34
1 1/2-inch Meter	40.66	10-inch Meter	1,749.00
2-inch Meter	70.64	12-inch Meter	2,547.56
3-inch Meter	158.10	16-inch Meter	4,633.94
4-inch Meter	279.16		

#### COMMODITY CHARGE

		<u>General Pressure Area*</u>	<u>Elevated Service Area**</u>
First	6,000 gallons	\$ .77 per M gallons	\$ .92 per M gallons
Next	6,000 gallons	.87 per M gallons	1.02 per M gallons
Next	388,000 gallons	.98 per M gallons	1.13 per M gallons
Next	2,600,000 gallons	.91 per M gallons	1.06 per M gallons
Next	17,000,000 gallons	.86 per M gallons	1.01 per M gallons
In excess of	20,000,000 gallons	.77 per M gallons	.92 per M gallons

\* General Pressure Area is defined as an area which can be served from the Crescent Hill/Cardinal Hill water system without additional pumping and storage facilities.

\*\* Elevated Service Area is defined as that area which cannot be served from Crescent Hill/Cardinal Hill water system without additional pumping and storage facilities.



### MINIMUM MONTHLY BILL

<u>Meter Size</u>	<u>Allowable Use M Gallons</u>	<u>General Pressure Area*</u>	<u>Elevated Service Area**</u>
5/8 - 3/4-inch	2	\$ 6.84	\$ 7.14
1-inch	10	26.66	28.16
1 1/2-inch	20	58.34	61.34
2-inch	30	98.12	102.62
3-inch	70	224.78	235.28
4-inch	130	404.64	424.14
6-inch	300	924.52	969.52
8-inch	500	1,606.42	1,681.42
10-inch	800	2,503.08	2,623.08
12-inch	1,200	3,665.64	3,845.64
16-inch	2,000	6,480.02	6,780.02

Installation charge:\*\*\*

3/4-inch service	\$ 450
1-inch service	700
1 1/2-inch service	1,900
2-inch service	2,000
4 x 3-inch service	4,200
4 x 4-inch service	4,200
6-inch service	6,000
8-inch service	7,000

### LOUISVILLE AND JEFFERSON COUNTY-FIRE SERVICE CHARGES

<u>Size of Line</u>	<u>Bi-Monthly Charge</u>
4-inch	\$ 12.50
6-inch	26.00
8-inch	50.00
10-inch	101.00
12-inch	201.00

Installation charge:\*\*\*

4-inch fire service -	\$3,500
6-inch fire service -	4,000
8-inch fire service -	6,000
10-inch fire service -	6,500
12-inch fire service -	7,000

\* General Pressure Area is defined as an area which can be served from the Crescent Hill/Cardinal Hill water system without additional pumping and storage facilities.

\*\* Elevated Service Area is defined as that area which cannot be served from Crescent Hill/Cardinal Hill water system without additional pumping and storage facilities.

\*\*\* Additional tapping fees are required in some cases.

Company serving **Jeffersontown\*** - Jeffersontown Water and Sewerage  
 Commission  
 P.O. Box 99367  
 Jeffersontown, Kentucky 40299  
 (502) 267-1286

Source of treated water - Louisville Water Company  
 Average daily consumption - 1,400,000 gallons  
 Peak daily consumption - 1,700,000 gallons  
 Storage capacity - 600,000 gallons  
 Size lines - 4, 6, 8, 10 and 12 inches  
 Average pressure - 50 to 60 psi  
 Average temperature - N/A

#### MONTHLY WATER RATES

First	3,000 gallons	\$4.70	Minimum
Next	7,000 gallons	1.16	per M gallons
Over	10,000 gallons	1.26	per M gallons

#### MONTHLY FIRE LINE CHARGE

6-inch	\$ 8
8-inch	15
10 or 12-inch	22

#### Tap-on charge:

5/8 x	3/4-inch meter -	\$ 300
3/4 x	3/4-inch meter -	350
	1-inch meter -	500
1	1/2-inch meter -	1,150
	2-inch meter -	1,250

Larger meters are based on actual cost plus 20 percent.

#### **Raw Water**

Surface water source - Ohio River

Average discharge - Ohio River at Louisville, Kentucky - 115,800 cfs (54 years, USGS)

Expected ground water yield - 500 to 1,000 gpm along the Ohio River; 5 to 50 gpm at isolated spots within the county; 5 gpm or less in remainder of the county.

\* Service area includes Bluegrass Industrial Park.



## Sewerage

Company serving **Louisville and Jefferson County** - Louisville & Jefferson  
County Metropolitan  
Sewer District  
400 South Sixth Street  
Louisville, Kentucky 40202  
(502) 587-0591

<u>Wastewater Treatment Plant</u>	<u>Design Flow (MGD)</u>	<u>Avg. Flow (MGD)</u>	<u>Type Treatment</u>	<u>Treatment Process</u>	<u>Receiving Stream</u>
Morris Forman	(1)	88.500	Secondary	Pure Oxygen	Ohio River
Hite Creek	4.380	2.400	Advance		
			Secondary	Aeration (2)	Hite Creek
Glenview Acres	0.012	0.020	Secondary	Aeration	Tributary of Goose Creek
Industrial Subdivision	0.040	0.044	Secondary	Aeration	Tributary of Pond Creek
Ken Carla	0.010	0.014	Secondary	Aeration	Harrods Creek
Villa Ana (3)	0.169	0.339	Secondary	Aeration	Mill Creek
Glenview Bluff	0.010	0.002	Secondary	Aeration	Tributary of Ohio River
Muddy Fork (Riverwood)	0.360	0.450	Advance		
			Secondary	Aeration (4)	Muddy Fork of Blue- grass Creek
Berrytown	0.075	0.016	Secondary	Aeration	Tributary of Floyds Fork
West County	15.000	(5)	Secondary	Aeration	Ohio River

### Notes:

- (1) In its present mode, the plant capacity is approximately equal to its current flow. Ongoing improvements will increase the capacity to 105 mgd.
- (2) Plus polishing filtration and oxygenation ladder.
- (3) Plant will be abandoned upon completion of the West County facility.
- (4) Plus mechanical polishing filter.
- (5) Plant under design, expected completion Spring 1987.

Size of sanitary mains - 8 to 120-inch diameter.

Size of storm mains - 12-inch diameter to 27.5 feet by 18.3 feet inverted egg.

(Cont'd)

Rates -

Service Charge (Minimum Bill)

<u>Meter Size</u>	<u>Monthly Bill</u>	<u>Bimonthly Bill</u>
5/8 or 3/4-inch	\$ 4.60	\$ 6.00
1-inch	7.55	11.30
1½-inch	11.30	18.85
2-inch	14.55	25.85
3-inch	30.70	57.60
4-inch	48.45	93.15
6-inch	93.15	183.00
8-inch	139.95	274.50
10-inch	183.00	360.65
12-inch	297.00	594.00
15 or 16-inch	360.00	720.00
18 or 20-inch	472.50	945.00

Volume Charge

\$0.89 per 1,000 gallons of volume billed.

Flat Rate Single Family Residential Customer

\$8.34 monthly or \$16.68 bimonthly (includes both service and volume charges for single family residential customer without a metered public water service).

Quality Charge

Applicable to contributed wastewater strengths in excess of 250 mg/l of biochemical oxygen demand (BOD) or 270 mg/l of suspended solids (SS).

\$0.153 per pound of BOD loading in excess of 250 mg/l

\$0.061 per pound of SS loading in excess of 270 mg/l

Customers whose average wastewater volume during any consecutive 12-month period exceeds 1,000,000 gallons per month may, until such volume is less than 1,000,000 gallons per month, have the option of being charged for wastewater service on the basis of \$0.55 per 1,000 gallons of volume plus \$0.153 per pound of total BOD loading plus \$0.061 per pound of total SS loading.

Bulk Dumping Charge for Vault Cleaners

\$41.00 per truckload dumped through 12/31/84.

\$0.019 per gallon based on capacity of tanker truck beginning 1/1/85.

\$0.19 per net 100 pounds when weighing facilities are available.



## Connection fees -

<u>Size of Property Service Connection</u>	<u>Costs</u>
4- or 6-inch	\$ 2,850
8-inch	5,037
10-inch	7,688
12-inch	11,069
15-inch	16,570
18-inch	24,126
21-inch	33,206
24-inch	42,419
27-inch	53,156
30-inch	65,484

## Improvements

The Louisville and Jefferson County Metropolitan Sewer District has numerous projects in the planning, design and/or construction stage, including the plans for a 15 MGD treatment plant to serve southwestern and southern Jefferson County and a multi-million dollar improvement program that is ongoing at the Morris Forman Plant.

Company serving **Jeffersontown\*** - Jeffersontown Water and Sewerage  
Commission  
10404 Taylorsville Road  
P.O. Box 99367  
Jeffersontown, Kentucky 40299  
(502) 267-1286

Design capacity - 6,500,000 gallons per day

Average daily flow - 2,500,000 gallons

Type of treatment - Tertiary

Treatment processes - Grit chamber, shredders, primary clarifier, aeration, secondary clarifier, contact basin, post aeration tank

Treated effluent discharged into - Chenoweth Run Creek

Size of sanitary mains - 6, 8, 10, 12, 18 and 36 inches

Size of storm mains - None

Monthly rates\*\* -

First	3,000 gallons	\$4.70 (Minimum)
Next	7,000 gallons	1.16 per M gallons
Over	10,000 gallons	1.26 per M gallons

Tap-on charge: Actual cost plus a \$10 inspection fee.

## Other Sewer Systems Serving Jefferson County

There are currently 124 other sewerage systems in Jefferson County, including incorporated cities with independent systems, sewer construction districts, subdivisions with independent systems and various private institutional systems.

\* Service area includes Bluegrass and Commonwealth industrial parks.

\*\* The City of Jeffersontown has established a wastewater pretreatment ordinance which outlines the limits of specified substances which may be discharged into the system.

## CLIMATE

### Jefferson County

#### Temperature

Normal (30-year record)	56.20 degrees
Average annual 1983	56.30 degrees
Record highest, July 1954 (36-year record)	105.00 degrees
Record lowest, January 1963 (36-year record)	-20.00 degrees
Normal heating degree days (30-year record)	4,525
(Heating degree day totals are the sums of negative departures of average daily temperatures from 65 degrees F.)	

#### Precipitation

Normal (30-year record)	43.56 inches
Mean annual snowfall (36-year record)	17.30 inches
Total precipitation 1983	47.38 inches
Mean number days precipitation (.01 inch or more) (36-year record)	124
Mean number days thunderstorms (36-year record)	45

#### Prevailing Winds (15-year record)

South

#### Relative Humidity (23-year record)

1 a.m.	76 percent
7 a.m.	81 percent
1 p.m.	59 percent
7 p.m.	61 percent

Source: U.S. Department of Commerce, Environmental Science Services Administration, Climatological Data, 1983. Station of record: Louisville, Kentucky.



## LOCAL GOVERNMENT

### City

Structure - Mayor - 4-year term; 12 aldermen - 2-year terms

Total operating budget 1984-85 - General Fund \$91,852,546

Fees and licenses - Occupational license tax and school boards' tax are based on employee compensation and on net profits

	<u>Work in Louisville and/or Jefferson County</u>	<u>Work and live in Louisville and/or Jefferson County</u>
Occupational license tax	1.45%	1.45%
School boards' tax	--	.75%
Total	1.45%	2.20%

Special license fees are imposed on certain businesses.

### County

Structure - County Judge/Executive - 4-year term; 3 commissioners - staggered 4-year terms

Budget 1984-85 - General Fund \$65,314,000; Road Fund \$1,476,000

Fees and licenses - Occupational license tax and school boards' tax are based on employee compensation and on net profits

	<u>Work in Louisville and/or Jefferson County</u>	<u>Work and live in Louisville and/or Jefferson County</u>
Occupational license tax	1.45%	1.45%
School boards' tax	--	.75%
Total	1.45%	2.20%

Special license fees are imposed on certain businesses.

### Assessed Value of Property, 1983\*

<u>Classes of Property</u>	<u>Louisville</u>	<u>Jefferson County</u>
Real Estate	\$3,707,730,958	\$10,532,431,598
Tangibles	1,252,450,359	2,833,764,235

\* Excludes Homestead Exemptions.

## **Property Taxes**

All property in Kentucky is assessed at 100 percent of fair cash value.

Land and buildings are taxed by the state and may be taxed by local jurisdictions. The state rate is \$0.22 per \$100 of assessed valuation.

Manufacturing machinery, raw materials inventories, pollution control equipment, and goods in the process of manufacture are not subject to local taxation. The state rate is \$0.15 per \$100.

Other tangible personal property owned by manufacturers (automobiles, trucks, finished goods, office furniture, office equipment) is taxed by the state at \$0.45 per \$100 and may be taxed by local jurisdictions.

Intangible personal property located in Kentucky (money in hand, shares of stock, notes, bonds, accounts receivable, and other credits) is taxed by the state at \$0.25 per \$100, and is not subject to local taxation.

Property stored in public warehouses in a transit status is not subject to local taxation. The state rate is only \$0.015 per \$100.

Private leaseholds in industrial facilities owned by cities or counties and financed by industrial revenue bonds are subject to a state tax of \$0.015 per \$100 of value (essentially the lessee's equity, adjusted for appreciation or depreciation). Local taxation is not permitted.

### **Local Property Tax Rates, 1984**

Property tax rates in the Greater Louisville area have been set for the following jurisdictions: Jefferson County, the City of Louisville, other smaller incorporated cities in the county, public school districts, and fire protection districts. Each of these jurisdictions has set tax rates for real estate, vehicles and other tangible personal property. Jefferson County levies taxes throughout the county, including property located inside of incorporated cities. Cities may levy taxes only within their corporate boundaries. School districts do not overlap. Fire protection districts levy taxes within their operating areas (usually a small portion of a city or the county).

The Jefferson County property tax rate for 1984 was \$0.176 per \$100 of assessed valuation for both real estate and tangible personal property, including vehicles.

(Cont'd)

LOCAL PROPERTY TAX RATES FOR SELECTED CITIES, 1984\*

<u>City</u>	<u>Real Estate</u>	<u>Vehicles</u>	<u>Other Tangibles</u>
Louisville	\$0.4950	\$0.566	\$0.5660**
Anchorage	0.381	0.381	0.381
Douglass Hills	0.2340	None	0.2340
Jeffersontown	0.2060	None	0.2060
Lyndon	0.220	None	0.220
Middletown	0.166	None	0.166
Prospect	0.245	None	0.245
St. Matthews	0.2995	None	None
St. Regis Park	0.213	None	0.213
Shively	0.2770	0.267	0.274

\* First through fourth class cities.

\*\* The City of Louisville sets a special property tax rate for business inventories. The 1984 rate was \$0.34.

In addition to the cities listed above, fifth and sixth class cities in Jefferson County levy property taxes. Property tax rates for these cities in 1984 range from \$0.0594 to \$0.405 for real estate and from "none" to \$0.405 for tangible personal property. None of these cities levied property taxes on vehicles in 1984.

Two public school systems operate in Jefferson County and levy property taxes within their respective boundaries. The 1984 property tax rates were:

<u>City</u>	<u>Real Estate</u>	<u>Vehicles</u>	<u>Other Tangibles</u>
Jefferson County	\$0.506	\$0.584	\$0.584
Anchorage Independent	0.789	0.853	0.789

Twenty-one (21) fire protection districts in Jefferson County levy property taxes within their district boundaries at rates ranging from "none" to \$0.10 for real estate and from "none" to \$0.10 for tangible personal property. The rate levied on vehicles ranges from \$0.065 to \$0.10.



## **Planning and Zoning**

The Louisville and Jefferson County Planning Commission is a joint city-county agency charged by statute to administer the zoning and subdivision regulations and to prepare a comprehensive plan that serves as a guide for development of public and private property. The commission makes recommendations to appropriate city and county legislative bodies in cases of zone-change requests and has authority to approve subdivisions of land in Jefferson County.

Building and code enforcement departments in Louisville and in Jefferson County administer local ordinances relating to provision of building safety and standards as well as Kentucky Plumbing Code, National Electric Code, Kentucky Boiler Regulations and Standards, and Kentucky Building Code (modeled after BOCA code).

Kentuckiana Regional Planning and Development Agency provides regional planning functions for governmental jurisdictions in the metropolitan area including seven Kentucky counties and two Indiana counties.

## **Safety**

### **Police**

The two principal police forces are the Louisville Division of Police, which operates within the city limits of Louisville, and the Jefferson County Police Department, the primary law enforcement agency in the remainder of the county. Of the remaining municipalities in the county, St. Matthews, Jeffersontown, Anchorage and Shively maintain a full-time patrol force. The Louisville Division of Police has an authorized manpower strength of 675 full time officers. The Jefferson County Police Department has an authorized strength of 421.

In addition to the full-time forces, many of the fifth and sixth-class cities are served by local police of some sort -- part-time officers, city marshals, or private police. For the most part, such local police supplement the county force, performing traffic patrol duties and responding to routine service calls.

### **Fire**

Fire protection in Jefferson County is provided by municipal fire protection programs and by fire protection districts. Louisville maintains a fully paid fire department and Shively maintains a partially paid-partially volunteer fire department. The remainder of the county is divided among 21 fire protection districts which are wholly volunteer or partially paid-partially volunteer organizations.

The Louisville Division of Fire includes the Fire Suppression Program and the Fire Prevention Bureau. The Fire Suppression Program, consisting of 32 fire companies located at 22 fire stations throughout the city, is responsible for extinguishing fires and handling similar emergencies. The Louisville Fire Department has 607 full-time personnel, 540 of whom are uniformed firefighters.

The City of Louisville has an Insurance Services Office, Public Protection Classification of 2 while classifications in the remainder of the county range from 2 to 9.

## Rescue Service

The Jefferson County Police Department River Patrol, with a staff of four officers, operates during the summer months only. The river patrol is equipped with a cruiser, first aid kits, stretchers, and scuba diving equipment. Primary patrol members are emergency medical technicians and receive scuba diving training.

## Refuse Collection and Disposal

### Louisville

Type service	Municipal
Fee charged:	
residential	None*
business	Based on volume**
Collection frequency:	
residential	Twice weekly
business	Twice weekly
Trash pickup	Once a year
Disposal method	Incineration and landfill

Approximately 30 private sanitation companies provide a variety of services in Jefferson County.

---

\* The Louisville Sanitation Department is financed through the city's general fund.

\*\* No fee is charged if the volume of refuse is two bags (or cans) or less per pickup. A fee for excess refuse is charged based on volume.

## EDUCATION

### Public Schools

#### Jefferson County

The Jefferson County Public School System includes 86 elementary schools, 23 middle schools, 20 high schools, and 11 special schools.

<u>Spring 1984</u>	<u>Enrollment</u>
TOTAL	92,652
Elementary (including kindergarten)	43,361
Middle School	22,348
High School	26,943

Student/Teacher Ratio - 19.6 to 1

Accreditation - Southern Association of Colleges and Schools

Percent High School Graduates to College (1983-84) - 51.7

Expenditures Per Pupil (1983-84) - \$2,657.32

Bonded Indebtedness (June 30, 1984) - \$148,700,000

#### Anchorage Independent

<u>August 1984</u>	<u>Enrollment</u>
K-9	270

Student/Teacher Ratio - 14.9 to 1

Expenditures Per Pupil (1983-84) - \$3,439.71

Bonded Indebtedness (June 30, 1984) - \$1,025,000

### Nonpublic Schools

#### Catholic School System

The Catholic School System includes 55 elementary schools and 10 high schools. Kindergarten programs are available at 24 of the elementary schools.

<u>Spring 1984</u>	<u>Enrollment</u>
TOTAL	24,317
Kindergarten	650
Elementary	16,606
High School	7,061

In addition, approximately 88 other parochial and private schools are located throughout Jefferson County with an estimated enrollment of 6,920 in the fall of 1983.



## Colleges and Universities

The University of Louisville is a state-supported institution of higher learning which enrolled 19,794 students in the fall of 1984. The University consists of the College of Arts and Sciences; the Graduate School; and schools of business, medicine, dentistry, nursing, law, engineering, education, justice administration, social work, and music.

Spalding University is a coeducational college of liberal arts and sciences which had a Fall 1984 enrollment of 1,126. The University offers an associate degree in computer studies; Bachelor of Science and Bachelor of Arts degrees; and masters degrees in education, library science, psychology, religious studies, and nursing.

Bellarmino College, a coeducational Catholic college of liberal arts and sciences, had a Fall 1984 enrollment of 2,710. Bellarmine offers an Associate of Arts, Associate of Nursing, Associate in Applied Science, Bachelor of Arts, Bachelor of Science, Master of Business Administration, Master of Arts in Education, and Master of Science in Nursing degrees.

Jefferson Community College is the largest of the 13 statewide community colleges in the University of Kentucky system. There are two campuses, one in downtown Louisville and one in southwestern Jefferson County, with a total enrollment of 6,767 in the fall of 1984. The college offers an Associate in Applied Science, Associate in Arts and Associate in Science degrees.

Indiana University Southwest, located in New Albany, Indiana, is one of eight campuses within the Indiana University system. Enrollment for the fall of 1984 totaled 4,399. The University offers programs leading to associate, bachelor, and master degrees.

Other specialized institutions of higher education in the Louisville-Jefferson County area include:

- Southern Baptist Theological Seminary
- Louisville Presbyterian Theological Seminary
- College of the Scriptures
- Simmons Bible College
- Louisville Bible College
- Louisville College of Medical and Dental Careers
- Sullivan Junior College of Business
- Spencerian (Business) College
- Watterson College
- McKendree College Kentucky Centers
- Webster College Graduate Center (Jeffersonville, Indiana)
- Kentucky College of Technology
- Louisville Technical Institute
- RETS Electronics Institute

Kentuckiana Metroversity, Inc., is a consortium of seven institutions of higher education in the Louisville metropolitan area. The participating institutions are:

1. Bellarmine College
2. Spalding University
3. University of Louisville
4. Jefferson Community College
5. Louisville Presbyterian Theological Seminary
6. Southern Baptist Theological Seminary
7. Indiana University Southeast (New Albany, Indiana)

The consortium allows a student to take up to six semester hours as a guest without payment of additional fees to the host institution. From any institution it takes no more than twenty minutes to get to any of the other members of the consortium.

### **Vocational Training**

Vocational training in Jefferson County is provided at Jefferson State Vocational-Technical School and Manpower Skill Center, six area vocational education centers, two rehabilitation centers and several independent technical schools.

Both the state vocational-technical schools and the area vocational education centers are operated by the Kentucky Department of Education. The state vocational-technical schools enroll persons full time who are at least 16 years of age and not in school. These students attend classes for six hours each day. The area vocational education centers are designed to accommodate high school students who are at least 15 years of age. These students attend vocational school for three hours each day. The state vocational-technical schools and the area education centers offer evening courses to enable working adults to upgrade current job skills. In addition to the regular curriculum, arrangements can be made to provide training in the specific production skills required by an industrial plant. Instruction may be conducted either in the vocational school or in the industrial plant, depending upon the desired arrangement and the availability of special equipment.

The Jefferson State Vocational-Technical School and Manpower Skill Center offers the following courses:

- Agriculture
  - Ornamental Horticulture
- Business and Office
  - Accounting/Jr. Management
  - Clerical
  - Data Processing
  - Secretarial
  - Word Processing
- Consumer and Home Economics
  - Consumer and Family Life Skills
  - Culinary Arts (Commercial Foods)
- Health and Personal Services Occupations
  - Cosmetology
  - Child Care Aide
  - Dental Assistant
  - Licensed Practical Nursing
  - Medical Assistant
  - Nurse's Aide
  - Surgical Technician
  - Ward Clerk
- Industrial Education
  - Air Conditioning and Refrigeration
  - Auto Body Repair
  - Auto Mechanics
  - Carpentry-Building Trades
  - Diesel Mechanics
  - Electricity
  - Electronics
  - Graphic Arts (Printing)
  - Machine Shop
  - Masonry
  - Plumbing
  - Welding
- Computer Literacy
- Learning Resource Center

The six area vocational education centers located in Jefferson County are:

- Ahrens AVEC
- Fairdale AVEC
- Jeffersontown AVEC
- Pleasure Ridge Park AVEC
- Scott Detrick AVEC
- Westport Road AVEC

In addition, four other vocational education centers operated by the Kentucky Department of Education are located within 33 miles of downtown Louisville. Indiana Vocational Technical College (Ivy Tech) provides vocational training at two locations in southern Indiana - Jeffersonville, 3 miles north of Louisville, and Sellersburg, 15 miles north of Louisville.



## HEALTH

### Local Medical Personnel

Physicians - 2,035  
Dentists - 495

### Hospitals

<u>Hospitals in Louisville-Jefferson County</u>	<u>Beds</u>
Baptist Hospital East	253 acute care
Baptist Hospital Highlands	197 acute care, 60 psychiatric, 19 rehabilitation
Central State Hospital	128 adult psychiatric, 68 mentally retarded 25 chemical dependency
Chalet	
Humana Hospital Audubon	484 acute care
Humana Hospital Southwest	150 acute care
Humana Hospital Suburban	380 acute care
Humana Hospital University	379 acute care, 25 psychiatric
Jewish Hospital	466 acute care
KMI Medical Center	69 psychiatric
Kosair Children's Hospital (pediatric)	174 acute care, 10 psychiatric
Methodist Evangelical Hospital	364 acute care
The Norton Hospital	321 acute care, 36 psychiatric
Our Lady of Peace	416 psychiatric
St. Anthony Hospital	374 acute care
Sts. Mary and Elizabeth Hospital	331 acute care
V.A. Medical Center	337 acute care, 49 psychiatric

### Ambulance Service

Primary emergency ambulance service is provided to Louisville and Jefferson County by the City of Louisville Emergency Ambulance Service and Jefferson County Police Emergency Medical Service. In addition, 16 other ambulance service facilities are licensed in Jefferson County.

In addition, emergency air ambulance service is provided in Louisville by STAT Flight at Humana Hospital University and by Sky-Care at Jewish Hospital. Non-emergency air ambulance transfer services are also available in Jefferson County.

## **Public Health**

The Louisville and Jefferson County Board of Health is comprised of two major service areas. These are the Department of Public Health, employing 288 personnel, and the Louisville Memorial Primary Care Center, employing 90 personnel. The Department of Public Health provides an array of environmental, educational, preventive medicine and dental services. The Department operates 10 health centers located throughout the county. The Louisville Memorial Primary Care Center operates a satellite primary care center also. Both provide general health care on an outpatient basis, education and referral.

## OTHER LOCAL FACILITIES

### Communications

Telephone -	South Central Bell Telephone Company
Telegraph - Services -	Western Union Counter service, toll free number (800-325-5100) to send mailgrams, telegrams, international messages, or change card money orders
Services -	Econ-O-Gram Toll free number (800-528-1904) to send United States or International telex telegrams; 7 days a week, 24-hour service
Postal - Class - Stations and branches -	U.S. Post Office First  23 in Jefferson County

### Newspapers -

#### Circulation

The Courier Journal (morning)	178,063
The Louisville Times (evening)	138,973
The Courier Journal (Sunday edition)	332,823
There are also 13 weeklies and semi-monthlies	

### Radio -

There are 19 radio stations located and operated  
in Louisville.

### Television -

WAVE-TV - Channel 3 (NBC)  
WDRB-TV - Channel 41 (Independent)  
WHAS-TV - Channel 11 (CBS)  
WLKY-TV - Channel 32 (ABC)  
WKPC-TV - Channel 15 (PBS)

### Cable service Kentucky Educational Television -

Louisville transmitter - WKMJ Channel 68



## Library Services

Louisville residents have access to an outstanding library system. The Louisville Free Public Library has 20 branches and 3 bookmobiles. The library operates two FM radio stations which are members of the National Public Radio network and broadcast 18 hours each day year-round. Nearly 2,500 16mm motion pictures and 1,500 35mm filmstrips and prints, phonograph records, music scores, and art reproductions are circulated to card holders, in addition to the major book collection of more than a million volumes. A non-circulation collection on Kentucky history is also maintained. The main branch has a special library for the blind and physically handicapped. Programs for children and adults are offered at the main library and most of the 20 branch libraries.

## Religious Institutions

Over 50 denominations, including all major ones, are represented in the Louisville area.

Synagogues in Louisville - Adath Israel Brith Sholom (reform)  
Adath Jeshurum (conservative)  
Anshei Sfard (orthodox)  
Keneseth Israel (orthodox)  
Sholom (reform)

## Financial Institutions

<u>Banks</u>	<u>Assets</u>	<u>Deposits</u>	<u>Statement Date</u>
Bank of St. Helens	\$ 29,557,493.11	\$ 24,694,873.41	6/30/84
Citizens Fidelity Corporation	2,855,019,000.00	2,053,890,000.00	6/30/84
Continental National Bank of Kentucky	16,902,000.00	14,451,000.00	6/30/84
First Kentucky National Corporation*	2,930,784,000.00	2,020,784,000.00	3/31/84
Liberty United Bancorp, Inc.	1,521,127,000.00	1,151,464,000.00	3/31/84
Mid-America Bancorp	598,314,000.00	410,252,000.00	6/30/84
Republic Bank and Trust Company	27,395,976.04	24,848,171.81	6/29/84
Stock Yards Bank and Trust Company	102,500,183.08	87,600,796.16	6/29/84

\* First National Bank of Louisville and First Kentucky Trust Company are the principal subsidiaries of First Kentucky Trust Company.

<u>Savings and Loan Associations</u>	<u>Assets</u>	<u>Savings Accounts</u>	<u>Statement Date</u>
Cumberland Federal Savings and Loan Association	\$ 940,074,160.00	\$ 765,028,763.00	6/30/84
Future Federal Savings and Loan Association	556,454,358.00	460,867,834.00	6/30/84
Great Financial Federal	1,007,743,125.99	765,396,633.93	6/30/84
Lincoln Federal Savings and Loan Association	527,194,669.00	475,190,050.00	6/30/84

### **Hotels and Motels**

Total number - Approximately 55  
Total rooms - Approximately 10,000

### **Convention Facilities**

The \$22 million Commonwealth Convention Center, located in the center of downtown Louisville, is an exhibition center for conventions, trade shows, and civic activities. The Center, which covers an entire city block, has more than 34 meeting rooms for groups of 25 to 1,000, five of which can be converted into an 8,200-square-foot ballroom. The Exhibit Hall has 100,000 square feet of column-free space with a clear ceiling height of 32 feet. It is adjacent to a hotel and a parking garage and is connected to them by overhead walkways.

The Kentucky Fair and Exposition Center is one of the largest multi-purpose exposition buildings in the United States with 30 acres under one roof. Located on a 376-acre plot, the center is one-third mile long from the east to the west exposition wings. A \$10 million multi-purpose annex connecting the east and west wings has been added to the center. It is about 10 minutes from downtown and has paved parking for 27,000 cars. The Kentucky State Fair is held there each summer.

Louisville Gardens is also downtown and has 7,000 permanent theatre-type seats. It has exhibit space and meeting rooms adaptable for groups of less than 100 to as many as 7,000 and is completely equipped for indoor sports events.

These extensive convention facilities, along with the hotel and motel accommodations, account for the fact that Louisville is a major center for national and international trade shows. Attendance ranges from 12,000 for the annual Manufactured Housing Show to 18,000 for the annual Recreational Vehicle Industry Association's trade show.

### **Clubs and Organizations**

Most national business, professional, civic, and fraternal clubs and organizations have one or more local chapters in Louisville.



## RECREATION AND CULTURAL ARTS

The most noted recreational event in Louisville is the Kentucky Derby at Churchill Downs. The "Run for the Roses" is the oldest and most prestigious thoroughbred horse race in the United States. The race is held on the first Saturday in May of each year and is the focal point of the 10-day Kentucky Derby Festival.

Churchill Downs, established in 1874, is open for two thoroughbred racing meets each year, the spring-summer meet and the fall meet. Louisville Downs is open for three harness racing meets each year, the spring meet, summer meet and fall meet.

Metro Parks, a joint agency of the City of Louisville and Jefferson County, maintains 140 parks which cover 11,000 acres of park land. Facilities include picnic areas; archery ranges; golf courses; tennis, basketball, and volleyball courts; softball and baseball diamonds; hiking trails; stable and horseback riding trails; croquet courts; swimming and wading pools; and a variety of instructional programs sponsored by the Parks' Department throughout the entire year. There are bike trails in some city parks as well as bike routes along city streets.

The Kentucky Department of Fish and Wildlife stocks 17 lakes at ten Metro Parks locations with channel catfish, bluegill, and bass. In addition, the Parks' Department offers approximately four miles of river frontage at eight locations. The Ohio River and nearby lakes and streams also provide excellent fishing.

Water sports are a favorite in the summer, both on the Ohio River and on the many lakes in Kentucky. Metro Parks operates 15 public swimming pools, three of them indoor facilities, as well as spray pools.

Metro Parks also offers two outdoor theaters for the visitor and local residents alike. The Iroquois Amphitheater and Shakespeare in Central Park operate only during the summer months.

Besides the public parks, there are a number of country clubs that offer a variety of recreational facilities. There are also boat clubs, tennis clubs, hunting and fishing clubs, as well as numerous clubs for specialized interests.

The Louisville Zoological Garden is a modern 60-acre facility with more than 600 animals in 60 exhibits. The zoo has many additional features, including a small animal center, picnic areas, a gift shop and special events held throughout the year.

The Belle of Louisville, built in 1914, is a sternwheeler operated by Louisville and Jefferson County since 1962. "The Belle" is kept in top condition and competes in the Great Steamboat Race during the Derby Festival each year. Daily excursions and charters are available during the summer months.



## Cultural Arts

Louisville is a community rich in cultural activities, many of them sharing support from the publicly funded Greater Louisville Fund for the Arts. The Fund's member agencies include the Louisville Orchestra; the Kentucky Opera Association; Art Center Association; Louisville and Jefferson County Youth Orchestra; Louisville Theatrical Association; Actors Theatre of Louisville; Louisville Bach Society; Stage One/Louisville Children's Theatre; Louisville Youth Choir; West Side Players; and Louisville Ballet.

In November 1983, the \$32 million Kentucky Center for the Arts opened. The center is home to five resident user groups: the Louisville Ballet, the Louisville Orchestra, the Kentucky Opera Association, the Louisville Theatrical Association and Stage One Children's Theatre.

Actors Theatre of Louisville, the stage theatre of Kentucky and one of the finest regional repertory theatres in the country, has gained international recognition for its annual festival of new plays.

The community also supports a number of amateur theatric groups. Shakespeare in the Park presents three productions each summer in cooperation with the Metropolitan Parks and Recreation Board. The Iroquois Park Players perform two musicals each summer at the amphitheatre in Iroquois Park.

Belknap Theatre, at the University of Louisville, is an educational theatre inviting experienced performers of the community to provide a balanced and high-level program of drama. Four major productions are cast each session. The university offers a regular curriculum of drama classes, including summer courses and evening classes for adults.

For two consecutive years Mikhail Baryshnikov appeared with the Louisville Ballet, the only regional group with which he has performed. The Louisville and Jefferson County Youth Orchestra has won national awards in competition and has performed in Europe. Special-interest groups like the Bach Society and Chamber Music Society have gained increasing support, drawing their members in part from the University of Louisville School of Music faculty.

A sizeable segment of Louisville's cultural activities is aimed at youth. Recently added to youth cultural activities is the Youth Performing Arts Center, which offers excellent instruction.

## Museums

The J. B. Speed Art Museum, Kentucky's oldest and largest art museum, has an outstanding collection of medieval furnishings and art; and Renaissance and French works. The Indian culture of early Kentucky is represented in one of the galleries. The museum houses both permanent and traveling exhibits. A recent addition to the museum doubled the size of exhibition space allowing for significantly larger changing exhibitions and uncovering much of the stored permanent collection.

The Museum of History and Science centers around the theme "Man and the River," and exhibits focus on the natural and cultural history of the Ohio River Valley and Kentucky from about 200 million years ago to the present. Exhibits feature the natural resources, geology, flora, and fauna of the region in addition to the settlement and growth of Louisville. Artifacts, spanning many of man's cultures, range from a 2,000-year-old mummy to a space craft built only a few years ago.

The Kentucky Derby Museum at Churchill Downs houses historical and sentimental mementos of the Kentucky Derby and contains displays and information on past winners. The museum will move into a new \$7 million facility by the 1985 Kentucky Derby.

The archaeological museum at the Louisville Presbyterian Theological Seminary has on display ancient Palestinian pottery, Holy Land artifacts, and a replica of the Dead Sea Scrolls. At the Southern Baptist Theological Seminary are the Eisenberg Museum of Egyptian and Near Eastern antiquities; the Nicol Museum of Biblical archaeology; and the Billy Graham Room.

Louisville's ties with the romantic age of the steam locomotive are recalled at the Kentucky Railway Museum.



## COMMUNITY IMPROVEMENTS

In 1983, an approximately 3.7-square-mile area in west and south central Louisville was designated as one of Kentucky's first enterprise zones. An enterprise zone is an economically distressed area where special incentives and regulatory relief is offered by state and local government to encourage new or expanded business activity. Benefits are available to businesses which employ 25 percent of their employees from either residents of the zone or persons who have been unemployed and/or on public assistance for at least one year and does 50 percent of their business from the zone location. The City of Louisville works closely with the private sector to meet the needs of business located in the zone.

United Parcel Service has chosen Louisville to become the national air distribution center for its next-day delivery service. The \$20 million expansion of the UPS package handling facility, adjacent to Standiford Field, will result in the creation of 500 new jobs. In addition, UPS will construct concrete parking pads and ramps for its fleet of airplanes stationed in Louisville.

A new terminal is under construction at Standiford Field. The new building will be used for passenger services such as airline ticket counters, baggage claim, rental cars and a restaurant. Completion of the new terminal is scheduled for mid-1985. Construction of a second building will begin in mid-1985. The second building will be used for boarding positions and gates. A tentative completion date of August 1986 is scheduled for the second building. The airport's existing terminal will be torn down when the new facilities are complete.

A major highway improvement project is under way on Interstate 264 (Watterson Expressway). The project, which will be completed in sections during the period from 1985 through 1988, will widen a 13.5-mile section of the expressway. The section of highway from U.S. 60 East (Shelbyville Road) to Interstate 65 will be widened to eight lanes. The section from Interstate 65 to U.S. 60 West (Dixie Highway) will be widened to six lanes.

Kentucky Highway 841 (Jefferson Freeway) is a multi-lane bypass under construction around Louisville. Some sections of the highway have been completed and are currently in use. The remaining sections of the highway are currently under construction or in the design stage. Upon completion, scheduled for late 1987, the freeway will stretch from U.S. 42 northeast of downtown Louisville to U.S. 60 (Dixie Highway) southwest of the downtown area.

The Broadway Renaissance is the redevelopment of a three-block, 33-acre area located in the heart of downtown Louisville. The project includes the renovation of many buildings plus new construction. Phase I of the project is under construction and includes renovation of the Brown Hotel and Office Building, a new retail center, Theater Square, restaurants, pubs, specialty shops and a 500-unit parking garage. The Hotel opened in 1984 and Theater Square is scheduled to open in the spring of 1985. Phase II of the project will include a new 500 to 700-unit residential structure. Phase II is expected to begin in 1985 and take several years to complete. Future phases of the project will include office towers, retail space and additional residential units. The Broadway Renaissance is expected to cost approximately \$250 million by the time it is completed in the late 1980's.



Humana, Inc., is in the process of constructing a new 27-story headquarters building in downtown Louisville. Construction of the \$60 million tower began in late 1982 and is expected to be completed during the spring of 1985. Humana, Inc., will occupy the lower 16 floors and lease the upper floors to other companies.