

1975

Industrial Resources: Kenton County - Northern Kentucky

Kentucky Library Research Collections
Western Kentucky University, spcol@wku.edu

Follow this and additional works at: https://digitalcommons.wku.edu/kenton_cty



Part of the [Business Administration, Management, and Operations Commons](#), [Growth and Development Commons](#), and the [Infrastructure Commons](#)

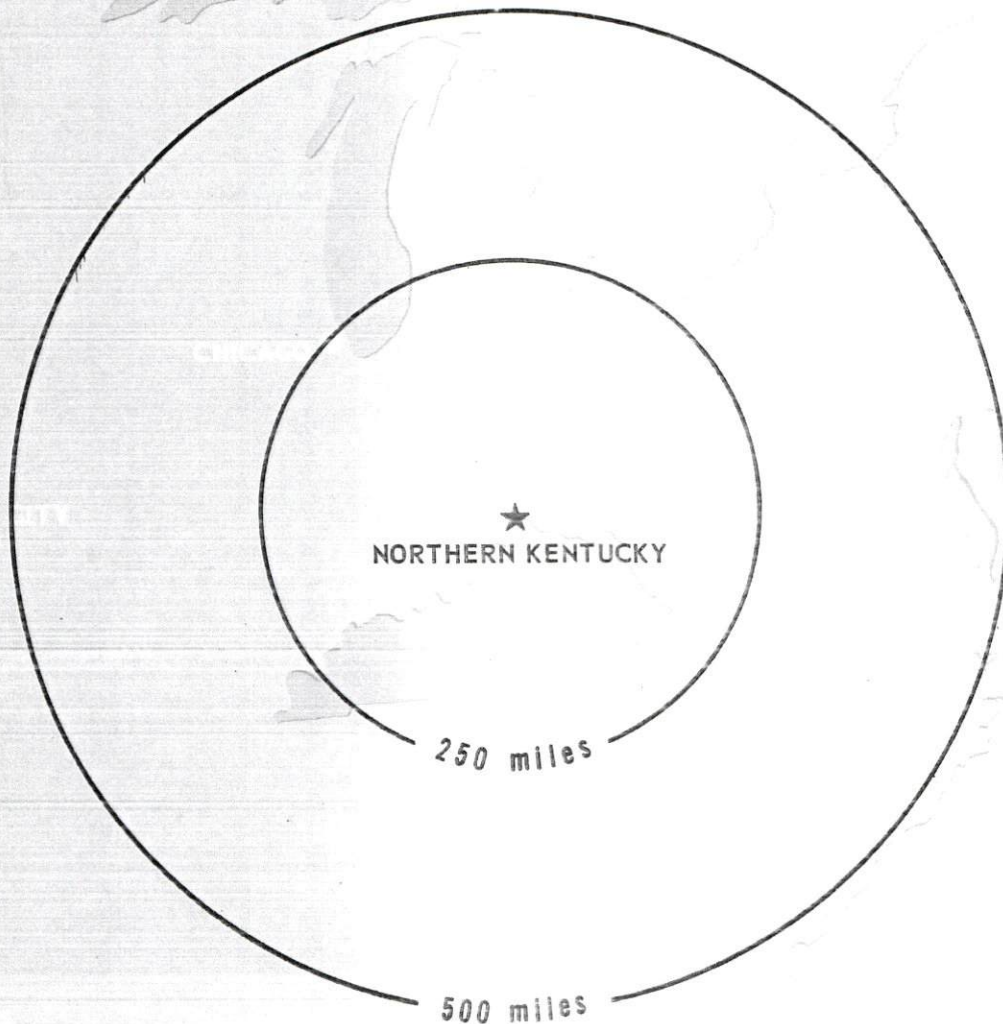
Recommended Citation

Kentucky Library Research Collections, "Industrial Resources: Kenton County - Northern Kentucky" (1975). *Kenton County*. Paper 11.
https://digitalcommons.wku.edu/kenton_cty/11

This Report is brought to you for free and open access by TopSCHOLAR®. It has been accepted for inclusion in Kenton County by an authorized administrator of TopSCHOLAR®. For more information, please contact topscholar@wku.edu.

INDUSTRIAL RESOURCES

NORTHERN KENTUCKY



INDUSTRIAL RESOURCES
NORTHERN KENTUCKY

Prepared by

The Kentucky Department of Commerce

in cooperation with

The Northern Kentucky Chamber of Commerce

1975

This copy has been prepared by the Kentucky Department of Commerce,
Division of Research and Planning, and the cost of printing paid from
state funds.

TABLE OF CONTENTS

<u>Chapter</u>	<u>Page</u>
INDUSTRIAL SITES	i
NORTHERN KENTUCKY - A RESOURCE PROFILE	1
THE LABOR MARKET.	12
Population Data for Northern Kentucky Area.	12
Population of Principal Towns in Northern Kentucky Area.	13
General Employment Characteristics, 1973	14
Manufacturing Employment Trends by Industry.	14
Major Northern Kentucky Area Manufacturing Firms, Their Products and Employment	15
Wages.	18
Labor Organizations	18
Estimated Male Labor Supply	22
Estimated Female Labor Supply	22
Per Capita Personal Income.	23
TRANSPORTATION	24
Rail.	24
Truck Service	25
Air	27
Water.	28
EDUCATION	30
Vocational Schools	30
Colleges and Universities	31
AGRICULTURE - NATURAL RESOURCES - CLIMATE	32
Agriculture	32
Natural Resources	32
Climate	33
BOONE COUNTY	
LOCAL TRANSPORTATION	35
Bus	35
Taxi	35

<u>Chapter</u>	<u>Page</u>
Rental Services	35
Airport Motor Passenger Service	35
POWER AND FUEL	36
Electricity	36
Natural Gas	36
Other Fuels	37
WATER AND SEWERAGE.	38
Water	38
Sewerage.	40
LOCAL GOVERNMENT.	42
City	42
County	42
Assessed Value of Property, 1974.	42
Property Taxes	43
Local Property Tax Rate Per \$100 of	
Assessed Valuation, 1974.	43
Utilities Gross Receipts Tax for Schools.	43
Planning and Zoning	43
Safety	44
Police	44
Fire	44
Rescue Service	44
Sanitation	45
LOCAL EDUCATION.	46
Public Schools	46
Nonpublic Schools	46
Northern Kentucky State College Extension Center	46
Vocational Schools	47
HEALTH	48
Hospitals.	48
Nursing Homes	48
Public Health.	48
OTHER LOCAL FACILITIES	49
Communications	49

<u>Chapter</u>	<u>Page</u>
Library Services	50
Day Care Facilities	50
Religious Institutions	50
Financial Institutions	50
Hotels and Motels	51
Clubs and Organizations.	51
RECREATION	52
Local	52
HISTORY	53
KENTON COUNTY	
LOCAL TRANSPORTATION	55
Bus.	55
Taxi	55
Rental Services	55
Airport Motor Passenger Service	55
POWER AND FUEL.	56
Electricity.	56
Natural Gas	56
Other Fuels	57
WATER AND SEWERAGE	58
Water.	58
Sewerage	60
LOCAL GOVERNMENT	62
City.	62
County	63
Assessed Value of Property, 1974	63
Property Taxes	63
Local Property Tax Rate Per \$100 of	
Assessed Valuation, 1974	63
Utilities Gross Receipts Tax for Schools	64
Planning and Zoning	64
Safety.	65
Police	65

<u>Chapter</u>	<u>Page</u>
Northern Kentucky Crime Prevention Team	65
Fire	65
Rescue Service.	66
Sanitation.	67
LOCAL EDUCATION	68
Public Schools.	68
Nonpublic Schools	69
Northern Kentucky State College - Covington Campus	69
HEALTH	70
Hospitals	70
Special Day Care Facilities	70
Nursing Homes	71
Public Health	71
OTHER LOCAL FACILITIES.	72
Communications	72
Library Services.	73
Day Care Facilities	74
Religious Institutions.	74
Financial Institutions.	75
Hotels and Motels	75
Clubs and Organizations	75
RECREATION	77
Local	77
HISTORY	79
CAMPBELL COUNTY	
LOCAL TRANSPORTATION	81
Bus	81
Taxi	81
Rental Services	81
Airport Motor Passenger Service	81
POWER AND FUEL.	82
Electricity	82

<u>Chapter</u>	<u>Page</u>
Natural Gas	82
Other Fuels	82
WATER AND SEWERAGE	83
Water.	83
Sewerage	85
LOCAL GOVERNMENT	86
City	86
County	86
Assessed Value of Property, 1974	86
Property Taxes	87
Local Property Tax Rate Per \$100 of	
Assessed Valuation, 1974	87
Planning and Zoning	88
Safety.	89
Police.	89
Northern Kentucky Crime Prevention Team	89
Fire.	89
Rescue Service.	89
Sanitation	90
LOCAL EDUCATION	91
Public Schools	91
Nonpublic Schools	93
Vocational Schools	94
HEALTH.	95
Hospitals	95
Special Day Care Facilities	95
Nursing Homes.	95
Public Health	95
OTHER LOCAL FACILITIES	
Communications	96
Library Services.	97
Day Care Facilities	97
Religious Institutions	97
Financial Institutions	98
Hotels and Motels	98
Clubs and Organizations.	98

<u>Chapter</u>	<u>Page</u>
RECREATION	100
Local	100
HISTORY	103

PREPARED BY THE
KENTUCKY DEPARTMENT OF TRANSPORTATION
BUREAU OF HIGHWAYS
DIVISION OF PLANNING
IN COOPERATION WITH THE
U.S. DEPARTMENT OF TRANSPORTATION
FEDERAL HIGHWAY ADMINISTRATION

PREPARED BY THE
KENTUCKY DEPARTMENT OF TRANSPORTATION
BUREAU OF HIGHWAYS
DIVISION OF PLANNING
IN COOPERATION WITH THE
U.S. DEPARTMENT OF TRANSPORTATION
FEDERAL HIGHWAY ADMINISTRATION



POLYCONIC PROJECTION

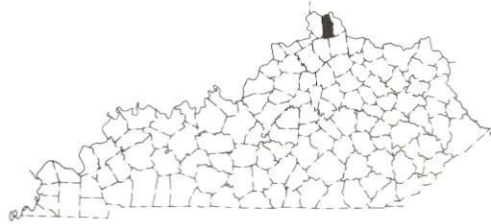
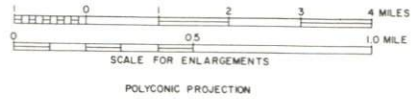
ORIGINAL DATA 1973			
REVISIONS			
DATE	BY	DATE	BY
1-1-74	JLM		



GENERAL HIGHWAY MAP KENTON COUNTY KENTUCKY

PREPARED BY THE
KENTUCKY DEPARTMENT OF TRANSPORTATION
BUREAU OF HIGHWAYS
DIVISION OF PLANNING

IN COOPERATION WITH THE
U. S. DEPARTMENT OF TRANSPORTATION
FEDERAL HIGHWAY ADMINISTRATION



ORIGINAL DATA 1970			
REVISIONS			
DATE	BY	DATE	BY
1-1-72	RLH		
1-1-73	JLM		
1-1-74	JLM		

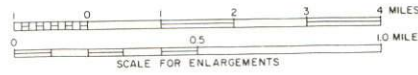


GENERAL HIGHWAY MAP CAMPBELL COUNTY KENTUCKY

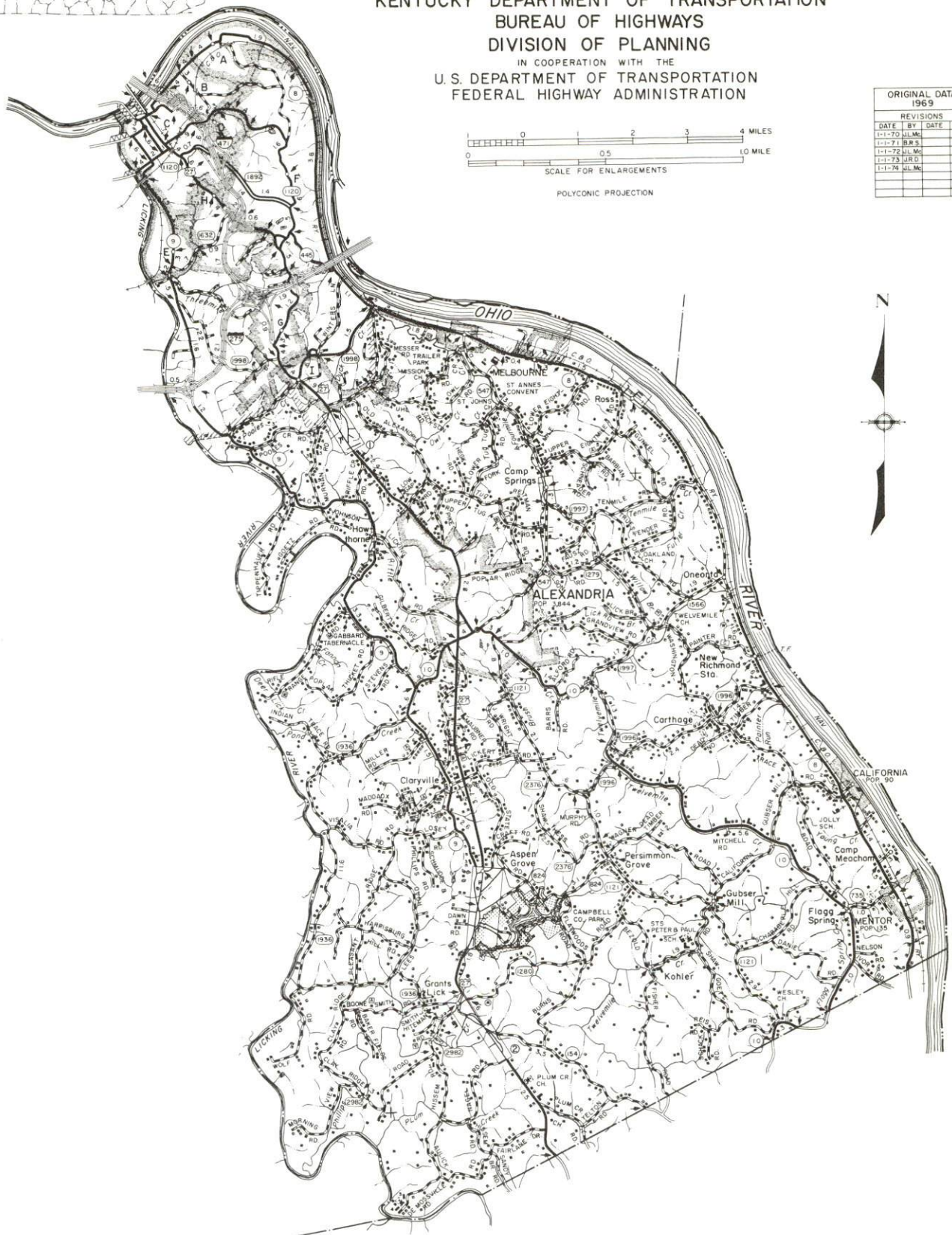
PREPARED BY THE
KENTUCKY DEPARTMENT OF TRANSPORTATION
BUREAU OF HIGHWAYS
DIVISION OF PLANNING

IN COOPERATION WITH THE
U.S. DEPARTMENT OF TRANSPORTATION
FEDERAL HIGHWAY ADMINISTRATION

ORIGINAL DATA 1969			
REVISIONS			
DATE	BY	DATE	BY
1-1-70	JLM		
1-1-71	BM		
1-1-72	JLM		
1-1-73	JRM		
1-1-74	JLM		



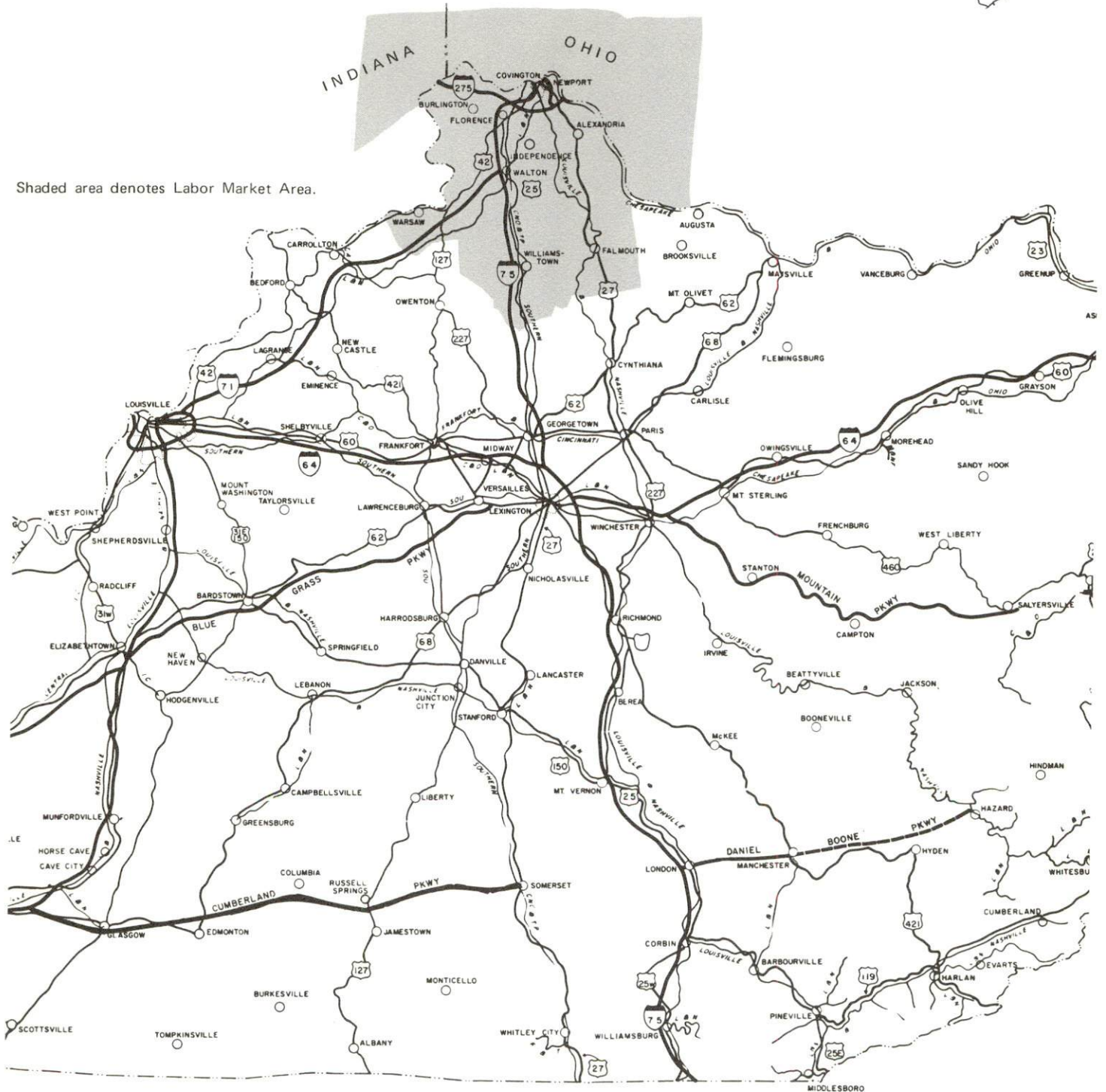
POLYCONIC PROJECTION



NORTHERN KENTUCKY LABOR MARKET AREA



Shaded area denotes Labor Market Area.



NORTHERN KENTUCKY AREA - A RESOURCE PROFILE

The Northern Kentucky Area, covering 563 square miles, is composed of Boone, Kenton, and Campbell Counties, and is ideally situated along and adjacent to the south bank of the Ohio River, immediately south of Cincinnati, Ohio. A portion of the Greater Cincinnati Area is located in the three Northern Kentucky counties. The tri-county area is part of the Cincinnati Standard Metropolitan Statistical Area, which in 1970 had a population of 1,384,851, and employed more than 170,900 people in manufacturing.

The Northern Kentucky Area forms the northern apex of an industrial triangle anchored by Louisville on the southwest and Lexington on the southeast. Within the triangle is more than one-third of the state's population and one-half of its manufacturing jobs. The interstate highway system places these three metropolitan areas within less than two hours driving distance from each other.

The Northern Kentucky Area's excellent transportation network - highway, rail, air, and water - provides the capability essential to moving raw materials and distribution of products. This, combined with available industrial sites, a good livability environment, high quality educational facilities, and a wide variety of recreation, provides a strong base for additional industrial growth in the Area.

The Economic Framework

Total employment in the tri-county area averaged 68,270 in 1973 with agriculture providing 1,440 jobs, manufacturing 11,920, trade and services 25,560, and government 10,940. Between September 1963 and September 1973, manufacturing employment increased by more than 63 percent or 4,850 jobs.

Some of the major industrial products are: paper and plastic bags, water meters, conveyor systems, metal dinette sets, cartoning machinery, soap presses, railroad freight cars, electrical equipment, metal products, miniature car tags, steel sheets, coils and line pipe, and malt beverages.

Per capita personal income in 1972 was \$3,902 in Boone County, \$4,088 in Campbell County, and \$4,193 in Kenton County, all exceeding the statewide average of \$3,634. Between 1962 and 1972 per capita personal income in Boone County increased by 63.7 percent, in Kenton County 81.0 percent, and Campbell County 72.2 percent.

The Northern Kentucky labor market area includes six Kentucky counties -- Boone, Kenton, Campbell, Gallatin, Grant, and Pendleton; two Ohio counties -- Hamilton and Clermont; and one Indiana county -- Dearborn.

Employment in the Kentucky portion of the labor market area in 1973 totaled 75,890 jobs with agriculture providing 2,860, manufacturing 12,860, trade and services 26,930, and government 12,270. Between September, 1963, and September, 1973, industrial employment in the Kentucky area increased by approximately 65 percent or 5,290 jobs with the sharpest gains in the machinery, fabricated metal products, and furniture industries.

Despite important industrial gains in recent years, the Kentucky area still has a deficit of 14,078 manufacturing jobs when measured against the national industrial employment-population ratio for 1973. This indicates an area where the potential for additional manufacturing production is excellent.

Resources for Growth

1. There is a current estimated labor supply of 4,650 men and 7,190 women in the Kentucky portion of the labor market area available for industrial jobs in the Northern Kentucky Area. In addition, 15,300 young men and 14,450 young women in the six northern Kentucky counties will become 18 years of age by 1980 and will be potentially available for work. The current labor supply would also be increased by the number of men and women in the adjoining Indiana and Ohio counties who are available for industrial jobs.

2. Three railroads serve Northern Kentucky-Southern Railway, Louisville & Nashville, and The Chessie System. Major highway access is by three U. S. routes and Interstates 71 and 75. Presently underway in Northern Kentucky is the construction of Interstate 275 (Circle Freeway). Construction of Interstate 471 is expected to begin by late 1975. Commercial air service is available at the Greater Cincinnati Airport, located in Boone County, Kentucky. Barge transportation is available on the Ohio River.

3. Electric power and natural gas are provided by the Union Light, Heat and Power Company, a subsidiary of the Cincinnati Gas and Electric Company. Other fuels - propane, butane, and distillate fuel oil - are available in the area. The raw water supply from the Ohio and Licking Rivers is adequate for additional growth.

4. Education is an important growth asset for Northern Kentucky with three county high schools, eleven independent school systems, and over fifty nonpublic schools providing educational facilities ranging from kindergarten through high school. Educational television is available.

Two universities and seven senior colleges are located within a 35-mile radius of Covington, Kentucky, with Northern Kentucky State College and Thomas More College located in the Northern Kentucky Area.

Northern Kentucky State College is a four-year, multi-purpose institution of higher education which evolved from the Covington-based Northern Kentucky Community College, a two-year extension of the University of Kentucky. The new, autonomous four-year college was created in 1968 and now occupies a new 250-acre campus near Highland Heights, Kentucky. In 1971, The Salmon P. Chase College of Law, formerly an independent law school in Cincinnati, merged with Northern Kentucky State College. The College of Law and the Associate Degree programs are housed on the Covington campus.

Thomas More College, founded in 1921 as Villa Madonna College in Covington, moved in 1968 to a new \$9 million campus of 223 acres in Crestview Hills, Kentucky, and at that time changed its name to Thomas More College. The private coeducational college (with a Catholic heritage) of liberal arts and sciences offers a four-year program leading toward the Bachelor of Arts degree. The school offers a unique program which allows students and their counselors to tailor curriculum to the student's needs. The program, called Venture Program, is receiving the attention and consideration of educators nationally. Additionally, Thomas More offers a Continuing Education Program, a Police Administration Program and a "Second Chance" Program.

Vocational education facilities are provided by the Northern Kentucky State Vocational-Technical School in Covington which offers 22 course areas; the Boone County Area Vocational Education Center in Hebron, which offers 7 course areas; and the Campbell County Area Vocational Education Center in Alexandria, which offers 10 course areas. The Kenton County Area Vocational Education Center is under construction in Edgewood and is expected to be in operation by Fall, 1975. The Northern Campbell County Vocational-Technical School, to be located on the Northern Kentucky State College campus, is presently in the planning stages. Opening is tentatively scheduled for 1977.

Community Programs for Improvement

The improvements listed below in no way purport to be all of the improvements that are being planned or have recently taken place in the Northern Kentucky Area.

Industrial and Warehousing

During 1973-74 eleven companies announced plans to locate in Northern Kentucky, providing over 800 new jobs. Three companies have announced plans to construct warehousing facilities which will provide over 350 new jobs. Since January, 1974, three companies have expanded facilities with added investment of over \$4,500,000.

Transportation

Rights of way have been purchased for the route of Interstate 471. Construction is expected to begin late in 1975. Construction of I-275 is underway. That portion from the Ohio River west to just west of the I-75-I-275 interchange is ready for surfacing. The Interstate from Indiana to the Kentucky Highway 9 - I-275 interchange is expected to be opened by late 1977. From this point to Ohio, completion is expected by late 1978. New four-lane Highway 18 from Burlington to the Florence-Burlington I-75 interchange opened to traffic during the winter of 1973. The Clay Wade Bailey Bridge at Covington was recently dedicated and opened to traffic. The superstructure has been completed on the bridge connecting I-275 with Indiana and deck paving is to be done in 1974. Completion of the bridge is expected by the fall of 1975. The superstructure has been completed on the bridge connecting I-471 with Ohio and paving is to begin early in 1975 with completion of the bridge by late 1975. The substructure has been completed on the bridge connecting I-275 with Ohio. The contract on the superstructure is to be let early in 1975 and completion of the bridge is expected by 1978.

A \$40 million expansion program has been completed at the Greater Cincinnati Airport in Boone County, Kentucky. The focal point of the expansion project is a three-terminal complex which involved the construction of two new highly modern terminal buildings and the remodeling of the old terminal building. Each of the two new terminals has its own baggage-claim building and all five buildings making up the complex are connected by carpeted, air-conditioned bridges. The airport complex now has nine shopping areas, eight restaurant and refreshment areas, and a new observation deck. In addition to the terminal complex the six airlines which serve Greater Cincinnati have acquired fourteen new gate positions; more than 2.2 million square feet of new concrete apron was poured; the airport has nearly tripled its public parking capacity and now provides for 3,800 cars; and an entirely new roadway system has been built to separate arriving and departing traffic. Air Kentucky, Inc., a commuter air carrier, will begin serving the airport in February, 1975.

The H. J. Hosea Company has a barge facility under construction which will have the capability of loading barges for direct shipment to many parts of the world. The firm is also planning to be a customs house broker, which will be able to clear import shipments and act as a break bulk distribution center on all import shipments.

Water - Sewerage - Electricity

Specifications are complete and site preparation is underway for a new 30,000,000 gallon per day sewage treatment plant for the Sanitation District No. 1 of Campbell and Kenton Counties.

The Florence Water and Sewer Commission has a new second sewage treatment plant, 1,000,000 gpd, which was put into use in May of 1974, bringing total treatment capacity to 2,000,000 gpd.

Construction of the Walton Sewerage System is now underway with completion expected by 1976. Land is available at the plant site for future expansion.

A preliminary study for sewerage service has been completed by the Boone County Water and Sewer District with the Hebron-Burlington area being considered as the initial area for service.

The city of Erlanger has completed two storm sewer projects costing \$100,000.

The Florence Water and Sewer Commission recently completed construction of a 1,000,000-gallon elevated water storage tank.

A 500,000-gallon water storage tank is under construction at the Covington Water Works.

A 1,000,000-gallon water storage tank has recently been constructed by the City of Newport Municipal Water Works and is now in use.

The Campbell County Kentucky Water District has a new booster pumping station under construction in Ft. Thomas which will increase its pumping capacity to 1,500 gpm.

Boone County Water District has extended 5 miles of water lines in the last 2 1/2 years.

The Cincinnati Gas and Electric Company has begun construction on a \$218,000,000 electric generating station at East Bend in Boone County.

Education

The Campbell County Area Vocational Education Center in Alexandria was opened in 1973. The Boone County Area Vocational Education Center in Hebron opened in the Fall of 1974. The Kenton County Area Vocational Education Center is under construction in Edgewood and is expected to be in operation by Fall, 1975. The Northern Campbell County Vocational-Technical School, to be located on the Northern Kentucky State College campus, is presently in the planning stages. Opening is tentatively scheduled for 1977.

Northern Kentucky State College has approximately \$35 million in land and capital improvement projects completed, underway, or planned. These projects include a \$7 million science building completed in 1974,

construction underway on a library, groundbreaking in 1974 for two buildings, and another building in the planning stages. A Master's degree in Education is now offered at the Northern Kentucky State College campus through the consortium with other state colleges.

Health

A \$2.6 million construction and renovation program was completed in 1974 at the St. Elizabeth Hospital base location at 20th and Eastern Avenue, Covington. A 175-bed satellite hospital will be constructed on the Dudley Road site. Twenty-five psychiatric beds will be added to the 20th Street hospital and thirteen medical/surgical beds will be added overall. The combined bed total for the base and satellite facilities will be 503.

A new wing to the St. Luke Hospital of Campbell County was completed in the fall of 1974. With this expansion program the total number of beds was increased to 296 and three operating rooms were added.

There are plans for the Booth Memorial Hospital to relocate from Covington to Boone County.

A new 392-bed nursing home for the elderly has been constructed in Newport.

Public Safety

The Walton Police Department, the Boone County Sheriff's office, and the Boone County Police Department are getting new radio equipment (ultra-high frequency) in 1974 which will be installed in the bay stations and mobile units of all three departments. This system will eventually link Boone County with the Kenton County and Campbell County Police Departments.

The Florence Fire Department has a 100-foot aerial ladder truck on order and due by February, 1975. The city of Florence has set up a new Life Squad and appropriated \$20,000 for an emergency vehicle. The unit has 40 volunteers on call.

A crime prevention unit has been formed at the Covington Police Department as an educational tool to inform community residents, businesses and industries of ways to secure their property. A bus is being remodeled and equipped with crime prevention equipment for use by the unit. The department has acquired new crowd control equipment. All policemen have been issued new standard police equipment and the department has replaced the mobile units in 22 patrol cars with porto-coms.

The Covington Fire Department has a new training facility and a new maintenance building is being constructed. In 1973, the department purchased a 100-foot aerial-ladder truck and an additional 1,000 gpm pumper. A \$1,000,000 project for the construction of a Central Fire Station and headquarters building in Covington is underway with occupancy expected by late 1975.

The Erlanger Police Department has located into new larger quarters in the city building remodeled specifically for its use. The department purchased \$2,000 worth of new furniture and had a new telephone system installed. By July, 1975, the department will have new radio equipment (ultra-high frequency) which will be linked to the Kenton County and Campbell County Police Departments dispatch units. A crime prevention program has been instituted by the police force and the department has the use of two mobile display units for demonstration purposes. In addition, a \$6,000 monitoring system is being planned.

The Erlanger Fire Department had a new aerial ladder truck - 1,000 gpm pumper delivered in December of 1974.

The Ludlow Police Department has received a \$13,000 grant for all new radio-communication equipment.

The Crescent Springs Police Department has purchased a 1974 radio-patrol car and \$1,700 worth of new radar equipment.

The Crescent Springs Fire Department has a 1,500 gpm pumper on order to be delivered by May, 1975. The city also plans to build a new fire station. The Crescent Springs Rescue Squad expects to have a new rescue unit - a salvage and rescue truck - in operation by the summer of 1975.

The Newport Police Department installed a new radio system at a cost of \$80,000 and purchased portable radio systems for the patrol cars. The department has added a crime prevention program and a bomb squad and has acquired the necessary equipment for the operation of these two units.

The Newport Fire Department has purchased two new 1,000 gpm pumpers to replace older equipment and expects to get an additional utility truck and an additional car by the end of 1974. A new electronic alarm system and P. A. system have been installed and a 750 gpm pumper is being modernized and converted into a foam truck.

Recreation

An indoor-outdoor tennis facility is under construction in Florence.

In Boone County the land acquisition has been completed for the development of Boone Woods, a recreational facility which will have a ballfield, tennis courts, playground, etc.

The city of Covington has completed the development of the Dr. J. E. Randolph Park, a multi-purpose recreational area with swimming pool, bathhouse, ballfield, multi-purpose courts, and playground. At the 500-acre Devou Park the roads have been resurfaced, offstreet parking facilities have been installed, and restroom facilities have been improved. Covington is in the land acquisition stage of a two year project to develop Rosedale Park, a 15-acre site which by the end of 1975 will have a swimming pool, bathhouse, two ballfields, four multi-purpose courts, picnic area, and playground.

Kenton County is prepared to take bids on a \$233,000 recreation facility which will have a ballfield, tennis courts, and a playground.

In 1974, Erlanger began the first phase of a three-year program to develop a 7 1/2-acre park at Silver Lake. The park will include lighted softball and football fields, a tot lot, playground equipment, and off-street parking. The city is also in the process of developing a 2-acre park in the Misty Creek subdivision area. Four additional tennis courts have been installed throughout the community. A private recreational facility with a roller skating rink and bowling lanes has been completed in Erlanger and a six movie theatre complex is under construction and due to open by the end of 1974.

In Crescent Springs a private Racquet Club will provide indoor tennis courts and a swimming pool.

Campbell County is in the process of acquiring 80 acres of land to expand the 900-acre Campbell County Park. Planned improvements to the existing park include bike trails, nature trails, an additional picnic area, an expanded sewerage system, and fishing piers for the handicapped.

Cold Spring is planning to develop a city park which will be located behind the city building.

A park is being developed in Ft. Thomas which will have a gymnasium and bowling lanes for indoor recreation, and six lighted fenced tennis courts, a ballfield, and playground area for outdoor recreation.

A \$120,000 Riverfront Park is underway in Newport and is due to open in October of 1974.

Other

A \$40 to \$50 million Mall at Florence is in the process of being

developed. The Florence Mall is expected to be completed by 1976 and will have four or five major stores and ten to fifteen satellite stores. It will be a two-storied enclosed facility. Also in Florence a 64-unit apartment complex has been built and approximately 80 new homes have been built or are under construction.

A major program for the development of the downtown Covington area has been proposed. Plans for this area include a high rise apartment complex and plaza in the riverfront area, a 600 to 1,000 space parking garage, and street improvement in the downtown area.

Two new apartment complexes for senior citizens with a total of 312 units have opened in Covington. A multi-storied office building is to be built in 1975 and a new subdivision for 87 single family dwellings is being planned for development.

An active street resurfacing program is underway in Covington with 6 miles of city streets improved in 1974. Also improved lighting has been placed in the downtown Covington and Latonia areas.

The new Kenton County Public Library in Covington was completed and opened in 1974. There are plans to renovate the Carnegie Library and convert it into a community center.

A renovation and remodeling project at the Erlanger City Building has been completed. The Community Bank in Erlanger completed a \$200,000 renovation of its facilities.

Extensive interior and exterior renovation of the Campbell County Courthouse-Newport City Building has been completed. An \$800,000 street repaving project is now underway in Newport. A 203-unit luxury apartment complex on the Newport riverfront is underway with completion expected by the end of 1974.

In 1974, the Newport Neighborhood Task Force was formed with the goal of renewing some of the city's blighted areas a block at a time. This project would involve preserving the structures that would be feasible to save and replacing others with apartment buildings.

The Boone County Public Library began operation in October 1974, at a temporary location in Florence. Architects are now working on the plans for a new library building with construction expected to begin in the spring of 1975. The new building will be ready for occupancy by mid-1976.

Northern Kentucky's new Convention and Visitors Commission recently created the Northern Kentucky Convention and Visitors Bureau (the Commonwealth's first multi-county Convention and Visitors Commission and Bureau). The Bureau has a full-time, professional staff

working at the state, regional and national level to develop both convention and visitor business to this area of Kentucky. The Bureau is financed by a 2 1/2 percent transient room tax and operated by the Northern Kentucky Chamber under a contractual arrangement with the Northern Kentucky Convention and Visitors Commission.

Recreation, Entertainment and Livability

Recreational opportunities are readily available in the Northern Kentucky Area due in part to its superb location in the Greater Cincinnati Metropolitan Area. Spectator sports, cultural centers, amusement areas, club and park recreational centers and state parks abound.

The sports enthusiasts will enjoy high caliber collegiate and professional football and baseball, collegiate basketball, professional hockey, and horse racing.

Cultural interests include the Cincinnati Symphony Orchestra, various art galleries and museums, libraries, and legitimate theatres presenting Broadway plays.

Amusement attractions of special interest include Kings Island Amusement Park and the Cincinnati Zoo, one of the oldest and most complete zoos in America.

For the outdoor enthusiasts, Big Bone Lick and various other Kentucky state parks located within easy driving distance offer a variety of recreational activities.

Big Bone Lick State Park is a 512-acre park located south of Florence in Boone County. The park which is open year round has facilities for tent and trailer camping with picnic areas and a swimming pool available. Big Bone Lick is the site of an ancient salt sulphur spring used by prehistoric animals. Excavations at this site have revealed prehistoric animal remains at depths of 10 to 24 feet with the discovery of bones and teeth of mammoth elephants and mastodons. The park museum contains these exhibits.

General Butler State Resort Park is an 809-acre park located 54 miles southwest of the Covington-Newport area. The park has lodge and cottage accommodations and modern facilities for tent and trailer camping. Features of the park include a 25-acre lake, beach, bathhouse, heated pool, picnic and playground areas, miniature train ride, and miniature and 9-hole golf courses. Motor boats and paddle boats are available for rental and a dock is situated at the park. Recreational activities include pool and lake swimming, fishing, winter ice-skating, horseback riding, hiking, shuffleboard, and supervised recreation. The Butler Mansion contains a museum of Ohio River lore, with visual interpretations of the riverboat era.

Kincaid Lake State Park is a 400-acre park located just 35 miles south of the Covington-Newport area. Park facilities include camping sites, a 175-acre lake, beach, bathhouse, picnic shelter, playground, nature trails, and a small amphitheatre. Boat and motor rentals, paddle boats, and dock are available. Recreational activities include swimming, fishing, badminton, shuffleboard, and miniature golf.

THE LABOR MARKET

POPULATION TRENDS

Area	Population				Percent Change	
	1973(Prov.)	1970	1960	1950	1960-70	1950-60
Cincinnati SMSA*	--	1,384,851	1,268,479**	--	--	--
Labor Market						
Area	283,600	274,835	252,767	216,853	+ 8.7	+16.5
Boone County	35,200	32,812	21,940	13,015	+49.6	+68.6
Campbell County	88,400	88,561	86,803	76,196	+ 2.0	+13.9
Kenton County	133,400	129,440	120,700	104,254	+ 7.2	+15.8
Gallatin County	4,300	4,134	3,867	3,969	+ 6.9	- 2.6
Grant County	11,800	9,999	9,489	9,809	+ 5.4	- 3.3
Pendleton County	10,500	9,949	9,968	9,610	- 0.2	+ 3.7

*Cincinnati Standard Metropolitan Statistical Area (includes Boone, Campbell, and Kenton Counties, Kentucky; Hamilton, Clermont, and Warren Counties, Ohio, and Dearborn County, Indiana).

**Includes 1960 population of Warren and Clermont Counties, Ohio; Dearborn County, Indiana, and Boone County, Kentucky, which were not counted as part of the Cincinnati SMSA Area in 1960.

Sources: U. S. Department of Commerce, Bureau of the Census, Census of Population, 1970, 1960, 1950. U. S. Bureau of the Census, Current Population Reports, Series P-26, September 1974.

POPULATION TRENDS

City	County	Population		Percent Change
		1970	1960	1960-70
Alexandra	Campbell	3,844	1,318	+191.7
Bellevue	Campbell	8,847	9,336	- 5.2
Bromley	Kenton	1,069	998	+ 7.1
California	Campbell	90	163	- 44.8
Cold Spring	Campbell	1,406	1,095	+ 28.4
Covington	Kenton	52,535	60,376	- 13.0
Crescent Park	Kenton	598	564	+ 6.0
Crescent Springs	Kenton	1,662	946	+ 75.7
Crestview	Campbell	659	616	+ 6.9
Crestview Hills	Kenton	1,114	307	+262.9
Dayton	Campbell	8,751	9,050	- 3.3
Edgewood	Kenton	4,139	1,100	+276.3
Elsmere	Kenton	5,161	4,607	+ 12.0
Erlanger	Kenton	12,676	7,072	+ 79.2
Fairview	Kenton	235	NA	NA
Florence	Boone	11,661	5,837	+ 99.8
Fort Mitchell	Kenton	6,982	525	+229.9
Fort Thomas	Campbell	16,338	14,896	+ 9.7
Fort Wright Lookout Heights	Kenton	4,819	--	--
Highland Heights	Campbell	4,400	3,491	+ 26.0
Hopeful Heights	Boone	473	--	--
Independence	Kenton	1,784	309	+477.3
Kenton Vale	Kenton	178	168	+ 6.0
Lakeside Park	Kenton	2,511	2,214	+ 13.4
Lakeview	Kenton	478	NA	NA
Latonia Lakes	Kenton	428	585	- 26.8
Ludlow	Kenton	5,815	6,233	- 6.7
Newport	Campbell	25,998	30,070	- 13.5
Park Hills	Kenton	3,999	4,076	- 1.9
Petersburg	Boone	430	390	+ 10.3
Ridgeview Heights	Kenton	189	--	--
Silver Grove	Campbell	1,365	1,207	+ 13.1
Southgate	Campbell	3,212	2,070	+ 55.2
Taylor Mill	Kenton	3,194	710	+349.9
Villa Hills	Kenton	1,647	--	--
Walton	Boone	1,801	1,530	+ 17.7
Wilders	Campbell	823	239	+244.4
Winston Park	Kenton	1,108	744	+ 48.9
Woodlawn	Campbell	525	387	+ 35.7

NA - Not Available

GENERAL EMPLOYMENT CHARACTERISTICS, 1973

Major Employment Group	Employment	
	Boone, Kenton and Campbell Counties	Labor Market Area*
TOTAL	68,270	75,890
Agricultural	1,440	2,860
Nonagricultural	66,830	73,030
Manufacturing	11,920	12,864
Government	10,940	12,270
Trade and Services	25,556	26,932
Other	18,414	20,964

*Includes Kentucky counties of Boone, Campbell, Kenton, Gallatin, Grant and Pendleton.

Sources: Kentucky Department for Human Resources, Bureau for Administration and Operations; Kentucky Department of Commerce, Research and Planning.

MANUFACTURING EMPLOYMENT TRENDS BY INDUSTRY SEPTEMBER, 1973 AND 1963

Industry	Boone, Kenton and Campbell Counties			Labor Market Area*		
	1973	1963	% Change	1973	1963	% Change
TOTAL	12,509	7,658	+ 63.3	13,429	8,142	+ 64.9
Food & Kindred Products	909	1,178	- 22.8	974	1,180	- 17.5
Tobacco	3	10	- 70.0	4	12	- 66.7
Apparel, Textiles, Leather	335	759	- 55.9	921	759	+ 21.3
Lumber, Furniture	1,211	374	+223.8	1,235	403	+206.5
Printing & Publishing, Paper	1,506	1,158	+ 30.1	1,522	1,174	+ 29.6
Chemicals, Petroleum & Coal, Rubber	891	119	+648.7	891	401	+122.2
Stone, Clay & Glass	197	283	- 30.4	205	290	- 29.3
Primary Metals	1,262	1,562	- 19.2	1,262	1,562	- 19.2
Machinery, Metal Products, Equipment	5,035	2,031	+147.9	5,255	2,177	+141.4
Other	1,160	184	+530.4	1,160	184	+530.4

*Includes Kentucky counties of Boone, Campbell, Kenton, Gallatin, Grant and Pendleton.

Sources: Kentucky Department for Human Resources, Bureau for Administration and Operations; Kentucky Department of Commerce, Research and Planning.

MAJOR NORTHERN KENTUCKY AREA MANUFACTURING FIRMS,
THEIR PRODUCTS AND EMPLOYMENT*

Firm (Establishment date)	Product	Employment			Organized
		Total	Male	Female	
Boone County					
Florence					
American Sign & Advertising Services, Inc. (1964)	Signs	168	105	63	**
Clow Corporation (1966)	Sewage treatment disposal plants, lift stations	150	125	25	
Continental Division of Arrow Hart, Inc. (1949)	Switchgear bus duct and panelboards, motor control centers	260	214	46	**
Copying Products Division Meade Paper Corporation (1963)	Electrostatic copying paper, and toner	128	107	21	**
Duchess Furniture (1967)	Metal dinette sets	300	80	220	**
Duchess Metal Furniture Company (1966)	Metal dinette furniture	275	125	150	**
Equitable Paper Bag Co., Inc. (1921)	Paper bags, polyethylene bags	270	180	90	**
Gamon Calmet Industries, Inc. (1969)	Water meters	200	150	50	**
Globe Union, Inc. (1967)	Plastic battery container covers	115	35	80	**
Grefco, Inc. (1963)	Roof insulation, BD sorbents	121	116	5	**
Hopple Plastics, Inc. (1973)	Plastic items, custom thermoforming	105	68	37	
Husky Products, Inc. (1964)	Cable bus, cable trays	159	139	20	**
Lifetime Foam Products (1973)	Mattress covers, furniture	150	50	100	
Lightcraft of California, Division of Scovill (1970)	Residential lighting	170	80	90	
Lit-ning Products Company (1969)	Metal office furniture	120			
Litton UHS (1968)	Conveyor systems	445	400	45	

<u>Firm (Establishment date)</u>	<u>Product</u>	<u>Employment</u>			<u>Organized</u>
		<u>Total</u>	<u>Male</u>	<u>Female</u>	
Natico, Inc. (1968)	Steel drums, fiber drums	100			**
Rotek, Inc. (1973)	Bearings	100			
Signode Corporation (1968)	Strapping machine components, fas- teners, strapping dispensers	355	332	23	
Sweco, Inc. (1973)	Metal finishing equipment, envi- ronmental systems equipment, industrial dryers	115	100	15	
Swedlow, Inc. (1968)	Plastics, acrylic sheets	200	179	21	

Kenton County

Covington

Avey Machine Tool Company (1907)	Metalworking machinery	192	180	12	**
Coca-Cola Bottling Company (1969)	Soft drinks	102	99	3	**
R. A. Jones & Co., Inc. (1923)	Cartoning machinery, soap presses	356	317	39	**
Ortner Freight Car Co. (1953)	Railroad freight cars	280	270	10	**
Overhead Door Company of Kentucky (1966)	Parts for door assembly, electric operated door openers	170	85	85	**
The Safeguard Corpora- tion (1967)	Decorative pillows, life preservers	100	10	90	
Stewart Decatur Security Systems, Inc. (1903)	Prison equipment, chain link wire fence, outdoor furniture	115	109	6	**
The Wadsworth Electric Manufacturing Co., Inc. (1917)	Safety switches, circuit breakers, wiring trough, fuse boxes, power out- lets	200			**

<u>Firm</u> (<u>Establishment date</u>)	<u>Product</u>	<u>Employment</u>			<u>Organized</u>
		<u>Total</u>	<u>Male</u>	<u>Female</u>	
<u>Erlanger</u>					
Wadsworth Electric Manufacturing Co. (1969)	Safety switches, circuit breakers	100	40	60	**
<u>Latonia</u>					
Coca Cola Bottling Works Co. (1969)	Soft drinks	109	106	3	**
<u>Ludlow</u>					
Duro Paper Bag Manufacturing Co. (1953)	Paper bags, plastic bags	750	450	300	**
<u>Campbell County</u>					
<u>Bellevue</u>					
Kent Division, L C A Corporation (1952)	Metal medicine cabinets, custom injection molders, plastic plated furniture hardware	220	170	50	**
<u>Cold Spring</u>					
Disabled American Veterans (1966)	Miniature car tags	518	139	379	
<u>Newport</u>					
Interlake, Inc. (1900)	Flat rolled steel sheets, coils, ERW line pipe, carbon and alloy strip and bars	1,450	1,400	50	**
The George Wiedemann Brewing Co. (1870)	Malt beverages	425	412	13	**

*Companies with 100 or more employees.

**See Labor Organizations, page 18.

Source: Kentucky Department of Commerce, Division of Research and Planning.

WAGES

AVERAGE WAGE RATES - SELECTED OCCUPATIONS OCTOBER, 1974

	<u>Average Minimum</u>	<u>Average Maximum</u>	<u>Average Now Paid</u>
Office Clerk	\$2.46	\$3.36	\$2.82
Typist	2.50	3.26	3.00
Stenographer	2.75	3.87	3.38
Assistant Bookkeeper	2.69	3.70	3.44
General Bookkeeper	3.21	4.46	4.12
Stock Clerk	2.93	3.68	3.35
Shipping Clerk	3.13	4.06	3.85
Janitor-Porter	2.92	3.25	3.10
Maintenance Man - Shop	3.97	4.47	4.44
Maintenance Man - Building	4.05	4.57	4.25
Machinist	3.84	4.77	4.64
Tool Room Machinist	4.15	5.10	4.85
Press Operator (Punch-Shear)	3.12	4.04	3.99
Assembler - Light	3.04	3.75	3.47
Assembler - Heavy	3.42	4.11	3.86
Drill Press Operator	3.44	3.88	3.66
Welder	3.76	4.61	4.18
Spray Painter	3.29	4.02	3.78
Electrician	4.88	5.38	5.13
Misc. Machine Operator	3.08	3.93	3.60
Laborer	3.04	3.66	3.22
Sewing Machine Operator	2.74	3.27	3.00

Sources: Kentucky Bureau of Manpower Services; Northern Kentucky Chamber of Commerce.

LABOR ORGANIZATIONS

<u>Company</u>	<u>Name of Union</u>
<u>Boone County</u>	
American Sign & Advertising Services, Inc.	International Sign, Display & Picture Artists
The Cincinnati Ventilating Co.	International Association of Bridge Structural and Ornamental Iron Workers
Continental Division of Arrow-Hart, Inc.	I. B. E. W.

CompanyName of UnionBoone County (Cont'd.)

Copying Products Division,
Meade Paper Corp.
Dutchess Furniture
Dutchess Metal Furniture Co.

International Printing Pressmen
and Assistants

I. U. E.

Communications Workers of
America

Equitable Paper Bag Co., Inc.

International Brotherhood of
Pulp, Sulphite and Paper Mill
Workers

Gamon Calmet Industries, Inc.

Allied Industrial Workers of
America

Globe Union, Inc.

Allied Industrial Workers of
America

Grefco, Inc.

International Brotherhood of
Pulp, Sulphite and Paper Mill
Workers

Husky Products, Inc.

International Association of Bridge
Structural and Ornamental Iron
Workers

Lingo Manufacturing Co., Inc.

International Association of Bridge,
Structural and Ornamental Iron
Workers

Litton UHS

International Association of Bridge,
Structural and Ornamental Iron
Workers

NATICO, Inc.

International Brotherhood of Pulp,
Sulphite and Paper Mill Workers

Skillcraft Sheet Metal, Inc.

Sheet Metal Workers' International
Association

Kenton County

Allied Lead, Inc.

United Association of Journeymen
and Apprentices of the Plumbing
and Pipe Fitting Industry

Arnamac Products, Inc.

International Association of
Machinists

Avey Machine Tool Company
Blue Grass Provision Co., Inc.

Independent Shop Union
Amalgamated Meat Cutters and
Butcher Workmen;

Central Optical

Teamsters (Drivers)

Allied Industrial Workers of
America

CompanyName of UnionKenton County (Cont'd.)

Coca-Cola Bottling Co.	Independent Soft Drink Drivers
J. B. Doppes & Sons Lumber Co.	Shop Carpenters and Joiners; Teamsters
Duro Paper Bag Manufacturing Company	International Brotherhood of Pulp, Sulphite and Paper Mill Workers (Shopmen) Teamsters
Eaton Asphalt Paving Company	International Union of Operating Engineers
Erlanger Lumber Company	Shop Carpenters and Joiners (Shop) Teamsters (Drivers)
Hellman Lumber Company	Shop Carpenters and Joiners; Teamsters (Drivers)
Impressive Manufacturing R. A. Jones & Co., Inc. Kinnaird Body Works, Inc.	Shop Carpenters and Joiners Independent Shop Union Allied Industrial Workers of America
Klaene Foundry Co., Inc.	International Molders' and Allied Workers
Levco Automotive Products Co.	Allied Industrial Workers of America
The Liberty Cherry & Fruit Co., Inc. Mastercraft Metals Co., Inc.	Teamsters Sheet Metal Workers' Interna- tional Association
The Michaels Art Bronze Co.	International Association of Bridge, Structural and Orna- mental Iron Workers
Moeschl-Edwards Co., Inc.	International Association of Bridge, Structural and Orna- mental Iron Workers
Ortner Freight Car Company Overhead Door Company of Kentucky	United Steelworkers of America Shop Carpenters & Joiners
Palm Beach Company	Amalgamated Clothing Workers of America
The Post Glover Division, ESB, Inc.	International Association of Bridge, Structural and Ornamental Iron Workers
Premier Industries, Inc.	Allied Industrial Workers of America
Serv All Foods, Inc.	Amalgamated Meat Cutters and Butcher Workmen (Factory), Teamsters (Drivers)

CompanyName of UnionKenton County (Cont'd.)

Stewart Decatur Security
Systems, Inc.

International Association of Bridge,
Structural and Ornamental Iron
Workers

Tri-County Concrete Company

Teamsters

U.S. Electric Tool Company

Teamsters

Wadsworth Electric Manufacturing
Co., Inc.

I. B. E. W.

Campbell County

Auto Vehicle Parts Co.

Allied Industrial Workers of
America

W. J. Baker Company

Allied Industrial Workers of
America

Ceramic Coating Company

Shop Carpenters & Joiners

Hanneken Dairy

Milk & Ice Cream Drivers and
Dairy Employees

Interlake, Inc.

United Steelworkers of America;
Building Trades Bricklayers
(Brick Dept.)

Kencabco Manufacturing, Inc.

Shop Carpenters & Joiners

Kent Division, LCA Corp.

United Mine Workers

Kentucky Cabinet & Sink Top, Inc.

Shop Carpenters & Jointers

L/N Materials Corp.

Teamsters

Mills Bakery

Bakery & Confectionery Workers

Niser & Trauth Dairy, Inc.

Milk & Ice Cream Drivers and
Dairy Employees

Otto Printing Company

International Typographical
(Printers)

Palm Beach Company

Amalgamated Clothing Workers
of America

Reliance Universal, Inc.

International Association of
Bridge, Structural and Orna-
mental Iron Workers

The Stevens Company

Teamsters

Sheet Metal Workers

Pipe Fitters

Operating Engineers

Vesper Printing, Inc.

International Typographical
(Printers)

The George Wiedemann Brewing Co.

International Association of
Machinists (Machine Shop)

Otto Zimmerman & Son Co., Inc.

Bookbinders & Bindery Women

Zonolite Construction Products

Teamsters

Division, W. R. Grace & Co.

ESTIMATED MALE LABOR SUPPLY
NORTHERN KENTUCKY AREA LABOR MARKET AREA

Area	Current			Future	
	Total	Not in Labor Force	Unemployed	Under-employed	Reaching 18 yrs. of age by 1980
Labor Market					
Area	4,650	380	500	3,770	15,296
Boone	450	0	60	480	2,049
Kenton	2,000	0	190	1,810	7,041
Campbell	1,270	0	120	1,150	4,911
Gallatin	260	170	50	40	193
Grant	210	0	50	160	513
Pendleton	370	210	30	130	589

Sources: Kentucky Department for Human Resources, Kentucky Labor Supply Estimates by County, 1973. Kentucky Department of Commerce, Future Labor Supply by 1980.

ESTIMATED FEMALE LABOR SUPPLY
NORTHERN KENTUCKY AREA LABOR MARKET AREA

Area	Current			Future	
	Total	Not in Labor Force	Unemployed	Under-employed	Reaching 18 yrs. of age by 1980
Labor Market					
Area	7,190	860	630	5,700	14,448
Boone	750	0	50	700	1,818
Kenton	3,060	0	270	2,790	6,700
Campbell	2,010	0	240	1,770	4,719
Gallatin	380	260	20	100	229
Grant	320	110	20	190	464
Pendleton	670	490	30	150	518

Sources: Kentucky Department for Human Resources, Kentucky Labor Supply Estimates by County, 1973. Kentucky Department of Commerce, Future Labor Supply by 1980.

PER CAPITA PERSONAL INCOME

<u>Area</u>	<u>1972</u>	<u>1962</u>	<u>% Change</u>
Boone County	\$3,902*	\$2,384	+ 63.7
Kenton County	4,193*	2,317	+ 81.0
Campbell County	4,088*	2,374	+ 72.2
Labor Market Area			
Range	\$2,668 - 4,193	\$1,227 - 2,384	N.A.
Kentucky	3,634	1,769	+105.4
U.S.	4,549	2,381	+ 91.1

*Provisional.

Sources: Office of Development Services and Business Research, College of Economics, University of Kentucky, Kentucky Personal Income 1929/68. U. S. Department of Commerce, Office of Business Economics, Survey of Current Business, May, 1974, August, 1974.

TRANSPORTATION

Rail

Lines serving the Northern Kentucky Area - Southern Railway System,
Louisville & Nashville Railroad Company, The Chessie System

The Southern Railway serves the cities of Ludlow, Crescent Springs, Erlanger, Elsmere, Florence and Walton. The railroad continues south via Lexington, Kentucky, to Chattanooga and Knoxville and the major metropolitan areas of the southeastern United States. Southern's classification yard and piggyback facility are located across the Ohio River in Cincinnati near the Union Terminal.

The Louisville and Nashville Railroad provides direct north-south access through central portions of Covington to the Latonia area. From this point the main line then splits into two separate lines, one extending south along the Licking River serving the classification yards and continuing south to Knoxville, Tennessee. The second line continues in a southwesterly direction to Walton and Louisville, Kentucky. In addition, the Louisville & Nashville Railroad has a line that connects the Penn-Central Railroad in Cincinnati with the main line in Latonia. This line extends through the cities of Newport and Wilder and then crosses the Licking River and reconnects with the main line in Latonia. The Louisville and Nashville Railroad classification yards are located adjacent to the Licking River, south of Covington. The Louisville and Nashville Railroad terminates at the Union Terminal in Cincinnati. One piggyback service terminal is located in the Northern Kentucky Area and is operated by the Louisville and Nashville Railroad.

The Chessie System directly serves the central portions of Covington, Newport, Bellevue, Dayton and then continues south through Campbell County paralleling the Ohio River. The Chessie System has its classification yards in Northern Kentucky in Silver Grove adjacent to the Ohio River. Piggyback facilities are located at Cheviot, Ohio.

For details on routing, schedules, rates, and services, contact:

District Sales Manager
Southern Railway System
307 East 4th Street
Cincinnati, Ohio 45202

and/or

(Cont'd.)

Manager of Industrial Development
Louisville & Nashville Railroad Co.
908 West Broadway
Louisville, Kentucky 40203

and/or

General Manager, Freight Service
The Chessie System
603 B & O Central Building
2 North Charles Street
Baltimore, Maryland 21201

Truck Service

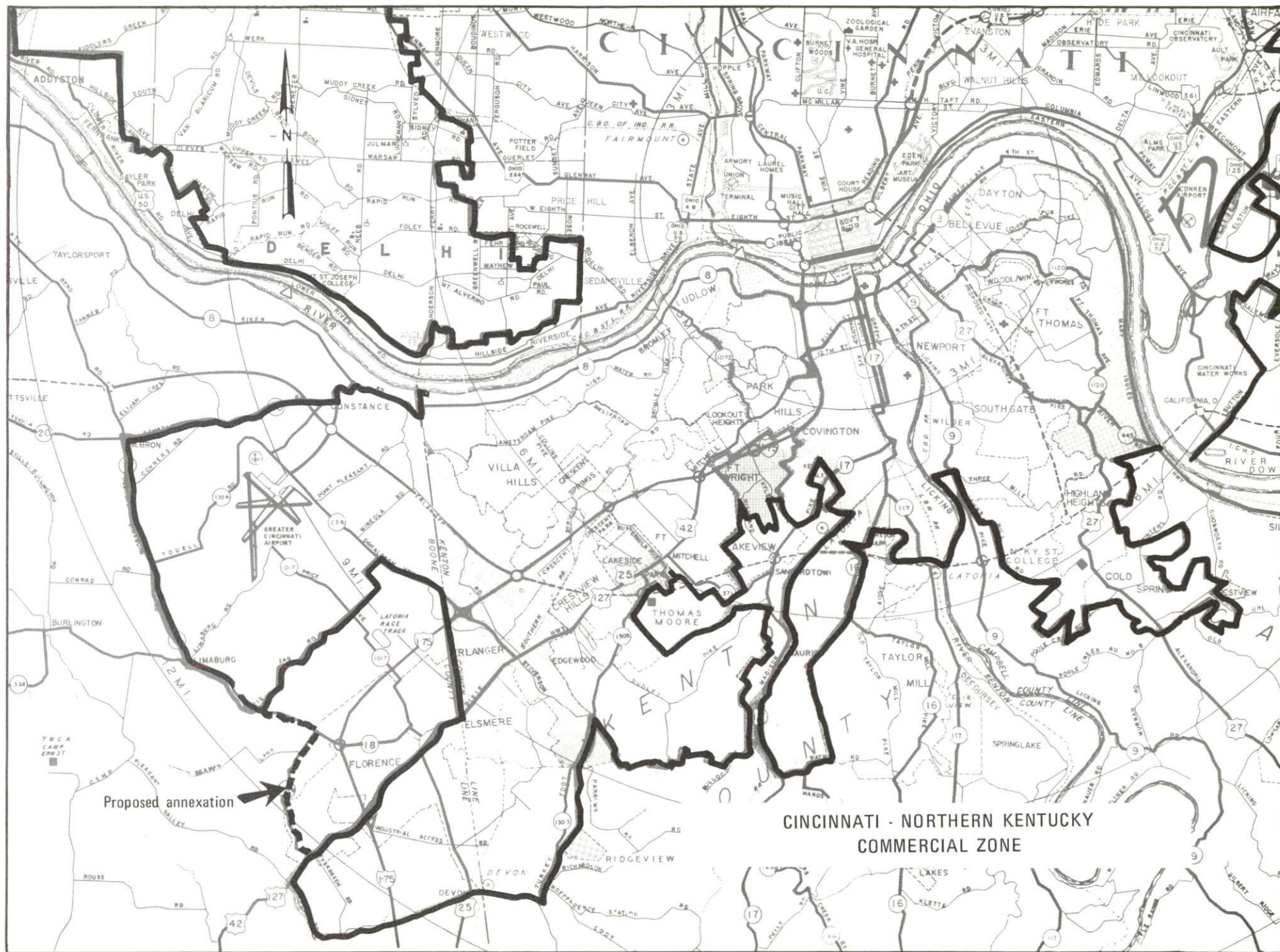
The major commercial and industrial areas of the Northern Kentucky area are in the Cincinnati-Northern Kentucky commercial zone. Approximately 85 common carriers have authority to serve the Northern Kentucky area.

CINCINNATI - NORTHERN KENTUCKY COMMERCIAL ZONE

The term, Commercial Zone, as applied to the Northern Kentucky Area, means the area within the corporate limits of the following Kentucky cities, towns and villages:

Bellevue	Fort Thomas
Bromley (Kenton County)	Fort Wright- Lookout Heights
Cold Spring	Highland Heights
Covington	Johns Hill
Crescent Park	Lakeside Park
Crescent Springs	Ludlow
Crestview Hills	Newport
Dayton	Park Hills
Edgewood	Southgate
Elsmere	Villa Hills
Erlanger	Wilders
Florence*	Woodlawn
Fort Mitchell	

*The only portion of Florence, Kentucky, presently in the zone is that portion south of U. S. 42 to U. S. 127. A petition will be presented to the Interstate Commerce Commission in the near future to extend the Cincinnati - Northern Kentucky Commercial Zone to include that part of Florence, Kentucky that is not presently within the zone.



Proposed annexation

CINCINNATI - NORTHERN KENTUCKY
COMMERCIAL ZONE

HIGHWAY MILES AND TRUCK TRANSIT TIME IN DAYS FROM
COVINGTON, KENTUCKY, TO SELECTED MARKET CENTERS

City	Delivery		City	Delivery	
	Highway Miles	Time TL		Highway Miles	Time TL
Atlanta, Ga.	460	2	Knoxville, Tenn.	253	2
Birmingham, Ala.	475	2	Los Angeles, Calif.	2,187	7
Chicago, Ill.	294	3	New Orlean, La.	819	4
Cincinnati, Ohio	1	1	New York, N. Y.	660	3
Cleveland, Ohio	245	2	Pittsburgh, Pa.	285	3
Detroit, Mich.	266	3	St. Louis, Mo.	337	3

Source: Delivery time only - Overnite Transportation Company, 1100
Commerce Road, Richmond, Virginia 23209.

Air

Nearest Commercial

Location:	Greater Cincinnati Airport 8 miles southwest of Covington in Boone County, Kentucky
Runways:	3 paved
Length:	5,500 feet, 7,800 feet, 9,500 feet
Traffic Control	Tower, guards, ground control, clearance delivery, approach control, departure control, CVG, ILS, Automatic Terminal Information Service, radar available
Lighting:	Beacon, VASI, REIL, MALS-REIL, ALS-SFL, HIRL, MIRL, Red T bar
Services:	TWA, Delta, American, Eastern, Piedmont, Allegheny and North Central; Air Kentucky*; fuel - 100 octane and Jet A-50; 650 turbine; major A & E repairs; hotel; restaurant; airport limousine; taxi; Weather Bureau; passenger motor service terminal to terminal and parking areas
Air Freight Service:	Air freight terminal regularly serviced by freight carrying airlines

*Commuter air carrier.

Source: Kentucky Department of Transportation, Division of Aeronautics.

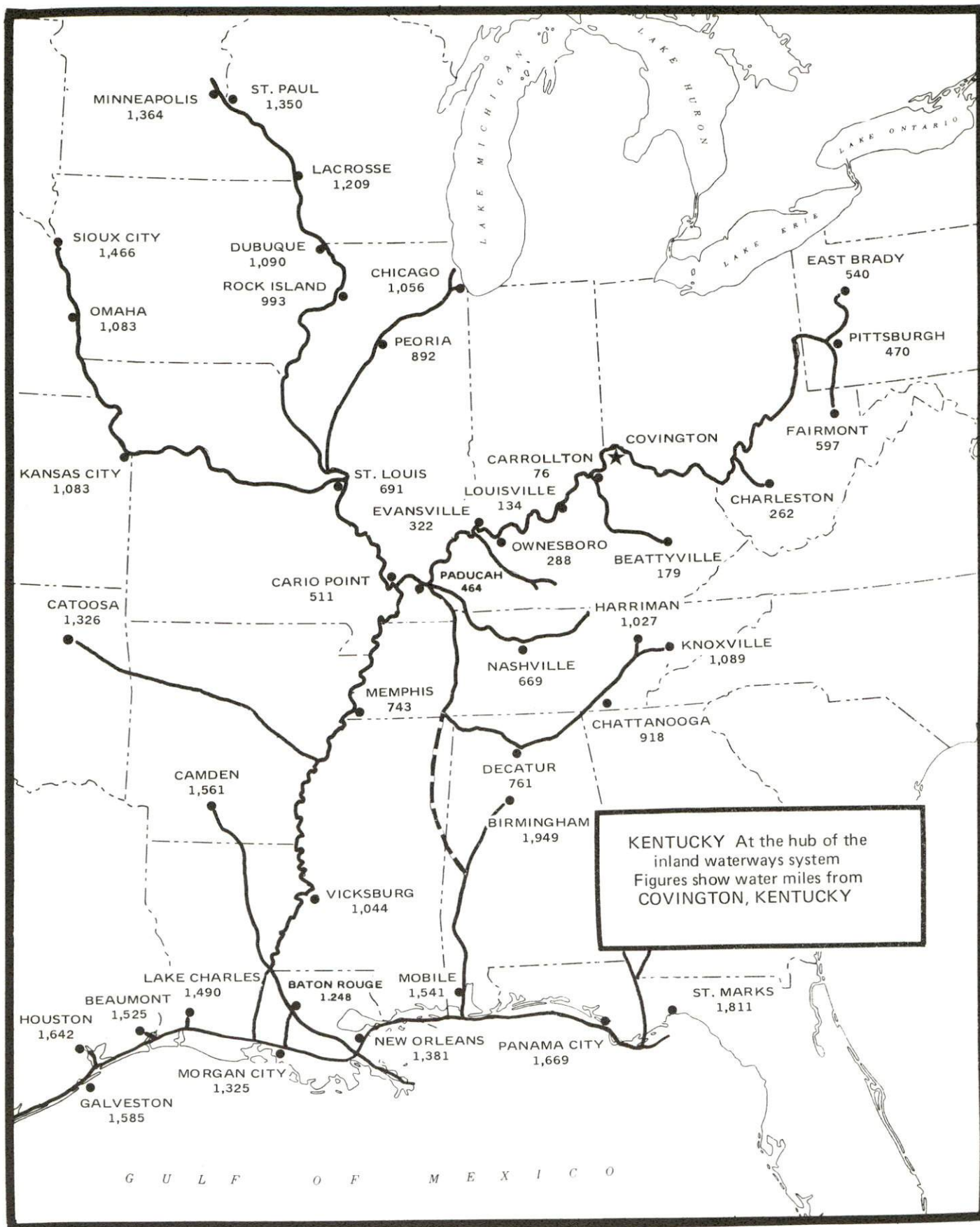
Water

The Northern Kentucky Area's location on the southern side of the Ohio River, across from the city of Cincinnati, provides maximum opportunity for waterborne commerce shipments. Approximately 73 miles of Ohio River shoreline abut the three Northern Kentucky counties. In addition the Licking River is navigable for a distance upstream of approximately 10 miles.

The Port of Cincinnati is an area extending along both sides of the Ohio River including the Licking River for a distance of about 28 miles. Of the eleven barge terminals existing in the three Northern Kentucky counties only two are located outside the Port of Cincinnati. Of the eleven river terminals, five are located on the Ohio River and six are located on the Licking River.

International

The H. J. Hosea Company, Newport, Kentucky, is the Midwest's largest total export service. They are export packers, operating a complete export trucking service to all U. S. Ports. They also are a container pool for 25 major steamship companies, in which they pool between 100-200 ocean containers, which is handled at their facility. They are international air and ocean freight forwarders. They have facilities to warehouse and consolidate export shipments. A barge facility is now under construction which will be able to load barges for direct shipment to many parts of the world. The firm is also planning to be a Customs House Broker, which will be able to clear import shipments and act as a break bulk distribution center on all import shipments.



EDUCATION

Vocational Schools*

Arrangements can be made to provide training in the specific production skills required by an industrial plant. Instruction may be conducted either in a vocational school or in the industrial plant, depending upon the desired arrangement and the availability of special equipment.

Vocational- Technical School

Location	Northern Kentucky State Vocational- Technical School	
	Covington	
Curriculum	Data Processing	Auto Body Repair
	Clerical	Auto Mechanics
	Secretarial	Carpentry-Building
	Marketing and Distribu-	Trades
	tive Education	Commercial Art
	Practical Nursing	Commercial Foods
	Child Care	Cosmetology
	Clothing Service	Drafting
	Food Service	Graphic Arts
	Learning Lab	Machine Shop
	Electronics (Technology)	Radio & TV Service
	Air Conditioning &	Welding
	Refrigeration	

A Northern Campbell County vocational school, to be located on the Northern Kentucky State College campus, is scheduled to open in 1977. This vocational-technical school will serve the entire Northern Kentucky Area. The program of courses as now planned includes an Allied Health Occupations cluster consisting of Dental Assistant, Medical Assistant, and Medical Records Technology; a Graphic Commercial Occupations cluster consisting of Printing, Lithographic Photography, and Commercial Art; Interior Finishing; Plumbing; Diesel Mechanics; Auto Mechanic-Foreign and Domestic; Industrial Electronics; and Horticulture. The program was designed to offer many courses not available elsewhere in the Northern Kentucky Region.

*Boone County - An area education center is located in Hebron, Kentucky. Kenton County - An area education center is under construction in Edgewood, Kentucky. Campbell County - An area education center is located in Alexandria, Kentucky.

The Northern Kentucky Vocational Education Region and Northern Kentucky State College are involved in a cooperative program whereby a student may obtain an Associate Degree in Industrial Education from Northern Kentucky State College. The vocational training involved in this program is provided by the Northern Kentucky State Vocational-Technical School and will also be available at the new Northern Campbell County School which will be ideally located on the college campus.

Colleges and Universities

<u>Name</u>	<u>Area - Within 35 miles*</u>		<u>Highest Degree Conferred</u>
	<u>Location</u>	<u>Enrollment (Fall, 1973)</u>	
Northern Kentucky State College**	Highland Heights	4,758	Baccalaureate, J. D.***
Thomas More College	Fort Mitchell	1,455	Baccalaureate
Athenaeum of Ohio	Cincinnati	222	Masters
Cincinnati Bible Seminary	Cincinnati	869	Academic and Professional
College of Mount St. Joseph on the Ohio	Cincinnati	870	Baccalaureate
Edgecliff College	Cincinnati	787	Baccalaureate
Hebrew Union College	Cincinnati	216	Ph. D.
University of Cincinnati	Cincinnati	36,262	Academic and Professional
Xavier University	Cincinnati	6,260	Masters

*Four-year colleges and universities within 35 miles of Covington, Kentucky.

**Includes the Salmon P. Chase College of Law at Covington, Kentucky and an extension center at Florence, Kentucky.

***A new program - a master's degree in education - is expected to get underway in the summer of 1975.

AGRICULTURE - NATURAL RESOURCES - CLIMATE

Agriculture*

	<u>Northern Kentucky Area</u>	<u>Labor Market Area</u>
Total land area (acres)	360,704	762,240
Percent of area in farm land	62.6	72.1
Number of farms	2,476	4,956
Average size of farms (acres)	91.1	110.9
1969 value of all farm products	\$10,312,250	\$ 24,217,396
Value per farm	4,165	4,886
Total crop sales	4,184,591	12,574,391
Total livestock & livestock products	6,081,158	11,571,536
1972 agricultural production included:		
Burley tobacco (lbs.) (est.)	4,881,000	17,849,000
Corn for grain (bu.)**	561,600	1,029,600
Cattle and calves (number)**	38,700	89,000
Hogs and pigs (number)**	13,400	18,000
Milk production, 1971 (lbs.)	47,560,000	109,380,000

Natural Resources

Principal mineral resources	Sand and gravel, stone
Acres of commercial forest land	44,300
Most abundant tree species	White oak, red oak, hickory, ash, hard maple, red cedar, black walnut

*U. S. Department of Commerce, Bureau of the Census, Census of Agriculture, 1969. U. S. Department of Agriculture and Kentucky Department of Agriculture, Kentucky Agricultural Statistics, 1972.

**Preliminary figures.

Climate*

Northern
Kentucky Area

Temperature

Annual mean (30-year record)	54.0 degrees
Average annual 1973	54.4 degrees
Record highest, August, 1962 (12-year record)	102.0 degrees
Record lowest, January, 1963 (12-year record)	- 19.0 degrees
Normal heating degree days (30-year record)	5,070
(Heating degree day totals are the sums of negative departures of average daily tem- peratures from 65 degrees F.)	

Precipitation

Mean annual total (30-year record)	39.04 inches
Mean annual snow and sleet (26-year record)	23.60 inches
Total precipitation 1973	49.43 inches
Mean number days precipitation (.01 inch or more) (26-year record)	128
Average number days thunderstorms (26-year record)	44

Prevailing winds (16-year record) South-southwest

*U. S. Department of Commerce, Environmental Science Services Admin-
istration, Climatological Data, 1973. Station of record: Cincinnati,
Ohio, Greater Cincinnati Airport.

BOONE COUNTY

LOCAL TRANSPORTATION

	<u>Florence</u>	<u>Walton</u>	<u>Boone County</u>
<u>Bus</u> -	Transit Authority of Northern Kentucky Greyhound Bus Lines East	Greyhound Bus Lines East	--
<u>Taxi</u> -	One company, 24-hour service radio-dispatched	--	--
<u>Rental Services</u> -			Car, truck, and trailer rentals available
<u>Airport Motor Passenger Service</u> - Limousine service is available from the airport to suburban hotels and motels in the Northern Kentucky Area and downtown Cincinnati			

POWER AND FUEL

Electricity

Company serving Boone County - Union Light, Heat & Power Company

Source of power - Cincinnati Gas & Electric Company

Total generating capacity - 3,584,390KW*

For industrial rates contact:

Union Light, Heat & Power Company, Covington,
Kentucky, a subsidiary of the
Cincinnati Gas & Electric Company
P. O. Box 960
Cincinnati, Ohio 45201

Company serving Boone County - Owen County RECC

Source of power - East Kentucky Power Cooperative

Total generating capacity - 548,000 KW

For industrial rates contact:

Owen County RECC
Owenton, Kentucky 40359

Natural Gas

Company serving Boone County - Union Light, Heat & Power Company**

Source of supply - Columbia Gas Transmission Corporation

Size of transmission mains - 20 and 24 inches

Distribution mains - 2 to 24 inches

Distribution pressure - up to 60 psi

Btu content - 1,020 per cubic foot

Specific gravity - .60

For rates and supplies contact:

Union Light, Heat & Power Company, Covington,
Kentucky, a subsidiary of the
Cincinnati Gas & Electric Company
P. O. Box 960
Cincinnati, Ohio 45201

*Applicable for summer, year of 1975, including O.V.E.C. entitlement.

**Gas service is not presently available for new or increased users due to the national gas shortage.

Other Fuels

Propane distributors - 10

Distillate fuel oil distributors - 32

Residual fuel oil - Arrangements must be made with the refinery

Low sulphur content coal - Available from eastern Kentucky

WATER AND SEWERAGE

Water

Company serving Florence - Florence Water and Sewer Commission
Source of supply of treated water - Kenton County Water District No. 1
Average daily consumption - 1,100,000 gallons
Peak daily consumption - 1,300,000 gallons
Storage capacity - 1,500,000 gallons*
Size lines - 16, 12, and 8 inches
Average pressure - 50 psi
Average temperature - 68 degrees F.

MONTHLY WATER RATES FOR WHOLESALE AND INDUSTRIAL CONSUMERS

Inside city

First	300 cubic feet	\$4.40 (Minimum)
All over	300 cubic feet	.70 per 100 cubic feet

Outside city

First	300 cubic feet	\$5.50 (Minimum)
All over	300 cubic feet	1.00 per 100 cubic feet

Tap-on charge - \$175

*Capacity includes recently completed 1,000,000-gallon elevated storage tank.

Company serving Walton - Walton Water Works
 Source - Two impoundments
 Treatment plant capacity - 368,640 gpd
 Average daily consumption - 183,500 gallons
 Peak daily consumption - 250,000 gallons
 Type treatment - Coagulation, settling, filtration, chlorination
 Storage capacity - 300,000 gallons
 Size lines - 8, 6 and 4 inches
 Average pressure - 50 psi
 Average temperature - 57 degrees F.

MONTHLY WATER RATES FOR WHOLESALE
 AND INDUSTRIAL CONSUMERS

<u>Consumption</u>	<u>Total Cost</u>
2,000 gallons	\$ 5.41
3,000 gallons	7.04
5,000 gallons	9.95
10,000 gallons	16.63
15,000 gallons	21.74
20,000 gallons	26.61
30,000 gallons	35.52
34,000 gallons	38.99
Over 34,000 gallons - \$.70 per 1,000 gallons and \$.07 per 100 gallons	
Tap-on charge - \$125 plus cost of meter if larger than 5/8-inch x 3/4 inch meter	

Name of water district - Boone County Water and Sewer District
Area served - Boone County
Date when water district began operating - October 1968
Source of supply of treated water - Covington Water Works
Average amount of water used in a 24-hour period - 450,000 gallons
Peak amount of water used in 24-hour period - 550,000 gallons
Storage capacity - 600,000 gallons
Average pressure - 80 psi
Average temperature - 62 degrees F.
Size lines - 16, 12, 8, 6 and 4 inches

MONTHLY WATER RATES

First	3,000 gallons	\$9.00 (Minimum)
Next	2,000 gallons	2.50 per M gallons
Next	5,000 gallons	2.25 per M gallons
All over	10,000 gallons	1.50 per M gallons

Tap-on charge - 3/4-inch meter - \$200
1 -inch meter - 250
1 1/2-inch meter - 320
2 -inch meter - 420

All meters over 2 inches - Installation cost plus 25 percent

Surface water sources - Ohio River and several small streams
Average discharge - Ohio River at Cincinnati, Ohio 96,810 cfs
(23 years, USGS)
Expected ground water yield - 500 to 1,000 gpm along Ohio River; 5 gpm
or less over remainder of county

Sewerage

Company serving Florence - Florence Water and Sewer Commission
Design capacity - 2,000,000 gpd*
Average daily flow - 960,000 gallons
Treatment - Primary and secondary
Type treatment - Primary clarifier, contact stabilization
Treated effluent discharged into - Utterback Creek
Size of sanitary mains - 18, 12, 8 and 6 inches
Rates - 50 percent of monthly water bill
Tap-on charge - \$250

*Second sewage treatment plant, 1,000,000 gpd, was put into use in May, 1974, bringing total treatment capacity to 2,000,000 gpd.

Company serving Walton - Walton Sewerage System (under construction)*
Design capacity - 225,000 gpd
Treatment - Tertiary
Type treatment - Extended aeration with polishing sand filters
Size of sanitary mains - 15, 12, 10, 8 and 6 inches

Company serving Boone County - Boone County Water and Sewer District
Plans - A preliminary study has been completed with the Hebron-Burlington area being considered as the initial area for sewerage service

Company serving parts of Boone County - Sanitation District No. 1 of Campbell and Kenton Counties
Design capacity - Presently 20,000,000 gpd
Average daily flow - At capacity**
Treatment - Primary
Type treatment - Settling, vacuum filters, incineration
Treated effluent discharged into - Ohio River
Size of sanitary mains - 8 to 60 inches

Sanitation District Rates - Quarterly

Quarterly Minimum Bill	\$6.64
0 - 800 cu. ft.	\$0.83 per 100 cu. ft.
801 - 5,000 cu. ft.	0.67 per 100 cu. ft.
5,001 - 25,000 cu. ft.	0.55 per 100 cu. ft.
25,001 - 100,000 cu. ft.	0.40 per 100 cu. ft.
All over 100,000 cu. ft.	0.32 per 100 cu. ft.

Tap-on charge - \$10

*Construction of the Walton Sewerage System is now underway with completion by 1976. Land is available at plant site for future expansion.

**Specifications are complete and site preparation is underway for a new 30,000,000 gallon per day sewage treatment plant. Treatment at the new plant will be primary and secondary with settling, aeration, sludge conditioning, vacuum filters, incineration, and clarifiers.

LOCAL GOVERNMENT

City

Florence

Structure - Mayor - 4-year term; 12 councilmen - 2-year terms

Budget 1973 - General Fund \$455,033

Fees and licenses - Occupational license - \$25 per year

Walton

Structure - Mayor - 4-year term; 6 councilmen - 2-year terms

Budget 1972 - General Fund \$66,375
 Water Fund 58,280

Fees and licenses - Occupational licenses range from \$10 to \$100
per year; automobile stickers - \$5 per year

County

Structure County Judge - 4-year term; 3 commissioners - 4-year terms

Budget 1974-75 - General Fund \$592,064
 Road Fund 371,700

Assessed Value of Property, 1974

<u>Classes of Property</u>	<u>Florence</u>	<u>Walton</u>	<u>Boone County</u>
Real Estate	\$87,084,300*	\$6,806,260	\$271,455,340
Tangibles	11,737,565*	2,722,264	84,189,130
Public Service			41,301,225

*1973 assessed value of property.

Property Taxes

Land and buildings are taxed by the state and may be taxed by local jurisdictions. The state rate is \$0.015 per \$100 of assessed valuation.

Tangible personal property owned by manufacturers (automobiles, trucks, finished goods, office furniture, office equipment) is taxed by the state at \$0.15 per \$100 and may be taxed by local jurisdictions.

Manufacturing machinery, raw materials inventories, and goods in process inventories are not subject to local taxation. The state rate is \$0.15 per \$100.

Property stored in public warehouses is not subject to local taxation. The state rate is only \$0.015 per \$100.

All property is assessed at 100 percent of fair cash value.

Local Property Tax Rate Per \$100 of Assessed Valuation, 1974*

<u>Taxing Jurisdiction</u>	<u>Florence</u>	<u>Walton</u>	<u>Boone County</u>
County	\$.202	\$.202	\$.202
School	.643	1.304	.643
City	.335	.400	

Utilities Gross Receipts Tax for Schools

Boone County levies a 3 percent tax on utilities receipts for schools. This tax is paid by all consumers of utilities. Exempted are receipts from utilities services that are resold and the receipts from the sale of energy producing fuels that exceed 3 percent of the cost of production in manufacturing, processing, mining or refining.

Planning and Zoning

County-Wide Planning

County agency - Boone County Planning Commission

Zoning enforced - All areas

Subdivision regulations enforced - All areas

Local codes enforced - Building, housing

Mandatory state codes enforced - Plumbing, National Fire Protection

Association Code, National Building Code (for major buildings and residential construction containing more than 12 bedrooms per building)

*Kentucky Department of Revenue.

Regional Planning Authority

Boone County is part of a nine-county planning agency (the Ohio-Kentucky-Indiana Regional Planning Authority) which is primarily responsible for coordinating the development of such regional facilities as: transportation systems, water and sewer systems, solid waste disposal facilities, major park and recreational facilities, etc.

Safety

<u>Police</u>	<u>Florence</u>	<u>Walton</u>	<u>Boone County</u>	
			<u>Police</u>	<u>Sheriff</u>
Total staff	17	3 full-time 3 part-time	13	7
Radio-patrol cars	7	2	8	4

Fire

American Insurance Association Fire Rating	7 & 9	7
Full-time staff	3	
Volunteers	40	36
Equipment:		
750 gpm pumpers	2	1
500 gpm pumpers	1	1
1,250 gpm pumper	1	
1,300 gallon tank truck		1
salvage and rescue truck		1

Rescue Service

Florence Rescue Squad:
Number of volunteers - 40
Equipment - Equipped rescue truck, ladders, air packs, porta-power, generator, lights
Personnel training - First aid, advanced first aid, fire rescue training

Florence Life Squad:
Number of volunteers - 35-40
Equipment - One emergency vehicle
Personnel training - First aid

Walton Life Squad:
Number of volunteers - 30
Equipment - 2 fully equipped ambulances
Personnel training - First aid, Emergency Medical Training

Boone County Water Rescue Team:

Number of volunteers - 7

Equipment - 2 boats (1 with 2-way police radio), 1 van, 4 complete sets of diving gear

Personnel training - Advanced first aid, year-round training sessions with classroom and diving instruction

Sanitation

	<u>Florence</u>	<u>Walton</u>	<u>Boone County</u>
Type service	Private	Private	Private
Fee charged:			
residential	\$3.20 per month	\$1.00 per month	
business	According to volume	1.00 per month	Varies*
Collection frequency:			
residential	Twice weekly	Once weekly	
business	Twice weekly	Once weekly	As needed
Trash pickup	Twice weekly	Once weekly	As needed
Disposal method	Landfill	Landfill	Landfill

*Partial list of the types of services and rates of one private sanitation company serving the Northern Kentucky Area.

- (1) 45-yard roll-off compact container, 6-day service weekly, removal and disposal - \$82 per removal.
- (2) 6-yard container, twice weekly service - \$64 per month.
6-yard container, 6-day service weekly - \$141.75 per month.
- (3) 20-, 30-, and 40-yard open-top containers - \$66, \$71.50, and \$79.75.

LOCAL EDUCATION

Public Schools

	<u>Walton-Verona Independent*</u>	<u>Boone County**</u>
Total Enrollment (Fall 1974)	805	8,217
Elementary	370	4,139
Junior High		2,087
High School	435	1,991
Student-Teacher Ratio	20-1	22-1
Elementary	21-1	22-1
Junior High		23-1
High School	19-1	20-1
Accreditation		Southern Association of Colleges and Schools
Percent High School Graduates to College	23.4	32.7
Expenditures Per Pupil (1972-73)	\$638.00	\$549.03
Bonded Indebtedness, June 30, 1973	\$993,000	\$8,104,000

Nonpublic Schools

Total Enrollment	540
Elementary	540
Student-Teacher Ratio	21-1
Elementary	21-1

Northern Kentucky State College Extension Center

The Northern Kentucky State College operates an extension center at Florence. Basic introductory courses are offered.

*A greenhouse and a \$575,000 Music/Physical Education building have been completed at the Walton-Verona High School.

**Construction of a new administration building has been completed for the Boone County School System.

Vocational Schools

Area Education Center

Location	Boone County Area Vocational Education Center
Curriculum	Hebron
	Health Careers
	Auto Body Repair
	Auto Mechanics
	Diesel Mechancis
	Electricity
	Sheet Metal
	Welding

HEALTH

Hospitals

The residents of Boone County are served by the two general hospitals in Covington.

Nursing Homes

	<u>Number</u>	<u>Type and Number of Beds</u>
Boone County	1	50 Nursing home 50 Personal care

Public Health

Facility - Boone County Health Department

Staff - 1 assistant administrator, 2 registered nurses, 2 health environmentalists, 2 clerks, 1 plumbing inspector (part time), and 1 nutritionist (part time)

Budget 1974-75 - \$79,581

OTHER LOCAL FACILITIES

<u>Communications</u>	<u>Florence</u>	<u>Walton</u>
Telephone -	Cincinnati Bell	Cincinnati Bell
Services -	Telephone Company Standard	Telephone Company Standard
Telegraph -	Western Union Office located in Covington	Western Union Office located in Covington
Postal - U.S. Post Office		
Class -	First	Second
Mail received -	Three times daily	Once daily
Mail dispatched -	Three times daily	Once daily
Newspapers -	Dixie News	Walton Advertiser
Weekly and circulation-	18,000	2,100 Boone County Recorder 4,400
Other papers received from -	Cincinnati, Ohio; Burlington and Louisville, Kentucky	Cincinnati, Ohio; Florence and Louisville, Kentucky
Radio -		
Stations received -	WNOP-AM; WCLU-AM WHKK-FM; WLW-AM; WEBN-FM; WKRC-AM; WKRQ-FM; WWEZ-FM; WZIP-AM; WCNW-AM WGUC-FM; WFIB-FM; WUBE-AM and FM; WSAI-AM and FM	WNOP-AM; WCLU-AM; WHKK-FM; WLW-AM; WEBN-FM; WKRC-AM; WKRQ-FM; WWEZ-FM; WZIP-AM; WCNW-AM; WGUC-FM; WFIB-FM; WUBE-AM and FM; WSAI-AM and FM
Television -		
Reception from -	WLWT-Channel 5 (NBC) WCPO-Channel 9 (CBS) WKRC-Channel 12 (ABC) WXIX-Channel 19	WLWT-Channel 5 (NBC) WCPO-Channel 9 (CBS) WKRC-Channel 12 (ABC) WXIX-Channel 19
Educational Television-	WCVN-Channel 54 WCET-Channel 48	WCVN-Channel 54 WCET-Channel 48

Library Services

The new Boone County Public Library opened in October of 1974 at a temporary location in Florence. A new library building is expected to be ready for occupancy by 1976. The library presently has a collection of 9,000 volumes which is estimated to increase to 15,000 volumes by 1976. Library services now include newspapers, magazines, interlibrary loan, records, projectors, film loaning, craft classes, children's hour, and a bookmobile.

Day Care Facilities

There are four day care centers located in Florence.

<u>Religious Institutions</u>	<u>Florence</u>	<u>Walton</u>
Number of churches -	14	8
Denominations -	Baptist	Baptist
	Catholic	Catholic
	Christian	Christian
	Church of Christ	Church of Christ
	Church of God	Church of God
	Episcopal	Methodist
	Lutheran	Presbyterian
	Methodist	
	Pentecostal	
Nearest synagogues -	There are sixteen synagogues located in Cincinnati, Ohio	
Type Congregations -	Orthodox, reform, traditional, and conservative	

Financial Institutions

<u>Banks</u>	<u>Assets</u>	<u>Deposits</u>	<u>Statement Date</u>
Boone State Bank	\$10,869,323.00	\$ 9,712,227.00	June 30, 1974
Dixie State Bank	9,048,793.00	8,127,092.74	June 29, 1974
Florence Deposit Bank	18,525,088.43	16,790,512.31	December 31, 1973
Hebron Deposit Bank	9,962,031.42	8,704,893.97	June 30, 1974
Peoples Deposit Bank	11,642,759.76	10,257,725.00	December 31, 1973
Union Deposit Bank	2,809,458.51	2,567,154.32	June 29, 1974
Verona Bank	1,811,481.91	1,579,113.55	June 29, 1974

Hotels and Motels

Total number - 19

Units - 858

Clubs and Organizations - Boone County

Business - Northern Kentucky Chamber of Commerce, Home Builders Association, Board of Realtors, Business Men's Association

Women's - Northern Kentucky Business & Professional Women's Club, League of Women Voters, Woman's Clubs, Junior Woman's Club, Jaycettes, Garden Club, Homemakers Club, National Secretaries Association, American Business Women, Mothers of Twins Club

Civic and Service - Jaycees, Kiwanis, Lions, Optimist, Rotary

Youth - Boy Scouts, Girl Scouts, Junior Achievement of Greater Cincinnati, 4-H Clubs, Boys Club

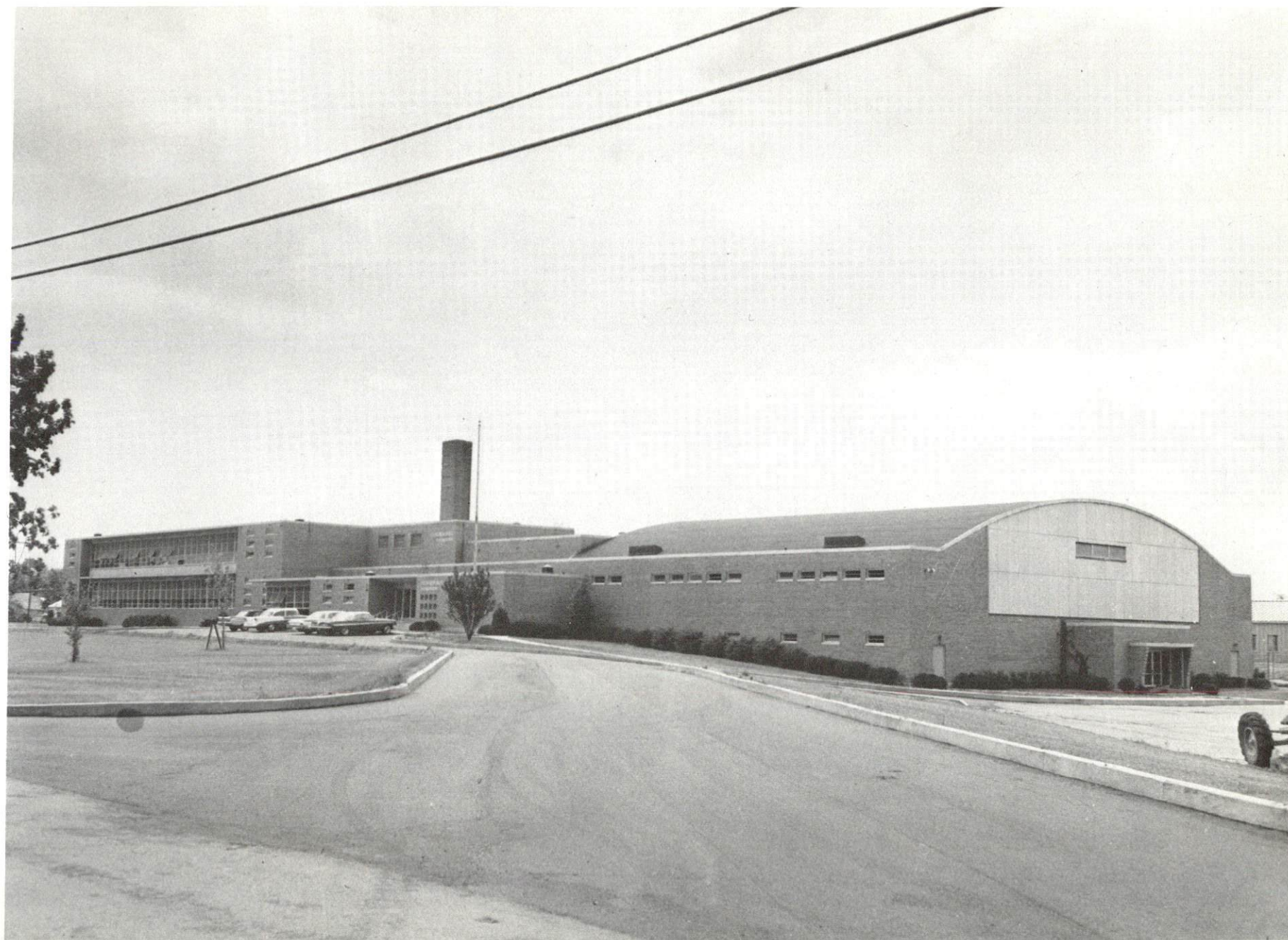
Other - Council for Deaf Children of Northern Kentucky, Heart Association of Northern Kentucky, Historical Society, Interfaith Commission of Northern Kentucky, Soil Conservation, Kentucky Tri-County Singles Club, Northern Kentucky Area Development District, Northern Kentucky Arts Council, Community Chest, Heritage League, Red Cross, Pharmacist Society, Rose Society, Senior Citizens of Northern Kentucky, Fair Board, Bar Association, Book Club, Association for Retarded Children, American Institute of Architects, American Cancer Society, Utopia Club, Boone Adult Workshop Adult Center, Antique Automobile Club

RECREATION

<u>Local</u>	<u>Florence</u>	<u>Walton</u>	<u>Boone County</u>
Public Recreation Facilities			
Supervised program -	Yes		
Parks -	2	1	
Playgrounds -	1	1	
Swimming pool -	1 indoor (YMCA)		
Golf courses -	2 (1-18-hole) (1- 9-hole)		
Tennis courts -	22		
Baseball diamonds	12		
Football fields	2	3	
Private Recreation Facilities			
Country club -	1		
Golf courses -	1 (18-hole)		1 (18-hole)
Swimming pool -	1		
Movie theatre -	1 drive-in		
Bowling facility		1 (8 lanes)	
Other	YMCA		Hunting and Fishing Club Gun clubs
Tourist Attractions			
Latonia Race Course			
Big Bone Lick State Park			
Greater Cincinnati Airport			
Cultural Events			
The Northern Kentucky and Greater Cincinnati Area offers a wide variety of both entertainment and cultural facilities			



BIG BONE STATE PARK



BOONE COUNTY HIGH SCHOOL
FLORENCE, KENTUCKY

HISTORY

Boone County, the thirtieth county formed in Kentucky, contains 249 square miles and dates from 1798. Its territory was taken from Campbell County. The Ohio River flows along its northern and western sides. Starting near the town of Grant, a giant bend in the river protrudes westward then curves south and eastward to Hamilton forming a huge nose to associate with the high forehead north of Grant through Petersburg to Veneeda in the northernmost part of Kentucky. These curves in the river mark a geographical boundary line that resembles the profile of a human face looking westward. No geographical formation could more completely reflect the spirit of Daniel Boone, for whom the county was named, than this human likeness which looks out over Western Kentucky as if longing to explore unknown areas beyond the Mississippi. The surface of the county is generally hilly with some level spaces back from the escarpment that lies along the river. Most of the land is tillable, and the soil is fairly fertile. Numerous small streams in the county flow into the Ohio River.

Boone County contains evidence of the Adena culture. A large number of earthenware vessels, copper bracelets, pendants, rings, and breastplates have been found in earth mounds and radioactive carbon tests indicate an age of over 1,200 years.

The first white visitors to come to Boone County included a French Captain named Longueil who discovered Big Bone Lick in 1739. In 1751 Robert Smith carried two teeth of a mastadon from the place for Christopher Gist who wanted to give his employer a memento from the west. Some five years later Mrs. Mary Ingels was taken there by the Indians, from whom she made a dramatic escape. Thomas Bullitt, James Douglas, and James Harrod made a survey of Big Bone Lick in 1773, which was followed the next year by a survey made by John Floyd.

The first settlement was made in 1783 at Petersburg by Robert Tanner, a Baptist preacher. Two years later John Hindman, William West, John Seft and their families arrived from Pennsylvania. Tanner's Station, later known as Petersburg, consisted of a blockhouse and stockyard and soon became the nucleus of a thriving river trade.

During the Civil War John Hunt Morgan's Raiders, while on a reconnoitering expedition, were opposed by a larger Federal command under General Lew Wallace at Florence in the eastern part of Boone County. Morgan's forces were able to rout Wallace's men by the spirited manner of their attack.

Boone County was named for Daniel Boone, a native of Exeter Township near Reading, Pennsylvania. He came to Kentucky via the Yadkin River Valley in North Carolina.

Burlington, the county seat, is 848 feet above sea level and was incorporated in 1824. When Boone County was organized John Craig and Robert Johnson donated 74 acres for a county seat site. Burlington is located in a prosperous farm trading center which produces grain, tobacco, and other agricultural products.

The 1850 population of Boone County was 11,185. The population fluctuated until it reached its 1910 level of 9,420. From 1910 the population of Boone County grew rapidly, reaching 32,812 in 1970.

Agriculture accounted for 670 of the county's 13,470 employed in 1973, with burley tobacco, corn, milk, cattle, and hogs the principal products. Manufacturing employment in the county increased from 268 in 1963 to 4,450 in 1973. There are 42 industrial firms operating in Boone County.

The Greater Cincinnati Airport at Florence is served by seven major airlines which provided service to over 2.7 million passengers in 1973. Interstate highways afford other modern transportation to the area.

Major John P. Gaines served five terms in the Kentucky Legislature, fought in the Mexican War, represented his district in the United States Congress, and was territorial Governor of Oregon at the time of his death in 1853. John U. Lloyd wrote Stringtown on the Pike which depicted the locale of Florence, his native town.