

1973

Industrial Resources: Knox County - Barbourville

Kentucky Library Research Collections
Western Kentucky University, spcol@wku.edu

Follow this and additional works at: https://digitalcommons.wku.edu/knox_cty



Part of the [Business Administration, Management, and Operations Commons](#), [Growth and Development Commons](#), and the [Infrastructure Commons](#)

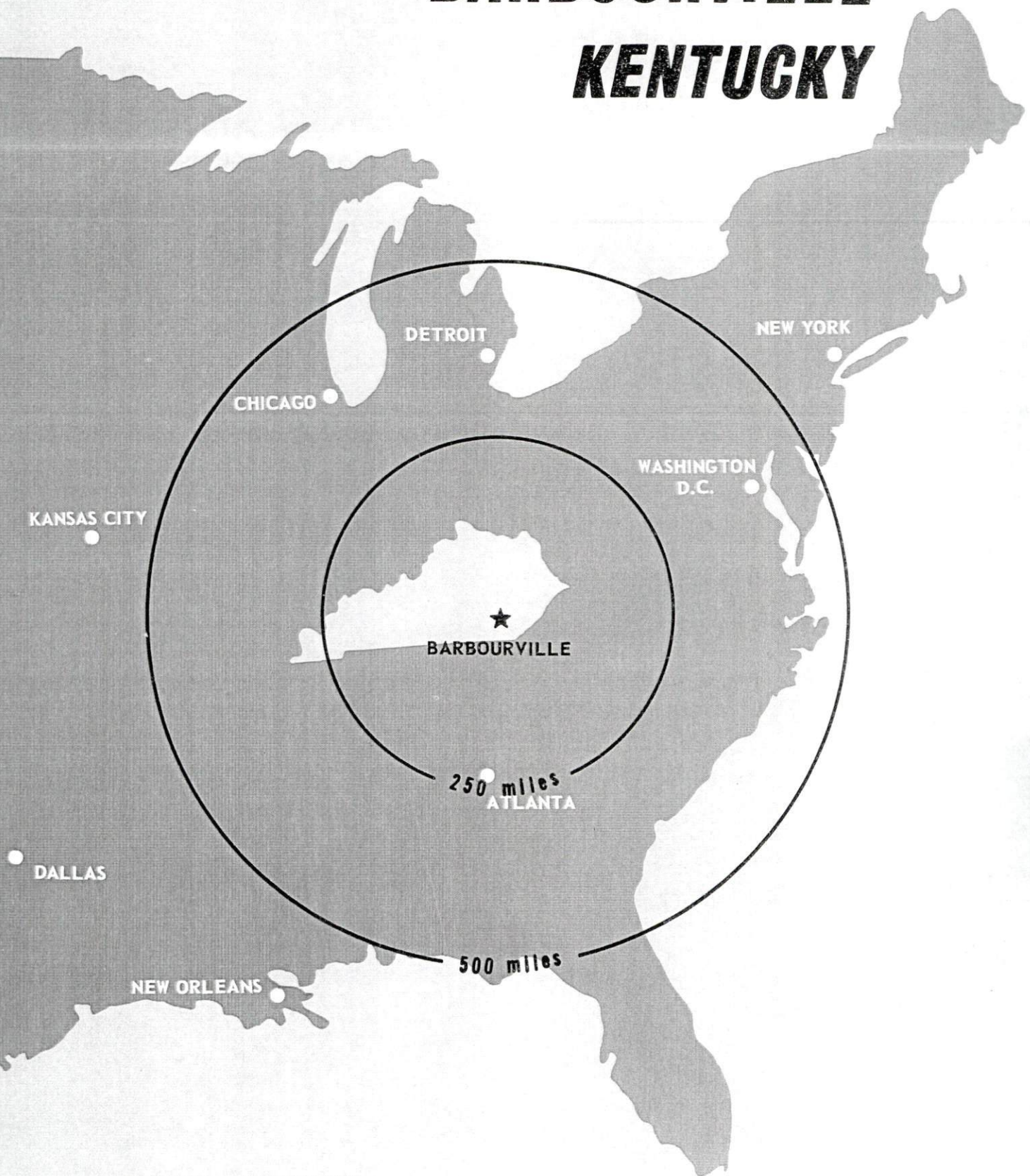
Recommended Citation

Kentucky Library Research Collections, "Industrial Resources: Knox County - Barbourville" (1973). *Knox County*. Paper 12.
https://digitalcommons.wku.edu/knox_cty/12

This Report is brought to you for free and open access by TopSCHOLAR®. It has been accepted for inclusion in Knox County by an authorized administrator of TopSCHOLAR®. For more information, please contact topscholar@wku.edu.

INDUSTRIAL RESOURCES

BARBOURVILLE **KENTUCKY**



KNOX COUNTY, KENTUCKY

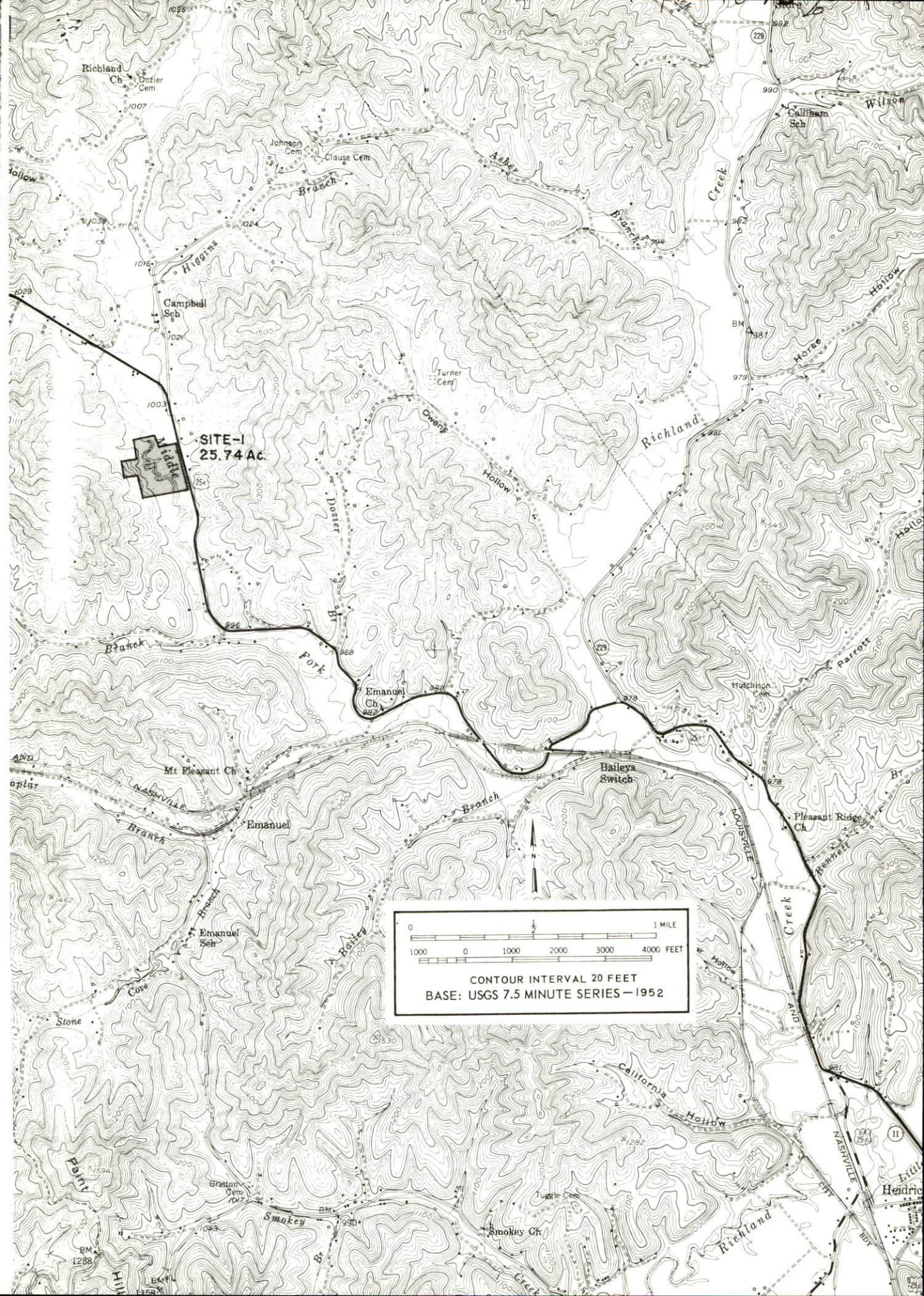
BARBOURVILLE INDUSTRIAL SITE

1973

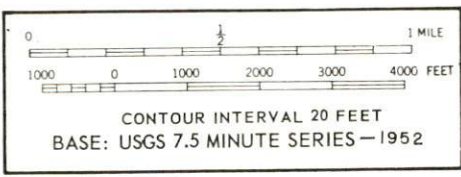
BARBOURVILLE INDUSTRIAL SITE

For more information about the following site, contact Charles Buchanan, Knoxco Improvement Company, Barbourville, Kentucky; or the Kentucky Department of Commerce, Capital Plaza Office Tower, Frankfort, Kentucky.

SITE # 1: ACREAGE: 25.74 acres
 LOCATION: Approximately 6.5 miles northwest of
 Barbourville
 ZONING: None
 HIGHWAY ACCESS: Fronts on U.S. 25-E
 RAILROADS: Not rail served
 WATER: Richland Water District
 SIZE LINE: 10-inch water line on property along west side
 of U.S. 25-E
 GAS: Peoples Gas Company
 ELECTRICITY: Cumberland Valley RECC
 SEWERAGE: Package plant
 OPTIONED BY: Knoxco Improvement Company



SITE-1
25.74 AC.



CONTOUR INTERVAL 20 FEET
BASE: USGS 7.5 MINUTE SERIES - 1952

INDUSTRIAL RESOURCES
BARBOURVILLE, KENTUCKY

Prepared by
The Kentucky Department of Commerce
in cooperation with
The Knox County Chamber of Commerce

1973

This copy has been prepared by the Kentucky Department of Commerce,
Division of Research and Planning, and the cost of printing paid from
state funds.

TABLE OF CONTENTS

<u>Chapter</u>	<u>Page</u>
INDUSTRIAL SITES	i
BARBOURVILLE, KENTUCKY - A RESOURCE PROFILE	1
THE LABOR MARKET	5
Population Trends	5
General Employment Characteristics, 1971	5
Manufacturing Employment Trends by Industry	5
Barbourville Manufacturing Firms, Their Products and Employment	6
Wage Rates for Selected Occupations	6
Labor Organizations	7
Current and Future Labor Supply	7
Total Personal Income	7
Per Capita Personal Income	7
EDUCATION	8
Public Schools	8
Parochial	8
Vocational Schools	11
Colleges and Universities	11
TRANSPORTATION	14
Rail	14
Truck Service	14
Air	15
Bus	15
Taxi	15
Rental Services	15
POWER AND FUEL	16
Electricity	16
Natural Gas	16
Other Fuels	17
WATER AND SEWERAGE	18
Water	18
Sewerage	19

<u>Chapter</u>	<u>Page</u>
LOCAL GOVERNMENT	21
City	21
County	21
Assessed Value of Property, 1972	21
Local General Property Tax Rates Per \$100 of Assessed Valuation, 1972	21
Planning and Zoning	21
Safety	22
Police	22
Fire	22
Rescue Service	22
Sanitation	22
HEALTH	23
Hospitals	23
Nursing Homes	23
Public Health	23
OTHER LOCAL FACILITIES	24
Communications	24
Library Services	24
Religious Institutions	25
Financial Institutions	25
Hotels and Motels	25
Clubs and Organizations	25
RECREATION	27
Local	27
Area	27
AGRICULTURE - NATURAL RESOURCES - CLIMATE	29
Agriculture	29
Natural Resources	29
Climate	29
HISTORY	30

GENERAL HIGHWAY MAP
KNOX COUNTY
KENTUCKY

PREPARED BY THE
KENTUCKY DEPARTMENT OF HIGHWAYS
DIVISION OF PLANNING

IN COOPERATION WITH THE
U.S. DEPARTMENT OF TRANSPORTATION
FEDERAL HIGHWAY ADMINISTRATION
BUREAU OF PUBLIC ROADS

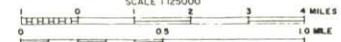
SCALE 1:250,000

0 1 2 3 4 MILES

0 0.5 1.0 MILE

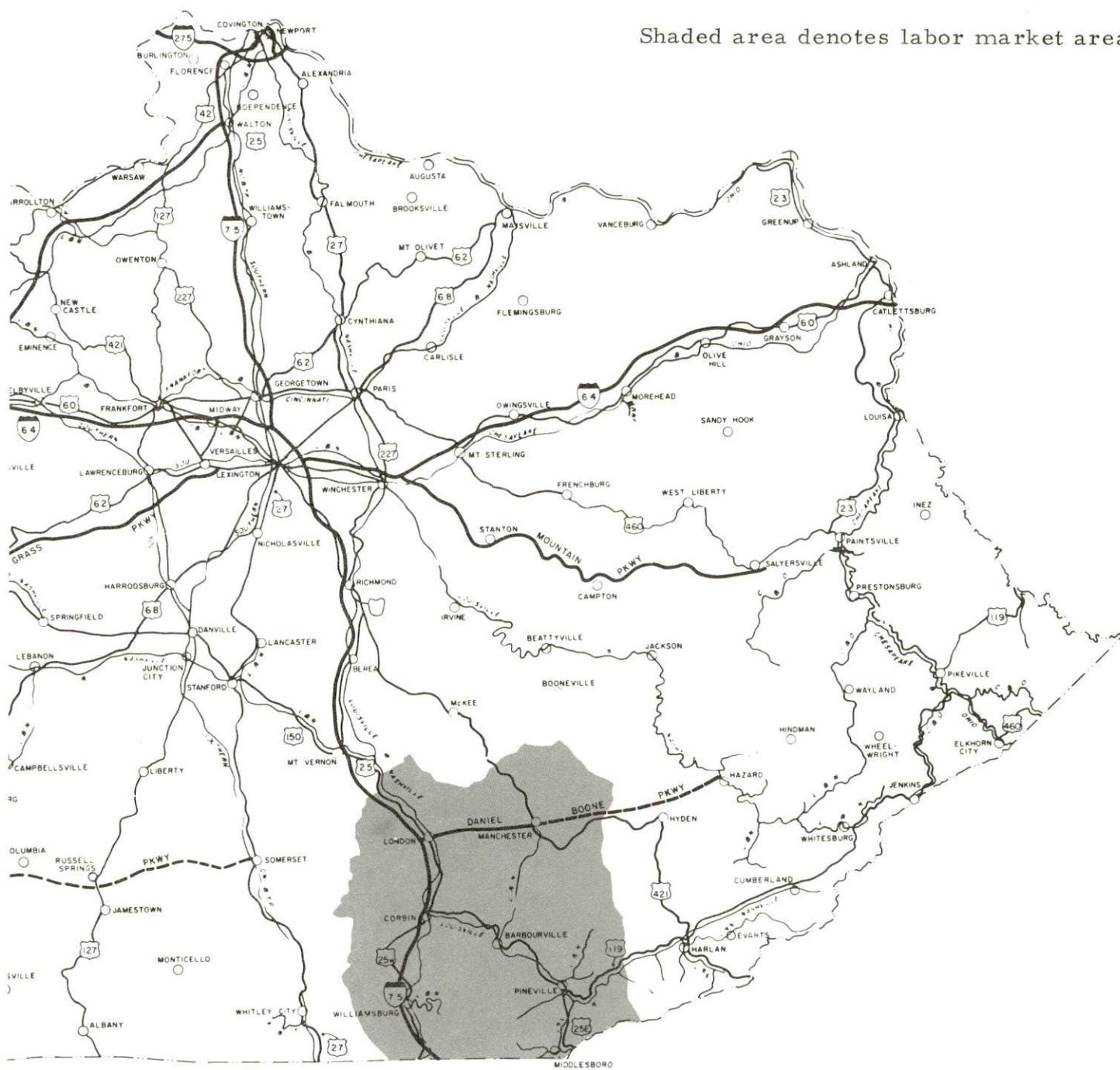
SCALE FOR ENLARGEMENTS

POLYCONFC PROJECTION

[illegible]

BARBOURVILLE LABOR MARKET AREA

Shaded area denotes labor market area



BARBOURVILLE, KENTUCKY - A RESOURCE PROFILE

Location

Barbourville is located in the historic Cumberland Gap area of southeastern Kentucky. Originally a western station on Daniel Boone's Wilderness Trail to the west, Barbourville still retains its pioneer heritage and cultural blend of east and west. Barbourville, on U. S. Highway 25-E and 18 miles from Interstate 75, is 103 miles south of Lexington, 187 miles southeast of Louisville, and 105 miles north of Knoxville, Tennessee. The 1970 Knox County population was 23,689 while Barbourville, the county seat, had a 1970 population of 3,549.

The Economic Framework

Total employment in Knox County averaged 4,680 in 1971 with manufacturing providing 800 jobs, trade and services 1,330 jobs, and government 1,030 jobs. Since 1961 manufacturing employment has increased by approximately 150 percent. Major industrial employment is in the apparel, lumber, machinery and metal products industries. A new manufacturing plant is now under construction in Barbourville. Upon completion the plant will provide employment for an estimated 500 workers.

Per capita personal income in the county in 1970 was \$1,608. Between 1960 and 1970, per capita personal income in the county increased approximately 221 percent.

The Barbourville labor market area includes Knox County and the four adjoining Kentucky counties. In 1971, employment in the labor market area totaled 30,620 with manufacturing providing 4,890 jobs, trade and services 9,375 jobs, and government 5,790 jobs. Since 1961 manufacturing employment in the area has increased approximately 150 percent with the sharpest gains in the apparel, textiles, machinery, metal products, and paper products industries.

Despite industrial gains in recent years, this area still has a deficit of 6,804 manufacturing jobs when measured against the national industrial employment-population ratio. This indicates an area where the potential for additional manufacturing production is excellent.

Resources for Growth

1. There is a current estimated labor supply of 16,435 men and 13,275 women available for industrial jobs in Knox County and the surrounding Kentucky counties. In addition, 7,100 young men and 6,770 young women in the labor market area will become 18 years of age by 1978 and potentially available for employment.

2. The Louisville & Nashville Railroad serves Barbourville with a variety of services. Major highway access is by Kentucky Highways 6, 11, 225 and 459. U. S. Highway 25-E is being reconstructed into a four-lane highway between Corbin and Barbourville and is to be completed in the fall of 1973. Interstate 75 is only 18 miles away. Commercial air service is available at the London-Corbin War Memorial Airport, 31 miles distant.

3. Electrical power is available in large quantity from the Barbourville Water and Electric Company in the Barbourville area. Kentucky Utilities and Cumberland Valley RECC serve Knox County.

4. One industrial site is available in Knox County. This site is located approximately 6 1/2 miles northwest of Barbourville and contains 25.74 acres.

5. Education is an important asset for Knox County's future development. Two school systems operate in the county, and educational television is available. Two senior colleges, two community colleges and one junior college are located within 75 miles of Barbourville.

Union College, founded in 1879 by citizens of Barbourville and Knox County, and now related to The United Methodist Church, is located in Barbourville and has assets in excess of \$8 million. The college enrolls 950-1,000 students and offers five degrees: Associate of Science, Bachelor of Science, Bachelor of Arts, Bachelor of Music, and Master of Arts in Education. Majors and minors are available in 26 academic disciplines.

Community Programs for Improvement

Recent community improvements include - A new bank, a clothing store, an extensive personal care home with 125 beds, student and science buildings at Union College, fire fighting equipment and fire station, a renovated building to house 20 offices, two new elementary schools, additions to three elementary schools, renovation of Lynn Camp High School, an addition to the Barbourville water treatment plant and the purchase of land by the Barbourville Water and Electric Company for a future sewage treatment facility.

Construction is underway on a new four-lane access road from Corbin to Barbourville.

In the planning stages are a small craft airport, an F. M. radio station, 120 low-rent housing units, and a new elementary school.

Recreation, Entertainment and Livability

The Daniel Boone Festival is observed in Barbourville in October of each year. This unique event recalls the life and times of the pioneers in the late 18th century. It is the celebration of a treaty between Kentucky and the Cherokee Indians. Highlights are a giant outdoor barbecue, a frontier parade, a coronation of two queens, Miss Kentucky Long Rifle and Miss Daniel Boone Festival. Featured each year is a long rifle shooting contest between riflemen of Kentucky and one of the other nearby states.

The Book of Job, an outdoor drama hailed on three continents as a masterpiece, has been presented annually during July and August at Pine Mountain State Resort Park since 1959.

Pine Mountain State Resort Park, 14 miles from Barbourville is a 2,500-acre park. Facilities include a 20-room lodge, pool, cottages and camp grounds. Recreational facilities include: swimming, riding, hiking, shuffle board and golfing.

Dr. Thomas Walker State Shrine, 5 miles away, is a 12-acre park with playground and picnic shelter.

Levi Jackson Wilderness Road State Park, 30 miles distant, is an 815-acre park. The facilities include: riding, hiking, shuffle board, picnicking, and archery.

Cumberland Falls State Resort Park, 30 miles away, is located in the Daniel Boone National Forest and has 1,720 acres. The accommodations include an air conditioned lodge and cottages. The recreational facilities are an Olympic-size swimming pool, fishing, horseback riding, hiking, and picnicking.

Cumberland Falls, 30 miles distant, famous for its falls, is called the "Niagara of the South." The rushing Cumberland River thunders 68 feet over a rock precipice into a boulder-studded gorge with a mighty roar. The falls are 150 feet wide. One of the only two moonbows in the world is visible here during the phase of the full moon. The other moonbow is over Victoria Falls in South Africa.

Kentucky Ridge State Forest, 14 miles distant, has 11,987 acres. It is the second largest state forest, and is open for hiking, camping, and picnicking.

Daniel Boone National Forest is 25 miles away. The forest covers over one-half million acres of timberland in eastern Kentucky. It encompasses much of Kentucky's greatest beauty and provides a vacation

paradise. There are scenic hiking trails, rivers, and creeks stocked with rainbow trout; special hunting preserves; and many hiking, camping, and fishing facilities. The highest point in the forest is in southern Whitley County at Wolf Knob - 2,245 feet.

Cumberland Gap National Park, 30 miles distant, is the largest national historical park in the U.S. - 20,168 acres. Facilities include a frontier museum, an old settlement (Hensley), and hiking trails.

THE LABOR MARKET

POPULATION TRENDS ^{1/}

Area	Population			Percent Change	
	1970	1960	1950	1960-70	1950-60
Barbourville	3,549	3,211	2,926	+10.5	+ 9.3
Labor Market Area	124,822	132,058	158,864	- 5.5	-16.9
Knox County	23,689	25,258	30,409	- 6.2	-16.9
Bell County	31,121	35,336	47,602	-12.0	-25.8
Clay County	18,481	20,748	23,116	-10.9	-10.2
Laurel County	27,386	24,901	25,797	+10.0	- 3.5
Whitley County	24,145	25,815	31,940	- 6.5	-19.2

GENERAL EMPLOYMENT CHARACTERISTICS, 1971 ^{2/}

Major Employment Group	Employment	
	Knox County	Labor Market Area
TOTAL	4,680	30,620
Agricultural	340	2,680
Nonagricultural	4,340	27,940
Manufacturing	800	4,890
Government	1,030	5,790
Trade and Services	1,330	9,376

MANUFACTURING EMPLOYMENT TRENDS BY INDUSTRY SEPTEMBER 1971 AND 1961 ^{3/}

Industry	Knox County			Labor Market Area		
	1971	1961	% Change	1971	1961	% Change
TOTAL	846	338	+150.3	5,024	2,006	+150.4
Food & Kindred						
Products	12	6	+100.0	753	512	+ 47.1
Tobacco	2	0	--	4	1	+300.0
Apparel, Textiles,						
Leather	300	147	+104.1	1,653	328	+403.9
Lumber, Furniture	222	169	+ 31.4	1,010	817	+ 23.6
Printing, Publishing						
& Paper	8	7	+ 14.3	578	104	+451.9
Chemicals, Petroleum						
& Coal, Rubber	0	0	0	131	84	+ 55.9
Stone, Clay & Glass	15	9	+ 66.7	99	91	+ 8.8
Machinery, Metal						
Products, Equip.	287	0	--	796	64	+1,143.8
Other	0	0	0	0	5	-100.0

BARBOURVILLE MANUFACTURING FIRMS,
THEIR PRODUCTS AND EMPLOYMENT ^{4/}

<u>Firm</u>	<u>Product</u>	<u>Employment</u>		
		<u>Total</u>	<u>Male</u>	<u>Female</u>
Advocate Publishing Co.	Newspaper and commercial printing	6	5	1
Barbourville Kiln Drying Co., Inc.	Kiln dried lumber	18	18	0
Cumberland Charcoal Corp.	Charcoal	9	9	0
East Kentucky Steel, Inc.	Hollow metal door & frames	27	27	0
Knox Concrete Products Co., Inc.	Ready mixed concrete, concrete septic tanks	15	15	0
Lawson Furniture Co.	Wood tables, upholstered furniture	60	45	15
Marshall Lumber Co.	Lumber	25	25	0
Tremco Mfg. Co. (under construction)	Industrial sealants	500 (estimated)		
Viall Lumber Co., Inc.	Hardwood lumber, trailer truck flooring	80	80	0
Warner Warnaco, Inc.	Brassieres, girdles	281	15	266
E.K. Wood Products Co.	Furniture dimension, kitchen cabinet moldings	46	45	1

WAGE RATES FOR SELECTED OCCUPATIONS
BARBOURVILLE, KENTUCKY ^{5/}

<u>Classification</u>	<u>Wages Per Hour</u>		
	<u>Starting</u>	<u>Maximum</u>	<u>Prevailing</u>
<u>Production Employees</u>			
Assembler	\$1.60	\$2.00	\$1.80
Inspector	1.60	2.10	1.90
Production Laborer	1.60	2.00	1.85
Sewing Machine Operator	1.60	2.75	1.85
<u>Service Employees</u>			
Electrician	3.00	5.25	4.25
Laborer	1.60	2.25	1.80
Crane Operator	2.50	3.50	3.20
Shipping Clerk	1.60	2.25	2.00
Truck Driver	1.60	3.50	2.50

(cont.)

<u>Classification</u>	<u>Wages Per Hour</u>		
	<u>Starting</u>	<u>Maximum</u>	<u>Prevailing</u>
<u>Office Employees</u>			
Bookkeeper	\$1.75	\$3.00	\$2.25
File Clerk	1.60	2.00	1.75
Receptionist	1.60	2.00	1.80
Secretary	1.60	2.50	2.00
Typist	1.60	2.20	1.80

LABOR ORGANIZATIONS

There are no unions representing manufacturing workers in Barbourville at this time.

CURRENT AND FUTURE LABOR SUPPLY - BARBOURVILLE LABOR MARKET AREA

<u>Area</u>	<u>Current Labor Supply, 1972 ^{6/}</u>			<u>Future Labor Supply by 1978 ^{7/}</u> <u>(Becoming 18 Years of Age)</u>		
	<u>Total</u>	<u>Male</u>	<u>Female</u>	<u>Total</u>	<u>Male</u>	<u>Female</u>
Labor Market Area	29,708	16,437	13,271	13,873	7,101	6,772
Knox	5,658	3,253	2,405	2,530	1,200	1,330
Bell	7,154	3,786	3,368	3,476	1,810	1,666
Clay	4,869	2,815	2,054	2,311	1,184	1,127
Laurel	5,678	2,982	2,696	2,973	1,494	1,479
Whitley	6,349	3,601	2,748	2,583	1,413	1,170

TOTAL PERSONAL INCOME ^{8/}

<u>Area</u>	<u>1970</u>	<u>1960</u>	<u>% Change</u>
Knox County	\$ 35,004,000	\$ 12,659,000	+176.8
Labor Market Area	225,750,000	103,280,000	+118.6
Kentucky	9,719,647,000	4,779,695,000	+103.4

PER CAPITA PERSONAL INCOME ^{9/}

<u>Area</u>	<u>1970</u>	<u>1960</u>	<u>% Change</u>
Knox County	\$1,608	\$ 501	+221.0
Labor Market Area			
Range	\$1,299 to 2,242	\$501 to 995	N.A.
Kentucky	3,019	1,573	+ 91.9

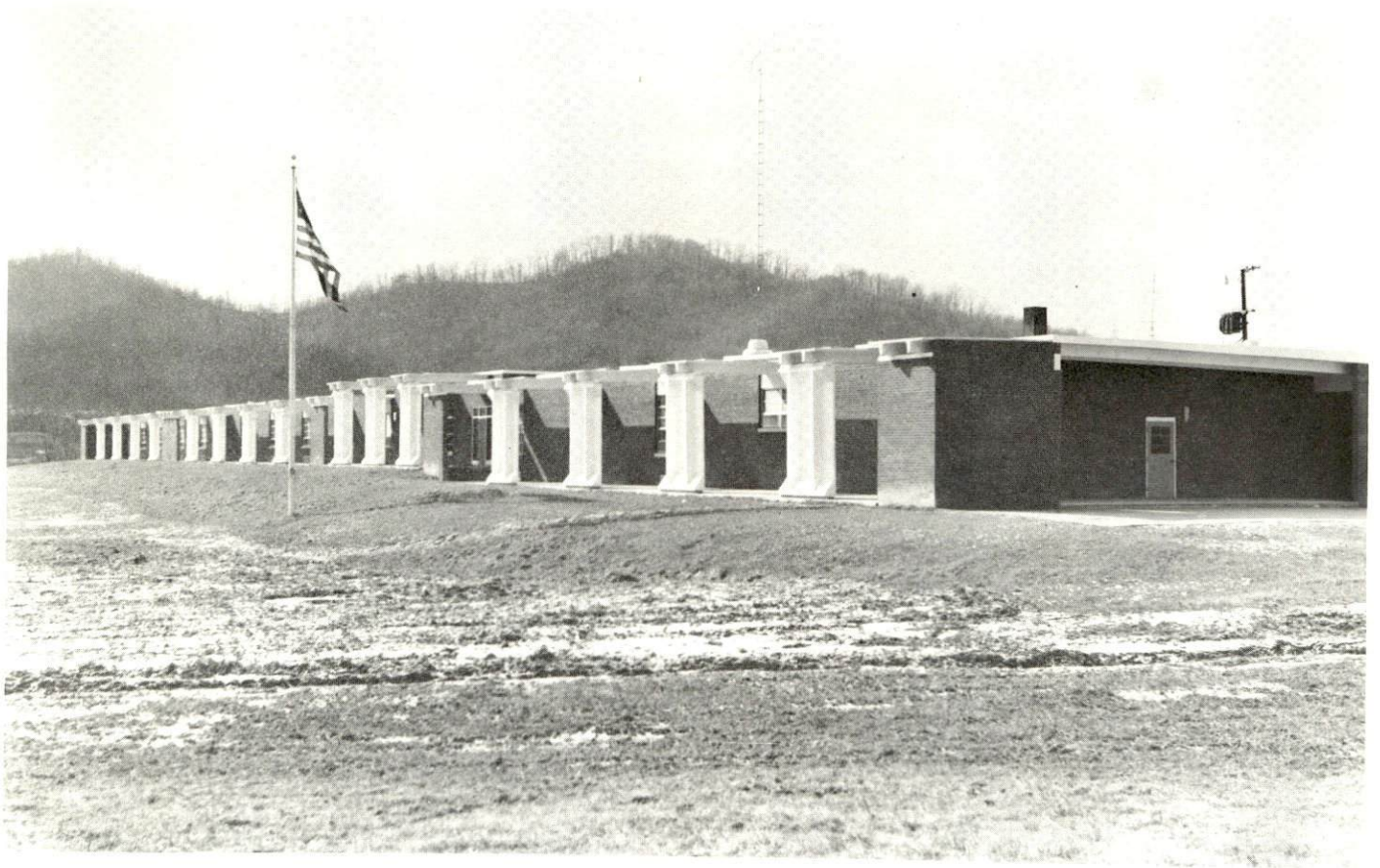
EDUCATION

Public Schools

	<u>Barbourville Independent</u>	<u>Knox County</u>
Total Enrollment	526	5, 532
Elementary	270 (grades 1-6)	4, 112
High School	256 (grades 7-12)	1, 420
Student-Teacher Ratio	18-1	25-1
Elementary	21-1	26-1
High School	17-1	23-1
State Rating of High School	Basic	Standard Comprehensive
Other Accreditations		The Southern Association of Colleges & Schools
Percent High School Graduates to College	53.8	34.8
Current Expenditures Per Pupil	\$467.07	\$457.62
Bonded Indebtedness, June 30, 1971	\$211,000	\$2,363,000

Parochial School

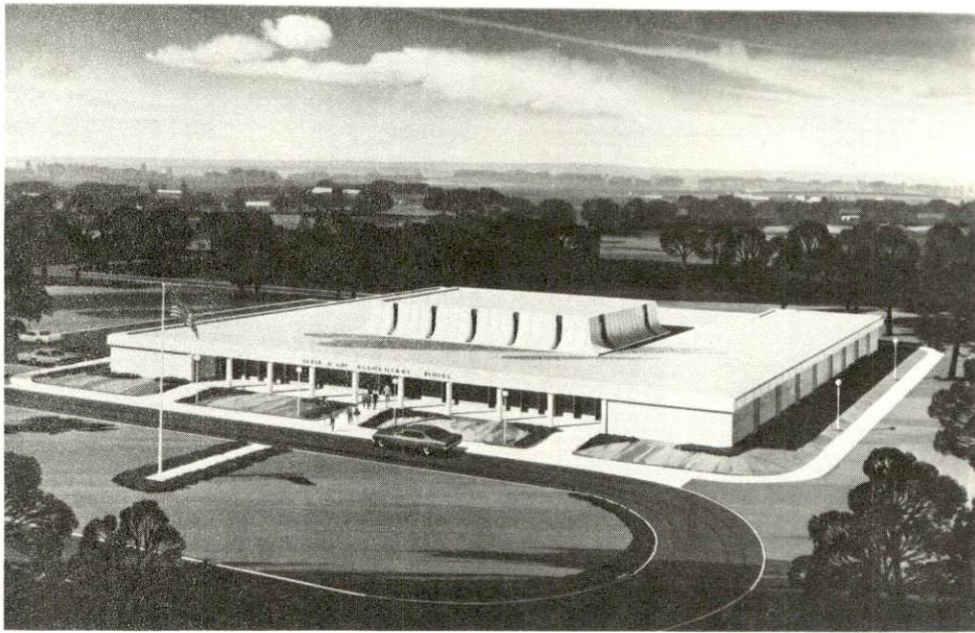
	<u>St. Gregory</u>
Total Enrollment	27
Elementary	27
Student-Teacher Ratio	14-1
Elementary	14-1



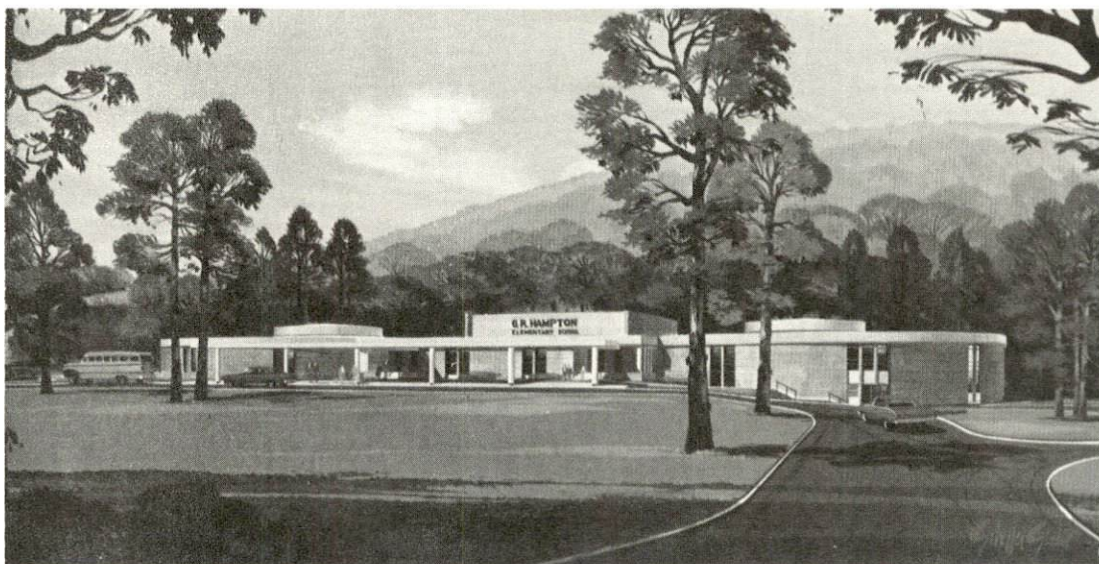
BOONE ELEMENTARY SCHOOL



KNOX CENTRAL HIGH SCHOOL



JESSE D. LAY ELEMENTARY SCHOOL



G. R. HAMPTON ELEMENTARY SCHOOL

Vocational Schools

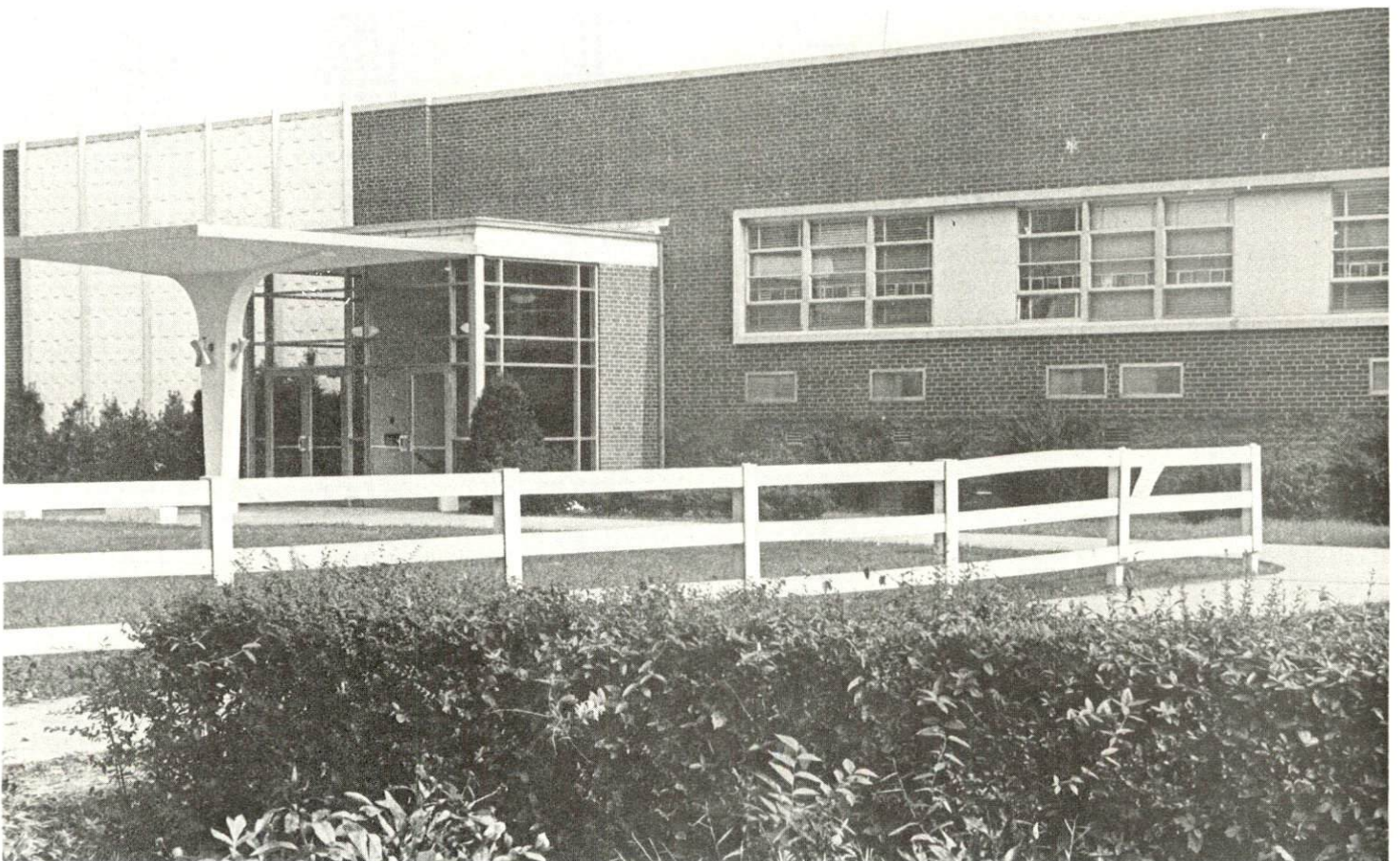
	<u>Nearest State School</u>	<u>Nearest Area Education Center</u>
Location	Harlan Area Vocational Technical School	Knox County Vocational Extension Center
Miles Distant	Harlan, Kentucky	Barbourville, Kentucky
Curriculum	51 miles	
	Health Careers	Appliance Repair
	Child Care	Auto Mechanics
	Food Service	Carpentry
	Learning Lab	Drafting
	Electronics (Industrial)	Electricity
	Air Conditioning and Refrigeration	Welding
	Auto Body Repair	
	Auto Mechanics	
	Carpentry	
	Drafting	
	Electricity	
	Machine Shop	
	Mine Maintenance	
	Welding	

Colleges and Universities

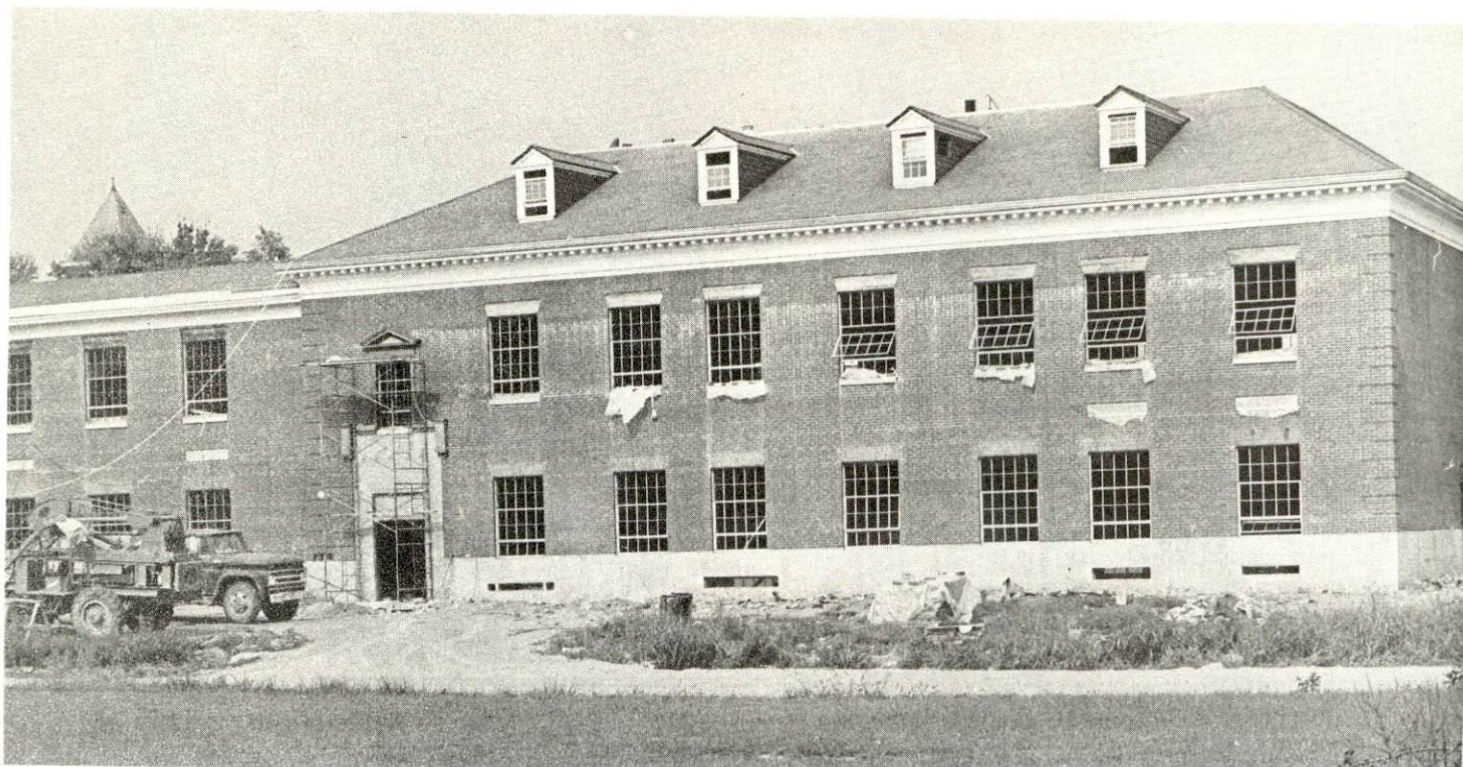
<u>Name</u>	<u>Area - Within 75 miles</u>		<u>Highest Degree Conferred</u>
	<u>Location</u>	<u>Enrollment</u>	
Sue Bennett Junior College	London	181	Associate
Union College	Barbourville	902	Masters
Southeast Community College	Cumberland	340	Associate
Somerset Community College	Somerset	682	Associate
Cumberland College	Williamsburg	1,807	Baccalaureate



PFEIFFER HALL, UNION COLLEGE



STUDENT CENTER, UNION COLLEGE



SCIENCE BUILDING UNDER CONSTRUCTION, UNION COLLEGE



PHYSICAL EDUCATION BUILDING, UNION COLLEGE

TRANSPORTATION

Rail

Line serving Barbourville - Louisville & Nashville Railroad

Services - Freight, switching, siding - (REA Express delivered from Corbin)

RAILWAY TRANSIT TIME FROM BARBOURVILLE, KENTUCKY TO: 10/

City	No. of Days		City	No. of Days	
	CL			CL	
Atlanta, Ga.	2		Los Angeles, Calif.	5	
Birmingham, Ala.	4		Louisville, Ky.	2	
Chicago, Ill.	3		Nashville, Tenn.	3	
Cincinnati, Ohio	2		New Orleans, La.	4	
Cleveland, Ohio	3		New York, N. Y.	4	
Detroit, Mich.	4		Pittsburgh, Pa.	4	
Knoxville, Tenn.	1		St. Louis, Mo.	3	

Truck Service

Company

Home Office

Consolidated Freightways	Menlo Park, California
Mason & Dixon Lines, Inc.	Kingsport, Tenn.
McDuffee Motor Freight, Inc. (United Trucking)	Detroit, Michigan

HIGHWAY MILES AND TRUCK TRANSIT TIME IN DAYS FROM BARBOURVILLE, KENTUCKY, TO SELECTED MARKET CENTERS

City	Delivery			City	Delivery		
	Highway Miles	Time ^{11/}			Highway Miles	Time	
		LTL	TL			LTL	TL
Atlanta, Ga.	297	3	2	Los Angeles, Calif.	2,357	6	4
Birmingham, Ala.	357	4	2	Louisville, Ky.	187	1	1
Chicago, Ill.	486	4	2	Nashville, Tenn.	290	2	1
Cincinnati, Ohio	184	1	1	New Orleans, La.	696	3	2
Cleveland, Ohio	436	3	2	New York, N. Y.	883	4	3
Detroit, Mich.	450	3	2	Pittsburgh, Pa.	523	3	2
Knoxville, Tenn.	105	1	1	St. Louis, Mo.	451	3	2

Air

Nearest Commercial

Location: London-Corbin War Memorial
London, Kentucky, 31 miles from
Barbourville

Runways: 1 paved

Length: 6,000 feet

Traffic Control: Wind sock

Lighting: Beacon, runway and obstruction lights

Services: 80 and 100 octane, JP-A-50, Piedmont
Airlines, taxi, U-Drive-It, weather,
flight training, charter and ambulance
service, vending machines

Bus

Southern Greyhound Bus Line, Stinking
Creek Bus Line

Taxi

15 companies, 24-hour service

Rental Services

Car rentals at London-Corbin War Memorial
Airport, 31 miles distant
U-Haul service at Barbourville

POWER AND FUEL

Electricity

Company serving Barbourville - Barbourville Water and Electric Co.

Source of power - Kentucky Utilities Company

Total generating capacity - 1,215,000 KW

Industrial rates furnished by - Barbourville Water and Electric Company, Barbourville, Kentucky

Company serving Knox County - Cumberland Valley RECC

Source of power - East Kentucky Power Cooperative

Total generating capacity - 548,000 KW

Industrial rates furnished by - Cumberland Valley RECC, Gray, Kentucky

Company serving Knox County - Kentucky Utilities Company

Source of power - Kentucky Utilities Company

Total generating capacity - 1,215,000 KW

Industrial rates furnished by - Kentucky Utilities Company, Corbin, Kentucky

Natural Gas

Company serving Barbourville - Peoples Gas Company of Kentucky

Source of supply - Wiser Oil Company

Size of transmission mains - 6 and 8 inches (supplier)

Distribution mains - 4 and 6 inches

Distribution pressure - 10 to 25 psi

Btu content - 1,000+

Specific gravity - .650

Rates - (Industrial)

Summer

First	1,000,000 cu. ft.	\$600.00
Next	1,000,000 cu. ft.	.58 per Mcf
All over	2,000,000 cu. ft.	.56 per Mcf

Winter

First	1,000,000 cu. ft.	\$770.00
Next	1,000,000 cu. ft.	.70 per Mcf
All over	2,000,000 cu. ft.	.69 per Mcf

Company serving Knox County - Knox Gas, Inc.

Source of supply - Cumberland Valley Pipeline Company

Size of transmission mains - 6 and 8 inches (supplier)

Distribution mains - 3 and 4 inches

Distribution pressure - 15 to 80 psi

Btu content - 1,050

Specific gravity - .58

Rates - (General Service)

First	2,000 cu. ft. or less per month	\$3.09 (minimum)
Next	8,000 cu. ft.	1.2119 per Mcf
Next	5,000 cu. ft.	1.1119 per Mcf
All over	15,000 cu. ft.	.8619 per Mcf

Other Fuels

Propane and butane - Lewis LP Gas, Barbourville; Barton Gas, Barbourville

Fuel Oils

Distillate fuel oil distributors - Union 76 (Bulk Station) Barbourville,
Standard Oil (Bulk Station) Barbourville, Gulf Oil (Bulk Station)
Knox County, Texaco (Bulk Station) Middlesboro

Residual fuel oil - arrangements must be made with the refinery

Low sulphur content coal - available locally

WATER AND SEWERAGE

Water

Company serving Barbourville - Barbourville Water & Electric Co.

Source - Cumberland River

Treatment plant capacity - 750,000 gallons per day

Average daily consumption - 500,000 gallons

Peak daily consumption - 550,000 gallons

Type treatment - Settled, filtered, chlorinated, flocculation (with alum, lime, fluoride, potassium)

Storage capacity - 800,000 gallons

Size mains - 2, 4, 6, 8, 10, and 12 inches (avg. size - 6 and 8 inches)

Average pressure - 80 to 84 psi

MONTHLY WATER RATES FOR WHOLESALE AND INDUSTRIAL CONSUMERS

Minimum	1,500 gallons	\$2.50
Next	50,000 gallons	.80 Per Thousand
Next	23,500 gallons	.70 Per Thousand
Next	25,000 gallons	.60 Per Thousand
Next	100,000 gallons	.50 Per Thousand
Next	100,000 gallons	.40 Per Thousand
All over	300,000 gallons	.30 Per Thousand

1" Meter Minimum	5,000 gallons	\$ 5.50
2" Meter Minimum	19,000 gallons	16.50
3" Meter Minimum	39,000 gallons	32.50
4" Meter Minimum	62,000 gallons	50.00

Name of water district - Richland Water District

Area served - Northeastern Knox County

Date when water district began operating - September 4, 1972

Source of supply of treated water - Barbourville Water and Electric Company

Amount of water which can be purchased in a 24-hour period -
1,500,000 gpd

Average amount of water used in a 24-hour period - partial operation

Peak amount of water used in a 24-hour period - in partial operation
at this time

Water district storage facilities and capacities -

<u>Facility</u>	<u>Capacity</u>
Highway 25 storage tank	250,000 gallons
Highway 11 storage tank	125,000 gallons

Average pressure - 70 or 80 psi
Size mains - 4, 6, 8, and 10 inches

Monthly charge -

First	1,000 gallons	\$4.50 (minimum)
Next	2,000 gallons	1.50 per M gallons
Next	3,000 gallons	1.25 per M gallons
Next	4,000 gallons	1.00 per M gallons
Next	15,000 gallons	.90 per M gallons
Next	25,000 gallons	.80 per M gallons
Next	50,000 gallons	.70 per M gallons
All over	100,000 gallons	.60 per M gallons

Surface water source - Cumberland River

Average discharge - Cumberland River at Barbourville 1,662 cfs
(31 years USGS)

Expected ground water yield - 50 to 200 gpm over entire county

Sewerage

Company serving Barbourville - Barbourville Water and Electric
Company

Design capacity - 450,000 gallons per day

Average daily flow - 300,000 gallons (est.)

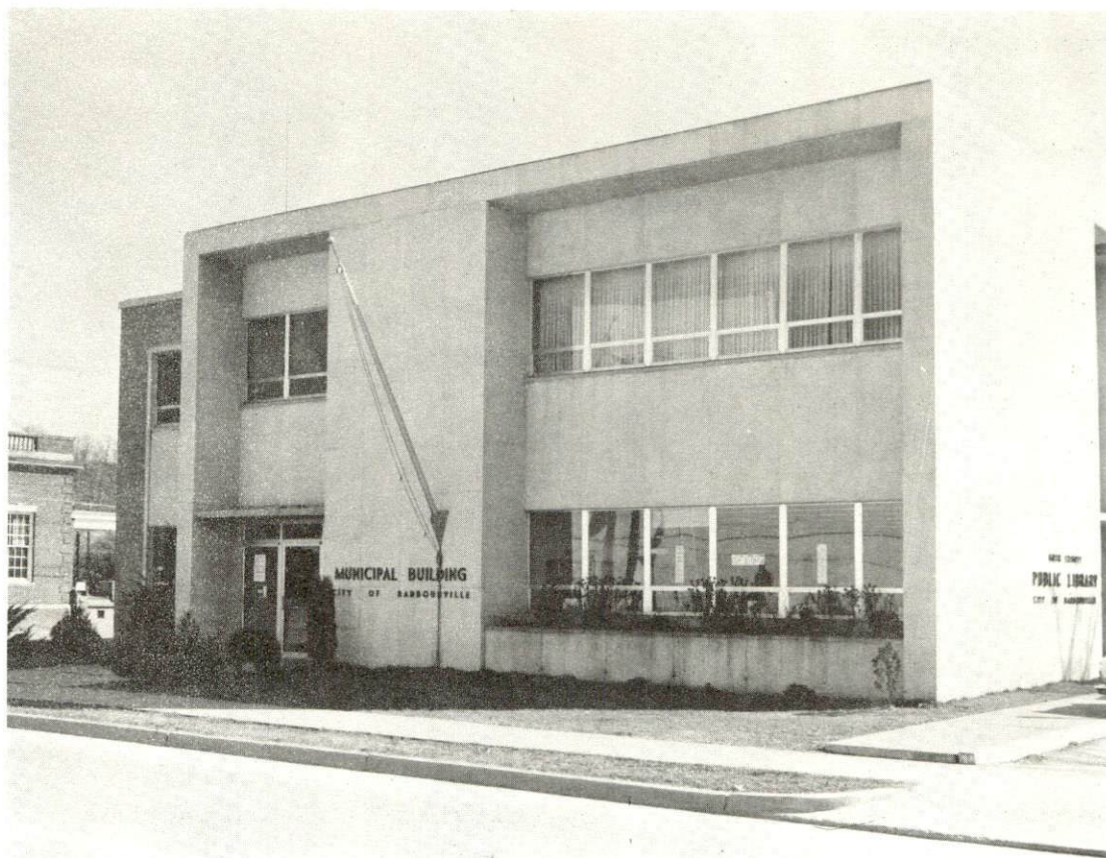
Treatment - Primary

Type treatment - Clarifier, digester, drying beds

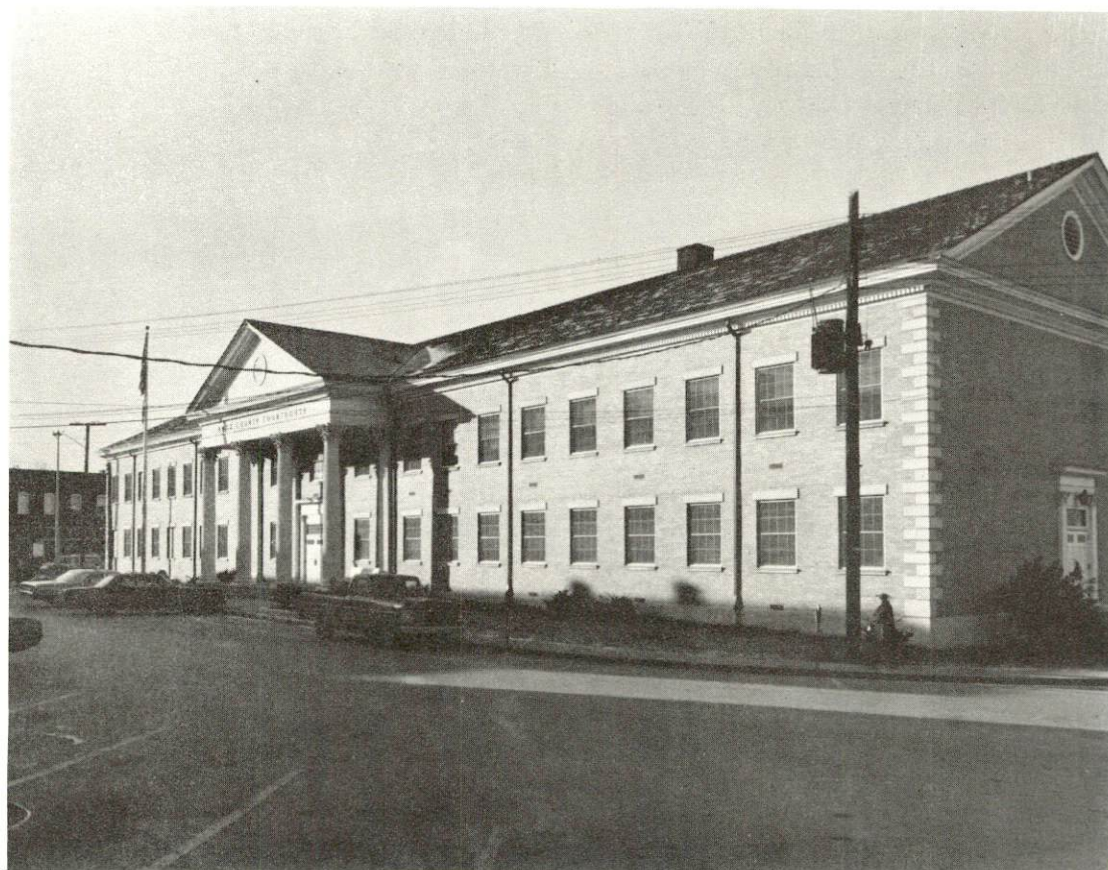
Treated effluent discharged into - Cumberland River

Size of sanitary mains - 8, 10, 12, and 15 inches

Rates - No sewerage charge at present



BARBOURVILLE MUNICIPAL BUILDING



KNOX COUNTY COURTHOUSE

LOCAL GOVERNMENT

City

Structure - Mayor - 4-year term; 6 councilmen - 2-year terms
Income 1971-72 - General Fund \$174,013; Water Fund \$114,716.20
Electric System \$463,225.58

County

Structure - County Judge - 4-year term; 8 magistrates - 4-year terms
Budget 1971-72 - General Fund \$110,480; Road Fund \$43,934

Assessed Value of Property, 1972

<u>Classes of Property</u> *	<u>Barbourville</u>	<u>Knox County</u>
Real Estate	\$9,632,295	\$42,243,866
Tangibles	3,123,691	15,069,530
Public Service		11,981,016

Local General Property Tax Rates Per \$100 of Assessed Valuation, 1972 ^{12/}

<u>Taxing Unit</u> **	<u>Barbourville</u>	<u>Knox County</u>
State	\$.015	\$.015
County	.318	.318
School	.670	.411
City	.350	
Total	\$1.353	\$.744

Planning and Zoning

Agency - Barbourville Planning Commission
Plans completed - General Plan

*Property assessed at 100 percent of fair value.

**Manufacturing machinery, raw materials inventories and goods in process inventories are not subject to local tax. State rate is only \$.15 per \$100.

Safety

<u>Police</u>	<u>Barbourville</u>	<u>Knox County</u>
Total staff	5	13
Radio-patrol cars	3	2

Fire

American Insurance

Association Fire Rating	7
Full-time staff	Day - 1 Night - 2
Volunteers	28
Equipment:	
750 gpm pumper	1
500 gpm pumpers	2
utility truck	1
Other - New building to house fire department	

Rescue Service

Knox County Rescue Squad

Number of volunteers - 30
Equipment - one ambulance, one 4-wheel drive ambulance, 15 radio equipped private cars
Personnel training - Civil Defense, first aid

Sanitation

	<u>Barbourville</u>
Type service	municipal
Fee charged:	
residential	no charge
commercial and	
industrial	contracted
Collection frequency:	
residential	twice weekly
commercial and	
industrial	contracted
Trash pickup	every day
Disposal method	State approved land fill

HEALTH

Hospitals

<u>General Hospital</u>	<u>Location</u>	<u>Beds</u>
Knox County General Hospital	Barbourville	40 acute 21 extended care

General hospital facilities - Operating room, X-ray, laboratory
emergency room, nursery, delivery room, pharmacy, EKG, blood
bank, dietary service

Medical staff - 7 medical doctors, 10 doctors on consulting staff, 1
doctor on courtesy staff, 8 registered nurses, 17 licensed practical
nurses, pathologist, radiologist, pediatrician

Nursing Homes

	<u>Number</u>	<u>Beds</u>
Extended care homes	2	71
Personal care homes (multi-purpose)	1	75

Public Health

Facility - Knox County Health Department

Staff - Sanitarian, 3 clerks, 3 registered nurses, 2 home health aides,
1 licensed practical nurse

Budget 1972-73 - \$83,065

OTHER LOCAL FACILITIES

Communications

Telephone - Kentucky Telephone Company
Services - standard

Telegraph - Western Union

Postal - U. S. Post Office
Class - first
Mail received - once daily
Mail dispatched - twice daily

Newspapers - The Barbourville Mountain Advocate
Daily and circulation - 4,000
Other papers received from - Louisville, Lexington, Corbin,
Kentucky; and Knoxville, Tennessee

Radio - WYWY AM
Stations received from - Louisville, Lexington, Corbin and London,
Kentucky; and Knoxville, Tennessee

Television -
Cable service
Reception from - Lexington, Kentucky; Knoxville, Tennessee; Asheville,
North Carolina; Bristol, Virginia
Kentucky Educational Television - Somerset transmitter - Channel 29

Library Services

Public library - Knox County Public Library
Size collection - 22,000 volumes
Circulation, 1972 - 35,000 volumes
Services - Story hour, films, records, art, projectors, phonographs,
athletic equipment, magazines and special mental health programs.

Private library - Weeks Library at Union College
Size collection - 60,000 volumes
Special collections - Library on Ecology Middlesboro Campus and
a Lincoln-Civil War collection containing 500 volumes, numerous
clippings and some artifacts
Services - Magazines, copy machine

Religious Institutions

Number of churches - 7

Denominations - Baptist, Catholic, Christian, Church of Christ, Methodist, Pentecostal, Seventh Day Adventist

Financial Institutions

<u>Bank</u>	<u>Statement as of June 30, 1972</u>	
	<u>Assets</u>	<u>Deposits</u>
Union National Bank	\$18,723,380.51	\$16,983,195.80
American Fidelity Bank	8,426,722.06	7,730,892.35

Hotels and Motels

Number - 3

Units - 54

Clubs and Organizations

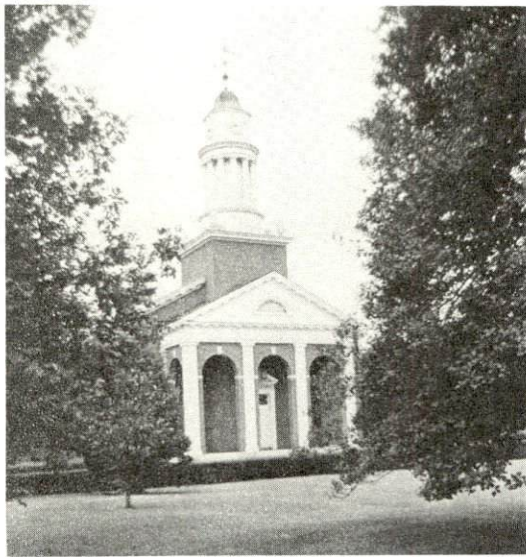
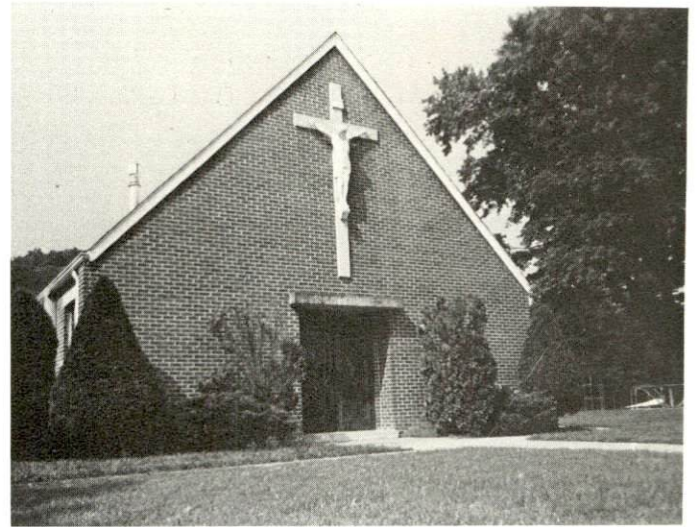
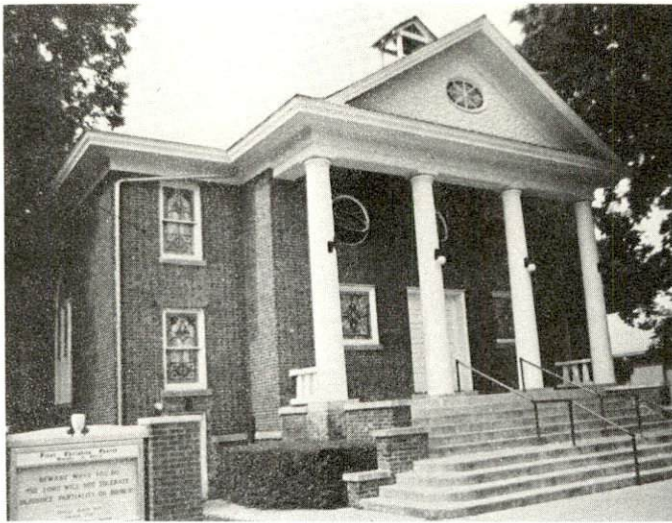
Business and Civic - Chamber of Commerce, Kiwanis, Lions, Medical Society, Ministerial Association, Red Cross, PTA, Civic League

Fraternal - American Legion, Masonic Lodge, Shriners, VFW

Women's - Woman's Club, DAR, Eastern Star, Garden Club, American Legion Auxiliary, VFW Auxiliary, American Business Woman's Association, American Association of University Women, Daughters of America

Youth - Boy Scouts, Girl Scouts, Cub Scouts, Brownies, FFA, FHA, 4-H, FTA

CHURCHES



RECREATION

Local

Public Recreation Facilities

- Park - 1
- Playgrounds - 3
- Swimming pool - 1 (at Union College - open to public)
- Tennis courts - 3
- Baseball diamond - 1
- Football field - 1
- Other - softball field, badminton court

Private Recreation Facilities

- Country Club - 1
- Golf course - 1
- Swimming pool - 1
- Movie theaters - 1 indoor, 1 outdoor

Tourist Attractions

- The Daniel Boone Festival

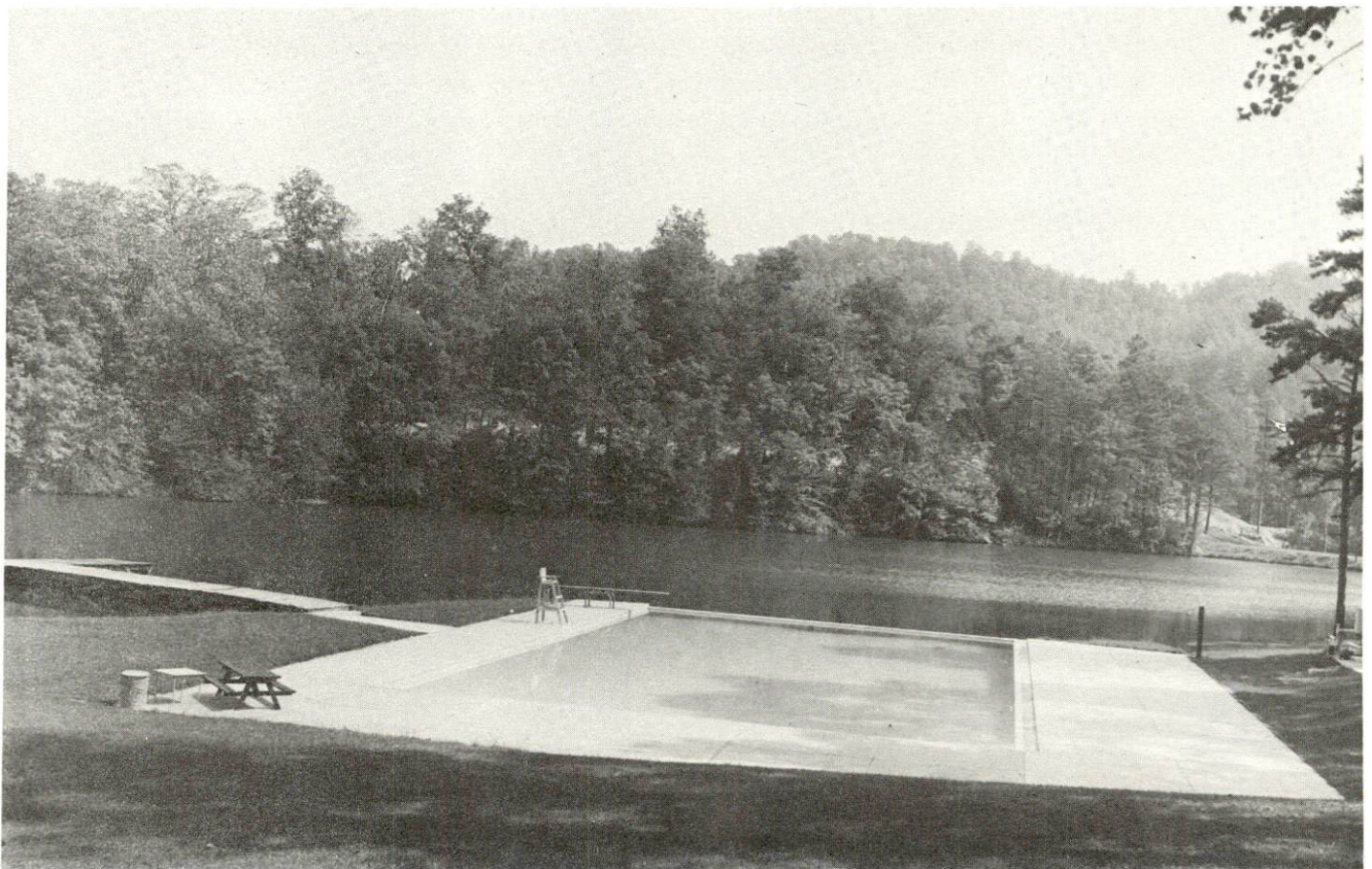
Cultural Events

Many cultural and entertainment events are sponsored in Barbourville by Union College and are open to the public. Assembly programs and guest lectures are held regularly, and famous names such as the Don Cossack Chorus, Stan Kenton, Duke Ellington and others have appeared in concert recently. The college's School of Music and drama department present several Broadway productions each year.

Area (Within 50 miles)

- Dr. Thomas Walker State Shrine
- Pine Mountain State Resort Park
- Levi Jackson Wilderness Road State Park
- Cumberland Falls State Resort Park
- Cumberland Falls
- Kentucky Ridge State Forest
- Daniel Boone National Forest
- Cumberland Gap National Historical Park
- The Book of Job

INDIAN SPRINGS COUNTRY CLUB
SWIMMING AND GOLFING FACILITIES



AGRICULTURE - NATURAL RESOURCES - CLIMATE

Agriculture 13/

	<u>Knox County</u>	<u>Labor Market Area</u>
Total land area (acres)	238,656	1,357,504
Percent of area in farm land	29.4	26.3
Number of farms	674	3,846
Average size of farms (acres)	104.1	91.9
1969 value of all farm products	\$1,025,524	\$ 9,528,496
Value per farm	1,521	2,477
Total crop sales	538,781	4,554,371
Total livestock & livestock products	593,264	4,997,553
1970 agricultural production included:		
Burley tobacco (lbs.)	877,000	7,657,000
Corn (bu.)	90,000	525,000
Cattle and calves (number)	6,200	40,300
Hogs and pigs (number)	2,200	13,300
Milk production, 1969 (lbs.)	6,630,000	43,780,000

Natural Resources

Principal mineral resources	Coal and petroleum
Other mineral resources	Natural gas, clay and clay shales, gravel and sandstone
Acres of commercial forest land	177,600 (74 percent of land area)
Most abundant tree species	Red oak, white oak, yellow poplar, hickory, yellow pine, soft maple and beech

Climate 14/

	<u>Knox County</u>
Temperature	
Annual mean (30-year record)	59.6 degrees
Average annual 1971	59.2 degrees
Record highest, August, 1968 (11-year record)	99 degrees
Record lowest, January, 1966 (11-year record)	-9 degrees
Seasonal heating degree days (30-year record)	3,494
Precipitation	
Mean annual total (30-year record)	45.85 inches
Mean annual snow and sleet (29-year record)	13.1 inches
Total precipitation 1971	55.44 inches
Mean number days precipitation, (.01 inch or more) (29-year record)	127
Average number days thunderstorms (29-year record)	48
Prevailing winds (14-year record)	Southeast

HISTORY

Knox County covers 373 square miles of the extreme southeastern portion of Kentucky. Its topography is hilly and mountainous except on river bottoms, and its soil is a sandy loam and clay mixture which is generally well adapted to agriculture in the valleys and to timber growth on the hills and mountains. Approximately 154,000 acres are forested. The Cumberland River, which meanders through the southern part of the county, is known for its scenic beauty.

The first pioneers who came to Knox County were Dr. Thomas Walker and his companions, surveyors and agents for the Loyall Land Company of Virginia, in 1750. Some of them built a log cabin, the first house built in Kentucky, and spent the winter about six miles from the present site of Barbourville. The Dr. Thomas Walker State Shrine now houses a replica of the original log cabin. It was Dr. Walker who named both the Cumberland Mountains and Cumberland River for the Duke of Cumberland, a son of the King of England, George II. Later, the Wilderness Road crossed Knox County east of Barbourville and thus many pioneers and hunters passed through the area.

In 1799 Knox County became Kentucky's forty-first county, named after General Henry Knox, a native of Boston who distinguished himself at the Battle of Bunker Hill, in 1775 and became the nation's first Secretary of War. Barbourville, the county seat, was founded in 1800 and named for James Barbour, who gave land for the town site. Union College has served southeastern Kentucky since its founding there in 1879 and presently has an enrollment of over 900 students.

In 1800, a population of 1,109 was recorded for Knox County which steadily grew, augmented by a land boom in 1888 with the coming of the Louisville and Nashville Railroad, and another boom with the discovery of oil in the county in 1900. Reaching an all-time high of 30,409 in 1950, the population declined to 25,258 in 1960 and then to 23,689 in 1970.

Agricultural employment in the county was 340 in 1971, with corn, hay, hens, cattle and hogs the primary products. Nonagricultural employment accounted for 4,340 jobs in 1971, 800 of them in manufacturing. The latter figure is well over double that of 1961. The most important industrial products of the county are lumber, machinery and metal products, and apparel. Largest among its 14 manufacturing firms are:

Viall Lumber Company, Warners Warnaco, Inc., Lawson Furniture Company and E. K. Wood Products. In the spring of 1972 construction began on the Tremco Manufacturing plant and upon completion employment is expected to reach 500 employees. Bituminous coal is an important mineral resource of Knox County, and in 1971 some 1,320,579 tons of coal were mined from 80 mines.

Two Kentucky governors, James D. Black and Flem D. Sampson, were citizens of Barbourville, as were five U. S. Representatives and one U. S. Senator. Silas Woodrow of Knox County also became a Kentucky governor. Other distinguished citizens of Knox County were Samuel F. Miller, who was appointed to the U. S. Supreme Court by President Lincoln and Joseph Eve, who served as Charge d' Affaires to the Republic of Texas.

SOURCES OF INFORMATION

- 1/ U. S. Department of Commerce, Bureau of the Census, Census of Population, 1950, 1960, 1970.
- 2/ Kentucky Department of Economic Security, Division of Research and Statistics.
- 3/ Kentucky Department of Economic Security, Number of Workers in Manufacturing Industries Covered by Kentucky Unemployment Insurance Law Classified by Industry and County, September 1971 and 1961.
- 4/ Kentucky Department of Commerce, Division of Research and Planning.
- 5/ Kentucky Department of Economic Security, Division of Employment Services, Corbin Office.
- 6/ Kentucky Department of Economic Security, Kentucky Labor Supply Estimates by County, January 1972.
- 7/ Kentucky Department of Commerce, Future Labor Supply by 1978.
- 8/ University of Kentucky, Office of Development Services and Business Research, Total Personal Income for Kentucky.
- 9/ University of Kentucky, Office of Development Services and Business Research, Per Capita Income in Kentucky.
- 10/ Louisville & Nashville Railroad Company, Louisville, Kentucky
- 11/ McDuffee Motor Freight, Inc., Lebanon, Kentucky.
- 12/ Kentucky Department of Revenue.
- 13/ U. S. Department of Commerce, Bureau of the Census, Census of Agriculture, 1969. U. S. Department of Agriculture and Kentucky Department of Agriculture, Kentucky Agricultural Statistics, 1971.
- 14/ U. S. Department of Commerce, Environmental Science Services Administration, Climatological Data, 1971.

All other information was obtained from governmental offices, local businesses and organizations.