

1969

Industrial Resources: Marshall County

Kentucky Library Research Collections
Western Kentucky University, spcol@wku.edu

Follow this and additional works at: https://digitalcommons.wku.edu/marshall_cty

 Part of the [Business Administration, Management, and Operations Commons](#), [Growth and Development Commons](#), and the [Infrastructure Commons](#)

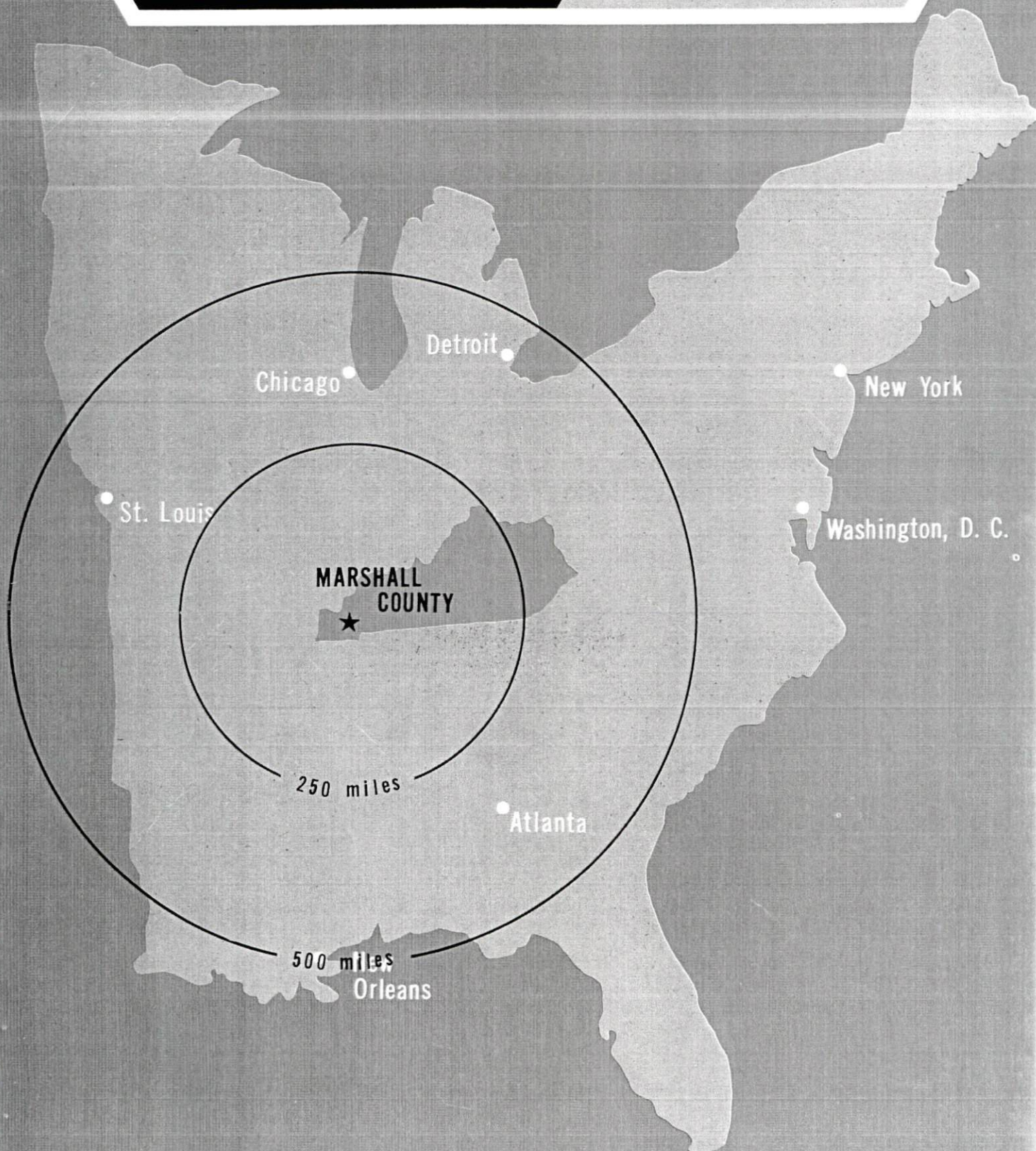
Recommended Citation

Kentucky Library Research Collections, "Industrial Resources: Marshall County" (1969). *Marshall County*. Paper 14.
https://digitalcommons.wku.edu/marshall_cty/14

This Report is brought to you for free and open access by TopSCHOLAR®. It has been accepted for inclusion in Marshall County by an authorized administrator of TopSCHOLAR®. For more information, please contact topscholar@wku.edu.

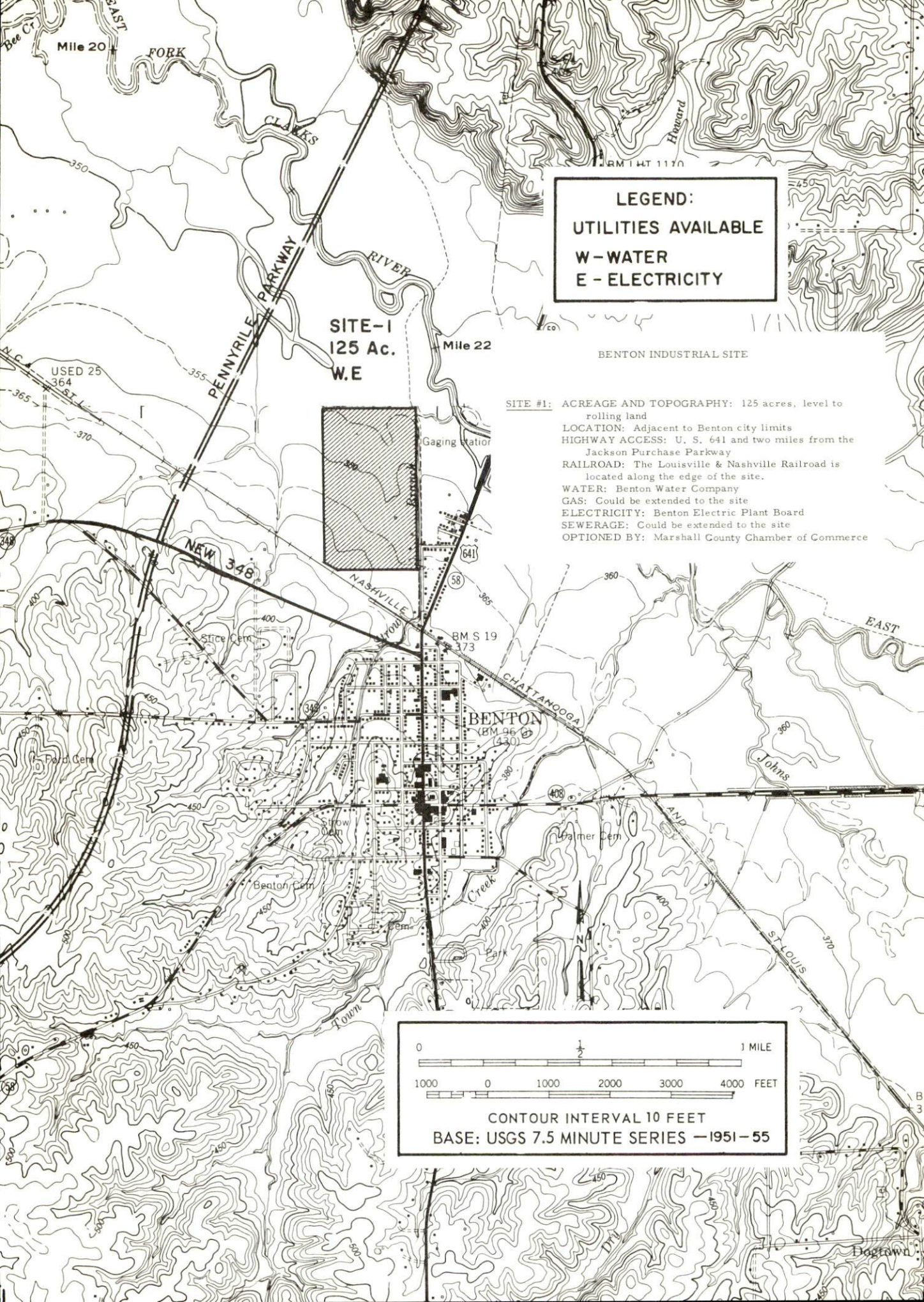
INDUSTRIAL RESOURCES

**MARSHALL
COUNTY
KENTUCKY**



INDUSTRIAL SITES, 1969

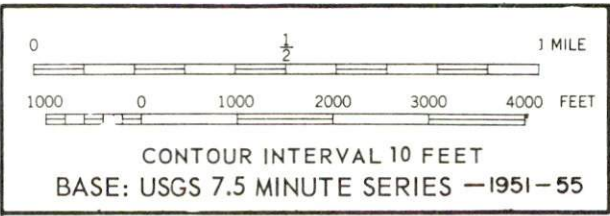
BENTON, KENTUCKY
AND
HARDIN, KENTUCKY

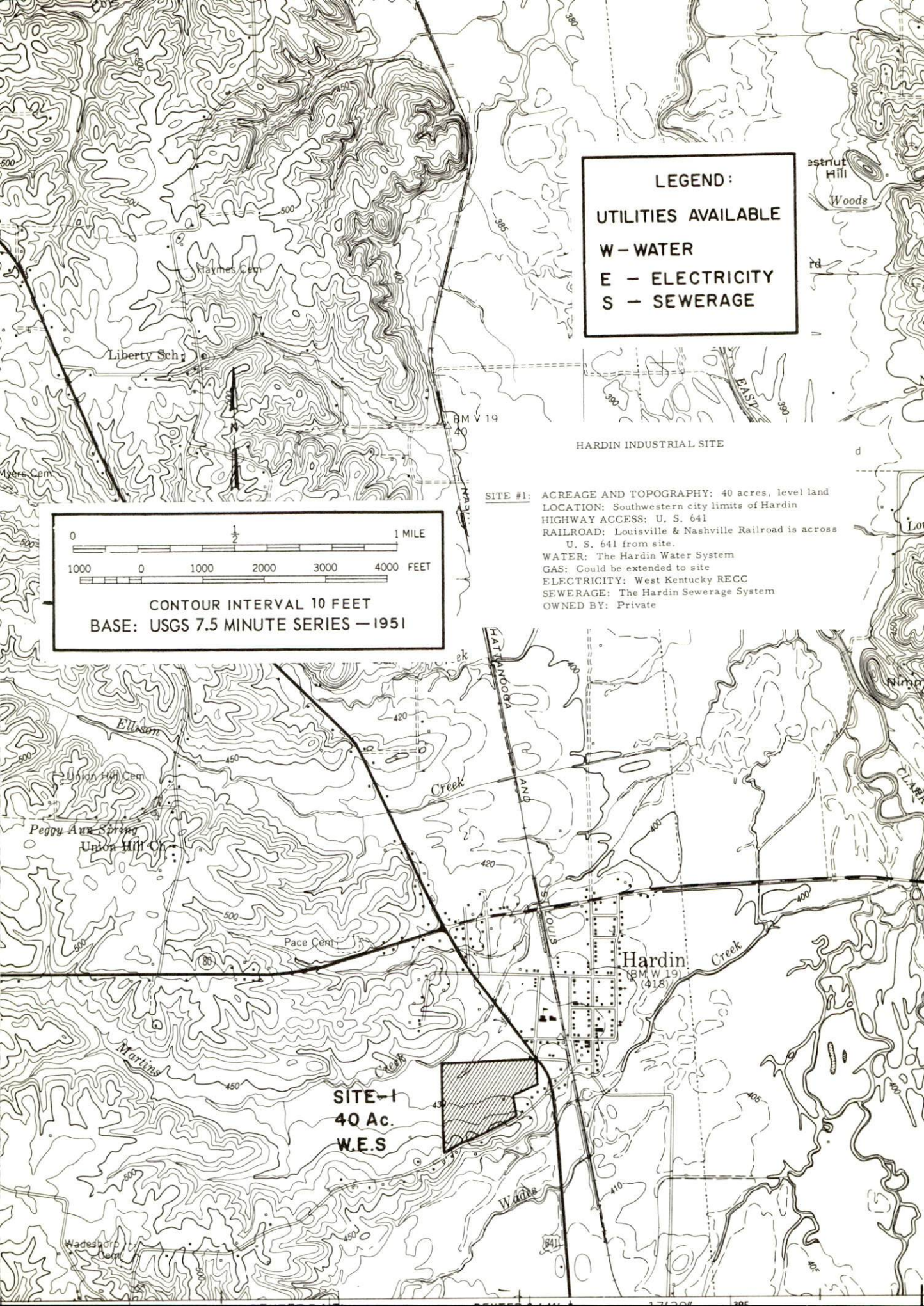


LEGEND:
UTILITIES AVAILABLE
W - WATER
E - ELECTRICITY

BENTON INDUSTRIAL SITE

SITE #1: ACREAGE AND TOPOGRAPHY: 125 acres, level to rolling land
LOCATION: Adjacent to Benton city limits
HIGHWAY ACCESS: U. S. 641 and two miles from the Jackson Purchase Parkway
RAILROAD: The Louisville & Nashville Railroad is located along the edge of the site.
WATER: Benton Water Company
GAS: Could be extended to the site
ELECTRICITY: Benton Electric Plant Board
SEWERAGE: Could be extended to the site
OPTIONED BY: Marshall County Chamber of Commerce





LEGEND:

UTILITIES AVAILABLE

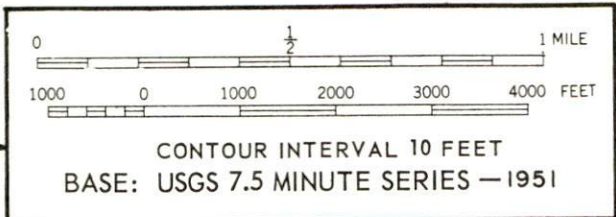
W - WATER

E - ELECTRICITY

S - SEWERAGE

HARDIN INDUSTRIAL SITE

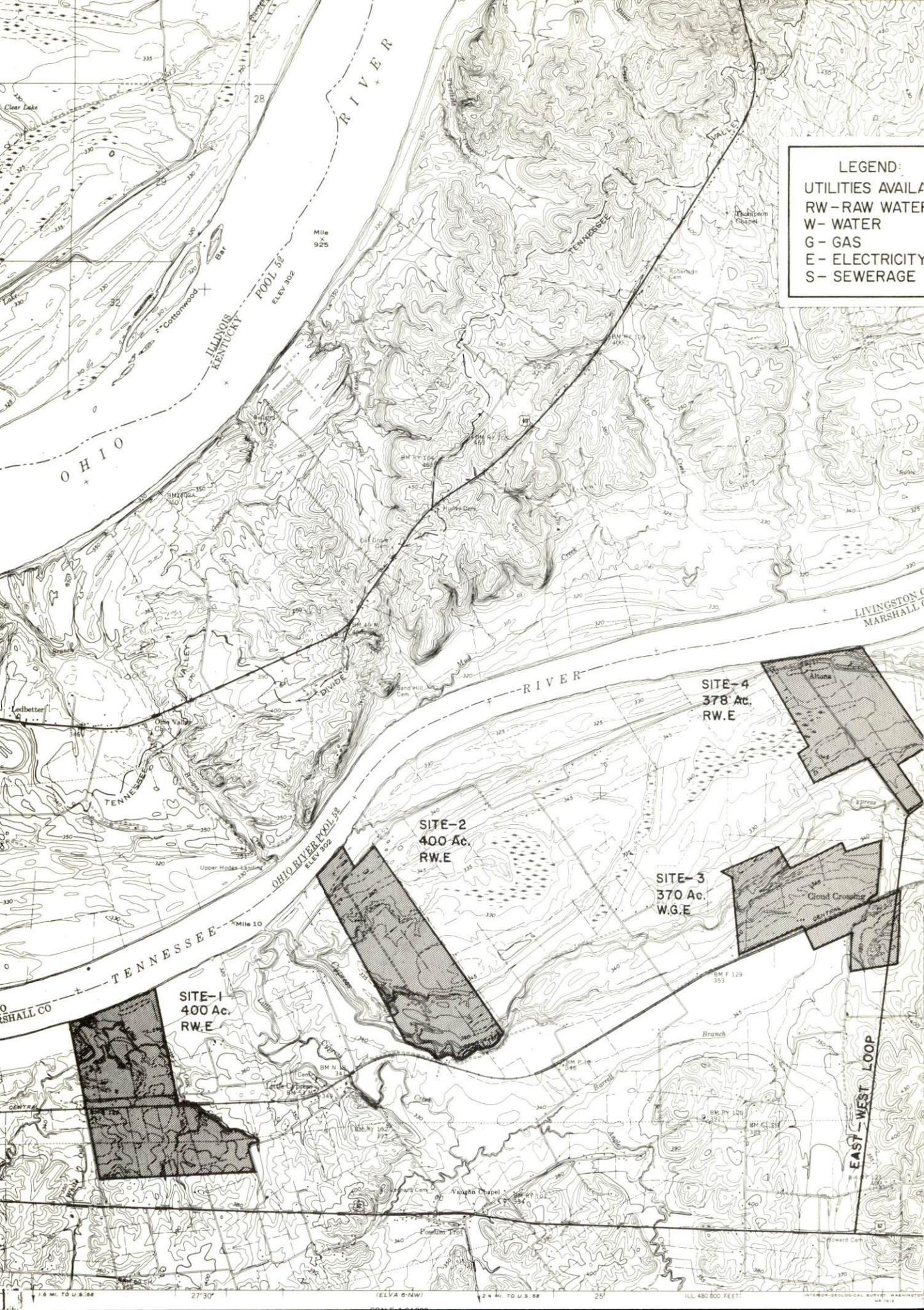
SITE #1: ACREAGE AND TOPOGRAPHY: 40 acres, level land
LOCATION: Southwestern city limits of Hardin
HIGHWAY ACCESS: U. S. 641
RAILROAD: Louisville & Nashville Railroad is across U. S. 641 from site.
WATER: The Hardin Water System
GAS: Could be extended to site
ELECTRICITY: West Kentucky RECC
SEWERAGE: The Hardin Sewerage System
OWNED BY: Private



SITE-1
40 Ac.
W.E.S

INDUSTRIAL SITES
1969
CALVERT CITY, KENTUCKY

- SITE #1: ACREAGE AND TOPOGRAPHY: 400 acres of level to rolling land
LOCATION: 4 miles west of Calvert City
HIGHWAY ACCESS: U. S. 62 is located several hundred feet south.
RAILROAD: The Illinois Central Railroad bisects the site.
WATER: Raw water is available from the Tennessee River.
ELECTRICITY: Jackson Purchase RECC
OWNERSHIP: Private
- SITE #2: ACREAGE AND TOPOGRAPHY: 400 acres of level to rolling land
LOCATION: 3 miles west of Calvert City
HIGHWAY ACCESS: County road to U. S. 62
RAILROAD: The Illinois Central Railroad runs adjacent to the property.
WATER: Raw water is available from the Tennessee River
ELECTRICITY: Jackson Purchase RECC
OWNERSHIP: Private
- SITE #3: ACREAGE AND TOPOGRAPHY: 370 acres of level land
LOCATION: One-half mile west of Calvert City
HIGHWAY ACCESS: County road to U. S. 62
RAILROAD: The Illinois Central traverses the site.
WATER: Calvert City Municipal Water Company
ELECTRICITY: Tennessee Valley Authority
GAS: Western Kentucky Gas Company
OWNERSHIP: Private
- SITE #4: ACREAGE AND TOPOGRAPHY: 378 acres of level land
LOCATION: One-half mile northwest of Calvert City
HIGHWAY ACCESS: Fronts on east-west loop of Calvert City
RAILROAD: The Illinois Central Railroad is one mile distant
RAW WATER: Tennessee River
ELECTRICITY: Tennessee Valley Authority
OWNERSHIP: Private
- SITE #5: ACREAGE AND TOPOGRAPHY: 125 acres of level land
LOCATION: Adjacent to northern limits of Calvert City
HIGHWAY ACCESS: Fronts on paved road leading to Kentucky Route 95
RAILROAD: Adjacent to Illinois Central Railroad
WATER: Calvert City Municipal Water Company
ELECTRICITY: Tennessee Valley Authority
GAS: Western Kentucky Gas Company
SEWERAGE: Calvert City Municipal Sewerage Department
OWNERSHIP: Private
- SITE #6: ACREAGE AND TOPOGRAPHY: 76 acres of level land
LOCATION: One-half mile northeast of Calvert City
HIGHWAY ACCESS: Fronts on east-west loop of Calvert City
RAILROAD: Illinois Central Railroad
WATER: Raw water is available from the Tennessee River.
ELECTRICITY: Tennessee Valley Authority
GAS: Western Kentucky Gas Company
OWNERSHIP: Private



LEGEND:
UTILITIES AVAILABLE
RW - RAW WATER
W - WATER
G - GAS
E - ELECTRICITY
S - SEWERAGE

SITE-1
400 Ac.
RW, E

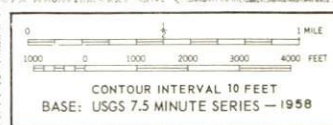
SITE-2
400 Ac.
RW, E

SITE-3
370 Ac.
W, G, E

SITE-4
378 Ac.
RW, E

EAST - WEST LOOP

ABLE
R



INDUSTRIAL RESOURCES
MARSHALL COUNTY, KENTUCKY

PREPARED BY
THE KENTUCKY DEPARTMENT OF COMMERCE
IN COOPERATION WITH
THE MARSHALL COUNTY CHAMBER OF COMMERCE

1969

This copy has been prepared by the Kentucky Department of Commerce,
Division of Research and Planning, and the cost of printing paid from
state funds.

TABLE OF CONTENTS

<u>Chapter</u>	<u>Page</u>
INDUSTRIAL SITES	i
MARSHALL COUNTY, KENTUCKY, A PROFILE	1
THE LABOR MARKET	3
Population	3
Employment Characteristics	3
Manufacturing Characteristics	4
Wage Levels	5
Labor Supply	6
Labor Organizations	7
Income	7
EDUCATION	8
Elementary and High School	8
Vocational Schools	8
Colleges	9
TRANSPORTATION	11
Rail	11
Highways	12
Truck Service	12
Air	13
Water	13
Other Transportation Services	14
POWER AND FUEL	15
Electricity	15
Natural Gas	16
Coal	18
Fuel Oil	18
WATER AND SEWERAGE	19
Water	19
Sewerage	20

<u>Chapter</u>	<u>Page</u>
AGRICULTURE - NATURAL RESOURCES - CLIMATE21
Agriculture21
Mineral Resources21
Water Resources21
Forests22
Climate22
LOCAL GOVERNMENT23
Structure23
Finance23
Taxes23
Planning and Zoning24
Safety25
Fire25
Police25
Sanitation25
HEALTH26
Hospitals26
Nursing Homes26
Public Health26
OTHER LOCAL FACILITIES28
Housing28
Communication28
Libraries29
Churches29
Financial Institutions29
Hotels and Motels31
Clubs and Organizations31
Recreation31
Local31
Area33
Community Improvements34
Public34
Business and Industrial34
Other34
HISTORY36

MARSHALL COUNTY, KENTUCKY, A PROFILE

Location

Marshall County's eastern border is the Tennessee River and Kentucky Lake. Benton, the county seat, is located 15 miles south of Paducah. St. Louis is only 196 miles to the west.

The Economy

Manufacturing, which provides about 3,000 jobs, mostly in the high-paying chemical industries, is the dominant economic force in Marshall County. Approximately 40 percent of total county employment is at manufacturing firms.

The recreational oriented industry with Kentucky Lake and two major state parks as a base is also of growing significance. The "Land Between the Lakes" national recreation area is located just across Kentucky Lake from Marshall County.

Per capita personal income of \$3,636 in 1968 reflects an economy of prosperity and reasonable balance. Total personal income was \$77,818,000 in 1968.

Manufacturing in a seven-county area centering on Marshall County provides about 14,000 jobs and is the largest economic activity.

The outlook for continuing economic growth in Marshall County is favorable. Local organization for development is sound. Transportation is good and I-24 and the new Purchase Parkway add strength to this resource. Industrial sites with power at reasonable rates and abundant water are available.

Labor Supply

There is a current labor supply of 4,900 men and 4,400 women within the Marshall County labor market area. This labor supply will be augmented by 7,058 young men and 6,773 young women who will become 18 years of age by 1975.

Industrial Sites and Services

Eight industrial sites ranging from 40 to 400 acres are available in the area. Six of these sites are located near the Calvert City Chemical Complex.

The recently completed Purchase Parkway provides a new highway transportation capability toward the east. Completion of I-24 will improve transportation to the south and west.

Trucking service is provided by six common carriers. Interstate and intrastate services are available.

Rail service to Marshall County is provided by the Louisville & Nashville Railroad Company and the Illinois Central Railroad.

Commercial air service is available at Barkley Field, 8 miles west of Paducah, Kentucky, and 22 miles from Benton.

Commercial barge service is available in Marshall County where there are seven contract and common carriers licensed to operate on the Tennessee River.

Ample supplies of power and fuels are available. Electric power is supplied by TVA, Jackson Purchase RECC, West Kentucky RECC, Kentucky Utilities Company, and The Benton Electric Plant Board. Natural gas is supplied by Western Kentucky Gas Company and Union Gas Company of Kentucky.

Recreation

Very few areas of the country can equal the water based recreational facilities of Marshall County. Along with local recreational facilities, there are two major state parks with full recreational facilities on Kentucky Lake.

Marshall County borders on Kentucky Lake, which has a canal connection to Lake Barkley only a few miles to the east. These lakes are two of the largest man-made lakes in America. The area between the impoundments is now the Land Between the Lakes National Recreational Area. The area is being fully developed, and many camping areas are presently available.

THE LABOR MARKET

Population

Marshall County had an estimated 1968 population of 21,400, an increase of 27.8 percent from 1960. From 1950-60, Marshall County experienced a 25 percent increase in population with 15.4 percent of the increase due to migration. The increases during the last two decades are principally a result of the increase in the economic development of the county.

Benton, Calvert City, and Hardin are the population centers of Marshall County with 1960 populations of 3,074, 1,505, and 458, respectively. The centers of population have experienced parallel growth along with the entire county.

TABLE 1

POPULATION TREND - BENTON, CALVERT CITY, HARDIN, AND
MARSHALL COUNTY, KENTUCKY ^{1/}

Year	Benton		Calvert City		Hardin		Marshall County	
	Popu- lation	%Change	Popu- lation	%Change	Popu- lation	%Change	Popu- lation	%Change
1900	664						13,692	
1950	1,980	198.2			324		13,387	2.2
1960	3,074	55.3	1,505		458	41.3	16,736	25.0
1968 (Est.)							21,400	^{2/} 27.8

Employment Characteristics

In 1967, total employment in Marshall County averaged 7,592. Major segments of employment are manufacturing (2,759), trade and services (801), government (662), and agriculture (405).

During 1967, total employment in the Marshall County labor market area totaled 51,713. Major segments of the employment were manufacturing (12,750), trade and services (13,319), agriculture (5,934), and government (4,914).

Manufacturing Characteristics

Manufacturing employment at 22 firms located in Marshall County totaled approximately 3,000 in September 1968. This was a dramatic increase of 80 percent in industrial employment during the 1960's.

The heaviest concentration of manufacturing activity is in the chemical industries located at Calvert City. Development of this major chemical complex has been carried out entirely during the past twenty years. Six major producers employing about 2,700 workers established plants between 1949 and 1956 and have announced numerous expansions during the 1960's. A combination of massive supplies of power at reasonable rates, water, and excellent transportation, was the base for this spectacular development. These factors incidentally continue to be available in Marshall County.

Table 2, which lists major firms in the county, shows the basic chemicals produced in this complex.

Ashby Metal Forming at Benton has expanded production four times since its location in 1961.

TABLE 2

MARSHALL COUNTY MANUFACTURING FIRMS WITH PRODUCTS AND EMPLOYMENT ^{3/}

Firm	Product	Employment		
		Male	Female	Total
<u>Benton</u>				
Ashby Metal Forming Corp.	Metal furniture	150	450	600
<u>Calvert City</u>				
Airco Alloys & Carbide (Div. of Air Reduction Co., Inc.)	Ferroalloys	662	21	683
Airco Alloys & Carbide (Div. of Air Reduction Co., Inc.)	Calcium carbide, acetylene, lime	375	6	381
Airco Chemicals & Plastics, a Subsidiary of Air Reduction Co., Inc.	Vinyl acetate, acetylenic alcohols, polyvinyl alcohol, and chloride	360	12	372
General Aniline & Film Corporation	Detergents, acety- lenics, methyl- amines, formaldehyde	320	16	336
(Contd.)				

(Contd.)

Firm	Product	Employment		
		Male	Female	Total
B. F. Goodrich Chemical Co.	Vinyl chloride, caustic soda, acry- lonitrile and ethyl- ene			525
Penn Olin Chemical Co. (Pennsalt Chemicals Corp.)	Sodium chlorate, refrigerants	35		35
Pennsalt Chemicals Corp.	Propellants, chlorine caustic soda, potash, hydrofluoric acid	460	18	478

The seven-county labor market area includes Marshall, Calloway, Graves, Livingston, Lyon, McCracken, and Trigg Counties. In June 1968, there were 13,828 employed in manufacturing in the area. Major groupings of activities are shown in Table 3. Employment in the chemical and rubber groupings is concentrated in Marshall County, with substantial employment also in McCracken and Graves Counties. Apparel is concentrated in Graves and McCracken Counties, while metal products and machinery are primarily in McCracken and Calloway Counties. Primary metals are of importance in Marshall County.

TABLE 3

MANUFACTURING EMPLOYMENT, MARSHALL COUNTY LABOR
MARKET AREA, JUNE, 1968 ^{4/}

Industry	Employment
TOTAL	13,828
Chemicals and rubber	4,397
Apparel	3,319
Metal products and machinery	2,980
Primary metals	1,032
Other	2,100

Wage Levels

The average weekly wage in Marshall County for all industries covered by unemployment insurance in 1967 was \$140.30, and the average weekly wage in manufacturing was \$158.36. Comparable figures for Kentucky were \$104.50 for all industries and \$115.08 for manufacturing. All counties in the labor market area except Marshall County were below the Kentucky average. The high wage rates in Marshall County are a result of the chemical complex located in Calvert City. Rates for unskilled workers in other industries would be lower depending on job classifications. The following wage rates are examples of the labor costs for certain skills in the area: ^{5/}

<u>Production Employees</u>	<u>Wages Per Hour</u>		
	<u>Starting</u>	<u>Maximum</u>	<u>Prevailing</u>
Assembler			\$1.72
Inspector			2.60
Production Laborer	\$2.38	\$2.48	2.48
Sprayer or Painter	3.56	3.76	3.76
Chemical Operator	3.12	3.40	3.40
Sr. Chemical Operator	3.48	3.55	3.55
Furnace Man	3.53	3.53	3.53
 <u>Service Employees</u>			
Carpenter	\$3.56	\$3.76	\$3.76
Crane Operator	3.66	3.66	3.66
Electrician	3.65	3.76	3.70
Janitor	3.07	3.14	3.14
Laborer	2.54	2.82	2.75
Machinist	3.56	3.76	3.76
Mechanic, Maintenance	3.65	3.76	3.67
Shipping Clerk	3.00	3.60	3.60
Truck Driver	2.70	2.70	2.70
Welder, Acetylene, Carbon & Arc	3.61	3.71	3.71
 <u>Office Employees</u>			
Bookkeeper or Accounting Clerk	\$2.00	\$2.75	\$2.75
Draftsman	3.67	3.77	3.77
File Clerk	1.80	2.50	2.50
Receptionist	2.45	2.80	2.80
Secretary	2.35	3.20	3.20
Stenographer	2.00	2.50	2.50
Telephone Operator	2.45	2.80	2.80
Typist	1.95	2.50	2.50

Labor Supply

There is an estimated current labor supply in the Marshall County labor market area of 4,900 women. By 1975, 7,058 boys and 6,773 girls will become 18 years of age and augment the labor supply. The current labor supply includes estimates of unemployed, underemployed, and persons who would enter the labor force if jobs become available.

TABLE 4

CURRENT AND FUTURE LABOR SUPPLY -
MARSHALL COUNTY LABOR MARKET AREA 6/

County	Current Labor Supply July, 1968			Future Labor Supply by 1975 (Becoming 18 Years of Age)		
	Total	Male	Female	Total	Male	Female
Labor Market						
Area	9,300	4,900	4,400	13,831	7,058	6,773
Marshall	1,800	900	900	1,770	889	881
Calloway	1,900	900	1,000	1,562	785	777
Graves	1,600	1,000	600	2,659	1,361	1,268
Livingston	800	300	500	655	335	320
Lyon	900	500	400	408	227	181
McCracken	1,500	900	600	5,909	3,011	2,898
Trigg	800	400	400	868	450	418

Labor Organizations

Unions represented in the Marshall County area are: International Association of Machinists; Oil, Chemical and Atomic Workers International Union; United Automobile, Aerospace and Agricultural Implement Workers of America; International Brotherhood of Teamsters, Chauffeurs, and Helpers of America; United Brotherhood of Carpenters and Joiners of America, Local 2049; and Aluminum Workers International Union, Local 102.

Income

The total personal income in Marshall County in 1968 was estimated at \$77,818,000. Per capita income was \$3,636 for a gain of \$1,465 during the previous nine years. 7/

In 1963, there were 210 retail establishments in Marshall County, 91 of which were in Benton. 8/

EDUCATION

The educational system within the Marshall County labor market area has the facilities to produce an effective labor force for future industrial growth.

Elementary and High School

The Marshall County School System has a student-teacher ratio of 25 to 1 in the high schools and 26 to 1 in the elementary grades. The 1968-69 school budget is \$1,788,000. The school system's bonded indebtedness as of August, 1968, was \$1,359,000. This includes the present construction of the elementary school at Calvert City which includes twenty-five classrooms, cafeteria, library, all-purpose room, rest rooms, and office. These facilities were occupied January 1969. A new elementary school is under construction in Fairdealing. This school consists of fourteen classrooms, library, gymnasium, cafeteria, rest rooms and office, and completion date is August 1969.

The Benton Independent School District has a student-teacher ratio of 26 to 1 in the elementary school and 23 to 1 in the high school.

At the present time, plans are underway for a consolidated high school for Marshall County. A one-half of one percent occupational license tax has been levied to finance the new school system.

TABLE 5

SCHOOLS, ENROLLMENT, NUMBER OF TEACHERS, STUDENT -
TEACHER RATIO IN BENTON AND MARSHALL COUNTY, 1968-69 ^{9/}

School	Grades	Enrollment	No. of Teachers	Student-Teacher Ratio
Benton Elementary (Ind.)	1- 8	629	24	26-1
Benton High School (Ind.)	9-12	251	11	23-1
Marshall County Elementary (total)	1- 8	2,631	100	26-1
Marshall County High School (total)	9-12	1,227	50	25-1

Vocational Schools

Marshall County is served by two vocational-technical schools located in Paducah, Kentucky.

Tilghman Area Vocational-Technical School offers the following trade and industrial educational courses: auto body repair, auto mechanics, carpentry, cosmetology, drafting, electronics technician, highway technology, industrial electricity, machine shop, small gasoline engine repair, and welding. In addition to regular preparatory classes, upgrading courses are offered in evening extension classes for employed persons. Special courses are also available for eligible people under the Manpower Development and Training Act.

Western Kentucky State Vocational-Technical School serves the entire Jackson Purchase Area. Trade and industrial educational courses offered include: appliance repair, auto body repair, auto mechanics, barbering, business and office education, carpentry, commercial foods, cosmetology, electricity, masonry, refrigeration and air-conditioning, and tailoring. This school serves the entire state for courses that are not offered elsewhere. In addition to regular preparatory classes, upgrading courses are offered in evening extension classes for employed persons. Special courses are also available for eligible people.

Colleges

Murray State, located 26 miles from Benton, is a multi-purpose, coeducational university of some 7,500 students. The university is organized into five schools - the School of Arts and Sciences, the School of Applied Science and Technology, the School of Business, the School of Education, and the Graduate School. There are 28 major departments. Pre-professional courses are also provided in medicine, veterinary medicine, dentistry, law, theology, pharmacy, engineering, forestry, and medical technology. Eleven baccalaureate degrees are offered and the masters degree is awarded in seventeen subject areas.

Some of the distinctive features of the more than 40 buildings on the campus are the largest college auditorium in Kentucky; modern spacious dormitories; and a host of new classroom buildings that are second to none in equipment, function and beauty. A variety of cultural activities contribute to the refinement and the all-around development of the students at Murray State University.

Beginning with the Fall semester, 1968, Paducah Junior College changed from its former classification of public junior college to the University of Kentucky Community College System.

The University of Kentucky Community College System has become a vital part of the university's undergraduate program by offering the local student his choice of an associate degree (2-year) or liberal arts curriculum preparatory to an additional two years at a senior college and a final baccalaureate degree.

Paducah Community College in 1964 moved to a beautiful spacious 132-acre campus on the Blandville Road. The six-building campus had an enrollment in September, 1968, of 804 students.

Institutions of higher learning in the Marshall County area include:

<u>College or University</u>	<u>Location</u>	<u>Distance</u>
Kentucky Wesleyan College	Owensboro, Kentucky	141 miles
Western Kentucky University	Bowling Green, Kentucky	142 miles
Brescia College	Owensboro, Kentucky	141 miles
Evansville College	Evansville, Indiana	95 miles
Southern Illinois University	Carbondale, Illinois	99 miles

TRANSPORTATION

Rail

The Louisville & Nashville Railroad Company serves Benton with two local freights daily. Switching service is provided daily. The passing track will accommodate thirty cars. Outbound loads per month average 65 cars of lumber and lawn furniture; inbound loads per month average twenty cars of cement, building materials, phosphate, and potash. Package car service is provided, and REA Express service is available.

Hardin is served by a division of the Louisville & Nashville Railroad.

Calvert City is served by the Kentucky Division of the Illinois Central Railroad, operating out of Paducah with five local freights daily each way and four through freights daily east from Paducah. Switching service is available seven days per week. Sidings can accommodate 150 cars. The average number of outbound carloads per month is 1,500 and the average number of inbound carloads per month is 1,000.

Paducah, 20 miles distant, is also served by the Paducah & Illinois Railroad, the Louisville & Nashville Railroad, and the Chicago, Burlington & Quincy Railroad.

TABLE 6

RAILWAY TRANSIT TIME FROM CALVERT CITY, KENTUCKY, TO: 10/

No. of Days		No. of Days	
City	CL	City	CL
Atlanta, Ga.	3	Louisville, Ky.	1
Birmingham, Ala.	2	Los Angeles, Calif.	4
Chicago, Ill.	2	Nashville, Tenn.	2
Cincinnati, Ohio	2	New Orleans, La.	2
Cleveland, Ohio	2	New York, N. Y.	4
Detroit, Mich.	3	Pittsburgh, Pa.	4
Knoxville, Tenn.	3	St. Louis, Mo.	2

TABLE 6-A

RAILWAY TRANSIT TIME FROM BENTON, KENTUCKY, TO: 11/

No. of Days		No. of Days	
City	CL	City	CL
Atlanta, Ga.	2 1/2	Louisville, Ky.	3
Birmingham, Ala.	3	Los Angeles, Calif.	9
Chicago, Ill.	5	Nashville, Tenn.	2
Cincinnati, Ohio	3	New Orleans, La.	4
Cleveland, Ohio	5	New York, N. Y.	6
Detroit, Mich.	5	Pittsburgh, Pa.	5
Knoxville, Tenn.	4	St. Louis, Mo.	3

Highways

Marshall County is served by U. S. Highways 641, 62, and 68, and by Kentucky Highways 58, 80, 408, 348, 962, 963, 95, and 1523.

The Purchase Parkway, opened January, 1969, extends from Fulton, Kentucky, to Calvert City where it will intersect with proposed Interstate 24, which will run from St. Louis, Missouri, to Nashville, Tennessee.

Truck Service: The following trucking firms serve Marshall County:

<u>Company</u>	<u>Home Office</u>
Dixie Highway Express, Inc.	Akron, Ohio
Harper Truck Service, Inc.	Paducah, Kentucky
Arnold Ligon Truck Line, Inc.	Lebanon, Kentucky
McLean Trucking Company	Winston-Salem, North Carolina
Modern Truck Lines, Inc.	Memphis, Tennessee
Paschall Truck Lines, Inc.	Murray, Kentucky

TABLE 7

HIGHWAY MILES AND TRUCK TRANSIT TIME FROM
MARSHALL COUNTY, KENTUCKY, TO SELECTED MARKET CENTERS 12/

City	Highway Miles	Delivery Time (Days)		City	Highway Miles	Delivery Time	
		LTL	TL			LTL	TL
Atlanta, Ga.	393	2	2	Louisville, Ky.	208	1	1
Birmingham, Ala.	342	2	2	Los Angeles, Calif.	2,066	1	1
Chicago, Ill.	422	1	1	Nashville, Tenn.	137	1	1
Cincinnati, Ohio	389	1	1	New Orleans, La.	530	3	2
Cleveland, Ohio	600	2	1	New York, N. Y.	961	3	2
Detroit, Mich.	441	2	1	Pittsburgh, Pa.	607	3	2
Knoxville, Tenn.	334	2	1	St. Louis, Mo.	196	1	1

Air

Barkley Field, 8 miles west of Paducah, Kentucky, serves the residents of the Marshall County area with airline service through Delta and Ozark Airlines. Delta Airlines provide three flights daily to Chicago, Detroit, and Memphis. Ozark Airlines provide nine flights daily to such cities as Louisville, Kentucky, St. Louis, Missouri, and Kansas City, Missouri. Cargo service to St. Louis, Missouri, and Chicago, Illinois, is provided daily.

Barkley Field has two runways: 6,500 by 150 feet and 4,000 by 150 feet. Services include 80 and 100 octane, jet fuel, taxi, limousine, storage, and major A & E repairs.

Kentucky Dam Village State Park, located at Gilbertsville, has a 4,000 by 100-foot paved and lighted runway and a 2,900 by 300-foot turf runway. Facilities include 80 and 100 octane gasoline, hangar, tie-down, charter service, and car rental.

Kentucky Lake State Park Airport, located at Kenlake State Park, has a 2,000 by 75-foot paved runway.

Water

Marshall County is bordered by the Tennessee River for 42 miles along its northern and eastern extremity. The Tennessee River, a tributary of the Ohio River, currently provides 9-foot navigation for 647 miles to Knoxville, Tennessee. This navigation depth is provided by 12 locks and 9 dams. River transportation has been improved by an interconnecting canal with the Cumberland River.

Navigation on the Ohio River is being vastly improved by the construction of new and larger locks and dams. This program, in part, provides for the new locks and dams to replace several existing smaller ones. In all, the number of lockages will be reduced from 46 to 18 and the present method of double locking large tows will be eliminated by the new 1,200-foot lock chambers. These improvements will substantially decrease transportation time and cost.

All of Marshall County's four industrial docks are located near Calvert City and its chemical complex. The freight originating from these docks includes coal, chemicals, sulphur, and salt.

The contract and common carriers licensed to operate on the Tennessee River in the Marshall County area are: Anon Transportation Company, American Commercial Barge Line Company, Green Line Steamers, Inc. (passenger), Igert, Inc., Southern Barge Line Corporation, Mississippi Valley Barge Line Company, and John I. Hay, Inc. (Mechling Barge Lines, Inc.).

Repair and fueling facilities are located at Paducah, Kentucky.

Other Transportation Services

Bus connections from Marshall County to all major points are made available by Southern Greyhound Bus Lines, Western Kentucky Stages, Inc., and Kentucky Bus Lines.

Car rental service is available in Marshall County, but no truck rental or taxi service is available.

POWER AND FUEL

Electricity

The Benton Electric Plant Board, whose source of supply is TVA, supplies Benton with electricity. Power is tapped from a 66,000 volt line at the east city limits of Benton, with a 13,000 volt line into the city and 7,200 volts on the city system which is 60 cycle, 3 phase. Average monthly use is 2,571,000 KWH. Monthly rates are as follows:

Residential:

First	75 kwh	2.5 ¢ per kwh
Next	100 kwh	1.5 ¢ per kwh
Next	225 kwh	1.0 ¢ per kwh
Next	750 kwh	0.4 ¢ per kwh
All over	1,150 kwh	0.75¢ per kwh

Minimum 0.75¢ per month

Commercial and Industrial:

First 50 kw of demand per month has no demand charge

First	150 kwh	2.5 ¢ per kwh
Next	400 kwh	1.5 ¢ per kwh
Next	950 kwh	1.0 ¢ per kwh
Next	1,400 kwh	0.8 ¢ per kwh
Next	11,100 kwh	1.05 ¢ per kwh
Next	19,000 kwh	.5 ¢ per kwh
Next	67,000 kwh	.4 ¢ per kwh
Next	400,000 kwh	.3 ¢ per kwh
Additional		.275¢ per kwh

All kw in excess of 50 kw is \$1 per kw.

Hardin is served by the West Kentucky RECC.

Large industrial users at Calvert City are supplied electricity directly from TVA. Other industrial, residential, and commercial power is distributed in Calvert City and Marshall County by Jackson Purchase RECC, Kentucky Utilities Company, and West Kentucky RECC.

The Jackson Purchase Rural Electric Cooperative Corporation provides service to 10,300 consumers in McCracken, Ballard, Carlisle, Graves, Marshall, and Livingston Counties. Service is provided through 10 different substations which are evenly located throughout the system to serve 1,700 miles of distribution lines, many miles of which are three phase. The Cooperative buys wholesale power from the Kentucky Utilities Company. Rates for industry will be furnished by the Cooperative upon request. The Cooperative's offices are located at Paducah, Kentucky.

The Kentucky Utilities Company has an approximate generating capacity of 740,000 kw in its six generating stations. Additional generating capacity of 427,000 kw is under construction with completion scheduled for May 1, 1971. The Company also has joined the Kentucky-Indiana Pool which will make additional capacity available. Rates for industry will be furnished by the Company's Industrial Development Department in Lexington, Kentucky.

The West Kentucky Rural Electric Cooperative Corporation provides electric service in five western Kentucky counties. Power is purchased from the Tennessee Valley Authority. Standard rates as filed with the Public Service Commission are TVA Standard General Lighting and Power Rate BGA and TVA Standard Residential Rate B-1. Copies of rates will be furnished upon request. The Cooperative's offices are located at Mayfield, Kentucky.

More power is generated in the Marshall County area than in any comparable area in the world. The nearby TVA hydroelectric plant of Kentucky Dam, with five generators, produces 165,000 kw; the TVA Shawnee Steam Plant, constructed to supply the Atomic Energy Plant at Paducah, has ten generators, producing 1,500,000 kw; and Joppa Steam Plant, with six generators, produces 900,000 kw. This plant was constructed by Electric Energy, Inc., a corporation comprised of five private utility companies. The TVA Johnsonville Steam Plant, with ten generators, produces 1,275,000 kw. The four generators at Barkley Dam produce 130,000 kw. The Marshall County area draws industrial power mainly from the Kentucky Dam, Shawnee and Johnsonville plants.

Natural Gas

The two gas companies which operate in Marshall County are Union Gas Company of Kentucky, Inc., and Western Kentucky Gas Company.

Union Gas Company of Kentucky, Inc., a municipally owned gas system, serves Benton. The system is supplied gas by Texas Gas Transmission Corporation through a 4-inch transmission line. This supply is unlimited. Pressure is maintained at 28 psi, Btu content is 1,030 per cubic foot, and specific gravity is .60.

Current rates are as follows:

Residential and small commercial:

First	500 cu. ft. or less	\$1.50 (Minimum)
Next	2,500 cu. ft.	1.25 per M cu. ft.
Next	7,000 cu. ft.	1.00 per M cu. ft.
Over	10,000 cu. ft.	.75 per M cu. ft.

Minimum bill - \$1.50

Large Commercial:

First	500 cu. ft. or less	\$2.00 (Minimum)
Next	3,500 cu. ft.	1.25 per M cu. ft.
Next	7,000 cu. ft.	.85 per M cu. ft.
Next	29,000 cu. ft.	.60 per M cu. ft.
Over	40,000 cu. ft.	.45 per M cu. ft.

Minimum bill - \$2.00

Calvert City is supplied natural gas by the Western Kentucky Gas Company, whose source of supply is the Texas Gas Transmission Corporation. The Btu content is approximately 1,015 and the specific gravity is .60.

Rate 3-A:

Gas service under this rate is available only to customers who require and contract for not less than 100,000 cubic feet per day, or 24,000,000 cubic feet per year. Service may be 100 percent interruptible, or 100 percent firm, or a combination of the two. The cost shall be:

Interruptible Service:

First	2,000,000 cu. ft. per month	\$950.00
Next	2,000,000 cu. ft. per month	44.5¢ per M cu. ft.
Next	2,000,000 cu. ft. per month	42.5¢ per M cu. ft.
All additional	cu. ft. per month	36.5¢ per M cu. ft.

Minimum Charge: \$950.00 per meter per month.

If additional information is needed, contact the Industrial Development Department, Western Kentucky Gas Company, Owensboro, Kentucky.

At the present time there is a natural gas system under construction in Hardin. The source of supply will be Texas Gas Transmission Corporation.

Coal

Marshall County is served by the Western Kentucky Coal Field. A representative freight cost for coal from the Western Kentucky District is \$3.30 per ton. 13/

Fuel Oil

Kentucky has three fuel oil refineries located in Catlettsburg, Louisville, and Somerset. Kentucky's fuel supply is supplemented by border state operations.

Delivered prices of the various grades may be obtained from the Kentucky Department of Commerce, Frankfort, Kentucky.

WATER AND SEWERAGE

Water

Three public water systems operate in Marshall County. They are located at Benton, Calvert City, and Hardin.

The Benton Water and Sewer Company, a municipally owned and operated company whose source of supply is two wells, supplies treated water to local residents. The plant's filter capacity is 700 gpm and storage facilities include a 125,000-gallon tank and a 50,000-gallon tank. The average pumping time to meet requirements is 7 hours per day. The average daily use is 300,000 gallons with the peak use being 398,000 gallons. Pressure is maintained at 65 psi and the mains are 6 and 8 inches. The company has 1,340 metered customers.

Monthly rates are as follows:

First	3,000 gals. of water per month (minimum)	\$3.15
Over	3,000 gals. but less than 3,500 gals.	3.70
Over	3,500 gals. but less than 4,000 gals.	4.20
Over	4,000 gals. but less than 4,500 gals.	4.75
Over	4,500 gals. but less than 5,000 gals.	5.25
Over	5,000 gals. but less than 5,500 gals.	5.80
Over	5,500 gals. but less than 6,000 gals.	6.30
Over	6,000 gals. but less than 6,500 gals.	6.85
Over	6,500 gals. but less than 7,000 gals.	7.35
Over	7,000 gals. - 30 cents for each 500 gallons or fraction thereof in excess of 7,000 gallons.	
Over	20,000 gals. - 20 cents for each 500 gallons or fraction thereof exceeding 20,000 gallons per month.	

Calvert City is provided finished water by a municipally owned water system, whose source of supply is two deep wells. Raw water is treated with chlorine, lime, alum, and by fluoridation process. The capacity of the treatment plant is 720,000 gpd with the peak daily demand being 375,000 gallons. The average daily use is 335,000 gallons. Storage facilities include a 750,000-gallon elevated tank and a 100,000-gallon clear well. Mains range from 4 to 8 inches and the average pressure is 100 psi.

Current monthly rates are:

	<u>Gallons</u>	<u>Per M Gallons</u>
First	2,000	\$3.50 (Minimum)
Next	3,000	1.00
Next	5,000	.80
Next	5,000	.70
Next	5,000	.60
Next	5,000	.50
Next	25,000	.40
All over	50,000	.30

The Hardin Water System, constructed in 1963, has a capacity of 100,000 gallons per day. The source of supply is two deep wells and the average daily use is 57,000 gallons.

Sewerage

Marshall County has three municipal sewerage systems, located at Benton, Calvert City, and Hardin.

The Benton Water and Sewer Company has a 15-acre sewerage lagoon and a 12-acre sewerage lagoon that were completed in 1963. The system is presently operating at 60 percent of capacity. Monthly rates are 25 percent of the water bill.

The Calvert City Water and Sewerage Department serves Calvert City with separate storm and sanitary sewers. Sanitary mains range from 10 to 12 inches in size and the storm mains are 16 inches. Sewage is given primary and secondary treatment and then is discharged into Cypress Creek. The treatment plant is designed to serve a population of 15,000. Rates equal 50 percent of the water bill with a minimum charge of \$2.90.

The sewerage system recently completed at Hardin has a capacity of 100,000 gallons per day.

AGRICULTURE - NATURAL RESOURCES - CLIMATE

Agriculture

The approximate total land area of Marshall County is 193,920 acres, with 52.2 percent of the area devoted to farming. In 1964, there were 1,079 farms in the county with an average size of 94 acres.

Farm income in the county is largely from the production of cattle and hogs with supplemental income from field crops. The 1964 value of sales of all farm products totaled \$3,250,948, averaging \$3,013 per farm. Crop sales totaled \$556,464; livestock and livestock products totaled \$2,693,684.

In 1966, agricultural production in Marshall County included 239,000 pounds of burley tobacco, 276,000 pounds of dark-fired tobacco, and 472,000 bushels of corn. Livestock on farms on January 1, 1967, included 16,600 cattle and calves, and 10,200 hogs and pigs. Milk cows on farms during 1965 averaged 1,200 head, with milk production for the year totaling 6.1 million pounds.

Mineral Resources

Mineral resources of Marshall County include sand and gravel, clays, silica sand, and chert. Of these, only sand and gravel deposits were commercially operated in 1966. Clays, silica sand, and chert are available for exploitation and have some commercial value for the future.

Sand and gravel from unconsolidated continental deposits are excavated intermittently from scattered pits for use as road metal.

Foundry sand for local use is obtained from the Clayton (?) and McNairy Formations in a small pit located in the northwest part of the Briensburg Quadrangle. Silica sand suitable for the manufacture of low-grade glass products is reported in the county. The development in 1958 of a silica sand deposit near New Concord, Calloway County, has significance for other deposits in the Jackson Purchase area.

Water Resources

Large quantities of water for public and industrial use can be secured from both surface and ground water. The Kentucky Lake Reservoir and the Tennessee River afford the largest sources of surface water.

Available information indicates that most wells yield large supplies of ground water for public, industrial, irrigational, and domestic use. Yields as great as 1,400 gpm are reported and yields of several hundred gallons per minute are common.

Forests

There are 64,300 acres of commercial forest land in Marshall County, covering 33.2 percent of the total land area. The most abundant species are red oaks, white oaks, hickories, sweetgum, soft maple, cottonwood, and ash.

In Kentucky, within a 50-mile radius of Benton, the county seat, there are 986 thousand acres of commercial forest land. In 1962, 78 million board feet of timber were harvested from this area. Forestry authorities agree that the desirable annual cut could be much larger. The adjacent parts of Tennessee, Missouri, and Illinois are also well forested. While some of the timber harvest is used locally, much of it is shipped out of the area for further processing.

Forests of the entire area receive organized protection from fire from the State Department of Natural Resources.

Climate

Marshall County has a pleasant year-round climate. Great extremes of heat or cold rarely occur, yet weather changes are sufficiently frequent to give variety.

Winter is short and mild with an average annual snowfall of 10 inches, lasting only a few days at a time.

Total precipitation averages 45 inches annually, occurring mainly in the winter and spring.

During an average year, 105 days are clear, 107 partly cloudy, and 153 cloudy. Normal monthly minimum temperatures range from 30° to 69° F; maximum range is from 47° to 88° F; average annual temperatures range from 39° to 79° F.

Prevailing wind is from the southwest.

LOCAL GOVERNMENT

Structure

Benton and Calvert City are fourth-class cities and have a mayor-council type government. The mayors are elected for terms of four years and the councilmen serve two years. Hardin, a sixth-class city, has a Board of Trustees type of government.

Marshall County is governed by a fiscal court composed of a county judge and five magistrates who are elected for four-year terms.

Finance

The City of Benton had an income of \$122,756 for the year ending June 30, 1968, while expenditures totaled \$111,115. Bonded indebtedness outstanding of the city is \$159,000. As of June 30, 1968, school district bonds outstanding totaled \$454,000.

Calvert City had an income of \$52,534 for the year ending June 30, 1968, while expenditures totaled \$47,246. Bonded indebtedness outstanding totaled \$275,000 in General Obligation Bonds for the water system.

The City of Hardin had an income of \$2,610 for the year ending June 30, 1968, while expenditures totaled \$2,436. Bonded indebtedness outstanding to the city is \$264,000 in Revenue Bonds for the water and sewerage systems.

Marshall County's budget for the fiscal year ending June 30, 1969, is \$285,791. As of June 30, 1968, the county had no bonded indebtedness.

Taxes

Most of the general revenue income for the Cities of Benton, Calvert City and Hardin, and Marshall County is derived from property taxes. Property must be assessed at 100 percent of value under provisions of the Kentucky Constitution. Net assessed value of property in these jurisdictions during 1968 was:

<u>Classes of Property</u>	<u>Benton</u>	<u>Calvert City</u>	<u>Hardin</u>	<u>Marshall County</u>
Real Estate		\$8,531,915	\$1,458,877	\$101,498,711
Tangibles				116,236,000
Public Service	\$531,067	1,270,613	204,910	15,142,091

The 1968 property tax rates for Benton, Calvert City, Hardin, and Marshall County are shown below.

TABLE 8

PROPERTY TAX RATES PER \$100 OF ASSESSED VALUE FOR BENTON,
CALVERT CITY, HARDIN, AND MARSHALL COUNTY, 1968 14/

Taxing Unit	Benton	Calvert City	Hardin	Marshall County
State	\$.015	\$.015	\$.015	\$.015
County	.167	.167	.167	.167
School	.487	.427	.427	.427
City	<u>.240</u>	<u>.198</u>	<u>.170</u>	<u> </u>
Total	\$.909	\$.807	\$.779	\$.609

There is a county-wide occupational license tax of 1/2 of 1 percent on gross receipts of individual income and businesses which operate within the county. The receipts from this tax go to the county school system.

Calvert City and Benton require a business license to be purchased annually. The maximum business license is \$60 for Calvert City and \$50 for Benton.

Benton, Calvert City, and Hardin are empowered by state law to allow a five-year tax exemption from municipal taxation for new industry.

Planning and Zoning

Benton and Calvert City have planning and zoning commissions.

The Benton Planning Commission has completed a Comprehensive Plan, Zoning Ordinance, Subdivision Regulations and Neighborhood Analysis.

The Calvert City Planning Commission has completed a Comprehensive Plan, Subdivision Regulations, revision of its base studies and is presently revising the Zoning Ordinance.

Both cities have adopted and enforce all major codes and ordinances.

Safety

Fire: Benton has a Class-7 American Insurance Association fire rating. The Benton Fire Department consists of one part-time chief and twenty-three volunteers. Motorized equipment includes a 1960 Chevrolet with a 750-gpm pump, and a 1952 Ford Central with a 500-gpm pump. Sixty fire hydrants are strategically located throughout the city.

Calvert City has a Class-7 American Insurance Association fire rating. The fire department consists of a chief, two assistant chiefs, twelve volunteer firemen, and seven auxiliary firemen. The department has a 750-gpm pumper truck, a 500-gpm pumper truck, a 1,100-gallon tank truck, an auxiliary equipment truck, and an ambulance-rescue truck.

The Hardin Fire Department has 10 volunteers and motorized equipment consists of a 1943 Ford with a 500-gallon tank on the truck and a pump with 300 pounds of pressure.

Police: The Benton Police Department is staffed with a chief and three patrolmen who use a two-way radio-equipped car.

The Calvert City Police Department consists of a chief and one patrolman. The department has two radio-equipped patrol cars.

The Marshall County Sheriff's Department, located in Benton, consists of a sheriff and three deputies. The department has four radio-equipped patrol cars.

In addition, there are five Kentucky State Policemen assigned to patrol the county area.

Sanitation

Garbage collection is maintained in Benton by a private collector through individual contracts. This service is also available in the county.

Refuse is collected by a municipal sanitation department twice weekly in both the business district and the residential areas in Calvert City. Charges are billed monthly in conjunction with the water bill. Disposal is by the sanitary land fill method.

HEALTH

Hospitals

Marshall County is served by a forty-bed hospital located in Benton. The hospital, with operating, X-ray, laboratory, and emergency facilities, is staffed by eight staff doctors, two courtesy staff doctors, four registered nurses, seven licensed practical nurses, thirty-eight nurses aides, five orderlies, two laboratory technicians, two X-ray technicians, nine housekeepers, thirteen kitchen employees, and eight employees on the administrative staff.

Benton has a private clinic equipped with six beds and six bassinets and staffed by a resident doctor and twelve employees.

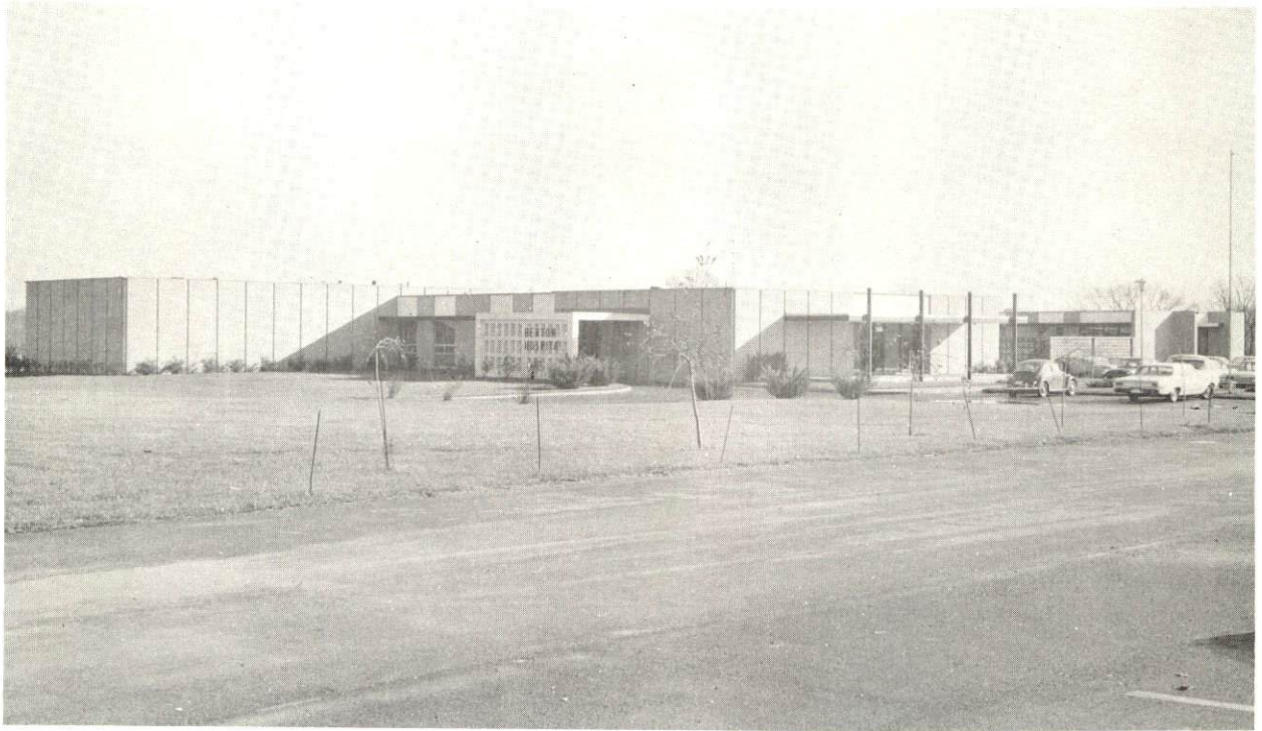
The Calvert City Clinic, offering outpatient service only, is staffed by two doctors, one dentist, three nurses and two clerks. X-ray equipment, EKG machine, nine examination rooms and full dental facilities are utilized.

Nursing Homes

The Benton Municipal Hospital Nursing Home is a state-licensed nursing home with a total of 42 beds.

Public Health

The Marshall County Health Department, located in Benton, provides a complete supervised health program for the county area. The department is staffed by five full-time and seven part-time employees. The budget for the 1968-69 fiscal year is \$52,221.



BENTON HOSPITAL



MARSHALL COUNTY LIBRARY

OTHER LOCAL FACILITIES

Housing

Very few houses or apartments are available for rent in Marshall County. However, there are a number of subdivisions being developed in and around Benton, Calvert City, and Hardin.

Communication

Telephone: The South Central Bell Telephone Company serves subscribers in Benton and Marshall County. Long distance service is described as excellent.

The Kentucky Telephone Company, with district offices in Calvert City, serves the residents of Calvert City with a dial system. Direct distance dialing and mobile service are available.

Marshall County is a toll-free area in both systems.

Telegraph: Western Union, located in Benton, provides telegraph service to Marshall County.

Postal: Benton is served by a first-class post office in which mail is received and dispatched four times daily.

Calvert City is served by a first-class post office in which mail is received and dispatched two times daily. The post office serves two rural routes.

Hardin is served by a third-class post office in which mail is received and dispatched three times daily. The post office serves one rural route.

Newspapers: There are three weekly newspapers which serve the residents of Marshall County. They are the Calvert News, with a circulation of 2,300; the Marshall Courier with a circulation of 2,350; and The Tribune-Democrat with a circulation of 2,488.

Other papers are received daily from Paducah and Louisville, Kentucky; and Nashville and Memphis, Tennessee.

Radio: Marshall County is served by WCBL-AM-FM in Benton. The radio station operates with 5,000 watts of power on 1290 kilocycles. The station's operating hours are daytime only. WCBL-FM operates with 3,000 watts of power on 102.3 megacycles. Operating hours are from sunrise to 8 p. m.

In addition to the local radio station, programs are received from three stations in Paducah, Kentucky.

Television: Television reception is described as excellent from Paducah, Kentucky; Harrisburg, Illinois; Cape Girardeau, Missouri; and Nashville, Tennessee. All major networks are represented.

Libraries

The Marshall County Public Library, Benton, has 13,602 volumes and an annual circulation of approximately 54,300 volumes.

The Calvert City Public Library has 4,762 volumes and an annual circulation of approximately 11,500.

The Hardin Branch has 2,650 volumes and was opened in May 1968.

All three libraries have records, magazines, and periodicals.

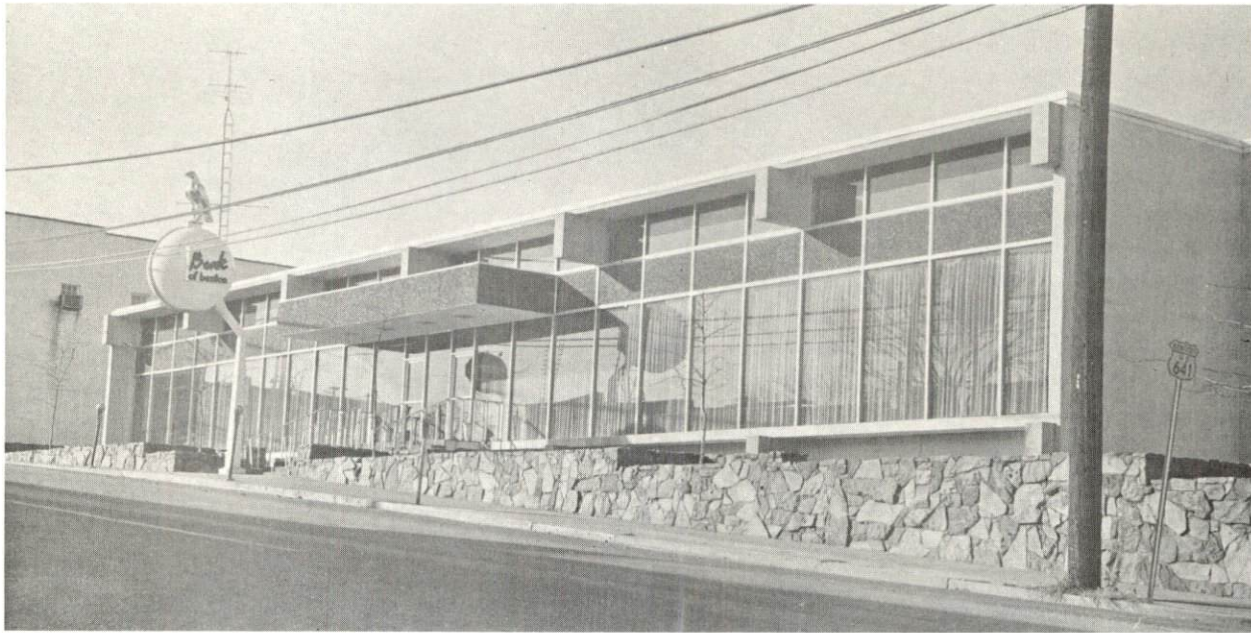
Churches

The following denominations are represented in Marshall County: Baptist, Catholic, Christian, Church of Christ, Church of God, Episcopal, Lutheran, Methodist, and Presbyterian.

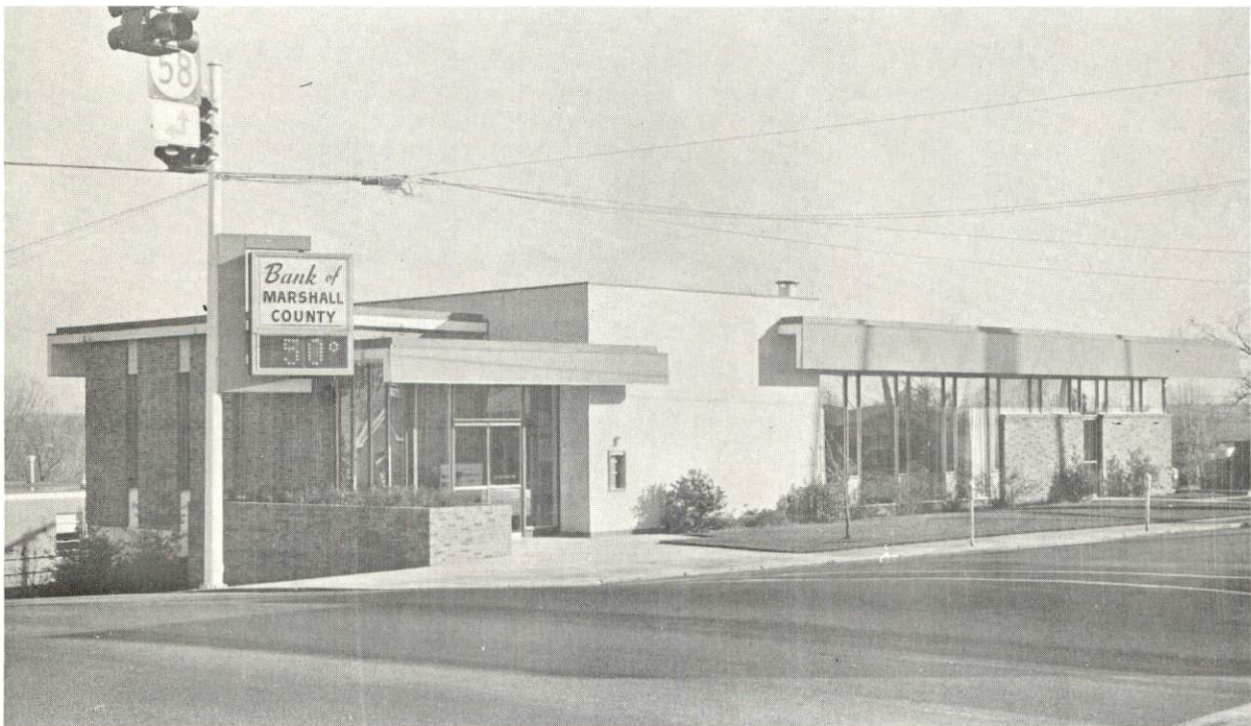
Financial Institutions

<u>Bank</u>	<u>Statement as of December 31, 1968</u>	
	<u>Assets</u>	<u>Deposits</u>
Bank of Benton	\$16,627,138.49	\$15,333,750.49
Bank of Marshall County	20,520,689.53	18,948,867.73
Calvert Bank	4,946,105.53	4,522,419.69
First Liberty	3,692,316.25	3,355,855.49

There are two loan associations in Benton, the Valley Building and Loan Association and First Federal Savings and Loan Association.



BANK OF BENTON



BANK OF MARSHALL COUNTY

Hotels and Motels

Marshall County is fortunate in having a number of motel and hotel facilities located within the county. Both state parks, Kentucky Dam Village State Park and Kenlake State Park, have beautiful modern resort lodges. There are many privately owned resorts in the county.

Clubs and Organizations

Business and Civic: West Kentucky Association of Independent Insurance Agents, Marshall County Association for Exceptional Children, Kentucky-Barkley Lakes Board of Realtors, Marshall County Soil Improvement Association, Marshall County Rescue Squad and Emergency Unit, Inc., Chamber of Commerce, Jaycees, Kiwanis, Lions, Rotary, Medical Society, Red Cross, Red Carpet Service, Benton Municipal Hospital Board, Benton Citizens Advisory Council, Benton Golf and Country Club, Kentucky Lake Shriner Club, Kentucky Lake Sailing Club, Kentucky Twin Lake Campers, Marshall County Bar Association, Marshall County PTA

Fraternal: American Legion, FOP, Masonic Lodge, Woodsmen of the World, Disabled American Veterans

Women's: Women's Club, B and PW Club, DAR, Eastern Star, Homemakers, Garden Club, American Legion Auxiliary

Youth: Candy Strippers, Jr. Volunteers, Boy Scouts, Girl Scouts, Cub Scouts, FFA, FHA, 4-H

Recreation

Local: The Benton City Park is well equipped with recreational facilities. Facilities include: swimming pool and bathhouse, roller skating rink, Little League baseball for age groups from seven to fifteen, riding stable and track, miniature golf, tennis and badminton courts, and picnicking and playground equipment.

A county fair and a horse show are held each year during midsummer. Teen Town is held every Saturday night in Calvert City and is sponsored by the Calvert City Junior Chamber of Commerce for the county.

The Benton Riding Club meets once a week in the city park. Benton's Square Dancing Club meets the fourth Saturday night of each month at Kentucky Dam Village State Park.

There are five major events held annually in Benton. They are: "Tater Day," similar to county court day; "Big Singing," singing festival; Easter Egg Hunt, largest in western Kentucky; Gospel Singing Convention, held each spring and fall; and the Marshall County Agriculture and Industry Fair, revived as the Marshall County Fair in 1963 after previous fair association was disbanded in 1960. The Calvert City Jaycees hold a yearly fish fry.

Calvert City has a 24-acre municipal park managed by the Calvert City Park Commission. Excellent facilities include a lighted baseball field, children's playground, shuffleboard courts, picnic area supplied with benches, tables, charcoal grills, and rest rooms.

During the summer months various baseball leagues have games from four to six nights per week. The teen-agers enjoy supervised Teen Town, bowling, roller skating, and various other activities.

Hardin has Little League, Pony League, and American Legion League baseball during the summer. Available also are a city park, a bowling alley, and a skating rink.

Marshall County is very fortunate to be located in the midst of a rapidly developing, nationally known recreation area.

Kentucky Lake, 184 miles long, forms Marshall County's eastern boundary. Stretching from a point near Paducah through Marshall and Calloway Counties and into Tennessee, the Kentucky Lake area is fast becoming the water playground of Mid-America. Within 500 miles of 70 million people, the area is annually drawing more than three million vacationers to its parks - Kentucky Dam Village at Gilbertsville, and Kenlake near Hardin. The lake was impounded in 1944 by Kentucky Dam (8,422 feet long and 206 feet high) across the Tennessee River.

Kentucky Dam Village State Park has a resort inn, two lodges, resort pool, dining room, coffee shop, gift shop, efficiency and two- and three-bedroom cottages, two- and three-bedroom deluxe cottages, tent and trailer camp sites with three central service buildings, bathhouse, sand beach and lake swimming, boating and rentals and two boat docks, fishing boat and ski-boat rentals, launching ramps, 18-hole golf course, golf-cart rentals, horseback riding, miniature golf, playground and planned recreation, grocery, coin laundry, lake cruises, airstrip and fishing. This park, on the northern end of Kentucky Lake, near Kentucky Dam, is the most visited of Kentucky's parks, with over 3.9 million visitors in 1964. It is Kentucky's "has everything" park.

Kenlake State Park has a resort hotel, swimming pool, dining room, gift shop, efficiency and one- and two-bedroom cottages, tent and trailer camp sites with central service building, group camp, bathhouse, beach and lake swimming, boat docks, boat rentals and a launching ramp, sail-boating and sailboat launching boom, 9-hole golf course, bicycle rentals, horseback riding, 140-power telescope, picnic shelter with rest rooms, coin laundry, airstrip, playground and supervised recreation, and amphitheatre. The park is situated on the west shore of 158,300-acre Kentucky Lake, which is the home of the Governor's Cup Regatta, held each year in late May, and the Watkins Cup Regatta, held annually in early October. The Kentucky Lake Fall Fishing Derby is held each year from mid-August through October.

Besides these state parks, there are a number of private lodges and resorts located in the county. The county's recreational facilities are its most plentiful and valuable asset.

Area: Barkley Dam, impounding the Cumberland River and creating the 118-mile long Barkley Lake, was completed in 1966. Lake Barkley State Park, an 1,800-acre, full-facility vacation resort park, is to be constructed on the east shore of Lake Barkley. This park will be only a 15 to 20-minute drive from Benton, which is located in central Marshall County.

The Land Between the Lakes National Recreation Area is located between Kentucky Lake and Lake Barkley in far southwestern Kentucky and northwestern Tennessee, with the largest portion in Trigg and Lyon Counties in Kentucky. The location is within 500 miles of 70 million people, or 30 percent of the U. S. population.

Racing: Thoroughbred racing is held at James C. Ellis Park and Race Track, located between Henderson, Kentucky, and Evansville, Indiana. Harness racing can also be found at Audubon Raceway, Henderson, Kentucky.

During the year additional thoroughbred and harness racing can be found at Louisville where on the first Saturday in May the world famous Kentucky Derby is held at Churchill Downs.

College Sports: Murray State University, 15 miles from Marshall County, provides a major collegiate program during the school year.

Professional Sports: Major League sports can be found in St. Louis, Missouri, 200 miles from Marshall County.

Drama and Music: Murray State University has an excellent drama department, with a summer theater production at Kentucky Lake State Park. The University offers a complete range of cultural activities open to the public.

Community Improvements

Public: Construction of natural gas system for Hardin; new elementary school at Calvert City; new elementary school in the community of Fairdealing to be completed by Fall of 1969; 50 low-income housing units completed in Benton; 20 low-income housing units completed in Calvert City.

Business and Industrial: New branch of Bank of Marshall County at Gilbertsville; eight new businesses in Rolling Hills Plaza.

Other: Several subdivisions are being developed; golf course and country club under construction in Calvert City.



EXCELLENT RECREATIONAL FACILITIES

HISTORY

Marshall County, Kentucky's ninety-second county, was formed from Calloway County and named for Chief Justice John Marshall of the United States Supreme Court from 1801 to 1835.

Marshall County's eastern boundary follows Kentucky Lake from Kentucky Dam near Gilbertsville upstream to Calloway County, a distance of approximately twenty-five miles. The numerous coves made by Kentucky Lake, plus the ideal climate the region enjoys most of the year, give the county a good share of a vacation and playground area fast becoming one of the most popular in the nation. Its 303 square miles of territory are generally level, its soil is good, and some large tracts of timber still dot the landscape.

Calvert City is located in the northern part of the county near Kentucky Dam and Lake. Prior to 1950, the main income for this rural hamlet was derived from agriculture and the sale of timber. Beginning with 1950, Calvert City has experienced rapid growth due to the locations of twelve industrial concerns which employ more than 3,000 people.

The building of Kentucky Dam in the late 1930's and early 1940's, and the building of Barkley Dam and Lake in the 1960's, created new opportunities in the way of an industrial boom and have created one of the nation's most attractive recreational areas.

Benton, the county seat, incorporated in 1845, is located in the south central part of Marshall County. Benton has also experienced rapid growth due to a rapid increase in manufacturing and commercial trade. One of the leading festivals in Benton, "Tater Day," celebrated on the first Monday in April, like county court day in many rural sections of Kentucky, is the annual spring holiday when the countryside gathers on the streets to buy and sell sweet potatoes for seed. The transaction was extended to include livestock, produce, guns, knives, or anything that can be swapped. The day is an occasion not only for trading but also for meeting friends.

SOURCES OF INFORMATION

- 1/ U. S. Bureau of the Census, U. S. Census of Population, Kentucky.
- 2/ Department of Sociology, University of Kentucky, Kentucky County Provisional Population Estimates, 1968, Lexington, Kentucky.
- 3/ Kentucky Department of Commerce, 1969 Kentucky Directory of Manufacturers.
- 4/ Kentucky Department of Economic Security, Division of Research and Statistics.
- 5/ Kentucky Department of Economic Security, Employment Service Office.
- 6/ Kentucky Department of Commerce, Kentucky's Labor Supply Estimates, 1968.
- 7/ Office of Development Services and Business Research, University of Kentucky, Lexington, Kentucky.
- 8/ U. S. Department of Commerce, 1963 U. S. Census of Business.
- 9/ Kentucky Department of Education, Kentucky School Directory, 1968-69.
- 10/ Illinois Central Railroad, Louisville, Kentucky.
- 11/ Louisville & Nashville Railroad, Louisville, Kentucky.
- 12/ McLean Trucking Company, Winston-Salem, North Carolina.
- 13/ Illinois Central Railroad, Chicago, Illinois.
- 14/ Kentucky Department of Revenue, Kentucky Property Tax Rates, 1968.