

1984

Industrial Resources: Menifee County - Frenchburg

Kentucky Library Research Collections
Western Kentucky University, spcol@wku.edu

Follow this and additional works at: https://digitalcommons.wku.edu/menifee_cty



Part of the [Business Administration, Management, and Operations Commons](#), [Growth and Development Commons](#), and the [Infrastructure Commons](#)

Recommended Citation

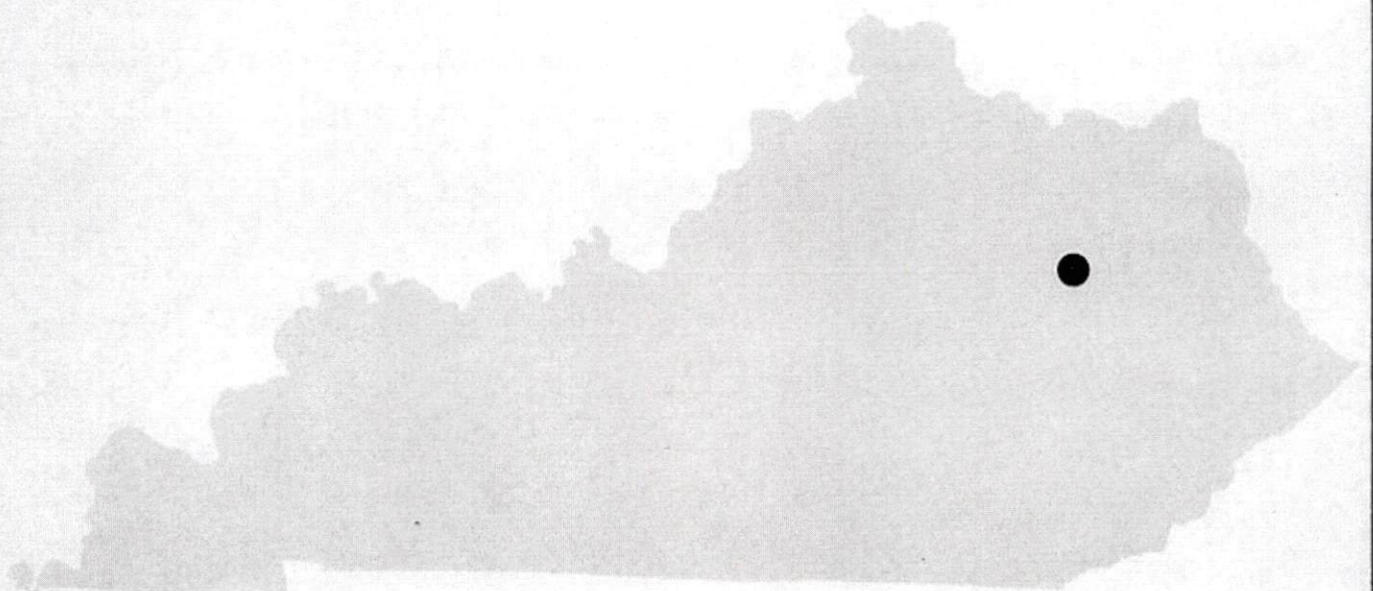
Kentucky Library Research Collections, "Industrial Resources: Menifee County - Frenchburg" (1984). *Menifee County*. Paper 7.
https://digitalcommons.wku.edu/menifee_cty/7

This Report is brought to you for free and open access by TopSCHOLAR®. It has been accepted for inclusion in Menifee County by an authorized administrator of TopSCHOLAR®. For more information, please contact topscholar@wku.edu.

TR 102.11422 COUNTY
430

**RESOURCES
FOR
ECONOMIC
DEVELOPMENT**

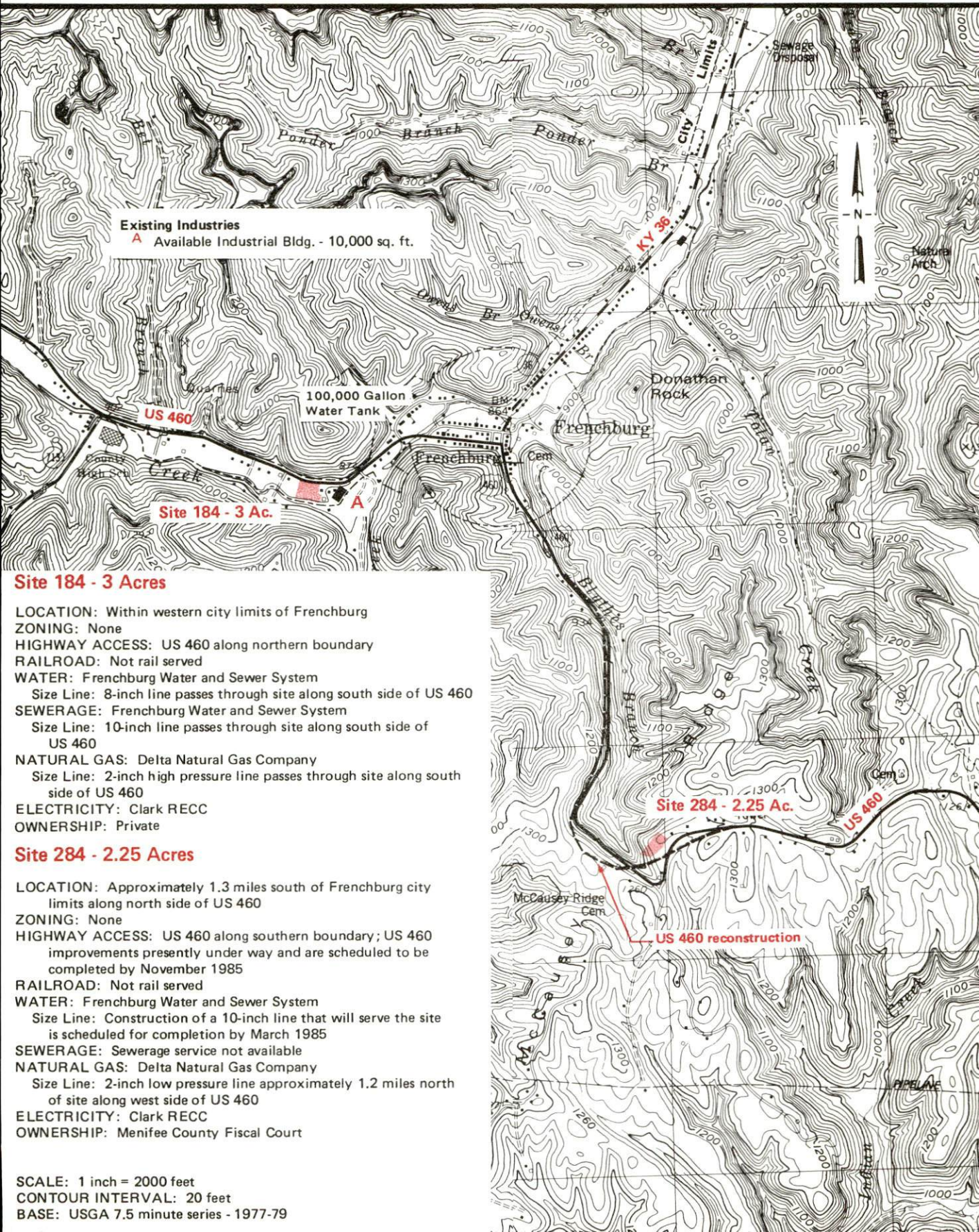
FRENCHBURG



KENTUCKY
The Business Environment is Right

FRENCHBURG, KENTUCKY --- Industrial Sites --- 1984

For more information contact the Kentucky Department of Economic Development, Industrial Development & Marketing Division, Capital Plaza Tower, Frankfort, Kentucky 40601 (502-564-7140).



Existing Industries

A Available Industrial Bldg. - 10,000 sq. ft.

Site 184 - 3 Ac.

Site 184 - 3 Acres

LOCATION: Within western city limits of Frenchburg

ZONING: None

HIGHWAY ACCESS: US 460 along northern boundary

RAILROAD: Not rail served

WATER: Frenchburg Water and Sewer System

Size Line: 8-inch line passes through site along south side of US 460

SEWERAGE: Frenchburg Water and Sewer System

Size Line: 10-inch line passes through site along south side of US 460

NATURAL GAS: Delta Natural Gas Company

Size Line: 2-inch high pressure line passes through site along south side of US 460

ELECTRICITY: Clark RECC

OWNERSHIP: Private

Site 284 - 2.25 Acres

LOCATION: Approximately 1.3 miles south of Frenchburg city limits along north side of US 460

ZONING: None

HIGHWAY ACCESS: US 460 along southern boundary; US 460 improvements presently under way and are scheduled to be completed by November 1985

RAILROAD: Not rail served

WATER: Frenchburg Water and Sewer System

Size Line: Construction of a 10-inch line that will serve the site is scheduled for completion by March 1985

SEWERAGE: Sewerage service not available

NATURAL GAS: Delta Natural Gas Company

Size Line: 2-inch low pressure line approximately 1.2 miles north of site along west side of US 460

ELECTRICITY: Clark RECC

OWNERSHIP: Menifee County Fiscal Court

SCALE: 1 inch = 2000 feet

CONTOUR INTERVAL: 20 feet

BASE: USGA 7.5 minute series - 1977-79

RESOURCES FOR ECONOMIC DEVELOPMENT
FRENCHBURG, KENTUCKY

Prepared by
The Kentucky Department of Economic Development
Division of Research and Planning
in cooperation with
The City of Frenchburg

1984

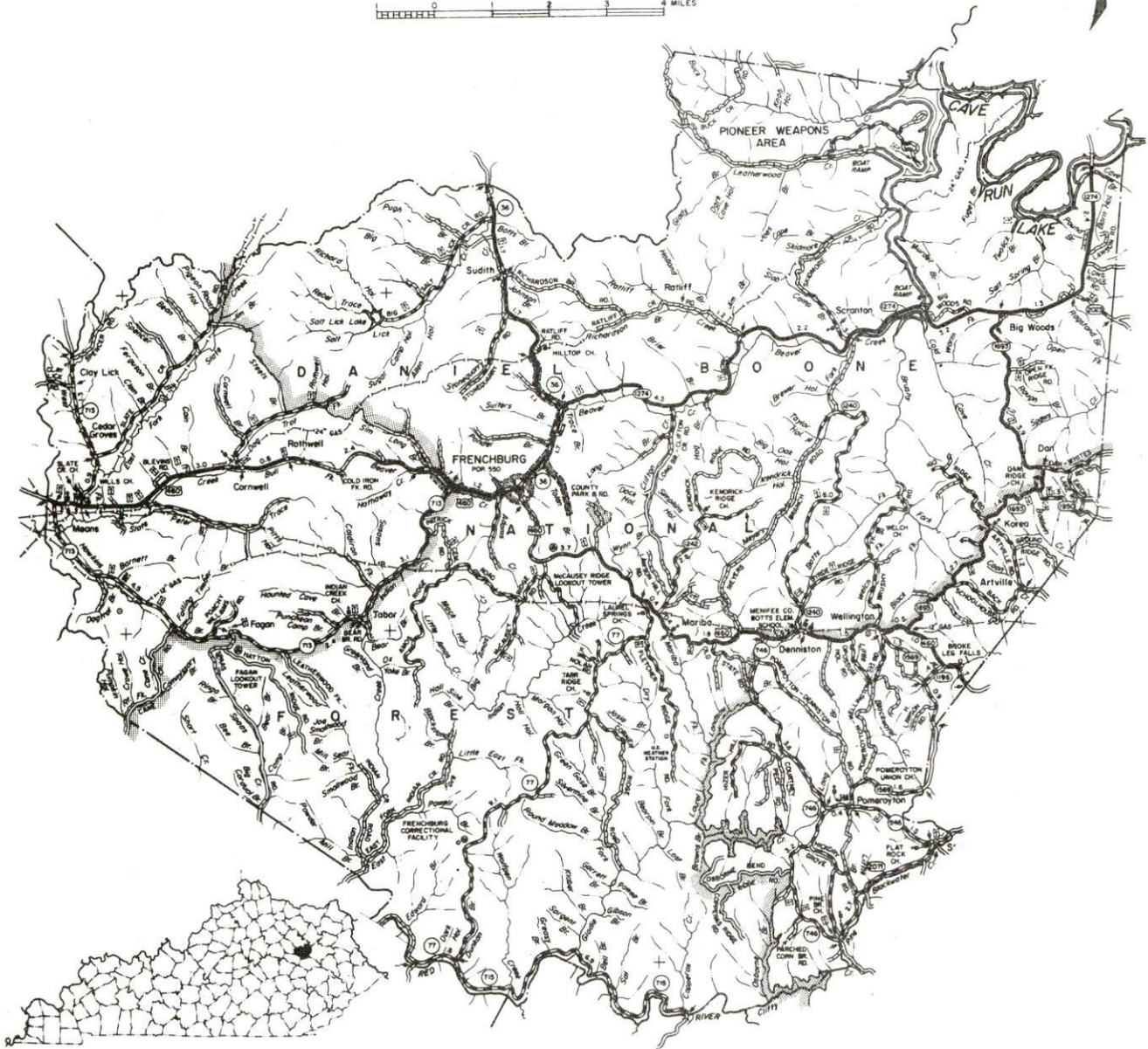
TABLE OF CONTENTS

<u>Chapter</u>	<u>Page</u>
INDUSTRIAL SITES	i
FRENCHBURG, KENTUCKY - A RESOURCE PROFILE	1
THE LABOR MARKET AREA	3
Population	3
Labor Force Characteristics of Residents, 1983	3
Selected Components of Nonagricultural Employment, by Place of Work, 1983	4
Frenchburg Manufacturing Firms, Their Products and Employment	4
Labor Organizations in Manufacturing Firms	4
Industrial Services	5
Estimated Male Labor Supply	6
Estimated Female Labor Supply	6
Average Weekly Wages By Industry, by Place of Work, 1983	7
Per Capita Personal Income	9
TRANSPORTATION	10
Rail	10
Highways	10
Truck Service	11
Air	12
Rental Services	13
Water	13
POWER AND FUEL	14
Electricity	14
Natural Gas	14
Other Fuels	15
WATER AND SEWERAGE	16
Public Water Supply	16
Raw Water	17
Sewerage	17
CLIMATE	18

<u>Chapter</u>	<u>Page</u>
LOCAL GOVERNMENT	19
City	19
County	19
Assessed Value of Property, 1984	19
Property Taxes	19
Combined State and Local Rates Per \$100 Valuation, 1983	20
Planning and Zoning	20
Safety	20
Police	20
Fire	20
Refuse Collection and Disposal	21
EDUCATION	22
Public Schools	22
Area Colleges and Universities	23
Vocational Schools	24
HEALTH	26
Hospitals	26
Other Medical Facilities	27
Ambulance Service	27
Public Health	27
OTHER LOCAL FACILITIES	28
Communications	28
Library Services	28
Religious Institutions	29
Financial Institutions	29
Clubs and Organizations	29
RECREATION	30
COMMUNITY IMPROVEMENTS	32

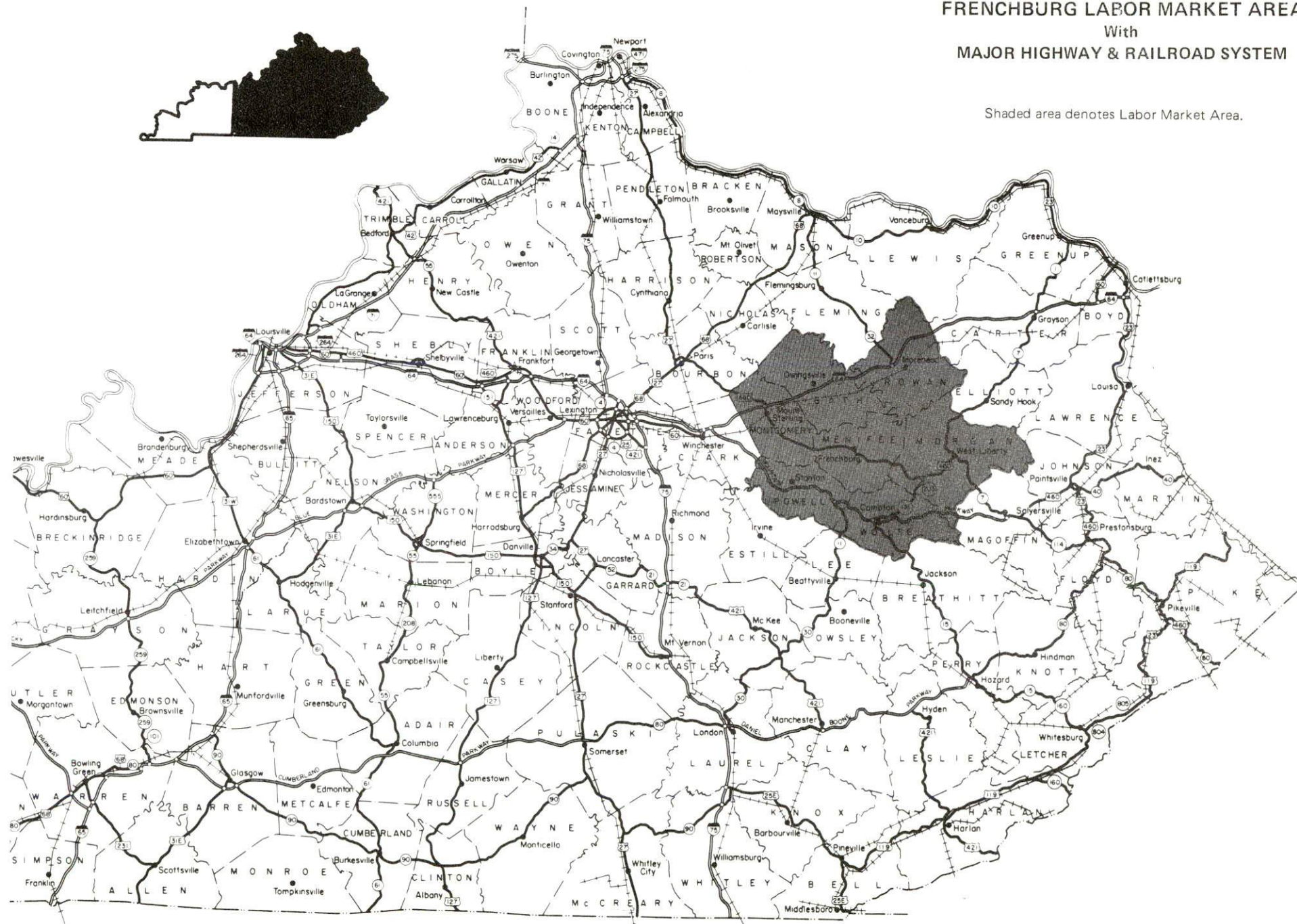
1984 EDITION
GENERAL HIGHWAY MAP
MENIFEE COUNTY
KENTUCKY

PREPARED BY THE
KENTUCKY TRANSPORTATION CABINET
DEPARTMENT OF HIGHWAYS
DIVISION OF PLANNING
IN COOPERATION WITH THE
U.S. DEPARTMENT OF TRANSPORTATION
FEDERAL HIGHWAY ADMINISTRATION



FRENCHBURG LABOR MARKET AREA With MAJOR HIGHWAY & RAILROAD SYSTEM

Shaded area denotes Labor Market Area.



FRENCHBURG, KENTUCKY - A RESOURCE PROFILE

Frenchburg, the county seat of Menifee County, is located at the western edge of the Eastern Kentucky Coal Field. Frenchburg is located 58 miles southeast of Lexington, Kentucky; 130 miles southeast of Louisville, Kentucky; 136 miles southeast of Cincinnati, Ohio; and 221 miles northeast of Knoxville, Tennessee. Frenchburg had a population of 550 in 1980.

Menifee County, with a land area of 203 square miles, is located in the northeastern portion of the Daniel Boone National Forest. The picturesque valley of the Red River forms part of the southern boundary of Menifee County. Menifee County had an estimated population of 5,300 in 1982.

The Economic Framework

The total number of Menifee County residents employed in 1983 averaged 1,115, with nonagricultural jobs accounting for 1,025 workers. Manufacturing employers in the county reported 10 workers; state and local government 150; wholesale and retail trade 70; and services 30. Manufacturing employment in Frenchburg is in the lumber and wood products industries.

Per capita personal income in Menifee County in 1982 was \$4,575. Between 1978 and 1982, per capita income increased by 41 percent.

The Frenchburg labor market area includes Menifee County and the six adjoining counties. The total number of residents of the labor market area employed in 1983 averaged 30,640, with nonagricultural jobs accounting for 28,520 workers. Manufacturing employers in the area reported 4,400 workers; wholesale and retail trade 4,380; state and local government 4,150; and services 2,170.

Resources for Growth

1. Labor Supply - There is a current labor supply of 8,580 men and 7,100 women available for industrial jobs in the labor market area. In addition, from 1984 through 1988, 3,770 young men and 3,405 young women in the area will become 18 years of age and potentially available for work.

2. Transportation - The Chessie System Railroad provides main line rail service at Mt. Sterling, 22 miles northwest of Frenchburg. Frenchburg is served directly by U.S. 460 and Kentucky 36, both "AAA"-rated trucking highways. Access to Interstate 64 is 17 miles northwest of Frenchburg and the Mountain Parkway is 21 miles south of Frenchburg. Three common carriers have the authority to serve Frenchburg. The nearest commercial airport, Blue Grass Field near Lexington, is located 63 miles northwest of Frenchburg. The Morehead-Rowan County Airport, 20½ miles northeast of Frenchburg, has a 2,600-foot paved runway and the Mt. Sterling-Montgomery County Airport, 24 miles northwest of Frenchburg has a 2,800-foot paved runway.

3. Power and Fuel - Electric power is provided to Frenchburg and parts of Menifee County by the Clark Rural Electric Cooperative Corporation, which is supplied by the East Kentucky Power Cooperative. Menifee County is also served electric power by the Licking Valley RECC, which is supplied by the East Kentucky Power Cooperative. Frenchburg is provided natural gas service by the Delta Natural Gas Company, which is supplied by the Columbia Gas Transmission Corporation. Two distributors of propane and three distributors of distillate fuel oil serve Frenchburg.

4. Education - Primary and secondary education is provided to Frenchburg and Menifee County by the Menifee County School System.

Four universities, three senior colleges, three community colleges, and two, two-year colleges are located within 75 miles of Frenchburg.

The Rowan State Vocational-Technical School in Morehead, 26 miles northeast, offers training in 16 courses. The Montgomery County Area Education Center in Mt. Sterling, 22 miles northwest, offers training in six courses.

THE LABOR MARKET AREA

The Frenchburg Labor Market Area includes Menifee County and the adjoining Kentucky counties of Bath, Montgomery, Morgan, Powell, Rowan and Wolfe.

POPULATION

Area	1982*	1980	1970	Percent Nonwhite
				1980
Frenchburg	N/A	550	467	0.0
Labor Market Area	85,100	84,139	69,051	N/A
Menifee County	5,300	5,117	4,050	1.3
Bath County	10,200	10,025	9,235	3.3
Montgomery County	20,400	20,046	15,364	5.4
Morgan County	12,200	12,103	10,019	0.4
Powell County	11,400	11,101	7,704	1.2
Rowan County	18,800	19,049	17,010	2.1
Wolfe County	6,800	6,698	5,669	0.2

* Population estimates.

Note: The 1980 city counts of population by race are provisional.

Sources: U.S. Department of Commerce, Bureau of the Census, 1980 Census of Population and Housing, March 1981; 1980 Census of Population, Number of Inhabitants; Local Population Estimates, Series P-26, No. 82-17-C, June 1984.

LABOR FORCE CHARACTERISTICS OF RESIDENTS, 1983

	Menifee County	Labor Market Area
Civilian Labor Force	1,509	35,974
Employment	1,115	30,637
Agricultural	90	2,121
Nonagricultural	1,025	28,516
Unemployment	394	5,337
Rate of Unemployment (%)	26.1	14.8

Source: Kentucky Cabinet for Human Resources, Kentucky Labor Force Estimates, Annual Averages, 1983.

SELECTED COMPONENTS OF NONAGRICULTURAL EMPLOYMENT,
BY PLACE OF WORK, 1983

	<u>Menifee County</u>	<u>Labor Market Area</u>
All Industries (total)	302	17,411
Manufacturing	10	4,403
Wholesale & Retail Trade	71	4,378
Services	29	2,172
State/Local Government	146	4,152
Contract Construction	0	579

Note: Excludes domestic workers, railway workers, certain nonprofit corporations, majority of federal government workers, and self-employed workers.

Source: Kentucky Cabinet for Human Resources, Average Monthly Workers Covered by Kentucky Unemployment Insurance Law, 1983.

FRENCHBURG MANUFACTURING FIRMS,
THEIR PRODUCTS AND EMPLOYMENT

<u>Firm</u> (Establishment date)	<u>Product</u>	<u>Employment</u>		
		<u>Total</u>	<u>Male</u>	<u>Female</u>
Lawson and Crain, Inc. (1978)	Wood trusses and components, sheet metal products	24	--	--
Morwood Sawmill, Inc. (1981)	Lumber	60	60	--
Boneal, Inc. (1980)	Subassemblies	13	3	10

Sources: Kentucky Department of Economic Development, 1984 Kentucky Directory of Manufacturers; Division of Research and Planning.

LABOR ORGANIZATIONS IN MANUFACTURING FIRMS

There are no unions representing manufacturing firms in Frenchburg at the present time.

INDUSTRIAL SERVICES

<u>Types of Services</u>	<u>Location</u>	<u>Mileage from Frenchburg</u>
Custom Plastics Producers	Mt. Sterling	22
	Winchester	39
Electric Motor Repair	Morehead	26
	Winchester	39
Grinding, Precision & Tool	Winchester	39
	Richmond	59
Heat Treating Facilities	Lexington	58
	Richmond	59
	Georgetown	68
Industrial Equipment & Supplies	Lexington	58
Industrial Gases	Lexington	58
	Richmond	59
Industrial Waste Removal	Lexington	58
Machine Shops, Tool & Die	Mt. Sterling	22
	Winchester	39
Metal Finishers	Winchester	39
	Lexington	58
	Richmond	59
Metal Service Centers	Lexington	58
Millwrights	Lexington	58
	Nicholasville	69

Sources: Kentucky Department of Economic Development, Kentucky Directory of Selected Industrial Services, 1983; Division of Research and Planning.

ESTIMATED MALE LABOR SUPPLY
FRENCHBURG LABOR MARKET AREA

Area	Current				Future
	Total	Unemployed	Under-employed	Not in Labor Force	Becoming 18 years of age 1984 thru 1988
Labor Market					
Area*	8,582	3,625	2,739	2,218	3,770
Menifee	855	236	81	538	252
Bath	871	455	193	223	431
Montgomery	1,806	752	492	562	941
Morgan	1,211	743	460	8	551
Powell	999	481	173	345	574
Rowan	1,848	634	1,214	0	712
Wolfe	992	324	126	542	309

* Additional workers may be drawn from other nearby counties.

Note: Unemployed - persons unemployed and actively seeking work;
Underemployed - persons employed but working only 14 to 26 weeks per year;
Not in Labor Force - represents the number of persons who would enter the labor force if suitable employment were available (based on the assumption that persons in Kentucky would like to participate in the labor force in the same proportion that they do nationally).

Sources: Kentucky Cabinet for Human Resources, Kentucky Labor Supply Estimates by County, 1983. Kentucky Department of Economic Development, Future Labor Supply Becoming 18 Years of Age, 1984 thru 1988.

ESTIMATED FEMALE LABOR SUPPLY
FRENCHBURG LABOR MARKET AREA

Area	Current				Future
	Total	Unemployed	Under-employed	Not in Labor Force	Becoming 18 years of age 1984 thru 1988
Labor Market					
Area*	7,099	1,712	2,099	3,288	3,405
Menifee	730	158	62	510	212
Bath	830	193	197	440	400
Montgomery	1,463	433	387	643	821
Morgan	1,096	173	178	745	507
Powell	907	259	230	418	493
Rowan	1,311	348	963	0	697
Wolfe	762	148	82	532	275

* Additional workers may be drawn from other nearby counties.

Note: Unemployed - persons unemployed and actively seeking work;
Underemployed - persons employed but working only 14 to 26 weeks per year;
Not in Labor Force - represents the number of persons who would enter the labor force if suitable employment were available (based on the assumption that persons in Kentucky would like to participate in the labor force in the same proportion that they do nationally).

Sources: Kentucky Cabinet for Human Resources, Kentucky Labor Supply Estimates by County, 1983. Kentucky Department of Economic Development, Future Labor Supply Becoming 18 Years of Age, 1984 thru 1988.

AVERAGE WEEKLY WAGES BY INDUSTRY,
BY PLACE OF WORK, 1983

	<u>Menifee County</u>	<u>Bath County</u>	<u>Montgomery County</u>	<u>Morgan County</u>
All Industries	\$216.10	\$216.39	\$228.72	\$234.93
Mining & Quarrying	*	0	*	415.63
Contract Construction	0	249.12	285.39	206.27
Manufacturing	139.17	142.96	264.71	165.91
Transportation, Communications & Public Utilities	153.79	414.24	289.71	301.76
Wholesale & Retail Trade	195.27	159.29	168.18	186.75
Finance, Insurance & Real Estate	*	219.80	251.55	254.76
Services	126.41	128.53	186.39	216.96
State/Local Government	255.32	258.72	275.37	270.72
Other	0	*	*	114.16
	<u>Powell County</u>	<u>Rowan County</u>	<u>Wolfe County</u>	
All Industries	\$230.65	\$252.08	\$223.74	
Mining & Quarrying	431.45	*	*	
Contract Construction	268.05	318.95	0	
Manufacturing	235.40	255.54	*	
Transportation, Communications & Public Utilities	308.14	381.58	260.33	
Wholesale & Retail Trade	152.30	165.20	162.87	
Finance, Insurance & Real Estate	*	313.49	*	
Services	166.71	260.54	134.73	
State/Local Government	244.44	282.52	237.67	
Other	*	158.09	0	

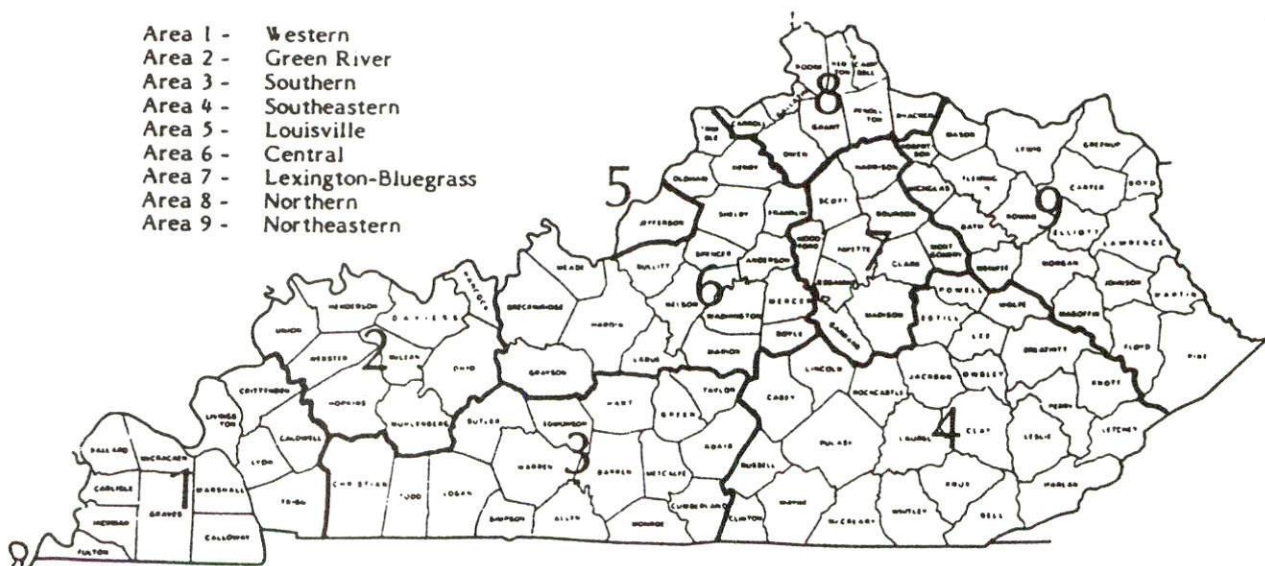
* Not disclosed.

Note: Excludes domestic workers, railway workers, certain nonprofit corporations, majority of federal government workers, and self-employed workers.

Source: Kentucky Cabinet for Human Resources, Average Weekly Wages of Workers Covered by Kentucky Unemployment Insurance Law, 1983.

Occupational wage rates for specific industries are usually not available to most government agencies, and wage data furnished to state employment agencies by individual industrial employers are protected from disclosure by federal law. The most reliable up-to-date wage information can be obtained by direct contact with local employers.

Associated Industries of Kentucky, a voluntary organization of Kentucky businesses, regularly collects occupational wage rates and fringe benefits data from participating member firms. Data are compiled for over 127 clearly defined office, production, and service occupations. Tabulations are published for nine geographical areas of Kentucky, as shown on the map below. It should be noted that the data may be weighted by the preponderance of firms in the larger cities and may be somewhat higher than the rates paid in the smaller communities. Data from these tabulations are available, upon request, from the Kentucky Department of Economic Development, Frankfort, Kentucky 40601.



Associated Industries of Kentucky Area Wage Surveys

PER CAPITA PERSONAL INCOME

<u>Area</u>	<u>1978</u>	<u>1982</u>	<u>Percent Change</u>
Menifee County	\$ 3,240	\$ 4,575	41.2
Labor Market Area Range	\$3,240 - 5,572	\$ 4,575 - 7,666	N/A
Kentucky	6,389	8,893	39.2
U. S.	7,776	11,100	42.7

Sources: U.S. Department of Commerce, Bureau of Economic Analysis, Survey of Current Business, April 1983; Commerce News, April 29, 1984. Kentucky Economic Information System, July 1984.

TRANSPORTATION

Rail

Frenchburg is not served directly by rail. The nearest rail service is provided by the Chessie System Railroads at Mt. Sterling, 22 miles northwest of Frenchburg.

Services at Mt. Sterling - Main line; one eastbound and one westbound freight stops every other day; one eastbound and one westbound through freight daily; team track space for 8 cars; siding space for 30 cars; nearest Chessie System piggyback facilities located at Louisville, Kentucky, 130 miles northwest of Frenchburg, and at Cincinnati, Ohio, 136 miles northwest of Frenchburg

For details on routing, schedules, rates, and services, contact:

The Chessie System Railroads
Real Estate and Industrial Development
Suite 500 Cornell Center
11311 Cornell Park Drive
Cincinnati, Ohio 45242
(513) 369-5258

Highways

Major highways serving Frenchburg are U.S. 460 and Kentucky 36, both "AAA"-rated (80,000-pound gross load limit) trucking highways. Access to Interstate 64 is 17 miles northwest of Frenchburg via Kentucky 36 and 22 miles northwest via U.S. 460. Interstate 64 intersects with Interstate 75, 52 miles northwest of Frenchburg near Lexington. The Mountain Parkway, a multilane toll road, is located 21 miles south of Frenchburg. In addition, Frenchburg is served by Kentucky 713 and 1274.

The widening of U.S. 460 on the east and west sides of Frenchburg is currently under construction. The \$4,668,000 project, which includes the addition of truck lanes and grade, drainage, and surface work, will be completed in the fall of 1985.

Truck Service

<u>Company</u>	<u>Home Office</u>
Bestway Express, Inc.*	Nashville, Tennessee 37210
The Maryland Transportation Company**	1111 Frankfurst Avenue Baltimore Maryland 21225
Overnite Transportation Company*	P.O. Box 1216 Richmond, Virginia 23209

* Interstate and intrastate service.

** Interstate service only.

Source: American Motor Carrier Directory, Fall 1984.

<u>Other Freight Services</u>	<u>Nearest Office or Shipping Center</u>
Emery	Lexington, 58 miles northwest
Federal Express	Lexington, 58 miles northwest
Purolator Courier	Lexington, 58 miles northwest
United Parcel Service	Clay City, 32 miles southwest

HIGHWAY MILES AND TRUCK TRANSIT TIME IN DAYS FROM FRENCHBURG, KENTUCKY, TO SELECTED MARKET CENTERS

City	Highway Miles	Delivery Time TL	City	Highway Miles	Delivery Time TL
Atlanta, Ga.	414	1	Los Angeles, Ca.	2,238	4-5
Baltimore, Md.	526	2	Louisville, Ky.	130	1
Birmingham, Ala.	456	1	Nashville, Tenn.	268	1
Chicago, Ill.	410	1	New Orleans, La.	785	3
Cincinnati, Ohio	136	1	New York, N. Y.	698	-
Cleveland, Ohio	375	1	Pittsburgh, Pa.	358	1
Detroit, Mich.	395	1	St. Louis, Mo.	393	1
Knoxville, Tenn.	221	1			

Note: Mileage computations are via the best interstate or primary highways, not necessarily the most direct route of travel.

Sources: Rand McNally Road Atlas, 1979. Official Kentucky Mileage Map, 1980.
Delivery time - Overnite Transportation Company, P.O. Box 11246, Lexington,
Kentucky 40574.

Air

Local

Location: Morehead-Rowan County Airport
5½ miles southwest of Morehead;
20½ miles northeast of Frenchburg

Runways: 1 paved
Length: 2,600 feet

Traffic Control: Wind sock, unicom

Lighting: Runway lights, rotating beacons, lighted wind sock

Services: Flight instruction, ground school, aircraft charter and leasing

Air Freight Service: Chartered air freight services must be arranged

Location: Mt. Sterling-Montgomery County Airport*
2 miles west of Mt. Sterling;
24 miles northwest of Frenchburg

Runways: 1 paved
Length: 2,800 feet

Traffic Control: Wind sock and tetrahedron

Lighting: Sunset to sunrise, rotating beacon, VASI and REIL

Services: 100LL fuel, charter, flight instruction, tie down, hangar, major and minor A & P repairs

Air Freight Service: Chartered air freight services must be arranged

Nearest Scheduled Commercial Airline Service

Location: Blue Grass Field
5 miles west of Lexington, Kentucky;
63 miles northwest of Frenchburg

Runways: 2 paved
Length: 6,500 feet; 3,500 feet

Traffic Control: Tower

Lighting: Approach lighting system, beacon, runways and obstructions lighted, VASI

Services: Delta, Piedmont, United, USAir, Allegheny Commuter, Comair, Tennessee Airways; fuel - 100LL and jet-A; hangars, tie-downs; major A & P repairs; major Avionics repairs; APU, charter, flight instruction, oxygen, plane rentals, survival equipment; taxi, limousine, car rentals, courtesy car, weather information; restaurant, snack bar

Air Freight Service: Air freight terminal

* The construction of a 4,000-foot runway is currently under way. The \$1.25 million project is scheduled to be completed in the summer of 1985.

Rental Services - Car, truck and trailer rental services are available in Mt. Sterling, 22 miles northwest, and Morehead, 26 miles northeast.

Water

The Ohio River is the nearest navigable river. Frenchburg is located 61 miles south of a point on the Ohio River at Maysville, where a 9-foot navigation channel is maintained. Public riverport facilities are planned at Maysville and at Ashland, 89 miles northeast of Frenchburg.

POWER AND FUEL

Electricity

Company serving **Frenchburg and a major portion of Menifee County** - Clark
Rural Electric Cooperative Corporation
Source of power - East Kentucky Power Cooperative
Total generating capacity - 1,309,000 KW*
For industrial rates contact:

Industrial Development Division
East Kentucky Power Cooperative
P.O. Box 707
Winchester, Kentucky 40391
(606) 744-4812

Company serving the **southeastern portion of Menifee County** - Licking Valley
Rural Electric Cooperative Corporation
Source of power - East Kentucky Power Cooperative
Total generating capacity - 1,309,000 KW*
For industrial rates contact:

Industrial Development Division
East Kentucky Power Cooperative
P.O. Box 707
Winchester, Kentucky 40391
(606) 744-4812

Natural Gas

Company serving **Frenchburg** - Delta Natural Gas Company
Source of supply - Columbia Gas Transmission Corporation
Size of transmission mains - 12-inch (supplier); 2-inch (distributor)
Distribution mains - 1 and 2 inches
Distribution pressure - 20 psi
Btu content - 1,025 per cubic foot
Specific gravity - .60
For rates and supplies contact:

Marketing Manager
Delta Natural Gas Company
Route 1, Box 30A
Winchester, Kentucky 40391
(606) 744-6171

* East Kentucky Power Cooperative's total generating capacity will be increased when a new 650,000 KW coal-fired generation plant is completed in southeast Clark County in 1992.

Other Fuels

Propane

Frenchburg Furniture and
Appliances
Frenchburg, Kentucky 40322

Southern States Co-op, Inc.
Gudgell Street
Owingsville, Kentucky 40360

Fuel oils

Distillate fuel oil -

Ashland Petroleum Bulk Plant
P.O. Box 117
West Liberty, Kentucky 40472

Wolfe Oil Company
Route 1
Campton, Kentucky 41301

Bonfield Brothers, Inc.
Calk Avenue
Mt. Sterling, Kentucky 40353

Residual fuel oil - Arrangements must be made with the refinery.

Low sulphur content coal - Available in Kentucky.

WATER AND SEWERAGE

Public Water Supply

Company serving **Frenchburg** - Frenchburg Water and Sewer System
P.O. Box 113
Frenchburg, Kentucky 40322
(606) 768-3457

Source of supply of treated water - Bath County Water District
Amount of treated water that can be purchased - 175,000 gallons per day
Average daily consumption - 44,300 gallons
Peak daily consumption - 56,157 gallons
Storage capacity - 200,000 gallons
Size lines - 4, 6, and 8 inches
Average pressure - 60 psi

MONTHLY WATER RATES

First	2,000 gallons	\$ 8.00 (Minimum)
Next	2,000 gallons	3.75 per M gallons
Next	3,000 gallons	3.50 per M gallons
Next	3,000 gallons	3.25 per M gallons
All over	10,000 gallons	1.65 per M gallons

Tap-on charge: \$440

Name of water district - Bath County Water District
P.O. Box 369
Salt Lick, Kentucky 40371
(606) 683-6363

Area served - Eastern portion of Bath County, City of Frenchburg, and the City of Sharpsburg
Date when water district began operating - August 1970
Source of supply of treated water - City of Morehead
Amount of treated water that can be purchased - 1,000,000 gallons per day
Average amount of water used in a 24-hour period - 238,000 gallons
Peak amount of water used in a 24-hour period - 260,000 gallons
Storage capacity - 162,000 gallons
Average pressure - 60 psi
Size lines - 2, 3, 4, 6, 8, and 10 inches
Monthly rates -

First	2,000 gallons	\$ 6.30 (Minimum)
Next	3,000 gallons	1.90 per M gallons
Next	5,000 gallons	1.20 per M gallons
Next	10,000 gallons	1.00 per M gallons
Next	30,000 gallons	.90 per M gallons
All over	50,000 gallons	.80 per M gallons

Tap-on charge: \$200

Raw Water

Surface water sources - Licking River and Cave Run Lake

Average discharge - Licking River at Farmers, Kentucky, 1,056 cfs (45-year record, USGS, unadjusted)

Expected ground water yield - 5 to 50 gpm in the southeastern portion of the county; 5 gpm or less in the remainder of the county

Sewerage

Company serving **Frenchburg** - Frenchburg Water and Sewer System

P.O. Box 113

Frenchburg, Kentucky 40322

(606) 768-3457

Design capacity - 75,000 gallons per day

Average daily flow - 21,000 gallons

Type of treatment - Secondary

Treatment processes - Aeration, drying beds

Treated effluent discharged into - Beaver Creek

Size of sanitary mains - 8-inch

Monthly rates -

First	2,000 gallons	\$ 7.36 (Minimum)
Next	2,000 gallons	3.45 per M gallons
Next	3,000 gallons	3.20 per M gallons
Next	3,000 gallons	3.00 per M gallons
All over	10,000 gallons	1.52 per M gallons

Tap-on charge: \$250

CLIMATE

Menifee County

Temperature

Normal (30-year record)	54.90 degrees
Average annual 1983	55.50 degrees
Record highest, August 1983 (39-year record)	103.00 degrees
Record lowest, January 1963 (39-year record)	-21.00 degrees
Normal heating degree days (30-year record) (Heating degree day totals are the sums of negative departures of average daily temperatures from 65 degrees F.)	4,814

Precipitation

Normal (30-year record)	45.68 inches
Mean annual snowfall (39-year record)	16.20 inches
Total precipitation 1983	40.76 inches
Mean number days precipitation (.01 inch or more) (39-year record)	131
Mean number days thunderstorms (39-year record)	46

Prevailing Winds (17-year record)

South

Relative Humidity

1 a.m.	77 percent (19-year record)
7 a.m.	81 percent (20-year record)
1 p.m.	60 percent (20-year record)
7 p.m.	64 percent (20-year record)

Source: U.S. Department of Commerce, Environmental Science Services
Administration, Climatological Data, 1983. Station of record: Lexington,
Kentucky.

LOCAL GOVERNMENT

City

Structure - Mayor - 4-year term; 4 commissioners - 2-year terms

Budget 1984 - General Fund \$ 4,280

Water and Sewer Fund 89,675

Fees and licenses - Business license \$20 annually; parking and unloading license \$25 annually; transient license \$10 annually

County

Structure - County Judge/Executive - 4-year term; 5 magistrates - 4-year terms

Budget 1983-84 - General Fund \$124,315; Road Fund \$250,374

Assessed Value of Property, 1984*

<u>Classes of Property</u>	<u>Frenchburg</u>	<u>Menifee County</u>
Real Estate	\$3,818,268	\$34,212,989
Tangibles		11,648,528

Property Taxes

All property in Kentucky is assessed at 100 percent of fair cash value.

Land and buildings are taxed by the state and may be taxed by local jurisdictions. The state rate is \$0.221 per \$100 of assessed valuation.

Manufacturing machinery, raw materials inventories, pollution control equipment, and goods in the process of manufacture are not subject to local taxation. The state rate is \$0.15 per \$100.

Other tangible personal property owned by manufacturers (automobiles, trucks, finished goods, office furniture, office equipment) is taxed by the state at \$0.45 per \$100 and may be taxed by local jurisdictions.

Intangible personal property located in Kentucky (money in hand, shares of stock, notes, bonds, accounts receivable, and other credits) is taxed by the state at \$0.25 per \$100, and is not subject to local taxation.

Property stored in public warehouses in a transit status is not subject to local taxation. The state rate is only \$0.015 per \$100.

Private leaseholds in industrial facilities owned by cities or counties and financed by industrial revenue bonds are subject to a state tax of \$0.015 per \$100 of value (essentially the lessee's equity, adjusted for appreciation or depreciation). Local taxation is not permitted.

* Excludes Homestead Exemptions.

Combined State and Local Rates Per \$100 Valuation, 1983*
(100% assessment)

	<u>Site Inside City of Frenchburg</u>	<u>Site Inside Unincorporated Menifee County</u>
1. Land and buildings	\$ 0.5420	\$ 0.4820
2. Mfg. machinery, raw materials, goods in process, pollution control equipment	0.1500	0.1500
3. Finished goods, office equipment, vehicles, other tangibles	0.7145*	0.7145
4. Intangibles (accounts receivable, notes, bonds, etc.)	0.2500	0.2500
5. Property stored in public warehouses in a transit status	0.0150	0.0150
6. Leaseholds in industrial revenue bond financed plants	0.0150	0.0150

Planning and Zoning

There is no planning and zoning commission currently in Frenchburg or Menifee County, but mandatory state codes are enforced.

Mandatory state codes enforced - Kentucky Plumbing Code, National Electric Code, Kentucky Boiler Regulations and Standards, Kentucky Building Code (modeled after BOCA code)

Safety

Police	Frenchburg	Menifee County
Total staff	**	2
Radio-patrol cars		3

Fire

Insurance Services Office, Public Protection Classification	9/10***	9/10***
Volunteers	15	60

* The City of Frenchburg does not tax tangible personal property.

** Police protection in Frenchburg is provided by the Menifee County Sheriff's Department.

*** Fire protection in Menifee County is provided by the Frenchburg-Menifee County Fire Protection Area and by the Menifee County Fire Protection District with stations at Denniston and Means. Within 5 road miles to a responding fire station, Class 9 applies; more than 5 road miles, Class 10 applies.

Refuse Collection and Disposal

	Frenchburg	Menifee County
Type service	Private	Private
Fee charged:		
residential	*	*
business	Negotiated	Negotiated
industrial	Negotiated	Negotiated
Collection frequency:		
residential	Weekly	Weekly
business	As needed	As needed
industrial	As needed	As needed
Disposal method	Sanitary landfill	Sanitary landfill

* Refuse collection and disposal is provided to residents of Frenchburg and Menifee County at no charge by Menifee County.

EDUCATION

Public Schools

Menifee County

Total Enrollment (Spring, 1984)	1,022
Elementary	781
High School	241
Student-Teacher Ratio	18-1
Elementary	21-1
High School	13-1
Percent High School Graduates to College (1983)	39.2
Expenditures Per Pupil (1982-83)	\$1,347.31
Bonded Indebtedness (June 30, 1983)	\$347,000

Area Colleges and Universities

<u>Name</u>	<u>Location (Miles distant)</u>	<u>Enrollment (Fall, 1983)</u>	<u>Highest Degree Conferred</u>
Morehead State University	Morehead (26)	6,505	Masters, Specialist*
Lees College	Jackson (52)	392	Associate
Lexington Community College	Lexington (58)	2,532	Associate
Transylvania University	Lexington (58)	655	Baccalaureate**
University of Kentucky	Lexington (58)	22,055	Doctorate, M.D., D.M.D., J.D.
Eastern Kentucky University	Richmond (59)	12,660	Masters, Specialist*
Maysville Community College	Maysville (61)	653	Associate
Kentucky Christian College	Grayson (64)	596	Baccalaureate
Georgetown College	Georgetown (68)	1,302	Masters
Midway College	Midway (70)	413	Associate
Berea College	Berea (73)	1,600	Baccalaureate
Prestonsburg Community College	Prestonsburg (74)	1,154	Associate

* Joint doctoral degree programs are offered in cooperation with the University of Kentucky, Lexington. The degrees are issued by the University of Kentucky.

** Courses in a masters degree program are taught on the Transylvania campus by faculty members of Xavier University of Cincinnati. The degree is issued by Xavier University.

Vocational Schools

Both the state vocational-technical schools and the area vocational education centers are operated by the Kentucky Department of Education. The state vocational-technical schools enroll persons full time who are at least 16 years of age and not in school. These students attend classes for six hours each day. The area vocational education centers are designed to accommodate high school students who are at least 15 years of age. These students attend vocational school for three hours each day. The state vocational-technical schools and the area education centers offer evening courses to enable working adults to upgrade current job skills.

Nearest State School

Location	Rowan State Vocational-Technical School
Miles Distant	Morehead 26
Curriculum	Agriculture Adult Farmer Business and Office Clerical Secretarial Word Processing Health and Personal Services Occupations Health Careers Practical Nursing Respiratory Therapy* Industrial Education Air Conditioning/Refrigeration Auto Mechanics Carpentry Diesel Mechanics Drafting Electricity Machine Shop Welding Special Vocational Programs Consumer and Family Life Skills Public Service Occupations Fire Fighter Training Learning Resource Center

(Cont'd)

* Scheduled to begin in the spring of 1985.

Nearest Area Education Center

Location	Montgomery County Area Vocational Education Center
Miles Distant	Mt. Sterling
Curriculum	22
	Business and Office
	Clerical
	Secretarial
	Health and Personal Services Occupations
	Health Services
	Industrial Education
	Auto Mechanics
	Carpentry
	Industrial Electricity

Arrangements can be made to provide training in the specific production skills required by an industrial plant. Instruction may be conducted either in the vocational school or in the industrial plant, depending upon the desired arrangement and the availability of special equipment.

HEALTH

Hospitals

<u>General Hospital</u>	<u>Location</u>	<u>Beds</u>
Mary Chiles Hospital	Mt. Sterling, 22 miles northwest	94*
St. Claire Medical Center	Morehead, 26 miles northeast	170

Mary Chiles Hospital

General hospital facilities - 4-bed ICU/CCU; 10-bed OB/GYN unit; 2 labor rooms; delivery room; nursery; 10-bed acute care unit; 40-bed general medical/surgical unit; 2 operating rooms; cystology room; recovery room; 30-bed skilled nursing unit; trauma room; 3 treatment areas; cast room; orthopedics; outpatient services; gynecology; urology; ear, nose and throat; clinical laboratory; physical therapy; diagnostic and therapeutic respiratory therapy and cardiopulmonary services; diagnostic radiology, including fluoroscopy; ultrasound and nuclear medicine; pharmacy and speech pathology

Medical staff - 21 physicians on active staff with an additional 37 on consulting and courtesy staff; 45 registered nurses; 14 licensed practical nurses; 2 physical therapists; 1 dietician; 3 pharmacists

St. Claire Medical Center

General hospital facilities - Inpatient and outpatient services; 14-station emergency room; 4 operating rooms; 3 delivery rooms; 10-bed intensive/cornary care unit; 20 psychiatric inpatient beds; physical therapy; diagnostic radiology, including ultrasound, nuclear medicine, and special procedures; CT scanning; EEG and RMG testing; EKG; blood bank; pharmacy; respiratory therapy; clinical and histology laboratory; medical library; home health and homemaker services; speech pathology; diagnostic and therapeutic psychiatric services; acute alcoholism and drug abuse services; hospice and pastoral care

Medical staff - 3 general surgeons; 1 anesthesiologist; 2 urologists; 2 orthopedists; 1 pediatrician; 3 obstetricians; 2 radiologists; 5 family medicine physicians; 5 internal medicine specialists; 2 pathologists; 1 oral surgeon; 1 psychiatrist; 1 ophthalmologist; 1 neurologist; 1 otolaryngologist; 54 registered nurses; 26 licensed practical nurses; 11 laboratory technologists; 10 X-ray technologists; 5 pharmacists; 3 physical therapists; 1 certified physical therapy assistant; and 4 respiratory therapists

* Includes 30 skilled nursing beds.

Other Medical Facilities

The Menifee Medical Center provides outpatient services to Frenchburg. The Center houses Pathways, Inc.; rehabilitation services; home health-homemaker services; day care center; physicians' offices; dental offices; and an ophthalmology office. The Center has an X-ray department, laboratory and a fully equipped emergency room. The staff includes certified physicians' assistant, business office manager, medical records transcriber, licensed practical nurse, patient aide, and a primary care administrator (part-time). Primary medical and dental services are provided Monday, Tuesday, Wednesday, and Friday by a medical health team.

Ambulance Service

Name - Meadows Ambulance Service
Staff - 6 emergency medical technicians
Service - 24-hour, county-wide
Equipment - 3 fully equipped ambulances

Public Health

Facility - Menifee County Health Center-Gateway District Health Department
Staff - Registered nurse, community health worker, clerk, clerk typist, environmentalist (part-time)

OTHER LOCAL FACILITIES

Communications

Telephone - Services -	Mountain Rural Telephone Company Standard
Telegraph - Services -	Western Union Toll-free number, 1-800-325-5100
Postal - Class - Mail received Mail dispatched -	U.S. Post Office Second Once daily Once daily
Newspapers Weekly and circulation - Other papers received from -	Menifee County News 1,250 Clay City, Lexington, and Louisville, Kentucky
Radio - Stations received from -	 Lexington, Morehead, Mt. Sterling, and West Liberty, Kentucky
Television - Cable service Reception from - Kentucky Educational Television -	 Lexington, Kentucky; Huntington, West Virginia; Chicago, Illinois; Atlanta, Georgia Morehead transmitter - Channel 38 Lexington-Richmond transmitter - Channel 46

Library Services

Public library - Menifee County Library
Size collection - 18,000 volumes
Circulation, 1982-83 - 30,516
Services - Bookmobile, newspapers, magazines, records, filmstrips, story hour

Religious Institutions

Number of churches - 4
Denominations - Baptist
Church of God
Presbyterian

Nearest Synagogues - Lexington, 58 miles northwest
Congregations - Adath Israel (reform)
Ohavey Zion (traditional)

Financial Institutions

<u>Banks</u>	<u>Assets</u>	<u>Deposits</u>	<u>Statement Date</u>
Traders Bank and Trust Company	\$ 47,586,784.53	\$ 42,452,909.15	12/31/83

Clubs and Organizations

American Legion
Astronomy Club
Beta Club
Boy Scouts
Brownies
Eastern Star
Farm Bureau
Fish and Game Club
4-H
Future Business Leaders of America (FBLA)
Future Farmers of America (FFA)
Future Homemakers of America (FHA)
Girl Scouts
Homemakers
Hospital Auxiliary
Library Club
Lioness Club
Lions Club
Little League
Masonic Lodge
Photography Club
Senior Citizens
Veterans of Foreign Wars
Women's Club

RECREATION

Local

The construction of the Menifee County Recreational Park is currently under way. The park will include a softball-baseball field, basketball and volleyball courts, a swimming pool, a bathhouse, picnic tables with grills, swings, slides, and a playground area.

Several tourist attractions are located near Frenchburg. **Pioneer Weapons Hunting Area** is a 7,480-acre preserve where hunters may use primitive weapons only. **Red River Gorge**, part of the Daniel Boone National Forest, is a boulder-strewn area of rugged forest, streams, cliffs, overlooks, arches, rare plants, and animal life. Picnic sites and camp sites are available in the **Koomer Ridge Recreation Area**.

Cave Run Lake, constructed by the U.S. Army Corps of Engineers, is located in Menifee County within the 640,000-acre Daniel Boone National Forest. The lake area offers everything for the camper, the boatsman, the hunter, the fisherman, and "the lover of leisure."

Menifee County is located within the northeastern portion of the **Daniel Boone National Forest**, which covers 640,000 acres of timberland in eastern Kentucky. It encompasses much of Kentucky's great beauty and provides a vacation paradise. There are scenic hiking trails, rivers and streams stocked with a variety of fish, hunting preserves, camping sites, and numerous other natural and historical attractions.

Area (Within 60 miles)

Natural Bridge State Resort Park near Slade, 23 miles south of Frenchburg, is located in the Daniel Boone National Forest where cliffs and stone arches fill the landscape. The rugged awesomeness of the great Natural Bridge is the main attraction. The park has a 35-room resort lodge with a dining room and gift shop, ten rustic cottages, and 95 camping sites. Other facilities include a lake, a swimming pool, picnic shelters and playgrounds, hiking trails, and a riding stable.

The spirit of Daniel Boone and his pioneers is reborn at **Fort Boonesborough State Park** in Boonesboro, 44 miles west of Frenchburg. In the re-created fort, pioneer crafts of the eighteenth century are demonstrated by using functioning antiques from the frontier era. Cabins are furnished as they would have been in the days of Boone and documentary films are presented which depict the struggle of the first Kentuckians to make the Kentucky wilderness a home. A gift shop within the fort offers for sale all the handcrafted items made at the fort. Other recreational facilities and activities of the park include the finest sand beach on the Kentucky River with a modern bathhouse and a modern camping area with 187 sites.

Carter Caves State Resort Park, 53 miles northeast of Frenchburg, provides a restful atmosphere with its mountain wildflowers, a rippling stream, the underground wonders of three caves, a 28-room lodge, a restaurant, and a gift shop. Recreational facilities available include something for the whole family with playgrounds, two swimming pools (one Olympic-size), tennis courts, shuffleboard, a 9-hole golf course, miniature golf, boating, fishing, horseback riding, picnicking, and cave tours.

White Hall State Shrine, 53 miles west of Frenchburg near Richmond, one of the grand estate houses of post-Civil War Kentucky, is the Italianate mansion of Cassius Marcellus Clay, the early abolitionist and politician. Kentucky handcrafts are sold in the White Hall gift shop, only a short walk from the mansion.

Lexington, 58 miles northwest of Frenchburg, offers a variety of cultural, sporting, and recreational activities. Thoroughbred and harness racing is presented at Keeneland Race Course and the Red Mile Harness Track during several meets each year. The University of Kentucky and Transylvania University offer a number of sporting events. The University of Kentucky basketball games are held at Rupp Arena, the world's largest basketball arena. Other attractions include Lexington Philharmonic concerts, Lexington Children's Theatre, and plays performed by Broadway touring companies, all held in the recently renovated Opera House.

The Kentucky Horse Park, a park dedicated to horses and to man's love for horses, is located 60 miles northwest of Frenchburg near Lexington. The park, which contains more than 1,000 acres of Kentucky Bluegrass, features the International Museum of the Horse; the Man O'War Memorial; an antique carriage display; horseback and pony rides; walking farm tours; horse-drawn tours; a restaurant; a gift shop; and a campground area, which offers swimming, tennis, and planned activities. Numerous special events are held year-round and include various horse shows, steeplechasing, dressage, polo games, and rodeos.

COMMUNITY IMPROVEMENTS

Recent

The construction of Beaver Creek Apartments, a 16-unit complex for the elderly and handicapped, was completed in August 1984. Total cost of the project was \$606,000.

The renovation of the old Frenchburg school campus was recently completed. The campus was converted into a family apartment complex.

Under Way

The widening of U.S. 460 on the east and west sides of Frenchburg is currently under construction. The \$4,668,000 project, which includes the addition of truck lanes and grade, drainage, and surface work, will be completed in the fall of 1985.

The construction of the Menifee County Recreation Park is currently under way. The park will include a softball-baseball field, basketball and volleyball courts, a swimming pool, a bathhouse, picnic tables with grills, swings, slides and a playground area.

Planned

A commercial scale plant for mining and processing oil shale and subsequent production of upgrade shale oil is planned for Means, Kentucky, 8 miles west of Frenchburg. The \$1 billion project, is estimated to employ 2,200 during peak construction and 790 during regular operations.