

1977

# Industrial Resources: Monroe County - Tompkinsville and Gamaliel

Kentucky Library Research Collections  
Western Kentucky University, [spcol@wku.edu](mailto:spcol@wku.edu)

Follow this and additional works at: [https://digitalcommons.wku.edu/monroe\\_cty](https://digitalcommons.wku.edu/monroe_cty)



Part of the [Business Administration, Management, and Operations Commons](#), [Growth and Development Commons](#), and the [Infrastructure Commons](#)

---

## Recommended Citation

Kentucky Library Research Collections, "Industrial Resources: Monroe County - Tompkinsville and Gamaliel" (1977). *Monroe County*. Paper 8.  
[https://digitalcommons.wku.edu/monroe\\_cty/8](https://digitalcommons.wku.edu/monroe_cty/8)

This Report is brought to you for free and open access by TopSCHOLAR®. It has been accepted for inclusion in Monroe County by an authorized administrator of TopSCHOLAR®. For more information, please contact [topscholar@wku.edu](mailto:topscholar@wku.edu).

#31  
1977

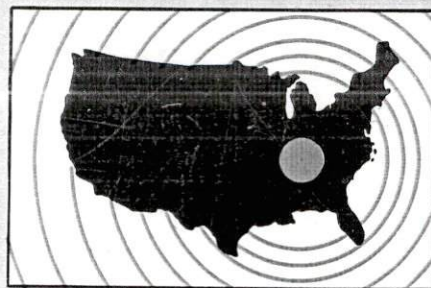
Monroe County

# ***INDUSTRIAL RESOURCES***

## **TOMPKINSVILLE**

### **GAMALIEL**

**Kentucky  
first**

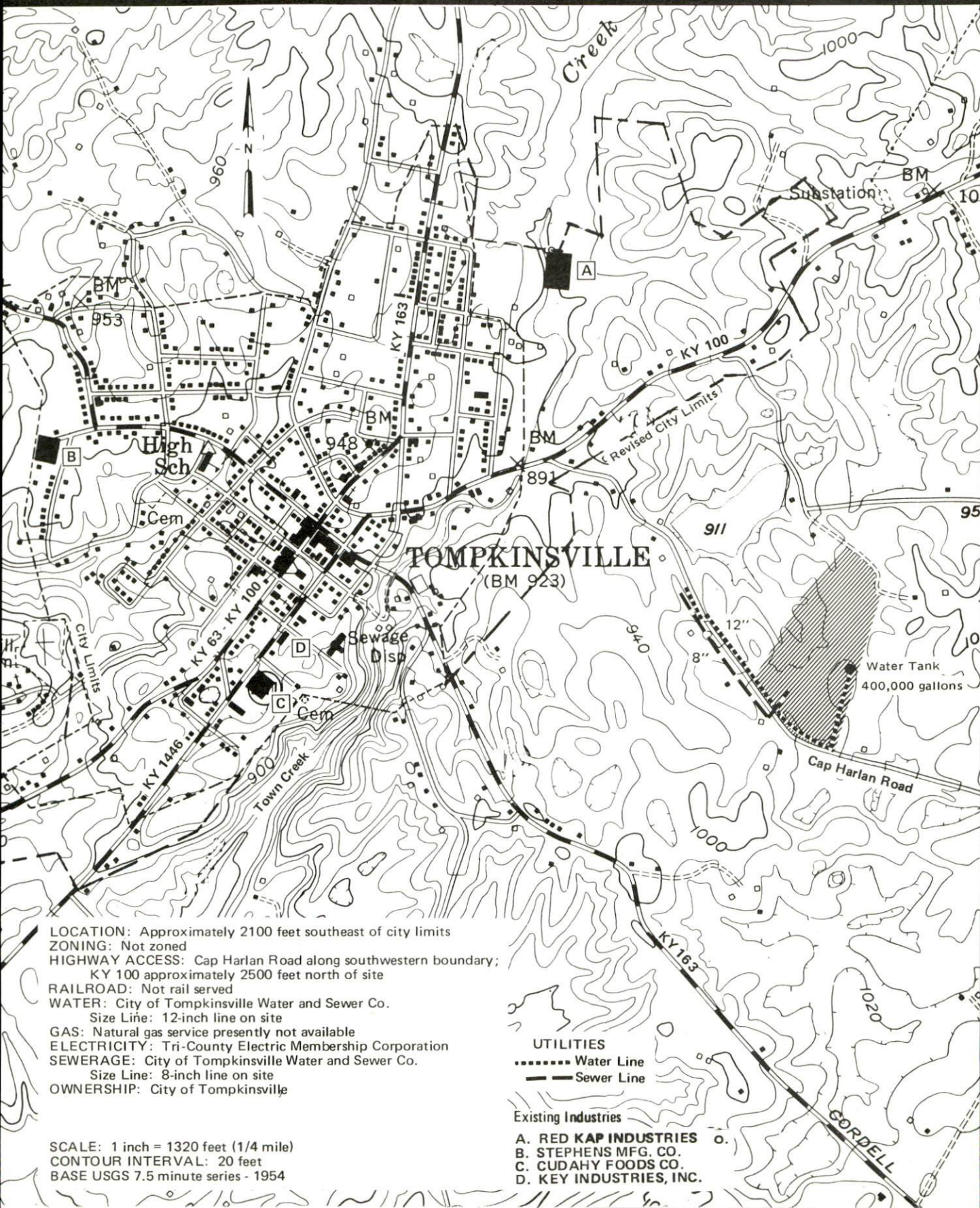


**DEPARTMENT OF COMMERCE**



# TOMPKINSVILLE, KENTUCKY --- Site No. 177 --- 37 Acres

For more information contact Carol C. Moore, President, Tompkinsville Industrial Foundation Association, Inc., 100 North Main Street, Tompkinsville, Kentucky 42167, or the Industrial Development Division, Department of Commerce, Capital Plaza Tower, Frankfort, Kentucky 40601

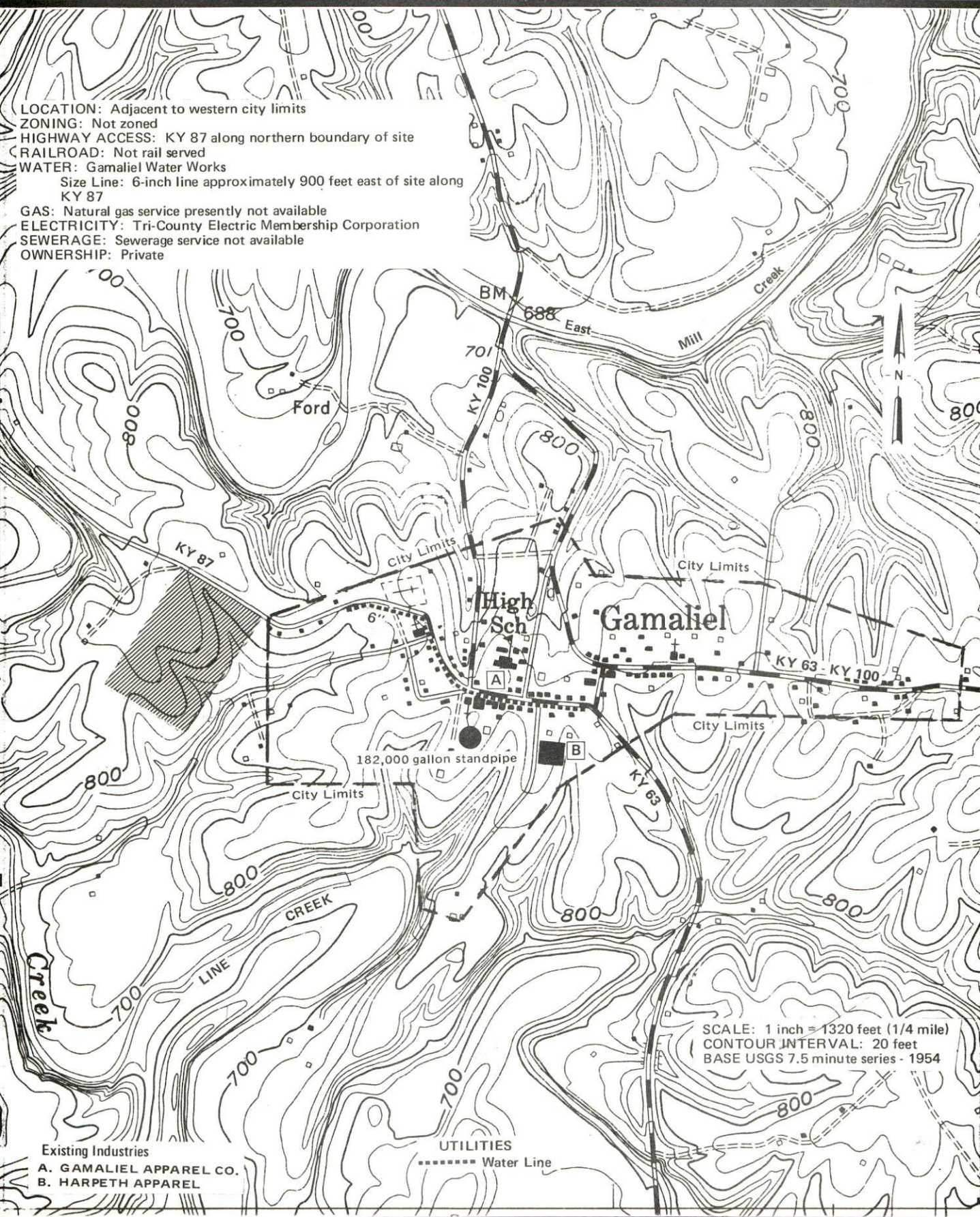




# GAMALIEL, KENTUCKY --- Site No. 177 --- 30 Acres

For more information contact Morris Carder, Chairman, Gamaliel Industrial Foundation, P. O. Box 145, Gamaliel, Kentucky 42140, or the Industrial Development Division, Department of Commerce, Capital Plaza Tower, Frankfort, Kentucky 40601.

LOCATION: Adjacent to western city limits  
 ZONING: Not zoned  
 HIGHWAY ACCESS: KY 87 along northern boundary of site  
 RAILROAD: Not rail served  
 WATER: Gamaliel Water Works  
 Size Line: 6-inch line approximately 900 feet east of site along KY 87  
 GAS: Natural gas service presently not available  
 ELECTRICITY: Tri-County Electric Membership Corporation  
 SEWERAGE: Sewerage service not available  
 OWNERSHIP: Private



Existing Industries  
 A. GAMALIEL APPAREL CO.  
 B. HARPETH APPAREL

UTILITIES  
 ..... Water Line

SCALE: 1 inch = 1320 feet (1/4 mile)  
 CONTOUR INTERVAL: 20 feet  
 BASE USGS 7.5 minute series - 1954



INDUSTRIAL RESOURCES  
TOMPKINSVILLE AND GAMALIEL, KENTUCKY

Prepared by  
The Kentucky Department of Commerce  
Division of Research and Planning  
in cooperation with  
The Tompkinsville Chamber of Commerce  
and  
The City of Gamaliel

1977



# TABLE OF CONTENTS

<u>Chapter</u>	<u>Page</u>
INDUSTRIAL SITES . . . . .	i
TOMPKINSVILLE AND GAMALIEL, KENTUCKY - A RESOURCE PROFILE . . . . .	1
THE LABOR MARKET AREA. . . . .	3
Population. . . . .	3
Labor Force Characteristics of Residents, 1975. . . . .	3
Nonagricultural Employment by Industry, by Place of Work, 1975 . . . . .	4
Tompkinsville and Gamaliel Manufacturing Firms, Their Products and Employment . . . . .	5
Labor Organizations . . . . .	6
Estimated Male Labor Supply . . . . .	6
Estimated Female Labor Supply . . . . .	6
Average Weekly Wages by Industry, by Place of Work, 1975 . . . .	7
Per Capita Personal Income. . . . .	9
TRANSPORTATION . . . . .	10
Rail. . . . .	10
Highways . . . . .	10
Truck Service . . . . .	10
Air . . . . .	11
Taxi . . . . .	12
Rental Services . . . . .	12
POWER AND FUEL . . . . .	13
Electricity. . . . .	13
Natural Gas . . . . .	13
Other Fuels . . . . .	14
WATER AND SEWERAGE . . . . .	15
Water. . . . .	15
Sewerage . . . . .	17
CLIMATE . . . . .	18



<u>Chapter</u>	<u>Page</u>
LOCAL GOVERNMENT . . . . .	19
City . . . . .	19
County . . . . .	19
Assessed Value of Property, 1976 . . . . .	19
Property Taxes . . . . .	19
Local Property Tax Rate Per \$100 of Assessed Valuation, 1976. . . . .	20
Utilities Gross Receipts Tax for Schools . . . . .	20
Planning and Zoning . . . . .	21
Safety . . . . .	21
Police . . . . .	21
Fire . . . . .	21
Rescue Service . . . . .	21
Solid Waste . . . . .	22
EDUCATION . . . . .	23
Public Schools . . . . .	23
Area Colleges and Universities . . . . .	23
Vocational Schools . . . . .	24
HEALTH . . . . .	25
Local Medical Personnel . . . . .	25
Hospitals . . . . .	25
Ambulance Service . . . . .	25
Nursing Homes . . . . .	25
Public Health . . . . .	25
OTHER LOCAL FACILITIES . . . . .	26
Communications . . . . .	26
Library Services . . . . .	27
Religious Institutions . . . . .	27
Financial Institutions . . . . .	27
Hotels and Motels . . . . .	27
Clubs and Organizations . . . . .	28
RECREATION . . . . .	29
COMMUNITY IMPROVEMENTS . . . . .	31
HISTORY . . . . .	34

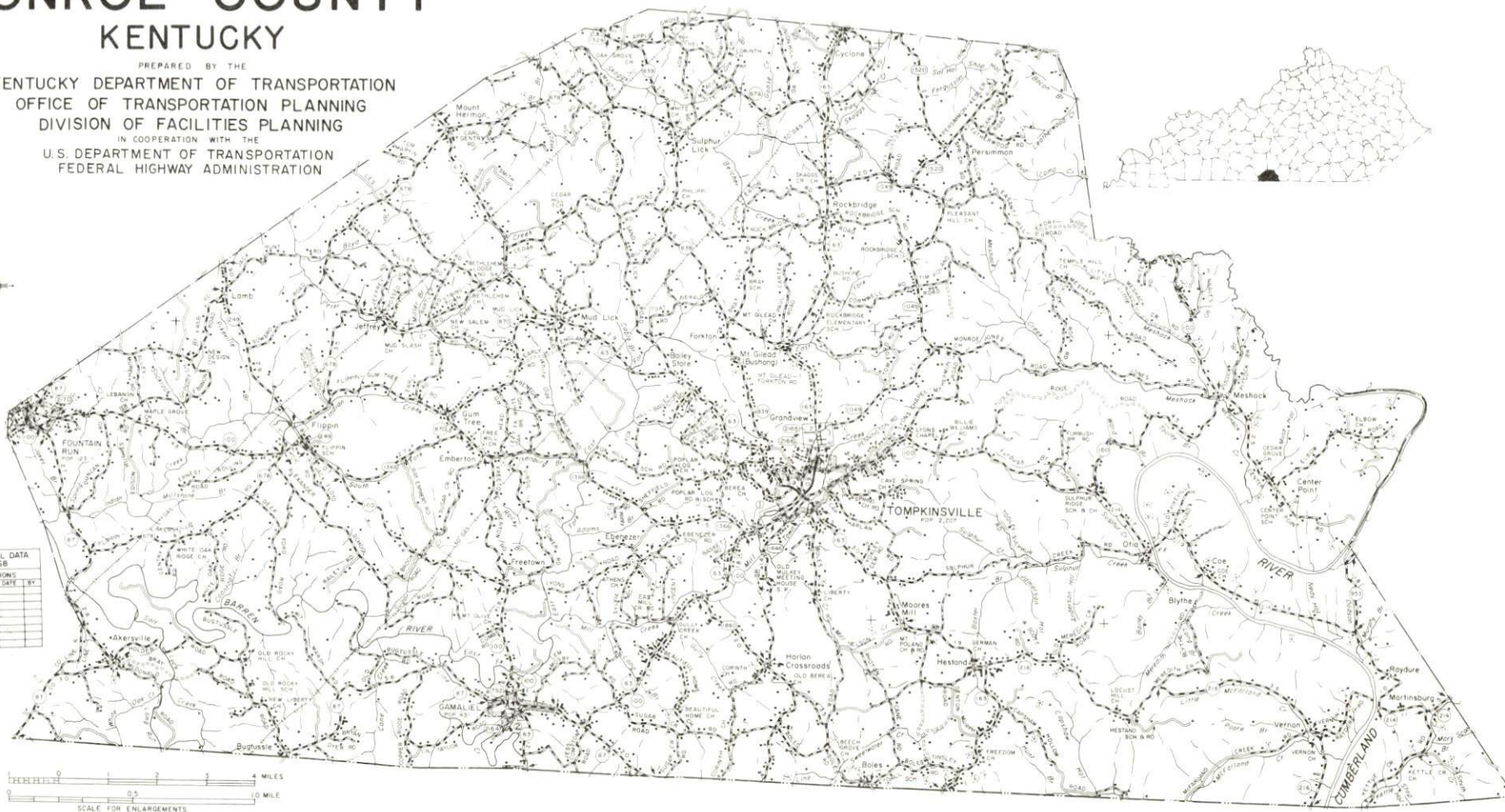


# GENERAL HIGHWAY MAP MONROE COUNTY KENTUCKY

PREPARED BY THE  
KENTUCKY DEPARTMENT OF TRANSPORTATION  
OFFICE OF TRANSPORTATION PLANNING  
DIVISION OF FACILITIES PLANNING  
IN COOPERATION WITH THE  
U.S. DEPARTMENT OF TRANSPORTATION  
FEDERAL HIGHWAY ADMINISTRATION



ORIGINAL DATA 1968			
REVISIONS			
DATE	BY	DATE	BY
11-1-68	J.S.		
11-1-68	J.S.		
11-1-68	J.S.		
11-1-68	J.S.		
11-1-68	J.S.		
11-1-68	J.S.		
11-1-68	J.S.		
11-1-68	J.S.		
11-1-68	J.S.		
11-1-68	J.S.		

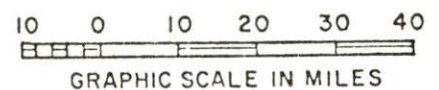
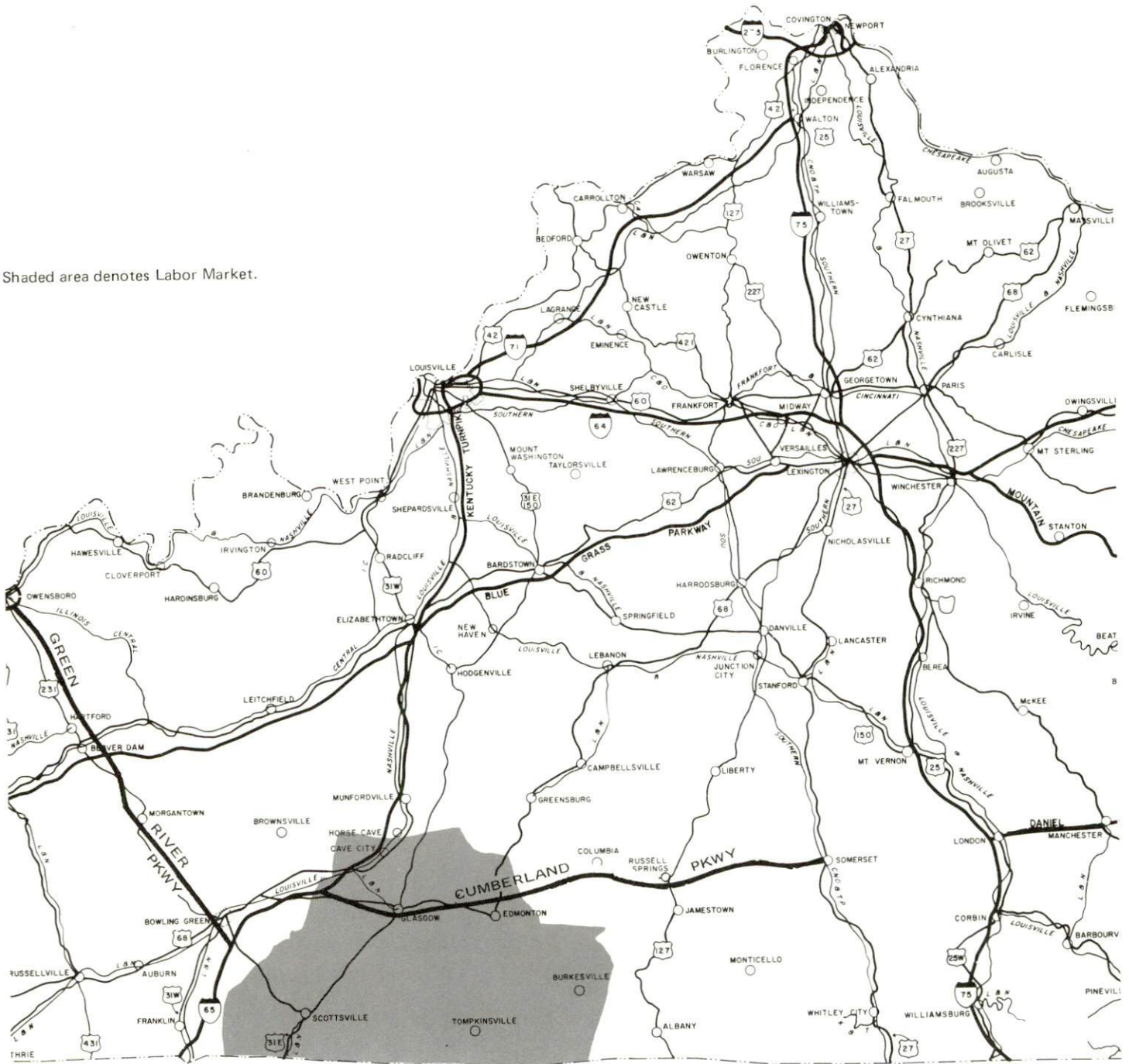




# TOMPKINSVILLE AND GAMALIEL LABOR MARKET AREA



Shaded area denotes Labor Market.



## TOMPKINSVILLE AND GAMALIEL, KENTUCKY - A RESOURCE PROFILE

Tompkinsville, county seat of Monroe County, is situated in the south central portion of the county. Tompkinsville is 121 miles south of Louisville, Kentucky, and 91 miles northeast of Nashville, Tennessee. In 1973, the city's population was estimated to be 2,279.

Gamaliel, located in the southwestern portion of Monroe County, is 8 miles southwest of Tompkinsville and is situated between the Barren River to the north and Tennessee to the south. In 1973, Gamaliel had an estimated population of 438.

Monroe County is located in south central Kentucky in the Mississippian Plateau physiographic region. The county's southern boundary is formed by the Kentucky-Tennessee state line. Monroe County, which covers a land area of 334 square miles, had an estimated population of 12,100 in 1975.

### The Economic Framework

The total number of Monroe county residents employed in 1975 averaged 4,060, with nonagricultural jobs accounting for 2,950 workers. Manufacturing employers in the county reported 1,010 workers; mining and quarrying 20; construction firms 30; transportation, communications, and public utilities 50; wholesale and retail trade 350; finance, insurance, and real estate 70; and employees in the service industries 150. The county's major industrial product is apparel.

Total unemployment in Monroe County averaged 9.3 percent of the labor force in 1975.

Per capita personal income in the county in 1974 was \$2,784, an increase of 44.6 percent since 1970.

The Tompkinsville and Gamaliel labor market area includes Monroe County, the four adjoining Kentucky counties, and Clay and Macon counties in Tennessee. The total number of residents in the Kentucky portion of the labor market area employed in 1975 averaged 30,980, with nonagricultural jobs accounting for 24,465 workers. Manufacturing employers in the area reported 6,560 workers; mining and quarrying 150; construction firms 610; transportation, communications, and public utilities 590; wholesale and retail trade 3,690; finance, insurance, and real estate 550; and employees in the service industries 1,920.



## Resources for Growth

1. Labor Supply - There is a current estimated labor supply of 2,710 men and 2,430 women available for industrial jobs in the Kentucky portion of the labor market area. In addition, 3,410 young men and 3,180 young women in this area will become 18 years of age by 1982 and potentially available for work. The current labor supply would be supplemented by the number of men and women in the adjoining Tennessee counties who are available for industrial jobs.

2. Transportation - The nearest rail service is provided by the Louisville and Nashville Railroad at Glasgow, 32 miles from Tompkinsville. An entrance to the Cumberland Parkway is located 22 miles north of Tompkinsville, providing easy access to the interstate highway system. Two truck lines serve Tompkinsville. An air field with a 4,000-foot runway and charter service is located at Glasgow. Commercial air service is available in Nashville, Tennessee, 91 miles southwest of Tompkinsville. Also, Air Kentucky Airlines (commuter service) serves the Bowling Green-Warren County Airport, 61 miles from Tompkinsville.

3. Utilities and Fuel - The Tri-County Electric Membership Corporation provides electricity to Tompkinsville, Gamaliel, and Monroe County. The Tompkinsville Water and Gas Company provides Tompkinsville with natural gas. Gamaliel does not have natural gas service. There are six propane distributors and eight distillate fuel oil distributors serving the area. Low sulphur content coal is available from Eastern Kentucky.

4. Education - The Monroe County School System provides primary and secondary education in Tompkinsville and Gamaliel. A senior college, a junior college, and two universities are located within 65 miles of Tompkinsville. Vocational education is provided in Tompkinsville by the Monroe County Area Vocational Education Center, which offers 6 courses. The Bowling Green State Vocational-Technical School in Bowling Green, 61 miles from Tompkinsville, offers instruction in 21 courses.

# THE LABOR MARKET AREA

## POPULATION

<u>Area</u>	<u>1975*</u>	<u>1970</u>	<u>Percent Nonwhite</u>
			<u>1970</u>
Tompkinsville	2,279**	2,207	13.6
Gamaliel	438**	431	N.A.
Labor Market			
Area	71,600	67,944	N.A.
Monroe County	12,100	11,642	3.5
Allen County	13,600	12,598	2.1
Barren County	30,700	28,677	6.3
Cumberland County	6,800	6,850	6.5
Metcalfe County	8,400	8,177	3.9

\*Provisional Estimates.

\*\*1973 Population Estimates.

Sources: U.S. Department of Commerce, Bureau of the Census, Census of Population, 1970. U.S. Department of Commerce, Bureau of the Census, Current Population Reports, Series P-25, No. 562, June 1975; Series P-26, No. 75-17, May 1976.

## LABOR FORCE CHARACTERISTICS OF RESIDENTS, 1975

	<u>Monroe County</u>	<u>Labor Market Area</u>
Civilian Labor Force	4,476	33,817
Employment	4,058	30,977
Agricultural	1,106	6,512
Nonagricultural	2,952	24,465
Unemployment	418	2,840
Rate of Unemployment (%)	9.3	8.4

Source: Kentucky Department for Human Resources, Kentucky Labor Force Estimates, Annual Averages, 1975.



NONAGRICULTURAL EMPLOYMENT BY INDUSTRY,  
BY PLACE OF WORK, 1975

	<u>Monroe County</u>	<u>Labor Market Area</u>
All Industries	1,691	14,124
Mining & Quarrying	18	149
Contract Construction	28	606
Manufacturing	1,012	6,564
Food & Kindred Products	25	323
Apparel, Textiles, Leather	763	2,590
Lumber & Furniture	170	680
Printing, Publishing & Paper	12	527
Chemicals, Petroleum, Coal		
& Rubber	16	73
Stone, Clay & Glass	26	59
Machinery, Metal Products		
& Equipment	0	2,314
Transportation, Communications		
& Public Utilities	49	590
Wholesale & Retail Trade	352	3,688
Finance, Insurance & Real Estate	68	546
Services	152	1,919
Other	13	57

Note: Excludes domestic workers, railway workers; certain nonprofit corporations; majority of federal, state, and local government workers; and self employed workers. Labor market area totals for some employment categories exclude employment that was not disclosed for individual counties. Manufacturing detail may not add to totals because of rounding of base data.

Source: Kentucky Department for Human Resources, Average Monthly Workers Covered by Kentucky Unemployment Insurance Law, 1975.

TOMPKINSVILLE AND GAMALIEL MANUFACTURING FIRMS,  
THEIR PRODUCTS AND EMPLOYMENT

<u>Firm</u> (Establishment date)	<u>Product</u>	<u>Employment</u>		
		<u>Total</u>	<u>Male</u>	<u>Female</u>
<u>Tompkinsville</u>				
Anderson Forest Products (1976)	Wood pallets	32		
Roy Anderson Lumber Company (1956)	Rough lumber	34	34	0
Cudahy Foods Company (1949)	Cheddar cheese	25	21	4
Graham Pallet Company (1960)	Pallets	35	33	2
Haile Guitars (1943)	Hand-craft concert and folk guitars	2	1	1
Hammer Printing Service (1955)	Commercial printing	3	2	1
Key Industries, Inc. (1952)	Men's and boys' jeans, dungarees, and coveralls	188	30	158
Monroe County Press (1947)	Newspaper and job printing	6	4	2
Monroe Sweet Feed Mill (1949)	Feed	5	5	0
Red Kap Industries (1963)	Men's laundry pants	200	30	170
Stephens Manufacturing Company (1956)	Steel bulk cement silos, ready mix plants, pollution control equipment	22	22	0
Tompkinsville Block Company (1961)	Concrete block, concrete tile septic tanks, metal fertilizer mixing machines	7	6	1
Tompkinsville Fertilizer Company, Inc. (1966)	Fertilizer	4	3	1
Tompkinsville Printing Company (1962)	Job printing, silk screening	3	3	0
<u>Gamaliel</u>				
Gamaliel Apparel Company (1976)	Men's sportswear, women's sportswear	60		
Harpeth Apparel (1960)	Casual jeans, men's sportswear, women's sportswear	390	80	310

Source: Kentucky Department of Commerce, Division of Research and Planning.



## LABOR ORGANIZATIONS

Presently there are no unions representing manufacturing workers in Monroe County.

### ESTIMATED MALE LABOR SUPPLY TOMPKINSVILLE AND GAMALIEL LABOR MARKET AREA

Area	Current			Future	
	Total	Not in Labor Force	Unemployed	Under-employed	Reaching 18 yrs. of age before 1982
Labor Market					
Area	2,710	400	1,060	1,250	3,414
Monroe	840	400	200	240	636
Allen	370	0	190	180	542
Barren	970	0	440	530	1,458
Cumberland	290	0	110	180	357
Metcalfe	240	0	120	120	421

Sources: Kentucky Department for Human Resources, Kentucky Labor Supply Estimates by County, 1975. Kentucky Department of Commerce, Future Labor Supply before 1982.

### ESTIMATED FEMALE LABOR SUPPLY TOMPKINSVILLE AND GAMALIEL LABOR MARKET AREA

Area	Current			Future	
	Total	Not in Labor Force	Unemployed	Under-employed	Reaching 18 yrs. of age before 1982
Labor Market					
Area	2,430	620	690	1,120	3,179
Monroe	710	380	130	200	556
Allen	390	0	140	250	578
Barren	790	0	300	490	1,318
Cumberland	150	0	40	110	319
Metcalfe	390	240	80	70	408

Sources: Kentucky Department for Human Resources, Kentucky Labor Supply Estimates by County, 1975. Kentucky Department of Commerce, Future Labor Supply before 1982.

AVERAGE WEEKLY WAGES BY INDUSTRY,  
BY PLACE OF WORK, 1975

	<u>Monroe County</u>	<u>Allen County</u>	<u>Barren County</u>
All Industries	\$104.11	\$126.42	\$135.49
Mining & Quarrying	131.97	108.25	173.54
Contract Construction	78.66	119.26	173.72
Manufacturing	103.57	138.12	156.82
Transportation, Communications & Public Utilities	185.01	190.46	178.08
Wholesale & Retail Trade	95.41	114.17	100.39
Finance, Insurance & Real Estate	130.48	143.59	151.40
Services	93.74	84.98	103.48
Other	68.06	79.65	87.15
	<u>Cumberland County</u>	<u>Metcalf County</u>	
All Industries	\$ 92.25	\$ 88.94	
Mining & Quarrying	91.55	98.37	
Contract Construction	100.70	98.79	
Manufacturing	89.35	*	
Transportation, Communications & Public Utilities	117.51	150.74	
Wholesale & Retail Trade	92.74	78.58	
Finance, Insurance & Real Estate	109.70	117.03	
Services	96.58	76.64	
Other	*	*	

Note: Excludes domestic workers, railway workers; certain nonprofit corporations; majority of federal, state and local government workers; and self employed workers.

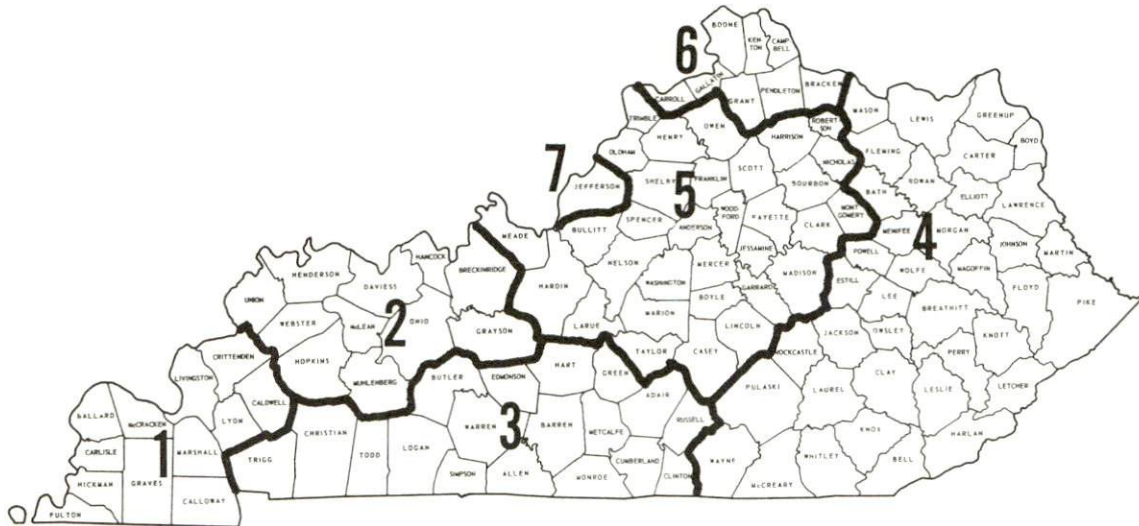
\*Not disclosed.

Source: Kentucky Department for Human Resources, Average Weekly Wages of Workers Covered By Unemployment Insurance, 1975.



Occupational wage rates for specific industries are usually not available to most government agencies, and wage data furnished to state employment agencies by individual industrial employers is protected from disclosure by federal law. The most reliable up-to-date wage information can be obtained by direct contact with local employers.

Associated Industries of Kentucky, a voluntary organization of Kentucky businesses, regularly collects occupational wage rates and fringe benefits data from participating member firms. Data is compiled for over 127 clearly defined office, production, and service occupations. Tabulations are published for seven regions of Kentucky, as shown on the map below. It should be noted that the data may be weighted by the preponderance of firms in the larger cities and may be somewhat higher than the rates paid in the smaller communities. Data from these tabulations are available, upon request, from the Kentucky Department of Commerce, Frankfort, Kentucky 40601.



Associated Industries of Kentucky Area Wage Surveys

Up-to-date occupational wage rates of the existing industries are maintained by South Kentucky Industrial Development Association, Post Office Box 726, Hopkinsville, Kentucky 42240.

PER CAPITA PERSONAL INCOME

<u>Area</u>	<u>1974</u>	<u>1970</u>	<u>Percent Change</u>
Monroe County	\$2,784	\$1,925	44.6
Labor Market Area			
Range	\$2,784 - 4,127	\$1,723 - 2,634	N.A.
Kentucky	4,442	3,112	42.7
U.S.	5,448	3,966	37.4

Sources: U.S. Department of Commerce, Bureau of Economic Analysis, Survey of Current Business, August 1975. U.S. Department of Commerce, Bureau of Economic Analysis, March 1976.



## TRANSPORTATION

### Rail

The nearest rail service is provided by the Louisville and Nashville Railroad at Glasgow, 32 miles from Tompkinsville. Services at Glasgow include freight service Monday through Friday, switcher, team track space for 12 cars plus siding space for 21 cars, and piggy-back facilities.

For details on routing, schedules, rates, and services, contact:

Manager of Industrial Development  
Louisville and Nashville Railroad  
908 West Broadway  
Louisville, Kentucky 40203  
(502) 587-5000

### Highways

Kentucky Route 163 connects Tompkinsville with Kentucky Route 90, 14 miles to the north, and with the Cumberland Parkway at Edmonton, 22 miles to the north. Kentucky Route 63 connects Gamaliel and Tompkinsville.

Efforts are now being made to secure a new highway from Glasgow to Tompkinsville.

### Truck Service

#### Company

#### Home Office

#### Tompkinsville

Manning Motor Express, Inc.

P. O. Box 685  
Glasgow, Kentucky 42141

TSC Express

830 Willoughby Way NE  
Atlanta, Georgia 30312

Other Freight Services

United Parcel Service\*

Nearest Shipping Center

Campbellsville, 62 miles north of  
Tompkinsville, and Bowling Green,  
61 miles northwest of Tompkinsville

HIGHWAY MILES AND TRUCK TRANSIT TIME IN DAYS FROM  
TOMPKINSVILLE, KENTUCKY, TO SELECTED MARKET CENTERS

City	Delivery		City	Delivery	
	Highway Miles	Time TL		Highway Miles	Time TL
Atlanta, Ga.	361	2	Los Angeles, Calif.	2,144	5
Birmingham, Ala.	315	2	Louisville, Ky.	126	1
Chicago, Ill.	417	3	Nashville, Tenn.	119	1
Cincinnati, Ohio	227	2	New Orleans, La.	636	3
Cleveland, Ohio	471	3	New York, N. Y.	874	4
Detroit, Mich.	486	3	Pittsburgh, Pa.	514	4
Knoxville, Tenn.	222	2	St. Louis, Mo.	389	3

Source: Delivery Time Only - Manning Motor Express, Inc., Box 685,  
Glasgow, Kentucky 42141.

Air

A master plan for a Monroe County Airport has been completed and approved. A site for the airport is now being selected. Plans include the construction of a 5,000+ foot runway. Long-range plans include lighting, hangars, and other services.

Nearest Small Craft

Moore Field  
Location: Glasgow, 32 miles from Tompkinsville  
Runways: 1 paved  
Length: 4,000 feet  
Traffic  
Control: Wind sock  
Lighting: Runway lights sundown to sunrise  
Services: 100 Octane, Jet Fuel, charter, flight instruction,  
taxi, A & E repairs, rental cars available,  
hangar rental, tug auxiliary power unit  
Air Freight  
Service: Chartered air freight services must be arranged

\*For regular scheduled pickups or for occasional pickups arrangements must be made with the Louisville office of U. P. S.



Nearest Commercial

Location: Nashville Metropolitan Airport  
Nashville, Tennessee, 91 miles  
southwest of Tompkinsville

Runways: 3 paved

Length: 8,000 feet; 7,700 feet; 4,025 feet

Traffic

Control: FAA control tower, full instrument  
landing system (ILS), radar  
approach and departure control,  
stage 3 radar service for VFR  
aircraft

Lighting: High intensity for instrument run-  
way, medium intensity for other  
runways; VASI; obstructions,  
beacon, and approach lights

Services: Allegheny, American, Braniff,  
Delta, Eastern, Ozark, Piedmont  
and Southern Airlines; Aerie Air-  
lines (air taxi); 80 to 145 octane,  
jet fuel; major repairs; tie downs  
and hangars; charter service;  
flight instruction; limousine, bus,  
taxi, and car rentals; weather  
information; restaurant, hotel

Air Freight

Service: Air Freight Terminal

Air Kentucky Airlines (commuter air carrier) serves the Bowling Green-Warren County Airport, 61 miles from Tompkinsville, providing daily connecting service to Louisville, Cincinnati, Frankfort and Owensboro.

Taxi - Tompkinsville has two cab companies providing 24-hour service.

Rental Services - Car, truck and trailer rentals at Glasgow, 32 miles from Tompkinsville.

## POWER AND FUEL

### Electricity

Company serving Tompkinsville, Gamaliel and Monroe County -  
Tri-County Electric Membership Corporation  
Source of power - Tennessee Valley Authority  
Total generating capacity - 26,723,430 KW  
For industrial rates contact:

South Kentucky Industrial Development  
Association, Inc.  
Post Office Box 726  
Hopkinsville, Kentucky 42240  
(502) 885-5392

and/or

Tri-County Electric Membership Corporation  
919 North Main  
Tompkinsville, Kentucky 42167  
(502) 487-6761

### Natural Gas

Company serving Tompkinsville - Tompkinsville Water and Gas  
Company  
Source of supply - Texas Eastern Transmission Corporation  
Size of transmission mains - 30 and 36 inches (supplier);  
3 1/2 inches (distributor)  
Distribution mains - 2 and 3 inches  
Distribution pressure - 31 psi  
Btu content - 1,020 to 1,035 per cubic foot  
Specific gravity - 0,575 (average)  
For rates and supplies contact:

Tompkinsville Water and Gas Company  
c/o City Hall  
Magnolia Street  
Tompkinsville, Kentucky 42167  
(502) 487-6243

Gamaliel does not have natural gas service.



## Other Fuels

### Propane and butane

Ashland Petroleum Company (Bulk Plant), West Main,  
Glasgow, Kentucky 42141  
Harold Clarkson Gas & Appliances, 921 West Main,  
Glasgow, Kentucky 42141  
Pargas of Glasgow, 214 Industrial Drive,  
Glasgow, Kentucky 42141  
Petrolane Gas Service,  
Marrowbone, Kentucky 42759  
Petrolane Gas Service,  
Red Boiling Springs, Tennessee 37150  
Williams Energy Company, West Main,  
Glasgow, Kentucky 42141

### Fuel oils

Distillate fuel oil -

Ashland Oil, Inc.,  
Burkesville, Kentucky 42717  
Edwin Bradshaw Oil,  
Marrowbone, Kentucky 42759  
Gentry's Standard Service, North Race,  
Glasgow, Kentucky 42141  
Gulf Oil Corporation, 700 West Main,  
Glasgow, Kentucky 42141  
Hall Standard Service, 107 Columbia Avenue,  
Glasgow, Kentucky 42141  
Standard Oil Company, 210 Leslie Avenue,  
Glasgow, Kentucky 42141  
Standard Oil Company, 310 South Main,  
Tompkinsville, Kentucky 42167  
Tri-County Oil Company, Inc., 715 West Main,  
Glasgow, Kentucky 42141

Residual fuel oil - Arrangements must be made with the refinery.

Low sulphur content coal - Available from Eastern Kentucky.

## WATER AND SEWERAGE

### Water

Company serving Tompkinsville - Tompkinsville Water and Gas Company\*  
c/o City Hall  
Magnolia Street  
Tompkinsville, Kentucky 42167  
(502) 487-6243

Source - Mill Creek Impoundment  
Treatment plant capacity - 1,500,000 gallons per day  
Average daily consumption - 285,000 gallons  
Peak daily consumption - 500,000 gallons  
Type treatment - Complete flocculation, clarification, filtration,  
fluoridation, and disinfection  
Storage capacity - 700,000 gallons  
Size lines - 12, 8, and 6 inches  
Average pressure - 80 psi

### MONTHLY WATER RATES FOR WHOLESALE AND INDUSTRIAL CONSUMERS

First	2,000 gallons	\$5.70 (Minimum)
Next	3,000 gallons	1.50 per M gallons
Next	5,000 gallons	1.15 per M gallons
Next	15,000 gallons	.90 per M gallons
Next	75,000 gallons	.70 per M gallons
Next	100,000 gallons	.55 per M gallons
Over	200,000 gallons	.35 per M gallons

Tap-on charge: \$80

---

\*A 400,000 gallon water storage tank has recently been constructed on Tompkinsville's 37-acre industrial site.

Company serving Gamaliel - Gamaliel Water Works System\*  
P.O. Box 126  
Gamaliel, Kentucky 42140  
(502) 457-2901

Source - Lion Creek

Treatment plant capacity - 120,000 gallons per day

Average daily consumption - 60,000 gallons

Peak daily consumption - 80,000 gallons

Type treatment - Filtration, chlorination, coagulation with alum and lime

Storage capacity - 182,000 gallons

Size lines - 8, 6, 4 and 2 inches

Average pressure - 72 psi

MONTHLY WATER RATES FOR WHOLESALE  
AND INDUSTRIAL CONSUMERS

First	2,000 gallons	\$5.00 (Minimum)
Next	1,000 gallons	1.75 per M gallons
Next	1,000 gallons	1.50 per M gallons
Next	1,000 gallons	1.25 per M gallons
Next	1,000 gallons	1.00 per M gallons
All over	6,000 gallons	.75 per M gallons

Tap-on charge: \$100

County water district - A county water district is being planned which will maintain approximately 25 miles of line and serve all of Monroe County except the city of Tompkinsville and the far western portion of the county. The water district will purchase treated water from the Tompkinsville Water and Gas Company.

---

\*Use of the Gamaliel Water Works System will be discontinued when the new county water district is put into operation.



Surface water sources - East Fork of Barren River and Cumberland River  
Average discharge - Barren River near Finney, Kentucky, 1,466 cfs  
(24-year record, USGS)  
Expected ground water yield - 5 to 50 gpm in belts running north-south  
in central and western portions of the county; 5 gpm or less in the  
remainder of the county

#### Sewerage

Company serving Tompkinsville - Tompkinsville Sewerage Company\*  
c/o City Hall  
Magnolia Street  
Tompkinsville, Kentucky 42167  
(502) 487-6211

Design capacity - 500,000 gallons per day  
Average daily flow - 275,000 gallons; Treatment - Primary and secondary  
Type treatment - Pre-chlorination, aeration, drying beds  
Treated effluent discharged into - Curtis Branch  
Size of sanitary mains - 12, 8, 6, and 4 inches  
Size of storm mains - 48, 36, and 24 inches  
Rates - 80 percent of monthly water bill  
Tap-on charge: \$65

Gamaliel is utilizing septic tanks for sewage disposal at this time;  
however, plans are underway to construct a municipal sewerage system.

---

\*Plans are presently being made to separate the sewer and storm main systems. Plans have been completed for adding a lift station and extending lines to a new subdivision.

## CLIMATE

### Monroe County

#### Temperature

Annual mean (30-year record)	59.4 degrees
Average annual 1975	60.2 degrees
Record highest, July, 1966 (10-year record)	103 degrees
Record lowest, January, 1966 (10-year record)	- 6.0 degrees
Normal heating degree days (30-year record)	3,696
(Heating degree day totals are the sums of negative departures of average daily temperatures from 65 degrees F.)	

#### Precipitation

Mean annual total (30-year record)	46.00 inches
Mean annual snowfall (34-year record)	10.90 inches
Total precipitation 1975	60.58 inches
Mean number days precipitation (.01 inch or more) (34-year record)	119
Average number days thunderstorms (34-year record)	56

Prevailing Winds (22-year record) South

#### Relative Humidity (10-year record)

Midnight	80 percent
6 a.m.	85 percent
Noon	59 percent
6 p.m.	62 percent

Source: U.S. Department of Commerce, Environmental Science Services  
Administration, Climatological Data, 1975. Station of record:  
Nashville, Tennessee.

## LOCAL GOVERNMENT

### City

#### Tompkinsville

Structure - Mayor - 4-year term; 6 councilmen - 2-year terms

Receipts 1975 - General Fund \$107,173.88

Water and Sewer Fund 340,584.53

City Gas System 214,162.26

Fees and licenses - Business licenses range from \$10.50 to \$300 per year.

#### Gamaliel

Structure - 5-member Board of Trustees - 2-year terms

Income 1975-76 - General Fund \$ 49,000.00

Water and Sewer Fund 34,000.00

Fees and licenses - Business licenses - \$25 per year; Occupational license tax of one percent on wages and net profits

### County

Structure - County Judge - 4-year term; 5 magistrates - 4-year terms

Budget 1975-76 - General Fund \$94,000; Road Fund \$48,300

### Assessed Value of Property, 1976

<u>Classes of Property</u>	<u>Tompkinsville</u>	<u>Gamaliel</u>	<u>Monroe County</u>
Real Estate and Tangibles	\$18,857,822	\$3,688,124	
Real Estate			\$53,409,031
Tangibles			13,839,008

### Property Taxes

All property in Kentucky is assessed at 100 percent of fair cash value.

Land and buildings are taxed by the state and may be taxed by local jurisdictions. The state rate is \$0.315 per \$100 of assessed valuation. Beginning January 1, 1977, local school tax rates were reduced by \$0.30 per \$100 valuation and the state rate was increased by \$0.30 per \$100 (from \$0.015), resulting in no net change in the combined state and local rates.

(Contd.)



Manufacturing machinery, raw materials inventories, pollution control equipment, and goods in the process of manufacture are not subject to local taxation. The state rate is \$0.15 per \$100.

Other tangible personal property owned by manufacturers (automobiles, trucks, finished goods, office furniture, office equipment) is taxed by the state at \$0.45 per \$100 and may be taxed by local jurisdictions. Beginning January 1, 1977, local school rates were reduced by \$0.30 per \$100 valuation and the state rate was raised \$0.30 per \$100 (from \$0.15).

Property stored in public warehouses in a transit status is not subject to local taxation. The state rate is only \$0.015 per \$100

Intangible personal property located in Kentucky (money in hand, shares of stock, notes, bonds, accounts, and other credits) is taxed by the state at \$0.25 per \$100, and is not subject to local taxation.

Intangible personal property owned by corporations in Kentucky as a result of business transactions performed out-of-state, but having a tax situs in Kentucky (accounts receivable, notes, bonds, credits, non-domestic bank deposits, licensing or royalty agreements, shares of stock of any affiliated company, etc.) is taxed by the state at \$0.015, and is not subject to local taxation.

Local Property Tax Rate Per \$100 of Assessed Valuation, 1976\*

<u>Taxing Jurisdiction</u>	<u>Tompkinsville</u>	<u>Gamaliel</u>	<u>Monroe County</u>
County	\$ .209	\$ .209	\$ .209
School	.521	.521	.521
City	.210	.200	

Utilities Gross Receipts Tax for Schools

Monroe County levies a 3 percent tax on utilities receipts for schools. This tax is paid by all consumers of utilities as an add-on to the utilities bills. Exempted are receipts from utilities services that are resold and the receipts from the sale of energy producing fuels that exceed 3 percent of the cost of production in manufacturing, processing, mining or refining.

\*Kentucky Department of Revenue.

### Planning and Zoning

Agency - There is presently no planning and zoning agency in Tompkinsville, Gamaliel, or Monroe County

Mandatory state codes enforced - Plumbing, National Fire Protection Association Code, National Building Code (for major buildings and residential construction containing more than 12 bedrooms per building)

### Safety

<u>Police</u>	<u>Tompkinsville</u>	<u>Gamaliel</u>	<u>Monroe County</u>
Total staff	7	2 full-time 1 part-time	5
Radio-patrol cars	2	1	2

### Fire

American Insurance  
Association Fire

Rating	8	7
Volunteers	18	22

### Rescue Service

Monroe County Rescue Squad:

Number of volunteers - 43

Equipment - Utility truck, step van, pontoon and motor, boat and motor, 3 generators, dragging equipment, 4 fire extinguishers, first aid supplies, oxygen tank, chain saw and attachments, and basic rescue gear. Members have CB radios.

Personnel and training - Four members are certified Emergency Medical Technicians, and four are registered nurses. Other members receive standard first aid training.

Solid Waste

	<u>Tompkinsville</u>	<u>Gamaliel</u>
Type service	Municipal	Municipal
Fee charged:		
residential	\$1.50 to \$3.00 per month	\$2.00 per month
business	\$8.00 to \$10.00 per month	\$10.00 per month
industrial	\$85 per month	Varies with amount collected
Collection frequency:		
residential	Once weekly	Twice weekly
business	Twice weekly	Daily to 3 times weekly
industrial	Five days per week	Daily
Trash pickup	Once yearly	None
Disposal method	Sanitary landfill	Sanitary landfill



## EDUCATION

### Public Schools

	<u>Monroe County</u>
Total Enrollment (Fall, 1976)	2,606
Elementary	1,224
Junior High	704
High School	678
Student-Teacher Ratio	25 to 1
Elementary	27 to 1
Junior High	27 to 1
High School	21 to 1
Percent High School Graduates to College	25.3
Expenditures Per Pupil (1974-75)	\$676.89
Bonded Indebtedness, June 30, 1976	\$1,798,000

### Area Colleges and Universities

<u>Name</u>	<u>Location</u> <u>(Miles distant)*</u>	<u>Enrollment</u> <u>(Fall, 1976)</u>	<u>Highest Degree</u> <u>Conferred</u>
Lindsey Wilson Junior College	Columbia (45)	383	Associate
Tennessee Technical University	Cookeville, Tennessee (56)	5,701	Academic & Professional
Western Kentucky University	Bowling Green(61)	13,385	Masters, Ph. D. **
Campbellsville College	Campbellsville(62)	686	Baccalaureate

\*Mileage from Tompkinsville.

\*\*Cooperative program with the University of Kentucky, Lexington, for a Ph. D. in education only.

## Vocational Schools

	<u>Nearest State School</u>	<u>Nearest Area Education Center</u>
	Bowling Green State Vocational-Technical School	Monroe County Area Vocational Education Center
Location	Bowling Green	Tompkinsville
Miles Distant	61	
Curriculum	Commercial Foods Distributive Education Dental Assisting Health Careers Nursing Assistant Surgical Technician Industrial Education Air Conditioning and Heating Auto Body Repair Auto Mechanics Carpentry Civil Highway Technician Drafting Electronics (Technology) Graphic Arts (Printing) Industrial Electricity Machine Shop Masonry Radio and TV Repair Small Engine Repair Tool and Die Making Welding	Agribusiness Business and Office Industrial Education Auto Mechanics Building Trades Drafting Electricity

Arrangements can be made to provide training in the specific production skills required by an industrial plant. Instruction may be conducted either in the vocational school or in the industrial plant, depending upon the desired arrangement and the availability of special equipment.

## HEALTH

### Local Medical Personnel

	<u>Tompkinsville</u>	<u>Gamaliel</u>
Physicians -	3	2
Dentists -	4	0

### Hospitals

<u>General Hospital</u>	<u>Location</u>	<u>Beds</u>
Monroe County War Memorial Hospital	Tompkinsville	49

General hospital facilities - X-ray equipment, emergency room, operating room, delivery room, laboratory, respiratory therapy

Medical staff - 4 medical doctors, 8 registered nurses, 8 licensed practical nurses, 1 pathologist, 1 radiologist, 2 associate radiologists, 2 associate cardiologists

### Ambulance Service

Name - Monroe County War Memorial Hospital Ambulance Service  
Staff - Vehicles staffed by hospital personnel; two Emergency Medical Technicians always on duty  
Service - 24-hour, county-wide  
Equipment - Two fully equipped ambulances; one partially equipped transporter

### Nursing Homes

	<u>Number</u>	<u>Beds</u>
Extended care homes	1	60

### Public Health

Facility - Monroe County Health Department  
Staff - Registered nurse, sanitarian, clerk



## OTHER LOCAL FACILITIES

### Communications

	<u>Tompkinsville</u>	<u>Gamaliel</u>
Telephone -	General Telephone	South Central Rural
Service -	Company	Telephone Cooperative
	Standard	Standard
Telegraph -	Western Union Office	Western Union Office
	in Tompkinsville	in Tompkinsville
Postal - U.S. Post Office		
Class -	Second	Third
Mail received -	Once daily	Once daily
Mail dispatched -	Once daily	Once daily
Newspapers -	Tompkinsville News	
Weekly and circulation-	3,400	
Other papers		
received from -	Louisville, Glasgow,	Tompkinsville, Louisville,
	and Scottsville,	Glasgow, and Scottsville,
	Kentucky; Nashville,	Kentucky; Nashville,
	Tennessee	Tennessee
Radio -	WTKY-AM-FM	
Stations received from-	Louisville, Glasgow,	Tompkinsville, Louisville,
	and Bowling Green,	Glasgow, and Bowling
	Kentucky; Celina and	Green, Kentucky; Celina
	Nashville, Tennessee	and Nashville, Tennessee
Television -		
Cable service	Yes	No
Reception from -	Louisville and Bowling	Bowling Green, Kentucky;
	Green, Kentucky;	Nashville, Tennessee
	Nashville, Tennessee	
Kentucky Educational		
Television -	Bowling Green	Bowling Green
	transmitter-	transmitter-
	Channel 53	Channel 53

### Library Services

Public library - William B. Harlan Memorial Library

Size collection - 27,541 volumes

Circulation, 1975-76 - 33,437; bookmobile - 21,914

Services - Magazines, newspapers, pamphlets, records, record player, art, story hour for day care center, 4 talking book machines for the blind, 8 mm projector and films, movie screens, microfilm, reader-printers, copying machine, cassette players, sports equipment, bookmobile

### Religious Institutions

	<u>Tompkinsville</u>	<u>Gamaliel</u>
Number of churches -	8	3
Denominations -	Baptist	Baptist
	Catholic	Church of Christ
	Church of Christ	Methodist
	Church of First Born	
	Church of Today	
	Latter Day Saints	
	Methodist	
Nearest Synagogues -	Nashville, 91 miles from Tompkinsville	
Congregations -	Sherith Israel (orthodox)	
	Ohabai Shalom (reform)	
	West End Synagogue (conservative)	

### Financial Institutions

<u>Banks</u>	<u>Assets</u>	<u>Deposits</u>	<u>Statement Date</u>
Deposit Bank of Monroe County	\$16,791,267.82	\$15,090,541.53	6/30/76
Peoples Bank of Tompkinsville	8,723,580.69	7,722,293.21	6/30/76
Gamaliel Bank	11,797,246.58	10,607,761.68	6/30/76

### Hotels and Motels

	<u>Tompkinsville</u>
Total number -	2
Total units -	30

## Clubs and Organizations

### Monroe County

Business and Civic - Chamber of Commerce, Lions, Tompkinsville  
Industrial Foundation, Gamaliel Industrial Foundation

Fraternal - American Legion, VFW, Masons

Women's - Business and Professional Women's Club, Monroe County  
Homemakers Club, Eastern Star

Youth - FFA, FHA, 4-H Club, Little League, Cub Scouts, Boy Scouts,  
Girl Scouts

Other - Fountain Run Community Club, Sportsman's Club, Monroe  
County Horsemen's Association



## RECREATION

### Local

Tompkinsville's recently completed city park offers facilities for picnicking, camping, hiking, and fishing and boating on a 100-acre lake. Other public recreation facilities in the city include two tennis courts near the new high school football stadium and baseball diamonds, softball diamonds, and football fields at the schools.

Gamaliel is developing a city park which will contain a horse ring, basketball courts, two tennis courts, shuffleboard courts, picnic shelters and grills. At present, public recreation facilities in the city include a baseball diamond and football field on the school grounds.

A private country club in the county offers a 9-hole golf course, swimming pool, and two tennis courts. A drive-in movie theater is located near Tompkinsville.

The annual Monroe County Fair, held in late August, features agricultural exhibits, fiddling contests, a country music show, rodeo horse show, tractor pulls, and various displays and exhibits.

Old Mulkey Meeting House State Shrine, near Tompkinsville, offers picnic areas and playgrounds. The House was built in 1804, and is the oldest log meeting house in the state. Daniel Boone's sister is buried in the graveyard and authentic records written in pokeberry ink are on display.

### Area (Within 80 miles)

Barren River Lake State Resort Park is located only 45 miles from Tompkinsville. The park covers 1,800 acres on a 10,000-acre lake. Accommodations include a resort lodge and coffee shop, cottages, and camping. The park features a pool, swimming beach, riding stables, nature trails, open and covered boat slips, boat rental, 9-hole par 3 golf course, planned recreation, playground, tennis, and a gift shop.

Dale Hollow Lake offers 27,700 acres of prime scenic and fishing waters. A state park is being developed on the lake which is located approximately 47 miles from Tompkinsville.

Mammoth Cave National Park is 49 miles from Tompkinsville. Beneath 51,000 park acres, Mammoth Cave is among the major tourist attractions of all time. It is one of the largest cave networks ever

discovered, with at least 150 miles charted on five levels and vast areas not yet mapped. Some famous sights are Snowball Dining Room (267 feet below surface), Frozen Niagara, Crystal Lake and Bottomless Pit. The park also features scenic boat trips on the Green River and nature and hiking trails. Park accommodations include a hotel, motor lodge, cottages and camping areas.

Green River Lake State Park is located 60 miles from Tompkinsville, near Campbellsville. This 1,300-acre park lies on an 8,200-acre lake. The park offers camping, fishing, swimming, beach, boating, docks, and picnic areas.

Lake Cumberland State Resort Park is located approximately 62 miles from Tompkinsville. The park consists of 3,000 acres on beautiful Lake Cumberland. A lodge with a dining room and a gift shop, cottages, and camping provide a diversity of accommodations. The park offers fishing, Olympic-size pool, resort pool, bathhouse, boats, houseboats, motors, dock, ramp, tennis, hiking, horseback riding, picnic areas and shelters, playground, 9-hole golf course, miniature golf course, and multipurpose convention center.

Abraham Lincoln Birthplace National Historic Site is located in Hodgenville, 76 miles from Tompkinsville. The grounds include 116 acres of the original Thomas Lincoln farm where Abraham Lincoln was born. Lincoln's birthplace, a small log cabin, is enclosed in a granite memorial shrine. The Visitor's Center has exhibits and an audio visual program. Picnic grounds, hiking trails, and a 300-year-old Boundary Oak, an old landmark even in Lincoln's time, complete the park attractions.

Tompkinsville and Gamaliel are within 80 miles of two Tennessee state parks -- the 850-acre Standing Stone State Park and the 1,000-acre Cedars of Lebanon State Park. These parks offer camping, picnicking, hiking, boating, fishing, swimming and lodge or cabin accommodations.

## COMMUNITY IMPROVEMENTS

### Recent:

#### Tompkinsville

1. A new 400,000 gallon water tower has been erected on Tompkinsville's 37-acre industrial site.
2. A new manufacturer - Anderson Forest Products - has located in Tompkinsville.
3. A furniture manufacturer, Pick's Manufacturing Company, constructed a building in Monroe County and is preparing to begin operation.
4. The Monroe Rest Home, Inc., has completed a new addition, almost doubling the number of beds.
5. The new city park has been opened, offering facilities for picnicking, camping, hiking, and fishing and boating on a 100-acre lake.
6. The Monroe County School System has implemented a levels reading program at the J. H. Carter Elementary School and a phase elective program in English and Social Studies at the high school.

#### Gamaliel

1. A new manufacturer - Gamaliel Apparel Company - has located in Gamaliel and manufactures sportswear.
2. Major roads through Gamaliel have been resurfaced and widened.
3. The Monroe County School System has added facilities to house the Title 1 and Title 3 programs.
4. A new Sportsmen's Clubhouse has been completed.
5. A new funeral home has been constructed.



## Underway:

### Tompkinsville

1. The Cudahy Foods Company is currently modernizing and enlarging its factory and upgrading its waste treatment plant. This will enable it to double production and to produce three kinds of cheese.
2. An urban renewal project is underway which will relocate 39 families and clear a 15-acre area. There has been no final determination of the use of the cleared land, which will be owned by the city.
3. An apartment complex is under construction.

### Gamaliel

1. Gamaliel is currently developing a city park. In addition to the horse ring already on the site, the park will contain basketball courts, two tennis courts, shuffleboard courts, picnic shelters and grills.
2. A new subdivision, containing approximately 27 lots, is being developed.

## Planned:

### Tompkinsville

1. A county water district is being planned which will have approximately 25 miles of line and serve all of Monroe County except Tompkinsville and the far western portion of the county. The water district will purchase treated water from the Tompkinsville Water and Gas Company.
2. The Tompkinsville Sewerage Company is presently developing plans to separate the sewer and storm main systems. Plans have been completed for adding a lift station and extending lines to a new subdivision.
3. Efforts are being made to secure a new highway from Glasgow to Tompkinsville.
4. A master plan for a county airport has been completed and approved. A site for the airport is now being selected. Plans include the construction of a 5,000+ foot runway. Long-range plans include lighting, hangars, and other services.

5. Construction of a new county courthouse is being planned.

6. The Monroe County War Memorial Hospital is planning to modernize its emergency and outpatient rooms, laboratory, and X-ray facilities. The hospital will also become part of a radio network connecting it and its ambulances with surrounding hospitals.

7. The Monroe County School System plans to add two agriculture buildings, one at Tompkinsville High School and one at Gamaliel High School. The School System is also preparing to construct a new, two-room addition to the trade school, in which nursing and welding classes will be held. Long-range plans call for the construction of a central office building and new bus garage.

#### Gamaliel

1. Plans are underway to construct a municipal sewerage system.

2. The Gamaliel Apparel Company is planning an expansion.

## HISTORY

Monroe County lies in the southcentral part of Kentucky, its southern boundary formed by the Tennessee state line. Its western portion is drained by the Barren River and the eastern portion by the Cumberland River. The land surface varies from level to rolling and hilly, and over 45 percent of its 334 square miles is forested. There are extensive limestone and oil deposits in the area.

The earliest settlers in Monroe County were Philip Mulkey and a group of Baptists from the Carolinas. They settled near present-day Tompkinsville and built a twelve-cornered log meeting house in 1798 known as Old Mulkey Meeting House, the oldest log meeting house in Kentucky. Important in this church's entwinement with Kentucky's religious history was the schism of the 1790's when Mulkey led a large portion of his Baptist congregation into the fold of the "Campbellites," forerunners of the Churches of Christ and Disciples of Christ. The Meeting House is now a state shrine in whose graveyard Hanna Boone, sister of Daniel Boone, is buried. Daniel Boone carved his initials on a Monroe County tree in 1777.

In 1820, Monroe became Kentucky's sixty-fifth county, taking its name from President James Monroe, then in his second term. Tompkinsville, the county seat, was named for then Vice President Daniel D. Tompkins, whose championing of common people's causes made him popular in Kentucky.

During the Civil War, Monroe County suffered greatly as the site of many maneuvers, including the passage of General Braxton Bragg's entire army in 1862.

The population at the time of the county's founding in 1820 was 4,956. The county's population reached a peak of 14,214 in 1920. Population decreased to 13,077 in 1930, increased to 14,070 in 1940, and again decreased with 13,770 recorded in 1950. After 1950, population continued to decrease, dropping to 11,799 in 1960 and 11,642 in 1970. Recently, however, population in the county has been increasing. In 1975, Monroe County's population was estimated to be 12,100.



The total number of Monroe county residents employed in 1975 averaged 4,060, with nonagricultural jobs accounting for 2,950 workers. Manufacturing employers in the county reported 1,010 workers; mining and quarrying 20; construction firms 30; transportation, communications, and public utilities 50; wholesale and retail trade 350; finance, insurance, and real estate 70; and employees in the service industries 150. The county's major industrial product is apparel.

Among distinguished citizens from the county are U. S. Congressman Doctor Tim Lee Carter, and the president of Western Kentucky University, Dero Downing.

Production supervisor: Patsy Wallace; research: David Wellman;  
clerical: Barbara Blair; graphics: N. C. Montague, Frank Ferrante,  
Tony Cecconi; cartography: Site Development Section. Cost of printing  
paid from state funds.