

1971

Industrial Resources: Muhlenberg County

Kentucky Library Research Collections
Western Kentucky University, spcol@wku.edu

Follow this and additional works at: https://digitalcommons.wku.edu/muhlenberg_cty



Part of the [Business Administration, Management, and Operations Commons](#), [Growth and Development Commons](#), and the [Infrastructure Commons](#)

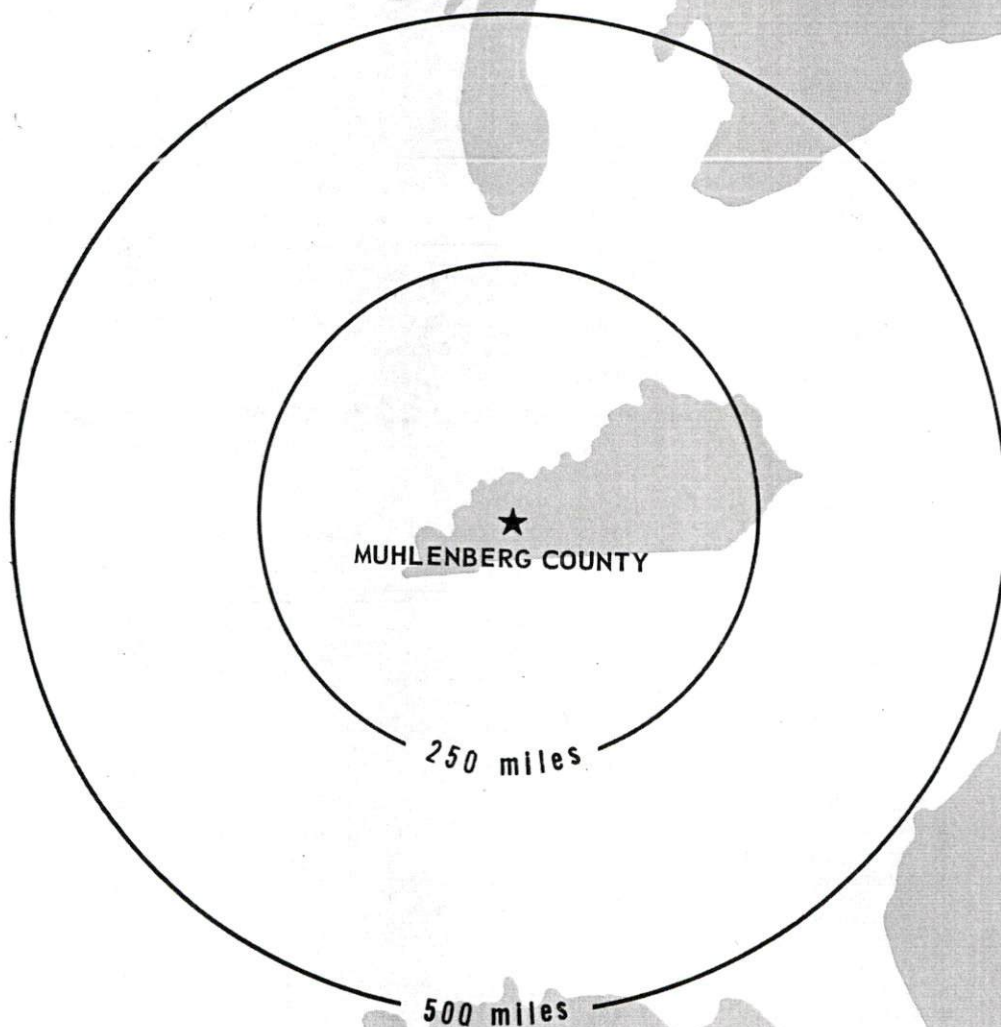
Recommended Citation

Kentucky Library Research Collections, "Industrial Resources: Muhlenberg County" (1971). *Muhlenberg County*. Paper 15.
https://digitalcommons.wku.edu/muhlenberg_cty/15

This Report is brought to you for free and open access by TopSCHOLAR®. It has been accepted for inclusion in Muhlenberg County by an authorized administrator of TopSCHOLAR®. For more information, please contact topscholar@wku.edu.

INDUSTRIAL RESOURCES

MUHLENBERG COUNTY ***KENTUCKY***



CENTRAL CITY INDUSTRIAL SITES

1971

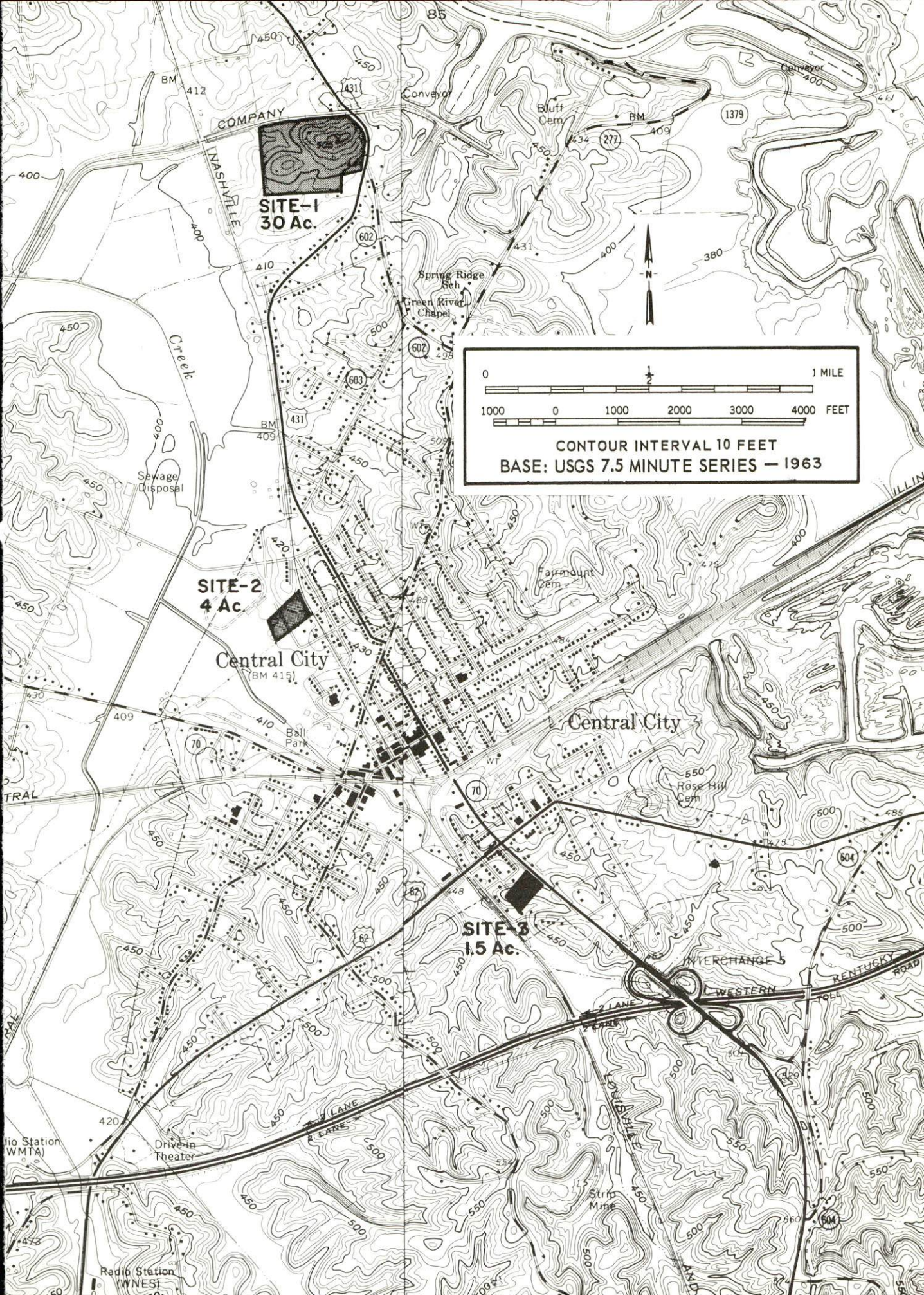
For more information about the following sites, contact Mr. Joe Ben Tucker or Mr. Don Wheatley of the Central City Chamber of Commerce, Central City, Kentucky; or the Kentucky Department of Commerce, Washington and Wapping Streets, Frankfort, Kentucky 40601.

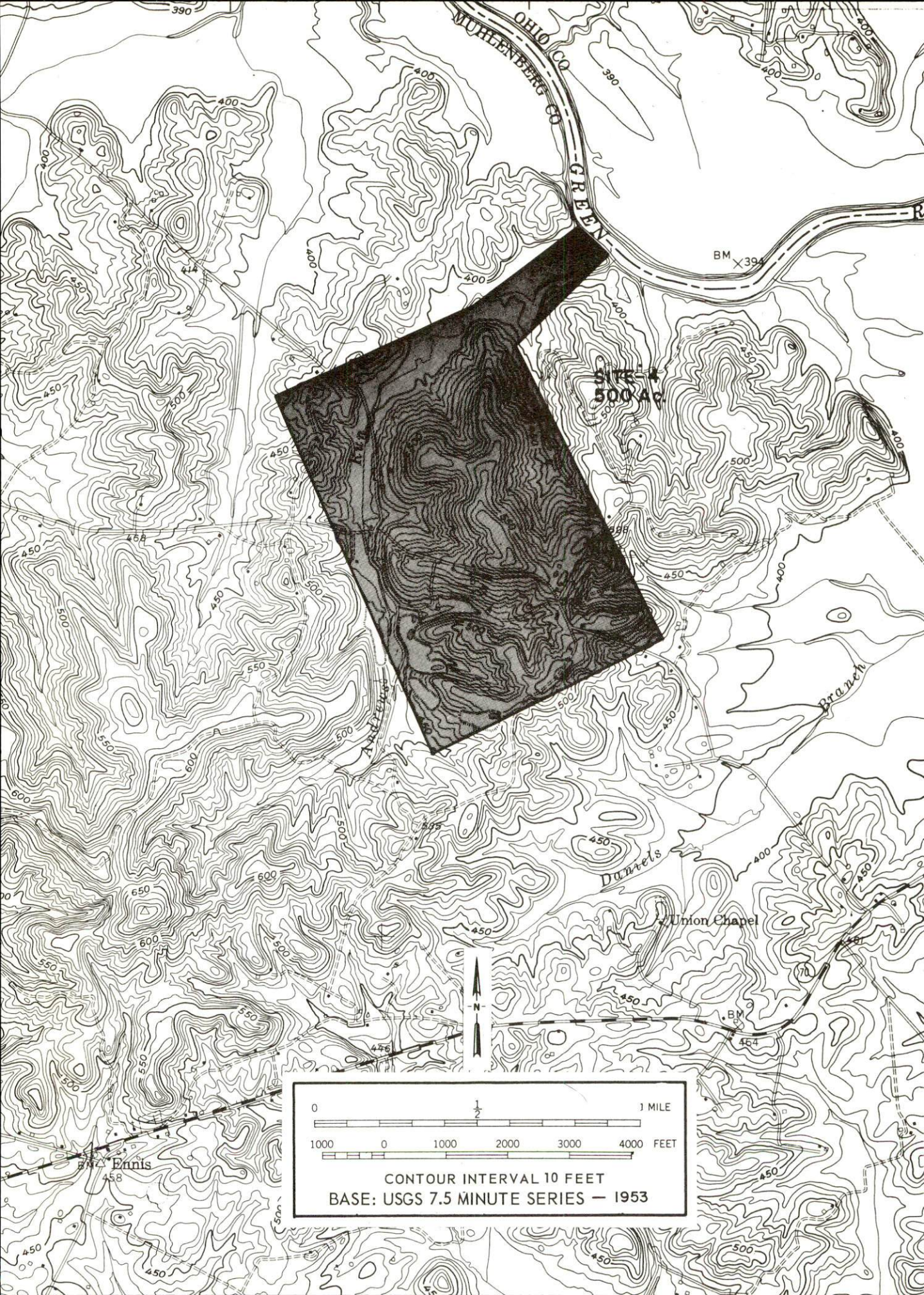
SITE #1: ACREAGE: 30 acres
LOCATION: Within north city limits of Central City
ZONING: Commercial
HIGHWAY ACCESS: U.S. 431 forms the eastern boundary of site.
RAILROADS: Louisville & Nashville Railroad; 800 feet west of the property line
WATER: Central City Municipal Water and Sewer Commission
SIZE LINE: 6-inch line 200 feet directly across U.S. 431
GAS: Western Kentucky Gas Company
SIZE MAIN: 2-inch main on site
ELECTRICITY: Kentucky Utilities Company
SEWERAGE: Central City Municipal Water and Sewerage Commission
OWNERSHIP: Greenville Industrial Development Corporation

SITE #2: ACREAGE: 4 acres
LOCATION: Within north city limits of Central City
ZONING: Commercial
HIGHWAY ACCESS: Legion Drive - city maintained street - 1 1/2 blocks to U.S. 431
RAILROADS: Louisville & Nashville Railroad borders site on east.
WATER: Central City Municipal Water and Sewer Commission
SIZE LINE: 6-inch line on site
GAS: Western Kentucky Gas Company
SIZE MAIN: 2-inch main on site
ELECTRICITY: Kentucky Utilities Company
SEWERAGE: Central City Municipal Water and Sewer Commission
OPTIONED BY: Central City Chamber of Commerce

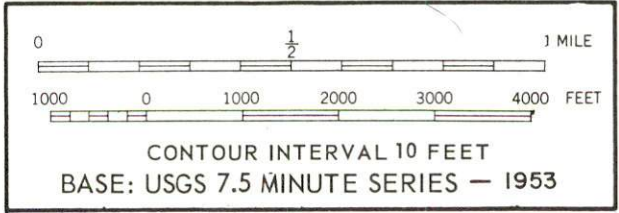
SITE #3: ACREAGE: 1.5 acres
LOCATION: Within south city limits of Central City
ZONING: Light industrial
HIGHWAY ACCESS: U.S. 431 borders site on the east.
RAILROADS: Louisville & Nashville Railroad 300 feet west of site
WATER: Central City Municipal Water and Sewer Company
SIZE LINE: 6-inch line 1,200 feet away on Stroud Lane
GAS: Western Kentucky Gas Company
SIZE MAIN: 2-inch main 500 feet to the north
ELECTRICITY: Kentucky Utilities Company
SEWERAGE: Central City Municipal Water and Sewer Commission
OPTIONED BY: Central City Chamber of Commerce

SITE #4: ACREAGE: 500 acres
LOCATION: 10 miles southeast of Central City
ZONING: None
HIGHWAY ACCESS: Access to U.S. 431 and Kentucky 70 and Kentucky 176 by county roads
RAILROADS: Louisville & Nashville Railroad is one-half mile away at the TVA plant.
WATER: Muhlenberg County Water District
SIZE LINE: 4-inch line at Browder
GAS: Drakesboro Natural Gas System
SIZE MAIN: 4-inch and 2-inch mains along U.S. 431
ELECTRICITY: Kentucky Utilities Company
SEWERAGE: Package plant would be necessary.
OPTIONED BY: Central City Chamber of Commerce





SITE 4
500 AC



BELTON INDUSTRIAL SITES

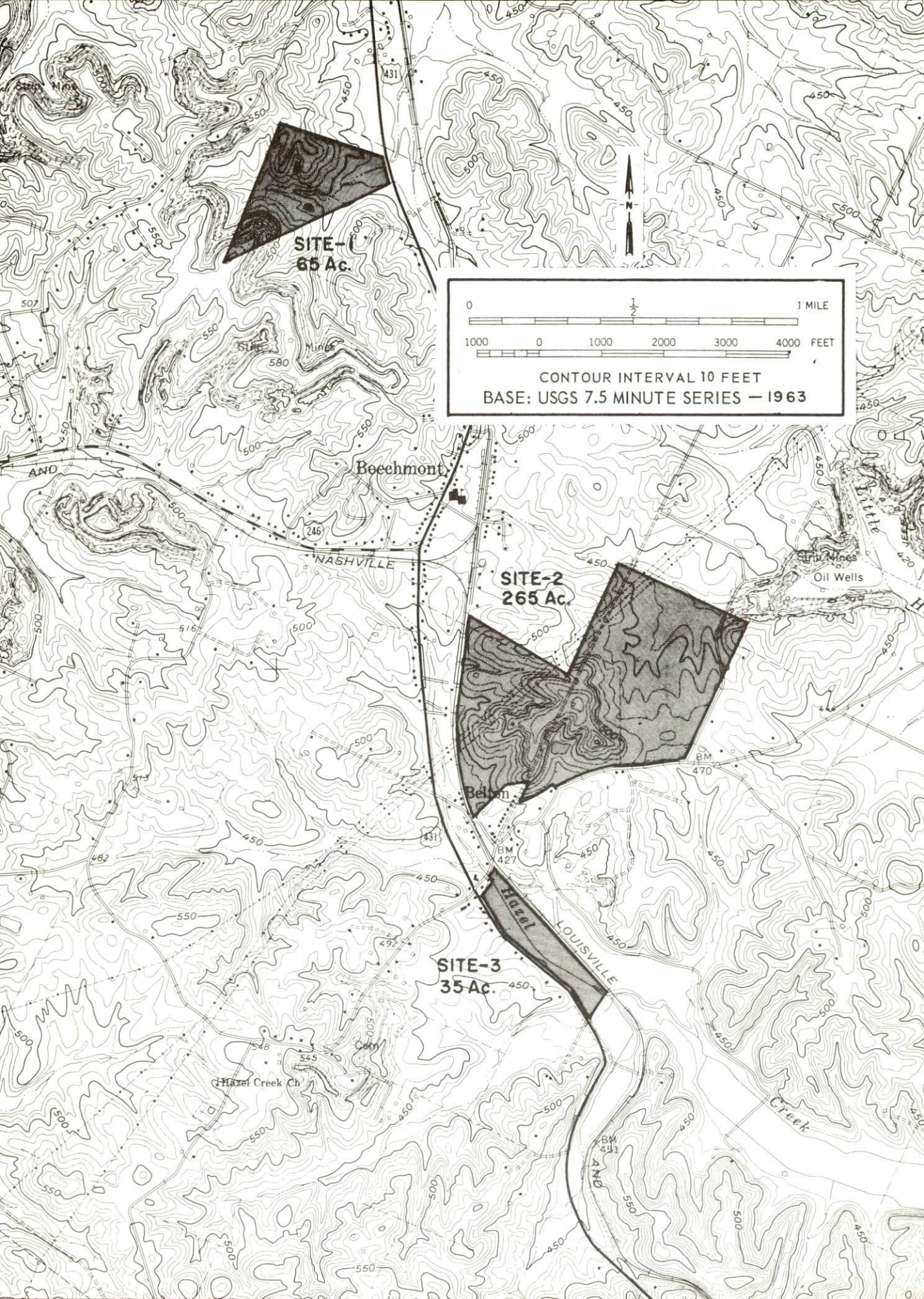
1971

For more information about the following sites, contact Mr. R. P. Forsythe, Box 67, Dawson Springs, Kentucky; or the Kentucky Department of Commerce, Washington and Wapping Streets, Frankfort, Kentucky 40601.

SITE #1: ACREAGE: 65 acres
LOCATION: 2.2 miles north of Belton
HIGHWAY ACCESS: Site fronts on U. S. 431
RAILROADS: Louisville & Nashville Railroad - 600 feet across U.S. 431
WATER: Muhlenberg County Water District
SIZE LINE: 6-inch line 200 feet across U.S. 431
GAS: Drakesboro Natural Gas System
SIZE MAIN: 2-inch main on site
ELECTRICITY: Kentucky Utilities Company
SEWERAGE: Package plant would be necessary.
OWNERSHIP: Private

SITE #2: ACREAGE: 265 acres
LOCATION: Northeast of Belton
HIGHWAY ACCESS: 600 feet away from U.S. 431 via paved road
RAILROADS: Louisville & Nashville Railroad bounds site on west for three-fourths mile.
WATER: Muhlenberg County Water District
SIZE LINE: 6-inch line within 200 yards
GAS: Drakesboro Natural Gas Service
SIZE MAIN: 4-inch main within 200 yards
ELECTRICITY: Kentucky Utilities Company
SEWERAGE: Package plant would be necessary.
OWNERSHIP: Private

SITE #3: ACREAGE: 35 acres
LOCATION: Three-tenths mile south of Belton
HIGHWAY ACCESS: Fronts on U.S. 431
RAILROADS: Louisville & Nashville Railroad bounds site on northeast.
WATER: Muhlenberg County Water District
SIZE LINE: 6-inch line approximately 200 feet across U.S. 431
GAS: Drakesboro Natural Gas System
SIZE MAIN: 4-inch main approximately 200 feet across U.S. 431
ELECTRICITY: Kentucky Utilities Company
SEWERAGE: Package plant would be necessary.
OWNERSHIP: Private

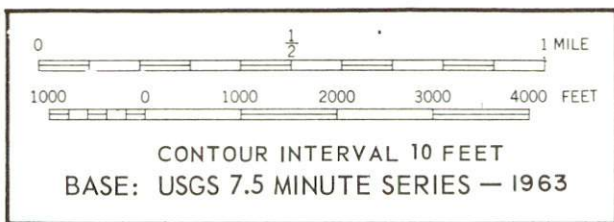


GREENVILLE INDUSTRIAL SITES

1971

For more information about the following sites, contact Mr. L. Wayne Cisney or Mr. L. B. Nofsinger of the Greenville Chamber of Commerce, Industrial Committee, Greenville, Kentucky; or the Kentucky Department of Commerce, Washington and Wapping Streets, Frankfort, Kentucky 40601.

SITE #1: ACREAGE: 100 acres
LOCATION: Within north city limits of Greenville
ZONING: None
HIGHWAY ACCESS: Fronts on Green Drive which was
formerly U. S. 62
RAILROADS: Illinois Central Railroad;
approximately 400 feet from site
WATER: Greenville Utilities Commission
SIZE LINE: 8-inch line on site
GAS: Western Kentucky Gas Company
SIZE MAIN: 6-inch main on site
ELECTRICITY: Kentucky Utilities Company
SEWERAGE: Greenville Utilities Commission
OWNERSHIP: Greenville Industrial Development Corporation



SITE-1
100 Ac.

- A - MARVEL INDUSTRIES, INC.
- B - NATIONAL LOCK COMPANY
- C - COWDEN GREENVILLE COMPANY



INDUSTRIAL RESOURCES
MUHLENBERG COUNTY, KENTUCKY

Prepared by
The Kentucky Department of Commerce
in cooperation with
The Central City Chamber of Commerce
and
The Greenville Chamber of Commerce

1971

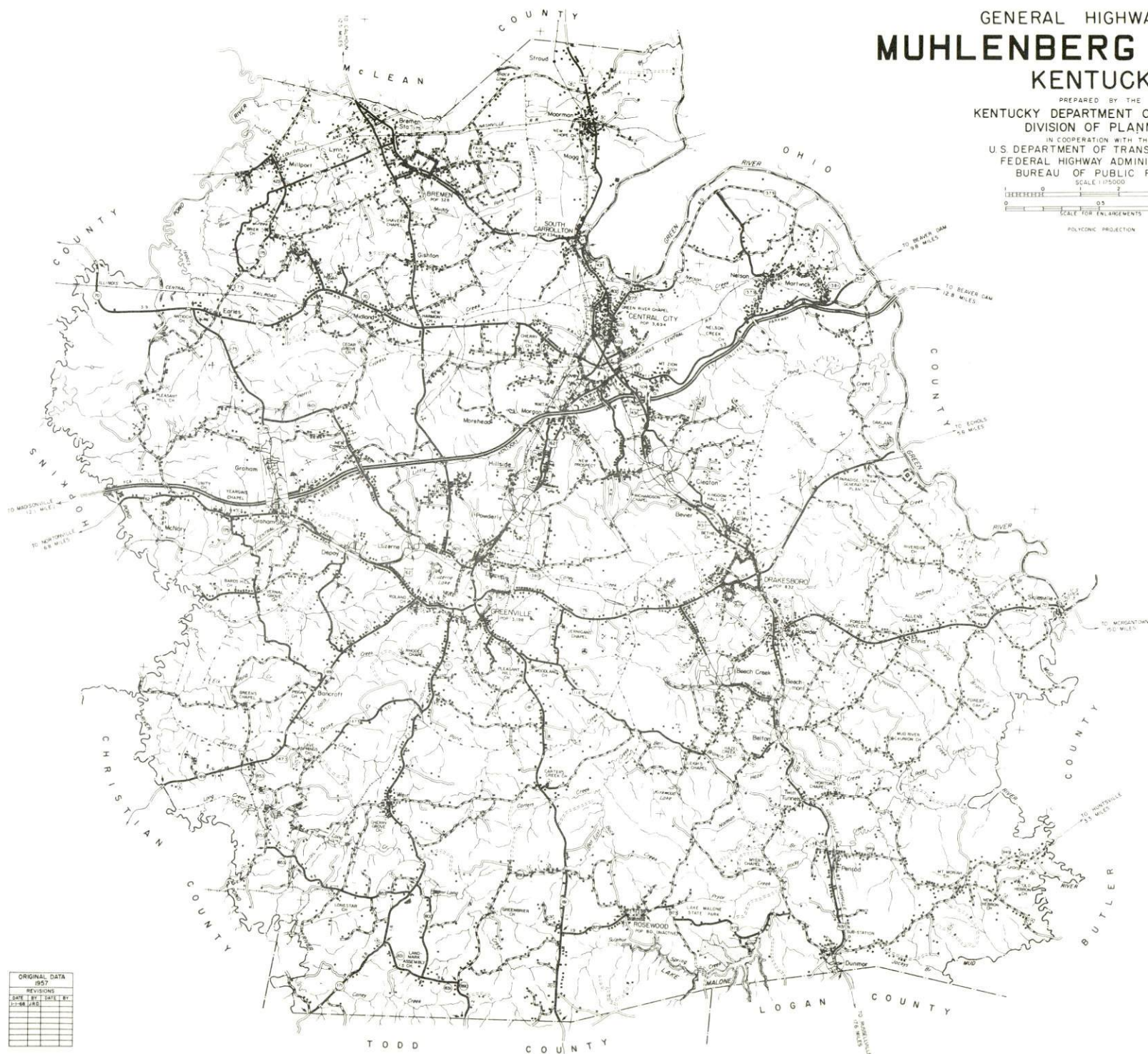
This copy has been prepared by the Kentucky Department of Commerce,
Division of Research and Planning, and the cost of printing paid from
state funds.

TABLE OF CONTENTS

<u>Chapter</u>	<u>Page</u>
INDUSTRIAL SITES	i
MUHLENBERG COUNTY, KENTUCKY - A RESOURCE PROFILE	1
THE LABOR MARKET	5
Population Trends	5
General Employment Characteristics, 1969	5
Manufacturing Employment Trends by Industry	6
Major Muhlenberg County Manufacturing Firms, Their Products and Employment	6
Wage Rates for Selected Occupations	7
Labor Organizations	8
Current and Future Labor Supply	8
Total Personal Income	8
Per Capita Personal Income	8
EDUCATION	9
Public Schools	9
Parochial Schools	9
Vocational Schools	11
Colleges and Universities	11
TRANSPORTATION	12
Rail	12
Truck Service	12
Air	13
Bus	13
Taxi	13
Rental Services	13
POWER AND FUEL	14
Electricity	14
Natural Gas	14

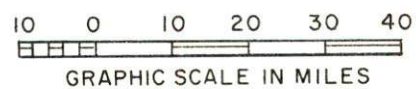
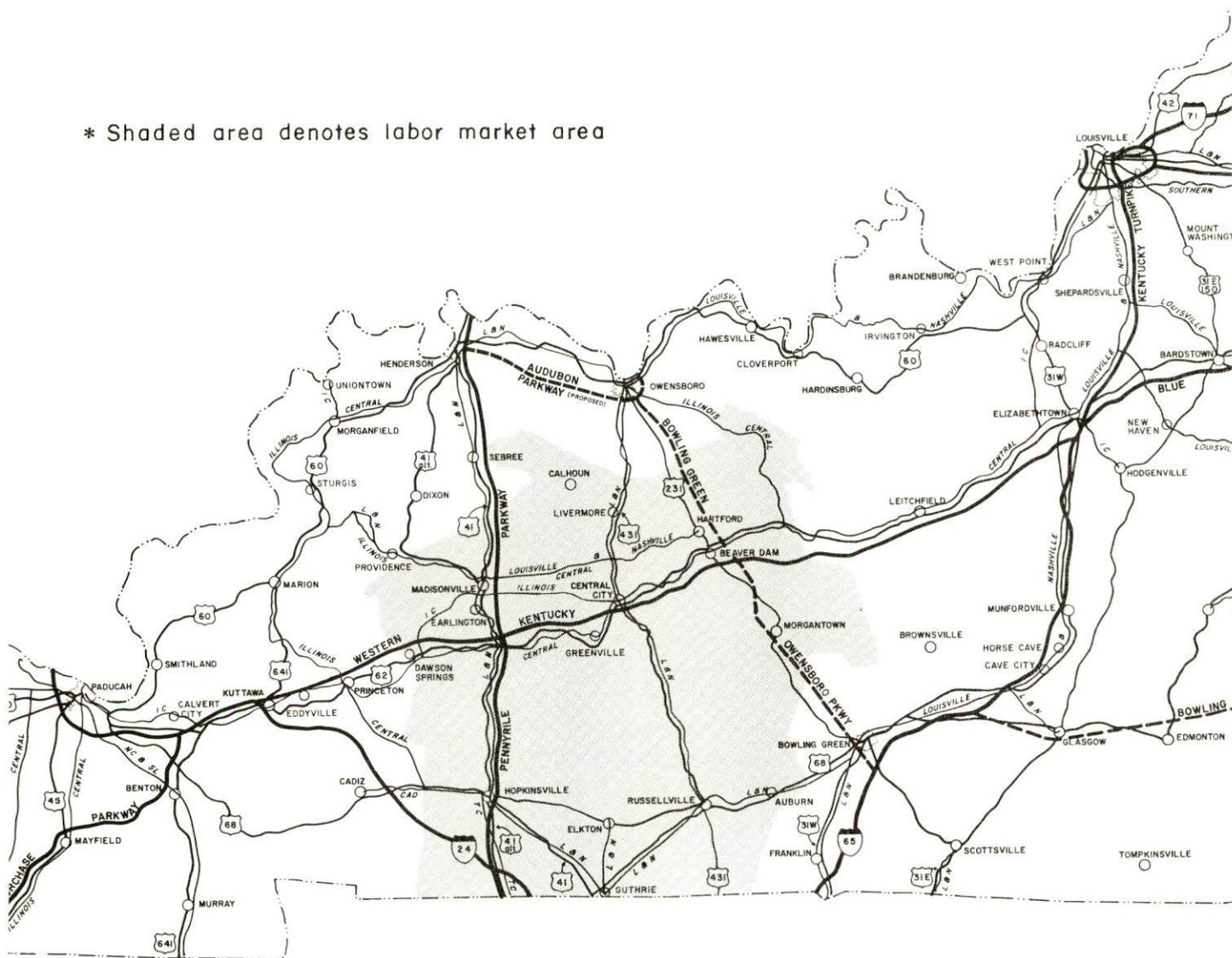
<u>Chapter</u>	<u>Page</u>
WATER AND SEWERAGE15
Water15
Sewerage18
LOCAL GOVERNMENT19
City19
County19
Assessed Value of Property, 197019
Local General Property Tax Rates Per \$100 of Assessed Valuation, 197019
Planning and Zoning20
Safety20
Police20
Fire20
Rescue Service20
Sanitation.23
HEALTH25
Hospitals25
Nursing Homes25
Public Health25
OTHER LOCAL FACILITIES26
Communications26
Library Services26
Religious Institutions28
Financial Institutions28
Hotels and Motels29
Clubs and Organizations29
RECREATION30
Local30
Area.30
AGRICULTURE - NATURAL RESOURCES - CLIMATE31
Agriculture.31
Natural Resources31
Climate31
HISTORY32

PREPARED BY THE
KENTUCKY DEPARTMENT OF HIGHWAYS
DIVISION OF PLANNING
IN COOPERATION WITH THE
U.S. DEPARTMENT OF TRANSPORTATION
FEDERAL HIGHWAY ADMINISTRATION
BUREAU OF PUBLIC ROADS

[illegible]

MUHLENBERG COUNTY LABOR MARKET AREA

* Shaded area denotes labor market area



MUHLENBERG COUNTY, KENTUCKY - A RESOURCE PROFILE

Location

Muhlenberg County, one of the largest coal producing counties in Kentucky, lies in the Western Coal Field Region of Kentucky. The county is bordered by the Green and Mud Rivers on the east and the Pond River on the west. Though Muhlenberg County is primarily rural, proximity to Owensboro and Kentucky and Barkley Lakes places the area within easy reach of both excellent recreational facilities and the advantages of a metropolitan area.

Muhlenberg County had a 1970 population of 27,537. Greenville, the county seat of Muhlenberg County, had a 1970 population of 3,875, Central City 3,455, and Drakesboro 907.

The Economic Framework

Total employment in Muhlenberg County averaged 8,200 in 1969, with trade and services providing 1,700 jobs, mining and quarrying 1,960 jobs, and manufacturing 1,100 jobs. Since 1960 manufacturing employment has increased by almost 700 jobs or 150 percent. Major industrial products are wood products, apparel and metal products.

Per capita income in the county in 1969 was \$2,490. Between 1959 and 1969, per capita personal income in the county increased by 93 percent.

The Muhlenberg County labor market area includes Muhlenberg and the seven surrounding counties. Area employment totals 62,600 jobs including 9,400 in agriculture, 11,300 in manufacturing, 10,400 in government, and 13,150 in trade and services. Area industrial employment has more than doubled since 1960 with sharp gains in the apparel, metal products, and leather products industries.

Despite important industrial gains in recent years the area still has a deficit of 5,735 manufacturing jobs when measured against the national industrial employment-population ratio. This indicates an area where the potential for additional manufacturing production is excellent.

Resources for Growth

1. There is a current estimated labor supply of 5,630 men and 6,375 women available for industrial jobs in the labor market area. In addition, 11,625 young men and 10,750 young women will become 18 years of age by 1977 and potentially available for work.

2. The local transportation capability is good. The Illinois Central Railroad and the Louisville & Nashville Railroad provide the county with a variety of services. The Western Kentucky Parkway passes through Muhlenberg County, with an exchange located at the city limits of Central City. The Muhlenberg County Airport provides the county with light aircraft service. Commercial air service is available at Owensboro, only 36 miles away.

3. Energy - Gas is provided to Muhlenberg County by the Western Kentucky Gas Company and the Drakesboro Natural Gas Service. Electricity is provided by the Kentucky Utilities Commission and the Pennyriple Rural Electric Cooperative Corporation. The water supply, provided by two municipal services and three county water districts, is adequate for future industrial growth.

4. Industrial sites - Muhlenberg County has eight available industrial sites ranging in size from 1.5 to 270 acres.

5. Education - Muhlenberg County is served by three separate school systems: Muhlenberg County, Central City Independent, and Greenville Independent. The three school systems maintain a total of seven high schools and eight elementary schools. The county has one parochial elementary school.

There are two senior colleges, one university, and two community colleges located within a 60-mile radius of Muhlenberg County.

Community Programs for Improvement

The communities of Muhlenberg County have aggressively sought ways to provide better and more modern facilities for their residents and to increase their attractiveness to industry.

Recent Greenville community improvements: Main Street has been changed from two to three lanes for easier traffic flow; a new Federal housing project, with approximately 50 units of housing, has been located in the southwestern section of town; and the library has been remodeled and shelf space approximately doubled.

Community improvements planned for Greenville: Plans are being made to enlarge the facilities of the Greenville Independent School System; the City of Greenville plans to provide time and money to various clubs and organizations to assist them in improving health and welfare of its citizens; the city also has land available for a park and playground and it is hoped that construction on the park facilities will begin this year.

Recent Central City community improvements: The city has located twelve new businesses; fourteen firms have done extensive remodeling within the past year.

Three acres of land was purchased on South Second Street, to be used for a shopping center; and in 1970 a national retailer constructed an 8,500 square-foot building on the property. It is expected that at least six more commercial buildings will be located in the shopping center.

The Central City High School added a new classroom to the present building. The school's library has been completely redecorated, with wall-to-wall carpeting and air conditioning installed.

The St. Joseph's School constructed a new building last year. The building is a one-floor brick structure with a large basement. Total floor area is approximately 14,000 square feet. There is a library, office, and four classrooms on the first floor, and the basement is used as a recreational area.

The Muhlenberg County Opportunity Center, which is located in Central City, is an organization that provides for the training of the handicapped, mentally retarded, and the emotionally disturbed. The center has received a \$16,000 grant from the Social Services Administration.

The library has moved to a new location and has approximately doubled its shelf space; an old warehouse has been completely renovated by a company of stockholders to form a very attractive theater; and the South Central Bell Telephone Company has moved into a new building.

Community improvements under construction: A new water treatment plant is under construction in Central City. It is located on River Road about three-fourths mile north of Central City. The treatment capacity will be 2,000,000 gallons per day. The treatment plant and the required new pipelines and intake system at the river will cost approximately \$1,500,000.

Planned community improvements: The Central City Fire Department is getting a new tanker this year which will serve the city and will also be used to make fire calls in the county. Plans are also being made for the construction of a new plant for Cowden Manufacturing Company.

Recreation, Entertainment, and Livability

Muhlenberg County is primarily a rural area, but proximity to Owensboro provides the county with a whole range of entertainment and recreational facilities within easy commuting distance.

Lake Malone State Park is located in Muhlenberg County, 18 miles south of Greenville, off U. S. 431. The 826-acre lake provides swimming, boating, and fishing, while the 374-acre park provides beach, hiking, picnic shelter, playground, and camping facilities year-round.

Green River also provides the area with excellent opportunities for fishing and water sports.

In late May of each year, Greenville products, coal and strawberries receive recognition through a joint festival.

Other scenic areas within easy driving time of Muhlenberg County are: The Pennyrile Forest State Resort Park, Jefferson Davis Monument State Shrine, Mammoth Cave National Park, Land Between the Lakes National Recreation Area, Kenlake State Resort Park, Kentucky Dam Village State Resort Park, and John James Audubon State Park.

THE LABOR MARKET

POPULATION TRENDS^{1/}

Area	Population			Percent Change	
	1970	1960	1950	1960-70	1950-60
Central City	3,455	3,694	4,110	- 6.5	- 10.1
Greenville	3,875	3,198	2,661	+ 21.2	+ 20.2
Drakesboro	907	832	1,102	+ 9.0	- 24.5
Labor Market Area	192,128	192,628	191,070	- 0.3	+ 0.8
Muhlenberg County	27,537	27,791	32,501	- 0.9	- 14.5
Butler County	9,723	9,586	11,309	+ 1.4	- 15.2
Christian County	56,224	56,904	42,359	- 1.2	+ 34.3
Hopkins County	38,167	38,458	38,815	- 0.8	- 0.9
Logan County	21,793	20,896	22,335	+ 4.3	- 6.4
McLean County	9,062	9,355	10,021	- 3.1	- 6.6
Ohio County	18,790	17,725	20,840	+ 6.0	- 14.9
Todd County	10,832	11,913	12,890	- 21.2	- 7.6

GENERAL EMPLOYMENT CHARACTERISTICS, 1969^{2/}

Major Employment Group	Employment	
	Muhlenberg County	Labor Market Area
TOTAL	8,200	62,600
Agricultural	800	9,400
Nonagricultural	7,400	53,200
Manufacturing	1,100	11,300
Trade and Services	1,707	13,150
Government	1,200	10,400
Mining & Quarrying	1,963	4,720
Other	1,430	13,630

MANUFACTURING EMPLOYMENT TRENDS BY INDUSTRY
SEPTEMBER 1970 AND 1960^{3/}

<u>Industry</u>	<u>Muhlenberg County</u>			<u>Labor Market Area</u>		
	<u>1970</u>	<u>1960</u>	<u>% Change</u>	<u>1970</u>	<u>1960</u>	<u>% Change</u>
TOTAL	1,140	456	+150.0	12,517	5,461	+ 129.2
Food & Kindred						
Products	29	40	- 27.5	842	555	+ 51.7
Tobacco	22	29	- 24.1	34	35	- 2.9
Apparel, Textiles,						
Leather	573	0		4,766	2,328	+ 104.7
Lumber & Furniture	380	359	+ 5.8	1,541	1,277	+ 20.7
Printing, Publishing,						
Paper	9	21	- 57.1	155	135	+ 14.8
Chemicals, Petroleum,						
Coal, Rubber	37	0		783	91	+ 760.4
Stone, Clay & Glass	0	7		91	84	+ 8.3
Primary Metals	0	0		995	209	+ 376.1
Machinery & Metal						
Products	90	0		3,040	735	+ 313.6
Other	0	0		270	12	+2150.0

MAJOR MUHLENBERG COUNTY MANUFACTURING FIRMS,
THEIR PRODUCTS AND EMPLOYMENT^{4/}

<u>Firm</u>	<u>Product</u>	<u>Employment</u>		
		<u>Total</u>	<u>Male</u>	<u>Female</u>
<u>Central City</u>				
Associated Pallet, Inc.	Pallets	50	50	0
Central City Tool & Manufacturing Co., Inc.	Casting molds, tools, dies	20	20	0
Central Pallet Mills, Inc.	Pallets	36	35	1
Cowden Manufacturing Co.	Work & sport clothing	110	10	100
Expendable Pallet Manufacturing Co., Inc.	Pallets	24	23	1
Muhlenberg County Opportunity Center	Woodworking	30	13	17
Pallet Mills, Inc.	Pallets	26	25	1
Ross Brothers Lumber Co., Inc.	Hardwood lumber, softwood, crossties	20	20	0
U & W Pallet, Inc.	Pallets, woodchips lumber	81	80	1

(Cont'd.)

Firm	Product	Employment		
		Total	Male	Female
<u>Greenville</u>				
Cowden-Greenville Co.	Work & play clothes	330	20	310
Geibel Lumber Co., Inc.	Pallets, skids, lumber	25	24	1
Greenville Quarries, Inc.	Agricultural lime	28	25	3
Marvel Industries, Inc.	Compact refrigerators	50		
National Lock Co.	Wood & sheet metal			
	screws	43	39	4
S. E. Rice Tobacco Co.	Chewing & pipe tobacco	25	20	5

Graham

The Ensign-Bickford Co.	Detonating cord	32	17	15
-------------------------	-----------------	----	----	----

WAGE RATES FOR SELECTED OCCUPATIONS
GREENVILLE AND CENTRAL CITY, KENTUCKY^{5/}

<u>Classification</u>	<u>Starting</u>	<u>Wages Per Hour</u>	
		<u>Maximum</u>	<u>Prevailing</u>
<u>Production Employees</u>			
Assembler	\$1.75	\$2.40	\$2.10
Inspector	1.80	2.65	2.25
Production Laborer	1.75	2.50	2.30
Welder, Arc or Acetylene (Class-A)	2.50	3.75	3.10
<u>Service Employees</u>			
Electrician (Class-A)	\$2.75	\$3.60	\$3.00
Laborer	1.70	2.50	2.10
Machinist	3.00	4.00	3.50
Mechanic, Maintenance	2.50	3.50	3.00
Truck Driver, Industrial (Class-A)	1.65	3.25	2.50
<u>Office Employees</u>			
Bookkeeper	\$1.80	\$2.25	\$2.00
File Clerk	1.60	2.00	1.75
Receptionist	1.60	2.00	1.75
Secretary	1.75	2.50	2.00
Typist	1.70	2.30	2.00

LABOR ORGANIZATIONS

<u>Union</u>	<u>Representing workers at:</u>
International Brotherhood of Teamsters, Chapffeurs, Warehousemen, and helpers of America	Cowden -Greenville Co. Marvel Industries, Inc.
Association of International Machinists and Aerospace Workers, AFL-CIO	National Lock Company

CURRENT AND FUTURE LABOR SUPPLY - MUHLENBERG COUNTY LABOR MARKET AREA

<u>Area</u>	<u>Current Labor Supply, 1971^{6/}</u>			<u>Future Labor Supply by 1977 (Becoming 18 Years of Age)^{7/}</u>		
	<u>Total</u>	<u>Male</u>	<u>Female</u>	<u>Total</u>	<u>Male</u>	<u>Female</u>
Labor Market						
Area	12,003	5,629	6,374	22,367	11,620	10,747
Muhlenberg County	2,164	815	1,349	3,313	1,687	1,626
Butler County	1,290	809	481	1,184	605	579
Christian County	1,820	864	956	6,320	3,356	2,964
Hopkins County	2,018	771	1,247	4,440	2,347	2,093
Logan County	822	270	552	2,552	1,312	1,240
McLean County	997	443	554	1,022	518	504
Ohio County	2,122	1,197	925	2,273	1,153	1,120
Todd County	770	460	310	1,263	642	621

TOTAL PERSONAL INCOME^{8/}

<u>Area</u>	<u>1969</u>	<u>1959</u>	<u>% Change</u>
Muhlenberg County	\$ 66,614,000	\$ 34,549,000	+ 92.8
Labor Market Area	594,733,000	255,355,000	+ 132.9
Kentucky	9,202,000,000	4,655,000,000	+ 97.6

PER CAPITA PERSONAL INCOME^{9/}

<u>Area</u>	<u>1969</u>	<u>1959</u>	<u>% Change</u>
Muhlenberg County	\$ 2,490	\$ 1,289	+ 93.2
Labor Market Area	\$1,580 to 4,610	\$684 to 1,619	N.A.
Kentucky	2,847	1,552	+ 83.4

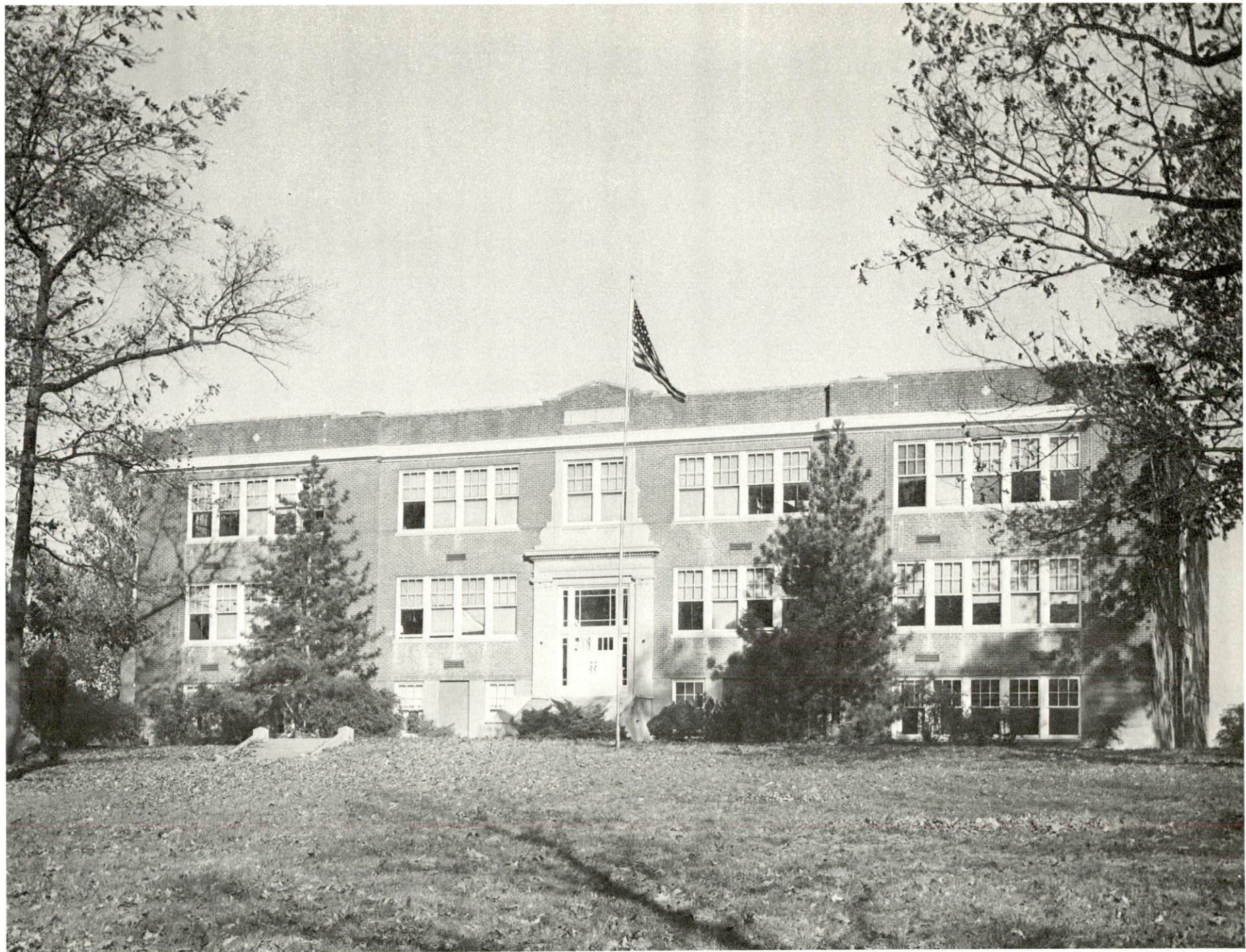
EDUCATION

Public Schools

	<u>Central City</u>	<u>Greenville</u>	<u>Muhlenberg County</u>
Total Enrollment	986	996	4,588
Elementary	511	507	3,272
High School	475	489	1,316
Student-Teacher Ratio	21-1	25-1	27-1
Elementary	21-1	25-1	28-1
High School	22-1	25-1	26-1
State Rating of High School	Standard (1)	Standard (1)	Basic (4) Standard (1)
Other Accreditations	The Southern Association of Colleges and Schools		
Percent High School Graduates to College	50.0	62.2	17.2
Current Expenditures Per Pupil	\$445.12	\$441.41	\$465.50
Bonded Indebtedness, June 30, 1971	\$96,000	\$127,000	\$708,000

Parochial Schools

Total Enrollment	45
Elementary	45
Student-Teacher Ratio	15-1
Elementary	15-1



Greenville High School

Vocational Schools

	<u>Nearest Area School</u>	<u>Nearest Extension Center</u>
Location	Madisonville Area Vocational School	Muhlenberg County Extension Center
Miles Distant	Madisonville 22	Greenville
Curriculum	Practical Nursing Electronics (Communications) Auto Body Repair Auto Mechanics Carpentry Drafting Electricity Machine Shop	Health Careers Auto Mechanics Carpentry Electricity Welding

Colleges and Universities

<u>Name</u>	<u>Area - Within 60 Miles</u>		<u>Highest Degree Conferred</u>
	<u>Location</u>	<u>Enrollment</u>	
Western Kentucky University	Bowling Green	10,737	Masters
Brescia College	Owensboro	1,017	Baccalaureate
Kentucky Wesleyan College	Owensboro	1,042	Baccalaureate
Madisonville Community College	Madisonville	307	Associate
Hopkinsville Community College	Hopkinsville	484	Associate

TRANSPORTATION

Rail

Line serving Central City and Greenville - Illinois Central Railroad
Services - Carload freight, switching

Line serving Drakesboro and Central City - Louisville & Nashville
Railroad Company
Services - Carload freight, switching

RAILWAY TRANSIT TIME FROM CENTRAL CITY, KENTUCKY, TO: ¹⁰/

City	No. of Days		City	No. of Days	
	CL			CL	
Atlanta, Ga.	4		Los Angeles, Calif.	6	
Birmingham, Ala.	4		Louisville, Ky.	1	
Chicago, Ill.	4		Nashville, Tenn.	2	
Cincinnati, Ohio	2		New Orleans, La.	4	
Cleveland, Ohio	4		New York, N. Y.	5	
Detroit, Mich.	5		Pittsburgh, Pa.	4	
Knoxville, Tenn.	3		St. Louis, Mo.	3	

Truck Service

Company

Home Office

A. Ligon Truck Line, Inc.	Detroit, Michigan
Majors Transit, Inc.	Canneyville, Kentucky
McLean Trucking Co.	Winston-Salem, North Carolina
Motor Freight Corporation	Terre Haute, Indiana
Roadway Express, Inc.	Akron, Ohio
Tennessee Cartage Co., Inc.	Nashville, Tennessee
T. I. M. E. - DC, Inc.	Lubbock, Texas

HIGHWAY MILES AND TRUCK TRANSIT TIME IN DAYS FROM
CENTRAL CITY, KENTUCKY, TO SELECTED MARKET CENTERS

City	Highway Miles	Delivery Time ^{11/}		City	Highway Miles	Delivery Time	
		LTL	TL			LTL	TL
Atlanta, Ga.	311	3	2	Los Angeles, Calif.	2,107	7-9	4-5
Birmingham, Ala.	246	3	2	Louisville, Ky.	121	1-2	1
Chicago, Ill.	419	2-3	1	Nashville, Tenn.	105	1-2	1
Cincinnati, Ohio	234	2	1	New Orleans, La.	710	3	2
Cleveland, Ohio	482	3	1-2	New York, N. Y.	769	4-6	2-3
Detroit, Mich.	503	3	2	Pittsburgh, Pa.	534	3	2
Knoxville, Tenn.	250	3	1-2	St. Louis, Mo.	359	2	1

Air

	<u>Local</u>	<u>Nearest Commercial</u>
	Muhlenberg County Airport	Owensboro-Daviess County Airport
Location:	2 miles northwest of Greenville	Owensboro, 36 miles distant
Runways:	1 paved	2 paved
Length:	3,000 feet	6,500 ft.; 3,700 ft.
Traffic		
Control:	Wind tee lighted	Control tower, ground control, guards
Lighting:	Runway lights	Beacon, runways, wind tee, obstruction lights and taxi lights
Services:	80-100 octane; charter; flight instruction; and A & E repair	80, 91, and 100 octane; Jet A fuel; storage; major A & E repairs; general flying service; taxi service; and Ozark Airlines

Bus

Continental Trailways serves both Central
City and Greenville.

Taxi

The Yellow Cab Company serves both
Central City and Greenville.

Rental Services

Car rentals are available in Central City.

POWER AND FUEL

Electricity

Company serving Central City and Greenville - Kentucky Utilities Company
Source of power - Kentucky Utilities Company
Total generating capacity - 1,215,000 KW
Industrial rates furnished by - Kentucky Utilities Company, Industrial Development Department, Lexington, Kentucky

Company serving Muhlenberg County - Pennyrile Rural Electric Cooperative Corporation
Source of power - Tennessee Valley Authority
Total generating capacity - 19,400,000 KW
Industrial rates furnished by - Pennyrile Rural Electric Cooperative Corporation, Hopkinsville, Kentucky

Natural Gas

Company serving Central City - Western Kentucky Gas Company
Source of supply - Texas Gas Transmission Corporation
Size of transmission lines - 4-inch
Distribution lines - 2, 4, and 6 inches
Btu content - 1,050
Specific gravity - .60
Distribution pressure - 50 psi
Rates - Will be provided by the Western Kentucky Gas Company, Central City Office.

Company serving Greenville - Western Kentucky Gas Company
Source of supply - Texas Gas Transmission Corporation
Size of transmission lines - 4-inch
Distribution lines - 2, 4, and 6 inches
Btu content - 1,050
Specific gravity - .60
Distribution pressure - 50 psi
Rates - Will be furnished by the Western Kentucky Gas Company, Central City Office.

Company serving Drakesboro, Ebenezer, Browder, Beech Creek, Beechmont, and Belton - Drakesboro Natural Gas System
Source of supply - Texas Gas Transmission Corporation and local wells
Size of transmission lines - 4-inch
Distribution lines - 1 1/4, 2, and 4 inches
Distribution pressure - 20 psi
Rates - Will be furnished by the Drakesboro Natural Gas System, Box 146, Drakesboro, Kentucky.

WATER AND SEWERAGE

Water

Company serving Central City - Municipal Water and Sewer Commission

Source - Green River

Treatment plant capacity - 1,500,000 gpd

Average daily consumption - 888,000 gallons

Peak daily consumption - 995,000 gallons

Type treatment - Chlorine, lime, alum, and fluoride

Storage capacity - 985,000 gallons

Average pressure - 50 psi

Average temperature - 82°F.

Size mains - 4, 6, 8, 10, and 12 inches

MONTHLY WATER RATES FOR WHOLESALE AND INDUSTRIAL CONSUMERS

Minimum for	1,000 gallons	\$2.50
Next	2,000 gallons	1.50 per M gallons
Next	2,000 gallons	1.35 per M gallons
Next	5,000 gallons	1.00 per M gallons
Next	10,000 gallons	.75 per M gallons
Next	80,000 gallons	.50 per M gallons
All over	100,000 gallons	.43 per M gallons

Company serving Greenville - Utilities Commission of the City of Greenville

Source - Lake

Treatment plant capacity - 720,000 gpd

Average daily consumption - 350,000 gallons

Peak daily consumption - 550,000 gallons

Type treatment - Chlorine, alum, lime, and fluoride

Storage capacity - 350,000 gallons

Size mains - 4, 6, 8 and 10 inches

MONTHLY WATER RATES FOR WHOLESALE
AND INDUSTRIAL CONSUMERS

First	1, 000 gallons	\$2.20 (Minimum)
Next	1, 000 gallons	1.15 per M gallons
Next	3, 000 gallons	1.00 per M gallons
Next	5, 000 gallons	.85 per M gallons
Next	40, 000 gallons	.70 per M gallons
Next	50, 000 gallons	.65 per M gallons
Over	100, 000 gallons	.60 per M gallons

Name of water district - Muhlenberg County Water District

Date when water district began operating - 1967

Source of supply of treated water - Municipal Water and Sewer,
Central City

Amount of water which can be purchased in a 24-hour period - 400, 000
gallons per day

Average amount of water used in a 24-hour period - 300, 000 gallons

Peak amount of water used in a 24-hour period - 400, 000 gallons

Water district storage facilities and capacities:

<u>Facility</u>	<u>Capacity</u>
Powderly Tank	500, 000 gallons
Beech Creek Tank	250, 000 gallons
Cleaton Tank	250, 000 gallons
Depoy Tank	150, 000 gallons

Average pressure - 90-100 psi

Average temperature - 68° F.

Size mains - 1 1/4, 1 1/2, 2, 3, 4, 6, 8, and 10 inches

Rates:

2, 000 gallons \$4.73

Name of water district - Muhlenberg County Water District # 1

Area served - Graham

Date when water district began operating - March 1966

Source of raw water - Artificial lake

Capacity of treatment plant - 65, 000 gallons per day

Type of treatment - Alum, lime, and chlorine

Average amount of water used in a 24-hour period - 23, 400 gallons

Peak amount of water used in a 24-hour period - 26, 181 gallons

Water district storage facilities and capacities:

<u>Facility</u>	<u>Capacity</u>
Standpipe Tank	50, 000 gallons
Clear Well	15, 000 gallons

Average pressure - 85 psi

Size mains - 6-inch

Rates:

First	2,000 gallons	\$4.00
Next	3,000 gallons	1.00 per M gallons
Next	5,000 gallons	.90 per M gallons
Next	10,000 gallons	.80 per M gallons
All over	20,000 gallons	.60 per M gallons

Name of water district - Muhlenberg County Water District # 3

Area served - North Muhlenberg County

When water district began operating - July 1, 1968

Source of supply of treated water - Municipal Water and Sewer,
Central City

Amount of water which can be purchased in a 24-hour period - 130,000
gallons

Average amount of water used in a 24-hour period - 120,000 gallons

Peak amount of water used in a 24-hour period - 130,000 gallons

Water district storage capacity - 250,000 gallons

Average pressure - 80 psi

Size mains - 6 and 8 inches

Rates:

First	2,000 gallons	\$4.00 (Minimum)
Next	8,000 gallons	1.50 per M gallons
Next	10,000 gallons	1.25 per M gallons
Next	30,000 gallons	1.00 per M gallons
All over	50,000 gallons	.75 per M gallons

Surface water sources - Green River

Average discharge - Green River at Paradise 8,589 cfs (20-years,
unadjusted, USGS) East Fork Pond River near Apex 257 cfs
(29-years USGS)

Expected ground water yield - 50 to 200 gpm in band running east-west
through southcentral portion of county; 5 to 50 gpm in band running
east-west through central and northcentral portions of county; 5 gpm
or less over remainder of county

Sewerage

Company serving Central City - Municipal Water and Sewer Commission

Design capacity - 600,000 gallons per day

Average daily flow - 370,000 gallons

Treatment - Secondary

Type treatment - Trickling filter

Treated effluent discharged into - Little Cypress Creek

Size of sanitary mains - 6, 8, and 12 inches

Size of storm mains - 12 and 48 inches

Rates - 50 percent of monthly water bill

Company serving Greenville - Utilities Commission of the City of
Greenville

Design capacity - 500,000 gallons per day

Average daily flow - 225,000 gallons

Treatment - Secondary

Type treatment - Drying beds, trickling filter

Treated effluent discharged into - Caney Creek

Size of sanitary mains - 8 and 10 inches

Rates - \$2.50 up to 4,000 gallons of water used. Over 4,000 gallons,
rate is 50 percent of water bill.

LOCAL GOVERNMENT

City

Central City

Structure - Mayor - 4-year term; 8 councilmen - 2-year terms
 Budget 1968-69 - General Fund \$120,525; 1970-71 - Water and
 Sewer Fund \$39,357
 Fees and licenses - Occupational licenses - \$5 to \$300 annually

Greenville

Structure - Mayor - 4-year term; 6 councilmen - 2-year terms
 Budget 1971 - General Fund \$148,131
 Fees and licenses - Motor vehicle license - base \$10 annually;
 occupational license - \$10 to \$500 annually

County

Structure - County Judge - 4-year term; 5 magistrates - 4-year terms
 Budget 1970-71 - General Fund \$215,660; Road Fund \$153,480

Assessed Value of Property, 1970

<u>Classes of Property*</u>	<u>Central City</u>	<u>Greenville</u>	<u>Muhlenberg County</u>
Real Estate & Personal	\$17,459,500		
Real Estate		\$18,561,230	\$98,671,653
Tangibles		5,907,470	58,397,172
Public Service	5,067,018		43,418,436 (1969)

Local General Property Tax Rates Per \$100 of Assessed Valuation, 1970^{12/}

<u>Taxing Unit**</u>	<u>Powderly</u>	<u>Drakes-</u> <u>boro</u>	<u>Central City</u>	<u>Greenville</u>	<u>Muhlen-</u> <u>berg Co.</u>
State	\$.015	\$.015	\$.015	\$.015	\$.015
County	.124	.124	.124	.124	.124
School	.409	.409	.502	.525	.409
City	.105	.380	.235	.207	
Total	\$.653	\$.928	\$.876	\$.871	\$.548

*Property assessed at 100 percent of fair value.

**Manufacturing machinery, raw materials inventories and goods in process inventories are not subject to local tax. State rate is only \$0.15 per \$100.

Planning and Zoning

Agency - Central City Planning Commission

Plans completed - Base Studies, Existing Land Use Map, Existing Land Use Analysis, Land Use Plan, Transportation Plan, Community Facilities Plan, Subdivision Regulations, Zoning Ordinance, Neighborhood Analysis, Public Improvements Program

Other programs - Greenville has a codes program and a Comprehensive Plan

Safety

<u>Police</u>	<u>Central City</u>	<u>Green- ville</u>	<u>Muhlen- berg Co.</u>	<u>Drakes- boro</u>
Total staff	6	6	4	
Radio-patrol cars	2	2	3	
Other equipment	Standard	Radar equipment	Standard	

Fire

American Insurance

Association Fire

Rating	7	7		8
Full-time staff	3	3		
Part-time staff	3			
Volunteers	25	25		10
Equipment:				
750-gpm pumpers	1	1		1
500-gpm pumpers	2	2	1*	
200-gpm pumper			1*	
ladder truck,tanker	1			

Rescue Service

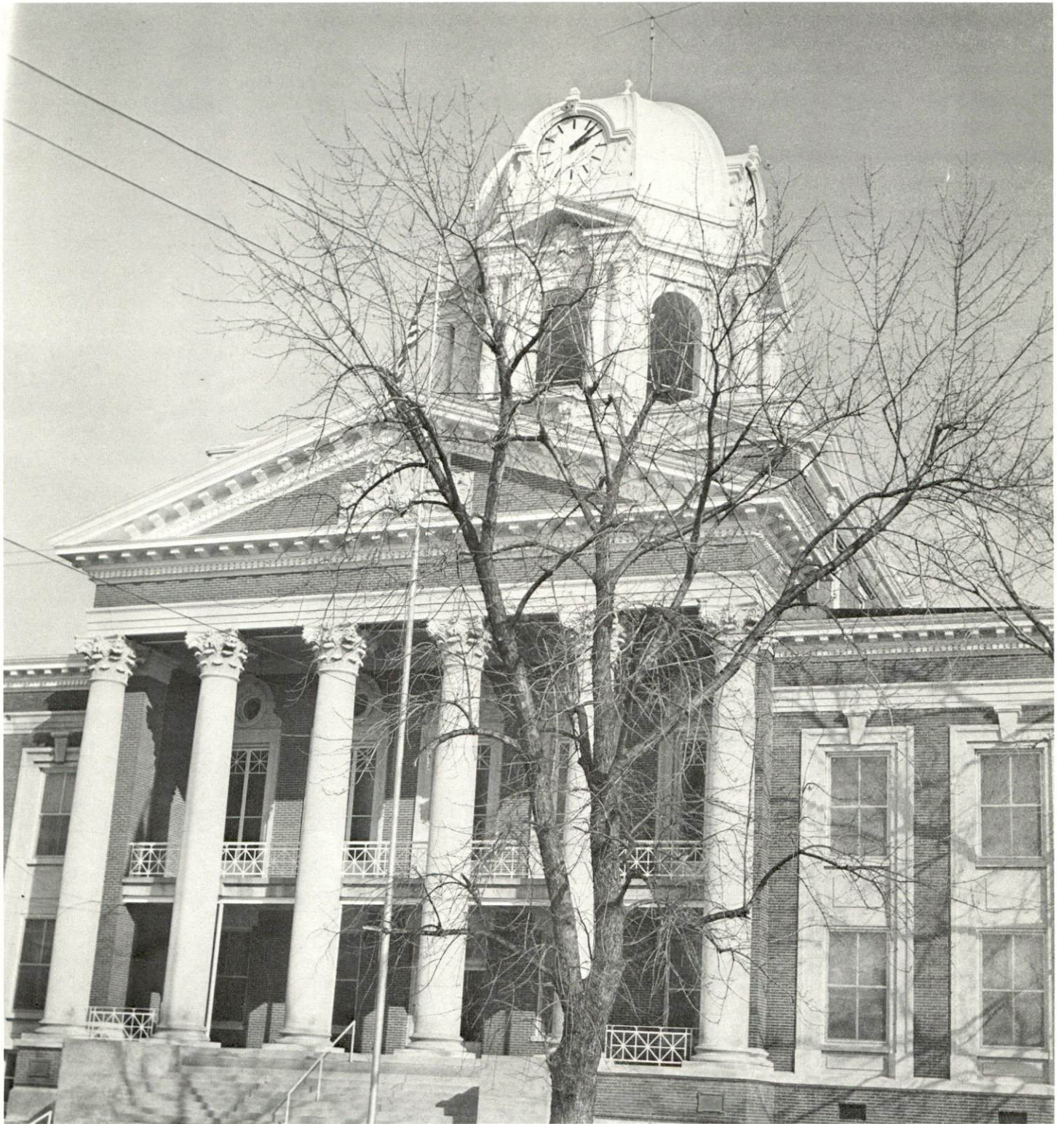
Central City - Muhlenberg County Rescue Squad:

Number of volunteers - 25

Equipment - Emergency rescue truck, boat and motor, dragging hooks, resuscitator, first aid equipment, rescue saws and jacks for car wrecks

Personnel training - First aid

*Operate out of Central City Fire Department and may be taken on rural runs.



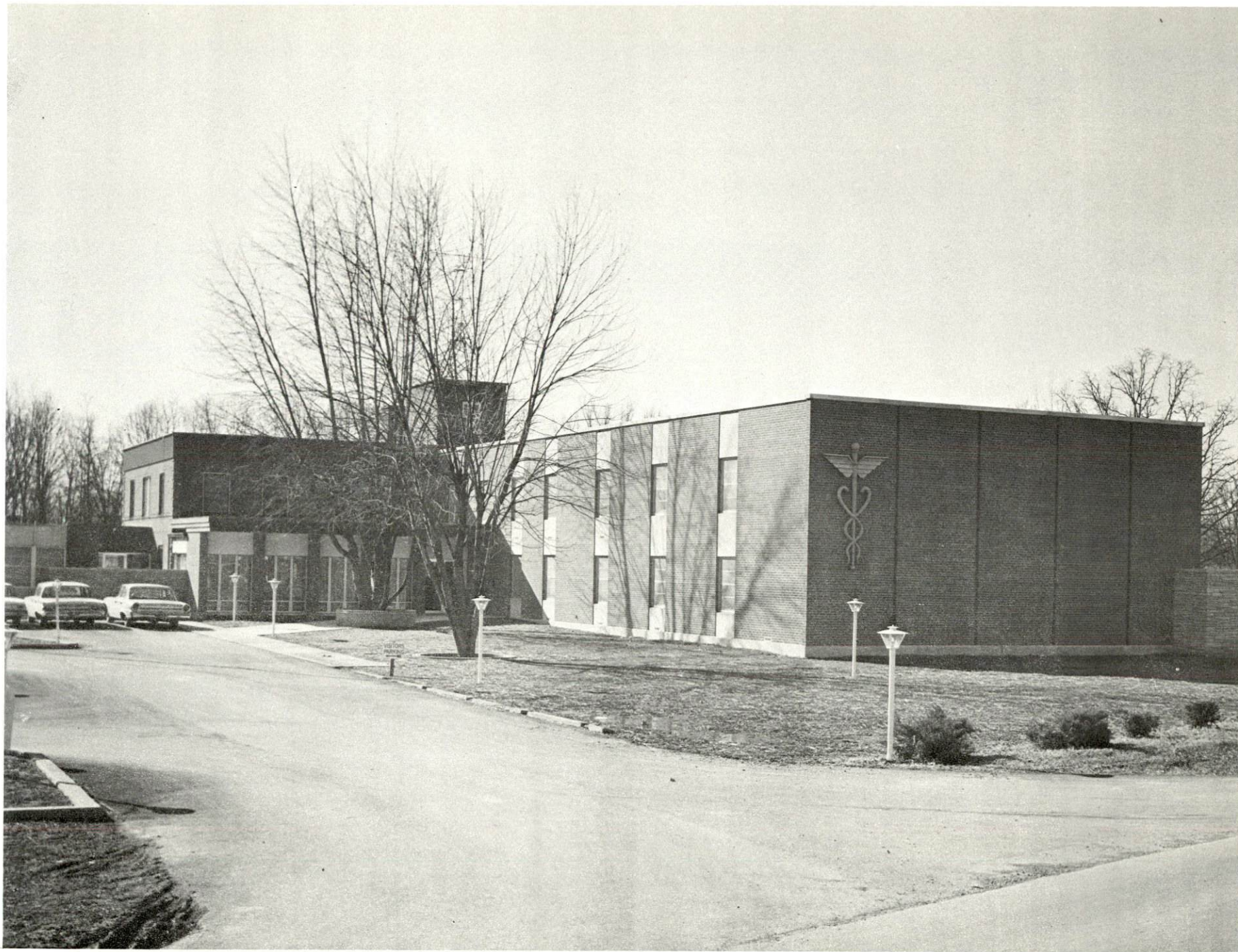
Muhlenberg County Courthouse



Greenville City Building

Sanitation

	<u>Central City</u>	<u>Greenville</u>
Type service	municipal	private
Cost		
residential	\$3 per mo.	\$3.00 to \$4.50 per mo.
business	\$3 to \$15 per month	\$7 to \$11 per mo.
Collection frequency		
residential	weekly	weekly to daily
business	daily	weekly to semiweekly
Trash pickup	weekly	weekly
Disposal method	dump	dump



Muhlenberg Community Hospital

HEALTH

Hospitals

<u>General Hospital</u>	<u>Location</u>	<u>Beds</u>
Muhlenberg Community Hospital	Greenville	96
General hospital facilities and services - Equipped to accommodate major and minor surgery, X-ray and EKG machine, laboratory, and physical therapy		
Medical staff - 12 doctors, 20 registered nurses, 50 licensed practical nurses		

Nursing Homes

	<u>Number</u>	<u>Beds</u>
Extended care homes	1	91
Personal care homes	4	284

Public Health

Facility - Muhlenberg County Health Department
Staff - Central City - Clerk, sanitarian, 1 nurse (part-time)
Greenville - Clerk, registered nurse, nurse travels to both
Central City and Greenville; medical clinician travels to both
Central City and Greenville
Budget 1971-72 - \$44,692

OTHER LOCAL FACILITIES

Communications

Telephone - South Central Bell

Services - Touch tone and direct dialing in Greenville and Central City

Telegraph - Western Union

Services - Central City - Office and telephone; Greenville - Office and telephone

Postal - U. S. Post Office	<u>Central City</u>	<u>Greenville</u>	<u>Drakesboro</u>
Class -	1	1	3
Mail received daily -	3	2	2
Mail dispatched daily -	3	2	2

Newspapers -

Greenville

Weekly and Circulation

The Messenger	4,300
The Times Argus	4,300
The Greenville Leader	7,000
Central City News	7,000

Other papers received from - Louisville and Owensboro, Kentucky; Evansville, Indiana; and Nashville, Tennessee

Radio - WMTA-AM, WNES-AM-FM

Stations received from - Madisonville and Owensboro, Kentucky; and Nashville, Tennessee

Television -

Reception from - Bowling Green and Henderson, Kentucky; Evansville, Indiana; and Nashville, Tennessee

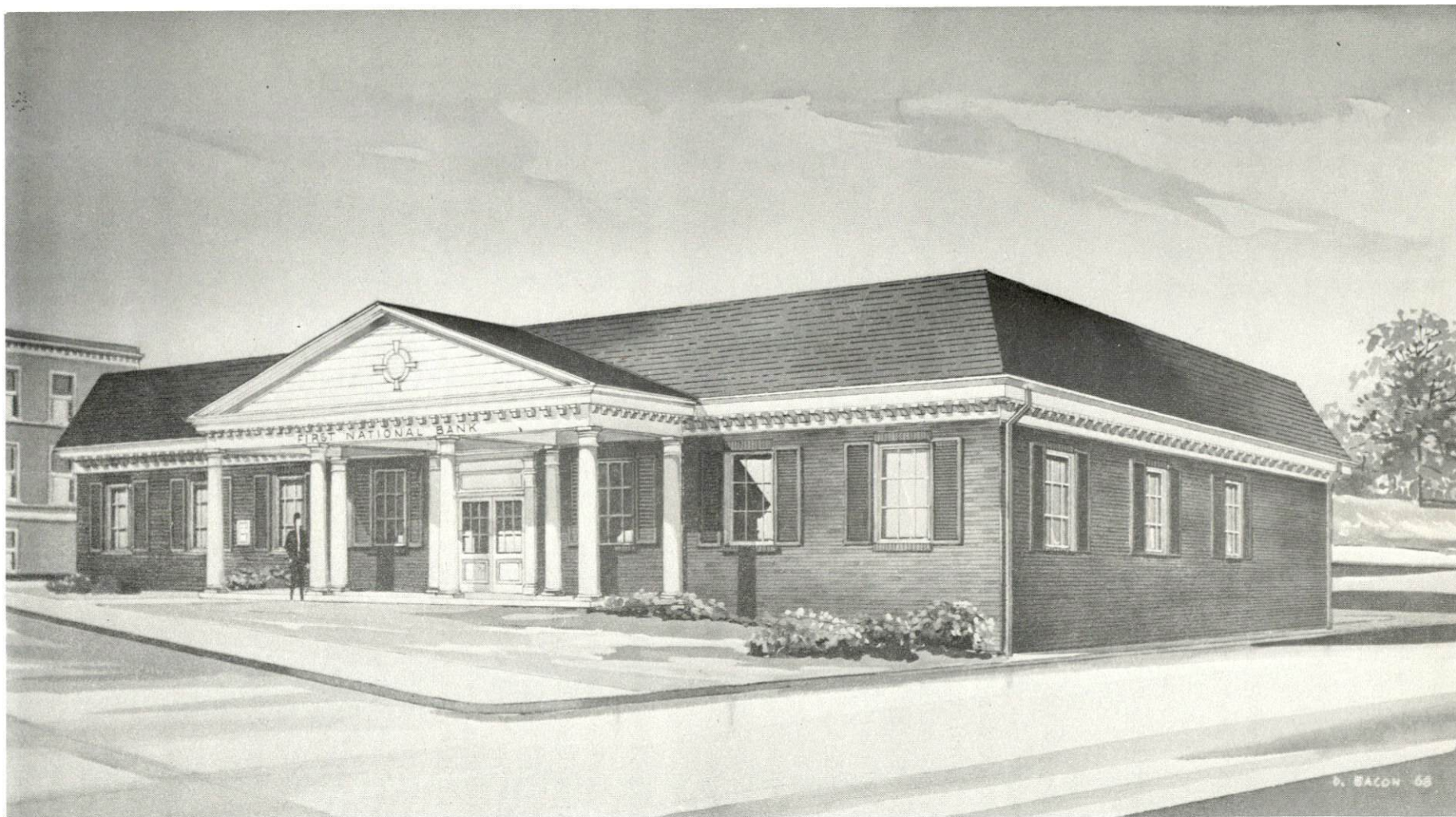
Library Services

Public Libraries - Muhlenberg County Library Board - Central City Library, Hardin Memorial Library - Greenville

Size collection - 40,217 volumes

Circulation, 1970 - 141,387 volumes, books

Services - Bookmobile, story hour, circulates periodicals, records, films, information file, visual equipment and sports equipment



First National Bank, Central City

Religious Institutions

Number of churches - 17

Denominations - Baptist, Catholic, Christian, Disciples of Christ,
Church of God, Church of the Nazarene, Holiness Church,
Jehovah's Witnesses, Methodist, Latter Day Saints, Presbyterian,
Pentecostal, Apostolic

Financial Institutions

<u>Banks</u>	<u>Statement as of June 30, 1971</u>	
	<u>Assets</u>	<u>Deposits</u>
<u>Central City</u>		
The First National Bank	\$8,146,651.56	\$7,237,848.27
Citizens Union Bank	3,584,445.66	3,132,798.15
<u>Greenville</u>		
The First State Bank	\$20,458,117.85	\$18,364,327.52



THE FIRST STATE BANK

Savings and Loan AssociationAssetsShared AccountsCentral City

First Federal Savings &
Loan Association

\$24,529,044.00

\$22,090,545.68

Hotels and MotelsNumberUnits

7

133

Clubs and OrganizationsCentral City - Greenville Area

Business and Civic - Chamber of Commerce, Junior Chamber of
Commerce, Retail Merchants, PTA, Lions, Rotary, and Kiwanis

Fraternal - American Legion, Masons, VFW, IOOF, Moose, WOW,
and FOE

Women's - Lioness, Rotarians, Business and Professional Women's
Club, Eastern Star, Homemakers, Junior Homemakers, Aeolian
Music Club, Jaycettes, Rebekah, VFW Auxiliary, Women's Club,
Junior Women's Club, American Legion Ladies Auxiliary, FOE
Auxiliary

Youth - Boy Scouts, Little League, Babe Ruth League, American
Legion League, Girl Scouts, Brownies, Cub Scouts, 4-H, FHA,
FBLA, FFA, FTA, Conservation Club, and Key Club

RECREATION

Local

Central City - Greenville Area

Public Recreation Facilities

Supervised program - Little League, American Legion League,
Babe Ruth League

Park - 1

Playgrounds - 12

Swimming pool - 1

Fair grounds - 1

Baseball diamonds - 2

Picnic areas - 2

Private Recreation Facilities

Country clubs - 2 (Greenville Country Club; Central City Country Club)
both have golf courses and swimming pools

Movie theaters - 2 walk-in; 1 drive-in

Bowling lanes - 1

Other - Stock car races on Saturday

Tourist Attractions

Strawberry and Coal Festival

Area (Within 100 miles)

Lake Malone State Park

Pennyrile Forest State Resort Park

Jefferson Davis Monument State Shrine

Mammoth Cave National Park

Land Between the Lakes National Recreation Area

Kenlake State Resort Park

Kentucky Dam Village State Resort Park

John James Audubon State Park

AGRICULTURE - NATURAL RESOURCES - CLIMATE

Agriculture 13/

	<u>Muhlenberg County</u>	<u>Labor Market Area</u>
Total land area (acres)	307,840	2,556,160
Percent of area in farm land	45.7	64.2
Number of farms	979	10,275
Average size of farms (acres)	143.7	159.8
1964 value of all farm products	\$3,061,057	\$52,668,479
Value per farm	3,127	5,126
Total crop sales	1,691,708	29,876,104
Total livestock & livestock products	1,368,149	22,780,049
1968 agricultural production included:		
Burley tobacco (lbs.)	815,000	16,165,000
Corn (bu.)	756,000	12,647,000
Cattle and calves (number)	21,900	239,800
Hogs and pigs (number)	13,800	170,900
Milk production (1967) (lbs.)	5,130,000	134,050,000

Natural Resources

Principal mineral resources	Coal, petroleum, limestone
Other mineral resources	Clay, shale, sand, gravel
Acres of commercial forest land	140,000
Most abundant tree species	Red oaks, white oaks, hickories, sweetgum, ash, yellow poplar, and beech

Climate 14/

	<u>Muhlenberg County</u>
Temperature	
Annual mean (30-year record)	57.0 degrees
Average annual 1969	55.0 degrees
Record highest July, 1966 (10-year record)	104.0 degrees
Record lowest January, 1963 (10-year record)	- 18.0 degrees
Seasonal heating degree-days (30-year record)	4,435
Precipitation	
Mean annual total (30-year record)	41.45 inches
Mean annual snow and sleet (30-year record)	13.0 inches
Total precipitation 1969	45.93 inches
Mean number days precipitation (30-year record) (.01 inches or more)	114
Average number days thunderstorms (30-year record)	47
Prevailing winds (14-year record)	south-southwest

HISTORY

Muhlenberg County lies in the Western Coal Field Region of Kentucky and covers 482 square miles of territory. It is bounded on the east by the Green and Mud Rivers and on the west by the Pond River. The land surface is generally rolling, though a part is broken and hilly, with the best farming land in the northern portion. Lying in Kentucky's Western Coal Field Region, Muhlenberg is one of the most important coal producing counties in the United States.

Most of the early settlers in the area were Revolutionary War soldiers, of various extracts, who came to live on land grants. In 1798 Muhlenberg became Kentucky's thirty-fourth county, named for General Peter Muhlenberg of Pennsylvania, who distinguished himself in the Revolution and later served three terms in the U. S. Congress. Henry Rodes, a soldier-settler who represented the county in the State Legislature, proposed the name and did much to assist in the county's formation.

Greenville, the county seat, was named in honor of General Nathaniel Greene, a Revolutionary War hero who served with George Washington. In 1970 Greenville had a population of 3,875.

The county's second largest town is Central City, a mining town formerly known as Morehead's Horse Mill because of the gristmill once located there. Its name was changed in 1870 after the Illinois Central Railroad was built through the town. Central City had a population of 3,455 in 1970.

In 1800, two years after its founding, Muhlenberg County had a population of 1,443, which by 1950 had reached 32,501. There was a subsequent decline to 27,791 in 1960, but this decline was nearly reversed in the next decade, for a population of 27,537 in 1970.

Agricultural employment accounted for 800 of the county's 8,200 employed in 1969, with burley and dark-fired tobacco, corn, cattle and hogs the principal products. Manufacturing employment was up sharply since 1959 to 1,100 in 1969, with heaviest concentration in the apparel industries. Largest of the county's firms are Cowden-Greenville Company in Greenville, Cowden Manufacturing Company in Central City, and U & W Pallet, Inc., in Central City.

Muhlenberg County is intersected by the Western Kentucky Parkway, which runs between Central City and Greenville. Lake Malone State Park, in the southern part of the county, offers excellent recreational facilities.

SOURCES OF INFORMATION

- 1/ U. S. Department of Commerce, Bureau of the Census, Census of Population, 1950, 1960, 1970.
- 2/ Kentucky Department of Economic Security, Division of Research and Statistics.
- 3/ Kentucky Department of Economic Security, Number of Workers in Manufacturing Industries Covered by Kentucky Unemployment Insurance Law Classified by Industry and County, September, 1960, September, 1970.
- 4/ Kentucky Department of Commerce, 1971 Kentucky Directory of Manufacturers.
- 5/ Kentucky Department of Economic Security, Division of Employment Services, Madisonville Office.
- 6/ Kentucky Department of Economic Security, Kentucky Labor Supply Estimates by County, January 1971.
- 7/ Kentucky Department of Commerce, Future Labor Supply by 1977.
- 8/ University of Kentucky, Office of Development Services and Business Research, Total Personal Income for Kentucky.
- 9/ University of Kentucky, Office of Development Services and Business Research, Per Capita Income in Kentucky.
- 10/ Louisville & Nashville Railroad, Louisville, Kentucky.
- 11/ McLean Trucking Company, Indianapolis, Indiana.
- 12/ Kentucky Department of Revenue, Kentucky Property Tax Rates, 1970.
- 13/ U. S. Department of Commerce, Bureau of the Census, Census of Agriculture, 1964. U. S. Department of Agriculture and Kentucky Department of Agriculture, Kentucky Agricultural Statistics, 1969.
- 14/ U. S. Department of Commerce, Environmental Science Services Administration, Climatological Data, 1970.

All other information was obtained from governmental offices, local businesses and organizations.