

1973

Industrial Resources: Ohio County - Beaver Dam and Hartford

Kentucky Library Research Collections
Western Kentucky University, spcol@wku.edu

Follow this and additional works at: https://digitalcommons.wku.edu/ohio_cty

 Part of the [Business Administration, Management, and Operations Commons](#), [Growth and Development Commons](#), and the [Infrastructure Commons](#)

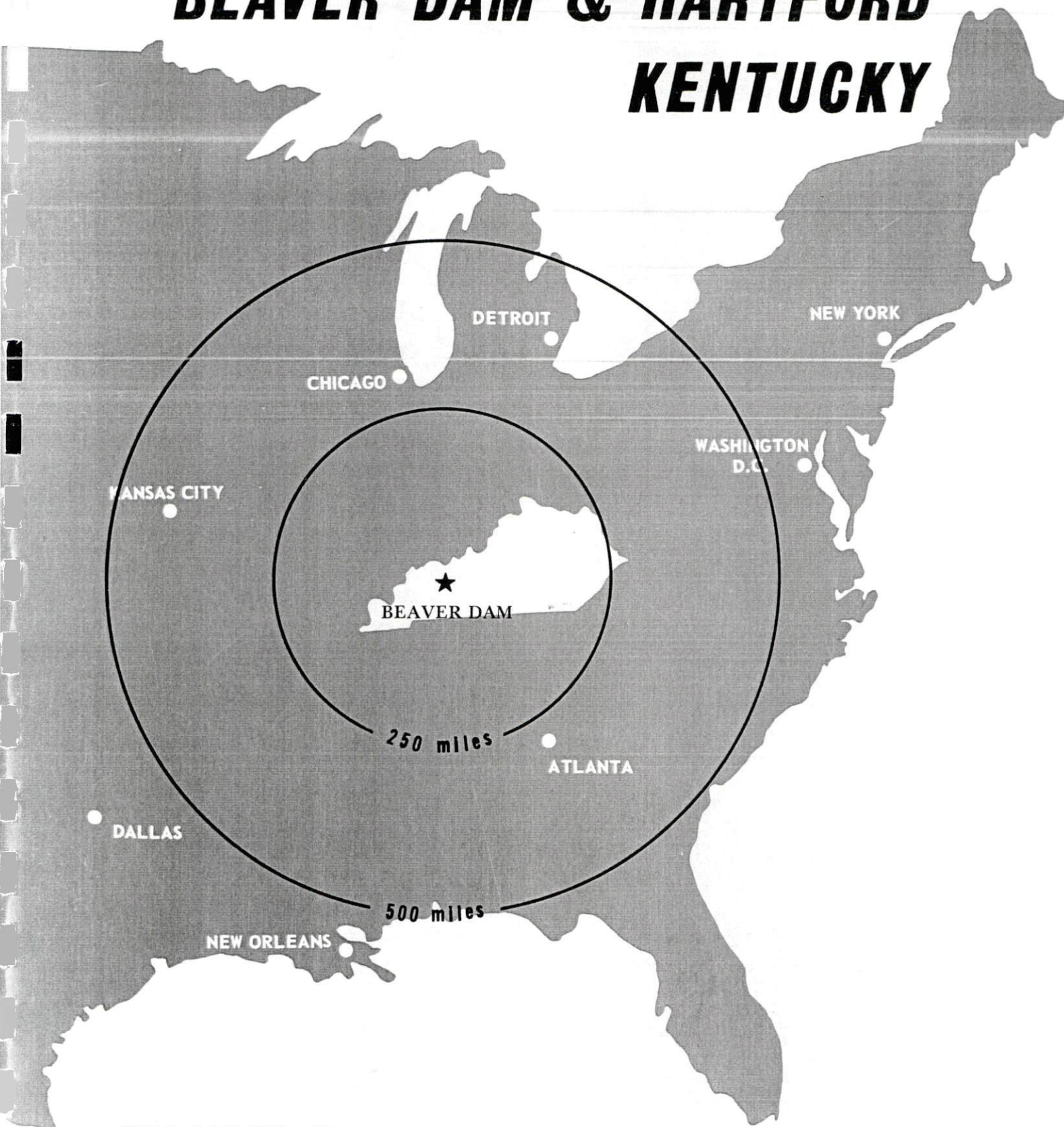
Recommended Citation

Kentucky Library Research Collections, "Industrial Resources: Ohio County - Beaver Dam and Hartford" (1973). *Ohio County*. Paper 12.
https://digitalcommons.wku.edu/ohio_cty/12

This Report is brought to you for free and open access by TopSCHOLAR®. It has been accepted for inclusion in Ohio County by an authorized administrator of TopSCHOLAR®. For more information, please contact topscholar@wku.edu.

INDUSTRIAL RESOURCES

BEAVER DAM & HARTFORD KENTUCKY



OHIO COUNTY, KENTUCKY

BEAVER DAM AND HARTFORD INDUSTRIAL SITES

1973

BEAVER DAM AND HARTFORD INDUSTRIAL SITES

1973

For more information about the following sites, contact Mr. A. M. Porter, Ohio County Chamber of Commerce, P. O. Box 22, Beaver Dam, Kentucky 32320; or the Kentucky Department of Commerce, Capital Plaza Office Tower, Frankfort, Kentucky.

Beaver Dam

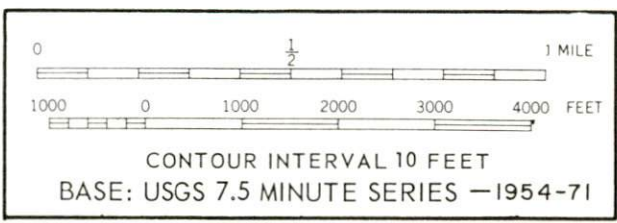
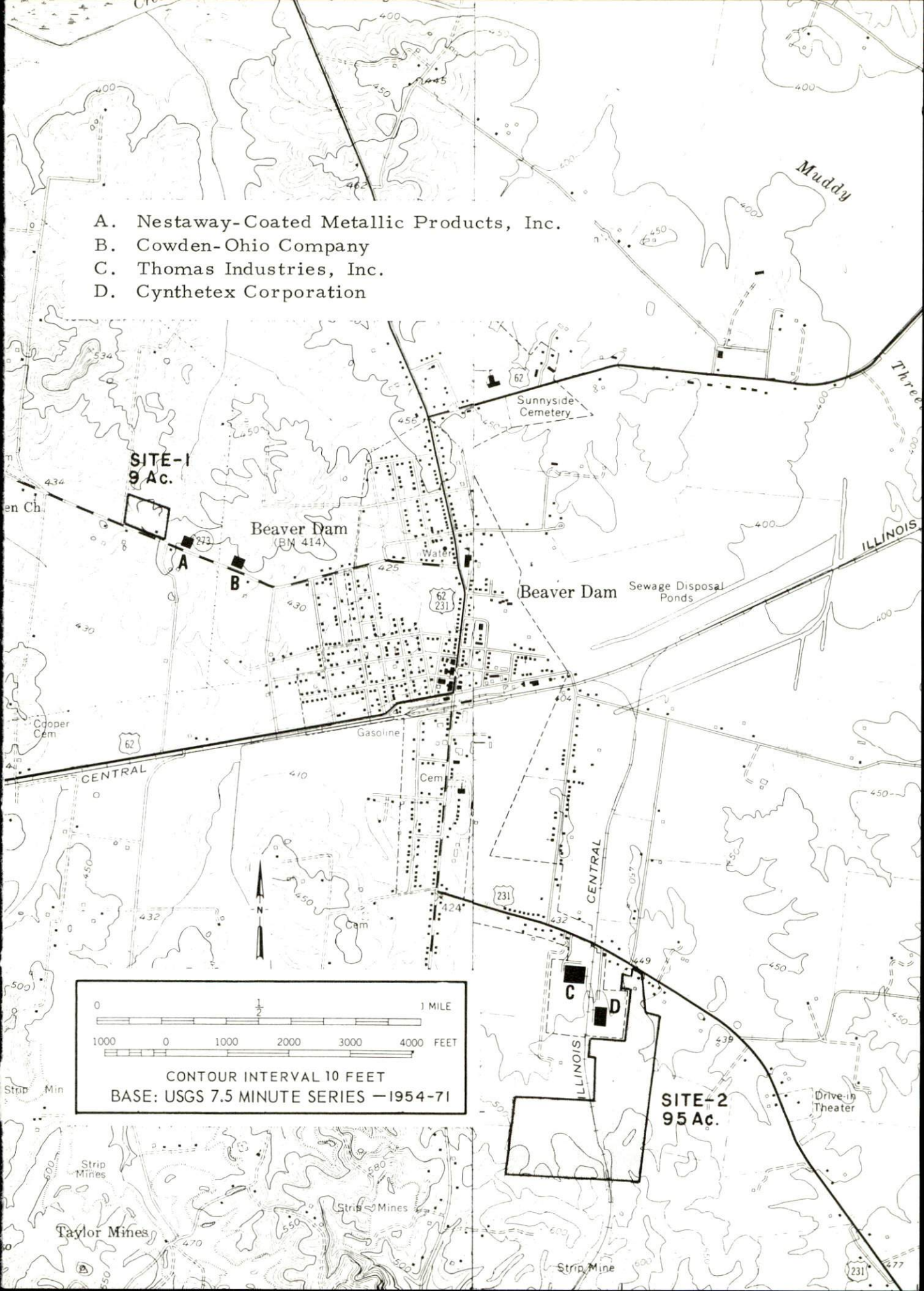
SITE #1: ACREAGE: 9 acres
LOCATION: In city limits, northwest of Beaver Dam proper
ZONING: Agricultural
HIGHWAY ACCESS: Kentucky 273 along southern boundary of site
RAILROAD: Not available
WATER: Beaver Dam Municipal Water and Sewer System
SIZE LINE: 8-inch, 400 feet east of site
GAS: Western Kentucky Gas Company
SIZE MAIN: 4-inch main, 400 feet east of site
ELECTRICITY: Kentucky Utilities Company, 3.3 kv line
along eastern boundary
SEWERAGE: Beaver Dam Municipal Water and Sewer System
SIZE LINE: 8-inch line, 400 feet east of site
OWNERSHIP: Ohio County Industrial Foundation

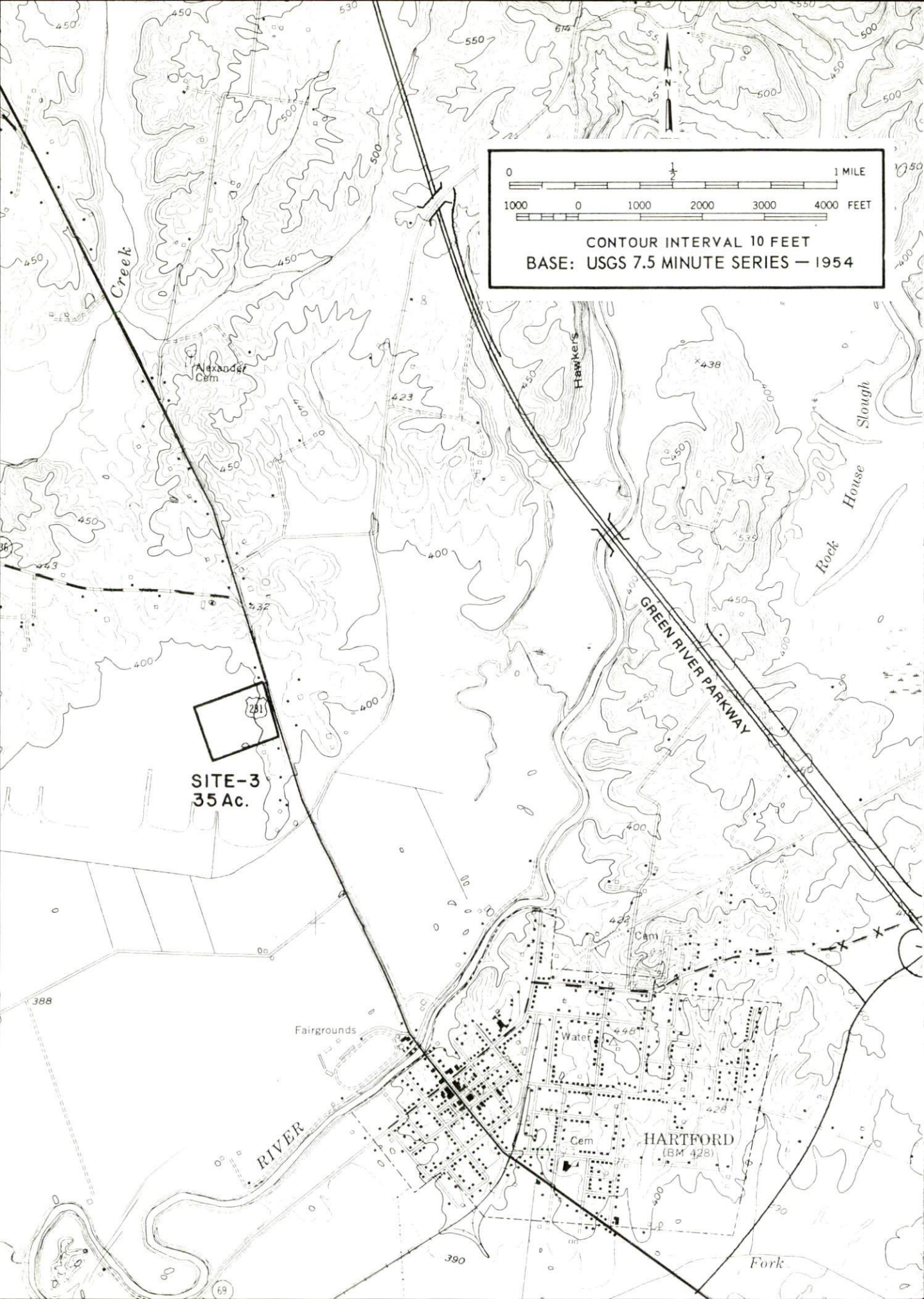
SITE #2: ACREAGE: 95 acres
LOCATION: In county adjacent to Beaver Dam's southern
city limits
ZONING: Agricultural
HIGHWAY ACCESS: U. S. Highway 231 along northern
boundary of site
RAILROAD: Illinois Central Railroad serves the site
WATER: Ohio County Water District
SIZE LINE: 10-inch main along northern border of site
GAS: Western Kentucky Gas Company
SIZE MAIN: 2-inch line along northern border of site
ELECTRICITY: Kentucky Utilities Company, 12 kv line
along northern border of site
SEWERAGE: Beaver Dam Municipal Water and Sewer System
SIZE LINE: 8-inch line, 500 feet west of site
OWNERSHIP: Private

Hartford

SITE #3: ACREAGE: 35 acres
LOCATION: In county, 1 mile northwest of Hartford on U. S. 231
ZONING: Agricultural
HIGHWAY ACCESS: U. S. Highway 231 borders site on the east.
RAILROAD: Not available
WATER: Ohio County Water District
SIZE LINE: 6-inch line along eastern boundary of site
GAS: Western Kentucky Gas Company
SIZE MAIN: 4-inch main along eastern boundary of site
ELECTRICITY: Kentucky Utilities Company, 4.2 kv line
along east side of property
SEWERAGE: Hartford Municipal Water Works and Sewer System
SIZE LINE: 8-inch line, 1 mile south of site
OPTIONED BY: Ohio County Chamber of Commerce

- A. Nestaway-Coated Metallic Products, Inc.
- B. Cowden-Ohio Company
- C. Thomas Industries, Inc.
- D. Cynthetex Corporation





0 1/2 1 MILE
1000 0 1000 2000 3000 4000 FEET
CONTOUR INTERVAL 10 FEET
BASE: USGS 7.5 MINUTE SERIES — 1954

281

SITE-3
35 Ac.

Creek

Alexander
Cem

Hawkens

Slough

House

Rock

GREEN RIVER PARKWAY

Fairgrounds

RIVER

Water

Cem

HARTFORD
(BM 42B)

Fork

INDUSTRIAL RESOURCES
BEAVER DAM AND HARTFORD, KENTUCKY

Prepared by
The Kentucky Department of Commerce
in cooperation with
The Ohio County Chamber of Commerce

1973

This copy has been prepared by the Kentucky Department of Commerce, Division of Research and Planning, and the cost of printing paid from state funds.

TABLE OF CONTENTS

<u>Chapter</u>	<u>Page</u>
INDUSTRIAL SITES	i
BEAVER DAM AND HARTFORD, KENTUCKY - A RESOURCE PROFILE	1
THE LABOR MARKET	5
Population Trends	5
General Employment Characteristics, 1971	5
Manufacturing Employment Trends by Industry	6
Major Beaver Dam and Hartford Manufacturing Firms, Their Products and Employment	6
Area Occupational Wage Rates	9
Labor Organizations	12
Estimated Male Labor Supply	12
Estimated Female Labor Supply	13
Per Capita Personal Income	13
TRANSPORTATION	14
Rail	14
Truck Service	14
Air	15
Bus	16
Taxi	16
Rental Services	16
POWER AND FUEL	17
Electricity	17
Natural Gas	18
Other Fuels	18
WATER AND SEWERAGE	19
Water	19
Sewerage	20
LOCAL GOVERNMENT	23
City	23
County	23

<u>Chapter</u>	<u>Page</u>
Assessed Value of Property, 1973	23
Property Taxes	23
Local Property Tax Rate Per \$100 of Assessed Valuation, 1972	24
Utilities Gross Receipts Tax for Schools	24
Planning and Zoning	24
Safety.	24
Police.	24
Fire	24
Rescue Service.	25
Sanitation	25
 EDUCATION	 26
Public Schools	26
Vocational Schools	26
Colleges and Universities.	27
 HEALTH	 29
Hospitals	29
Nursing Homes	29
Public Health	29
 OTHER LOCAL FACILITIES	 30
Communications	30
Library Services	30
Religious Institutions.	31
Financial Institutions.	31
Motels	31
Clubs and Organizations	33
 RECREATION	 34
Local.	34
Area	34
 AGRICULTURE - NATURAL RESOURCES - CLIMATE	 35
Agriculture	35
Natural Resources	35
Climate.	36
 HISTORY.	 37

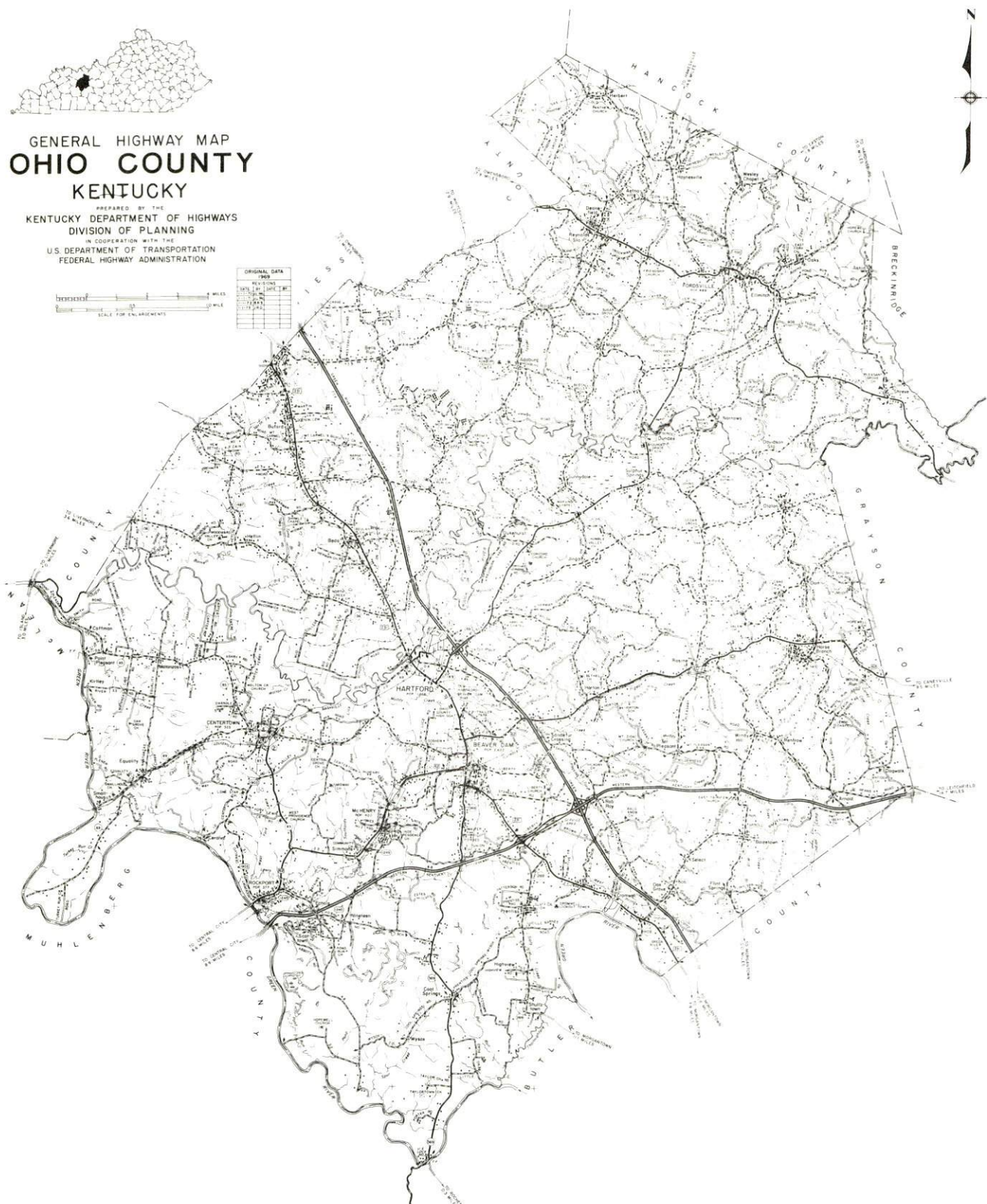


GENERAL HIGHWAY MAP OHIO COUNTY KENTUCKY

PREPARED BY THE
KENTUCKY DEPARTMENT OF HIGHWAYS
DIVISION OF PLANNING
IN COOPERATION WITH THE
U.S. DEPARTMENT OF TRANSPORTATION
FEDERAL HIGHWAY ADMINISTRATION



ORIGINAL DATA	
REVISION	
DATE	
BY	
FOR	
BY	
FOR	



BEAVER DAM AND HARTFORD, KENTUCKY - A RESOURCE PROFILE

Beaver Dam, located in the western section of the state, in Ohio County, is 25 miles southeast of Owensboro, 107 miles southwest of Louisville, 59 miles south of Evansville, Indiana, and 106 miles north of Nashville, Tennessee. In 1970, Beaver Dam had a population of 2,622.

Hartford, the county seat of Ohio County, is located 4 miles north of Beaver Dam. In 1970, Hartford had a population of 1,868.

Ohio County, with 596 square miles, is the fifth largest county in Kentucky geographically and had a 1970 population of 18,790.

The Economic Framework

Total employment in Ohio County averaged 5,600 in 1971 with manufacturing providing 970 jobs, trade and services 760, government 720, agriculture 1,030 and mining 830. Since 1962, manufacturing employment has increased 359 percent or 840 new jobs. Major industrial products are apparel, bituminous concrete, leather and vinyl gloves, lighting fixtures, and plastic coated metallic products.

Per capita income in 1970 was \$2,229. Between 1960 and 1970 per capita personal income in the county increased by 75.4 percent.

The Beaver Dam and Hartford labor market area includes Ohio and the seven adjoining counties. Total area employment averaged 61,250 jobs in 1971 including 7,800 in agriculture, 14,890 in manufacturing, 13,930 in trade and services, 6,810 in government, and 3,760 in mining. Since 1962, manufacturing employment has increased 51.5 percent or 5,295 new jobs, with the sharpest gains in the apparel, fabricated metal products and primary metals industries.

Despite important industrial gains in recent years, the area still has a deficit of 1,755 manufacturing jobs when measured against the national industrial employment-population ratio. This indicates an area with a potential for additional manufacturing production.

Resources for Growth

1. There is a current labor supply of 12,575 men and 15,095 women available for industrial jobs in the labor market area. In addition, 9,940 young men and 9,495 young women will become 18 years of age by 1979 and potentially available for work.

2. Beaver Dam and Hartford are served by U.S. 231 and U.S. 62. The Western Kentucky Parkway interchange is 3 miles south of Beaver Dam and the Green River Parkway interchange is 5 miles south of Beaver Dam. The Illinois Central Gulf Railroad serves Beaver Dam while Hartford is served by the Louisville & Nashville Railroad. Commercial air service is available in Owensboro, 25 miles northwest of Beaver Dam.

3. Energy - In the Beaver Dam-Hartford area, natural gas is provided by the Western Kentucky Gas Company. Beaver Dam has one propane distributor and two distillate fuel oil distributors. Hartford has four distillate fuel oil distributors. The Kentucky Utilities Company furnishes electricity in Beaver Dam and Hartford. Electricity in Ohio County is provided by three Rural Electric Cooperatives -- Green River, Meade County and Warren.

4. Industrial sites - Ohio County has six available industrial sites. Four sites are in Hartford and two are in Beaver Dam.

5. Education - There are three universities, two senior colleges, and two community colleges all within a 60-mile radius of the Beaver Dam-Hartford area.

In Owensboro, which is only 25 miles from Beaver Dam, there are two vocational schools. The Daviess County State Vocational-Technical School offers 18 courses and the Owensboro Area Vocational Education Center offers 9 courses.

Community Programs for Improvement

Projects Recently Completed:

A mini-park in Beaver Dam was completed in 1972. It has playground equipment, tennis court and basketball court.

In Beaver Dam, the Midtown Shopping Center was opened in the Fall of 1972.

The Beaver Dam Deposit Bank opened a branch office in the Fall of 1972.

Thomas Industries expanded in 1972.

Current Underway:

A new Baptist Church in Beaver Dam is expected to be completed in 1973.

The construction of a new Kentucky Utilities office in Beaver Dam is expected to be completed in the Fall of 1973.

Kentucky Utilities Company is constructing a 6,200 KVA substation near the northern boundary of Beaver Dam and it will be completed by the Summer of 1973.

The Ohio County Historical Society is compiling information and collecting antiques for an Ohio County Museum.

Two new underground coal mines will be opening soon with initial employment of 400 which is expected to be increased to 800.

In Beaver Dam, improvements are being made at Oldham Park and its completion is expected in the Summer of 1973. There will be a picnic area, tennis courts, baseball diamond, basketball court, croquet court, miniature golf, swimming pool and a concession building.

A HUD housing development will be completed next year in Beaver Dam.

Two housing developments will be completed within the next five years in Beaver Dam.

In Hartford, the new Ellis Park will be completed in the Summer of 1973. It will have a playground and a picnic area.

A HUD housing project in Hartford will be completed in the Fall of 1973.

Ohio County Federal Savings and Loan is constructing a building in Hartford which will be completed by the Fall of 1973.

The Hartford Municipal Water Works and Sewer System is extending an 8-inch sewer line 1 mile northeast of the city limits and it is expected to be completed by the Fall of 1973.

Future Plans:

Nestaway-Coated Metallic Products, Inc., plans an expansion.

Recreation, Entertainment, and Livability

The Beaver Dam-Hartford area offers supervised recreation programs during the summer months. Little League baseball, tennis courts, playgrounds and a swimming pool are available. Fishing and camping may be enjoyed on Rough River. Lake Washburn, approximately 5 miles north of Hartford, has facilities for boating, fishing, swimming, picnicking, and camping. The Ohio County Country Club has an excellent 9-hole golf course, clubhouse, pool and fishing lake. In addition, Ohio County has the Ohio County Baseball League, Junior League softball and several bowling leagues. An annual horse show is held at the Ohio County Fairgrounds.

John James Audubon Park in Henderson, 50 miles northwest of the Hartford and Beaver Dam area, is a 645-acre park. There are cottages and camping facilities, a 28-acre recreation lake, playground, 9-hole golf course and hiking trails. The Audubon Memorial Museum and Nature Museum is located on the park grounds. It was there that John James Audubon gathered material for his paintings, "Bird of America". The Museum contains Kentucky's greatest exhibit of original Audubon prints. Across from the park is the Audubon Raceway which features harness racing.

Southwest of the Hartford-Beaver Dam area is Lake Malone State Park, located in Dunmor, 44 miles distant. Lake Malone is a 692-acre lake which offers swimming, fishing, boat rentals, launching ramps, and open boat slips. Facilities include camping, playground, picnic shelter and hiking trails.

Rough River Dam State Resort Park is located 37 miles northeast in the Falls of Rough. The park has a resort lodge and camping facilities. At the 4,860-acre Rough River Lake, is swimming, boat and motor rentals, paddle boats and fishing. On the park grounds are miniature golf, tennis, hiking, shuffleboard, playground and supervised recreation.

Owensboro, which is approximately 23 miles from the Beaver Dam-Hartford area, has a multitude of museums, recreational facilities, sporting and cultural events. The Annual Kentucky Governor's Cup Race for unlimited hydroplanes takes place at Owensboro, on the Ohio River. There is a Youth Orchestra and a Symphony Orchestra. The Sportscenter is the recreational heart of Owensboro. It has one of the largest swimming pools in the south, the largest ice skating rink in the state, various sporting events and Broadway road shows which are scheduled throughout the year.

THE LABOR MARKET

POPULATION TRENDS

Area	Population			Percent Change	
	1970	1960	1950	1960-70	1950-60
Beaver Dam	2,622	1,648	1,349	+59.1	+22.2
Hartford	1,868	1,618	1,564	+15.5	+ 3.5
Labor Market Area	182,912	170,943	170,512	+ 7.0	+ 0.3
Ohio County	18,790	17,725	20,840	+ 6.0	-14.9
Breckinridge County	14,789	14,734	15,528	+ 0.4	- 5.1
Butler County	9,723	9,586	11,309	+ 1.4	-18.0
Daviess County	79,486	70,588	57,241	+12.6	+23.3
Grayson County	16,445	15,834	17,063	+ 3.9	- 7.2
Hancock County	7,080	5,330	6,009	+32.8	-11.3
McLean County	9,062	9,355	10,021	- 3.1	- 6.6
Muhlenberg County	27,537	27,791	32,501	- 0.9	-14.5

Source: U.S. Department of Commerce, Bureau of the Census, Census of Population, 1970, 1960, 1950.

GENERAL EMPLOYMENT CHARACTERISTICS, 1971

Major Employment Group	Employment	
	Ohio County	Labor Market Area
TOTAL	5,600	61,250
Agricultural	1,030	7,800
Nonagricultural	4,570	53,450
Manufacturing	970	14,890
Government	720	6,810
Trade and Services	757	13,930
Mining	829	3,763*

*Total does not include Breckinridge and Grayson Counties.

Sources: Kentucky Department of Economic Security, Division of Research and Statistics; Kentucky Department of Mines and Minerals, 1971 Annual Report.

MANUFACTURING EMPLOYMENT TRENDS BY INDUSTRY
MARCH 1972 AND 1962

Industry	Ohio County			Labor Market Area		
	1972	1962	% Change	1972	1962	% Change
TOTAL	1,074	234	+ 359.0	15,569	10,274	+ 51.5
Food & Kindred						
Products	28	31	- 9.7	1,548	1,657	- 6.6
Tobacco	0	0	0	590	547	+ 7.9
Apparel, Textiles,						
Leather	430	48	+ 795.8	2,397	581	+312.6
Lumber, Furniture	155	83	+ 86.7	1,513	1,394	+ 8.5
Printing & Publishing,						
Paper	23	18	+ 27.8	566	188	+201.1
Chemicals, Petroleum						
& Coal, Rubber	2	0	--	367	199	+ 84.4
Stone, Clay & Glass	0	0	0	666	542	+ 22.9
Primary Metals	0	0	0	2,697	628	+329.5
Machinery, Metal						
Products, Equip.	432	27	+1,500.0	5,212	4,500	+ 15.8
Other	4	27	- 85.2	13	38	- 65.8

Source: Kentucky Department of Economic Security, Number of Workers in Manufacturing Industries Covered by Kentucky Unemployment Insurance Law Classified by Industry and County, March 1972, March 1962.

MAJOR BEAVER DAM AND HARTFORD MANUFACTURING FIRMS,
THEIR PRODUCTS AND EMPLOYMENT

Firm	Product	Employment		
		Total	Male	Female
<u>Beaver Dam</u>				
Cowden-Ohio Company	Work clothes, play clothes	236	21	215
Cynthetex Corporation	Non-woven fabrics	90	90	0
Nestaway-Coated Metallic Products, Inc.	Plastic coated trays, wire racks, painted or plated	135	124	11
Thomas Industries, Inc.	Lighting fixtures	311	167	144
Young Manufacturing Company	Millwork, furniture dimension	96	90	6

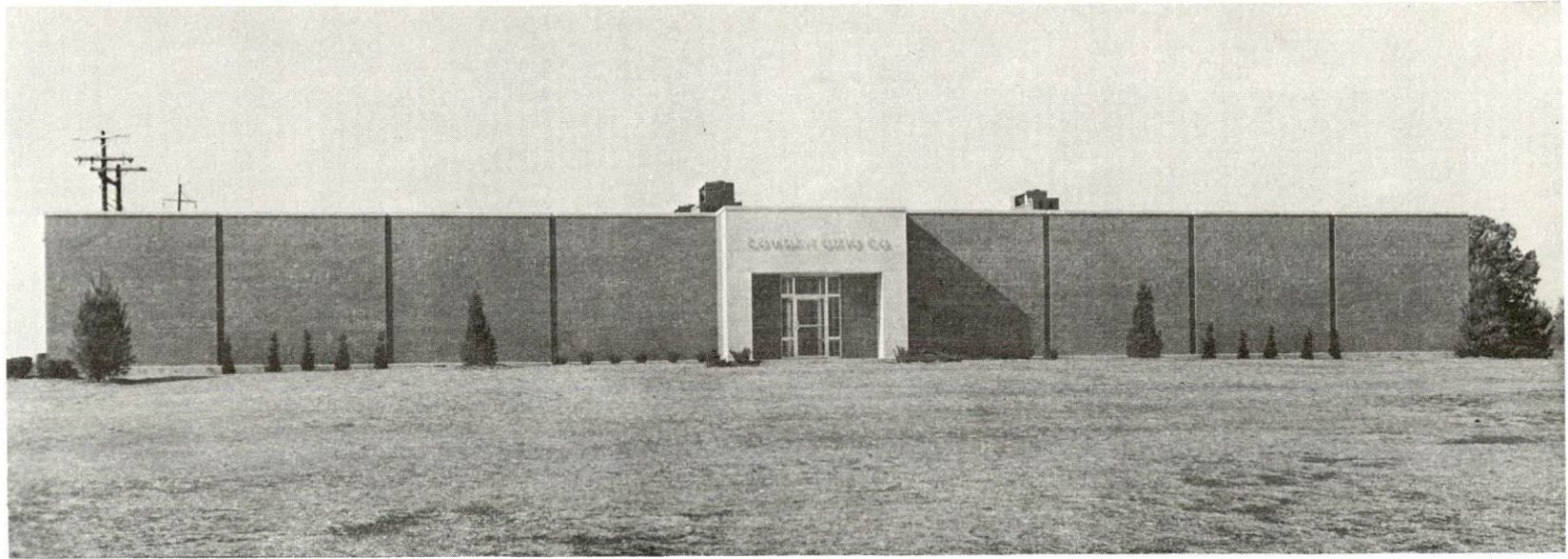
(cont'd.)



THOMAS INDUSTRIES, INC.



NESTAWAY-COATED METALLIC PRODUCTS, INC.



COWDEN OHIO CO.



MONTPELIER GLOVE CO.

<u>Firm</u>	<u>Product</u>	<u>Employment</u>		
		<u>Total</u>	<u>Male</u>	<u>Female</u>
<u>Hartford</u>				
Montpelier Glove Company	All leather gloves, cloth and leather combination gloves, vinyl gloves	125	29	96
State Contracting and Stone Company, Inc.	Bituminous concrete	105	101	4

Source: Kentucky Department of Commerce, 1973 Kentucky Directory of
Manufacturers.

AREA OCCUPATIONAL WAGE RATES

Reliable wage data for specific communities are not available for publication. The best source for manufacturing wages in Beaver Dam and Hartford are the major firms listed in this survey. The Department of Commerce will assist in obtaining data by specific occupation for a specific community.

Associated Industries of Kentucky publishes an excellent annual Survey of Wages and Related Practices. This survey shows wages for eight regions of the state but not for specific communities. It does give a good indication of competing rates in the area.

Beaver Dam and Hartford are in Area 3 which includes the counties shown on the inset map.

Area Three

Job Classification	SERVICE EMPLOYEES -- HOURLY				Weighted Averages
	Firms and Employees	RATES REPORTED			
Crane Operator Overhead (A)	5/36	6--\$3.00-\$3.49 4--\$3.50-\$3.99	24--\$4.00-\$4.49 2--\$4.50-\$4.99		\$3.99
Electrician (B)	8/10	2--\$3.00-\$3.49	6--\$3.50-\$3.99	2--\$4.50-\$4.99	\$3.80
Laborer	18/150	5--To--\$1.99 16--\$2.00-\$2.49	76--\$2.50-\$2.99 16--\$3.00-\$3.49	17--\$3.50-\$3.99 20--\$5.50-Up	\$3.11
Mechanic Maintenance (All Around)	21/259	7--\$2.50-\$2.99 10--\$3.00-\$3.49 34--\$3.50-\$3.99	40--\$4.00-\$4.49 66--\$4.50-\$4.99 88--\$5.00-\$5.49	14--\$5.50-Up	\$4.76
Tool, Die or Gauge Maker (B)	3/52	2--\$3.50-\$3.99	4--\$4.00-\$4.49	46--\$4.50-\$4.99	\$4.71
Welder	6/27	1--\$3.00-\$3.49 1--\$3.50-\$3.99	1--\$4.00-\$4.49 5--\$4.50-\$4.99	3--\$5.00-\$5.49 16--\$5.50-Up	\$5.66

Job Classification	OFFICE EMPLOYEES -- MONTHLY				Weighted Averages
	Firms and Employees	RATES REPORTED			
Draftsman	11/28	1--\$450-\$499 3--\$500-\$549 2--\$550-\$599	1--\$600-\$649 2--\$650-\$699 13--\$700-\$799	6--\$800-Up	\$723
File Clerk	3/11	4--To--\$349 2--\$350-\$399	2--\$400-\$449 1--\$450-\$499	2--\$650-\$699	\$433
Secretary-- Junior	16/61	2--To--\$349 4--\$350-\$399 10--\$400-\$449	8--\$450-\$499 19--\$500-\$549 11--\$550-\$599	7--\$600-\$649	\$506
Stenographer-- Junior	5/55	10--\$350-\$399 8--\$400-\$449	10--\$450-\$499 27--\$500-\$549		\$468
Telephone Operator- Receptionist	12/13	2--To--\$349 2--\$350-\$399	1--\$400-\$449 3--\$450-\$499	4--\$500-\$549 1--\$550-\$599	\$456
Typist	4/10	3--\$400-\$449	7--\$450-\$499		\$455

By permission of Associated Industries of Kentucky, 200 West Chestnut Street, Louisville, Kentucky 40202

LABOR ORGANIZATIONS

Union	Representing manufacturing workers at:
International Brotherhood of Electrical Workers	Thomas Industries, Inc.
Teamsters	Cowden-Ohio Company
United Auto Workers	Cynthetex Corporation
United Auto Workers	Nestaway-Coated Metallic Products, Inc.

ESTIMATED MALE LABOR SUPPLY BEAVER DAM AND HARTFORD LABOR MARKET AREA

Area	Current			Future
	Total	Not in Labor Force	Unemployed	Under- employed
Labor Market				Reaching 18 yrs. of age by 1979
Area	12,576	4,306	2,791	5,479
Ohio	1,627	827	204	596
Breckinridge	1,247	465	304	478
Butler	1,273	638	206	429
Daviness	3,549	246	1,075	2,228
Grayson	1,671	724	323	624
Hancock	528	143	170	215
McLean	658	236	196	226
Muhlenberg	2,023	1,027	313	683
	1,440			

Sources: Kentucky Department of Economic Security, Kentucky Labor Supply Estimates by County, 1972. Kentucky Department of Commerce, Future Labor Supply by 1979.

ESTIMATED FEMALE LABOR SUPPLY
BEAVER DAM AND HARTFORD LABOR MARKET AREA

Area	Current			Under- employed	Future
	Total	Not in Labor Force	Unemployed		Reaching 18 yrs. of age by 1979
Labor Market Area					
Ohio	15,097	6,300	1,629	7,168	9,496
Breckinridge	1,728	858	116	754	914
Butler	1,318	661	166	491	773
Daviess	944	393	114	437	486
Grayson	4,272	57	665	3,550	4,332
Hancock	1,656	895	177	584	835
McLean	711	319	90	302	380
Muhlenberg	1,577	1,162	114	301	431
	2,891	1,955	187	749	1,345

Sources: Kentucky Department of Economic Security, Kentucky Labor Supply Estimates by County, 1972. Kentucky Department of Commerce, Future Labor Supply by 1979.

PER CAPITA PERSONAL INCOME

Area	1970	1960	% Change
Ohio County	\$2,229*	\$1,271	+75.4
Labor Market Area			
Range	\$1,682 to 6,536*	\$652 to 1,846	N.A.
Kentucky	3,099	1,581	+96.0
U. S.	3,933	2,216	+77.5

*Unadjusted for commuting.

Sources: University of Kentucky, Office of Development Services and Business Research, Per Capita Income in Kentucky. U. S. Department of Commerce, Bureau of Economic Analysis, Survey of Current Business, August 1972.

TRANSPORTATION

Rail

Line serving Beaver Dam - Illinois Central Gulf Railroad

Services - 2 local freights daily; switching once daily 6 days a week, siding space for 103 cars. Piggyback facilities are available at Central City, 20 miles away

Line serving Hartford - Louisville & Nashville Railroad

Services - Siding space for 39 cars, industrial switching daily, 1 train daily

For details on routing, schedules, rates, and services, contact:

Manager of Industrial Development
Louisville & Nashville Railroad Company
908 West Broadway
Louisville, Kentucky 40203

and/or

Director of Industrial Development
Illinois Central Gulf Railroad Company
135 East 11th Place
Chicago, Illinois 60605

Truck Service

Company

Home Office

Beaver Dam

Harper Truck Service
Majors Transit, Inc.
McLean Trucking Company
Motor Freight Corporation
T. I. M. E. - DC, Inc.

Paducah, Kentucky
Caneyville, Kentucky
Winston-Salem, North Carolina
New York, New York
Lubbock, Texas

(cont'd.)

CompanyHome OfficeHartford

Majors Transit, Inc.
 McLean Trucking Company
 T. I. M. E. - DC, Inc.

Caneyville, Kentucky
 Winston-Salem, North Carolina
 Lubbock, Texas

Other Freight Services

United Parcel Service

Nearest shipping center is at
 Owensboro, Kentucky

REA Express

Service office at Hartford, Kentucky

HIGHWAY MILES AND TRUCK TRANSIT TIME IN DAYS FROM
 HARTFORD, KENTUCKY, TO SELECTED MARKET CENTERS

City	Delivery		City	Delivery	
	Highway Miles	Time TL		Highway Miles	Time TL
Atlanta, Ga.	362	4	Los Angeles, Calif.	2,218	7
Birmingham, Ala.	297	4	Louisville, Ky.	111	overnight
Chicago, Ill.	412	3	Nashville, Tenn.	110	3
Cincinnati, Ohio	224	3	New Orleans, La.	640	4
Cleveland, Ohio	465	3	New York, N. Y.	880	4
Detroit, Mich.	486	3	Pittsburgh, Pa.	505	4
Knoxville, Tenn.	295	4	St. Louis, Mo.	268	3

Source: Delivery time only - Majors Transit, Inc., P. O. Box 7,
 Caneyville, Kentucky 42721

AirNearest Commercial

Owensboro-Daviess County Airport
 Location: Owensboro, 21 miles northwest of Hartford
 Runways: 2 paved
 Length: 6,500 feet; 3,700 feet
 Traffic
 Control: Control tower, ground control, guards
 Lighting: Beacon, runways, wind tee, obstruction lights
 and taxi lights
 Services: 80, 91, and 100 octane; Jet A Fuel, Ozark Airlines,
 storage, major A & E repairs, general flying service,
 and taxi
 Air Freight
 Service: Space available basis

Bus -

Trailway Bus Line and Fuqua Bus Line
serve Beaver Dam and Hartford

Taxi -

24-hour service is provided to both Beaver Dam
and Hartford

Rental Services -

2 rental companies serve both Beaver Dam and
Hartford

POWER AND FUEL

Electricity

Company serving Beaver Dam and Hartford - Kentucky Utilities Company
Source of power - Kentucky Utilities Company
Total generating capacity - 1,215,000 KW
For industrial rates contact:

Kentucky Utilities Company
Industrial Development Division
120 South Limestone Street
Lexington, Kentucky 40507

Company serving Ohio County - Green River RECC, Meade County RECC
Source of power - Big Rivers RECC
Total generating capacity - 400,000 KW
For industrial rates contact:

Green River RECC
3111 Fairview Drive
P. O. Box 1389
Owensboro, Kentucky 42301

and/or

Meade County RECC
P. O. Box 367
Brandenburg, Kentucky 40108

Company serving Ohio County - Warren RECC
Source of power - Tennessee Valley Authority
Total generating capacity - 19,400,000 KW
For industrial rates contact:

Warren RECC
P. O. Box 1118
951 Fairview Avenue
Bowling Green, Kentucky 42101

Natural Gas

Company serving Beaver Dam and Hartford - Western Kentucky Gas Company

Source of supply - Texas Gas Transmission Corporation

Size of transmission mains - 26 inches (supplier)

Distribution mains - 4, 2, and 1 1/4 inches

Btu content - 1,040 per cubic foot

Specific gravity - .60

For rates and supplies contact:

Western Kentucky Gas Company
608 Frederica Street
Owensboro, Kentucky 42301

Other Fuels

Propane and butane - Pargas - Beaver Dam

Fuel Oils -

Distillate fuel oil - Standard Oil Company - Beaver Dam

Sun Oil Company - Beaver Dam

Baird & Hudson Arco Products - Hartford

Gulf Oil Products - Hartford

Marathon Oil Distributor - Hartford

Paxton & Ball, Inc., Gulf Distributor - Hartford

Residual fuel oil - arrangements must be made with the refinery.

Low sulphur content coal - Available from Eastern Kentucky

WATER AND SEWERAGE

Water

Company serving Beaver Dam - Beaver Dam Municipal Water and Sewer System

Source of treated water - Ohio County Water District

Average daily consumption - 330,000 gallons

Peak daily consumption - 425,000 gallons

Storage capacity - 250,000 gallons

Size mains - 10, 8, and 6 inches

Average pressure - 65 psi

MONTHLY WATER RATES FOR WHOLESALE AND INDUSTRIAL CONSUMERS

First	2,000 gallons	\$4.02 (minimum)
Next	3,000 gallons	.95 per M gallons
Next	5,000 gallons	.85 per M gallons
Next	15,000 gallons	.70 per M gallons
Next	25,000 gallons	.60 per M gallons
All over	50,000 gallons	.55 per M gallons

Company serving Hartford - Hartford Municipal Water Works and Sewer System

Source - Rough River

Treatment plant capacity - 504,000 gpd

Average daily consumption - 200,000 gallons

Peak daily consumption - 300,000 gallons

Type treatment - Coagulated, settled, filtered, chlorinated, fluoridated

Storage capacity - 200,000 gallons

Size lines - 6, 4, 2, and 3/4 inches

Average pressure - 78 psi

Average temperature - 60 degrees F.

QUARTERLY METER RATES FOR WHOLESALE AND INDUSTRIAL CONSUMERS

Minimum charge	\$7.35 for First 10,500 gallons
Next	6,000 gallons \$.70 per M gallons
Next	6,000 gallons .60 per M gallons
All over	22,501 gallons .50 per M gallons

Name of water district - Ohio County Water District
 Area served - Ohio County and a 4-mile area in Daviess County
 Date when water district began operating - March, 1967
 Source of raw water - Green River
 Capacity of treatment plant - 1,000,000 gallons per day
 Type of treatment - Alum, lime and chlorine
 Average amount of water used in a 24-hour period - 710,000 gallons
 Peak amount of water used in a 24-hour period - 830,000 gallons
 Storage capacity - 625,000 gallons
 Average pressure - 85 psi
 Average temperature - 60 degrees F.
 Size lines - 10, 8, 6, 4, and 3 inches
 Rates -

First	2,000 gallons	\$4.00
Next	8,000 gallons	1.40 per M gallons
Next	10,000 gallons	1.20 per M gallons
Next	30,000 gallons	1.00 per M gallons
Next	50,000 gallons	.80 per M gallons
Next	100,000 gallons	.55 per M gallons
Next	800,000 gallons	.40 per M gallons
Next	1,000,000 gallons	.35 per M gallons

Surface water sources - Green and Rough Rivers
 Average discharge - Rough River near Dundee, Kentucky, 949 cfs (32 years, unadjusted); Green River at Paradise, Kentucky, 8,600 cfs (22 years, unadjusted)
 Expected ground water yield - 50 to 200 gpm along eastern boundary of county; 5 to 50 gpm along Rough River; 5 gpm or less over remainder of county

Sewerage

Company serving Beaver Dam - Beaver Dam Municipal Water and Sewer System
 Average daily flow - 300,000 gallons
 Treatment - Secondary
 Type treatment - Lagoon
 Treated effluent discharged into - Rough River
 Size of sanitary mains - 10 and 8 inches
 Rates - 50 percent of monthly water bill

Company serving Hartford - Hartford Municipal Water Works and Sewer System*

Average daily flow - 100,000 gallons

Treatment - Secondary

Type treatment - Lagoon

Treated effluent discharged into - Rough River

Size of sanitary mains - 10 and 8 inches

Size of storm mains - 15 to 18 inches

Quarterly meter rates - Minimum sewer charge is \$6; All over 10,500 gallons is .04 per hundred gallons up to \$24

*The Hartford Municipal Water Works and Sewer System is extending an 8-inch sewer line one mile northeast of the city limits and it is expected to be completed by the Fall of 1973.



OHIO COUNTY COURTHOUSE

LOCAL GOVERNMENT

City

Beaver Dam

Structure - Mayor - 4-year term; 6 councilmen - 2-year terms
Budget - General Fund, 1971-72 - \$30,709; Water and Sewer Fund, 1973
\$116,750
Fees and licenses - Occupational licenses - \$10 to \$75 annual fee

Hartford

Structure - Mayor - 4-year term; 6 councilmen - 2-year terms
Budget 1972 - General Fund \$8,401; Water and Sewer Fund \$75,000
Fees and licenses - Occupational licenses - \$5 to \$25 annually

County

Structure - County Judge - 4-year term; 5 magistrates - 4-year terms
Budget 1972-73 - General Fund \$147,700; Road Fund \$88,000

Assessed Value of Property, 1973

<u>Classes of Property</u>	<u>Beaver Dam</u>	<u>Hartford</u>	<u>Ohio County</u>
Real Estate	\$11,650,425	\$7,121,570*	\$83,395,520 (1972)
Tangibles	2,983,570		25,058,260 (1972)
Public Service	322,969		14,254,437 (1971)

Property Taxes

Land and buildings are taxed by the state and may be taxed by local jurisdictions. The state rate is \$0.015 per \$100 of assessed valuation.

Tangible personal property owned by manufacturers (automobiles, trucks, finished goods, office furniture, office equipment) is taxed by the state at \$0.15 per \$100 and may be taxed by local jurisdictions.

Manufacturing machinery, raw materials inventories, and goods in process inventories are not subject to local taxation. The state rate is \$0.15 per \$100.

Property stored in public warehouses is not subject to local taxation. The state rate is only \$0.015 per \$100.

All property is assessed at 100 percent of fair cash value.

*Includes tangibles and public service.

Local Property Tax Rate Per \$100 of Assessed Valuation, 1972*

<u>Taxing Jurisdiction</u>	<u>Beaver Dam</u>	<u>Hartford</u>	<u>Ohio County</u>
County	\$.168	\$.168	\$.168
School	.369	.369	.369
City	.300	.400	

Special (not county wide): \$.06 - Caney Creek Watershed

Utilities Gross Receipts Tax for Schools

Ohio County levies a 3 percent tax on utilities receipts for schools. This tax is paid by all consumers of utilities. Exempted are receipts from utilities services that are resold and the receipts from the sale of energy or energy producing fuels that exceed 3 percent of the cost of production in manufacturing, processing, mining or refining.

Planning and Zoning

Joint agency - Ohio County Joint Planning and Zoning Commission of Hartford and Beaver Dam

Zoning enforced - Cities of Hartford and Beaver Dam and approximately 2 miles outside Hartford and Beaver Dam

Subdivision regulations enforced - Cities of Hartford and Beaver Dam and approximately 2 miles outside Hartford and Beaver Dam

Mandatory state codes enforced - Plumbing, National Fire Protection Association Code, National Building Code (for major buildings and residential construction containing more than 12 bedrooms per building)

Safety

<u>Police</u>	<u>Beaver Dam</u>	<u>Hartford</u>	<u>Ohio County</u>
Total staff	2	2	5
Radio-patrol cars	1	2	5

Fire

American Insurance

Association Fire Rating 7 7

Volunteers 45 26

Equipment:

750 gpm pumpers 1 1

500 gpm pumpers 1 1

Emergency truck 1

Army vehicle with winch on front 1

*Kentucky Department of Revenue, Kentucky Property Tax Rates, 1972

Rescue Service

Ohio County Rescue Squad:

Number of volunteers - 36

Equipment - 1 panel truck, 1 citizens band radio, 1 police radio

Personnel training - First Aid

Sanitation

	<u>Beaver Dam</u>	<u>Hartford</u>	<u>Ohio County</u>
Type service	Private	Municipal	Private
Fee charged:			
residential	\$4.00 monthly	None	\$4 monthly
business	Contract	None	Contract
Collection frequency:			
residential	Weekly	Once a month	When desired
business	Contract	Once a month	When desired
Trash pickup	Two times per month	Once a month	
Disposal method	Landfill	Landfill	Landfill

EDUCATION

Public Schools

	<u>Ohio County</u>
Total Enrollment (Fall 1972)	4,380
Elementary	2,710
Junior High	420
High School	1,250
Student-Teacher Ratio	22-1
Elementary	25-1
Junior High	22-1
High School	19-1
Accreditation	Comprehensive
Percent High School Graduates to College	34.7
Expenditures Per Pupil (1971-72)	\$456.14
Bonded Indebtedness, June 30, 1972	\$2,551,000

Vocational Schools

	<u>Nearest State School</u>	<u>Nearest Area Education Center</u>
	Daviness County State Vocational-Technical School	Owensboro Area Vocational Education Center
Location	Owensboro	
Miles Distant	21	21
Curriculum	Accounting Jr. Management Clerical Secretarial Marketing & Distributive Education Child Care Food Service Home & Community Service	Practical Nursing Electronics (Communications) Auto Mechanics Carpentry Cosmetology Drafting Machine Shop Office Machines Repair Welding
	(cont'd.)	

Nearest State School (cont'd.)

Learning Lab
Electronics (Industrial)
Instrumentation
Air Conditioning & Refrigeration
Auto Body Repair
Auto Mechanics
Cosmetology
Diesel Mechanics
Masonry
Printing
Welding

Arrangements can be made to provide training in the specific production skills required by an industrial plant. Instruction may be conducted either in the vocational school or in the industrial plant, depending upon the desired arrangement and the availability of special equipment.

Colleges and Universities

<u>Name</u>	<u>Area - Within 60 miles</u>		<u>Highest Degree Conferred</u>
	<u>Location</u>	<u>Enrollment (Fall 1972)</u>	
Brescia College	Owensboro	931	Baccalaureate
Kentucky Wesleyan College	Owensboro	772	Baccalaureate
Western Kentucky University	Bowling Green	11,329	Masters, Ph. D.*
Hopkinsville Community College	Hopkinsville	752	Associate
Madisonville Community College	Madisonville	356	Associate
Indiana State University Evansville Campus	Evansville, Ind.	2,648	Baccalaureate
University of Evansville	Evansville, Ind.	5,468	Masters

*Cooperative program with the University of Kentucky, Lexington, for a Doctorate in Education only.



OHIO COUNTY HOSPITAL

HEALTH

Hospitals

<u>General Hospital</u>	<u>Location</u>	<u>Beds</u>
Ohio County Hospital	Hartford, Kentucky	68

General hospital facilities - Emergency room, operating room,
OB ward, laboratory, X-ray, physical therapy, inhalation therapy

Medical staff - 7 doctors, 14 registered nurses, 18 licensed practical
nurses

Nursing Homes

	<u>Number</u>	<u>Beds</u>
Personal care homes	4	267

Public Health

Facility - Ohio County Health Department
Staff - Nurse, sanitation inspector, clerk-typist
Budget 1972-73 - \$35,753

OTHER LOCAL FACILITIES

Communications

	<u>Beaver Dam</u>	<u>Hartford</u>
Telephone -	South Central Bell	South Central Bell
Services -	Telephone Company Standard	Telephone Company Standard
Telegraph -	Western Union	Western Union
Services -	Telephone	Telephone
Postal - U.S. Post Office		
Class -	Second	Second
Mail received -	Three times daily	Three times daily
Mail dispatched -	Two times daily	Two times daily
Newspapers -		
Weekly and circulation -	Ohio County Messenger 6,000	Ohio County News 4,100
Weekly and circulation -		Ohio County Times 6,000
Other papers received from -	Owensboro and Louisville, Kentucky; Evansville, Indiana	
Radio -	WLLS	
Stations received from -	Bowling Green, Central City, Henderson, Louisville, Madisonville, and Owensboro, Kentucky; Evansville, Indiana	
Television -		
Reception from -	Bowling Green and Paducah, Kentucky; Evansville, Indiana; Nashville, Tennessee	
Kentucky Educational Television -	Bowling Green transmitter, Channel 53	

Library Services

Public library - Ohio County Library
 Size collection - 24,000 volumes
 Circulation, 1972 - 70,000
 Services - 1 bookmobile, meeting rooms, story hour, phonograph
 and records, films, strip and slide projector, paintings, magazines,
 paperback books

Religious Institutions

	<u>Beaver Dam</u>	<u>Hartford</u>
Number of churches -	8	7
Denominations -	Baptist Catholic Christian Church of Christ Church of God Full Gospel Church Methodist Presbyterian	Baptist Christian Church of Christ Church of God Full Gospel Church Methodist Presbyterian
Nearest Synagogues -	Owensboro - 25 miles away	
Congregations -	Adath Israel (reform)	

Financial Institutions

	<u>Statement as of December 31, 1972</u>	
<u>Banks</u>	<u>Assets</u>	<u>Deposits</u>
The Beaver Dam Deposit Bank	\$17,624,535.05	\$16,256,709.71
The Citizens Bank of Hartford	2,790,071.65	2,550,887.95
The Hartford Bank and Trust Company	11,783,891.88	10,976,044.50
<u>Savings and Loan Associations</u>	<u>Assets</u>	<u>Shared Accounts</u>
Ohio County Federal Savings and Loan Association	\$ 7,948,742.73	\$ 6,831,068.91

Motels

Total number - 3
Units - 45



OHIO COUNTY LIBRARY



HARTFORD CHRISTIAN CHURCH

Clubs and Organizations

Beaver Dam and Hartford

Business and Civic - Chamber of Commerce, Jaycees, Lions, Ohio County Medical Society, Ohio County Ministerial Association, Optimist, Red Cross Chapter

Fraternal - American Legion, Masons, Shrine, VFW

Women's - American Legion Auxiliary, DAR, Eastern Star, Homemakers, Jaycettes, Woman's Club

Youth - Boy Scouts, Brownies, Cub Scouts, FBLA, FFA, FHA, FTA, 4-H, Girl Scouts, Little League

Other - Ohio County Country Club, Ohio County Fish and Game Club, Ohio County Saddle Club

RECREATION

Local

	<u>Beaver Dam</u>	<u>Hartford</u>
Public Recreation Facilities		
Supervised program -	Yes	Yes
Parks -	1	1
Playgrounds -	2	2
Swimming pool -		1
Tennis courts -	2	2
Baseball diamonds -	1	1
Football fields -	1	1
Other -	Fairgrounds	
Private Recreation Facilities		
Country club -		1
Golf course -		1
Swimming pool		1
Movie theaters -	1 drive-in	1 indoor
Bowling facility	1	
Other -		Tennis courts
Tourist Attractions		
Lake Washburn		

Area (Within 50 miles)

John James Audubon State Park - Henderson
 Lake Malone State Park - Dunmor
 Rough River Dam State Resort Park - Falls of Rough
 Owensboro has a multitude of museums, recreational facilities, sporting
 and cultural events

AGRICULTURE - NATURAL RESOURCES - CLIMATE

Agriculture*

	<u>Ohio County</u>	<u>Labor Market Area</u>
Total land area (acres)	381,248	2,223,936
Percent of area in farm land	49.4	67.9
Number of farms	1,539	10,767
Average size of farms (acres)	122.3	140.3
1969 value of all farm products	\$5,345,177	\$ 59,210,673
Value per farm	3,473	5,499
Total crop sales	2,616,741	28,169,137
Total livestock & livestock products	2,678,171	30,605,072
1970 agricultural production included:		
Burley tobacco (lbs.)	2,220,000	23,037,000
Corn (bu.)	585,000	5,894,000
Cattle and calves (number)	28,200	247,400
Hogs and pigs (number)	19,400	177,600
Milk production, 1969 (lbs.)	6,050,000	103,720,000

Natural Resources

Principal mineral resources	Coal, limestone, and petroleum
Acres of commercial forest land	194,800
Most abundant tree species	Red oak, white oak, hickory, sweetgum, yellow poplar, beech and hard maple

*U. S. Department of Commerce, Bureau of the Census, Census of Agriculture, 1969. U. S. Department of Agriculture and Kentucky Department of Agriculture, Kentucky Agricultural Statistics, 1971.

Climate*

Ohio County

Temperature

Annual mean (30-year record)	57.0 degrees
Average annual 1972	54.5 degrees
Record highest, July, 1966 (12-year record)	104.0 degrees
Record lowest, January, 1963 (12-year record)	-18.0 degrees
Normal heating degree days (30-year record)	4,435
(Heating degree day totals are the sums of negative departures of average daily temperatures from 65 degrees F.)	

Precipitation

Mean annual total (30-year record)	41.45 inches
Mean annual snow and sleet (32-year record)	13.4 inches
Total precipitation 1972	42.27 inches
Mean number days precipitation (.01 inch or more) (32-year record)	114
Average number days thunderstorms (32-year record)	46
Prevailing winds (14-year record)	South, southwest

*U. S. Department of Commerce, Environmental Science Services Administration, Climatological Data, 1972. Station of record: Evansville, Indiana.

HISTORY

Ohio County became Kentucky's thirty-fifth county in 1798 and was created from a portion of Hardin County. The county was named for the beautiful Ohio River. Before Daviess and Hancock Counties were created from its northern areas, Ohio County's northern border was the Ohio River. Located in the western section of the state, Ohio County is drained principally by the Green River, which forms most of its southern border; the Rough River, which flows from the northeast to the southwest in the central part of the county; the South (east) Fork of Panther Creek, located in the northern section; and Caney Creek, which runs along the eastern border into the Rough River. Ohio County is comprised of 596 square miles and is the fifth largest county in the state.

Oil was discovered in Ohio County in 1912 in a deep well about 4 miles east of Hartford. This well became the first profitable well in western Kentucky. At various times since then, Ohio County has ranked first in the state as an oil producing county.

Hartford, located on the bank of the Rough River, became the county seat. At an elevation of 425 feet, it is surrounded by hills which rise from 650 to 700 feet above it. Founded in 1790, it was originally named Deer Crossing, and then later became known as "Hart-ford". In 1808, it was incorporated, and by 1840 had a population of 400. The town consisted of a brick courthouse, eight other county buildings, two churches, two taverns, fifteen stores and groceries, and ten mechanic shops. There were also six doctors and six lawyers.

Beaver Dam, today the largest city of Ohio County, was described in 1870 as having a blacksmith shop, Baptist Church, railroad depot, drug store, general store, hotel and livery stable. By 1938, Beaver Dam had a population of 1,036, and had become an important mining center of the Western Kentucky Coal Field.

Among the many beauties of Ohio County is the Green River, with its slow-flowing and deeply-colored water. A 9-foot navigation channel is maintained to mile point 103 near Paradise, Kentucky. The remainder of the river along Ohio County's boundary has a 5.5-foot channel. Along the stream have been found Indian shell mounds which are exceedingly rare in Kentucky.

Today, Ohio County's location near several excellent market centers and metropolitan areas, and its accessibility to others by way of an excellent system of highways and waterways marks it as a prime area for economic growth.

Manufacturing employment has increased from 234 in 1962 to 1,074 in 1972, with the heaviest concentration of production in apparel, bituminous concrete, leather and vinyl gloves, lighting fixtures, and plastic coated metallic products. Largest of the county's firms are Montpelier Glove Company; State Contracting and Stone Company, Inc.; Cowden-Ohio Company; Nestaway-Coated Metallic Products, Inc.; and Thomas Industries, Inc.