

1987

# Industrial Resources: Owsley County - Booneville

Kentucky Library Research Collections  
Western Kentucky University, [spcol@wku.edu](mailto:spcol@wku.edu)

Follow this and additional works at: [https://digitalcommons.wku.edu/owsley\\_cty](https://digitalcommons.wku.edu/owsley_cty)



Part of the [Business Administration, Management, and Operations Commons](#), [Growth and Development Commons](#), and the [Infrastructure Commons](#)

---

## Recommended Citation

Kentucky Library Research Collections, "Industrial Resources: Owsley County - Booneville" (1987). *Owsley County*. Paper 13.  
[https://digitalcommons.wku.edu/owsley\\_cty/13](https://digitalcommons.wku.edu/owsley_cty/13)

This Report is brought to you for free and open access by TopSCHOLAR®. It has been accepted for inclusion in Owsley County by an authorized administrator of TopSCHOLAR®. For more information, please contact [topscholar@wku.edu](mailto:topscholar@wku.edu).



78  
584 Owsley County, Ky

## RESOURCES FOR ECONOMIC DEVELOPMENT

# Booneville

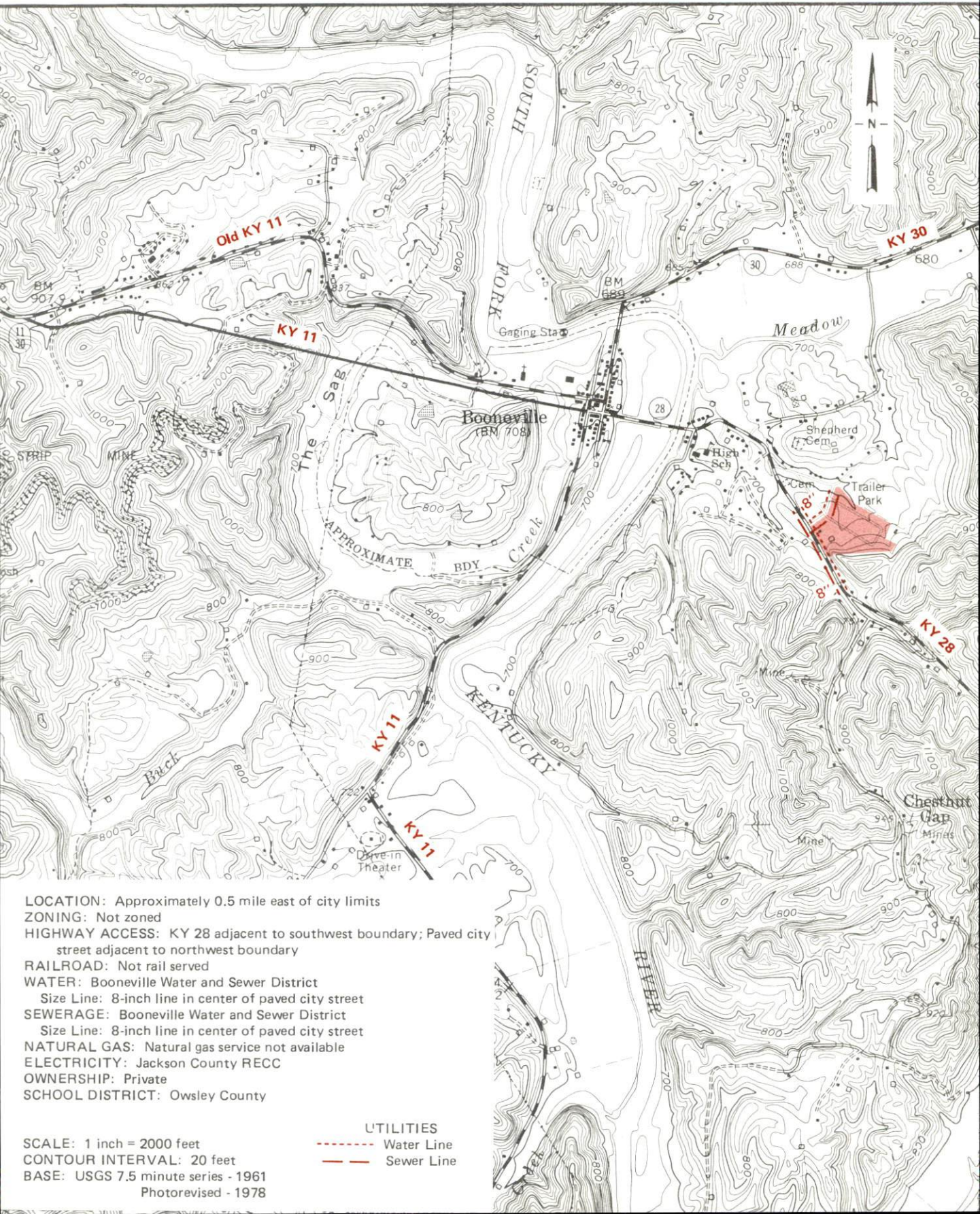


**KENTUCKY**  
The business environment is right.



# BOONEVILLE, KENTUCKY -- Site 187 -- 18 Acres

For more information contact the Kentucky Department of Economic Development, Industrial Development & Marketing Division, Capital Plaza Tower, Frankfort, Kentucky 40601 (502-564-7140).



LOCATION: Approximately 0.5 mile east of city limits

ZONING: Not zoned

HIGHWAY ACCESS: KY 28 adjacent to southwest boundary; Paved city street adjacent to northwest boundary

RAILROAD: Not rail served

WATER: Booneville Water and Sewer District

Size Line: 8-inch line in center of paved city street

SEWERAGE: Booneville Water and Sewer District

Size Line: 8-inch line in center of paved city street

NATURAL GAS: Natural gas service not available

ELECTRICITY: Jackson County RECC

OWNERSHIP: Private

SCHOOL DISTRICT: Owsley County

SCALE: 1 inch = 2000 feet

CONTOUR INTERVAL: 20 feet

BASE: USGS 7.5 minute series - 1961

Photorevised - 1978

## UTILITIES

----- Water Line  
----- Sewer Line

RESOURCES FOR ECONOMIC DEVELOPMENT  
BOONEVILLE, KENTUCKY

Prepared by  
The Kentucky Department of Economic Development  
Division of Research and Planning  
in cooperation with  
The City of Booneville

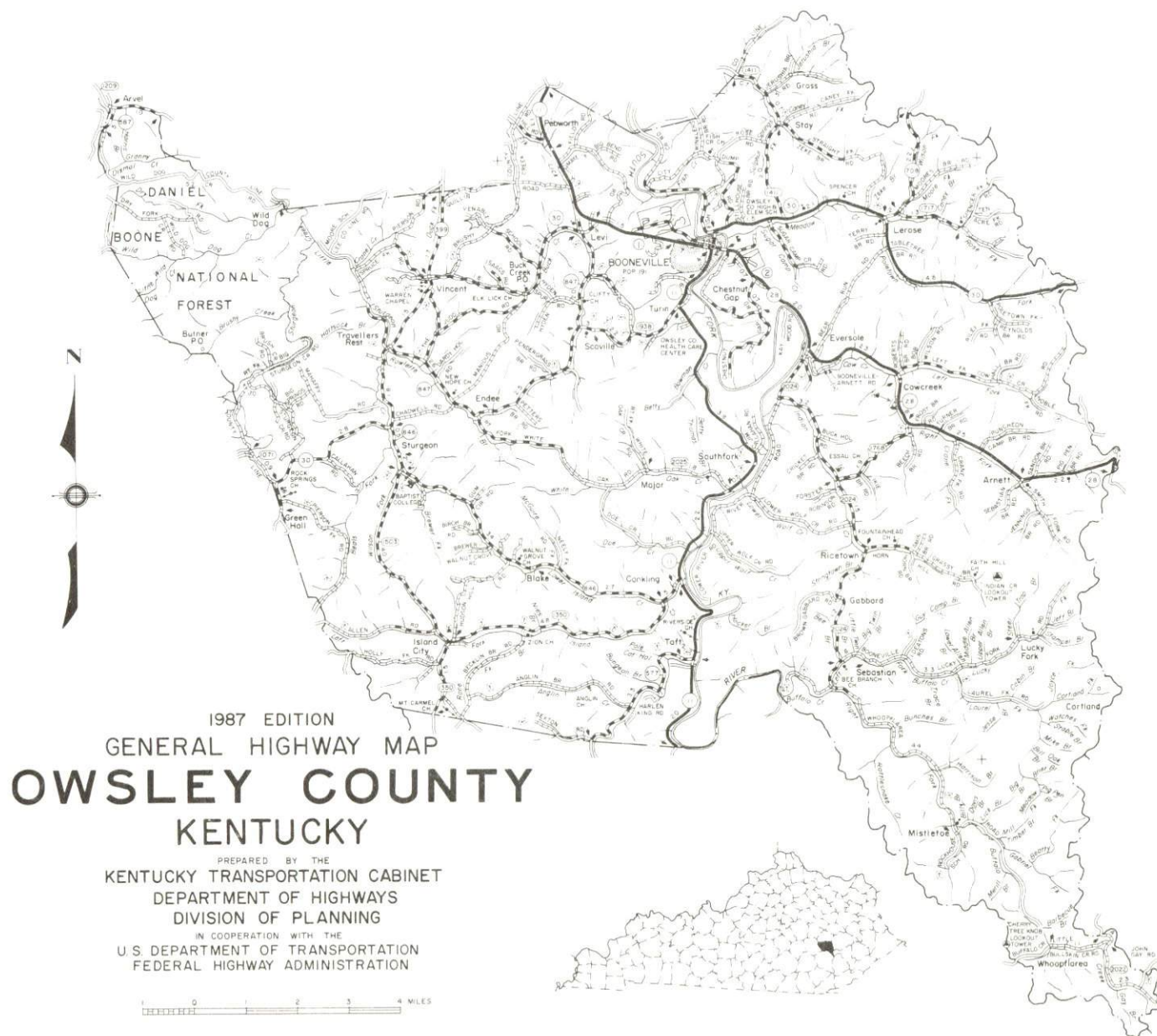
1987



## TABLE OF CONTENTS

<u>Chapter</u>	<u>Page</u>
INDUSTRIAL SITES . . . . .	i
BOONEVILLE, KENTUCKY - A RESOURCE PROFILE . . . . .	1
THE LABOR MARKET AREA . . . . .	2
Population . . . . .	2
Population Projections . . . . .	2
Labor Force Characteristics of Residents, 1986 . . . . .	3
Selected Components of Nonagricultural Employment, by Place of Work, 1986 . . . . .	3
Per Capita Personal Income . . . . .	4
Estimated Male Labor Supply . . . . .	5
Estimated Female Labor Supply . . . . .	5
Average Weekly Wages by Industry, by Place of Work, 1986 . . . . .	6
EXISTING INDUSTRY . . . . .	8
Manufacturing Firms . . . . .	8
Selected Industrial Services . . . . .	8
TRANSPORTATION . . . . .	9
Rail . . . . .	9
Highways . . . . .	9
Truck Service . . . . .	9
Air . . . . .	10
Air Express Service . . . . .	10
POWER AND FUEL . . . . .	11
Electricity . . . . .	11
Other Fuels . . . . .	11
WATER AND SEWERAGE . . . . .	12
Public Water Supply . . . . .	12
Sewerage . . . . .	12
CLIMATE . . . . .	13

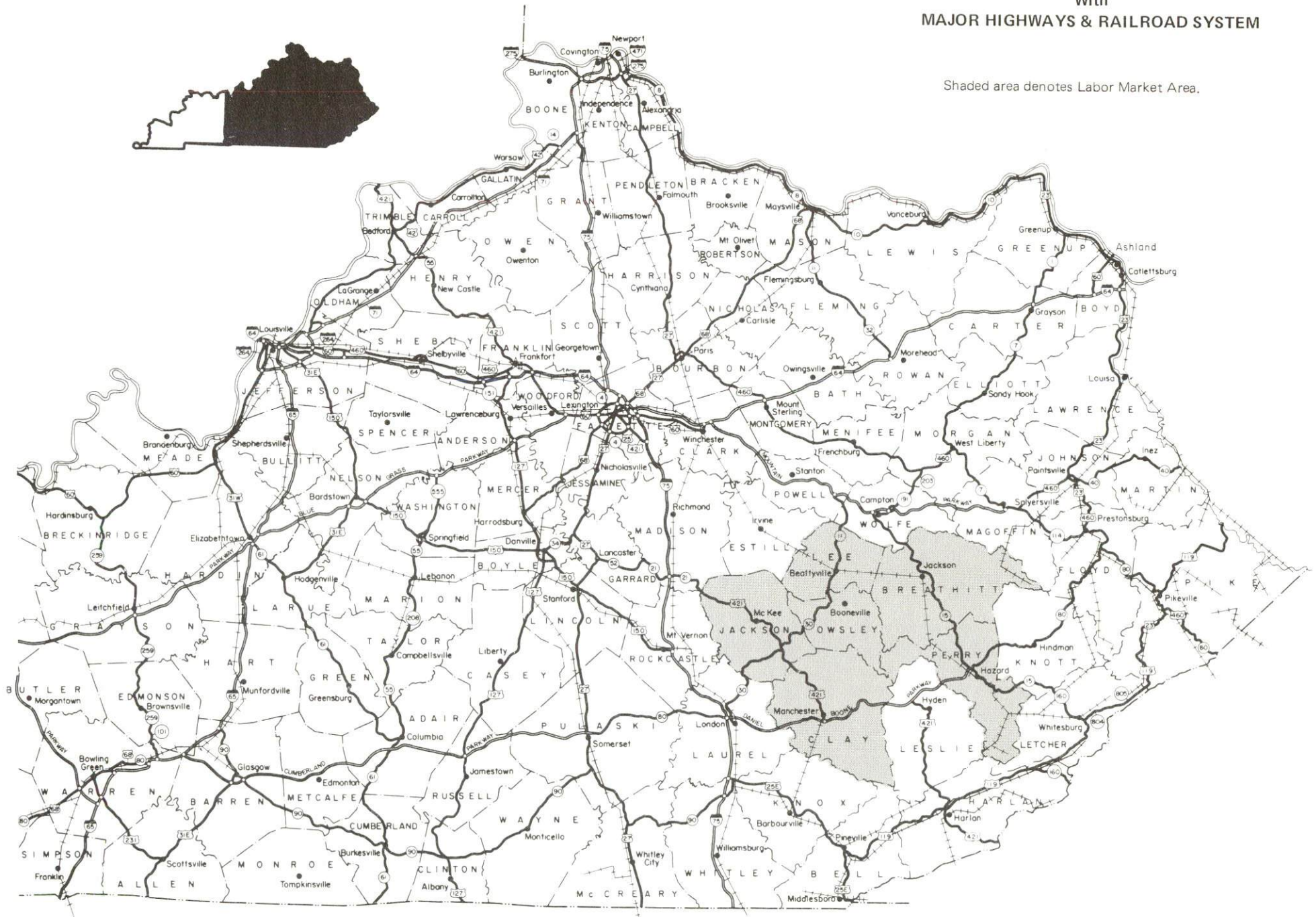
<u>Chapter</u>	<u>Page</u>
LOCAL GOVERNMENT . . . . .	14
Structure . . . . .	14
Planning and Zoning . . . . .	14
Local Fees and Licenses . . . . .	14
State and Local Property Taxes . . . . .	15
Combined State and Local Rates Per \$100 Valuation, 1986 . . . . .	15
Safety . . . . .	16
Police . . . . .	16
Fire . . . . .	16
Rescue Service . . . . .	16
Refuse Collection and Disposal . . . . .	16
EDUCATION . . . . .	17
Public Schools . . . . .	17
Area Colleges and Universities . . . . .	17
Vocational Training . . . . .	18
HEALTH . . . . .	20
Local Medical Personnel . . . . .	20
Hospitals . . . . .	20
Other Medical Facilities . . . . .	20
Ambulance Service . . . . .	20
OTHER LOCAL FACILITIES. . . . .	21
Communications . . . . .	21
Library Services . . . . .	21
Religious Institutions . . . . .	21
Financial Institutions . . . . .	21
Hotels and Motels . . . . .	21
RECREATION . . . . .	22





**BOONEVILLE LABOR MARKET AREA**  
With  
**MAJOR HIGHWAYS & RAILROAD SYSTEM**

Shaded area denotes Labor Market Area.





## BOONEVILLE, KENTUCKY - A RESOURCE PROFILE

Booneville, the county seat of Owsley County, is located in the Eastern Mountain Region of Kentucky, 86 miles southeast of Lexington, 160 miles southeast of Louisville, 164 miles south of Cincinnati, and 130 miles southwest of the Ashland-Huntington area. Booneville's location in the mountains of Eastern Kentucky provides it with vast opportunities to become a recreation center. In 1984 Booneville had a population of 194.

Owsley County, primarily a rural area, covers an area of 197 square miles. Owsley County had a 1986 population of 5,600.

**The Economic Framework** - The total number of Owsley County residents employed in 1986 averaged 1,772. Wholesale and retail trade provided 83 jobs; 258 people were employed in service occupations; state and local government accounted for 218 employees; contract construction firms provided 4 jobs; and 21 people were employed by mining and quarrying operations.

**Labor Supply** - There is a current estimated labor supply of 12,024 men and 13,335 women available for industrial jobs in the labor market area. In addition, from 1987 through 1991, 4,902 young men and 4,567 young women in the area will become 18 years of age and potentially available for industrial jobs.

**Transportation** - The nearest rail service is provided by the CSX Corporation at Beattyville, 11 miles north of Booneville. Booneville is served by Kentucky Highways 11 and 52, both are "AAA"-rated (80,000-pound gross load limit) trucking highways. Access to the Mountain Parkway via Kentucky 11 is 31 miles to the north. Access to the Daniel Boone Parkway, a multi-lane toll road, is 43 miles southeast via Kentucky Highways 28 and 15. One trucking company provides interstate and intrastate service to Booneville. The nearest scheduled commercial airline service is available at Bluegrass Airport near Lexington, 91 miles northwest of Booneville. The nearest local air service is available at the East Kentucky Regional Airport, located 15 miles north of Hazard, which is approximately 60 miles east of Booneville.

**Power and Fuel** - Electric power is provided to Booneville and Owsley County by the Jackson County Rural Electric Cooperative Corporation, which receives its power from the East Kentucky Power Cooperative. Natural gas is not available in Booneville. One distributor of propane and one distributor of fuel oil serve Booneville.

**Education** - The Owsley County School System provides primary and secondary education to Booneville and Owsley County. One university, one senior college, two junior colleges, and one community college are located within 60 miles of Booneville. Vocational training is available at the Hazard State Vocational-Technical School at Hazard, 43 miles east of Booneville, and at the Lee County Area Vocational Education Center, located at Beattyville, 11 miles north of Booneville.

## LABOR MARKET STATISTICS

The Booneville Labor Market Area includes Owsley County and the adjoining Kentucky counties of Breathitt, Clay, Jackson, Lee and Perry.

### POPULATION

Area	1986*	1980	1970	Percent Nonwhite
				1980
Booneville	194	191	126	0.5
Labor Market Area	101,300	98,978	80,576	-
Owsley County	5,600	5,709	5,023	0.2
Breathitt County	16,700	17,004	14,221	0.5
Clay County	23,600	22,752	18,481	1.7
Jackson County	12,500	11,996	10,005	0.1
Lee County	8,000	7,754	6,587	0.5
Perry County	34,900	33,763	26,259	2.1

\* Population estimates. City estimates are for 1984.

Note: The 1980 city counts of population by race are provisional.

Sources: U.S. Department of Commerce, Bureau of the Census, 1980 Census of Population and Housing, March 1981; 1980 Census of Population, Number of Inhabitants. University of Louisville, Urban Studies Center, Population Unit, October 1985; University of Louisville, Urban Studies Center, State Data Center, Provisional Estimates of the Population of Counties and Components of Change, July 1, 1985.

### POPULATION PROJECTIONS

Area	1990	1995	2000	2010
Labor Market Area	107,887	113,473	118,277	125,949
Owsley County	6,016	6,315	6,545	6,921
Breathitt County	17,074	17,528	17,993	18,728
Clay County	25,203	26,498	27,642	29,507
Jackson County	12,882	13,246	13,570	14,052
Lee County	8,291	8,694	8,967	9,369
Perry County	38,421	41,192	43,560	47,372

Source: University of Louisville, Urban Studies Center, Population Research Unit, How Many Kentuckians: Population Forecasts, 1980-2020, the 1986 Edition, Spring 1986.



**LABOR FORCE CHARACTERISTICS OF RESIDENTS, 1986**

	<u>Owsley County</u>	<u>Labor Market Area</u>
Civilian Labor Force	2,078	32,216
Employment	1,772	27,576
Unemployment	306	4,640
Rate of Unemployment (%)	14.7	14.4

Source: Kentucky Cabinet for Human Resources, Kentucky Labor Force Estimates, Annual Averages, 1986.

**SELECTED COMPONENTS OF NONAGRICULTURAL EMPLOYMENT  
BY PLACE OF WORK, 1986**

	<u>Owsley County</u>	<u>Labor Market Area</u>
All Industries (total)	606	20,334
Manufacturing	0	472
Wholesale & Retail Trade	83	4,220
Services	258	2,830
State/Local Government	218	4,401
Contract Construction	4	354
Mining & Quarrying	21	5,057

Note: Excludes domestic workers, railway workers, certain nonprofit corporations, majority of federal government workers, and self-employed workers.  
Source: Kentucky Cabinet for Human Resources, Average Monthly Workers Covered by Kentucky Unemployment Insurance Law, 1985.

PER CAPITA PERSONAL INCOME

<u>Area</u>	<u>1980</u>	<u>1984</u>	<u>Percent Change</u>
Owsley County	\$ 3,560	\$ 5,093	43.1
Labor Market Area Range	\$3,560 - 6,305	\$5,093 - 7,668	-
Kentucky	7,644	10,232	33.9
U.S.	9,494	12,772	34.5

Sources: U.S. Department of Commerce, Bureau of Economic Analysis. Kentucky Economic Information System, June 1986.



ESTIMATED MALE LABOR SUPPLY  
BOONEVILLE LABOR MARKET AREA

Area	Current				Future
	Total Male	Unemployed	Under-employed	Not in Labor Force	Becoming 18 years of age 1987 thru 1991
Labor Market					
Area*	12,024	3,261	2,260	6,503	4,902
Owsley	680	230	190	260	256
Breathitt	1,914	439	305	1,170	777
Clay	3,260	732	489	2,039	1,227
Jackson	1,447	483	356	608	606
Lee	887	400	202	285	363
Perry	3,836	977	718	2,141	1,673

ESTIMATED FEMALE LABOR SUPPLY  
BOONEVILLE LABOR MARKET AREA

Area	Current				Future
	Total Female	Unemployed	Under-employed	Not in Labor Force	Becoming 18 years of age 1987 thru 1991
Labor Market					
Area*	13,335	1,379	1,600	10,356	4,567
Owsley	658	76	59	523	251
Breathitt	2,205	209	237	1,759	796
Clay	3,055	316	391	2,348	1,110
Jackson	1,631	229	176	1,226	520
Lee	977	144	170	663	306
Perry	4,809	405	567	3,837	1,584

\* Additional workers may be drawn from other nearby counties.

Note: Unemployed - persons unemployed and actively seeking work; Underemployed - persons employed but working only 14 to 26 weeks per year; Not in Labor Force - represents the number of persons who would enter the labor force if suitable employment were available (based on the assumption that persons in Kentucky would like to participate in the labor force in the same proportion that they do nationally).

Sources: Kentucky Cabinet for Human Resources, Kentucky Labor Supply Estimates by County, 1986. Kentucky Department of Economic Development, Future Labor Supply Becoming 18 Years of Age, 1987 thru 1991.

AVERAGE WEEKLY WAGES BY INDUSTRY  
BY PLACE OF WORK, 1986

	<u>Owsley County</u>	<u>Breathitt County</u>	<u>Clay County</u>
All Industries	\$209.54	\$406.81	\$369.22
Mining & Quarrying	299.44	*	544.03
Contract Construction	97.00	185.37	183.44
Manufacturing	0	*	190.15
Transportation, Communications & Public Utilities	289.61	336.44	328.45
Wholesale & Retail Trade	158.19	189.14	218.38
Finance, Insurance & Real Estate	230.58	347.20	274.70
Services	174.90	203.90	230.16
State/Local Government	260.30	305.92	284.73
Other	0	180.83	*
	<u>Jackson County</u>	<u>Lee County</u>	<u>Perry County</u>
All Industries	\$249.51	\$259.05	\$394.28
Mining & Quarrying	346.43	420.52	622.77
Contract Construction	254.48	171.61	378.66
Manufacturing	195.38	*	397.35
Transportation, Communications & Public Utilities	316.56	387.91	449.98
Wholesale & Retail Trade	189.65	202.77	230.09
Finance, Insurance & Real Estate	*	396.83	388.01
Services	200.52	187.96	299.42
State/Local Government	248.53	258.91	273.91
Other	*	*	246.70

\* Not disclosed.

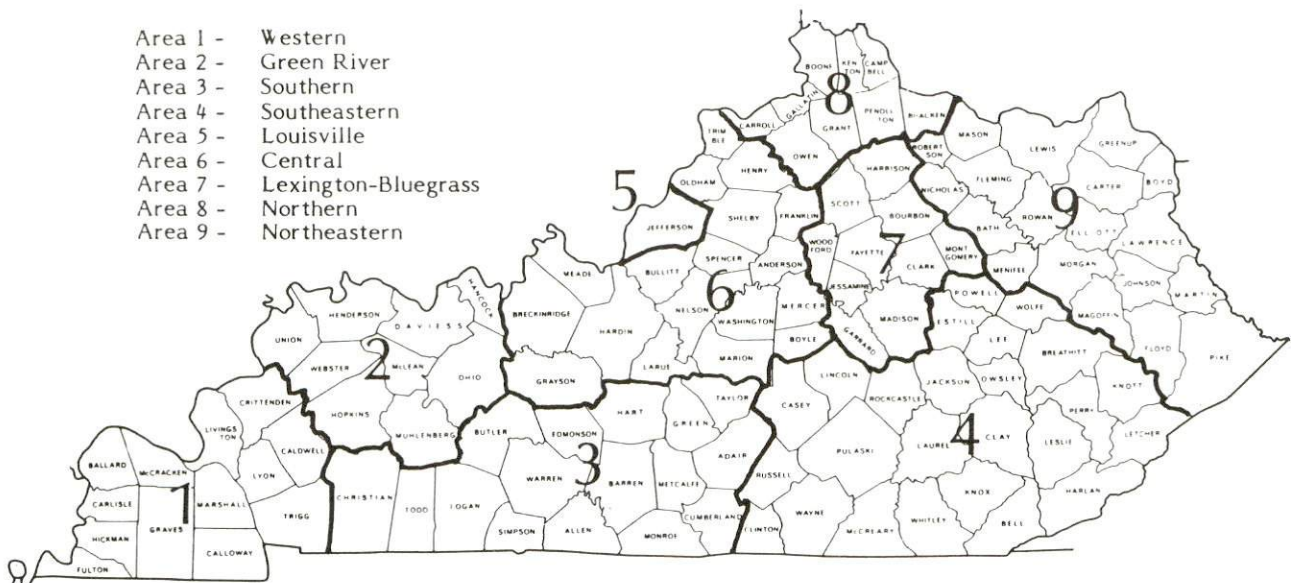
**Note:** The average weekly wage for each category includes the salaries and wages of all persons working for that type business. For example, the manufacturing category includes both production workers and administrative personnel. Excludes domestic workers, railway workers, certain nonprofit corporations, majority of federal government workers, and self-employed workers.

**Source:** Kentucky Cabinet for Human Resources, Average Weekly Wages of Workers Covered by Kentucky Unemployment Insurance Law, 1985.



Occupational wage rates for specific industries are usually not available to most government agencies, and wage data furnished to state employment agencies by individual industrial employers are protected from disclosure by federal law. The most reliable up-to-date wage information can be obtained by direct contact with local employers.

Associated Industries of Kentucky, a voluntary organization of Kentucky businesses, regularly collects occupational wage rates and fringe benefits data from participating member firms. Data are compiled for over 127 clearly defined office, production, and service occupations. Tabulations are published for nine geographical areas of Kentucky, as shown on the map below. It should be noted that the data may be weighted by the preponderance of firms in the larger cities and may be somewhat higher than the rates paid in the smaller communities. Data from these tabulations are available, upon request, from the Kentucky Department of Economic Development, Frankfort, Kentucky 40601.



Associated Industries of Kentucky Area Wage Surveys

## EXISTING INDUSTRY

### MANUFACTURING FIRMS

There are no manufacturing plants located in Booneville at the present time.

### SELECTED INDUSTRIAL SERVICES

<u>Types of Service</u>	<u>Location</u>	<u>Mileage from Booneville</u>
Custom Plastics Producers	Irvine	38
Electric Motor Repair	Winchester	65
Grinding, Precision & Tool	Richmond	59
Heat Treating Facilities	Richmond	59
Industrial Equipment & Supplies	Richmond	59
Industrial Gases	London	56
Industrial Waste Removal	Richmond	59
Machine Shops, Tool & Die	Manchester	36
Metal Finishers	Richmond	59
Metal Service Centers	Richmond	59
Millwrights	Lexington	86
Public Warehouse Facilities	Lexington	86

Sources: Kentucky Department of Economic Development, Kentucky Directory of Selected Industrial Services, 1985; Division of Research and Planning.



## TRANSPORTATION

### Rail

The nearest rail service is provided by the CSX Corporation at Beattyville, 11 miles north of Booneville.

### Highways

Booneville is served by Kentucky Highways 11 & 52, both are "AAA"-rated trucking highways. Access to the Mountain Parkway via Kentucky 11 is 31 miles to the north. Access to the Daniel Boone Parkway, a multi-lane toll road, is 43 miles southeast via Kentucky Highways 28 and 15.

### Truck Service

Manning Motor Express, Inc.\*

\* Interstate and intrastate service.

Source: American Motor Carrier Directory, Spring 1987.

HIGHWAY MILES AND TRUCK TRANSIT TIME IN DAYS FROM  
BOONEVILLE, KENTUCKY, TO SELECTED MARKET CENTERS

City	Highway Miles	Delivery Time TL	City	Highway Miles	Delivery Time TL
Atlanta, GA	393	1	Los Angeles, CA	2,266	3
Baltimore MD	581	2	Louisville, KY	160	1
Birmingham, AL	454	1	Nashville, TN	257	1
Chicago, IL	448	1	New Orleans, LA	796	2
Cincinnati, OH	164	1	New York, NY	753	2
Cleveland, OH	403	1	Pittsburgh, PA	413	2
Detroit, MI	423	1	St. Louis, MO	421	1
Knoxville, TN	200	1			

Note: Mileage computations are via the best interstate or primary highways, not necessarily the most direct route of travel.

Sources: Rand McNally Deluxe Motor Carriers' Road Atlas, 1987. Official Kentucky Mileage Map, 1980. Delivery time - Manning Motor Express, 601 Cavalry Drive, P. O. Box 685, Glasgow, Kentucky 42141.

## Air

### Local

Location: East Kentucky Regional Airport  
15 miles north of Hazard;  
60 miles east of Booneville  
Runways: 1 paved  
Length: 3,240 feet  
Lighting: MIRL and beacon  
Services: 100LL and jet-A fuel

### Nearest Scheduled Commercial Airline Service

Location: Bluegrass Airport  
4 miles west of Lexington, Kentucky;  
91 miles northwest of Booneville  
Runways: 2 paved  
Length: 7,000 feet; 3,500 feet  
Traffic  
Control: Tower  
Lighting: Approach lighting system, beacon, runways and  
obstructions lighted, VASI  
Services: Delta, Piedmont, United, USAir, Allegheny Commuter,  
TWA, Continental Jet Express, Piedmont Commuter,  
Eastern Metro, Comair, American Eagle; fuel -  
100LL and jet-A; hangars, tie-downs; major A & P  
repairs; major Avionics repairs; APU, charter,  
flight instruction, oxygen, plane rentals,  
survival equipment; taxi, limousine, car rentals,  
courtesy car, weather information; restaurant,  
snack bar  
Air Freight  
Service: Air freight terminal

### Air Express Service

Several major companies offer air express services in Kentucky. These companies provide a quick means of shipping small to medium-sized packages expeditiously.



## POWER AND FUEL

### Electricity

Company serving Booneville and Owsley County - Jackson County Rural  
Electric Cooperative Corporation  
Source of power - East Kentucky Power Cooperative  
For industrial rates contact:

Industrial Development Division  
East Kentucky Power Cooperative  
P. O. Box 707  
Winchester, Kentucky 40391  
(606) 744-4812

and/or

Jackson County RECC  
P. O. Box 307  
McKee, Kentucky 40447  
(606) 287-7161

### Natural Gas

Natural gas service is not available in Booneville.

### Other Fuels

#### Propane

Ferrell Gas  
Main Street  
Beattyville, Kentucky 41311

#### Fuel oils

Distillate fuel oil -

Rogers Oil Company  
Box W  
Beattyville, Kentucky 41311

Residual fuel oil - Arrangements must be made with the refinery.

Low sulphur content coal - Available in Kentucky.

## WATER AND SEWERAGE

### Public Water Supply

Company serving Booneville - Booneville Water & Sewer District\*  
Box 218  
Booneville, Kentucky 41314  
(606) 593-5281

Source - South Fork of the Kentucky River  
Treatment plant capacity - 300,000 gallons per day  
Average daily consumption - 140,000 gallons  
Peak daily consumption - 175,000 gallons  
Treatment processes - Aeration, rapid mix, coagulation, flocculation, sedimentation, filtration, chlorination, and fluoridation  
Storage capacity - 411,000 gallons  
Size lines - 2, 3, 4, 6 and 8 inches  
Water pressure - 20 to 100 psi

### MONTHLY WATER RATES

First	2,000 gallons	\$9.70 (Minimum bill)
Next	3,000 gallons	2.20 per M gallons
Next	5,000 gallons	1.80 per M gallons
Next	10,000 gallons	1.70 per M gallons
Over	20,000 gallons	1.50 per M gallons

Tap-on charge: \$200

### Sewerage

Company serving Booneville - Booneville Water & Sewer District  
Box 218  
Booneville, Kentucky 41314  
(606) 593-5281

Design capacity - 100,000 gallons per day  
Average daily flow - 85,000 gallons  
Type of treatment - Secondary  
Treatment processes - Extended aeration & chlorination  
Treated effluent discharged into - South Fork of Kentucky River  
Size of sanitary mains - 8-inch  
Size of storm mains - None  
Monthly rates - 50% of water charge  
Tap-on charge: \$175.00

\* Construction is currently under way to rehabilitate and expand the water treatment plant. Water plant capacity will increase to 600,000 gallons per day. One 100,000-gallon storage tank, one 10,000-gallon storage tank and 26 miles of water lines will also be constructed. Completion of this \$1,530,000 project is scheduled for June 1988.



## CLIMATE

### Owsley County

#### Temperature

Normal (30-year record)	54.90 degrees
Average annual 1985	54.60 degrees
Record highest, August 1983 (41-year record)	103.00 degrees
Record lowest, January 1963 (41-year record)	-21.00 degrees
Normal heating degree days (30-year record)	4,814
(Heating degree day totals are the sums of negative departures of average daily temperatures from 65 degrees F.)	

#### Precipitation

Normal (30-year record)	45.68 inches
Mean annual snowfall (30-year record)	16.50 inches
Total precipitation 1985	37.75 inches
Mean number days precipitation (.01 inch or more) (41-year record)	130.70
Mean number days thunderstorms (41-year record)	45.80

#### Prevailing winds (through 1963)

South

#### Relative Humidity

1 a.m.	77 percent (21-year record)
7 a.m.	82 percent (22-year record)
1 p.m.	60 percent (22-year record)
7 p.m.	64 percent (22-year record)

Source: U.S. Department of Commerce, Environmental Science Services Administration, Climatological Data, 1985. Station of record: Lexington, Kentucky.

## LOCAL GOVERNMENT

### Structure

Booneville is governed by a mayor and four commission members. The mayor is elected to a four-year term and the commissioners serve two-year terms. Owsley County is governed by a county judge/executive and three magistrates elected to four-year terms.

### Planning and Zoning

Mandatory state codes enforced - Kentucky Plumbing code, National Electric Code, Kentucky Boiler Regulations and Standards, Kentucky Building Code (modeled after BOCA code)

### Local Fees and Licenses

The city of Booneville levies a business license fee of \$20 annually for businesses located within the city limits. Beauty and barber shops pay a business license fee of \$10 annually. License fees for delivery trucks are \$20 annually.



## State and Local Property Taxes

All property in Kentucky, except items exempted by the state constitution, is taxed by the state. Property which also may be taxed by local jurisdictions includes land and buildings, finished goods inventories, automobiles, trucks, office furniture and office equipment. Local taxing jurisdictions in Kentucky include counties, cities, and school districts.

All property in Kentucky is assessed at 100 percent of fair cash value.

### COMBINED STATE AND LOCAL RATES PER \$100 VALUATION, 1986

	Site Inside Booneville	Site Inside Unincorporated Owsley County
Land and Buildings	\$0.6359	\$0.6359
Manufacturing		
Machinery	0.1500	0.1500
Pollution Control		
Equipment	0.1500	0.1500
Inventories		
Raw materials	0.0010	0.0010
Goods in Process	0.0010	0.0010
Finished Goods	0.4230	0.4230
Automobiles & Trucks	0.8800	0.8800
Other Tangible		
Personal Property	0.8720	0.8720
Intangibles (Accounts receivable*, money in hand, stock, notes, bonds)	0.2500	0.2500
Goods Stored in Public Warehouses in Transit		
Status	0.0010	0.0010
Private Leaseholds in Industrial Revenue Bond Financed Facilities	0.0150	0.0150

\* Accounts receivable are taxed at 85 percent of face value, for an effective rate of \$0.2125 per \$100 valuation.

## Safety

Police	Booneville	Owsley County
Total staff	-	4
Radio-patrol cars	-	2

### Fire\*

Insurance Services Office,  
Public Protection

Classification	10	10 **
Full-time staff	-	1
Volunteers	8	17

### Rescue Service

Rescue service is provided to Booneville by the Jackson County Rescue Squad and the Booneville Owsley County Fire Department.

## Refuse Collection and Disposal

Refuse collection is provided for residents of Booneville by private contractors.

---

\* Includes copyrighted material of ISO Commercial Risk Services, Inc., with its permission.

\*\* Class 10 applies to unincorporated areas not contained within a fire district.



## EDUCATION

### Public Schools

	Owsley County
Total Enrollment (Spring 1987)	1,018
Kindergarten	83
Elementary	510
Junior High	156
High School	269
Pupil-Teacher Ratio (1985-86)	19-1
Percent High School Graduates to College (1985-86)	33.3
Expenditures Per Pupil (1985-86)	\$1,946.24

### Area Colleges and Universities (Within 60 miles)

<u>Name</u>	<u>Location (Miles distant)</u>	<u>Enrollment (Fall, 1986)</u>	<u>Highest Degree Conferred</u>
Lees College Hazard	Jackson (25)	383	Associate
Community College	Hazard (47)	776	Associate
Sue Bennett College	London (56)	452	Associate
Berea College Eastern	Berea (58)	1,587	Baccalaureate
Kentucky University	Richmond (59)	12,737	Masters, Specialist*

\* Joint doctoral degree programs are offered in cooperation with the University of Kentucky, Lexington. The degrees are issued by the University of Kentucky.

## Vocational Training

The Bluegrass State Skills Corporation, an independent public corporation created and funded by the Kentucky General Assembly, provides programs of skills training to meet the needs of business and industry from entry level to advanced training, and from upgrading present employees to retraining experienced workers.

The Bluegrass State Skills Corporation is the primary source for skills training assistance for a new or existing company. The Corporation works in partnership with other employment and job training resources and programs, as well as Kentucky's economic development activities, to package a program customized to meet the specific needs of a company.

Vocational training is available at both the state vocational-technical schools and the area vocational education centers. The state vocational-technical schools are post-secondary institutions. The area vocational education centers are designed to supplement the curriculum of high school students. Both the state vocational-technical schools and the area vocational education centers offer evening courses to enable working adults to upgrade current job skills.

Arrangements can be made to provide training in the specific production skills required by an industrial plant. Instruction may be conducted either in the vocational school or in the industrial plant, depending upon the desired arrangement and the availability of special equipment.

### Nearest State School

Hazard State Vocational-Technical School  
Hazard, 47 miles southeast

Business & Office	Heavy Equipment Operator
Clerical	Heavy Equipment Repair
Secretarial	Machine Shop
Health & Personal Services	Masonry
Occupations	Mine Equipment Operator
Cosmetology	Mine Maintenance Technology
Practical Nursing	Welding
Industrial Education	Learning Resource Center
Air Conditioning	Public Service Occupations
Auto Body Repair	Business/Industry Security
Auto Mechanics	Training
Carpentry	CPR Training
Civil & Highway Technology	Electrical Safety Training
Coal Mining Operations	Emergency Medical Care
Diesel Mechanics	Fire Service Training
Drafting (with CAD/CAM)	First Aid & Safety
Electricity	Rescue & Emergency Services
Electronics	Training

Nearest Area Education Center

Lee County Area Vocational Education Center  
Beattyville, 11 miles north

Business & Office  
Clerical  
Secretarial  
Industrial Education  
Auto Mechanics

Carpentry  
Electricity  
Oil Field Technician  
Welding



## HEALTH

### Local Medical Personnel

Physicians - 1  
Dentists - 1

### Hospitals

<u>General Hospital</u>	<u>Location</u>	<u>Beds</u>
ARAH Regional Medical Center	Hazard, 47 miles east of Booneville	200
Marcum and Wallace Memorial Hospital	Irvine, 38 miles northeast of Booneville	26
Memorial Hospital	Manchester, 37 miles south of Booneville	52 acute care 11 skilled nursing

### ARAH Regional Medical Center

Medical staff - 38 physicians, 82 licensed practical nurses, and 87 registered nurses

### Marcum and Wallace Memorial Hospital

Medical staff - 7 physicians, 18 registered nurses, and 6 licensed practical nurses

### Memorial Hospital

Medical staff - 10 physicians, 22 registered nurses, and 22 licensed practical nurses

### Other Medical Facilities

Owsley County Health Care Center - 101-bed facility, 11 personal care  
Owsley County Health Department  
Owsley County Medical Clinic

### Ambulance Service

Allen's Ambulance Service  
Staff - 5 emergency medical technicians

## OTHER LOCAL FACILITIES

### Communications

Telephone -	People's Rural Telephone Cooperative Corporation, Inc.
Telegraph -	Western Union Toll-Free number, 1-800-325-6000
Newspapers -	The Booneville Sentinel
Weekly and circulation -	2,100
Radio -	WLJC (Beattyville)
Television -	
Airwave reception from -	Beattyville, Hazard, Lexington
Cable service -	West End Cable
Educational Television -	The Kentucky Educational Television (K.E.T.) network is available statewide

### Library Services

Public library - Owsley County Public Library  
Size collection - 19,000 volumes  
Circulation, 1985-86 - 65,000

### Religious Institutions

Denominations -	Baptist Methodist Presbyterian	Assembly of God Catholic
Nearest Synagogues -	Lexington, Kentucky (86 miles northwest)	
Congregations -	Adath Israel (reform) Ohavey Zion (traditional)	

### Financial Institutions

<u>Banks</u>	<u>Assets</u>	<u>Deposits</u>	<u>Statement Date</u>
Farmers State Bank, Inc.	\$20,086,270.14	\$17,921,355.86	6/30/87

### Hotels and Motels

Total number - 1  
Total rooms - 10

## RECREATION

### Area (Within 80 miles)

Northwestern Owsley County falls within the Daniel Boone National Forest, which covers 640,000 acres of timberland in eastern Kentucky. It encompasses much of Kentucky's great beauty and provides a vacation paradise. There are scenic hiking trails, rivers and streams stocked with a variety of fish, hunting preserves, camping sites, and numerous other natural and historical attractions.

Noble's Pioneer Museum is located 5 miles from Booneville on Kentucky Highway 30. This museum features five authentic log houses, primitive tools and antiques, Indian artifacts, and other items associated with early mountain life.

Natural Bridge State Resort Park near Slade, 30 miles north of Booneville, is located in the Daniel Boone National Forest where cliffs and stone arches fill the landscape. The rugged awesomeness of the great Natural Bridge is the main attraction. The park offers a 35-room resort lodge with a dining room, convention center, gift shop, ten rustic cottages, and 95 camping sites. Other facilities include a lake, a swimming pool, picnic shelters and playgrounds, hiking trails, and a riding stable.

The Red River Canoe Race is an annual event occurring usually in May. This race begins near Natural Bridge State Park and ends near Stanton. This attraction draws many tourists to the area.

Buckhorn Lake State Resort Park, approximately 30 miles southeast of Booneville at Buckhorn, is a full-facility resort park with a 36-room lodge. The lodge itself offers a dining room with a lake view, a gift shop, a pool, meeting rooms, and a recreation room. Other park facilities and activities include a beach, a bathhouse, a picnic shelter, a playground, mini-golf, tennis, hiking, a dock with open and covered slips, boat rentals, a 40-foot levee plus a fishing pier, bicycle rentals, and planned recreation.

Levi Jackson Wilderness Road State Park, 58 miles southwest of Booneville at London, is a 815-acre park located where the Boone Trace and Wilderness Road pioneer trails converge. In addition to a reproduced pioneer settlement, the park offers a museum on mountain folklore, 15 cabins, a pool, a bathhouse, hiking trails, horseback riding, miniature golf, shuffleboard, 185 campsites, a picnic area, a playground, and an amphitheater. A new 40-acre historical theme park, Wilderness Road Village, will open at the park in the fall depicting frontier life with a working crafts area, exhibits, entertainment, horse-drawn carriages and a tavern.

White Hall State Shrine, 67 miles northwest of Booneville near Richmond, one of the grand estate houses of post-Civil War Kentucky, is the Italianate mansion of Cassius Marcellus Clay, the early abolitionist and politician. Kentucky handcrafts are sold in the White Hall gift shop, only a short walk from the mansion.



The spirit of Daniel Boone and his pioneers is reborn at **Fort Boonesborough State Park** in Boonesboro, 75 miles northwest of Booneville. In the re-created fort, pioneer crafts of the eighteenth century are demonstrated by using functioning antiques from the frontier era. Cabins are furnished as they would have been in the days of Boone and documentary films are presented which depict the struggle of the first Kentuckians to make the Kentucky wilderness a home. A gift shop within the fort offers for sale all the handcrafted items made at the fort. Other recreational facilities and activities of the park include the finest sand beach on the Kentucky River with a modern bathhouse and a modern camping area with 187 sites, picnic area, playground and miniature golf.