

1974

Industrial Resources: Perry County - Hazard

Kentucky Library Research Collections
Western Kentucky University, spcol@wku.edu

Follow this and additional works at: https://digitalcommons.wku.edu/perry_cty



Part of the [Business Administration, Management, and Operations Commons](#), [Growth and Development Commons](#), and the [Infrastructure Commons](#)

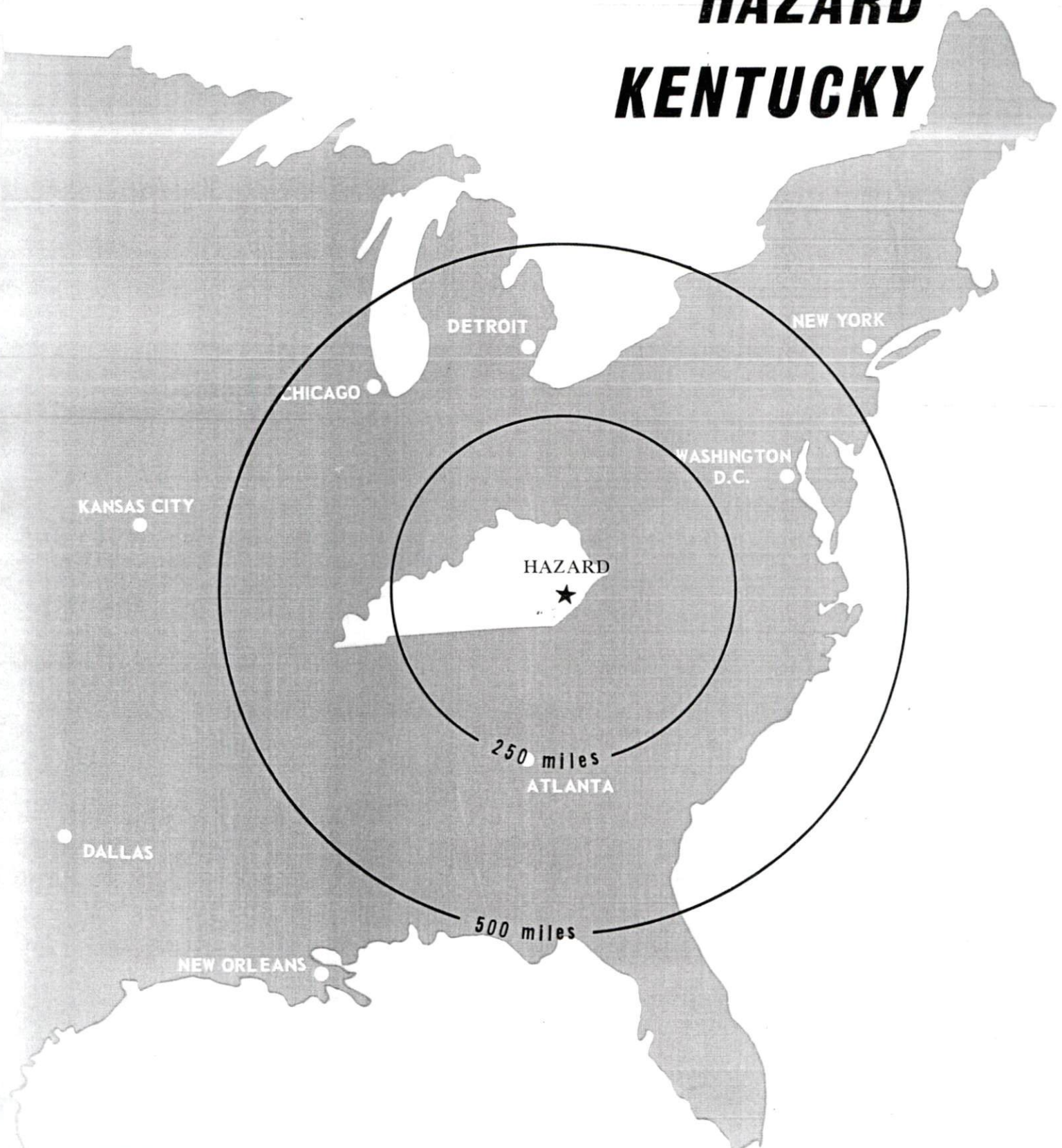
Recommended Citation

Kentucky Library Research Collections, "Industrial Resources: Perry County - Hazard" (1974). *Perry County*. Paper 9.
https://digitalcommons.wku.edu/perry_cty/9

This Report is brought to you for free and open access by TopSCHOLAR®. It has been accepted for inclusion in Perry County by an authorized administrator of TopSCHOLAR®. For more information, please contact topscholar@wku.edu.

INDUSTRIAL RESOURCES

HAZARD KENTUCKY



PERRY COUNTY, KENTUCKY

INDUSTRIAL RESOURCES

HAZARD, KENTUCKY

Prepared by

The Kentucky Department of Commerce

in cooperation with

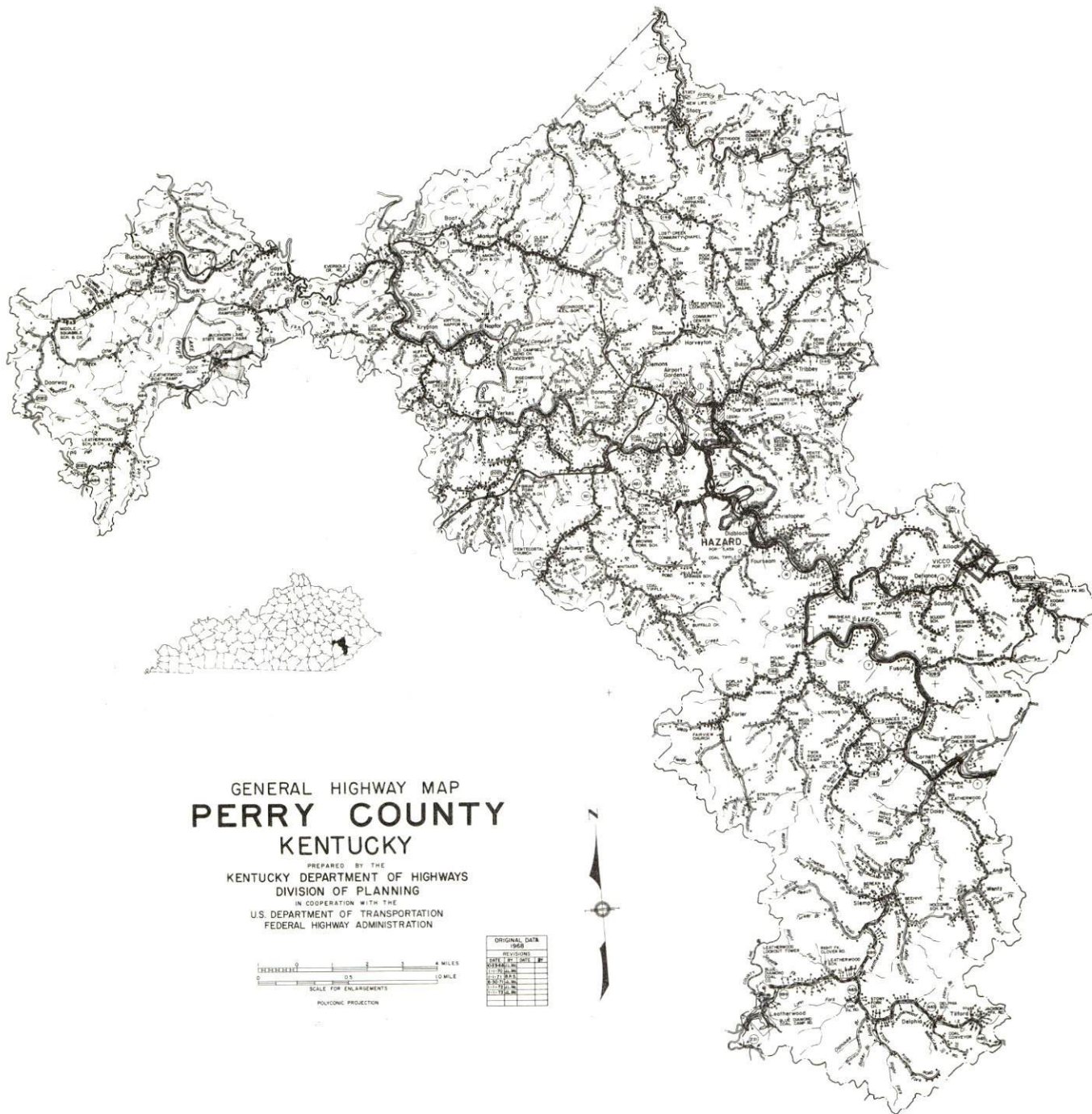
The Hazard Chamber of Commerce

1974

TABLE OF CONTENTS

<u>Chapter</u>	<u>Page</u>
INDUSTRIAL SITES	i
HAZARD, KENTUCKY - A RESOURCE PROFILE	1
THE LABOR MARKET	5
Population Trends	5
General Employment Characteristics, 1972	5
Manufacturing Employment Trends by Industry.	6
Hazard Manufacturing Firms, Their Products and Employment	6
Wages	7
Labor Organizations	8
Estimated Male Labor Supply	8
Estimated Female Labor Supply	9
Per Capita Personal Income	9
TRANSPORTATION	10
Rail	10
Truck Service	10
Air	11
Bus	11
Taxi.	11
Rental Services.	11
POWER AND FUEL	12
Electricity	12
Natural Gas	12
Other Fuels	12
WATER AND SEWERAGE.	13
Water	13
Sewerage.	14
LOCAL GOVERNMENT.	15
City	15
County.	15
Assessed Value of Property, 1973	15

<u>Chapter</u>	<u>Page</u>
Property Taxes	15
Local Property Tax Rate Per \$100 of	
Assessed Valuation, 1973	16
Planning and Zoning	16
Safety	16
Police	16
Fire	16
Rescue Service	16
Sanitation	17
EDUCATION	18
Public Schools	18
Vocational Schools	18
Colleges and Universities	20
HEALTH	21
Hospitals	21
Nursing Homes	21
Public Health	21
OTHER LOCAL FACILITIES	23
Communications	23
Library Services	23
Religious Institutions	24
Financial Institutions	24
Hotels and Motels	24
Clubs and Organizations	24
RECREATION	25
Local	25
Area	25
AGRICULTURE - NATURAL RESOURCES - CLIMATE	26
Agriculture	26
Natural Resources	26
Climate	27
HISTORY	28



GENERAL HIGHWAY MAP **PERRY COUNTY** KENTUCKY

PREPARED BY THE
 KENTUCKY DEPARTMENT OF HIGHWAYS
 DIVISION OF PLANNING
 IN COOPERATION WITH THE
 U.S. DEPARTMENT OF TRANSPORTATION
 FEDERAL HIGHWAY ADMINISTRATION

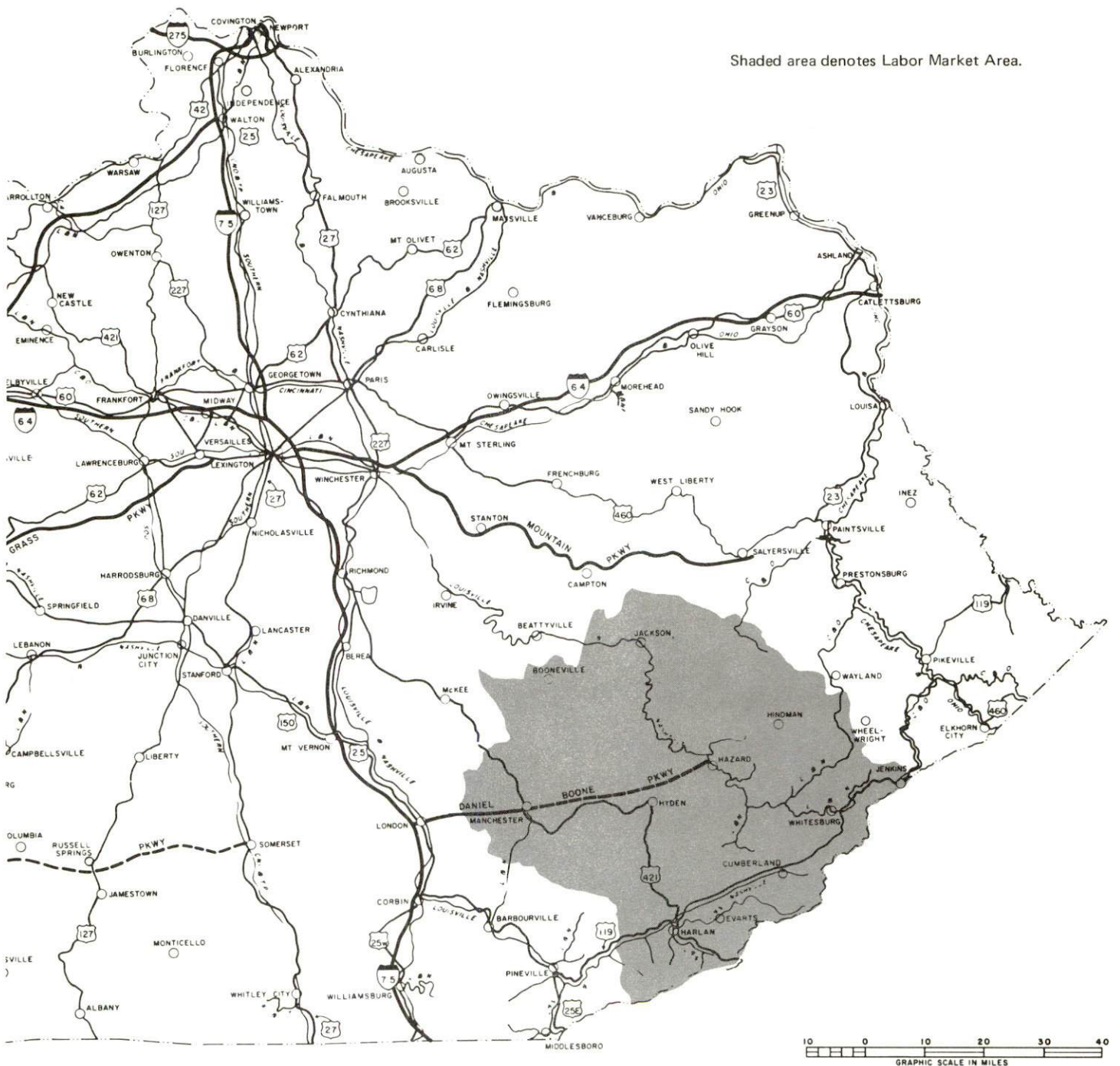


ORIGINAL DATA	
1958	
REVISIONS	DATE
1. 1958	1958
2. 1959	1959
3. 1960	1960
4. 1961	1961
5. 1962	1962
6. 1963	1963
7. 1964	1964
8. 1965	1965
9. 1966	1966
10. 1967	1967
11. 1968	1968
12. 1969	1969
13. 1970	1970
14. 1971	1971
15. 1972	1972
16. 1973	1973
17. 1974	1974
18. 1975	1975
19. 1976	1976
20. 1977	1977
21. 1978	1978
22. 1979	1979
23. 1980	1980
24. 1981	1981
25. 1982	1982
26. 1983	1983
27. 1984	1984
28. 1985	1985
29. 1986	1986
30. 1987	1987
31. 1988	1988
32. 1989	1989
33. 1990	1990
34. 1991	1991
35. 1992	1992
36. 1993	1993
37. 1994	1994
38. 1995	1995
39. 1996	1996
40. 1997	1997
41. 1998	1998
42. 1999	1999
43. 2000	2000
44. 2001	2001
45. 2002	2002
46. 2003	2003
47. 2004	2004
48. 2005	2005
49. 2006	2006
50. 2007	2007
51. 2008	2008
52. 2009	2009
53. 2010	2010
54. 2011	2011
55. 2012	2012
56. 2013	2013
57. 2014	2014
58. 2015	2015
59. 2016	2016
60. 2017	2017
61. 2018	2018
62. 2019	2019
63. 2020	2020
64. 2021	2021
65. 2022	2022
66. 2023	2023
67. 2024	2024
68. 2025	2025
69. 2026	2026
70. 2027	2027
71. 2028	2028
72. 2029	2029
73. 2030	2030
74. 2031	2031
75. 2032	2032
76. 2033	2033
77. 2034	2034
78. 2035	2035
79. 2036	2036
80. 2037	2037
81. 2038	2038
82. 2039	2039
83. 2040	2040
84. 2041	2041
85. 2042	2042
86. 2043	2043
87. 2044	2044
88. 2045	2045
89. 2046	2046
90. 2047	2047
91. 2048	2048
92. 2049	2049
93. 2050	2050
94. 2051	2051
95. 2052	2052
96. 2053	2053
97. 2054	2054
98. 2055	2055
99. 2056	2056
100. 2057	2057
101. 2058	2058
102. 2059	2059
103. 2060	2060
104. 2061	2061
105. 2062	2062
106. 2063	2063
107. 2064	2064
108. 2065	2065
109. 2066	2066
110. 2067	2067
111. 2068	2068
112. 2069	2069
113. 2070	2070
114. 2071	2071
115. 2072	2072
116. 2073	2073
117. 2074	2074
118. 2075	2075
119. 2076	2076
120. 2077	2077
121. 2078	2078
122. 2079	2079
123. 2080	2080
124. 2081	2081
125. 2082	2082
126. 2083	2083
127. 2084	2084
128. 2085	2085
129. 2086	2086
130. 2087	2087
131. 2088	2088
132. 2089	2089
133. 2090	2090
134. 2091	2091
135. 2092	2092
136. 2093	2093
137. 2094	2094
138. 2095	2095
139. 2096	2096
140. 2097	2097
141. 2098	2098
142. 2099	2099
143. 2100	2100
144. 2101	2101
145. 2102	2102
146. 2103	2103
147. 2104	2104
148. 2105	2105
149. 2106	2106
150. 2107	2107
151. 2108	2108
152. 2109	2109
153. 2110	2110
154. 2111	2111
155. 2112	2112
156. 2113	2113
157. 2114	2114
158. 2115	2115
159. 2116	2116
160. 2117	2117
161. 2118	2118
162. 2119	2119
163. 2120	2120
164. 2121	2121
165. 2122	2122
166. 2123	2123
167. 2124	2124
168. 2125	2125
169. 2126	2126
170. 2127	2127
171. 2128	2128
172. 2129	2129
173. 2130	2130
174. 2131	2131
175. 2132	2132
176. 2133	2133
177. 2134	2134
178. 2135	2135
179. 2136	2136
180. 2137	2137
181. 2138	2138
182. 2139	2139
183. 2140	2140
184. 2141	2141
185. 2142	2142
186. 2143	2143
187. 2144	2144
188. 2145	2145
189. 2146	2146
190. 2147	2147
191. 2148	2148
192. 2149	2149
193. 2150	2150
194. 2151	2151
195. 2152	2152
196. 2153	2153
197. 2154	2154
198. 2155	2155
199. 2156	2156
200. 2157	2157
201. 2158	2158
202. 2159	2159
203. 2160	2160
204. 2161	2161
205. 2162	2162
206. 2163	2163
207. 2164	2164
208. 2165	2165
209. 2166	2166
210. 2167	2167
211. 2168	2168
212. 2169	2169
213. 2170	2170
214. 2171	2171
215. 2172	2172
216. 2173	2173
217. 2174	2174
218. 2175	2175
219. 2176	2176
220. 2177	2177
221. 2178	2178
222. 2179	2179
223. 2180	2180
224. 2181	2181
225. 2182	2182
226. 2183	2183
227. 2184	2184
228. 2185	2185
229. 2186	2186
230. 2187	2187
231. 2188	2188
232. 2189	2189
233. 2190	2190
234. 2191	2191
235. 2192	2192
236. 2193	2193
237. 2194	2194
238. 2195	2195
239. 2196	2196
240. 2197	2197
241. 2198	2198
242. 2199	2199
243. 2200	2200
244. 2201	2201
245. 2202	2202
246. 2203	2203
247. 2204	2204
248. 2205	2205
249. 2206	2206
250. 2207	2207
251. 2208	2208
252. 2209	2209
253. 2210	2210
254. 2211	2211
255. 2212	2212
256. 2213	2213
257. 2214	2214
258. 2215	2215
259. 2216	2216
260. 2217	2217
261. 2218	2218
262. 2219	2219
263. 2220	2220
264. 2221	2221
265. 2222	2222
266. 2223	2223
267. 2224	2224
268. 2225	2225
269. 2226	2226
270. 2227	2227
271. 2228	2228
272. 2229	2229
273. 2230	2230
274. 2231	2231
275. 2232	2232
276. 2233	2233
277. 2234	2234
278. 2235	2235
279. 2236	2236
280. 2237	2237
281. 2238	2238
282. 2239	2239
283. 2240	2240
284. 2241	2241
285. 2242	2242
286. 2243	2243
287. 2244	2244
288. 2245	2245
289. 2246	2246
290. 2247	2247
291. 2248	2248
292. 2249	2249
293. 2250	2250
294. 2251	2251
295. 2252	2252
296. 2253	2253
297. 2254	2254
298. 2255	2255
299. 2256	2256
300. 2257	2257
301. 2258	2258
302. 2259	2259
303. 2260	2260
304. 2261	2261
305. 2262	2262
306. 2263	2263
307. 2264	2264
308. 2265	2265
309. 2266	2266
310. 2267	2267
311. 2268	2268
312. 2269	2269
313. 2270	2270
314. 2271	2271
315. 2272	2272
316. 2273	2273
317. 2274	2274
318. 2275	2275
319. 2276	2276
320. 2277	2277
321. 2278	2278
322. 2279	2279
323. 2280	2280
324. 2281	2281
325. 2282	2282
326. 2283	2283
327. 2284	2284
328. 2285	2285
329. 2286	2286
330. 2287	2287
331. 2288	2288
332. 2289	2289
333. 2290	2290
334. 2291	2291
335. 2292	2292
336. 2293	2293
337. 2294	2294
338. 2295	2295
339. 2296	2296
340. 2297	2297
341. 2298	2298
342. 2299	2299
343. 2300	2300
344. 2301	2301
345. 2302	2302
346. 2303	2303
347. 2304	2304
348. 2305	2305
349. 2306	2306
350. 2307	2307
351. 2308	2308
352. 2309	2309
353. 2310	2310
354. 2311	2311
355. 2312	2312
356. 2313	2313
357. 2314	2314
358. 2315	2315
359. 2316	2316
360. 2317	2317
361. 2318	2318
362. 2319	2319
363. 2320	2320
364. 2321	2321
365. 2322	2322
366. 2323	2323
367. 2324	2324
368. 2325	2325
369. 2326	2326
370. 2327	2327
371. 2328	2328
372. 2329	2329
373. 2330	2330
374. 2331	2331
375. 2332	2332
376. 2333	2333
377. 2334	2334
378. 2335	2335
379. 2336	2336
380. 2337	2337
381. 2338	2338
382. 2339	2339
383. 2340	2340
384. 2341	2341
385. 2342	2342
386. 2343	2343
387. 2344	2344
388. 2345	2345
389. 2346	2346
390. 2347	2347
391. 2348	2348
392. 2349	2349
393. 2350	2350
394. 2351	2351
395. 2352	2352
396. 2353	2353
397. 2354	2354
398. 2355	2355
399. 2356	2356
400. 2357	2357
401. 2358	2358
402. 2359	2359
403. 2360	2360
404. 2361	2361
405. 2362	2362
406. 2363	2363
407. 2364	2364
408. 2365	2365
409. 2366	2366
410. 2367	2367
411. 2368	2368
412. 2369	2369
413. 2370	23

HAZARD LABOR MARKET AREA



Shaded area denotes Labor Market Area.



HAZARD, KENTUCKY - A RESOURCE PROFILE

Hazard, the county seat of Perry County, is located in southeastern Kentucky in the heart of the Appalachian Mountains, 114 miles southeast of Lexington, 188 miles southeast of Louisville, 195 miles southeast of Cincinnati, Ohio, and 64 miles northeast of Knoxville, Tennessee. The population of Perry County in 1970 was 26,259 and the population of Hazard was 5,459.

The Economic Framework

Total employment in Perry County averaged 7,840 in 1972. Agriculture accounted for 90 jobs, manufacturing 110, government 1,410, trade and services 2,045 and mining and quarrying 1,690. The leading manufactured products are soft drinks, cabinets, ready mixed concrete, and newspapers and commercial printing.

Per capita personal income in the county was \$2,121 in 1970, an increase of 80.5 percent over 1960.

The Hazard labor market area includes Perry County and the six surrounding counties. In 1972, employment in the labor market area totaled 34,290. Agriculture provided 980 jobs, manufacturing 930, trade and services 7,020, government 8,030, and mining and quarrying 9,500. Manufacturing employment gain in the labor market area since 1962 has been greatest in the machinery and metal products industries.

Resources for Growth

1. There is a current estimated labor supply of 16,920 men and 14,510 women available for industrial jobs in the labor market area. In addition 8,290 young men and 7,860 young women in this area will become 18 years of age by 1979 and potentially available for employment.

2. The Louisville and Nashville Railroad serves Hazard. Major highway access is by Kentucky Highways 80 and 15. The Daniel Boone Parkway will be completed late in 1973 and will connect Hazard with I-75. The Hazard Airport has a paved 2,300-foot runway which can accommodate light aircraft. Hazard is planning a commercial airport with a 4,600-foot runway, but currently the closest commercial air service is available at the London-Corbin War Memorial Airport, 75 miles distant.

3. Electric power is available in large quantity from the Kentucky Power Company. The Hazard Gas Company is supplied by the Kentucky-West Virginia Gas Company, private wells, and company owned wells. There are two propane distributors and five distillate fuel oil distributors in the Hazard area. The raw water supply is adequate for continued growth.

4. Two school systems operate in Perry County, and educational television is available. Two senior colleges, one university, three junior colleges, and three community colleges are within a 60-mile radius, with Hazard Community College located in Hazard.

The Hazard State Vocational-Technical School, located in Hazard, offers 18 different areas of study and is in the process of adding new buildings and expanding the curriculum.

Community Programs for Improvement

Recent improvements include:

- new library and community center
- two expansions of the vocational school during the last year - adding some new buildings and additional course areas
- water and sewer treatment plants improved
- Land Use Plan and Water Quality Management Study adopted by the Kentucky River Area Development District - which is based in Hazard
- purchase of additional equipment for maintenance work by the city
- Flood Plan Ordinance adopted to help prevent floods
- formation of a Regional Health Department with Hazard as a member and the headquarters location
- comprehensive housing plan completed
- beautification study completed by the University of Kentucky for the city and implementation of this plan is now underway
- sewer lines extended throughout the city
- Hazard Community College completed
- sanitary landfill now being used
- two garbage packer trucks purchased
- city streets improved
- full-time recreation director hired
- new stores constructed on Urban Renewal property development complex
- new metal fabricating plant of Mine Service Manufacturing Division located in Hazard

Improvements underway include:

- new elementary school
- second expansion of the hospital - the second in two years
- new sewer extensions in Perry County
- study of the water plant treatment capacity and the possibility of extending the water lines

- 65-unit high rise housing project for the elderly
- budget and fiscal management procedure study to improve the spending of public funds
- new shopping center
- 200-car parking structure
- street improvements and new roads
- systematic naming of streets and numbering of houses

Proposed improvements include:

- commercial airport with a 4,600-foot runway
- new secondary high school and recreational center
- water district to serve the county
- completion of the bypass
- 100-bed personal care nursing home
- expansion of one of the motels
- new bank building
- branch bank
- implementation of the Topics Program

Recreation, Entertainment and Livability

Hazard is located within a 50-mile radius of many excellent parks and resort areas.

Breaks Interstate Park is 50 miles from Hazard and consists of 2,700 acres. It was a unique undertaking by two states, on the rim of the largest river canyon east of the Mississippi. The Visitor's Center has nature exhibits and recorded calls of native birds. The park offers riding, hiking, fishing, stables, shelters, picnic sites, playgrounds and swimming. There are also camping sites and a lodge with a dining room, gift shop, laundry, and an Olympic-size swimming pool.

Jenny Wiley State Resort Park consists of 1,700 acres and is 50 miles northeast of Hazard. A lodge, dining room, cottages, campsites, picnic areas, playgrounds, supervised recreation, hiking trails, swimming pools, fishing, boat rentals, horseback riding, golf, souvenir and gift shop help make up the park. In addition there is also a skylift and a summer theater.

Natural Bridge State Resort Park, 50 miles from Hazard, consists of 1,500 acres in a land of natural bridges in the Red River Gorge. The park offers a new resort lodge, cottages, tents, and trailer camping facilities. A gift shop and dining room are also available, along with picnic areas, playgrounds, supervised recreation, hiking trails, swimming pool, fishing, horseback riding, and golf.

Buckhorn Lake State Resort Park is 11 miles from Hazard and consists of 750 acres with a 1,200-acre mountain lake. A lodge, dining room, cottages, camping sites, picnic area, playground, supervised recreation, hiking trails, swimming, a pool, fishing, boat rentals and souvenir and gift shop are features of this park.

Levi Jackson Wilderness Road State Park, 50 miles from Hazard, offers camping, picnic areas, playground, supervised recreation, hiking trails, swimming pool, horseback riding, souvenir and gift shop, the Mountain Life Museum, and an 815-acre park.

Pine Mountain State Resort Park is 50 miles from Hazard. The park consists of 2,500 acres and "The Book of Job," an outdoor drama, is presented from July through August. The park also has a lodge, dining room, cottages, campsites, picnic areas, playground, supervised recreation, hiking trails, swimming pool, fishing, horseback riding, golf, and a souvenir and gift shop.

Cumberland Gap National Historical Park is 50 miles southwest of Hazard and consists of 20,168 acres. The startling break in the Cumberland Mountains was the passage for the first pioneers to Kentucky and the west. The park lies in three states: Kentucky, Virginia, and Tennessee. The headquarters contains a museum of the frontier days and a scenic overlook. The park also offers camping, picnicking and hiking trails.

Kingdom Come State Park is 50 miles from Hazard and offers picnicking, playgrounds, hiking, fishing, The Little Shepherd Trail and a 1,000-acre park.

Daniel Boone National Forest is 10 miles west of Hazard. It is a vast Kentucky timberland which runs from the northeastern part of the state south across the entire state, and encompasses hundreds of natural and historic attractions. It is the land that Daniel Boone stalked, hunted and settled. Much of Kentucky's great beauty abounds here, and there are scenic hiking trails, stocked creeks, and hunting preserves. The Red River Gorge, many stone arch natural bridges, waterfalls, and the rapids of Devil's Jump are among its scenic attractions. It also offers picnicking, playgrounds, hiking areas, camping, fishing and boating.

Dr. Thomas Walker State Shrine is 50 miles from Hazard. On the 12-acre site is a replica of the first house in Kentucky. It also offers picnicking and playgrounds.

THE LABOR MARKET

POPULATION TRENDS

Area	Population				Percent Change	
	1972*	1970	1960	1950	1960-70	1950-60
Hazard	NA	5,459	5,958	6,985	- 8.4	-14.7
Labor Market Area	139,500	132,359	165,332	220,984	-19.9	-25.2
Perry County	27,100	26,259	34,961	46,566	-26.4	-24.9
Breathitt County	14,500	14,221	15,490	19,964	- 8.2	-22.4
Harlan County	39,800	37,370	51,107	71,751	-26.9	-28.8
Knott County	15,600	14,698	17,362	20,320	-15.3	-14.6
Leslie County	12,300	11,623	10,941	15,537	+ 6.2	-29.6
Letcher County	25,000	23,165	30,102	39,522	-23.0	-23.8
Owsley County	5,200	5,023	5,369	7,324	- 6.4	-26.7

*Provisional estimates.

Sources: U. S. Department of Commerce, Bureau of the Census, Census of Population, 1970, 1960, 1950. U. S. Bureau of the Census, Current Population Reports, Series P-26, June 1973.

GENERAL EMPLOYMENT CHARACTERISTICS, 1972

Major Employment Group	Employment	
	Perry County	Labor Market Area
TOTAL	7,840	34,290
Agricultural	90	980
Nonagricultural	7,750	33,310
Manufacturing	110	928
Government	1,410	8,030
Trade and Services	2,045	7,020
Mining and Quarrying	1,694	9,497
Other	4,185	17,332

Sources: Kentucky Department of Economic Security, Division of Research and Statistics; Kentucky Department of Mines and Minerals, Annual Report, December 31, 1972.

MANUFACTURING EMPLOYMENT TRENDS BY INDUSTRY
SEPTEMBER 1972 AND 1962

Industry	Perry County			Labor Market Area		
	1972	1962	% Change	1972	1962	% Change
TOTAL	122	161	- 24.2	959	1,099	- 12.7
Food & Kindred						
Products	77	77	0	337	454	- 25.8
Tobacco	0	1	-100.0	1	2	- 50.0
Lumber, Furniture	35	69	- 49.0	460	566	- 18.7
Printing & Publishing,						
Paper	9	0	--	59	40	+ 47.5
Stone, Clay & Glass	0	0	0	2	14	- 85.7
Machinery, Metal						
Products, Equip.	1	14	- 92.9	95	23	+313.0
Other	0	0	0	5	0	--

Source: Kentucky Department of Economic Security, Number of Workers in Manufacturing Industries Covered by Kentucky Unemployment Insurance Law Classified by Industry and County, September 1972, September 1962.

HAZARD MANUFACTURING FIRMS,
THEIR PRODUCTS AND EMPLOYMENT

Firm (Establishment Date)	Product	Employment			
		Total	Male	Female	Organized
Adams Construction Corp. (1956)	Ready mix and bituminous concrete	15	15	0	
East Kentucky Beverage Company (1942)	Soft drinks	45	42	3	*
Hazard Block Company, Inc. (1972)	Concrete blocks	N/A			
Hazard Herald (1912)	Newspaper, job printing	7	4	3	
Home Lumber Company (1914)	Cabinets, ready mixed concrete	30	28	2	
Mine Service Manufacturing Div. (1971)	Metal fabrication, refuse containers, small and medium tanks	15	15	0	
Newspapers, Inc. (1969)	Newspaper, commercial printing	25			

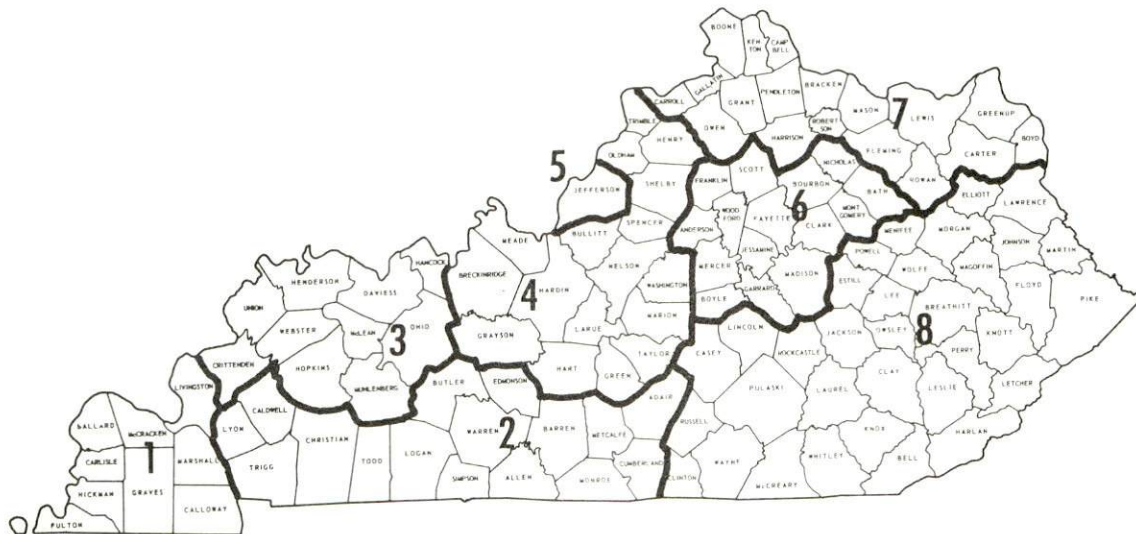
*See Labor Organizations, Page 8.

Source: Kentucky Department of Commerce, Division of Research and Planning.

WAGES

Occupational wage rates for specific industries are usually not available to most government agencies, and wage data furnished to state employment agencies by industrial employers is protected from disclosure by federal law. The most reliable up-to-date wage information can be obtained by direct contact with local employers.

Associated Industries of Kentucky, a voluntary organization of Kentucky businesses, regularly collects occupational wage rates and fringe benefits data from participating member firms. Data is compiled for over 130 clearly defined office, production, and service occupations. Tabulations are published for eight regions of Kentucky, as shown on the map below. It should be noted that the data may be weighted by the preponderance of firms in the larger cities and may be somewhat higher than the rates paid in the smaller communities. Data from these tabulations are available, upon request, from the Kentucky Department of Commerce, Frankfort, Kentucky 40601.



Associated Industries of Kentucky Area Wage Surveys

LABOR ORGANIZATIONS

<u>Union</u>	<u>Representing manufacturing workers at:</u>
Southern Labor Council	Coal companies
District 50, United Mine Workers	East Kentucky Beverage Company

ESTIMATED MALE LABOR SUPPLY HAZARD LABOR MARKET AREA

<u>Area</u>	<u>Current</u>			<u>Future</u>	
	<u>Total</u>	<u>Not in Labor Force</u>	<u>Unemployed</u>	<u>Under- employed</u>	<u>Reaching 18 yrs. of age by 1979</u>
Labor Market					
Area	16,916	11,236	2,085	3,595	8,287
Perry	3,101	2,033	427	641	1,629
Breathitt	2,055	1,342	128	585	941
Harlan	4,803	3,022	554	1,227	2,240
Knott	2,140	1,516	193	431	965
Leslie	1,549	1,146	241	162	813
Letcher	2,440	1,712	421	307	1,401
Owsley	828	465	121	242	298

Sources: Kentucky Department of Economic Security, Kentucky Labor Supply Estimates by County, 1972. Kentucky Department of Commerce, Future Labor Supply by 1979.

ESTIMATED FEMALE LABOR SUPPLY
HAZARD LABOR MARKET AREA

Area	Current			Future	
	Total	Not in Labor Force	Unemployed	Under-employed	Reaching 18 yrs. of age by 1979
Labor Market					
Area	14,511	10,351	1,215	2,945	7,857
Perry	2,541	1,649	243	649	1,463
Breathitt	1,440	1,002	72	366	921
Harlan	4,306	2,983	336	987	2,101
Knott	1,505	1,085	107	313	916
Leslie	1,205	939	139	127	825
Letcher	2,820	2,157	249	414	1,362
Owsley	694	536	69	89	269

Sources: Kentucky Department of Economic Security, Kentucky Labor Supply Estimates by County, 1972. Kentucky Department of Commerce, Future Labor Supply by 1979.

PER CAPITA PERSONAL INCOME

Area	1970	1960	% Change
Perry County	\$2,121*	\$1,175	+80.5
Labor Market Area			
Range	\$890 - 2,572*	\$514 - 1,424	N. A.
Kentucky	3,099	1,581	+96.0
U. S.	3,933	2,216	+77.5

*Unadjusted for commuting.

Sources: University of Kentucky, Office of Development Services and Business Research, Per Capita Income in Kentucky. U. S. Department of Commerce, Bureau of Economic Analysis, Survey of Current Business, August 1972.

TRANSPORTATION

Rail

Line serving Hazard - Louisville and Nashville Railroad Company
Services - Carload freight only, through freights vary from one to
eight daily depending on the coal industry, switching facilities,
siding

For details on routing, schedules, rates, and services, contact:

Manager of Industrial Development
Louisville and Nashville Railroad Company
908 West Broadway
Louisville, Kentucky 40203

Truck Service

Company

Home Office

Bell Lines, Inc.

6414 McCorkle Ave. S.E.
Charleston, West Virginia

Hazard Express*

1115 Winchester Pike
Lexington, Kentucky

Hogan Storage and Transfer
Company (Irregular)

721 E. Fourth Avenue
Williamson, West Virginia

McDuffee Motor Freight, Inc.
(United Trucking)

332 High School Avenue
Lebanon, Kentucky

Overnite Transportation
Company

1100 Commerce Road
Richmond, Virginia

Point Express, Inc.

P. O. Box 10185, Station C
Charleston, West Virginia

Other Freight Services

Nearest Shipping Center

United Parcel Service

Cornettsville (15 miles southeast
of Hazard)

REA Express

*Local terminal.

HIGHWAY MILES AND TRUCK TRANSIT TIME IN DAYS FROM
HAZARD, KENTUCKY, TO SELECTED MARKET CENTERS

City	Highway Miles	Delivery		City	Highway Miles	Delivery	
		Time TL				Time TL	
Atlanta, Ga.	244	4		Los Angeles, Calif.	2,295	7	
Birmingham, Ala.	178	4		Louisville, Ky.	188	1	
Chicago, Ill.	489	3		Nashville, Tenn.	95	4	
Cincinnati, Ohio	195	2		New Orleans, La.	522	5	
Cleveland, Ohio	447	3		New York, N. Y.	648	5	
Detroit, Mich.	563	3		Pittsburgh, Pa.	470	4	
Knoxville, Tenn.	64	2		St. Louis, Mo.	452	4	

Source: Delivery time only - Hazard Express, 1115 Winchester Pike,
Lexington, Kentucky 40505.

Air

	<u>Local</u>	<u>Nearest Commercial</u>
Location:	Hazard Airport 2 1/2 miles north-northwest of Hazard	London-Corbin War Memorial Airport Approximately 75 miles west of Hazard
Runways:	1 paved	1 paved
Length:	2,300 feet	6,000 feet
Traffic		
Control:	Wind sock	Wind sock
Lighting:	None	Beacon, runway, obstruction lights
Services:	80 and 100 octane, 6 days- daylight hours	80 and 100 octane, JP-A50, Piedmont Airlines, taxi, U- Drive-It, weather, flight train- ing, charter and ambulance service, vending machines
Air Freight Service:		Commercial air carrier accepts air freight on a space-available basis

Bus - Southern Greyhound Bus Lines
Buckhorn-Hyden-Hazard Bus Lines

Taxi - 4 companies, 24-hour service

Rental Services - Truck rentals (U-Haul)

POWER AND FUEL

Electricity

Company serving - Kentucky Power Company
Source of power - Kentucky Power Company
Total generating capacity - 1,085,000 KW
For industrial rates contact:

Kentucky Power Company
Hazard, Kentucky 41701

Natural Gas

Company serving - Hazard Gas Company, Inc.
Source of supply - 5 company owned wells, 15 privately operated wells
and Kentucky-West Virginia Gas Company
Size of transmission mains - 8-inch (supplier); 5-inch (distributor)
Distribution mains - 6, 5 1/2, 4, 3 1/2, 2 and 1 1/2 inches
Distribution pressure - 4 to 7 ounces
Btu content - 1,150 per cubic foot; Specific gravity - .690
For rates and supplies contact:

Hazard Gas Company, Inc.
Hazard, Kentucky

Other Fuels

Propane and butane - Ashland Oil Company, Bulan
Ro-Loane Gas, Hazard

Fuel Oils -

Distillate fuel oil - Ashland Oil Company (bulk), Bulan
Gulf Oil Company (bulk), Hazard
Shell Oil Company (bulk), Hazard
Standard Oil Company (bulk), Hazard
Texaco Oil Company (bulk), Hazard

Residual fuel oil - Arrangements must be made with the refinery

Low sulphur content coal - Available locally

WATER AND SEWERAGE

Water

Company serving - Water Department, City of Hazard

Source - North Fork of the Kentucky River

Treatment plant capacity - 2,000,000 gallons per day

Average daily consumption - 1,250,000 gallons

Peak daily consumption - 1,500,000 gallons

Type treatment - Pre-chlorination, fluoridation, aeration, settling,
and filtration

Storage capacity - 3,000,000 gallons

Size mains - 6 to 14 inches; Average pressure - 110 psi

MONTHLY WATER RATES FOR WHOLESALE AND INDUSTRIAL CONSUMERS

	<u>Inside city</u>
First - 3,000	\$2.50 minimum charge
3,001 - 4,000	.80 per 1,000 gallons
4,001 - 5,000	.75 per 1,000 gallons
5,001 - 10,000	.70 per 1,000 gallons
10,001 - 60,000	.65 per 1,000 gallons
60,001 - 110,000	.60 per 1,000 gallons
110,001 - 160,000	.55 per 1,000 gallons
160,001 - 210,000	.50 per 1,000 gallons
210,001 - 310,000	.45 per 1,000 gallons
All over - 310,000	.40 per 1,000 gallons

	<u>Outside city</u>
First - 2,000	\$4.75 minimum charge
2,001 - 6,000	.80 per 1,000 gallons
6,001 - 10,000	.75 per 1,000 gallons
10,001 - 20,000	.70 per 1,000 gallons
20,001 - 120,000	.65 per 1,000 gallons
120,001 - 220,000	.60 per 1,000 gallons
All over - 220,000	.55 per 1,000 gallons

Name of water district - Buckhorn-Gays Creek Water District (proposed)

Area to serve - Chavis, Buckhorn, Gays Creek, and northeast section
of Perry County

Number of customers - Approximately 10,000

Source of supply - Buckhorn Dam

Surface water sources - Kentucky River

Average discharge - North Fork of Kentucky River at Hazard, 53 cfs
(29-year record, USGS)

Expected ground water yield - 5 to 200 gpm over entire county

Sewerage

Company serving Hazard - Sewer Department, City of Hazard

Design capacity - 1.5 million gallons per day

Average daily flow - 600,000 gallons

Treatment - Primary and secondary

Type treatment - Grit chamber, primary clarifier, trickling filter,
secondary clarifier, digester, drying beds, and chlorination

Treated effluent discharged into - North Fork of the Kentucky River

Size of sanitary mains - 30 to 8 inches

Size of storm mains - 36 to 12 inches

Rates - 90 percent of monthly water bill

Tap on fee - \$50 city, \$100 county

LOCAL GOVERNMENT

City

Structure - Mayor - 4-year term; 4 councilmen - 2-year terms;
City manager

Budget 1973-74 - General Fund	\$507,300
Water and Sewer Fund	340,050
Garbage Collection Fund	51,950

Fees and licenses - Payroll occupational tax 1 percent on gross earnings; business license based on set fee or on gross receipts, depending on type of business; professional license based on the profession; auto tax \$5 per auto

County

Structure - County Judge - 4-year term; 3 magistrates - 4-year terms

Budget 1973-74 - General Fund	\$242,750
Road Fund	44,950

Assessed Value of Property, 1973

<u>Classes of Property</u>	<u>Hazard</u>	<u>Perry County</u>
Real Estate	\$27,492,200	\$49,739,600
Tangibles	9,248,000	27,792,600
Public Service		26,274,682

Property Taxes

Land and buildings are taxed by the state and may be taxed by local jurisdictions. The state rate is \$0.015 per \$100 of assessed valuation.

Tangible personal property owned by manufacturers (automobiles, trucks, finished goods, office furniture, office equipment) is taxed by the state at \$0.15 per \$100 and may be taxed by local jurisdictions.

Manufacturing machinery, raw materials inventories, and goods in process inventories are not subject to local taxation. The state rate is \$0.15 per \$100.

Property stored in public warehouses is not subject to local taxation. The state rate is only \$0.015 per \$100.

All property is assessed at 100 percent of fair cash value.

Local Property Tax Rate Per \$100 of Assessed Valuation, 1973*

<u>Taxing Jurisdiction</u>	<u>Hazard</u>	<u>Perry County</u>
County	\$.302	\$.302
School	.782	.482
City	.470	

Planning and Zoning

City agency - Hazard Planning and Zoning Board
Zoning enforced - City only
Subdivision regulations enforced - City and 5 miles beyond the city limits
Local codes enforced - Building, housing, and electrical
Mandatory state codes enforced - Plumbing, National Fire Protection Association Code, National Building Code (for major buildings and residential construction containing more than 12 bedrooms per building)
Other programs - Urban renewal and public housing

Safety

<u>Police</u>	<u>Hazard</u>	<u>Perry County</u>
Total staff	14	7
Radio-patrol cars	3	2
Other equipment	Standard	Standard

State Police barracks are located in Hazard.

Fire

American Insurance Association Fire Rating	7 - 9
Full-time staff	9
Volunteers	13
Equipment:	
750 gpm pumpers	2
500 gpm pumper	1
Other (car)	1

Rescue Service

Rescue service is operated from the Hazard Appalachian Regional Hospital.

*Kentucky Department of Revenue.

Sanitation

Type service
Fee charged:
 residential
 business
Collection frequency:
 residential
 business
Trash pickup
Disposal method

Hazard

Municipal

\$2 monthly
Contract

Twice weekly
Contract
Twice monthly
Sanitary landfill

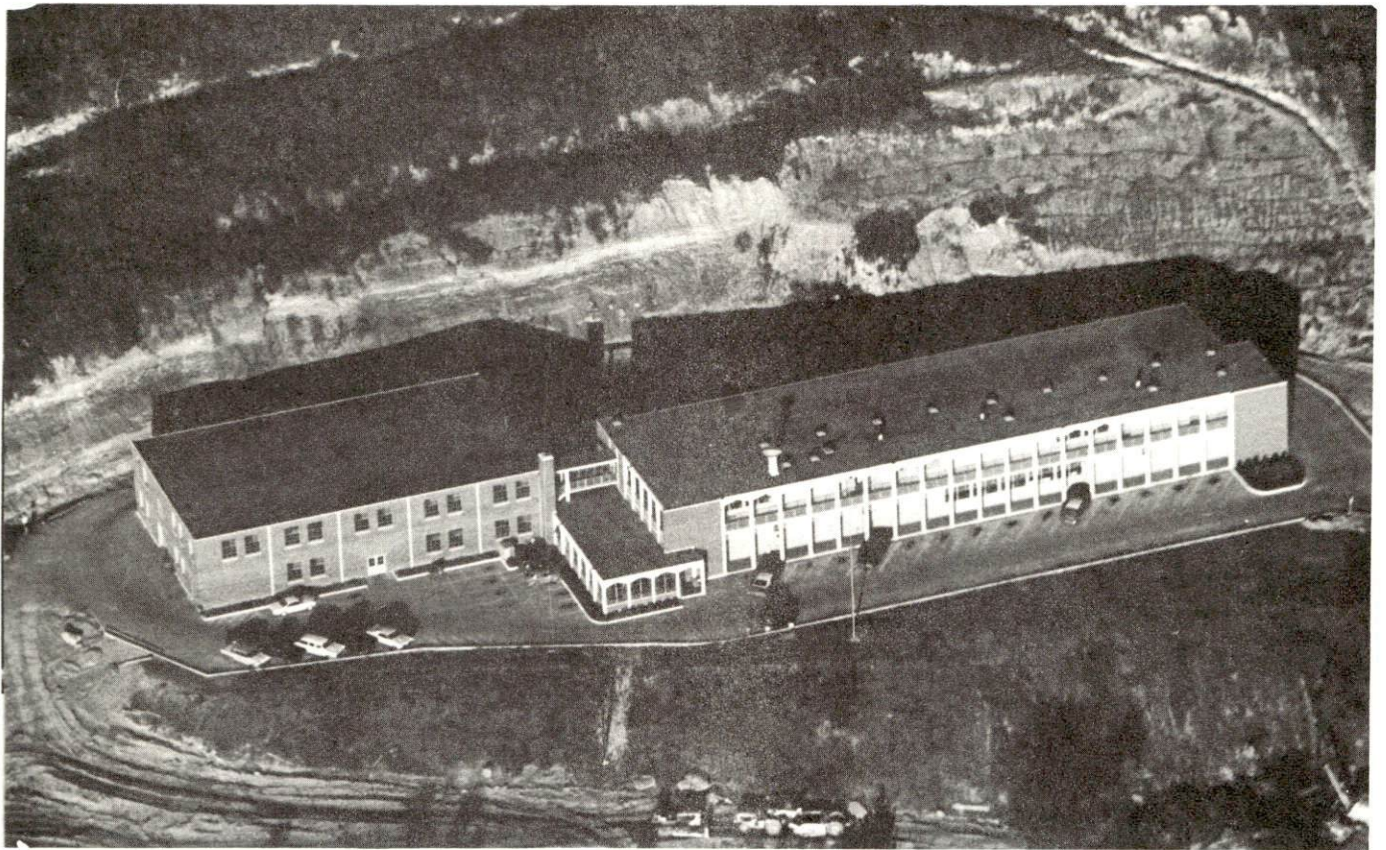
EDUCATION

Public Schools

	<u>Hazard</u>	<u>Perry County</u>
Total Enrollment (Fall 1972)	1,677	5,817
Kindergarten		12
Elementary	1,185	4,305
High School	492	1,500
Student-Teacher Ratio	22.9 - 1	22.8 - 1
Kindergarten		12.0 - 1
Elementary	23.1 - 1	23.2 - 1
High School	22.6 - 1	21.9 - 1
Accreditation	Southern Association of Colleges and Schools	
Percent High School Graduates to College	57.6	38.7
Expenditures Per Pupil (1971-72)	\$447.58	\$433.36
Bonded Indebtedness, June 30, 1972	\$455,000	\$2,945,000

Vocational Schools

	<u>Nearest State School</u>
Location	Hazard State Vocational-Technical School
Curriculum	Hazard, Kentucky
	Clerical
	Secretarial
	Practical Nursing
	Learning Lab
	Electronics (Industrial)
	Highway Technology
	Auto Body Repair
	Auto Mechanics
	Carpentry
	Commercial Foods
	Cosmetology
	Diesel Mechanics
	Drafting
	Electricity
	Heavy Equipment
	Machine Shop
	Mine Maintenance
	Welding



HAZARD STATE VOCATIONAL SCHOOL



ADDITION TO THE VOCATIONAL SCHOOL

Arrangements can be made to provide training in the specific production skills required by an industrial plant. Instruction may be conducted either in the vocational school or in the industrial plant, depending upon the desired arrangement and the availability of special equipment.

Colleges and Universities

<u>Name</u>	<u>Area - Within 60 miles</u>		
	<u>Location</u>	<u>Enrollment (Fall, 1972)</u>	<u>Highest Degree Conferred</u>
Hazard Community College	Hazard	203	Associate
Union College	Barbourville	889	Masters
Southeast Community College	Cumberland	306	Associate
Prestonsburg Community College	Prestonsburg	457	Associate
Sue Bennett Junior College	London	190	Associate
Lees Junior College	Jackson	352	Associate
Alice Lloyd Junior College	Pippa Passes	280	Associate
Virginia Intermont College	Bristol, Virginia	589	A.A., B.A.
University of Virginia	Wise, Virginia	765	B.A., B.S.

HEALTH

Hospitals

<u>General Hospital</u>	<u>Location</u>	<u>Beds</u>
Hazard Appalachian Regional*	Hazard	142

General hospital facilities and services - X-ray service, emergency service, pathology and clinical laboratory, home health service, pharmacy, blood bank, intensive care unit, nursery, 2 major operating rooms, minor operating room, obstetrics, physical therapy, inhalation therapy, 38-bed skilled nursing facility, pediatric department, emergency ambulance service, mental health unit, child development clinic, infant care program, rehabilitation counseling, social services, chaplain program, volunteer services, education services

Professional staff - 16 physicians, 43 registered nurses, 79 licensed practical nurses, 1 radiologist, 2 pathologists, 3 pharmacists, 2 surgeons, 1 doctor of internal medicine, 1 pediatrician

Other - The Frontier Nursing Service established in 1925 by Mary Breckinridge is in service in seven major towns in four counties, including Perry County. Home Place Clinic operating under the direction of Hazard Appalachian Regional Hospital is an outpatient clinic serving northern Perry County with X-ray, laboratory, pharmacy, and home health services; (26.8 employees).

Nursing Homes

	<u>Number</u>	<u>Beds</u>
Extended care homes	1	38

Public Health

Facility - Perry County Health Department

Staff - 1 health officer - 2 sanitarians, 2 registered nurses, 3 clerks, 1 auxiliary clerk, 2 dentists

Budget 1973-74 - \$94,485

*Expansion program underway - At the present time the hospital is involved in an expansion program, the second one in two years. Plans call for a 6-bed coronary and intensive care unit, and an emergency care center. Facilities to be expanded will include laboratory, X-ray, pharmacy, surgery and emergency services.



HAZARD APPALACHIAN REGIONAL HOSPITAL

OTHER LOCAL FACILITIES

Communications

Telephone - General Telephone Company
Services - Standard

Telegraph - Western Union

Postal - U. S. Post Office
Class - First
Mail received - Twice daily
Mail dispatched - Three times daily

Newspapers -	Hazard Herald	The Voice
Semi-weekly and circulation -	7,000	
Weekly and circulation -		6,015
Other papers received from - Lexington and Louisville, Kentucky; Knoxville, Tennessee; and exchanges with 10 smaller cities		

Radio - WKIC, AM-FM
Stations received from - Lexington, Whitesburg, and Louisville,
Kentucky; Cincinnati, Ohio; Knoxville, Tennessee

Television - WKYH, Channel 57
Reception from - Johnson City, Bristol and Kingsport, Tennessee
(Tri-City); Lexington, Kentucky; Huntington and Charleston, West
Virginia; Knoxville, Tennessee

Kentucky Educational Television - Hazard transmitter, Channel 35

Library Services

Public library - Perry County Public Library
Size collection - 47,689 volumes
Circulation, 1973 - 332,871
Services - Interlibrary loan of materials not owned by the local
library, books, periodicals, story hours, summer reading pro-
grams, telephone reference services, services to shut-ins, services
for the blind and handicapped, general reading lists (special subjects
upon request), bookmobile service to the county and schools, reading
guidance and reference assistance, research center, area code
directories, zip code directories, audio-visual equipment, films,
records, filmstrips, special children's programs, games, guidance
in development of special programs for organizations and individuals,
framed prints for home and office, special programs presented for
organizations upon request, educational television class kits (loaned
free), tours for requesting groups, service to local hospitals and
convalescent homes, copying service (minimum fee)

Private library - Hazard Community College Library

Size collection - 21,281 volumes

Circulation 1973 - 3,723

Services - Magazines, reference service, microfilm reader and printer, records, film strips, inter-library loan, periodicals, slides, cassettes, telephone reference service

Religious Institutions

Number of churches - 10

Denominations - Baptist, Catholic, Christian, Episcopal, Methodist, Presbyterian

Financial Institutions

<u>Banks</u>	<u>Statement as of June 30, 1973</u>	
	<u>Assets</u>	<u>Deposits</u>
Citizens State Bank	\$12,687,590.00	\$11,583,901.26
Peoples Bank	22,098,168.45	20,253,650.40
<u>Savings and Loan Associations</u>		<u>Savings Accounts</u>
First Federal Savings and Loan Association	\$25,063,472.05	\$23,127,222.44

Hotels and Motels

Total number - 5

Units - 144

Clubs and Organizations

Business and Civic - Chamber of Commerce, Jaycees, Kiwanis, Lions, Rotary, Perry County Fish and Game Club, Medical Society, Dental Society, Ministerial Association, Red Cross

Fraternal - Fraternal Order of Police, Shrine, Lions, Beta Sigma Phi (Alpha Xi Chapter and Xi Psi Chapter), VFW, American Legion

Women's - Business and Professional Woman's Club, Jaycee-Ettes, Mountain View Garden Club, Perry County Garden Club, Daughters of American Revolution, Eastern Star, Homemakers, American Legion Auxiliary

Youth - Boy Scouts, Girl Scouts, Cub Scouts, Brownies, FFA, FHA, 4-H, Beta Club, Junior Achievement, Babe Ruth League, Little Leagues - baseball, football, and basketball, High School Garden Club

RECREATION

Local

Public Recreation Facilities

Supervised program - yes
Parks - 2
Playgrounds - 6
Tennis courts - 2
Baseball diamonds - 3
Football fields - 2
Other - basketball courts - 4

Private Recreation Facilities

Country clubs - 2
Golf course - 1 (9-hole)
Swimming pools - 2
Movie theaters - 2 (1 indoor, 1 drive-in)
Other - tennis courts - 3; basketball courts - 1

Area (Within 50 miles)

Breaks Interstate Park
Jenny Wiley State Resort Park
Natural Bridge State Resort Park
Buckhorn Lake State Resort Park
Levi Jackson Wilderness Road State Park
Dr. Thomas Walker State Shrine
Pine Mountain State Resort Park
Cumberland Gap National Historical Park
Kingdom Come State Park
Daniel Boone National Forest

AGRICULTURE - NATURAL RESOURCES - CLIMATE

Agriculture*

	<u>Perry County</u>	<u>Labor Market Area</u>
Total land area (acres)	218,240	1,667,200
Percent of area in farm land	5.1	13.0
Number of farms	137	1,818
Average size of farms (acres)	81.1	119.3
1969 value of all farm products	\$ 91,055	\$2,391,324
Value per farm	664	1,315
Total crop sales	41,328	1,592,177
Total livestock & livestock products	43,927	759,687
1970 agricultural production included:		
Burley tobacco (lbs.)	41,000	2,863,000 (incomplete)
Corn (bu.)	7,000	216,000
Cattle and calves (number)	1,000	9,200
Hogs and pigs (number)	700	6,400

Natural Resources

Principal mineral resources	Coal and petroleum
Other mineral resources	Natural gas
Acres of commercial forest land	186,200 (85 percent of land area)
Most abundant tree species	Red oak, white oak, yellow poplar, hickory, beech, soft maple, basswood

*U. S. Department of Commerce, Bureau of the Census, Census of Agriculture, 1969. U. S. Department of Agriculture and Kentucky Department of Agriculture, Kentucky Agricultural Statistics, 1971.

Climate*

Perry County

Temperature

Annual mean (30-year record)	56.8 degrees
Average annual 1972	55.8 degrees
Record highest, July, 1970**(11-year record)	95.0 degrees
Record lowest, January, 1966 (11-year record)	-15.0 degrees
Normal heating degree days (30-year record)	4,143
(Heating degree day totals are the sums of negative departures of average daily temperatures from 65 degrees F.)	

Precipitation

Mean annual total (30-year record)	41.06 inches
Mean annual snow and sleet (35-year record)	16.50 inches
Total precipitation 1972	51.17 inches
Mean number days precipitation (.01 inch or more)	
(27-year record)	134
Average number days thunderstorms	
(29-year record)	46

Prevailing winds (9-year record)

West by southwest

*U. S. Department of Commerce, Environmental Science Services Administration, Climatological Data, 1972. Station of record: Bristol, Johnson City, Kingsport, Tennessee.

**Also on earlier days, months, or years.

HISTORY

Perry County is situated in the southeastern section of the state at the head waters of the Kentucky River. It covers 343 square miles of the Appalachian Mountain region and is drained by the North and Middle Forks of the Kentucky River and their tributaries - creeks with such names as Hell-for-Certain, Cutskin and Squabble. The land surface is hilly and mountainous, a large portion of it unsuitable for cultivation. The valleys, however, are fertile and have a sandstone foundation. An abundance of coal is present in the county, which lies in the Eastern Kentucky Coal Fields.

The first settler in the area was Elijah Combs, who built houses at the present site of Hazard in 1795. The Combs name became an important one in the county's political history. Perry County was formed in 1820, Kentucky's sixty-eighth, taking its name from Commodore Oliver Hazard Perry, under whom many Kentuckians fought in the defeat of the British on Lake Erie in 1813. Perry County is part of an area remembered for its bloody family feuds, such as the French-Eversole feud which claimed many lives.

Hazard, the county seat and first town in the county, incorporated in 1884, was also named for Oliver Hazard Perry. The town first grew slowly but received a strong stimulus for faster growth in 1912 with the coming of the Louisville & Nashville Railroad. Hazard is now a trade and shipping center for an area of coal, oil, gas, and timber resources.

The earliest recorded population figure for Perry County was 3,330 in 1830. By 1950 the total was 46,566, since diminished to 34,961 in 1960 and 26,259 in 1970, but then began to increase with 27,100 estimated in 1972.

Agriculture accounted for only 90 of the county's 7,840 employed in 1972. Principal agricultural products are burley tobacco, corn, cattle, hogs, and poultry. In September, 1972, manufacturing employed 120 persons. Perry County's economy is heavily dependent upon the mining industry which directly employed 1,690 in 1972. The county is one of the large producers of coal in the state.

Completion of the Daniel Boone Parkway through Perry County will significantly improve the transportation situation in the area.