

1975

Industrial Resources: Pike County

Kentucky Library Research Collections
Western Kentucky University, spcol@wku.edu

Follow this and additional works at: https://digitalcommons.wku.edu/pike_cty

 Part of the [Business Administration, Management, and Operations Commons](#), [Growth and Development Commons](#), and the [Infrastructure Commons](#)

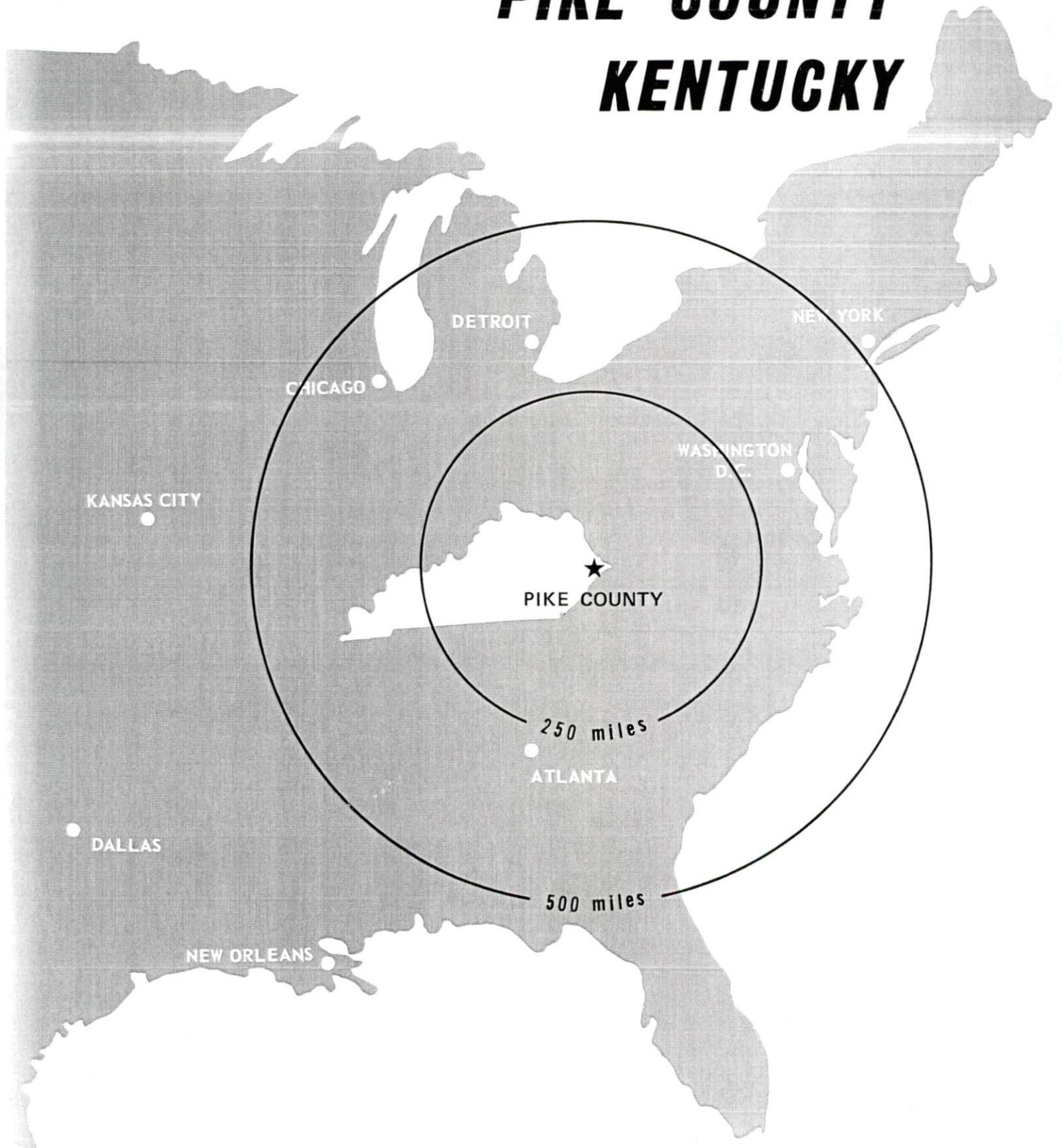
Recommended Citation

Kentucky Library Research Collections, "Industrial Resources: Pike County" (1975). *Pike County*. Paper 10.
https://digitalcommons.wku.edu/pike_cty/10

This Report is brought to you for free and open access by TopSCHOLAR®. It has been accepted for inclusion in Pike County by an authorized administrator of TopSCHOLAR®. For more information, please contact topscholar@wku.edu.

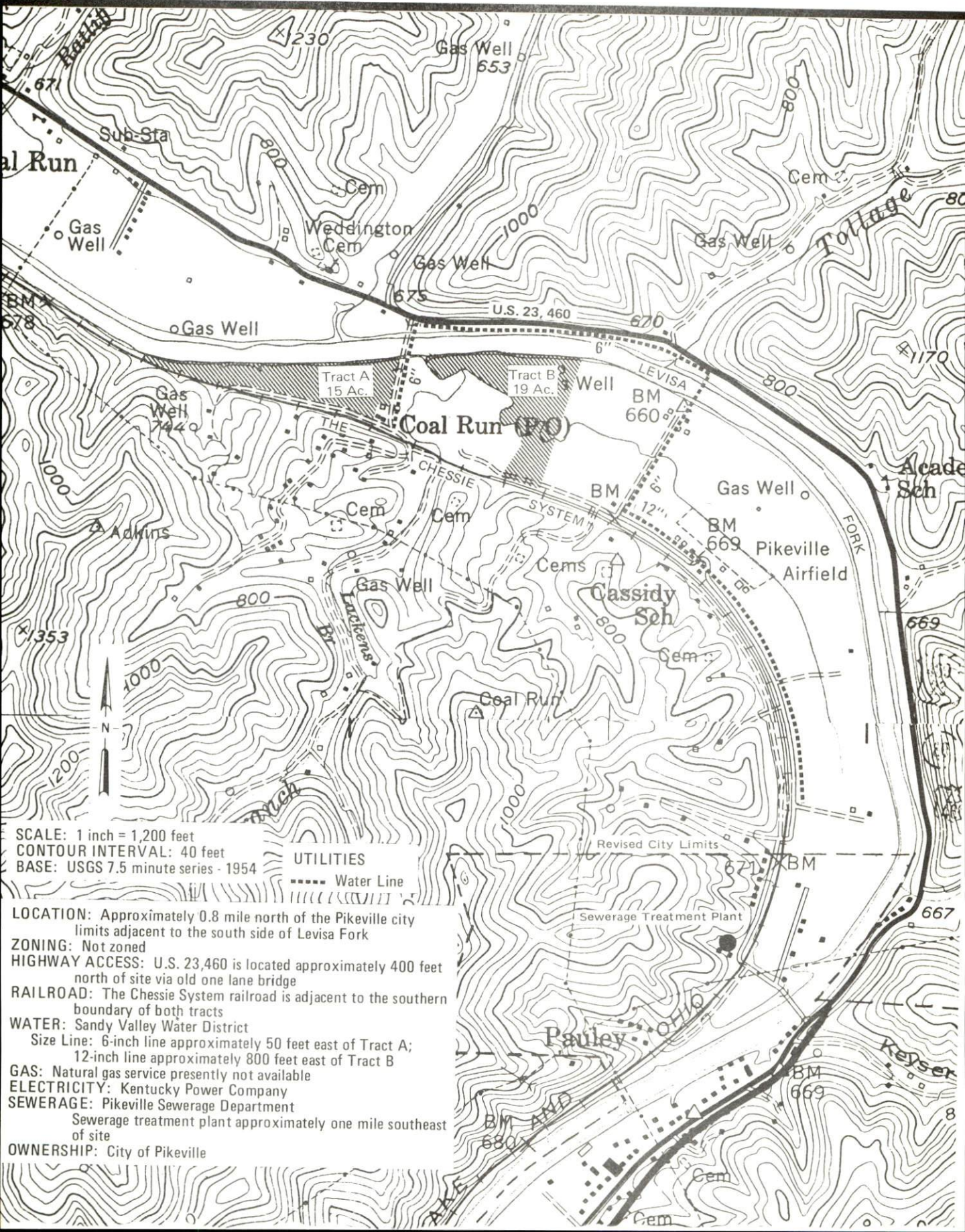
INDUSTRIAL RESOURCES

PIKE COUNTY KENTUCKY



PIKEVILLE, KENTUCKY --- Site No. 175 -- 34 Acres

For more information contact Jarrett Wood, Kentucky Power Company, Main Street, Pikeville, Kentucky 40501 or the Industrial Development Division, Kentucky Department of Commerce, Capital Plaza Tower, Frankfort, Kentucky 40601.



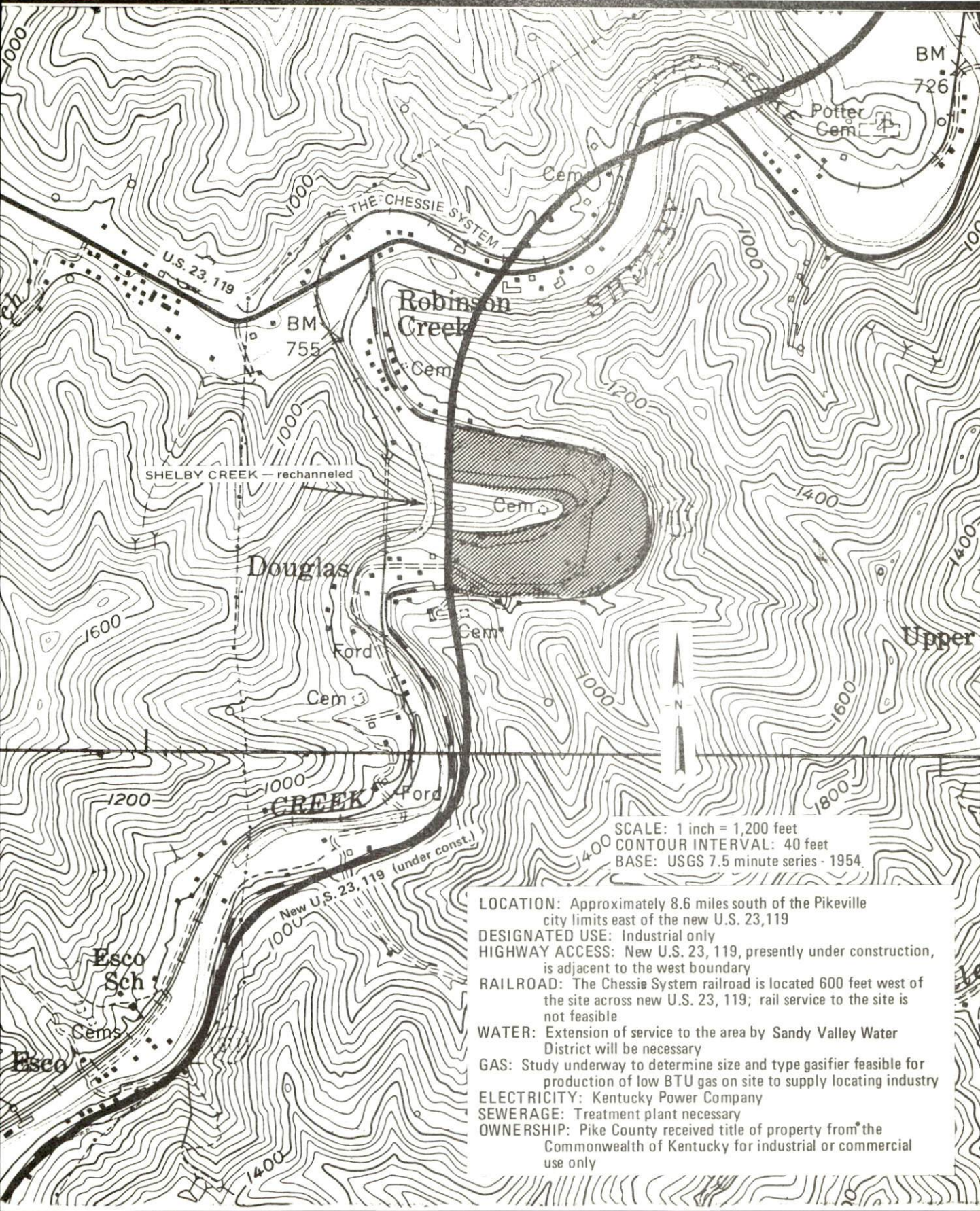
SCALE: 1 inch = 1,200 feet
 CONTOUR INTERVAL: 40 feet
 BASE: USGS 7.5 minute series - 1954

UTILITIES
 - - - - - Water Line
 ||||| Sewer Line

LOCATION: Approximately 0.8 mile north of the Pikeville city limits adjacent to the south side of Levisa Fork
ZONING: Not zoned
HIGHWAY ACCESS: U.S. 23,460 is located approximately 400 feet north of site via old one lane bridge
RAILROAD: The Chesapeake System railroad is adjacent to the southern boundary of both tracts
WATER: Sandy Valley Water District
 Size Line: 6-inch line approximately 50 feet east of Tract A; 12-inch line approximately 800 feet east of Tract B
GAS: Natural gas service presently not available
ELECTRICITY: Kentucky Power Company
SEWERAGE: Pikeville Sewerage Department
 Sewerage treatment plant approximately one mile southeast of site
OWNERSHIP: City of Pikeville

PIKEVILLE, KENTUCKY --- Site No. 275 -- 45 Acres Douglas Waste Area - Future Industrial Site

For more information contact Jarrett Wood, Kentucky Power Company, Main Street, Pikeville, Kentucky 40501 or the Industrial Development Division, Kentucky Department of Commerce, Capital Plaza Tower, Frankfort, Kentucky 40601.



SCALE: 1 inch = 1,200 feet
CONTOUR INTERVAL: 40 feet
BASE: USGS 7.5 minute series - 1954

- LOCATION:** Approximately 8.6 miles south of the Pikeville city limits east of the new U.S. 23, 119
- DESIGNATED USE:** Industrial only
- HIGHWAY ACCESS:** New U.S. 23, 119, presently under construction, is adjacent to the west boundary
- RAILROAD:** The Chessie System railroad is located 600 feet west of the site across new U.S. 23, 119; rail service to the site is not feasible
- WATER:** Extension of service to the area by Sandy Valley Water District will be necessary
- GAS:** Study underway to determine size and type gasifier feasible for production of low BTU gas on site to supply locating industry
- ELECTRICITY:** Kentucky Power Company
- SEWERAGE:** Treatment plant necessary
- OWNERSHIP:** Pike County received title of property from the Commonwealth of Kentucky for industrial or commercial use only

INDUSTRIAL RESOURCES
PIKE COUNTY, KENTUCKY

Prepared by
The Kentucky Department of Commerce
in cooperation with
The Pike County Chamber of Commerce, Inc.

1975

Production Supervisor

Patsy Wallace

Research

Sarah Welling

Clerical

Mildred Keefer

Graphics

N. C. Montague

Frank Ferrante

Tony Cecconi

Cartography

Site Development Section

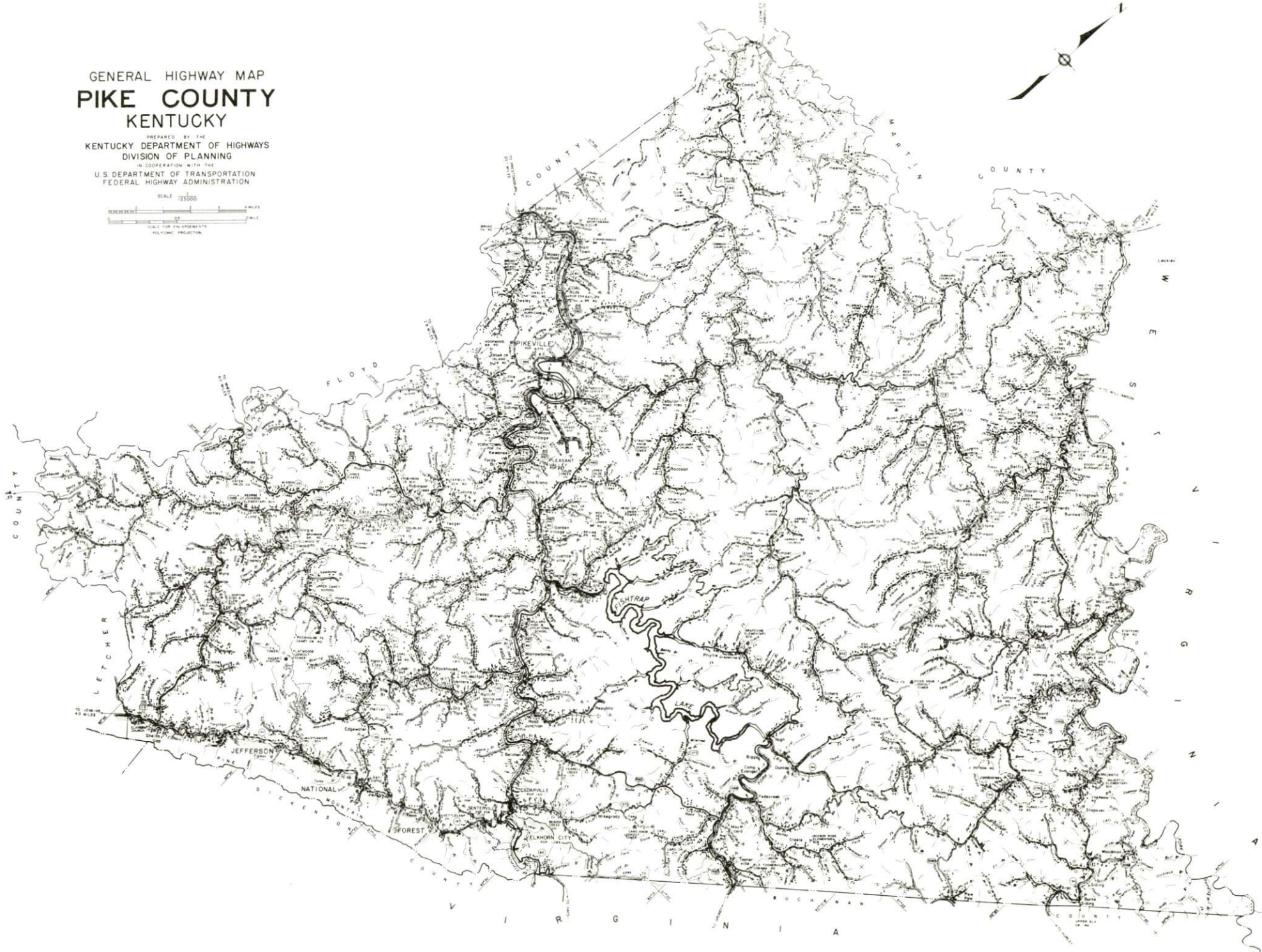
TABLE OF CONTENTS

<u>Chapter</u>	<u>Page</u>
INDUSTRIAL SITES	i
PIKE COUNTY, KENTUCKY - A RESOURCE PROFILE	1
THE LABOR MARKET.	9
Population Trends	9
General Employment Characteristics, 1973	9
Manufacturing Employment Trends by Industry.	10
Pike County Manufacturing Firms, Their	
Products and Employment	11
Labor Organizations	12
Estimated Male Labor Supply	12
Estimated Female Labor Supply	12
Wages.	13
Per Capita Personal Income.	14
TRANSPORTATION	15
Rail.	15
Truck Service	16
Air	17
Bus	17
Taxi	17
Rental Services	17
POWER AND FUEL	18
Electricity.	18
Natural Gas	18
Other Fuels	19
WATER AND SEWERAGE	20
Water.	20
Sewerage	23
LOCAL GOVERNMENT	24
City.	24
County.	24

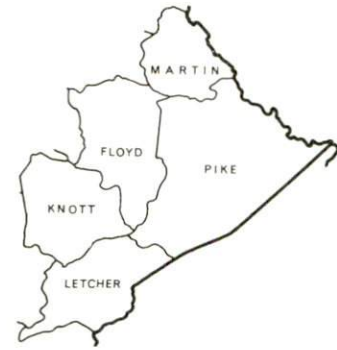
<u>Chapter</u>	<u>Page</u>
Assessed Value of Property, 1974	24
Property Taxes	25
Local Property Tax Rate Per \$100 of Assessed Valuation, 1974 . .	25
Utilities Gross Receipts Tax for Schools	26
Planning and Zoning	26
Safety.	26
Police	26
Fire	27
Rescue Service	27
Sanitation	28
 EDUCATION	 29
Public Schools	29
Nonpublic Schools	29
Vocational Schools	30
Colleges and Universities	31
 HEALTH.	 33
Hospitals	33
Ambulance Service	35
Nursing Homes	35
Public Health	35
 OTHER LOCAL FACILITIES.	 36
Communications	36
Library Services.	37
Religious Institutions.	38
Financial Institutions.	38
Hotels and Motels	38
Clubs and Organizations.	39
 RECREATION	 40
Local.	40
Area	40
 AGRICULTURE-NATURAL RESOURCES-CLIMATE	 41
Agriculture	41
Natural Resources	41
Climate.	42
 HISTORY	 43

GENERAL HIGHWAY MAP
PIKE COUNTY
KENTUCKY

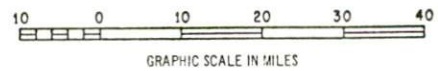
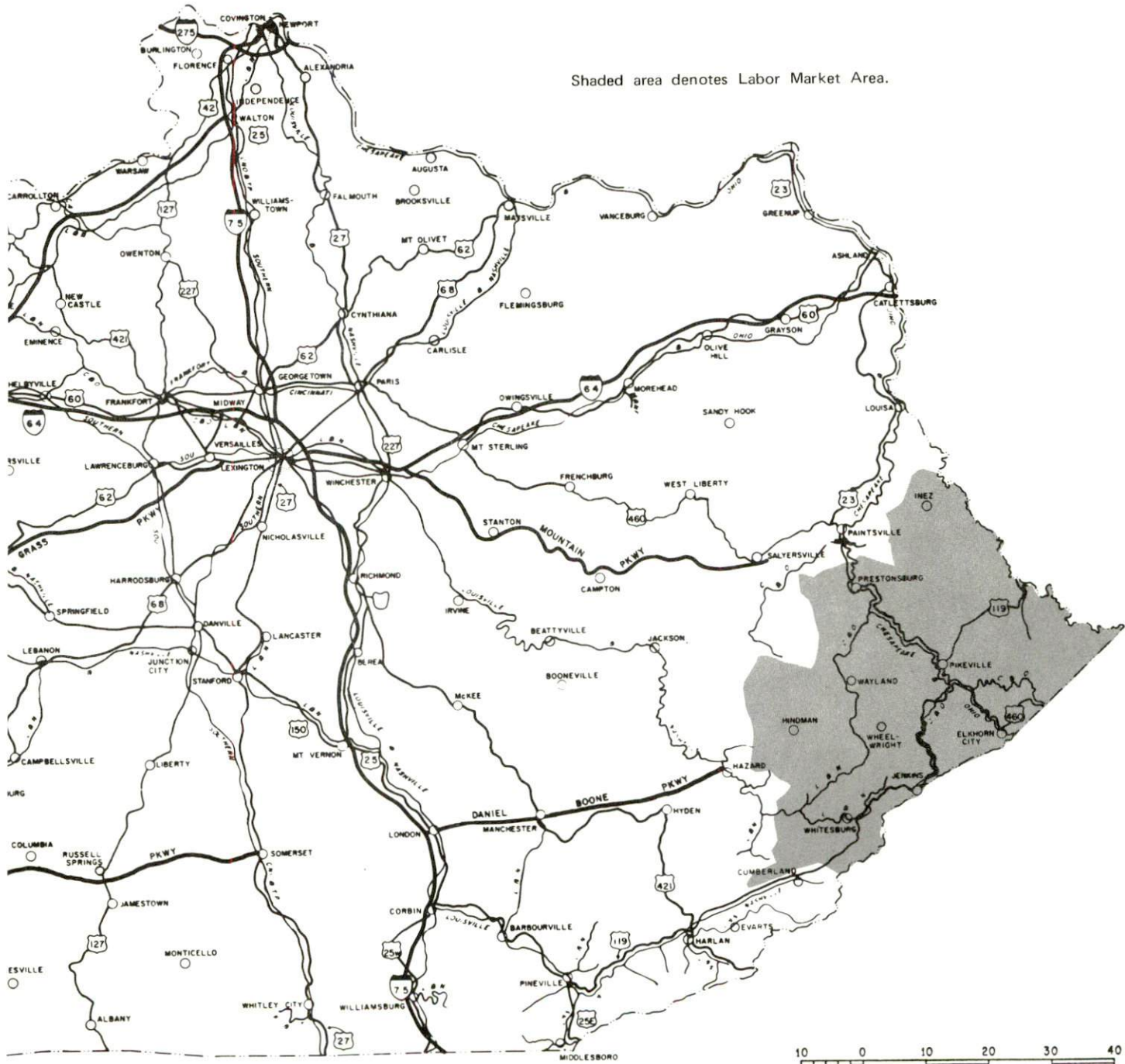
PREPARED BY THE
KENTUCKY DEPARTMENT OF HIGHWAYS
DIVISION OF PLANNING
IN COOPERATION WITH THE
U.S. DEPARTMENT OF TRANSPORTATION
FEDERAL HIGHWAY ADMINISTRATION



PIKE COUNTY LABOR MARKET AREA



Shaded area denotes Labor Market Area.



PIKE COUNTY, KENTUCKY - A RESOURCE PROFILE

Pike County is located in the Big Sandy River Valley in the extreme eastern part of Kentucky. It lies 143 miles southeast of Lexington, 110 miles southwest of Huntington, West Virginia, and 256 miles northeast of Knoxville, Tennessee. Pike County, covering an area of 782 square miles, is the largest county in Kentucky. It is also the largest underground bituminous coal producing county in the United States. Pike County is nestled in the Cumberland Range of the Appalachian Mountains with the Kentucky-Virginia state line as the southeastern border and the Kentucky-West Virginia state line as the northeastern border. The county had a 1970 population of 61,059. In 1974, the population was an estimated 65,100. In only 4 years, the population increased 7 percent, or 4,041 persons.

Pikeville is the county seat of Pike County. Pikeville was chosen as one of the nation's first group of 75 model cities and was the smallest city to be chosen as a Model City. The goal of the model city plan is to turn Pikeville into a regional trade and services center. In 1970, the population of Pikeville was 4,889.

Elkhorn City is located 19 miles southeast of Pikeville in southern Pike County. Elkhorn City is 3 miles from Breaks Interstate Park, a 3,360-acre park which lies in Kentucky and Virginia.

Economic Framework

In 1973, total employment in Pike County averaged 16,350. Appropriately for a county located over one of the greatest bituminous coal fields in the U. S., mining led in number of persons employed in 1973 with 6,100. Trade and services provided 4,210 jobs; government 2,540; manufacturing 260; and agriculture 50. Major manufactured products include soft drinks, asphalt, concrete ready mix, and bituminous concrete.

Per capita income in Pike County in 1972 was \$2,500, \$1,134 below the Kentucky average. Between 1962 and 1972, per capita income increased approximately 155 percent.

The Pike County labor market area includes Pike, the four adjacent Kentucky counties, Buchanan County, Virginia, and Mingo County, West Virginia. In 1973, employment in the Kentucky part of the labor market area totaled 36,980 with mining providing 12,210 jobs; trade and services 8,580; government 7,050; manufacturing 1,320; and agriculture 160.

Once a relatively poor and underdeveloped area in Appalachia, Pike County today is experiencing an economic growth boom unparalleled in its history. This boom is reflected by recent increases in county population and the fact that bank assets and deposits in Pike County more than doubled in 1974.

The Pikeville Cut-Through, a project which includes rerouting a river, removing the railroad from the downtown area and providing four-lane highway access, is now in progress and completion is set for 1976. The project will open up 200 acres of flat land for development in a growing city that was previously congested, locked between the mountains and the river. A corridor 3,500 feet long was cut through two mountains outside Pikeville -- over 650 feet deep in some areas -- and a total of 13.5 million cubic yards of materials were moved.

Pike County is a principal producing area of coal, and it also produces some natural gas, petroleum, and high-calcium limestone. In 1974, Pike County produced more underground coal than any other county in Kentucky, and Kentucky produced more coal than any other state. Yet, only a small percentage of the rich underground bituminous coal in Pike County has been mined.

Elkhorn City, in southern Pike County, is located near an enormous deposit of many millions of tons of high grade, high silica sandstone free of iron oxide.

A project is planned for Pike County to convert coal to low-BTU gas that can be used by manufacturing firms in their production processes. A feasibility study by Battelle-Columbus Laboratories examined alternative gasification processes for producing low-BTU gas and determined candidate industries to locate in Pike County, many of which can use the process gas from a gasifier. The planned site for the gasifier is the Douglas Waste Area, a 45-acre site located approximately 8.6 miles from Pikeville on U. S. 23, 119, a new four-lane highway being constructed.

Resources for Growth

1. There is a current estimated labor supply of 6,960 men and 11,820 women available for industrial jobs in the Kentucky part of the labor market area. In addition, 8,300 young men and 7,910 young women will become 18 years of age before 1981 and will be potentially available for work. The current and future labor supplies are both increased by the number of men and women in the bordering Virginia and West Virginia counties who are available for industrial employment.

2. Three railroads serve Pike County - The Chessie System, the Norfolk and Western, and the Clinchfield - with a variety of services. Pikeville is served by four trucking companies and Elkhorn City by two. Pike County is served by a network of more than 90 miles of modern, divided four-lane ARC Corridor Highways, and Pikeville is the highway-hub for the 13 appalachian states. Pikeville is also served by U. S. Highways 23, 119, and 460 and by Kentucky Highway 80. The Mountain Parkway is 51 miles to the northwest. The Pikeville Airport has a 3,000 foot

crushed, rolled stone runway that can accommodate light aircraft. Commercial air service is available at Tri-State Airport near Huntington, West Virginia, 110 miles from Pikeville.

3. The Kentucky Power Company provides electric power to Pikeville, Elkhorn City and Pike County. Natural gas is distributed in Pikeville by the Pikeville Utilities Department, whose source of supply is the Columbia Gas Transmission Company and local companies. Elkhorn City is served by the Lyda Gas Company (residential only). Propane is available from four distributors and fuel oil is available from four.

The raw water supply is adequate for additional growth.

4. Education is an integral part of Pike County's future. Pikeville College, a 4-year liberal arts college, in Pikeville offers a federally funded mining technology course that is unique in the U. S. In addition, one community college and one junior college are within 55 miles of Pikeville. Pike County offers two area vocational education centers, at Millard and Belfry, which offer course training in four and five areas, respectively. Mayo State Vocational-Technical School, 42 miles away at Paintsville, offers 25 courses.

5. Total banking assets in Pike County (3 banks and their branches) increased approximately 129 percent between 1972 and 1974. In that two-year period, banking assets more than doubled.

Programs for Improvements

Pikeville

The Pikeville Cut-Through is now in process and will be completed in 1976. The Cut-Through involves cutting a corridor through a mountain and rerouting the river, the railroad tracks and the highway. The Cut-Through will generate 200 acres of flat land, relieve congestion in the city and provide modern highways.

Municipal Services

1. Three public housing projects now being built will provide an additional 363 units.
2. A new addition to the Pikeville library provides space for meetings and exhibits.
3. The Pikeville Fire Department has new equipment including a fully equipped rescue van, rescue equipped backboards, 6 self-contained masks with 30 minute tanks, two 10-ton portapowers and several K-12 saws.

4. The water treatment plant has doubled its capacity to 1.5 million gallons.
5. Water and sewerage service was expanded in 1974 at a cost of \$1,276,000 and gas service at a cost of \$180,000.
6. Pikeville is planning a new civic center and amphitheater.

Health Services

1. The Health Planning Council is considering bids on a new intermediate care home.

Commercial

1. Two motels have recently expanded and one new motel has opened.
2. A shopping center including 21 stores is under construction just north of Pikeville, and several new retail and service firms recently opened in the downtown area.

Transportation

1. Best Way Express, Inc., a trucking company, is initiating service to Pikeville.

Recreation

1. A new football stadium and athletic field will provide recreation for students, and a park with boating and picnic areas is being planned.

Pikeville College

1. A \$3.9 million science facility has opened providing paramedical, pre-dental, medical technology, computer and various technology programs.
2. A graduate consortium with Morehead State University has been established through which Pikeville College offers a masters degree in education.
3. The college's unique Coal Mining Institute has received approximately \$800,000 in grants since its inception in 1970 for education and research. Enrollment in the school's program is 200.

Elkhorn City

Municipal Services

1. The Fire Department has remodeled the station and installed a new telephone system. A new stationhouse is being planned.
2. The Police Department is improving the communications system.
3. The Sanitary Sewer System is extending 2,000 feet of 8-inch pipeline and planning a new sewage treatment plant.
4. Water and sewerage services were extended to the southern city limits in Fall, 1974.
5. Thirty-two units of public housing were opened in January, 1975.

Education

1. A new high school is being planned for Elkhorn City.

Communications

1. Radio Station WECL-FM began broadcasting in Fall, 1974.

Commercial

1. A new pharmacy is open.
2. A new motel and restaurant are open.

Recreation

1. Elkhorn City plans to construct a public pool in the city park.

Pike County

County Services

1. The courthouse system is undergoing a series of improvements including a new annex at Belfry, a new building at Phelps, a remodeling project for the Hellier Annex, and extensive remodeling of the main courthouse in Pikeville.

2. Four sanitary landfills are being established and Pike County will soon be served by a county-wide franchised sanitation system which two ecology enforcement officers will supervise.
3. The County has initiated a clean-up campaign to include the removal of abandoned cars.
4. The Pike County Juvenile Detention Facility, in operation two years, offers an open atmosphere and is considered one of the most progressive detention facilities in the state.
5. The Pike County Health Department now has branch facilities in the new branch courthouse at Phelps as well as Pikeville.
6. The Pike County Sheriff's Office recently acquired a rescue boat, four 1974 auto cruisers, and three replacement cruisers.
7. The Pike County Ambulance Service has ordered a new radio system and is building a transmitting tower. Four new ambulances were received in May, 1975, and the staff began training in EMT and Cardiac-Pulmonary Rescue.
8. The Pike County Rescue Squad has a new headquarters building, and new equipment includes a portable lighting system, motors for boats, and jaws.
9. The new Marrowbone Water District expects to extend services to additional customers.

Recreation

1. A new county park, the Blackberry Fork Recreational Center, is being developed on land donated by private companies.
2. Pike County is working to establish Fishtrap Lake into a state park.
3. Pike County has begun a concert and lecture series.

Transportation

1. A new 94-mile network of 4-lane superhighways is being built across Pike County. This project by the Appalachian Regional Commission will be completed in 1978 and will place Pikeville at the crossroads of Appalachia.

Commercial

1. Phone hookups have increased 160 percent since 1969 with 437 new business telephones.
2. Bank assets and deposits in Pike County more than doubled in 1974. The Pike County banking community now ranks as third largest in Kentucky, after Louisville and Lexington.

Health Care

1. The Methodist Hospital in Pikeville plans to add a radiation therapy unit, health education program in nursing, and an expanded program in medical technology. This hospital has been designated the Eastern Kentucky Hospital Center.
2. The Williamson Appalachian Regional Hospital is building a 50-bed addition which will be finished by the end of 1975.
3. The Williamson Memorial Hospital has a remodeling project underway which includes two new boilers, a generator, and a fire escape.

Education

1. A new vocational school being built at Phelps is due to open in Fall, 1975.
2. The "Follow Through Program," a corollary to Head Start, is now offered to grades 1-3 in 5 schools.
3. A new gymnasium is being planned for the county high school at Phelps.
4. The elementary school at Millard is being renovated.
5. The County Science Fair and county reading festival are being reinstated.
6. Pike County is working to upgrade the preschool and Head Start programs.

Industrial

Pike County has hired a research and development institute, Battelle Columbus Laboratories, to investigate the possibilities of a coal gasification plant in Pike County and various gas using

industries. The project is now complete and Pike County plans to build a coal gasification plant at the Douglas Waste Area site.

Recreation, Entertainment and Livability

Pike County lies in the heart of the Cumberland Mountains region which draws vacationers from all over the nation.

Blackberry Fork Recreational Center, a park now under development in Pike County, will provide recreation for all ages. It will include tot lots, picnic shelters, horseshoe pits, field activities and a basketball court.

Fishtrap Lake, which lies in Pike County, offers boating, fishing and camping areas. The Fishtrap Lake Wildlife area, approximately 16 miles from Pikeville, offers state regulated hunting in season.

In addition, there are two parks within 30 miles of Pikeville. Breaks Interstate Park, located at Elkhorn City, encompasses 3,360 acres and is the site of the largest canyon east of the Mississippi River. Park facilities include lodge, restaurant, housekeeping cottages, tent and trailer campsites, picnic areas, playground, hiking trails, horseback riding, fishing, fishing boat rentals, community pool, visitors' center, and gift shop.

Jenny Wiley State Resort Park, 29 miles from Pikeville in Prestonsburg, is a 1,700-acre park in a beautiful setting. The extensive park facilities and activities include a lodge, dining room, housekeeping cottages, primitive campsites, picnic areas, planned recreation, playground, golf, hiking trails, horseback riding, shuffleboard, fishing, fishing boat rentals, pedal boat rentals, olympic pool, and gift shop. Special attractions include summer theater presentations, a 4,700 foot air lift sky ride and ferris wheel, and the annual hydroplane regatta.

The Jefferson National Forest, which lies in Letcher and Pike Counties, Kentucky, and Virginia, covers 550,626 acres and offers idyllic camping, hunting, and fishing.

THE LABOR MARKET

POPULATION TRENDS

Area	Population				Percent Change	
	1974*	1970	1960	1950	1960-70	1950-60
Pikeville	5,329**	4,889	4,754	5,154	+ 2.8	- 7.8
Elkhorn City	1,042**	1,081	1,085	1,349	- 0.4	-19.6
Labor Market						
Area	155,700	144,188	167,571	206,173	-14.0	-18.7
Pike County	65,100	61,059	68,264	81,154	-10.6	-15.9
Floyd County	38,900	35,889	41,642	53,500	-13.8	-22.2
Knott County	16,200	14,698	17,362	20,320	-15.3	-14.6
Letcher County	25,100	23,165	30,102	39,522	-23.0	-23.8
Martin County	10,400	9,377	10,201	11,677	- 8.1	-12.6

*Provisional estimates.

**1973 estimates.

Sources: U. S. Department of Commerce, Bureau of the Census, Census of Population, 1970, 1960, 1950. Population Estimates Series P-26, No.120 and P-25, No. 562, June 1975.

GENERAL EMPLOYMENT CHARACTERISTICS, 1973

Major Employment Group	Employment	
	Pike County	Labor Market Area
TOTAL	16,350	36,980
Agricultural	50	160
Nonagricultural	16,300	36,820
Manufacturing	260	1,318
Government	2,540	7,050
Trade and Services	4,212	8,582
Mining	6,096	12,208

Source: Kentucky Department for Human Resources, Bureau for Administration and Operations. Kentucky Department of Mines and Minerals.

MANUFACTURING EMPLOYMENT TRENDS BY INDUSTRY
SEPTEMBER 1974 AND 1964

Industry	Pike County			Labor Market Area		
	1974	1964	% Change	1974	1964	% Change
TOTAL	282	277	+ 1.8	1,328	632	+ 110.1
Food & Kindred						
Products	107	92	+ 16.3	172	145	+ 18.6
Apparel, Textiles,						
Leather	0	0	0	399	0	--
Lumber, Furniture	62	126	- 50.8	202	281	- 28.1
Printing & Publishing,						
Paper	9	28	- 67.9	31	51	- 39.2
Chemicals, Petroleum						
& Coal, Rubber	2	0	--	52	39	+ 33.3
Stone, Clay & Glass	91	30	+203.3	117	57	+ 105.3
Machinery, Metal						
Products, Equipment	4	0	--	340	58	+ 486.2
Other	7	1	+600.0	15	1	+1,400.0

Source: Kentucky Department for Human Resources, Number of Workers in Manufacturing Industries Covered by Kentucky Unemployment Insurance Law Classified by Industry and County, September, 1974, September, 1964.

PIKE COUNTY MANUFACTURING FIRMS,
THEIR PRODUCTS AND EMPLOYMENT

<u>Firm</u> (Establishment date)	<u>Product</u>	<u>Employment</u>			<u>Organized</u>
		<u>Total</u>	<u>Male</u>	<u>Female</u>	
<u>Pikeville</u>					
Adams Construction Corporation (1955)	Concrete ready mix, bituminous concrete	36	30	6	*
Big Sandy Electric and Supply (1944)	Coils for electrical motors, fabricated metal products	17	13	4	*
Coca-Cola Bottling Company of Pikeville (1912)	Carbonated beverages	28	25	3	*
East Kentucky Beverage Company, Inc. (1931)	Soft drinks	118	110	8	*
Keene Garage Welding Shop (1945)	Machine shop	4	4	0	
Medusa Aggregates Company (1974)	Asphalt	60			*
Pike County News (1920)	Newspaper, job printing	10	5	5	
East Kentucky Machine and Electric Company, Inc. (1942)	Electric conversion equipment	28	25	3	
State Construction Company (1974)	Asphalt	27	25	2	
<u>Robinson Creek</u>					
Colley Block Company, Inc. (1958)	Concrete blocks, septic tanks	31	30	1	
Precision Drilling	(Not yet in operation)				
<u>Elkhorn City</u>					
Elkhorn Stone Company (1967)	Crushed limestone				*
Johnson Brothers Limestone Company (1952)	Aggregate limestone	13	12	1	

*See Labor Organizations page 12.

Sources: Kentucky Department of Commerce, Pike County Chamber of Commerce, Department for Human Resources, individual companies.

LABOR ORGANIZATIONS

Union

Representing manufacturing workers at:

United Steel Workers of
America

Adams Construction Corporation
Big Sandy Electric and Supply
Coca-Cola Bottling Company
East Kentucky Beverage Company
Medusa Aggregates Company
Elkhorn Stone Company

ESTIMATED MALE LABOR SUPPLY PIKE COUNTY LABOR MARKET AREA

<u>Area</u>	<u>Current</u>			<u>Future</u>	
	<u>Total</u>	<u>Not in Labor Force</u>	<u>Unemployed</u>	<u>Under- employed</u>	<u>Reaching 18 yrs. of age before 1981</u>
Labor Market					
Area	6,960	3,080	2,710	1,170	8,301
Pike	1,620	540	950	130	3,452
Floyd	2,410	1,220	730	460	1,994
Knott	1,410	940	230	240	915
Letcher	1,160	370	600	190	1,344
Martin	360	10	200	150	596

Sources: Kentucky Department for Human Resources, Kentucky Labor Supply Estimates by County, 1973. Kentucky Department of Commerce, Future Labor Supply before 1981.

ESTIMATED FEMALE LABOR SUPPLY PIKE COUNTY LABOR MARKET AREA

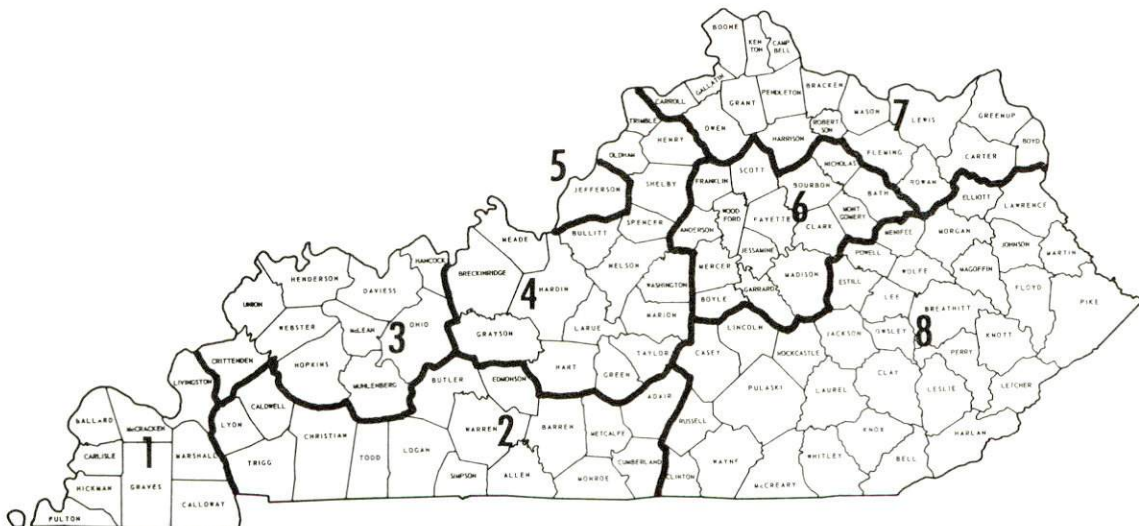
<u>Area</u>	<u>Current</u>			<u>Future</u>	
	<u>Total</u>	<u>Not in Labor Force</u>	<u>Unemployed</u>	<u>Under- employed</u>	<u>Reaching 18 yrs. of age before 1981</u>
Labor Market					
Area	11,820	8,660	950	2,210	7,908
Pike	5,460	3,770	410	1,280	3,256
Floyd	2,470	1,700	320	450	1,906
Knott	1,150	880	90	180	873
Letcher	2,120	1,860	110	150	1,298
Martin	620	450	20	150	575

Sources: Kentucky Department for Human Resources, Kentucky Labor Supply Estimates by County, 1973. Kentucky Department of Commerce, Future Labor Supply before 1981.

WAGES

Occupational wage rates for specific industries are usually not available to most government agencies, and wage data furnished to state employment agencies by industrial employers is protected from disclosure by federal law. The most reliable up-to-date wage information can be obtained by direct contact with local employers.

Associated Industries of Kentucky, a voluntary organization of Kentucky businesses, regularly collects occupational wage rates and fringe benefits data from participating member firms. Data is compiled for over 130 clearly defined office, production, and service occupations. Tabulations are published for eight regions of Kentucky, as shown on the map below. It should be noted that the data may be weighted by the preponderance of firms in the larger cities and may be somewhat higher than the rates paid in the smaller communities. Data from these tabulations are available, upon request, from the Kentucky Department of Commerce, Frankfort, Kentucky 40601.



Associated Industries of Kentucky Area Wage Surveys

PER CAPITA PERSONAL INCOME

<u>Area</u>	<u>1972</u>	<u>1962</u>	<u>% Change</u>
Pike County	\$2,500	\$ 980	+155.1
Labor Market Area			
Range	\$1,702 - 2,678	\$570 - 1,038	N. A.
Kentucky	3,634	1,769	+105.4
U. S.	4,549	2,381	+ 91.1

Sources: Office of Development Services and Business Research, College of Economics, University of Kentucky, Kentucky Personal Income 1929/68. U. S. Department of Commerce, Office of Business Economics, Survey of Current Business, May, 1974, August, 1974.

TRANSPORTATION

Rail

Line serving Pikeville and Pike County - Chesapeake and Ohio Railway Company/Baltimore and Ohio Railroad Company (Chessie System)
Services - Freight service as needed (carload only); 4 through freights daily, 2 northbound and 2 southbound; switching facilities; siding space - 10 sidetracks in vicinity of Pikeville, 3 subdivisions in Pike County; nearest piggyback facilities- Huntington, West Virginia, 110 miles north

Line serving Elkhorn City and Pike County - Clinchfield Railroad (a subsidiary of the Louisville and Nashville Railroad Company)
Services - Freight service, 5 freights daily; 3 northbound and 2 southbound; switching facilities; siding space-house track for 8 cars; yard track for 250 cars; nearest piggyback facilities- Kingsport, Tennessee, 93 miles south

Line serving Pike County - Norfolk and Western Railroad Company
Services - Freight service, 7 freights per day (these currently carry only coal, but they could serve industry as needed); average 8 through freights per day; switching facilities; siding space at Williamson, West Virginia (on the border of Pike County, 31 miles from Pikeville) for approximately 3,500 cars. Passenger service available through Amtrak at Williamson, West Virginia

For details on routing, schedules, rates, and services, contact:

General Manager, Freight Service
The Chessie System
603 B & O Central Building
2 North Charles Street
Baltimore, Maryland 21201

and/or

Manager of Industrial Development
Louisville and Nashville Railroad Company
908 West Broadway
Louisville, Kentucky 40203

and/or

Manager, Norfolk and Western Railroad Company
Williamson, West Virginia 25661

Truck Service

Company

Home Office

Hogan Storage and Transfer
Company (Irregular)*
Point Express, Inc.**

Smith's Transfer Corporation
of Virginia
Best Way Express, Inc.

721 East Fourth Avenue
Williamson, West Virginia 25661
P. O. Box 10185, Station C
Charleston, West Virginia 25312
P. O. Box 1000
Staunton, Virginia 24401
710 Poplar Avenue
Nashville, Tennessee 37210

Other Freight Services

Shipping Center

REA Express
United Parcel Service

Local pick up and delivery service
Pikeville

HIGHWAY MILES AND TRUCK TRANSIT TIME IN DAYS FROM
PIKEVILLE, KENTUCKY, TO SELECTED MARKET CENTERS

City	Delivery		City	Delivery	
	Highway Miles	Time TL		Highway Miles	Time TL
Atlanta, Ga.	450	2	Los Angeles, Calif.	2,320	7
Birmingham, Ala.	510	2	Louisville, Ky.	213	2
Chicago, Ill.	521	2	Nashville, Tenn.	441	2
Cincinnati, Ohio	228	1	New Orleans, La.	865	3
Cleveland, Ohio	398	2	New York, N. Y.	739	2
Detroit, Mich.	493	2	Pittsburgh, Pa.	367	2
Knoxville, Tenn.	256	2	St. Louis, Mo.	487	2

Source: Delivery Time only - Point Express, Inc., P. O. Box 10185,
Station C, Charleston, West Virginia 25312.

*Also serving Elkhorn City.

**Local terminal, Pikeville.

Air

	<u>Local</u>	<u>Nearest Commercial</u>
	Pikeville Airport	Tri-State Airport (Walker-Long Field)
Location:	2 miles northwest of Pikeville	9 miles west of Huntington, West Virginia, 101 miles from Pikeville
Runways:	1 (crushed stone-rolled)	1 paved (concrete)
Length:	2,500 feet	5,280 feet
Traffic		
Control:	Wind sock	Control tower
Lighting:	None	Beacon, runway
Services:	Tie down facilities, 80-100 octane, taxi, charter, air ambulance and flight instruction	Allegheny, Piedmont; 80-100 octane, jet fuel, major repairs, hangars, tiedowns, flight instruction, charter, restaurant, restrooms, limousine, taxi, car rentals
Air Freight Service:		Air freight accepted on a space available basis

Bus -

<u>Pikeville</u>	<u>Elkhorn City</u>
Southern Greyhound Bus Lines Trailways Bus Lines	Trailways Bus Lines

Taxi - Individual operators, 12-hour service daily, radio dispatched

Rental Services - U-Haul Truck and Trailer Rentals, National Car Rentals

POWER AND FUEL

Electricity

Company serving Pikeville, Elkhorn City and Pike County - Kentucky Power Company

Source of power - Kentucky Power Company

Total generating capacity - 1,080,000 KW

For industrial rates contact:

Kentucky Power Company
Pikeville, Kentucky 41501

Natural Gas

Company serving Pikeville - Pikeville Utilities Department

Source of supply - Columbia Gas Transmission Company and local companies

Size of transmission mains - 6 inches (supplier); 6 and 4 inches (distributor)

Distribution mains - 4, 2 and 1 inches

Distribution pressure - Low pressure: 15 psi

Btu content - Over 1,000 per cubic foot

For rates and supplies contact:

Pikeville Utilities Office
Division Street
Pikeville, Kentucky 41501

Elkhorn City is served by a privately owned local gas company, Lyda Gas Company, Inc. The source of supply is one private gas well, and the supply is limited to a few residential customers.

Other Fuels

Propane and butane - Within 42 miles of Pikeville

Williams Energy Company
Collins
Virgie, Kentucky 41572

Comstock's Hardware
Martin, Kentucky 41649

Owen's Bottled Gas
Russell
Elkhorn City, Kentucky 41522

Hardware Charlie Gas Company
Route 23
Paintsville, Kentucky 41240

Fuel oils

Distillate fuel oil - Within 19 miles of Pikeville

Kentucky Oil and Refining Company
Harold, Kentucky 41635

Chapman's Fuel Oil Service
Jackson's Branch
Elkhorn City, Kentucky 41522

H. and R. Oil Company
Kettle Camp
Elkhorn City, Kentucky 41522

Ashland Petroleum Company
Bulk Plant
Yeager
Virgie, Kentucky 41572

Residual fuel oil - Arrangements must be made with the refinery

Low sulphur content coal - Available locally

WATER AND SEWERAGE

Water

Company serving Pikeville and Pike County - Pikeville Utilities Department (City of Pikeville Water Treatment Plant)

Source - Big Sandy River

Treatment plant capacity - 1,500,000 gallons per day

Average daily consumption - 1,126,000 gallons

Type treatment - Coagulated, settled, filtered, chlorinated, fluoridated

Storage capacity - 2,850,000 gallons

Size lines - 10, 8, 6, 4 and 2 inches

Average pressure - 85 psi

Average temperature - 40 degrees F.

MONTHLY WATER FEES FOR WHOLESALE AND INDUSTRIAL CONSUMERS

2,000 gallons	\$ 3.41 (Minimum)
3,000 gallons	4.86
5,000 gallons	7.76
10,000 gallons	14.71
15,000 gallons	21.36
20,000 gallons	28.01
30,000 gallons	38.91
34,000 gallons	43.27
All over 35,000 gallons	2.09 per M gallons

Tap-on charge: \$112.50

Company serving Elkhorn City - Elkhorn City Water Department
 Source - Russell Fork of Big Sandy River
 Treatment plant capacity - 480,000 gallons per day
 Average daily consumption - 100,000 gallons
 Peak daily consumption - 125,000 gallons
 Type treatment - Settled, filtered, chlorinated
 Storage capacity - 200,000 gallons
 Size lines - 8, 6, 4 and 2 inches
 Average pressure - 115 psi
 Average temperature - 60 degrees F.

MONTHLY WATER RATES FOR WHOLESALE
 AND INDUSTRIAL CONSUMERS

First	2,000 gallons	\$5.00 (Minimum)
Next	2,000 gallons	1.00 per M additional gallons
Next	4,000 gallons	.80 per M additional gallons
Next	4,000 gallons	.70 per M additional gallons
Next	4,000 gallons	.60 per M additional gallons
Next	4,000 gallons	.50 per M additional gallons
Next	20,000 gallons	.40 per M additional gallons
Over	40,000 gallons	.30 per M additional gallons

3-inch meter or larger - Minimum \$40

Tap-on charge: \$25

Name of water district - Sandy Valley Water District
 Area served - Along U. S. 23; Pikeville (Pike County) to Stanville
 (Floyd County), Kentucky
 Date when water district began operating - July, 1969
 Source of supply of treated water - City of Pikeville Water Treatment
 Plant
 Average amount of water used in a 24-hour period - 300,000 gallons
 Peak amount of water used in a 24-hour period - 335,000 gallons
 Storage capacity - 300,000 gallons
 Average pressure - 95 psi
 Average temperature - 63 degrees F.
 Size lines - 12 and 6 inches
 Rates -

First	2,000 gallons (Minimum)	
5/8-inch meter		\$ 4.50
3/4-inch meter		5.00
1-inch meter		6.00
1 1/2-inch meter		7.00
2-inch meter		8.00
3-inch meter		10.00
4-inch meter		15.00
Next	3,000 gallons	\$ 1.70 per M gallons
Next	15,000 gallons	1.20 per M gallons
Next	30,000 gallons	.80 per M gallons
Next	50,000 gallons	.60 per M gallons
All over	100,000 gallons	.35 per M gallons

Tap-on charge: \$150

Surface water sources - Big Sandy River - Levisa Fork and Russell Fork
 Average discharge - Levisa Fork at Pikeville - 1,444 cfs (37 years USGS,
 unadjusted); Russell Fork at Elkhorn City - 726 cfs (14 years USGS,
 unadjusted)
 Expected ground water yield - 50 to 200 gpm throughout county except
 portions in northwest and south which yield 5 to 50 gpm

Sewerage

Company serving Pikeville - Pikeville Utilities Department (City of
Pikeville Sewage Treatment Plant)

Design capacity - 800,000 gallons per day

Average daily flow - 663,115 gallons

Treatment - Primary and secondary

Type treatment - Trickling filter, clarifier and drying beds

Treated effluent discharged into - Big Sandy River

Size of sanitary mains - 6, 12, and 16 inches

Size of storm mains - 8, 12 and 36 inches

Rates - 85 percent of municipal water bill

Tap-on charge: \$100

Company serving Elkhorn City - Elkhorn City Sanitary Sewer System

Design capacity - 150,000 gallons per day

Average daily flow - 80,000 gallons

Treatment - Primary and secondary

Type treatment - Aeration

Treated effluent discharged into - Russell Fork of Big Sandy River

Size of sanitary mains - 8 inches

Rates - 125 percent of municipal water bill

Tap-on charge: \$25

LOCAL GOVERNMENT

City

Pikeville

Structure - Mayor - 4-year term; 4 commissioners - 2-year terms;
City manager

Budget 1975 - General Fund	\$712,477.17
Water and Sewer Fund	415,500.00
City Gas System	425,000.00

Fees and licenses - Business license - 1 $\frac{1}{2}$ percent of net profits;
occupational license tax - 1 $\frac{1}{2}$ percent of gross salaries

Elkhorn City

Structure - Mayor - 4-year term; 6 councilmen - 2-year terms

Budget 1974-75 - General Fund	\$ 40,700
Water and Sewer Fund	59,660

Fees and licenses - Business licenses vary from \$5 to \$1,000 per year;
auto license - \$5 per year; unloading license - \$50 per year

County

Structure - County Judge - 4-year term; 8 magistrates - 4-year terms

Budget 1974-75 - General Fund \$496,817; Road Fund \$157,000

Assessed Value of Property, 1974

<u>Classes of Property</u>	<u>Pikeville</u>	<u>Elkhorn City</u>	<u>Pike County</u>
Real Estate and Tangibles	\$56,110,681	\$ 5,696,905	
Real Estate			\$199,789,711
Tangibles			126,573,443

Property Taxes

Land and buildings are taxed by the state and may be taxed by local jurisdictions. The state rate is \$0.015 per \$100 of assessed valuation.

Tangible personal property owned by manufacturers (automobiles, trucks, finished goods, office furniture, office equipment) is taxed by the state at \$0.15 per \$100 and may be taxed by local jurisdictions.

Manufacturing machinery, raw materials inventories, and goods in process inventories are not subject to local taxation. The state rate is \$0.15 per \$100.

Property stored in public warehouses is not subject to local taxation. The state rate is only \$0.015 per \$100.

All property is assessed at 100 percent of fair cash value.

Local Property Tax Rate Per \$100 of Assessed Valuation, 1974*

<u>Taxing Jurisdiction</u>	<u>Pikeville</u>	<u>Elkhorn City</u>	<u>Pike County</u>
County	\$.201	\$.201	\$.201
School	.984	.514	.514
City	.174	.200**	

*Kentucky Department of Revenue, Kentucky Property Tax Rates, 1974.

**Public Service Company - \$.300.

Utilities Gross Receipts Tax for Schools

Pike County levies a 3 percent tax on utilities receipts for schools. This tax is paid by all consumers of utilities. Exempted are receipts from utilities services that are resold and the receipts from the sale of energy or energy producing fuels that exceed 3 percent of the cost of production in manufacturing, processing, mining or refining.

Planning and Zoning

County agency - Pike County Planning and Zoning Board
Zoning enforced - All areas
Subdivision regulations enforced - City and 5 miles beyond city limits
Local codes enforced - Building and housing
Mandatory state codes enforced - Plumbing, National Fire Protection Association Code, National Building Code (for major buildings and residential construction containing more than 12 bedrooms per building)

Safety

<u>Police</u>	<u>Pikeville</u>	<u>Elkhorn City</u>	<u>Pike County</u>
Total staff	13	5	10
Radio-patrol cars	2	2 radio phones	12
Other equipment	6 walkie-talkies, 2 mobile units and base station	2 walkie-talkies	5 radios, 4 walkie-talkies, boat with 85 horsepower engine and full emergency and safety equipment

<u>Fire</u>	<u>Pikeville</u>	<u>Elkhorn City</u>
American Insurance Association Fire Rating	8 and 9	9
Full-time staff	8	
Volunteers	20	14
Equipment:		
1,000 gpm pumper	1	
750 gpm pumpers	2	1
500 gpm pumpers	1	1
250 gpm pumper	1	
1,000 gallon tanker	1	
Other	Rescue van (fully equipped), K-12 saws, backboards (all rescue equipped) 6 self-contained masks with 30 minute tanks, two 10 ton porta powers	Simultaneous alarm system, 2,500 feet of hose, 3 ladders, pike poles, 6 fire extinguishers, power plant, 2 portable pumps, ropes

Rescue Service

Pike County Emergency and Rescue Squad, Inc. :

Number of volunteers - 35

Equipment - 1969 heavy duty truck, 1964 pickup truck, 2 half-ton vans (all radio equipped); two 16-foot aluminum boats with 20 HP motors; 18-foot assault boat with 35 HP motor; 15 CB radio sets; rescue saw; two portable generators; porta-power; hydraulic jack

Personnel training - Standard and first aid training, 3 trained skin divers, emergency medical technician course

Pike County Civil Defense Unit:

Full-time staff - 2

Number of volunteers - Approximately 30

Equipment - Shared with Rescue Squad (see above)

Personnel training - First Aid

Sanitation*

	<u>Pikeville</u>	<u>Elkhorn City</u>
Type service	Municipal	Municipal
Fee charged		
residential	\$3.50 per month	\$1.50 per month
business	\$10 to \$150 per month	\$2.50 per month
Collection frequency:		
residential	Twice weekly	Weekly
business	6 times weekly	Twice weekly
Trash pickup	Daily	Annually
Disposal method	Landfill	Landfill
Industrial service:		
Inside city limits	See municipal service above	
Outside city limits	Industry must provide its own services	Industry must provide its own services

*Pike County is in the process of developing a county-wide franchised sanitation service that will soon be in operation.

EDUCATION

Public Schools

	<u>Pikeville</u>	<u>Pike County</u>
Total Enrollment (1974)	1, 220	14, 909
Elementary	600	10, 129
High School	620	4, 780
Student-Teacher Ratio	21 - 1	30 - 1
Elementary	20 - 1	32 - 1
High School	21 - 1	26 - 1
Percent High School Graduates to College	74. 7	34. 2
Expenditures Per Pupil (1973-74)	\$562. 62	\$547. 65
Bonded Indebtedness, June 30, 1974	\$3, 464, 000	\$7, 415, 000

Nonpublic Schools

Total Enrollment	40
Elementary	40
Student-Teacher Ratio	20 - 1
Elementary	20 - 1

Vocational Schools

Nearest State School

Location	Mayo State Vocational-Technical School Paintsville, Kentucky
Miles Distant	42
Curriculum	Accounting Junior Management Data Processing Clerical Secretarial Practical Nursing Learning Lab Electronics (Communications) Electronics (Industrial) Highway Technology Instrumentation Technical Drafting Tool and Die Design Auto Body Repair Auto Mechanics Carpentry- Building Trades Cosmetology Diesel Mechanics Drafting Electricity Graphic Arts Machine Shop Mine Maintenance Radio and TV Service Tool and Die Making Welding

Nearest Area Education Centers

	Pike County Area Vocational Education Center	Pike County Area Vocational Education Center
Location	Belfry	Millard
Curriculum	Auto Mechanics Drafting Electricity Machine Shop Welding	Auto Mechanics Carpentry- Building Trades Drafting Electricity



PIKEVILLE COLLEGE

HEALTH

Hospitals

<u>General Hospital</u>	<u>Location</u>	<u>Beds</u>
The Methodist Hospital of Kentucky	Pikeville, Kentucky	225
Williamson Appalachian Regional Hospital	South Williamson, Kentucky	143
Williamson Memorial Hospital	Williamson, West Virginia	95

The Methodist Hospital of Kentucky

General hospital facilities and services - 6 operating rooms, emergency room, X-ray, pathology, laboratory, electrocardiogram, mental health, inpatient and outpatient clinic, extended care, intensive care, coronary care, pediatrics, obstetrics, physical therapy, inhalation therapy, radioisotope unit (scanner)

Medical staff - 35 doctors, including urologist, pathologist, surgeon, OB-GYN, internists, cardiologist, radiologist, ophthalmologist, otolaryngologist, EENT, psychiatrist, 25 registered nurses, 65 licensed practical nurses

Williamson Appalachian Regional Hospital

General hospital facilities and services - 3 operating rooms, 4 X-ray diagnostic machines, facilities for radiation therapy (with the exception of Cobalt), fully equipped laboratory, EKG machine, fully equipped physical therapy department, 3 whirlpools and electromyography, pharmacy, Home Health Care, social service department
Also located at the hospital: Mountain Comprehensive Care

Medical staff - 42 physicians (27 active, 4 consulting, 11 courtesy), 30 registered nurses and 48 licensed practical nurses

Williamson Memorial Hospital

General hospital facilities and services - 2 operating rooms, emergency rooms, X-ray, pathology, laboratory, EKG, outpatient clinic, obstetrics, pediatrics

Medical staff - 16 doctors (5 active, 5 consulting, 6 courtesy), 18 registered nurses and 18 licensed practical nurses



WILLIAMSON APPALACHIAN REGIONAL HOSPITAL



METHODIST HOSPITAL OF KENTUCKY

Ambulance Service

Name - Pike County Ambulance Service

Staff - 11 employees - 1 medical assistant and 9 employees with first aid training*

Service - 24 hours, 7 days a week

Equipment - 5 vans with oxygen and cots

Nursing Homes

	<u>Number</u>	<u>Beds</u>
Extended care home	1	100

Public Health

Facility - Pike County Health Department

Staff - 1 health officer, 5 sanitarians, 5 registered nurses, 1 X-ray technician, 4 clerks, 1 nutritionist, 1 plumbing inspector

*In May, 1975, the ambulance service staff will begin training in Emergency Medical Technology and Cardiac-Pulmonary Rescue.

OTHER LOCAL FACILITIES

Communications

	<u>Pikeville</u>	<u>Elkhorn City</u>
Telephone - Services -	South Central Bell Telephone Company Standard	South Central Bell Telephone Company Standard
Telegraph - Services -	Western Union Telephone	Western Union - by telephone Through Pikeville
Postal - U. S. Post Office		
Class -	First	Second
Mail received -	3 times daily	Twice daily
Mail dispatched -	Twice daily	Twice daily
Newspapers -	Pike County News	
Weekly and circulation-	7,400	
Other papers received from -	Huntington and Williamson, West Virginia; Louisville, Lexington, and Ashland, Kentucky; Bristol, Kingsport and Johnson City, Tennessee	Pikeville, Louisville, and Lexington, Kentucky; Huntington and Williamson, West Virginia
Radio -	WLSI-AM, WPKE-AM, WDHR-FM, and WHJC-AM (Buskirk, Kentucky)	WECL-FM
Stations received from -	Louisville, Kentucky; Cincinnati, Ohio; Huntington, West Virginia; Bristol, Tennessee	Pikeville, Louisville, and Jenkins, Ken- tucky; Cincinnati, Ohio; Grundy, Virginia; Bristol, Tennessee; William- son, West Virginia; 50 FM stations available through cable service

	<u>Pikeville</u>	<u>Elkhorn City</u>
Television - Cable service	Yes	Yes - local originating station
Reception from -	Huntington and Charleston, West Virginia; Bristol, Tennessee	Huntington, Charleston and Bluefield, West Virginia; Bristol and Oak Hill, Tennessee; Hazard and Johnson City, Kentucky
	All together, there are 58 CATV systems operating in Pike County	
Kentucky Educational Television -	Pikeville transmitter, Channel 22	Pikeville transmitter, Channel 22

Library Services*

Public library - Pikeville Public Library

Size collection - Approximately 30,000 volumes

Circulation for 6 month period - 25,000 volumes

Services - Records, TV, film projector, film strip and film strip projector, screen, copying machine, story hours (3 or 4 per week), meeting rooms, art, microfilm printer-reader, 2 stereos, record player, color TV, branch libraries at Elkhorn City, Stone, Virgie and Phelps

Private library - O'Rear Robinson Library of Pikeville College

Size collection - 80,000 volumes

Special collections - Kentucky Civil War

Services - Periodicals, newspapers, microfilm, microfilm reader-printer, copying machine, tapes, records, record players, cassettes and cassette player, microbook (17,500 on record), music library (2,000 records), science library and U. S. Government Depository Library

*Branch libraries are maintained at Elkhorn City, Stone, Virgie and Phelps.

Religious Institutions

	<u>Pikeville</u>	<u>Elkhorn City and Pike County</u>
Number of churches - Denominations	11 Baptist, Catholic, Christian, Church of Christ, Church of God, Episcopal, Free Will Baptist, Methodist, Presbyterian, Wesleyan	6 Baptist, Church of Christ, Church of God, Free Will Baptist, Methodist, Southern Baptist

Financial Institutions

<u>Banks</u>	<u>Assets</u>	<u>Deposits</u>	<u>Statement Date</u>
The Citizens Bank of Pikeville	\$ 73,507,986.18	\$ 65,848,919.91	12/31/74
The First National Bank	84,872,793.62	77,687,519.65	12/31/74
Pikeville National Bank and Trust Company	160,052,371.32	146,462,999.69	12/31/74

Savings and Loan Associations

	<u>Assets</u>	<u>Shared Accounts</u>	<u>Statement Date</u>
First Federal Savings and Loan Association of Pikeville	\$ 4,523,258.84	\$ 4,272,776.94	12/31/74

Hotels and Motels

	<u>Pikeville</u>	<u>Elkhorn City</u>
Total number	9	1
Total units	411	20

Clubs and Organizations

Pikeville and Pike County

Business and Civic - Pike County Chamber of Commerce, Rotary Club, Kiwanis Club, Lions Club, Jaycees, PTA

Fraternal - Masons, IOOF, Shriners, Fraternal Order of Eagles

Women's - Eastern Star, Rebekah Lodge, Woman's Club, Junior Woman's Club, Business and Professional Woman's Club, Beta Sigma Phi Sorority, DAR, WSCS, Homemakers, American Association of Univeristy Women, Licensed Practical Nurses Association

Youth - Boy Scouts, Girl Scouts, FFA, FHA, FTA, 4-H, Little League baseball and football, Babe Ruth League baseball

Other - American Red Cross, Sportsman's Club, Saddle Club, Mountain Mental Health Association, Pike County Tuberculosis Association, Pike County Bar Association, Hospital Guild, Medical Auxiliary, Guild of St. David's, Ministerial Association, Historical Society, Pikeville Concert Association, Band and Athletic Club, Weight Watchers

RECREATION

Local

	<u>Pikeville</u>	<u>Elkhorn City</u>
Public Recreation Facilities		
Supervised program -	1 municipal and 2 church-affiliated	
Parks -	1	1
Playgrounds -	3	2
Swimming pools -	2	
Basketball courts -	2	1
Tennis courts -	8	
Baseball diamonds -	2	1
Football fields -	1	

Private Recreation Facilities

Country club -	1	
Golf course -	1	
Swimming pool -	1	
Movie theaters -	1 indoor, 2 drive-ins	
Bowling lanes -	10	

Tourist Attractions

Hatfield-McCoy Feud Historical Plaque at Buskirk, Kentucky
The Pikeville Cut-Through, the deepest highway cut through in the U. S., over 600 feet in spots; the result of excavating 17 million cubic yards of material
Elkhorn City - Clinchfield Railroad excursions

Cultural Events

Concert and Lecture Series
Elkhorn City Youth Presentations sponsored by local civic clubs

Area (Within 30 miles)

Breaks Interstate Park
Jenny Wiley State Resort Park
Fishtrap Lake
Jefferson National Forest
Blackberry Fork Recreational Center

AGRICULTURE - NATURAL RESOURCES - CLIMATE

Agriculture*

	<u>Pike County</u>	<u>Labor Market Area</u>
Total land area (acres)	500,480	1,348,608
Percent of area in farm land	4.0	4.1
Number of farms	154	686
Average size of farms (acres)	130.5	120.8
1969 value of all farm products	\$144,480	\$ 702,061
Value per farm	938	1,023
Total crop sales	43,186	150,536
Total livestock & livestock products	99,754	535,630
1973 agricultural production included:		
Corn for grain (bu.) (est.)	18,000	89,300
Cattle and calves (number)	1,000	3,900
Hogs and pigs (number) (preliminary)	400	2,800

Natural Resources

Principal mineral resources	Coal and natural gas
Other mineral resources	Petroleum, limestone with high calcium zones, and high-silica sandstone
Acres of commercial forest land	429,000
Most abundant tree species	Red oak, white oak, yellow poplar, hickory, beech, soft maple and hard maple

*U. S. Department of Commerce, Bureau of the Census, Census of Agriculture, 1969. U. S. Department of Agriculture and Kentucky Department of Agriculture, Kentucky Agricultural Statistics, 1973.

Climate*

Pike County

Temperature

Annual mean (30-year record)	56.1 degrees
Average annual 1973	56.8 degrees
Record highest, July, 1970** (12-year record)	95.0 degrees
Record lowest, January, 1966 (12-year record)	-15.0 degrees
Normal heating degree days (30-year record)	4,306
(Heating degree day totals are the sums of negative departures of average daily temperatures from 65 degrees F.)	

Precipitation

Mean annual total (30-year record)	41.47 inches
Mean annual snow and sleet (36-year record)	16.30 inches
Total precipitation 1974	45.87 inches
Mean number days precipitation (.01 inch or more) (28-year record)	134
Average number days thunderstorms (30-year record)	46

Prevailing winds (9-year record)

West-southwest

*U. S. Department of Commerce, Environmental Science Services Administration, Climatological Data, 1974. Station of record: Bristol, Johnson City, Kingsport, Tennessee.

**Also on earlier dates, months, or years.

HISTORY

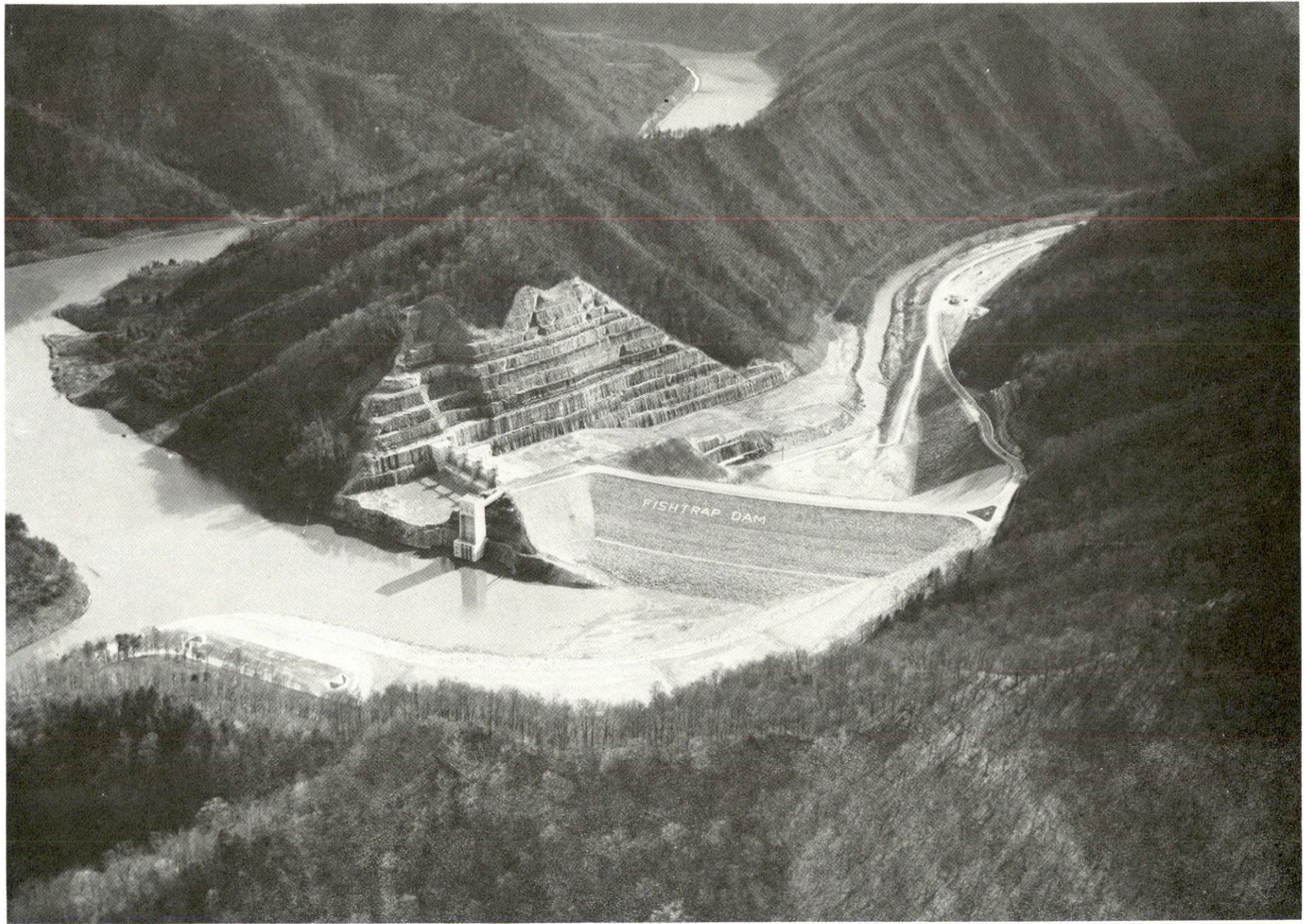
Pike County is located in the Big Sandy Valley in Kentucky's easternmost corner and is bordered by West Virginia on the northeast and by Virginia on the southeast. With an area of 782 square miles, it is the largest county in the state and the largest county east of the Mississippi. Tug Fork of the Big Sandy River flows along the northeastern boundary and the Russell and Levisa Forks of the Big Sandy run through the western part of the county. Fishtrap Reservoir in the central area covers over 11,000 acres. The land surface is mountainous, but there is fertile land in the river valleys. Eighty-five percent of the area is forested, and there are large deposits of coal, oil, natural gas and high-silica sandstone.

Settlers first came to the Pike County area in the 1780's, and by the turn of the century there was some agitation for a new county, although the area's rugged topography delayed the process. In 1821 Pike became Kentucky's seventieth county, its territory taken from Floyd County. It was named in honor of General Zebulon M. Pike, the famous explorer for whom Pike's Peak, Colorado, is also named.

A colorful part of the county's history centers around the infamous Hatfield-McCoy fued, which involved most of the people in Pike County and Logan County, West Virginia. Begun in 1882 when the Hatfields were accused of crossing the state line to vote in Kentucky, and Tolbert McCoy killed "Big Ellison" Hatfield at a polling place, the fued eventually took some 65 lives.

Pikeville, the county seat, is located in a narrow valley on land originally donated by Elijah Adkins. Pikeville College, a four-year liberal arts college with approximately 680 students, is located here. Pikeville's population was 4,899 in 1970. By 1973 that figure had climbed beyond the 5,000 mark. But this can be a misleading figure without further investigation. This figure reflects what could be termed a "bedroom" population in that each business morning, at least 3 times as many people enter the city to take up their respective work as service, retail and office employees in the county's hub before the customers begin to arrive.

In 1830 Pike County recorded 2,677 inhabitants. Population increased to a high of 81,154 in 1950, followed by a decline to 68,264 in 1960. Although the decline continued during the 1960's, it was at a slower rate, leaving 61,059 in 1970. In the 1970's, the population again began to rise and in 1974 Pike County had an estimated 65,100 inhabitants. Population projections show continued increases.



FISHTRAP DAM

Mining and quarrying of the area's mineral wealth is the major source of employment in Pike County. Pike County is the nation's greatest underground coal producer. Agriculture accounted for only 50 of the 16,350 employed in 1973 with corn, cattle and hogs the principal products. Manufacturing provided 260 jobs. Large firms include the East Kentucky Beverage Company and Medusa Aggregates Company.