

1974

Industrial Resources: Scott County - Georgetown

Kentucky Library Research Collections
Western Kentucky University, spcol@wku.edu

Follow this and additional works at: https://digitalcommons.wku.edu/scott_cty



Part of the [Business Administration, Management, and Operations Commons](#), [Growth and Development Commons](#), and the [Infrastructure Commons](#)

Recommended Citation

Kentucky Library Research Collections, "Industrial Resources: Scott County - Georgetown" (1974). *Scott County*. Paper 21.
https://digitalcommons.wku.edu/scott_cty/21

This Report is brought to you for free and open access by TopSCHOLAR®. It has been accepted for inclusion in Scott County by an authorized administrator of TopSCHOLAR®. For more information, please contact topscholar@wku.edu.

CURRENT INDUSTRIAL RESOURCES, GEORGETOWN, KENTUCKY

This is a 1974 supplement to "Industrial Resources, Georgetown, Kentucky" which was published in 1973.

Population

	<u>1972</u> (Provisional)	<u>1970</u>	<u>1960</u>
Georgetown	N.A.	8,629	6,986
Scott County	17,200	17,948	15,376
Labor Market Area	297,000	291,289	238,224
(Includes Scott, Bourbon, Fayette, Franklin, Grant, Harrison, Owen, and Woodford Counties.)			

General Employment Characteristics

<u>Industry</u>	<u>Employment 1972</u>	
	<u>Scott County</u>	<u>Labor Market Area</u>
TOTAL	5,920	158,810
Agricultural	1,080	8,870
Nonagricultural	4,840	149,940
Manufacturing	1,850	26,703
Trades and Services	1,130	42,512
Government	640	40,590

Manufacturing Employment

<u>Type Industry</u>	<u>Scott County</u>			<u>Labor Market Area</u>		
	<u>March</u> <u>1973</u>	<u>March</u> <u>1963</u>	<u>%Change</u>	<u>March</u> <u>1973</u>	<u>March</u> <u>1963</u>	<u>%Change</u>
TOTAL	2,065	1,428	44.6	29,283	17,891	63.7
Food & Kindred Products	18	41	- 56.1	2,403	2,525	- 4.8
Tobacco	1	2	- 50.0	1,512	1,778	- 15.0
Apparel, Textiles, Leather	0	0	0	3,185	2,078	53.3
Lumber, Furniture	4	0	--	223	212	5.2
Printing & Publishing, Paper	16	8	100.0	2,570	1,624	58.3
Chemicals, Petroleum & Coal, Rubber	107	37	189.2	1,439	459	213.5
Stone, Clay & Glass	0	0	0	558	420	32.9
Primary Metals	283	124	128.2	826	124	566.1
Machinery & Metal Products, Equipment	1,214	1,007	20.6	14,625	8,016	82.4
Other	422	209	101.9	1,942	655	196.5

There are presently 28 manufacturing firms in Georgetown. Major firms, employment, and year started operations:

<u>Firms</u>	<u>Employment</u>	<u>Year started operations</u>
Blue Ribbon Pen & Pencil Company, Inc.	120	1958
Clark Equipment Company	525	N. A.
Electric Parts Corp.	470	1957
Johnson Service Company	299	1969
Mallard Pen & Pencil Company, Inc.	145	1945
Teledyne Kentucky Die Casting	98	1959
Universal Wire Spring Division, Hoover Ball & Bearing Company	438	1961

Labor Supply

	<u>Scott County</u>			<u>Labor Market Area</u>		
	<u>Total</u>	<u>Male</u>	<u>Female</u>	<u>Total</u>	<u>Male</u>	<u>Female</u>
Current (1973)	1,140	500	640	18,230	7,880	10,350
Potential additions next five years	1,655	865	790	27,106	13,879	13,227

Personal Income

Scott County, 1971: Per Capita - \$3,173 (Estimated)
1961: Per Capita - \$1,907

Local Government

Property Tax Rates

Property tax rates per \$100 of assessed valuation, 1973.

	<u>Georgetown</u>	<u>Scott County</u>
State	\$.015	\$.015
County	.267	.267
School	.719	.543
City	.199	
Total	\$1.200	\$.825

GEORGETOWN INDUSTRIAL SITES

1974

GEORGETOWN INDUSTRIAL SITES

1974

For more information about the following sites, contact Mr. Joe E. Johnson, 143 E. Main Street, Georgetown, Kentucky or the Kentucky Department of Commerce, Capital Plaza Office Tower, Frankfort, Kentucky.

SITE #5: ACREAGE: 3 acres
 LOCATION: Within eastern city limits
 ZONING: Industrial
 HIGHWAY ACCESS: Paved city street to U. S. 62 - 227 - 460
 RAILROAD: Not rail served
 WATER: Georgetown Municipal Water and Sewer Commission
 SIZE LINE: 10-inch line adjacent to site along west side of Chambers Avenue
 GAS: Columbia Gas of Kentucky
 SIZE MAIN: 6-inch main approximately 880 feet west of site across Chambers Avenue
 ELECTRICITY: Kentucky Utilities Company
 SEWERAGE: Georgetown Municipal Water and Sewer Commission
 SIZE LINE: 10-inch line adjacent to site across Chambers Avenue
 OPTIONED BY: Georgetown Improvement Company

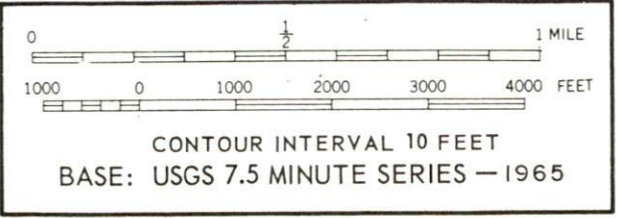
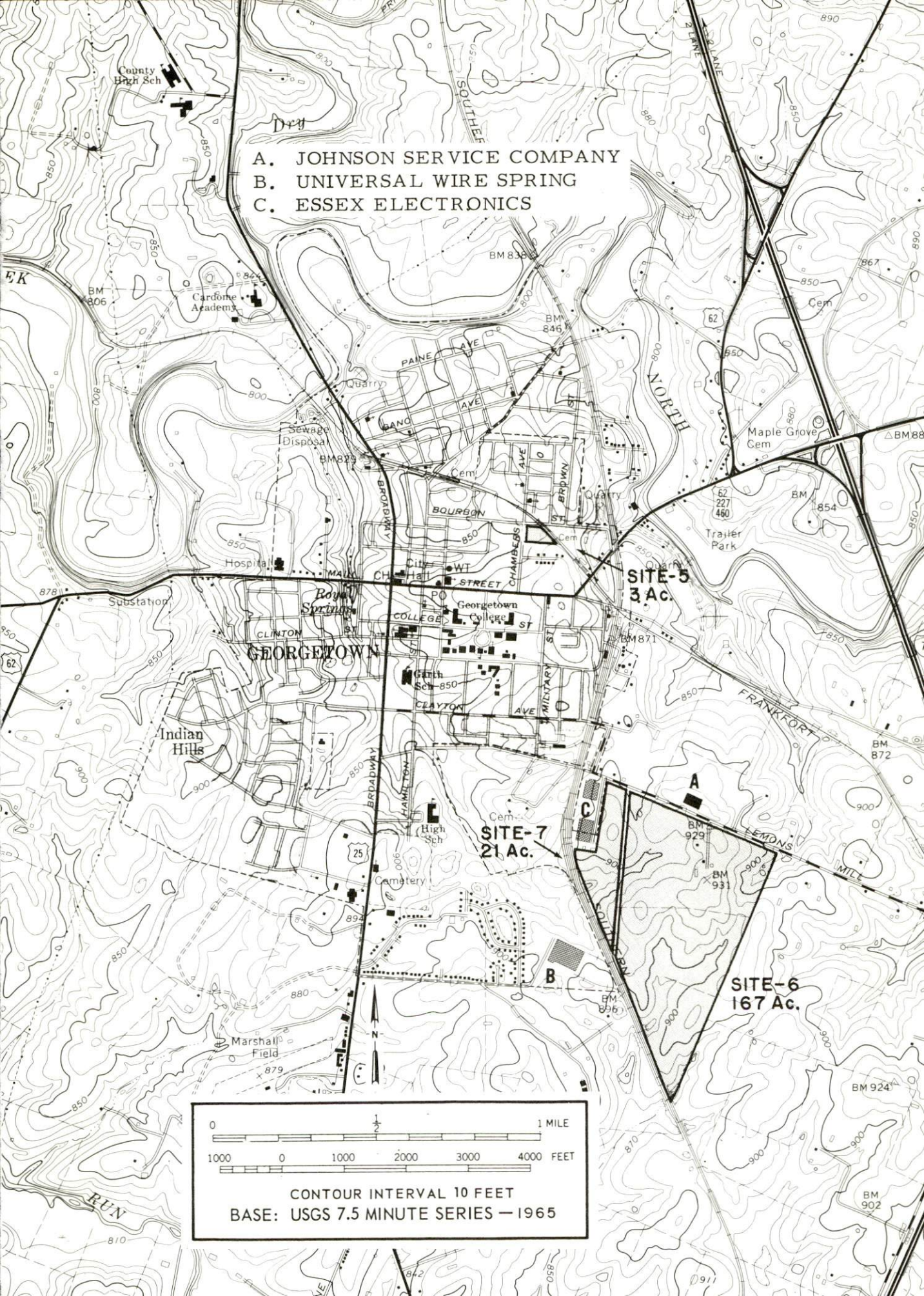
SITE #6: ACREAGE: 167 acres
 LOCATION: Approximately 500 feet east of city limits
 ZONING: Industrial
 HIGHWAY ACCESS: Lemons Mill Road along northern boundary of site
 RAILROAD: Southern Railway System along southwest boundary of site
 WATER: Georgetown Water and Sewer Commission
 SIZE LINE: 10-inch line along north side of Lemons Mill Road
 GAS: Columbia Gas of Kentucky
 SIZE MAIN: 4-inch main adjacent to site along north side of Lemons Mill Road
 ELECTRICITY: Kentucky Utilities Company
 SEWERAGE: Georgetown Water and Sewer Commission
 SIZE LINE: 8-inch line along north side of Lemons Mill Road
 OPTIONED BY: Georgetown Improvement Company

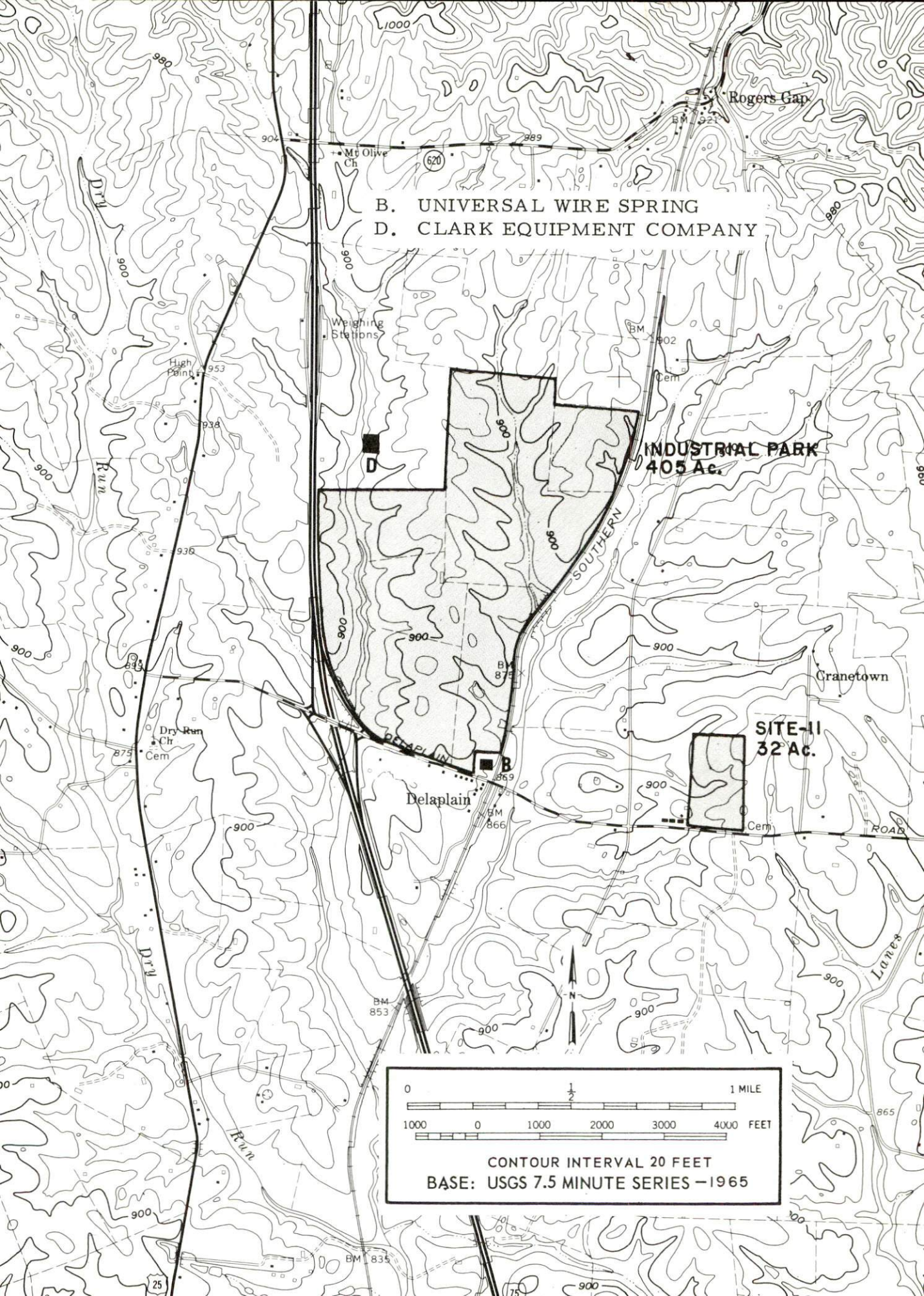
SITE #7: ACREAGE: 21 acres
 LOCATION: Adjacent to southeast city limits
 ZONING: Industrial
 HIGHWAY ACCESS: Lemons Mill Road along northern boundary of site
 RAILROAD: Southern Railway System
 WATER: Georgetown Municipal Water and Sewer Commission
 SIZE LINE: 10-inch line along north side of Lemons Mill Road
 GAS: Columbia Gas of Kentucky
 SIZE MAIN: 4-inch main along north side of Lemons Mill Road
 ELECTRICITY: Kentucky Utilities Company
 SEWERAGE: Georgetown Municipal Water and Sewer Commission
 SIZE LINE: 8-inch line along north side of Lemons Mill Road
 OPTIONED BY: Georgetown Improvement Company

SITE #11: ACREAGE: 32 acres
 LOCATION: Approximately 6 miles north of Georgetown on the Deleplain Road
 ZONING: Industrial
 HIGHWAY ACCESS: Paved county road to Interstate 75 interchange
 RAILROAD: Not rail served
 WATER: Kentucky American Water Company
 SIZE LINE: 6-inch line along southern boundary of site
 GAS: Natural gas service not available
 ELECTRICITY: Kentucky Utilities Company
 SEWERAGE: Sewerage service not available
 OPTIONED BY: Georgetown Improvement Company

INDUSTRIAL PARK: ACREAGE: 405 acres
 LOCATION: Approximately 5 miles north of Georgetown at Deleplain Road and I 75 interchange
 ZONING: Industrial
 HIGHWAY ACCESS: Interstate 75 interchange located at southwest corner of park
 RAILROAD: Southern Railway along eastern boundary of site
 WATER: Kentucky American Water Company
 SIZE LINE: 8-inch line passes through site; 12-inch line under construction through center of park, to be completed by September 1974
 GAS: Natural gas service not available
 ELECTRICITY: Kentucky Utilities Company
 SEWERAGE: Package treatment plant on southwestern corner of park
 OPTIONED BY: Georgetown Improvement Company

- A. JOHNSON SERVICE COMPANY
B. UNIVERSAL WIRE SPRING
C. ESSEX ELECTRONICS





B. UNIVERSAL WIRE SPRING
D. CLARK EQUIPMENT COMPANY

INDUSTRIAL PARK
405 Ac.

SITE-11
32 Ac.

