

1971

# Industrial Resources: Shelby County - Shelbyville

Kentucky Library Research Collections  
Western Kentucky University, [spcol@wku.edu](mailto:spcol@wku.edu)

Follow this and additional works at: [https://digitalcommons.wku.edu/shelby\\_cty](https://digitalcommons.wku.edu/shelby_cty)

 Part of the [Business Administration, Management, and Operations Commons](#), [Growth and Development Commons](#), and the [Infrastructure Commons](#)

---

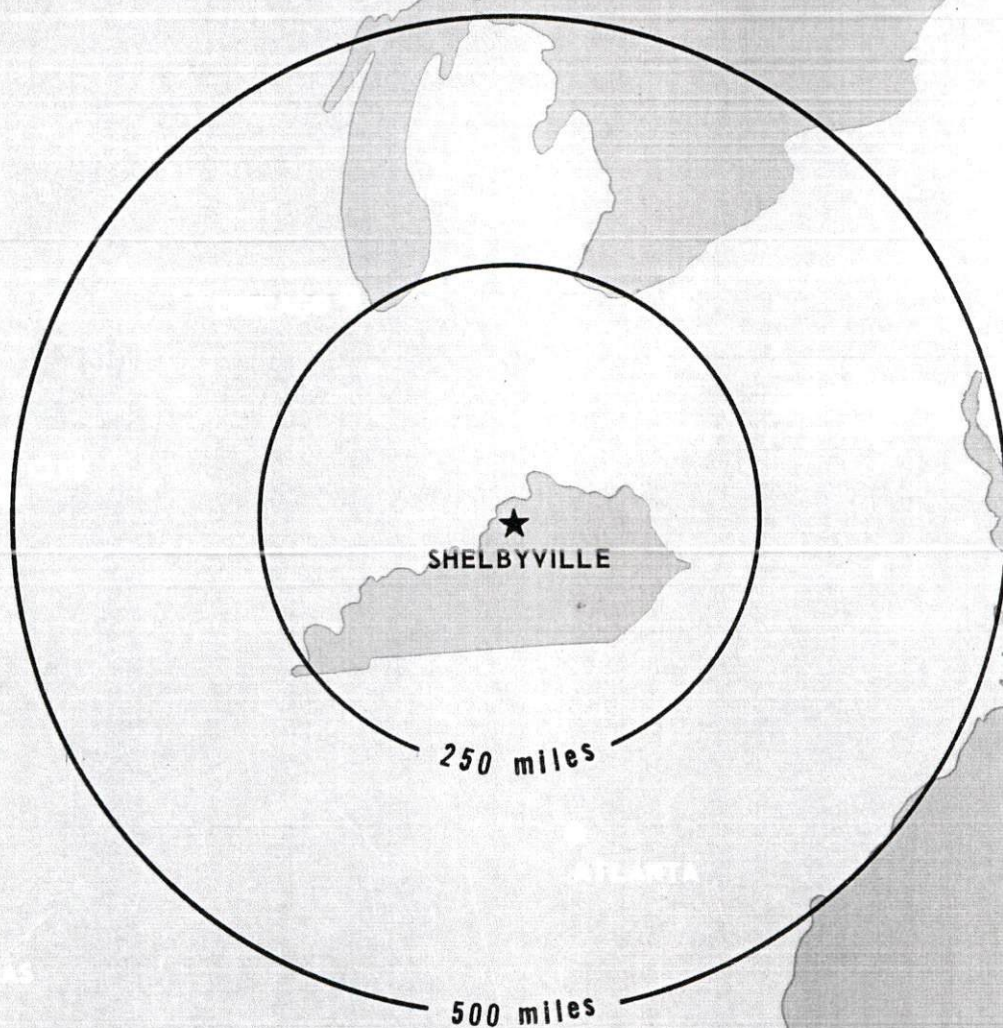
## Recommended Citation

Kentucky Library Research Collections, "Industrial Resources: Shelby County - Shelbyville" (1971). *Shelby County*. Paper 15.  
[https://digitalcommons.wku.edu/shelby\\_cty/15](https://digitalcommons.wku.edu/shelby_cty/15)

This Report is brought to you for free and open access by TopSCHOLAR®. It has been accepted for inclusion in Shelby County by an authorized administrator of TopSCHOLAR®. For more information, please contact [topscholar@wku.edu](mailto:topscholar@wku.edu).

# INDUSTRIAL RESOURCES

## ***SHELBYVILLE, KENTUCKY***



SHELBYVILLE INDUSTRIAL SITES

1971



## SHELBYVILLE INDUSTRIAL SITES

1971

For more detailed information concerning the following sites, contact Marshall Long, President, Shelby County Industrial and Development Foundation, Shelbyville, Kentucky; or the Kentucky Department of Commerce, Frankfort, Kentucky.

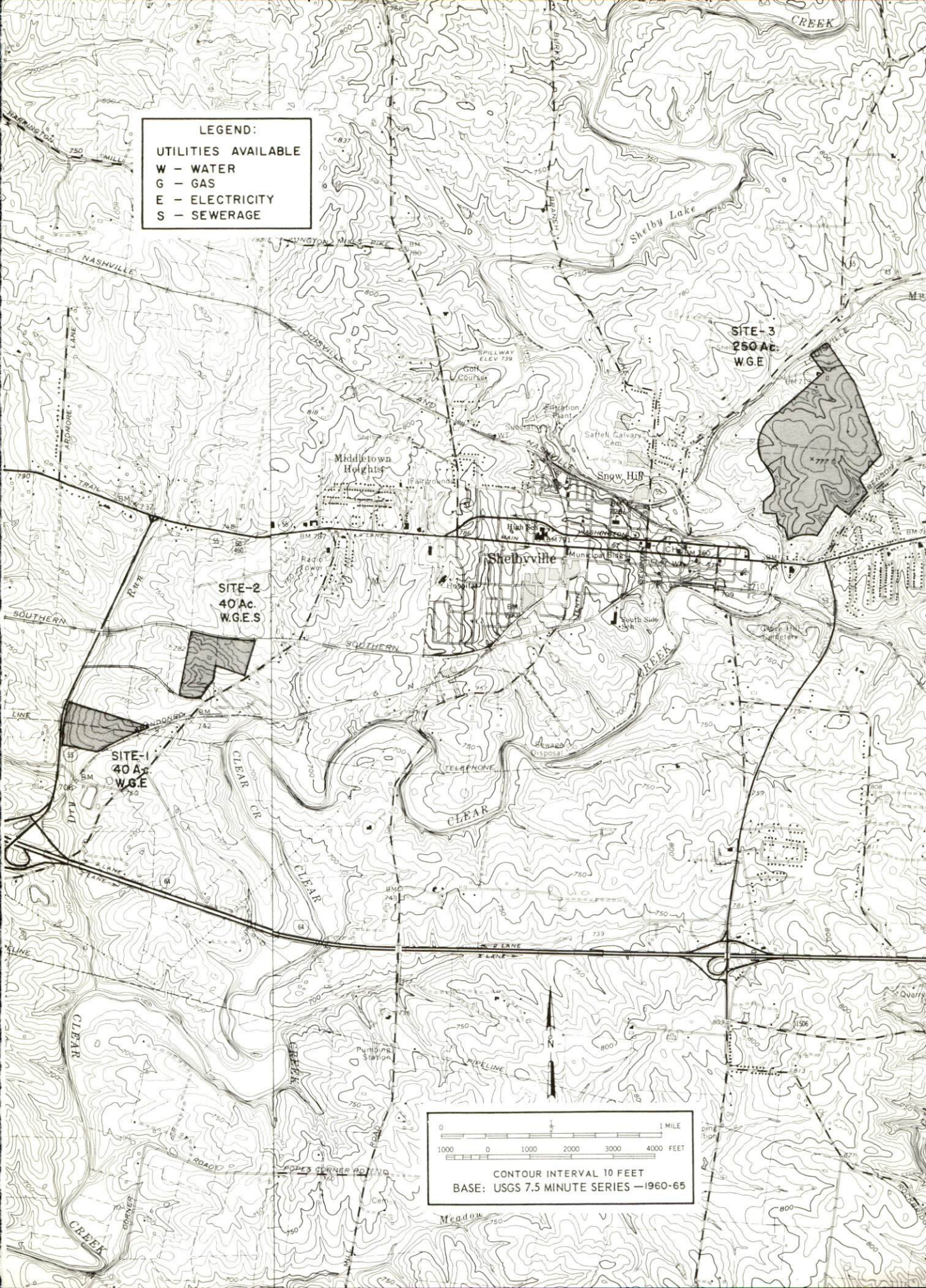
SITE # 1:   ACREAGE: 40 acres  
              LOCATION: 1 mile southwest of city limits  
              ZONING: Industrial  
              HIGHWAY ACCESS: Kentucky 55 borders site on west,  
                                  1,700 feet from I-64 interchange  
              RAILROADS: Louisville & Nashville Railroad (spur)  
                                  borders on east.  
              WATER: Shelbyville Municipal Water and Sewer Commission  
                      SIZE LINE: 12-inch line - 750 feet from site  
              GAS: Western Kentucky Gas Company  
                      SIZE LINE: 4-inch main - 750 feet from site  
              ELECTRICITY: Kentucky Utilities Company  
              SEWERAGE: Package plant necessary  
              OWNERSHIP: Louisville & Nashville Railroad

SITE # 2:   ACREAGE: 40 acres  
              LOCATION: Three-quarters mile southwest of city limits  
              ZONING: Industrial  
              HIGHWAY ACCESS: Paved access road connects with  
                                  Kentucky 55.  
              RAILROADS: Southern Railway along northern boundary  
              WATER: Shelbyville Municipal Water and Sewer Commission  
                      SIZE LINE: 12-inch line on site  
              GAS: Western Kentucky Gas Company  
                      SIZE LINE: 4-inch main on site  
              ELECTRICITY: Kentucky Utilities Company  
              SEWERAGE: Package plant necessary  
              OWNERSHIP: Shelby County Industrial and Development  
                                  Foundation

SITE # 3:   ACREAGE: Approximately 250 acres  
              LOCATION: One-half mile northeast of city limits  
              HIGHWAY ACCESS: Benson Pike borders site on southeast  
                                  for approximately 800 feet.  
              RAILROADS: Louisville & Nashville Railroad borders site  
                                  on north for approximately 450 feet.  
              WATER: Shelbyville Municipal Water and Sewer Commission  
                      SIZE LINE: 14 and 8 inches  
              GAS: Western Kentucky Gas Company  
                      SIZE LINE: 4-inch main - 1,000 feet from site  
              ELECTRICITY: Kentucky Utilities Company  
              SEWERAGE: Package plant necessary  
              OWNERSHIP: Private



LEGEND:  
UTILITIES AVAILABLE  
W - WATER  
G - GAS  
E - ELECTRICITY  
S - SEWERAGE



0 1000 0 1000 2000 3000 4000 FEET  
1 MILE  
CONTOUR INTERVAL 10 FEET  
BASE: USGS 7.5 MINUTE SERIES -1960-65



INDUSTRIAL RESOURCES  
SHELBYVILLE, KENTUCKY

Prepared by  
The Kentucky Department of Commerce  
in cooperation with  
The Shelby County Chamber of Commerce

1971

## TABLE OF CONTENTS

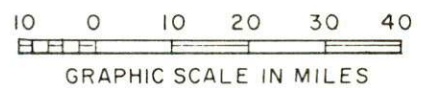
<u>Chapter</u>	<u>Page</u>
INDUSTRIAL SITES . . . . .	i
SHELBYVILLE, KENTUCKY - A RESOURCE PROFILE . . . . .	1
THE LABOR MARKET . . . . .	4
Population Trends . . . . .	4
General Employment Characteristics, 1969 . . . . .	4
Manufacturing Employment Trends by Industry . . . . .	4
Major Shelby County Manufacturing Firms, Their Products and Employment . . . . .	5
Wage Rates for Selected Occupations . . . . .	8
Labor Organizations . . . . .	8
Current and Future Labor Supply . . . . .	9
Total Personal Income . . . . .	9
Per Capita Personal Income . . . . .	9
EDUCATION . . . . .	10
Public Schools . . . . .	10
Vocational Schools . . . . .	10
Colleges and Universities . . . . .	13
TRANSPORTATION . . . . .	14
Rail . . . . .	14
Truck Service . . . . .	14
Air . . . . .	15
Bus . . . . .	15
Taxi . . . . .	15
Rental Services . . . . .	15
POWER AND FUEL . . . . .	16
Electricity . . . . .	16
Natural Gas . . . . .	16
WATER AND SEWERAGE . . . . .	17
Water . . . . .	17
Sewerage . . . . .	18



<u>Chapter</u>	<u>Page</u>
LOCAL GOVERNMENT . . . . .	19
City . . . . .	19
County . . . . .	19
Assessed Value of Property, 1970 . . . . .	19
Local General Property Tax Rates Per \$100 of	
Assessed Valuation, 1970 . . . . .	19
Planning and Zoning . . . . .	21
Safety . . . . .	21
Police . . . . .	21
Fire . . . . .	21
Rescue Service . . . . .	21
Sanitation . . . . .	22
HEALTH . . . . .	23
Hospitals . . . . .	23
Nursing Homes . . . . .	23
Public Health . . . . .	23
OTHER LOCAL FACILITIES . . . . .	24
Communications . . . . .	24
Library Services . . . . .	24
Religious Institutions . . . . .	24
Financial Institutions . . . . .	26
Hotels and Motels . . . . .	26
Clubs and Organizations . . . . .	26
RECREATION . . . . .	27
Local . . . . .	27
Area . . . . .	27
AGRICULTURE - NATURAL RESOURCES - CLIMATE . . . . .	28
Agriculture . . . . .	28
Natural Resources . . . . .	28
Climate . . . . .	28
HISTORY . . . . .	29

## SHELBYVILLE LABOR MARKET AREA

\*Shaded area denotes labor market area



## SHELBYVILLE, KENTUCKY - A RESOURCE PROFILE

### Location

Shelbyville, the county seat of Shelby County, is located in the Outer Bluegrass Region of Central Kentucky. Shelbyville is 25 miles east of Louisville, 54 miles west of Lexington, and 105 miles southwest of Cincinnati, Ohio.

The population of Shelbyville in 1970 was 4,182 while Shelby County had a population of 18,999.

### The Economic Framework

Total employment in Shelby County averaged 7,200 jobs in 1969 with manufacturing providing 1,200 of these jobs. Since 1960, manufacturing employment has increased 180 percent. The county's industrial employment is heaviest in printing and publishing, and fabricated metal products.

Per capita personal income in the county in 1969 was \$2,678 and ranked 29th among the state's 120 counties. This indicates a relatively prosperous economy, with adequate room for future economic growth.

In the Shelbyville labor market area, which includes Shelby County and its six surrounding counties, total employment in 1969 averaged 369,300. Manufacturing provided 99,220 of these jobs while trade and services provided 108,300 jobs. Area industrial employment is heaviest in machinery and metal products, food and kindred products, and tobacco industries.

### Resources for Growth

1. There is a current estimated labor supply of 9,085 men and 6,565 women available for industrial jobs in the labor market area. In addition, by 1977, nearly 42,140 men and 40,735 women will have become 18 years of age and potentially available for work.

2. The local transportation capability is good. Interstate 64, a link in the nation's major highway network, is 2 miles south of Shelbyville. The county is provided freight service by the Louisville & Nashville Railroad, Southern Railway, and the Chesapeake & Ohio Railway Company. Commercial air service is available in Louisville, only minutes away.



3. Energy - Shelbyville is served by the Western Kentucky Gas Company and the Kentucky Utilities Company.

Water - Shelbyville has 1,800,000 gpd excess capacity of treated water, which is adequate for continued growth.

4. Industrial sites - Shelbyville has three sites available for industrial use.

5. There are five colleges, three universities and one community college within a 55-mile radius of Shelbyville.

#### Community Programs for Improvement

Recent community improvements: a 500,000-gallon water storage tank at Industrial Park; 40 additional low-rent housing units; a 72-apartment complex under construction; the North Shelby Water District, which will provide water to 875 families, under construction; private ambulance service; several stores and one office building redecorated and expanded; a new wing added to the library and new lighting installed throughout; a new upper elementary school; expansion of two industries; new building for vending service machines; new lift station and installation of larger sewer mains.

Planned improvements include: two new shopping centers and 135 additional low-rent housing units.

#### Recreation, Entertainment and Livability

Recreational facilities in Shelbyville include: three ball parks, three playgrounds, bowling alley, municipal swimming pool, tennis courts, country club, 18-hole golf course, and three fishing lakes with picnic grounds.

General Butler State Park, My Old Kentucky Home State Park and Pioneer Memorial State Park are all within easy driving distance.

Churchill Downs, home of the Kentucky Derby, is in Louisville, only 25 miles away. Two thoroughbred racing meets and the world-famous Kentucky Derby are held there annually. Additional thoroughbred racing is held at Miles Park. Harness racing is offered at the beautiful new Louisville Downs.

Four race meets are held each year in Lexington, 54 miles from Shelbyville. Meets are held in the spring and fall for thoroughbreds at Keeneland Race Course, and two meets for harness horses are held at Lexington's Big Red Mile Trotting Track.

Intercollegiate athletic programs in football, basketball, and baseball at the University of Kentucky and University of Louisville can be enjoyed by the sports fan. Louisville is home to the Louisville Colonels baseball team and the Louisville Colonels basketball team.

The Louisville Orchestra, the Louisville Opera Association, the Louisville Ballet, Actors Theatre, the Bach Society, the Chamber Music Society and the Louisville School of Music present their annual series to the delight of many persons.

Lexington sponsors the Central Kentucky Concert and Lecture Series, and the Central Kentucky Philharmonic Orchestra each year. The University of Kentucky School of Music and the Drama Department also offer many hours of cultural entertainment.

# THE LABOR MARKET

## POPULATION TRENDS <sup>1/</sup>

Area	Population			Percent Change	
	1970	1960	1950	1960-70	1950-60
Shelbyville	4,182	4,525	4,403	- 7.6	+ 2.8
Labor Market Area	788,978	728,534	566,014	+ 8.3	+28.7
Shelby County	18,999	18,493	17,912	+ 2.7	+ 3.2
Anderson County	9,358	8,618	8,984	+ 8.6	- 4.1
Franklin County	34,481	29,421	25,933	+17.2	+13.5
Henry County	10,910	10,987	11,395	- 0.7	- 3.6
Jefferson County	695,055	610,947	484,615	+13.6	+26.1
Oldham County	14,687	13,388	11,018	+ 9.7	+21.5
Spencer County	5,488	5,680	6,157	- 3.4	- 7.7

## GENERAL EMPLOYMENT CHARACTERISTICS, 1969 <sup>2/</sup>

Major Employment Group	Employment	
	Shelby County	Labor Market Area
TOTAL	7,200	369,300
Agricultural	1,900	7,700
Nonagricultural	5,300	361,600
Manufacturing	1,200	99,220
Trade and Services	1,867	108,301
Government	500	46,000

## MANUFACTURING EMPLOYMENT TRENDS BY INDUSTRY

JUNE 1970-60 <sup>3/</sup>

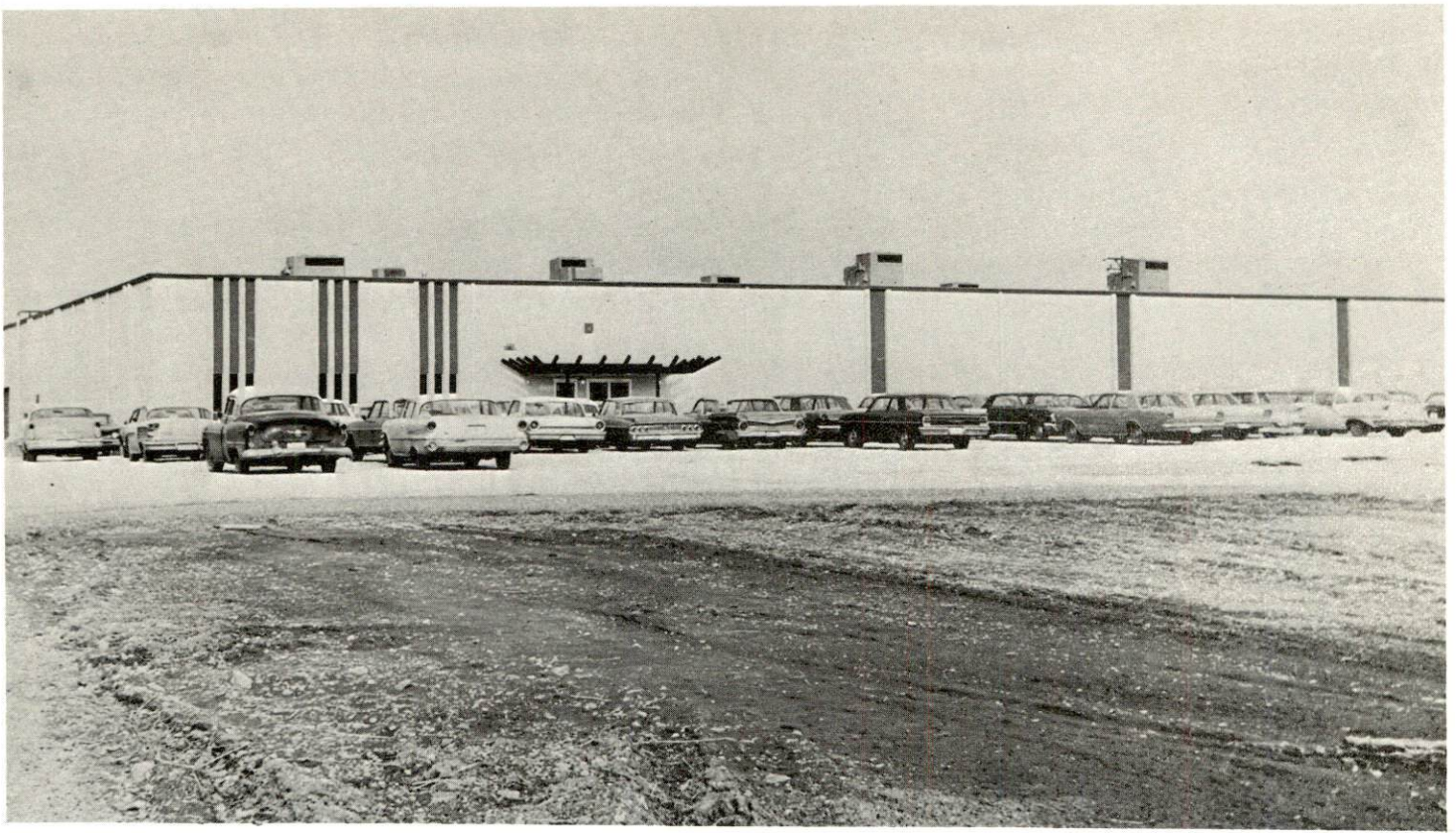
Industry	Shelby County			Labor Market Area		
	1970	1960	% Change	1970	1960	% Change
TOTAL	1,067	381	+ 180.1	102,665	80,527	+ 27.5
Food & Kindred Products	120	88	+ 36.4	12,314	13,793	- 10.7
Tobacco	1	13	- 92.3	10,248	8,157	+ 25.6
Apparel, Textiles, Leather	107	89	+ 20.2	2,850	2,648	+ 7.6
Lumber & Furniture	0	0		3,775	5,911	- 36.1
Printing, Publishing, Paper	210	17	+1135.3	9,074	6,701	+ 35.4
Chemicals, Petroleum,						
Coal, Rubber	37	0		8,552	6,804	+ 25.7
Stone, Clay & Glass	91	54	+ 68.5	2,310	1,916	+ 20.6
Primary Metals	62	17	+ 264.7	2,148	1,732	+ 24.0
Machinery & Metal Products	439	103	+ 326.2	49,009	31,772	+ 54.3
Other	0	0		2,385	1,093	+118.2



MAJOR SHELBY COUNTY MANUFACTURING FIRMS,  
THEIR PRODUCTS AND EMPLOYMENT <sup>4/</sup>

<u>Firm</u>	<u>Product</u>	<u>Employment</u>		
		<u>Total</u>	<u>Male</u>	<u>Female</u>
<u>Shelbyville</u>				
American Air Filter Co., Inc.	Air filtration systems & equipment	50		
Briel Industries, Inc.	Extrusion billets	63	60	3
Food Foils, Inc.	Aluminum foil containers	50	20	30
Lee McClain Co., Inc.	Men's suits, sport coats, men's slacks	100	25	75
Long Silo Co.	Concrete staves	77	75	2
Newspapers, Inc.	Newspapers	188	60	128
E. J. O'Brien Long Co.	Tobacco redrying	73	51	22
Plastic Parts, Inc.	Plastic parts for furniture	50		
Roll Forming Corp.	Custom roll formed products	168	123	45
Shelbyville Finishing Co.	Greeting card finishing	150	8	142
Western District Redrying & Storage	Tobacco redrying	185	125	60
		(seasonal)		
<u>Simpsonville</u>				
Lear Siegler, Inc.	Swivels, rockers, swivel bases, metal stampings, TV pedestal bases, recliner chair mechanisms	315	151	164





SHELBYVILLE FINISHING CO.  
(AMERICAN GREETINGS CORP.)



GREATER KENTUCKY PUBLISHERS, INC.





ROLL FORMING CORP.



WAGE RATES FOR SELECTED OCCUPATIONS  
SHELBYVILLE, KENTUCKY 5/

<u>Classification</u>	<u>Wages Per Hour</u>	
	<u>Starting</u>	<u>Maximum</u>
<u>Production Employees</u>		
Assembler	\$1.95	\$2.20
Inspector	2.75	3.50
Production Laborer	1.80	2.05
Welder, Arc or Acetylene (Class-A)	3.00	3.50
<u>Service Employees</u>		
Electrician (Class-A)	\$2.75	\$3.50
Laborer	1.80	2.05
Mechanic, Maintenance	2.55	3.50
Truck Driver, Industrial (Class-A)	2.55	2.80
<u>Office Employees</u>		
	<u>Wages Per Month</u>	
Bookkeeper	\$315	\$400
Receptionist	350	400
Secretary	400	500
Typist	285	340

LABOR ORGANIZATIONS

<u>Union</u>	<u>Representing Workers at:</u>
Aluminum Workers	Ohio Valley Co.
	Food Foils, Inc.
United Auto Workers	Suma, Inc.
Production Service Sales Employees	Shelbyville Finishing Co.

CURRENT AND FUTURE LABOR SUPPLY -  
SHELBYVILLE LABOR MARKET AREA

Area	Current Labor Supply by 1971 <sup>6/</sup>			Future Labor Supply by 1977 (Becoming 18 Years of Age) <sup>7/</sup>		
	Total	Male	Female	Total	Male	Female
Labor Market						
Area	15,650	9,084	6,566	82,876	42,139	40,737
Shelby	403	218	185	1,911	947	964
Anderson	544	273	271	839	423	416
Franklin	882	569	313	2,794	1,399	1,395
Henry	445	230	215	949	472	477
Jefferson	12,804	7,484	5,320	74,373	37,855	36,518
Oldham	236	106	130	1,349	699	650
Spencer	336	204	132	661	344	317

TOTAL PERSONAL INCOME <sup>8/</sup>

Area	1969*	1959	% Change
Shelby County	\$ 51,181,000	\$ 26,073,000	+96.3
Labor Market Area	179,529,800	1,552,757,000	+15.6
Kentucky	9,202,000,000	4,655,000,000	+97.6

PER CAPITA PERSONAL INCOME <sup>9/</sup>

Area	1969*	1959	% Change
Shelby County	\$2,678	\$1,514	+76.9
Labor Market Area	\$1,920 to 4,090	\$1,174 to 2,360	NA
Kentucky	2,847	1,552	+83.4

\*Preliminary.



## EDUCATION

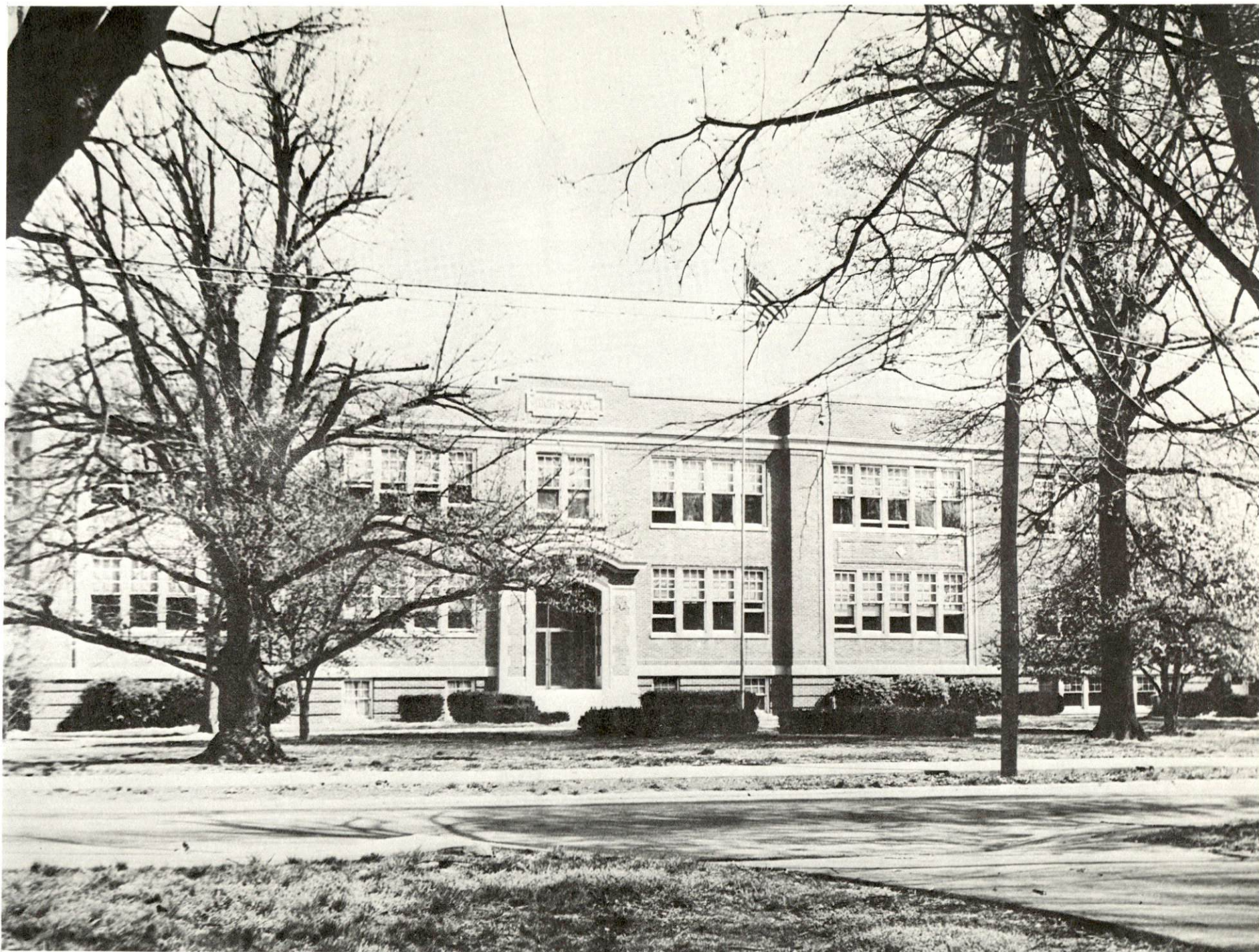
### Public Schools

	<u>Shelbyville</u>	<u>Shelby County</u>
Total Enrollment	1,800	2,904
Elementary	1,020	1,480
Middle School	302	548
High School	478	876
Student-Teacher Ratio	27-1	21-1
Elementary	24-1	21-1
Middle School	32-1	22-1
High School	27-1	21-1
State Rating of High School	Standard	Comprehensive
Other Accreditations	Southern Association of Colleges and Schools	
Percent High School Graduates to College	60.2	49.6
Current Expenditures Per Pupil	\$410.99	\$391.51
Bonded Indebtedness, June 30, 1970	\$483,000	\$2,564,000

### Vocational Schools

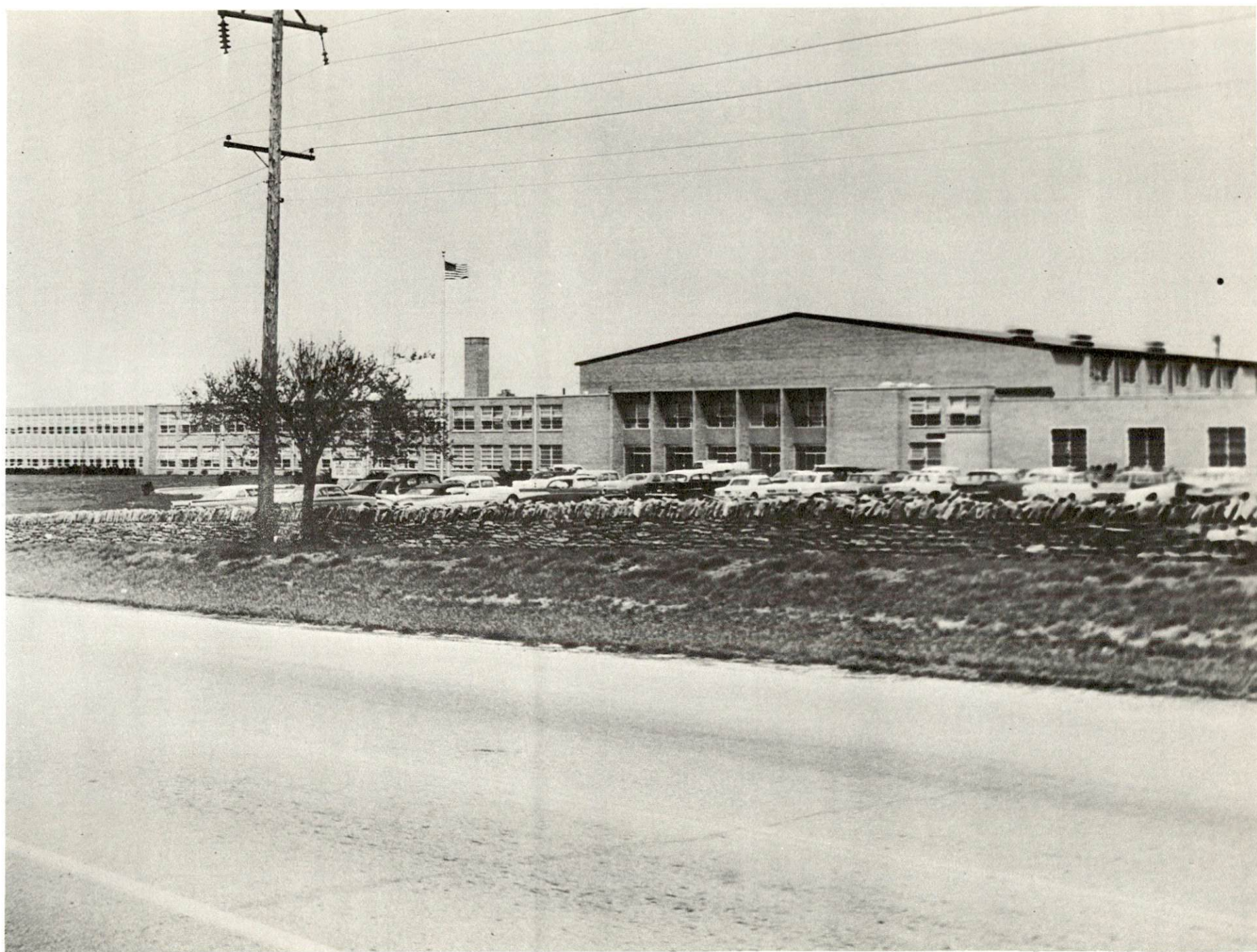
	<u>Nearest Area School</u>	<u>Nearest Extension Center</u>
Location	Jefferson County Area Vocational School	Shelby County Shelbyville
Miles Distant	Jeffersontown, Kentucky 25 miles distant	
Curriculum	Agricultural Mechanics Horticulture General Clerical Data Processing Retail Salesmanship Retail Sales Record Keeping Practical Nursing Dental Assistant	Accounting Jr. Mgmt. Auto Mechanics Carpentry Electricity General Clerical Machine Shop Secretarial-Steno Welding





SHELBYVILLE HIGH SCHOOL





SHELBY COUNTY HIGH SCHOOL

Nearest Area  
School (Cont'd.)

Electronics  
Radio & TV  
Commercial Foods  
Welding, Printing  
Air Conditioning &  
Refrigeration  
Machine Shop  
Office Machine Repair  
Auto Body, Drafting

Colleges and Universities

<u>Name</u>	<u>Area - Within 55 miles</u>		<u>Highest Degree Conferred</u>
	<u>Location</u>	<u>Enrollment</u>	
University of Louisville	Louisville	10,142	Ph.D., M.D., D.M.D., J.D.
Bellarmino-Ursuline	Louisville	1,612	Baccalaureate
Spalding College	Louisville	1,269	Masters
Jefferson Community College	Louisville	2,557	Associate
Kentucky State College	Frankfort	1,754	Baccalaureate
Georgetown College	Georgetown	1,425	Masters
Transylvania University	Lexington	859	Masters
University of Kentucky	Lexington	17,790	Ph.D., M.D., D.M.D., J.D.
Centre College	Danville	776	Baccalaureate



## TRANSPORTATION

### Rail

Lines serving - Louisville & Nashville Railroad, C & O/B & O, and Southern Railway

Services - Freight, siding, switching, passenger, REA Express.  
Piggyback service is available in Frankfort, 18 miles distant.

### RAILWAY TRANSIT TIME FROM SHELBYVILLE, KENTUCKY, TO: 10/

No. of Days		No. of Days	
City	CL	City	CL
Atlanta, Ga.	3	Los Angeles, Calif.	6
Birmingham, Ala.	3	Louisville, Ky.	1
Chicago, Ill.	4	Nashville, Tenn.	2
Cincinnati, Ohio	2	New Orleans, La.	4
Cleveland, Ohio	4	New York, N. Y.	5
Detroit, Mich.	5	Pittsburgh, Pa.	5
Knoxville, Tenn.	2	St. Louis, Mo.	2

### Truck Service

#### Company

Claxon Truck Line, Inc.  
Cooper-Jarrett, Inc.  
Ecklar-Moore Express, Inc.  
McDuffee Motor Freight, Inc.  
(Ellis Trucking)  
Motor Freight Corporation  
O.K. Trucking Company  
Smith's Transfer Corporation of  
Virginia  
Turner Expediting Service  
Webb Transfer Line, Inc.  
Wilson Freight Company

#### Home Office

Frankfort, Kentucky  
Orange, New Jersey  
Lexington, Kentucky  
  
Lebanon, Kentucky  
Terre Haute, Indiana  
Cincinnati, Ohio  
  
Staunton, Virginia  
Louisville, Kentucky  
Shelbyville, Kentucky  
Cincinnati, Ohio

HIGHWAY MILES AND TRUCK TRANSIT TIME IN DAYS FROM  
SHELBYVILLE, KENTUCKY, TO SELECTED MARKET CENTERS

City	Highway Miles	Delivery Time <sup>11</sup> / <sub>TL</sub>		City	Highway Miles	Delivery Time <sup>11</sup> / <sub>TL</sub>	
		TL				TL	
Atlanta, Ga.	470	3		Los Angeles, Calif.	2,140	7	
Birmingham, Ala.	436	3		Louisville, Ky.	25	1	
Chicago, Ill.	325	3		Nashville, Tenn.	187	2	
Cincinnati, Ohio	105	3		New Orleans, La.	810	4	
Cleveland, Ohio	349	3		New York, N. Y.	745	5	
Detroit, Mich.	348	3		Pittsburgh, Pa.	380	4	
Knoxville, Tenn.	242	3		St. Louis, Mo.	292	3	

Air

Nearest Commercial

Location:	Standiford Field
Runways:	Louisville, Kentucky, 25 miles distant
Length:	3 paved
Traffic Control:	7,800 ft; 7,250 ft; 5,000 ft.
Lighting:	Control tower, approach control, ground control, guards
Services:	Runways, obstructions, beacon and approach lights, center line on runways
	80, 100, 115, jet fuel; storage; major A&E repairs; TWA, American, Eastern, Delta, Piedmont, Ozark, and Allegheny Airlines; car rental; restaurant; taxi; city bus services

Bus

Southern Greyhound Bus Lines

Taxi

24-hour service

Rental Services

Car and truck rentals



## POWER AND FUEL

### Electricity

Company serving Shelbyville - Kentucky Utilities Company  
Source of power - Kentucky Utilities Company  
Total generating capacity - 773,000 KW  
Industrial rates furnished by - Kentucky Utilities Company, Industrial  
Development Department, Lexington, Kentucky.

Company serving Shelby County - Shelby RECC and Fox Creek RECC  
Source of power - East Kentucky Power Cooperative  
Total generating capacity - 515,000 KW  
Industrial rates furnished by - East Kentucky Power Cooperative,  
Winchester, Kentucky,

### Natural Gas

Company serving Shelbyville - Western Kentucky Gas Company  
Source of supply - Texas Gas Transmission Corporation  
Size of transmission lines - 12, 8, 6, and 4 inches - Western Kentucky  
Gas Company; 30-inch - Texas Gas Transmission Corporation  
Distribution lines - 8, 6, 4 and 2 inches  
Btu content - 1,000  
Specific gravity - .60  
Distribution pressure - 60 psi  
Rates - Furnished by Western Kentucky Gas Company, Owensboro,  
Kentucky.

## WATER AND SEWERAGE

### Water

Company serving Shelbyville - Shelbyville Municipal Water and Sewer Commission

Source - Guist Creek Lake

Treatment plant capacity - 3,000,000 gpd

Average daily consumption - 900,000 gallons

Peak daily consumption - 1,200,000 gallons

Type treatment - Aeration, flocculation, sedimentation, filtration, chlorination or fluoridation

Storage capacity - 1,000,000 gallons

Average pressure - 65 psi

Average temperature - 60 to 65°

Size mains - 2, 4, 6, 8, 10, 12, 14 and 16 inches

### MONTHLY WATER RATES FOR WHOLESALE AND INDUSTRIAL CONSUMERS

(1)

First	1,000 gallons	\$2.65 (Minimum)
Next	9,000 gallons	1.02 per 1,000 gallons
Next	15,000 gallons	.85 per 1,000 gallons
Next	25,000 gallons	.70 per 1,000 gallons
Next	50,000 gallons	.55 per 1,000 gallons
All over	100,000 gallons	.40 per 1,000 gallons

Minimum Monthly Charge (For 1,000 gallons per month or less)

5/8	or	3/4-inch meter	\$2.65
		1-inch meter	3.25
1 1/4	or	1 1/2-inch meter	3.85
		2-inch meter	5.30
		3-inch meter	9.45
		4-inch meter	14.25
		6-inch meter	26.55

(2)

Within that area outside the corporate limits extending south from U.S. Highway 60 along Kentucky Highway 53 to Interstate Highway 64 the monthly water rate shall be 151 percent of the amount computed in accordance with the schedule of rates and charges in (1) above applicable to domestic and commercial users.



Surface water sources - Impoundments of small streams  
Expected ground water yield - 5 gpm or less over entire county

Sewerage

Company serving - Shelbyville Municipal Water and Sewer Commission  
Design capacity - 1,350,000 gpd  
Average daily flow - 350,000 gallons  
Treatment - Primary and secondary  
Type treatment - Settling tanks, trickling filter, digester and chlorination  
Treated effluent discharged into - Clear Creek  
Size of sanitary mains - 6, 8, 10, 12 and 15 inches  
Size of storm mains - 12 to 60 inches

Monthly Sewer Rates: (based upon water usage)

First	1,000 gallons	\$1.13 (Minimum)
Next	9,000 gallons	.43 per 1,000 gallons
Next	15,000 gallons	.35 per 1,000 gallons
Next	25,000 gallons	.30 per 1,000 gallons
Next	50,000 gallons	.23 per 1,000 gallons
All over	100,000 gallons	.18 per 1,000 gallons

## LOCAL GOVERNMENT

### City

Structure - Mayor - 4-year term; 6 councilmen - 2-year terms  
Budget 1970 - General Fund \$169,500; Water and Sewer Fund \$36,725  
Fees and licenses - Business license fees range from \$19 to \$300 annually; car stickers \$5 annually

### County

Structure - County Judge - 4-year term; 7 magistrates - 4-year terms  
Budget 1970-71 - General Fund \$149,201; Road Fund \$143,199

### Assessed Value of Property, 1970

<u>Classes of Property*</u>	<u>Shelbyville</u>	<u>Shelby County</u>
Real Estate	\$18,160,952	\$146,975,220
Tangibles	4,542,093	13,626,052
Public Service		17,418,591 (Est.)

### Local General Property Tax Rates Per \$100 of Assessed Valuation, 1970 <sup>12/</sup>

<u>Taxing Unit**</u>	<u>Shelbyville</u>	<u>Shelby County</u>
State	\$ .015	\$ .015
County	.172	.172
School	.464	.496
City	.270	
Total	\$ .921	\$ .683

\*Property assessed at 100 percent of fair value.

\*\*Manufacturing machinery, raw materials inventories and goods in process inventories are not subject to local tax. State rate is only \$0.15 per \$100.





SHELBYVILLE MUNICIPAL BUILDING



## Planning and Zoning

Agency - The Shelbyville-Shelby County Planning Commission  
Plans completed - Comprehensive Plan, Subdivision Regulations,  
Zoning Ordinance, Population and Economic Study, Existing Land Use  
Analysis  
Plans in process - Park and Recreation Study, Housing Study, Housing  
Condition Survey  
Codes adopted - Building, housing, plumbing, electrical, fire, gas

## Safety

<u>Police</u>	<u>Shelbyville</u>	<u>Shelby County</u>
Total staff	8	5
Radio-patrol cars	2	4
Other equipment	1 Cushman	

Fire

American Insurance Assoc- iation Fire Rating	6	8 & 9
Full-time staff	6	
Volunteers	12	32
Equipment:		
1,000-gpm pumper	1	
750-gpm pumper	1	1
500-gpm pumper	1	1
Other		jeep with water tank for grass fires

## Rescue Service

Shelby County Rescue Squad:  
Number of volunteers - 32  
Equipment - Rescue truck with generator, cutting torch, saw, first aid  
equipment, 2 walkie-talkies, 10 hand lights, hot sticks, 2 boats with  
motors, scuba diving gear  
Personnel training - First aid and emergency rescue



Sanitation

	<u>Shelbyville</u>	<u>Shelby County</u>
Type service	private	private
Cost		
residential	\$.75 per week	\$.75 per week
business	contract	contract
Collection frequency		
residential	once a week	once a week
business	when desired	when desired
Trash pickup	when desired	when desired
Disposal method	land fill	land fill

## HEALTH

### Hospitals

<u>General Hospital</u>	<u>Location</u>	<u>Beds</u>
King's Daughters' Hospital	Shelbyville	65
General hospital facilities - Laboratory, X-ray, 2 operating rooms, fracture room, cystoscopic room, 2 delivery rooms, emergency room, recovery room, intensive coronary section		
Medical staff - 10 doctors, 16 registered nurses, and 11 licensed practical nurses		

### Nursing Homes

	<u>Number</u>	<u>Beds</u>
Extended care homes	2	77
Personal care homes	3	130
Fraternal home	1	150

### Public Health

Facility - The Shelby County Health Department  
Staff - Nurse, sanitarian, clerk and health officer  
Budget 1969-70 - \$27,000



## OTHER LOCAL FACILITIES

### Communications

Telephone - South Central Bell Telephone Company  
Services - Standard

Telegraph - Western Union  
Services - Standard

Postal - U. S. Post Office  
Class - 1  
Mail received - 3 times daily  
Mail dispatched - 4 times daily

Newspapers -	Shelby Sentinel	Shelby News
Weekly and circulation -	4,900	4,900
Other papers received from - Louisville and Lexington, Kentucky		

Radio - WCND  
Stations received from - Frankfort, Lexington and Louisville, Kentucky

Television -  
Reception from - Louisville and Lexington, Kentucky; Cincinnati, Ohio  
Kentucky Educational Television - Owenton, Channel 52

### Library Services

Public Libraries - Shelby County Library  
Size collection - 34,075 volumes  
Circulation, 1969-70 - 20,573  
Services - Story hour, films, pictures, records, magazines,  
newspapers, meeting room, film strip

### Religious Institutions

Number of churches - 18  
Denominations - Baptist, Christian, Church of Christ, Episcopal,  
Methodist, Latter Day Saints, Church of God, Pentecostal,  
Presbyterian, Catholic



CHURCH AND EDUCATIONAL BUILDING



HOSPITAL AND NEW NURSING HOME



## Financial Institutions

<u>Banks</u>	<u>Statement as of December 31, 1970</u>	
	<u>Assets</u>	<u>Deposits</u>
Bank of Shelbyville	\$5,540,340.45	\$3,463,251.91
Citizens Union Bank	8,272,756.05	5,147,816.81
Shelby County Trust & Banking Co.	7,574,927.86	6,807,748.64
Farmers & Traders Bank	6,183,182.18	4,626,889.31
<u>Savings and Loan Associations</u>	<u>Assets</u>	<u>Shared Accounts</u>
Shelby County Building & Loan Association	\$1,502,240.71	\$1,397,500.00

## Hotels and Motels

<u>Number</u>	<u>Units</u>
3	82

## Clubs and Organizations

Business and Civic - Chamber of Commerce, Jaycees, Kiwanis, Lions, Rotary, Ruritan, Optimist, Shelby County Historical Society, PTA

Fraternal - American Legion, Masons, Odd Fellows, VFW, Moose

Women's - Business & Professional Women, Shelby County Garden Club, Chautauqua Club, Eastern Star, Shelby County Homemakers, Hospital Auxiliary, Jennie Bennedict Circle, Women of the Moose, Welcome Wagon, Greeter Service

Youth - Boy Scouts, Girl Scouts, 4-H, FFA

## RECREATION

### Local

#### Public Recreation Facilities

Supervised program - Parks and Recreation Board

Parks - 3

Playgrounds - 3

Swimming pool - 1

Tennis courts - 2

Baseball diamonds - 2

Football field - 1

#### Private Recreation Facilities

Country club - 1

Golf course - 1

Swimming pool - 1

Movie theater - 1 drive-in

Bowling lanes - 1

Other - Archer range, saddle club

#### Tourist Attractions

Science Hill Inn

Old Stone Inn

Home of Colonel Sanders

#### Cultural Events

Dinner Theatre

### Area (Within 60 miles)

Louisville, 25 miles distant, offers the full spectrum of sophisticated entertainment, cultural and sporting events. Frankfort, the capital city, 18 miles distant, has many historic places of interest. General Butler State Park, My Old Kentucky Home State Park and Pioneer Memorial State Park are within easy driving distance. Lexington has spring and fall race meets and harness racing.



# AGRICULTURE - NATURAL RESOURCES - CLIMATE

## Agriculture 13/

	<u>Shelby County</u>	<u>Labor Market Area</u>
Total land area (acres)	245,120	1,178,240
Percent of area in farm land	93.1	
Number of farms	1,735	6,786
Average size of farms (acres)	131.5	
1964 value of all farm products	\$13,339,793	\$46,978,284
Value per farm	7,689	6,923
Total crop sales	6,320,887	22,943,492
Total livestock & livestock products	7,017,115	24,014,602
1968 agricultural production included:		
Burley tobacco (lbs.)	10,037,000	32,471,000
Corn (bu.)	1,050,000	3,002,000
Cattle and calves (number)	54,900	208,800
Hogs and pigs (number)	17,200	60,300
Milk production (1967) (lbs.)	126,960,000	262,531,000

## Natural Resources

Principal mineral resources	No mineral production has been reported
Other mineral resources	Limited limestone & clay deposits
Acres of commercial forest land	31,300
Most abundant tree species	White oaks, red oaks, hickories, yellow poplar, ash, and hard maple

## Climate 14/

	<u>Shelby County</u>
Temperature	
Annual mean (30-year record)	55.6 degrees
Average annual 1969	54.6 degrees
Record highest, July, 1966 (6-year record)	98.0 degrees
Record lowest, January, 1966 (6-year record)	-10.0 degrees
Seasonal heating degree-days (30-year record)	4,683
Precipitation	
Mean annual total (30-year record)	44.73 inches
Mean annual snow and sleet (25-year record)	16.0 inches
Total precipitation 1969	39.50 inches
Mean number days precipitation (25-year record) (.01 inch or more)	128
Average number days thunderstorms(25-year record)	47
Prevailing winds (17-year record)	South

## HISTORY

Shelby County, the twelfth county formed in Kentucky, dates from 1792. It was the third of seven counties established by Kentucky's first legislature which convened in Lexington. Its territory was taken from Jefferson County. Later it contributed lands to form Henry (1798), and parts of Franklin (1794), Gallatin (1798), Oldham (1823), and Spencer Counties (1824). It is drained by the Kentucky and Salt Rivers. It contains 384 square miles. The surface is rolling to hilly, and the soil is based upon limestone with a red clay foundation and is fertile. There are some forested areas in the county.

Shelby County was named for Issac Shelby. During the Revolutionary War he fought in the Battle of King's Mountain. He moved to Kentucky in 1783, helped secure her separation from Virginia, and served as the State's first Governor. He also served a second term as Governor in 1812, during which he organized and commanded a body of volunteers at the Battle of the Thames, October, 1813. He was a member of the Special Commission which purchased the remaining lands from the Chickasaw Indians in Kentucky and Tennessee in 1818.

The first settlement in Shelby County was at Painted Stone by Squire Boone. Soon others moved into the area; among whom were John Allen, John Simpson, William Logan, John Logan, and Isham Talbott. By the time Kentucky became a State in 1792, a sufficient number of people inhabited the region to warrant the creation of a new county. Louisville, the county seat of Jefferson, was a great distance from the settlers' homes in present-day Shelby County, thus the reason for the new county. The location of Shelbyville, the county seat, was determined at the first session of court held at the home of Brackett Owen. William Shannon donated the land for the townsite. A courthouse was built four years later, which met the needs until 1912 when the present structure was erected.

The first church was built in Shelby County in 1804. William Shannon donated a school house site on Clear Creek about two miles south of Shelbyville. Science Hill and Stewart's Female College reflected desires for educational advancements.

Old Stone Inn near Simpsonville has been in operation since its establishment early in the nineteenth century. The stone used in its construction was hauled from Nelson County by oxcarts. The original flooring, ship-oak on the first and poplar on the second floor, and the hand-groomed casings still remain. It was built for a home, but had to be sold before it was finished.



## SOURCES OF INFORMATION

- 1/ U. S. Department of Commerce, Bureau of the Census, Census of Population, 1950, 1960, 1970.
- 2/ Kentucky Department of Economic Security, Division of Research and Statistics.
- 3/ Kentucky Department of Economic Security, Number of Workers in Manufacturing Industries Covered by Kentucky Unemployment Insurance Law Classified by Industry and County, June 1970-1960.
- 4/ Kentucky Department of Commerce, 1970 Kentucky Directory of Manufacturers.
- 5/ Kentucky Department of Economic Security, Division of Employment Services, Frankfort Office.
- 6/ Kentucky Department of Economic Security, Kentucky Labor Supply Estimates by County, January 1970.
- 7/ Kentucky Department of Commerce, Future Labor Supply by 1977.
- 8/ University of Kentucky, Office of Development Services and Business Research, Total Personal Income for Kentucky.
- 9/ University of Kentucky, Office of Development Services and Business Research, Per Capita Income in Kentucky.
- 10/ Louisville & Nashville Railroad, Louisville, Kentucky.
- 11/ Webb Transfer Line, Inc., Shelbyville, Kentucky.
- 12/ Kentucky Department of Revenue, Frankfort, Kentucky.
- 13/ U. S. Department of Commerce, Bureau of the Census, Census of Agriculture, 1964. U. S. Department of Agriculture and Kentucky Department of Agriculture, Kentucky Agricultural Statistics, 1969.
- 14/ U. S. Department of Commerce, Environmental Science Services Administration, Climatological Data, 1969.

All other information was obtained from governmental offices, local businesses and organizations.