

1976

Industrial Resources: Simpson County - Franklin

Kentucky Library Research Collections

Follow this and additional works at: https://digitalcommons.wku.edu/simpson_cty



Part of the [Business Administration, Management, and Operations Commons](#), [Growth and Development Commons](#), and the [Infrastructure Commons](#)

Recommended Citation

Kentucky Library Research Collections, "Industrial Resources: Simpson County - Franklin" (1976). *Simpson County*. Paper 9.
https://digitalcommons.wku.edu/simpson_cty/9

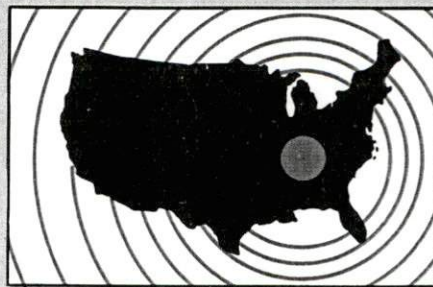
This Report is brought to you for free and open access by TopSCHOLAR®. It has been accepted for inclusion in Simpson County by an authorized administrator of TopSCHOLAR®. For more information, please contact topscholar@wku.edu.

1977 Simpson County

INDUSTRIAL RESOURCES

Franklin, Kentucky

**Kentucky
first**



DEPARTMENT OF COMMERCE

FRANKLIN, KENTUCKY -- Index to Industrial Sites -- 1976

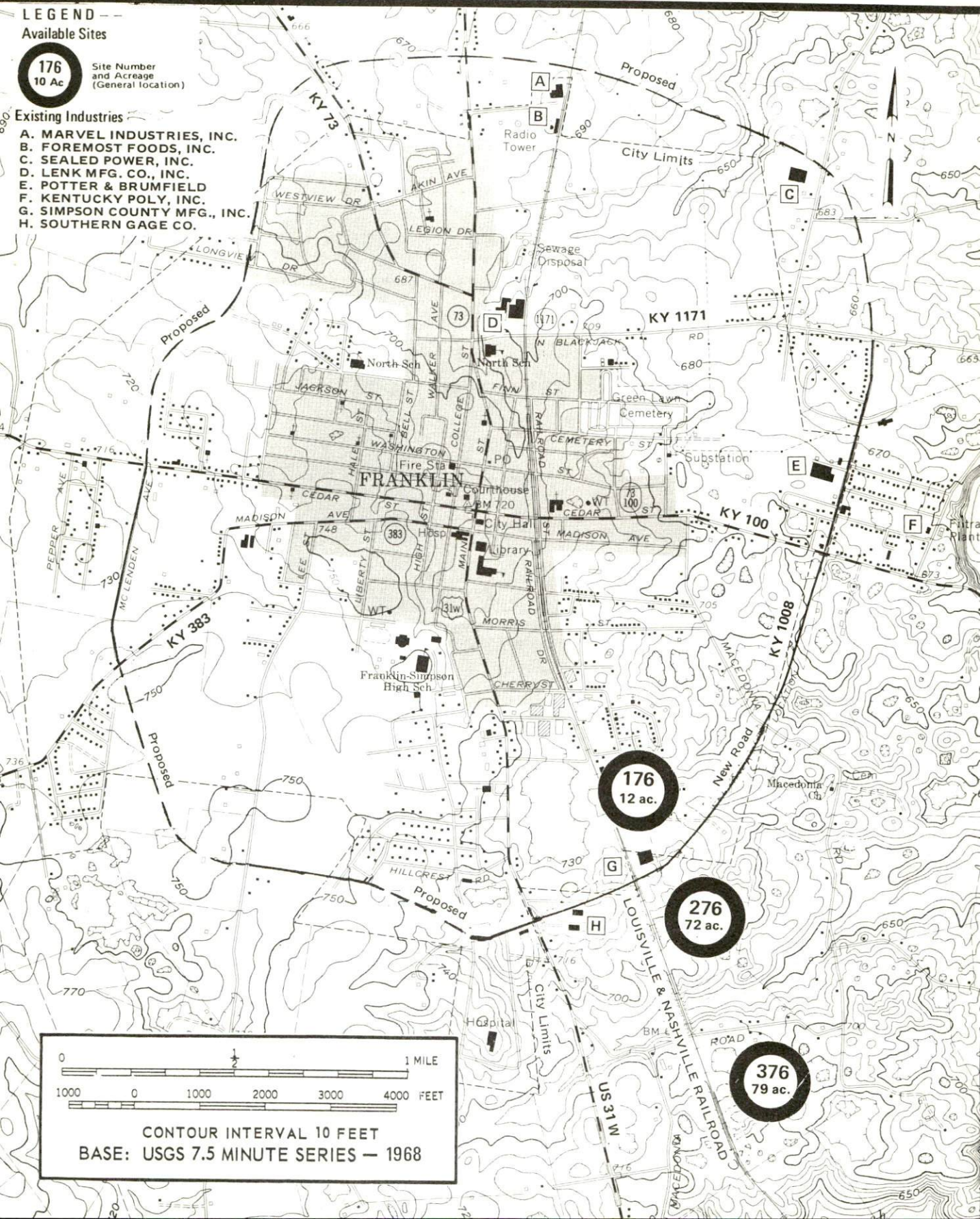
For detailed data on individual sites, contact John T. Butts, Franklin Electric Plant Board, Franklin, Kentucky 42134, or the Industrial Development Division, Kentucky Department of Commerce, Capital Plaza Tower, Frankfort, Kentucky 40601.

LEGEND -- Available Sites

176
10 Ac
Site Number
and Acreage
(General location)

Existing Industries

- A. MARVEL INDUSTRIES, INC.
- B. FOREMOST FOODS, INC.
- C. SEALED POWER, INC.
- D. LENK MFG. CO., INC.
- E. POTTER & BRUMFIELD
- F. KENTUCKY POLY, INC.
- G. SIMPSON COUNTY MFG., INC.
- H. SOUTHERN GAGE CO.



CONTOUR INTERVAL 10 FEET

BASE: USGS 7.5 MINUTE SERIES -- 1968

INDUSTRIAL RESOURCES

FRANKLIN, KENTUCKY

Prepared by

The Kentucky Department of Commerce

in cooperation with

The Franklin-Simpson County Chamber of Commerce

1976

TABLE OF CONTENTS

<u>Chapter</u>	<u>Page</u>
INDUSTRIAL SITES	i
FRANKLIN, KENTUCKY - A RESOURCE PROFILE	1
THE LABOR MARKET AREA	3
Population	3
General Employment Characteristics, 1974	3
Manufacturing Employment By Industry, March 1975	4
Major Franklin Manufacturing Firms, Their Products and Employment.	5
Labor Organizations.	5
Estimated Male Labor Supply.	6
Estimated Female Labor Supply	6
Wages	7
Per Capita Personal Income	8
TRANSPORTATION	9
Rail	9
Highways.	9
Truck Service	10
Air	11
Bus	11
Taxi.	11
POWER AND FUEL	12
Electricity	12
Natural Gas	13
Other Fuels	13
WATER AND SEWERAGE.	14
Water	14
Sewerage.	16
CLIMATE	17

<u>Chapter</u>	<u>Page</u>
LOCAL GOVERNMENT	18
City.	18
County	18
Assessed Value of Property, 1976	18
Property Taxes	18
Local Property Tax Rate Per \$100 of Assessed Valuation, 1975	20
Utilities Gross Receipts Tax for Schools	20
Planning and Zoning	20
Safety.	20
Police	20
Fire	20
Rescue Service	21
Solid Waste	21
EDUCATION	22
Public Schools	22
Nonpublic Schools	22
Colleges and Universities	23
Vocational Schools	24
HEALTH.	25
Local Medical Personnel	25
Hospitals	25
Ambulance Service	25
Nursing Homes.	25
Public Health	25
OTHER LOCAL FACILITIES	27
Communications	27
Library Services.	27
Religious Institutions	29
Financial Institutions	29
Hotels and Motels	29
Clubs and Organizations.	29
RECREATION.	31
COMMUNITY IMPROVEMENTS.	32
HISTORY.	34

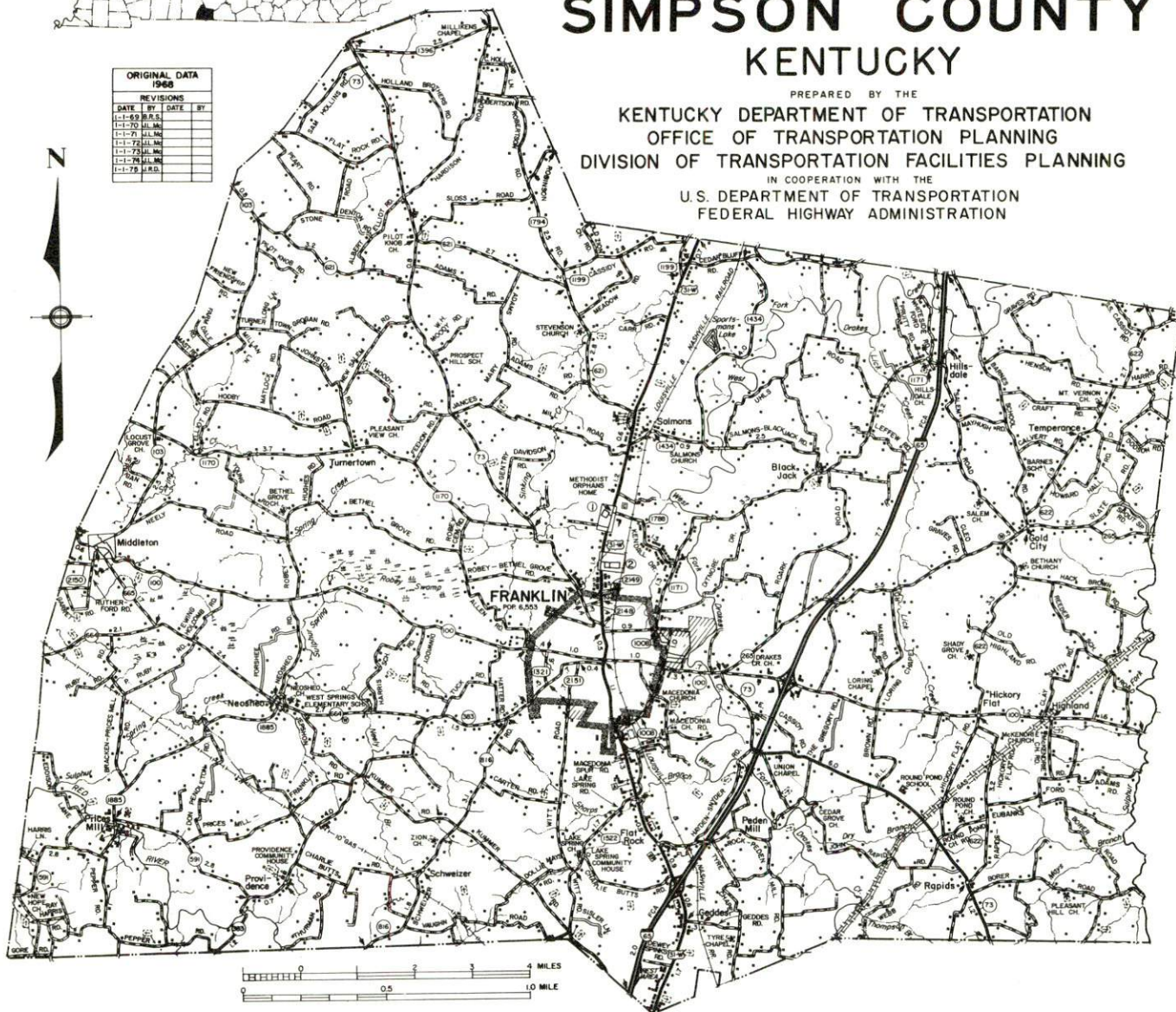


GENERAL HIGHWAY MAP SIMPSON COUNTY KENTUCKY

PREPARED BY THE
KENTUCKY DEPARTMENT OF TRANSPORTATION
OFFICE OF TRANSPORTATION PLANNING
DIVISION OF TRANSPORTATION FACILITIES PLANNING
IN COOPERATION WITH THE
U.S. DEPARTMENT OF TRANSPORTATION
FEDERAL HIGHWAY ADMINISTRATION

ORIGINAL DATA		
1968		
REVISIONS		
DATE	BY	DATE
1-1-68	B.S.S.	
1-1-70	J.L.M.	
1-1-71	J.L.M.	
1-1-72	J.L.M.	
1-1-73	J.L.M.	
1-1-74	J.L.M.	
1-1-75	J.L.M.	
1-1-76	J.L.M.	
1-1-77	J.L.M.	
1-1-78	J.L.M.	

N



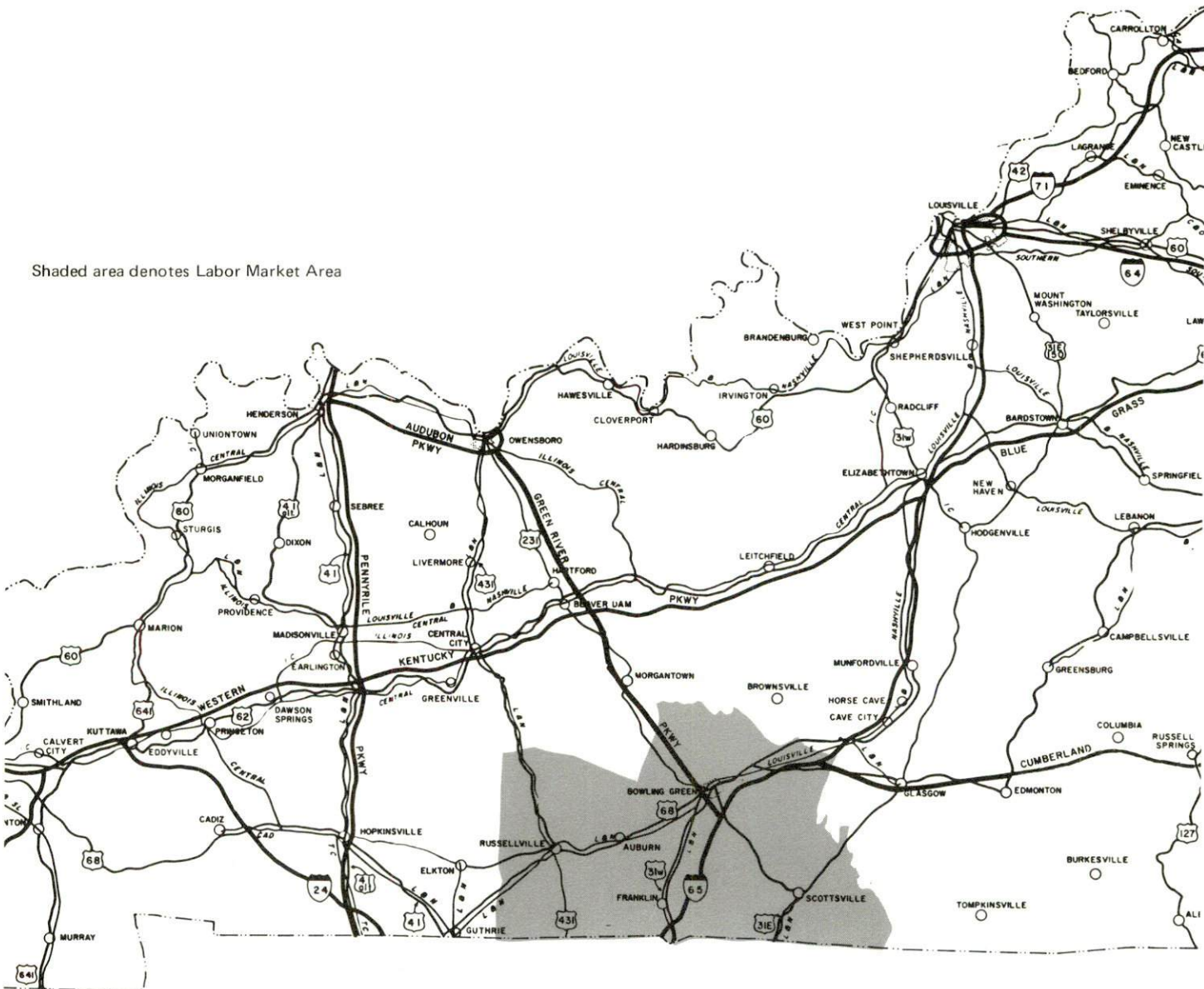


AERIAL VIEW OF FRANKLIN, KENTUCKY

FRANKLIN LABOR MARKET AREA



Shaded area denotes Labor Market Area



FRANKLIN, KENTUCKY - A RESOURCE PROFILE

Franklin, the county seat of Simpson County, is located in Kentucky's Pennyridge area in the southwestern part of the state. Franklin, with a population of 7,720, is located 6 miles north of the Tennessee state line, and approximately 52 miles north of Nashville, Tennessee.

Simpson County, with a population of 14,200, covers an area of 239 square miles. The county is bounded on the east by Allen County, on the north by Warren County, on the west by Logan County, and on the south by the Tennessee state line. The west fork of Drakes Creek and the Red River flow through the county.

The Economic Framework

The total number of Simpson County residents employed in 1974 averaged 5,860, including 400 in agriculture and 520 in government. Manufacturing employers in the county reported 3,000 workers; trade and services firms employed 1,230. Major industrial products are: adhesive tape products, electrical relays, clothing, aerosol fillers, transmission and small engine rings, and rubber bands.

Total unemployment in Simpson County averaged 4.8 percent of the labor force in 1974.

Per capita personal income in the county in 1973 was \$4,384, an increase of 40.2 percent since 1969.

The Franklin labor market area includes Simpson County, the three adjoining Kentucky counties, and Robertson and Sumner counties in Tennessee. The total number of residents in the Kentucky portion of the labor market area employed in 1974 averaged 52,490, including 4,850 in agriculture and 7,060 in government. Manufacturing employers in the Kentucky portion of the labor market area reported 15,360 workers; trade and services firms employed 13,340.

Resources for Growth

1. Labor Supply - There is a current estimated labor supply of 4,400 men and 4,480 women available for jobs in the Kentucky portion of the labor market area. In addition, 5,060 young men and 4,790 young women in this area will become 18 years of age by 1982 and potentially available for work. The current labor supply would be supplemented by the number of men and women in two adjoining Tennessee counties who are available for industrial jobs.

2. Transportation - Franklin is served by U. S. Highway 31-W and Kentucky Highways 383, 73 and 100. An Interstate 65 interchange is located 3 miles east of Franklin. Rail service is provided by the Louisville & Nashville Railroad, including piggyback facilities. Local air service is provided by WHAK Field, 3 miles from Franklin. Air Kentucky Airlines (commuter air carrier) serves the airport at Bowling Green, 21 miles from Franklin, providing daily connecting service to Louisville, Cincinnati, Frankfort and Owensboro. Commercial service is available at the Nashville Metropolitan Airport, 52 miles distant.

3. Utilities and Fuel - Electric power for Franklin is provided by the Franklin Electric Plant Board. Electricity for Simpson County is provided by the Warren RECC and Pennyrite RECC. The Western Kentucky Gas Company serves Franklin with natural gas. Two distributors of propane and one distributor of distillate fuel oil are located in Franklin. Distributors located in Bowling Green and Russellville also serve the Franklin area.

4. Education - Franklin and Simpson County are served by the Simpson County School System. There are four universities, four senior colleges and one medical college within 55 miles of Franklin. The nearest state vocational-technical school located at Bowling Green, 21 miles away, offers training in 20 vocational areas. The nearest area education center, located at Scottsville, 21 miles away, offers five courses.

THE LABOR MARKET AREA

POPULATION

<u>Area</u>	<u>1974*</u>	<u>1970</u>	<u>Percent Nonwhite</u>
			<u>1970</u>
Franklin	7,720**	7,176	18.5
Labor Market Area	111,100	105,329	
Simpson County	14,200	13,054	12.4
Allen County	13,400	12,598	2.1
Logan County	21,900	21,793	10.1
Warren County	61,600	57,884	8.6

*Provisional Estimates.

**1973 Population Estimates.

Sources: U. S. Department of Commerce, Bureau of the Census, Census of Population, 1970. U. S. Bureau of the Census, Current Population Reports, Series P-25, No. 562, June 1975; Series P-26, No. 120, June 1975.

GENERAL EMPLOYMENT CHARACTERISTICS, 1974

<u>Major Employment Group</u>	<u>Employment by Place of Residence of Workers</u>	
	<u>Simpson County</u>	<u>Labor Market Area</u>
Total Employment	5,860	52,490
Agriculture	401	4,854
Government	520	7,062
	<u>Employment by Location of Jobs</u>	
	<u>Simpson County</u>	<u>Labor Market Area</u>
Manufacturing	2,999	15,357
Trade and Services	1,233	13,340

Source: Kentucky Department for Human Resources, Bureau for Administration and Operations.

MANUFACTURING EMPLOYMENT BY INDUSTRY
MARCH 1975

<u>Industry</u>	<u>Simpson County</u>	<u>Labor Market Area</u>
TOTAL	2, 327	12, 897
Food & Kindred Products	19	858
Tobacco	0	173
Apparel, Textiles, Leather	240	3, 057
Lumber, Furniture	29	884
Printing & Publishing, Paper	105	293
Chemicals, Petroleum & Coal,		
Rubber	302	667
Stone, Clay & Glass	10	63
Primary Metals	33	478
Machinery, Metal Products,		
Equipment	934	5, 608
Other	655	816

Source: Kentucky Department for Human Resources, Number of Workers in Manufacturing Industries Covered by Kentucky Unemployment Insurance Law Classified by Industry and County, March, 1975.

MAJOR FRANKLIN MANUFACTURING FIRMS,
THEIR PRODUCTS AND EMPLOYMENT

<u>Firm</u> (Establishment date)	<u>Product</u>	<u>Employment</u>			<u>Organized</u>
		<u>Total</u>	<u>Male</u>	<u>Female</u>	
Alliance Rubber Company, Inc. (1958)	Rubber bands	110	40	70	
Anaconda Company, Brass Division (1966)	Welded copper air condition- ing tube	58	55	3	
Haywood Company (1946)	Fatigue pants, jackets, shirts	200	15	185	
Kendall Company, Adhesive Plant (1962)	Industrial, consumer and athletic adhesive tape products	523	274	249	
Kendall Company, Polyken Plant	Industrial adhesive tapes, pipeline coating	249	209	40	
Lenk Manufacturing Company, Inc. (1953)	Contract aerosol fillers	300	120	180	
Marvel Industries, Inc. (1959)	Industrial jacks, couplers for mobile homes	69	65	4	
Potter and Brumfield (1956)	Electrical relays	379	161	218	
Sealed Power Corp. (1972)	Transmission and small engine rings	230	140	90	
Southern Containers, Inc. (1970)	Corrugated shipping containers	64	61	3	
Southern Gage Company (1968)	Thread, plain and snap gauges; machine shop	45	38	7	*

*See Labor Organizations below.

Source: Kentucky Department of Commerce, Division of Research and Planning.

LABOR ORGANIZATIONS

<u>Union</u>	<u>Representing manufacturing workers at:</u>
International Brotherhood of Electrical Workers	Neon Fluorescent Engineering Company
International Association of Machinists	Southern Gage Company

ESTIMATED MALE LABOR SUPPLY
FRANKLIN LABOR MARKET AREA

Area	Current			Future	
	Total	Not in Labor Force	Unemployed	Under-employed	Reaching 18 yrs. of age before 1982
Labor Market Area	4,400	510	1,240	2,650	5,060
Simpson	870	510	170	190	714
Allen	370	0	190	180	542
Logan	560	0	250	310	1,142
Warren	2,600	0	630	1,970	2,662

Sources: Kentucky Department for Human Resources, Kentucky Labor Supply Estimates by County, 1975. Kentucky Department of Commerce, Future Labor Supply before 1982.

ESTIMATED FEMALE LABOR SUPPLY
FRANKLIN LABOR MARKET AREA

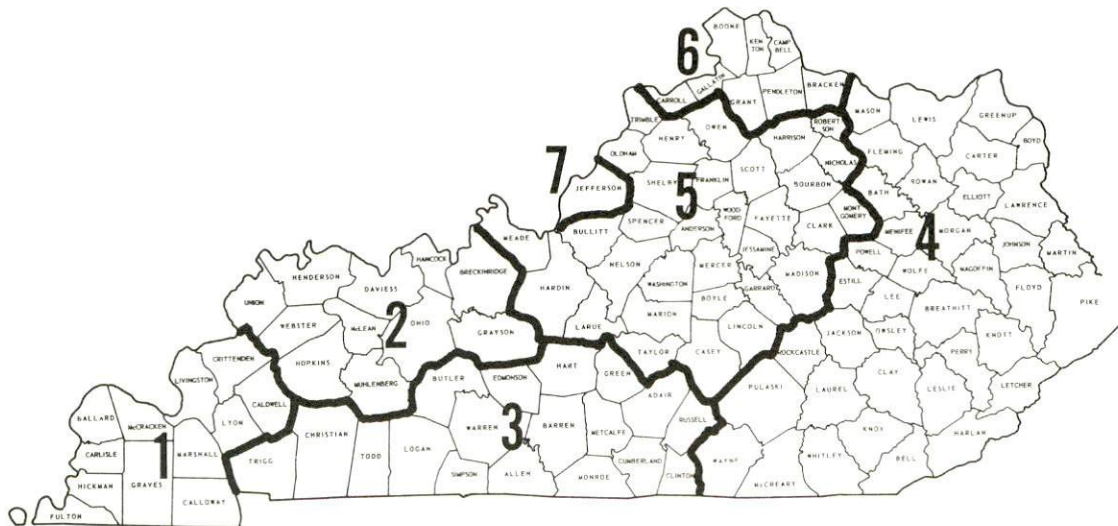
Area	Current			Future	
	Total	Not in Labor Force	Unemployed	Under-employed	Reaching 18 yrs. of age before 1982
Labor Market Area	4,480	830	930	2,720	4,786
Simpson	800	430	130	240	651
Allen	390	0	140	250	578
Logan	910	400	190	320	1,017
Warren	2,380	0	470	1,910	2,540

Sources: Kentucky Department for Human Resources, Kentucky Labor Supply Estimates by County, 1975. Kentucky Department of Commerce, Future Labor Supply before 1982.

WAGES

Occupational wage rates for specific industries are usually not available to most government agencies, and wage data furnished to state employment agencies by individual industrial employers is protected from disclosure by federal law. The most reliable up-to-date wage information can be obtained by direct contact with local employers.

Associated Industries of Kentucky, a voluntary organization of Kentucky businesses, regularly collects occupational wage rates and fringe benefits data from participating member firms. Data is compiled for over 127 clearly defined office, production, and service occupations. Tabulations are published for seven regions of Kentucky, as shown on the map below. It should be noted that the data may be weighted by the preponderance of firms in the larger cities and may be somewhat higher than the rates paid in the smaller communities. Data from these tabulations are available, upon request, from the Kentucky Department of Commerce, Frankfort, Kentucky 40601.



Associated Industries of Kentucky Area Wage Surveys

Up-to-date occupational wage rates of the existing industries are maintained by South Kentucky Industrial Development Association, Post Office Box 726, Hopkinsville, Kentucky 42240.

PER CAPITA PERSONAL INCOME

<u>Area</u>	<u>1973</u>	<u>1969</u>	<u>Percent Change</u>
Simpson County	\$4,384	\$3,128	40.2
Labor Market Area			
Range	\$3,147 - 4,384	\$2,110 - 3,128	N. A.
Kentucky	4,050	2,894	39.9
U. S.	5,041	3,733	35.1

Sources: U. S. Department of Commerce, Office of Business Economics, Survey of Current Business, August, 1974. U. S. Department of Commerce, Bureau of Economic Analysis, April, 1975.

TRANSPORTATION

Rail

Line serving Franklin - Louisville & Nashville Railroad

Services - One local freight, daily except Sunday service, northbound on Monday, Wednesday and Friday, southbound on Tuesday, Thursday and Saturday; 10 to 20 through freights daily both northbound and southbound; switching facilities, team track space for 25 cars, piggyback facilities

For details on routing, schedules, rates, and services contact:

Manager of Industrial Development
Louisville & Nashville Railroad Company
908 West Broadway
Louisville, Kentucky 40203
(502) 587-5000

Highways

Franklin, 3 miles west of Interstate I-65, is served by U.S. Highway 31-W and Kentucky Highways 383, 73 and 100. Planned for the near future is a cloverleaf interchange on I-65 at the Franklin exit.

Truck Service

<u>Company</u>	<u>Home Office</u>
Associated Transport, Inc.	380 Madison Avenue New York, New York 10017
Bowling Green Express, Inc.	Plum Springs Road Bowling Green, Kentucky 42101
Franklin Express*	P. O. Box 208 Franklin, Kentucky 42134
Great Lakes Express	1150 N. Niagara Saginaw, Michigan 48602
McLean Trucking Company	P. O. Box 213 Winston Salem, North Carolina 27102
Renner's Express, Inc.	1350 South West Street Indianapolis, Indiana 46206
Southern Forwarding Company	728 Alston Avenue Memphis, Tennessee 38102
Wilson Freight Company	3636 Follett Avenue Cincinnati, Ohio 45223

<u>Other Freight Services</u>	<u>Nearest Shipping Center</u>
United Parcel Service	Bowling Green, Kentucky, 21 miles distant

HIGHWAY MILES AND TRUCK TRANSIT TIME IN DAYS FROM FRANKLIN, KENTUCKY, TO SELECTED MARKET CENTERS

City	Delivery		City	Delivery	
	Highway Miles	Time TL		Highway Miles	Time TL
Atlanta, Ga.	294	2	Los Angeles, Calif.	2,077	5
Birmingham, Ala.	248	2	Louisville, Ky	131	1
Chicago, Ill.	423	2	Nashville, Tenn.	52	1
Cincinnati, Ohio	232	1	New Orleans, La.	569	2
Cleveland, Ohio	476	2	New York, N. Y.	879	3
Detroit, Mich.	491	2	Pittsburgh, Pa.	519	2
Knoxville, Tenn.	229	1	St. Louis, Mo.	356	2

Source: Delivery Time Only - McLean Trucking Company, 617 Waughtown Street, Winston Salem, North Carolina 27107.

*Local terminal.

Air

	<u>Local</u>	<u>Nearest Commercial</u>
	WHAK Field	Nashville Metropolitan Airport
Location:	3 miles from Franklin	Nashville Tennessee, 52 miles south of Franklin
Runways:	1 turf	3 paved
Length:	2,400 feet	8,000 feet; 7,700 feet; 4,025 feet
Traffic		
Control:	Wind sock	FAA control tower; full instrument landing system (ILS); radar approach and departure control; Stage 3 radar service for VFR aircraft
Lighting:	Sundown to sunrise	High intensity for instrument runway, medium intensity for other runways; VASI; obstructions, beacon, and approach lights
Services:	100 octane on request, hangars and overnight tie downs	Allegheny, American, Braniff, Delta, Eastern, Ozark, Piedmont, and Southern Airlines; Aerie Airlines (air taxi); 80 to 145 octane, jet fuel; major repairs; tie downs and hangars; charter service; flight instructions; limousine, bus, taxi, and car rentals; weather information; restaurant; hotel
Air Freight		
Service:		Air freight terminal

Bus - Southern Greyhound Bus Line

Taxi - One taxicab company

POWER AND FUEL

Electricity

Company serving Franklin - Franklin Electric Plant Board

Source of power - Tennessee Valley Authority

Total generating capacity - 26,723,430 KW

For industrial rates contact:

South Kentucky Industrial Development Association, Inc.
Post Office Box 726
Hopkinsville, Kentucky 42240
(502) 885-5392

and/or

Franklin Electric Plant Board
309 N. High Street
Franklin, Kentucky 42134
(502) 586-4441

Company serving Simpson County - Warren RECC

Source of power - Tennessee Valley Authority

Total generating capacity - 26,723,430 KW

For industrial rates contact:

Warren RECC
P. O. Box 1118
951 Fairview Avenue
Bowling Green, Kentucky 42101
(502) 842-6541

Company serving Simpson County - Pennyrite RECC

Source of power - Tennessee Valley Authority

Total generating capacity - 26,723,430 KW

For industrial rates contact:

Pennyrite RECC
2000 Harrison Street
Hopkinsville, Kentucky 42240
(502) 886-2555

Natural Gas

Company serving Franklin - Western Kentucky Gas Company
Source of supply - Texas Gas Transmission Corporation
Size of transmission mains - 10 inches (supplier)
Distribution mains - 6, 4, 3 and 2 inches
Distribution pressure - Up to 25 psi
Btu content - 1,000 per cubic foot
Specific gravity - .60
For rates and supplies contact:

Western Kentucky Gas Company
311 West 7th Street
Owensboro, Kentucky 42301
(502) 684-8811

Other Fuels

Propane

Pargas of Franklin, 700 N. Main Street, Franklin, Kentucky 42134
Southern States Franklin Petroleum Co-op, Gold City Road,
Franklin, Kentucky 42134

Other distributors of propane are located in Bowling Green,
21 miles distant.

Fuel oils

Distillate fuel oil -

Balance Oil Company, West Second, Russellville, Kentucky 42276
Southern States Franklin Petroleum Co-op, Gold City Road,
Franklin, Kentucky 42134

Other distributors of distillate fuel oil are located in Bowling
Green, 21 miles distant.

Residual fuel oil - Arrangements must be made with the refinery.

Low sulphur content coal - Available in Kentucky

WATER AND SEWERAGE

Water

Company serving Franklin - City of Franklin Water Works Commission*
109 South Main Street
Franklin, Kentucky 42134
(502) 586-4496

Source - West Fork Drakes Creek
Treatment plant capacity - 3,500,000 gallons per day
Average daily consumption - Approximately 1,700,000 gallons
Peak daily consumption - Approximately 2,400,000 gallons
Type treatment - Clarification and sand filtration
Storage capacity - 1,350,000 gallons
Size lines - 6, 8, and 12 inches
Average pressure - 50 psi

MONTHLY WATER RATES FOR WHOLESALE AND INDUSTRIAL CONSUMERS

Inside City

First	2,000 gallons	\$3.25 (Minimum bill)
Next	18,000 gallons	1.05 per M gallons
Next	80,000 gallons	0.50 per M gallons
Next	900,000 gallons	0.45 per M gallons
Over	1,000,000 gallons	0.40 per M gallons

Outside City

Inside rate x 1.50

Tap Fees Inside and Outside City

Meter Size

5/8 and 3/4 inch	\$ 60.00
1 inch	100.00
1 1/2 inch	200.00
2 inch	400.00
4 inch	600.00
6 inch	1,500.00

*The water treatment plant was recently expanded to high rate two of the five filters. Coagulant control and turbidity monitoring were also installed. Presently under construction is a water supply dam, reservoir and raw water intake structure to be completed in the fall of 1976.

Name of water district - Simpson County Water District
Warren RECC Building
P. O. Box 9
Franklin, Kentucky 42134
(502) 586-8106

Area served - Simpson County excluding area within city limits of
Franklin

Date when water district began operating - October, 1968

Source of supply of treated water - City of Franklin, Kentucky

Average amount of water used in a 24-hour period - 251,000 gallons

Peak amount of water used in a 24-hour period - 340,000 gallons

Storage capacity - 300,000 gallons

Average pressure - 60 psi

Average temperature - 60 degrees F.

Size lines - 2, 3, 4, 6 and 8 inches

Rates -

Minimum -	\$5.00 for 2,000 gallons (Res.)
Next	2,000 gallons \$1.50 per M gallons
Next	2,000 gallons 1.10 per M gallons
Next	4,000 gallons .90 per M gallons
Next	20,000 gallons .80 per M gallons
Next	50,000 gallons .70 per M gallons
Next	60,000 gallons .50 per M gallons
All over	.40 per M gallons

Contribution in aid of construction

5/8 inch meter (Residential)	\$ 250
3/4 inch meter	300
1 inch meter	350
1½ inch meter	500
2 inch meter	675
3 inch meter	950
4 inch meter	1,350
6 inch or larger meter	Actual cost

Surface water sources - Drakes Creek

Average discharge - West Fork Drakes Creek near Franklin, Kentucky
224 cfs (7 years-USGS)

Expected ground water yield - 50 to 200 gpm along major streams,
5 to 50 gpm over remainder of county

Sewerage

Company serving Franklin - City of Franklin Water Works Commission*
109 South Main Street
Franklin, Kentucky 42134
(502) 586-4496

Design capacity - 1,200,000 gallons per day

Average daily flow - 1,000,000 gallons

Treatment - Secondary treatment using a trickling filter

Type treatment - Primary clarifier, trickling filter, secondary clarifier, anaerobic digestion and drying beds

Treated effluent discharged into - West Fork Drakes Creek

Size of sanitary mains - 6 through 36 inches

Rates -

Inside City

First 2,000 gallons	\$2.00 (Minimum bill)
Over 2,000 gallons	0.60 per M gallons

Outside City

Inside rate x 1.50

Tap Fees Inside and Outside City

Meter Size

5/8 and 3/4 inch	\$ 300.00
1 inch	400.00
1 1/2 inch	600.00
2 inch	800.00
4 inch	1,000.00
6 inch	1,400.00

*A 201 Facilities Plan is presently being prepared.

CLIMATE

Simpson County

Temperature

Annual mean (30-year record)	59.4 degrees
Average annual 1974	59.8 degrees
Record highest, July, 1966 (9-year record)	103.0 degrees
Record lowest, January, 1966 (9-year record)	- 6.0 degrees
Normal heating degree days (30-year record)	3,696
(Heating degree day totals are the sums of negative departures of average daily temperatures from 65 degrees F.)	

Precipitation

Mean annual total (30-year record)	46.00 inches
Mean annual snowfall (33-year record)	11.00 inches
Total precipitation 1974	60.70 inches
Mean number days precipitation (.01 inch or more) (33-year record)	119
Average number days thunderstorms (36-year record)	56

Prevailing Winds (22-year record)

South

Relative Humidity (9-year record)

12 midnight	80 percent
6 a. m.	84 percent
12 noon	58 percent
6 p. m.	62 percent

Source: U. S. Department of Commerce, Environmental Science Services
Administration, Climatological Data, 1974. Station of record:
Nashville, Tennessee.

LOCAL GOVERNMENT

City

Structure - Mayor - 4-year term; 6 councilmen - 2-year terms
Budget 1976 - General Fund \$397,450
Water and Sewer Fund 685,400
Fees and licenses - Business license ranging from \$25 to \$450
annually; auto sticker fee of \$10

County

Structure - County Judge - 4-year term; 4 magistrates - 4-year terms
Budget 1975-76 - General Fund \$226,070; Road Fund \$62,200

Assessed Value of Property, 1976

<u>Classes of Property</u>	<u>Franklin</u>	<u>Simpson County</u>
Real Estate	\$39,685,740	\$118,768,190
Tangibles	12,269,110	25,046,590

Property Taxes

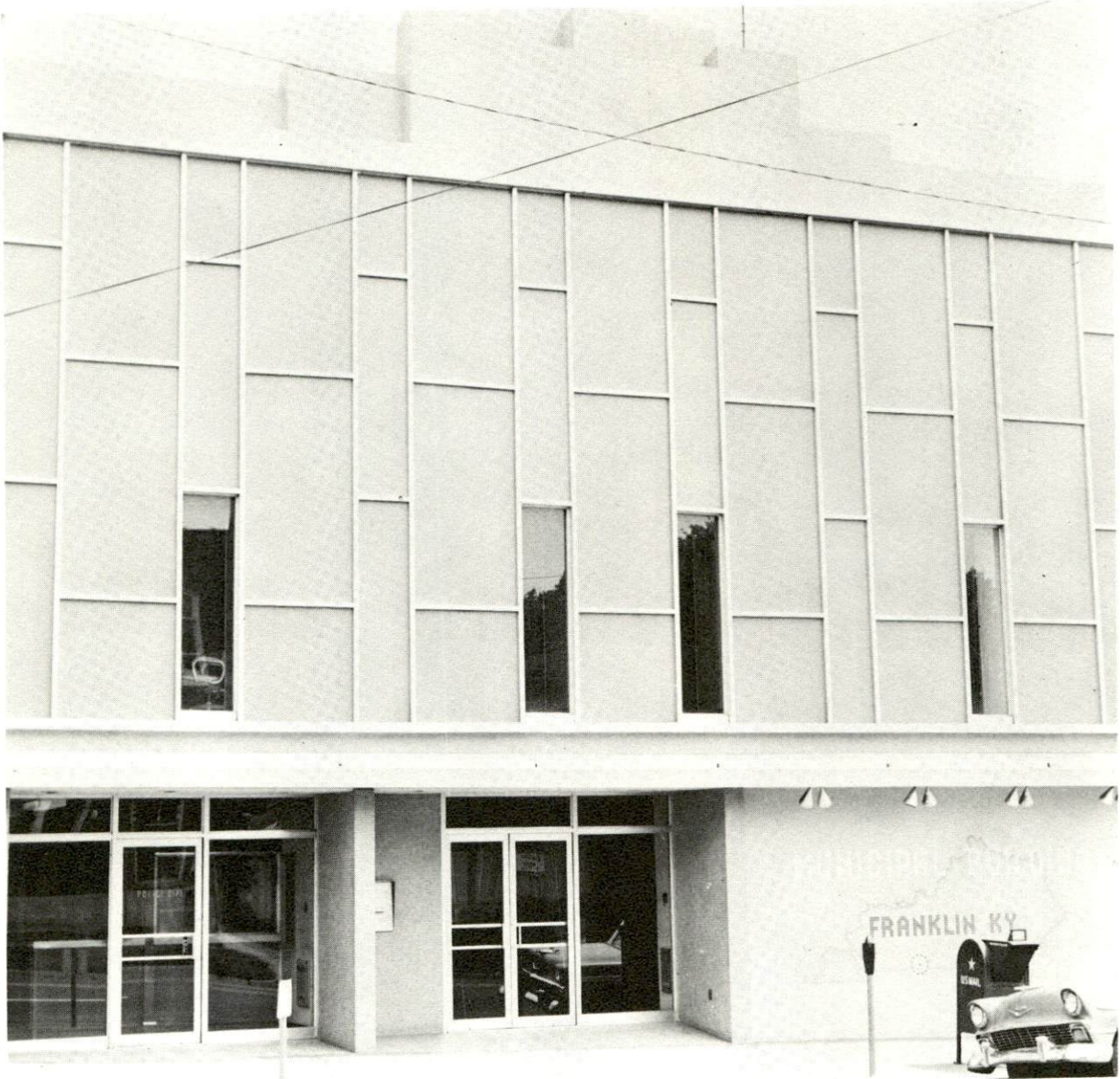
Land and buildings are taxed by the state and may be taxed by local jurisdictions. The state rate is \$0.015 per \$100 of assessed valuation.

Tangible personal property owned by manufacturers (automobiles, trucks, finished goods, office furniture, office equipment) is taxed by the state at \$0.15 per \$100 and may be taxed by local jurisdictions.

Manufacturing machinery, raw materials inventories, pollution control equipment, and goods in process inventories are not subject to local taxation. The state rate is \$0.15 per \$100.

Property stored in public warehouses is not subject to local taxation. The state rate is only \$0.015 per \$100.

All property is assessed at 100 percent of fair cash value.



MUNICIPAL BUILDING



ELECTRIC PLANT BOARD

Local Property Tax Rate Per \$100 of Assessed Valuation, 1975*

<u>Taxing Jurisdiction</u>	<u>Franklin</u>	<u>Simpson County</u>
County	\$.1700	\$.170
School	.4880	.488
City	.2704	

Utilities Gross Receipts Tax for Schools

Simpson County levies a 3 percent tax on utilities receipts for schools. This tax is paid by all consumers of utilities as an add-on to the utilities bills. Exempted are receipts from utilities services that are resold and the receipts from the sale of energy or energy producing fuels that exceed 3 percent of the cost of production in manufacturing, processing, mining or refining.

Planning and Zoning

Joint agency - Franklin-Simpson County Planning and Zoning Commission
Zoning enforced - All areas
Subdivision regulations enforced - All areas
Mandatory state codes enforced - Plumbing, National Fire Protection Association Code, National Building Code (for major buildings and residential construction containing more than 12 bedrooms per building)

Safety

<u>Police</u>	<u>Franklin</u>	<u>Simpson County</u>
Total staff	17	5
Radio-patrol cars	3	4

Fire

American Insurance Association Fire Rating	8
Full-time staff	1
Volunteers	16

*Kentucky Department of Revenue, Kentucky Property Tax Rates, 1975.

Rescue Service

Franklin-Simpson County Rescue Squad:

Number of volunteers - 25

Equipment - Rescue van, resuscitator, geiger counter, two stretchers,
search light, scuba diving equipment, jeep, utility truck

Personnel training - 3 scuba divers

Solid Waste

Type service	Municipal
Fee charged:	
residential	\$2.75 monthly
business	Negotiated
industrial	Negotiated

Collection frequency:	
residential	Weekly
business	Twice weekly
industrial	Negotiated

Trash pickup	Weekly
Disposal method	Landfill

EDUCATION

Public Schools

Simpson County

Total Enrollment (Fall, 1975)	3,178
Elementary	1,678
Middle School	600
High School	900
Student-Teacher Ratio	21-1
Elementary	24-1
Middle School	22-1
High School	18-1
Accreditation	Southern Association of Colleges and Schools
Percent High School Graduates to College	42.9
Expenditures Per Pupil (1974-75)	\$682.26
Bonded Indebtedness, June 30, 1975	\$1,623,000

Nonpublic Schools

Total Enrollment	34
Elementary	34
Student-Teacher Ratio	17-1
Elementary	17-1

Colleges and Universities

<u>Name</u>	<u>Location (Miles Distant)</u>	<u>Enrollment (Fall, 1975)</u>	<u>Highest Degree Conferred</u>
Western Kentucky University	Bowling, Green (21)	13,040	Masters, Ph. D. *
Belmont College	Nashville, Tennessee (52)	1,114	A. B. , B. S. , A. A.
David Lipscomb College	Nashville, Tennessee (52)	2,086	A. B. , B. S.
Fisk University	Nashville, Tennessee (52)	1,428	A. B. , B. S., M. A.
George Peabody College for Teachers	Nashville, Tennessee (52)	1,865	Academic and Professional
Meharry Medical College	Nashville, Tennessee (52)	790	M. S. , M. D. , D. D. S. , Certificate
Trevecca Nazarene College	Nashville, Tennessee (52)	856	A. B. , B. S.
Tennessee State University	Nashville, Tennessee (52)	5,686	A. A. , B. S. , B. S. , M. A. , M. S.
Vanderbilt University	Nashville, Tennessee (52)	7,034	Academic and Professional

*Cooperative program with the University of Kentucky, Lexington, for a Ph. D. in Education only.

Vocational Schools

	<u>Nearest State School</u>	<u>Nearest Area Education Center</u>
	Bowling Green State Vocational-Technical School	Allen County Area Vocational Education Center
Location	Bowling Green	Scottsville
Miles Distant	21	21
Curriculum	Commercial Foods Distributive Education Dental Assisting Health Careers Nursing Assistant Surgical Technician Industrial Education Air Conditioning and Heating Auto Body Repair Carpentry Civil Highway Technician Drafting Electronics (Technology) Graphic Arts (Printing) Industrial Electricity Machine Shop Masonry Radio and TV Repair Small Engine Repair Tool and Die Making Welding	Business and Office Industrial Education Auto Mechanics Building Trades Drafting Electricity

Arrangements can be made to provide training in the specific production skills required by an industrial plant. Instruction may be conducted either in the vocational school or in the industrial plant, depending upon the desired arrangement and the availability of special equipment.

HEALTH

Local Medical Personnel

Physicians - 7
Dentists - 5

Hospitals

<u>General Hospital</u>	<u>Location</u>	<u>Beds</u>
Franklin-Simpson Memorial Hospital	Franklin	50

General hospital facilities - Laboratory and X-ray equipment, emergency room, nursery, operating room, delivery room, cardiac monitoring, radiology service

Medical staff - 4 general practitioners, 8 consulting doctors, 10 registered nurses, 11 licensed practical nurses, 28 aides and orderlies, 3 X-ray and medical technologists

Ambulance Service

Name - Franklin - Simpson County Ambulance Service
Staff - 6 emergency medical technicians
Service - 24-hour service
Equipment - 2 new fully equipped ambulances

Nursing Homes

	<u>Number</u>	<u>Beds</u>
Personal care homes	4	153

Public Health

Facility - Simpson County Health Department
Staff - One environmentalist, nurse, clerk and local physicians on contract for medical services



FRANKLIN - SIMPSON MEMORIAL HOSPITAL



SIMCO PERSONAL CARE HOME

OTHER LOCAL FACILITIES

Communications

Telephone - South Central Bell Telephone Company
Services - Standard

Telegraph - Western Union Telegraph Company
Services - Standard

Postal - U. S. Post Office
Class - First
Mail received - Twice daily
Mail dispatched - Twice daily

Newspapers - Franklin Favorite
Bi-Weekly and circulation - 4,300
Other papers received from - Bowling Green and Louisville,
Kentucky; Nashville, Tennessee

Radio - WFKN-AM
Stations received from - Russellville, Scottsville, Bowling Green,
Lexington, Louisville, Hopkinsville and Glasgow, Kentucky;
Nashville, Clarksville, Gallatin and Springfield, Tennessee

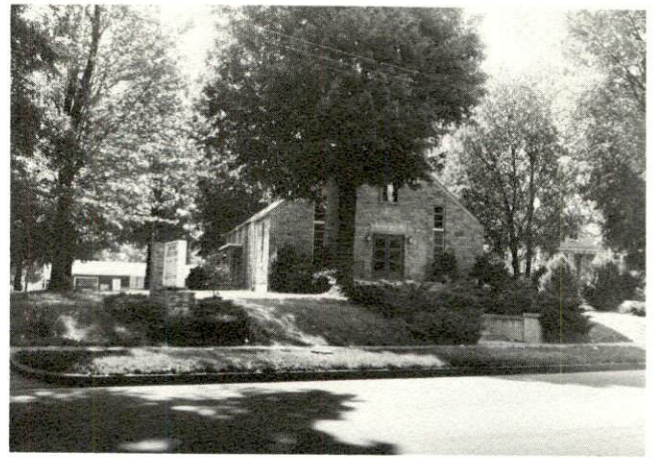
Television -
Reception from - Bowling Green, Kentucky; Nashville, Tennessee
Kentucky Educational Television - Channel 53, Bowling Green
transmitter

Library Services

Public library - Goodnight Memorial Library
Size collection - 19,051 volumes
Circulation, 1974-75 - 72,764
Services - Story hour, loan records, framed reproductions,
magazines, films, culture and enrichment program, art
exhibits, civic club meeting room, head start program,
hospital service, service for the handicapped, reader-printer



FIRST BAPTIST CHURCH



ST. MARY CATHOLIC CHURCH



CHURCH OF CHRIST



PRESBYTERIAN CHURCH



FIRST METHODIST CHURCH

Religious Institutions

Number of churches - 15

Denominations - Baptist, Catholic, Church of Christ, Episcopal,
Jehovah's Witnesses, Lutheran, Methodist, Nazarene, Presbyterian,
Seventh Day Adventist

Nearest Synagogues - Nashville, 52 miles south

Congregations - Sherith Israel (orthodox); Ohabai Shalom (reform);
West End Synagogue (conservative)

Financial Institutions

<u>Banks</u>	<u>Assets</u>	<u>Deposits</u>	<u>Statement Date</u>
Franklin Bank and Trust Company	\$17,175,017.34	\$15,641,608.07	12/31/75
Simpson County Bank	35,914,997.75	32,114,931.73	12/31/75

<u>Savings and Loan Associations</u>	<u>Assets</u>	<u>Shared Accounts</u>	<u>Statement Date</u>
First Federal Savings and Loan Association	\$70,832,864.16	\$63,750,292.09	12/31/75

Hotels and Motels

Total number - 7
Total units - 109

Clubs and Organizations

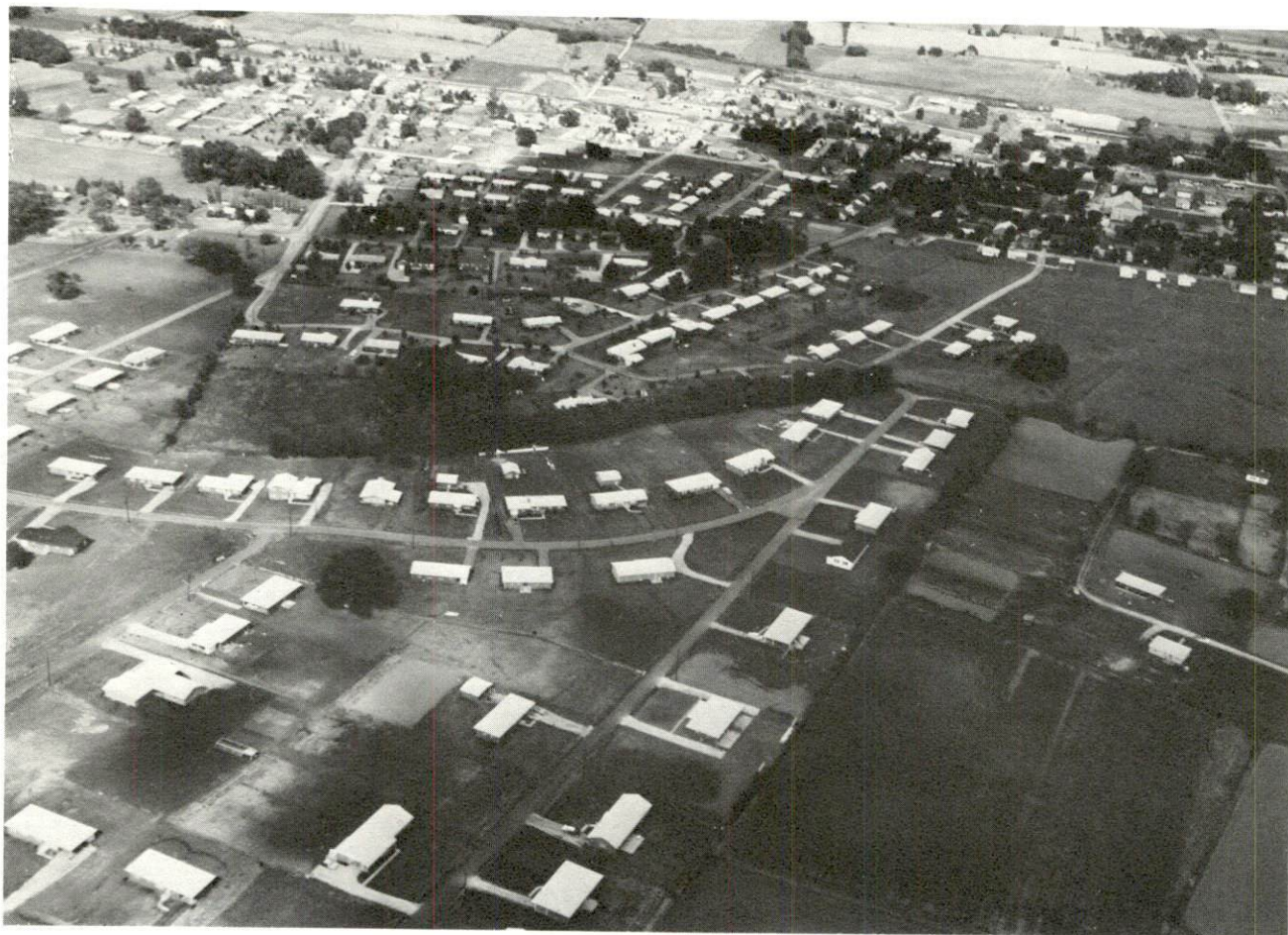
Business and Civic - Chamber of Commerce, Jaycees, Lions, Rotary,
Optimist

Fraternal - Masonic Lodge, American Legion, VFW, WOW, Moose,
Shriners

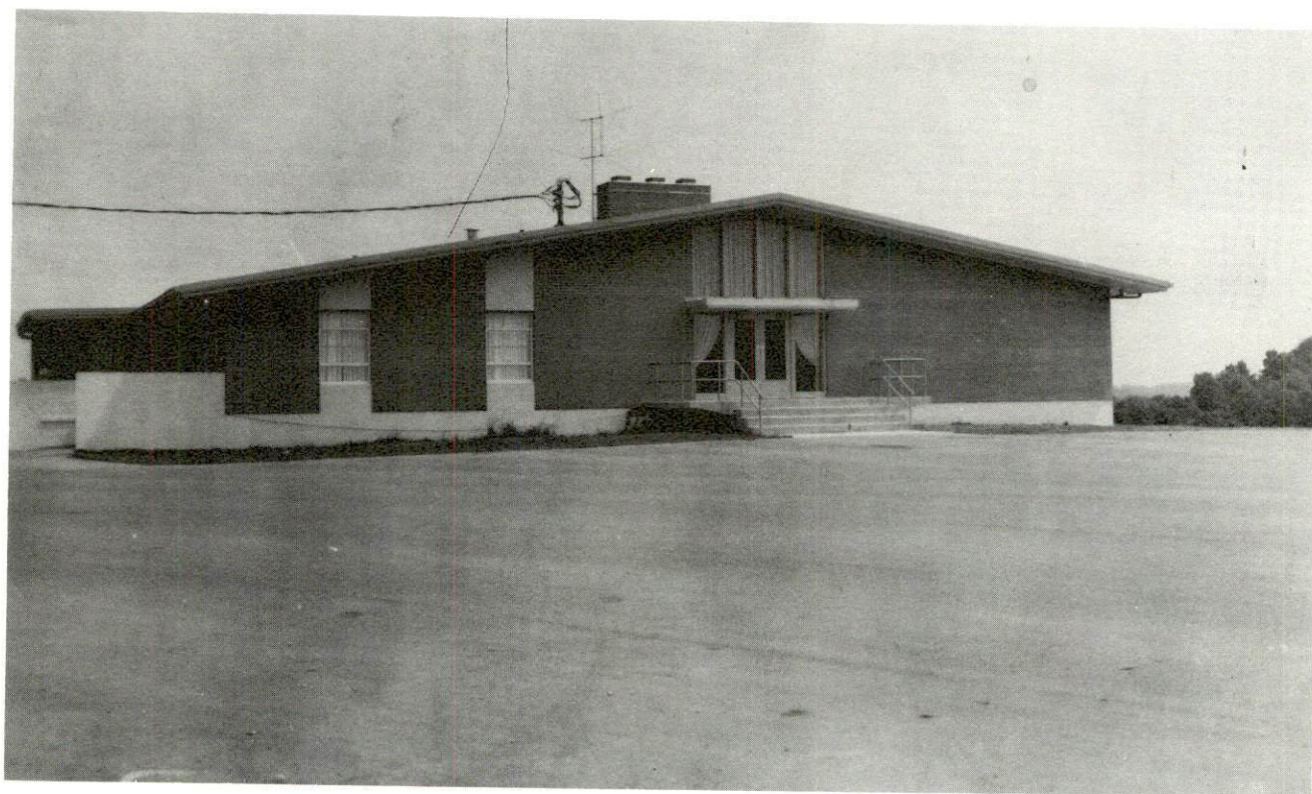
Women's - Garden Club, Homemakers, Eastern Star, Business and
Professional Women's Association, VFW Auxiliary, DAR

Youth - Junior Music Club, 4-H, Boy Scouts, Girl Scouts, FHA, FFA,
Cub Scouts, Brownies, Quarterback Club

Other - Ministerial Association, Sportsmen's Club, Simpson County
Fish and Game Club, P. T. A., American Association of Retired Persons



SUBDIVISION DEVELOPMENT



FRANKLIN COUNTRY CLUB

RECREATION

Local

Public recreation facilities in Franklin are numerous. In addition to supervised little league baseball and football programs, there are four playgrounds, two parks, one swimming pool, eight tennis courts, four baseball diamonds, and one football field.

Private recreation facilities include the Franklin Country Club, which offers a nine-hole golf course, swimming pool and tennis courts, and one drive-in movie theater.

Area

Located within 50 miles of Franklin are two state parks and one national park. There are also five caves in the area, Diamond Caverns, Mammoth Onyx Cave, Jesse James Cave, Crystal Onyx Cave and Hundred Dome Cave.

Mammoth Cave National Park approximately 50 miles from Franklin features guided tours of the cave, a scenic boat cruise, lodge, cottages, dining room, coffee shop, tennis, shuffleboard, wildlife preserve and nature trails.

Barren River State Resort Park, located approximately 35 miles away, offers a lodge, coffee shop, cottages, camping, swimming, boating, picnic area, playground, fishing, restaurant, pool, riding stables, nature trails, and golf course.

Lake Malone State Park is located approximately 50 miles away. Facilities at the park include camping, picnic area, playground, swimming, hiking, fishing and boat rentals.

Western Kentucky University at Bowling Green, 21 miles from Franklin, offers an array of cultural and athletic activities, including a fine arts series, a university lecture series, various musical performances, and productions by the Western Players. The Hardin Planetarium and the Kentucky Building, housing a collection of art and artifacts devoted to local and state history, are open to the public.

COMMUNITY IMPROVEMENTS

Recent

1. The Franklin Municipal Housing Project has been completed.
2. A new branch of the Simpson County Bank has been completed.
3. The Goodnight Memorial Library has recently completed renovation and expansion costing more than \$200,000.
4. The Mammoth Cave Production Credit Association has constructed a new building.
5. The Western Kentucky Gas Company has recently replaced some of the gas mains.
6. The water treatment plant was recently expanded to high rate two of the five filters. Coagulant control and turbidity monitoring were also installed.
7. The Simpson County School System has completed the addition to the High School housing library and science facilities, completed a physical education building for the Middle School, constructed a cafeteria for Lincoln Elementary and remodeled the older addition of the Lincoln building.
8. The High School has received a Comprehensive Rating; initiated a Practical Arts Program at the Middle School; and established a Sixth Grade Center.
9. One new patrol car has been purchased by the Franklin Police Department.

Planned

1. Southern Containers is planning to build a new warehouse.
2. Planning is underway for a vocational school to be constructed on the high school campus. The school will house five trade and industrial programs.

Underway

1. Presently under construction is a water supply dam, reservoir and raw water intake structure to be completed in the fall of 1976.
2. The Franklin Bank and Trust Company is building a new branch bank.
3. The "Townlift Program" for the downtown area includes removal of parking meters, overhead signs; making sidewalk improvements; providing areas for park benches around the courthouse; and renovation of numerous store fronts. This program is being undertaken by local merchants and the city financial institutions.
4. A 201 Facilities Plan is presently being prepared.

HISTORY

Simpson County lies in the southwestern part of Kentucky in the Pennyryle physiographic region. It covers 239 square miles of territory and is bordered on the south by Tennessee. Simpson County was formed in 1819, and became the sixty-third county in Kentucky. Simpson County was taken from Allen, Logan and Warren Counties.

The West Fork of Drakes Creek and the Red River flow through the county. The surface of the county is generally level to slightly undulating. The soil is based on limestone with a red clay formation, and is very fertile.

Simpson County was named for Captain John Simpson, an Indian fighter and state legislator. In 1812 he was elected to a term in the U. S. Congress. But in 1813, before he could serve, he was killed while leading his men into battle against the British. Franklin, the county seat, was named for Benjamin Franklin in 1820.

Names worthy of remembrance are:

J. R. Collins - was editor of the Franklin Favorite before the turn of the Twentieth Century.

John Welsh - founded a woolen mill in the early 1900's.

William Hudspath - owned land which was chosen as the site for Franklin.

In 1820, Simpson County had a population of 4,852. By 1850, population had reached 7,733, and by 1900, population had increased to 11,624. Between 1900 and 1960 population fluctuated slightly, with 1960 population being 11,548. By 1970, population had increased to 13,054. Population continued to increase between 1970 and 1974, with the 1974 population estimated at 14,200.

The total number of Simpson County residents employed in 1974 averaged 5,860, including 400 in agriculture and 520 in government. Manufacturing employers in the county reported 3,000 workers, and trade and services firms employed 1,230. The largest manufacturing firms in Simpson County are: Kendall Company, Lenk Manufacturing Company, Potter and Brumfield, Haywood Company, Sealed Power Corporation, and Alliance Rubber Company.