

1971

Industrial Resources: Todd County

Kentucky Library Research Collections
Western Kentucky University, spcol@wku.edu

Follow this and additional works at: https://digitalcommons.wku.edu/todd_cty

 Part of the [Business Administration, Management, and Operations Commons](#), [Growth and Development Commons](#), and the [Infrastructure Commons](#)

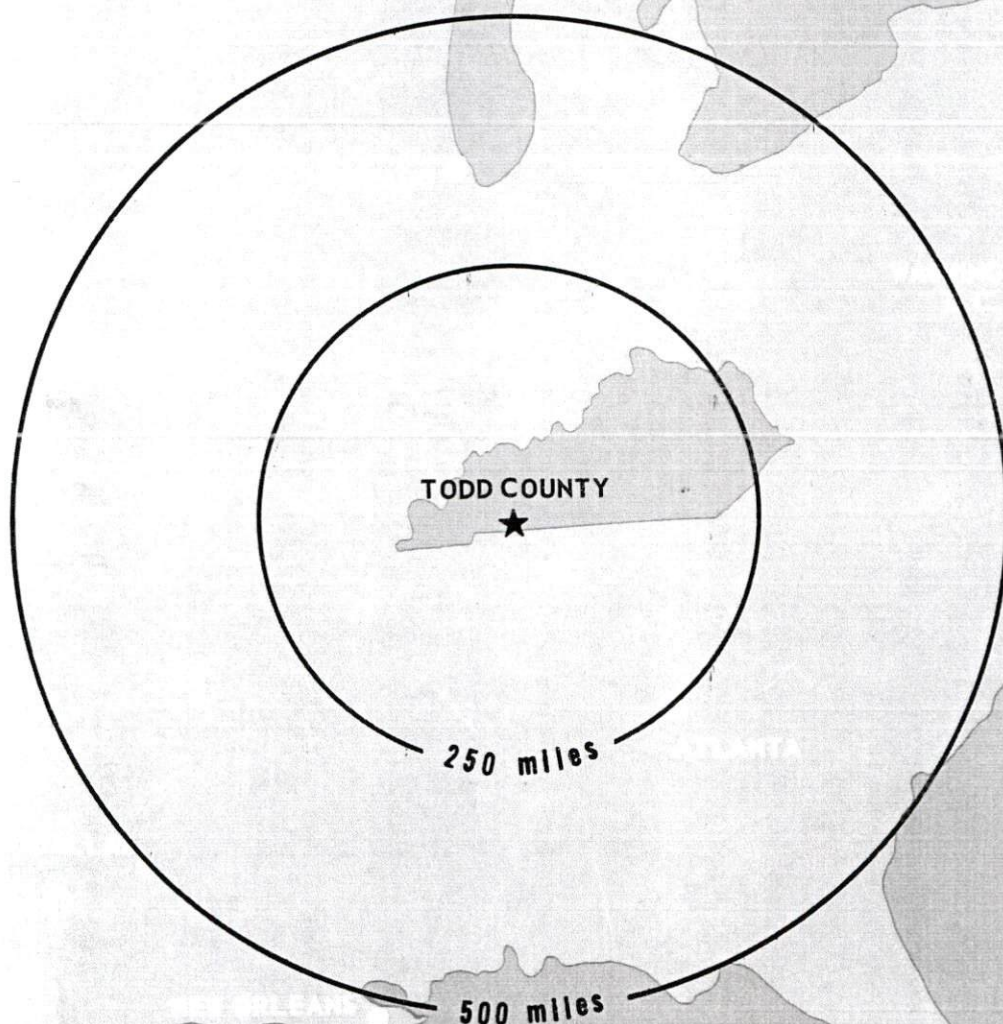
Recommended Citation

Kentucky Library Research Collections, "Industrial Resources: Todd County" (1971). *Todd County*. Paper 11.
https://digitalcommons.wku.edu/todd_cty/11

This Report is brought to you for free and open access by TopSCHOLAR®. It has been accepted for inclusion in Todd County by an authorized administrator of TopSCHOLAR®. For more information, please contact topscholar@wku.edu.

INDUSTRIAL RESOURCES

TODD COUNTY KENTUCKY



GUTHRIE INDUSTRIAL SITES
1971

For specific information concerning available industrial sites in Guthrie, Kentucky, contact Harry Covington, President, Guthrie Industrial Development Commission, Inc., Guthrie, Kentucky, or the Kentucky Department of Commerce, Frankfort, Kentucky.

- SITE #1: ACREAGE: 11 acres
LOCATION: Northeast of Guthrie, within city limits
ZONING: Industrial
HIGHWAY ACCESS: On city maintained street; 1 mile from U. S. 41
RAILROADS: 300 yards to Louisville & Nashville main line
WATER: Guthrie Municipal Water Company; 8-inch line 100 feet from site
GAS: Not available
ELECTRICITY: Pennyrite RECC
SEWERAGE: Not available
OWNERSHIP: Guthrie Industrial Development Commission
- SITE #2: ACREAGE: 50 acres
LOCATION: One-half mile west of city limits
ZONING: Agricultural
HIGHWAY ACCESS: On U. S. 41
WATER: Guthrie Municipal Water Company; 6-inch line on site
GAS: Not available
ELECTRICITY: Pennyrite RECC
SEWERAGE: Not available
OPTIONED BY: Guthrie Industrial Development Commission
- SITE #3: ACREAGE: 120 acres
LOCATION: One-half mile west of city limits
ZONING: Agricultural
HIGHWAY ACCESS: On U. S. 79 and U. S. 41
WATER: Guthrie Municipal Water Company; 6-inch line on site
GAS: Not available
ELECTRICITY: Pennyrite RECC
SEWERAGE: Not available
OPTIONED BY: Guthrie Industrial Development Commission
- SITE #4: ACREAGE: 20 acres
LOCATION: Northeast of Guthrie adjoining city limits
ZONING: Agricultural
HIGHWAY ACCESS: Industrial Development Commission will build access road to site.
RAILROADS: Louisville & Nashville Railroad
WATER: Guthrie Municipal Water Company; 6-inch line 500 feet from site
GAS: Not available
ELECTRICITY: Pennyrite RECC
SEWERAGE: Not available
OPTIONED BY: Guthrie Industrial Development Commission
- SITE #5: ACREAGE: 25 acres
LOCATION: Partially within city limits
HIGHWAY ACCESS: City maintained street; one block from U. S. 41
RAILROADS: Louisville & Nashville Railroad
WATER: Guthrie Municipal Water Company; 8-inch line 500 feet from site
GAS: Not available
ELECTRICITY: Pennyrite RECC
SEWERAGE: Not available
OPTIONED BY: Guthrie Industrial Development Commission

TRENTON INDUSTRIAL SITES

1971

For additional information concerning the following sites, contact E. S. Hurst, Hurst Drugstore, Trenton, Kentucky, or the Kentucky Department of Commerce, Frankfort, Kentucky.

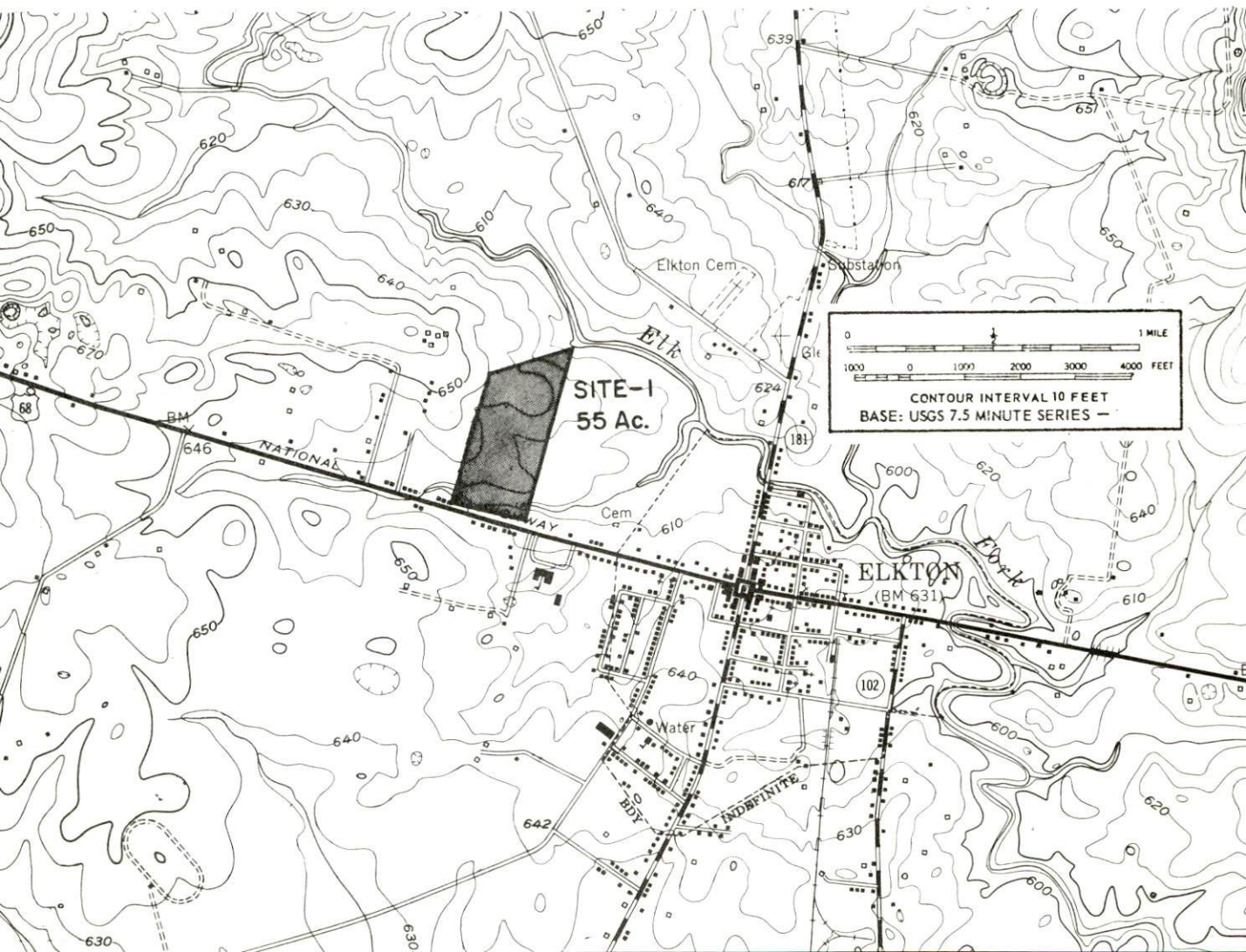
- SITE #1: ACREAGE: 35 acres
LOCATION: One-half mile southeast of Trenton
HIGHWAY ACCESS: Fronts on U. S. 41
RAILROADS: Not rail served
WATER: Trenton Water Works; 6-inch line 800 feet from site
GAS: Natural gas is not available in Trenton.
ELECTRICITY: Pennyriple RECC
SEWERAGE: Trenton Sewer Works; 6-inch line 800 feet from site
OWNERSHIP: Private
- SITE #2: ACREAGE: 9 acres
LOCATION: One-half mile east of Trenton
HIGHWAY ACCESS: Paved access road to U. S. 41, one-half mile from site
RAILROADS: Louisville & Nashville Railroad along southern boundary of site
WATER: Trenton Water Works; 4-inch line 2,000 feet from site
GAS: Natural gas is not available in Trenton.
ELECTRICITY: Pennyriple RECC
SEWERAGE: Trenton Sewer Works; 6-inch line 2,000 feet from site
OWNERSHIP: Private
- SITE #3: ACREAGE: 7.5 acres
LOCATION: Adjacent to Trenton east city limits
HIGHWAY ACCESS: Fronts on Kentucky 104
RAILROADS: Louisville & Nashville Railroad along south-southwest boundary of site
WATER: Trenton Water Works; 4-inch line 500 feet from site
GAS: Natural gas is not available in Trenton.
ELECTRICITY: Pennyriple RECC
SEWERAGE: Trenton Sewer Works; 6-inch line 500 feet from site
OWNERSHIP: Private
- SITE #4: ACREAGE: 40 acres
LOCATION: Part of site in southeast city limits
HIGHWAY ACCESS: Fronts on U. S. 41
RAILROADS: Louisville & Nashville Railroad along northern boundary of site
WATER: Trenton Water Works; 6-inch line 150 feet from site
GAS: Natural gas is not available in Trenton.
ELECTRICITY: Pennyriple RECC
SEWERAGE: Trenton Sewer Works; 8-inch line 150 feet from site
OWNERSHIP: Private

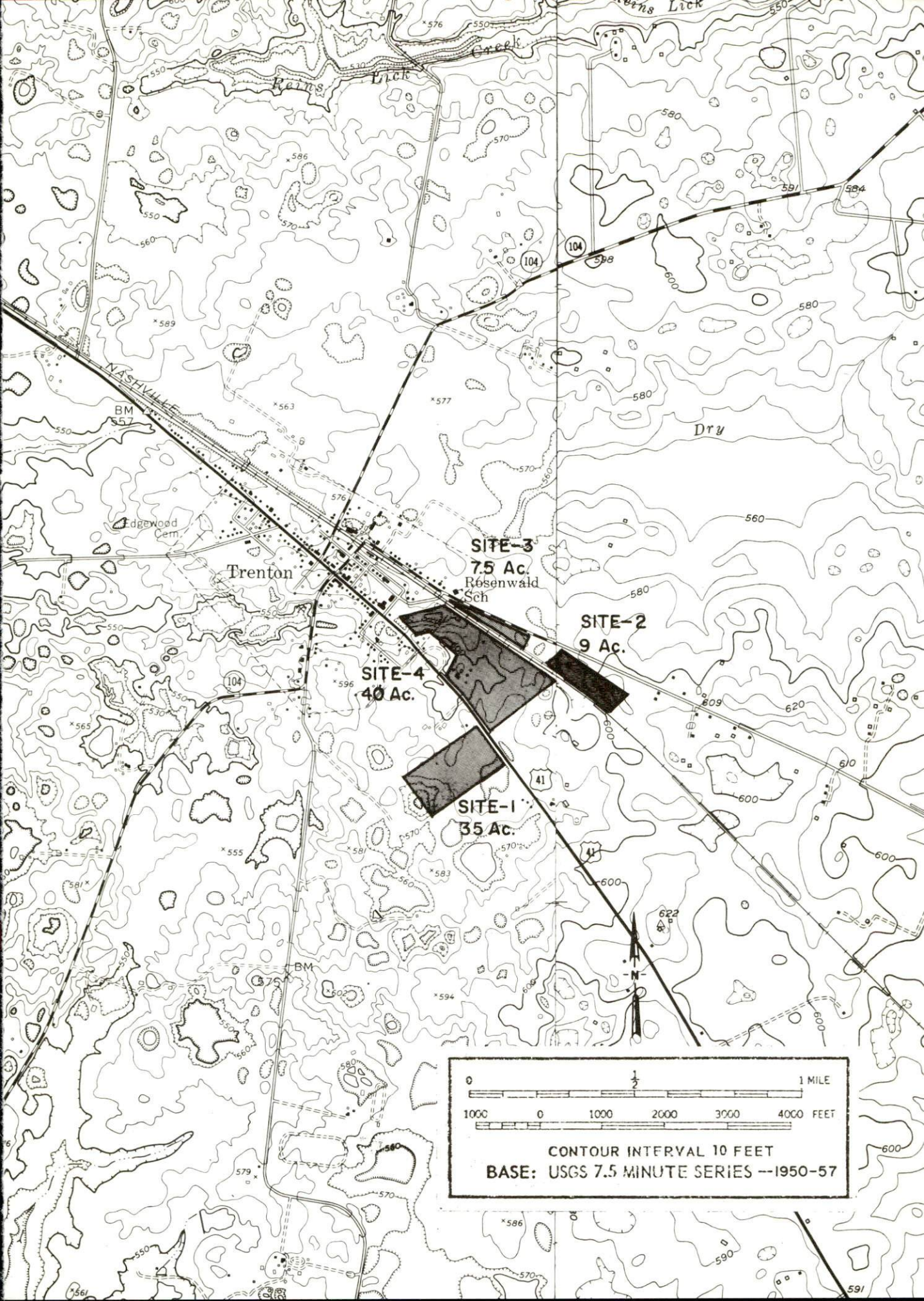
ELKTON INDUSTRIAL SITE

1971

For specific information concerning Elkton's available industrial site, contact Aubrey Campbell, Secretary-Treasurer of Elkton Industrial Foundation, Elkton, Kentucky, or the Kentucky Department of Commerce, Frankfort, Kentucky.

SITE # 1: ACREAGE: 55 acres
LOCATION: Approximately one-fourth mile west of Elkton
HIGHWAY ACCESS: Fronts on U.S. 68
WATER: Elkton Water Works
SIZE LINE: 12-inch line 200 feet from site
GAS: Western Kentucky Gas Company
SIZE LINE: 2 1/2-inch main 200 feet from site
ELECTRICITY: Pennyrite RECC
SEWERAGE: Municipal Sewerage System
OWNERSHIP: Elkton Industrial Foundation





SITE-3
7.5 Ac.
Rosenwald Sch

SITE-2
9 Ac.

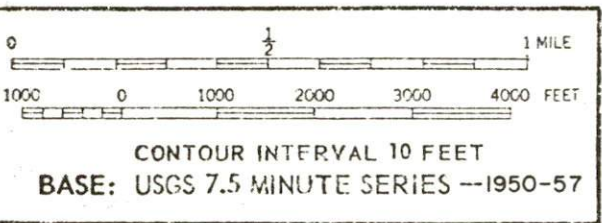
SITE-4
40 Ac.

SITE-1
35 Ac.

Trenton

Edgewood Cem

NASHVILLE



INDUSTRIAL RESOURCES
TODD COUNTY, KENTUCKY

Prepared by
The Kentucky Department of Commerce
in cooperation with
The Guthrie Industrial Development Commission, Inc.,
The Elkton Industrial Foundation
and
The City of Trenton
1971

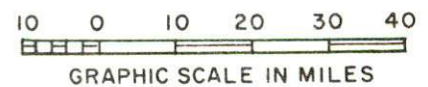
TABLE OF CONTENTS

<u>Chapter</u>	<u>Page</u>
INDUSTRIAL SITES	i
TODD COUNTY, KENTUCKY - A RESOURCE PROFILE	1
THE LABOR MARKET	4
Population Trends	4
General Employment Characteristics, 1969	4
Manufacturing Employment Trends by Industry	4
Major Todd County Manufacturing Firms, Their Products and Employment	5
Wage Rates for Selected Occupations	6
Labor Organizations	6
Current and Future Labor Supply	7
Total Personal Income	7
Per Capita Personal Income	7
EDUCATION	8
Public Schools	8
Vocational Schools	8
Colleges and Universities	9
TRANSPORTATION	10
Rail	10
Truck Service	10
Air	11
Bus	11
Rental Services	11
POWER AND FUEL	12
Electricity	12
Natural Gas	12
WATER AND SEWERAGE	13
Water	13
Sewerage	15

<u>Chapter</u>	<u>Page</u>
LOCAL GOVERNMENT	16
City	16
County.	16
Assessed Value of Property, 1970	16
Local General Property Tax Rates Per \$100 of Assessed Valuation, 1970	17
Planning and Zoning.	17
Safety	17
Police	17
Fire	17
Sanitation	18
HEALTH	19
Hospitals	19
Nursing Homes	19
Public Health.	19
OTHER LOCAL FACILITIES	21
Communications	21
Library Services	21
Religious Institutions	22
Financial Institutions	22
Hotels and Motels.	22
Clubs and Organizations	22
RECREATION	25
Local	25
Area	25
AGRICULTURE - NATURAL RESOURCES - CLIMATE	26
Agriculture	26
Natural Resources	26
Climate	26
HISTORY	27

TODD COUNTY LABOR MARKET AREA

Shaded area denotes labor market area



TODD COUNTY, KENTUCKY - A RESOURCE PROFILE

Location

Todd County, located in the Pennyrile Region of southwestern Kentucky, is 148 miles south-southwest of Louisville, 65 miles north-northwest of Nashville, Tennessee, and 279 miles southeast of St. Louis, Missouri. The population of Todd County was 10,823 in 1970. Elkton, the county seat, had a 1970 population of 1,612, Guthrie had a population of 1,200, and Trenton had a population of 496.

The Economic Framework

Total employment in Todd County averaged 3,700 in 1969 with manufacturing providing 600 jobs, trade and services 478 jobs, and government 500 jobs. Since 1960, manufacturing employment has increased by approximately 92 percent. Major industrial products are men's shirts and work jackets, mobile homes, and glass doors for refrigerators.

Per capita personal income in the county in 1969 was \$2,070. Between 1959 and 1969 per capita personal income in the county increased approximately 94 percent.

The Todd County labor market area includes Todd County, the three adjoining Kentucky counties and Montgomery and Robertson Counties, Tennessee. In 1969, employment in the Kentucky portion of the labor market area totaled 38,700 with 6,200 in agriculture. Manufacturing provided 7,900 jobs, trade and services 8,034 jobs, and government 6,700 jobs. Industrial employment in this area has increased approximately 113 percent since 1960 with the sharpest gains in the apparel, primary metals, and machinery and metal products industries.

Despite important industrial gains in recent years, this area still has a deficit of 2,524 manufacturing jobs when measured against the national industrial employment-population ratio. This indicates an area where potential for additional manufacturing production is excellent.

Resources for Growth

1. There is a current estimated labor supply of 2,400 men and 3,165 women available for industrial jobs in Todd County and the surrounding Kentucky counties. In addition, 6,420 young men and 6,150 young women in this area will become 18 years of age by 1977 and potentially available for employment. Also, the current labor supply would be increased by the number of men and women in the two adjoining Tennessee counties who are available for industrial jobs.

2. The local transportation capability is good. The Louisville & Nashville Railroad provides the county with a variety of services. U. S. Highways 41, 79, and 68 and Kentucky 80 serve the county. When completed, Interstate 24, connecting St. Louis, Missouri, and Nashville, Tennessee, will pass approximately 7 miles southwest of Guthrie. Standard Field at Elkton has a 3,500-foot turf runway capable of accommodating light aircraft. Commercial air service is available at Outlaw Field near Clarksville, Tennessee, 25 miles distant.

3. Electricity is available in large quantity from Pennyriple RECC. Natural gas is available in the Elkton vicinity from the Western Kentucky Gas Company. The raw water supply is adequate for continued growth.

4. Available industrial sites - There is one industrial site in Elkton, five industrial sites in Guthrie, and four industrial sites and an industrial building in Trenton.

5. Education is an important part of Todd County's future development. One consolidated school system operates in Todd County. Two universities and one community college are within a 50-mile radius.

The nearest vocational extension center, located in Russellville, 16 miles distant, offers 7 courses. The Bowling Green Area Vocational School at Bowling Green, 45 miles distant, offers 24 courses.

Community Programs for Improvement

Elkton: A new 68-bed nursing home has been constructed. A new school for grades 6, 7, and 8 is planned. Hangar facilities and a surfaced runway are planned for the local airport.

Guthrie: A new sewerage system is planned. New buildings housing the jail and fire department have been completed. Improvement in the water system is planned. Repaving of the city streets is planned. A dialysis machine has been purchased for use by county residents.

Recreation, Entertainment, and Livability

Although Todd County has recreation facilities of its own, it is within easy driving distance of Kentucky's greatest recreational area.

Jefferson Davis Monument State Shrine, 9 miles from Elkton, is a 20-acre park with picnic shelter and playground area. It is the site of the farm on which the president of the Confederacy was born. A museum is housed in the monument, a 351-foot cast concrete obelisk, which is the tallest in the world. An elevator ride to the top of the monument affords a magnificent view of the countryside.

Lake Malone State Park, 34 miles from Elkton, has 374 acres with camping accommodations and an 826-acre lake with beach, boat rentals, paddle boats, dock launching ramp, picnic shelter, playground.

Pennyrile Forest State Resort Park, 41 miles from Elkton, is a 436-acre resort park with a 55-acre lake, lodge, cottages, and camping facilities. The park recreational facilities and activities include: native pine and hardwood forest, lodge pool, beach, bathhouse, boat rentals, fishing, golf, horseback riding, hiking, picnic shelter, playground, and supervised recreation.

Lake Barkley State Park, 49 miles distant, is a 3,000-acre resort park. The facilities include a lodge and cottages, and camping sites. Recreational activities include fishing, boating, swimming, and golfing.

Lake Barkley, formed by Barkley Dam, has 1,004 miles of shoreline bordering its 93,000-acre reservoir. Recreational activities include fishing, boating, camping, swimming, hunting, and picnicking. The dam near Grand Rivers is 157 feet high and 10,180 feet long.

Land Between the Lakes National Recreational Area consists of 170,000 acres of wooded ridge formed into a peninsula by Kentucky and Barkley Lakes. Activities include: fishing, water sports, hunting, and camping.

Kentucky Lake and Kentucky Dam, with 2,380 miles of shoreline, is the longest of any man-made lake in the world. The recreational activities include fine fishing and water sports, swimming, boating, and water skiing. The huge dam is TVA's largest and controls the waters of the Tennessee River near its junction with the Ohio River at Paducah. The dam is 206 feet high, 8,422 feet long, and cost \$115 million.

Kenlake State Resort Park, 60 miles distant, is an 1,800-acre resort park with hotel, cottages and camping facilities. The park activities include: fishing, boating, pool and lake swimming, horseback riding, golfing, tennis, and shuffleboard.

THE LABOR MARKET

POPULATION TRENDS^{1/}

Area	Population			Percent Change	
	1970	1960	1950	1960-70	1950-60
Elkton	1,612	1,448	1,312	+11.3	+ 10.4
Guthrie	1,200	1,211	1,253	- 0.9	- 3.4
Trenton	496	542	577	- 8.5	- 6.1
Labor Market Area	116,377	116,955	110,085	- .5	+ 6.2
Todd County	10,823	11,364	12,890	- 4.8	- 11.8
Christian County	56,224	56,904	42,359	- 1.2	+ 34.3
Logan County	21,793	20,896	22,335	+ 4.3	- 6.4
Muhlenberg County	27,537	27,791	32,501	- 0.9	- 14.5

GENERAL EMPLOYMENT CHARACTERISTICS, 1969^{2/}

Major Employment Group	Employment	
	Todd County	Labor Market Area
TOTAL	3,700	38,700
Agricultural	1,300	6,200
Nonagricultural	2,400	32,500
Manufacturing	600	7,900
Trade and Services	478	8,034
Government	500	6,700
Other	822	9,806

MANUFACTURING EMPLOYMENT TRENDS BY INDUSTRY SEPTEMBER 1970 AND 1960^{3/}

Industry	Todd County			Labor Market Area		
	1970	1960	% Change	1970	1960	% Change
TOTAL	636	331	+ 92.1	8,532	4,011	+ 112.7
Food & Kindred Products	0	8	- 100.0	391	433	- 9.7
Tobacco	0	0	0	33	33	0
Apparel, Textiles, Leather	276	223	+ 23.8	2,949	1,675	+ 76.1
Lumber & Furniture	120	100	+ 20.0	873	766	+ 14.0
Printing, Publishing, Paper	0	0	0	85	71	+ 19.7
Chemicals, Petroleum, Coal, Rubber	2	0	+ 100.0	367	86	+ 326.7
Stone, Clay & Glass	0	0	0	83	76	+ 9.2
Primary Metals	63	0	+ 100.0	922	188	+ 390.4
Machinery & Metal Products	175	0	+ 100.0	2,566	682	+ 276.2
Other	0	0	0	263	1	+ 26,200.0

MAJOR TODD COUNTY MANUFACTURING FIRMS,
THEIR PRODUCTS AND EMPLOYMENT ^{4/}

<u>Firm</u>	<u>Product</u>	<u>Employment</u>		
		<u>Total</u>	<u>Male</u>	<u>Female</u>
<u>Allensville</u>				
Kentucky Woven Label Co., Inc.	Woven labels	20	16	4
<u>Elkton</u>				
Ardco, Inc.	Glass doors for refrigerators	85	67	18
Todd Manufacturing Co.	Men's shirts, work jackets	270	23	247
Yonts & Sweeney Stave Co., Inc.	Barrel staves	35	35	0
<u>Guthrie</u>				
Koppers Co., Inc.	Wood preserving	47	45	2
Schult Mobile Home Corp.	Mobile homes	125	117	8

WAGE RATES FOR SELECTED OCCUPATIONS
TODD COUNTY, KENTUCKY^{5/}

<u>Classification</u>	<u>Starting</u>	<u>Wages Per Hour</u>	
		<u>Maximum</u>	<u>Prevailing</u>
<u>Production Employees</u>			
Assembler	\$1.71	\$2.01	\$1.84
Inspector	1.71	2.99	2.01
Production Laborer	1.71	2.82	2.00
Welder, Arc or Acetylene (Class-A)	1.90	2.31	2.11
<u>Service Employees</u>			
Electrician (Class-A)	\$5.61	\$5.61	\$5.61
Laborer	1.60	2.60	1.90
Machinist	2.13	3.80	3.10
Mechanic, Maintenance	2.75	3.80	3.10
Truck Driver, Industrial (Class-A)	1.80	2.75	2.25
<u>Office Employees</u>			
Bookkeeper	\$1.81	\$2.26	\$1.90
File Clerk	1.71	2.20	1.71
Receptionist	1.60	1.75	1.60
Secretary	1.90	2.50	1.95
Typist	1.90	2.40	1.90

LABOR ORGANIZATIONS

<u>Union</u>	<u>Representing workers at:</u>
Teamsters	Ardco, Inc.
International Hod Carrier's Building (AFL-CIO) and Common Laborer's Union of America	Koppers Co., Inc.

CURRENT AND FUTURE LABOR SUPPLY -
TODD COUNTY LABOR MARKET AREA

<u>Area</u>	<u>Current Labor Supply, 1971^{6/}</u>			<u>Future Labor Supply by 1977 (Becoming 18 Years of Age)^{7/}</u>		
	<u>Total</u>	<u>Male</u>	<u>Female</u>	<u>Total</u>	<u>Male</u>	<u>Female</u>
Labor Market Area						
Todd Co.	5,576	2,409	3,167	12,570	6,418	6,152
Christian Co.	770	460	310	1,138	573	565
Logan Co.	1,820	864	956	6,717	3,435	3,282
Muhlenberg Co.	822	270	552	2,084	1,065	1,019
	2,164	815	1,349	2,631	1,345	1,286

TOTAL PERSONAL INCOME^{8/}

<u>Area</u>	<u>1969</u>	<u>1959</u>	<u>% Change</u>
Todd County	\$ 22,441,000	\$ 11,587,000	+ 93.7
Labor Market Area	422,380,000	163,581,000	+158.2
Kentucky	9,202,000,000	4,655,000,000	+ 97.7

PER CAPITA PERSONAL INCOME^{9/}

<u>Area</u>	<u>1969</u>	<u>1959</u>	<u>% Change</u>
Todd County	\$2,070	\$1,065	+94.3
Labor Market Area	\$2,070 to 4,610	\$1,065 to 1,600	NA
Kentucky	2,847	1,552	+83.4

EDUCATION

Public Schools

	<u>Todd County</u>
Total Enrollment	2,440
Elementary	1,756
High School	684
Student-Teacher Ratio	24-1
Elementary	24-1
High School	24-1
State Rating of High School	Standard
Other Accreditations	The Southern Association of Colleges & Schools
Percent High School Graduates to College	39.6
Current Expenditures Per Pupil	\$420.02
Bonded Indebtedness, June 30, 1970	\$511,000

Vocational Schools

	<u>Nearest Area School</u>	<u>Nearest Extension Center</u>
Location	Bowling Green Area Vocational School	Russellville Extension Center
Miles Distant	Bowling Green 45	Russellville 16
Curriculum	Dental Assistant Health Careers Nurse Aide Practical Nursing Surgical Technician Ward Clerk Distributive Education Electronics Technology Highway Technology Technical Drafting Air Conditioning & Refrigeration	Appliance Repair Auto Mechanics Carpentry Drafting Electricity Machine Shop Welding

(Cont'd.)

Nearest Area
School (Cont'd.)

Auto Body Repair
 Auto Mechanics
 Carpentry
 Commercial Foods
 Drafting
 Electricity
 Machine Shop
 Office Machine Repair
 Printing
 Radio & TV Repair
 Small Engine Repair
 Tool & Die Making
 Welding

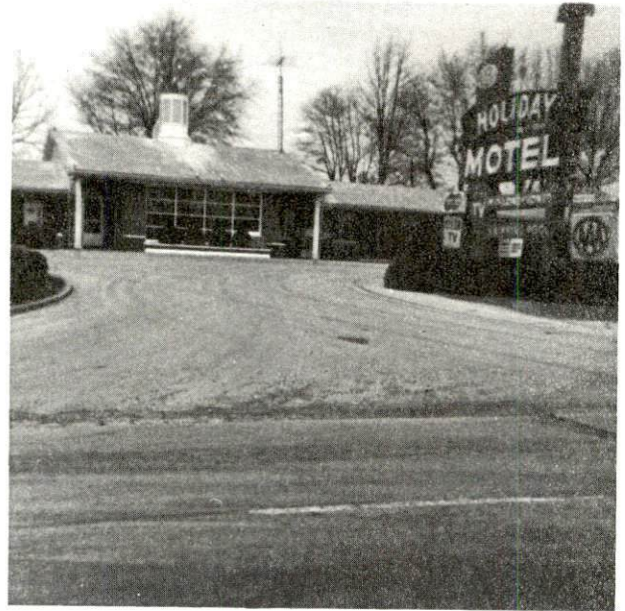
Colleges and Universities

<u>Name</u>	<u>Area - Within 50 Miles</u>		<u>Highest Degree Conferred</u>
	<u>Location</u>	<u>Enrollment</u>	
Hopkinsville Community College	Hopkinsville	486	Associate
Western Kentucky University	Bowling Green	10,900	Masters
Austin Peay State University	Clarksville, Tennessee	3,574	Masters

GUTHRIE, KENTUCKY



Oak Hill Subdivision



Holiday Motel



Guthrie Elementary School

Stage Coach Inn



Koppers Co., Inc.

New Water Treatment Plant



TRANSPORTATION

Rail

Line serving Guthrie and Trenton - Louisville & Nashville Railroad

Services - Freight, siding and switching, REA Express

RAILWAY TRANSIT TIME FROM GUTHRIE, KENTUCKY, TO: 10/

No. of Days		No. of Days	
City	CL	City	CL
Atlanta, Ga.	2	Los Angeles, Calif.	4
Birmingham, Ala.	2	Louisville, Ky.	1
Chicago, Ill.	2	Nashville, Tenn.	1
Cincinnati, Ohio	3	New Orleans, La.	3
Cleveland, Ohio	5	New York, N. Y.	6
Detroit, Mich.	4	Pittsburgh, Pa.	5
Knoxville, Tenn.	3	St. Louis, Mo.	2

Truck Service

Company

McLean Trucking Company
 Skaggs Transfer, Inc.
 Gateway Transportation
 Company, Inc.
 Marvin Hayes Line, Inc.
 Arnold Ligon Truck Lines, Inc.
 (Ellis Trucking)
 T.I.M.E. Freight, Inc.

Home Office

Winston-Salem, North Carolina
 Louisville, Ky

 La Crosse, Wisconsin
 Clarksville, Tennessee

 Lebanon, Kentucky
 Lubbock, Texas

HIGHWAY MILES AND TRUCK TRANSIT TIME IN DAYS FROM
GUTHRIE, KENTUCKY, TO SELECTED MARKET CENTERS

City	Highway Miles	Delivery Time <u>11</u> /		City	Highway Miles	Delivery Time	
		LTL	TL			LTL	TL
Atlanta, Ga.	317	2-3	1-2	Los Angeles, Calif.	2,126	7-9	4-5
Birmingham, Ala.	252	2-3	1	Louisville, Ky.	148	1	1
Chicago, Ill.	443	2	1	Nashville, Tenn.	65	1-2	1
Cincinnati, Ohio	258	1-2	1	New Orleans, La.	595	3-4	2
Cleveland, Ohio	500	2-3	1-2	New York, N. Y.	930	4-5	2
Detroit, Mich.	523	2	1-2	Pittsburgh, Pa.	553	3	2
Knoxville, Tenn.	250	2	1	St. Louis, Mo.	279	2	1

Air

	<u>Local</u>	<u>Nearest Commercial</u>
Location:	Standard Field Elkton, Kentucky	Outlaw Field Clarksville, Tennessee, 25 miles distant
Runways:	1 turf	2 paved
Length:	3,500 feet	4,100 feet; 5,000 feet
Traffic Control:	Wind sock	
Lighting:		Beacon, runway
Services:		80, 87, 100, 130 fuel; taxi; National Car Rentals; major repairs; restaurant; storage; APU; loading ramps; tie down; charter; Ozark Airlines

Bus

Elkton - Bowling Green - Hopkinsville Bus Company
Trenton - Southern Greyhound Bus Lines
Guthrie - Southern Greyhound Bus Lines

Rental Services

National Car Rentals at Outlaw Field, Clarksville,
Tennessee, 25 miles distant

POWER AND FUEL

Electricity

Company serving Elkton, Guthrie, Trenton, and Todd County -
Pennyrile RECC

Source of power - Tennessee Valley Authority

Total generating capacity - 19,400,000 KW

Industrial rates furnished by - Pennyrile RECC, Hopkinsville,
Kentucky

Natural Gas

Company serving Elkton - Western Kentucky Gas Company

Source of supply - Texas Gas Transmission Company

Size of transmission lines - 10-inch, Western Kentucky Gas Company;
30-inch, Texas Gas Transmission Company

Distribution lines - 2 and 3 inches

Btu content - 1,000

Specific gravity - .65

Distribution pressure - 15 to 45 psi

Rates - Industrial rates will be furnished upon request by the Western
Kentucky Gas Company, Russellville, Kentucky.

Natural gas is not available in Guthrie or Trenton. Liquified petroleum
is provided by three local distributors.

WATER AND SEWERAGE

Water

Company serving Elkton - Elkton Water and Sewerage Works
Source - 151 million gallon city lake
Treatment plant capacity - 360,000 gpd
Average daily consumption - 154,000 gallons
Peak daily consumption - 259,000 gallons
Type treatment - Coagulated, settled, filtered, chlorinated and
fluoridated
Storage capacity - 490,000 gallons
Average pressure - 56 psi
Average temperature - 54° F.
Size mains - 12, 8, and 6 inches

MONTHLY WATER RATES FOR WHOLESALE AND INDUSTRIAL CONSUMERS

First	2,000 gallons	\$4.50 (Minimum)
Next	3,000 gallons	1.00 per M gallons
Next	5,000 gallons	.90 per M gallons
Next	15,000 gallons	.75 per M gallons
Next	25,000 gallons	.65 per M gallons
Next	50,000 gallons	.55 per M gallons
All over		.50 per M gallons

Company serving Guthrie - Guthrie Water Works
Source - One spring
Treatment plant capacity - 432,000 gpd
Average daily consumption - 300,000 gallons
Peak daily consumption - 350,000 gallons
Type treatment - Gravity filtered and chlorinated
Storage capacity - 230,000 gallons
Average pressure - 65 psi
Average temperature - 55° F.
Size mains - 4, 6, and 8 inches

MONTHLY WATER RATES FOR WHOLESALE
AND INDUSTRIAL CONSUMERS

2,000 gallons	\$ 5.50
3,000 gallons	7.10
4,000 gallons	8.70
5,000 gallons	10.30
6,000 gallons	11.30
7,000 gallons	12.30
8,000 gallons	13.30
9,000 gallons	14.30
10,000 gallons	15.30
10,000 gallons to 25,000 approx.	.80 per M gallons
25,000 gallons to 100,000 approx.	.50 per M gallons

Company serving Trenton - Trenton Water Works
Source - two wells
Treatment plant capacity - 288,000 gpd
Average daily consumption - 65,000 gallons
Peak daily consumption - 100,000 gallons
Type treatment - settled, filtered, chlorinated
Storage capacity - 200,000 gallons
Average pressure - 55 psi
Average temperature - 60 degrees F.
Size mains - 4, 6, and 8 inches

MONTHLY WATER RATES FOR WHOLESALE
AND INDUSTRIAL CONSUMERS

City Rate

First	2,000 gallons	\$4.00 (minimum)
Next	3,000 gallons	1.50 per M gallons
Next	5,000 gallons	.90 per M gallons
Next	10,000 gallons	.70 per M gallons
Next	10,000 gallons	.60 per M gallons
All over	30,000 gallons	.40 per M gallons

Outside City Limits

First	2,000 gallons	\$6.00 (minimum)
Next	3,000 gallons	2.25 per M gallons
Next	5,000 gallons	1.35 per M gallons
Next	10,000 gallons	1.05 per M gallons
Next	10,000 gallons	.90 per M gallons
All over	30,000 gallons	.60 per M gallons

Surface water sources - Impoundment of small streams
Expected ground water yield - 50 to 500 gpm in southern half of county;
5 gpm or less in northern half of county.

Sewerage

Company serving Elkton - Elkton Water and Sewerage Works
Design capacity - 720,000 gpd
Average daily flow - 220,000 gallons
Treatment - Primary and secondary
Type treatment - Aeration and drying beds
Treated effluent discharged into - Elk Fork Creek
Size of sanitary mains - 8, 10, and 12 inches
Size of storm mains - 12, 15, and 18 inches
Rates - 70 percent of monthly water bill

Company serving Trenton - Trenton Sewerage Works
Design capacity - 125,000 gpd
Average daily flow - Not available
Treatment - Primary
Type treatment - Aeration
Treated effluent discharged into - Red River
Size of sanitary mains - 6 and 8 inches
Rates - 70 percent of monthly water bill

Guthrie - Septic tanks are used for sewage disposal.

LOCAL GOVERNMENT

City

Elkton

Structure - Mayor - 4-year term; 6 councilmen - 2-year terms
Budget 1970 - General Fund \$65,327; Water and Sewer Fund \$98,499
Fees and licenses - Privilege license for manufacturers varies from \$50 to \$400 annually and is based on the number of employees.
Manufacturers are exempt from the tax the first year. Auto licenses are \$5.00 per year.

Guthrie

Structure - Mayor - 4-year term; 5 councilmen - 2-year terms
Budget 1970 - General Fund \$25,435; Water and Sewer Fund \$34,062
Fees and licenses - Privilege license varies from \$10 to \$75 annually; auto licenses are \$4.50 annually

Trenton

Structure - Chairman of Board of Trustees - 2-year term; 5 trustees - 2-year terms
Budget 1971 - General Fund \$7,628; Water and Sewer Fund \$26,319.
Fees and licenses - Business licenses \$25 annually

County

Structure - County Judge - 4-year term; 8 magistrates - 4-year terms
Budget 1971 - General Fund \$85,800; Road Fund \$31,500

Assessed Value of Property, 1970

<u>Classes of Property*</u>	<u>Elkton</u>	<u>Guthrie</u>	<u>Trenton</u>	<u>Todd County</u>
Real Estate	\$5,447,960	\$2,935,349	\$1,108,405	\$47,305,631
Tangibles	1,594,464	745,293	151,710	12,843,335
Public Service		457,570	284,144	8,444,341(1969)

*Property assessed at 100 percent of fair value.

Local General Property Tax Rates Per \$100 of Assessed Valuation, 1970 ^{12/}

<u>Taxing Unit*</u>	<u>Elkton</u>	<u>Guthrie</u>	<u>Trenton</u>	<u>Todd County</u>
State	\$.015	\$.015	\$.015	\$.015
County	.101	.101	.101	.101
School	.382	.382	.382	.382
City	.280	.300	.250	
Total	\$.778	\$.798	\$.748	\$.498

Planning and Zoning

Codes adopted -	<u>Elkton</u>	<u>Guthrie</u>	<u>Trenton</u>
	Building Plumbing Electric Gas	Building Plumbing	Building Plumbing

Safety

<u>Police</u>	<u>Elkton</u>	<u>Guthrie</u>	<u>Trenton</u>	<u>Todd County</u>
Total staff	5	2	1	3 (full-time) 1 (part-time)
Radio-patrol cars	1	1	1	2

Fire

American Insurance Association Fire Rating	7	7	8	
Volunteers	16	12	12	
Equipment:				
750-gpm pumpers		2		
500-gpm pumpers	2		2	

*Manufacturing machinery, raw materials inventories and goods in process inventories are not subject to local tax. State rate is only \$0.15 per \$100.

Sanitation

	<u>Elkton</u>	<u>Guthrie</u>
Type service	private	private
Cost		
residential	\$. 75 weekly	\$2.00 monthly
business	contracted	\$3.50 monthly
Collection frequency		
residential	once weekly	twice a month
business	twice weekly	weekly
Trash pickup	same	same
Disposal method	city dump	land fill

HEALTH

Hospitals

<u>General Hospital</u>	<u>Location</u>	<u>Beds</u>
Jennie Stuart Hospital	Hopkinsville, Kentucky	175

General hospital facilities and services - 26 bassinets, 4 operating rooms, coronary care unit, pediatrics, maternity ward, X-ray, radioisotope, laboratory, pathology, physical therapy, blood bank, intensive care units, practical nurses school and an AA nursing program with Hopkinsville Community College

Medical staff - 30 doctors, 52 registered nurses, 42 graduate licensed practical nurses, physical therapist, Ph.D bacteriologist, 4 registered X-ray technicians, 8 registered lab technicians

Nursing Homes

	<u>Number</u>	<u>Beds</u>
Personal care homes	1	68

Public Health

Facility - Todd County Health Department
Staff - 1 sanitarian (part-time), 1 registered nurse, 1 clerk
Budget 1970-71 - \$21,824

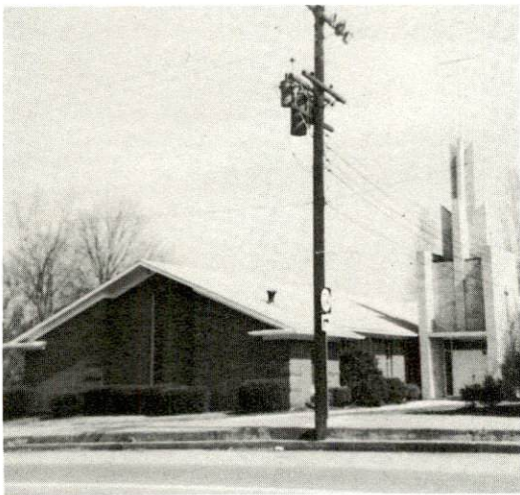
TRENTON, KENTUCKY



Super Market



Drug Store and Clinic



United Methodist Church



U. S. Post Office

OTHER LOCAL FACILITIES

Communications

	<u>Elkton</u>	<u>Guthrie</u>	<u>Trenton</u>
Telephone -	South Central Bell Tele- phone Co.	South Central Bell Tele- phone Co.	South Central Bell Tele- phone Co.
Services -	Standard	Standard	Standard
Telegraph -		Western Union	
Postal - U. S. Post Office			
Class	2	2	3
Mail received	twice daily	3 times daily	once daily
Mail dispatched	twice daily	twice daily	once daily

Newspapers - Todd County Standard

Weekly and circulation - 2,300

Other papers received from - Louisville, Kentucky; Nashville,
Tennessee

Radio -

Stations received from - Hopkinsville, Bowling Green, and
Russellville, Kentucky; Nashville, and Clarksville, Tennessee

Television -

Reception from - Bowling Green, Kentucky; Nashville, Tennessee
Kentucky Educational Television - Madisonville transmitter,
Channel 35

Library Services

Public Libraries - Todd County is served by a bookmobile from the
Logan County Public Library at Russellville, Kentucky.

Religious Institutions

	<u>Elkton</u>	<u>Guthrie</u>	<u>Trenton</u>
Number of churches -	9	9	4
Denominations -	Assembly of God Baptist Catholic Christian Church of Christ Latter Day Saints Methodist Nazarene Presbyterian	Assembly of God Baptist Catholic Christian Chruch of Christ Latter Day Saints Methodist Nazarene Presbyterian	Baptist Christian Methodist Presbyterian

Financial Institutions

<u>Banks</u>	<u>Statement as of December 31, 1970</u>	
	<u>Assets</u>	<u>Deposits</u>
Elkton Bank & Trust Co.	\$4,373,955	\$3,832,500
Planters Bank of Todd Co.	2,927,658	2,656,036

Hotels and Motels

<u>Number</u>	<u>Units</u>
4	95

Clubs and Organizations

Todd County

Business and Civic - Rotary Club, Elkton Chamber of Commerce, Civitan, Elkton Industrial Foundation, Trenton Civic Club, Jaycees, Guthrie Industrial Foundation, PTA

Fraternal - Masons

Women's - Garden Club, Homemakers, Eastern Star, Women's Auxiliary, Chamber of Commerce

Youth - Girl Scouts, Boy Scouts, Little League, FHA, 4-H, FFA

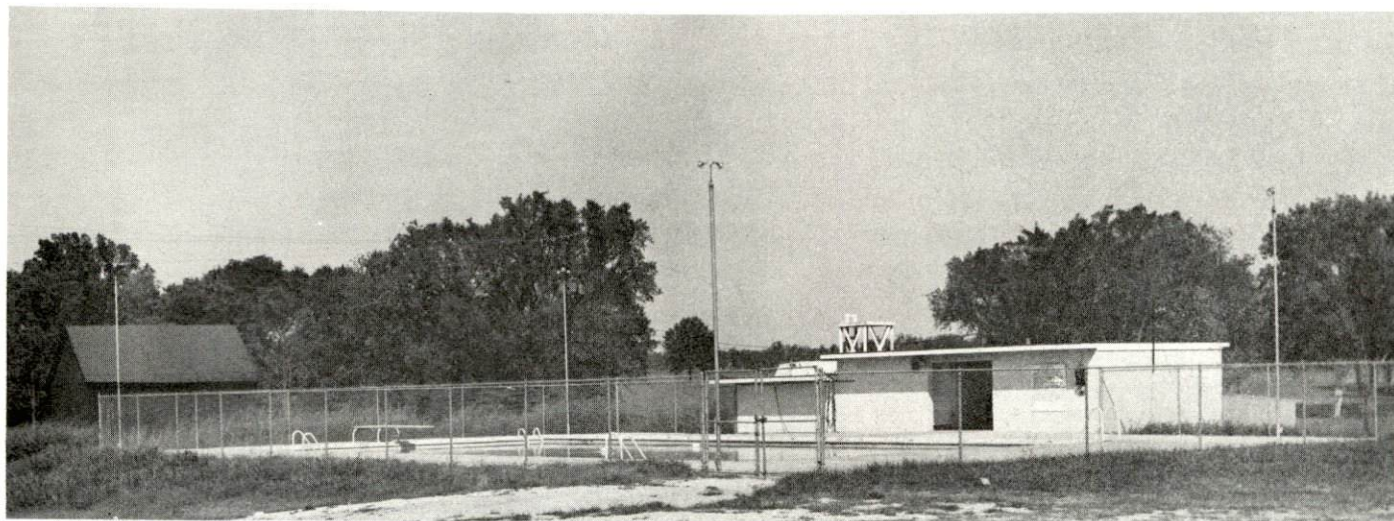
Other - Todd County Fish and Game Club



Elkton's 9-Hole Golf Course



Elkton Tennis Courts



Elkton Swimming Pool



Elkton Community Center

RECREATION

Local

	<u>Elkton</u>	<u>Guthrie</u>	<u>Trenton</u>
Public Recreation Facilities			
Supervised program -	Yes	No	No
Parks -	1		
Playgrounds -	1	1	1
Baseball diamond -	1		
Football field -	1		
Other -	Skating rink		Softball

Private Recreation Facilities

	<u>Todd County</u>
Country club	1
Golf course	1
Swimming pool	1

Cultural Events

Todd County celebrated their sesquicentennial during the last week of April 1971.

Area (Within 60 miles)

Lake Malone State Park
 Jefferson Davis Monument State Shrine
 Lake Barkley State Resort Park
 Lake Barkley and Barkley Dam
 Land Between the Lakes National Recreational Area
 Kentucky Lake and Kentucky Dam
 Kenlake State Resort Park
 Pennyrile Forest State Resort Park

AGRICULTURE - NATURAL RESOURCES - CLIMATE

Agriculture 13/

	<u>Todd County</u>	<u>Labor Market Area</u>
Total land area (acres)	240,640	172,800
Percent of area in farm land	82.4	565.6
Number of farms	1,039	5,794
Average size of farms (acres)	190.7	168.7
1964 value of all farm products	\$7,961,813	\$32,272,156
Value per farm	7,663	5,570
Total crop sales	4,795,255	20,224,538
Total livestock & livestock products	3,166,558	16,038,172
1968 agricultural production included:		
Burley tobacco (lbs.)	2,396,000	11,843,000
Corn (bu.)	1,794,000	7,959,000
Cattle and calves (number)	34,800	155,700
Hogs and pigs (number)	18,200	105,000
Milk production (1967) (lbs.)	25,345,000	110,105,000

Natural Resources

Principal mineral resources	Limestone and petroleum
Other mineral resources	Small amounts of gravel and clay
Acres of commercial forest land	61,100
Most abundant tree species	Red oaks, white oaks, hickories, ash, sweetgum, yellow poplar and beech

Climate 14/

	<u>Todd County</u>
Temperature	
Annual mean (30-year record)	60.0 degrees
Average annual 1970	58.8 degrees
Record highest, July, 1966 (5-year record)	103.0 degrees
Record lowest, January, 1966 (5-year record)	- 6.0 degrees
Seasonal heating degree-days (30-year record)	3,578
Precipitation	
Mean annual total (30-year record)	45.14 inches
Mean annual snow and sleet (29-year record)	11.6 inches
Total precipitation 1970	46.93 inches
Mean number days precipitation (29-year record) (.01 inch or more)	118
Average number days thunderstorms(29-year record)	55
Prevailing winds (22-year record)	South

HISTORY

Todd County is located in the Pennyrile region of southwestern Kentucky, its southern border formed by Tennessee. Its 376 square miles contain numerous creeks which flow into Pond River and the West Fork of Red River. The land surface of the southern half and a portion of the northern half is level to gently rolling, while the remainder is hilly and rough. The soil has a limestone base and is fairly fertile. Pilot Rock, a well-known landmark northeast of Elkton, rises some 200 feet above a plain, affording a broad view from the summit.

Traditionally, the first pioneer on Kentucky soil is accounted to be John Salling, who was captured by Indians in present-day Western Virginia and taken across Tennessee to enter Kentucky at Todd County in 1732.

Franklin M. Chestnut, John Montgomery and James Davis of Virginia settled in the Todd County Area on the West Fork of Red River when it was still a part of Lincoln County in 1785.

In 1819, Todd became Kentucky's sixty-fourth county, named for Colonel John Todd, a Pennsylvanian native who came to Boonesborough, Kentucky in 1775 and later settled at Lexington. Colonel Todd accompanied General George Rogers Clark on his campaign against the British north of the Ohio and was made temporary Governor of the Territory of Illinois.

Elkton, the county seat, was named for the Elk Fork Creek, on whose banks it is located. Incorporated in 1820, it was built on land owned by John Gray, a Revolutionary War soldier who operated a stage coach in the area. The Todd County courthouse, the state's second oldest, was built here in 1835. In 1970 Elkton had a population of 1,612.

In 1820, a year after its founding, Todd County had a population of 5,089. The 1950 total was 12,890, followed by a decline to 11,364 in 1960. Though this decline continued during the 1960's its rate was significantly reduced, leaving a population of 10,823 in 1970.

The economy of Todd County is strongly influenced by agriculture, which accounted for 1,300 of a total 3,700 employed in 1969. Principal farm products are burley, dark-fired and air-cured tobacco, cattle and hogs. Manufacturing employment increased 70 percent during the 1960's and totaled 600 in 1969. The greatest production was in the apparel, lumber and furniture industries. Largest of the county's firms is Todd Manufacturing Company, which makes men's shirts and jackets.

Most famous of Todd County's citizens was Jefferson Davis, Secretary of War under President Pierce and President of the Confederacy during the Civil War. Born in 1808 (in what was then Christian County), a 351-foot concrete monument at Fairview on the Todd-Christian line honors Davis. Kenn Johnson, Governor of Kentucky from 1939 to 1943, grew up in Todd County. Supreme Court Justice J. C. McReynolds was from Elkton, as was Benjamin H. Bristow, the first U. S. Solicitor General.

SOURCES OF INFORMATION

- 1/ U. S. Department of Commerce, Bureau of the Census, Census of Population, 1950, 1960, 1970.
- 2/ Kentucky Department of Economic Security, Division of Research and Statistics.
- 3/ Kentucky Department of Economic Security, Number of Workers in Manufacturing Industries Covered by Kentucky Unemployment Insurance Law Classified by Industry and County, September, 1970-1960.
- 4/ Kentucky Department of Commerce, 1971 Kentucky Directory of Manufacturers.
- 5/ Kentucky Department of Economic Security, Division of Employment Services, Hopkinsville Office.
- 6/ Kentucky Department of Economic Security, Kentucky Labor Supply Estimates by County, January 1971.
- 7/ Kentucky Department of Commerce, Future Labor Supply by 1977.
- 8/ University of Kentucky, Office of Development Services and Business Research, Total Personal Income for Kentucky.
- 9/ University of Kentucky, Office of Development Services and Business Research, Per Capita Income in Kentucky.
- 10/ Louisville & Nashville Railroad, Louisville, Kentucky.
- 11/ McLean Trucking Company, Winston-Salem, North Carolina.
- 12/ Kentucky Department of Revenue, Kentucky Property Tax Rates, 1970.
- 13/ U. S. Department of Commerce, Bureau of the Census, Census of Agriculture, 1964. U. S. Department of Agriculture and Kentucky Department of Agriculture, Kentucky Agricultural Statistics, 1969.
- 14/ U. S. Department of Commerce, Environmental Science Services Administration, Climatological Data, 1970.

All other information was obtained from governmental offices, local businesses and organizations.