

1977

Industrial Resources: Trigg County - Cadiz

Kentucky Library Research Collections
Western Kentucky University, spcol@wku.edu

Follow this and additional works at: https://digitalcommons.wku.edu/trigg_cty



Part of the [Business Administration, Management, and Operations Commons](#), [Growth and Development Commons](#), and the [Infrastructure Commons](#)

Recommended Citation

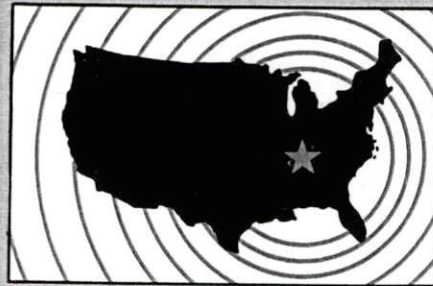
Kentucky Library Research Collections, "Industrial Resources: Trigg County - Cadiz" (1977). *Trigg County*. Paper 13.
https://digitalcommons.wku.edu/trigg_cty/13

This Report is brought to you for free and open access by TopSCHOLAR®. It has been accepted for inclusion in Trigg County by an authorized administrator of TopSCHOLAR®. For more information, please contact topscholar@wku.edu.

INDUSTRIAL RESOURCES

CADIZ

**Kentucky
first**



DEPARTMENT OF COMMERCE

INDUSTRIAL RESOURCES

CADIZ, KENTUCKY

Prepared by
The Kentucky Department of Commerce
Division of Research and Planning
in cooperation with
The Cadiz-Trigg County Chamber of Commerce

1977

TABLE OF CONTENTS

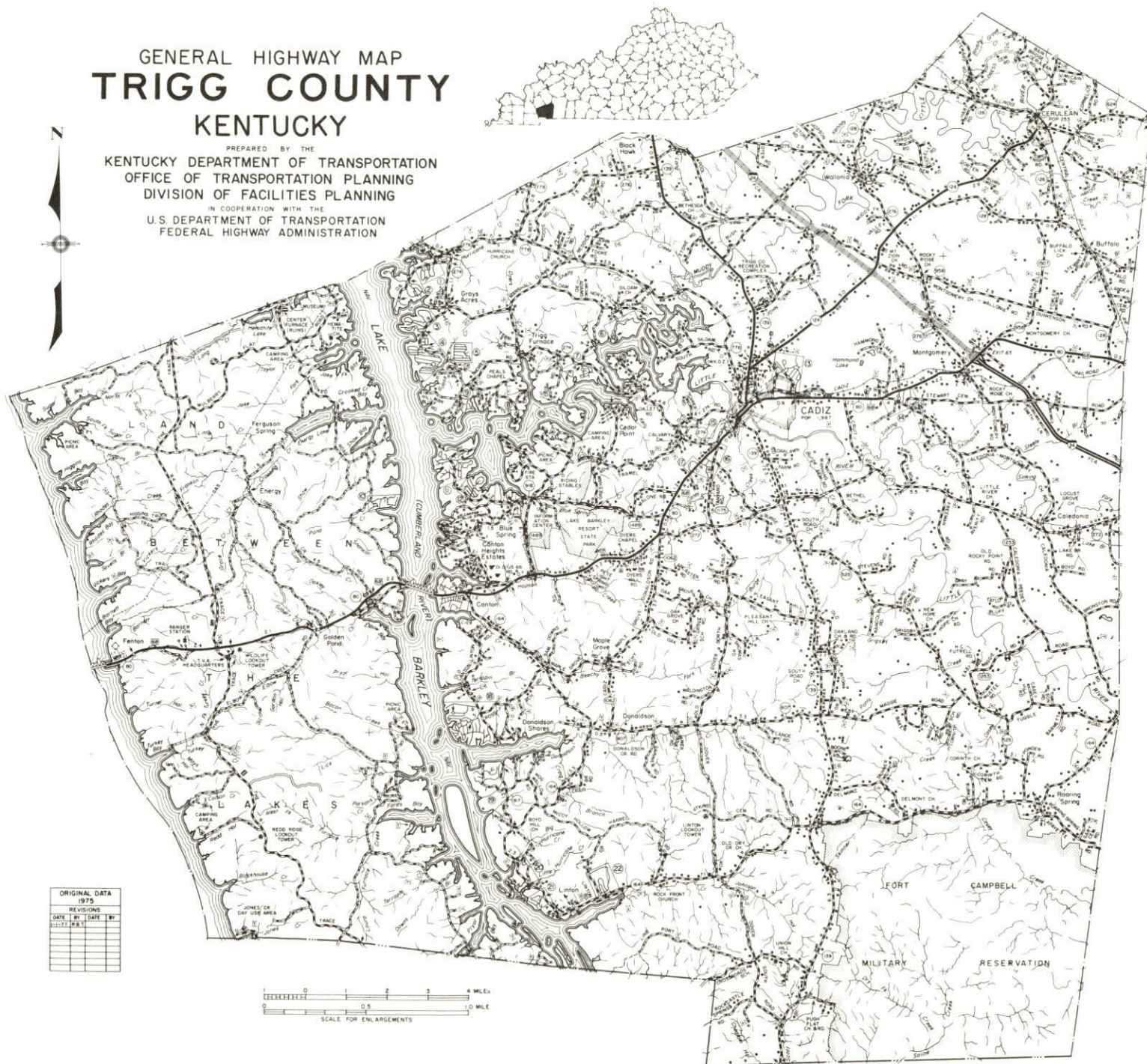
| <u>Chapter</u> | <u>Page</u> |
|---|-------------|
| INDUSTRIAL SITES | i |
| SUMMARY OF INDUSTRIAL RESOURCES - CADIZ, KENTUCKY | 1 |
| THE LABOR MARKET AREA | 6 |
| Population | 6 |
| Labor Force Characteristics of Residents, 1975 | 6 |
| Cadiz Manufacturing Firms, | |
| Their Products and Employment | 7 |
| Labor Organizations | 8 |
| Industrial Services | 8 |
| Estimated Male Labor Supply | 9 |
| Estimated Female Labor Supply | 9 |
| Average Weekly Wages by Industry, | |
| by Place of Work, 1975 | 10 |
| Per Capita Personal Income | 12 |
| TRANSPORTATION | 13 |
| Rail | 13 |
| Highways | 13 |
| Truck Service | 14 |
| Air | 15 |
| Bus | 16 |
| Rental Services | 16 |
| Water | 16 |
| POWER AND FUEL | 17 |
| Electricity | 17 |
| Natural Gas | 17 |
| Other Fuels | 18 |
| WATER AND SEWERAGE | 19 |
| Water | 19 |
| Sewerage | 21 |
| CLIMATE | 22 |

| <u>Chapter</u> | <u>Page</u> |
|--|-------------|
| LOCAL GOVERNMENT | 23 |
| City | 23 |
| County | 23 |
| Assessed Value of Property, 1977 | 23 |
| Property Taxes | 23 |
| Combined State and Local Rates Per \$100 Valuation, 1976 | 24 |
| Planning and Zoning | 24 |
| Safety | 25 |
| Police | 25 |
| Fire | 25 |
| Rescue Service | 25 |
| Solid Waste | 25 |
| EDUCATION | 26 |
| Public Schools | 26 |
| Area Colleges and Universities | 26 |
| Vocational Schools | 27 |
| HEALTH | 28 |
| Local Medical Personnel | 28 |
| Hospitals | 28 |
| Other Medical Facilities | 28 |
| Ambulance Service | 28 |
| Public Health | 28 |
| OTHER LOCAL FACILITIES | 29 |
| Communications | 29 |
| Library Services | 29 |
| Religious Institutions | 29 |
| Day Care Centers | 30 |
| Financial Institutions | 30 |
| Hotels and Motels | 30 |
| Clubs and Organizations | 30 |
| RECREATION | 31 |
| COMMUNITY IMPROVEMENTS | 34 |

GENERAL HIGHWAY MAP TRIGG COUNTY KENTUCKY

PREPARED BY THE
KENTUCKY DEPARTMENT OF TRANSPORTATION
OFFICE OF TRANSPORTATION PLANNING
DIVISION OF FACILITIES PLANNING

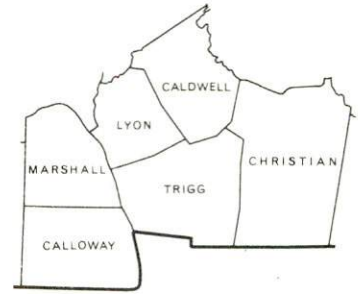
IN COOPERATION WITH THE
U.S. DEPARTMENT OF TRANSPORTATION
FEDERAL HIGHWAY ADMINISTRATION



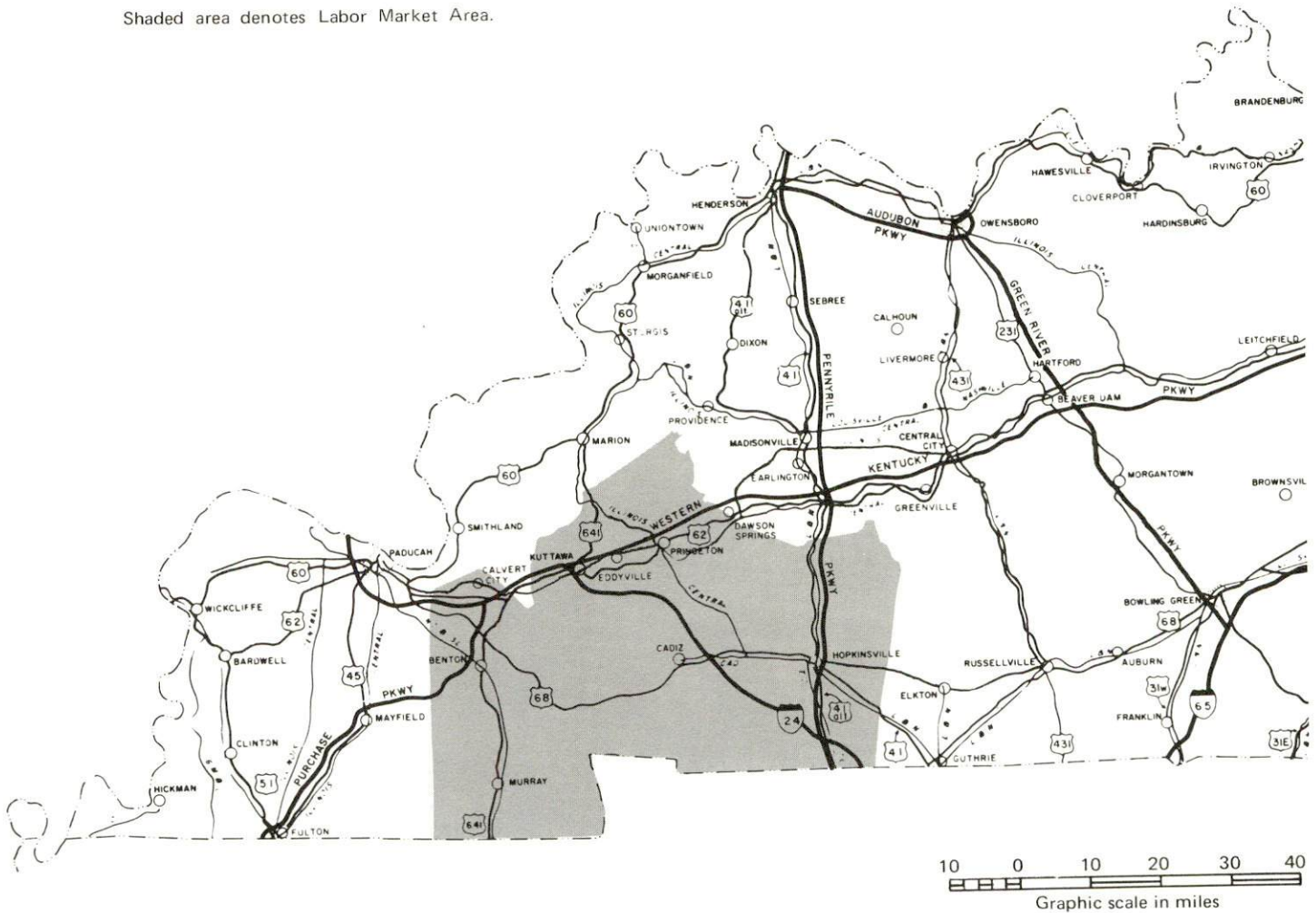
| | | | |
|---------------|-----|------|----|
| ORIGINAL DATA | | | |
| 1975 | | | |
| REVISIONS | | | |
| DATE | BY | DATE | BY |
| 3-1-77 | RST | | |
| | | | |
| | | | |
| | | | |
| | | | |
| | | | |
| | | | |



CADIZ LABOR MARKET AREA

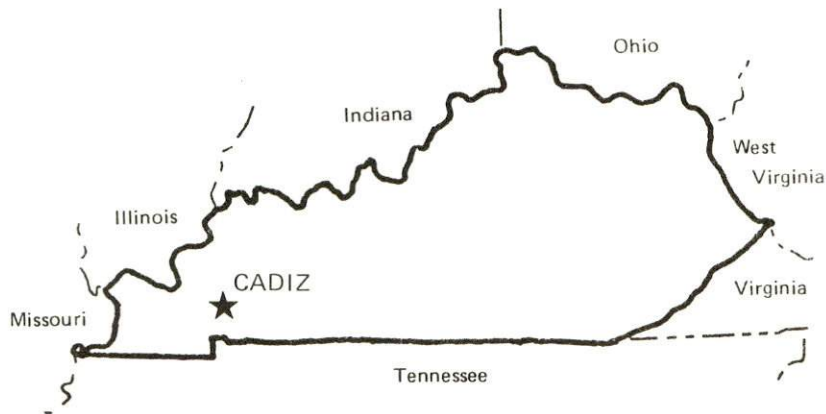


Shaded area denotes Labor Market Area.



SUMMARY OF INDUSTRIAL RESOURCES CADIZ, KENTUCKY

LOCATION



Road Distance in Miles:

| | | | |
|----------|------------|-----------|------------|
| Atlanta | <u>329</u> | Baltimore | <u>624</u> |
| Chicago | <u>430</u> | Detroit | <u>553</u> |
| New York | <u>886</u> | St. Louis | <u>231</u> |

POPULATION

City of Cadiz, 1975 - 1,953
 Trigg County, 1976 - 9,100
 Labor Market Area, 1976 - 146,500
 % Nonwhite, Trigg County, 1970 - 18.0

LABOR ANALYSIS

Labor Market Area - Trigg, Caldwell, Calloway, Christian, Lyon, and Marshall Counties

Estimated available workers from labor market area:

| | | | |
|-------------------------|---------------|-------------------|---------------|
| Male | <u>10,560</u> | Female | <u>13,160</u> |
| Unemployment rate, 1975 | | Labor Market Area | <u>8.9%</u> |
| Trigg County | <u>7.9%</u> | Christian County | <u>7.8%</u> |
| Caldwell County | <u>12.7%</u> | Lyon County | <u>5.3%</u> |
| Calloway County | <u>7.5%</u> | Marshall County | <u>13.7%</u> |

Total employment, Trigg County - 3,710
 Manufacturing employment in labor market area - 8,990

Major local manufacturing plants:

| <u>Name</u> | <u>Employment</u> |
|--|-------------------|
| <u>Cadiz Spring Products Division</u> | <u>425</u> |
| <u>Elk Brand Manufacturing Company</u> | <u>202</u> |

Labor unions in local manufacturing plants: Steelworkers

TRANSPORTATION

Highways:

Interstates - I-24 (under construction)
Parkways - Purchase Parkway, 23 miles away
U.S. Highway - 68

Rail:

Railroad - Cadiz Railroad Company
Distance to nearest piggyback - 10 miles

Truck:

Number of interstate motor carriers - 5

Water:

Nearest navigable rivers - Cumberland and Tennessee Rivers
Nearest public riverport - Paducah
Distance - 58 miles

Air:

Nearest commercial service - Clarksville, Tennessee
Distance - 52 miles; Airlines serving - Ozark
Nearest local airport - Woodruff Airport
Distance - 1.5 miles; Runway length - 2,910 feet

UTILITIES AND SERVICES

Electricity:

Local distributor - Pennyrile RECC
Source of power - Tennessee Valley Authority

Natural Gas:

Local distributor - Western Kentucky Gas Company
Source of supply - Texas Gas Transmission Corporation
Available for new industry - No

Other Fuels:

Number of area propane distributors - 4

Number of area distillate fuel oil distributors - 5

Water, treated:

Local supplier - Municipal; Excess municipal system capacity -
80,000 gpd; Expansions planned - No

Water, raw:

Source for industrial use - Lake Barkley; Little River (342 cfs)

Sewer:

Excess treatment capacity - 200,000 gpd; Planned expansions - No

Industrial Services

| | <u>Location</u> | <u>Miles Distant</u> |
|--|--|--------------------------|
| Tool & Die, Machine & Pattern Shops | <u>Cadiz</u> | |
| Metal Service Centers | <u>Nashville, Tennessee; Evansville, Indiana</u> | <u>87; 88</u> |
| Heat Treating | <u>Louisville</u> | <u>187</u> |
| Metal Finishers | <u>Nashville, Tennessee; Evansville, Indiana</u> | <u>87; 88</u> |
| Electric Motor Repair | <u>Hopkinsville</u> | <u>22</u> |

CLIMATE

Temperature, Normal - 59.4 degrees F.

Precipitation, Normal - 46 inches

Snowfall, Mean Annual - 10.7 inches

Prevailing Winds - South

Relative humidity (%) - 6 a.m. 85; 6 p.m. 62

GOVERNMENT

Type - Mayor and 6 councilmen

Police personnel - full-time - 8

Fire department personnel - volunteer - 15

Fire insurance rating (A.I.A.), class - Inside city - 7
Outside city - 10

TAXES

Property taxes:

Combined state and local rates per \$100 valuation
(100% assessment)

| | <u>Inside City of Cadiz</u> | <u>Outside City</u> |
|---|---------------------------------|-------------------------|
| 1. Land and buildings | <u>\$0.880</u> | <u>\$0.602</u> |
| 2. Mfg. machinery, raw materials, goods in process, pollution control equipment | <u>0.150</u> | <u>0.150</u> |
| 3. Finished goods, office equipment, vehicles, other tangibles | <u>0.915</u> | <u>0.737</u> |
| 4. Intangibles (accounts, notes, bonds, etc.) | <u>0.250</u> | <u>0.250</u> |

EDUCATION

State vocational-technical school - Madisonville, 52 miles away
Area vocational educational center - Hopkinsville, 22 miles away
College or university - Hopkinsville Community College, 22 miles away

Public Schools:

High school enrollment - 648; Student/teacher ratio - 17-1
Middle school enrollment - 578; Student/teacher ratio - 21-1
Elementary school enrollment - 822; Student/teacher ratio - 19-1

FINANCIAL INSTITUTIONS

Banks - 2; Total assets - \$45,514,564.97
Savings and loan association - 1; Total assets - \$71,446,531.74

COMMUNICATIONS

Local newspaper - 1 weekly
Local radio station - WKDZ

MEDICAL

Number of physicians locally - 3; Number of dentists locally - 3
Hospital - Trigg County Hospital, Inc.
Number of beds - 40

RELIGIOUS FACILITIES

Churches - 25; Synagogue - Hopkinsville, 22 miles away

PUBLIC LODGING

Total number hotels and motels - 4; Total rooms - 43

RECREATION FACILITIES

Park; Tennis courts; Swimming pools

Other major facilities - Horse show arena, fairgrounds, public marina,
18 Army Corps of Engineers Recreation Areas in county, Teen Center

Nearest state park - Lake Barkley State Resort Park, 7 miles away
Camping; Swimming; Fishing; Golfing; Water skiing; Boating;
Lodgings; Dining facility; Open year round

THE LABOR MARKET AREA

| POPULATION | | | |
|-------------------|---------|---------|--------------------------|
| Area | 1976* | 1970 | Percent Nonwhite 1970 |
| Cadiz | 1,953** | 1,987 | 19.7 |
| Labor Market Area | 146,500 | 131,658 | N/A |
| Trigg County | 9,100 | 8,620 | 18.0 |
| Caldwell County | 12,900 | 13,179 | 7.1 |
| Calloway County | 29,000 | 27,692 | 3.2 |
| Christian County | 66,800 | 56,224 | 22.5 |
| Lyon County | 5,900 | 5,562 | 7.5 |
| Marshall County | 22,800 | 20,381 | 0.2 |

*Provisional Estimates.

**1975 Population Estimates.

Sources: U.S. Department of Commerce, Bureau of the Census, Census of Population, 1970. U.S. Department of Commerce, Bureau of the Census, Current Population Reports, Series P-25, No. 665, May 1977; Series P-26, No. 76-17, July 1977.

| LABOR FORCE CHARACTERISTICS OF RESIDENTS, 1975 | | |
|--|--------------|-------------------|
| | Trigg County | Labor Market Area |
| Civilian Labor Force | 4,029 | 52,639 |
| Employment | 3,710 | 47,928 |
| Agricultural | 656 | 3,997 |
| Nonagricultural | 3,054 | 43,931 |
| Unemployment | 319 | 4,711 |
| Rate of Unemployment (%) | 7.9 | 8.9 |

Source: Kentucky Department for Human Resources, Kentucky Labor Force Estimates, Annual Averages, 1975.

CADIZ MANUFACTURING FIRMS,
THEIR PRODUCTS AND EMPLOYMENT

| Firm (Establishment date) | Product | Employment | | | Organized |
|---|---|------------|------|--------|-----------|
| | | Total | Male | Female | |
| Averitt Lumber Company (1975) | Lumber indus- trial timbers, wood chips | 57 | 55 | 2 | |
| B & B Food Products (1966) | Country hams, country bacon, country sausage | 2 | | | |
| Bailey Lumber Company (1960) | Sawmill, lumber | 25 | 25 | 0 | |
| Cadiz Machine & Tool Company, Inc. (1972) | Tools, dies, jigs, fabri- cating | 19 | 17 | 2 | |
| The Cadiz Record (1876) | Newspaper | 4 | 1 | 3 | |
| Cadiz Spring Products Division (1965) | Automotive, truck seat springs | 425 | | | * |
| Elk Brand Manufacturing Company (1967) | Dungarees | 202 | 19 | 183 | |
| Furrow Iron Works (1976) | Ornamental ironworks | 4 | 3 | 1 | |
| Kentucky Nature-Crafts (N/A) | Artificial wreaths, arrangements | 2 | 0 | 2 | |
| Kerr-McGee Oil Company (1967) | Fertilizer chemicals | 4 | 4 | 0 | |
| Noel Concrete & Excavating Company, Inc. (1967) | Ready mixed concrete | 26 | 25 | 1 | |
| Round Oak Leather Shop (1976) | Leather goods | 9 | 7 | 2 | |
| Southern States Cooperative (N/A) | Fertilizer | 2 | 2 | 0 | |
| Trigg-Knit Hosiery Mill (1952) | Children's hosiery | 39 | | | |
| Viking Engineering of Kentucky (1972) | Machine shop, foundry, fabrication | 35 | 33 | 2 | |
| Viking Foundry (1973) | Foundry casting | 10 | 9 | 1 | |

*See Labor Organizations below.

Source: Kentucky Department of Commerce, Division of Research & Planning.

LABOR ORGANIZATIONS

| | |
|--------------------------------|---|
| <u>Union</u> | <u>Representing manufacturing workers at:</u> |
| United Steelworkers of America | Cadiz Spring Products Division |

INDUSTRIAL SERVICES

| | <u>Location</u> | <u>Miles Distant</u> |
|--|------------------------|--------------------------|
| Tool & Die, Machine & Pattern Shops | Cadiz, Kentucky | |
| Metal Service Centers | Evansville, Indiana | 88 |
| | Nashville, Tennessee | 87 |
| Heat Treating | Louisville, Kentucky | 187 |
| Metal Finishers | Evansville, Indiana | 88 |
| | Nashville, Tennessee | 87 |
| Electric Motor Repair | Hopkinsville, Kentucky | 22 |

Source: Kentucky Directory of Selected Industrial Services, 1976.

ESTIMATED MALE LABOR SUPPLY
CADIZ LABOR MARKET AREA

| Area | Current | | | Future | |
|-------------------|---------|--------------------|------------|----------------|-------------------------------------|
| | Total | Not in Labor Force | Unemployed | Under-employed | Reaching 18 yrs. of age before 1983 |
| Labor Market Area | 10,560 | 4,070 | 3,080 | 3,410 | 5,781 |
| Trigg | 350 | 0 | 200 | 150 | 432 |
| Caldwell | 1,340 | 720 | 440 | 180 | 561 |
| Calloway | 1,660 | 0 | 590 | 1,070 | 1,036 |
| Christian | 4,430 | 1,830 | 990 | 1,610 | 2,591 |
| Lyon | 180 | 0 | 110 | 70 | 193 |
| Marshall | 2,600 | 1,520 | 750 | 330 | 968 |

Sources: Kentucky Department for Human Resources, Kentucky Labor Supply Estimates by County, 1976. Kentucky Department of Commerce, Future Labor Supply before 1983.

ESTIMATED FEMALE LABOR SUPPLY
CADIZ LABOR MARKET AREA

| Area | Current | | | Future | |
|-------------------|---------|--------------------|------------|----------------|-------------------------------------|
| | Total | Not in Labor Force | Unemployed | Under-employed | Reaching 18 yrs. of age before 1983 |
| Labor Market Area | 13,160 | 8,520 | 1,630 | 3,010 | 5,578 |
| Trigg | 290 | 0 | 120 | 170 | 390 |
| Caldwell | 1,460 | 920 | 250 | 290 | 554 |
| Calloway | 1,530 | 220 | 340 | 970 | 996 |
| Christian | 7,120 | 5,500 | 570 | 1,050 | 2,534 |
| Lyon | 130 | 0 | 60 | 70 | 174 |
| Marshall | 2,630 | 1,880 | 290 | 460 | 930 |

Sources: Kentucky Department for Human Resources, Kentucky Labor Supply Estimates by County, 1976. Kentucky Department of Commerce, Future Labor Supply before 1983.

AVERAGE WEEKLY WAGES BY INDUSTRY,
BY PLACE OF WORK, 1975

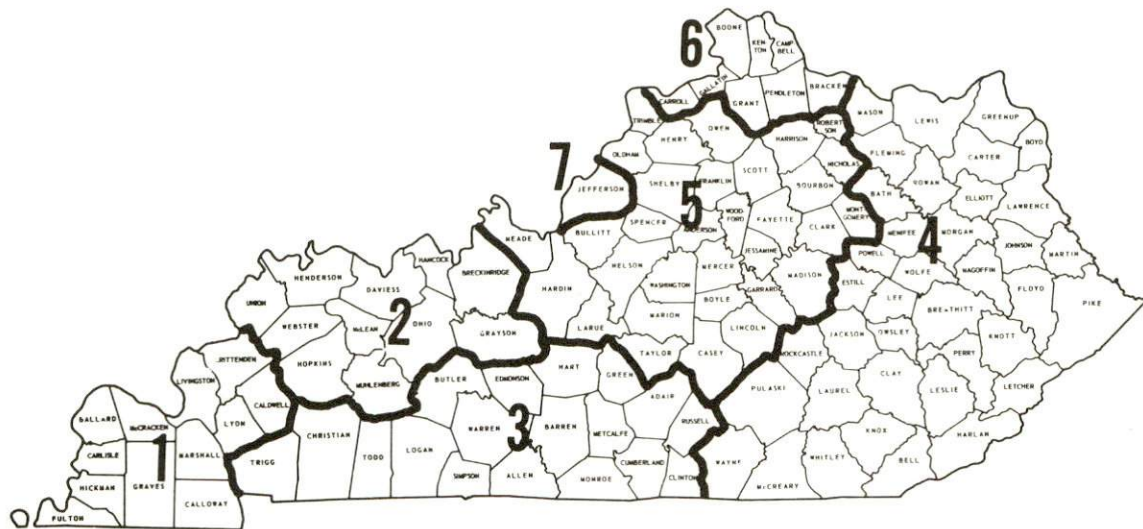
| | <u>Trigg County</u> | <u>Caldwell County</u> | <u>Calloway County</u> |
|---|-----------------------------|----------------------------|----------------------------|
| All Industries | \$119.93 | \$130.88 | \$142.58 |
| Mining & Quarrying | 0 | 205.51 | 158.39 |
| Contract Construction | 155.95 | 125.35 | 153.15 |
| Manufacturing | 138.88 | 145.18 | 183.21 |
| Transportation, Communications & Public Utilities | 176.17 | 146.59 | 188.75 |
| Wholesale & Retail Trade | 84.87 | 113.45 | 106.39 |
| Finance, Insurance & Real Estate | 146.25 | 163.20 | 146.63 |
| Services | 87.12 | 96.74 | 154.78 |
| Other | 0 | 132.78 | 80.96 |
| | <u>Christian County</u> | <u>Lyon County</u> | <u>Marshall County</u> |
| All Industries | \$135.43 | \$124.62 | \$212.44 |
| Mining & Quarrying | 185.07 | 0 | * |
| Contract Construction | 154.13 | 176.38 | 248.77 |
| Manufacturing | 147.20 | * | 270.16 |
| Transportation, Communications & Public Utilities | 171.17 | 197.06 | 172.43 |
| Wholesale & Retail Trade | 122.53 | 82.44 | 102.68 |
| Finance, Insurance & Real Estate | 137.95 | * | 156.48 |
| Services | 123.68 | 83.30 | 88.44 |
| Other | 158.49 | 0 | * |

*Not disclosed.

Note: Excludes domestic workers, railway workers; certain nonprofit corporations; majority of federal, state, and local government workers; and self-employed workers.

Source: Kentucky Department for Human Resources, Average Weekly Wages of Workers Covered By Unemployment Insurance, 1975

Associated Industries of Kentucky, a voluntary organization of Kentucky businesses, regularly collects occupational wage rates and fringe benefits data from participating member firms. Data is compiled for over 127 clearly defined office, production, and service occupations. Tabulations are published for seven regions of Kentucky, as shown on the map below. It should be noted that the data may be weighted by the preponderance of firms in the larger cities and may be somewhat higher than the rates paid in the smaller communities. Data from these tabulations are available, upon request from the Kentucky Department of Commerce, Frankfort, Kentucky 40601.



Associated Industries of Kentucky Area Wage Surveys

Up-to-date occupational wage rates of the existing industries are maintained by South Kentucky Industrial Development Association, Post Office Box 726, Hopkinsville, Kentucky 42240.

PER CAPITA PERSONAL INCOME

| <u>Area</u> | <u>1975</u> | <u>1971</u> | <u>Percent Change</u> |
|-------------------|-----------------|-----------------|---------------------------|
| Trigg County | \$4,078 | \$2,979 | 36.9 |
| Labor Market Area | | | |
| Range | \$3,934 - 4,705 | \$2,721 - 3,213 | N/A |
| Kentucky | 4,886 | 3,314 | 47.4 |
| U.S. | 5,903 | 4,195 | 40.7 |

Sources: U.S. Department of Commerce, Bureau of Economic Analysis, Survey of Current Business, April 1977. U.S. Department of Commerce, Bureau of Economic Analysis, March 1976.

TRANSPORTATION

Rail

Line serving Cadiz - Cadiz Railroad Company; joins the Illinois Central Gulf Railroad at Gracey, Kentucky, 10 miles east of Cadiz.

Services - Freight, carload only; one local freight from Cadiz to Gracey and return Monday through Friday (Saturday if needed); switching facilities; two team tracks at Cadiz accommodating twenty cars; piggyback facilities. One team track at Montgomery, 5 miles distant, for eight cars, switching to Illinois Central Gulf daily at Gracey

For details on routing, schedules, rates, and services, contact:

Cadiz Railroad Company
P.O. Drawer B
Cadiz, Kentucky 42211
(502) 522-8555

Highways

Cadiz is served by U.S. Highway 68, a class "AAA" trucking highway.

Interstate 24 is routed through Trigg County and located 6 miles east of Cadiz. When completed, Interstate 24 will extend for more than 300 miles, linking Interstate 57 in Illinois and Chattanooga, Tennessee. Expected completion date is 1980. Within Kentucky, I-24 will provide easy access to the Purchase Parkway, Pennyryle Parkway, and the Western Kentucky Parkway.

The Pennyryle Parkway, a north-south toll road, is located 23 miles west of Cadiz via U.S. 68.

Truck Service

| <u>Company</u> | <u>Home Office</u> |
|-----------------------------------|---|
| Harper Truck Service, Inc.** | 1266 North 8th Street Paducah, Kentucky 42001 |
| McLean Trucking Company* | P.O. Box 213 Winston-Salem, North Carolina 27102 |
| Overnite Transportation Company** | 1000 Semmes Avenue P.O. Box 216 Richmond, Virginia 23209 |
| Renner's Express, Inc.** | 1350 South West Street P.O. Box 882 Indianapolis, Indiana 46206 |
| Tennessee Cartage Company* | 1238 Antioch Pike P.O. Box 23193 Nashville, Tennessee 37202 |

Other Freight Services

Nearest Shipping Center

United Parcel Service

Hopkinsville, Kentucky,
22 miles away

HIGHWAY MILES AND TRUCK TRANSIT TIME IN DAYS FROM CADIZ, KENTUCKY, TO SELECTED MARKET CENTERS

| City | Highway Miles | Delivery Time TL | City | Highway Miles | Delivery Time TL |
|------------------|------------------|------------------------|-------------------|------------------|------------------------|
| | | | | | |
| Atlanta, Ga. | 329 | 2 | Los Angeles, Cal. | 2,076 | 6 |
| Baltimore, Md. | 624 | 3 | Louisville, Ky. | 187 | 1 |
| Birmingham, Ala. | 283 | 2 | Nashville, Tenn. | 87 | 1 |
| Chicago, Ill. | 430 | 2 | New Orleans, La. | 604 | 3 |
| Cincinnati, Ohio | 244 | 2 | New York, N.Y. | 886 | 4 |
| Cleveland, Ohio | 538 | 2 | Pittsburgh, Pa. | 575 | 3 |
| Detroit, Mich. | 553 | 3 | St. Louis, Mo. | 231 | 2 |
| Knoxville, Tenn. | 264 | 2 | | | |

Source: Delivery Time Only - Renner's Express, Inc., P.O. Box 882,
Indianapolis, Indiana 46206.

*Interstate only.

**Interstate and Intrastate.

Air

Local

Location: Woodruff Airport (private)
1.5 miles east of Cadiz
Runways: 1 bituminous
Length: 2,910 feet
Traffic
Control: Wind sock
Lighting: On request
Services: None

Nearest Commercials

| | | |
|-------------------------|--|---|
| Location: | Barkley Field Paducah, Kentucky, 58 miles from Cadiz | Outlaw Field Clarksville, Tennessee, 52 miles from Cadiz |
| Runways: | 2 paved | 2 paved |
| Length: | 6,500 feet, 4,000 feet | 5,000 feet, 4,100 feet |
| Traffic | | |
| Control: | Tower, ground control, approach control | |
| Lighting: | Beacon, boundary, obstruction, runway lights and runway end identification lights; medium intensity approach lighting system | Beacon, runway (hours of darkness) |
| Services: | Delta, Ozark, and Air Kentucky (commuter) airlines, 100 octane, JA-1 fuel, taxi, limousine, U-Drive-It, storage, major A & E repairs, restaurant | Ozark Airline; 100/130 and jet fuel, major repairs, hangars, tiedowns, flight instruction, rental plane, lodging |
| Air Freight Service: | Air freight accepted on a space available basis | Air freight accepted on a space available basis |

Bus - Western Kentucky Stages

Rental Services - Truck and trailer rentals; car rentals in
Hopkinsville, 22 miles away

Water -

Cadiz is located less than 10 miles from the Cumberland River, a navigable waterway. A 1.5 mile canal between the Cumberland and Tennessee Rivers allows alternate routes between either the Cumberland or Tennessee Rivers and the Ohio River. The completion of the Tennessee-Tombigbee Waterway will provide direct access through Lake Barkley down the Tennessee River and through the Port of Mobile.

Presently the nearest riverport is located at Paducah, 58 miles northwest of Cadiz. The Lyon County (Lake Barkley) Riverport at Eddyville, 22 miles from Cadiz, will open in 1978.

POWER AND FUEL

Electricity

Company serving Cadiz and Trigg County - Pennyrile RECC

Source of power - Tennessee Valley Authority

Total generating capacity - 27,071,480 KW

For industrial rates contact:

South Kentucky Industrial
Development Association, Inc.
P.O. Box 726
Hopkinsville, Kentucky 42240
(502) 885-5392

and/or

Pennyrile Rural Electric
Cooperative Corporation
2000 Harrison Street
Hopkinsville, Kentucky 42240
(502) 886-2555

Natural Gas

Company serving Cadiz - Western Kentucky Gas Company

Source of supply - Texas Gas Transmission Corporation

Size of transmission mains - 25 inches (supplier);
4 and 6 inches (distributor)

Distribution mains - 2 and 4 inches

Distribution pressure - 20 psi

Btu content - 1,008 per cubic foot; Specific gravity - .60

For rates and supplies contact:

Western Kentucky Gas Company
311 West Seventh Street
Owensboro, Kentucky 42301
(502) 684-8811

Other Fuels

Propane

Speedway Gas Company
294 East Main Street
Cadiz, Kentucky 42211

J. Petty Company
Route #1
Gracey, Kentucky 42232

Paragas of Hopkinsville
Fort Campbell Boulevard
Hopkinsville, Kentucky 42240

Fortner L.P. Gas Company
Cadiz Street
Princeton, Kentucky 42445

Fuel oils

Distillate fuel oil -

Cunningham and Lester
(Gulf Oil)
Cadiz, Kentucky 42211

Standard Oil Company,
J. "Tappy" Edwards,
Distributor
Cadiz, Kentucky 42211

R.C. McKinney
East 14th Street
Hopkinsville, Kentucky 42240

Ashland Petroleum Company
(bulk plant)
P.O. Box 31
Hopkinsville, Kentucky 42240

Exxon Company USA
(bulk plant)
800 West 15th
Hopkinsville, Kentucky 42240

Residual fuel oil - Arrangements must be made with the refinery.

Low sulphur content coal - Available in eastern Kentucky.

WATER AND SEWERAGE

Water

Company serving Cadiz - City of Cadiz Water Works
Cadiz, Kentucky 42211
(502) 522-8144

Source - Spring
Treatment plant capacity - 500,000 gpd
Average daily consumption - 325,000 gallons
Peak daily consumption - 420,000 gallons
Type treatment - Coagulation, sedimentation, filtration,
chlorination, fluoridation
Storage capacity - 700,000 gallons
Size lines - 4, 6, and 8 inches
Average pressure - 58 psi
Average temperature - 60 degrees F.

MONTHLY WATER RATES FOR WHOLESALE AND INDUSTRIAL CONSUMERS

Inside City

| | | |
|----------|-----------------|--------------------|
| First | 2,000 gallons | \$4.60 (Minimum) |
| Next | 3,000 gallons | 1.55 per M gallons |
| Next | 5,000 gallons | 1.27 per M gallons |
| Next | 10,000 gallons | 0.92 per M gallons |
| Next | 30,000 gallons | 0.81 per M gallons |
| Next | 50,000 gallons | 0.63 per M gallons |
| All over | 100,000 gallons | 0.52 per M gallons |

Outside City

| | | |
|----------|-----------------|--------------------|
| First | 2,000 gallons | \$5.46 (Minimum) |
| Next | 3,000 gallons | 1.84 per M gallons |
| Next | 5,000 gallons | 1.55 per M gallons |
| Next | 10,000 gallons | 1.27 per M gallons |
| Next | 30,000 gallons | 1.09 per M gallons |
| Next | 50,000 gallons | 0.81 per M gallons |
| All over | 100,000 gallons | 0.52 per M gallons |

Tap-on charge:

| <u>Size of meter</u> | <u>Inside City</u> | <u>Outside City</u> |
|----------------------|--------------------|---------------------|
| 3/4-inch | \$125.00 | \$150.00 |
| 1-inch | 300.00 | 325.00 |
| 2-inch | 425.00 | 450.00 |

Name of water district - Barkley Lake Water District*

P.O. Box 308

Cadiz, Kentucky 42211

(502) 924-5616

Area served - Parts of Trigg, Christian, and Lyon Counties

Date when water district began operating - June 1969

Source of raw water - Lake Barkley

Capacity of treatment plant - 1,000,000 gpd

Type of treatment - Sand filter, chlorination, fluoridation,
lime, alum, activated charcoal

Average amount of water used in a 24-hour period - 500,000 gallons

Peak amount of water used in a 24-hour period - 650,000 gallons

Storage capacity - 800,000 gallons

Average pressure - 100 psi

Average temperature - 50 degrees F.

Size lines - 2, 3, 4, 6, 8, and 10 inches

Rates -

| <u>Gallons Per Month</u> | | <u>Monthly Charges</u> |
|--------------------------|---------|------------------------|
| First | 2,000 | \$4.60 minimum bill |
| Next | 3,000 | 1.30 per M gallons |
| Next | 5,000 | 1.10 per M gallons |
| Next | 40,000 | 0.90 per M gallons |
| Next | 50,000 | 0.70 per M gallons |
| Next | 400,000 | 0.60 per M gallons |
| All over | 500,000 | 0.50 per M gallons |

First 500,000 gallons per month \$325.00, minimum bill.

All over 500,000 gallons 0.50 per 1,000 gallons.

Minimum Rates

| <u>Meter Size</u> | <u>Minimum Rate Per Month</u> |
|-------------------|-------------------------------|
| 5/8-inch | \$ 4.60 |
| 3/4-inch | 4.60 |
| 1-inch | 8.50 |
| 1-1/2-inch | 14.00 |
| 2-inch | 23.00 |
| 3-inch | 52.00 |
| 4-inch | 85.00 |

Tap-on charge: (Meter Size)

| | |
|------------|----------|
| 5/8-inch | \$200.00 |
| 3/4-inch | 250.00 |
| 1-inch | 350.00 |
| 1-1/2-inch | 450.00 |
| 2-inch | 600.00 |

*The water district is in the process of extending lines in Trigg and Christian Counties, adding a 150,000-gallon storage tank, constructing two additional booster stations and replacing pumps.

Surface water sources - Lake Barkley, Little River and Sinking Fork River

Average discharge - Little River near Cadiz 342 cfs (36-years, USGS)

Expected ground water yield - 50 to 200 gpm paralleling the eastern shores of Barkley Lake and extending into portions of the northern and eastern parts of the county; 5 gpm or less in a north-south strip in the western part of the county; 5 to 50 gpm in remainder of the county.

Sewerage

Company serving Cadiz - City of Cadiz Sewerage Department

Box 436

Cadiz, Kentucky 42211

(502) 522-6138

Design capacity - 320,000 gallons per day

Average daily flow - 120,000 gallons

Treatment - Primary and secondary

Type treatment - Aeration, clarifier, drying beds

Treated effluent discharged into - Little River

Size of sanitary mains - 6, 8, and 10 inches

Rates -

Monthly sewer rates based on water usage:

| | | |
|----------|-----------------|--------------------|
| First | 2,000 gallons | \$3.60 (Minimum) |
| Next | 3,000 gallons | 1.27 per M gallons |
| Next | 5,000 gallons | 1.04 per M gallons |
| Next | 10,000 gallons | 0.81 per M gallons |
| Next | 30,000 gallons | 0.75 per M gallons |
| Next | 50,000 gallons | 0.63 per M gallons |
| All over | 100,000 gallons | 0.58 per M gallons |

Tap-on charge: \$100

CLIMATE

Trigg County

Temperature

| | |
|--|---------------|
| Normal (30-year record) | 59.4 degrees |
| Average annual 1976 | 57.5 degrees |
| Record highest, July, 1952 (37-year record) | 107.0 degrees |
| Record lowest, January, 1963 (37-year record) | -15.0 degrees |
| Normal heating degree days (30-year record) | 3,696 |
| (Heating degree day totals are the sums of negative departures of average daily temperatures from 65 degrees F.) | |

Precipitation

| | |
|--|--------------|
| Normal (30-year record) | 46.00 inches |
| Mean annual snowfall (35-year record) | 10.70 inches |
| Total precipitation 1976 | 49.57 inches |
| Mean number days precipitation (.01 inch or more) (35-year record) | 119 |
| Mean number days thunderstorms (35-year record) | 55 |

Prevailing Winds (22-year record)

South

Relative Humidity (11-year record)

| | |
|----------|------------|
| Midnight | 80 percent |
| 6 a.m. | 85 percent |
| Noon | 58 percent |
| 6 p.m. | 62 percent |

Source: U.S. Department of Commerce, Environmental Science Services Administration, Climatological Data, 1976. Station of record: Nashville, Tennessee.

LOCAL GOVERNMENT

City

Structure - Mayor - 4-year term; 6 councilmen - 2-year terms
Estimated operating budget 1977 - General Fund \$195,550
Water and Sewer Fund 215,000
Fees and licenses - Business privilege licenses for manufacturers range from \$100 to \$200 depending upon number of employees; one percent payroll tax on gross salaries; unloading license of \$25 per year

County

Structure - County Judge - 4-year term; 7 magistrates - 4-year terms
Budget 1976-77 - General Fund \$163,899; Road Fund \$44,600

Assessed Value of Property, 1977

| <u>Classes of Property</u> | <u>Cadiz</u> | <u>Trigg County</u> |
|----------------------------|--------------|---------------------|
| Real Estate | \$8,018,185 | \$72,509,623 |
| Tangibles | 4,088,562 | 15,605,952 |

Property Taxes

All property in Kentucky is assessed at 100 percent of fair cash value.

Land and buildings are taxed by the state and may be taxed by local jurisdictions. The state rate is \$0.315 per \$100 of assessed valuation. Beginning January 1, 1977, local school tax rates were reduced by \$0.30 per \$100 valuation and the state rate was increased by \$0.30 per \$100 (from \$0.015), resulting in no net change in the combined state and local rates.

Manufacturing machinery, raw materials inventories, pollution control equipment, and goods in the process of manufacture are not subject to local taxation. The state rate is \$0.15 per \$100.

Other tangible personal property owned by manufacturers (automobiles, trucks, finished goods, office furniture, office equipment) is taxed by the state at \$0.45 per \$100 and may be taxed by local jurisdictions. Beginning January 1, 1977, local school rates were reduced by \$0.30 per \$100 valuation and the state rate was raised by \$0.30 per \$100 (from \$0.15).

Property stored in public warehouses in a transit status is not subject to local taxation. The state rate is only \$0.015 per \$100.

(Contd.)

Intangible personal property located in Kentucky (money in hand, shares of stock, notes, bonds, accounts, and other credits) is taxed by the state at \$0.25 per \$100, and is not subject to local taxation.

Intangible personal property owned by corporations in Kentucky as a result of business transactions performed out-of-state, but having a tax situs in Kentucky (accounts receivable, notes, bonds, credits, non-domestic bank deposits, licensing or royalty agreements, shares of stock of any affiliated company, etc.) is taxed by the state at \$0.015 and is not subject to local taxation.

Combined State and Local Rates Per \$100 Valuation, 1976*
(100% assessment)

| | <u>Inside City of Cadiz</u> | <u>Outside City</u> |
|---|---------------------------------|-------------------------|
| 1. Land and buildings | \$0.880 | \$0.602 |
| 2. Mfg. machinery, raw materials, goods in process, pollution control equipment | 0.150 | 0.150 |
| 3. Finished goods, office equipment, vehicles, other tangibles | 0.915 | 0.737 |
| 4. Intangibles (accounts, notes, bonds, etc.) | 0.250 | 0.250 |

Planning and Zoning

Joint agency - Cadiz-Trigg County Planning Commission
 Zoning enforced - In city of Cadiz only
 Local codes enforced - Building, housing (in Cadiz only)
 Mandatory state codes enforced - Plumbing, National Fire Protection Association Code, National Building Code (for major buildings and residential construction containing more than 12 bedrooms per building)

*Kentucky Department of Commerce.

Safety

Police

| | <u>Cadiz</u> | <u>Trigg County</u> |
|-------------------|------------------|---------------------|
| Total staff | 8 full-time | 2 |
| Radio-patrol cars | 2 part-time 1 | 2 |

Fire

American Insurance
Association Fire

| | | |
|------------|----|----|
| Rating | 7 | 10 |
| Volunteers | 15 | * |

Rescue Service

Cadiz-Trigg County Emergency Preparedness Team:

Number of volunteers - 54 plus the city and county volunteer firemen

Equipment - 4 rescue units, rescue gear, emergency medical supplies, 18 boats and motors, dragging equipment, generators, emergency radio equipment, 1 mobile emergency generator, ambulance

Solid Waste

| | <u>Cadiz</u> |
|-----------------------|---|
| Type service | Municipal |
| Fee charged: | |
| residential | Single person in-city - \$1.75 per month |
| | Family in-city - \$3.00 per month |
| business | Outside city - \$3.50 per month |
| industrial | \$17.50 per month |
| | \$20.00 per month |
| Collection frequency: | |
| residential | Weekly |
| business | Twice weekly |
| industrial | As needed |
| Trash pickup | Weekly |
| Disposal method | County-owned sanitary landfill |

*Volunteer fire departments operate in two unincorporated areas of Trigg County.

EDUCATION

Public Schools

| | <u>Trigg County</u> |
|---|---|
| Total Enrollment (6/7/77) | 2,048 |
| Elementary | 822 |
| Middle School | 578 |
| High School | 648 |
| Student-Teacher Ratio | 19-1 |
| Elementary | 19-1 |
| Middle School | 21-1 |
| High School | 17-1 |
| Accreditation | Southern Association of Colleges and Schools |
| Percent High School Graduates to College | 42.4 |
| Expenditures Per Pupil (1975-76) | \$869.14 |
| Bonded Indebtedness, June 30, 1976 | \$2,089,000 |

Area Colleges and Universities

| <u>Name</u> | <u>Location (Miles Distant)</u> | <u>Enrollment (Fall, 1976)</u> | <u>Highest Degree Conferred</u> |
|-----------------------------------|-------------------------------------|------------------------------------|-------------------------------------|
| Hopkinsville Community College | Hopkinsville, Ky. (22) | 1,082 | Associate |
| Murray State University | Murray, Ky. (35) | 7,394 | Masters, Ph.D.* |
| Austin Peay State University | Clarksville, Tenn. (49) | 3,643 | Academic & Professional |
| Madisonville Community College | Madisonville, Ky. (52) | 652 | Associate |
| Paducah Community College | Paducah, Ky. (58) | 1,302 | Associate |

*Cooperative Program with the University of Kentucky, Lexington, for a Ph.D. in education only.

Vocational Schools

Nearest State School

| | |
|---------------|--|
| Location | Madisonville State Vocational-Technical School |
| Miles Distant | Madisonville |
| Curriculum | 52 miles |
| | Health and Personal Service Occupations |
| | Certified Lab Assistant |
| | Health Careers |
| | Medical Secretary |
| | Practical Nursing |
| | Respiratory Therapy |
| | Surgical Technician |
| | Industrial Education |
| | Auto Body Repair |
| | Auto Mechanics |
| | Carpentry |
| | Drafting |
| | Electronics (Communications) |
| | Industrial Electricity |
| | Machine Shop |
| | Mining Maintenance Mechanics |
| | Welding |
| | Learning Resource Center |
| | Public Service Programs |
| | Fire Service Training |
| | Law Enforcement Education |

Nearest Area Education Center

| | |
|---------------|---|
| Location | Christian County Area Vocational Education Center |
| Miles Distant | Hopkinsville |
| Curriculum | 22 miles |
| | Industrial Education |
| | Appliance Repair |
| | Auto Body Repair |
| | Auto Mechanics |
| | Carpentry - Building Trades |
| | Electricity |
| | Machine Shop |
| | Masonry |
| | Welding |

Arrangements can be made to provide training in the specific production skills required by an industrial plant. Instruction may be conducted either in the vocational school or in the industrial plant, depending upon the desired arrangement and the availability of special equipment.

HEALTH

Local Medical Personnel

Physicians - 3
Dentists - 3

Hospitals

| <u>General Hospital</u> | <u>Location</u> | <u>Beds</u> |
|-----------------------------|-----------------|-------------|
| Trigg County Hospital, Inc. | Cadiz | 40 |

General hospital facilities - Laboratory, emergency room, nursery, obstetrics, gynecology, X-ray, EKG, cardiac care unit. The Trigg County Hospital is part of Western Kentucky Hospital Services, Inc., which participates in the Mid South Regional Medical Program, Pennyroyal Mental Retardation Program, Comprehensive Health Planning, Red Cross Whole Blood Program.

Medical staff - 3 physicians, 8 registered nurses, 6 licensed practical nurses

Other Medical Facilities

Trigg County Mental Health Clinic

Ambulance Service

Ambulance service is available on a county-wide basis, 24 hours a day, seven days a week.

Public Health

Facility - Trigg County Health Department
Staff - Health environmentalist-administrator, community health nurse, clerk-typist, medical clinician, dentist, community health nurse, community worker

OTHER LOCAL FACILITIES

Communications

Telephone - South Central Bell Telephone Company
Services - Standard

Telegraph - Western Union
Services - Telephone to Hopkinsville

Postal - U.S. Post Office
Class - First
Mail received - Twice daily
Mail dispatched - Twice daily

Newspapers - The Cadiz Record
Weekly and circulation - 2,700
Other papers received from - Hopkinsville, Louisville, and
Paducah, Kentucky; Evansville,
Indiana

Radio - WKDZ AM-FM
Stations received from - Hopkinsville, Louisville, Paducah,
Murray, and Princeton, Kentucky;
Nashville, Tennessee

Television*-
Reception from - Paducah and Bowling Green, Kentucky; Nashville
Tennessee
Kentucky Educational
Television - Madisonville transmitter - Channel 35;
Murray-Mayfield transmitter - Channel 21

Library Services

Public library - John L. Street Library
Size collection - 9,500 volumes
Circulation, 1976-77 - 16,836
Services - Magazines, newspapers, information file material,
records, art, film strips, film strip projector,
story hour

Religious Institutions

Number of churches - Approximately 25
Denominations - Baptist, Catholic, Christian, Church of Christ,
Church of God, Methodist, Presbyterian

Nearest Synagogue - Hopkinsville, 22 miles away
Congregations - Adath Israel (reform)

*A contract has been signed for cable service.

Day Care Centers

Number of centers - 3

Financial Institutions

| <u>Banks</u> | <u>Assets</u> | <u>Deposits</u> | <u>Statement Date</u> |
|---------------------------|-----------------|-----------------|-----------------------|
| Bank of Cadiz | \$10,624,437.76 | \$ 9,417,202.82 | 6/30/77 |
| Trigg County Farmers Bank | 34,890,127.21 | 31,390,657.11 | 6/30/77 |

| <u>Savings and Loan Associations</u> | <u>Assets</u> | <u>Savings Accounts</u> | <u>Statement Date</u> |
|--|-----------------|-------------------------|-----------------------|
| Hopkinsville Federal Savings & Loan Association (branch office in Cadiz) | \$71,446,531.74 | \$66,138,163.10 | 7/30/77 |

Hotels and Motels

Total number - 4
Total units - 43

Excellent accommodations are also available at Lake Barkley State Resort Park, only 7 miles from Cadiz.

Clubs and Organizations

Business and Civic - Cadiz-Trigg County Chamber of Commerce, Civitan Club, Jaycees, Lions Club, Optimist, Rotary

Fraternal - American Legion, Fraternal Order of Eagles, Masonic Lodge, Woodmen of the World Society

Women's - Business and Professional Women's Club, DAR, Eastern Star, Garden Club, Hospital Auxiliary, Homemaker's, Iota Tau Sorority, Jaycettes, National Secretaries Association, Women's Club, Women's Missionary Union

Youth - Boy Scouts, Cub Scouts, Girl Scouts, Brownies, Explorers, FFA, 4-H, Little League, Teen Club

Other - Cadiz Bass Club, Cadiz Powerboat Club, C-B Radio Club, Foxhunters Association, Sportsman Club, West Kentucky Trail Bike Riders Association

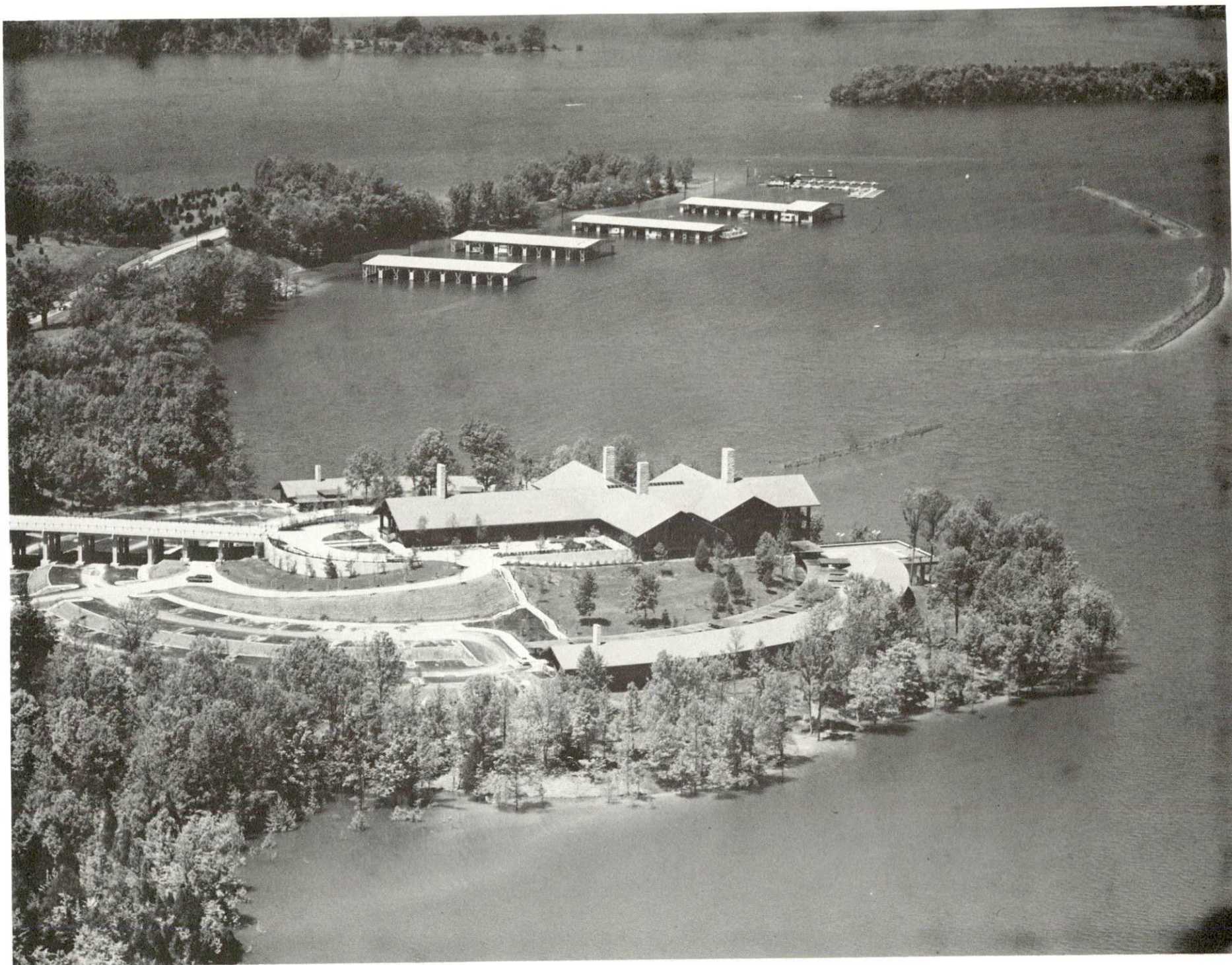
RECREATION

Local

Cadiz is located in Kentucky's magnificent Western Waterlands, one of the top outdoor recreational areas in the Southeastern United States. Lake Barkley which flows through Trigg County and Kentucky Lake which follows the western boundary of the county form the world's largest man-made water complex, with 217,000 surface acres. A portion of Land Between the Lakes National Recreation Area also lies within Trigg County.

Lake Barkley State Resort Park, one of Kentucky's finest state parks, is located just 7 miles from Cadiz on the shores of Lake Barkley. This 3,600-acre park offers lodge and cottage accommodations and 80 camping sites. The lodge contains 120 guests rooms, four suites, a large dining room, a coffee shop, a gift shop, a game room, a lounge and meeting rooms. Other park features include a heated pool, a beach with bathhouse, an 18-hole golf course, riding stables, lighted tennis courts, hiking trails, playground, picnic areas, shuffleboard court and a trapshooting range. A 126-slip marina provides storage facilities, boat rentals, and full service facilities for fisherman.

The Land Between the Lakes National Recreation Area is located approximately five miles west of the park. Six to eight miles wide and over 40 miles long, the complex is being developed by the Tennessee Valley Authority into a major area for outdoor recreation, conservation and environmental learning. Within these 170,000 acres which rest between Lake Barkley and Kentucky Lake, there are many miles of trails and numerous group and family camping facilities. A 5,000-acre Environmental Education Center which has quarters for school study groups features an educational farm and a Center Station with films and displays. Among the many other activities provided by Land Between the Lakes are fishing, boating, swimming, hunting and hiking.



LAKE BARKLEY STATE RESORT PARK

Area (Within 55 miles)

Two state resort parks - Kentucky Dam Village and Kenlake - are located on the western shore of Kentucky Lake. Both parks feature a lodge, cottages, dining room, meeting rooms, golf course, tennis courts, beach, pool, shuffleboard, camping, boat dock and horseback riding. An airport with a 4,000-foot lighted airstrip is located at the Kentucky Dam Village Park.

Another area park is the Pennyrile Forest State Resort Park, located 38 miles northeast of Cadiz in Kentucky's largest state forest. The park has a lodge, cottages, dining room, camping facilities, a 55-acre lake, a beach, a swimming pool and a 9-hole golf course. Facilities are also available for boating, fishing, hiking, horseback riding, picnicking and shuffleboard.

The Jefferson Davis Monument State Shrine, located 32 miles east of Cadiz, is the fourth highest monument in the United States. This 351-foot obelisk, which has a museum and an elevator to the top, is the site of the birthplace of Confederate President Jefferson Davis.

COMMUNITY IMPROVEMENTS

Four new manufacturing concerns have recently begun operations in Trigg County. They are Furrow Iron Works, which makes wrought iron fixtures; Kentucky Nature-Crafts, a manufacturer of artificial arrangements and wreaths; Southern States Cooperative, a fertilizer producer; and Round Oak Leather Shop, which makes and retails leather goods.

Commercial firms that have recently opened in Cadiz include a recreational vehicle sales and service firm, a credit association and a nursery. A new shopping mall containing approximately ten stores is scheduled for completion in 1979.

Recreational improvements include new little league fields, expansion of the horseshow arena, and a new swimming pool.

A stretch of Interstate 24 located southwest of Cadiz has been completed to U.S. 68. Highway 68 has been rebuilt from Interstate 24 to the Land Between the Lakes. A Cadiz by-pass is now in the planning stages.

The city of Cadiz has completed an extension of sewer lines to the Woodruff Industrial Park and has added 10,000 feet of 8-inch water lines. A project to extend sewer service to additional customers is now being planned.

The Barkley Lake Water District has two booster stations and a storage tank under construction. Existing pumps are being replaced with larger ones and lines are being extended into new service areas.

The Trigg County School System has recently completed construction of a football stadium. A new cafeteria is under construction.

Other recent improvements in Trigg County include the construction of a new county jail and the opening of a tourist administration center by the Tennessee Valley Authority.