

1983

Industrial Resources: Warren County - Bowling Green

Kentucky Library Research Collections
Western Kentucky University, spcol@wku.edu

Follow this and additional works at: https://digitalcommons.wku.edu/warren_cty

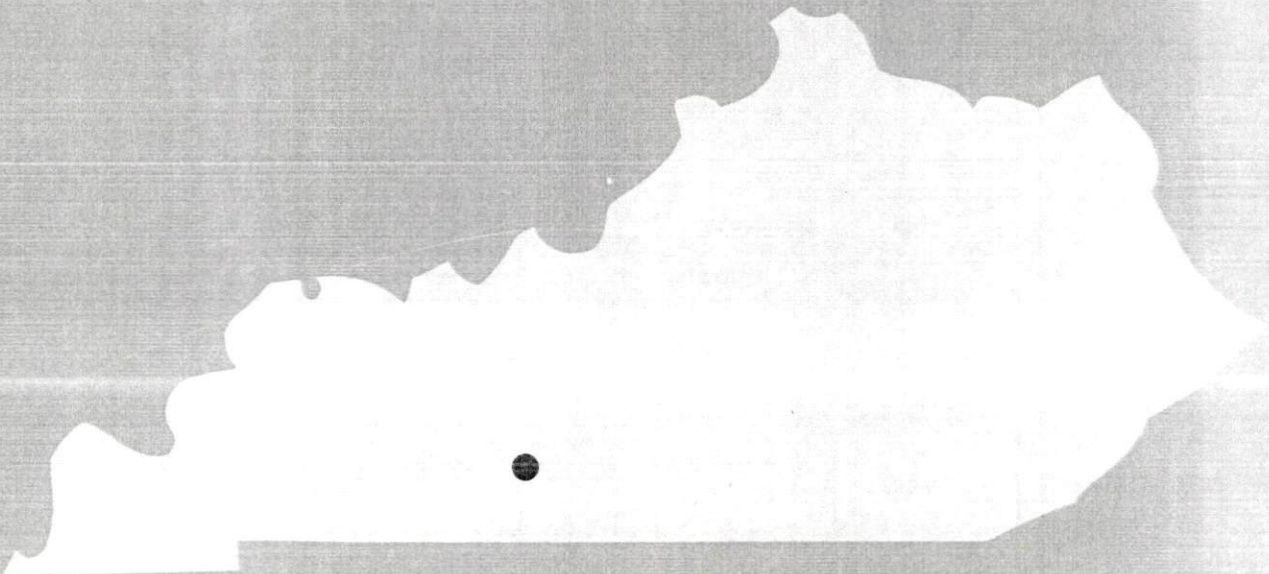
 Part of the [Business Administration, Management, and Operations Commons](#), [Growth and Development Commons](#), and the [Infrastructure Commons](#)

Recommended Citation

Kentucky Library Research Collections, "Industrial Resources: Warren County - Bowling Green" (1983). *Warren County*. Paper 21. https://digitalcommons.wku.edu/warren_cty/21

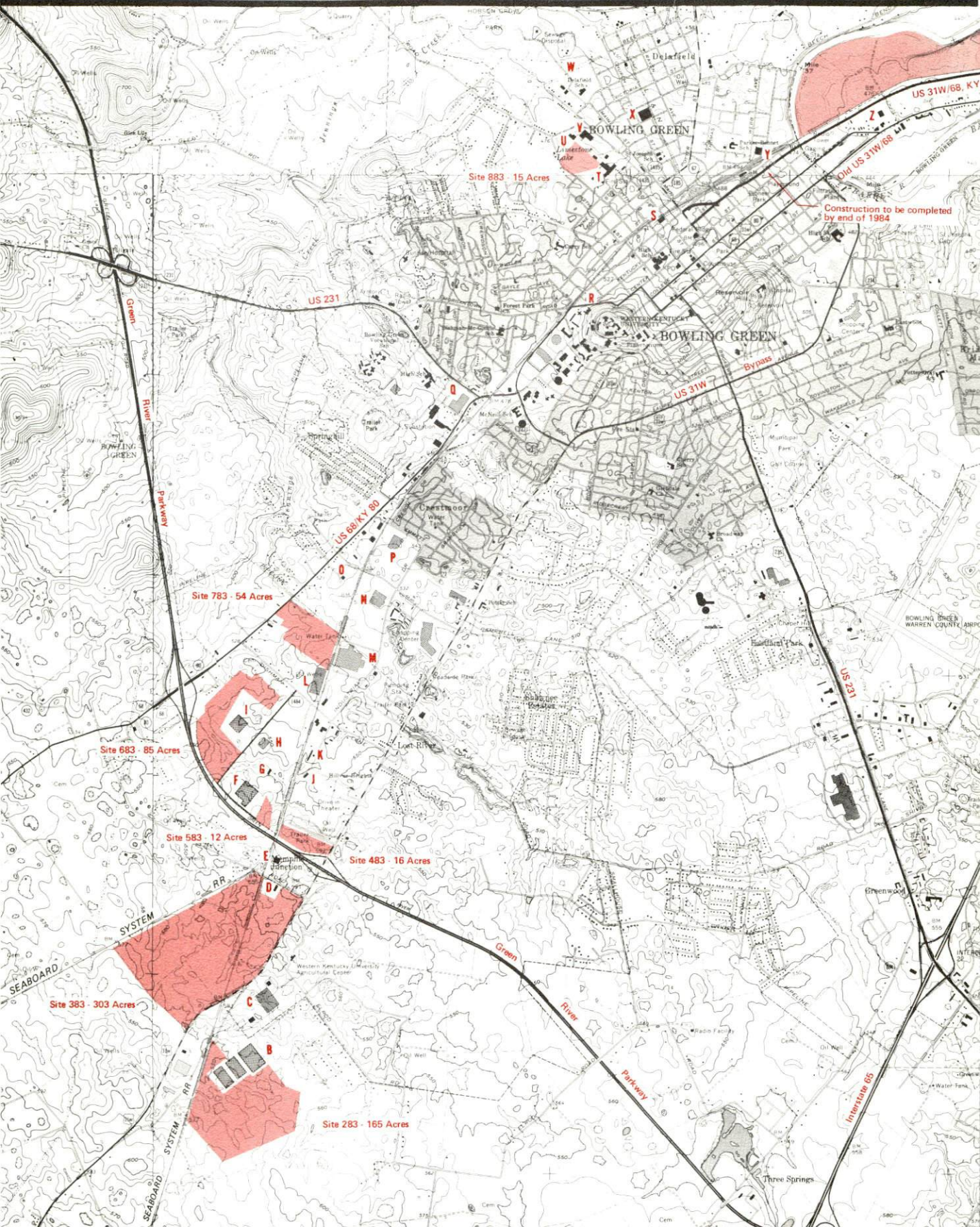
This Report is brought to you for free and open access by TopSCHOLAR®. It has been accepted for inclusion in Warren County by an authorized administrator of TopSCHOLAR®. For more information, please contact topscholar@wku.edu.

1983
A comprehensive
report on
Bowling Green, Ky.



BOWLING GREEN, KENTUCKY --- Index to Industrial Sites --- 1983

For detailed data on individual sites contact the Kentucky Department of Economic Development, Industrial Development & Marketing Division, Capital Plaza Tower, Frankfort, Kentucky 40601 (502-564-7140).





- Existing Industries**
- A Union Underwear Co.
 - B World Corporate Headquarters
 - C Industrial Redistribution Center
 - D F M C Corporation
 - E Overhead Door Co. of Bowling Green
 - F Ohio Poly Inc.
 - G Country Oven Bakery
 - H RAD Chemicals
 - I Division of RAD Services Inc.
 - J Lord Corporation
 - K Holley Carburetor Colt Industries Inc.
 - L Modern Welding Co., Inc.
 - M Plastipak Packaging
 - N Universal Co. Cooperatives Inc.
 - O Eaton Corp.
 - P AMCA International
 - Q Consumer Products Division
 - R Exceptional Industries
 - S Detrex Chemical Co.
 - T Holley Carburetor Colt Industries Inc.
 - U Pan American Mills Inc.
 - V Nehi Royal Crown Bottling Co.
 - W Holley Carburetor Colt Industries Inc.
 - X Tri State Bedding Co., Inc.
 - Y L. F. Strassheim Co.
 - Z Country Garden Mfg. Co.
 - AA Union Underwear Co., Inc.
 - BB Pepsi Cola General Bottlers Inc.
 - CC Coca Cola Bottling Co.
 - DD Bada Co., Inc.
 - EE Western Kraft Paper Group
 - General Motors Corp.

0 1000 2000 3000 4000 FEET

0 1 2 3 4 MILE

CONTOUR INTERVAL 10 FEET
 BASE: USGS 7.5 MINUTE SERIES - 1965 - 73
 Photorevised - 1982

A COMPREHENSIVE REPORT ON
BOWLING GREEN, KENTUCKY

Prepared by
The Kentucky Department of Economic Development
Division of Research and Planning
in cooperation with
The Bowling Green-Warren County
Chamber of Commerce

1983

Program manager - Pamela Riley; research - Andrew Dennis; clerical - Bobbi Medley; graphics - Frank Ferrante, Tony Cecconi, Robert Owens; cartography - Site Evaluation Branch, Division of Industrial Development. Cost of printing paid from state funds.

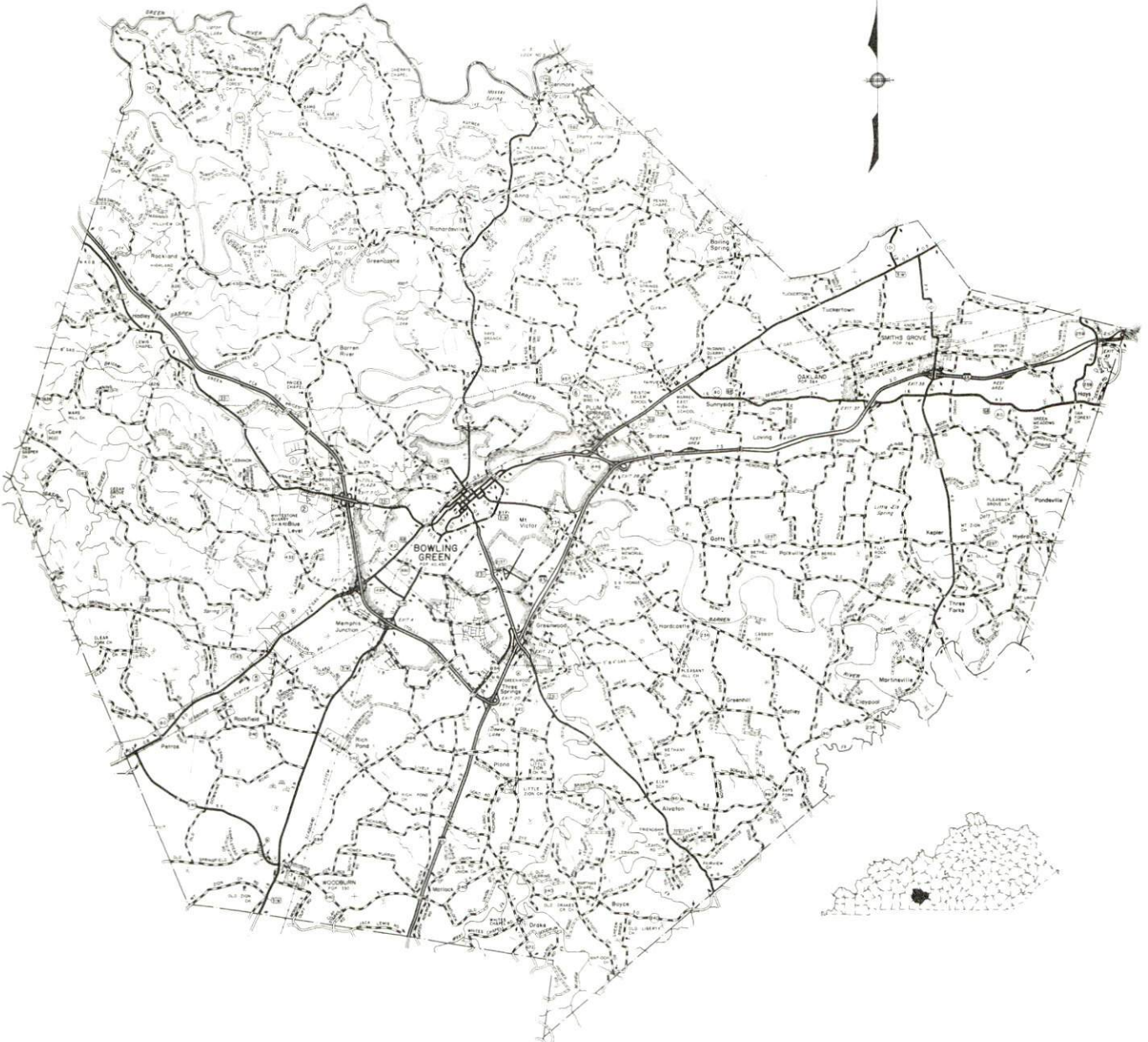
TABLE OF CONTENTS

<u>Chapter</u>	<u>Page</u>
INDUSTRIAL SITES	i
BOWLING GREEN, KENTUCKY - A RESOURCE PROFILE	1
THE LABOR MARKET AREA	3
Population	3
Labor Force Characteristics of Residents, 1982	3
Selected Components of Nonagricultural Employment, by Place of Work, 1982	4
Major Bowling Green Manufacturing Firms, Their Products and Employment	5
Labor Organizations in Manufacturing Firms	7
Industrial Services	8
Estimated Male Labor Supply	9
Estimated Female Labor Supply	9
Average Weekly Wages By Industry, by Place of Work, 1982	10
Per Capita Personal Income	12
TRANSPORTATION	13
Rail	13
Highways	13
Truck Service	14
Air	16
Bus	17
Taxi	17
Rental Services	17
Water	17
POWER AND FUEL	18
Electricity	18
Natural Gas	19
Other Fuels	19
WATER AND SEWERAGE	20
Public Water Supply	20
Raw Water	22
Sewerage	23
CLIMATE	25

<u>Chapter</u>	<u>Page</u>
LOCAL GOVERNMENT	26
City	26
County	26
Assessed Value of Property, 1983	26
Property Taxes	27
Combined State and Local Rates Per \$100 Valuation, 1983	28
Utilities Gross Receipts Tax for Schools	28
Planning and Zoning	29
Safety	29
Police	29
Fire	29
Rescue Service	29
Refuse Collection and Disposal	30
EDUCATION	31
Public Schools	31
Nonpublic Schools	31
Area Colleges and Universities	32
Vocational Schools	33
HEALTH	35
Local Medical Personnel	35
Hospitals	35
Other Medical Facilities	36
Ambulance Service	36
Public Health	36
OTHER LOCAL FACILITIES	37
Communications	37
Library Services	38
Religious Institutions	39
Financial Institutions	39
Hotels and Motels	40
Clubs and Organizations	40
RECREATION	42
COMMUNITY IMPROVEMENTS	45

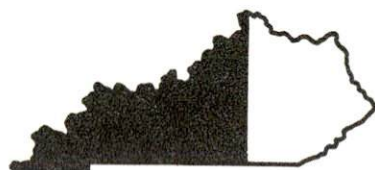
1983 EDITION
GENERAL HIGHWAY MAP
WARREN COUNTY
KENTUCKY

PREPARED BY THE
KENTUCKY TRANSPORTATION CABINET
DEPARTMENT OF HIGHWAYS
DIVISION OF PROJECT DEVELOPMENT
IN COOPERATION WITH THE
U.S. DEPARTMENT OF TRANSPORTATION
FEDERAL HIGHWAY ADMINISTRATION

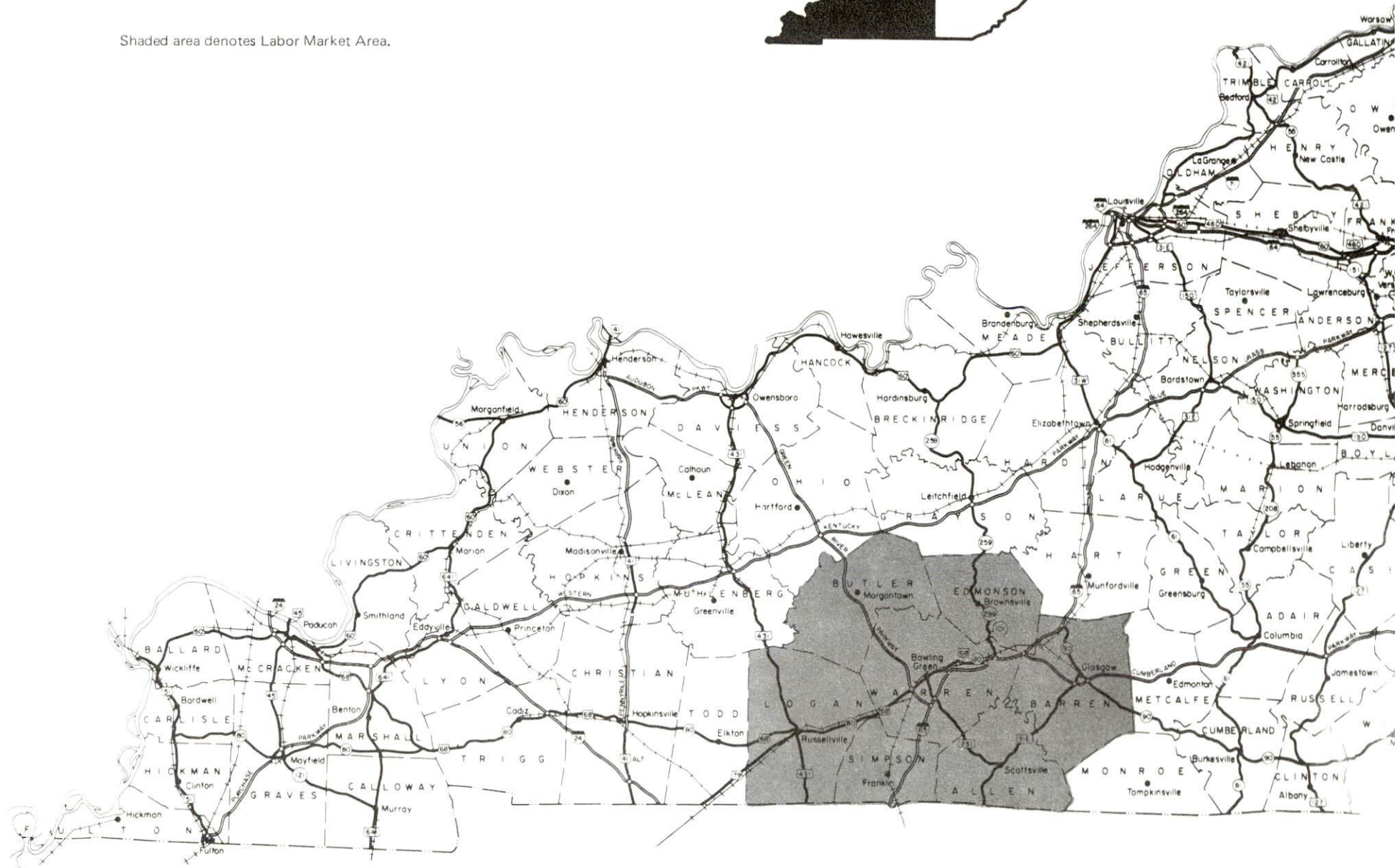


BOWLING GREEN LABOR MARKET AREA

With
MAJOR HIGHWAYS & RAILROAD SYSTEM



Shaded area denotes Labor Market Area.



BOWLING GREEN, KENTUCKY - A RESOURCE PROFILE

Bowling Green serves as the educational, commercial and industrial center of south central Kentucky. Situated on the banks of Barren River, Bowling Green is Kentucky's fifth largest city with a 1980 population of 40,450. Bowling Green is the home of Western Kentucky University and is the county seat of Warren County.

Bowling Green is 64 miles north of Nashville, Tennessee; 113 miles southwest of Louisville, Kentucky; and 278 miles southeast of St. Louis, Missouri.

Warren County covers a land area of 547 square miles in Kentucky's Pennyroyal Region. The Pennyroyal Region is noted for its gently rolling plain and agricultural production. Warren County had a 1980 population of 71,828.

The Economic Framework

The total number of Warren County residents employed in 1982 averaged 33,850 with 32,530 employed in nonagricultural jobs. Manufacturing employers reported 7,980 workers; wholesale and retail trade 7,050; service firms 4,980; and state and local government 3,945. Manufacturing employment is greatest in the nonelectrical machinery, transportation equipment and apparel and related products industries.

Per capita personal income in Warren County in 1981 was \$8,141. Between 1977 and 1981 per capita income increased by 48.5 percent.

Bowling Green is the hub of a labor market area which includes Warren and the six adjoining counties. The total number of residents employed in the labor market area in 1982 averaged 79,330 with 72,370 employed in nonagricultural jobs. Manufacturing employers reported 19,115 workers; wholesale and retail trade 12,900; service firms 8,110; and state and local government 7,880.

Resources for Growth

1. Labor Supply - There is a current estimated labor supply of 10,990 men and 10,770 women available for industrial jobs in the labor market area. In addition, from 1983 through 1987, 7,045 young men and 6,900 young women in the area will become 18 years of age and potentially available for work.

2. Transportation - The Seaboard System Railroad provides main line freight service and a variety of other rail services. Interstate 65, a major north-south route, serves Bowling Green with three interchanges. Bowling Green is the terminus of the Green River Parkway, a multilane toll road. The Cumberland Parkway, also a multilane toll road, is 20 miles east of Bowling Green via I-65. Thirty seven common carriers have authority to serve Bowling Green; eighteen of the trucking companies maintain a terminal in the city. The Bowling Green-Warren County Airport has two paved runways, 6,500 and 4,000 feet in length. The nearest scheduled commercial airline service is available at Nashville Metropolitan Airport, 70 miles south of Bowling Green.

3. Power and Fuel - Electric power is provided by Bowling Green Municipal Utilities and Warren Rural Electric Cooperative with Tennessee Valley Authority serving as the source of supply for both distributors. Natural gas service is provided by Western Kentucky Gas Company which is supplied by Texas Gas Resources Corporation. There are two bulk plant distributors of propane and seven distributors of distillate fuel oil in Bowling Green.

4. Education - The Bowling Green Independent School System and the Warren County School System are each accredited by the Southern Association of Colleges and Schools.

Western Kentucky University is located in Bowling Green. The university's undergraduate division offers a bachelor's degree in 57 academic majors plus 32 associate degree programs. The Graduate College offers six masters degree programs, the specialist degree and Rank I and II programs. The Fall 1982 headcount enrollment was 12,855.

The Bowling Green Junior College of Business offers ten business-oriented programs through seven academic departments. The Fall 1982 enrollment was 553.

In addition, eleven institutions of higher education are located within 65 miles of Bowling Green.

The Bowling Green State Vocational-Technical School offers training in 29 courses.

THE LABOR MARKET AREA

The Bowling Green Labor Market Area includes Warren County and the adjoining Kentucky counties of Allen, Barren, Butler, Edmonson, Logan and Simpson.

POPULATION			
<u>Area</u>	<u>1980</u>	<u>1970</u>	<u>Percent Nonwhite</u>
Bowling Green	40,450	36,705	12.5
Labor Market Area	179,802	152,480	N/A
Warren County	71,828	57,884	9.0
Allen County	14,128	12,598	1.3
Barren County	34,009	28,677	5.1
Butler County	11,064	9,723	0.6
Edmonson County	9,962	8,751	1.9
Logan County	24,138	21,793	9.3
Simpson County	14,673	13,054	12.4

Note: The 1980 counts of population by race are provisional.

Sources: U.S. Department of Commerce, Bureau of the Census, 1980 Census of Population and Housing, March 1981; 1980 Census of Population, Number of Inhabitants. Population Research Unit, Urban Studies Center, University of Louisville, Kentucky Demographics: The 1980 Census of Kentucky, Characteristics of Population, Households, Housing, January 1982.

LABOR FORCE CHARACTERISTICS OF RESIDENTS, 1982		
	<u>Warren County</u>	<u>Labor Market Area</u>
Civilian Labor Force	37,664	89,673
Employment	33,848	79,332
Agricultural	1,321	6,963
Nonagricultural	32,527	72,369
Unemployment	3,816	10,341
Rate of Unemployment (%)	10.1	11.5

Source: Kentucky Cabinet for Human Resources, Kentucky Labor Force Estimates, Annual Averages, 1982.

SELECTED COMPONENTS OF NONAGRICULTURAL EMPLOYMENT,
BY PLACE OF WORK, 1982

	<u>Warren County</u>	<u>Labor Market Area</u>
All Industries (total)	27,135	56,510
Manufacturing	7,979	19,115
Wholesale & Retail Trade	7,048	12,902
Services	4,984	8,111
State/Local Government	3,945	7,878
Contract Construction	1,080	2,013

Note: Excludes domestic workers, railway workers, certain nonprofit corporations, majority of federal government workers, and self-employed workers.

Source: Kentucky Cabinet for Human Resources, Average Monthly Workers Covered by Kentucky Unemployment Insurance Law, 1982.

MAJOR BOWLING GREEN MANUFACTURING FIRMS,
THEIR PRODUCTS AND EMPLOYMENT*

<u>Firm</u> (Establishment date)	<u>Product</u>	<u>Employment</u>			<u>Labor Unions</u>
		<u>Total</u>	<u>Male</u>	<u>Female</u>	
AMCA International, Consumer Products Division (1964)	Portable heaters	350	245	105	Sheet Metal Workers**
Bada Company, Inc. (1972)	Lead wheel weights	84	--	--	
Country Oven Bakery (1981)	Frozen dough, hearth bread	285	--	--	
Detrex Chemical Company (1955)	Degreasing equipment, commercial dry cleaning equipment, hospital instrument cleaning equipment	207	188	19	Sheet Metal Workers**
Dibrell Kentucky, Inc. (1962)	Tobacco redrying	550	350	200	
Eaton Corporation, Cutler Hammer Products (1964)	Electrical and electronic controls	600	400	200	Machinists**
Exceptional Industries (1968)	Industrial sub- assemblies, assemble handles for sport bags	70	30	40	
FMC Corporation (1974)	Truck mounted cable cranes	250	--	--	
General Motors Corporation, GMAD Bowling Green (1980)	Automobiles	1,375	--	--	Auto Workers**
Holley Carburetor, Colt Industries, Inc., Bowling Green Plant (1951)	Carburetors	1,712	752	960	

(contd.)

<u>Firm (Establishment date)</u>	<u>Product</u>	<u>Employment</u>			<u>Labor Unions</u>
		<u>Total</u>	<u>Male</u>	<u>Female</u>	
Lord Corporation (1974)	Shock and vibration control systems	104	85	19	
Medusa Aggregate Corporation (1974)	Bituminous concrete, crushed limestone aggregates	53	50	3	
Nehi Royal Crown Bottling Company, Inc. (1931)	Soft drinks, syrups, plastic jugs	106	95	11	
News Publishing Company, Park City Daily News (1854)	Newspaper	69	37	32	
Ohio Poly Corporation	Polyethylene tubes, sheeting film, polyethylene liners and bags	72	67	5	Sheet Metal Workers**
Page Wilson Corporation, Page Welding Division (1967)	Automatic welding wire	125	113	12	Auto Workers**
Plastipak Packaging (1979)	Plastic bottles	70	40	30	
Scott Tobacco Company (1902)	Twist, smoking tobacco	106	17	89	
Tri-State Bedding Company, Inc. (1957)	Mattresses, box springs	50	35	15	Teamsters**
Union Underwear Company, Inc. (1941)	Men's and boys' underwear	962	97	865	
Western Kraft Paper Group, Division of Willamette Industries, Inc. (1965)	Shipping containers	100	87	13	Teamsters**

* Firms with 50 employees or more.

** See Labor Organizations below.

Source: Kentucky Department of Economic Development, Division of Research and Planning.

LABOR ORGANIZATIONS IN MANUFACTURING FIRMS

<u>Union</u>	<u>Representing workers at:</u>
International Association of Machinists and Aerospace Workers, AFL-CIO	Eaton Corporation, Cutler Hammer Products
International Brotherhood of Teamsters, Chauffeurs, Warehousemen and Helpers of America	N. Ennis Ready Mix Concrete; Tri-State Bedding Company, Inc.; Western Kraft Paper Group, Division of Willamette Industries, Inc.
International Union of Operating Engineers, AFL-CIO International Union, United Automobile, Aerospace and Agricultural Implement Workers of America	Gary Brothers Crushed Stone Company General Motors Corporation, GMAD Bowling Green; Page Wilson Corporation, Page Welding Division
Sheet Metal Workers' International Association	AMAC International, Consumer Products Division; Detrex Chemical Company; Ohio Poly Corporation
United Brotherhood of Carpenters and Joiners of America, AFL-CIO	True Temper Corporation

INDUSTRIAL SERVICES

<u>Types of Services</u>	<u>Location</u>	<u>Mileage from Bowling Green</u>
Custom Plastics Producers	Bowling Green, Kentucky	-
Electric Motor Repair	Bowling Green, Kentucky	-
Grinding, Precision & Tool	Nashville, Tennessee	64
Heat Treating Facilities	Nashville, Tennessee	64
Industrial Equipment & Supplies	Bowling Green, Kentucky	-
Industrial Gases	Bowling Green, Kentucky	-
Industrial Waste Removal	Russellville, Kentucky	29
Machine Shops, Tool & Die	Bowling Green, Kentucky	-
Metal Finishers	Hartford, Kentucky	46
	Nashville, Tennessee	64
	Elizabethtown, Kentucky	70
Metal Service Centers	Bowling Green, Kentucky	-
Millwrights	Bowling Green, Kentucky	-
Industrial Lift Truck Sales, Services and Rentals	Bowling Green, Kentucky	-

Sources: Kentucky Department of Economic Development, Kentucky Directory of Selected Industrial Services, 1983. Bowling Green-Warren County Chamber of Commerce.

ESTIMATED MALE LABOR SUPPLY
BOWLING GREEN LABOR MARKET AREA

Area	Current			Not in Labor Force	Future
	Total	Unemployed	Under- employed		Becoming 18 years of age 1983 thru 1987
Labor Market					
Area*	10,994	5,653	4,105	1,236	7,045
Warren	4,345	1,976	2,369	0	2,528
Allen	730	527	203	0	592
Barren	1,813	1,207	606	0	1,395
Butler	1,093	450	236	407	483
Edmonson	1,087	402	127	558	417
Logan	1,085	724	361	0	966
Simpson	841	367	203	271	664

*Additional workers may be drawn from other nearby counties.

Note: Unemployed - persons unemployed and actively seeking work;
Underemployed - persons employed but working only 14 to 26 weeks per year;
Not in Labor Force - represents the number of persons who would enter the labor force if suitable employment were available (based on the assumption that persons in Kentucky would like to participate in the labor force in the same proportion that they do nationally).

Sources: Kentucky Cabinet for Human Resources, Kentucky Labor Supply Estimates by Area Development District and County, 1982. Kentucky Department of Economic Development, Future Labor Supply Becoming 18 Years of Age, 1983 thru 1987.

ESTIMATED FEMALE LABOR SUPPLY
BOWLING GREEN LABOR MARKET AREA

Area	Current			Not in Labor Force	Future
	Total	Unemployed	Under- employed		Becoming 18 years of age 1983 thru 1987
Labor Market					
Area*	10,774	4,688	4,297	1,789	6,901
Warren	4,281	1,840	2,441	0	2,446
Allen	746	482	264	0	589
Barren	1,428	856	572	0	1,383
Butler	1,229	146	223	860	457
Edmonson	1,165	325	159	681	425
Logan	975	515	374	86	960
Simpson	950	524	264	162	641

*Additional workers may be drawn from other nearby counties.

Note: Unemployed - persons unemployed and actively seeking work;
Underemployed - persons employed but working only 14 to 26 weeks per year;
Not in Labor Force - represents the number of persons who would enter the labor force if suitable employment were available (based on the assumption that persons in Kentucky would like to participate in the labor force in the same proportion that they do nationally).

Sources: Kentucky Cabinet for Human Resources, Kentucky Labor Supply Estimates by Area Development District and County, 1982. Kentucky Department of Economic Development, Future Labor Supply Becoming 18 Years of Age, 1983 thru 1987.

AVERAGE WEEKLY WAGES BY INDUSTRY,
BY PLACE OF WORK, 1982

	<u>Warren County</u>	<u>Allen County</u>	<u>Barren County</u>	<u>Butler County</u>
All Industries	\$275.27	\$229.52	\$251.43	\$207.99
Mining & Quarrying	281.66	132.68	301.27	366.29
Contract Construction	273.68	176.68	283.43	181.24
Manufacturing	354.06	257.09	308.75	169.54
Transportation, Communications & Public Utilities	340.57	318.42	297.87	315.01
Wholesale & Retail Trade	188.60	203.80	174.73	180.24
Finance, Insurance & Real Estate	269.24	246.94	260.54	220.56
Services	229.23	166.03	208.66	149.08
State/Local Government	317.59	213.18	241.41	218.18
Other	159.84	192.72	133.77	*

	<u>Edmonson County</u>	<u>Logan County</u>	<u>Simpson County</u>
All Industries	\$190.32	\$276.75	\$272.97
Mining & Quarrying	*	*	*
Contract Construction	141.15	*	349.63
Manufacturing	*	253.26	320.92
Transportation, Communications & Public Utilities	185.30	312.57	375.33
Wholesale & Retail Trade	161.76	173.46	179.83
Finance, Insurance & Real Estate	203.52	241.57	263.19
Services	193.86	181.54	184.04
State/Local Government	208.98	246.35	225.01
Other	*	211.06	*

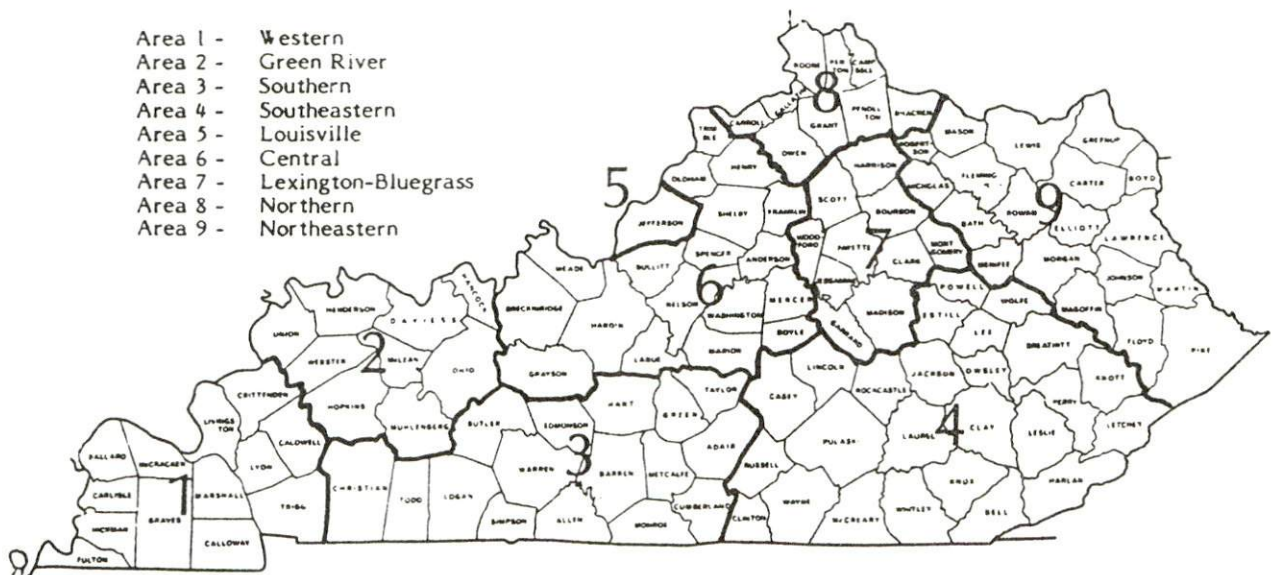
*Not disclosed.

Note: Excludes domestic workers, railway workers, certain nonprofit corporations, majority of federal government workers, and self-employed workers.

Source: Kentucky Cabinet for Human Resources, Average Weekly Wages of Workers Covered by Kentucky Unemployment Insurance Law, 1982.

Occupational wage rates for specific industries are usually not available to most government agencies, and wage data furnished to state employment agencies by individual industrial employers are protected from disclosure by federal law. The most reliable up-to-date wage information can be obtained by direct contact with local employers.

Associated Industries of Kentucky, a voluntary organization of Kentucky businesses, regularly collects occupational wage rates and fringe benefits data from participating member firms. Data are compiled for over 127 clearly defined office, production, and service occupations. Tabulations are published for nine geographical areas of Kentucky, as shown on the map below. It should be noted that the data may be weighted by the preponderance of firms in the larger cities and may be somewhat higher than the rates paid in the smaller communities. Data from these tabulations are available, upon request, from the Kentucky Department of Economic Development, Frankfort, Kentucky 40601.



Associated Industries of Kentucky Area Wage Surveys

Up to date occupational wage rates of the existing industries are maintained by South Kentucky Industrial Development Association, Post Office Box 726, Hopkinsville, Kentucky 42240.

PER CAPITA PERSONAL INCOME

<u>Area</u>	<u>1977</u>	<u>1981</u>	<u>Percent Change</u>
Warren County	\$ 5,483	\$ 8,141	48.5
Labor Market Area Range	\$3,345 - 5,856	\$5,140 - 9,213	N/A
Kentucky	5,797	8,416	45.2
U. S.	6,984	10,495	50.3

Source: U. S. Bureau of Economic Analysis, Kentucky Economic Information System, May 1983.

TRANSPORTATION

Rail

Line serving **Bowling Green** - Seaboard System Railroad

Services - Main line; one northbound and one southbound local freight makes daily stops; six through freights daily; switching services; team track space for 35 cars; siding space for 210 cars; piggyback facilities are located in Nashville, Tennessee, 64 miles south, and in Owensboro, Kentucky, 71 miles northwest

For details on routing, schedules, rates, and services, contact:

Manager of Industrial Development
Seaboard System Railroad
P.O. Box 32290
Louisville, Kentucky 40232
(502) 587-5228

Highways

Bowling Green is served by an excellent highway system. Interstate 65, a major north-south highway, serves Bowling Green with three interchanges. The Green River Parkway, a multilane toll road, directly serves the city with three interchanges and provides access to major east-west routes, including the Western Kentucky Parkway, just 37 miles northwest of Bowling Green. Access to the Cumberland Parkway, another multilane toll road, is only 20 miles east of Bowling Green via Interstate 65.

Other major highways serving Bowling Green are U.S. Highways 31-W, 68 and 231, all "AAA" rated (80,000-pound gross load limit) trucking highways.

A multilane north-south connector highway is currently under construction in Bowling Green. The new highway is designed to redirect traffic from U. S. 68 and KY 80. The project includes the reconstruction of Adams and Kentucky Streets and a new bridge over the Barren River. The section of the project which is within the city is scheduled for completion in late 1983. The remainder of the project, including the new bridge, will be completed in late 1984.

Truck Service

Company

A & H Truck Line, Inc. (T)*
American Freight System, Inc.
(T)**

Bestway Express, Inc.*

Bowling Green Express, Inc. (T)*
Bowling Green Freight, Inc. (T)*

Budig Western*

Buske Lines, Inc. (truck load
only)**

C & H Transportation Company,
Inc.*
C W Transport, Inc. (T)*

Commercial Lovelace Motor
Freight, Inc.*

Duff Truck Line, Inc. (T)*

Epes Transport System, Inc.*

F.M.S. Transportation
(truck load only)*

Franklin Express*
Marvin Hayes Lines, Inc. (T)*

Interstate System (T)**

Maislin Transport, Ltd. (truck
load only)*

Majors Transit, Inc.*

The Mason and Dixon Line, Inc.*

McLean Trucking Company (T)**

Richard L. Morgan Agency, Inc.*
Morgan Express, Inc.*
Mural Transport, Inc.*
The O.K. Trucking Company*

Home Office

Evansville, Indiana 47711

9393 West 110th Street
Overland Park, Kansas 66210
520 Lester Avenue
Nashville, Tennessee 37210
Bowling Green, Kentucky 42101
Route 14, Box 65B
Bowling Green, Kentucky 42101
1100 Gest Street
Cincinnati, Ohio 45203

P.O. Box 349
Litchfield, Illinois 62056

Dallas, Texas 75227
610 High Street
Wisconsin Rapids, Wisconsin 54494

3400 Refugee Road
Columbus, Ohio 43227
P.O. Box 359
Lima, Ohio 45802
P.O. Box 24038
Richmond, Virginia 23224

2564 Harley Drive
St. Louis, Missouri 63043
Franklin, Kentucky 42134
P.O. Box 468
Clarksville, Tennessee 37040
110 Ionia N.W.
Grand Rapids, Michigan 49503

7401 Newman Boulevard
LaSalle (Montreal) Quebec,
CN H8N 1X4
P.O. Box 9
Caneyville, Kentucky 42721
P.O. Box 969
Kingsport, Tennessee 37662
P.O. Box 213
Winston-Salem, North Carolina 27102
Kansas City, Kansas 66115
Dallas, Texas 75247
North Brunswick, New Jersey 08902
3000 East Crescentville Road
Cincinnati, Ohio 45241

(cont'd)

CompanyHome Office

Overnite Transportation Company
(T)**

P.O. Box 1216
Richmond, Virginia 23209
25 North Via Monte
Walnut Creek, California 94598

P-I-E (T)*

P.O. Box 179
Portland, Tennessee 37148

Portland Express, Inc. (T)*

Renner's Express, Inc.*

P.O. Box 882
Indianapolis, Indiana 46206
Rigaad, Quebec, CN JOP IPO
1077 Gorge Boulevard
Akron, Ohio 44310

Rigaad Transport, Inc. (T)*

Roadway Express, Inc. (T)**

Robbins Truck Line, Inc. (T)*

P.O. Box 429
Hardinsburg, Kentucky 40143
5259 Aviation Drive, N.W.
Roanoke, Virginia 24012

Russell Transfer, Inc.*

Smith's Transfer Corporation
(T)**

P.O. Box 1000
Staunton, Virginia 24401
Atlanta, Georgia 30301
600 Johnson Road
Charlotte, North Carolina 28206

TSC Express*

Thurston Motor Lines, Inc.*

United Trucking Service, Inc. (T)*

8505 West Warren
Dearborn, Michigan 48126

Yellow Freight System, Inc. (T)*

P.O. Box 7270
Overland Park, Kansas 66207

(T) Local terminal.

* Interstate and intrastate service.

** Interstate service only.

Source: American Motor Carrier Directory, Spring 1983.

Other Freight ServicesNearest Office or Shipping Center

Burlington Northern
Emery
Federal Express
KATO Express, Inc. (air
cargo service)

Bowling Green, Kentucky
Nashville, Tennessee, 64 miles south
Nashville, Tennessee, 64 miles south

Purolator Courier
United Parcel Service

Elizabethtown, Kentucky, 70 miles
northeast
Nashville, Tennessee, 64 miles south
Bowling Green, Kentucky

HIGHWAY MILES AND TRUCK TRANSIT TIME IN DAYS FROM
BOWLING GREEN, KENTUCKY, TO SELECTED MARKET CENTERS

City	Highway Miles	Delivery		City	Highway Miles	Delivery	
		Time TL				Time TL	
Atlanta, Ga.	306	1		Los Angeles, Ca.	2,089	4	
Baltimore, Md.	692	2		Louisville, Ky.	113	1	
Birmingham, Ala.	260	1		Nashville, Tenn.	64	1	
Chicago, Ill.	405	1		New Orleans, La.	581	2	
Cincinnati, Ohio	214	1		New York, N. Y.	854	2	
Cleveland, Ohio	458	1		Pittsburgh, Pa.	494	2	
Detroit, Mich.	473	1		St. Louis, Mo.	278	1	
Knoxville, Tenn.	241	1					

Note: Mileage computations are via the best interstate or primary highways, not necessarily the most direct route of travel.

Sources: Rand McNally Road Atlas, 1979. Official Kentucky Mileage Map, 1980.
Delivery time - Robbins Truck Line, Inc., P.O. Box 429, Hardinsburg, Kentucky 40143.

Air

	<u>Local</u>
Location:	Bowling Green-Warren County Airport*
Runways:	2 miles southeast of Bowling Green
Length:	2 paved
Traffic	6,500 feet; 4,000 feet
Control:	Wind tee, airport advisory service
Lighting:	Runways, obstructions, taxiways, beacon, wind tee, strobes approach to 3, VASI
Services:	100 octane and jet-A fuel, charter, plane rental, storage, major and minor A&P repairs, oxygen, FAA flight service station, taxi and car rental
Air Freight Service:	Chartered air freight service must be arranged

(cont'd)

* Bowling Green and Warren County have jointly purchased a \$200,000 fire truck to be based at the airport. The new truck has a water capacity of 2,000 gallons and has a pumping capacity of 1,250 gpm plus a capacity of 75 gallons of foam.

Nearest Scheduled Commercial Airline Service

Location: Nashville Metropolitan Airport
6 miles southeast of Nashville, Tennessee;
70 miles south of Bowling Green

Runways: 3 paved
Length: 8,000 feet; 7,700 feet; 4,320 feet

Traffic Control: Tower

Lighting: Beacon, runway

Services: American, Delta, Eastern, Ozark, Piedmont, Republic,
TWA, USAir, Allegheny Commuter, Comair, Scheduled
Skyways, Sunbird, Tennessee Airways; fuel - 100LL,
jet-A; tie-downs, hangars; major A & P repairs,
major Avionics repairs; APU, charter, flight instruction,
oxygen, plane rental, survival equipment, U. S. Customs;
taxi, limousine, car rental, courtesy car, public transit;
weather information; restaurant, snack bar

Air Freight Service: Air freight terminal

Bus - Greyhound Bus Lines; Tennessee Trailblazers

Taxi - One company, 24-hour radio-dispatched service

Rental Services - Automobile, truck, and trailer rentals are available locally.

Water

Bowling Green is located approximately 55 miles southeast of the Green River near Paradise, Kentucky. A nine-foot navigation channel is maintained on the Green River from Paradise to the Ohio River.

POWER AND FUEL

Electricity

Company serving **Bowling Green** and a portion of **Warren County** - Bowling Green Municipal Utilities*

Source of power - Tennessee Valley Authority

Total generating capacity - 31,109,160 KW

For industrial rates contact:

Bowling Green Municipal Utilities
801 Center Street
Bowling Green, Kentucky 42101
(502) 782-1200

Company serving major portion of **Warren County** - Warren Rural Electric Cooperative Corporation

Source of power - Tennessee Valley Authority

Total generating capacity - 31,109,160 KW

For industrial rates contact:

Warren RECC
951 Fairview Avenue
P.O. Box 1118
Bowling Green, Kentucky 42101
(502) 842-6541

and/or

South Kentucky Industrial
Development Association, Inc.
P.O. Box 726
Hopkinsville, Kentucky 42240
(502) 885-5392

* Bowling Green Municipal Utilities is planning a \$1.4 million project to expand its service area during late 1983 and early 1984. The project is planned for the Scottsville Road area and will include the addition of approximately 300 new households and/or businesses.

Natural Gas

Company serving **Bowling Green** - Western Kentucky Gas Company
Source of supply - Texas Gas Resources Corporation
Size of transmission mains - 10-inch (supplier); 6 and 8-inch (distributor)
Distribution mains - 1 through 10 inches
Distribution pressure - 4 ounces to 55 psi
Btu content - 1,003 per cubic foot
Specific gravity - 0.583
For rates and supplies contact:

Western Kentucky Gas Company
311 West 7th Street
P.O. Box 866
Owensboro, Kentucky 42301
(502) 685-8000

Other Fuels

Propane

Millers Bottled Gas, Inc. (bulk plant)
110 Campbell Lane
Bowling Green, Kentucky 42101

Southern States Bowling Green
Petroleum Cooperative (bulk plant)
Emmett Drive
Bowling Green, Kentucky 42101

Fuel oils

Distillate fuel oil -

Browning Oil Company
Louisville Road
Bowling Green, Kentucky 42101

Hildreth Oil Company (Chevron)
316 Portage Railroad
Bowling Green, Kentucky 42101

Hopper Oil Company (Sunoco)
Nugent Road
Bowling Green, Kentucky 42101

McKinney's (Texaco)
110 Plain Avenue
Bowling Green, Kentucky 42101

Ramsey Oil Company (Phillips 66)
633 U.S. 31-W Bypass
Bowling Green, Kentucky 42101

Roe Oil Company (Gulf)
800 Power Street
Bowling Green, Kentucky 42101

Tom's Oil Company
3170 Fitzgerald Industrial Drive
Bowling Green, Kentucky 42101

Residual fuel oil - Arrangements must be made with the refinery.

Low sulphur content coal - Available in Kentucky.

WATER AND SEWERAGE

Public Water Supply

Company serving **Bowling Green** - Bowling Green Municipal Utilities*
801 Center Street
P.O. Box 478
Bowling Green, Kentucky 42101
(502) 782-1220

Source - Barren River

Treatment plant capacity - 15,000,000 gallons per day

Average daily consumption - 10,000,000 gallons

Peak daily consumption - 11,800,000 gallons

Type treatment - Flocculation, sedimentation, filtration, fluoridation, oxidation, coagulation, chlorination

Storage capacity - 11,200,000 gallons

Size lines - 4 through 30 inches

Average pressure - 60 psi

Average temperature - 63.29 degrees F.

MONTHLY WATER RATES

Inside City

First	300 cubic feet	\$3.51 (minimum bill)
Next	1,700 cubic feet	1.19 per 100 cubic feet
Next	3,000 cubic feet	1.11 per 100 cubic feet
Next	20,000 cubic feet	1.04 per 100 cubic feet
Next	25,000 cubic feet	.65 per 100 cubic feet
Over	50,000 cubic feet	.55 per 100 cubic feet

Outside City

First	300 cubic feet	\$4.91 (minimum bill)
Next	1,700 cubic feet	1.67 per 100 cubic feet
Next	3,000 cubic feet	1.55 per 100 cubic feet
Next	20,000 cubic feet	1.46 per 100 cubic feet
Next	25,000 cubic feet	.91 per 100 cubic feet
Over	50,000 cubic feet	.77 per 100 cubic feet

(cont'd)

* Bowling Green Municipal Utilities has adopted a new five-year capital improvement plan for the water treatment system. Currently the effective capacity of the treatment system is 15,000,000 gallons per day and the filtration capacity of the treatment plant is 22,000,000 gallons per day. The new plan includes increasing the effective capacity and plant capacity to 30,000,000 gallons per day. Full design of the project will begin in 1985.

Tap-on charge:

5/8-inch meter	\$ 200
1-inch meter	325
2-inch meter	1,200*
4-inch meter	2,750*
6-inch meter	4,200*

A water and sewer connection privilege fee for designated water and sewer lines has been established by Bowling Green Municipal Utilities. The privilege fees are payments as contribution-in-aid-of construction and are in addition to standard tap-on charges.

A water connection privilege fee is in effect at Cavemill Road (Water Line W-74-255).

<u>Connection Size</u>	<u>Amount of Fee</u>
5/8-inch and 1-inch	\$ 572.50
All other connections	572.50 per inch of connection size

Name of water district - Warren County Water District**
P.O. Box 1118
Bowling Green, Kentucky 42101
(502) 842-6541

Area served - Warren County

Date when water district began operating - 1964

Source of raw water - Barren River

Warren County Water District's treatment plant capacity - 432,000 gallons per day

Type of treatment - High rate filtration

Purchase treated water from - Bowling Green Municipal Utilities

Maximum amount of water which can be purchased - 6,830,000 gallons per day

Average amount of water used in a 24-hour period - 2,916,000 gallons

Peak amount of water used in a 24-hour period - 4,374,000 gallons

Storage capacity - 2,565,000 gallons

Average pressure - 70 psi

Average temperature - 62.6 degrees F.

Size lines - 2 through 20 inches

Monthly water rates - (see next page)

(cont'd)

* Based on deposit plus estimated cost which is to be prepaid. Final charge is based on actual cost of installation. Overpayment is refunded, underpayment is invoiced to the applicant.

** The Warren County Water District recently completed a \$947,000 project which included construction of a 200,000-gallon storage tank, a 100,000-gallon storage tank and a new pump station. Three existing pump stations were upgraded. The water district also tentatively plans to extend water lines to approximately 725 new customers.

MONTHLY WATER RATES

Minimum Bills

5/8-inch meter	First	2,000 gallons	\$ 6.46
3/4-inch meter	First	3,000 gallons	8.49
1-inch meter	First	5,000 gallons	12.55
2-inch meter	First	16,000 gallons	26.28
3-inch meter	First	30,000 gallons	42.10
4-inch meter	First	50,000 gallons	61.10
6-inch meter	First	100,000 gallons	105.80
8-inch meter	First	160,000 gallons	152.90
10-inch meter	First	550,000 gallons	418.10

Rates Above Minimum Bills

Next	3,000 gallons	\$2.03 per M gallons
Next	3,000 gallons	1.43 per M gallons
Next	4,000 gallons	1.23 per M gallons
Next	20,000 gallons	1.13 per M gallons
Next	50,000 gallons	.93 per M gallons
Next	60,000 gallons	.83 per M gallons
Next	3,000,000 gallons	.68 per M gallons
Additional gallons		.58 per M gallons

Contribution in Aid of Construction

5/8-inch meter (residential)	\$ 250
3/4-inch meter	300
1-inch meter	350
2-inch meter (plus actual cost over 5 feet)	675
3-inch meter (plus actual cost over 5 feet)	950
4-inch meter (plus actual cost over 5 feet)	1,350
6-inch meter or larger	Actual Cost

Raw Water

Surface water sources - Barren River and Green River

Average discharge - Barren River at Bowling Green, Kentucky - 2,588 cfs (44 years, USGS, unadjusted); Green River at Lock 4 at Woodbury, Kentucky - 8,374 cfs (45 years, USGS, unadjusted)

Expected ground water yield - 50 to 200 gpm along Barren River, in extreme northern and south central Warren County; 5 to 50 gpm in west central and east central portion of the county; 5 gpm or less in remainder of county

Sewerage

Company serving **Bowling Green** - Bowling Green Municipal Utilities*
801 Center Street
P.O. Box 478
Bowling Green, Kentucky 42101
(502) 782-1221

Design capacity - 8,400,000 gallons per day

Average daily flow - 5,800,000 gallons

Type of treatment - Secondary

Treatment process - Aeration, two-stage bio-filtration (carbonaceous and nitrogenous), clarification, disinfection, aerobic digestion and subsurface land application

Treated effluent discharged into - Barren River

Size of sanitary mains - 8 through 42 inches

Size of storm mains - 15 to 107 inches (24-inch average within city)

Monthly rates - Based on water usage:

Inside City

First	300 cubic feet	\$3.45 (minimum bill)
Next	1,700 cubic feet	1.18 per 100 cubic feet
Next	3,000 cubic feet	1.08 per 100 cubic feet
Next	20,000 cubic feet	1.03 per 100 cubic feet
Next	25,000 cubic feet	.47 per 100 cubic feet
Over	50,000 cubic feet	.44 per 100 cubic feet

Outside City

First	300 cubic feet	\$4.83 (minimum bill)
Next	1,700 cubic feet	1.65 per 100 cubic feet
Next	3,000 cubic feet	1.51 per 100 cubic feet
Next	20,000 cubic feet	1.44 per 100 cubic feet
Next	25,000 cubic feet	.66 per 100 cubic feet
Over	50,000 cubic feet	.62 per 100 cubic feet

Tap-on charge: Prepaid estimated cost at time of application. Final charge based on actual cost of installation. Overpayment is refunded, underpayment is invoiced to applicant.

(cont'd)

* Bowling Green Municipal Utilities completed three new wastewater lift stations and an interceptor in 1982 at a total cost of \$2.3 million. In addition, a new wastewater treatment process was added in 1982. The process involves the land application of pretreated wastewater which is injected 12 to 14 inches underground.

There is a surcharge for high biochemical oxygen demand (BOD), high Suspended Solids, high Total Solids and high chemical oxygen demand (COD) levels in wastewater discharged into the public sanitary sewer by a non-residential user. The surcharges are as follows:

- (1) \$0.30 per 750 gallons per 100 mg/l of BOD over 300 mg/l
- (2) \$0.30 per 750 gallons per 100 mg/l of COD over 450 mg/l
- (3) \$0.30 per 750 gallons per 100 mg/l of Suspended Solids over 300 mg/l
- (4) \$0.30 per 750 gallons per 100 mg/l of Total Solids over 900 mg/l

A water and sewer connection privilege fee for designated water and sewer lines has been established by Bowling Green Municipal Utilities. The privilege fees are payments as contribution-in-aid-of construction and are in addition to standard tap-on charges. Two sewer lines have been designated:

Scottsville Road - Interstate 65 (Sanitary Sewer Line S-67-97)

<u>Type Development</u>	<u>Privilege Fee Amount</u>
Single family residence	\$ 75
Most types of commercial establishments including manufacturing firms	\$ 0.08 per square foot of enclosed building area*

Boatlanding Road (Sanitary Sewer Line S-74-253)

<u>Type Development</u>	<u>Privilege Fee Amount</u>
Single family residence	\$ 150
Duplex	\$ 300 (\$150 each unit)
Commercial establishments including manufacturing	\$2,500

* Not to include manufacturing warehouse area. Shall include commercial product storage areas.

CLIMATE

Warren County

Temperature

Normal (30-year record)	59.40 degrees
Average annual 1982	59.30 degrees
Record highest, July 1952 (43-year record)	107.00 degrees
Record lowest, January 1963 (43-year record)	-15.00 degrees
Normal heating degree days (30-year record) (Heating degree day totals are the sums of negative departures of average daily temperatures from 65 degrees F.)	3,696

Precipitation

Normal (30-year record)	46.00 inches
Mean annual snowfall (42-year record)	11.60 inches
Total precipitation 1982	49.43 inches
Mean number days precipitation (.01 inch or more) (41-year record)	119
Mean number days thunderstorms (41-year record)	54

Prevailing Winds (22-year record)

South

Relative Humidity (17-year record)

Midnight	79 percent
6 a.m.	84 percent
Noon	58 percent
6 p.m.	61 percent

Source: U.S. Department of Commerce, Environmental Science Services Administration, Climatological Data, 1982. Station of record: Nashville, Tennessee.

LOCAL GOVERNMENT

City

Structure - Mayor - 4-year term; 4 commissioners - 2-year terms; city manager
 Budget 1983-84 - General Fund \$10,200,000
 Water and Sewer Fund 2,971,030 plus capital improvement funds
 Electric Fund 4,203,650 plus cost of purchasing power from TVA

Fees and licenses - Occupational license fees of 1½ percent of gross salaries, wages and compensations earned by individuals, and 1½ percent of the net profits of businesses with an annual minimum of \$30; specific regulated businesses are required to pay in advance a minimum fee ranging from \$5 to \$1,000 per year, depending on the type of business

County

Structure - County Judge/Executive - 4-year term; 8 magistrates - 4-year terms
 Budget 1982-83 - General Fund \$2,560,870; Road Fund \$1,134,900

Assessed Value of Property, 1983*

<u>Classes of Property</u>	Bowling Green	Warren County
Real Estate	\$560,102,185	\$997,986,425
Tangibles	180,248,770	250,267,070

* Excludes Homestead Exemptions.

Property Taxes

All property in Kentucky is assessed at 100 percent of fair cash value.

Land and buildings are taxed by the state and may be taxed by local jurisdictions. The state rate is \$0.221 per \$100 of assessed valuation.

Manufacturing machinery, raw materials inventories, pollution control equipment, and goods in the process of manufacture are not subject to local taxation. The state rate is \$0.15 per \$100.

Other tangible personal property owned by manufacturers (automobiles, trucks, finished goods, office furniture, office equipment) is taxed by the state at \$0.45 per \$100 and may be taxed by local jurisdictions.

Intangible personal property located in Kentucky (money in hand, shares of stock, notes, bonds, accounts receivable, and other credits) is taxed by the state at \$0.25 per \$100, and is not subject to local taxation.

Property stored in public warehouses in a transit status is not subject to local taxation. The state rate is only \$0.015 per \$100.

Private leaseholds in industrial facilities owned by cities or counties and financed by industrial revenue bonds are subject to a state tax of \$0.015 per \$100 of value (essentially the lessee's equity, adjusted for appreciation or depreciation). Local taxation is not permitted.

Combined State and Local Rates Per \$100 Valuation, 1983*
(100% assessment)

Kentucky school districts levy property taxes on property located within individual school district boundaries. Two types of school districts are operated in Kentucky: 1) independent school districts which usually operate within a single city and often do not cover the entire city; and 2) common school districts which operate in portions of counties not covered by independent districts and cover the entire county when there is no independent district. School district boundaries are mutually exclusive and do not cross.

	Site Inside City of Bowling Green and within the Bowling Green <u>School District</u>	Site Inside City of Bowling Green and within the Warren County <u>School District</u>	Site Inside Unincorporated Warren County
1. Land and buildings	\$1.085	\$0.724	\$0.482
2. Mfg. machinery, raw materials, goods in process, pollution control equipment	0.150	0.150	0.150
3. Finished goods, office equipment, vehicles, other tangibles	1.474	1.022	0.762
4. Intangibles (accounts rec., notes, bonds, etc.)	0.250	0.250	0.250
5. Property stored in public warehouses in a transit status	0.015	0.015	0.015
6. Leaseholds in industrial revenue bond financed plants	0.015	0.015	0.015

Utilities Gross Receipts Tax for Schools

A 3 percent tax is levied on utilities receipts for schools in Bowling Green and Warren County. Tax is paid by all consumers of utilities as an add-on to the utilities bills. Exempted are receipts from utilities services that are resold and the receipts from the sale of energy or energy producing fuels that exceed 3 percent of the cost of production in manufacturing, processing, mining or refining.

* Kentucky Department of Economic Development

Planning and Zoning

Joint agency - City-County Planning Commission of Warren County*
Zoning enforced - All areas
Subdivision regulations enforced - All areas
Local codes enforced - Building and housing in all areas
Mandatory state codes enforced - Kentucky Plumbing Code, National Electric Code, Kentucky Boiler Regulations and Standards, Kentucky Building Code (modeled after BOCA code)

Safety

Police	Bowling Green	Warren County
Total staff	75 officers	13 full-time 3 part-time
Radio-patrol cars	29	10

Fire

Insurance Services Office, Public Protection Classification	4	9/10**
Full-time staff	85	--
Volunteers	--	175
Number of stations	4	9

Rescue Service

Bowling Green-Warren County Rescue Squad:

Number of volunteers - 40

Equipment - 12 vehicles including six four-wheel drive trucks, two pumpers, one communications van, one bus, one back-up ambulance, one jeep; one pontoon; six boats and motors; generators; specialized small equipment; two-way radios in all vehicles

Personnel training - First aid, CPR, nine of the volunteers are emergency medical technicians, and four of the volunteers are paramedics

* The participating cities are Bowling Green, Woodburn, Plum Springs and Smiths Grove.

** Warren County operates nine fire protection area stations throughout the county. The county is rated Class 9 within five road miles of each station and Class 10 beyond five miles.

Refuse Collection and Disposal

Residential, commercial and industrial refuse collection and disposal is provided by private companies in Bowling Green and Warren County. Within Bowling Green, a private collection company is franchised by the city. Types of service and rates charged by this company in Bowling Green are as follows:

<u>Type of Service</u>	<u>Collection Frequency</u>	<u>Rates Charged*</u>
Residential	Weekly	\$ 5.07 per month inside city 6.07 per month outside city
20 to 30 gallon containers	As needd	\$ 13.06 per pick-up for 1 to 3 containers \$ 17.41 per pick-up for 4 to 6 containers
Dumpster	As needed	\$ 2.54 per cubic yard per pick-up

* All rates are scheduled to be increased by 9 percent effective February 1, 1984.

EDUCATION

Public Schools

	Bowling Green Independent*	Warren County
Total Enrollment (1982-83)	3,532	8,955
Elementary	1,901	6,390 (K-8)
Junior High	613	--
High School	1,018	2,565
Student-Teacher Ratio	19-1	23-1
Elementary	20-1	24-1
Junior High	18-1	--
High School	17-1	20-1
Accreditation	Southern Association of Colleges and Schools	Southern Association of Colleges and Schools
Percent High School Graduates to College (1982)	64.4	46.3
Expenditures Per Pupil (1982-83)	\$ 1,911.84	\$ 1,519.80
Bonded Indebtedness (June 30, 1983)	\$2,434,000	\$10,690,000

Nonpublic Schools

	<u>Potter Christian School</u>	<u>Anchored Christ School</u>	<u>Seventh Day Adventist</u>	<u>St. Joseph</u>
Total Enrollment	225	235	18	215
Elementary	150 (K-8)	200 (K-8)	18 (1-8)	215 (1-8)
High School	75	35	--	--
Student Teacher Ratio	17-1	18-1	9-1	22-1
Elementary	20-1	22-1	9-1	22-1
High School	13-1	8-1	--	--

* The Bowling Green Independent School System established three computer labs during the 1982-83 school year. Renovation projects are currently under way at three schools within the school system at a cost of \$350,000.

Area Colleges and Universities

<u>Name</u>	<u>Location (Miles distant)</u>	<u>Enrollment (Fall, 1982)</u>	<u>Highest Degree Conferred</u>
Western Kentucky University	Bowling Green	12,855	Masters, Specialist*
Austin Peay State University	Clarksville, Tennessee (63)	5,060	Academic & Professional
Belmont College	Nashville, Tennessee (64)	1,927	Baccalaureate
David Lipscomb College	Nashville, Tennessee (64)	2,262	Baccalaureate
Fisk University	Nashville, Tennessee (64)	750	Masters
Free Will Baptist Bible College	Nashville, Tennessee (64)	510	Masters in Pastoral Studies
Meharry Medical College	Nashville, Tennessee (64)	985	Academic & Professional
Scarritt College (Graduate level only)	Nashville, Tennessee (64)	90	Masters
Trevecca Nazarene College	Nashville, Tennessee (64)	972	Baccalaureate
Tennessee State University	Nashville, Tennessee (64)	8,011	Academic & Professional
Vanderbilt University	Nashville, Tennessee (64)	8,782	Academic & Professional
Hopkinsville Community College	Hopkinsville (65)	1,164	Associate

* Joint doctoral degree programs are offered in cooperation with the University of Kentucky, Lexington, and cooperative doctoral degree programs are offered with the University of Louisville. The degrees are issued by the University of Kentucky or the University of Louisville.

Western Kentucky University

Located on a hill overlooking the city of Bowling Green, the Western Kentucky University campus is acclaimed as one of the most beautiful in the nation. There are 66 major buildings on the approximately 200-acre main campus, with another 800 acres on the University Farm.

Western's undergraduate division provides four-year programs leading to the Bachelor of Arts, the Bachelor of Fine Arts, the Bachelor of Science, the Bachelor of Science in Nursing, and the Bachelor of Music degrees. Fifty-seven academic majors and areas, sixty-five academic minors, and twelve pre-professional programs are available. Thirty-two associate degree programs are offered leading to the Associate of Arts degree, Associate of Science degree and Associate of Liberal Studies degree.

The Graduate College offers the Master of Arts, Master of Arts in Education, Master of Business Administration, Master of Science, Master of Music, and Master of Public Service. Western also offers the Specialist Degree in Rank I and Rank II programs. Joint doctoral degree programs are offered in cooperation with the University of Kentucky and cooperative doctoral degree programs are offered with the University of Louisville.

Bowling Green Junior College of Business

Bowling Green Junior College of Business is also located in Bowling Green. Ten programs are offered through seven academic departments including Secretarial Science, Accounting and Finance, Medical Administration Assistants, Business Administration, Fashion Merchandising and Computer Programming. The Fall 1982 enrollment was 553.

Vocational Schools

Both the state vocational-technical schools and the area vocational education centers are operated by the Kentucky Department of Education. The state vocational-technical schools enroll persons full time who are at least 16 years of age and not in school. These students attend classes for six hours each day. The area vocational education centers are designed to accommodate high school students who are at least 15 years of age. These students attend vocational school for three hours each day. In Bowling Green, the high school program and the adult program are both taught at the state vocational-technical school. The state vocational-technical schools and the area education centers offer evening courses to enable working adults to upgrade current job skills.

(cont'd)

Nearest State School

Location	Bowling Green State Vocational-Technical School
Curriculum	Bowling Green Business and Office Accounting/Jr. Management Clerical Secretarial Consumer and Home Economics Commercial Foods Health and Personal Services Occupations Dental Assistant Health Careers Nurse Assistant Practical Nurse* Radiological Technology Respiratory Therapy Surgical Technician Industrial Education Auto Body Repair Auto Mechanics Carpentry Civil Highway Technology Diesel Mechanics Electricity Electronics Servicing Occupations Electronics Technology Graphic Arts (Printing) Industrial Maintenance Machine Shop Masonry Plumbing Refrigeration and Air Conditioning Small Engine Repair Technical Drafting Tool and Die Making Welding

Arrangements can be made to provide training in the specific production skills required by an industrial plant. Instruction may be conducted either in the vocational school or in the industrial plant, depending upon the desired arrangement and the availability of special equipment.

* This course is taught at the T. J. Samson Community Hospital in Glasgow.

HEALTH

Local Medical Personnel

Physicians - 92
Dentists - 49

Hospitals

<u>General Hospital</u>	<u>Location</u>	<u>Beds</u>
Greenview Hospital	Bowling Green	211
The Medical Center at Bowling Green	Bowling Green	325 including 15 psychiatric

Greenview Hospital*

General hospital facilities - Six surgery suites, includes general surgery, thoracic, vascular, orthopedic, neurosurgical, gynecological, urological, ophthalmic, cardiology and ENT; 16-bed coronary/intensive/progressive care unit, physical therapy department, pathological laboratory, electroencephalography, nuclear medicine, ultra sound, CT scan, X-ray, inhalation therapy, outpatient and diagnostic departments, stress testing, pharmacy, cafeteria and coffee shop

Medical staff - 120 physicians, 115 full-time and 53 part-time registered nurses, 13 full-time and 5 part-time licensed practical nurses, and 344 other employees

(cont'd)

* Greenview Hospital completed approximately \$7 million in expansion and renovation projects during 1982 and 1983. In 1982 a fifth floor was added to the hospital and the ancillary services area was renovated. In 1983 a 1,800-square-foot expansion was completed to house the new CT scan unit.

The Medical Center at Bowling Green*

General hospital facilities - 8 operating rooms; 12 emergency rooms, including 4 trauma rooms; 12-bed coronary care unit; 12-bed intensive care unit; physical therapy department; occupational therapy department; respiratory therapy department; laboratory department, including pathology and electrocardiography; neuro-diagnostic laboratory including electromyography and electroencephalography; radiology department including nuclear medicine, xeroradiography, CAT scanner and ultrasound; ambulance service; social service; home health agency; pharmacy; outpatient service, including 2 operating rooms, diagnostic exam area and private referral facilities; obstetrics department, including 3 delivery rooms, 6 labor rooms, and a neonatal intensive care unit; and The Cancer Treatment Center for Southern Kentucky, (a division of The Medical Center at Bowling Green), including both photon and high energy X-ray

Medical staff - 105 physicians, 165 registered nurses, 55 licensed practical nurses, and 692 other employees

Other Medical Facilities

Barren River Mental Health - Mental Retardation Board, Inc.
Barren River Comprehensive Care Center
Comprehensive Family Services
Lion's Handicapped School

Ambulance Service

Name - The Medical Center at Bowling Green Ambulance Service
Staff - 14 paramedics and 4 emergency medical technicians
Service - 24-hour, county-wide
Equipment - Six advance life support ambulances

Public Health

Facility - Bowling Green-Warren County Health Center**
Staff - Full time: Center coordinator, nursing director, 23 registered nurses, 3 licensed practical nurses, 4 environmental health technicians, venereal disease inspector, X-ray technician, laboratory technician, 26 clerks, clerk registrar, 5 social workers, 3 health educators, 3 nutritionists, 4 community health workers, 2 pediatric nurse practitioners, 3 certified nurse midwives;
Part-time: 6 physicians, dentist, dental hygienist, 4 pediatric clinicians, 2 registered nurses

* The Medical Center at Bowling Green recently completed an approximately \$5 million expansion. The project includes a cancer treatment center, an outpatient center and an expanded emergency room.

** The Bowling Green-Warren County Health Center is the headquarters of the Barren River District Health Department.

OTHER LOCAL FACILITIES

Communications

Telephone - Services -	South Central Bell Telephone Company Full line of telephone communication services
Telegraph - Services -	Western Union Counter service, telephone and taxi delivery services, toll-free number for mailgrams and international and telegram messages (1-800-325-5100)
Postal - Class - Mail received - Mail dispatched -	U.S. Post Office First Seven times daily Seven times daily
Newspapers - Daily except Saturday and circulation -	Park City Daily News - Daily, 20,082; Sunday, 23,126
Other papers received from -	Louisville, Kentucky; Nashville, Tennessee
Radio - Major stations received from -	WBGN-AM; WDNS-FM; WKCT-AM; WLBJ-AM & FM; WKYU-FM Louisville, Kentucky; Nashville, Tennessee
Television - Cable service Reception from -	WBKO Channel 13, ABC affiliate Bowling Green and Louisville, Kentucky; Nashville Tennessee; New York, New York; Chicago, Illinois; and Atlanta, Georgia
Kentucky Educational Television -	WKGB-KET Channel 53, Bowling Green Transmitter

Library Services

Public library - Bowling Green Public Library

Size collection - 75,000 items

Circulation, 1981-82 - 245,000 items

Services - Two bookmobiles, fiction and non-fiction books, map file, telephone directories, large print books, periodicals and newspapers, records, framed prints, films, stock market guides, audiovisual equipment loan, business guides, tax information, reference help, Interlibrary Loan, information file, occupational file, automobile fix-up manuals, picture file, book-by-mail for shut-ins, talking book service for the blind and physically handicapped, informational service for 23 counties, DAR genealogical and historical library special collections, public copy machine, public typewriter, Notary Public Services, children's story hour, art gallery with monthly art exhibits, lecture series, music programs, film shows, conference and public meeting facilities, microfilm reader/printer, Western Kentucky University card catalog on microfiche, college and university catalogs on microfiche, daily newspaper on microfilm, special speakers available through library, puppet show

University library - Six libraries and resource centers on the Western Kentucky University campus

Size collection - 900,000 volumes

Special collections - The Kentucky Library houses study and research collections relating to Kentucky life, history and genealogy. The Kentucky Museum contains historical, anthropological, biological and artistic objects and specimens relating to the heritage and environment of Kentucky and the contiguous states, and exhibits

Services - Recordings, documents, newspapers, magazines, clippings, scrapbooks, tapes, sheet music, museum programs, duplication, Interlibrary Loan, complete catalog of holdings available for nominal fee, electronic data searching available for businesses and industries

Religious Institutions

Warren County has more than 150 churches representing 30 different denominations.

Major denominations - Assembly of God
 Baptist
 Catholic
 Christian
 Church of Christ
 Church of God
 Disciples of Christ
 Episcopal
 Holiness
 Jehovah's Witnesses
 Latter Day Saints
 Lutheran
 Methodist
 Nazarene
 Pentecostal
 Presbyterian
 Seventh Day Adventist

The nearest synagogues are located in Nashville, Tennessee.

Congregations - Sherith Israel (orthodox)
 Ohabai Shalom (reform)
 West End Synagogue (conservative)

Financial Institutions

<u>Banks</u>	<u>Assets</u>	<u>Deposits</u>	<u>Statement Date</u>
American National Bank and Trust Company	\$176,071,000	\$161,511,000	3/31/83
Bowling Green Bank and Trust Company	76,750,352	67,862,320	12/31/82
Citizens National Bank of Bowling Green	166,467,000	148,312,000	3/31/83
<u>Savings and Loan Associations</u>	<u>Assets</u>	<u>Savings Accounts</u>	<u>Statement Date</u>
The Cumberland*	\$829,490,237	\$669,466,812	12/31/82
First Federal Savings and Loan Association of Bowling Green	120,788,849	112,549,258	12/31/82

* The Cumberland is headquartered in Louisville, Kentucky, and operates branch offices in six Kentucky cities. The figures shown above are taken from the combined statement of condition for all locations.

Hotels and Motels

Total number - 21
Total rooms - 1,689

Clubs and Organizations

Alpha Theta (ESA)	Cardinals of Kentucky
Altrusa Club of Bowling Green	Child Protection, Inc.
American Business Women's Association	City Hostess Greeting Service
American Legion	Civil Defense
American Legion Auxiliary	Civitan Clubs
American Red Cross	Community Greeters
Arts Commission	Consumer Product Safety Commission
Barber Shop Quartet	Current Events Club
Barren River Area Diabetes Chapter	Daughters of American Colonists
Barren River Darts Association	Daughters of the American Revolution
Big Brothers and Sisters of Bowling Green	Elks Club
Bluegrass Toastmasters of Bowling Green	Epilepsy Association
Bowling Green Bar Association	Farm Bureau
Bowling Green Beautification Commission	Farm Bureau Women
Bowling Green Board of Realtors	4-H
Bowling Green Cardinal Council of Federated Garden Clubs	Fraternal Order of Police
Bowling Green Country Club	Fraternal Order of Police-Ladies Auxiliary
Bowling Green Dental Association	Garden Club
Bowling Green Homebuilders Association	Girl Scouts of America
Bowling Green Junior's Women's Club	Girls Club Board
Bowling Green Rainbow Assembly	Handicapped Children
Bowling Green Rebekah Lodge	Hands Organization
Bowling Green Senior Citizens Club	Heart Fund
Bowling Green Shrine Club	Home Economics Club
Bowling Green-Warren County Association for Retarded Citizens	Homemakers Health Aide Program
Bowling Green-Warren County Home Economist in Homemaking	Hospice
Bowling Green-Warren County Saddle Club	Houchen's Center for Women
Bowling Green Women's Club	Independent Insurance Agents
Bowling Leagues	Independent Music Teachers Association
Boy Scouts of America	Independent Order of Foresters
Boys Club	Independent Order of Odd Fellows
Business and Professional Women's Club	Jaycees
	Jaycee-ettes
	Kentucky Colonel Amateur Radio Society
	Kidney Foundation
	Kiwanis Clubs
	Lamaze Classes
	Landmark Association
	Lioness Club
	Lions Clubs
	Little League Baseball
	March of Dimes
	Masonic Lodge
	Medical Society
	Ministerial Association

(cont'd)

Moose Club
Muscular Dystrophy
National Association of
Accountants
NAACP
National Association of Retired
Federal Employees
Optimist Clubs
Opti-Mrs. Club
Order of the Eastern Star
Parents Without Partners
Past Noble Grands of Rebeccahs
Phi Upsilon Omicron Alumni
Professional Secretaries
International
Retired Officers Association
Rose Society
Rotary Club
Scottish Rite

Sons of American Revolution
Southern Kentucky Genealogical
Society
Southern Kentucky Guild of
Artists and Craftsmen, Inc.
Southern Kentucky Paddlers Society
Sweet Adelines
Tops Club
Transportation Association
United Way
Veterans of Foreign Wars
Veterans of Foreign Wars Auxiliary
Veterans of World War I
War Memorial Boys Club
Warren County Historical Society
Weight Watchers
Western Buckaroos Square Dancers
Western Kentucky Women
Women's Political Caucus

RECREATION

Local

The city of Bowling Green and Warren County each maintain full time recreation departments which provide over 650 acres of public parks and facilities. Both parks' departments provide various leagues, tournaments, instructional programs, crafts and other activities.

The Bowling Green Parks and Recreation Department maintains 500 acres of parks and facilities which include two 9-hole golf courses, tennis courts, softball/baseball fields, volleyball courts, basketball courts, swimming pools plus picnic and playground facilities and a community center.

The Warren County Parks and Recreation Department oversees 165 acres of parks, 45 acres of which are community parks maintained by the county. Facilities include softball/baseball fields, tennis courts, football/soccer field, BMX track, junior archery range, junior rifle range, picnic areas, playgrounds and a community center.

Places of historical interest in Bowling Green are Mariah Moore House, built in 1818 by the city's founding father, Robert Moore; Fountain Square Park, the original hub of community activities; and Hobson House, used as a Confederate munitions magazine during the Civil War.

Other facilities open to the public include twelve movie theaters, one drive-in theater, and Beech Bend Park. Beech Bend features a swimming pool, small zoo, an amusement park, stage entertainment, horseback riding, restaurants, playgrounds and 6,500 campsites. Beech Bend International Raceway, an NHRA sanctioned track, hosts several national drag racing championships.

Two private country clubs are located in Bowling Green - each has an 18-hole golf course, swimming pools, and tennis courts. Other private facilities include two private swim clubs, a racquetball club, tennis club and a spa.

Western Kentucky University is the focal point for many cultural and educational activities. Hardin Planetarium, the largest in the state, is located at the university. The Kentucky Building houses an outstanding collection of materials on the history of Kentucky and its contiguous states. Lecture series and university drama and music productions are popular attractions. The art gallery in the Ivan Wilson Center for Fine Arts has outstanding revolving exhibits.

Area (Within 65 miles)

Mammoth Cave National Park is located 30 miles northeast of Bowling Green near Cave City. Beneath 51,000 park acres, Mammoth Cave is among the major tourist attractions of all times. It is one of the largest cave networks ever discovered, with at least 150 miles charted on five levels and vast areas not yet mapped. Some famous sights are Snowball Dining room (267 feet below surface), Frozen Niagra, Crystal Lake, and Bottomless Pit. The park also features scenic boat trips on the Green River and nature and hiking trails. Park accommodations include a hotel with distinctive gift shops featuring native Kentucky and Southern Highland handicrafts, a motor lodge, hotel cottages, woodland cottages, and a hotel annex with budget accommodations and craft shop featuring live exhibits of broom making and weaving. Other park facilities include the hotel dining room and coffee shop, a service center, group meeting facilities, a campground, a picnic area, and tennis and shuffleboard courts.

Nolin River Lake is just north of Mammoth Cave National Park. The lake has a surface area of 5,800 acres and offers facilities for camping, boating, and fishing.

Barren River Lake State Resort Park, 42 miles southeast of Bowling Green near Glasgow, is a full-facility resort park offering a resort lodge, a coffee shop, cottages, a lodge pool, a beach, riding stables, nature trails, open and covered boat slips, a 9-hole par-3 golf course, lighted handball and tennis courts, shuffleboard, park camping with a service building, a restaurant, fishing and pleasure boat rentals, picnic areas, and a playground. Barren River Lake, which covers 10,000 acres, is a popular area for skiing, sailing, fishing, and swimming.

Lake Malone State Park, located in southern Muhlenberg County, 52 miles northwest of Bowling Green, offers camping facilities, swimming, fishing and boating on a 788-acre lake. Playground facilities and picnic shelters are located in a beautiful scenic cliff area. Located across from the entrance to the park is an inn, featuring luxury rooms, a restaurant, a swimming lake, a beach, boating, fishing, tennis, and nature trails.

Jefferson Davis Monument State Shrine is located 54 miles west of Bowling Green at Fairview. The shrine is at the site of the birthplace of Jefferson Davis, a former U.S. Senator, Secretary of War, and the only president of the Confederate States of America. The 16-acre park contains a 351-foot obelisk with an elevator to the top for viewing, a museum, a gift shop, and a playground with picnic tables.

Noteworthy for its spaciousness, **Rough River Dam State Resort Park** at Falls of Rough is 60 miles north of Bowling Green. The 377-acre park on Rough River Lake has a 40-room lodge with a dining room, a coffee shop, a gift shop, and a meeting room. Cottages and camping sites are also available. Recreational facilities include a launching ramp, a dock with open and covered slips, fishing and pleasure boat rental, a 9-hole, 3-par golf course, a swimming pool, a sand beach with a bathhouse complex, tennis courts, an archery range, hiking trails, picnic and playground areas, and planned recreation. Cruise boat excursions on Rough River Lake are available on the "Lady of the Lake" in season.

Old Mulkey Meeting House State Shrine, 64 miles southeast of Bowling Green near Tompkinsville, offers picnic areas and playgrounds. The house was built in 1804, and is the oldest log meeting house in the state. Daniel Boone's sister is buried in the graveyard and authentic records written in pokeberry ink are on display.

COMMUNITY IMPROVEMENTS

Recent

Two new manufacturing firms were established in Bowling Green in 1982 or early 1983. Timber Products, Inc., manufactures wood pallets and crossties. The Directors Chair manufactures chairs and furniture parts.

The Warren County Water District recently completed a \$947,000 project which included construction of a 200,000-gallon storage tank, a 100,000-gallon storage tank and a new pump station. Three existing pump stations were upgraded. The water district also tentatively plans to extend water lines to approximately 725 new customers.

The Medical Center at Bowling Green recently completed an approximately \$5 million expansion. The project includes a cancer treatment center, an outpatient center and an expanded emergency room.

Greenview Hospital has completed approximately \$7 million in expansion and renovation projects during 1982 and 1983. In 1982 a fifth floor was added to the hospital and the ancillary services area was renovated. In 1983 a 1,800-square-foot expansion was completed to house the new CT scan unit.

Bowling Green Municipal Utilities completed three new wastewater lift stations and an interceptor in 1982 at a total cost of \$2.3 million. In addition, a new wastewater treatment process was added in 1982. The process involves the land application of pretreated wastewater which is injected 12 to 14 inches underground.

Bowling Green and Warren County have jointly purchased a \$200,000 fire truck to be based at the airport. The new truck has a water capacity of 2,000 gallons and has a pumping capacity of 1,250 gpm plus a capacity of 75 gallons of foam.

Under Way

A multilane, north-south connector highway is currently under construction in Bowling Green. The new highway is designed to redirect traffic from U.S. 68 and KY 80. The project includes the reconstruction of Adams and Kentucky Streets and a new bridge over the Barren River. The section of the project which is within the city is scheduled for completion in late 1983. The remainder of the project, including the new bridge, will be completed in late 1984.

Two major redevelopment projects are under way in downtown Bowling Green. In the Main Street Project, 27 renovation projects have been completed with seven more projects under way or planned. In the Midtown Redevelopment Project approximately 25 acres have been cleared of substandard buildings for new development.

The Bowling Green Independent School System established three computer labs during the 1982-83 school year. Renovation projects are currently under way at three schools within the school system at a cost of \$350,000.

Planned

Bowling Green Municipal Utilities is planning a \$1.4 million project to expand its electric power service area during late 1983 and early 1984. The project is planned for the Scottsville Road area and will include the addition of approximately 300 new households and/or businesses.

Bowling Green Municipal Utilities has adopted a new five-year capital improvement plan for the water treatment system. Currently, the effective capacity of the treatment system is 15,000,000 gallons per day and the filtration capacity of the treatment plant is 22,000,000 gallons per day. The new plant includes increasing the effective capacity and plant capacity to 30,000,000 gallons per day. Full design of the project will begin in 1985.