

1978

Industrial Resources: Wayne County - Monticello

Kentucky Library Research Collections
Western Kentucky University, spcol@wku.edu

Follow this and additional works at: https://digitalcommons.wku.edu/wayne_cty

 Part of the [Business Administration, Management, and Operations Commons](#), [Growth and Development Commons](#), and the [Infrastructure Commons](#)

Recommended Citation

Kentucky Library Research Collections, "Industrial Resources: Wayne County - Monticello" (1978). *Wayne County*. Paper 11.
https://digitalcommons.wku.edu/wayne_cty/11

This Report is brought to you for free and open access by TopSCHOLAR®. It has been accepted for inclusion in Wayne County by an authorized administrator of TopSCHOLAR®. For more information, please contact topscholar@wku.edu.

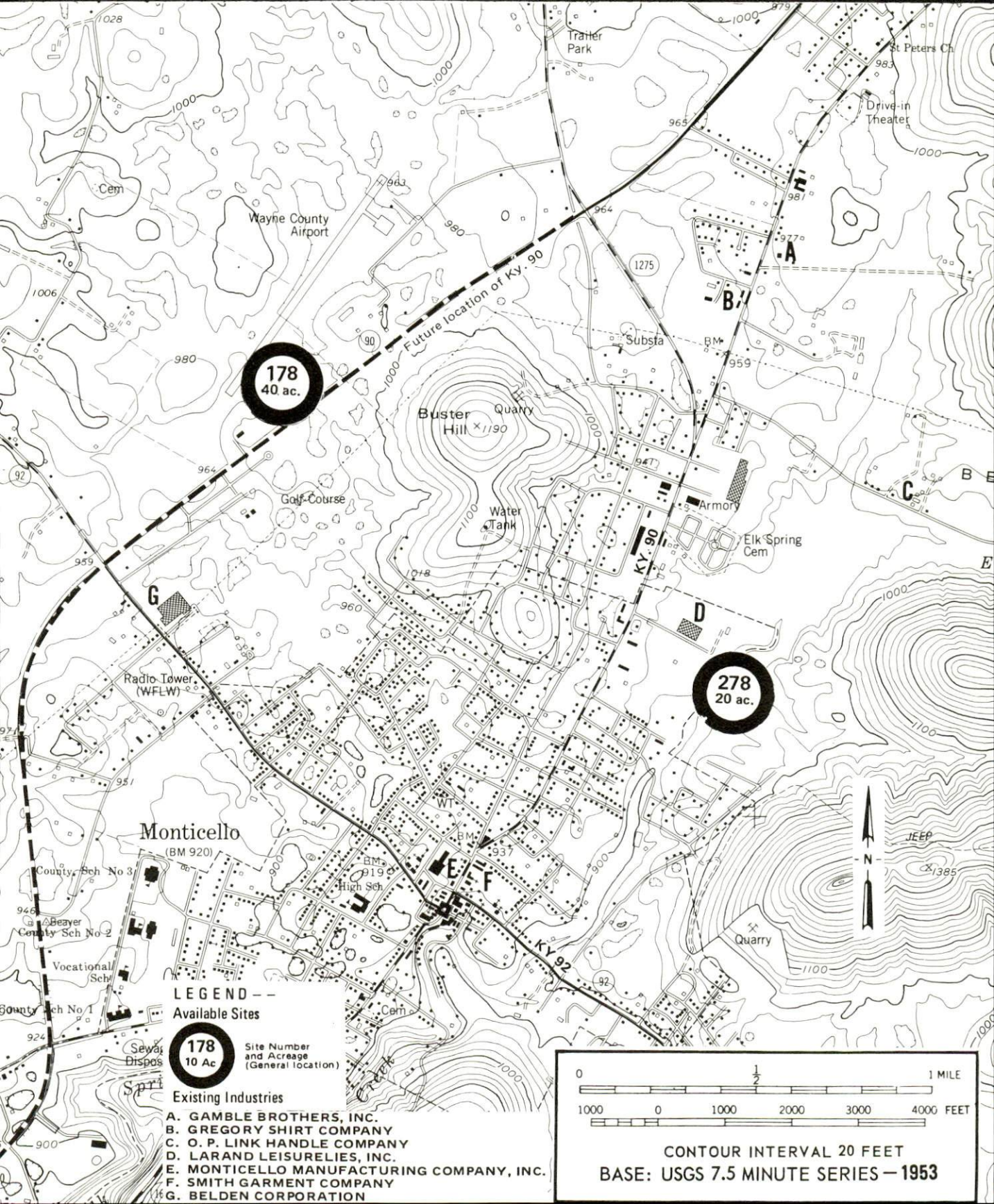
INDUSTRIAL RESOURCES

MONTICELLO

*Kentucky
first*



DEPARTMENT OF COMMERCE



178
40 ac.

278
20 ac.

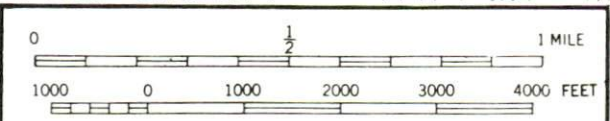
LEGEND

178
10 Ac

Site Number and Acreage (General location)

Existing Industries

- A. GAMBLE BROTHERS, INC.
- B. GREGORY SHIRT COMPANY
- C. O. P. LINK HANDLE COMPANY
- D. LARAND LEISURELIES, INC.
- E. MONTICELLO MANUFACTURING COMPANY, INC.
- F. SMITH GARMENT COMPANY
- G. BELDEN CORPORATION



CONTOUR INTERVAL 20 FEET
BASE: USGS 7.5 MINUTE SERIES - 1953

INDUSTRIAL RESOURCES

MONTICELLO, KENTUCKY

Prepared by
The Kentucky Department of Commerce
Division of Research and Planning
in cooperation with
The Monticello-Wayne County Chamber of Commerce

1978

Program manager: Patsy Wallace; production supervisor: Pam Riley;
research: Darlene Craycroft; clerical: Annette Mitchell; graphics:
N.C. Montague, Frank Ferrante, Tony Cecconi, Richard Spencer;
cartography: Industrial Development Division. Cost of printing paid
from state funds.

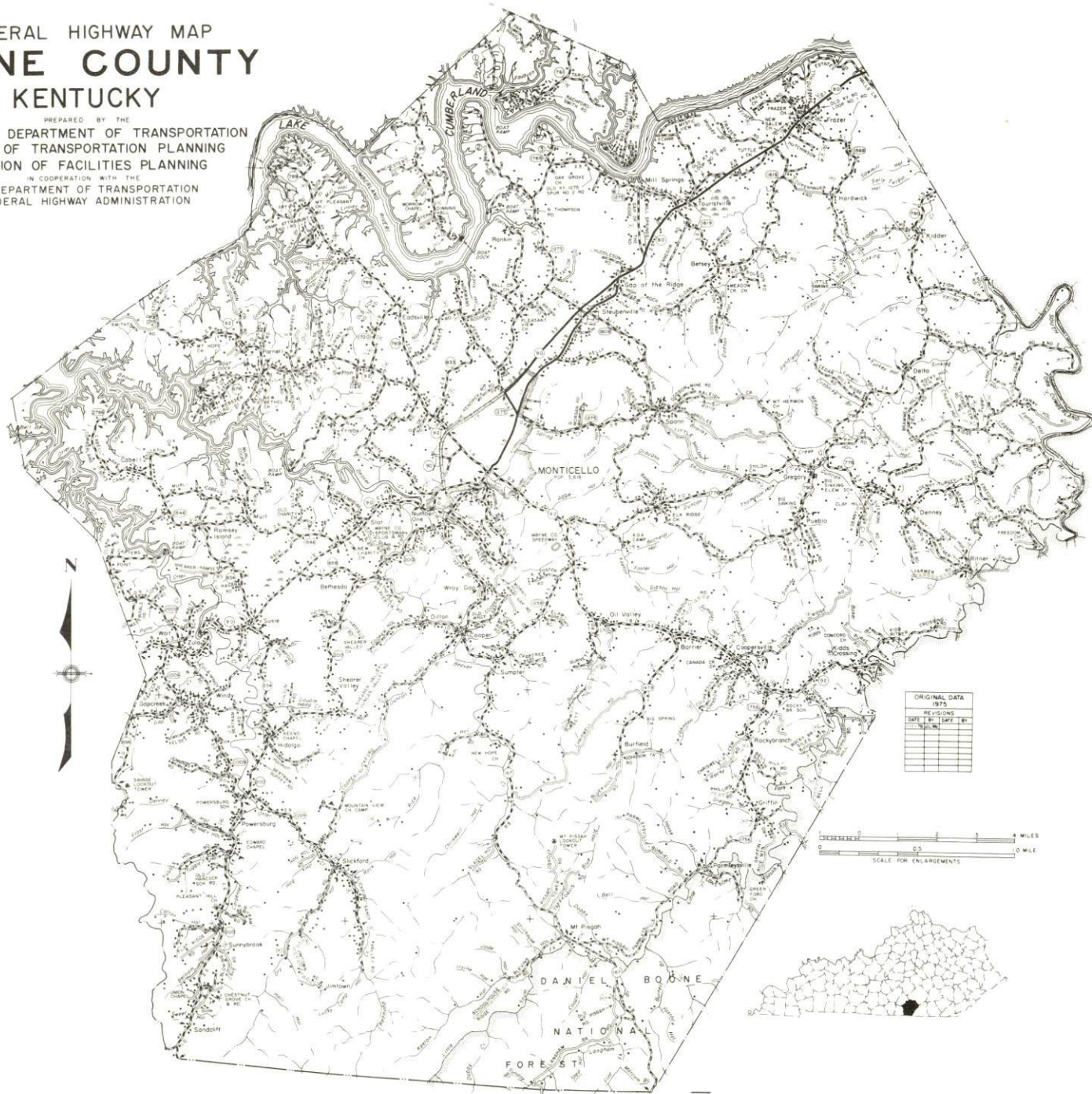
TABLE OF CONTENTS

<u>Chapter</u>	<u>Page</u>
INDUSTRIAL SITES	i
SUMMARY OF INDUSTRIAL RESOURCES - MONTICELLO, KENTUCKY	1
THE LABOR MARKET AREA	6
Population	6
Labor Force Characteristics of Residents, 1975	6
Monticello Manufacturing Firms, Their Products and Employment	7
Labor Organizations	9
Industrial Services	9
Estimated Male Labor Supply	10
Estimated Female Labor Supply	10
Average Weekly Wages by Industry, by Place of Work, 1975	11
Per Capita Personal Income	13
TRANSPORTATION	14
Rail	14
Highways	14
Truck Service	15
Air	16
Bus	16
Taxi	16
Rental Services	16
Water	16
POWER AND FUEL	17
Electricity	17
Natural Gas	18
Other Fuels	18
WATER AND SEWERAGE	19
Water	19
Sewerage	21
CLIMATE	22

<u>Chapter</u>	<u>Page</u>
LOCAL GOVERNMENT	23
City	23
County	23
Assessed Value of Property, 1976	23
Property Taxes	24
Combined State and Local Rates Per \$100 Valuation, 1976	25
Planning and Zoning	25
Safety	25
Police	25
Fire	25
Rescue Service	26
Solid Waste	26
EDUCATION	27
Public Schools	27
Area Colleges and Universities	27
Vocational Schools	28
HEALTH	31
Local Medical Personnel	31
Hospitals	31
Other Medical Facilities	31
Ambulance Service	31
Public Health	31
OTHER LOCAL FACILITIES	32
Communications	32
Library Services	32
Religious Institutions	35
Financial Institutions	35
Hotels and Motels	35
Clubs and Organizations	36
RECREATION	39
COMMUNITY IMPROVEMENTS	40

GENERAL HIGHWAY MAP WAYNE COUNTY KENTUCKY

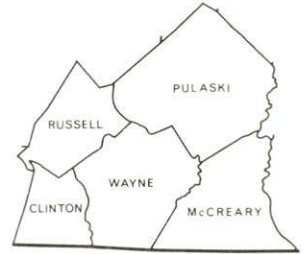
PREPARED BY THE
KENTUCKY DEPARTMENT OF TRANSPORTATION
OFFICE OF TRANSPORTATION PLANNING
DIVISION OF FACILITIES PLANNING
IN COOPERATION WITH THE
U.S. DEPARTMENT OF TRANSPORTATION
FEDERAL HIGHWAY ADMINISTRATION



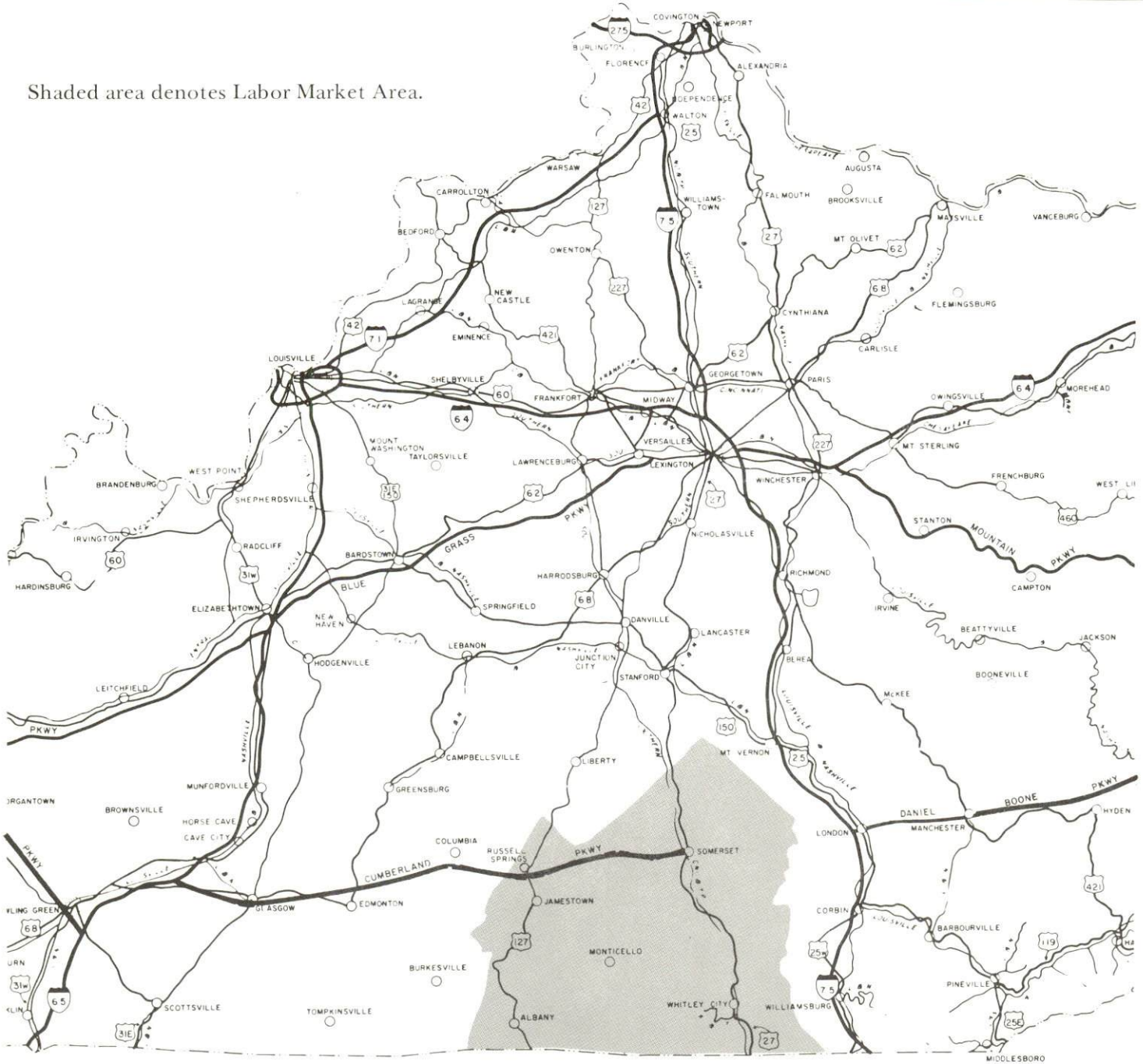
ORIGINAL DATA	1975
REVISIONS	
DATE	BY



MONTICELLO LABOR MARKET AREA

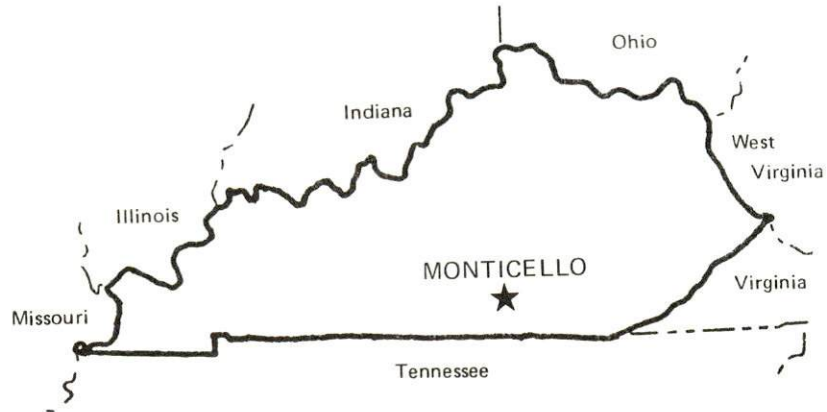


Shaded area denotes Labor Market Area.



SUMMARY OF INDUSTRIAL RESOURCES
MONTICELLO, KENTUCKY

LOCATION



Road Distance in Miles:

Atlanta	<u>351</u>	Baltimore	<u>674</u>
Chicago	<u>447</u>	Detroit	<u>470</u>
New York	<u>836</u>	St. Louis	<u>418</u>

POPULATION

City of Monticello, 1975	<u>3,778</u>
Wayne County, 1976	<u>15,600</u>
Labor Market Area, 1976	<u>93,800</u>
% Nonwhite, Wayne County, 1970	<u>2.7</u>

LABOR ANALYSIS

Labor Market Area - Wayne, Clinton, McCreary, Pulaski, and Russell Counties

Estimated available workers from labor market area:

Male	<u>6,000*</u>	Female	<u>6,690*</u>
Unemployment rate, 1975		Labor Market Area	<u>9.0%</u>
Wayne County	<u>10.1%</u>	Pulaski County	<u>7.6%</u>
Clinton County	<u>9.7%</u>	Russell County	<u>13.3%</u>
McCreary County	<u>8.7%</u>		

Total employment - Wayne County - 5,825
 Manufacturing employment in labor market area - 6,130

*Includes estimated available labor supply from the Tennessee county of Pickett.

Major local manufacturing plants:

<u>Name</u>	<u>Employment</u>
<u>Gregory Shirt Company</u>	<u>118</u>
<u>Belden Corporation</u>	<u>180</u>
<u>Gamble Brothers</u>	<u>225</u>
<u>Monticello Manufacturing Company, Inc.</u>	<u>240</u>
<u>Larand Leisurelies, Inc.</u>	<u>154</u>

Labor unions in local manufacturing plants:

Laborers' Union; International Ladies' Garment Workers

TRANSPORTATION

Highways:

Interstate - I-75; 53 miles distant
Parkway - Cumberland Parkway, 30 miles distant
U.S. Highways - U.S. 27, 35 miles distant; U.S. 127, 23 miles distant

Rail:

Railroad - Southern Railway System
Nearest piggyback service - Danville; Distance to nearest
piggyback - 74 miles

Truck:

Number of interstate motor carriers - 2

Water:

Nearest navigable waterway - Lake Cumberland

Air:

Nearest commercial service - London-Corbin Airport (Magee Field)
Distance - 86 miles; Airline serving - Piedmont Airlines

Nearest local airport - Monticello-Wayne County Airport
Distance - 1.5 miles; Runway length - 4,000 feet

UTILITIES AND SERVICES

Electricity:

Local distributor - City of Monticello Electric Plant Board
Source of power - Tennessee Valley Authority

Natural Gas:

Monticello does not have natural gas service.

Other Fuels:

Number of area propane distributors - 6
Number of area distillate fuel oil distributors - 5

Water, treated:

Local supplier - Municipal; Excess municipal system capacity -
250,000 gpd

Water, raw:

Source for industrial use - Lake Cumberland

Sewer:

Excess treatment capacity - 85,000 gpd

Industrial Services:

	<u>Location</u>	<u>Miles Distant</u>
Tool & Die, Machine & Pattern Shops	<u>Monticello</u>	
Metal Service Centers	<u>Knoxville</u>	<u>123</u>
Heat Treating	<u>Richmond</u>	<u>56</u>
Metal Finishers	<u>Richmond</u>	<u>56</u>
Electric Motor Repair	<u>Somerset</u>	<u>30</u>

CLIMATE

Temperature, Normal - 59.7 degrees F.
Precipitation, Normal - 46.18 inches
Snowfall, Mean Annual - 12.3 inches
Prevailing winds - Northeast
Relative humidity (%) - 7 a.m. 84; 7 p.m. 62

GOVERNMENT

Type - Mayor-Councilmen
Police personnel - full-time - 10
Fire department personnel - volunteers - 18
Fire insurance rating (A.I.A.), class - Inside city - 7
Outside city - 10

TAXES

Property taxes:

Combined state and local rates per \$100 valuation
(100% assessment)

	<u>Inside City of Monticello</u>	<u>Outside City</u>
1. Land and buildings	\$1.212	\$0.670
2. Mfg. machinery, raw materials, goods in process, pollution control equipment	0.150	0.150
3. Finished goods, office equipment, vehicles, other tangibles	1.347	0.805
4. Intangibles (accounts, notes, bonds, etc.)	0.250	0.250

EDUCATION

Nearest state vocational-technical school - Somerset State Vocational-Technical School, 30 miles distant
Area vocational educational center - Wayne County Vocational Education Center
Nearest college or university - Somerset Community College, 30 miles distant

Public Schools:

High school enrollment - 975; Student/teacher ratio - 19-1
Elementary school enrollment - 2,647; Student/teacher ratio - 21-1

FINANCIAL INSTITUTIONS

Banks - 2; Total assets - \$37,407,672.16
Savings & loan association - 1; Total assets - \$46,865,104.35

COMMUNICATIONS

Local newspapers - 2
Weeklies - Wayne County Outlook and The Reporter
Local radio station - WFLW, AM; WKYM, FM
Television station - Local news and weather station

MEDICAL

Number of physicians locally - 8; Number of dentists locally - 4
Hospitals - Wayne County Hospital; Number of beds - 40

RELIGIOUS FACILITIES

Churches - 15; Nearest synagogues - Lexington, 109 miles distant

PUBLIC LODGING

Total number hotels and motels - 3; Total rooms - 134

RECREATION FACILITIES

Golf course - 1; Parks - 2; Tennis courts - 6; Swimming pools - 3;
Country club - 1

Nearest state park - Lake Cumberland State Resort Park
Camping; Swimming; Fishing; Water skiing; Boating; Lodgings;
Dining facility; Open year round

THE LABOR MARKET AREA

POPULATION			
Area	1976*	1970	Percent Nonwhite
			1970
Monticello	3,778**	3,618	4.0
Labor Market Area	93,800	80,766	N/A
Wayne County	15,600	14,268	2.7
Clinton County	8,700	8,174	0.4
McCreary County	14,700	12,548	1.6
Pulaski County	42,900	35,234	1.7
Russell County	11,900	10,542	0.8

*Provisional Estimates.

**1975 Population Estimates.

Sources: U.S. Department of Commerce, Bureau of the Census, Census of Population, 1970. U.S. Department of Commerce, Bureau of the Census, Current Population Reports, Series P-25, No. 665, May 1977; Series P-26, No. 76-17, July 1977.

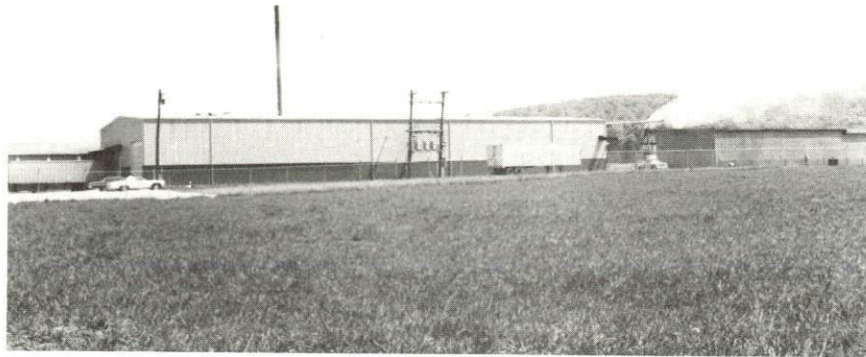
LABOR FORCE CHARACTERISTICS OF RESIDENTS, 1975

	Wayne County	Labor Market Area
Civilian Labor Force	6,479	33,372
Employment	5,825	30,343
Agricultural	1,114	3,550
Nonagricultural	4,711	26,793
Unemployment	654	3,029
Rate of Unemployment (%)	10.1	9.0

Source: Kentucky Department for Human Resources, Kentucky Labor Force Estimates, Annual Averages, 1975.

MONTICELLO MANUFACTURING FIRMS,
THEIR PRODUCTS AND EMPLOYMENT

Firm (Establishment date)	Product	Employment			Organized
		Total	Male	Female	
Bassett Products Company (1929)	Crushed lime-stone, ready mixed concrete, agricultural lime	30	30	0	
Belden Corp. (1973)	Electronic wire & cable	180	90	90	
Frank Bell (1941)	Lumber	21	20	1	
Dodson Block Company (1956)	Concrete block	6	6	0	
Farmers Supply & Produce Company (1957)	Feed	9	8	1	
Gamble Brothers (1969)	Machined wood parts	225	213	12	*
Gregory Shirt Company (N/A)	Men's shirts, blouses	118	105	13	
J. P. Hamer Lumber Company (N/A)	Lumber	16	16	0	
Huff Lumber Company (1949)	Hickory dimensions, dowels	9	8	1	
Lakeview Printing, Inc. (N/A)	Commercial printing	3	2	1	
Larand Leisurelies, Inc. (1969)	Women's & children's sleepwear	154	14	140	*
O. P. Link Handle Company, Inc. (1950)	Hickory handle blanks, hickory barbecue wood & sawdust	21	21	0	
McCutchen & Plyes Lumber Company, Inc. (1960)	Lumber	31	30	1	
Monticello Flooring & Lumber Company (1973)	Wood flooring, wood paneling, molding	57	55	2	

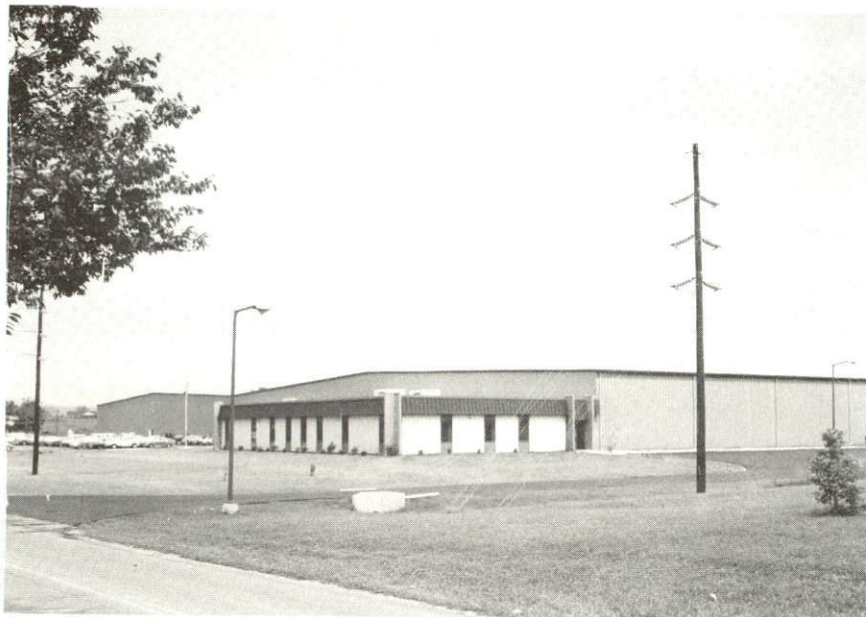


Gamble Brothers, Inc.



Monticello Manufacturing Company, Inc.

8



Belden Corporation



Gregory Shirt Company

<u>Firm</u> (Establishment date)	<u>Product</u>	<u>Employment</u>			<u>Organized</u>
		<u>Total</u>	<u>Male</u>	<u>Female</u>	
Monticello Machine Shop (1948)	Machine shop, conveyors, sawmill	14	12	2	
Monticello Manufacturing Company, Inc. (1955)	Men's shirts, ladies' blouses, shirts	240	40	200	
Wayne County Outlook (1904)	Newspaper, job printing	7	3	4	
Coy Worley (1950)	Lumber, crossties	19	19	0	
Smith Garments, Inc. (1977)	Girls' jeans & skirts, boys' jeans	47	4	43	

*See Labor Organizations below.

Source: Kentucky Department of Commerce, Division of Research and Planning.

LABOR ORGANIZATIONS

<u>Union</u>	<u>Representing manufacturing workers at:</u>
Laborers' Union	Gamble Brothers
International Ladies' Garment Workers	Larand Leisurelies, Inc.

INDUSTRIAL SERVICES

	<u>Location</u>	<u>Miles Distant</u>
Tool & Die, Machine & Pattern Shops	Monticello	
Metal Service Centers	Knoxville	123
Heat Treating	Richmond	56
Metal Finishers	Richmond	56
Electric Motor Repair	Somerset	30

Source: Kentucky Directory of Selected Industrial Services, 1976.

ESTIMATED MALE LABOR SUPPLY
MONTICELLO LABOR MARKET AREA

Area	Current			Under- employed	Future
	Total	Not in Labor Force	Unemployed		Reaching 18 yrs. of age before 1984
Labor Market Area	6,000				4,321
Wayne	740	0	500	240	694
Clinton	810	290	240	280	441
McCreary	580	0	310	270	728
Pulaski	2,260	800	890	570	1,799
Russell	1,500	900	380	220	466
Pickett (Tenn.)	110	N/A	N/A	N/A	193

Sources: Kentucky Department for Human Resources, Kentucky Labor Supply Estimates by County, 1976. Tennessee Department of Economic and Community Development, Available Labor, February 1977. Kentucky Department of Commerce, Future Labor Supply before 1984.

ESTIMATED FEMALE LABOR SUPPLY
MONTICELLO LABOR MARKET AREA

Area	Current			Under- employed	Future
	Total	Not in Labor Force	Unemployed		Reaching 18 yrs. of age before 1984
Labor Market Area	6,690				4,030
Wayne	1,030	750	150	130	729
Clinton	460	200	70	190	349
McCreary	460	270	90	100	698
Pulaski	3,440	2,540	270	630	1,602
Russell	1,270	960	110	200	497
Pickett (Tenn.)	30	N/A	N/A	N/A	155

Sources: Kentucky Department for Human Resources, Kentucky Labor Supply Estimates by County, 1976. Tennessee Department of Economic and Community Development, Available Labor, February 1977. Kentucky Department of Commerce, Future Labor Supply before 1984.

AVERAGE WEEKLY WAGES BY INDUSTRY,
BY PLACE OF WORK, 1975

	<u>Wayne County</u>	<u>Clinton County</u>	<u>McCreary County</u>
All Industries	\$ 99.69	\$ 94.11	\$142.36
Mining & Quarrying	174.16	*	260.97
Contract Construction	117.73	83.81	130.62
Manufacturing	101.52	88.43	87.28
Transportation, Com- munications & Public Utilities	142.48	124.78	147.72
Wholesale & Retail Trade	96.62	77.65	103.73
Finance, Insurance & Real Estate	70.84	121.69	149.93
Services	88.83	127.71	100.84
Other	41.15	*	*

	<u>Pulaski County</u>	<u>Russell County</u>
All Industries	\$136.60	\$ 93.16
Mining & Quarrying	250.57	0
Contract Construction	125.66	96.89
Manufacturing	154.74	96.75
Transportation, Com- munications & Public Utilities	170.12	140.77
Wholesale & Retail Trade	107.60	79.34
Finance, Insurance & Real Estate	156.17	107.51
Services	122.74	84.13
Other	74.55	0

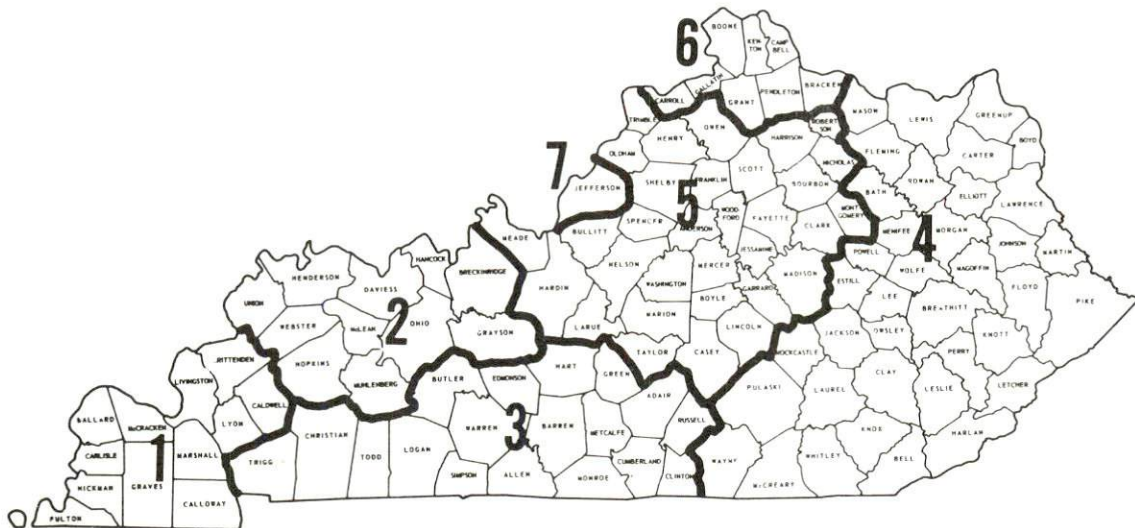
*Not disclosed.

Note: Excludes domestic workers, railway workers; certain nonprofit corporations; majority of federal, state, and local government workers; and self-employed workers.

Source: Kentucky Department for Human Resources, Average Weekly Wages of Workers Covered by Unemployment Insurance, 1975.

Occupational wage rates for specific industries are usually not available to most government agencies, and wage data furnished to state employment agencies by individual industrial employers is protected from disclosure by federal law. The most reliable up-to-date wage information can be obtained by direct contact with local employers.

Associated Industries of Kentucky, a voluntary organization of Kentucky businesses, regularly collects occupational wage rates and fringe benefits data from participating member firms. Data is compiled for over 127 clearly defined office, production, and service occupations. Tabulations are published for seven regions of Kentucky, as shown on the map below. It should be noted that the data may be weighted by the preponderance of firms in the larger cities and may be somewhat higher than the rates paid in the smaller communities. Data from these tabulations are available, upon request, from the Kentucky Department of Commerce, Frankfort, Kentucky 40601.



Associated Industries of Kentucky Area Wage Surveys

Up-to-date occupational wage rates of the existing industries are maintained by South Kentucky Industrial Development Association, Post Office Box 726, Hopkinsville, Kentucky 42240.

PER CAPITA PERSONAL INCOME

<u>Area</u>	<u>1975</u>	<u>1971</u>	<u>Percent Change</u>
Wayne County	\$2,551	\$1,744	46.3
Labor Market Area			
Range	\$2,309 - 3,686	\$1,353 - 2,572	N/A
Kentucky	4,886	3,314	47.4
U.S.	5,903	4,195	40.7

Sources: U.S. Department of Commerce, Bureau of Economic Analysis, Survey of Current Business, April 1977. U.S. Department of Commerce, Bureau of Economic Analysis, March 1976.

TRANSPORTATION

Rail

Nearest line serving Monticello - Southern Railway System at Burnside, 21 miles distant.

Services - One northbound and one southbound freight daily, an average of 12 northbound and 12 southbound through freights daily, switching facilities, team track with space for eight cars, siding space available with space available for approximately 30 cars on each side. The nearest Southern Railway piggyback facilities are available at Danville, 74 miles distant.

For details on routing, schedules, rates, and services, contact:

District Sales Manager
Southern Railway System
701 South Broadway
Lexington, Kentucky 40508
(606) 252-2242

Highways

Monticello is served by Kentucky Highway 90, which connects with U.S. 27 just 21 miles northeast of Monticello; and Kentucky Highway 92, which connects with U.S. 27, 35 miles southeast. U.S. 127 is 23 miles southwest of Monticello. The Cumberland Parkway is just 30 miles north of Monticello. Interstate 75, a major north-south route, is 53 miles east of Monticello.

Truck Service

Company

Home Office

Eldridge Truck Line

North Highway 27
P. O. Box 659
Somerset, Kentucky 42501

Manning Motor Express, Inc.

Westwood Drive
P. O. Box 685
Glasgow, Kentucky 42141

Monticello-Albany Freight
Lines, Inc.

160 South Main Street
P. O. Box 85
Monticello, Kentucky 42633

Other Freight Services

Nearest Shipping Center

United Parcel Service

London, Kentucky, 86 miles distant

Purolator Courier

Louisville, Kentucky, 155 miles
distant

HIGHWAY MILES AND TRUCK TRANSIT TIME IN DAYS FROM
MONTICELLO, KENTUCKY, TO SELECTED MARKET CENTERS

City	Highway Miles	Delivery		City	Highway Miles	Delivery	
		Time TL				Time TL	
Atlanta, Ga.	351	2		Los Angeles, Calif.	2,219	5	
Baltimore, Md.	674	3		Louisville, Ky.	155	1	
Birmingham, Ala.	390	2		Nashville, Tenn.	194	2	
Chicago, Ill.	447	2		New Orleans, La.	711	3	
Cincinnati, Ohio	211	2		New York, N. Y.	836	3	
Cleveland, Ohio	450	2		Pittsburgh, Pa.	476	2	
Detroit, Mich.	470	2		St. Louis, Mo.	418	2	
Knoxville, Tenn.	158	2					

Source: Delivery Time Only - Monticello-Albany Freight Line, Inc.,
160 South Main Street, Box 85, Monticello, Kentucky 42633.

Air

	<u>Local</u>	<u>Nearest Commercial</u>
Location:	Monticello-Wayne County Airport 1.5 miles north of Monticello	London-Corbin Airport (Magee Field) 3 miles south-southeast of London; 86 miles from Monticello
Runways:	1 paved	1 paved
Length:	4,000 feet	6,000 feet
Traffic Control:	Wind sock	Wind sock
Lighting:	Wind sock and runway lights	Beacon, runway and obstruction lights
Services:	Tie down, transportation to motel and restaurant	Piedmont Airlines, 100 Octane, JP-A-50, taxi, car rental, weather, flight training, charter, and ambulance service, vending machines
Air Freight Service:		Air freight service on a space available basis.

Bus - Greyhound Bus Lines and Somerset Suburban Carriers, Inc., serve Somerset, 29 miles distant.

Taxi - Two companies provide 24-hour service.

Rental Services - Nearest car, truck, and trailer rentals are available in Somerset, 29 miles distant.

Water - Lake Cumberland, 10 miles distant, is navigable for an approximate 100 miles. Presently, barge service on the lake is being used for transport of coal to the John Sherman Cooper Power Station at Burnside, Kentucky.

POWER AND FUEL

Electricity

Company serving Monticello - City of Monticello Electric Plant Board
Source of power - Tennessee Valley Authority
Total generating capacity - 27,071,480 KW
For industrial rates contact:

South Kentucky Industrial Development
Association, Inc.
P.O. Box 726
Hopkinsville, Kentucky 42240
(502) 885-5392

and/or

City of Monticello Electric Plant Board
615 Columbia Avenue
Monticello, Kentucky 42633
(606) 348-8102

Company serving Wayne County - South Kentucky Rural Electric
Cooperative Corporation
Source of power - East Kentucky Power Cooperative
Total generating capacity - 868,000 KW
For industrial rates contact:

Industrial Development Division
East Kentucky Power Cooperative
P.O. Box 707
Winchester, Kentucky 40391
(606) 744-4812

and/or

South Kentucky Rural Electric Cooperative
Corporation
P.O. Box 910
Somerset, Kentucky 42501
(606) 678-4121

Natural Gas

Monticello does not have natural gas service.

Other Fuels

Propane (Within 30 miles)

Ashland Oil (bulk plant), South Main Street, Monticello, Kentucky
Suburban Propane, 104 Albany Road, Monticello, Kentucky

Albany Gas & Electric Service, Washington Street, Albany,
Kentucky

Pyrofax Gas Corporation, 114 South Main Street, Somerset, Kentucky

Williams Energy Company, 104 South Vine Street, Somerset, Kentucky

Empiregas Company of Monticello, North Highway 90, Monticello,
Kentucky

Fuel oils (Within 25 miles)

Distillate fuel oil -

Somerset Oil (bulk plant), South Highway 90, Monticello, Kentucky

Standard Oil (bulk plant), 608 North Main Street, Monticello,
Kentucky

Ashland Oil (bulk plant), South Main Street, Monticello, Kentucky

Lewis J. Heber Oil Company, Inc., Walnut Street, Burnside,
Kentucky

Wisdom Oil Company, 100 Burkesville Road, Albany, Kentucky

Residual fuel oil - Arrangements must be made with the refinery.

Low sulphur content coal - Available in Wayne County.

WATER AND SEWERAGE

Water

Company serving Monticello - Monticello Utility Commission*
City Hall
Monticello, Kentucky 42633
(606) 348-3421

Source - Lake Cumberland

Treatment plant capacity - 1,000,000 gallons per day

Average daily consumption - 650,000 gallons

Peak daily consumption - 750,000 gallons

Type treatment - Coagulation with alum and lime, filtration,
chlorination, fluoridation

Storage capacity - 800,000 gallons

Size lines - 12, 10, and 8 inches

Average pressure - 100 psi

Average temperature - 55 degrees F.

*A grant received from the Community Development Block Grant Program was received and the funds are being used to extend water lines 6.3 miles north of Monticello to provide service to approximately 100 families.

MONTHLY WATER RATES FOR RESIDENTIAL
AND COMMERCIAL CONSUMERS

RESIDENTIAL
Inside Corporate Limits

First -	700 Gallons	\$5.75 Minimum Bill
701 -	1,500 Gallons	6.50 Minimum Bill
1,501 -	2,500 Gallons	7.25 Minimum Bill
Next -	2,000 Gallons	1.00 Per Thousand
Next -	2,000 Gallons	.80 Per Thousand
Over -	6,500 Gallons	.50 Per Thousand

RESIDENTIAL
Outside Corporate Limits

First -	2,500 Gallons	\$8.25 Minimum Bill
Next -	2,000 Gallons	1.10 Per Thousand
Next -	2,000 Gallons	1.00 Per Thousand
Over -	6,500 Gallons	.75 Per Thousand

COMMERCIAL

First -	700 Gallons	\$5.75 Minimum Bill
701 -	1,500 Gallons	6.50 Minimum Bill
1,500 -	2,500 Gallons	7.25 Minimum Bill
Next -	7,500 Gallons	1.00 Per Thousand
Next -	20,000 Gallons	.60 Per Thousand
Over -	30,000 Gallons	.50 Per Thousand

Tap-on charge: Inside City - \$100
Outside City - \$150

Surface water sources - Lake Cumberland

Extremes - Lake Cumberland at Jamestown, Kentucky - Maximum
contents, 1,462,300 cfs - days; minimum 1,093,700 cfs - days (1976)
Expected ground water yield - 5 to 50 gpm in northwest part; remainder
of county 5 gpm or less

Sewerage

Company serving Monticello - Monticello Utility Commission*
Box 518
Monticello, Kentucky 42633
(606) 348-3421

Design capacity - 360,000 gallons per day

Average daily flow - 275,000 gallons

Treatment - Primary and secondary

Type treatment - Clarifier, trickling filter, drying beds

Treated effluent discharged into - Elk Creek

Size of sanitary mains - 10, 8, and 6 inches

Rates -

Residential - Minimum Bill \$2.75, or 50% of Water Bill
with a maximum bill of \$7.50

Commercial - Minimum Bill \$2.75, or 50% of Water Bill
with a maximum bill of \$100

Sprinkler Charge - \$.10 per sprinkler head per month

Tap-on charge - \$100

*A grant application is to be made to obtain funds to initiate a
201 Facilities Plan.

CLIMATE

Wayne County

Temperature

Normal (30-year record)	59.7 degrees
Average annual 1976	57.1 degrees
Record highest, September, 1954 (35-year record)	103.0 degrees
Record lowest, January, 1966 (35-year record)	-9.0 degrees
Normal heating degree days (30-year record) (Heating degree day totals are the sums of negative departures of average daily temperatures from 65 degrees F.)	3,478

Precipitation

Normal (30-year record)	46.18 inches
Mean annual snowfall (34-year record)	12.30 inches
Total precipitation 1976	42.44 inches
Mean number days precipitation (.01 inch or more) (34-year record)	128
Mean number days thunderstorms (34-year record)	47

Prevailing Winds (14-year record)

Northeast

Relative Humidity (16-year record)

1 a.m.	79 percent
7 a.m.	84 percent
1 p.m.	59 percent
7 p.m.	62 percent

Source: U.S. Department of Commerce, Environmental Science Services
Administration, Climatological Data, 1976. Station of record:
Knoxville, Tennessee.

LOCAL GOVERNMENT

City

Structure - Mayor - 4-year term; 6 councilmen - 2-year terms

Budget 1977 - General Fund \$250,000
 Water and Sewer Fund 350,000

Fees and licenses - Manufacturers: less than 50 employees - \$150 annually; between 50 and 100 employees - \$250 annually; more than 100 employees - \$300 annually.

County

Structure - County Judge Executive - 4-year term; 4 magistrates - 4-year terms

Budget 1976-77 - General Fund \$127,707; Road Fund \$49,633

Assessed Value of Property, 1976

<u>Classes of Property</u>	<u>Monticello</u>	<u>Wayne County</u>
Real Estate	\$25,111,173	\$67,951,974
Tangibles	6,051,751	15,578,630

Property Taxes

All property in Kentucky is assessed at 100 percent of fair cash value.

Land and buildings are taxed by the state and may be taxed by local jurisdictions. The state rate is \$0.315 per \$100 of assessed valuation. Beginning January 1, 1977, local school tax rates were reduced by \$0.30 per \$100 valuation and the state rate was increased by \$0.30 per \$100 (from \$0.015), resulting in no net change in the combined state and local rates.

Manufacturing machinery, raw materials inventories, pollution control equipment, and goods in the process of manufacture are not subject to local taxation. The state rate is \$0.15 per \$100.

Other tangible personal property owned by manufacturers (automobiles, trucks, finished goods, office furniture, office equipment) is taxed by the state at \$0.45 per \$100 and may be taxed by local jurisdictions. Beginning January 1, 1977, local school rates were reduced by \$0.30 per \$100 valuation and the state rate was raised by \$0.30 per \$100 (from \$0.15).

Property stored in public warehouses in a transit status is not subject to local taxation. The state rate is only \$0.015 per \$100.

Intangible personal property located in Kentucky (money in hand, shares of stock, notes, bonds, accounts, and other credits) is taxed by the state at \$0.25 per \$100, and is not subject to local taxation.

Intangible personal property owned by corporations in Kentucky as a result of business transactions performed out-of-state, but having a tax situs in Kentucky (accounts receivable, notes, bonds, credits, non-domestic bank deposits, licensing or royalty agreements, shares of stock of any affiliated company, etc.) is taxed by the state at \$0.015 and is not subject to local taxation.

Combined State and Local Rates Per \$100 Valuation, 1976*
 (100% assessment)

	<u>Inside City of Monticello</u>	<u>Outside City</u>
1. Land and buildings	\$1.212	\$0.670
2. Mfg. machinery, raw materials, goods in process, pollution control equipment	0.150	0.150
3. Finished goods, office equipment, vehicles, other tangibles	1.347	0.805
4. Intangibles (accounts, notes, bonds, etc.)	0.250	0.250

Planning and Zoning

City agency - Monticello Planning Commission
 Zoning enforced - None
 Subdivision regulations enforced - None
 Local codes enforced - None
 Mandatory state codes enforced - Plumbing, National Fire Protection Association Code, National Building Code (for major buildings and residential construction containing more than 12 bedrooms per building)

Safety

<u>Police</u>	<u>Monticello</u>	<u>Wayne County</u>
Total staff	10	4
Radio-patrol cars	5	3
<u>Fire</u>		
American Insurance Association Fire Rating	7	10
Volunteers	18	

*Kentucky Department of Commerce.

Rescue Service

Wayne County Rescue Squad

Number of volunteers - 26

Equipment - Two pickup trucks; three Thundercraft boats, 800 pounds capacity; three aluminum boats; three outboard motors; dragging equipment; two jeeps; portable generator

Personnel training - Training has been provided in cooperation with the Civil Defense and Red Cross organizations. The Rescue Squad has also had training in radiological monitoring.

Solid Waste

Type service	Municipal
Fee charged:	
residential	\$2 per month
business	\$3 to \$100 per month
Collection frequency:	
residential	Weekly
business	Daily, or two or three times per week
Disposal method	Sanitary landfill

Wayne County residents are served by private collectors who use the Monticello sanitary landfill.

EDUCATION

Public Schools

	<u>Monticello Independent</u>	<u>Wayne County</u>
Total Enrollment (9/77)	711	2,911
Elementary	373	1,717
Junior High	131	
Middle School		426
High School	207	768
Student-Teacher Ratio	17-1	21-1
Elementary	17-1	21-1
Junior High	21-1	
Middle School		23-1
High School	16-1	21-1
Percent High School Graduates to College	60.6	25.0
Expenditures Per Pupil (1975-76)	\$677.44	\$679.07
Bonded Indebtedness, June 30, 1976	\$355,000	\$1,594,000

Area Colleges and Universities

<u>Name</u>	<u>Location (Miles distant)</u>	<u>Enrollment (Fall, 1976)</u>	<u>Highest Degree Conferred</u>
Somerset Community College	Somerset (30)	798	Associate
Lindsey Wilson Junior College	Columbia (47)	383	Associate
Cumberland College	Williamsburg (54)	1,866	Baccalaureate
Berea College	Berea (72)	1,480	Baccalaureate
Centre College	Danville (74)	800	Baccalaureate
Sue Bennett Junior College	London (83)	226	Associate
Tennessee Technical University	Cookeville, Tennessee (97)	5,701	Professional

Vocational Schools

Nearest State School

Location	Somerset State Vocational- Technical School
Miles Distant	Somerset
Curriculum	30 Business and Office Accounting-Jr. Management Clerical Data Processing Secretarial Health and Personal Service Occupations Health Careers Industrial Education Aircraft Maintenance Tech. Appliance Repair Auto Body Repair Auto Mechanics Diesel Mechanics Drafting Electronics Graphic Arts (Printing) Machinist Welding Public Service Programs Fire Service Training (Regional Service) Marketing and Distributive Education Learning Resource Center

Nearest Area Education Center

Location	Wayne County Vocational Education Center
Curriculum	Monticello Agribusiness Business and Office General Clerical Secretarial Health and Personal Service Occupations Health Careers Industrial Education Auto Mechanics Machine Shop Welding

Arrangements can be made to provide training in the specific production skills required by an industrial plant. Instruction may be conducted either in the vocational school or in the industrial plant, depending upon the desired arrangement and the availability of special equipment.



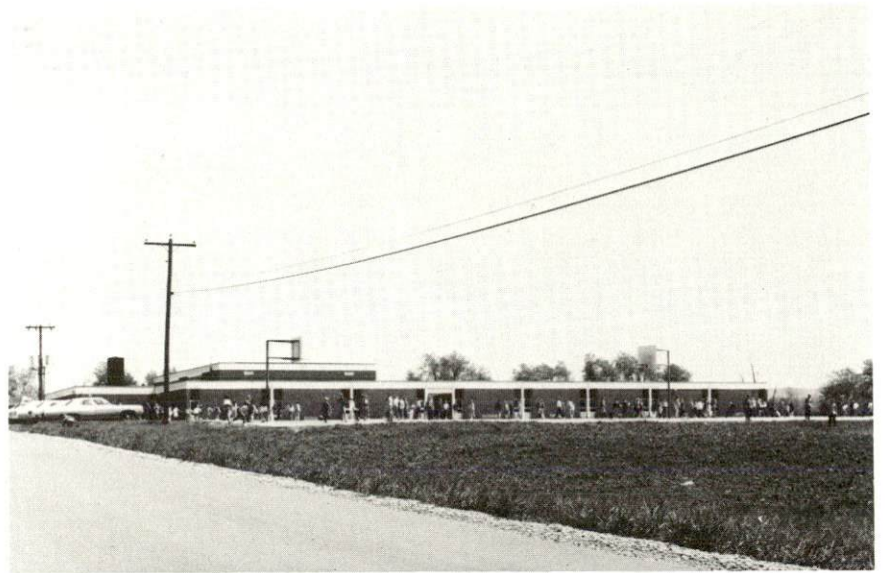
Monticello City School



Monticello Independent Board of Education



Wayne County High School

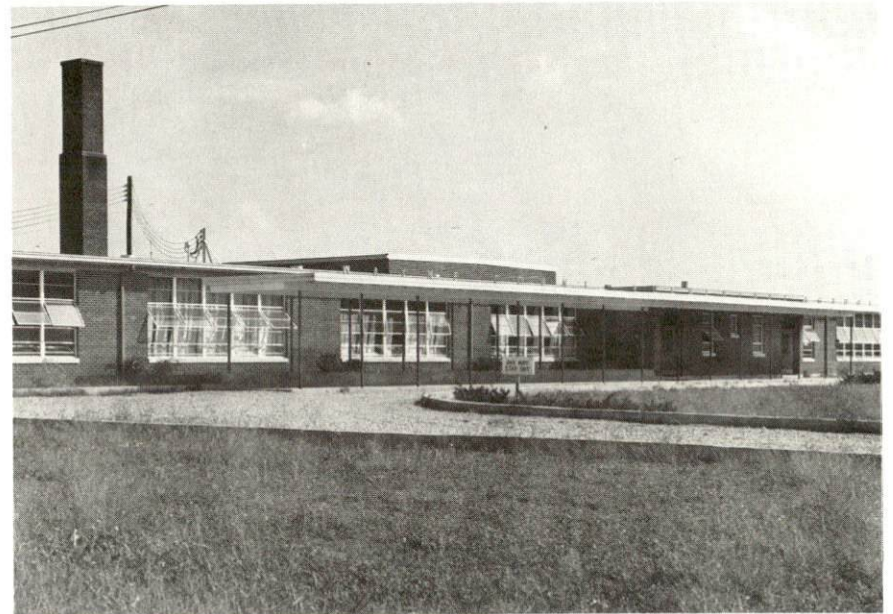


Wayne County Elementary School No. 3

30.



Wayne County Vocational School



Wayne County Elementary School

HEALTH

Local Medical Personnel

Physicians - 8
Dentists - 4

Hospitals

<u>General Hospital</u>	<u>Location</u>	<u>Beds</u>
Wayne County Hospital	Monticello	40

General hospital facilities - Emergency room, OB section, X-ray, laboratory

Medical staff - 8 general practitioners, 7 registered nurses, 7 licensed practical nurses, 16 nurse's aides, 4 lab technicians, 2 X-ray technicians, physical therapist and aide, activities director, dietary supervisor; pathologist, radiologist and dietician on consulting basis

The Lake Cumberland Medical Center, with 175 beds, is located at Somerset, only 30 miles distant.

Other Medical Facilities

Lake Cumberland Comprehensive Care Center, Monticello
Staff - Mental health associate consultation specialist, alcoholism counselor, area team coordinator (4 days per week)
Services - 24-hour phone service, marriage-family counseling, adult training unit (over 16 years of age)

Ambulance Service

Name - Wayne County Ambulance - Division of Lake Cumberland
Emergency Medical Service
Staff - 7 (5 members are emergency medical technicians)
Service - 24-hour county-wide service
Equipment - 2 standard equipped ambulances

Public Health

Facility - Wayne County Health Center
Staff - 2 registered nurses, sanitarian, health service aide, office manager, 2 clerks, 1 clinician (part-time)

OTHER LOCAL FACILITIES

Communications

Telephone - General Telephone Company
Services - Standard

Telegraph - Western Union Telegraph Company, Somerset, 30 miles distant
Services - Standard

Postal - U.S. Post Office
Class - First
Mail received - Once daily
Mail dispatched - Once daily

Newspapers - Wayne County Outlook; The Reporter
Weekly and circulation - 4,000; 3,000
Other papers received from - Lexington, Louisville and Somerset,
Kentucky

Radio - WFLW, AM; WKYM, FM
Stations received from - Lexington and Louisville, Kentucky;
Nashville and Knoxville, Tennessee

Television - Local Weather and News station
Cable service
Reception from - Lexington and Louisville, Kentucky; Nashville,
and Knoxville, Tennessee
Kentucky Educational Television - Channel 29, Somerset transmitter

Library Services

Public library - Wayne County Library
Size collection - 29,587 volumes
Circulation, 1976-77 - 114,297 volumes (library and bookmobile)
Services - Bookmobile, magazines, film-strips, microfilm, films,
phonograph records, framed paintings, audio visual
equipment, story hour for preschool children, summer
reading program, Great Books discussion for adults,
Wayne County-Monticello Library Media Club, oral
history program (tapes), meeting place for Historical
Society



Town and Country Plaza



Tradeway Center

33.



Wayne County Hospital



Monticello Country Club



Mutual Federal Savings & Loan



Wayne County Public Library

34.



Monticello Banking Company



Peoples State Bank

Religious Institutions

Number of churches - 15
Denominations - Baptist
Catholic
Christian
Church of Christ
Church of God
Jehovah's Witnesses
Methodist
Nazarene

Nearest Synagogues - Lexington, Kentucky, 109 miles distant
Congregations - Adath Israel (reform); Ohavey Zion (traditional)

Financial Institutions

<u>Banks</u>	<u>Assets</u>	<u>Deposits</u>	<u>Statement Date</u>
Monticello Banking Company	\$20,815,794.61	\$17,964,059.53	6/30/77
Peoples State Bank	16,591,877.55	14,185,339.18	6/30/77
<u>Savings and Loan Associations</u>	<u>Assets</u>	<u>Savings Accounts</u>	<u>Statement Date</u>
Mutual Federal Savings and Loan Association (Monticello branch)	\$73,653,947.06	\$63,671,573.17	12/31/77

Hotels and Motels

Total number - 3
Total units - 134

Clubs and Organizations

Business and Civic - Lions Club, Kiwanis Club, Monticello-Wayne
County Development Board, Wayne County Chamber of Commerce, PTA,
Wayne County-Monticello Library Media Club

Fraternal - Masonic Lodge, VFW, American Legion, DAV

Women's - Eastern Star, Business and Professional Women's Club,
Woman's Club

Youth - Boy Scouts, Cub Scouts, Little League baseball and football,
FFA, FHA, FBLA, FTA, 4-H Club, Junior Conservation, Demolay, Girl
Scouts, Brownies, Key Club, Y-Teens

Other - Wayne County Sportsman Club, CB Club, Bass Club



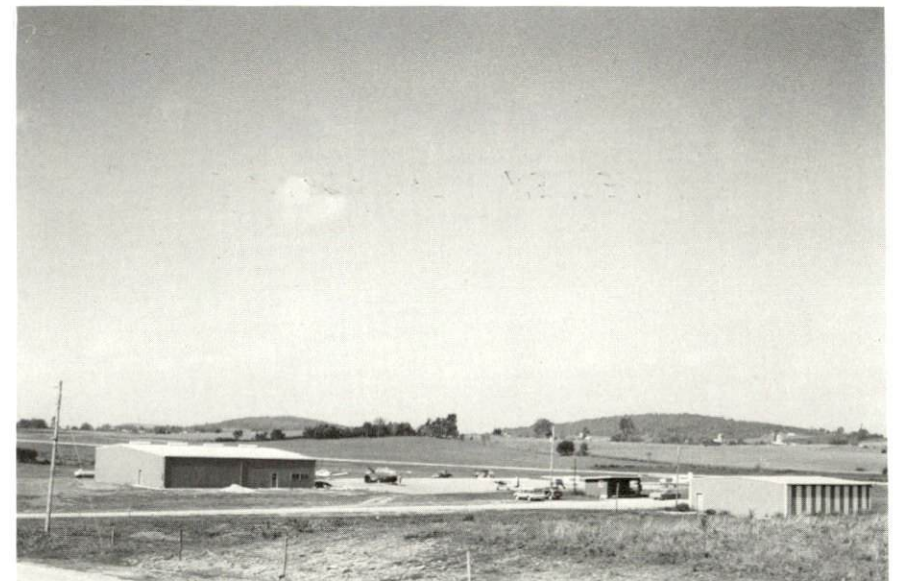
Monticello Motel



Executive Motor Inn



Anchor Motel



Monticello-Wayne County Airport

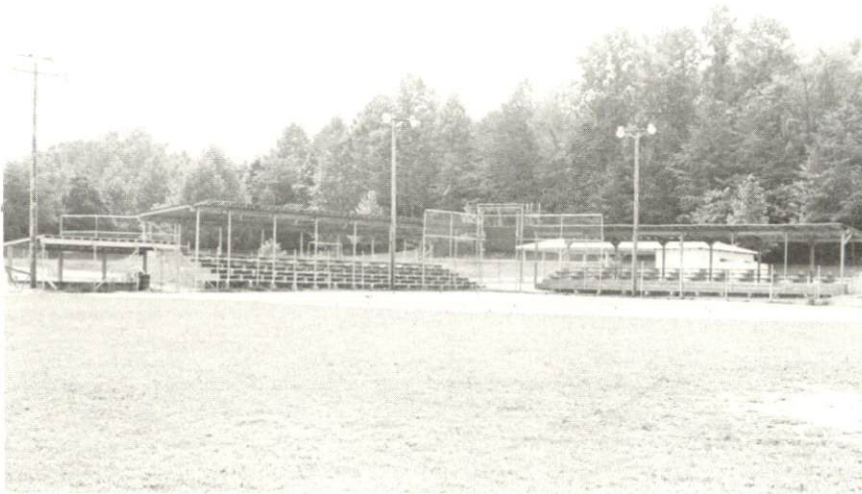


Beaver Lodge Dock



Conley Bottom Resort

38.



Monticello-Wayne County Memorial Park



Monticello-Wayne County Memorial Park

RECREATION

Local

Monticello has a supervised recreation program. The Monticello-Wayne County Memorial Park is an 86-acre facility which offers 5 shelters with 1 shelter used for roller skating, 2 playgrounds, 3 basketball courts, 2 lighted tennis courts, volleyball, badminton, horseshoe pitching, croquet, 2 softball fields, 1 baseball field, and horseback riding trails.

A 2-acre park and playground is located on Frisby Street.

A natatorium is available to the community for recreation and instruction.

Private recreation facilities include - a country club, 9-hole golf course, 2 swimming pools, movie theater, and 2 tennis courts. Immanuel Baptist Church Camp has 5 cabins accommodating 42 people each; staff house with capacity of 16; dining room for 200; swimming pool; softball field; and an activities building for basketball, volleyball and religious services.

Area (Within 55 miles)

Lake Cumberland State Resort Park is approximately 52 miles from Monticello. This magnificent lake extends for over 100 miles and is one of Kentucky's largest man-made lakes. The park offers lodge and cottage accommodations and camp sites. Recreation facilities include boating, fishing, swimming, golf course, playgrounds, two tennis courts, picnicking, and horseback riding.

Mill Springs Civil War Battle Site, 10 miles north of Monticello, boasts the world's largest water wheel near a famous Civil War battle site. Roadside park has gift shop and picnic area overlooking Lake Cumberland.

Conley Bottom Boat Dock on Lake Cumberland is a commercial dock. Improvements have been made to include a new boat dock, ramp, and a restaurant. One hundred new campsites and five efficiency cottages are also available.

General Burnside State Park, 23 miles northeast of Monticello, on Chandler Island, is a 400-acre facility that offers camping, fishing, dock, picnic area, playground, and 18-hole golf course.

Dale Hollow Lake State Park, approximately 30 miles southwest of Monticello, offers a marina, picnic areas, camping, fishing, and boating.

COMMUNITY IMPROVEMENTS

1. Monticello is presently participating in a beautification program. Many businesses in the downtown area are painting and renovating the exterior of their buildings. There are plans to place overhead wires underground.
2. A new plant, Smith Garments, Inc., recently opened in the downtown area.
3. A new "minimall" is to open very soon in one of the shopping centers. A 40,000 square foot discount department store is planning to open in early 1978.
4. The City of Monticello has a new municipal building under construction. The building will provide offices for the mayor and city clerk and all other city agencies.
5. Monticello has recently received a grant from the Community Development Block Grant program. The funds are being used to extend 6.3 miles of water line north of Monticello to serve approximately 100 families.
6. The Monticello City School has a new natatorium. The pool serves the students as well as the community for recreation and instruction.
7. The Wayne County School System was just awarded a grant to construct additional classrooms at the elementary school. Construction should begin in the near future. Plans are to have these classrooms ready for the 1978-79 school year.
8. The Monticello-Wayne County Municipal Park has just been completed. The park is an 86-acre facility and provides for many recreational activities. There are living quarters on the grounds for the park supervisor.
9. A grant application is to be made to obtain funds to initiate a 201 Facilities Plan.

**Kentucky Department of Commerce
Capital Plaza Tower
Frankfort, Kentucky 40601**

**Office of the Commissioner
(502) 564-4270**

**Industrial Development Division
(502) 564-7140**

**Field Services Division
(502) 564-4270**

**Existing Industries Division
(502) 564-4300**

**Agribusiness Division
(502) 564-6784**

**Office of Minority Business Enterprise
(502) 564-2064**

**Research and Planning Division
(502) 564-4886
Map Sales Office
133 Holmes Street
(502) 564-4715**

**International Trade and Investment
Promotion Division
(502) 564-2170**

**Kentucky Industrial Development Finance Authority (KIDFA)
(502) 564-4554**

**Kentucky Film Commission
(502) 564-2240**