

1985

Industrial Resources: Anderson County

Kentucky Library Research Collections
Western Kentucky University, spcol@wku.edu

Follow this and additional works at: https://digitalcommons.wku.edu/anderson_cty

 Part of the [Business Administration, Management, and Operations Commons](#), [Growth and Development Commons](#), and the [Infrastructure Commons](#)

Recommended Citation

Kentucky Library Research Collections, "Industrial Resources: Anderson County" (1985). *Anderson County*. Paper 12.
https://digitalcommons.wku.edu/anderson_cty/12

This Report is brought to you for free and open access by TopSCHOLAR®. It has been accepted for inclusion in Anderson County by an authorized administrator of TopSCHOLAR®. For more information, please contact topscholar@wku.edu.

IR ANDERSON COUNTY

405

RESOURCES
FOR
ECONOMIC
DEVELOPMENT

LAWRENCEBURG

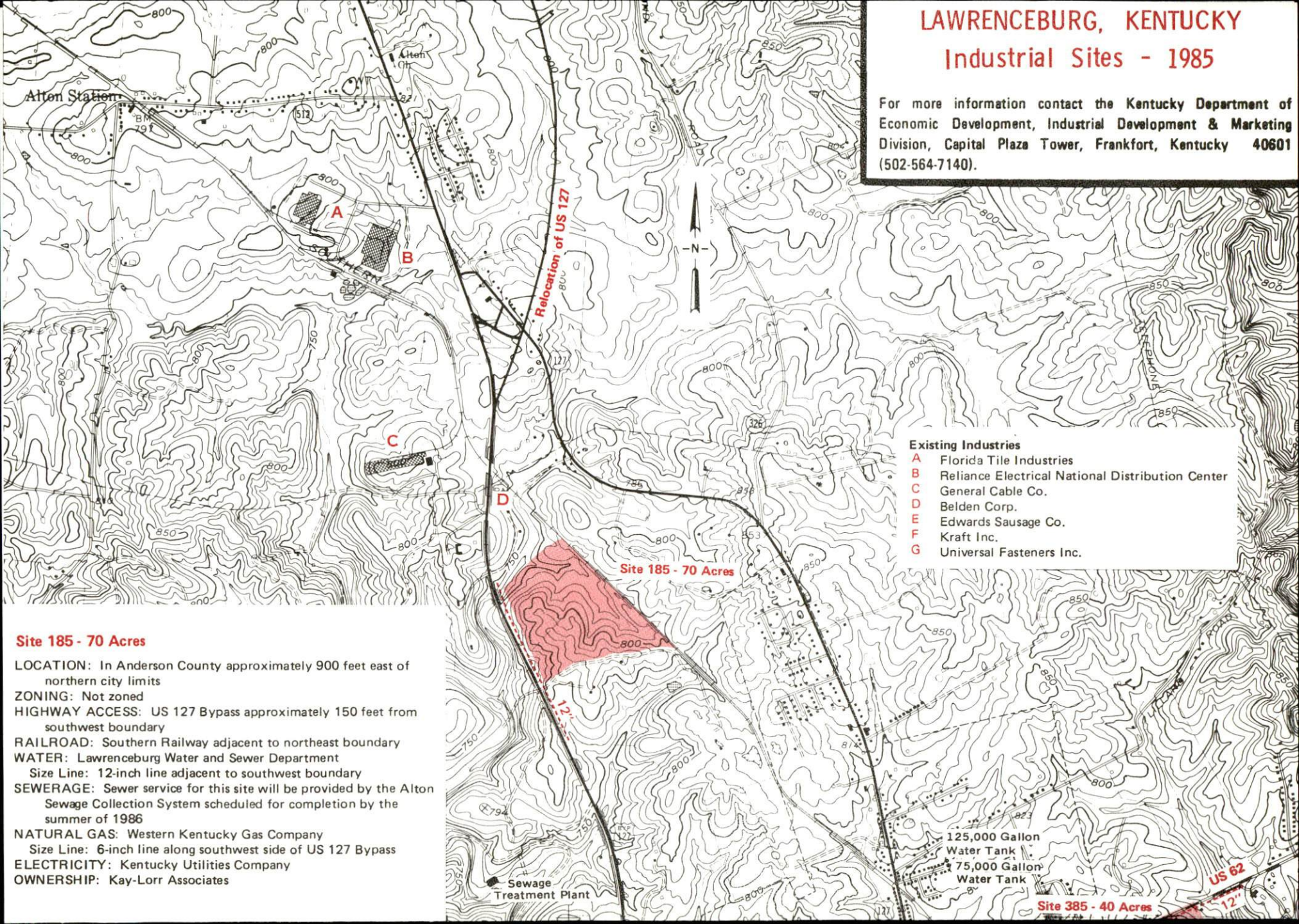
KENTUCKY

The Business Environment is Right

LAWRENCEBURG, KENTUCKY

Industrial Sites - 1985

For more information contact the Kentucky Department of Economic Development, Industrial Development & Marketing Division, Capital Plaza Tower, Frankfort, Kentucky 40601 (502-564-7140).



Existing Industries

- A Florida Tile Industries
- B Reliance Electrical National Distribution Center
- C General Cable Co.
- D Belden Corp.
- E Edwards Sausage Co.
- F Kraft Inc.
- G Universal Fasteners Inc.

Site 185 - 70 Acres

LOCATION: In Anderson County approximately 900 feet east of northern city limits
ZONING: Not zoned
HIGHWAY ACCESS: US 127 Bypass approximately 150 feet from southwest boundary
RAILROAD: Southern Railway adjacent to northeast boundary
WATER: Lawrenceburg Water and Sewer Department
Size Line: 12-inch line adjacent to southwest boundary
SEWERAGE: Sewer service for this site will be provided by the Alton Sewage Collection System scheduled for completion by the summer of 1986
NATURAL GAS: Western Kentucky Gas Company
Size Line: 6-inch line along southwest side of US 127 Bypass
ELECTRICITY: Kentucky Utilities Company
OWNERSHIP: Kay-Lorr Associates

Site 385 - 40 Acres

US 62

Site 285 - 100 Acres

LOCATION: Partially within western city limits
ZONING: Not zoned
HIGHWAY ACCESS: KY 44 adjacent to northern boundary
RAILROAD: Not rail served
WATER: Lawrenceburg Water and Sewer Department
Size Line: 12-inch line crosses northwest corner; 12-inch line along north side of KY 44
SEWERAGE: Lawrenceburg Water and Sewer Department
Size Line: 10-inch line on site
NATURAL GAS: Western Kentucky Gas Company
Size Line: 6-inch line approximately 600 feet west along west side of US 127 Bypass 2-inch line approximately 250 feet south
ELECTRICITY: Kentucky Utilities Company
OWNERSHIP: Private

Site 385 - 40 Acres

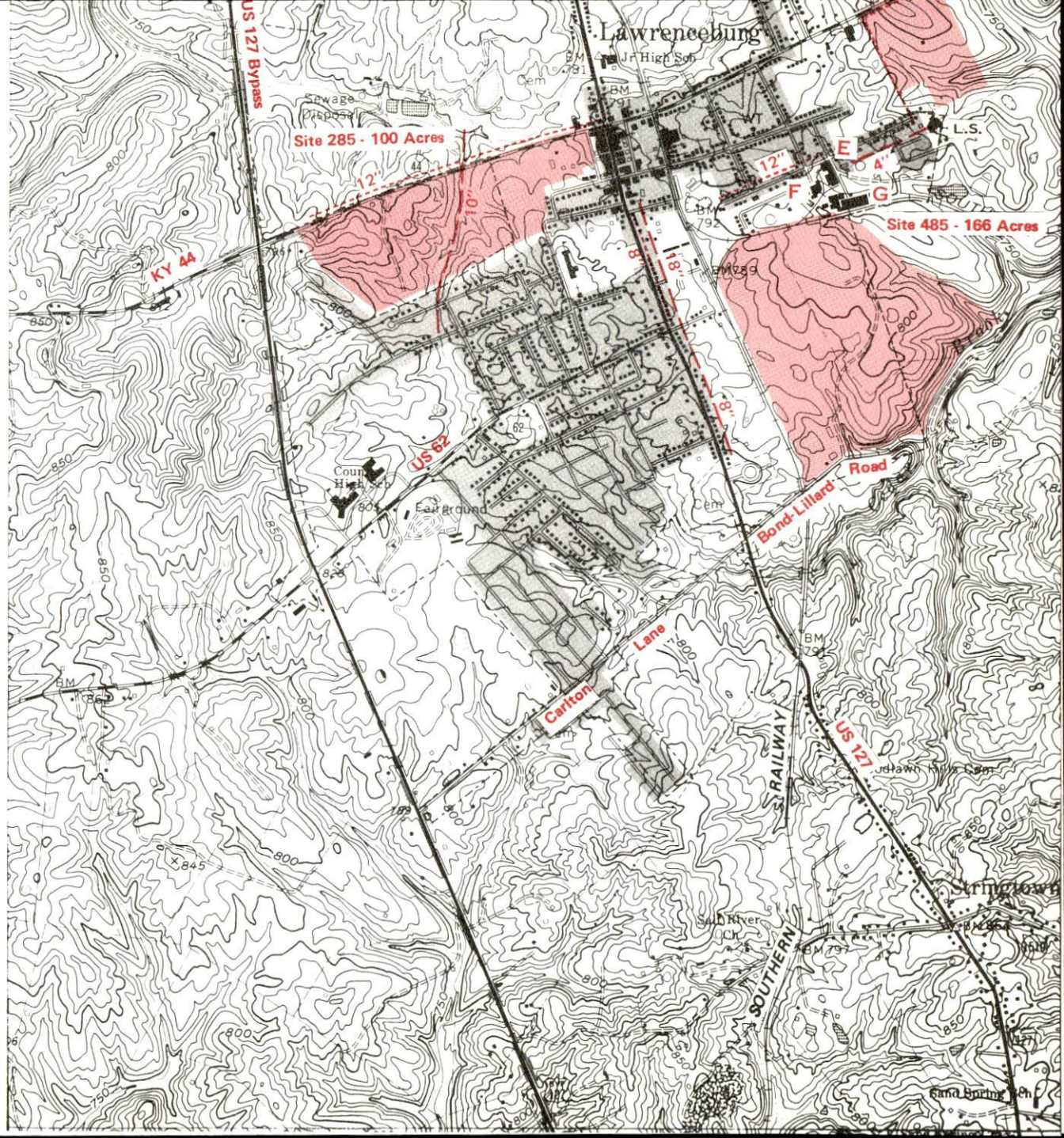
LOCATION: Adjacent to eastern city limits
ZONING: Not zoned
HIGHWAY ACCESS: US 62 adjacent to northern boundary
RAILROAD: Not rail served
WATER: Lawrenceburg Water and Sewer Department
Size Line: 12-inch line along northern boundary
SEWERAGE: Lawrenceburg Water and Sewer Department
Size Line: Lift station and 4-inch force main adjacent to southwest corner
NATURAL GAS: Western Kentucky Gas Company
Size Line: 2-inch line along north side of US 62
ELECTRICITY: Kentucky Utilities Company
OWNERSHIP: Private

Site 485 - 166 Acres

LOCATION: Major portion of site within southeast city limits
ZONING: Industrial
HIGHWAY ACCESS: US 127 approximately 1000 feet west via Bond-Lillard Road
RAILROAD: Southern Railway adjacent to northern and western boundaries
WATER: Lawrenceburg Water and Sewer Department
Size Line: 12-inch line approximately 600 feet north along north side of Lincoln Street; 8-inch line approximately 750 feet west of site
SEWERAGE: Lawrenceburg Water and Sewer Department
Size Line: 18-inch line approximately 500 feet west
NATURAL GAS: Western Kentucky Gas Company
Size Line: 4-inch line approximately 600 feet west of site; 2-inch line approximately 100 feet from southwest corner of site
ELECTRICITY: Kentucky Utilities Company
OWNERSHIP: Private

SCALE: 1 inch = 2000 feet
CONTOUR INTERVAL: 10 feet
BASE: USGS 7.5 minute series - 1967
Photorevised - 1978

UTILITIES
- - - - - Water Line
- - - - - Sewer Line



RESOURCES FOR ECONOMIC DEVELOPMENT
LAWRENCEBURG, KENTUCKY

Prepared by
The Kentucky Department of Economic Development
Division of Research and Planning
in cooperation with
The Anderson County Chamber of Commerce

1985

Program manager - Pamela Riley; research - Shirley Wood; clerical - Bobbi Graves; graphics - Frank Ferrante, Tony Cecconi, Robert Owens; cartography - Site Evaluation Branch, Division of Industrial Development and Marketing. Cost of printing paid from state funds.

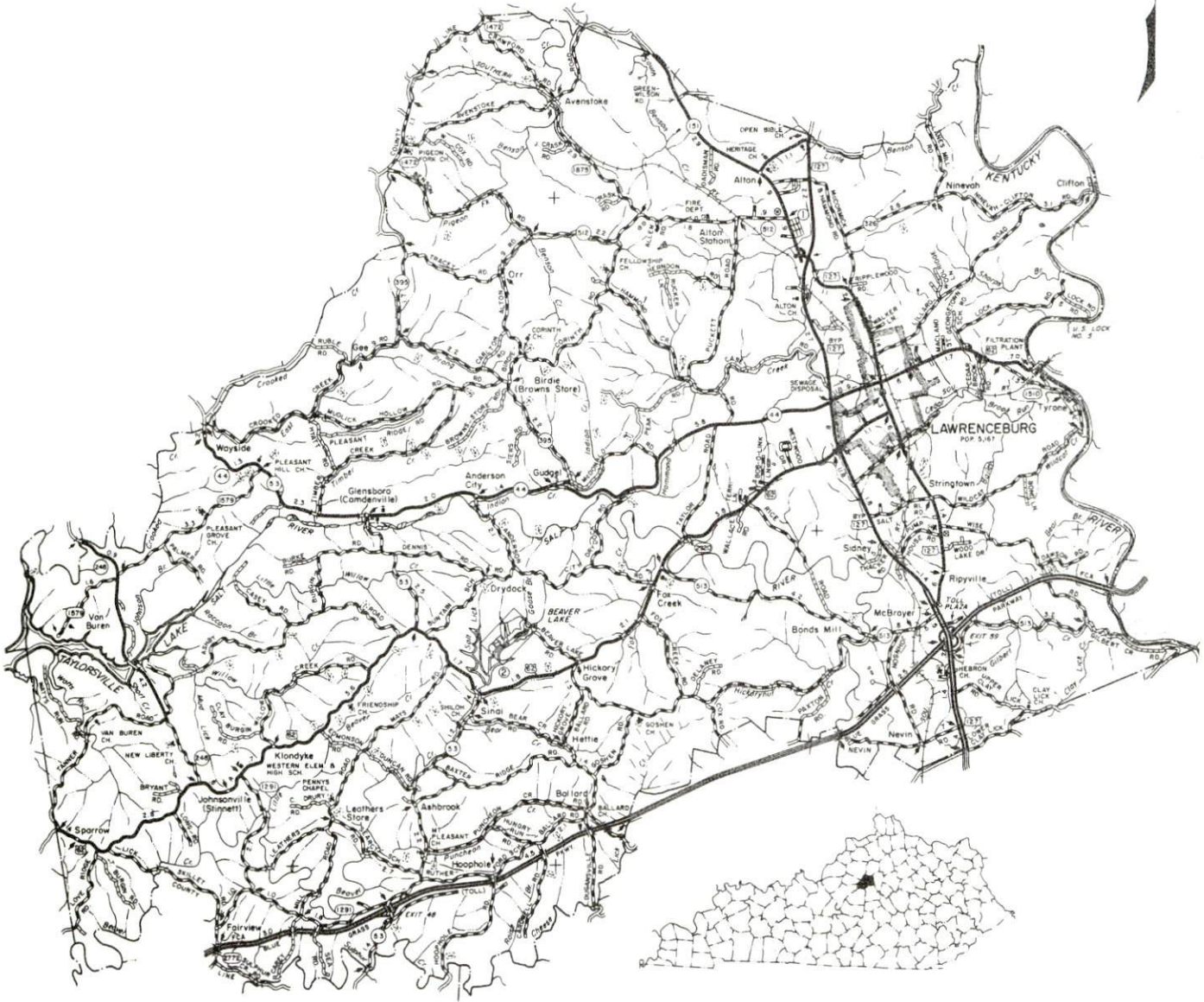
TABLE OF CONTENTS

<u>Chapter</u>	<u>Page</u>
INDUSTRIAL SITES	i
LAWRENCEBURG, KENTUCKY - A RESOURCE PROFILE	1
THE LABOR MARKET AREA	3
Population	3
Labor Force Characteristics of Residents, 1983	3
Selected Components of Nonagricultural Employment, by Place of Work, 1983	4
Lawrenceburg Manufacturing Firms, Their Products and Employment	5
Labor Organizations in Manufacturing Firms	7
Industrial Services	8
Estimated Male Labor Supply	9
Estimated Female Labor Supply	10
Average Weekly Wages By Industry, by Place of Work, 1983	11
Per Capita Personal Income	13
TRANSPORTATION	14
Rail	14
Highways	14
Truck Service	14
Air	16
Bus	17
Rental Services	17
Water	17
POWER AND FUEL	18
Electricity	18
Natural Gas	18
Other Fuels	19
WATER AND SEWERAGE	20
Public Water Supply	20
Raw Water	20
Sewerage	21
CLIMATE	22

<u>Chapter</u>	<u>Page</u>
LOCAL GOVERNMENT	23
City	23
County	23
Assessed Value of Property, 1984	23
Property Taxes	23
Combined State and Local Rates Per \$100 Valuation, 1984	24
Planning and Zoning	24
Safety	24
Police	24
Fire	24
Rescue Service	25
Refuse Collection and Disposal	25
EDUCATION	26
Public Schools	26
Area Colleges and Universities	27
Vocational Schools	28
HEALTH	30
Local Medical Personnel	30
Hospitals	30
Other Medical Facilities	30
Ambulance Service	31
Public Health	31
OTHER LOCAL FACILITIES	32
Communications	32
Library Services	32
Religious Institutions	33
Financial Institutions	33
Hotels and Motels	33
Clubs and Organizations	34
RECREATION	35
COMMUNITY IMPROVEMENTS	38

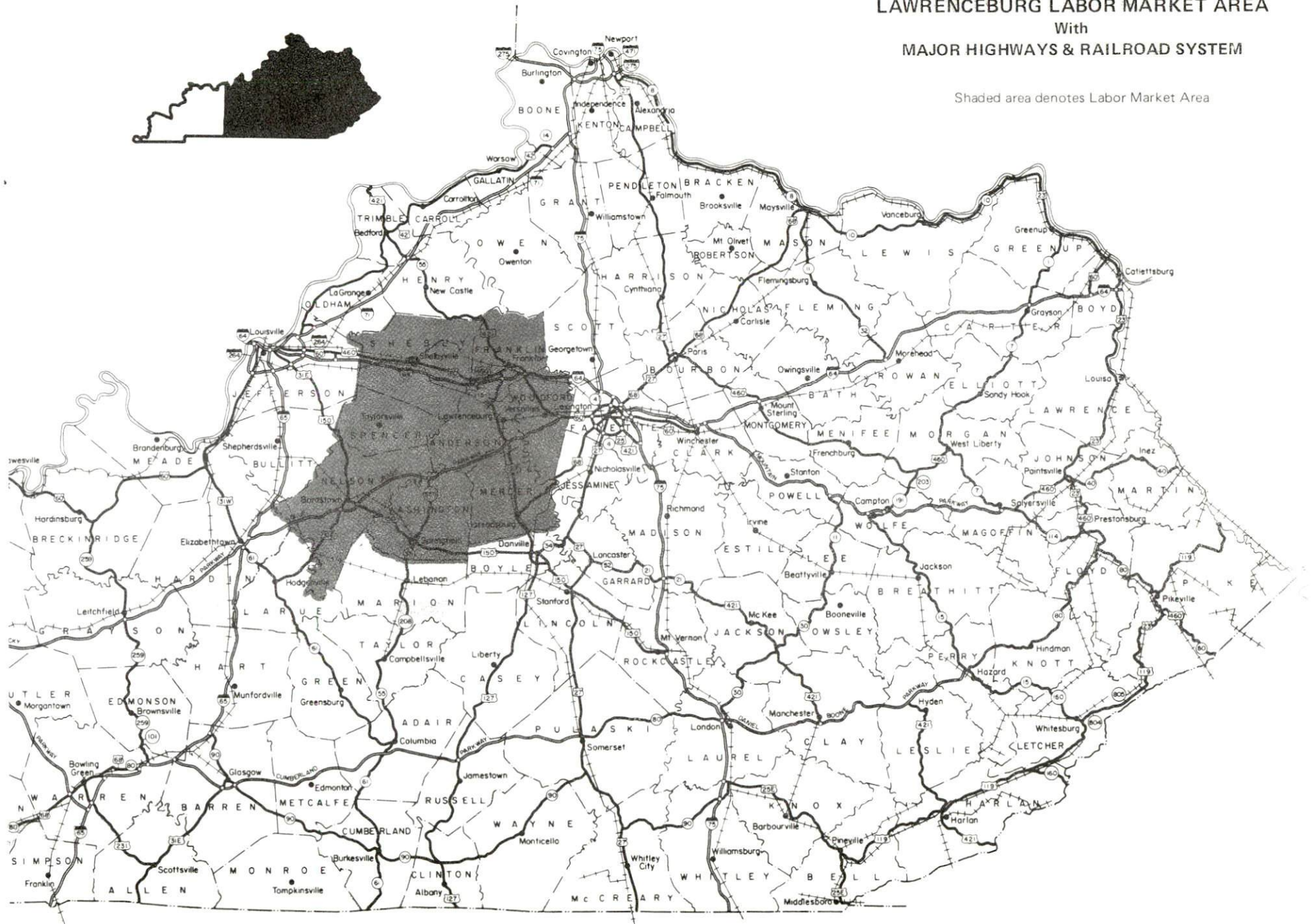
1984 EDITION
GENERAL HIGHWAY MAP
ANDERSON COUNTY
KENTUCKY

PREPARED BY THE
KENTUCKY TRANSPORTATION CABINET
DEPARTMENT OF HIGHWAYS
DIVISION OF PLANNING
IN COOPERATION WITH THE
U.S. DEPARTMENT OF TRANSPORTATION
FEDERAL HIGHWAY ADMINISTRATION



LAWRENCEBURG LABOR MARKET AREA With MAJOR HIGHWAYS & RAILROAD SYSTEM

Shaded area denotes Labor Market Area



LAWRENCEBURG, KENTUCKY - A RESOURCE PROFILE

Lawrenceburg, the county seat of Anderson County, is located in the rolling to hilly terrain of central Kentucky's famous Blue Grass Region. The 1982 estimated population of Anderson County was 12,900, with an estimated 5,220 people residing within the Lawrenceburg city limits. Lawrenceburg is located 23 miles west of Lexington, Kentucky; 55 miles east of Louisville, Kentucky; and 101 miles south of Cincinnati, Ohio.

The Economic Framework

The total number of Anderson County residents employed in 1983 averaged 5,605, with nonagricultural jobs accounting for 5,240 workers. Manufacturing employers in the county reported 935 workers; construction 70 employees; wholesale and retail trade 500 employees; service industries 240 employees; and state and local government 400 employees. Manufacturing employment is greatest in the food and kindred products, and the stone, clay and glass products industries.

Per capita personal income in the county in 1982 was \$9,095. Between 1978 and 1982 per capita income increased by 37 percent.

The Lawrenceburg labor market area includes Anderson and the seven adjoining counties. The total number of residents of the labor market area employed in 1983 averaged 69,740, with nonagricultural jobs accounting for 63,510 workers. Manufacturing employers in the area reported 12,150 workers; construction firms 1,730 employees; wholesale and retail 8,900 employees; state and local government 14,735 employees; and 5,970 employees in the service industries.

Resources for Growth

1. Labor Supply - There is a current labor supply of 9,130 men and 8,350 women available for industrial jobs in the labor market area. In addition, from 1985 through 1989, 6,910 young men and 6,675 young women in the area will become 18 years of age and potentially available for industrial jobs.

2. Transportation - Local transportation capability is excellent. The Southern Railway System provides rail service which includes northbound and southbound freights which stop daily. Major highways serving Lawrenceburg are U.S. Highways 127 and 62, plus Kentucky Highways 44 and 151. The Blue Grass Parkway is 5 miles south of Lawrenceburg, and Interstate 64 is 11 miles north of the city. The nearest airport is located in Frankfort, 14 miles to the north, and the nearest scheduled airline service is available at Blue Grass Field, 18 miles east of Lawrenceburg, near Lexington.

3. Power and Fuel - Electric power is provided to Lawrenceburg by Kentucky Utilities Company and to Anderson County by Fox Creek RECC, which is supplied by East Kentucky Power Cooperative. Natural gas service is provided by the Western Kentucky Gas Company, which is supplied by Texas Gas Resources Corporation. There are three distributors of propane and six distributors of distillate fuel oil located within 15 miles.

4. Education - The Anderson County School System serves over 2,700 students. There are 15 institutions of higher learning located within 60 miles of Lawrenceburg.

The Central Kentucky State Vocational-Technical School, located 23 miles to the east in Lexington, offers training in 21 different courses. The Franklin County Area Vocational Education Center, located 14 miles distant in Frankfort, offers seven different courses. Also, the Harrodsburg Area Vocational Education Center, 21 miles south, offers seven courses.

THE LABOR MARKET AREA

The Lawrenceburg Labor Market Area includes Anderson County and the adjoining Kentucky counties of Franklin, Mercer, Nelson, Shelby, Spencer, Washington and Woodford.

POPULATION				
<u>Area</u>	<u>1982*</u>	<u>1980</u>	<u>1970</u>	<u>Percent Nonwhite 1980</u>
Lawrenceburg	5,220	5,167	3,579	8.0
Labor Market Area	160,800	158,791	132,925	N/A
Anderson County	12,900	12,567	9,358	3.9
Franklin County	42,600	41,830	34,481	8.7
Mercer County	19,100	19,011	15,960	4.6
Nelson County	28,100	27,584	23,477	6.6
Shelby County	23,700	23,328	18,999	11.4
Spencer County	5,900	5,929	5,488	2.7
Washington County	10,500	10,764	10,728	10.3
Woodford County	18,000	17,778	14,434	8.0

* Population estimates.

Note: The 1980 city counts of population by race are provisional.

Sources: U.S. Department of Commerce, Bureau of the Census, 1980 Census of Population and Housing, March 1981; 1980 Census of Population, Number of Inhabitants; Local Population Estimates, Series P-26, No. 82-17-C, June 1984.

LABOR FORCE CHARACTERISTICS OF RESIDENTS, 1983

	<u>Anderson County</u>	<u>Labor Market Area</u>
Civilian Labor Force	6,167	77,106
Employment	5,605	69,744
Agricultural	368	6,234
Nonagricultural	5,237	63,510
Unemployment	562	7,362
Rate of Unemployment (%)	9.1	9.5

Source: Kentucky Cabinet for Human Resources, Kentucky Labor Force Estimates, Annual Averages, 1983.

SELECTED COMPONENTS OF NONAGRICULTURAL EMPLOYMENT,
BY PLACE OF WORK, 1983

	<u>Anderson County</u>	<u>Labor Market Area</u>
All Industries (total)	2,347	47,524
Manufacturing	935	12,153
Wholesale & Retail Trade	504	8,897
Services	244	5,967
State/Local Government	396	14,735
Contract Construction	67	1,729

Note: Excludes domestic workers, railway workers, certain nonprofit corporations, majority of federal government workers, and self-employed workers.

Source: Kentucky Cabinet for Human Resources, Average Monthly Workers Covered by Kentucky Unemployment Insurance Law, 1983.

LAWRENCEBURG MANUFACTURING FIRMS,
THEIR PRODUCTS AND EMPLOYMENT

Firm (Establishment date)	Product	Employment			Labor Unions
		Total	Male	Female	
Anderson County Farm Service (1953)	Feed	7	7	0	
Anderson News (1877)	Newspaper	7	2	5	
Anderson Tool and Die (1974)	Tools, dies, molds, custom machines	4	3	1	
Austin Nichols and Company, Inc. (1855)	Distilled spirits	200	100	100	Distillery Workers*
Belden, Cord Products Division (1981)	Electrical cord sets	50	N/A	N/A	
Cricketeer Cutting Shop (1980)	Fabric cutting, men's suits	24	18	6	
Edwards Sausage Company (1939)	BBQ ribs and chicken	27	23	4	
Farmers Service Center, Inc. (1955)	Feed	5	4	1	
Florida Tile Industries (1968)	Wall tile	259	154	105	
General Cable Company (1974)	Telephone cable	136	115	21	
The Kentucky Stone Company (1936)	Agricultural lime, crushed stone	19	18	1	
Kentucky Wiring Devices (1981)	Electrical harness assemblies, industrial sub-assemblies	20	3	17	
Kraft, Inc. (1929)	Cheese, whey	90	N/A	N/A	
Lawrenceburg Supply Company (1907)	Lumber, ready mixed concrete	11	9	2	

(Cont'd)

<u>Firm (Establishment date)</u>	<u>Product</u>	<u>Employment</u>			<u>Labor Unions</u>
		<u>Total</u>	<u>Male</u>	<u>Female</u>	
Mago Construction Company, Inc. (1970)	Bituminous concrete, surface mixes	4	N/A	N/A	
Joseph E. Seagram and Sons, Inc. (1895)	Bourbon whiskey, dried feed	37	36	1	Distillery Workers; Firemen & Oilers*
Sportsman's Trailer Manufacturing (1984)	Boat and utility trailers	15	N/A	N/A	
Universal Fasteners, Inc. (1955)	Metal buttons, snap fasteners, hooks and eyes, automatic attaching machines	201	161	40	Ladies' Garment Workers; Machinists*

* See Labor Organizations on the following page.

Sources: Kentucky Department of Economic Development, 1984 Kentucky Directory of Manufacturers; Division of Research and Planning.

In addition to the manufacturing firms, Reliance Electric maintains a distribution center in Lawrenceburg. In 1984 Reliance Electric had an average employment of 98 workers.

LABOR ORGANIZATIONS IN MANUFACTURING FIRMS

<u>Union</u>	<u>Representing workers at:</u>
Distillery, Wine and Allied Workers' International Union, AFL-CIO-CLC	Austin Nichols and Company, Inc.; Joseph E. Seagram and Sons, Inc.
International Brotherhood of Firemen and Oilers, AFL-CIO	Joseph E. Seagram and Sons, Inc.
International Ladies' Garment Workers Union, AFL-CIO	Universal Fasteners, Inc.
International Association of Machinists and Aerospace Workers, AFL-CIO	Universal Fasteners, Inc.

INDUSTRIAL SERVICES

<u>Types of Services</u>	<u>Location</u>	<u>Mileage from Lawrenceburg</u>
Custom Plastics Producers	Shelbyville	26
	Georgetown	28
Electric Motor Repair	Lexington	23
Grinding, Precision & Tool	Georgetown	28
Heat Treating Facilities	Frankfort	14
	Lexington	23
	Georgetown	28
Industrial Equipment & Supplies	Frankfort	14
	Lexington	23
Industrial Gases	Lexington	23
Industrial Waste Removal	Frankfort	14
	Lexington	23
Machine Shops, Tool & Die	Lawrenceburg	-
	Versailles	11
	Frankfort	14
	Lexington	23
Metal Finishers	Lexington	23
Metal Service Centers	Lexington	23
Millwrights	Lexington	23
	Nicholasville	37
Uniform Rentals	Lawrenceburg	-

Sources: Kentucky Department of Economic Development, Kentucky Directory of Selected Industrial Services, 1983; Division of Research and Planning.

ESTIMATED MALE LABOR SUPPLY
LAWRENCEBURG LABOR MARKET AREA

Area	Current			Not in Labor Force	Future
	Total	Unemployed	Under- employed		Becoming 18 years of age 1985 thru 1989
Labor Market					
Area*	9,133	4,334	2,651	2,148	6,907
Anderson	1,016	299	143	574	547
Franklin	2,780	983	787	1,010	1,731
Mercer	977	617	360	0	772
Nelson	1,700	1,217	483	0	1,318
Shelby	891	496	395	0	935
Spencer	586	155	85	346	277
Washington	666	319	129	218	487
Woodford	517	248	269	0	840

* Additional workers may be drawn from other nearby counties.

Note: Unemployed - persons unemployed and actively seeking work;
Underemployed - persons employed but working only 14 to 26 weeks per year;
Not in Labor Force - represents the number of persons who would enter the labor force if suitable employment were available (based on the assumption that persons in Kentucky would like to participate in the labor force in the same proportion that they do nationally).

Sources: Kentucky Cabinet for Human Resources, Kentucky Labor Supply Estimates by County, 1983. Kentucky Department of Economic Development, Future Labor Supply Becoming 18 Years of Age, 1985 thru 1989.

ESTIMATED FEMALE LABOR SUPPLY
LAWRENCEBURG LABOR MARKET AREA

Area	Current			Not in Labor Force	Future
	Total	Unemployed	Under- employed		Becoming 18 years of age 1985 thru 1989
Labor Market					
Area*	8,350	3,028	3,270	2,052	6,625
Anderson	588	263	228	97	523
Franklin	1,573	602	971	0	1,546
Mercer	1,349	357	356	636	788
Nelson	1,989	822	608	559	1,337
Shelby	986	355	492	139	962
Spencer	576	115	53	408	225
Washington	638	276	149	213	449
Woodford	651	238	413	0	795

* Additional workers may be drawn from other nearby counties.

Note: Unemployed - persons unemployed and actively seeking work;
Underemployed - persons employed but working only 14 to 26 weeks per year;
Not in Labor Force - represents the number of persons who would enter the labor force if suitable employment were available (based on the assumption that persons in Kentucky would like to participate in the labor force in the same proportion that they do nationally).

Sources: Kentucky Cabinet for Human Resources, Kentucky Labor Supply Estimates by County, 1983. Kentucky Department of Economic Development, Future Labor Supply Becoming 18 Years of Age, 1985 thru 1989.

AVERAGE WEEKLY WAGES BY INDUSTRY,
BY PLACE OF WORK, 1983

	<u>Anderson County</u>	<u>Franklin County</u>	<u>Mercer County</u>	<u>Nelson County</u>
All Industries	\$279.50	\$310.19	\$252.62	\$268.27
Mining & Quarrying	*	*	0	353.34
Contract Construction	231.63	369.32	293.88	300.98
Manufacturing	341.91	337.77	329.56	375.77
Transportation, Communications & Public Utilities	385.85	410.97	384.08	382.53
Wholesale & Retail Trade	209.75	172.36	161.35	174.45
Finance, Insurance & Real Estate	262.63	314.23	274.60	237.75
Services	166.04	228.60	171.54	157.30
State/Local Government	276.49	349.47	258.70	263.15
Other	152.47	202.99	162.15	130.33
	<u>Shelby County</u>	<u>Spencer County</u>	<u>Washington County</u>	<u>Woodford County</u>
All Industries	\$247.09	\$205.55	\$220.45	\$298.42
Mining & Quarrying	0	0	*	*
Contract Construction	187.61	*	390.01	236.39
Manufacturing	285.99	*	239.03	381.35
Transportation, Communications & Public Utilities	366.87	212.57	176.24	386.63
Wholesale & Retail Trade	186.11	149.88	165.41	168.46
Finance, Insurance & Real Estate	265.51	*	295.60	244.47
Services	199.90	231.23	146.90	214.79
State/Local Government	322.21	230.00	224.49	273.11
Other	209.68	163.80	135.72	278.71

* Not disclosed.

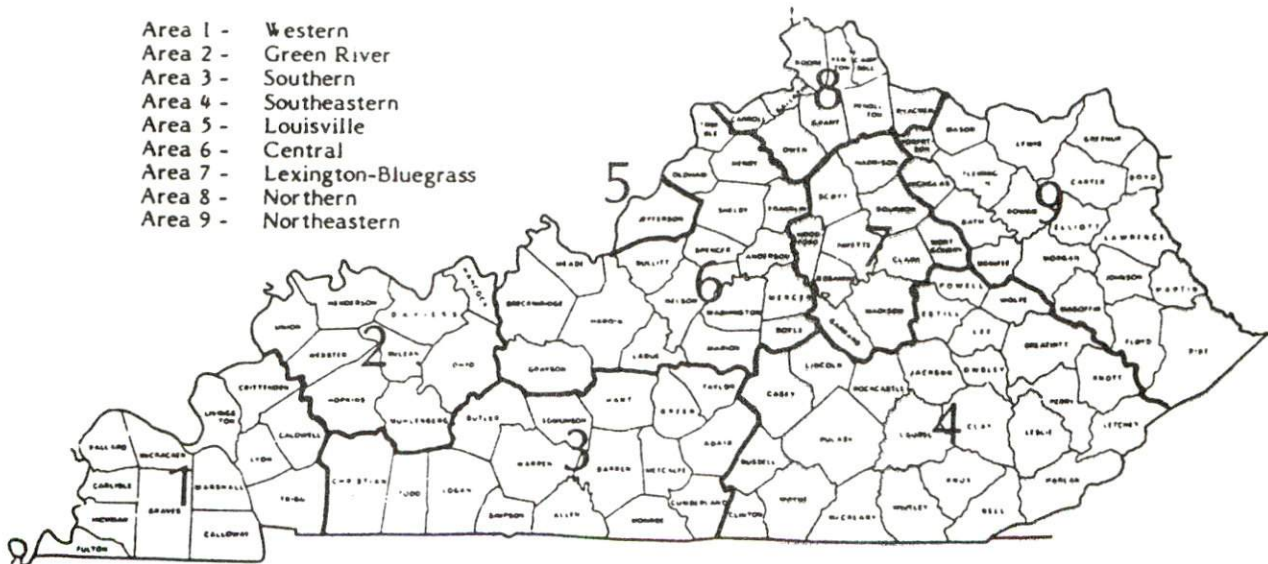
Note: Excludes domestic workers, railway workers, certain nonprofit corporations, majority of federal government workers, and self-employed workers.

Source: Kentucky Cabinet for Human Resources, Average Weekly Wages of Workers Covered by Kentucky Unemployment Insurance Law, 1983.

Occupational wage rates for specific industries are usually not available to most government agencies, and wage data furnished to state employment agencies by individual industrial employers are protected from disclosure by federal law. The most reliable up-to-date wage information can be obtained by direct contact with local employers.

Associated Industries of Kentucky, a voluntary organization of Kentucky businesses, regularly collects occupational wage rates and fringe benefits data from participating member firms. Data are compiled for over 127 clearly defined office, production, and service occupations. Tabulations are published for nine geographical areas of Kentucky, as shown on the map below. It should be noted that the data may be weighted by the preponderance of firms in the larger cities and may be somewhat higher than the rates paid in the smaller communities. Data from these tabulations are available, upon request, from the Kentucky Department of Economic Development, Frankfort, Kentucky 40601.

- Area 1 - Western
- Area 2 - Green River
- Area 3 - Southern
- Area 4 - Southeastern
- Area 5 - Louisville
- Area 6 - Central
- Area 7 - Lexington-Bluegrass
- Area 8 - Northern
- Area 9 - Northeastern



Associated Industries of Kentucky Area Wage Surveys

PER CAPITA PERSONAL INCOME

<u>Area</u>	<u>1978</u>	<u>1982</u>	<u>Percent Change</u>
Anderson County	\$ 6,626	\$ 9,095	37.3
Labor Market Area Range	\$5,011 - 8,052	\$6,852 - 12,213	N/A
Kentucky	6,389	8,893	39.2
U. S.	7,776	11,100	42.7

Sources: U.S. Department of Commerce, Bureau of Economic Analysis, Survey of Current Business, April 1983; Commerce News, April 29, 1984. Kentucky Economic Information System, July 1984.

TRANSPORTATION

Rail

Line serving **Lawrenceburg** - Southern Railway System

Services - Main line; 1 northbound and 1 southbound freights make daily stops; switching services; team track space for 4 cars; nearest piggyback facilities are at Danville, 30 miles to the south, or at Louisville, 55 miles to the west

For details on routing, schedules, rates, and services, contact:

District Sales Manager
Norfolk Southern Corporation
1402 South 15th Street
Louisville, Kentucky 40210
(502) 636-6023

Highways

Major highways serving Lawrenceburg are U.S. Highways 127 and 62, Kentucky Highways 44 and 151, and Blue Grass Parkway. U.S. Highways 127, 62, and Kentucky Highway 151 are "AAA" rated (80,000-pound gross load limit) trucking highways. Kentucky 44 is a "AA" rated (62,000-pound gross load limit) trucking highway.

The Blue Grass Parkway, a multilane toll road which traverses across central Kentucky, is 5 miles south of Lawrenceburg via U.S. 127.

Interstate 64, a major east-west route, is 11 miles north of the city via U.S. 127. Interstate 64 interconnects with Interstate 75, a major north-south route, 33 miles distant of Lawrenceburg.

Truck Service

<u>Company</u>	<u>Home Office</u>
ANR Freight System, Inc.*	12136 W. Bayaud Avenue Lakewood, Colorado 80228
American Freight Systems, Inc.*	9393 W. 110th Street Overland Park, Kansas 66210
Bailey's Express Company, Inc.**	Middletown, Connecticut 06457
Bestway Express, Inc.**	Nashville, Tennessee 37210
Bishop Motor Express**	Grand Rapids, Michigan 49502
Branch Motor Express Company**	114 Fifth Avenue New York, New York 10011
Briggs Transportation Company**	St. Paul, Minnesota 55113
CCC Highway, Inc.**	Cleveland, Ohio 44115

(Cont'd)

CompanyHome Office

Carolina Freight Carriers Corporation**	P.O. Box 697 Cherryville, North Carolina 28021
Central Transport, Inc.*	34200 Mound Road Sterling Heights, Michigan 48077
Consolidated Freightways Corporation of Delaware**	175 Linfield Drive Menlo Park, California 94025
Expressway, Inc.**	Louisville, Kentucky 40210
General Highway Express, Inc.*	Sidney, Ohio 45365
Helms/Byrns Express**	Irwin, Pennsylvania 15642
Interstate System*	Grand Rapids, Michigan 49503
Lawrenceburg Transfer Company, Inc.** (T)	P.O. Box 220 Lawrenceburg, Kentucky 40342
Leoni Motor Express, Inc.**	Chicago Heights, Illinois 60411
Mason and Dixon Lines, Inc.**	P.O. Box 969 Kingsport, Tennessee 37662
McLean Trucking Company*	P.O. Box 213 Winston-Salem, North Carolina 27154
Middlewest Freightways, Inc.**	6810 Prescott Avenue St. Louis, Missouri 63147
O.K. Trucking Company**	3000 E. Crescentville Road Cincinnati, Ohio 45241
Overnite Transportation Company**	P.O. Box 1216 Richmond, Virginia 23209
Renner's Express, Inc.*	P.O. Box 882 Indianapolis, Indiana 46206
Roadway Express, Inc.**	1077 Gorge Boulevard Akron, Ohio 44310
Ryder/P-I-E Nationwide, Inc.*	P.O. Box 2408 Jacksonville, Florida 32203
Smith's Transfer Corporation*	P.O. Box 1000 Staunton, Virginia 24401
Suburban Motor Freight, Inc.**	P.O. Box 1739 Columbus, Ohio 43216
Thurston Motor Lines, Inc.**	600 Johnston Road Charlotte, North Carolina 28206
Transcon Lines**	101 Continental Boulevard El Segundo, California 90245
United Trucking Service, Inc.**	8505 W. Warren Dearborn, Michigan 48126

(T) Local Terminal

* Interstate service only.

** Interstate and intrastate service.

Source: American Motor Carrier Directory, Fall 1984.

Other Freight Services

Emery
 Federal Express
 Purolator Courier
 United Parcel Service

Nearest Office or Shipping Center

Lexington, 23 miles distant
 Lexington, 23 miles distant
 Lexington, 23 miles distant
 Lexington, 23 miles distant

HIGHWAY MILES AND TRUCK TRANSIT TIME IN DAYS FROM
 LAWRENCEBURG, KENTUCKY, TO SELECTED MARKET CENTERS

City	Highway Miles	Delivery Time TL	City	Highway Miles	Delivery Time TL
Atlanta, Ga.	385	1	Los Angeles, Ca.	2,163	7
Baltimore, Md.	564	2	Louisville, Ky.	55	1
Birmingham, Ala.	419	1	Nashville, Tenn.	223	1
Chicago, Ill.	347	1	New Orleans, La.	740	2
Cincinnati, Ohio	101	1	New York, N. Y.	726	2
Cleveland, Ohio	340	1	Pittsburgh, Pa.	366	1
Detroit, Mich.	360	1	St. Louis, Mo.	318	1
Knoxville, Tenn.	204	1			

Note: Mileage computations are via the best interstate or primary highways, not necessarily the most direct route of travel.

Sources: Rand McNally Road Atlas, 1979. Official Kentucky Mileage Map, 1982.
 Delivery time - Lawrenceburg Transfer, Inc., P.O. Box 36005, Louisville,
 Kentucky 40233-6005.

AirLocal

Location: Capital City Airport
 1 mile west of Frankfort;
 14 miles north of Lawrenceburg

Runways: 1 paved

Length: 5,000 feet

Traffic

Control: Wind tee

Lighting: Beacon, runway lights sundown to sunrise,
 REILS and VASI

Services: 100 octane, jet fuel; hangar; storage;
 auto rental, taxi

(Cont'd)

Nearest Scheduled Commercial Airline Service

Location: Blue Grass Field
5 miles west of Lexington, Kentucky;
18 miles east of Lawrenceburg

Runways: 2 paved
Length: 6,500 feet; 3,500 feet

Traffic Control: Tower

Lighting: Approach lighting system, beacon, runways and
obstructions lighted, VASI

Services: Delta, Piedmont, United, USAir, Allegheny Commuter,
Comair, Tennessee Airways; fuel - 100LL and
jet-A; hangars, tie-downs; major A & P repairs;
major Avionics repairs; APU, charter, flight
instruction, oxygen, plane rentals, survival
equipment; taxi, limousine, car rentals, courtesy
car, weather information; restaurant, snack bar

Air Freight Service: Air freight terminal

Bus - Trailways Bus Lines

Rental Services - Car, truck and trailer rentals are available locally.

Water

Lawrenceburg is located 14 miles from a point on the Kentucky River in Frankfort, where a 6-foot navigation channel is maintained. Unloading facilities for sand and gravel are located in Frankfort.

Lawrenceburg is 55 miles east of Louisville, where the Louisville and Jefferson County Riverport Authority and the Port of Louisville are located on the Ohio River. The Louisville and Jefferson County Riverport Authority has been designated as a Foreign Trade Zone and offers complete U.S. Customs services for exports and imports.

POWER AND FUEL

Electricity

Company serving **Lawrenceburg and portions of eastern Anderson County** -
Kentucky Utilities Company
Source of power - Kentucky Utilities Company
Total generating capacity - 3,164,000 KW*
For industrial rates contact:

Industrial Development Department
Kentucky Utilities Company
One Quality Street
Lexington, Kentucky 40507
(606) 255-1461

Company serving **the majority of Anderson County** - Fox Creek Rural Electric
Cooperative Corporation
Source of power - East Kentucky Power Cooperative
Total generating capacity - 1,309,000 KW**
For industrial rates contact:

Industrial Development Division
East Kentucky Power Cooperative
P.O. Box 707
Winchester, Kentucky 40391
(606) 744-4812

Natural Gas

Company serving **Lawrenceburg** - Western Kentucky Gas Company
Source of supply - Texas Gas Resources Corporation
Size of transmission mains - 24 and 26 inches (supplier); 6, 8 and 12 inches
(distributor)
Distribution mains - 2, 4 and 6 inches
Distribution pressure - 40 to 60 psi
Btu content - 1,025 per cubic foot
Specific gravity - .60
For rates and supplies contact:

Western Kentucky Gas Company
311 West Seventh Street
Owensboro, Kentucky 42301
(502) 685-8000

* Kentucky Utilities Company's total generating capacity will be increased when a new 650,000 KW generation plant is completed in Hancock County in 1993.

** East Kentucky Power Cooperative's total generating capacity will be increased when a new 650,000 KW coal-fired generation plant is completed in southeast Clark County in 1992.

Other Fuels (Within 15 miles)

Propane

Buckeye Gas Products Company
(Doxol Propane, bulk plant)
U.S. 127 Bypass
Lawrenceburg, Kentucky 40342

Southern States Cooperative, Inc.
Jett Petroleum Service
Versailles Road
Frankfort, Kentucky 40601

Burley Oil Company
(Doxol Propane)
Versailles Road
Frankfort, Kentucky 40601

Fuel oils

Distillate fuel oil -

Anderson County Petroleum
U.S. 127 North
Lawrenceburg, Kentucky 40342

Phillips 66 (bulk plant)
Louisville Road
Frankfort, Kentucky 40601

Burley Oil Company (bulk plant)
Versailles Road
Frankfort, Kentucky 40601

Rainbow Coal & Oil Company
Lexington Pike
Versailles, Kentucky 40383

D & S Distributors
Highway 127 North
Lawrenceburg, Kentucky 40342

Robinson's Oil Company
Versailles Road
Frankfort, Kentucky 40601

Residual fuel oil - Arrangements must be made with the refinery.

Low sulphur content coal - Available in Kentucky.

WATER AND SEWERAGE

Public Water Supply

Company serving **Lawrenceburg** - Lawrenceburg Water and Sewer Department
201 Court Street
Lawrenceburg, Kentucky 40342
(502) 839-5372

Source - Kentucky River
Treatment plant capacity - 2,250,000 gallons per day
Average daily consumption - 1,300,000 gallons
Peak daily consumption - 1,700,000 gallons
Type treatment - Flocculation, settling basins, filtration, coagulation, and chlorination
Storage capacity - 1,225,000 gallons including clearwells
Size lines - 2, 4, 6, 8, 10 and 12 inches
Average pressure - 55 psi
Average temperature - 60 degrees F. (estimated)

MONTHLY WATER RATES

First	3,000 gallons	\$6.00	Minimum
Next	7,000 gallons	1.60	per M gallons
Next	20,000 gallons	1.50	per M gallons
Next	30,000 gallons	1.21	per M gallons
Next	40,000 gallons	1.08	per M gallons
Next	100,000 gallons	.96	per M gallons
Next	300,000 gallons	.85	per M gallons
Over	500,000 gallons	.81	per M gallons

The minimum rate outside city limits is \$7.09.

Tap-on charge: Residential - \$200
Commercial and industrial - Actual cost of tap, material and labor

Raw Water

Surface water sources - Kentucky River, Salt River and Beaver Creek
Average discharge - Kentucky River at Lock 6, near Salvisa, 6,732 cfs (58 years, unadjusted, USGS)
Expected ground water yield - 50 to 200 gpm in small portion of central Anderson County; 5 to 50 gpm along the Kentucky River; 5 gpm or less in remainder of county

Sewerage

Company serving **Lawrenceburg** - Lawrenceburg Water and Sewer Department*
201 Court Street
Lawrenceburg, Kentucky 40342
(502) 839-5372

Design capacity - 1,900,000 gallons per day
Average daily flow - 700,000 gallons per day
Type of treatment - Primary and secondary
Treatment processes - Grit chamber, rotating screening, rotating biological contactors, secondary clarifiers, chlorine contact, sludge thickener, digesters and drying beds
Treated effluent discharged into - Hammonds Creek
Size of sanitary mains - 6, 8, 10, 12, 18 and 21 inches
Monthly rates -

First	2,000 gallons	\$6.00	Minimum
Next	8,000 gallons	2.40	per M gallons
Next	20,000 gallons	2.15	per M gallons
Next	30,000 gallons	1.90	per M gallons
Next	40,000 gallons	1.65	per M gallons
Next	100,000 gallons	1.45	per M gallons
Next	300,000 gallons	1.35	per M gallons
Over	500,000 gallons	1.25	per M gallons

Industrial users are required to pretreat waste water which exceeds the following limits:

- 1) 5-day BOD greater than 300 mg/l, or
- 2) Suspended solid greater than 350 mg/l, or
- 3) Containing any quantity of substances having the characteristics described in Section 17-56 of the local sewer ordinance, or
- 4) Average daily flow greater than 2% of the average daily sewage flow of the city

Tap-on charge: Residential - \$75
Commercial and industrial - Actual cost of labor and materials

Construction is to begin in Spring 1985 of the Alton Sewerage Collector System. The system will be composed of a 6-inch force main which will run approximately 11 miles adjacent to U.S. 127 Bypass from the Alton area to the new Lawrenceburg waste water treatment plant. Upon completion, the system is expected to serve 250 residential customers and several industries. Estimated flow of the completed system is 50,000 gallons per day. Also included in the approximately \$2 million project are four vacuum stations and two pumping stations. The project is tentatively scheduled for completion in Fall 1985.

* The City of Lawrenceburg's new waste water treatment plant began operation in late 1983. The \$4 million facility has a design capacity of 1.9 million gallons per day. Upon completion of the new treatment plant, service was discontinued at the old waste water plant.

CLIMATE

Anderson County

Temperature

Normal (30-year record)	54.90 degrees
Average annual 1983	55.50 degrees
Record highest, August 1983 (39-year record)	103.00 degrees
Record lowest, January 1963 (39-year record)	-21.00 degrees
Normal heating degree days (30-year record) (Heating degree day totals are the sums of negative departures of average daily temperatures from 65 degrees F.)	4,814

Precipitation

Normal (30-year record)	45.68 inches
Mean annual snowfall (39-year record)	16.20 inches
Total precipitation 1983	40.76 inches
Mean number days precipitation (.01 inch or more) (39-year record)	131
Mean number days thunderstorms (39-year record)	46

Prevailing Winds (17-year record)

South

Relative Humidity

1 a.m.	77 percent (19-year record)
7 a.m.	81 percent (20-year record)
1 p.m.	60 percent (20-year record)
7 p.m.	64 percent (20-year record)

Source: U.S. Department of Commerce, Environmental Science Services Administration, Climatological Data, 1983. Station of record: Lexington, Kentucky.

LOCAL GOVERNMENT

City

Structure - Mayor - 4-year term; 6 council members - 2-year terms

Budget 1984-85 - General Fund \$531,530

Water and Sewer Fund 866,000

Fees and licenses - Occupational license fees range from \$25 to \$500 annually based on the type of business

County

Structure - County Judge/Executive - 4-year term; 6 magistrates - 4-year terms

Budget 1984-85 - General Fund \$489,929; Road Fund \$330,500

Assessed Value of Property, 1984*

<u>Classes of Property</u>	<u>Lawrenceburg</u>	<u>Anderson County</u>
Real Estate	\$65,639,934	\$177,006,269
Tangibles	16,308,214	55,532,783

Property Taxes

All property in Kentucky is assessed at 100 percent of fair cash value.

Land and buildings are taxed by the state and may be taxed by local jurisdictions. The 1984 state rate is \$0.22 per \$100 of assessed valuation.

Manufacturing machinery, raw materials inventories, pollution control equipment, and goods in the process of manufacture are not subject to local taxation. The state rate is \$0.15 per \$100.

Other tangible personal property owned by manufacturers (finished goods, office furniture, office equipment) is taxed by the state at \$0.45 per \$100 and may be taxed by local jurisdictions.

Intangible personal property located in Kentucky (money in hand, shares of stock, notes, bonds, accounts receivable, and other credits) is taxed by the state at \$0.25 per \$100, and is not subject to local taxation.

Property stored in public warehouses in a transit status is not subject to local taxation. The state rate is only \$0.015 per \$100.

Private leaseholds in industrial facilities owned by cities or counties and financed by industrial revenue bonds are subject to a state tax of \$0.015 per \$100 of value (essentially the lessee's equity, adjusted for appreciation or depreciation). Local taxation is not permitted.

* Excludes Homestead Exemptions.

Combined State and Local Rates Per \$100 Valuation, 1984*
(100% assessment)

	Site Inside City of Lawrenceburg	Site Inside Unincorporated Anderson County
1. Land and buildings	\$0.9430	\$0.7110
2. Mfg. machinery, raw materials, goods in process, pollution control equipment	0.1500	0.1500
3. Finished goods, office equipment, other tangibles	1.2176	0.9886
4. Intangibles (accounts receivable, notes, bonds, etc.)	0.2500	0.2500
5. Property stored in public warehouses in a transit status	0.0150	0.0150
6. Leaseholds in industrial revenue bond financed plants	0.0150	0.0150

Planning and Zoning

Joint agency - Lawrenceburg-Anderson County Planning and Zoning Commission
 Zoning enforced - Within Lawrenceburg city limits only
 Subdivision regulations enforced - All areas
 Local codes enforced - None
 Mandatory state codes enforced - Kentucky Plumbing Code, National Electric Code, Kentucky Boiler Regulations and Standards, Kentucky Building Code (modeled after BOCA code)

Safety

Police	Lawrenceburg	Anderson County
Total staff	13 full-time 2 part-time	4
Radio-patrol cars	5	3
Fire		
Insurance Services Office, Public Protection Classification	7	**
Volunteers	21	-

* Kentucky Department of Economic Development.

** Anderson County is served by five fire protection areas. The areas and their insurance fire ratings are as follows: Alton F.P.A. - 9; Glensboro F.P.A. - 9; Hickory Grove F.P.A. - 10; Stringtown Ruritan F.P.A. - 9; and Western F.P.A. - 10.

Rescue Service

Anderson County Rescue Squad:

Number of volunteers - 24

Equipment - Four-wheel drive truck, jeep, rescue vehicle equipped for light duty rescue, 2 recovery boats, 2 motors, 2 portable generators, light duty rescue equipment, and "Jaws of Life"

Personnel training - Standard first aid, water rescue, basic field training; 2 members of the squad are emergency medical technicians

Refuse Collection and Disposal

	Lawrenceburg	Anderson County
Type service	Private	Private
Fee charged:		
residential	\$6.50 per month	\$6.50 per month
business	Based on volume	Based on volume
Collection frequency:		
residential	Weekly	Weekly
business	As needed	As needed
Trash pickup	On call	On call
Disposal method	Landfill	Landfill

Sanitation service is available to manufacturing plants located inside and outside the corporate limits through a private sanitation company. Cost of this service is based on volume and frequency of collection.

EDUCATION

Public Schools

Anderson County

Total Enrollment (September 1984)	2,701
Elementary	1,458*
Middle School	476
High School	767
Student-Teacher Ratio	21-1
Elementary	22-1
Middle School	22-1
High School	19-1
Percent High School Graduates to College (1983)	36.9
Expenditures Per Pupil (1982-83)	\$ 1,572.85
Bonded Indebtedness (June 30, 1984)	\$2,892,000**

* Includes kindergarten

** Includes refunding issue of \$1,015,000.

Area Colleges and Universities

<u>Name</u>	<u>Location (Mileage from Lawrenceburg)</u>	<u>Enrollment (Fall, 1984)</u>	<u>Highest Degree Conferred</u>
Kentucky State University	Frankfort (14)	2,066	Masters
Midway College	Midway (15)	352	Associate
University of Kentucky	Lexington (23)	21,237	Doctorate, M.D., D.M.D., J.D.
Transylvania University	Lexington (23)	787	Baccalaureate*
Lexington Community College	Lexington (23)	2,573	Associate
Georgetown College	Georgetown (28)	1,298	Masters
Centre College	Danville (30)	748	Baccalaureate
Asbury College	Wilmore (36)	1,067	Baccalaureate
St. Catharine College	Springfield (37)	180	Associate
Eastern Kentucky University	Richmond (47)	12,357	Masters, Specialist**
University of Louisville	Louisville (55)	19,794	Doctorate, M.D., D.M.D., J.D.
Bellarmino College	Louisville (55)	2,710	Masters
Spalding University	Louisville (55)	1,126	Masters, Specialist
Jefferson Community College	Louisville (55)	6,767	Associate
Berea College	Berea (60)	1,554	Baccalaureate

* Courses in a masters degree program are taught on the Transylvania campus by faculty members of Xavier University of Cincinnati. The degree is issued by Xavier University.

** Joint doctoral degree programs are offered in cooperation with the University of Kentucky, Lexington. The degrees are issued by the University of Kentucky.

Vocational Schools

Both the state vocational-technical schools and the area vocational education centers are operated by the Kentucky Department of Education. The state vocational-technical schools enroll persons full time who are at least 16 years of age and not in school. These students attend classes for six hours each day. The area vocational education centers are designed to accommodate high school students who are at least 15 years of age. These students attend vocational school for three hours each day. The state vocational-technical schools and the area education centers offer evening courses to enable working adults to upgrade current job skills.

	<u>Nearest State School</u>
Location	Central Kentucky State Vocational-Technical School Lexington
Miles Distant	23
Curriculum	Business and Office Accounting Clerical Secretarial Consumer and Home Economics Commercial Foods Health and Personal Services Occupations Cosmetology Dental Assistant Nurse's Aide Practical Nursing Surgical Technician Industrial Education Air Conditioning Auto Body Repair Auto Mechanics Carpentry Drafting (with CAD/CAM) Electronics Graphic Arts Industrial Electricity Machine Shop Masonry Welding Learning Resource Center

(Cont'd)

Nearest Area Education Centers

Location	Franklin County Area Vocational Education Center
Miles Distant	Frankfort
Curriculum	14 Marketing and Retailing Industrial Education Auto Body Auto Mechanics Drafting Electricity Machine Shop Welding
Location	Harrodsburg Area Vocational Education Center
Miles Distant	Harrodsburg
Curriculum	21 Business and Office Clerical Secretarial Health and Personal Services Occupations Health Careers Industrial Education Auto Mechanics Carpentry Industrial Electricity Welding

Arrangements can be made to provide training in the specific production skills required by an industrial plant. Instruction may be conducted either in the vocational school or in the industrial plant, depending upon the desired arrangement and the availability of special equipment.

HEALTH

Local Medical Personnel

Physicians - 6

Dentists - 5

Hospitals

<u>General Hospital</u>	<u>Location</u>	<u>Beds</u>
Woodford Memorial Hospital	Versailles, 11 miles east of Lawrenceburg	71
King's Daughters Memorial Hospital	Frankfort, 14 miles north of Lawrenceburg	190

Woodford Memorial Hospital

General hospital facilities - 2 operating rooms (1 equipped for ENT surgery and orthopedic surgery), 6 emergency rooms, 2 delivery rooms, obstetrics, 10 bassinets, recovery room, 3 bed intensive-coronary care unit, respiratory therapy, physical therapy, laboratory, X-ray department, and pharmacy

Medical staff: 27 physicians, 45 registered nurses (15 part-time), 10 nurses on a special call in program who are oriented and work when called in to relieve regular staff when sick or on vacation, 12 licensed practical nurses, 6 operating room personnel, 7 laboratory personnel (4 medical technologists, 3 medical technicians), 15 intensive-coronary care unit personnel, 2 registered pharmacists, pharmacy technician, 5 X-ray personnel, dietitian, 4 registered respiratory therapists, certified respiratory therapist, 2 respiratory therapy technicians, 2 physical therapists, physical therapy technician

King's Daughters Memorial Hospital

General hospital facilities - 5 operating rooms, recovery room, clinical reference laboratory, CAT scanner, X-ray, digital vascular imaging, CCU/ICU, emergency room, pharmacy, OB section with birthing room and nursery, neurology services including EEG, physical therapy, respiratory therapy, nuclear medicine, social services, outpatient surgery, and ultrasound

Medical staff - 45 medical doctors, 9 dentists, 97 registered nurses (76 full-time, 21 part-time), 7 licensed practical nurses, 30 nursing technicians

Other Medical Facilities

Lawrenceburg Specialty Clinic

Service - Laboratory and specialty services including general surgery, OB/GYN, and internal medicine

Ambulance Service

Name - Anderson Emergency Medical Service

Staff - 7 full-time and 3 part-time emergency medical technicians

Service - 24-hour, 7 days per week, radio-dispatched, county-wide

Equipment - 2 fully-equipped ambulances (ambulances are also equipped with rescue equipment) and 1 backup ambulance

Public Health

Facility - Anderson County Health Department

Staff - Full-time: Health environmentalist, community health nurse, 3 community health workers; Part-time: Administrative assistant, community health nurse, clinician, and clerk

OTHER LOCAL FACILITIES

Communications

Telephone -	South Central Bell
Telegraph - Services -	Western Union Toll-free number, 1-800-325-5100
Postal - Class - Mail received Mail dispatched -	U.S. Post Office First Once daily Twice daily
Newspapers - Weekly and circulation - Other papers received from -	Anderson News 5,000 Frankfort, Lexington and Louisville, Kentucky
Radio - Stations received from -	Frankfort, Lexington and Louisville, Kentucky; Cincinnati, Ohio
Television - Cable service Reception from -	Lexington and Louisville, Kentucky; Cincinnati, Ohio; Atlanta, Georgia
Kentucky Educational Television -	Lexington-Richmond transmitter - Channel 46 Louisville transmitter - Channel 68

Library Services

Public library - Anderson Public Library
Size collection - 34,723
Circulation, 1983-84 - 73,670
Services - Records, pictures, 92 periodicals, newspapers, record player, art by local artists, filmstrips and projector, movie projector and screen, carousel projector, microfilm reader-printer, copy machine, story hour, community meeting room, bookmobile, summer reading program, local history and genealogy, overhead projector, microfiche, notary public

Religious Institutions

Number of churches - Approximately 45
Denominations -
Assembly of God
Baptist
Catholic
Christian
Church of Christ
Church of God
Jehovah's Witnesses
Methodist
Pentecostal
Prebyterian
Seventh Day Adventist

Nearest Synagogues - Lexington, 23 miles distant
Congregations -
Adath Israel (reform)
Ohavey Zion (traditional)

Financial Institutions

<u>Banks</u>	<u>Assets</u>	<u>Deposits</u>	<u>Statement Date</u>
Anderson National Bank	\$38,290,123.90	\$33,112,446.61	6/30/84
Lawrenceburg National Bank	38,300,694.26	32,762,022.72	6/30/84

<u>Savings and Loan Associations</u>	<u>Assets</u>	<u>Savings Accounts</u>	<u>Statement Date</u>
Harrodsburg First Federal Savings and Loan Association*	\$65,366,791.00	\$62,296,334.00	9/30/83

Hotels and Motels

Total number - 1
Total rooms - 11

* Home office in Harrodsburg, Kentucky.

Clubs and Organizations

American Cancer Society
Beta Club
Beta Sigma Phi Women's Club
Boy Scouts
Business and Professional Women
Career Girls
Chamber of Commerce
Co-Ed-Y
Coupon Club
Crafts Club
Eastern Star
Farm Bureau
Fellowship of Christian Athletes
French Club
Future Farmers of America (FFA)
Future Homemakers of America (FHA)
Garden Club
Girl Scouts
Good News Club
Homemakers
Human Society
Lions Club
Masonic Lodge
P.T.A.
Red Cross
Rotary
Ruritan
Sportsmen
Student Action for Education
Welcome Wagon
Young Historians

RECREATION

Local

Recreation in Lawrenceburg includes facilities for baseball, softball, basketball, track and tennis. Public recreational facilities include two parks, three playgrounds, two swimming pools, one 18-hole golf course, tennis courts, baseball diamonds and football fields.

The city and county have purchased approximately 10 acres of land for a new recreational park. Construction of the park should begin in 1985. Facilities included are softball, baseball, and soccer fields, tennis courts, picnic area, and a playground.

The 170-acre Beaver Lake is approximately 10 miles southwest of Lawrenceburg off U.S. 62. Beaver Lake Boat Dock is open March 1 to November 1, weather permitting. There are boat slips, a snack bar, and fishing boats available for rental. An adjacent campground, also open March 1 to November 1, has campsites with electrical hookups, pit toilets, drinking water and ice.

Annual featured activities include the Lawrenceburg Fair and Horse Show and the 4-H Fair.

A portion of Taylorsville Lake is in western Anderson County, approximately 13 miles west of Lawrenceburg at the end of Kentucky Highway 1579. The Taylorsville Lake was developed by the U.S. Army Corps of Engineers. The 3,050-acre lake and 10,700-acre recreation area offer facilities for fishing, boating, swimming, and wildlife recreation.

Area (Within 55 miles)

Frankfort, the capital of Kentucky, is 14 miles north of Lawrenceburg. Points of interest in Frankfort include the Capitol Building, a 34-foot floral clock, the Daniel Boone Monument, several museums, and old homes with their original furnishings. Frankfort is also the home of Kentucky State University which offers many cultural activities and sporting events.

Old Fort Harrod State Park, 21 miles south of Lawrenceburg, is a 28-acre park in Harrodsburg that features a full-scale reproduction of the original Fort Harrod. The park also contains the log cabin where Abraham Lincoln's parents were wed, the Mansion Museum which houses mementos associated with the great periods of Kentucky history, a pioneer cemetery, and a federal monument dedicated to pioneers. The "Legend of Daniel Boone" and "Lincoln" are two excellent outdoor dramas which are performed at the Old Fort Amphitheater during the summer months.

Lexington, 23 miles east of Lawrenceburg, offers a variety of cultural, sporting, and recreational activities. Thoroughbred and harness racing is presented at Keeneland Race Course and the Red Mile Harness Track during several meets each year. The University of Kentucky and Transylvania University offer a number of sporting events. The University of Kentucky basketball games are held at Rupp Arena, the world's largest basketball arena. Other attractions include Lexington Philharmonic concerts, Lexington Children's Theatre, and plays performed by Broadway touring companies, all held in the recently renovated Opera House.

Herrington Lake, 28 miles south of Lawrenceburg near Danville and Harrodsburg, was developed by the Kentucky Utilities Company in 1925. Dix River Dam near Pleasant Hill is located on the 3,600-acre lake. Fishing, boating, and swimming can all be enjoyed on the lake. Camping and fishing facilities are available near Danville and Harrodsburg.

Pleasant Hill, a restored Shaker Village located 28 miles southeast of Lawrenceburg, is a National Historic Landmark. Over 20 buildings and grounds have been restored to display unique Shaker skills in furniture making, crafts, and architecture. Dining rooms, lodging, craft shops, and seasonal festivals and plays are offered.

Waveland State Shrine, 28 miles east of Lawrenceburg near Lexington, features an 1847 Greek Revival mansion depicting Kentucky lifestyles from the days of early settlers to the antebellum era of gentility and elegance as well as the Civil War and postwar periods. The shrine also includes the Kentucky Life Museum and a plantation village on ten acres with many shops and displays.

Constitution Square State Shrine, 30 miles south of Lawrenceburg in Danville, is a reproduction of Kentucky's first courthouse square, including the original 1792 post office which was the first in the west.

The Kentucky Horse Park, a park dedicated to horses and to man's love for horses, is located 31 miles east of Lawrenceburg near Lexington. The park, which contains more than 1,000 acres of Kentucky Bluegrass, features the International Museum of the Horse; the Man O'War Memorial; an antique carriage display; horseback and pony rides; walking farm tours; horse-drawn tours; a restaurant; a gift shop; and a campground area, which offers swimming, tennis, and planned activities. Numerous special events are held year-round and include various horse shows, steeplechasing, dressage, polo games, and rodeos.

Lincoln Homestead State Park, 32 miles southwest of Lawrenceburg near Springfield, is a 153-acre park on land settled by Abraham Lincoln's family. The actual building in which Nancy Hanks, mother of President Lincoln, lived during her courtship with Thomas Lincoln is preserved here as well as a replica of the 1782 cabin where Thomas Lincoln lived as a boy. The park also has a museum, a gift shop, a picnic area, and an 18-hole golf course.

Perryville Battlefield State Shrine, 34 miles southwest of Lawrenceburg near Perryville, is the site of the largest Civil War battle in Kentucky. A museum, a picnic area, and a playground are located on the grounds.

Isaac Shelby State Shrine, 35 miles south of Lawrenceburg near Danville, is the burial site of Kentucky's first governor and one of the Commonwealth's foremost statesmen.

My Old Kentucky Home State Park, 40 miles west of Lawrenceburg in Bardstown, portrays an image of the South's gentle and leisurely home life before the Civil War. The restored Georgian Colonial mansion is where composer Stephen Foster visited and where he was inspired to write "My Old Kentucky Home." One of the nation's most successful outdoor dramas, "The Stephen Foster Story", is presented in the park's amphitheatre during the summer months. The park also offers a 40-site campground, a gift shop, a 9-hole golf course and pro shop, a picnic area, and planned recreation.

White Hall State Shrine, 41 miles east of Lawrenceburg near Richmond, one of the grand estate houses of post-Civil War Kentucky, is the Italianate mansion of Cassius Marcellus Clay, the early abolitionist and politician. Kentucky handcrafts are sold in the White Hall gift shop, only a short walk from the mansion.

E. P. "Tom" Sawyer State Park, 43 miles west of Lawrenceburg, is located near Louisville. Recreational facilities include an outdoor Olympic-size pool, a bathhouse, 12 lighted tennis courts, a picnic area, an archery range, and soccer fields. Planned recreation and a playground are offered year-round. Indoor facilities are available for basketball, volleyball, exercise classes, dance classes and various other events.

William Whitley House State Shrine, 49 miles south of Lawrenceburg near Stanford, is the first brick house west of the Allegheny Mountains, built 1787-94. Whitley laid out Kentucky's first race track here and started U.S. counterclockwise racing. The facility provides picnic and playground areas in a ten-acre park.

The spirit of Daniel Boone and his pioneers is reborn at **Fort Boonesborough State Park** in Boonesboro, 50 miles southeast of Lawrenceburg. In the re-created fort, pioneer crafts of the eighteenth century are demonstrated by using functioning antiques from the frontier era. Cabins are furnished as they would have been in the days of Boone and documentary films are presented which depict the struggle of the first Kentuckians to make the Kentucky wilderness a home. A gift shop within the fort offers for sale all the handcrafted items made at the fort. Other recreational facilities and activities of the park include the finest sand beach on the Kentucky River with a modern bathhouse and a modern camping area with 187 sites.

Louisville, 55 miles west of Lawrenceburg, provides a wide variety of recreational opportunities. The most noted recreational event in Louisville is the Kentucky Derby at Churchill Downs. The "Run for the Roses" is the oldest continuously held horse race in the United States. Other attractions include: Kentucky Center for the Arts, Macauley Theatre, Actors Theatre of Louisville, Louisville Children's Theatre, the Louisville Bach Society, the Louisville Orchestra, the Louisville Ballet, the Kentucky Opera Association, several museums, the Louisville Zoological Gardens, University of Louisville sporting events, rock concerts, and the "Belle of Louisville" sternwheeler.

COMMUNITY IMPROVEMENTS

Recent

The City of Lawrenceburg's new waste water treatment plant began operation in late 1983. The \$4 million facility has a design capacity of 1.9 million gallons per day. Upon completion of the new treatment plant, service was discontinued at the old waste water plant.

Improvements have been made to two Lawrenceburg parks. A \$40,000 improvement project at the city swimming pool included renovation of the bathhouse and the mechanical system. At the Lincoln Street Park, work was done on the basketball court, softball field and a new fence was installed. Cost of the Lincoln Street project was \$12,000.

Four existing industries have had expansions in Lawrenceburg during 1983 or 1984. General Cable Company, Kraft, Inc., Universal Fasteners, and Cricketeer Cutting Shop each expanded their Lawrenceburg operations.

The new West Park Shopping Center opened in the western part of the city limits of Lawrenceburg. There is a grocery store, department store, drug store, several fast food restaurants, and a branch bank.

The Anderson National Bank and Lawrenceburg National Bank have each opened branch banks on the western part of the city.

Under Way

Construction is to begin in Spring 1985 of the Alton Sewerage Collector System. The system will be composed of a 6-inch force main which will run approximately 11 miles adjacent to U.S. 127 By-Pass from the Alton area to the new Lawrenceburg waste water treatment plant. Upon completion, the system is expected to serve 250 residential customers and several industries. Estimated flow of the completed system is 50,000 gallons per day. Also included in the approximately \$2 million project are four vacuum stations and two pumping stations. The project is tentatively scheduled for completion in Fall 1985.

Planned

The city and county have purchased approximately 10 acres of land for a new recreational park. Construction of the park is scheduled to begin in 1985. Facilities included are softball, baseball, and soccer fields, tennis courts, picnic area, and a playground.