

1984

Industrial Resources: Bath County - Owingsville

Kentucky Library Research Collections
Western Kentucky University, spcol@wku.edu

Follow this and additional works at: https://digitalcommons.wku.edu/bath_cty

 Part of the [Business Administration, Management, and Operations Commons](#), [Growth and Development Commons](#), and the [Infrastructure Commons](#)

Recommended Citation

Kentucky Library Research Collections, "Industrial Resources: Bath County - Owingsville" (1984). *Bath County*. Paper 7.
https://digitalcommons.wku.edu/bath_cty/7

This Report is brought to you for free and open access by TopSCHOLAR®. It has been accepted for inclusion in Bath County by an authorized administrator of TopSCHOLAR®. For more information, please contact topscholar@wku.edu.

IR
433

BATH COUNTY

RESOURCES
FOR
ECONOMIC
DEVELOPMENT

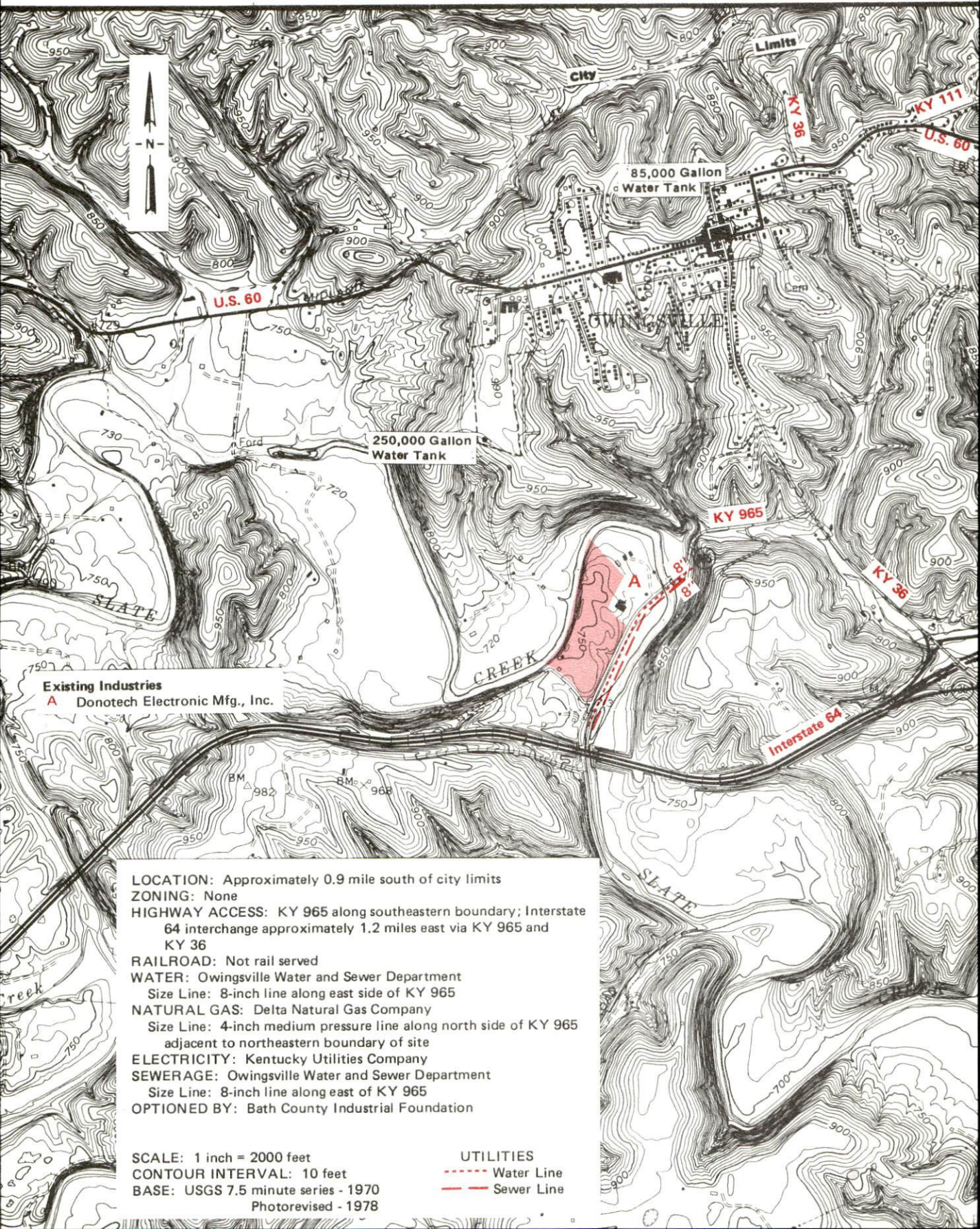
OWINGSVILLE



KENTUCKY
The Business Environment is Right

OWINGSVILLE, KENTUCKY --- Site 184 --- 36 Acres

For more information contact the Kentucky Department of Economic Development, Industrial Development & Marketing Division, Capital Plaza Tower, Frankfort, Kentucky 40601 (502-564-7140).



RESOURCES FOR ECONOMIC DEVELOPMENT
OWINGSVILLE, KENTUCKY

Prepared by
The Kentucky Department of Economic Development
Division of Research and Planning
in cooperation with
The Owingsville Chamber of Commerce

1984

Program manager - Pamela Riley; research - James R. Thompson; clerical - Bobbi Graves; graphics - Frank Ferrante, Tony Cecconi, Robert Owens; cartography - Site Evaluation Branch, Division of Industrial Development and Marketing. Cost of printing paid from state funds.

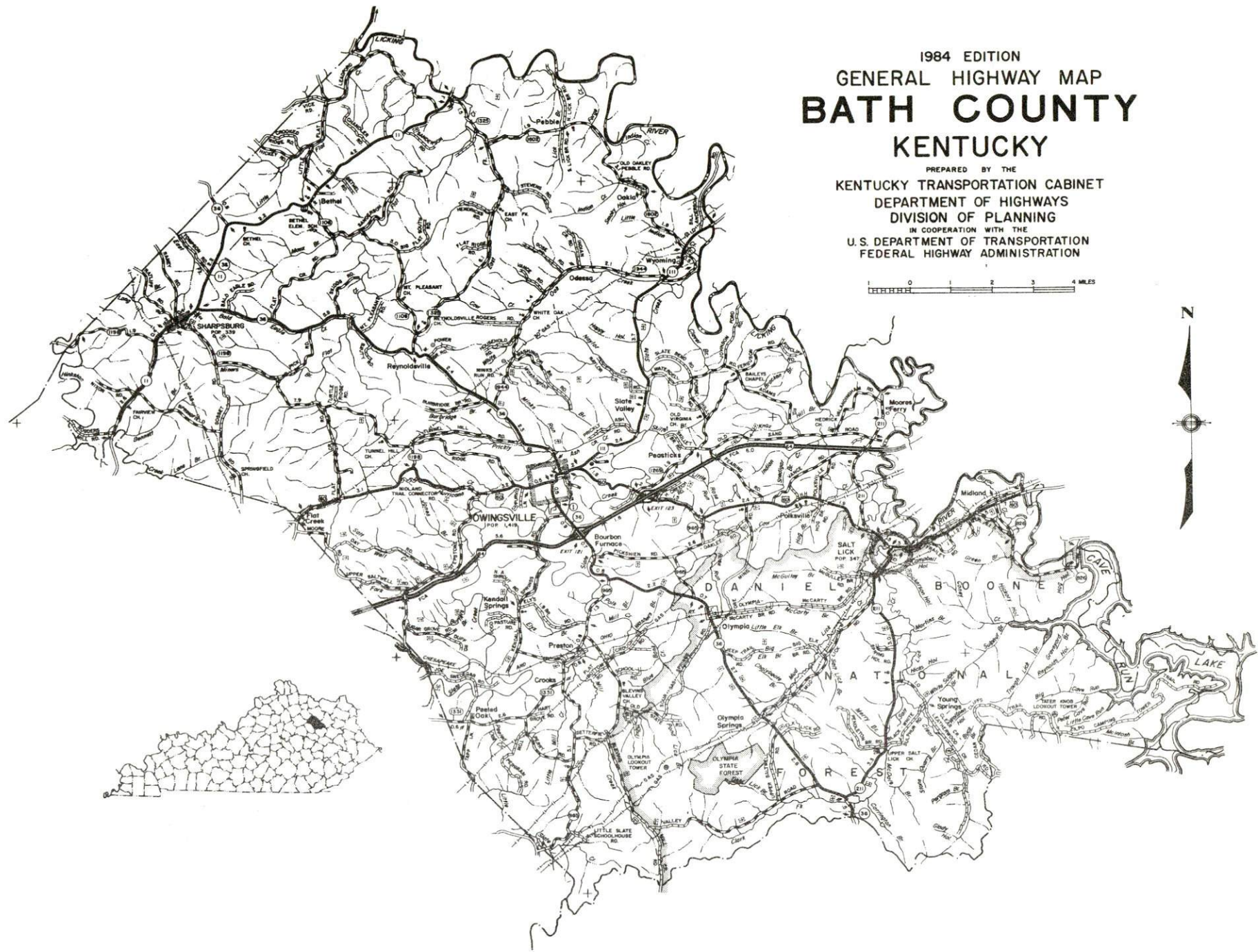
TABLE OF CONTENTS

<u>Chapter</u>	<u>Page</u>
INDUSTRIAL SITES	i
OWINGSVILLE, KENTUCKY - A RESOURCE PROFILE	1
THE LABOR MARKET AREA	3
Population	3
Labor Force Characteristics of Residents, 1983	3
Selected Components of Nonagricultural Employment, by Place of Work, 1983	4
Owingsville Manufacturing Firms, Their Products and Employment	4
Labor Organizations in Manufacturing Firms	4
Industrial Services	5
Estimated Male Labor Supply	6
Estimated Female Labor Supply	6
Average Weekly Wages By Industry, by Place of Work, 1983	7
Per Capita Personal Income	9
TRANSPORTATION	10
Rail	10
Highways	10
Truck Service	10
Air	11
Rental Services	12
Water	12
POWER AND FUEL	13
Electricity	13
Natural Gas	14
Other Fuels	14
WATER AND SEWERAGE	15
Public Water Supply	15
Raw Water	15
Sewerage	16
CLIMATE	17

<u>Chapter</u>	<u>Page</u>
LOCAL GOVERNMENT	18
City	18
County	18
Assessed Value of Property, 1984	18
Property Taxes	18
Combined State and Local Rates Per \$100 Valuation, 1983	19
Planning and Zoning	19
Safety	19
Police	19
Fire	19
Rescue Service	20
Refuse Collection and Disposal	20
EDUCATION	21
Public Schools	21
Area Colleges and Universities	22
Vocational Schools	23
HEALTH	25
Local Medical Personnel	25
Hospitals	25
Ambulance Service	26
Public Health	26
OTHER LOCAL FACILITIES	27
Communications	27
Library Services	27
Religious Institutions	28
Financial Institutions	28
Clubs and Organizations	28
RECREATION	29
COMMUNITY IMPROVEMENTS	31

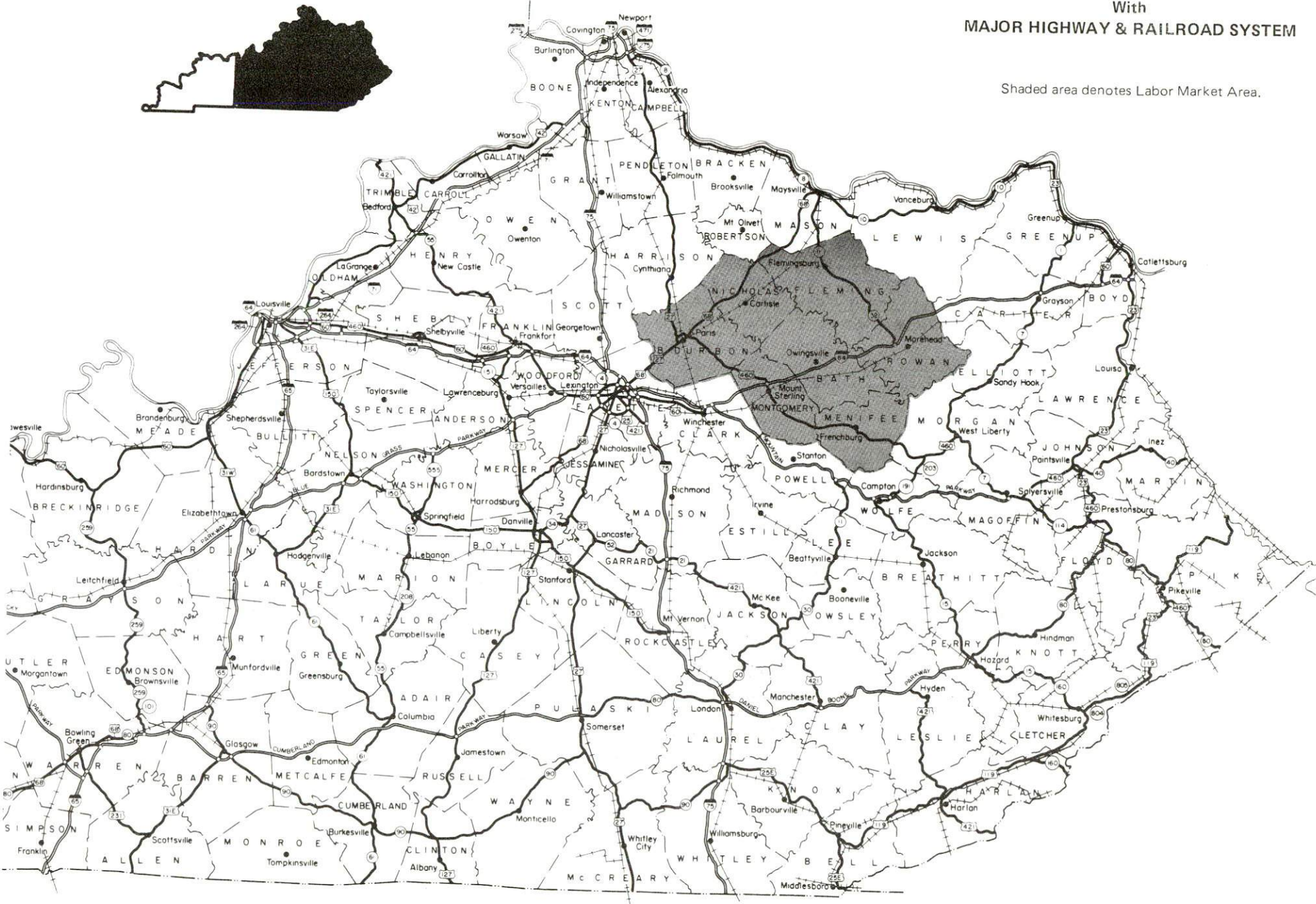
1984 EDITION
GENERAL HIGHWAY MAP
BATH COUNTY
KENTUCKY

PREPARED BY THE
KENTUCKY TRANSPORTATION CABINET
DEPARTMENT OF HIGHWAYS
DIVISION OF PLANNING
IN COOPERATION WITH THE
U.S. DEPARTMENT OF TRANSPORTATION
FEDERAL HIGHWAY ADMINISTRATION



OWINGSVILLE LABOR MARKET AREA With MAJOR HIGHWAY & RAILROAD SYSTEM

Shaded area denotes Labor Market Area.



OWINGSVILLE, KENTUCKY - A RESOURCE PROFILE

Owingsville, the county seat of Bath County, is located in the outer Bluegrass Region in northeastern Kentucky. Owingsville is located 48 miles east of Lexington, Kentucky; 121 miles east of Louisville, Kentucky; 125 miles southeast of Cincinnati, Ohio; 129 miles southwest of Charleston, West Virginia; and 211 miles north of Knoxville, Tennessee. Owingsville had a population of 1,419 in 1980.

Bath County covers a total land area of 278 square miles. Bath County, which is mostly hilly to mountainous, is located where the outer Bluegrass Region meets the foothills of the Cumberland escarpment. In 1982, Bath County had an estimated population of 10,200.

The Economic Framework

The total number of Bath County residents employed in 1983 averaged 3,620, with nonagricultural jobs accounting for 2,980. Manufacturing employers in the county reported 30 workers; state and local government 315; wholesale and retail trade 220; and services 110. Manufacturing employment is greatest in electrical machinery.

Per capita personal income in 1982 was \$6,882. Between 1978 and 1982, per capita income increased by 43 percent.

The Owingsville labor market area includes Bath County and the six adjoining counties. The total number of residents of the labor market area employed in 1983 averaged 38,485, with nonagricultural jobs accounting for 34,050 workers. Manufacturing employers in the area reported 5,090 workers; wholesale and retail trade 5,490; state and local government 4,510; and services 2,530.

Resources for Growth

1. Labor Supply - There is a current labor supply of 7,570 men and 6,350 women available for industrial jobs in the labor market area. In addition, from 1984 through 1988, 4,030 young men and 3,740 young women in the area will become 18 years of age and potentially available for work.

2. Transportation - The Chessie System provides rail service at Preston, five miles south of Owingsville. Owingsville is served directly by U.S. Highway 60, a "AAA" rated trucking highway, and Kentucky Highways 36 and 111. Two interchanges of Interstate 64 are located within 3 miles of Owingsville. Four common carriers have the authority to serve Owingsville. The nearest commercial airport, Blue Grass Field near Lexington, is located 53 miles west of Owingsville. The Mt. Sterling-Montgomery County Airport, 16 miles west of Owingsville, has a 2,800-foot paved runway and the Morehead-Rowan County Airport, 17½ miles east of Owingsville has a 2,600-foot paved runway.

3. Power and Fuel - Electric power is provided to Owingsville and part of Bath County by Kentucky Utilities Company, an electric generation and transmission company. Bath County is also served by the Fleming-Mason Rural Electric Cooperative Corporation and Clark Rural Electric Cooperative Corporation, which are supplied by the East Kentucky Power Cooperative. Owingsville is provided natural gas service by the Delta Natural Gas Company, Inc., which is supplied by Columbia Gas Transmission Corporation. Two distributors of propane and one distributor of distillate fuel oil are located in Owingsville.

4. Education - Primary and secondary education is provided to Owingsville and Bath County by the Bath County School System.

Four universities, four senior colleges, two community colleges, and one junior college are located within 65 miles of Owingsville.

The Central Kentucky State Vocational-Technical School in Lexington, 48 miles west of Owingsville, offers training in 20 courses. The Montgomery County Area Vocational Education Center in Mt. Sterling, 14 miles southwest of Owingsville, offers training in 6 courses.

THE LABOR MARKET AREA

The Owingsville Labor Market Area includes Bath County and the adjoining Kentucky counties of Bourbon, Fleming, Menifee, Montgomery, Nicholas and Rowan.

POPULATION				
Area	1982*	1980	1970	Percent Nonwhite 1980
Owingsville	N/A	1,419	1,381	6.9
Labor Market Area	93,500	93,122	82,009	N/A
Bath County	10,200	10,025	9,235	3.3
Bourbon County	19,200	19,405	18,476	10.2
Fleming County	12,500	12,323	11,366	1.9
Menifee County	5,300	5,117	4,050	1.3
Montgomery County	20,400	20,046	15,364	5.4
Nicholas County	7,100	7,157	6,508	1.9
Rowan County	18,800	19,049	17,010	2.1

* Population estimates.

Note: The 1980 city counts of population by race are provisional.

Sources: U.S. Department of Commerce, Bureau of the Census, 1980 Census of Population and Housing, March 1981; 1980 Census of Population, Number of Inhabitants; Local Population Estimates, Series P-26, No. 82-17-C, June 1984.

LABOR FORCE CHARACTERISTICS OF RESIDENTS, 1983

	Bath County	Labor Market Area
Civilian Labor Force	4,265	43,286
Employment	3,617	38,485
Agricultural	637	4,438
Nonagricultural	2,980	34,047
Unemployment	648	4,801
Rate of Unemployment (%)	15.2	11.1

Source: Kentucky Cabinet for Human Resources, Kentucky Labor Force Estimates, Annual Averages, 1983.

SELECTED COMPONENTS OF NONAGRICULTURAL EMPLOYMENT,
BY PLACE OF WORK, 1983

	<u>Bath County</u>	<u>Labor Market Area</u>
All Industries (total)	843	20,907
Manufacturing	29	5,089
Wholesale & Retail Trade	219	5,486
Services	114	2,532
State/Local Government	315	4,511
Contract Construction	68	905

Note: Excludes domestic workers, railway workers, certain nonprofit corporations, majority of federal government workers, and self-employed workers.

Source: Kentucky Cabinet for Human Resources, Average Monthly Workers Covered by Kentucky Unemployment Insurance Law, 1983.

OWINGSVILLE MANUFACTURING FIRMS,
THEIR PRODUCTS AND EMPLOYMENT

<u>Firm</u> (Establishment date)	<u>Product</u>	<u>Employment</u>		
		<u>Total</u>	<u>Male</u>	<u>Female</u>
Bath County News Outlook (1879)	Newspaper	5	2	3
Donotech Manufacturing, Inc. (1982)	Printed circuit boards, electronic sub- assembly	50	16	34

Sources: Kentucky Department of Economic Development, 1984 Kentucky Directory of Manufacturers; Division of Research and Planning.

LABOR ORGANIZATIONS IN MANUFACTURING FIRMS

There are no labor unions representing manufacturing workers in Owingsville at the present time.

INDUSTRIAL SERVICES

<u>Types of Services</u>	<u>Location</u>	<u>Mileage from Owingsville</u>
Custom Plastics Producers	Mount Sterling	14
	Winchester	29
Electric Motor Repair	Winchester	29
	Lexington	48
Grinding, Precision & Tool	Richmond	50
	Georgetown	58
Heat Treating Facilities	Lexington	48
	Richmond	50
	Georgetown	58
Industrial Equipment & Supplies	Lexington	48
Industrial Gases	Lexington	48
	Richmond	50
Industrial Waste Removal	Lexington	48
Machine Shops, Tool & Die	Mount Sterling	14
	Winchester	29
Metal Finishers	Lexington	48
	Richmond	50
Metal Service Centers	Lexington	48
Millwrights	Lexington	48

Sources: Kentucky Department of Economic Development, Kentucky Directory of Selected Industrial Services, 1983; Division of Research and Planning.

ESTIMATED MALE LABOR SUPPLY
OWINGSVILLE LABOR MARKET AREA

Area	Current			Not in Labor Force	Future
	Total	Unemployed	Under- employed		Becoming 18 years of age 1984 thru 1988
Labor Market					
Area*	7,566	3,142	2,535	1,889	4,030
Bath	873	526	191	156	431
Bourbon	686	392	294	0	871
Fleming	597	401	196	0	518
Menifee	1,260	259	79	922	252
Montgomery	1,803	837	477	489	941
Nicholas	584	165	97	322	305
Rowan	1,763	562	1,201	0	712

* Additional workers may be drawn from other nearby counties.

Note: Unemployed - persons unemployed and actively seeking work;
Underemployed - persons employed but working only 14 to 26 weeks per year;
Not in Labor Force - represents the number of persons who would enter the labor force if suitable employment were available (based on the assumption that persons in Kentucky would like to participate in the labor force in the same proportion that they do nationally).

Sources: Kentucky Cabinet for Human Resources, Kentucky Labor Supply Estimates by Area Development District and County, 1982. Kentucky Department of Economic Development, Future Labor Supply Becoming 18 Years of Age, 1984 thru 1988.

ESTIMATED FEMALE LABOR SUPPLY
OWINGSVILLE LABOR MARKET AREA

Area	Current			Not in Labor Force	Future
	Total	Unemployed	Under- employed		Becoming 18 years of age 1984 thru 1988
Labor Market					
Area*	6,347	1,914	2,337	2,096	3,738
Bath	781	223	195	363	400
Bourbon	851	375	476	0	761
Fleming	847	224	179	444	543
Menifee	687	172	60	455	212
Montgomery	1,426	482	377	567	821
Nicholas	497	130	100	267	304
Rowan	1,258	308	950	0	697

* Additional workers may be drawn from other nearby counties.

Note: Unemployed - persons unemployed and actively seeking work;
Underemployed - persons employed but working only 14 to 26 weeks per year;
Not in Labor Force - represents the number of persons who would enter the labor force if suitable employment were available (based on the assumption that persons in Kentucky would like to participate in the labor force in the same proportion that they do nationally).

Sources: Kentucky Cabinet for Human Resources, Kentucky Labor Supply Estimates by Area Development District and County, 1982. Kentucky Department of Economic Development, Future Labor Supply Becoming 18 Years of Age, 1984 thru 1988.

AVERAGE WEEKLY WAGES BY INDUSTRY,
BY PLACE OF WORK, 1983

	<u>Bath County</u>	<u>Bourbon County</u>	<u>Fleming County</u>	<u>Menifee County</u>
All Industries	\$216.39	259.09	213.86	216.10
Mining & Quarrying	0	*	*	*
Contract Construction	249.12	297.22	295.36	0
Manufacturing	142.96	312.86	183.72	139.17
Transportation, Communications & Public Utilities	414.24	351.73	337.55	153.79
Wholesale & Retail Trade	159.29	200.44	178.40	195.27
Finance, Insurance & Real Estate	219.80	303.74	241.08	*
Services	128.53	174.07	156.61	126.41
State/Local Government	258.72	304.92	254.30	255.32
Other	*	262.53	99.85	0
	<u>Montgomery County</u>	<u>Nicholas County</u>	<u>Rowan County</u>	
All Industries	\$228.72	217.67	252.08	
Mining & Quarrying	*	0	*	
Contract Construction	285.39	155.96	318.95	
Manufacturing	264.71	*	255.54	
Transportation, Communications & Public Utilities	289.71	362.83	381.58	
Wholesale & Retail Trade	168.18	156.46	165.20	
Finance, Insurance & Real Estate	251.55	279.74	313.49	
Services	186.39	*	260.54	
State/Local Government	275.37	225.66	282.52	
Other	*	197.12	158.09	

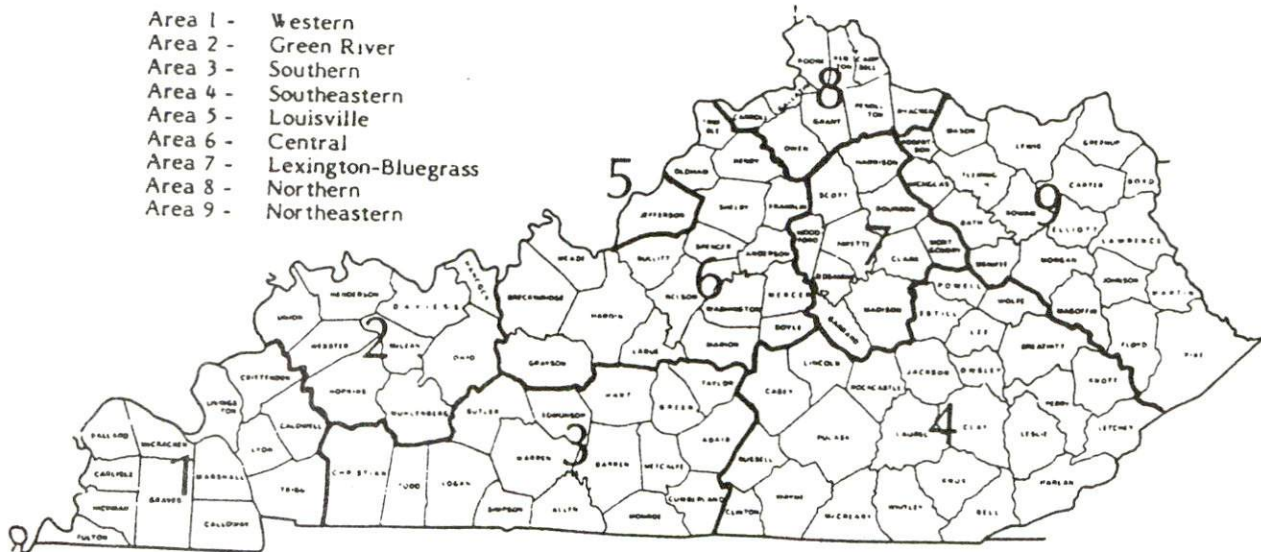
* Not disclosed.

Note: Excludes domestic workers, railway workers, certain nonprofit corporations, majority of federal government workers, and self-employed workers.

Source: Kentucky Cabinet for Human Resources, Average Weekly Wages of Workers Covered by Kentucky Unemployment Insurance Law, 1983.

Occupational wage rates for specific industries are usually not available to most government agencies, and wage data furnished to state employment agencies by individual industrial employers are protected from disclosure by federal law. The most reliable up-to-date wage information can be obtained by direct contact with local employers.

Associated Industries of Kentucky, a voluntary organization of Kentucky businesses, regularly collects occupational wage rates and fringe benefits data from participating member firms. Data are compiled for over 127 clearly defined office, production, and service occupations. Tabulations are published for nine geographical areas of Kentucky, as shown on the map below. It should be noted that the data may be weighted by the preponderance of firms in the larger cities and may be somewhat higher than the rates paid in the smaller communities. Data from these tabulations are available, upon request, from the Kentucky Department of Economic Development, Frankfort, Kentucky 40601.



Associated Industries of Kentucky Area Wage Surveys

PER CAPITA PERSONAL INCOME

<u>Area</u>	<u>1978</u>	<u>1982</u>	<u>Percent Change</u>
Bath County	\$ 4,768	\$ 6,822	43.1
Labor Market Area Range	\$3,240 - 8,174	\$4,575 - 12,788	N/A
Kentucky	6,389	8,893	39.2
U. S.	7,776	11,100	42.7

Sources: U.S. Department of Commerce, Bureau of Economic Analysis, Survey of Current Business, April 1983; Commerce News, April 29, 1984. Kentucky Economic Information System, July 1984.

TRANSPORTATION

Rail

Line serving **Owingsville** - The Chessie System at Preston, five miles south of Owingsville

Services - Main line; three eastbound and three westbound freights stop weekly; switching services; team track space for five cars; siding space for 30 cars. Piggyback facilities are located at Louisville, Kentucky, 121 miles west of Owingsville, and at Cincinnati, Ohio, 125 miles northwest.

For details on routing, schedules, rates, and services, contact:

The Chessie System Railroads
Real Estate and Industrial Development
Department
Suite 500 Cornell Center
11311 Cornell Park Drive
Cincinnati, Ohio 45242
(513) 369-5258

Highways

Owingsville is served directly by U.S. Highway 60, a "AAA" rated (80,000-pound gross load limit) highway, and Kentucky Highways 36 and 111. Two interchanges of Interstate 64, a major east-west highway, are located within 3 miles of Owingsville. The Mountain Parkway, a multilane toll road is located 26 miles southwest via Interstate 64. Interstate 75, a major north-south highway, is located 42 miles west via Interstate 64.

Truck Service

<u>Company</u>	<u>Home Office</u>
Bestway Express, Inc.*	Nashville, Tennessee 37210
Overnite Transportation Company*	P.O. Box 1216 Richmond, Virginia 23209
Smith's Transfer Corporation**	P.O. Box 1000 Staunton, Virginia 24401
Suburan Motor Freight, Inc.*	P.O. Box 1739 Columbus, Ohio 43216

* Interstate and intrastate service.

** Interstate service only.

Source: American Motor Carrier Directory, Fall, 1984.

Other Freight Services

Emery
 Federal Express
 Purolator Courier
 United Parcel Service

Nearest Office or Shipping Center

Lexington, 48 miles west
 Lexington, 48 miles west
 Lexington, 48 miles west
 Clay City, 29 miles southwest

**HIGHWAY MILES AND TRUCK TRANSIT TIME IN DAYS FROM
 OWINGSVILLE, KENTUCKY, TO SELECTED MARKET CENTERS**

City	Highway Miles	Delivery Time TL	City	Highway Miles	Delivery Time TL
Atlanta, Ga.	410	2	Los Angeles, Ca.	2,228	4
Baltimore, Md.	510	2	Louisville, Ky.	121	1
Birmingham, Ala.	446	2	Nashville, Tenn.	258	2
Chicago, Ill.	400	2	New Orleans, La.	775	2
Cincinnati, Ohio	125	2	New York, N. Y.	682	-
Cleveland, Ohio	365	2	Pittsburgh, Pa.	342	2
Detroit, Mich.	385	2	St. Louis, Mo.	383	2
Knoxville, Tenn.	211	2			

Note: Mileage computations are via the best interstate or primary highways, not necessarily the most direct route of travel.

Sources: Rand McNally Road Atlas, 1979. Official Kentucky Mileage Map, 1980.
 Delivery time - Overnite Transportation Company, P.O. Box 1216, Richmond, Virginia 23209.

AirLocal

Location: Mt. Sterling-Montgomery County Airport*
 2 miles west of Mt. Sterling;
 16 miles west of Owingsville

Runways: 1 paved

Length: 2,800 feet

Traffic Control: Wind sock and tetrahedron

Lighting: Sunset to sunrise, rotating beacon, VASI and REIL

Services: 100LL fuel, charter, flight instruction, tie down, hangar, major and minor A & P repairs

Air Freight Services: Chartered air freight services must be arranged

(Cont'd)

* The construction of a 4,000-foot runway is currently under way. The \$1.25 million project is scheduled to be completed in the summer of 1985.

Location: Morehead-Rowan County Airport
 5½ miles southwest of Morehead;
 17½ miles east of Owingsville
 Runways: 1 paved
 Length: 2,600 feet
 Traffic
 Control: Wind sock, unicom
 Lighting: Runway lights, rotating beacons, lighted wind
 sock
 Services: Flight instruction, ground school, aircraft
 charter and leasing
 Air Freight
 Service: Chartered air freight services must be arranged

Nearest Scheduled Commercial Airline Service

Location: Blue Grass Field
 5 miles west of Lexington, Kentucky;
 53 miles west of Owingsville
 Runways: 2 paved
 Length: 6,500 feet; 3,500 feet
 Traffic
 Control: Tower
 Lighting: Approach lighting system, beacon, runways and
 obstructions lighted, VASI
 Services: Delta, Frontier, Piedmont, United, USAir, Allegheny
 Commuter, Comair, Tennessee Airways; fuel - 100LL
 and jet-A; hangars, tie-downs; major A & P repairs;
 major Avionics repairs; APU, charter, flight
 instruction, oxygen, plane rentals, survival
 equipment; taxi, limousine, car rentals, courtesy
 car, weather information; restaurant, snack bar
 Air Freight
 Service: Air freight terminal

Rental Services - Auto, truck, and trailer rental services are available in Mt. Sterling, 14 miles southwest, and Morehead, 20 miles east.

Water

The Ohio River is the nearest navigable river. Owingsville is located 42 miles south of a point on the Ohio River at Maysville, where a 9-foot navigation channel is maintained. Public river port facilities are planned at Maysville and at Ashland, 73 miles northeast of Owingsville.

POWER AND FUEL

Electricity

Company serving **Owingsville and parts of Bath County** - Kentucky Utilities Company

Source of power - Kentucky Utilities Company

Total generating capacity - 3,164,000 KW*

For industrial rates contact:

Industrial Development Department
Kentucky Utilities Company
One Quality Street
Lexington, Kentucky 40507
(606) 255-1461

Company serving the northern portion of **Bath County** - Fleming-Mason Rural Electric Cooperation

Source of power - East Kentucky Power Cooperative

Total generating capacity - 1,309,000 KW**

For industrial rates contact:

Industrial Development Division
East Kentucky Power Cooperative
P.O. Box 707
Winchester, Kentucky 40391
(606) 744-4812

Company serving the southern portion of **Bath County** - Clark Rural Electric Cooperative Corporation

Source of power - East Kentucky Power Cooperative

Total generating capacity - 1,309,000 KW**

For industrial rates contact:

Industrial Development Division
East Kentucky Power Cooperative
P.O. Box 707
Winchester, Kentucky 40391
(606) 744-4812

* Kentucky Utilities Company's total generating capacity will be increased when a new 650,000 KW generation plant is completed in Hancock County in 1993.

** East Kentucky Power Cooperative's total generating capacity will be increased when a new 650,000 KW coal-fired generation plant is completed in southeast Clark County in 1992.

Natural Gas

Company serving Owingsville - Delta Natural Gas Company, Inc.
Source of supply - Columbia Gas Transmission Corporation
Size of transmission mains - 20-inch (supplier); 3-inch (distributor)
Distribution mains - 2 to 4 inches
Distribution pressure - 5 to 20 psi
Btu content - 1,040 per cubic foot
Specific gravity - 0.60
For rates and supplies contact:

Delta Natural Gas Company, Inc.
Route 1, Box 30-A
Winchester, Kentucky 40391
(606) 744-6171

Other Fuels

Propane

Buckeye Gas Products Company
West Main Street
Owingsville, Kentucky 40360

Southern States Cooperative, Inc.
Brooks Avenue
Owingsville, Kentucky 40360

Fuel oils

Distillate fuel oil -

Smith Oil Service
U.S. Highway 60
Owingsville, Kentucky 40360

Residual fuel oil - Arrangements must be made with the refinery.

Low sulphur content coal - Available in Kentucky.

WATER AND SEWERAGE

Public Water Supply

Company serving **Owingsville** - Owingsville Water and Sewer Department
P.O. Box 147
Owingsville, Kentucky 40360
(606) 674-6361

Source - Slate Creek

Treatment plant capacity - 360,000 gallons per day

Average daily consumption - 160,000 gallons

Peak daily consumption - 220,000 gallons

Type treatment - Coagulation, settlement, filtration, chlorination, fluoridation

Storage capacity - 347,500 gallons including clearwell

Size lines - 1½, 2, 4, 6, and 8 inches

Average pressure - 60 psi

Average temperature - 55 degrees F.

MONTHLY WATER RATES

First	1,000 gallons	\$ 6.00 (Minimum)
Next	9,000 gallons	2.30 per M gallons
All over	10,000 gallons	1.85 per M gallons

Tap-on charge:

5/8- and 3/4-inches	\$ 300
1-inch	600
2-inch	1,000

Raw Water

Surface water sources - Licking River and Cave Run Lake

Average discharge - Licking River at Farmers, Kentucky - 1,058 cfs (USGS, 44 years, unadjusted); Cave Run Lake near Farmers, Kentucky - maximum contents, 479,310 acre-feet (USGS)

Expected ground water yield - 5 gpm or less over most of the county; 5 to 50 gpm along the Licking River on the eastern boundary of the county.

Sewerage

Company serving **Owingsville** -Owingsville Water and Sewer Department*
P.O. Box 147
Owingsville, Kentucky 40360
(606) 674-6361

Design capacity - 200,000 gallons per day

Average daily flow - 100,000 gallons

Type of treatment - Primary and secondary

Treatment processes - Drying beds, chlorine contact chamber, digester

Treated effluent discharged into - Dry Branch of Slate Creek

Size of sanitary mains - 6 and 8 inches

Monthly rates - 50 percent of monthly water bill

Tap-on charge: \$200

* The Owingsville Water and Sewer Department has plans for the construction of a new sewage treatment plant. The lagoon system plant, which will replace the existing plant, will have a treatment capacity of 280,000 gallons per day.

CLIMATE

Bath County

Temperature

Normal (30-year record)	54.90 degrees
Average annual 1983	55.50 degrees
Record highest, August 1983 (39-year record)	103.00 degrees
Record lowest, January 1963 (39-year record)	-21.00 degrees
Normal heating degree days (30-year record) (Heating degree day totals are the sums of negative departures of average daily temperatures from 65 degrees F.)	4,814

Precipitation

Normal (30-year record)	45.68 inches
Mean annual snowfall (39-year record)	16.20 inches
Total precipitation 1983	40.76 inches
Mean number days precipitation (.01 inch or more) (39-year record)	131
Mean number days thunderstorms (39-year record)	46

Prevailing Winds (17-year record)

South

Relative Humidity

1 a.m.	77 percent (19-year record)
7 a.m.	81 percent (20-year record)
1 p.m.	60 percent (20-year record)
7 p.m.	64 percent (20-year record)

Source: U.S. Department of Commerce, Environmental Science Services Administration, Climatological Data, 1983. Station of record: Lexington, Kentucky.

LOCAL GOVERNMENT

City

Structure - Mayor - 4-year term; 6 council members - 2-year terms

Budget 1983-84 - General Fund \$115,150

Water and Sewer Fund 183,700

Fees and licenses - Occupational license fees range from \$5 to \$500 annually

County

Structure - County Judge/Executive - 4-year term; 3 commissioners - 4-year terms

Budget 1983-84 - General Fund \$236,922; Road Fund \$296,386

Assessed Value of Property, 1984*

<u>Classes of Property</u>	<u>Owingsville</u>	<u>Bath County</u>
Real Estate	\$13,815,850	\$83,228,399
Tangibles	3,527,531	21,319,156

Property Taxes

All property in Kentucky is assessed at 100 percent of fair cash value.

Land and buildings are taxed by the state and may be taxed by local jurisdictions. The state rate is \$0.221 per \$100 of assessed valuation.

Manufacturing machinery, raw materials inventories, pollution control equipment, and goods in the process of manufacture are not subject to local taxation. The state rate is \$0.15 per \$100.

Other tangible personal property owned by manufacturers (automobiles, trucks, finished goods, office furniture, office equipment) is taxed by the state at \$0.45 per \$100 and may be taxed by local jurisdictions.

Intangible personal property located in Kentucky (money in hand, shares of stock, notes, bonds, accounts receivable, and other credits) is taxed by the state at \$0.25 per \$100, and is not subject to local taxation.

Property stored in public warehouses in a transit status is not subject to local taxation. The state rate is only \$0.015 per \$100.

Private leaseholds in industrial facilities owned by cities or counties and financed by industrial revenue bonds are subject to a state tax of \$0.015 per \$100 of value (essentially the lessee's equity, adjusted for appreciation or depreciation). Local taxation is not permitted.

* Excludes Homestead Exemptions.

Combined State and Local Rates Per \$100 Valuation, 1983*
(100% assessment)

	<u>Site Inside City of Owingsville</u>	<u>Site Inside Unincorporated Bath County</u>
1. Land and buildings	\$0.9145	\$0.6245
2. Mfg. machinery, raw materials, goods in process, pollution control equipment	0.1500	0.1500
3. Finished goods, office equipment, vehicles, other tangibles	1.1515	0.8615
4. Intangibles (accounts receivable, notes, bonds, etc.)	0.2500	0.2500
5. Property stored in public warehouses in a transit status	0.0150	0.0150
6. Leaseholds in industrial revenue bond financed plants	0.0150	0.0150

Planning and Zoning

The Owingsville Planning Commission, which was recently established, is in the process of developing zoning and subdivision regulations.

Mandatory state codes enforced - Kentucky Plumbing Code, National Electric Code, Kentucky Boiler Regulations and Standards, Kentucky Building Code (modeled after BOCA code)

Safety

Police	Owingsville	Bath County
Total staff	4	5
Radio-patrol cars	2	4
Fire		
Insurance Services Office, Public Protection Classification	7	10
Volunteers	30	**

* Kentucky Department of Economic Development.

** Bath County is provided fire service by the Owingsville Fire Department.

Rescue Service

Bath County Disaster Emergency Service Rescue Squad

Equipment - 6 rescue vehicles (1 pickup truck, 3 4x4 trucks, 1 6x6 truck, 1 mobile communications van), 2 boats (1 equipped with an outboard motor), 4 generators, flood lights and assorted rescue equipment

Personnel training - Members receive training in advanced first aid and rescue training techniques

Refuse Collection and Disposal*

	Owingsville
Type service	Private
Fee charged:	
residential	\$5 per month
business	Negotiable
Industrial	Negotiable
Collection frequency:	
residential	Weekly
business	Negotiable
industrial	Negotiable
Disposal method	Sanitary landfill

* A transfer station is located in the county where residents can deposit trash free of charge.

EDUCATION

Public Schools

Bath County

Total Enrollment (June 1984)	1,905
Elementary	1,013
Junior High	339
High School	553
Student-Teacher Ratio	17-1
Elementary	17-1
Junior High	24-1
High School	15-1
Percent High School Graduates to College (1983)	43.1
Expenditures Per Pupil (1982-83)	\$ 1,538.30
Bonded Indebtedness (June 30, 1983)	\$1,567,000

Area Colleges and Universities

<u>Name</u>	<u>Location (Miles distant)</u>	<u>Enrollment (Fall, 1983)</u>	<u>Highest Degree Conferred</u>
Morehead State University	Morehead (20)	6,505	Masters, Specialist*
Maysville Community College	Maysville (42)	653	Associate
Lexington Community College	Lexington (48)	2,532	Associate
Transylvania University	Lexington (48)	655	Baccalaureate**
University of Kentucky	Lexington (48)	22,055	Doctorate, M.D., D.M.D., J.D.
Eastern Kentucky University	Richmond (50)	12,660	Masters, Specialist*
Kentucky Christian College	Grayson (52)	596	Baccalaureate
Georgetown College	Georgetown (58)	1,302	Masters
Midway College	Midway (60)	413	Associate
Asbury College	Wilmore (63)	1,062	Baccalaureate
Berea College	Berea (64)	1,600	Baccalaureate

* Joint doctoral degree programs are offered in cooperation with the University of Kentucky, Lexington. The degrees are issued by the University of Kentucky.

** Courses in a masters degree program are taught on the Transylvania campus by faculty members of Xavier University of Cincinnati. The degree is issued by Xavier University.

Vocational Schools

Both the state vocational-technical schools and the area vocational education centers are operated by the Kentucky Department of Education. The state vocational-technical schools enroll persons full time who are at least 16 years of age and not in school. These students attend classes for six hours each day. The area vocational education centers are designed to accommodate high school students who are at least 15 years of age. These students attend vocational school for three hours each day. The state vocational-technical schools and the area education centers offer evening courses to enable working adults to upgrade current job skills.

Nearest State School

Location	Central Kentucky State Vocational-Technical School Lexington
Miles Distant	48
Curriculum	Business and Office Accounting Clerical Secretarial Consumer and Home Economics Commercial Foods Health and Personal Services Occupations Cosmetology Dental Assistant Nurse's Aide Practical Nursing Surgical Technician Industrial Education Air Conditioning Auto Body Repair Auto Mechanics Carpentry Drafting (with CAD/CAM) Electronics Graphic Arts Industrial Electricity Machine Shop Masonry Welding Learning Resource Center

Nearest Area Education Center

Location	Montgomery County Area Vocational Education Center
Miles Distant	Mt. Sterling 14
Curriculum	Business and Office Clerical Secretarial Health Occupations Health Services Industrial Education Auto Mechanics Carpentry Industrial Electricity

Arrangements can be made to provide training in the specific production skills required by an industrial plant. Instruction may be conducted either in the vocational school or in the industrial plant, depending upon the desired arrangement and the availability of special equipment.

Lexington Community College

The Lexington Community College is a unit of Kentucky's community college system operating on the University of Kentucky campus. The college awards the Associate in Applied Science degree in the following programs: Accounting Technology; Architectural Technology; Civil Engineering Technology; Data Processing Technology; Dental Hygiene; Dental Laboratory Technology; Electrical Engineering Technology (Electronics option); Management Technology (Business and Transportation options); Mechanical Engineering Technology; Nuclear Medicine Technology; Nursing; Radiologic Technology; Real Estate; Respiratory Therapy; Secretarial and Office Administration.

HEALTH

Local Medical Personnel

Physicians - 3
Dentists - 2

Hospitals

<u>General Hospital</u>	<u>Location</u>	<u>Beds</u>
Mary Chiles Hospital	Mt. Sterling, 14 miles southwest	94*
St. Claire Medical Center	Morehead, 20 miles east	170

Mary Chiles Hospital

General hospital facilities - 4-bed ICU/CCU; 10-bed OB/GYN unit; 2 labor rooms; delivery room; nursery; 10-bed acute care unit; 40-bed general medical/surgical unit; 2 operating rooms; cystology room; recovery room; 30-bed skilled nursing unit; trauma room; 3 treatment areas; cast room; orthopedics; outpatient services; gynecology; urology; ear, nose and throat; clinical laboratory; physical therapy; diagnostic and therapeutic respiratory therapy and cardiopulmonary services; diagnostic radiology, including fluoroscopy; ultrasound and nuclear medicine; pharmacy; and speech pathology

Medical staff - 21 physicians on active staff with an additional 37 on consulting and courtesy staff; 45 registered nurses; 14 licensed practical nurses; 2 physical therapists; 1 dietician; 3 pharmacists

St. Claire Medical Center

General hospital facilities - Inpatient and outpatient services; 14-station emergency room; 4 operating rooms; 3 delivery rooms; 10-bed intensive/corony care unit; 20 psychiatric inpatient beds; physical therapy; diagnostic radiology, including ultrasound, nuclear medicine, and special procedures; CT scanning; EEG and RMG testing; EKG; blood bank; pharmacy; respiratory therapy; clinical and histology laboratory; medical library; home health and homemaker services; speech pathology; diagnostic and therapeutic psychiatric services; acute alcoholism and drug abuse services; hospice and pastoral care

Medical staff - 3 general surgeons; 1 anesthesiologist; 2 urologists; 2 orthopedists; 1 pediatrician; 3 obstetricians; 2 radiologists; 5 family medicine physicians; 5 internal medicine specialists; 2 pathologists; 1 oral surgeon; 1 psychiatrist; 1 ophthalmologist; 1 neurologist; 1 otolaryngologist; 54 registered nurses; 26 licensed practical nurses; 11 laboratory technologists; 10 X-ray technologists; 5 pharmacists; 3 physical therapists; 1 certified physical therapy assistant; and 4 respiratory therapists

* Includes 30 skilled nursing beds.

Ambulance Service

Name - Bath County Ambulance Service
Staff - 9 emergency medical technicians
Service - 24-hour service, county-wide
Equipment - 2 ambulances, fully equipped

Public Health

Facility - Bath County Health Center
Staff - Registered nurse; health environmentalist; clerk; 2 community health workers; health educator

Facility - Gateway District Health Department*
Staff - 51 total staff (including health center staffs in 5 counties) including physician; 11 registered nurses; 4 environmentalists; 6 community health workers; 4 nutritionists; administrator; 13 clerks; licensed practical nurse; administrative assistant; and 2 administrative secretaries

* Serves Bath, Menifee, Montgomery, Morgan and Rowan Counties.

OTHER LOCAL FACILITIES

Communications

Telephone - Services -	General Telephone Company Standard
Telegraph - Services -	Western Union Toll-free number, 1-800-325-5100
Postal - Class - Mail received - Mail dispatched -	U.S. Post Office Second Twice daily Once daily
Newspapers - Weekly and circulation - Other papers received from -	The Bath County News Outlook 3,200 Lexington, Louisville, and Mt. Sterling, Kentucky
Radio - Stations received from -	WKCA-FM Mt. Sterling, Morehead, Lexington and Louisville, Kentucky; Cincinnati, Ohio
Television - Cable service Reception from - Kentucky Educational Television -	Lexington, Kentucky; Huntington and Charleston, West Virginia; Cincinnati, Ohio Morehead transmitter, Channel 38

Library Services

Public library - Bath County Memorial Library
Size collection - 20,000 volumes
Circulation, 1983 - 35,052
Services - Newspapers, magazines, periodicals, records, record players, slides, films and film strips, projectors, art, television set, information file material, community reading room, photocopy machine, bookmobile, microfilm reader-printer, Interlibrary Loan

Religious Institutions

Number of churches - 8
 Denominations - Baptist
 Catholic
 Christian
 Church of Christ
 Church of God
 Grace Gospel Tabernacle
 Methodist

Nearest Synagogues - Lexington, 48 miles southwest
 Congregations - Adath Israel (reform)
 Ohavey Zion (traditional)

Financial Institutions

<u>Banks</u>	<u>Assets</u>	<u>Deposits</u>	<u>Statement Date</u>
Farmers Bank	\$ 19,243,269.73	\$ 17,295,867.95	12/31/83
Owingsville Banking Company	13,931,441.29	11,323,725.78	12/31/83

Clubs and Organizations

American Legion
 American Legion Auxiliary
 Bath County Farm Bureau
 Bath County Fox Hunters Club
 Bath County Garden Club
 Bath County Industrial Foundation
 Bath County Sportsman Club
 Boy Scouts
 Brownies
 CB Linear City
 Coon Hunters
 Cub Scouts
 Eastern Star
 4-H Club
 Future Farmers of America (FFA)
 Future Homemakers of America (FHA)
 Future Teachers of America (FTA)
 Girl Scouts
 Homemakers
 Lions Club
 Little League
 Masonic Lodge
 Owingsville Chamber of Commerce
 Senior Citizens
 Veterans of Foreign Wars (VFW)
 Women's Club

RECREATION

Local

Public recreational facilities in Bath County include a park, two playgrounds, a swimming pool, a dance pavillion, three tennis courts, three baseball diamonds and a football field.

The Lions Club sponsors an annual Fourth of July horse show. The three-night event, including arts and crafts displays, is held at the Lions Club Recreational Park, which has a horse show ring, barns, a building for club meetings, picnic facilities, and a ballpark.

A popular tourist attraction, **Owings Furnace** (hence the name Owingsville), was a maker of Civil War cannon balls. A roadside park with picnic facilities is located on the grounds.

Cave Run Lake, constructed by the U.S. Army Corps of Engineers, is located 15 miles east of Owingsville within the 640,000-acre Daniel Boone National Forest. The lake area offers everything for the camper, the boatsman, the hunter, the fisherman, and "the lover of leisure."

Bath County is located within the northeastern portion of the **Daniel Boone National Forest**, which covers 640,000 acres of timberland in eastern Kentucky. It encompasses much of Kentucky's great beauty and provides a vacation paradise. There are scenic hiking trails, rivers and streams stocked with a variety of fish, hunting preserves, camping sites, and numerous other natural and historical attractions.

Area (Within 60 miles)

Many lectures, concerts and sporting events at **Morehead State University**, 20 miles distant, are open to the public.

The spirit of Daniel Boone and his pioneers is reborn at **Fort Boonesborough State Park** in Boonesboro, 34 miles southwest of Owingsville. In the re-created fort, pioneer crafts of the eighteenth century are demonstrated by using functioning antiques from the frontier era. Cabins are furnished as they would have been in the days of Boone and documentary films are presented which depict the struggle of the first Kentuckians to make the Kentucky wilderness a home. A gift shop within the fort offers for sale all the handcrafted items made at the fort. Other recreational facilities and activities of the park include the finest sand beach on the Kentucky River with a modern bathhouse and a modern camping area with 187 sites.

Blue Licks Battlefield State Park is located near Mt. Olivet, 35 miles northwest of Owingsville. The 100-acre park is on the site of the last Revolutionary War battle in Kentucky. A museum features Indian and pioneer artifacts, an audiovisual program, and prehistoric bones from animals trapped at Blue Licks. Facilities include ten primitive campsites, a gift shop, picnic shelters and grills, a playground, a snack bar, and an Olympic-size swimming pool. Fishing is available at the Licking River which runs through the park.

Carter Caves State Resort Park, 45 miles northeast of Owingsville, provides a restful atmosphere with its mountain wildflowers, a rippling stream, the underground wonders of three caves, a 28-room lodge, a restaurant, and a gift shop. Recreational facilities available include something for the whole family with playgrounds, two swimming pools (one Olympic-size), tennis courts, shuffleboard, a 9-hole golf course, miniature golf, boating, fishing, horseback riding, picnicking, and cave tours.

Natural Bridge State Resort Park near Slade, 42 miles south of Owingsville, is located in the Daniel Boone National Forest where cliffs and stone arches fill the landscape. The rugged awesomeness of the great Natural Bridge is the main attraction. The park has a 35-room resort lodge with a dining room and gift shop, ten rustic cottages, and 95 camping sites. Other facilities include a lake, a swimming pool, picnic shelters and playgrounds, hiking trails, and a riding stable.

White Hall State Shrine, 44 miles southwest of Owingsville near Richmond, one of the grand estate houses of post-Civil War Kentucky, is the Italianate mansion of Cassius Marcellus Clay, the early abolitionist and politician. Kentucky handcrafts are sold in the White Hall gift shop, only a short walk from the mansion.

Lexington, 48 miles west of Owingsville, offers a variety of cultural, sporting, and recreational activities. Thoroughbred and harness racing is presented at Keeneland Race Course and the Red Mile Harness Track during several meets each year. The University of Kentucky and Transylvania University offer a number of sporting events. The University of Kentucky basketball games are held at Rupp Arena, the world's largest basketball arena. Other attractions include Lexington Philharmonic concerts, Lexington Children's Theatre, and plays performed by Broadway touring companies, all held in the recently renovated Opera House.

The Kentucky Horse Park, a park dedicated to horses and to man's love for horses, is located 50 miles west of Owingsville near Lexington. The park, which contains more than 1,000 acres of Kentucky Bluegrass, features the International Museum of the Horse; the Man O'War Memorial; an antique carriage display; horseback and pony rides; walking farm tours; horse-drawn tours; a restaurant; a gift shop; and a campground area, which offers swimming, tennis, and planned activities. Numerous special events are held year-round and include various horse shows, steeplechasing, dressage, polo games, and rodeos.

Waveland State Shrine, 53 miles southwest of Owingsville near Lexington, features an 1847 Greek Revival mansion depicting Kentucky lifestyles from the days of early settlers to the antebellum era of gentility and elegance as well as the Civil War and postwar periods. The shrine also includes the Kentucky Life Museum and a plantation village on ten acres with many shops and displays.

Grayson Lake State Park is located 60 miles east of Owingsville, near Grayson. Facilities available include 71 campsites, a beach, and a picnic area. Good fishing and organized recreational programs can be found during the summer. The park is located in the 7,350-acre Grayson Lake Wildlife Area.

COMMUNITY IMPROVEMENTS

Recent

The construction of the Bath County Courthouse annex was completed in the summer of 1981. Also included in the \$758,000 project was a 40-car parking lot.

The Bath County Ambulance Service recently purchased a new \$20,000 ambulance which replaced an existing ambulance.

A \$50,000 renovation of the Bath County Jail was recently completed. The project consisted of the upgrading of the heating and cooling system, fire escape, and doors.

The construction of a ballpark at the Lions Club Recreation Park was recently completed. Total cost of the project was \$10,000.

The planting of trees and the construction of new sidewalks in the front of the courthouse was completed in the fall of 1983. Total cost of the project was \$10,000.

A new radio station, WKCA-FM, began operation in Owingsville in December of 1983.

Planned

The Owingsville Water and Sewer Department has plans for the construction of a new sewage treatment plant. The lagoon system plant, which will replace the existing plant, will have a treatment capacity of 280,000 gallons per day.