

1977

Industrial Resources: Bell County - Middlesboro & Pineville

Kentucky Library Research Collections
Western Kentucky University, spcol@wku.edu

Follow this and additional works at: https://digitalcommons.wku.edu/bell_cty

 Part of the [Business Administration, Management, and Operations Commons](#), [Growth and Development Commons](#), and the [Infrastructure Commons](#)

Recommended Citation

Kentucky Library Research Collections, "Industrial Resources: Bell County - Middlesboro & Pineville" (1977). *Bell County*. Paper 13.
https://digitalcommons.wku.edu/bell_cty/13

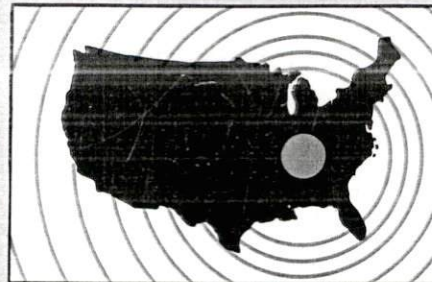
This Report is brought to you for free and open access by TopSCHOLAR®. It has been accepted for inclusion in Bell County by an authorized administrator of TopSCHOLAR®. For more information, please contact topscholar@wku.edu.

INDUSTRIAL RESOURCES

MIDDLESBORO

PINEVILLE

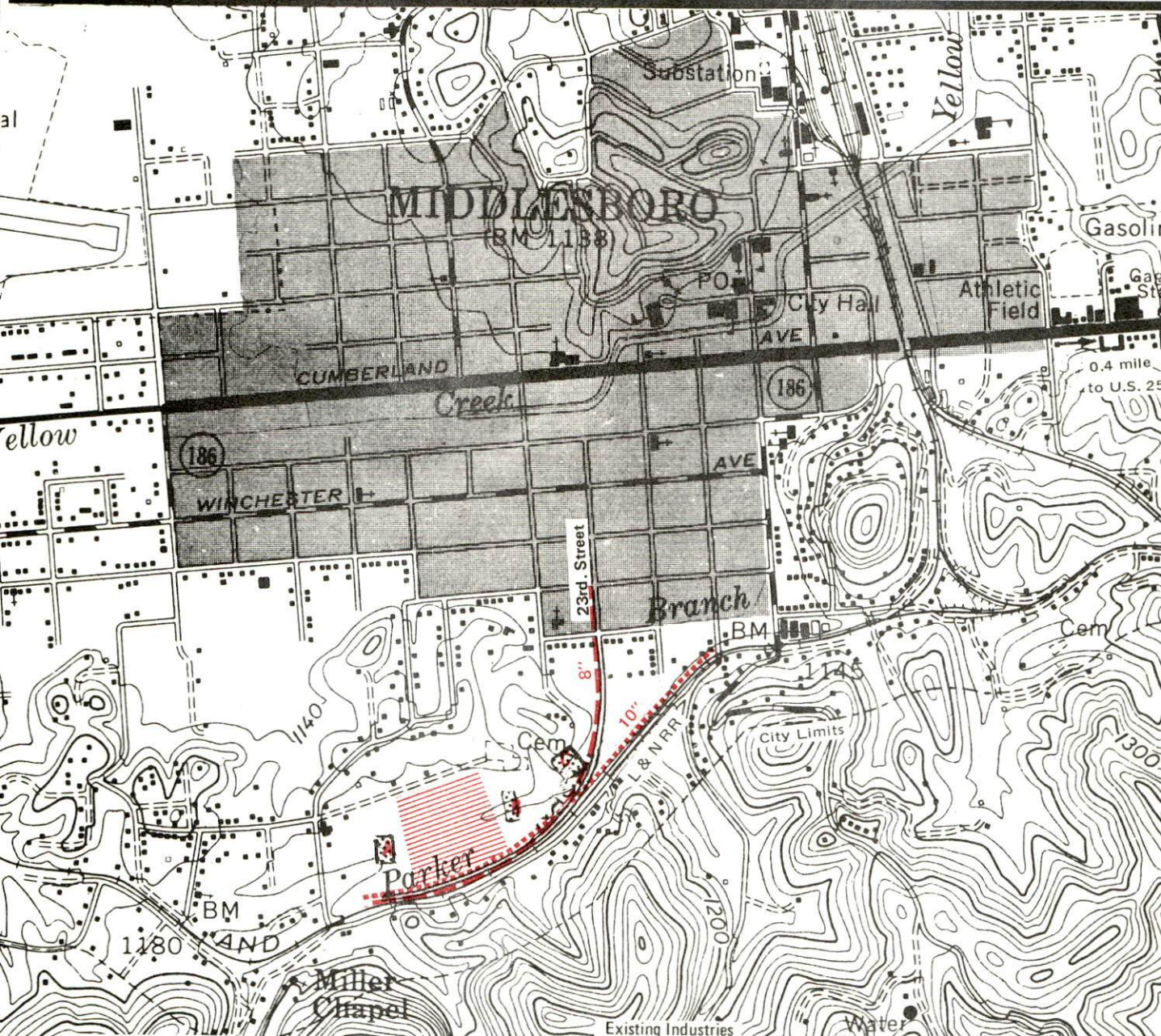
**Kentucky
first**



DEPARTMENT OF COMMERCE

MIDDLESBORO, KENTUCKY --- Site No. 177 -- 12.6 Acres

For more information contact William E. Cranfill, Middlesboro Chamber of Commerce, North 20th Street, P.O. Box 788, Middlesboro, Kentucky 40965 or the Industrial Development Division, Kentucky Department of Commerce, Capital Plaza Tower, Frankfort, Kentucky 40601.



LOCATION: Within the southern portion of the Middlesboro city limits adjacent to new 23rd Street extended
ZONING: Heavy industrial
HIGHWAY ACCESS: 23rd Street has been extended from downtown Middlesboro along southern boundary of site; approximately 1.7 miles from U.S. 25 E junction
RAILROAD: Louisville and Nashville Railroad is located approximately 150 feet south of site across paved access road, rail spur to the site would be feasible
WATER: Kentucky Water Service Company, Inc.
 Size Line: 10-inch line along southern boundary of site
GAS: Natural gas service presently not available
ELECTRICITY: Kentucky Utilities Company
SEWERAGE: Middlesboro Sewerage Commission
 Size Line: 8-inch line along southern boundary
OWNERSHIP: Middlesboro Industrial Foundation

- Existing Industries
- A. J.F. SCHNEIDER & SON, INC.
 - B. KIRBY BODY CO., INC.
 - C. DURA LINE CORP.

- UTILITIES**
- Water Line
 - Sewer Line

SCALE: 1 inch = 1,200 feet
 CONTOUR INTERVAL: 20 feet
 BASE: USGS 7.5 minute series - 1959

SPILLWAY
 ELEV 1202

FERN LAKE

INDUSTRIAL RESOURCES
MIDDLESBORO AND PINEVILLE, KENTUCKY

Prepared by
The Kentucky Department of Commerce
Division of Research and Planning
in cooperation with
The Middlesboro Chamber of Commerce
and
The Pineville Chamber of Commerce

1977

Production supervisor: Patsy Wallace; research: Craig Turner;
clerical: Edna Beard; graphics: N. C. Montague, Frank Ferrante,
Tony Cecconi, Richard Spencer; cartography: Industrial Development
Division. Cost of printing paid from state funds.

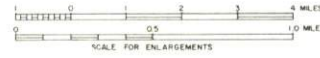
TABLE OF CONTENTS

<u>Chapter</u>	<u>Page</u>
INDUSTRIAL SITES	i
MIDDLESBORO AND PINEVILLE, KENTUCKY - A RESOURCE PROFILE	1
THE LABOR MARKET AREA	3
Population	3
Labor Force Charactersitics of Residents, 1975	3
Nonagricultural Employment by Industry, by Place of Work, 1975	4
Middlesboro and Pineville Manufacturing Firms, Their Products and Employment	5
Labor Organizations	6
Estimated Male Labor Supply	7
Estimated Female Labor Supply	7
Average Weekly Wages by Industry, by Place of Work, 1975	8
Per Capita Personal Income	10
TRANSPORTATION	11
Rail	11
Highways	12
Truck Service	12
Air	13
Bus	13
Taxi	13
Rental Services	13
POWER AND FUEL	14
Electricity	14
Natural Gas	15
Other Fuels	15
WATER AND SEWERAGE	17
Water	17
Sewerage	19
CLIMATE	20

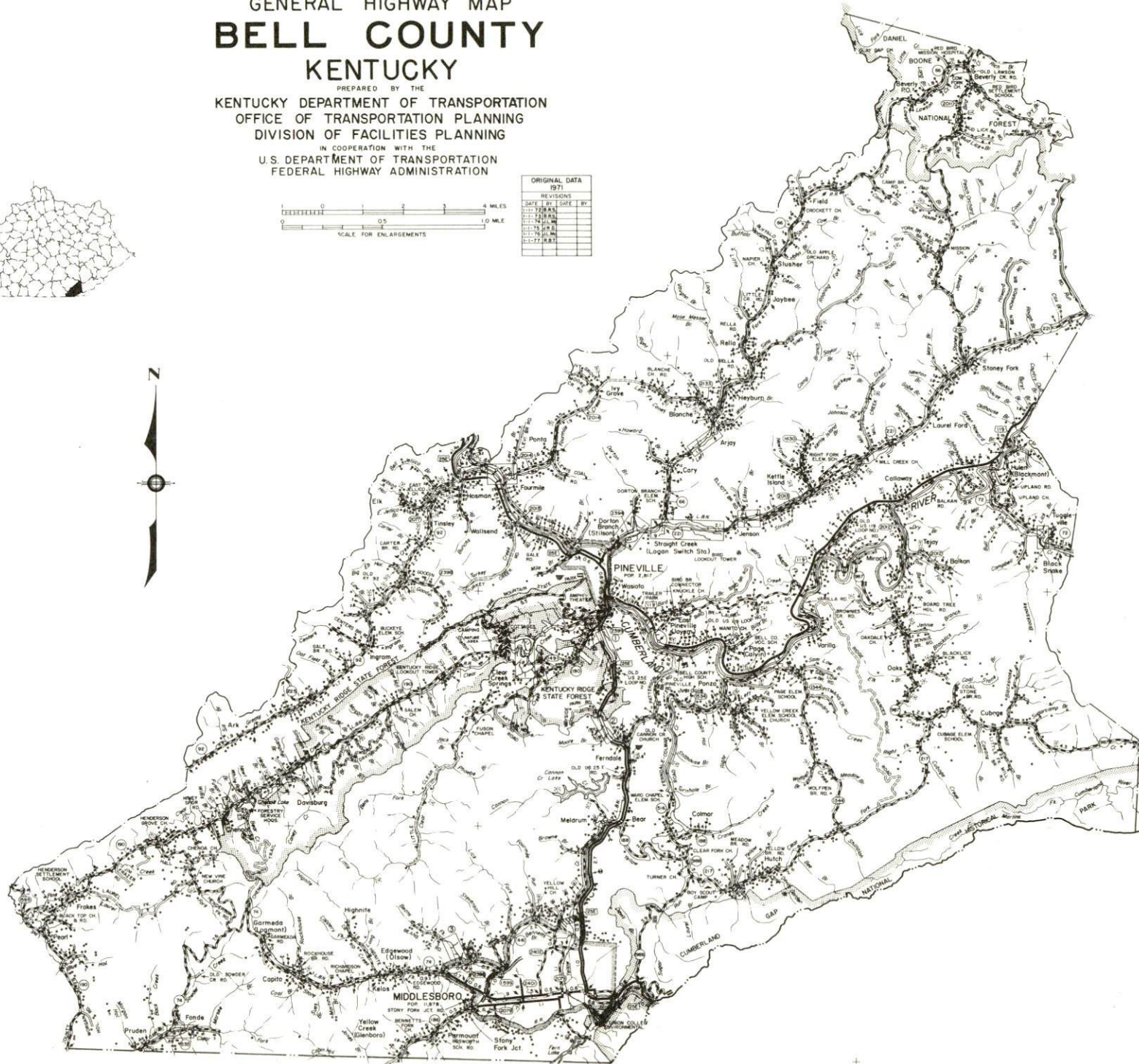
<u>Chapter</u>	<u>Page</u>
LOCAL GOVERNMENT	21
City	21
County	21
Assessed Value of Property, 1976	21
Property Taxes	21
Local Property Tax Rate per \$100 of Assessed Valuation, 1976	22
Planning and Zoning	22
Safety	23
Police	23
Fire	23
Rescue Service	23
Solid Waste	24
EDUCATION	25
Public Schools	25
Nonpublic Schools	25
Area Colleges and Universities	26
Vocational Schools	27
HEALTH	29
Local Medical Personnel	29
Hospitals	29
Other Medical Facilities	30
Ambulance Service	30
Nursing Homes	30
Public Health	30
OTHER LOCAL FACILITIES	33
Communications	33
Library Services	34
Religious Institutions	34
Financial Institutions	35
Hotels and Motels	35
Clubs and Organizations	35
RECREATION	37
COMMUNITY IMPROVEMENTS	39

GENERAL HIGHWAY MAP BELL COUNTY KENTUCKY

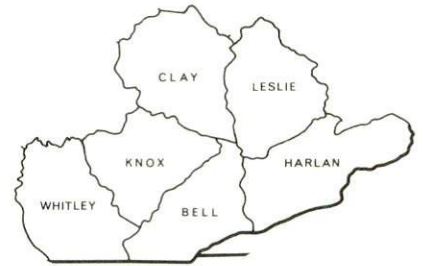
PREPARED BY THE
KENTUCKY DEPARTMENT OF TRANSPORTATION
OFFICE OF TRANSPORTATION PLANNING
DIVISION OF FACILITIES PLANNING
IN COOPERATION WITH THE
U.S. DEPARTMENT OF TRANSPORTATION
FEDERAL HIGHWAY ADMINISTRATION



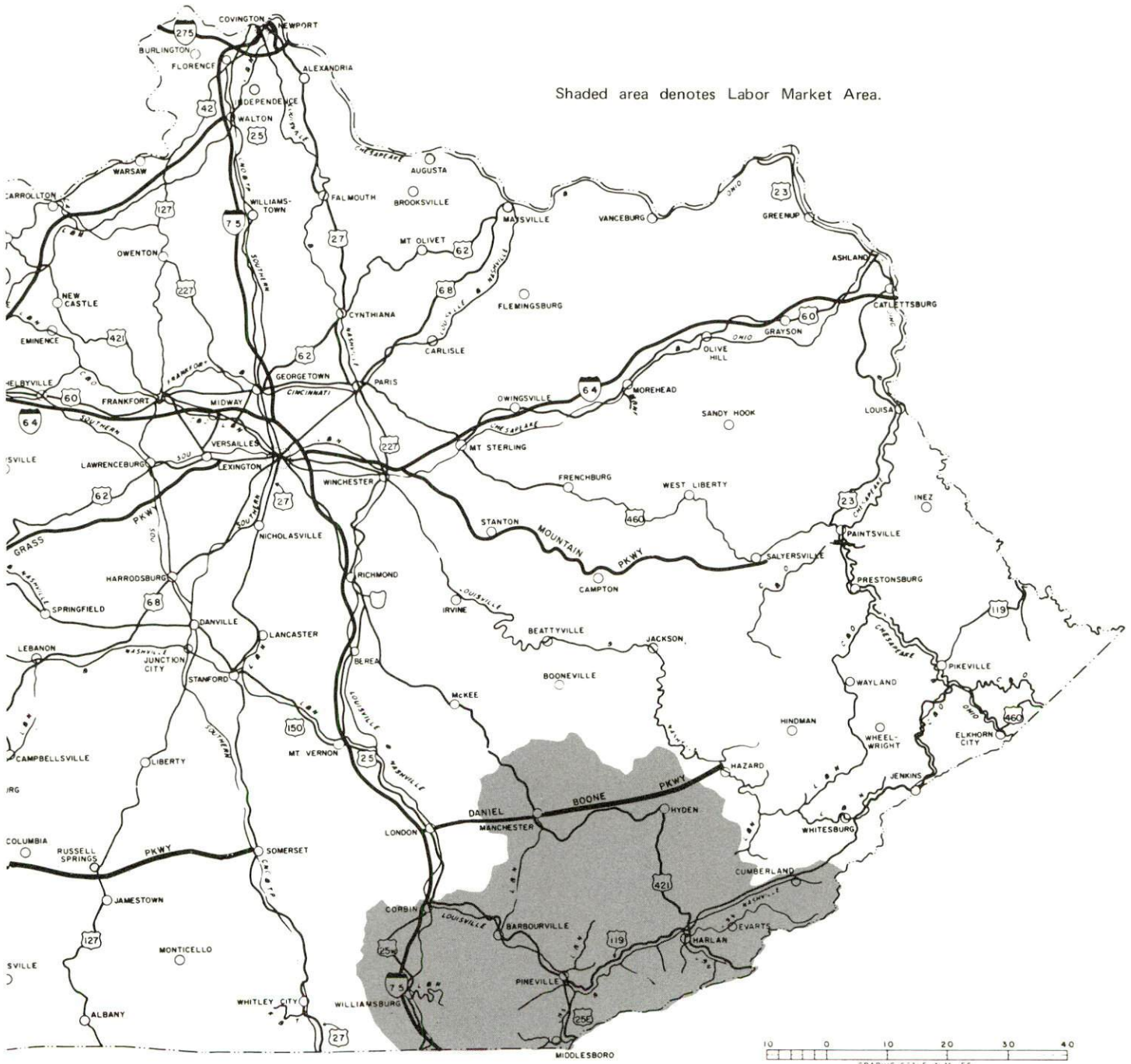
ORIGINAL DATA		
1971		
REVISIONS	DATE	BY
1	7/21/71	RAH
2	7/21/71	RAH
3	7/21/71	RAH
4	7/21/71	RAH
5	7/21/71	RAH
6	7/21/71	RAH
7	7/21/71	RAH
8	7/21/71	RAH
9	7/21/71	RAH
10	7/21/71	RAH



MIDDLESBORO AND PINEVILLE LABOR MARKET AREA



Shaded area denotes Labor Market Area.



MIDDLESBORO AND PINEVILLE, KENTUCKY - A RESOURCE PROFILE

Middlesboro, a 1975 "All Kentucky City," is the largest city in Bell County. The city had a 1973 population of 12,165. Located in the southeastern corner of the state it is only a few miles from the Tennessee and Virginia state lines. Cumberland Gap National Historic Park at Middlesboro reveals some of the natural beauty of the Appalachian Mountains. Middlesboro is 82 miles northeast of Knoxville, Tennessee, 136 miles southeast of Lexington, Kentucky, 208 miles southeast of Louisville, Kentucky, 214 miles southeast of Cincinnati, Ohio, and 254 miles southwest of Ashland, Kentucky.

Pineville, a 1976 "All Kentucky City," is the county seat of Bell County, and is located 13 miles north of Middlesboro. In 1973, Pineville had an estimated population of 2,580. The Pine Mountain State Resort Park, near Pineville, is the home of the well known summer drama "The Book of Job."

Bell County covers 370 square miles and is situated in the Eastern Coal Field physiographic region of Kentucky. In 1975, the county had an estimated population of 32,800.

The Economic Framework

The total number of Bell County residents employed in 1975 averaged 9,930, with nonagricultural jobs accounting for 9,855 workers. Manufacturing employers in the county reported 870 workers; mining and quarrying 1,330; construction firms 370; transportation, communications, and public utilities 500; wholesale and retail trade 1,840; finance, insurance, and real estate 300; and employees in the service industries 1,440. Major industrial products are tanned and colored leather, men's jeans, mobile homes, modular homes and soft drinks.

Total unemployment in Bell County averaged 9.7 percent of the labor force in 1975.

Per capita personal income in the county in 1974 was \$3,388, an increase of 56.8 percent since 1970.

The Middlesboro and Pineville labor market area includes Bell County, the five adjoining Kentucky counties, and Claiborne County, Tennessee, and Lee County, Virginia. The total number of residents in the Kentucky portion of the labor market area employed in 1975 averaged 47,640, with nonagricultural jobs accounting for 46,665 workers. Manufacturing employers in the area reported 4,800 workers; mining and quarrying 7,600; construction firms 1,610; transportation, communications, and public utilities 1,320; wholesale and retail trade 6,820; finance, insurance, and real estate 920; and employees in the service industries 6,040.

Resources for Growth

1. Labor Supply - There is a current estimated labor supply of 11,690 men and 11,990 women available for industrial jobs in the Kentucky portion of the labor market area. In addition, 7,835 young men and 7,600 young women in this area will become 18 years of age by 1983 and potentially available for work. The current labor supply would be supplemented by the number of men and women in the adjoining two counties who are available for industrial jobs.

2. Transportation - Middlesboro and Pineville are served by the Louisville and Nashville Railroad. Middlesboro is also served by the Southern Railway System. The nearest piggyback facilities available for the Louisville and Nashville Railroad are at Williamsburg, Kentucky, 51 miles northwest of Middlesboro and 38 miles west of Pineville. Piggyback facilities are available for the Southern Railway at Knoxville, Tennessee, 82 miles southwest of Middlesboro. Middlesboro is served by U. S. Highways 25E and 58, while Pineville is served by U. S. Highways 25E and 119. Seven truck lines serve Middlesboro and Pineville. The Middlesboro-Bell County Airport is equipped with one paved 3,650-foot runway which can accommodate light aircraft. The London-Corbin Airport, 62 miles northwest of Middlesboro and 49 miles northwest of Pineville, provides the area with commercial air service.

3. Utilities and Fuel - Middlesboro and Pineville are served electric power by the Kentucky Utilities Company. The Cumberland Valley RECC serves the remainder of Bell County. Gas Service Company, Inc., whose source of supply is the Cumberland Valley Pipeline Company, supplies both Middlesboro and Pineville with natural gas. Middlesboro and Pineville are served by two distributors of propane, and each city is served by five distributors of distillate fuel oil.

4. Education - There are three public school systems operating in Bell County: the Middlesboro Independent School System, the Pineville Independent School System, and the Bell County School System. All three school systems are accredited by the Southern Association of Colleges and Schools. Three universities, four colleges, one junior college and one community college are located within 85 miles of Middlesboro and Pineville. The Harlan State Vocational-Technical School, 46 miles from Middlesboro and 33 miles from Pineville, offers 13 training programs. Two vocational education centers are located in Pineville - The Bell County Area Vocational Education Center offering 11 courses of study, and the Pineville School of Practical Nursing.

THE LABOR MARKET AREA

POPULATION			Percent Nonwhite
Area	1975*	1970	1970
Middlesboro	12,165**	11,878	7.40
Pineville	2,580**	2,817	5.30
Labor Market Area	160,700	146,429	N.A.
Bell County	32,800	31,121	3.50
Clay County	20,900	18,481	1.90
Harlan County	39,800	37,370	6.40
Knox County	26,300	23,689	1.70
Leslie County	12,500	11,623	.03
Whitley County	28,400	24,145	0.70

*Provisional Estimates.

**1973 Population Estimates.

Sources: U. S. Department of Commerce, Bureau of the Census, Census of Population, 1970. U. S. Department of Commerce, Bureau of the Census, Current Population Reports, Series P-25, No. 562, June 1975; Series P-26, No. 75-17, May 1976.

LABOR FORCE CHARACTERISTICS OF RESIDENTS, 1975		
	Bell County	Labor Market Area
Civilian Labor Force	10,994	51,992
Employment	9,928	47,636
Agricultural	73	971
Nonagricultural	9,855	46,665
Unemployment	1,066	4,356
Rate of Unemployment (%)	9.7	8.4

Source: Kentucky Department for Human Resources, Kentucky Labor Force Estimates, Annual Averages, 1975.

NONAGRICULTURAL EMPLOYMENT BY INDUSTRY,
BY PLACE OF WORK, 1975

	<u>Bell County</u>	<u>Labor Market Area</u>
All Industries	6,655	29,170
Mining & Quarrying	1,326	7,602
Contract Construction	368	1,608
Manufacturing	870	4,800
Food & Kindred Products	149	413
Apparel, Textiles, Leather	323	869
Lumber, Furniture	109	557
Printing & Publishing, Paper	38	1,479
Chemicals, Petroleum & Coal,		
Rubber	86	243
Stone, Clay & Glass	23	102
Primary Metals	11	11
Machinery, Metal Products,		
Equipment	131	1,126
Transportation, Communications		
& Public Utilities	504	1,319
Wholesale & Retail Trade	1,842	6,821
Finance, Insurance &		
Real Estate	298	919
Services	1,439	6,043
Other	*	*

*Not disclosed.

Note: Excludes domestic workers, railway workers; certain nonprofit corporations; majority of federal, state, and local government workers; and self-employed workers. Labor market area totals for some employment categories exclude employment that was not disclosed for individual counties. Manufacturing detail may not add to totals because of rounding of base data.

Source: Kentucky Department for Human Resources, Average Monthly Workers Covered by Kentucky Unemployment Insurance Law, 1975.

MIDDLESBORO AND PINEVILLE MANUFACTURING FIRMS,
THEIR PRODUCTS AND EMPLOYMENT

Firm (Establishment date)	Product	Employment			Organized
		Total	Male	Female	
<u>Middlesboro</u>					
Bell Concrete Industries, Inc. (1966)	Ready mixed concrete packaged cement mixes	22	20	2	
Bell Printing Company (1916)	Offset printing, letterpress printing	2	2	0	
Coppinger Machinery (1967)	Sprockets, gears, shafts, mine machinery repair	47	46	1	
Cowden Manufacturing Company (1976)	Men's jeans	200	25	175	
Cumberland Gap Corporation (1967)	Lumber, chips, pallet materials	35	35	0	
Dura Line Corporation (1971)	Plastic pipe	34	31	3	
Giles Industries, Inc. (1962)	Mobile homes, travel trailers, modular homes	97	92	5	*
J. R. Hoe and Sons, Inc. (1909)	Coal mining equipment, gray iron castings, fabricated structural steel	58	56	2	
Kentucky Newspapers, Inc. (1916)	Newspaper	29	19	10	
Kirby Steel Products, Inc. (1957)	Truck beds, mobile home chassis, transport trailers	34	33	1	
Martin Manufacturing Corporation (1922)	Elastic webbing, yarn bleaching, dyeing, athletic supporters	N/A			

(Contd.)

<u>Firm</u> (Establishment date)	<u>Product</u>	<u>Employment</u>			<u>Organized</u>
		<u>Total</u>	<u>Male</u>	<u>Female</u>	
Middlesboro Block Company, Inc. (N/A)	Concrete block	7	7	0	
Middlesboro Coca Cola Bottling, Inc. (1904)	Soft drinks	90	85	5	
Middlesboro Tanning Company of Delaware (1952)	Tanning and coloring leather	300	270	30	*
Millett Hardwoods, Inc. (1943)	Lumber, hardwood	5			
Perma Pipe Corporation (1953)	Extruded plastic pipe, tubing	40	3	37	
Royal Crown Bottling Company, Inc. (1921)	Carbonated beverages	12	11	1	
J. F. Schneider & Son, Inc. (1927)	Meat packing	47	39	8	*
Three States Printing Company (1948)	Job printing	5	4	1	
<u>Pineville</u>					
Arthur Asher (1946)	Rough lumber, mine timber, crossties	6	6	0	
Davidson Lumber Company (1939)	Lumber	6	5	1	
Delaware Powder Company (1964)	Explosives	37	32	5	*
Paul Elliott (N/A)	Cap boards, mine timbers	1	1	0	
Oxygen of Kentucky, Inc. (1968)	Acetylene and oxygen products	10	8	2	

*See Labor Organizations below.

Source: Kentucky Department of Commerce, Division of Research and Planning.

LABOR ORGANIZATIONS

<u>Union</u>	<u>Representing manufacturing workers at:</u>
Teamsters	Giles Industries, Inc.
Amalgamated Meat Cutters and Butcher Workmen of North America, and Teamsters	Middlesboro Tanning Company of Delaware
Amalgamated Meat Cutters and Butcher Workmen of North America	J. F. Schneider and Son, Inc.
United Steelworkers of America	Delaware Powder Company

ESTIMATED MALE LABOR SUPPLY
MIDDLESBORO AND PINEVILLE LABOR MARKET AREA

Area	Current			Future	
	Total	Not in Labor Force	Unemployed	Under- employed	Reaching 18 yrs. of age before 1983
Labor Market					
Area	11,690	5,840	3,420	2,430	7,834
Bell	2,150	950	820	380	1,633
Clay	1,520	700	460	360	1,155
Harlan	3,140	1,920	600	620	1,855
Knox	1,090	0	620	470	1,247
Leslie	430	0	350	80	779
Whitley	3,360	2,270	570	520	1,165

Sources: Kentucky Department for Human Resources, Kentucky Labor Supply Estimates by County, 1976. Kentucky Department of Commerce, Future Labor Supply before 1983.

ESTIMATED FEMALE LABOR SUPPLY
MIDDLESBORO AND PINEVILLE LABOR MARKET AREA

Area	Current			Future	
	Total	Not in Labor Force	Unemployed	Under- employed	Reaching 18 yrs. of age before 1983
Labor Market					
Area	11,990	9,130	940	1,920	7,598
Bell	2,760	2,110	240	410	1,592
Clay	1,950	1,640	150	160	1,159
Harlan	4,010	3,430	120	460	1,827
Knox	540	0	200	340	1,243
Leslie	340	230	50	60	705
Whitley	2,390	1,720	180	490	1,072

Sources: Kentucky Department for Human Resources, Kentucky Labor Supply Estimates by County, 1976. Kentucky Department of Commerce, Future Labor Supply before 1983.

AVERAGE WEEKLY WAGES BY INDUSTRY,
BY PLACE OF WORK, 1975

	<u>Bell County</u>	<u>Clay County</u>	<u>Harlan County</u>
All Industries	\$172.13	\$169.60	\$225.88
Mining & Quarrying	291.22	223.59	307.25
Contract Construction	163.31	183.14	228.09
Manufacturing	154.72	*	179.06
Transportation, Com- munications & Public Utilities	197.67	146.71	166.35
Wholesale & Retail Trade	124.32	128.55	150.12
Finance, Insurance & Real Estate	170.48	157.22	144.53
Services	127.81	117.79	159.11
Other	*	*	*

	<u>Knox County</u>	<u>Leslie County</u>	<u>Whitley County</u>
All Industries	\$137.91	\$150.03	\$142.27
Mining & Quarrying	226.19	239.25	245.73
Contract Construction	124.80	117.73	160.83
Manufacturing	134.16	92.03	127.80
Transportation, Com- munications & Public Utilities	163.80	129.55	206.88
Wholesale & Retail Trade	113.84	99.77	117.35
Finance, Insurance & Real Estate	142.49	*	138.58
Services	109.76	112.43	117.79
Other	*	0	*

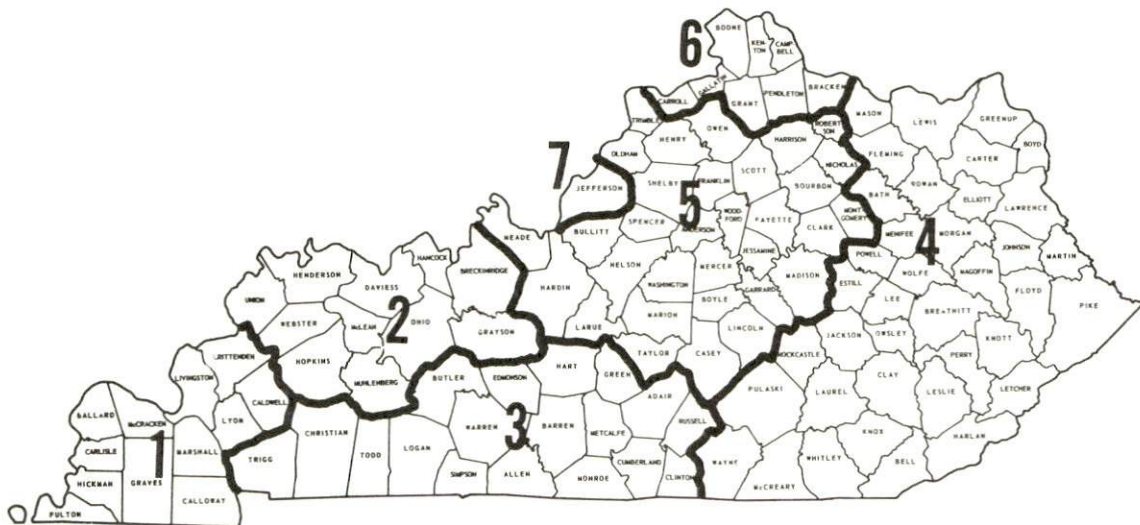
*Not disclosed.

Note: Excludes domestic workers, railway workers; certain nonprofit corporations; majority of federal, state, and local government workers; and self-employed workers.

Source: Kentucky Department for Human Resources, Average Weekly Wages of Workers Covered By Unemployment Insurance, 1975.

Occupational wage rates for specific industries are usually not available to most government agencies, and wage data furnished to state employment agencies by individual industrial employers is protected from disclosure by federal law. The most reliable up-to-date wage information can be obtained by direct contact with local employers.

Associated Industries of Kentucky, a voluntary organization of Kentucky businesses, regularly collects occupational wage rates and fringe benefits data from participating member firms. Data is compiled for over 127 clearly defined office, production, and service occupations. Tabulations are published for seven regions of Kentucky, as shown on the map below. It should be noted that the data may be weighted by the preponderance of firms in the larger cities and may be somewhat higher than the rates paid in the smaller communities. Data from these tabulations are available, upon request, from the Kentucky Department of Commerce, Frankfort, Kentucky 40601.



Associated Industries of Kentucky Area Wage Surveys

PER CAPITA PERSONAL INCOME

<u>Area</u>	<u>1974</u>	<u>1970</u>	<u>Percent Change</u>
Bell County	\$3,388	\$2,161	56.8
Labor Market Area			
Range	\$2,298 - 3,592	\$1,288 - 2,296	N.A.
Kentucky	4,442	3,112	42.7
U. S.	5,448	3,966	37.4

Sources: U. S. Department of Commerce, Bureau of Economic Analysis, Survey of Current Business, August 1975. U. S. Department of Commerce, Bureau of Economic Analysis, March 1976.

TRANSPORTATION

Rail

Line serving Middlesboro - Louisville and Nashville Railroad

Services - Two local freights - one southbound and one northbound make daily stops; switching facilities; team track for 17 cars; siding space for 20 cars; nearest piggyback facilities at Williamsburg, Kentucky, 51 miles northwest of Middlesboro

Line serving Middlesboro - Southern Railway System

Services - One northbound and one southbound freight stops daily; two through freights daily; switching facilities; team track and siding space for 175 cars; nearest piggyback facilities at Knoxville, Tennessee, 82 miles southwest of Middlesboro

Line serving Pineville - Louisville and Nashville Railroad

Services - Local freight stopping daily; two through freights daily - one northbound and one southbound; switching facilities; team track with space for 4 cars; siding space for 15 cars; nearest piggyback facilities available at Williamsburg, Kentucky, 38 miles west of Pineville

For details on routing, schedules, rates, and services, contact:

Manager of Industrial Development
Louisville and Nashville Railroad
908 West Broadway
Louisville, Kentucky 40203
(502) 587-5000

and/or

District Sales Manager
Southern Railway System
101 Gay Street, Northwest
Knoxville, Tennessee 37902
(615) 522-7225

Highways

U. S. Highways 25E and 58 and state highway 74 serve Middlesboro. U. S. 25E connects Middlesboro with Interstate 75, 50 miles to the northwest. U. S. 25E is a multi-lane highway between Middlesboro and Pineville, and also a section of the highway between Barbourville and Corbin is multi-laned.

Pineville is served by U. S. Highways 25E and 119, and state highway 221. Interstate 75 is only 37 miles northwest of Pineville.

Truck Service

Company

Home Office

Middlesboro and Pineville

Hogan Storage and Transfer
Company (Irregular)
Mason and Dixon Lines, Inc.

721 East Fourth Street
Williamson, West Virginia 25661
P. O. Box 969
Kingsport, Tennessee 37662

McLean Trucking Company

P. O. Box 213
Winston-Salem, North Carolina 27102

Overnite Transportation
Company*

1000 Semmes Avenue
Richmond, Virginia 23209

Skyline Transportation
Company

131 Quincey Avenue
Knoxville, Tennessee 37917

Thurston Motor Lines, Inc.**

600 Johnston Road
Charlotte, North Carolina 28206

United Trucking Service, Inc.
(McDuffee Motor Freight,
Inc.)***

3047 Lonyo Road
Detroit, Michigan 48209

Other Freight Services

Nearest Shipping Center

United Parcel Service

London, 62 miles from Middlesboro
and 49 miles from Pineville

*Temporary service.

**Serves Middlesboro only.

***Local terminal.

HIGHWAY MILES AND TRUCK TRANSIT TIME IN DAYS FROM
MIDDLESBORO, KENTUCKY, TO SELECTED MARKET CENTERS

City	Highway Miles	Delivery Time		City	Highway Miles	Delivery Time	
		TL	City			TL	
Atlanta, Ga.	275	2	Los Angeles, Cal.	2,284	6		
Birmingham, Ala.	336	2	Louisville, Ky.	208	1		
Chicago, Ill.	488	2	Nashville, Tenn.	259	1		
Cincinnati, Ohio	214	1	New Orleans, La.	678	3		
Cleveland, Ohio	453	1	New York, N. Y.	726	2		
Detroit, Mich.	473	1	Pittsburgh, Pa.	522	1		
Knoxville, Tenn.	82	1	St. Louis, Mo.	471	2		

Source: Delivery Time Only - United Trucking Service, Inc. (McDuffee Motor Freight, Inc.), 3047 Lonyo Road, Detroit, Michigan 48209.

Air

	<u>Local</u>	<u>Nearest Commercial</u>
Location:	Middlesboro-Bell County Airport 1.2 miles west of Middlesboro, 13 miles from Pineville	London-Corbin Airport London, 49 miles northwest of Pineville, 62 miles northwest of Middlesboro
Runways:	1 paved	1 paved
Length:	3,650 feet	6,000 feet
Traffic Control:	Wind sock	Wind sock and FSS advisory service
Lighting:	None	Beacon, runway and obstruc- tion lights
Services:	80 and 100 octane, major and minor A and E re- pairs, general flying service, taxi, air- craft inspection and authorization	Piedmont Airlines, 100 oc- tane, taxi, car rental, weather, flight training, charter and ambulance service, vending machines
Air Freight Service:		Freight accepted on a space available basis

Bus - Greyhound Bus Lines serves both Middlesboro and Pineville

Taxi - Middlesboro has four companies, 24-hour, radio-dispatched service
Pineville has three companies, 24-hour, radio-dispatched service

Rental Services - Car, truck and trailer rentals are available in both
Middlesboro and Pineville

POWER AND FUEL

Electricity

Company serving Middlesboro and Pineville - Kentucky Utilities Company
Source of power - Kentucky Utilities Company
Total generating capacity - 1,839,000 KW
For industrial rates contact:

Industrial Development Department
Kentucky Utilities Company
120 South Limestone Street
Lexington, Kentucky 40507
(606) 255-1461

Company serving Bell County - Cumberland Valley RECC
Source of power - East Kentucky Power Cooperative
Total generating capacity - 868,000 KW
For industrial rates contact:

Industrial Development Division
East Kentucky Power Cooperative
P. O. Box 707
Winchester, Kentucky 40391
(606) 744-4812

and/or

Cumberland Valley RECC
Highway 25E
Gray, Kentucky 40734
(606) 528-2677

Natural Gas

Company serving Middlesboro - Gas Service Company, Inc.
Source of supply - Cumberland Valley Pipeline Company
Size of transmission mains - 8 inches (supplier);
6 inches (distributor)
Distribution mains - 2 and 4 inches
Distribution pressure - 35 psi
Btu content 1,100 per cubic foot; Specific gravity - .65
For rates and supplies contact:

Gas Service Company, Inc.
2110 Cumberland Avenue
Middlesboro, Kentucky 40965
(606) 248-1845

Company serving Pineville - Gas Service Company, Inc.
Source of supply - Cumberland Valley Pipeline Company
Size of transmission mains - 8 inches (supplier);
6 inches (distributor)
Distribution mains - 2 and 4 inches
Distribution pressure - 7 psi
Btu content - 1,100 per cubic foot; Specific gravity - .65
For rates and supplies contact:

Gas Service Company, Inc.
2110 Cumberland Avenue
Middlesboro, Kentucky 40965
(606) 248-1845

Other Fuels

Propane

Middlesboro - Pineville

Lewis L. P. Gas Company
North 19th Street
Middlesboro, Kentucky 40965

Barton's Gas Service
298 Cumberland Avenue
Barbourville, Kentucky 40906

Fuel oils

Distillate fuel oil -

Middlesboro

Blakeman and Sons, Inc.
Fitzpatrick Avenue
Middlesboro, Kentucky 40965

Brooks Oil Company, Inc.
Fitzpatrick Avenue
Middlesboro, Kentucky 40965

Gulf Oil Products, Inc.
North 19th Street
Middlesboro, Kentucky 40965

Harris Oil Company
(Shell Oil products)
1632 East Cumberland Avenue
Middlesboro, Kentucky 40965

Texaco, Inc.
Wilderness Road
Middlesboro, Kentucky 40965

Pineville

Blakeman and Sons, Inc.
Fitzpatrick Avenue
Middlesboro, Kentucky 40965

Brooks Oil Company, Inc.
Fitzpatrick Avenue
Middlesboro, Kentucky 40965

Chevron Oil Company (bulk plant)
U. S. 119
Pineville, Kentucky 40977

G and M Oil Company
Pineville Road
Barbourville, Kentucky 40906

Red Ace Oil Company
Mt. View Avenue
Pineville, Kentucky 40965

Residual fuel oil - Arrangements must be made with the refinery.

Low sulphur content coal -- Available locally.

WATER AND SEWERAGE

Water

Company serving Middlesboro - Kentucky Water Service Company, Inc.
2103 Cumberland Avenue
Middlesboro, Kentucky 40965
(606) 248-5730

Source - Fern Lake on Little Yellow Creek
Treatment plant capacity - 2,000,000 gpd
Average daily consumption - 1,300,000 gallons
Peak daily consumption - 1,800,000 gallons
Type treatment - Sedimentation, coagulation, filtration,
fluoridation, and chlorination
Storage capacity - 1,200,000 gallons
Size lines - 6, 8, 10, 12, 16, 20, and 24 inches
Average pressure - 105 psi
Average temperature - 68 degrees F.

MONTHLY WATER RATES FOR WHOLESALE AND INDUSTRIAL CONSUMERS

First	1,000 gallons	\$3.60 (Minimum)
Next	9,000 gallons	1.05 per M gallons
Next	15,000 gallons	.90 per M gallons
Next	25,000 gallons	.85 per M gallons
Next	50,000 gallons	.75 per M gallons
Next	100,000 gallons	.65 per M gallons
Over	200,000 gallons	.55 per M gallons

MINIMUM MONTHLY CHARGES

	5/8 or	3/4-inch meter	\$	3.60
1	or 1	1/4-inch meter		8.70
	1	1/2-inch meter		14.20
	2	-inch meter		21.30
	3	-inch meter		57.30
	4	-inch meter		94.80
	6	-inch meter		190.00

Tap-on charge: None

Company serving Pineville - Pineville Water System
Park Avenue
Pineville, Kentucky 40977
(606) 337-6611

Source - Cannon Creek Reservoir
Treatment plant capacity - 1,000,000 gpd
Average daily consumption - 641,000 gallons
Peak daily consumption - 800,000 gallons
Type treatment - Conventional rapid sand filtration
Storage capacity - 1,200,000 gallons
Size lines - 4, 8, and 12 inches
Average pressure - 110 psi
Average temperature - 67 degrees F.

MONTHLY WATER RATES FOR WHOLESAL
AND INDUSTRIAL CONSUMERS

First	1,000 gallons	\$4.20 (plus tax)
Next	9,000 gallons	1.95 per M gallons
Next	20,000 gallons	1.35 per M gallons
Over	30,000 gallons	1.05 per M gallons

Tap-on charge: \$150 for a 5/8-inch meter;
all over 5/8- inch meter - cost of
materials and labor

Surface water sources - Yellow Creek and Cumberland River
Average discharge - Yellow Creek near Middlesboro, Kentucky 113 cfs
(35-year record); Cumberland River near Pineville, Kentucky 1,414
cfs (37-year record)
Expected ground water yield - Majority of the county's ground water
yields 50-200 gpm; extensions in east central and west central
portions yield 5-50 gpm; small areas in central and southern Bell
County yield 200-500 gpm.

Sewerage

Company serving Middlesboro - Sewerage Commission of Middlesboro*
North 20th Street
Middlesboro, Kentucky 40965
(606) 248-5670

Design capacity - 3,000,000 gpd
Average daily flow - 1,500,000 gallons; Treatment - Primary
and secondary
Type treatment - Aeration, clarifier and drying beds
Treated effluent discharged into - Yellow Creek
Size of sanitary mains - 8 to 24 inches
Size of storm mains - 8 inches to 7 feet
Rates - Residential: \$3.15 to \$4.20 per month
Business: 70 percent of water bill
Tap-on charge - \$100

Company serving Pineville - Pineville Municipal Sanitation Commission*
Walnut Avenue
Pineville, Kentucky 40977
(606) 337-6612

Design capacity - 400,000 gpd
Average daily flow - 275,000 gallons; Treatment - Secondary
Type treatment - Aeration, one anaerobic digester and final
settling tanks
Treated effluent discharged into - Cumberland River
Size of sanitary mains - 8 to 15 inches
Size of storm mains - 8 to 54 inches
Rates - 52 percent of water bill
Tap-on charge - \$100

*A 201 Facilities Plan, Phase I, is underway.

CLIMATE

Bell County

Temperature

Normal (30-year record)	59.7 degrees
Average annual 1976	57.1 degrees
Record highest, September, 1954 (35-year record)	103.0 degrees
Record lowest, January, 1966 (35-year record)	-9.0 degrees
Normal heating degree days (30-year record)	3,478
(Heating degree day totals are the sums of negative departures of average daily temperatures from 65 degrees F.)	

Precipitation

Normal (30-year record)	46.18 inches
Mean annual snowfall (34-year record)	12.30 inches
Total precipitation 1976	42.44 inches
Mean number days precipitation (.01 inch or more) (34-year record)	128
Mean number days thunderstorms (34-year record)	47

Prevailing Winds (14-year record)

Northeast

Relative Humidity (16-year record)

1 a.m.	79 percent
7 a.m.	84 percent
1 p.m.	59 percent
7 p.m.	62 percent

Source: U. S. Department of Commerce, Environmental Science Services Administration, Climatological Data, 1976. Station of record: Knoxville, Tennessee.

LOCAL GOVERNMENT

City

Middlesboro

Structure - Mayor - 4-year term; 12 councilmen - 2-year terms
 Budget 1976-77 - General Fund \$1,025,100
 Sewer Fund 116,000
 Sanitation Fund 140,800
 Fees and licenses - Occupational license fee - 2% of gross wages and
 2% of net business profits; vehicle tax - all trucks (\$15 per year)

Pineville

Structure - Mayor - 4-year term; 8 councilmen - 2-year terms
 Budget 1975 - General Fund \$172,999
 Fees and licenses - Business privilege licenses range from \$5 to \$200
 per year; privilege license for merchants based on annual cash
 receipts (\$35 minimum); automobile privilege licenses \$5 per year;
 unloading license \$35 per year

County

Structure - County Judge - 4-year term; 8 magistrates - 4-year terms
 Budget 1976-77 - General Fund \$395,250; Road Fund \$56,392

Assessed Value of Property, 1976

<u>Classes of Property</u>	<u>Middlesboro</u>	<u>Pineville</u>	<u>Bell County</u>
Real Estate	\$69,122,559	\$9,158,582	\$96,764,000
Tangibles	19,369,695	3,195,393	73,793,935

Property Taxes

All property in Kentucky is assessed at 100 percent of fair cash value.

Land and buildings are taxed by the state and may be taxed by local jurisdictions. The state rate is \$0.315 per \$100 of assessed valuation. Beginning January 1, 1977, local school tax rates were reduced by \$0.30 per \$100 valuation and the state rate was increased by \$0.30 per \$100 (from \$0.015), resulting in no net change in the combined state and local rates.

Manufacturing machinery, raw materials inventories, pollution control equipment, and goods in the process of manufacture are not subject to local taxation. The state rate is \$0.15 per \$100.

(Contd.)

Other tangible personal property owned by manufacturers (automobiles, trucks, finished goods, office furniture, office equipment) is taxed by the state at \$0.45 per \$100 and may be taxed by local jurisdictions. Beginning January 1, 1977, local school rates were reduced by \$0.30 per \$100 valuation and the state rate was raised by \$0.30 per \$100 (from \$0.15).

Property stored in public warehouses in a transit status is not subject to local taxation. The state rate is only \$0.015 per \$100.

Intangible personal property located in Kentucky (money in hand, shares of stock, notes, bonds, accounts, and other credits) is taxed by the state at \$0.25 per \$100, and is not subject to local taxation.

Intangible personal property owned by corporations in Kentucky as a result of business transactions performed out of state, but having a tax situs in Kentucky (accounts receivable, notes, bonds, credits, non-domestic bank deposits, licensing or royalty agreements, shares of stock of any affiliated company, etc.) is taxed by the state at \$0.015, and is not subject to local taxation.

Local Property Tax Rate Per \$100 of Assessed Valuation, 1976*

<u>Taxing Jurisdiction</u>	<u>Middlesboro</u>	<u>Pineville</u>	<u>Bell County</u>
County	\$.241	\$.241	\$.241
School	.650	.632	.518
City	.240	.625	

Planning and Zoning

City agency - Middlesboro Planning Commission
 Zoning enforced - City only
 Subdivision regulations enforced - City only
 Local codes enforced - Building and housing
 Mandatory state codes enforced - Plumbing, National Fire Protection Association Code, National Building Code (for major buildings and residential construction containing more than 12 bedrooms per building)

City agency - Pineville Planning Commission
 Zoning enforced - City only
 Subdivision regulations enforced - City only
 Local codes enforced - Building and housing
 Mandatory state codes enforced - Plumbing, National Fire Protection Association Code, National Building Code (for major buildings and residential construction containing more than 12 bedrooms per building)

*Kentucky Department of Revenue, Kentucky Property Tax Rates, 1976.

Safety

<u>Police</u>	<u>Middlesboro</u>	<u>Pineville</u>	<u>Bell County</u>
Total staff	27	5	13
Radio-patrol cars	6	1	8

Fire

American Insurance Association Fire Rating	6	9
Full-time staff	22	3
Volunteers	15	13

Rescue Service

Middlesboro-Bell County Emergency Rescue Squad, Inc.*

Number of volunteers - 22 active

Equipment - Crash truck, 2 jeeps, 5 boats and motors, 2 large portable generators, 2 small portable generators, sleeper van for 10 people, portable kitchen, radio equipment in all vehicles, 8 mobile units and base station, 6-passenger personnel van, 12-passenger personnel van, and a reconditioned 2 1/2 ton army truck

Personnel training - First aid courses, civil defense course (radiologist), dragging operation procedures, one CPR instructor, and four emergency medical technicians

*Member Kentucky Association of Rescue Squads.

Solid Waste

	<u>Middlesboro</u>	<u>Pineville</u>	<u>Bell County</u>
Type service	Municipal	Municipal	County
Fee charged:			
residential	\$3 to \$5 month	\$2 per month	\$3 per month
business	\$5 to \$30 per month; dumpster rental - \$12 to \$20 per month; pickups \$7.50 to \$10 each	According to volume	According to volume
industrial	Same as business	According to volume	According to volume
Collection frequency:			
residential	1 to 2 times per week	Once per week	Once per week
business	Daily to once per week	3 times per week	According to volume
industrial	Daily to once per week	3 times per week	According to volume
Trash pickup	Daily to once per week	Up to 3 times per week	According to volume
Disposal method	Sanitary landfill	Sanitary landfill	Sanitary landfill

EDUCATION

Public Schools

	<u>Middlesboro Independent</u>	<u>Pineville Independent</u>	<u>Bell County</u>
Total Enrollment (Fall, 1976)	2,586	576	4,581
Elementary	1,144	352	3,424
Middle School	701		
High School	841	224	1,157
Student-Teacher Ratio	22-1	16-1	20-1
Elementary	23-1	17-1	21-1
Middle School	23-1		
High School	21-1	15-1	18-1
Accreditation	Southern Association of Colleges and Schools	Southern Association of Colleges and Schools	Southern Association of Colleges and Schools
Percent High School Graduates to College	38.8	67.5	31.7
Expenditures Per Pupil (1975-76)	\$654.89	\$771.23	\$649.57
Bonded Indebtedness, June 30, 1976	\$2,775,000	\$695,000*	\$1,134,000

Nonpublic Schools

	<u>St. Julian</u>
Total Enrollment	67
Elementary	67
Student-Teacher Ratio	22-1
Elementary	22-1

*Includes advance refunding issue - \$330,000.

Area Colleges and Universities

<u>Name</u>	<u>Location (Miles distant)*</u>	<u>Enrollment (Fall, 1976)</u>	<u>Highest Degree Conferred</u>
Lincoln Memorial University	Harrogate, Tennessee (4)	915	Baccalaureate
Union College	Barbourville, Kentucky (18)	1,151	Masters
Cumberland College	Williamsburg, Kentucky (39)	1,866	Baccalaureate
Carson-Newmann University	Jefferson City, Tennessee (62)	1,450	Baccalaureate
Sue Bennett Junior College	London, Kentucky (62)	226	Associate
Southeast Community College	Cumberland, Kentucky (69)	365	Associate
University of Tennessee Knoxville College	Knoxville, Tennessee (82)	22,693	Academic and Professional
Johnson Bible College	Knoxville, Tennessee (82)	778	Baccalaureate
	Tennessee (82)	393	Baccalaureate

*Mileage from Middlesboro.

Vocational Schools

Nearest State School

Location	Harlan State Vocational- Technical School
Miles Distant	Harlan 46 miles from Middlesboro and 33 miles from Pineville
Curriculum	Consumer and Home Economics Child Care Services Consumer and Family Life Skills Food Services Industrial Educaion Air Conditioning and Heating Auto Body Repair Auto Mechanics Carpentry - Building Trades Drafting Electronics (Technology) Industrial Electricity Machine Shop Mining Maintenance Mechanics Welding Learning Resource Center

Nearest Area Education Center

Location	Bell County Area Vocational Education Center
Miles Distant	Pineville 13 miles from Middlesboro
Curriculum	Consumer and Home Economics Consumer and Family Life Skills Health and Personal Services Health Careers Industrial Education Air Conditioning and Heating Auto Body Repair Auto Mechanics Carpentry - Building Trades Drafting Industrial Electricity Machine Shop Radio and TV Service Welding

(Contd.)

Nearest Area Education Center

Location	Pineville School of Practical Nursing
Miles Distant	Pineville
Curriculum	13 miles from Middlesboro
	Practical Nursing

Arrangements can be made to provide training in the specific production skills required by an industrial plant. Instruction may be conducted either in the vocational school or in the industrial plant, depending upon the desired arrangement and the availability of special equipment.

HEALTH

Local Medical Personnel

Physicians - 36
Dentists - 9

Hospitals

<u>General Hospital</u>	<u>Location</u>	<u>Beds</u>
The Middlesboro Community Hospital - ARH Inc.	Middlesboro	96 acute 56 extended care
The Pineville Community Hospital	Pineville	120 acute 67 extended care

The Middlesboro Community Hospital - ARH Inc.

General hospital facilities - Radiology department, clinical laboratory, 4 operating rooms, 2 delivery rooms, newborn nursery, emergency unit, respiratory therapy, intensive care-coronary care unit, physical therapy, social service, emergency ambulance service, home care, and pulmonary function studies

Medical staff - 4 surgeons, 3 pediatricians, 3 OB-GYN specialists, 2 EENT specialists, 2 general practitioners, 2 internists, 5 dentists, 36 registered nurses, 3 licensed practical nurse specialists, 38 licensed practical nurses, 15 nurses' aides, 3 anesthetists, 10 doctors on courtesy staff, 9 consulting doctors, 2 emergency room physicians, ophthalmologist, radiologist, pathologist, 5 medical technicians, 3 respiratory therapists, physical therapist, medical social worker, 3 pharmacists, medical records administrator and registered dietitian

The Pineville Community Hospital

General hospital facilities - X-ray department, delivery room, 2 operating rooms, obstetrics and diagnostic department, ambulant care center, community physicians' offices, laboratory, home health service, 8 intensive and coronary care beds, pharmacy, physical therapy, respiratory therapy, social services, nuclear medicine laboratory, pathology department, and emergency ambulance service

Medical staff - Total staff, 335 personnel (10 active physicians, 3 dentists, 16 registered nurses, 60 licensed practical nurses, 83 nurses' aides, orderlies, and ward clerks). Specialists are available on a consultation basis.

Other Medical Facilities

The Daniel Boone Clinic, Middlesboro

General clinic facilities - 15 physicians' offices; 40 examination rooms; laboratory; ophthalmology, dermatology, pediatrics, general medical, general surgical and OB-GYN departments

Medical staff - 11 physicians, 4 consulting physicians, 15 licensed practical nurses, 7 nurses aides, and 22 office and receptionist personnel

The Cumberland River Comprehensive Care Center, Middlesboro

General care facilities - Full range of outpatient services, in-patient services available for clinics in Corbin and Harlan, consultation-education services, 24-hour emergency system, group homes for exceptional girls and boys (retarded), Cardinal House (alcoholism, halfway house); Alcoholism Rehabilitation Center in London, SID services, speech therapy, alcohol and drug abuse counseling, and children's services (child problems)

Staff - Psychiatrist, M. D., mental health worker, 3 social workers, psychologist, 2 registered nurses, family service worker, child service specialist, alcoholism field coordinator, 6 resident counselors, speech therapist, alcoholism and drug educator, teachers, aides, and clerical personnel

Ambulance Service

Name - Bell County Appalachian Regional Hospital Emergency Ambulance Service

Staff - 18 total - 9 stationed in Middlesboro at the Appalachian Regional Hospital, 9 stationed at the Pineville Community Hospital; all personnel are certified medical technicians

Service - Ambulances provide 24-hour, seven day-per-week service

Equipment - Four radio-equipped ambulances, three stationed at Appalachian Regional Hospital and two stationed at the Pineville Community Hospital. All ambulances contain standard emergency medical equipment as required by law.

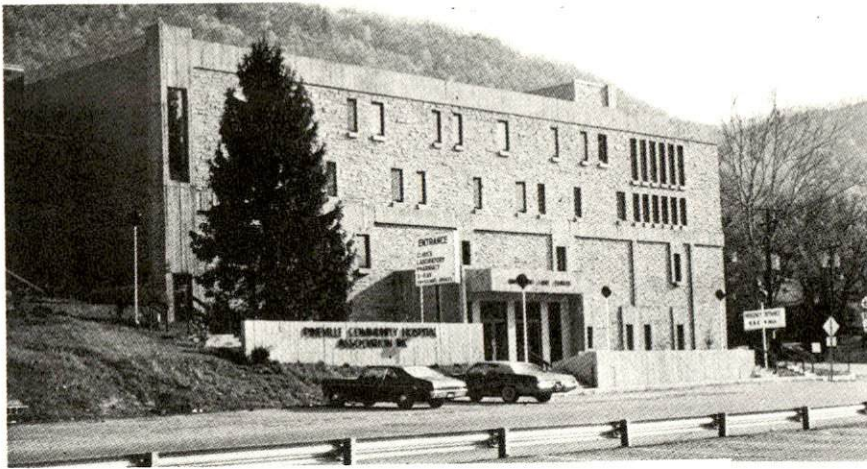
Nursing Homes

	<u>Number</u>	<u>Beds</u>
Extended care homes	2	122
Personal care homes	1	44

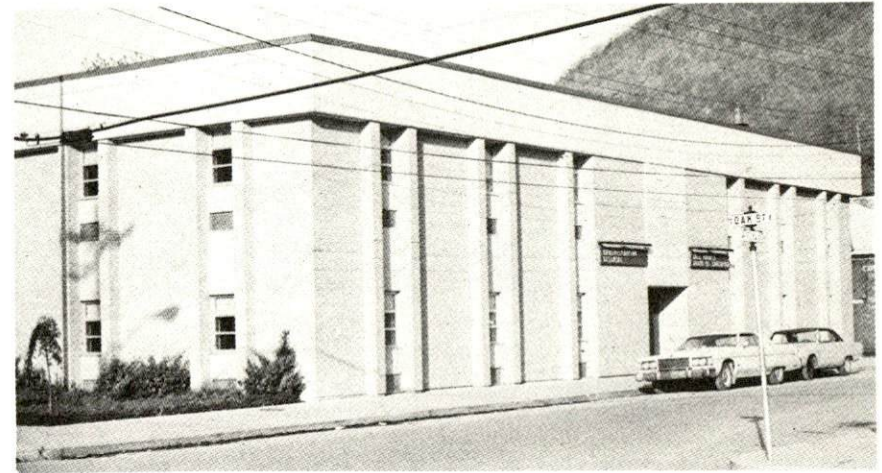
Public Health

Facility - Bell County Health Department, Middlesboro and Pineville

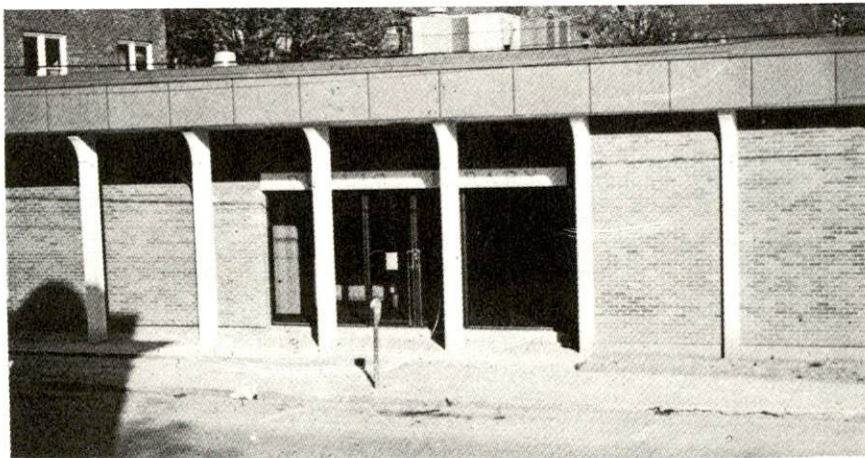
Staff - 4 registered nurses, 2 health environmentalists, 3 clerk typists, 1 administrator



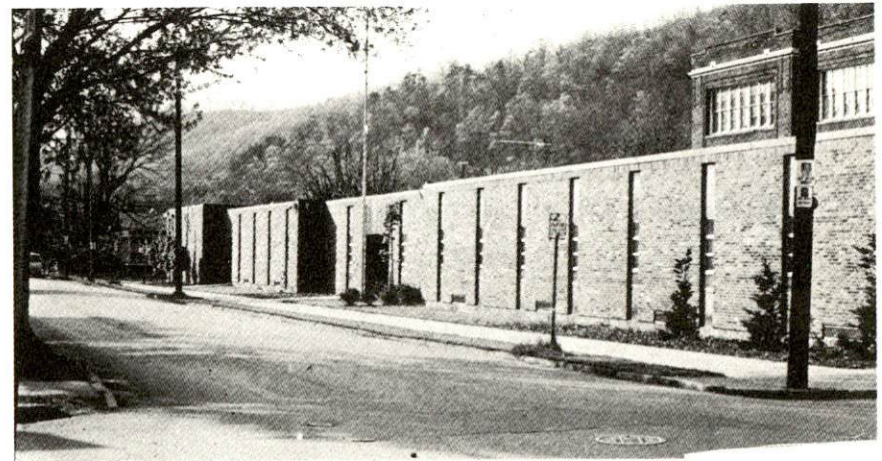
PINEVILLE COMMUNITY HOSPITAL



BELL COUNTY BOARD OF EDUCATION
ADMINISTRATION BUILDING



PINEVILLE-BELL COUNTY PUBLIC LIBRARY



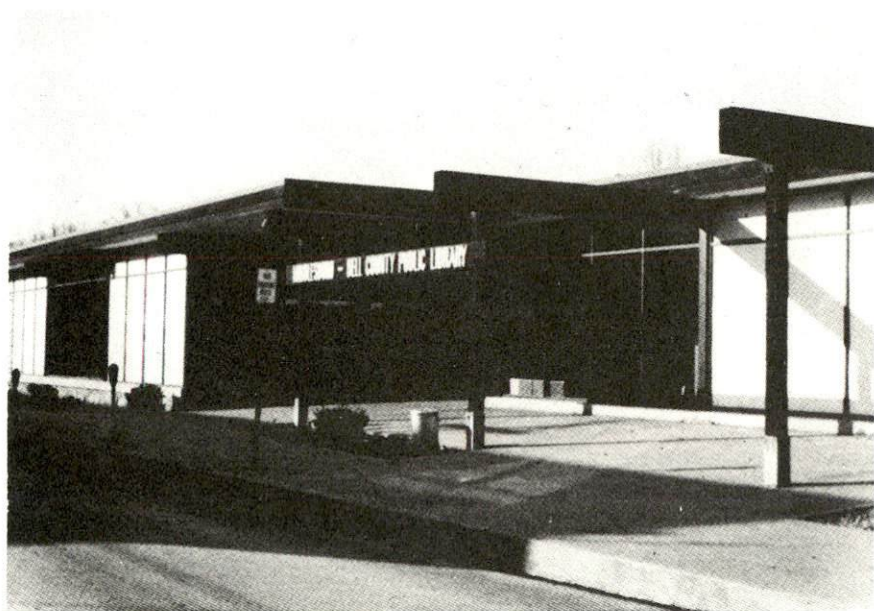
PINEVILLE ELEMENTARY SCHOOL



MIDDLESBORO MIDDLE SCHOOL



THE NATIONAL BANK, MIDDLESBORO



MIDDLESBORO-BELL COUNTY PUBLIC LIBRARY



COMMERCIAL BANK, MIDDLESBORO

OTHER LOCAL FACILITIES

Communications

	<u>Middlesboro</u>	<u>Pineville</u>
Telephone - Services -	South Central Bell Telephone Company Standard, WATS line	South Central Bell Telephone Company Standard; WATS line; computer line - data processing trans- mission capability through Cincinnati
Telegraph - Services	Western Union Local office - standard services	Western Union Local office - standard services
Postal - U. S. Post Office Class -	First	First
Mail received -	Twice daily	Twice daily
Mail dispatched -	Twice daily	Twice daily
Newspapers -	Middlesboro Daily News	Pineville Sun- Cumberland Courier
Daily and circulation -	7,800	4,000
Weekly and circulation -		
Other papers received from -	Louisville and Lexington, Kentucky; Knoxville, Tennessee	Louisville and Lexington, Kentucky; Knoxville, Tennessee
Radio - Stations recieved from -	WFXV-AM and WMIK-AM/FM Pineville, London, and Corbin, Kentucky; Knoxville, Tennessee	WANO-AM AND WTJM-FM Barbourville, Corbin, London and Middles- boro, Kentucky; Knoxville and Oak Ridge, Tennessee
Television - Cable service Reception from -	Lexington, Kentucky; Knoxville and Johnson City, Tennessee; Bristol, Virginia; Asheville, North Carolina	Lexington, Kentucky; Knoxville and Johnson City, Tennessee; Bristol, Virginia; Asheville, North Carolina
Kentucky Educational Television -	Hazard transmitter, Channel 35; Sneed- ville, Tennessee Channel 2	Somerset transmitter, Channel 29; Sneed- ville, Tennessee Channel 2

Library Services

Public library - Middlesboro-Bell County Public Library

Size collection - 31,113 volumes

Circulation, 1975-76 - 79,541 (combined library and bookmobile)

Services - Magazines, newspapers, books, story hour, bookmobile, talking books for the blind, records, microfilm reader-printer, historical room, children's room, service to shut-ins and convalescent patients, community room with kitchen facilities, film programs, oral history project; member - Kentucky Inter-Library Loan Communications Network

Public library - Pineville-Bell County Public Library

Size collection - 17,786 volumes

Circulation - 1975-76 - 68,094 (combined library and bookmobile)

Services - Magazines, newspapers, books, story hour, bookmobile, talking books for the blind, records, microfilm reader-printer, historical room, children's room, service to shut-ins and convalescent patients, community room with kitchen facilities, film programs, oral history project; member - Kentucky Inter-Library Loan Communications Network

Religious Institutions

	<u>Middlesboro</u>	<u>Pineville</u>
Number of churches -	55	8
Denominations -	AME Zion, Assemblies of God, Baptist, Catholic, Christian, Christian Science, Church of Christ, Church of First Born, Church of God, Episcopal, Jehovah's Witnesses, Methodist, Nazarene, Pentecostal, Presbyterian, Salvation Army, Seventh Day Adventist	Baptist, Catholic, Christian, Church of God, Methodist, Nazarene, Presbyterian
Nearest Synagogues -	Knoxville, Tennessee, 82 miles from Middlesboro	
Congregations -	Heska Amuna (orthodox) Temple Bethel (reform)	

Financial Institutions

<u>Banks</u>	<u>Assets</u>	<u>Deposits</u>	<u>Statement Date</u>
<u>Middlesboro</u>			
Commercial Bank	\$40,197,608.63	\$36,863,543.69	12/31/76
National Bank	32,555,009.02	30,035,235.81	12/31/76

Pineville

First State Bank	\$18,460,686.38	\$16,043,085.42	12/31/76
------------------	-----------------	-----------------	----------

<u>Savings and Loan Associations</u>	<u>Assets</u>	<u>Savings Accounts</u>	<u>Statement Date</u>
--------------------------------------	---------------	-------------------------	-----------------------

Middlesboro

Home Federal	\$29,031,733	\$27,456,763	12/31/76
Middlesboro Federal	23,019,039	21,372,051	12/31/76

Pineville

First Federal	\$20,818,086	\$18,364,553	12/31/76
---------------	--------------	--------------	----------

Hotels and Motels

	<u>Middlesboro</u>	<u>Pineville</u>
Total number	12	4
Total units	400	95

Clubs and Organizations

Middlesboro

Business and Civic - Chamber of Commerce, Kiwanis, Rotary, Lions, Retail Merchants Association, Jaycees, Business and Professional Women's Club

Fraternal - American Legion, Masonic Lodge, J.O.U.A.M., Elks

Women's - Cumberland Park Garden Club, Middlesboro Garden Club, Middlesboro Junior Woman's Club, American Legion Auxiliary, Alpha Mu Chapter, Beta Sigma Phi, Rebekahs, Eastern Star, Jaycettes, D.A.R., Xi Phi Chapter, Beta Sigma Phi, Nancy Hanks Club, Middlesboro Democratic Women's Club, Middlesboro Senior Homemakers, Phi Chapter, Alpha Delta Kappa, Republican Women's Club, Mountain View Homemakers

Youth - 4-H, Key Club, Boy Scouts, Cub Scouts, Girl Scouts, Brownies, FHA, FFA, Little League and Intermediate League Programs

(Contd.)

Other - PTA, Middlesboro Ministerial Association, Middlesboro Federated Music Club, Middlesboro Little Theater, Middlesboro Art Club, Tri-State Citizen's Band Radio Club, Tri-State Saddle Club, American Association of Retired Persons, Palette Art League

Pineville

Business and Civic - Bell County Bar Association, Chamber of Commerce, Kiwanis, Lions, Rotary, Pineville Improvement Committee, Jaycees, Business and Professional Women's Club

Fraternal - American Legion, Masonic Lodge

Women's - Junior Woman's Club, Junior and Senior Homemakers, Senior Woman's Club, Eastern Star, Mountain Laurel Garden Club, Pineville Garden Club

Youth - Boy Scouts, Cub Scouts, FHA, FFA, 4-H, Little League Program, Bell Youth Center

Other -PTA

RECREATION

Local

The city of Middlesboro offers a variety of recreation facilities and programs. The city supports supervised programs six parks, four playgrounds, a swimming pool, six tennis courts, two baseball diamonds, one football field, four basketball courts and a city maintained civic center.

Private recreation facilities are as extensive as the public. The country club offers an 18-hole golf course and a swimming pool. A bowling alley, two movie-theaters - one indoor and one drive-in, and a roller skating rink are available to the public.

Pineville offers numerous recreational facilities. These include supervised programs, three parks, six playgrounds, a swimming pool, one golf course, two tennis courts, two baseball diamonds, two football fields and four basketball courts. Also located in Pineville is the Bell County Youth Center.

Numerous tourist attractions are found in and around Middlesboro and Pineville:

The Cumberland Gap Arts and Crafts Festival is held in Middlesboro in mid-October. Other tourist attractions found in Middlesboro are the Little Theater and Coal House (Chamber of Commerce Building). Lincoln Memorial University, located a few miles outside of Middlesboro in Harrogate, Tennessee, has the world's second largest collection of Abraham Lincoln relics on display. Cumberland Gap National Historical Park, 3 miles distant, is the largest national historic park in the United States. Features in this 20,816-acre park include: a frontier museum; Pinnacle Mountain that overlooks three states; three caves; old iron furnace; and Hensley Settlement, a restored mountain village.

Pineville offers a variety of cultural events and attractions. The Southeastern Kentucky Community Concert Series performs concerts on a regular basis. Also held in town each year is the Sidewalk Art Show. Located just outside of town is Pine Mountain State Resort Park, a 2,500-acre park, located in the Kentucky Ridge State Forest. This park is the scene of the Mountain Laurel Festival in the spring, and the summer drama, "The Book of Job." Other park features offered are swimming, hiking, horseback riding, shuffleboard, picnicking, playground, golf, and camping.

Area (Within 70 miles)

In addition to Pine Mountain State Resort Park and Cumberland Gap National Historical Park, there are three state parks, one lake and one state shrine within 70 miles of Middlesboro.

Laurel River Lake, 48 miles from Middlesboro, is a 5,600-acre lake in the Daniel Boone National Forest. This beautiful new lake offers camping, fishing, boating and swimming.

Cumberland Falls State Resort Park, 48 miles northwest of Middlesboro, is located in the Daniel Boone National Forest and envelopes 1,720 acres. It is famous for Cumberland Falls, where the Cumberland River tumbles 68 feet over a rock precipice. One of the only two moonbows in the world is visible here in the full phase of moon. The park offers accommodation facilities, camping, fishing, swimming, hiking, horseback riding, playground, and dance pavilion.

Levi Jackson Wilderness Road State Park, 62 miles from Middlesboro, is an 815-acre park, located where the Boone Trace and Wilderness Road pioneer trails converge. In addition to a reproduced pioneer settlement, the park offers a pool, bathhouse, hiking trails, horseback riding, shuffleboard, picnic area, and playground.

Kingdom Come State Park, 69 miles west of Middlesboro, is surrounded by 1,000 beautiful acres. The park features a 3-acre lake, fishing, hiking, campsites, picnic area, and playground. The state park is situated at the midway point of the Little Shephard Trail, which follows Pine Mountain from Harlan to Whitesburg.

Dr. Thomas Walker State Shrine, 31 miles west of Middlesboro in Barbourville, is the site of the cabin built by Dr. Walker, who led the first documented expedition through Cumberland Gap. This 12-acre park contains a replica of the cabin and also a playground and picnic shelter.

COMMUNITY IMPROVEMENTS

Middlesboro

Industrial

Cowden Manufacturing Company has located a manufacturing plant in Middlesboro that will eventually employ between 300 and 500 persons, and will manufacture denim jeans and similar apparel.

Coppinger Machinery and Kirby Steel Products, Inc., have added new additions to their buildings. Middlesboro Tanning Company is constructing a new facility to aid in waste disposal.

Commercial Development

A new bridge has been built on Lothbury Avenue with four lanes of traffic to give a better flow of traffic in the downtown shopping area.

Sidewalks are planned for the entire downtown area and school areas.

A new shopping center is underway on the north side of town. This center will have a total of twenty new stores.

The downtown and east end branch facilities of the Commercial Bank have been remodeled.

The National Bank is planning a new downtown banking facility. A new branch has been opened in the eastern part of town.

A new and modern coal tipple has been opened to handle unit train processing of coal.

Downtown merchants have opened the Municipal Parking Lot for free customer parking.

Home Federal Savings and Loan Association is planning to construct a new facility and has already purchased a lot. Also, the central facility has recently been enlarged and remodeled.

Middlesboro Federal Savings and Loan Association has opened a new branch. The new central office facility has a community room and drive-in windows.

Public Service

Plans are being made for a new municipal building. A lot is available and an engineer has been hired on a consulting basis.

The city has installed automatic controlled traffic lights to speed the flow of traffic.

The Middlesboro-Bell County Emergency Rescue Squad has moved into a new \$60,000 headquarters building. The squad recently purchased an additional 12-passenger van.

The city has obtained an emergency generator and an automatic flood warning device valued at \$10,000.

Sewerage

A 201 Facilities Plan, Phase I, is underway.

Education

The Middlesboro Independent School System is planning construction of a new administration building and vocational school. Practical Arts has been added to the curriculum at the middle school.

Recreation

Four recreational complexes in various parts of the city have been completed at a total cost in excess of \$200,000. The parks feature softball, tennis courts, playground equipment, basketball courts, and picnic areas.

Pineville

Commercial Development

The First State Bank of Pineville is presently enlarging its facility at a cost of approximately \$500,000.

The City of Pineville has received a Federal grant of \$248,500 for use in slum clearance and playground development. The money will be used to purchase 12 parcels of land that are flooded, raze 15 old buildings and develop the area.

Water and Sewerage

The Pineville Water System has extended water lines more than 30 miles and has proposed to run a 6-inch line to Pine Mountain State Resort Park.

Pineville is planning to upgrade community sewerage services, through the EPA 201 Facilities Plan.

Expansion joints are being replaced in the city's floodwall.

Government

Renovation is underway on the Bell County Courthouse at a cost of \$1,000,000. The renovation includes a new roof, additional office space, and exterior improvements.

Education

The Pineville Independent School System plans to build a new one million dollar junior high school.

The Bell County School System has added a library, two classrooms, and new roof at the R. J. Elementary School at a cost of about \$364,000. At the Blackmount Elementary School, two new classes, a kitchen and renovation of the cafeteria cost approximately \$377,000. A storage building has also been completed at the vocational school.

Health

The Pineville Community Hospital has completed construction of a third-floor addition to the rear east-west wing of the hospital. The wing houses 26 private rooms. Plans are underway to build two new floors over the existing Dietary Section. One floor will contain twenty-two private beds, and the second floor will contain a four-room surgical suite, CCU/ICU, sterile central supply, and a surgical recovery room. The project is estimated to cost 1.8 million dollars.

Construction is underway on a 122-unit nursing home located between Pineville and Middlesboro.

Recreation

The Colonel Walter B. Smith Playground, part of the city's mini-park program, was recently completed. The park has playground equipment and rest room facilities. The park is surrounded by a chain link fence.

The new \$80,000 Pineville-Bell County Community Center is now open. The center provides space for dancing, ping-pong, billiards, lounge, and other recreational activities.