

1975

Industrial Resources: Boyle County - Danville

Kentucky Library Research Collections
Western Kentucky University, spcol@wku.edu

Follow this and additional works at: https://digitalcommons.wku.edu/boyle_cty

 Part of the [Business Administration, Management, and Operations Commons](#), [Growth and Development Commons](#), and the [Infrastructure Commons](#)

Recommended Citation

Kentucky Library Research Collections, "Industrial Resources: Boyle County - Danville" (1975). *Boyle County*. Paper 4.
https://digitalcommons.wku.edu/boyle_cty/4

This Report is brought to you for free and open access by TopSCHOLAR®. It has been accepted for inclusion in Boyle County by an authorized administrator of TopSCHOLAR®. For more information, please contact topscholar@wku.edu.

INDUSTRIAL RESOURCES

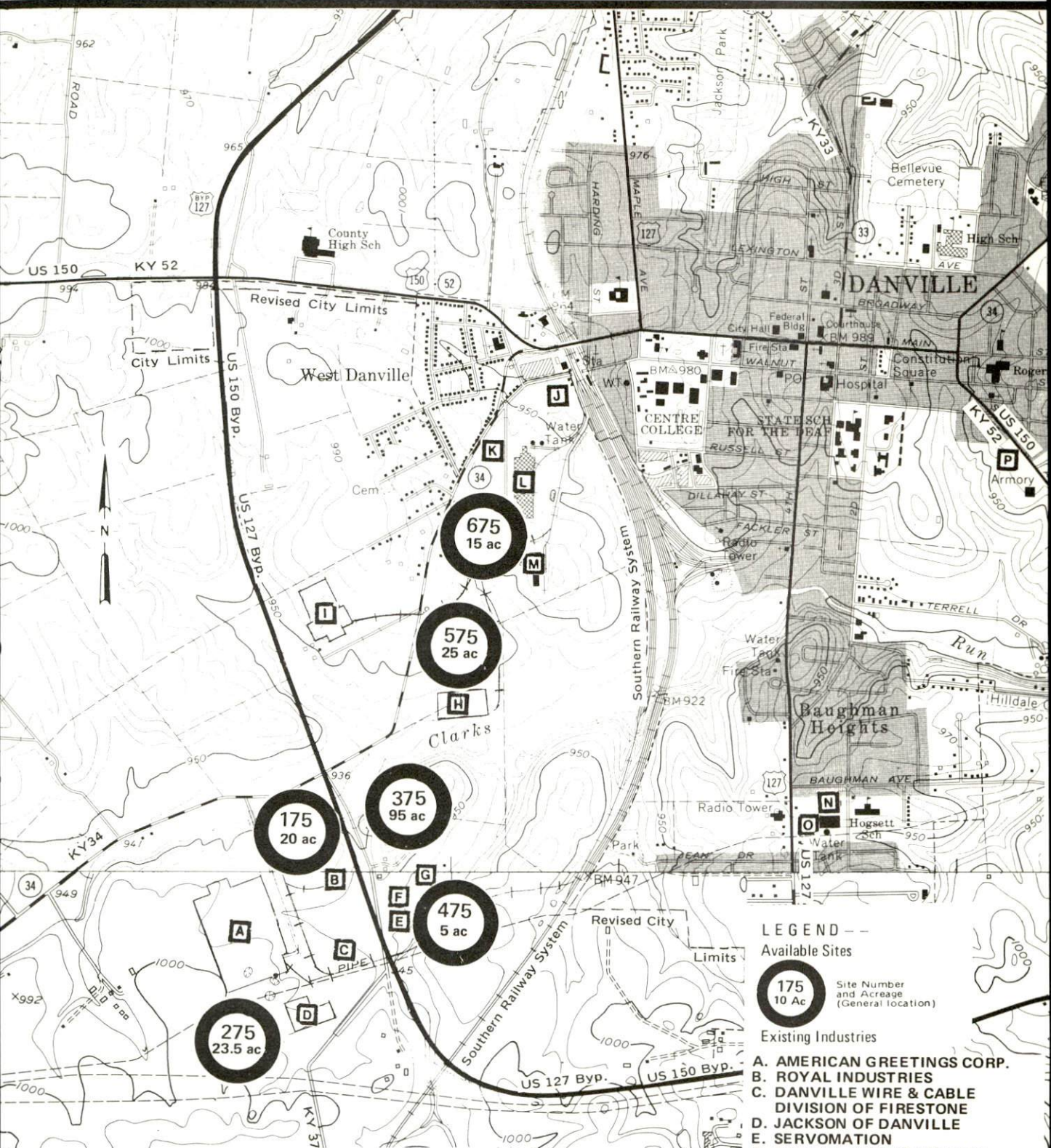
DANVILLE KENTUCKY



BOYLE COUNTY, KENTUCKY

DANVILLE, KENTUCKY -- Index to Industrial Sites -- 1975

For more detailed data on individual sites, contact Mr. John Bailey, Chairman, Danville Development Corporation, c/o Kentucky Utilities Company, 198 West Broadway, Danville, Kentucky 40422, or the Industrial Development Division, Kentucky Department of Commerce, Capital Plaza Tower, Frankfort, Kentucky 40601.

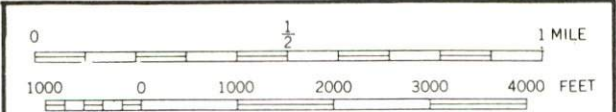


LEGEND --
Available Sites

175
10 ac
Site Number and Acreage (General location)

Existing Industries

- A. AMERICAN GREETINGS CORP.
- B. ROYAL INDUSTRIES
- C. DANVILLE WIRE & CABLE DIVISION OF FIRESTONE
- D. JACKSON OF DANVILLE
- E. SERVOMATION
- F. ECKLAR-MOORE EXPRESS
- G. FRED CAIN FARM EQUIPMENT CO.
- H. REXNORD, INC.
- I. WHIRLPOOL CORP.
- J. SELLERS ENGINEERING CO
- K. ELLIS TRUCKING CO.
- L. CORNING GLASS WORKS
- M. BLUEGRASS PLANT FOODS, INC.
- N. ROYAL CROWN BOTTLING
- O. GENESCO, INC.
- P. PALM BEACH CO.



CONTOUR INTERVAL 10 FEET
BASE: USGS 7.5 MINUTE SERIES -- 1952-67

INDUSTRIAL RESOURCES

DANVILLE, KENTUCKY

Prepared by

The Kentucky Department of Commerce

in cooperation with

The Danville-Boyle County Chamber of Commerce

1975

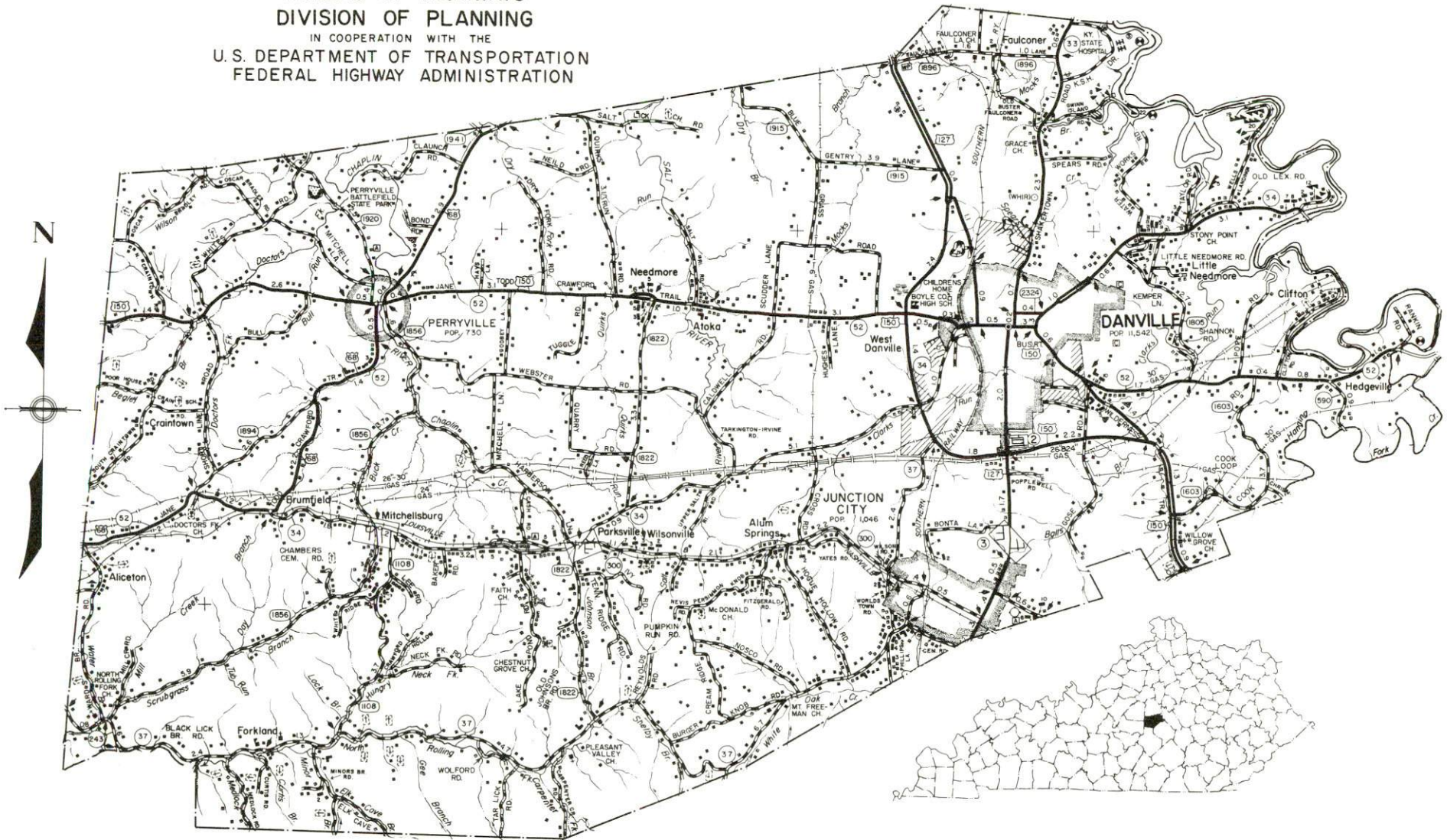
TABLE OF CONTENTS

| <u>Chapter</u> | <u>Page</u> |
|---|-------------|
| INDUSTRIAL SITES | i |
| DANVILLE, KENTUCKY - A RESOURCE PROFILE | 1 |
| THE LABOR MARKET | 5 |
| Population Trends | 5 |
| General Employment Characteristics, 1973 | 5 |
| Manufacturing Employment Trends by Industry | 6 |
| Major Danville Manufacturing Firms, Their Products and Employment. | 7 |
| Wages | 12 |
| Labor Organization | 13 |
| Estimated Male Labor Supply | 13 |
| Estimated Female Labor Supply | 14 |
| Per Capita Personal Income | 14 |
| TRANSPORTATION | 15 |
| Rail | 15 |
| Truck Service | 15 |
| Air | 17 |
| Bus | 17 |
| Taxi | 17 |
| Rental Services | 17 |
| POWER AND FUEL | 18 |
| Electricity | 18 |
| Natural Gas | 18 |
| Other Fuels | 19 |
| WATER AND SEWERAGE | 20 |
| Water | 20 |
| Sewerage | 22 |
| LOCAL GOVERNMENT | 23 |
| City | 23 |
| County | 23 |

| <u>Chapter</u> | <u>Page</u> |
|---|-------------|
| Assessed Value of Property, 1974 | 23 |
| Property Taxes | 23 |
| Local Property Tax Rate Per \$100 of | |
| Assessed Valuation, 1974 | 24 |
| Planning and Zoning | 24 |
| Safety | 24 |
| Police | 24 |
| Fire | 24 |
| Rescue Service | 25 |
| Sanitation | 25 |
| EDUCATION | 27 |
| Public Schools | 27 |
| Nonpublic Schools | 27 |
| Vocational Schools | 30 |
| Colleges and Universities | 32 |
| HEALTH | 34 |
| Hospitals | 34 |
| Ambulance Service | 34 |
| Nursing Homes | 34 |
| Public Health | 34 |
| OTHER LOCAL FACILITIES | 35 |
| Communications | 35 |
| Library Services | 35 |
| Religious Institutions | 36 |
| Financial Institutions | 36 |
| Hotels and Motels | 36 |
| Clubs and Organizations | 37 |
| RECREATION | 39 |
| Local | 39 |
| Area | 39 |
| AGRICULTURE - NATURAL RESOURCES - CLIMATE | 40 |
| Agriculture | 40 |
| Natural Resources | 40 |
| Climate | 41 |
| HISTORY | 42 |

GENERAL HIGHWAY MAP
BOYLE COUNTY
KENTUCKY

PREPARED BY THE
KENTUCKY DEPARTMENT OF TRANSPORTATION
BUREAU OF HIGHWAYS
DIVISION OF PLANNING
IN COOPERATION WITH THE
U.S. DEPARTMENT OF TRANSPORTATION
FEDERAL HIGHWAY ADMINISTRATION





AERIAL VIEW - DANVILLE, KENTUCKY

DANVILLE, KENTUCKY - A RESOURCE PROFILE

Danville, county seat of Boyle County, is in the central portion of Kentucky. The county is a part of the Bluegrass Region, and its southwestern corner extends into the Knobs. Its eastern border follows Herrington Lake on Dix River. Its 183 square miles of land range from gently rolling to hilly terrain.

Danville is no typical small town. It was designated "All American City" in 1968 and has been entered in the "All Kentucky City Hall of Fame." Today, with a population of 11,767, Danville is progressing rapidly while maintaining a beautiful image of the past.

Danville is 31 miles from Lexington, 82 miles from Louisville, and 121 miles from Cincinnati, Ohio. Its central location and accessibility to Kentucky's new modern highway system has made Danville an attractive prospect as a distribution center and manufacturing site for industry.

The Economic Framework

Total employment in Boyle County averaged 10,760 in 1973, with manufacturing providing 2,640 of these jobs and trade and services providing 3,800. Manufacturing employment has increased 43.5 percent or 790 jobs since 1964. The American Greetings Corporation's Danville plant is utilized as a distribution center and provides more than 600 jobs. The major industrial products are glass bulbs and tubing, materials handling systems, men's suits, ladies' shoes, steel wire and cable, household trash compactors, and icemakers for refrigerators.

Per capita personal income in the county in 1973 was \$4,219, or \$169 above the Kentucky average. Between 1969 and 1973, per capita personal income in the county increased by 37.7 percent.

Danville is the hub of a labor market area that includes Boyle and the six surrounding counties. Total area employment averaged 45,240 jobs in 1973, including 8,690 in agriculture, 5,050 in government, 8,100 in trade and services, and 8,840 in manufacturing.

Resources for Growth

1. There is a current labor supply of 4,220 men and 3,790 women available for industrial jobs in the labor market area. In addition, 5,460 young men and 5,060 young women will become 18 years of age before 1981 and potentially available for work.

2. The local transportation capability is good. The Southern Railway System serves Danville with a variety of services including piggyback facilities. There is easy access to Interstate 75 and Interstate 64, which are major highway arteries to the industrial south, midwest, and east. The Blue Grass Parkway, only a short distance to the north is an important link to the west. Ten trucking companies serving Danville make delivery time competitive with most shipping points within the general market area. The local airport provides charter service, and commercial air service is available in Lexington, 31 miles north of Danville.

3. Electric service is provided by the Kentucky Utilities Company. Natural gas service is provided by the Western Kentucky Gas Company. There are five propane and butane distributors and four distillate fuel oil distributors in the Danville area. Low sulfur content coal is available in eastern Kentucky.

4. Education is an important growth asset for Danville. The city and county school systems are rated among the most outstanding in Kentucky.

Four universities, four senior colleges, three junior colleges, one community college, and a technical institute are within 50 miles of Danville, with the University of Kentucky only 31 miles away. At Danville is Centre College, chartered in 1819. During the 1960's Centre College's capital resources were doubled, eleven new buildings were added, and the enrollment increased from 450 to 750. In 1970, Centre became one of the smallest of the 199 institutions now sheltering local chapters of Phi Beta Kappa.

Since 1904 Centre College has been a member of the Southern Association of Colleges and Schools and also holds membership in the Association of American Colleges. Governed by a self perpetuating board of trustees, Centre is affiliated with the United Presbyterian Church in the United States of America and the Presbyterian Church in the United States.

Vocational education is available at the Harrodsburg Vocational Education Center, 9 miles north of Danville, and at the Garrard County Vocational Education Center, 12 miles east of Danville in Lancaster. The Central Kentucky State Vocational-Technical School is located at Lexington and offers 17 courses.

Community Programs for Improvement

Cooperation, planning, and action have resulted in successful community programs and industrial expansion for Danville.

The Boyle County School System has recently completed a \$40,000 renovation project and has expanded its kindergarten. Completed projects of the Danville Independent School District included the addition of a library and classrooms to Mary Hogsett Elementary School, a new greenhouse, and a new athletic-recreational complex containing a football stadium, baseball field, tennis courts, and track facilities. It is also developing academic programs in numerous areas, including an expanded special education program, career education, environmental education, drug abuse curriculum, independent study and parental visitation in schools.

The city of Danville has made improvements in its city services and plans are being made for further improvement. The city rebuilt streets within several new subdivisions. Plans are underway to four-lane South 4th Street to the U.S. 127 bypass. The rescue squad is now providing four ambulances to serve the Danville area. The Police Department is in the process of improving its radio communication system. Water and sewerage facilities have been extended approximately eight-tenths mile out Perryville Road to the Danville Manor Shopping Center, and south to the U.S. 127 bypass. A 201 Facilities Plan is presently being conducted to determine what improvements need to be made to upgrade the sewerage system.

Danville's Urban Renewal program is moving ahead on schedule. A mid-rise building for the elderly is underway and scheduled for completion next spring. Restoration of historical buildings adjacent to Constitution Square will be finished this fall. In addition, the agency has undertaken a rehabilitation-acquisition project on Grant and Russell Streets, which will be finished in six months. This is being performed under the new Community Development Act which will appropriate \$454,000 in each of the next three years.

Danville, a historic town, is known as "The City of Firsts." Its progressive community programs have enabled Danville to win the "All Kentucky City" award in 1967-68-71-73 and 74. The desire for further improvements continues to be basic to the effort to maintain the fine standard of living here.

Recreation, Entertainment and Livability

Danville's location in the heart of Kentucky places it in the center of numerous recreation facilities.

Danville offers much in entertainment in both public and private facilities. Offerings in sports include golf, swimming, tennis, football and baseball. Several public parks and playgrounds are available. A supervised recreational program is provided for all age groups.

As Kentucky's first capital, Danville is the home of Constitution Square State Shrine, an authentic reproduction of the state's first courthouse square. Included is the original 1792 post office and replica of the jail, courthouse and meeting house.

Adjacent to Constitution Square is the McDowell House and Apothecary Shop National Historic Landmark. Within walking distance is a second National Historic Landmark, Jacobs Hall, on the campus of the Kentucky School for the Deaf. A walking tour connects these and other points of interest, including the scenic Centre College campus.

Tourist attractions near Danville include state and national shrines, two state parks, Kentucky's Official State Theatre - Pioneer Playhouse, Old Fort Harrod Amphitheatre, and Shakertown Village.

Perryville Battlefield State Park is located 13 miles west of Danville. On October 8, 1862, this was the site of Kentucky's bloodiest Civil War battle. The park presently includes a cemetery, museum, picnic area and playground.

Old Fort Harrod State Park, just 9 miles north of Danville is the site of Kentucky's first permanent settlement. This 28-acre park contains a pioneer fort, museum, federal monument, and cemetery. During the summer, The Legend of Daniel Boone is presented in the Old Fort Harrod Amphitheatre adjacent to the park. This exciting and acclaimed drama is performed outdoors in a natural setting of trees and mountains.

Pioneer Playhouse, Kentucky's Official State Theatre, brings summer stock to Danville during June, July and August.

Just 16 miles northeast of Danville is Shakertown, once a prosperous religious community. The 19th century village of original buildings has been carefully restored. Visitors will be interested in walking through the quiet village and viewing the exhibits.

Herrington Lake, 4 miles from Danville, offers excellent fishing, boating and swimming. Lexington, 31 miles north, offers cultural and sporting events. At the center of the Bluegrass, it offers some of the world's most classic thoroughbred racing events.

THE LABOR MARKET

POPULATION TRENDS

| Area | Population | | | | Percent Change | |
|-------------------|------------|---------|---------|---------|----------------|---------|
| | 1974* | 1970 | 1960 | 1950 | 1960-70 | 1950-60 |
| Danville | 11,767** | 11,542 | 9,010 | 8,686 | +28.1 | + 3.7 |
| Labor Market | | | | | | |
| Area | 106,600 | 104,313 | 104,485 | 112,307 | - 0.2 | - 7.0 |
| Boyle County | 22,100 | 21,861 | 21,257 | 20,532 | + 2.8 | + 3.5 |
| Casey County | 13,900 | 12,930 | 14,327 | 17,446 | - 9.8 | -17.9 |
| Garrard County | 9,400 | 9,457 | 9,747 | 11,029 | - 3.0 | -11.6 |
| Lincoln County | 17,000 | 16,663 | 16,503 | 18,668 | + 1.0 | -11.6 |
| Marion County | 16,300 | 16,714 | 16,887 | 17,212 | - 1.0 | - 1.8 |
| Mercer County | 17,400 | 15,960 | 14,596 | 14,643 | + 9.3 | - 0.3 |
| Washington County | 10,500 | 10,728 | 11,168 | 12,777 | - 3.9 | -12.6 |

*Provisional Estimates.

**1973 Population Estimates.

Sources: U.S. Department of Commerce, Bureau of the Census, Census of Population, 1970, 1960, 1950. U.S. Bureau of the Census, Current Population Reports, Series P-26, June 1975; Series P-25, June 1975.

GENERAL EMPLOYMENT CHARACTERISTICS, 1973

| Major Employment Group | Employment | |
|------------------------|--------------|-------------------|
| | Boyle County | Labor Market Area |
| TOTAL | 10,760 | 45,240 |
| Agricultural | 800 | 8,690 |
| Nonagricultural | 9,960 | 36,550 |
| Manufacturing | 2,640 | 8,840 |
| Government | 1,130 | 5,050 |
| Trade and Services | 3,798 | 8,097 |

Source: Kentucky Department for Human Resources, Bureau for Administration and Operations.

MANUFACTURING EMPLOYMENT TRENDS BY INDUSTRY
SEPTEMBER 1974 AND 1964

| Industry | Boyle County | | | Labor Market Area | | |
|---|--------------|-------|---------|-------------------|-------|---------|
| | 1974 | 1964 | %Change | 1974 | 1964 | %Change |
| TOTAL | 2,603 | 1,814 | + 43.5 | 8,570 | 5,020 | + 71.1 |
| Food & Kindred Products | 74 | 172 | - 57.0 | 342 | 498 | - 31.3 |
| Tobacco | 3 | 3 | 0 | 75 | 27 | + 177.8 |
| Apparel, Textiles, Leather | 958 | 820 | + 16.8 | 3,132 | 2,676 | + 17.0 |
| Lumber, Furniture | 194 | 95 | + 104.2 | 998 | 428 | + 133.2 |
| Printing & Publishing, Paper | 43 | 103 | - 58.3 | 101 | 145 | - 30.4 |
| Chemicals, Petroleum & Coal, Rubber | 0 | 7 | - 100.0 | 111 | 7 | +1485.7 |
| Stone, Clay & Glass | 531 | 563 | - 5.7 | 834 | 593 | + 40.6 |
| Machinery, Metal Products, Equipment | 800 | 48 | +1566.7 | 1,871 | 231 | + 710.0 |
| Other | 0 | 3 | - 100.0 | 1,106 | 415 | + 166.5 |

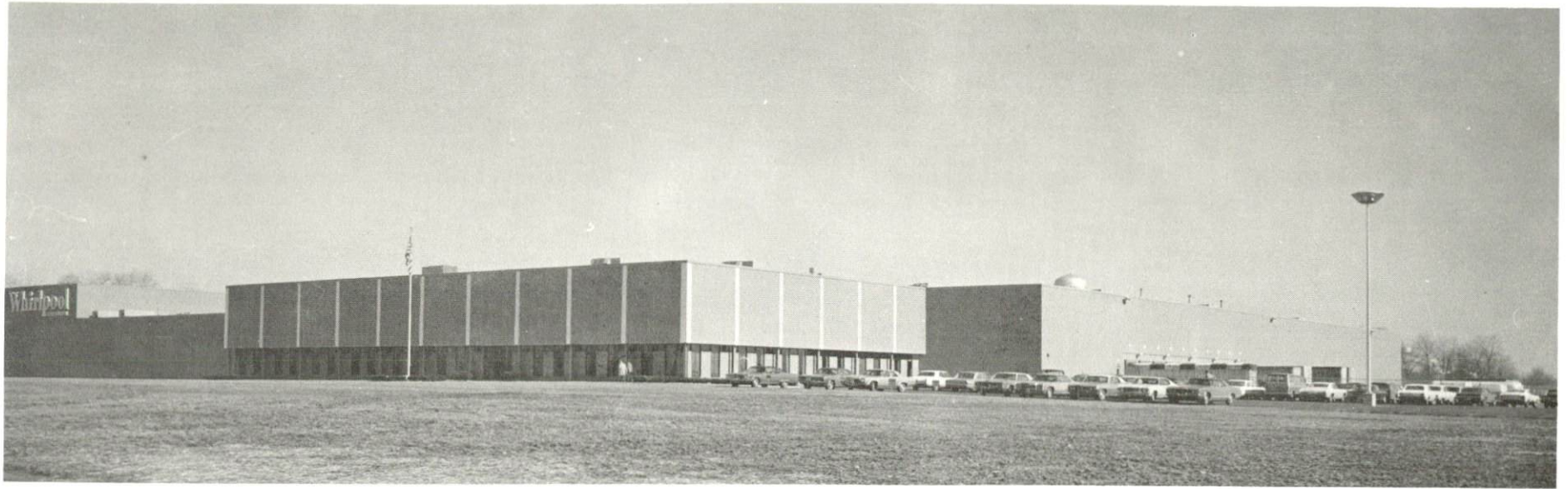
Source: Kentucky Department for Human Resources, Number of Workers in Manufacturing Industries Covered by Kentucky Unemployment Insurance Law Classified by Industry and County, September, 1974, September, 1964.

MAJOR DANVILLE MANUFACTURING FIRMS,
THEIR PRODUCTS AND EMPLOYMENT

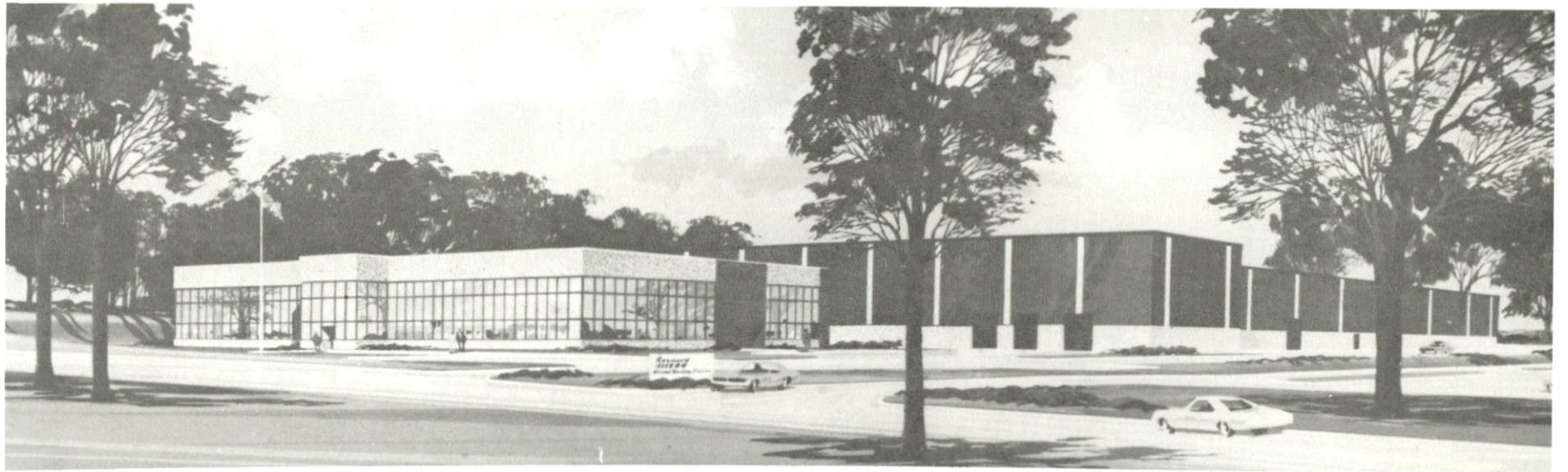
| Firm (Establishment date) | Product | Employment | | | |
|---|--|------------|------|--------|-----------|
| | | Total | Male | Female | Organized |
| Fred Cain Farm Equip- ment Company (1959) | Tractor acces- sories, field tillers | 36 | 34 | 2 | |
| Caldwell Stone Company, Inc. (1928) | Agricultural lime | 23 | 23 | 0 | |
| Corning Glass Works (1952) | Glass bulbs, tubing | 400 | 250 | 150 | * |
| Danville Advocate- Messenger Company (1865) | Newspaper | 41 | 26 | 15 | |
| Firestone Wire & Cable Company (1971) | Steel wire and cable | 360 | 356 | 4 | |
| Genesco, Incorporated (1946) | Ladies' shoes | 500 | 130 | 370 | |
| Jackson of Danville (1946) | Upholstered chairs, sofas | 223 | 165 | 58 | * |
| Palm Beach Company (1937) | Men's suits | 569 | 37 | 532 | * |
| Pioneer Opportunity Workshop, Inc. (1969) | Wood boxes, wood pallets | 50 | 25 | 25 | |
| Rexnord, Incorporated (1973) | Materials han- dling system | 400 | 300 | 100 | |
| Royal Crown Bottling Company (1938) | Soft drinks | 41 | 38 | 3 | |
| Royal Industries (1969) | Friction brake lining, disc pads | 100 | 74 | 26 | * |
| Sellers Engineering Company (1947) | Boilers, commer- cial gas fired water heaters, deaerators | NA | | | |
| Thorobred Boat Trailers, Inc. | Boat and utility trailers | 20 | 19 | 1 | |
| Whirlpool Corporation (1969) | Trash com- pacters, ice makers for refrigerators | 453 | 383 | 70 | |

*See Labor Organizations, page 13.

Sources: Kentucky Department of Commerce, Division of Research and Planning.



WHIRLPOOL CORPORATION



REXNORD, INC., MATERIAL HANDLING DIVISION



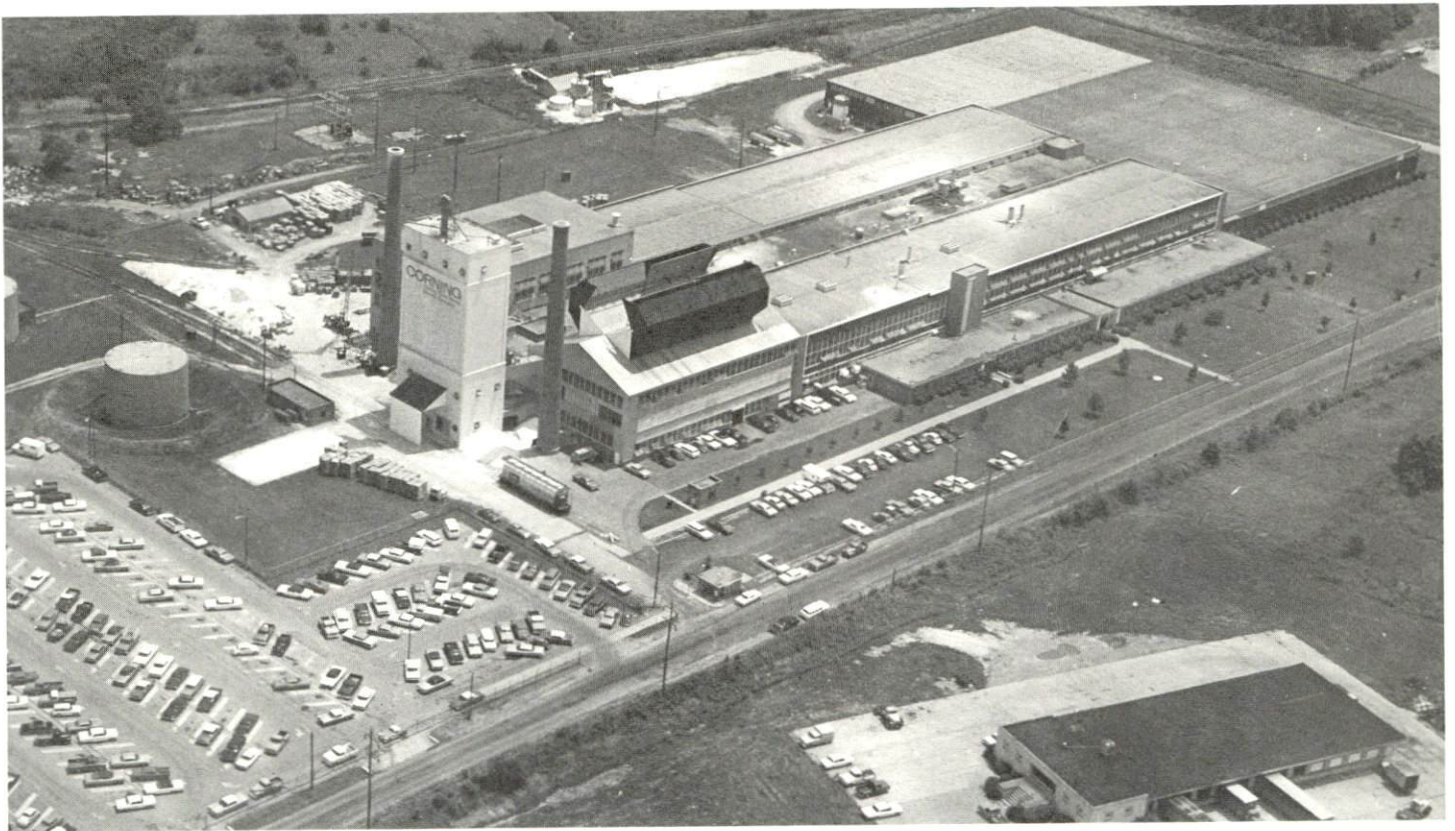
ROYAL INDUSTRIES



FIRESTONE WIRE & CABLE COMPANY



GENESCO, INC.



CORNING GLASS WORKS

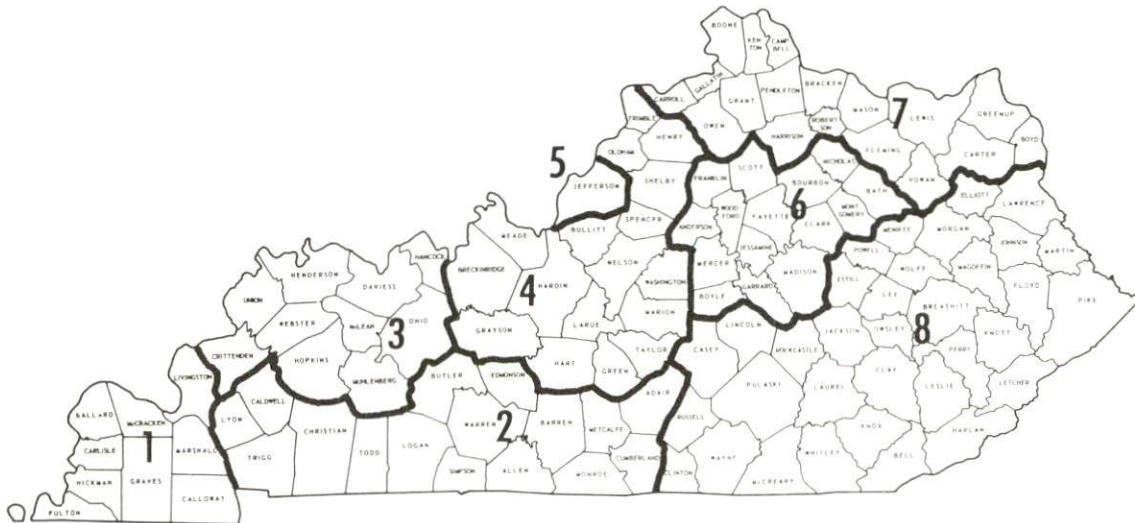


PALM BEACH COMPANY

WAGES

Occupational wage rates for specific industries are usually not available to most government agencies, and wage data furnished to state employment agencies by industrial employers is protected from disclosure by federal law. The most reliable up-to-date wage information can be obtained by direct contact with local employers.

Associated Industries of Kentucky, a voluntary organization of Kentucky businesses, regularly collects occupational wage rates and fringe benefits data from participating member firms. Data is compiled for over 130 clearly defined office, production, and service occupations. Tabulations are published for eight regions of Kentucky, as shown on the map below. It should be noted that the data may be weighted by the preponderance of firms in the larger cities and may be somewhat higher than the rates paid in the smaller communities. Data from these tabulations are available, upon request, from the Kentucky Department of Commerce, Frankfort, Kentucky 40601.



Associated Industries of Kentucky Area Wage Surveys

LABOR ORGANIZATIONS

| <u>Union</u> | <u>Representing manufacturing workers at:</u> |
|--|---|
| American Flint Glass Workers Union of North America | Corning Glass Works |
| Upholsterers International of North America | Jackson of Danville |
| United Steel Workers of America | Royal Industries |
| Amalgamated Clothing Workers of America | Palm Beach Company |

ESTIMATED MALE LABOR SUPPLY DANVILLE LABOR MARKET AREA

| <u>Area</u> | Current | | | Future | |
|--------------|--------------|-------------------------------|-------------------|----------------------------|--|
| | <u>Total</u> | <u>Not in Labor Force</u> | <u>Unemployed</u> | <u>Under- employed</u> | <u>Reaching 18 yrs. of age before 1981</u> |
| Labor Market | | | | | |
| Area | 4,220 | 400 | 1,830 | 1,990 | 5,456 |
| Boyle | 1,190 | 400 | 270 | 520 | 1,041 |
| Casey | 530 | 0 | 250 | 280 | 651 |
| Garrard | 300 | 0 | 140 | 160 | 481 |
| Lincoln | 760 | 0 | 430 | 330 | 856 |
| Marion | 580 | 0 | 310 | 270 | 1,049 |
| Mercer | 480 | 0 | 170 | 310 | 782 |
| Washington | 380 | 0 | 260 | 120 | 596 |

Sources: Kentucky Department for Human Resources, Kentucky Labor Supply Estimates by County, 1974. Kentucky Department of Commerce, Future Labor Supply before 1981.

ESTIMATED FEMALE LABOR SUPPLY
DANVILLE LABOR MARKET AREA

| Area | Current | | | Future | |
|--------------|---------|-----------------------|------------|--------------------|--|
| | Total | Not in Labor Force | Unemployed | Under- employed | Reaching 18 yrs. of age before 1981 |
| Labor Market | | | | | |
| Area | 3,790 | 980 | 1,010 | 1,800 | 5,063 |
| Boyle | 780 | 140 | 150 | 490 | 945 |
| Casey | 710 | 350 | 140 | 220 | 625 |
| Garrard | 340 | 100 | 80 | 160 | 431 |
| Lincoln | 760 | 260 | 240 | 260 | 787 |
| Marion | 540 | 130 | 170 | 240 | 1,016 |
| Mercer | 390 | 0 | 90 | 300 | 697 |
| Washington | 270 | 0 | 140 | 130 | 562 |

Sources: Kentucky Department for Human Resources, Kentucky Labor Supply Estimates by County, 1974. Kentucky Department of Commerce, Future Labor Supply before 1981.

PER CAPITA PERSONAL INCOME

| Area | 1973 | 1969 | %Change |
|-------------------|-----------------|-----------------|---------|
| Boyle County | \$4,219 | \$3,064 | 37.7 |
| Labor Market Area | | | |
| Range | \$2,231 - 4,219 | \$1,554 - 3,064 | N.A. |
| Kentucky | 4,050 | 2,894 | 39.9 |
| U.S. | 5,041 | 3,733 | 35.1 |

Sources: U.S. Department of Commerce, Office of Business Economics, Survey of Current Business, August, 1974. U.S. Department of Commerce, Bureau of Economic Analysis, April, 1975.

TRANSPORTATION

Rail

Line serving Danville - Southern Railway System
Services - 23 to 25 freights stopping daily, 10 to 20 through freights daily, switching facilities, siding space for approximately 40 cars, crew switching station, piggyback facilities

For details on routing, schedules, rates, and services, contact:

District Sales Manager
Southern Railway System
701 South Broadway
Lexington, Kentucky 40508

Truck Service

| <u>Company</u> | <u>Home Office</u> |
|--|---|
| Best Way Express, Inc | 710 Poplar Avenue Nashville, Tennessee 37210 |
| Cooper-Jarrett, Inc. | 23 South Essex Avenue Orange, New Jersey 07050 |
| Distillery Transfer Service, Inc. (Distillery products & supplies only) | Depot Bardstown, Kentucky 40004 |
| Ecklar-Moore Express, Inc. | 147 S. Forbes Road Lexington, Kentucky 40505 |
| Lawrenceburg Transfer Company | Court Street Lawrenceburg, Kentucky 40342 |
| McDuffee Motor Freight, Inc. (United Trucking) | 3047 Lonyo Road Detroit, Michigan 48209 |
| McLean Trucking Company | P.O. Box 213 617 Waughtown Street Winston-Salem, North Carolina 27107 |
| O.K. Trucking Company | 1810 South Street Cincinnati, Ohio 45204 |
| Smith's Transfer Corporation of Virginia | P.O. Box 1000 Staunton, Virginia 24401 |
| Turner Expediting Service | Box 21333, Standiford Field Louisville, Kentucky 40221 |

Other Freight ServicesShipping Center

United Parcel Service*

Danville, Kentucky

HIGHWAY MILES AND TRUCK TRANSIT TIME IN DAYS FROM
DANVILLE, KENTUCKY, TO SELECTED MARKET CENTERS

| City | Highway Miles | Delivery | | City | Highway Miles | Delivery | |
|------------------|------------------|------------|--|---------------------|------------------|------------|--|
| | | Time TL | | | | Time TL | |
| Atlanta, Ga. | 359 | 2 | | Los Angeles, Calif. | 2,273 | 4 | |
| Birmingham, Ala. | 422 | 2 | | Louisville, Ky. | 82 | 1 | |
| Chicago, Ill. | 374 | 2 | | Nashville, Tenn. | 226 | 1 | |
| Cincinnati, Ohio | 121 | 1 | | New Orleans, La. | 764 | 2 | |
| Cleveland, Ohio | 368 | 2 | | New York, N. Y. | 787 | 2 | |
| Detroit, Mich. | 380 | 1 | | Pittsburgh, Pa. | 418 | 2 | |
| Knoxville, Tenn. | 166 | 1 | | St. Louis, Mo. | 345 | 1 | |

Source: Delivery Time Only - McDuffee Motor Freight, Inc., 3047
Lonyo Road, Detroit, Michigan 48209

*For regular scheduled pickups or for occasional pickups, arrangements must be made with the Louisville office of UPS.

Air

| | <u>Local</u> | <u>Nearest Commercial</u> |
|------------------|--|---|
| Location: | Goodall Field 4.2 miles south of Danville | Blue Grass Field Lexington, 31 miles from Danville |
| Runways: | 2 paved | 2 paved |
| Length: | 2,600 feet and 3,400 feet | 6,500 feet and 3,500 feet |
| Traffic Control: | Wind sock | Tower, guards, approach control, ground control, automatic terminal information service |
| Lighting: | Rotating beacon, Rwy 12-30, Sundown to sunrise | Approach lighting system, beacon, runways and obstructions lighted. |
| Services: | 80-100 octane, charter, hangar, tiedown, flight instruction, aero crop spraying | Delta, Eastern, Piedmont and Allegheny Airlines, National Weather Service, flight instructions, charter service, storage, taxi, limousine, and car rentals, fuel - 24-hour service - 80, 100, 145, and jet fuel, major A&E repairs, certified avionics repair station |

Air Freight

| | | |
|----------|--|--|
| Service: | Chartered air freight services must be arranged. | Air freight service provided on a space-available basis |
|----------|--|--|

Bus

Southern Greyhound, Trailways Bus Lines

Taxi

Three cab companies - 24-hour, radio-dispatched service

Rental Services

Car, trailer, and truck rentals

POWER AND FUEL

Electricity

Company serving Danville and parts of Boyle County - Kentucky Utilities Company

Source of power - Kentucky Utilities Company

Total generating capacity - 1,615,500 KW

For industrial rates contact:

Director of Industrial Development
Kentucky Utilities Company
120 South Limestone Street
Lexington, Kentucky 40507

Company serving Boyle County - Inter County RECC

Source of power - East Kentucky Power Cooperative

Total generating capacity - 496,000 KW

For industrial rates contact:

Inter-County RECC
P.O. Box 87
Danville, Kentucky 40422

Natural Gas

Company serving Danville - Western Kentucky Gas Company

Source of supply - Tennessee Gas Pipeline Company

Size of transmission mains - 24-inch (supplier); 6-inch (distributor)

Distribution mains - 8, 6, 4, 3, 2, and 1 1/2 inches

Distribution pressure - 50 psi in winter to 25 psi in the summer

BTU content - 1,000 per cubic foot; Specific gravity - .6

For rates and supplies contact:

Western Kentucky Gas Company
424 West Main Street
Danville, Kentucky 40422

Other Fuels

Propane and butane

Bright's Bottle Gas Company
100 West Brook Street
Burgin, Kentucky 40310
Williams Energy Company
Route 127
Moreland, Kentucky 40454
Southern States Boyle Cooperative, Inc.
South Fourth Street
Danville, Kentucky 40422
Suburban Propane
121 North Fourth Street
Nicholasville, Kentucky 40356
Mayes, Helm & Coyle LP Gas
West Second Street
Perryville, Kentucky 40468

Fuel oils

Distillate fuel oil -

Ashland Oil & Refining Company
Danville Pike
Harrodsburg, Kentucky 40330
Woods & Helton, Inc. Distributors
Dillehay Street
Danville, Kentucky 40422
Sam's Service, Incorporated
Stanford Pike
Danville, Kentucky 40422
Texaco, Incorporated
Hope Street
Danville, Kentucky 40422

Residual fuel oil - arrangements must be made with the refinery.

Low sulphur content coal - Available in Eastern Kentucky.

WATER AND SEWERAGE

Water

Company serving Danville - Danville Water Department
Source - Herrington Lake
Treatment plant capacity - 5,000,000 gallons per day
Average daily consumption - 2,800,000 gallons
Peak daily consumption - 3,100,000 gallons
Type treatment - Aeration, flocculation, sedimentation, filtration,
chlorination, fluoridation
Storage capacity - 2,000,000 gallons
Size lines - 12, 8, and 6 inches
Average pressure - 80 psi
Average temperature - 50 degrees F.

MONTHLY WATER RATES FOR WHOLESALE AND INDUSTRIAL CONSUMERS

| | | |
|----------|-------------------|--------------------------------|
| First | 20,000 cu. ft. | \$60.00 (Minimum monthly bill) |
| Next | 80,000 cu. ft. | .20 per 100 cu. ft. |
| Next | 100,000 cu. ft. | .18 per 100 cu. ft. |
| Next | 300,000 cu. ft. | .16 per 100 cu. ft. |
| Next | 500,000 cu. ft. | .14 per 100 cu. ft. |
| All over | 1,000,000 cu. ft. | .12 per 100 cu. ft. |

Tap-on charge:

| | |
|---------------------------|-------------------|
| 3/4 inch - 5/8 inch meter | \$150.00 |
| 1 inch meter | \$175.00 |
| Split service | \$200.00 |
| Larger | Time and material |

Name of water district - Clearview Water Company
Area served - East Southeast Danville
Date when water district began operating - 1962
Source of supply of treated water - Danville Water Department
Average amount of water used in a 24-hour period - 9,500 cubic feet
Peak amount of water used in a 24-hour period - 10,000 cubic feet
Storage capacity - None
Average pressure - 50-60 psi
Average temperature - 50 degrees F.
Size lines - 4 and 6 inches

(continued)

Monthly Rates -

| | | |
|----------|----------------|-----------------------|
| First | 267 cu. ft. | \$3.36 (Minimum Bill) |
| Next | 400 cu. ft. | 1.26 per 133 cu. ft. |
| Next | 667 cu. ft. | 1.01 per 133 cu. ft. |
| Next | 2,000 cu. ft. | .84 per 133 cu. ft. |
| Next | 3,333 cu. ft. | .67 per 133 cu. ft. |
| Next | 6,667 cu. ft. | .50 per 133 cu. ft. |
| All over | 13,334 cu. ft. | .42 per 133 cu. ft. |

Tap-on charge: \$125

Name of water district - Parksville Water District

Area served - South Central Boyle County

Date when water district began operating - 1966

Source of supply of treated water - Danville Water Department

Average amount of water used in a 24-hour period - 70,000 gallons

Peak amount of water used in a 24-hour period - 80,000 gallons

Storage capacity - 175,000 gallons

Average pressure - 80 psi

Average temperature - 50 degrees F.

Size lines - 10, 6, 4, 3, 2 1/2 and 2 inches

Monthly Rates -

| | | |
|---------------------|----------------|---------|
| | Class A | |
| First | 15,000 gallons | \$15.00 |
| For each additional | 1,000 gallons | .75 |
| | Class B | |
| First | 4,000 gallons | \$5.75 |
| For each additional | 1,000 gallons | .85 |
| | Class C | |
| First | 1,000 gallons | \$4.50 |
| Next | 1,000 gallons | 1.25 |
| Next | 1,000 gallons | 1.25 |
| Next | 1,000 gallons | 1.00 |
| Next | 1,000 gallons | 1.00 |
| For each additional | 1,000 gallons | .85 |

Tap-on charge: Class A-\$400.00; Class B-\$225.00; Class C-\$125.00
(In addition, there will be a charge for labor and for all service pipe over 5 feet)

Name of water district - Lake Village Water District
 Area served - Northeastern Boyle County
 Date when water district began operating - 1970
 Source of supply of treated water - Danville Water Department
 Average amount of water used in a 24-hour period - 160,000 gallons
 Peak amount of water used in a 24-hour period - 185,000 gallons
 Storage capacity - 47,000 gallons
 Average pressure - 60-65 psi
 Average temperature - 40-45 degrees F.
 Size lines - 6 inches

Rates -

| | | |
|-------|---------------|-----------------------|
| First | 1,000 gallons | \$6.00 (Minimum Bill) |
| Next | 2,000 gallons | 2.25 per M gallons |
| Next | 1,500 gallons | 1.75 per M gallons |
| Next | 1,500 gallons | 1.25 per M gallons |
| Over | 6,000 gallons | 1.00 per M gallons |

Tap-on charge: \$300

Surface water sources - Dix and Salt Rivers and Herrington Lake
 Average discharge - Dix River near Danville, 444 cfs (32-year record);
 Maximum usable contents Herrington Lake 118,300 acre-feet; records
 for Salt River not available
 Expected ground water yield - 5 to 50 gpm in central and extreme
 eastern portion of county; 5 gpm or less over remainder of county

Sewerage

Company serving Danville - Danville Sewerage Department*
 Design capacity - 2,200,000 gallons per day
 Average daily flow - 1,600,000 gallons; Treatment - Primary and
 secondary
 Type treatment - Lime when needed, degreaser when needed, and
 chlorine when discharged into stream
 Treated effluent discharged into - Clarks Run
 Size of sanitary mains - 24-inch; Size of storm mains - 24-inch

Rates - 40 percent of monthly water bill

Tap-on charge: \$25 (Sewer Permit)

* A 201 Facilities Plan is presently being conducted to determine what
 improvements need to be made to upgrade the sewerage system.

LOCAL GOVERNMENT

City

Structure - Mayor - 4-year term; 4 councilmen - 2-year terms
Budget 1974-75 - General Fund \$993,900
Water and Sewer Fund 592,986

Fees and licenses - Occupational license - 1% on wages, and net profits (\$25 minimum); Boyle County - 1/2 of 1% tax on earnings

County

Structure - County Judge - 4-year term; 6 magistrates - 4-year terms
Budget 1974-75 - General Fund \$179,000
Road Fund 155,000

Assessed Value of Property, 1974

| <u>Classes of Property</u> | <u>Danville</u> | <u>Boyle County</u> |
|----------------------------|-----------------|---------------------|
| Real Estate | \$61,300,108 | \$130,724,407 |
| Tangibles | 8,172,349 | 49,194,442 |

Property Taxes

Land and buildings are taxed by the state and may be taxed by local jurisdictions. The state rate is \$0.015 per \$100 of assessed valuation.

Tangible personal property owned by manufacturers (automobile, trucks, finished goods, office furniture, office equipment) is taxed by the state at \$0.15 per \$100 and may be taxed by local jurisdictions.

Manufacturing machinery, raw materials inventories, pollution control equipment, and goods in process inventories are not subject to local taxation. The state rate is \$0.15 per \$100.

Property stored in public warehouses is not subject to local taxation. The state rate is only \$0.015 per \$100.

All property is assessed at 100 percent of fair cash value.

Local Property Tax Rate Per \$100 of Assessed Valuation, 1974*

| <u>Taxing Jurisdiction</u> | <u>Danville</u> | <u>Boyle County</u> |
|----------------------------|-----------------|---------------------|
| County | \$.218 | \$.218 |
| School | .906 | .648 |
| City | .380 | |

Planning and Zoning

Joint agency - Danville - Boyle County Planning and Zoning Commission
 Zoning enforced - All areas
 Subdivision regulations enforced - All areas
 Local codes enforced - Building
 Mandatory state codes enforced - Plumbing, National Fire Protection Association Code, National Building Code (for major buildings and residential construction containing more than 12 bedrooms per building)
 Other programs - Urban Renewal, Public Housing and Neighborhood Development Program.

Safety

| <u>Police</u> | <u>Danville</u> | <u>Boyle County</u> |
|-------------------|-----------------|---------------------|
| Total staff | 27 | 6 |
| Radio-patrol cars | 5 | 5 |
| Other equipment | Standard | Standard |

Fire

| | | |
|--|----|-----|
| American Insurance Association Fire Rating | 6 | |
| Full-time staff | 25 | |
| Volunteers | 20 | 106 |
| Equipment: | | |
| 1,000 gpm pumpers | 3 | |
| 750 gpm pumpers | 1 | 6 |
| 1,500 gpm tankers | | 2 |
| 1,200 gpm tanker | | 1 |
| Ladder truck | 1 | |
| Utility truck | 1 | |

*Kentucky Department of Revenue, Kentucky Property Tax Rates, 1974.

Rescue Service

Danville - Boyle County Rescue Squad:

Number of volunteers - 23

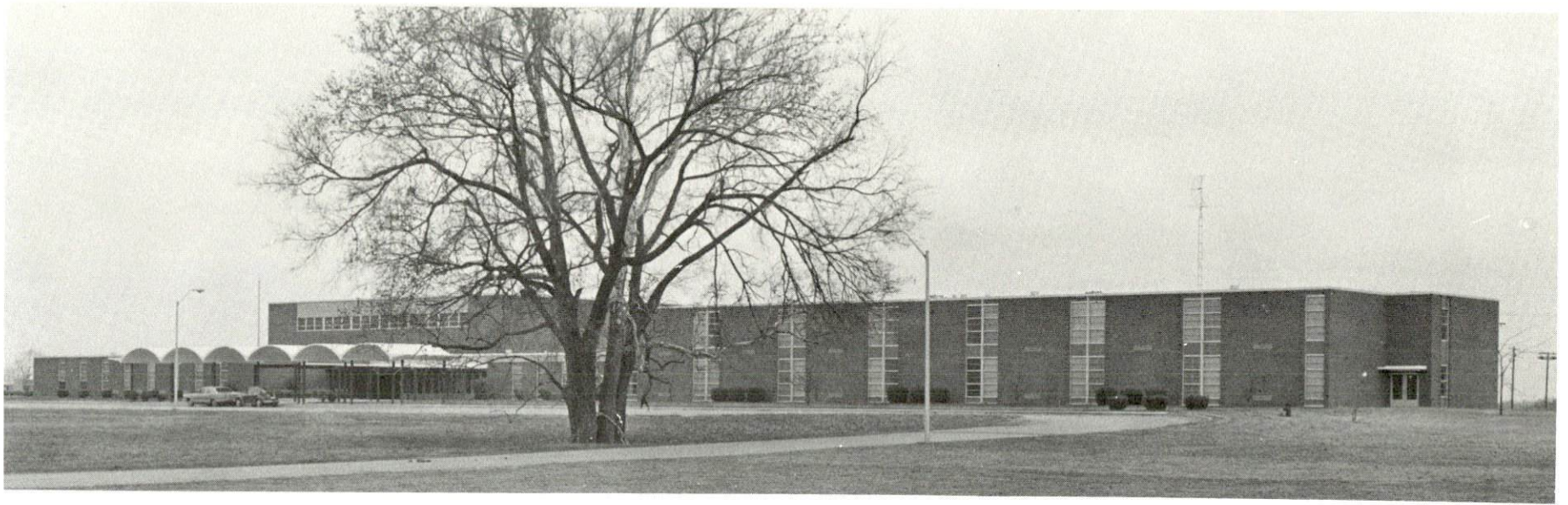
Equipment - 4 radio-dispatched ambulances

Personnel training - Standard and advanced first aid

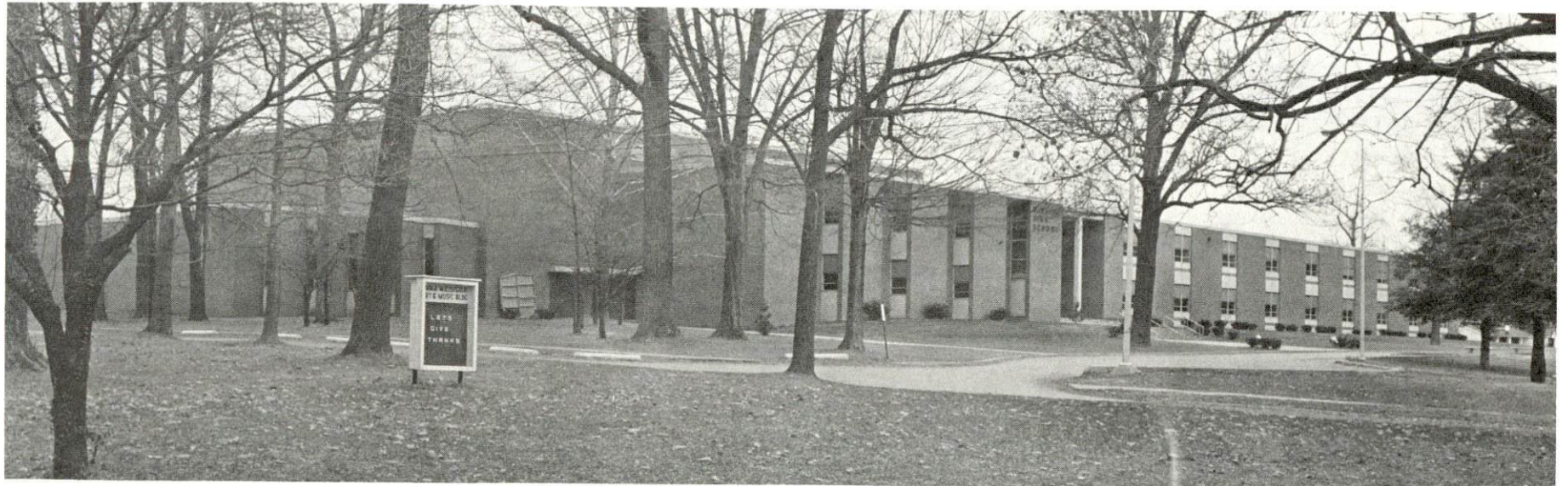
Sanitation

| | <u>Danville</u> | <u>Boyle County</u> |
|-----------------------|-----------------|---------------------|
| Type service | Municipal | Private |
| Fee charged: | | |
| residential | None | \$5 per month |
| business | None | By contract |
| Collection frequency: | | |
| residential | Weekly | Weekly |
| business | Daily | By contract |
| Trash pickup | Monthly | |
| Disposal method | Landfill | Landfill |

Industrial service: Sanitation service is offered to manufacturers both inside and outside the city limits by two private sanitation companies. It is also permissible for manufacturers to haul their own refuse to the landfill.



BOYLE COUNTY HIGH SCHOOL



DANVILLE HIGH SCHOOL

EDUCATION

Public Schools

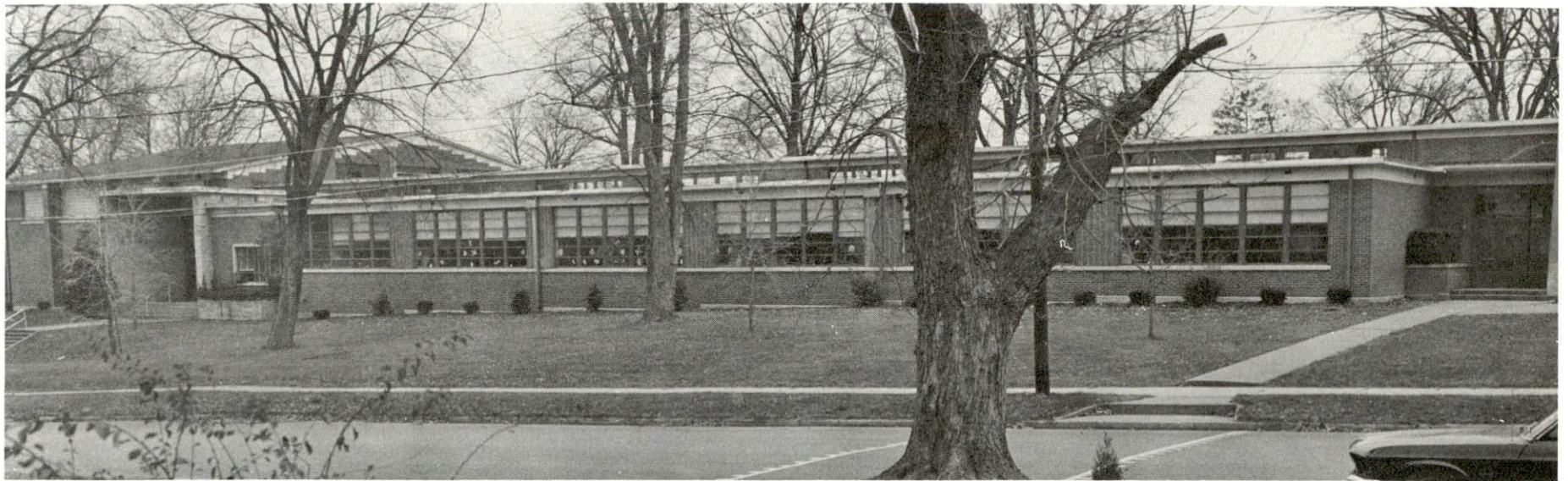
| | <u>Danville Independent</u> | <u>Boyle County</u> |
|---|---|-------------------------|
| Total Enrollment (Fall 1974) | 2,010 | 2,371 |
| Elementary | 790 | 1,723 |
| Middle School | 420 | |
| High School | 800 | 648 |
| Student-Teacher Ratio | 20-1 | 20-1 |
| Elementary | 19-1 | 21-1 |
| Middle School | 24-1 | |
| High School | 20-1 | 18-1 |
| Accreditation | Southern Association of Colleges and Schools | |
| Percent High School Graduates to College | 39.8 | 30.9 |
| Expenditures Per Pupil (1973-74) | \$671.56 | \$563.63 |
| Bonded Indebtedness, June 30, 1974 | \$1,523,000 | \$2,832,000 |

Nonpublic Schools

| | <u>Kentucky School for the Deaf</u> |
|-----------------------|-------------------------------------|
| Total Enrollment | 397 |
| Elementary | 264 |
| High School | 133 |
| Student-Teacher Ratio | 5-1 |
| Elementary | 5-1 |
| High School | 5-1 |



MARY HOGSETT ELEMENTARY SCHOOL



JENNIE ROGERS ELEMENTARY SCHOOL



DANVILLE BATE MIDDLE SCHOOL



EDNA TOLIVER ELEMENTARY SCHOOL

Vocational Schools

Nearest State School

Location
Miles Distant
Curriculum

Central Kentucky State
Vocational-Technical
School
Lexington
31
General Clerical
Steno-Secretarial
Practical Nursing
Learning Lab
Electronics
Auto Body Repair
Auto Mechanics
Commercial Foods
Cosmetology
Drafting
Industrial Electricity
Graphic Arts
Machine Shop
Office Machine Repair
Sheet Metal
Welding
Equine Education

Nearest Area Education Centers

| | Harrodsburg Area Vocational Education Center | Garrard County Area Vocational Education Center |
|---------------|--|---|
| Location | Harrodsburg | Lancaster |
| Miles Distant | 9 | 12 |
| Curriculum | General Clerical Steno-Secretarial Auto Mechanics Carpentry-Building Trades Electricity Welding Health Careers | Auto Mechanics Carpentry-Building Trades Drafting Electricity Welding |

The Danville School of Practical Nursing at Danville offers Health Careers and Practical Nursing.

Arrangements can be made to provide training in the specific production skills required by an industrial plant. Instruction may be conducted either in the vocational school or in the industrial plant, depending upon the desired arrangement and the availability of special equipment.

Colleges and Universities

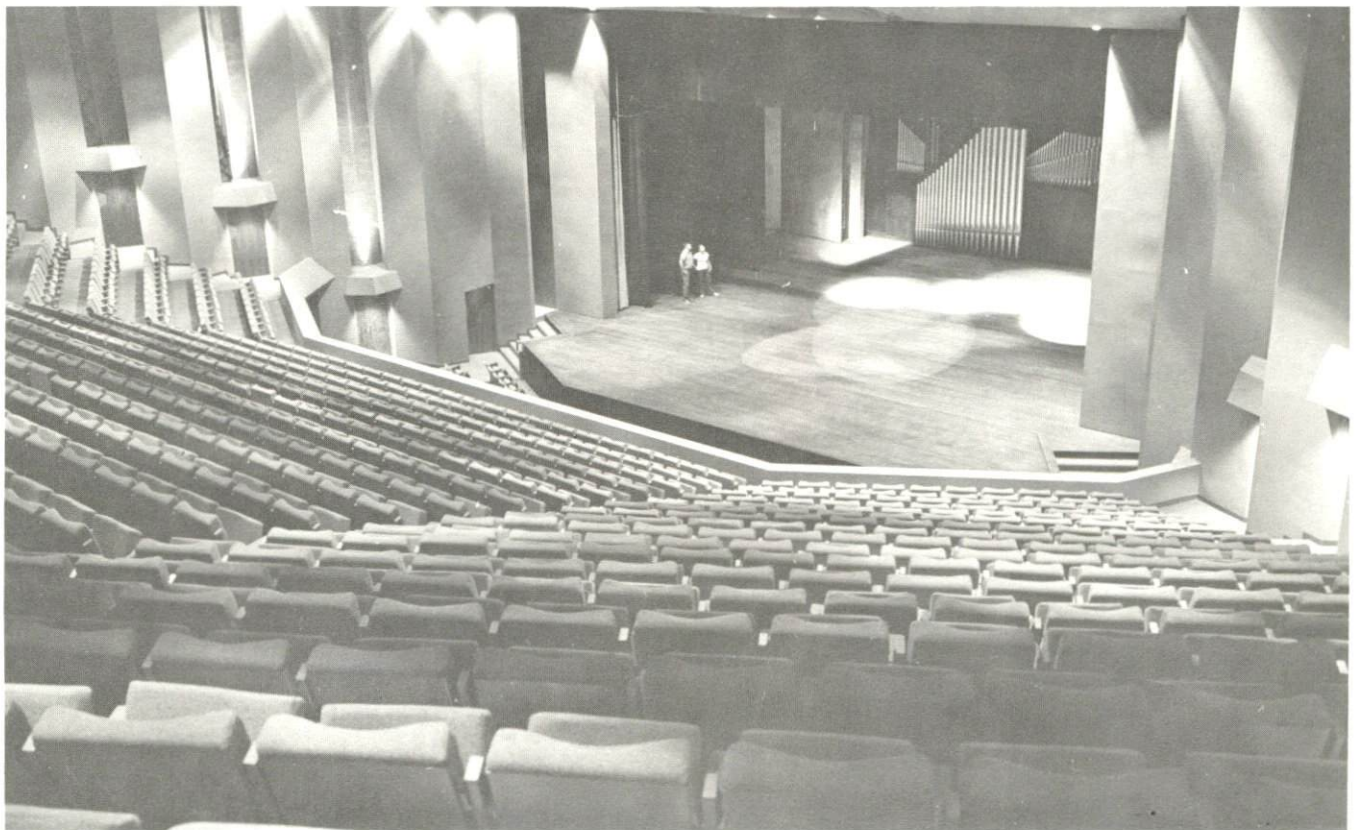
| <u>Name</u> | <u>Area - Within 50 miles</u> | | <u>Highest Degree Conferred</u> |
|--------------------------------|-------------------------------|--------------------------------|---------------------------------|
| | <u>Location</u> | <u>Enrollment (Fall, 1974)</u> | |
| Asbury College | Wilmore | 1,184 | Baccalaureate |
| Berea College | Berea | 1,411 | Baccalaureate |
| Campbellsville College | Campbellsville | 678 | Baccalaureate |
| Centre College | Danville | 796 | Baccalaureate |
| Eastern Kentucky University | Richmond | 12,571 | Masters, Ph.D.* |
| Kentucky State University | Frankfort | 2,174 | Masters |
| Lexington Technical Institute | Lexington | 1,281 | Associate |
| Midway Junior College | Midway | 341 | Associate |
| Transylvania University | Lexington | 664 | Masters ** |
| University of Kentucky | Lexington | 21,586 | Ph.D., M.D. D.M.D., J.D. |
| Saint Catharine College | St. Catharine | 125 | Associate |
| Somerset Community College | Somerset | 661 | Associate |
| Southeastern Christian College | Winchester | 73 | Associate |

*Cooperative program with the University of Kentucky, Lexington, for a Ph.D. in Education only.

**Courses are taught on the Transylvania campus by Xavier University of Cincinnati faculty members. The degree is issued by Xavier University.



CENTRE COLLEGE DINING COMMONS



INTERIOR CENTRE COLLEGE REGIONAL ARTS BUILDING

HEALTH

Hospitals

| <u>General Hospital</u> | <u>Location</u> | <u>Beds</u> |
|------------------------------------|-----------------|-------------|
| Ephraim McDowell Memorial Hospital | Danville | 100 |

General hospital facilities - 3 operating rooms, recovery room, obstetrical service, X-ray, laboratories, 4-bed intensive care unit, drug dispensary unit, emergency service, nuclear medicine services, and respiratory therapy

Medical staff - 14 general practitioners, including general surgeons, 9 specialists, 34 registered nurses, 64 licensed practical nurses and graduate licensed practical nurses, 28 nurses aides, and 1 pharmacist (part time)

Other

Kentucky State Hospital, Southern Blue Grass Comprehensive Care Center (Region C)

Ambulance Service

Name - Danville-Boyle County Rescue Squad

Staff - 23 volunteers

Service - 24-hour service to all parts of the county

Equipment - Four radio-dispatched ambulances fully-equipped with modern equipment

Nursing Homes

| | <u>Number</u> | <u>Beds</u> |
|---------------------|---------------|-------------|
| Extended care home | 1 | 50 |
| Personal care homes | 2 | 150 |

Public Health

Facility - Boyle County Health Department

Staff - 1 dentist (part time), 3 nurses, 1 TB project nurse (part time), health environmentalist, state plumbing inspector (part time), 2 clerks and 1 out-reach worker in family planning.

OTHER LOCAL FACILITIES

Communications

Telephone - South Central Bell Telephone Company
Services - All standard services, touch tone

Telegraph - Western Union
Services - Telephone

Postal - U.S. Post Office
Class - First
Mail received - 2 times daily
Mail dispatched - once daily

Newspapers -
Daily and circulation - Danville Advocate - Messenger - 8,963
Weekly and circulation - Kentucky Advocate (Sunday) - 9,047
Other papers
received from - Major cities

Radio - WHIR-AM; WMGE-FM
Stations received from - Louisville and Lexington, Kentucky;
Cincinnati, Ohio

Television -
Cable service
Reception from - Louisville and Lexington, Kentucky; Cincinnati, Ohio

Kentucky Educational
Television - Lexington transmitter, channel 46

Library Services

Public library - Danville Public Library
Size collection - 27,500 volumes
Circulation, 1974-75 - 93,019 volumes
Services - Bookmobile, a part of the regional system of libraries
furnishes all library services to outlying city areas and the county.

Private library - The Grace Doherty Library, Centre College

Size collection - Over 110,000 volumes

Special collections - A wide variety of periodicals, government documents, pamphlets, recordings, music scores, microfilm, micro-cards and other audio visual material

Services - More than 600 periodicals and more than a dozen newspapers regularly; music listening facilities and photo duplication services provided to students

Religious Institutions

Number of churches - 30

Denominations - Apostolic, Baptist, Christian, Pentecostal Church of God, Church of God, Church of Jesus Christ of Latter Day Saints, Episcopal, Jehovah's Witnesses, Lutheran, Nazarene, Presbyterian, Roman Catholic, Salvation Army, United Methodist, Church of Christ

Nearest Synagogues - Lexington, 31 miles away

Congregations - Adath Israel (Reform); Ohavey Zion (traditional)

Financial Institutions

| <u>Banks</u> | <u>Assets</u> | <u>Deposits</u> | <u>Statement Date</u> |
|---------------------------|---------------|-----------------|-----------------------|
| Bank of Danville | \$18,158,535 | \$16,235,130 | 6/30/75 |
| The Farmers National Bank | 24,642,464 | 21,976,312 | 6/30/75 |
| Citizens National Bank | 18,131,020 | 16,259,404 | 6/30/75 |

| <u>Savings and Loan Associations</u> | <u>Assets</u> | <u>Shared Accounts</u> | <u>Statement Date</u> |
|---|---------------|------------------------|-----------------------|
| Central Kentucky Federal Savings and Loan Association | \$15,585,320 | \$14,221,712 | 6/30/75 |
| Commonwealth First Federal Savings and Loan Association | 18,188,996 | 16,844,619 | 6/30/75 |

Hotels and Motels

Total number - 4

Total units - 184

Clubs and Organizations

Business and Civic - Chamber of Commerce, Rotary, Lions, Kiwanis, Jaycees, Optimist, Historical Society, Newcomers, Danville Ministeral Association, Jolly Believers, Bar Association, Medical Association

Fraternal - Demolay, American Legion, Shrine, Knights of Columbus, Mas'ons, Knights of Pythias, IOOF

Women's - Garden Clubs, Business and Professional Women's Club, Junior Women's Club, DAR, AAVW, Kentucky Club, Ladies Domestic Economy Club, Sunshine Club, Eastern Star, Rebekah

Youth - Boy Scouts, Girl Scouts, FFA, FHA, 4-H, Little League baseball and football

Other - Fish and Game Club, Wilderness Trail Riding Club



DANVILLE COUNTRY CLUB

RECREATION

Local

Public Recreation Facilities

Supervised program - Danville-Boyle County Recreation Department

Parks - 4

Playgrounds - 4

Swimming pool - 1

Tennis courts - 2

Baseball diamonds - 3

Football fields - 4

Private Recreation Facilities

Country club - 1

Golf course - 1

Swimming pools - 3

Movie theaters - 2

Bowling facility - 1

Skating rink - 1

Tourist Attractions

Constitution Square State Shrine

Jacobs Hall National Shrine

McDowell Home and Apothecary Shop

Centre College

Pioneer Playhouse, Kentucky's Official State Theater

Area (Within 25 miles)

Camp Nelson

Herrington Lake

Old Fort Harrod State Park

Perryville Battlefield State Shrine

Shakertown

William Whitley House State Shrine

Isaac Shelby State Shrine

AGRICULTURE - NATURAL RESOURCES - CLIMATE

Agriculture*

| | <u>Boyle County</u> | <u>Labor Market Area</u> |
|--|---------------------|--------------------------|
| Total land area (acres) | 117,312 | 1,344,064 |
| Percent of area in farm land | 97.9 | 89.1 |
| Number of farms | 882 | 9,870 |
| Average size of farms (acres) | 130.2 | 121.3 |
| 1969 value of all farm products | \$ 6,973,855 | \$ 66,404,582 |
| Value per farm | 7,906 | 6,728 |
| Total crop sales | 3,016,736 | 28,518,983 |
| Total livestock & livestock products | 3,927,675 | 37,582,192 |
| 1973 agricultural production included: | | |
| Burley tobacco (lbs.)(est.) | 3,328,000 | 30,914,000 |
| Corn for grain (bu.)(est.) | 490,200 | 4,396,100 |
| Cattle and calves (number) | 37,500 | 344,300 |
| Hogs and pigs (number) (preliminary) | 5,700 | 64,400 |
| Milk production, 1972 (lbs.) | 15,960,000 | 281,760,000 |

Natural Resources

| | |
|---------------------------------|--|
| Principal mineral resources | Limestone |
| Other mineral resources | Clay, fluorspar |
| Acres of commercial forest land | 20,100 |
| Most abundant tree species | White oak, hickory, red oak, ash, maple, red cedar, black walnut |

*U.S. Department of Commerce, Bureau of the Census, Census of Agriculture, 1969. U.S. Department of Agriculture and Kentucky Department of Agriculture, Kentucky Agricultural Statistics, 1973.

Climate*

Boyle County

Temperature

| | |
|--|---------------|
| Annual mean (30-year record) | 55.2 degrees |
| Average annual 1974 | 55.1 degrees |
| Record highest, July, 1966 (11-year record) | 98.0 degrees |
| Record lowest, January, 1972 (11-year record) | -11.0 degrees |
| Normal heating degree days (30-year record) | 4,729 |
| (Heating degree day totals are the sums of negative departures of average daily temperatures from 65 degrees F.) | |

Precipitation

| | |
|---|--------------|
| Mean annual total (30-year record) | 44.49 inches |
| Mean annual snowfall (30-year record) | 15.70 inches |
| Total precipitation 1974 | 60.09 inches |
| Mean number days precipitation (.01 inch or more) (30-year record) | 130 |
| Average number days thunderstorms (30-year record) | 47 |

Prevailing winds (17-year record) South

*U.S. Department of Commerce, Environmental Science Services
Administration, Climatological Data, 1974. Station of record:
Lexington, Kentucky.

HISTORY

Boyle County lies in the central portion of Kentucky, partly in the Bluegrass Physiographic Region and partly in the Knobs. Its eastern border follows Herrington Lake on Dix River, and Chaplin and Salt Rivers flow through the county. Its 183 square miles of territory range from gently rolling to hilly terrain with rich soil.

The Boyle County area was one of the earliest colonized in Kentucky. James Harrod, the founder of Harrodsburg, in adjoining Mercer County, built a cabin in present-day Danville around 1774. The first settlement was made in 1775, and within a decade enough progress had been made for Danville to become the center for efforts to make Kentucky a state. Beginning in 1784, ten conventions met over a period of eight years in a building on present-day Constitution Square in efforts to lay a basis for statehood. Under the leadership of Samuel McDowell, these conventions led to Kentucky's admission to the Union on June 1, 1792.

Danville served as the seat of Virginian government west of the Allegheny Mountains from 1785 to 1792, and upon Kentucky's admission to the Union, Danville became the first state capitol for a brief time. The first post office west of the Alleghenies was established here in 1792 and the restored structure now sits at Constitution Square near a replica of the Convention Building. An important advance in surgery was made in Danville in 1809, when Doctor Ephraim McDowell performed the first abdominal surgery. A shrine has been made of the McDowell residence where the operation was performed.

Two of the state's most prominent educational institutions, Transylvania and Centre Colleges, were founded at Danville. Transylvania was chartered by the Virginia Assembly in 1780, established in 1783, and moved to Lexington in 1788 to merge with Lexington Seminary. Centre was chartered in 1819 and has since produced a host of distinguished alumni, including two United States Vice Presidents, Richard M. Johnson and John C. Breckinridge, Supreme Court Chief Justice Fred Vinson and thirteen United States Senators. One of the country's most respected independent liberal arts colleges, Centre had an enrollment of 796 in 1974. The Kentucky School for the Deaf, established at Danville in 1823, was the first school of its kind to be operated at government expense.

Boyle County was not formed until 1842, after some thirty years of agitation for county status. The state's ninety-fourth county, Boyle was named for John Boyle, a Virginia native who moved to Kentucky, where he was elected to three terms in the United States Congress and served as Kentucky's Chief Justice for 16 years. Danville is the county seat of Boyle

County. The Civil War Battle of Perryville in 1862 was the bloodiest to take place in Kentucky and a memorial park is maintained at the battle site in Perryville, west of Danville.

In 1850 Boyle County had 9,116 inhabitants. A century later, the figure stood at 20,532 and by 1960 reached 21,257. Population continued to grow and was 21,861 in 1970. Danville's population was 11,542 in 1970, and Junction City had 1,046 residents.

There were 10,760 people employed in Boyle County in 1973. Agriculture accounted for 800 of these jobs, with burley tobacco, corn, cattle and milk the principal products. Manufacturing employment reached 2,640 in 1973. Largest of the county's firms are: American Greetings Corporation, a distribution center for stationary and gift wrap; Palm Beach Company, making men's suits; Whirlpool Corporation, manufacturer of trash compactors and ice makers for refrigerators; Genesco, Incorporated, which makes women's shoes; Rexnord, Inc., Manufacturing materials handling system; and Corning Glass Works, producer of glass bulbs and tubing.

Among noted figures in Boyle County history was James G. Birney, a well-known abolitionist prior to the Civil War who was presidential candidate of the Liberty Party in 1844.

This copy has been prepared by the Kentucky Department of Commerce, Division of Research and Planning, and the cost of printing paid from state funds.

Production Supervisor

Patsy Wallace

Research

David Wellman

Clerical

Barbara Blair

Graphics

N. C. Montague

Frank Ferrante

Tony Cecconi

Cartography

Site Development Section

**Kentucky Department of Commerce
Capital Plaza Tower
Frankfort, Kentucky 40601**

**Industrial Development Division
(502) 564-7140**

**Community Services Division
(502) 564-4300**

**Business Development Division
(502) 564-4300**

**Research and Planning Division
(502) 564-4886**

**Office of Minority Business Enterprises
(502) 564-4270**

**Map Sales Office
133 Holmes Street
(502) 564-4715**

**Industrial Development Finance Authority
(502) 564-4554**