

1980

# Industrial Resources: Bullitt County - Shepherdsville, Mt. Washington, and Lebanon Junction

Kentucky Library Research Collections  
Western Kentucky University, [spcol@wku.edu](mailto:spcol@wku.edu)

Follow this and additional works at: [https://digitalcommons.wku.edu/bullitt\\_cty](https://digitalcommons.wku.edu/bullitt_cty)

 Part of the [Business Administration, Management, and Operations Commons](#), [Growth and Development Commons](#), and the [Infrastructure Commons](#)

---

## Recommended Citation

Kentucky Library Research Collections, "Industrial Resources: Bullitt County - Shepherdsville, Mt. Washington, and Lebanon Junction" (1980). *Bullitt County*. Paper 8.  
[https://digitalcommons.wku.edu/bullitt\\_cty/8](https://digitalcommons.wku.edu/bullitt_cty/8)

This Report is brought to you for free and open access by TopSCHOLAR®. It has been accepted for inclusion in Bullitt County by an authorized administrator of TopSCHOLAR®. For more information, please contact [topscholar@wku.edu](mailto:topscholar@wku.edu).

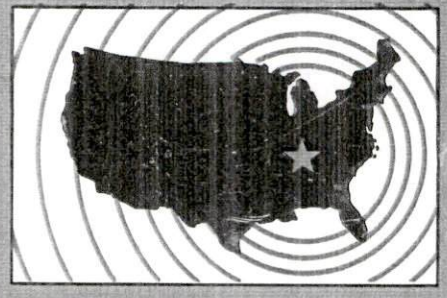
12  
196

Bullitt County

# **INDUSTRIAL RESOURCES**

## **BULLITT COUNTY**

**Kentucky  
First**

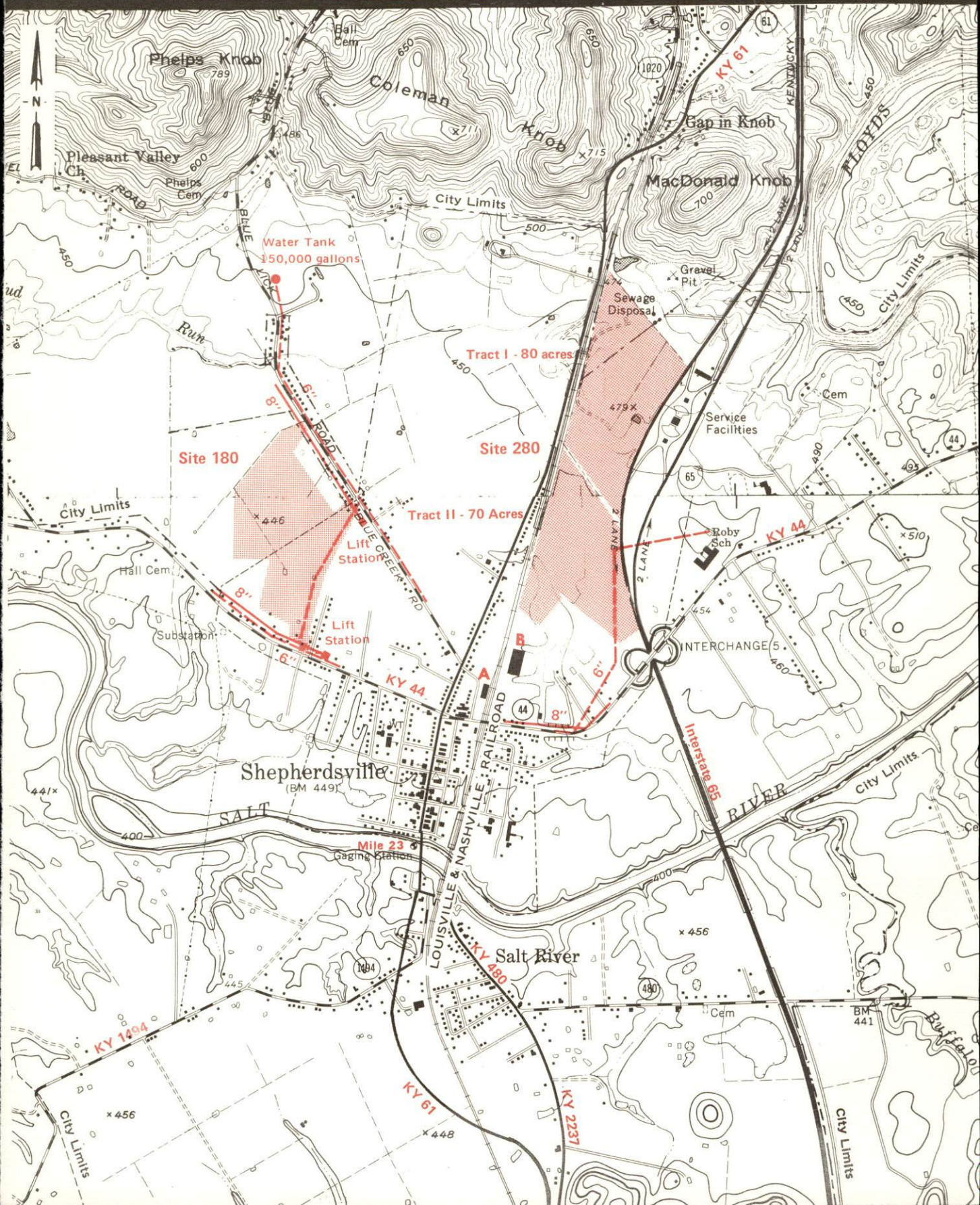


**DEPARTMENT OF COMMERCE**



For more information contact Ronald Florence, Bullitt County Chamber of Commerce, P. O. Box 485, Shepherdsville, Kentucky 40165, or the Kentucky Department of Commerce, Industrial Development Division, Capital Plaza Tower, Frankfort, Kentucky 40601.

# Industrial Sites---1980 Shepherdsville, Kentucky





## Site 180 - 87 Acres

**LOCATION:** Partially within northwestern city limits  
**ZONING:** Light industrial  
**HIGHWAY ACCESS:** KY 44 adjacent to southeast corner of site;  
Interstate 65 interchange approximately 1.1 miles east via  
KY 44.  
**RAILROAD:** Not rail served  
**WATER:** Shepherdsville Water Works  
Size Line: 6-inch line along eastern boundary; 6-inch line parallel  
to northeastern boundary along north side of Blue Lick Road;  
6-inch line adjacent to southeastern boundary  
**GAS:** Louisville Gas and Electric Company  
**ELECTRICITY:** Louisville Gas and Electric Company  
**SEWERAGE:** Shepherdsville Sewer Works  
Size Line: 8-inch line adjacent to southeastern boundary; 8-inch  
line adjacent to northeastern boundary  
**OWNERSHIP:** Private  
**FLOOD DATA:** Salt River Mile 23 - Intermediate Regional Flood-  
Modified, Elevation 448 feet (average frequency once in  
100 years)

## Site 280 - 150 Acres

**LOCATION:** Partially within northern city limits  
**ZONING:** Industrial  
**HIGHWAY ACCESS:** KY 44 approximately 800 feet south (right of  
way has been verbally committed) Interstate 65 interchange 250  
feet from southeast corner of site.  
**RAILROAD:** Louisville and Nashville Railroad adjacent to western  
boundary  
**WATER:** Shepherdsville Water Works  
Size Line: 6-inch line passes through southeast corner of site  
**GAS:** Louisville Gas and Electric Company  
**ELECTRICITY:** Louisville Gas and Electric Company  
**SEWERAGE:** Shepherdsville Sewer Works  
Size Line: 8-inch line approximately 700 feet south of site along  
north side of KY 44  
**OWNERSHIP:** Private  
**FLOOD DATA:** Salt River Mile 23 - Intermediate Regional Flood -  
Modified, Elevation 448 feet (average frequency once in 100  
years)

### Existing Industries

- A. Publishers Printing Co.
- B. A. J. Bayer Co.

### UTILITIES

- Water Line
- Sewer Line

SCALE: 1 inch = 2,000 feet  
CONTOUR INTERVAL: 10-20 feet  
BASE: USGS 7.5 minute series - 1962-71



INDUSTRIAL RESOURCES  
BULLITT COUNTY, KENTUCKY

Prepared by  
The Kentucky Department of Commerce  
Division of Research and Planning  
in cooperation with  
The Bullitt County Chamber of Commerce

1980

Program supervisor - Pamela Riley; research - John McMurray; clerical - Linda Fint & Jody Allphin; graphics - Frank Ferrante, Tony Cecconi, Richard Spencer; cartography - Industrial Development Division. Cost of printing paid from state funds.



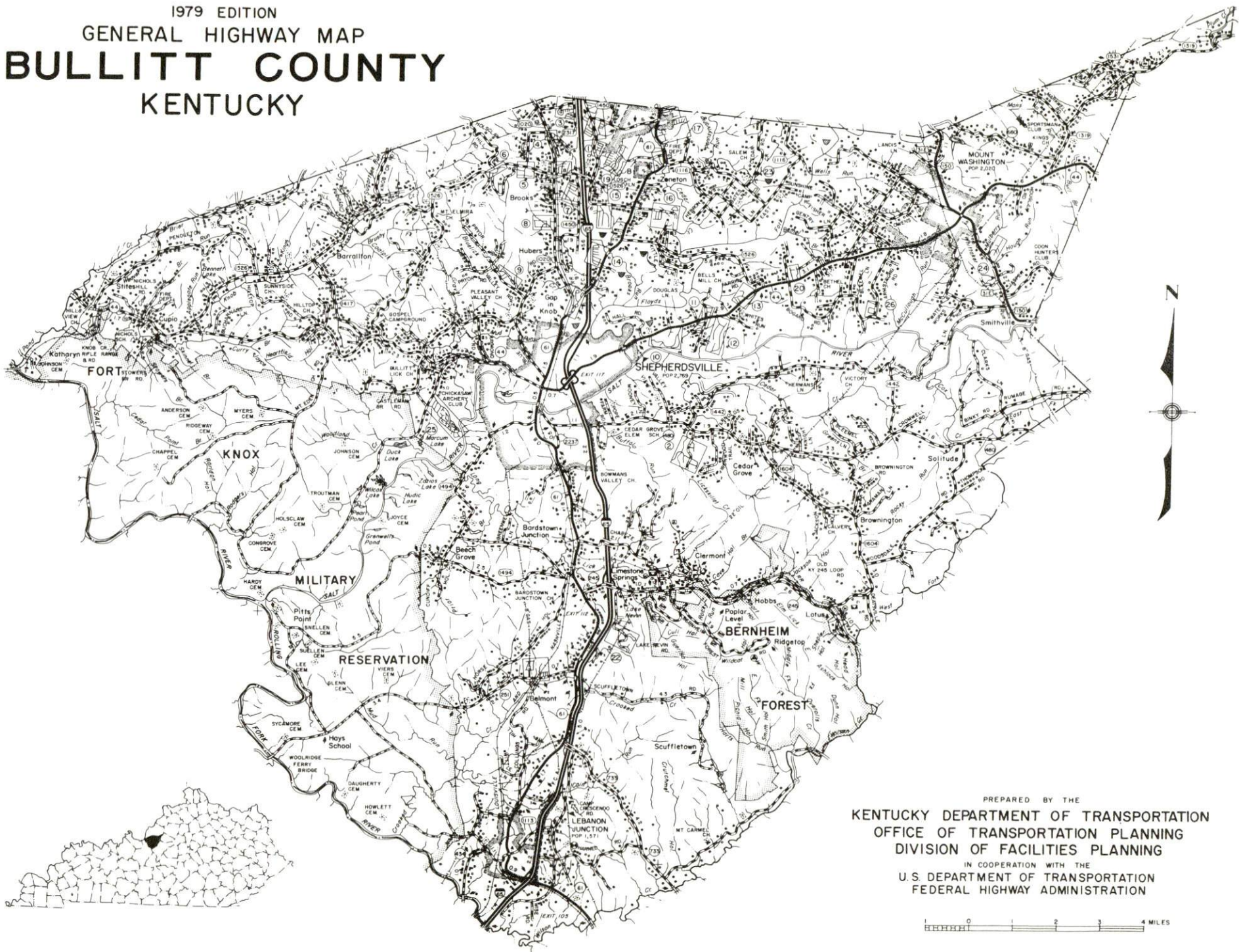
## TABLE OF CONTENTS

<u>Chapter</u>	<u>Page</u>
INDUSTRIAL SITES . . . . .	i
SUMMARY OF INDUSTRIAL RESOURCES - BULLITT COUNTY, KENTUCKY . . . .	1
THE LABOR MARKET AREA . . . . .	9
Population . . . . .	9
Labor Force Characteristics of Residents, 1979 . . . . .	9
Bullitt County Manufacturing Firms, Their Products and Employment . . . . .	10
Labor Organizations . . . . .	12
Industrial Services . . . . .	12
Estimated Male Labor Supply . . . . .	13
Estimated Female Labor Supply . . . . .	13
Average Weekly Wages by Industry, by Place of Work, 1978 . . . . .	14
Per Capita Personal Income . . . . .	16
TRANSPORTATION . . . . .	17
Rail . . . . .	17
Highways . . . . .	17
Truck Service . . . . .	18
Air . . . . .	20
Bus . . . . .	20
Rental Services . . . . .	20
Water . . . . .	20
POWER AND FUEL . . . . .	21
Electricity . . . . .	21
Natural Gas . . . . .	22
Other Fuels . . . . .	22
WATER AND SEWERAGE . . . . .	23
Water . . . . .	23
Sewerage . . . . .	27
CLIMATE . . . . .	30

<u>Chapter</u>	<u>Page</u>
LOCAL GOVERNMENT . . . . .	31
City . . . . .	31
County . . . . .	31
Assessed Value of Property, 1979 . . . . .	32
Property Taxes . . . . .	32
Combined State and Local Rates Per \$100 Valuation, 1979 . . . . .	33
Utilities Gross Receipts Tax for Schools . . . . .	33
Planning and Zoning . . . . .	34
Safety . . . . .	34
Police . . . . .	34
Fire . . . . .	34
Rescue Service . . . . .	35
Refuse Collection and Disposal . . . . .	35
EDUCATION . . . . .	36
Public Schools . . . . .	36
Nonpublic Schools . . . . .	36
Area Colleges and Universities . . . . .	37
Vocational Schools . . . . .	38
HEALTH . . . . .	40
Local Medical Personnel . . . . .	40
Hospitals . . . . .	40
Ambulance Service . . . . .	40
Public Health . . . . .	40
OTHER LOCAL FACILITIES . . . . .	41
Communications . . . . .	41
Library Services . . . . .	41
Religious Institutions . . . . .	42
Financial Institutions . . . . .	42
Hotels and Motels . . . . .	42
Clubs and Organizations . . . . .	43
RECREATION . . . . .	44
COMMUNITY IMPROVEMENTS . . . . .	46



1979 EDITION  
GENERAL HIGHWAY MAP  
**BULLITT COUNTY**  
KENTUCKY



PREPARED BY THE  
KENTUCKY DEPARTMENT OF TRANSPORTATION  
OFFICE OF TRANSPORTATION PLANNING  
DIVISION OF FACILITIES PLANNING  
IN COOPERATION WITH THE  
U.S. DEPARTMENT OF TRANSPORTATION  
FEDERAL HIGHWAY ADMINISTRATION

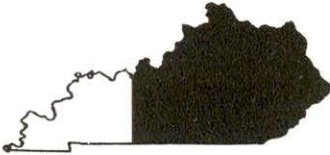
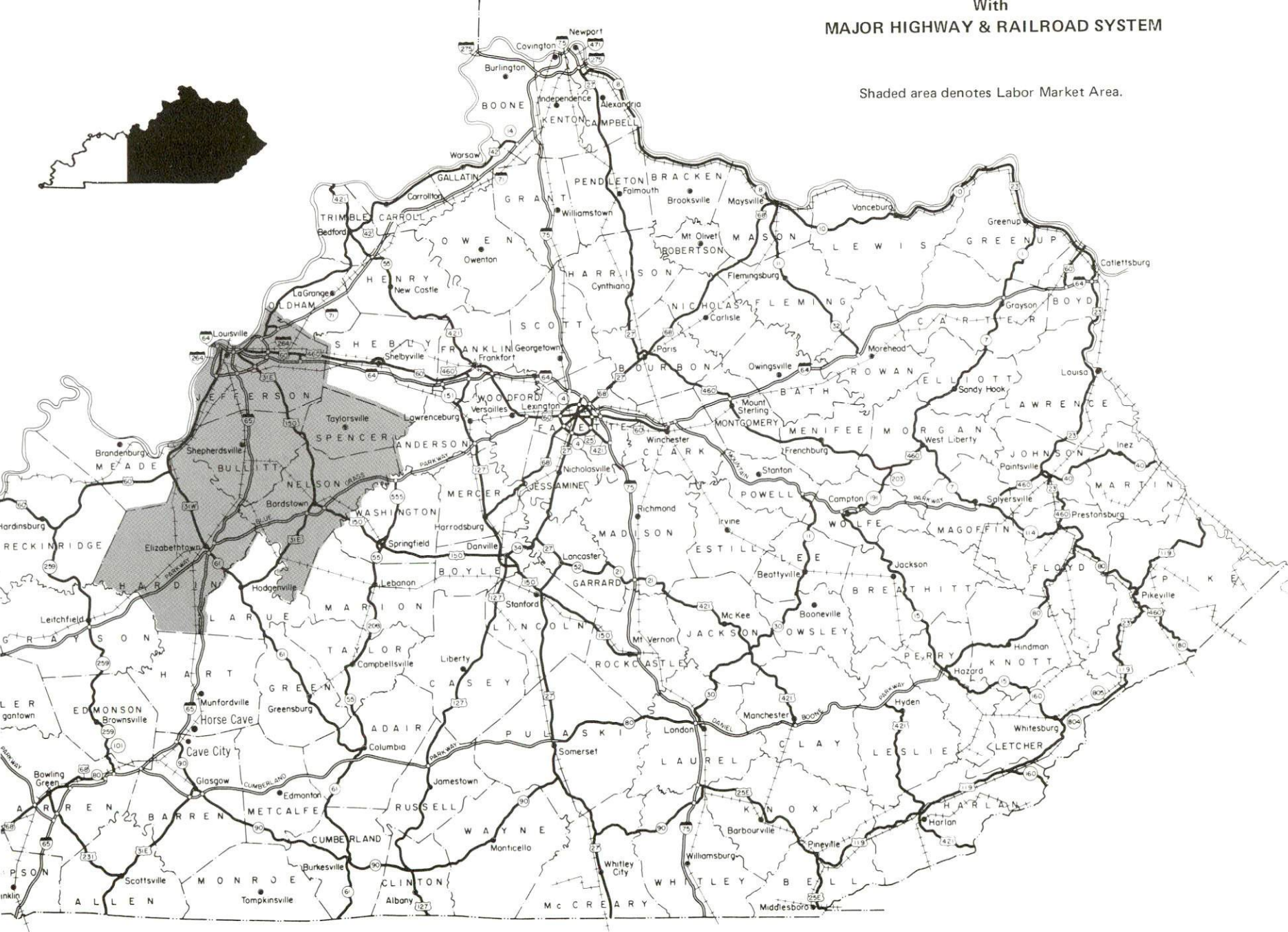
0 1 2 3 4 MILES



# BULLITT COUNTY LABOR MARKET AREA

With  
MAJOR HIGHWAY & RAILROAD SYSTEM

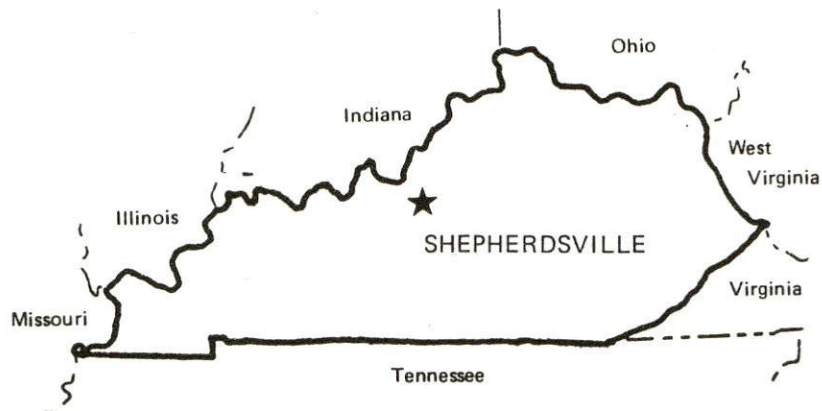
Shaded area denotes Labor Market Area.





SUMMARY OF INDUSTRIAL RESOURCES  
BULLITT COUNTY, KENTUCKY

LOCATION



Road Distance in Miles from Shepherdsville:

Atlanta	<u>390</u>	Baltimore	<u>618</u>
Chicago	<u>312</u>	Detroit	<u>380</u>
New York	<u>768</u>	St. Louis	<u>283</u>

POPULATION

City of Shepherdsville, 1977	3,740
City of Mt. Washington, 1977	<u>2,386</u>
City of Lebanon Junction, 1977	<u>1,809</u>
City of Hillview, 1977	<u>2,639</u>
Bullitt County, 1978	<u>39,100</u>
Labor Market Area, 1978	<u>827,800</u>
% Nonwhite, Bullitt County, 1978	<u>0.7</u>

LABOR ANALYSIS

Labor Market Area - Bullitt, Hardin, Jefferson, Nelson and Spencer Counties

Estimated available workers from labor market area, 1978:

Male	<u>27,545</u>	Female	<u>29,696</u>
Unemployment rate, 1979		Labor Market Area	<u>5.4%</u>
Bullitt County	<u>4.6%</u>	Nelson County	<u>7.9%</u>
Hardin County	<u>6.5%</u>	Spencer County	<u>6.5%</u>
Jefferson County	<u>5.2%</u>		

Total employment, Bullitt County, 1979 - 15,452  
 Manufacturing employment in labor market area, 1978 - 103,162  
 Major manufacturing plants in Bullitt County:

<u>Name</u>	<u>Employment</u>
<u>James B. Beam Distilling Company</u>	<u>514</u>
<u>Publishers Printing Company</u>	<u>250</u>
<u>A. J. Bayer Company</u>	<u>228</u>

Labor unions in local manufacturing plants:

Distillery Workers; Steelworkers; Carpenters and Joiners;  
Operating Engineers

INDUSTRIAL SERVICES

	<u>Location</u>	<u>Mileage from Shepherdsville</u>
Tool & Die, Machine & Pattern Shops	<u>Louisville</u>	<u>20</u>
Metal Service Centers	<u>Louisville</u>	<u>20</u>
Heat Treating	<u>Louisville</u>	<u>20</u>
Metal Finishers	<u>Louisville</u>	<u>20</u>
Electric Motor Repair	<u>Louisville</u>	<u>20</u>

TRANSPORTATION

Rail:

Railroad - Louisville and Nashville Railroad serves Shepherdsville  
 and Lebanon Junction; Distance to nearest piggyback - 20 miles  
 north of Shepherdsville

Highways:

Interstate - I-65  
 Nearest parkways - Blue Grass Parkway and Western Kentucky Parkway  
 U.S. Highways - U.S. 31E/150 serves Mt. Washington

Truck:

Number of interstate motor carriers - 6; Local terminals - 0

Air:

Nearest scheduled airline service - Standiford Field at Louisville  
 Distance - 15 miles north of Shepherdsville; Airlines serving -  
 American, Delta, Eastern, Ozark, Piedmont, TWA, USAir and Air  
 Kentucky (commuter)



Water:

Nearest navigable river - Ohio River  
Nearest public port - Louisville  
Distance - 20 miles north of Shepherdsville

UTILITIES AND SERVICES

Electricity:

Bullitt County

Local Distributor - (1) Louisville Gas and Electric Company;  
(2) Salt River Rural Electric Cooperative Corporation; (3) Kentucky  
Utilities Company  
Source of power - (1) Louisville Gas and Electric Company; (2) East  
Kentucky Power Cooperative; (3) Kentucky Utilities Company

Natural Gas:

Shepherdsville, Mt. Washington and Hillview

Local distributor - Louisville Gas and Electric Company  
Source of supply - Texas Gas Transmission Company  
Available for new industry - Yes, on a limited basis

Natural gas service is not available in Lebanon Junction.

Other Fuels:

Number of local propane distributors - 3  
Number of local distillate fuel oil distributors - 3

Water, treated:

Shepherdsville

Local supplier - Shepherdsville Water Works  
Excess municipal system capacity - 88,000 gpd  
Storage capacity - 170,000 gallons  
Expansions planned - Yes

Mt. Washington

Local supplier - Mt. Washington Water Company  
Source of supply of treated water - Louisville Water Company  
Local storage capacity - 300,000 gallons  
Expansions planned - No

Lebanon Junction

Local supplier - Lebanon Junction Water Works  
Source of supply of treated water - Bardstown Municipal Light and Water Company  
Local storage capacity - 110,000 gallons  
Expansions planned - No

Hillview

Local supplier - Louisville Water Company  
Local storage capacity - None

Water, raw:

Sources - Salt River and Rolling Fork River

Sewer:

Shepherdsville

Excess treatment capacity - None  
Planned expansions - An expansion of treatment plant capacity from 300,000 to 1,000,000 gpd

Mt. Washington

Excess treatment capacity - 174,700 gpd  
Planned expansions - Step 1 of a 201 Facilities Study under way

Lebanon Junction

Excess treatment capacity - 160,000 gpd  
Planned expansions - No

Hillview

The city is served by a company that operates four package treatment plants. Septic tanks are also used for sewage disposal.

CLIMATE

Temperature, Normal - 55.2 degrees F.  
Precipitation, Normal - 44.49 inches  
Snowfall, Mean Annual - 16.7 inches  
Prevailing winds - South  
Relative humidity (%) - 7 a.m. 81; 7 p.m. 64

GOVERNMENT

Shepherdsville

Type - Mayor-City Council

Police personnel - full-time - 3, part-time - 5

Fire department personnel - volunteer - 30

Fire insurance rating (A.I.A.), class - Inside city - 9  
Outside city - 10

Mt. Washington

Type - Mayor-City Council

Police personnel - full-time - 3

Fire department personnel - volunteer - 30

Fire insurance rating (A.I.A.), class - Inside city - 7  
Outside city - 10

Lebanon Junction

Type - Mayor-City Council

Police personnel - full-time - 2

Fire department personnel - volunteer - 26

Fire insurance rating (A.I.A.), class - Inside city - 8  
Outside city - 10

Hillview

Type - Mayor-City Council

Police personnel - full-time - 1, part-time - 6

Fire department personnel - Volunteers from Zoneton F.P.D.

Fire insurance rating (A.I.A.), class - Inside city - 8 and 9  
Outside city - 10



TAXES

Property taxes:

Combined state and local rates per \$100 valuation, 1979  
(100% assessment)

	<u>Inside City of Shepherdsville</u>	<u>Inside City of Mt. Washington</u>		
1. Land and buildings	\$0.823	\$0.833		
2. Mfg. machinery, raw materials, goods in process, pollution control equipment	0.150	0.150		
3. Finished goods, office equipment, vehicles, other tangibles	0.994	1.004		
4. Intangibles (accounts receivable, notes, bonds, etc.)	0.250	0.250		
5. Leaseholds in I. R. bond financed plants	0.015	0.015		
	<u>Inside City of Lebanon Junction</u>	<u>Inside City of Hillview</u>	<u>Outside City</u>	
1. Land and buildings	\$0.968	\$0.833	\$0.603	
2. Mfg. machinery, raw materials, goods in process, pollution control equipment	0.150	0.150	0.150	
3. Finished goods, office equipment, vehicles, other tangibles	1.139	1.004	0.774	
4. Intangibles (accounts receivable, notes, bonds, etc.)	0.250	0.250	0.250	
5. Leaseholds in I. R. bond financed plants	0.015	0.015	0.015	

Special local taxes:

Utilities tax - 3% of electric, gas, water, sewer, telephone services

## EDUCATION

Nearest state vocational-technical schools - Louisville, 20 miles from Shepherdsville, and Elizabethtown, 26 miles from Shepherdsville

Area vocational education center - Bullitt County Vocational Education Center at Shepherdsville

Nearest colleges and universities - Nine institutions of higher learning within 50 miles of Shepherdsville

### Public Schools:

High school enrollment - 3,415; Student/teacher ratio - 29-1

Middle school enrollment - 2,828; Student/teacher ratio - 24-1

Elementary school enrollment - 5,211; Student/teacher ratio - 22-1

### Nonpublic Schools:

Enrollment - 351; Student/teacher ratio - 10-1

## MEDICAL

Number of physicians locally - 6; Number of dentists locally - 6  
Hospitals - Excellent facilities located at Louisville, 20 miles from Shepherdsville

## COMMUNICATIONS

Local newspapers - The Pioneer News - Weekly; Mt. Washington Star - Weekly  
Television reception from - Louisville, Kentucky

## RELIGIOUS FACILITIES

Churches - 36 in Bullitt County

Nearest Synagogues - Louisville, 20 miles from Shepherdsville

## FINANCIAL INSTITUTIONS

### Bullitt County

Banks - 3; Total assets - \$63,455,580.60

Savings & loan associations - 1; Total assets - \$17,078,323.00

## PUBLIC LODGING

Total number hotels and motels - 4; Total rooms - 259

RECREATIONAL FACILITIES

Bullitt County

Public golf courses; Parks; Swimming pools; Tennis courts; Baseball fields; Football fields; Basketball courts; Playgrounds; Country club

Nearest state park - My Old Kentucky Home State Park  
Golf; Camping; Playground; Picnic area; Outdoor musical drama "The Stephen Foster Story" presented during summer months

THE LABOR MARKET AREA

Area	POPULATION		Percent Nonwhite**
	1978*	1970	
Shepherdsville	3,740**	2,769	2.8
Mt. Washington	2,386**	2,020	0.05
Lebanon Junction	1,809**	1,571	2.0
Hillview	2,639**	1,758	N/A
Labor Market Area	827,800	828,531	N/A
Bullitt County	39,100	26,090	0.7
Hardin County	78,300	78,421	9.9
Jefferson County	678,200	695,055	17.5
Nelson County	26,400	23,477	8.0
Spencer County	5,800	5,488	4.6

\*Provisional Estimates.

\*\*1977 Population Estimates; 1970 Percent Nonwhite for cities; 1978 Percent Nonwhite for counties.

Sources: U.S. Department of Commerce, Bureau of the Census, Census of Population, 1970. U.S. Department of Commerce, Bureau of the Census, Current Population Reports, Series P-25, No. 830, October 1979; Series P-26, No. 78-17, August 1979. University of Louisville, Urban Studies Center, Population Research Unit, "Kentucky's Population Disaggregations of 1978 Estimates," January 1980.

LABOR FORCE CHARACTERISTICS OF RESIDENTS, 1979

	Bullitt County	Labor Market Area
Civilian Labor Force	16,189	376,633
Employment	15,452	356,432
Agricultural	226	4,238
Nonagricultural	15,226	352,194
Unemployment	737	20,201
Rate of Unemployment (%)	4.6	5.4

Source: Kentucky Department for Human Resources, Kentucky Labor Force Estimates, Annual Averages, 1979.



BULLITT COUNTY MANUFACTURING FIRMS,  
THEIR PRODUCTS AND EMPLOYMENT

Firm (Establishment date)	Product	Employment			Organized
		Total	Male	Female	
<u>Shepherdsville</u>					
A. J. Bayer Company (1973)	Conveyors	228	199	29	*
Bullitt County Stone Company (1967)	Agricultural lime, crushed stone	30	28	2	*
Mago Construction Company, Inc. (N/A)	Bituminous concrete mixes	15	15	0	
Modern Designs, Inc. (1967)	Fiberglass septic tanks	10	10	0	
Monarch Hardware Manufacturing Company (1965)	Panic exit hardware	23	22	1	*
The Pioneer News (1882)	Newspaper, job printing	12	5	7	
Publishers Printing Company (1866)	Offset litho- graphic printing, book publishing	250	182	68	
Quality Crushed Stone Company, Inc. (1966)	Crushed limestone, agricultural lime	17	15	2	
Quality Ready Mix, Inc. (1960)	Ready mixed concrete	5	4	1	
Charles H. Reichmuth, Inc. (1962)	Rough lumber, ties	11	11	0	
<u>Mt. Washington</u>					
B & B Screw Machine Specialists, Ltd. (1965)	Screw machine products, shafts and collars, screws	18	17	1	
Mt. Washington Star, Inc. (1964)	Newspaper	6	1	5	

(Contd.)

<u>Firm (Establishment date)</u>	<u>Product</u>	<u>Employment</u>			<u>Organized</u>
		<u>Total</u>	<u>Male</u>	<u>Female</u>	
<u>Mt. Washington (Contd.)</u>					
Walker Machine Tool Company, Inc. (1959)	Plastic molding, molds and dies, machine shop	20	9	11	
<u>Lebanon Junction</u>					
Mac Manufacturing Company (1957)	Barrel lifts, automatic barrel filling device, auto- matic barrel stenciler	14	13	1	
<u>Hillview</u>					
Taylor Battery Company (1952)	Batteries, rebuilt	26	19	7	
Ziniz Company (1969)	Conveyors, steel fabrication	52	50	2	*
<u>Clermont</u>					
James B. Beam Distilling Company (1934)	Whiskey, cordials, cocktails, vodka, distillers dried grains	514	225	289	*

\*See Labor Organizations below.

Source: Kentucky Department of Commerce, Division of Research and Planning.

## LABOR ORGANIZATIONS

<u>Union</u>	<u>Representing manufacturing workers at:</u>
Distillery, Wine and Allied Workers' International Union, AFL-CIO-CLC	James B. Beam Distilling Company
United Steelworkers of America, AFL-CIO	Monarch Hardware Manufacturing Company
United Brotherhood of Carpenters and Joiners of America, AFL-CIO	A. J. Bayer Company; Ziniz Company
International Union of Operating Engineers, AFL-CIO	Bullitt County Stone Company

## INDUSTRIAL SERVICES

	<u>Location</u>	<u>Mileage from Shepherdsville</u>
Tool & Die, Machine & Pattern Shops	Louisville	20
Metal Service Centers	Louisville	20
Heat Treating	Louisville	20
Metal Finishers	Louisville	20
Electric Motor Repair	Louisville	20

Sources: Kentucky Directory of Selected Industrial Services, 1979.  
 Kentucky Department of Commerce, Division of Research and Planning.

ESTIMATED MALE LABOR SUPPLY  
BULLITT COUNTY LABOR MARKET AREA

Area	Current			Future	
	Total	Not in Labor Force	Unemployed	Under- employed	Reaching 18 years of age before 1986
Labor Market					
Area	27,545	5,271	8,924	13,350	39,820
Bullitt	1,010	250	360	400	1,749
Hardin	3,743	446	737	2,560	3,033
Jefferson	21,708	4,368	7,390	9,950	33,408
Nelson	909	166	383	360	1,327
Spencer	175	41	54	80	303

Sources: Kentucky Department for Human Resources, Kentucky Labor Supply Estimates by County, 1978. Kentucky Department of Commerce, Future Labor Supply Before 1986.

ESTIMATED FEMALE LABOR SUPPLY  
BULLITT COUNTY LABOR MARKET AREA

Area	Current			Future	
	Total	Not in Labor Force	Unemployed	Under- employed	Reaching 18 years of age before 1986
Labor Market					
Area	29,696	2,596	10,420	16,680	38,194
Bullitt	1,100	92	358	650	1,606
Hardin	2,075	180	765	1,130	2,946
Jefferson	25,449	2,233	8,816	14,400	32,046
Nelson	960	75	425	460	1,343
Spencer	112	16	56	40	253

Sources: Kentucky Department for Human Resources, Kentucky Labor Supply Estimates by County, 1978. Kentucky Department of Commerce, Future Labor Supply Before 1986.



AVERAGE WEEKLY WAGES BY INDUSTRY,  
BY PLACE OF WORK, 1978

	<u>Bullitt County</u>	<u>Hardin County</u>	<u>Jefferson County</u>
All Industries	\$176.10	\$178.43	\$239.27
Mining & Quarrying	*	*	*
Contract Construction	186.91	209.85	281.06
Manufacturing	234.95	227.35	313.70
Transportation, Communications & Public Utilities	210.40	216.54	315.81
Wholesale & Retail Trade	143.35	143.63	179.04
Finance, Insurance & Real Estate	163.02	181.73	220.12
Services	114.12	145.45	172.89
Other	*	86.16	*

	<u>Nelson County</u>	<u>Spencer County</u>
All Industries	\$192.80	\$155.06
Mining & Quarrying	*	0
Contract Construction	230.24	203.30
Manufacturing	242.14	*
Transportation, Communications & Public Utilities	270.04	171.49
Wholesale & Retail Trade	131.77	123.00
Finance, Insurance & Real Estate	153.77	*
Services	118.43	150.84
Other	*	*

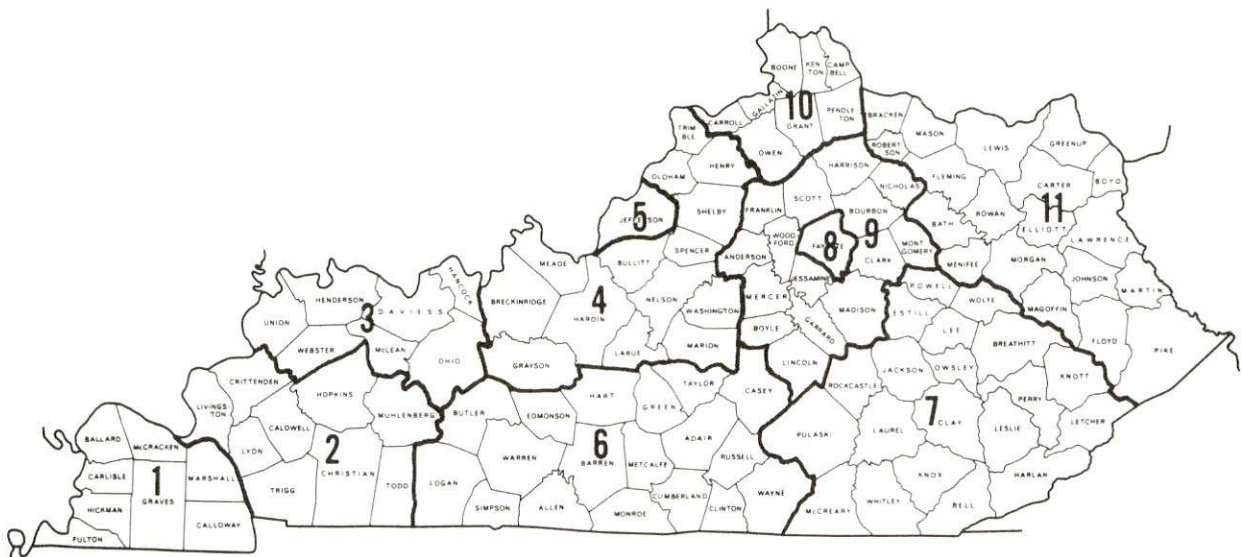
\*Not disclosed.

Note: Excludes domestic workers, railway workers; certain nonprofit corporations; majority of federal, state, and local government workers; and self-employed workers.

Source: Kentucky Department for Human Resources, Average Weekly Wages of Workers Covered by Kentucky Unemployment Insurance Law, 1978.

Occupational wage rates for specific industries are usually not available to most government agencies, and wage data furnished to state employment agencies by individual industrial employers is protected from disclosure by federal law. The most reliable up-to-date wage information can be obtained by direct contact with local employers.

Associated Industries of Kentucky, a voluntary organization of Kentucky businesses, regularly collects occupational wage rates and fringe benefits data from participating member firms. Data is compiled for over 127 clearly defined office, production, and service occupations. Tabulations are published for eleven regions of Kentucky, as shown on the map below. It should be noted that the data may be weighted by the preponderance of firms in the larger cities and may be somewhat higher than the rates paid in the smaller communities. Data from these tabulations are available, upon request, from the Kentucky Department of Commerce, Frankfort, Kentucky 40601.



Associated Industries of Kentucky Area Wage Surveys

PER CAPITA PERSONAL INCOME

<u>Area</u>	<u>1978</u>	<u>1974</u>	<u>Percent Change</u>
Bullitt County	\$5,655	\$3,836	47.4
Labor Market Area			
Range	\$5,593 - 8,496	\$3,836 - 5,660	N/A
Kentucky	6,605	4,524	46.0
U.S.	7,840	5,428	44.4

Source: U.S. Department of Commerce, Bureau of Economic Analysis,  
April 1980.



## TRANSPORTATION

### Rail

Line serving Shepherdsville - Louisville & Nashville Railroad

Services - Main line; 1 northbound and 1 southbound freight make daily stops; 7 northbound and 7 southbound through freights daily; team track space for 2 cars; nearest piggyback facilities located at Louisville, 20 miles north of Shepherdsville

Line serving Lebanon Junction - Louisville & Nashville Railroad

Services - Main line; 1 northbound and 1 southbound freight make daily stops; 7 northbound and 7 southbound through freights daily; team track space for 2 cars; nearest piggyback facilities located at Louisville, 33 miles north of Lebanon Junction

For details on routing, schedules, rates, and services, contact:

Director of Industrial Development  
Louisville & Nashville Railroad  
908 West Broadway  
Louisville, Kentucky 40201  
(502) 587-5723

Mt. Washington and Hillview are not served directly by a rail line.

### Highways

Interstate 65, a major north-south highway, is routed through the center of Bullitt County with an interchange located at Shepherdsville. Direct access to I-65 North is available at Lebanon Junction. I-65 interconnects with I-64 and with I-71 at Louisville, 20 miles north of Shepherdsville, and with the Blue Grass Parkway and the Western Kentucky Parkway at Elizabethtown, 25 miles south of Shepherdsville.

Mt. Washington is located 10 miles east of I-65 via Kentucky Highway 44. In addition, Mt. Washington is served by U.S. Highway 31E/150. This class "AAA" rated trucking highway connects with the Blue Grass Parkway, an east-west toll road, 21 miles south of Mt. Washington. Hillview is served by Kentucky Highway 61 which provides access to the interstate highway system at Shepherdsville.

Truck Service

Company

Home Office

Shepherdsville

Cooper-Jarrett, Inc.*	Hanover Plaza Morristown, New Jersey 07960
Distillery Transfer Service, Inc.**	P. O. Box "H" Bardstown, Kentucky 40004
IML Freight, Inc.*	2175 South 3270 West Salt Lake City, Utah 84125
Interstate Motor Freight System*	110 Ionia, N.W. Grand Rapids, Michigan 49503
McLean Trucking Company*	P. O. Box 213 Winston-Salem, North Carolina 27102
Overnite Transportation Company*	P. O. Box 1216 Richmond, Virginia 23209

Mt. Washington

Cooper-Jarrett, Inc.*	- Same as above -
Distillery Transfer Service, Inc.**	- Same as above -
IML Freight, Inc.*	- Same as above -
Interstate Motor Freight System*	- Same as above -
Overnite Transportation Company**	- Same as above -

Lebanon Junction

Cooper-Jarrett, Inc.*	- Same as above -
Distillery Transfer Service, Inc.**	- Same as above -
McLean Trucking Company*	- Same as above -
Overnite Transportation Company*	- Same as above -

Hillview

Cooper-Jarrett, Inc.*	- Same as above -
Distillery Transfer Service, Inc.**	- Same as above -
IML Freight, Inc.*	- Same as above -

\*Interstate service only.  
\*\*Interstate and intrastate service.

Other Freight ServicesNearest Shipping Center

Purolator Courier Corporation\*

Louisville, 20 miles north of  
Shepherdsville

United Parcel Service\*

Louisville, 20 miles north of  
Shepherdsville

HIGHWAY MILES AND TRUCK TRANSIT TIME IN DAYS FROM  
SHEPHERDSVILLE, KENTUCKY, TO SELECTED MARKET CENTERS

City	Highway Miles	Delivery		City	Highway Miles	Delivery	
		Time*	TL			Time*	TL
Atlanta, Ga.	390	1		Los Angeles, Ca.	2,128	7-8	
Baltimore, Md.	618	2		Louisville, Ky.	20	1	
Birmingham, Ala.	344	1		Nashville, Tenn.	148	1	
Chicago, Ill.	312	1		New Orleans, La.	655	2-3	
Cincinnati, Ohio	121	1		New York, N. Y.	768	3	
Cleveland, Ohio	365	2		Pittsburgh, Pa.	408	1-2	
Detroit, Mich.	380	3		St. Louis, Mo.	283	1	
Knoxville, Tenn.	261	1					

\*Transit time does not include the day of pickup.

Source: Delivery Time Only - Overnite Transportation Company,  
P. O. Box 1216, Richmond, Virginia 23209.

\*For regular scheduled pickups or for occasional pickups, arrangements must be made with the Louisville office of Purolator Courier Corporation or United Parcel Service.



Air

Nearest Scheduled Airline Service

Location: Standiford Field  
4 1/2 miles southeast of center of  
Louisville, Kentucky; 15 miles  
north of Shepherdsville

Runways: 3 paved  
Length: 7,800 feet; 7,250 feet; 5,000 feet

Traffic Control: Control tower

Lighting: Runways, obstructions, beacon and  
approach and touchdown lights,  
center line on one runway

Services: American, Delta, Eastern, Ozark,  
Piedmont, TWA, and USAir airlines;  
Air Kentucky commuter air carrier;  
100 octane and jet fuel; major  
A & E repairs; storage; Louisville-  
Jefferson County Air Board; Hertz,  
Avis, National and Budget rental  
car services; taxi, city bus  
service; restaurant

Air Freight Service: Air freight terminal

Bullitt County

Bus\* - Greyhound Bus Lines and Kentucky Bus Lines

Rental Services - Complete car, truck, and trailer rentals are  
available in Louisville, 20 miles north of  
Shepherdsville.

Water

Shepherdsville is only 20 miles from Louisville, via Interstate 65,  
where port facilities are available on the Ohio River. Louisville has  
been classified as a Foreign Trade Zone and offers complete U.S.  
customs services for exports and imports.

\*Efforts are under way to have the Transit Authority of River City (the  
Louisville city transit system) extend bus service to certain areas of  
Bullitt County.

POWER AND FUEL

Electricity

Companies serving Bullitt County\* - (1) Louisville Gas and Electric Company; (2) Salt River Rural Electric Cooperative Corporation; (3) Kentucky Utilities Company

Source of power - (1) Louisville Gas and Electric Company; (2) East Kentucky Power Cooperative; (3) Kentucky Utilities Company

Total generating capacity - (1) 2,692,700 KW; (2) 867,000 KW; (3) 2,238,400 KW

For industrial rates contact:

(1) Louisville Gas and Electric Company  
311 West Chestnut Street  
Louisville, Kentucky 40202  
(502) 566-4250

and/or

(2) Industrial Development Division  
East Kentucky Power Cooperative  
P. O. Box 707  
Winchester, Kentucky 40391  
(606) 744-4812

and/or

(2) Salt River RECC  
111 West Brashear Avenue  
Bardstown, Kentucky 40004  
(502) 348-3931

and/or

(3) Industrial Development Department  
Kentucky Utilities Company  
One Quality Street  
Lexington, Kentucky 40507  
(606) 255-1461

\*The Louisville Gas and Electric Company supplies electricity to the cities of Shepherdsville, Mt. Washington and Hillview and to parts of Bullitt County. Kentucky Utilities Company provides electricity to the city of Lebanon Junction. Salt River RECC serves the major portion of Bullitt County.

## Natural Gas

Company serving Shepherdsville, Mt. Washington and Hillview - Louisville  
Gas and Electric Company  
Source of supply - Texas Gas Transmission Corporation  
Size of transmission mains - 30 and 26 inches (supplier);  
8 inches (distributor)  
Distribution mains - 8, 4 and 2 inches  
Distribution pressure - 35 psi  
Btu content - 1,025 per cubic foot  
Specific gravity - 0.5801  
For rates and supplies contact:

Manager  
Gas Market Services  
Louisville Gas and Electric Company  
P. O. Box 32010  
Louisville, Kentucky 40232  
(502) 566-4255

Natural gas service is not available in Lebanon Junction.

## Other Fuels

### Propane

Big 3 Gas Company of Lebanon Junction Preston Highway Lebanon Junction, Kentucky 40150	Bullitt County LP Gas Company Highway 61S Shepherdsville, Kentucky 40165
---	--

Williams Energy Company (Plant)  
Highway 61  
Shepherdsville, Kentucky 40165

### Fuel oils

Distillate fuel oil -

Ace Oil Distributors, Inc. Highway 61 Shepherdsville, Kentucky 40165	Dawson & Reesol Service Station & Fuel Oil Second and Buckman Streets Shepherdsville, Kentucky 40165
--	---

Stanley Lee, Agent  
Chevron Oil Company  
Box 86  
Shepherdsville, Kentucky 40165

Residual fuel oil - Arrangements must be made with the refinery.

Low sulphur content coal - Available in Kentucky.



## WATER AND SEWERAGE

### Water

Company serving Shepherdsville - Shepherdsville Water Works\*  
P. O. Box 398  
Shepherdsville, Kentucky 40165  
(502) 543-6016

Source - Salt River  
Treatment plant capacity - 400,000 gallons per day\*\*  
Average daily consumption - 280,000 gallons  
Peak daily consumption - 312,000 gallons  
Type treatment - Settling basin, alum, lime, and chlorine  
Storage capacity - 170,000 gallons including clearwell  
Size lines - 2, 4, 6 and 8 inches  
Average pressure - 60 psi  
Average temperature - 55 degrees F.

### MONTHLY WATER RATES

First	2,000 gallons	\$7.80 (Minimum)
Next	3,000 gallons	2.50 per M gallons
Next	5,000 gallons	2.00 per M gallons
Next	15,000 gallons	1.90 per M gallons
Next	25,000 gallons	1.50 per M gallons
Next	50,000 gallons	1.30 per M gallons
Next	100,000 gallons	1.20 per M gallons
All over	200,000 gallons	1.10 per M gallons

Tap-on charge:	3/4-inch meter	\$150
	1-inch meter	300
	2-inch meter	500

\*A \$430,000 improvement to the Shepherdsville water system is scheduled for completion in the fall of 1980. Construction of a 200,000-gallon ground tank and a 150,000-gallon elevated tank is planned. A series of loops will tie the present lines together.

\*\*Based on 16 hours pumping.

Company serving Mt. Washington - Mt. Washington Water Company  
 208 Snapp Street  
 Mt. Washington, Kentucky 40047  
 (502) 538-4216

Source of supply of treated water - Louisville Water Company  
 Average daily consumption - 413,300 gallons  
 Peak daily consumption - 570,000 gallons  
 Storage capacity - 300,000 gallons  
 Size lines - 4, 6 and 12 inches  
 Average pressure - 45 psi  
 Average temperature - 55 degrees F.

MONTHLY WATER FEES

0 - 2,490 gallons	\$ 6.05
2,500 - 3,490 gallons	7.16
3,500 - 4,490 gallons	8.36
4,500 - 5,490 gallons	9.56
5,500 - 6,490 gallons	10.56
6,500 - 7,490 gallons	11.56
7,500 - 8,490 gallons	12.56
8,500 - 9,490 gallons	13.56
9,500 - 10,490 gallons	14.56
10,500 - 11,490 gallons	15.56
11,500 - 12,490 gallons	16.56
12,500 - 13,490 gallons	17.56
13,500 - 14,490 gallons	18.56
14,500 - 15,490 gallons	19.56
All over 15,500 gallons	0.76 per M gallons plus tax

Tap-on charge:	3/4-inch meter	\$250
	1-inch meter	435
	2-inch meter	735

Company serving Lebanon Junction - Lebanon Junction Water Works\*  
 City Hall  
 Lebanon Junction, Kentucky 40150  
 (502) 833-4311

Source of supply of treated water - Bardstown Municipal Light and Water Company

Storage capacity - 110,000 gallons  
 Size lines - 4, 6 and 8 inches  
 Average pressure - 50 psi  
 Average temperature - 62 degrees F.

MONTHLY WATER RATES

First	2,000 gallons	\$7.20 (Minimum)
Next	4,000 gallons	3.00 per M gallons
Next	4,000 gallons	2.50 per M gallons
Next	5,000 gallons	2.00 per M gallons
Next	10,000 gallons	1.75 per M gallons
All over	25,000 gallons	1.50 per M gallons

Tap-on charge: 3/4-inch meter \$250  
 Larger size meter \$250 plus cost

Company serving Hillview - Louisville Water Company  
 435 South Third Street  
 Louisville, Kentucky 40202  
 (502) 582-2431

The city of Hillview does not maintain a water treatment system. City residents purchase water from the Louisville Water Company. Water lines in the city are 6 and 8 inches.

BI-MONTHLY WATER RATES

0 - 2,000 gallons	\$6.40 (Minimum)
Over 2,000 gallons	1.30 per M gallons

Tap-on charge: 3/4-inch meter \$300  
 1-inch meter 400  
 For larger meters, actual cost of tap on

\*An 8-inch water main connects the Lebanon Junction Water Works with the Bardstown Municipal Light and Water Company. The Lebanon Junction Water Works' treatment plant has been inactivated.



Name of water district - Salt River Water District  
P. O. Box 426  
Shepherdsville, Kentucky 40165  
(502) 543-3253

Area served - Approximately 1 1/2 miles south of Salt River and  
2 miles northeast of Salt River

Date when water district began operating - 1963

Source of raw water - Salt River

Capacity of treatment plant - 500,000 gallons per day

Type of treatment - Rapid mix

Average amount of water used in a 24-hour period - 240,000 gallons

Peak amount of water used in a 24-hour period - 320,000 gallons

Storage capacity - 200,000 gallons

Average pressure - 57-60 psi

Average temperature - 50 degrees F.

Size lines - 2, 3, 4, 6 and 8 inches

Monthly rates -

First	3,000 gallons	\$7.00 (Minimum)
Next	5,000 gallons	1.25 per M gallons
Next	7,000 gallons	1.00 per M gallons
Next	10,000 gallons	.80 per M gallons
All over	25,000 gallons	.70 per M gallons

Tap-on charge: \$250

Surface water sources - Salt River and Rolling Fork

Average discharge - Salt River at Shepherdsville - 1,551 cfs  
(40 years, USGS); Rolling Fork near Boston - 1,758 cfs (40 years,  
USGS)

Expected ground water yield - 500 to 1,000 gpm in northwestern tip of  
county along Ohio River; 50 to 200 gpm in western edge of county;  
5 to 50 gpm in areas adjacent to Salt River; 5 gpm or less over  
remainder of county

## Sewerage

Company serving Shepherdsville - Shepherdsville Sewer Works\*  
P. O. Box 398  
Shepherdsville, Kentucky 40165  
(502) 543-7339

Design capacity - 300,000 gallons per day

Average daily flow - At capacity

Treatment - Primary and secondary

Type treatment - Aeration, chlorination and activated sludge

Treated effluent discharged into - Salt River

Size of sanitary mains - 8 inches

Size of storm mains - 24 inches

Rates - 65 percent of monthly water bill (\$5.09 per month minimum)

Tap-on charge: \$500 - Residential

\$1,000 - Commercial and Industrial

\*Construction is scheduled to begin in the spring of 1981 for the rehabilitation of the Shepherdsville sewer system. The \$5 million project will increase the treatment plant capacity to 1 million gallons per day. Plans include the rehabilitation of some lines and the installation of 10,000 feet of interceptor lines.

Company serving Mt. Washington - Mt. Washington Waste Water  
 Treatment Plant\*  
 P. O. Box 237  
 Mt. Washington, Kentucky 40047  
 (502) 538-4781

Design capacity - 400,000 gallons per day  
 Average daily flow - 225,300 gallons  
 Treatment - Secondary, extended aeration, activated sludge  
 Type treatment - Grit collector, aeration clarifier, digester,  
 drying beds and chlorine contact tank  
 Treated effluent discharged into - McCullough Run to Salt River  
 Size of sanitary mains - 6, 8, 10, 12, 14 and 16 inches  
 Monthly fees - Based on water usage

0 - 2,490 gallons	\$ 7.99
2,500 - 3,490 gallons	9.45
3,500 - 4,490 gallons	11.04
4,500 - 5,490 gallons	12.62
5,500 - 6,490 gallons	13.94
6,500 - 7,490 gallons	15.26
7,500 - 8,490 gallons	16.58
8,500 - 9,490 gallons	17.90
9,500 - 10,490 gallons	19.22
10,500 - 11,490 gallons	20.54
11,500 - 12,490 gallons	21.86
12,500 - 13,490 gallons	23.18
13,500 - 14,490 gallons	24.50
14,500 - 15,490 gallons	25.82
All over 15,500 gallons	0.80 per M gallons

Users who are not connected to city water - \$12.75 per month

Tap-on charge: \$500

\*Step I of a 201 Facilities Plan is under way.

Company serving Lebanon Junction - Lebanon Junction Sewerage Department  
City Hall  
Lebanon Junction, Kentucky 40150  
(502) 833-4311

Design capacity - 280,000 gallons per day  
Average daily flow - 120,000 gallons  
Treatment - Primary  
Type treatment - Aeration, clarification, and chlorination  
Treated effluent discharged into - Rolling Fork River  
Size of sanitary mains - 8 and 10 inches  
Rates - 50 percent of monthly water bill  
Tap-on charge: \$350

Company serving Hillview - Maryville Sewerage System, Inc.\*  
4898 Brownsboro Center  
Louisville, Kentucky 40207  
(502) 895-4273

Sewer service - Provided by four package treatment plants  
Treated effluent discharged into - Tanyard Branch and Brooks Run  
Size of sanitary mains - 12, 10, 8, 6, and 4 inches  
Monthly rates - \$12 residential; \$24 commercial  
Tap-on charge: \$2,000

---

\*The Maryville Sewerage System operates four private package treatment plants. Customers may hook onto the system depending on the accessibility and capacity of an individual plant and the projected usage of the customer. Septic tanks are also used for sewage disposal in Hillview.



## CLIMATE

### Bullitt County

#### Temperature

Normal (30-year record)	55.2 degrees
Average annual 1978	53.0 degrees
Record highest, September, 1954 (34-year record)	103.0 degrees
Record lowest, January, 1963 (34-year record)	-21.0 degrees
Normal heating degree days (30-year record) (Heating degree day totals are the sums of negative departures of average daily temperatures from 65 degrees F.)	4,729

#### Precipitation

Normal (30-year record)	44.49 inches
Mean annual snowfall (34-year record)	16.70 inches
Total precipitation 1978	57.73 inches
Mean number days precipitation (.01 inch or more) (34-year record)	131
Mean number days thunderstorms (34-year record)	47

#### Prevailing Winds (17-year record)

South

#### Relative Humidity

1 a.m.	77 percent (14-year record)
7 a.m.	81 percent (15-year record)
1 p.m.	60 percent (15-year record)
7 p.m.	64 percent (15-year record)

Source: U.S. Department of Commerce, Environmental Science  
Services Administration, Climatological Data, 1978.  
Station of record: Lexington, Kentucky.

LOCAL GOVERNMENT

City

Shepherdsville

Structure - Mayor - 4-year term; 6 councilmen - 2-year terms  
Budget 1979 - General Fund \$259,840  
                  Water and Sewer Fund 224,135  
Fees and licenses - Business licenses vary from \$10 to \$400 per year;  
unloading license - \$25 per year

Mt. Washington

Structure - Mayor - 4-year term; 6 councilmen - 2-year terms  
Budget 1979 - General Fund \$110,713  
                  Water and Sewer Fund 238,376  
Fees and licenses - Business licenses vary from \$3 to \$5,000 per year;  
unloading license - \$25 per year; vehicle tax - \$5 per year

Lebanon Junction

Structure - Mayor - 4-year term; 6 councilmen - 2-year terms  
Budget 1980 - General Fund \$75,774.28  
                  Water and Sewer Fund 88,305.21  
Fees and licenses - Business licenses vary from \$10 to \$400 per year;  
unloading license - \$25 per year

Hillview

Structure - Mayor - 4-year term; 6 councilmen - 2-year terms  
Budget 1979 - General Fund \$93,279  
Fees and licenses - Occupational licenses range from \$10 to \$500 per  
year depending on type of business

County

Structure - County Judge/Executive - 4-year term;  
4 magistrates - 4-year terms  
Budget 1979-80 - General Fund \$583,328; Road Fund \$364,290

Assessed Value of Property, 1979

<u>Classes of Property</u>	<u>Shepherdsville</u>	<u>Mt. Washington</u>	<u>Lebanon Junction</u>
Real Estate	\$32,156,093	\$39,322,639	\$5,033,753
Tangibles	5,689,625	6,718,360	1,275,641
	<u>Hillview</u>	<u>Bullitt County</u>	
Real Estate	\$35,000,000 (estimated)	\$382,572,991	
Tangibles	---	56,846,693	

Property Taxes

All property in Kentucky is assessed at 100 percent of fair cash value.

Land and buildings are taxed by the state and may be taxed by local jurisdictions. The state rate is \$0.279 per \$100 of assessed valuation.

Manufacturing machinery, raw materials inventories, pollution control equipment, and goods in the process of manufacture are not subject to local taxation. The state rate is \$0.15 per \$100.

Other tangible personal property owned by manufacturers (automobiles, trucks, finished goods, office furniture, office equipment) is taxed by the state at \$0.45 per \$100 and may be taxed by local jurisdictions.

Property stored in public warehouses in a transit status is not subject to local taxation. The state rate is only \$0.015 per \$100.

Intangible personal property located in Kentucky (money in hand, shares of stock, notes, bonds, accounts receivable, and other credits) is taxed by the state at \$0.25 per \$100, and is not subject to local taxation.

Private leaseholds in industrial facilities owned by cities or counties and financed by industrial revenue bonds are subject to a state tax of \$0.015 per \$100 of value (essentially the lessee's equity, adjusted for appreciation or depreciation). Local taxation is not permitted.

Combined State and Local Rates Per \$100 Valuation, 1979\*  
(100% assessment)

	<u>Inside City of Shepherdsville</u>	<u>Inside City of Mt. Washington</u>		
1. Land and buildings	\$0.823	\$0.833		
2. Mfg. machinery, raw materials, goods in process, pollution control equipment	0.150	0.150		
3. Finished goods, office equipment, vehicles, other tangibles	0.994	1.004		
4. Intangibles (accounts receivable, notes, bonds, etc.)	0.250	0.250		
5. Leaseholds in I. R. bond financed plants	0.015	0.015		
	<u>Inside City of Lebanon Junction</u>	<u>Inside City of Hillview</u>	<u>Outside City</u>	
1. Land and buildings	\$0.968	\$0.833	\$0.603	
2. Mfg. machinery, raw materials, goods in process, pollution control equipment	0.150	0.150	0.150	
3. Finished goods, office equipment, vehicles, other tangibles	1.139	1.004	0.774	
4. Intangibles (accounts receivable, notes, bonds, etc.)	0.250	0.250	0.250	
5. Leaseholds in I. R. bond financed plants	0.015	0.015	0.015	

Utilities Gross Receipts Tax for Schools

A 3 percent tax is levied on utilities receipts for schools in Bullitt County. Tax is paid by all consumers of utilities as an add-on to the utilities bills. Exempted are receipts from utilities services that are resold and the receipts from the sale of energy or energy producing fuels that exceed 3 percent of the cost of production in manufacturing, processing, mining or refining.

\*Kentucky Department of Commerce.



Planning and Zoning

Joint agency - Bullitt County Joint Planning Commission\*

Zoning enforced - All areas

Subdivision regulations enforced - All areas

Mandatory state codes enforced - Kentucky Plumbing Code, National Electric Code, Kentucky Boiler Regulations and Standards, National Fire Protection Association Standards of Safety (for buildings with an occupancy of less than 100 persons), Kentucky Building Code (modeled after BOCA code and applying to buildings with an occupancy of 100 or more persons)

Safety

Police

	<u>Full-time Staff</u>	<u>Part-time Staff</u>	<u>Radio-patrol Cars</u>
Shepherdsville	3	5	6
Mt. Washington	3		2
Lebanon Junction	2		2
Hillview	1	6	4
Bullitt County			
Police	7**		7
Sheriff	12		12

Fire

	<u>American Insurance Association Fire Rating</u>	<u>Volunteers</u>
Shepherdsville	9	30
Mt. Washington	7	30
Lebanon Junction	8	26
Hillview	***	--

\*Includes the cities of Shepherdsville, Mt. Washington, Lebanon Junction and Hillview.

\*\*Includes 5 dispatchers who also serve the Bullitt County Sheriff's Department.

\*\*\*Fire protection for the city of Hillview is provided by the Zoneton Fire Protection District volunteer fire department. The Zoneton F.P.D. has an American Insurance Association fire rating of Class 8 & 9.

Rescue Service

Kentucky Rescue Squad:

Number of volunteers - 6

Equipment - 3 sets of scuba diving equipment, 1 boat, 1 drag bar

Personnel training - Fire fighting training, emergency medical technician training, cardiopulmonary resuscitation, scuba diving, and radiological monitoring

Refuse Collection and Disposal

Bullitt County\*

Type service	Private
Fee charged:	
residential	\$5 to \$6 per month
business	Negotiated
industrial	Negotiated
Collection frequency:	
residential	Twice weekly
business	Negotiated
industrial	Negotiated
Trash pickup	Included with garbage
Disposal method	Sanitary landfill

\*Includes service to the cities of Shepherdsville, Mt. Washington, Lebanon Junction and Hillview.

EDUCATION

Public Schools

Bullitt County

Total Enrollment (Fall, 1979)	11,454
Elementary	5,211
Middle School	2,828
High School	3,415
Student-Teacher Ratio	24-1
Elementary	22-1
Middle School	24-1
High School	29-1
Percent High School Graduates to College	22.6
Expenditures Per Pupil (1978-79)	\$898.25
Bonded Indebtedness, June 30, 1979	\$11,440,000

Nonpublic Schools

	<u>Bullitt Christian Academy</u>	<u>St. Aloysius</u>	<u>St. Benedict</u>
Total Enrollment	50	201	100
Elementary	30	201	100
High School	20		
Student-Teacher Ratio	8-1	21-1	14-1
Elementary	7-1	21-1	14-1
High School	10-1		

Area Colleges and Universities  
(Within 50 miles of Shepherdsville)

<u>Name</u>	<u>Location</u>	<u>Enrollment (Fall, 1979)</u>	<u>Highest Degree Conferred</u>
University of Louisville	Louisville, Kentucky	19,156	Doctorate, M.D., D.M.D., J.D.
Bellarmino College	Louisville, Kentucky	2,095	Masters
Spalding College	Louisville, Kentucky	928	Masters
Jefferson Community College	Louisville, Kentucky	4,205	Associate
Jefferson Community College - Southwest	Louisville, Kentucky	592	Associate
Fort Knox Extension Campus, University of Kentucky	Fort Knox, Kentucky	*	Baccalaureate
Elizabethtown Community College	Elizabethtown, Kentucky	1,767	Associate
St. Catharine College	St. Catharine, Kentucky	180	Associate
Indiana University Southeast	New Albany, Indiana	4,061	Masters**

\*Enrollment is included in total enrollment of the University of Kentucky which in 1979 was 22,899.

\*\*Masters in education only.



Vocational Schools

Location  
Miles Distant  
Curriculum

Nearest State Schools

Jefferson State Vocational-  
Technical School  
Louisville  
20 from Shepherdsville  
Agriculture  
Horticulture  
Business and Office  
Accounting-Jr. Management  
Clerical  
Data Processing  
Secretarial (Legal & Medical)  
Consumer and Home Economics  
Culinary Arts  
Health and Personal Services Occupations  
Cosmetology  
Child Care Aide  
Dental Assistant  
Licensed Practical Nursing  
Medical Assistant  
Nurse's Aide  
Surgical Technician  
Industrial Education  
Air Conditioning and Refrigeration  
Auto Body Repair  
Auto Mechanics  
Carpentry - Building Trades  
Diesel Mechanics  
Electricity  
Electronics  
Graphic Arts (Printing)  
Machine Shop  
Masonry  
Plumbing  
Welding  
Learning Resource Center

(Contd.)

Location	Elizabethtown State Vocational- Technical School
Miles Distant	Elizabethtown
Curriculum	26 from Shepherdsville Business and Office Clerical Consumer and Home Economics Commercial Foods Health and Personal Services Occupations Health Careers Industrial Education Appliance Repair Auto Mechanics Carpentry - Building Trades Commercial Heating and Air Conditioning Drafting Industrial Electricity Industrial Maintenance Machine Shop Radio and Television Repair Welding

Nearest Area Education Center

Location	Bullitt County Area Vocational Education Center
Curriculum	Shepherdsville Consumer and Home Economics Commercial Foods Marketing and Distributive Education Health and Personal Services Occupations Health Careers Industrial Education Air Conditioning/Heating/Refrigeration Auto Mechanics Graphic Arts (Printing) Radio and Television Service Welding

Arrangements can be made to provide training in the specific production skills required by an industrial plant. Instruction may be conducted either in the vocational school or in the industrial plant, depending upon the desired arrangement and the availability of special equipment.

## HEALTH

### Local Medical Personnel

Physicians - 6  
Dentists - 6

### Hospitals

Major hospital facilities are located in Louisville, 20 miles from Shepherdsville. Also, hospitals are located in nearby Elizabethtown and Bardstown.

### Ambulance Service

Name - MEDIC, Inc.

Service - 24-hour service to all of Bullitt County

Personnel are fully trained in emergency medical technician and cardiopulmonary resuscitation procedures

Equipment - 5 fully equipped ambulances are located in Bullitt County

### Public Health

Facility - Bullitt County Health Center

Staff - Four clerks (one part-time), two registered nurses, one licensed practical nurse (part-time), one health environmentalist, one plumbing inspector (part-time)

Programs - Neurological clinic, communicable disease, family planning, Kentucky Medical Assistance Program, diabetes testing, development disability, school program including kidney screening, hearing and vision tests, TB skin tests, and women, infants and children food supplement program

Facility - Seven Counties Service Mental Retardation Board

Staff - Five social workers (one part-time), one psychiatrist (part-time), and one medical records librarian

## OTHER LOCAL FACILITIES

### Communications

Telephone - Echo Telephone Company serves Hillview, Mt. Washington,  
and Shepherdsville  
South Central Bell Telephone Company serves Lebanon Junction

Telegraph - Western Union  
Services - Toll-free telephone number

Postal - U.S. Post Office

	<u>Shepherdsville</u>	<u>Mt. Washington</u>	<u>Lebanon Junction</u>
Class -	First	Second	Second
Mail received -	Twice	Twice	Once
Mail dispatched -	Once	Once	Once

Newspapers -

	<u>Shepherdsville</u>	<u>Mt. Washington</u>
	Pioneer News	Mt. Washington Star
Weekly and circulation -	6,500	5,133
Other papers received from -	Louisville, Bardstown and Elizabethtown, Kentucky	

Radio -

Stations received from - Louisville, Elizabethtown, Bardstown and  
Fort Knox, Kentucky; Cincinnati, Ohio;  
Nashville, Tennessee

Television -

Reception from - Louisville, Kentucky  
Kentucky Educational  
Television - Elizabethtown transmitter, channel 23;  
Louisville transmitter, channel 68

### Library Services

Public library - Ridgway Memorial Library, Shepherdsville

Size collection - 57,630 volumes

Circulation, 1978-79 - 144,698

Services - Magazines, records and record player, framed paintings,  
information file, art, story hour, filmstrips, copying machine,  
microfilm reader-printer, meeting room, children's summer program,  
tapes on oral history, Interlibrary Loan and newspapers. Branch  
libraries are located in Mt. Washington, Hillview and Lebanon  
Junction.



Religious Institutions

Bullitt County

Number of churches - 36  
Denominations - Assembly of God  
Baptist  
Calvary Christian  
Catholic  
Christian  
Church of Christ  
Church of God  
Fellowship Baptist  
First Church of the Nazarene  
Jehovah's Witnesses  
Methodist  
Presbyterian

Nearest synagogues - Louisville, 20 miles north of Shepherdsville  
Congregations - Adath Israel (reform)  
Adath Jeshurun (conservative)  
Anshei Sfard (orthodox)  
Brith Shalom (reform)  
Keneseth Israel (orthodox)

Financial Institutions

<u>Banks</u>	<u>Assets</u>	<u>Deposits</u>	<u>Statement Date</u>
Bullitt County Bank, Shepherdsville	\$17,324,225.56	\$14,779,399.66	6/30/79
The Peoples Bank, Mt. Washington*	21,157,355.04	18,345,403.55	6/30/79
The Peoples Bank of Shepherdsville	24,974,000.00	21,367,000.00	6/30/79
<u>Savings and Loan Associations</u>	<u>Assets</u>	<u>Savings Accounts</u>	<u>Statement Date</u>
Bullitt Federal Savings and Loan Association, Shepherdsville**	\$17,078,323.00	\$14,535,043.00	12/30/78

Hotels and Motels

Total number - 4  
Total units - 259

\*A branch bank is located in Hillview.  
\*\*A branch office is located in Mt. Washington.

## Clubs and Organizations

### Bullitt County

Boy Scouts  
Bullitt County Jaycees  
Bullitt County Saddle Club  
Cub Scouts  
Eastern Star  
4-H  
Future Farmers of America  
Future Teachers of America  
Friendship Center  
Homemakers  
Lions Club  
Masons  
Ministerial Association  
Optimist  
Peaceful Valley Saddle Club  
Parents-Teachers Association  
Women's Club

## RECREATION

### Local

Public recreational facilities include three parks, three playgrounds, four swimming pools, three golf courses, four tennis courts, four baseball diamonds, two football fields, and one basketball court. In addition, a supervised recreational program is available in Bullitt County.

Private recreational facilities include a country club, one golf course, three skating rinks, two bowling facilities, and a camp ground with a swimming pool.

Bullitt County was established in 1773 by Thomas Bullitt. Located east of Shepherdsville, which was designated the seat of Bullitt County in 1796, is the site where salt production was provided by Thomas Bullitt. Prehistoric animals licked the natural salt formations found in the area, thus the name Bullitt's Lick.

Located in southeastern Bullitt County is Bernheim Forest, a renowned 10,000-acre wildlife sanctuary with natural forest, lakes, an arboretum, a nature center and hiking trails.

Camp Crescendo, located at Lebanon Junction, provides facilities for instruction and training in marching, proper use and display of flags, rifle drill team, drum major and drum majorette to marching bands in Kentucky, Indiana, Ohio, West Virginia, and Tennessee.

The Bullitt County Fair is an annual event held in mid-June. A rural atmosphere is prevalent with displays, judging of events and awarding of ribbons.

### Area (Within 50 miles)

Louisville, 20 miles north of Shepherdsville, offers a wide variety of recreational, sporting, and cultural events. Most notable is the running of the Kentucky Derby. The most prestigious thoroughbred horse race in America is held at historic Churchill Downs the first Saturday in May. The Kentucky Derby was modeled after the Epsom Derby (Darby) held at Epsom Downs in Surrey County, England.

Other famous Louisville attractions are the renowned sternwheeler, the Belle of Louisville, (the Belle vies for honors in the Great Steamboat Race held annually during the Derby festival); the Kentucky Derby Museum; the Louisville Zoological Gardens; the Museum of Natural History and Science; and the J. B. Speed Art Museum. Seasonal performances of the arts are presented by Actors Theatre, the Louisville Ballet Company, the Kentucky Opera Association, the Louisville Bach Society, the Louisville Orchestra, and Shakespeare-in-the-Park.

(Contd.)

{ West of Shepherdsville and extending into Bullitt County is the Fort Knox Military Reservation. } Named in honor of revolutionary war general, first secretary of war, Henry T. Knox, the vast 110,300-acre military reservation was activated in 1918.

The Patton Museum of Cavalry and Armor is located near Fort Knox. Opened in 1949, the museum has cavalry and armor displays dating from the revolutionary war to the war in Vietnam. Also displayed are personal effects of famed World War II General George S. Patton, Jr. Much enemy armor, captured by General Patton and his troops, are displayed on the grounds of the museum.

The United States Gold Depository at Fort Knox is a two-story granite, steel, and concrete bullion depository containing a greater part of the United States gold reserve. The stored gold is in standard mint bars of almost pure gold or melted coin gold.

The Abraham Lincoln Birthplace National Historic Site, located near Hodgenville, is one of the most visited shrines in the United States since being completed in 1911. Located on 116 acres of the original Thomas Lincoln Farm, the shrine encloses the log cabin in which Abraham Lincoln was born.

At My Old Kentucky Home State Park in Bardstown stands the stately Georgian colonial mansion, My Old Kentucky Home, built circa 1800. Stephen Foster, visiting his cousin Judge John Rowan here in 1852, was inspired to write the song "My Old Kentucky Home" which has since become the official Kentucky state song. A production of the musical drama, "The Stephen Foster Story," is presented in the park amphitheatre during the summer months.



## COMMUNITY IMPROVEMENTS

### Bullitt County

Formation of the Bullitt County Chamber of Commerce was completed in June 1979. The Chamber has been very active in recruiting members and promoting the communities in Bullitt County.

Construction is under way on the Bullitt Lick Middle School, located at Shepherdsville, and the Bullitt East High School, located at Mt. Washington. The two schools, costing a total of \$6.35 million, are scheduled for completion in 1980.

### Shepherdsville

A \$430,000 improvement to the Shepherdsville water system is scheduled for completion in the fall of 1980. Construction of a 200,000-gallon ground tank and a 150,000-gallon elevated tank is planned. A series of loops will tie the present lines together.

Construction is scheduled to begin in the spring of 1981 for the rehabilitation of the Shepherdsville sewer system. The \$5 million project will increase the treatment plant capacity to 1 million gallons per day. Plans include the rehabilitation of some lines and the installation of 10,000 feet of interceptor lines.

A new \$200,000 city hall building in Shepherdsville houses the city's administrative offices, utility offices, and the police and fire departments.

Resurfacing of three miles of city streets has been completed.

Lighting has been greatly improved in the business district by replacing the mercury vapor street lights with the newer sodium vapor lights.

The recently constructed Parquet Springs Shopping Center provides Shepherdsville with a modern shopping center featuring a supermarket, drugstore, bakery, hardware store, laundromat, and ladies' apparel shop. In addition, ten restaurants, three motels and a convenient type market have opened in the community.

A newly completed subdivision has provided homes for moderate and upper income families.

Completion of a 104-unit dwelling complex now affords homes for low income and elderly families.

(Contd.)

The purchase and renovation of an adjoining building has provided the Bullitt County Bank with additional space. The \$240,000 expansion has combined the bookkeeping and computer system into one building.

The Echo Telephone Company now occupies a new building in Shepherdsville. The \$1 million, 12,000-square-foot structure houses the administrative, engineering, business and commercial offices of the company. The facility also provides a training center for the Allied Telephone Company. At the time of installation, the Echo Telephone Company maintained the largest digital electronic switching office in the United States.

Publishers Printing Company has completed construction of a 25,000-square-foot storage area. Continued growth of the company provided 60 new jobs to the community in 1979.

### Mt. Washington

A new \$90,000 city hall building in Mt. Washington houses the city's administrative offices, utility offices, police department and city council chambers. The Mt. Washington branch of the Bullitt County Library is also located in the building.

Recent repairs amounting to \$14,000 have been completed to the city streets.

A new pumper with a 750-gallon tank and a Jeep with a 250-gallon tank and pump have been purchased for the Mt. Washington Fire Department at a combined cost of \$53,000.

New businesses recently opened in Mt. Washington are a supermarket, convenient type market, floor service, furniture store, two restaurants and a vacuum cleaner shop.

A new branch office of the Bullitt Federal Savings and Loan Association is under construction in Mt. Washington. The new branch, due for completion in the spring of 1980, will feature drive-in facilities and a full line of service.