

1970

Industrial Resources: Calloway County - Murray

Kentucky Library Research Collections
Western Kentucky University, spcol@wku.edu

Follow this and additional works at: https://digitalcommons.wku.edu/calloway_cty

 Part of the [Business Administration, Management, and Operations Commons](#), [Growth and Development Commons](#), and the [Infrastructure Commons](#)

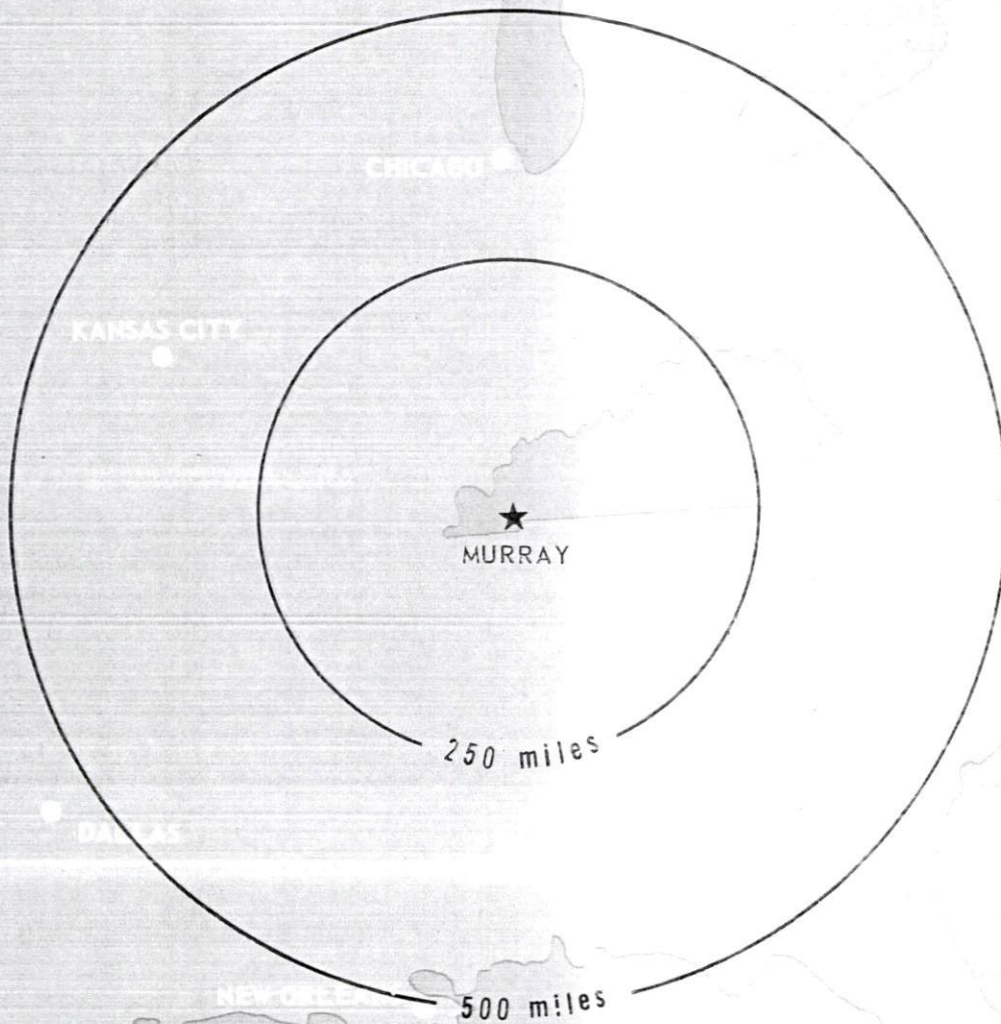
Recommended Citation

Kentucky Library Research Collections, "Industrial Resources: Calloway County - Murray" (1970). *Calloway County*. Paper 11.
https://digitalcommons.wku.edu/calloway_cty/11

This Report is brought to you for free and open access by TopSCHOLAR®. It has been accepted for inclusion in Calloway County by an authorized administrator of TopSCHOLAR®. For more information, please contact topscholar@wku.edu.

INDUSTRIAL RESOURCES

MURRAY **KENTUCKY**



MURRAY INDUSTRIAL SITES

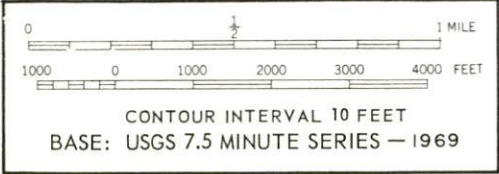
1970

MURRAY INDUSTRIAL SITES
1970

For further information concerning the following sites, contact James L. Johnson, Murray-Calloway County Chamber of Commerce, Murray, Kentucky; or the Kentucky Department of Commerce, Frankfort, Kentucky.

- SITE #1:** ACREAGE AND TOPOGRAPHY: 105 acres, flat slope
LOCATION: 2.7 miles north of Murray on U.S. 641
ZONING: None
HIGHWAY ACCESS: Four-lane U.S. 641
RAILROADS: Louisville & Nashville Railroad on site
WATER: 10-inch municipal line to be extended to site
GAS: Murray Natural Gas System
SIZE MAIN: 6-inch, high pressure
ELECTRICITY: West Kentucky RECC
SEWERAGE: None
OWNERSHIP: Murray-Calloway County Industrial Foundation, Inc.
- SITE #2:** ACREAGE AND TOPOGRAPHY: 69 acres, flat
LOCATION: 2.5 miles north of Murray on U.S. 641
ZONING: None
HIGHWAY ACCESS: U.S. 641, four-lane; paved access road is south boundary of site
RAILROADS: Louisville & Nashville Railroad on east boundary of site
WATER: 10-inch municipal line to be extended to site
GAS: Murray Natural Gas System
SIZE MAIN: 6-inch, high pressure
ELECTRICITY: West Kentucky RECC
SEWERAGE: None
OPTIONED BY: Murray Chamber of Commerce
- SITE #3:** ACREAGE AND TOPOGRAPHY: 191 acres, flat slope
LOCATION: 2.3 miles north of Murray on U.S. 641
ZONING: None
HIGHWAY ACCESS: U.S. 641, four-lane, paved access roads on north and south boundaries of site
RAILROADS: Louisville & Nashville Railroad on east boundary of site
WATER: 10-inch municipal line to be extended to site
GAS: Murray Natural Gas System
SIZE MAIN: 6-inch, high pressure
ELECTRICITY: West Kentucky RECC
SEWERAGE: None
OPTIONED BY: Oral option to Murray Chamber of Commerce
- SITE #4:** ACREAGE AND TOPOGRAPHY: 188.2 acres, flat to rolling
LOCATION: 2 miles north of Murray on U.S. 641
ZONING: None
HIGHWAY ACCESS: U.S. 641, four-lane; paved access road is northern boundary of site
RAILROADS: Louisville & Nashville Railroad on east boundary of site
WATER: 10-inch municipal line to be extended to site; site tested for ground water - guaranteed yield - 5,000 gpm
GAS: Murray Natural Gas System
SIZE MAIN: 6-inch, high pressure
ELECTRICITY: West Kentucky RECC
SEWERAGE: None
OPTIONED BY: Murray-Calloway County Industrial Foundation, Inc.
- SITE #5:** ACREAGE AND TOPOGRAPHY: 23.7 acres, flat to rolling
LOCATION: Within Murray city limits on Kentucky 2075
ZONING: Industrial
HIGHWAY ACCESS: Kentucky 2075 on western boundary
RAILROADS: Louisville & Nashville Railroad is eastern boundary of site
WATER: Murray Water and Sewerage System
SIZE LINE: 8-inch
GAS: Murray Natural Gas System
SIZE MAIN: 4-inch
ELECTRICITY: West Kentucky RECC
SEWERAGE: Murray Water and Sewerage System
OWNERSHIP: Murray Chamber of Commerce
- SITE #6:** ACREAGE AND TOPOGRAPHY: 40 acres, gentle slope
LOCATION: Within northern city limits on Kentucky 2075
ZONING: Industrial
HIGHWAY ACCESS: Kentucky 2075 is western boundary of site
RAILROADS: Louisville & Nashville Railroad is eastern boundary of site
WATER: Murray Water and Sewerage System
SIZE LINE: 8-inch
GAS: Murray Natural Gas System
SIZE MAIN: 2-inch
ELECTRICITY: Murray Electric System
SEWERAGE: Murray Water and Sewerage System
OPTIONED BY: Murray Chamber of Commerce
- SITE #7:** ACREAGE AND TOPOGRAPHY: 285 acres, almost flat
LOCATION: Within northern city limits on Industrial Road
ZONING: Industrial
HIGHWAY ACCESS: Paved access road to Kentucky 94
RAILROADS: Louisville & Nashville Railroad on west boundary of site
WATER: Murray Water and Sewerage System
SIZE LINE: 8-inch
GAS: Murray Natural Gas System
SIZE MAIN: 4-inch
ELECTRICITY: Murray Electric System
SEWERAGE: Murray Water and Sewerage System
OPTIONED BY: Murray Chamber of Commerce
- SITE #8:** ACREAGE AND TOPOGRAPHY: 30.5 acres, gently rolling
LOCATION: Southern city limits
ZONING: Industrial
HIGHWAY ACCESS: Kentucky 121
RAILROADS: Louisville & Nashville Railroad on east boundary of site
WATER: Murray Water and Sewerage System
SIZE LINE: 12-inch
GAS: Murray Natural Gas System
SIZE MAIN: 4-inch, high pressure
ELECTRICITY: Murray Electric System
SEWERAGE: Murray Water and Sewerage System
OWNERSHIP: Murray-Calloway County Industrial Foundation, Inc.

LEGEND:
UTILITIES AVAILABLE
 W - WATER
 G - GAS
 E - ELECTRICITY
 S - SEWERAGE



SITE-1
 105 Ac.
 G.E.

SITE-3
 191 Ac.
 G.E.

SITE-2
 69 Ac.
 G.E.

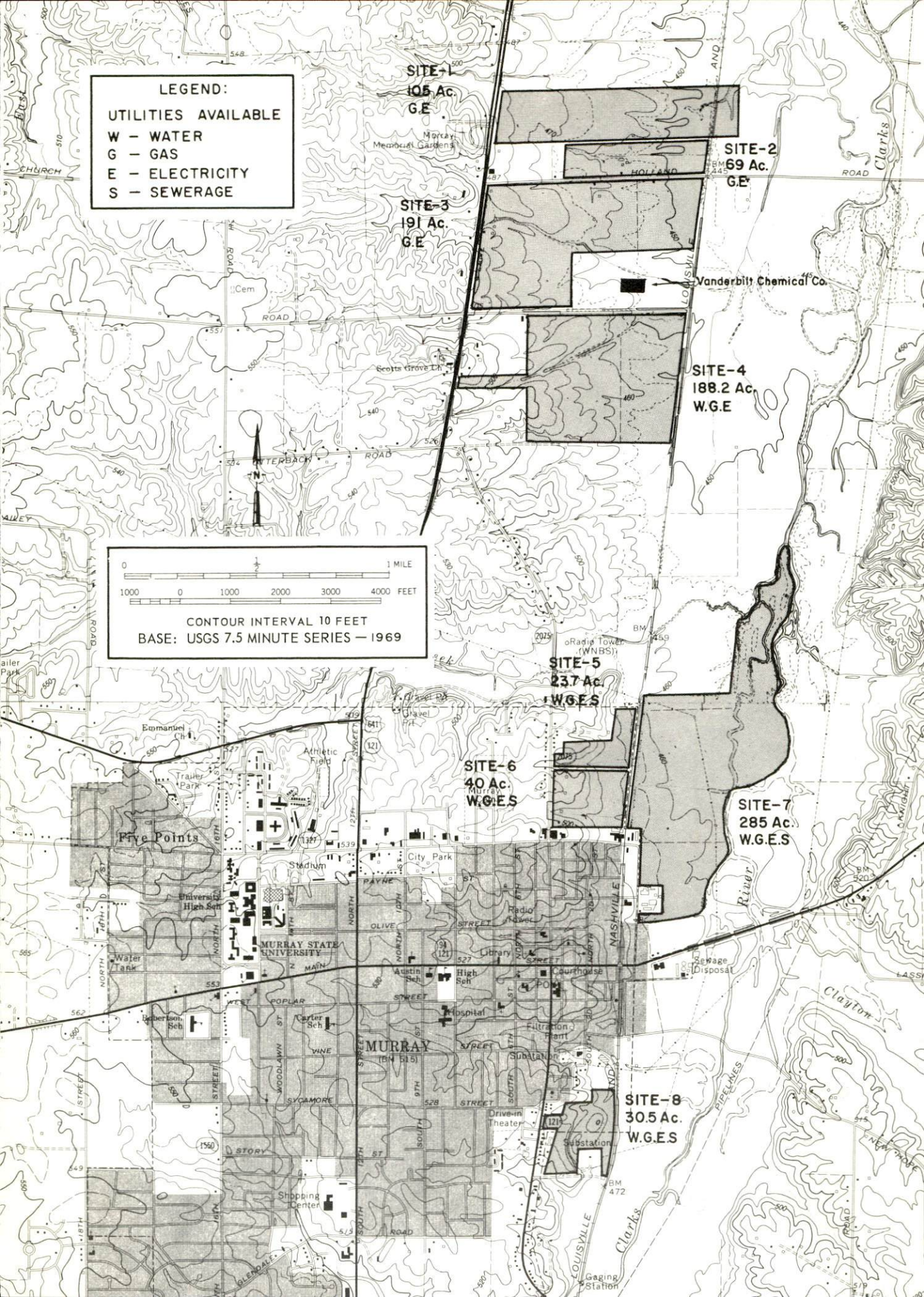
SITE-4
 188.2 Ac.
 W.G.E.

SITE-5
 23.7 Ac.
 W.G.E.S.

SITE-6
 40 Ac.
 W.G.E.S.

SITE-7
 285 Ac.
 W.G.E.S.

SITE-8
 30.5 Ac.
 W.G.E.S.



AVAILABLE INDUSTRIAL BUILDINGS

LOCATION: Elm and Second Streets

DIMENSIONS (Overall): Building No. 1 - 95 x 245 ft.; Building No. 2 - 100 x 100 ft.

TOTAL FLOOR SPACE: 34,000 square feet in the 2 buildings (24,000 sq. ft. in No. 1 and 10,000 sq. ft. in No. 2)

NO. OF FLOORS: One; SIZE OF BAYS: None; ACREAGE AVAILABLE: None

TYPE OF CONSTRUCTION: Concrete block and brick; OFFICE SPACE: None; SPRINKLERED: No

TYPE ROOF: Built-up; HEIGHT OF ROOF: 13 1/2 feet at eave and under steel - 18 feet at gable

TYPE FLOOR: 6-inch reinforced concrete; YEAR BUILT: 1955

HEATING: None; VACATED WHEN? June 1, 1970 or within 30 days

RAILROAD SIDING & CAPACITY: Rail is one block from building

TRUCK LOADING DOCKS: Two-truck level; ROADWAY ACCESS: Elm and Second Sts.

UTILITIES:

Electricity: Murray Electric Plant Board (TVA Distributor)

Gas: None in building but Western Kentucky Gas line within 6 feet

Water: Murray Water and Sewer System

Sewer: Murray Water and Sewer System

LEASE OR PURCHASE ARRANGEMENT: Lease

LEASE PRICE: Building No. 1 - \$700 per month; Building No. 2 - \$250 per month

OWNER: Murray Warehousing Corporation

LOCATION: East Main Street

FLOOR SPACE: 20,000 square feet - one floor

DIMENSIONS: Two buildings - 80 x 120 ft. - plus 12 ft. connecting building, 40 ft. long; and metal storage building, 15 x 28 ft.; and 10 x 50 ft. loading ramp

TYPE CONSTRUCTION: Concrete block with self supporting steel girders and wood decking

OFFICE SPACE: 855 sq. ft. - air conditioned

TYPE ROOF: Tar and felt on wood decking

TYPE FLOORS: 6-inch concrete; FLOOR TO CEILING GIRDER CLEARANCE: 13 ft.

HEATING: Swinging gas heaters

ROADWAY ACCESS: Paved highway front, gravel street on side and back

SIZE OF LOT: 404 ft. highway front extends back 436 ft. on east side; and 310.5 ft. on gravel street; and 386.5 ft. back gravel street

SPRINKLER SYSTEM: All building, new; VACANT: January 1, 1971

LOADING RAMP: 10 x 50 ft. with roof

AVAILABILITY OF RAILROAD: Track and siding 518.5 ft. away

UTILITIES:

Electricity: City of Murray (TVA power)

Water: City of Murray Water System

Gas: City of Murray Natural Gas System

Sewer: City of Murray Water and Sewer System

PURCHASE PRICE: \$120,000; LEASE PRICE: \$1,500 per month

CONTACT: Murray Chamber of Commerce or Roberts Realty, Murray, Kentucky

INDUSTRIAL RESOURCES

MURRAY, KENTUCKY

Prepared by

The Kentucky Department of Commerce

in cooperation with

The Murray Chamber of Commerce

1970

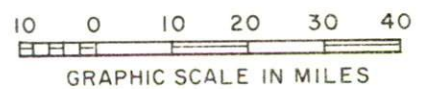
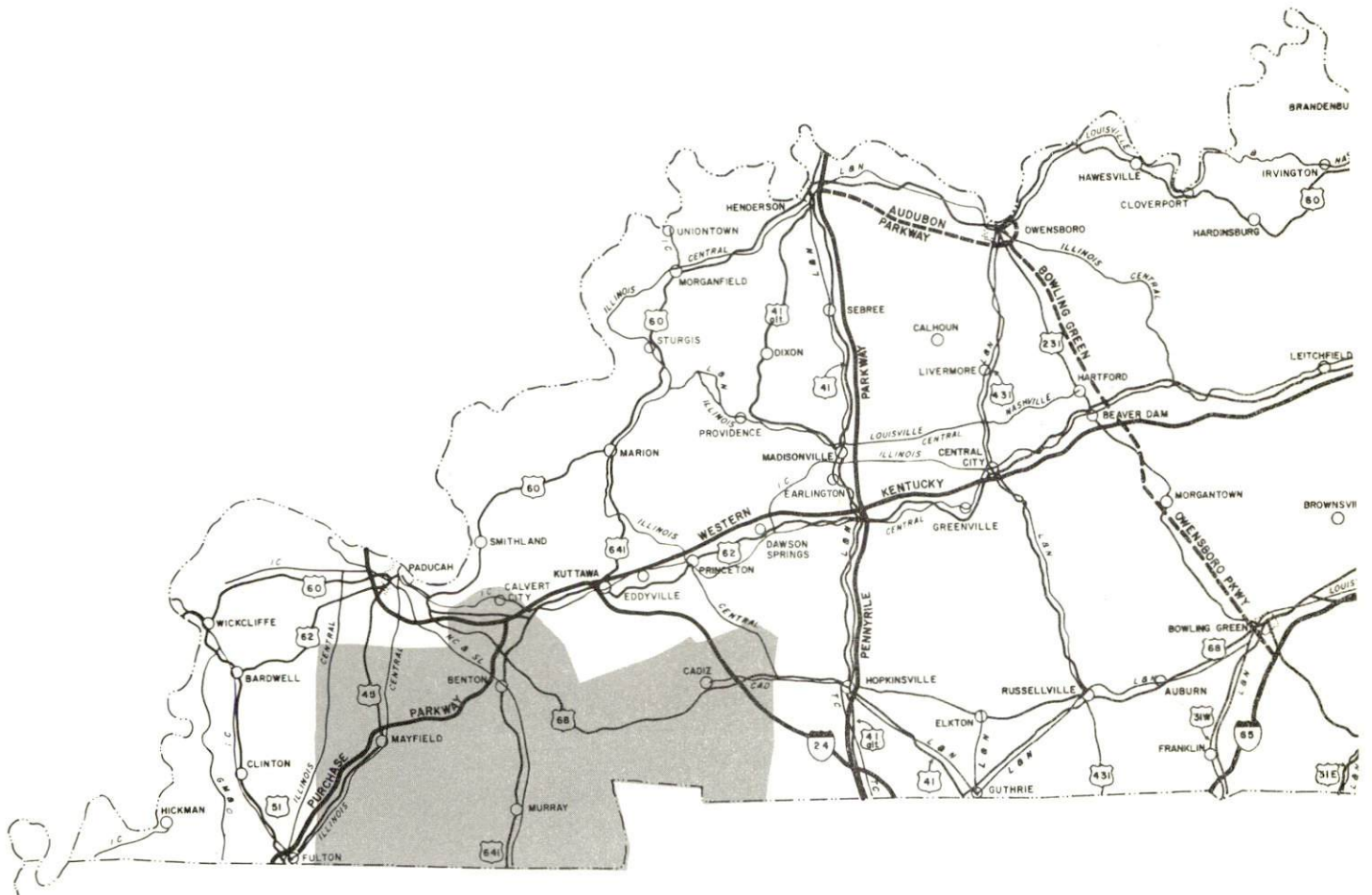
TABLE OF CONTENTS

<u>Chapter</u>	<u>Page</u>
INDUSTRIAL SITES	i
MURRAY, KENTUCKY - A RESOURCE PROFILE	1
THE LABOR MARKET	5
Population Trends	5
General Employment Characteristics.	5
Manufacturing Employment Trends by Industry	5
Murray Manufacturing Firms, Their Products and Employment	6
Wage Rates for Selected Occupations	7
Labor Organizations	7
Current and Future Labor Supply	8
Total Personal Income	8
Per Capita Personal Income.	8
EDUCATION	9
Public Schools	9
Special Schools	9
Vocational Schools	10
Colleges and Universities.	10
TRANSPORTATION	14
Rail	14
Truck Service	14
Air	15
Bus.	15
Taxi	15
Rental Services	15
POWER AND FUEL	16
Electricity	16
Natural Gas	16
WATER AND SEWERAGE	17
Water.	17
Sewerage	18

<u>Chapter</u>	<u>Page</u>
LOCAL GOVERNMENT19
City19
County19
Assessed Value of Property - 196919
Local General Property Tax Rates Per \$100 of Assessed Valuation - 197019
Planning and Zoning.20
Safety20
Police20
Fire20
Rescue Service20
Sanitation21
HEALTH22
Hospitals22
Nursing Homes.22
Day Care Centers.22
Public Health.22
OTHER LOCAL FACILITIES.24
Communications24
Library Service25
Religious Insitutions25
Financial Institutions25
Hotels and Motels25
Clubs and Organizations.26
RECREATION27
Local27
Area27
AGRICULTURE - NATURAL RESOURCES - CLIMATE29
Agriculture29
Natural Resources29
Climate29
HISTORY30

MURRAY LABOR MARKET AREA

*Shaded area denotes labor market area



MURRAY, KENTUCKY - A RESOURCE PROFILE

Location

Murray, county seat and largest city in Calloway County, is located in the flatlands of the Jackson Purchase Region of western Kentucky. The Purchase is both an historic and a geographic hub of America. Before settlers entered the territory, it was a borderland between northern and southern Indian tribes. In the pre-Civil War era it was a borderland between free and slave states. In Murray and Calloway County visitors discover a pleasing mixture of the best of all four regions including true southern hospitality which is part of the area's priceless heritage.

From Murray, Nashville, Tennessee, is 119 miles southeast; Paducah is 45 miles northwest; and the Blood River inlet of Kentucky Lake is just 8 miles east.

Surrounding Murray are the waterways of Kentucky's southwest corner - the Western Waterlands - known for its huge lakes, mighty rivers and numerous streams. This has made the community a tourist center, and proven to be a great asset for industrial growth.

The Economic Framework

Total employment in Calloway County averaged 7,800 in 1969 with manufacturing providing 1,300 of these jobs. During the first nine years of the decade manufacturing increased by approximately 120 jobs. Major industrial products are gas and electric ranges, uniforms, and dairy products.

Per capita personal income in the county in 1968 was \$2,026.

Calloway is the hub of a labor market area that includes Calloway and the three surrounding Kentucky counties. Area employment in 1969 totaled 30,200 including 3,800 in agriculture. Manufacturing furnishes 8,700 jobs. Area industrial employment has increased by more than 40 percent since 1959 with sharpest gains in the chemical, rubber, machinery and metal products industries.

Resources For Growth

1. There is a current estimated labor supply of 3,000 men and 2,690 women available for industrial jobs in the labor market area not including the additional persons that would commute from the adjoining Tennessee counties. In addition, 3,530 young men and 3,400 young women will become 18 years of age by 1976 and potentially available for work.

2. The local transportation capability is good. The Louisville & Nashville Railroad serves Murray with a variety of services, and the city is in a favorable freight zone for major midwestern, western, and southern market centers. Major highway arteries in the area include the Purchase Parkway, 23 miles northwest of Murray, the Western Kentucky Parkway, 45 miles northeast of the city, and Interstate 24, now under construction, 31 miles to the north. In addition to Murray's own airport, there is a paved runway at both of the nearby state parks and commercial service is available at Paduch, 45 miles distant.

3. Energy - Gas is provided by the Murray Natural Gas System, and electricity, generated by the Tennessee Valley Authority, is provided by the Murray Electric System. There is an ample supply of water from municipally owned wells.

4. Murray has eight available industrial sites totaling 934.7 acres.

5. Education is an important growth asset for Murray and Calloway County. The city and county school systems are excellent from elementary through high school levels. Since its founding in 1922 as Murray State Teachers College, Murray State University with a present enrollment of over 7,000 has been a tremendous economic stimulant for the community. The university is a multi-purpose coeducational institution which seeks to provide opportunities in higher education that are commensurate with the needs and interests of the people of the region. It is organized into six schools: The Schools of Applied Science and Technology, Arts and Sciences, Business, Education, Fine Arts, and the Graduate School. Pre-professional curricula also are provided in medicine, dentistry, forestry, veterinary medicine, optometry, engineering, medical technology, pharmacy and law. Some of the distinctive features of the more than 40 buildings on the campus are the largest college auditorium in Kentucky; modern spacious dormitories; and a host of the new classroom buildings that are second to none in equipment, function, and beauty.

Located in Paducah, 45 miles from Murray, are the Paducah Community College and two vocational education centers.

Community Programs For Improvement

Murray has demonstrated its progressive character in a number of recent community improvements, both public and private.

Public:

1. Continuing expansion of the municipal gas, sewerage and water systems. Expansion of the sewage disposal plant is virtually complete and sites are being considered which will provide space for two additional city wells.

2. Recently completed highway construction includes U.S. Highway 641 By-Pass, U.S. Highway 121 By-Pass, four-laning of a 2.7 mile section of U.S. 641 north, and four-laning of one section of 12th Street. Being planned are the four-laning of a second section of 12th Street out to the Purchase Parkway and the four-laning of Main Street. Murray is one of two cities in Kentucky to receive a grant for downtown traffic renewal under the federal Topics Program. The \$75,000 grant will be used to widen inter-sections and provide synchronized traffic signals in the downtown area.

3. A four-bed intensive coronary care unit, monitored by Vanderbilt University Hospital, has recently been installed at the new Murray-Calloway County Hospital and funds have been granted for the addition of 50 more beds to the hospital facilities.

4. A new city high school building currently under construction is expected to open in the Fall of 1971. The Murray University Elementary Laboratory School occupies a new building, opened in April 1970, which is one of the most modern school buildings in the nation. Murray has been authorized to open a vocational education school as part of the city school system. Construction will be financed by an EDA loan plus state and local matching funds. New modern facilities are continually being added at Murray State University. Currently under construction is a 23,000-seat football stadium.

5. A municipal housing project is underway which will provide 50 units of low-rent housing.

6. The Calloway County Public Library, the regional library headquarters for the Jackson Purchase, has recently moved into a new modern building.

7. Other recent improvements accomplished by the city include a new fire substation, a \$12,000 building at the city park for equipment storage and rest rooms, and three neighborhood parks.

Business and Industrial:

1. Recently opened are two new movie theaters reputed to be the finest in the state.

2. A \$1 million mobile home park, one of the largest in the Southern United States, is under construction outside the city limits on U.S. 641 North.

3. A \$1 million warehousing center for Tappan Company has just been completed.

4. The first phase of a \$3,250,000 shopping center, the Central Center, will open in the Fall of 1970 and a \$2,740,000 section of the Bel-Aire Shopping Center is complete.

5. A TV Drive-In Bank has been opened in the downtown area.

Recreation, Entertainment, and Livability

Murray's location in the heart of Kentucky's Land of Lakes gives it an excellent livability index. Adjacent to Murray are Kentucky Lake, the world's largest man-made lake, and Lake Barkley with 880 miles of shoreline. Two Kentucky state parks and one Tennessee state park are within minutes of town and offer a wide variety of activities including a summer theater program. Currently being developed is the vast Land Between the Lakes, a 170,000-acre wilderness between Kentucky Lake and Lake Barkley. The Tennessee Valley Authority plans over 5,000 family campsites here with expanded facilities for every facet of outdoor life. There are also 54 commercial resorts in the Calloway County area.

The Thoroughbreds of Murray State University are perennial challengers for major honors in the seven intercollegiate sports in the Ohio Valley Conference. In addition, several lectures, recitals, concerts, and plays are presented each year on the campus and are open to the public.

Paducah is 45 miles distant and Nashville and Memphis are within a 3-hour drive, making available additional cultural activities and entertainment media.

A less tangible but equally important ingredient making Murray a good place to live, work and play, is the genuine southern hospitality and spirit of community cooperation among the citizens of Murray and Calloway County.

Some points of interest and city pride in Murray are: (1) One of the largest dark-fired tobacco markets in the world is located in Murray, (2) Murray, the "popcorn capital of the world," processes 10 percent of the nation's popcorn, and (3) the largest deposit of high-quality silica sand in existence is found in Murray.

THE LABOR MARKET

POPULATION TRENDS ^{1/}

Area	Population			Percent Change	
	1970	1960	1950	1960-70	1950-60
Murray	13,484	9,303	6,035	+44.9	+54.2
Labor Market Area	85,987	76,599	74,581	+12.3	+ 2.7
Calloway County	27,206	20,972	20,147	+29.7	+ 4.1
Graves County	30,745	30,021	31,364	+ 2.4	- 4.3
Marshall County	19,639	16,736	13,387	+17.3	+25.0
Trigg County	8,397	8,870	9,683	- 5.3	- 8.4

GENERAL EMPLOYMENT CHARACTERISTICS ^{2/}

Major Employment Group	1969	
	Calloway County	Labor Market Area
TOTAL	7,800	30,200
Agricultural	1,100	3,800
Nonagricultural	6,700	26,400
Manufacturing	1,300	8,700
Trade and Services	1,956	5,836
Government	3,400	6,150

MANUFACTURING EMPLOYMENT TRENDS BY INDUSTRY
SEPTEMBER 1959 AND 1969 ^{3/}

Industry	Calloway County			Labor Market Area		
	1969	1959	%Change	1969	1959	%Change
TOTAL	1,366	1,248	+ 9.5	9,041	6,303	+ 43.4
Food & kindred products	112	96	+16.7	217	375	- 42.1
Apparel, textiles, leather	14	437	-96.8	1,989	2,971	- 33.1
Lumber & furniture	0	6	-	270	362	- 25.4
Printing, publishing, paper	30	25	+20.0	98	83	+ 18.1
Chemicals, petroleum, coal, rubber	12	12	0	3,466	1,374	+ 152.3
Stone, clay & glass	21	19	+10.5	481	150	+ 220.7
Primary metals	0	0	-	675	287	+ 135.2
Machinery & metal products	1,118	652	+71.8	1,479	677	+ 118.5
Other	59	1	+5800.0	326	19	+1615.8

MURRAY MANUFACTURING FIRMS,
THEIR PRODUCTS AND EMPLOYMENT ^{4/}

Firm	Product	Employment		
		Total	Male	Female
Chrisman Popcorn Co.	Popcorn	8	6	2
Dairy Cheer Stores, Inc.	Ice cream, meat, bread	12	6	6
Ellis Popcorn Co.	Popcorn	4	3	1
Fitts Block & Ready Mix Co., Inc.	Concrete block, ready mixed concrete	17	17	0
Fulton Coal & Ice Co., Inc.	Ice	4	4	0
Geurin Products	Concrete products	20	20	0
Hutson Chemical Co., Inc.	Fertilizer	10	10	0
J. G. Chemists	Industrial adhesives, cleaners, solvents	2	2	0
Ledger & Times Publishing Co., Inc.	Newspaper, job printing	19	13	6
Murray Fabrics, Inc.	Knitted tubing	11	2	9
Murray Machine & Tool Co.	Pump houses, septic water tanks, ornamental ironwork	7	7	0
Parker Popcorn Co., Inc.	Popcorn processing	8	8	0
Pocock Enterprises	Wire products, safety lights for automobiles	2	1	1
Ryan Milk Co.	Dairy products	95	80	15
Sager Glove Co.	Fireproof, acid-proof clothing	60		
Smith and Sons	Country ham, bacon	1	1	0
Standard Textile Co.	Uniforms	290	30	260
Tappan Co.	Gas and electric ranges	920	880	40
Thurmond Feed Co.	Livestock feeds	2	2	0
Valentine Printing	Job printing	1	0	1
Vanderbilt Chemical Co.	Industrial chemical additives	35	31	4
York Spring Company	O-Ring springs	26	5	21

WAGE RATES FOR SELECTED OCCUPATIONS
MURRAY, KENTUCKY ^{5/}

Classification	Wages Per Hour		
	Starting	Maximum	Prevailing
<u>Production Employees</u>			
Assembler	\$1.60	\$3.25	\$2.75
Inspector	1.60	3.25	2.65
Production Laborer	1.60	2.75	2.60
Welder, Arc or Acetylene (Class-A)	1.60	4.00	3.00
<u>Service Employees</u>			
Electrician (Class-A)	\$1.60	\$4.75	\$3.00
Laborer	1.60	3.25	2.50
Machinist	1.60	4.50	3.00
Mechanic, Maintenance	1.60	4.50	3.00
Truck Driver, Industrial (Class-A)	1.60	3.10	2.00
<u>Office Employees</u>			
Bookkeeper	\$1.60	\$2.50	\$2.00
File Clerk	1.60	2.00	1.80
Receptionist	1.60	2.25	1.90
Secretary	1.60	2.50	2.00
Typist	1.60	2.00	1.80

LABOR ORGANIZATIONS

<u>Union</u>	<u>Representing Workers at:</u>
United Packinghouse Workers	Ryan Milk Company
Amalgamated Garment Workers (AGWA)	Standard Textile Company
United Auto Workers	Tappan Company

CURRENT AND FUTURE LABOR SUPPLY
MURRAY LABOR MARKET AREA

County	1970			Future Labor Supply by 1976 ^{7/} (Becoming 18 Years of Age)		
	Current Labor Supply ^{6/}			Total	Male	Female
	Total	Male	Female			
Labor Market Area	5,700	3,011	2,689	6,940	3,531	3,409
Calloway	1,509	719	790	1,586	816	770
Graves	1,665	1,026	639	2,608	1,347	1,261
Marshall	1,841	932	909	1,868	944	924
Trigg	685	334	351	878	424	454

TOTAL PERSONAL INCOME ^{8/}

Area	1968	1959	% Change
Calloway County	\$ 51,547,000	\$ 27,048,000	+90.6
Labor Market Area	210,175,000	111,882,000	+87.9
Kentucky	8,516,000,000	4,655,000,000	+82.9

PER CAPITA PERSONAL INCOME ^{9/}

Area	1968	1959	% Change
Calloway County	\$2,026	\$1,334	+51.9
Labor Market Area	\$2,026 to 3,571	\$941 to 2,187	+115.3 to +63.3
Kentucky	2,645	1,552	+70.4

EDUCATION

Public Schools

	<u>Murray Independent</u>	<u>Calloway County</u>
Total Enrollment	1,884	2,554
Elementary	930	1,820
High School	954	734
Student-Teacher Ratio	24-1	25-1
Elementary	25-1	30-1
High School	22-1	20-1
State Rating of High School	Standard	Standard
Other Accreditations	Southern Association of Colleges and Schools	Southern Association of Colleges and Schools
Percent High School Graduates to College	85.0	48.9
Current Expenditures Per Pupil	\$411.30	\$376.37
Bonded Indebtedness	\$136,000	\$566,000

Special Schools

Total Enrollment	207
Elementary	207
Student-Teacher Ratio	23-1
Elementary	23-1

Vocational Schools

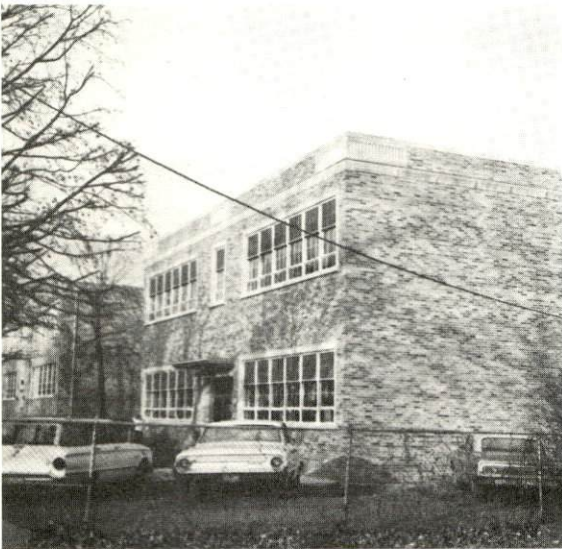
Nearest Area Schools

	Tilghman Area, Paducah	West Kentucky Area, Paducah
Miles Distant	44	44
Curriculum	Nurse Aide Practical Nursing Surgical Technician Ward Clerk Distributive Education Electronics (Technology) Highway Technology Air Conditioning and Refrigeration Appliance Repair Auto Body Repair Auto Mechanics Carpentry Cosmetology Drafting Electricity Machine Shop Small Engine Repair Welding	General Clerical Secretarial-Steno Electronics (Communication) Auto Body Repair Auto Mechanics Barbering Carpentry Commercial Foods Cosmetology Drafting Electricity Groundskeeping and Landscaping Masonry Tailoring

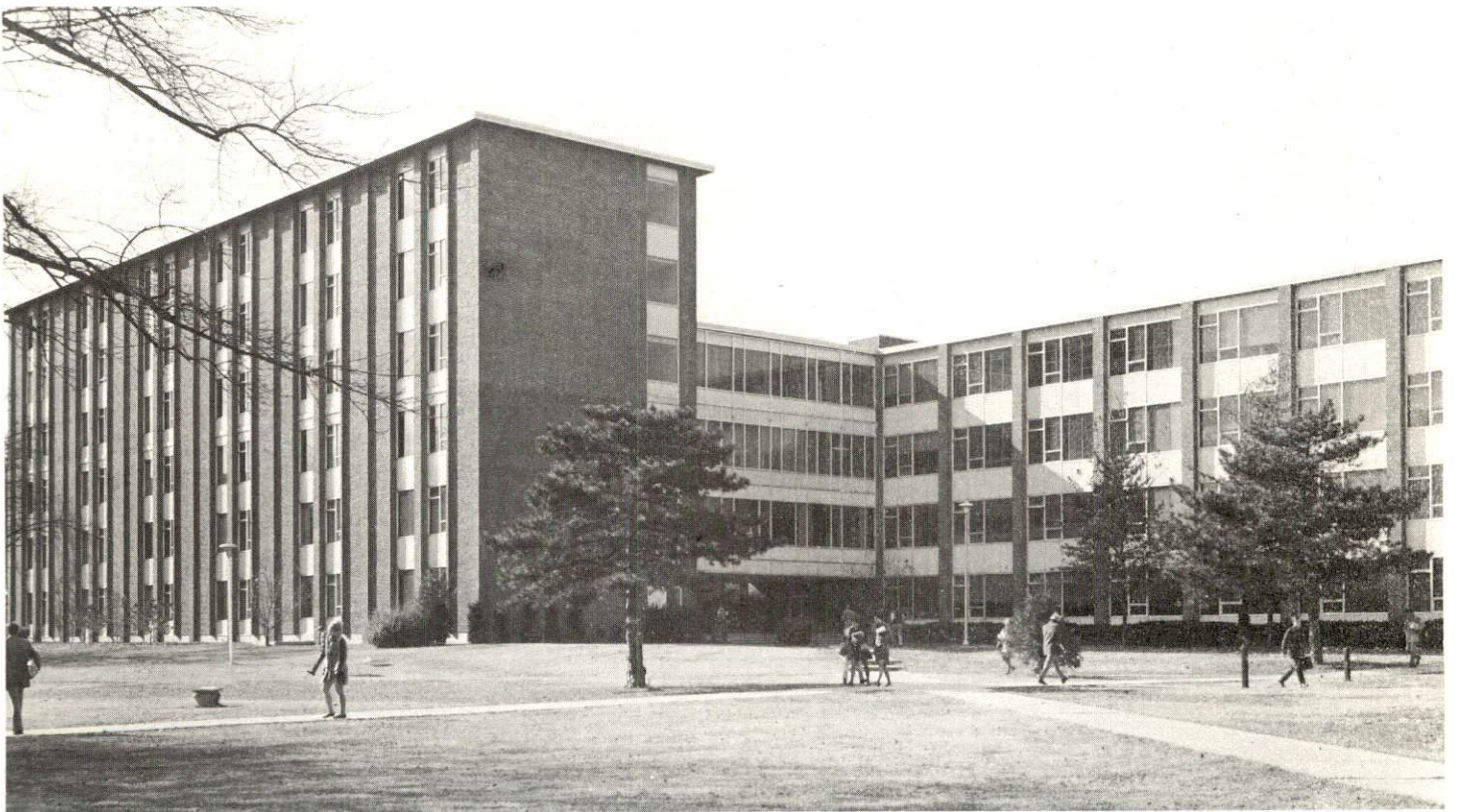
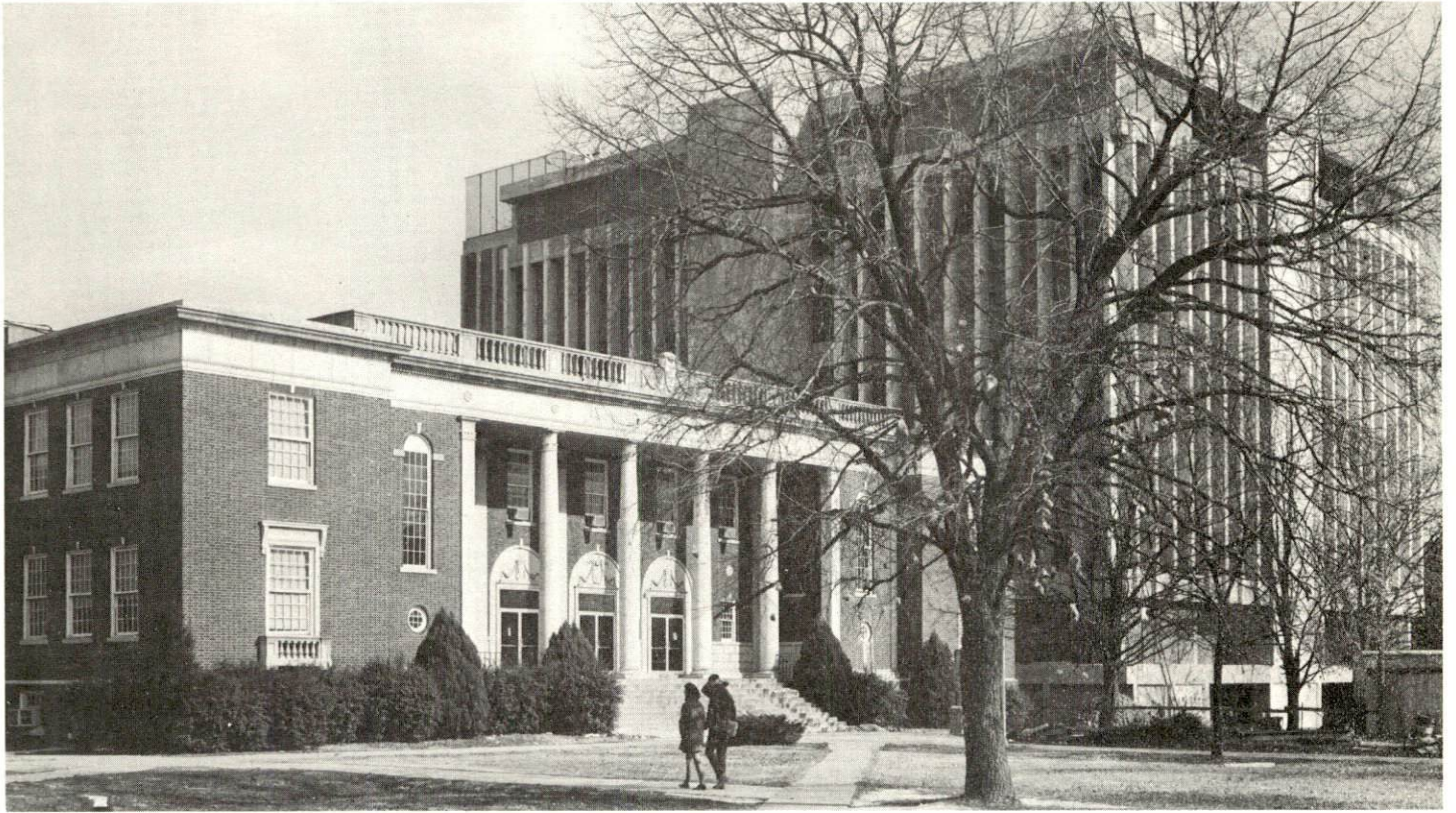
Colleges and Universities

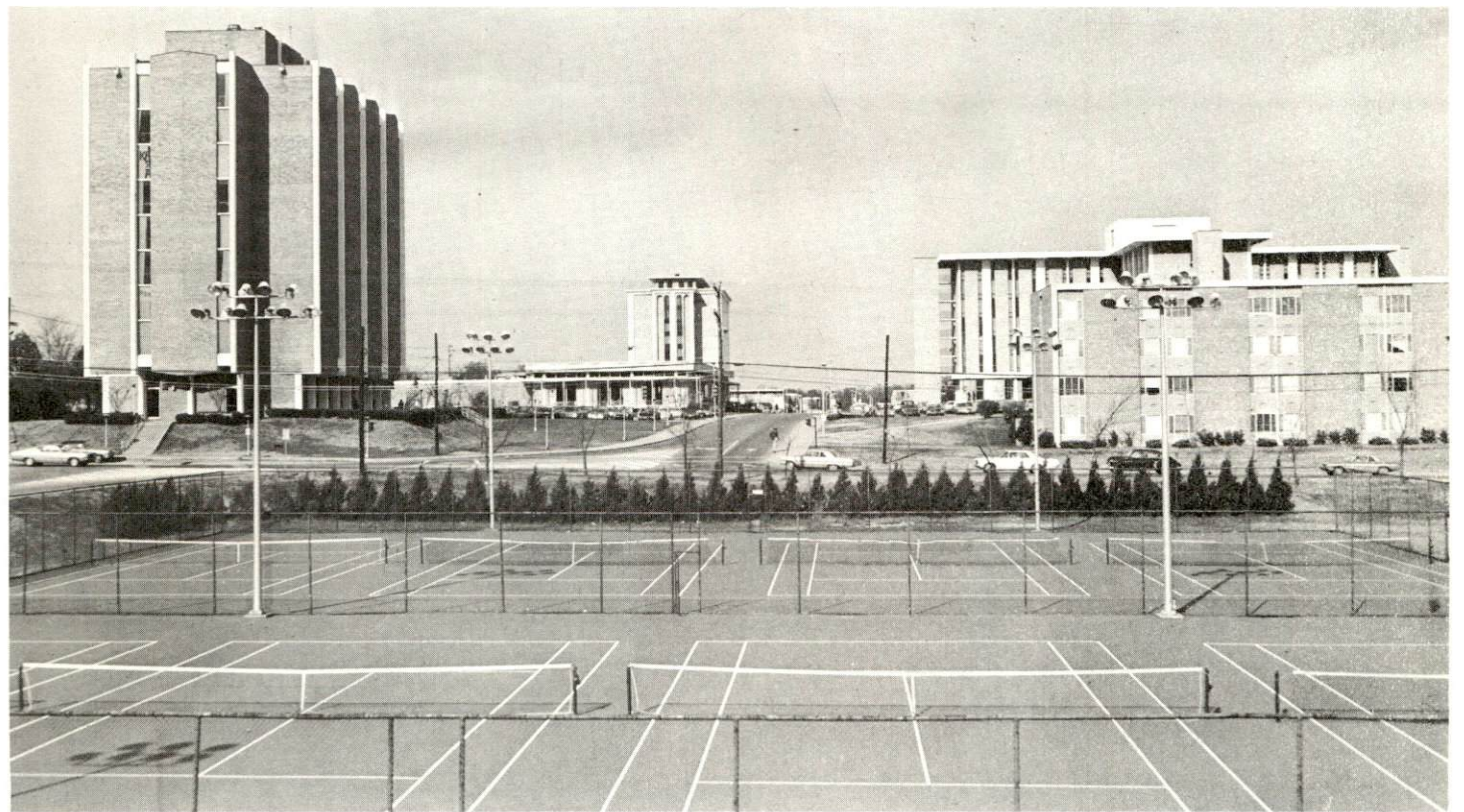
<u>Name</u>	<u>Kentucky Area - Within 50 miles</u>		<u>Highest Degree Conferred</u>
	<u>Location</u>	<u>Enrollment</u>	
Murray State University	Murray	7,055	Masters
Paducah Community College	Paducah	1,085	Associate

ELEMENTARY AND HIGH SCHOOLS



MURRAY STATE UNIVERSITY





TRANSPORTATION

Rail

Lines serving - Louisville & Nashville Railroad

Services - Freight service, space for siding, switching facilities;

REA Express - daily pickup and delivery from Mayfield Office.

Branch packing agent at Murray

RAILWAY TRANSIT TIME FROM MURRAY, KENTUCKY, TO: 10/

City	No. of Days		City	No. of Days	
	CL			CL	
Atlanta, Ga.	3		Los Angeles, Calif.	4	
Birmingham, Ala.	3		Louisville, Ky.	2	
Chicago, Ill.	3		Nashville, Tenn.	1	
Cincinnati, Ohio	3		New Orleans, La.	3	
Cleveland, Ohio	4		New York, N. Y.	5	
Detroit, Mich.	5		Pittsburgh, Pa.	4	
Knoxville, Tenn.	3		East St. Louis, Ill.	3	

Truck Service

Company

Harper Truck Service, Inc.
 Arnold Ligon Truck Line, Inc.
 (Ellis Trucking)
 McLean Trucking Company
 Paschall Truck Lines, Inc.
 T. I. M. E. Freight, Inc.

Home Office

Paducah, Kentucky
 Lebanon, Kentucky
 Winston-Salem, North Carolina
 Murray, Kentucky
 Lubbock, Texas

HIGHWAY MILES AND TRUCK TRANSIT TIME IN DAYS FROM
MURRAY, KENTUCKY, TO SELECTED MARKET CENTERS

City	Highway Miles	Delivery Time <u>11/</u>		City	Highway Miles	Delivery Time	
		LTL	TL			LTL	TL
Atlanta, Ga.	375	3-4	1-2	Los Angeles, Calif.	1,991	7-9	4-6
Birmingham, Ala.	324	3-4	1-2	Louisville, Ky.	241	1-2	1
Chicago, Ill.	435	2	1	Nashville, Tenn.	119	1-2	1
Cincinnati, Ohio	341	1-2	1	New Orleans, La.	561	3-4	2
Cleveland, Ohio	585	3-4	1-2	New York, N. Y.	1,000	4-6	2-3
Detroit, Mich.	606	3-4	1-2	Pittsburgh, Pa.	548	3-4	1-2
Knoxville, Tenn.	304	2-3	1	St. Louis, Mo.	240	1-2	1

Air

	<u>Local</u>	<u>Nearest Commercial</u>
Location:	Kyle Field 5 miles northwest of Murray	Barkley Field Paducah, Kentucky
Runways:	1 paved	2 paved
Length:	4,000 feet	6,500 feet; 4,000 feet
Traffic Control:	Wind sock and tee	Wind tee
Lighting:	Beacon, runway lights sundown to sunrise, wind tee	Beacon, boundary, obstruction, runway lights and runway end identification lights
Services:	80-100 octane, charter and flight instruction, hanger and tie down	80 and 100 octane; jet fuel; Delta, Ozark, Sun and Desoto Airlines; taxi; limousine; U-Drive-It; storage; major A & E repairs

Bus West Kentucky Stages, Southern Greyhound Bus Lines

Taxi 18-hour daily service by Radio Cab Company

Rental Services Car and truck rentals

POWER AND FUEL

Electricity

Company serving Murray - Murray Electric System

Source of power - Tennessee Valley Authority

Total generating capacity - 18,202,090 KW

Industrial rates negotiated by - Murray Electric System, Murray,
Kentucky

Company serving Calloway County - West Kentucky RECC

Source of power - Tennessee Valley Authority

Total generating capacity - 18,202,090 KW

Industrial rates negotiated by - West Kentucky RECC, Mayfield, Kentucky

Natural Gas

Company serving - Murray Natural Gas System

Source of supply - Texas Gas Transmission Corporation

Size of transmission lines - 6-inch

Distribution lines - 6, 4, and 2 inches

BTU content - 1,008; Specific gravity - .585

Distribution pressure - 35 psi

Monthly Rates:

Residential and Small Commercial

First	2,000 cu. ft. or less	\$2.20 Net
Next	1,000 cu. ft.	1.85 Per M cu. ft.
Next	1,000 cu. ft.	1.75 Per M cu. ft.
Next	1,000 cu. ft.	1.60 Per M cu. ft.
Next	1,000 cu. ft.	1.10 Per M cu. ft.
Next	4,000 cu. ft.	1.05 Per M cu. ft.
Over	10,000 cu. ft.	.95 Per M cu. ft.
Minimum		2.20

Industrial

Industrial rates will be negotiated depending on the volume of gas required.

WATER AND SEWERAGE

Water

Company serving Murray - Murray Water and Sewer System

Source - wells

Treatment plant capacity - 5,000,000 gpd

Average daily consumption - 2,500,000 gallons

Peak daily consumption - 3,000,000 gallons

Type treatment - iron removal, chlorination, fluoridation, liquid caustic soda for PH adjustment

Storage capacity - 2,200,000 gallons; Average pressure - 45 - 50 psi

Average temperature - 59 degrees F.

Size mains - 16, 12, 10, 8, 6, and 4 inches

MONTHLY WATER RATES FOR WHOLESALE AND INDUSTRIAL CONSUMERS

Inside

Minimum		\$1. 80
First	2,000 gals. per month	. 90 per M gals.
Next	2,000 gals. per month	. 79 per M gals.
Next	2,000 gals. per month	. 68 per M gals.
Next	2,000 gals. per month	. 58 per M gals.
Next	2,000 gals. per month	. 50 per M gals.
Next	25,000 gals. per month	. 40 per M gals.
Next	25,000 gals. per month	. 29 per M gals.
Next	240,000 gals. per month	. 22 per M gals.
Next	1,700,000 gals. per month	. 18 per M gals.
All over	2,000,000 gals. per month	. 14 per M gals.

Outside

Minimum		\$2. 16
First	2,000 gals. per month	1. 08 per M gals.
Next	2,000 gals. per month	. 97 per M gals.
Next	2,000 gals. per month	. 86 per M gals.
Next	2,000 gals. per month	. 79 per M gals.
Next	2,000 gals. per month	. 65 per M gals.
Next	25,000 gals. per month	. 58 per M gals.
Next	25,000 gals. per month	. 43 per M gals.
Next	240,000 gals. per month	. 25 per M gals.
Next	1,700,000 gals. per month	. 18 per M gals.
All over	2,000,000 gals. per month	. 14 per M gals.

Surface water sources - Kentucky Lake and East Fork of Clark River
 Average discharge - unlimited supplies on Kentucky Lake and approxi-
 mately 90 cfs on East Fork of Clark River
 Expected ground water yield - 500 - 1,000 gpm

Sewerage

Company serving Murray - Murray Water and Sewer System
 Design capacity - 5,000,000 gpd
 Average daily flow - 1,800,000 gallons
 Treatment - primary and secondary
 Type treatment - grit chambers, trickling filters, primary and secondary
 settling tanks, digesters, sludge dewatering equipment, chlorination
 Treated effluent discharged into - Clark River
 Size of sanitary mains - 8 to 24 inches

Rates - Based on gallons of water usage per month

Inside city -

Minimum		\$1.80
First	2,000 gals. per month	.90 per M gals.
Next	2,000 gals. per month	.26 per M gals.
Next	2,000 gals. per month	.23 per M gals.
Next	2,000 gals. per month	.19 per M gals.
Next	2,000 gals. per month	.17 per M gals.
Next	25,000 gals. per month	.13 per M gals.
Next	25,000 gals. per month	.10 per M gals.
Next	240,000 gals. per month	.07 per M gals.
Next	1,700,000 gals. per month	.06 per M gals.
All over	2,000,000 gals. per month	.05 per M gals.

Outside - all sewer customers outside the city limits are to be assessed
 an additional twenty percent of total sewer billing.

Minimum	\$ 2.16
2,000 gals.	2.16
3,000 gals.	2.47
4,000 gals.	2.78
5,000 gals.	3.06
6,000 gals.	3.34
7,000 gals.	3.57
8,000 gals.	3.80
9,000 gals.	4.00
10,000 gals.	4.20
35,000 gals.	8.10
60,000 gals.	11.10
300,000 gals.	31.26
2,000,000 gals.	153.66

LOCAL GOVERNMENT

City

Structure - Mayor - 4-year term; 12 councilmen - 2-year terms
 Budget 1970-71 - General Fund \$595,000; Water and Sewer System total operating expenses for year ended December 31, 1969 - \$282,196.52
 Fees and licenses - annual business license fee ranging from \$7.50 to \$250; annual vehicle license tax - \$15

County

Structure - County Judge - 4-year term; 4 magistrates - 4-year terms
 Budget 1969-70 - General Fund \$164,000; Road Fund \$72,000

Assessed Value of Property - 1969

<u>Classes of Property*</u>	<u>Murray</u>	<u>Calloway County</u>
Real Estate	\$48,292,363 (1970)	\$105,038,608
Tangibles	12,913,687 (1970)	24,581,739
Public Service	4,002,212	12,425,064

Local General Property Tax Rates Per \$100 of Assessed Valuation - 1970 ^{12/}

<u>Taxing Unit**</u>	<u>Murray</u>	<u>Calloway County</u>
State	\$.015	\$.015
County	.209	.209
School	.537	.330
City	.400	
Total	\$1.161	\$.554

*Property assessed at 100 percent of fair value.

**Manufacturing machinery, raw materials inventories and goods in process inventories are not subject to local tax. State rate is only \$0.15 per \$100.

Planning and Zoning

Agency - Murray Planning Commission

Plans completed - Comprehensive Plan, Community Facilities Plan, Subdivision Regulations, Fringe Area Study, Public Improvements Program, Capital Improvements Budget

Codes adopted - Kentucky State Plumbing Code, Kentucky Standards of Safety

Other programs - Completed - 142-unit public housing project

Underway - FHA project - 262-unit mobile home park

Safety

Police

Murray

Calloway County

Total staff

20

5

Radio-patrol cars

3

3

Other equipment

chief's command car
radar timing device,
breathalyzer

base station maintains
radio communication
with state police and
police in surrounding
communities

Fire

American Insurance

Association Fire Rating

6

Full-time staff

20

Volunteers

6

Equipment:

1,000 gpm pumpers

1

750 gpm pumpers

1

500 gpm pumpers

1

ladder truck

1 quad with 750 gpm pumper

chief's car

1

Rescue Service

Murray-Calloway County Rescue Squad

Number of volunteers - 30

Equipment - one 1,000 gpm pumper; one 250 gpm brush fire truck;
one utility truck

Personnel training - first aid, fire-fighting techniques, water rescue

Sanitation

	<u>Murray</u>	<u>Calloway County</u>
Type service	municipal	Each business and residence is responsible for its own garbage disposal.
Cost:		
residential	\$2 per month	
business	negotiated	
Collection frequency:		
residential	weekly	
business	daily to twice weekly (depending on need)	
Trash pickup	weekly (no charge)	
Disposal method	land fill	use of city land fill free of charge

HEALTH

Hospitals

<u>General Hospital</u>	<u>Location</u>	<u>Beds</u>
Murray-Calloway County Hospital	Murray	106

General hospital facilities - 2 operating rooms, 4-bed intensive coronary unit, defibrillator, 49 convalescent beds, 15 bassinets, premature infant nursery with 4 isolettes

Medical staff - 21 doctors, 51 registered nurses, 43 licensed practical nurses

Nursing Homes

	<u>Number</u>	<u>Beds</u>
Extended care homes	2	101

Day Care Centers

<u>Number</u>	<u>Hours</u>	<u>Capacity</u>
1	7 a.m. - 5 p.m.	15

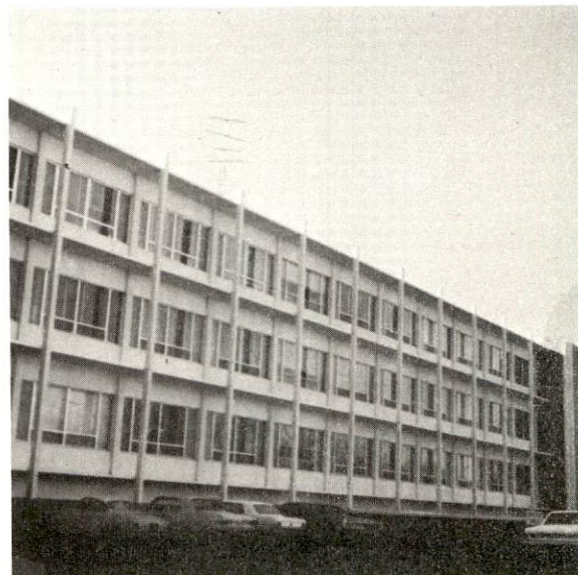
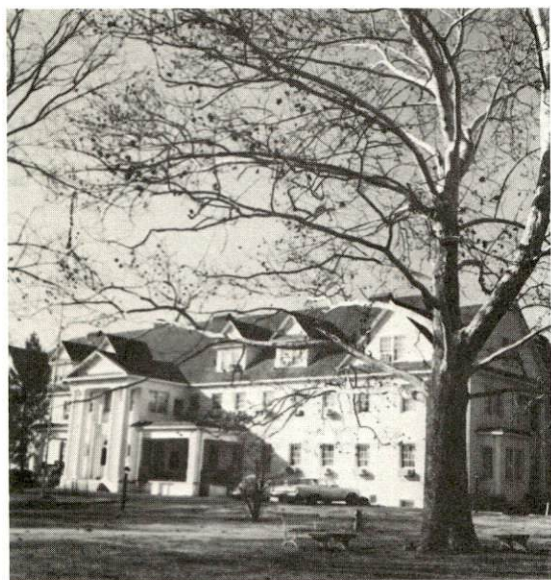
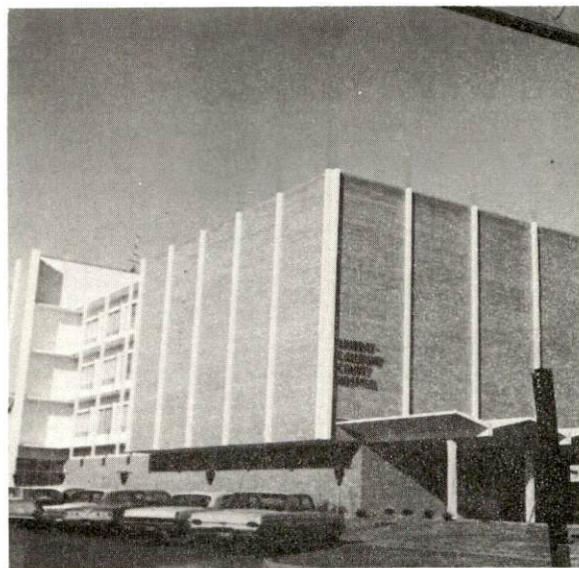
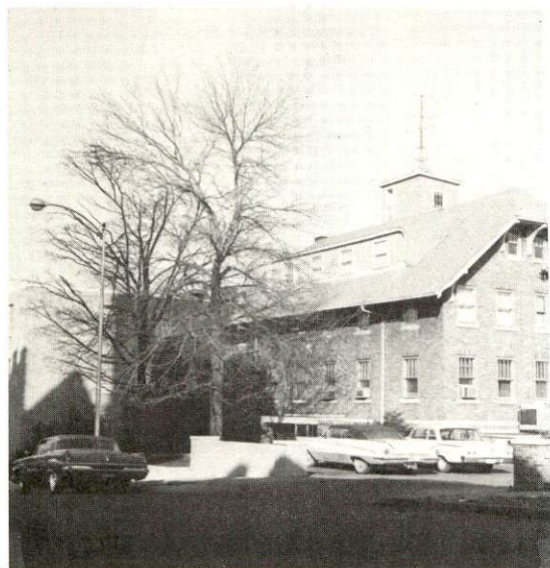
Public Health

Facility - Calloway County Health Department

Staff - administrator, 3 sanitarians, 3 public health nurses, 1 part-time nutritionist, 1 plumbing inspector (state employee), and 2 clerks

Budget 1970-71 - \$71,855

HOSPITAL, CHURCH, CLINICS



OTHER LOCAL FACILITIES

Communications

Telephone - South Central Bell Telephone Company

Services - standard, over 11,000-unit Centrex system at Murray State University

Telegraph - Western Union Telegraph Company

Services - office, telephone delivery of message

Postal - U. S. Post Office

Main office and contract station at Murray State University

Class - First

Mail received - 3 times daily

Mail dispatched - 3 times daily

Newspapers -

Murray Democrat

Daily and circulation - daily, except Saturday - 3,100

Ledger & Times

Daily and circulation - daily, except Sunday - 5,700

Other papers received from - New York, New York; Memphis and Nashville, Tennessee; Louisville and Paducah, Kentucky

Radio - WNBS-AM, WAAW-FM (one of 13 maximum power stations in the nation), WKMU-FM

Stations received from - All radio networks and independent stations within a 150-mile radius.

Television -

Cable service

Reception from - Nashville, Tennessee (3 channels); one channel each from Paducah, Kentucky, Harrisburg, Illinois, Cape Girardeau, Missouri, and Jackson, Tennessee

Kentucky Educational Television - Channel 21, Murray transmitter;

Educational TV - Nashville, Tennessee, Channel 2

Library Services

Public Libraries - Calloway County Public Library

Size collection - 37,000 volumes

Circulation, 1969 - 200,000

Services - Bookmobile serves the city and county. Films, periodicals, paintings lending, microfilms, story hours, adult and junior great books, discussion groups, book reviews held regularly, special displays, Jackson Purchase regional library headquarters

Private Libraries - Murray State University

Size collection - 207,000 volumes

Special collections - Manuscripts of Nathan B. Stubblefield, Harry Lee Waterfield and Mancil Vinson; depository for TVA material and literary works of Jesse Stuart; Kentuckiana and Jackson Purchase collections

Services - The University library welcomes the public and invites business and industry to use the library facilities as a center for information and research. In addition to the main library, there are four departmental libraries on campus.

Religious Institutions

Number of churches - 89

Denominations - Church of Christ, Lutheran, Methodist, Nazarene, Episcopal, Christian, Catholic, Baptist, Presbyterian, Pentecostal, Seventh Day Adventist

Financial Institutions

<u>Banks</u>	<u>Statement as of June 30, 1970</u>	
	<u>Assets</u>	<u>Deposits</u>
Bank of Murray	\$38,025,394	\$34,642,360
Peoples Bank of Murray, Kentucky	26,750,085	24,348,786
Dees Bank of Hazel, Kentucky	4,671,814	4,275,203

Savings and Loan Associations

Murray Branch

Hopkinsville Federal Savings and Loan Association

Hotels and Motels

Total number - 6

Units - 165

Clubs and Organizations

Business and Civic - Murray Chamber of Commerce, Jaycees, Kiwanis, Lions, Rotary, Optimist, Civitan, Murray Hospital Association, Murray Dental Society, Murray Ministerial Association, Salvation Army, Red Cross, Agricultural Council, Welcome Wagon, Calloway County Medical Association, Calloway County Conservation Club, Young Business Men's Club

Fraternal - American Legion, Disabled Veterans, Masonic Lodge 105, VFW, Thoroughbred Club, Eagles, FOP, IOOF, Moose Lodge, Knights Templar, Shrine, Elks, Woodmen of the World

Women's - AAUW, Associated Women of Farm Bureau, B & PW Club, Homemakers, Nature Palette, DAR, Magazine Club, Murray Women's Club, Eastern Star, Garden Club, Jaycettes, Moose Auxiliary, American Legion Auxiliary, VFW Auxiliary, American Business Women's Association, Daughters of the Confederacy

Youth - Boy Scouts, Girl Scouts, Cub Scouts, Brownies, 4-H, Junior Rose Club, Murray Baseball Association, FFA, FHA, FTA, Beta Club, FBLA, Little League

RECREATION

Local

Municipal

Murray State University (facilities open to the public)

Public Recreation Facilities

Supervised program -	summer months	
Park -	1	
Playgrounds -	3	
Swimming pool -		1 - indoor
Tennis courts -	6	8
Baseball diamonds -	2 - lighted	1 - lighted
Basketball court -	1	
Picnic shelters and grills at city park		

Private Recreation Facilities

Country clubs -	2	
Golf courses -	2 - 18-hole	
Movie theaters -	2 - indoor; 1 drive-in	
Bowling lanes -	1 - 18 lanes	

Tourist Attractions

Murray State University
The Confederate Memorial

Cultural Events

Lectures, recitals, and concerts at Murray State University
Several plays presented each year by the University's drama department
Dinner Theater at Ken-Bar Resort, Gilbertsville

Area (Within 25 miles)

Kentucky Lake
Barkley Lake
Kenlake State Resort Park
Kentucky Dam Village State Resort Park
Land Between the Lakes National Recreation Area
Kaintuck Territory, frontier settlement reproduction
Governor's Cup Regatta, Watkins Cup Regatta, at Kenlake State Resort Park
Kentucky Lake Fall Fishing Derby
Septemberfest, square dancing festival at Kentucky Dam Village State Resort
Park



EXCELLENT RECREATIONAL FACILITIES

AGRICULTURE - NATURAL RESOURCES - CLIMATE

Agriculture 13/

	<u>Calloway County</u>	<u>Labor Market Area</u>
Total land area (acres)	245,760	1,091,840
Percent of area in farm land	69.2	61.2
Number of farms	1,707	6,045
Average size of farms (acres)	99.7	110.5
1964 value of all farm products	\$ 6,083,778	\$22,645,011
Value per farm	3,564	3,746
Total crop sales	3,323,208	10,323,273
Total livestock & livestock products	2,757,759	12,317,832
1968 agricultural production included:		
Burley tobacco (lbs.)	381,000	9,169,000
Corn (bu.)	1,179,000	12,739,000
Cattle and calves (number)	26,900	106,800
Hogs and pigs (number)	15,700	94,600
Milk production (1967) (lbs.)	23,760,000	68,790,000

Natural Resources

Principle mineral resources	glass-type sand and local clays
Acres of commercial forest land	77,100
Most abundant tree species	red oak, white oak, hickory, sweetgum, ash, cottonwood, and blackgum

Climate 14/

	<u>Calloway County</u>
Temperature	
Annual mean (30-year record)	60.0 degrees
Average annual 1969	58.6 degrees
Record highest (4-year record) July, 1966	103 degrees
Record lowest (4-year record) January, 1966	- 9 degrees
Seasonal heating degree-days (30-year record)	3,578
Precipitation	
Mean annual total (30-year record)	45.14 inches
Mean annual snow and sleet (28-year record)	11.8 inches
Total precipitation 1969	42.27 inches
Mean No. days precipitation (28-year record) (.01 inches or more)	118
Average No. days thunderstorms (28-year record)	55
Prevailing winds (22-year record)	South

HISTORY

Calloway County is part of the 8,500 square mile area known as the Jackson Purchase. The territory is the former tribal lands of the Chickasaw Indians which the United States purchased in 1818 by treaty after negotiations by General Andrew Jackson and Governor Isaac Shelby. The tract is composed of eight westernmost Kentucky counties and twenty Tennessee counties.

Names for Colonel Richard Calloway of Virginia who migrated to Kentucky in 1776 to survey the town site of Boonesborough, Calloway County was established in 1822 as the seventy-second Kentucky county. Most of the county's surface is level; in fact, a greater percentage of its land is level than any other county in the state. It is largely unforested because the area was the western extent of the famous barrens lands which Indians kept free of trees in order to hunt the buffalo.

During the Civil War, Calloway Countians were pro-southern in their sympathies. A large majority of those who fought in the war served in the Confederate ranks. Daniel Matthewson, state legislator from the area in 1861, was a member of the "Sovereignty Convention" in 1862, whose objective was to set up a Confederate government in Kentucky.

Murray, the county seat since 1844, is located on the west banks of Clarks River near the geographical center of the county. It was named for the Honorable John L. Murray, who served two terms in the State Legislature and one term in the U. S. Congress.

Murray was the home of Nathan B. Stubblefield, a pioneer in the field of wireless telephony. Many reference works list Stubblefield as the inventor of the radio, and it is with great pride that the citizens of Murray tell of his experiment performed in 1902 which was, in fact, one of the first public demonstrations of the transmission of the human voice via wireless radio. Stubblefield did not patent his discovery until 1908, but by that time, Guglielmo Marconi, whose experiments with the telegraph were already famous, received credit for voice transmission also.

Murray State University, founded in 1922 as Murray State Teachers College, has become an important educational institution which serves not only the State of Kentucky, but several neighboring states as well.

The Mississippi River, which borders the Jackson Purchase on the west, encouraged the development of agriculture as the area's economic base because it provided vital transportation to southern markets. Since the founding of the University and the gradual development of tourism and industry, the economy of Murray and Calloway County has become well diversified and will probably continue to develop upon a broad base of industry, commerce, agriculture, and educational services.

SOURCES OF INFORMATION

- 1/ U. S. Department of Commerce, Bureau of the Census, Census of Population, 1950, 1960, 1970 (Preliminary figures).
- 2/ Kentucky Department of Economic Security, Division of Research and Statistics.
- 3/ Kentucky Department of Economic Security, Number of Workers in Manufacturing Industries Covered by Kentucky Unemployment Insurance Law Classified by Industry and County, September 1959 and 1969.
- 4/ Kentucky Department of Commerce, 1970 Kentucky Directory of Manufacturers.
- 5/ Kentucky Department of Economic Security, Division of Employment Services, Mayfield Office.
- 6/ Kentucky Department of Economic Security, Kentucky Labor Supply Estimates by County, January 1970.
- 7/ Kentucky Department of Commerce, Future Labor Supply by 1976.
- 8/ University of Kentucky, Office of Development Services and Business Research, Total Personal Income for Kentucky.
- 9/ University of Kentucky, Office of Development Services and Business Research, Per Capita Income in Kentucky.
- 10/ Louisville & Nashville Railroad, Louisville, Kentucky.
- 11/ McLean Trucking Company, Winston-Salem, North Carolina.
- 12/ Calloway County Tax Commissioner; Murray City Clerk.
- 13/ U. S. Department of Commerce, Bureau of the Census, Census of Agriculture, 1964. U. S. Department of Agriculture and Kentucky Department of Agriculture, Kentucky Agricultural Statistics, 1969.
- 14/ U. S. Department of Commerce, Environmental Science Services Administration, Climatological Data, 1969.

All other information was obtained from governmental offices, local businesses and organizations.

This copy has been prepared by the Kentucky Department of Commerce,
Division of Research and Planning, and the cost of printing paid from
state funds.