

1978

Industrial Resources: Carroll County - Carrollton

Kentucky Library Research Collections
Western Kentucky University, spcol@wku.edu

Follow this and additional works at: https://digitalcommons.wku.edu/carroll_cty

 Part of the [Business Administration, Management, and Operations Commons](#), [Growth and Development Commons](#), and the [Infrastructure Commons](#)

Recommended Citation

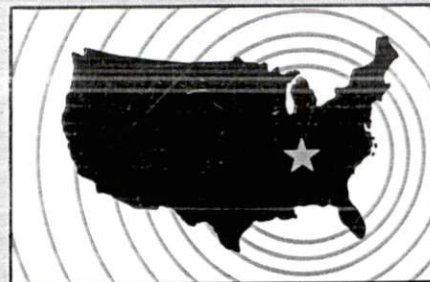
Kentucky Library Research Collections, "Industrial Resources: Carroll County - Carrollton" (1978). *Carroll County*. Paper 9.
https://digitalcommons.wku.edu/carroll_cty/9

This Report is brought to you for free and open access by TopSCHOLAR®. It has been accepted for inclusion in Carroll County by an authorized administrator of TopSCHOLAR®. For more information, please contact topscholar@wku.edu.

INDUSTRIAL RESOURCES

CARROLLTON

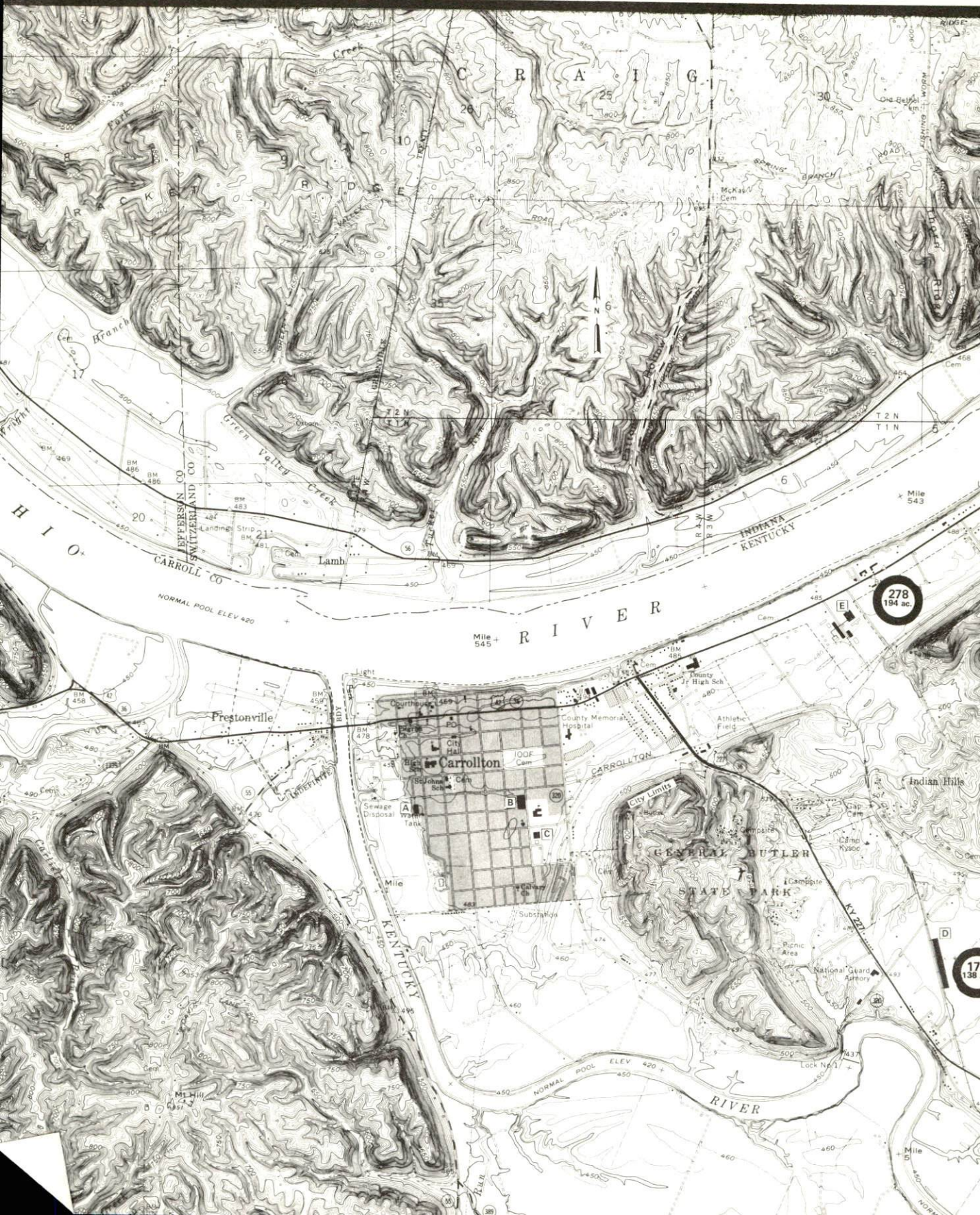
**Kentucky
first**

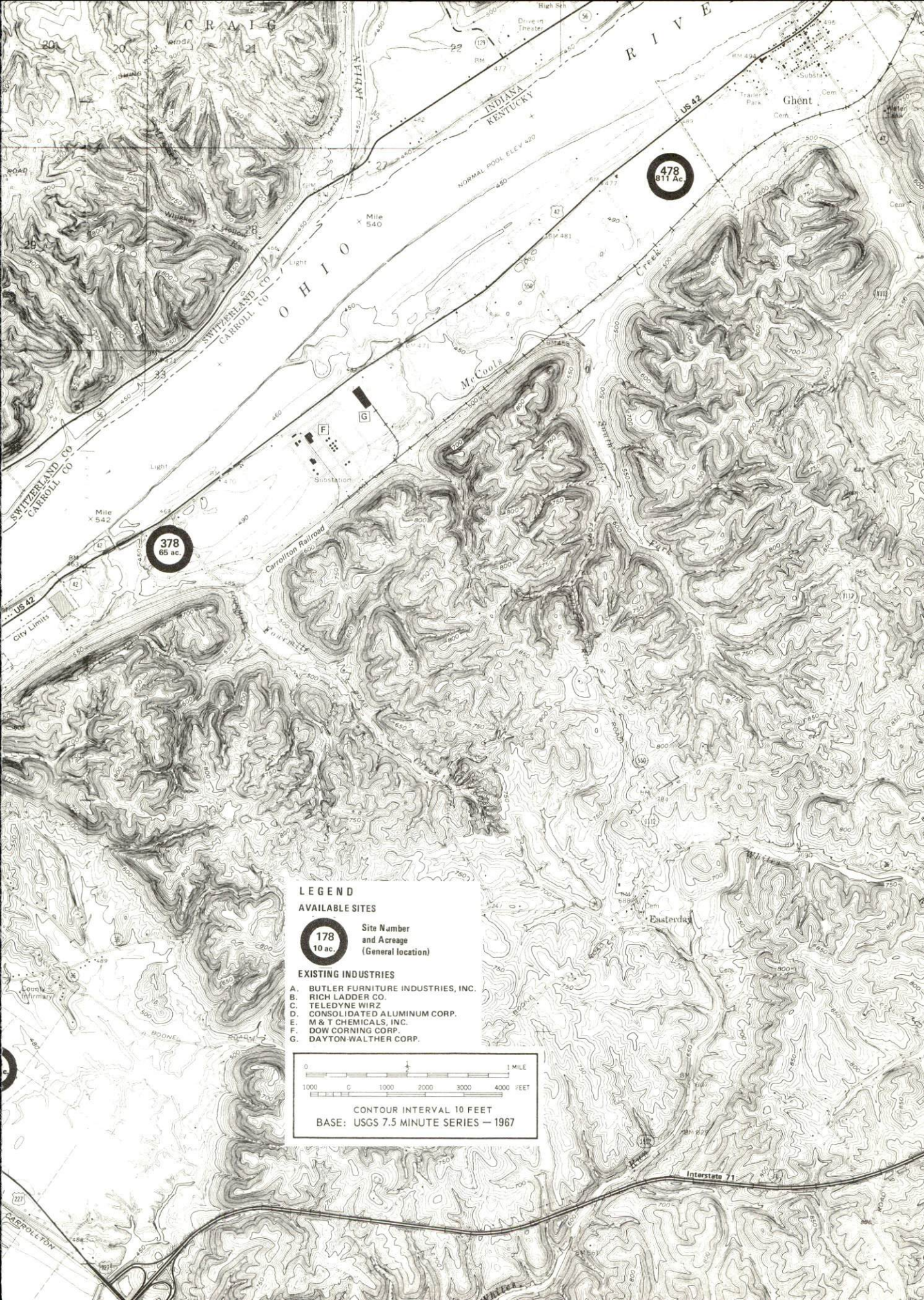


DEPARTMENT OF COMMERCE

CARROLLTON, KENTUCKY --- Index to Industrial Sites --- 1978

For detailed data on individual sites, contact Mr. John Perkins, P. O. Box 36, Carrollton, Kentucky 41008 or the Kentucky Department of Commerce, Industrial Development Division, Capital Plaza Tower, Frankfort, Kentucky 40601.





378
65 ac.

478
811 ac.

LEGEND

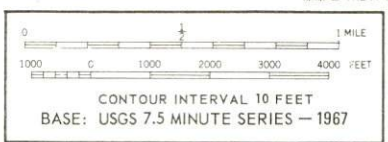
AVAILABLE SITES

178
10 ac.

Site Number and Acreage
(General location)

EXISTING INDUSTRIES

A. BUTLER FURNITURE INDUSTRIES, INC.
 B. RICH LADDER CO.
 C. TELEDYNE WIRZ
 D. CONSOLIDATED ALUMINUM CORP.
 E. M & T CHEMICALS, INC.
 F. DOW CORNING CORP.
 G. DAYTON-WALTHER CORP.



INDUSTRIAL RESOURCES

CARROLLTON, KENTUCKY

Prepared by
The Kentucky Department of Commerce
Division of Research and Planning
in cooperation with
The Carroll County Chamber of Commerce

1978

Program manager: Patsy Wallace; Production supervisor: Pam Riley;
Research: Darlene Craycroft; Clerical: Linda Fint; Graphics: Frank
Ferrante, Tony Cecconi, Richard Spencer; Cartography: Industrial
Development Division. Cost of printing paid from state funds.

TABLE OF CONTENTS

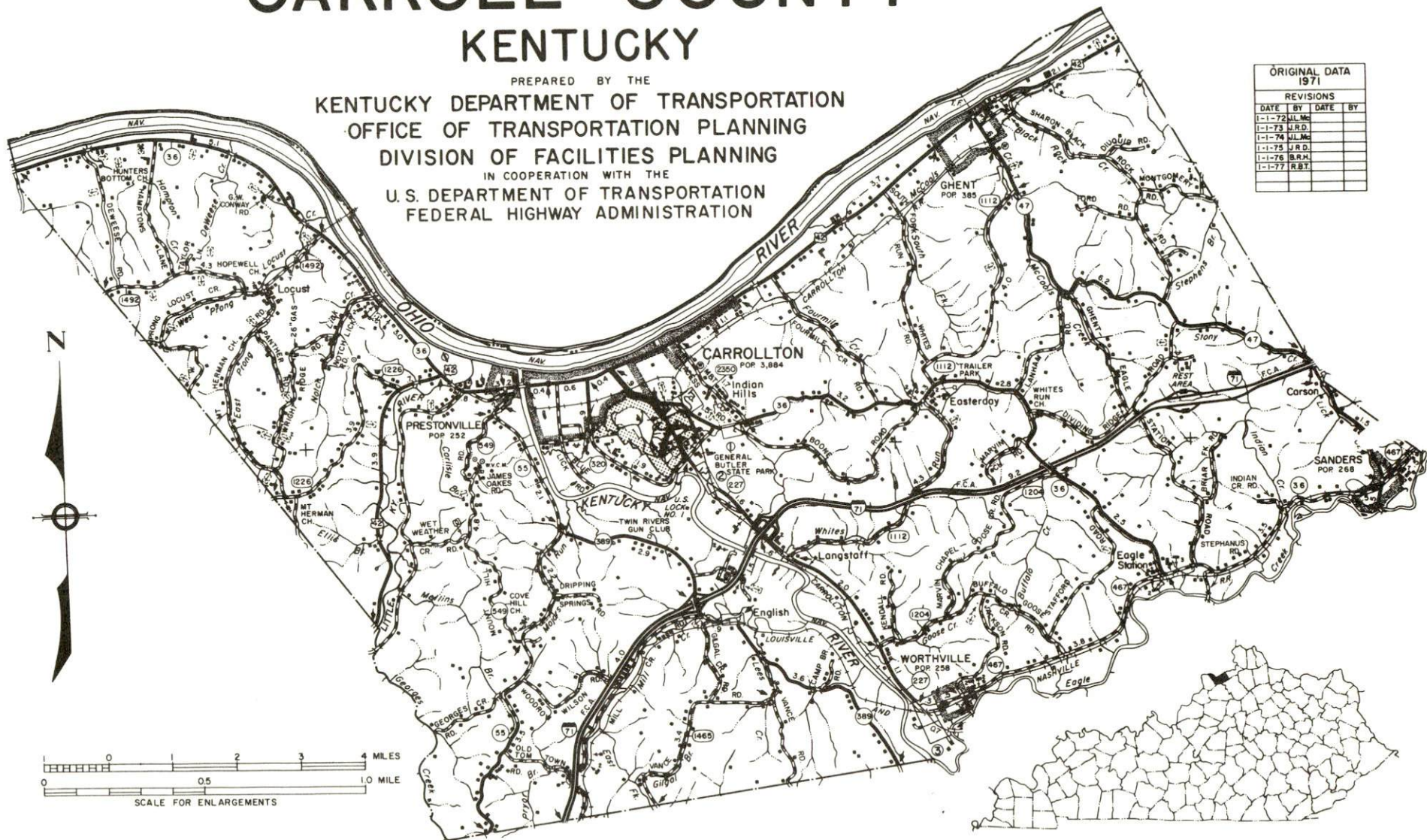
<u>Chapter</u>	<u>Page</u>
INDUSTRIAL SITES	i
SUMMARY OF INDUSTRIAL RESOURCES - CARROLLTON, KENTUCKY	1
THE LABOR MARKET AREA.	6
Population	6
Labor Force Characteristics of Residents, 1977	6
Carrollton Manufacturing Firms, Their Products and Employment	7
Labor Organizations.	8
Industrial Services.	8
Estimated Male Labor Supply.	9
Estimated Female Labor Supply.	9
Average Weekly Wages by Industry, by Place of Work, 1976	10
Per Capita Personal Income	12
TRANSPORTATION	13
Rail	13
Highways	13
Truck Service.	14
Air.	16
Bus.	17
Taxi	17
Rental Services.	17
Water.	17
POWER AND FUEL	18
Electricity.	18
Natural Gas.	19
Other Fuels.	19
WATER AND SEWERAGE	20
Water.	20
Sewerage	24
CLIMATE.	25

<u>Chapter</u>	<u>Page</u>
LOCAL GOVERNMENT	26
City	26
County	26
Assessed Value of Property, 1977	26
Property Taxes	26
Combined State and Local Rates Per \$100 Valuation, 1977.	27
Utilities Gross Receipts Tax for Schools	27
Planning and Zoning.	27
Safety	28
Police	28
Fire	28
Rescue Service	28
Refuse Collection and Disposal	28
EDUCATION.	29
Public Schools	29
Area Colleges and Universities	30
Vocational Schools	31
HEALTH	33
Local Medical Personnel.	33
Hospitals.	33
Other Medical Facilities	33
Ambulance Service.	33
Public Health.	33
OTHER LOCAL FACILITIES	34
Communications	34
Library Services	34
Religious Institutions	35
Financial Institutions	35
Hotels and Motels.	35
Clubs and Organizations.	36
RECREATION	37
COMMUNITY IMPROVEMENTS	38

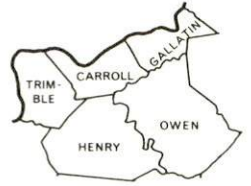
GENERAL HIGHWAY MAP CARROLL COUNTY KENTUCKY

PREPARED BY THE
 KENTUCKY DEPARTMENT OF TRANSPORTATION
 OFFICE OF TRANSPORTATION PLANNING
 DIVISION OF FACILITIES PLANNING
 IN COOPERATION WITH THE
 U.S. DEPARTMENT OF TRANSPORTATION
 FEDERAL HIGHWAY ADMINISTRATION

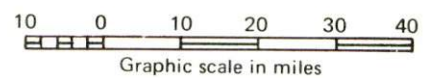
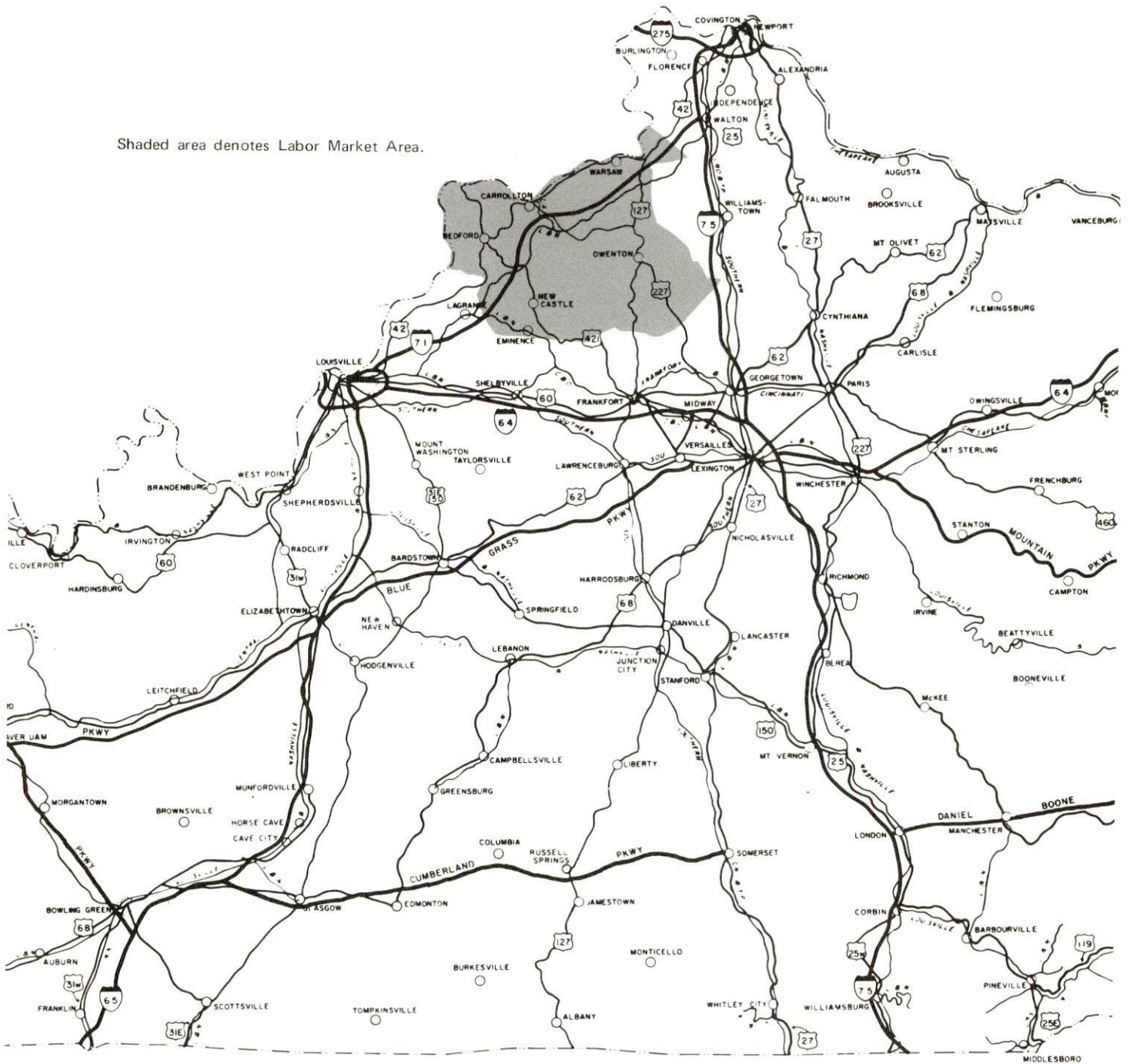
ORIGINAL DATA 1971			
REVISIONS			
DATE	BY	DATE	BY
1-1-72	J.L.M.		
1-1-73	J.R.D.		
1-1-74	J.L.M.		
1-1-75	J.R.D.		
1-1-76	B.R.H.		
1-1-77	R.B.T.		



CARROLLTON LABOR MARKET AREA

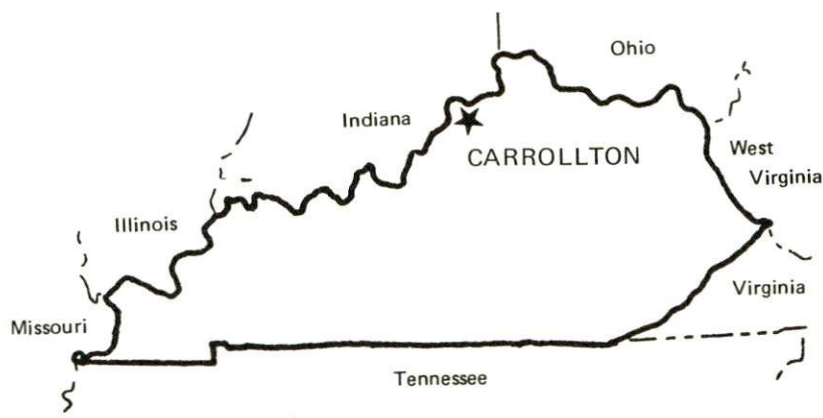


Shaded area denotes Labor Market Area.



SUMMARY OF INDUSTRIAL RESOURCES
CARROLLTON, KENTUCKY

LOCATION



Road Distance in Miles:

Atlanta	432	Baltimore	557
Chicago	<u>342</u>	Detroit	<u>319</u>
New York	<u>707</u>	St. Louis	<u>313</u>

POPULATION

City of Carrollton, 1975	3,936
Carroll County, 1976	<u>8,500</u>
Labor Market Area, 1976	<u>37,800</u>
% Nonwhite - Carroll County, 1970	<u>2.6</u>

LABOR ANALYSIS

Labor Market Area - Carroll, Gallatin, Henry, Owen and Trimble Counties

Estimated available workers from labor market area:

Male	<u>1,430</u>	Female	<u>1,440</u>
Unemployment rate, 1977		Labor Market Area	<u>4.4%</u>
Carroll County	3.5%	Owen County	6.4%
Gallatin County	<u>4.5%</u>	Trimble County	<u>2.8%</u>
Henry County	<u>4.4%</u>		

Total employment, Carroll County, 1977 - 4,330
 Manufacturing employment in labor market area, 1976 - 2,180

Major local manufacturing plants:

<u>Name</u>	<u>Employment</u>
<u>M & T Chemicals, Inc.</u>	<u>400</u>
<u>Butler Furniture Industries, Inc.</u>	<u>225</u>
<u>Kawneer Company</u>	<u>200</u>
<u>Carrollton Division, Dayton-Walther Corporation</u>	<u>172</u>
<u>Consolidated Aluminum Corporation</u>	<u>154</u>
<u>Dow Corning Corporation</u>	<u>145</u>
<u>Teledyne Wirz</u>	<u>101</u>

Labor unions in local manufacturing plants:

Steelworkers; Auto Workers; Aluminum Workers International; Teamsters

TRANSPORTATION

Highways:

Interstate - I-71, 4 miles southeast; U.S. Highway - U.S. 42

Rail:

Railroad - Carrollton Railroad (a subsidiary of the Louisville & Nashville Railroad)

Distance to nearest piggyback - 50 miles

Truck:

Number of interstate motor carriers - 9; Local terminals - 3

Water:

Nearest navigable rivers - Ohio River and Kentucky River

Nearest public port - Louisville, Kentucky; Distance - 50 miles

Air:

Nearest commercial service - Standiford Field, Louisville

Distance - 50 miles; Airlines serving - TWA, American, Eastern, Delta, Piedmont, Ozark, Allegheny and Air Kentucky (commuter)

UTILITIES AND SERVICES

Electricity:

Local distributor - Kentucky Utilities Company
Source of power - Kentucky Utilities Company

Natural Gas:

Local distributor - Carrollton Utilities
Source of supply - Texas Gas Transmission Corporation
Available for new industry - No

Other Fuels:

Number of area propane distributors - 3
Number of area distillate fuel oil distributors - 3

Water, treated:

Local supplier - Municipal; Excess municipal system capacity - 300,000 gpd; Expansions planned - No

Water, raw:

Sources for industrial use - Wells

Sewer:

Excess treatment capacity - 186,000 gpd; Planned expansions - Yes

Industrial Services

	<u>Location</u>	<u>Miles Distant</u>
Tool & Die, Machine & Pattern Shops	<u>Louisville</u>	<u>50</u>
Metal Service Centers	<u>Louisville</u>	<u>50</u>
Heat Treating	<u>Louisville</u>	<u>50</u>
Metal Finishers	<u>Louisville</u>	<u>50</u>
Electric Motor Repair	<u>Louisville</u>	<u>50</u>

CLIMATE

Temperature, Normal - 55.6 degrees F.
Precipitation, Normal - 43.11 inches
Snowfall, Mean Annual - 17.00 inches
Prevailing winds - South
Relative humidity (%) - 7 a.m. 81; 7 p.m. 61

GOVERNMENT

Type - Mayor-City Council

Police personnel - full-time - 14

Fire department personnel - full-time - 4; volunteer - 25

Fire insurance rating (A.I.A.), class - Inside city - 6

Outside city - 10

TAXES

Property taxes:

Combined state and local rates per \$100 valuation, 1977
(100% assessment)

	<u>Inside City of Carrollton</u>	<u>Outside City</u>
1. Land and buildings	\$1.281	\$0.991
2. Mfg. machinery, raw materials, goods in process, pollution control equipment	0.150	0.150
3. Finished goods, office equipment, vehicles, other tangibles	1.416	1.126
4. Intangibles (accounts, notes, bonds, etc.)	0.250	0.250

Special local taxes:

Utilities tax - 3% of electric, gas, water, sewer, telephone services

EDUCATION

State vocational-technical school - Jeffersontown, 53 miles distant

Area vocational educational center - Carrollton

Colleges and universities - Seven institutions of higher learning located within 65-mile radius

Public Schools:

High School enrollment - 573; Student/teacher ratio - 18-1

Elementary school enrollment - 836; Student/teacher ratio - 19-1

Middle school enrollment - 528; Student/teacher ratio - 20-1

FINANCIAL INSTITUTIONS

Banks - 2; Total assets - \$23,366,441.87
Savings & loan associations - 1; Total assets - \$7,881,427.00

COMMUNICATIONS

Local newspaper - Carrollton News-Democrat, weekly
Local radio station - WVCM
Television reception - Cable service available

MEDICAL

Number of physicians locally - 5; Number of dentists locally - 2
Hospital - Carroll County Memorial Hospital; Number of beds - 80

RELIGIOUS FACILITIES

Churches - 20; Nearest synagogues - Louisville, Kentucky; Cincinnati, Ohio

PUBLIC LODGING

Total number hotels and motels - 6; Total rooms - 205

RECREATION FACILITIES

Public golf course; Parks; Tennis courts; Swimming pool

Nearest state park - General Butler State Resort Park, Carrollton
Camping; Swimming; Fishing; Boating; Golf; Lodgings; Dining facility;
Open year round

THE LABOR MARKET AREA

POPULATION			
Area	1976*	1970	Percent Nonwhite 1970
Carrollton	3,936**	3,884	3.1
Labor Market Area	37,800	36,386	N/A
Carroll County	8,500	8,523	2.6
Gallatin County	4,400	4,134	2.6
Henry County	11,400	10,910	7.2
Owen County	8,000	7,470	3.6
Trimble County	5,500	5,349	0.1

*Provisional Estimates.

**1975 Population Estimates.

Sources: U.S. Department of Commerce, Bureau of the Census, Census of Population, 1970. U.S. Department of Commerce, Bureau of the Census, Current Population Reports, Series P-25, No. 665, May 1977; Series P-26, No. 76-17, July 1977.

LABOR FORCE CHARACTERISTICS OF RESIDENTS, 1977

	Carroll County	Labor Market Area
Civilian Labor Force	4,492	17,285
Employment	4,334	16,527
Agricultural	412	3,369
Nonagricultural	3,922	13,158
Unemployment	158	758
Rate of Unemployment (%)	3.5	4.4

Source: Kentucky Department for Human Resources, Kentucky Labor Force Estimates, Annual Averages, 1977.

CARROLLTON MANUFACTURING FIRMS,
THEIR PRODUCTS AND EMPLOYMENT

Firm (Establishment date)	Product	Employment			Organized
		Total	Male	Female	
Butler Furniture Industries, Inc. (1971)	Wood dinette sets, chairs	225	75	150	
Carrollton Cabinet Company, Inc. (1960)	Electronic and clock cabinets	35	5	30	
Carrollton Division, Dayton-Walther Corporation (1972)	Disc brakes, drums, wheels	172	121	51	*
Carrollton Redrying Company (1946)	Tobacco redrying	32	28	4	
Consolidated Aluminum Corporation (1969)	Aluminum extrusion	154	144	10	*
Coo Par (1949)	Ready mixed concrete	16	15	1	*
Dow Corning Corporation (1967)	Silicones	145	130	15	
Hills Dairy (1898)	Milk	5	5	0	
Kawneer Company (1965)	Aluminum appliance trim, auto parts	200	110	90	*
M & T Chemicals, Inc. (1958)	Metallo organic chemicals, industrial coatings	400	350	50	
News-Democrat (1867)	Newspaper, job printing	7	2	5	
Ohio Valley Paving Company (1953)	Asphaltic concrete	3	3	0	
Reinbeau Printing (N/A)	Job printing	3	-	-	
Rich Ladder Company (1945)	Wood ladders	85	40	45	
Teledyne Wirz (1954)	Metal collapsible tubes	101	34	67	*

*See Labor Organizations below.

Source: Kentucky Department of Commerce, Division of Research and Planning.

LABOR ORGANIZATIONS

<u>Union</u>	<u>Representing manufacturing workers at:</u>
United Steelworkers of America, AFL-CIO	Teledyne Wirz
United Auto Workers	Carrollton Division, Dayton-Walther Corporation; Kawneer Company
Aluminum Workers International Union, AFL-CIO	Consolidated Aluminum Corporation
International Brotherhood of Teamsters	Coo Par

INDUSTRIAL SERVICES

	<u>Location</u>	<u>Miles Distant</u>
Tool & Die, Machine & Pattern Shops	Louisville	50
Metal Service Centers	Louisville	50
Heat Treating	Louisville	50
Metal Finishers	Louisville	50
Electric Motor Repair	Louisville	50
Source: <u>Kentucky Directory of Selected Industrial Services, 1977.</u>		

ESTIMATED MALE LABOR SUPPLY
CARROLLTON LABOR MARKET AREA

Area	Current			Future	
	Total	Not in Labor Force	Unemployed	Under- employed	Reaching 18 years of age before 1984
Labor Market					
Area	1,430	0	810	620	1,748
Carroll	340	0	200	140	419
Gallatin	120	0	70	50	212
Henry	490	0	320	170	505
Owen	310	0	140	170	329
Trimble	170	0	80	90	283

Sources: Kentucky Department for Human Resources, Kentucky Labor Supply Estimates by County, 1976. Kentucky Department of Commerce, Future Labor Supply Before 1984.

ESTIMATED FEMALE LABOR SUPPLY
CARROLLTON LABOR MARKET AREA

Area	Current			Future	
	Total	Not in Labor Force	Unemployed	Under- employed	Reaching 18 years of age before 1984
Labor Market					
Area	1,440	470	250	720	1,614
Carroll	390	110	70	210	406
Gallatin	360	230	20	110	197
Henry	290	0	90	200	446
Owen	300	130	50	120	307
Trimble	100	0	20	80	258

Sources: Kentucky Department for Human Resources, Kentucky Labor Supply Estimates by County, 1976. Kentucky Department of Commerce, Future Labor Supply Before 1984.

AVERAGE WEEKLY WAGES BY INDUSTRY,
BY PLACE OF WORK, 1976

	<u>Carroll County</u>	<u>Gallatin County</u>	<u>Henry County</u>
All Industries	\$176.32	\$114.12	\$138.01
Mining & Quarrying	*	*	*
Contract Construction	240.27	81.69	106.31
Manufacturing	190.19	110.66	177.22
Transportation, Communications & Public Utilities	258.86	185.51	148.47
Wholesale & Retail Trade	108.41	95.77	107.55
Finance, Insurance & Real Estate	158.74	113.86	153.40
Services	100.67	78.16	100.48
Other	89.69	52.22	72.59

	<u>Owen County</u>	<u>Trimble County</u>
All Industries	\$134.84	\$ 98.48
Mining & Quarrying	0	0
Contract Construction	125.77	97.16
Manufacturing	117.22	104.00
Transportation, Communications & Public Utilities	238.40	0
Wholesale & Retail Trade	116.78	66.89
Finance, Insurance & Real Estate	139.77	155.94
Services	159.38	104.48
Other	*	*

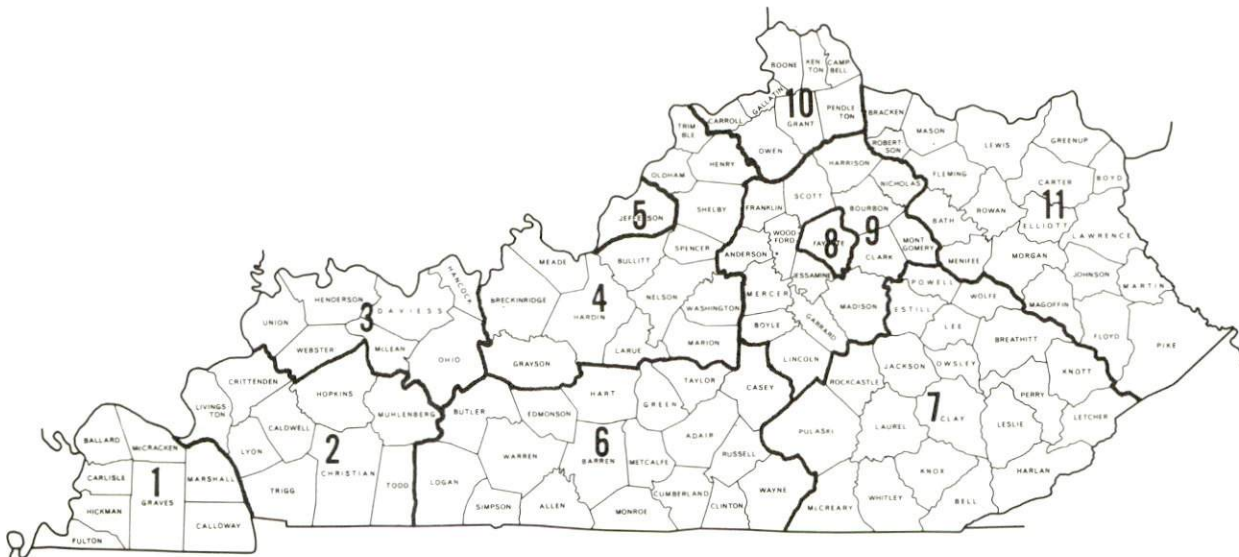
*Not disclosed.

Note: Excludes domestic workers, railway workers; certain nonprofit corporations; majority of federal, state, and local government workers; and self-employed workers.

Source: Kentucky Department for Human Resources, Average Weekly Wages of Workers Covered by Unemployment Insurance Law, 1976.

Occupational wage rates for specific industries are usually not available to most government agencies, and wage data furnished to state employment agencies by individual industrial employers is protected from disclosure by federal law. The most reliable up-to-date wage information can be obtained by direct contact with local employers.

Associated Industries of Kentucky, a voluntary organization of Kentucky businesses, regularly collects occupational wage rates and fringe benefits data from participating member firms. Data is compiled for over 127 clearly defined office, production, and service occupations. Tabulations are published for eleven regions of Kentucky, as shown on the map below. It should be noted that the data may be weighted by the preponderance of firms in the larger cities and may be somewhat higher than the rates paid in the smaller communities. Data from these tabulations are available, upon request, from the Kentucky Department of Commerce, Frankfort, Kentucky 40601.



Associated Industries of Kentucky Area Wage Surveys

PER CAPITA PERSONAL INCOME

<u>Area</u>	<u>1975</u>	<u>1971</u>	<u>Percent Change</u>
Carroll County	\$4,985	\$2,943	69.4
Labor Market Area			
Range	\$3,881 - 4,985	\$2,547 - 2,943	N/A
Kentucky	4,886	3,314	47.4
U. S.	5,903	4,195	40.7

Sources: U. S. Department of Commerce, Bureau of Economic Analysis, Survey of Current Business, April 1977. U. S. Department of Commerce, Bureau of Economic Analysis, March 1976.

TRANSPORTATION

Rail

Line serving Carrollton - The Carrollton Railroad (a subsidiary of the Louisville and Nashville Railroad)

Services - Local switching services 7 days per week at Carrollton and Ghent, Kentucky; team track available for 10 cars; siding space for 25 cars; nearest piggyback facilities are located at Louisville, Kentucky, and Cincinnati, Ohio. The Carrollton Railroad interchanges with the Louisville and Nashville Railroad at Worthville, Kentucky, 9 miles from Carrollton, and the Louisville and Nashville Railroad has local freight service from Louisville to DeCoursey, Kentucky, and returning Monday thru Friday.

For details on routing, schedules, rates, and services, contact:

The Carrollton Railroad
P. O. Box 716
Carrollton, Kentucky 41008
(502) 732-6179

and/or

Manager of Industrial Development
Louisville and Nashville Railroad
908 West Broadway
Louisville, Kentucky 40203
(502) 587-5000

Highways

Carrollton is served by U.S. 42 and Kentucky Highway 227. An interchange of Interstate 71 is located 4 miles southeast of Carrollton by way of Kentucky 227.

Truck Service

Company

Branch Motor Express*
Cooper-Jarrett, Inc.*
E & G Motor Express (T)**
Gordons Transports, Inc.*
Lee Way Motor Freight, Inc.*

Kentucky Truck Lines, Inc.
(Distillery products and
and supplies only)**
O. K. Trucking Company***
Overnite Transportation
Company (T)***

Owenton Express, Inc.(T)***
Smith's Transfer Corporation
of Virginia*
United Trucking Service,
Inc.***

Other Freight Services

United Parcel Service

Home Office

114 Fifth Avenue
New York, New York 10011
Hanover Plaza
Morristown, New Jersey 07960
Route #1, U.S. 42
Carrollton, Kentucky 41008
185 West McLemore
P. O. Box 59
Memphis, Tennessee 38101
3000 West Reno
P. O. Box 82488
Oklahoma City, Oklahoma 73108

P. O. Box 92
Frankfort, Kentucky 40602
3000 East Crescentville
Cincinnati, Ohio 45241

1000 Semmes Avenue
P. O. Box 1216
Richmond, Virginia 23209
Route #2
Owenton, Kentucky 40359

P. O. Box 1000
Staunton, Virginia 24401

3047 Lonyo Street
Detroit, Michigan 48209

Nearest Shipping Center

Louisville, 50 miles distant

(T)Local terminal.

*Interstate only.

**Intrastate only.

***Interstate and intrastate.

HIGHWAY MILES AND TRUCK TRANSIT TIME IN DAYS FROM
 CARROLLTON, KENTUCKY, TO SELECTED MARKET CENTERS

City	Delivery		City	Delivery	
	Highway Miles	Time* TL		Highway Miles	Time* TL
Atlanta, Ga.	432	1	Los Angeles, Cal.	2,158	6-8
Baltimore, Md.	557	2	Louisville, Ky.	50	1
Birmingham, Ala.	414	1	Nashville, Tenn.	218	1
Chicago, Ill.	342	2	New Orleans, La.	735	2-3
Cincinnati, Ohio	60	1	New York, N. Y.	707	3
Cleveland, Ohio	304	2	Pittsburgh, Pa.	347	2
Detroit, Mich.	319	2	St. Louis, Mo.	313	1
Knoxville, Tenn.	291	1			

*Delivery time does not include the day of pickup.

Source: Delivery Time Only - Overnite Transportation Company, P. O.
 Box 1216, Richmond, Virginia 23209.

Air

Nearest Commercial Airports

Greater Cincinnati Airport*
Location: 8 miles southwest of Covington, Kentucky, 52 miles
from Carrollton
Runways: 3 paved
Length: 5,500 feet; 7,800 feet; 9,500 feet
Traffic
Control: Tower, ground control, guards, clearance delivery,
approach control, departure control
Lighting: Beacon, VASI, MALS-RAIL, ALS-SFL, HIRL, Red T-Bar,
CL and TDZ
Services: TWA, Delta, American, Piedmont, Eastern, Allegheny,
North Central, and Air Kentucky (commuter) Airlines;
fuel - 100 octane, Jet A-50, 650 turbine; storage;
major A & E repairs; hotel, restaurant; airport
limousine; taxi; freight handling
Air Freight
Service: Air freight terminal regularly serviced by freight
carrying airlines. Cargo/warehouse facilities
are located at the airport and space is available.

Standiford Field
Location: Louisville, Kentucky, 50 miles distant
Runways: 3 paved
Length: 5,000 feet; 7,250 feet; 7,800 feet
Traffic
Control: Control tower: approach control, ground control;
guards; radar service: departure control;
clearance delivery
Lighting: Runways, obstructions, beacon and approach and
touchdown lights, center line on runways 1-19
Services: TWA, American, Eastern, Delta, Piedmont, Ozark,
Allegheny and Air Kentucky (commuter) Airlines;
100 octane, jet fuel; storage; major A & E repairs;
Hertz, Avis, National and Budget rent-a-car service;
taxi and city bus service; restaurant
Air Freight
Service: Air freight terminal regularly serviced by freight
carrying airlines

*The Greater Cincinnati Airport Board has received a \$419,000 grant and started construction on an international facility which will offer full customs immigration services on an on-call basis. Completion is scheduled for 1979.

Bus - Southern Greyhound Bus Lines

Taxi - One company, 24-hour service

Rental Services - Complete car, truck, and trailer rental services are available in Louisville, 50 miles distant

Water -

Carrollton is located at the confluence of the Ohio and Kentucky Rivers. A nine-foot navigation channel is maintained along the Ohio River.

Port facilities are available at Louisville, Kentucky, 50 miles southwest, and the Northern Kentucky-Cincinnati area, 60 miles northeast of Carrollton.

POWER AND FUEL

Electricity

Company serving Carrollton and part of Carroll County -
Kentucky Utilities Company
Source of power - Kentucky Utilities Company
Total generating capacity - 2,238,400 KW
For industrial rates contact:

Industrial Development Department
Kentucky Utilities Company
120 South Limestone Street
Lexington, Kentucky 40507
(606) 255-1461

Companies serving parts of Carroll County - Owen County RECC;
Shelby RECC
Source of power - East Kentucky Power Cooperative
Total generating capacity - 867,000 KW
For industrial rates contact:

Industrial Development Division
East Kentucky Power Cooperative
P. O. Box 707
Winchester, Kentucky 40391
(606) 744-4812

and/or

Owen County RECC
510 Georgetown Road
Owenton, Kentucky 40359
(502) 484-3471

and/or

Shelby RECC
P. O. Box 311
Shelbyville, Kentucky 40065
(502) 633-4420

Natural Gas

Company serving Carrollton - Carrollton Utilities
Source of supply - Texas Gas Transmission Corporation
Size of transmission mains - 24 and 30 inches (supplier)
6 inches (distributor)
Distribution mains - 6, 4, 3, and 2 inches
Distribution pressure - 15 psig to 60 psig
Btu content - 1,006 per cubic foot
Specific gravity - 0.588
For rates and supplies contact:

Carrollton Utilities
Sixth and Sycamore Streets
Carrollton, Kentucky 41008
(502) 732-4221

Other Fuels

Propane

Boonie's Blue Flame
412 East Second Street
Madison, Indiana 47250

Williams Energy Company
11 West Market
Warsaw, Kentucky 41095

Crouch Gas Service
Glencoe, Kentucky 41046

Fuel oils

Distillate fuel oil -

Dorten Oil Company (Gulf)
Worthville Road
Carrollton, Kentucky 41008

Chevron U. S. A.
601 Park Avenue
Carrollton, Kentucky 41008

Davis and Craig
Marathon Distributor
U. S. 42-E
Ghent, Kentucky 41045

Residual fuel oil - Arrangements must be made with the refinery.

Low sulphur content coal - Available in eastern Kentucky.

WATER AND SEWERAGE

Water

Company serving Carrollton - Carrollton Utilities*
Sixth and Sycamore Streets
P. O. Box 277
Carrollton, Kentucky 41008
(502) 732-4221

Source - Wells

Treatment plant capacity - 1,000,000 gallons per day

Average daily consumption - 500,000 gallons

Peak daily consumption - 700,000 gallons

Type treatment - Lime softening, alum, chlorination, fluoridation

Storage capacity - 1,000,000 gallons

Size lines - 12, 10, 8, 6, and 4 inches

Average pressure - 105 psi static

Average temperature - 16 degrees C.

*The new water treatment plant, which increased capacity to 1,000,000 gallons per day, was completed in October of 1977.

MONTHLY WATER RATES FOR WHOLESAL
AND INDUSTRIAL CONSUMERS

In Town

First	1,000 gallons	\$2.50 Minimum
Next	4,000 gallons	1.15 per M gallons
Next	15,000 gallons	0.85 per M gallons
Next	20,000 gallons	0.75 per M gallons
Next	60,000 gallons	0.55 per M gallons
Next	300,000 gallons	0.45 per M gallons
Over	400,000 gallons	0.40 per M gallons

Out of Town

First	1,000 gallons	\$3.25 Minimum
Next	4,000 gallons	1.35 per M gallons
Next	15,000 gallons	1.05 per M gallons
Next	20,000 gallons	0.85 per M gallons
Next	60,000 gallons	0.65 per M gallons
Next	300,000 gallons	0.55 per M gallons
Over	400,000 gallons	0.50 per M gallons

<u>Minimum Monthly Charges</u>	<u>In Town</u>	<u>Out of Town</u>
5/8 or 3/4-inch meter	\$ 2.50	\$ 3.25
1-inch meter	3.00	4.00
1 ¼ or 1 ½-inch meter	3.50	4.50
2-inch meter	5.00	6.00
3-inch meter	7.50	8.50
4-inch meter	11.00	12.25
6-inch meter	20.00	21.50

Tap-on charge:

5/8-3/4-inch meter	\$175
1-inch meter	200
1 ¼-1 ½-inch meter	225
2-inch meter	300
3-inch meter	400
4 - 6-inch meter	At cost

Name of water district - Carroll County Water District #1
Ghent, Kentucky 41045
(502) 347-9943

Area served - Ghent, Sanders, Worthville and East Carroll County

Date when water district began operating - 1965

Source of raw water - Wells

Capacity of treatment plant - 500,000 gallons per day

Type of treatment - Chlorination

Average amount of water used in a 24-hour period - 275,000 gallons

Peak amount of water used in a 24-hour period - 350,000 gallons

Storage capacity - 222,000 gallons

Average pressure - 65 psi

Average temperature - 14 degrees C.

Size lines - 6 inches

Rates -

First	1,000 gallons	\$7.00
Next	9,000 gallons	1.50 per M gallons
Next	10,000 gallons	1.25 per M gallons
Next	10,000 gallons	1.00 per M gallons
Next	10,000 gallons	0.85 per M gallons
Next	10,000 gallons	0.80 per M gallons
Next	10,000 gallons	0.75 per M gallons
Next	10,000 gallons	0.70 per M gallons
Next	10,000 gallons	0.65 per M gallons
Next	10,000 gallons	0.60 per M gallons
Next	10,000 gallons	0.50 per M gallons
All over	100,000 gallons	0.50 per M gallons

Tap-on charge: 3/4-inch meter \$200
1-inch meter \$300

Name of water district - West Carroll County Water District*

P. O. Box 45

Carrollton, Kentucky 41008

(502) 732-6376

Area served - West Carroll County and Trimble County

Date when water district began operating - 1976

Source of supply of treated water - Carrollton Utilities, Henry
County Water District and Trimble County Water District

Average amount of water used in a 24-hour period - 346,000 gallons

Storage capacity - 94,000 gallons

Average pressure - 90 psi

Size lines - 6, 5, 4, 3, and 2 inches

Rates -

First	2,000 gallons	\$8.00 Minimum
Next	3,000 gallons	3.00 per M gallons
Next	5,000 gallons	2.00 per M gallons
Next	90,000 gallons	1.00 per M gallons
Next	100,000 gallons	0.65 per M gallons

Tap-on charge: \$235

Surface water sources - Ohio and Kentucky Rivers

Average discharge - Ohio River at Markland Dam, 125,300 cfs
(6-year record, USGS); Kentucky River at Lock 2 at Lockport,
8,037 cfs (51-year record, USGS)

Expected ground water yield - 500 to 1,000 gpm on northern border
adjacent to the Ohio River; 5 to 50 gpm adjacent to the Kentucky
River through central and southeastern portion of county; 5 gpm
or less over remainder of county.

*The water district began operation in 1976 and serves approximately
385 customers. Plans are underway to extend service to approximately
30 additional customers.

Sewerage

Company serving Carrollton - Carrollton Utilities*
Sixth and Sycamore Streets
Carrollton, Kentucky 41008
(502) 732-4221

Design capacity - 500,000 gallons per day

Average daily flow - 314,000 gallons**

Treatment - Primary

Type treatment - Settling, clarifier, drying beds, digester

Treated effluent discharged into - Kentucky River

Size of sanitary mains - 10, 8, and 6 inches

Rates - 100 percent of monthly water bill

Tap-on charge: \$300

*Carrollton Utilities is nearing completion of Phase I of the 201 Facilities Plan and expects to begin the design of a secondary sewage treatment plant in the very near future.

**Kentucky Department for Natural Resources and Environmental Protection.

CLIMATE

Carroll County

Temperature

Normal (30-year record)	55.6 degrees
Average annual 1976	55.4 degrees
Record highest, July, 1954 (29-year record)	105 degrees
Record lowest, January, 1963 (29-year record)	-20 degrees
Normal heating degree days (30-year record)	4,640
(Heating degree day totals are the sums of negative departures of average daily temperatures from 65 degrees F.)	

Precipitation

Normal (30-year record)	43.11 inches
Mean annual snowfall (29-year record)	17.00 inches
Total precipitation 1976	34.15 inches
Mean number days precipitation (.01 inch or more) (29-year record)	124
Mean number days thunderstorms (29-year record)	45

Prevailing Winds (15-year record)

South

Relative Humidity (16-year record)

1 a.m.	76 percent
7 a.m.	81 percent
1 p.m.	59 percent
7 p.m.	61 percent

Source: U. S. Department of Commerce, Environmental Science Services Administration, Climatological Data, 1976. Station of record: Louisville, Kentucky.

LOCAL GOVERNMENT

City

Structure - Mayor - 4-year term; 6 councilmen - 2-year terms
Budget 1978 - General Fund \$ 292,120
 Water, Sewer, and Gas Fund 1,337,599
Fees and licenses - Business licenses range from \$5 to \$500 annually;
 manufacturing licenses for operating a plant for the manufacture of
 any product by processing, assembling or converting (except
 alcoholic beverages) - \$100; annual vehicle sticker - \$7.50

County

Structure - County judge/executive - 4-year term;
 3 magistrates - 4-year terms
Budget 1977-78 - General Fund \$207,605; Road Fund \$71,600

Assessed Value of Property, 1977

<u>Classes of Property</u>	<u>Carrollton</u>	<u>Carroll County</u>
Real Estate	\$24,844,726	\$67,572,591
Tangibles	9,070,253	17,328,051

Property Taxes

All property in Kentucky is assessed at 100 percent of fair cash value.

Land and buildings are taxed by the state and may be taxed by local jurisdictions. The state rate is \$0.315 per \$100 of assessed valuation.

Manufacturing machinery, raw materials inventories, pollution control equipment, and goods in the process of manufacture are not subject to local taxation. The state rate is \$0.15 per \$100.

Other tangible personal property owned by manufacturers (automobiles, trucks, finished goods, office furniture, office equipment) is taxed by the state at \$0.45 per \$100 and may be taxed by local jurisdictions.

Property stored in public warehouses in a transit status is not subject to local taxation. The state rate is only \$0.015 per \$100.

Intangible personal property located in Kentucky (money in hand, shares of stock, notes, bonds, accounts, and other credits) is taxed by the state at \$0.25 per \$100, and is not subject to local taxation.

Intangible personal property owned by corporations in Kentucky as a result of business transactions performed out-of-state, but having a tax situs in Kentucky (accounts receivable, notes, bonds, credits, non-domestic bank deposits, licensing or royalty agreements, shares of stock of any affiliated company, etc.) is taxed by the state at \$0.015 and is not subject to local taxation.

Combined State and Local Rates Per \$100 Valuation, 1977*
(100% assessment)

	<u>Inside City of Carrollton</u>	<u>Outside City</u>
1. Land and buildings	\$1.281	\$0.991
2. Mfg. machinery, raw materials, goods in process, pollution control equipment	0.150	0.150
3. Finished goods, office equipment, vehicles, other tangibles	1.416	1.126
4. Intangibles (accounts, notes, bonds, etc.)	0.250	0.250

Utilities Gross Receipts Tax for Schools

A 3 percent tax is levied on utilities receipts for schools in Carroll County. Tax is paid by all consumers of utilities as an add-on to the utilities bills. Exempted are receipts from utilities services that are resold and the receipts from the sale of energy or energy producing fuels that exceed 3 percent of the cost of production in manufacturing, processing, mining or refining.

Planning and Zoning

Joint agency - Carroll County Joint City-County Planning Commission
Zoning enforced - City of Carrollton only
Subdivision regulations enforced - City of Carrollton
Local codes enforced - Housing and Building
Mandatory state codes enforced - Plumbing, National Fire Protection Association Code, National Building Code (for major buildings and residential construction containing more than 12 bedrooms per building)

*Kentucky Department of Commerce.

EDUCATION

Public Schools

Carroll County

Total Enrollment (February 1978)	1,937
Elementary	836
Middle School	528
High School	573
Student-Teacher Ratio	19-1
Elementary	19-1
Middle School	20-1
High School	18-1
Accreditation	Southern Association of Colleges and Schools
Percent High School Graduates to College	32.2
Expenditures Per Pupil (1976-77)	\$833
Bonded Indebtedness, June 30, 1977	\$4,121,000*

*Includes refunding issue - \$790,000.

Area Colleges and Universities

<u>Name</u>	<u>Location (Miles distant)</u>	<u>Enrollment (Fall, 1977)</u>	<u>Highest Degree Conferred</u>
Thomas More College	Ft. Mitchell (48)	1,296	Baccalaureate
Kentucky State University	Frankfort (50)	2,252	Masters
Bellarmino College	Louisville (50)	1,782	Baccalaureate
Jefferson Community College	Louisville (50)	5,036	Associate
Southwest Campus	Louisville (50)	558	Associate
Spalding College	Louisville (50)	1,003	Masters
University of Louisville	Louisville (50)	17,799	Ph.D., M.D., D.M.D., J.D.
Northern Kentucky University	Highland Heights (62)	6,569	Masters, J.D.*

*Salmon P. Chase College of Law is a part of Northern Kentucky University.

Vocational Schools

Nearest State Schools

	Jefferson State Vocational-Technical School	Northern Kentucky State Vocational-Technical School
Location	Jeffersontown	Covington
Miles Distant	53	57
Curriculum	Agriculture Agriculture Mechanics Horticulture Business and Office Clerical Data Processing Model Office Secretarial Health and Personal Service Occupations Cosmetology Child Care Dental Assisting Medical Assisting Nurse Aide Practical Nursing Surgical Technician Industrial Education Air Conditioning and Heating Auto Body Repair Auto Mechanics Carpentry-Building Trades Diesel Mechanics Electronics Graphic Arts (Printing) Industrial Electricity Building Maintenance Mechanics Machine Shop Masonry Plumbing Welding	Business and Office Clerical Data Processing Secretarial Consumer and Home Economics Child Care Services Clothing Services Commercial Foods Food Services Health and Personal Service Occupations Cosmetology Practical Nursing Industrial Education Air Conditioning and Heating Auto Body Repair Auto Mechanics Carpentry Commercial Art Drafting Electronics (Technology) Graphic Arts (Printing) Machine Shop Radio and TV Repair Welding Public Service Programs Fire Service Training (Regional Service) Learning Resource Center

Nearest Area Education Center

Location	Carroll County Area Vocational Education Center
Curriculum	Carrollton Business and Office Accounting Business Math Clerical Office Machines Secretarial Shorthand Typing Industrial Education Air Conditioning Auto Mechanics Carpentry Industrial Electricity Welding

Arrangements can be made to provide training in the specific production skills required by an industrial plant. Instruction may be conducted either in the vocational school or in the industrial plant, depending upon the desired arrangement and the availability of special equipment.

HEALTH

Local Medical Personnel

Physicians - 5
Dentists - 2

Hospitals

<u>General Hospital</u>	<u>Location</u>	<u>Beds</u>
Carroll County Memorial Hospital	Carrollton	80

General hospital facilities - Operating room, recovery room, emergency room, X-ray, laboratory, OB section, nursery, physical therapy, electrocardiography, cardiac monitors, respiratory therapy, blood bank

Medical staff - 7 doctors, 16 registered nurses, 11 graduate licensed practical nurses, 2 medical technologists, 2 X-ray technicians, respiratory therapist, physical therapist, medical records technician

Other Medical Facilities

Comprehensive Care Center - serves Carroll, Owen, and Gallatin Counties

Ambulance Service

Name - Carroll County Ambulance Service
Staff - 29 emergency medical technicians - Volunteers
Service - 24-hour service, 7 days a week
Equipment - One van and 2 fully equipped modular ambulances with backboards, stretchers, air and bar splints, resuscitator, wrecking bars, built-a-boards, stair chair

Public Health

Facility - Three Rivers District-Carroll County Health Center
Staff - Acting administrator, 2 nurses, clerk, health environmentalist (part time)

OTHER LOCAL FACILITIES

Communications

Telephone - South Central Bell Telephone Company
Services - Standard

Telegraph - Western Union Telegraph Company
Services - Mailgrams or international messages

Postal - U.S. Post Office
Class - First
Mail received - Twice daily
Mail dispatched - Twice daily

Newspapers - Carrollton News-Democrat
Weekly and circulation - 3,355
Other papers
received from - Louisville and Lexington, Kentucky;
Cincinnati, Ohio;
Indianapolis and Madison, Indiana

Radio - WVCB
Stations received from - Louisville and Lexington, Kentucky

Television -
Cable service
Reception from - Louisville and Lexington, Kentucky;
Cincinnati, Ohio;
Indianapolis, Indiana
Kentucky Educational
Television - Channel 52, Owenton transmitter

Library Services

Public library - Carroll County Public Library
Size collection - 12,897 volumes
Circulation, 1976-77 - 32,137
Services - Bookmobile, magazines, story hour, records, films,
microform reader-printer

Religious Institutions

Number of churches - 20
Denominations - Apostolic
Baptist
Calvary Tabernacle
Catholic
Christian
Church of Christ
Disciples of Christ
Latter Day Saints
Lutheran
Pilgrim Holiness
Pentecostal
Presbyterian

Nearest Synagogues - Louisville, Kentucky, 50 miles distant
Cincinnati, Ohio, 60 miles distant
Congregations - Louisville - 5 (orthodox, reform, conservative)
Cincinnati - 16 (orthodox, reform, conservative, traditional)

Financial Institutions

<u>Banks</u>	<u>Assets</u>	<u>Deposits</u>	<u>Statement Date</u>
Kentucky State Bank	\$11,122,646.38	\$10,191,276.66	12/31/77
The First National Bank of Carrollton	12,243,795.49	10,857,637.22	12/31/77
<u>Savings and Loan Associations</u>	<u>Assets</u>	<u>Savings Accounts</u>	<u>Statement Date</u>
Carrollton Federal Savings and Loan Association	\$ 7,881,427.00	\$ 6,907,162.00	12/31/77

Hotels and Motels

Total number - 6
Total units - 205

Clubs and Organizations

Business and Civic - Carroll County Chamber of Commerce, Jaycees, Carroll County Safety Council, Rotary, Business and Professional Women's Club, Kiwanis, Port William Historical Society

Fraternal - American Legion, Masonic, IOOF, DAV, VFW, Moose

Women's - Homemakers, Garden Club, Woman's Club, Younger Woman's Club, Eastern Star, IOOF Auxiliary

Youth - Girl Scouts, Boy Scouts, Cub Scouts, Brownies, 4-H Club, FHA, FFA, Key Club, Beta Club, Science Club, Art Club, Drama Club, Conservation Club, Little League, Carroll County Youth Council

RECREATION

Local

There are various recreational opportunities available in the Carrollton area due to its location on the Kentucky and Ohio Rivers and its proximity to Louisville, Kentucky, and Cincinnati, Ohio.

The Carrollton Recreation Department along with the local churches provide supervised recreation programs. Six playgrounds are located throughout the city as well as tennis courts, a baseball diamond, football field, and boating facilities. There are also several private boat docks and one private movie theater located in Carrollton.

A 6-acre site has been selected for the Point Park project. The park is to provide a playground, lighted softball field, shuffleboard, camping, and picnic area. The construction on this park is to begin in the summer of 1978.

A proposed city/county recreational park is to be located on a 35-acre site and plans are to include 4 tennis courts, 2 softball fields, horse show arena, horse barns, and exhibit hall with meeting rooms, locker rooms, showers, restrooms, youth center and a recreational area for senior citizens.

General Butler State Resort Park at Carrollton covers 809 acres which includes a 30-acre lake, boat dock, fishing, 9-hole golf course, miniature golf course, swimming pool, camping, playgrounds, shuffleboard, tennis courts, lodge, gift shops, and horseback riding. The Butler Mansion has been restored and contains a museum of Ohio River Lore.

Area (Within 60 miles)

Big Bone Lick State Park, 40 miles northeast of Carrollton, is a 512-acre park in the area of the greatest graveyard of ice-age animals. The park features camping, swimming pool, picnic area, the site of the ancient salt sulphur spring used by historic animals and a museum.

Louisville, Kentucky, and Cincinnati, Ohio offer a wide variety of recreational, sporting, and cultural events.

COMMUNITY IMPROVEMENTS

Recent:

A new water treatment plant was completed in October of 1977, increasing treatment capacity to 1,000,000 gallons per day.

A new water district was opened for business in 1976. The West Carroll County Water District has approximately 385 customers and serves West Carroll County and Trimble County.

The Carroll County Courthouse was remodeled in 1976 at an approximate cost of \$575,000. One floor and two new wings were added providing 70 percent more floor space.

A new 84-bed nursing home has been completed in the central section of Carrollton and is scheduled to open May 1, 1978.

The Carroll County School System added five rooms to the Middle School, implemented a Practical Arts Program for grades K-5, added a hearing impaired unit, and added a social worker and a homebound teacher to the staff.

Underway:

Construction of a new \$3 million research center at Dow Corning is scheduled for completion in July 1978. In addition, another \$37 million will be spent increasing the production capabilities of the plant.

A major medical clinic, which will house six physicians, is under construction at a location near the hospital. Completion is scheduled for June 1, 1978.

The City of Carrollton is planning to remodel an existing building to **provide** housing for senior citizens. Bids are to be let in late spring of 1978 and construction will begin shortly after.

Planned:

The West Carroll County Water District plans to extend service to approximately 30 additional customers.

Carrollton Utilities is nearing completion of Phase I of the 201 Facilities Plan and will begin the design stage of a secondary treatment plant in the very near future.

A new Carroll County library is planned and construction should begin within the next 2 years.

**Kentucky Department of Commerce
Capital Plaza Tower
Frankfort, Kentucky 40601**

**Office of the Commissioner
(502) 564-4270**

**Industrial Development Division
(502) 564-7140**

**Field Services Division
(502) 564-4270**

**Existing Industries Division
(502) 564-4300**

**Agribusiness Division
(502) 564-6784**

**Office of Minority Business Enterprise
(502) 564-2064**

**Tourism Development Division
(502) 564-2868**

**International Trade and Investment
Promotion Division
(502) 564-2170**

**Research and Planning Division
(502) 564-4886
Map Sales Office
133 Holmes Street
(502) 564-4715**

**Kentucky Development Finance Authority (K DFA)
(502) 564-4554**

**Kentucky Film Commission
(502) 564-2240**