

1990

Industrial Resources: Casey County - Liberty

Kentucky Library Research Collections
Western Kentucky University, spcol@wku.edu

Follow this and additional works at: https://digitalcommons.wku.edu/casey_cty

 Part of the [Business Administration, Management, and Operations Commons](#), [Growth and Development Commons](#), and the [Infrastructure Commons](#)

Recommended Citation

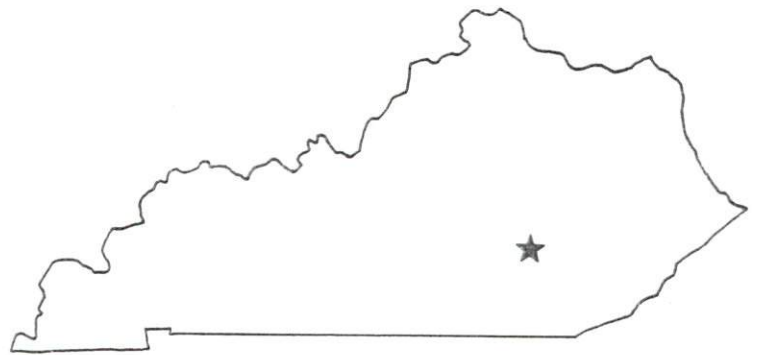
Kentucky Library Research Collections, "Industrial Resources: Casey County - Liberty" (1990). *Casey County*. Paper 5.
https://digitalcommons.wku.edu/casey_cty/5

This Report is brought to you for free and open access by TopSCHOLAR®. It has been accepted for inclusion in Casey County by an authorized administrator of TopSCHOLAR®. For more information, please contact topscholar@wku.edu.

IR 670 Casey

Resources for Economic Development

Liberty- Casey County



KENTUCKY
Open for Business

RESOURCES FOR ECONOMIC DEVELOPMENT
LIBERTY-CASEY COUNTY, KENTUCKY

Prepared by
The Kentucky Cabinet for Economic Development
Division of Research and Planning
in cooperation with
The Liberty-Casey County Chamber of Commerce

1990

Division Director - Pamela K. Riley; program manager - Keith Roberts; research - Scott Hourigan; clerical - Wanda Sharp; graphics - Robert Owens, Pat Coleman; cartography - Edwin Scott, Dave Clark. Cost of printing paid from state funds.

TABLE OF CONTENTS

<u>Chapter</u>	<u>Page</u>
LIBERTY-CASEY COUNTY, KENTUCKY - A RESOURCE PROFILE	1
THE LABOR MARKET STATISTICS	2
Labor Market Area Map	2
Population	3
Population Projections	3
Estimated Labor Supply	3
Labor Force Characteristics of Residents, 1989.....	4
Selected Components of Nonagricultural Employment, by Place of Work, 1989	5
Per Capita Personal Income	6
Average Placement Wages	7
Average Weekly Wages of Workers Covered by Unemployment Insurance 1988 - Bar Chart.....	8
Average Weekly Wages by Industry, by Place of Work, 1988	9
EXISTING INDUSTRY	10
Liberty-Casey County Manufacturing Firms, Their Products and Employment	10
Labor Organizations in Manufacturing Firms	11
Selected Industrial Services	12
TRANSPORTATION	13
Highways	13
Truck Service	13
Selected Market Location Map	14
Rail	15
Air	15
UTILITIES	16
Electricity	16
Natural Gas	17
Public Water Supply	17
Sewerage	17
CLIMATE.....	18

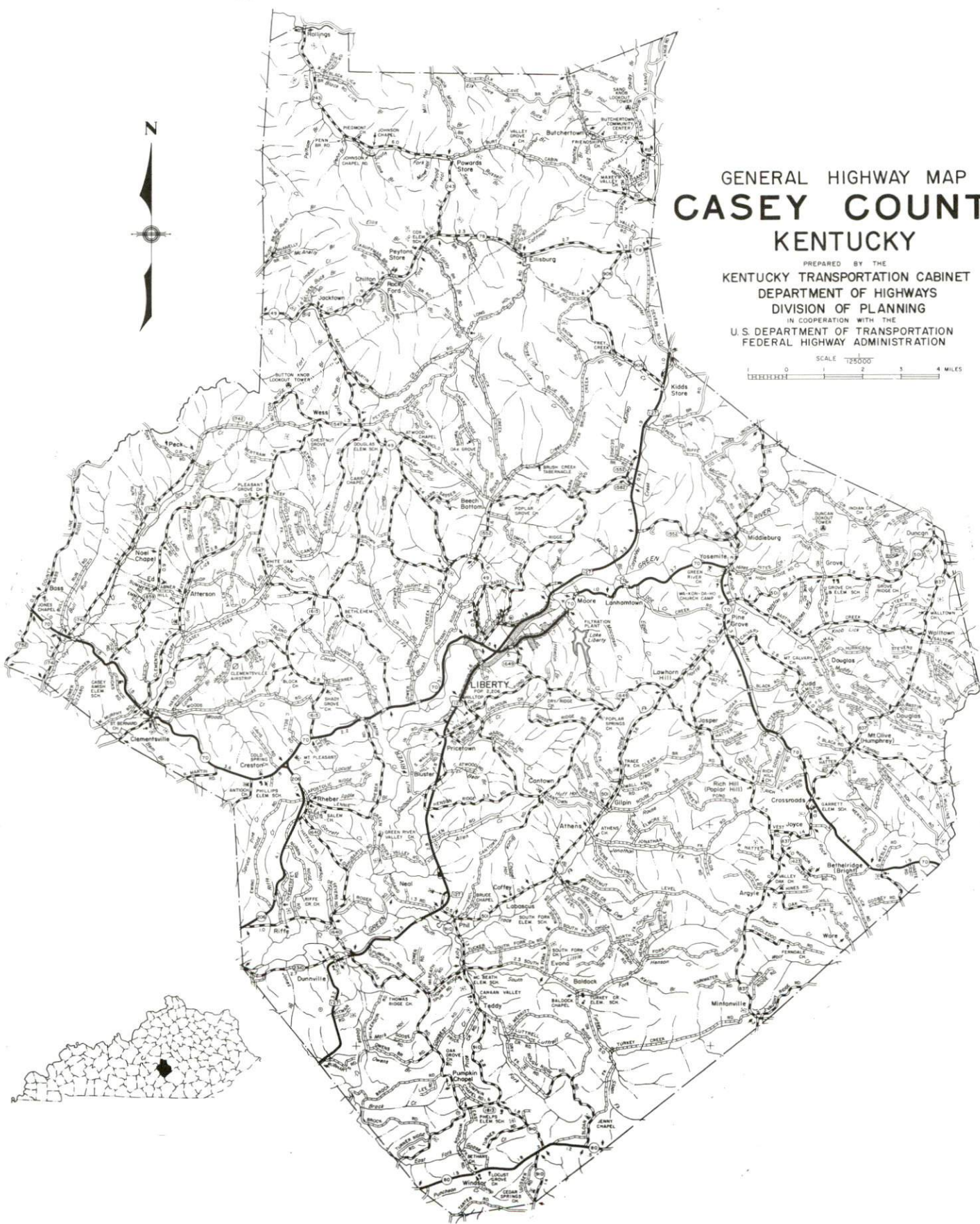
<u>Chapter</u>	<u>Page</u>
LOCAL GOVERNMENT	19
Structure	19
Planning and Zoning	19
State and Local Property Taxes	20
Combined State and Local Rates Per \$100 Valuation, 1989	20
EDUCATION	21
Public Schools	21
Area Colleges and Universities	21
Vocational Training	22
OTHER LOCAL FACILITIES	23
Local Medical Personnel	23
Hospitals	23
Other Medical Facilities and Services	23
Banks and Savings & Loan Associations	23
Newspapers	23
Telephone Service	23
RECREATION	24
COMMUNITY IMPROVEMENTS	25



GENERAL HIGHWAY MAP CASEY COUNTY KENTUCKY

PREPARED BY THE
KENTUCKY TRANSPORTATION CABINET
DEPARTMENT OF HIGHWAYS
DIVISION OF PLANNING
IN COOPERATION WITH THE
U.S. DEPARTMENT OF TRANSPORTATION
FEDERAL HIGHWAY ADMINISTRATION

SCALE 1:725000
0 1 2 3 4 MILES



LIBERTY-CASEY COUNTY, KENTUCKY - A RESOURCE PROFILE

Liberty, the county seat of Casey County, is 58 miles south of Lexington, Kentucky; 167 miles northeast of Nashville, Tennessee; and 109 miles southeast of Louisville, Kentucky. Liberty had a 1988 estimated population of 2,310.

Casey County is located in the Mississippian Plateaus area of south-central Kentucky. It is a well-dissected upland area with rather broad valleys and numerous long, flat-topped ridges. Casey County, which covers a land area of 445 square miles, had a 1988 estimated population of 14,500.

The Economic Framework - The total number of Casey County residents employed in 1989 averaged 4,697. Manufacturing firms in the county reported 1,203 employees; wholesale and retail trade provided 436 jobs; 120 people were employed in service occupations; state and local government accounted for 562 employees; and contract construction firms provided 146 jobs.

Labor Supply - There is a current estimated labor supply of 21,974 persons available for industrial jobs in the labor market area. In addition, from 1990 through 1994, 12,843 young persons in the area will become 18 years of age and potentially available for industrial jobs.

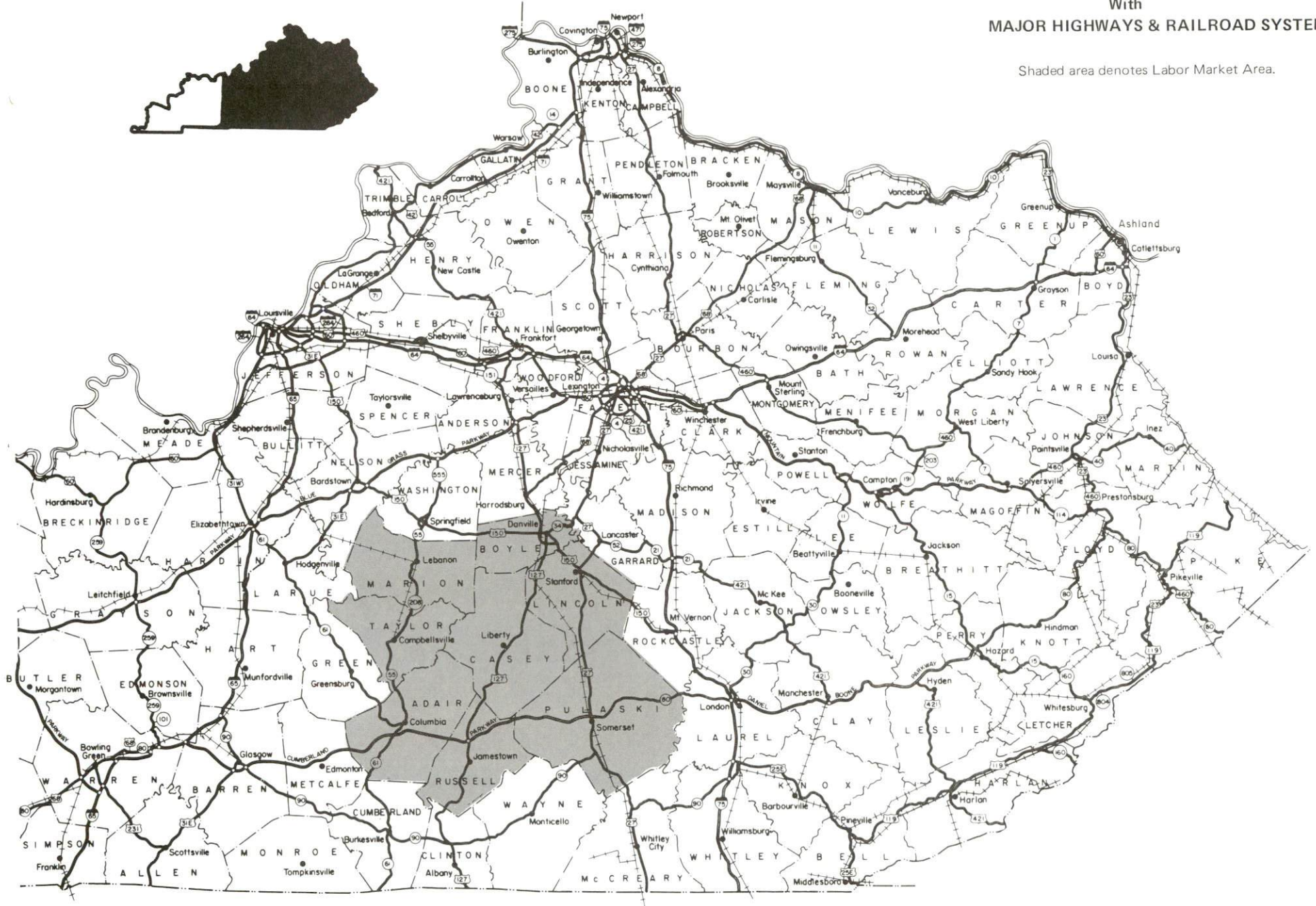
Transportation - The nearest rail service is provided by the Norfolk Southern Railway Company at Moreland, 16 miles north of Liberty. Liberty is served by U.S. Highway 127, a "AAA"-rated trucking highway, and "AA"-rated Kentucky Routes 70 and 49. Access to the Cumberland Parkway, a limited access multilane toll road, is 24 miles south of Liberty via U.S. 127. The Cumberland Parkway then provides access to Interstate 65 to the west and Interstate 75 to the east. Twelve trucking companies provide interstate and/or intrastate service to Liberty. The Liberty-Casey County Airport, located six miles west of the city, maintains a 3,000-foot paved runway. The Boyle County Airport, located 24 miles north of Liberty, has a 4,800-foot and a 2,400-foot paved runway. Scheduled commercial airline service is available at Bluegrass Airport at Lexington, Kentucky, 58 miles northeast of Liberty.

Power and Fuel - Electric power is provided to Liberty and parts of Casey County by Kentucky Utilities Company. The remainder of Casey County is served by RECC's supplied by the East Kentucky Power Cooperative. Natural gas service is provided to Liberty by the Liberty Gas Company, which is supplied by the Texas Eastern Transmission Company.

Education - Primary and secondary education is provided to Liberty and Casey County by the Casey County School System. Eleven institutions of higher learning are located within 75 miles of Liberty. Vocational training is available locally at the Casey County Area Vocational Education Center in Liberty and at the Somerset State Vocational-Technical School.

LIBERTY LABOR MARKET AREA With MAJOR HIGHWAYS & RAILROAD SYSTEM

Shaded area denotes Labor Market Area.



LABOR MARKET STATISTICS

The Liberty-Casey County Labor Market Area includes Casey County and the adjoining Kentucky counties of Adair, Boyle, Lincoln, Marion, Pulaski, Russell, and Taylor.

POPULATION			
	1988*	1980	1970
Labor Market Area	177,800	172,769	144,119
Liberty	2,310	2,206	1,765
Casey County	14,500	14,818	12,930

* Population estimates.

Sources: U.S. Department of Commerce, Bureau of the Census, August 1989; November 1989.

POPULATION PROJECTIONS				
	2000	2010	2020	2030
Labor Market Area	186,420	189,090	188,190	183,380
Casey County	15,130	15,500	15,680	15,610

Source: University of Louisville, Urban Studies Center, State Data Center.

ESTIMATED LABOR SUPPLY					
	Current				Future
	Total	Unemployed	Employed Part-Time	Not in Labor Force	Becoming 18 years of age 1990 thru 1994
Labor Market Area*	21,974	6,128	7,947	7,899	12,843
Casey County	3,443	369	719	2,355	1,137

* Additional workers may be drawn from other nearby counties.

Note: Unemployed - persons unemployed and actively seeking work; Employed Part-Time - persons employed but working only 14 to 26 weeks per year; Not in Labor Force - represents the number of persons who would enter the labor force if suitable employment were available (based on the assumption that persons in Kentucky would like to participate in the labor force in the same proportion that they do nationally).

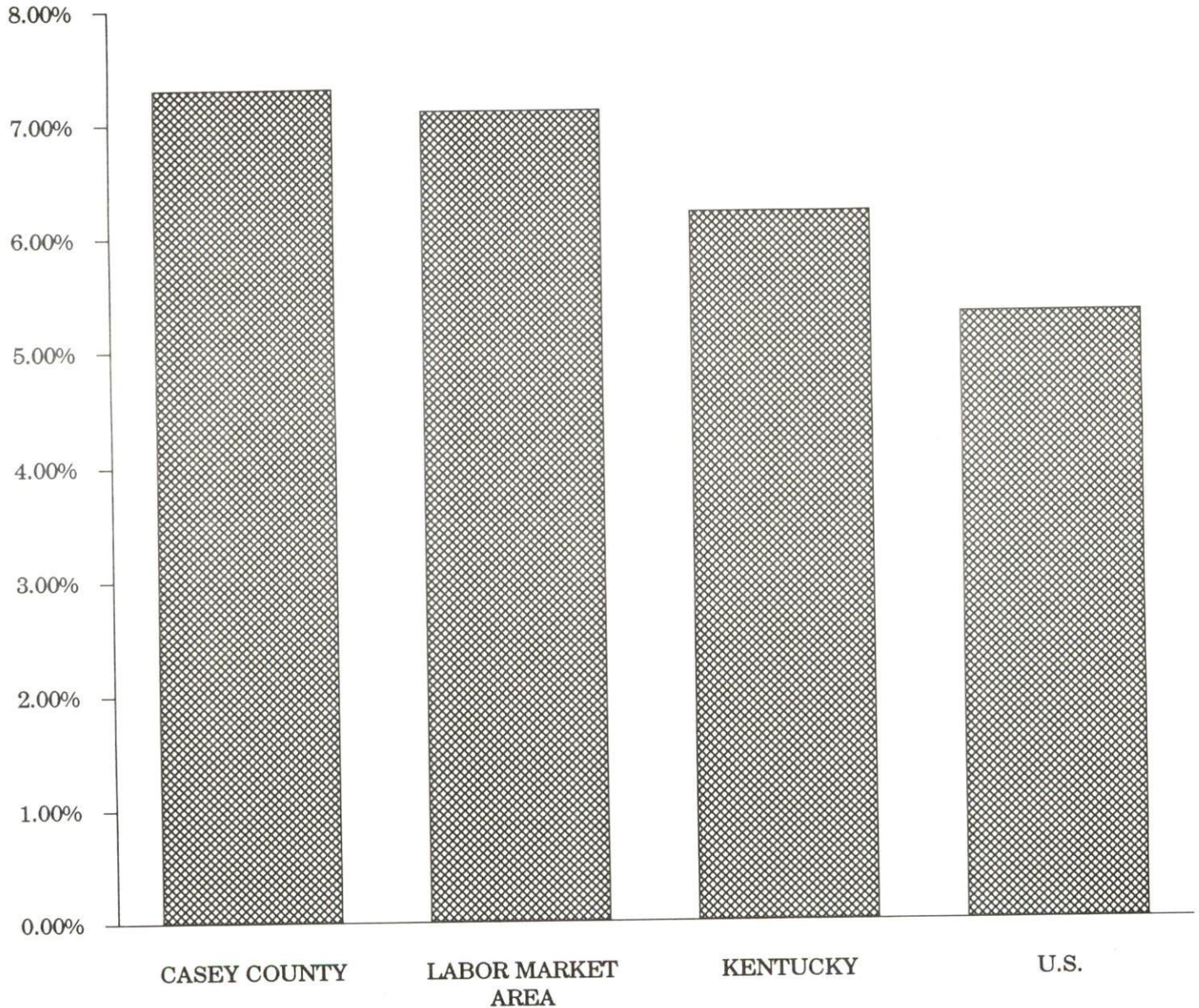
Sources: Kentucky Cabinet for Human Resources, Kentucky Labor Supply Estimates by County, 1988. Kentucky Cabinet for Economic Development, Future Labor Supply Becoming 18 Years of Age, 1990 thru 1994.

LABOR FORCE CHARACTERISTICS OF RESIDENTS, 1989

	Casey County	Labor Market Area
Civilian Labor Force	5,066	86,510
Employment	4,697	80,382
Unemployment	369	6,128
Rate of Unemployment (%)	7.3	7.1

Source: Kentucky Cabinet for Human Resources, Kentucky Labor Force Estimates, Annual Averages, 1989.

UNEMPLOYMENT RATES
1989

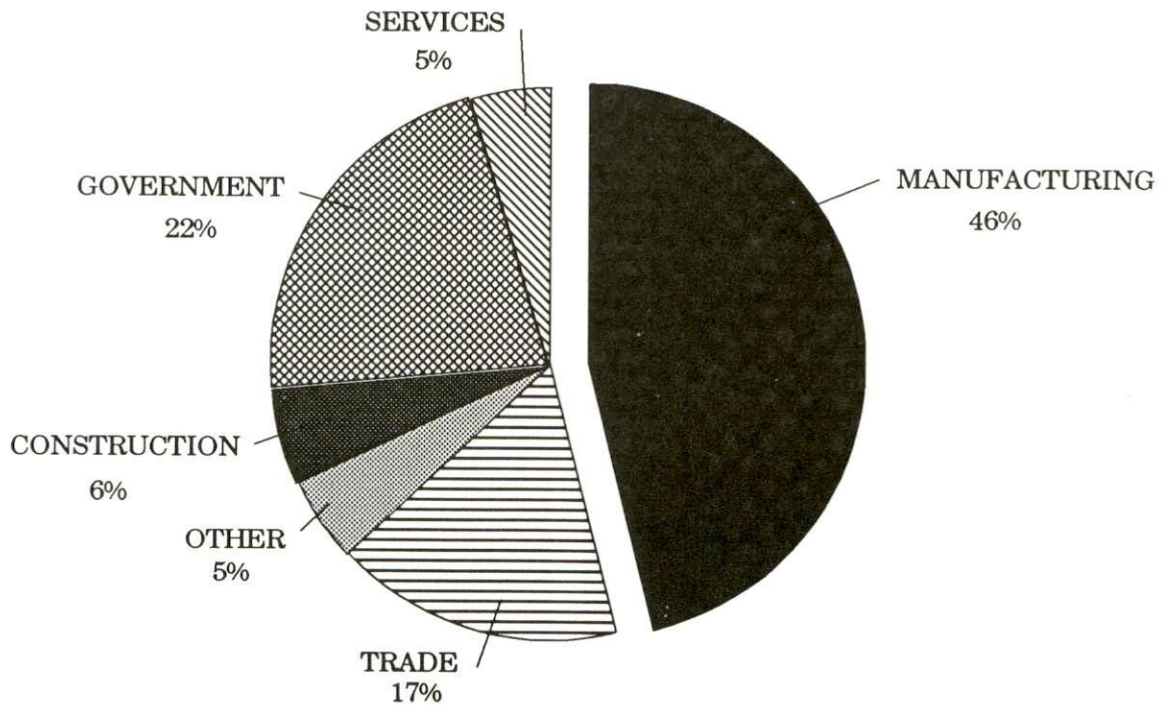


SELECTED COMPONENTS OF NONAGRICULTURAL EMPLOYMENT
BY PLACE OF WORK, 1989

	Casey County	Labor Market Area
All Industries (total)	2,600	56,999
Manufacturing	1,203	20,113
Wholesale & Retail Trade	436	13,851
Services	120	8,500
State/Local Government	562	8,356
Contract Construction	146	2,144

Note: Excludes domestic workers, railway workers, certain nonprofit corporations, majority of federal government workers, and self-employed workers.
Source: Kentucky Cabinet for Human Resources, Average Monthly Workers Covered by Kentucky Unemployment Insurance Law, 1989.

CASEY COUNTY

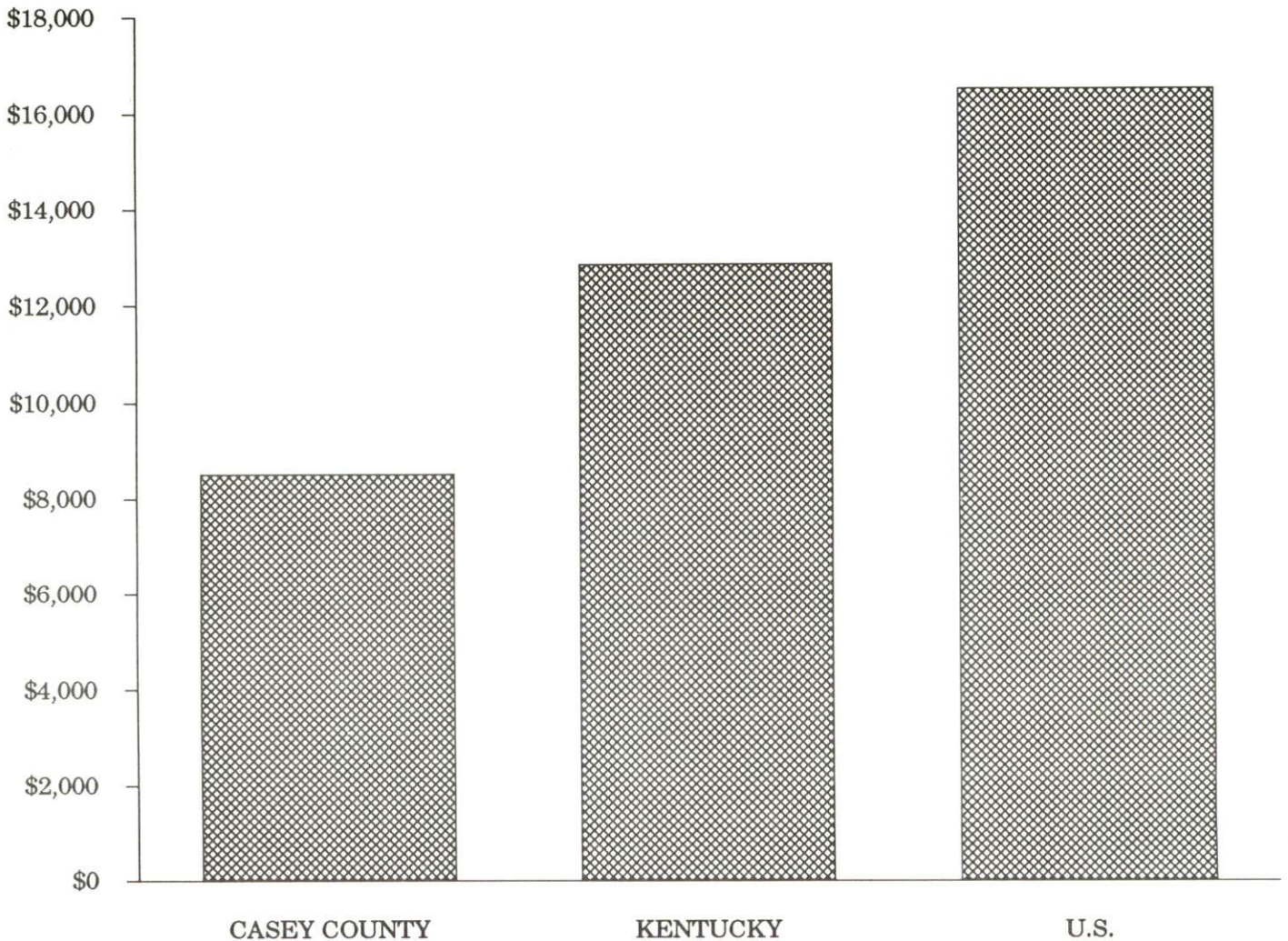


PER CAPITA PERSONAL INCOME

<u>Area</u>	<u>1984</u>	<u>1988</u>	<u>Percent Change</u>
Casey County	\$6,666	\$8,491	27.4
Labor Market Area Range	\$6,666 - \$10,242	\$8,491 - \$12,427	-
Kentucky	\$10,411	\$12,830	23.2
U.S.	\$13,116	\$16,490	25.7

Sources: U.S. Bureau of Economic Analysis, Kentucky Economic Information System, April 1990.

PER CAPITA PERSONAL INCOME
1988



AVERAGE PLACEMENT WAGES

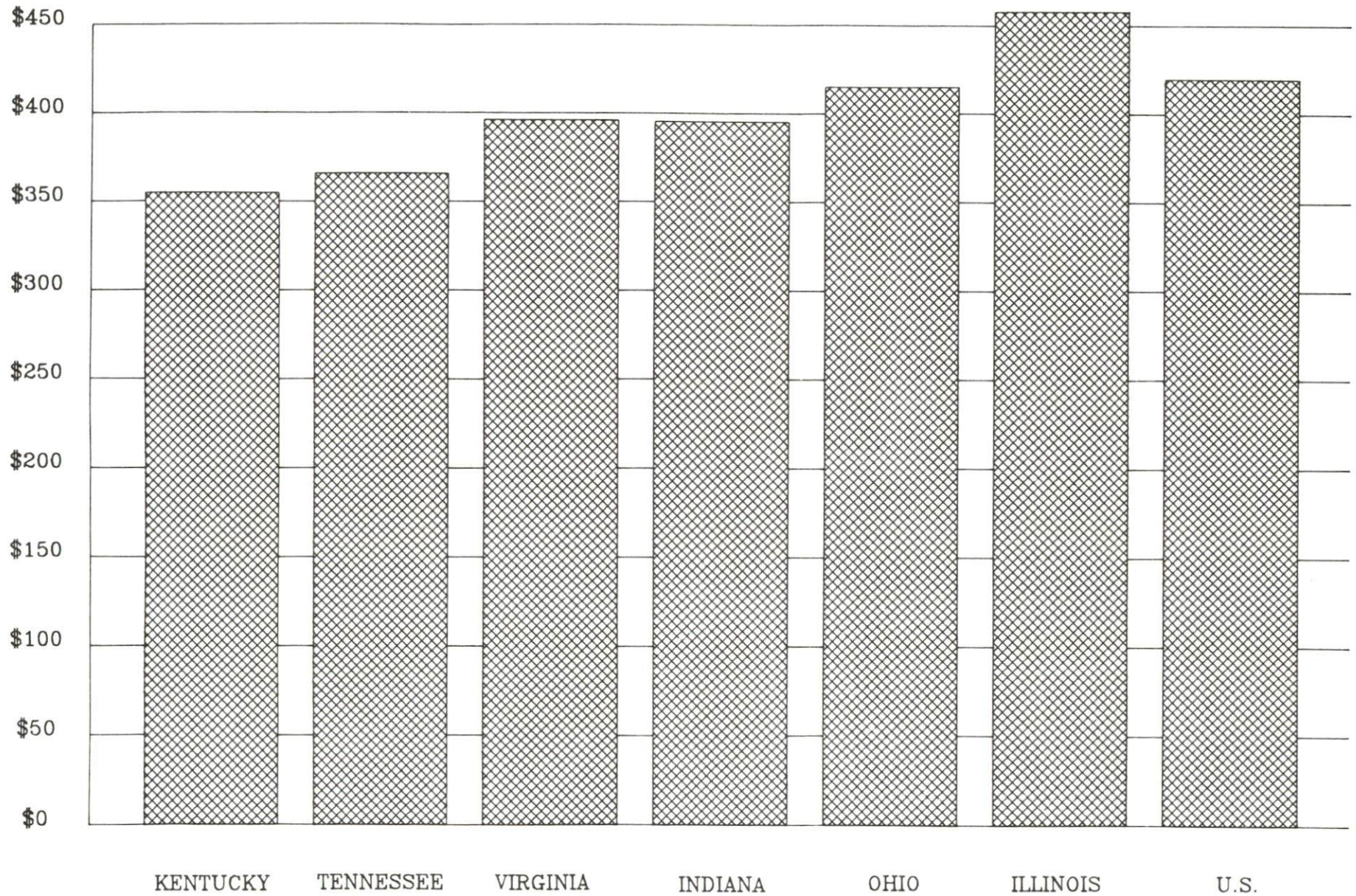
Casey County is served by the Somerset local office of the Kentucky Department for Employment Services. The focus of the following data is on job placements made by the Somerset local office and may therefore be used as an indicator of the wages which employers in the area pay new employees. During the twelve months which ended on June 30, 1989, the local employment office filled 5,504 job openings in various occupational categories. The average hourly wage for selected occupational categories were:

<u>OCCUPATIONAL CATEGORY</u>	<u>NUMBER OF PLACEMENTS</u>	<u>AVERAGE WAGE(\$)</u>
All Occupations	5,504	4.06
Clerical	1,339	3.61
Sales	109	3.68
Services (excluding domestic)	442	3.36
Agricultural, Fishery, Forestry, etc.	51	4.04
Processing	72	3.71
Machine Trades	238	4.04
Bench Work	2,347	4.03
Structural	489	5.31
Motor Freight/ Transportation	58	4.18
Packaging and Materials Handling	215	4.88
Other	85	3.62

The Somerset local office also serves Adair, Clinton, Cumberland, Green, McCreary, Pulaski, Russell, Taylor, and Wayne Counties. The above occupational categories are taken from the Dictionary of Occupational Titles published by the U.S. Department of Labor.

Source: Kentucky Cabinet for Human Resources, Department for Employment Services.

AVERAGE WEEKLY WAGES OF WORKERS COVERED BY
UNEMPLOYMENT INSURANCE - 1988



AVERAGE WEEKLY WAGES BY INDUSTRY
BY PLACE OF WORK, 1988

	Casey County	Kentucky (State- Wide)	Tennessee	Virginia
All Industries	\$231.14	\$352.31	\$363.12	\$392.56
Mining & Quarrying	*	603.27	495.85	596.88
Contract Construction	226.50	380.71	394.27	422.27
Manufacturing	203.44	464.92	416.73	452.60
Transportation, Communications & Public Utilities	507.96	468.17	485.13	554.17
Wholesale & Retail Trade	164.42	238.88	N/A	N/A
Finance, Insurance & Real Estate	339.05	401.17	269.27	466.23
Services	171.48	298.98	343.48	391.67
State/Local Government	280.36	377.81	403.21	457.00
	<u>Indiana</u>	<u>Ohio</u>	<u>Illinois</u>	<u>U. S.</u>
All Industries	\$392.63	\$411.08	\$454.10	\$416.33
Mining & Quarrying	635.77	579.73	674.62	660.40
Contract Construction	449.87	465.46	584.10	469.85
Manufacturing	532.06	569.98	555.83	517.62
Transportation, Communications & Public Utilities	502.69	519.17	584.83	542.33
Wholesale & Retail Trade	N/A	N/A	N/A	N/A
Finance, Insurance & Real Estate	406.58	444.33	579.88	532.52
Services	317.98	348.48	402.38	384.31
State/Local Government	395.31	428.10	453.12	442.71

* Not disclosed.

N/A Not Available.

Note: The average weekly wage for each category includes the salaries and wages of all persons working for that type business. For example, the manufacturing category includes both production workers and administrative personnel. Excludes domestic workers, railway workers, certain nonprofit corporations, majority of federal government workers, and self-employed workers.

Source: Kentucky Cabinet for Human Resources, Average Weekly Wages of Workers Covered by Kentucky Unemployment Insurance Law, 1988. U.S. Department of Labor, Bureau of Labor Statistics, Average Annual Pay by State and Industry, August 29, 1989.

EXISTING INDUSTRY

CASEY COUNTY MANUFACTURING FIRMS, THEIR PRODUCTS AND EMPLOYMENT

<u>Firm</u> (Establishment date)	<u>Product</u>	<u>1989</u> <u>Average Employment</u>
Liberty		
C-Ville Gate Company (1977)	Metal holding gates	28
Casey County News (1904)	Newspaper	5
Casey Ready Mix (1971)	Ready mix concrete	4
Wayne Floyd Gate Company (1982)	Metal farm gates	46
Murphy Gate Company (1981)	Steel farm gates	35
Oshkosh B'Gosh, Inc. (1985)	Children's apparel	587
South Indiana Lumber Company, Inc. (1967)	Green and kiln dried lumber, hickory handles, furniture squares, oak stair banisters	45
Watson Gate Company (1976)	Truck racks, bale feeders, metal gates	64
Watson Lumber Company (1960)	Wood chips, dowels, furniture squares, baseball bat blanks	100
Watson Tube Mill, Inc. (1981)	Steel tubing	8
Weddle Feed Mill (1977)	Fertilizer, feed	4
Wilson Gate Company (1987)	Metal panels, livestock metal feeders, farm gates	16
Wolford & Wethington Company, Inc. (1981)	Lumber, furniture squares	27
Dunnville		
Tarter Gate Company (1945)	Metal farm gates, rough lumber shipping pallets	230
Tarter Tube, Inc. (1975)	Steel tubing	15
Bethelridge		
Casey Stone Company (1947)	Asphalt, agricultural lime, crushed limestone	20

(Continued)

<u>Firm</u> <u>(Establishment date)</u>	<u>Product</u>	<u>1989</u> <u>Average Employment</u>
Middleburg		
Chubby Baird Gate Company, Inc. (1981)	Metal farm gates, CCA pressure treated posts	50
Yosemite		
Hamilton & Family Lumber Company, Inc. (1978)	Rough lumber	10

Sources: Kentucky Cabinet for Economic Development, Division of Research and Planning.

LABOR ORGANIZATIONS IN MANUFACTURING FIRMS

Union

International Association of Bridge,
Structural and Ornamental
Ironworkers, AFL-CIO
United Garment Workers of
America, AFL-CIO

Representing workers at:

Watson Gate Company, Inc.;
Watson Tube Mill, Inc.
Oshkosh B'Gosh, Inc.

SELECTED INDUSTRIAL SERVICES

<u>Types of Services</u>	<u>Location</u>	<u>Mileage from Liberty</u>
Custom Data Processing	Danville	27
Custom Plastics Producers	Danville	27
Electric Motor Repair	Lebanon	31
Grinding, Precision & Tool	Richmond	56
Heat Treating Facilities	Richmond	56
Industrial Equipment & Supplies	Springfield	39
Industrial Gases	Campbellsville	31
Industrial Waste Removal	Somerset	38
Machine Shops, Tool & Die	Liberty	-
Metal Castings	Horse Cave	77
Metal Finishers	Richmond	56
Metal Service Centers	Richmond	56
Millwrights	Nicholasville	50
Public Warehouse Facilities	Danville	27

Sources: Kentucky Cabinet for Economic Development, Kentucky Directory of Selected Industrial Services, 1987; Division of Research and Planning.

TRANSPORTATION

Highways

Liberty is served by U.S. Highway 127, a "AAA"-rated (80,000-pound gross load limit) trucking highway, and Kentucky Routes 70 and 49. Access to the Cumberland Parkway, an excellent multilane toll road, is 24 miles south of Liberty via U.S. 127. The Cumberland Parkway then provides access to Interstate 65 to the west, and the Cumberland Parkway and Kentucky 80 provides access to Interstate 75 to the east.

HIGHWAY MILES FROM LIBERTY, KENTUCKY, TO SELECTED MARKET CENTERS

City	Highway Miles	City	Highway Miles
Atlanta, GA	375	Los Angeles, CA	2,171
Baltimore, MD	592	Louisville, KY	109
Birmingham, AL	354	Nashville, TN	167
Chicago, IL	396	New Orleans, LA	687
Cincinnati, OH	136	New York, NY	771
Cleveland, OH	376	Pittsburgh, PA	399
Detroit, MI	394	St. Louis, MO	367
Knoxville, TN	180		

Note: Mileage computations are via the best interstate or primary highways, not necessarily the most direct route of travel.

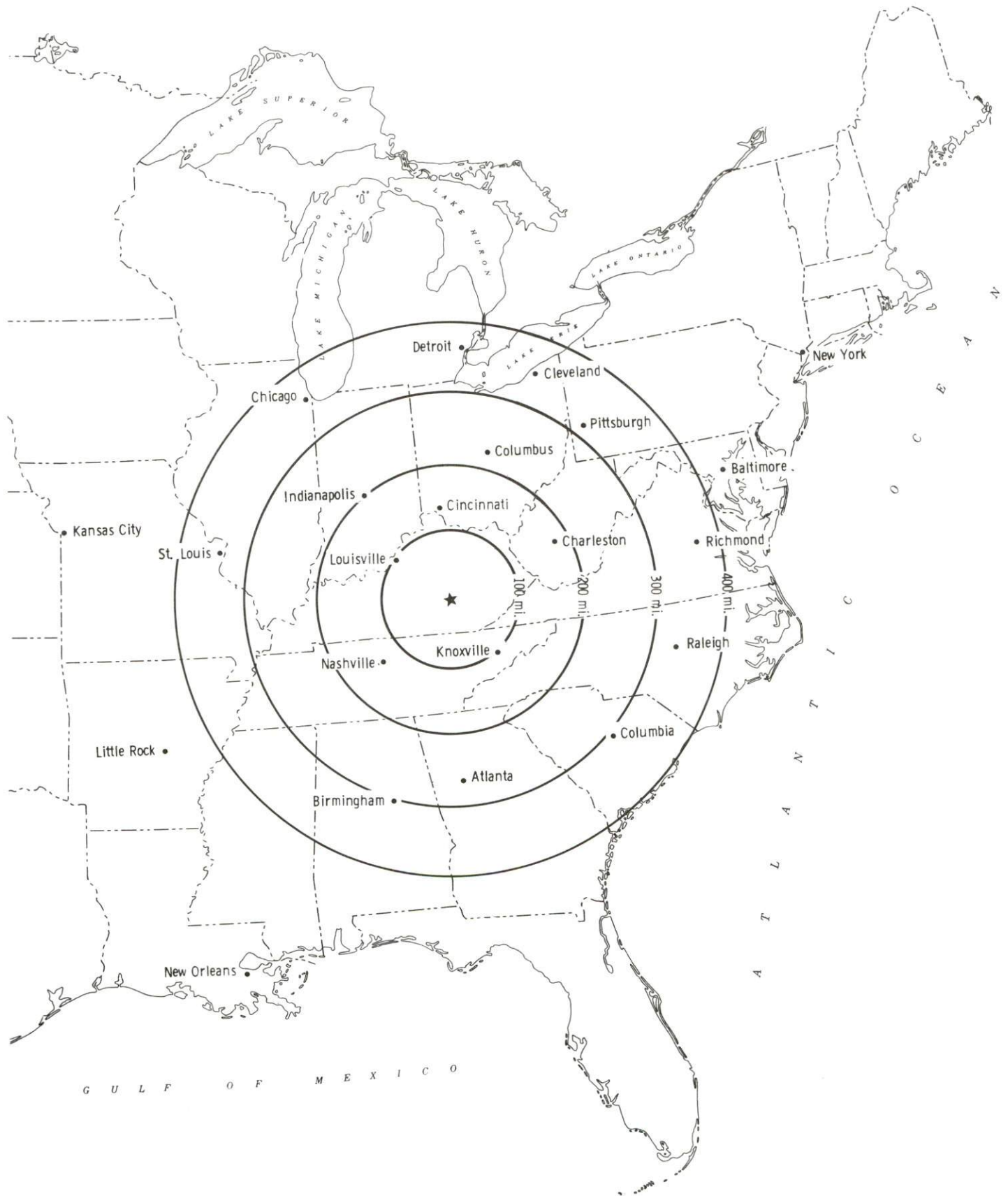
Sources: Rand McNally Deluxe Motor Carriers' Road Atlas, 1989. Official Kentucky Mileage Map, 1980.

Truck Service

There are currently twelve common carrier trucking companies that provide interstate and/or intrastate service to Casey County.

Source: American Motor Carrier Directory, Fall 1990.

Selected Market Centers



Rail

The nearest main line rail service is provided by The Norfolk Southern Railway Company at Moreland, 16 miles north of Liberty. They also provide the nearest piggyback facilities at Georgetown, 73 miles north of Liberty.

For details on routing, schedules, rates, and services contact:

District Sales Manager
Norfolk Southern Corporation
1402 South 15th Street
Louisville, Kentucky 40210
(502) 636-6023

Air

Local

Location: Liberty-Casey County Airport
6 miles west of Liberty
Runways: 1 paved
Length: 3,000 feet
Traffic
Control: Wind sock
Lighting: Dusk to dawn

Plans are being made for a three phase construction project. The first phase consists of construction of a 4,000-foot runway and a maintenance/administrative building. Phase two consists of a 1,500-foot extension to the new runway. The third phase consists of an enlarged ramp area, installation of fuel pumps, and additional parking. The total cost of this project is expected to be \$3,700,000.

Location: Goodall Field, Danville-Boyle County Airport
4 miles south of Danville
24 miles north of Liberty
Runways: Two paved
Length: 4,800 feet and 2,400 feet
Traffic
Control: Wind sock, instrument approach, Unicom 122.8
Lighting: Rotating beacon, sundown to sunrise; VASI, REILS
Services: 100 octane, jet-A; major and minor A & P repairs;
hangar; tie-down; flight instruction; aircraft
rentals
Air Freight
Service: Chartered air freight service must be arranged

A 4,000-foot taxiway parallel to the 4,800-foot runway was constructed in January, 1990 at a cost of \$500,000. Plans are being made for installation of an AWOS3 (All Weather Observation Station) and a localizer landing system by the winter of 1990, costing \$300,000.

Nearest Scheduled Commercial Airline Service

Location: Bluegrass Airport
4 miles west of Lexington, Kentucky;
58 miles north of Liberty
Air Service: Delta, USAir, TWA, United Express, JetStream,
Air Kentucky, American Eagle, ComAir
Daily Arrivals
& Departures: 116

UTILITIES

Electricity

Company serving Liberty and parts of Casey County - Kentucky Utilities Company

Source of power - Kentucky Utilities Company

For industrial rates contact:

Industrial Development Department
Kentucky Utilities Company
One Quality Street
Lexington, Kentucky 40507
(606) 255-1461

Company serving southeastern Casey County - South Kentucky Rural Electric Cooperative Corporation

Source of power - East Kentucky Power Cooperative

For industrial rates contact:

Industrial Development Division
East Kentucky Power Cooperative
P. O. Box 707
Winchester, Kentucky 40391
(606) 744-4812

and/or

South Kentucky Rural Electric
Cooperative Corporation
P.O. Box 910
Somerset, Kentucky 42501
(606) 678-4121

Company serving southwestern Casey County - Taylor County Rural Electric Cooperative Corporation

Source of power - East Kentucky Power Cooperative

For industrial rates contact:

Industrial Development Division
East Kentucky Power Cooperative
P. O. Box 707
Winchester, Kentucky 40391
(606) 744-4812

and/or

Taylor County Rural Electric
Cooperative Corporation
P.O. Box 100
Campbellsville, Kentucky 42718
(502) 465-4101

Company serving northern Casey County - Inter-County Rural Electric
Cooperative Corporation
Source of power - East Kentucky Power Cooperative
For industrial rates contact:

Industrial Development Division
East Kentucky Power Cooperative
P. O. Box 707
Winchester, Kentucky 40391
(606) 744-4812

and/or

Inter-County Rural Electric
Cooperative Corporation
P.O. Box 87
Danville, Kentucky 40422
(606) 236-4561

Natural Gas

Company serving Liberty - Liberty Gas Company
Source of supply - Texas Eastern Transmission Company
For rates and supplies contact:

Liberty Gas Company
Box 127
Liberty, Kentucky 42539
(606) 787-6691

Public Water Supply

Company serving Liberty - Liberty Water Department
P.O. Box 127
Liberty, Kentucky 42539
(606) 787-7234

Source -	Hickman Creek
Treatment plant capacity -	622,000 gallons per day
Average daily consumption -	406,000 gallons
Peak daily consumption -	642,000 gallons
Storage capacity -	250,000 gallons
Water pressure -	80 psi to 110 psi

Sewerage

Company serving Liberty - Liberty Sewer Department
P.O. Box 127
Liberty, Kentucky 42539
(606) 787-7234

Design capacity -	500,000 gallons per day
Average daily flow -	433,000 gallons
Type of treatment -	Secondary
Treated effluent discharged into -	Green River

CLIMATE

Casey County

Temperature

Normal (30-year record)	54.90 degrees
Average annual 1988	54.90 degrees
Record highest, July 1988 (44-year record)	103.00 degrees
Record lowest, January 1963 (44-year record)	-21.00 degrees
Normal heating degree days (30-year record) (Heating degree day totals are the sums of negative departures of average daily temperatures from 65 degrees F.)	4,818

Precipitation

Normal (30-year record)	45.68 inches
Mean annual snowfall (44-year record)	16.20 inches
Total precipitation 1988	38.90 inches
Mean number days precipitation (.01 inch or more) (44-year record)	129.50
Mean number days thunderstorms (44-year record)	45.30

Prevailing winds (through 1963)

South

Relative Humidity (25-year record, except 1 a.m. - 24-year record)

1 a.m.	77 percent
7 a.m.	81 percent
1 p.m.	60 percent
7 p.m.	64 percent

Source: U.S. Department of Commerce, Environmental Science Services Administration, Climatological Data, 1988. Station of record: Lexington, Kentucky.

LOCAL GOVERNMENT

Structure

The city of Liberty is served by a mayor and six council members. The mayor is elected to a four-year term and the council members serve two-year terms. Casey County is served by a county judge/executive and four magistrates. The judge/executive and magistrates are elected to four-year terms.

Planning and Zoning

City agency - City of Liberty Planning Commission

Zoning enforced - Within city limits only

Subdivision regulations enforced - Within city limits

Local codes enforced - Building and housing

Mandatory state codes enforced - Kentucky Plumbing Code, National

Electric Code, Kentucky Boiler Regulations and Standards, Kentucky

Building Code (modeled after BOCA code)

State and Local Property Taxes

All property in Kentucky, except items exempted by the state constitution, is taxed by the state. Property which also may be taxed by local jurisdictions includes land and buildings, finished goods inventories, automobiles, trucks, office furniture and office equipment. Local taxing jurisdictions in Kentucky include counties, cities, and school districts.

All property in Kentucky is assessed at 100 percent of fair cash value.

COMBINED STATE AND LOCAL RATES PER \$100 VALUATION, 1989

	City of Liberty	Unincorporated Casey County
Land and Buildings	\$0.9796	\$0.7796
Manufacturing		
Machinery	0.1500	0.1500
Pollution Control		
Equipment	0.1500	0.1500
Inventories		
Raw Materials	0.0010	0.0010
Goods in Process	0.0010	0.0010
Finished Goods	0.7626	0.5626
Automobiles & Trucks	1.1776	0.9776
Other Tangible		
Personal Property	1.2116	1.0116
Intangibles (Accounts receivable*, money in hand, stock, notes, bonds)	0.2500	0.2500
Goods Stored in Public Warehouses in Transit Status	0.0010	0.0010
Private Leaseholds in Industrial Revenue Bond Financed Facilities	0.0150	0.0150

* Accounts receivable are taxed at 85 percent of face value, for an effective rate of \$0.2125 per \$100 valuation.

EDUCATION

Public Schools

	Casey County
Total Enrollment (Fall, 1989)	2,597
Pupil-Teacher Ratio (1988-89)	17.2-1
Percent High School Graduates to College (1988-89)	53.9
Expenditures Per Pupil (1988-89)	\$2,441.22

Area Colleges and Universities

<u>Name</u>	<u>Location (Miles distant)</u>	<u>Enrollment (Fall, 1989)</u>
Centre College	Danville, Kentucky (27)	857
Lindsey Wilson College	Columbia, Kentucky (30)	1,153
Campbellsville College	Campbellsville, Kentucky (31)	760
Somerset Community College	Somerset, Kentucky (38)	1,755
Saint Catharine College	Springfield, Kentucky (39)	242
Asbury College	Wilmore, Kentucky (51)	1,076
Berea College	Berea, Kentucky (53)	1,550
Eastern Kentucky University	Richmond, Kentucky (56)	14,268
Lexington Community College	Lexington, Kentucky (58)	3,928
Transylvania University	Lexington, Kentucky (58)	1,076
University of Kentucky	Lexington, Kentucky (58)	22,957

Vocational Training

Vocational training is available at both the state vocational-technical schools and the area vocational education centers. The state vocational-technical schools are post-secondary institutions. The area vocational education centers are designed to supplement the curriculum of high school students. Both the state vocational-technical schools and the area vocational education centers offer evening courses to enable working adults to upgrade current job skills.

Arrangements can be made to provide training in the specific production skills required by an industrial plant. Instruction may be conducted either in the vocational school or in the industrial plant, depending upon the desired arrangement and the availability of special equipment.

Bluegrass State Skills Corporation

The Bluegrass State Skills Corporation, an independent public corporation created and funded by the Kentucky General Assembly, provides programs of skills training to meet the needs of business and industry from entry level to advanced training, and from upgrading present employees to retraining experienced workers.

The Bluegrass State Skills Corporation is the primary source for skills training assistance for a new or existing company. The Corporation works in partnership with other employment and job training resources and programs, as well as Kentucky's economic development activities, to package a program customized to meet the specific needs of a company.

<u>Vocational School</u>	<u>Location (Miles distant)</u>	<u>Cumulative Enrollment 1988-1989</u>
Somerset State Vocational- Technical School	Somerset, Kentucky (38)	909
Casey County Area Vocational Education Center	Liberty	404

OTHER LOCAL FACILITIES

Local Medical Personnel

Physicians - 6
Dentists - 3

Hospitals

<u>General Hospital</u>	<u>Location</u>	<u>Beds</u>
Casey County Hospital	Liberty	24
Ephraim McDowell Memorial Hospital	Danville, 27 miles north of Liberty	177
Humana Hospital Lake Cumberland	Somerset, 38 miles southeast of Liberty	227

Casey County Hospital

Medical staff - 4 physicians, 7 registered nurses, 6 licensed practical nurses

Ephraim McDowell Memorial Hospital

Medical staff - 55 physicians, 112 registered nurses, 99 licensed practical nurses

Humana Hospital Lake Cumberland

Medical staff - 59 physicians, 116 registered nurses, 46 licensed practical nurses

Other Medical Facilities and Services

Casey County Health Department
Family Home Health Care
Lake Cumberland Health Agency
Casey County Ambulance Service
Liberty-Casey County Rescue Squad

Banks and Savings and Loan Associations

Casey County Bank
Farmers Deposit Bank
Great Financial Federal
Lincoln County Federal Savings and Loan Association

Newspapers

Casey County News (Weekly)

Telephone Service

General Telephone of the South

RECREATION

Local

The Casey County Apple Festival, held annually during the last full week of September, is one of the largest and most successful festivals in the state of Kentucky. The primary event of the festival is the baking and serving of the world's largest apple pie. Estimated crowds of up to 50,000 attend its week-long celebration. The festivities include something for everyone, including a kid's Big Wheel competition race, sports activities, fun filled tournaments, and continuous live entertainment.

Gate Way Park offers two basketball courts, two tennis courts, a volleyball court, baseball field, picnic area and playground.

Hickory Hills Country Club, a private club, offers a nine-hole golf course, tennis court, and swimming pool.

Casey County Sportsman Club, located 5 miles from Liberty, has a large and small bore rifle range, skeet shooting range and an archery and black powder range.

A variety of hunting is available in Casey County and great fishing on Green River and Lake Liberty. Trout fishing is available on Goose Creek. A one-acre fishing lake is now under construction at Hickory Hills Market located approximately six miles from Liberty.

Many hiking trails are available in Casey County along with 500 miles of scenic drives throughout the county.

The county has a very active Pee-Wee and Junior Pro basketball and football programs, little league and Babe Ruth baseball program and an adult softball league.

Area (Within 50 miles)

Isaac Shelby State Shrine
Green River Lake State Park
Constitution Square State Shrine
William Whitley House State Shrine
Herrington Lake
Old Fort Harrod State Park
Perryville Battlefield State Shrine
Pleasant Hill
Lake Cumberland State Resort Park
Lincoln Homestead State Park
General Burnside State Park

COMMUNITY IMPROVEMENTS

Recent

A 40-acre industrial site was recently acquired in Liberty. The site is located on Kentucky Highway 127 south of Liberty and is served by water and natural gas. Sewer service will be available in the spring of 1991.

Osh Kosh B'Gosh recently expanded their facility by 110,000 square feet and added a screen printing, embroidery, and cutting process division at a cost of \$323,000. This addition created 150 new jobs.

The Liberty water plant has been upgraded at a cost of approximately \$90,000. The project was completed in the spring of 1988.

Construction of a new sewage treatment plant was completed in April 1988. The new plant has a design capacity of 500,000 gallons-per-day and utilizes the oxidation ditch system. Cost of the project was approximately \$2 million and was completed in June 1989.

Capital improvement projects totaling \$3.8 million have been completed in the Casey County School System. The project included a new middle school, which accommodates 500 students in the seventh and eighth grades from all sections of the county. With a total of 48,000 square feet, the school has classrooms and teachers that offer courses in art, music, and computer science in addition to the regular course study. A new Liberty Elementary School has been constructed on the site of what was the Liberty Middle School. The project consisted of renovation of the present school and an additional wing of new classrooms, new cafeteria, kitchen and new library facilities. Completion of these capital improvements were the fall of 1988.

Under Way

A section of U.S. Highway 127 is being widened to five lanes on the bypass. The project is planned to be completed in the spring of 1991, costing \$2,300,000.

Planned

The Liberty-Casey County Airport has plans for a three phase construction project. Phase one consists of construction of a 4,000-foot runway and a maintenance/administrative building. Phase two consists of a 1,500-foot extension to the new runway. The third phase consists of an enlarged ramp area, installation of fuel pumps, and additional parking. The total cost of this project is expected to be \$3,700,000.



KENTUCKY
Open for Business

Cabinet for Economic Development • Capital Plaza Tower
Frankfort, Kentucky 40601 • (502) 564-7140