

1973

# Industrial Resources: Christian County - Hopkinsville

Kentucky Library Research Collections  
Western Kentucky University, [spcol@wku.edu](mailto:spcol@wku.edu)

Follow this and additional works at: [https://digitalcommons.wku.edu/christian\\_cty](https://digitalcommons.wku.edu/christian_cty)

 Part of the [Business Administration, Management, and Operations Commons](#), [Growth and Development Commons](#), and the [Infrastructure Commons](#)

---

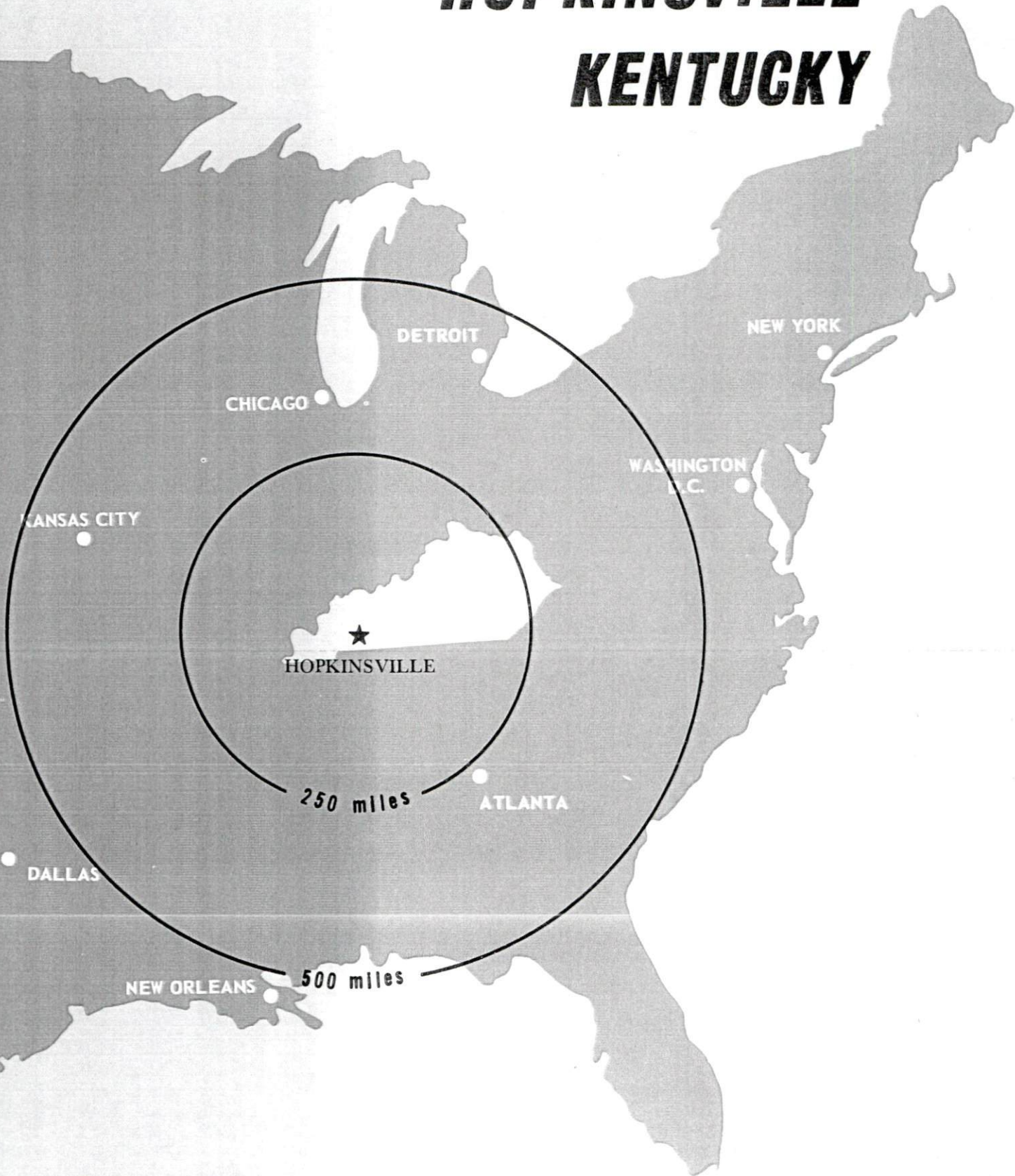
## Recommended Citation

Kentucky Library Research Collections, "Industrial Resources: Christian County - Hopkinsville" (1973). *Christian County*. Paper 11.  
[https://digitalcommons.wku.edu/christian\\_cty/11](https://digitalcommons.wku.edu/christian_cty/11)

This Report is brought to you for free and open access by TopSCHOLAR®. It has been accepted for inclusion in Christian County by an authorized administrator of TopSCHOLAR®. For more information, please contact [topscholar@wku.edu](mailto:topscholar@wku.edu).

# INDUSTRIAL RESOURCES

## **HOPKINSVILLE KENTUCKY**



CHRISTIAN COUNTY, KENTUCKY

# CURRENT INDUSTRIAL RESOURCES

## CURRENT INDUSTRIAL RESOURCES, HOPKINSVILLE, KENTUCKY

This is a 1974 supplement to "Industrial Resources, Hopkinsville, Kentucky" which was published in 1973.

### Population

	<u>1972 (Prov.)</u>	<u>1970</u>	<u>1960</u>
Hopkinsville	N. A.	21,250	19,465
Christian County	56,900	56,224	56,904
Labor Market Area	157,600	154,550	156,470
(Includes Christian, Caldwell, Hopkins, Muhlenburg, Todd, and Trigg Counties.)			

### General Employment Characteristics

<u>Industry</u>	<u>Employment 1972</u>	
	<u>Christian County</u>	<u>Labor Market Area</u>
TOTAL	21,150	60,220
Agricultural	1,820	5,580
Nonagricultural	19,330	54,640
Manufacturing	3,890	10,720
Trade and Services	4,620	10,080
Government	5,411	13,360
Other	5,409	20,480

### Manufacturing Employment

<u>Type Industry</u>	<u>Christian County</u>			<u>Labor Market Area</u>		
	<u>Sept. 1973</u>	<u>Sept. 1963</u>	<u>%Change</u>	<u>Sept. 1973</u>	<u>Sept. 1963</u>	<u>%Change</u>
TOTAL	3,978	2,359	68.6	10,998	5,064	117.2
Food & Kindred Products	154	302	-49.0	473	602	-21.4
Tobacco	13	15	-13.3	32	42	-23.8
Apparel, Textiles, Leather	1,322	950	39.2	3,542	2,134	65.9
Lumber, Furniture	76	194	-60.8	745	906	-17.8
Printing & Publishing, Paper	70	52	34.6	179	121	47.9
Chemicals, Petroleum & Coal, Rubber	135	33	309.1	487	87	459.8
Stone, Clay & Glass	74	67	10.4	95	121	-21.5
Primary Metals	420	0	0	544	43	1165.1
Machinery & Metal Products, Equipment	1,519	746	103.6	4,696	1,005	367.3
Other	195	0	0	205	3	6733.3



There are presently 44 manufacturing firms in Hopkinsville. Major firms, employment, and year started operations:

<u>Firms</u>	<u>Employment</u>	<u>Year started operations</u>
Ebonite Co.	262	1967
Elk Brand Manufacturing Co., Inc.	240	1930
Hopkinsville Clothing Manufacturing Co.	490	1927
International Shoe Co.	480	1946
Kaufman & Broad Home Systems, Inc.	125	1971
Mid Continent Spring Co. of Kentucky	185	1957
Pellon Kentucky Corp.	150	1973
Phelps Dodge Magnet Wire Corp.	450	1965
Phillips Products, Co., Inc.	104	1966
Southwestern Tobacco Co., Inc.	115	1918
Thomas Industries Inc.	800	1955

Labor Supply

	<u>Christian County</u>			<u>Labor Market Area</u>		
	<u>Total</u>	<u>Male</u>	<u>Female</u>	<u>Total</u>	<u>Male</u>	<u>Female</u>
Current (1973)	3,720	2,180	1,540	12,680	5,370	7,310
Potential additions next five years	5,178	2,649	2,529	14,782	7,595	7,187

Personal Income

Christian County, 1972: Per Capita - \$3,952  
 1962: Per Capita - \$1,797

Power and Fuel

Electric Distributors

Hopkinsville Electric Plant Board

Source of Supply

TVA

Natural Gas Distributor

Western Kentucky Gas Company

Water and Sewerage

Water: Daily treatment capacity - 5,000,000 gallons; average daily use - 3,000,000 gallons; peak daily use - 4,100,000 gallons; storage capacity - 1,750,000 gallons; size distribution lines 18 through 4 inches



Rates: (Monthly)

First	3,000 cu. ft.	\$.50	per 100 cu. ft.
Next	3,000 cu. ft.	.40	per 100 cu. ft.
Next	3,000 cu. ft.	.30	per 100 cu. ft.
Next	3,000 cu. ft.	.25	per 100 cu. ft.
Next	3,000 cu. ft.	.20	per 100 cu. ft.
All over	15,000 cu. ft.	.16 2/3	per 100 cu. ft.

Meter Minimum

5/8 inch	\$ 1.50 per month	300 cu. ft.
3/4 inch	2.00 per month	400 cu. ft.
1 inch	3.00 per month	600 cu. ft.
1 1/4 inch	4.00 per month	800 cu. ft.
1 1/2 inch	6.00 per month	1,200 cu. ft.
2 inch	10.00 per month	2,000 cu. ft.
3 inch	20.00 per month	
4 inch	30.00 per month	
6 inch	120.00 per month	

Private Fire Protection

Rates and charges not metered - Billed semi-annually  
in advance

Through 2 inch connection	\$ 24.00 per year
Through 3 inch connection	36.00 per year
Through 4 inch connection	60.00 per year
Through 6 inch connection	108.00 per year
Through 8 inch connection	156.00 per year

City of Hopkinsville Billed Monthly

Fire Hydrants, per year, per hydrant - \$30.00

Sewerage: Type treatment - Primary and secondary; design capacity -  
3,000,000 gallons per day; average daily flow 2,500,000 gallons; size  
of sewer mains - 21 through 8 inches.

Rates: 80 percent of the monthly water bill

Local Government

Business Fees and Licenses: Business licenses vary according to type of  
business (set by ordinance); Payroll tax - 1 percent of gross salary.

## Property Tax Rates

Property tax rates per \$100 of assessed valuation, 1974.

	<u>Hopkinsville</u>	<u>Christian County</u>
State	\$ .015	\$ .015
County	.135	.135
School	.563	.420
City	.310	
Special: (Not county-wide) - watersheds:		
East Fork, Pond River		\$ .009
West Fork, Pond River		.010
Trade Water		.010

## Tax for Schools

Christian County levies a 3 percent tax on utilities receipts for schools.

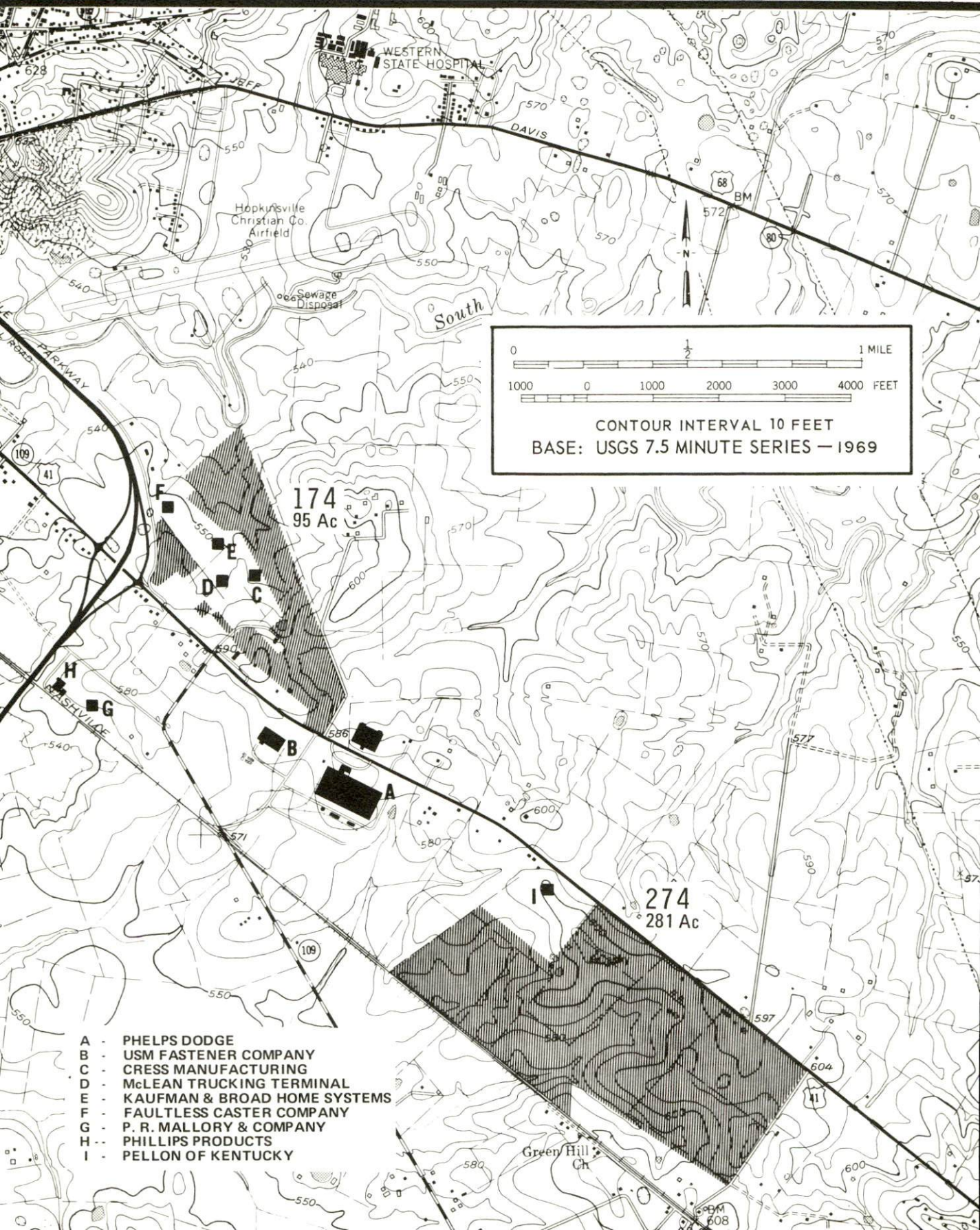
## Community Improvements:

- 1) Hopkinsville Electric Plant Board - completed 40 MVA substation and 69 KV transmission loop July 1973.
- 2) Preliminary study completed for a water plant expansion to 7 million gpd includes two elevated water tanks, two million gallons each. This expansion should be completed by the summer of 1976.
- 3) Planning a three phase, \$10 million, 4 year construction project consisting of additional third process to present plant, building a new plant south of town and the installation of miles of outfall and collector mains. Project presently in the planning stages of phase 1 with April 1975 being the approximate date to begin construction.



# HOPKINSVILLE, KENTUCKY --- AVAILABLE INDUSTRIAL SITES

For more information contact Rodney Dempsey, Hopkinsville Chamber of Commerce, South Virginia Street, Hopkinsville, Kentucky or the Kentucky Department of Commerce, Capital Plaza Tower, Frankfort, Kentucky 40601.



0 1/2 1 MILE  
1000 0 1000 2000 3000 4000 FEET

CONTOUR INTERVAL 10 FEET  
BASE: USGS 7.5 MINUTE SERIES - 1969

- A - PHELPS DODGE
- B - USM FASTENER COMPANY
- C - CRESS MANUFACTURING
- D - McLEAN TRUCKING TERMINAL
- E - KAUFMAN & BROAD HOME SYSTEMS
- F - FAULTLESS CASTER COMPANY
- G - P. R. MALLORY & COMPANY
- H - PHILLIPS PRODUCTS
- I - PELLON OF KENTUCKY



**SITE No. 174**

**LOCATION:** In county, southeast of Hopkinsville

**ZONING:** Industrial

**HIGHWAY ACCESS:** Pennyrile Parkway via U. S. 41

**RAILROAD:** Not rail served

**WATER:** Hopkinsville Sewerage and Water Works Commission

Size Line: 12-inch line on site

**GAS:** Western Kentucky Gas Company

Size Main: 6-inch main on site

**ELECTRICITY:** Pennyrile RECC and Hopkinsville Electric Plant Board

**SEWERAGE:** Hopkinsville Sewerage and Water Works Commission

Size Line: 8-inch line on site

**OWNERSHIP:** Private

**SITE No. 274**

**LOCATION:** In county, southeast of Hopkinsville

**ZONING:** None

**HIGHWAY ACCESS:** U. S. 41 fronts property; Pennyrile Parkway

1¼ miles distant

**RAILROAD:** Louisville & Nashville Railroad serves site

**WATER:** Hopkinsville Sewerage and Water Works Commission

Size Line: 12-inch line on site

**GAS:** Western Kentucky Gas Company

Size Main: 6-inch main 2,200 feet northwest of site along U. S. 41

**ELECTRICITY:** Pennyrile RECC

**SEWERAGE:** Hopkinsville Sewerage and Water Works Commission

Size Line: 10-inch line on site

**OWNERSHIP:** Hopkinsville Industrial Foundation

HOPKINSVILLE INDUSTRIAL SITES

1973

## HOPKINSVILLE INDUSTRIAL SITES

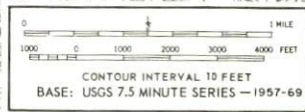
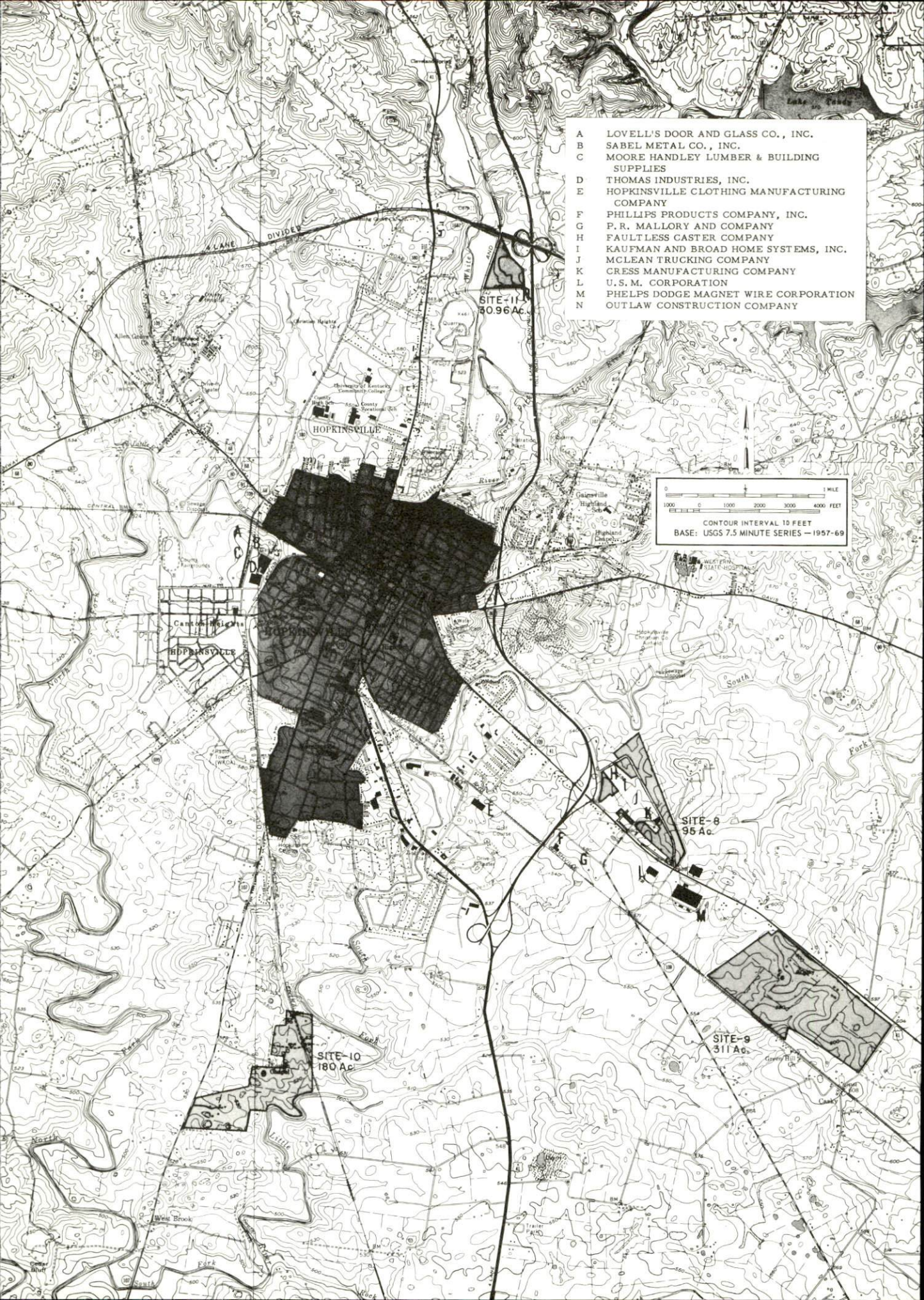
1973

For more information about the following sites, contact Rodney Dempsey, Hopkinsville Chamber of Commerce, South Virginia Street, Hopkinsville, Kentucky; or the Kentucky Department of Commerce, Capital Plaza Office Tower, Frankfort, Kentucky.

- SITE #8: ACREAGE: 95-acre Industrial Park  
LOCATION: In county, southeast of Hopkinsville  
ZONING: None  
HIGHWAY ACCESS: Pennyrile Parkway via US-41  
RAILROAD: Not rail served  
WATER: Hopkinsville Sewerage and Water Works Commission  
SIZE LINE: 12-inch line on site  
GAS: Western Kentucky Gas Company  
SIZE MAIN: 6-inch main on site  
ELECTRICITY: Pennyrile RECC and Hopkinsville Electric Plant Board  
SEWERAGE: Hopkinsville Sewerage and Water Works Commission  
SIZE LINE: 8-inch line on site  
OWNERSHIP: Private
- SITE #9: ACREAGE: 311 acres  
LOCATION: In county, southeast of Hopkinsville  
ZONING: None  
HIGHWAY ACCESS: US-41 fronts property; Pennyrile Parkway 1 1/2 miles distant  
RAILROAD: Louisville & Nashville Railroad serves site  
WATER: Hopkinsville Sewerage and Water Works Commission  
SIZE LINE: 12-inch line 3,200 feet northwest of site along US-41  
GAS: Western Kentucky Gas Company  
SIZE MAIN: 6-inch main 2,200 feet northwest of site along US-41  
ELECTRICITY: Pennyrile RECC  
SEWERAGE: Hopkinsville Sewerage and Water Works Commission  
SIZE LINE: 8-inch line 3,000 feet northwest of site along the  
Louisville & Nashville Railroad  
OWNERSHIP: Hopkinsville Industrial Foundation owns 44 acres, has option on  
217 acres; remaining 50 acres are privately owned.
- SITE #10: ACREAGE: 180 acres  
LOCATION: In county, south of Hopkinsville  
ZONING: None  
HIGHWAY ACCESS: Kentucky 107 and county road  
RAILROAD: Illinois Central Gulf Railroad serves site  
WATER: Hopkinsville Sewerage and Water Works Commission  
SIZE LINE: 6-inch line 700 feet north of site  
GAS: Western Kentucky Gas Company  
SIZE MAIN: 4-inch main approximately 2,300 feet northwest of site  
along Kentucky 107  
ELECTRICITY: Pennyrile RECC  
SEWERAGE: Hopkinsville Sewerage and Water Works Commission  
SIZE LINE: 8-inch line 700 feet north of site  
OWNERSHIP: Private
- SITE #11: ACREAGE: 31 acres  
LOCATION: In county, north of Hopkinsville  
ZONING: None  
HIGHWAY ACCESS: US-41 via county road  
RAILROAD: Louisville & Nashville provides service  
WATER: Hopkinsville Sewerage and Water Works Commission  
SIZE LINE: 12-inch line 2,000 feet west of site along US-41  
GAS: Western Kentucky Gas Company  
SIZE MAIN: 4-inch main 2,000 feet west of site along US-41  
ELECTRICITY: Pennyrile RECC  
SEWERAGE: Hopkinsville Sewerage and Water Works Commission  
SIZE LINE: 8-inch line 2,000 feet west of site along US-41  
OWNERSHIP: Private



- A LOVELL'S DOOR AND GLASS CO., INC.
- B SABEL METAL CO., INC.
- C MOORE HANDLEY LUMBER & BUILDING SUPPLIES
- D THOMAS INDUSTRIES, INC.
- E HOPKINSVILLE CLOTHING MANUFACTURING COMPANY
- F PHILLIPS PRODUCTS COMPANY, INC.
- G P. R. MALLORY AND COMPANY
- H FAULTLESS CASTER COMPANY
- I KAUFMAN AND BROAD HOME SYSTEMS, INC.
- J MCLEAN TRUCKING COMPANY
- K CRESS MANUFACTURING COMPANY
- L U. S. M. CORPORATION
- M PHELPS DODGE MAGNET WIRE CORPORATION
- N OUTLAW CONSTRUCTION COMPANY



SITE-11  
30.96 Ac.

SITE-8  
95 Ac.

SITE-10  
180 Ac.

SITE-9  
311 Ac.

HOPKINSVILLE

HOPKINSVILLE

HOPKINSVILLE

F

T

H

LANE DIVIDER

Canton Heights

Galesville

Highland

Highland

South

Fork

Wheat Brook

Fork

Train Road

Green Hill

Caak

Green Hill

Green Hill

Green Hill



INDUSTRIAL RESOURCES  
HOPKINSVILLE, KENTUCKY

Prepared by  
The Kentucky Department of Commerce  
in cooperation with  
The Hopkinsville-Christian County Chamber of Commerce

1973

This copy has been prepared by the Kentucky Department of Commerce,  
Division of Research and Planning, and the cost of printing paid from  
state funds.



## TABLE OF CONTENTS

<u>Chapter</u>	<u>Page</u>
INDUSTRIAL SITES . . . . .	i
HOPKINSVILLE, KENTUCKY - A RESOURCE PROFILE . . . . .	1
THE LABOR MARKET . . . . .	9
Population Trends . . . . .	9
General Employment Characteristics, 1971 . . . . .	9
Manufacturing Employment Trends by Industry . . . . .	11
Major Hopkinsville Manufacturing Firms, Their Products and Employment . . . . .	11
Wages . . . . .	13
Labor Organizations . . . . .	14
Estimated Male Labor Supply . . . . .	14
Estimated Female Labor Supply . . . . .	15
Per Capita Personal Income . . . . .	15
TRANSPORTATION . . . . .	16
Rail . . . . .	16
Truck Service . . . . .	16
Air . . . . .	18
Bus . . . . .	18
Taxi . . . . .	18
Rental Services . . . . .	18
POWER AND FUEL . . . . .	19
Electricity . . . . .	19
Natural Gas . . . . .	19
Other Fuels . . . . .	20
WATER AND SEWERAGE . . . . .	21
Water . . . . .	21
Sewerage . . . . .	22
LOCAL GOVERNMENT . . . . .	23
City . . . . .	23
County . . . . .	23

<u>Chapter</u>	<u>Page</u>
Assessed Value of Property . . . . .	23
Property Taxes . . . . .	23
Local Property Tax Rate Per \$100 of	
Assessed Valuation, 1972 . . . . .	25
Utilities Gross Receipts Tax for Schools . . . . .	25
Planning and Zoning . . . . .	25
Safety . . . . .	25
Police . . . . .	25
Fire . . . . .	26
Rescue Service . . . . .	26
Ambulance Service . . . . .	26
Sanitation . . . . .	26
 EDUCATION . . . . .	 27
Public Schools . . . . .	27
Nonpublic Schools . . . . .	27
Vocational Schools . . . . .	29
Colleges and Universities . . . . .	29
 HEALTH . . . . .	 31
Hospitals . . . . .	31
Nursing Homes . . . . .	31
Public Health . . . . .	31
 OTHER LOCAL FACILITIES . . . . .	 33
Communications . . . . .	33
Library Services . . . . .	33
Religious Institutions . . . . .	35
Financial Institutions . . . . .	35
Hotels and Motels . . . . .	35
Clubs and Organizations . . . . .	36
 RECREATION . . . . .	 37
Local . . . . .	37
Area . . . . .	37
 AGRICULTURE . . . . .	 38
Agriculture . . . . .	38
Natural Resources . . . . .	38
Climate . . . . .	39
 HISTORY . . . . .	 40

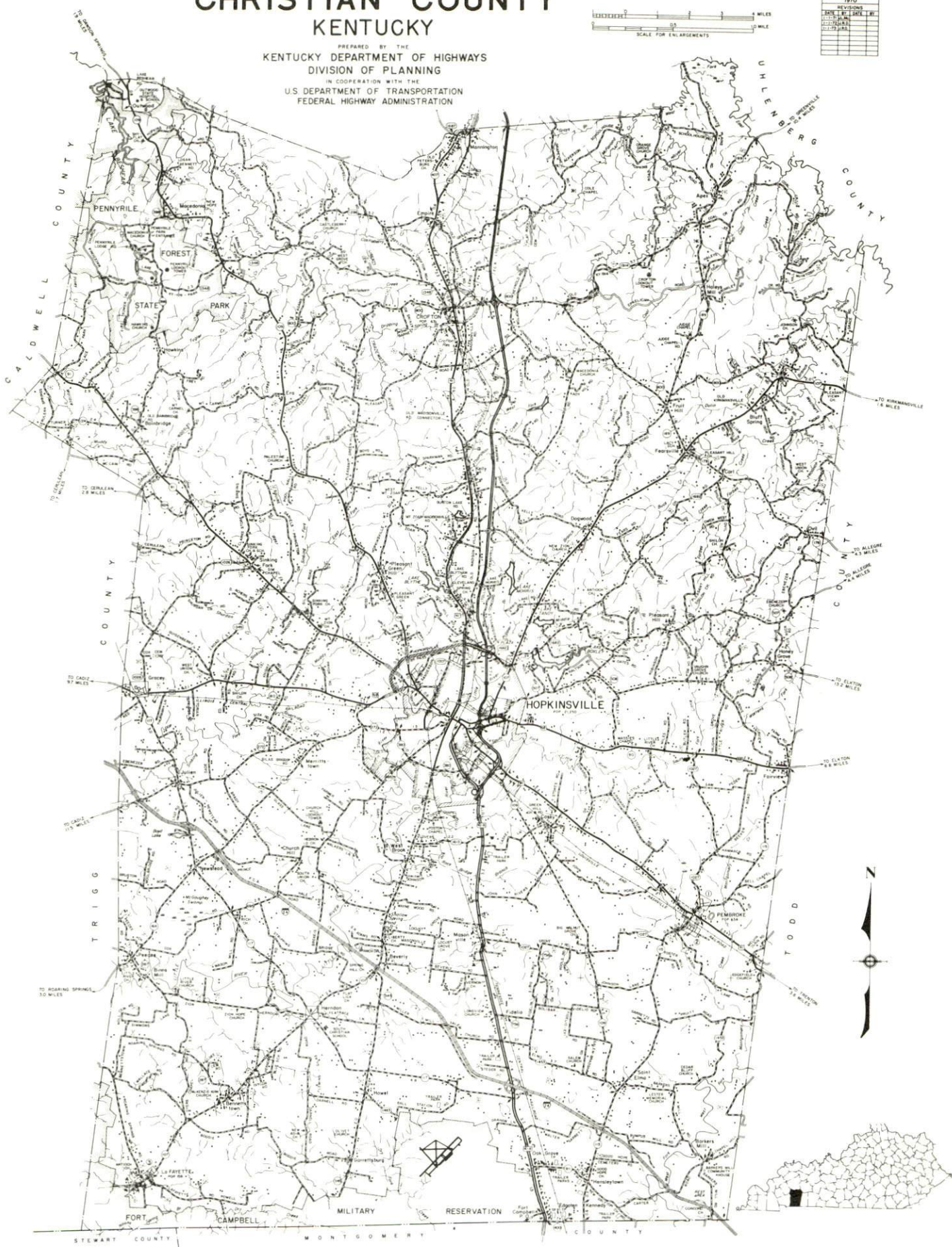


# GENERAL HIGHWAY MAP CHRISTIAN COUNTY KENTUCKY

PREPARED BY THE  
KENTUCKY DEPARTMENT OF HIGHWAYS  
DIVISION OF PLANNING  
IN COOPERATION WITH THE  
U.S. DEPARTMENT OF TRANSPORTATION  
FEDERAL HIGHWAY ADMINISTRATION



ORIGINAL DATA	
1970	
REVISIONS	DATE BY DATE BY







## HOPKINSVILLE, KENTUCKY - A RESOURCE PROFILE

Hopkinsville, the county seat of Christian County, is located in the southwestern section of Kentucky. Christian County, covering a land area of 725 square miles, is the second largest county in Kentucky and is bordered on the south by Tennessee, to the west by the Land Between the Lakes Recreation Area, to the east by fertile agricultural lands and Western Kentucky coal fields to the north. Louisville is 161 miles north-east, Nashville 70 miles south, Evansville 70 miles north, St. Louis 232 miles northwest, Chicago 462 miles north, Cincinnati 274 miles northeast, Memphis 244 miles southwest.

The population of Hopkinsville in 1970 was 21,250, while Christian County had a population of 56,224.

### The Economic Framework

Total employment in Christian County averaged 17,370 in 1971, with agriculture providing 1,980 jobs, government 4,340, trade and services 4,475, and manufacturing 3,620. Major industrial products include: lighting fixtures, apparel, shoes, bowling balls, compression torsion springs, and magnet wire.

Per capita income in the county in 1970 was \$3,868, a 100 percent increase since 1960. This indicates a relatively prosperous economy, with adequate room for future economic growth.

The Hopkinsville labor market area includes Christian County, and the five adjoining Kentucky counties, and Montgomery and Steward Counties in Tennessee. Total employment in the Kentucky portion of the labor market area in 1971 averaged 55,120, with agriculture providing 5,900 jobs and government 9,520. Fort Campbell, a U.S. military reservation, is located in Christian, Trigg, Steward and Montgomery Counties and has a tremendous economic impact on the area. Manufacturing provided 9,380 jobs in 1971, while trade and services provided 12,560. Manufacturing employment in the area has more than doubled since 1962 with the sharpest employment gains in the apparel, metal products and machinery industries.

Despite important industrial gains in recent years, the area still has a deficit of 4,684 manufacturing jobs when measured against the national industrial employment-population ratio. This indicates an area with a potential for additional manufacturing production.



## Resources for Growth

1. There is a current estimated labor supply of 10,679 men and 12,309 women available for industrial jobs in Christian and the surrounding Kentucky counties. In addition, 7,621 young men and 7,210 young women will have become 18 years of age by 1979 and potentially available for work. Also the labor supply would be increased by the number of men and women in the adjoining Tennessee counties who are available for industrial jobs.

2. The local transportation capability is very good and will be further enhanced by the completion of Interstate 24, which is approximately 5 1/2 miles southwest of Hopkinsville. The Pennyrile Parkway goes through the eastern side of town and has three interchanges at Hopkinsville. U.S. 41-A and U.S. 41 also serve Hopkinsville and are considered major highway arteries into the industrial south and midwest. The Western Kentucky Parkway, 23 miles distant via the Pennyrile Parkway, is an important link to the East and West. Seven trucking companies have authorization to serve Hopkinsville. In addition, there are two other freight services, three bus lines, four cab companies, and car and truck rental services. The Hopkinsville-Christian County Airport has a 5,000 foot paved runway capable of accommodating small jets, with commercial air service being available at Outlaw Field, 20 miles away at Fort Campbell, Kentucky. The Louisville & Nashville Railroad and the Illinois Central Gulf Railroad both serve Hopkinsville with a variety of services, including piggyback facilities.

3. Electricity is furnished to Hopkinsville by the Hopkinsville Electric Plant Board and to Christian County by the Pennyrile RECC, with TVA serving as the source of supply. Natural gas service is provided by the Western Kentucky Gas Company, which is supplied by the Texas Gas Transmission Corporation. There are also four distributors of propane and butane and five distributors of distillate fuel oil.

4. Hopkinsville has four available industrial sites.

5. Education in Hopkinsville and Christian County is very progressive. The city and county school systems were consolidated in July of 1971 in order to strengthen the educational system. Now both high schools are rated comprehensive, Kentucky's highest rating. Hopkinsville is the home of Hopkinsville Community College, which is an extension of the University of Kentucky and offers an associate degree. Two Educational Funds, the Rotary Student Loan Fund and the Elizabeth Stone Educational Fund, provide financial assistance to students wishing to further their education. There are seven universities, eight senior colleges, and four

community colleges within 70 miles of Hopkinsville. Vocational schools are also available: the Christian County Area Vocational Education Center is located in Hopkinsville and offers six courses in different fields, and the Madisonville State Vocational-Technical School, located in Madisonville, 33 miles away, offers fifteen courses in a variety of fields.

### Community Programs for Improvement

#### Recent:

New four lane bypass extension has been opened to traffic and extends from Jefferson Davis Highway to U.S. 41.

Mid Continent Spring Company had a 15,000 foot expansion.

Hopkinsville Clothing Company expanded its facilities.

Elk Brand Manufacturing Company expanded its facilities.

Thomas Industries expanded its operations.

P. R. Mallory is locating and will employ 20 people.

Cress Manufacturing Company is located and will employ 10 people.

Blue Lake Block Company completed its expansion.

McLean Trucking Company has a new 32-door terminal in Hopkinsville, which is second largest in size in Kentucky for McLean.

Detailed transportation study has been completed.

Several new parking lots have been completed.

First Federal Savings and Loan just completed landscaping its parking area.

City acquired expanded freight service from Illinois Central Gulf, building has been razed and tracks moved.

Hopkinsville Community College is participating with Eagle University, at Fort Campbell, with programs sponsored by colleges and universities of the area.



All phases of public health and welfare have been improved.

Eight churches and other private and public agencies now are offering state certified kindergarten and pre-school educational programs.

The Vocational School has a new Home Building Project and Environmental Aid Program.

Several of the local business and civic clubs have undertaken beautification and landscaping programs.

University Heights Academy, a new coeducational school opening in September 1973, will serve grades one through eight. A minimum of one grade will be added each year up through grade twelve.

The Christian County School System has completed: additions to -- Hopkinsville High School of 24 classrooms and agriculture shop, Central Office Building, Sinking Fork Elementary (cafeteria), South Christian Elementary (cafeteria), Crofton Elementary (cafeteria); construction of -- Lacy Elementary School, Pembroke Elementary School, Physical Education and gym at Christian County High School. Additions to the curricula include: Industrial Arts and Home Economics to the 5th and 6th grades, Health Occupations, Work Orientation Program, and Vocational Guidance at Hopkinsville High School.

544 new apartment units completed.

Mobile Home Parks with a total of 60 units have been completed, with 500 - 800 additional units to be completed during 1973.

Subdivision containing more than 300 building lots completed, with 530 additional lots to be developed.

Underway:

U. S. 41 is being four-laned from the southeast city limits to a distance of approximately 3 miles south of town.

Canton Pike is being renovated with part of it being four-laned within the city limits with a new bridge over the Illinois Central Gulf Railroad.

Pennyroyal Regional Health Center recently acquired a building which is now being remodeled and will provide room for expansion.

Developing a River Front of approximately two miles on Little River, plans include: trails for hiking and biking, benches, rest areas, children's playgrounds, an outdoor market, and an area for demonstrations and shows, connections of two streets to aid traffic, three landscaped parking lots.

Improving and expanding parks and playgrounds, cultural activities, and youth activities.

Three churches are expanding facilities: Second Baptist, and Church of Christ at two locations.

Three major shopping centers are expanding and adding new stores. New construction or alterations underway cost in excess of \$6 million.

The First City Bank and Trust Company has started work on a site for a new high rise banking facility in downtown Hopkinsville to cost in excess of \$1,500,000.

Planned:

A three phase sewerage improvement project is being planned which will consist of: adding a third process to the present treatment plant, building a new treatment plant south of town, and installing miles of outfall and collector mains. The project is now in the planning stage of Phase I with construction expected to begin by April 1974. Construction of the three phase project is expected to take four years to complete and will cost an estimated \$10 million.

A preliminary study has been completed for a water system improvement project which will consist of a water plant expansion to 7 million gallons a day, two 1 million gallon elevated tanks, and new 16, 12, 8, and 6 inch water lines, to be completed by the summer of 1976.

Final engineering plans of the Christian County Water District are awaiting approval.

A new addition to the hospital is being planned which will provide for expanded outpatient facilities and a new laboratory.

A \$14,000 master plan grant has been approved for further development of the airport which will include a new aviation direction system and possible extensions and widening of the runway.

The city is planning the annexation of two areas in 1973, with additional annexation planned for 1974.

The Memorial Building will be renovated.

Construction and development projects include: new parks and open spaces, new community building, new library, new auditorium, and a redevelopment program for the southeast part of town.

Plans are underway to improve the central business district.

#### Recreation, Entertainment and Livability

Hopkinsville offers a recreational program for children supervised by a full-time director and staff. There are five playgrounds, tennis courts, football field, parks, swimming pools, five baseball diamonds, recreation building, three indoor and two outdoor theaters, two country clubs, three golf courses, riding stables, bowling lanes, two dude ranches for children, roller rink and trap shooting.

Hopkinsville is only minutes away from some of Kentucky's largest and most beautiful state resort parks and lakes:

1. Land Between the Lakes: This beautiful 170,000-acre woodland has been developed by TVA into a major area for family camping and outdoor recreation. It is a mecca for fishing, hunting, camping, boating, hiking, swimming and environmental learning. It is a peninsula five to ten miles wide and stretching for 40 miles north to south between Kentucky Lake and Lake Barkley and has easy highway access from all directions.

2. Lake Barkley State Resort Park: This 3,000-acre resort park has a new \$7 million lodge considered one of the finest in the nation. Recreation includes fishing, boating, swimming, golf, and hiking.



3. Pennyrile Forest State Resort Park is a 436-acre resort park, with a nice lodge, cottages, and camping accommodations. The park facilities and activities include: lake, pool for swimming, fishing, golfing, horseback riding, hiking, and picnicking.

4. Lake Barkley and Barkley Dam has 1,004 miles of shoreline and impounds a reservoir of more than 93,000-acres. The shoreline and islands are open for fishing, boating, camping, swimming, hunting, and picnicking. The dam off Kentucky 453 near Grand Rivers, controls the waters of the Cumberland River and is 157 feet high and almost 2 miles wide (10,180 feet).

5. Kentucky Lake and Kentucky Dam with 2,380 miles of shoreline, is the longest of any man-made lake in the world. Water activities include fine fishing, swimming, boating, and water skiing. The huge dam is TVA's largest and controls the waters of the Tennessee River near its junction with the Ohio River at Paducah. The dam is 206 feet high, 8,422 feet long and cost \$115 million.

6. Kenlake State Resort Park is an 1,800-acre resort park with hotel, cottages, and camping facilities. Recreational activities include: fishing, boating, pool and lake swimming, horseback riding, golfing, tennis and shuffleboard.

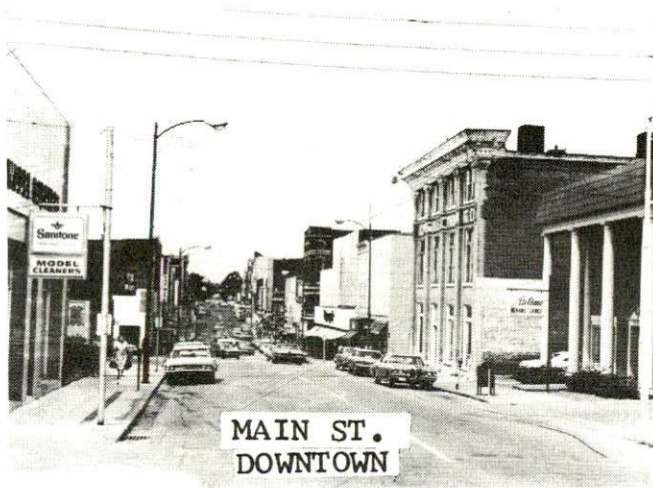
7. Kentucky Dam Village State Resort Park includes 1,200-acres. Facilities include Village Inn, Lake Lodge, cottages, and camping accommodations. The park has a pool, 18-hole golf course, horseback riding trails, playground, tennis courts, airstrip, and a lake for boating and fishing.

8. Lake Malone State Park is located on Lake Malone near Dunmor. The park is opened year around and offers camping, boating, fishing, water skiing, hiking and picnicking.

9. Jefferson Davis Monument State Shrine is located at Fairview, nine miles east of Hopkinsville on U. S. 68 and is opened year around. It is the site of the farm on which Jefferson Davis, president of the confederacy was born. The monument, less than 100 miles from Abraham Lincoln's birthplace, is a 351 foot cast concrete obelisk, and is the fourth highest monument in the U. S. The obelisk has a museum, an elevator to the top and a grand view.

10. Pennyrile Festival of Arts is open from October 14 - 20. It offers juried art exhibits, programs in drama and music, and tour of garden of blooming mums.

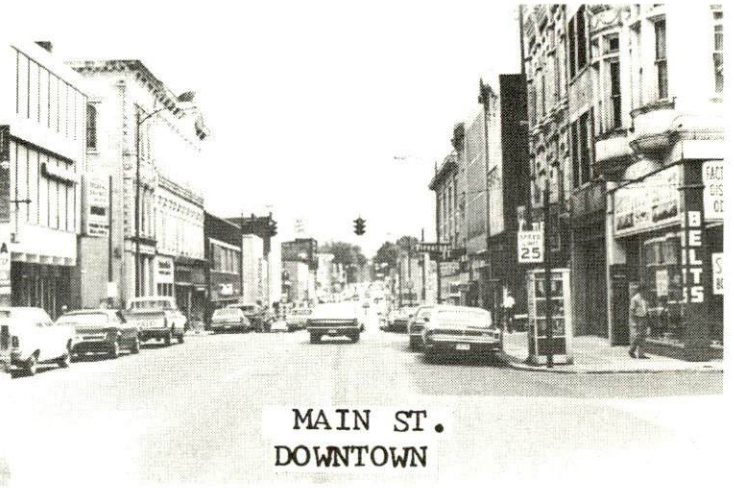




MAIN ST.  
DOWNTOWN



NINTH ST.  
DOWNTOWN



MAIN ST.  
DOWNTOWN



PENNYRILE MALL



INDIAN HILLS SHOPPING CENTER



GRANT PLAZA SHOPPING CENTER



FORT CAMPBELL BLVD.



SKYLINE SHOPPING CENTER



## THE LABOR MARKET

### POPULATION TRENDS

<u>Area</u>	<u>Population</u>			<u>Percent Change</u>	
	<u>1970</u>	<u>1960</u>	<u>1950</u>	<u>1960-70</u>	<u>1950-60</u>
Hopkinsville	21,250	19,465	12,526	+9.2	+55.4
Labor Market Area	154,550	156,460	149,447	-1.2	+ 4.7
Christian County	56,224	56,904	42,359	-1.2	+34.3
Caldwell County	13,179	13,073	13,199	+0.8	- 1.0
Hopkins County	38,167	38,458	38,815	-0.8	- 0.9
Muhlenberg County	27,537	27,791	32,501	-0.9	-14.5
Todd County	10,823	11,364	12,890	-4.8	-11.8
Trigg County	8,620	8,870	9,683	-2.8	- 8.4

Source: U. S. Department of Commerce, Bureau of the Census, Census of Population, 1970, 1960, 1950.

### GENERAL EMPLOYMENT CHARACTERISTICS, 1971

<u>Major Employment Group</u>	<u>Employment</u>	
	<u>Christian County</u>	<u>Labor Market Area</u>
TOTAL	19,370	55,120
Agricultural	1,980	5,900
Nonagricultural	17,390	49,220
Manufacturing	3,620	9,380
Government	4,340	9,520
Trade and Services	4,474	12,564
Other	4,956	17,756

Source: Kentucky Department of Economic Security, Division of Research and Statistics.

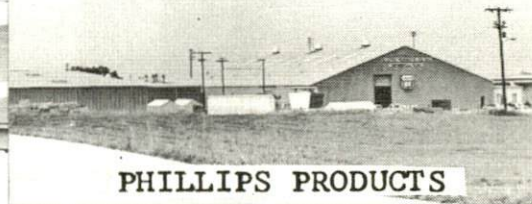




PHELPS DODGE



PEPSI COLA BOTTLING CO.



PHILLIPS PRODUCTS



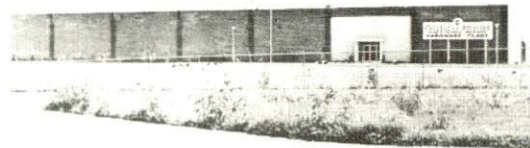
ELK BRAND MFG.



EBONITE CO.



USM FASTENER



FAULTLESS DIVISION DEC. HDW.



MID-CONTINET SPRING CO.



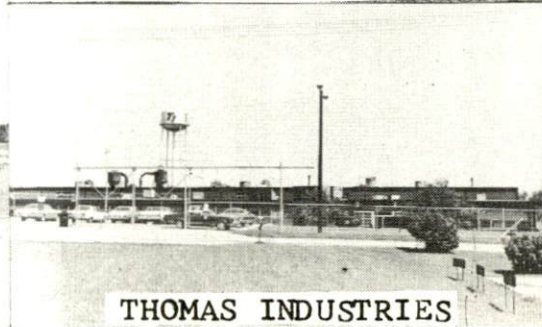
INTERCO, INC.



HOPKINSVILLE CLOTHING



KAUFMAN & BROAD MFG.



THOMAS INDUSTRIES



COCA COLA BOTTLING CO.

MANUFACTURING EMPLOYMENT TRENDS BY INDUSTRY  
SEPTEMBER 1972 AND 1962

Industry	Christian County			Labor Market Area		
	1972	1962	% Change	1972	1962	% Change
TOTAL	4,199	2,211	+ 89.9	11,617	4,679	+ 148.3
Food & Kindred Products	166	243	- 31.7	496	537	- 7.6
Tobacco	12	26	- 53.8	34	54	- 37.0
Apparel, Textiles, Leather	1,320	893	+ 47.8	3,594	2,111	+ 70.3
Lumber, Furniture	75	182	- 58.8	754	829	- 9.0
Printing & Publishing, Paper	72	50	+ 44.0	175	122	+ 43.4
Chemicals, Petroleum & Coal, Rubber	103	31	+232.3	693	89	+ 678.7
Stone, Clay & Glass	61	60	+ 1.7	84	169	- 50.3
Primary Metals	425	0	--	517	21	+2,361.9
Machinery, Metal Products, Equip.	1,670	726	+130.0	4,970	744	+ 568.0
Other	295	0	--	300	3	+9,900.0

Source: Kentucky Department of Economic Security, Number of Workers in Manufacturing Industries Covered by Kentucky Unemployment Insurance Law Classified by Industry and County, September 1972, September 1962.

MAJOR HOPKINSVILLE MANUFACTURING FIRMS,  
THEIR PRODUCTS AND EMPLOYMENT

Firm (Establishment date)	Product	Employment		
		Total	Male	Female
Central Tool & Die, Inc. (1966)	Dies, tools	55		
Coca Cola Bottling Company (1932)	Soft drinks	53		
Ebonite Company (1967)	Bowling balls	262	250	12
Elk Brand Mfg. Company, Inc. (1930)	Men's and boys' jeans, slacks and walking shorts, men's insulated underwear	240	200	40
Faultless Div., B. L. I. (1969)	Decorative furniture hardware	93	50	43
Hopkinsville Clothing Mfg. Co. (1927)	Men's and boys' jeans	490	125	365

(cont.)



<u>Firm</u>	<u>(Establishment date)</u>	<u>Product</u>	<u>Employment</u>		
			<u>Total</u>	<u>Male</u>	<u>Female</u>
Hopkinsville Milling Company	(1874)	Wheat flour, corn meal	61	59	2
International Shoe Company	(1946)	Women's shoes	412	101	311
K-Y Clothing Mfg., Inc.	(1966)	Men's work coveralls, coats, jackets	75	12	63
Kaufman & Broad Home Systems, Inc.	(1971)	Mobile homes	125		
Kentucky New Era, Inc.	(1869)	Newspaper	52	38	14
Mid Continent Spring Co. of Kentucky	(1957)	Compression torsion springs	185	95	90
R. C. Owen Co.	(1936)	Hardwood flooring and lumber pallets	91	89	2
Pal Lumber & Mfg. Co., Inc.	(1960)	Roof trusses, A-frame cottages, laminated counter tops	88		
Pepsi Cola - General Bottlers, Inc.	(1939)	Carbonated beverages	53	47	6
Phelps Dodge Magnet Wire Corp.	(1965)	Magnet wire	N. A.		
Phillips Products Co., Inc.	(1966)	Plastic products	104	60	44
Southwestern Tobacco Co., Inc.	(1918)	Tobacco redrying	115	55	60
Thomas Industries, Inc.	(1955)	Lighting fixtures	1,115	701	414
USM Corporation	(1965)	Fasteners	88	78	10

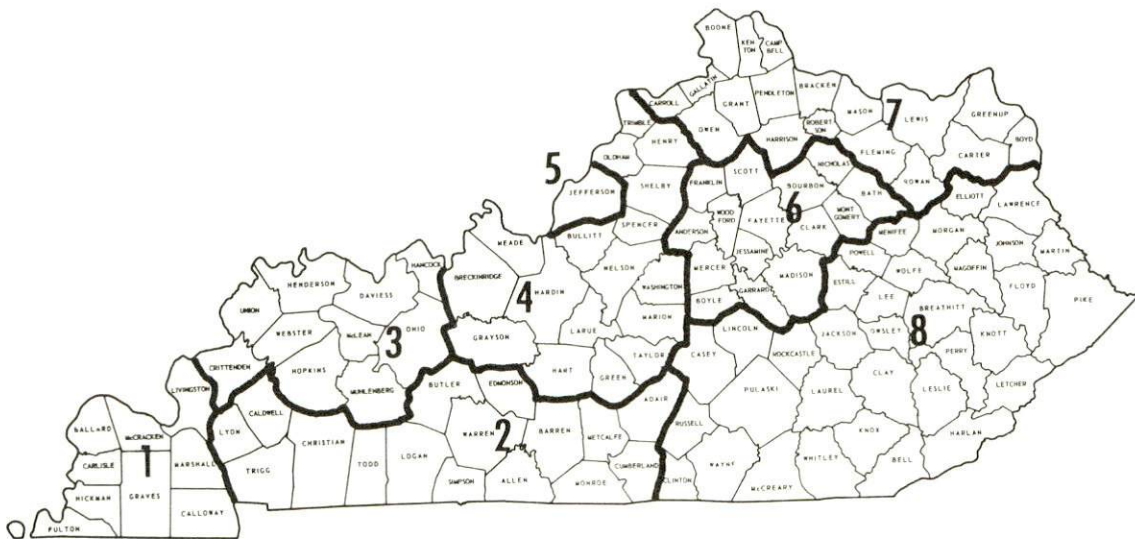
Source: Kentucky Department of Commerce, Division of Research and Planning.



## WAGES

Occupational wage rates for specific industries are usually not available to most government agencies, and wage data furnished to state employment agencies by industrial employers is protected from disclosure by federal law. The most reliable up-to-date wage information can be obtained by direct contact with local employers.

Associated Industries of Kentucky, a voluntary organization of Kentucky businesses, regularly collects occupational wage rates and fringe benefits data from participating member firms. Data is compiled for over 130 clearly defined office, production, and service occupations. Tabulations are published for eight regions of Kentucky, as shown on the map below. It should be noted that the data may be weighted by the preponderance of firms in the larger cities and may be somewhat higher than the rates paid in the smaller communities. Data from these tabulations are available, upon request, from the Kentucky Department of Commerce, Frankfort, Kentucky 40601.



Associated Industries of Kentucky Area Wage Surveys

## LABOR ORGANIZATIONS

<u>Union</u>	<u>Representing manufacturing workers at:</u>
Teamsters	Phillips Products
Teamsters and International Brotherhood of Electrical Workers	Thomas Industries, Inc.
United Steelworkers of America	International Shoe Company
International Leather, Plastic and Novelty Workers	Ebonite Company
International Association of Machinists	USM Corporation
Retail, Wholesale and Department Store Workers	Hopkinsville Milling Company
U. A. W.	Phelps Dodge Magnet Wire Corporation

### ESTIMATED MALE LABOR SUPPLY HOPKINSVILLE LABOR MARKET AREA

<u>Area</u>	<u>Current</u>			<u>Future</u>	
	<u>Total</u>	<u>Not in Labor Force</u>	<u>Unemployed</u>	<u>Under-employed</u>	<u>Reaching 18 yrs. of age by 1979</u>
Labor Market Area	10,679	3,062	2,202	5,415	7,621
Christian	3,546	0	808	2,738	2,674
Caldwell	1,220	452	396	372	585
Hopkins	2,234	1,061	267	906	1,950
Muhlenberg	2,023	1,027	313	683	1,440
Todd	1,023	320	297	406	540
Trigg	633	202	121	310	432

Sources: Kentucky Department of Economic Security, Kentucky Labor Supply Estimates by County, 1972. Kentucky Department of Commerce, Future Labor Supply by 1979.

ESTIMATED FEMALE LABOR SUPPLY  
HOPKINSVILLE LABOR MARKET AREA

<u>Area</u>	<u>Current</u>			<u>Future</u>
	<u>Total</u>	<u>Not in Labor Force</u>	<u>Unemployed</u>	<u>Under- employed</u>
Labor Market				<u>Reaching 18 yrs. of age by 1979</u>
Area	12,309	5,576	1,168	5,565
Christian	3,366	1,073	332	1,961
Caldwell	1,341	435	244	662
Hopkins	3,024	1,432	163	1,429
Muhlenberg	2,891	1,955	187	749
Todd	968	412	173	383
Trigg	719	269	69	381

Sources: Kentucky Department of Economic Security, Kentucky Labor Supply Estimates by County, 1972. Kentucky Department of Commerce, Future Labor Supply by 1979.

PER CAPITA PERSONAL INCOME

<u>Area</u>	<u>1970</u>	<u>1960</u>	<u>% Change</u>
Christian County	\$3,868*	\$1,929	+100.5
Labor Market Area			
Range	\$2,249 to 3,868*	\$943 to 2,073	N. A.
Kentucky	3,099	1,581	+ 96.0
U. S.	3,933	2,216	+ 77.5

\*Unadjusted for commuting.

Sources: University of Kentucky, Office of Development Services and Business Research, Per Capita Income in Kentucky. U. S. Department of Commerce, Bureau of Economic Analysis, Survey of Current Business, August 1972.



## TRANSPORTATION

### Rail

Line serving Hopkinsville - Louisville & Nashville Railroad

Services - Freight - 1 northbound and 1 southbound daily, plus fast freight pick up when needed; switching, siding space for approximately 50 cars, piggyback facilities

Line serving Hopkinsville - Illinois Central Gulf Railroad

Services - Freight - 1 northbound and 1 southbound daily; switching and siding facilities are available, piggyback service facilities

For details on routing, schedules, rates, and services, contact:

Manager of Industrial Development  
Louisville & Nashville Railroad Company  
908 West Broadway  
Louisville, Kentucky 40203

and/or

Director of Industrial Development  
Illinois Central Gulf Railroad Company  
135 East 11th Place  
Chicago, Illinois 60605

### Truck Service

#### Company

#### Home Office

Harper Truck Service, Inc.

1266 North 8th Street  
Paducah, Kentucky 42002

Marvin Hayes Lines, Inc.\*

P.O. Box 468  
Clarksville, Tennessee 37901

United Trucking Service, Inc.\*

3047 Lonyo Road  
Detroit, Michigan 48209

McLean Trucking Company

P.O. Box 213  
617 Waughtown Street  
Winston-Salem, North Carolina 27107

(cont.)

\*Local Terminal.

<u>Company</u>	<u>Home Office</u>
Renner's Express, Inc.*	1350 South West Street P. O. Box 613 Indianapolis, Indiana 46206
T. I. M. E. - DC, Inc.	P. O. Box 2550 Lubbock, Texas 79408
Wilson Freight Company	3636 Follett Avenue Cincinnati, Ohio 45223

Other Freight Services

REA Express	Highway 41-N, Hopkinsville, Kentucky (pickup and delivery service)
United Parcel Service**	Hopkinsville, Kentucky (shipping center)

\*Local Terminal.

\*\*For regular scheduled pickups or for occasional pickups, arrangements must be made with the Louisville office of U. P. S.

HIGHWAY MILES AND TRUCK TRANSIT TIME IN DAYS FROM  
HOPKINSVILLE, KENTUCKY, TO SELECTED MARKET CENTERS

City	Delivery		City	Delivery	
	Highway Miles	Time TL		Highway Miles	Time TL
Atlanta, Ga.	322	2	Los Angeles, Calif.	2,128	3
Birmingham, Ala.	257	2	Louisville, Ky.	161	1
Chicago, Ill.	462	1	Nashville, Tenn.	70	1
Cincinnati, Ohio	274	1	New Orleans, La.	600	2
Cleveland, Ohio	515	2	New York, N. Y.	930	2
Detroit, Mich.	536	2	Pittsburgh, Pa.	555	2
Knoxville, Tenn.	255	2	St. Louis, Mo.	232	1

Source: Delivery time only - Harper Truck Service, Inc., P. O. Box 338,  
Paducah, Kentucky 42001.



Air

	<u>Local</u>	<u>Nearest Commercial</u>
Location:	Hopkinsville-Christian County Airport 1 mile east of Hopkinsville	Outlaw Field Clarksville, Tennessee 20 miles from Hopkinsville
Runways:	1 paved	2 paved
Length:	5,000 feet	4,100 feet; 5,000 feet
Traffic Control:	Wind sock on the northwest corner	Unicom
Lighting:	Sundown to sunrise	Beacons on runway during hours of darkness
Services:	80-100 octane, charter, flight training, tie down and taxi, National Rent-A-Car	80/87 octane, 100/130 jet fuel, taxi, National car rentals, major repairs, restaurant, weather information available, storage hangars, tiedowns, APU, baggage carts, rest rooms
Air Freight Service:		Space available basis
<u>Bus</u> -	Greyhound Bus Lines Bowling Green-Hopkinsville Bus Line Brooks Bus Line	
<u>Taxi</u> -	24 hour, radio-dispatched service by four cab companies	
<u>Rental Services</u> -	Car and truck rentals	

## POWER AND FUEL

### Electricity

Company serving Hopkinsville - Hopkinsville Electric Plant Board

Source of power - Tennessee Valley Authority

Total generating capacity - 19,400,000 KW; voltage 7,200/14,400

For industrial rates contact:

South Kentucky Industrial  
Development Association  
P. O. Box 726  
Hopkinsville, Kentucky 42240

Company serving Christian County - Pennyrile RECC

Source of power - Tennessee Valley Authority

Total generating capacity - 19,400,000 KW; voltage 7,200/14,400

For industrial rates contact:

South Kentucky Industrial  
Development Association  
P. O. Box 726  
Hopkinsville, Kentucky 42240

### Natural Gas

Company serving Hopkinsville - Western Kentucky Gas Company

Source of supply - Texas Gas Transmission Corporation

Size of transmission mains - 10 inches (supplier); 6 - 8 inches (distributor)

Distribution mains - 2 - 8 inches

Distribution pressure - 20 - 50 psi as required

Btu content - 1,000 per cubic foot; Specific gravity - 0.60

For rates and supplies contact:

Western Kentucky Gas Company  
311 West 7th Street  
Owensboro, Kentucky 42301



Other Fuels

Propane and Butane

Pargas, Inc., Fort Campbell Blvd., Hopkinsville  
Southern States Hopkinsville Petroleum Coop.,  
Wooldridge Road, Hopkinsville  
Tennessee Liquefied Gas Corp. (bulk), Kelly Lane,  
Clarksville, Tennessee  
Texgas Corporation (affiliated with Tennessee Liquefied  
Gas Corp.) (bulk), Kelly Lane, Clarksville, Tennessee

Fuel Oils

Distillate fuel oil -

Altsheler Oil Company, Nashville Road, Hopkinsville  
Ashland Petroleum Company (Ashland), Fort Campbell  
Blvd., Hopkinsville  
J. B. Hyde (Gulf), 700 West 15th Street, Hopkinsville  
Hopkinsville Oil Company, 708 North Main, Hopkinsville  
Standard Oil Company (bulk), 118 South Clay, Hopkinsville

Residual fuel oil - arrangements must be made with the refinery

Low sulphur content coal - Available in Kentucky

## WATER AND SEWERAGE

### Water

Company serving Hopkinsville - Hopkinsville Sewerage and Water Works Commission\*

Source - Impoundments of Lakes Blythe, Morris, Tandy and Boxley

Treatment plant capacity - 5,000,000 gpd

Average daily consumption - 3,000,000 gallons

Peak daily consumption - 4,100,000 gallons

Type treatment - Rapid mix, flocculation, clarification, filtration

Storage capacity - 1,750,000 gallons

Size mains - 4, 6, 8, 10, 12, 16, and 18 inches

Average pressure - 80 psi

Average temperature - 60 degrees F.

#### MONTHLY WATER RATES FOR WHOLESALE AND INDUSTRIAL CONSUMERS

---

First	3,000 cu. ft.	\$.50	per 100 cu. ft.
Next	3,000 cu. ft.	.40	per 100 cu. ft.
Next	3,000 cu. ft.	.30	per 100 cu. ft.
Next	3,000 cu. ft.	.25	per 100 cu. ft.
Next	3,000 cu. ft.	.20	per 100 cu. ft.
All over	15,000 cu. ft.	.16 2/3	per 100 cu. ft.

#### Meter Minimum

5/8 inch	\$ 1.50 per month	300 cu. ft.
3/4 inch	2.00 per month	400 cu. ft.
1 inch	3.00 per month	600 cu. ft.
1 1/4 inch	4.00 per month	800 cu. ft.
1 1/2 inch	6.00 per month	1,200 cu. ft.
2 inch	10.00 per month	2,000 cu. ft.
3 inch	20.00 per month	
4 inch	30.00 per month	
6 inch	120.00 per month	

(cont.)

---

\*Preliminary study completed for a water plant expansion to 7 million gallons per day; and includes two elevated water tanks, one million gallons each. New water main will include diameters of 16, 12, 8, and 6 inches. The expansion should be completed by the summer of 1976.



## Private Fire Protection

Rates and charges not metered - Billed semi-annually  
in advance

Through 2 inch connection	\$ 24.00 per year
Through 3 inch connection	36.00 per year
Through 4 inch connection	60.00 per year
Through 6 inch connection	108.00 per year
Through 8 inch connection	156.00 per year

### City of Hopkinsville Billed Monthly

Fire Hydrants, per year, per hydrant - \$30.00

Name of water district - Christian County Water District (planned)\*  
Service area - County areas of Christian County; number of customers -  
1,528 signed customers  
Source of supply of treated water - Hopkinsville Sewerage and Water  
Works Commission and the City of Crofton Water Company  
Storage capacity - 520,000 gallons  
Size lines - 3, 4, 6, and 8 inches  
Rates - Awaiting approval

Surface water sources - South Fork of Little River  
Average discharge - South Fork of Little River at Hopkinsville,  
Kentucky, 64.4 cfs (22-year record)  
Expected ground water yield - Varies throughout the county for a high  
of 500 gpm to 5 gpm or less

### Sewerage

Company serving Hopkinsville - Hopkinsville Sewerage and Water Works  
Commission  
Design capacity - 3,000,000 gpd  
Average daily flow - 2,500,000 gallons  
Treatment - Primary and secondary  
Type treatment - Primary and secondary settling grit removal,  
comminution sludge thickening, anaerobic digestion, and drying beds  
Treated effluent discharged into - North Fork of Little River  
Size of sanitary mains - 21, 15, 10, and 8 inches  
Rates - 80 percent of the monthly water bill

Note: Planning a three phase, \$10 million, 4 year construction project  
consisting of additional third process to present plant, building a  
new plant south of town and the installation of miles of outfall and  
collector mains. Project presently in the planning stages of  
phase 1 with April 1974 being the approximate date to begin  
construction.

---

\*Final engineering plans of water district are awaiting approval.

## LOCAL GOVERNMENT

### City

Structure - Mayor - 4-year term; 12 councilmen - 2-year terms

Estimated Budget 1973-74 - General Fund \$1,400,000

Income May 1971 - April 1972 Water Fund \$504,430

Sanitation Fund 311,527

Garbage Fund 366,096

Fees and licenses - Business licenses vary according to type of business (set by ordinance); Payroll tax - 1 percent of gross salary

### County

Structure - County Judge - 4-year term; 8 magistrates - 4-year terms

Budget 1973-74 - General Fund \$437,100; Road Fund \$153,200

### Assessed Value of Property

<u>Classes of Property</u>	<u>Hopkinsville</u>	<u>Christian County</u>
Real Estate	\$101,831,188 (1973)	\$203,168,648 (1972)
Tangibles	28,149,194 (1973)	72,935,179 (1972)
Public Service		20,701,628 (1971)

### Property Taxes

Land and buildings are taxed by the state and may be taxed by local jurisdictions. The state rate is \$0.015 per \$100 of assessed valuation.

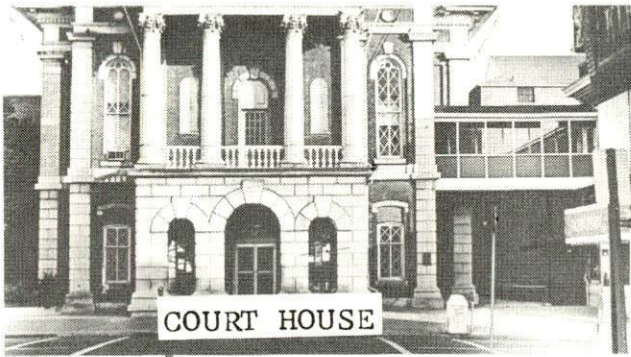
Tangible personal property owned by manufacturers (automobiles, trucks, finished goods, office furniture, office equipment) is taxed by the state at \$0.15 per \$100 and may be taxed by local jurisdictions.

Manufacturing machinery, raw materials inventories, and goods in process inventories are not subject to local taxation. The state rate is \$0.15 per \$100.

Property stored in public warehouses is not subject to local taxation. The state rate is only \$0.015 per \$100.

All property is assessed at 100 percent of fair cash value.

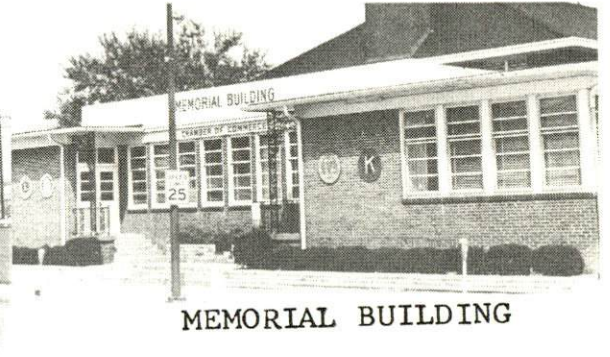




COURT HOUSE



POST OFFICE



MEMORIAL BUILDING



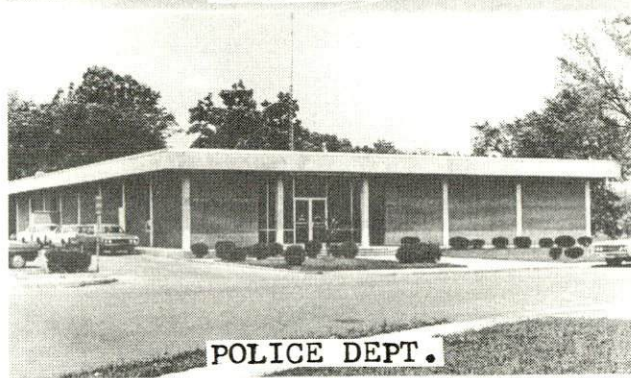
CITY HALL



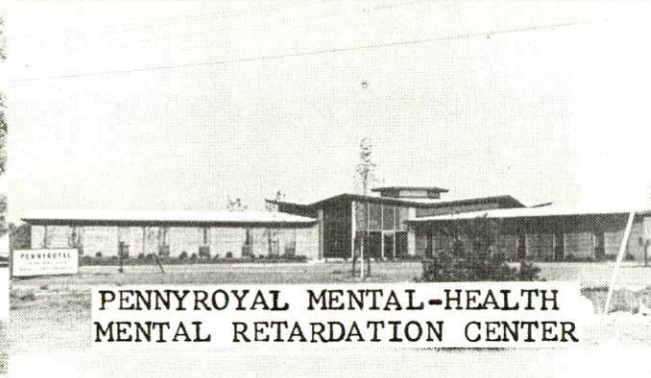
STATE OFFICE BUILDING



KENTUCKY NEW ERA



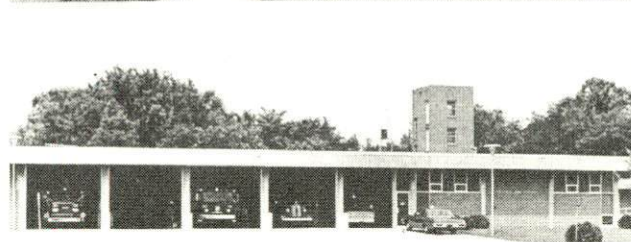
POLICE DEPT.



PENNYROYAL MENTAL-HEALTH  
MENTAL RETARDATION CENTER



HOPKINSVILLE HIGH SCHOOL



FIRE DEPT.



ANIMAL DIAGNOSTIC LAB.



HOPKINSVILLE COMMUNITY COLLEGE



Local Property Tax Rate Per \$100 of Assessed Valuation, 1972\*

<u>Taxing Jurisdiction</u>	<u>Hopkinsville</u>	<u>Christian County</u>
County	\$ .135	\$ .135
School	.414	.414
City	.305	
Special (not county wide):	Watersheds:	
	East Fork, Pond River	\$ .010
	West Fork, Pond River	.010
	Tradewater	.009

Utilities Gross Receipts Tax for Schools

Christian County levies a 3 percent tax on utilities receipts for schools. This tax is paid by all consumers of utilities. Exempted are receipts from utilities services that are resold and the receipts from the sale of energy or energy producing fuels that exceed 3 percent of the cost of production in manufacturing, processing, mining or refining.

Planning and Zoning

Joint agency - Hopkinsville-Christian County Planning Commission  
 Zoning enforced - City only  
 Subdivision regulations enforced - City and county  
 Local codes enforced - Building and housing  
 Mandatory state codes enforced - Plumbing, National Fire Protection Association Code, National Building Code (for major buildings and residential construction containing more than 12 bedrooms per building)  
 Other programs - Redevelopment program for southeastern part of town

Safety

<u>Police</u>	<u>Hopkinsville</u>	<u>Christian County</u>
Staff	40 uniform 10 civilian 9 school patrol	6
Radio-patrol cars	7	5
Other equipment	crime lab, 1 car, 1 van	

\*Kentucky Department of Revenue, Kentucky Property Tax Rates, 1972.

FireHopkinsvilleChristian County

American Insurance

Association Fire Rating

5

Full-time staff

53

Volunteer department

Equipment:

1, 250 gpm pumper

1

1, 000 gpm pumpers

2

750 gpm pumpers

2

Ladder truck

1 (85-foot)

Utility truck

1

Hose wagon

1

Number of stations

3

Rescue Service

Christian County Rescue Squad:

Number of volunteers - 45 to 50

Equipment - 2 generators, lake dragging equipment, scuba diving equipment, 8 privately owned boats for use, 27 radio-equipped cars (citizen band), a station wagon, 8-man squad truck, a field kitchen (van), and other heavy duty rescue equipment

Personnel training - 3 professional scuba divers, 18 men skilled in lake dragging, all personnel trained in standard First Aid and some with advanced Red Cross training

Ambulance Service

July 1, the fire department took over the ambulance service. This service is county-wide, offering 24-hour service, and has 2 ambulances.

SanitationHopkinsvilleChristian County

Type service

Municipal

Private

Fee charged:

residential

\$2.30 per month

Contract

business

Varies according to the volume collected

Contract

Collection frequency:

residential

Once weekly

Once weekly

business

Daily

Contract

Trash pickup

Twice monthly

Contract

Disposal method

Sanitary landfill

Sanitary landfill



## EDUCATION

### Public Schools

### Christian County

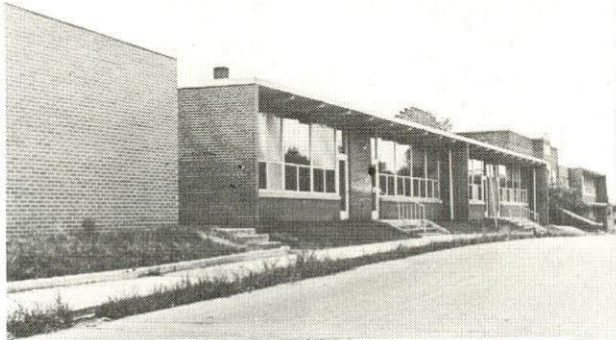
Total Enrollment (Fall 1972)	10,890
Elementary	5,790
Middle	1,850
High School	3,250
 Student-Teacher Ratio	 24-1
Elementary	25-1
Middle	22-1
High School	25-1
 Accreditation	 Southern Association of Colleges and Schools (2)
 Percent High School Graduates to College	 49.0
Expenditures Per Pupil (1971-72)	\$473.28
Bonded Indebtedness, June 30, 1972	\$9,954,000*

### Nonpublic Schools

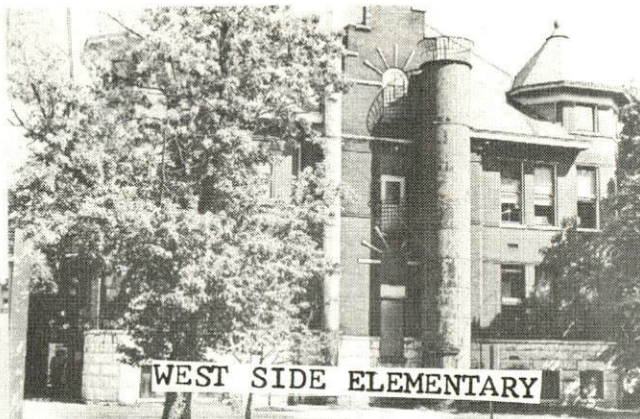
Total Enrollment	3,210
Elementary	2,180
Middle	650
High School	380
 Student-Teacher Ratio	 22-1
Elementary	23-1
Middle	19-1
High School	17-1

\*Includes \$825,000 of advanced refunding.

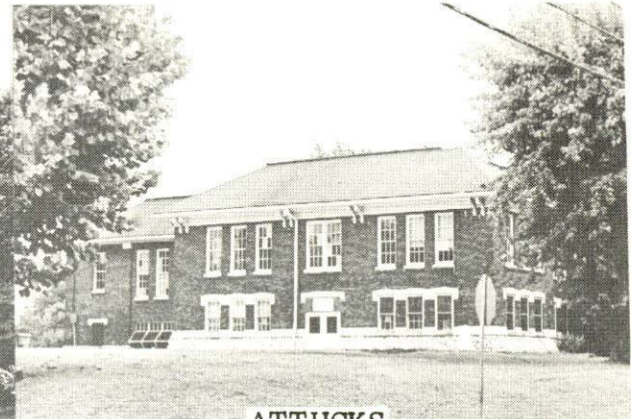




BOOKER T. WASHINGTON ELEM.



WEST SIDE ELEMENTARY



ATTUCKS



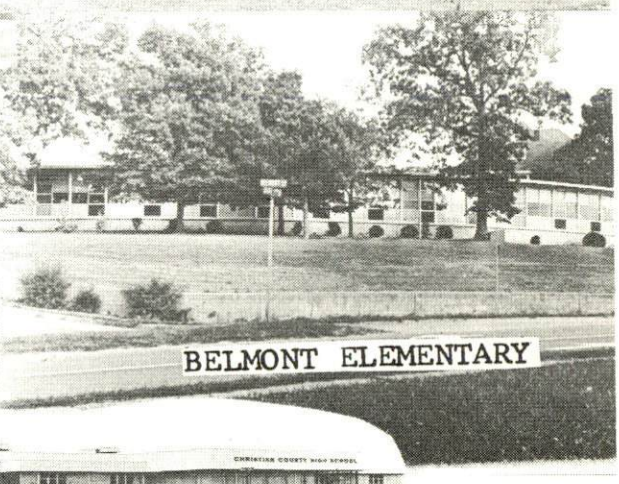
HOLIDAY PARK ELEMENTARY



HIGHLAND ELEMENTARY



INDIAN HILLS ELEMENTARY



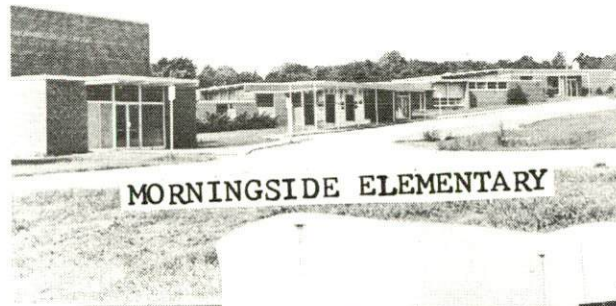
BELMONT ELEMENTARY



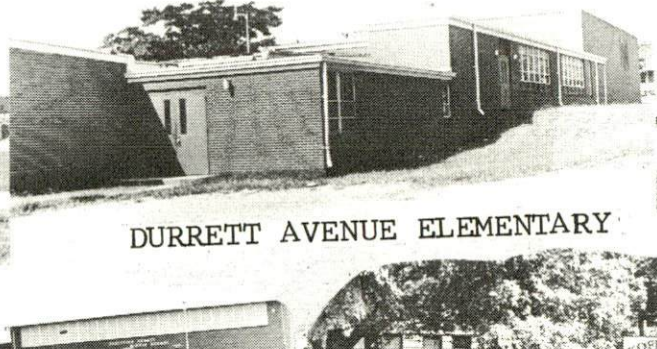
HOPKINSVILLE HIGH SCHOOL



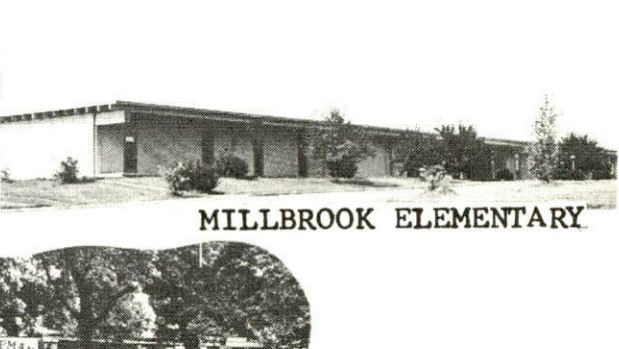
CHRISTIAN COUNTY HIGH SCHOOL



MORNINGSIDE ELEMENTARY



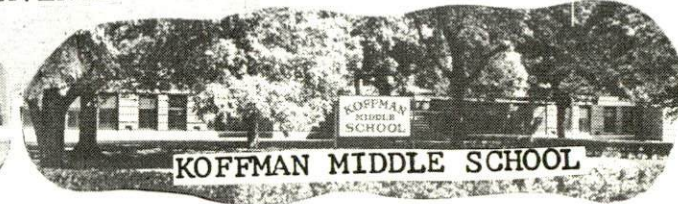
DURRETT AVENUE ELEMENTARY



MILLBROOK ELEMENTARY



CHRISTIAN CO. MIDDLE SCHOOL



KOFFMAN MIDDLE SCHOOL



Vocational Schools

	<u>Nearest State School</u>	<u>Nearest Area Education Center</u>
	Madisonville State Vocational-Technical School	Christian County Area Vocational Education Center
Location	Madisonville	Hopkinsville
Miles Distant	33	
Curriculum	Certified Lab Assistant Medical Assistant Medical Secretary Practical Nursing Radiologic Technology Surgical Technician Learning Lab Electronics (Communications) Auto Body Repair Auto Mechanics Carpentry Drafting Electricity Machine Shop Mine Maintenance	Appliance Repair Auto Mechanics Carpentry Drafting Electricity Welding

Arrangements can be made to provide training in the specific production skills required by an industrial plant. Instruction may be conducted either in the vocational school or in the industrial plant, depending upon the desired arrangement and the availability of special equipment.

Colleges and Universities

<u>Name</u>	<u>Location</u>	<u>Area - Within 70 miles</u>	
		<u>Enrollment (Fall 1972)</u>	<u>Highest Degree Conferred</u>
Hopkinsville Community College	Hopkinsville	752	Associate
Western Kentucky University	Bowling Green	11,329	Masters
Madisonville Community College	Madisonville	356	Associate
Kentucky Wesleyan	Owensboro	772	Baccalaureate

(cont.)



<u>Name</u>	<u>Area - Within 70 miles</u>		<u>Highest Degree Conferred</u>
	<u>Location</u>	<u>Enrollment (Fall 1972)</u>	
Brescia College	Owensboro	931	Baccalaureate
Henderson Community College	Henderson	608	Associate
Paducah Community College	Paducah	1,161	Associate
Murray State University	Murray	7,121	Masters
Austin Peay State University	Clarksville, Tennessee	3,668	Masters
Belmont College	Nashville, Tennessee	930	A. B. , B. S. , A. A.
David Lipscomb	Nashville, Tennessee	2,061	B. A. , B. S.
Fisk University	Nashville, Tennessee	1,558	A. B. , B. S. , B. M. , M. A.
George Peabody College For Teachers	Nashville, Tennessee	1,959	Ph. D.
Mcharry Medical College	Nashville, Tennessee	622	M. A. , M. D. , D. D. S. , Cert.
Scarritt College for Christ Work	Nashville, Tennessee	142	B. A. , M. A. , M. C. W.
Trevecca Nazarene	Nashville, Tennessee	766	A. B. , B. S.
Tennessee State University	Nashville, Tennessee	4,640	Masters
Vanderbilt University	Nashville, Tennessee	6,895	Ph. D.

## HEALTH

### Hospitals

<u>General Hospital</u>	<u>Location</u>	<u>Beds</u>
Jennie Stuart Memorial Hospital	Hopkinsville	227

General hospital facilities - 4 operating rooms, coronary care unit, OB section, pediatrics, X-ray, radioisotope, laboratory, pathology, physical therapy blood bank, intensive care unit, pharmacy, renal dialysis unit, emergency room, practical nurses school, an ADA nursing program with Hopkinsville Community College, a surgical technological school, and a laboratory technological school

Other - The Pennyroyal Regional Comprehensive Mental-Health Center and the Western State Hospital, a mental treatment facility, are located in Hopkinsville. Outwood State Hospital for the mentally retarded is located in northwestern Christian County.

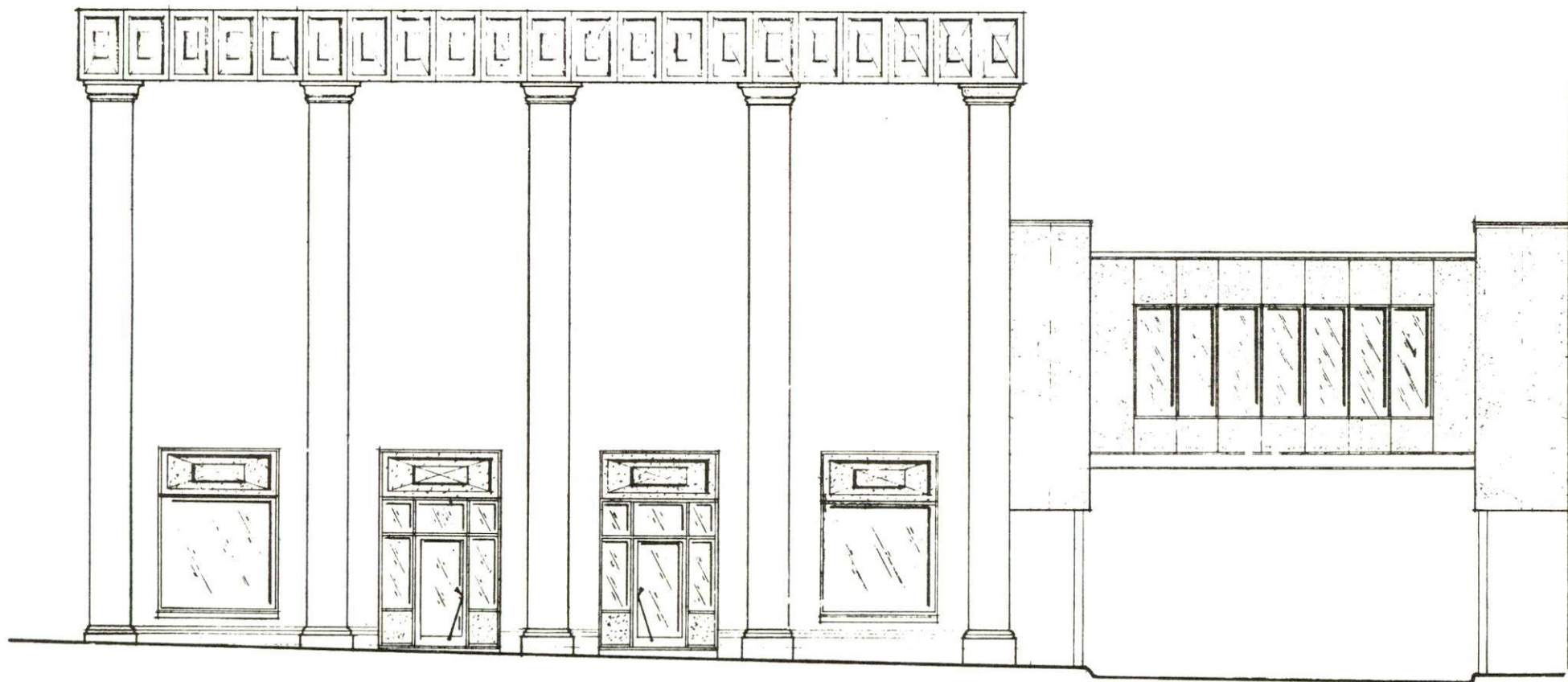
### Nursing Homes

	<u>Number</u>	<u>Beds</u>
Extended care homes	3	113
Personal care homes	5	303

### Public Health

Facility - Christian County Health Department  
Staff - 1 doctor, 5 registered nurses, 1 sanitarian acting as administrative assistant, 3 sanitarians, and 3 clerks  
Budget 1973-74 - \$135,617





Proposed new front for Cayce-Yost Company building

## OTHER LOCAL FACILITIES

### Communications

Telephone - South Central Bell Telephone Company  
Services - Standard

Telegraph - Western Union  
Services - Standard

Postal - U.S. Post Office  
Class - First  
Mail received - 4 times daily  
Mail dispatched - 4 times daily

Newspapers - The Kentucky New Era  
Daily and circulation - 14,443  
Other papers  
received from - Evansville, Indiana; Louisville, Kentucky;  
Nashville, Tennessee

Radio - WHOP, WKOA, WABD (all in Christian County)  
Stations received from - Cadiz, Russellville and Bowling Green,  
Kentucky; Nashville, Tennessee

Television -  
Cable Service  
Reception from - 3 stations from Nashville, Tennessee, received  
without cable service; Louisville, Paducah,  
Bowling Green, Kentucky; Evansville, Indiana, and  
Cape Girardeau, Missouri, received with cable  
service

Kentucky Educational  
Television - Madisonville transmitter, Channel 35  
Nashville, Tennessee, Channel 2

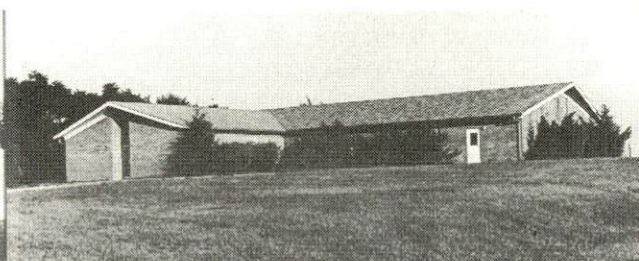
### Library Services

Public library - Hopkinsville Public Library  
Size collection - 27,274 volumes  
Circulation, 1972-73 - 61,312  
Services - Phonograph records, filmstrips, slides, microfilm,  
bookmobile, pictures, magazines, films, Xerox, records





SECOND BAPTIST CHURCH



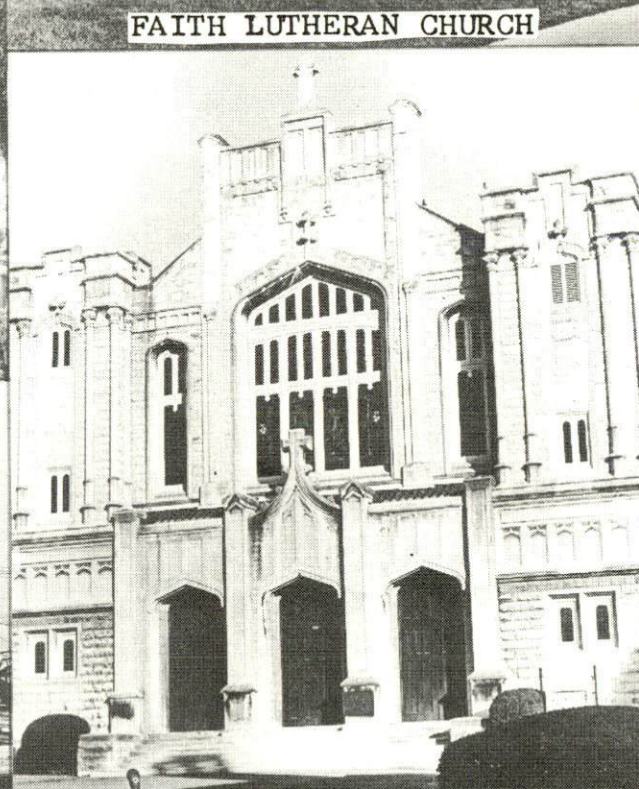
FAITH LUTHERAN CHURCH



FIRST BAPTIST CHURCH



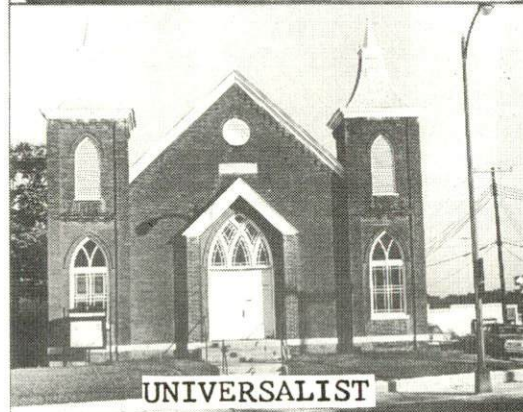
ST'S. PETER & PAUL  
CATHOLIC CH.



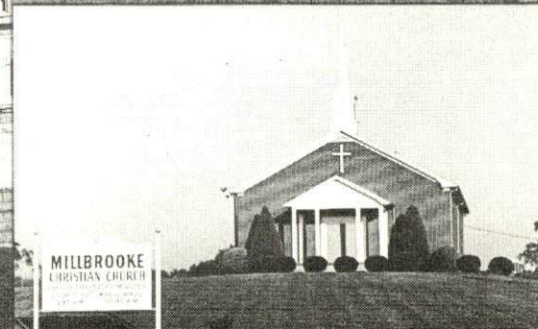
FIRST UNITED METHODIST CH.



FIRST CHRISTIAN CHURCH



UNIVERSALIST

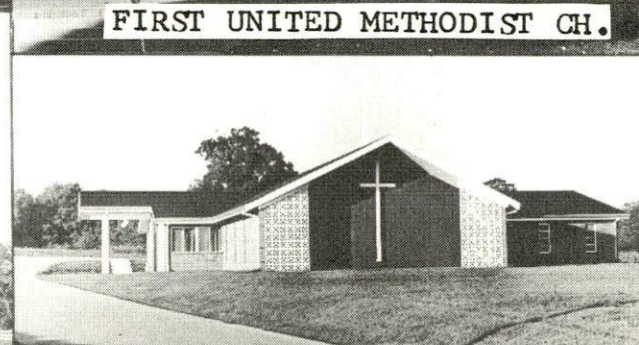


MILLBROOKE  
CHRISTIAN CHURCH

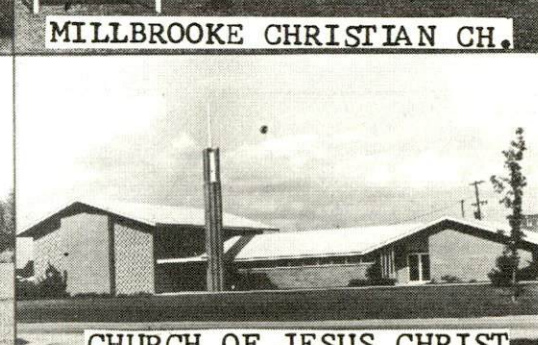
MILLBROOKE CHRISTIAN CH.



CUMBERLAND PRESBYTERIAN CH.



HENDERSON MEMORIAL BAPTIST



CHURCH OF JESUS CHRIST  
LATTER DAY SAINTS



Religious Institutions

Number of churches - 35

Denominations - Assembly of God, Baptist, Catholic, Christian, Christian Science, Church of Christ, Church of God, Church of the Nazarene, Episcopal, Jehovah's Witnesses, Latter Day Saints, Lutheran, Methodist, Pentecostal, Presbyterian, Salvation Army, Seventh Day Adventist, Universalist

Synagogue - Adath Israel (reform)

Financial Institutions

<u>Banks</u>	<u>Statement as of December 31, 1972</u>	
	<u>Assets</u>	<u>Deposits</u>
First City Bank & Trust Company	\$53,286,209.68	\$47,818,313.01
Planters Bank & Trust Company	71,854,006.97	66,041,198.00
<u>Savings and Loan Associations</u>	<u>Assets</u>	<u>Shared Accounts</u>
First Federal Savings & Loan Association	\$18,336,864.14	\$15,377,270.56
Hopkinsville Federal Savings & Loan	34,040,404.32	30,473,721.28

Hotels and Motels

Total number - 18

Units - 512

## Clubs and Organizations

Business and Civic - Chamber of Commerce, Jaycees, Rotary, Kiwanis, Lions, Optimist, Elks, VFW, Farm Bureau, Pioneers, Inc., Civitan, Western Kentucky State Fair, Pennyrile Area Development Association, United Fund

Fraternal - Shriners, Masons, Moose, Epsilon Sigma Alpha, IOOF, Ye Ole Timers Club, DAV, Woodsmen of the World

Women's - National Secretaries Association, Altrusa Club, Eastern Star, Rebekahs, Business and Professional Women's Club, Junior Auxiliary, DAR, Homemakers, Garden Club, AAUW, LWV, Daughters of the Confederacy, Jaycettes, Lions, Civitan, Elks, Moose, American Legion, and VFW Auxiliaries

Youth - Junior Achievement, Boy Scouts, Girl Scouts, YMCA, Brownies, FFA, FHA, 4-H, FTA, Beta Club, Girls Guards and Sunbeams



## RECREATION

### Local

#### Public Recreation Facilities

Supervised program - full-time director and staff

Parks - 2

Playgrounds - 5

Swimming pool - 1

Tennis courts - 5 locations

Baseball diamonds - 5

Football field - 1

Other - indoor basketball and other recreation facilities are contained  
in the city recreation building

#### Private Recreation Facilities

Country clubs - 2

Golf courses - 3

Swimming pools - 4

Movie theaters - 3 indoor; 2 outdoor

Bowling lane - 1

Other - riding stables, trap shooting, roller rink, 2 dude ranches  
for children

#### Tourist Attractions

The Jefferson Davis Monument State Park; Western Kentucky State Fair

#### Cultural Events

Community Concert Association, Art Guild exhibits and community  
theater group

### Area (Within 50 miles)

Land Between the Lakes National Recreation Area

Lake Barkley State Resort Park with a new \$7 million lodge considered  
one of the finest in the nation

Pennyrile Forest State Resort Park

Lake Barkley and Barkley Dam

Kentucky Lake and Kentucky Dam

Kenlake State Resort Park

Kentucky Dam Village State Resort Park

Lake Malone State Park

Jefferson Davis Monument State Shrine

Pennyrile Festival of Arts - art exhibits, concerts, drama, flower show

AGRICULTURE - NATURAL RESOURCES - CLIMATE

Agriculture\*

	<u>Christian County</u>	<u>Labor Market Area</u>
Total land area (acres)	464,128	1,741,346
Percent of area in farm land	74.1	72.8
Number of farms	1,868	6,336
Average size of farms (acres)	184.2	274.8
1969 value of all farm products	\$18,863,713	\$52,981,584
Value per farm	10,098	8,361
Total crop sales	9,198,466	23,342,048
Total livestock & livestock products	9,569,315	29,221,239
1970 agricultural production included:		
Burley tobacco (lbs.)	5,336,000	10,711,000
Corn (bu.)	2,550,000	7,189,000
Cattle and calves (number)	56,000	193,900
Hogs and pigs (number)	52,400	169,700
Milk production, 1969 (lbs.)	16,900,000	70,820,000

Natural Resources

Principal mineral resources	Limestone, petroleum, coal and miscellaneous clay
Other mineral resources	Gas
Acres of commercial forest land	129,600
Most abundant tree species	Red oak, white oak, hickory, sweetgum, ash, yellow poplar, and hard maple

\*U. S. Department of Commerce, Bureau of the Census, Census of Agriculture, 1969. U. S. Department of Agriculture and Kentucky Department of Agriculture, Kentucky Agricultural Statistics, 1971.

U. S. DEPARTMENT OF COMMERCE, NATIONAL OCEANIC AND ATMOSPHERIC  
 ADMINISTRATION, NATIONAL WEATHER SERVICE, IN COOPERATION WITH  
 KENTUCKY AGRICULTURAL EXPERIMENT STATION  
 CLIMATOGRAPHY OF THE UNITED STATES NO. 20 - 15



LATITUDE 36° 51' N  
 LONGITUDE 87° 30' W  
 ELEV. (GROUND) 540 Feet

**CLIMATOLOGICAL SUMMARY**  
 REVISED NOVEMBER 1972

STATION: HOPKINSVILLE,  
 KENTUCKY

Extremes: 1896 - 1971  
 MEANS AND EXTREMES FOR PERIOD Means : 1942 - 1971

COUNTY: CHRISTIAN

Month	Temperature (°F)							** Mean degree days	Precipitation Totals (Inches)						Mean number of days					Month		
	Means			Extremes					Mean	Greatest daily	Year	Snow, Sleet			Precip. .10 inch or more	Temperatures						
	Daily maximum	Daily minimum	Monthly	Record highest	Year	Record lowest	Year					Mean	Maximum monthly	Year		Greatest daily	Year	Max.			Min.	
																		90° and above	32° and below		32° and below	0° and below
(a)	30	30	30	75		75		30	30	75		28	75#		41%		30	30	30	30		
Jan.	45.2	24.7	35.0	78	1943	-20	1963	930	4.25	5.33	1920	3.8	27.0	1918	7.0	1931	7	0	5	24	1	Jan.
Feb.	49.0	27.1	38.1	82	1962	-22	1951	753	4.24	4.75	1949	2.4	13.2	1921	7.0	1951	7	0	3	20	1	Feb.
Mar.	57.4	34.6	46.0	94	1929	-3	1960	592	5.30	3.80	1935	2.5	25.7	1960	12.0	1960	8	0	1	14	*	Mar.
Apr.	70.0	46.0	58.0	95	1925	20	1924	226	4.20	6.30	1912	T	5.0	1910	T	1962+	8	*	*	2	0	Apr.
May	78.2	54.6	66.4	100	1911	31	1954	83	4.50	4.00	1905	0	0		0		7	2	0	*	0	May
June	86.4	63.2	74.8	106	1913	40	1956	5	4.07	4.57	1900	0	0		0		6	11	0	0	0	June
July	89.5	65.9	77.7	110	1936	45	1947	0	3.77	4.13	1933	0	0		0		7	17	0	0	0	July
Aug.	89.1	64.6	76.9	111	1930	41	1946	0	3.47	2.93	1949	0	0		0		6	16	0	0	0	Aug.
Sept.	82.9	57.5	70.2	108	1925	31	1899	25	3.07	4.15	1965	0	0		0		5	6	0	0	0	Sept.
Oct.	73.2	45.7	59.5	98	1953	21	1952	217	2.53	5.60	1900	0	1.5	1925	0		4	1	*	2	0	Oct.
Nov.	58.5	35.0	46.8	87	1922	-4	1950	546	4.11	6.18	1900	0.6	5.3	1906	4.9	1966	6	0	1	14	*	Nov.
Dec.	47.9	27.4	37.7	78	1951	-14	1901	846	4.16	4.75	1902	1.4	18.5	1917	8.0	1963	6	0	3	22	*	Dec.
Year	68.9	45.5	57.2	111	Aug. 1930	-22	Feb. 1951	4223	47.67	6.30	April 1912	10.7	27.0	Jan. 1918	12.0	Mar. 1960	77	53	13	98	2	Year

(a) Average length of record, years.

T Trace, an amount too small to measure.

\*\* Base 65°F

+ Also on earlier dates, months, or years.

\* Less than one half.

% 1931-1971 (Some data missing).

# 1896-1971 (Some data missing).



## HISTORY

Christian County was created from Logan County by the General Assembly of the Commonwealth of Kentucky, December 13, 1796, though the county did not come into existence until March 1, 1797. The county was named in honor of Colonel William Christian, 1743-1786, a native of Augusta County, Virginia. This soldier, statesman, frontiersman, served in the Continental Army during the Revolutionary War. After the war, as a Virginia planter, he became a member of the convention which formed Virginia as a state. The Colonel married Annie Henry, a sister of the great orator and statesman, Patrick Henry. Coming to Kentucky in 1785, he settled near Louisville. The following year Christian was killed by the Indians across the Ohio River in southern Indiana.

As originally formed, Christian County included all land north of the Tennessee line, west of Logan County, and the Green River, south of the Ohio River, and east of the Tennessee River. Counties formed out of Christian County between 1798 and 1860 include: Caldwell, Crittenden, Henderson, Hopkins, Livingston, Lyon, Muhlenberg, McLean, Todd, Trigg, Union, and Webster.

The first settlement in the county was made by James Davis and John Montgomery, natives of Augusta County, Virginia. Around 1782, they came by flatboat up the Cumberland River and from the Ohio River, and built a blockhouse about one mile southeast of Pembroke near the West Fork of Red River. The grave of Davis, dating from 1797, is the oldest marked grave in the county. For a period of the next twenty years, settlement of the county proceeded slowly with a greater concentration in North Christian. This fact was due to the greater abundance of fresh water, wild game, and timber for building. The level to gently rolling fertile land in South Christian was settled in the first quarter of the 1800's, consisting of large farms supported by slave labor. This fact would tend to divide the county into two sections of sentiment as the Civil War approached.

The first settler on the site of Hopkinsville was Bartholomew Wood, a native of North Carolina, who settled here in 1796. He built a log cabin at the present corner of Ninth and Virginia Streets near the "Rock Spring." The following year, on November 21, 1797, a commission, appointed by the county court to locate the county seat, selected a site between the two forks of Little River at the "Rock Spring." Wood donated five acres of land upon which the county courthouse and jail were built. This original grant is today bounded by Fifth, Main, and Seventh Streets, with Little River on the west. The town was first called Elizabeth, but the name was

changed to Hopkinsville in April, 1804, in order to avoid conflict with another town of the same name in Hardin County. The new name honored General Samuel Hopkins, 1753-1818, a native of Albemarle County, Virginia, and an officer in the Continental Army. He was living in Henderson County at the time of his death.

Education has long exercised a vital role in the life of Hopkinsville and Christian County. With the gift by Bartholomew Wood of a plot of ground, a school was erected about 1812 and operated as a private academy. Public education had its beginning in the community in 1842. South Kentucky College, in operation from 1849 until 1914, and Bethel College, in existence from 1854 until 1964, provided an excellent form of religious training in higher education. Hopkinsville Community College continues the outstanding tradition of these earlier institutions. Major James O. Ferrell, a former Confederate officer operated a select school for boys here from 1873 until 1903. The Christian County School System has been in operation since 1845, while the Hopkinsville Public School System was in existence from 1881 until 1971.

Christian County had a population of 2,318 in 1800, and by 1950 had reached 42,359. The next decade saw rapid growth, with the 1960 population totalling 56,904. Subsequently, there was a slight decline to 56,224 in 1970.

Agricultural employment accounted for 1,980 of the counties 19,370 jobs in 1971. The principal agricultural products were burley tobacco, corn, cattle and hogs. Manufacturing employment was up approximately 90 percent from 1962 to 4,199 in 1972. Hopkinsville largest firms are Thomas Industries, Inc., which makes lighting fixtures; Hopkinsville Clothing Manufacturing Company, manufacturing men's and boy's jeans; International Shoe Company, which makes women's shoes, and Phillips Dodge Magnet Wire Corporation, which manufactures magnet wire.