

1976

Industrial Resources: Clark County - Winchester

Kentucky Library Research Collections
Western Kentucky University, spcol@wku.edu

Follow this and additional works at: https://digitalcommons.wku.edu/clark_cty

 Part of the [Business Administration, Management, and Operations Commons](#), [Growth and Development Commons](#), and the [Infrastructure Commons](#)

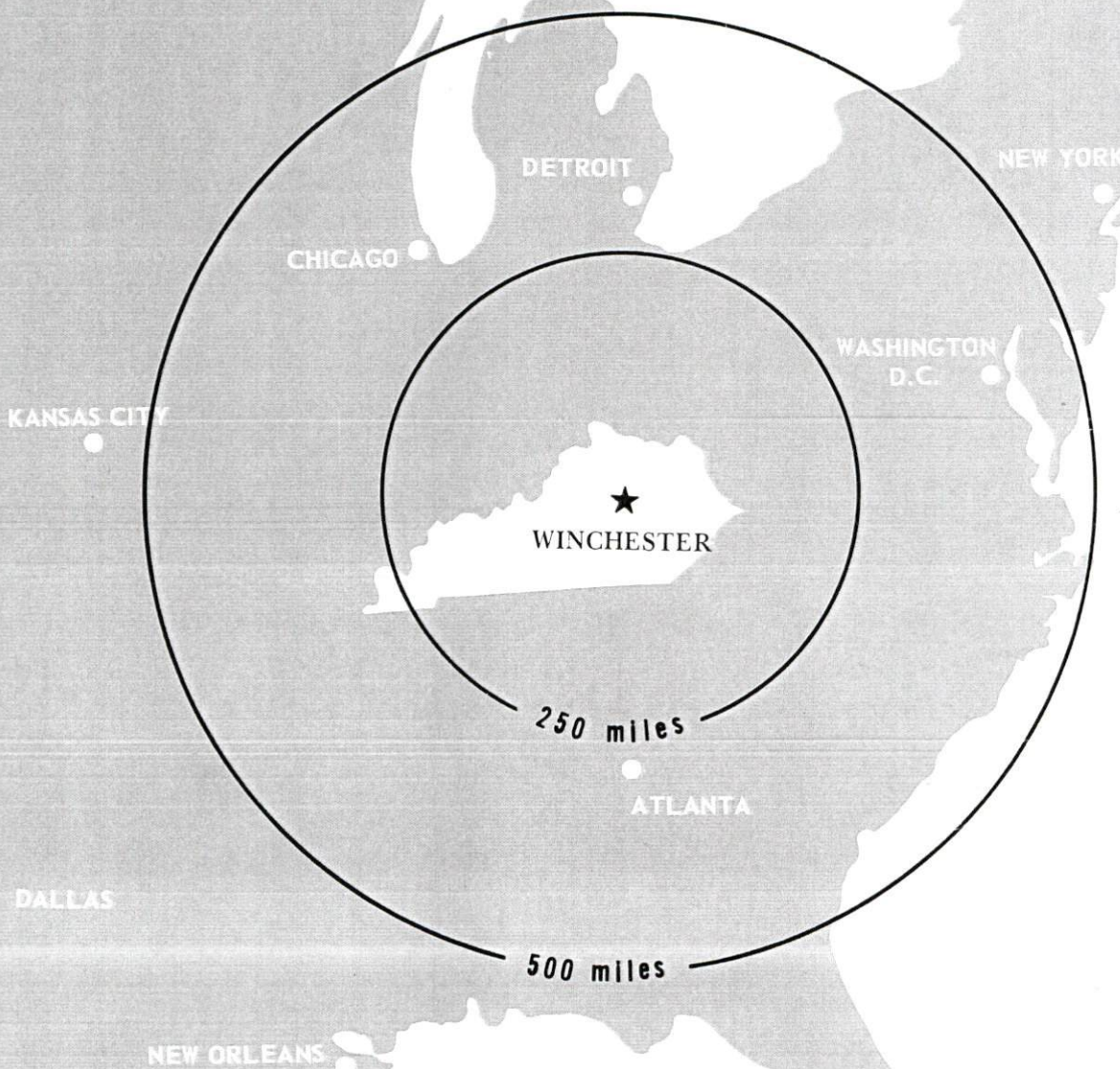
Recommended Citation

Kentucky Library Research Collections, "Industrial Resources: Clark County - Winchester" (1976). *Clark County*. Paper 9.
https://digitalcommons.wku.edu/clark_cty/9

This Report is brought to you for free and open access by TopSCHOLAR®. It has been accepted for inclusion in Clark County by an authorized administrator of TopSCHOLAR®. For more information, please contact topscholar@wku.edu.

INDUSTRIAL RESOURCES

WINCHESTER KENTUCKY

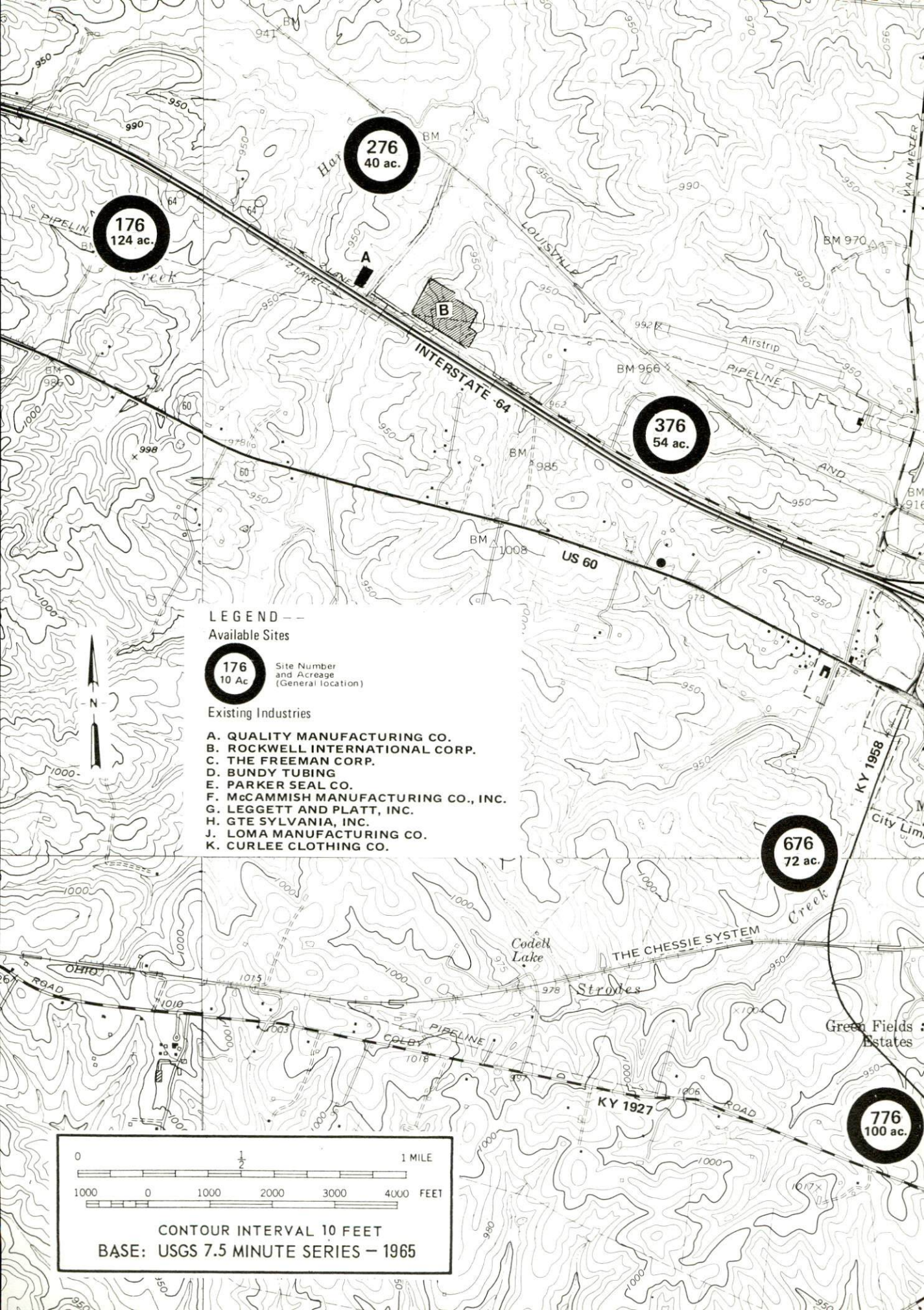


CLARK COUNTY, KENTUCKY

WINCHESTER, KENTUCKY --- Index to Industrial Sites --- 1976

For detailed data on individual sites, contact Mr. George Gawthrop, 40 Winn Avenue, Winchester, Kentucky 40391, or the Kentucky Department of Commerce, Capital Plaza Tower, Frankfort, Kentucky 40601.





176
124 ac.

276
40 ac.

376
54 ac.

676
72 ac.

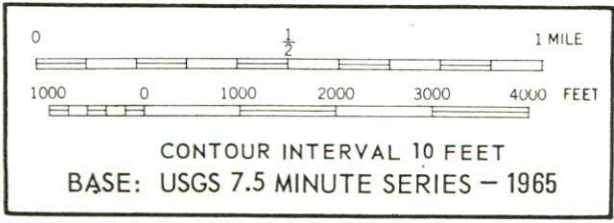
776
100 ac.

LEGEND --
Available Sites

176
10 Ac
Site Number and Acreage
(General Location)

Existing Industries

- A. QUALITY MANUFACTURING CO.
- B. ROCKWELL INTERNATIONAL CORP.
- C. THE FREEMAN CORP.
- D. BUNDY TUBING
- E. PARKER SEAL CO.
- F. McCAMMISH MANUFACTURING CO., INC.
- G. LEGGETT AND PLATT, INC.
- H. GTE SYLVANIA, INC.
- J. LOMA MANUFACTURING CO.
- K. CURLEE CLOTHING CO.



INDUSTRIAL RESOURCES
WINCHESTER, KENTUCKY

Prepared by
The Kentucky Department of Commerce
in cooperation with
The Winchester-Clark County Chamber of Commerce

1976

This copy has been prepared by the Kentucky Department of Commerce, Division of Research and Planning, and the cost of printing paid from state funds.

Production Supervisor
Patsy Wallace

Research
Pamela Riley

Clerical
Mildred Keefer

Graphics
N. C. Montague
Frank Ferrante
Tony Cecconi

Cartography
Site Development Section

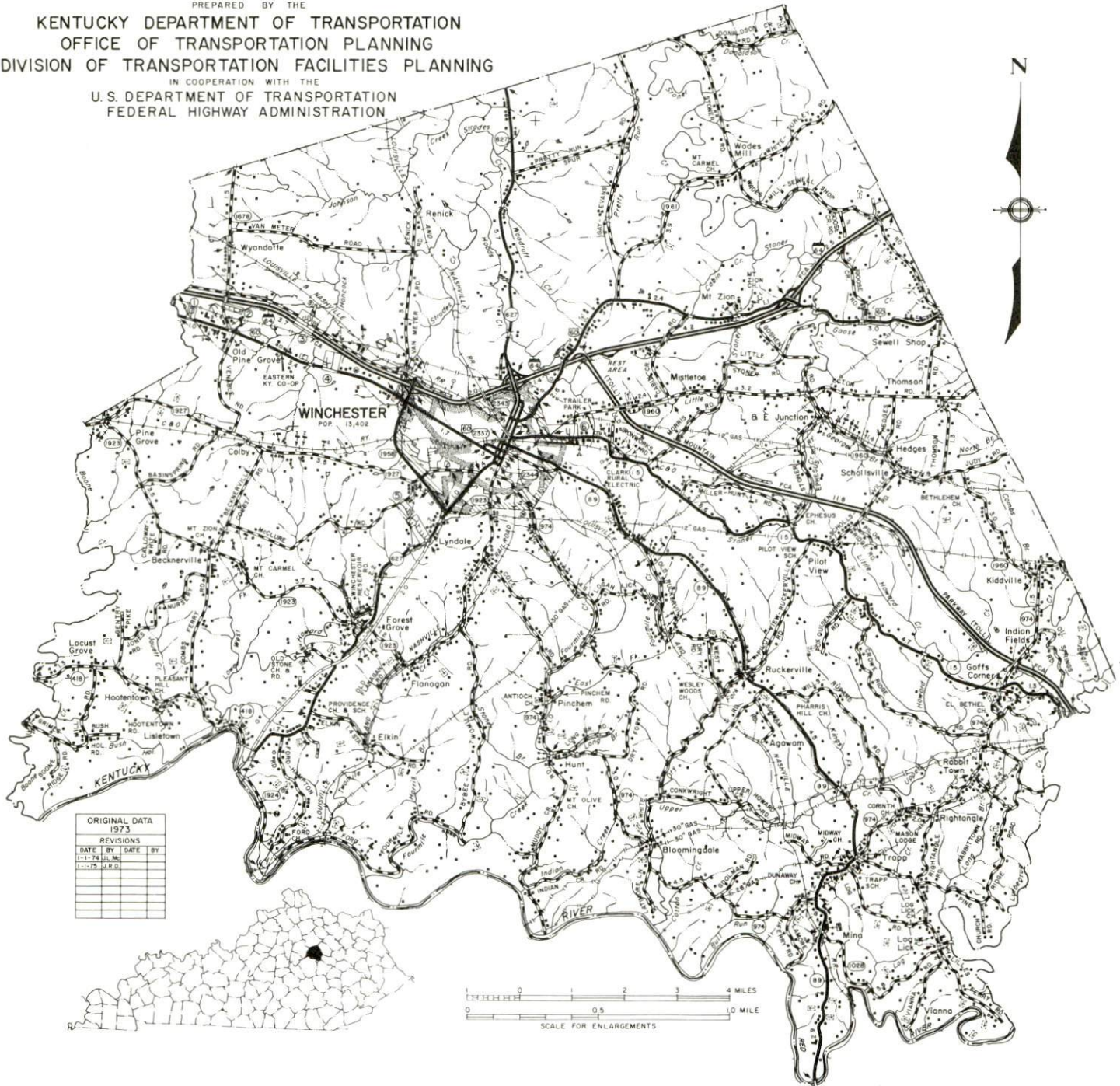
TABLE OF CONTENTS

<u>Chapter</u>	<u>Page</u>
INDUSTRIAL SITES	i
WINCHESTER, KENTUCKY - A RESOURCE PROFILE	1
THE LABOR MARKET AREA.	3
Population.	3
General Employment Characteristics, 1974	3
Manufacturing Employment by Industry	4
Major Winchester Manufacturing Firms, Their Products and Employment	5
Labor Organizations	5
Estimated Male Labor Supply	6
Estimated Female Labor Supply	6
Wages.	7
Per Capita Personal Income.	8
TRANSPORTATION	9
Rail.	9
Highways	9
Truck Service	10
Air	11
Bus	11
Taxi	11
Rental Services	11
Water.	11
POWER AND FUEL	13
Electricity.	13
Natural Gas	13
Other Fuels	14
WATER AND SEWERAGE	15
Water.	15
Sewerage	17
CLIMATE	19

<u>Chapter</u>	<u>Page</u>
LOCAL GOVERNMENT	20
City	20
County	20
Assessed Value of Property, 1975.	20
Property Taxes	20
Local Property Tax Rate Per \$100 of Assessed Valuation, 1975	21
Utilities Gross Receipts Tax for Schools	21
Planning and Zoning	21
Safety.	21
Police	21
Fire	21
Rescue Service	22
Solid Waste	22
EDUCATION.	23
Public Schools.	23
Nonpublic Schools	23
Area Colleges and Universities	24
Vocational Schools	25
HEALTH	26
Local Medical Personnel	26
Hospitals	26
Other Medical Facilities	26
Ambulance Service.	26
Nursing Homes	27
Public Health	27
OTHER LOCAL FACILITIES.	28
Communications	28
Library Services	28
Religious Institutions.	29
Financial Institutions.	29
Hotels and Motels	29
Clubs and Organizations	30
RECREATION	33
COMMUNITY IMPROVEMENTS	35
HISTORY	37

GENERAL HIGHWAY MAP CLARK COUNTY KENTUCKY

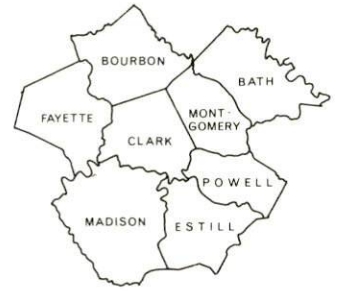
PREPARED BY THE
 KENTUCKY DEPARTMENT OF TRANSPORTATION
 OFFICE OF TRANSPORTATION PLANNING
 DIVISION OF TRANSPORTATION FACILITIES PLANNING
 IN COOPERATION WITH THE
 U.S. DEPARTMENT OF TRANSPORTATION
 FEDERAL HIGHWAY ADMINISTRATION



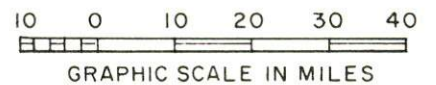
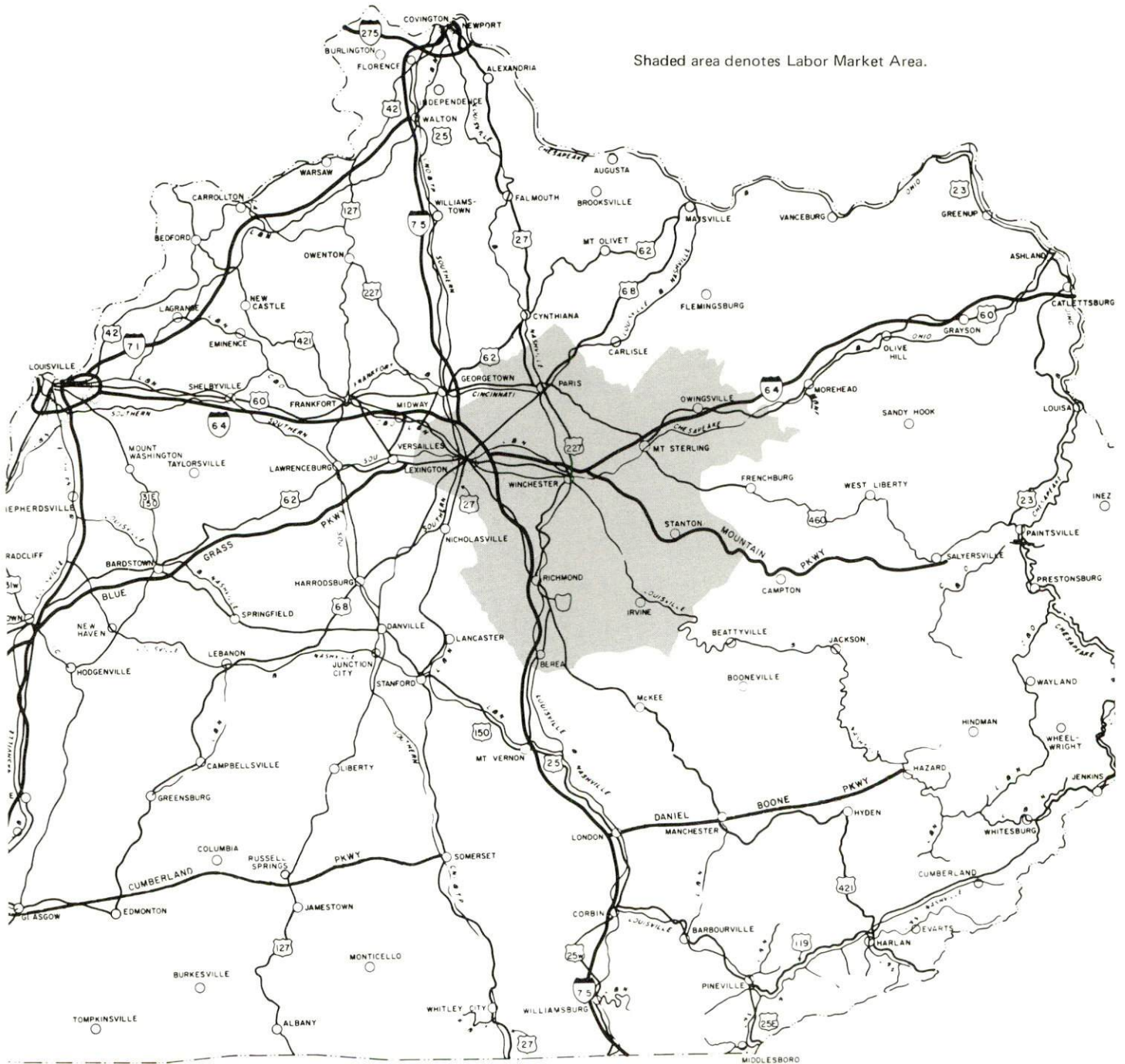
ORIGINAL DATA			
1973			
REVISIONS			
DATE	BY	DATE	BY
1-1-76	LL		
1-1-78	J.R.S.		



WINCHESTER LABOR MARKET AREA



Shaded area denotes Labor Market Area.



WINCHESTER, KENTUCKY - A RESOURCE PROFILE

Winchester, the county seat of Clark County and a 1974 All-Kentucky City, is located in central Kentucky 19 miles east of Lexington, Kentucky, 91 miles east of Louisville, Kentucky, 97 miles south of Cincinnati, Ohio, and 194 miles north of Knoxville, Tennessee. The city had a 1973 population of 15,352.

Clark County is situated on the eastern edge of the Bluegrass Region of Kentucky with the southeastern portion of the county extending into the Knobs Region. The county's 259 square miles range from gently rolling to hilly terrain. Clark County had a 1974 population of 25,600.

The Economic Framework

The total number of Clark County residents employed in 1974 averaged 11,650, including 1,180 in agriculture and 1,670 in government. Manufacturing employers in the county reported 4,025 workers and trade and services firms employed 2,530. Major industrial products are: truck axles, projector and PAR lamps, copper-coated steel tubing and steel tubing, mattress units, box springs and bed frames, and men's and ladies' apparel.

Total unemployment in Clark County averaged 2.7 percent of the labor force in 1974.

Per capita personal income in the county in 1973 was \$4,705, an increase of 42.1 percent since 1969.

The Winchester labor market area includes Clark and the seven adjoining counties. The total number of residents of the labor market area employed in 1974 averaged 153,120, including 9,140 in agriculture and 34,140 in government. Manufacturing employers in the labor market area reported 31,720 workers and trade and services firms employed 55,610.

Resources for Growth

1. There is a current labor supply of 11,860 men and 12,150 women available for industrial jobs in the labor market area. In addition, 14,530 young men and 12,870 young women in the area will become 18 years of age by 1981 and potentially available for work.

2. Transportation facilities are excellent for Winchester and Clark County. The Louisville & Nashville Railroad and The Chessie System provide Winchester with a variety of rail services. The city is served by eight truck lines. Interstate 64 is routed through Clark County with an

interchange off U. S. 60, three-tenths mile west of Winchester, and another interchange just north of the city. Interstate 64 connects with the Mountain Parkway, one mile east of Winchester, and also connects with Interstate 75, fifteen miles to the west. Commercial air services (passenger and freight) are available at Blue Grass Field in Lexington, 23 miles west of Winchester.

3. The Kentucky Utilities Company provides electric power to Winchester and the Clark Rural Electric Cooperative Corporation supplies electricity to Clark County. Natural gas service is provided by Columbia Gas of Kentucky, Inc., whose source of supply is the Columbia Gas Transmission Corporation. There are three distributors of propane and three distributors of distillate fuel oil located in Winchester.

4. Education is an important growth asset for Winchester. The Clark County School System serves over 5,800 students and is recognized as a progressive and effective educational institution with high ratings from the state. In addition, one elementary parochial school is located in Winchester.

Winchester is the home of Southeastern Christian College, a junior college designed to provide a Christian liberal arts education. In addition, five universities, four senior colleges, one junior college, and one technical institute are located within 55 miles of Winchester.

A vocational education center located at Winchester offers training in five fields. The nearest state vocational-technical school, in Lexington, offers 17 different course areas.

THE LABOR MARKET AREA

POPULATION

Area	1974*	1970	Percent Nonwhite
			1970
Winchester	15,352**	13,402	13.0
Labor Market Area			
Area	325,400	304,674	
Clark County	25,600	24,090	7.7
Bath County	9,500	9,235	4.4
Bourbon County	18,700	18,476	12.4
Estill County	13,200	12,752	0.3
Fayette County	186,900	174,323	12.7
Madison County	46,200	42,730	6.8
Montgomery County	17,100	15,364	7.4
Powell County	8,200	7,704	0.9

*Provisional Estimates.

**1973 Population Estimates.

Sources: U. S. Department of Commerce, Bureau of the Census, Census of Population, 1970. U. S. Bureau of the Census, Current Population Reports, Series P-25, No. 562, June 1975; Series P-26, No. 120, June 1975.

GENERAL EMPLOYMENT CHARACTERISTICS, 1974

Major Employment Group	Employment by Place of Residence of Workers	
	Clark County	Labor Market Area
	Total Employment	11,651
Agriculture	1,180	9,139
Government	1,674	34,143
	Employment by Location of Jobs	
	Clark County	Labor Market Area
Manufacturing	4,025	31,721
Trade and Services	2,526	55,613

Source: Kentucky Department for Human Resources, Bureau for Administration and Operations.

MANUFACTURING EMPLOYMENT BY INDUSTRY
SEPTEMBER 1974

<u>Industry</u>	<u>Clark County</u>	<u>Labor Market Area</u>
TOTAL	4,114	32,253
Food & Kindred Products	82	1,284
Tobacco	1	1,081
Apparel, Textiles, Leather	451	3,883
Lumber, Furniture	479	803
Printing & Publishing, Paper	58	1,609
Chemicals, Petroleum & Coal, Rubber	58	1,617
Stone, Clay & Glass	63	1,113
Primary Metals	509	911
Machinery, Metal Products, Equipment	2,398	18,599
Other	15	1,353

Source: Kentucky Department for Human Resources, Number of Workers in Manufacturing Industries Covered by Kentucky Unemployment Insurance Law Classified by Industry and County, September, 1974.

MAJOR WINCHESTER MANUFACTURING FIRMS,
THEIR PRODUCTS AND EMPLOYMENT

<u>Firm (Establishment date)</u>	<u>Product</u>	<u>Employment</u>			<u>Organized</u>
		<u>Total</u>	<u>Male</u>	<u>Female</u>	
Bundy Tubing (1957)	Copper-coated steel tubing, steel tubing	519	472	47	*
Concrete Materials Corporation (1960)	Concrete products, building materials	65	61	4	
Curlee Clothing Company (1947)	Men's sportcoats	394	34	360	
The Freeman Corporation (1912)	Walnut veneer, kiln dried walnut lumber, furniture hardwood	63	50	13	
GTE Sylvania, Inc. (1953)	Projector and PAR lamps	838	256	582	*
Leggett & Platt, Inc. (1910)	Mattress units, box springs, bed frames	360	340	20	*
Loma Manufacturing Company (1956)	Ladies' blouses, men's shirts, ladies' dresses	135	10	125	
Quality Manufacturing Company (1973)	Production machining, special machines	85	75	10	
Rockwell International Corporation, Truck Axle Division (1966)	Truck axles	1308	1283	25	*

*See Labor Organizations below.

Source: Kentucky Department of Commerce, Division of Research and Planning.

LABOR ORGANIZATIONS

<u>Union</u>	<u>Representing manufacturing workers at:</u>
International Association of Machinists and Aerospace Workers (IAM)	Leggett & Platt, Inc.
International Union, United Automobile, Aerospace & Agricultural Implement Workers of America (UAW)	Bundy Tubing GTE Sylvania, Inc. Rockwell International Corporation, Truck Axle Division

ESTIMATED MALE LABOR SUPPLY
WINCHESTER LABOR MARKET AREA

Area	Current			Under- employed	Future
	Total	Not in Labor Force	Unemployed		Reaching 18 yrs. of age before 1981
Labor Market					
Area	11,860	1,580	2,830	7,450	14,529
Clark	660	0	280	380	1,260
Bath	500	0	320	180	448
Bourbon	390	0	110	280	929
Estill	1,580	1,050	280	250	670
Fayette	5,250	0	1,170	4,080	8,199
Madison	2,050	0	260	1,790	1,782
Montgomery	970	370	220	380	791
Powell	460	160	190	110	450

Sources: Kentucky Department for Human Resources, Kentucky Labor Supply Estimates by County, 1974. Kentucky Department of Commerce, Future Labor Supply before 1981.

ESTIMATED FEMALE LABOR SUPPLY
WINCHESTER LABOR MARKET AREA

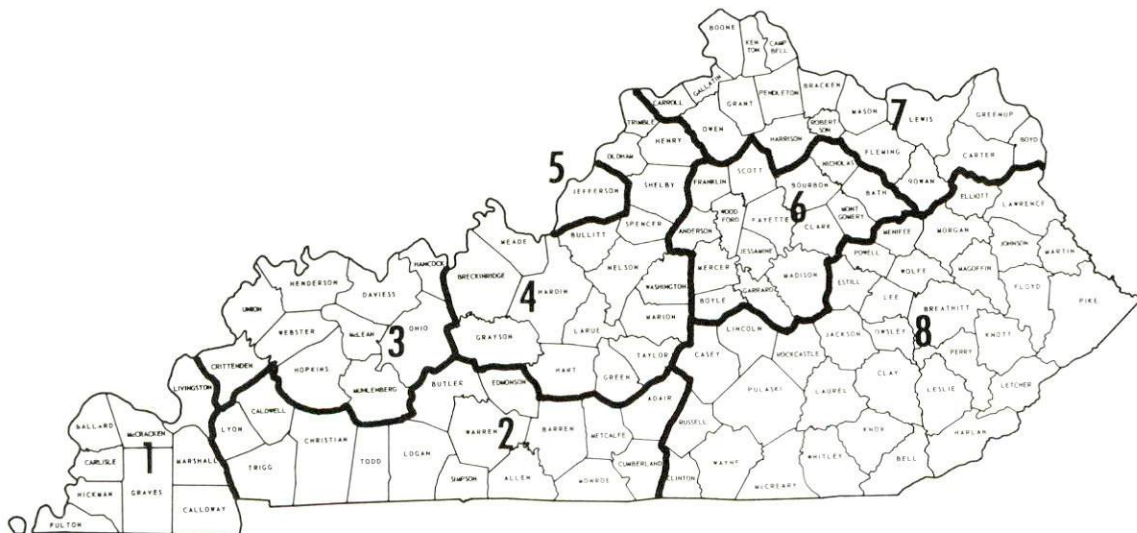
Area	Current			Under- employed	Future
	Total	Not in Labor Force	Unemployed		Reaching 18 yrs. of age before 1981
Labor Market					
Area	12,150	2,380	1,340	8,430	13,868
Clark	1,120	370	110	640	1,133
Bath	590	350	60	180	456
Bourbon	580	110	70	400	843
Estill	1,270	930	100	240	624
Fayette	5,540	0	750	4,790	7,910
Madison	1,830	0	100	1,730	1,741
Montgomery	640	260	80	300	746
Powell	580	360	70	150	415

Sources: Kentucky Department for Human Resources, Kentucky Labor Supply Estimates by County, 1974. Kentucky Department of Commerce, Future Labor Supply before 1981.

WAGES

Occupational wage rates for specific industries are usually not available to most government agencies, and wage data furnished to state employment agencies by industrial employers is protected from disclosure by federal law. The most reliable up-to-date wage information can be obtained by direct contact with local employers.

Associated Industries of Kentucky, a voluntary organization of Kentucky businesses, regularly collects occupational wage rates and fringe benefits data from participating member firms. Data is compiled for over 130 clearly defined office, production, and service occupations. Tabulations are published for eight regions of Kentucky, as shown on the map below. It should be noted that the data may be weighted by the preponderance of firms in the larger cities and may be somewhat higher than the rates paid in the smaller communities. Data from these tabulations are available, upon request, from the Kentucky Department of Commerce, Frankfort, Kentucky 40601.



Associated Industries of Kentucky Area Wage Surveys

PER CAPITA PERSONAL INCOME

<u>Area</u>	<u>1973</u>	<u>1969</u>	<u>% Change</u>
Clark County	\$4,705	\$3,311	42.1
Labor Market Area			
Range	\$2,814 - 4,930	\$1,903 - 3,740	N. A.
Kentucky	4,050	2,894	39.9
U. S.	5,041	3,733	35.1

Sources: U. S. Department of Commerce, Office of Business Economics, Survey of Current Business, August, 1974. U. S. Department of Commerce, Bureau of Economic Analysis, April, 1975.

TRANSPORTATION

Rail

Line serving Winchester - Louisville & Nashville Railroad

Services - Three northbound and three southbound freights daily, eight northbound and eight southbound through freights daily, switching facilities, team track with space for 14 cars; nearest piggyback facilities at Lexington, Kentucky, 19 miles west of Winchester

Line serving Winchester - The Chessie System

Services - One eastbound and one westbound freight daily, one eastbound and one westbound through freight daily, switching facilities, team track with space for 14 cars; nearest piggyback facilities at Huntington, West Virginia, 106 miles east of Winchester

For details on routing, schedules, rates, and services, contact:

Manager of Industrial Development
Louisville & Nashville Railroad Company
908 West Broadway
Louisville, Kentucky 40203
(502) 587-5000

and/or

Real Estate and Industrial Development
The Chessie System
2 North Charles Street
Baltimore, Maryland 21201
(301) 237-2754

Highways

Winchester is served by an excellent highway system. Interstate 64, a major east-west highway, is routed through Clark County with an interchange three-tenths mile east of Winchester and an interchange just north of the city. Interstate 64 connects with the Mountain Parkway, one mile east of Winchester, and also connects with Interstate 75, 15 miles to the west. Winchester is also served by U. S. 60 and Kentucky Routes 627, 89, and 15.

Truck Service

<u>Company</u>	<u>Home Office</u>
Cooper- Jarrett, Inc.	23 South Essex Avenue Orange, New Jersey 07050
Ecklar-Moore Express, Inc.	147 South Forbes Road Lexington, Kentucky 40505
Great Lakes Express	1105 North Niagara Street Saginaw, Michigan 48602
McDuffee Motor Freight, Inc. (United Trucking)	3047 Lonyo Road Detroit, Michigan 48209
McLean Trucking Company	617 Waughtown Street Winston-Salem, North Carolina 27107
Point Express, Inc.	P. O. Box 10185, Station C Charleston, West Virginia 25312
Smith's Transportation Corporation of Virginia	P. O. Box 1000 Staunton, Virginia 24401
Wilson Freight Company	3636 Follett Avenue Cincinnati, Ohio 45223

<u>Other Freight Services</u>	<u>Nearest Shipping Center</u>
United Parcel Service	Lexington, Kentucky

HIGHWAY MILES AND TRUCK TRANSIT TIME IN DAYS FROM
WINCHESTER, KENTUCKY, TO SELECTED MARKET CENTERS

City	Delivery		City	Delivery	
	Highway Miles	Time TL		Highway Miles	Time TL
Atlanta, Ga.	387	2	Los Angeles, Calif.	2,199	5
Birmingham, Ala.	448	2	Louisville, Ky.	91	overnight*
Chicago, Ill.	383	1	Nashville, Tenn.	229	1
Cincinnati, Ohio	97	overnight	New Orleans, La.	790	2
Cleveland, Ohio	344	1	New York, N. Y.	756	2
Detroit, Mich.	356	1	Pittsburgh, Pa.	387	1
Knoxville, Tenn.	194	1	St. Louis, Mo.	354	1

*On truckload shipments, same day service can be provided.

Source: Delivery Time Only - Ecklar-Moore Express, Inc. 147 South
Forbes Road, Lexington, Kentucky 40505.

Air

Nearest Commercial

Location: Blue Grass Field
Lexington, Kentucky, 23 miles west of
Winchester

Runways: 2 paved
Length: 6,500 feet and 3,500 feet

Traffic
Control: Tower; guards; radar services - arrival
and departure, Stage II contact approach
control, ground control; Automatic Terminal
Information Service

Lighting: Approach lighting system, beacon, runways
and obstructions lighted

Services: Delta, Eastern, Piedmont and Allegheny
Airlines; 80, 100, 145, and jet fuel;
Major A & E repairs and certified Avionics
repair station; National Weather Service;
flight instructions; charter service; storage;
taxi, limousine and car rentals; restaurant

Air Freight
Service: Accepted on a space-available basis

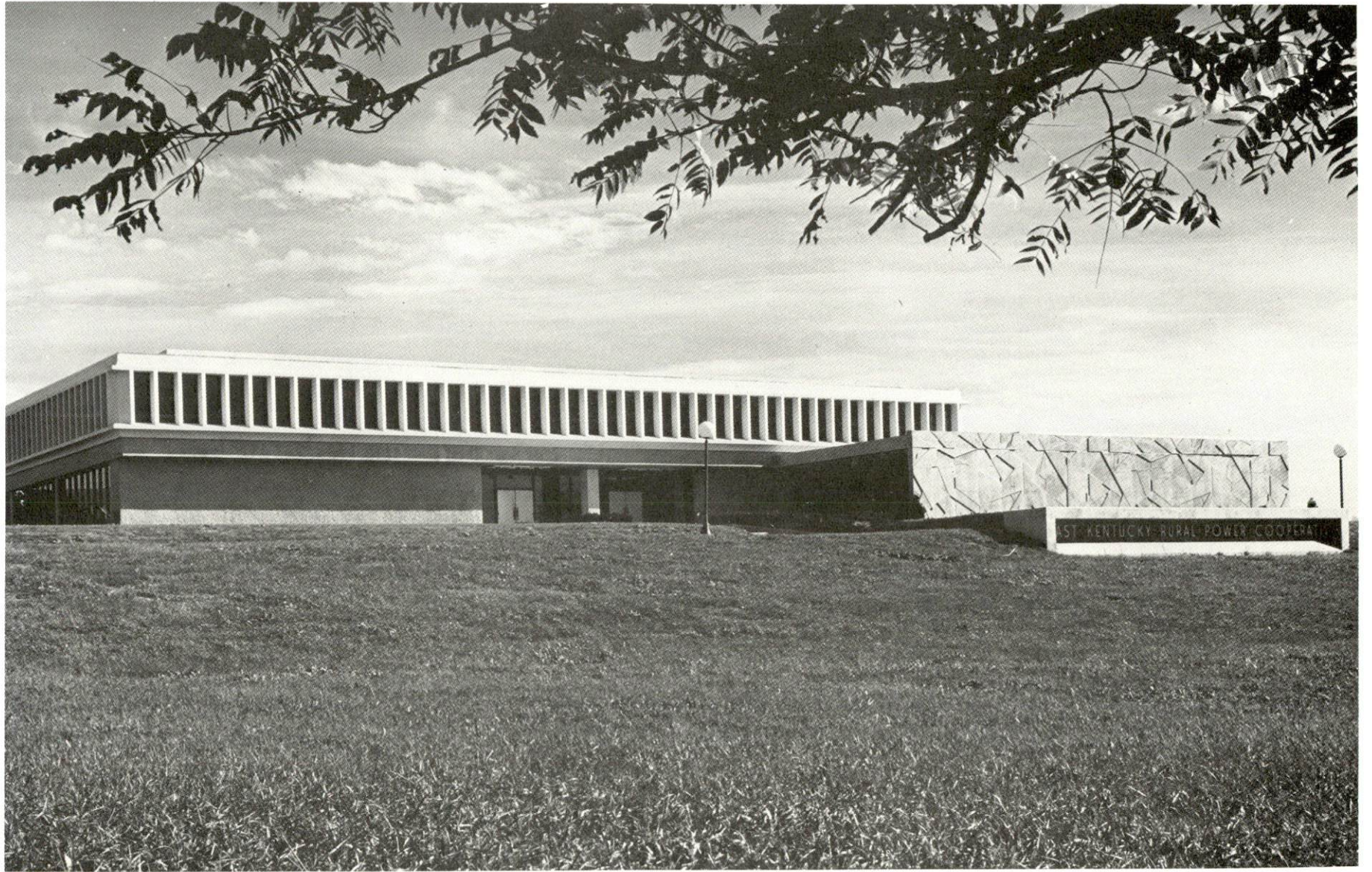
Bus - Greyhound Bus Lines

Taxi - 4 companies, radio-dispatched

Rental Services - Truck and trailer rentals

Water

The Kentucky River, 8 miles south of Winchester, is navigable from Carrollton to Beattyville (a distance of 258.6 miles) with a 6-foot minimum depth navigation channel suitable for commercial barge transportation. This is a part of the inland waterways system of the Eastern United States.



EAST KENTUCKY RURAL POWER COOPERATIVE
HEADQUARTERS - WINCHESTER

POWER AND FUEL

Electricity

Company serving Winchester - Kentucky Utilities Company

Source of power - Kentucky Utilities Company

Total generating capacity - 1,615,500 KW

For industrial rates contact:

Kentucky Utilities Company
308 West Lexington Avenue
Winchester, Kentucky 40391
(606) 744-1434

Company serving Clark County - Clark RECC

Source of power - East Kentucky Power Cooperative

Total generating capacity - 496,000 KW

For industrial rates contact:

Clark RECC
P. O. Box 748; Route 15
Winchester, Kentucky 40391
(606) 744-4251

Natural Gas

Company serving Winchester - Columbia Gas of Kentucky, Inc.

Source of supply - Columbia Gas Transmission Corporation

Size of transmission mains - 12 inches (supplier); 12 inches (distributor)

Distribution mains - 2 to 12 inches

Distribution pressure - 4 to 6 ounces

Btu content - 1020 per cubic foot

Specific gravity - .59

Sulphur content - less than 1 percent or a range of .4 to 1.8 grams
per 100 cubic feet

For rates and supplies contact:

Columbia Gas of Kentucky, Inc.
166 Walnut Street
P. O. Box 241
Lexington, Kentucky 40501
(606) 255-3612

Other Fuels

Propane and butane

Bill Bartlett's Gas and Appliances (Doxol propane dealer for
Williams Energy Company)
Victory Avenue
Winchester, Kentucky 40391

Southern States Clark Co-op, Inc. (dealer for Southern LP Gas)
Pendleton Street
Winchester, Kentucky 40391

Woodgate Petroleum Company
40 Winn Avenue
Winchester, Kentucky 40391

Fuel oils

Distillate fuel oil -

Ashland Petroleum Company Agent
221 North Main Street
Winchester, Kentucky 40391

Lowry Oil Company (Ashland Products)
Evans Street
Winchester, Kentucky 40391

Standard Oil Company
512 West Lexington Avenue
Winchester, Kentucky 40391

Residual fuel oil - Arrangements must be made with the refinery.

Low sulphur content coal - Available in Kentucky.

WATER AND SEWERAGE

Water

Company serving Winchester - Winchester Municipal Utilities
26 Wall Street
Winchester, Kentucky 40391
(606) 744-5434

Source - 2 impounded reservoirs and the Kentucky River

Treatment plant capacity - 5,500,000 gallons per day

Average daily consumption - 2,300,000 gallons

Peak daily consumption - 3,390,000 gallons

Type treatment - Prechlorination, coagulation, flocculation,
sedimentation, fluoride adjustment, postchlorination, high-
rate filtration

Storage capacity - 2,775,000 gallons

Size lines - 2 to 18 inches

Average pressure - 60 psi

Average temperature - 60 degrees F.

MONTHLY WATER RATES FOR WHOLESALE AND INDUSTRIAL CONSUMERS

First	300 cubic feet	\$3.45 (Minimum)
Next	200 cubic feet	1.10 per 100 cubic feet
Next	1,500 cubic feet	1.00 per 100 cubic feet
Next	15,000 cubic feet	.85 per 100 cubic feet
Over	17,000 cubic feet	.60 per 100 cubic feet

Tap-on charge: Up to 2-inch service - \$120 or \$240
Over 2-inch service - Actual cost

Name of water district - Boonesboro Water Association, Inc.
 Westchester Manor
 Winchester, Kentucky 40391
 (606) 744-8941

Area served - Southwestern portion of Clark County
 Date when water district began operating - 1969
 Source of supply of treated water - Winchester Municipal Utilities
 Average amount of water used in a 30-day period - 4,500,000 gallons
 Peak amount of water used in a 30-day period - 6,000,000 gallons
 Storage capacity - 224,740 gallons
 Average pressure - 40 psi
 Size lines - 8, 6, 4, 3, and 2 inches
 Monthly rates -

Regular Service: 5/8-inch Meter

First	1,000 gallons	\$8.75 (Minimum)
Next	2,000 gallons	1.95 per M gallons
Next	12,000 gallons	1.65 per M gallons
All over	15,000 gallons	1.40 per M gallons

Special 1-inch Meter

First	10,000 gallons	\$23.25 (Minimum)
Next	5,000 gallons	1.65 per M gallons
All over	15,000 gallons	1.40 per M gallons

Special 1½-inch Meter

First	30,000 gallons	\$51.25 (Minimum)
Next	10,000 gallons	1.40 per M gallons
Next	10,000 gallons	1.20 per M gallons
All over	50,000 gallons	1.05 per M gallons

Special 2-inch Meter

First	50,000 gallons	\$75.50 (Minimum)
All over	50,000 gallons	1.05 per M gallons

Connection fees:

5/8-inch meter	\$ 200
1-inch meter	400
1 1/2-inch meter	2,000
2-inch meter	2,250

Fire hydrant connection fee - \$200 plus \$50 a year
 rental fee

Surface water sources - Kentucky River

Average discharge - Kentucky River at Lock 10, near Winchester,
Kentucky 5,233 cfs (67-year record, unadjusted) USGS

Expected ground water yield - 50 to 200 gpm in far western section
of county; 5 to 50 gpm in western and northcentral sections of
county; 5 gpm or less in remaining sections.

Sewerage

Company serving Winchester - Winchester Municipal Utilities
26 Wall Street
Winchester, Kentucky 40391
(606) 744-5434

Design capacity - (1) 2,200,000 gallons per day; (2) 1,000,000 gallons
per day*

Average daily flow - 2,000,000 gallons

Treatment - (1) Primary and secondary; (2) Tertiary

Type treatment - (1) Primary settling tank with two-stage sludge
digestion system, secondary trickling filters, secondary settling
and chlorination; (2) Bio disc

Treated effluent discharged into - (1) Town Branch to Strodes Creek;
(2) Strodes Creek

Size of sanitary mains - 6 to 30 inches

Rates - \$.72 per 100 cubic feet of water used.

Tap-on charge: Residential - \$300
Commercial - 500
Industrial - To be negotiated

*New plant put into operation early in 1976.

Company serving Rockwell Village - Boonesboro Water Association, Inc.
(in Clark County) Westchester Manor
Winchester, Kentucky 40391
(606) 744-8941

Design capacity - 40,000 gallons per day

Average daily flow - 10,000 gallons

Type treatment - Secondary with polishing pond (sanitary waste only)

Treated effluent discharged into - Town Branch tributary to Strodes
Creek

Size of sanitary mains - 8 inches

Rates - One-half of water rates

CLIMATE

Clark County

Temperature

Annual mean (30-year record)	55.2 degrees
Average annual 1974	55.1 degrees
Record highest, July, 1966 (11-year record)	98.0 degrees
Record lowest, January, 1972 (11-year record)	-11.0 degrees
Normal heating degree days (30-year record) (Heating degree day totals are the sums of negative departures of average daily temperatures from 65 degrees F.)	4,729

Precipitation

Mean annual total (30-year record)	44.49 inches
Mean annual snowfall (30-year record)	15.70 inches
Total precipitation 1974	60.09 inches
Mean number days precipitation (.01 inch or more) (30-year record)	130
Average number days thunderstorms (30-year record)	47

Prevailing Winds (17-year record) South

Relative Humidity (11-year record)

1 a. m.	76 percent
7 a. m.	81 percent
1 p. m.	59 percent
7 p. m.	64 percent

Source: U. S. Department of Commerce, Environmental Science Services Administration, Climatological Data, 1974. Station of record: Lexington, Kentucky.

LOCAL GOVERNMENT

City

Structure - Mayor - 4-year term; 4 commissioners - 2-year terms;

City Manager

Budget 1975 - General Fund \$1,629,570

Water, Sewer, and

Garbage Fund 1,478,300

Fees and licenses - Occupational license fees for manufacturers range from \$150 (less than 10 employees) to \$2,500 (more than 1,000 employees)

County

Structure - County Judge - 4-year term; 7 magistrates - 4-year terms

Budget 1974-75 - General Fund \$433,942; Road Fund \$158,200

Assessed Value of Property, 1975

<u>Classes of Property</u>	<u>Winchester</u>	<u>Clark County</u>
Real Estate	\$86,317,400	\$192,475,070
Tangibles	20,798,590	39,199,150

Property Taxes

Land and buildings are taxed by the state and may be taxed by local jurisdictions. The state rate is \$0.015 per \$100 of assessed valuation.

Tangible personal property owned by manufacturers (automobiles, trucks, finished goods, office furniture, office equipment) is taxed by the state at \$0.15 per \$100 and may be taxed by local jurisdictions.

Manufacturing machinery, raw materials inventories, pollution control equipment, and goods in process inventories are not subject to local taxation. The state rate is \$0.15 per \$100.

Property stored in public warehouses is not subject to local taxation. The state rate is only \$0.015 per \$100.

All property is assessed at 100 percent of fair cash value.

Local Property Tax Rate Per \$100 of Assessed Valuation, 1975*

<u>Taxing Jurisdiction</u>	<u>Winchester</u>	<u>Clark County</u>
County	\$.209	\$.209
School	.544	.544
City	.286	

Utilities Gross Receipts Tax for Schools

Clark County levies a 3 percent tax on utilities receipts for schools. This tax is paid by all consumers of utilities as an add-on to the utilities bills. Exempted are receipts from utilities services that are resold and the receipts from the sale of energy or energy producing fuels that exceed 3 percent of the cost of production in manufacturing, processing, mining or refining.

Planning and Zoning

Joint agency - Winchester-Clark County Planning Commission
 Zoning enforced - All areas
 Subdivision regulations enforced - All areas
 Local codes enforced - Building (city only); Housing (city and county)
 Mandatory state codes enforced - Plumbing, National Fire Protection Association Code, National Building Code (for major buildings and residential construction containing more than 12 bedrooms per building)

Safety

<u>Police</u>	<u>Winchester</u>	<u>Clark County</u>
Total staff	37	6
Radio-patrol cars	7 cars and 1 mobile crime lab	3
<u>Fire</u>		
American Insurance Association Fire Rating	6	
Full-time staff	35	10
Volunteers	7	8
Number of stations	2	1

*Kentucky Department of Revenue.

Rescue Service

The Winchester Fire Department provides rescue service and is equipped with an emergency rescue squad truck, power saws, hydraulic rescue units, resuscitators, major forceable entry tools, a 1,200 pound winch, generators, and lights.

The Department will answer rescue calls along with the Winchester-Clark County Ambulance Service.

Solid Waste

	<u>Winchester</u>
Type service	Municipal
Fee charged:	
residential	\$4.00 per month
business	Based on volume
industrial	Based on volume
Collection frequency:	
residential	2 times per week
business	5 times per week
industrial	5 times per week
Trash pickup	Same as garbage
Disposal method	Sanitary landfill

Refuse can be hauled directly to the county landfill. The fee charged for use of the landfill is based on volume.

A private contractor provides sanitation services in Clark County.

EDUCATION

Public Schools

	<u>Clark County</u>
Total Enrollment (Fall, 1975)	5,814
Elementary	3,052
Middle School	1,064
High School	1,698
Student-Teacher Ratio	21 to 1
Elementary	21 to 1
Middle School	21 to 1
High School	21 to 1
Accreditation	Southern Association of Colleges and Schools
Percent High School Graduates to College	37.2
Expenditures Per Pupil (1974-75)	\$684.10
Bonded Indebtedness, June 30, 1975	\$3,219,000

Nonpublic Schools

	<u>St. Agatha Academy</u> <u>(Grades 1-8)</u>
Total Enrollment	111
Elementary	111
Student-Teacher Ratio	16 to 1
Elementary	16 to 1

Area Colleges and Universities

<u>Name</u>	<u>Location</u>	<u>Distance (Miles)</u>	<u>Enrollment (Fall, 1974)</u>	<u>Highest Degree Conferred</u>
Southeastern Christian Junior College	winchester		73	Associate
Transylvania University	Lexington	19	664	Masters*
University of Kentucky	Lexington	19	21, 586	Ph. D. , M. D. , D. M. D. , J. D.
Lexington Technical Institute	Lexington	19	1, 281	Associate
Eastern Kentucky University	Richmond	22	12, 571	Masters, Ph. D.**
Georgetown College	Georgetown	31	1, 118	Masters
Midway Junior College	Midway	34	341	Associate
Berea College	Berea	34	1, 411	Baccalaureate
Asbury College	Wilmore	36	1, 184	Baccalaureate
Kentucky State University	Frankfort	44	2, 174	Masters
Morehead State University	Morehead	46	6, 765	Masters, Ph. D.**
Centre College	Danville	53	796	Baccalaureate

*Courses are taught on the Transylvania campus by Xavier University of Cincinnati faculty members. The degree is issued by Xavier University.

**Cooperative program with the University of Kentucky, Lexington, for a Ph. D. in education only.

Vocational Schools

	<u>Nearest State School</u>	<u>Nearest Area Education Center</u>
	Central Kentucky State Vocational-Technical School	Clark County Area Vocational Education Center
Location	Lexington	Winchester
Miles Distant	19	
Curriculum	Clerical Stenographic-Secretarial Practical Nursing Learning Lab Electronics Auto Body Repair Auto Mechanics Commercial Foods Cosmetology Drafting Industrial Electricity Graphic Arts Machine Shop Office Machine Repair Sheet Metal Welding Equine Education	Auto Mechanics Machine Shop Carpentry- Building Trades Drafting Welding

Arrangements can be made to provide training in the specific production skills required by an industrial plant. Instruction may be conducted either in the vocational school or in the industrial plant, depending upon the desired arrangement and the availability of special equipment.

HEALTH

Local Medical Personnel

Physicians - 11
Dentists - 8

Hospitals

<u>General Hospital</u>	<u>Location</u>	<u>Beds</u>
Clark County Hospital	Winchester	74

General hospital facilities - 3 major and 1 minor operating rooms, 2 delivery rooms, 14 bassinets, 2 X-ray rooms, 1 laboratory

Medical staff - 12 doctors, 9 dentists, 31 registered nurses, 31 licensed practical nurses, 1 anesthesiologist, 6 laboratory technicians, 50 aides, and 7 orderlies. A team of 4 radiologists from Louisville provide services on a rotating basis. Pathological and cardiological services are received from Lexington.

Other Medical Facilities

Comprehensive Care Center

Ambulance Service

Name - Winchester - Clark County Ambulance Service

Staff - Full time: 6 Emergency Medical Technicians and 1 driver
Part-time: 2 Emergency Medical Technicians and 2 drivers

Services - 24 hours, 7 days a week; rescue service is also provided

Equipment - 3 fully equipped ambulances

Nursing Homes

Number of homes

1

Number and type of beds

50 extended care beds;
50 personal care beds

Public Health

Facility - Clark County Health Department

Staff - Full time: 6 registered nurses, 2 community health
workers, 2 health environmentalists,
4 clerks

Part time: 1 health officer, 1 registered nurse, 1 nutritionist,
1 physical therapist, 1 family planning doctor

OTHER LOCAL FACILITIES

Communications

Telephone - South Central Bell Telephone Company
Services - Standard, mobile service, touch tone

Telegraph - Western Union
Services - Standard

Postal - U. S. Post Office
Revenue Units - 3,781
Mail received - 4 times daily
Mail dispatched - 3 times daily

Newspapers - Winchester Sun
Daily and circulation - 6,400 (Except Sunday)
Other papers
received from - Lexington and Louisville, Kentucky;
Cincinnati, Ohio

Radio - WWKY-AM; WKDJ-FM
Stations received from - Lexington and Louisville, Kentucky;
Cincinnati, Ohio

Television -
Cable service
Reception from - Lexington and Louisville, Kentucky;
Cincinnati, Ohio

Kentucky Educational
Television - Lexington-Richmond transmitter, channel 46

Library Services

Public library - Public Library
Size collection - 30,000 volumes
Circulation, 1974 - 91,325 (library and bookmobile)
Services - Newspapers, magazines, framed paintings, records,
record player, films, film projector, filmstrips, filmstrip
projector, carousel slide projector, screen, copy service,
microfilm reader-printer, bookmobile, special genealogical
collection, art exhibits, photography exhibits, weekly story hour,
large print books for the blind, arrangements made for receiving
"Talking Books," weekly library column in newspaper

Private library - Olmstead Memorial Library; Southeastern Christian College

Size collection - 16,100 volumes

Special collections - Church of Christ History

Services - Tapes, filmstrips, magazines, records

Religious Institutions

Number of churches - 62 in Clark County

Denominations - Assembly of God, Baptist, Catholic, Christian, Church of Christ, Church of God, Episcopal, Methodist, Nazarene, Pentecostal, Presbyterian, Lutheran Church in Lexington

Nearest Synagogues - Lexington, Kentucky - 19 miles distant

Congregations - Adath Israel (reform), Ohavey Zion (traditional)

Financial Institutions

<u>Banks</u>	<u>Assets</u>	<u>Deposits</u>	<u>Statement Date</u>
Clark County National Bank	\$28,426,519.18	\$24,737,960.91	6/30/75
Peoples Commercial Bank	33,029,992.40	29,059,247.55	6/30/75
The Winchester Bank	44,517,324.05	39,361,857.13	6/30/75

<u>Savings and Loan Associations</u>	<u>Assets</u>	<u>Shared Accounts</u>	<u>Statement Date</u>
Winchester Building and Savings Association	\$16,036,531.55	\$14,862,854.64	6/30/75
Winchester Federal Savings and Loan Association	7,491,742.70	6,708,666.04	12/31/74

Hotels and Motels

Total number - 7

Total units - 266

Clubs and Organizations

Business and Civic - Chamber of Commerce, Jaycees, Lions, Kiwanis, Rotary, Optimist, Civitan, Business & Professional Women's Club, Association of Legal Secretaries, Civil Defense, Hospital Auxiliary, Youth Council, Ministerial Association

Fraternal - American Legion, Masonic Lodge, IOOF

Women's - League of Women Voters, Jaycettes, Lioness, American Legion Auxiliary, Eastern Star, Civinettes, Women's Democratic Club, Republican Woman's Club, Daniel Boone Music Club, Winchester Music Club, Little Garden Club, Fortnightly Club, Woman's Club, Newcomers Club, Community Greeters, Homemakers, American War Mothers

Youth - FTA, FHA, FFA, National Forensic League, Beta Club, Quill and Scroll, Children's Theatre, Junior Achievement, Young Democrats

Other - Retired Teachers Club, United Community Fund, National Cystic Fibrosis Research Fund, American Cancer Society, Heart Fund, Muscular Dystrophy Fund



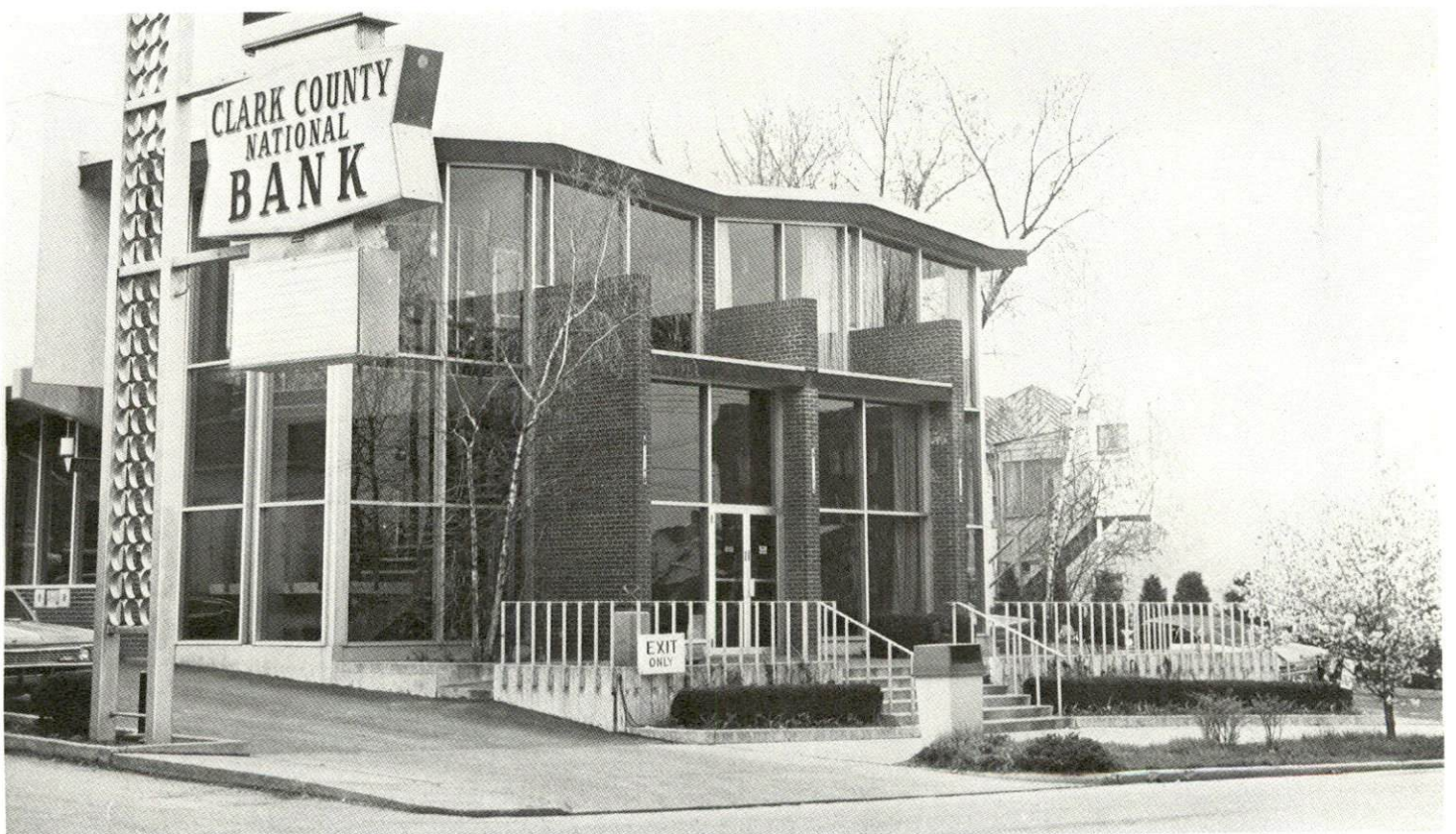
CLARK COUNTY HOSPITAL



PEOPLES COMMERCIAL BANK



THE WINCHESTER BANK



CLARK COUNTY NATIONAL BANK

RECREATION

Local

Winchester and Clark County offer a variety of recreational activities. The Winchester - Clark County Parks and Recreation Department sponsors year-round supervised recreational programs for all ages. Public facilities include seven parks with playgrounds and outdoor basketball courts, a swimming pool, tennis courts, ball parks, and picnic areas. There are also excellent private facilities for the sports participant in golfing, swimming, tennis, horseback riding, and bowling.

For entertainment and recreation in the Winchester area tourists can visit: The Barn Dinner Theatre featuring theatre in-the-round; Bwamazon Horse Farm, a typical horse farm in Kentucky's famed Bluegrass; Hidden Valley Dude Ranch, a true-to-life western town ranch resort; and the Iroquois Hunt Club with its traditional "Ride to the Hounds" on the beautiful Kentucky countryside.

Points of historical interest in Clark County include the Old Stone Meeting House, the first established church west of the Appalachian Mountains; Indian Old Fields, the last Indian town in Kentucky; and the Clark County Courthouse where Henry Clay made his first and last speeches. A collection of historical paintings is displayed at the courthouse.

Area (Within 60 miles)

Natural Bridge State Resort Park is a 1,899-acre park located in the Daniel Boone National Forest where cliffs and stone arches fill the landscape. The main attraction is Natural Bridge, the largest of the 12 natural arches in the park. A lodge, cottages, camping sites, and a wide variety of recreational facilities are available at the park.

Fort Boonesborough State Park, 8 miles south of Winchester on the Kentucky River, features a reproduction of the original fort built by Daniel Boone in 1775. The park provides facilities for camping and water sports.

Old Fort Harrod State Park in Harrodsburg is a 28-acre park with a full-scale reproduction of the original pioneer fort, a museum, a federal monument, and a pioneer cemetery. An outdoor production of "The Legend of Daniel Boone" is presented in the park amphitheatre every summer.

Blue Licks Battlefield State Park near Mt. Olivet is a 100-acre park on the site of the last battle of the Revolution and the last Indian-Pioneer struggle in Kentucky. A museum with historical objects and a monument to pioneers are featured.

Five state shrines in the area are:

Isaac Shelby State Shrine, near Danville - burial site of Kentucky's first governor.

Constitution Square State Shrine, in Danville - reproduction of Kentucky's first courthouse square.

William Whitley House State Shrine, near Stanford - first brick house west of the Alleghenies.

White Hall State Shrine, near Richmond - restored mansion of Cassius Marcellus Clay, early politician and abolitionist.

Waveland State Shrine, near Lexington - Greek Revival mansion containing Kentucky Life Museum, hundreds of pioneer items and Civil War Relics.

Nearby cities offering tourist attractions include:

Berea - summer production of "Wilderness Road."

Danville - Pioneer Playhouse.

Frankfort - home of Kentucky State Capitol and the famous Floral Clock as well as many historical buildings and museums.

Lexington - Keeneland Race Course, Red Mile Trotting Track, and world famous horse farms.

Pleasant Hill - restored Shaker village.

COMMUNITY IMPROVEMENTS

Industrial and Commercial

Two industrial plants have expanded: Pepsi-Cola Bottling Company enlarged its plant and Springfield-London Manufacturing Company added new equipment.

Southern States Cooperative, Inc., is planning to build a large feed mill in the Winchester area.

Facelifting projects are underway at several commercial businesses in the downtown area.

Water and Sewerage

The water treatment plant capacity has been increased to 5,500,000 gallons per day. A new one million gallon water storage tank has been put into service. Over 7,000 feet of 14-inch pipe and 12,000 feet of 12-inch pipe was installed in 1975.

A new one million gallon per day sewage treatment plant was put into operation early in 1976. The existing sewage treatment plant is undergoing extensive renovation. Application has been made for funds for a 201 Facilities Plan to study infiltration and inflow of the sewerage system.

Public Safety

At the Winchester Police Department a crime prevention team has been formed; a Criminal Investigation Division has been put into operation and equipped with a mobile crime lab; and additional and updated communication equipment has been purchased.

The city fire department purchased a new 1,000 gpm pumper and a new rescue truck. A new central fire station will be ready for occupancy early in 1976.

The Clark County Fire Department relocated into a new fire station in October of 1975.

Education

A new junior high school for the Clark County School System is in the planning stage.

Transportation

U. S. 60 is being widened at the U. S. 60 -bypass intersection to provide right and left turn lanes. Traffic signals will also be upgraded at the intersection.

Over \$50,000 in street resurfacing improvements were made in 1975.

Two railroad bridges over the Louisville and Nashville Railroad tracks have been improved.

Recreation

At the new 40-acre Lykins Park in Clark County four tennis courts have been completed, three ball parks are under construction, and an outdoor basketball court and a picnic area are planned.

An outdoor basketball court is being constructed and playground equipment will be installed at the new Holiday Hills Park.

Belmont Football Field has been completely renovated.

Other

Clark County Hospital expanded its emergency room facilities to include a 3-bed short stay unit.

A two-story addition to the public library is underway and the existing building will be completely remodeled.

HISTORY

Clark County is situated in the central part of Kentucky, covering 259 square miles. Its western portion lies in the Bluegrass Region and is gently rolling and very fertile; its northeastern portion is broken but fertile; and the southeastern section lies in the Knobs Region and is hilly with thin soil. The Kentucky River forms the county's southwestern border and Red River its southeastern border. Boone Creek flows along its western line.

The first settlements in the area were Strode's Station, established in 1779 two miles from present-day Winchester, and Hood's Station, established soon thereafter. Bush's Station, which was developed in 1783, became the county seat and was later named Winchester. The county's first brick building was built there by Captain William Bush in 1784. Indian Old Fields, the last Indian town in the state, was located in the eastern part of Clark County, and the oldest Indian trail in America, "The Warriors' Path," passed through the area. Consequently, the central Kentucky settlements came under heaviest attack by the Indians.

In 1792, Clark became Kentucky's fourteenth county, named for General George Rogers Clark, who built Fort Nelson at present-day Louisville and led campaigns against the British in the western territory. Clark had helped guide the plans by which Kentucky became a state.

Winchester, the county seat, was named for Winchester, Virginia. Early in its history Winchester became important as the marketing center of a large agricultural area. It was here that Henry Clay made his first and last speeches in law cases. The town grew in economic importance with the coming of the Louisville and Nashville and Chesapeake and Ohio Railroads. Winchester had a population of 13,402 in 1970 and an estimated population of 15,352 in 1973.

Clark County had a population of 7,653 in 1800, which had reached 18,898 by 1950. Rapid industrial growth accompanied a population increase over the next two decades to 21,075 in 1960 and 24,090 in 1970. The 1974 population estimates show a further increase to 25,600.

The total number of Clark County residents employed in 1974 averaged 11,650 including 1,180 in agriculture. Manufacturing employers in the county reported 4,025 workers in 1974. Largest of the county's firms, all employing over 300, are Rockwell International Corporation, which manufactures truck axles; GTE Sylvania, Inc., which produces projector and PAR lamps; Bundy Tubing, which produces steel tubing;

Curlee Clothing Company, which makes men's sportswear; and Leggett & Platt, Inc., which manufactures mattress units, box springs, and bed frames.

Both Interstate 64 and the Mountain Parkway pass near Winchester, providing major transportation outlets. Southeastern Christian College, a junior liberal arts institution, is located at Winchester, and Fort Boonesborough State Park to the south offers recreational facilities.

Among noted names in the history of Clark County are James A. Clark, Governor of Kentucky (1836-1839), and General Richard Hickman, Lieutenant Governor of Kentucky (1812-1816).

**Kentucky Department of Commerce
Capital Plaza Tower
Frankfort, Kentucky 40601**

**Industrial Development Division
(502) 564-7140**

**Community Services Division
(502) 564-4300**

**Business Development Division
(502) 564-4300**

**Research and Planning Division
(502) 564-4886**

**Office of Minority Business Enterprises
(502) 564-4270**

**Map Sales Office
133 Holmes Street
(502) 564-4715**

**Industrial Development Finance Authority
(502) 564-4554**